

# High ice water content in tropical mesoscale convective systems (a conceptual model)

5 Alexei Korolev<sup>1</sup>, Zhipeng Qu<sup>1</sup>, Jason Milbrandt<sup>1</sup>, Ivan Heckman<sup>1</sup>, Mélissa Cholette<sup>2</sup>, Mengistu Wolde<sup>3</sup>, Cuong Nguyen<sup>3</sup>, Greg M. McFarquhar<sup>4</sup>, Paul Lawson<sup>5</sup>, Ann M. Fridlind<sup>6</sup>

<sup>1</sup> Environment and Climate Change Canada, Toronto, ON, Canada

<sup>2</sup>.Environment and Climate Change Canada, Dorval, QC, Canada

10 <sup>3</sup> National Research Council Canada, Ottawa, ON, Canada

<sup>4</sup> Cooperative Institute for Severe and High Impact Weather Research and Operations and School of Meteorology, University of Oklahoma, Oklahoma City, OK, USA

<sup>5</sup> Stratton Park Engineering Company, Boulder, CO, USA

<sup>6</sup> NASA Goddard Institute for Space Studies, New York, NY, USA

15

*Correspondence to:* Alexei Korolev ([alexei.korolev@ec.gc.ca](mailto:alexei.korolev@ec.gc.ca))

## Abstract

20 The phenomenon of high ice water content (HIWC) occurs in mesoscale convective systems (MCS) when a large number of small ice particles with typical sizes of a few hundred micrometers, concentrations of the order of  $10^2$ - $10^3$  L<sup>-1</sup> and IWC exceeding 1 g m<sup>-3</sup> are found at high altitudes. HIWC regions in MCSs may extend vertically up to 10 km above the melting layer and horizontally up to hundreds of kilometers, filling large volumes of the convective systems. HIWC has great geophysical significance due to its effect on precipitation formation, the hydrological cycle, and the radiative properties of MCSs. It is also recognized as a hazard for commercial aviation operations since it can result in engine power loss and in the malfunctioning of aircraft data probes. This study summarizes observational and numerical simulation efforts leading to the development of a conceptual model for the production of HIWC in tropical MCSs based on the data collected during the HAIC-HIWC campaign. It is hypothesized that secondary ice production (SIP) in the vicinity of the melting layer plays a key role in the formation and sustainability of HIWC. In-situ observations suggest that the major SIP mechanism in the vicinity of the melting layer is related to the fragmentation of freezing drops (FFD). Both in-situ data and numerical simulations suggest that the recirculation of drops through the melting layer led to the amplification of SIP. However, laboratory measurements remain insufficient to support the accurate model representation of FFD conclusively. The proposed conceptual model and simulation results motivate further efforts to extend reproducible laboratory measurements.

## 1. Introduction

40 The interest in cloud environments with enhanced ice water contents (IWC > 1 g m<sup>-3</sup>) has emerged in connection with the development of aviation safety envelopes for the operation of commercial aviation. Reports of a growing number of engine power-loss events on commercial aircraft flying in the vicinity of convective storm cores has initiated trial field studies of the

environmental conditions related to the engine events (Lawson et al., 1998; Strapp et al., 1999).  
45 Data obtained provided evidence that engine power-loss events result primarily from the  
ingestion of large concentrations of ice crystals into the engine. The analysis of the Boeing  
event database showed that the engine power losses typically occur in tropical mesoscale  
convective systems (MCS) in the altitude range of 5 to 12 km and the temperature range of -  
10°C to -55°C (Mason et al., 2006; Mason and Grzych, 2011). The radar reflectivity in the  
50 regions of engine events was found to be typically below 30 dBZ (e.g., Mason et al., 2006;  
Grzych and Mason, 2010; Protat et al., 2016; Wolde et al., 2016). A detailed examination of the  
information obtained allowed the formulation of a hypothesis that the engine power-loss  
events occur in the presence of high concentrations of small ice crystals constituting high ice  
water content (HIWC) environments (Lawson et al., 1998; Strapp et al., 2016).

55 In order to provide a statistically significant data set to assess aviation safety envelopes for  
engine operations in HIWC environments (FAA Title 14 Code of Federal Regulations Part 33  
Appendix D – Mixed-Phase/Glaciared Environmental Envelope, and the identical EASA CS-25  
Appendix P), the USA Federal Aviation Administration (FAA) and European Union Aviation  
Safety Agency (EASA) jointly initiated an international field campaign: the European High-  
60 Altitude Ice Crystals (HAIC) (Dezitter et al., 2013) and North American HIWC (hereafter HAIC-  
HIWC) (Strapp et al., 2016). The flight operations were conducted out of Darwin, Australia in  
2014 and Cayenne, French Guiana in 2015. The HAIC-HIWC project was designed to obtain the  
99<sup>th</sup> percentile of total water content (TWC) and characterize ice particle sizes for regulatory  
purposes. To address the regulatory objectives, cloud environments were sampled along the  
65 horizontal traverses at different distances from the convective cores at four temperature levels  
centered around -10°C, -30°C, -40°C and -50°C ( $\pm 5^\circ\text{C}$ ) (Strapp et al., 2020).

During the HAIC-HIWC in Darwin-2014 and Cayenne-2015 campaigns, most of the MCSs  
were sampled during its mature stage, i.e., when the cloud top area with temperature below -  
50°C from the GOES-13 10.8  $\mu\text{m}$  channel passed its maximum. Approximately, 83% of studied  
70 MCSs had an age of over 6 h, and approximately 44% over 12 h (Hu et al., 2021). Most of the  
MCSs were in ice phase thermodynamic states at the moment of their observation. The spatial  
occurrence of mixed-phase cloud segments was only a few percent (Korolev et al., 2018, Strapp  
et al., 2021).

The first two HAIC-HIWC flight campaigns provided a wealth of data which enabled insight  
75 into the microphysical and thermodynamical conditions inside tropical MSCs. Thus, Leroy et al.  
(2017) found that in HIWC cloud regions the median mass diameter (MMD) of ice particles  
ranges from 250  $\mu\text{m}$  to 500  $\mu\text{m}$  and that the MMD decreases with increasing IWC. This is  
consistent with earlier findings of Lawson et al. (1998), who showed that median of the  
maximum particle dimension in tropical MCSs is close to 400  $\mu\text{m}$ . Strapp et al. (2020, 2021)  
80 studied the dependence of the TWC versus averaging spatial scale. It was found that maximum  
TWC reached 4.1  $\text{g m}^{-3}$  at averaging distance 0.5 NM (0.93 km) at the -30°C temperature level.  
Even at the 100 NM (186 km) distance scale, the overall TWC maxima were near 2  $\text{g m}^{-3}$  in the  
-10°C and -30°C levels. Average MMD values increased with increasing temperature from  
about 326  $\mu\text{m}$  in the -50°C level to about 708  $\mu\text{m}$  in the -10°C level (Strapp et al. 2020).

85 Ladino et al. (2017) concluded that the measured concentration of ice particles could not be  
explained by primary ice nucleation and that the likely explanation of the formation of the  
observed ice was related to secondary ice production (SIP). Analysis of high-resolution imagery  
of ice particles performed in Korolev et al. (2020) suggested that SIP occurs above the melting

90 layer primarily due to the fragmentation of freezing drops SIP mechanism. Most of the observed SIP cloud regions were collocated with convective updrafts.

Hu et al. (2021) explored dependences of IWC, MMD and ice number concentration  $N_{ice}$  versus environmental conditions such as temperature ( $T$ ), vertical velocity ( $U_z$ ), proximity to the convective core ( $L_{conv}$ ) and MSC age. It was found that IWC correlates with  $U_z$ , whereas MMD decreases and  $N_{ice}$  increases with decreasing  $T$ . The relationship between IWC and MMD is more complex and it depends on  $T$ ,  $N_{ice}$ ,  $L_{conv}$ , and MCS age.

95 Hu et al. (2022) and Brechner et al. (2023) explored the modality of ice particle size distributions (PSD) in HIWC cloud regions, developed functional relationships between the PSD parameters, and examined the dependence of PSDs on environmental conditions. Using an automated technique for the identification of unimodal, bimodal, and trimodal size distributions, they found that temperature and IWC were the most important variables determining the modality of the PSDs, with the frequency of trimodal distributions increasing with temperature and bimodal distributions more common in updraft cores, and the existence of the small peak indicative of SIP.

100 Early numerical simulations of the HIWC phenomenon showed significant challenges in reproduction of HIWC environment and revealed great sensitivity to the ice initiation schemes employed in numerical models (Ackerman et al., 2015; Fridlind et al., 2015; Franklin et al., 2016; Stanford et al., 2017; Qu et al., 2018; Huang et al., 2021). To better simulate the HIWC condition, Wurtz et al. (2021, 2023) improved the parameterization of snow particle size distributions within a single-moment cloud microphysical scheme. Qu et al. (2018) used a cloud-resolving (250-m horizontal grid spacing) model to simulate tropical MCS with SIP represented by the Hallett-Mossop (rime splintering) SIP process. It was found that the misaligned simulated profiles of  $IWC$  and  $N_{ice}$  might be related to inadequate handling of SIP processes which led to the production of too few, and thus too large, ice particles. It was thus recognized that the proper simulation of hydrometeors in HIWC environments could be improved with a better representation of SIP. The subsequent development of numerical models showed how inclusion of SIP processes plays a crucial role in the simulation of HIWC environment in tropical MCSs (Qu et al., 2022; Huang et al., 2021, 2022).

105 The geophysical significance of HIWC environments in tropical MCSs has yet to be fully understood. However, it is expected that ice initiation mechanisms in the convective cores of tropical MCSs are directly linked to the formation of anvil cirrus and their longevity, which eventually affects radiative transfer. The typical size of ice particles constituting HIWC environments is strongly related to their fall velocity, which affects the sustainability of HIWC cloud regions and, thus, will affect the type (e.g., hail vs. rain) and the rate of precipitation at the surface. Altogether, this suggests that the microphysical processes in tropical MCSs may affect climate, circulation, and the hydrological cycle on regional and global scales (Sullivan and Voigt, 2021).

110 As indicated above, the HIWC environment in tropical MCSs typically has radar reflectivity values below 30 dBZ (e.g., Mason et al., 2006; Grzych and Mason, 2010; Protat et al., 2016; Wolde et al., 2016), which corresponds to green echoes on the pilot radar. This hinders in-flight identification of regions of HIWC and the initiation of an avoidance procedure. Numerical guidance from high-resolution weather prediction models is a potential tool to help establish avoidance strategies for rerouting flights and mitigating negative impacts of encounters with HIWC. To this end, a conceptual model underlying the natural formation of HIWC environments

135 and in-depth understanding of the cloud microphysical and thermodynamical processes in  
MCSs should precede the development of such numerical guidance.

The objective of this paper is to synergize observational and modeling efforts and formulate a preliminary conceptual model of the formation of sustainable HIWC regions in tropical MCSs. The in-situ airborne observations are essentially Eulerian type measurements, which suffer from problems such as small sample volume and sparse needle-like sampling (Baumgardner et al., 2017) as well as the difficulty of gaining information on processes since air parcels are not tracked. SIP processes occur on short time periods (minutes) and small spatial scales (hundreds of meters) (Korolev et al., 2020). Therefore, in-situ observations of SIP events inside mesoscale cloud systems are a great challenge, and sampling SIP is a matter of luck. On the other hand, in-situ observations give numerous hints on cloud processes and provide feedback for the improvement of numerical simulations. Upon improvement, numerical models can potentially help to put together bits of information collected from in situ and fill the gaps in our understanding, thereby giving a deeper insight of the microphysics and thermodynamics of tropical MCSs. We have attempted to employ this iterative process between analysis of observations and numerical simulations, aiming at the formulation of a conceptual model of HIWC in tropical MCSs.

The present paper is arranged as follows. A summary of the results of the in-situ observations of HIWC microphysics are presented in section 2. Section 3 presents results of quasi-idealized cloud-resolving numerical simulations of HIWC in tropical deep convection. A proposed conceptual model of HIWC formation is discussed in section 4 followed by conclusions in section 5.

## 2. Results of in-situ observations

In this section, we describe the results of the in-situ observations of HIWC collected during the HAIC-HIWC campaign, which are complimentary to the previous studies above.

### 2.1 Methodology, instrumentation and the data set

In the absence of a clear physical basis, at present there is no consensus regarding the definition of HIWC. Typically, the threshold IWC adapted by different research groups varies between  $2 \text{ g m}^{-3}$  (Leroy et al., 2016),  $1.5 \text{ g m}^{-3}$  (Leroy et al. 2017; Hu et al., 2021), and  $1 \text{ g m}^{-3}$  (Yost et al., 2018; Strapp et al., 2020, 2021). In this study, we will employ the threshold of  $1 \text{ g m}^{-3}$  to define HIWC.

The in-situ observations presented here are primarily focused on the data collected from the National Research Council of Canada (NRC) Convair-580 (CV580) research aircraft during the HAIC-HIWC project. The flight operations were conducted out of Cayenne in May 2015. Fourteen CV580 research flights were conducted in the frame of the HIWC campaign, with an average flight endurance of approximately 4 h. Most of the flights were performed in oceanic MCS at altitudes ranging from 4700 m to 7300 m and temperatures from  $0^{\circ}\text{C}$  to  $-15^{\circ}\text{C}$ . The observations of MCSs were performed during their mature stages when the area of clouds with longwave brightness temperatures less than  $-50^{\circ}\text{C}$  from GOES-13 approached or surpassed its maximum. At that stage, most of the volume of the MCS above the freezing level was nearly glaciated, with embedded mixed-phase regions associated mainly with updrafts (Korolev et al., 2018; Strapp et al., 2020). However, the MCSs studied remained dynamically active during the observation periods, with updrafts peaking at  $15\text{-}20 \text{ m s}^{-1}$ . The CV580 was equipped with state-of-the-art cloud microphysical and thermodynamic instrumentation. Size distributions of

180 aerosol particles were measured by a DMT Ultrahigh Sensitivity Aerosol Spectrometer (UHSAS)  
(Cai et al., 2008). Measurements of  $N_{ice}$  and IWC were extracted from composite PSDs  
measured by optical array 2D imaging probes, such as PMS Optical Array Probe (OAP) OAP-2DC  
(Knollenberg, 1981), a SPEC 2-Dimensional Stereo (2DS, Lawson et al., 2006) and a DMT  
Precipitation Imaging Probe PIP (Baumgardner et al., 2001). Cloud droplet size distributions  
185 were measured by a PMS Forward Scattering Spectrometer Probe (FSSP, Knollenberg, 1981)  
and a DMT Cloud Droplet Probe (CDP-2, Lance et al., 2010). The SPEC Cloud Particle Imager  
(CPI, Lawson et al., 2001) provided a photographic quality 256 grey-level imagery of cloud  
particles with 2.3  $\mu\text{m}$  pixel resolution. Bulk liquid water content (LWC) and TWC were measured  
with a SkyPhysTech Nevzorov probe (Korolev et al., 1998) and a SEA IsoKinetic probe (IKP-2)  
(Davison et al., 2011). A Goodrich Rosemount Icing Detector (RID) was used for detection of  
190 liquid water at  $T < -5^\circ\text{C}$  (Mazin et al., 2001). The extinction coefficient was measured with the  
ECCC Cloud Extinction Probe (Korolev et al., 2014). Vertical velocity was measured by  
Rosemount 858 (Williams and Marcotte, 2000) and an Aventech AIMMS-20 (Beswick et al.,  
2008). Air temperature was measured by a Rosemount total-air temperature probe and an  
AIMMS-20. Water vapor mixing ratio was measured by Licor-850a and Licor-6262. The CV580  
195 was also equipped with NRC Airborne W-band and X-band radars (NAWX) with Doppler  
capability (Wolde and Pazmany, 2005).

Measurements of  $N_{ice}$  remain a challenging task primarily due to the ambiguity of the  
definition of the size of non-spherical particles (e.g., McFarquhar et al., 2017; Korolev et al.,  
2017), the uncertainty of the definition of sample area (e.g., Baumgardner et al., 2017;  
200 McFarquhar et al. 2017), and artifacts related to diffraction effects (e.g., Korolev and Field,  
2015) and ice particles shattering during sampling (e.g., Korolev et al., 2011, 2013b). These  
effects are most pronounced for particle images consisting of less than four pixels in size,  
regardless of image pixel resolution of the particle probe. For that reason, particle images with  
a size of less than four pixels were excluded from the analysis of 2DS data. Therefore, the in situ  
205 data describing ice microphysical parameters below refer to particles  $\geq 40 \mu\text{m}$ .

To mitigate the effects of shattering artifacts anti-shattering K-tips were installed on all  
particle probes (Korolev et al., 2013a). The remaining shattering artifacts were filtered out with  
the modified inter-arrival time algorithm (Korolev and Field, 2015). Diffraction effects resulted  
in diffraction fringes, noisy patterns around images and fragmented images when particles  
210 passed near the depth-of-field. These were cleared with special image processing algorithms.

The collected cloud microphysical and remote sensing data were processed and analyzed  
with the ECCC D2G software.

Altogether, the NRC CV580 instrumentation provided high-level redundant measurements  
and allowed extensive analysis of cloud microphysics and cloud dynamics.

215 During the HAIC-HIWC field campaign the measurements were also performed from the  
SAFIRE Falcon-20 (F20) (Leroy et al., 2016; Strapp et al., 2021). Because of the limited access,  
the SAFIRE F20 data could not be processed the same way as the NRC CV580 measurements.  
For this reason, the observations used in this study is primarily focused on the CV580 data.  
However, published SAFIRE F20 results are employed to support the outcomes of this study.

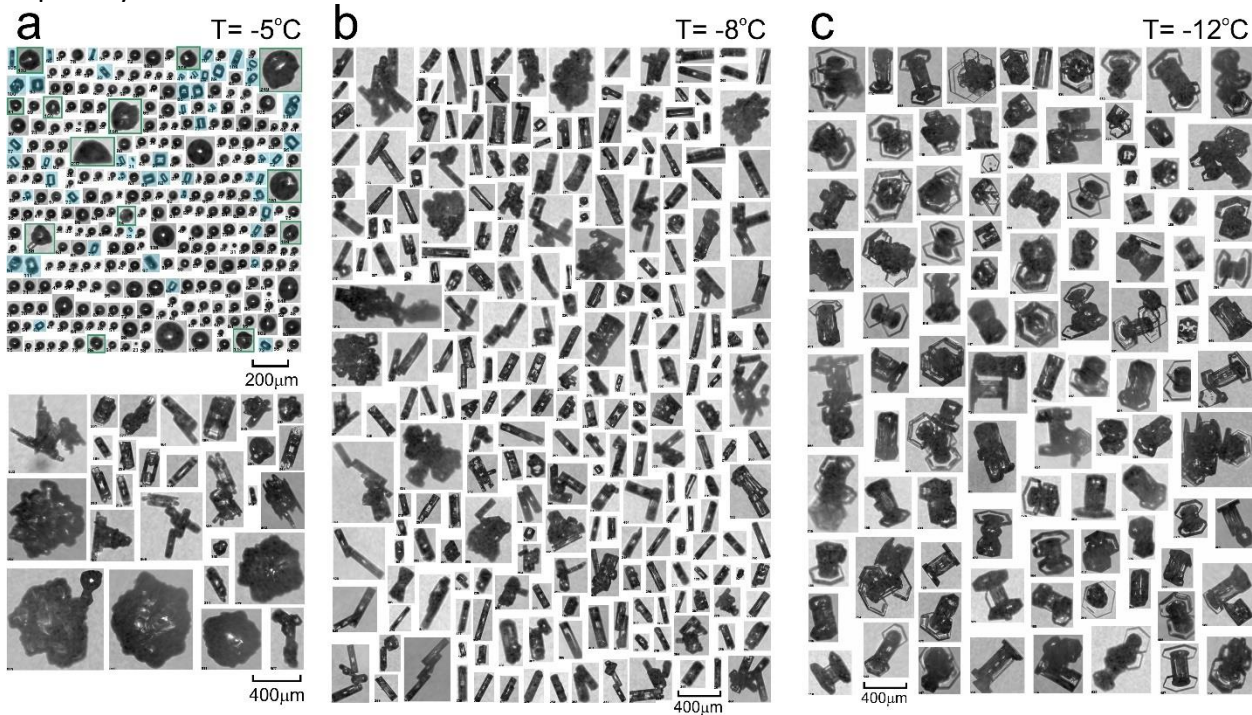
220

## 2.2 Ice initiation

The mechanism behind the ice initiation is the key to understanding the formation of HIWC  
in tropical MCSs. One of the most striking findings of this research was the observation of

225 unusually high amounts of small faceted ice crystals with sizes  $< 100 \mu\text{m}$  formed just above the  
 melting layer at temperatures  $-5^\circ\text{C} < T < -2^\circ\text{C}$  (Korolev et al., 2020). Typically, the observed  
 small ice crystals were hexagonal solid prisms with aspect ratios ranging from 0.3 to 6.  
 Examples of such small ice crystals are shown in Fig. 1a. The concentration of small ice crystals  
 ranged from  $10^2$  to  $10^3 \text{ L}^{-1}$ , which exceeds the estimated concentration of INPs ( $N_{INP}$ , Ladino et  
 al., 2017) by 6-8 orders of magnitude. Such a big difference between  $N_{ice}$  and  $N_{INP}$  suggests  
 230 that the initiation of small faceted ice particles is related to SIP (Field et al., 2017).

At present, there are six recognized SIP mechanisms (Korolev and Leisner, 2020).  
 Identification of the specific SIP mechanisms responsible for the formation of the observed ice  
 is hindered by the essentially Eulerian nature of the observations. Such observations do not  
 allow direct observations of SIP processes, but rather enable the observation of the products of  
 235 SIP after the SIP events have occurred. In this regard, the analysis of the cloudy environment  
 associated with SIP may provide some hints about the mechanisms responsible for the  
 enhanced ice concentration. The important condition for using of such evidence is that they be  
 spatially correlated with the SIP environment.



240 **Figure 1.** Images of ice particle observed in MCS during the NRC Convair-580 flight on 15 May 2015 measured by  
 the SPEC CPI. (a-top): spatial sequence of liquid drops and small faceted ice crystals (highlighted by blue),  
 deformed and fragmented frozen drops (green frames) (for a more detailed imaging see Fig.1A in Appendix A), (a-  
 bottom): large ice particles from the SIP region shown in a-top 09:40:42–09:40:47, 5600m,  $T=-5.1^\circ\text{C}$ ,  $IWC \approx 0.6 \text{ g}$   
 $\text{m}^{-3}$ ,  $N_{ice} \approx 1000 \text{ L}^{-1}$ ; (b) spatial sequence of ice particles measured in the cloud region dominated by columnar ice,  
 245 10:49:58–10:50:04, 6250m,  $T=-7.8^\circ\text{C}$ ,  $IWC \sim 1.8 \text{ g m}^{-3}$ ,  $N_{ice} \approx 600 \text{ L}^{-1}$ ; (c) spatial sequence of particles in the region  
 dominated by capped columns 11:47:38–11:47:50, 7000 m,  $T= -11.7^\circ\text{C}$ ,  $IWC \sim 0.9 \text{ g m}^{-3}$ ,  $N_{ice} \approx 100 \text{ L}^{-1}$ .

The age of the small faceted ice crystals at  $-5^\circ\text{C}$  is estimated as less than 2-3 min (Korolev et al. 2020). As argued in the aforementioned study, the point of origin of such small-age ice  
 250 particles is near the location of their observation. This enables the use of the evidence found in  
 the environment populated by small faceted ice crystals for identification of the possible type  
 of the SIP mechanism. Thus, it was found that in many cases the regions with enhanced

concentrations of small faceted ice were associated with the presence of supercooled large drops (SLD) and they also contained fragments of deformed and fragmented frozen droplets. Such droplets are highlighted by green frames in Fig. 1a (see also Fig. 18 in Korolev et al., 2020). Observations of precipitation size drops, fragmented and deformed frozen drops, and large concentrations of tiny faceted ice crystals suggest that the “fragmentation of freezing droplet” (FFD) SIP mechanism is responsible for the enhanced concentration of the observed ice concentration above the melting layer.

### 2.3 Metamorphosis of ice particle shapes

Early laboratory studies revealed that the linear growth rate ( $dL/dt$ ) of ice particles along the crystallographic axes (i.e.,  $a$  and  $c$ ) is highly sensitive to humidity and ambient temperature (e.g., aufm Kampe et al., 1951; Nakaya, 1954; Kobayashi, 1957; Hallett and Mason, 1958, Ryan et al. 1976). This unique feature of ice growth results in an infinite variety of intricate ice particles shapes. However, despite the complexity and variety of ice shapes, there are two major growth regimes. The first occurs, when the growth rate of the prism faces (i.e., along the  $c$ -axis) exceeds the growth rate of the basal faces (i.e., along  $a$ -axes) e.g.,  $dL_c/dt > dL_a/dt$ . This regime results in a formation of columnar type of ice crystals, e.g., solid and hollow columns, scroll, sheath, needles and bullets. The second growth regime corresponds to the case when the growth rate along the  $c$ -axis is slower compared to the growth rate along  $a$ -axes, e.g.,  $dL_c/dt < dL_a/dt$ . This regime corresponds to the formation of planar types of ice crystals such as plates, stellar, and dendrites. The preferential growth directions of ice crystals along  $a$ - and  $c$ -axes change versus temperature in a cyclical way, changing the habits between plate-column-plate-column near  $-4^\circ\text{C}$ ,  $-9^\circ\text{C}$  and  $-22^\circ\text{C}$ , respectively. Temperature ( $T$ ) and relative humidity ( $RH$ ) experience continuous changes in a cloud environment due to the air vertical motion and mixing. This results in metamorphoses of ice particle shapes due to changes of the dominant growth direction, depending on  $T$  and  $RH$  at each moment of time. Therefore, in some special cases, observations of ice particle habits may allow the reconstruction of the history of  $T$  and  $RH$ , which the ice particles had experienced. In this section, we consider ice particle habits observed in tropical MCSs, which provide information on ice particle history and their vertical travel.

One of the important features of tropical MCSs at temperatures  $-10^\circ\text{C} < T < -5^\circ\text{C}$  is that, in many cases, columnar ice is the dominant habit of particles constituting HIWC regions (e.g., Kobayashi, 1961; Magono, and Lee, 1966; Rottner and Vali, 1974, Pruppacher and Klett, 1997). The fraction of columns in HIWC regions in some cases may approach 100%. An example of ice particle images in such HIWC environment is shown in Fig. 1b.

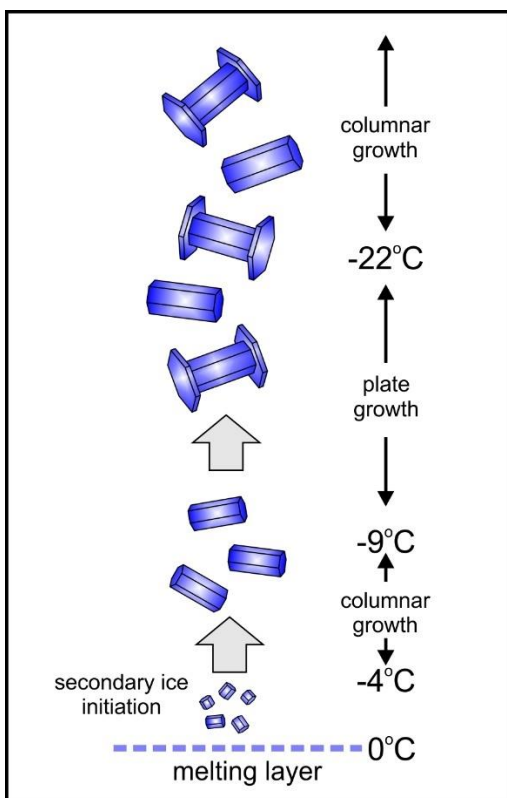
The typical size of the observed columns varied from 200 to 500  $\mu\text{m}$  and their concentration changes in the range from  $10^2$  to  $10^3 \text{ L}^{-1}$ . This is quite a high concentration of ice and it cannot be explained by primary ice nucleation in the  $-10^\circ\text{C} < T < -5^\circ\text{C}$  temperature range (Ladino et al. 2017). The similarity of the concentrations of columns at  $-10^\circ\text{C} < T < -5^\circ\text{C}$  and small faceted secondary ice crystals at  $-5^\circ\text{C} < T < -2^\circ\text{C}$ , and the spatial proximity in the vertical direction of these two temperature layers is indicative that the columnar ice in the HIWC cloud region is consistent with the successive growth of the secondary ice formed in the vicinity of the melting layer after their ascent in convective updrafts.

Higher up in the cloud, at the levels with  $T < -12^\circ\text{C}$ , it was found that the population of ice crystals in HIWC regions contained a large number of capped columns. Similar to columnar ice,

in some cases the fraction of capped columns may reach nearly 100%, as shown in Fig. 1c. Observations of capped columns in tropical MCSs were also reported by Ackermann et al. (2015, Fig. 1). Leroy et al. (2017, Fig. 8) presented measurements of ice particles images dominated by capped columns, which were sampled at  $-37^{\circ}\text{C}$  in the HIWC cloud region during the HAIC-HIWC campaign.

Capped columns are a result of the metamorphosis of columnar ice crystals after transitioning from the columnar growth regime to the plate growth regime determined by the ambient  $T$  and  $RH$ . In this case, the pre-existing columnar crystals alter their primary growth direction from the  $c$ -axis direction to the  $a$ -axes. However, due to higher gradients of water vapor around sharp ice edges the crystal areas in the vicinity of the edges of the basal face will have a higher growth rate along the  $a$ -axes compared to that of the rest of the prismatic faces (e.g., Nelson, 2001). This leads to the formation of plates capping the ice column ends.

310



**Figure 2.** A conceptual diagram of metamorphosis of ice particles in convective regions in tropical MCSs.

315 The association of columns and capped columns with HIWC regions and their linkage through the metamorphosis of the ice shapes suggests that the capped columns originate from the columns formed at  $-10^{\circ}\text{C} < T < -5^{\circ}\text{C}$ . Formation of capped columns may also be associated with the metamorphosis of columns formed at high altitudes at  $T < -22^{\circ}\text{C}$  that then precipitated down to the levels with temperatures  $-9^{\circ}\text{C} > T > -22^{\circ}\text{C}$ , corresponding to the plate growth condition. Such a scenario was discussed by Heymsfield et al. (2002). This case may be also relevant to some fraction of ice crystals in the studied MCSs. However, such sequence of ice transformation cannot explain observations of capped columns at temperatures of  $-37^{\circ}\text{C}$  (Leroy et al., 2017) since it assumes that the original columns were formed at lower temperatures at a

320



325 higher altitude and upon precipitating down to the  $-37^{\circ}\text{C}$  level they cannot experience the plate growth conditions; therefore, they cannot transform into capped columns.

Observations of capped columns at temperatures around  $-37^{\circ}\text{C}$  can be also explained by recirculation through the levels with  $-9^{\circ}\text{C} > T > -22^{\circ}\text{C}$  of the columns formed at  $T < -22^{\circ}\text{C}$ . However, such a scenario seems unlikely to explain nearly uniform population ice crystals consisting of columns and capped with large spatial extension and concentration reaching a few hundred  $\text{L}^{-1}$  (Leroy et al., 2017).

335 Summarizing the above, the most likely scenario for the evolution of ice particles in the convective cloud regions in tropical MCSs is as follows. Secondary ice initiation occurs in the vicinity of the melting layer in the temperature range  $-5^{\circ}\text{C} < T < -2^{\circ}\text{C}$ , resulting in the generation of numerous small faceted ice crystals. After ascent within the convective updraft to the level  $-9^{\circ}\text{C} < T < -5^{\circ}\text{C}$  the faceted small ice crystals turn into columns. Subsequent ascent through the temperature range  $-22^{\circ}\text{C} < T < -9^{\circ}\text{C}$  turns columns into capped columns. Figure 1 shows ice particles sampled in the same MCS in convective regions, but at different temperatures. Even though these images were sampled in horizontally separated regions, they support the proposed sequence of ice metamorphosis. Analysis of ice particle images HIWC regions in other studied MCSs showed the same altitude pattern of changes of particle habits.

340 A conceptual diagram describing the metamorphosis of ice particles in convective regions of studies MSCs is shown in Fig. 2. It should be noted that HIWC regions frequently contain ice particles with habits different from columns or capped columns. Presence of such particles is related to the entrainment in the convective updrafts of aged ice particles with different histories from the ambient cloud regions or precipitating from above.

#### 2.4 Ice concentration, particle sizes and IWC

Besides the shape of ice crystals, the way mass is distributed across the population of ice particles may also be exploited to retrieve the microphysical processes which the ice particles underwent. Thus, the relationship between  $IWC$ ,  $N_{ice}$  and particle size may provide important information about the mechanisms of HIWC formation. In the following discussion, the  $MMD_{ice}$  will be used as a metric of the population of ice particles.

To explore  $IWC - N_{ice}$  and  $IWC - MMD_{ice}$  relationships, we employed data collected by particle imaging probes, primarily the 2DS and PIP. To reduce the biases in calculations of  $N_{ice}$  due to uncertainty in the definition of the depth-of-field and diffraction effects on particle image sizing, the first three size bins in the 2DS measurements were omitted which resulted in PSD and  $N_{ice}$  calculations for  $D_{ice} \geq 40 \mu\text{m}$ . Such truncation is a reasonable compromise between uncertainty in concentration related to measurements of low pixel number images and underestimation of particle concentration due to disregarding small images.

360 Analysis of the mass distributions of ice particles shows that the particle mass concentration rapidly decreases with the decrease of particle size for  $D < 200 \mu\text{m}$ . The estimated bias in calculations of  $MMD_{ice}$  related to uncertainty of particle counting with  $D < 40 \mu\text{m}$  for the Cayenne data set is expected to not exceed 8%.

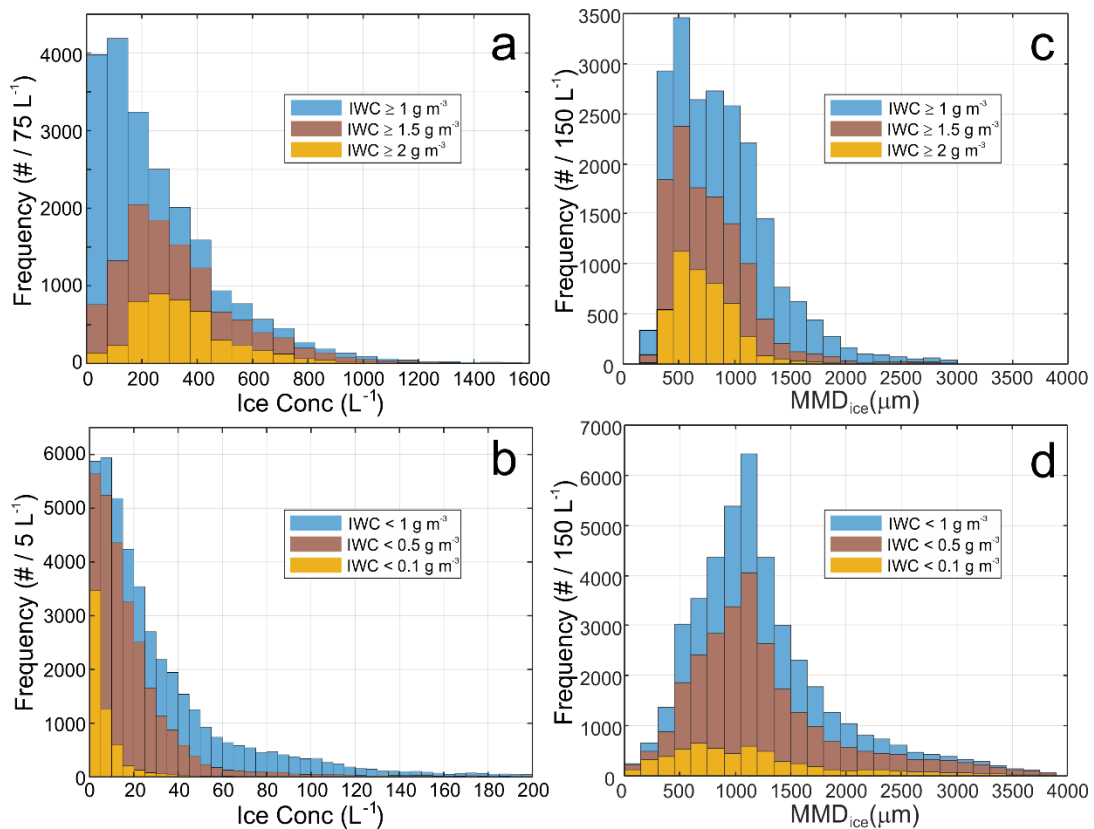
365 The  $IWC$  was primarily measured by the IKP. Calculation of  $IWC$  from the IKP required accurate measurements of the background humidity. Unfortunately, in several flights the background humidity sensor was malfunctioning. Therefore, to increase the statistics of  $IWC - N_{ice}$  and  $IWC - MMD_{ice}$  relationship,  $IWC$  was calculated from integration of the composite PSD measured by 2DS and PIP. The coefficients  $a$  and  $b$  in the size-to-mass parameterization

370  $M = aL^b$ , where  $M$  is the particle mass and  $L$  is the particle image maximum dimension, were found by minimizing the difference between  $IWC$  calculated from the measured PSD and that measured by the IKP for the flights when accurate  $RH$  measurements were available ( $a=7.0044 \cdot 10^{-12}$ ,  $b=2.3$ ). This approach was motivated by the fact that the HIWC environment was dominated by columnar ice crystals, which resulted in different coefficients  $a$  and  $b$  obtained for irregularly shaped ice particles in the original study by Brown and Francis (1995).

375 Figure 3a shows probability density functions (PDF) of  $N_{ice}$  for ice particles with  $D_{ice} \geq 40 \mu\text{m}$  in HIWC cloud regions with  $IWC \geq 1 \text{ g m}^{-3}$ ,  $1.5 \text{ g m}^{-3}$  and  $2 \text{ g m}^{-3}$ . As it is seen the PDFs of  $N_{ice}$  have modal distributions with modal concentrations increasing approximately from  $100 \text{ L}^{-1}$  to  $250 \text{ L}^{-1}$  with increase of  $IWC$ . The ice concentration in HIWC cloud regions varies across a broad range reaching maximum of  $4 \times 10^3 \text{ L}^{-1}$ .

380 The PDFs of  $N_{ice}$  with  $IWC < 1 \text{ g m}^{-3}$ ,  $0.5 \text{ g m}^{-3}$  and  $0.1 \text{ g m}^{-3}$  are shown in Fig. 3b. As it is seen the behaviours of  $N_{ice}$  PDFs in the low IWC regions contrasting to those in the HIWC environments in Fig. 3a. The ice particle concentrations in low  $IWC$  clouds appear to be much smaller compared to that in HIWC regions. Comparisons of 10<sup>th</sup>, 50<sup>th</sup> and 90<sup>th</sup> percentiles of  $N_{ice}$  for low IWC and HIWC environments in Table 1 illustrate the well pronounced difference between these low and high IWC cases.

385



390 **Figure 3.** Probability density function of  $N_{ice}$  and  $MMD_{ice}$  in cloud regions with (a, c)  $IWC \geq 1 \text{ g m}^{-3}$ ,  $1.5 \text{ g m}^{-3}$  and  $2 \text{ g m}^{-3}$  and (b,d)  $IWC < 1 \text{ g m}^{-3}$ ,  $0.5 \text{ g m}^{-3}$  and  $0.1 \text{ g m}^{-3}$ , respectively. Measurements were collected in the temperature range  $-15^\circ\text{C} < T < -5^\circ\text{C}$ .

The PDFs of  $MMD_{ice}$  in high and low IWC cloud regions are shown in Figs. 3c,d. As it is seen  $MMD_{ice}$  in HIWC cloud regions cloud ice particles have smaller  $MMD_{ice}$ , whereas in low IWC

395 clouds the  $MMD_{ice}$  is higher. The relationships between  $MMD_{ice}$  and  $IWC$  can also be seen from Table 1, which shows increase of MMDs' 10<sup>th</sup>, 50<sup>th</sup> and 90<sup>th</sup> percentiles with the decrease of  $IWC$ .

400 **Table 1.** 10<sup>th</sup>, 50<sup>th</sup> and 90<sup>th</sup> percentiles of ice particle concentrations with  $D_{ice} \geq 40 \mu\text{m}$  and MMD in cloud regions with different  $IWC$  in the temperature range  $-15^\circ\text{C} < T < -5^\circ\text{C}$ .

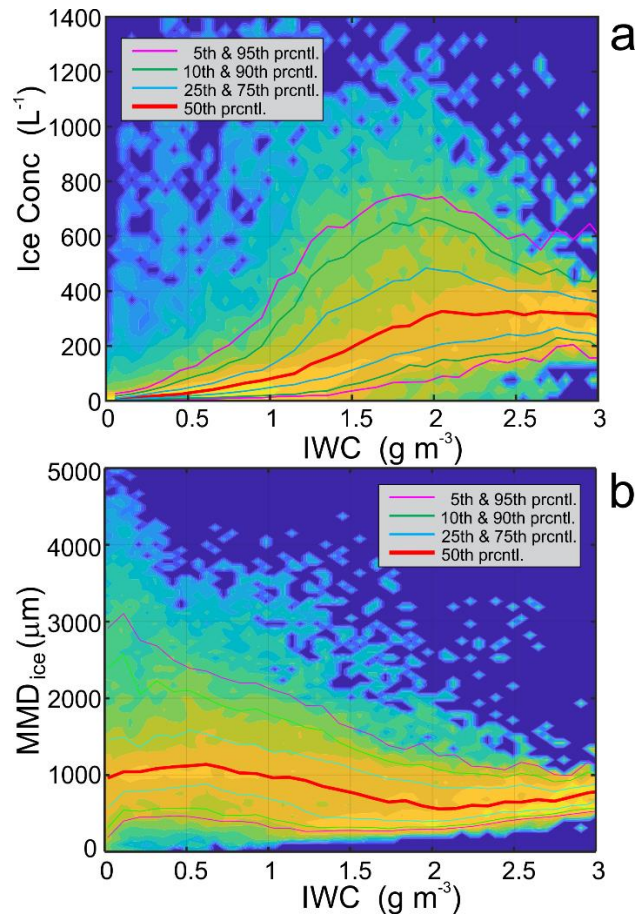
IWC range	ice concentration ( $\text{cm}^{-3}$ )			$MMD_{ice}$ ( $\mu\text{m}$ )		
	10 <sup>th</sup> percentile	50 <sup>th</sup> percentile	90 <sup>th</sup> percentile	10 <sup>th</sup> percentile	50 <sup>th</sup> percentile	90 <sup>th</sup> percentile
$IWC > 2 \text{ g m}^{-3}$	162	319	600	436	687	1070
$IWC > 1.5 \text{ g m}^{-3}$	103	285	626	403	711	1200
$IWC > 1 \text{ g m}^{-3}$	44	203	580	407	819	1480
$IWC < 1 \text{ g m}^{-3}$	3.8	21	92	562	1120	2180
$IWC < 0.5 \text{ g m}^{-3}$	2.6	13	42	554	1100	2320
$IWC < 0.1 \text{ g m}^{-3}$	0.9	4.2	18	359	1020	2420

405 The relationship between  $N_{ice}$ ,  $MMD_{ice}$  and  $IWC$  can be seen in more details from the scatter diagrams of  $N_{ice}(IWC)$  and  $MMD_{ice}(IWC)$  in Figs. 4a,b. As shown in Fig. 4a, the median  $N_{ice}$  increases monotonically with the increase of  $IWC$  up to  $2 \text{ g m}^{-3}$  and then remains approximately constant, equal to  $320 \text{ L}^{-1}$ . However,  $MMD_{ice}$  has a general tendency to decrease with increase of  $IWC$  (Fig. 4b).

410 The main conclusion from Figs. 3 and 4 is that despite of a large scatter of  $N_{ice}$  and  $MMD_{ice}$  vs  $IWC$ , HIWC environments at  $-15^\circ\text{C} < T < 5^\circ\text{C}$  mainly consist of a relatively high concentrations of small ice particles with the median values of  $N_{ice}$  ranging from  $200 \text{ L}^{-1}$  to  $300 \text{ L}^{-1}$  and median  $MMD_{ice}$  ranging between approximately  $700 \mu\text{m}$  and  $800 \mu\text{m}$  (Table 1). However, in low  $IWC$  clouds most cases have a relatively low  $N_{ice}$  with median values less than  $20 \text{ L}^{-1}$  and median  $MMD_{ice}$  exceeding  $1000 \mu\text{m}$ . As was shown in Hu et al. (2021), the correlation between  $N_{ice}$  and  $IWC$  remains down to the  $-50^\circ\text{C} < T < -40^\circ\text{C}$  temperature range.

415 There are two possible explanations for the observed relationship between  $N_{ice}$  and  $IWC$ . First, ice particles could be initiated at the upper parts of the MCS through homogeneous (e.g., at  $T < -40^\circ\text{C}$ ) or heterogeneous (at  $T > -40^\circ\text{C}$ ) freezing of cloud droplets in convective updrafts. The amount of generated ice may be sufficient to explain the observed concentrations of ice particles. The drawback of this explanation is that the shape of ice particles formed on frozen droplets at low temperatures is dominated by bullet-rosettes (e.g., Bailey and Hallett, 2009).  
 420 However, this type of ice particle habit was not observed in any noticeable amounts in the studied MCSs. This makes this explanation less plausible.

425 The second explanation is related to ice initiation through SIP processes above the melting layer where secondary ice particles are then transported to the upper parts of the MCS by convective updrafts. This explanation is consistent with the observed ice particle habits as discussed in section 2.3.



430 **Figure 4.** Scatter diagram (a)  $N_{ice}$  vs  $IWC$  and (b)  $MMD_{ice}$  vs  $IWC$  at  $-15^{\circ}\text{C} < T < -5^{\circ}\text{C}$ . In the density map the PDFs of  $N_{ice}$  and  $MMD_{ice}$  were normalized on unity in each interval  $\Delta IWC = 0.05 \text{ g m}^{-3}$  in the temperature range  $-15^{\circ}\text{C} < T < -5^{\circ}\text{C}$ .

### 2.5 Mixed-phase cloud regions

435 The analysis of the data collected from the NRC CV580 showed that in mature MCSs mixed-phase environments are quite sparse. The spatial occurrence of mixed-phase regions averaged over the entire data set at  $-2^{\circ}\text{C} > T > -15^{\circ}\text{C}$  was 4.8%. Mixed-phase cloud was observed in spatially small-scale regions with the mean and median horizontal extension of 0.48 km and 0.23 km, respectively, and the maximum length of 2.5 km. Nearly all observed mixed-phase cloud regions were associated with vertical updrafts exceeding  $1 \text{ m s}^{-1}$ . However, many strong updrafts with  $u_z \sim 10 \text{ m s}^{-1}$  contained no liquid. Average and median LWC observed in mixed-phase regions was  $0.047 \text{ g m}^{-3}$  and  $0.034 \text{ g m}^{-3}$ , with maximum LWC peaking up to  $0.1 \text{ g m}^{-3}$ . For most of the observed mixed-phase cases,  $LWC \ll IWC$  with an average liquid water fraction  $LWC/TWC = 0.13$ . These results are generally consistent with the data collected from the SAPHIRE F20 (Strapp et al., 2021). The F20 data showed 0.2% of spatial occurrence mixed-phase at  $-30^{\circ}\text{C}$  and no presence of liquid below  $-35^{\circ}\text{C}$ . Earlier a similar conclusion about trace amounts of liquid water in tropical MCSs was obtained in Lawson et al (1998).

445 The low occurrence and sparsity of mixed phase in MCSs is consistent with the observation of high concentration of ice in HIWC regions, which creates conditions favorable for rapid glaciation of clouds. Thus, for a still air  $U_z = 0 \text{ m s}^{-1}$ , initial  $LWC_0 = 0.1 \text{ g m}^{-3}$ , temperature  $T = -5^{\circ}\text{C}$ , ice particle size  $L_i = 100 \text{ }\mu\text{m}$  and concentration  $N_i = 300 \text{ L}^{-1}$  the mixed-phase cloud will glaci-

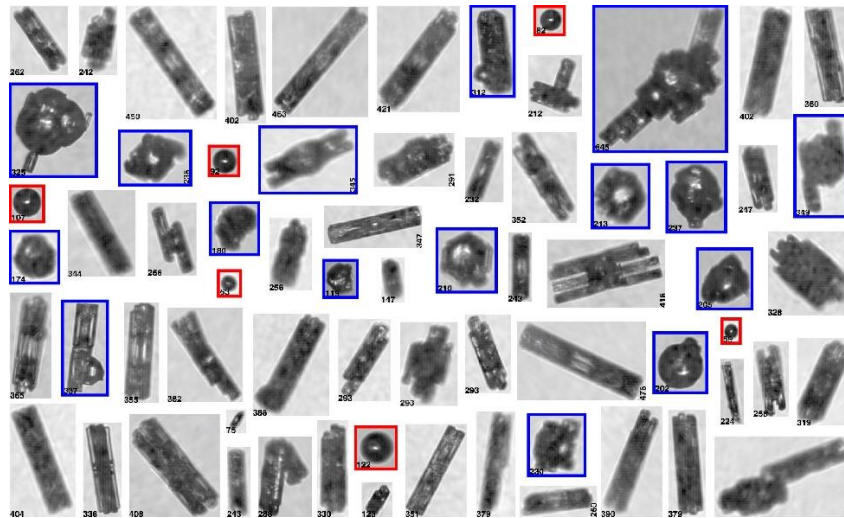
due to the Wegener–Bergeron–Findeisen process within 120 seconds (Korolev and Isaac, 2003). The riming process will expedite conversion of liquid into ice and the glaciation time will be even shorter.

Besides the concentration of ice, the glaciation time also depends on vertical velocity and the initial LWC (Korolev and Isaac, 2003; Pinsky et al., 2014). Since the droplets and ice may grow simultaneously (Korolev and Mazin, 2003), the glaciation process may take longer or the cloud may glaciate after reaching the homogeneous freezing temperature. Therefore, the mixed-phase cloud may exist only in a horizontally narrow regions associated with convective updrafts. Analysis of the X- and W-band radar Doppler velocities showed that the typical horizontal dimensions of the updrafts are a few hundred meters. This is consistent with the typical spatial horizontal scale of mixed-phase clouds in MCSs.

## 2.6 Sparse supercooled large drops

One of the interesting features related to mixed-phase regions is the observation of SLDs with  $D$  ranging from 50  $\mu\text{m}$  to 200  $\mu\text{m}$  embedded in ice clouds with no presence of small droplets. An example of spatially sparse large drops is shown in Fig. 5 (red frames).

Identification of “sparse” SLD regions in tropical MCSs with the help of OAPs (e.g., 2DS, CIP, 2DC) and scattering probes (e.g., FSSP, CDP) is hindered due to the limitations of their performances. Thus, scattering probes do not respond in sparse SLD regions since, in most cases, the diameters of the smallest drops there exceed the maximum measured size of these instruments. On the other hand, OAPs images of out-of-focus small ice crystals, in many cases, appear as the out-of-focus images of drops, and therefore images of ice particles may be confused with liquid drops.



**Figure 5.** Spatial sequence of cloud particle images measured by the CPI with isolated large drops (red frames) embedded in the ice environment shown in Fig. 6. Blue frames indicate ice particles with attached or embedded large frozen drops.  $H=6500\text{m}$ ,  $T=-9.5^{\circ}\text{C}$ , 10:48:10-10:48:11 UTC, 26 May 2015.

In this study, the detection of sparse SLDs was identified from the CPI high-resolution imaging probe with the help of the image processing software trained on the ensemble of droplet images collected in warm clouds. Even though the CPI is not well qualified to measure bulk microphysical parameters, it allows for a crude estimate of the number concentration, which is sufficient for this study. Assessment of the number concentration based on Connoly et

485 al. (2007) showed that the droplet concentration in sparse SLD regions varied in a wide range with a maximum of the order  $10^2 \text{ L}^{-1}$ . The estimate of the minimum local droplet concentration depends on the spatial averaging scale and it may go well below  $10^{-3} \text{ L}^{-1}$ .

Figure 6d shows a time series of SLD concentration with drop diameter larger  $60 \mu\text{m}$ ,  $80 \mu\text{m}$ ,  $100 \mu\text{m}$ , and  $200 \mu\text{m}$ . As can be seen sparse SLD regions were usually observed in convective updrafts and their vicinity (Figs. 6b,c). In many cases in tropical MCSs, SLD regions (Fig. 6d) are spatially separated from cloud regions with small droplets measured by scattering probes (Fig. 6e).

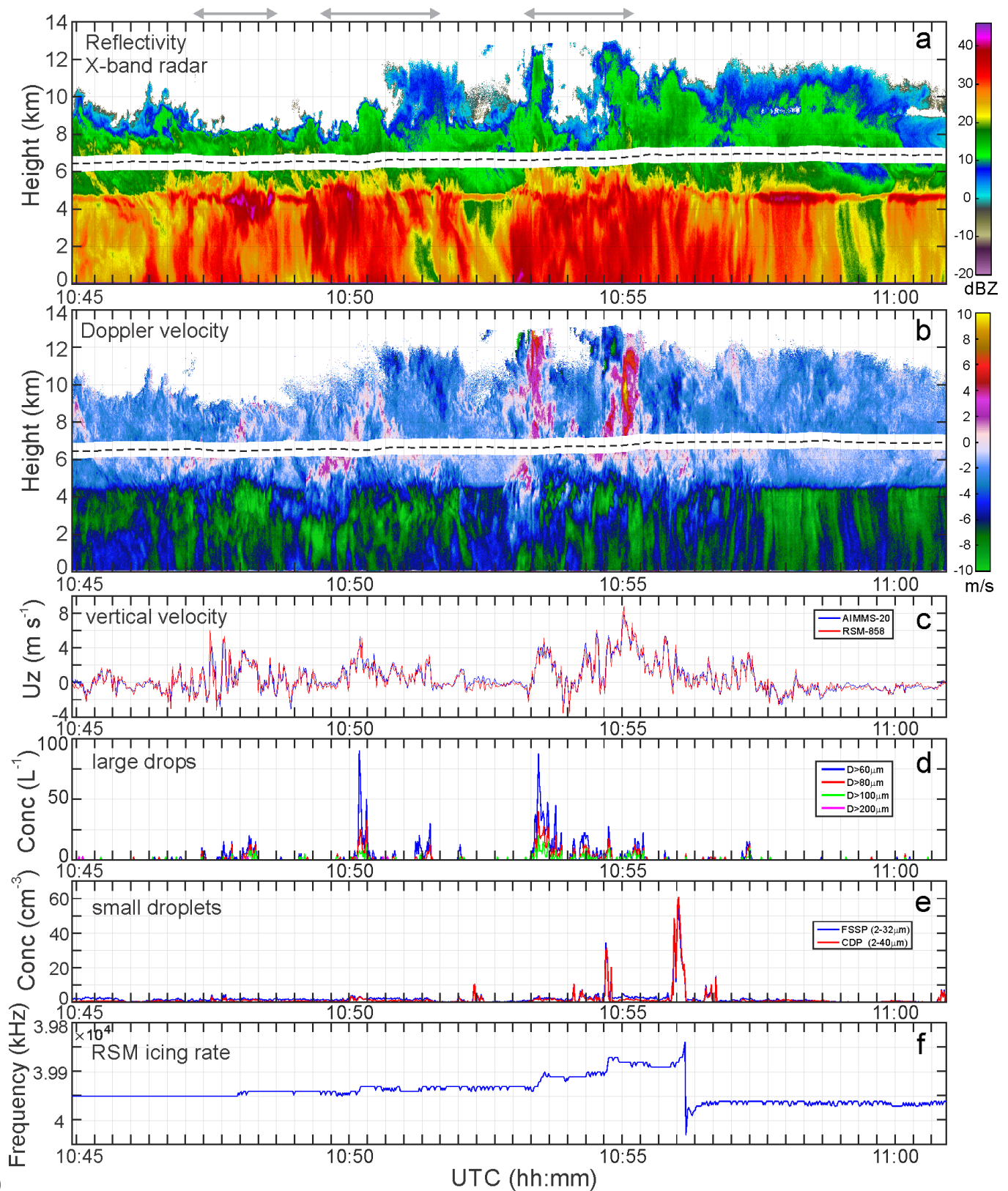
490 Strictly speaking, the identification of the thermodynamic phase of spherical particles from their images at  $T < 0^\circ\text{C}$  is ambiguous since the images of liquid and freshly frozen non-deformed drops appear the same way. However, the response of RID in the sparse SLD regions (Fig. 6f), unambiguously indicate that at least some fraction of the spherical particles in the CPI imagery is in liquid phase. Based on the rate of changes of the RID signal (Mazin et al., 2001) it was found that in SLD regions at 2 km above the melting layer LWC may reach over  $0.1 \text{ g m}^{-3}$ . It is worth mentioning that there were multiple episodes of airframe icing experienced by the CV580 in the SLD regions during operations in tropical MCS, two of which resulted in occasions of buffeting (personal communication NRC pilot A. Brown).

500 A conventional explanation of large drops consists of attributing their formation to collision-coalescence process. Such explanation assumes the presence of small droplets to enable the growth of larger drops due to coalescence with smaller ones. The presence of small droplets will also lead to the formation of rimed ice particles. Rimed ice can be easily identified from the high-resolution imagery based on the distinct features on ice particle surfaces. However, no small-droplet riming was found within hundreds of meters around regions with sparse SLDs. Instead, there were many large ( $50\text{-}200 \mu\text{m}$ ) frozen drops on the surfaces of ice particles or regrown in ice crystals (blue frames in Fig. 5). This is suggestive that the collision-coalescence process was unlikely to have a significant contribution to the formation of sparse SLDs.

510 An alternative explanation of the sparse large drops is related to their uplift through the melting layer. This hypothesis is supported by the absence of small droplet riming and observation of large frozen drops inside or attached to ice particles (Fig. 5, blue frames). The terminal fall velocity of a  $200 \mu\text{m}$  drop at the level of the melting layers is approximately  $1 \text{ m s}^{-1}$ . Therefore, these drops could be transported by a moderate convective updraft (e.g.,  $4\text{-}5 \text{ m s}^{-1}$ ) from the melting layer to the level of the observations ( $\Delta H \sim 1 \text{ km}$ ) within 5-6 min.

## 2.8 Disturbance of the bright band

520 Another interesting feature observed during the HAIC-HIWC field campaign is a disturbance of the top of the bright band. Figure 6a shows one of the examples of the bright band patterns measured by the X-band radar during transit through the MCS on 26 May 2015 (Fig. B1ab in Appendix B). As seen in Fig. 6a, the top of the bright band was relatively uniform in stratiform regions where at the flight level the vertical wind velocity  $U_z$  is close to  $0 \text{ m s}^{-1}$  (Fig. 6c) (time segments: 10:44:40-10:46:30; 10:52:10-10:53:10; 10:58:20-11:01:00). However, in convective regions the enhanced reflectivity above the level of undisturbed bright band may extend up to 1.5-2 km. This can be seen from the diagrams with the vertical Doppler velocity (Fig. 6b) and vertical wind velocity  $U_z$ , at the flight level (Fig. 6c), which correspond to the convective regions within the time segments 10:47:05 - 10:48:40; 10:49:25-10:51:20; 10:53:10-10:55:15 (indicated by arrows in Fig.6a).



530

**Figure 6.** Time series of (a) X-band radar reflectivity, (b) Doppler velocity measured by X-band radar, (c) AIMMS-20 and RSM-858 vertical wind velocity, (d) SLD number concentration estimated from CPI measurements, (e) FSSP and CDP concentration, (f) Rosemount Icing Detector frequency. The three arrows at the top indicate cloud regions with elevated bright band. The measurements were collected at  $6500 \text{ m} < H < 7000 \text{ m}$ ,  $-12^\circ\text{C} < T < -9.5^\circ\text{C}$ , 26 May 2015.

535

The bright band forms as a result of enhanced radar return from melting ice particles falling below the freezing level. The linkage between the bright band and freezing level suggests that the spatial vertical fluctuations of the bright band may be explained by the vertical fluctuations of the 0°C-isotherm. However, 1.5-2 km vertical changes of the altitude of the freezing level would result in spatial fluctuations of the temperature,  $\Delta T$ , of the order of 9°C to 12°C, with the assumption of a moist adiabatic lapse rate. Such temperature fluctuations are overly high and were never observed on kilometer spatial scales. Typically, during leveled flights in convective regions in studied MCSs, the amplitude of temperature fluctuations did not exceed  $\pm 1^\circ\text{C}$ .

A potential explanation of the disturbance of the bright band in convective regions is related to recirculation of completely and partially melted ice through the melting layer. The precipitation size drops formed after the melting of ice particles may be transported above the melting layer with updrafts generated by regular convection or gravity waves. Above the melting layer SLDs will interact with the preexisting ice, and thus produce high density spherical particles and graupel, which together with SLDs will result in the enhancement of reflectivity.

The above explanation of the enhanced reflectivity over the melting layer is consistent with the observation of SLDs (section 2.6). It is also supported by positive Doppler velocity observed below and within the melting layer as in Fig. 6b (10:49:11-10:49:40, 10:52:50-10:53:20; 10:56:02-10:56:12). It is worth mentioning that the radar average Doppler velocity has a higher sensitivity to larger drops. Therefore, even though the average Doppler velocity is negative, small droplets driven by updrafts may have positive vertical velocity.

560

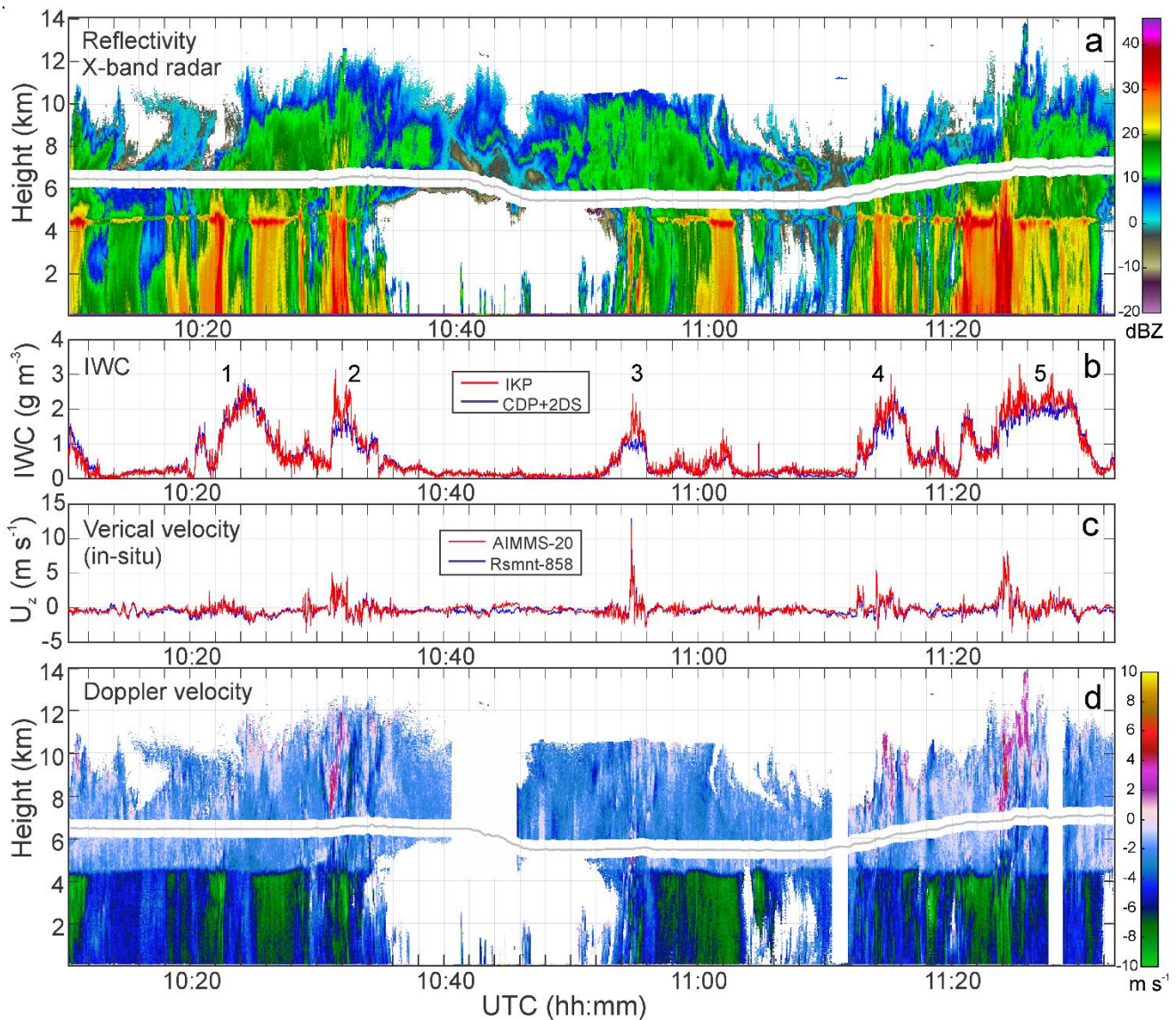
### 2.9 High IWC cloud regions and vertical updrafts

Observations collected during the HAIC-HIWC campaign showed that traversing through convective updrafts was usually accompanied by an increase of *IWC* over  $1 \text{ g m}^{-3}$ . Nearly all convective regions with  $u_z > 2 \text{ m s}^{-1}$  observed during the Cayenne campaign were associated with enhanced IWC. The HIWC regions around convective updrafts extended from a few hundreds of meters to tens of kilometers. A detailed study of the statistics of horizontal spatial scales of HIWC cloud regions is available from Strapp et al. (2021). However, in some cases no convective updrafts were observed during transit through the HIWC regions.

The time series in Fig. 7 illustrates relationship between *IWC* and  $u_z$  described above (Appendix B). As it is seen, four of five HIWC cells (i.e., #2-5 in Fig. 7b) are associated with the embedded convection observed somewhere within these cells (Fig. 7c). In-situ vertical velocity measured on the flight level (Fig. 7c) correlates well with the Doppler velocity (Fig. 7d), which in some cases may extend to the cloud top of the MCS. However, no distinct convective updrafts were observed within HIWC cell #1 (in Fig. 7b; ~10:20-10:26). An encounter of the convective updrafts during the transit through the HIWC region depends on the flight pattern and it is possible that the aircraft trajectory did not intersect or came close enough to the convective region. It is also possible that during sampling of the HIWC region the convection in this area faded away.

575





580 **Figure 7.** Time series of (a) X-band radar reflectivity, (b) IWC, (c) vertical velocity, (d) Doppler velocity measured by  
 the X-band radar. The numbers in (b) indicate HIWC cell number (see text). The measurements were collected  
 from the NRC Convair-580 on 27 May 2015.

585 A comprehensive analysis of the relation between  $IWC$  and proximity to the center of the  
 nearest convection based on the combined analysis of the in-situ and satellite data was  
 conducted by Hu et al. (2021). It was found that  $IWC$ , on average, depends on the distance  
 from the convective core ( $L_{conv}$ ), and that  $IWC$  decreases with increasing  $L_{conv}$ . The  
 590 dependence of  $IWC$  on the distance from the convective core was also indicated in Lawson et  
 al. (1998).

The relationship between  $IWC$  and  $U_z$  described above suggests that the convective  
 updrafts transport small ice particles to the upper levels. Due to the small fall velocity newly  
 formed secondary ice particles can be transported to high altitudes even with a relatively low  
 595 vertical velocity. During the ascent, ice crystals grow through water vapor deposition which  
 ultimately results in the formation of HIWC.

### 3. Numerical simulations

600 The objective of this section is to summarize results of numerical simulations of HIWC in tropical MCSs and explore the role of SIP in the vicinity of the melting layer on the formation of HIWC environments.

#### 3.1 Model configuration

##### 3.1.1 Atmospheric model

605 The numerical model used in this study is the Global Environmental Multiscale (GEM) atmospheric model (Côté et al., 1998; Girard et al., 2014). GEM is the operational NWP model of Environment and Climate Change Canada (ECCC), used for all of ECCC's deterministic and ensemble NWP prediction systems. It is also capable at running at high spatial resolution (including sub-km, near cloud-resolving scales) for detailed atmospheric research purposes. The dynamical core of GEM is formulated based on the non-hydrostatic, fully-compressible, 610 primitive equations with a terrain-following hybrid vertical grid. For the simulations described below, the model dynamics and physics options are summarized in Appendix C (Table C1).

A tropical MCS that was observed during the HIWC-HAIC campaign was simulated using a quasi-idealized model configuration of GEM, similar to the simulations described in Qu et al. (2022). An analysis sounding from ECCC's global deterministic NWP system was used to 615 initialize GEM on a domain with a 250-m horizontal grid spacing, with 256 x 256 km<sup>2</sup> and 183 unevenly-spaced vertical levels. The initial atmospheric conditions were horizontally homogeneous, based on the sounding taken 1200 UTC 15 May 2015 at 6.769°N and 49.551°W (Appendix C, Figure C1). The initial sea surface temperature was set to 300.37 K. To initiate the convection, the updraft nudging method of Naylor and Gilmore (2012) was used to force 620 convection during the first 15 min of the simulation with maximum vertical wind speed of 10 m s<sup>-1</sup>. Three distinct updrafts 16 km apart from each other in the western part of the simulation domain were initialized. The simulations were integrated for 3 h.

In order to examine the impact of SIP on HIWC from a modeling point of view, two simulations were run. In the baseline (i.e. control) simulation, referred to BASE, four ice 625 categories in the microphysics scheme (see 3.1.2 below) were used and all SIP processes were deactivated. In the second run, referred to as SIP-ON, the parameterized HM and FFD mechanisms for SIP were activated (see 3.1.3 below). A comparison of the two simulations allows for an investigation of the impacts of SIP processes on HIWC.

Note that at 250 m, the simulations conducted are near to what is conventionally regarded 630 as "cloud resolving" or large eddy simulation (LES) scale (with horizontal grid-spacings of ~100 m or less). At this scale, a 3D turbulence parameterization should be used. GEM currently lacks the capability to run in true LES mode, thus the following results are not truly cloud-resolving simulations. However, GEM has been used successfully by other groups to simulate deep convection with a 250-m horizontal grid spacing (e.g. Belair et al., 2018). Furthermore, the 635 model results shown below are reasonably close to the in-situ observations in terms of bulk microphysical fields and the model sensitivity with respect to the inclusion of SIP processes is consistent with observational evidence. Hence, despite the limitations of the model, the simulation results can be used with a sufficient degree of confidence to support the conceptual model proposed in section 5.

##### 3.1.2 Microphysics scheme

640 Given the relative importance of the model microphysics in this study, some additional detail on the P3 microphysics scheme is warranted. The P3 scheme was introduced in Morrison and Milbrandt (2015). Since its inception there have been several major developments, summarized

645 in Cholette et al. (2023). The liquid-phase component of P3 uses a standard two-moment, two-  
category approach, with liquid hydrometeors partitioned into “cloud” (small droplets) and  
“rain”. Each liquid category is represented by a complete gamma size distribution and has  
prognostic variables for the mass and number mixing ratios. As such the size distribution of  
each category goes from zero to infinity; however, for practical purposes a diameter of around  
80 microns can be regarded as a de facto demarcation size between the two categories.

650 The ice phase, on the other hand, is treated much differently in P3 than in traditional  
schemes which typically partition frozen hydrometeors into several predefined categories (e.g.  
pristine “ice”, “snow”, “graupel”, etc.) with associated fixed parameters to prescribe physical  
properties (e.g. density). Rather, P3 has a user-specified number of generic “ice” categories,  
each of whose physical properties can evolve freely and continuously in time and space due to  
655 the choice of prognostic variables (Milbrandt and Morrison, 2016). The PSD for each ice  
category is a complete gamma function. The following six mixing ratio variables for each ice  
category are predicted: the total mass, rime mass, liquid mass, total number, rime volume, and  
the sixth moment. With these prognostic variables, which are advected by the GEM dynamics  
and whose values are updated due to microphysical process in the P3 scheme itself, bulk  
660 physical properties (of each ice category) including density, mean size, rime fraction, liquid  
fraction (thereby allowing for mixed-phase particles), PSD spectral width, etc. are all predicted  
independently. Fields such as bulk fall speeds, radar reflectivity, etc. can also be computed and  
benefit from the degrees of freedom.

665 While each “ice” category is generic and can represent a wide range of mixed-phase  
hydrometeor particles, it can only represent a single dominant mode or particle type (e.g.  
lightly-rimed small aggregates) for the population of particles that it represents. In order to  
represent multiple modes of ice particles at a given point in space (i.e. model grid point) and  
time, two or more ice categories must be used. Thus, in order to model SIP using P3 at least two  
ice categories must be used since SIP can result in the production of numerous small crystals in  
670 the presence of pre-existing larger ice, such as graupel in the case of the HM SIP process. The  
P3 microphysics scheme, therefore, is an appropriate and useful tool for the examination of the  
impacts of SIP in an atmospheric model. Qu et al. (2022) showed a near “convergence” of GEM  
model solutions with P3 using three ice categories. In the simulations in this study, four ice  
categories were used.

675 The Doppler velocities were calculated offline by subtracting the mass-weighted fall speed of  
hydrometeors from the vertical wind speed. In the P3 scheme, the mass-weighted fall speed for  
each ice category is computed based on the fall speed for an individual particle of a given size  
and set of predicted bulk properties (following Heymsfield et al., 2007) and integrated over the  
particle size distribution (see Morrison and Milbrandt, 2015 for details). The overall mass-  
680 weighted fall speed is then obtained by summing the bulk fall speeds of all four ice categories  
and for rain, weighted by their respective masses.

### 3.1.3 Parameterization of SIP processes

685 Two SIP mechanisms were examined, HM and FFD, and are activated in the SIP-ON  
simulation. The parameterized HM process produces 10  $\mu\text{m}$  ice splinters with maximum  
number of 350 crystals per mg of collected liquid cloud droplets by graupel during riming within  
a temperature range of  $-3^\circ\text{C} > T > -8^\circ\text{C}$ , with the peak value at  $-5^\circ\text{C}$  and varying linearly to 0 at  
the extreme temperature ranges. In the P3 scheme, ice properties evolve freely within a free  
ice category, as there is no predefined graupel category. For this study, graupel is defined as ice

690 with a rime fraction between 0.4 and 1.0, a bulk ice density between 50 and 700 kg m<sup>-3</sup>, and a mean mass diameter greater than 2 mm.

For FFD, the number of ice splinters produced is calculated based on the number of raindrops with diameters between 100 and 3500 μm colliding with ice particles with diameter smaller than 100 μm. This parameterized process follows the heuristic relationship proposed by Lawson et al. (2015), based on agreement of parcel model results with in-situ aircraft observations:

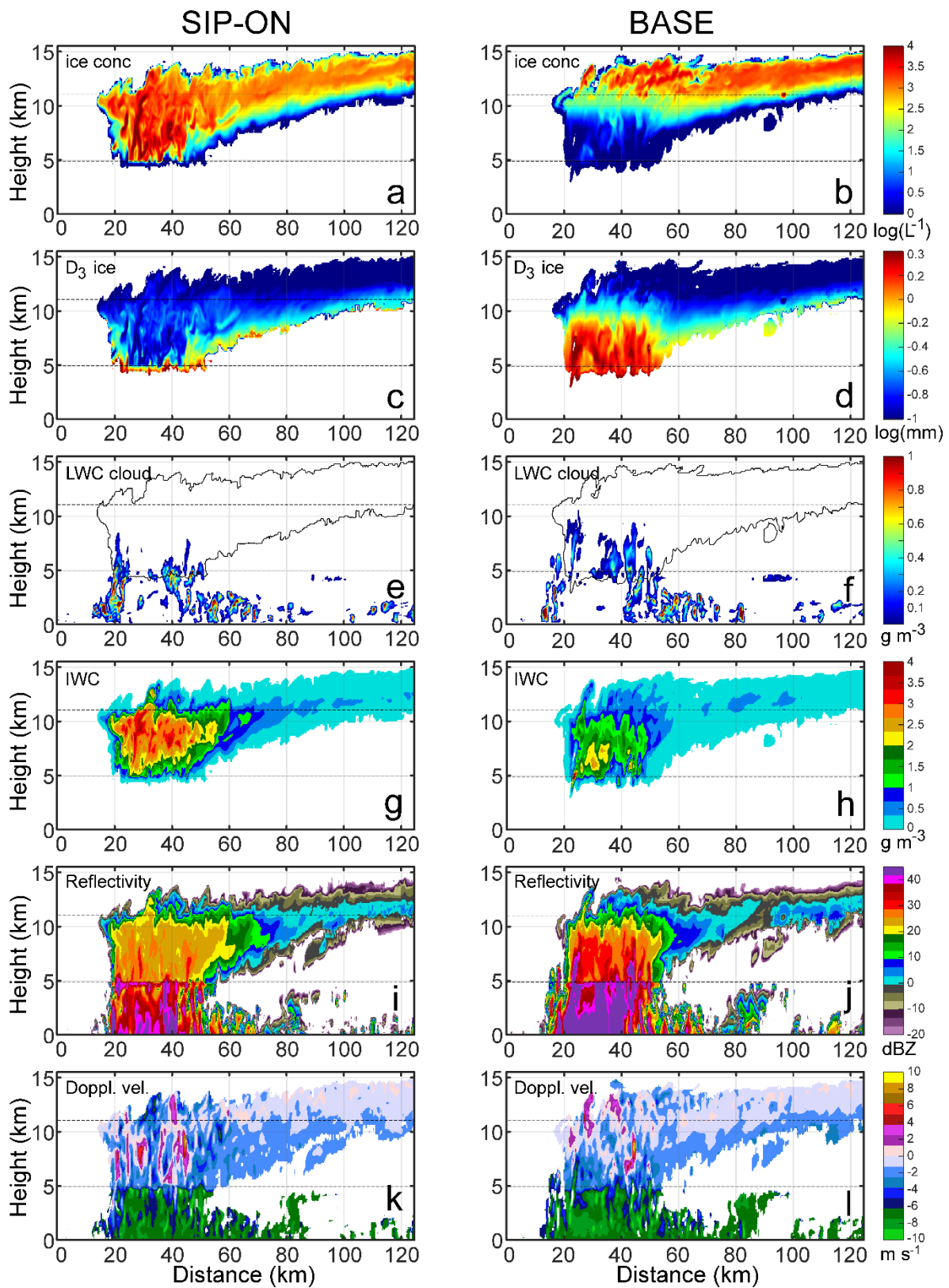
$$N_{sip} = N_r 2.5 \times 10^{-11} D^4 \quad (1)$$

695 where  $N_{sip}$  is the number of ice splinters produced by the freezing of rain drops of a given diameter  $D$ .  $N_r$  is the number of drops with diameter  $D$  colliding with ice particles with diameter smaller than 100 μm. The total number of ice splinter produced by FFD process will be the integral of Eq. 1 over  $D$  between 100 and 3500 μm. To prevent extreme values of ice number mixing ratio, a maximum total value of  $5 \times 10^7$  kg<sup>-1</sup> (the sum of all four ice categories) is imposed in the simulations.

700 Based on Keinert et al. (2020), the FFD process exhibit activity within a specific temperature range of  $-25^\circ\text{C} < T < -2^\circ\text{C}$ . Their findings indicate that among supercooled liquid drops, the most frequent splitting and ejection events occur at  $-12.5^\circ\text{C}$ . However, the dependence of the total number of small ice splinters versus temperature and drop size remains unclear from laboratory studies to date. The observational evidence suggests that SIP production is particularly active within 2 km above the melting layer. In this study, the maximum FFD rate  $N_{sip}$  is set to occur at  $T = -4^\circ\text{C}$ . Beyond this point, the FFD rate is assumed to decrease linearly from its peak at  $-4^\circ\text{C}$  to zero at the two temperature extremes ( $-25^\circ\text{C}$  and  $-2^\circ\text{C}$ ).

705 In the analysis in the following sections, various quantities are computed from direct model output fields from the GEM simulations. The raw model output fields include mixing ratios for hydrometeor mass and total number for cloud droplets ( $Q_c$  and  $N_c$ ), rain ( $Q_r$  and  $N_r$ ), and each category  $x$  for ice ( $Q_{i,x}$  and  $N_{i,x}$ ). For  $Q_{i,x}$ , this is the total (for category  $x$ ) of the deposition mass, rime mass, and liquid (for mixed-phase particles) mass, each of which are independent prognostic model variables. With the air density  $\rho_a$ , the mass contents are computed as  $LWC_{cloud} = \rho_a Q_c$ ,  $LWC_{rain} = \rho_a Q_r$ , and  $IWC = \rho_a (Q_{i,1} + Q_{i,2} + Q_{i,3} + Q_{i,4})$  and the total number concentrations as  $N_{cloud} = \rho_a N_c$ ,  $N_{rain} = \rho_a N_r$ , and  $N_{ice} = \rho_a (N_{i,1} + N_{i,2} + N_{i,3} + N_{i,4})$ . However, for consistency with the observations, which exclude ice particle sizes smaller than 40 μm, each  $N_{i,x}$  was re-computed from the ice PSD as the incomplete integral from 40

710 μm to infinity. The mean-mass particle sizes were computed as  $D_{3\,cloud} = \left( \frac{6}{\pi \rho_w} \frac{LWC_{cloud}}{N_{cloud}} \right)^{1/3}$ ,  $D_{3\,rain} = \left( \frac{6}{\pi \rho_w} \frac{LWC_{rain}}{N_{rain}} \right)^{1/3}$ , and  $D_{3\,ice} = \left( \frac{6}{\pi \rho_{ice}} \frac{IWC}{N_{ice}} \right)^{1/3}$ , where  $\rho_w$  and  $\rho_{ice}$  are the bulk densities of water and ice, respectively. Note that  $D_{3\,ice}$  represents the diameter of an equivalent-mass sphere. In P3,  $\rho_{ice}$  is a predicted variable (for each category), however since we examine primarily small, unrimed ice a value of 917 kg m<sup>-3</sup> is assumed, for simplicity. The model reflectivity,  $Z$ , is computed in-line (within the microphysics scheme); see Cholette et al. (2023) for details. The total SIP rates,  $(dN_{ice}/dt)$ , are computed in-line and output for analysis.



730

**Figure 8.** Vertical cross section domains of different parameters of GEM simulations for SIP-ON (left column) and BASE (right column) setups: (a,b)  $N_{ice}$ ; (c,d)  $D_3 ice$ ; (e,f)  $LWC_{cloud}$ ; (g,h)  $IWC$ ; (i,j)  $Z$ ; (k,l)  $U_{Doppl}$ . The cross sections were performed for the same vertical plane at 90 minutes on the modelled time. Horizontal dashed lines show levels corresponding to  $T = 0^\circ\text{C}$  ( $H = 4.9\text{km}$ ) and  $T = -40^\circ\text{C}$  ( $H = 11.1\text{km}$ ) levels.

735 **1.1 Comparisons of SIP-ON and BASE simulations**

The two sets of vertical cross-sections of SIP-ON and BASE in Fig. 8 show stark differences between the model fields of the SIP-ON and BASE simulations. To facilitate comparison, both SIP-ON and BASE cross-sections were produced along the same vertical planes at 90 min simulation time. The top view of the cross sections' location within the cloud domain is shown in Fig.D1 (Appendix D).

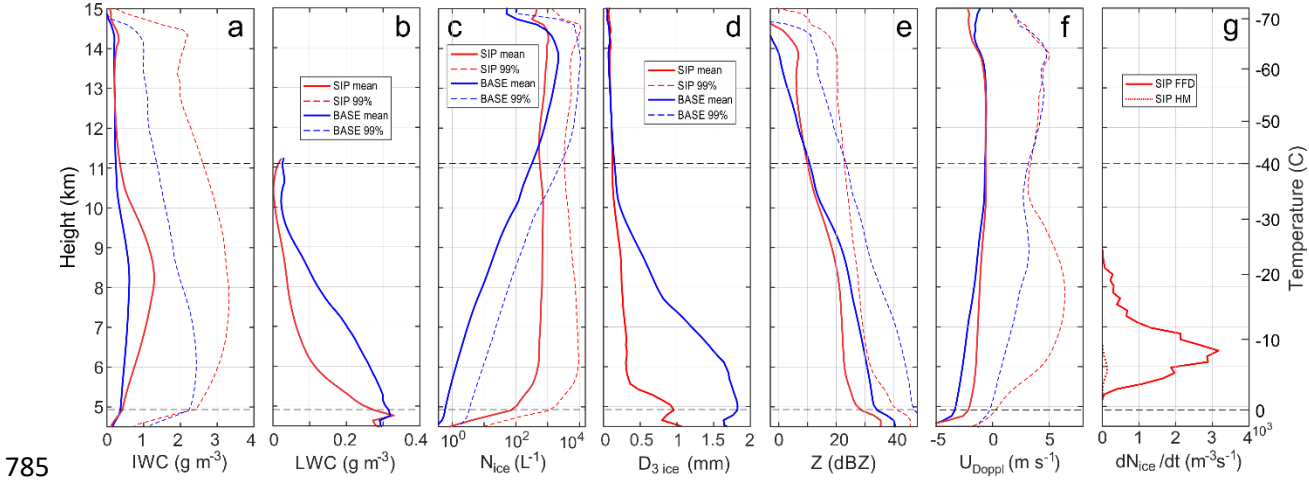
740 In the BASE simulation  $N_{ice}$  increases by approximately two orders of magnitude within a short distance above an altitude of 10 km (Fig.8b). A similar rapid vertical changes of ice particle sizes is seen above  $H \sim 10$  km, where  $D_{3ice}$  decreases from approximately 1-1.5mm at  $H < 10$  km to 100-400  $\mu\text{m}$  at  $H > 10$  km (Fig.8d).

745 The vertical behaviour of  $N_{ice}$  and  $D_{3ice}$  in BASE is in contrast with those in the SIP-ON simulation. As seen from Fig. 8a,c,  $N_{ice}$  and  $D_{3ice}$  experience only modest changes in the vertical direction and they change in a smaller range compared to the BASE run. In the SIP-ON simulation, ice with high concentrations ( $\sim 10^3 \text{ L}^{-1}$ ) is present in the cloud domain right above the melting layer ( $\sim 5$  km) and the field of  $N_{ice}$  remains relatively uniform up to the cloud top (Fig. 8a). Ice particle size  $D_{3ice}$ , on average, exhibits relatively minor changes between the melting layer and the cloud top (Fig. 8c). The  $LWC_{cloud}$  field has broader horizontal extent (at least in most locations) and extends higher in BASE compared to the SIP-ON simulation (Figs. 750 8e,f). Figures 8g,h shows that the SIP-ON simulation has much higher values of IWC than BASE. Maximum IWC in the SIP-ON run approaches  $4 \text{ g m}^{-3}$  in some regions (Figs. 8g), whereas in BASE the maximum IWC barely reaches  $2.5 \text{ g m}^{-3}$  (Fig. 8h). The area with high IWC ( $> 1 \text{ g m}^{-3}$ ) in SIP-ON (Fig. 8g) has considerably more horizontal and vertical extent compared to BASE (Fig. 8h). Figures 8i and j show that the radar reflectivity is noticeably lower in the SIP-ON simulation than in the BASE simulation. Such behaviour of  $Z$  is reversed to that of  $IWC$ . The domains of the Doppler velocity (Figs. 8k,l) show that SIP-ON clouds are more dynamically active than those in BASE. The pattern of the Doppler velocity field in Fig. 8k also indicates significant transport of hydrometeors from the melting layer to the cloud top in the SIP-ON simulation. The intense dynamics and vertical transport of ice will stimulate vertical mixing and homogenizing fields of  $N_{ice}$  and  $IWC$  in the SIP-ON simulation (Figs. 8a).

760 While Fig. 8 provides a qualitative comparison of the results of the SIP-ON and BASE runs, a more definitive comparison of the two simulations can be examined through temporal and spatial averaging of the modeling results, as shown in Fig. 9. The temporal averaging was done over 1 h, from 75 to 135 min of the model cloud lifetime, which include 13 modeling domains separated by 5 min. The spatial averaging was computed over the area of precipitation. The selection of the averaging domain above the melting layer was aimed at excluding the outflow anvil area, which may extend to large distances from the convective region and is significantly affected by entrainment and mixing. Another reason for the choice of averaging was to mitigate biases when comparing with in-situ airborne observations, which were collected mainly in the vicinity of the convective parts of the MCSs.

770 Figure 9a shows that below 11 km the mean IWC in the SIP-ON simulation is up to two times higher than that of BASE. However, at  $H > 11$  km the average IWC in the SIP-ON and BASE simulations are approximately equal. The 99<sup>th</sup> percentile  $IWC_{99}$  in SIP-ON remains systematically higher from the melting layer up to the cloud top. Maximum of the mean IWC occurs between 8 and 9 km. LWC in BASE remains consistently higher than that of SIP-ON between the melting and homogeneous freezing levels (Fig. 9b).

780 As seen from Fig 9c, the behaviour of  $N_{ice}$  is very different between the two simulations. In the SIP-ON run, the mean  $N_{ice}$  increases up to  $\sim 500 \text{ L}^{-1}$  in the first kilometer above the freezing level and then remains moderately constant, varying between  $500 \text{ L}^{-1}$  and  $700 \text{ L}^{-1}$  up to the homogeneous freezing level ( $\sim 11 \text{ km}$ ). After the minimum at  $11.5 \text{ km}$ ,  $N_{ice}$  reaches maximum of  $\sim 1000 \text{ L}^{-1}$  above  $14 \text{ km}$ .



785 **Figure 9.** Average profiles of the results of SIP-ON (red) and BASE (blue) simulations. (a)  $IWC$  (solid) and  $IWC_{99}$  (dashed), (b)  $LWC$  (solid), (c)  $N_{ice}$  (solid) and  $N_{ice\ 99}$  (dashed), (d)  $D_{3\ ice}$  (e)  $Z$  (solid) and  $Z_{99}$  (dashed); (f)  $U_{Doppl}$  (solid) and  $U_{Doppl\ 99}$  (dashed); (g) ice crystal production rates for FFD (solid) and HM (dashed) for the SIP-ON simulation. The profiles spatially averaged over the cloud domain above the precipitation below the melting layer. The cloud domain was determined as the environment with  $IWC > 0.001 \text{ g m}^{-3}$ . The temporal averaging was performed over 13 modeling domains with time step 5 min within the time frame from 75 to 135 min.

790

The vertical distribution of  $N_{ice}$  in BASE contrasts with the SIP-ON simulation. In the BASE run,  $N_{ice}$  increases monotonically with altitude following a nearly exponential law and its values change from  $\sim 0.5 \text{ L}^{-1}$  at the freezing level to  $\sim 2200 \text{ L}^{-1}$  at an elevation of approximately  $14 \text{ km}$ . The rapid increase of  $N_{ice}$  from  $100 \text{ L}^{-1}$  to  $2000 \text{ L}^{-1}$  between  $10 \text{ km}$  and  $13.7 \text{ km}$  occurs due to homogeneous freezing of cloud droplets in convective updrafts. As seen from Fig. 9b in both SIP-ON and BASE, convective updrafts are capable of maintaining liquid water up to the homogeneous freezing level. This results in an enhancement of  $N_{ice}$  through the freezing of cloud droplets. The fact that the BASE  $N_{ice}$  becomes larger than in SIP-ON above  $11.5 \text{ km}$  is explained by the larger number of cloud droplets transported by convection to the homogeneous freezing level in BASE compared to SIP-ON, which turn into ice and enhance ice concentration rather than evaporate due to the Wegener-Bergeron-Findeisen (WBF) process. This can also be seen in Fig. 9b, which shows a larger LWC in BASE above  $11 \text{ km}$  compared to the SIP-ON.

800 Figure 9d shows profiles of mean mass diameter  $D_{3\ ice}$ . As seen in both BASE and SIP-ON,  $D_{3\ ice}$  decreases monotonically with increasing height up to  $11 \text{ km}$ , and  $D_{3\ ice}$  in BASE always remains larger than in SIP-ON. However, above  $11 \text{ km}$   $D_{3\ ice}$  in both simulations is approximately equal and remains nearly constant up to the cloud top.

805 Comparisons of the radar reflectivity in Fig. 9e show that in both BASE and SIP-ON  $Z$  decreases monotonically with altitude from the freezing level to the cloud top. However, the BASE  $Z$  remains larger up to  $11.5 \text{ km}$  and then it becomes lower before reaching the cloud top. The difference in  $Z$  between BASE and SIP-ON in the lower part of the cloud does not exceed  $10 \text{ dBZ}$ .

810

Figure 9f shows vertical changes of the Doppler velocity  $U_{Doppl}$ . The mean  $U_{Doppl}$  in BASE remains smaller than in SIP-ON up to  $\sim 11$  km and then both become approximately equal. The 99<sup>th</sup> percentiles  $U_{Doppl}$  follow the same pattern as mean  $U_{Doppl}$ , i.e. BASE 99<sup>th</sup> percentile  $U_{Doppl}$  is lower than SIP-ON 99<sup>th</sup> percentile  $U_{Doppl}$  in the lower part of the cloud and they become equal above 11.5 km. Analysis of the vertical wind velocity  $U_{air}$  shows that mean and 99<sup>th</sup> percentiles of BASE and SIP-ON  $U_{air}$  remain approximately equal throughout the cloud depth (Fig. D2 in Appendix D). This indicates the dynamical similarity of the BASE and SIP-ON simulated clouds. Therefore, the lower values of the  $U_{Doppl}$  in BASE can be mainly attributed to the presence of large particles and therefore, larger fall speeds compared to those in SIP-ON. This conclusion is also supported by larger BASE  $D_{3\ ice}$  compared to SIP-ON  $D_{3\ ice}$  (Fig. 9d).

Figure 9g shows the production rates of the FFD and HM processes in the SIP-ON simulation. Note that these processes were shut off in the BASE simulation. In the SIP-ON run, the FFD rate is much higher than that of HM and is therefore the main contributor to the production of secondary ice. The peak of the FFD rate occurs at approximately 6.4 km ( $-8^{\circ}\text{C}$ ).

It is worth noting that both SIP-ON and BASE simulations show distinct differences in the behavior of cloud microphysical parameters below and above the homogeneous freezing level ( $\sim 11$  km). Thus  $IWC$ ,  $D_{3\ ice}$ , and  $U_{Doppl}$  in both BASE and SIP-ON are approximately equal above 11 km. In contrast, below 11 km the changes of  $IWC$ ,  $N_{ice}$ ,  $D_{3\ ice}$ ,  $Z$  and  $U_{Doppl}$  with altitude are vividly different between the two runs. This suggests a significant difference in dominant physical processes responsible for the formation of the cloud microstructure.

## 1.2 Comparisons with observations

In this section the results of the SIP-ON simulation are compared with the measurements collected from the NRC CV580 and SAFIRE F20 during the HAIC-HIWC Cayenne field campaign.

The outflow non-precipitating cloud segments and anvil regions identified from the onboard X-band radar were excluded from the CV580 statistics. The mean  $LWC_m$ , mean  $IWC_m$ , 99<sup>th</sup> percentiles  $IWC_{99}$ , and  $D_{3\ ice}$  from the CV580 data, presented below, were sampled within the altitude range of 6 to 7.3 km and averaged over a total horizontal distance of 5374 km. The F20  $IWC_m$ ,  $IWC_{99}$  and median mass diameter  $MMD_{ice}$  for various altitudes were brought from Strapp et al. (2018, 2021).

The CV580 data were averaged over 1 s, corresponding to approximately 115 m spatial averaging at the average CV580 speed. Whereas the F20 data were averages over 0.5 NM ( $\sim 930$  m). The averaging scales of CV580, and F20 are close enough to that of the GEM model (250 m) to address the purposes of the comparisons. The differences in spatial averaging may affect the 99<sup>th</sup> percentile values. However, the mean values are expected to experience a minor effect.

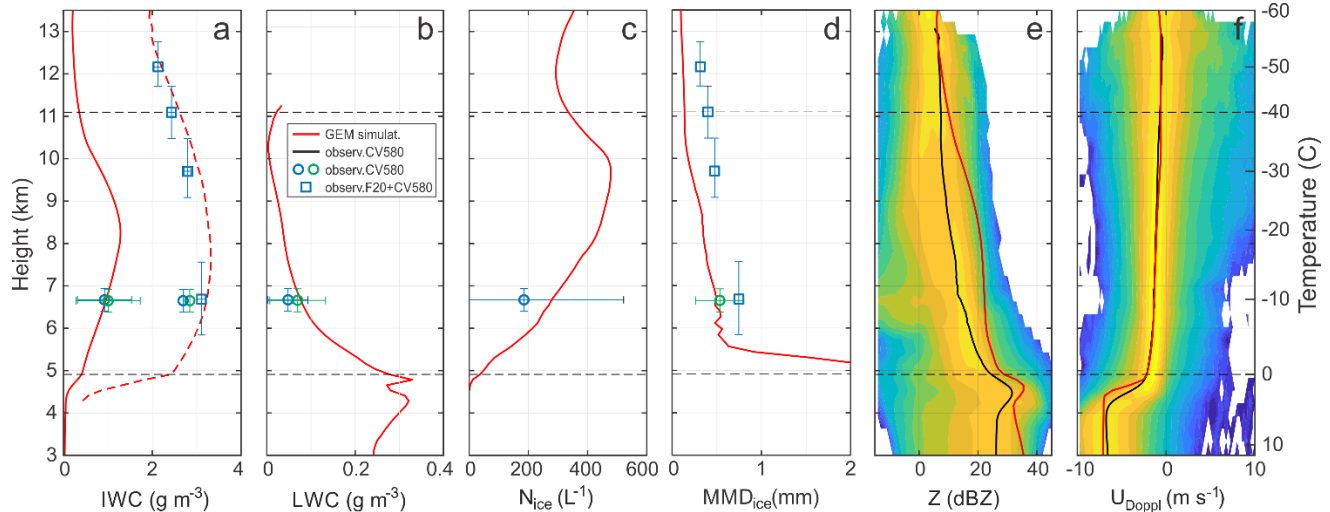
For the purpose of comparisons, the results of the GEM simulations were averaged over a 1-h period from 75 to 135 min, as in Fig. 9. This time frame covers the “mature” period of simulated MCS after the maximum IWC has been reached, at approximately 45-50 min. During the averaged period, the cloud remains dynamically active with maximum updrafts peaking at  $U_z \approx 15\text{ m s}^{-1}$ , although the convective area is diminishing over time. The choice of the averaging time of the simulation was aimed to align with the in-situ airborne CV580 and F20 sampling, which was typically extended over 2-3 h.

Figures 10a shows comparisons of the observed and modeled  $IWC_m$  and  $IWC_{99}$ . The CV580 IWC were measured by the IKP and calculated from composite PSDs measured by 2DS and PIP.



The F20 IWC was measured by the IKP (Strapp et al., 2020, 2021). The difference between measured and simulated  $IWC_m$  and  $IWC_{99}$  does not exceed 6% and 20%, respectively.

Figure 10b shows comparisons of the simulated  $LWC_m$  to that calculated from the FSSP and CDP measurements. The difference between the modeled  $LWC_m$  and that measured by the FSSP and CDP is 38% and 9%, respectively.



**Figure 10.** Comparisons of the average microphysical parameters from the GEM simulation and in-situ measurements collected from CV580 (circles) and F20 (squares). (a) simulated  $IWC_m$  (red, solid) and  $IWC_{99}$ , (red, dashed), measured by IKP (blue circles) and 2D probes (green circle) (b) mean modelled  $LWC$  (red), measured by FSSP (green circle) and CDP (blue circle) (c) mean modelled (red) and measured (blue circle) concentration of ice  $N_{ice}$  with  $D > 40 \mu\text{m}$ , (d) modeled  $D_{3\ ice}$  corrected on the ice density, CV580  $D_{3\ ice}$  (blue circles), measured F20  $MMD_{ice}$  (blue squares), (e) measured by the CV580 X-band radar probability density field and mean reflectivity  $Z$  (black), and modeled mean  $Z$  (red); (f) measured by the CV580 X-band radar probability density field and mean Doppler velocity  $U_{Doppl}$  (black) and modeled mean  $U_{Doppl}$  (red). The F20 vertical error bars indicate the temperature range of the sampled data. The CV580 vertical and horizontal error bars indicate the standard deviation of the sampling statistics.

For the comparison purposes, the model  $N_{ice}$  was modified to match the size range of ice particles measured by the 2DS. Since the first three size bins in 2DS measurements were omitted due to the uncertainty of the depth-of-field definition and large errors in sizing of small particles, the 2DS measured  $N_{ice}$  did not include ice particles smaller than  $40 \mu\text{m}$ . In order to make direct comparisons of observed and modeled  $N_{ice}$ , the ice particle sizes smaller than  $40 \mu\text{m}$  were also excluded from the modelled  $N_{ice}$  by recomputing the concentration from the model ice PSD but with an incomplete gamma function, starting at  $40 \mu\text{m}$ . Figure 10c shows a reasonable agreement between of the corrected modelled and measured  $N_{ice}$ , and the deviation between the modeled and observed  $N_{ice}$  is 35%.

As mentioned in section 3.1, the modeled  $D_{3\ ice}$  is the diameter of an equivalent-mass sphere. However, the measured ice particle sizes represent one dimension of randomly oriented projections of non-spherical particles. In order to make direct comparisons between the modeled and measured ice particle sizes, the simulated  $D_{3\ ice}$  was modified from that for unrimed ice in the original P3 microphysics scheme to  $D_{3\ corr} = \left( \frac{\pi \rho_{ice}}{a} D_{3\ ice}^3 \right)^{\frac{1}{b}}$ , where  $a$  and  $b$  are parameters in the mass-size relation,  $V(D) = aD^b$  (e.g., Brown and Francis, 1995). The comparisons of values measured from the CV580 and the corrected simulated  $D_{3\ ice}$  is shown in Fig. 10d.

890 Figure 10d also shows median mass size  $MMD_{ice}$  measured from F20.  $MMD_{ice}$  and  $D_{3ice}$  may  
be quite different depending on the shape of a PSD, which makes the comparisons of these two  
sizes not strictly valid. As seen from Fig. 10d, the modeled  $D_{3ice}$  and measured  $MMD_{ice}$  differs  
from each other from 2 to 4 times above 9 km. However, despite these differences in definitions  
of the modeled and measured sizes, the observed  $MMD_{ice}$  profiles show a general trend in size  
895 reduction towards the cloud top, which is similar to the behaviour of simulated  $D_{3ice}$  profile.

Comparisons in Fig. 10e show that the modeled mean  $Z$  is systematically larger than the  
measured values, with differences reaching 10 dBZ. This is an overly large difference. The analysis  
of the model setup suggests that the complete gamma function for the ice PSDs in the  
microphysics scheme overestimates the number of large particle sizes, for which higher moments  
900 such as radar reflectivity are sensitive. At the time of writing, a solution for this diagnostic  
problem is being examined and the problem will be corrected in a future version of the P3  
scheme. Note that small errors in the tail of the PSD can create relatively large errors in higher  
moments of the PSD (including  $Z$ ) but only small errors in lower moments, such as those  
associated with the fields of interest (e.g.  $N_{ice}$ ,  $MMD_{ice}$ ,  $IWC$ , etc.), which appears to be the case  
905 in the simulations presented. Also, note that the model reflectivity field is computed as a simple  
diagnostic, not an instrument simulator per se; it is calculated based on Rayleigh scattering  
assumptions and does not account for Mie scattering for large particles for the case of X-band  
radar.

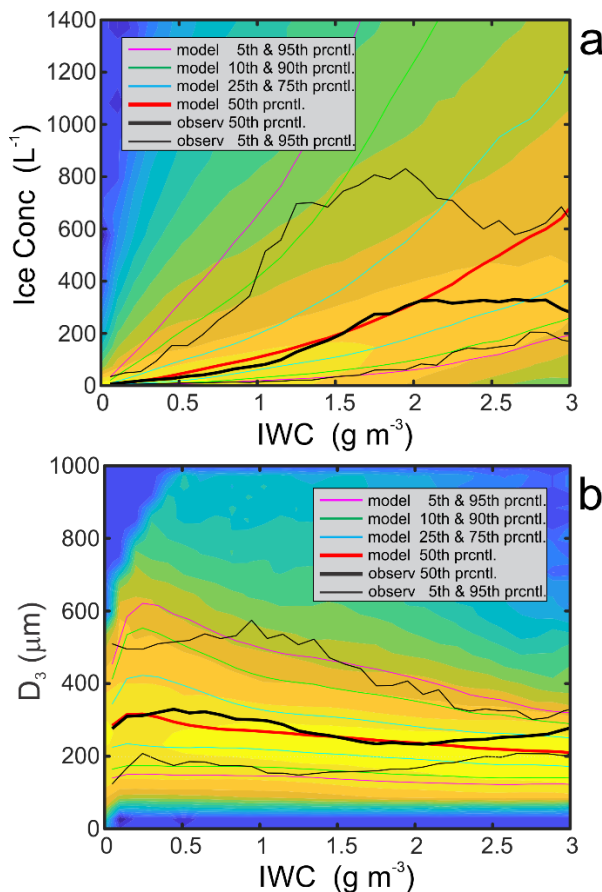
Despite the significant difference in reflectivity, the modeled and observed Doppler velocity  
910 values have a surprisingly good agreement. One of the explanations for such a good agreement  
is the weak dependence of particle fall velocity on particle size for diffusion grown ice particles  
(Pruppacher and Klett, 1997). In this case the presence of artificially large particles may not have  
a significant effect on the Doppler velocity.

Another set of comparisons is shown in Fig. 11. Figure 11a shows modeled and observed ice  
915 number concentration versus  $IWC$ . The latter was shown earlier in Fig. 4a. For comparison  
purposes, the particles  $< 40 \mu\text{m}$  were excluded from  $N_{ice}$  to be consistent with the measured  
values. As seen in Fig. 11, the median observed and modeled ice concentrations reasonably agree  
to approximately  $2 \text{ g m}^{-3}$ . The model produces a higher ice number concentration for  $IWC > 2 \text{ g}$   
 $\text{m}^{-3}$  than those observed in situ.

920 Figure 11b shows comparisons of the modeled mean volume diameter of ice particles with  
those obtained from observations. In order to match the definition of the modeled ice size, the  
measured mean volume diameter was calculated as  $D_{3ice} = \left( \frac{6}{\pi \rho_{ice}} \frac{IWC}{N_{ice}} \right)^{1/3}$ . As seen, the  
measured and modeled median  $D_{3ice}$  agree within 25%. However, the modeled sizes have large  
scatter compared to the measured ones.

925 We emphasize that there are many limitations in this study and these clearly illustrate the  
need for further laboratory, numerical and field studies. On the measurement side, there are  
challenges with in-situ observations such as limited sampling statistics, limitations of flight  
operations, and instrumentation uncertainties and errors. For the numerical model, there are  
challenges and limitations that include unresolved turbulent air motion, hydrometeor size  
930 distribution assumptions in the bulk microphysics scheme, incomplete knowledge of natural  
cloud microphysics to constrain the parameterization of individual processes, and the use of a  
quasi-idealized model set-up. Overall, however, the GEM model simulations using the P3  
microphysics scheme yields a reasonably good agreement with the in-situ observations, with the  
caveat that observations themselves were used to derive the FFD parameterization. This provides

935 a strong motivation to establish better FFD formulations as a potential leading mechanism of formation of HIWC environment in tropical MCSs.



940 **Figure 11.** Comparisons of modeling results and in situ observations of  $IWC$ ,  $D_{3\ ice}$  and  $N_{ice}$ . Fields of modeled (a) concentration of ice particles  $>40\ \mu\text{m}$  vs  $IWC$  and (b) equivalent volume diameter of ice particles vs  $IWC$ . Observed median (thick) and 5<sup>th</sup> and 95<sup>th</sup> percentile (thin) values are shown in black. The modeling data were averaged over time period from 75 to 135 min and the range of altitudes between 5.8 and 7.4 km corresponding to the CV580 sampling altitudes.

945 **1.3 SIP initiation.**

The results of the SIP-ON simulation show that the cloud environment above the melting layer is densely populated with small ice crystals (Figs. 8a,c and 9c,d). Thus, within 1 km above the melting layer the average  $N_{ice}$  in the SIP-ON run exceeds that of BASE by two orders of magnitude (Fig. 9c). Since the inclusion of the FFD and HM processes in the SIP-ON simulation is the only difference between the SIP-ON and BASE configurations, the enhanced concentration of ice particles above the melting layer in the SIP-ON simulation is unambiguously attributed to the secondary ice processes.

950 Of the two additional processes included in the SIP-ON simulation, the Hallett-Mossop (HM) process was found to be significantly less efficient in producing secondary ice compared to FFD (Fig. 8g). Therefore, the main contribution to the ice concentration is from the FFD. Equation 1 shows a strong dependence on the drop size, which suggests that the FFD rate will be most efficient in presence of large drops. This raises the question of the source of large drops inside deep glaciated MCSs.

960 The set of diagrams in Fig. 12 presents vertical  $6 \times 8$  km fields of the main microphysical fields of interest intersecting a convective updraft in the vicinity of the melting layer. As seen from Fig. 12a, the vertical updraft starts at approximately 3 km and extends above 7 km. The convective updraft results in supersaturation over water (Fig. 12n) and activation of cloud droplets (Fig. 12e,h,k). The boundary of the water supersaturation region (Fig.12n) and newly formed cloud (Fig. 12e,h,k) follows the pattern of the convective plume (Fig. 12a).

965 The Doppler velocity field in Fig. 12b shows that the majority of cloud particles above the melting layer are moved upward within this convective updraft. The depression of  $5 \text{ m s}^{-1}$  of the Doppler velocity field with respect to the neighboring region below the melting layer indicates that precipitation size drops with  $D > 2\text{mm}$  are lifted by the updraft. Smaller-size drops will have higher upward velocity in the updraft, and they will be brought up by the updraft to higher altitudes during the same time period. This is consistent with the  $D_{3 \text{ rain}}$  field (Fig. 12i), which shows that 1 mm drops did not ascend through the melting layer because of the slow vertical velocity of their ascent. However, drops with  $D < 500 \mu\text{m}$  have small enough fall velocity to be moved by the convective updraft above the melting layer.

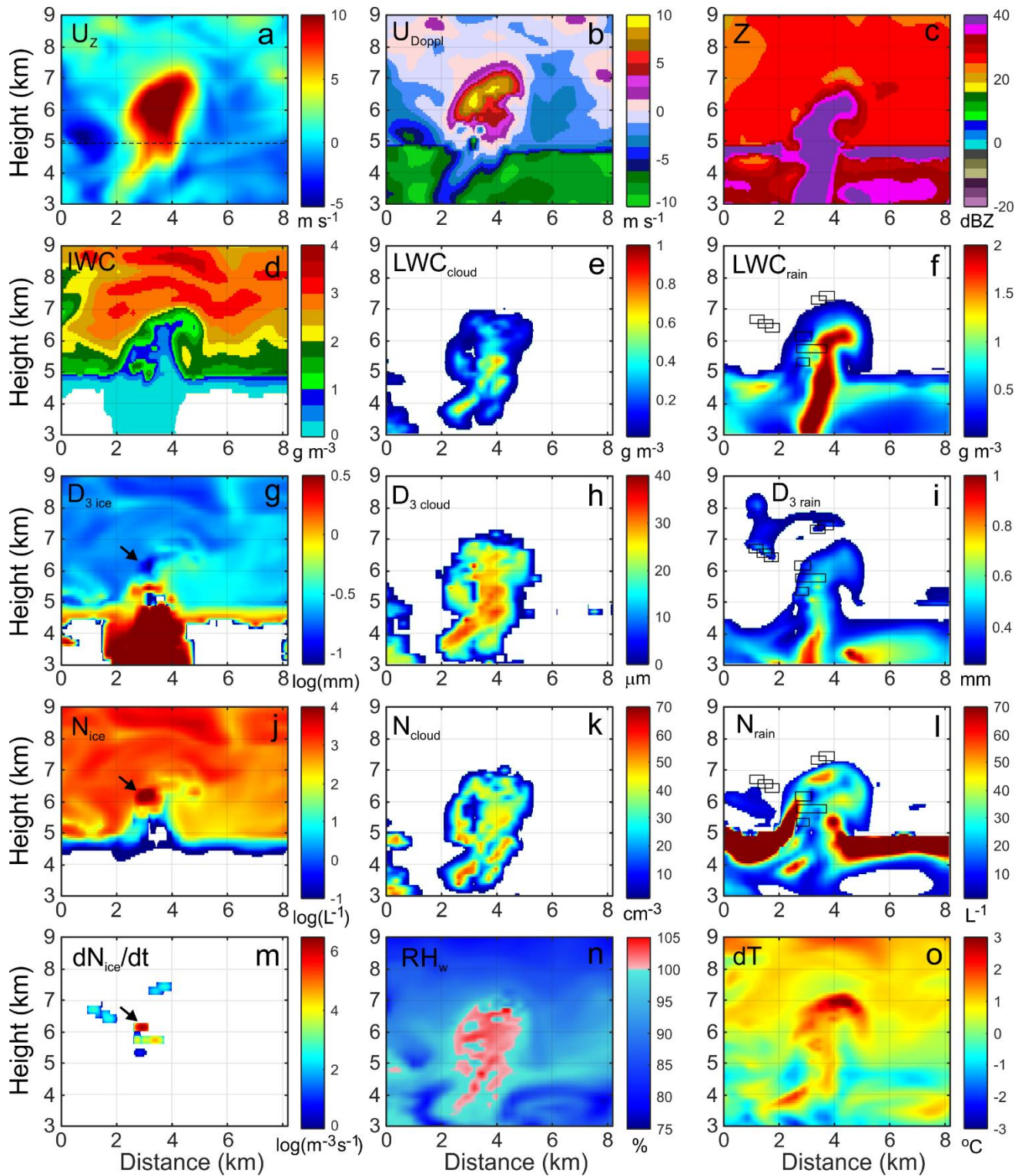
975 Figure 12l shows how a convective updraft affects the field of the concentration of raindrops  $N_{\text{rain}}$ . It is worth noting that the top of the melting layer is densely populated with a large number of small-sized rain and drizzle drops, the concentration of which may reach several hundred per liter. The small sizes of these small drops explained by the melting of small secondary ice particles, which melt rapidly below the freezing level. The concentration of raindrops in the melting layer of BASE is lower, because of the lower ice concentration, and the size of raindrops is larger because of larger ice particles compared to the SIP-ON simulation.

980 The upward transport of rainwater through the melting layer (Figs. 12a,f) eventually manifests in the disturbance of the bright band (Fig. 12c). Similar disturbances of the bright band are observed in situ (Figs. 6a and 7a). Note that the patterns of the fields of  $LWC_{\text{rain}}$ ,  $N_{\text{rain}}$ ,  $D_{3 \text{ rain}}$  do not coincide with that of  $LWC_{\text{cloud}}$ ,  $N_{\text{cloud}}$ ,  $D_{3 \text{ cloud}}$ ; this suggests that the rain water is primarily transported by the updraft from underneath of the melting layer, rather than being formed locally though the collision-coalescence process of cloud water. However, accretion of cloud water may contribute to the enhancement of raindrop sizes.

985 The high value of  $dN_{\text{ice}}/dt$  results in the increase of  $N_{\text{ice}}$  (Fig. 12j; location indicated by the arrow). As expected, the newly formed particles in the region with enhanced concentration have smaller sizes (Fig. 12g, indicated by arrow) due to their smaller age.

990 Figure 12m shows that the field of the high SIP rate  $dN_{\text{ice}}/dt$  (peak location indicated by the arrow) occurs inside the fields of  $LWC_{\text{rain}}$ ,  $N_{\text{rain}}$ ,  $D_{3 \text{ rain}}$  in Figs. 12f,i,l, but it does not necessarily coincides with their peak values. The areas maximum of  $dN_{\text{ice}}/dt$ , indicated by rectangles in Figs. 12f,i,l, are offset from the local maxima of  $LWC_{\text{rain}}$ ,  $N_{\text{rain}}$ , and  $D_{3 \text{ rain}}$ . One of the reasons for that is that besides the droplet size, the FFD rate also depends on temperature, the concentration of large drops, the ice particles sizes, and their concentrations. Consequently, combinations of these five fields may result in local maxima of  $dN_{\text{ice}}/dt$ , which are not necessarily coincident with the individual maxima of  $N_{\text{rain}}$ ,  $D_{3 \text{ rain}}$ ,  $N_{\text{ice}}$ , and  $D_{3 \text{ ice}}$ .

1000 Freezing of cloud and rain drops and depositional growth of numerous secondary ice particles result in the release of latent heat, which will subsequently lead to positive temperature perturbations. The local temperature perturbation near the top of the updraft reaches approximately  $3^\circ\text{C}$  (Fig. 12o). Such high-temperature fluctuations will result in the invigoration of convection above the melting layer.



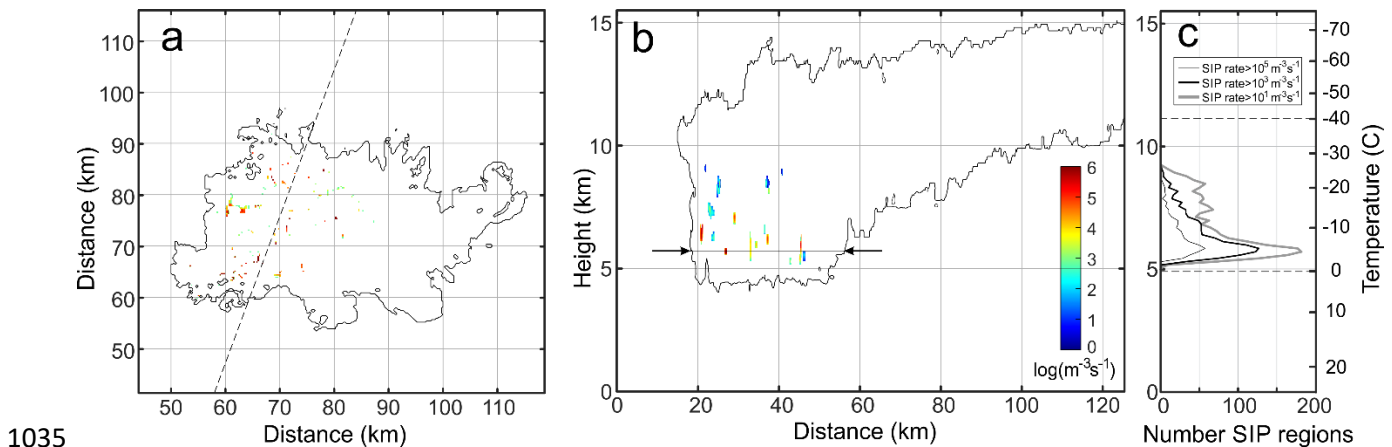
1005 **Figure 12.** Model microphysical and thermodynamical fields illustrating the effects of recirculating rain drops in  
 convective updrafts on the FFD process. (a) vertical velocity  $U_z$ ; (b) Doppler velocity  $U_{Doppl}$ ; (c) radar reflectivity  $Z$ ;  
 (d)  $IWC$ ; (e)  $LWC_{cloud}$ ; (f)  $LWC_{rain}$ ; (g) mean mass diameter of ice  $D_{3\ ice}$ ; (h) mean mass diameter of cloud  
 droplets  $D_{3\ cloud}$ ; (i) mean mass diameter of rain drops  $D_{3\ rain}$ ; (j) ice particles number concentration  $N_{ice}$ ; (k)  
 1010 cloud droplets number concentration  $N_{cloud}$ ; (l) rain drops number concentration  $N_{rain}$ ; (m) SIP rate  $dN_{ice}/dt$ ; (n)  
 relative humidity over liquid  $RH_w$ ; (o) temperature perturbation  $\Delta T$ . The rectangles in (f), (i), (l) indicate locations  
 of the active SIP regions shown in (m).

The analysis of the numerous cases similar to that in Fig. 12 across the model domain suggests that convective updrafts play a key role in transporting precipitation size drops across the melting layer. The presence of large drops provides one of the necessary conditions for initiating the FFD process. However, just the presence of the large drops is not sufficient for triggering the FFD chain reaction; the four other criteria required for efficient SIP production, i.e. (1) drop concentration, (2) size of ice particles, (4) concentration of ice particles and (4) temperature must be also met. The optimum conditions for the FFD  $dN_{ice}/dt$  may not necessarily occur inside the updrafts intersecting the melting layer, but rather they may happen somewhere in their vicinity of the convection, when the outflow of large drops mixes with the pre-existing ice outside of the convective plume.

#### 1.4 Spatial and temporal characteristics of SIP regions

One of the important aspects of HIWC formation is understanding where, when, and at what rate ice initiation occurs. This section analyzes the rates of ice production and spatial distributions of SIP regions in the model domain. Given that the FFD SIP process is the main contributor to ice production, for the sake of conciseness, the following analysis is focused on the FFD regions, and the discussion of the role of the HM is omitted.

Figures 13a,b show a horizontal and vertical cross sections of the FFD rate fields inside the modeled MCS. The horizontal cross section in Fig. 13a refers to the altitude of 5.8 km ( $-5^{\circ}\text{C}$ ) indicated by two arrows in Fig. 13b, and the vertical section in Fig. 13b was done along the dashed line in Fig. 13a. As seen from these diagrams  $dN_{ice}/dt$  varies within several orders of magnitude and may reach  $10^7 \text{ m}^{-3} \text{ s}^{-1}$ .

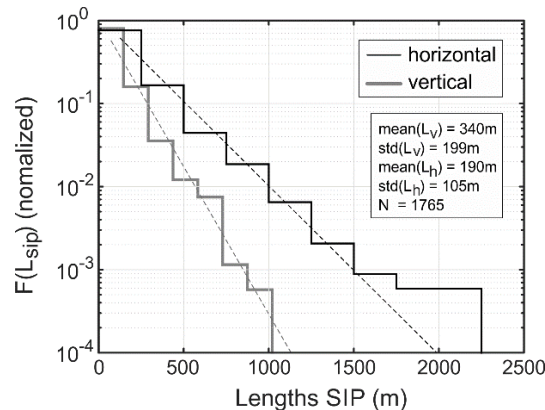


**Figure 13.** Cloud regions with active SIP simulated at 90 min. (a) Horizontal cross section of the SIP rate field at  $H = 5.8 \text{ km}$ ,  $T = -5^{\circ}\text{C}$ . (b) Vertical section of SIP rate field along the line indicated by the dashed line in (a). Arrows in (b) indicate the level of the horizontal section shown in (a). Thin black lines in (a, b) indicate cloud boundaries at the isoline of ice concentration at the threshold  $N_{ice} = 0.01 \text{ L}^{-1}$ . (c) vertical profiles of the number of spatially isolated SIP regions at different SIP rate thresholds for the cloud shown in (a) and (b).

Both panels in Fig. 13a,b show that regions of secondary ice production have highly clustered spatial structures. The vertical changes of the number of the isolated SIP regions ( $n_{SIP}$ ) integrated over each model level in Figs. 13a,b is shown in Fig. 13c. As seen from Fig. 13c  $n_{SIP}$  depends on the threshold of  $dN_{ice}/dt$ . The general trend of the vertical changes of  $n_{SIP}$  for all three SIP thresholds remains the same and they all reach a maximum at the same altitude  $\sim 5.8 \text{ km}$  ( $-5^{\circ}\text{C}$ ).

The production of secondary ice extends up to 9.2 km, which corresponds to  $-25^{\circ}\text{C}$ , the lowest temperature of the FFD process (Keinert et al., 2020).

1050



**Figure 14.** Frequency distributions of vertical  $L_v$  and horizontal  $L_h$  lengths of SIP clouds regions with SIP rate  $>10^3 \text{ m}^{-3} \text{ s}^{-1}$ . The spatial averaging was performed over the in-cloud layer  $5.0 < H < 9.2 \text{ km}$  at 90 minutes of modeled cloud. Dashed lined are parameterization of the frequency distributions.

1055

Figure 14 shows frequency distributions of horizontal  $F(L_h)$  and vertical  $F(L_v)$  lengths of the SIP regions. These distributions were integrated over the cloud layer between 5.2 km and 9.2 km (30 model levels). The mean values of  $L_h$  and  $L_v$  are equal to 340 and 190 m, respectively. However, in terms of the modeled grid cell dimensions (i.e., horizontal = 250 m and vertical  $\approx 145$  m) the mean values of  $L_h$  and  $L_v$  are 1.36 and 1.31, respectively. That is, in the modeled space the shapes of SIP regions are isometric, with  $L_h \approx L_v$ . This suggests that the resolution of the model may not be sufficient to resolve the actual dimensions of the SIP regions and that SIP is an essentially a subgrid process (within the context of a model with a 250-m horizontal grid spacing).

1060

Both  $F(L_h)$  and  $F(L_v)$  can be well parameterized by an exponential function  $F(L) = ae^{-bL}$  where  $a_v = -8.2 \cdot 10^{-3}$ ;  $b_v = 0.024$ ;  $a_h = -4.7 \cdot 10^{-3}$ ;  $b_h = 0.089$ . As follows from Fig. 14, approximately 75% of active SIP regions  $L_h$  and  $L_v$  have scales of approximately one grid cell, i.e. 250 m and 145 m, respectively.

1065

The  $F(L_h)$  and  $F(L_v)$  distributions were calculated for the SIP regions with the rate  $dN_{ice}/dt > 10^3 \text{ m}^{-3} \text{ s}^{-1}$ . Calculations of  $F(L_h)$  and  $F(L_v)$  for other SIP threshold in the range  $10^1 \text{ m}^{-3} \text{ s}^{-1} < dN_{ice}/dt < 10^5 \text{ m}^{-3} \text{ s}^{-1}$  showed, that it does not have any significant effect on the shape of the distributions in Fig. 14 and the mean values of  $L_h$  and  $L_v$  vary within only 7%.

1070

Another important characteristic of SIP regions is their spatial occurrence. Figure 15 shows vertical profiles of the area fraction and the average distance between SIP regions. The area fraction is defined as the ratio of the area of all SIP regions in the modeled layer to the area of the horizontal cloud cross section at that level. The cloud cross-sectional area was calculated for the environment with  $N_{ice} > 0.01 \text{ L}^{-1}$  (e.g., Fig. 13a). As seen from Fig. 15a, the SIP area fraction varies between 0.2% and 2% depending on the SIP rate threshold, and its maximum occurs between 5.5 and 5.8 km. This altitude corresponds to the maximum rate of SIP (Fig. 8g) and maximum number of SIP regions (Fig. 13c). The average distance between SIP regions (Fig. 15b), depending on the SIP threshold, varies from approximately 30 to 100 km at the level of maximum SIP occurrence (5.5 to 5.8 km). Above and below this altitude the average distance between SIP regions rapidly increases.

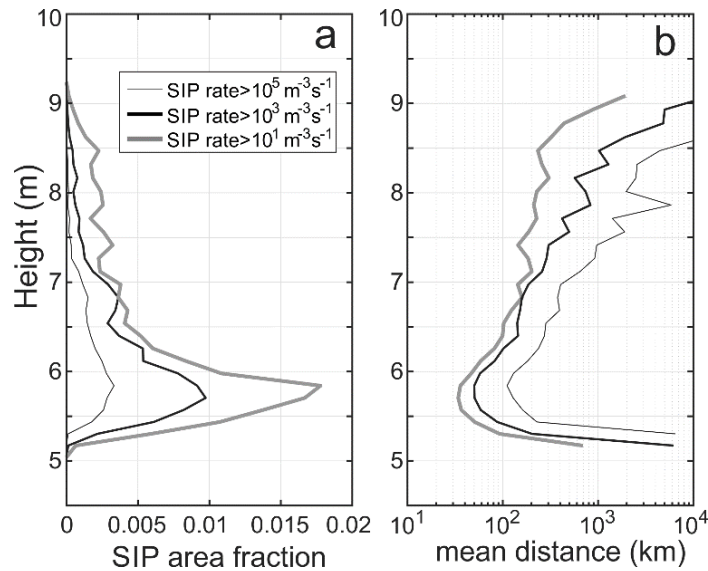
1075

1080

Endurance of the individual SIP regions is an important parameter affecting the formation and maintenance of the HIWC environment. The lifetime of individual SIP cloud regions can be

1085 estimated from the animations of the modeled cloud regions with the SIP rate  $dN_{ice}/dt > 10^5 \text{ m}^{-3} \text{ s}^{-1}$  available from Supplementary Materials. Visual analysis of the animations allowed a rough assessment that the endurance of the SIP regions is of the order of  $10^1 - 10^2 \text{ s}$  with an average of close to 2-3 minutes. Typically, small SIP regions with a horizontal extent of a few hundred meters have a relatively short lifetime of 20 to 40 seconds. Meanwhile, the lifetime of SIP regions over a  
 1090 few kilometers may reach over 10 minutes. The lifetime of the FFD SIP regions is primarily determined by the presence of large drops, which are depleted with time due to freezing on impact with secondary or preexisting ice particles, precipitating out of the cloud volume, of evaporation due to the WBF process.

The primary findings of this section can be summarized as follows. The FFD SIP regions are  
 1095 short-living cloud objects ( $\sim 10^2 \text{ s}$ ) with spatial scales of the order of hundreds of meters. The area fraction of SIP regions is quite small and typically less than 1%. At the level of their maximum SIP occurrence, the average distance between the SIP regions is of the order of tens of kilometers. Altogether, the spatial sparsity and short lifetime make the SIP regions challenging objects for in-situ observations.



1100 **Figure 15.** Vertical profiles of (a) the area fraction and (b) mean distance between the SIP cloud regions.

Existing observational techniques do not allow for measurements of SIP rates. However, the  
 1105 spatial scales of the cloud regions that experienced SIP in the recent past could be estimated from the measurements of horizontal lengths of cloud regions with enhanced concentrations of small faceted ice crystals ( $D_{max} < 100 \mu\text{m}$ ). Such small ice crystals, due to their small age, are still associated with the location of their origin, and the dimensions of the cloud regions affected by SIP have not yet been significantly changed by turbulent diffusion. Therefore, the dimensions of  
 1110 the cloud regions with enhanced concentrations of small ice particles can be used as a proxy of the active SIP regions. Thus, Korolev et al. (2020 Figs. 5a, 23a) showed that typical horizontal dimensions of such cloud regions are of the order of a few hundred meters. The same study showed that SIP regions are separated by tens of kilometers. Therefore, spatial scales, clustering of SIP cloud regions, and distance between them obtained in simulations are generally consistent  
 1115 with the in-situ observations.



## 2. Summary of observations and modeling

Prior to the formulation of the conceptual model of HIWC, we summarize the main outcomes of in-situ observations (section 2) and numerical simulation (section 3), which are relevant to the understanding of the formation of HIWC:

- 1120 (1) Small faceted hexagonal prisms ( $D_{max} < 100 \mu\text{m}$ ) with measured number concentrations up to  $N_{ice} \sim 10^3 \text{ L}^{-1}$  were observed above the melting layer at temperatures  $T < -2^\circ\text{C}$ . The enhanced concentrations of small ice particles were attributed to the massive production of secondary ice (section 2.2).
- 1125 (2) The secondary ice production cloud regions with enhanced concentration of small faceted ice were frequently accompanied by observations of supercooled large drops ( $D < 300 \mu\text{m}$ ), deformed frozen drops and fragments of frozen drops. This enables the hypothesis that the main mechanism of SIP is the fragmentation of freezing drops (FFD). (section 2.2).
- 1130 (3) Cloud regions experiencing SIP were sparse and had small horizontal extents (i.e., of the order of  $10^2 \text{ m}$ ). SIP regions were typically associated with convective regions (section 2.2).
- (4) The dominating ice shapes in tropical MCSs has a distinct pattern in the vertical direction above the melting layer: “small hexagonal prisms” => “columns” => “capped columns”. Such vertical changes of the ice particle habits can be explained by metamorphosis of ice particles when they experience successive columnar growth ( $-9^\circ\text{C} < T < -2^\circ\text{C}$ ) followed by plate growth ( $-22^\circ\text{C} < T < -9^\circ\text{C}$ ) regimes. The observed changes of ice particles in the vertical direction suggest the small ice particles formed in the vicinity of the melting layer were transported upwards by the convective updrafts and went through columnar and then plate growth regimes. (section 2.3).
- 1135 (5) The HIWC cloud regions on average have significantly higher concentrations and smaller ice particles compared to the cloud regions with low IWC. (section 2.3; Figs. 3,4; Table 1)
- (6) Mixed-phase cloud regions in mature MCSs are sparse and occupy only a few percent of in-cloud space at  $-5^\circ\text{C}$ . Mixed-phase cloud regions were primarily observed in convective updrafts which can force coexistence of ice and liquid phase (section 2.5).
- 1145 (7) Spatially sparse large drops ( $100 \mu\text{m} < D < 300 \mu\text{m}$ ) with number concentration  $< 10^{-3} \text{ L}^{-1}$  were observed at 1-2 km above the melting layer in the vicinity of updrafts. In absence of any significant LWC layers the only source of these large drops could be precipitating size drops formed below the melting layer and then transported upward by convective updrafts (section 2.6).
- 1150 (8) The disturbance of the bright band was typically observed in convective regions and is explained by vertical transport of melting ice along with precipitation size drops through the melting layer in an upward direction (section 2.8).
- (9) HIWC cells are associated with convective updrafts existing somewhere inside these cells (section 2.9).

1155 The numerical model simulation (SIP-ON configuration) reproduced the observed large concentration of ice particles above the melting layer, with an average ranging from  $10^2 \text{ L}^{-1}$  to  $10^3 \text{ L}^{-1}$  and peaking up to  $10^4 \text{ L}^{-1}$ . The main mechanism of ice initiation was related to the FFD process.

1160 The model was able to reproduce high clustering and sparsity of SIP regions when using a parameterization that was based on previous aircraft measurements. The typical horizontal dimensions ( $10^2$ - $10^3 \text{ m}$ ) and distances between SIP regions ( $10^1$ - $10^2 \text{ km}$ ) are generally

consistent with observations. The model qualitatively and quantitatively reproduced trends of vertical profiles of  $IWC$ ,  $LWC$ ,  $N_{ice}$ ,  $D_{3ice}$ ,  $Z$ , and  $U_{Doppl}$  (Fig. 10) and general relations between  $N_{ice}$  and  $D_{3ice}$  versus  $IWC$  (Fig. 11).

1165 The numerical modeling confirmed the hypothesis of transport of precipitation size drops through the melting layer by convective updrafts (Korolev et al., 2020). The model also reproduced the disturbance of the bright band and justified the hypothesis of disturbance of the bright band by convective updrafts. The vertical transport of precipitation size drops creates an environment above the melting layer favorable for the SIP FFD process.

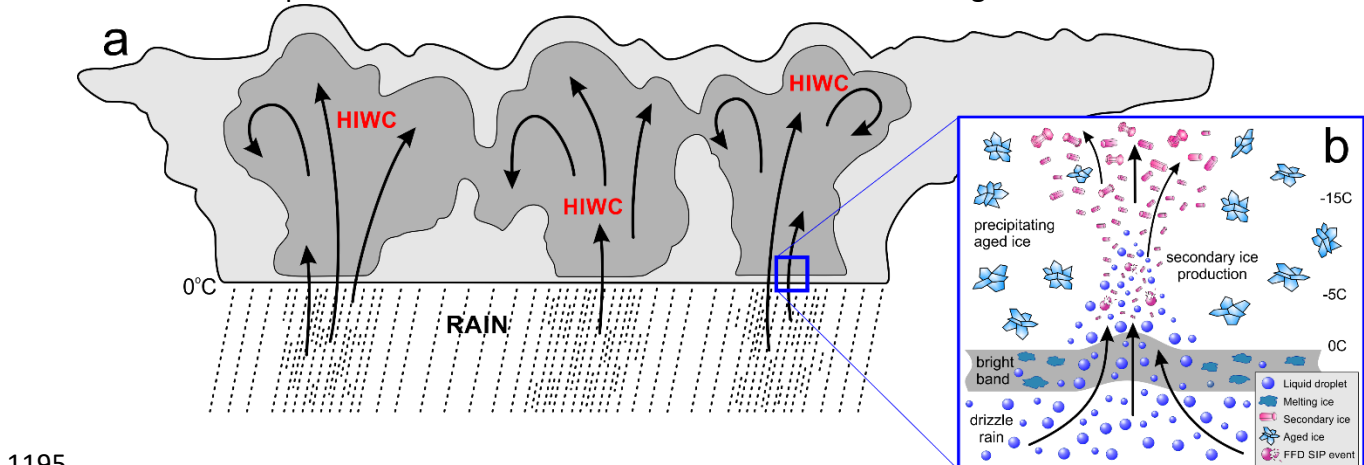
1170 The agreement between in-situ observations and numerical simulations creates a basis for the following conceptual model of the formation of HIWC cloud regions in tropical MCSs.

### 3. Conceptual model of HIWC

1175 The combination of in-situ observations and numerical simulations enables us to make the following general conclusions regarding formation of HIWC in oceanic tropical MCSs. The process begins with forming a melting layer in a convective environment during the early stage of MCS. Updrafts generated by regular convection or gravity waves transport precipitation sized drops from below the melting layer to above it. Above the melting layer, large supercooled drops create a favorable environment for the FFD SIP process. FFD yields a massive production of secondary ice particles within 1 to 1.5 km above the melting layer with a maximum of around  $-5^{\circ}\text{C}$  to  $-8^{\circ}\text{C}$ . Freezing drops and rapid depositional growth of large amounts of ice particles result in enhanced release of the latent heat and invigoration of the convection. During the subsequent updraft, the ensemble of small ice crystals rapidly depletes the supersaturated water vapor, increasing  $IWC$ , thereby forming the HIWC environment. High concentrations of secondary ice particles lead to intense competition for the water vapor, which hinders their growth. As a result, ice particles constituting the HIWC environment remain small in size. The convective updrafts transport small ice particles to higher altitudes and distribute them throughout the stratiform regions.

1180 Convective updrafts across the MCS domain periodically pump small ice crystals to high altitudes, maintaining the HIWC environment there. The maintenance of HIWC is also facilitated by small sizes of ice particles, which may remain suspended in the cloud for a longer time due to the small fall speeds. Overall, HIWC environments are dynamic cloud objects that form due to a balance between particle sedimentation and  $IWC$  brought up by convection.

1185 The conceptual model of the HIWC formation is illustrated in Fig. 16.



1195 **Figure 16.** Illustration of a conceptual model of HIWC formation in tropical MCSs

1200 While the proposed conceptual model is based on a relatively limited number of in-situ  
observations (focused on one specific geographical location) and quasi-idealized numerical  
model simulations, both of which have limitations and challenges, the central point of the  
conceptual model is that HIWC environments in tropical MCSs form as a result of intensive  
production of secondary ice particles at temperatures just below freezing (primarily  $-10^{\circ}\text{C} < T <$   
 $-2^{\circ}\text{C}$ ), which are then transported to high altitudes ( $\sim 7 < H < 15$  km) by convective updrafts. This  
part of the conceptual model is well justified based on in-situ observations and can be  
1205 considered as an established experimental fact.

However, despite observational evidence indicating that the FFD process is the major  
contributor to the production of secondary ice, this part of the conceptual model requires more  
in-situ observations and especially laboratory studies. The latter is crucial for detailed studies of  
the dependence of FFD rates on environmental conditions and the development of physically-  
1210 based parameterizations that can be used in numerical simulations. The simulations examined  
in this study support the hypothesis that FFD SIP alone is sufficient to explain the large amounts  
of ice generated without involving other SIP mechanisms (Korolev and Leisner, 2020; James et  
al., 2021). That said, the authors acknowledge that the FFD mechanism is not well established  
in the laboratory, and the contribution of other mechanisms also remains uncertain and  
1215 requires further study.

#### 4. Concluding remarks

The mechanism of HIWC formation described above is specifically relevant to tropical  
oceanic MCSs, which are characterized by a low aerosol load and relatively moderate  
1220 convection with vertical velocities peaking at 15 to 20 m s<sup>-1</sup>. We emphasize that the roles and  
contributions of different cloud processes in HIWC depend on the initial environmental  
parameters, and it may be different for continental and midlatitude convective systems  
compared to HIWC in maritime tropical MCSs. Results of the baseline simulation, with SIP  
processes off, suggest that any convective system, if strong enough, may generate a HIWC  
1225 environment. However, the bulk properties of the population of ice particles comprising HIWC,  
such as MMD, reflectivity, and IWC, may be different from those observed in the tropics. For  
example, as discussed in Lawson et al. (2015, 2023), high aerosol load in continental convective  
systems may suppress SIP. One of the consequences of SIP suppression is the high production  
of graupel/hail, increased radar reflectivity, and relatively low ice number concentration. This  
1230 case would be equivalent to the HIWC environment in the BASE simulations as described in  
section 3.2 (Figs.8). Due to the larger particle sizes and, therefore, higher fall velocity, the  
endurance of the HIWC environment in such clouds will be shorter compared to those in  
tropical MCSs with smaller ice particles.

We reiterate that while the numerical simulations presented in this study support the  
1235 proposed conceptual model for the importance of SIP in the production of HIWC in tropical  
convection, no claim is made regarding the fidelity of the model in accurately simulating the  
fundamental processes involved in SIP. Besides the model set-up being quasi-idealized, the FFD  
parameterization itself in the microphysics scheme is ad hoc and is essentially constructed to  
give good results. The original FFD formulation in Lawson et al. (2015) is essentially an  
1240 empirical parameterization based on observations; in this study we have adjusted it further to

produce peak FFD rates at relatively warm temperatures (in contrast to laboratory studies) in order to improve the simulations. The utility of this model “tuning” approach is that while we have insufficient knowledge of the fundamental physics on which a credible FFD parameterization can be based, we can at least introduce what may be considered a  
1245 compensating model error such that the end result (i.e. the numerical simulation with SIP on) is sufficiently close to the in-situ microphysical observations that we can use the simulation to examine further the model storm and to lend support to the largely observation-based conceptual model.

The significance of the initial environmental conditions for the bulk properties of the HIWC  
1250 environment was supported by the recent in-situ observations of the HIWC cloud regions in cold season mid-latitude frontal clouds (Rugg et al., 2022). Despite the small data set, it was found that in the mid-latitude winter clouds, MMD in HIWC regions (Fig. 10, in Rugg et al., 2022) was higher compared to those in tropical MCSs (Fig. 17, in Strapp et al., 2021). These comparisons indicate the need for more observational and modeling studies of bulk properties  
1255 of HIWC cloud regions in different geographical regions with different environmental backgrounds. An especially high priority should be placed on furthering reproducible laboratory-based parameterizations of FFD and other SIP mechanisms.

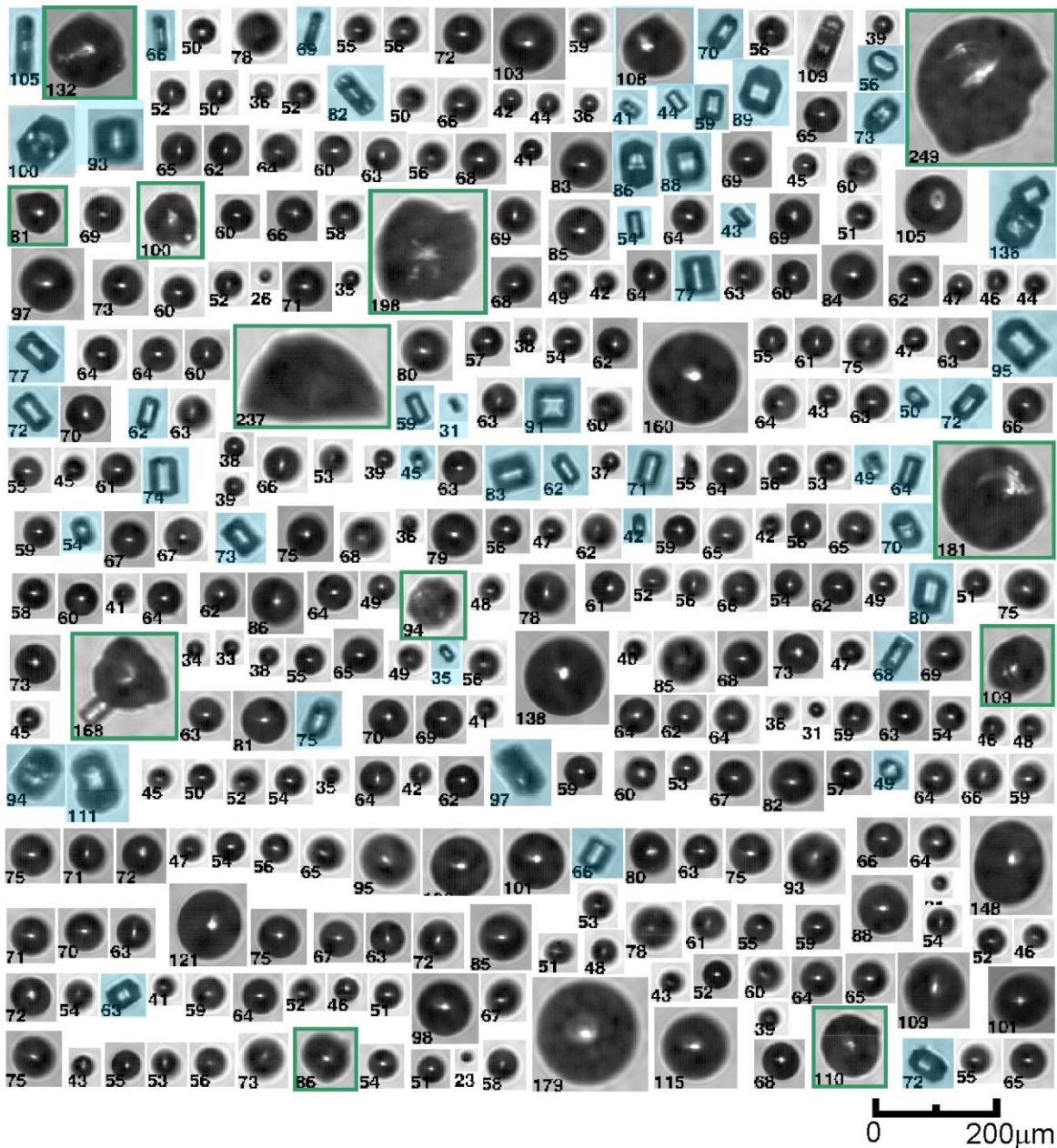
*Data availability:* In situ data are available from the Earth Observation Laboratory (EOL) archive  
1260 <https://doi.org/10.26023/PSC2-TTQS-390A>. The GEM code model is available at <https://github.com/ECCC-ASTD-MRD/gem>. The code for the P3 microphysics scheme used is available at <https://github.com/P3-microphysics/P3-microphysics>). Configuration files to reproduce the GEM simulations are available upon request.

*Authors’ contribution.* A. Korolev developed a concept, led the collection of the cloud microphysical data and data analysis. Z. Qu performed GEM model simulations. J. Milbrandt is the co-developer of the P3  
1265 microphysics scheme. I. Heckman performed analysis of the cloud microphysical data. M. Wolde carried out the airborne data collection and analysis of in-situ atmospheric state parameters and NAWX radar data. N. Cung performed analysis on the NAWX radar data. M. Cholette developed and implemented the predicted liquid fraction capability of the P3 scheme and leads its maintenance the GEM model. G.  
1270 McFarquhar, A. Fridlind participated in planning of HIWC flight operations during HAIC-HIWC 2015. A. Korolev prepared the manuscript, with contribution from co-authors G. McFarquhar, P. Lawson, A. Fridlind, Z. Qu, and J. Milbrandt.

*Competing interests.* The authors declare that they have no conflict of interests. At least one of the co-authors is a member of the editorial board of Atmospheric Chemistry and Physics.

*Acknowledgements.* The HIWC program was supported by Environment and Climate Change Canada (ECCC), the National Research Council of Canada (NRCC), Transport Canada (TC), and the Federal  
1280 Aviation Administration (FAA). Any opinions, findings, conclusions, or recommendations expressed in this material are those of the authors and do not necessarily reflect the views of the FAA and TC. Authors express special thanks to the NRC FRL pilots Anthony Brown, Paul Kissman, and Rob Erdos for their outstanding cooperation during flight operations and in-situ data collection. The authors are grateful for the technical support provided by the ECCC and NRCC technical and engineering teams.  
1285 Authors acknowledge contributions from Ed Emery, Tom Ratvasky (NASA GRC), Walter Strapp (MetAnalytics Inc.), Lyle Lilie (SAE Inc.).

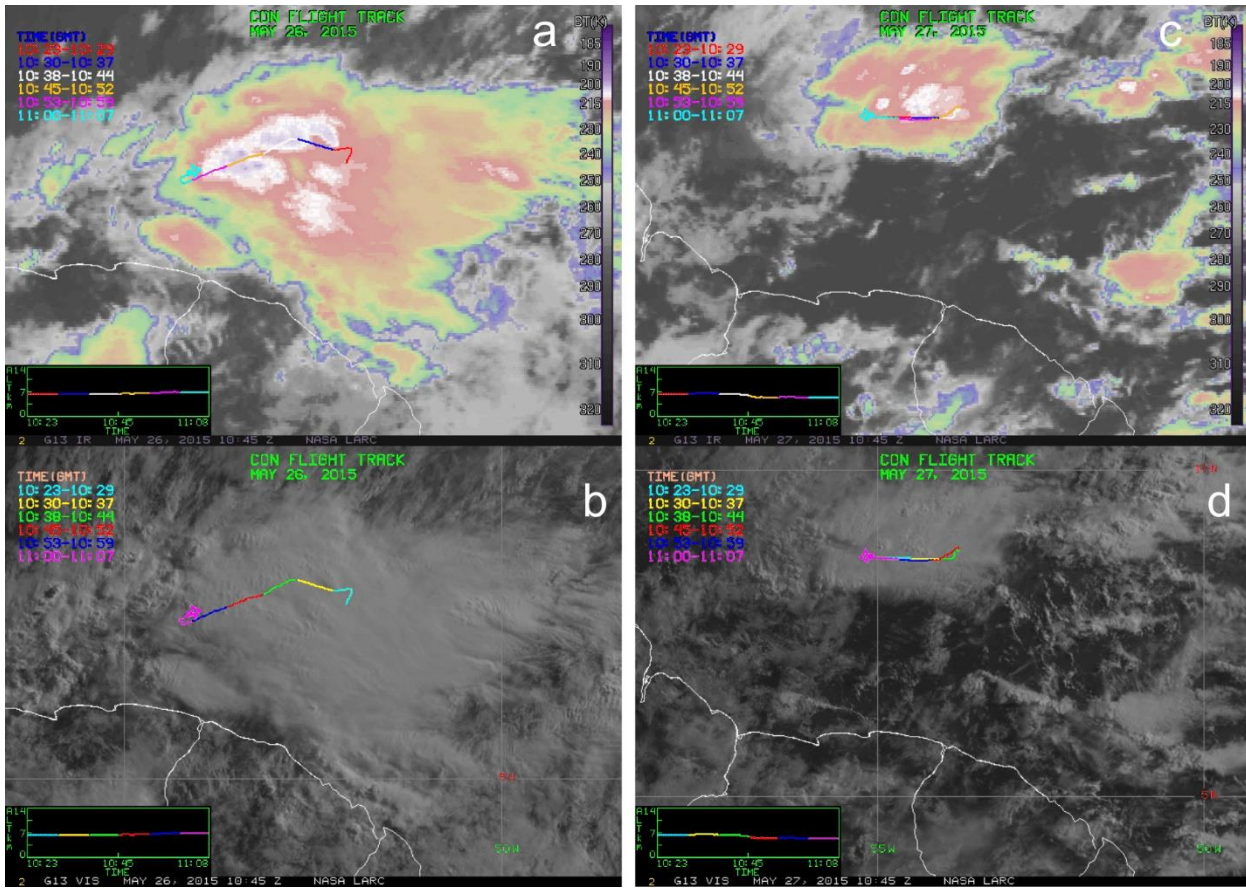
APPENDIX A



1290 **Figure A1.** Zoomed-in images of cloud particles in Fig.1a showing details of shapes of secondary ice (highlighted in blue) and frozen drops (highlighted by green frames).

1295

APPENDIX B



1300

**Figure B1.** GOES-13 satellite infrared and visible images with the Convair-580 flight track for the flight segments shown in (a,b) Fig. 6 and (c,d) Fig. 7.

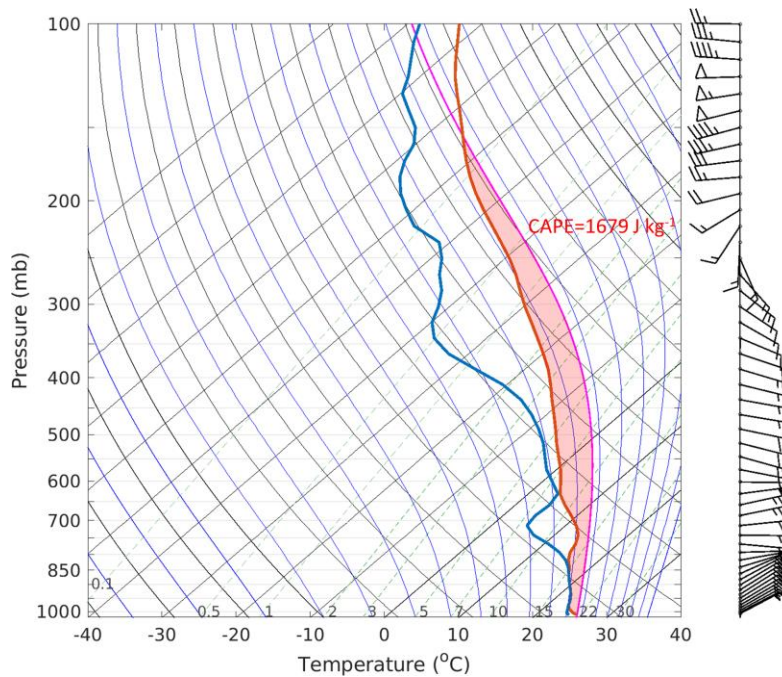
1305

1310

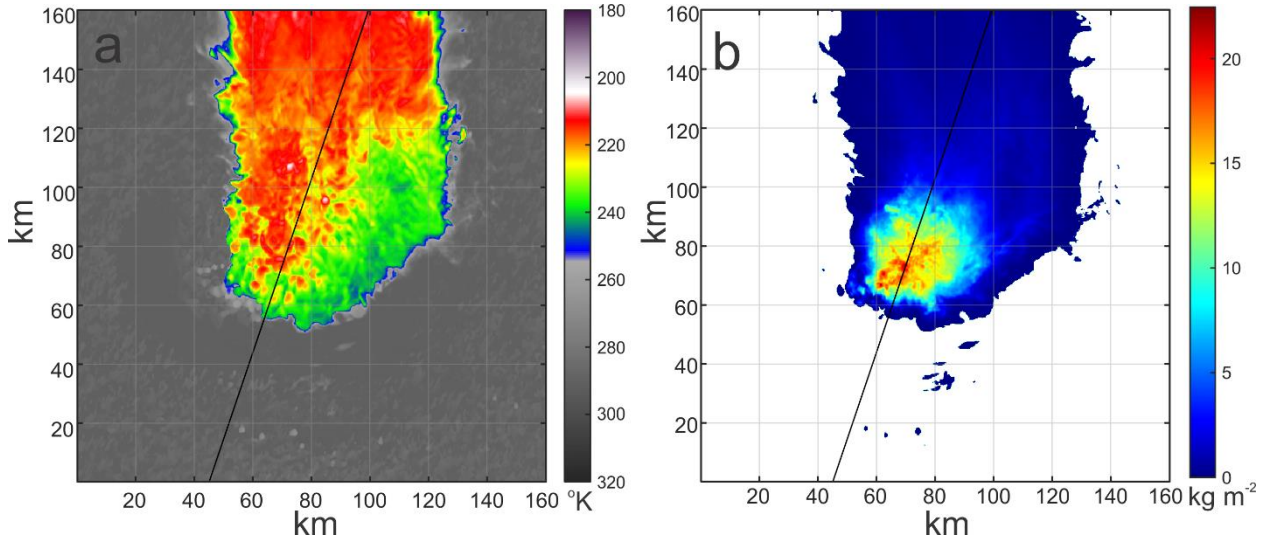
1315

**Table C1: Summary of GEM configurations details.**

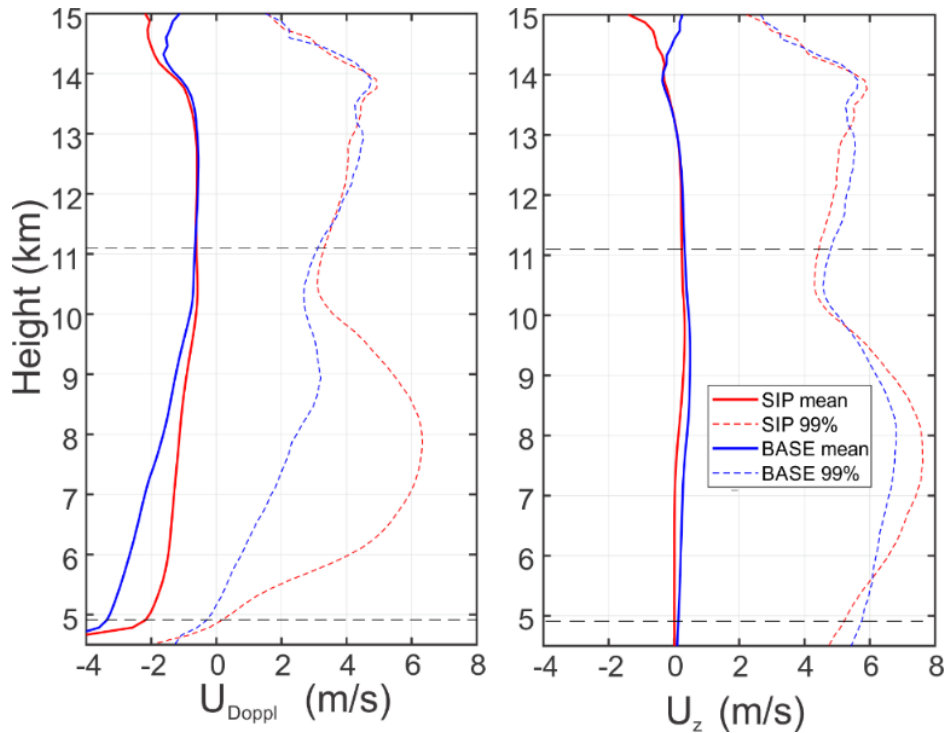
Dynamics/Numerics
<ul style="list-style-type: none"> <li>• Nonhydrostatic primitive equations</li> <li>• Limited-area grid on a latitude–longitude projection</li> <li>• Uniform horizontal grid spacing of 0.00225 longitude (~ 250 m)</li> <li>• 183 vertical levels</li> <li>• Upper-boundary nesting above 10 hPa</li> <li>• Time step of 10 s</li> <li>• Terrain-following Gal-Chen vertical coordinate</li> <li>• Two-time-level semi-implicit time differencing</li> <li>• 3D semi-Lagrangian advection</li> <li>• <math>\nabla^4</math> horizontal diffusion (<math>\nabla^6</math> for potential temperature)</li> </ul>
Physics
<ul style="list-style-type: none"> <li>• Planetary boundary layer scheme based on turbulence kinetic energy with statistical representation of subgrid-scale cloudiness (MoistTKE)</li> <li>• Kuo–transient shallow convection scheme</li> <li>• P3 microphysics (with triple-moment-ice and liquid fraction options on)</li> <li>• Li–Barker correlated-k distribution radiative transfer scheme (called every 3 min)</li> <li>• Interaction Sol-Biosphère-Atmosphère (ISBA) land surface scheme</li> <li>• Distinct roughness lengths for momentum and heat/humidity</li> </ul>



1325 **Figure C1.** Initial atmospheric profiles for the idealized simulations. The blue line represents the dew point temperature, the red line represents the environment sounding (temperature), and the magenta line represents the parcel lapse rate. (Qu et al., 2022)



**Figure D1.** Brightness temperature at 11.2  $\mu\text{m}$  (a) and ice water path (b) of the GEM simulated cloud system at 90 min. Black lines indicate the cross sections of the microphysical fields shown in Fig. 8.



**Figure D2.** Average vertical profiles of GEM simulated Doppler velocity  $U_{Doppl}$  and vertical wind velocity  $U_z$ . The averaging was performed over time period from 75 to 135 min.



1345 **References**

- Ackerman, A. S., Fridlind, A. M., Grandin, A., Dezzitter, F., Weber, M., Strapp, J. W., and Korolev, A. V.: High ice water content at low radar reflectivity near deep convection – Part 2: Evaluation of microphysical pathways in updraft parcel simulations, *Atmos. Chem. Phys.*, 15, 11729–11751, <https://doi.org/10.5194/acp-15-11729-2015>, 2015.
- 1350 aufm Kampe, H. J., Weickmann, H. K. and Kelly, J. J.: The influence of temperature on the shape of ice crystals growing at water saturation. *J. Meteor.*, 8, 168–174, [https://doi.org/10.1175/1520-0469\(1951\)008%3C0168:TIOTOT%3E2.0.CO;2](https://doi.org/10.1175/1520-0469(1951)008%3C0168:TIOTOT%3E2.0.CO;2), 1951.
- Bailey, M., and J. Hallett, H.: A comprehensive habit diagram for atmospheric ice crystals: Confirmation from the laboratory, AIRS II, and other field studies. *J. Atmos. Sci.*, 66, 2888–2899, <https://doi.org/10.1175/2009JAS2883.1>, 2009
- 1355 Baumgardner, D., Jonsson, H. H., Dawson, W., O'Connor, D. P., and Newton, R.: The Cloud, Aerosol and Precipitation Spectrometer: A New Instrument for Cloud Investigations, *Atmos. Res.*, 59–60, 251–264, [https://doi.org/10.1016/S0169-8095\(01\)00119-3](https://doi.org/10.1016/S0169-8095(01)00119-3), 2001.
- Baumgardner, D., Abel, S.J., Axisa, D., Cotton, R., Crosier, J., Field, P., Gurganus, C., Heymsfield, A., 1360 Korolev, A., Krämer, M., Lawson, P., McFarquhar, G., Ulanowski, Z., and Um, J.: Cloud Ice Properties: In Situ Measurement Challenges, *Meteorological Monographs*, 58, 9.1–9.23, <https://doi.org/10.1175/AMSMONOGRAPHS-D-16-0011.1>, 2017.
- Belair, S., S. Leroyer, N. Seino, L. Spacek, V. Souvanlassy, D. Paquin-: Role and Impact of the urban environment in a numerical forecast of an intense summertime precipitation event over Tokyo. *J. Meteor. Soc. Japan*, 96A, DOI: 10.2151/jmsj.2018-011, 2018.
- 1365 Beswick, K. M., Gallagher, M. W., Webb, A. R., Norton, E. G., and Perry, F.: Application of the Aventech AIMMS20AQ airborne probe for turbulence measurements during the Convective Storm Initiation Project, *Atmos. Chem. Phys.*, 8, 5449–5463, <https://doi.org/10.5194/acp-8-5449-2008>, 2008.
- Brechner, P., McFarquhar, G. M., Schwarzenboeck, A., Korolev, A.V.: Ice Crystal Size Distributions in 1370 Tropical Mesoscale Convective Systems in the Vicinity of Darwin, Australia: Results from the HAIC/HIWC Campaign. *Journal of the Atmospheric Sciences*, 80, 2147–2164, <https://doi.org/10.1175/JAS-D-22-0209.1>, 2023.
- Brown, A.: National Research Council of Canada, Flight Research Facility, personal communication of the first author, February 2024.
- 1375 Brown, P. R. A., and Francis, P. N.: Improved measurements of the ice water content in cirrus using a total-water probe. *J. Atmos. Oceanic Technol.*, 12, 410–414, [https://doi.org/10.1175/1520-0426\(1995\)012%3C0410:IMOTIW%3E2.0.CO;2](https://doi.org/10.1175/1520-0426(1995)012%3C0410:IMOTIW%3E2.0.CO;2), 1995.
- Cai, Y., Montague, D. C., Mooiweer-Bryan, W., and Deshler, T.: Performance characteristics of the ultra high sensitivity aerosol spectrometer for particles between 55 and 800 nm: Laboratory and field 1380 studies, *J. Aerosol Sci.*, 39, 759–769, <https://doi.org/10.1016/j.jaerosci.2008.04.007>, 2008.
- Cholette, M., J.A. Milbrandt, H. Morrison, D. Paquin-Ricard, D. Jaques: Combining triple-moment ice with prognostic liquid fraction in the P3 microphysics scheme: Impacts on a simulated squall line. *J. of Advances in Modeling Earth Systems*. 15, e2022MS003328, <https://doi.org/10.1029/2022MS003328>, 2023.
- 1385 Connolly, P.J., Flynn, M.J., Ulanowski, Z., Choulaton, T.W., Gallagher, M.W., Bower, J.K.N: Calibration of the cloud particle imager probes using calibration beads and ice crystal analogs: The depth of field. *J. Atmos. Oceanic Technol.* 24, 1860 – 1879, <https://doi.org/10.1175/JTECH2096.1>, 2007.
- Côté, J., Gravel, S., Méthot, A., Patoine, A., Roch, M. and Staniforth, A.: The operational CMC–MRD global environmental multiscale (GEM) model. Part I: Design considerations and formulation. 1390 *Monthly Weather Review*, 126, 1373–1395. [https://doi.org/10.1175/1520-0493\(1998\)126,1373:TOCMGE.2.0.CO;2](https://doi.org/10.1175/1520-0493(1998)126,1373:TOCMGE.2.0.CO;2), 1998.

- 1395 Davison, C., Ratvasky, T., and Lyle, L.: Naturally Aspirating Isokinetic Total Water Content Probe: Wind Tunnel Test Results and Design Modifications, in: SAE 2011 International Conference on Aircraft and Engine Icing and Ground Deicing, Chicago, Illinois, 13–17 June 2011, <https://doi.org/10.4271/2011-38-0036>, 2011.
- Dezitter, F., Grandin, A., Brenguier, J.-L., Hervy, F., Hans Schlager, H., Villedieu, P., and G.: HAIC—High Altitude Ice Crystals,” in 5th AIAA Atmospheric and Space Environments Conference, San Diego, CA, American Institute of Aeronautics and Astronautics, <http://arc.aiaa.org/doi/abs/10.2514/6.2013-2674>, 2013.
- 1400 Field, P. R., Lawson, P., Brown, P., Lloyd, G., Westbrook, C., Moisseev, D., Miltenberger, A., Nenes, A., Blyth, A., Choularton, T., Connolly, P., Bühl, J., Crosier, J., Cui, Z., Dearden, C., DeMott, P., Flossmann, A. I., Heymsfield, A. J., Huang, Y., and Sullivan, S.: Secondary Ice Production: Current State of the Science and Recommendations for the Future, *Meteor. Mon.*, 58, 7.1–7.20, <https://doi.org/10.1175/AMSMONOGRAPHS-D-16-0014.1>, 2017.
- 1405 Franklin, C. N., Protat, A., Leroy, D., and Fontaine, E.: Controls on phase composition and ice water content in a convection-permitting model simulation of a tropical mesoscale convective system, *Atmos. Chem. Phys.*, 16, 8767–8789, <https://doi.org/10.5194/acp-16-8767-2016>, 2016.
- 1410 Fridlind, A. M., Ackerman, A. S., Grandin, A., Dezitter, F., Weber, M., Strapp, J. W., Korolev, A. V., and Williams, C. R.: High ice water content at low radar reflectivity near deep convection—Part 1: Consistency of in situ and remote-sensing observations with stratiform rain column simulations. *Atmos. Chem. Phys.*, 15, 11 713–11 728, <https://doi.org/10.5194/acp-15-11713-2015>, 2015.
- 1415 Girard, C., Plante A., Desgagné, M., McTaggart-Cowan, R., Côté J., Charron, M., Gravel, S., Lee, V., Patoine, A., Qaddouri, A., Roch, M., Spacek, L., Tanguay, M., Vaillancourt, P.A.: Staggered vertical discretization of the Canadian environmental multiscale (GEM) model using a coordinate of the loghydrostatic-pressure type, *Mon. Weather Rev.*, 142, 1183–1196, <https://doi.org/10.1175/MWR-D-13-00255.1>, 2014.
- Grzych, M. L., and Mason, J.G.: Weather conditions associated with jet engine power loss and damage due to ingestion of ice particles: What we’ve learned through 2009. 14th Conf. on Aviation, Range, and Aerospace Meteorology, Atlanta, GA, Amer. Meteor. Soc., 6.8, <https://ams.confex.com/ams/pdfpapers/165923.pdf>, 2010.
- 1420 Hallett, J., and Mason, B.J.: The influence of temperature and supersaturation on the habit of ice crystals grown from the vapour. *Proc. Roy. Soc. A*, 247, 440-453, <https://doi.org/10.1098/rspa.1958.0199>, 1958.
- 1425 Heymsfield, A.J., Bansemer, A. Field, P.R., Durden, S.L., Stith, J.L., Dye, J.E., Hall, W., and Grainger, C.A.: Observations and Parameterizations of Particle Size Distributions in Deep Tropical Cirrus and Stratiform Precipitating Clouds: Results from In Situ Observations in TRMM Field Campaigns. *J. Atmos. Sci.*, 59, 3457–3491, [https://doi.org/10.1175/1520-0469\(2002\)059%3C0003:AGAFDT%3E2.0.CO;2](https://doi.org/10.1175/1520-0469(2002)059%3C0003:AGAFDT%3E2.0.CO;2) 2002.
- 1430 Heymsfield, A. J., Bansemer, A., and Twohy, C. H.: Refinements to ice particle mass dimensional and terminal velocity relationships for ice clouds. Part I: Temperature dependence. *J. Atmos. Sci.*, 64, 1047–1067, doi:10.1175/JAS3890.1, 2007. Hu, Y., McFarquhar, G. M., Wu, W., Huang, Y., Schwarzenboeck, A., Protat, A., Korolev, A., Rauber, R. M., and Wang, H.: Dependence of Ice Microphysical Properties On Environmental Parameters: Results from HAIC-HIWC Cayenne Field Campaign, *J. Atmos. Sci.*, 78, 2957–2981, <https://doi.org/10.1175/JAS-D-21-0015.1>, 2021.
- 1435 Hu, Y., McFarquhar, G. M., Brechner, P., Wu, W., Huang, Y., Korolev, A., Protat, A., Nguyen, C., Wolde, M., Schwarzenboeck, A., Rauber, R. M., Wang, H.: Dependence of Ice Crystal Size Distributions in High Ice Water Content Conditions on Environmental Conditions: Results from the HAIC-HIWC Cayenne Campaign. *J. Atmos. Sci.*, 80, 3103–3134, <https://doi.org/10.1175/JAS-D-22-0008.1>, 2022.
- 1440 Huang, Y., Wu, W., McFarquhar, G. M., Xue, M., Morrison, H., Milbrandt, J., Korolev, A. V., Hu, Y., Qu, Z., Wolde, M., Nguyen, C., Schwarzenboeck, A., and Heckman, I.: Microphysical processes producing high ice water contents (HIWCs) in tropical convective clouds during the HAIC-HIWC field campaign:

- dominant role of secondary ice production, *Atmos. Chem. Phys.*, 22, 2365–2384, <https://doi.org/10.5194/acp-22-2365-2022>, 2022.
- 1445 Huang, Y., Wu, W., McFarquhar, G. M., Wang, X., Morrison, H., Ryzhkov, A., Hu, Y., Wolde, M., Nguyen, C., Schwarzenboeck, A., Milbrandt, J., Korolev, A. V., and Heckman, I.: Microphysical processes producing high ice water contents (HIWCs) in tropical convective clouds during the HAIC-HIWC field campaign: evaluation of simulations using bulk microphysical schemes, *Atmos. Chem. Phys.*, 21, 6919–6944, <https://doi.org/10.5194/acp-21-6919-2021>, 2021.
- 1450 James, R.L., Vaughan T. J. Phillips, V.Z.J., and Paul J. Connolly P.J., Secondary ice production during the break-up of freezing water drops on impact with ice particles. *Atmos. Chem. Phys.*, 21, 18519–18530, <https://doi.org/10.5194/acp-21-18519-2021>, 2021
- Keinert, A., Spannagel, D., Leisner, T., and Kiselev, A.: Secondary ice production upon freezing of freely falling drizzle droplets, *J. Atmos. Sci.*, 77, 2959–2967, <https://doi.org/10.1175/JAS-D-20-0081.1>, 2020.
- 1455 Knollenberg, R. G.: Techniques for probing cloud microstructure, in: *Clouds their Formation, Optical Properties, and Effects*, edited by: Hobbs, P. V. and Deepak, A., Academic Press, New York, 15–91, 1981.
- Kobayashi, T.: Experimental researches on the snow crystal habit and growth by means of a diffusion cloud chamber. *J. Meteor. Soc. Japan*, 35A, 38–47, [https://doi.org/10.2151/jmsj1923.35A.0\\_38](https://doi.org/10.2151/jmsj1923.35A.0_38), 1957.
- 1460 Kobayashi, T.: The growth of snow crystals at low supersaturation. *Phil. Mag.*, 5, 1363–1370, <https://doi.org/10.1080/14786436108241231>, 1966
- Korolev, A. V., Strapp, J. W., Isaac, G. A., and Nevzorov, A. N.: The Nevzorov Airborne Hot-Wire LWC–TWC Probe: Principle of Operation and Performance Characteristics, *J. Atmos. Ocean. Tech.*, 15, 1495–1510, [https://doi.org/10.1175/1520-0426\(1998\)015<1495:TNAHWL>2.0.CO;2](https://doi.org/10.1175/1520-0426(1998)015<1495:TNAHWL>2.0.CO;2), 1998.
- 1465 Korolev, A.V., Isaac, G.A.: Phase transformation of mixed phase clouds. *Quart. J. Roy. Met. Soc.*, 129, 19–38, <https://doi.org/10.1256/qj.01.203>, 2003.
- Korolev, A.V. and Mazin, I.P.: Supersaturation of water vapor in clouds. *J. Atm. Sci.*, 60, 2957–2974, [https://doi.org/10.1175/1520-0469\(2003\)060<2957:SOWVIC>2.0.CO;2](https://doi.org/10.1175/1520-0469(2003)060<2957:SOWVIC>2.0.CO;2), 2003.
- 1470 Korolev, A. V., Emery, E. F., Strapp, J. W., Cober, S. G., Isaac, G. A., Wasey, M., and Marcotte, D.: Small Ice Particles in Tropospheric Clouds: Fact or Artifact? Airborne Icing Instrumentation Evaluation Experiment, *B. Am. Meteorol. Soc.*, 92, 967–973, <https://doi.org/10.1175/2010BAMS3141.1>, 2011.
- Korolev, A., Emery, E., and Creelman, K.: Modification and tests of particle probe tips to mitigate effects of ice shattering, *J. Atmos. Ocean. Tech.*, 30, 690–708, <https://doi.org/10.1175/JTECH-D-12-00142.1>, 2013a.
- 1475 Korolev, A., Emery, E., Strapp, J., Cober, S., and Isaac, G.: Quantification of the effects of shattering on airborne ice particle measurements, *J. Atmos. Ocean. Tech.*, 30, 2527–2553, <https://doi.org/10.1175/JTECH-D-13-00115.1>, 2013b.
- Korolev, A., Shashkov, A., and Barker, H.: Calibrations and Performance of the Airborne Cloud Extinction Probe, *J. Atmos. Ocean. Tech.*, 31, 326–345, <https://doi.org/10.1175/JTECH-D-13-00020.1>, 2014.
- 1480 Korolev, A. and Field, P. R.: Assessment of the performance of the inter-arrival time algorithm to identify ice shattering artifacts in cloud particle probe measurements, *Atmos. Meas. Tech.*, 8, 761–777, <https://doi.org/10.5194/amt-8-761-2015>, 2015.
- Korolev, A., McFarquhar, G., Field, P. R., Franklin, C., Lawson, P., Wang, Z., Williams, E., Abel, S. J., Axisa, D., Borrmann, S., Crosier, J., Fugal, J., Krämer, M., Lohmann, U., Schlenzcek, O., Schnaiter, M., and Wendisch, M.: Mixed-Phase Clouds: Progress and Challenges. *Meteorological Monographs*, 58, 5.1–5.50, <https://doi.org/10.1175/AMSMONOGRAPHS-D-17-0001.1>, 2017
- 1485 Korolev, A., Heckman, I., and Wolde, M.: Observation of Phase Composition and Humidity in: Oceanic Mesoscale Convective Systems, 15th AMS Cloud Physics Conference, Vancouver, BC, 9–13 July 2018, available at: <https://ams.confex.com/ams/15CLOUD15ATRAD/webprogram/Paper347111.html> (last access: 30 April 2024), 2018.
- 1490

- Korolev, A., Heckman, I., Wolde, M., Ackerman, A. S., Fridlind, A. M., Ladino, L. A., Lawson, R. P., Milbrandt, J., and Williams, E.: A new look at the environmental conditions favorable to secondary ice production, *Atmos. Chem. Phys.*, 20, 1391–1429, <https://doi.org/10.5194/acp-20-1391-2020>, 2020.
- 1495 Korolev, A., and Leisner, T.: Review of experimental studies on secondary ice production. *Atmos. Chem. Phys.*, 20, 11767–11797, 2020, <https://doi.org/10.5194/acp-20-11767-2020>, 2020.
- Ladino, L.A., Korolev, A., Heckman, I., Wolde, M., Fridlind, A.M., and Ackerman, A.S.: On the role of ice-nucleating aerosol in the formation of ice particles in tropical mesoscale convective systems. *Geoph. Res. Lett.*, 44, 1574-1582, <https://doi.org/10.1002/2016GL072455>, 2017
- Lance, S., Brock, C. A., Rogers, D., and Gordon, J. A.: Water droplet calibration of the Cloud Droplet Probe (CDP) and in-flight performance in liquid, ice and mixed-phase clouds during ARCPAC, *Atmos. Meas. Tech.*, 3, 1683–1706, <https://doi.org/10.5194/amt-3-1683-2010>, 2010.
- 1500 Lawson, R.P., Angus, L.J., and Heymsfield, A.J.: Cloud Particle Measurements in Thunderstorm Anvils and Possible Threat to Aviation, *J. Aircraft*, 35(1):113-121, <https://doi.org/10.2514/2.2268>, 1998.
- 1505 Lawson, R. P., Baker, B. A., Schmitt, C. G. and Jensen, T. L.: An overview of microphysical properties of Arctic clouds observed in May and July 1998 during FIRE ACE, *J. Geophys. Res. Atmos.*, 106(D14), 14989–15014, <https://doi.org/10.1029/2000JD900789>, 2001.
- Lawson, R. P., O'Connor, D., Zmarzly, P., Weaver, K., Baker, B., Mo, Q., and Jonsson, H.: The 2D-S (Stereo) Probe: Design and Preliminary Tests of a New Airborne, High-Speed, High-Resolution Particle Imaging Probe, *J. Atmos. Ocean. Tech.*, 23, 1462–1477, <https://doi.org/10.1175/JTECH1927.1>, 2006.
- 1510 Lawson, R. P., Woods, S., and Morrison, H.: The microphysics of ice and precipitation development in tropical cumulus clouds, *J. Atmos. Sci.*, 72, 2429–2445, <https://doi.org/10.1175/JAS-D-14-0274.1>, 2015.
- Lawson, R. P., Korolev, A.V., DeMott, P.J., Heymsfield, A.J., Brientjes, R.T., Wolff, C.A., Woods, S., Patnaude, R. J., Jensen, J.B., Moore, K.A., Heckman, I., Rosky, E., Haggerty, J., Perkins, R.J., Fisher, T., and Hill, T.C.J.: The Secondary Production of Ice in Cumulus Experiment (SPICULE). *Bull. Amer. Met. Soc.* <https://doi.org/10.1175/BAMS-D-21-0209.1>, 2023.
- 1515 Leroy, D., Fontaine, E., Schwarzenboeck, A., and Strapp, J.W.: Ice Crystal Sizes in High Ice Water Content Clouds. Part I: On the Computation of Median Mass Diameters from In Situ Measurements, *J. Atmos. Oceanic Technol.* 33:2461-2476, 2016, <https://doi.org/10.1175/JTECH-D-15-0151.1>, 2016
- 1520 Leroy, D., Fontaine, E., Schwarzenboeck, A., Strapp, J. W., Korolev, A., McFarquhar, G., Dupuy, R., Gourbeyre, C., Lilie, L., Protat, A., Delanoe, J., Dezitter F., and Grandin A.: Ice Crystal Sizes in High Ice Water Content Clouds. Part II: Statistics of Mass Diameter Percentiles in Tropical Convection Observed during the HAIC/HIWC Project. *J. Atmos. Oceanic Technol.*, 34, 117–136, <https://doi.org/10.1175/JTECH-D-15-0246.1>, 2017.
- 1525 Magono, C. and Lee, C.: Meteorological classification of natural snow crystals, *J. Fac. Sci., Hokkaido Univ. Ser. VII*, 2, 321-335, <http://hdl.handle.net/2115/8672>, 1966
- Mason, J. and Grzych, M.: The Challenges Identifying Weather Associated with Jet Engine Ice Crystal Icing, SAE Technical Paper 2011-38-0094, <https://doi.org/10.4271/2011-38-0094>, 2011.
- Mason, J., Strapp, J.W., and Chow, P.: The Ice Particle Threat to Engines in Flight, 44th AIAA Aerospace Sciences Meeting and Exhibit, Reno, NV, AIAA 2006-206, <https://doi.org/10.2514/6.2006-206>, 2006.
- 1530 Mazin, I. P., Korolev, A. V., Heymsfield, A., Isaac, G. A., and Cober, S. G.: Thermodynamics of Icing Cylinder for Measurements of Liquid Water Content in Supercooled Clouds, *J. Atmos. Ocean. Tech.*, 18, 543–558, [https://doi.org/10.1175/1520-0426\(2001\)018<0543:TOICFM>2.0.CO;2](https://doi.org/10.1175/1520-0426(2001)018<0543:TOICFM>2.0.CO;2), 2001.
- 1535 McFarquhar, G. M., Baumgardner, D., Bansemer, A., Abel, S. J., Crosier, J., French, J., Rosenberg, P., Korolev, A., Schwarzenboeck, A., Leroy, D., Um, J., Wu, W., Heymsfield, A. J., Twohy, C., Detwiler, A., Field, P., Neumann, A., Cotton, R., Axisa, D., and Dong, J.: Processing of ice cloud in situ data collected by bulk water, scattering, and imaging probes: fundamentals, uncertainties, and efforts toward consistency, *Meteor. Mon.*, 58, 11.1–11.33, <https://doi.org/10.1175/AMSMONOGRAPHSD-16-0007.1>, 2017.

- 1540 Milbrandt, J.A. and Morrison, H.: Parameterization of cloud microphysics based on the prediction of bulk ice particle properties. Part III. Introduction of multiple free categories. *J. Atmos. Sci.*, 73, 975–995, <https://doi.org/10.1175/JAS-D-15-0204.1>, 2016.
- Morrison, H. and Milbrandt, J.A.: Parameterization of cloud microphysics based on the prediction of bulk ice particle properties. Part I: Scheme description and idealized tests, *J. Atmos. Sci.*, 72, 287–311, <https://doi.org/10.1175/JAS-D-14-0065.1>, 2015.
- 1545 Nakaya, U.: *Snow Crystals, Natural and Artificial*. Harvard University Press, 510 pp, 1954.
- Naylor, J. and Gilmore, M. S.: Convective initiation in an idealized cloud model using an updraft nudging technique, *Mon. Weather Rev.*, 140, 3699–3705, <https://doi.org/10.1175/MWRD-12-00163.1>, 2012.
- Nelson, J.: Growth mechanisms to explain the primary and secondary habits of snow crystals, *Philos. Mag. A* 81, 2337–2373, <http://dx.doi.org/10.1080/01418610108217152>, 2001.
- 1550 Pinsky, M., Khain, A., and Korolev, A.: Analytical investigation of glaciation time in mixed-phase adiabatic cloud volumes. *J. Atmos. Sci.*, 57, 4143–4157, <https://doi.org/10.1175/JAS-D-13-0359.1>, 2014.
- Protat, A., Delanoë, J., Strapp, J., Fontaine, E., Leroy, D., Schwarzenboeck, A., Lilie, L., Davison, C., Dezitter, F., Grandin, A., and Weber, M.: The measured relationship between ice water content and cloud radar reflectivity in tropical convective clouds, *J. Appl. Meteorol. Clim.*, 55, 1707–1729, <https://doi.org/10.1175/JAMC-D-15-0248.1>, 2016.
- 1555 Pruppacher, H. R. and Klett, J. D.: *Microphysics of clouds and precipitation*, Kluwer Academic Publishers, Dordrecht, 954 pp., 1997.
- Rottner, D., and Vali, G.: Snow crystal habit at small excesses of vapor density over ice saturation. *J. Atmos. Sci.*, 31, 560–569, [https://doi.org/10.1175/1520-0469\(1974\)031,0560:SCHASE.2.0.CO;2](https://doi.org/10.1175/1520-0469(1974)031,0560:SCHASE.2.0.CO;2), 1974
- 1560 Ryan, B. F., Wishart, E. R., and Shaw, D. E.: The Growth Rates and Densities of Ice Crystals between  $-3^{\circ}\text{C}$  and  $-21^{\circ}\text{C}$ . *J. Atmos. Sci.*, 33, 842–850, [https://doi.org/10.1175/1520-0469\(1976\)033<0842:TGRADO>2.0.CO;2](https://doi.org/10.1175/1520-0469(1976)033<0842:TGRADO>2.0.CO;2), 1976
- 1565 Qu, Z., Barker, H. W., Korolev, A. V., Milbrandt, J. A., Heckman, I., Bélair, S., Leroyer, S., Vaillancourt, P. A., Wolde, M., Schwarzenboeck, A., Leroy, D., Strapp, J. W., Cole, J. N. S., Nguyen, L., Heidinger, A.: Evaluation of a high-resolution NWP model’s simulated clouds using observations from CloudSat and in situ aircraft, *Q. J. R. Meteorol. Soc.* 2018;1–14. <https://doi.org/10.1002/qj.3318>, 2018.
- 1570 Qu, Z., Korolev, A., Milbrandt, J. A., Heckman, I., Huang, Y., McFarquhar, G. M., Morrison, H., Wolde, M., and Nguyen, C.: The impacts of secondary ice production on microphysics and dynamics in tropical convection. *Atmos. Chem. Phys.*, 22, 12287–12310, <https://doi.org/10.5194/acp-22-12287-2022>, 2022.
- Stanford, M. W., Varble, A., Zipser, E., Strapp, J. W., Leroy, D., Schwarzenboeck, A., Potts, R., and Protat, A.: A ubiquitous ice size bias in simulations of tropical deep convection, *Atmos. Chem. Phys.*, 17, 9599–9621, <https://doi.org/10.5194/acp-17-9599-2017>, 2017.
- 1575 Strapp, J. W., Chow, P., Maltby, M., Bezer, A. D. Korolev A., Stromberg, I., Hallett, J.: Cloud Microphysical Measurements in Thunderstorm Outflow Regions during Allied/BAe 1997 Flight Trials, in 37th AIAA Aerospace Sciences Meeting and Exhibit, Reno, NV, AIAA 99-0498, <https://doi.org/10.2514/6.1999-498>, 1999.
- 1580 Strapp, J.W., Korolev, A., Ratvasky, T.P. Potts, R., Protat, A., May, P., Ackerman, A., Fridlind, A., Minnis, P., Haggerty, J., Riley, J. T., Lilie, L.E, and Isaac, G.A.: The High Ice Water Content (HIWC) Study of Deep Convective Clouds: Science and Technical Plan, FAA Rep. DOT/FAA/TC-14/31, 105pp., <http://www.tc.faa.gov/its/worldpac/techrpt/tc14-31.pdf>, 2016.
- 1585 Strapp, J.W., Schwarzenboeck, A., Bedka, K., Bond, T., Calmels, A., Delanoë, J., Dezitter, F., Grzych, M., Harrah, S., Korolev, A., Leroy, D., Lilie, L., Mason, J., Potts, R., Protat, A., Ratvasky, T., Riley, J., and Wolde, M.: An assessment of cloud total water content and particle size from flight test campaign measurements in high ice water content, mixed phase/ice crystal icing conditions: Primary in-situ

- measurements, project science and technical plan. FAA Rep. DOT/FAA/TC-18/1, 262 pp., <http://www.tc.faa.gov/its/worldpac/techrpt/tc18-1.pdf>, 2020.
- 1590 Strapp, J.W., Schwarzenboeck, A., Bedka, K., Bond, T., Camels, A., Delanoë, J., Dezitter, F., Grzych, M., Harrah, S., Korolev, A., Leroy, D., Lilie, L., Mason, J., Potts, R., Protat, A., Ratvasky, T., Riley, J., and Wolde, M.: Comparisons of Cloud In Situ Microphysical Properties of Deep Convective Clouds to Appendix D/P Using Data from the High-Altitude Ice Crystals-High Ice Water Content and High Ice Water Content-RADAR I Flight Campaigns, *SAE Int. J. Aerosp.* 14(2):2021, ISSN: 1946-3855, e-ISSN: 1946-3901, <https://doi.org/10.4271/01-14-02-0007>, 2021.
- 1595 Sullivan, S., and Voigt, A.: Ice microphysical processes exert a strong control on the simulated radiative energy budget in the tropics. *Communications Earth and Environment*, 2(1), <https://doi.org/10.1038/s43247-021-00206-7>, 2021
- 1600 Williams, A. and Marcotte, D.: Wind measurements on a maneuvering twin-engine turboprop aircraft accounting for flow distortion, *J. Atmos. Ocean. Tech.*, 17, 795–810, [https://doi.org/10.1175/1520-0426\(2000\)017%3C0795:WMOAMT%3E2.0.CO;2](https://doi.org/10.1175/1520-0426(2000)017%3C0795:WMOAMT%3E2.0.CO;2), 2000.
- 1605 Wolde, M. and Pazmany, A.: NRC dual-frequency airborne radar for atmospheric research, in: 32nd Int. Conf. on Radar Meteorology, Albuquerque, NM, 22–29 October 2005, *Amer. Meteor. Soc.*, P1R.9, available at: [https://ams.confex.com/ams/32Rad11Meso/techprogram/paper\\_96918.htm](https://ams.confex.com/ams/32Rad11Meso/techprogram/paper_96918.htm) (last access: 25 April 2024), 2005.
- 1610 Wolde, M., Nguyen, C., Korolev, A., and Bastian, M.: Characterization of the Pilot X-band radar responses to the HIWC environment during the Cayenne HAIC-HIWC 2015 Campaign. Eighth Conf. on AIAA Atmospheric and Space Environments, Washington, DC, American Institute of Aeronautics and Astronautics, AIAA-2016-4201, <https://doi.org/10.2514/6.2016-4201>, 2016.
- 1615 Wurtz, J., Bouniol, D., Vié, B., and Lac, C.: Evaluation of the AROME model's ability to represent ice crystal icing using in situ observations from the HAIC 2015 field campaign, *Q. J. Roy. Meteor. Soc.*, 147, 2796–2817, <https://doi.org/10.1002/qj.4100>, 2021.
- Wurtz, J., Bouniol, D., and Vié, B.: Improvements to the parametrization of snow in AROME in the context of ice crystal icing, *Q. J. Roy. Meteor. Soc.*, <https://doi.org/10.1002/qj.4437>, 2023.
- 1615 Yost, C.R., Bedka, K.M., Minnis, P., Nguyen, L., Strapp, J.W., Palikonda, R., Khlopenkov, K., Spangenberg, D., Smith Jr., W.L., Protat, A., and Delanoë, J.: A prototype method for diagnosing high ice water content probability using satellite imager data. *Atmos. Meas. Tech.*, 11, 1615–1637, <https://doi.org/10.5194/amt-11-1615-2018>, 2018