

Investigating processes influencing simulation of local Arctic wintertime anthropogenic pollution in Fairbanks, Alaska during ALPACA-2022

Natalie Brett^{1,2}, Kathy S. Law¹, Steve R. Arnold², Javier G. Fochesatto³, Jean-Christophe Raut¹, Tatsuo Onishi¹, Robert Gilliam⁴, Kathleen Fahey⁴, Deanna Huff⁵, George Pouliot⁴, Brice Barret⁶, Elsa Dieudonné⁷, Roman Pohorsky⁸, Julia Schmale⁸, Andrea Baccarini^{8,9}, Slimane Bekki¹, Gianluca Pappaccogli¹⁰, Federico Scoto¹⁰, Stefano Decesari¹¹, Antonio Donato¹⁰, Meeta Cesler-Maloney¹², William Simpson¹², Patrice Medina⁶, Barbara D'Anna¹³, Brice Temime-Roussel¹³, Joel Savarino¹⁴, Sarah Albertin^{14,1}, Jingqiu Mao¹², Becky Alexander¹⁵, Allison Moon¹⁵, Peter F. DeCarlo¹⁶, Vanessa Selimovic¹⁷, Robert Yokelson¹⁸, and Ellis S. Robinson¹⁶

¹Sorbonne Université, UVSQ, CNRS, LATMOS, 75252 Paris, France

²Institute for Climate and Atmospheric Science, School of Earth & Environment, University of Leeds, UK

³Department of Atmospheric Sciences, College of Natural Science and Mathematics, University of Alaska Fairbanks, Fairbanks, AK 99775, United States

⁴Center for Environmental Measurement and Modeling, Office of Research and Development, US EPA, Research Triangle Park NC 27709, United States

⁵Alaska Department of Environmental Conservation, P.O. Box 111800, Juneau, 99811-1800, United States

⁶Université Paul Sabatier, Université de Toulouse - CNRS, Toulouse, France

⁷Laboratoire de Physico-Chimie de l'Atmosphère (LPCA), Université du Littoral Côte d'Opale (ULCO): 59140 Dunkerque, Hauts-de-France, FR

⁸Extreme Environments Research Laboratory, École Polytechnique Fédérale de Lausanne, EPFL Valais Wallis, Sion, Switzerland

⁹Laboratory of Atmospheric Processes and their Impacts, Ecole Polytechnique Fédérale de Lausanne, Switzerland

¹⁰Institute of Atmospheric Sciences and Climate (ISAC) of the National Research Council of Italy (CNR), Lecce 73100, Italy

¹¹Institute of Atmospheric Sciences and Climate (ISAC) of the National Research Council of Italy (CNR), Bologna 40121, Italy

¹²Geophysical Institute and Department of Chemistry and Biochemistry, University of Alaska Fairbanks, Fairbanks, AK 99775, United States

¹³Aix Marseille Univ, CNRS, LCE, Marseille, France

¹⁴IGE, Univ. Grenoble Alpes, CNRS, INRAE, IRD, Grenoble INP, 38000 Grenoble, France

¹⁵Department of Atmospheric Sciences, University of Washington, Seattle, Washington 98195, United States

¹⁶Department of Environmental Health and Engineering, Johns Hopkins University, Baltimore, MD 21218, United States

¹⁷Department of Chemistry, University of Michigan Ann Arbor, Michigan 48109, US

¹⁸Department of Chemistry and Biochemistry, University of Montana, Missoula, Montana 59812, United States

Correspondence: Natalie Brett (natalie.brett@latmos.ipsl.fr) and Steve R. Arnold (S.Arnold@leeds.ac.uk)

Abstract. Lagrangian tracer simulations are deployed to investigate processes influencing vertical and horizontal dispersion of anthropogenic pollution in Fairbanks, Alaska, during the ALPACA-2022 field campaign. Simulations of carbon monoxide (CO), sulphur dioxide (SO₂) and nitrogen oxides (NO_x), including surface and elevated **sources**, are highest at the surface under very cold stable conditions. **Pollution enhancements above the surface (50-300 m) are mainly attributed to elevated power plant**

5 emissions. Both surface and elevated sources are contributing to Fairbanks regional pollution that is transported downwind,
primarily to the south-west, and may be contributing to wintertime Arctic haze. Inclusion of a novel power plant plume rise
treatment that considers the presence of surface and elevated temperature inversion layers leads to improved agreement with
observed CO and NO_x plumes with discrepancies attributed to, for example, displacement of plumes by modelled winds.
At the surface, model results show that observed CO variability is largely driven by meteorology and to a lesser extent by
10 emissions, although simulated tracers are sensitive to modelled vertical dispersion. Modelled underestimation of surface NO_x
during very cold polluted conditions is considerably improved following the inclusion of substantial increases in diesel vehicle
NO_x emissions at cold temperatures (e.g. a factor of 6 at -30 °C). In contrast, overestimation of surface SO₂ is attributed mainly
to model deficiencies in vertical dispersion of elevated (5-18 m) space heating emissions. This study highlights the need for
improvements to local wintertime Arctic anthropogenic surface and elevated emissions and improved simulation of Arctic
15 stable boundary layers.

Copyright statement. TEXT

1 Introduction

Arctic haze, with enhanced aerosols and trace gases, is formed in the lower troposphere during late winter and early spring-
time (Shaw, 1995), and is predominantly caused by low-level transport of pollution, driven by low pressure weather systems,
20 originating from Northern Eurasia (Stohl, 2006; Bourgeois and Bey, 2011; Law et al., 2014). Declining trends in aerosol
mass concentrations of Arctic haze constituents, including sulphate aerosols and black carbon (BC), since the early 1990s,
across many stations including Barrow, Alaska and Alert, Canada, correlate with reductions in anthropogenic emissions in
northern mid-latitudes (Bodhaine and Dutton, 1993; Sharma et al., 2019; Schmale et al., 2022). However, increases in Arctic
urbanisation and industrial activities, that are anticipated to continue rising due to the warming climate and socio-economic
25 development, also contribute to Arctic haze and to local air quality, highlighting their importance for Arctic urban areas and lo-
cal communities (Andrew, 2014; Schmale et al., 2018). Local sources of air pollution in the Arctic include gas flaring, mining,
shipping, domestic heating and power generation (Stohl et al., 2013; Schmale et al., 2018). In the wintertime, energy demands
are considerable due to the harsh cold climates endured by residents, however, significant challenges arise implementing sus-
tainable transportation and energy infrastructure (de Witt et al., 2021; Kolker et al., 2022) due to remote and sparsely populated
30 communities and cities (Schmale et al., 2018). This has led to substantial investment in fossil fuel power generation, e.g. in
Alaska and Canada (Mortensen et al., 2017; Kolker et al., 2022). The release of harmful air pollutants from surface emission
sources and elevated power plant stacks contributes to poor air quality and adverse effects on human health during Arctic
winter (Rosenthal and Watson, 2011; Schmale et al., 2018). These effects are exacerbated by snow covered surfaces and low
solar radiation at this time of year, which create favourable conditions for reduced atmospheric boundary layer (ABL) heights
35 and the formation of surface-based temperature inversions (SBIs). Such strong stratification near the surface inhibits pollution

dispersion leading to a build-up of pollutants at breathing level (Bradley et al., 1992; Shaw, 1995). However, the contribution of local Arctic emissions to air quality, and its possible contribution to background Arctic haze remains poorly quantified. This is due to uncertainties in emissions and in the ability of models to capture wintertime processes such as aerosol formation, deposition and the complex boundary layer meteorology (Emerson et al., 2020; AMAP, 2021; Donateo et al., 2023).

40 Fairbanks, a sub-Arctic city in Interior of Alaska (64.8 N, -147.7 W), is an example of a polluted urban area. Despite the relatively low population ($\sim 33\,000$ inhabitants in Fairbanks and 100 000 in Fairbanks North Star Borough (FNSB) agglomeration), the 24h-average National Ambient Air Quality Standard (NAAQS) of $35\ \mu\text{g m}^{-3}$ of particulate matter below $2.5\ \mu\text{m}$ diameter ($\text{PM}_{2.5}$) set by the United States Environmental Protection Agency (US EPA) is regularly exceeded during wintertime (Simpson et al., 2019). Primary emissions in Fairbanks in winter are produced from domestic home heating systems, trans-
45 portation, and power plant combustion sources (ADEC, 2019) with enhanced demands due to frequent extreme cold episodes. Fairbanks is situated in a semi-open basin, surrounded by hills and valleys to the north, east and west. This topography, coupled with the regular occurrence of anticyclonic meteorological conditions sets up strong SBIs induced by strong surface radiative cooling (surface temperatures reaching $-40\ ^\circ\text{C}$), and near-surface temperature gradients often exceeding $0.5\ ^\circ\text{C/m}$ (Mayfield and Fochesatto, 2013; Malingowski et al., 2014; Ye and Wang, 2020), contributing to very stable meteorological ABL conditions. This favours regional atmospheric blocking (low wind speeds) and hinders pollutant dispersion leading to elevated
50 surface concentrations (Mölders et al., 2011; Cesler-Maloney et al., 2022). Trapping of pollutants occurs, not only at the near-surface, but also in laminar layers aloft due to the presence of elevated temperature inversion (EI) layers that can form above SBIs (Angevine et al., 2001; Fochesatto et al., 2001; Mayfield and Fochesatto, 2013). Thus, pollutant emissions from elevated sources, such as power plant chimney stacks, can be influenced by the presence of stably stratified layers (Pasquill and Smith,
55 1983; Briggs, 1984; Tran and Mölders, 2011; Akingunola et al., 2018). Less stable conditions, with weak surface temperature inversions, can be induced by transient or cyclonic synoptic conditions or local sub-mesoscale flows under anti-cyclonic conditions (Maillard et al., 2022).

The Alaskan Layered Pollution and Chemical Analysis (ALPACA) project aims to improve understanding about wintertime Arctic air pollution including attribution of local pollution sources, chemical formation pathways of aerosols under cold and
60 low photochemistry regimes, and pollution transport in the stratified ABL (Simpson et al., 2019). To study these issues, the international ALPACA field campaign took place in Fairbanks in January and February 2022 (ALPACA-2022). The campaign design, measurements, and first results are described in Simpson et al. (2024). Vertical profiles of trace gases and particles collected on a tethered balloon (Helikite) on the western edge of the city showed the regular presence of pollution layers close to the surface and aloft which emission tracer forecasts during the campaign attributed to power plant emissions (Simpson
65 et al., 2024).

Here we aim to understand processes influencing the vertical and spatial distributions of air pollutants during the ALPACA-2022 field campaign. We use the FLEXible PARTicle-Weather Research and Forecasting (FLEXPART-WRF) Lagrangian particle dispersion model, driven by meteorological fields from WRF simulations generated by Alaska Department of Environmental Conservation (ADEC)/EPA. Transport of emission tracers of carbon monoxide (CO), sulfur dioxide (SO_2), nitric oxide
70 (NO) and nitrogen dioxide (NO_2) are simulated in the Fairbanks area and their dependence on ABL structure and stability

is investigated. Three of the selected trace gases (CO, SO₂ and NO₂) are defined as 'criteria pollutants' for human health by the US EPA. Simulations include hourly-varying surface and non-surface emissions from ADEC/EPA for the campaign period (ADEC, 2023). This includes hourly power plant emissions based on data provided by the power plant operating companies. Buoyancy flux calculations using stack characteristics for each power plant, are used to calculate emission injection heights.

75 The presence of temperature inversion layers in the ABL, which can trap power plant plumes, is also taken into account in a novel approach designed to cap injection heights. Variability in modelled tracers at different altitudes is linked to ABL stability including the presence of SBIs and EIs. Results are compared to vertical profile data and used to evaluate the power plant plume emission treatments, including plume rise and capping of plumes in multi-layered stratified temperature regimes (Mayfield and Fochesatto, 2013). Simulations are also evaluated against surface data and the sensitivity of the results to selected

80 processes is explored, including meteorology and emission treatments. This is one of the first studies investigating the role of ABL meteorology on dispersion of elevated and surface emissions in the Arctic wintertime.

The methodology is described in Section 2 including details about the emissions, power plant plume rise parameterisation, FLEXPART-WRF model configuration and observations used for the model evaluation. Section 3 provides a brief overview of the ALPACA-2022 campaign including observations of trace gases and meteorology. Spatial and vertical distributions of

85 modelled emission tracers over the Fairbanks area are presented in Section 4. Model results are evaluated against selected vertical profile data in Section 5 and surface observations in Section 6. The results of the sensitivity runs are also discussed in Sections 5 and 6. The main findings are presented in Section 7 together with wider implications and potential future research avenues.

2 Methodology

90 FLEXPART-WRF is run from 18 January to 25 February 2022 to explore the transport of local pollution during ALPACA-2022 using high temporal and spatial resolution emissions for surface and elevated sources, including emissions from five power plants within the Fairbanks region. Figure 1 shows the power plant and measurement/analysis locations discussed, together with the areas denoted by FNSB for air quality regulation (aqfairbanks.com). For the purposes of this study, the Fairbanks area encompasses Fairbanks and the adjoining town of North Pole. Section 2.1 describes the power plant and surface emissions

95 used in this study. The injection altitude for the power plant releases is estimated according to a plume rise parameterisation, as described in Section 2.2. The WRF and FLEXPART-WRF model configurations and control simulations are described in Section 2.3 and the observations used for model validation are described in Section 2.4. All dates refer to the year 2022.

2.1 Emissions

Selected trace gases from power plant and surface sector emissions provided by the power plant companies and ADEC/EPA, respectively, are included in the FLEXPART-WRF simulations. Gridded hourly emission fluxes for CO, SO₂, NO and NO₂ were

100 developed with the Sparse Matrix Operator Kernel Emissions (SMOKE) Processing System and data provided by ADEC/EPA for the duration of the campaign (CMAS Center, 2023). Tracers of CO, SO₂ and NO_x (NO + NO₂) emissions are released

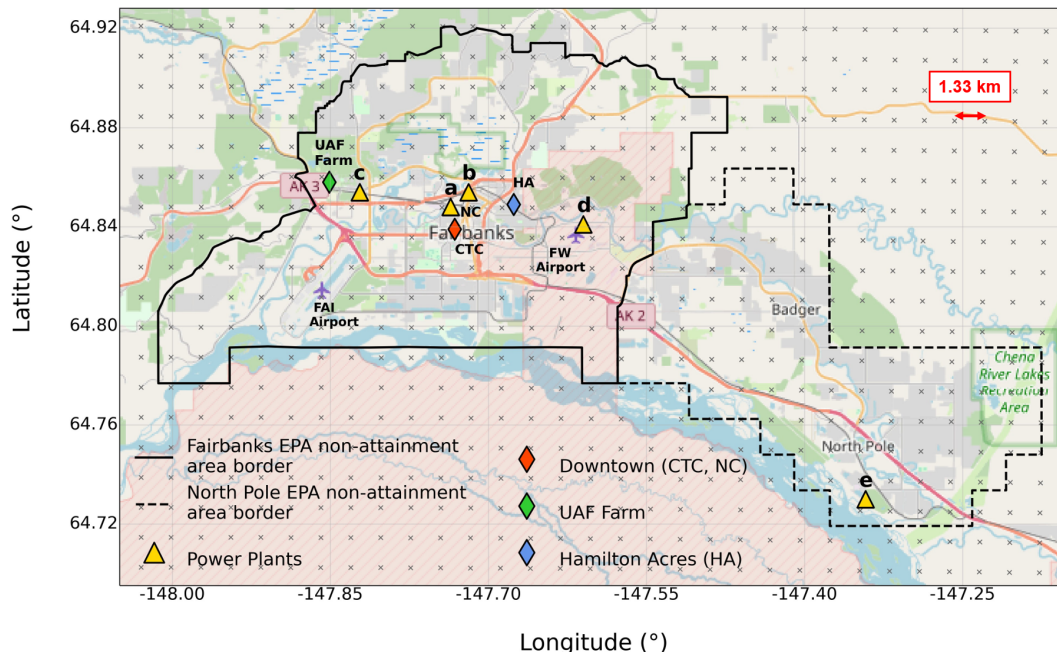


Figure 1. Map of Fairbanks and North Pole. Solid and dashed lines indicate the Fairbanks and North Pole EPA non-attainment areas (aq-fairbanks.com). The power plant locations (yellow triangles) correspond to the following power plants: a) Aurora, b) Zehnder, c) University Alaska Fairbanks (UAF), d) Doyon (Fort Wainwright), e) North Pole. Measurement sites at which trace gas measurements are available for model evaluation are indicated (see Section 2.3.1 for details). The two airports Fairbanks International Airport (FAI) and Fort Wainwright (military base) are also indicated. The grid cells for surface-emitted emissions, 1.33 km apart, are shown as small grey crosses. ©OpenStreetMap contributors 2024. Distributed under the Open Data Commons Open Database License (ODbL) v1.0.

from point sources and the near-surface sources with masses based on their respective emissions. These trace gases are chosen based on the availability of emission data, and vertical profile and surface observations for model validation. Additionally, it is informative to compare reactive trace gases (SO_2 and NO_x) with CO which is a good tracer of transport and dispersion due to its long photochemical lifetime.

2.1.1 Power Plant Emissions

The power plants included in the model simulations are listed in Table 1 together with key stack parameter information including stack heights, fuel types, flue gas exit temperatures and velocities. For the 5 power plant facilities, there are 8 stacks included as separate point source releases in FLEXPART-WRF because the UAF and North Pole facilities have more than one power plant stack with variable characteristics that influence the plume buoyancy calculations (Section 2.2). Each power plant provided temporal emission information throughout the ALPACA-2022 campaign (see Figure A2), with the exception of Doyon (coal power plant at Fort Wainwright army base) where hourly 2020 data is used instead. Emissions for each power

Power Plant	Stack Height (m)	Fuel Type	Flue Gas Exit Temperature (°C)	Flue Gas Exit Velocity (m s ⁻¹)
Aurora	48	Coal	149	78.5
Zehnder	18	Diesel	480	146
UAF A	20	Diesel	149	18.9
UAF B	20	Diesel	177	60.1
UAF C	64	Coal	129	23.4
Doyon	26	Coal	186	38.4
North Pole A	34	Naphtha	202	70.6
North Pole B	19	Diesel	292	176

Table 1. Power plant key characteristics. 'A', 'B' and 'C' denote separate burners and stacks at the same power plant facility. Locations of power plants are shown in Figure 1.

plant stack are provided at hourly time resolution except for UAF A and B for which only daily variability is available. Due to operational issues, the newer more efficient coal UAF C stack (64 m height, Table 1), was only running from 4 February (0900 AKST) onwards with hourly emissions provided. Prior to this, UAF A and B diesel generators (20 m heights) ran from 17 January, but with very low emissions from 1 February. Zehnder was operating only during cold polluted conditions in January and from 10 to 25 February, the operating periods were more frequent.

Figure 2 shows average hourly emissions of CO, SO₂, NO and NO₂ during ALPACA-2022 for each stack. Overall, Doyon and Aurora contribute most to SO₂ emissions, UAF C, Doyon and Aurora (coal-fired plants) to CO emissions and North Pole A, Doyon and Aurora to NO emissions. North Pole A has notably high NO_x emissions because naphtha fuel has high nitrogen content and high NO_x emission potential. Appendix A1 provides information about emission control strategies contributing to these differences. However, temporal emission variations and differences in stack characteristics also affect whether a particular power plant influences trace gas distributions.

2.1.2 Surface Emissions

Surface emissions on 1.33 km horizontal grid spacing are provided by ADEC/EPA for different sectors. Space heating emissions include commercial and residential sources using coal, distillate oil, gas and wood and industrial waste oil. The emissions are distributed over the first 4 WRF model layers with the fractions used by EPA: 15% 0-4 m; 69% 4-8 m; 15% 8-12 m and 0.01% 12-18 m and are processed by SMOKE according to ALPACA-2022 ambient temperatures. All other emissions are based on 2020 surrogates. On-road and non-road mobile sources take into account week-day and weekend differences and are emitted at the surface (0-4 m). Likewise, non-point sources, including stationary fuel combustion, commercial cooking and

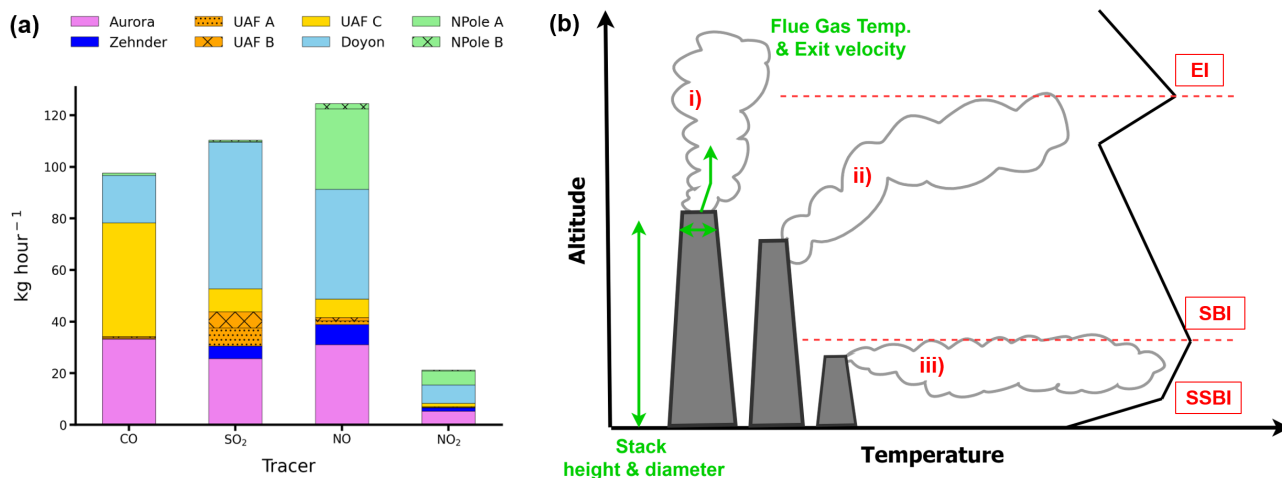


Figure 2. a) Average power plant emissions (kg/hour) during ALPACA-2022 for CO, SO₂, NO and NO₂. b) Schematic to illustrate the plume rise parameterisation used to simulate power plant injection altitudes. Examples of surface-based inversion (SBI), stratified SBI (SSBI) and elevated inversion (EI) layers are given, and i) corresponds to a plume with no inversion capping, ii) a plume which has been capped at an EI top, and iii) a plume which has been capped at an SBI top.

solvent use, are also emitted between 0-4 m. Airport emissions are available on the 38 WRF model levels, but are included from 0 to 18 m (first 4 levels), for the purpose of this study.

Further details about the surface emissions can be found in the ADEC emissions manual (ADEC, 2019). Average emissions for CO, SO₂, NO and NO₂ for each sector, summed over the Downtown, HA, UAF Farm and Fairbanks non-attainment areas between 0-18 m are shown in Figure A1.

2.2 Plume Rise Parameterisation

Air pollutants released from a power plant stack have a buoyancy flux which is dependent on stack parameters (height, radius, flue gas exit temperature and velocity), along with ambient winds and temperatures in the proximity of the stack (Pasquill and Smith, 1983; Briggs, 1984; Akingunola et al., 2018). This information is required to more realistically predict plume injection altitudes (Bieser et al., 2011; Mailler et al., 2013; Guevara et al., 2014). Thus, power plant plume rise varies temporally depending on power plant operations and local meteorology, in particular related to atmospheric stability and the presence of temperature inversion layers in the Arctic winter. The plume rise parameterisation used here is summarised by the schematic in Figure 2b, and is based on Briggs (1984) plume rise equations in stable conditions (Equations 1 and 2) where the buoyancy flux, denoted F_b (units = m⁴ s⁻³), is given by:

$$F_b = \frac{g}{\pi} \times (V \times \frac{T_s - T_a}{T_s}) \quad (1)$$

Where g = acceleration due to gravity, T_s = effluent temperature, T_a = ambient temperature at stack height, V = volume flow rate of the effluent which is equivalent to: $v \times r^2$, where v = exit velocity and r = stack radius. The estimated plume rise height, d_h , is then given by:

$$150 \quad d_h = 2.61 \times \left(\frac{F_b}{U_s}\right)^{\frac{1}{3}} \quad (2)$$

Where U_s corresponds to wind speed at closest altitude of radiosonde profile to the power plant stack height.

Stack parameters, combined with ambient temperatures and winds at the closest altitude to the stack height, interpolated from the Fairbanks International Airport (FAI) radiosonde profiles are used to calculate new injection altitudes above the
 155 stack height every 12 hours at 0300 and 1500 Alaskan Standard Time (AKST). For three missing radiosonde profiles, the assumption is made that the atmospheric profile has similar characteristics to the previous profile. The airport is 2 to 12 km from the Fairbanks power plant facilities and ~ 25 km from the North Pole facility.

Diagnosis of plume rise injection heights is further complicated by the vertically stratified ABL in Fairbanks wintertime since the presence of SBIs or EIs can inhibit plume rise and cap the emissions. Although the plume rise calculation given in
 160 Equations 1 and 2 is generally appropriate for stable conditions, it is not necessarily representative of the extremely stable conditions that occur in winter in Fairbanks with a high latitude continental climate. SBIs are extremely shallow throughout ALPACA-2022 where the 25th, 50th and 75th percentiles of SBI top heights determined from FAI radiosondes are 21 m, 46 m and 89 m, respectively. Stratified SBI (SSBI) layers within the SBIs can also develop close to the surface with even steeper positive temperature gradients, as well as EIs aloft, as depicted in Figure 2 and discussed further in Section 3.

165 In order to take into account possible capping of power plant emissions at the injection (stack) location, the occurrence of SSBIs, SBIs and/or EIs is diagnosed from the FAI radiosondes every 12 hours. A layer fit routine is applied to the radiosonde profiles up to 3000 m to smooth the temperature profiles and assign temperature gradients (dT), according to Fochesatto (2015). Once this is applied, the inversion layer diagnosis is performed, based on the following conditions for each profile:

- 170 – Profiles with negative temperature gradients, i.e. no surface or elevated inversions detected, are removed from the analysis.
- SBIs are assigned at the first change in sign of dT away from the surface (from positive to negative).
- EIs are assigned based on layers above the SBI, again when sign of dT of the next layer changes from positive to negative.
- SSBIs are assigned if there is at least one layer below the SBI, and the gradient changes between the SBI top and the surface but remains positive. If there is more than one layer using this description, the sub-layer with the steepest gradient
 175 is assigned as the SSBI.

For each diagnosed inversion layer, the temperature and altitudes at the top of the layer is assigned. Derived 12-hourly SBI and SSBI altitudes are shown in Figure 3d and discussed further in Section 3. Injection heights for the power plant emissions are capped at the top of the diagnosed inversion layers in the CTRL simulation, only when the inversion height exceeds the stack height. Otherwise, the EI top aloft is used, if diagnosed. Emission tracers are released between $\pm 8\%$ of the calculated plume rise height, to represent the plume thickness. **This threshold was chosen based on the optimal thickness compared to observed plumes in test simulations. In the case of plume capping, this also accounts for a small fraction of the emissions penetrating the temperature inversion.** Modelled power plant tracers are compared to available vertical profile observations in Section 5. The sensitivity of the results to plume rise injection height and capping is also examined.

2.3 Model Simulations

This section provides details about the WRF and FLEXPART-WRF model configurations and the tracer simulations.

2.3.1 WRF Configuration

The dispersion of emission tracers released in the FLEXPART-WRF simulations are driven by hourly meteorology fields from WRF model simulations provided by EPA for the ALPACA-2022 campaign (EPA-WRF from now on) at 1.33 km horizontal resolution with 38 vertical levels. Twelve levels are in the lowest 555 m with three below 10 m (Gilliam et al., 2023). The physics parameterisations used are the Rapid Update Cycle Land Surface Model (Benjamin et al., 2004), the Mellor-Yamada Nakanishi Niino (MYNN) planetary boundary layer scheme (Nakanishi and Niino, 2009), the Rapid Radiative Transfer Model (RRTM) short wave (SW) and long wave (LW) radiation (Iacono et al., 2008) scheme and explicit grid scale hydrometeors using the Morrison micro physics scheme (Morrison et al., 2009). Observational nudging is applied using all available near-surface measurements of temperature, humidity and winds and vertical profiles at a few key measurements sites for the duration of ALPACA-2022. The near-surface observations include University of Alaska Fairbanks (UAF) Community Training College (CTC), which was the main ground-based measurement site during ALPACA-2022, ADEC/EPA sites including NCORE (NC), A-Street and Hurst Rd, and standard U.S. weather sites and local measurements from the MADIS database (MADIS, 2023). CTC, NC and UAF locations are shown in Figure 1. Above the surface, hourly Doppler Wind Light Detection And Ranging (LiDAR) measurements at CTC (18 January - 7 February) and the UAF Farm (8-25 February) (Fochesatto et al., 2024), as well as FAI radiosonde data, are assimilated into the EPA-WRF simulations. Finally, nudging to National Centers for Environmental Prediction (NCEP) Global Forecast System (GFS) analyses are included above 300 m every 3 hours. **An evaluation of EPA-WRF against observations is provided in Appendix B.**

2.3.2 FLEXPART-WRF Configuration

FLEXPART-WRF is a Lagrangian particle dispersion model used to simulate the transport of atmospheric trace constituents. FLEXPART is often run in backwards mode to identify key source areas, in particular for long-range transport studies e.g.

Stohl et al. (2013). Forward simulations are used here to evaluate dispersion of emission tracers, and the relation to local and synoptic scale meteorology, over the Fairbanks area during ALPACA-2022.

The land use and topography data for the simulations are taken from EPA-WRF together with hourly winds and temperatures that drive horizontal and vertical transport of the tracers. The turbulent wind parameterisation in the ABL is either calculated internally using the Hanna scheme based on ABL parameters including ABL height, Obukhov Length and friction velocity (Hanna, 1984), or using external prognostic turbulent kinetic energy (TKE) from WRF that includes internal partitioning of TKE into horizontal and vertical components based on the Hanna scheme surface-layer scaling and local stability (Brioude et al., 2013). Brioude et al. (2013) suggested using the Hanna turbulence scheme in typical mid-latitude environments to ensure a well-mixed ABL, but this is not applicable in conditions where the ABL is stably stratified, as is predominantly the case in Fairbanks during winter. Simulations comparing Hanna (not shown here) and WRF-TKE schemes showed that WRF-TKE better captures differences in stability regimes around Fairbanks, for instance changes from stable to less stable conditions during the campaign, and is used here in the control simulation (CTRL). The ABL height (h_{mix}), sensible heat flux and friction velocity are calculated in FLEXPART-WRF based on EPA-WRF input fields. h_{mix} has a default minimum height (h_{min}) of 100 m. If h_{mix} is calculated to be lower than h_{min} , it is set equal to h_{min} . However, FLEXPART-WRF is generally used in conditions where strong stratification is not a distinct feature with more sunlight, turbulence, and stronger ABL mixing. Since FLEXPART-WRF is not currently configured for use in strongly stable conditions, h_{min} is used here as a proxy to investigate the sensitivity of tracer dispersion to the SBI layer height since it has a strong influence on trapping emissions at or close to the surface. Model simulations are sensitive to h_{min} due to the difficulties simulating shallow wintertime SSBI or SBI in WRF-EPA. h_{min} is set to 20 m in the CTRL configuration rather than 100 m due to better agreement during stable conditions, and the sensitivity to different h_{min} values is explored in Section 6.

2.3.3 Tracer Simulations

Tracers of CO, SO₂, NO and NO₂ are released in each simulation based on emissions in the FNSB region and background concentrations from further afield are not included. Therefore, modelled mixing ratios are enhancements due to Fairbanks local emissions above background concentrations. **For each power plant stack, 5000 particles are released for each tracer, every hour, providing the stack was operational. The total number of particles is scaled by the emission mass, and distributed evenly between the particles. Diurnal variability is calculated from the diurnal cycle for each stack.** Every 12 hours, a new injection height is assigned at the point of emission according to the plume rise parameterisation (Section 2.2). For the surface sources all emission sectors are summed and an hourly emission variability is assigned to each tracer according to the total sectors, for example the diurnal cycle of CO is comparable to the on-road mobile sector. **A total of 80,000 particles are released every hour, over the FNSB nonattainment area. The number of particles in each grid cell depends on the emission mass, which is distributed evenly between all particles.** Mobile and Non-point source sectors are released between 0-4 m only, while the space heating and airport emissions are released between 0-4, 4-8 and 8-12 m (layers 3 and 4, 8-12 and 12-18 m, respectively are summed due to negligible contributions in layer 4). The airport emissions occurring higher than 18 m are not included in this study as they are generally transported to the south-west of the city (see Section 4). Modelled tracer concentrations are calculated in

240 volume mixing ratios allowing comparison with observed CO, SO₂ and NO_x (NO + NO₂) mixing ratios. In CTRL, emitted CO, SO₂ and NO_x are treated as tracers and atmospheric lifetimes are not included. The influence of meteorology and emission treatments are explored in Section 6, together with atmospheric lifetimes (Appendix E5). **There is no explicit chemistry or atmospheric lifetime for CO included in the model setup.** Dry and wet deposition are included in CTRL only for SO₂ (see Appendix E3 for more details) since these losses are not important for CO, and considered to be very small for NO_x (Liu et al., 1987). **A fog event occurred from 29 January to 3 February (Lill et al., 2024), and precipitation events in February.** Runs with and without dry and wet deposition of SO₂ only had a very small influence on the results (not shown). CTRL includes power plant plume rise and capping of plume injection heights, as described in Section 2.2. The NOCAP sensitivity includes power plant plume rise without capping at inversion heights and, in the NO-RISE sensitivity, emission tracers are released at the height of the stack. Results are discussed in Section 5. The CTRL setup and power plant sensitivities are summarised in

250 Table 2.

Simulation Name	Air tracers	Description
CTRL	CO	Surface and power plant tracers
	NO _x	Power plant simulation includes plume rise parameterisation plus capping at diagnosed inversion heights (Section 2.2).
	SO ₂ + deposition	
NOCAP	CO	Power plants only
	NO _x	Plume rise parameterisation without capping
	SO ₂ + deposition	
NORISE	CO	Power plants only
	NO _x	No plume rise parameterisation - emission tracers released at stack height
	SO ₂ + deposition	

Table 2. Summary of the CTRL simulation setup and power plant plume rise sensitivity tests.

2.4 Observations

Model simulations are evaluated against surface and vertical profile observations from ALPACA-2022 sites shown in Figure 1. Further details about measurement techniques, sites and the observations are given in Simpson et al. (2024). Hourly averaged surface observations of CO, SO₂ at CTC and NC, NO_x at CTC, as well as wind speed and direction and temperatures at 3, 11 and 23 m at CTC and 3 and 11 m at NC are used to evaluate FLEXPART-WRF tracer concentrations and EPA-WRF meteorology, respectively, in urban Fairbanks (Downtown in Figure 1). Surface observations of CO and NO_x at the ALPACA-2022 house site in Hamilton Acres (HA), in the east residential area of Fairbanks, together with surface CO and meteorological parameters (2.5 m winds and 2 m and 11 m temperatures) at the UAF Farm site in the west of the city, are also used.

In-situ vertical profiles were measured at the UAF Farm site using the École Polytechnique Fédérale de Lausanne (EPFL) Helikite, a tethered balloon stabilised by a kite, from the surface up to 350 m (Pohorsky et al., 2024). Here, profiles of tem-

260

perature and NO_x and CO, measured using the Micromegas low-cost sensor package at 15 s time resolution and calibrated using machine learning algorithms are used as well as EPFL mid-infrared absorption (MIRA) Pico CO data. EPFL CO₂ profiles measured by Vaisala GMP343 are used to check pollution presence observed in the trace gas profiles, since we expect CO₂ profile measurements to be highly reliable due to stability of the Vaisala instrument. More details about the EPFL instruments are provided in Pohorsky et al. (2024). All Helikite observations are averaged over 15 s time resolution for consistency. Temperature profiles from the FAI radiosondes at 1500 and 0300 AKST are used to complement the analysis. Wind LiDAR attenuated backscatter data are also used to detect pollution (aerosol) plume presence between 40 m and 290 m (see Appendix D2 for details).

At the surface (0-25 m), strongly stable (SS) and weakly stable (WS) meteorological regimes are diagnosed based on observed temperature gradients ($\frac{dT}{dz}$) per 100 m calculated using the 12-hourly FAI radiosonde data. To improve the temporal resolution, temperature gradients (dT 23-3 m) at CTC, with hourly resolution (shown in Figure 3c), are also used to account for variability not captured in the 12 hourly data. Criteria based on previous studies, including Cesler-Maloney et al. (2022) and Malingowski et al. (2014), are used to determine SS or WS regimes:

Strongly Stable (SS)	Weakly Stable (WS)
$\frac{dT}{dz}$ per 100 m ≥ 10 °C	$\frac{dT}{dz}$ per 100 m < 10 °C and dT 23-3 m < 2 °C
or	
$\frac{dT}{dz}$ per 100 m < 10 °C and dT 23-3 m ≥ 2 °C	

3 Meteorological Variability during the ALPACA-2022 Campaign

Figure 3 shows time series of observed surface NO_x, wind speeds, temperature gradients and stability analysis at the CTC site in central Fairbanks and surface pressure at the UAF Farm, during ALPACA-2022. Overall, anticyclonic conditions were frequent during the campaign, resulting in cold, calm and generally clear-sky conditions (Simpson et al., 2024). This coincides with the presence of SBIs, high NO_x concentrations, and generally lower wind speeds near the surface (Figure 3, panels a-c). Due to a large scale synoptic variability during the campaign, anticyclonic conditions were interspersed with less stable conditions. This was due to the intrusion of low-pressure weather systems over central Alaska, notably during February. During these conditions, weaker SBIs, lower NO_x and higher surface wind speeds were observed. Figure 3 variables (panels a-c) are coloured according to SS or WS regimes. Most notably, SS conditions prevailed in periods with strong positive surface temperature gradients resulting in higher NO_x. The presence of SBIs, SSBIs and EIs are also diagnosed from FAI radiosonde profiles as described in Section 2.2 and SBI and SSBI top heights are shown in Figure 3d. SBI top heights range between 7 to > 200 m, and are lowest during SS conditions (often below 30 m). The presence of stable layers aloft is also diagnosed from radiosonde data up to 300 m providing information about ABL stability (Figure 3e) and used in the evaluation of the model results. For instance, days with strong stability in the surface layer (0-25 m) and weaker stability aloft (> 25 m), such as 24 January, indicate a decoupling of the surface layer from EIs aloft that are linked to large-scale meteorology. By 25 January, the large-scale synoptic conditions

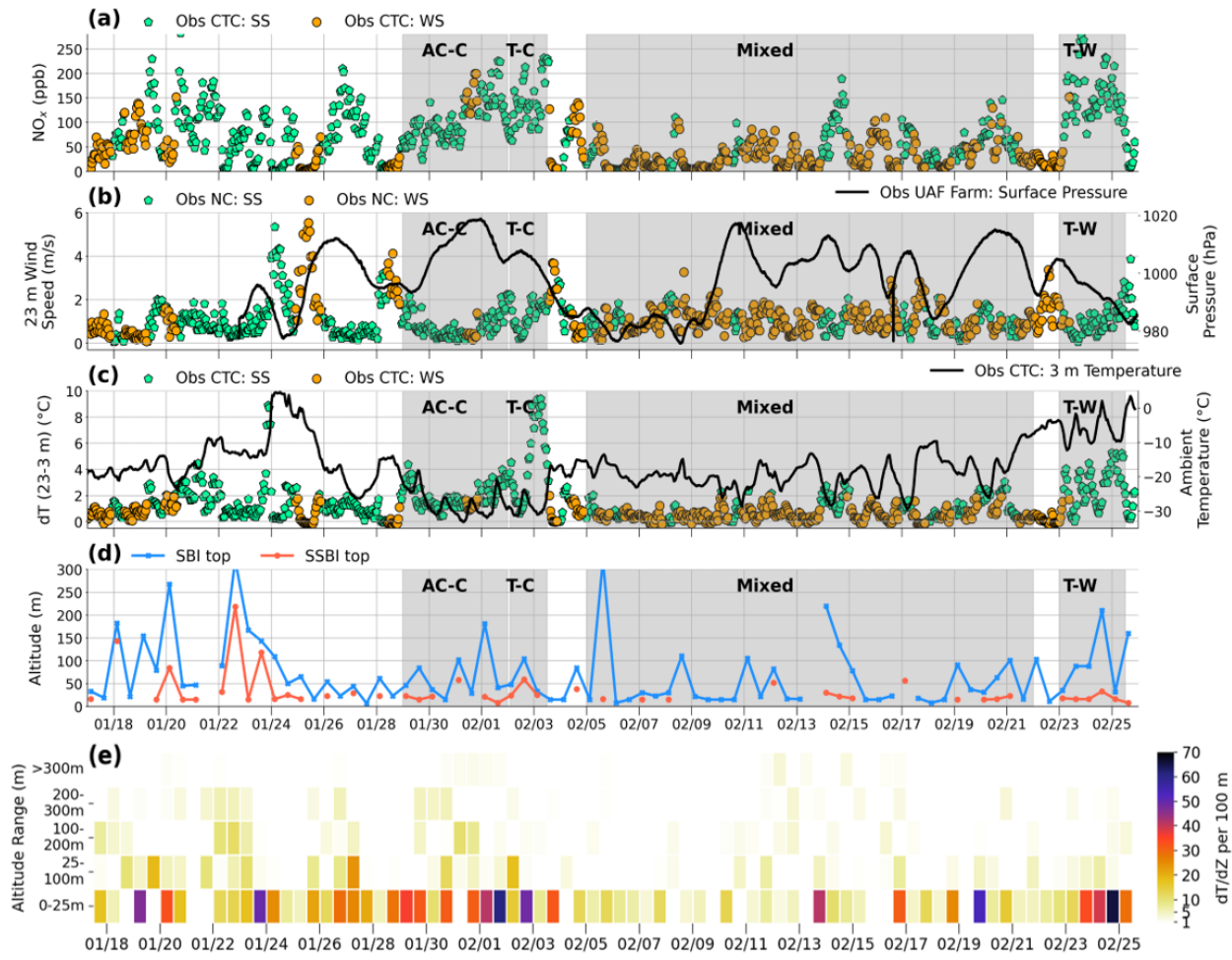


Figure 3. Observations of a) surface NO_x mixing ratios (ppb), b) wind speeds (23 m, m s^{-1}) and surface pressure (hPa) at the UAF Farm and c) temperature inversions ($dT_{23\text{m}-3\text{m}}$, $^{\circ}\text{C}/\text{m}$) at CTC during the ALPACA-2022 campaign (1 hour averages), coloured by strongly stable (SS) and weakly stable (WS) regimes, d) SBI and SSBI top heights (in meters) derived from the FAI radio-sondes (12-hourly), and e) stability strengths, $\frac{dT}{dZ}$ per 100 m ($^{\circ}\text{C}/100\text{m}$) derived from 12-hourly radiosonde data over given altitude bins. The meteorological periods used in the analysis are also indicated in panels a)-d). See text for details.

influence the surface level, as shown by weak temperature gradients, and substantial reductions in surface pollution (e.g. NO_x , panel a). The range of stability strengths shown for the surface layer also enables weaker and stronger SBI and SSBIs to be distinguished as shown in Figure 3d.

In addition to stability regimes, the results are discussed in relation to three periods representative of the dominant meteorological situations that occurred during ALPACA-2022. The first period from 29 January to 3 February occurred when SS

conditions dominated at the surface, and EIs were present aloft (Figures 3d and 3e). Cold anticyclonic conditions persisted from 29 January to 1 February (named anticyclonic-cold (AC-C)), followed by a transition from AC to cyclonic conditions or transient-cold (T-C) from 2-3 February, as shown by a decrease in surface pressure in Figure 3b. **During the transient T-C period, the high pressure system that was positioned over interior Alaska during A-C is interrupted by the northward movement of the Aleutian low pressure system, resulting in a high-low pressure gradient.** The surface layer was decoupled from aloft with SS conditions persisting at the surface as shown by strong surface stability strengths (30 - 60 °C per 100m, Figure 3e), and SBI or SSBIs often below 30 m (Figure 3d). The second period from 23 to 25 February, encompassed a transition from anticyclonic to cyclonic conditions with warmer temperatures compared to T-C (named Transition-Warm, T-W). Competing high and low-pressure weather systems, combined with a reduction in radiative cooling with respect to January, and the presence of high altitude clouds, contributed to warmer temperatures at this time. Intrusion of a warm air mass warmed the layers above the surface layer and increased the temperature gradients at the surface, as shown by the increased inversion strength at the surface between 24 to 25 February (Figures 3d and 3e). These SS surface conditions resulted in NO_x exceeding 250 ppb (Figure 3a). The third period, from 5 to 21 February, is denoted the Mixed period, with transient, cyclonic and anticyclonic large scale meteorological conditions. SS conditions occurred at the surface but did not persist for longer than 24 hours and were interspersed with WS conditions. Enhanced surface pollution coincides with SBI presence as shown in Figure 3d.

4 Vertical and Horizontal Dispersion of Emission Tracers

section 4 shows total surface-emitted plus power plant tracers of CO and SO_2 from CTRL near to the surface (0-10 m) and for SO_2 aloft (50-100 m, 200-300 m) averaged over the whole campaign for SS and WS conditions. Winds are also shown and provide an indication of average wind patterns. Below 10 m, simulated tracers are primarily localised in the main urban centres of Fairbanks and North Pole (non-attainment areas) with concentrations under SS conditions about two times higher than under WS conditions (SS CO > 500 ppb, WS CO > 200 ppb). This is due to weaker surface winds during SS conditions with no prevalent wind direction (see also observed and EPA-WRF winds at CTC (Figure B1)). Tracers below 10 m include surface-emitted sources and elevated sources from space heating, airports and power plants. In particular, power plant emissions with low stack heights, such as Zehnder (18 m) if capping at a shallow SBI occurs while plants with higher stacks may be transported downwards more intermittently as discussed in the next section. Spatial differences in CO and SO_2 occur because of differences in the dominant surface emission sectors. Two hot spots with enhanced SO_2 correspond to airport emissions located to the south-west of central Fairbanks (FAI) and the east of downtown Fairbanks (Fort Wainwright army base), as shown in Figure 1. Simulated SO_2 in downtown Fairbanks is primarily influenced by residential and commercial distillate oil heating sectors contributing > 90% of surface SO_2 emissions. This is reduced in the wider Fairbanks non-attainment area (~ 65%) where airport emissions also contribute ~ 30% (Figure A1). SO_2 is smaller in North Pole which is mainly influenced by residential heating emissions. CO at 0-10 m is primarily influenced by on-road mobile emissions sector (Figure A1).

SO_2 is also simulated more substantially between 50-100 m under SS compared to WS conditions due to the stratification of the ABL and to a stronger north-easterly flow, possibly contributing to a wider regional influence. Above 50 m, enhanced

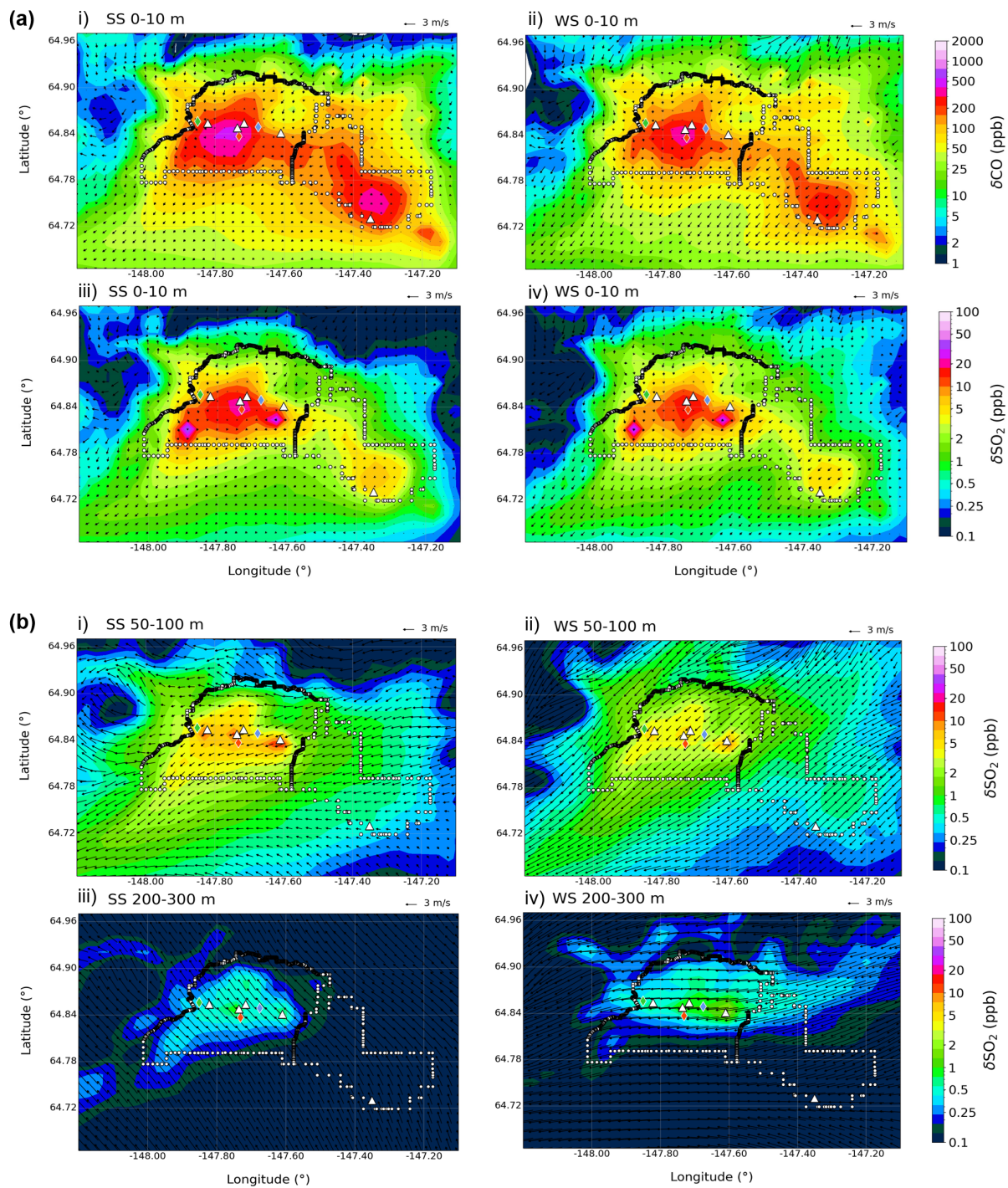


Figure 4. a) Total power plant and surface-emitted tracers (enhancements above background in ppb) from CTRL for CO and SO₂ at 0-10m, and b) SO₂ at 50-100 m (i, ii) and 200-300 m (iii, iv) for strongly stable (SS) (left) and weakly stable (WS) (right) meteorological conditions. Wind vectors (black arrows) indicating average wind direction (degs.) and speeds (m s⁻¹) from EPA-WRF are shown and correspond to respective altitudes. The Fairbanks and North Pole non-attainment area borders are marked with black and white circles, power plants as white triangles and analysis locations as coloured diamonds as in Figure 1.

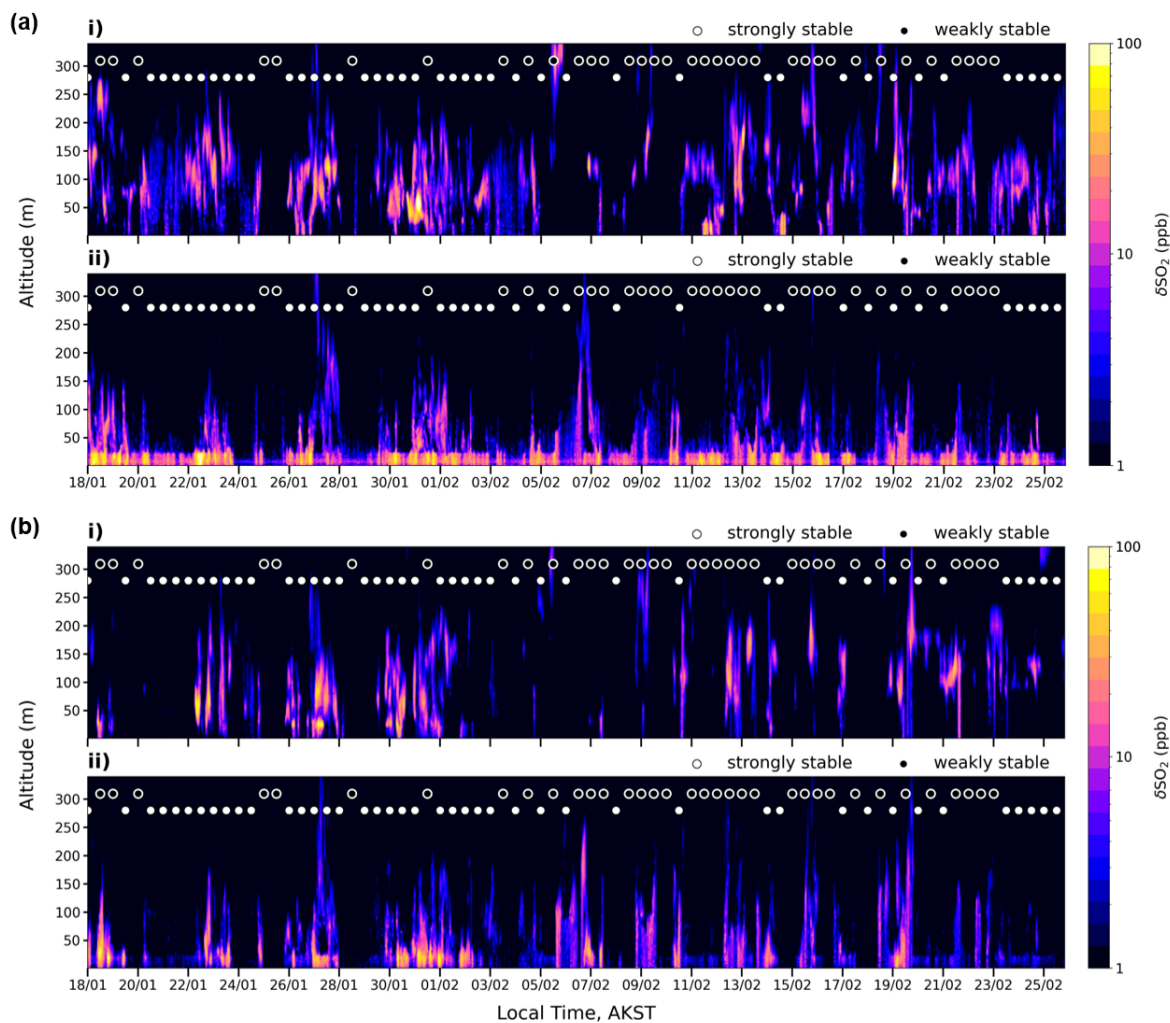


Figure 5. a) Modelled (CTRL) SO₂ tracer as a function of altitude (m) and local time (AKST, hours) for i) total power plant emissions and (ii) total surface emissions at a) Downtown and b) UAF Farm. The WS and SS surface stability regimes are indicated every 12 hours by filled (solid), and unfilled (open) circles, respectively.

concentrations are found around the power plants suggesting that power plant emissions are the main contributors to SO₂ aloft (50-100 m, 200-300 m) (see Figure C1, for results at 100-200 m). Modelled values are in agreement with DOAS SO₂ measurements ranging from 5-15 ppb collected between 73-191 m to the north-east of the Downtown area during polluted periods (Simpson et al., 2024). SO₂ is also influenced by power plant emissions at 200-300 m with enhancements up to 1-2 ppb. Concentration enhancements are larger during WS conditions when winds are often north-easterly below 200 m, and stronger ($> 3 \text{ m s}^{-1}$), compared to SS conditions when winds are from the east and weaker ($< 3 \text{ m s}^{-1}$). At 200-300 m, wind speeds are strong in both WS and SS conditions. Weaker winds in the lower ABL in SS conditions, reflect increased stratification and limited vertical transport, with stronger winds and more vertical exchange during WS conditions. However, tracer enhancements are considerably smaller above 200 m and the bulk of pollution tracers are transported at lower altitudes in dominant north-easterly outflow (to the south-west).

Additional results for CO and NO_x are shown in Figures C1 and C2, respectively. CO enhancements above 50 m, relative to 0-10 m, are inappreciable compared to SO₂, because CO surface emissions are much larger relative to power plant emissions, than is the case for SO₂. For instance, CO surface emissions (campaign average) in the Fairbanks non-attainment area (approx. 950 kg hour⁻¹, Figure A1a,i), are a factor of 10 higher than total CO power plant emissions (approx. 98 kg hour⁻¹, Figure 2a), whereas the emission masses for SO₂ are comparable in both cases (110-120 kg hour⁻¹). Simulated NO_x at 0-10 m and 50-100 m show similar spatial patterns to CO with surface concentrations of > 50 ppb, on average. Emissions are mainly from on-road mobile, and to a lesser extent from residential distillate oil. Power plant emissions also contribute aloft (> 10 ppb at 100-200 m) especially around the North Pole A stack which runs on naphtha, a fuel high in NO_x emissions (see Figure C2b).

The vertical distributions of SO₂ from power plant and surface-emitted sources at Downtown and the UAF Farm during the campaign are shown in Figure 5 and SS or WS conditions are indicated. As shown in section 4, simulated near-surface mixing ratios are enhanced during SS compared to WS conditions. Emission tracers are concentrated in the lowest 20 m, in particular in the Downtown area due to strong vertical stratification. This capping at 20 m is related to running the model with $h_{\min} = 20$ m in the FLEXPART-WRF turbulence scheme. Sensitivity of the model results to this parameter is examined further in Section 6. In contrast, lower surface concentrations are simulated during WS conditions. They are sometimes linked to stronger vertical transport when a higher proportion of SO₂ is lofted upwards up to 300 m, for example on 6-7 and 9-10 February over Downtown. In other cases, reduced near-surface SO₂ mixing ratios are explained by enhanced horizontal dispersion e.g. on 24-25 January and 3-4 February (Downtown) due to stronger wind speeds between 2-6 m s⁻¹ (see also Figure 3b). At the UAF Farm, the model simulates stronger vertical dispersion of both surface and power plant tracers (Figure 5 b), likely induced by stronger turbulence and wind speeds at this site (see also Figure B2) showing stronger modelled and observed winds compared to the Downtown sites). At HA, surface-emitted tracers are also maintained near the surface during SS conditions. Vertical transport appears larger than Downtown but smaller than the UAF Farm, markedly in February, when mixing heights greater than 20 m are depicted (see Figure C3a).

Power plant tracers of SO₂ are generally simulated between 50-250 m over Downtown (Figure 5a) with some dispersion towards the surface in both SS and WS conditions (e.g. 30 January to 1 February) and enhanced vertical transport in WS conditions. The results also show that power plant SO₂ tracers are simulated at higher altitudes from 4-25 February over the

UAF Farm (Figure 5b). This is due to a change in operations from UAF A and UAF B to the UAF C facility which has a higher stack height (64 m) and runs on coal instead of diesel, also resulting in higher CO concentrations from power plant emissions during this period (Figure C3b). Power plant tracers also have a substantial impact at HA (e.g. SO₂, Figure C3a), and are attributed predominantly to the Doyon stack to the south-east of the site (Figure 1).

Overall, these results show that pollution is enhanced at the surface. Surface enhancements are considerable under SS conditions while aloft enhancements can be greater under WS conditions due to more vertical transport. In both cases, the results suggest that background pollution levels are being influenced by local air pollution sources from Fairbanks and North Pole. This regional pollution could be contributing to wintertime Arctic haze which has lower concentrations of trace gases and aerosols. For example, simulated SO₂ concentrations at Villum in north-east Greenland range between 0.1 and 2.2 µg m⁻³ (approx. 0.1-0.9 ppb) in 2018 and 2019 winter months (Skov et al., 2023). Sulphate concentrations between 0.1 to 0.8 µg m⁻³ at Alert, Zeppelin and Villum in January and February 2014 were reported in Ioannidis et al. (2023), while sulphate in downtown Fairbanks ranged between 1-5 µg m⁻³ during ALPACA-2022 (Moon et al., 2023).

5 Simulated Vertical Distributions and Power Plant Plumes

Pollution plumes were regularly intercepted by the Helikite at the UAF Farm above the surface layer (Simpson et al., 2024), and are used here to evaluate simulated vertical transport of tracers and, in particular, the power plant plume rise parameterisation. Selected cases with different meteorological regimes are investigated in more detail. As noted earlier, surface mixing ratios at the UAF Farm are generally reduced compared to central Fairbanks. Differences in synoptic and local-scale meteorological conditions are influencing horizontal and vertical transport at this site together with lower emission magnitudes. However, above about 80 m, there is less influence of local valley flows at the UAF Farm and wind speeds/directions are more similar to central Fairbanks (Fochesatto et al. (2024)). Periods with east or north-easterly winds favoured transport of power plant pollution from Fairbanks to the UAF Farm.

Since model results are representative of enhancements above background, a polluted background is assigned to the Helikite CO and NO_x measurements to determine observed pollution plume enhancements (δCO and δNO_x) equivalent to the simulated quantities. First, the pollution plumes are assigned using the 90th percentile of the distribution of concentrations observed during each flight. A polluted background is assigned using the modal concentration of each flight, and subtracted from the identified plume to give the observed pollution plume enhancement (δCO and δNO_x). In order to evaluate power plant plumes only, this comparison only uses observations above 30 m, away from the influence of surface emissions. Some profiles of CO on 30 January and 10 February are removed due to issues with the CO sensor.

Figure 6 shows the comparison of model results from CTRL and observed enhancements for each of the identified plumes for CO and NO_x during the campaign when flights took place. CTRL generally captures plume presence aloft when compared with observed δNO_x and δCO above 30 m (Figure 6a), although there are some displacements that could be due to temporal biases in modelled wind speeds and directions or in the diagnosed injection height. This could be due to using 12-hourly radiosonde data or due to spatial differences, for example using observed profiles at FAI rather than at each power plant location. In addition, the

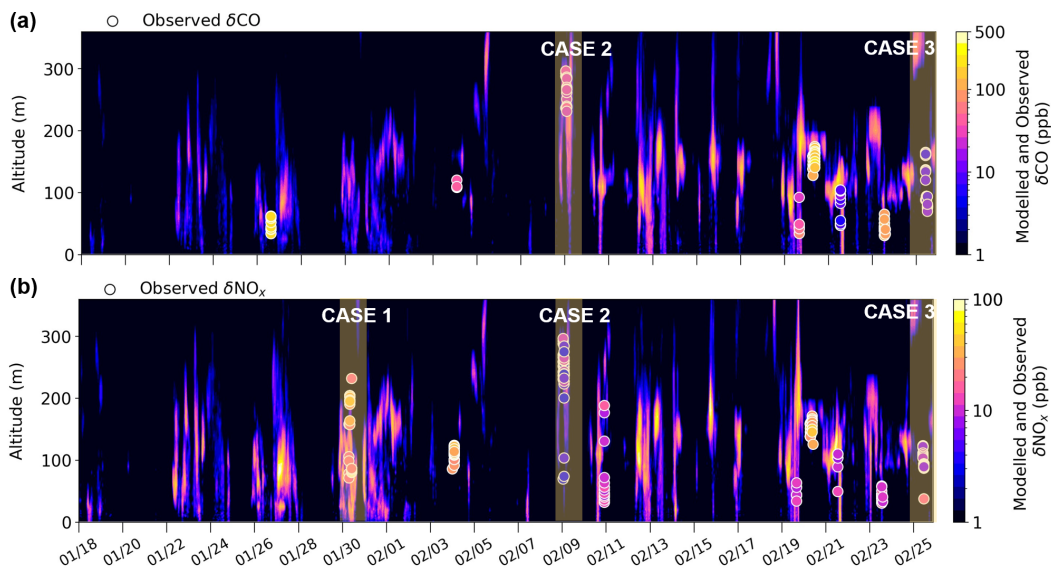


Figure 6. Comparison of modelled (CTRL) power plant and observed trace gas enhancements above background (> 30 m) for A) δCO (ppb), and B) δNO_x (ppb) at the closest grid-cell to the UAF Farm. Periods with available observations are shown. Observed plume enhancements are shown as circles (ppb). Cases discussed in the main text are highlighted.

395 model is run with an hourly time resolution using EPA-WRF fields whilst the Helikite observations are collected at very high temporal resolution. The model is likely to have difficulties capturing this variability on small spatial scales. To examine the influence of the model treatment of power plant emissions, the model is run without plume capping at temperature inversions at the point of emission (run NO-CAP) and without plume injection due to plume buoyancy, i.e. emissions at stack height (run NO-RISE). Results are shown in Figure D1. Results are generally improved in CTRL compared to NO-CAP, or otherwise
 400 comparable. Results in NO-RISE are worse with tracers generally concentrated in the lowest 100 m and plume enhancements are overestimated compared to observations.

To evaluate model performance further, specific cases during the different meteorological situations discussed earlier are examined in more detail. They are selected to illustrate model behaviour after examination of all cases shown in Figure 6. The first case on 30 January is during the cold stable polluted AC-C period. The second case from 8-9 February is during the
 405 Mixed period with lower surface concentrations and the third case on 25 February is at the end of T-W when temperatures were warmer but stable surface conditions resulted in high surface pollution levels. Results are shown in Figures 7 and 8. For each case, observed plume enhancements of δNO_x and/or δCO are shown together with model results from CTRL and NO-CAP or NO-RISE. Results are binned over altitude and averaged over the 4 grid cells surrounding the UAF Farm (Figs 6). Observed Helikite temperature profiles are shown together with radiosonde temperature profiles at 1500 and 0300 AKST for the days in
 410 question, for each case in Figure 7a. **Radiosonde profiles are shown to provide information regarding the diagnosed SBIs and EIs used in the plume rise capping parameterisation.** Modelled vertical cross sections (total power plant tracer) for a period

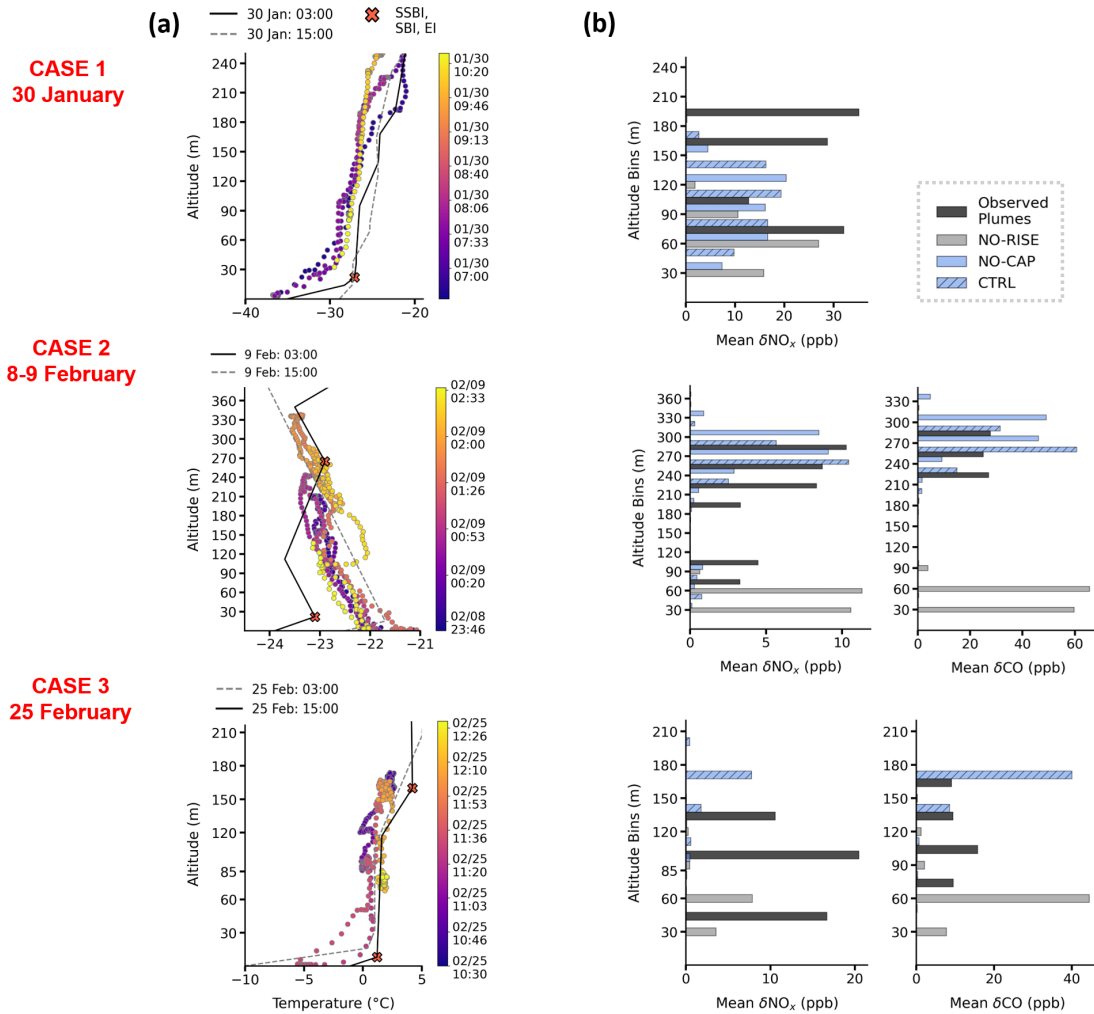


Figure 7. a) Temperature profiles (°C) recorded during the Helikite flight for the cases highlighted in a) and b). Coloured circles correspond to the time during the flight. Radiosonde temperature profiles (°C) used for the calculation of plume rise are also shown (solid black lines) and 12 hours before or after the flight (dashed grey line). Derived temperature inversion (temperature (°C), height (m)) are indicated as red crosses. b) Modelled (CTRL) power plant tracers compared to observations for CO and/or NO_x (ppb) averaged over altitude bins every 30 m (indicated on the y-axis) at the time of the Helikite flight. For panels a) and b), cases 1-3 are shown from top to bottom. See text for more details.

that extends several hours before and after the flight are also shown together with observed plume altitudes and concentrations (Figure 8a). In addition, hourly power plant contributions (%) (summed over all altitudes) are provided in Figure 8b and the altitude corresponding to the 95th percentile for all contributing power plants are shown in Figure 8c, allowing identification of

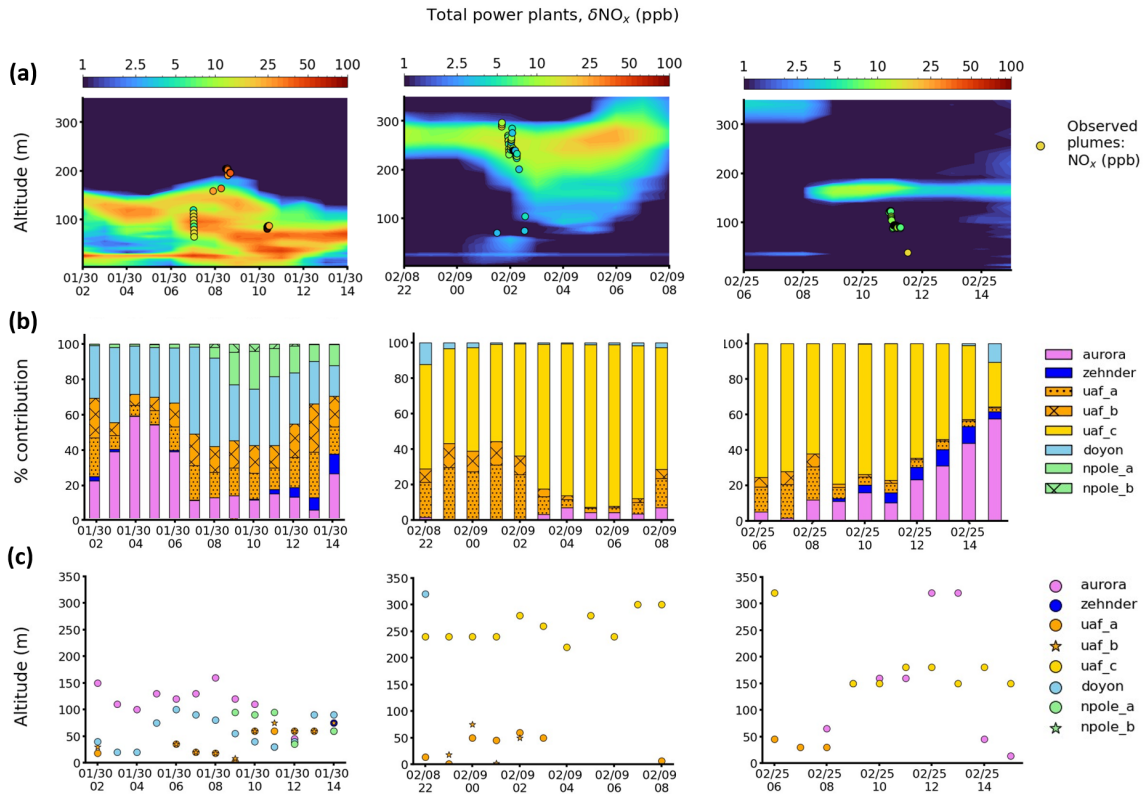


Figure 8. a) Vertical cross section of total simulated (CTRL) power plant tracer over several hours before, during and after each flight, with observations included as scatter points (as in Figure 6). b) Hourly % contributions from different power plant stack throughout the vertical profile. c) The altitude (m) where the 95th percentile of tracers reside, for each contributing power plant stack, as a function of time (hourly). For panels a) to c), cases 1-3 are shown from left to right. See text for more details.

415 the origin of different plumes.

Case 1 - 30 January 2022, Figure 7 top panel & Figure 8 left panels: This case during AC-C is characteristic of SS surface conditions with low wind speeds ($<1 \text{ m s}^{-1}$) from the east or north-east ($\frac{dT}{dz}$ up to $30 \text{ }^\circ\text{C}$ per 100 m at 0-25 m) and some stratification in the layers aloft ($\frac{dT}{dz}$ up to $10 \text{ }^\circ\text{C}$ per 100 m, at 100 - 300 m, see Figure 3e). Only NO_x observations are available for this case because of issues with the CO sensors on 30 January. Two plumes are identified between 70-110 m and 160-210 m altitude, just below elevated inversions observed in the Helikite temperature profile data (Figure 7a). Modelled plumes are between 30-150 m and attributed predominantly to Doyon and UAF A and B. Aurora contributes most at 120-150 m, notably between 0700 and 0900 AKST with some downward transport to around 100 m between 0900 and 1030 AKST (Figure 8a,c). The EI in the Helikite temperature profile occurs around 210 m, indicating trapping of the upper observed plume. However, no capping is applied in CTRL for the Aurora emissions because the predicted plume rise is lower than the radiosonde

420

425

EI (398 m). Therefore, the calculated emission injection height for Aurora until 0900 AKST is 150 m (midpoint) and is the same in CTRL and NO-CAP. Also, at 0300 AKST on 30 January (time of radiosonde), the observed LiDAR wind speeds at CTC (900 m south-east of Aurora) were up to 4 m s^{-1} at the Aurora stack height (48 m), while the radiosonde wind speeds were lower than 1 m s^{-1} ($> 5 \text{ km}$ south-west of Aurora). **Since radiosonde wind speeds are used to calculate plume rise, this suggests that the simulated altitude of the Aurora plume may be underestimated due to a lack of observed spatial coverage in the parameterisation.** This may also contribute to an underestimation of the plume injection height and explain why the model does not capture the observed plume at 160-210 m.

Case 2 - 8-9 February 2022, Figure 7 top panel & Figure 8 middle panels: This case, during the Mixed period, contrasts to the previous SS case and is characteristic of WS conditions. Wind directions from the south to south-west transport pollution to the north (0-500 m altitude). At the time of this local nighttime Helikite flight, conditions were more stable than the daytime with pollution trapped at the surface due to a drop in wind speeds and an increase in SBI strength (Figure 3). A weak EI was observed aloft at 260 m at 0300 AKST as shown in Figure 7a, resulting in dispersed plumes of NO_x and CO aloft over the UAF Farm. In this case, the radiosonde-derived EI agrees with the observed Helikite EI and, even if the stratification is rather weak, a layer of trapped emissions, with observed CO and NO_x enhancements, is evident. **However, below 270 m, the radiosonde temperature profile shows an SBI, in disagreement with the Helikite profile which has a negative temperature gradient, likely due to influence from the drainage flow at the UAF Farm, see Appendix B, and Fochesatto et al. (2024).** Modelled plume enhancements from CTRL compare well with the observed plume aloft between 250-300 m with some downward transport (to 200 m) towards the end of the flight which is also observed. This plume is attributed to UAF C. In this case, EI capping is applied and improves the modelled plume altitude compared to NO-CAP **in terms of the plume altitude.** Simulated plumes are much too low (30-60 m) in NO-RISE highlighting the need to include plume buoyancy calculations (Figure 7b) as shown in previous studies (e.g., Briggs, 1984; Akingunola et al., 2018). A lower altitude plume between 50-100 m is only observed in the NO_x data. Only small enhancements ($< 1 \text{ ppb}$) are simulated in CTRL, and also in NO-CAP, and attributed to UAF A and B stacks. They have lower stack heights and run on diesel which may explain the lack of observed CO plume enhancements. The model may be underestimating NO_x in this case, or surface-emitted tracers may be lofted vertically and contribute to the observed plume at 50-100 m.

Case 3 - 25 February 2022, Figure 7 top panel & Figure 8 right panels: This case is at the end of T-W. **A plume with relatively small NO_x enhancements ($< 5 \text{ ppb}$ mean δNO_x) is observed at approximately 50 m, and an elevated plume is observed with increased enhancements in NO_x between 85-120 m (5-10 ppb mean δNO_x) and 120-160 m in CO (25-30 ppb).** The Helikite temperatures indicate EIs near 85 and 120 m (Figure 7a). The plume aloft, which encompasses most of the data points for both δCO and δNO_x , is captured in CTRL but not in NO-CAP. This is due to the EI observed by the 1500 AKST radiosonde (160 m) that is used to calculate the plume injection height in CTRL, while in NO-CAP the injection altitude is approximately 500 m, demonstrating the importance of the capping parameterisation. However, the modelled plume altitude is likely overestimated by approximately 30-50 m due to the EIs occurring at lower altitudes at the UAF Farm (Figure 7a). There is better agreement of modelled δCO with the observed enhancements than for δNO_x (Figure 7b and Figure 8a), which can be explained by contributions from different power plants. The UAF C stack contributes to δCO directly at the UAF farm

as shown in Figure D2a. UAF C, Aurora and Zehnder contribute to modelled δNO_x (Figure 8c), but UAF C NO_x emissions are low compared to CO because the stack has more NO_x emission controls (ADEC, 2020) (see Appendix A1). Aurora and Zehnder plumes are displaced to the south of the UAF Farm due to a displacement in modelled wind direction (north-east vs east). This results in stronger transport to the south, displacing the simulated plumes slightly south of the UAF Farm (Figure D2b), most likely explaining the underestimated modelled NO_x enhancement. NO_x plumes are also displaced southward in a supplementary case on 3-4 February from the Doyon power plant between 120 - 180 m (Figure D2c in Appendix D1).

Appendix Figure D3 shows doppler wind LiDAR observations for cases 1 (CTC) and 2 (UAF Farm). In each case, plumes are identified by the wind LiDAR at a comparable altitude to the identified plumes at the Farm. Although the wind LiDAR is sensitive to aerosols, and not trace gases, it is possible that sulphate aerosols are contributing to observed aerosols. The results suggest that power plants are also a source of aerosols over Fairbanks (more details in Appendix D2).

Overall, based on the evaluation of these cases, the CTRL run including plume rise and capping using information on the ABL structure often performs best compared to available profile observations. Therefore, CTRL is used in the following examination of processes influencing surface pollution during ALPACA-2022. Evidently, plume rise and capping has to be taken into account but ideally using vertical profile information at the point of injection would be required to improve the plume rise calculations. Discrepancies in modelled winds sometimes lead to displacement in modelled plumes, as shown by case 3 and the supplementary case on 3-4 February (Appendix D1). This is important for power plant facilities located away from the UAF Farm e.g. Aurora and Doyon.

6 Processes Influencing Simulated Surface Trace Gases

Model results from the CTRL run are initially evaluated against surface observations. To understand model behavior during different meteorological conditions, and to examine possible causes of model discrepancies, the sensitivity of model results to various processes is then explored. This analysis is not exhaustive in terms of the processes considered and other possible processes are highlighted in the discussion of the results.

6.1 Evaluation against surface observations

Total modelled CO, SO₂ and NO_x from surface-emitted and power plant sources in the surface layer between 0-5 m compared to available surface observations as a function of time, Downtown, are shown in Figure 9a. Note that SO₂ results include wet and dry deposition but their influence is small as noted earlier (also Appendix E3). Downtown observations correspond to CTC and NC data averaged for CO and SO₂ and compared with the closest grid cell to the Downtown area, while NO_x observations are only available at the CTC site. Diurnal cycles of the observations and model results during the entire campaign (all data) and events AC-C, T-C, Mixed and T-W are shown in Figure 9b. Results for the HA site in eastern residential Fairbanks and the UAF Farm are provided in Figures E1 and E2. Normalised mean biases (NMBs) and normalised mean errors (NMEs) for

Sensitivity Simulation	Tracer	Description
CONST-EM	CO SO ₂ NO _x	CTRL with constant emissions
NO _x _Emissions NO _x _Emissions_LT	NO _x	CTRL + temperature dependent diesel vehicle emissions NO _x _Emissions + variable photochemical lifetime
SO2_SOR	SO ₂	SO2_CTRL + sensitivity to oxidation ratio
MixH_100_CO	CO	CTRL + $h_{min} = 100$ m
MixH_100_SO2	SO ₂	SO2_SOR + $h_{min} = 100$ m
MixH_100_NOx	NO _x	NO _x _Emissions_LT + $h_{min} = 100$ m
MixH_10_CO	CO	CTRL + $h_{min} = 10$ m
MixH_10_SO2	SO ₂	SO2_SOR + $h_{min} = 10$ m
MixH_10_NOx	NO _x	NO _x _Emissions_LT + $h_{min} = 10$ m

Table 3. Surface sensitivity simulations. See text for details.

Downtown using hourly results are provided in Table 4. Both metrics are shown as fractions with no units and Equations are given in Appendix E1. Tables E1 and E2 correspond to HA and UAF Farm in Appendix E2.

As discussed earlier, observed CO, SO₂ and NO_x are enhanced during stable conditions. Observed variability with larger concentrations in SS compared to WS conditions is generally captured. CO concentrations and variability are reasonably well
495 simulated. However, while the NMB is 0.02 over the entire campaign (all data), the NME is 0.52 (Table 4). There are also negative biases during the stable transient events T-C and T-W (NMBs = -0.34 and -0.55) and a strong positive bias during the Mixed period (NMB = +0.5). Since CO has a long photochemical lifetime in winter of the order of months, discrepancies may be caused by meteorology.

500 SO₂ and NO_x tracer variability in CTRL is comparable to that of CO. However, for SO₂ there are large overestimates, in particular during the Mixed event (NMB = +1.26, NME = 1.37, Table 4). The main source of SO₂ in Downtown is residential distillate oil in the space heating sector emissions (Figure A1). This source is released up to 12 m with 85% of the emissions released above 5 m. Therefore, these emissions can be transported to the surface as well as higher in altitude. Modelled SO₂ appears to be sensitive to the vertical transport of these emissions and is explored in the sensitivity analysis. Although the
505 photochemical loss of SO₂ by OH is not considered to be important during the winter (e.g., Green et al., 2019), oxidation by other reactions may be important. In contrast, the model significantly underestimates observed NO_x notably in SS conditions (NMB = -0.65 and -0.8 events AC-C and T-C with comparable NMEs, Table 4). Moreover, an overestimate might be expected

because the lifetime of NO_x is not included in CTRL. The sensitivity of modelled SO_2 and NO_x to processes governing their lifetimes are considered in Appendix E5.

510 Observations at HA in the East Residential area of Fairbanks follow the same general variability as Downtown but differ during the strongly stable events AC-C, T-C and T-W, as highlighted by the diurnal variations (Figure 9b and Figure E1b). The Downtown sites are located close to main roads leading to higher observed NO_x mixing ratios than at the HA site. CO magnitudes are more comparable because of higher contributions from residential wood burning at the HA site, as supported by the strong peak around 0600 AKST in the diurnal cycle of CO at HA (Figure E1b). However, Downtown, the diurnal cycle
515 follows the on-road mobile sector (Figure 9b). The agreement between model and observations is weaker at HA, for instance $\text{NME} = 0.56$ (Table E1) in contrast to 0.37 Downtown (Table 4) for CTRL_CO because the horizontal resolution of the surface emissions (1.33 km grid spacing) may be too coarse to sufficiently capture small spatial differences within the city. Emission source contributions for CO and NO_x in the Downtown and HA areas are comparable (Figure A1), supporting this argument. It should also be noted that the model results shown in Figure 9 are interpolated onto the same grid as the emissions (1.33 km).
520 Furthermore, the locations of meteorological data assimilated in EPA-WRF are biased towards the Downtown area, potentially leading to more realistic simulated meteorology. Moreover, during SS conditions, horizontal transport is hindered in Fairbanks, leading to a large variability in the observations at different locations. This was demonstrated by Robinson et al. (2023) during multiple mobile sniffer drives of $\text{PM}_{2.5}$ around Fairbanks.

At the UAF Farm site, smaller surface CO mixing ratios are observed. Over the entire campaign, NMBs and NMEs are
525 comparable to Downtown but biases are higher when stable conditions influence Downtown more than the UAF Farm, notably during the AC-C period. A local flow that originates from large-scale north-easterly winds intermittently descends the Goldstream valley to the north-west resulting in a dominant north-westerly flow at the UAF Farm towards the surface (Mailard et al., 2022; Fochesatto et al., 2024). The wind direction of the local flow is captured by EPA-WRF at 10 m due to data assimilation, however, underestimations in horizontal wind speeds can occur when strong static stability is observed (strong
530 temperature gradients) due to difficulties simulating dynamic instability (turbulence/wind shear) induced by the local flow (e.g. Figure B2 during AC-C).

6.2 Sensitivity Simulations

Following the initial evaluation, the sensitivity of modelled tracers to meteorology, emissions and vertical mixing are explored. Description of the sensitivity to NO_x trace gas lifetimes are included in Appendix E5. The series of sensitivity simulations,
535 carried out to better understand processes influencing modelled surface tracers and which may help explain model biases, are summarised in Table 3.

6.2.1 Sensitivity to Meteorology

As noted earlier, model biases can be induced by errors in EPA-WRF or treatments in FLEXPART-WRF of vertical or horizontal transport. Of particular interest are discrepancies during cold stable periods with poor air quality. For example, the NMB and
540 NME of CO during T-C are -0.34 and 0.39, respectively. Temperature gradients at CTC (dT 23-3 m) are generally well captured

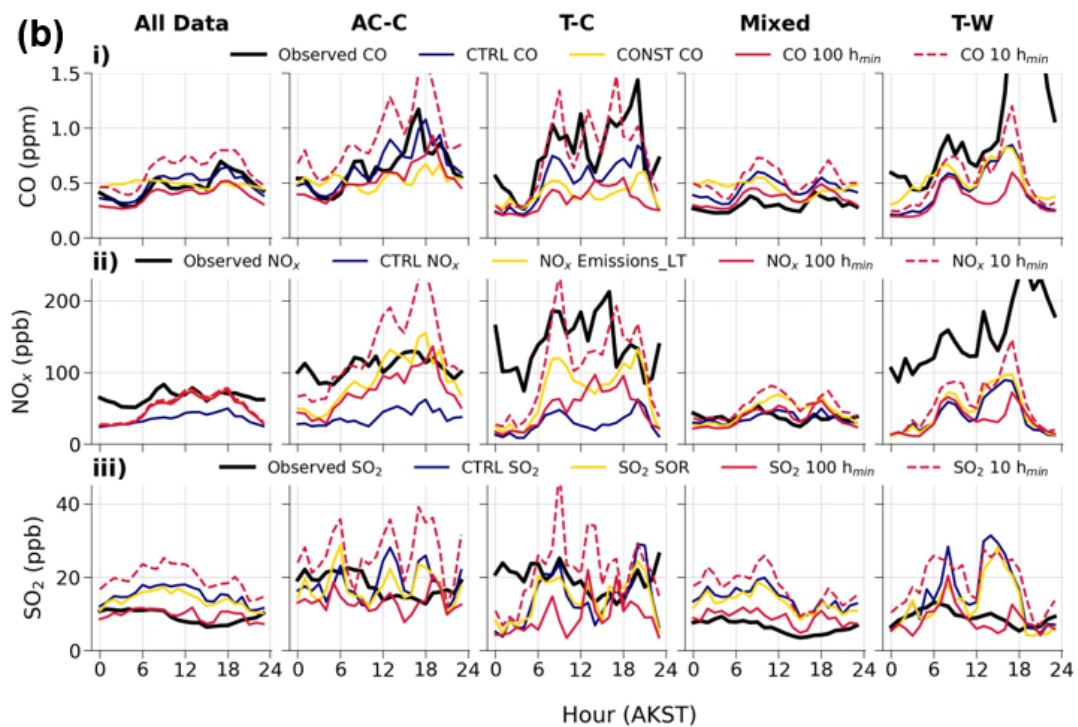
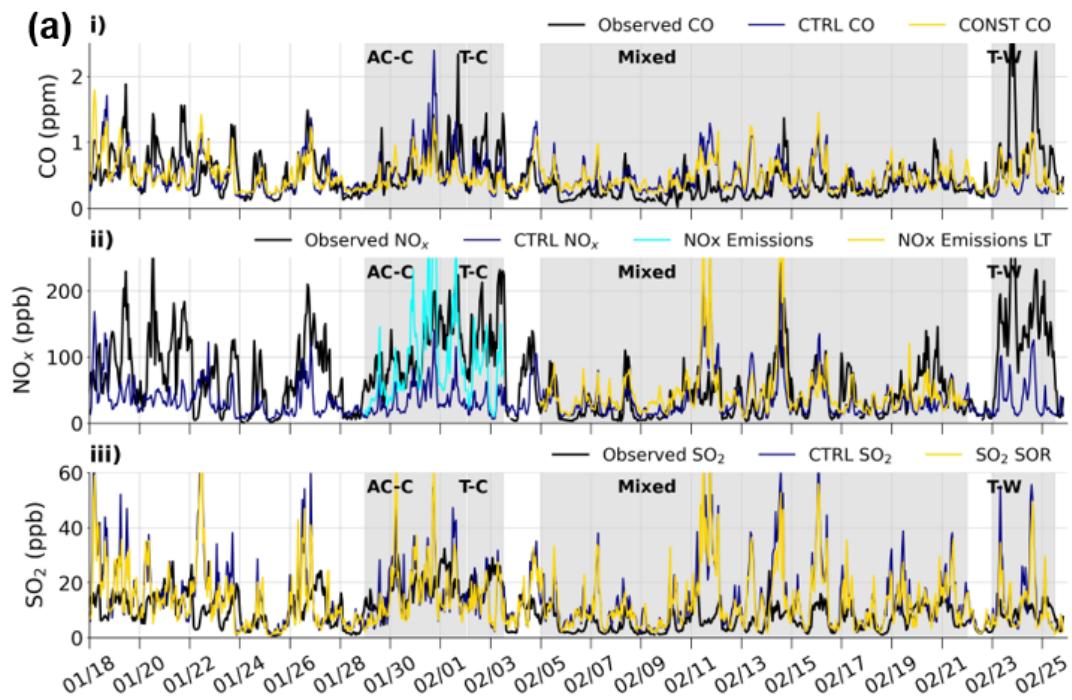


Figure 9. a) Total modelled surface and power plant tracers as a function of time between 0-5 m for CTRL and selected sensitivity simulations described in Table 2 compared to available surface observations, Downtown for i) CO, ii) NO_x and iii) SO₂. b) Diurnal cycles, Downtown, for observations (black) and model simulations (colours as in (a)), averaged over all data (left) and over events A-C, T-C, Mixed and T-W.

by EPA-WRF since the model is nudged with these temperatures. However, dT 23-3 m is not well reproduced in EPA-WRF during T-C on 2-3 February when the very large observed dT (up to 8 °C) is underestimated by 3 °C (Figure B1b). 23 m wind speeds measured at CTC are also overestimated resulting in stronger horizontal transport at the surface than observed (Figure B1). There is also more upward vertical transport of tracers on 1 February (Figure 5). Consequentially, modelled CO is underestimated during T-C. This could be explained by a transient synoptic condition (i.e., a low-pressure weather system) in upper layers above the surface layer from 2-3 February (T-C), disrupting the vertical stratification provided by the stable anticyclonic conditions that occurred from 29 January to 1 February (AC-C). Yet at the surface, local-scale radiative cooling persisted and strong temperature gradients were maintained and strengthened due to the arrival of the warm air mass aloft, as also observed by Mayfield and Fochesatto (2013).

During the warm polluted period T-W at the end of the campaign (23-25 Feb) under AC to cyclonic transient conditions, CO and NO_x are underestimated compared to observations. This was an unusual event when the SBI was very strong but temperatures were warmer (-10 to 5 °C) than in AC-C and T-C, for example. Whilst observed temperature gradients at CTC are captured well by EPA-WRF during this period, horizontal transport appears to be overestimated because the EPA-WRF wind speeds are slightly higher than observations close to the surface e.g. at 10 m (Figure B1). This may partly explain the low model NMB during this period (CO = -0.55 and NO_x = -0.74, respectively, Table 4). During the Mixed period, the dT (23-3 m) is often too high compared to observations, for example on 16 February (Figure B1). This leads to overestimates in modelled mixing ratios, notably for SO₂ (Figure 9).

In order to explore the influence of meteorological variability on simulated tracers at the surface, the model is run with constant emissions (run CONST-EM, see Figure 9a). For this run, hourly emissions are averaged over the full campaign, removing the diurnal and weekday/week-end variability, and the effects of temperature on the emissions. Results are examined for CO since, due to its long photochemical lifetime in winter, simulated CO is only dependent on meteorology, i.e. it has no chemical loss. Note that NO_x and SO₂ with constant emissions were also simulated (not shown), and are more comparable to the CTRL simulation. Differences in diurnal cycles for CTRL and CONST-EM CO are also shown in Figure 9b. In general, CONST-EM CO shows the same variability over time as CTRL. For example, CONST-EM CO is higher during the stable polluted AC-C period compared to the less stable Mixed period (Figure 9a,b). CONST-EM results also exhibit some diurnal variability, albeit less than in CTRL, and compared to the observations. These results highlight that variations in meteorological conditions, including diurnal effects, are an important factor controlling pollutants at the surface. Differences between CONST-EM and CTRL also show the importance of diurnal variations in CO emissions during pollution episodes. Surface CO emissions are dominated by the on-road sector Downtown (see Figure A1). Nevertheless, the CONST-EM negative biases are more pronounced in cold polluted periods than the full campaign, showing the cold temperature dependence of CO gasoline emissions is important. In summary, CO biases can be explained partly by emission variability and by differences in modelled and observed meteorology

influencing tracer transport and mixing, as well as ABL stability. Discrepancies due to meteorology are linked to the EPA-WRF simulation as discussed above, and also to treatments of vertical mixing and turbulence in FLEXPART-WRF. The sensitivity of results to the mixing height parameter in the FLEXPART-WRF BL scheme is examined further in Section 6.2.4.

Simulation Name	NMB					NME				
	All Data	AC-C	T-C	Mixed	T-W	All Data	AC-C	T-C	Mixed	T-W
CTRL CO	0.02	0.02	-0.34	0.5	-0.55	0.52	0.39	0.37	0.68	0.56
CONST-EM CO	0.03	-0.17	-0.46	0.54	-0.45	0.54	0.37	0.5	0.73	0.5
MixH_100_CO	-0.19	-0.17	-0.55	0.21	-0.64	0.47	0.34	0.55	0.48	0.64
MixH_10_CO	0.3	0.45	-0.04	0.79	-0.45	0.66	0.66	0.35	0.92	0.51
CTRL NOx	-0.46	-0.65	-0.8	-0.03	-0.74	0.69	0.66	0.8	0.66	0.74
NOx Emissions	-0.07	-0.05	-0.47	0.59	-0.67	0.68	0.45	0.5	0.93	0.67
NOx Emissions_LT	-0.23	-0.17	-0.5	-0.21	0.7	0.61	0.41	0.52	0.7	0.7
MixH_100_NOx	-0.25	-0.32	-0.67	-0.01	-0.77	0.61	0.42	0.67	0.65	0.77
MixH_10_NOx	-0.2	0.2	-0.25	0.44	-0.62	0.61	0.53	0.44	0.76	0.62
CTRL SO2	0.6	0.03	-0.3	1.26	0.6	0.94	0.49	0.4	1.37	0.95
SO2 SOR	0.47	-0.02	-0.29	1.08	0.32	0.84	0.48	0.37	1.22	0.74
MixH_100_SO2	0.03	-0.26	-0.57	0.43	-0.08	0.62	0.42	0.63	0.7	0.54
MixH_10_SO2	1.08	0.5	0.1	1.71	1.0	1.31	0.79	0.55	1.8	1.18

Table 4. Normalised mean biases (NMBs) and normalised mean errors (NMEs) of model simulations (total tracers) at the surface, Downtown, compared to surface observations Downtown (CTC and NC averaged), at hourly time resolution. NMBs and NMEs are given for all data and the meteorological events AC-C, T-C, Mixed and T-W. The values highlighted in green and red show the smallest and largest NMBs and NMEs, respectively, for each period and each tracer.

575 6.2.2 Sensitivity to Vehicle NO_x Emissions at Cold Temperatures

The underestimate of NO_x during SS periods, such as AC-C, is more significant than CO and SO₂ and may indicate a missing source of NO_x. The on-road sector is an important source of NO_x in the Downtown area (Figure A1) for which diesel is the largest contributor, even if the fraction of diesel vehicles is rather low (9% diesel versus 90% gasoline vehicles in Fairbanks non-attainment area, EPA 2022). The diesel fleet in the area is predominantly made up of heavy duty trucks. In 2022, EPA used
580 MOr Motor Vehicle Emission Simulator 3 (MOVES3) (U.S. EPA, 2021) to calculate on-road emissions, which were subsequently processed with the SMOKE model. MOVES3 includes a higher incremental temperature dependence of CO compared to NO_x gasoline emissions, which is important because CO emissions are much higher than NO_x emissions for gasoline. In addition, cold-temperature dependencies for diesel vehicle cold starts for both CO and NO_x are set to zero, however, data was only
585 collected down to +1.5 °C in that study (U.S. EPA, 2015). More details are provided in Appendix E4. Several studies have shown that NO_x emissions from diesel vehicles are higher at cold temperatures, in particular in modern vehicles with selective

catalyst reduction (SCR) units that have been introduced following more stringent emission regulations. Failure to heat the diesel exhaust fluid (DEF) injection to the required temperature to initiate the SCR units is considered to contribute to enhanced emissions (Weber et al., 2019; Selleri et al., 2022; Seo et al., 2022; Wærsted et al., 2022). Ambient temperatures in Fairbanks reach -40 °C, up to 25 °C lower than the lowest temperatures in these studies. Hence, the lack of cold temperature dependence for diesel NO_x emissions in MOVES3, may be contributing to the substantial underestimate in modelled NO_x during cold conditions. Other emission inventories, such as CAMS, also have a weaker temperature dependence for NO_x vehicle emissions than CO at low temperatures (Guevara et al., 2021). This may be because the current emissions inventories are based on older vehicles without SCR units that are associated to newer diesel vehicles or due to limited research on this topic in very cold environments.

The possible contribution of temperature dependent diesel emissions to CO and NO_x concentrations in Fairbanks is investigated based on the EPA surface emission fluxes that are used in the model simulations. In order to compare to surface observations at CTC, surface fluxes for each emission sector, in kg m⁻² s⁻¹, are converted into hourly mixing ratios (in ppb) by taking into account the volume of each emission grid cell (1.33 km² x 10 m (AGL) in vertical). These estimates are averaged over the 4 grid cells covering the Downtown area and shown in Figure 10. The results are shown in Figure 10 averaged over 3 °C temperature bins over the full campaign, the cold polluted period (AC-C, 29 January to 2 February), and the warm polluted period (T-W, 24 to 25 February). At intermediate temperatures (-13°C to -23°C), common during the Mixed period, estimated NO_x mixing ratios are overestimated compared to observations. This is in part because meteorology and mixing are not considered, as also shown for CO. However, the observations show a clear increase in NO_x at colder temperatures, especially below -23°C, which is much less distinct for observed CO. For CO, as noted earlier, a cold temperature dependence is already included for mobile (on-road and non-road) gasoline emissions in MOVES3, and there is better agreement between the CO observations and estimated mixing ratios during the cold polluted period (CPP) (Figure 10b). The poor agreement between NO_x observations and estimated NO_x during the CPP supports the hypothesis that an increase in diesel NO_x vehicle emissions due to a cold temperature dependence may be required. Furthermore, estimated CO and NO_x mixing ratios are both underestimated during T-W (Figure 10c), indicating that a cold-temperature effect is not driving the discrepancy in this period.

Temperature-dependent NO_x emissions are revisited based on a study of diesel vehicles in Norway that found a factor of 3 increase was required at -13 °C with a linear increment from 2.9 to 1.0 between -13 °C to +14 °C, respectively (Wærsted et al., 2022). Here, emission enhancements for total mobile emissions using a log-linear function of between a factor of 1.5 to factor of 10 are calculated for daily average temperatures between 0 °C to -40 °C. For example, the increment is ×3 at -20 °C and a factor of 6 at -30 °C (see Figure E3). A log-linear function is also used in MOVES3 for the temperature-dependent increase in gasoline emissions (U.S. EPA, 2015). Estimated mixing ratios including the cold temperature dependence are also shown in Figure 10. Inclusion of this NO_x emission enhancement significantly reduces discrepancies compared with observations during AC-C with very cold temperatures, and biases for the cold and warm polluted events are now comparable to CO (Figure 10). However, observed NO_x at intermediate temperatures between -22 and -13 °C is now overestimated. This corresponds to temperatures during the Mixed period when surface conditions varied between SS and WS conditions and the discrepancy

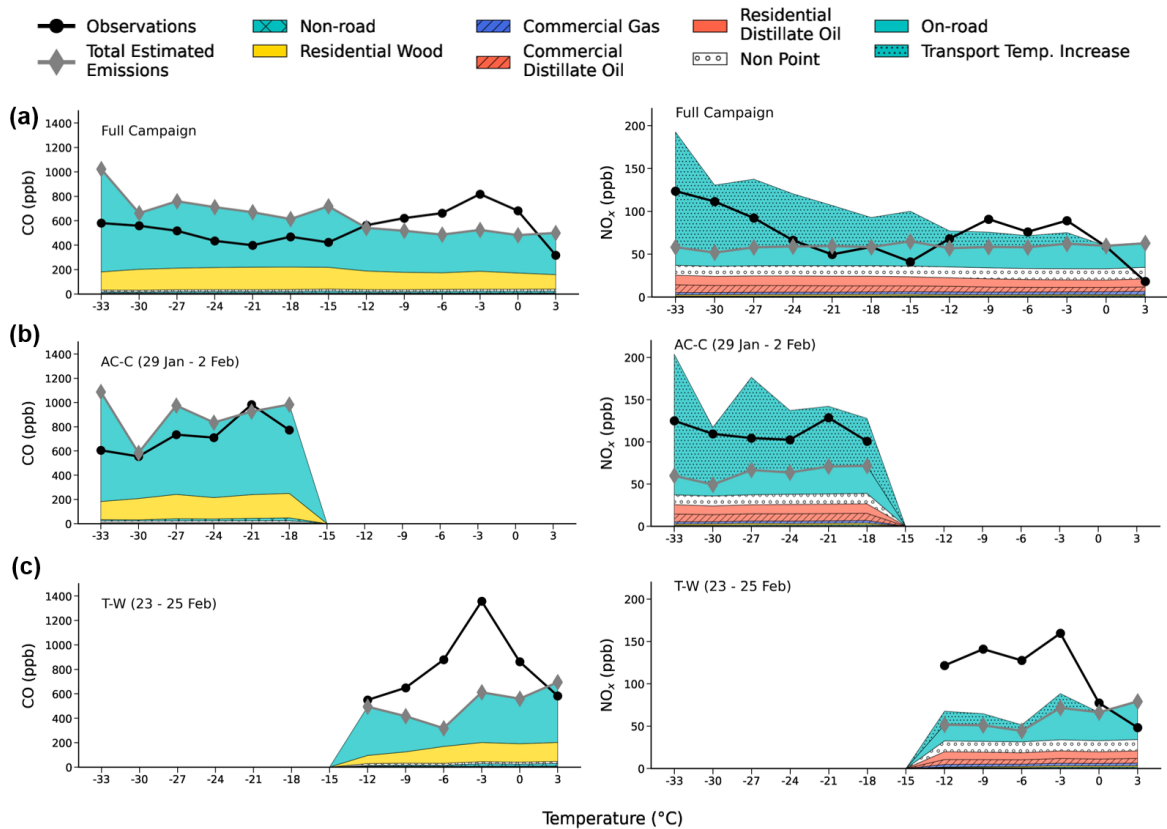


Figure 10. Estimated mixing ratios in ppb, based on EPA surface emission fluxes, averaged over the Downtown area, compared to observed mixing ratios in ppb at the CTC site (black circles), averaged over 3 °C temperature bins for a) full campaign, b) 29 January to 2 February, and c) 23 to 25 February, for CO (left) and NO_x (right). The shaded colours correspond to the contributing emission sectors indicated in the legend (total of all sectors = grey diamonds), The mid-point of the 3 °C temperature bin is shown on the x-axis. The increment in NO_x vehicle emissions at low temperatures, according to the linear temperature dependence is also shown with cyan shading and '...' hatching. See text for details.

620 between observed and estimated CO and NO_x is expected to be influenced more by meteorology and BL stability, as discussed previously.

The log-linear NO_x temperature dependence is applied to modelled mobile emissions tracers in the NO_x_Emissions run leading to significant improvements compared to the observations, notably during cold stable conditions e.g. the NME is reduced from 0.8 to 0.5 during T-C. The results suggest an increase in NO_x emissions from diesel vehicles is needed during
 625 periods with very cold temperatures, notably below -20 °C. The modelled NO_x diurnal cycle also shows a clear improvement during the daytime although differences compared to the observations remain at nighttime. This can be partly explained by difficulties in modelling extremely stable conditions that are enhanced at nighttime. For example, during T-C, there is also an

underestimate in CO and SO₂ between 0000 and 0600 AKST. However, the large nighttime underestimate in NO_x with respect to CO (e.g. for all data), may indicate an underestimation in NO_x from residential distillate oil emissions (Figure A1). These emissions dominate at night when mobile emissions are low and warrants investigation in future studies. In event T-W, the bias reduction is small and NMB remains strongly negative at -0.67 because only a small increment is applied to the mobile NO_x emissions at warmer ambient temperatures. The fact that both CO and NO_x are underestimated during this period suggests that these biases are unlikely to be due to the cold temperature dependence, but potentially by uncertainty in the mobile emissions on these days and/or overestimated horizontal transport induced by modelled surface stability as discussed in the previous section.

Discrepancies in modelled NO_x could also be explained by inclusion of atmospheric lifetimes and is explored in Appendix E5 (run NO_x_Emissions_LT, shown in Figure 9 for Mixed period). Notably, inclusion of a shorter atmospheric lifetime during WS conditions improves agreement compared to observations during the Mixed period because O₃ transported from aloft leads to titration of NO by reaction with O₃ (NME is reduced from 0.93 to 0.7). This has little effect during SS conditions when a longer lifetime is expected due to O₃ titration by excess NO and limited O₃ production or transport from aloft. Although, assumptions about NO_x lifetimes in this study are simple and a more sophisticated investigation into NO_x chemical processing may be required moving forwards.

6.2.3 Sensitivity to SO₂ Oxidation

Dry and wet deposition are included in the CTRL SO₂ simulation and a photochemical lifetime is not considered because it is too long during Arctic wintertime (Yu et al., 2018; Green et al., 2019) (Appendix E5). Appendix E3 explains the impacts of deposition on SO₂. However, SO₂ can be oxidised and form secondary sulphate species through other reactions e.g. by oxidation with hydrogen peroxide (H₂O₂) (Alexander et al., 2012; Moon et al., 2023). Based on isotope observations used in Moon et al. (2023), it is shown that secondary sulphate aerosol formation increased in February (average 44.4 % secondary sulphate) with respect to January (average 27.5 % secondary sulphate) during ALPACA-2022, consistent with higher observed sulfur oxidation ratio (SOR), an indicator of secondary aerosol formation. Increased secondary sulphate formation in February was due to more WS conditions with higher O₃ concentrations at the surface, higher humidity and more clouds, promoting oxidation through aqueous and heterogeneous chemistry.

Here, the SO₂ SOR sensitivity explores an effective reduction in SO₂ by reducing SO₂ emissions using daily SOR values calculated in Moon et al. (2023) (Table 3). Modelled SO₂ overestimates are reduced for the entire campaign, and notably, in late February for the reasons given (NMEs reduced from 0.94 to 0.84 entire campaign, 0.95 to 0.74 during T-W). Remaining overestimates during T-W may be due to residential heating emissions being too high during the warm polluted period. However, since a temperature dependence is already applied in the residential heating emissions, this appears to be unlikely as the controlling factor. Another possible reason could be that SO₂ oxidation was enhanced due to the presence of aerosol haze that occurred during this period. Such pollution haze has previously been shown to promote oxidation of SO₂ (e.g., Wang et al., 2014). Overestimate of SO₂ may also be influenced by modelled vertical mixing and is explored in the following section.

6.2.4 Sensitivity to Vertical Mixing

In a final set of sensitivities, vertical mixing near the surface is explored. Results of these simulations are included in Figure 9b showing diurnal cycles. More details about the model setup and interpretation of the results are provided in Appendix E6. A mixing height of 20 m (CTRL) is optimal for CO and NO_x tracers (all data). However, during periods of increased stratification (strong SBIs or SSBIs), including T-C and T-W, inhibited vertical mixing is better simulated when $h_{\min} = 10$ m. On the other-hand, runs with $h_{\min} = 100$ m improve simulated tracer concentrations during WS conditions with enhanced vertical transport. SO₂ is more complex because space heating emissions are mainly emitted above the surface (5-18 m), and $h_{\min} = 100$ m better represents vertical mixing of the tracers above the surface. The exception is during T-C, when $h_{\min} = 20$ m performs better. Overall, the results suggest improvements are needed to the treatment of vertical mixing in FLEXPART-WRF during wintertime Arctic conditions. However, we note that SO₂ overestimates may also be influenced by additional chemical processing not accounted for in Section 6.2.3, or by underestimation of dry or wet deposition. Variable results among pollutants could also indicate compensating errors in the model.

7 Conclusions and Future Perspectives

This study presents a detailed investigation of processes influencing wintertime pollution from surface urban and elevated point sources in Fairbanks, a sub-Arctic city in Alaska, exploiting Lagrangian particle dispersion modelling and comprehensive surface and vertical profile measurements made during the ALPACA campaign in January-February 2022 (Simpson et al., 2024). To evaluate the dispersion and vertical distribution of different pollution sources in the Fairbanks area, high temporal and spatial resolution surface and power plant emission tracers of CO, SO₂, NO and NO₂ have been included in the FLEXPART-WRF model. To account for the presence of stable layers, at the surface and aloft, a scheme for estimating power plant emission injection heights in FLEXPART-WRF was implemented using detailed information about the power plant stack emissions, building on the previous work of Briggs (1984) in stable conditions. Comparison of simulated tracer distributions with observations, and sensitivities to switching off power plant plume rise and plume capping by stable layers, show that accounting for plume buoyancy and capping emission injection are critically important for accurate simulation of power plant plume injection heights and their transport downwind. In particular, the use of detailed stack parameters (stack height and radius, flue gas exit temperature and velocity), and temperature profile measurements to diagnose the presence of inversions that trap pollution plumes, are required.

Model results were evaluated depending on different meteorological conditions. Notably, analysis of surface temperature gradients identified strongly stable (SS) and weakly stable (WS) conditions close to the surface, following Maillard et al. (2022) and Simpson et al. (2024). Simulated trace gas concentrations, which are enhancements above background, emitted from surface and elevated sources, including the power plants, are larger during SS compared to WS conditions over the Fairbanks area. Vertical transport is more limited in SS conditions and by the presence of elevated inversion layers. Near surface pollution is reduced and pollution concentrations above 200 m are enhanced during WS conditions owing to stronger horizontal and vertical transport, likely due to enhanced turbulent mixing. Pollution outflow to the south-west, due to dominating north-

easterly winds up to 200 m suggests a possible regional influence due to anthropogenic emissions from Fairbanks and North Pole, which requires further investigation, including exploration of recirculation. Modelled tracer concentrations are larger than those typically found in wintertime Arctic haze.

Pollution plumes observed by the Helikite aloft are generally well simulated in terms of timing and vertical distributions. These plumes are attributed to particular power plant stacks following transport by north-easterly or easterly winds to the UAF Farm site in the west of Fairbanks. In some cases, small discrepancies in EPA-WRF winds, used to drive the tracer simulations, results in displacement of the plumes, for example to the south of the measurement location. The plume rise calculations could be improved further by using WRF temperatures and winds at the location of the power plant stacks, rather than using radiosondes at Fairbanks airport, allowing spatial differences to be better captured. The treatment of vertical plume rise could be further improved by taking into account the changes in the buoyancy force of the plume as it rises above the stack, for example, as in Akingunola et al. (2018). Acquisition of more vertical profile observations (e.g. using drones) at, and downwind of, the power plant stacks would also be valuable.

At the surface, modelled CO compares well to observations in downtown Fairbanks with variability driven by changes in surface stability. Discrepancies are mostly explained by differences in modelled meteorology or ABL stability on short time-scales. Agreement at other sites is less good. At the Hamilton Acres site in the eastern residential area, model discrepancies could be explained by the horizontal resolution of the emissions (1.33 km) being too coarse to capture the larger residential wood burning emissions at this site. Surface pollution is reduced at the UAF Farm in western Fairbanks, a site also influenced by a local valley flow, that frequently establishes during anticyclonic conditions, induces turbulence and clears out surface pollution. This flow is underestimated by EPA-WRF in situations when strong surface stability is observed, and thus in the tracer simulations. This is due to misrepresentation of dynamic instability (turbulence/shear) induced by the local flow in the WRF simulations. These results highlight the complexities of dispersion modelling in a region influenced by strongly stable ABL conditions and local-scale phenomena linked to orography. Improvements to WRF simulations based on Maillard et al. (2022) who examined surface effects of the local valley flow at the UAF Farm site, or using higher resolution model simulations, such as Large Eddy Simulations, may also improve results.

In contrast to CO, surface NO_x is significantly underestimated in the CTRL simulation, notably in very cold, stable conditions. A possible cause is underestimation of NO_x emissions from diesel vehicles, already shown to be important down to -13 °C (e.g. Wærsted et al. (2022)). Inclusion of a log-linear temperature dependence for NO_x emissions from the mobile (on-road and non-road) sector, by a factor of x1.5 at 0°C to x6 at -30 °C (average daily temperatures), considerably improves the model results (during daytime). Previous studies have not considered such large increases at very low temperatures below -15 °C and warrants further investigation. Such dependencies may be due to inefficient, or even failure of, selective catalytic reduction units implemented in vehicles to reduce NO_x emissions (Seo et al., 2022), and should be considered in emission inventories in cold wintertime environments similar to Fairbanks. Inclusion of photochemical lifetimes for NO and NO₂ also improves simulated surface NO_x notably during WS conditions, when O₃ concentrations are higher. Future work investigating chemical processing of NO_x and O₃ at the surface, and in power plant plumes, will help to better constrain NO_x lifetimes in the polluted Arctic wintertime.

Surface SO₂ is generally overestimated, despite inclusion of simplified treatments of wet and dry deposition and an estimation of the fraction of SO₂ converted to secondary sulphate species. Discrepancies appear to be mostly driven by the vertical transport of space heating emissions which are distributed between 5 and 12 m in the EPA-ALPACA emission inventory. This is explored by varying the minimum mixing height (h_{\min}) in FLEXPART-WRF which, in this study, influences the altitude to which surface tracers are mixed vertically. Increasing h_{\min} from 20 m to 100 m improves the comparison to observed SO₂ at the surface due to enhanced vertical transport of the space heating emissions. In contrast, the on-road mobile sector dominates surface emissions of CO and NO_x in central Fairbanks and they are often trapped near to the surface by very shallow SBI or SSBIs. For these tracers, runs with h_{\min} equal to 10 m limits vertical mixing and leads to further improvement in the model results compared to surface observations. Model sensitivity to the h_{\min} parameter suggests that improvements are needed to the treatment of turbulent mixing in wintertime conditions with very stable boundary layers.

Overall, the findings of this study illustrate the complexity of simulating surface and elevated pollution sources in cold stable Arctic wintertime conditions. The tracer simulations, while simplified in some aspects, provide important insights into possible processes affecting trace gas pollution at the surface and aloft in the boundary layer. They form a basis for regional 3D chemical and aerosol modelling of pollution due to anthropogenic emissions over the Fairbanks region and its potential contribution to background Arctic haze during winter-spring. As the Arctic becomes more developed in the future, due to increasing human activity and climate warming, higher energy demands in Arctic communities are expected. This may lead to increases in poor air quality during Arctic winter, notably if poor energy infrastructure persists. More stringent emissions standards for surface and elevated sources, and an accelerated transition towards renewable energies needs to be considered at the policy level in the Arctic moving forwards.

Data availability. Final data from the study will be available to the scientific community two years after the conclusion of the study. Arctic-data.io (<https://arcticdata.io/catalog/portals/ALPACA>) provides a portal to archival repositories of the field study's data. **The MICROME GAS ALPACA data are available here: <https://arcticdata.io/catalog/view/doi:10.18739/A2V11VN3Z>.**

Appendix A: Emissions

In this section, additional figures related to the emissions used in this study are provided. Appendix A1 provides details on emission controls used for the power plant stacks running during ALPACA-2022. Figure A1 shows **campaign averaged surface emissions for each sector, in the non-attainment, Downtown, Hamilton Acres (HA) and UAF Farm areas**. In the Fairbanks non-attainment area, airport emissions are large for SO₂. The emission contributions at the East Residential and Downtown sites are

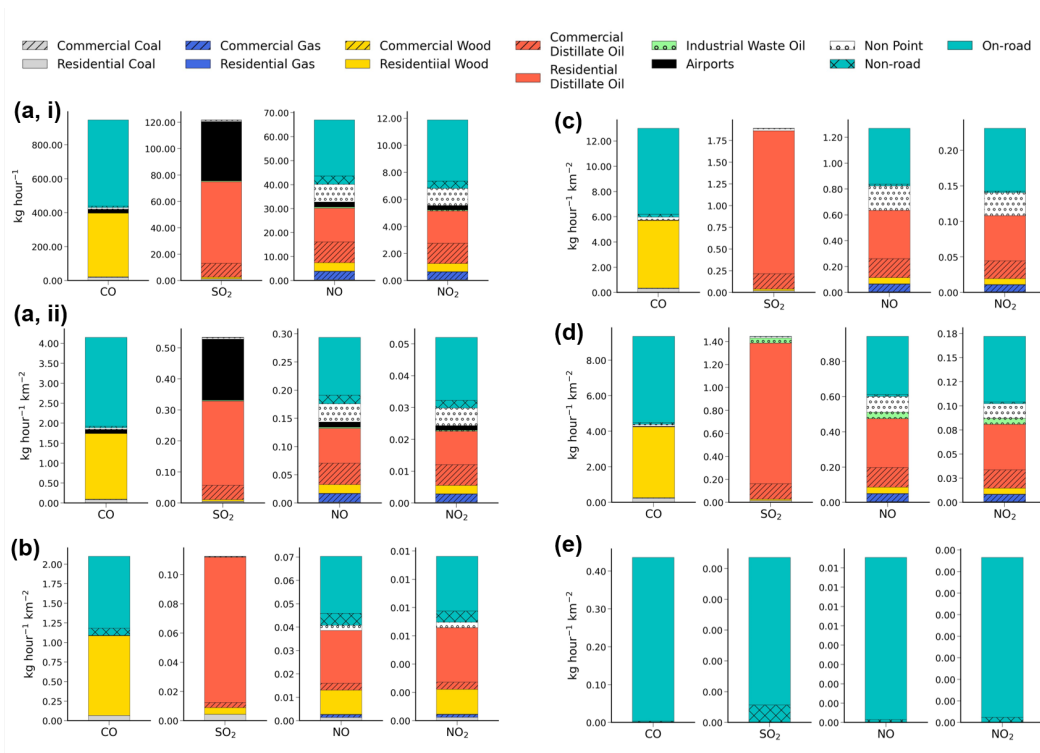


Figure A1. CO, SO₂, NO and NO₂ emissions averaged over the campaign, summed between 0-18 m altitude in: (a, i) Fairbanks non-attainment area, sum of 129 grid cells (1.33 x 133 km²) (kg hour⁻¹). In panels (a, ii) and (b-e), the emissions are averaged per grid cell (kg hour⁻¹ km⁻²) for (a, ii) Fairbanks Non-attainment area, b) North Pole Non-attainment area, c) Downtown, d) Hamilton Acres and e) UAF Farm. Panels c to e are for the EPA emissions grid cell closest to the location. See Figure 1 for details.

comparable but magnitudes are greater Downtown (Figure A1c,d). The UAF Farm site is dominated by the mobile sector but the magnitude of emissions are small compared to the other locations. Figure A2 shows a time series of power plant emission data for each power plant stack for the trace gases (CO, SO₂, NO and NO₂). Differences in trace gas emissions according to fuel type are evident in Figure A2. For example, North Pole A emits large NO₂ emissions due to running on Naphtha fuel, while NO_x and SO₂ emissions from UAF C are small compared to the other coal-fired stacks (Aurora and Doyon) owing to more stringent emission controls (Appendix A1).

A1 Power Plant Emissions Control Strategies

The power plant emissions used in this study were provided by each of the power plant facilities for the campaign period. The emissions vary depending on fuel type and emission reduction controls (ADEC, 2020). The UAF C coal stack uses low NO_x burners (40-60% efficiency) and staged combustion to reduce NO_x emissions. However, Aurora and Doyon (also coal) do not have NO_x emission controls such as selective catalyst reduction (SCR) units. Diesel or fuel oil power plants (Zehnder, UAF A,

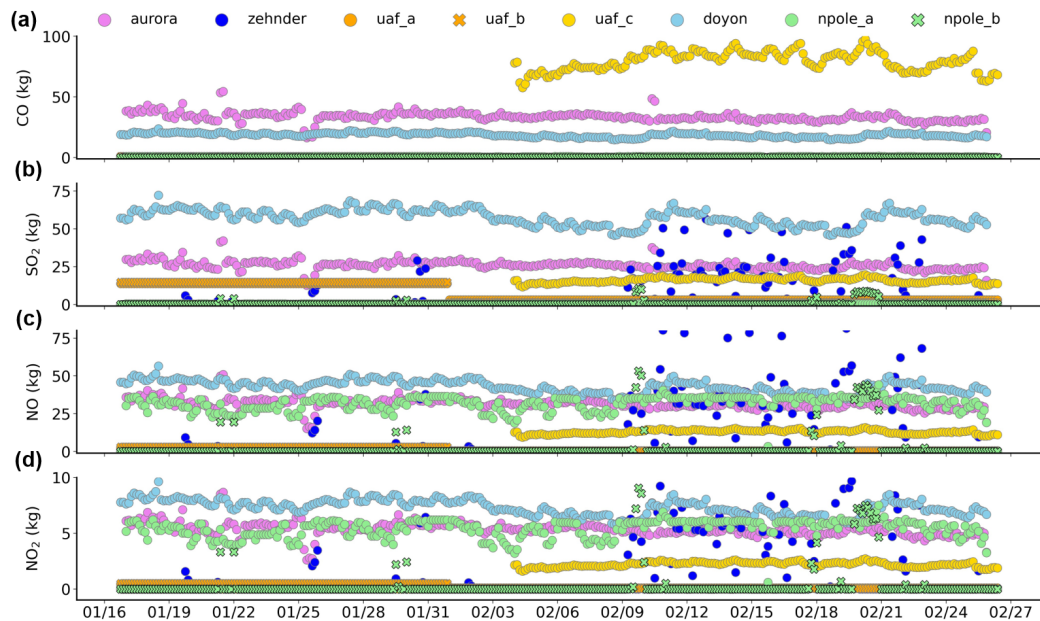


Figure A2. Emissions of a) CO, b) SO₂, c) NO and d) NO₂ (kg) for each power plant stack (indicated above panel A) as a function of time during ALPACA-2022. 3-hour averages are shown for clarity of the data points, but 1-hour data is used in the modelling study.

B and North Pole A) do not have NO_x emission reduction strategies, while North Pole A uses water injection (70% efficiency in NO_x reduction). SO₂ control strategies include 0.25% sulfur by weight for each coal power plant and UAF C also uses limestone injection. North Pole A uses 20 parts per million (ppm) sulfur, while UAF A, B and North Pole B are limited to 15 ppm sulfur. The limit is as high as 1000 ppm sulfur for Zehnder but operations are limited to < 70 tons per year. Zehnder and North Pole B stacks ran intermittently (non-continuous) during the campaign, and more frequently in February than January (Figure A2), due to having 'limited operation' controls. ADEC (2020) provides more information on control strategies for each of the power plant facilities.

Appendix B: Evaluation of EPA-WRF model results against meteorological observations

775 Evaluation of the EPA-WRF simulation generally found that, when surface measurements are assimilated, the errors at sites not included in the nudging also decrease. For example, root mean square error (RMSE) temperature profile errors, compared to FAI radiosondes, are as low as can be expected for a two-month simulation with errors at or below 1 K throughout the troposphere. RMSEs of near surface temperatures (2, 3, 6, 11 and 23 m) are 2 K or less over the full ALPACA-2022 campaign with multiple sites having RMSEs of 1.5 K or less. Given the difficulties simulating the winter climate of the Fairbanks area, 780 the model performs well (Gilliam et al., 2023). Statistical evaluation of temperature profiles and SBI/EI diagnosis performed by Fochesatto et al. (2023) confirms the good model performance in terms of vertical temperature profiles. Wind speed and

direction biases are larger below 150 m (up to 2.5 m s^{-1}) than above the inversion layer (up to 1.5 m s^{-1}). 10 m wind speed RMSEs at observation sites, including FAI and CTC, are closer to 1.5 m s^{-1} with direction errors around 35° (Gilliam et al., 2023). Near-surface wind errors are important considerations for this study when evaluating the transport of surface emission tracers.

785

Figures B1 and B2 compares modelled and observed meteorology (temperatures, wind speeds and directions) as a function of time for available altitudes up to 23 m, at the Downtown and UAF Farm sites, respectively. The general variability is well captured by EPA-WRF, notably Downtown. For temperature gradients (23-3 m) Downtown, however there are some days in which high temperature gradients are underestimated (e.g. 2 February) or overestimated (e.g. 24 January). Wind direction agreement is poor when wind speeds are very low, but this is expected owing to higher uncertainties at low wind speeds (Figure B1f, Figure B2d). At the UAF Farm, the very high observed temperature gradients during AC-C and T-C are underestimated by EPA-WRF. Wind speeds at the UAF Farm are in poorer agreement when temperature gradients are high, notably during AC-C and T-C. Effectively modelling local flows, as experienced at the UAF Farm, is challenging (see discussion in Section 6.1). Discrepancies in winds and temperatures may contribute to differences between the FLEXPART-WRF tracer concentrations and observations. This is considered in the main text.

790
795

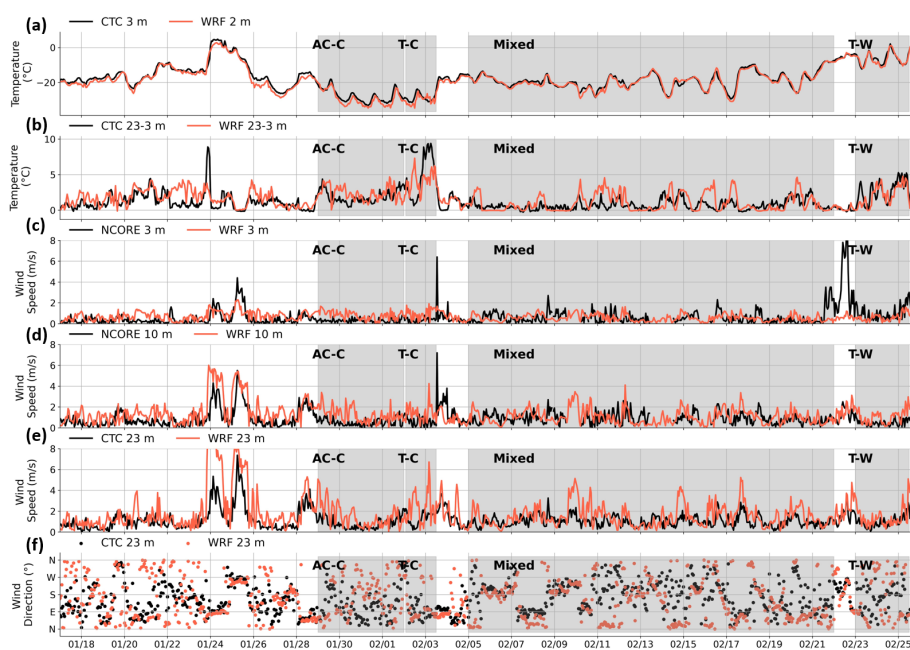


Figure B1. Time series of surface and near-surface temperatures ($^\circ\text{C}$), temperature gradients (dT , $^\circ\text{C}$), wind speeds (m s^{-1}) and directions (degs.), at Downtown, compared to EPA-WRF (red) for available observations (black) up to 23 m altitude during ALPACA-2022.

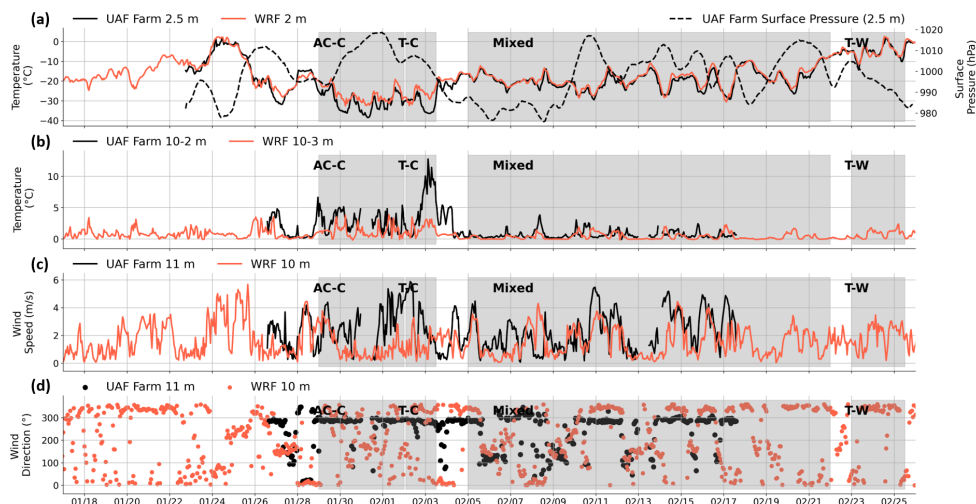


Figure B2. Time series of surface and near-surface temperatures ($^{\circ}\text{C}$), temperature gradients (dT , $^{\circ}\text{C}$), wind speeds (m s^{-1}) and directions (degs.), at UAF Farm, compared to EPA-WRF (red) for available observations (black) up to 11 m altitude during ALPACA-2022.

Appendix C: Vertical and Horizontal Dispersion of Emission Tracers

Figures C1 and C2 show spatial distributions in total (surface-emitted plus power plant) tracer enhancements at various altitude levels for SO_2 , CO and NO_x . In Figure C1, above 50 m, power plant influences are less evident for CO than for SO_2 and NO_x , with respect to the total tracer because CO emissions from power plants are smaller relative to surface-emitted tracers. For example, there is an order of magnitude difference for surface-emitted and power plant modelled CO tracers, that is not seen for SO_2 and NO_x (depicted in Figure C3b, see the following). At 0-10 m, NO_x spatial variability is comparable to that of CO due to similarities in emission sources (see also Figure A1). NO_x mixing ratios are larger from 0-100 m in SS compared to WS conditions, while above 100 m, mixing ratios are larger in WS conditions and influences from power plants are evident (Figure C2). The North Pole power plant stacks have larger influences for NO_x than CO and SO_2 due to differences in fuel types. Figure C3 shows simulated power plant (i) and surface-emitted (ii) tracers as a function of altitude and time for SO_2 at Hamilton Acres and CO at the UAF Farm. Power plant contributions vary at HA and the UAF Farm, indicating influences from different power plants at each location. Vertical transport is stronger at the UAF Farm site, notably for the surface-emitted tracers (Figure C3b).

Appendix D: Simulated Vertical Distributions and Power Plant Plumes

Vertical distribution of CO and NO_x power plant tracers as a function of time at the UAF Farm (1 grid cell) of δCO and δNO_x are shown for NO-RISE and NO-CAP simulations in Figure D1. The altitude and concentration of the model simulated tracers compared to observed plumes is significantly improved in NOCAP than NORISE, highlighting the importance of accounting

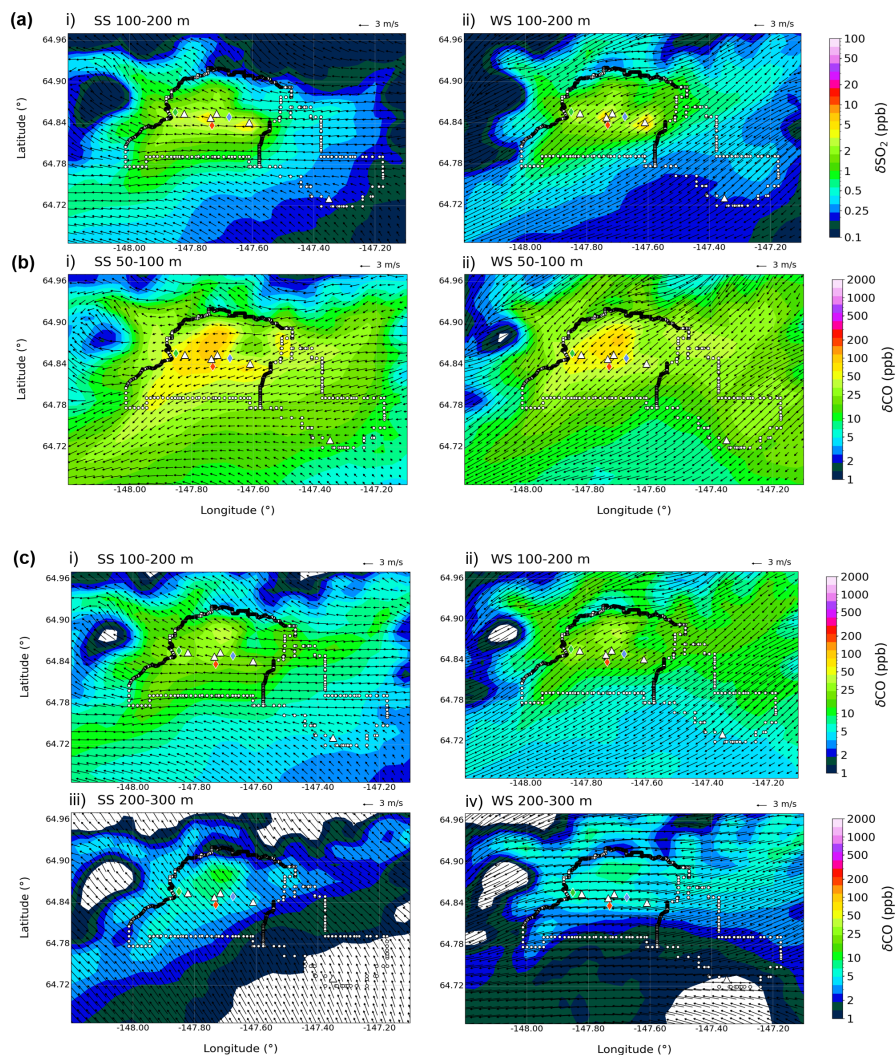


Figure C1. Spatial maps of total power plants and surface-emitted tracer enhancements (CTRL simulation) for i) SS and ii) WS for conditions a) SO₂ (ppb) at 100 - 200 m, b) CO at 50 - 100 m and c) CO at 100-200 m and 200 - 300m (iii, iv). Wind vectors (black arrows) indicate average wind direction (degs.) and wind speeds (m s^{-1}) simulated by EPA-WRF. [PLACEHOLDER: MAY REMOVE]

for plume buoyancy. CAP (Figure 6, main text) vs NOCAP differences are evaluated in the main text in more detail for individual cases. In some cases (e.g. CASE 3, main text and CASE 4, D1), the observed plume is not simulated at the grid cell
 815 closest to the UAF Farm due to displacement induced by wind direction discrepancies (see Appendix D1).

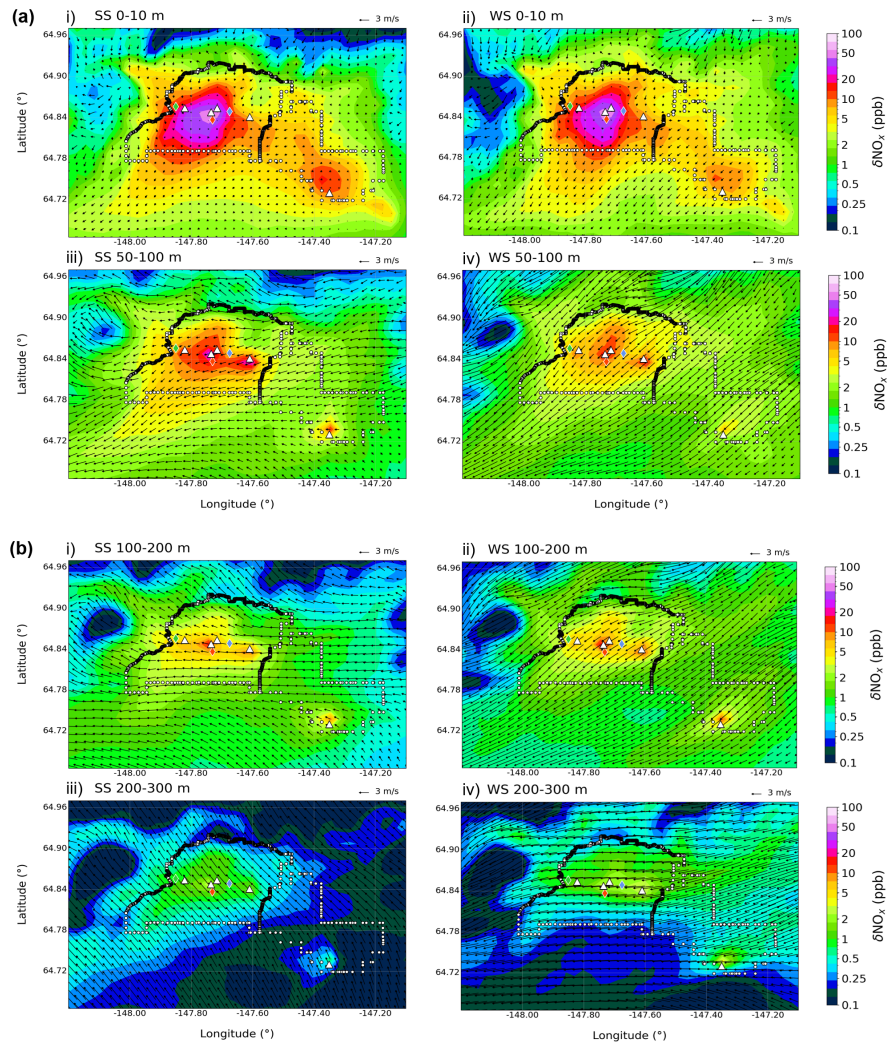


Figure C2. Spatial maps of total power plants and surface-emitted tracer enhancements (CTRL simulation) for i) SS and ii) WS conditions for CO (ppb) at a) 0-10 m (top), 50-100 m (lower) and b) 100 - 200 m (top) and 200 - 300 m (lower). Wind vectors (black arrows) indicate average wind direction (degs.) and wind speeds (m s^{-1}) simulated by EPA-WRF.

D1 Power plant plume model displacement

Figure D2a shows the spatial distribution of power plant tracers during case 3 for CO and NO_x to support the discussion in section 5. Here, the larger modelled CO enhancements are supported by the influence of the UAF C stack in close proximity to the UAF Farm and a displacement of the plume from the Aurora and Zehnder stacks in the east of Fairbanks, with larger NO_x concentrations. Figure D2b shows results for an additional case study (Case 4) on 3-4 February which supports displacement of power plant tracers due to EPA-WRF model against observation discrepancies. In Figure D2b, there is a large underestimate

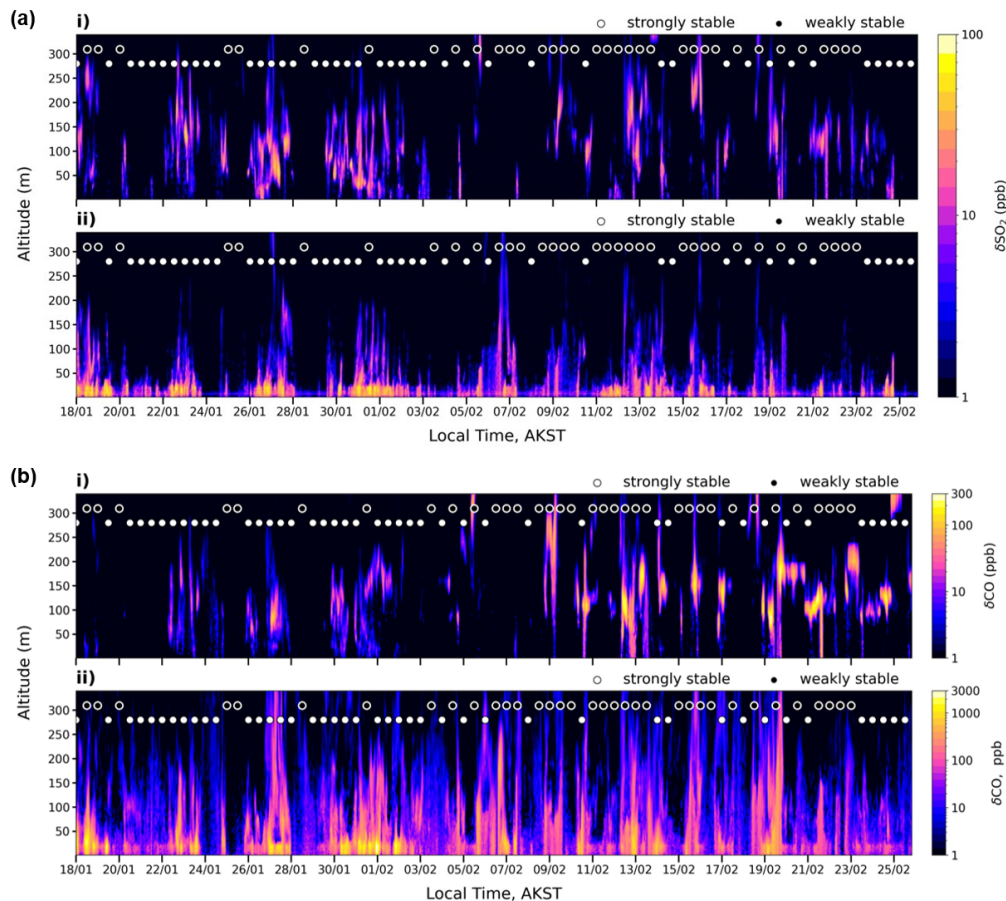


Figure C3. a) Total power plants (i) and surface-emitted (ii) tracer enhancements (CTRL simulation) as a function of altitude and time for a) SO_2 (ppb) at Hamilton Acres and b) CO (ppb) at the UAF Farm. The WS and SS stability regimes indicated every 12 hours.

in NO_x compared to observations, averaged over altitude bins. This can be explained by a discrepancy in the modelled wind direction (model: north-east, observed: east) leading to displacement of the modelled plume, as depicted in Figure D2c. A simulated plume is transported from the Doyon stack and south of the UAF Farm site between 120 - 180 m at 0200 AKST. The UAF C stack was not running during this flight (operations started from 0900 AKST on 4 February, Section 2.1.1).

D2 Model evaluation against Wind LiDAR observations

Figure D3 shows modelled power plant NO_x tracer enhancements compared to wind LiDAR observations measured at the CTC site (CASE 1 on 30 January to 1 February) and the UAF Farm (CASE 2 on 8 to 9 February). The wind LiDAR measures the 3 wind components using 5 beams (1 vertical and 4 slanted) of infrared light to record the attenuated backscatter of particles in the air (aerosol and water droplets) between 40 m and 290 m (20 m depth layers), referred to here as the RCS (range

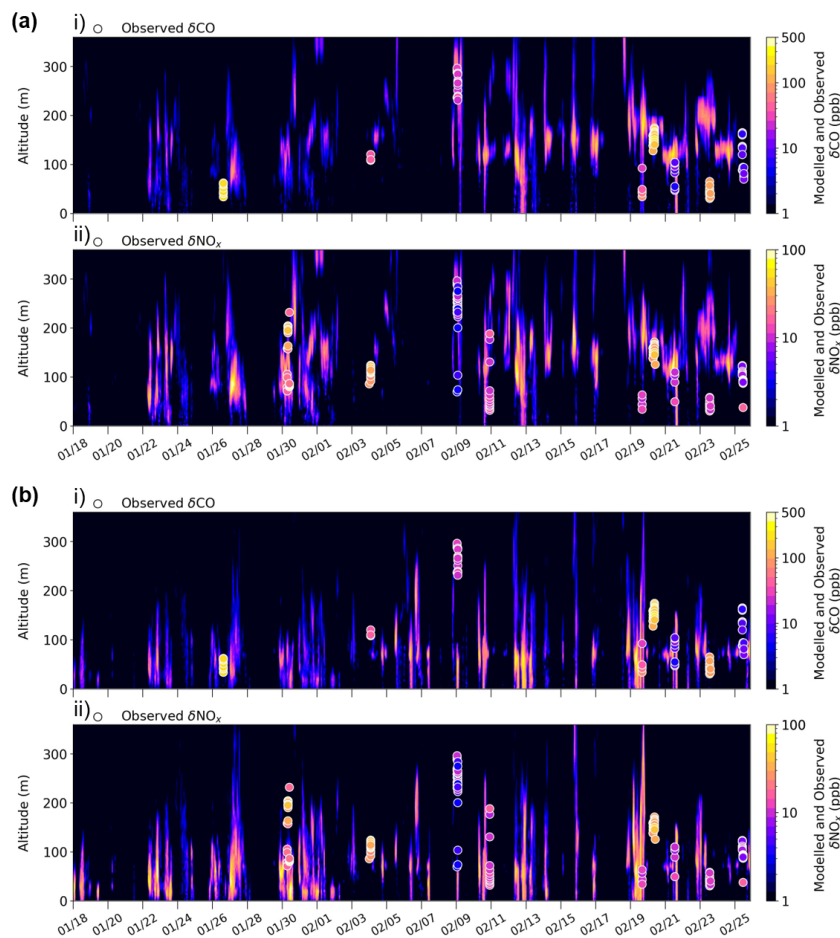
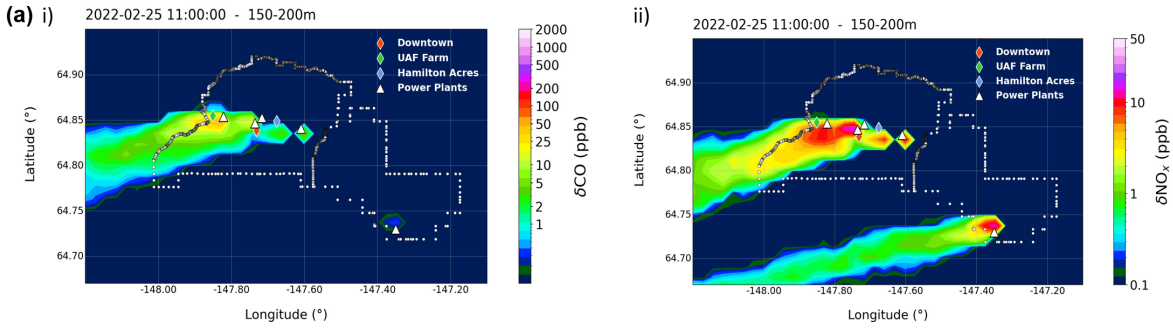


Figure D1. Comparison of modelled (CTRL) power plant and observed trace gas enhancements above background (> 30 m) for a) NOCAP and b) NORISE and i) δCO (ppb) and ii) δNO_x (ppb) at the closest grid-cell to the UAF Farm. Periods with available observations are shown. Observed plume enhancements are shown as circles (ppb).

corrected signal) (Figure D3, panel iii)) (Dieudonné et al., 2023). The quality of the signal to noise ratio depends on the presence of particles in the atmosphere, i.e. higher pollution or precipitation (snow) produces a stronger signal. A wind LiDAR plume mask has been developed to distinguish between water droplets and aerosols based on RCS and is used here to explore the presence of elevated plumes containing aerosols compared to the model results. This comparison is qualitative since the model simulations are enhancements in trace gas mixing ratios above background and wind lidar RCS provides an indication about the presence of particles between 0.5 - 1 μm with a peak of sensitivity around 0.7 - 0.8 μm (Dieudonné et al., 2019), which could be either primary or secondary aerosols.

CASE 3: 25 February



CASE 4: 3-4 February

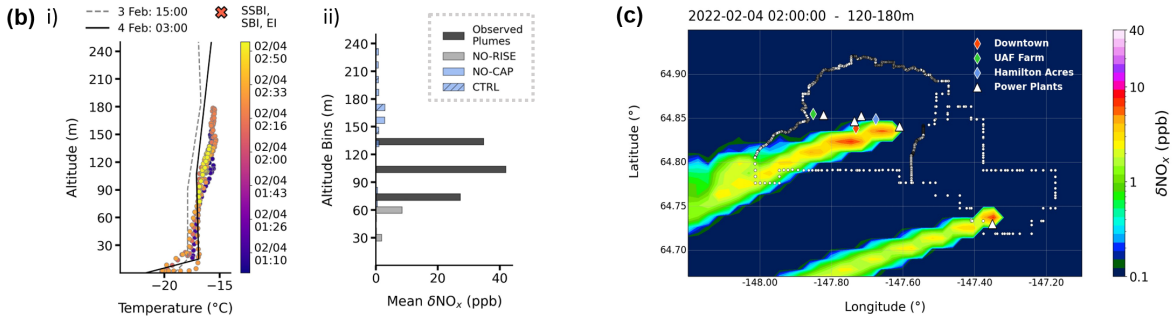


Figure D2. a) Spatial distribution of power plant tracers for i) CO (ppb) and ii) NO_x (ppb) between 150-200 m at 1100 AKST on 25 February (Case 3, Section 5), highlighting the Aurora plume displacement to the south of the UAF Farm. b) Observed temperature profiles and modelled NO_x tracer (ppb) enhancements against observations averaged over 30 m altitude bins for Case 4 on 3-4 February (see Figure 7 for details). c) Spatial distribution of power plant NO_x tracer (ppb) between (120 - 180 m) at 0200 AKST on 4 February, highlighting the Doyon plume displacement to the south of the UAF Farm.

Appendix E: Evaluation of modelled surface tracers

E1 Statistical Metrics

840 To evaluate model performance Normalised Mean Biases (NMBs) and Normalised Mean Errors (NMEs) are calculated using the following equations :

$$NMB = \frac{\sum_{i=1}^n (M_i - X_i)}{\sum_{i=1}^n X_i} \quad (E1)$$

$$NME = \frac{\sum_{i=1}^n |M_i - X_i|}{\sum_{i=1}^n X_i} \quad (E2)$$

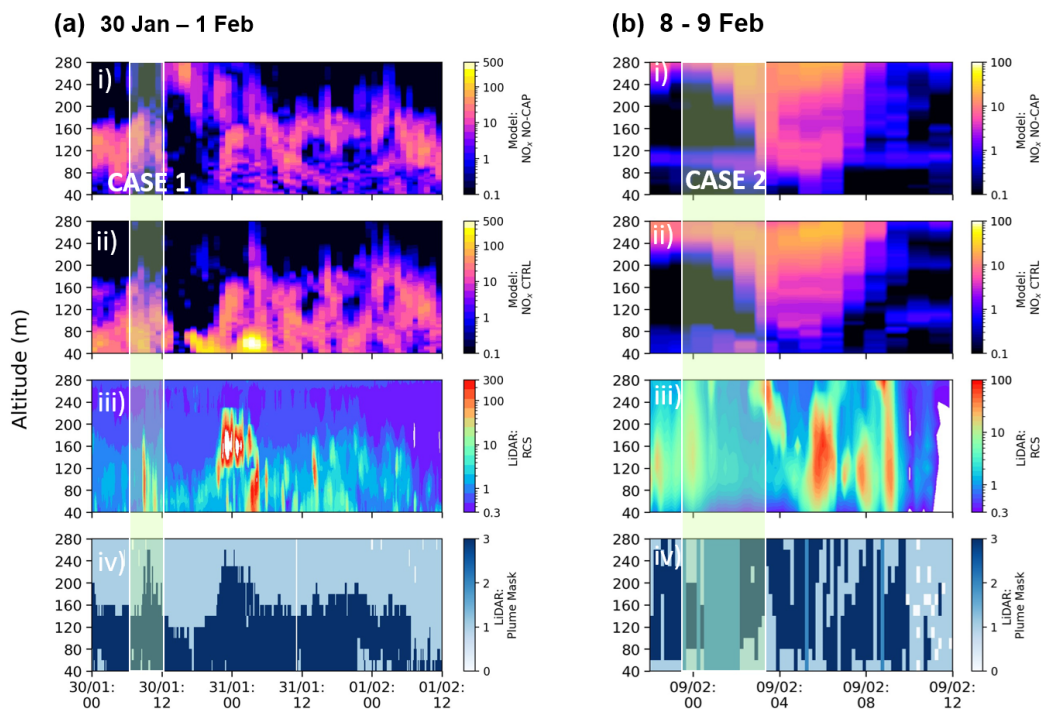


Figure D3. i, ii) Simulated power plant NO_x tracers (ppb) as a function of altitude and time for NOCAP and CTRL simulations, respectively, iii) aerosol back-scatter coefficient observed by wind LiDAR observations and iv) LiDAR-plume mask (described in Appendix D), for a) 30 January to 1 February at Downtown (CASE 1 highlighted by white box) and b) 8 to 9 February at the UAF Farm (CASE 2 highlighted by white box).

E2 UAF Farm and Hamilton Acres

845 NMBs and NMEs for model performance compared to surface observations are provided for Downtown (Table 4) and here for the HA and UAF Farm sites (Tables E1 and E2). Figures E1 and E2 show the time series and diurnal cycles for the different meteorological regimes as described in Section 6.1 for HA and the UAF Farm, respectively.

E3 SO_2 Wet and Dry Deposition

850 Dry or wet deposition were explored initially and included in the CTRL simulation for SO_2 . With regard to dry deposition of SO_2 , fluxes are expected to be low in Arctic winter due to lower temperatures, less exposure to moist surfaces and low levels of oxidants, as found in the Athabasca Oil Sands region in Canada (Hsu et al., 2016). However, Hsu et al. (2016) recorded higher deposition fluxes close to emission sources such as power plants. In this study, a dry deposition velocity of 0.1 cm s^{-1} is used, based on values recorded over snow in the wintertime Arctic, ranging from 0.06 and 0.082 cm s^{-1} (Dasch and Cadle, 1986; Valdez et al., 1987) and 0.2 cm s^{-1} in northern Canada between February and March (Barrie and Walmsley, 1978). A

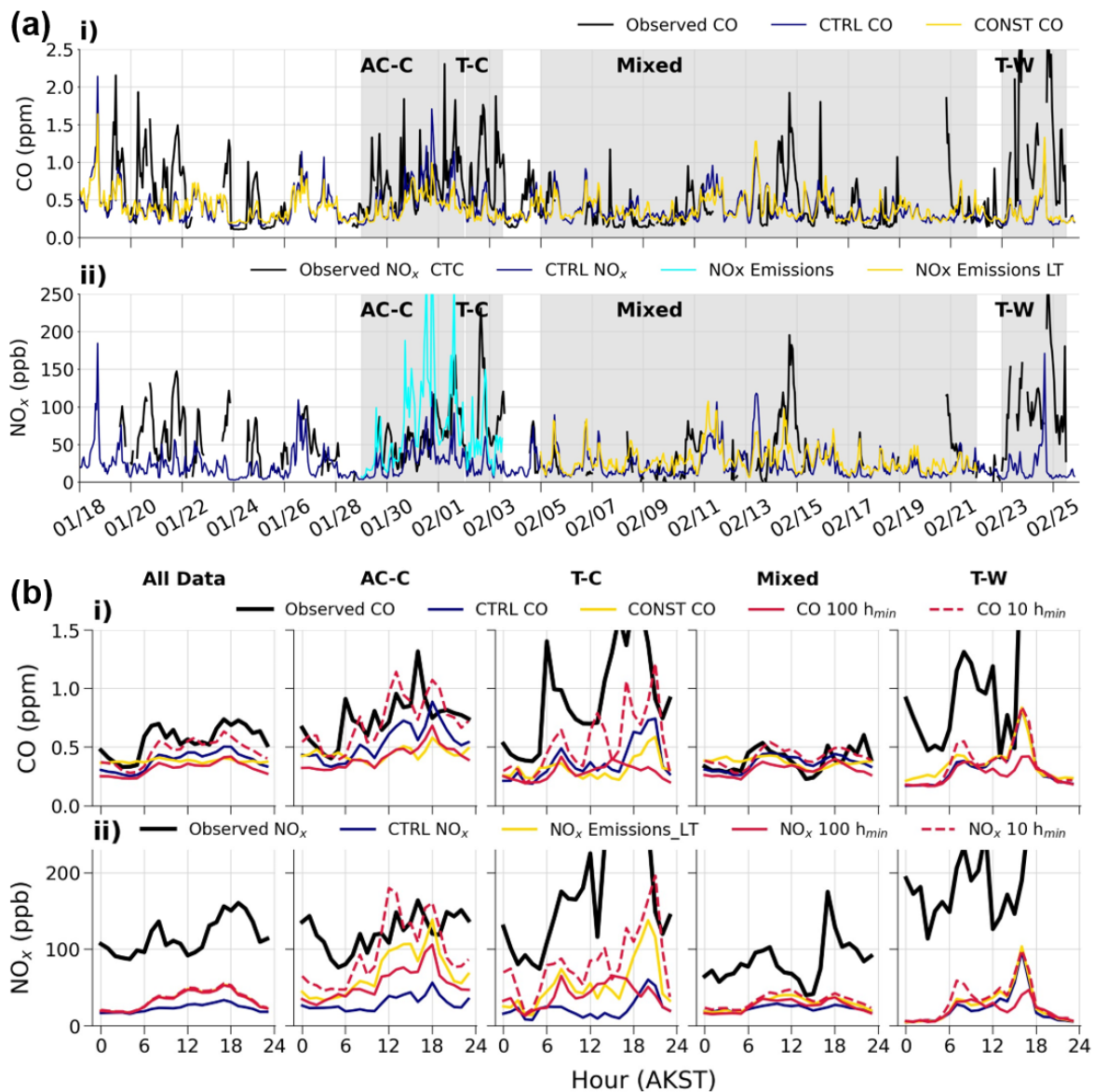


Figure E1. a) Total modelled surface and power plant tracers as a function of time between 0-5 m for CTRL and selected sensitivity simulations described in Table 2 compared to available surface observations, at HA for i) CO and ii) NO_x. b) Average diurnal cycles at HA for observations (black) and model simulations (colours as in (a)) for i) CO and ii) NO_x, averaged over all data and for events A-C, T-C, Mixed and T-W.

855 simplified treatment for wet deposition of SO₂ is also included in the CTRL run using FLEXPART-WRF. A wet deposition velocity, or scavenging coefficient is prescribed 1×10^{-4} , together with a Henry's law constant of 3×10^{-4} , based on values used in other studies (e.g., Valdez et al., 1987; Choi et al., 2000; Elperin et al., 2013). In general most of the precipitation

Simulation Name	NMB					NME				
	All Data	AC-C	T-C	Mixed	T-W	All Data	AC-C	T-C	Mixed	T-W
CTRL CO	-0.34	-0.27	-0.59	-0.06	-0.78	0.56	0.44	0.6	0.55	0.78
CONST CO	-0.35	-0.4	-0.64	-0.05	-0.74	0.56	0.47	0.64	0.54	0.74
MixH_100_CO	-0.44	-0.43	-0.68	-0.21	-0.78	0.57	0.49	0.68	0.49	0.78
MixH_10_CO	-0.21	-0.03	-0.42	0.06	-0.74	0.55	0.46	0.5	0.61	0.75
CTRL NO _x	-0.79	-0.73	-0.88	-0.69	-0.91	0.82	0.73	0.88	0.82	0.91
NO _x Emissions	-0.58	-0.27	-0.71	-0.44	-0.89	0.72	0.51	0.72	0.77	0.89
NO _x Emissions_LT	-0.65	-0.37	-0.72	-0.6	-0.9	0.73	0.53	0.73	0.73	0.9
MixH_100_NO _x	-0.66	-0.51	-0.81	-0.67	-0.91	0.73	0.59	0.81	0.75	0.91
MixH_10_NO _x	-0.64	-0.13	-0.57	-0.57	-0.87	0.72	0.48	0.6	0.72	0.87

Table E1. Comparison of Normalised mean biases (NMBs) and normalised mean errors (NMEs) of model simulations (total tracers) between 0-5 m, compared to surface observations at Hamilton Acres for CO and NO_x at hourly time resolution. NMB and NMEs are given for all data and the meteorological events A-C, T-C, Mixed and T-W.

Simulation Name	NMB					NME				
	All Data	AC-C	T-C	Mixed	T-W	All Data	AC-C	T-C	Mixed	T-W
CTRL CO	0.39	0.68	-0.04	0.58	-0.06	0.56	0.82	0.33	0.64	0.18
CONST CO	0.37	0.44	-0.06	0.61	0.09	0.56	0.66	0.38	0.67	0.19
MixH_100_CO	0.07	0.08	-0.17	0.22	-0.09	0.31	0.34	0.29	0.33	0.19
MixH_10_CO	0.6	1.04	0.19	0.71	0.04	0.73	1.14	0.43	0.76	0.17

Table E2. Comparison of Normalised mean biases (NMBs) and normalised mean errors (NMEs) of model simulations (total tracers) between 0-5 m, compared to surface observations at UAF Farm for CO at hourly time resolution. NMB and NMEs are given for all data and the meteorological events A-C, T-C, Mixed and T-W.

occurred during the Mixed period in February and during WS conditions. Biases were reduced when deposition is considered but had minor effect compared to the other sensitivities in this study, hence deposition was included in the CTRL simulation.

860 E4 Sensitivity to Vehicle NO_x Emissions at Cold Temperatures

MOVES3 (U.S. EPA, 2021) includes an incremental temperature dependence with higher emissions at colder temperatures for gasoline and diesel vehicles based on MOVES2014b (U.S. EPA, 2015). Updates in MOVES3 compared to MOVES2014b include reduced NO_x emissions due to the diesel fleet turnover but not to the temperature adjustments for the trace gas species in this study. For start energy combustion emissions (from engine fuel ignition), there is a higher increment for gasoline emissions at colder temperatures (up to a factor of 4.8 at -30 °C) than diesel (up to a factor of 2.7 at -30 °C). A multiplicative adjustment

865

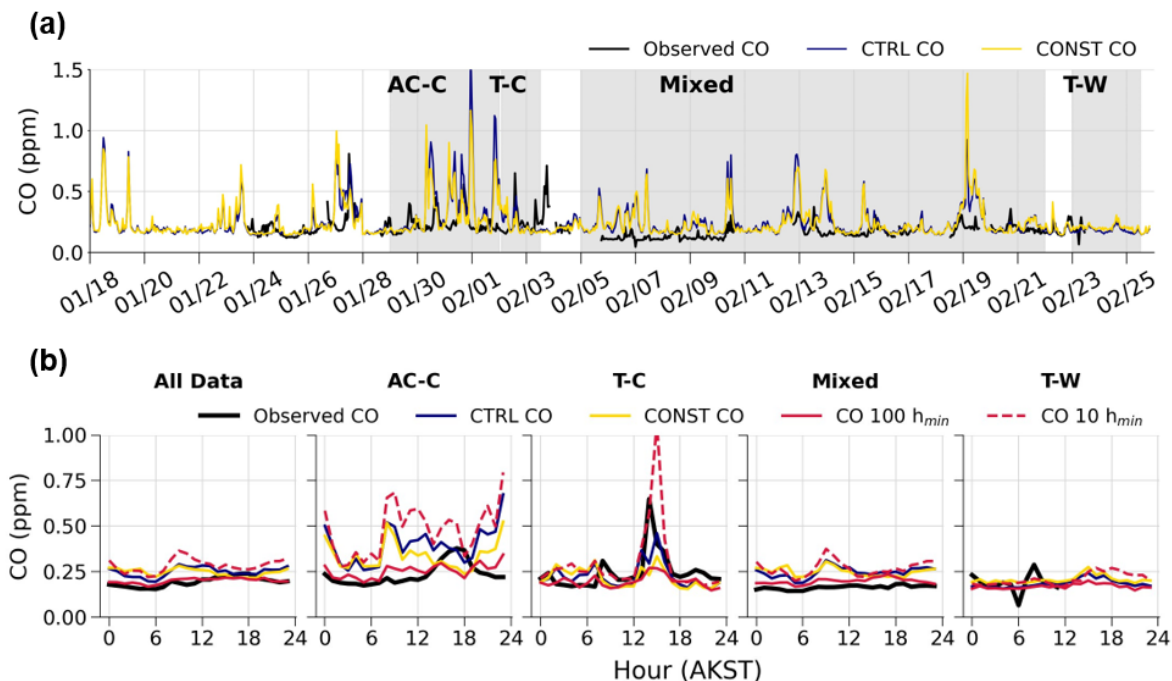


Figure E2. a) Total modelled surface and power plant tracers as a function of time between 0-5 m for CTRL and selected sensitivity simulations described in Table 2 compared to available surface observations, at UAF Farm for CO. b) Average diurnal cycles at UAF Farm for observations (black) and model simulations (colours as in (a)) for CO averaged over all data and for events A-C, T-C, Mixed and T-W.

using a log-linear fit based on ambient temperatures is applied to CO gasoline emissions. However, for NO_x gasoline emissions, at $-18\text{ }^\circ\text{C}$ a 1.227 additive temperature adjustment is reduced only to 1.201 at $-30\text{ }^\circ\text{C}$, so that the adjustment does not exceed 1.2 at colder temperatures. Since NO_x emissions from gasoline vehicles are much lower than for CO, this results in a much higher increment for CO emissions at cold temperatures. In addition, for diesel vehicle cold starts, no statistical relationship was found for both NO_x and CO, and the temperature adjustments are set to zero in MOVES3 following U.S. EPA (2015). However, data was only collected down to $+1.5\text{ }^\circ\text{C}$ in that study. While diesel CO emissions were not statistically significant, NO_x diesel emissions were a factor of 2.6 higher at this temperature compared to a factor of 0.32 at $7\text{ }^\circ\text{C}$. This, together with other studies discussed in Section 6.2.2, suggests that a much higher increment may be required for temperatures below $0\text{ }^\circ\text{C}$. Figure E3 shows the log-linear function used to increase mobile NO_x emissions based on decreases in daily average ambient temperatures.

E5 Sensitivity to Photochemical Lifetimes

This section investigates the influence of photochemical lifetimes on simulated tracers. The photochemical lifetime of SO_2 is considered, but is estimated to be long, around 10 to 20 days since hydroxyl radical (OH) concentrations, one of the main loss

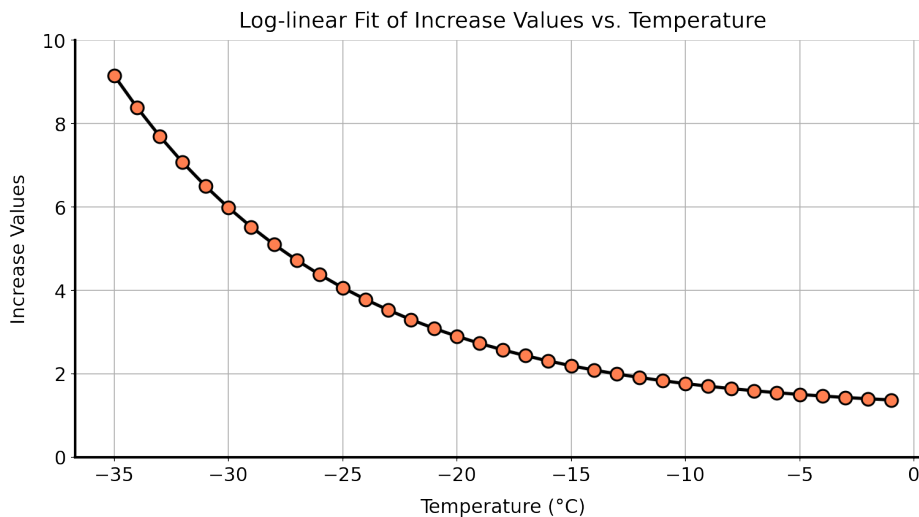


Figure E3. Increment applied to NO_x mobile (on-road+non-road) emissions as a function of daily average temperature (°C) using a log-linear function.

880 pathways for SO₂, are very low in Arctic winter (Yu et al., 2018; Green et al., 2019). Therefore, it is considered that transport and emissions of SO₂ are more important than photochemical loss during winter. The lifetime of CO is of the order of months during Arctic winter (AMAP, 2021) and not considered further.

885 However, a photochemical lifetime for NO_x is considered and included in the run with temperature-dependent diesel vehicle emissions (run NO_x_Emissions_LT). NO is lost by reaction with O₃ and reformed following photolysis of NO₂ but in winter O₃ is fully or almost fully titrated since photolysis rates are very low, especially under conditions with strong surface-based temperature inversions with little vertical mixing of O₃ from aloft. Here, the lifetimes of NO and NO₂ are included and assumed to have a longer lifetime in SS compared to WS conditions. During polluted SS conditions O₃ concentrations are very low or even zero at the surface and NO_x levels are high, whilst during WS conditions O₃ is higher and mixed down from aloft contributing to reduced NO_x (Simpson et al., 2024). Kenagy et al. (2018) found that winter nighttime lifetimes were shorter (6.3 hours) than daytime (29 hours) due to the occurrence of nocturnal chemistry such as nitric acid and N₂O₅ production. However, 890 if O₃ concentrations are very low, N₂O₅ formation is limited (Fibiger et al., 2018). In our study, lifetimes are assumed to be 8 and 12 hours for NO and NO₂, respectively, in WS conditions, and 48 hours for both species in SS conditions, in line with typical winter values and increased in SS conditions to account for titrated O₃. Inclusion of NO_x lifetimes reduces the NMB and NME arising from inclusion of the temperature-dependent vehicle emissions, notably during the Mixed period (NMB and NME reduced from 0.59 and 0.93 to -0.21 and 0.7, respectively, Table 4).

895 **E6 Sensitivity to Vertical Mixing**

The model is run including all previous updates (Table 3). As described earlier, h_{\min} , which is used as a proxy for the height of surface stable layers in this study, is set to 20 m in CTRL. Thus, tracers, that are emitted from sources at or below 20 m, can be mixed up to this height if the FLEXPART-WRF ABL height is less than this, as depicted in Figure 5. Since the structure of stable layers in the ABL is complex, sometimes with very shallow SBIs or SSBIs within SBI layers, and difficult for models to reproduce, a sensitivity run is performed with h_{\min} equal to 10 m (MixH_10). However, during the Mixed period (WS conditions), the ABL is less stable with more vertical mixing. To explore this, a sensitivity with h_{\min} equal to 100 m is also performed (run MixH_100). Results from MixH_100 and MixH_10 for selected periods are shown in Figure 9 with NMBs and NMEs for all runs in Table 4.

CO and NO_x are overestimated compared to the observations during AC-C in the runs with $h_{\min} = 10$ m, also seen in the diurnal comparisons, leading to poorer agreement compared to CTRL CO and NO_x_EMissions_LT (Figure 9). Results are worse for SO₂ due to excessive trapping of space heating emissions below 10 m. In contrast, on-road emissions for NO_x and CO are released only at the near-surface (0-4 m). Negative biases are reduced during T-C in runs using $h_{\min} = 10$ m, in particular during the daytime, and also during event T-W but only slightly and NMBs remain high (-0.62 for MixH_10_NO_x, -0.45 for MixH_10_CO, Table 4). As discussed in Section 4.3.2, this may be explained by meteorology, although the surface inversion strength is reproduced quite well by EPA-WRF, simulated horizontal transport is too strong during T-W below 20 m. Runs using $h_{\min} = 100$ m lead to improvements (reduced positive biases, improved NMEs) during the Mixed period for CO and NO_x due to more vertical dispersion in less stable conditions. Model biases in SO₂ are generally improved when $h_{\min} = 100$ m, notably in the Mixed period and T-W. The results indicate that the modelled tracers are sensitive to the vertical distribution of emissions, such as those from space heating, as well as the treatment of vertical dispersion and turbulence in FLEXPART-WRF.

915 *Author contributions.* EPA-WRF simulations were provided by R.G. (EPA). Helikite data was provided by the EPFL team and Micromegas Helikite data by B.B. Downtown surface observations were provided by M.S.-M. and W.S. FLEXPART-WRF simulations were conducted by NB with contributions from T.O. and J.-C.R. Key contributions to the manuscript include N.B., K.S.L. and S.A., assisted by contributions from all co-authors. The views expressed in this article are those of the author(s) and do not necessarily represent the views or policies of the U.S. Environmental Protection Agency.

920 *Competing interests.* The authors declare that they have no conflict of interest.

Acknowledgements. We thank the entire ALPACA science team of researchers for designing the experiment, acquiring funding, making measurements, and ongoing analysis of the results. The ALPACA project is organized as a part of the International Global Atmospheric Chemistry (IGAC) project under the Air Pollution in the Arctic: Climate, Environment and Societies (PACES) initiative with support from

the International Arctic Science Committee (IASC), the National Science Foundation (NSF), and the National Oceanic and Atmospheric Administration (NOAA). We thank University of Alaska Fairbanks and the Geophysical Institute for logistical support, and we thank Fairbanks for welcoming and engaging with this research. We also thank each of the power plant facilities for providing the power plant emissions for the duration of the campaign. N.B. K.S.L., B.D'A., J.S., S.A., B.B., S.B., H.D., E.D., A.I., T.O., J.-C.R., F.R., T.R., and B.T.-R. acknowledge support from the Agence National de Recherche (ANR) CASPA (Climate-relevant Aerosol Sources and Processes in the Arctic) project (grant no. ANR-21-CE01-0017), and the Institut polaire français Paul-Émile Victor (IPEV) (grant no. 1215) and CNRS-INSU programme LEFE (Les Enveloppes Fluides et l'Environnement) ALPACA-France projects. We also acknowledge access to IDRIS HPC resources (GENCI allocation A013017141) for the FLEXPART-WRF simulations. S.R.A. and N.B. acknowledge support from the UK Natural Environment Research Council (grant ref. NE/W00609X/1). G.J.F. acknowledges support from NSF grants 2117971, 2146929, and 2232282. R.P. and J.S. received funding from the Swiss National Science Foundation grant no. 200021_212101. J.S. holds the Ingvar Kamprad Chair for Extreme Environments Research. S.D., A.D., G.P., F.S. acknowledge support from the PRA ("Programma di Ricerche in Artico") 2019 programme (project "A-PAW") and from the ENI-CNR Research Center "Aldo Pontremoli". W.R.S. and M.C.-M. acknowledge support from NSF grants NNA-1927750 and AGS-2109134. J.M. acknowledges support from NSF grants NNA-1927750 and AGS-2029747. V.S. acknowledges support from NSF grants RISE-1927831 and AGS-2037091. P.F.D. and E.S.R. acknowledge funding support from NSF award 2012905.

References

- ADEC: Amendments to: State Air Quality Control Plan, Vol. III: Appendix III.D.7.07, Alaska Department of Environmental Conservation (ADEC), 2019.
- ADEC: Amendments to: State Air Quality Control Plan, Vol. II: III.D.7.07 Control Strategies, Alaska Department of Environmental Conservation (ADEC), 2020.
- ADEC: Technical Analysis Modeling Report for Phase 1, 2, and 3, Alaska Department of Environmental Conservation (ADEC) - Division of Air Quality, 2023.
- 945 Akingunola, A., Makar, P. A., Zhang, J., Darlington, A., Li, S.-M., Gordon, M., Moran, M. D., and Zheng, Q.: A chemical transport model study of plume-rise and particle size distribution for the Athabasca oil sands, *Atmospheric Chemistry and Physics*, 18, 8667–8688, <https://doi.org/10.5194/acp-18-8667-2018>, 2018.
- Alexander, B., Allman, D., Amos, H., Fairlie, T., Dachs, J., Hegg, D. A., and Sletten, R. S.: Isotopic constraints on the formation pathways of sulfate aerosol in the marine boundary layer of the subtropical northeast Atlantic Ocean, *Journal of Geophysical Research: Atmospheres*, 950 117, <https://doi.org/10.1029/2011JD016773>, 2012.
- AMAP: Arctic climate change update 2021: key trends and impacts. Summary for policy-makers, Arctic monitoring and assessment programme (AMAP), p. 16, 2021.
- Andrew, R.: Socio-Economic Drivers of Change in the Arctic. AMAP Technical Report No. 9 (2014)., Arctic Monitoring and Assessment Programme (AMAP), 2014.
- 955 Angevine, W. M., Baltink, H. K., and Bosveld, F. C.: Observations of the morning transition of the convective boundary layer, *Boundary-Layer Meteorology*, 101, 209–227, <https://doi.org/10.1023/A:1019264716195>, 2001.
- [aqfairbanks.com: https://www.aqfairbanks.com/338/Program-Boundaries](https://www.aqfairbanks.com/338/Program-Boundaries), 2023.
- Barrie, L. and Walmsley, J.: A study of sulphur dioxide deposition velocities to snow in northern Canada, *Atmospheric Environment* (1967), 12, 2321–2332, 1978.
- 960 Benjamin, S. G., Grell, G. A., Brown, J. M., Smirnova, T. G., and Bleck, R.: Mesoscale weather prediction with the RUC hybrid isentropic–terrain-following coordinate model, *Monthly Weather Review*, 132, 473–494, [https://doi.org/10.1175/1520-0493\(2004\)132<0473:MWPWTR>2.0.CO;2](https://doi.org/10.1175/1520-0493(2004)132<0473:MWPWTR>2.0.CO;2), 2004.
- Bieser, J., Aulinger, A., Matthias, V., Quante, M., and Van Der Gon, H. D.: Vertical emission profiles for Europe based on plume rise calculations, *Environmental Pollution*, 159, 2935–2946, <https://doi.org/10.1016/j.envpol.2011.04.030>, 2011.
- 965 Bodhaine, B. A. and Dutton, E. G.: A long-term decrease in Arctic haze at Barrow, Alaska, *Geophysical Research Letters*, 20, 947–950, <https://doi.org/10.1029/93GL01146>, 1993.
- Bourgeois, Q. and Bey, I.: Pollution transport efficiency toward the Arctic: Sensitivity to aerosol scavenging and source regions, *Journal of Geophysical Research: Atmospheres*, 116, <https://doi.org/10.1029/2010JD015096>, 2011.
- Bradley, R. S., Keimig, F. T., and Diaz, H. F.: Climatology of surface-based inversions in the North American Arctic, *Journal of Geophysical Research: Atmospheres*, 97, 15 699–15 712, <https://doi.org/10.1029/92JD01451>, 1992.
- 970 Briggs, G. A.: Plume rise and buoyancy effects, *Atmospheric science and power production*, pp. 327–366, 1984.
- Brioude, J., Arnold, D., Stohl, A., Cassiani, M., Morton, D., Seibert, P., Angevine, W., Evan, S., Dingwell, A., Fast, J. D., et al.: The Lagrangian particle dispersion model FLEXPART-WRF version 3.1, *Geoscientific Model Development*, 6, 1889–1904, <https://doi.org/10.5194/gmd-6-1889-2013>, 2013.

- 975 Cesler-Maloney, M., Simpson, W. R., Miles, T., Mao, J., Law, K. S., and Roberts, T. J.: Differences in Ozone and Particulate Matter Between Ground Level and 20 m Aloft are Frequent During Wintertime Surface-Based Temperature Inversions in Fairbanks, Alaska, *Journal of Geophysical Research: Atmospheres*, 127, e2021JD036215, <https://doi.org/10.1029/2021JD036215>, 2022.
- Choi, J., Conklin, M. H., Bales, R. C., and Sommerfeld, R. A.: Experimental investigation of SO₂ uptake in snow, *Atmospheric Environment*, 34, 793–801, 2000.
- 980 CMAS Center: SMOKE Version 5.0 User's Manual, Available online: <https://www.cmascenter.org/help/documentation.cfm?model=smoke&version=5.0>, accessed on: 26 March 2024, 2023.
- Dasch, M. J. and Cadle, S. H.: Dry deposition to snow in an urban area, *Water, Air, and Soil Pollution*, 29, 297–308, 1986.
- de Witt, M., Stefánsson, H., Valfell, Á., and Larsen, J. N.: Energy resources and electricity generation in Arctic areas, *Renewable Energy*, 169, 144–156, <https://doi.org/10.1016/j.renene.2021.01.025>, 2021.
- 985 Dieudonné, E., Delbarre, H., Augustin, P., Fourmentin, M., Flament, P., Deboudt, K., Ngagine, S. H., and Cazier, F.: Application of existing Doppler lidars for simultaneous air quality applications: results from comparison with PM₁₀, PM_{2.5} and granulometric observations in a multi-influenced harbor city, in: *AGU Fall Meeting Abstracts*, vol. 2019, pp. A111–2669, 2019.
- Dieudonné, E., Delbarre, H., Sokolov, A., Ebojje, F., Augustin, P., and Fourmentin, M.: Characteristics of the low-level jets observed over Dunkerque (North Sea French coast) using 4 years of wind lidar data, *Quarterly Journal of the Royal Meteorological Society*, 149, 1745–1768, <https://doi.org/10.1002/qj.4480>, 2023.
- 990 Donato, A., Pappacogli, G., Famulari, D., Mazzola, M., Scoto, F., and Decesari, S.: Characterization of size-segregated particles' turbulent flux and deposition velocity by eddy correlation method at an Arctic site, *Atmospheric Chemistry and Physics*, 23, 7425–7445, <https://doi.org/10.5194/acp-23-7425-2023>, 2023.
- Elperin, T., Fominykh, A., and Krasovitov, B.: Rain scavenging of soluble gases by non-evaporating and evaporating droplets from inhomogeneous atmosphere, *Meteorology and Atmospheric Physics*, 122, 215–226, 2013.
- 995 Emerson, E. W., Hodshire, A. L., DeBolt, H. M., Bilsback, K. R., Pierce, J. R., McMeeking, G. R., and Farmer, D. K.: Revisiting particle dry deposition and its role in radiative effect estimates, *Proceedings of the National Academy of Sciences*, 117, 26076–26082, <https://doi.org/10.1073/pnas.2014761117>, 2020.
- Fibiger, D. L., McDuffie, E. E., Dubé, W. P., Aikin, K. C., Lopez-Hilfiker, F. D., Lee, B. H., Green, J. R., Fiddler, M. N., Holloway, J. S., Ebben, C., et al.: Wintertime overnight NO_x removal in a southeastern United States coal-fired power plant plume: A model for understanding winter NO_x processing and its implications, *Journal of Geophysical Research: Atmospheres*, 123, 1412–1425, 2018.
- 1000 Fochesatto, G.: Methodology for determining multilayered temperature inversions, *Atmospheric Measurement Techniques*, 8, 2051–2060, <https://doi.org/10.5194/amt-8-2051-2015>, 2015.
- Fochesatto, G. J., Drobinski, P., Flamant, C., Guedalia, D., Sarrat, C., Flamant, P. H., and Pelon, J.: Evidence of dynamical coupling between the residual layer and the developing convective boundary layer, *Boundary-layer meteorology*, 99, 451–464, <https://doi.org/10.1023/A:1018935129006>, 2001.
- 1005 Fochesatto, G. J., Brett, N., Law, K. S., Pohorsky, R., Baccarini, A., Barret, B., Pappacogli, G., Scoto, F., Busetto, M., Dieudonné, E., Albertin, S., Bekki, S., Maillard, J., Cesler-maloney, M., Raut, J.-C., Ravetta, F., Atkinson, D., Keller, D., Roberts, T. J., Schmale, J., Decesari, S., Donato, A., Douglgeris, K., Brus, D., Arnold, S., Mao, J., and Simpson, W. R.: Overview of the ALPACA-PBL Winter Field Experiment, in: *The 103rd AMS Annual Meeting*, Denver, United States, <https://insu.hal.science/insu-04216320>, 2023.
- 1010 Fochesatto, G. J., Law, K. S., Schmale, J., Decesari, S., Simpson, W., Pohorsky, R., Barret, B., Baccarini, A., Dieudonné, E., Brett, N., Keller, D., Donato, A., Pappacogli, G., Scoto, F., Busetto, M., Albertin, S., Bekki, S., Ravetta, F., Raut, J.-C., Cailteau-Fischbach,

- C., Cesler-Maloney, M., Mao, J., Arnold, S., Temime-Roussel, B., D'Anna, B., Savarino, J., Maillard, J., Ioannidis, E., Doulgieris, K., Brus, D., Gilliam, R., Roberts, T., Atkinson, D., Petersen, E., Iwata, H., Ueyama, M., and Harazono, Y.: Meteorological Overview of the ALPACA-2022 Field Experiment: dynamical influences on boundary-layer composition in continental Arctic wintertime, paper in preparation, 2024.
- 1015 Gilliam, R. C., Pouliot, G., Fahey, K., Pye, H., Briggs, N., Huff, D., and Farrell, S.: Modeling the Wintertime Meteorology for the 2022 Alaskan Layered Pollution and Chemical Analysis (ALPACA) Campaign, in: 103rd AMS Annual Meeting, AMS, 2023.
- Green, J. R., Fiddler, M. N., Holloway, J. S., Fibiger, D. L., McDuffie, E. E., Campuzano-Jost, P., Schroder, J. C., Jimenez, J. L., Weinheimer, A. J., Aquino, J., et al.: Rates of wintertime atmospheric SO₂ oxidation based on aircraft observations during clear-sky conditions over the eastern United States, *Journal of Geophysical Research: Atmospheres*, 124, 6630–6649, <https://doi.org/10.1029/2018JD030086>, 2019.
- 1020 Guevara, M., Soret, A., Arévalo, G., Martínez, F., and Baldasano, J. M.: Implementation of plume rise and its impacts on emissions and air quality modelling, *Atmospheric environment*, 99, 618–629, <https://doi.org/10.5194/essd-13-367-2021>, 2014.
- Guevara, M., Jorba, O., Tena, C., Denier van der Gon, H., Kuenen, J., Elguindi, N., Darras, S., Granier, C., and Pérez García-Pando, C.: Copernicus Atmosphere Monitoring Service TEMPORal profiles (CAMS-TEMPO): global and European emission temporal profile maps for atmospheric chemistry modelling, *Earth System Science Data*, 13, 367–404, <https://doi.org/10.5194/essd-13-367-2021>, 2021.
- 1025 Hanna, S.: Applications in air pollution modeling, in: *Atmospheric Turbulence and Air Pollution Modelling: A Course held in The Hague*, 21–25 September, 1981, pp. 275–310, Springer, 1984.
- Hsu, Y.-M., Bytnerowicz, A., Fenn, M. E., and Percy, K. E.: Atmospheric dry deposition of sulfur and nitrogen in the Athabasca Oil Sands Region, Alberta, Canada, *Science of the total Environment*, 568, 285–295, 2016.
- 1030 Iacono, M. J., Delamere, J. S., Mlawer, E. J., Shephard, M. W., Clough, S. A., and Collins, W. D.: Radiative forcing by long-lived greenhouse gases: Calculations with the AER radiative transfer models, *Journal of Geophysical Research: Atmospheres*, 113, <https://doi.org/10.1029/2008JD009944>, 2008.
- Ioannidis, E., Law, K. S., Raut, J.-C., Marelle, L., Onishi, T., Kirpes, R. M., Upchurch, L. M., Tuch, T., Wiedensohler, A., Massling, A., et al.: Modelling wintertime sea-spray aerosols under Arctic haze conditions, *Atmospheric Chemistry and Physics*, 23, 5641–5678, <https://doi.org/10.5194/acp-23-5641-2023>, 2023.
- 1035 Kenagy, H. S., Sparks, T. L., Ebben, C. J., Wooldrige, P. J., Lopez-Hilfiker, F. D., Lee, B. H., Thornton, J. A., McDuffie, E. E., Fibiger, D. L., Brown, S. S., et al.: NO_x lifetime and NO_y partitioning during WINTER, *Journal of Geophysical Research: Atmospheres*, 123, 9813–9827, 2018.
- 1040 Kolker, A., Garber-Slaght, R., Anderson, B., Reber, T., Zyatitsky, K., and Pauling, H.: Geothermal Energy and Resilience in Arctic Countries, Tech. rep., National Renewable Energy Lab.(NREL), Golden, CO (United States), <https://doi.org/10.2172/1862005>, 2022.
- Law, K. S., Stohl, A., Quinn, P. K., Brock, C. A., Burkhardt, J. F., Paris, J.-D., Ancellet, G., Singh, H. B., Roiger, A., Schlager, H., et al.: Arctic air pollution: New insights from POLARCAT-IPY, *Bulletin of the American Meteorological Society*, 95, 1873–1895, <https://doi.org/10.1175/BAMS-D-13-00017.1>, 2014.
- 1045 Lill, E., Costa, E. J., Barry, K., Mirrielees, J. A., Mashkevich, M., Wu, J., Holen, A. L., Cesler-Maloney, M., DeMott, P. J., Perkins, R., et al.: The abundance and sources of ice nucleating particles within Alaskan ice fog, *Journal of Geophysical Research: Atmospheres*, 129, e2024JD041170, <https://doi.org/10.1029/2024JD041170>, 2024.
- Liu, S., Trainer, M., Fehsenfeld, F., Parrish, D., Williams, E., Fahey, D. W., Hübler, G., and Murphy, P. C.: Ozone production in the rural troposphere and the implications for regional and global ozone distributions, *Journal of Geophysical Research: Atmospheres*, 92, 4191–4207, <https://doi.org/10.1029/JD092iD04p04191>, 1987.
- 1050

- MADIS, S. T.: NCEP Meteorological Assimilation Data Ingest System (MADIS), <https://madis-data.ncep.noaa.gov/index.shtml>, 2023.
- Maillard, J., Ravetta, F., Raut, J.-C., Fochesatto, G. J., and Law, K. S.: Modulation of Boundary-Layer Stability and the Surface Energy Budget by a Local Flow in Central Alaska, *Boundary-Layer Meteorology*, 185, 395–414, <https://doi.org/10.1007/s10546-022-00737-2>, 2022.
- 1055 Mailler, S., Khvorostyanov, D., and Menut, L.: Impact of the vertical emission profiles on background gas-phase pollution simulated from the EMEP emissions over Europe, *Atmospheric Chemistry and Physics*, 13, 5987–5998, <https://doi.org/10.5194/acp-13-5987-2013>, 2013.
- Malingowski, J., Atkinson, D., Fochesatto, J., Cherry, J., and Stevens, E.: An observational study of radiation temperature inversions in Fairbanks, Alaska, *Polar Science*, 8, 24–39, <https://doi.org/10.1016/j.polar.2014.01.002>, 2014.
- Mayfield, J. A. and Fochesatto, G. J.: The layered structure of the winter atmospheric boundary layer in the interior of Alaska, *Journal of Applied Meteorology and Climatology*, 52, 953–973, <https://doi.org/10.1175/JAMC-D-12-01.1>, 2013.
- 1060 Mölders, N., Tran, H. N., Quinn, P., Sassen, K., Shaw, G. E., and Kramm, G.: Assessment of WRF/Chem to simulate sub-Arctic boundary layer characteristics during low solar irradiation using radiosonde, SODAR, and surface data, *Atmospheric Pollution Research*, 2, 283–299, <https://doi.org/10.5094/APR.2011.035>, 2011.
- Moon, A., Jongebloed, U., Dingilian, K. K., Schauer, A. J., Chan, Y.-C., Cesler-Maloney, M., Simpson, W. R., Weber, R. J., Tsiang, L., 1065 Yazbeck, F., et al.: Primary Sulfate Is the Dominant Source of Particulate Sulfate during Winter in Fairbanks, Alaska, *ACS ES&T Air*, <https://doi.org/10.1021/acsestair.3c00023>, 2023.
- Morrison, H., Thompson, G., and Tatarskii, V.: Impact of cloud microphysics on the development of trailing stratiform precipitation in a simulated squall line: Comparison of one-and two-moment schemes, *Monthly weather review*, 137, 991–1007, <https://doi.org/10.1175/2008MWR2556.1>, 2009.
- 1070 Mortensen, L., Hansen, A. M., and Shestakov, A.: How three key factors are driving and challenging implementation of renewable energy systems in remote Arctic communities, *Polar Geography*, 40, 163–185, <https://doi.org/10.1080/1088937X.2017.1329758>, 2017.
- Nakanishi, M. and Niino, H.: Development of an improved turbulence closure model for the atmospheric boundary layer, *Journal of the Meteorological Society of Japan. Ser. II*, 87, 895–912, <https://doi.org/10.2151/jmsj.87.895>, 2009.
- Pasquill, F. and Smith, F. B.: *Atmospheric diffusion*, vol. 437, E. Horwood New York, NY, USA, 1983.
- 1075 Pohorsky, R., Baccarini, A., Tolu, J., Winkel, L. H., and Schmale, J.: Modular Multiplatform Compatible Air Measurement System (MoMu-CAMS): a new modular platform for boundary layer aerosol and trace gas vertical measurements in extreme environments, *Atmospheric Measurement Techniques*, 17, 731–754, <https://doi.org/10.5194/amt-17-731-2024>, 2024.
- Robinson, E. S., Cesler-Maloney, M., Tan, X., Mao, J., Simpson, W., and DeCarlo, P. F.: Wintertime spatial patterns of particulate matter in Fairbanks, AK during ALPACA 2022, *Environmental Science: Atmospheres*, 3, 568–580, <https://doi.org/10.1039/D2EA00140C>, 2023.
- 1080 Rosenthal, E. and Watson, R.: Multilateral efforts to reduce black carbon emissions: A lifeline for the warming Arctic?, *Review of European Community & International Environmental Law*, 20, 3–10, <https://doi.org/10.1111/j.1467-9388.2011.00705.x>, 2011.
- Schmale, J., Arnold, S., Law, K. S., Thorp, T., Anenberg, S., Simpson, W., Mao, J., and Pratt, K.: Local Arctic air pollution: A neglected but serious problem, *Earth's Future*, 6, 1385–1412, <https://doi.org/10.1029/2018EF000952>, 2018.
- Schmale, J., Sharma, S., Decesari, S., Pernov, J., Massling, A., Hansson, H.-C., Von Salzen, K., Skov, H., Andrews, E., Quinn, P. K., 1085 et al.: Pan-Arctic seasonal cycles and long-term trends of aerosol properties from ten observatories, *Atmospheric Chemistry and Physics Discussions*, 2022, 1–53, <https://doi.org/10.5194/acp-22-3067-2022>, 2022.

- Selleri, T., Gioria, R., Melas, A. D., Giechaskiel, B., Forloni, F., Mendoza Villafuerte, P., Demuyneck, J., Bosteels, D., Wilkes, T., Simons, O., et al.: Measuring Emissions from a Demonstrator Heavy-Duty Diesel Vehicle under Real-World Conditions—Moving Forward to Euro VII, *Catalysts*, 12, 184, <https://doi.org/10.3390/catal12020184>, 2022.
- 1090 Seo, J., Yun, B., Kim, J., Shin, M., and Park, S.: Development of a cold-start emission model for diesel vehicles using an artificial neural network trained with real-world driving data, *Science of The Total Environment*, 806, 151347, <https://doi.org/10.1016/j.scitotenv.2021.151347>, 2022.
- Sharma, S., Barrie, L. A., Magnusson, E., Brattström, G., Leaitch, W., Steffen, A., and Landsberger, S.: A factor and trends analysis of multidecadal lower tropospheric observations of Arctic aerosol composition, black carbon, ozone, and mercury at Alert, Canada, *Journal of Geophysical Research: Atmospheres*, 124, 14 133–14 161, <https://doi.org/10.1029/2019JD030844>, 2019.
- 1095 Shaw, G. E.: The Arctic haze phenomenon, *Bulletin of the American Meteorological Society*, 76, 2403–2414, [https://doi.org/10.1175/1520-0477\(1995\)076<2403:TAHP>2.0.CO;2](https://doi.org/10.1175/1520-0477(1995)076<2403:TAHP>2.0.CO;2), 1995.
- Simpson, W., Law, K., Schmale, J., Pratt, K., Arnold, S., Mao, J., Alexander, B., Anenberg, S., Baklanov, A., Bell, D., et al.: Alaskan Layered Pollution And Chemical Analysis (ALPACA) White Paper, 84, 2019.
- 1100 Simpson, W. R., Mao, J., Fochesatto, G. J., Law, K. S., DeCarlo, P. F., Schmale, J., Pratt, K. A., Arnold, S. R., Stutz, J., Dibb, J. E., et al.: Overview of the Alaskan Layered Pollution and Chemical Analysis (ALPACA) Field Experiment, *ACS ES&T Air*, <https://doi.org/10.1021/acsestair.3c00076>, 2024.
- Skov, H., Massling, A., Nordstrøm, C., Bossi, R., Vorkamp, K., Christensen, J. H., Hansen, K. M., Poulsen, M. B., Pernov, J. B., Thomas, D. C., et al.: AMAP CORE-ATMOSPHERE, and no.: Scientific Report from DCE—Danish Centre for Environment and Energy, 2023.
- 1105 Stohl, A.: Characteristics of atmospheric transport into the Arctic troposphere, *Journal of Geophysical Research: Atmospheres*, 111, <https://doi.org/10.1029/2005JD006888>, 2006.
- Stohl, A., Klimont, Z., Eckhardt, S., Kupiainen, K., Shevchenko, V. P., Kopeikin, V., and Novigatsky, A.: Black carbon in the Arctic: the underestimated role of gas flaring and residential combustion emissions, *Atmospheric Chemistry and Physics*, 13, 8833–8855, <https://doi.org/10.5194/acp-13-8833-2013>, 2013.
- 1110 Tran, H. N. and Mölders, N.: Investigations on meteorological conditions for elevated PM_{2.5} in Fairbanks, Alaska, *Atmospheric Research*, 99, 39–49, <https://doi.org/https://doi.org/10.1016/j.atmosres.2010.08.028>, 2011.
- U.S. EPA: Emission Adjustments for Temperature, Humidity, Air Conditioning, and Inspection and Maintenance for On-road Vehicles in MOVES2014, Environmental Protection Agency - Assessment and Standards Division, Office of Transportation and Air Quality, 2015.
- U.S. EPA: Overview of EPA's Motor Vehicle Emission Simulator (MOVES3), Environmental Protection Agency - Assessment and Standards
- 1115 Division, Office of Transportation and Air Quality, 2021.
- Valdez, M. P., Bales, R. C., Stanley, D. A., and Dawson, G. A.: Gaseous deposition to snow: 1. Experimental study of SO₂ and NO₂ deposition, *Journal of Geophysical Research: Atmospheres*, 92, 9779–9787, 1987.
- Wærsted, E. G., Sundvor, I., Denby, B. R., and Mu, Q.: Quantification of temperature dependence of NO_x emissions from road traffic in Norway using air quality modelling and monitoring data, *Atmospheric Environment: X*, 13, 100160, <https://doi.org/10.1016/j.aeaoa.2022.100160>, 2022.
- 1120 Wang, Y., Zhang, Q., Jiang, J., Zhou, W., Wang, B., He, K., Duan, F., Zhang, Q., Philip, S., and Xie, Y.: Enhanced sulfate formation during China's severe winter haze episode in January 2013 missing from current models, *Journal of Geophysical Research: Atmospheres*, 119, 10–425, <https://doi.org/10.1002/2013JD021426>, 2014.

- 1125 Weber, C., Sundvor, I., and Figenbaum, E.: Comparison of regulated emission factors of Euro 6 LDV in Nordic temperatures and cold start conditions: Diesel-and gasoline direct-injection, *Atmospheric Environment*, 206, 208–217, <https://doi.org/10.1016/j.atmosenv.2019.02.031>, 2019.
- Ye, L. and Wang, Y.: Long-term air quality study in Fairbanks, Alaska: Air pollutant temporal variations, correlations, and PM_{2.5} source apportionment, *Atmosphere*, 11, 1203, <https://doi.org/10.3390/atmos11111203>, 2020.
- 1130 Yu, T., Zhao, D., Song, X., and Zhu, T.: NO₂-initiated multiphase oxidation of SO₂ by O₂ on CaCO₃ particles, *Atmospheric Chemistry and Physics*, 18, 6679–6689, <https://doi.org/10.5194/acp-18-6679-2018>, 2018.