

Supplement to Warming effects of reduced sulfur emissions from shipping

Masaru Yoshioka, Daniel Grosvenor, Ben B. B. Booth, Chris Smith, and Ken S. Carslaw

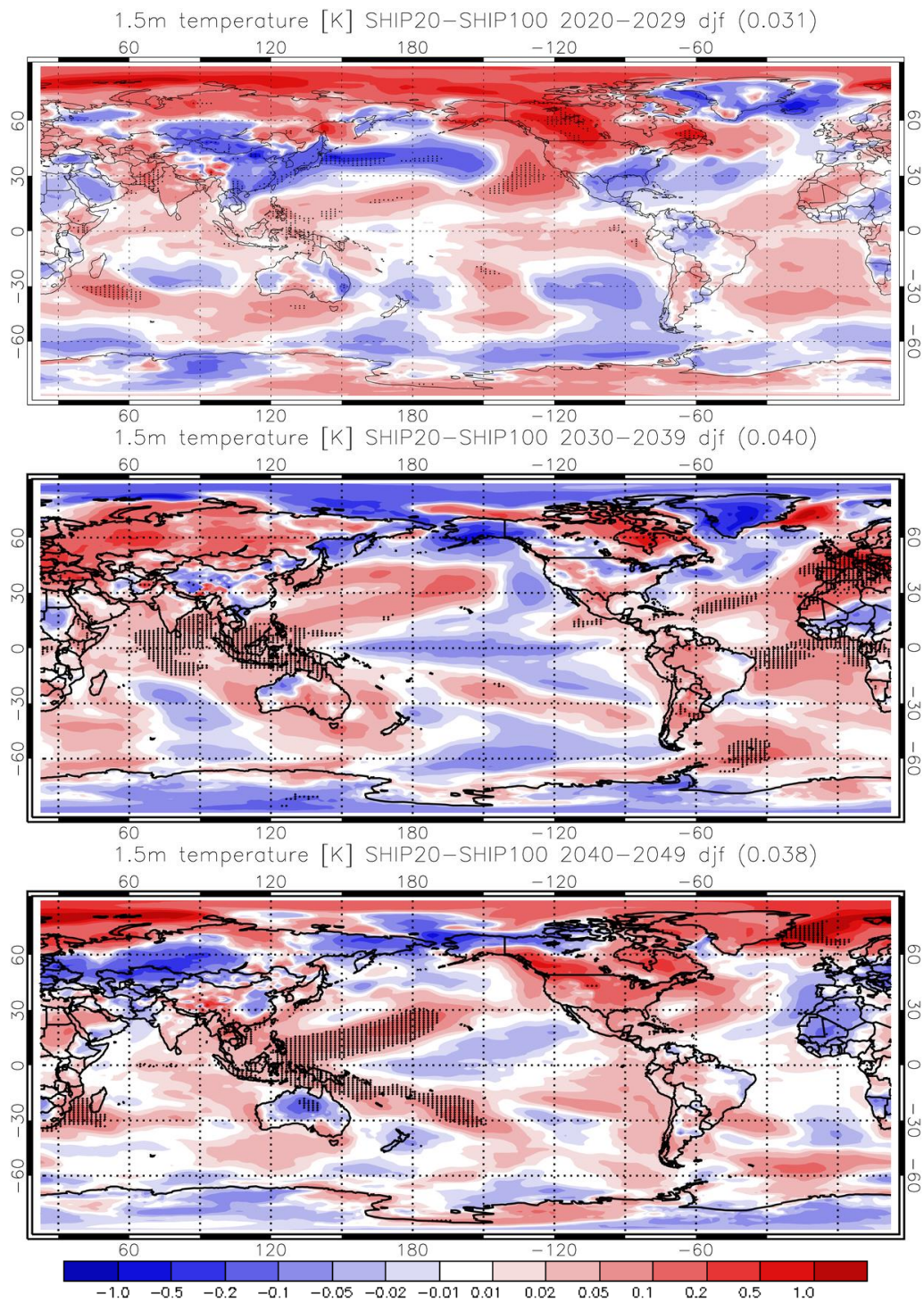


Figure S1. Same as Figure 4 but for DJF.

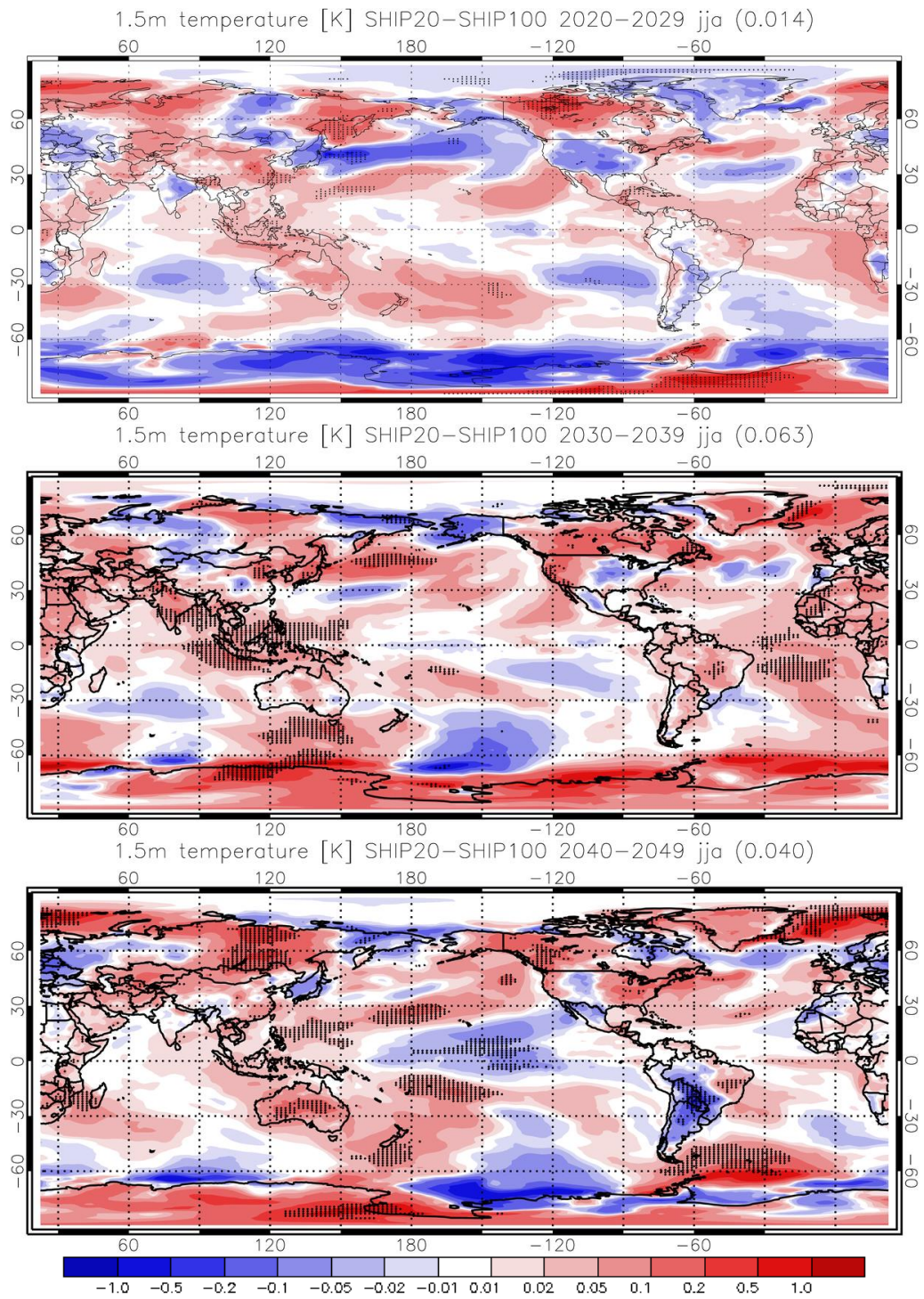


Figure S2. Same as Figure 4 but for JJA.

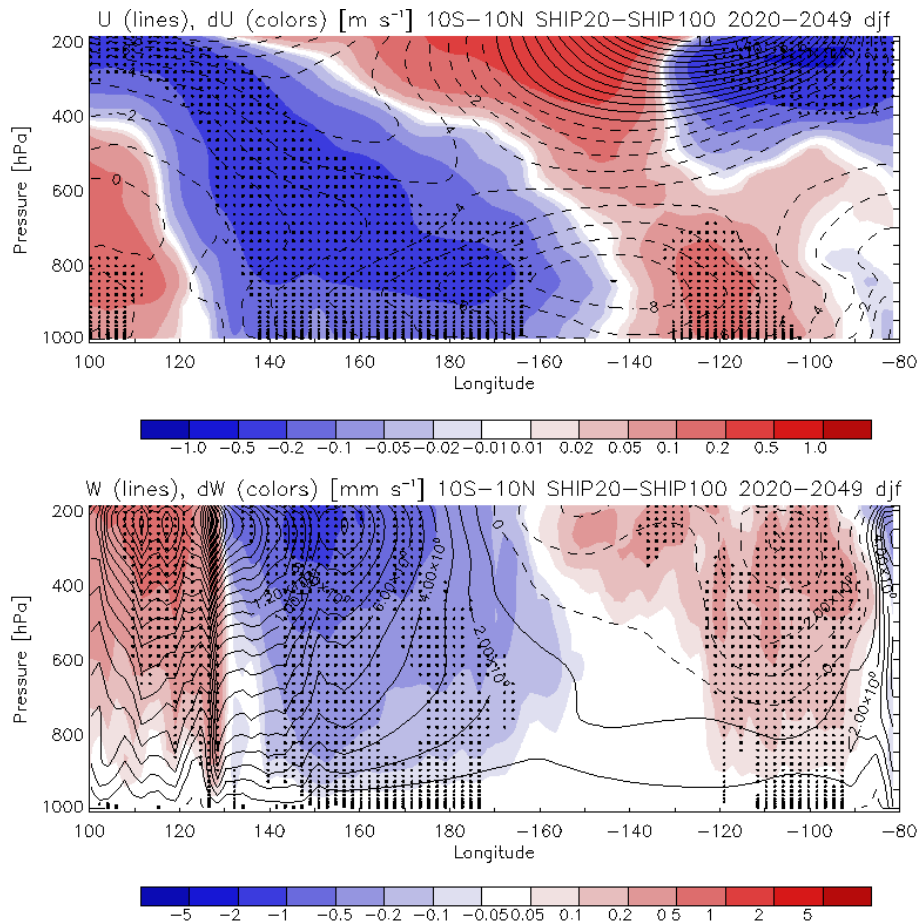


Figure S3. Ensemble mean DJF zonal (positive eastward; U; m s^{-1} ; top panel) and vertical (positive upward; W) winds (mm s^{-1}) in SHIP100 (line contours) over the equatorial Pacific (averaged for 10S-10N and shown for 100E-80W and surface-200hPa) and changes in U (ΔU) and W (ΔW) from SHIP100 to SHIP20 (colors). Positive (solid lines and red colors) and negative (dashed lines and blue colors) regions for U (top panel) show eastward and westward motions, respectively, whereas for W (bottom panels) they show upward and downward motions, respectively. Hatching indicates areas where the differences are statistically significant at a 95% confidence level.

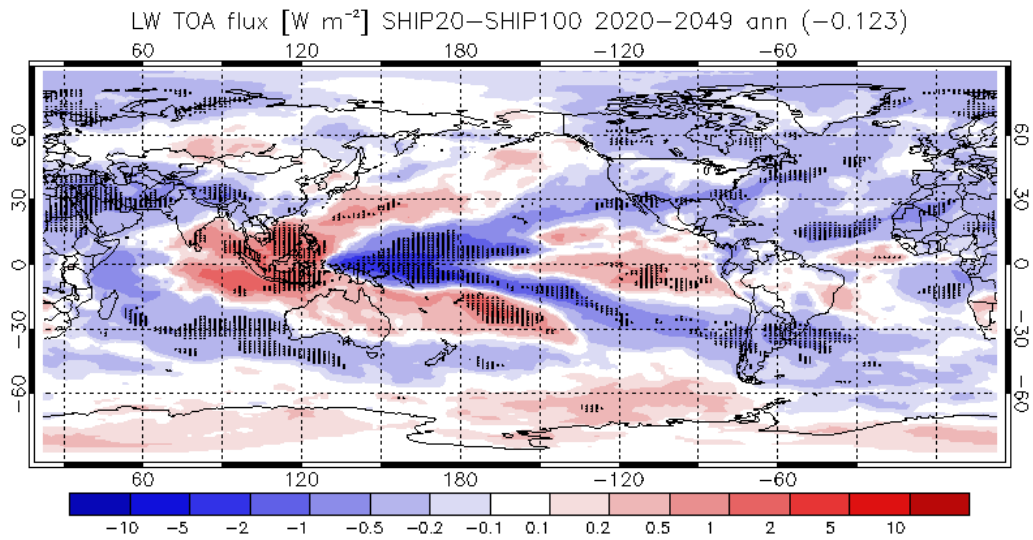


Figure S4. Difference (SHIP20-SHIP100) in ensemble mean LW radiative flux (W m^{-2}) at the top of the atmosphere. Respectively, blue and red colours indicate cooling and warming effects induced by the reduction of shipping sulfur emission.

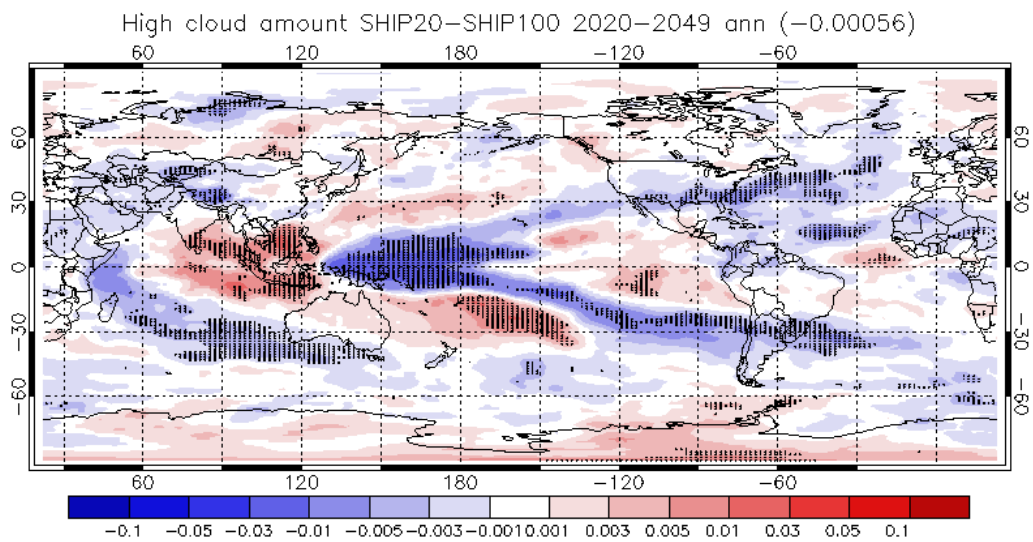


Figure S5. Difference (SHIP20-SHIP100) in ensemble annual means of high-level cloud fractions. High-level clouds indicate clouds in the levels approximately 5600-13600m.

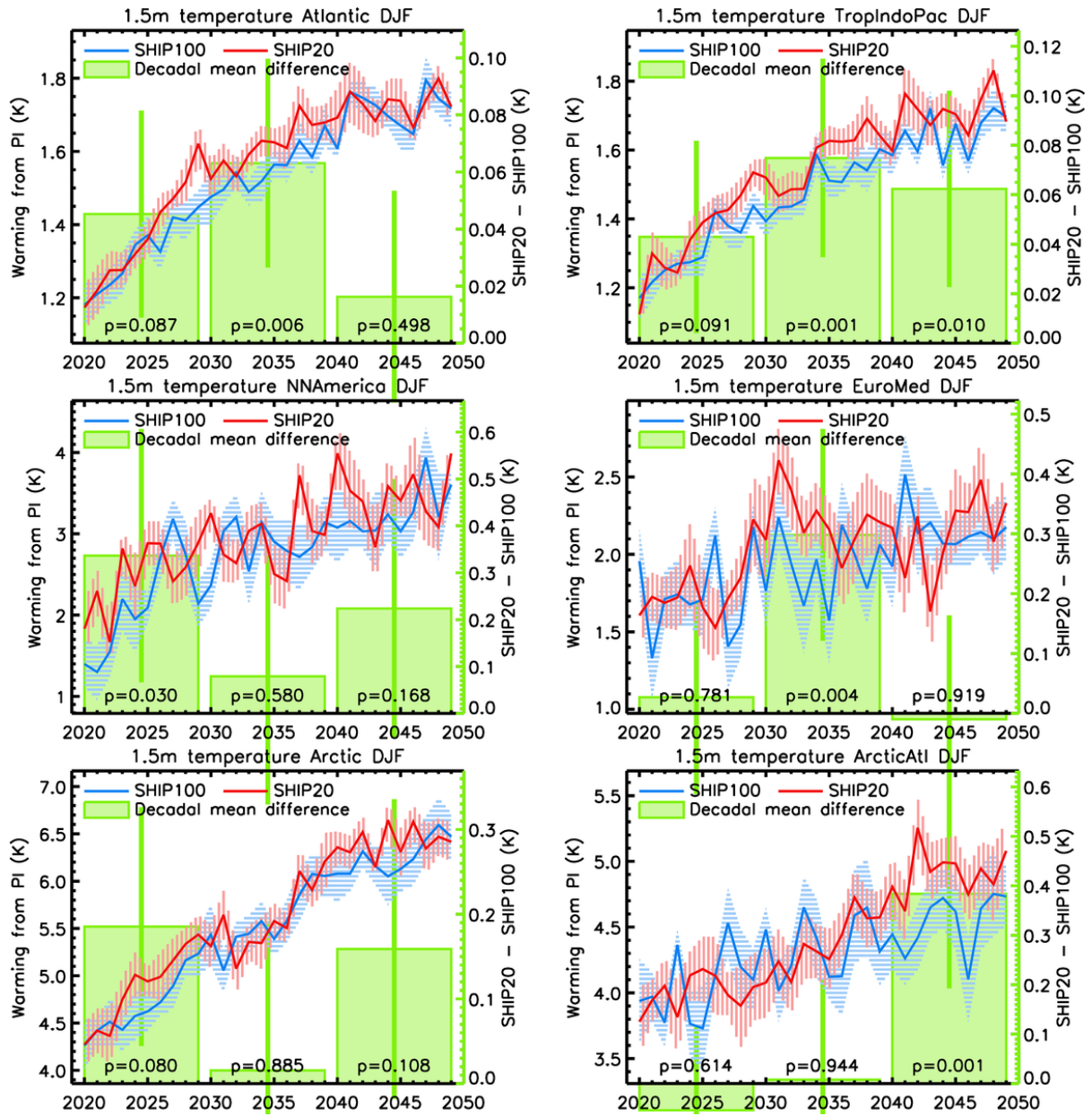


Figure S6. Same as Figure 7 but for DJF averages

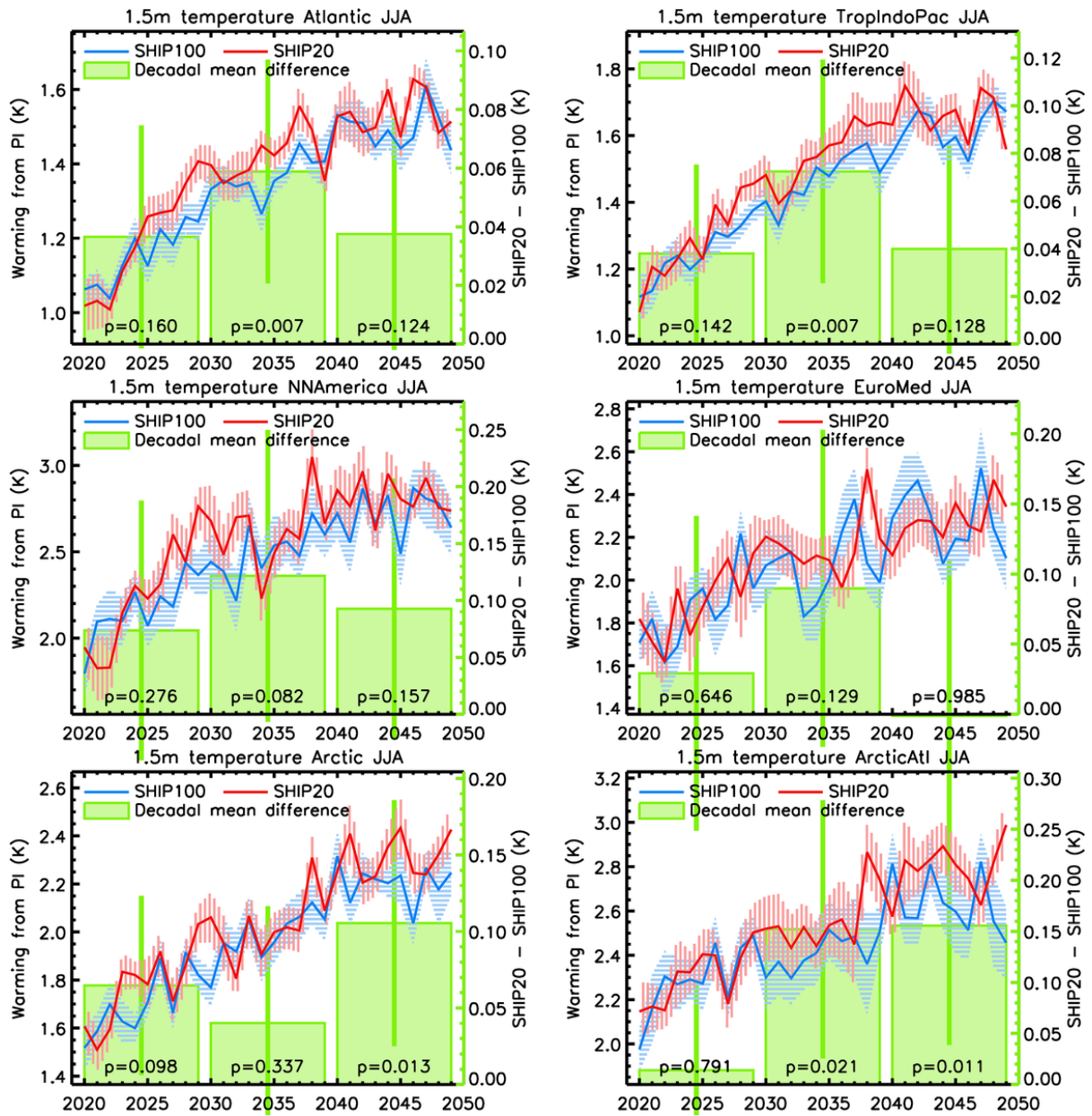


Figure S7. Same as Figure 7 but for JJA averages