

Modelling Current and Future Forest Fire Susceptibility in north-east Germany

Katharina H. Horn¹, Stenka Vulova¹, Hanyu Li¹, and Birgit Kleinschmit¹

¹Geoinformation in Environmental Planning Lab, Technische Universität Berlin, Straße des 17. Juni 145, 10623 Berlin, Germany

Correspondence: Katharina H. Horn (k.horn@tu-berlin.de)

Abstract. Preventing and fighting forest fires has been a challenge worldwide in recent decades. Forest fires alter forest structure and composition, threaten people's livelihoods, and lead to economic losses, as well as soil erosion and desertification. Climate change and related drought events, paired with anthropogenic activities, have magnified the intensity and frequency of forest fires. Consequently, we analysed forest fire susceptibility (FFS), which ~~we understand~~ can be understood as the likelihood of fire occurrence in a certain area. We applied Random Forest (RF) machine learning (ML) algorithm to model current and future FFS in the federal state of Brandenburg (Germany) using topographic, climatic, anthropogenic, soil, and vegetation predictors. FFS was modelled at a spatial resolution of 50 metres for current (2014-2022) and future scenarios (2081-2100) ~~considering different shared socioeconomic pathways (SSP3-70 and SSP5-85)~~. Model accuracy ranged between 69 % (RF_{test}) and 71 % (LOYO), showing a moderately high model reliability for predicting FFS. The model results under-
score the importance of anthropogenic parameters and vegetation parameters in modelling FFS on a regional level. This study will allow forest managers and environmental planners to identify areas, which are most susceptible to forest fires, enhancing warning systems and prevention measures.

1 Introduction

Over the past decades, climate change has been leading to a higher intensity and frequency in extreme weather events all over the planet (Kemter et al., 2021; Silva et al., 2018; Wu et al., 2021). In Germany, very low precipitation has been occurring more frequently in the last six years, leading to an increased number of forest fires (Gnilke and Sanders, 2021). Long periods of drought have been causing soils and vegetation to dry out substantially. Especially in forests, the drying out of trees, underground vegetation, litter, and soils is making forests highly flammable (Littell et al., 2016). Consequently, it is crucial to understand the conditions that cause the emergence and spread of forest fires as well as to detect the areas that are most prone to forest fires (Ambadan et al., 2020). This way, forest fire prevention and management strategies can be improved, decreasing the subsequent potential threats to forests, population and infrastructure located in proximity to forests. In the long run, this may also decrease the financial costs of climate change (Chicas and Østergaard Nielsen, 2022).

Apart from meteorological conditions, forest fires are influenced by a number of environmental factors, including soil moisture, topography, sun exposition, lightning strikes, and wind (He et al., 2022; Saidi et al., 2021; Wang et al., 2021). Moreover,

25 they are closely linked to human influence, encompassing the expansion of infrastructure in proximity to forests, as well as the
utilisation of forests for recreational purposes (Ghorbanzadeh et al., 2019). On a European scale, a study by El Garroussi et al.
(2024) shows that 96 % of wildfires are triggered by human influence. In a similar vein, Gnilke and Sanders (2021) state that up
to 50 % of the burnt area from forest fires in Germany is caused by human action. German forest fire statistics identified human
negligence as the most important factor in the occurrence of forest fires (Federal Office for Agriculture and Food, 2023). Thus,
30 anthropogenic influences should be carefully considered along with other parameters when analysing forest fires (He et al.,
2022; Ruffault and Mouillot, 2017).

Forest fires and the assessment of meteorological, climatic, and anthropogenic parameters have been addressed in numerous
studies. Some of them analyse the fire risk of certain regions (Ambadan et al., 2020; Saidi et al., 2021), whereas others focus on
the identification of parameters influencing forest fire emergence (He et al., 2022; Ruffault and Mouillot, 2017). For example,
35 Saidi et al. (2021) developed a GIS-remote sensing approach to investigate forest fire risk in Tunisia, whereas He et al. (2022)
studied the drivers of bushfires in New South Wales, Australia over a time period of 40 years. The current state of research
on forest fires suggests that topography, climate, land use, and anthropogenic influences are the most influential parameters
(Abdollahi and Pradhan, 2023; Cilli et al., 2022; Ghorbanzadeh et al., 2019; He et al., 2022; Ruffault and Mouillot, 2017; Saidi
et al., 2021; Li et al., 2024). For example, Ruffault and Mouillot (2017) consider human influence, land cover, and weather
40 conditions for the assessment of influencing factors for wildfires in the French Mediterranean region.

FFS can be analysed with a variety of methodological approaches, including knowledge-based approaches, such as hierarchical
weighting (Busico et al., 2019), ML and statistical approaches, or hybrid approaches (Chicas and Østergaard Nielsen, 2022).
ML algorithms include RF (Cilli et al., 2022; He et al., 2022; Milanović et al., 2021; Oliveira et al., 2012, 2016), boosting
models (Ruffault and Mouillot, 2017; Wang et al., 2021), and artificial neural networks (Ghorbanzadeh et al., 2019). Previous
45 research on FFS has been focusing on bigger research areas (Busico et al., 2019; He et al., 2022; Saidi et al., 2021), whereas
research on a smaller scale has fallen short. However, geodata and remote sensing data at high spatial resolution allow for
detailed analysis to enhance forest fire research on a local scale. Especially regarding climate change and the growing likeli-
hood of weather extremes such as droughts, local FFS modelling is essential for identifying key drivers on a local scale. This
way, improved prevention and management strategies of forest fires can be provided. While future climate data now enables
50 the modelling of future forest fire susceptibility (FFS), those types of studies remain scarce (Busico et al., 2019), indicating
significant untapped potential for enhancing forest fire prevention efforts.

This study focuses on the analysis of forest fires in Brandenburg, Germany. Due to a high percentage of coniferous forest, this
federal state has been particularly prone to forest fires in the past. Furthermore, remnants of old munitions at former military
training sites have been causing forest fires in Brandenburg in 2018 and 2019 (Gnilke et al., 2022). Although this issue has
55 been addressed by German newspapers, it has received minimal attention in scientific research (Feng et al., 2022). Therefore,
this study aims to predict FFS in Brandenburg under two current (2016 and 2022) and two future scenarios (2081-2100) using
geodata and remote sensing data at high spatial resolution and the Random Forest (RF) machine learning (ML) algorithm.
Following Zhang et al. (2019), FFS in this study represents “the probability estimation of fire occurrence”. In addition to
topographic, vegetation, and soil parameters, this study incorporates a comprehensive set of anthropogenic and land use pa-

60 rameters, including new predictors such as the distance to campsites and military training sites, to expand existing research on forest fires. To our knowledge, only few studies have analysed FFS at a high spatial resolution so far (Ghorbanzadeh et al., 2019; Suryabhagavan et al., 2016; Razavi-Termeh et al., 2020; Pourtaghi et al., 2015) and we do not know of any studies that modelled future FFS at a high spatial resolution. Within the scope of this investigation, the following research questions will be answered:

- 65 a) Which variables are most significant in terms of forest fire spread in north-east Germany?
b) Which areas in Brandenburg are most susceptible to forest fires now? How will these areas change considering future climate conditions?

2 Materials and Methods

2.1 Study area

70 The federal state of Brandenburg (Fig. 1) was selected as the study area for modelling FFS under current and future scenarios. Brandenburg is located in the north-east of Germany. With sandy or sandy-loamy soils and a high number of rivers and lakes, the federal state is characterised by a periglacial landscape. Agriculture and managed forests are the main land uses. The forests are dominated by pine trees (*Pinus sylvestris* L.) (Matos et al., 2010) and the climate is characterised by rather dry summer months. The combination of these conditions is linked to a medium to high forest fire risk (Holsten et al., 2009; Matos et al., 75 2010; Reyer et al., 2012; Thonicke and Cramer, 2006). Comparing all German federal states, Brandenburg is the federal state that has been most affected by forest fires (Gnilke and Sanders, 2021), which is why it was selected for this study.

2.2 Current and future forest fire susceptibility scenarios

The aim of this research is to compare FFS under different temporal scenarios. To do so, current and future FFS in the federal state of Brandenburg were modelled. To represent the current state, the years of 2016 and 2022 were selected after carefully 80 analysing the monthly precipitation sums and mean monthly air temperature of Brandenburg between 2014 to 2022 (see Fig. S 1 and S 2 in the [supplement](#)[Supplement](#)). Based on this analysis, 2016 was characterised by average climatic conditions, whereas 2022 was characterised by conditions of drought (low precipitation rates). Consequently, the scenario of 2016 was considered as a baseline scenario with average climatic conditions. In contrast to 2016, the scenario of 2022 represents a very dry year, which can be expected to occur more frequently due to the expected increase in extreme weather events in the future 85 (Silva et al., 2018; Wu et al., 2021).

The future scenarios of FFS cover the period of 2081 to 2100 using ~~two different shared the~~ socio-economic ~~pathways (SSPs)~~ [pathway \(SSP\) 5.85](#). SSPs are different projections of future greenhouse gas emissions under distinct potential political and socioeconomic developments. The SSPs range from SSP1.19 to ~~SSP5.85~~[SSP 5.85](#), covering CO₂ concentrations ranging from 393 to 1135 ppm until 2100. ~~For the scope of this research, the scenarios SSP3.70 and SSP5.85 were selected for further~~ 90 ~~analysis. Whereas SSP3.70 refers to a “medium-high reference scenario”,~~ [SSP 5.85](#) represents “a high fossil-fuel

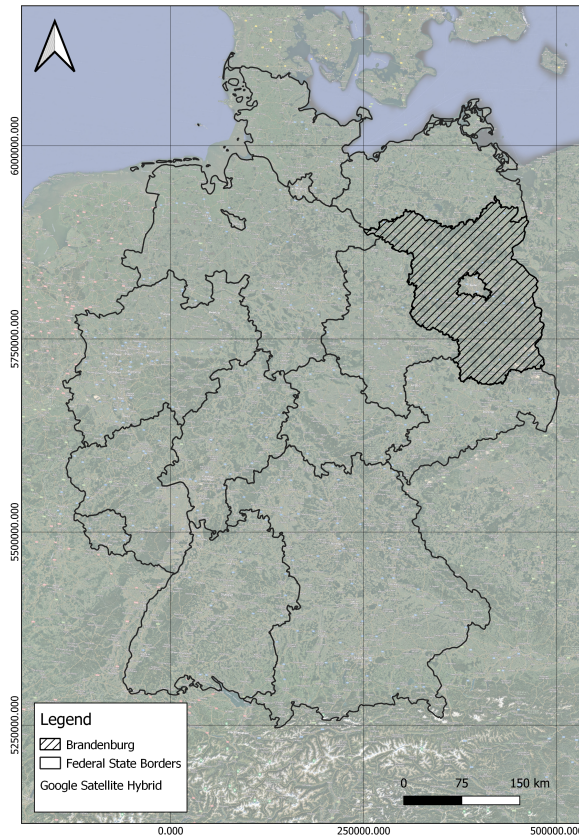


Figure 1. The federal state of Brandenburg in north-east Germany. Basemap © 2024 TerraMetrics, Google, GeoBasis-DE/BKG (© 2009). Border layers © BKG (2024) dl-de/by-2-0 (Data not changed).

development world throughout the 21st century” (Meinshausen et al., 2020). We decided to use SSP 5.85 from the Global Climate Model (GCM) MPI-ESM-1-2-HR. Xu et al. (2023) state that this GCM reflects future drought conditions rather well, which is why it was selected for this study. The climate data (monthly average minimum temperature (°C), monthly average maximum temperature (°C), and monthly total precipitation (mm)) were downloaded from WorldClim (www.worldclim.org). This website provides gridded multi-annual data sets based on different GCMs for different socio-economic pathways (SSPs) and different time periods between 2021 to 2100 up to 30 arc seconds (~1 km) spatial resolution. In order to include future land cover changes into the future predictions, future FFS was predicted twice: a) including only projected meteorological data for 2081-2100; and b) including projected meteorological data for 2081-2100 and projected land cover data. Within the Fig. 2, 4, 5, 6, and 7, as well as in Table 3 the latter will be labeled with “*”. Additionally, a third future scenario based on the SSP 3.70 was predicted. The results can be found in the Supplement (Fig. S 10 to S 13). After analysing the monthly frequency of forest fires in the federal state of Brandenburg, the month of June was selected for the prediction of the four scenarios, since forest fire data showed the highest number of forest fires in this month between 2014 to 2022 (Lower Forestry Authority of the

State of Brandenburg, 2023). For model training, we used all available forest fire events of all months between 2014 to 2022 and pre-processed climatic data sets in accordance with the available forest fire data.

105 2.3 Data

2.3.1 Forest fire data

To model FFS in Brandenburg under different scenarios, forest fire data as well as a set of predictor datasets were acquired and pre-processed. Data including statistical and geospatial information on forest fires in Brandenburg were provided by the Lower Forestry Authority of the State of Brandenburg (2023), an institution that focuses on analysing the vitality of forests in the federal state (Lower Forestry Authority of the State of Brandenburg, 2023; Ministry for Rural Development, Environment and Agriculture in Brandenburg, 2023). The Lower Forestry Authority of the State of Brandenburg (2023) provided data containing the following information: forest district number, section, date and hour, cause of fire, burnt area (ha), and X-Y coordinates of the fire ignition point.

115 2.3.2 Predictor variables

To model FFS in Brandenburg, a set of 20 predictors were selected for the analysis. The predictor variables are shown in Table 1 (also see Fig. S 4 in the [supplementSupplement](#)). They cover meteorology, vegetation, topography, soil, anthropogenic influences and land use and land cover (LULC) and were identified as most relevant for modelling FFS based on an extensive literature review. In the following sections, the predictor variables will be presented in more detail.

120 a) Meteorology

To assess climatic conditions for both the current and future scenarios, air temperature and precipitation were selected. Since climate change and the consequent increase in extreme weather events such as meteorological droughts around the world may increase the frequency and intensity of forest fires in the future (Abdollahi and Pradhan, 2023; Silva et al., 2018), air temperature and precipitation patterns are crucial for the analysis of FFS. Further climatic parameters such as wind speed, solar radiation or lightning strikes may impact the emergence of forest fires as well (Abdollahi and Pradhan, 2023; Busico et al., 2019). However, for the scope of this work the focus remained on air temperature and precipitation, since both current and projected data was only available for those climatic parameters. Following the suggestions by He et al. (2022), we used monthly climate data between 2013 to 2022, which was aggregated to three months to incorporate precipitation and air temperature prior to the occurrence of a forest fire. ~~In this regard, the 3-monthly aggregation of the climatic variables is more suitable to reflect situations of drought that usually result from extended periods with precipitation rates below the average (Rad et al., 2021; Wilhite and Buchanan-Smith, 2005; Wu et al., 2021)~~ Several forest fire related studies have used a monthly aggregation of meteorological data sets to model forest fires (Busico et al., 2019; Wang et al., 2021; He et al., 2022). He et al. (2022) further argue that future studies should consider a monthly or quarterly aggregation of meteorological data

135 when investigating forest fires. Especially in order to identify conditions of meteorological droughts prior to the emergence
of a forest fire, we followed the methodology of other authors that used a three-month aggregation of the broadly used SPEI
drought index to identify meteorological droughts (Zhou et al., 2023; Wen et al., 2020; Guo et al., 2018).

b) Vegetation

The type and condition of vegetation is a crucial factor in the emergence of forest fires (Abdollahi and Pradhan, 2023). Several studies have shown that monocultural forests are more likely to be affected by forest fires not only in number, but also in extent
140 (Afreen et al., 2011; Bauhus et al., 2017). For example, Bauhus et al. (2017) state that coniferous species such as pine trees tend to be highly flammable, which is mainly caused by their resins and oils. Furthermore, the distance to the forest edge can impact tree vitality and the consequent vulnerability to droughts (Buras et al., 2018). Buras et al. (2018) analysed the tree mortality of Scots pine forests by comparing trees on the forest edge and trees in the interior of the forests. Their results show an increase in vulnerability to drought of trees located at forest edges, resulting in higher mortality and decreased vitality. Consequently,
145 the selected vegetation-related predictors were the percentage of broadleaf forest, canopy height, tree cover density, and the distance to forest edges.

c) Topography

Numerous studies have shown the influence of topography on the emergence of forest fires, which is why topographic parameters are commonly used for studying forest fires (Abdollahi and Pradhan, 2023; Busico et al., 2019; Ghorbanzadeh et al., 2019; He et al., 2022; Maingi and Henry, 2007; Saidi et al., 2021; Wang et al., 2021). For example, Preston et al. (2009) have pointed
150 out that bushfires spread with higher velocity and intensity on upward slopes. Furthermore, they discuss how aspect impacts sun and wind regimes, which may influence forest fires as well. In this regard, Busico et al. (2019) conclude that northern aspects decrease the likelihood of forest fire ignition. Besides slope and aspect, elevation has been pointed out as a significant parameter for forest fires (He et al., 2022; Maingi and Henry, 2007). Chicas and Østergaard Nielsen (2022) performed an
155 extensive analysis of existing studies on mapping FFS, confirming that slope, elevation, aspect and topographic wetness index (TWI) are the most commonly used topographic parameters. Following their assessment, those four parameters were selected for the scope of this study.

d) Soil

The spread of forest fires is greatly influenced by the characteristics of the soil and its moisture content (He et al., 2022).
160 Therefore, it was considered important to include different soil characteristics as predictor variables. The soil depth chosen for the soil predictors was 0-5 cm, since fires are usually initiated on the soil surface (Badía-Villas et al., 2014; Mallik et al., 1984). The water retention capacity of soils is significantly influenced by their structure, such as the relative proportions of sand and silt. Soil types characterised by larger pore sizes, such as sandy soils, typically exhibit low water retention capabilities, leading to arid conditions and a diminished field capacity. Conversely, soils with intermediate pore sizes, or silty soils, have
165 higher moisture levels and more water available for plants (Amelung et al., 2018). Therefore, the proportion of sand particles (> 0.05 mm) in the fine earth fraction (sand) and the proportion of silt particles (≥ 0.002 mm and ≤ 0.05 mm) in the fine earth

fraction (silt) were selected for the analysis. Similarly, both bulk density of the fine earth fraction (bdod) and organic carbon density (ocs) can serve as proxies for water retention and therefore for the flammability of the soil (Oyonarte et al., 1998). For example, Oyonarte et al. (1998) have shown a high correlation between water retention and organic carbon, as well as bulk density, which underlines their potential influence on FFS. Thus, bulk density of the fine earth fraction and organic carbon density were used as predictor variables as well.

e) Anthropogenic influences & land use and land cover (LULC)

Finally, anthropogenic factors as well as LULC have been shown to influence the emergence of past forest fires in Brandenburg (Gnilke and Sanders, 2021). The data provided by the Lower Forestry Authority of the State of Brandenburg (2023) on causes of forest fire ignitions in Brandenburg between 2014 to 2022 (see Table S 2 in the [supplementSupplement](#)) confirms this statement. In a similar vein, He et al. (2022) argue that human activities such as the construction of transportation networks and other types of infrastructure influence forest fire emergence on a local scale. Therefore, they [strongly suggest highly recommend](#) including anthropogenic factors into the analysis of forest fires. Likewise, Ghorbanzadeh et al. (2019) relate the increase in forest fires not only to the changing climate, but also to anthropogenic aspects such as human activities or demographic expansion. Thus, to predict FFS in northern Iran, they included proximity to villages, streets, and recreational areas, as well as aspects of land use as predictor variables. The latter has been emphasised by Busico et al. (2019) as well, who stated that anthropogenic land use significantly contributes to forest fire emergence. Consequently, to include anthropogenic influences as well as aspects of LULC, distance to urban settlements, streets, railways, campsites, water bodies and military sites were selected as predictor variables. [According to the respective data set, we understand "distance to urban settlements" as the distance to any type of constructed above-ground building \(European Environment Agency \[EEA\], 2020b\). We assume that this predictor can show \(ir-\) regular human presence at these places that may be related to an increased FFS. Furthermore, to address future land cover changes, we included a data set on projected land cover change in 2050 provided by Esri Environment \(2021\). To our knowledge, this was the only available data set with a high spatial resolution to show future land cover changes, which is why it was selected for this study.](#) Table 1 provides an overview of the predictors as well as their characteristics and origin.

190 2.4 Data processing

RStudio version '2023.12.0.369' with R version 4.3.1 (2023-06-16 ucrt) was used for data pre-processing, analysis, RF modelling and computation of statistics, graphs and maps. Geospatial packages such as terra, sf, maptools and ggplot2 were used for data pre-processing and analysis. The caret package was used for modelling and the computation of performance metrics. The dplyr and readxl packages were used for the analysis and formatting of the forest fire data. The open source software QGIS 3.28.10-Firenze was used for processing, analysis, and visualisation of the geodata. Figure 2 provides an overview of the main data processing steps that will be explained in the following sections.

a) Pre-processing of predictor layers

Prior to modelling FFS under current and future scenarios, the necessary datasets were downloaded and pre-processed. Pre-processing steps involved projecting the data to the same coordinate reference system (EPSG 25833), cropping to the geo-

Table 1. Predictor variables for modelling forest fire susceptibility in Brandenburg.

Category	Predictor	Abbreviation	Data Source	Spatial Resolution	Temporal Resolution	Unit
	Air temperature (current scenario)	airtemp	GWS Climate Data Center (2023b)	1 km	monthly mean	1/10 °C
	Air temperature (future scenario)	airtemp	Fick and Hijmans (2022)	30 arcsec	multi-annual monthly mean	°C
Meteorology	Precipitation (current scenario)	precip	GWS Climate Data Center (2023a)	1 km	monthly sum	mm
	Precipitation (future scenario)	precip	Fick and Hijmans (2022)	30 arcsec	multi-annual monthly sum	mm
Vegetation	Tree cover density	tcd	EEA (2020c)	10 m	-	%
	Distance to forest edge	forestedge	EEA (2020c)	10 m	-	m
	Percentage of broadleaf forest	broadleaf	EEA (2020a)	20 m	-	%
	Canopy height	canopy	Lang et al. (2023)	10 m	-	m
Topography	Slope	slope	LGB State Office for Land Surveying	10 m	-	°
	Aspect	aspect	and Geoinformation Brandenburg (2023)	10 m	-	°
	Elevation	dem		10 m	-	m
	Topographic Wetness Index	twi		10 m	-	-
Soil	Bulk density of the fine earth fraction	bdod		250 m	-	cg/cm ³
	Organic carbon density	ocs		250 m	-	hg/m ³
	Proportion of sand particles (> 0.05 mm) in the fine earth	sand	Poggio et al. (2021)	250 m	-	g/kg
	Proportion of silt particles (≥ 0.002 mm and < 0.05 mm) in the fine earth	silt		250 m	-	g/kg
parameters and LULC	Anthropogenic					
	Distance to urban settlements	urban	EEA (2020b)	10 m	-	m
	Distance to streets	streets				
	Distance to railways	railways				
	Distance to campsites	campsites				
	Distance to military sites	military	OpenStreetMap Contributors (2023)			
	Distance to water bodies	water				
	Distance to urban settlements (2050)	urban_2050				
			Esri Environment (2021)	300 m	-	m

The topographic predictors slope, aspect, and TWI were computed based on the digital elevation model that was derived from LGB State Office for Land Surveying and Geoinformation Brandenburg (2023).

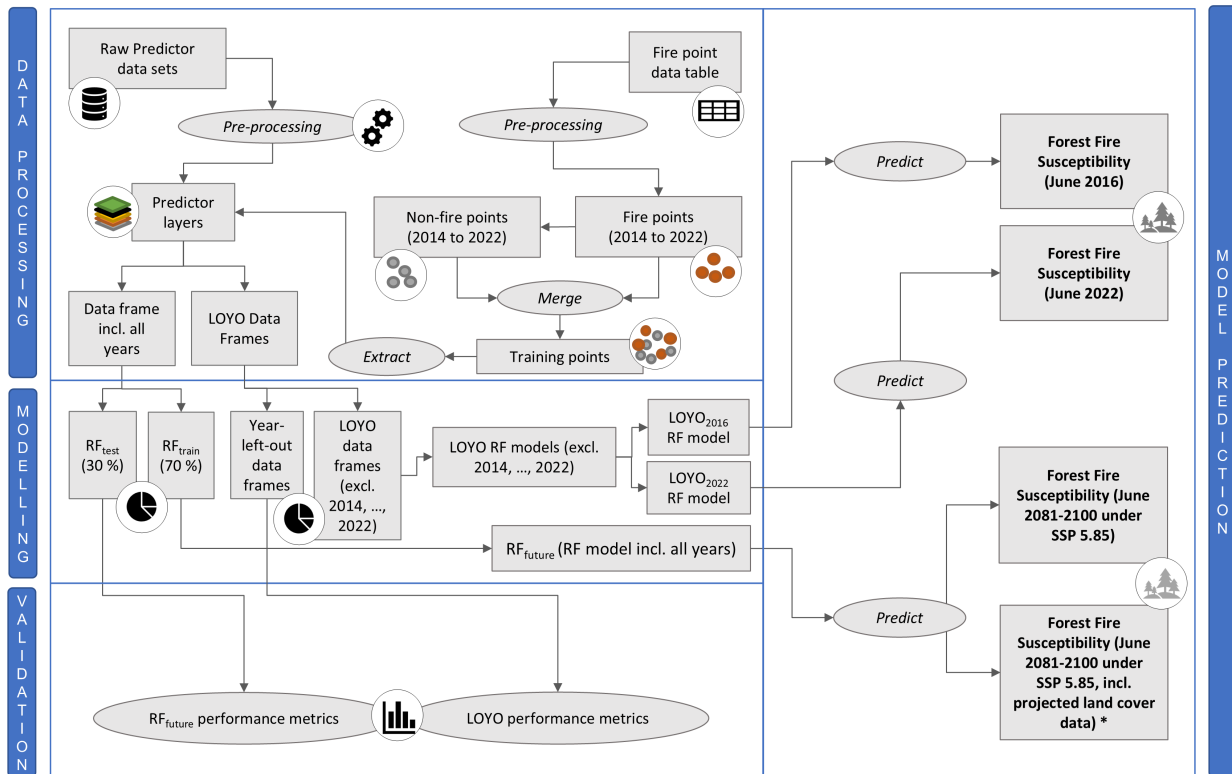


Figure 2. Methodological approach for modelling forest fire susceptibility under different scenarios.

200 graphic extent of Brandenburg, masking the forest areas in Brandenburg, and resampling to a spatial resolution of 50 metres using bilinear interpolation for numeric variables, and nearest neighbour interpolation for factor variables. Furthermore, several predictor datasets such as distance to campsites or military areas were created based on available data from OpenStreetMap Contributors (2023) or LGB State Office for Land Surveying and Geoinformation Brandenburg (2023). The topographic predictors slope, aspect and TWI were computed in RStudio based on the digital elevation model derived from LGB State Office
 205 for Land Surveying and Geoinformation Brandenburg (2023). A forest mask was generated by filtering all pixels with tree cover density greater than or equal to 50 % from the tree cover density dataset. Proximity rasters were computed for various features, including urban settlements, roads, railways, military sites, campsites, water bodies, and forest edges, by applying the “Proximity (raster distance)” tool in QGIS derived from the GDAL toolbox.

b) Processing of training points

210 The forest fire data table provided by the Lower Forestry Authority of the State of Brandenburg (2023) served as the baseline for the creation of the training points for the RF models. Rows containing NA values were removed and the fire data points were converted to shapefile format for further processing. Looking at the statistics of the burnt area (ha) of each of the fires

in Brandenburg between 2014 to 2022, the maximum burnt area of a forest fire was 422 ha. In contrast, the median burnt area was only 0.05 ha, indicating a high number of small fires and a relatively low number of big fires (see Table S 1 in the [supplement](#) [Supplement](#)). Since the spread extent of the fires was not included in the data provided by the Lower Forestry Authority of the State of Brandenburg (2023), a circular fire spread was assumed. The diameter of a circular burnt forest fire based on the median burnt area (0.05 ha or 500 m²) is ≈ 25 m. Considering that the direction of the fire spread was unknown as well, the doubled diameter of a median sized forest fire in Brandenburg (50 m) was assumed as a baseline for converting the forest fire points into a raster dataset (see Fig. S 3 in the [supplement](#) [Supplement](#)). Consequently, the fire points were resampled to a raster grid with 50 m spatial resolution considering the potential fire spread in different directions. Accordingly, all the predictor variables were resampled to the same spatial resolution.

In addition to the provided set of fire points, a set of non-fire points was created that included the identical number of points per year as the pre-processed fire points from the data table provided by the Lower Forestry Authority of the State of Brandenburg (2023). To create those non-fire points, the maximum extent of each forest fire for each year was computed to identify areas where no fires occurred for each year. To do so, the fire point data table was first subsetted by year and then burnt area was estimated based on the previously described approach. The results were nine raster layers for each year between 2014 to 2022 that contained the maximum extent that was potentially burnt in that respective year. For each year, potential burnt areas were then removed from the forest mask layer to derive areas where no fires occurred. Based on the forest masks that excluded potentially burnt areas, random non-fire points were created for each year, matching the number of fires that occurred in the respective year. To do so, the `randomPoints()` function from the R package `raptr` was used.

Finally, the resulting non-fire points were merged with the fire points to complement the training points. To do so, the training points were assigned to the classes of “fire” and “non-fire”, respectively. Each fire registered by the Lower Forestry Authority of the State of Brandenburg (2023) was paired with a non-fire point with the same date. To prepare the dataframe for the RF models, the training points were used to extract the geospatial information of the predictor variables using `extract()` function from the `terra` R package. The resulting data table included the spatial coordinates of all non-fire and fire points and the information of all the predictor variables at those locations. This dataframe served as the basis for training RF models to predict FFS under current and future scenarios.

2.5 Correlation analysis and Random Forest modelling

To assess FFS in Brandenburg under different temporal scenarios, RF classification ML algorithm was used. Precisely, a total of ten RF models were run using binary classes (fire and non-fire) for predicting current and future FFS. RF is a well known and often used ML algorithm in forestry and remote sensing (Gislason et al., 2006). In the field of forest fire research, RF has been frequently applied, achieving high accuracies (Eslami et al., 2021; He et al., 2022; Lizundia-Loiola et al., 2020; Milanović et al., 2021; Oliveira et al., 2016). The RF algorithm is based on the bagging approach, developed by Breiman (1999). It involves the growth of a set of random decision trees to form what is known as a “Random Forest” (Breiman, 2001; Kuhn and Johnson, 2013). As mentioned before, FFS is defined in this study as the estimated likelihood of a forest fire event (Zhang

et al., 2019). The probability score of a pixel being predicted as a fire pixel represents its susceptibility to a forest fire.

Model for future scenarios

250 First, a model (RF_{future}) containing data from all the available years (2014 to 2022) was set up for the prediction of future FFS scenarios. Following Nguyen et al. (2021), the input data for modelling FFS was split into 70 % for model training (RF_{train}) and 30 % for testing the model performance (RF_{test}). We refer to the 30 % left out data as the testing dataset. Before running a RF model, a set of tuning parameters can be set. After initially running the model, the results showed the best model performance at $mtry = 2$. Consequently, the model was run with $mtry$ set to 2.

255 *Models for current scenarios*

For current FFS scenarios, a so-called "leave-one-year-out" (LOYO) approach was implemented in order to evaluate the models' capacity for temporal extrapolation. Leaving one year out of training and using the excluded year for testing can be used to assess how models will perform on an unseen (or future) year. In this case, the approach was used for modelling current FFS for the scenarios of 2016 and 2022. LOYO models were computed for all nine available years (2014 to 2022). For instance, 260 $LOYO_{2016}$ refers to a model trained on all years except 2016, which was used to predict FFS in 2016. As mentioned before, $mtry$ was set to 2 to be consistent with the model for the future FFS scenarios.

Performance metrics

After training the RF models, performance metrics were calculated using the caret and rPROC packages. The confusionMatrix() function provides information on the different performance metrics such as accuracy, kappa, sensitivity, or specificity. 265 Additionally, F1-score and AUC were computed using the rPROC package in RStudio. AUC was calculated by first computing the receiver operator characteristic (ROC) curve using the roc() function. The formulas for calculating the different performance metrics can be found in the [supplement Supplement](#) (Table S 3). They typically range between 0 and 1, with values close to 1 implying a high model performance.

270 **3 Results**

3.1 Model accuracy

To assess the reliability of the RF_{future} model in predicting FFS in Brandenburg, performance metrics and a confusion matrix (see Table S 4 in the [supplement Supplement](#)) were computed. The training (RF_{train}) and testing set (RF_{test}) for the RF_{future} model consisted of 3243 and 1388 points respectively. 487 out of 681 fire points and 520 out of 707 non-fire points were 275 correctly classified. The performance metrics (Table 2) for both RF_{test} and the LOYO cross validation all range between 0.654 and 0.718 (excluding the kappa values), showing a moderately high model reliability of predicting FFS in Brandenburg. RF_{test} had an accuracy of 0.718, reflecting the number of samples that were correctly classified as fire points. The LOYO cross validation indicates a marginally lower mean accuracy of 0.695. The precision values of LOYO cross validation (0.702)

Table 2. Overview of the validation metrics.

	Accuracy	Kappa	Precision	Recall	F1-Score	AUC
RF _{test}	0.718	0.435	0.712	0.714	0.713	0.718
LOYO cross-validation	0.695	0.388	0.702	0.654	0.676	0.694

and RF_{test} (0.712) illustrate the proportion of correctly assigned fire points out of all samples that were classified as fire. To further assess the performance of the RF FFS classification, the ROC curve was computed. The area under the ROC curve (AUC) refers to the likelihood that a fire point was correctly classified (Bradley, 1997). Here, AUC is 0.694 for the LOYO cross validation and at 0.718 for RF_{test}. Finally, recall and F1-score metrics show similar values, indicating a moderately high model reliability. A detailed overview of all the performance metrics for every LOYO model can be found in Table S 5 in the [supplementSupplement](#).

285 3.2 Importance of predictor variables

Overall, distance to urban settlements, the percentage of broadleaf forest, and the distance to railways were the three most significant predictors for the RF_{future} model. The importance of these predictors, as well as others, is shown in Fig. 3. Land use and anthropogenic predictors exhibited moderate to high influence for the model, such as the distance to urban settlements (100 %), the distance to railways (84.3 %), or the distance to campsites (50.9 %). Similarly, vegetation predictors showed varying degrees of influence, ranging from moderate (e.g., distance to forest edge) to high parameter importance, notably the percentage of broadleaf forest (87.8 %). Soil predictors demonstrated medium importance, ranging from 39.9 % for organic carbon density to 53.4 % for silt content. Topographic predictors displayed varied importance, with elevation at 49.1 % and the TWI at 11.6 %. In contrast, climatic variables had a relatively minor influence on model performance, with air temperature contributing only 14.4 % and precipitation accounting for a mere 3.1 %. The value distributions of the three most significant predictors are depicted in Fig. S 5 of the [supplementSupplement](#). A Wilcoxon test was conducted to test significance. The notably low p-values of the Wilcoxon tests, for example $p = 5.70e-20$ for the percentage of broadleaf, confirm that the value distributions of all three predictors significantly differ between fire and non-fire points. A comprehensive overview of the p-values for all predictor variables is provided in Table S 6 in the [supplementSupplement](#).

The value distributions of the three most significant predictors (Fig. S 5) lead to several conclusions. First, fire points tend to be closer (mean \approx 578 m) to urban settlements than non-fire points (mean \approx 813 m). Second, the distribution in the percentage of broadleaf is ranging mainly from 0 to almost 40 % for non-fire points, whereas the percentage of broadleaf for fire points is close to 0 (excluding some outliers). Third, similarly to the distance to urban settlements, non-fire points tend to be further away from railways than fire points. [To more deeply explore the relationship between key variables and FFS, partial dependence plots were created \(see Fig. S 7 to S 9 in the Supplement\).](#)

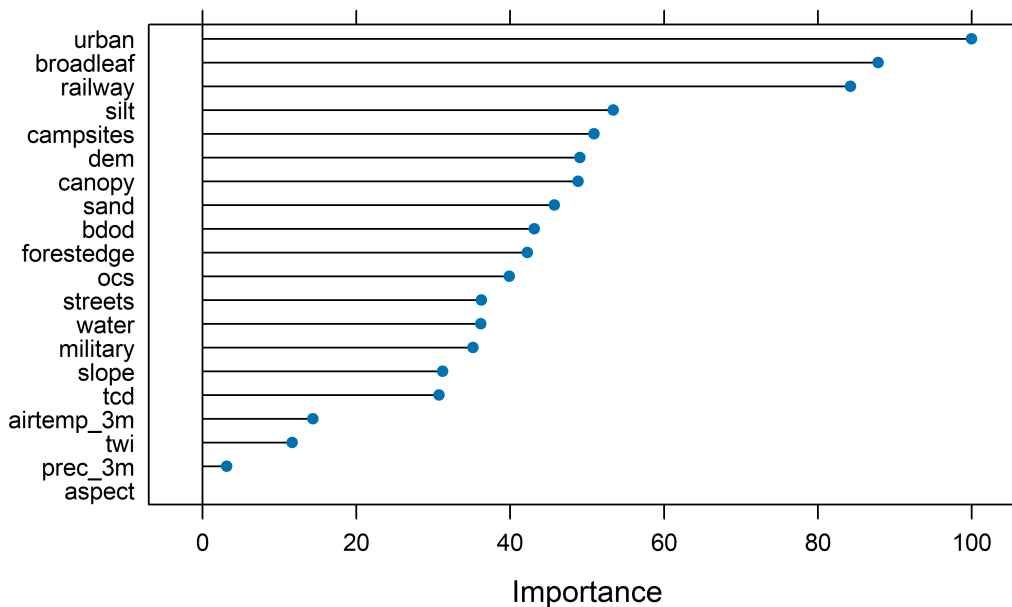


Figure 3. Variable importance based on the RF_{future} model.

305 3.3 Forest fire susceptibility under current and future scenarios

Figure 4 shows the FFS in Brandenburg for the two current scenarios, June 2016 and June 2022, as well as for the two future scenarios, June 2081-2100 under ~~SSP3.70 and SSP5.85~~ SSP 5.85 and June 2081-2100 under SSP 5.85 including projected land cover data. For comparison, the FFS for June 2081-2100 under SSP 3.70 can be found in the Supplement (Fig. S 10). The values range from 0 to 100 %, reflecting the likelihood of fire ignition at each pixel (the FFS). In all four scenarios, the FFS is higher in the southern part of Brandenburg. Especially in the south of Berlin, several patches with a FFS of ≥ 75 % can be identified. In the north and north-east of Brandenburg however, the FFS is rather low in all the scenarios, ranging between 0 to 20 %.

Figure 5 illustrates the anomalies in FFS relative to the reference scenario of June 2016. In the June 2022 scenario (scenario a), FFS exhibits notable positive anomalies across various regions of the federal state, with anomalies ranging from + 5 to + 15 % compared to June 2016. Many areas across Brandenburg maintain similar FFS levels as the 2022 scenario. Only a few selected small regions in the south-east and south-west ~~register exhibit~~ register exhibit negative FFS anomalies compared to June 2016. Regarding future FFS anomalies relative to June 2016, the ~~southern parts of Brandenburg experience positive FFS anomalies of up to +~~ future scenarios differ rather substantially from one another. Whereas the scenario neglecting land cover changes (b) shows positive FFS anomalies up to 15 % and more in southern, eastern, and western parts of Berlin, one area in the south

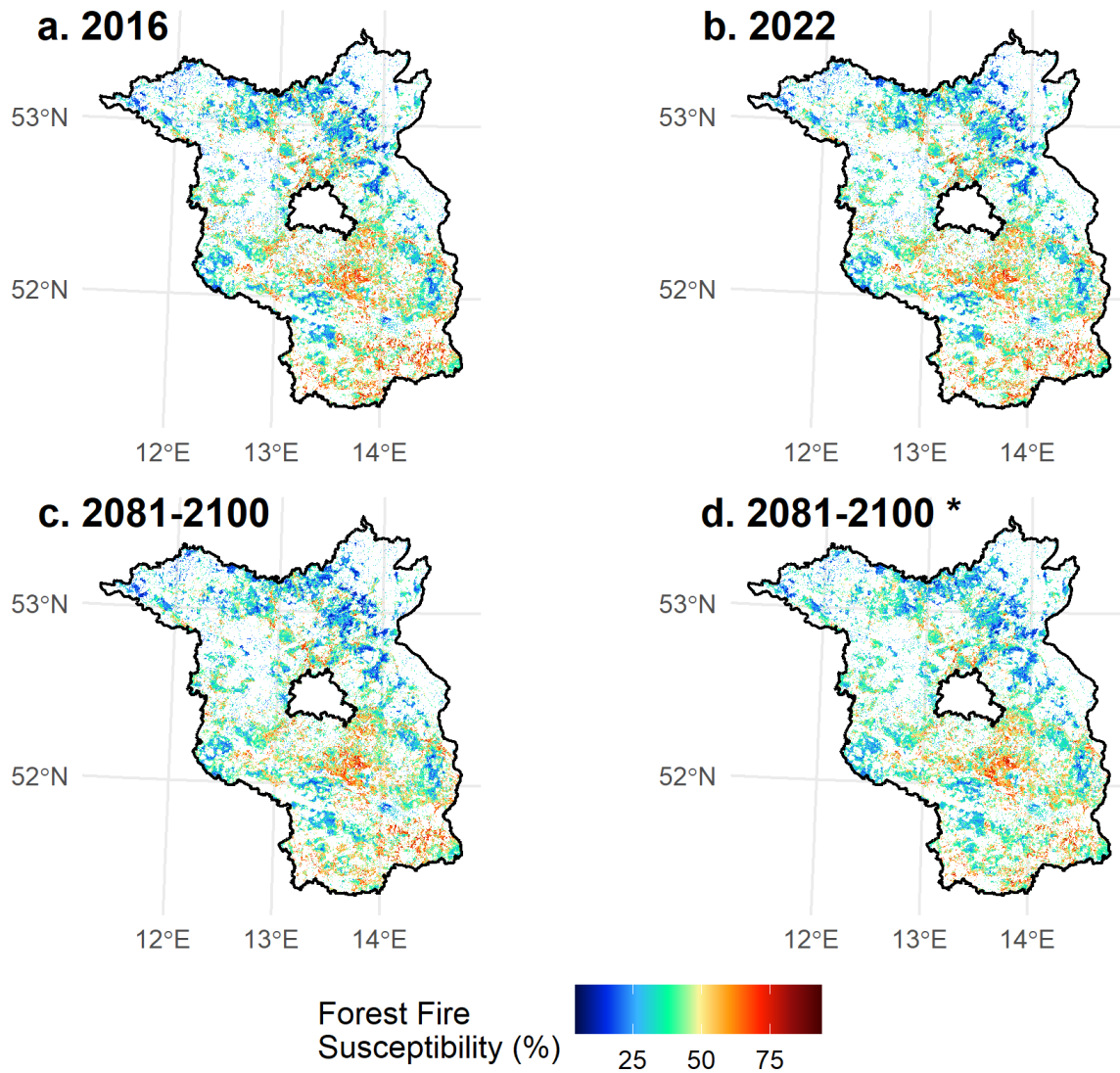


Figure 4. Forest fire susceptibility in Brandenburg under different scenarios. [Scenarios c and d both show predicted FFS in June 2081-2100 under SSP 5.85. Scenario d includes projected land cover data, whereas scenario c does not.](#) Border layer © 2018-2022 GADM.

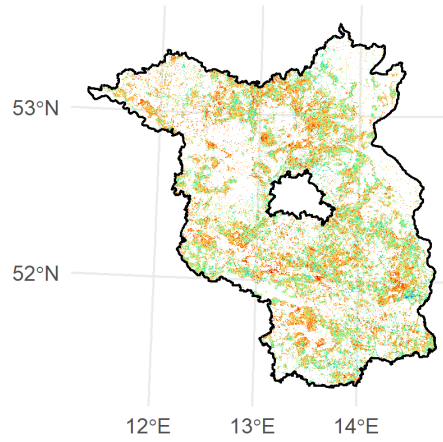
Table 3. Statistical overview of the four forest fire susceptibility scenarios. Scenarios “2081-2100” and “2081-2100 *” both show predicted FFS in June 2081-2100 under SSP 5.85. Scenario “2081-2100 *” includes projected land cover data, whereas scenario “2081-2100” does not.

	2016	2022	2081-2100 (SSP3.70)	2081-2100 (SSP5.85)*
Minimum	0.040	0.040	0.042	0.042 <u>0.072</u>
Maximum	0.936	0.964	0.978 0.976	<u>0.878</u>
Mean	0.409	0.419	0.414	0.417 <u>0.393</u>
Standard Deviation	0.147	0.146	0.144	0.144 <u>0.116</u>

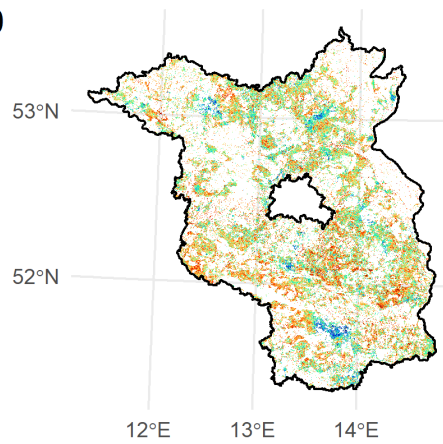
320 shows negative FFS anomalies up to - 20 %. ~~Conversely, slightly negative FFS anomalies are visible in the northern region of Brandenburg and more substantial.~~ In comparison to the scenario based on only climatological projections, the scenario incorporating land cover changes (c) shows mostly negative FFS anomalies in a larger area in ranging from 0 to - 20 %, especially in the southern part of the state. ~~Overall, both future FFS scenarios exhibit similar trends in FFS . Comparing the anomaly values of the same areas in the south of Brandenburg under the different scenarios, it can be noted that many of these areas indicate higher FFS anomaly values for the future scenarios (Brandenburg. The northern part of Brandenburg however is characterised by an increase in FFS in many areas, reaching anomalies up to + ~20 %) than for the scenario of 2022 (up to + ~15 %).~~ However, Additionally, some areas in the south of Brandenburg showed the opposite relationship, with negative FFS anomalies for the future scenarios and higher FFS anomalies (with values close to zero) in the 2022 scenario. South and West also show positive FFS anomalies. For comparison, the FFS anomalies for 2081-2100 under SSP 3.70 can be found in the Supplement (Fig. S 11 to S 13).

Table 3 presents summary statistics of the FFS for the four scenarios. Upon comparing the values across all scenarios, it is evident that the 2016 scenario exhibits the lowest minimum ~~, maximum, and mean FFS values~~ value among the four. Conversely, the 2022 scenario demonstrates higher maximum and mean FFS values, suggesting a greater susceptibility compared to 2016. Notably, the mean susceptibility value for 2022 (0.419) is the highest among the four scenarios ~~. The minimum and maximum values of the future scenarios are higher than those of the current scenarios. Specifically, the maximum value of the SSP3.70 scenario slightly surpasses that of indicating the highest mean FFS. The future scenario excluding projected land cover data shows the highest maximum value and only a slightly lower mean value (0.414) than the scenario of June 2022. Finally the future scenario including land cover data (*) shows the lowest maximum, mean and standard deviation FFS values compared to the SSP5.85 scenario . The period from 2081 to 2100 under SSP5.85 exhibits a slightly higher mean value (0.417), indicating a marginally elevated mean FFS compared to SSP3.70. However, disparities in FFS between the two future scenarios are minimal overall. These results suggest that FFS increases in future scenarios, except for the mean FFS values that are highest in the 2022 scenario. other scenarios.~~

a. 2022



b. 2081-2100



c. 2081-2100 *

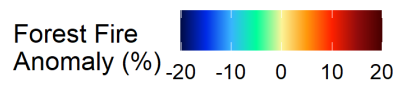
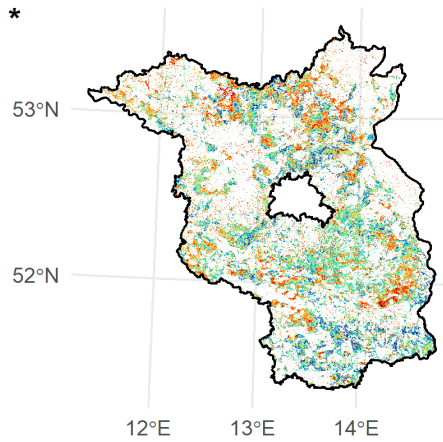


Figure 5. Forest fire anomalies compared to 2016. [Scenarios b and c both show predicted FFS in June 2081-2100 under SSP 5.85. Scenario d includes projected land cover data, whereas scenario c does not.](#) Border layer © 2018-2022 GADM.

To assess variabilities in FFS on a local scale, a detailed zoom to an area in the west of Brandenburg is shown in Fig. 6. The four maps show the municipality of Medewitz in the west of Brandenburg. The 2016 scenario shows a fairly low FFS (Fig. 6a). The three other maps show FFS anomalies compared to 2016 (Fig. 6b to d). Whereas the scenario of 2022 shows positive anomaly values of 10 to 15 %, anomaly values are even higher in the future ~~scenarios~~scenario excluding projected land cover data, reaching + 20 %. In contrast, the scenario including land cover changes (d) shows negative anomalies up to -15 %. However, pixels in the east and south of the map show positive FFS anomalies as well. The four zoomed-in maps in Fig. 7 depict the Crinitz municipality located in the south of Brandenburg. ~~Fig. 7b to d reveal negative FFS anomalies compared to the 2016 reference scenario (Fig. 7a), as opposed to the anomalies in Medewitz (Fig. 6b to d)~~. The ~~Whereas the June 2022 map shows some areas with positive anomalies~~scenario (b) mainly shows anomalies close to 0, except for some pixels reaching up to + 16 %, the future scenario relying only on climatic projections (c) shows substantial negative anomalies reaching up to -20 %. Similarly, the scenario including projected land cover data (d) shows a substantial proportion of pixels with negative FFS anomalies. However, ~~some areas in the north east and west, whereas the future scenarios indicate overall negative FFS anomalies of up to -20 % and southwest of the city show positive FFS anomalies~~. Figures 6 and 7 show that despite the trend of overall increase in FFS between 2016 and the future ~~scenarios~~scenario of 2081-2100 ~~under SSP3.70 and SSP5.85 excluding projected land cover data~~ (Fig. 4 and 5), FFS ~~is not increasing in all parts of~~differs significantly across the federal state. ~~Another aspect to mention is that FFS appears higher at forest edges and forest areas in proximity to urban areas (see FFS of 2016 in Fig. 6a and 7a)~~. Furthermore, the future scenario incorporating land cover changes shows substantial differences to the scenario only relying on climatic projections.

4 Discussion

4.1 The drivers of forest fire susceptibility

Overall, the climatic variables did not have a significant influence on the model performance. In contrast, the anthropogenic, LULC, and vegetation predictors showed a higher importance. The results reflect that climatic parameters do not appear to play a pivotal role for FFS ~~-(see Fig. S 6 in the Supplement)~~. The reason for this finding may be the extent of the study area, as meteorological conditions do not show high spatial variation within Brandenburg. Meteorological conditions may be more important when analysing FFS on a national or international scale (Busico et al., 2019; He et al., 2022; Li et al., 2024). According to the Lower Forestry Authority of the State of Brandenburg (2023), a high number of fires were caused by intentional arson and other anthropogenic actions such as open fires or smoking (see Table S 2 in the ~~supplement~~Supplement). Therefore, climatic conditions may not have contributed to the emergence of those fires in a significant way. Furthermore, meteorological projections assume that air temperatures will increase overall. However, precipitation is expected to increase in the future as well (see Fig. S 1 and ~~A-S~~2 in the ~~supplement~~Supplement). Consequently, wetter conditions may have lowered future FFS, outweighing the effect of higher air temperatures and contributing to the lower mean FFS in future scenarios compared to the extremely hot and dry year of 2022. The German Weather Service (DWD, 2019) predicts changes between - 4 % to + 13 % in the annual precipitation sums until the end of the 21st century, illustrating the uncertainty of future precipitation predictions.

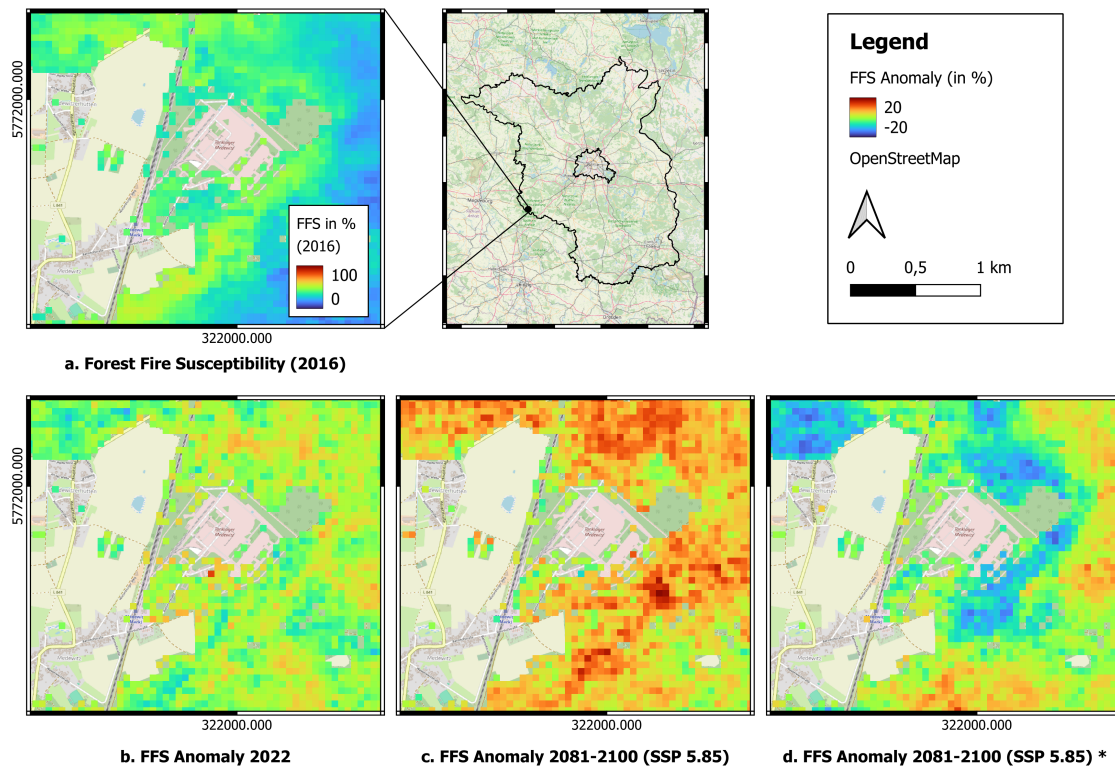


Figure 6. Detailed maps of future-FFS increase-anomalies in the municipality of Medewitz (Brandenburg). Scenarios c and d both show predicted FFS in June 2081-2100 under SSP 5.85. Scenario d includes projected land cover data, whereas scenario c does not. Base Map © OpenStreetMap contributors 2024. Distributed under the Open Data Commons Open Database License (ODbL) v1.0, Border layer © 2018-2022 GADM.

As a result, in case of a decrease in precipitation until the end of the 21st century, this will strongly affect the flammability of Brandenburg's forests and thus the future FFS.

Extreme weather events may be a better indicator of future FFS rather than averaged long-term meteorological trends. Extreme weather conditions such as the dry conditions in 2022 were efficiently captured by the current meteorological data, whereas the multi-annually aggregated monthly projected meteorological data (WorldClim) did not reflect these extreme weather events. For instance, the monthly average precipitation sum in Brandenburg shows flatter curves for the future precipitation, whereas more intense changes in mean precipitation values can be seen in 2016 and 2022 (see Fig. S 2 in the supplementSupplement). For example, the precipitation curve for 2022 shows a substantial drop in March, reflecting a very dry month with low precipitation that may have driven the higher FFS mean value in 2022 compared to other scenarios. Hence, future FFS might turn out higher in reality, given the expected increase in extreme weather events that will enhance the likelihood of drought conditions (Rad et al., 2021; Silva et al., 2018; Wu et al., 2021). To assess the future development of FFS on a local scale, climatic data

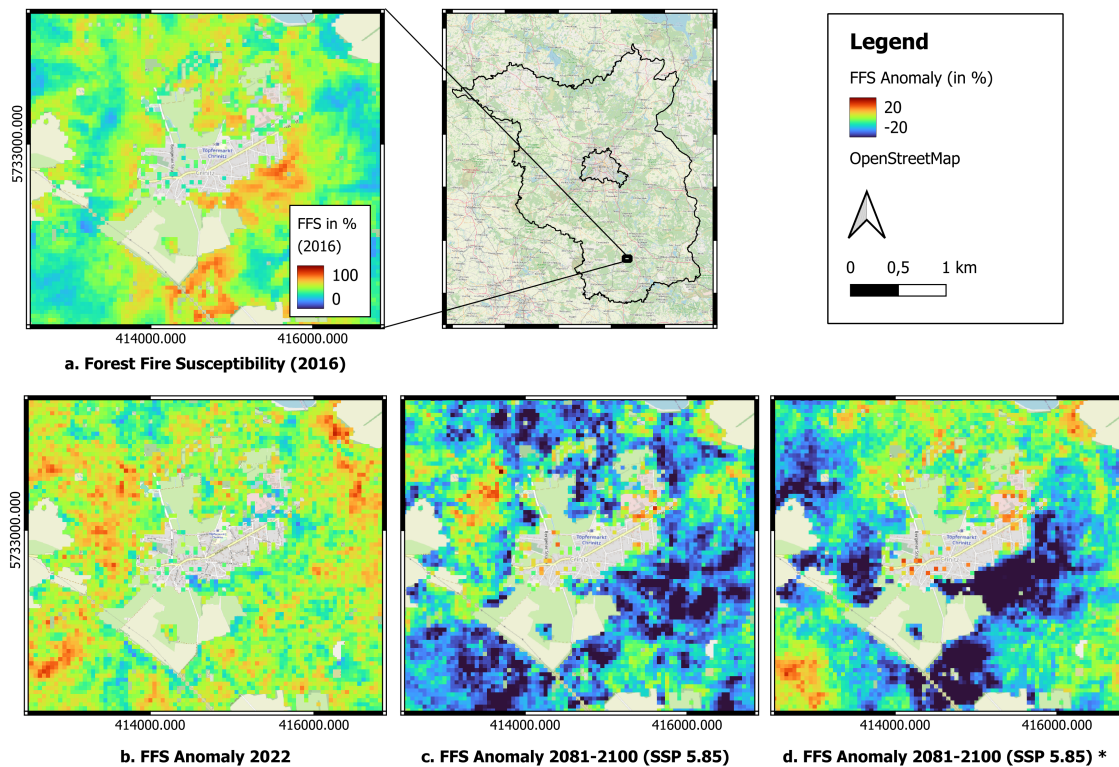


Figure 7. Detailed maps of ~~future FFS decrease anomalies~~ in the municipality of Crinitz (Brandenburg). Scenarios c and d both show predicted FFS in June 2081-2100 under SSP 5.85. Scenario d includes projected land cover data, whereas scenario c does not. Base Map © OpenStreetMap contributors 2024. Distributed under the Open Data Commons Open Database License (ODbL) v1.0, Border layer © 2018-2022 GADM.

with a higher temporal resolution is needed to reflect weather extremes more adequately than multi-annually aggregated climate data.

The moderate to low influence of topographic predictors in predicting FFS is most likely due to the rather homogeneous topography in Brandenburg. For vegetation parameters, the percentage of broadleaf forest was most important for the modelling. This result aligns with several studies that have shown monocultural coniferous forests to be more sensitive to forest fires (Afreen et al., 2011; Bauhus et al., 2017; Gnilke et al., 2022). Being dominated by pine trees makes Brandenburg particularly susceptible to forest fires. For example, Gnilke et al. (2022) assessed the fire damage in pine forests in Brandenburg, concluding that pure pine stands showed the most burning marks, whereas mixed tree stands were more resilient to forest fires. Furthermore, Buras et al. (2018) have underlined the vulnerability of pine trees located at forest edges, similarly to our results about the influence of distance to forest edge (mean distance for fire points 148.5 m and mean distance for non-fire points 174.8 m; also see Table S 6 in the supplement). Thus, forest edges in Brandenburg may require special protection to avoid

future forest fires.

On a regional scale, anthropogenic parameters appear to be more relevant for FFS. In particular, the distance to urban settle-
400 ments and railways showed a high significance for modelling FFS in Brandenburg. This confirms the statistics of forest fire
emergence in Brandenburg provided by the Lower Forestry Authority of the State of Brandenburg (2023) (see Table S 2 in
the ~~supplement~~Supplement), highlighting that most forest fires in Brandenburg emerge from human negligence or malicious
arson. Several other studies have reached the same conclusion (Busico et al., 2019; Cilli et al., 2022; Ghorbanzadeh et al.,
2019; Gnilke and Sanders, 2021; He et al., 2022; Ruffault and Mouillot, 2017). However, the distance to military sites only
405 moderately influenced the RF models (see Fig. 3). Furthermore, the Wilcoxon test (see Table S 6 in the Supplement) was not
significant, underlining that there was no clear difference in the distribution of fire and non-fire points across Brandenburg.
Therefore, the data and model results do not show a clear relationship between distance to military sites and FFS.

4.2 Assessing current and future forest fire susceptibility

~~Future scenarios~~ Overall, the future scenario 2081-2100 (excl. projected land cover data) revealed a substantial increase
410 in mean FFS compared to 2016. However, in 2022 the mean FFS was higher than in 2016 and the two future scenarios.
The comparatively high mean FFS of 2022 can be explained by significantly drier and hotter conditions compared to 2016.
~~However~~ Nevertheless, the mean FFS ~~values~~ value of the future ~~scenarios are~~ scenario neglecting land cover changes is only
slightly below the mean FFS value of 2022 and higher than the mean FFS value of ~~2016, underlining an expected FFS increase~~
~~in the future compared to the reference scenario of~~ 2016. ~~Looking at these results, FFS can be expected to increase in most~~
415 ~~parts of the federal state of~~ Considering exclusively future climatic conditions, this indicates an expected overall increase in
FFS in Brandenburg until the end of the 21st century ~~. Since compared to June 2016. However, since~~ the future modelled cli-
mate data relies on multi-annual monthly averages of air temperature and precipitation, future FFS is possibly underestimated
in this study. ~~The presumably increased emergence of extreme weather events in the future is yet to be reflected in future~~
~~meteorological data. In particular, the~~
420 The second future scenario including both projected land cover changes (*) and future climatic conditions paints a different
picture. As shown in Table 3, mean FFS was lowest of all scenarios indicating an overall decrease in FFS. This result can most
likely be explained by two aspects: First, Esri's "Land Cover 2050 - Global" data set (Esri Environment, 2021) used to plot
future distance to urban settlements projects a decrease in urbanised areas in the future compared to the Impervious Built-up
data set (European Environment Agency [EEA], 2020b). Shrinking urban areas can be explained by demographic changes,
425 such as the ageing and decline of the German population, especially in the East of Germany (Kroll and Haase, 2010). Although
Kroll and Haase (2010) state that the ageing of the German population has not yet influenced land use changes, they argue that
this is likely to change in the future. Second, Esri's "Land Cover 2050 - Global" data set (Esri Environment, 2021) has a lower
spatial resolution (300 m) than the COPERNICUS Imperviousness data set (European Environment Agency [EEA], 2020b)
used to map the distance to "current" urban settlements (10 m). As a result, Esri's data set may show some inaccuracies due
430 to mixed pixel effects. For instance, some smaller settlements may not appear in the future land cover data set. Our results
underscore how the inclusion of projected land cover data significantly changes the projected FFS in the future, an aspect that

can be further explored in future studies with new land cover projections.

435 Based on our findings, it can be argued that future urban development trends will significantly influence FFS. Hence, a population decline and abandonment of villages and rural areas may decrease FFS in those areas. However, new settlements due to continuous suburbanization processes may require additional forest fire prevention efforts in the future. Regardless of these trends, the expected increase in drought events in Brandenburg (Gnilke et al., 2022) may intensify the FFS in Brandenburg in the future. Consequently, effective forest fire management strategies in Brandenburg need to address these aspects. Therefore, the following chapter provides key strategies for the management of forest fires in the future.

4.3 Strategies for forest fire management in Brandenburg

440 Forest fire management strategies include the improvement of forest fire prediction, prevention, detection, extinction, constant monitoring of meteorological conditions, and assessment of previous forest fires to improve management strategies (Martell, 2007). An effective forest fire prevention strategy in Brandenburg involves promoting the growth of mixed forests instead of the prevalent monocultural pine forests. In particular, increasing the percentage of broadleaf trees is needed (Ministry for Rural Development, Environment and Agriculture in Brandenburg, 2024; Gnilke et al., 2022). Protection measures should put particular emphasis on forest edges and forests in proximity to any type of anthropogenic infrastructure. The prediction of FFS as implemented here provides a helpful tool to identify the most susceptible forest areas in Brandenburg, where the implementation of forest fire management strategies is most important. Complementing with constant monitoring of meteorological conditions, it can provide a powerful means to predict FFS and to provide an early warning system for forest fires. In addition to that, the constantly updated meteorological data, as well as drought indices and the forest fire danger index provided by the
445 German Meteorological Service (GMS) are essential to predict FFS in Brandenburg (Fekete and Nehren, 2023).

The conventional approach to fire detection involves integrating public reports with observation towers and aerial patrols (Martell, 2007). Increasing the number of observation towers in forest areas with high FFS could speed up fire detection and extinguishment. A valuable forest fire prevention measure is the restriction of human activities in forests or the closure of forests to the public in accordance with the meteorological conditions, given the large anthropogenic contribution to FFS. This
455 is recommendable especially in forest areas with high FFS to decrease the number of fires caused by anthropogenic influences. However, the meaning of forests for recreational purposes, as well as the economic factor of touristic forest users should be considered before implementing such measures. Additionally, implementing public education initiatives on forest fires through school programs and media campaigns is imperative for fostering greater awareness on forest fires and modifying behaviors to reduce ignition risks (Martell, 2007).

460 Moreover, the implementation of fire breaks is recommendable to limit the spread of forest fires (Berčák et al., 2023). Another strategy can be the thinning of pine forests to reduce fire risk. For example, Crecente-Campo et al. (2009) have concluded that thinning of *Pinus sylvestris* can contribute to the growth of a mixed leaved forest that has shown to be more resilient to forest fires (Afreen et al., 2011; Bauhus et al., 2017; Gnilke et al., 2022). Finally, it is crucial to employ interregional forest fire management strategies, since forest fires, such as the fire in Bohemian Switzerland National Park in 2022, may spread from
465 neighbouring countries to Germany or vice versa (Boháč and Drápela, 2023). Considering the high FFS in the southeast of

the federal state, forest fire management authorities in Brandenburg should consider closer cooperation with the neighbouring country Poland to develop and implement joint management strategies.

4.4 Shortcomings and future perspectives

Analysing FFS on a local scale ideally requires climatic data at both high spatial and temporal resolution. High temporal resolution meteorological data better reflects extreme weather events such as droughts. Consequently, the availability of climatic data at both high spatial and temporal resolution may significantly enhance the quality of future FFS assessments. Ideally, future FFS analysis should incorporate projected climate data with a monthly temporal resolution to reflect future drought events more effectively. Similarly, ~~high spatial and temporal resolution~~ forest fire products based on remote sensing data with a high spatial and temporal resolution would strongly improve forest fire assessments on smaller scales. However, this type of data is not available yet and its development is limited by the fact that current satellites used for meteorological observations are not able to create images both at high spatial and temporal resolution due to technical restrictions (Kussul et al., 2023). Forest fire data providers such as the European Forest Fire Information System (EFFIS) supply frequently updated burnt areas for Europe, the Middle East, and North Africa, which is helpful for forest fire analysis on national or international scales. However, the EFFIS burnt areas product is based on the 250 m spatial resolution of MODIS' optical scanner, resulting in smaller forest fires not being included (Achour et al., 2022). Thus, this product is not appropriate for the assessment of FFS at smaller scales.

In a similar vein, an analysis of forest fire detection systems by Barmpoutis et al. (2020) underlines the limitations of satellites in providing both high temporal and spatial resolution. Although satellites such as MODIS or Landsat have thermal infrared bands that can serve for active fire detection, those satellites have their limitations. MODIS has a high temporal resolution, but a spatial resolution of only 1 km for the thermal infrared bands. Landsat satellites, on the other hand, provide higher spatial resolution data (e.g., 100 m for the thermal infrared band for Landsat 8 and 9), but are limited to a temporal resolution of 16 days (Acharya and Yang, 2015; Chanthiya and Kalaivani, 2021; Fu et al., 2020). However, new developments of real time detection and life tracking of wildfires based on a set of over 20 satellites such as provided by OroraTech (OroraTech, 2021) show the potential of future analysis of forest fires.

Nevertheless, it is crucial that local forest fire management institutions provide data on smaller fires as well. However, in the case of the Lower Forestry Authority of the State of Brandenburg, forest fire data was not provided in the form of polygons of burnt areas, but in the form of fire ignition points. Despite the fact that the burnt area (ha) was provided, the exact extent of it could only be assumed. Consequently, model results of FFS prediction might have been more accurate if the actual extent of the forest fires had been available. Nevertheless, with continuous advances in remote sensing, forest fire data may be openly available at higher spatial resolutions in the future, which represents a significant potential for future FFS predictions on a local scale.

~~Furthermore, future LULC changes were not considered for~~ Apart from the spatial resolution of forest fire products, the modelling approach to predict FFS should be carefully selected. As previously discussed, meteorological parameters did not have a significant influence on the model. Therefore, future research may consider applying a Long Short-Term Memory (LSTM) model to better incorporate meteorological trends and to improve the understanding of how forests react to droughts

500 and heat waves (Burge et al., 2021; Natekar et al., 2021).
Furthermore, the future land cover change data set (Esri Environment, 2021) had some limitations. First, it only included information on "Artificial Surface or Urban Area". Consequently, a differentiation of different anthropogenic land uses (e.g., campsites, streets, urban settlements, or railways) for the future scenarios was not possible. Instead, the data set was only used to project the future distance to urban settlements. Second, the projection of the data set was only available for 2050.
505 Ideally, a data set reflecting the land use changes until the end of the ~~scope of this study. However, the 21st century would have led to more accurate results.~~ Third, compared to the other land use and land cover data sets used in this study, the spatial resolution of the future land cover change data set (Esri Environment, 2021) was relatively coarse. Therefore, the data set may contain some inaccuracies, thus potentially decreasing the accuracy of the future FFS projections. Nevertheless, to our knowledge, this data set had a relatively high spatial resolution compared to other data sets, which is why it was selected for
510 the study. In the end, the expansion of renewable energies (Hilker et al., 2024), the settlement of new companies and factories (e.g., Tesla gigafactory in Grünheide) (Kühn, 2023), ~~as well as suburbanization around Berlin due to suburbanization processes around Berlin driven by~~ rising housing prices (Leibert et al., 2022)~~may~~, and finally the abandonment of smaller villages due to ageing and population decline is likely to lead to future land cover changes ~~, implying additional pressure on forests by the population~~ and either heightened or decreased pressures on forests. Consequently, including this data set into the
515 analysis provides valuable information on potential land cover changes. Future research may ~~benefit from considering these developments~~ consider including higher-spatial-resolution land cover change data to model FFS.
Finally, future FFS research may integrate further predictors, dynamic predictors in particular, into their analysis. Following Rad et al. (2021), key variables shaping drought conditions are precipitation, soil moisture, and stream flow. Thus, it may be beneficial to include ~~soil moisture, which is particularly relevant to forest fire risk, especially soil moisture data~~ into future
520 analyses. However, due to a lack of soil moisture projections, this parameter was not integrated into this study. ~~Integrating more dynamic predictors into the current and future analysis of FFS may also influence the future modelled FFS, which is only based on changing climatic datasets, whereas all other static predictors remain unchanged in the future predictions.~~

5 Conclusions

This study successfully predicted FFS on a regional scale in the federal state of Brandenburg under different scenarios with the
525 RF ML algorithm. The FFS maps show a high FFS in the south and south-east of the federal state. ~~Future~~ Considering only future meteorological conditions, future FFS is expected to increase compared to the 2016 reference scenario. Extreme events such as droughts can significantly intensify FFS, which was demonstrated by the higher mean FFS value of 2022 compared to the other scenarios. However, including both projected land cover change and future meteorological data into the future projections showed a decrease in FFS. This trend might be driven by demographic changes ultimately leading to future land
530 use changes.

The selection of a three-month temporal aggregation of the meteorological data sets was appropriate to reflect long-term meteorological trends. Using climate data at a higher temporal resolution would have shown the effect of extreme weather

events more adequately. Therefore, future research could aim at integrating climate data at higher temporal resolution (e.g., weekly) to integrate the effect of extreme weather events into the predictions.

535 Our study emphasised the importance of anthropogenic predictors such as distance to urban settlements, railways or campsites. Thus, it is crucial to protect forests from anthropogenic influences to reduce the occurrence of forest fires, especially during drought events. Furthermore, we showed the higher resilience of mixed forests in contrast to monocultural forests, confirming previous literature. Forest managers should therefore prioritise the growth of broadleaf trees. Soil parameters such as percentage of silt and sand had a medium to high importance, suggesting that pore sizes and the consequent capacity of the soil to
540 carry and maintain water restricts the availability of water for trees. Finally, topographic parameters such as slope or TWI had a rather low importance for predicting FFS in Brandenburg, which is likely due to the overall rather flat topography of the federal state.

This study and FFS maps can serve local forest managers and firefighters in the prevention of forest fires in the region. Furthermore, the identification of contributing variables can support the development of forest fire management strategies adapted
545 to local circumstances.

Code availability. We will make our code available upon personal request.

Data availability. The forest fire data was provided by the Lower Forestry Authority of the State of Brandenburg and can be acquired upon request at the Eberswalde Forestry Competence Center (EFCC).

Author contributions. **Katharina H. Horn:** Writing – original draft, Visualization, Validation, Software, Methodology, Investigation, Formal
550 analysis, Data curation. **Stenka Vulova:** Writing – review & editing, Supervision, Methodology, Conceptualization. **Hanyu Li:** Writing – review & editing, Methodology, Conceptualization. **Birgit Kleinschmit:** Writing – review & editing, Supervision, Resources, Project administration, Funding acquisition, Conceptualization.

Competing interests. The authors declare that they have no known competing financial interests or personal relationships that could have appeared to influence the work reported in this paper.

555 *Acknowledgements.* This investigation was funded through the Einstein Research Unit ‘Climate and Water under Change’ from the Einstein Foundation Berlin and Berlin University Alliance (ERU-2020-609). We would also like to thank Chunyan Xu, Christian Schulz, and Pedro Alencar for their support on technical and conceptual matters. For the scope of this research, Chat-GPT 3.5 was used to support coding, writing, and editing of this article.

References

- 560 Abdollahi, A. and Pradhan, B.: Explainable artificial intelligence (XAI) for interpreting the contributing factors feed into the wildfire susceptibility prediction model, *The Science of the total environment*, 879, 163 004, <https://doi.org/10.1016/j.scitotenv.2023.163004>, 2023.
- Acharya, T. D. and Yang, I.: Exploring Landsat 8, *International Journal of IT, Engineering and Applied Sciences Research (IJIEASR)*, 4, 4–10, 2015.
- Achour, H., Toujani, A., Trabelsi, H., and Jaouadi, W.: Evaluation and comparison of Sentinel-2 MSI, Landsat 8 OLI, and EFFIS
565 data for forest fires mapping. Illustrations from the summer 2017 fires in Tunisia, *Geocarto International*, 37, 7021–7040, <https://doi.org/10.1080/10106049.2021.1980118>, 2022.
- Afreen, S., Sharma, N., Chaturvedi, R. K., Gopalakrishnan, R., and Ravindranath, N. H.: Forest policies and programs affecting vulnerability and adaptation to climate change, *Mitigation and Adaptation Strategies for Global Change*, 16, 177–197, <https://doi.org/10.1007/s11027-010-9259-5>, 2011.
- 570 Ambadan, J. T., Oja, M., Gedalof, Z., and Berg, A. A.: Satellite-Observed Soil Moisture as an Indicator of Wildfire Risk, *Remote Sensing*, 12, 1543, <https://doi.org/10.3390/rs12101543>, num Pages: 14, 2020.
- Amelung, W., Blume, H.-P., Fleige, H., Horn, R., Kandeler, E., Kögel-Knabner, I., Kretschmar, R., Stahr, K., and Wilke, B.-M.: *Scheffer-Schachtschabel Lehrbuch der Bodenkunde*, Springer eBook Collection, Springer Spektrum, Berlin, Heidelberg, seventeenth edition edn., <https://doi.org/10.1007/978-3-662-55871-3>, 2018.
- 575 Badía-Villas, D., González-Pérez, J. A., Aznar, J. M., Arjona-Gracia, B., and Martí-Dalmau, C.: Changes in water repellency, aggregation and organic matter of a mollic horizon burned in laboratory: Soil depth affected by fire, *Geoderma*, 213, 400–407, <https://doi.org/10.1016/j.geoderma.2013.08.038>, 2014.
- Barmpoutis, P., Papaioannou, P., Dimitropoulos, K., and Grammalidis, N.: A Review on Early Forest Fire Detection Systems Using Optical Remote Sensing, *Sensors*, 20, 6442, <https://doi.org/10.3390/s20226442>, publisher: Multidisciplinary Digital Publishing Institute, 2020.
- 580 Bauhus, J., Forrester, D. I., Gardiner, B., Jactel, H., Vallejo, R., and Pretzsch, H.: Ecological Stability of Mixed-Species Forests, in: *MIXED-species forests: Ecology and management*, edited by Pretzsch, H., Forrester, D. I., and Bauhus, J., pp. 337–382, Springer-Verlag, Berlin, https://doi.org/10.1007/978-3-662-54553-9_7, 2017.
- Berčák, R., Holuša, J., Kaczmarowski, J., Tyburski, L., Szczygieł, R., Held, A., Vacik, H., Slivinský, J., and Chromek, I.: Fire Protection Principles and Recommendations in Disturbed Forest Areas in Central Europe: A Review, *Fire*, 6, 310, <https://doi.org/10.3390/fire6080310>,
585 2023.
- Boháč, A. and Drápela, E.: Present Climate Change as a Threat to Geoheritage: The Wildfire in Bohemian Switzerland National Park and Its Use in Place-Based Learning, *Geosciences*, 13, 383, <https://doi.org/10.3390/geosciences13120383>, 2023.
- Bradley, A. P.: The use of the area under the ROC curve in the evaluation of machine learning algorithms, *Pattern Recognition*, 30, 1145–1159, [https://doi.org/10.1016/S0031-3203\(96\)00142-2](https://doi.org/10.1016/S0031-3203(96)00142-2), 1997.
- 590 Breiman, L.: Using adaptive bagging to debias regressions, Tech. rep., University of California at Berkeley, <https://www.stat.berkeley.edu/users/breiman/adaptbag99.pdf>, 1999.
- Breiman, L.: Random Forests, *Machine Learning*, 45, 5–32, <https://doi.org/10.1023/A:1010933404324>, 2001.
- Buras, A., Schunk, C., Zeiträg, C., Herrmann, C., Kaiser, L., Lemme, H., Straub, C., Taeger, S., Göbwein, S., Klemmt, H.-J., and Menzel, A.: Are Scots pine forest edges particularly prone to drought-induced mortality?, *Environmental Research Letters*, 13, 025 001, <https://doi.org/10.1088/1748-9326/aaa0b4>, 2018.
595

- Burge, J., Bonanni, M., Ihme, M., and Hu, L.: Convolutional LSTM Neural Networks for Modeling Wildland Fire Dynamics, <https://doi.org/10.48550/arXiv.2012.06679>, arXiv:2012.06679 [cs], 2021.
- Busico, G., Giuditta, E., Kazakis, N., and Colombani, N.: A Hybrid GIS and AHP Approach for Modelling Actual and Future Forest Fire Risk Under Climate Change Accounting Water Resources Attenuation Role, *Sustainability*, 11, 7166, <https://doi.org/10.3390/su11247166>, publisher: Multidisciplinary Digital Publishing Institute, 2019.
- 600 Chanthiya, P. and Kalaivani, V.: Forest fire detection on LANDSAT images using support vector machine, *Concurrency and Computation: Practice and Experience*, 33, <https://doi.org/10.1002/cpe.6280>, number Of Volumes: e6280, 2021.
- Chicas, S. D. and Østergaard Nielsen, J.: Who are the actors and what are the factors that are used in models to map forest fire susceptibility? A systematic review, *Natural Hazards*, 114, 2417–2434, <https://doi.org/10.1007/s11069-022-05495-5>, publisher: Springer; Springer
- 605 Netherlands, 2022.
- Cilli, R., Elia, M., D’Este, M., Giannico, V., Amoroso, N., Lombardi, A., Pantaleo, E., Monaco, A., Sanesi, G., Tangaro, S., Bellotti, R., and Laforteza, R.: Explainable artificial intelligence (XAI) detects wildfire occurrence in the Mediterranean countries of Southern Europe, *Scientific Reports*, 12, 16 349, <https://doi.org/10.1038/s41598-022-20347-9>, publisher: Nature Publishing Group, 2022.
- Crecente-Campo, F., Pommerening, A., and Rodríguez-Soalleiro, R.: Impacts of thinning on structure, growth and risk of crown fire in a *Pinus sylvestris* L. plantation in northern Spain, *Forest Ecology and Management*, 257, 1945–1954, <https://doi.org/10.1016/j.foreco.2009.02.009>,
- 610 2009.
- DWD: Klimareport Brandenburg. Fakten bis zur Gegenwart - Erwartungen für die Zukunft, Report 1, German Weather Service, Offenbach am Main, Deutschland, https://www.dwd.de/DE/leistungen/klimareport_bb/klimareport_bb_2019_download.pdf;jsessionid=5BB70292853A51CB031B8D1E338E7F56.live21071?__blob=publicationFile&v=5, 2019.
- 615 El Garroussi, S., Di Giuseppe, F., Barnard, C., and Wetterhall, F.: Europe faces up to tenfold increase in extreme fires in a warming climate, *npj Climate and Atmospheric Science*, 7, <https://doi.org/10.1038/s41612-024-00575-8>, 2024.
- Eslami, R., Azarnoush, M., Kialashki, A., and Kazemzadeh, F.: GIS-Based Forest Fire Susceptibility Assessment By Random Forest, Artificial Neural Network And Logistic Regression Methods, *JOURNAL OF TROPICAL FOREST SCIENCE*, 33, 173–184, <https://doi.org/10.26525/jtfs2021.33.2.173>, 2021.
- 620 Esri Environment: Land Cover 2050 - Global, Tech. rep., Esri Environment, <https://hub.arcgis.com/datasets/esri::land-cover-2050-global/about>, 2021.
- European Environment Agency [EEA]: Forest Type 2018 (raster 10 m), Europe, 3-yearly, Oct. 2020, Tech. rep., European Environment Agency, 2020a.
- European Environment Agency [EEA]: Impervious Built-up 2018 (raster 10 m), Europe, 3-yearly, Aug. 2020, Tech. rep., European Environ-
- 625 ment Agency, 2020b.
- European Environment Agency [EEA]: Tree Cover Density 2018 (raster 10 m), Europe, 3-yearly, Sep. 2020, Tech. rep., European Environment Agency, 2020c.
- Federal Office for Agriculture and Food: Waldbrandstatistik der Bundesrepublik Deutschland für das Jahr 2022, Tech. rep., Federal Office for Agriculture and Food, Bonn, <https://www.bmel-statistik.de/fileadmin/daten/0302250-2022.pdf>, 2023.
- 630 Fekete, A. and Nehren, U.: Assessment of social vulnerability to forest fire and hazardous facilities in Germany, *International Journal of Disaster Risk Reduction*, 87, 103 562, <https://doi.org/10.1016/j.ijdr.2023.103562>, 2023.
- Feng, L., Lysakowski, B., Eisenschmidt, J., and Birkhofer, K.: The impact of wildfire and mammal carcasses on beetle emergence from heathland soils, *Ecological Entomology*, 47, 883–894, <https://doi.org/10.1111/een.13179>, 2022.

- Fick, S. E. and Hijmans, R. J.: WorldClim 2.1 (CMIP6) - 30s resolution climate projections: WorldClim, https://www.worldclim.org/data/cmip6/cmip6_clim30s.html, 2022.
- 635
- Fu, Y., Li, R., Wang, X., Bergeron, Y., Valeria, O., Chavardès, R. D., Wang, Y., and Hu, J.: Fire Detection and Fire Radiative Power in Forests and Low-Biomass Lands in Northeast Asia: MODIS versus VIIRS Fire Products, *Remote Sensing*, 12, 2870, <https://doi.org/10.3390/rs12182870>, 2020.
- Ghorbanzadeh, O., Blaschke, T., Gholamnia, K., and Aryal, J.: Forest Fire Susceptibility and Risk Mapping Using Social/Infrastructural Vulnerability and Environmental Variables, *Fire*, 2, 50, <https://doi.org/10.3390/fire2030050>, number: 3 Publisher: Multidisciplinary Digital Publishing Institute, 2019.
- 640
- Gislason, P. O., Benediktsson, J. A., and Sveinsson, J. R.: Random Forests for land cover classification, *Pattern Recognition Letters*, 27, 294–300, <https://doi.org/10.1016/j.patrec.2005.08.011>, 2006.
- Gnilke, A. and Sanders, T.: Forest fire history in Germany (2001-2020), Tech. rep., Thünen-Institut of Forest Ecosystems, https://www.thuenen.de/media/publikationen/project_brief/project_brief_2021_32a.pdf, 2021.
- 645
- Gnilke, A., Liesegang, J., and Sanders, T.: Potential forest fire prevention by management-An analysis of fire damage in pine forests, Tech. rep., Thünen-Institute of Forest Ecosystems, https://literatur.thuenen.de/digbib_extern/dn065237.pdf, 2022.
- Guo, H., Bao, A., Liu, T., Jiapaer, G., Ndayisaba, F., Jiang, L., Kurban, A., and De Maeyer, P.: Spatial and temporal characteristics of droughts in Central Asia during 1966–2015, *Science of The Total Environment*, 624, 1523–1538, <https://doi.org/10.1016/j.scitotenv.2017.12.120>,
- 650 2018.
- GWS Climate Data Center: Grids of monthly total precipitation over Germany, version v1.0., Tech. rep., German Weather Service, https://opendata.dwd.de/climate_environment/CDC/grids_germany/monthly/precipitation/, 2023a.
- GWS Climate Data Center: Grids of monthly averaged daily air temperature (2m) over Germany, version v1.0., Tech. rep., German Weather Service, https://opendata.dwd.de/climate_environment/CDC/grids_germany/monthly/air_temperature_mean/, 2023b.
- 655
- He, W., Shirowzhan, S., and Pettit, C. J.: GIS and Machine Learning for Analysing Influencing Factors of Bushfires Using 40-Year Spatio-Temporal Bushfire Data, *ISPRS International Journal of Geo-Information*, 11, 336, <https://doi.org/10.3390/ijgi11060336>, publisher: Multidisciplinary Digital Publishing Institute, 2022.
- Hilker, J. M., Busse, M., Müller, K., and Zscheischler, J.: Photovoltaics in agricultural landscapes: “Industrial land use” or a “real compromise” between renewable energy and biodiversity? Perspectives of German nature conservation associations, *Energy, Sustainability and Society*, 14, <https://doi.org/10.1186/s13705-023-00431-2>, num Pages: 15, 2024.
- 660
- Holsten, A., Vetter, T., Vohland, K., and Krysanova, V.: Impact of climate change on soil moisture dynamics in Brandenburg with a focus on nature conservation areas, *Ecological Modelling*, 220, 2076–2087, <https://doi.org/10.1016/j.ecolmodel.2009.04.038>, 2009.
- Kemter, M., Fischer, M., Luna, L. V., Schönfeldt, E., Vogel, J., Banerjee, A., Korup, O., and Thonicke, K.: Cascading Hazards in the Aftermath of Australia’s 2019/2020 Black Summer Wildfires, *Earth’s Future*, 9, <https://doi.org/10.1029/2020EF001884>, 2021.
- 665
- Kroll, F. and Haase, D.: Does demographic change affect land use patterns?: A case study from Germany, *Land Use Policy*, 27, 726–737, <https://doi.org/10.1016/j.landusepol.2009.10.001>, 2010.
- Kuhn, M. and Johnson, K.: *Applied Predictive Modeling*, Springer New York, New York, NY, <https://doi.org/10.1007/978-1-4614-6849-3>, 2013.
- Kussul, N., Fedorov, O., Yailymov, B., Pidgorodetska, L., Kolos, L., Yailymova, H., and Shelestov, A.: Fire Danger Assessment Using Moderate-Spatial Resolution Satellite Data, *Fire*, 6, 72, <https://doi.org/10.3390/fire6020072>, 2023.
- 670

- Kühn, M.: Planungskonflikte und Partizipation: die Gigafactory Tesla, Raumforschung und Raumordnung | Spatial Research and Planning, 81, 538–556, <https://doi.org/10.14512/rur.1698>, 2023.
- Lang, N., Jetz, W., Schindler, K., and Wegner, J. D.: A high-resolution canopy height model of the Earth, *Nature Ecology & Evolution*, 7, 1778–1789, <https://doi.org/https://doi.org/10.1038/s41559-023-02206->, 2023.
- 675 Leibert, T., Wolff, M., and Haase, A.: Shifting spatial patterns in German population trends: local-level hot and cold spots, 1990–2019, *Geographica Helvetica*, 77, 369–387, <https://doi.org/10.5194/gh-77-369-2022>, 2022.
- LGB State Office for Land Surveying and Geoinformation Brandenburg: Geländemodell, <https://geobasis-bb.de/lgb/de/geodaten/3d-produkte/gelaendemodell/>, 2023.
- Li, H., Vulova, S., Rocha, A. D., and Kleinschmit, B.: Spatio-temporal feature attribution of European summer wildfires with Explainable
680 Artificial Intelligence (XAI), *Science of The Total Environment*, 916, 170 330, <https://doi.org/10.1016/j.scitotenv.2024.170330>, 2024.
- Littell, J. S., Peterson, D. L., Riley, K. L., Liu, Y., and Luce, C. H.: Effects of drought on forests and rangelands in the United States: A comprehensive science synthesis, *Fire and Drought*, pp. 135–154, <https://www.fs.usda.gov/research/treesearch/download/50971.pdf>, 2016.
- Lizundia-Loiola, J., Otón, G., Ramo, R., and Chuvieco, E.: A spatio-temporal active-fire clustering approach for global burned area mapping
685 at 250 m from MODIS data, *Remote Sensing of Environment*, 236, 111 493, <https://doi.org/10.1016/j.rse.2019.111493>, 2020.
- Lower Forestry Authority of the State of Brandenburg: Waldbranddaten der Jahre 2010 bis 2022 [Data], 2023.
- Maingi, J. K. and Henry, M. C.: Factors influencing wildfire occurrence and distribution in eastern Kentucky, USA, *International Journal of Wildland Fire*, 16, 23, <https://doi.org/10.1071/WF06007>, 2007.
- Mallik, A. U., Gimingham, C. H., and Rahman, A. A.: Ecological Effects of Heather Burning: I. Water Infiltration, Moisture Retention and
690 Porosity of Surface Soil, *The Journal of Ecology*, 72, 767, <https://doi.org/10.2307/2259530>, 1984.
- Martell, D. L.: Forest Fire Management, in: *Handbook Of Operations Research In Natural Resources*, edited by Weintraub, A., International Series In Operations Research amp; Mana, pp. 489–509, Springer Science+Business Media, LLC, Boston, MA, https://doi.org/10.1007/978-0-387-71815-6_26, 2007.
- Matos, E. S., Freese, D., Ślázak, A., Bachmann, U., Veste, M., and Hüttl, R. F.: Organic-carbon and nitrogen stocks and organic-carbon
695 fractions in soil under mixed pine and oak forest stands of different ages in NE Germany, *Journal of Plant Nutrition and Soil Science*, 173, 654–661, <https://doi.org/10.1002/jpln.200900046>, 2010.
- Meinshausen, M., Nicholls, Z. R. J., Lewis, J., Gidden, M. J., Vogel, E., Freund, M., Beyerle, U., Gessner, C., Nauels, A., Bauer, N., Canadell, J. G., Daniel, J. S., John, A., Krummel, P. B., Luderer, G., Meinshausen, N., Montzka, S. A., Rayner, P. J., Reimann, S., Smith, S. J., van den Berg, M., Velders, G. J. M., Vollmer, M. K., and Wang, R. H. J.: The shared socio-economic pathway (SSP) greenhouse gas concentrations
700 and their extensions to 2500, *Geoscientific Model Development*, 13, 3571–3605, <https://doi.org/10.5194/gmd-13-3571-2020>, 2020.
- Milanović, S., Marković, N., Pamučar, D., Gigović, L., Kostić, P., and Milanović, S. D.: Forest Fire Probability Mapping in Eastern Serbia: Logistic Regression versus Random Forest Method, *Forests*, 12, 5, <https://doi.org/10.3390/f12010005>, 2021.
- Ministry for Rural Development, Environment and Agriculture in Brandenburg: Waldzustandsbericht 2023 des Landes Brandenburg, Tech. rep., Ministry for Rural Development, Environment and Agriculture in Brandenburg, Potsdam, <https://forst.brandenburg.de/sixcms/media.php/9/wzb23.pdf>, 2023.
705
- Ministry for Rural Development, Environment and Agriculture in Brandenburg: Strategie des Landes Brandenburg zur Anpassung an die Folgen des Klimawandels, Tech. rep., Ministry for Rural Development, Environment and Agriculture in Brandenburg, Potsdam, <https://mluk.brandenburg.de/sixcms/media.php/9/Klimaanpassungsstrategie-BB-Kurzfassung.pdf>, 2024.

- Natekar, S., Patil, S., Nair, A., and Roychowdhury, S.: Forest Fire Prediction using LSTM, in: 2021 2nd International Conference for Emerging Technology (INCET), pp. 1–5, <https://doi.org/10.1109/INCET51464.2021.9456113>, 2021.
- 710 Nguyen, Q. H., Ly, H.-B., Ho, L. S., Al-Ansari, N., van Le, H., van Tran, Q., Prakash, I., and Pham, B. T.: Influence of Data Splitting on Performance of Machine Learning Models in Prediction of Shear Strength of Soil, *Mathematical Problems in Engineering*, 2021, 1–15, <https://doi.org/10.1155/2021/4832864>, 2021.
- Oliveira, S., Oehler, F., San-Miguel-Ayanz, J., Camia, A., and Pereira, J. M.: Modeling spatial patterns of fire occurrence in Mediterranean Europe using Multiple Regression and Random Forest, *Forest Ecology and Management*, 275, 117–129, <https://doi.org/10.1016/j.foreco.2012.03.003>, 2012.
- 715 Oliveira, T. M., Barros, A. M. G., Ager, A. A., and Fernandes, P. M.: Assessing the effect of a fuel break network to reduce burnt area and wildfire risk transmission, *International Journal of Wildland Fire*, 25, 619, <https://doi.org/10.1071/WF15146>, 2016.
- OpenStreetMap Contributors: OpenStreetMap, <https://www.openstreetmap.org>, publisher: OpenStreetMap Contributors, 2023.
- 720 OroraTech: Wildfire Solution | OroraTech, <https://ororatech.com/wildfire-solution/>, lastaccess:6May2024,2021., 2021.
- Oyonarte, C., Escoriza, I., Delgado, R., Pinto, V., and Delgado, G.: Water-retention capacity in fine earth and gravel fractions of semiarid Mediterranean Montane soils, *Arid Soil Research and Rehabilitation*, 12, 29–45, <https://doi.org/10.1080/15324989809381495>, 1998.
- Poggio, L., Sousa, L. M., Batjes, N. H., Heuvelink, G. B. M., Kempen, B., Ribeiro, E., and Rossiter, D.: SoilGrids 2.0: producing soil information for the globe with quantified spatial uncertainty, *SOIL*, 7, 217–240, <https://doi.org/10.5194/soil-7-217-2021>, 2021.
- 725 Pourtaghi, Z. S., Pourghasemi, H. R., and Rossi, M.: Forest fire susceptibility mapping in the Minudasht forests, Golestan province, Iran, *Environmental Earth Sciences*, 73, 1515–1533, <https://doi.org/10.1007/s12665-014-3502-4>, 2015.
- Preston, B. L., Brooke, C., Measham, T. G., Smith, T. F., and Gorddard, R.: Igniting change in local government: lessons learned from a bushfire vulnerability assessment, *Mitigation and Adaptation Strategies for Global Change*, 14, 251–283, <https://doi.org/10.1007/s11027-008-9163-4>, 2009.
- 730 Rad, A. M., AghaKouchak, A., Navari, M., and Sadegh, M.: Progress, Challenges, and Opportunities in Remote Sensing of Drought, in: *Global drought and flood: Observation, modeling, and prediction*, edited by Wu, H., Lettenmaier, D. P., Tang, Q., and Ward, P. J., vol. 265 of *Geophysical monograph series*, pp. 1–28, American Geophysical Union; Wiley, [Washington, D.C]; Hoboken, NJ, <https://doi.org/10.1002/9781119427339.ch1>, 2021.
- Razavi-Termeh, S. V., Sadeghi-Niaraki, A., and Choi, S.-M.: Ubiquitous GIS-Based Forest Fire Susceptibility Mapping Using Artificial Intelligence Methods, *Remote Sensing*, 12, 1689, <https://doi.org/10.3390/rs12101689>, number: 10 Publisher: Multidisciplinary Digital Publishing Institute, 2020.
- 735 Reyer, C., Bachinger, J., Bloch, R., Hattermann, F. F., Ibisch, P. L., Kreft, S., Lasch, P., Lucht, W., Nowicki, C., Spathelf, P., Stock, M., and Welp, M.: Climate change adaptation and sustainable regional development: a case study for the Federal State of Brandenburg, Germany, *Regional Environmental Change*, 12, 523–542, <https://doi.org/10.1007/s10113-011-0269-y>, publisher: Springer; Springer-Verlag, 2012.
- 740 Ruffault, J. and Mouillot, F.: Contribution of human and biophysical factors to the spatial distribution of forest fire ignitions and large wildfires in a French Mediterranean region, *International Journal of Wildland Fire*, 26, 498, <https://doi.org/10.1071/WF16181>, 2017.
- Saidi, S., Younes, A. B., and Anselme, B.: A GIS-remote sensing approach for forest fire risk assessment: case of Bizerte region, Tunisia, *Applied Geomatics*, 13, 587–603, <https://doi.org/10.1007/s12518-021-00369-0>, 2021.
- 745 Silva, C. V. J., Aragão, L. E. O. C., Barlow, J., Espirito-Santo, F., Young, P. J., Anderson, L. O., Berenguer, E., Brasil, I., Foster Brown, I., Castro, B., Farias, R., Ferreira, J., França, F., Graça, P. M. L. A., Kirsten, L., Lopes, A. P., Salimon, C., Scaranello, M. A., Seixas, M., Souza, F. C., and Xaud, H. A. M.: Drought-induced Amazonian wildfires instigate a decadal-scale disruption of forest carbon dynamics,

- Philosophical transactions of the Royal Society of London. Series B, Biological sciences, 373, <https://doi.org/10.1098/rstb.2018.0043>, 2018.
- 750 Suryabhadgavan, K. V., Alemu, M., and Balakrishnan, M.: GIS-based multi-criteria decision analysis for forest fire susceptibility mapping: a case study in Harenna forest, southwestern Ethiopia, *Tropical Ecology*, 57, 33–43, 2016.
- Thonicke, K. and Cramer, W.: Long-term Trends in Vegetation Dynamics and Forest Fires in Brandenburg (Germany) Under a Changing Climate, *Natural Hazards*, 38, 283–300, <https://doi.org/10.1007/s11069-005-8639-8>, 2006.
- Wang, S. S.-C., Qian, Y., Leung, L. R., and Zhang, Y.: Identifying Key Drivers of Wildfires in the Contiguous US Using Machine Learning and Game Theory Interpretation, *Earth's Future*, 9, 2020001 910, <https://doi.org/10.1029/2020EF001910>, 2021.
- 755 Wen, X., Tu, Y.-h., Tan, Q.-f., Li, W.-y., Fang, G.-h., Ding, Z.-y., and Wang, Z.-n.: Construction of 3D drought structures of meteorological drought events and their spatio-temporal evolution characteristics, *Journal of Hydrology*, 590, 125 539, <https://doi.org/10.1016/j.jhydrol.2020.125539>, 2020.
- Willhite, D. A. and Buchanan-Smith, M.: Drought as Hazard: Understanding the Natural and Social Context, in: *Drought and Water Crises. Science, Technology, and Management Issues*, p. 406, Taylor & Francis, Boca Raton, ISBN: 9781420028386 Num Pages: 406 Place: Boca Raton Publisher: Taylor & Francis, 2005.
- 760 Wu, H., Lettenmaier, D. P., Tang, Q., and Ward, P. J., eds.: *Global drought and flood: Observation, modeling, and prediction*, vol. 265 of *Geophysical monograph series*, American Geophysical Union; Wiley, [Washington, D.C]; Hoboken, NJ, 2021.
- Xu, F., Bento, V. A., Qu, Y., and Wang, Q.: Projections of Global Drought and Their Climate Drivers Using CMIP6 Global Climate Models, *Water*, 15, 2272, <https://doi.org/10.3390/w15122272>, 2023.
- 765 Zhang, G., Wang, M., and Liu, K.: Forest Fire Susceptibility Modeling Using a Convolutional Neural Network for Yunnan Province of China, *International Journal of Disaster Risk Science*, 10, 386–403, <https://doi.org/10.1007/s13753-019-00233-1>, 2019.
- Zhou, Z., Zhang, L., Chen, J., She, D., Wang, G., Zhang, Q., Xia, J., and Zhang, Y.: Projecting Global Drought Risk Under Various SSP-RCP Scenarios, *Earth's Future*, 11, e2022EF003 420, <https://doi.org/10.1029/2022EF003420>, <https://onlinelibrary.wiley.com/doi/pdf/10.1029/2022EF003420>, 2023.