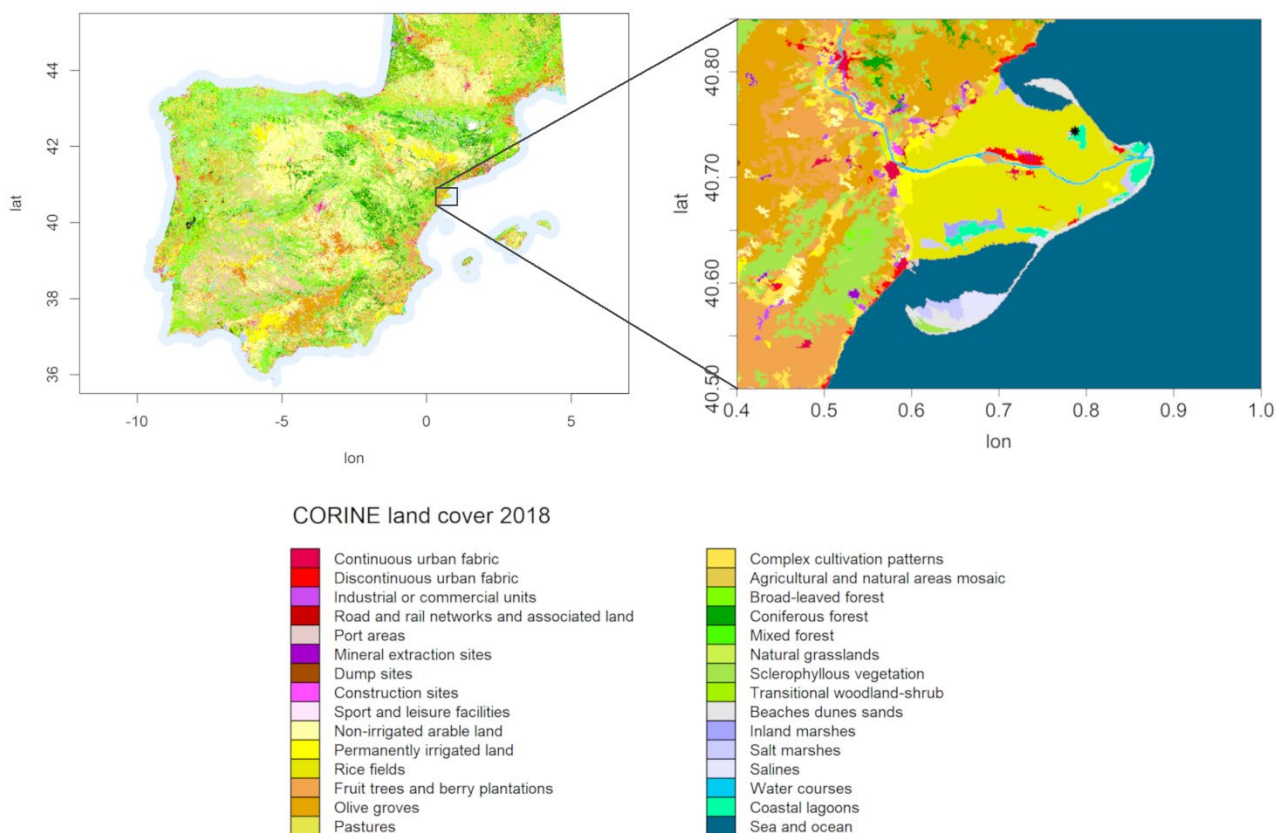
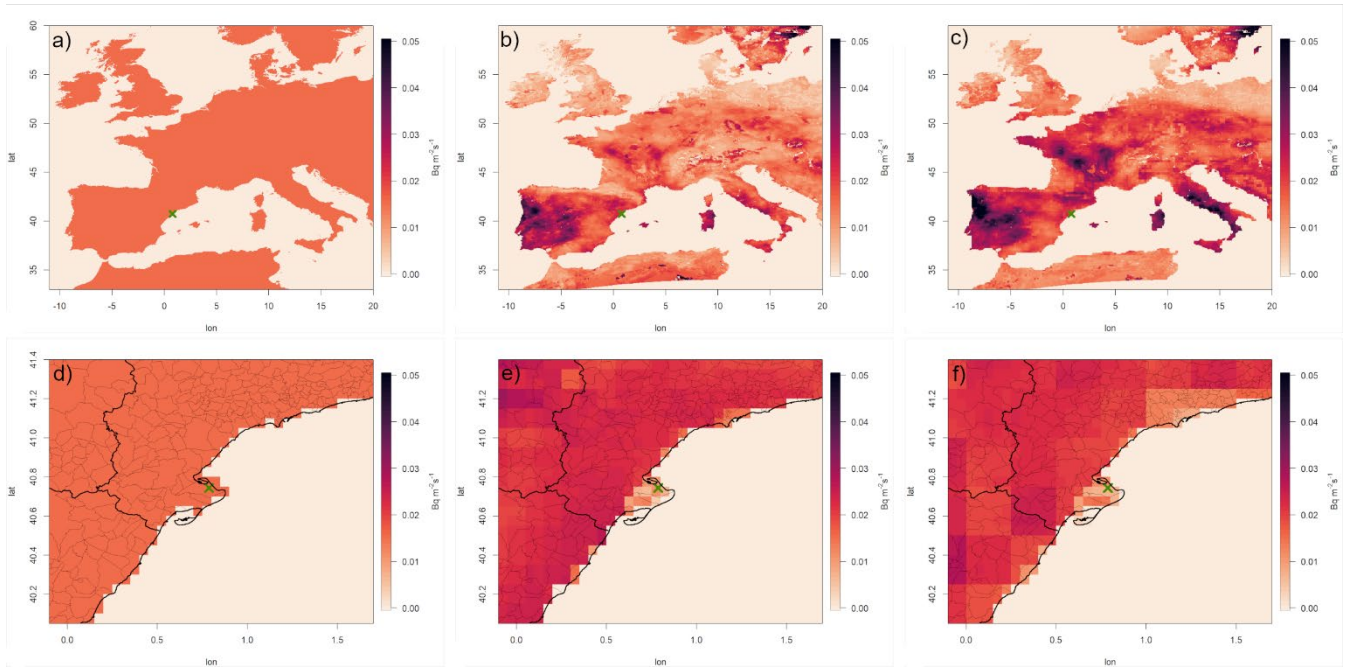


Supplementary to Estimation of seasonal methane fluxes over a Mediterranean rice paddy area using the Radon Tracer Method (RTM)

5



10 **Figure S1. CORINE land cover map 2018 for the Iberian Peninsula with a zoom, on the right side, over the Ebro River Delta (European Union, 2018). DEC station is marked with a black asterisk.**



15

Figure S2. Average 2013-2019 ^{222}Rn exhalation maps: a) Constant value of $15.8 \text{ mBq m}^{-2} \text{ s}^{-1}$ over land; b) ERA5-Land radon exhalation map; c) GLDAS-Noah radon exhalation map; c, d and e, same as a, b and c for the $70 \text{ km} \times 70 \text{ km}$ window around DEC station (green cross).

20

25

30

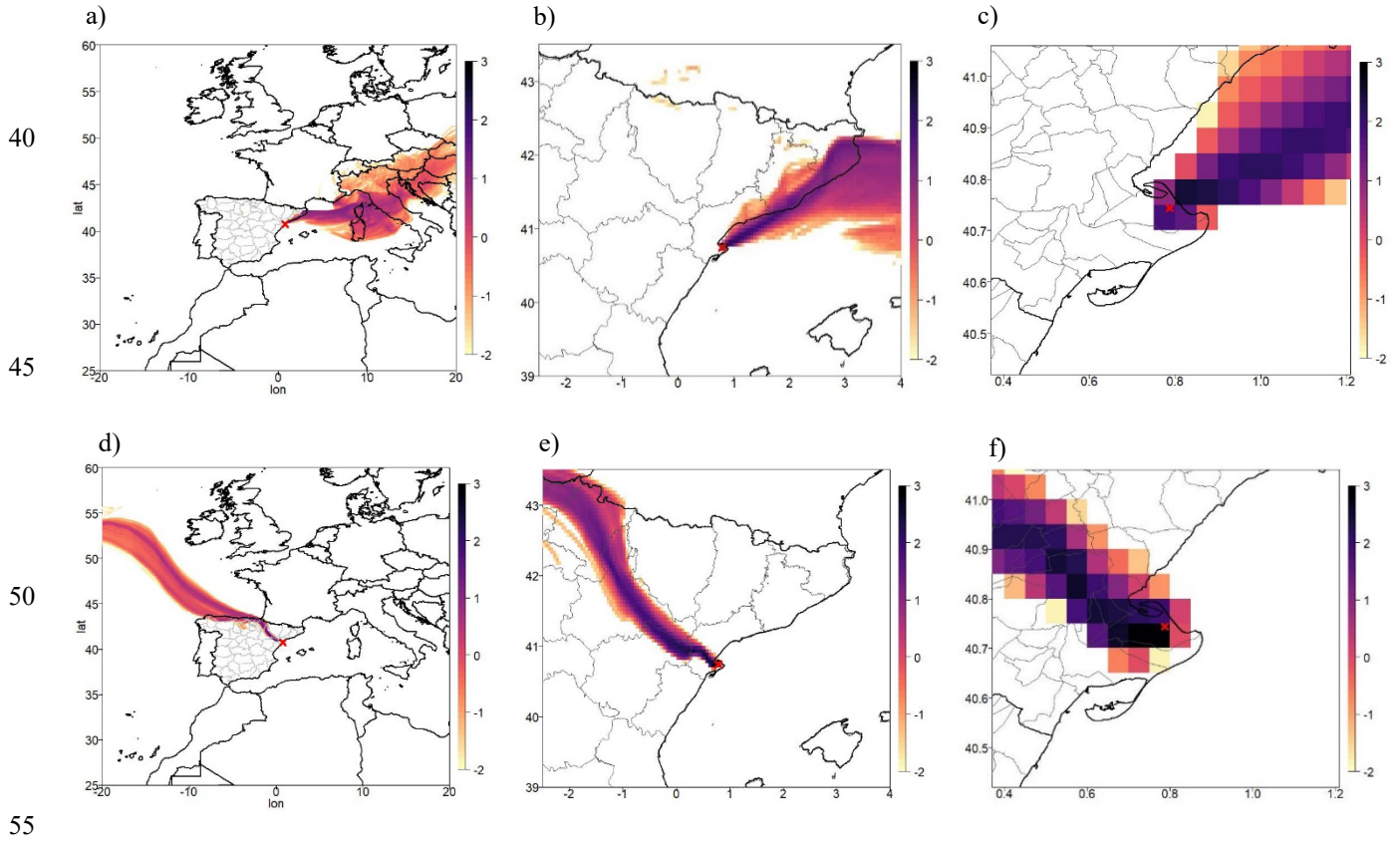
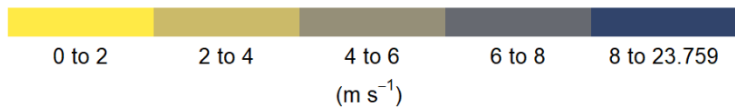
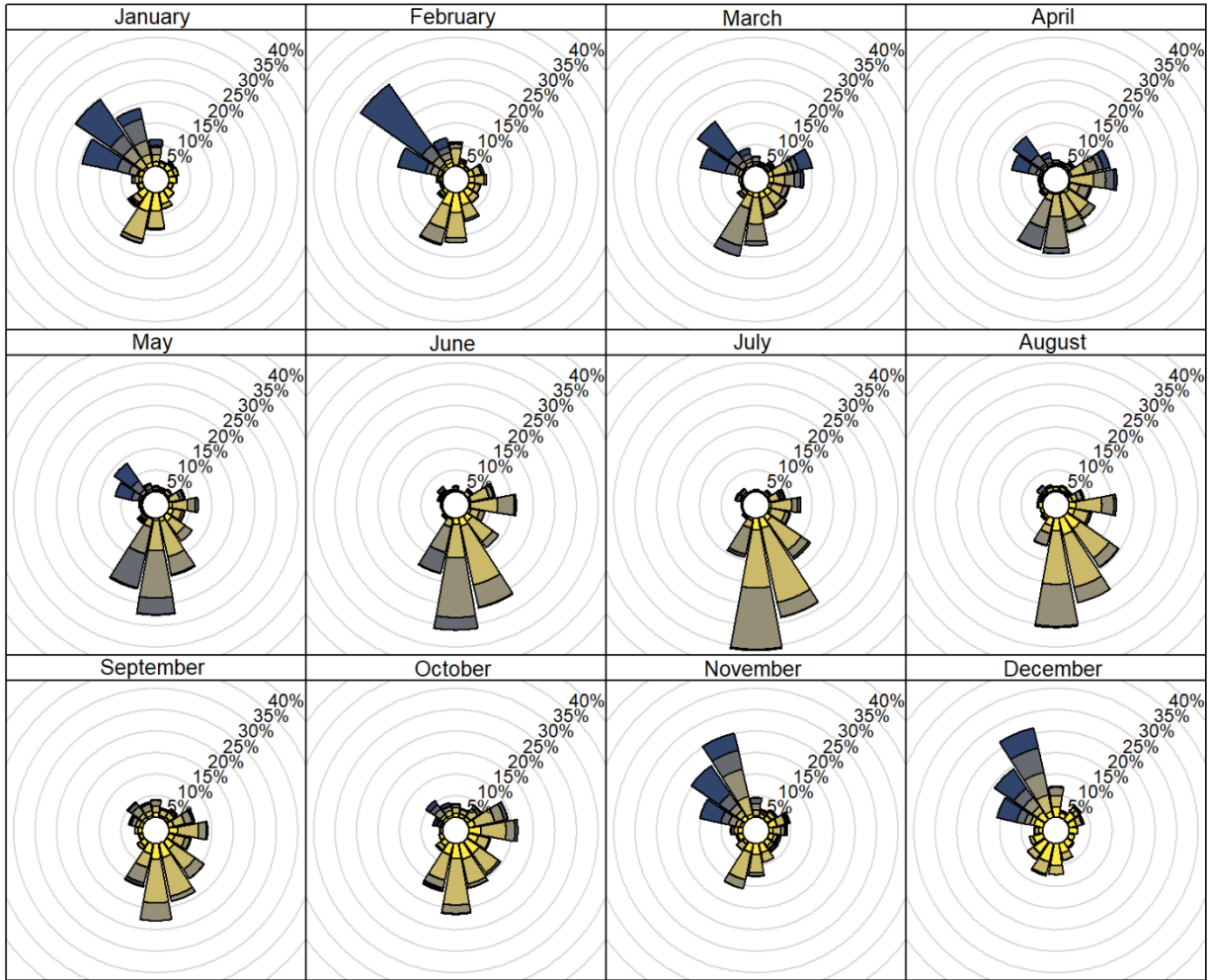
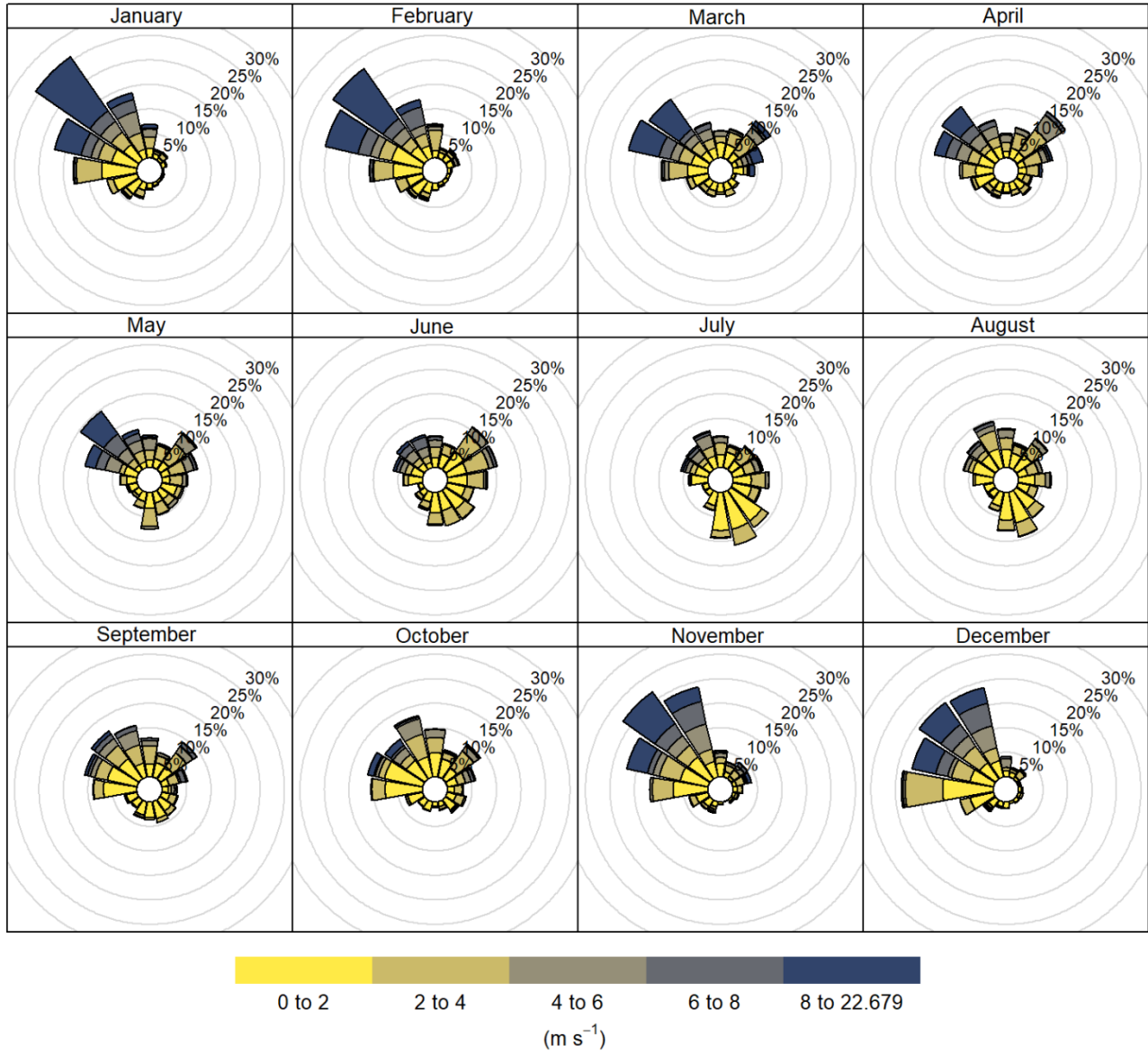


Figure S3. Modelled back trajectories (between 0 - 200 m a.g.l.) from DEC with Flex-WRF for two different synoptic situations: day 19/04/2019 at 00h UTC (a, b and c panels) and day 20/05/2019 at 00h UTC (d, e and f panels). Colours represent de logarithm of the residence time (seconds) in every $0.05^\circ \times 0.05^\circ$ grid cell.

a)



b)



65

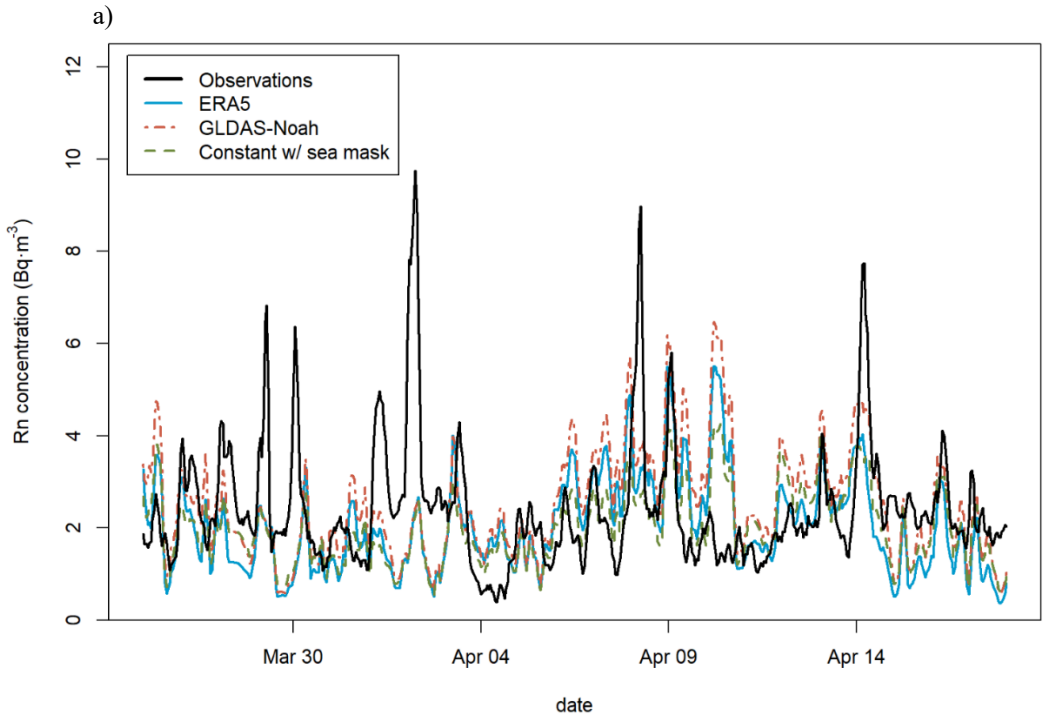
Figure S4. Wind roses for air coming at DEC station (10 m a.g.l.) for: a) midday hours (11h UTC to 17h UTC); b) nocturnal hours (RTM window, 21h UTC to 03h UTC).

70

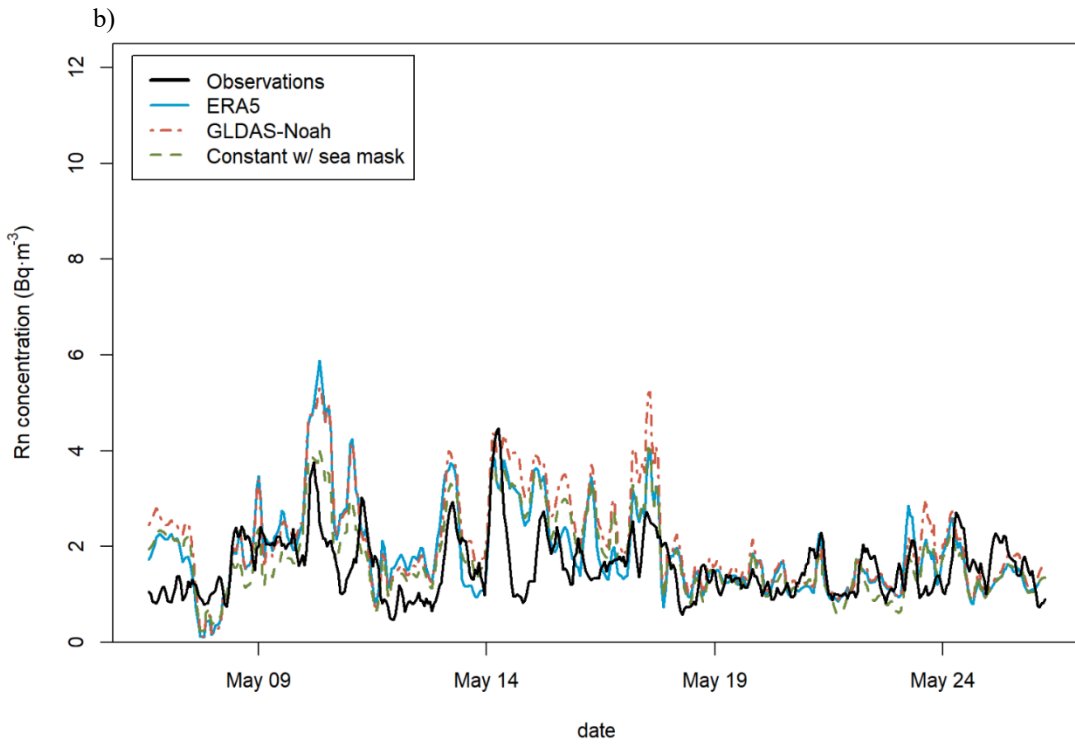
Table S1. Simulation of radon concentrations at DEC station: models' performance measures across different time periods based on the comparison of models' predictions vs. observed values.

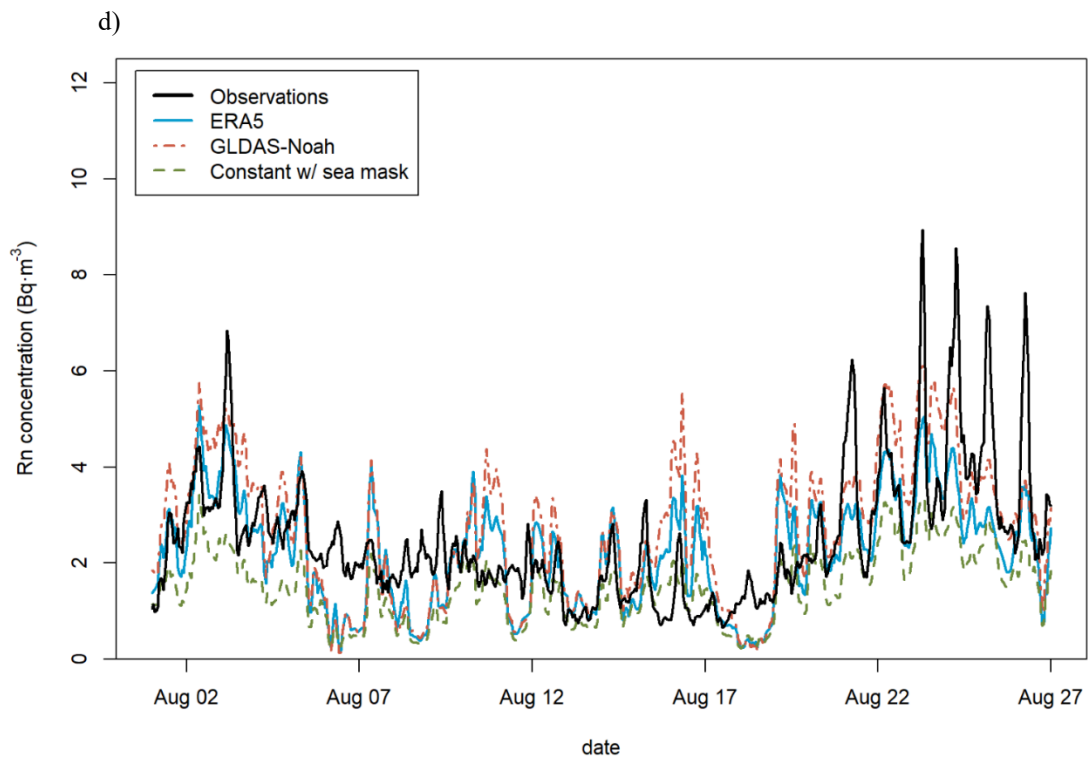
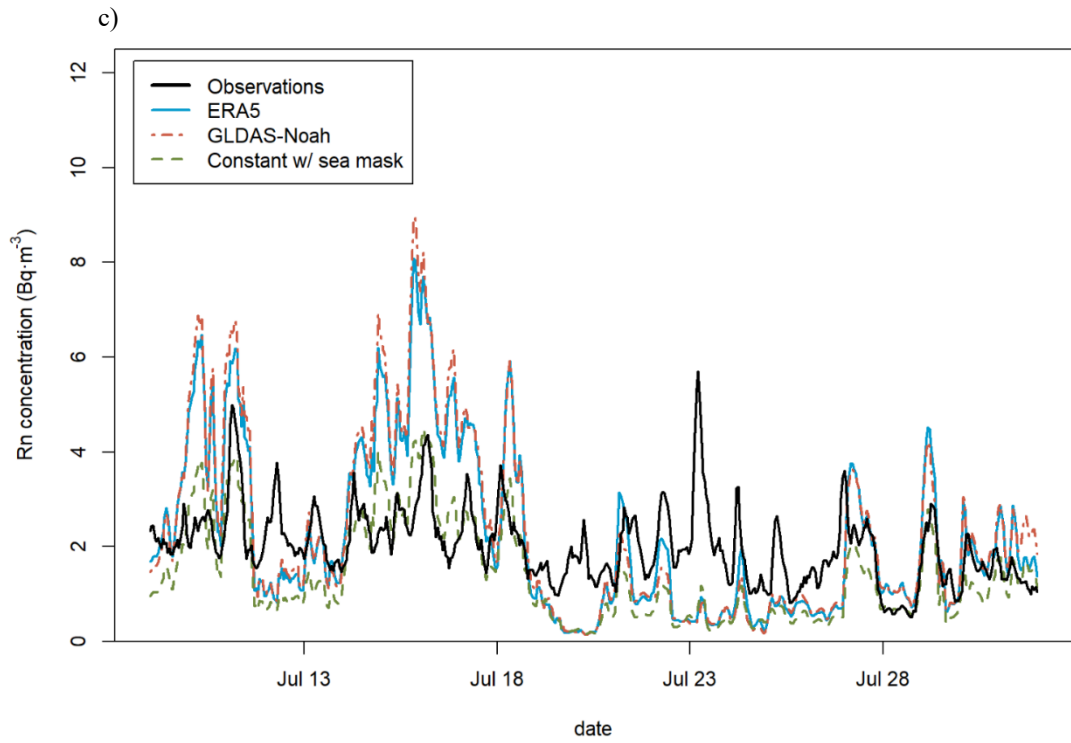
Period	Statistics	Flex-WRF-ERA5 vs. Observations	Flex-WRF-GLDAS vs. Observations	Flex-WRF-Const* vs. Observations
March - April 2019	Bias (Bq m ⁻³)	-0.38	0.084	-0.43
	R (-)	0.21	0.18	0.24
	RMSE (Bq m ⁻³)	1.57	1.63	1.47
	WRMSE (Bq m ⁻³)	0.61	0.58	0.54
May 2019	Bias (Bq m ⁻³)	0.33	0.54	0.21
	R (-)	0.54	0.54	0.52
	RMSE (Bq m ⁻³)	0.87	1.03	0.76
	WRMSE (Bq m ⁻³)	0.48	0.52	0.45
July - August 2019	Bias (Bq m ⁻³)	-0.05	0.22	-0.82
	R (-)	0.51	0.53	0.58
	RMSE (Bq m ⁻³)	1.33	1.47	1.28
	WRMSE (Bq m ⁻³)	1.62	1.65	0.7
October - November 2019	Bias (Bq m ⁻³)	-0.52	-0.23	-0.92
	R (-)	0.46	0.38	0.33
	RMSE (Bq m ⁻³)	1.94	1.97	2.13
	WRMSE (Bq m ⁻³)	0.61	0.62	0.63

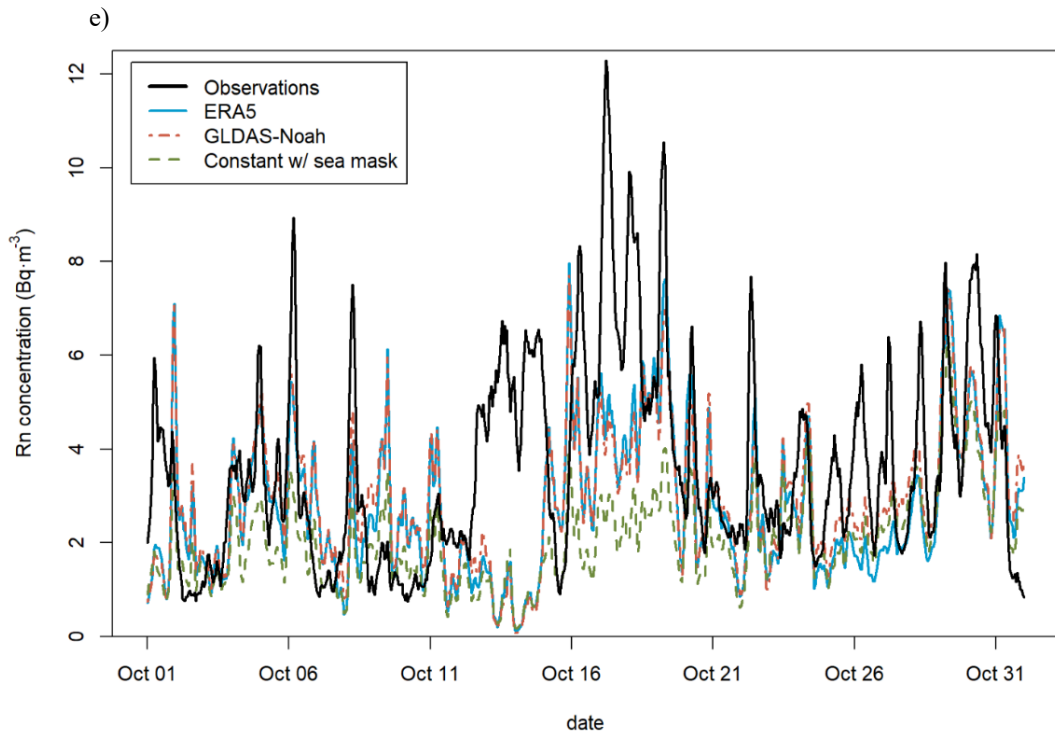
*Constant value of 15.8 mBq m⁻³ s⁻¹ on land pixels and 0 mBq m⁻³ s⁻¹ on sea pixels.



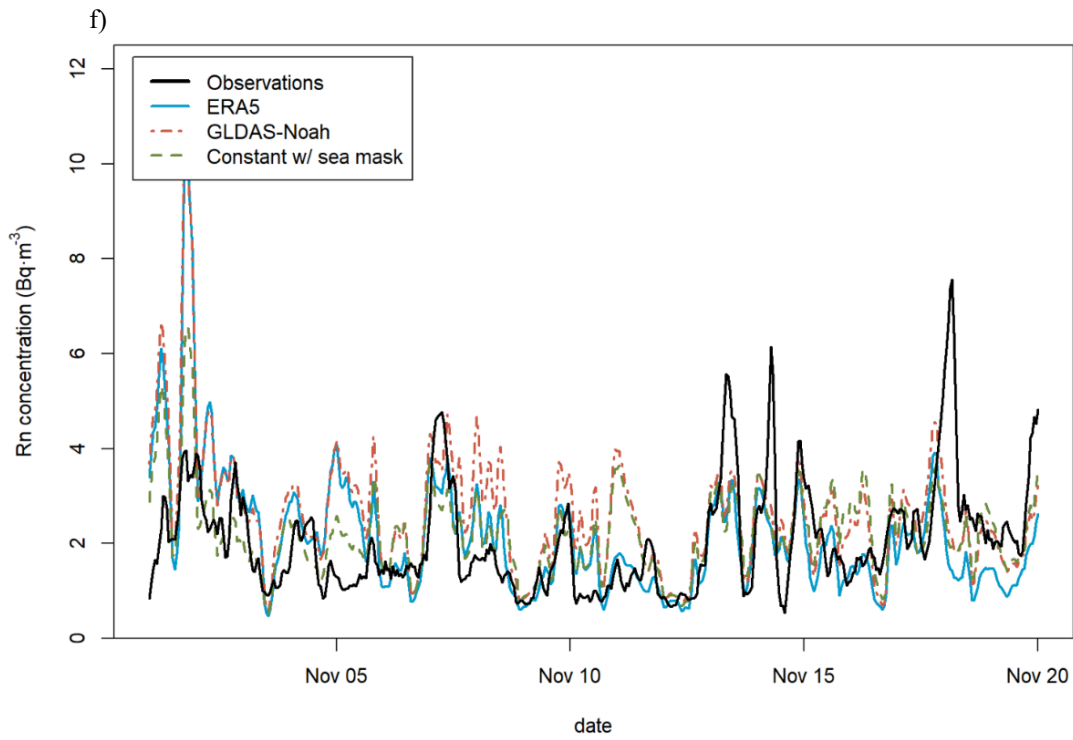
75







80



85 **Figure S5. Measured (black) and simulated radon atmospheric concentrations at DEC using ERA5 radon exhalation maps (solid blue), GLDAS radon exhalation maps (dash-dotted red line) and a constant radon exhalation value with a land-sea mask (dashed green line) for different periods: a) March-April 2019, b) May 2019, c) July 2019, d) August 2019, e) October 2019, and f) November 2019.**