

Estimation of seasonal methane fluxes over a Mediterranean rice paddy area using the Radon Tracer Method (RTM)

Roger Curcoll¹, Alba Àgueda³, Josep-Anton Morguí², Lídia Cañas², Sílvia Borràs⁴, Arturo Vargas¹,
5 Claudia Grossi^{1,5}

¹ Institute of Energy Technologies, Universitat Politècnica de Catalunya, Barcelona, 08028, Spain

² Department of Evolutionary Biology, Ecology and Environmental Sciences, Universitat de Barcelona, Barcelona, 08028, Spain

³ CERTEC, Chemical Engineering Department, Universitat Politècnica de Catalunya, Barcelona, 08019, Spain

10 ⁴ AIRLAB, Climate and Health Group, Barcelona Institute for Global Health (ISGlobal), Barcelona, Spain

⁵ Physics Department, Universitat Politècnica de Catalunya, Barcelona, 08028, Spain

Correspondence to: Roger Curcoll (roger.curcoll@upc.edu)

Abstract. The Ebro River Delta, in the northwestern Mediterranean basin, has an extension of 320 km² and is mainly covered by rice fields. In the framework of the ClimaDat project, the greenhouse gases atmospheric station DEC was installed in this
15 area in 2013. The DEC station was equipped, among others, with a Picarro G2301 instrument and an ARMON (Atmospheric Radon Monitor) to measure both CH₄ and CO₂, and ²²²Rn concentrations, respectively.

The variability of methane fluxes over this area and during the different phases of the rice production cycle was evaluated in this study by using the Radon Tracer Method (RTM). The RTM was carried out using: i) nocturnal hourly atmospheric measurements of CH₄ and ²²²Rn between 2013 and 2019; and ii) FLEXPART-WRF back trajectories coupled with radon flux
20 maps for Europe with a resolution of 0.05° x 0.05° available thanks to the project traceRadon. Prior to the calculation of methane fluxes by RTM, the FLEXPART-WRF model and the traceRadon flux maps were evaluated by modelling atmospheric radon concentrations at DEC station and comparing them with observed data.

RTM based methane fluxes show a strong seasonality with maximums in October (13.9 mg CH₄ m⁻² h⁻¹), corresponding with the period of harvest and straw incorporation in rice crop fields, and minimums between March and June (0.2 mg CH₄ m⁻² h⁻¹
25 to 0.6 mg CH₄ m⁻² h⁻¹). The total estimated methane annual emission was about 262.8 kg CH₄ ha⁻¹. These fluxes were compared with fluxes directly measured with static accumulation chambers by other researchers in the same area. Results show a stunning agreement between both methodologies, both having a very similar annual cycle and monthly mean absolute values.

1 Introduction

Globally averaged surface CH₄ concentrations have risen from 722 ± 25 ppb in 1750 to 1927 ± 2 ppb in 2023, and in the last
30 years (2020-2023), the global methane concentration has increased an average of 15 ppb year⁻¹ (Lan et al., 2024). The causes

of this increase are varied and still with large uncertainties (Drinkwater et al., 2023). The main driver of the methane trend over the last decades is known to be the anthropogenic activity (Skeie et al., 2023), such as agriculture, fossil fuels combustion, and decomposition of landfill waste. In addition to the direct methane emissions into the atmosphere, methane increase is also driven by CO and NO_x emissions, which change the atmospheric oxidation capacity and hence the atmospheric methane lifetime (Wuebbles and Hayhoe, 2002). A reduction of all anthropogenic methane sources is therefore mandatory to reduce the increase in concentrations and reach the Paris agreements (Schleussner et al., 2016).

Particularly, in the case of agriculture, it is known that over the past 110 years global CH₄ emissions from rice cultivation have increased by 85% due to rice field expansion and nitrogen fertilizers use (Zhang et al., 2016). Global rice fields are estimated to emit between 18.3 ± 0.1 Tg CH₄/yr and 38.8 ± 1.0 Tg CH₄/yr, with emissions varying based on different water management practices (Yan et al., 2009; Zhang et al., 2016). Rice field methane emissions follow a strong seasonality mainly due to the management practices. Flooded rice paddies and wetland environments have a predominantly oxygen-free (anoxic) soil profile. In these ecosystems, CH₄ is produced by methanogenic bacteria that digest organic matter under anaerobic conditions (methanogenesis) (Zhang et al., 2016). Atmospheric CH₄ concentrations measured in the lower boundary layer of these ecosystems result from a combination of processes, including diffusion, ebullition and transport through aerenchyma of the plants. This methane originates from the net CH₄ produced at the soil-water/soil-atmosphere interface of the ecosystem, further influenced by both positive or negative contributions due to the atmospheric mixing and advective transport from remote areas.

So far, many studies have investigated the different factors and variables controlling methane emissions from rice paddies, including both environmental and agricultural considerations. As an example, it has been observed that during the crop cycle these factors may include soil and air temperature, soil redox potential, water management, organic amendment or fertilizers management (Oo et al., 2015; Pereira et al., 2013; Sass et al., 1991; Seiler et al., 1983; Wang et al., 2018; Yan et al., 2005). In recent years, some efforts have been done to monitor also CH₄ emissions during fallow periods of rice soils. This includes investigations into the impact of straw management practices (e.g. incorporation into the field, removal from the field, or burning) and flooding practices after harvest, as these can substantially influence emission levels (Alberto et al., 2015; Martínez-Eixarch et al., 2018; Fitzgerald et al., 2000; Belenguer-Manzanedo et al., 2022).

The results of these studies may be of great utility to understand the emission differences due to diverse agricultural practices and soil characteristics, thus offering valuable insights for improving agricultural techniques and protocols. In addition, such studies are needed to improve emission inventories as well as methane emission models.

Nowadays various approaches have been applied to estimate CH₄ emissions from rice fields. These approaches include direct flux measurements using techniques such as the eddy-covariance method (e.g. Alberto et al., 2015; Iwata et al., 2018; Runkle

60 et al., 2019), accumulation chambers (Martínez-Eixarch et al., 2021; Wassmann et al., 2000), or measuring methane both below and above the canopy (Simpson et al., 1995). A combination of all these techniques (Meijide et al., 2011) has also been valuable to provide a comprehensive understanding of CH₄ emissions. Top-down techniques have also been used to estimate methane fluxes on rice fields, as aircraft measurements (Desjardins et al., 2018; Peischl et al., 2012) or inversion models from atmospheric measurements (Thompson et al., 2015) or satellite data (Chen et al., 2022). However, in studies where multiples
65 approaches are used, some disagreement have been found, mainly due to the uncertainties associated with atmospheric transport models or the accuracy of the emissions inventories (Desjardins et al., 2018; Cheewaphongphan et al., 2019).

In the present work, methane fluxes over a rice paddies area, located in the Ebro River Delta (northwestern Spain), were estimated during different phases of the rice cultivation cycle. The estimation was conducted using the Radon Tracer Method (RTM). The RTM is a well-known method that has been used in different sites for the retrieval of fluxes of greenhouse gases
70 (GHG) and other trace gases (Grossi et al., 2018; Levin et al., 2011; Schmidt et al., 1996; Vogel et al., 2012). The RTM uses co-located atmospheric observations of the noble gas ²²²Rn and the gas of interest, in this case CH₄, together with modelled values of ²²²Rn fluxes. Recently, researchers are focusing on understanding RTM limitations to improve its applications worldwide (Levin et al., 2021).

In this work, the area of study and the methodology applied are firstly described in the *Methods* section. In the *Results and*
75 *discussion* section the observational measurements are firstly presented, together with modelled radon concentrations and methane flux values derived from the RTM. Additionally, radon flux maps and transport models results are also evaluated, and CH₄ fluxes obtained by applying RTM are compared with fluxes from known emission inventories and previous research studies in order to put them in context. A sketch of the process followed for obtaining the methane fluxes is shown in Figure 1.

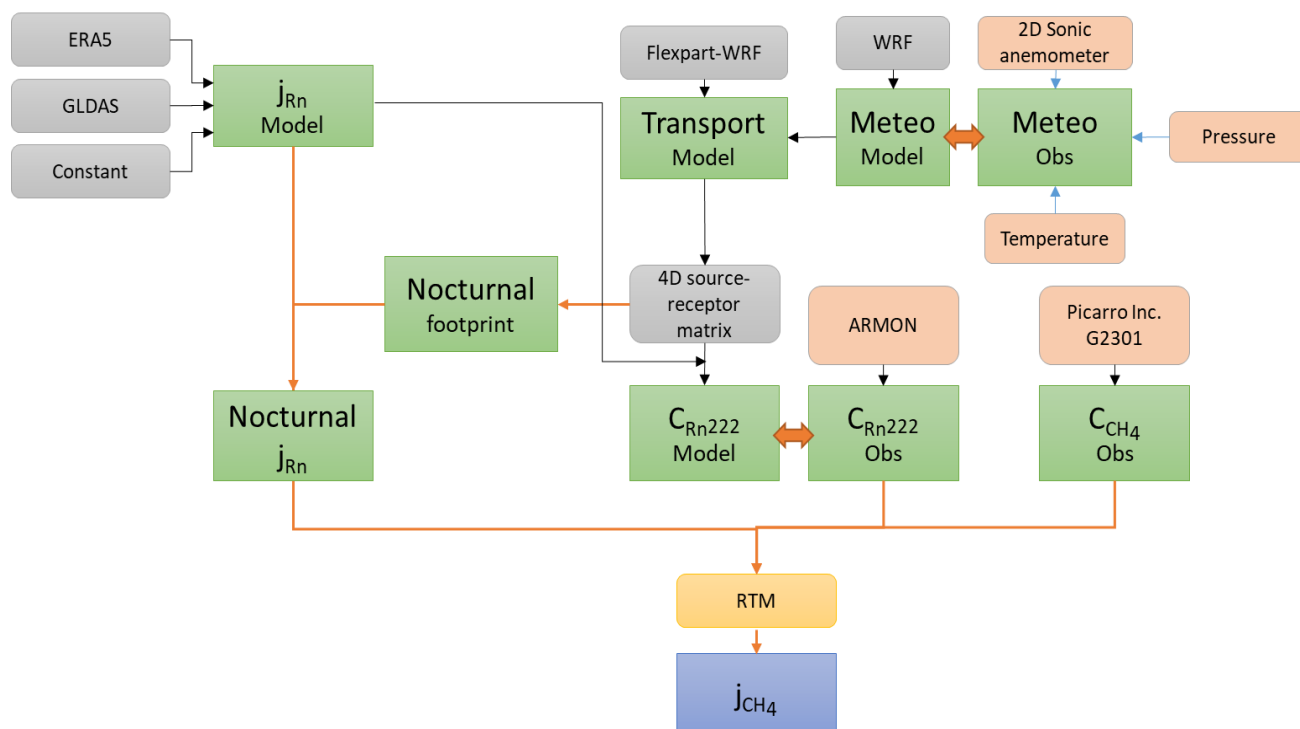


Figure 1. Sketch of the process followed for estimating CH₄ fluxes (j_{CH_4}) at DEC within this study.

2 Methods

85 2.1 Site description: Ebro River Delta

The Ebro River Delta (ERD), with an extension of 320 km², is located at the Ebro river mouth, in the Spanish coast of the western Mediterranean basin. Its main land use is rice field (70 %), followed by beaches, salt marshes, dunes and coastal lagoons, according to the CORINE land use inventory (European Union, 2018) (See Supplement, Figure S1).

The ERD experiences strong winds coming from the North of Spain and channeled through the Ebro River watershed (Gangoiti et al., 2002; Valdenebro et al., 2011). These winds cross the valley between the Iberian System and the Pyrenees. The wind regime in the ERD is also dominated by land-sea breeze phenomena, with upcoming winds from the sea during the day and land-sea breezes at night (Martín et al., 1991).

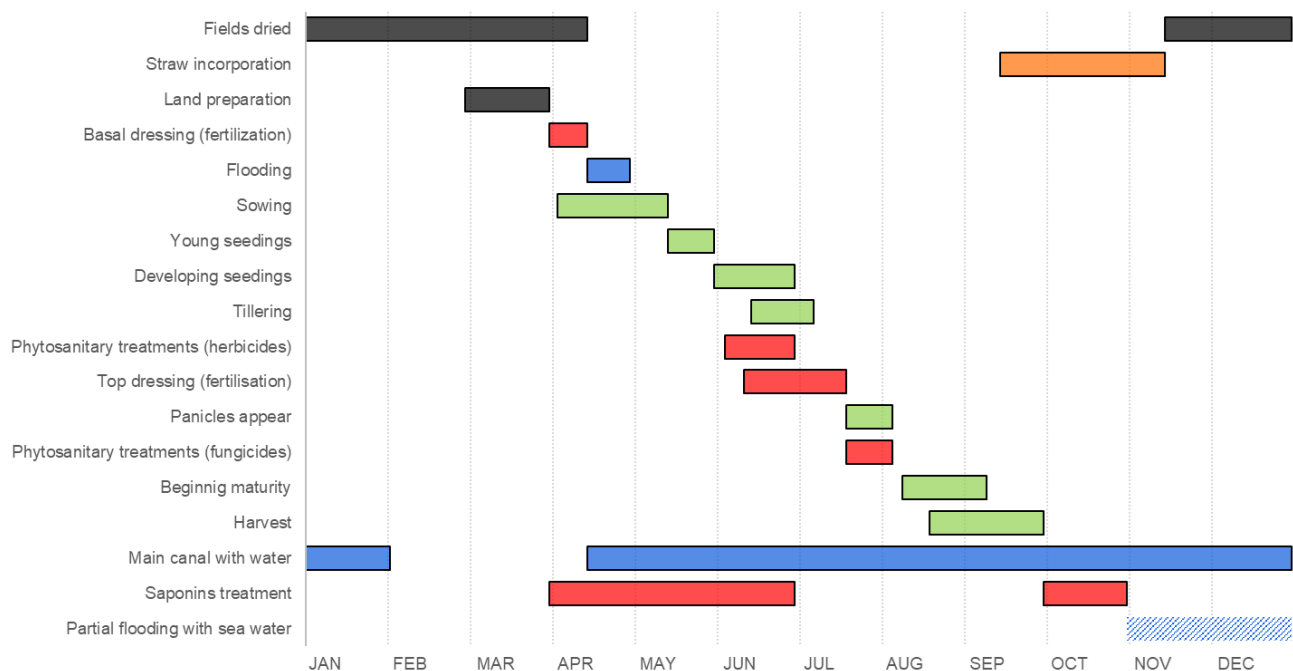
The ERD has a typical Mediterranean climate with mild winters and warm summers (Casanova, 1998). Wind blows with high mean annual velocities ($> 8 \text{ m s}^{-1}$) during the entire year (Generalitat de Catalunya, 2022), and blows predominantly from the

95 NW in winter (e.g. Casanova, 1998), and from the S-SE in summer (Generalitat de Catalunya, 2022). The atmospheric relative humidity is high over the entire year ($> 65\%$) (e.g. Grossi et al., 2016).

The ERD has a flat orography, with approximately 60% of its total area having elevations lower than 1 m above sea level (a.s.l.) (Generalitat de Catalunya, 2022). Two main canals flank the river, distributing water across a network of smaller canals. Rice paddies cover an extension of more than 200 km² and represent an 83% of the total crop area in the Ebro Delta.

100 Figure 2 presents a Gantt diagram, adapted from Àgueda et al. (2017), outlining the main anthropogenic activities conducted in the ERD rice fields. It is important to note that the timing of these activities may vary slightly from year to year due to the weather seasonality or changes in management practices.

Rice fields in the ERD remain completely flooded during the majority of the growth cycle, with a water column typically ranging from 8 cm to 15 cm (Alvarado-Aguilar et al., 2000). Prior to irrigation, usually in mid-April, the land is prepared
105 (tilled and leveled) and fertilized. After the flooding, direct sowing takes place between mid-April and mid-May and plants grow until mid-August, marking the onset of harvesting. After harvest, rice straw is incorporated into the soil using mechanical means. In some years, a flooding with sea water of some of the rice fields was carried out during winter months in order to cope with an ampullaride plague.



110 **Figure 2. Gantt chart of the annual agricultural practices usually performed in the Ebro River Delta (ERD) (black: fields; orange: straw and weed management; red: chemicals; blue: water management; green: rice phenology). Adapted from Àgueda et al. (2017).**

2.2 Atmospheric observations

115 An atmospheric station in the Ebro Delta (DEC, 40.74N; 0.79E, 7 m a.s.l.) was built in 2013 within the ClimaDat project (Grossi et al., 2016; Morgui et al., 2013). The station was built next to the Biological Station of Canal Vell, in the middle of the ERD, surrounded by rice fields (black asterisk in the right panel of Figure S1 of Supplement). At the DEC atmospheric station, GHG (CO₂, CH₄, N₂O, CO), atmospheric radon and meteorological variables (see section 2.2.4) were continuously measured at a 10 m above ground level (a.g.l.) tower. Due to the extreme humidity conditions and salty air at DEC site, sampling pumps continuously broke over the years and thus only 30% of the days in the sampling period (2013-2019) have the full record of ²²²Rn, GHG, and meteorology variables.

120

2.2.1 Atmospheric radon measurements

The atmospheric concentrations of the radioactive and noble gas radon (^{222}Rn) were hourly measured at DEC station using a first version of the Atmospheric Radon Monitor (ARMON) designed and calibrated by researchers of the IONHE (Ionizing Radiation, Health and Environment) group of the Institute of Energy Techniques (INTE) of the Universitat Politècnica de Catalunya (UPC, Spain). The ARMON is based on the alpha spectrometry of positive ions of ^{218}Po , coming from the radon decay within the detection volume, collected on a Passivated Implanted Planar Silicon (PIPS) detector surface by an electrostatic field (Grossi et al., 2012; Vargas et al., 2015). The ARMON is capable to distinguish between ^{222}Rn and ^{220}Rn (thoron) contribution and, with an integration time of 1 hour, has a detection limit of 0.132 Bq m^{-3} and a total uncertainty around 10% for average concentrations of about 5 Bq m^{-3} (Curcoll et al., 2024). This type of monitor was installed at several Spanish stations (Grossi et al., 2016) and its response and performance have been compared with those of other radon and radon progeny monitor types (Grossi et al., 2020).

Due to the fact that the collection efficiency of ^{218}Po on the detector surface is strongly influenced by the humidity of the sampled air, a low-maintenance drying system was designed and installed at the DEC site (see section 2.2.3). Moreover, to address this influence, a linear water correction factor was empirically determined and applied following the methodology outlined by Grossi et al. (2012).

2.2.2 Atmospheric CH_4 measurements

CH_4 measurements were continuously performed by a G2301 gas concentration analyzer (Picarro Inc., USA). This device is based on the cavity ring-down spectroscopy technique (CRDS) (Crosson, 2008) and offers simultaneous and precise measurements of CO_2 , CH_4 and H_2O every 5 seconds. Hourly mean values were used in this study.

During the measurements, the Picarro G2301 analyzer was calibrated every 2 weeks using four secondary working gas standards, which were calibrated at the beginning and at the end of their lifetime against seven standards of the National Oceanic and Atmospheric Administration (NOAA). Calibration scales were WMO-X2019 (Hall et al., 2021) and WMO-X2004A (Dlugokencky, 2005) for CO_2 and CH_4 , respectively. A fifth target gas was analyzed daily for 20 min in order to check the stability and quality of the instrument calibration. Precision of the instrument for methane was better than $\pm 0.3 \text{ ppb}$ and accuracy better than $\pm 1 \text{ ppb}$.

Although the instrument at DEC site was measuring dried air, a water correction factor was applied for a better accuracy of measurements, following the MPI-Jena method (Rella et al., 2013).

2.2.3 Drying system

As previously noted, water vapor content has an important influence in Picarro Inc. measurements (Rella et al., 2013; Reum et al., 2017) as well as radon measurements with ARMON (Grossi et al., 2012; Curcoll et al. 2023). Moreover, the extreme weather conditions at the ERD during the summer season, characterized by temperatures surpassing 30 °C and relative humidity levels reaching 80%, highlights the need for sample drying to prevent water condensation within the lines or the instruments. To address this concern, an automatic circuit was developed at DEC station to dry the air sample before it entered the instruments. The sampled air (2.5 L min⁻¹) was passed through a Nafion® membrane (Permapure, PD-100T-24MPS) exchanging water molecules with a dry counter-current air flow. The counter-current air flow was generated in a two-step process, first flushing air through a cooling coil in a refrigerator at 3 °C and a pressure of 5.5 bar, and then through a cryotrap at -70 °C and a pressure of 1.5 bar. Multiple cryotrapers were selected with electrovalves in order to increase the autonomy of the system to approximately 2 months. After the Nafion membrane, the air sample had a water vapor concentration between 100 ppm and 400 ppm. At this point, the flow was divided: 2 L min⁻¹ were sent directly to the ARMON and the rest were passed through a cryotrap in order to reduce the water content up to 10 ppm for the Picarro Inc. G2301 instrument.

2.2.4 Meteorological observations

Meteorological variables were continuously measured at the DEC tower. The tower was equipped with: (1) a two-dimensional sonic anemometer (WindSonic, Gill Instruments) for wind speed and direction (accuracies of $\pm 2\%$ and ± 3 degrees, respectively); (2) a humidity and temperature probe (HMP 110, Vaisala) with an accuracy of $\pm 1.7\%$ and ± 0.2 °C, respectively; (3) a barometric pressure sensor (61302V, Young Company) with an accuracy of 0.2 hPa (at 25 °C) and 0.3 hPa (from -40 °C to +60 °C). All the accuracy factors previously mentioned refer to manufacturers' specifications.

2.3 CH₄ fluxes estimation using the Radon Tracer Method (RTM)

The Radon Tracer Method (RTM) was applied in this work to obtain nocturnal methane fluxes [mg CH₄ m⁻² h⁻¹] over the footprint area covered by the DEC station. The RTM uses atmospheric concentration measurements of ²²²Rn [Bq m⁻³] and the target gas (here, CH₄ [mg CH₄ m⁻³]) together with simulated values of ²²²Rn fluxes [Bq m⁻² s⁻¹]. This method, described in detail in the works from Grossi et al. (2018), Levin et al. (2011, 2021), Schmidt et al. (1996) or Vogel et al. (2012), is based on the assumption that the nocturnal lower atmospheric boundary layer can be described as a well-mixed box of air. The nocturnal boundary layer effective height ($h(t)$) is considered homogeneous within the box and horizontal advection is considered negligible under stable atmospheric conditions (Griffiths et al., 2013). Thus, within this atmospheric volume the variation of the concentration of any tracer (represented with the subindex i) with time $C_i(t)$ is proportional to the flux of the tracer itself $j_i(t)$, inversely proportional to the height $h_i(t)$, and homogenous within the volume (see Eq. 1).

$$\frac{dC_i(t)}{dt} \propto \frac{j_i(t)}{h_i(t)} \quad (1)$$

In the case of ^{222}Rn we should also consider its decay by including a decay constant (λ_{Rn} ; [s^{-1}]) (see Levin et al., 2021).

If the RTM methodology is applied for single nocturnal windows, the gases fluxes may be taken as constant within each individual nocturnal window and finite temporal concentration increases (or slopes) of the measured gases may be used. Finally, as both gases are measured at the same point, the effective height $h(t)$ may be considered to be the same for both. Combining Eq. 1 for the measured target gas (CH_4) as well as for ^{222}Rn , the term $h(t)$ can be removed, obtaining Eq. 2, where the target gas flux j_{CH_4} can be calculated.

$$j_{\text{CH}_4} = j_{\text{Rn}} \frac{\Delta C_{\text{CH}_4}(t)}{\Delta C_{\text{Rn}}(t)} \left(1 + \frac{\lambda_{\text{Rn}} \cdot C_{\text{Rn}}(t)}{\Delta C_{\text{Rn}}(t)/\Delta t} \right)^{-1} \quad (2)$$

In Eq. 2, for each night, j_{Rn} is the radon flux, ΔC_{Rn} is the radon atmospheric variability over the nocturnal window, and ΔC_{CH_4} is the methane atmospheric variability over the same time interval. Considering that applying the RTM during the nocturnal window the maximum change in ^{222}Rn activity concentration due to radioactive decay is less than 10%, which is much smaller than the uncertainties due to RTM and radon exhalation maps, the decay contribution of radon may be neglected (Levin et al., 2021), obtaining the simplified Eq. 3.

$$j_{\text{CH}_4} = j_{\text{Rn}} \frac{\Delta C_{\text{CH}_4}}{\Delta C_{\text{Rn}}} \quad (3)$$

Thus, from Eq. 3, if the radon flux over the footprint area is known, the methane flux can be calculated knowing the temporal variation of radon and methane atmospheric concentrations measured during each nocturnal window.

In order to estimate the effective nocturnal radon flux over the footprint area (i.e. around DEC station), a window of 70 km x 70 km around it was selected as feasible influence area. The influence area for radon flux retrieval for every single night over the whole 2013-2019 period was obtained from the residence time of 6 h FLEXPART-WRF back trajectories from the DEC station. The setup of both WRF and FLEXPART models is described in section 2.4.2. Representative back trajectories were run daily at 00h UTC, and only the layers next to the surface (0 m-200 m) and within the 70 km x 70 km window were considered. Three average radon flux values for every nocturnal event (denoted as j_{Rn} in Eq. 3) were derived by multiplying daily footprints with three different European radon exhalation maps (refer to section 2.4.1), according to the methodology presented by Grossi et al. (2018).

As the RTM is based on the stability assumption, only night periods with specific characteristics were chosen in this study. The selection criteria were based on the following requirements:

- i) A nocturnal window between 21h UTC and 03h UTC was selected for each single night analysis in order to use only nocturnal accumulation events;
- 205 ii) A data selection criterion based on a threshold of $R^2 \geq 0.5$ for the linear correlation between ^{222}Rn and CH_4 concentrations was used to reject events with a low linear correlation between the atmospheric concentrations of both gases;
- iii) Only nights where both CH_4 and ^{222}Rn had a positive concentration gradient were selected, in order to retrieve only positive net fluxes under stable boundary layer conditions.
- iv) In order to evaluate the possible effect of advection signals for both radon and methane accumulations, the RTM was run
210 both considering only events with wind speeds below 1.5 m s^{-1} and without wind speeds restriction.

2.4 Evaluation of the reliability of RTM-based CH_4 fluxes

One of the main questions that arises when applying the RTM methodology is the representativeness area for the estimated fluxes. Levin et al. (2021) exposed that one of the main limitations of the RTM was that the quantitative comparison of RTM-based with bottom-up emission data was not directly possible without reliable footprint modelling of the night-time
215 observations, and that this may be hampered by the reliability of the night-time model transport.

In order to evaluate the reliability of the RTM-based CH_4 estimated fluxes, the nocturnal radon flux term (denoted as j_{Rn} in Eq. 3), which is essential for implementing the RTM and is dependent on the footprint assessment, was evaluated based on the performance of both the meteorological (WRF) and transport (FLEXPART-WRF) models. Additionally, as previously mentioned, three different radon exhalation maps were used to assess the significance of the differences observed between
220 them. Atmospheric radon concentrations at DEC were simulated for a whole year (2019) according to the following methodology: from the output of the FLEXPART-WRF model, a source-receptor matrix (Seibert and Frank, 2004) was obtained and it was coupled with the available radon exhalation maps to calculate hourly ^{222}Rn concentrations. Then these values were compared with in-situ observations obtained with the ARMON. Details of this procedure are explained in detail in the following sections.

225 **2.4.1 Radon exhalation maps**

Radon exhalation maps used in this study were obtained from the European radon maps developed by Karstens and Levin (2023) within the EMPIR 19ENV01 traceRadon project (Röttger et al., 2021). The theoretical equations applied to simulate the radon transport in the soil and its exhalation to the lower atmosphere are described in Karstens et al. (2015). It basically assumes that the transport of radon through the soil and across the soil surface into the atmosphere occurs predominantly by molecular diffusion and it strongly depends on physical soil parameters and its water content (Nazaroff, 1992). The model uses soil uranium content (Cinelli et al., 2019), soil properties (Hiederer, 2013) and two different soil moisture reanalysis datasets: ERA5-Land soil moisture reanalysis (Muñoz Sabater, 2019) or GLDAS-Noah v2.1 soil moisture reanalysis (Beaudoin and Rodell, 2020). For this study, monthly data were used for the period 2013-2016, and daily data were used for the period 2017-2019, in accordance with model output availability. The horizontal resolution of these radon exhalation maps is $0.05^\circ \times 0.05^\circ$. Two radon exhalation maps were obtained using both ERA5-Land (ERA5) and GLDAS-Noah (GLDAS) datasets. In addition, a third radon exhalation map (Const) was generated with a constant term exhalation from inland surface grid cells of $15.8 \text{ mBq m}^{-2} \text{ s}^{-1}$ and a zero radon exhalation flux for sea grid cells. These values were applied according to previous European studies (Arnold, 2009; Levin et al., 1999; Schmidt et al., 2001). Figure S2 of the Supplementary material shows average radon exhalation distribution for the period 2013-2019 for Europe and for the ERD area according to the three previous maps.

2.4.2 WRF and FLEXPART-WRF simulations for RTM

The Lagrangian particle dispersion model FLEXPART-WRF v.3.1 (Brioude et al., 2013) was used to calculate back trajectories from DEC station. The original FLEXPART model (Stohl et al., 2005) was designed for calculating long-range and mesoscale dispersion of hazardous substances from point sources, but evolved into a comprehensive tool for multi-scale atmospheric transport modelling and analysis (Pisso et al., 2019). In this work, we used the FLEXPART version that works with the inputs coming from the mesoscale meteorological model Weather Research and Forecasting (WRF, Skamarock et al., 2021). The decision of using a mesoscale model, such as WRF, for this study rather than a global model was made based on the dimensions of the ERD ($15 \times 22 \text{ km}^2$) and the recognized importance of using high-resolution mesoscale models in coastal areas (Ahmadov et al., 2009; Hegarty et al., 2013). The FLEXPART-WRF v.3.1 model, referred to as Flex-WRF hereafter, has already been used in studies where global weather models may not reproduce correctly the terrain-induced weather features due to complex terrains (e.g. coastal sites or mountains) (Aliaga et al., 2021; Madala et al., 2016). The WRF model v.4.1 (Skamarock et al., 2021) was set up for this study with three domains (see Appendix): d01) Europe (size $27 \text{ km} \times 27 \text{ km}$); d02) Iberian Peninsula (size of $9 \text{ km} \times 9 \text{ km}$), and d03) Northwestern Spain (size of $3 \text{ km} \times 3 \text{ km}$). All domains had 57 verticals layers up to 50 hPa and the meteorological initial and lateral boundary conditions were determined using ERA5 global model data (Hersbach et al., 2020). More details about the parametrization used for these simulations are shown in the Appendix.

WRF outputs were used as inputs within Flex-WRF v.3.1 model to simulate back trajectories arriving at DEC station inlet point (10 m a.g.l.). WRF outputs from all 3 domains were used. The back trajectories were run simulating the transport of 10,000 particles with time steps of 1 hour. The output of this type of back trajectory simulations is the residence time of the particles in each 3D grid cell at every time step (1h).

260 Flex-WRF back trajectories were used both to simulate the radon concentrations at DEC (see section 2.4.3) and to retrieve the effective radon flux influencing the DEC station each night for the RTM application. For the radon concentration simulation, back trajectories of 8 days (192h) were used. For the retrieval of the nocturnal effective radon flux, back trajectories length were set to 6 hours.

265 The output domain of Flex-WRF (see Figure A1) covered Europe and the north-Atlantic region with a resolution of $0.1^\circ \times 0.1^\circ$, although a nested output domain of 150 km x 150 km around DEC station with a resolution of $0.05^\circ \times 0.05^\circ$ (referred as Flexpart NEST, Figure A1) was also used. The vertical resolution of the output was from 0 to 5,000 m height (17 levels). For the retrieval of nocturnal radon fluxes, only the nested domain was used.

From all the back trajectories, a 4D source-receptor matrix (Seibert and Frank, 2004) for particles arriving at DEC was obtained. A ^{222}Rn decay ($t_{1/2} = 3.8$ days) was applied to the matrix in order to obtain the source-receptor matrix for ^{222}Rn . The
270 layers with influence for the source-receptor matrix were assumed to be only those below 200 m (Hüser et al., 2017).

Figure S3 of the Supplementary material shows two examples of the residence time of the fictitious particles calculated with Flex-WRF for two of the most typical synoptic situations using 196 hours back trajectories.

2.4.3 Radon concentrations simulation

275 The 8 days Flex-WRF back trajectories were run at every hour for every day of 2019 in order to simulate hourly atmospheric radon concentrations at DEC during 2019. Three radon concentration time series at DEC station were then simulated at every hour by multiplying the source-receptor matrix with each of the three different radon exhalation maps explained in section 2.4.1, and dividing by the height of the influence layer (i.e. 200 m), obtaining: Flex-WRF-ERA5, Flex-WRF-GLDAS and Flex-WRF-Const time series, respectively. The largest domain from the back trajectory simulations was rescaled to $0.05^\circ \times 0.05^\circ$ and merged with the nested domain in order to have the same resolution as the radon exhalation maps.

280 2.4.4 Statistical metrics to evaluate Flex-WRF-based ^{222}Rn concentrations

For the quantitative evaluation of the goodness of the simulation of radon concentrations at DEC, the following metrics were calculated between simulated and observed hourly radon concentrations in 2019: the bias (BIAS), the correlation coefficient

(R), the root mean square error (RMSE) and the weighted root mean square error (WRMSE). This last coefficient was calculated as in Eq. 4, and the weight was defined as the average value between observed and modelled values (Eq. 5). The WRMSE can better evaluate the performance of the models without giving too much importance to nocturnal overestimations or underestimations of concentrations due to a poor representativeness of the local boundary layer height (Arnold, 2009).

$$WRMSE = \sqrt{\frac{1}{N} \sum_{i=1}^N \frac{(x_i^m - x_i^o)^2}{\tilde{x}_i^2}} \quad (4)$$

with

$$\tilde{x}_i = \frac{x_i^m + x_i^o}{2} \quad (5)$$

where x_i^o refers to the measured values and x_i^m to the modelled ones.

2.5 Literature review of CH₄ fluxes in the ERD

To assess the reliability of the methodology applied in this work, methane flux values derived from the RTM were compared against data from available databases, such as the Emissions Database for Global Atmospheric Research database (EDGAR), as well as from Spanish inventories and experimental studies (Martínez-Eixarch et al., 2018, 2021).

EDGAR v.7.0 inventory, developed by the European Commission Joint Research Centre and the Netherlands Environmental Assessment Agency (European Commission, 2023), includes global anthropogenic emissions of GHGs and air pollutants by country on a spatial grid. The EDGAR version used in the present study provides monthly CH₄ emissions on a 0.1° x 0.1° resolution for the period 2013-2019. All major anthropogenic source sectors (e.g. waste treatment, industrial and agricultural sources) are included in this inventory, whereas natural sources (e.g. wetlands or rivers) are excluded. The spatial allocation of emissions on 0.1° x 0.1° grid cells in EDGAR has been built up by using spatial proxy datasets with the location of energy and manufacturing facilities, road networks, shipping routes, human and animal population density, and agricultural land use. Figure 3 shows the EDGAR inventory grid map extracted for a region centered over the ERD.

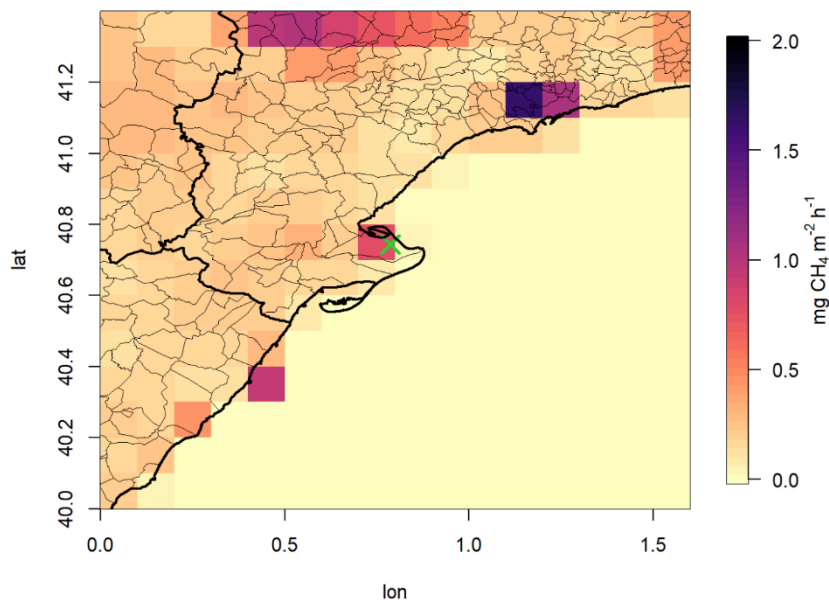


Figure 3. Average methane fluxes around ERD station (150 km x 150 km) according to EDGAR inventory v.7.0 for the period 2013-2019. DEC station is indicated with a green cross.

National inventory reports establish, following the methodology of the IPCC Guidelines (Eggelston et al., 2006), an annual emission factor for rice crops as a function of a fixed term multiplied by a series of coefficients associated with fertilization management or length (in days per year) of rice crop production. The inventoried emissions also take in considerations the fallow emissions, although it distributes its emissions among the crop season. In its latest national inventory reported to the UNFCCC (National Inventory Report of Spain, 2023), Spain reported an average methane emission flux of $1.32 \text{ kg CH}_4 \text{ ha}^{-1} \text{ day}^{-1}$ for its rice crops during the crop cultivations (150 days), equivalent to $5.54 \text{ mg CH}_4 \text{ m}^{-2} \text{ h}^{-1}$ during the crop period and a total yearly emission of $198.5 \text{ kg CH}_4 \text{ ha}^{-1}$. Following the IPCC methodology only for the Ebro Delta crop fields, the same value is obtained.

In 2015 and 2016 a multisite field experiment covering the agronomic and environmental variability of the rice growing area of the ERD area was conducted by researchers of the Institute of Agrifood Research and Technology (IRTA, Spain) (Martínez-Eixarch et al., 2018, 2021) for evaluating the GHG emissions during the productive (June-October) and fallout (October-December) rice seasons. Static flux chambers were used in this study at 24 sampling points, covering both sides of the river and different rice varieties and fertilization management practices present in the area. Annual methane emissions obtained from these studies are $262.6 \pm 5.9 \text{ kg CH}_4 \text{ ha}^{-1}$, equivalent to an average flux of $3.0 \text{ mg CH}_4 \text{ m}^{-2} \text{ h}^{-1}$.

3.1 Observed atmospheric concentrations of ^{222}Rn and CH_4 at DEC station (2013-2019)

Figure 4 shows monthly average values of ^{222}Rn and CH_4 atmospheric observations measured at DEC station during the period 2013-2019. Atmospheric CH_4 concentrations show a pronounced seasonal trend, with maximums observed in the months of September, October and November, with monthly average concentrations between 2.2 ppm and 2.4 ppm, and minimums from March to July with monthly average concentrations below 2 ppm. The highest methane concentrations correspond to months of the year during which straw incorporation occurs, as reported in Figure 2. Conversely, monthly averages of the atmospheric radon concentrations do not show any strong seasonality. In general, monthly mean values are below 4 Bq m^{-3} , lower than those usually measured at continental sites (Grossi et al., 2016, 2018; Levin et al., 2021) but similar to those observed at coastal sites (Biraud et al., 2000; Vargas et al., 2015). Higher radon values are observed in December, as previously reported by Grossi et al. (2016) for the period 2013-2015 at the same station. This could be attributed to the arrival of northwestern winds from continental areas in the north of Spain to the DEC station, probably with air masses rich in radon in comparison with background levels (see Grossi et al. 2016), but also to an increase of the local radon emissions.

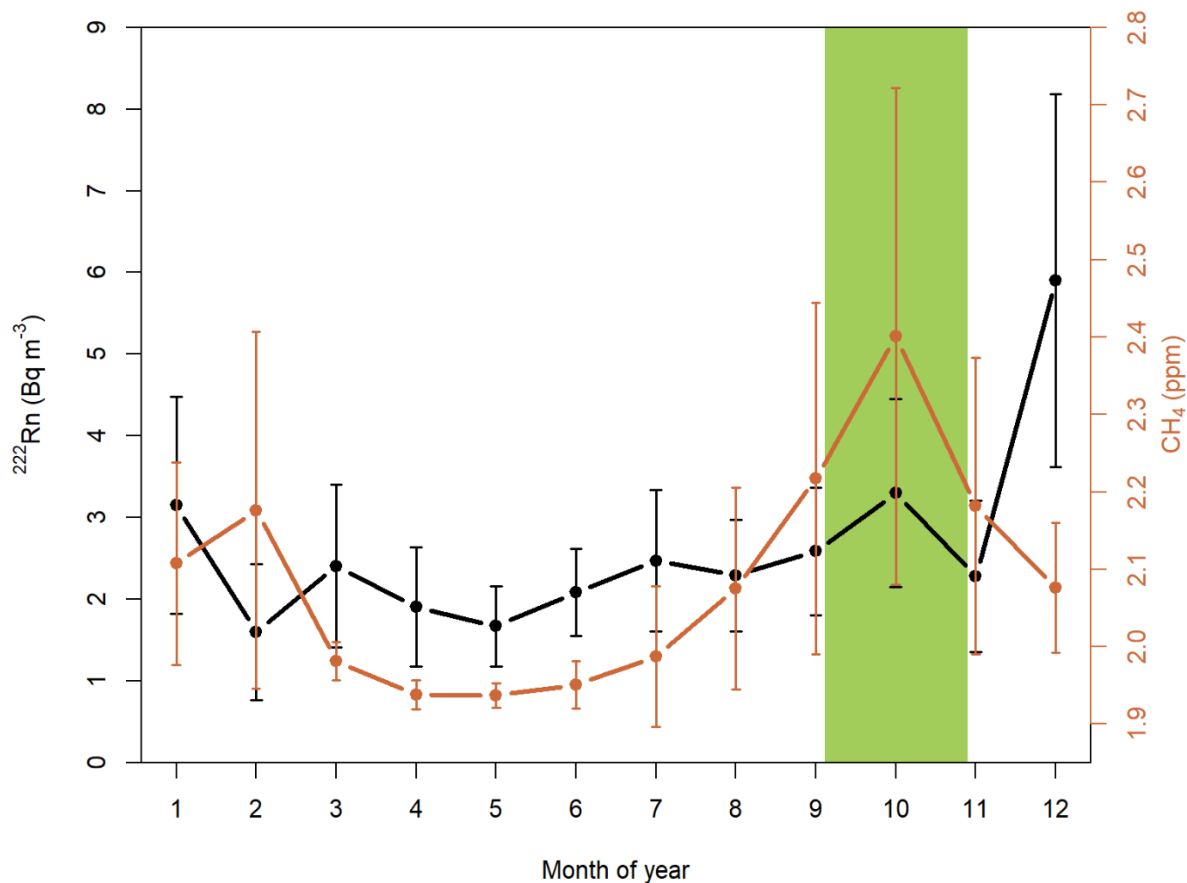


Figure 4. Observed average annual cycle for radon (black) and CH₄ (orange) concentrations at DEC within the 2013-2019 period dataset. Vertical whiskers represent variability (standard deviation) for each month. Green area corresponds to the “straw incorporation” period in the rice management cycle at ERD.

Average monthly diurnal cycles for both CH₄ and ^{222}Rn gases have been calculated for each month of the year over the whole 2013-2019 dataset (Figure 5). Methane concentrations show a flat diurnal cycle from December to July. However, from August to November a more prominent methane diurnal cycle can be observed, with the typical nocturnal accumulations and the decrease of concentrations after 06h UTC. On the other hand, the hourly average radon concentrations show a more regular diurnal cycle throughout the year, with a daily maximum at 07h UTC and minimums in the afternoon. These asymmetric differences in the cycles between the two gases cannot be only explained by atmospheric conditions and it could be due to seasonal differences in the source terms of the two gases as it will be analyzed in more detail later.

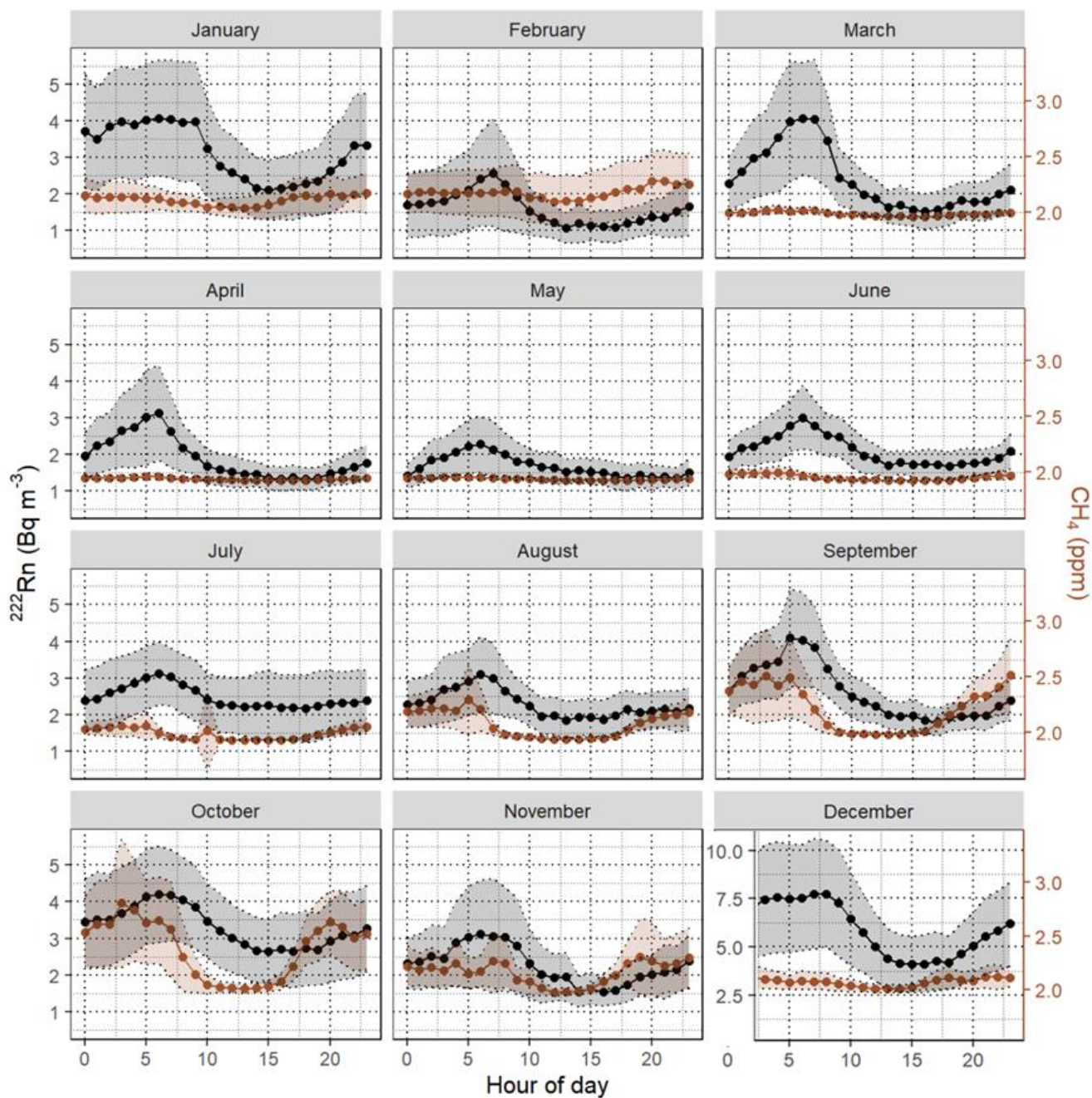


Figure 5. Observed average monthly diurnal cycles for atmospheric radon (black) and methane (orange) at DEC within the 2013-2019 period dataset. Points are hourly averaged values. The shaded area is the standard deviation for both CH_4 and ^{222}Rn . Note the distinctive ^{222}Rn scale for December.

Figure 6 shows average monthly wind roses for the period 2013-2019 elaborated using wind speed and direction measured at
350 DEC tower. From the multiple plots, two main seasonal patterns in wind regime are observed. During winter months
(November to March) strong north-western winds coming from the Ebro valley are predominant and in summer the
predominant winds are softer sea breezes coming from south, in agreement with Cerralbo et al. (2015). This last observation
may indicate that during the summer months the local source term of the two gases may have a larger impact on the observed
concentrations and thus on their diurnal cycles than during the winter months.

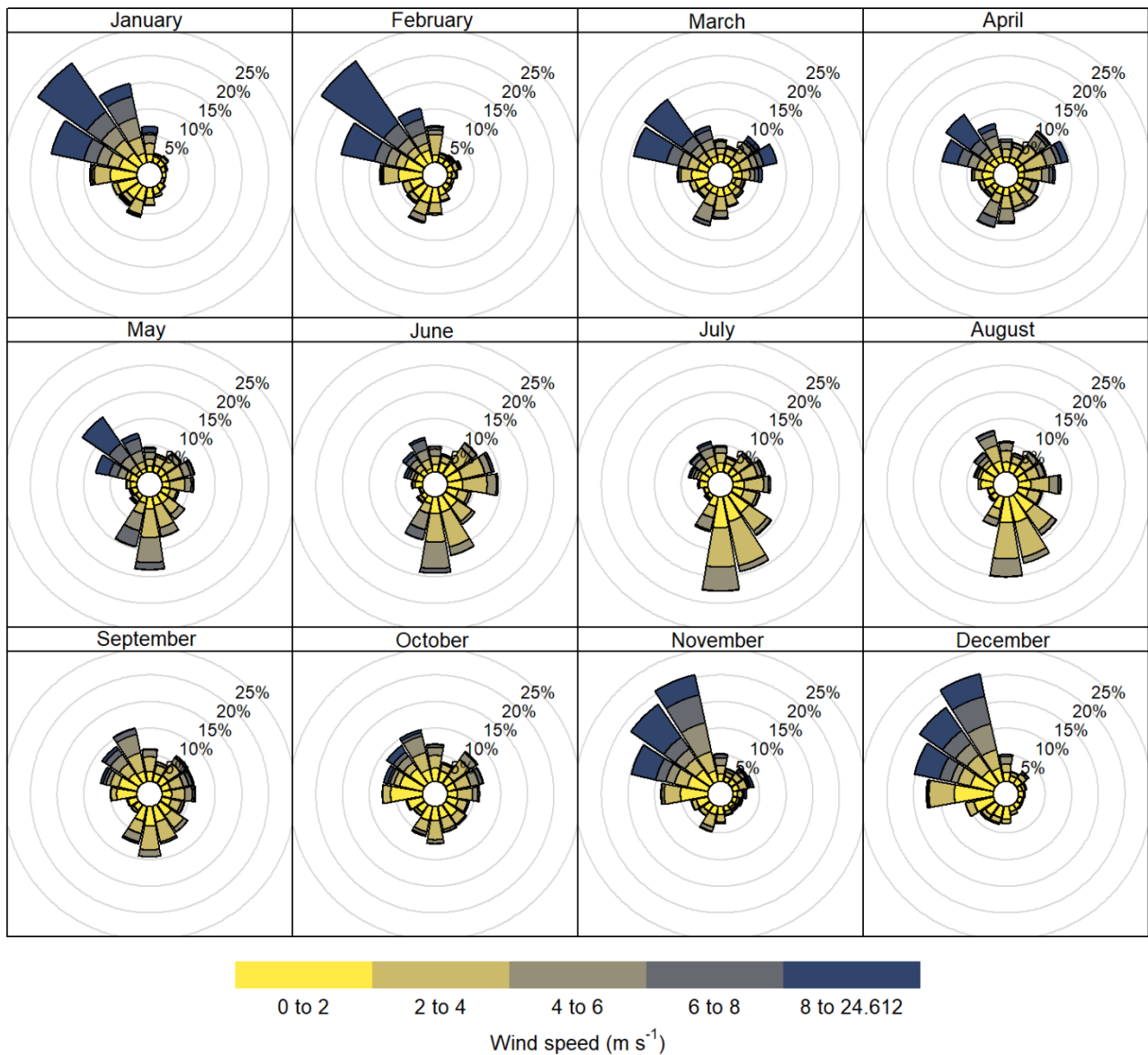


Figure 6. Monthly wind roses for the upcoming winds at DEC station (10 m a.g.l.) within the 2013-2019 period dataset.

Figure S4 of the Supplementary material presents monthly wind roses calculated for night time (21h UTC to 03h UTC, same windows as for RTM) and midday (11h UTC to 17h UTC). The southern winds are only present at midday and in warm months (May-October), as they are caused by the sea-land breeze. Northwestern winds in winter (November-March) are present day

360 and night, although they are stronger at night time. In spring (April-May) and fall (September-October), soft land-sea breezes at night and sea-land breezes during the day can be observed, although the signal is weak.

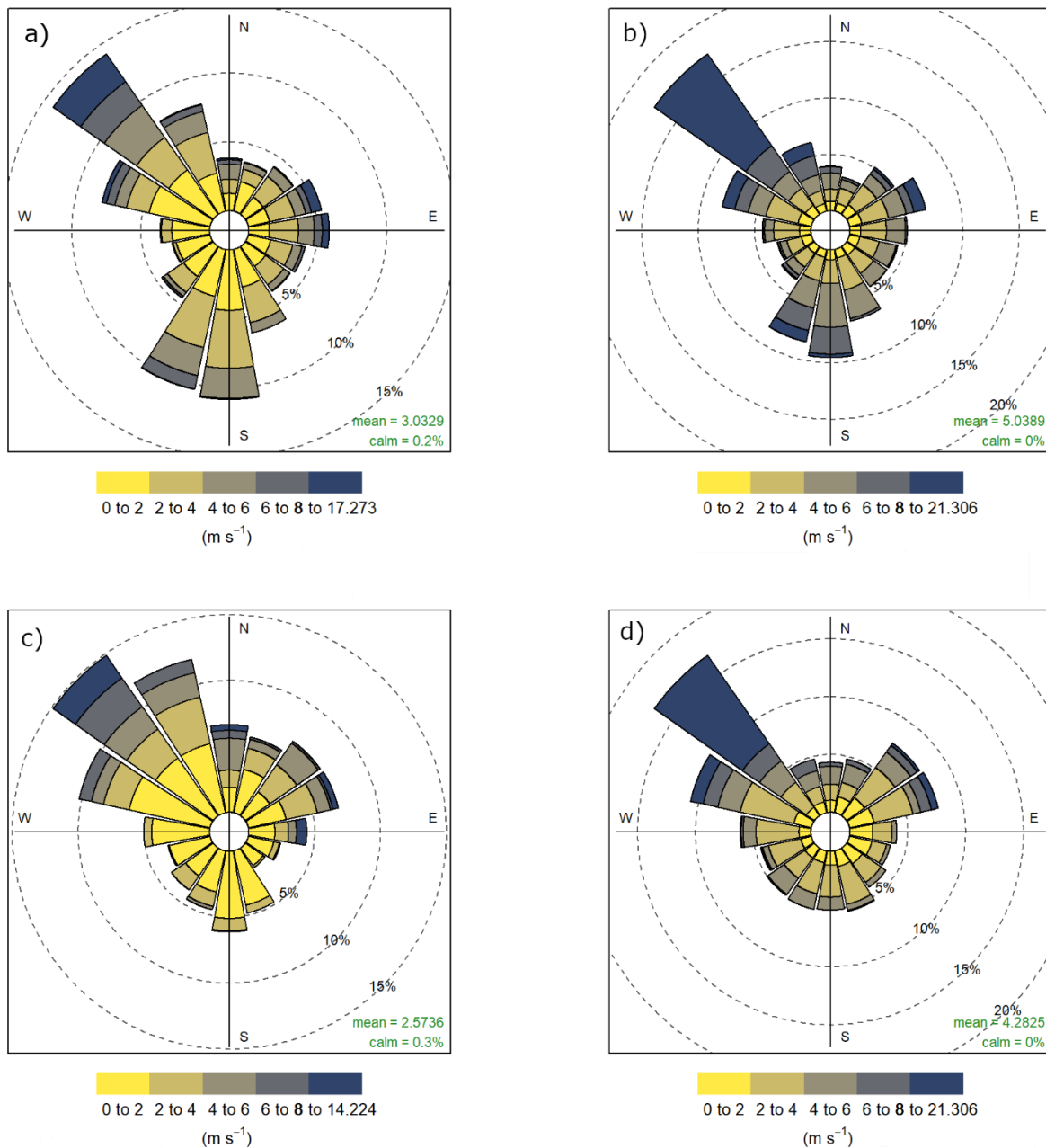
3.2 Radon flux term evaluation

To assess the reliability of RTM-based CH₄ estimated fluxes, we have previously evaluated the radon flux term by assessing the performance of meteorological (WRF) and transport (FLEXPART-WRF) models. We examined also the footprint and the
365 annual cycles of radon flux.

3.2.1 Meteorological model evaluation

Figure 7 shows a comparison between diurnal (0h UTC to 24h UTC) and nocturnal (23h UTC to 03h UTC) wind patterns at DEC station for 2019 both from experimental observations and WRF surface field outputs. Although direction patterns are quite similar, modeled winds seem to be stronger. The model seems to overestimate the wind speed with an average bias of
370 2.0 m s⁻¹. The correlation factor found between simulated and observed wind speed is 0.57, and the circular correlation for wind direction is 0.52. The model seems to better simulate temperature and pressure, as the correlation between these simulated variables and the observed values at DEC station are 0.89 and 0.92, respectively. It must be taken in consideration that the ERD is in a flat coastal zone with a quite complicated wind regime due to the Ebro valley channeling and the land-sea breezes, making the wind regime simulation a challenge for weather models, as reported in previous studies (Cerralbo et al., 2015).

375 If we look only at the nocturnal window used for the RTM (21:00 – 03:00 UTC), the bias between the simulated and observed wind speed is lower (1.7 m s⁻¹) than for the whole day comparison, but the correlation has the same value. The RMSE for wind speed is 3.3 m s⁻¹ for the whole day and 3.2 m s⁻¹ for the nocturnal window. In Figure S5 of the supplement, the RMSE, bias and correlation between wind speed measurements and model across the different months is plotted, differentiating between whole day and nocturnal RTM window values. No significant difference is observed between nocturnal RTM window values
380 and whole day intercomparison values. November is the month with higher correlation, but also higher bias and RMSE, probably due to higher wind values, as observed in Figure 6.



385 **Figure 7. Annual average wind roses at DEC within the 2019 dataset: a) observations over the whole day (0h UTC to 24h UTC); b) modeled over the whole day (0h UTC to 24h UTC); c) observations over the nocturnal window (23h UTC to 03h UTC); d) modeled over the nocturnal window (23h UTC to 03h UTC).**

3.2.2 Transport model evaluation

The results of the quantitative evaluation of the performance of the models in simulating hourly atmospheric radon concentrations at DEC station during 2019 are shown in Table 1. It was examined by comparing simulated values using the three different radon flux maps against observed hourly radon concentrations at the same time. The smallest bias in the comparison of observed values against models is with Flex-WRF-GLDAS (-0.024 Bq m⁻³), and the best correlation with Flex-WRF-ERA5 (0.43). The WRMSE is similar for all three models. In the comparison model-to-model, the correlation coefficient between Flex-WRF-GLDAS and Flex-WRF-ERA5 outputs is 96%, the WRMSE is 0.21 Bq m⁻³ and the bias is 0.3 Bq m⁻³. In the case of Flex-WRF-Const and Flex-WRF-ERA5 the correlation coefficient is 85%, and the bias and the RSME are higher (-0.4 and 0.85, respectively) than those obtained comparing Flex-WRF-GLDAS and Flex-WRF-ERA5. The RSME in these two previous comparisons are much lower than those obtained when models' outputs are compared with measurements. This may indicate that the influence of the radon exhalation maps input is less significant than that of the atmospheric transport model or the meteorological model (as observed in section 3.2.1, for example, in the case of the wind).

Table 1. Models' performance metrics based on the comparison of models' predictions against observed values and on the comparison between models.

Statistics	Flex-WRF-ERA5 vs. Observations	Flex-WRF-GLDAS vs. Observations	Flex-WRF-Const* vs. Observations	Flex-WRF-GLDAS vs. Flex-WRF- ERA5	Flex-WRF-Const* vs. Flex-WRF-ERA5
Bias (Bq m ⁻³)	-0.32	-0.024	-0.72	0.29	-0.4
R	0.43	0.38	0.4	0.96	0.85
RMSE (Bq m ⁻³)	1.68	1.75	1.73	0.48	0.85
WRMSE (Bq m ⁻³)	0.61	0.62	0.64	0.21	0.34

*Constant value of 15.8 mBq m⁻³ s⁻¹ on land pixels and 0 mBq m⁻³ s⁻¹ on sea pixels.

When analyzing the statistical metrics shown in Table 1 for the different available time periods (see Table S1 of the Supplementary material), it was observed that in October-November the best fit between measured and simulated radon concentration values was with the ERA5 radon map, yielding an R value of 0.46 and a WRMSE of 0.61 Bq m⁻³. When using a constant exhalation flux value, a lower R value was obtained (0.33) and a similar WRMSE value (0.63 Bq m⁻³). In July-August period the fitting between models and observations was better, with correlation coefficients of 0.51, 0.53, and 0.58 for Flex-WRF-ERA5, Flex-WRF-GLDAS, and Flex-WRF-Const, respectively. Bias with Flex-WRF-ERA5 during July-August and October-November periods was -0.05 and -0.52 Bq m⁻³ respectively, while bias with Flex-WRF-GLDAS was 0.22 and -0.23 Bq m⁻³, respectively. However, bias with Flex-WRF-Const was quite high (-0.82 and -0.92 Bq m⁻³ for both periods, respectively). Thus, although a similar RMSE and even a better correlation coefficient was obtained over this period using

Flex-WRF-Const, the constant radon exhalation map was finally excluded for the application of the RTM due to the higher bias observed during these two periods (those in which larger methane concentrations were measured).

Figure 8 shows a comparison between observed and simulated hourly radon atmospheric concentrations for the months of July and August 2019. Plots depicting the observed and modelled time series for other months in 2019 can be found in Figure S6 of the Supplementary material. In general, the model is able to reproduce the daily and synoptic radon variability over the different periods. However, differences can be observed during some synoptic episodes.

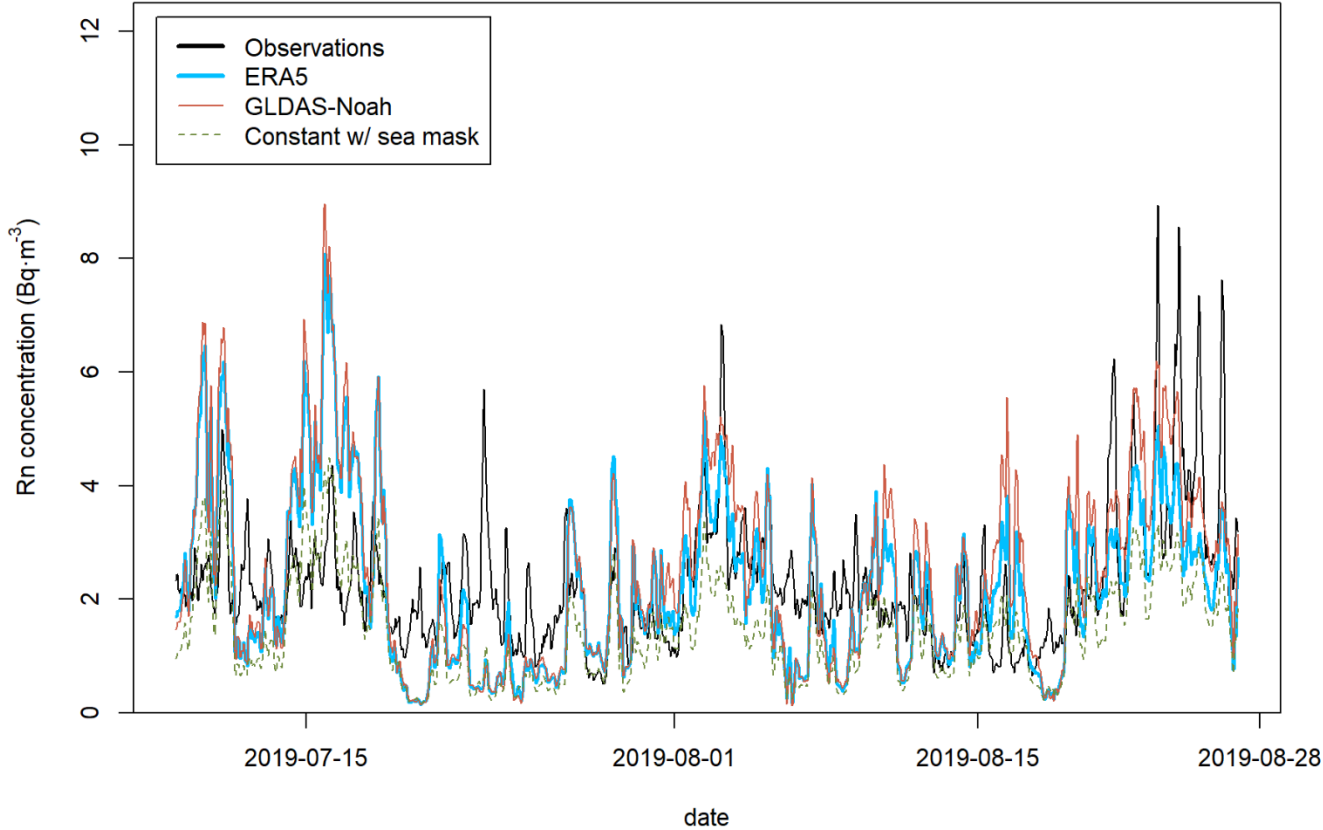


Figure 8. DEC ²²²Rn concentrations: observations (black line), modelled values using different radon exhalation maps: Flex-WRF-ERA5 (blue), Flex-WRF-GLDAS (red, dashed-dotted) and Flex-WRF-Const (green, dashed).

A more detailed visual inspection of the simulated results seems to show that the model does not detect the very high concentrations obtained during nocturnal peaks (accumulation phase), as seen in the periods of 29/03/2019 to 03/04/2019,

19/08/2019 to 27/08/2019 or 12/10/2019 to 29/10/2019 (Figure S6). Looking at the average diurnal cycle for the whole 2019 dataset (Figure 9) it can be noticed that observations and models peak at the same time (06h UTC), but the observed peak is much stronger than the simulated, being 3.0 Bq m⁻³ higher than Flex-WRF-GLDAS and 5.4 Bq m⁻³ higher than Flex-WRF-ERA5. However, between 10h UTC and 0h UTC the averaged radon concentrations are similar to the modelled ones, and the observed hourly average value remains between the Flex-WRF-GLDAS and the Flex-WRF-ERA5 hourly average values. The averaged modelled values using Flex-WRF-Const are much lower for all the diurnal cycle.

This bias between the observed and modelled radon concentrations at the daily peak was not constant over the tested year. For example, in April and May no bias was observed between radon observations and Flex-WRF-ERA5 modelled radon data. An average bias of 1.21 Bq m⁻³ was found in the months of October-November. This variability may also induce biases in the calculated nocturnal radon fluxes and therefore in the methane fluxes retrieved with the RTM. However, the variability in the bias may not be due only to the calculated radon fluxes but also to the WRF input so it is difficult to quantify and it may be a further analysis.

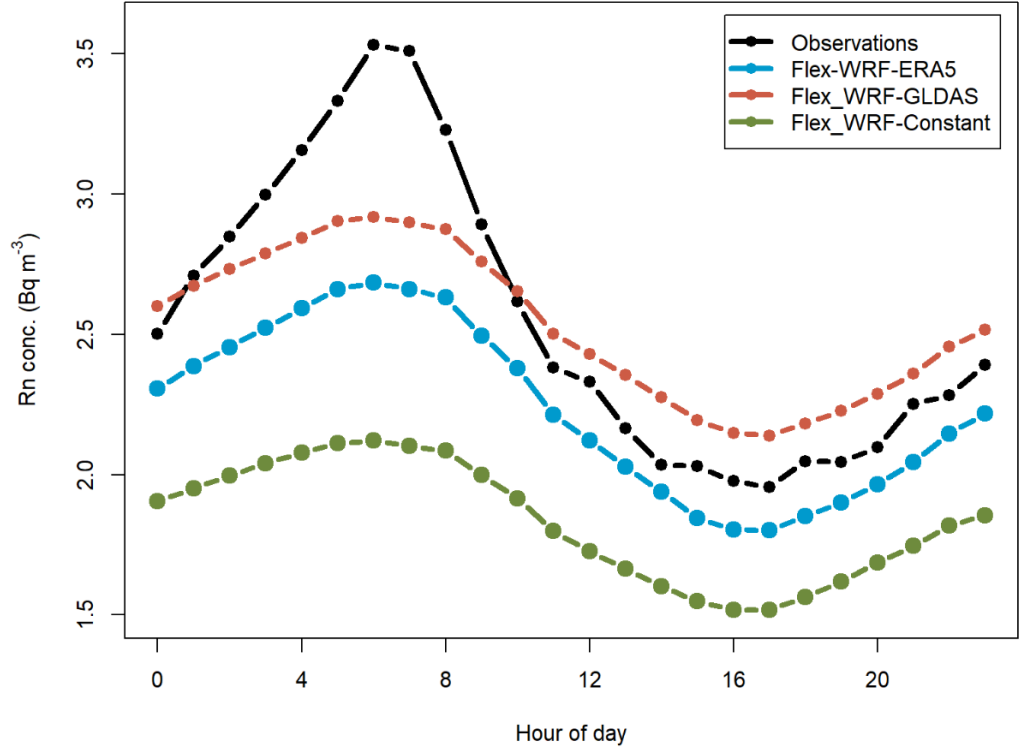


Figure 9. Average diurnal cycle of ²²²Rn concentration at DEC: observations (black line), modelled values using different radon exhalation maps: Flex-WRF-ERA5 (blue), Flex-WRF-GLDAS (red, dashed-dotted) and Flex-WRF-Constant (green, dashed).

It is known from the literature that the nocturnal boundary layer height (BLH) is one of the most challenging variables to simulate in mesoscale models (García-Díez et al., 2013) and this fact can cause a significant impact on transport models outputs (Díaz-Isaac et al., 2018; Gerbig et al., 2008; Mohan and Gupta, 2018). It has been proven in previous studies that the nocturnal boundary layer often gets overestimated or underestimated in dispersion models (Arnold et al., 2010; Williams et al., 2011) and that it can be the main cause of divergence between simulated and observed nocturnal atmospheric concentrations. However, overall differences between model and observations may be attributable to both radon flux maps and transport models and from the data obtained it is not possible to attribute a higher contribution in the uncertainties to the radon maps or to the atmospheric models.

445

3.2.3 Nocturnal footprint

At DEC station the inlet was located at 10 m a.g.l. and, therefore, it can be considered that the station footprint at night was very local. From the hourly footprints calculated with Flex-WRF for all nights where RTM was applied with the 1.5 m s^{-1} threshold, the influence area was calculated too. Figure 10 shows the normalized average residence time for all back trajectories from DEC during nights where the RTM was applied. Results show that the ERD represents ~50% of the influence area for the air sampled at DEC station, while another 35% is over the sea, and the rest (15%) is a continental influence. Considering negligible radon and methane fluxes coming from the sea (Weber et al., 2019; Wilkening and Clements, 1975; Zahorowski et al., 2013), it may be considered that RTM-based CH_4 fluxes will mainly be due to the ERD contribution except for a 15% of continental influence. Taking in consideration that the models overestimate the nocturnal mixing (as seen in Figure 9), the continental contribution would probably be lower.

455

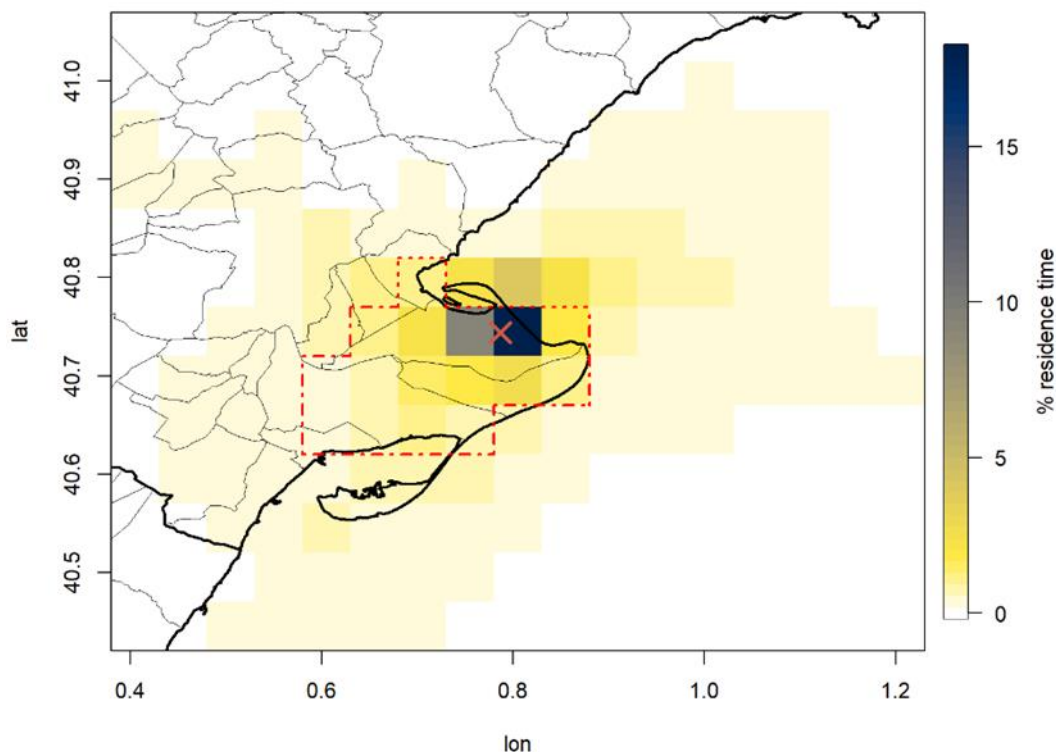


Figure 10. Normalized average residence time of air masses arriving at DEC station (red cross) during RTM windows (21h UTC - 03h UTC). Pixels considered ERD are enclosed by the red dotted line.

3.2.4 Radon flux cycles

Annual cycles of radon flux were calculated considering four different integration levels: (i) DEC station (the darkest pixel as illustrated in Figure 10); (ii) the whole ERD (red dotted line pixels as illustrated in Figure 10); (iii) the 70 km x 70 km window surrounding DEC (complete area shown in Figure 10), and (iv) the footprint-weighted radon flux applied for the RTM. As shown in Figure 11a, a clear annual cycle was observed with maximum values in summer. However, it seems that radon exhalation models are not taking into account an agricultural practice characteristic of rice paddies: the flooding of the fields (Figure 2) or, in other words, the existence of a water table of a certain level in rice crop fields that would decrease radon exhalation. Additionally, the increase in ^{222}Rn concentration in winter months (in day and night time) (see Figure 5) does not seem compatible with the modeled radon flux cycle.

The observed bias between observations and modelled radon concentrations for different periods of the year (2019) are shown in Figure 11b, both for the whole day and only for the afternoon (15:00 to 18:00). Results show that both ERA5 and GLDAS radon exhalation maps are probably underestimating radon fluxes in fall (Oct.-Nov.), while they seem to overestimate radon fluxes in late spring. A constant continental value of $15.8 \text{ mBq m}^{-2} \text{ h}^{-1}$ seems to be underestimated at least for summer and fall months, as was already observed analyzing the average diurnal cycle (Fig. 9). Therefore, the constant value ^{222}Rn map will not be used to retrieve methane fluxes with RTM. Radon concentration bias in the afternoon does not differ from the bias for the whole day.

Finally, the observed biases may indicate that the seasonality observed using radon exhalation maps may not agree with the real radon emission at ERD area. Although no bias data is available for December, high atmospheric radon concentration values in that month (see section 3.1) indicate an increase in the radon flux for that month near DEC station, which is not observed based on radon exhalation maps. This increase could be driven by the complete drying of rice fields, which is not taken in consideration in the land models.

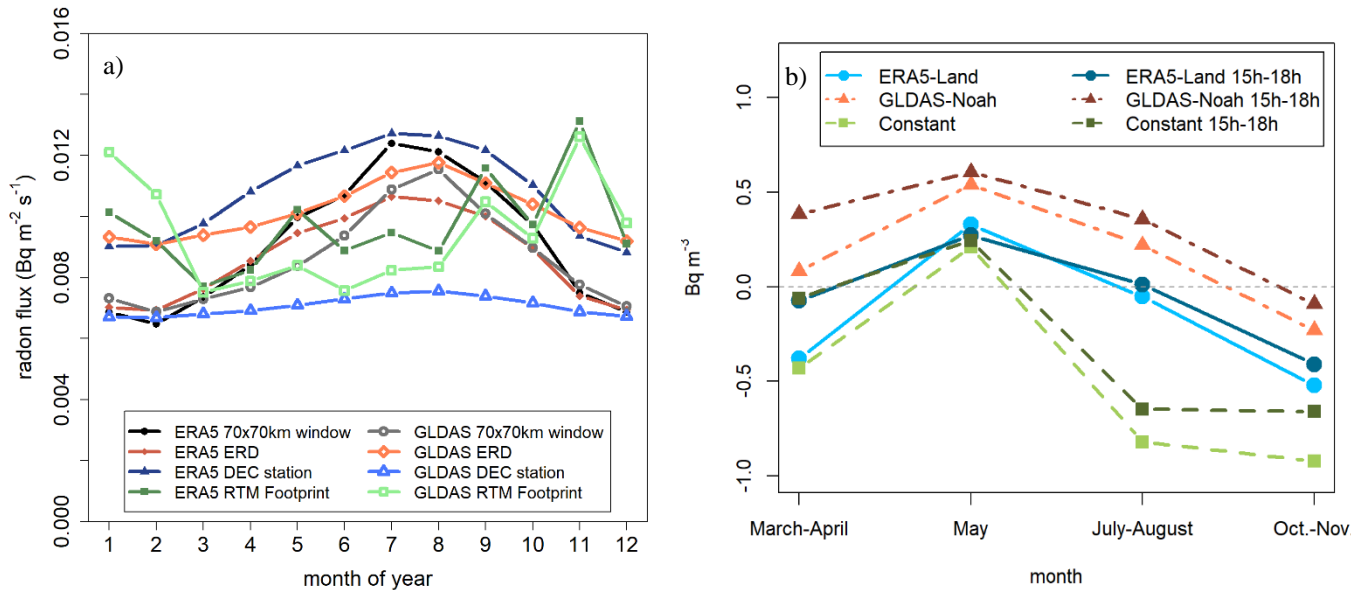


Figure 11. a) Average annual cycle of ^{222}Rn exhalation values for the 70 km x 70 km window, ERD and DEC station grid and RTM footprint-weighted for both ERA5 and GLDAS models; b) Bias between observations and modelled radon concentrations for 2019 for the whole day for each of the radon exhalation maps: ERA5 (solid light blue), GLDAS (dashed-dotted light red), constant value (dashed light green) and for the afternoon (15-18h) for each of the radon exhalation maps: ERA5 (solid dark blue), GLDAS (dashed-dotted dark red), constant value (dashed dark green).

485 The footprint-weighted radon fluxes show a different trend than radon flux maps, which may be caused by the seasonality of winds, coming from the northwest in winter months. Overall, the RTM footprint-weighted radon fluxes are similar for both models and in the same order of magnitude as the 70x70km window or the ERD.

3.3 RTM-based CH4 fluxes at DEC station.

Figure 12 presents the monthly median values of the nocturnal CH4 fluxes obtained using the RTM with two radon exhalation maps: ERA5 and GLDAS taking in consideration the whole dataset (left plot) and only nights where the average wind speed was below 1.5 m s⁻¹ (right plot). Constant radon flux map was not used in this second part of the study as previously explained (see section 3.2.2).

The Shapiro-Wilk test for normality (Shapiro and Wilk, 1965) was performed to the RTM CH4 flux data indicating that flux data was not following a normal distribution (w <0.29, p-value < 0.01), but that there were no reasons to reject a log-normal distribution (w = 0.99, p-value = 0.67). Therefore, monthly median CH4 flux values were used instead of monthly mean values. The RTM selection criteria used in this study restricted the percentage of nocturnal accumulation events used over the 7 years (2013-2019) dataset to its 15% when using the whole dataset and 7% when using only nights with average wind speed below 1.5 m s⁻¹. Table 2 shows, for each month, the percentage of nights that were selected over the total available, the median and the standard deviation of the log-normal distribution ($\hat{\sigma}$) of the retrieved RTM-based CH4 fluxes using two radon exhalation maps. Table 3 shows the same values when only using vents with average wind speed below 1.5 m s⁻¹.

Table 2. Statistics of the RTM application at DEC station for the 2013-2019 period.

Month	N° of nights with measurements	N° of nights eligible for RTM	Percentage (%)	Median CH4 flux (ERA5) (mg CH4 m ⁻² h ⁻¹)	$\hat{\sigma}$ (ERA5)	Median CH4 flux (GLDAS) (mg CH4 m ⁻² h ⁻¹)	$\hat{\sigma}$ (GLDAS)
January	42	8	19%	2.00	1.21	2.50	1.26
February	28	2	7%	1.92	1.13	2.14	1.09
March	57	12	21%	0.38	1.14	0.38	1.13
April	68	17	25%	0.21	1.09	0.19	1.19
May	54	13	24%	0.64	0.69	0.51	0.73
June	49	8	16%	1.78	0.96	1.38	0.97
July	86	15	17%	2.70	1.05	2.20	1.04
August	71	14	20%	4.76	0.88	4.45	0.93
September	44	9	20%	2.95	1.66	2.60	1.75

October	74	10	13%	13.90	2.44	14.38	2.43
November	38	5	13%	4.08	0.58	5.51	0.56
December	68	16	24%	0.34	0.91	1.02	0.85
Total	679	98	15%	3.0	1.59	3.1	1.62

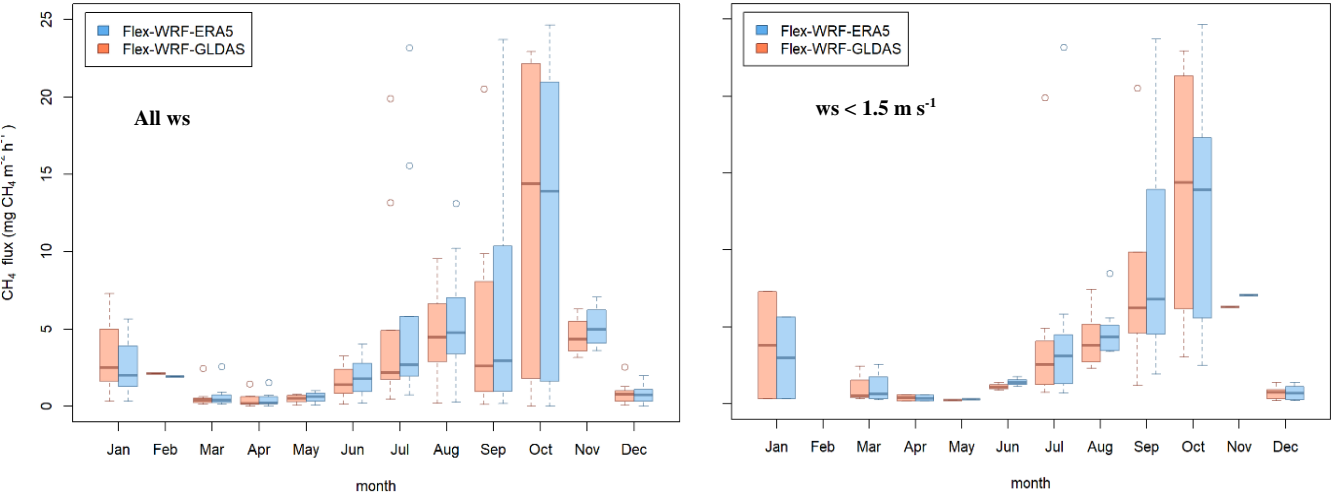
Table 3. Statistics of the RTM application at DEC station for the 2013-2019 period if only nights with $w_s < 1.5 \text{ m s}^{-1}$ are considered.

Month	N° of nights with measurements	N° of nights eligible for RTM	Percentage (%)	Median CH ₄ flux (ERA5) (mg CH ₄ m ⁻² h ⁻¹)	$\hat{\sigma}$ (ERA5)	Median CH ₄ flux (GLDAS) (mg CH ₄ m ⁻² h ⁻¹)	$\hat{\sigma}$ (GLDAS)
January	42	2	5 %	3.00	1.98	3.82	2.15
February	28	0	0				
March	57	4	7 %	0.66	0.99	0.55	0.87
April	68	2	3 %	0.37	0.77	0.4	0.83
May	54	1	2 %	0.31		0.24	
June	49	3	6 %	1.40	0.23	1.09	0.22
July	86	7	8 %	3.11	1.18	2.54	1.13
August	71	8	11 %	4.33	0.31	3.81	0.4
September	44	5	11 %	6.79	0.98	6.25	1.04
October	74	5	7 %	13.90	0.93	14.38	0.87
November	38	1	3 %	7.07		6.30	
December	68	7	10 %	0.69	0.79	0.74	0.71
Total	679	45	7 %	3.5	1.36	3.4	1.34

No significant difference is observed when using only night events when the wind is lower than 1 m s^{-1} compared to when no wind restriction is used. The methane fluxes follow the same seasonal pattern, and in the October, the month with the bigger discrepancies, the fluxes values are exactly the same. The bigger discrepancies are found in the month of September, when methane fluxes with wind restrictions more than doubles the methane fluxes measured with no wind restrictions. The average annual fluxes are a 15% higher when only the events with a wind speed under 1.5 m s^{-1} are selected.

The number of eligible events with wind restrictions is less than half of the nights when no wind restrictions are used. Therefore, the representativity decreases, and for some months as February no event is available as eligible for RTM. Thus, and

giving the low differences with and without wind restriction, the values obtained with no wind restrictions will be used for the comparison of the annual emissions with other studies and inventories.



515 **Figure 12. Boxplots of the methane RTM based fluxes over the DEC station calculated using Flex-WRF-ERA5 (blue) and Flex-WRF-GLDAS (red) for every month of the year (period 2013-2019) for the whole dataset (left) and only taken in consideration events with wind seed < 1.5 m s⁻¹ (right). Outliers are represented with round points, boxes represent the region between interquartiles Q1 and Q3, and horizontal solid lines the medians for each model.**

520 The average difference between RTM-based CH₄ fluxes obtained using Flex-WRF-ERA5 and Flex-WRF-GLDAS models were only of 0.1 ± 0.2 mg CH₄ m⁻² h⁻¹. This difference is stable whether the wind threshold is used or not. The monthly methane RTM based fluxes obtained with Flex-WRF-ERA5 (and Flex-WRF-GLDAS) showed a strong seasonality, with a maximum in October with a median flux of 13.9 (14.4) mg CH₄ m⁻² h⁻¹ and a minimum between the months of March, April and May, with values between 0.2 and 0.7 (0.2 and 0.6) mg CH₄ m⁻² h⁻¹. For the data without wind threshold, the average methane flux for the period between tillering and straw incorporation (i.e. between June and November) was 5.2 (4.9) mg CH₄ m⁻² h⁻¹. For the period when the fields were dried (i.e. February to April), the average methane flux decreased to 0.8 (0.9) mg CH₄ m⁻² h⁻¹. Finally, the total annual average emission rate was calculated to be 3.1 (3.0) mg CH₄ m⁻² h⁻¹. This emission is equivalent to an annual emission of 262.8 kg CH₄ ha⁻¹. The area of representativeness for these fluxes is discussed in the following section.

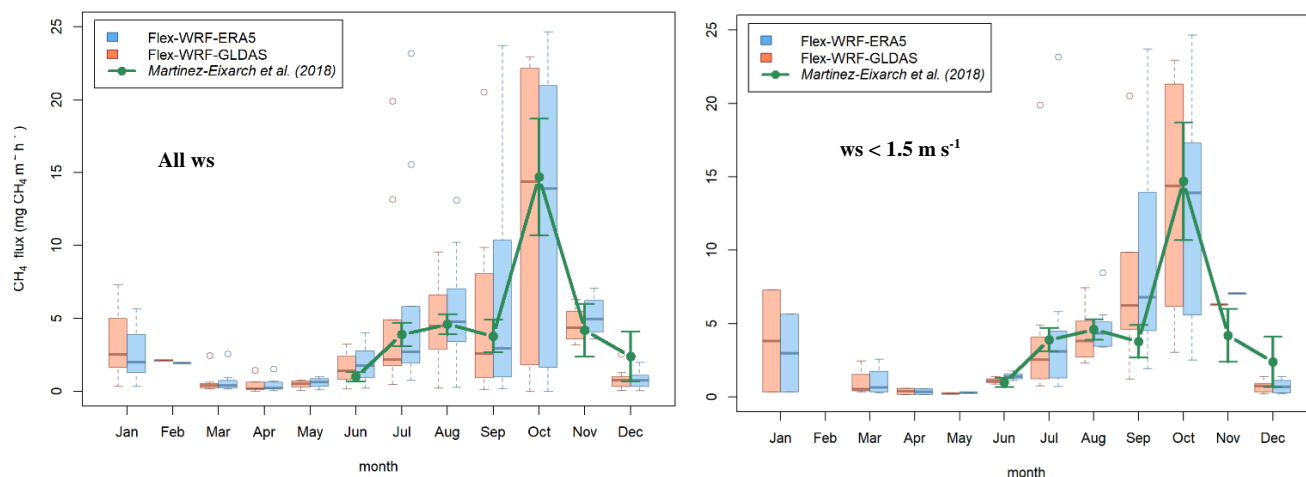
From radon concentration simulation results, it was not possible to decide which one of the two radon flux maps performed better, as results vary for the different periods of year and there is a regular trend between both of them. In addition, so far not

530 other studies are available within the literature where these two radon flux maps have been evaluated. Therefore, for the calculation of methane fluxes with RTM, both maps have to be considered. However, differences in flux measurements are low ($< 5\%$) and, therefore, we will refer only to the results obtained with ERA5 radon exhalation map for the comparison with other studies.

3.4 RTM-based CH₄ fluxes vs. CH₄ fluxes from the literature

535 Average 2013-2019 methane fluxes from EDGAR v7.0 inventory is shown in Figure 3. Although EDGAR v7.0 counts for agriculture soils emissions, its data does not consider the emissions from rice paddy fields at ERD, as the emissions from agricultural soils assigned in the pixels of the ERD are below $0.02 \text{ mg CH}_4 \text{ m}^{-2} \text{ h}^{-1}$. The 80% of the emission assigned at the pixel of DEC station is related to a cow farm located 9 km west from the station. The largest emissions in the area are located 55 km Northeastern of the sampling site, and are related to a petrochemical industry complex. From this dataset, it may be
540 confirmed that no accounted significant anthropogenic methane emissions are present in the area around the station apart from the unaccounted methane due to ERD rice fields. The fact that from January to June no methane diurnal cycles are observed at DEC supports the hypothesis that the methane fluxes observed can be entirely attributed to the local rice fields. Moreover, assuming zero emissions of methane and radon from the sea, it can be inferred that when wind is coming from the sea all the signal in RTM is coming from the ERD. Therefore, taking into consideration the footprint area, RTM results can be considered
545 as a good proxy of the variability of methane emissions due to rice cultivation cycle in ERD over the months of the year.

Monthly methane flux values obtained by Martínez-Eixarch et al. (2018) at ERD with static chambers are plotted together with RTM based results from the present work in Figure 13. The plot shows a remarkable correlation between both results, obtained using independent methodologies. The seasonal variability of the flux estimated using both methodologies follows a consistent pattern during productive and fallout months. However, December stands out as the month with the greatest disagreement
550 between the two methodologies, with the RTM estimation being $2 \text{ mg CH}_4 \text{ m}^{-2} \text{ h}^{-1}$ lower than the static chambers estimation. This disparity could be caused by an underestimation of the radon fluxes in December, as seen in section 3.2.4. The absolute values are very similar during months with the highest emissions. For instance, in October RTM-based results estimated a median flux of $13.9 \text{ mg CH}_4 \text{ m}^{-2} \text{ h}^{-1}$, while the fluxes from static chambers were calculated as $14.7 \pm 4.2 \text{ mg CH}_4 \text{ m}^{-2} \text{ h}^{-1}$.



555 **Figure 13. Boxplots of the methane RTM based fluxes over the DEC station calculated using Flex-WRF-ERA5 (blue) and Flex-WRF-GLDAS (red) for every month of the year (period 2013-2019) for the whole dataset (left) and only taken in consideration events with wind speed < 1.5 m s⁻¹ (right), and methane fluxes over ERD using static chambers (green points and lines) (Martínez-Eixarch et al., 2018).**

In a study conducted by Wang et al. (2018), a global modelling of rice fields emissions was undertaken, accounting for multiple parameters at each country. The country-specific emission factor for Spain was estimated to be 1.13 kg CH₄ h⁻¹ day⁻¹. In the Ebro Delta, the emission factor according the latest national inventory of Spain reported to the UNFCC (National Inventory Report of Spain, 2023), is 1.32 kg CH₄ h⁻¹ day⁻¹. This inventory emission corresponds to an emission of 5.54 mg CH₄ m⁻² h⁻¹ during the crop period and a total yearly emission of 198.5 kg CH₄ ha⁻¹ using the inventoried rice crop period of 150 days reported to the UNFCC. With the RTM methodology the estimated annual emission was 262.8 kg CH₄ ha⁻¹. In the work by Martínez-Eixarch et al. (2018), the annual emission is reported to be 262.6 CH₄ ha⁻¹. The outstanding similarity using both methodologies, however, has to be taken carefully due to the high uncertainty of both methods, but it confirms the suitability of both methodologies for the calculation of methane fluxes in a region as the ERD.

RTM-based CH₄ flux estimations show that emissions were distributed along the year and that the higher ones corresponded to the months of harvest and straw management. However, during all months that the fields were flooded, emissions were significantly higher than those inventoried in EDGAR, and only similar to the inventories in months were the fields are dried (March-April). As in the work by Martínez-Eixarch et al. (2018), it can be seen that neglecting the fallow season can significantly underestimate annual emissions. Methane emissions from October to December represent the 54% of the total, while emissions in the growing period (May-September) only stands for the 31%. Finally, emissions from January to April only stand for the 15% of the total methane emissions.

575 As seen in section 3.2, the WRF model in regions like ERD does not always simulate correctly the nocturnal accumulation and the wind speeds, deriving to important bias in concentration simulations. The advantage of the work exposed here is that due to the small height of the sampling point, the footprint of the station is quite small, within few kilometers, and thus, the footprint is more reliable.

One of the limitations of the RTM is that only the nocturnal emissions are monitored. In the case of rice fields, it is well known
580 that the gross ecosystem photosynthesis (GEP) and the soil temperature are drivers of the CH₄ flux variability (Hatala et al., 2012). Although diel fluxes and nocturnal fluxes keep a strong correlation (Wassmann et al., 2018), methane emissions in the early afternoon can be between 10% and 200% higher than the nocturnal emissions during the productive months (Alberto et al., 2014; Dai et al., 2019; Minamikawa et al., 2012). This difference may lead to an underestimation, ranging between 10% (Weller et al., 2015) and 20 % (Wassmann et al., 2018), of diel fluxes if considering only the nocturnal emissions.

585 **4 Conclusions**

Using radon flux maps, modeled particle back trajectories, and methane and radon atmospheric concentrations from a 10 m tower at the ERD, methane fluxes variability over a rice crop area in the north-east of the Iberian Peninsula was evaluated. Prior to this calculation, modeled back trajectories and the different radon exhalation maps used in the study were evaluated by simulating radon concentrations at the tower sampling point and comparing them with observations. The two main
590 conclusions drawn from this previous comparison are:

- 1) Atmospheric transport models have issues in accurately estimating the nocturnal boundary layer in the coastal ERD area, overestimating the vertical mixing.
- 2) The seasonality observed in the radon exhalation maps from Karstens and Levin (2023) may not be adequately parametrized in the ERD area, as different bias among the months are observed between the modeled and observed atmospheric radon
595 concentrations. Although the biases could also be produced by the seasonal difference in the transport model performance, the estimated radon fluxes at DEC does not seems to take in consideration the seasonality of the water table height within this area.

From the application of the RTM, a strong annual cycle of methane emissions is observed. This annual cycle is related with the rice crop cycle, with the highest emissions in October coinciding with the harvest and the straw incorporation in the fields.
600 When a wind threshold of 1.5 m s⁻¹ is used for RTM application, small differences are observed. The overall pattern is the same with an increase of 15% in average annual emissions. The methane emission pattern and values are remarkably similar to a study done with static chambers along two years, validating this methodology. The total annual methane emissions

605 estimated are 262.8 kg CH₄ ha⁻¹, close to the 262.6 from the study of the static chambers and 32% higher than the UNFCC
inventoried value (198.5 kg CH₄ ha⁻¹). The independent EDGAR emissions database does not take into consideration methane
emissions from this area with rice fields. Absolute emission values given by the RTM may be handled with care, as there are
many assumptions and simplifications considered. However, its application has been proven to be useful to know the inter-
annual variability of regional methane emissions (Levin et al., 2021), to amend inventory values for not considering seasonality
of livestock management (Grossi et al., 2018), or, as in this work, to understand and quantify the seasonal variability of
emissions over a reduced area. Due to the hostile environmental conditions at DEC station (very high humidity, high
610 temperatures and salty air) the dataset presents several gaps. Thus, a year-to-year variability study was not feasible. With a
longer dataset without important gaps this methodology could be of interest in order to monitor the inter-annual variability,
which could be driven by changes in the agricultural management (e.g. straw management, water management or fertilization
changes). Considering the resources needed, an atmospheric station equipped with radon and methane instrumentation could
be much more efficient than performing periodical surveys using accumulation chambers across the entire area of interest for
615 an extended period.

Appendix. Flex-WRF modeling parameters

Table A1 shows the main parameters used in the WRF modeling for radon simulation during 2019, as well as for the RTM
footprint spanning the period from 2013 to 2019.

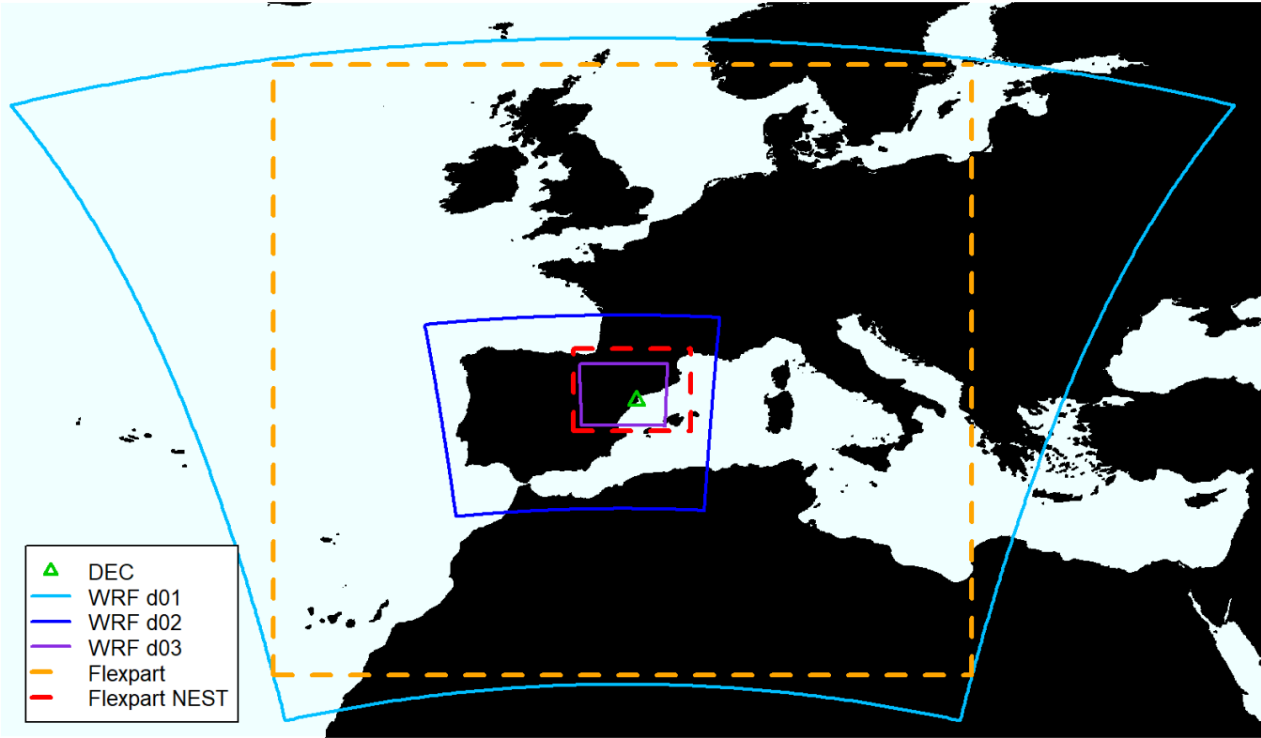
Table A1. WRF parameters for Flex-WRF simulations.

WRF version	4.2.1
PBL Scheme	Yonsei University scheme
Microphysics	WRF Single-moment 6-class scheme
Surface Layer physics	Revised MM5 surface layer scheme
Horizontal resolution	d01: 27 km x 27 km d02: 9 km x 9 km d03: 3 km x 3 km
Vertical layers	57
Top of the atmosphere	50 hPa
Meteorological initial conditions	ERA5 (Hersbach et al., 2020)

620 Flex-WRF was parametrized to be used with mean winds from WRF output and with convection, turbulence and PBL schemes.

As for the domains, while in WRF a lambert conformal conic projection was used for a better performance, a regular lat-lon grid was used in Flex-WRF for an easiest merge with radon maps, which are in lat-lon regular grid projection.

Figure A1 shows the limits of the three domains for WRF simulations and the two domains for Flex-WRF back trajectories.



625 **Figure A1. WRF and Flexpart domains for Flex-WRF simulations.**

Data availability

The data and codes for this paper are available at the CORA Repositori de Dades de Recerca with DOI <https://doi.org/10.34810/data1332>.

Author contributions

630 J-AM, as PI of the ClimaDat project, designed and leaded the creation of the ClimaDat network. AÀ, SB, CG, LC, J-AM and RC participated actively in the mounting and maintenance of the DEC station atmospheric measurements and drying system.

RC and CG were in charge of the Picarro and AMON instruments and data production, respectively. CG designed the RTM application study for DEC station. RC led this work, performed the Flex-WRF simulations needed for the RTM applications as well as for the models evaluation and wrote the original draft of the manuscript. AV and CG coordinated the data analysis and discussions. AÀ, CG and AV contributed actively to the manuscript writing. All authors participated in the manuscript writing and agreed to the published version of the paper.

Competing interests

The authors declare that they have no conflict of interests.

Acknowledgements

A. Àgueda is a Serra Hunter Fellow. The authors would like to thank the members of the ClimaDat project who worked for the maintenance of the ClimaDat DEC station: Manel Nofuentes, Eusebi Vázquez, Òscar Batet and Paola Occhipinti. The authors would also like to acknowledge the workers of the “Estació biològica del Canal Vell”, particularly Miquel Àngel and Laura, for their help and cooperation. Finally, this work is dedicated to the beloved memory of our ClimaDat colleague Òscar Batet Torrell.

Financial support

All the measurements at DEC station were supported by the ClimaDat project [Obra Social “La Caixa”, 2010 - 2019]. Part of the research was carried under the project “Methane interchange between soil and air over the Iberian Peninsula” (CGL2013-46186-R) funded by the Ministerio Español de Economía y Competitividad. The modeling, data analysis, application of the RTM and manuscript writing was carried on under the 19ENV01 traceRadon project, which has received funding from the EMPIR programme co-financed by the Participating States and from the European Union's Horizon 2020 research and innovation programme.

References

Àgueda, A., Grossi, C., Pastor, E., Rioja, E., Sánchez-García, L., Batet, Ò., Curcoll, R., Ealo, M., Nofuentes, M., Occhipinti, P., Rodó, X. and Morguí, J.-A.: Temporal and spatial variability of ground level atmospheric methane concentrations in the Ebro River Delta, Atmos. Pollut. Res., 8(4), 741–753, doi:10.1016/j.apr.2017.01.009, 2017.

Ahmadov, R., Gerbig, C., Kretschmer, R., Körner, S., Rödenbeck, C., Bousquet, P. and Ramonet, M.: Comparing high resolution WRF-VPRM simulations and two global CO₂ transport models with coastal tower measurements of CO₂, Biogeosciences, 6(5), 807–817, doi:10.5194/bg-6-807-2009, 2009.

- Alberto, M. C. R., Wassmann, R., Buresh, R. J., Quilty, J. R., Correa, T. Q., Sandro, J. M. and Centeno, C. A. R.: Measuring methane flux from irrigated rice fields by eddy covariance method using open-path gas analyzer, *F. Crop. Res.*, 160, 12–21, doi:10.1016/j.fcr.2014.02.008, 2014.
- Alberto, M. C. R., Wassmann, R., Gummert, M., Buresh, R. J., Quilty, J. R., Correa, T. Q., Centeno, C. A. R. and Oca, G. M.: Straw incorporated after mechanized harvesting of irrigated rice affects net emissions of CH₄ and CO₂ based on eddy covariance measurements, *F. Crop. Res.*, 184, 162–175, doi:10.1016/j.fcr.2015.10.004, 2015.
- Aliaga, D., Sinclair, V. A., Andrade, M., Artaxo, P., Carbone, S., Kadantsev, E., Laj, P., Wiedensohler, A., Krejci, R. and Bianchi, F.: Identifying source regions of air masses sampled at the tropical high-altitude site of Chacaltaya using WRF-FLEXPART and cluster analysis, *Atmos. Chem. Phys.*, 21(21), 16453–16477, doi:10.5194/acp-21-16453-2021, 2021.
- Alvarado-Aguilar, D., Jiménez, J. A. and Nicholls, R. J.: Methane Emissions from Major Rice Ecosystems in Asia, edited by R. Wassmann, R. S. Lantin, and H.-U. Neue, Springer Netherlands, Dordrecht., 2000.
- Arnold, D.: Study of the atmospheric radon concentration dynamics at the Spanish radiological surveillance stations and its application to air mass movements, *Universitat Politècnica de Catalunya (UPC).*, 2009.
- Arnold, D., Vargas, A., Vermeulen, A. T., Verheggen, B. and Seibert, P.: Analysis of radon origin by backward atmospheric transport modelling, *Atmos. Environ.*, 44(4), 494–502, doi:10.1016/j.atmosenv.2009.11.003, 2010.
- Beaudoin, H. and Rodell, M.: NASA/GSFC/HSL (2020), GLDAS Noah Land Surface Model L4 3 hourly 0.25 x 0.25 degree V2.1, Greenbelt, Maryland, USA, Goddard Earth Sci. Data Inf. Serv. Cent. (GES DISC), 2020.
- Belenguer-Manzanedo, M., Alcaraz, C., Camacho, A., Ibáñez, C., Català-Forner, M. and Martínez-Eixarch, M.: Effect of post-harvest practices on greenhouse gas emissions in rice paddies: flooding regime and straw management, *Plant Soil*, 474(1–2), 77–98, doi:10.1007/s11104-021-05234-y, 2022.
- Biraud, S., Ciais, P., Ramonet, M., Simmonds, P., Kazan, V., Monfray, P., O'Doherty, S., Spain, T. G. and Jennings, S. G.: European greenhouse gas emissions estimated from continuous atmospheric measurements and radon 222 at Mace Head, Ireland, *J. Geophys. Res. Atmos.*, 105(D1), 1351–1366, doi:10.1029/1999JD900821, 2000.
- Brioude, J., Arnold, D., Stohl, A., Cassiani, M., Morton, D., Seibert, P., Angevine, W., Evan, S., Dingwell, A., Fast, J. D., Easter, R. C., Pisso, I., Burkhardt, J. and Wotawa, G.: The Lagrangian particle dispersion model FLEXPART-WRF version 3.1,

Geosci. Model Dev., 6(6), 1889–1904, doi:10.5194/gmd-6-1889-2013, 2013.

- 685 Casanova, D.: Quantifying the Effects of Land Conditions on Rice Growth. A case study in the Ebro Delta (Spain) using remote sensing, Wageningen Agricultural University., 1998.

Cerralbo, P., Grifoll, M., Moré, J., Bravo, M., Sairouní Afif, A. and Espino, M.: Wind variability in a coastal area (Alfacs Bay, Ebro River delta), *Adv. Sci. Res.*, 12(1), 11–21, doi:10.5194/asr-12-11-2015, 2015.

- Cheewaphongphan, P., Chatani, S. and Saigusa, N.: Exploring Gaps between Bottom-Up and Top-Down Emission Estimates Based on Uncertainties in Multiple Emission Inventories: A Case Study on CH₄ Emissions in China, *Sustainability*, 11(7), 2054, doi:10.3390/su11072054, 2019.

Chen, Z., Jacob, D. J., Nesser, H., Sulprizio, M. P., Lorente, A., Varon, D. J., Lu, X., Shen, L., Qu, Z., Penn, E. and Yu, X.: Methane emissions from China: a high-resolution inversion of TROPOMI satellite observations, *Atmos. Chem. Phys.*, 22(16), 10809–10826, doi:10.5194/acp-22-10809-2022, 2022.

- 695 Cinelli, G., Tollefsen, T., Bossew, P., Gruber, V., Bogucarskis, K., De Felice, L. and De Cort, M.: Digital version of the European Atlas of natural radiation, edited by G. Cinelli, M. De Cort, and T. Tollefsen, *J. Environ. Radioact.*, 196, 240–252, doi:10.1016/j.jenvrad.2018.02.008, 2019.

Crosson, E. R.: A cavity ring-down analyzer for measuring atmospheric levels of methane, carbon dioxide, and water vapor, *Appl. Phys. B Lasers Opt.*, 92(3 SPECIAL ISSUE), 403–408, doi:10.1007/s00340-008-3135-y, 2008.

- 700 Curcoll, R., Grossi, C., Röttger, S. and Vargas, A.: Full characterization and calibration of a transfer standard monitor for atmospheric radon measurements, *Atmos. Meas. Tech.*, 17(10), 3047–3065, doi:10.5194/amt-17-3047-2024, 2024.

Dai, S., Ju, W., Zhang, Y., He, Q., Song, L. and Li, J.: Variations and drivers of methane fluxes from a rice-wheat rotation agroecosystem in eastern China at seasonal and diurnal scales, *Sci. Total Environ.*, 690, 973–990, doi:10.1016/j.scitotenv.2019.07.012, 2019.

- 705 Desjardins, R. L., Worth, D. E., Pattey, E., VanderZaag, A., Srinivasan, R., Mauder, M., Worthy, D., Sweeney, C. and Metzger, S.: The challenge of reconciling bottom-up agricultural methane emissions inventories with top-down measurements, *Agric. For. Meteorol.*, 248(September 2017), 48–59, doi:10.1016/j.agrformet.2017.09.003, 2018.

- Díaz-Isaac, L. I., Lauvaux, T. and Davis, K. J.: Impact of physical parameterizations and initial conditions on simulated atmospheric transport and CO₂ mole fractions in the US Midwest, *Atmos. Chem. Phys.*, 18(20), 14813–14835, doi:10.5194/acp-18-14813-2018, 2018.
- 710
- Dlugokencky, E. J.: Conversion of NOAA atmospheric dry air CH₄ mole fractions to a gravimetrically prepared standard scale, *J. Geophys. Res.*, 110(D18), D18306, doi:10.1029/2005JD006035, 2005.
- Drinkwater, A., Palmer, P. I., Feng, L., Arnold, T., Lan, X., Michel, S. E., Parker, R. and Boesch, H.: Atmospheric data support a multi-decadal shift in the global methane budget towards natural tropical emissions, *Atmos. Chem. Phys.*, 23(14), 8429–
- 715 8452, doi:10.5194/acp-23-8429-2023, 2023.
- Eggelston, S., Buendia, L., Miwa, K., Ngara, T. and Tanabe, K.: IPCC guidelines for national greenhouse gas inventories 2006, Intergov. Panel Clim. Chang., 2006.
- European Commission: EDGAR (Emissions Database for Global Atmospheric Research) Community GHG Database, [online] Available from: https://edgar.jrc.ec.europa.eu/report_2023 (Accessed 27 November 2023), 2023.
- 720 European Union: Copernicus Land Monitoring Service 2018, European Environment Agency (EEA), 2018.
- Fitzgerald, G. J., Scow, K. M. and Hill, J. E.: Fallow season straw and water management effects on methane emissions in California rice, *Global Biogeochem. Cycles*, 14(3), 767–776, doi:10.1029/2000GB001259, 2000.
- Gangoiti, G., Alonso, L., Navazo, M., Albizuri, A., Perez-Landa, G., Matabuena, M., Valdenebro, V., Maruri, M., Antonio García, J. and Millán, M. M.: Regional transport of pollutants over the Bay of Biscay: Analysis of an ozone episode under a
- 725 blocking anticyclone in west-central Europe, *Atmos. Environ.*, 36(8), 1349–1361, doi:10.1016/S1352-2310(01)00536-2, 2002.
- García-Díez, M., Fernández, J., Fita, L. and Yagüe, C.: Seasonal dependence of WRF model biases and sensitivity to PBL schemes over Europe, *Q. J. R. Meteorol. Soc.*, 139(671), 501–514, doi:10.1002/qj.1976, 2013.
- Generalitat de Catalunya: Plec de condicions de la denominació d'origen protegida “Arròs del Delta de l'Ebre”. [online] Available from:
- 730 http://agricultura.gencat.cat/web/.content/al_alimentacio/al02_qualitat_alimentaria/al02_04_dop/documents/fitxers_estatics/pliego_condiciones_inf_pub_castellano_dop_arroz_delta_ebro.pdf, 2022.

- Gerbig, C., Körner, S. and Lin, J. C.: Vertical mixing in atmospheric tracer transport models: error characterization and propagation, *Atmos. Chem. Phys.*, 8(3), 591–602, doi:10.5194/acp-8-591-2008, 2008.
- Griffiths, A. D., Parkes, S. D., Chambers, S. D., McCabe, M. F. and Williams, A. G.: Improved mixing height monitoring
735 through a combination of lidar and radon measurements, *Atmos. Meas. Tech.*, 6(2), 207–218, doi:10.5194/amt-6-207-2013, 2013.
- Grossi, C., Arnold, D., Adame, J. A., López-Coto, I., Bolívar, J. P., De La Morena, B. A. and Vargas, A.: Atmospheric ²²²Rn concentration and source term at El Arenosillo 100 m meteorological tower in southwest Spain, *Radiat. Meas.*, 47(2), 149–162, doi:10.1016/j.radmeas.2011.11.006, 2012.
- 740 Grossi, C., Àgueda, A., Vogel, F. R., Vargas, A., Zimnoch, M., Wach, P., Martín, J. E., López-Coto, I., Bolívar, J. P., Morguί, J. A. and Rodó, X.: Analysis of ground-based ²²²Rn measurements over Spain: Filling the gap in southwestern Europe, *J. Geophys. Res. Atmos.*, 121(18), 11,021–11,037, doi:10.1002/2016JD025196, 2016.
- Grossi, C., Vogel, F. R., Curcoll, R., Àgueda, A., Vargas, A., Rodó, X., Morguί, J.-A., Grossi, C., Vogel, F. R. and By, C. C.: Study of the daily and seasonal atmospheric CH₄ mixing ratio variability in a rural Spanish region using ²²²Rn tracer, *Atmos.*
745 *Chem. Phys.*, 18(8), 5847–5860, doi:10.5194/acp-18-5847-2018, 2018.
- Grossi, C., Chambers, S. D., Llado, O., Vogel, F. R., Kazan, V., Capuana, A., Werczynski, S., Curcoll, R., Delmotte, M., Vargas, A., Morguί, J.-A., Levin, I. and Ramonet, M.: Intercomparison study of atmospheric ²²²Rn and ²²²Rn progeny monitors, *Atmos. Meas. Tech.*, 13(5), 2241–2255, doi:10.5194/amt-13-2241-2020, 2020.
- Hall, B. D., Crotwell, A. M., Kitzis, D. R., Mefford, T., Miller, B. R., Schibig, M. F. and Tans, P. P.: Revision of the World
750 Meteorological Organization Global Atmosphere Watch (WMO/GAW) CO₂ calibration scale, *Atmos. Meas. Tech.*, 14(4), 3015–3032, doi:10.5194/amt-14-3015-2021, 2021.
- Hatala, J. A., Detto, M. and Baldocchi, D. D.: Gross ecosystem photosynthesis causes a diurnal pattern in methane emission from rice, *Geophys. Res. Lett.*, 39(6), 1–5, doi:10.1029/2012GL051303, 2012.
- Hegarty, J., Draxler, R. R., Stein, A. F., Brioude, J., Mountain, M., Eluszkiewicz, J., Nehrkorn, T., Ngan, F., Andrews, A.,
755 Division, C. S. and Division, G. M.: Evaluation of lagrangian particle dispersion models with measurements from controlled tracer releases, *J. Appl. Meteorol. Climatol.*, 52(12), 2623–2637, doi:10.1175/JAMC-D-13-0125.1, 2013.

- Hersbach, H., Bell, B., Berrisford, P., Hirahara, S., Horányi, A., Muñoz-Sabater, J., Nicolas, J., Peubey, C., Radu, R., Schepers, D., Simmons, A., Soci, C., Abdalla, S., Abellan, X., Balsamo, G., Bechtold, P., Biavati, G., Bidlot, J., Bonavita, M., De Chiara, G., Dahlgren, P., Dee, D., Diamantakis, M., Dragani, R., Flemming, J., Forbes, R., Fuentes, M., Geer, A., Haimberger, L.,
760 Healy, S., Hogan, R. J., Hólm, E., Janisková, M., Keeley, S., Laloyaux, P., Lopez, P., Lupu, C., Radnoti, G., de Rosnay, P., Rozum, I., Vamborg, F., Villaume, S. and Thépaut, J. N.: The ERA5 global reanalysis, *Q. J. R. Meteorol. Soc.*, 146(730), 1999–2049, doi:10.1002/qj.3803, 2020.
- Hiederer, R.: Mapping soil properties for Europe—spatial representation of soil database attributes, (No. EUR26082EN), *Sci. Tech. Res. Ser.*, 47, 1831–9424, 2013.
- 765 Hüser, I., Harder, H., Heil, A. and Kaiser, J. W.: Assumptions about footprint layer heights influence the quantification of emission sources: a case study for Cyprus, *Atmos. Chem. Phys.*, 17(18), 1955–10967, doi:10.5194/acp-17-10955-2017, 2017.
- Iwata, H., Mano, M., Ono, K., Tokida, T., Kawazoe, T., Kosugi, Y., Sakabe, A., Takahashi, K. and Miyata, A.: Exploring sub-daily to seasonal variations in methane exchange in a single-crop rice paddy in central Japan, *Atmos. Environ.*, 179(July 2017), 156–165, doi:10.1016/j.atmosenv.2018.02.015, 2018.
- 770 Karstens, U. and Levin, I.: traceRadon monthly radon flux map for Europe 2006-2022 (based on GLDAS-Noah v2.1 soil moisture), [online] Available from: <https://hdl.handle.net/11676/YLHSb9HhpYbqzMpd4yPmfm3s>, 2023.
- Karstens, U., Schwingshackl, C., Schmithüsen, D. and Levin, I.: A process-based 222radon flux map for Europe and its comparison to long-term observations, *Atmos. Chem. Phys.*, 15(22), 12845–12865, doi:10.5194/acp-15-12845-2015, 2015.
- Lan, X., Thoning, K. W., Dlugokencky, E. J., Lan, X., Thoning, K. W., Dlugokencky, E. J., Lan, X., Thoning, K. W. and
775 Dlugokencky, E. J.: Trends in globally-averaged CH₄, N₂O, and SF₆ determined from NOAA Global Monitoring Laboratory measurements, , doi:10.15138/P8XG-AA10, 2024.
- Levin, I., Glatzel-Mattheier, H., Marik, T., Cuntz, M., Schmidt, M. and Worthy, D. E.: Verification of German methane emission inventories and their recent changes based on atmospheric observations, *J. Geophys. Res. Atmos.*, 104(D3), 3447–3456, doi:10.1029/1998JD100064, 1999.
- 780 Levin, I., Hammer, S., Eichelmann, E. and Vogel, F. R.: Verification of greenhouse gas emission reductions: the prospect of atmospheric monitoring in polluted areas, *Philos. Trans. R. Soc. A Math. Phys. Eng. Sci.*, 369(1943), 1906–1924, doi:10.1098/rsta.2010.0249, 2011.

- Levin, I., Karstens, U., Hammer, S., DellaColetta, J., Maier, F. and Gachivskyi, M.: Limitations of the Radon Tracer Method (RTM) to estimate regional Greenhouse Gases (GHG) emissions – a case study for methane in Heidelberg, *Atmos. Chem. Phys.*, 21(23), 1–34, doi:10.5194/acp-21-17907-2021, 2021.
- Madala, S., Hari Prasad, K. B. R. R., Srinivas, C. V. and Satyanarayana, A. N. V.: Air quality simulation of NOX over the tropical coastal city Chennai in southern India with FLEXPART-WRF, *Atmos. Environ.*, 128, 65–81, doi:10.1016/j.atmosenv.2015.12.052, 2016.
- Martín, M., Plaza, J., Andrés, M. D., Bezares, J. C. and Millán, M. M.: Comparative study of seasonal air pollutant behavior in a Mediterranean coastal site: Castellón (Spain), *Atmos. Environ. Part A. Gen. Top.*, 25(8), 1523–1535, doi:10.1016/0960-1686(91)90012-V, 1991.
- Martínez-Eixarch, M., Alcaraz, C., Viñas, M., Noguerol, J., Aranda, X., Prenafeta-Boldu, F. X., Saldaña-De la Vega, J. A., del Mar Catala, M. and Ibáñez, C.: Neglecting the fallow season can significantly underestimate annual methane emissions in Mediterranean rice fields, *PLoS One*, 13(5), doi:10.1371/journal.pone.0198081, 2018.
- Martínez-Eixarch, M., Alcaraz, C., Viñas, M., Noguerol, J., Aranda, X., Prenafeta-Boldú, F. X., Català-Forner, M., Fennessy, M. S. and Ibáñez, C.: The main drivers of methane emissions differ in the growing and flooded fallow seasons in Mediterranean rice fields, *Plant Soil*, 460(1–2), 211–227, doi:10.1007/s11104-020-04809-5, 2021.
- Meijide, A., Manca, G., Goded, I., Magliulo, V., di Tommasi, P., Seufert, G. and Cescatti, A.: Seasonal trends and environmental controls of methane emissions in a rice paddy field in Northern Italy, *Biogeosciences*, 8(12), 3809–3821, doi:10.5194/bg-8-3809-2011, 2011.
- Minamikawa, K., Yagi, K., Tokida, T., Sander, B. O. and Wassmann, R.: Appropriate frequency and time of day to measure methane emissions from an irrigated rice paddy in Japan using the manual closed chamber method, *Greenh. Gas Meas. Manag.*, 2(2–3), 118–128, doi:10.1080/20430779.2012.729988, 2012.
- Mohan, M. and Gupta, M.: Sensitivity of PBL parameterizations on PM10 and ozone simulation using chemical transport model WRF-Chem over a sub-tropical urban airshed in India, *Atmos. Environ.*, 185(May), 53–63, doi:10.1016/j.atmosenv.2018.04.054, 2018.
- Morgui, J. A., Agueda, A., Batet, O., Curcoll, R., Ealo, M. and Grossi, C.: ClimaDat : A long-term network to study at different scales climatic processes and interactions between climatic compartments, *EGU Gen. Assem. Conf. Abstr.*, 15, 10265 [online]

Available from: <https://ui.adsabs.harvard.edu/abs/2013EGUGA..1510265M>, 2013.

- 810 Muñoz Sabater, J.: ERA5-Land hourly data from 1950 to present. Copernicus Climate Change Service (C3S) Climate Data Store (CDS)., , doi:10.24381/cds.e2161bac, 2019.

National Inventory Report of Spain: National Inventory of Emissions of Greenhouse Gases 1990–2015. [online] Available from: <https://unfccc.int/documents/627815>, last access: 21 November 2017, 2023.

Nazaroff, W. W.: Radon transport from soil to air, *Rev. Geophys.*, 30(2), 137, doi:10.1029/92RG00055, 1992.

- 815 Oo, A. Z., Win, K. T. and Bellingrath-Kimura, S. D.: Within field spatial variation in methane emissions from lowland rice in Myanmar, *Springerplus*, 4(1), doi:10.1186/s40064-015-0901-2, 2015.

- Peischl, J., Ryerson, T. B., Holloway, J. S., Trainer, M., Andrews, A. E., Atlas, E. L., Blake, D. R., Daube, B. C., Dlugokencky, E. J., Fischer, M. L., Goldstein, A. H., Guha, A., Karl, T., Kofler, J., Kosciuch, E., Miszta, P. K., Perring, A. E., Pollack, I. B., Santoni, G. W., Schwarz, J. P., Spackman, J. R., Wofsy, S. C. and Parrish, D. D.: Airborne observations of methane emissions from rice cultivation in the Sacramento Valley of California, *J. Geophys. Res. Atmos.*, 117(23), 1–13, doi:10.1029/2012JD017994, 2012.

Pereira, J., Figueiredo, N., Goufo, P., Carneiro, J., Morais, R., Carranca, C., Coutinho, J. and Trindade, H.: Effects of elevated temperature and atmospheric carbon dioxide concentration on the emissions of methane and nitrous oxide from Portuguese flooded rice fields, *Atmos. Environ.*, 80, 464–471, doi:10.1016/j.atmosenv.2013.08.045, 2013.

- 825 Pisso, I., Sollum, E., Grythe, H., Kristiansen, N., Cassiani, M., Eckhardt, S., Arnold, D., Morton, D., Thompson, R. L., Groot Zwaftink, C. D., Evangeliou, N., Sodemann, H., Haimberger, L., Henne, S., Brunner, D., Burkhardt, J. F., Fouilloux, A., Brioude, J., Philipp, A., Seibert, P. and Stohl, A.: The Lagrangian particle dispersion model FLEXPART version 10.3, *Geosci. Model Dev. Discuss.*, (January), 1–67, doi:10.5194/gmd-2018-333, 2019.

- Rella, C. W., Chen, H., Andrews, A. E., Filges, A., Gerbig, C., Hatakka, J., Karion, A., Miles, N. L., Richardson, S. J., 830 Steinbacher, M., Sweeney, C., Wastine, B. and Zellweger, C.: High accuracy measurements of dry mole fractions of carbon dioxide and methane in humid air, *Atmos. Meas. Tech.*, 6(3), 837–860, doi:10.5194/amt-6-837-2013, 2013.

Reum, F., Gerbig, C., Lavric, J. V., Rella, C. W. and Göckede, M.: An improved water correction function for Picarro greenhouse gas analyzers, *Atmos. Meas. Tech. Discuss.*, (June), 1–30, doi:10.5194/amt-2017-174, 2017.

- Röttger, A., Röttger, S., Grossi, C., Vargas, A., Curcoll, R., Otáhal, P., Hernández-Ceballos, M. Á., Cinelli, G., Chambers, S.,
835 Barbosa, S. A., Ioan, M., Radulescu, I., Kikaj, D., Chung, E., Arnold, T., Yver-Kwok, C., Fuente, M., Mertes, F. and Morosh,
V.: New metrology for radon at the environmental level, *Meas. Sci. Technol.*, 32(12), 124008, doi:10.1088/1361-6501/ac298d,
2021.
- Runkle, B. R. K., Suvočarev, K., Reba, M. L., Reavis, C. W., Smith, S. F., Chiu, Y.-L. and Fong, B.: Methane Emission
Reductions from the Alternate Wetting and Drying of Rice Fields Detected Using the Eddy Covariance Method, *Environ. Sci.*
840 *Technol.*, 53(2), 671–681, doi:10.1021/acs.est.8b05535, 2019.
- Sass, R. L., Fisher, F. M., Turner, F. T. and Jund, M. F.: Methane emission from rice fields as influenced by solar radiation,
temperature, and straw incorporation, *Global Biogeochem. Cycles*, 5(4), 335–350, doi:10.1029/91GB02586, 1991.
- Schleussner, C. F., Rogelj, J., Schaeffer, M., Lissner, T., Licker, R., Fischer, E. M., Knutti, R., Levermann, A., Frieler, K. and
Hare, W.: Science and policy characteristics of the Paris Agreement temperature goal, *Nat. Clim. Chang.*, 6(9), 827–835,
845 doi:10.1038/nclimate3096, 2016.
- Schmidt, M., Graul, R., Sartorius, H. and Levin, I.: Carbon dioxide and methane in continental Europe: a climatology, and 222
Radon-based emission estimates, *Tellus B Chem. Phys. Meteorol.*, 48(4), 457–473, doi:10.3402/tellusb.v48i4.15926, 1996.
- Schmidt, M., Glatzel-mattheier, H., Sartorius, H., Worthy, D. E., Levin, I. and Forest, B.: Western European N₂O emissions :
A top-down approach based on atmospheric observations nighttime N • O observations at Heidelbergg to estimate mean
850 regional emissions , which, 2001.
- Seibert, P. and Frank, a.: Source-receptor matrix calculation with a Lagrangian particle dispersion model in backward mode,
Atmos. Chem. Phys., 4(1), 51–63, doi:10.5194/acp-4-51-2004, 2004.
- Seiler, W., Holzapfel-Pschorn, A., Conrad, R. and Scharffe, D.: Methane emission from rice paddies, *J. Atmos. Chem.*, 1(3),
241–268, doi:10.1007/BF00058731, 1983.
- 855 Shapiro, S. S. and Wilk, M. B.: An Analysis of Variance Test for Normality (Complete Samples), *Biometrika*, 52(3/4), 591,
doi:10.2307/2333709, 1965.
- Simpson, I. J., Thurtell, G. W., Kidd, G. E., Lin, M., Demetriades-Shah, T. H., Flitcroft, I. D., Kanemasu, E. T., Nie, D.,
Bronson, K. F. and Neue, H. U.: Tunable diode laser measurements of methane fluxes from an irrigated rice paddy field in the

Philippines, *J. Geophys. Res. Atmos.*, 100(D4), 7283–7290, doi:10.1029/94JD03326, 1995.

860 Skamarock, W. C., Klemp, J. B., Dudhia, J. B., Gill, D. O., Barker, D. M., Duda, M. G., Huang, X.-Y., Wang, W. and Powers, J. G.: A description of the Advanced Research WRF Model Version 4, NCAR Tech. Note, (June), 113, doi:10.5065/1dfh-6p97, 2021.

Skeie, R. B., Hodnebrog, Ø. and Myhre, G.: Trends in atmospheric methane concentrations since 1990 were driven and modified by anthropogenic emissions, *Commun. Earth Environ.*, 4(1), 1–14, doi:10.1038/s43247-023-00969-1, 2023.

865 Stohl, A., Forster, C., Frank, A., Seibert, P. and Wotawa, G.: Technical note: The Lagrangian particle dispersion model FLEXPART version 6.2, *Atmos. Chem. Phys.*, 5(9), 2461–2474, doi:10.5194/acp-5-2461-2005, 2005.

Thompson, R. L., Stohl, A., Zhou, L. X., Dlugokencky, E., Fukuyama, Y., Tohjima, Y., Kim, S. -Y., Lee, H., Nisbet, E. G., Fisher, R. E., Lowry, D., Weiss, R. F., Prinn, R. G., O'Doherty, S., Young, D. and White, J. W. C.: Methane emissions in East Asia for 2000–2011 estimated using an atmospheric Bayesian inversion, *J. Geophys. Res. Atmos.*, 120(9), 4352–4369, 870 doi:10.1002/2014JD022394, 2015.

Valdenebro, V., Gangoiti, G., Albizuri, A., Alonso, L., Navazo, M., García, J. A., Iza, J. and Millán, M. M.: Build-up and decay of two ozone episodes through northern Iberia and southern France - An inter-regional transport analysis, *Atmos. Environ.*, 45(8), 1591–1603, doi:10.1016/j.atmosenv.2010.12.031, 2011.

Vargas, A., Arnold, D., Adame, J. A., Grossi, C., Hernández-Ceballos, M. A. and Bolivar, J. P.: Analysis of the vertical radon 875 structure at the spanish “El arenosillo” tower station, *J. Environ. Radioact.*, 139, 1–17, doi:10.1016/j.jenvrad.2014.09.018, 2015.

Vogel, F. R., Ishizawa, M., Chan, E., Chan, D., Hammer, S., Levin, I. and Worthy, D. E. J.: Regional non-CO₂ greenhouse gas fluxes inferred from atmospheric measurements in Ontario, Canada, *J. Integr. Environ. Sci.*, 9(sup1), 41–55, doi:10.1080/1943815X.2012.691884, 2012.

880 Wang, J., Akiyama, H., Yagi, K. and Yan, X.: Controlling variables and emission factors of methane from global rice fields, *Atmos. Chem. Phys.*, 18(14), 10419–10431, doi:10.5194/acp-18-10419-2018, 2018.

Wassmann, R., Neueu, H.-U., Lantin, R. S., Buendia, L. V. and Rennenberg, H.: Characterization of methane emissions from rice fields in Asia. I. Comparison among field sites in five countries, *Methane Emiss. from Major Rice Ecosyst. Asia*, 4, 1–12,

doi:10.1007/978-94-010-0898-3_1, 2000.

- 885 Wassmann, R., Alberto, M. C., Tirol-Padre, A., Hoang, N. T., Romasanta, R., Centeno, C. A. and Sander, B. O.: Increasing sensitivity of methane emission measurements in rice through deployment of ‘closed chambers’ at nighttime, *PLoS One*, 13(2), doi:10.1371/journal.pone.0191352, 2018.
- Weber, T., Wiseman, N. A. and Kock, A.: Global ocean methane emissions dominated by shallow coastal waters, *Nat. Commun.*, 10(1), 1–10, doi:10.1038/s41467-019-12541-7, 2019.
- 890 Weller, S., Kraus, D., Butterbach-Bahl, K., Wassmann, R., Tirol-Padre, A. and Kiese, R.: Diurnal patterns of methane emissions from paddy rice fields in the Philippines, *J. Plant Nutr. Soil Sci.*, 178(5), 755–767, doi:10.1002/jpln.201500092, 2015.
- Wilkening, M. H. and Clements, W. E.: Radon 222 from the ocean surface, *J. Geophys. Res.*, 80(27), 3828–3830, doi:10.1029/JC080i027p03828, 1975.
- 895 Williams, I. N., Riley, W. J., Torn, M. S., Berry, J. A. and Biraud, S. C.: Using boundary layer equilibrium to reduce uncertainties in transport models and CO₂ flux inversions, *Atmos. Chem. Phys.*, 11(18), 9631–9641, doi:10.5194/acp-11-9631-2011, 2011.
- Wuebbles, D. J. and Hayhoe, K.: Atmospheric methane and global change, *Earth-Science Rev.*, 57(3–4), 177–210, doi:10.1016/S0012-8252(01)00062-9, 2002.
- 900 Yan, X., Yagi, K., Akiyama, H. and Akimoto, H.: Statistical analysis of the major variables controlling methane emission from rice fields, *Glob. Chang. Biol.*, 11(7), 1131–1141, doi:10.1111/j.1365-2486.2005.00976.x, 2005.
- Yan, X., Akiyama, H., Yagi, K. and Akimoto, H.: Global estimations of the inventory and mitigation potential of methane emissions from rice cultivation conducted using the 2006 Intergovernmental Panel on Climate Change guidelines, *Global Biogeochem. Cycles*, 23(2), doi:10.1029/2008GB003299, 2009.
- 905 Zahorowski, W., Griffiths, A. D., Chambers, S. D., Williams, A. G., Law, R. M., Crawford, J. and Werczynski, S.: Constraining annual and seasonal radon-222 flux density from the Southern Ocean using radon-222 concentrations in the boundary layer at Cape Grim, *Tellus, Ser. B Chem. Phys. Meteorol.*, 65(1), doi:10.3402/tellusb.v65i0.19622, 2013.

Zhang, B., Tian, H., Ren, W., Tao, B., Lu, C., Yang, J., Banger, K. and Pan, S.: Methane emissions from global rice fields: Magnitude, spatiotemporal patterns, and environmental controls, *Global Biogeochem. Cycles*, 30(9), 1246–1263, 910 doi:10.1002/2016GB005381, 2016.