

Quadratic Magnetic Gradients from 7- and 9-Spacecraft Constellations

Chao Shen¹, Gang Zeng², Rungployphan Kieokaew³, Yufei Zhou¹

¹School of Science, Harbin Institute of Technology, Shenzhen 518055, China

²School of Mathematics and Physics, Jingchu University of Technology, Jingmen, China

5 ³Institut de Recherche en Astrophysique et Planétologie (IRAP), France

Correspondence to: Chao Shen (shenchao@hit.edu.cn), Gang Zeng (gzeng2014@126.com)

Abstract. To uncover the dynamics of magnetised plasma, it is crucial to determine the geometric structure of the magnetic field, which depends on its linear and quadratic spatial gradients. Estimating the linear magnetic gradient requires at least four simultaneous magnetic measurements, while calculating the quadratic gradients generally requires at least ten. This study focuses on deriving both linear and quadratic spatial gradients of the magnetic field using data from the nine-spacecraft HelioSwarm or seven-spacecraft Plasma Observatory constellations. Time-series magnetic measurements, combined with transformations between reference frames, were employed to determine the apparent velocity of the magnetic structure and the quadratic magnetic gradient components along the direction of motion. The linear gradient and remaining components of the quadratic gradient were derived using the least-squares method with iterative calculations applied to ensure precision. The validity of the approach was demonstrated using magnetic flux rope and dipole magnetic field models. The findings indicate that constellations with at least seven spacecraft in nonplanar configurations can successfully yield linear and quadratic spatial gradients of magnetic field.

20

Key Points:

1. An iterative algorithm for the quadratic magnetic gradient based on measurement with constellations comprising at least seven spacecraft is presented.
2. Magnetic flux ropes and dipole magnetic field testing demonstrated the validity of the approach.
- 25 3. Constellations containing at least seven spacecraft with nonplanar configurations are required for the approach.

Key Words: Multiple Spacecraft Measurements, Space Plasmas, Magnetic field, Quadratic Magnetic Gradient, Least Squares Method

30

1 Introduction

35 Multi-spacecraft constellations provide a unique capability to observe plasma processes at various spatiotemporal
scales simultaneously. In particular, in situ magnetic measurements from such constellations enable the deduction of magnetic
gradients, allowing for the investigation of fine magnetic structures, current densities, and magnetic field geometries. Typically,
magnetic measurements from at least four spacecraft in a nonplanar configuration are required to deduce the three-dimensional
(3-D) linear spatial gradient of a magnetic field (Harvey, 1998; Chanteur, 1998; Chanteur and Harvey, 1998; Shen et al., 2003;
40 De Keyser, et al., 2007; De Keyser, 2008; Hamrin et al., 2008; Shen et al., 2012). Additionally, linear spatial gradients of other
scalar fields (e.g., plasma moments) or vector fields (e.g., an incompressible velocity field) can be obtained similarly. This is
done by performing a Taylor expansion around the origin (e.g., the four-spacecraft mesocentre) up to the first order; the linear
gradient, which provides a (unique) solution that fits the measurements, is then obtained using the least-squares method
(Harvey, 1998; Chanteur, 1998; Chanteur and Harvey, 1998; Shen et al., 2003; Broeren et al., 2021).

45 The Cluster mission (Escoubet et al., 1997, 2001) and the Magnetospheric MultiScale (MMS; Burch et al., 2015)
mission both utilize four-spacecraft constellations arranged in a tetrahedral configuration. Using the simultaneous magnetic
measurements from these missions allows the linear spatial gradient of the magnetic field, e.g., the current density distribution,
to be estimated and the topology of the magnetic field to be further derived (Dunlop et al., 2002b; Shen et al., 2003, 2008,
2012, 2014; Shi et al., 2005; Runov et al., 2006; Shi et al., 2010; Zhang et al., 2011; Rong et al., 2011; Burch and Phan, 2016;
50 Dong et al., 2018; Pitout and Bogdanova, 2021; Haaland et al., 2021). Furthermore, four-point magnetic field measurements
can also be applied to determine the orientation and motion of planar discontinuities (Russell et al., 1983; Dunlop et al., 2002a;
Sonnerup et al., 2004), as well as the geometry of curved boundary layers (Kieokaew et al., 2018; Kieokaew and Foullon,
2019; Shen et al., 2020). For a planar constellation or a constellation comprising three spacecraft, only a two-dimensional
linear magnetic gradient in the constellation plane can generally be derived (Vogt et al., 2009, 2013; Shen et al., 2012).
55 Nevertheless, for certain structures such as one-dimensional and force-free structures, magnetic measurements from planar
constellations or even Double Star constellations can also be reduced to a three-dimensional linear magnetic gradient (Vogt et
al., 2009, 2013; Shen et al., 2012).

To estimate second spatial derivatives of the magnetic field (or Hessian matrix over each component of the magnetic
field), simultaneous magnetic measurements from a constellation with more spacecraft are required. Considering a Taylor's
60 expansion of the magnetic field around the origin up to the second order, there are 10 unknown parameters: 1 magnetic
measurement at the origin, 3 components of linear magnetic gradient, and 6 components of second-order magnetic gradient
(i.e., the quadratic gradient tensor is symmetric). To obtain a unique solution to the system of equations, we need a number of
unknown parameters to be equal to, or less than, the number of the constraints (i.e., equations). Therefore, 10-point
measurements are required to solve the quadratic gradient (Chanteur, 1998; Shen et al., 2021b) given that not all spacecraft
65 are simultaneously within the same quadratic surface (Zhou and Shen, 2024). Nevertheless, the quadratic gradient of a

magnetic field can still be estimated from four-spacecraft constellations if additional current density measurements deduced from electron and ion measurements and certain physical constraints such as Ampère's law and Magnetic Gauss's law, are utilised (Liu et al., 2019; Torbert et al., 2020; Denton et al., 2020; Shen et al., 2021a). Utilising the linear and quadratic gradients of the magnetic field means that the complete geometry of a magnetic field, which concerns linear, e.g., current sheets, and nonlinear spatial structures, e.g., magnetic flux ropes, can be determined (Shen et al., 2021a). Furthermore, the calculation of quadratic spatial gradients of physical electromagnetic and plasma quantities in general allows us to study nonlinear plasma dynamics involving second-order spatial derivatives such as in plasma turbulence (e.g., Politano and Pouquet, 1998a, b; Yang, 2019; Pecora et al. 2023) and nonlinear wave dynamics (e.g. Chian et al. 1998; 2022), among others.

The HelioSwarm mission (Klein et al. 2023) is a nine-spacecraft constellation consisting of one hub (mothercraft) and eight nodes (daughtercraft) planned to be launched in 2029 by the National Aeronautics and Space Administration (NASA). The swarm of nine spacecraft will allow simultaneous cross-scale observations of turbulent solar-wind plasmas for the first time in the vicinity of Earth. Specifically, each spacecraft of HelioSwarm will be equipped with a Fluxgate magnetometer and a Search-Coil magnetometer, allowing comprehensive measurements of magnetic fields at 9 points simultaneously. Plasma Observatory (Retinò et al. 2022) is a new European Space Agency (ESA) mission with a seven-spacecraft constellation in the Solar-Terrestrial environment, currently under Phase-A study. One important topic for these two new multi-spacecraft constellations is to ascertain how the linear and quadratic gradients of the magnetic field can be inferred from seven- or nine-point magnetic measurements, allowing the fine, nonlinear spatial structures of the magnetic field in a space plasma to be identified. In this study, a new algorithm for calculating the linear and quadratic spatial gradients of the magnetic field from 7- or 9-point simultaneous magnetic measurements was derived using the least-squares method. By considering the transformation of reference frame involving mixed space-time derivatives of the magnetic field, we demonstrate that 7- or 9-point simultaneous measurements can be used to estimate quadratic spatial gradients. Here, by exploiting the least-squares method, we propose an iterative approach to achieve an optimal solution.

The remainder of this paper is as follows. The new algorithm for calculating the linear and quadratic magnetic gradients from 7- or 9-point simultaneous magnetic measurements is presented in Section 2; a description of the tests conducted for two typical nonlinear magnetic structures (a cylindrical force-free flux rope and a dipole magnetic field), which were utilized to check the validity and accuracy of the new algorithm, is given in Section 3; the accuracy of the algorithm is evaluated in section 4; and finally, the conclusions are presented in Section 5.

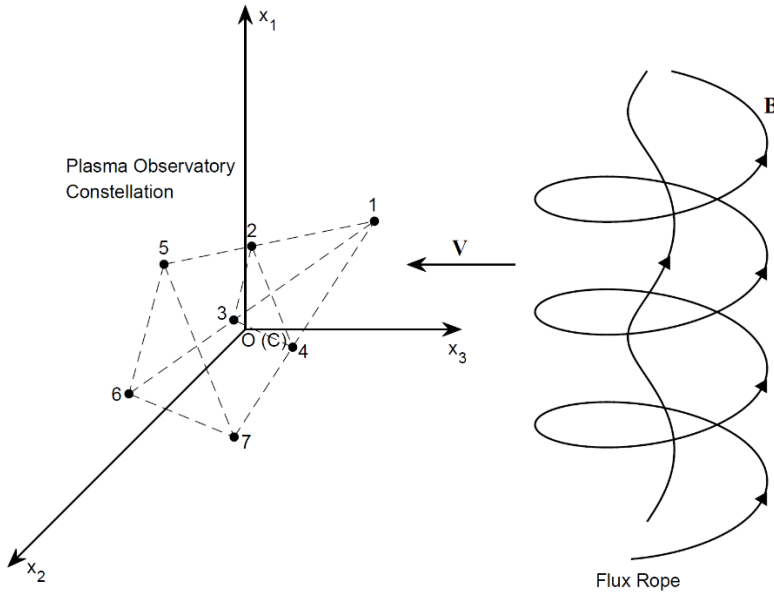
2. Methodology

2.1 The scheme

Calculation of the linear and quadratic gradients of a magnetic field generally requires simultaneous magnetic measurements from at least ten spacecraft. There are $3+9+18=30$ parameters in the Taylor expansion up to second order, and

3N magnetic field measurements in an array with N spacecraft are needed accordingly. Thus, using the magnetic measurements of nine-spacecraft (9S/C) HelioSwarm or seven-spacecraft (7S/C) Plasma Observatory constellation means that additional
 100 constraints are required. The transfer relationships between different reference frames are the proper limitations used for completely determining the spatial linear and quadratic gradients of the magnetic field. In these limits, we assume that the magnetic structures are slowly evolving during their passages through the multi-point constellations such that any differences in the measurements at different spacecraft can be attributed to the spatial variations rather than the temporal changes (i.e., evolution of magnetic structures).

105



110 **Figure 1. Schematic plot showing observation of a magnetic structure by the Plasma Observatory Constellation, which is composed of seven spacecraft. (The special configuration is similar to the mission term proposal and the actual geometry can deviate from it.) Barycentric coordinates are adopted; thus, the centre C of the constellation overlaps with the origin O of the Cartesian coordinates (x_1, x_2, x_3) the magnetic structure is assumed to be moving at velocity V relative to the constellation, and the x_3 axis is presumed to be anti-parallel to V .**

The Taylor expansion of the magnetic field within two orders is expressed using

$$115 \quad \mathbf{B}(\mathbf{t}, \mathbf{r}) = \mathbf{B}(\mathbf{t}, \mathbf{r}_c) + (\mathbf{r} - \mathbf{r}_c) \cdot \nabla \mathbf{B}(\mathbf{t}, \mathbf{r}_c) + \frac{1}{2} (\mathbf{r} - \mathbf{r}_c) (\mathbf{r} - \mathbf{r}_c) \cdot \nabla \nabla \mathbf{B}(\mathbf{t}, \mathbf{r}_c). \quad (1)$$

The Taylor expansion of each component of the magnetic field at each spacecraft α can be written as

$$f_{(\alpha)} = f_c + x_{(\alpha)}^i (\nabla_i f)_c + \frac{1}{2} x_{(\alpha)}^i x_{(\alpha)}^j (\nabla_i \nabla_j f)_c = f_c + x_{(\alpha)}^i g_i + \frac{1}{2} x_{(\alpha)}^i x_{(\alpha)}^j G_{ij}, \quad (2)$$

where f represents any one of the three components B^1, B^2, B^3 of the magnetic field \mathbf{B} . The first-order gradient is denoted as $\mathbf{g}_i \equiv (\nabla_i f)_c$, where $i=1, 2, 3$, i.e. the three cartesian components, and the second-order gradient is denoted as

120 $\mathbf{G}_{ij} \equiv (\nabla_i \nabla_j f)_c$ where $i, j=1, 2, 3$.

Conventionally, 10-point simultaneous measurements are necessary to infer both the first- and second-order spatial gradients of a physical scalar field (Chanteur, 1998; Shen et al., 2021b). To obtain such the spatial gradients with the 9S/C HelioSwarm and 7S/C Plasma Observatory, we consider adding additional physical constraints to the system of equations. Figure 1 shows a schematic diagram about observation of a magnetic structure by the Plasma Observatory Constellation. The

125 shape of the constellation is ideal but this does not change the generality and applicability of our method.

The following transformation relationship involving the mixed space-time derivatives is used for the magnetic measurements:

$$\partial_t \mathbf{B} = -\mathbf{V} \cdot \nabla \mathbf{B} \quad \text{and} \quad \partial_t \nabla \mathbf{B} = -\mathbf{V} \cdot \nabla \nabla \mathbf{B} . \quad (3)$$

By computing the temporal derivative $\partial_t \mathbf{B}$, and then the temporal derivative of spatial gradient $\partial_t \nabla \mathbf{B}$, this relationship allows

130 both the apparent velocity \mathbf{V} of the magnetic structure and the nine components of the quadratic magnetic gradient tensor along the direction of motion, $\hat{\mathbf{V}} \cdot \nabla \nabla \mathbf{B}$, to be obtained (Shen et al., 2021a). The constraints to the Eq. (3) are that the plasmas are highly conductive and have a very low velocity ($V/c \ll 1$, where V is the apparent speed of the magnetic structure and c is the speed of light in vacuum), and the physical processes are slowly evolving at low frequencies. The truncation errors in formula (3) are on the order V/c .

135

2.1.1 The zeroth iteration

First, the temporal variation rate $\partial_t \mathbf{B}$ and first-order magnetic gradient $(\nabla \mathbf{B})^{(0)}$, where the uppercase label (0) denotes the zeroth order, can be obtained from seven- or nine-point simultaneous magnetic measurements. Here, the change rate of the magnetic field can be obtained from the temporal (time-series) measurements at each spacecraft. The linear spatial gradient can be obtained using four-spacecraft techniques (Chanteur, 1998; Harvey, 1998; Shen et al. 2003). Using equation

140 (3), we can thus obtain the apparent velocity \mathbf{V} of the magnetic structure (Shen et al., 2021a). Next, the longitudinal components of the second-order magnetic gradient, $\hat{\mathbf{V}} \cdot \nabla \nabla \mathbf{B} = \frac{1}{V} \partial_3 \nabla \mathbf{B}$, can be deduced from the transformation relationship (3). These steps will be described in detail in Section 2.2.1. Finally, the remaining nine components of the second-order magnetic gradient (i.e., the transverse components $\mathbf{G}_{rs}^{(1)} = (\nabla_r \nabla_s f)^{(1)}$ where $(r, s = 1, 2)$) can be determined from the seven- or nine-point

145 simultaneous magnetic measurements using the least-squares method, allowing a first-order quadratic magnetic gradient $(\nabla\nabla\mathbf{B})^{(1)}$ to be obtained, as described next.

2.1.2 The first order iteration

Provided with the first-order quadratic magnetic gradient $(\nabla\nabla\mathbf{B})^{(1)}$, the corrected first-order linear magnetic gradient $(\nabla\mathbf{B})^{(1)}$ can be found using the least-squares method. Furthermore, the corrected apparent velocity $\mathbf{v}^{(1)}$ of the magnetic structure and the longitudinal components of the second-order quadratic magnetic gradient $(\hat{\mathbf{v}} \cdot \nabla\nabla\mathbf{B})^{(2)}$ can be obtained from the transformation relationship (3). Again, the corrected transverse components of the quadratic magnetic gradient $(G_{rs}^{(2)}(r, s = 1, 2))$ are obtained using the least-squares method, allowing a second-order quadratic magnetic gradient $(\nabla\nabla\mathbf{B})^{(2)}$ to be obtained.

The iterations are performed repeatedly until results are converge, which means satisfactory results are achieved.

155 For the 7S/C Plasma Observatory, the seven-point magnetic measurements in 3-D yield $7 \times 3=21$ independent parameters, while the reference frame transformation provides nine constraints, resulting in $21+9=30$ input parameters in total. The objective is to determine the magnetic field (three parameters), first-order gradient (nine parameters), and quadratic magnetic gradient (18 parameters) at the mesocentre of the constellation, a total of $3+9+18=30$ parameters. Therefore, this scheme is reasonable such that the solution to the system of equations can be uniquely determined.

160 Clearly, the 9S/C magnetic measurements of HelioSwarm are sufficient to draw first-order and quadratic magnetic gradients using this method. These results indicate that the developed method is suitable for constellations comprising at least seven spacecraft.

2.2 Practical steps of the algorithm

165

Details of the steps used are given below.

2.2.1 The zeroth iteration:

We first assume a linear approximation in space and let $G_{ij}^{(0)} = \mathbf{0}$. The magnetic field $\mathbf{B}_c^{(0)}$ and its linear gradient $(\nabla\mathbf{B})^{(0)}$ at the mesocentre of the constellation can then be obtained using the following formulas (Harvey, 1998; Shen et al., 2003):

$$B_{ci}^{(0)} = \frac{1}{N} \sum_{\alpha=1}^N B_{\alpha i}, \quad (4)$$

$$(\partial_i B_j)_c^{(0)} = \frac{1}{N} \sum_{\alpha=1}^N B_{\alpha i} r_{\alpha k} R_{kj}^{-1}. \quad (5)$$

where the volume tensor is $R_{kj} = \frac{1}{N} \sum_{\alpha=1}^N r_{\alpha k} r_{\alpha j}$ or $\mathbf{R} \equiv \frac{1}{N} \sum_{\alpha=1}^N \mathbf{r}_\alpha \mathbf{r}_\alpha$, where N is the number of spacecraft within the constellation, and R_{kj}^{-1} is the inverse of the volume tensor R_{kj} . The determinant of the volume tensor is required to be nonzero, i.e., $\mathbf{R} = \det(\mathbf{R}_{kj}) \neq 0$. This is equivalent to that the constellation is non-planar (i.e., not all spacecraft are in the same plane).

The temporal variation rate $(\partial_t \mathbf{B})_c^{(0)}$ is readily obtained from central differences of the magnetic observation time series.

Now the frame transformation relationships (3) are reduced to the apparent velocity $\mathbf{V}^{(0)}$ of the magnetic structure and the longitudinal components of the quadratic magnetic gradient $(\partial_3 \nabla \mathbf{B})^{(1)}$.

First, the zeroth approximation of the apparent velocity of the magnetic structure $\mathbf{V}^{(0)}$ can be found using the frame transformation relationship:

$$(\partial_t \mathbf{B})^{(0)} = -\mathbf{V}^{(0)} \cdot (\nabla \mathbf{B})^{(0)}, \quad (6)$$

Then, using the relationship:

$$\partial_t (\nabla \mathbf{B})^{(0)} = -\mathbf{V}^{(0)} \cdot (\nabla \nabla \mathbf{B})^{(1)}, \quad (7)$$

the longitude components of the quadratic magnetic gradient at first order can be drawn as:

$$(\partial_3 \nabla \mathbf{B})_c^{(1)} = \frac{1}{V^{(0)}} \partial_t (\nabla \mathbf{B}(t, \mathbf{r}_c))^{(0)}, \quad (8)$$

which are just $(G_{31}^{(1)}, G_{32}^{(1)}, G_{33}^{(1)})$.

The remaining components of the quadratic magnetic gradients can be deduced using the least-squares method.

190 Assuming that:

$$S = \frac{1}{N} \sum_{\alpha=1}^N \left[f_c^{(0)} + x_{(\alpha)}^i g_i^{(0)} + \frac{1}{2} x_{(\alpha)}^i x_{(\alpha)}^j G_{ij}^{(1)} - f_{(\alpha)} \right]^2, \quad (9)$$

which can also be written as:

$$S = \frac{1}{N} \sum_{\alpha=1}^N \left[f_c^{(0)} + x_{(\alpha)}^i g_i^{(0)} - f_{(\alpha)} + \left(1 - \frac{1}{2} \delta_{i3} \right) x_{(\alpha)}^i x_{(\alpha)}^3 G_{i3}^{(1)} + \frac{1}{2} x_{(\alpha)}^p x_{(\alpha)}^q G_{pq}^{(1)} \right]^2. \quad (10)$$

where, $p, q = 1, 2$.

195 If $\delta S = 0$, then

$$\frac{\partial S}{\partial G_{pq}} = \frac{1}{N} \sum_{\alpha=1}^N 2 \left[f_c^{(0)} + x_{(\alpha)}^i g_i^{(0)} - f_{(\alpha)} + \left(1 - \frac{1}{2} \delta_{i3} \right) x_{(\alpha)}^i x_{(\alpha)}^3 G_{i3}^{(1)} + \frac{1}{2} x_{(\alpha)}^r x_{(\alpha)}^s G_{rs}^{(1)} \right] \cdot x_{(\alpha)}^p x_{(\alpha)}^q = 0. \quad (11)$$

which reduces to:

$$\begin{aligned} & f_c^{(0)} \sum_{\alpha=1}^N x_{(\alpha)}^p x_{(\alpha)}^q + \sum_{\alpha=1}^N x_{(\alpha)}^i x_{(\alpha)}^p x_{(\alpha)}^q g_i^{(0)} - \sum_{\alpha=1}^N f_{(\alpha)} x_{(\alpha)}^p x_{(\alpha)}^q + \sum_{\alpha=1}^N \left(1 - \frac{1}{2} \delta_{i3} \right) x_{(\alpha)}^i x_{(\alpha)}^3 x_{(\alpha)}^p x_{(\alpha)}^q G_{i3}^{(1)} \\ & + \frac{1}{2} \sum_{\alpha=1}^N x_{(\alpha)}^r x_{(\alpha)}^s x_{(\alpha)}^p x_{(\alpha)}^q G_{rs}^{(1)} = 0 \end{aligned} \quad (12)$$

200 Resulting in $G_{rs}^{(1)} (r, s = 1, 2)$, i.e., $(G_{21}^{(1)}, G_{22}^{(1)}, G_{11}^{(1)})$. The constellation must be nonplanar to achieve this result. This is verified as follows.

Following Zhou & Shen (2024), in order for the solution to exist, it is expected that the position of all the spacecraft in the constellation must not obey the following formula

$$a_{11} \left(x_{(\alpha)}^1 \right)^2 + a_{12} x_{(\alpha)}^1 x_{(\alpha)}^2 + a_{12} x_{(\alpha)}^2 x_{(\alpha)}^1 + a_{22} \left(x_{(\alpha)}^2 \right)^2 = 0, \quad (13)$$

where $a_{rs} (r, s = 1, 2)$ are fixed coefficients. The above equations can be rewritten as

205
$$a_{11} \left(x_{(\alpha)}^1 / x_{(\alpha)}^2 \right)^2 + 2a_{12} \left(x_{(\alpha)}^1 / x_{(\alpha)}^2 \right) + a_{22} = 0, \quad (14)$$

which reduce to $x_{(\alpha)}^1 / x_{(\alpha)}^2 = \text{constant}$. It means that all the spacecraft are in the plane parallel to the x_3 axis or the motion direction. Therefore, it is necessary that the constellation should not be planar in order to deduce the quadratic magnetic gradients as well as the linear magnetic gradient. The next iterations would also require this condition.

210 2.2.2 First order iteration

Assuming that:

$$S = \frac{1}{N} \sum_{\alpha=1}^N \left[f_c^{(1)} + x_{(\alpha)}^i g_i^{(1)} + \frac{1}{2} x_{(\alpha)}^i x_{(\alpha)}^j G_{ij}^{(1)} - f_{(\alpha)} \right]^2. \quad (15)$$

If $\delta S = 0$, then:

$$215 \quad \frac{\partial S}{\partial f_c^{(1)}} = 0, \quad \frac{\partial S}{\partial g_i^{(1)}} = 0. \quad (16)$$

From $\frac{\partial S}{\partial f_c^{(1)}} = 0$, it can be assumed that:

$$\frac{1}{N} \sum_{\alpha=1}^N \left[f_c^{(1)} + x_{(\alpha)}^i g_i^{(1)} + \frac{1}{2} x_{(\alpha)}^i x_{(\alpha)}^j G_{ij}^{(1)} - f_{(\alpha)} \right] = 0. \quad (17)$$

220

Meaning that:

$$f_c^{(1)} = \frac{1}{N} \sum_{\alpha=1}^N f_{(\alpha)} - \frac{1}{2N} \sum_{\alpha=1}^N x_{(\alpha)}^i x_{(\alpha)}^j G_{ij}^{(1)} = \frac{1}{N} \sum_{\alpha=1}^N f_{(\alpha)} - \frac{1}{2} R^{ij} G_{ij}^{(1)}. \quad (18)$$

If $\frac{\partial S}{\partial g_i^{(1)}} = 0$, this can be reduced to:

$$225 \quad \frac{1}{N} \sum_{\alpha=1}^N \left[f_c^{(1)} + x_{(\alpha)}^i g_i^{(1)} + \frac{1}{2} x_{(\alpha)}^i x_{(\alpha)}^j G_{ij}^{(0)} - f_{(\alpha)} \right] x_{(\alpha)}^k = 0, \quad (19)$$

i.e.,

$$\frac{1}{N} \sum_{\alpha=1}^N x_{(\alpha)}^k x_{(\alpha)}^i g_i^{(1)} + \frac{1}{2} \frac{1}{N} \sum_{\alpha=1}^N x_{(\alpha)}^k x_{(\alpha)}^i x_{(\alpha)}^j G_{ij}^{(0)} - \frac{1}{N} \sum_{\alpha=1}^N f_{(\alpha)} x_{(\alpha)}^k = 0. \quad (20)$$

The tensor $R^{kij} = \frac{1}{N} \sum_{\alpha=1}^N x_{(\alpha)}^k x_{(\alpha)}^i x_{(\alpha)}^j$ is then defined, resulting in:

230

$$R^{ki} g_i^{(1)} + \frac{1}{2} R^{kij} G_{ij}^{(0)} - \frac{1}{N} \sum_{\alpha=1}^N f_{(\alpha)} x_{(\alpha)}^k = 0. \quad (21)$$

Therefore, the first magnetic gradient is:

$$g_{\ell}^{(1)} = -\frac{1}{2} (R^{-1})^{k\ell} R^{kij} G_{ij}^{(0)} + (R^{-1})^{k\ell} \cdot \frac{1}{N} \sum_{\alpha=1}^N f_{(\alpha)} x_{(\alpha)}^k. \quad (22)$$

Using equation (3), it is now possible to obtain the corrected apparent velocity $\mathbf{V}^{(1)}$ of the magnetic structure and the longitudinal components of the corrected quadratic magnetic gradient $(\partial_3 \nabla \mathbf{B})^{(2)} \left((\partial_3 \partial_i \mathbf{B})^{(2)} \right)$, as in the zeroth iteration.

235 The least-squares method is then used to obtain the remaining nine components of the corrected quadratic magnetic gradient. If:

$$\begin{aligned} S &= \frac{1}{N} \sum_{\alpha=1}^N \left[f_{(c)}^{(1)} + x_{(\alpha)}^i g_i^{(1)} + \frac{1}{2} x_{(\alpha)}^i x_{(\alpha)}^j G_{ij}^{(2)} - f_{(\alpha)} \right]^2 \\ &= \frac{1}{N} \sum_{\alpha=1}^N \left[f_{(c)}^{(1)} + x_{(\alpha)}^i g_i^{(1)} - f_{(\alpha)} + \left(1 - \frac{1}{2} \delta_{i3} \right) x_{(\alpha)}^i x_{(\alpha)}^3 G_{i3}^{(2)} + \frac{1}{2} x_{(\alpha)}^p x_{(\alpha)}^q G_{pq}^{(2)} \right]^2 \end{aligned} \quad (23)$$

then $G_{pq}^{(2)} (p, q = 1, 2)$ can be obtained using the same procedure as that used for the zeroth iteration. So that all the components of the corrected quadratic magnetic gradient $(\nabla \nabla \mathbf{B})^{(2)}$ are obtained.

240 Similarly, two or more iterations can be performed until stable linear and second-order magnetic gradients are obtained.

This algorithm requires that the constellation be composed of at least seven spacecraft and that its configuration is non-planar. Because both the 9S/C HelioSwarm and 7S/C Plasma Observatory satisfy these requirements, the linear and quadratic magnetic gradients can be readily obtained.

245 The Curlometer technique (Dunlop et al., 2002b) is used to calculate the current density based on multiple spacecraft magnetic measurements, with the relative error estimated by the ratio between the divergence and curl of the magnetic field,

i.e., $\left| \frac{\nabla \cdot \mathbf{B}}{\nabla \times \mathbf{B}} \right|$. If the length and the magnetic field are normalized by the characteristic distance and magnetic strength

(D, B_0) , the equation becomes $\left| \frac{\bar{\nabla} \cdot \bar{\mathbf{B}}}{\bar{\nabla} \times \bar{\mathbf{B}}} \right| \approx \left| \frac{\bar{\nabla} \cdot \bar{\mathbf{B}}}{1} \right| = |\bar{\nabla} \cdot \bar{\mathbf{B}}|$. Therefore, the dimensionless divergence of the magnetic field

calculated with observation data can be regarded a reasonable measure of the relative error within the linear magnetic gradient.

250 Similarly, the dimensionless $\left| \bar{\nabla} \left(\bar{\nabla} \cdot \bar{\mathbf{B}} \right)_c \right|$ can be used as a measure describing the relative error in the quadratic magnetic gradient derived using the method.

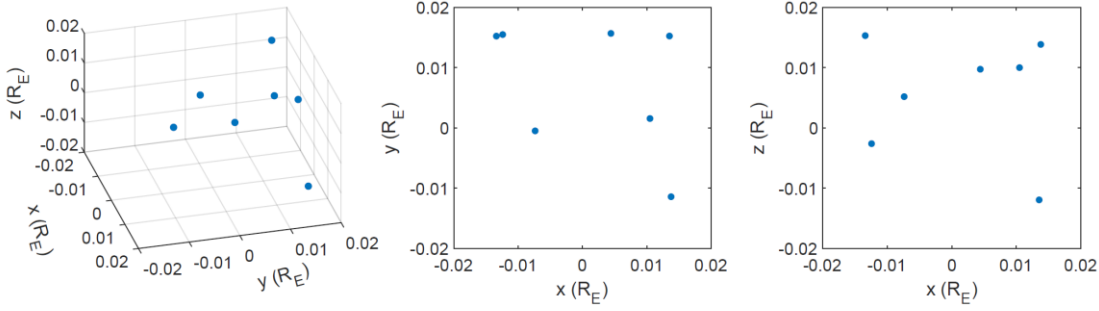
3. Comparison of new method with analytical modelling

In this section, the new method is applied to two analytical magnetic field models (a cylindrical force-free flux rope
255 and a dipole magnetic field) to evaluate its validity and accuracy. The applicability of this approach was tested on the 7S/C Plasma Observatory (N=7) under the assumption that the seven-spacecraft cluster crosses a magnetic field structure (as illustrated in Figure 1) by comparing the linear and quadratic gradients of the magnetic field obtained by the new method with those obtained by accurate modelling.

The positions of the seven spacecrafts in the barycentric coordinate system were generated randomly with Cartesian
260 coordinates between -0.02 and 0.02 R_E , as seen in Table 1. The 7S/C array is illustrated in Figure 2.

Table 1. Coordinates of the seven spacecraft in the barycentre coordinate system, with α denoting spacecraft number.

α	$x_{(\alpha)} (R_E)$	$y_{(\alpha)} (R_E)$	$z_{(\alpha)} (R_E)$
1	0.0105	0.0016	0.0100
2	0.0135	0.0153	-0.0119
3	-0.0124	0.0155	-0.0026
4	0.0138	-0.0114	0.0139
5	0.0044	0.0157	0.0097
6	-0.0134	0.0152	0.0153
7	-0.0074	-0.0005	0.0052



265 **Figure 2. Configuration of the 7-S/C constellation.**

The characteristic configuration of the spacecraft is described using several parameters. The three eigenvalues of the volumetric tensor R^{ij} are represented by w_1 , w_2 , and w_3 (where $w_1 \geq w_2 \geq w_3$) (Harvey, 1998), with their square roots representing the characteristic half-widths of the S/C in the three orthogonal directions along the corresponding eigenvectors (Harvey, 1998). The characteristic size of the S/C constellation is twice the square root of the maximum eigenvalue,

270 $L = 2\sqrt{w_1}$ (Robert et al., 1998; Shen et al, 2012). For the 7-S/C constellation tested in this section, the three eigenvalues are $w_1 = 0.1643 \times 10^{-3} R_E^2$, $w_2 = 0.1104 \times 10^{-3} R_E^2$, and $w_3 = 0.0341 \times 10^{-3} R_E^2$. The characteristic size is $L = 2\sqrt{w_1} = 0.0256 R_E = 163.33 \text{ km}$.

275 3.1 Flux Rope

The flux rope was assumed to be force-free and cylindrically symmetrical. The magnetic field of the flux rope can be described using the Helmholtz equation, for which Lundquist (1950) provided analytical solutions in terms of the Bessel functions.

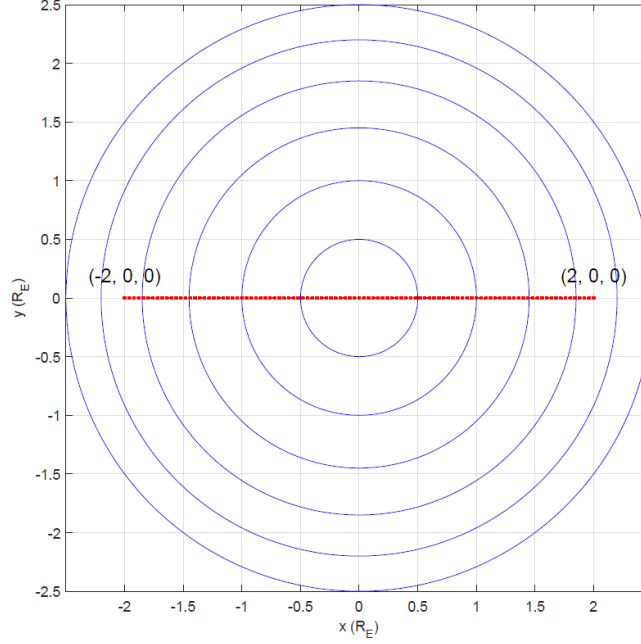
$$B_r = 0, B_\phi(r) = B_0 J_1(\alpha r), B_z(r) = B_0 J_0(\alpha r), \quad (24)$$

280 where r is the radial distance from the centric axis; α is a constant, with $1/\alpha$ representing the characteristic scale of the flux rope; B_0 is the peak axial field intensity; and J_0 and J_1 are the zeroth- and first-order Bessel functions of the first kind, respectively. For this test, we set $B_0=60 \text{ nT}$ and $\alpha=1/R_E$.

The 7-S/C array was assumed to cross the flux rope in a straight line at uniform velocity. The array is represented by the barycentre with the red dot in Figure 3, and moves from $(-2, 0, 0) R_E$ to $(2, 0, 0) R_E$ along the x -axis over a time interval of

285 100 s. The resolution of the magnetic field measurement was set to 1 s for the time-series observations, and the characteristic

size of the 7-S/C array was set to $L=0.0256 R_E$ for the gradients of the magnetic field at the barycentre along the trajectory to be obtained.



290 **Figure 3. The cylindrical force-free flux rope crossing by the 7-S/C constellation as viewed from the axial direction. Trajectory of the barycentre of the constellation from $(-2, 0, 0) R_E$ to $(2, 0, 0) R_E$ over 100 s is shown by the red dotted line. Blue lines represent magnetic field lines.**

The linear gradient of the magnetic field ($\nabla_i B_k$) has nine components, while the quadratic gradients ($\nabla_i \nabla_j B_k$) comprise 27 components. According to the analytical flux-rope model and symmetry of the quadratic gradients, only five independent components of the quadratic gradients $\nabla_1 \nabla_2 B_1$, $\nabla_1 \nabla_1 B_2$, $\nabla_2 \nabla_2 B_2$, $\nabla_1 \nabla_1 B_3$, and $\nabla_2 \nabla_2 B_3$, and three
 295 components of the linear gradients $\nabla_2 B_1$, $\nabla_1 B_2$, and $\nabla_1 B_3$ are nonzero points on the x -axis when using Cartesian coordinates, simplifying the comparison between the gradients derived from the proposed method and the analytical model.

The impact of iteration on the results was investigated first, with the results at two different points used to demonstrate the variation in the relative errors under iteration, as illustrated in Figure 4. The relative error is defined as

$$\left| \frac{X_{algorithm} - X_{accurate}}{X_{accurate}} \right| \times 100\%$$
, where $X_{algorithm}$ and $X_{accurate}$ represent the algorithm gradients derived using the
 300 new method and accurate values from the analytical model at the barycentre, respectively. As shown in Figure 4(a) and 4(c), the linear gradients converged to certain values within 50 iterations, and the final relative errors were less than 0.02%. Figure 4(b) and 4(d) also indicate that the quadratic gradients converge. However, some quadratic gradients converged faster than others with fewer relative errors, and final relative errors of no more than 1.5% were obtained after 100 iterations. The maximum number of iterations was set to 100; thus, the gradients could be derived with good accuracy.

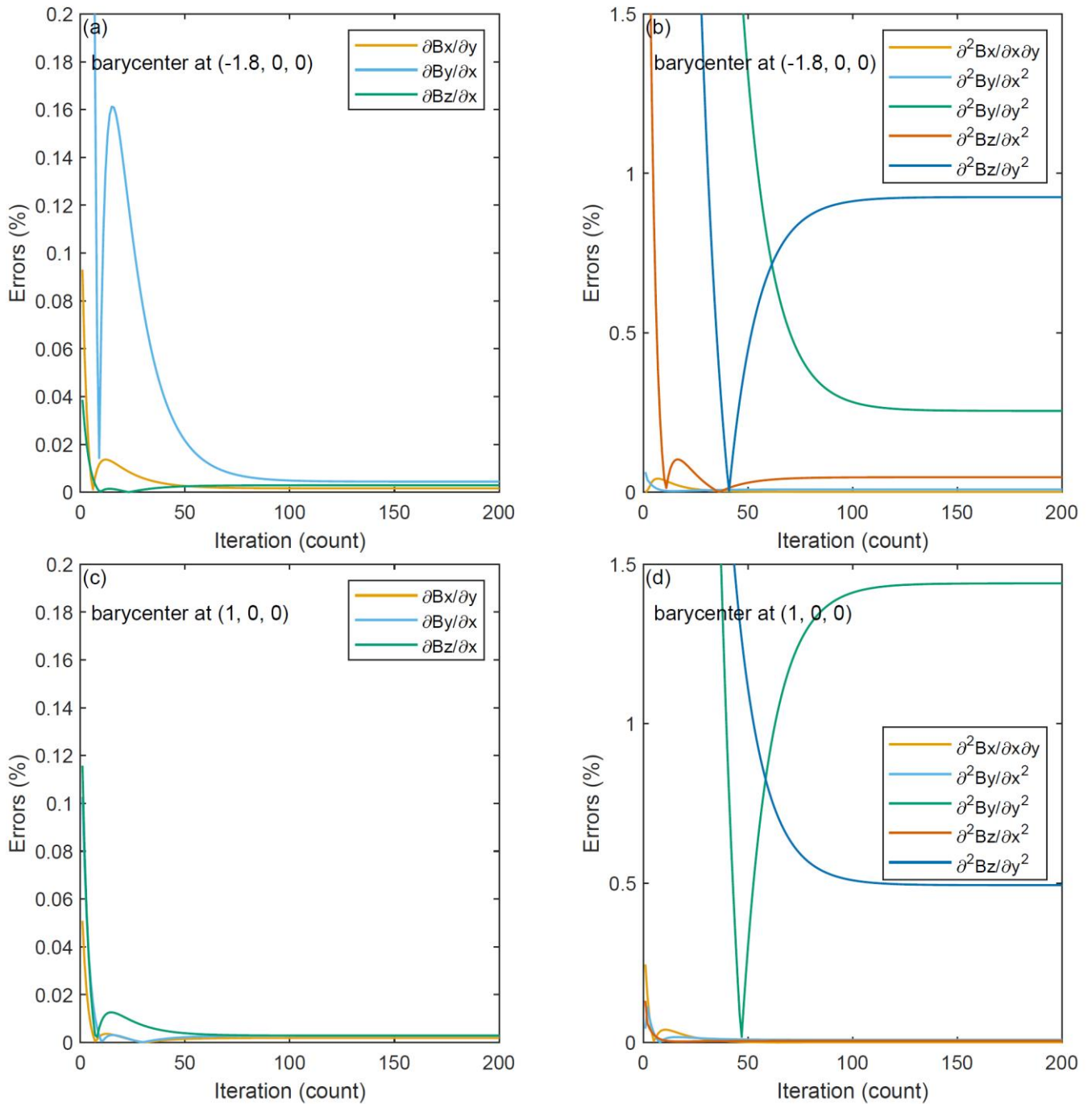


Figure 4. Relative errors in the nonzero components of the linear and quadratic gradients with different iteration numbers at various barycentres.

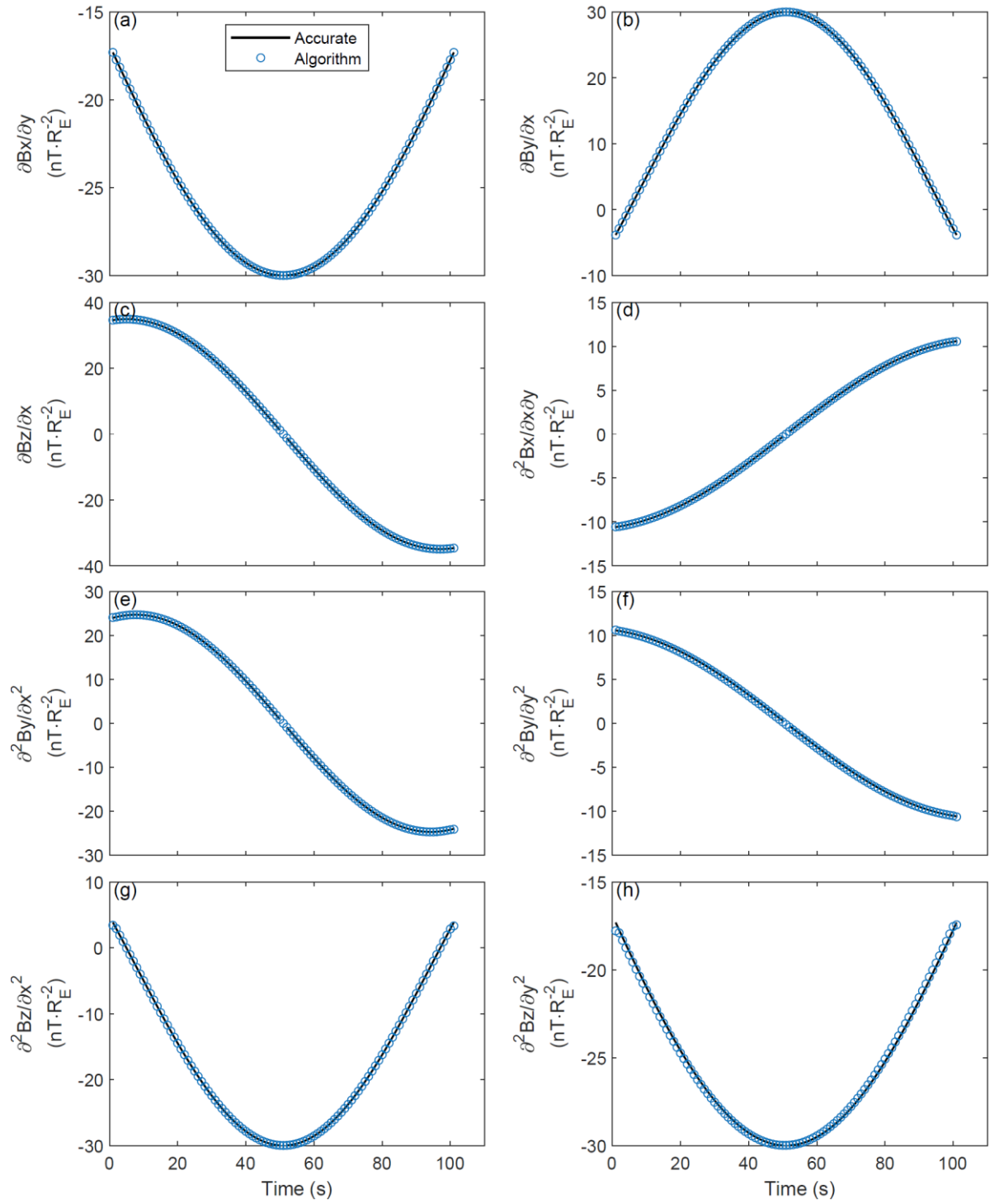
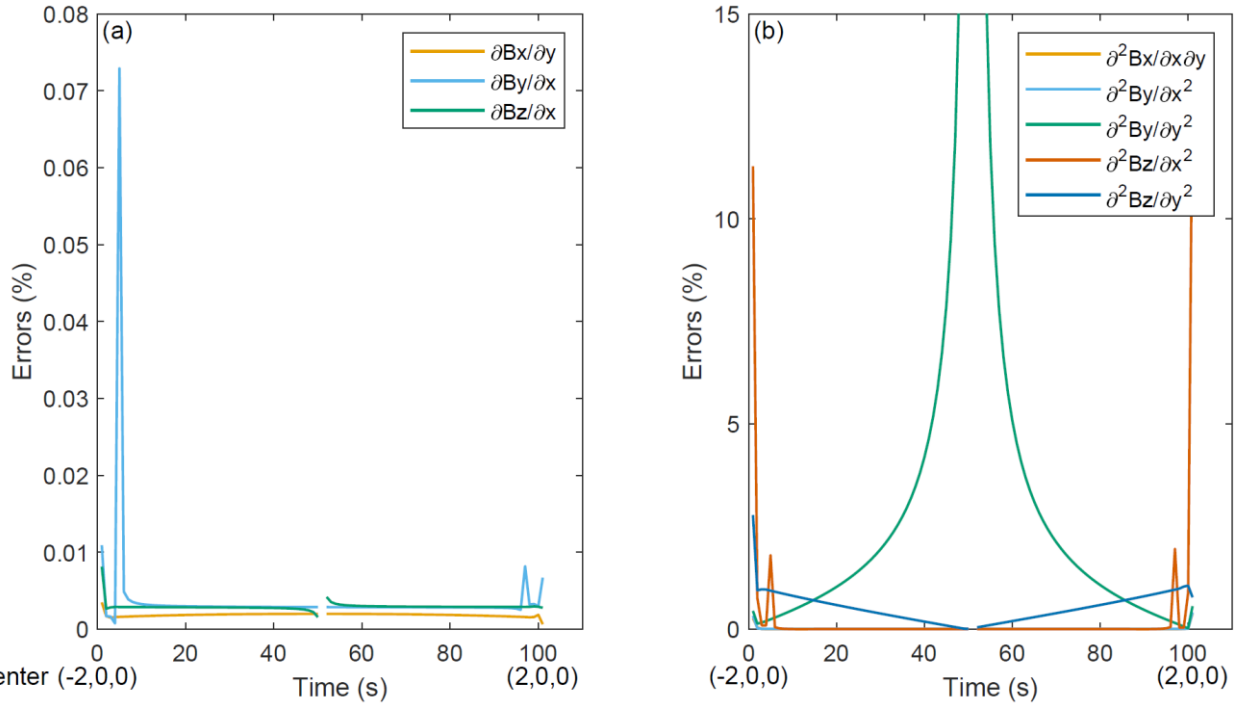


Figure 5. Time series showing nonzero components of the linear and quadratic gradients. Circles and solid lines represent the results obtained using the algorithm and accurate modelling, respectively.

315

Figure 5 shows a comparison of the nonzero linear and quadratic gradients at the barycentre derived from our method with those derived from the analytical model. The algorithm gradients are consistent with the accurate gradients, indicating that the proposed method is effective and precise when used with flux ropes.



320

Figure 6. Relative errors in the nonzero components of the linear and quadratic gradients along the crossing path.

The relative errors of the gradients at points along the trajectory are shown in Figure 6. All the relative errors of the linear gradients were less than 0.1%, and the vast majority of the relative errors for the quadratic gradients did not exceed 5%. It should be noted that the barycentre is at (0,0,0) at 50 s and that the nonzero components of the linear and quadratic gradients do not exist at (0,0,0). The barycentre is at (-0.04,0,0) R_E at 49 s, when accurate modelling and algorithm values for the quadratic gradient $\nabla_2 \nabla_2 \mathcal{B}_2$ are 0.3 and 0.1570 $\text{nT} \cdot \mathbf{R}_E^2$, respectively. The relative error approaches 50%; however, the absolute error is just 0.143 $\text{nT} \cdot \mathbf{R}_E^2$, which is approaching zero. Symmetrically, the situation described is the same as it would be if the barycentre were at (0.04,0,0).

330

3.2 Dipole field

The proposed method was also tested and verified using a magnetic dipole field. The geomagnetic dipole field is mathematically expressed as:

$$\begin{cases} B_x = -\frac{3xz}{r^5} B_0 \\ B_y = -\frac{3yz}{r^5} B_0 \\ B_z = \frac{r^2 - 3z^2}{r^5} B_0 \end{cases}, \quad (25)$$

335 where B_0 is the magnetic field at the Earth's equator and is defined by $B_0 = \frac{\mu_0 M}{4\pi R_E^3} = 30008 \text{ nT}$; $M = 7.76 \times 10^{22} \text{ A} \cdot \text{m}^2$

is the geomagnetic moment, with its direction set anti-parallel to the z -axis; x , y and z are the coordinates of the field points measured by R_E , and $r = \sqrt{x^2 + y^2 + z^2}$ is the radial distance from the origin measured by R_E .

340 The 7-S/C array was assumed to cross the dipole field in a straight line at constant velocity, with the barycentre parallel to the x -axis and moving from $(-5, 0, 5) R_E$ to $(5, 0, 5) R_E$ over 125 s, as illustrated in Figure 7. The resolution of the magnetic field measurement was set to 1 s and the characteristic size of the 7-S/C array was set to $0.0256 R_E$, which is the same as that of the flux-rope case, for the gradients of the magnetic field at the barycentre along the trajectory to be obtained.

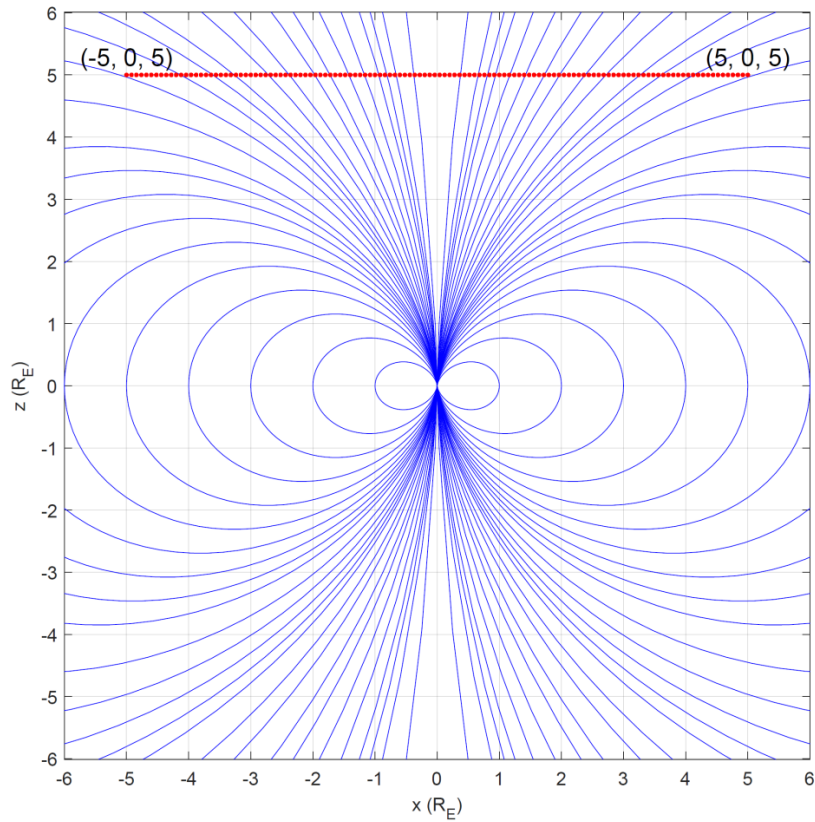
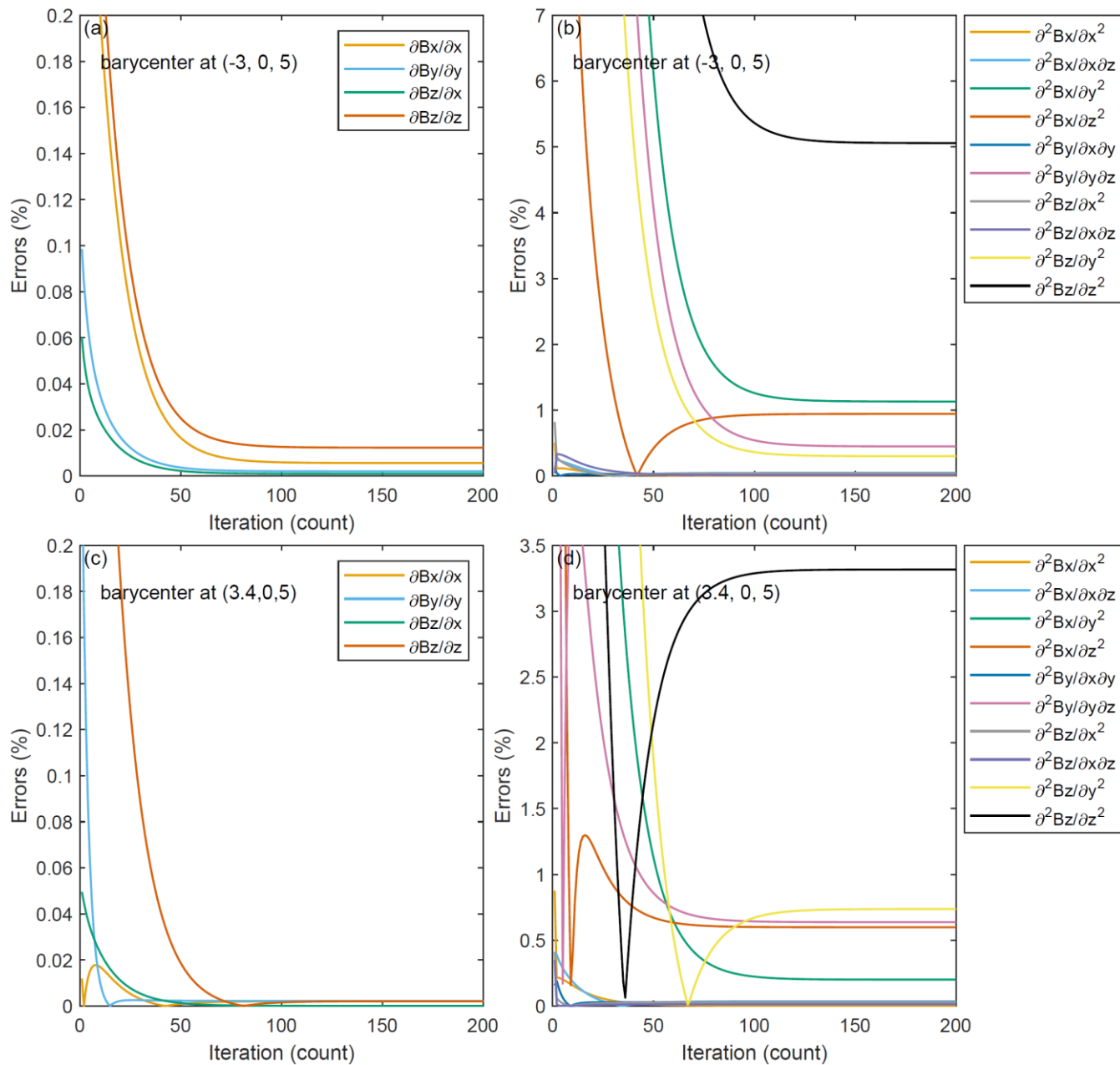


Figure 7. The magnetic dipole field crossed by the 7-S/C array. Trajectory of the barycentre of the 7-S/C array is from $(-5, 0, 5) R_E$ to $(5, 0, 5) R_E$ over 126 s as shown by the red dotted line. Blue lines represent magnetic field lines.

345

Only nonzero independent components are displayed, similar to the flux rope case. In view of the mathematical expression of the dipole field, ten independent components of the quadratic gradients and four independent components of the linear gradients were nonzero along the crossing path.



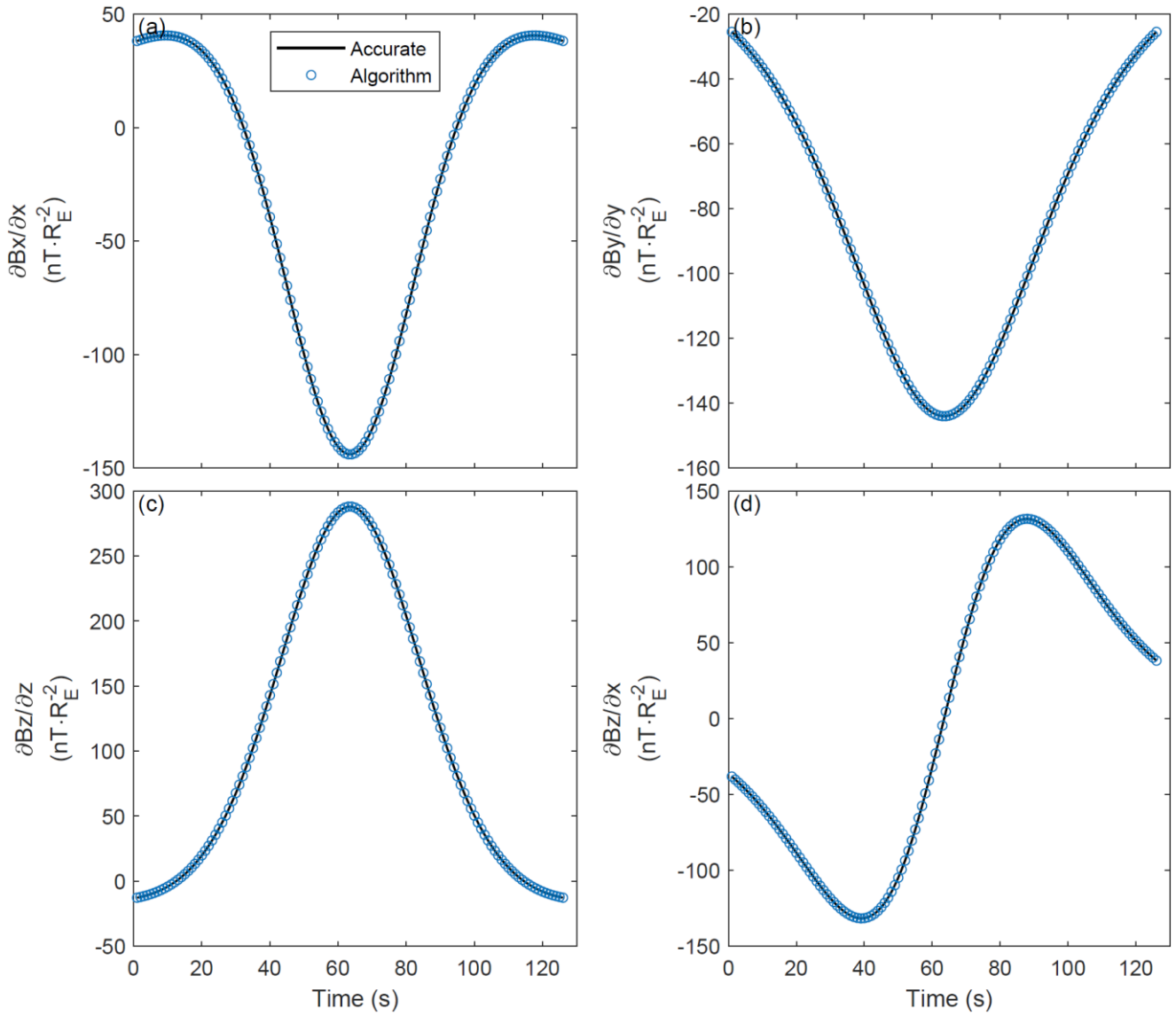
350

Figure 8. Relative errors in the nonzero components of the linear and quadratic gradients with different iteration numbers at various barycentres.

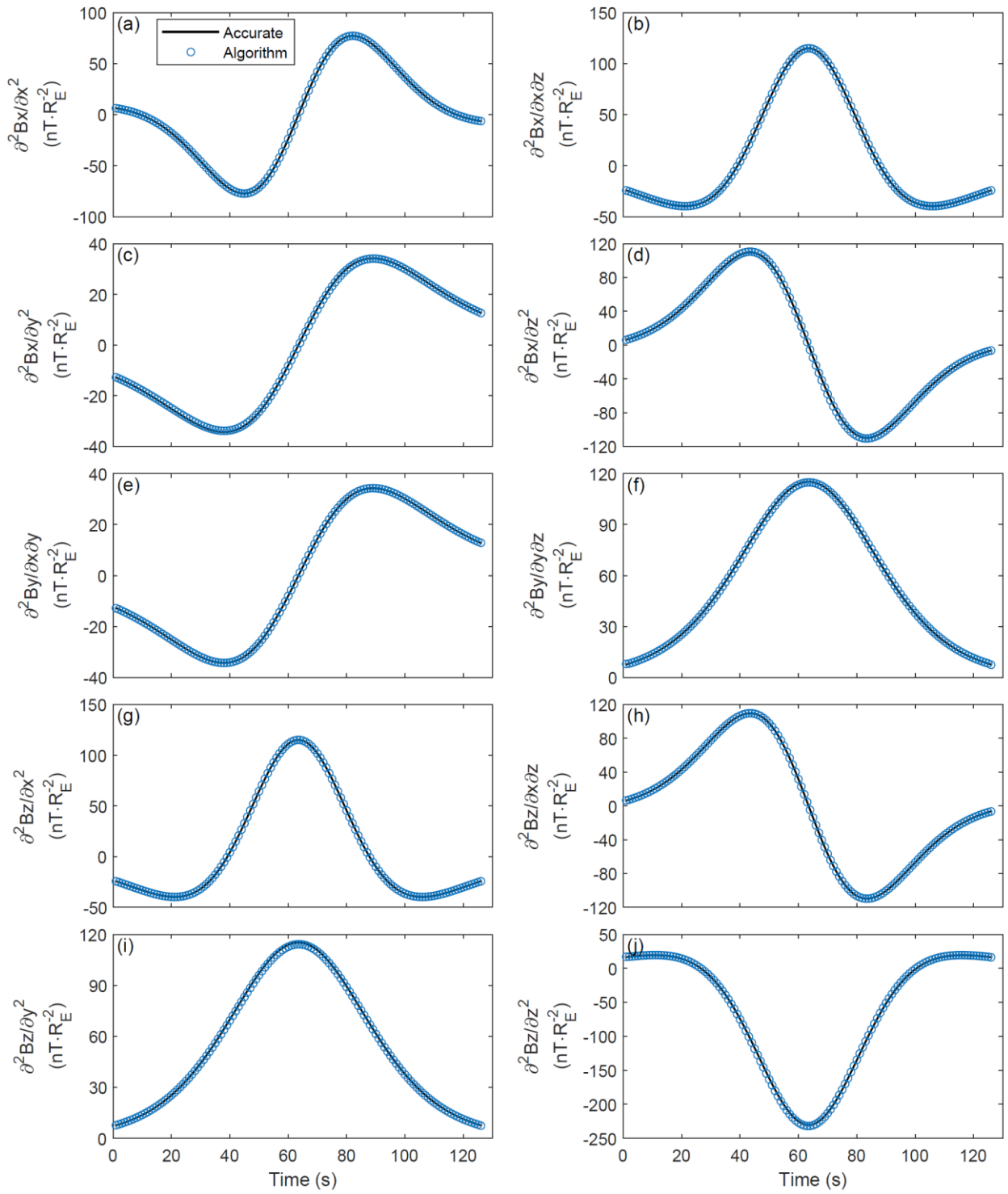
Figure 8 shows the variation in the relative errors under iteration at two different points. As shown in Figure 8(a) and 8(c), the linear gradients converged to certain values within 60 iterations, with final relative errors of less than 0.02%. Figure 8(b) and 8(d) show that the quadratic gradients also converge to low errors. After 100 iterations, most of the relative errors of

355

the quadratic gradients were less than 1%, and the largest relative error was no more than 6%. These results suggest that it is reasonable to set the maximum number of iterations to 100 for the gradients to be derived with good accuracy in this case.



360 **Figure 9.** Time series showing nonzero components of the linear gradients. Circles and solid lines represent the results obtained using the algorithm and accurate modelling, respectively.



365 **Figure 10.** Time series showing nonzero components of the quadratic gradients. Circles and solid lines represent the results obtained using the algorithm and accurate modelling, respectively.

Figure 9 shows a comparison of the nonzero linear gradients derived from our method with those derived from the analytical model. A comparison of the nonzero quadratic gradients derived from the different sources is shown in Figure 10. Both Figure 9 and 10 indicate that the algorithm gradients are entirely consistent with those obtained from the accurate model, suggesting that the developed method is effective and precise for use with the dipole field.

370

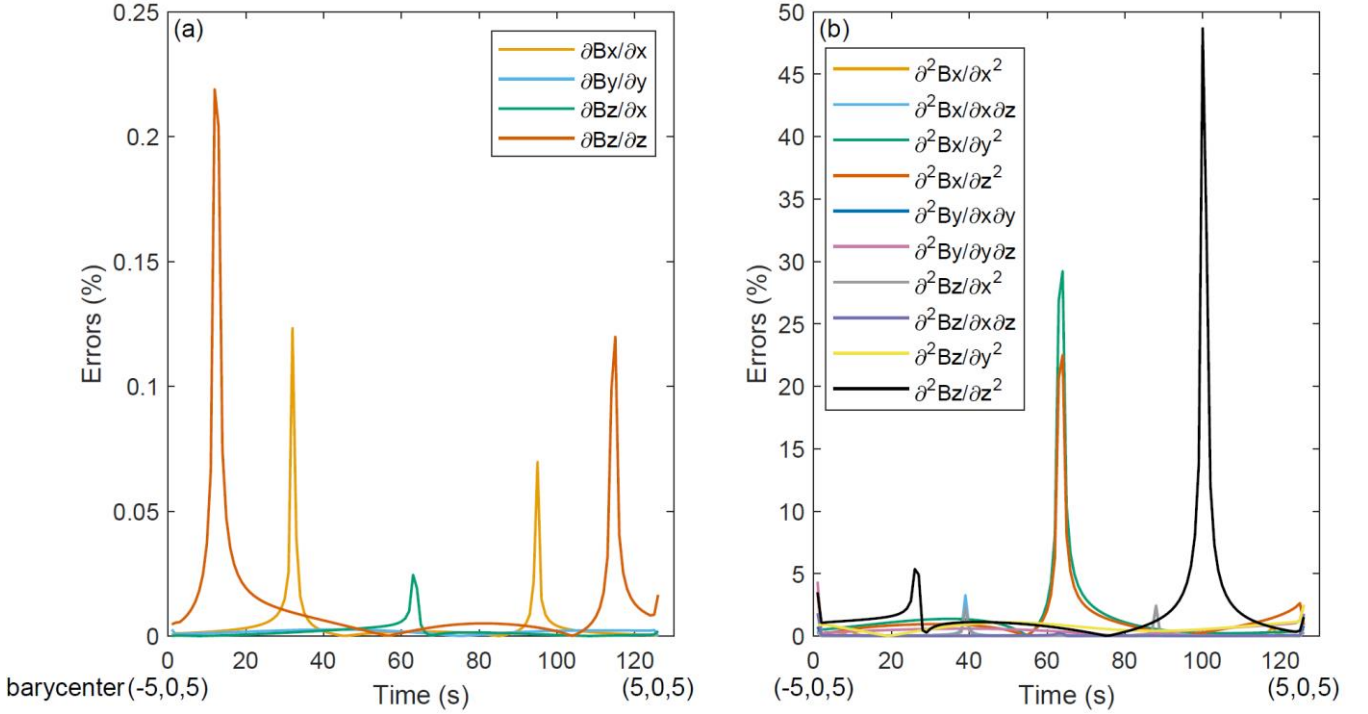


Figure 11. Relative errors in the nonzero components of the linear and quadratic gradients along the crossing path.

Figure 11 shows the relative errors of the gradients at the measured points along the crossing path. All the relative errors for the linear gradients were less than 0.25 %, and most of the relative errors in the quadratic gradients were less than 5%. It should be noted that the barycentre is at $(2.92, 0, 5) R_E$ at 100s, and the accurate and algorithm quadratic gradients $\nabla_3 \nabla_3 \mathbf{B}_3$ are -1.2584 and $-0.6461 \text{ nT} \cdot \mathbf{R}_E^2$, respectively. The relative error approaches 50%; however, the absolute error is $0.6123 \text{ nT} \cdot \mathbf{R}_E^2$, which is approaching zero. The barycentre is at $(-0.04, 0, 5) R_E$ at 63 s and $(0.04, 0, 5) R_E$ at 64 s. Similarly, the absolute errors in the quadratic gradients $\nabla_2 \nabla_2 \mathbf{B}_1$ and $\nabla_3 \nabla_3 \mathbf{B}_1$ were no more than $1 \text{ nT} \cdot \mathbf{R}_E^2$, whereas the relative errors were approximately 30%.

380

3.3 Discussion

The two analytical magnetic field models (cylindrical force-free flux rope and dipole magnetic field) are simplified and highly symmetrical structures. The linear gradient of the magnetic field has 9 components, while the quadratic gradients comprise 18 independent components due to the symmetry of quadratic gradients. For the flux rope case, only 3 components of linear gradient and 5 components of quadratic gradients have been assessed. But for dipole field case, 4 components of linear gradient and 10 components of quadratic gradients have been assessed. The number of assessed parameters has reached half. However, only a subset of the $9+18=27$ components can be assessed. In this study, we have chosen a symmetric model magnetic field in order to easily compare our results with the analytic calculations. The zero components of the magnetic gradients are calculated with the algorithm and checked. Further evaluation of the algorithm with a less symmetric magnetosphere model could be useful.

4. Errors

In this Section, we consider the diverse sources of errors, namely the truncation error, discretisation error, iteration error, and measurement error or random error, that can impact the linear and quadratic magnetic spatial gradient estimation. We introduce and discuss them as follows. Further detailed analyses can be found in Appendix A-D.

Discretisation errors arise from the spatial resolution of measurement, which is the combined effect of finite temporal resolution and the relative motion of a probe with respect to the magnetic structure during the measurement period. The significance of these errors can be assessed by comparing the spatial resolution--- can be due to S/C motion during the measurement or the S/C motion in between two successive measurements ---with the separation between probes, over which the measured data are subtracted from one another. Typically, spacecraft separation within a constellation ranges from several 100km to several 1000km, while the temporal resolution of magnetic measurement Δt is about 0.01 s, i.e. $\Delta t = 0.01$ s. Assuming a magnetic structure moves at a velocity $V < 500$ km/s relative to the spacecraft, the spatial resolution along the motion direction is about $v\Delta t < 5$ km, which is significantly smaller than the S/C separation. Therefore, the corresponding discretisation errors are expected to be small.

The iterative method provides converging solutions with decreasing errors as the number of iterations increases as demonstrated in Section 3. A particular type of error is the mismatch between the actual limit of the procedure and the approximation reached after a finite number of iterations. This error may be termed iteration error. We note that it is not associated with the finite resolution of the spacecraft array or the time series. As shown in Figure 4, the iterative procedures help reduce the calculation error and make the calculation more stable. In addition, once the number of iterations is sufficient (e.g., above 100), the iterative error becomes rather insignificant (see Appendix B).

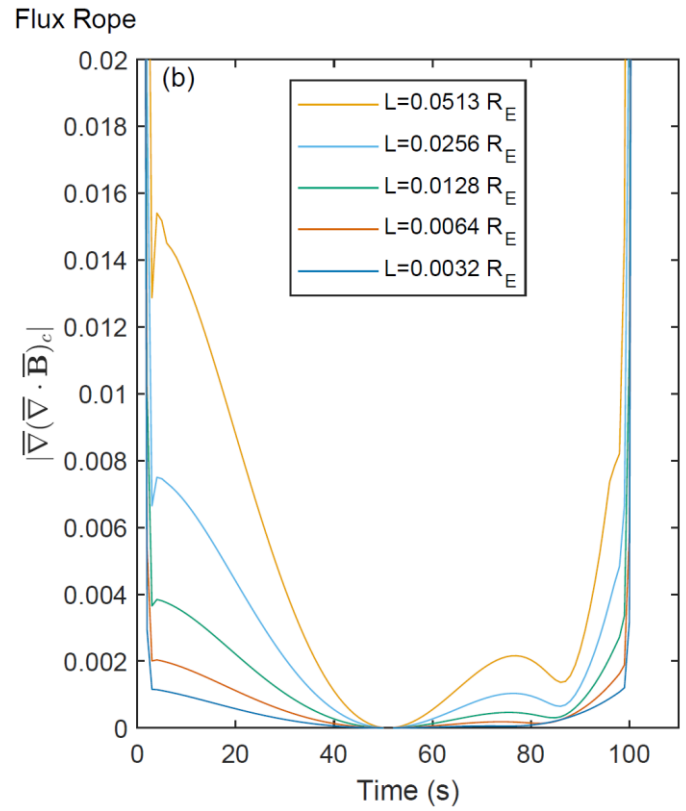
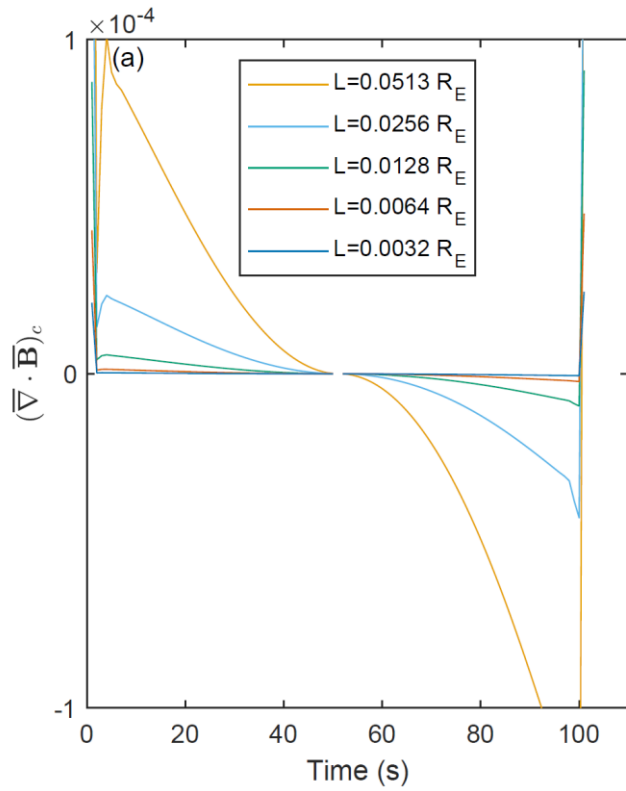
Due to noise or measurement inaccuracies of input data, the estimated parameters (first and second derivatives) will be subject to random errors. The noise or disturbances in the data can come from the measurement error or the presence of high-frequency (physical) fluctuations such as those from plasma waves, which can make the calculation of the high order

magnetic gradients very difficult (Shen et al. 2021a). When analysing the actual observation data, filtering methods should be employed to remove the high frequency components and avoid the negative effect of the noise. This process would help to
415 extract large-scale magnetic structures under the consideration.

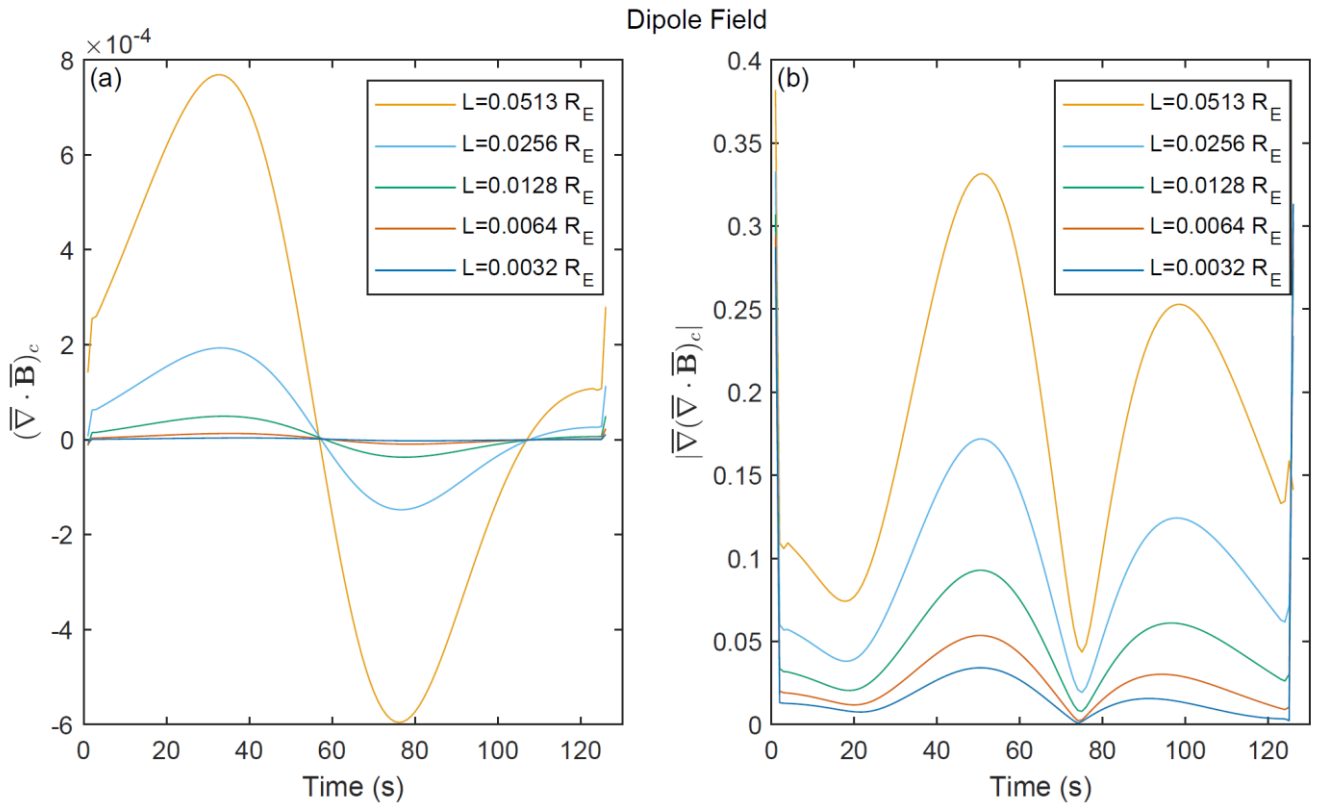
As discussed above, the discretisation error, and iteration error are expected to be rather small for the magnetic configuration considered. The errors caused by the random measurement errors would be large, and the global features of the magnetic structure would be missed (Shen et al. 2021a). In the following, only truncation error has been evaluated.

In Section 3, relative error is used to evaluate the truncation error of the proposed method. However, in some cases,
420 evaluation with the relative error is not effective, while the gradient obtained from the accurate model is very small. Furthermore, the truncation error was evaluated under divergence-free magnetic field conditions.

Theoretically, the divergence of the magnetic field and the gradient of the magnetic field divergence are both exactly zero, as shown by $\nabla \cdot \mathbf{B} = 0$ and $|\nabla(\nabla \cdot \mathbf{B})| = 0$. To offer a uniform standard for evaluation, the divergence and gradient of divergence were non-dimensionalized with the corresponding characteristic quantity. The length was calibrated with the
425 spatial characteristic scale of the magnetic structure D , and the magnetic field was calibrated with the characteristic magnetic field at the barycentre B_c . Therefore, two evaluation indices were introduced, represented by $(\bar{\nabla} \cdot \bar{\mathbf{B}})_c$ and $|\bar{\nabla}(\bar{\nabla} \cdot \bar{\mathbf{B}})_c|$. The values of the two indices can be used to evaluate the accuracies of the linear and quadratic gradients derived using the proposed method. Nevertheless, this evaluation is not perfect because it cannot include all partial components of the magnetic gradients (the formula $\nabla \cdot \mathbf{B} = 0$ contains 3 of the total 9 components of $\nabla \mathbf{B}$ while $|\nabla(\nabla \cdot \mathbf{B})| = 0$ contains 9 of the total 18
430 components of $\nabla \nabla \mathbf{B}$). The advantage to use them as the measures of the errors of the magnetic gradients is that they are robust and simple. We still have not found other better ways for evaluating the accuracy of the algorithm because the actual values of the magnetic gradients are unknown when analysing the real observation data.



435 **Figure 12. Dimensionless divergence and gradient of divergence for magnetic field along the flux rope crossing path with different characteristic S/C sizes (L).**



440 **Figure 13. Dimensionless divergence and gradient of divergence for magnetic field along the dipole field crossing path with different characteristic S/C sizes (L).**

The algorithm gradients were utilized to calculate the dimensionless divergence and the gradient of divergence for magnetic field at the barycentre along the crossing path with different characteristic S/C sizes, with the results for the flux-rope and dipole-field cases shown in Figure 12 and 13, respectively. Figure 12 (a) and 13 (a) show that the dimensionless divergence $(\bar{\nabla} \cdot \bar{\mathbf{B}})_c$ at the barycentre is in the order of 10^{-4} , while L varies from 0.0032 to 0.0513 R_E . The dimensionless

445 gradient of the divergence $|\bar{\nabla}(\bar{\nabla} \cdot \bar{\mathbf{B}})_c|$ for the flux-rope case was less than 0.02 with $L=0.0513 R_E$, as shown in Figure 12 (b). Similarly, Figure 13 (b) shows that $|\bar{\nabla}(\bar{\nabla} \cdot \bar{\mathbf{B}})_c|$ was less than 0.4, with $L=0.0513 R_E$, for the dipole field. Meanwhile, that $|\bar{\nabla}(\bar{\nabla} \cdot \bar{\mathbf{B}})_c|$ decreased with decreasing L in both cases. These results confirm the accuracy of the proposed method. As evidenced in Figures 12 and 13, the errors of the first derivative decrease quadratically with the scale L whereas the errors of the second derivatives decrease linearly with L .

450

5. Conclusions

In this study, a new algorithm was derived to estimate the linear and quadratic spatial gradients of the magnetic field from simultaneous 7- or 9-point magnetic measurements to obtain the fine structure of the magnetic field and the magnetic field geometry, allowing elucidation of whether the 7-spacecraft Plasma Observatory and the 9-spacecraft HelioSwarm missions could be utilized for such measurements. By inputting simultaneous 7–9-point magnetic measurements and using the reference frame transformation relationships of the magnetic field as well as the least-squares method, the new algorithm performs several iterations to finally derive the convergent magnetic linear and quadratic spatial gradients.

The developed algorithm requires only one restriction on the spatial configuration of the constellations, which is that the constellations must be non-planar. Actual operating constellations can easily satisfy this constraint. Only simultaneous magnetic measurements are required, with no other physical measurements needed, and the only physical constraint of the algorithm is the reference-frame transformation relationship of the magnetic field. In this study, simultaneous magnetic measurements from 7 or 9 points were assumed to be obtained by identical instruments onboard mothercraft and daughtercraft of the space mission. Nowadays, the sampling time resolutions of the detectors are already very high, and the temporal variations of the magnetic field or magnetic spatial gradients can be obtained from the time-series data. So, this algorithm only focuses on the magnetic spatial gradients, and the magnetic measurements from different spacecraft should be simultaneous. However, the real temporal measurements at different detectors may not be perfectly simultaneous, so the magnetic field data from different detectors need to be synchronized by using interpolations. Furthermore, a homogeneous set of instruments onboard the constellation may not be achieved so that the systematic errors may arise. The total systematic error can be analysed by the well-established error theory. In this study, the total truncation error has been evaluated. Furthermore, the iteration error, discretisation error and measurement error have been initially evaluated in Appendix. It is found that the iteration error and discretisation error are rather small for the dipole field case, and the measurement error would cause large error so that the observation data should be filtered during the actual investigations as made in the previous research (Shen et al., 2021a). Divergence-free magnetic field conditions were not required to calculate the magnetic spatial gradient. Alternatively, in the algorithm, the magnitudes of the magnetic divergence and its gradient were used to evaluate the truncation errors of the linear and quadratic magnetic spatial gradients, respectively.

The proposed algorithm was verified using a cylindrical force-free flux rope and a dipole magnetic field, with results showing that the iterations effectively converged and that the magnetic spatial gradients can reach reasonable accuracy. The results of this study can thus be applied to the analysis of magnetic field data from multi-spacecraft constellations (e.g., the Plasma Observatory and HelioSwarm) as well as to the design of future constellation missions.

480

Author contributions

CS designed the method and RK gives some advice. GZ developed the model code and performed the test. CS and GZ wrote the paper. CS and RK reviewed and edited the paper. YZ helps to evaluate the method.

485 Competing interests

The authors declare that they have no conflict of interest.

Acknowledgments

This work was supported by the National Natural Science Foundation of China (Grant No. 42130202), National Key Research and Development Program of China (Grant No. 2022YFA1604600) and Hubei Provincial Natural Science Foundation of China
490 (Grant No. 2022CFB928). This research was also supported by the International Space Science Institute (ISSI) in Bern through the ISSI International Team project #556 (cross-scale energy transfer in space plasmas). Work at IRAP is supported by CNRS, CNES, and UPS. We appreciate the reviewer's valuable suggestions.

References

- Burch, J. L., Moore, T. E., Torbert, R. B., and Giles, B. L.: Magnetospheric multiscale overview and science objectives, *Space*
495 *Sci. Rev.*, 199, 5–21. <https://doi.org/10.1007/s11214-015-0164-9>, 2015.
- Burch, J. L. and Phan, T. D.: Magnetic reconnection at the dayside magnetopause: Advances with MMS, *Geophys. Res. Lett.*,
43, 8327–8338. <https://doi.org/10.1002/2016GL069787>, 2016.
- Broeren, T., Klein, K. G., TenBarge, J. M., Dors, I., Roberts, O. W., and Verscharen, D.: Magnetic Field Reconstruction for a
Realistic Multi-Point, Multi-Scale Spacecraft Observatory, *Front. Astron. Space Sci.*, 8, 727076.
500 <https://doi.org/10.3389/fspas.2021.727076>, 2021.
- Chian, A. C. L., Borotto, F. A., & Gonzalez, W. D.: Alfvén Intermittent Turbulence Driven by Temporal Chaos, *Astrophys.*
J., 505(2), 993. <https://doi.org/10.1086/306214>, 1998.
- Chian, A. C. L., Borotto, F. A., Hada, T., Miranda, R. A., Muñoz, P. R., & Rempel, E. L.: Nonlinear dynamics in space
plasma turbulence: Temporal stochastic chaos. *Rev. Mod. Plasma Phys.*, 6(1), 34. [https://doi.org/10.1007/s41614-022-](https://doi.org/10.1007/s41614-022-00095-z)
505 [00095-z](https://doi.org/10.1007/s41614-022-00095-z), 2022.
- Chanteur, G.: Spatial Interpolation for four spacecraft: Theory, in: Analysis methods for multi-spacecraft data, edited by
Paschmann, G. and Daly, P. W., European Space Agency Publ. Division, Noordwijk, Netherlands, 349–370, 1998.

- Chanteur, G. and Harvey, C. C.: Spatial interpolation for four spacecraft: Application to magnetic gradients, in: Analysis methods for multi-spacecraft data, edited by Paschmann, G. and Daly, P. W., European Space Agency Publications Division, Noordwijk, Netherlands, 371–394, 1998.
- 510 De Keyser, J., Darrouzet, F., Dunlop, M. W., and Décréau, P. M. E.: Least-squares gradient calculation from multi-point observations of scalar and vector fields: Methodology and applications with Cluster in the plasmasphere, *Ann. Geophys.*, 25, 971–987. <https://doi.org/10.5194/angeo-25-971-2007>, 2007.
- De Keyser, J.: Least-squares multi-spacecraft gradient calculation with automatic error estimation, *Annales Geophysicae*, 26, 515 3295–3316, <https://doi.org/10.5194/angeo-26-3295-2008>, 2008.
- Denton, R. E., Torbert, R. B., Hasegawa, H., Dors, I., Genestreti, K. J., Argall, M. R., et al.: Polynomial reconstruction of the reconnection magnetic field observed by multiple spacecraft, *Journal of Geophysical Research: Space Physics*, 125, e2019JA027481. <https://doi.org/10.1029/2019JA027481>, 2020.
- Dong, X.-C., Dunlop, M. W., Wang, T.-Y., Cao, J.-B., Trattner, K. J., Bamford, R., Russell, C. T., Bingham, R., Strangeway, R. J., Fear, R. C., Giles, B. L., Torbert, R. B.: Carriers and sources of magnetopause current: MMS case study, *Journal of Geophysical Research: Space Physics*, 123, 5464–5475. <https://doi.org/10.1029/2018JA025292>, 2018.
- 520 Dunlop, M. W., Balogh, A., and Glassmeier, K.-H.: Four-point Cluster application of magnetic field analysis tools: The discontinuity analyzer, *J. Geophys. Res.*, 107, 1385. <https://doi.org/10.1029/2001JA005089>, 2002a.
- Dunlop, M. W., Balogh, A., Glassmeier, K.-H., and Robert, P.: Four-point cluster application of magnetic field analysis tools: The curlometer, *J. Geophys. Res.*, 107, 1384. <https://doi.org/10.1029/2001JA005088>, 2002b.
- 525 Dunlop, M. W., Haaland, S., Escoubet, P. C., and Dong, X.-C.: Commentary on accessing 3-D currents in space: Experiences from Cluster, *J. Geophys. Res.*, 121, 7881–7886. <https://doi.org/10.1002/2016JA022668>, 2016.
- Escoubet, C. P., Fehringer, M., and Goldstein, M.: The Cluster mission, *Ann. Geophys.*, 19, 1197–1200. <https://doi.org/10.5194/angeo-19-1197-2001>, 2001.
- 530 Escoubet, C. P., Schmidt, R., and Goldstein, M. L.: Cluster—Science and mission overview, *Space Sci. Rev.*, 79, 11–32. <https://doi.org/10.1023/A:1004923124586>, 1997.
- Haaland, S., Hasegawa, H., Paschmann, G., Sonnerup, B., and Dunlop, M.: 20 years of Cluster observations: The magnetopause, *J. Geophys. Res.*, 126, JA029362, e2021. <https://doi.org/10.1029/2021JA029362>, 2021.
- Hamrin, M., Rönmark, K., Börlin, N., Vedin, J., and Vaivads, A.: GALS - gradient analysis by least squares, *Ann. Geophys.*, 535 26, 3491–3499, <https://doi.org/10.5194/angeo-26-3491-2008>, 2008.
- Harvey, C. C.: Spatial gradients and the volumetric tensor, in: Analysis methods for multi-spacecraft data, edited by Paschmann, G. and Daly, P. W., European Space Agency Publ. Division, Noordwijk, Netherlands, 307–322, 1998.
- Kieokaew, R., Foullon, C., & Lavraud, B.: Four-Spacecraft Magnetic Curvature and Vorticity Analyses on Kelvin-Helmholtz Waves in MHD Simulations, *J. Geophys. Res.*, 123(1), 513–529. <https://doi.org/10.1002/2017JA024424>, 2018.
- 540 Kieokaew, R., and Foullon, C.: Kelvin-Helmholtz Waves Magnetic Curvature and Vorticity: Four-Spacecraft Cluster Observations, *J. Geophys. Res.* 124, 3347–3359. <https://doi.org/10.1029/2019JA026484>, 2019.

- Klein, K. G., Spence, H., Alexandrova, O., Argall, M., Arzamasskiy, et al.: HelioSwarm: A Multipoint, Multiscale Mission to Characterize Turbulence, *Space Sci. Rev.*, 219, 74. <https://doi.org/10.1007/s11214-023-01019-0>, 2023.
- Liu, Y. Y., Fu, H. S., Olshevsky, V., Pontin, D. I., Liu, C. M., Wang, Z., Chen, G., Dai, L., Retino, A.: SOTE: A nonlinear method for magnetic topology reconstruction in space plasmas, *Astrophys. J.*, 244, 31. <https://doi.org/10.3847/1538-4365/ab391a>, 2019.
- Lundquist, S.: Magneto-hydrostatic fields, *Arkiv för Fysik*, 2, 361–365, 1950.
- Pecora, F., Yang, Y., Matthaeus, W. H., Chasapis, A., Klein, K. G., Stevens, M., Servidio, S., Greco, A., Gershman, D. J., Giles, B. L., and Burch, J. L.: Three-Dimensional Energy Transfer in Space Plasma Turbulence from Multipoint Measurement, *Phys. Rev. Lett.*, 131(22), 225201. <https://doi.org/10.1103/PhysRevLett.131.225201>, 2023.
- Pitout, F. and Bogdanova, Y. V.: The polar cusp seen by Cluster, *J. Geophys. Res.*, 126, JA029582, e2021. <https://doi.org/10.1029/2021JA029582>, 2021.
- Politano, H., and Pouquet, A.: Von Kármán–Howarth equation for magnetohydrodynamics and its consequences on third-order longitudinal structure and correlation functions, *Phys. Rev. E.*, 57(1), R21–R24. <https://doi.org/10.1103/PhysRevE.57.R21>, 1998.
- Politano, H., and Pouquet, A.: Dynamical length scales for turbulent magnetized flows, *Geophys. Res. Lett.*, 25(3), 273–276. <https://doi.org/10.1029/97GL03642>, 1998.
- Retinò, A., Khotyaintsev, Y., Le Contel, O. et al. Particle energization in space plasmas: towards a multi-point, multi-scale plasma observatory. *Exp. Astron.*, 54, 427–471. <https://doi.org/10.1007/s10686-021-09797-7>, 2022.
- Robert, P., Roux, A., Harvey, C. C., Dunlop, M. W., Daly P. W., Glassmeier, K-H.: Tetrahedron geometric factors, in: Analysis methods for multi-spacecraft data, edited by Paschmann, G. and Daly, P. W., European Space Agency Publ. Division, Noordwijk, Netherlands, 323–348, 1998.
- Rong, Z. J., Wan, W. X., Shen, C., Li, X., Dunlop, M. W., Petrukovich, A. A., Zhang, T. L., and Lucek, E.: Statistical survey on the magnetic structure in magnetotail current sheets, *J. Geophys. Res.*, 116, A09218. <https://doi.org/10.1029/2011JA016489>, 2011.
- Runov, A., Sergeev, V. A., Nakamura, R., Baumjohann, W., Apatenkov, S., Asano, Y., Takada, T., Volwerk, M., Vörös, Z., Zhang, T. L., Sauvaud, J.-A., Rème, H., Balogh, A.: Local structure of the magnetotail current sheet: 2001 Cluster observations, *Ann. Geophys.*, 24, 247–262. <https://doi.org/10.5194/angeo-24-247-2006>, 2006.
- Russell, C. T., Mellott, M. M., Smith, E. J., and King, J. H.: Multiple spacecraft observations of interplanetary shocks: Four spacecraft determination of shock normals, *J. Geophys. Res.*, 88, 4739–4748. <https://doi.org/10.1029/JA088iA06p04739>, 1983.
- Shen, C., Li, X., Dunlop, M., Liu, Z. X., Balogh, A., Baker, D. N., Hapgood, M., and Wang, X.: Analyses on the geometrical structure of magnetic field in the current sheet based on cluster measurements, *J. Geophys. Res.*, 108, 1168. <https://doi.org/10.1029/2002JA009612>, 2003.

- 575 Shen, C., Liu, Z. X., Li, X., Dunlop, M., Lucek, E., Rong, Z. J., Chen, Z. Q., Escoubet, C. P., Malova, H. V., Lui, A. T. Y., Fazakerley, A., Walsh, A. P., Mouikis, C.: Flattened current sheet and its evolution in substorms, *J. Geophys. Res.*, 113, A07S21. <https://doi.org/10.1029/2007JA012812>, 2008.
- Shen, C., Rong, Z. J., Dunlop, M. W., Ma, Y. H., Li, X., Zeng, G., Yan, G. Q., Wan, W. X., Liu, Z. X., Carr, C. M., Rème, H.: Spatial gradients from irregular, multiple-point spacecraft configurations, *J. Geophys. Res.*, 117, A11207. <https://doi.org/10.1029/2012JA018075>, 2012.
- 580 Shen, C., Yang, Y. Y., Rong, Z. J., Li, X., Dunlop, M., Carr, C. M., Liu, Z. X., Baker, D. N., Chen, Z. Q., Ji, Y., Zeng, G.: Direct calculation of the ring current distribution and magnetic structure seen by Cluster during geomagnetic storms, *J. Geophys. Res.*, 119, 2458–2465. <https://doi.org/10.1002/2013JA019460>, 2014.
- Shen, C., Zeng, G., Zhang, C., Rong, Z., Dunlop, M., Russell, C. T., Escoubet, C. P., Ren, N.: Determination of the configurations of boundaries in space, *J. Geophys. Res.*, 125, JA028163, e2020. <https://doi.org/10.1029/2020JA028163>, 2020.
- Shen, C., Zhang, C., Rong, Z., Pu, Z., Dunlop, M. W., Escoubet, C. P., Russell, C. T., Zeng, G., Ren, N., Burch, J. L., Zhou, Y.: Nonlinear magnetic gradients and complete magnetic geometry from multispacecraft measurements, *J. Geophys. Res.*, 126, JA028846. <https://doi.org/10.1029/2020JA028846>, 2021a.
- 590 Shen, C., Zhou, Y. F., Ma, Y. H., Wang, X. G., Pu, Z. Y., and Dunlop, M.: A general algorithm for the linear and quadratic gradients of physical quantities based on 10 or more point measurements, *J. Geophys. Res.*, 126, JA029121, e2021. <https://doi.org/10.1029/2021JA029121>, 2021b.
- Shi, J. K., Cheng, Z. W., Zhang, T. L., Dunlop, M., Liu, Z. X., Torkar, K., Fazakerley, A., Lucek, E., Rème, H., Dandouras, I., Lui, A. T. Y., Pu, Z. Y., Walsh, A. P., Volwerk, M., Lahiff, A. D., Taylor, M. G. G. T., Grocott, A., Kistler, L. M., Lester, M., Mouikis, C., Shen, C.: South-north asymmetry of field-aligned currents in the magnetotail observed by Cluster, *J. Geophys. Res.*, 115, A07228. <https://doi.org/10.1029/2009JA014446>, 2010.
- 595 Shi, Q. Q., Shen, C., Pu, Z. Y., Dunlop, M. W., Zong, Q. G., Zhang, H., Xiao, C. J., Liu, Z. X., and Balogh, A.: Dimensional analysis of observed structures using multipoint magnetic field measurements: Application to Cluster, *Geophys. Res. Lett.*, 32, L12105. <https://doi.org/10.1029/2005GL022454>, 2005.
- 600 Sonnerup, B. U. Ö., Haaland, S., Paschmann, G., Lavraud, B., Dunlop, M. W., Rème, H., and Balogh, A.: Orientation and motion of a discontinuity from single-spacecraft measurements of plasma velocity and density: Minimum mass flux residue, *J. Geophys. Res.*, 109, A03221. <https://doi.org/10.1029/2003JA010230>, 2004.
- Torbert, R. B., Dors, I., Argall, M. R., Genestreti, K. J., Burch, J. L., Farrugia, C. J., Forbes, T. G., Giles, B. L., Strangeway, R. J.: A new method of 3-D magnetic field reconstruction, *Geophys. Res. Lett.*, 47, GL085542, e2019. <https://doi.org/10.1029/2019GL085542>, 2020.
- 605 Vogt, J., Albert, A., and Marghitsu, O.: Analysis of three-spacecraft data using planar reciprocal vectors: Methodological

- framework and spatial gradient estimation, *Ann. Geophys.*, 27, 3249–3273. <https://doi.org/10.5194/angeo-27-3249-2009>, 2009.
- 610 Vogt, J., Sorbalo, E., He, M., and Blagau, A.: Gradient estimation using configurations of two or three spacecraft, *Ann. Geophys.*, 31, 1913–1927. <https://doi.org/10.5194/angeo-31-1913-2013>, 2013.
- Yang, Y.: *Energy Transfer and Dissipation in Plasma Turbulence: From Compressible MHD to Collisionless Plasma*, Springer Theses, Springer Singapore, <https://doi.org/10.1007/978-981-13-8149-2>, 2019.
- Zhang, Q. H., Dunlop, M. W., Lockwood, M., Holme, R., Kamide, Y., Baumjohann, W., Liu, R. Y., Yang, H. G., Woodfield, E. E., Hu, H. Q., Zhang, B. C., Liu, S. L.: The distribution of the ring current: Cluster observations, *Ann. Geophys.*, 29, 615 1655–1662. <https://doi.org/10.5194/angeo-29-1655-2011>, 2011.
- Zhou, Y. and Shen, C.: Estimating gradients of physical fields in space, *Ann. Geophys.*, 42, 17–28. <https://doi.org/10.5194/angeo-42-17-2024>, 2024.

620 **Appendix A: Truncation error**

In the following error analysis, only the dipole field case is taken as an example. In section 4, the dimensionless divergence and gradient of the divergence of magnetic field have been used as the measures of the errors of the first order and second order magnetic gradients, respectively. And the Figure 13 shows the dimensionless divergence and gradient of the divergence with various characteristic S/C sizes. Nevertheless, the divergence and gradient of the divergence don't contain all the components of the magnetic gradients. In Appendix A, the truncation errors of the nonzero and independent components of the first order and second order magnetic gradients have been investigated, respectively. The truncation error is evaluated by the total relative error, which has been defined as $\left| \left(X_{algorithm} - X_{accurate} \right) / X_{accurate} \right| \times 100\%$ in section 3.1. Figure A1 shows the total relative errors in the nonzero components of the linear and quadratic gradients with different characteristic size (L). As evidenced in Figures A1, the truncation error decreases as the distance between satellites reduced. Furthermore, the errors of the first derivative decrease quadratically as the scale L is reduced, whereas the errors of the second derivatives decrease linearly with L reduced.

625

630

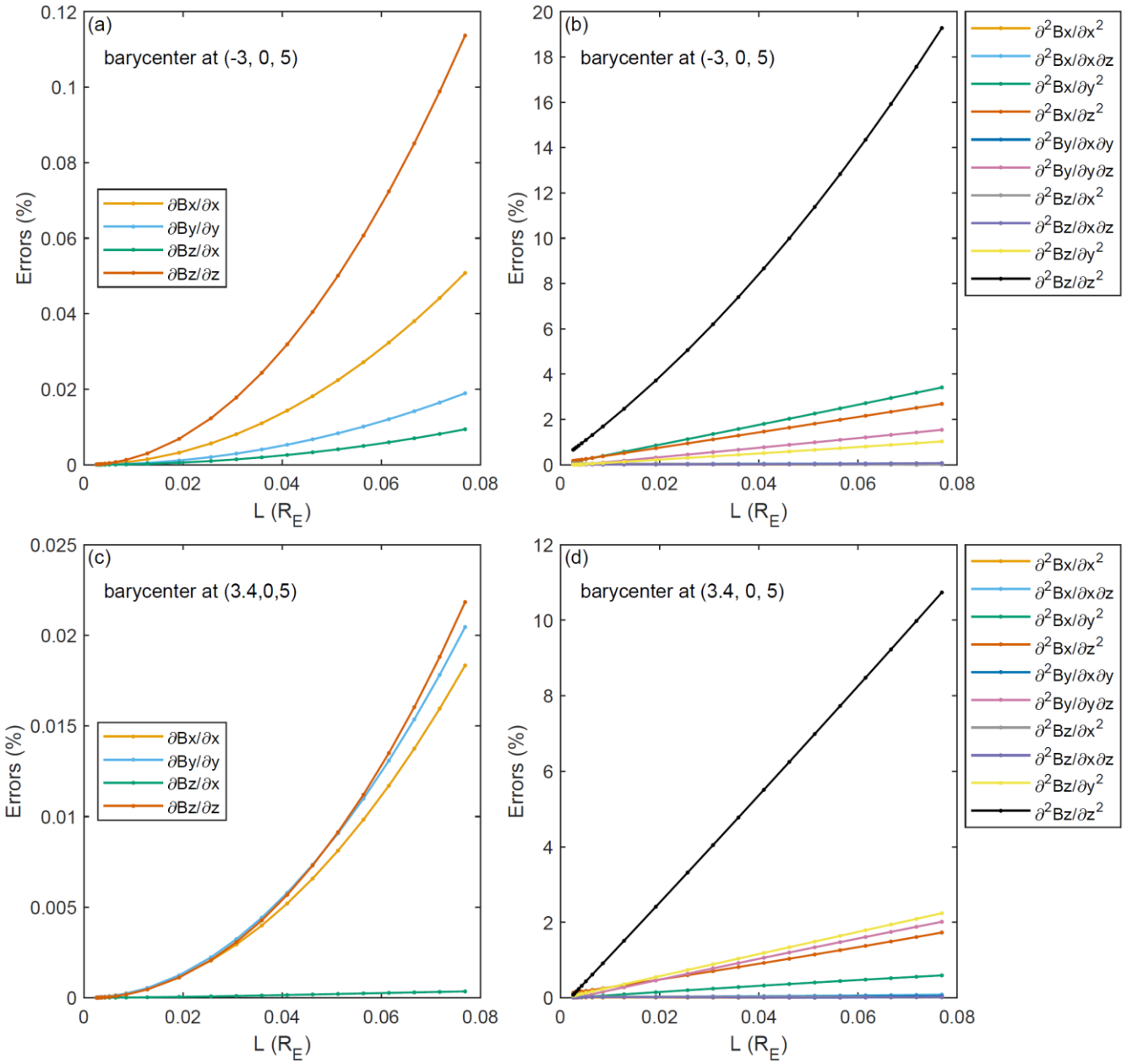


Figure A1. The total relative errors in the nonzero components of the linear and quadratic gradients with different characteristic size (L) at various barycentre positions for the dipole field case.

By holding the configuration of the 7-S/C constellation, the distances between satellites are scaled down by a factor of 100, which decreased the characteristic size of the 7-S/C array to $L=0.2564 \times 10^{-3} R_E$. Due to this reduction, the high-order truncation error converges to zero. In section 3.2, the cut-off number of iterations was set to 100. In order to clearly show the convergence of the iterations, the number of iterations was increased to 1000. Figure B1 shows the variation in the total relative errors of the linear and quadratic gradients with respect to the iteration numbers for the dipole field case. The total relative errors of the 4 nonzero components of linear gradients at point (-3, 0, 5) and (3.4, 0, 5) are both less than $10^{-6}\%$. The total relative errors of the 10 nonzero components of quadratic gradients at point (-3, 0, 5) are 0.0085%, 0.0459%, 0.0377%, 0.0928%, 0.0276%, 0.0701%, 0.0459%, 0.0083%, 0.0338% and 0.2880%, while those at point (3.4, 0, 5) are 0.0063%, 0.0304%, 0.0171%, 0.0870%, 0.0271%, 0.0788%, 0.0304%, 0.0180%, 0.0112% and 0.2405%, respectively. It is found that the total relative errors of the linear gradients decrease to 0 and those of the majority quadratic gradients decrease to less than 0.1%, with the distances between satellites reduced. The iteration error goes to zero asymptotically.

truncation error converges to 0

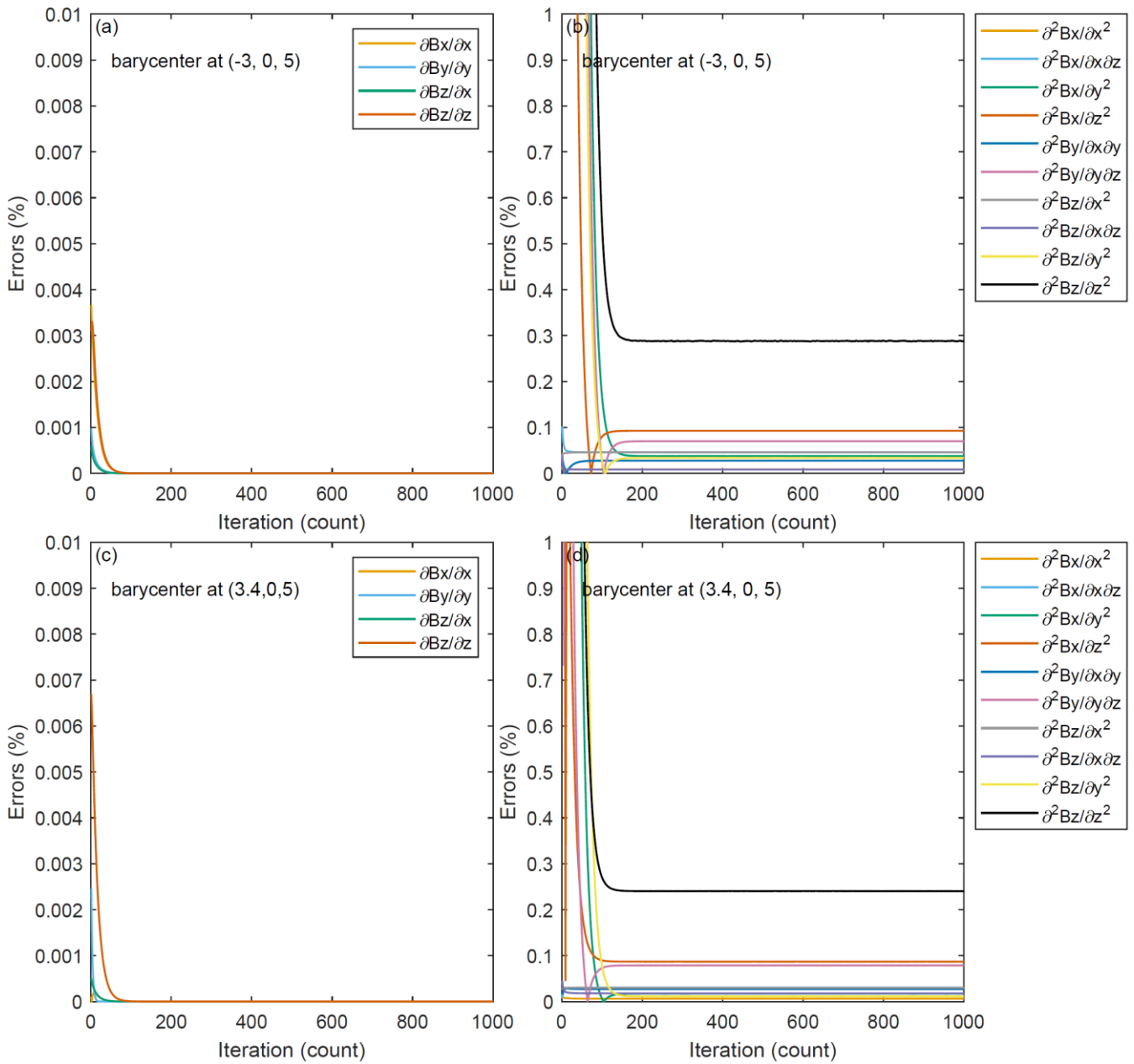
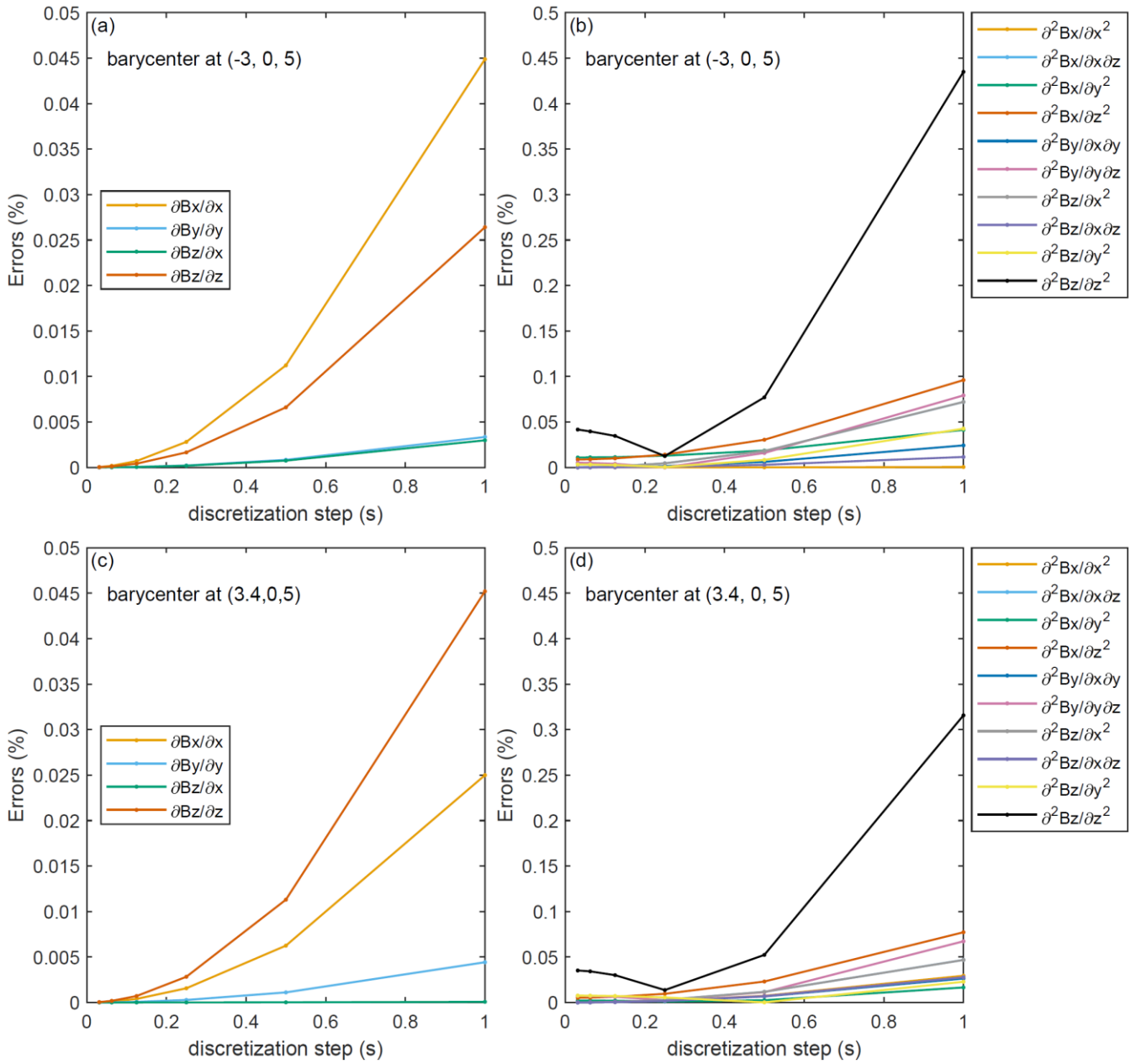


Figure B1. As the truncation error converges to zero, the total relative errors in the nonzero components of the linear and quadratic gradients with different iteration numbers at various barycentres for the dipole field case.

Appendix C: Discretisation error

In section 3, the magnetic field measurement is instantaneous, and the resolution of measurement is set to 1 second. It is assumed that the magnetic field value at the measurement point is the average along the satellite's trajectory for a duration of 0.5 second before and after the point, in the direction of the satellite's motion. This assumption introduces a discretisation error, and the discretization step is defined as 1 second accordingly. The characteristic size of the 7-S/C array is decreased to $L=0.2564\times 10^{-3} R_E$. So, the truncation error converges to zero, leaving only the discretisation error. If the resolution of the magnetic field measurement changes to 0.5 second, the duration time before and after the measurement point is set to 0.25 second accordingly. And the discretization step is reduced to 0.5 second. Figure C1 shows the variation in total relative errors of the linear and quadratic gradients with respect to the discretization steps for the dipole field case, with a discretisation error introduced. The total relative errors of the 4 nonzero components of linear gradients are no more than 0.05%, while the total relative errors of the 10 nonzero components of quadratic gradients are no more than 0.5%. The truncation error is decreased as the discretization step reduced. It can be suggested that the discretisation error is relatively small.



665 **Figure C1.** As the truncation error converges to zero, the total relative errors of the linear and quadratic gradients with different discretization steps at various barycentres for the dipole field case, with a discretisation error introduced.

Appendix D: Measurement error

670 In order to evaluate the measurement error, the random gaussian errors with mean 0 and standard deviation 0.01 are imposed on the magnetic field measurements. The results show that the total relative errors of linear gradients are about 1%. However, the total relative errors of majority quadratic gradients are more than 10%, and individual errors even exceeded 100%. This algorithm would be negative robustness to measurement noise. Shen et al. (2021a) have developed a novel algorithm that can estimate the quadratic magnetic gradient from multi-spacecraft measurements. This novel algorithm has been verified to be effective as applying to analyze MMS (Magnetospheric Multiscale Mission) observations. In their 675 investigation, the magnetic field data has to be filtered by a low-pass filter to eliminate disturbances, otherwise the errors caused by these disturbances would be very large. It can be suggested that the observation data should be filtered to remove noise as applying our algorithm.

680