

From hydraulic root architecture models to efficient macroscopic sink terms including perirhizal resistance: Quantifying accuracy and computational speed

Daniel Leitner¹, Andrea Schnepf¹, and Jan Vanderborght¹

¹IBG-3 (Agrosphäre), Forschungszentrum Jülich GmbH, Wilhelm-Johnen-Str., 52428 Jülich, Germany

Correspondence: Daniel Leitner (d.leitner@fz-juelich.de)

Abstract. Root water uptake strongly affects soil water balance and plant development. It can be described by mechanistic models of soil-root hydraulics based on soil water content, soil and root hydraulic properties, and the dynamic development of the root architecture. Recently, novel upscaling methods have emerged, which enable the application of detailed mechanistic models on a larger scale, particularly for land surface and crop models, by using mathematical upscaling.

5

In this study, we explore the underlying assumptions and the mathematical fundamentals of different upscaling approaches. Our analysis rigorously investigates the errors introduced in each step during the transition from fine-scale mechanistic models, which considers the nonlinear perirhizal resistance around each root, to more macroscopic representations. Upscaling steps simplify the representation of the root architecture, the perirhizal geometry, and the soil spatial dimension and thus introduces errors compared to the full complex 3D simulations. In order to investigate the extent of these errors, we perform simulation case studies: spring barley as a representative non-row crop and maize as a representative row crop, and using three different soils.

We show that the error introduced by the upscaling steps strongly differs, depending on root architecture and soil type. Furthermore, we identify the individual steps and assumptions that lead to the most important losses in accuracy. An analysis of the trade off between model complexity and accuracy provides valuable guidance for selecting the most suitable approach for specific applications.

1 Introduction

Plant transpiration plays a vital role in the overall soil water balance ~~within the field~~ and is a sensitive process in land surface and crop models (~~Good et al., 2015~~) accounting for 61-75% of the total evapotranspiration (Schlesinger and Jasechko, 2014) and 10-15% of the total global evaporation (Ruhoff et al., 2022). A mechanistic description of how plant transpiration is influenced by soil and root properties helps to unravel the interaction between climate, soil water balance and plant development. Such models can support plant breeding efforts to find root traits aiming for more drought resistant plants in specific pedoclimatic environments and empower decision-makers in optimizing agricultural practices for improved crop water management and

25 sustainable land use (Louarn and Song, 2020; Soualiou et al., 2021).

The soil-plant system is a multi-scale hierarchically structured system with typical structures that exist and influence or control processes at different scales. At the smallest scale, water flow in soils depends on the structure of the water filled pore network, i.e. the size of water filled pores, of water films on solid surfaces, and their connectivity. In plants, this scale corresponds to the water flow in cell walls, through cell membranes, through water conducting vessels, i.e. xylem vessels. The arrangement of cells in tissues, the constitution of cell walls and the size of xylem vessels and the pits in their sieve plates control water flow in root system. Using models that solve Navier-Stokes equations, hydraulic properties that define the averaged flow over these smaller scale structures as a function of averaged water potential gradients can be derived. ~~These For porous media, Darcy's law can be derived from the Navier-Stokes equations using homogenisation (Hornung, 1996). Also in plants, water flow is generally laminar. Couvreur et al. (2018) describe water movement within root cross sections, numerically calculating effective radial conductivity from root anatomical features. The effective~~ hydraulic properties can subsequently be used to describe the averaged flow as a function of averaged water potentials using continuum equations.

~~In this way the flow in the entire rooting zone can be simulated, and a straightforward approach is to represent summary, Darcy-type flow equations are used to simulate water flow in both the soil and roots as two separate and mutually exclusive domains with different properties~~ the root domains as well as the water exchange between them. However, the small diameter of roots ($\approx 1\text{e} - 4\text{ m}$) with respect to their length ~~and~~ ($\approx 1\text{ m}$) lead to very small diameter to length ratios $O(1\text{e} - 4)$. The size of the root zone ~~would require a very small discretization~~ requires very small discretizations with respect to the size of the simulation domain to accurately represent the fluxes and water potentials ~~in this system accurately~~. Therefore, a so-called 1D-3D mixed model approach is used (Koch et al., 2018). ~~In this approach, where,~~ the flow in the soil is described using a 3D continuum equation, i.e. the Richards equation. This approach will be the starting point of our upscaling.

The flow in the root system is represented by a network of porous pipes with pipe walls representing the root tissues through which water flows radially towards the xylem tissue that represents the internal part of the tube where water flows axially. The flow in each xylem segment is described as a function of the water potential gradient along the xylem and the exchange between the root and the soil as a function of the water potential difference between soil-root interface and the water in the root xylem tissue. The root system is assumed not to occupy a volume in the soil domain and the water flow between the soil and root domains is represented by a source/sink term in the soil domain. The information that needs to be exchanged between the two domains are the water potentials and water fluxes at the soil-root interfaces.

Schnepf et al. (2023, 2020) recently benchmarked such functional-structural root architecture models for simulating the root water uptake (RWU) from drying soils. A central part is the coupling between the two domains. In the 3D soil model, the water potentials are calculated at the nodes or the centres of the grid cells that are used to discretize the 3D soil domain. The 3D soil model, in which RWU is represented as a source or sink term, does not resolve the fluxes and water potential gradients

60 around the root segments within a grid cell. In order to obtain water potentials at the soil root interfaces, which are used by the
root model ~~we employ~~, a perirhizal model around the root segments is employed that incorporates nonlinear soil conductance
based on Schröder et al. (2008). This is crucial, since ~~in dry soil~~ Khare et al. (2022) showed that in drying soils a mere increase
in ~~macroscopic grid~~ resolution fails to accurately characterize the sharp gradients in soil ~~potential (Khare et al., 2022)~~ water
potential. Following Vanderborght et al. (2023) the perirhizal zone is approximated by a cylindrical domain. Typically, the
65 domain volume is approximated in proportion to the segment's root length, surface or volume in a given macroscopic soil
element volume (e.g. De Bauw et al., 2020; Mai et al., 2019). It is well known that the inter-root distance influences the uptake
potential (de Willigen, 1987) due to inter-root competition and Graefe et al. (2019) underlines the importance of the outer
perirhizal cylinder radii distribution. Kohl et al. (2007) used Voronoi diagrams to determine the outer radii in 2D, ~~and where~~
the Voronoi faces are located exactly at mid-distance between the roots, and therefore separating the corresponding perirhizal
70 zones. Schlüter et al. (2018) used distance functions in 3D to quantify the perirhizal zone. In this work we present a novel
approach using Voronoi diagrams in 3D ~~to obtain more realistic perirhizal volumes than the approaches based root densities,~~
where the Voronoi cells describe the perirhizal volumes.

Moving to larger scale models the first obvious step is to reduce the dimensions of the macroscopic soil model. de Willigen
75 et al. (2012) simulated RWU at different complexities, using 1D, 2D and 3D soils. They found that acknowledging the lateral
water potential gradients resulted in a reduction of simulated actual transpiration. However, they considered a soil with the
same lateral (x and y) dimension, with the root system in the middle, which is not consistent with the inter-plant and inter-row
distances of most agricultural crops. Couvreur et al. (2014) demonstrated that failing to account for lateral variations in root
density and bulk soil water potentials results in an overestimation of simulated collar water potentials for row crops but worked
80 sufficiently well for crops with rather uniform lateral root distributions.

The representation of the root architecture in an upscaled, e.g. 1D, soil water flow model can be of different complexity.
When the 3D root architecture model is coupled with a 1D soil model, a first assumption ~~that could be made~~ is that the water
potentials at the soil-root interface are uniform at a given depth or in a certain layer of the discretized 1D soil profile. Therefore,
85 we use a representation of a mean behaviour, where the variance is captured only when using higher dimensional models. When
the hydraulic root system model is assumed to be linear, i.e., it is assumed that the conductance of the different segments does
not depend on the water potential, then an exact upscaled root hydraulic model can be derived (Vanderborght et al., 2021). This
exact upscaled model can be approximated by a so-called parallel root model that assumes that the water that is taken up by
root segments in a certain soil layer is directly transferred to the root collar through an effective laterally impermeable root pipe
90 that does not exchange water with other soil layers so that RWU from different soil layers occurs in parallel (Couvreur et al.,
2014; Vanderborght et al., 2021). Vanderborght et al. (2021) ~~showed that it reproduced the~~ demonstrated that this approach well
reproduced the water uptake by 3D root architectures ~~quite well~~. When the root architecture model is coupled with a 1D soil
model, the 1D soil model simulates the bulk soil water potential and assumes that they are uniform at a certain depth. When
the soil is sufficiently wet and the hydraulic conductivity of the soil sufficiently large, the soil water potential at the soil root

95 interface can be assumed to be equal to the bulk soil water potential. But when soils dry out, the water potentials at the soil root
interfaces differ from the bulk soil water potentials and depend on the flow to a specific root segment. In order to couple the 3-D
root architecture model with an upscaled 1D soil model, Vanderborght et al. (2023) used cylindrical perirhizal models around
the single root segments and assumed that the bulk soil water potentials and outer radii of the perirhizal cylinders were the
same for all root segments. The perirhizal radii were derived assuming that all roots in a soil layer were parallel and equidistant,
100 which is a good approximation when roots are homogeneously distributed. To simplify the model further, they used parallel
root model assuming that the xylem water potential in and the water flow to each root segment in a certain soil layer were the
same. Despite the fact that the flow rate and water potentials in the xylem and at the soil-root interfaces of root segments of
the 3D architecture that was coupled to the 1D model varied a lot between the root segments, the parallel root model ~~could~~
~~describe-described~~ the total RWU from a soil layer as well as the overall transpiration quite well and with ~~a~~-strongly reduced
105 computational ~~cost~~costs.

However, the consequences of assuming uniform bulk soil water potentials were not considered in Vanderborght et al.
(2023, 2021). In this study we systematically test these new upscaling methods for the first time for scenarios that ~~realistically~~
represent the distribution of plants in an agricultural field. We use spring barley as a representative non-row crop and maize as
110 a representative row crop. We simulate plant transpiration over two weeks in three soil types loam, clay and sandy loam ~~an-to~~
observe soil water depletion and the occurrence of plant water stress. We perform the simulations with the full hydraulic 3D
model and compare the accuracy of the approximations in each upscaling step.

The full ~~hydraulic-architecture-root~~ hydraulic architecture model combined with a 3D soil model enables us to ~~study~~
115 ~~the-processes-analyse spatial water depletion~~ in detail. However, the computational costs make it inefficient for large-scale
applications. Also, the full hydraulic root architecture is not easily included in large-scale models, and it is preferable to use
a RWU sink term that is only based on the soil states explicitly. Vanderborght et al. (2023) showed how such sink terms can
be derived from more mechanistic models using 3D root hydraulics. We divide the different upscaling steps in three categories
(see Figure 1) and analyse the steps regarding accuracy and speed:

- 120 1. The way the root hydraulic system ~~is-represented: By individual potentials for root segment~~ (left green column): The
surrounding soil of the root system is characterised by soil water potentials at the soil root interface for each root segment
(Figure 1, ~~column-1, A~~), ~~same potentials within a soil element for all segments (column-1, B), or approximated A~~), or
is given for each soil element of the macroscopic soil grid (Figure 1, B). The third choice is to approximate the root
architecture by a parallel root system with similar macroscopic hydraulic properties (~~column-1, C~~ Figure 1, C).
- 125 2. ~~Representation~~ The way the radius of the perirhizal ~~radius: Either using zone is calculated~~ (mid yellow column): The first
option uses 3D Voronoi diagrams to obtain the volume of the perirhizal zone (Figure 1, ~~column-2, A~~ A), or assumeing
homogeneously distributed roots are assumed within each soil cell (~~column-2, B~~ Figure 1, B).

3. The dimensionality of the soil model (right blue column): Either the macroscopic soil is described in full 3D (see Figure 1, column 3, A). To obtain a speed up in computation we consider soil models with lower dimensionality A), or the soil is approximated by a lower dimensional model, where we assume the soil water potential does not change in specific directions (see Figure 1, column 3, BB).

We use the three columns of Figure 1 for a precise categorization of the upscaling steps involved, ~~AAA being choosing a triple where the first letter denotes the root hydraulic system, the second the way the perirhizal zone is calculated and the third~~ the dimensionality of the model. In this way AAA describes the most accurate model, and ~~CBB~~ CBB the fastest and coarsest model, and we use a lower case 'x' to indicate the choice of any model, e.g. Axx are all possible model where the full 3D root hydraulic model is calculated, therefore soil water potentials at the soil root interface are given for each root segment.

2 Materials and Methods

We describe water flow in the plant-rhizosphere-soil system by considering each subdomain as mathematical sub-problems that are solved sequentially (see Koch et al. 2021 for alternative monolithic schemes). We sequentially compute the macroscopic soil model (Section 2.1), the root architecture development (Section 2.2), and using a fixed point iteration, where we solve the root hydraulic model and perirhizal model (Section 2.3). From the resulting root xylem potentials \mathbf{H}_x and the total potentials at the root-soil interface \mathbf{H}_{sr} the RWU is determined, which then acts as a sink for the macroscopic soil model, see Figure 2. Table 1 presents a summary of all variable and parameter of the models.

The models were implemented in CPlantBox (Zhou et al., 2020; Schnepf et al., 2018) and dumux-rosi (Giraud et al., 2023) which are available on GitHub and are open source which facilitates reproducibility and further advancements (Barba, 2022). The use of upscaled models fundamentally increases performance. Depending on the root architecture and soil type we could achieve speed ups up to 15000%. We discuss the trade off between model accuracy and computational speed which guides users how to pick the appropriate modelling approach for specific applications.

In the following we describe each part of Figure 2 in detail, first the macroscopic soil model (Section 2.1), the root architecture development model (Section 2.2), and the fixpoint iteration, where we iterate the full root hydraulic model and the perirhizal model (Section 2.3). These models are of type Axx (see Figure 1). We present two upscaled models, first the upscaled aggregated model (Section 2.5) corresponding to the models Bxx, and the parallel root model (Section 2.6) corresponding to the models Cxx. Next, we describe the two approaches to obtain the outer perirhizal radii (Section 2.4) corresponding to the models xAx and xBx. Finally, in Section 2.7 we define test scenarios to benchmark the efficiency of the simplifications of the larger scale models against the reference full hydraulic model.

2.1 Macroscopic soil model

160 Water movement is described by the Richards equation

$$\frac{\partial \theta}{\partial t} = \nabla \cdot (K(\theta) \nabla H_s) + S, \quad (1)$$

where θ [~~1~~cm³/cm³] is the water content, K [cm²/day] is the soil hydraulic conductivity, H_s [cm] is the ~~soil-total~~total soil
water potential, and S is a sink term that describes RWU [1/day].

165 We can solve the Richard equation in 3D (these models are named xxA) or assume no change in water potential in specific directions using a 1D or 2D soil grid (xxB). We use the finite volume solver DuMu^x (Koch et al., 2021) to numerically solve Eqn 1. The sink our source S is calculated for each finite volume cell as a function of the root xylem total potentials H_x and the total potentials at the root surface interface H_{sr} . Generally, H_{sr} is derived as a function of H_x and H_s using a perirhizal model, as described in Section 2.3. For each finite volume cell i the sink or source S_i [cm³/day] is calculated as

$$170 \quad S_i = \sum_{j \in cell_i} 2a_{\textcolor{red}{j}\textcolor{blue}{root},j} \pi k_{r,j} dl_j (H_{sr,j} - H_{x,j}), \quad (2)$$

where j is the root segment index of a segment located within the finite volume cell i , ~~a_j~~ $a_{root,j}$ [cm] root radius, $k_{r,j}$ [1/day] intrinsic root radial conductivity, dl_j [cm] segment length, $H_{sr,j}$ [cm] total potential at the soil-root interface, and segment xylem total potential $H_{x,j}$ [cm].

175 The relation between θ and the soil matric potential h_s by is given by the water retention curve, which we describe by the Van Genuchten model (Van Genuchten, 1980). The conversion between total and matric potentials can readily be done as

$$h_s = H_s - z, \quad (3)$$

where z is the elevation.

2.2 Root architecture development model

180 We use the model CPlantBox to describe the root architecture (~~Zhou et al., 2020; Schnepf et al., 2018~~)(Giraud et al., 2023; Zhou et al., 2020), which is able to represent the development of different root architecture geometries. CPlantBox is an open source software, the code is available at GitHub. The root architecture is represented as straight 1D segments in 3D space (1D/3D), where the segment length is less or equal the axial resolution dx .

185 Parameters are defined per root type and given by a mean and standard deviation to mimic the stochastic nature of the root system. Typical parameters are insertion angle (θ_{root}), length of the basal zone (l_b), the inter-lateral distance (l_n), the maximal root length (the number of laterals is deduced from maximal length) (l_{max}), the length of apical zone (l_a), or apical delay time (l_{delay}), root radius (~~a_{root}~~), initial growth rate (r), as well as type and probability of successor roots. We chose

root architecture parameter sets for spring barley according to Eloundou (2021) based on Postma et al. (2017) and for maize
 190 according to (Landl et al., 2018) which are available within the CPlantBox repository.

CPlantBox is a relatively generic code that allows different models of elongation rate, branching patterns, tropisms and root
 senescence. In this study, we assumed negative exponential growth, independent of any environmental influences such as soil
 temperature or bulk density. Likewise, branching patterns and insertion angles are not influenced by environmental conditions.
 Root radii are constant per root branch. The root types which can emerge from a given parent root are determined by root
 195 order. With this relatively simple root architecture simulations, we still produce realistic root system geometries that allow to
 determine the effect of those geometries and in particular their heterogeneities on the upscaling results.

2.3 Root hydraulic and perirhizal model (Axx)

We use the model of Doussan et al. (1998) and in the following describe it using methods from graph theory. Along each root
 segment the axial water flow is driven by the gradient of the total xylem water potential, and is given by

$$200 \quad q_{axial} \approx k_x \nabla H_x, \quad (4)$$

where q_{axial} [cm³/day] is the axial water flow, k_x [cm³/day] the intrinsic root axial conductance, and H_x [cm] the total xylem
 water potential. The radial water flow is given for each root node i as

$$q_{radial,i} \approx 2\pi a_{root,i} k_{r,i} (H_{sr,i} - H_{x,i}), \quad (5)$$

where $q_{root,i}$ [cm²/day] is the radial water flow per root length at node i , $a_{root,i}$ [cm] is the root radius, $k_{r,i}$ [1/day] is the
 205 intrinsic root radial conductance, and $H_{sr,i}$ [cm] is the total soil water potential at the soil-root interface. As Doussan et al. (1998)
 , we consider that the soil water is a dilute solution as is the sap and therefore we neglect the osmotic potential in the xylem
 and the soil.

The root system can be interpreted as a directed graph of n nodes and $n - 1$ edges representing the root segments. The
 210 ~~connections between the nodes of the root system is given by its incidence matrix $\mathbf{C} \in \mathbb{R}^{n \times n-1}$ in such a way that its ij^{th}
 entry is equal to -1 when edge~~ axial water flow (Eqn 4) is approximated by

$$q_{axial,i,j} \approx k_x \frac{H_{x,j} - H_{x,i}}{dl_{i,j}} \quad (6)$$

where (i, j) is the edge connecting node i and j ~~is leaving~~ and $dl_{i,j}$ is the length of this segment [cm]. In this context Kirchhoff's
 law just states that the axial fluxes equal the radial flux at each node i , ~~and 1 when edge~~. All volume fluxes going into the node
 215 must leave the node again, i.e., we assume that there is no water storage inside the root. Thus,

$$\sum_{j \in N(i)} q_{axial,i,j} = q_{radial,i}, \quad (7)$$

where i arrives in node and j are nodes indices, and $N(i)$ are the indices of the edges (i, j) in the graph. We can use the Laplace matrix \mathbf{L} to easily describe Kirchhoff's law as in matrix notation:

$$\mathbf{L} \begin{bmatrix} H_{collar} \\ \mathbf{H}_x \end{bmatrix} = \begin{bmatrix} t_{act} \\ \mathbf{q}_{root} \end{bmatrix}, \quad (8)$$

220 where the symmetric Laplacian matrix $\mathbf{L} \in \mathbb{R}^{n \times n}$ is given by

$$\mathbf{L} = \mathbf{C} \text{diag}(\mathbf{K}_x) \mathbf{C}^T, \quad (9)$$

and H_{collar} is the total root collar potential cm, \mathbf{H}_x the $(n-1) \times 1$ vector of the total root water potentials cm of the other root nodes, and $\mathbf{C} \in \mathbb{R}^{n \times n-1}$ is the graph's incidence matrix, where ij^{th} entry is equal to -1 when edge j is leaving node i , and 1 when edge i arrives in node j . The matrix \mathbf{K}_x is the $(n-1) \times 1$ vector of root axial conductances [cm^2/day], where

$$225 \quad (\mathbf{K}_x)_i = K_{x,i} = k_{x,i} / l_{root,i}, \quad (10)$$

$k_{x,i}$ being the intrinsic root axial conductance [cm^3/day] and $l_{root,i}$ the segment length [cm] of root segment with apical node index i . The H_{collar} is the total root collar potential [cm], \mathbf{H}_x the $(n-1) \times 1$ vector of the total root water potentials [cm] of the other root nodes. At the right hand side of Eqn 8 the value t_{act} describes the actual volumetric transpiration at the root collar [cm^3/day] and \mathbf{q}_{root} [cm^3/day] describes the sources (positive sign) and sinks (negative sign) which represents water

230 uptake or loss from soil or water loss into soil by the roots.

To solve specific root hydraulic scenarios, we need to define the RWU and adjust Eqn (8) to include root collar boundary conditions.

The volumetric RWU \mathbf{q}_{root} [cm^3/day] is given for a total xylem potential \mathbf{H}_x [cm] and a total water potential at the soil root interface \mathbf{H}_{sr} [cm] as

$$\mathbf{q}_{root} = \text{diag}(\mathbf{K}_r)(\mathbf{H}_{sr} - \mathbf{H}_x), \quad (11)$$

where \mathbf{H}_{sr} is the $(n-1) \times 1$ vector of the total soil water potentials at the soil root interface, and \mathbf{K}_r is the $(n-1) \times 1$ vector of the root radial conductances [cm^2/day], where

$$(\mathbf{K}_r)_i = K_{r,i} = 2 a_{root,i} \pi l_{root,i} k_{r,i} \quad (12)$$

240 $k_{r,i}$ being the intrinsic root radial conductance [$1/\text{day}$], and $a_{root,i}$ is the root segment radius [cm] of root segment i .

Including a Dirichlet boundary condition at the root collar, which is assumed to be located at the first node, Eqn (8) can be rewritten as

$$\mathbf{L}_d \begin{bmatrix} H_{collar} \\ \mathbf{H}_x \end{bmatrix} = \begin{bmatrix} H_{prescribed} \\ \text{diag}(\mathbf{K}_r)(\mathbf{H}_{sr} - \mathbf{H}_x) \end{bmatrix}, \quad (13)$$

245 where \mathbf{L}_d is the Laplacian Matrix adjusted for the Dirichlet boundary condition such that the first entry of the first row is equal to 1 and all other entries are zeros. If we want to solve for \mathbf{H}_x we can re-write above equation as

$$-K_{x,1}\mathbf{e}_1 H_{collar} + \mathbf{L}_{n-1} \mathbf{H}_x = \text{diag}(\mathbf{K}_r) \mathbf{H}_{sr} - \text{diag}(\mathbf{K}_r) \mathbf{H}_x, \quad (14)$$

where \mathbf{L}_{n-1} is the $(n-1) \times (n-1)$ submatrix of \mathbf{L} with removed first row and column, and \mathbf{e}_1 is the $(n-1) \times 1$ unit vector (see also Vanderborght et al. (2021), Eqn A5). Then, for any known \mathbf{H}_{sr} , we can solve for \mathbf{H}_x as

$$250 \quad \underbrace{(\mathbf{L}_{n-1} + \text{diag}(\mathbf{K}_r))}_{=: \mathbf{A}} \mathbf{H}_x = \underbrace{\text{diag}(\mathbf{K}_r) \mathbf{H}_{sr} + K_{x,1}\mathbf{e}_1 H_{collar}}_{=: \mathbf{b}_d}, \quad (15)$$

where \mathbf{A} is symmetric and diagonal dominant for $(K_r)_i > 0$, and therefore positive definite, the right hand side \mathbf{b} depends on the matric potential of the soil root interface H_{sr} and the total root collar potential H_{collar} .

When developing larger scale soil models we generally do not want to consider individual root water potentials since it is not
 255 feasible to explicitly describe the root architecture in such models. Thus, the effective sink term for RWU should be formulated in a way such that the values \mathbf{H}_x are not explicitly needed. For Dirichlet boundary conditions we calculate \mathbf{H}_x from Eqn (15) and insert it into the Eqn (11) which describes RWU as

$$\mathbf{q}_{root} = \text{diag}(\mathbf{K}_r)(\mathbf{H}_{sr} - (\mathbf{A}^{-1} \text{diag}(\mathbf{K}_r) \mathbf{H}_{sr} + \mathbf{A}^{-1} K_{x,1}\mathbf{e}_1 H_{collar})) \quad (16)$$

$$\mathbf{q}_{root} = \text{diag}(\mathbf{K}_r)(\mathbf{I} - \mathbf{A}^{-1} \text{diag}(\mathbf{K}_r))\mathbf{H}_{sr} - \text{diag}(\mathbf{K}_r)\mathbf{A}^{-1} K_{x,1}\mathbf{e}_1 H_{collar}, \quad (17)$$

260 corresponding to Vanderborght et al. (2021), Eqn A16. For big sparse matrices \mathbf{A} it is not efficient to compute \mathbf{A}^{-1} since this matrix is dense, so we express above equation as

$$\underbrace{\mathbf{A} \text{diag}(\mathbf{K}_r)^{-1}}_{=: \mathbf{A}_q} \mathbf{q}_{root} = \underbrace{(\mathbf{A} - \text{diag}(\mathbf{K}_r))\mathbf{H}_{sr} - K_{x,1}\mathbf{e}_1 H_{collar}}_{=: \mathbf{b}_q}. \quad (18)$$

and we can solve this sparse linear system for \mathbf{q}_{root} for given \mathbf{H}_{sr} and H_{collar} (note that $\text{diag}(\mathbf{K}_r)^{-1}$ is sparse).

265 We can easily switch between Dirichlet boundary conditions, where we set the total potential H_{collar} [cm] at the root collar, and Neumann boundary conditions, where we predetermine a volumetric transpiration t_{act} [cm³/day]. In the simulation the boundary condition will be automatically switched between Neumann and Dirichlet assuring that the root collar potential cannot be below a critical potential where we assume the plants wilting point. The relationship between $t_{act} = \sum_i q_{root,i}$ and H_{collar} is given by

$$270 \quad t_{act} = K_{rs}(H_{eff} - H_{collar}), \quad (19)$$

$$H_{collar} = (K_{rs}H_{eff} - t_{act})/K_{rs}, \quad (20)$$

where K_{rs} [cm²/day] is the root system conductivity, $H_{eff} = \text{SUF}^T \cdot \mathbf{H}_{sr}$ [cm] is the effective water potential at the soil root interface, and SUF [1] [is the standard uptake fraction](#) as defined by Couvreur et al. (2012), which corresponds with ~~the~~

q_{root}/t_{act} calculated for a uniform H_{sr} . Eqn (19) is derived by summing up the rows of Eqn (17). For a detailed derivation we
 275 refer to Vanderborght et al. (2021), Appendix A.

In dry soils, RWU is often limited by low soil hydraulic conductivity near the root surface, i.e., in the perirhizal zone that is influenced by the radial water flow towards the root. Therefore, we consider an additional perirhizal resistance for each root segment as described by Vanderborght et al. (2023) which ~~is based on~~ uses the approach of Schröder et al. (2008) to determine
 280 the total potential at the soil root interface H_{sr} . We assume a steady rate in the cylindrical perirhizal zone, i.e. $d\theta/dt$ does not vary with radial distance from the root axis r . The steady ~~rate is dependent on the bulk soil total state model is not transient,~~
and the model state only depends on the steady rate which is determined from the bulk total soil water potential H_s and the root xylem potential H_x . Note that in with respect to the model application the steady rate approach can also be replaced by more complex dynamic rhizosphere models to determine H_{sr} (e.g. Khare et al., 2022; De Bauw et al., 2020; Mai et al., 2019).

285

The RWU of a single segment is given by

$$q_r = 2a_{root}\pi l_{root}k_r(H_{sr} - H_x) = \frac{H_{sr} - H_x}{r_1}, \quad (21)$$

where q_r [cm^3/day] is the volumetric flow rate, see Eqns (11) and (12), and $r_1 = (2a_{root}\pi l_{root}k_r)^{-1}$ [day/cm^2] is the radial resistance to water flow ~~trough~~ through the root.

290

The volumetric flow rate q_{sr} [cm^3/day] towards the soil-root interface through the perirhizal zone is equal to

$$q_{sr} = 2\pi l_{root}K_{prhiz}B(H_s - H_{sr}) = \frac{H_s - H_{sr}}{r_2}, \quad (22)$$

where H_s [cm] is the mean total soil potential of the segments perirhizal zone, K_{prhiz} [cm/day] is the average hydraulic conductance in the perirhizal zone and defined by

$$295 \quad K_{prhiz} = \frac{\Phi(h_s) - \Phi(h_{sr})}{H_s - H_{sr}}, \quad (23)$$

where ~~$\Phi(h_s) - \Phi(h_{sr}) = \int_{h_{sr}}^{h_s} K(h)dh$~~ is the soil matric flux potential [cm^2/day], and $h_s := H_s - z$ is the soil matric potential in the perirhizal cylinder corresponding to the average volumetric water content in that cylinder and to the soil matric potential of the macroscopic soil model. Furthermore, $h_{sr} := H_{sr} - z$ is the matric potential at the soil root interface, B [1] is a geometry factor, and $r_2 = (2a_{root}\pi l_{root}K_{prhiz}B)^{-1}$ [day/cm^2] is the resistance to water flow ~~trough~~ through the perirhizal zone. The
 300 geometry factor B [1] is dependent on ρ [1] which is the ratio of the outer radius of the perirhizal zone a_{prhiz} [cm] and the root radius a_{root} [cm]. The geometry factor is given by

$$B = \frac{2(\rho^2 - 1)}{(1 - 0.53\rho)^2 + 2\rho^2 \ln(0.53\rho)}, \quad (24)$$

$$\rho = \frac{a_{prhiz}}{a_{root}}. \quad (25)$$

~~A derivation of~~ We derive the geometry factor ~~can be found in Schröder et al. (2008); Van Lier et al. (2006).~~ B in SI Section 1.
 305 The factor 0.53 represents the ratio between the radial distance from the root surface at which the water content is equal to the

average perirhizal water content and the perirhizal radius ([Van Lier et al., 2006](#)).

For the steady rate assumptions the flux into the root q_r equals the flux through the perirhizal zone q_{sr} , i.e. $q_r = q_{sr} := q$. Since root and perirhizal zone resistances are serial we can compute the overall resistance as

$$310 \quad q = \frac{H_s - H_x}{r_1 + r_2} = \frac{2\pi a_{root} l_{root} B k_r K_{prhiz}}{a_{root} k_r + B K_{prhiz}} (H_s - H_x) \quad (26)$$

where $r_1 + r_2$ is the resistance to water flow ~~through~~ through the root and perirhizal zone.

From $q_r = q_{sr}$ we can compute H_{sr} as

$$H_{sr} = \frac{a_{root} k_r H_x + B K_{prhiz} H_s}{a_{root} k_r + B K_{prhiz}}. \quad (27)$$

315 Note that K_{prhiz} is a function of H_{sr} , see Eqn (23), and we need to solve this implicit nonlinear equation for H_{sr} for given H_s and H_x . Note that for a simulation with a Neumann boundary condition, H_x is variable and depends also on H_{sr} . Thus, for any given value of H_s , two consistent values of H_x and H_{sr} need to be found.

To speed up computation time we pre-compute the solutions of Eqn (27) for a specific soil and create a four dimensional
320 look up table depending on H_x , H_s , $(a_{root} k_r)$, and ρ . We use a fixed point iteration to find consistent values H_x and H_{sr} , see Algorithm 1. Initialization of H_{sr} is done with H_{sr}^{prev} the soil-root interface potential of the previous time step, or H_s for the first time step.

Algorithm 1 Fixed point iteration to find consistent values H_x and H_{sr}

Initialize: $k := 0$, $\mathbf{H}_x^0 := f_{root}(\mathbf{H}_{sr}^{prev})$, see Eqn (15)

(1) $\mathbf{H}_{sr}^{k+1} := f_{prhiz}(\mathbf{H}_x^k, \mathbf{H}_s)$, see Eqn (27)

(2) $\mathbf{H}_x^{k+1} := f_{root}(\mathbf{H}_{sr}^k)$, see Eqn (15)

(3) $k := k + 1$, and proceed with Step (1). until $\mathbf{H}_x^{k+1} \approx \mathbf{H}_x^k$ and $\mathbf{H}_{sr}^{k+1} \approx \mathbf{H}_{sr}^k$

2.4 Perirhizal geometry (xAx) versus uniform root length density (xBx)

The geometry of the perirhizal zone is cylindrical and determined by the root radius a_{root} [cm] and the outer perirhizal radius
325 a_{prhiz} [cm]. The ratio ρ [1] between these two values enter the geometry factor B , see Eqn (24), and therefore affects the potential at soil root interface H_{sr} , see Eqn (27). We use either 3D Voronoi mesh to obtain the outer perirhizal radii (models of type xAx) or root length, surface or volume densities (models of type xBx).

In the first approach we use a 3D Voronoi mesh around the nodes of the root system. In this way the soil volume is partitioned
330 into cells, where each node has a corresponding Voronoi cell, see Figure 3. The Voronoi cell faces are located at mid-distance between the neighbouring nodes. Therefore, the volume of the Voronoi cells are a good approximation of the node perirhizal

volume, and we define the root segment's perirhizal volume vol_j [cm³] as the the volume of the Voronoi cell of the segment's apical node. We approximate this volume by a cylindrical geometry of the same volume, i.e.,

$$vol_j = \pi l_{root,j} (a_{prhiz,j}^2 - a_{root,j}^2), \quad (28)$$

335 and we can calculate the outer perirhizal radius $a_{prhiz,j}$ for each root segment j as

$$a_{prhiz,j} = \sqrt{\frac{vol_j}{\pi l_{root,j}} + a_{root,j}^2}. \quad (29)$$

The more commonly used approach so far is to approximate the perirhizal geometry using root length density [cm/cm³],
 340 surface density [cm²/cm³], or volume density [cm³/cm³] in a finite soil volume vol_{soil} [cm³] (e.g. De Bauw et al., 2020; Mai et al., 2019). Assuming that the roots are evenly distributed, the perirhizal volume is given by

$$vol_j = t_j vol_{soil}, \quad (30)$$

where t_j [1] is the ratio between segment length (surface, or volume) and total root length (surface, or volume) within the finite soil volume. The outer radius $a_{prhiz,j}$ for each root segment j is again given by Eqn (29).

345

If we couple the perirhizal models with a macroscopic soil model the Voronoi mesh or the density based method must be aligned with the macroscopic finite volume cells for mass conservation. For both methods this will affect the distribution of perirhizal radii, see Section 3.2. This density based approach is suitable for soils where the soil grid cells are 3D with edge length in the order of centimeters. For 1D layered soil grids, the Voronoi mesh-based is preferable allowing more realistic
 350 distributions of the true perirhizal zones within each soil layer. Note that both approaches are approximations since we assume a cylindrical perirhizal zone which is generally not the case. The Voronoi method computes more realistic perirhizal volumes but is computational expensive and less feasible for dynamic root growth.

2.5 Upscaling by aggregating RWU from root segment to soil element level (Bxx)

For developing larger scale models we want to describe the effect of the root system without keeping track of the exact root
 355 system geometry. Generally, the number of root segments is much higher, than the number of finite soil volumes for 1D, 2D or 3D soil models. Therefore, we aim for models that are described on the soil element level. These models are of category Bxx.

The linear system in Eqn (18) describes one equation per root node excluding the root collar, i.e $n - 1$ equations. The number of soil cells m is generally much lower $m \ll n - 1$, and we will rewrite the linear system in variables given per soil cell. We
 360 can sum up Eqn (17) regarding the soil cells by multiplying with the matrix \mathbf{M} , i.e.

$$\mathbf{M} \mathbf{q}_{root} = \mathbf{M} \text{diag}(\mathbf{K}_r) (\mathbf{I} - \mathbf{A}^{-1} \text{diag}(\mathbf{K}_r)) \mathbf{H}_{sr} - \mathbf{M} \text{diag}(\mathbf{K}_r) \mathbf{A}^{-1} k_{x,1} \mathbf{e}_1 H_{collar}, \quad (31)$$

where \mathbf{M} is a $m \times (n - 1)$ matrix mapping each root node index to a soil cell index. For each column (i.e. node index-1) the matrix contains exactly a 1 in the row of the soil cell index where the node is located and zero otherwise. Therefore, the RWU from a soil volume \mathbf{q}_{soil} [cm³/day] is given by

$$\mathbf{q}_{soil} = \mathbf{M} \mathbf{q}_{root}, \quad (32)$$

and right hand side of Eqn (31) exactly computes the soil fluxes. Now, we can simplify the system by assuming that the soil-root matric potential is the same in each soil cell.

We define $\mathbf{H}_{sr}^{soil} \in \mathbb{R}^m$ to be the mean value of the \mathbf{H}_{sr} in each soil volume. Note that $(\mathbf{M} \mathbf{M}^T)$ is a $m \times m$ diagonal matrix containing the number of root nodes within each soil cell, therefore the mean value is given by

$$\mathbf{H}_{sr}^{soil} := (\mathbf{M} \mathbf{M}^T)^{-1} \mathbf{M} \mathbf{H}_{sr} = (\mathbf{M}^T)^+ \mathbf{H}_{sr}, \quad (33)$$

where \mathbf{M}^{T+} is the Moore Penrose pseudo inverse of \mathbf{M}^T . We can approximately solve above equation for \mathbf{H}_{sr} yielding

$$\mathbf{M}^T \mathbf{H}_{sr}^{soil} \approx \mathbf{H}_{sr}, \quad (34)$$

where \mathbf{M}^T is an $n \times m$ matrix, \mathbf{H}_{sr}^{soil} is a m dimensional vector at soil element level, and \mathbf{H}_{sr} is a n dimensional vector at root segment level. Note that in this case, all entries of \mathbf{H}_{sr} will be the same within every soil element and this assumption causes loss of information.

Inserting the approximation of Eqn (34) into Eqn (31) yields

$$\mathbf{q}_{soil} = \underbrace{\mathbf{M} \text{diag}(\mathbf{K}_r)(\mathbf{I} - \mathbf{A}^{-1} \text{diag}(\mathbf{K}_r))\mathbf{M}^T}_{\mathbf{A}_{up} \in \mathbb{R}^{m \times m}} \mathbf{H}_{sr}^{soil} - \underbrace{\mathbf{M} \text{diag}(\mathbf{K}_r) \mathbf{A}^{-1} k_{x,1} \mathbf{e}_1 H_{collar}}_{\mathbf{b}_{up} \in \mathbb{R}^m}. \quad (35)$$

This much smaller linear system can be solved very quickly after calculating \mathbf{A}_{up} once. However, the number of root nodes might be limiting since it is necessary to explicitly calculate \mathbf{A}^{-1} .

For including the perirhizal model in the aggregated approach (Eqn 35) the total potential \mathbf{H}_x^{soil} can be calculated from \mathbf{q}_{soil} summing up Eqn (11) over the soil cells:

$$\mathbf{M} \mathbf{q}_{root} = \mathbf{M} \text{diag}(\mathbf{K}_r)(\mathbf{H}_{sr} - \mathbf{H}_x) \quad (36)$$

$$\mathbf{M} \mathbf{q}_{root} = \mathbf{M} (\text{diag}(\mathbf{K}_r)^{-1} + \text{diag}(\mathbf{K}_{prhiz})^{-1})^{-1} (\mathbf{H}_s - \mathbf{H}_x) \quad (37)$$

$$\mathbf{q}_{soil} = \mathbf{M} \text{diag}(\mathbf{K}_r)(\mathbf{M}^T \mathbf{H}_{sr}^{soil} - \mathbf{M}^T \mathbf{H}_x^{soil}), \text{ yielding} \quad (38)$$

$$\mathbf{H}_x^{soil} = \mathbf{H}_{sr}^{soil} - \underbrace{(\mathbf{M} \text{diag}(\mathbf{K}_r) \mathbf{M}^T)^{-1}}_{\mathbf{K}_{r,up} \in \mathbb{R}^{m \times m}} \mathbf{q}_{soil}. \quad (39)$$

A suitable pair \mathbf{H}_x^{soil} and \mathbf{H}_{sr}^{soil} (both on soil element level) is found using a fixed point iteration as before for values per segment:

Algorithm 2 Fixed point iteration to find consistent values \mathbf{H}_x^{soil} and \mathbf{H}_{sr}^{soil}

Initialize: $k := 0$, $\mathbf{H}_x^{soil,0} := h_{soil}(q_{soil}(\mathbf{H}_{sr}^{soil,prev}))$, applying Eqn (35) first, and then Eqn (39)

- (1) $\mathbf{H}_{sr}^{soil,k+1} := f_{prhiz}(\mathbf{H}_x^{soil,k}, \mathbf{H}_s)$, Eqn (27), with averaged root and perirhizal radii per soil volume (3D) or soil layer (1D).
 - (2) $\mathbf{H}_x^{soil,k+1} := h_{soil}(q_{soil}(\mathbf{H}_{sr}^{soil,k}))$, , applying Eqn (35) first, and then Eqn (39)
 - (3) $k := k + 1$, proceed with Step (1), until $\mathbf{H}_x^{soil,k+1} \approx \mathbf{H}_x^{soil,k}$ and $\mathbf{H}_{sr}^{soil,k+1} \approx \mathbf{H}_{sr}^{soil,k}$
-

2.6 Upscaling by root architecture simplification - The parallel root system approach (Cxx)

In a further simplification step we replace the exact root system by a parallel root system, where we assume exactly one single root segment per soil element (Vanderborght et al., 2021). Each of these segments is connected directly to the root collar by an artificial root segment, see Figure 4. The RWU of such a system is described by

$$395 \quad \mathbf{q}_{soil} = K_{rs} \text{diag}(\mathbf{SUF}^{ups}) (\mathbf{H}_{sr}^{ups} - \mathbf{H}_{collar}), \quad (40)$$

where \mathbf{q}_{soil} is the RWU per soil volume [cm³/day], K_{rs} the standard uptake fraction, \mathbf{H}_{sr}^{ups} is the total potential at the soil root interface and \mathbf{H}_x^{ups} the total xylem potential of the parallel root system model. [cm], and \mathbf{H}_{collar} is a vector where each component is the total water potential at root collar [cm].

400 Root hydraulic parameters of the parallel root model are chosen in a way that the macroscopic hydraulic properties of the exact root system are preserved. These properties are the root system conductance K_{rs} [cm²/day], the standard uptake fraction \mathbf{SUF}^{ups} [1], the total root length l_{root}^{ups} [cm], total root surface surf^{ups} [cm²] and root radial conductance \mathbf{K}_r^{ups} [cm²/day] per each soil element. These models are of category Cxx. This model is simpler than Bxx, as the general incidence matrix representing the hydraulic root architecture and mapped to the soil elements is replaced by a simple diagonal matrix.

405 This results in a computationally less expensive simulation at the cost of loss of accuracy, particularly noticeable for highly heterogeneous soil water potentials, as hydraulic lift can only occur via a 'detour' via the root collar.

First, we obtain ~~SUF, length, surface~~ \mathbf{SUF}^{ups} , ~~root length~~ l_{root}^{ups} , ~~surface~~ surf^{ups} and root radial conductance \mathbf{K}_r^{ups} per soil element by summing the corresponding values given per each root segment over each soil layer or soil volume,

$$410 \quad \mathbf{SUF}^{ups} := \mathbf{M} \mathbf{SUF} \quad (41)$$

$$l_{root}^{ups} := \mathbf{M} l_{root} \quad (42)$$

$$\text{surf}^{ups} := \mathbf{M} \text{surf} \quad (43)$$

$$\mathbf{K}_r^{ups} := \mathbf{M} \mathbf{K}_r, \quad (44)$$

where \mathbf{M} is a $m \times (n - 1)$ matrix mapping each root node index to a soil cell index as described in the previous section.

415 Therefore, \mathbf{SUF}^{ups} , ~~l_{root}^{ups}~~ , \mathbf{a}^{ups} , and \mathbf{K}_r^{ups} are $m \times 1$ vectors where m is the number of soil layers.

Next, we choose the axial conductance \mathbf{K}_x^{ups} of the artificial segments, that connect the single root segments to the collar, in such a way, that the macroscopic root system hydraulic properties \mathbf{SUF} and K_{rs} are the same as in the exact hydraulic model. For each soil layer the RWU can be described as

$$420 \quad (\mathbf{q}^{soil})_i = K_{rs} \mathbf{SUF}_i^{ups} \left((\mathbf{H}_{sr}^{ups})_i - H_{collar} \right) \quad (45)$$

$$= K_{r,i}^{ups} \left((\mathbf{H}_{sr}^{ups})_i - (\mathbf{H}_x^{ups})_i \right) \quad (46)$$

$$= K_{x,i}^{ups} \left((\mathbf{H}_x^{ups})_i - H_{collar} \right), \quad (47)$$

where \mathbf{H}_x^{ups} is the total xylem potential of the parallel root system model [cm]. From these equations, we can calculate \mathbf{K}_x^{ups} as

$$425 \quad (\mathbf{K}_x^{ups})_i = \frac{K_{rs} \mathbf{SUF}_i^{ups}}{1 - K_{rs} \mathbf{SUF}_i^{ups} / K_{r,i}^{ups}}, \quad (48)$$

using $K_{rs} \mathbf{SUF}_i / K_{r,i}^{ups} = (H_{sr,i}^{ups} - H_{x,i}^{ups}) / (H_{sr,i}^{ups} - H_{collar})$ from Eqns (45) and (46).

We use the same iteration as in Algorithm 1 but the exact root architecture is replaced by the parallel root model. We iterate to find a suitable pair of \mathbf{H}_{sr}^{ups} and \mathbf{H}_x^{ups} .

Algorithm 3 Fixed point iteration to find consistent values \mathbf{H}_{sr}^{ups} and \mathbf{H}_x^{ups}

Initialize: $k := 0$, $\mathbf{H}_x^{ups,0} := f_{root}(\mathbf{H}_{sr}^{ups,prev})$, see Eqn (15)
0: $\mathbf{H}_{sr}^{ups,k+1} := f_{prhiz}(\mathbf{H}_x^{ups,k}, \mathbf{H}_s^{ups})$, see Eqn (27)
0: $\mathbf{H}_x^{ups,k+1} := f_{root}(\mathbf{H}_{sr}^{ups,k})$, see Eqn (15)
0: $k := k + 1$, and proceed with Step (1). until $\mathbf{H}_x^{ups,k+1} \approx \mathbf{H}_x^{ups,k}$ and $\mathbf{H}_{sr}^{ups,k+1} \approx \mathbf{H}_{sr}^{ups,k}$

430 With the parallel root system approach the exact root architecture and hydraulic properties can be neglected, while K_{rs} and \mathbf{SUF}^{ups} are still preserved. The simplified model is typically much faster to solve having less than 1% of the degrees of freedom of the original root system. Furthermore, root hydraulics is solely depend on the parameters K_{rs} , \mathbf{l}^{ups} , \mathbf{a}^{ups} , and \mathbf{K}_r^{ups} , which are much easier to handle compared to the full hydraulic model. At a constant total soil potential the approximation will be exact, but we expect differences in dynamic settings where strong variations in soil potentials can appear.

435 2.7 Root soil hydraulic scenarios

Root hydraulic properties are given by the root radial ~~conductivities~~ and root axial conductances. These values were taken from literature (Knipfer and Fricke, 2010) for spring barley using linear regression, and (Couvreur et al., 2012) for maize. The hydraulic properties depend on the age of the root segments, see Figure 5. For both measurements axial conductances increase with root age, while radial conductances decrease. Soil hydraulic properties were described by the van Genuchten model
440 (Van Genuchten, 1980). We obtained typical parameters for loam, clay, and sandy loam using the Hydrus 1D soil catalog

(Simunek et al., 2005), see Table 2.

In order to simulate field conditions, we consider the root architectures of spring barley and maize in a periodic domain. In this way we have to contrasting set-ups: For spring barley, we choose an inter-row distance of 13 cm and plant spacing of 3
445 cm. For maize, we choose a larger inter-row distance of 76 cm and plant spacing of 16 cm. We consider both plants at the end of their vegetative stage, resulting in a growth period of 7 weeks for spring barley and 8 weeks for maize.

All the following scenarios include nonlinear conductivities from the perirhizal model. The simulations describe water depletion from an initially wet soil of -200 cm total soil water potential using a transpiration rate of 0.5 [cm/day] with a
450 sinusoidal shape from 6 am to 6 pm with maximal transpiration at noon, and no uptake during night. Actual RWU and corresponding cumulative uptake is calculated over two weeks. -At the top and bottom of the soil domain, we prescribe no-flux boundary conditions, so that water can leave the domain only through transpiration. In the 3D scenarios, the boundary conditions at the sides are periodic.

3 Results

455 In the following we first present the simulation results of root architecture, and the corresponding precomputed perirhizal outer radii. Then we show simulation results of the root hydraulic models using the dynamic scenarios presented in Section 2.7. The implementation of the new up-scaled models was performed in the framework of CPlantBox and dumux-rosi, and the following results can be found in the branch 'upscaling'.

460 3.1 Root architectures for spring barley and maize

Figure 6 shows the root architecture development after 7 weeks for spring barley and after 8 weeks for maize, and illustrates the concept of using periodicity to mimic field conditions. The roots axial resolution is set to a maximum of 0.5 cm yielding a final amount of 6.92×10^3 nodes for the spring barley and 4.82×10^4 segments for the maize root system.

465 From root topology and root hydraulic parameters at segment level (see Section 2.7) we calculated the macroscopic root system hydraulic parameters K_{rs} , ~~and~~ SUF , see left lower subplots in Figure 6. Spring barley has a K_{rs} of 0.0064 [cm²/day] and maize of 0.1345 [cm²/day].

3.2 Perirhizal outer radii

Perirhizal outer radii are precomputed for both root systems. The first approach (xAx, see Section 2.4) is using a Voronoi
470 mesh that is aligned to the soil grids, i.e., the maximum Voronoi cell volume is equal to soil cell volume. Figure 7 shows the distribution of perirhizal outer radii top soil 0-30 cm depth and subsoil 30-150 cm depth. Note that the perirhizal radius can

be larger than $\sqrt{vol_{soil}/\pi}$ if the root segment length is small, see Eqn (29). In both root architectures root density in the top soil is higher leading to a smaller mean outer perirhizal radius in the top soil. For spring barley mean outer radius is 0.51 cm (3D) and 0.71 cm (1D) in topsoil, and 0.53 cm (3D) and 0.92 (1D) in subsoil; for maize 0.47 (3D), 0.65 (2D), 0.75 (1D) cm in topsoil, and 0.55 (3D), 0.92 (2D), 1.14 (1D) cm in subsoil. A reduction in dimensions of the soil grid generally leads to higher mean outer perirhizal radii.

The second approach (xBx, see Section 2.4) uses root length, surface or volume densities to compute the perirhizal outer radii. Figure 8 shows the distribution of perirhizal outer radii in top and subsoil based on length densities for the soil grid types used in the simulations. As for the Voronoi method top soil mean outer radii are smaller due to higher root density: 0.43 (3D), 0.72 (1D) cm for spring barley and 0.42 (3D), 0.65 (2D), 1.05 (1D) cm for maize. For sub soil mean radii are 0.51 (3D), 1.02 (1D) cm for spring barley, and 0.49 (3D), 0.93 (2D), 1.5 (1D) cm for maize. For the 1D soil layers the histogram is strongly divided into radii classes because the limited number of soil layers, where most smaller outer radii are located in the upper layers. For 1D soil grids we expect the largest deviation in model results compared to using the Voronoi method.

3.3 Root soil hydraulic simulation results

3.3.1 Full hydraulic model where using a 3D grid (AAA) compared to a lower dimensional grid (AAB)

The full hydraulic 3D model is solved as described in Section 2.3 and perirhizal radii were determined using the Voronoi method (see Section 2.4) for the scenarios presented in Section 2.7. We compare using a 3D macroscopic soil with a resolution of 1 cm³ (reference scenario AAA) to using a 1D macroscopic soil with layers of 1 cm thickness (AAB), where only the vertical water movement is considered. Figure 9 shows the resulting soil matric potential for maize in loam soil after 2 weeks of simulation time, and highlights the difference between the 3D grid and the 1D grid where horizontal water movement is neglected. Using a 3D grid (left subplot) shows the development of local water depletion around areas with high RLD, while using a 1D grid (right subplot) relies on averaged values per layer.

The actual and cumulative transpiration is presented in Figure 10 for the three soil types. The solid curve represents the reference scenario (AAA), the dashed line the scenario using a 1D macroscopic soil grid (AAB). Additionally, for maize the dotted line shows the solution using a 2D macroscopic grid, where water movement along the plant rows is neglected. Generally, for maize water stress occurred earlier compared to spring barley for loam and clay. For sandy loam both root systems were immediately in stress. The differences in cumulative root uptake are much higher for maize, since there is more variation in RLD due to the distance between the planting rows. Using a 2D macroscopic grid, where water movement in this direction is enabled, yields an improved accuracy. For spring barley RLD is much more uniform due to smaller planting distances, and therefore the error by neglecting lateral water movement is small. Additionally, the differences are smaller in

finer textured soils since they redistribute the water over larger distances so that the soil water potential is more uniform.

505

A lower dimensional soil grid leads to an overestimation of RWU compared to the full 3D model. For spring barley after one week cumulative root uptake differed 1% for loam, 0.7% for clay, and 12.5% for sandy loam, after two weeks the error increases to 1.6% for loam, 1.7% for clay and 13.9% for sandy loam. For maize cumulative transpiration is largely overestimated using a 1D soil grid. After one week simulation time it differed 43.5% for loam, 28.1% for clay, and 115.1% for sandy loam, after two weeks 62.4% for loam, 42.5% for clay, and 110.8% for sandy loam. Using a 2D soil grid errors for maize reduced to 13.3% for loam, 8% for clay, and 45.5% for sandy loam after one week, and 13.4%, 8.4%, and 34.9% after two weeks.

510

Figures 11 and 12 show the RWU of spring barley and maize from soil at noon (top row) and redistribution during night (bottom row) for the three soil types. Solid lines represent the results using a 3D soil grid (AAA), while dashed lines use a 1D grid (AAB). The different root architectures result in different RWU patterns. In the beginning (blue line) the RWU is proportional to the SUF since the initial ~~soil-total~~ total soil water potential is constant. First, water is taken up from the upper layers, later when the upper layer becomes drier, more water is taken up from the lower layers, qualitatively changing the shape of the RWU profile. During night water is redistributed from the lower layers into the upper layers. Redistribution is strongest for clay for both, spring barley and maize, and negligible for sandy loam.

520

Using a 1D soil grid leads to differences in RWU patterns: For spring barley the differences are small in all soil types over the whole period of two weeks. Differences in maize are strong due to the overestimated cumulative transpiration (see right column Figure 10), which also impacts the local uptake. For loam and clay soil uptake from the upper layer is largely overestimated at the beginning leading to a delayed dynamic in water uptake and redistribution. For loam and clay the RWU is proportional to the SUF for the first two days until the profile changes due to soil water depletion in the upper layers.

525

While introducing errors, computational time decreases. For spring barley the model runs 5 times faster for loam and clay, and 3 times for sandy loam. For maize the speed up compared to the 3D soil grid is higher, since the 3D domain is larger, yielding a speed up of 15 times for loam, 18 times for clay, an 11 times for sandy loam for the 1D grid, and 8 times for loam and clay, and 10 times for sandy loam for the 2D grid.

530

3.3.2 The impact of using density based outer perirhizal radii instead of the Voronoi method (AAA vs. ABA, and AAB vs. ABB)

We compare the full hydraulic model using the 3D macroscopic soil and Voronoi method for the outer perirhizal radii (AAA) to the same model, where the outer radii were based on root length, surface or volume (ABA). Actual transpiration and the shape and dynamics of the resulting RWU were similar, and errors of cumulative transpiration were under 1% after two weeks.

535

Given their similarities, this information isn't plotted.

The approximation has a stronger impact on the results in 1D, because the soil layers are much larger than the soil volumes in 3D, and root length, surface or volume densities are constant in each of these soil volumes. Figure 13 shows a comparison between the full hydraulic 3D model in a 1D soil grid using Voronoi method (AAB) and an approximation based on densities (ABB). The choice to calculate outer radii based on root length, surface or volume showed negligible differences on the overall cumulative root uptake, with exception of maize in loam soil: Radii based on length densities overestimate the cumulative flux for 1%, while it is underestimated for 6% based on surface or volume. For spring barley the difference between Voronoi and density based methods is small. After two weeks cumulative flux is underestimated less than 1% for loam and clay, and 3.1% for sandy loam. For maize the differences are stronger leading to an error of approximately 6% for loam using surface or volume densities (1.2% for length), 5% for clay, and 16% for sandy loam.

~~Figures ?? and ?? show the RWU from~~ The shape and dynamics of RWU are similar for spring barley. For maize small deviations can be observed around day 6 for loam and clay. For clay soil the error increases leading to less water redistribution using the approximation. For sandy loam RWU is strongly underestimated in the beginning of the simulation but RWU profiles become more similar for later simulation times (day 6 and day 13). RWU profiles for springbarley and maize are given in SI Figures 1 and 2, showing soil at noon (top row) and redistribution during night (bottom row) for spring barley and maize using a 1D grid for the three soil types comparing the two different methods of ~~determination of calculating the~~ perirhizal radii, using Voronoi method, or based on RLD. Solid lines represent the results using Voronoi method (AAB), and dashed lines use outer radii based on RLD (ABB). ~~Figure ?? shows that for spring barley the shape and dynamics of RWU are similar. For maize (Figure ??) small deviations can be observed around day 6 for loam and clay. For clay soil the error increases leading to less water redistribution using the approximation. For sandy loam RWU is strongly underestimated in the beginning of the simulation but RWU profiles become more similar for later simulation times (day 6 and day 13).~~

560

The Voronoi method is computational expensive, but the outer radii can be precomputed. Therefore, there is no speed up in simulation time using the density based methods. The approximation using density based outer radii is very accurate regarding RWU but needs review for more complex rhizosphere models, e.g. including root solute uptake.

3.3.3 Full hydraulic model (ABB) compared to the upscaled root hydraulic model (BBB)

In the next step we replace the full 3D hydraulic model with a 1D grid (ABB) by the aggregated model (BBB) (see Section 2.5), and compare plant actual and cumulative transpiration, see Figure 14. The approximation works very well for loam and clay: for spring barley the error is less than 0.8%, for maize less 1.9% for loam and 5.7% for clay after two weeks. For sandy loam the cumulative transpiration is underestimated for around 20% for spring barley and 9.5% for maize. This indicates that in the case of sandy loam the variation in root xylem potentials across one soil layer is high, and therefore, we introduce a

570 larger error by using the same total potential at the root-soil interface and the xylems for each layer, see approximation Eqn (34).

~~Figure ?? Figure ?? presents the~~ The RWU profiles for spring barley and maize ~~. It reveals reveal~~ that aggregation works well for loam and clay. However, for sandy soil the profiles show qualitative differences, strongly underestimating RWU in the lower soil layers for both plants and in the case of maize initially overestimating RWU in the upper layers. RWU profiles are presented in SI Figures 3 and 4.

575 Compared to the full 3D root hydraulic model using a 1D soil grid (ABB), computation time was 6-8 times faster for spring barley, and 75-100 times faster for the maize using the aggregated model. Generally, the speed up of the method is mainly dependent on the number root of segments, which is reduced to the number of soil elements. The total speed up of aggregated model in a 1D soil (BBB) compared to the full hydraulic model using a 3D soil grid (ABA) is around 25 times for spring barley and 1000 times for maize.

3.3.4 Full hydraulic model (ABB) compared to the parallel root system (CBB)

As a further simplification, we replace the 3D full hydraulic root model using a 1D grid (ABB) by the parallel root model (CBB) (see Section 2.6). Figure 15 shows the actual and cumulative transpiration of spring barley and maize. For spring barley the parallel root system underestimates the actual transpiration. After two weeks the error of the cumulative transpiration is 11.9% for loam, 12.3% for clay, and 20.2% for sandy loam. For the maize root system the actual transpiration is overestimated with errors of 1.7%, 6.4% and 30.4% for loam, clay, and sandy loam.

590 ~~Figure ?? and Figure ?? show the RWU profiles for the parallel root system model for spring barley and maize.~~ For loam and clay ~~the profiles look very~~ RWU profiles look similar, for spring barley redistribution is shifted upwards after day 6. As in the case of the aggregated model, sandy loam has the largest error. RWU profiles for the parallel root system model for spring barley and maize are given in SI Figure 5 and 6.

595 The computational speed up of the parallel root system model (CBB) compared to the full hydraulic model (ABB) is similar of the speed up of the aggregated model. The reason for this is that in both models the degrees of freedom are proportional to the number of soil layers. Compared to the full root hydraulic model, computation time was 7-8 times faster for spring barley and 96-126 times faster. The total speed up of the parallel model in a 1D soil (CBB) compared to the full hydraulic model using a 3D grid (ABA) is around 30 times for spring barley and 1180 times for maize.

600

The advantage of the parallel root system is that the number of parameters are small compared to the full hydraulic model or the aggregated model. The root system hydraulic properties are solely described by SUF , length l , root surface $surf$, and radial conductivity K_r per soil layer, see Section 2.6, which can be easily managed by larger scale models.

4 Discussion

605 The right spatial and temporal scale of a mathematical model is often a balance between accuracy and efficiency. Equally important, small scale mechanistic models are often hard to parameterize and not feasible for larger scale applications (Roose and Schnepf, 2008). In this study we showed step by step how to develop larger scale models, from fully parameterized mechanistic hydraulic root-soil interaction models, such as presented by Schnepf et al. (2023, 2020). We analyse the increase of efficiency by each upcaling step, the error that is introduced, and the number of model parameters that are needed. Tables 3, 610 and 4 show the errors and the corresponding speed ups introduced by the upscaled models for spring barley, and maize using a 1D grid or 2D grid. Results suggest that the error introduced by the upscaling steps depend on the root architecture as well as the root and soil hydraulic properties. [The root hydraulic architectures in our simulations were in range with values for maize \(Meunier et al., 2019\) and cereals \(Baca Cabrera et al., 2024\).](#)

615 Reducing the dimensionality of the macroscopic soil model from 3D to 1D (AAA vs. AAB) works well if lateral water movement can indeed be neglected. This is the case if roots are evenly distributed with similar root hydraulic properties (Couvreur et al., 2014). Furthermore, even if the roots are evenly distributed, they also need to be sufficiently dense, depending on the soil hydraulic conductivity. Otherwise, isolated depletion zones can develop which would lead to horizontal fluxes in the 3D soil domain that are not represented in the 1D soil layer. For spring barley this worked well for loam and clay, but 620 for sandy loam we observed a larger error due to low soil conductivity. For maize errors were larger due to its non-uniform root distribution. Generally, the accuracy of 1D soil models is dependent on the inter-row and planting distance. In the maize scenario root density strongly varies in the direction between two plant rows. Therefore, to maintain a more precise model it is recommendable to neglect only one dimension, keeping the direction orthogonal to the the planting row, and averaging along the direction of the planting row, where changes of root density are expected to be smaller. In case of maize using a 2D 625 macroscopic soil model reduced the error, with a speed up between five to ten times dependent on the soil type (see Table 4).

We used a new method to determine the outer radii of the perirhizal zones based on Voronoi diagrams in 3D similar as Kohl et al. (2007) did for 2D root observations in trenches. We compared these more exact results to the common approach calculating the radii based on length, surface or volume densities (AAB vs. ABB), e.g. (Schröder et al., 2008; Van Lier et al., 630 2006). Generally, the approximation using densities works very well with negligible impact for 3D soil grids, and stronger impact using 1D soil layers. In the 1D case, using the Voronoi approach leads to higher radii at the root tips, since the Voronoi cell volumes are statistically larger at the root tip nodes where a small root segment has access to a large soil volume. Thus, those parts of the root system with a higher root radial conductance have access to a larger soil volume compared to the uniformly distributed roots, leading to an increased actual transpiration. Since restricting the model to vertical movement leads 635 to an overestimation of actual transpiration, the underestimation of actual transpiration of the more classical approaches seems beneficial. Overall, we showed that perirhizal radii based on length, surface, and volume densities introduced only a small error compared to the other upscaling steps. For both plants the sandy loam scenario lead to the highest discrepancies in cumulative

plant uptake because low soil conductivity leads to steeper gradients in the rhizosphere, and generally increases the importance of the perirhizal zones.

640

Upscaling by aggregating RWU from root segment to soil element level was introduced by Couvreur et al. (2012) not considering any perirhizal conductance's. In this case the total potential at the soil root interface is the same for all root segments in each soil layer in the full hydraulic model and the aggregated one. Vanderborgh et al. (2023) included perirhizal conductance's which leads to individual total potentials at the soil root interface for the full hydraulic model, and aggregation leads to the additional assumption that these total potentials at the soil root interface are equal in each soil layer. In this study we tested this assumption for the first time in dynamic settings. The approximation performs well in loam and clay soil because of the higher soil conductivity with relative errors less than 1% for spring barley (0.04 mm and 0.05 mm absolute error) and maize (+0.5 mm absolute error for 1D, and -1.7 mm and -0.6 mm 2D) compared to reference scenario AAB. For sandy loam cumulative transpiration was underestimated around 23% for both plants (5.9 mm for spring barley, and -3.9 mm for maize 1D and -2.5 mm 2D), see Tables 3 and 4. The speed up of the method is dependent on the number of segments within the root system. Depending on soil type the aggregated model is at least 26 times faster for spring barley and 1111 times faster for maize using a 1D grid and 28 times faster using a 2D grid.

In a further step we replaced the root architecture model with a parallel root model to obtain a more efficient model with less parameters, which is easier to parameterise and can be used in an easier way by larger scale models (Vanderborgh et al., 2024). It relies only on the root system conductivity K_{rs} and values given per soil layer (SUF , length l , root surface $surf$, and radial conductivity K_r) and needs no additional information on root system topology. Results are exact when the soil-root interface potentials are uniform. For non-uniform soil-root interface potentials, the uptake compensation is not exact anymore. Under the dynamic depletion scenarios this approach lead to an underestimation of cumulative uptake for spring barley and an overestimation for maize, owing to different root hydraulic properties. The parallel model (CBB) is an efficient approximation with the largest speed ups where the lumped parameters are derived from the mechanistic parameters of the detailed model (AAA).

Within the perirhizal zone the steep gradients in water potential towards the roots are described using the steady rate approach of Schröder et al. (2008). We emphasize that this analysis of upscaling methods could be done with more complex rhizosphere models. The water potential near the root surface depends on a variety of biochemical processes leading to complex mechanistic models that are often hard to parameterise. Important rhizosphere processes affecting root water uptake include mucilage (Schwartz et al., 2016), root hairs (Duddek et al., 2023), mycorrhizal fungi (Püschel et al., 2020), or of the osmotic potential (Wang et al., 2023). They are often not explicitly described by model, but enter the model as effective or lumped parameters. Furthermore, one could aim to reduce the errors introduced by the dimensionality reduction, especially in row crops, e.g., by numerical homogenisation. In general, to obtain effective models and parameters, homogenisation procedure can be a valuable tool in model development (Hornung, 1996).

5 Conclusion

RWU is crucial for soil water balance and plant development. We describe soil-root hydraulics and dynamic root architecture in a mechanistic way and analyse upscaling methods to develop efficient sink terms for land surface or crop models.

In this study, we explored the mathematical fundamentals of the different upscaling approaches and the the impact of each simplifications step. Reducing the dimensionality of the macroscopic soil model from 3D to 1D (AAA vs. AAB) worked well if lateral water movement can indeed be neglected. This depended on root distribution, as well as root and soil hydraulic properties. Assuming homogeneously distributed roots to calculate the outer perirhizal radii provided accurate results regarding RWU (AAB vs. ABB), but needs review for more complex rhizosphere models. Generally, the approximation had a stronger impact using coarse 1D soil layers, which leads to an underestimation of actual transpiration of the actual transpiration. The exactly upscaled model (BBB) with uniform soil root interface water potentials offered a large speed up in computation time introducing only small errors compared to the error introduced by dimensionality reduction. The parallel root model (CBB) introduced slightly larger errors but can be implemented more easily in larger scale models due to lower number of model parameters.

This study highlights the importance of carefully considering the trade-offs between model complexity and accuracy. By pinpointing the sources of errors and understanding where they accumulate or cancel out, we provide guidance for choosing appropriate models based on the required performance and accuracy. This knowledge facilitates the development of new sink terms and enhances the reliability of RWU modeling in diverse agricultural and environmental contexts.

. The implementation of the up-scaled models was performed in the framework of CPlantBox and dumux-rosi and results can be found in the branch dumux-rosi branch 'upscaling'.

. JV initiated this study on quantifying accuracy and computational speed of efficient macroscopic sink terms including perirhizal resistance. Model implementation was done by DL and codes were revised by AS. All authors contributed to the conceptualization of the paper. DL mainly wrote the paper, which was critically reviewed by all co-authors.

. The authors declare that they have no conflict of interest.

. This project was partially funded by the BMBF in the frame of Rhizo4Bio (Phase 1): RhizoWheat - Rhizosphere processes and yield decline in wheat crop rotations, grant no. 031B0910B.

References

- 700 Baca Cabrera, J. C., Vanderborght, J., Boursiac, Y., Behrend, D., Gaiser, T., Nguyen, T. H., and Lobet, G.: The evolution of root hydraulic traits in wheat over 100 years of breeding, *bioRxiv*, <https://doi.org/10.1101/2024.10.10.617660>, 2024.
- Barba, L. A.: Defining the Role of Open Source Software in Research Reproducibility, *Computer*, 55, 40–48, <https://doi.org/10.1109/MC.2022.3177133>, 2022.
- Couvreur, V., Vanderborght, J., and Javaux, M.: A simple three-dimensional macroscopic root water uptake model based on the hydraulic architecture approach, *Hydrology and earth system sciences*, 16, 2957–2971, 2012.
- 705 Couvreur, V., Vanderborght, J., Beff, L., and Javaux, M.: Horizontal soil water potential heterogeneity: simplifying approaches for crop water dynamics models, *Hydrology and Earth System Sciences*, 18, 1723–1743, 2014.
- Couvreur, V., Faget, M., Lobet, G., Javaux, M., Chaumont, F., and Draye, X.: Going with the flow: multiscale insights into the composite nature of water transport in roots, *Plant physiology*, 178, 1689–1703, 2018.
- 710 De Bauw, P., Mai, T. H., Schnepf, A., Merckx, R., Smolders, E., and Vanderborght, J.: A functional–structural model of upland rice root systems reveals the importance of laterals and growing root tips for phosphate uptake from wet and dry soils, *Annals of botany*, 126, 789–806, 2020.
- de Willigen, P.: Uptake potential of non-regularly distributed roots, *Journal of Plant Nutrition*, 10, 1273–1280, <https://doi.org/10.1080/01904168709363656>, 1987.
- 715 de Willigen, P., van Dam, J. C., Javaux, M., and Heinen, M.: Root Water Uptake as Simulated by Three Soil Water Flow Models, *Vadose Zone Journal*, 11, vzj2012.0018, <https://doi.org/https://doi.org/10.2136/vzj2012.0018>, 2012.
- Doussan, C., Pagès, L., and Vercambre, G.: Modelling of the Hydraulic Architecture of Root Systems: An Integrated Approach to Water Absorption—Model Description, *Annals of Botany*, 81, 213–223, <https://doi.org/https://doi.org/10.1006/anbo.1997.0540>, 1998.
- Duddek, P., Ahmed, M. A., Javaux, M., Vanderborght, J., Lovric, G., King, A., and Carminati, A.: The effect of root hairs on root water uptake is determined by root–soil contact and root hair shrinkage, *New Phytologist*, 240, 2484–2497, <https://doi.org/https://doi.org/10.1111/nph.19144>, 2023.
- 720 Eloundou, F. B.: Parameterization of Root-Soil Interaction Models using Experimental Data, Ph.D. thesis, BTU Cottbus-Senftenberg, 2021.
- Giraud, M., Gall, S. L., Harings, M., Javaux, M., Leitner, D., Meunier, F., Rothfuss, Y., van Dusschoten, D., Vanderborght, J., Vereecken, H., et al.: CPlantBox: a fully coupled modelling platform for the water and carbon fluxes in the soil–plant–atmosphere continuum, in *silico* Plants, 5, diad009, 2023.
- 725 Good, S. P., Noone, D., and Bowen, G.: Hydrologic connectivity constrains partitioning of global terrestrial water fluxes, *Science*, 349, 175–177, <https://doi.org/10.1126/science.aaa5931>, 2015.
- Graefe, J., Prüfert, U., and Bitterlich, M.: Extension of the Cylindrical Root Model for Water Uptake to Non-Regular Root Distributions, *Vadose Zone Journal*, 18, 1–11, 2019.
- 730 Hornung, U., ed.: Homogenization and porous media, Springer-Verlag, Berlin, Heidelberg, ISBN 0387947868, 1996.
- Khare, D., Selzner, T., Leitner, D., Vanderborght, J., Vereecken, H., and Schnepf, A.: Root System Scale Models Significantly Overestimate Root Water Uptake at Drying Soil Conditions, *Frontiers in Plant Science*, 13, <https://doi.org/10.3389/fpls.2022.798741>, 2022.
- Knipfer, T. and Fricke, W.: Water uptake by seminal and adventitious roots in relation to whole-plant water flow in barley (*Hordeum vulgare* L.), *Journal of Experimental Botany*, 62, 717–733, 2010.

- 735 Koch, T., Heck, K., Schröder, N., Class, H., and Helmig, R.: A New Simulation Framework for Soil-Root Interaction, Evaporation, Root Growth, and Solute Transport, *Vadose Zone Journal*, 17, <https://doi.org/10.2136/vzj2017.12.0210>, 2018.
- Koch, T., Gläser, D., Weishaupt, K., et al.: DuMu^x 3 - an open-source simulator for solving flow and transport problems in porous media with a focus on model coupling, *Computers & Mathematics with Applications*, 81, 423–443, 2021.
- Kohl, M., Böttcher, U., and Kage, H.: Comparing different approaches to calculate the effects of heterogeneous root distribution on nutrient uptake: A case study on subsoil nitrate uptake by a barley root system, *Plant and Soil*, 298, 145–159, <https://doi.org/10.1007/s11104-007-9347-9>, 2007.
- Landl, M., Schnepf, A., Vanderborght, J., Bengough, A. G., Bauke, S. L., Lobet, G., Bol, R., and Vereecken, H.: Measuring root system traits of wheat in 2D images to parameterize 3D root architecture models, *Plant and Soil*, 425, 457–477, 2018.
- Louarn, G. and Song, Y.: Two decades of functional–structural plant modelling: now addressing fundamental questions in systems biology and predictive ecology, *Annals of Botany*, 126, 501–509, 2020.
- 745 Mai, T. H., Schnepf, A., Vereecken, H., and Vanderborght, J.: Continuum multiscale model of root water and nutrient uptake from soil with explicit consideration of the 3D root architecture and the rhizosphere gradients¹, *Plant and soil*, 439, 273–292, <https://doi.org/10.1007/s11104-018-3890-4>, 2019.
- Meunier, F., Heymans, A., Draye, X., Couvreur, V., Javaux, M., and Lobet, G.: MARSHAL, a novel tool for virtual phenotyping of maize root system hydraulic architectures, in *silico Plants*, 2, diz012, <https://doi.org/10.1093/insilicoplants/diz012>, 2019.
- 750 Postma, J. A., Kuppe, C., Owen, M. R., Mellor, N., Griffiths, M., Bennett, M. J., Lynch, J. P., and Watt, M.: OpenSimRoot: widening the scope and application of root architectural models, *New Phytologist*, 215, 1274–1286, 2017.
- Püschel, D., Bitterlich, M., Rydlová, J., and J., J.: Facilitation of plant water uptake by an arbuscular mycorrhizal fungus: a Gordian knot of roots and hyphae, *Mycorrhiza*, 2, 299–313, 2020.
- 755 Roose, T. and Schnepf, A.: Mathematical models of plant–soil interaction, *Philosophical Transactions of the Royal Society A: Mathematical, Physical and Engineering Sciences*, 366, 4597–4611, 2008.
- Ruhoff, A., de Andrade, B. C., Laipelt, L., Fleischmann, A. S., Siqueira, V. A., Moreira, A. A., Barbedo, R., Cyganski, G. L., Fernandez, G. M. R., Brêda, J. P. L. F., Paiva, R. C. D. d., Meller, A., Teixeira, A. d. A., Araújo, A. A., Fuckner, M. A., and Biggs, T.: Global Evapotranspiration Datasets Assessment Using Water Balance in South America, *Remote Sensing*, 14, <https://www.mdpi.com/2072-4292/14/11/2526>, 2022.
- 760 Schlesinger, W. H. and Jasechko, S.: Transpiration in the global water cycle, *Agricultural and Forest Meteorology*, 189–190, 115–117, <https://doi.org/https://doi.org/10.1016/j.agrformet.2014.01.011>, 2014.
- Schlüter, S., Blaser, S. R., Weber, M., Schmidt, V., and Vetterlein, D.: Quantification of root growth patterns from the soil perspective via root distance models, *Frontiers in Plant Science*, 9, 1084, 2018.
- 765 Schnepf, A., Leitner, D., Landl, M., Lobet, G., Mai, T. H., Morandage, S., Sheng, C., Zörner, M., Vanderborght, J., and Vereecken, H.: CRootBox: a structural–functional modelling framework for root systems, *Annals of Botany*, 121, 1033–1053, 2018.
- Schnepf, A., Black, C. K., Couvreur, V., Delory, B. M., Doussan, C., Koch, A., Koch, T., Javaux, M., Landl, M., Leitner, D., Lobet, G., Mai, T. H., Meunier, F., Petrich, L., Postma, J. A., Priesack, E., Schmidt, V., Vanderborght, J., Vereecken, H., and Weber, M.: Call for Participation: Collaborative Benchmarking of Functional-Structural Root Architecture Models. The Case of Root Water Uptake, *Frontiers in Plant Science*, 11, 316, 2020.
- 770

- Schnepf, A., Black, C. K., Couvreur, V., Delory, B. M., Doussan, C., Heymans, A., Javaux, M., Khare, D., Koch, A., Koch, T., et al.: Collaborative benchmarking of functional-structural root architecture models: Quantitative comparison of simulated root water uptake, in *silico Plants*, p. diad005, 2023.
- 775 Schröder, T., Javaux, M., Vanderborght, J., Körfggen, B., and Vereecken, H.: Effect of local soil hydraulic conductivity drop using a three-dimensional root water uptake model, *Vadose Zone Journal*, 7, 2008.
- Schwartz, N., Carminati, A., and Javaux, M.: The impact of mucilage on root water uptake—A numerical study, *Water Resources Research*, 52, 264–277, <https://doi.org/https://doi.org/10.1002/2015WR018150>, 2016.
- Simunek, J., Van Genuchten, M. T., and Sejna, M.: The HYDRUS-1D software package for simulating the one-dimensional movement of water, heat, and multiple solutes in variably-saturated media, University of California-Riverside Research Reports, 3, 1–240, 2005.
- 780 Soualiou, S., Wang, Z., Sun, W., de Reffye, P., Collins, B., Louarn, G., and Song, Y.: Functional–Structural Plant Models Mission in Advancing Crop Science: Opportunities and Prospects, *Frontiers in Plant Science*, 12, <https://doi.org/10.3389/fpls.2021.747142>, 2021.
- Van Genuchten, M.: Closed-form equation for predicting the hydraulic conductivity of unsaturated soils, *Soil Science Society of America Journal*, 44, 892–898, 1980.
- 785 Van Lier, Q. d. J., Metselaar, K., and Van Dam, J. C.: Root water extraction and limiting soil hydraulic conditions estimated by numerical simulation, *Vadose Zone Journal*, 5, 1264–1277, 2006.
- Vanderborght, J., Couvreur, V., Meunier, F., Schnepf, A., Vereecken, H., Bouda, M., and Javaux, M.: From hydraulic root architecture models to macroscopic representations of root hydraulics in soil water flow and land surface models, *Hydrology and Earth System Sciences*, 25, 4835–4860, 2021.
- 790 Vanderborght, J., Leitner, D., Schnepf, A., Couvreur, V., Vereecken, H., and Javaux, M.: Combining root and soil hydraulics in macroscopic representations of root water uptake, *Vadose Zone Journal*, p. e20273, 2023.
- Vanderborght, J., Couvreur, V., Javaux, M., Leitner, D., Schnepf, A., and Vereecken, H.: Mechanistically derived macroscopic root water uptake functions: The α and ω of root water uptake functions, *Vadose Zone Journal*, p. e20333, 2024.
- 795 Wang, T., Xu, Y., Zuo, Q., Shi, J., Wu, X., Liu, L., Sheng, J., Jiang, P., and Ben-Gal, A.: Evaluating and improving soil water and salinity stress response functions for root water uptake, *Agricultural Water Management*, 287, 108451, <https://doi.org/https://doi.org/10.1016/j.agwat.2023.108451>, 2023.
- Zhou, X.-R., Schnepf, A., Vanderborght, J., Leitner, D., Lacointe, A., Vereecken, H., and Lobet, G.: CPlantBox, a whole-plant modelling framework for the simulation of water- and carbon-related processes, in *silico Plants*, 2, 2020.

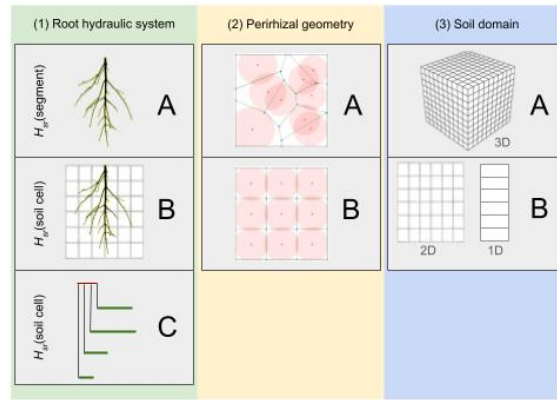


Figure 1. The first green column shows the simplification of RWU regarding the root architecture: full (A) full model, (B) exactly upscaled with uniform soil root interface water potentials per soil cell, (BC) parallel root model with uniform soil root interface water potentials (C). The second mid yellow column shows a 2D representation of the perirhizal radii computation (A) using Voronoi diagrams or (AB) or uniform perirhizal radii for all root segments in a soil element (B). The third left blue column describes the dimensionality of the macroscopic soil domain as 3D: (A) full 3D, or the (B) cases where we assume that the soil water potential does not change in specific directions (B).

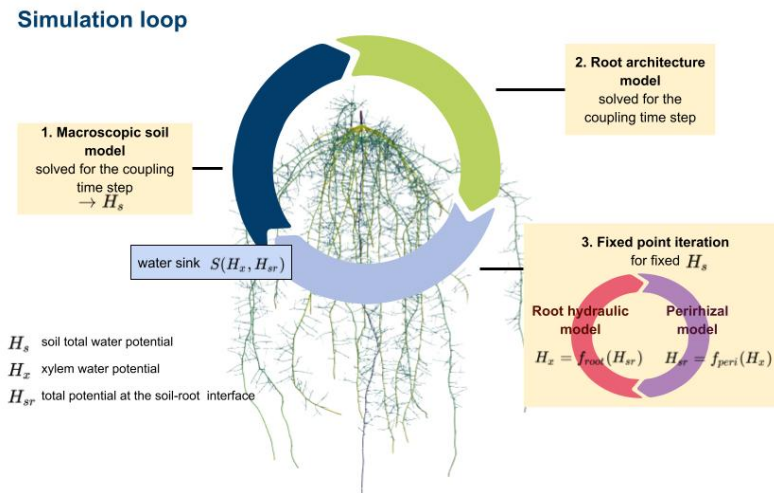


Figure 2. The main simulation loop first solves the macroscopic soil model yielding the total soil potential H_s , next optionally, root architectural development, and finally, finds consistent values for the total xylem water potential H_x and soil-root interface potentials H_{sr} using a fixed-point iteration. Sink terms are calculated from the potentials H_x and H_{sr} .

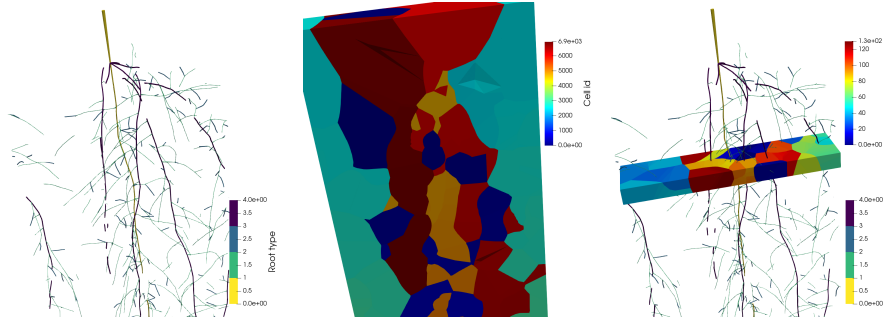


Figure 3. The left plot shows the spring barley root system mapped to a periodic domain. The mid plot shows the Voronoi diagram bounded by the periodic domain, where each Voronoi cell is located around a node. The right plot shows the Voronoi diagram of single layer with 1 cm height.

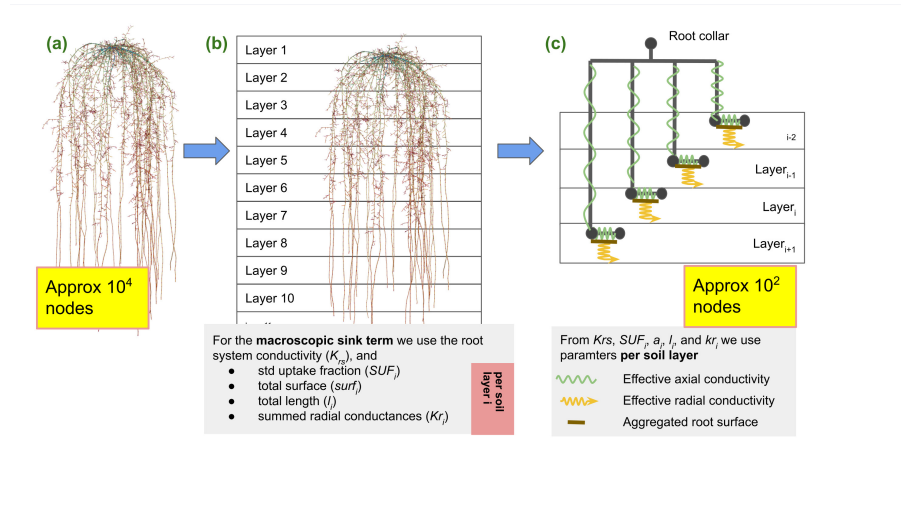


Figure 4. Starting from the full hydraulic model, subplot (a), we first derive the root system conductance K_{rs} and layer aggregated root hydraulic root properties, subplot (b). These are given for each soil layer or soil volume i as SUF_i^{ups} , total root surface $surf_i^{ups}$, total summed length l_i^{ups} and mean radial conductivity $K_{r,i}^{ups}$. In a final step, subplot (c) we neglect the actual root architecture and replace it by a parallel root system with hydraulic parameters preserving the macroscopic hydraulic properties.

Vertical RWU of spring barley using the full hydraulic 3D model during noon (top row) and redistribution during night (bottom row) of spring barley for loam (left column), clay (mid column), and sandy loam (right column) in a 1D soil grid. Solid lines represent the results using Voronoi method (AAB), while dashed lines use RLD-based outer radii (ABB).

Vertical RWU of the full hydraulic 3D model during noon (top row) and redistribution during night (bottom row) of maize for loam (left column), clay (mid column), and sandy loam (right column) in a 1D soil grid. Solid lines represent the results using Voronoi method (AAB), while dashed lines use RLD-based outer radii (ABB).

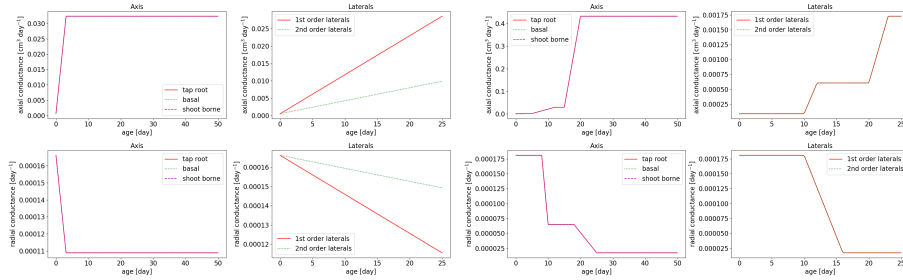


Figure 5. The age dependent root axial conductances and radial conductivities for spring barley (left sub-plot) and maize (right sub-plot).

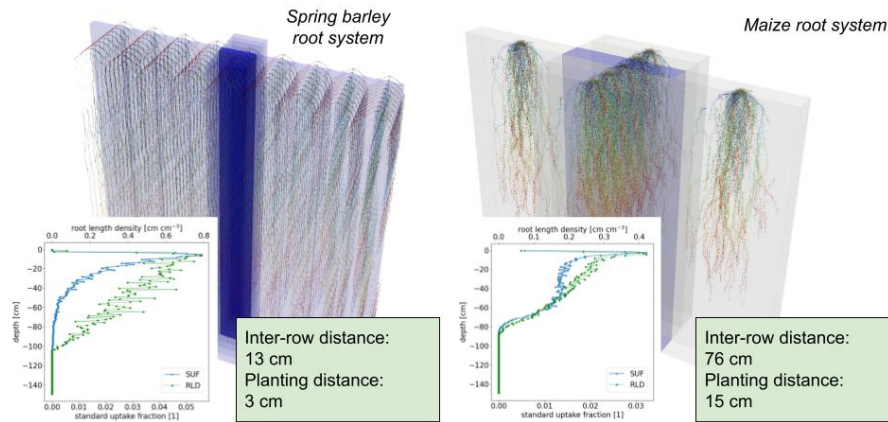


Figure 6. Spring barley (left-subplot) and maize (right-subplot) root architecture under field conditions, both at the end of their vegetative stage (after 7 weeks for spring barley, 8 weeks for maize). In the lower left subplots we show the corresponding *SUF* and root length density *RLD*.

Comparison of the full hydraulic model (ABB) with the aggregated model (BBB) for spring barley using a 1D soil grid. Vertical RWU during noon (top row) and redistribution during night (bottom row) of spring barley for loam (left column), clay (mid column), and sandy loam (right column):

Comparison of the full hydraulic model (ABB) with the aggregated model (BBB) for maize using a 1D soil grid. Vertical RWU during noon (top row) and redistribution during night (bottom row) of maize for loam (left column), clay (mid column), and sandy loam (right column):

Comparison of the full hydraulic model (ABB) and the parallel root model (CBB) for spring barley using a 1D soil grid. Vertical RWU during noon (top row) and redistribution during night (bottom row) of spring barley for loam (left column), clay (mid column), and sandy loam (right column):

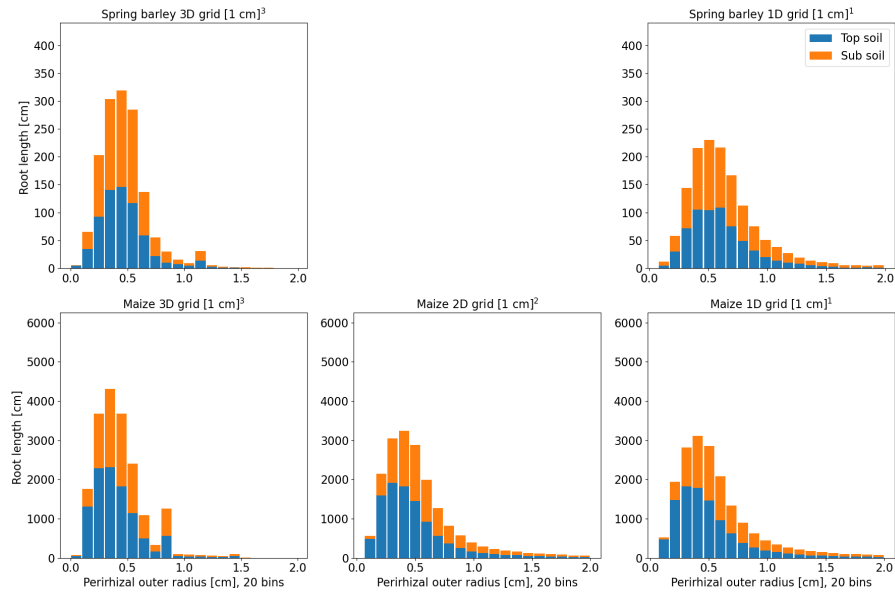


Figure 7. Histogram of perirhizal zone outer radii using a 3D Voronoi diagram for spring barley (top) and maize (right) for the soil grids used in the following sections. Colours denote typical soil horizons: top soil 0-30 cm depth, and subsoil 30-150 cm depth.

Comparison of the full hydraulic model (ABB) and the parallel root model (CBB) for maize using a 1D soil grid. Vertical RWU during noon (top row) and redistribution during night (bottom row) of maize for loam (left column), clay (mid column), and sandy loam (right column).

815

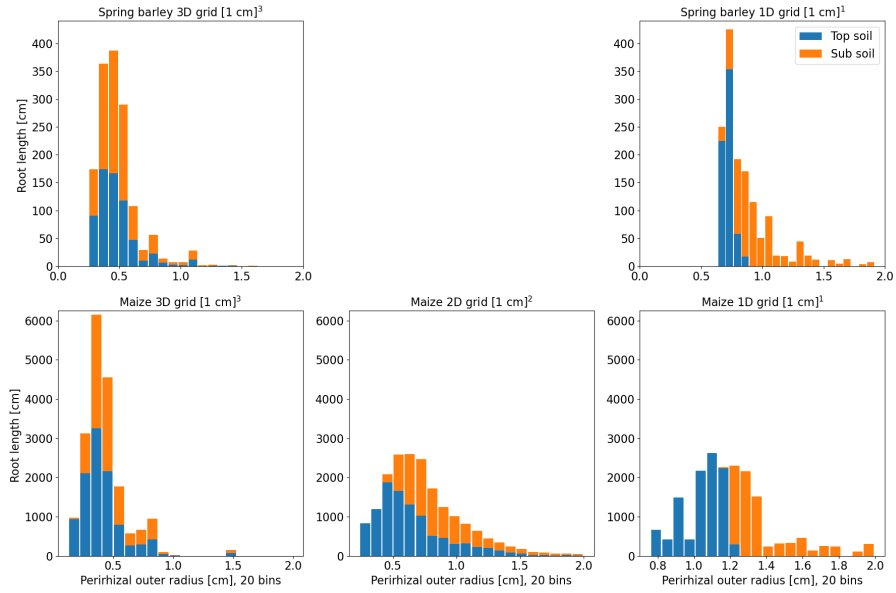


Figure 8. Histogram of perirhizal zone outer radii using root length densities to obtain perirhizal outer radii for spring barley (top) and maize (right) for the soil grids used in the following sections. Colours denote typical soil horizons: top soil 0-30 cm depth, and subsoil 30-150 cm depth.

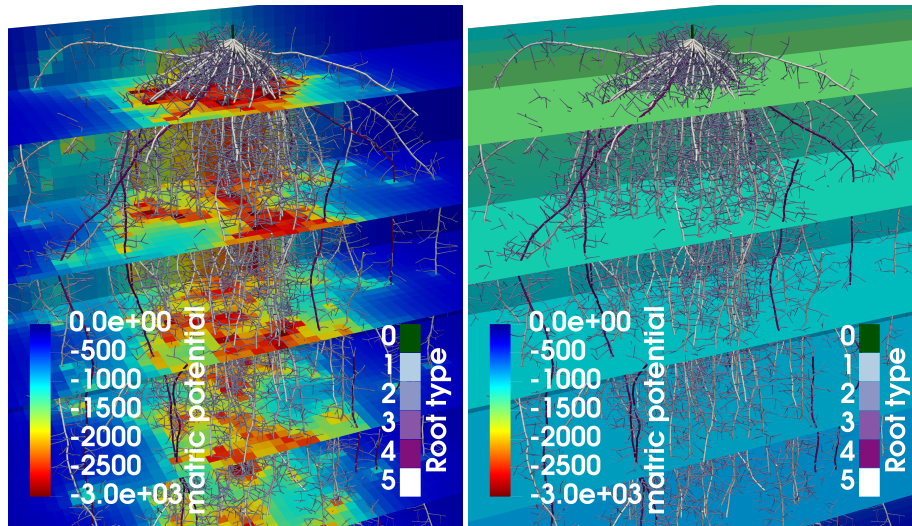


Figure 9. Soil matrix potential for maize in loam soil after 2 weeks of simulation time in a 3D grid (left subplot) and a 1D grid (right subplot). In the left subplot local depletion develops around areas with high RLD, while in the right subplot the water potential is constant per soil layer.

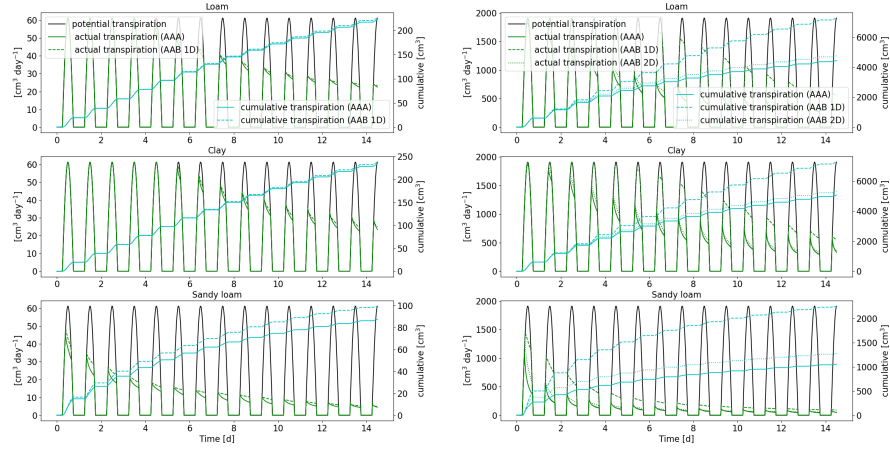


Figure 10. Potential and actual transpiration of the full 3D hydraulic model of spring barley (left) and maize (right) for the soil types loam (top), clay (mid) and sandy loam (bottom). The blue line indicates the cumulative plant water uptake. Solid lines represent the results using a 3D soil grid (AAA), while dashed lines are the results using a 1D grid, and dotted lines a 2D grid (AAB).

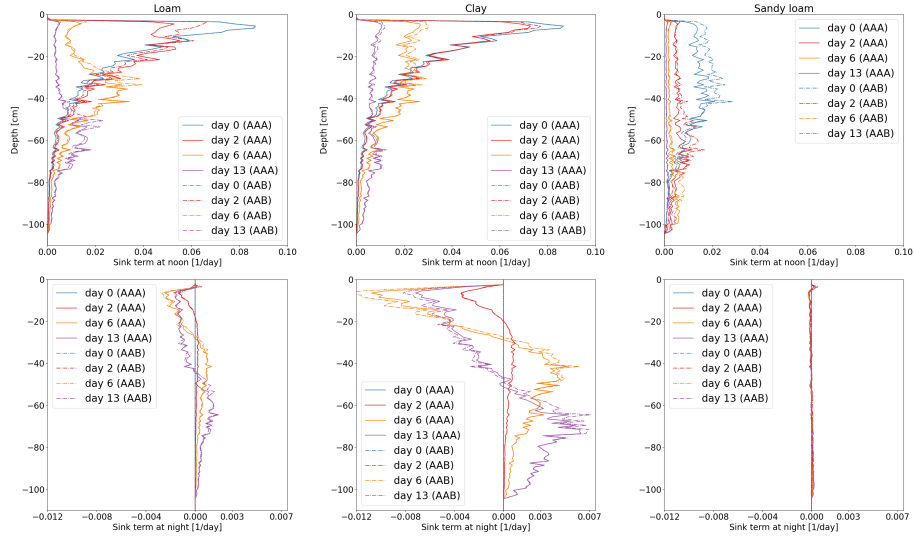


Figure 11. Vertical RWU of the full hydraulic 3D model during noon (top row) and redistribution during night (bottom row) of spring barley for loam (left column), clay (mid column), and sandy loam (right column). Solid lines represent the results using a 3D soil grid (AAA), while dashed lines use a 1D grid (AAB).

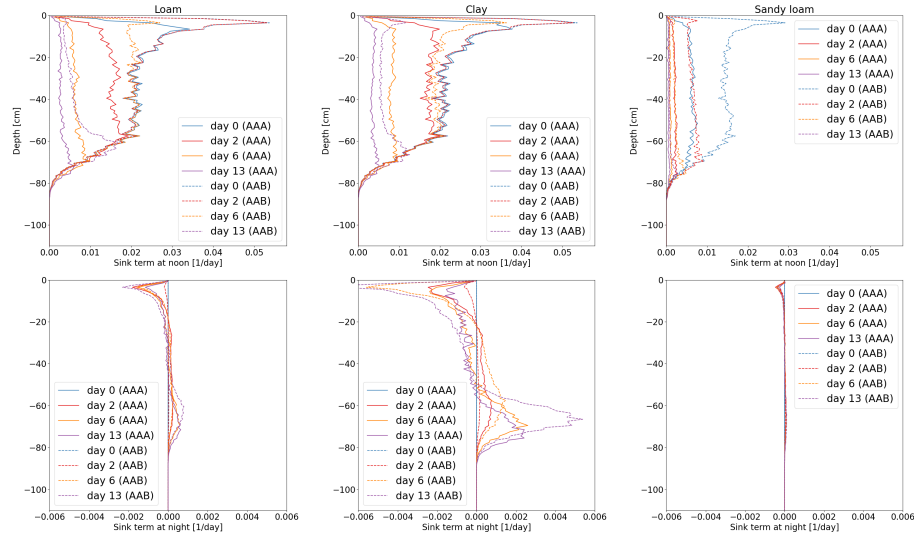


Figure 12. Vertical RWU of the full hydraulic 3D model during noon (top row) and redistribution during night (bottom row) of maize for loam (left column), clay (mid column), and sandy loam (right column). Solid lines represent the results using a 3D soil grid (AAA), while dashed lines use a 1D grid (AAB).

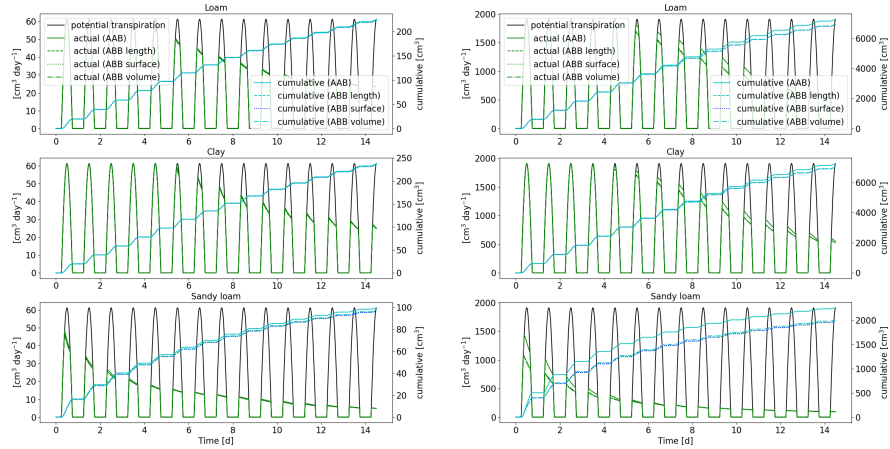


Figure 13. Potential and actual transpiration of the full hydraulic 3D model of spring barley (left) and maize (right) for the soil types loam (top), clay (mid) and sandy loam (bottom) in a 1D soil grid. The blue line indicates the cumulative plant water uptake. Solid lines represent the results using Voronoi method (AAB), while dashed lines use outer radii based on root length, surface or volume densities (ABB).

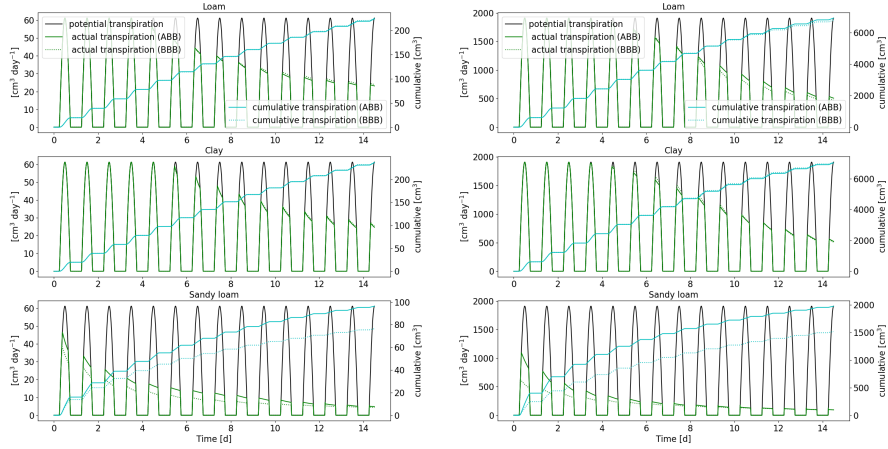


Figure 14. Comparison of the the full hydraulic model (ABB) to the aggregated model (BBB) using a 1D soil grid. Potential and actual transpiration of spring barley (left) and maize (right) for the soil types loam (top), clay (mid) and sandy loam (bottom). The blue line indicates the cumulative plant water uptake.

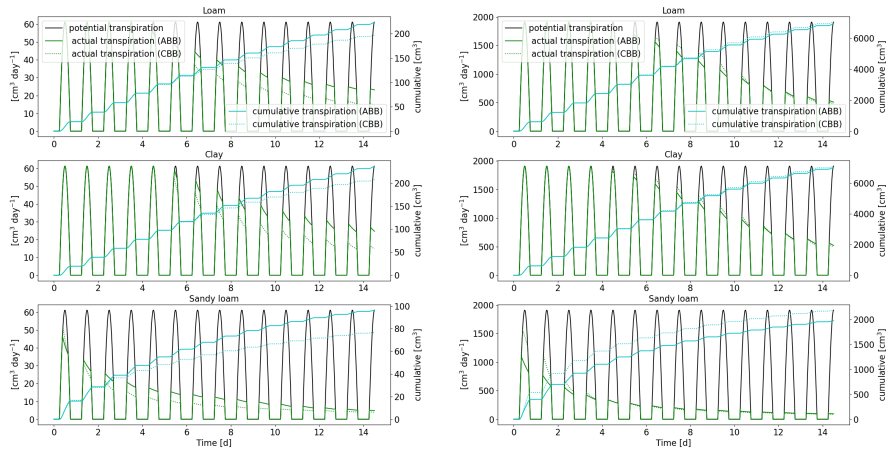


Figure 15. Comparison of the full hydraulic model (ABB) and the parallel root model (CBB) using a 1D soil grid. Potential and actual transpiration of spring barley is shown in the left sub-plot, maize in the right sub-plot. The blue line indicates the cumulative plant water uptake.

Table 1. Overview of parameter and variable names in alphabetical order

Name	Description	Units
a_{perhiz}	outer radius of the perirhizal zone	cm
a_{root}	root radius	cm
B	is a geometry factor	1
C	Incidence Matrix	1
$cell$	set containing the segment indices located in a finite volume grid cell	1
dl	segment length	cm
dx	axial resolution of the root architecture model	cm
H_{collar}	root collar water potential	cm
H_{eff}	the effective water potential at the soil root interface	cm
$H_{prescribed}$	prescribed water potential at the root collar	cm
H_s, h_s	soil total water potential, soil matric potential	cm
H_{sr}, h_{sr}	total potential at the soil root interface, matric potential at the soil root interface	cm
H_x, h_x	xylem total potential, xylem matric potential	cm
K	soil hydraulic conductivity	cm/day
K_{perhiz}	average hydraulic conductance	cm/day
k_r	root hydraulic conductivity	1/cm
K_{rs}	root system conductivity	cm ² /day
k_x	intrinsic root axial conductance	cm ³ /day
K_x	root axial conductance	cm ² /day
L	Laplacian matrix	cm ² /day
l_a	length of the apical zone	cm
l_b	length of the basal zone	cm
l_{delay}	apical delay time	day
l_{max}	maximal root length	cm
l_n	inter-lateral distance	cm
l_{root}	root length	cm
m	number of finite volume soil cells	1
M	matrix mapping root node index to soil cell index	1
n	number of nodes of the root system	1
$N(i)$	Set of nodes that are connected to node i	1
Φ	soil matric flux potential	cm ² /day
q, q_r, q_{sr}	water movement through the rhizosphere, root surface, or soil-root interface	cm ³ /day
q_{axial}	root axial water flow	cm ³ /day
q_{radial}	radial water uptake or loss by the roots per root length	cm ² /day
q_{root}	water uptake or loss by the roots	cm ³ /day
q_{soil}	RWU from a soil volume	cm ³ /day
r	initial growth rate	cm/day
r_1	radial resistance to water flow through the root	day/cm ²
r_2	radial resistance to water flow through the perirhizal zone	day/cm ²
ρ	ratio of the outer radius of the perirhizal zone (a_{perhiz}) and the root radius (a_{root})	1
S	sink term describing RWU in the macroscopic soil model	1/day
SUF	standard uptake fraction	1
$surf$	surface of the root segment for each apical node	cm ²
t	time	day
t_{act}	actual transpiration	cm ³ /day
θ	water content	cm ³ /cm ³
θ_{root}	root insertion angle with respect to parent root	rad
vol	the volume of the Voronoi cell corresponding to the segments apical node	cm ³
vol_{soil}	volume of the soil grid cell representing the macroscopic soil model	cm ³
z	elevation	cm

Table 2. Van Genuchten parameters for loam, clay, and sandy loam from Hydrus 1D soil catalog (Simunek et al., 2005).

Soil type	θ_{res} (-)	θ_{sat} (-)	α (cm ⁻¹)	n (-)	K_s (cm d ⁻¹)
Loam	0.078	0.43	0.036	1.56	24.96
Clay	0.068	0.38	0.008	1.09	4.8
Sandy loam	0.065	0.41	0.075	1.89	106.1

Table 3. Error and speed up for spring barley after two weeks: red cells denote the absolute error in cumulative plant uptake [mm]. The corresponding speed up is given by the green cells in multiplicity.

Spring barley	AAA			AAB			ABB			BBB			CBB		
	loam	clay	sandy loam	loam	clay	sandy loam	loam	clay	sandy loam	loam	clay	sandy loam	loam	clay	sandy loam
AAA				5	5	3	5	5	5	3	26	28	27	35	24
AAB	0.9	1.0	3.1				1	1	1	1	5	5	10	7	8
ABB	0.5	0.7	2.3	-0.4	-0.3	-0.8					5	6	8	7	7
BBB	0.9	1.0	-2.8	0.0	-0.0	-5.9	0.4	0.3	-5.1				1	1	1
CBB	-6.3	-6.8	-2.7	-7.2	-7.8	-5.8	-6.8	-7.5	-5.0	-7.2	-7.8	0.1			

Table 4. Error and speed up for maize after two weeks: red cells denote the absolute error in cumulative plant uptake [mm]. The corresponding speed up is given by the green cells in multiplicity.

Maize	AAA			AAB			ABB			BBB			CBB		
	loam	clay	sandy loam	loam	clay	sandy loam	loam	clay	sandy loam	loam	clay	sandy loam	loam	clay	sandy loam
AAA				15	18	11	15	12	11	1,148	1,172	1,111	1,555	1,499	1,072
AAB	21.7	17.2	8.6				1	1	1	77	65	103	104	83	99
ABB	22.3	14.6	6.0	0.7	-2.6	-2.6				75	98	100	101	126	96
BBB	21.2	17.8	4.7	-0.5	0.5	-3.9	-1.1	3.2	-1.3				1	1	1
CBB	23.3	18.1	10.2	1.6	0.9	1.6	1.0	3.5	4.2	2.1	0.3	5.5			

Maize (2D)	AAA			AAB			ABB			BBB			CBB		
	loam	clay	sandy loam	loam	clay	sandy loam	loam	clay	sandy loam	loam	clay	sandy loam	loam	clay	sandy loam
AAA				6	5	10	6	7	9	33	28	33	51	47	46
AAB	4.6	3.4	2.7				1	1	1	6	6	3	9	9	5
ABB	3.7	2.7	2.0	-1.0	-0.6	-0.7				6	4	4	9	6	5
BBB	2.9	2.8	0.2	-1.7	-0.6	-2.5	-0.7	0.0	-1.8				2	2	1
CBB	8.0	6.5	3.7	3.4	3.1	1.0	4.4	3.7	1.7	5.1	3.7	3.4			