

# Verifying the relationships among the variabilities of summer rainfall extremes over Japan in the d4PDF climate ensemble, Pacific sea surface temperature, and monsoon activity

Shao-Yi Lee<sup>1</sup>, Sicheng He<sup>1</sup>, Tetsuya Takemi<sup>1</sup>

<sup>1</sup>Disaster Prevention Research Institute, Kyoto University, Uji, Kyoto 611-0011, Japan

Correspondence to: Tetsuya Takemi (takemi@storm.dpri.kyoto-u.ac.jp)

## Abstract.

Upper 99th percentile hourly, 90th percentile daily, and 90th percentile pentad rainfall was calculated over the four large Japanese islands for June–July every year in the 1952–2010 period, using 10 ensemble members of the 5 km resolution d4PDF (database for Policy Decision-making for Future climate changes) climate ensemble, and 126 rain-gauges. The HDBSCAN (Hierarchical Density-Based Spatial Clustering of Applications with Noise) algorithm was used to cluster rain-gauges and d4PDF grid-points, based a multi-frequency metric. Six analysis regions were identified based on rain-gauge clusters. Spearman correlation was calculated between cluster rainfall extremes and standardised scores of five modes from the Rotated Extended Principal Component Analysis of Pacific SST (Sea Surface Temperature) anomalies. By order of explained variance for the analysis period, these modes represent El Niño-Southern Oscillation (ENSO) growth, ENSO decay, warming trend, mixed with climate variability (Trend+), non-canonical ENSO, and other Pacific Decadal Variability (PDV). Rain-gauges showed field significant correlation between hourly extremes and Trend+, and between daily extremes and PDV. d4PDF showed excessive spatially widespread correlation and anti-correlation with ENSO decay and non-canonical ENSO, respectively. Rainfall extremes were better related to indices describing the regional monsoon jet's position and water vapour flux, for both rain-gauges and d4PDF. Modulation of the regional monsoon by the Pacific SST modes was used to explain the relationship between rainfall extremes and Pacific SST modes. The differences between rain-gauges and d4PDF may be caused by slower monsoon development in d4PDF.

- Deleted: .
- Deleted: of the d4PDF sets (clusters and unclassified points),
- Deleted: rotated extended Principle
- Deleted: These
- Deleted: ENSO (
- Deleted: , PDV (
- Deleted: ), and non-canonical ENSO. Correlations from rain-gauges and d4PDF were at most weak ( $|R| \leq 0.4$ ) and moderate ( $|R| \leq 0.6$ ), respectively. The
- Deleted: patterns for the first two SST modes were somewhat similar
- Deleted: d4PDF and rain-gauges, but were biased
- Deleted: and magnitude-wise. Spatial patterns for higher modes were different between d4PDF and rain-gauges.
- Deleted: indices; from rain-gauges, up to moderate correlation with the seasonal anomaly of monsoon jet zonal
- Deleted: , Pacific SST modes can modulate
- Deleted: through the
- Deleted: , but were not major controlling factors
- Deleted: the occurrence of rainfall extremes. However, we hypothesize that multiple SST modes may stack to strengthen their modulating effect, and recommend further investigation with sensitivity simulations on case studies.

## 1 Introduction

Extreme rainfall events in recent summers have prompted the identification of regional conditions favorable to such developments (Harada et al. 2020, Yokoyama et al. 2020, Nayak and Takemi 2021, Naka and Takemi 2023). There is concern that climate change is increasing the strength of such events (Nayak and Takemi, 2019; Kamae et al., 2021; Mori et al., 2021), and if so, there is interest in what spatio-temporal scales of rainfall are impacted (Fujibe 2016, Unuma and Takemi 2021). The authors wish to evaluate the changes of monsoon rainfall extremes (if any) in the future warmer climate; for this purpose, a standard procedure of calculating climate projections begins by comparing and verifying historical or control climate simulation with observations. The possible dependence of such extremes on internal climate variability complicates the calculation of climate projections since climate variability itself may change in the future climate. Hence, in this study we evaluated the relationships between the variabilities of summer rainfall extremes over western Japan, monsoon activity, and Pacific sea surface temperature (SST).

Many hemispheric-scale modes of climate variability may interact with the regional- and global-scale signals over Japan; however, since Japan is an island located at the edge of the Pacific Ocean, it seems highly possible that the modes of Pacific SST have impacts on extreme rainfall over Japan. The dominant mode of Pacific variability is the El Niño-Southern Oscillation (ENSO). Although ENSO takes place in the tropical Pacific, it influences SSTs in the mid-latitudes and even globally in the form of the “Pacific-North America pattern” (Horel and Wallace 1981, Hoskins and Karoly 1981; see Alexander et al. 2002 for a literature review).

Over East Asia, the development of an El Niño during winter influences the following summer through the “Anomalous Philippine Sea Anti-cyclone”, persistent anti-cyclonic wind anomalies over the western North Pacific to the east of the Philippines which result in a wetter monsoon (e.g. Wang et al. 2000). The persistence of the El Niño signal has been explained by the “Indo-western Pacific Ocean Capacitor”, or teleconnections into and returning from the Indian Ocean (Kosaka et al. 2013, Xie et al. 2016), which excite a series of alternating high-and-low pressure, temperature and convection across the region termed as the “Pacific-Japan” (P-J) pattern (Nitta, 1987).

While the El Niño-associated anomalous anti-cyclone is one lobe of the of the P-J pattern, the P-J pattern is excited not only by ENSO. A positive Indian Ocean Dipole (IOD) occurring by itself without an El Niño would also have a teleconnection to the Pacific. An extremely warm Indian Ocean since 2019 likely contributed to the extreme rainfall event of 2020 (Takaya et al. 2020), in conjunction with other exacerbating factors like the Madden-Julian Oscillation (Zhang et al. 2021). The P-J pattern can also be excited by Rossby wave breaking (Takemura and Mukougawa 2022), which increases during Niña-like conditions in summer (Takemura et al. 2020). Such results suggest that it will be difficult to find clean and robust relationships between ENSO phase and rainfall over Japan.

An early study using data for a 30-year period (1951–1980) found no evident relationship between the Baiu (monsoon front) rainfall and the Southern Oscillation Index (SOI) of the season (Ninomiya and Mizuno, 1987). A study using another 30-year (1963–1992) period data found that the relationship changed from Baiu rainfall lagging the Nino3 index during 1963–1977, to leading Nino3 during 1978–1992 (Tanaka, 1997). A study of rainfall in Fukuoka (in Kyushu) for about a century (1890–2000) using categorised SOI found heavy rainfall to lag the “Strong La Niña” category (Kawamura et al. 2001, Jin et al. 2005). Yet another study for 54 years (1958–2011) found that weather patterns associated with heavy rainfall over Japan occurred more frequently when the Nino3.4 index of the season was high (Ohba et al. 2015). Such examples suggest that the relationship between ENSO and rainfall over Japan may depend on the period of data or even the location being studied. ENSO has a period of about 5–7 years, so even a 100-year period would contain only about 20 cycles. A 400-year study using paleoclimate proxies concluded that the strength and even sign of the relationship varied over time, and proposed that the Pacific Decadal Oscillation modulated the relationship (Sakashita et al. 2016). It appears that scientific literature is far from unanimous regarding the relationship between ENSO and rainfall variability over Japan.

Since we were unable to draw satisfactory conclusions from those past studies, we decided to investigate the relationships between Pacific climate variability and extreme rainfall variability in the monsoon season over Japan in observations first, before applying the same methodology to climate models. The methodology was based on two considerations:

100 Firstly, although the SOI or Niño indices indicate the ENSO-related state of the atmosphere and ocean respectively, ENSO phases are not instantaneous states but processes that develop and decay over the course of two years, even when SOI/Niño indices may have similar values before and after the ENSO peak. Clearer relationships may emerge between rainfall and an indicator measuring the direction of ENSO progress.

105 Secondly, the value of SOI/Niño indices may reflect not only the ENSO state, but also the states of other modes, such as the above-mentioned Pacific Decadal Oscillation. This study will directly decompose Pacific temperature anomalies through ~~rotated extended Principal~~ Component Analysis (rePCA) and correlate between each mode and extreme rainfall, instead of using the SOI/Niño indices.

110 The structure of this paper is organized as follows: Section 2 describes the data and methods used. Section 3 describes the results from the Pacific SST, rainfall clustering, and correlation of SST modes with clustered rainfall extremes. In Section 4, we discuss how the SST modes may act on rainfall through monsoon activity. Finally, Section 5 summarises the findings of the study.

Deleted: Principle

Deleted: Principle Component Analysis

2 Data and Methods

2.1 Data and tools

2.1.1 Rainfall data

120 The database for Policy Decision-making for Future climate changes (d4PDF) is a collection of ensemble climate  
simulations [covering the 1951–2010 period](#) (Mizuta et al. 2017, Ishii and Mori 2020). A 100-member historical-warming  
(HPB) climate ensemble has been simulated by the Meteorological Research Institute (MRI) Atmospheric General  
Circulation Model (AGCM) version 3.2 (MRI-AGCM3.2; Mizuta et al. 2012), which [provided rainfall at 60 km spatial and](#)  
125 [daily temporal resolution](#). Twelve members have been downscaled to [5 km spatial and](#) hourly temporal [resolution](#) (Kawase  
et al., 2023). “d4PDF” in this study will refer to the downscaled data; the AGCM will termed “d4PDF-AGCM”. Ensemble  
mean rainfall extremes from 10 members of the 5 km d4PDF was compared against rain-gauge rainfall extremes from 126  
meteorological stations in Japan. The analysis period was 1952–2010, or 59 years.

Rainfall during June and July was analysed. This is the season when the monsoon (Baiu) front passes over the study domain.  
130 An analysis of typhoon frequency was carried out for each month using the International Best Track Archive for Climate  
Stewardship (IBTrACS; Knapp et al., 2018) for observations, and Webb et al. (2019) for d4PDF. The number of typhoons  
was found to increase substantially in August. Evaluating typhoon changes in the future climate is not trivial (e.g. Mori and  
Takemi, 2016 for a review), so the authors preferred to exclude typhoon-associated rainfall as much as possible, even though  
135 the typical calendar “summer” includes August. From a phenomenon perspective, August rainfall is climatologically quite  
distinct from June–July rainfall over Japan. The 99th percentile hourly, 90th percentile daily, and 90th percentile running-  
pentad rainfall values in June–July of every year were calculated. Percentiles were calculated inclusive of timesteps with no  
rainfall.

2.1.2 Sea Surface Temperature (SST) and climate mode indices

140 The historical (HPB) d4PDF-AGCM ensemble was driven by randomly perturbed SST from the Centennial Observation-  
Based Estimates of SST version 2 (COBE-SST2; Hirahara et al., 2014). The SST data was of 1° spatial resolution and  
monthly temporal resolution. Data over the Pacific in the domain of 100°E–60°W, 20°S–60°N was used. Data on the  
Atlantic side was removed. Data over the Sea of Okhotsk (135°E–160°E, 45°N–60°N) was removed, in order to reduce the  
influence of sea ice. The same 59-year period as the rainfall period (1952–2010) was used for analysis.

145 The Southern Oscillation Index (SOI; Ropelewski and Jones, 1987) and Interdecadal Pacific Oscillation Tripole Index (TPI;  
Henley et al., 2015) were provided by the United States of America National Oceanic and Atmospheric Administration  
(NOAA). The non-standardised version of the SOI was used, but standardisation has no impact on correlation. The filtered  
COBE-SST version of the TPI was used, with units of degrees Celsius. [The North Pacific Gyre Oscillation \(NPGO; di](#)  
150 [Lorenzo et al., 2008\) index was used, available at https://o3d.org/npgo.](#)

2.1.3 Other meteorological variables

Meteorological variables in the region of (125–130°E, 20–50°N) from the Japanese 55-year Reanalysis (JRA55; Kobayashi  
et al., 2015) and d4PDF-AGCM were used to evaluate the monsoon activity. The datasets were obtained at 1.25° spatial  
155 resolution. 850 hPa daily mean temperature and specific humidity were used to calculate the monsoon front location. Zonal  
wind, meridional wind and specific humidity at pressure levels 1000, 925, 850, 700, 600 and 500 hPa were used to calculate  
water vapour flux. Monsoon activity in the simulations was evaluated using variables from d4PDF-AGCM using the same  
10 ensemble members as the rainfall data. The period of 1958–2022 was used because JRA55 started from 1958.

Deleted: of  
Deleted: 12  
Deleted: and 5 km spatial resolutions

Deleted:

Deleted: upper  
Deleted: upper  
Deleted: upper



2.1.4 Processing tools

Coastlines and administrative boundaries were obtained from the Database of Global Administrative Areas version 4.1 (GADM; <https://gadm.org>). [Principal Component Analysis](#) and part of the data processing was carried out using Max-Planck Institute for Meteorology's Climate Data Operators software package (CDO; Schulzweida, 2022). Equivalent potential temperature was calculated using the NCAR Command Language (NCL, 2019). The rest of the data processing was carried out in Python 3, using python libraries NumPy (Harris et al., 2020), SciPy (Virtanen et al., 2020), pandas (McKinney, 2010) and xarray (Hoyer and Hamman, 2017). Clustering of rainfall and curve fitting was carried out using [SciPy Wavelet analysis was carried out using Pywavelets \(Lee et al., 2019\)](#). Figures were prepared with the python libraries Matplotlib (Hunter, 2007), Cartopy (Met Office, 2010–2015), and the GNU Image Manipulation Program (GIMP, 2025).

Deleted: Principle

Deleted: Scipy.

Deleted: ) and

2.2 Method

2.2.1 [Rotated Extended Principal Component Analysis \(rePCA\)](#)

Deleted: Principle

Deleted: PCA)

Deleted: PCA

Deleted: PCA with time concatenation

Deleted: Principle

Deleted:

Deleted: PCA

Deleted: PCA

Deleted: PCA

### 2.2.2 Rainfall clustering

Upper percentile rainfall in June–July of every year was calculated individual rain-gauges, as well as individual grid-points of d4PDF within a convex hull covering four large Japanese islands of Hokkaido (northern diamond-shaped island), Honshu (S-shaped large island), Shikoku (southern barbell-shaped island) and Kyushu (southwestern oval-shaped island). The last two days of May and the first two days of August were used in the calculation of running-pentads. The percentile calculation was inclusive of times with zero rainfall. For hourly rainfall, this was the 15th highest value of the June–July season. For daily and running-pentad rainfall, these were the sixth highest values. This produced time-series of 59 samples (years). For d4PDF, percentiles were calculated for each individual ensemble member, then the ensemble mean was taken.

The hourly rainfall in June–July of every year at individual locations was also decomposed into different frequency components through projection into wavelet space, using stationary (non-downsampled discrete) wavelet transform based on the Haar wavelet with six decomposition levels. A prior examination of the hourly data using continuous wavelet transformation on the rainfall indicated that most of the energy lay within frequencies resolved by six discrete decomposition levels. This produced six detail components of periods 2–4 hours (D1), 4–8 hours (D2), 8–16 hours (D3), 16 hours–1.3 days (D3), 1.3–2.7 days (D4), 2.7–5.3 days (D5), 5.3–10.7 days (D6), and one approximation component containing signals of periods longer than 10.7 days (A6). The number of samples each component remained the same since the input was not downsampled, so the 99th percentile of each June–July season was recorded for each component. Hence, the rainfall at each location was reduced to a 59×7 (years × frequency components) matrix. Wavelet transformation (Torrence and Compo 1998) has been successfully used to analyse rainfall at the Matsuyama rain-gauge (Santos et al., 2001) and precipitation indices over Japan (Duan et al., 2015), although for monthly resolution.

The spatial points were clustered using the Hierarchical Density-Based Spatial Clustering of Applications with Noise (HDBSCAN) function, [SciPy's](#) implementation of the hierarchical density-based clustering algorithm developed by Campello et al. (2013). This algorithm builds a hierarchical tree of the samples (points) by searching around the vicinity of each sample at increasing radius based on a distance metric ( $D$ ), merging samples into increasingly larger clusters as they are found, then returning the most persistent clusters above a minimum cluster size ( $c_{\min}$ ) along the tree's depth. The tree-construction algorithm was user-set to brute-force ("brute"), i.e. the tree was explicitly constructed. The manner in which clusters grew to fulfill the requirement of increasing  $c_{\min}$  depended on the minimum sample size, which was set to 1, i.e. even one sample that was significantly correlated with any member of the cluster would be added to the cluster, allowing the cluster to keep expanding until no more such samples could be found.

The distance metric between two points  $i$  and  $j$  was defined as  $D = 1 - r_{ij}$ , where the geographically-adjusted similarity  $r_{ij} \in [-1, 1]$ . For each clustering of points based on their hourly, daily and running-pentad rainfall extremes,

$$r_{ij} = \begin{cases} -1 & \text{if } R_{ij} \text{ is statistically significant and negative} \\ 0 & \text{if } R_{ij} \text{ is not statistically significant} \\ \max(0, R_{ij} - s_{ij}) & \text{if } R_{ij} \text{ is statistically significant and positive} \end{cases}$$

using the Spearman correlation  $R_{ij}$  and geographical adjustment factor  $s_{ij} = S_{ij}/S_{\max}$ . The Spearman correlation  $R_{ij}$  between the rainfall time series of points  $i$  and  $j$  was evaluated for statistical significance using a two-tail test at  $\alpha=0.05$ , i.e. significant if  $|R_{ij}| > 0.256$  for the 59-sample (years) period of 1952–2010. The geographical adjustment  $s_{ij}$  is the physical distance between the two points  $S_{ij}$  normalised through division by a maximal distance  $S_{\max}$ , which will be described later. This was metric is similar to clustering by F-madogram (Bernard et al., 2013) with geographical adjustment factor (Bracken et al., 2015), and has been successful applied to the Tibetan Plateau, an orographically complex region like the study domain (Ma et al., 2020).

**Formatted:** Font color: Text 1

**Deleted:** Scipy's

**Deleted:** In this

**Deleted:** ,

**Deleted:** all

**Deleted:** is first built

**Deleted:** point

**Deleted:** ,

**Deleted:** them

**Deleted:** larger and

**Deleted:** , until a single cluster that includes all points is formed. The

**Deleted:** along the depth of the tree that fulfill the user-provided

**Formatted:** Font: Not Italic

**Deleted:** are finally selected. We defined the distance metric between two points as  $D = 1 - R$  if the Spearman correlation  $R$  was statistically significant at  $\alpha=0.05$  and the two points were neighboring points,  $D=2.0$  otherwise. In the case of rain-gauges, neighboring points were determined through Delaunay triangulation. In the case of d4PDF gridded data, neighboring points were those within a circle of radius  $0.15^\circ$  centered on the grid-point. The choice of  $0.15^\circ$  was based on the estimated size of the smallest rain-gauge cluster produced by HDBSCAN. For each rain-gauge cluster, the upper bound of cluster size was estimated as maximum of the distances between pairs of stations in the cluster. The smallest cluster was the one with the smallest upper bound of cluster size, or approximately  $0.15^\circ$ .

The

**Deleted:** without the use of approximations that would speed up calculation. In the case of rain-gauges, neighboring points were determined through Delaunay triangulation, so the algorithm was set to return at least one triangle (three samples, or  $c_{\min}=3$ ). Increasing  $c_{\min}$  resulted in more unclassified rain-gauges when their groupings were not large enough, which due to the sparse distribution of rain-gauges. For this reason,  $c_{\min}=3$  was used for rain-gauges to include all possible triangles. For d4PDF, the initial setting was  $c_{\min}=3$  and the algorithm was iterated with larger  $c_{\min}$ , until the threshold was reached when the algorithm returned a singular cluster consisting of almost all grid-points in the domain. The previous  $c_{\min}$  was then selected. The smallest parameter amongst the three time resolutions was used as the final parameter applied to all three time resolutions

**Formatted:** Font: Not Italic

**Deleted:** A time series of rainfall was calculated for each cluster or unclassified point ("set"). At each timestep, the maximum rainfall in each set was selected. For example, in a cluster of three points, this would be the point with the highest rainfall and the other two points would be discarded. This was based on the concept that a set included locations which experienced rainfall from the same event, and the maximum rainfall of that event was sampled by an observer that could "see" the entire location rather than only one specific point. The number of samples every year would also be only along the time

For clustering of points based on wavelet decomposition, there were multiple Spearman correlation coefficients  $R_{ij}^k$  and their corresponding similarity values  $r_{ij}^k$ , for  $k=0, \dots, n_k$  where  $n_k=6$ , representing the frequency components A6, D6, ..., D1. In this case,  $r_{ij}$  was defined as

$$r_{ij} = \begin{cases} -1 & \text{if } R_{ij}^k \text{ is negative for any } k \\ \max(0, \sum_k r_{ij}^k / n_k - s_{ij}) & \text{otherwise} \end{cases}$$

where  $r_{ij}^k = \begin{cases} -1 & \text{if } R_{ij}^k \text{ is statistically significant and negative} \\ 0 & \text{if } R_{ij}^k \text{ is not statistically significant} \\ R_{ij}^k & \text{if } R_{ij}^k \text{ is statistically significant and positive} \end{cases}$

When  $n_k=1$ , this reduces to the version used in clustering hourly, daily or running-pentad extremes. The maximum function in the calculation of  $r_{ij}$  implements a lower bound of 0 in cases of significantly correlated distant points. At sufficiently large distances  $r_{ij}$  would be attenuated to the case there were no statistically significant  $R$ 's, or  $D=1$ . Both cases were distinct from the case where significant anti-correlation was found, where the points should not be clustered and  $D=2$ . While the maximum function strictly necessary, it provided two advantages. Firstly, since  $c_{\min}$  was a user-provided parameter, a method of selecting an optimal  $c_{\min}$  was needed. When there was a step jump in  $D$ , we found that as the algorithm was iterated with increasing  $c_{\min}$ , there was a change in the number of clusters when a certain  $c_{\min}$  threshold was reached. A plateau was reached when the number of clusters remained the same. For d4PDF, this took the form of a singular cluster consisting of almost all grid-points in the domain, and a few tiny clusters over the Japanese Alps. Such a configuration was not interesting, so the previous  $c_{\min}$  was selected. Secondly, by reducing  $r$ 's to only indicate desirable to cluster ( $r \geq 0$ ) or strongly undesirable to cluster ( $r = -1$ ), most  $r$ 's were zero. This allowed for efficient storage of  $r$ 's as sparse matrices, which was particularly important for d4PDF with over 35 thousand points.

To speed up the calculation,  $s_{ij}$  was approximated using degree distance for  $S_{ij}$  and  $20^\circ$  for  $S_{\max}$ , the approximate degree distance from southwest to northeast of the d4PDF study region. Two points with minimally significant  $R$  of approximately 0.25 would only be completely attenuated when their geographical degree distance exceeded  $5^\circ$ , which was sufficiently generous when compared against the smaller geographical extent of clusters obtained from rain-gauges. In the case of d4PDF, a further threshold  $S_{\text{calc}}$  was set, where  $r_{ij}$  was calculated only for pairs  $(i, j)$  where  $S_{ij} < S_{\text{calc}}$ . A token value of  $S_{\text{calc}} = 1^\circ$  was set based on the size of the rain-gauge clusters, and the results were checked against results obtained from halving and doubling  $S_{\text{calc}}$ .

The results using the wavelet-based distance metric were compared against results from individually clustering three temporal resolutions (hourly, daily running-pentad) for rain-gauges, before being applied to d4PDF. The comparison method is described in the following section.

**Moved down [1]:** Upper percentile rainfall for the set was then calculated every year from the set's rainfall time series.

**Formatted:** Font color: Text 1

**Deleted:** Spearman correlation was calculated between the upper percentile rainfall of each set, and the score of each mode from the rotated PCA. ¶

360 2.2.3 Selection of analysis regions

365 To combine the results of individually clustering hourly, daily and running-pentad extremes, we would like to group the rain-gauges into regions that persisted across the three temporal resolutions. The most suitable  $c_{min}$  amongst the three temporal resolutions was commonly applied to all three resolutions. Rain-gauges belonging to the same set of clusters produced at three temporal resolutions were grouped together ("3Class"). To illustrate this, if (A, B, C, D, E, F, G) was an hourly cluster, (A, B, C) and (E, F, G) daily clusters, and (A, B, D) and (C, E, F, G) were pentad clusters, the 3Class regions would be (A, B) and (E, F, G). A group must contain at least two rain-gauges. The 3Class regions were compared with the clusters produced by the wavelet-based distance metric, and eight regions were finally selected for analysis. These are listed in Table 1 and the comparison process will be described in Section 3.2.

370 A time series of rainfall was calculated for each cluster or unclassified location, commonly referred to as "sets". The mean rainfall of the set was calculated at every timestep. The number of samples every year would only along the time dimension and remain the same between different sets for the calculation of percentile rainfall. Upper percentile rainfall for the set was then calculated every year from the set's rainfall time series.

375 When directly comparing regional values between rain-gauges and d4PDF, statistics were calculated from d4PDF clusters co-located with the rain-gauges of the region. A d4PDF cluster was considered as co-located with the rain-gauge if any grid-point belonging to that cluster lay within 0.05° of the rain-gauge location.

Table 1. The 8 regions in Japan selected for analysis, and the rain-gauges in regions.

Region	Rain-gauges
1	Akita, Aomori, Asahikawa, Esashi, Fukaura, Haboro, Hachinohe, Hakodate, Iwamizawa, Kitami-esashi, Kushiho, Kutchan, Miyako, Morioka, Muroran, Mutsu, Obihiro, Omu, Otaru, Rumoi, Sakata, Sapporo, Sutsu, Tomakomai, Urakawa, Wakkanai
2	Fukui, Fushigi, Kanazawa, Karuizawa, Matsumoto, Nagano, Suwa, Takata, Toyama, Takayama, Wajima
3	Ajiro, Chichibu, Choshi, Hamamatsu, Irago, Irozaki, Katsuura, Kofu, Kumagaya, Lake Kawaguchi, Mishima, Mito, Okunikko, Omaezaki, Onahama, Shizuoka, Tateno, Tokyo, Utsunomiya, Yokohama
4	Gifu, Hikone, Himeji, Iida, Kobe, Kyoto, Nara, Nagoya, Osaka, Sumoto, Tokushima, Tsuruga, Tsu, Ueno, Wakayama
5	Maizuru, Matsue, Sakai, Tottori, Toyooka, Yonago
6	Akune, Fukuoka, Fukuyama, Hagi, Hamada, Hirado, Hiroshima, Hita, Hitoyoshi, Iizuka, Kumamoto, Kure, Matsuyama, Mount Unzen, Nagasaki, Okayama, Oita, Saga, Sasebo, Shimonoseki, Tadotsu, Takamatsu, Ushibuka, Uwajima
7	Aburatsu, Kagoshima, Makurazaki, Miyakonojo, Miyazaki, Tanegashima, Yakushima
8	Fukushima, Ishinomaki, Sendai, Shirakawa, Yamagata

2.2.4 Evaluation of correlation coefficients ( $R$ )

385 In this study, Spearman correlation was used, which measured only monotonicity between two variables without need for linearity. The correlation coefficient  $R$  was tested for statistical significance using a two-tailed test at  $\alpha=0.05$ . For the 59-

**Deleted:** The spatial patterns that result from

**Deleted:** can be compared between rain-gauges and d4PDF, but since rain-gauges are sparsely distributed point, the rainfall sampled by the points may not be representative of the regional spatial pattern. As an additional check, d4PDF sets corresponding to rain-gauge locations were selected for each rain-gauge. This was defined as sets that contain any grid-points within a circle of radius 0.10° centered on the rain-gauge. A circle of radius 0.05° which approximated the 5 km spatial resolution of d4PDF sometimes resulted in only a single grid-point (a set of one unclassified grid-point) being selected. Such a spatial coverage could be unrepresentative if there were even minor spatial biases in d4PDF, so the radius was doubled.

Since there were over a hundred rain-gauges

**Deleted:** them

**Deleted:** time

**Deleted:** by HDBSCAN

**Deleted:** time

**Deleted:** Each gauge and time-step was treated as a rainfall sample in the year, e.g. a region containing two rain-gauges each with 61 samples of daily rainfall per year would result in a total of 122 daily rainfall samples per year. This was because many rain-gauges in the

**Deleted:** sparsely located and distant from one another. The time series of annual rainfall extremes at two rain-gauges in a group could be significantly correlated, but typical rainfall levels could differ between the rain-gauges. If the maximum rainfall between rain-gauges was selected at each time-step, one rain-gauge or a subset of rain-gauges in the region could excessively dominate the time samples. In contrast, d4PDF sets consisted of geographically nearby grid-points at high spatial resolution, so the typical rainfall levels were expected to be similar between grid-points in a set. The individual d4PDF sets that corresponded to the rain-gauge locations in a 3Class region were treated as separate rainfall samples. To illustrate this, if a 3Class region contained rain-gauges (A, B), with d4PDF sets (a1, a2, a3) near A's location and (b1, b2) near B's location, then the corresponding d4PDF 3Class region would contain sets (a1, a2, a3, b1, b2) providing 5×61=305 daily samples per year.

**Moved (insertion) [1]**

**Formatted:** Font color: Text 1

**Deleted:** 20

**Deleted:** , as shown in Fig. 3d

**Formatted:** Font color: Text 1

**Deleted:** Region ... [2]

**Deleted:** CCs

**Deleted:** strength of

**Deleted:** relationship was defined

year period of 1952–2010, the threshold value is  $|R| = 0.256$ . Analysis of JRA55 used the 53-year period of 1958–2010, with threshold value  $|R| = 0.270$ . In the text,  $R$  will be described as “perfect” if  $|R| = 1.00$ , “strong” if  $1.00 > |R| \geq 0.75$ , “moderate” if  $0.75 > |R| \geq 0.50$ , “weak” if  $0.50 > |R| \geq 0.25$ , and “no relation” otherwise.

When multiple significance tests are repeatedly performed, a number of false positives may occur. The number of positives must exceed a threshold for there to be statistical significance for the entire field, i.e. field significance. Rain-gauge  $R$ 's were tested for field significance following the methodology of Livezey and Chen (1983). If individual rain-gauges were considered independent samples, significance for at least 12 rain-gauges would be required for field significance. Since the method requires samples to be mutually independent, if sets produced by clustering were used as samples, significance for at least three sets would be required for field significance.

## 2.2.5 Monsoon activity indices

The structure of the monsoon front during a heavy rainfall episode has been described by Matsumoto et al. (1971) as being characterised more so by a low-level jet than temperature gradient, with heavy rainfall brought about by mesoscale systems associated with 1000 km wavelength disturbances. We defined indices that described the location and stability of the monsoon front, as well as the location, stability and strength of the low-level jet.

The daily location of the monsoon front was determined based on the methodology of Li et al. (2018). The 850 hPa equivalent potential temperature  $\theta_e$  was calculated from daily mean temperature and specific humidity, based on equation 39 of Bolton (1981). At each discrete longitude value in the range 125–130 °E, the latitudinal rate of change of  $\theta_e$ ,  $(\partial\theta_e/\partial\varphi)_\lambda$ , was then calculated. The monsoon belt was defined as present in the latitudes where  $(\partial\theta_e/\partial\varphi)_\lambda \leq -0.04$  K km<sup>-1</sup>, and the location of the front was defined as the mean latitude if more than one latitude point was found. If only one latitude point was found, then the front was defined as not present. After this, the presence of the front was checked at the two points directly west and east of each longitude point. If the front was absent at both sides, then the front was defined as not present at the central point. The zonal mean of the front latitude was defined to be FLat.

The meridional and zonal components of the lower tropospheric water vapour flux (henceforth, just “WVflux”) at each grid-point were calculated for each day by vertically integrating the product of daily mean specific humidity  $q$  and vector wind  $(u, v)$  through six pressure levels (1000, 925, 850, 700, 600, and 500 hPa). In a discrete form, the zonal WVflux is  $\sum_i (q_{i+1}u_{i+1} + q_i u_i - p_{i+1}) / 2g$ , for the  $i=1 \dots 5$  pressure levels. The magnitude of the WVflux was calculated from its zonal and meridional components. At each discrete longitude value in the range 125–130 °E, the discrete latitude location with the maximum WVflux was located, then its zonal and meridional components were extracted at that location. The zonal means of the WVflux jet latitude and vector components were defined to be JLat and (QU, QV), respectively.

For each of the 61 days in June–July, the means of Flat, JLat, and (QU, QV) were taken over all the years of data, to obtain a 61-day time series. For d4PDF, this was done individually for each of the 10 ensemble members, to obtain 10×61=610 days. The time series QU and QV were fitted to sine functions  $A \sin[\pi(t-T)/L] + B$ , with A, B, L and T as fit parameters. The time series JLat and FLat were fitted to logistic functions  $A[1 + e^{-k(t-T)}]^{-1} + B$ , with A, B, k and T as fit parameters. For d4PDF, the 610 days of all ensemble members were fitted together. The fits were defined to be the climatological seasonal cycles (QU)<sub>0</sub>, (QV)<sub>0</sub>, (JLat)<sub>0</sub>, and (FLat)<sub>0</sub>. For any day of any year, the deviation from the climatological seasonal cycle was calculated to obtain anomalies (QU)<sub>a</sub>, (QV)<sub>a</sub>, (JLat)<sub>a</sub>, and (FLat)<sub>a</sub>. For example, (QU)<sub>a</sub> = QU - (QU)<sub>0</sub>.

For each year, the seasonal mean anomalies  $\mu_{QU}$ ,  $\mu_{QV}$ ,  $\mu_{JLat}$ , and  $\mu_{FLat}$ , and seasonal variances  $\sigma^2_{QU(V)}$ ,  $\sigma^2_{JLat}$ ,  $\sigma^2_{FLat}$  were calculated from the anomalies to obtain seven annual time indices. For d4PDF, the indices were calculated individually for each member of the ensemble, then the ensemble mean was taken. For example,  $\sigma^2_{QU(V)} = [\sum_i (\sigma^2_{QU} + \sigma^2_{QV})_i] / N$  for  $i=1 \dots N$  ensemble members (N=10).

- Deleted: |CC| = 1.0, “very
- Deleted: 1.0 > |CC| ≥ 0.8, “strong” if 0.8 > |CC| ≥ 0.6
- Formatted: Font color: Text 1
- Deleted: 0.6 > |CC| ≥ 0.4
- Deleted: 0.4 > |CC| ≥ 0.2
- Formatted: Font color: Text 1
- Deleted: Statistical significance was tested at  $\alpha=0.05$ , such that the thresholds for statistical significance were approximately at “weak” level (|CC| > 0.22) for the 1952–2010 period.
- Deleted: CCs
- Deleted: The
- Deleted: so
- Deleted: .

- Deleted: .

- Deleted:
- Formatted: Font: Cambria Math
- Formatted: Justified

### 3 Results

#### 3.1 Rotated Extended Principal Component (rePCA) Analysis of Pacific SST anomalies

rePCA was carried out on three time periods, 1921–2022 (102 years), 1952–2022 (71 years), and 1952–2010 (59 years). The top five modes appeared distinct from the remaining modes in terms of explained variance. For the 1921–2022 period, the top five modes accounted for 24%, 16%, 8%, 6%, and 5% of the variance. For the 1952–2022 period, they accounted for 28%, 16%, 7%, 6%, and 4% of the variance. For the 1952–2010 period, they accounted for 26%, 16%, 9%, 5%, 7% of the variance, with the order of the fourth and fifth modes swapped to match the order from the other two periods. The remaining modes each explained 3% or less of the total variance. The top five modes were similar to those from Guan and Nigam (2008), which had identified the first five modes of their rotated eigenvectors as ENSO+ (growth), ENSO- (decay), Trend, and Pan-Pacific Decadal Variability, and non-canonical ENSO. In this study, these modes will be termed canonical ENSO growth (ENSO+), canonical ENSO decay (ENSO-), Trend-containing (Trend+), Pacific Decadal Variability (PDV), and non-canonical ENSO (ENSO-NC). Figures 1 and 2 show the scores and loadings, respectively.

The scores for ENSO+, ENSO-, PDV, and ENSO-NC were almost identical where they overlapped between the three time periods. This was particularly so for the four ENSO and PDV modes, where the relationships were almost perfect ( $R > 0.95$ ) between time periods (Figs 1a, 1b, 1c, 1e). The loadings were similar between time periods as well (not shown). Hence, these four modes were robust irrespective of the time period used for rePCA. To evaluate the identity of the modes against known modes of Pacific variability in the scientific literature, their scores were correlated against SOI, NPGO and TPI for the 1952–2010 period. The negative of SOI was used such that positive correlation with -SOI indicated better correspondence to canonical El Niño. The correlation between ENSO+ score and -SOI was strong ( $R = 0.78$ ; Fig. 1a), and the loading clearly showed a canonical El Niño developing over Eastern Tropical Pacific (Figs 2a-e). The correlation between ENSO- score and -SOI leading by one year was moderate ( $R = 0.70$ ; Fig. 1b), and the loading clearly showed a decaying canonical El Niño (Figs 2f-j). However, the ENSO-NC had no relationship with -SOI, and only weak anti-correlation with -SOI leading by one year ( $R = -0.25$ ; Fig. 1e). The score was strongly positive in 1983 and 1998, years containing the tail end of strong prolonged El Niño events. In addition, the loading showed the Niño-like warm SST anomalies over the Eastern Tropical Pacific from March to August (Fig 2z-d). This indicated the ENSO-NC mode describes the tail end of an atypically strong El Niño that extends into summer months. PDV score had weak relationships with both NPGO ( $R = -0.32$ ) and TPI ( $R = 0.49$ ; Fig. 1d). The anti-correlation between TPI and PDV was the strongest relationship between TPI and the SST modes (ENSO+ 0.29, ENSO- -0.27, Trend+ -0.27, ENSO-NC -0.18). The correlation between NPGO and PDV was not the strongest relationship between NPGO and SST modes (ENSO+ -0.31, ENSO- -0.15, Trend+ 0.38, ENSO-NC 0.16).

The score and loading of the Trend+ mode was sensitive to the analysis period. As shown in Fig. 1c, the scores for the 1952–2010 and 1952–2022 periods were strongly correlated ( $R = 0.95$ ), but both were different from the score for the 1921–2022 period ( $R = 0.62$  with the score for the 1952–2010 period). Although the scores of Trend+ overall increased in all three analysis periods, different interannual and decadal variability could be seen, which may contribute to the lower  $R$ 's. The spatial loading of Trend+ was not homogenous but showed seasonal and spatial variability, with cool anomalies over the tropical Pacific resembling the La Niña and warm anomalies over the northwest Pacific (Figs 2k-o). Although the Niña-like pattern was consistent with some past studies, other studies have also reported a Niño-like pattern, with the direction of the pattern depending on the choice of data used (e.g. Vecchi et al. 2008, Lee et al. 2022). The loading from the 1921–2022 period showed stronger warm anomalies over Northwest Pacific, but weaker “horseshoe-shape” cool anomalies over East Pacific (Figs 2p-t). Hence, the spatial patterns in Fig. 1k-o may be residues from interannual and decadal variability. The actual global warming pattern associated with only the warming trend may be much more homogenous. The correlation between NPGO and Trend+ was the strongest relationship between NPGO and SST modes ( $R = 0.38$ ), which supports this possibility. For this reason, the mode was termed “Trend-containing (other climate variability)” rather than just “Trend”.

Deleted: (PCA)

Deleted: PCA

Deleted: CC

Deleted: PCA

Deleted: ascertain

Deleted: CC

Deleted: also strong (CC)

Deleted: CC

Deleted: The correlation between

Deleted: was moderate (CC)

Deleted: ), but this

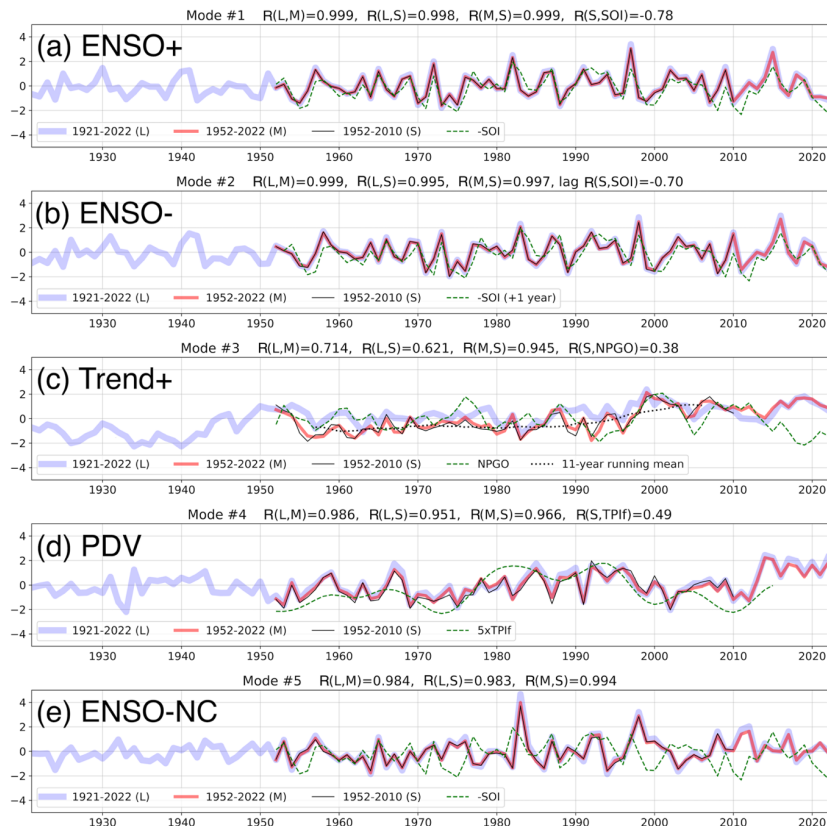
Deleted: CC

Deleted: CC

Deleted: CC

Deleted: CCs





Deleted: 1

cc(L,M)=0.999, cc(L,

(a) ENSO+

1921-2022 #1 (L) 1952-2022 #1 (M) 1952-

cc(L,M)=0.999, cc(L,

(b) ENSO-

1921-2022 #2 (L) 1952-2022 #2 (M) 1952-

cc(L,M)=0.714, cc(L,

(c) Trend+

1921-2022 #3 (L) 1952-2022 #3 (M) 1952-

cc(L,M)=0.986, cc(L,

(d) PDV

1921-2022 #4 (L) 1952-2022 #4 (M) 1952-

cc(L,M)=0.984, cc(L,

(e) ENSO-NC

1921-2022 #5 (L) 1952-2022 #5 (M) 1952-

Deleted: Scores

Deleted: Principal Component Analysis

Deleted: Sea Surface Temperature

Deleted: Green

Deleted: ". Green dotted line shows

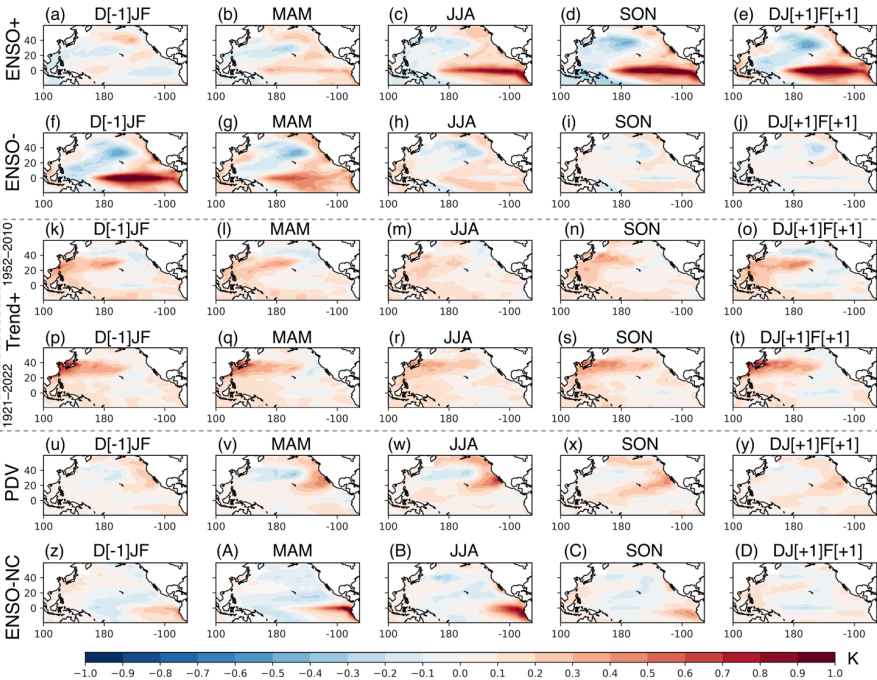
Deleted: "TPI

Deleted: ).

Deleted: .

Figure 1. Standardised principal components (scores) of the first five modes from the rotated extended PCA of Pacific SST anomalies for the 1921–2022 (blue), 1952–2022 (red), and 1952–2010 (black) periods. (a) Canonical ENSO-growth mode “ENSO+”; (b) Canonical ENSO-decay mode “ENSO-”; (c) Trend-containing mode “Trend+”; (d) Pacific Decadal Variability mode “PDV”; (e) non-canonical ENSO “ENSO-NC”. The black dotted line in panel (c) shows the 11-year running mean of the 1952–2010 score. The green dashed line in the panels shows (a) negative of the Southern Oscillation Index “-SOI”; (b) negative of the Southern Oscillation Index phased-shifted by 1 year “-SOI (+1 year)”; (c) North Pacific Gyre Oscillation index “NPGO”; (d) Interdecadal Pacific Oscillation Tripole Index filtered version “TPIf” (in °C scaled by a factor of 5); (e) negative of the Southern Oscillation Index “-SOI”. The correlation coefficients between the scores from 1921–2022 “L”, 1952–2022 “M”, and 1952–2010 “S” for overlapping periods are shown on the top of the panels, as well as correlation coefficients between “S” and the green index for panels (a)–(d).

570 **Figure 2.** Loadings of the first five modes from the rotated **extended PCA** of Pacific **SST** anomalies for the 1952–2010 period, and only the Trend+ mode for the 1921–2022 period. Rows show the modes. Row 1 (a–e) ENSO+; row 2 (f–j) ENSO-; row 3 (k–o) Trend+; row 4 (p–t) Trend+ for 1921–2022; row 5 (u–y) PDV; row 6 (z–D) ENSO-NC. Columns show anomalies of five seasons centered on June–July–August “JJA”.



Deleted: .....Page Break.....

Deleted: Principal Component Analysis

Deleted: Sea Surface Temperature



## 580 3.2 Rainfall clustering

The results of individually clustering three temporal resolutions of rain-gauge rainfall are shown in Figs 3a–d. For hourly extremes,  $c_{\min}=4$  produced 12 clusters with 28 unclassified rain-gauges, but  $c_{\min}=5$  and  $c_{\min}=6$  produced 6 clusters with 19 unclassified rain-gauges (Fig. 3a). For daily extremes,  $c_{\min}=5$  produced eight clusters with 39 unclassified rain-gauges (Fig. 3c), but  $c_{\min}=6$  and  $c_{\min}=7$  produced three clusters with five unclassified rain-gauges (Fig. 3d). For running-pentad extremes,  $c_{\min}=4$  produced 14 clusters with 3 unclassified rain-gauges, but  $c_{\min}=5$  and  $c_{\min}=6$  produced 2 clusters with 6 unclassified rain-gauges (Fig. 3b). The three results were similar despite some minor differences in whether smaller clusters were merged into larger clusters or turned into unclassified rain-gauges due to being smaller than  $c_{\min}$ .

There were three clusters in Hokkaido island, represented by clusters 3, 4, and unclassified rain-gauges on the southern coast in Fig. 3c. These may merge into one larger cluster (cluster 2 in Fig. 3b; cluster 3 in Fig. 3d). There were two clusters over the Tohoku region, represented by clusters 1 and 2 in Fig. 3c. The northern cluster may either merge northwards (Fig. 3a) or southwards (Fig. 3b) to form one larger cluster. The southern cluster usually merged southwards (cluster 1 in Fig. 3b and Fig. 3d). There was a large cluster in the Kanto region, represented by cluster 2 in Fig. 3a and cluster 6 in Fig. 3c. The size and boundary of this cluster varied particularly in terms of its western coastal side and northern mountainous side; North of it was a small cluster on the Sea of Japan coast (cluster 3 in Fig. 3a), while west of it was a cluster in the Kansai region (cluster 5 in Fig. 3a and Fig. 3c). There was a large cluster covering most of the Chugoku region and Kyushu island, represented by cluster 6 in Fig. 3a and cluster 8 in Fig. 3c. Finally, there was a small cluster at the southern tip of Kyushu that was quite robust persisting through multiple values of  $c_{\min}$ , represented by cluster 4 in Fig. 3a and cluster 5 in Fig. 3c. The five clusters from Kanto to Kyushu may merge into one larger cluster (cluster 1 in Fig. 3b and Fig. 3d). Most rain-gauges along the Pacific coast of Shikoku island and Kinki were unclassified and only merged into this larger cluster as  $c_{\min}$  increased.

The optimal value  $c_{\min}=6$  was common between the three temporal resolutions. Fig. 3e shows “3Class” rain-gauge groups with the same combination of cluster labels from using  $c_{\min}=6$  on the three temporal resolutions, excluding 23 rain-gauges containing any unclassified label. Six 3Classes emerged, with the “5” label skipped for later comparison with Fig. 3f. The northernmost being a four-in-one large cluster consisting of the combination of the three Hokkaido clusters and the northern Tohoku cluster. The southern Tohoku cluster was excluded because it consisted of five rain-gauges, which became unclassified for hourly extremes when  $c_{\min}=6$  (Fig. 3a). Based on this consideration, the southern Tohoku cluster was manually added to create a total of seven 3Classes (red dashed contour labelled “8” in Fig. 3e).

Fig. 4 shows the clusters returned with different  $c_{\min}$  using the wavelet metric. Starting from  $c_{\min}=3$  produced 19 clusters and 23 unclassified rain-gauges (boxes a–s in Fig. 4). Increasing to  $c_{\min}=4$  produced 12 clusters with 22 unclassified rain-gauges; Five smaller clusters in Kyushu island and Chugoku region merged (boxes n–r in Fig. 4; cluster 6 in Fig. 3e), but the cluster at the southern tip of Kyushu (box m in Fig. 4; cluster 7 in Fig. 3e) and the cluster on the Sea of Japan coast (box s in Fig. 4; cluster 5 in Fig. 3e) would persist until  $c_{\min}=11$ . Increasing to  $c_{\min}=5$  produced nine clusters with 20 unclassified rain-gauges; three smaller clusters in the Kanto region merged into one (boxes i–k in Fig. 4; cluster 3 in Fig. 3e). A notable change took place at  $c_{\min}=6$  which produced 7 clusters and 18 unclassified rain-gauges. Hokkaido and northern Tohoku clusters merge into one cluster (boxes a–e in Fig. 4; cluster 1 in Fig. 3e). However, the southern Tohoku cluster of five rain-gauges became unclassified (box f in Fig. 4). The clusters remained largely unchanged until  $c_{\min}=11$ , except that the Sea of Japan cluster of six rain-gauges also became unclassified at  $c_{\min}=7$ . Hence,  $c_{\min}=6$  was optimal for producing a small number of large clusters, as shown in Fig. 3f. The southern Tohoku cluster was manually added to create a total of eight analysis regions and 12 unclassified rain-gauges (box f in Fig. 4; cluster 8 in Fig. 3f). The specific rain-gauges that make up these regions have been listed in Table 1.

The result of individually clustering three temporal resolutions and creating 3Classes from unique combinations of cluster labels and the result of the wavelet-based clustering were compared in Fig. 3e and Fig. 3f. The same optimal  $c_{\min}=6$  was found in both methods. The value of  $c_{\min}$  can be reduced to produce better geographical resolution, since most of the smaller clusters appeared robust between methods. On the other hand, increasing  $c_{\min}$  further would not produce interesting clusters from the perspective of regional study since the results would resemble Fig. 3b or Fig. 3d. The clusters produced by the two

- Deleted: on
- Deleted: time
- Deleted: c.
- Deleted: .
- Deleted: from north to south (clusters 5–7 in Fig. 3a; clusters 2–4
- Deleted: 3b; clusters 1–3
- Deleted: 3c).
- Deleted: (
- Deleted: 4
- Deleted: ; clusters 1 and 6 in Fig. 3b; clusters 4 and 5
- Deleted: 3c). The southern-most Hokkaido cluster sometimes extended into Tohoku. The rain-gauges
- Deleted: near
- Deleted: either formed one large
- Deleted: or a few smaller clusters (clusters
- Deleted: and 11
- Deleted: ; clusters 5, 9–11 in Fig. 4b; cluster 7 in Fig. 3c). This was also the case for the Kinki
- Moved (insertion) [2]
- Deleted: 3a;
- Deleted: 12
- Deleted: 3b; clusters 12, 14
- Deleted: 15
- Deleted: 3c). There were one or two
- Deleted: along the Sea of Japan side in the Chubu region (clusters 3 and 9 in Fig. 3a; cluster 8 in Fig. 3b; clusters 8 and 9 in Fig.
- Moved up [2]: 3c).
- Deleted: Rain-gauges
- Deleted: the Chugoku region formed one single hourly cluster (cluster 13 in Fig. 3a), but otherwise were arranged into two clusters, one along the Sea of Japan coast and one along the inner sea coast (clusters 16 and 15 in Fig.
- Deleted: ; clusters 13 and 10 in Fig. 3c). Rain-gauges at the ... [3]
- Moved down [3]: Fig.
- Deleted: 3a; clusters 18, 14 and 13 in Fig. 3b; clusters 16
- Deleted: 11 in
- Deleted: 3c
- Moved (insertion) [3]
- Moved (insertion) [4]
- Deleted: Figure 3d shows twenty regions were defined based on [4]
- Deleted: at three time resolutions
- Deleted: During the iterative clustering process on d4PDF, the... [5]

705 methods were also highly similar. The most notable difference was that that 3Class 6 in Fig. 3e split into two wavelet-based clusters, clusters 5 and 6 in Fig. 3f. Minor differences were that clusters 1 and 2 were larger from the wavelet-based method than the 3Class method. The wavelet-based method is better than the 3Class method in that it included multiple temporal frequencies in one round of clustering, and produced a single clustering tree that was more easily interpretable.

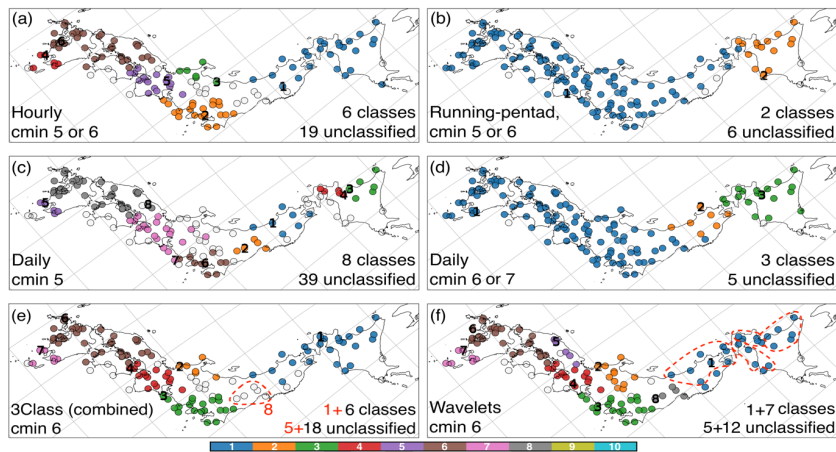
710 The wavelet-based clustering method was next applied to d4PDF. When  $c_{\min}=8$ , most points suddenly merged into one large cluster covering the entire study domain. Therefore,  $c_{\min}=7$  was used, and the result is shown in Fig. 5a. There were 1501 small clusters, which appeared excessively large. To make sense of this, three wavelet components were independently clustered. These were D1 corresponding to periods of 2–4 hours, D4 corresponding to periods of 1.3–2.7 days, and D6 corresponding to periods of 5.3–10.7 days. Fig. 5b shows the results of clustering D1 with the largest usable  $c_{\min}=7$ , producing 898 classes. Clusters with similar (purple) labels were found along Kyushu and the Pacific coast of western Japan.

715 Fig. 5c shows the results of clustering D4 with the largest usable  $c_{\min}=8$ , producing 1165 clusters. The linear pattern along the Pacific coast had broken apart. In particular, cluster labels over Kyushu were split into western (purple) and eastern (orange–yellow) groups. Fig. 5d shows the results of clustering D6 with the largest usable  $c_{\min}=25$ , producing 282 clusters. Clusters with similar (orange–yellow) labels now covered the whole of Kyushu, inland and the Sea of Japan coast of northeast Japan. Purple labels were found over the region corresponding to cluster 5 in Fig. 3e and the Pacific coast from Kanto to Hokkaido. The change between two coast-aligned patterns from high to low temporal frequencies likely contributed to the fragmentation into many clusters. Illustrating this with rain-gauges,  $c_{\min}=5$  produced six hourly, eight daily and two running-pentad clusters, but these combined into nine 3Classes (10 with the manual addition of the southern Tohoku cluster).

720

725 Another contributing factor was likely limitation by the finest denominator of clustering. The D6 component could be clustered with  $c_{\min}=25$  into 282 clusters of relatively large size, so the overall  $c_{\min}=7$  threshold was likely due to the D1 component with the same threshold. To test if larger clusters could be formed by considering more distant points as cluster candidates, D1 was re-clustered after doubling the calculation radius  $S_{\text{scale}}$  from  $1^\circ$  to  $2^\circ$ , then from  $2^\circ$  to  $4^\circ$ . The results were unchanged, indicating that the cause was the lack of significantly correlated points inside the domain at this frequency range, rather than artificial limitation by  $S_{\text{scale}}$ . Even if clustering were limited to D6, the 282 D6 clusters was still very large compared to even the  $c_{\min}=3$  rain-gauge result of 19 clusters. The reason for the large number of clusters is not clear. It is possible that clustering methodology must be further adapted for use on the high-resolution ensemble simulations.

730



**Figure 3. Rain-gauge clusters.** Labels of clusters based on the time series of **June–July** (a) 99th percentile hourly rainfall using  $c_{min}=5$  or  $c_{min}=6$ ; (b) 90th percentile running-pentad rainfall using  $c_{min}=5$  or  $c_{min}=6$ ; and (c) 90th percentile daily rainfall using  $c_{min}=5$ ; (d) 90th percentile daily rainfall using  $c_{min}=6$ . (e) Labels of station groups with the same combination of hourly, daily and running-pentad clusters using  $c_{min}=6$  (“3Class”). The red dashed contour shows the manual addition of cluster 8. Cluster label 5 is missing in this panel. (f) Labels of clusters using the wavelet-based metric with  $c_{min}=6$ , including the manual addition of one  $c_{min}=5$  cluster as cluster 8. Red dashed contours show three  $c_{min}=5$  clusters that merged to form cluster 1 when  $c_{min}=6$ . The number of classes (referring to either clusters or 3Class) and unclassified rain-gauges are shown on the bottom right. Colours only reflect the cluster numbering and do not reflect any units or magnitudes. White markers show unclassified rain-gauges. Longitude-latitude gridlines are shown as grey lines; the map is a rotated projection.

Moved up [4]: Fig.

**Deleted:** 4c), the separation between western (purple) and eastern (orange–yellow) groups over Kyushu became more apparent, with the western group extending along the Sea of Japan coast into Chugoku. These clusters had closer labels with regions along the Sea of Japan coast. The clusters region near Tokyo in Kanto formed a similarly labelled group (red-purple). Thus, a new coast-aligned linear pattern formed.

Rain-gauge and d4PDF reflected similar pattern shifts. Firstly, Rain-gauge hourly clusters along the Pacific coast had similar labels (clusters 10–12 in Fig. 3a). Secondly, two larger clusters formed over Hokkaido for running-pentad extremes (clusters 1 and 2 in Fig. 3c). Thirdly, one large cluster formed over Kanto for running-pentad extremes (cluster 7 in Fig. 3c). We could not ascertain whether an east-west split developed over Kyushu, since there were few rain-gauges in the eastern side.

Page Break  
... [6]

**Deleted:** seasonal

**Deleted:** , (a

**Deleted:** , and (a) 90th percentile running-pentad rainfall.

**Deleted:** Small white

**Deleted:** (d) The 3Class analysis regions described in Section 2.2.3.

**Deleted:** Page Break

**Formatted:** Font: Bold, Font color: Text 1

**Deleted:** [7]

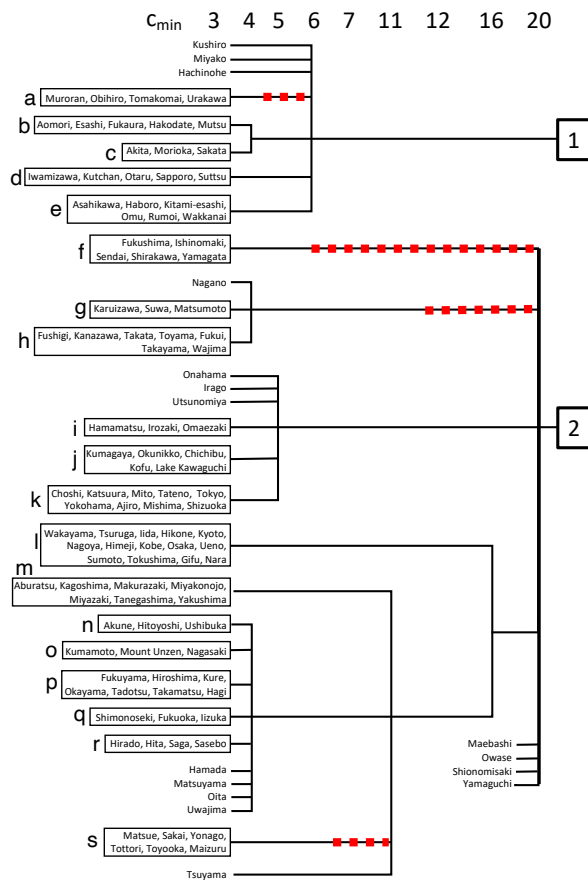
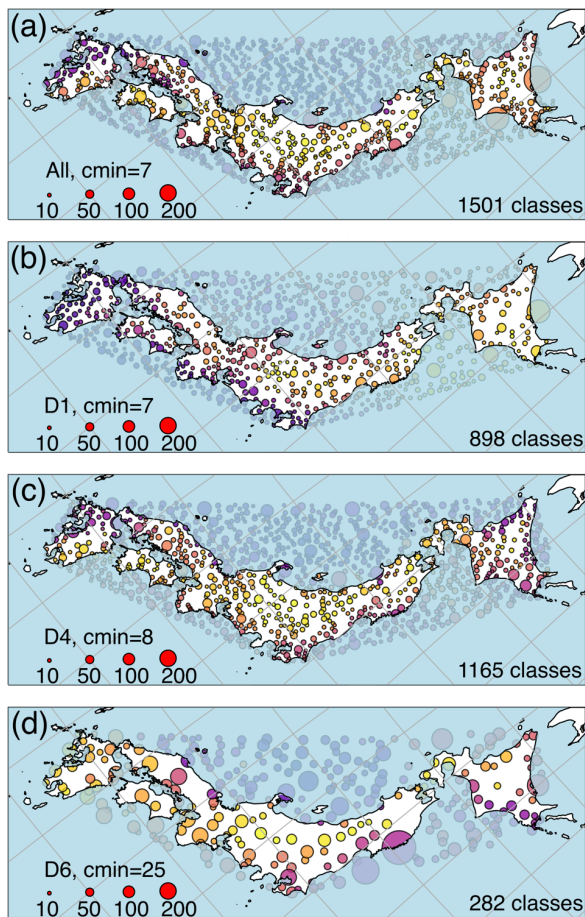


Figure 4. The combination of rain-gauges into clusters using the wavelet-based metric and different values of  $C_{min}$ , starting from 19 clusters when  $C_{min}=3$ . Red dashes indicate that the rain-gauges in the boxes became unclassified because the cluster size was smaller than  $C_{min}$ . These unclassified rain-gauges later merged back into larger clusters.



**Figure 5.** d4PDF clusters. Labels and sizes of clusters based on the time series of seasonal (a) 99th percentile hourly, (a) 90th percentile daily, and (a) 90th percentile running-pentad rainfall. Colours only reflect the cluster numbering and do not reflect any units or magnitudes. Circle marker sizes reflect cluster sizes (legend). A translucent blue mask was used to cover data within the convex hull used for clustering, but falling inside the ocean. Longitude-latitude gridlines are shown as grey lines; the map is a rotated projection.

**Formatted:** Font: Bold

### 3.3 Correlation Coefficients ( $R$ 's)

Before correlating rainfall extremes with the Pacific SST modes, the rainfall values to be used were compared between rain-gauges and d4PDF clusters co-located with the rain-gauges. Figure 6 shows the distributions of rainfall extremes for the eight analysis regions. The ranges of rain-gauges and d4PDF overlapped in all comparison cases, although the distribution peaks of d4PDF were always of smaller value than that of the rain-gauge. The latter was not surprising since the model was of 5 km horizontal resolution, and we expect rainfall extremes to improve with model resolution in the future. Hourly and daily extremes were better simulated than running-pentad extremes; The quartile bars of rain-gauges and d4PDF overlapped except for Region 5. For running-pentad extremes, the quartile bars of rain-gauges and d4PDF overlapped only for Region 3 (Kanto). The difference in performance between daily and running-pentad resolutions suggests that rain-gauges experienced more continuous rainfall in 5-day periods, but the model less so. d4PDF distributions of hourly extremes are bimodal or trimodal in most cases, but for rain-gauges this was only obviously so for Region 2 (central Sea of Japan coast). d4PDF performed the best over Region 3, and worst over Region 5 (western Sea of Japan coast). The good performance over Region 3 may be due to it being topographically flat. In contrast, Region 5 was a topographically complex region with steep topography near a coastline.

Figures 7–9 show the  $R$ 's between rainfall extremes and scores of the Pacific SST modes, at three temporal resolutions. Figure 10 summarises the results by analysis region. The left columns of Figs 7–9 show  $R$ 's for individual rain-gauges, which were at most weak. By individual rain-gauges, field significance was found for correlation with Trend+ for hourly extremes (12 significant rain-gauges), and anti-correlation with PDV for daily extremes (13 significant rain-gauges). Rain-gauges correlated with Trend+ for hourly extremes were scattered over the study domain, but more were found on the east side of Kyushu island, and on eastern Japan near the Kanto region (Fig. 7c). Due to their scattered nature, only analysis region 7 (southern Kyushu) showed significant hourly relationship of  $R=0.31$  (first bar of mode 3 in Fig. 10b). Region 3 (Kanto) showed hourly  $R=0.22$  close to but not exceeding the significance threshold (first bar of mode 3 in Fig. 10f). Rain-gauges anti-correlated with PDV for daily extremes were less scattered, with more found on Shikoku island and Hokkaido island (Fig. 8d). Most rain-gauges on Shikoku specifically Pacific-facing locations were unclassified by clustering. Region 1 (Hokkaido and Tohoku) showed significant daily relationship of  $R=-0.28$  (second bar of mode 4 in Fig. 10g).

Besides these larger patterns, there were rain-gauges concentrated over northwestern Kyushu correlated with ENSO+ for daily extremes (Fig. 8a), over Kanto anti-correlated with ENSO+ for running-pentad extremes (Fig. 9a), over Hokkaido anti-correlated with PDV for hourly extremes (Fig. 7b), over west Kyushu correlated with ENSO-NC for hourly and daily extremes (Figs 7e and 8e), and along the Pacific coast of eastern Japan with ENSO-NC for hourly extremes (Fig. 7e). However, these relationships were not seen for the analysis regions that contained these subsets of rain-gauges except for the last, reflected in Region 1 which showed significant hourly relationship of  $R=0.28$  (first bar of mode 5 in Fig. 10g).

Besides the regional relationships described above, region 7 showed significant running-pentad relationship with ENSO+ of  $R=-0.27$  (Fig. 10b), and region 1 showed significant daily relationships with ENSO-NC of  $R=0.30$ , respectively (Fig. 10g). Examination of Fig. 9a shows that the first relationship derives from only one rain-gauge in the cluster. Examination of Fig. 8e suggests that the second relationship to be believable since it derived for four rain-gauges, and was consistent with the hourly ENSO-NC relationship. Considering clusters, there was no domain-wide field significance with any SST mode.

The right columns of Figs 7–9 show  $R$ 's for d4PDF clusters, which were at most weak, except for the relationship between hourly extremes and ENSO-NC where a few moderately anti-correlated clusters were seen over eastern Japan (Fig. 7i). The spatial correlation patterns in d4PDF were different from those in the rain-gauges. Correlation with ENSO+ was seen over Chugoku for hourly and running-pentad extremes (Figs 7f and 9f; Region 5 in Fig. 10c). This was not seen in the rain-gauges, although this may be a spatial bias where observed positive correlation over northwest/west Kyushu was shifted northwestwards in d4PDF. Correlation with ENSO- was seen over western Kyushu and some places along the Sea of Japan coast. (Figs 7g, 8g, and 9g; Regions 6 and 7 in Figs 10a and 10b) This was excessively strong and not seen in the rain-gauges, so it can be considered as a strength bias. Correlation with Trend+ was seen over some parts of Hokkaido (Figs 7h, 8h, and 8h). This may be a spatial bias from the rain-gauges, where correlation was seen in regions south of Hokkaido but not in

Deleted: CCs

Deleted: 5–

Deleted: CCs

Deleted: time

Deleted: CCs

Deleted: The only exception is moderate

Deleted: between hourly extremes and

Deleted: at

Deleted: at the southern tip of Kyushu (Fig. 5c). With regards to the first two ENSO modes, rain-gauges showed

Deleted: at

Moved (insertion) [5]

Moved (insertion) [6]

850 Hokkaido. Correlation with PDV was seen over eastern Kyushu and southeast Hokkaido for daily and running-pentad extremes (Figs 8i and 9i). This was strength bias from the rain-gauges, which only showed anti-correlation. Correlation with ENSO-NC was seen over some parts of western Kyushu, while anti-correlation with ENSO-NC was seen over eastern Japan (Figs 7j, 8j, and 9j; Region 3 in Fig. 10f). The anti-correlation over eastern Japan was excessive and not seen in rain-gauges, resulting in a strength bias.

855 The relative performance of d4PDF for the different SST modes can be evaluated from Fig. 10. We required that the rain-gauge  $R$  values (blue diamonds) fall within the range of d4PDF  $R$  values (box plot), for at least two out of three temporal resolutions, to call the model performance “acceptable”. For ENSO+ this was six of eight regions (6, 5, 2, 1 / 3, 8 listed along rows with top and bottom rows divided by a slash). For ENSO- this was three regions (1 / 4, 3, 8). For Trend+ this was seven regions (6, 5, 2, 1 / 4, 8). For PDV this was three regions (5 / 3, 8). For ENSO-NC this was four regions (6, 5 / 7, 4). The best performance by region was for ENSO+ and Trend+, although in almost all cases acceptable performance meant reproducing the lack of relationship, the Trend+ mode was described in Section 3.1 as including both warming trend and well as interannual and decadal variability, so we would like to further investigate its relationship with rainfall extremes.

865 To better evaluate the relationships between rainfall extremes and warming alone, Trend+ scores were smoothed using a 11-year running mean (black dotted line in Fig. 1c). Figure 11 shows the correlations with this smoothed trend. Figure 12 summarises the results by analysis region, including also regional relationships with the NPGO index, TPI index, and SOI. The spatial patterns for the other three indices are not shown because the relationships were unremarkable and no better than that with the SST modes. In these figures, the threshold for significance was  $|R| > 0.273$  due to the shorter time period after smoothing. Due to this high threshold, there was no domain-wide field significance by considering individual rain-gauges. Although Fig. 11a showed a similar number of weakly correlated rain-gauges as Fig. 7a, including one moderately correlated rain-gauge at southern Kyushu, only 10 rain-gauges were significantly correlated. Nevertheless, the spatial distribution of correlated rain-gauges over Kyushu and anti-correlation rain-gauges over the inland region further northeast was present at all three temporal resolutions (Figs 11a, 11b, and 11c). d4PDF showed a similar spatial pattern, except for the presence of correlated regions over Hokkaido that was not seen in rain-gauges (Figs 11d, 11e, 11f).

875 By analysis region, only Region 7 showed significant correlation for all three temporal resolutions, of hourly  $R=0.45$ , daily  $R=0.36$ , and running-pentad  $R=0.38$  (trend mode in Fig. 12b). The model performance with smoothed trend was acceptable for the same seven regions as Trend+ (6, 5, 2, 1 / 4, 3, 8). In Region 7, model  $R$  values were also high but their range fell short of the rain-gauge values for hourly and daily extremes (first and second bars of trend mode in Fig. 12b). Model performance with NPGO index was acceptable for seven region (2, 1 / 7, 4, 3, 8). For TPI, this was only three regions (6, 5, 2). For SOI, this was five regions (6, 5, 2 / 3, 8), the same regions as ENSO+ excluding region 1. It seems that d4PDF produced appropriate relationships between hourly rainfall extremes and the slow components of Trend+, except for over Hokkaido. It should be used with caution when studying the ENSO and PDV due to the above-described biases.

**Deleted:** time resolutions, but smaller regions contained rain-gauges with significant CCs.

**Deleted:** With ENSO+, d4PDF showed similar correlation signs to rain-gauges over northeastern, eastern and southwestern Japan, but with spatial biases. Anti-correlated rain-gauges were found at western Hokkaido for hourly and running-pentad extremes (Figs 5a and 7a; Table 2 regions 1–2), but at eastern Hokkaido for daily extremes (Fig. 6a). Anti-correlated rain-gauges were scattered over central Japan, Kanto and southern Kyushu (Figs 5a, 6a, 7a; Table 2 region 20). Correlated rain-gauges were found along the Sea of Japan coast (Table 2 region 5), and at northwestern Kyushu (Table 2 regions 17–19). Similar to the rain-gauges, d4PDF also showed anti-correlation over Hokkaido for all three time resolutions, although not at the same locations as rain-gauges (Figs 5f, 6f, 7f; Table 2 region 1). Similar to the rain-gauges, there were also some anti-correlated sets near Kanto, particularly for hourly extremes, although not at the same locations as rain-gauges. Similar to the rain-gauges, there were correlated sets at Kyushu, although on the eastern side. Unlike the rain-gauges, d4PDF showed widespread correlation over western Japan (Table 2 regions 12–16). ¶

¶ With ENSO-, d4PDF was excessively correlated across most of Japan, except at the eastern side of topography with some anti-correlated sets. Anti-correlated rain-gauges were found at northwestern Kyushu, for all three time resolutions (Figs 5b, 6b, 7b; Table 2 region 19). Anti-correlated rain-gauges were also scattered along the Pacific coast and near the Japanese Alps central of the domain, particularly for daily extremes (Fig. 6b). Similar to the rain-gauges, d4PDF also showed anti-correlation along the Pacific coast for daily and pentad extremes, although only on the east side of topography (Figs 6g, 7g). Similar to the rain-gauges, there were some anti-correlation sets near the Japanese Alps for all three time resolutions. Unlike the rain-gauges, d4PDF showed widespread correlation across Japan (Table 2 regions 1–5, 7–13, 15–20). Reversed the rain-gauges, d4PDF showed correlation at northwestern Kyushu for daily and running-pentad extremes (Figs 6g, 7g). ¶

¶ Considering clustered results for hourly extremes, there was field significance over the study domain for correlation with Trend+ and ENSO-NC, i.e. at least 5 sets with significant CCs. For daily extremes, there was field significance for anti-correlation with PDV. For running-pentad extremes, no mode showed field significance, although there were a number of individual rain-gauges correlated with Trend+ and anti-correlated with PDV. As discussed in Section 2.2.4, the field significance test had the disadvantage of treating large clusters and single rain-gauges equally, so field significance tests were also carried out individual rain-gauges under the assumption that they were mutually independent. Since this is a false assumption, such a test would be too permissive, but the results may be useful as a comparison. For hourly extremes, there was field significance over the domain for correlation with Trend+, i.e. at least 11 rain-gauges with significant CCs. For daily extremes, there was field significance for anti-correlation with PDV. For running-pentad extremes, no mode showed field significance. Hence, field significance results were consistent between the two methods, except for ENSO-NC

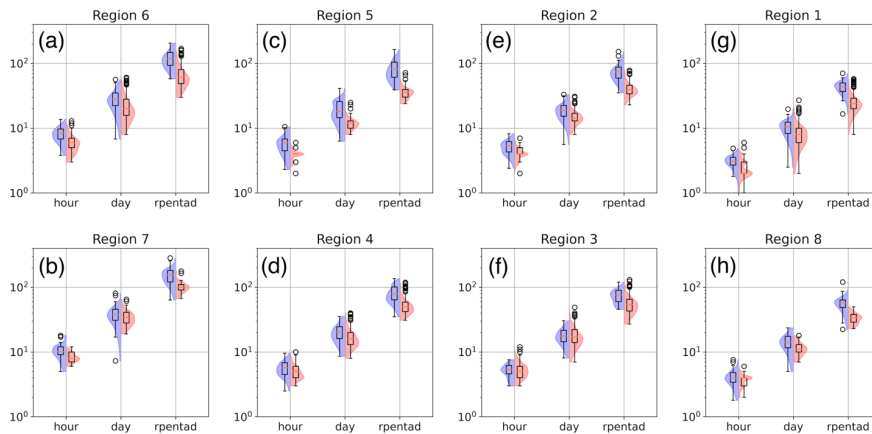
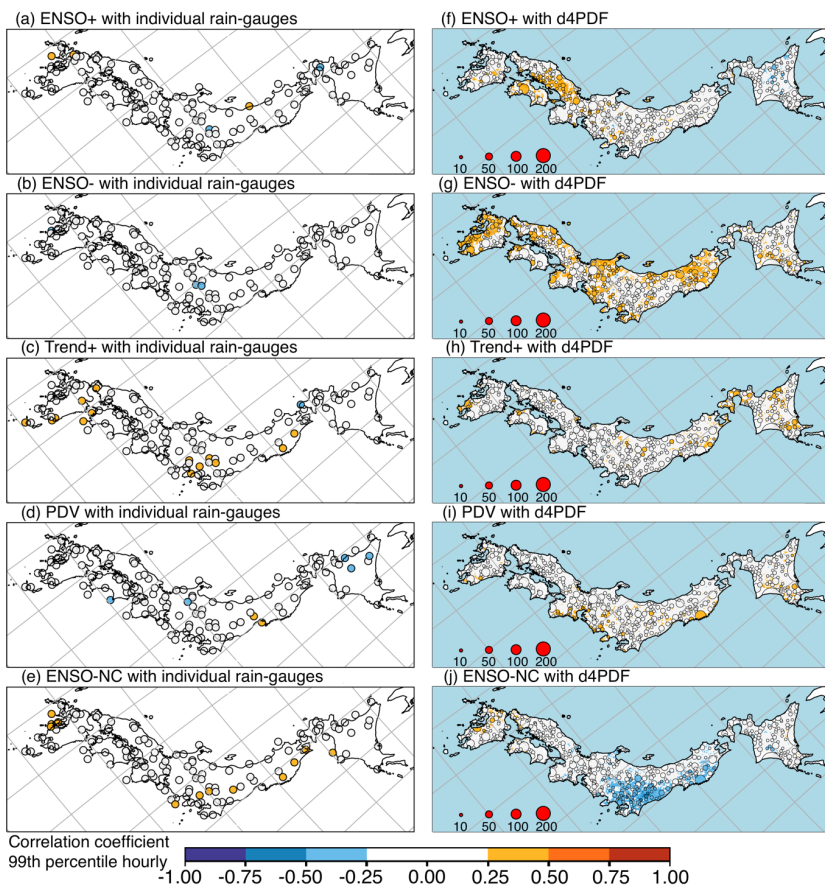


Figure 6. The distribution of June–July 99th percentile hourly rainfall (“hour”), 90th percentile daily rainfall (“day”), and 90th percentile running-pentad rainfall (“rpentad”) in mm. The eight analysis regions are arranged by their geographical location from southwest to northeast in Fig. 3f. Left side (blue shading) shows the distribution from rain-gauges, where each sample is the annual percentile value of the cluster. Right side (red shading) shows the distribution from d4PDF, where each sample is the annual percentile of each cluster co-located with the rain-gauges. Bar and whisker plots show the quantile values and circle markers showing outliers.





Moved up [5]:

The right columns

**Deleted:** of Figs 5–7 show CCs for sets in d4PDF. CCs were weak over most of Japan, but could be moderate in some locations, particularly in Kanto with ENSO-NC (Figs 5j and

Moved up [6]: 7j).

**Deleted:** For the higher modes of Trend+, PDV, and ENSO-NC, the patterns of CCs in d4PDF were similar between time resolutions, but did not seem to resemble rain-gauge patterns. With Trend+, rain-gauges showed correlation outside of Hokkaido (Fig. 5c; Table 2 regions 8–9 Kanto, 19–20 southwestern Kyushu), but d4PDF showed correlation in Hokkaido (Fig. 5h; Table 2 regions 1–4). With PDV, rain-gauges showed anti-correlation across Japan (Fig. 6d; Table 2 regions 1, 2, 11, 14, 19), but d4PDF showed mostly correlation near the Pacific coast (Fig. 6i; Table 2 regions 3, 8, 12, 20). There was only one anti-correlated region at the Sea of Japan coast (Table 2 region 16). With ENSO-NC, rain-gauges showed correlation across Japan (Fig. 5e; Table 2 regions 3, 4, 6, 8, 19), but d4PDF showed correlation only at northwestern Kyushu (Table 2 region 17–19). Northeastern and eastern Japan were anti-correlated (Table 2 regions 2, 4, 6–11), particularly over Kanto (Fig. 5j; Table 2 region 8).

Page Break

...

[8]

**Deleted:** seasonal

**Deleted:** upper

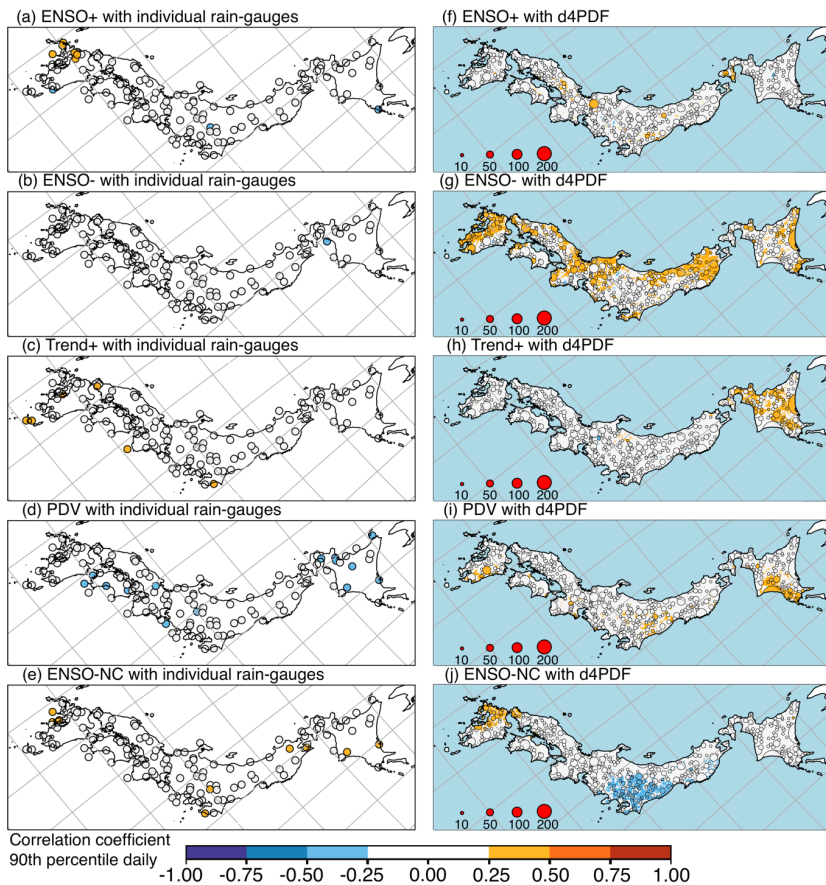


Figure 8. Like as Fig. 7, except for seasonal 90th percentile daily rainfall.

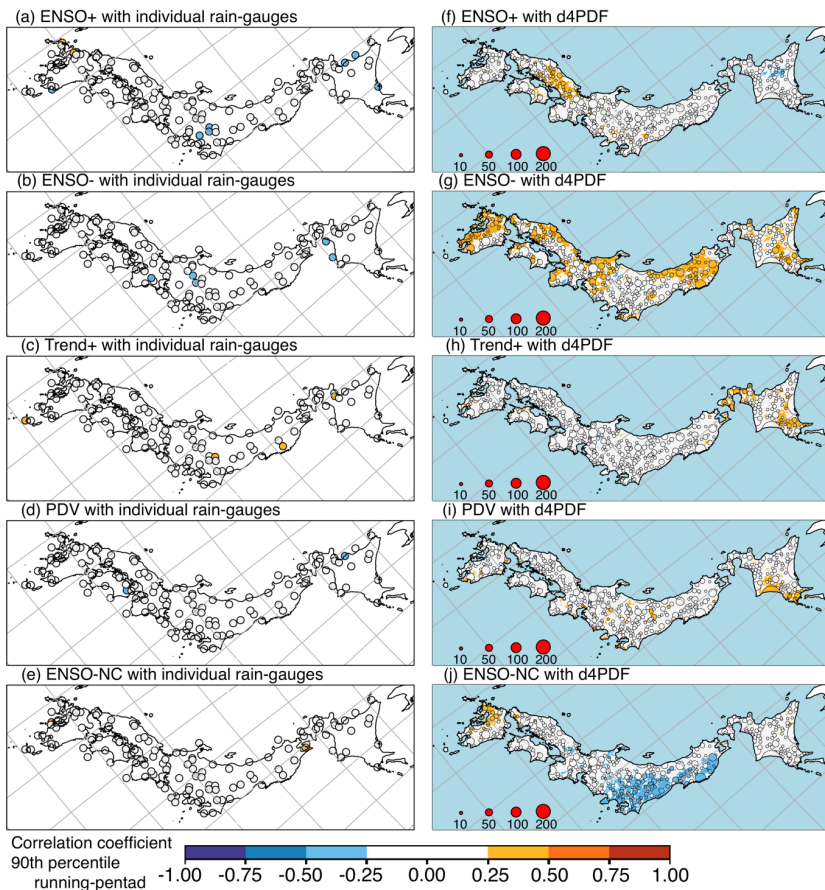


Figure 9. Like Fig. 7, except for seasonal 90th percentile running-pentad rainfall.

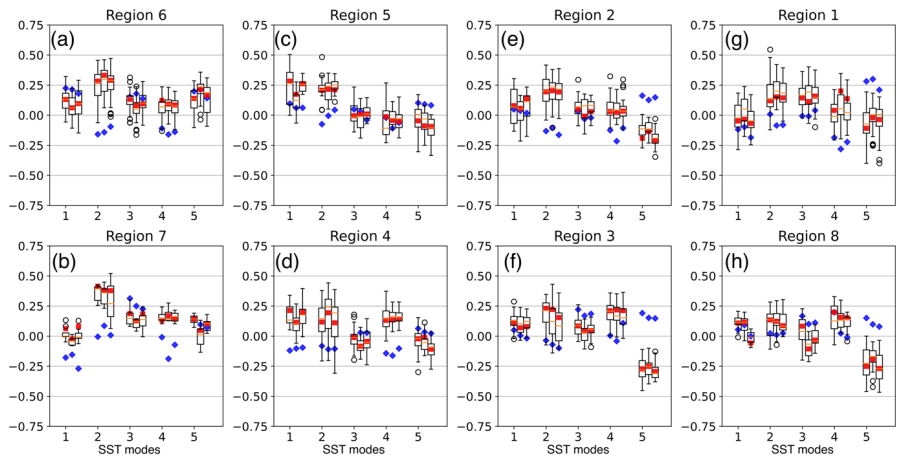


Figure 10. Spearman correlation coefficients  $R$ 's between June–July rainfall extremes and the scores of the first five Pacific SST modes. The eight analysis regions are arranged by their geographical location from southwest to northeast in Fig. 3f. Three columns for each mode show the results for 99th percentile hourly, 90th percentile daily, and 90th percentile running-pentad rainfall. Blue diamonds represent the  $R$ 's from rain-gauge cluster. Bar and whisker plots show the quantile values of the d4PDF clusters co-located with the rain-gauges, with circle markers showing outliers. Red boxes show the mean of d4PDF  $R$ 's weighted by cluster size.

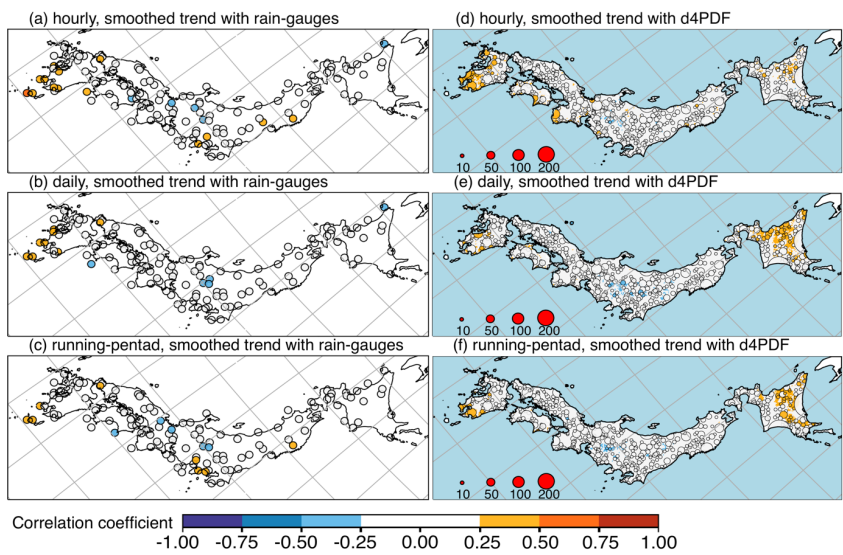
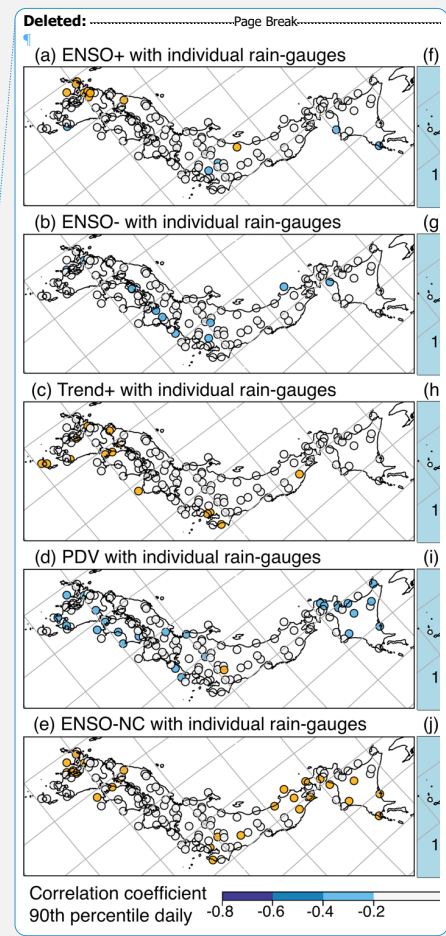


Figure 11. Spearman correlation coefficients  $R$ 's for the 1957–2006 period between 11-year running mean of the Trend+ score June–July and rainfall extremes of different temporal resolution (rows), from individual rain-gauges (left column) or d4PDF (right column). From rain-gauges, (a) 99th percentile hourly rainfall, (b) 99th percentile daily rainfall, (c) 99th percentile running-pentad rainfall. From d4PDF, (d) 99th percentile hourly rainfall, (e) 99th percentile daily rainfall, (f) 99th percentile running-pentad rainfall. In the right column, circle marker sizes reflect cluster sizes, while single points are shown as coloured dots. A blue mask was used to cover d4PDF data inside the ocean. Longitude-latitude gridlines are shown as grey lines; the map is a rotated projection.



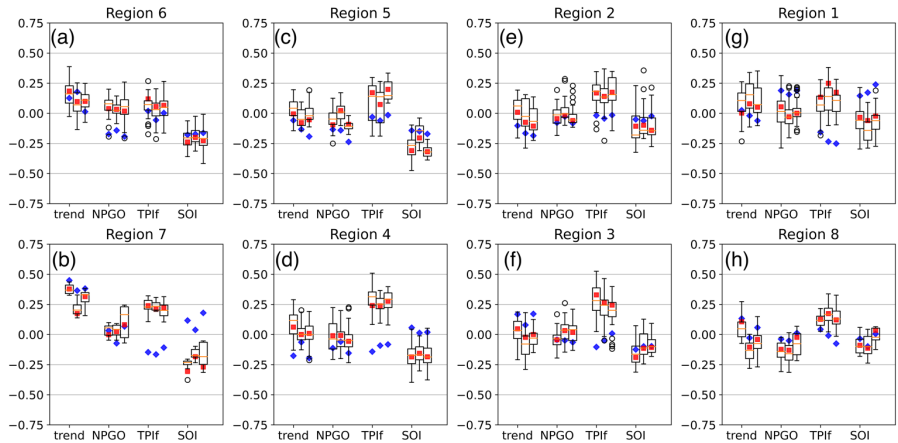


Figure 12. Like Fig. 10 but with the 11-year running mean Trend+ score, NPGO index, TPI index (filtered version), and the SOI.

Deleted: 612. Like as ...ig. 5, except for seasonal 90th upper. [9]

Formatted: Not Strikethrough

region	time	ENSO+		ENSO-	
		gauge	d4PDF	gauge	d4f
1	H	-0.16	-0.21	0.04	0.
	D	-0.12	-0.09	-0.04	0.
	P	-0.24	-0.16	-0.04	0.
2	H	-0.31	0.15	-0.04	0.
	D	-0.16	0.04	-0.02	0.
	P	-0.25	-0.04	-0.06	0.
3	H	-0.17	-0.02	-0.20	0.
	D	-0.09	-0.07	-0.18	0.
	P	-0.06	-0.05	-0.36	0.
4	H	-0.04	0.01	-0.11	0.
	D	0.00	0.14	-0.16	0.
	P	-0.13	0.09	-0.06	0.
5	H	0.22	0.01	-0.01	0.
	D	0.16	0.11	0.02	0.
	P	0.12	0.09	0.02	0.
6	H	0.06	0.06	-0.02	0.
	D	0.07	0.05	0.11	0.
	P	0.00	0.01	0.11	0.
7	H	0.06	0.07	0.03	0.
	D	0.11	0.19	0.01	0.
	P	-0.04	0.14	0.05	0.
8	H	-0.08	0.02	-0.07	0.
	D	-0.09	0.14	0.01	0.
	P	-0.10	0.13	-0.14	0.
9	H	-0.03	0.12	-0.06	0.
	D	-0.19	0.15	-0.03	0.
	P	-0.17	0.17	-0.07	0.
10	H	0.03	-0.03	-0.11	0.
	D	0.04	0.08	-0.16	0.
	P	0.03	0.08	-0.16	0.
11	H	-0.03	0.08	-0.09	0.
	D	-0.10	0.08	0.02	0.
	P	-0.03	0.17	-0.03	0.
12	H	-0.05	0.28	-0.12	0.
	D	-0.03	0.15	-0.04	0.
	P	-0.09	0.21	-0.05	0.
13	H	-0.07	0.17	-0.05	0.
	D	-0.14	0.16	-0.19	0.
	P	-0.08	0.23	-0.11	0.
14	H	-0.12	0.23	-0.11	0.
	D	-0.18	0.14	-0.04	0.
	P	-0.03	0.27	0.03	0.
15	H	0.13	0.21	-0.14	0.
	D	0.11	0.17	-0.08	0.
	P	0.10	0.22	-0.06	0.
16	H	0.11	0.11	-0.09	0.
	D	0.13	0.03	0.01	0.
	P	0.09	0.23	0.02	0.
17	H	0.14	0.10	-0.09	0.
	D	0.20	-0.07	-0.11	0.
	P	0.10	-0.03	-0.08	0.
18	H	0.20	0.08	-0.13	0.
	D	0.26	-0.05	-0.12	0.
	P	0.23	-0.03	-0.05	0.
19	H	0.25	0.08	-0.22	0.
	D	0.17	0.04	-0.18	0.
	P	0.22	0.05	-0.17	0.
20	H	-0.19	0.01	-0.11	0.
	D	-0.13	-0.02	0.03	0.
	P	-0.19	0.05	-0.06	0.

Deleted:

Formatted: Font color: Text 1



#### 4 Discussion

The lack of strong  $R$ 's between rainfall extremes and the Pacific SST modes indicates that the latter are not major controlling factors for extreme rainfall over Japan. These results are sensible in that extreme rainfall typically occurs in mesoscale systems which may be associated with certain synoptic scale conditions, but are much less likely to be directly influenced by hemispheric or planetary scale climate variability. In this section, rainfall extremes were correlated against indices reflecting the regional state of the monsoon near Japan, to check if there were stronger relationships with regional conditions. Rain-gauge rainfall extremes were correlated with monsoon indices calculated from JRA55, and these relationships were considered as "observations", shown on the left columns of Figs 13–18. d4PDF rainfall extremes were correlated with monsoon indices calculated from d4PDF-AGCM, shown on the right columns of Figs 13–18. Figure 19 summarises the results by analysis region.

Based on observations, rainfall extremes showed up to moderate correlation only with the seasonal anomaly of monsoon jet zonal strength ( $\mu_{OJ}$ ; Figs 14a, 16a, and 18a). Considering individual rain-gauges, domain-wide field significance was found for correlation with  $\mu_{OJ}$  using all three resolutions of hourly extremes (25 rain-gauges; Fig. 14a), daily extremes (36 rain-gauges; Fig. 16a), and running-pentad extremes (24 rain-gauges; a). The correlated rain-gauges were also concentrated along the Pacific coast of western Japan. This was reflected in significant cluster correlation in region 7 for all time resolutions with hourly  $R=0.55$ , daily  $R=0.60$ , and running-pentad  $R=0.56$  (JQU in Fig. 19b); in region 3 for hourly and daily extremes with  $R=0.31$  and  $R=0.43$  respectively (first and second bars of JQU in Fig. 19f); region 4 for daily extremes with  $R=0.28$  (second bar of JQU in Fig. 19d); region 6 for daily extremes with  $R=0.29$  (second bar of JQU in Fig. 19a). This meant that cluster-wise field significance was found for daily correlation with  $\mu_{OJ}$ .

The rest of the indices showed at most weak relationships, similar to the relationships with SST modes. However, rainfall extremes had better relationships with some monsoon indices in the sense that more rain-gauges showed significant relationships. Field significance was also found for correlation with the seasonal meridional anomaly of monsoon jet meridional strength ( $\mu_{OV}$ ) using all three resolutions of hourly extremes (12 rain-gauges; Fig. 14b), daily extremes (15 rain-gauges; Fig. 16b), and running-pentad extremes (14 rain-gauges; b). The  $\mu_{OV}$ -correlated rain-gauges were concentrated along the Sea of Japan coast. Only region 1 showed significant correlation, significant at all three resolutions with hourly  $R=0.28$ , daily  $R=0.36$ , and running pentad  $R=0.35$  (JQV in Fig. 19g).

Both  $\sigma^2_{JLat}$  and  $\sigma^2_{Q(U,V)}$  were indicators of monsoon jet instability, but  $\sigma^2_{JLat}$  better related to rainfall extremes than  $\sigma^2_{Q(U,V)}$ . Field significance was found for anti-correlation with the seasonal variance of monsoon jet latitude ( $\sigma^2_{JLat}$ ) using daily extremes (28 rain-gauges; Fig. 15d) and running-pentad extremes (15 rain-gauges; Fig. 17d), but not hourly extremes (11 rain-gauges only; Fig. 13d). The anti-correlated rain-gauges were concentrated along the Pacific coast of western Japan. The spatially widespread relationship was reflected in significant cluster anti-correlation in region 7 for daily and running-pentad extremes with  $R=-0.39$  and  $R=-0.33$  respectively (southern Kyushu; second and third bars of JLe in Fig. 19b); in region 4 for daily and running-pentad extremes with  $R=-0.30$  and  $R=-0.29$  respectively (Kansai; second and third bars of JLe in Fig. 16d); in region 3 for daily extremes only with  $R=-0.31$  (Kanto; second bar of JLe in Fig. 19f). This meant that cluster-wise field significance was found for daily anti-correlation with  $\sigma^2_{JLat}$ .

Field significance was not found for the seasonal variance of monsoon jet strength ( $\sigma^2_{Q(U,V)}$ ) despite the presence of a number of weakly anti-correlated rain-gauges for hourly extremes (Fig. 14d), daily extremes (Fig. 16d), and running-pentad extremes (d), because the number of significantly anti-correlated rain-gauges were only 11, 11 and 10, respectively. The anti-correlated rain-gauges were concentrated in southern Kyushu, and only region 7 showed significant anti-correlation, significant for all three resolutions with hourly  $R=-0.36$ , daily  $R=-0.42$ , and running-pentad  $R=-0.42$  (JQe in Fig. 19b).

The relationships seen in d4PDF were much stronger than observed relationships. Only three rain-gauges in southwest Kyushu showed moderate relationships and only with  $\mu_{OV}$ , two for hourly and daily extremes (Figs 14a and 16a), and a different one for running-pentad extremes (Figs 14a and 18a). d4PDF showed up to moderate relationships between rainfall extremes and five monsoon indices  $\mu_{OV}$ ,  $\sigma^2_{JLat}$ ,  $\mu_{OJ}$ ,  $\mu_{JLat}$ , and  $\sigma^2_{Q(U,V)}$ , in order of influence. The spatial patterns for  $\mu_{OV}$  and

**Deleted:** CCs

**Deleted:** "

**Deleted:** . The

**Deleted:** were similar between the three time resolutions, so only the results for daily extremes are described below (Figs 8, 9).

**Deleted:** Based on observations, CCs with the seasonal anomaly of the monsoon front latitude ( $\mu_{FLat}$ ; Fig. 8a), seasonal variance of the monsoon front latitude ( $\sigma^2_{FLat}$ ; Fig. 8b), seasonal anomaly of the monsoon jet latitude ( $\mu_{JLat}$ ; Fig. 8c), and seasonal anomaly of the monsoon jet meridional strength ( $\mu_{OV}$ ; Fig. 9b) were no stronger than CCs with the SST modes. The spatial patterns of correlation were similar between d4PDF and rain-gauges for the  $\mu_{FLat}$ ,  $\mu_{JLat}$ , and  $\mu_{OV}$ , showing correlation along the Sea of Japan coast and anti-correlation along the Pacific coast (Figs 8e, 8g, 9e). However, d4PDF CCs were much stronger than observations, showing up to strong CCs in some locations.

Compared to SST modes, rainfall extremes were observed to have better relationships with the seasonal variance of monsoon jet latitude ( $\sigma^2_{JLat}$ ; Fig. 8d) and the seasonal variance of monsoon jet strength ( $\sigma^2_{Q(U,V)}$ ; Fig. 9c), both of which were indicators of monsoon jet instability. Spatially widespread weak anti-correlation with  $\sigma^2_{JLat}$  was observed along the Pacific coast, for more rain-gauges than with any SST mode. With  $\sigma^2_{Q(U,V)}$ , two moderately anti-correlated rain-gauges were seen at southern Kyushu. This meant that larger variance or greater instability of the monsoon jet did not correlate with stronger rainfall extremes in the observations. In contrast to observations, d4PDF showed up to strong anti-correlation with  $\sigma^2_{JLat}$  along the opposite Sea of Japan coast, but correlation over the Pacific coast east of topography and at eastern Japan (Fig. 8h). d4PDF also showed mainly correlation with  $\sigma^2_{Q(U,V)}$ , particularly at eastern Kyushu (Fig. 9f).

The strongest observed relationships were with the seasonal anomaly of monsoon jet zonal strength ( $\mu_{OJ}$ ; Fig. 9a). Widespread correlation of up to moderate strength was observed along the Pacific coast, particularly at southwestern Kyushu. In contrast to observations, d4PDF showed up to strong correlation along the opposite Sea of Japan coast, but anti-correlation along the Pacific coast east of topography.

The spatially widespread and up to strong CCs seen in d4PDF indicated that model extreme rainfall had much better relationships with regional monsoon indices than with Pacific SST modes. This was consistent with observations which also showed stronger relationships between extreme rainfall and the indices, and supported the hypothesis that Pacific SST modes act indirectly through the regional monsoon. Next, correlations between the monsoon indices and scores of the Pacific SST modes were calculated. CCs from JRA55 and d4PDF were at most weak, with only one exception from d4PDF.

The exception of moderate CC from d4PDF was 0.46 between ENSO- and  $\mu_{OJ}$ , in contrast to the JRA55 significant value of 0.30. For d4PDF, ENSO- also had significant CCs with  $\sigma^2_{JLat}$  and  $\mu_{OV}$  at -0.32 and 0.32, respectively. In contrast, observations showed no relationships with  $\sigma^2_{JLat}$  and  $\mu_{OV}$ . The d4PDF spatial patterns of  $\sigma^2_{JLat}$  and  $\mu_{OV}$  were respectively reversed to (Fig. 8h) and similar to (Fig. 9e) the pattern of  $\mu_{OJ}$  (Fig. 9d). The stacking of these three patterns...

$\mu_{OU}$  were similar to each other, and between temporal resolutions (Figs 14d–e, 16d–e, 18d–e). This was correlation along the Sea of Japan coast, correlation along the Pacific coast west of topography, but anti-correlation along the Pacific coast east of topography. The spatial patterns for  $\sigma^2_{JLat}$  was similar between temporal resolutions (Figs 13h, 15h, 17h). This was the reversed pattern with anti-correlation along the Sea of Japan coast, anti-correlation along the Pacific coast west of topography, but correlation along the Pacific coast east of topography. The most influential three indices  $\mu_{OV}$ ,  $\sigma^2_{JLat}$ , and  $\mu_{OU}$  for d4PDF were also the three indices that showed field-significant relationships for observation. However, the observed order of importance was  $\mu_{OU}$ ,  $\sigma^2_{JLat}$ , and  $\mu_{OV}$ .

The other two monsoon indices showing moderate correlations with rainfall extremes had better relationships with hourly and pentad extremes than with daily extremes. For  $\mu_{JLat}$ , areas with moderate anti-correlation were not spatially widespread, and occurred only with scattered clusters in southern Kyushu or Chugoku for hourly and running-pentad extremes (Figs 13g and 17g, but not Fig. 15g). Weak anti-correlation was spatially widespread over western Japan so this was a relatively influential mode for d4PDF, but not for observation. For  $\sigma^2_{O(U,V)}$ , moderate correlation was concentrated over eastern Kyushu only for hourly extremes (Fig. 14f). Weak correlation was seen over eastern Kyushu, Chugoku, some parts along the Sea of Japan coast for hourly and pentad extremes, but only over eastern Kyushu for daily extremes.

The remaining two monsoon indices related to the monsoon front latitude  $\sigma^2_{FLat}$  and  $\mu_{FLat}$  showed weak relationships that were spatially more widespread than observation. For  $\sigma^2_{FLat}$ , this was clearly so with weak anti-correlation over western Kyushu and weak correlation along the Pacific coast of eastern Japan for all three temporal resolutions (Figs 13f, 15f, 17f). For  $\mu_{FLat}$ , this was less clearly so and only over eastern Japan. Clusters with weak anti-correlation were concentrated over the Kanto region, and most widespread for hourly extremes (Fig. 13f, vs Figs 15f and 17f). Weak correlation was seen along the Sea of Japan coast, but only widespread for daily extremes (Fig. 15f, vs Figs 13f and 17f).

In both observations and d4PDF, rainfall extremes had stronger or more spatially widespread relationships with some of the regional monsoon indices than with Pacific SST modes. This supported the hypothesis that Pacific SST modes act indirectly through the regional monsoon. Hence, correlations between the monsoon indices and standardised principal components of the Pacific SST modes were calculated (Table 2). Relationships from both JRA55 and d4PDF were at most weak, and we propose that multiple aspects of influence through the monsoon indices need to stack for a relationship to be detected between the SST modes and extreme rainfall. This method of explanation will first be applied to the ENSO-related SST modes, to explain their relationships with rainfall extremes in d4PDF were excessive compared to rain-gauges. Then the method will be less successfully applied to PDV and Trend+, to explain why relationships with rainfall extremes were seen in rain-gauges, but not in d4PDF.

ENSO+ was significantly correlated with  $\sigma^2_{O(U,V)}$  for both d4PDF ( $R=0.31$ ) and JRA55 ( $R=0.30$ ). There was significant anti-correlation only for d4PDF, with  $\mu_{OV}$  ( $R=-0.28$ ),  $\mu_{JLat}$  ( $R=-0.29$ ), and  $\mu_{FLat}$  ( $R=-0.34$ ), but not for JRA55 ( $R=0.04$ ,  $R=-0.20$ , and  $R=-0.15$ , respectively). The  $\mu_{JLat}$   $R$  values were similar between d4PDF and JRA55, but only d4PDF showed a spatially widespread relationship between  $\mu_{JLat}$  and extreme rainfall (panels c vs d for Figs 13, 15, and 17), so  $\mu_{JLat}$  was influential only for d4PDF. d4PDF displayed the stacked spatiotemporal signals of  $\sigma^2_{O(U,V)}$  and reversed  $\mu_{JLat}$  in the ENSO+ signals. Firstly, ENSO+ also showed weak correlation over eastern Kyushu only for hourly extremes (Fig. 7f) but not otherwise (Figs 8f and 9f);  $\sigma^2_{O(U,V)}$  showed up to moderate correlation over eastern Kyushu only for hourly extremes (Fig. 14f) but weak correlation otherwise (Figs 16f and 18f); reversed  $\mu_{JLat}$  showed up to moderate correlation over Kyushu only for hourly extremes (reversed Fig. 13g) but weak correlation otherwise (reversed Figs 15g and 17g). Secondly, ENSO+ also showed weak correlation only for hourly and running-pentad extremes (Figs 7f and 9f) but not for daily extremes (Fig. 8f);  $\sigma^2_{O(U,V)}$  showed weak correlation over Chugoku only for hourly and running-pentad extremes (Figs 14f and 18f) but not daily extremes (Fig. 16f); reversed  $\mu_{JLat}$  showed up to moderate correlation over Chugoku only for hourly and running-pentad extremes (reversed Figs 13g and 17g) but weak correlation for daily extremes (reversed Fig. 15g). The signals of reversed  $\mu_{OV}$ , reversed  $\mu_{FLat}$ , and western Kyushu part of reversed  $\mu_{JLat}$  seemed to have “cancelled out”. Reversed  $\mu_{OV}$  showed anti-correlation over western Kyushu and along the Sea of Japan coast (Figs. 14e, 16e, 18e); reversed  $\mu_{FLat}$  showed correlation along the Sea of Japan coast (Figs 13e, 15e, 17e); reversed  $\mu_{JLat}$  showed correlation over western Kyushu (Figs 13g, 15g, 17g). Reversed  $\mu_{OV}$  showed correlation over Kanto; reversed  $\mu_{FLat}$  showed anti-correlation over Kanto. Unlike the stacking of



signals with the same direction, it was more difficult to decide whether antagonising signals would “cancel”. Two factors were involved: the strength of the relationship between SST modes and the regional monsoon, as well as the strength of the relationship between the regional monsoon modes and extreme rainfall.

ENSO- was significantly correlated with  $\mu_{OU}$  for both d4PDF ( $R=0.46$ ) and JRA55 ( $R=0.30$ ). There was significant correlation with  $\mu_{OV}$  for d4PDF only ( $R=0.32$ ), but not for JRA55 ( $R=0.02$ ). There was significant anti-correlation with  $\sigma^2_{OU(V)}$  for JRA55 only ( $R=-0.30$ ), but not d4PDF ( $R=-0.11$ ). There was significant anti-correlation for d4PDF with  $\sigma^2_{JLat}$  ( $R=-0.31$ ),  $\mu_{JLat}$  ( $R=-0.32$ ), and  $\mu_{FLat}$  ( $R=-0.30$ ), but not for JRA55 ( $R=-0.05$ ,  $R=0.07$ , and  $R=-0.20$ , respectively). For observation, the stacking of correlation over southern Kyushu from  $\mu_{OU}$  (Figs 14a, 16a, 18a) and reversed  $\sigma^2_{OU(V)}$  (Figs 14c, 16c, 18c) suggested that correlated rain-gauges should be seen over southern Kyushu, but this was not the case (Figs 7b, 8b, and 9b). However, stacking could explain d4PDF’s excessive correlation between ENSO- and rainfall extremes. The three patterns of  $\mu_{OU}$  (Figs 14d, 16d, 18d),  $\mu_{OV}$  (Figs 14e, 16e, 18e), and reversed  $\sigma^2_{JLat}$  (reversed Figs 13h, 15h, 17h) were similar, with correlation along the Sea of Japan coast, correlation along the Pacific coast west of topography, but anti-correlation along the Pacific coast east of topography. Over western Japan, the anti-correlation was antagonised by the reversed  $\mu_{JLat}$  signal of correlation (reversed Figs 13g, 15g, 17g). Over eastern Japan particularly Kanto, the anti-correlation was antagonised by the reversed  $\mu_{FLat}$  signal of correlation (reversed Figs 13e, 15e, 17e). This produced the d4PDF spatial pattern of correlation along the Sea of Japan coast and along the Pacific coast west of topography, but no relationship along the Pacific coast east of topography (Figs 7g, 8g, 9g). A few moderately anti-correlated clusters were seen over Kanto for hourly extremes (Fig. 7g).

ENSO-NC showed only significant relationships with d4PDF. This was correlation with  $\mu_{OU}$  ( $R=0.31$ , vs JRA55  $R=0.08$ ), anti-correlation with  $\sigma^2_{JLat}$  ( $R=-0.36$ , vs JRA55  $R=-0.01$ ), and anti-correlation with  $\sigma^2_{FLat}$  ( $R=-0.27$ , vs JRA55  $R=-0.19$ ). Since  $\sigma^2_{FLat}$  was not influential for JRA55, the higher magnitude of  $R$  for JRA55 did not matter. The two patterns of  $\mu_{OU}$  (Figs 14d, 16d, 18d) and reversed  $\sigma^2_{JLat}$  (reversed Figs 13h, 15h, 17h) were similar, as earlier described. This combined pattern stacked further with reversed  $\sigma^2_{FLat}$ , which showed correlation over western Kyushu and anti-correlation along the Pacific coast of eastern Japan (reversed Figs 13f, 15f, 17f). This produced the d4PDF spatial pattern of correlation over western Kyushu, and anti-correlation over eastern Japan (Figs 7i, 8i, 9i).

PDV showed no significant relationships with monsoon indices for either JRA55 or d4PDF. For JRA55, there were still two  $R$ ’s of stronger (but not significant) magnitude, with  $\mu_{OV}$  ( $R=-0.24$ , vs d4PDF  $R=0.09$ ) and  $\sigma^2_{JLat}$  ( $R=0.20$ , vs d4PDF  $R=0.06$ ). For d4PDF, there was only one  $R$  of stronger magnitude, with  $\mu_{OU}$  ( $R=-0.20$ , vs JRA55  $R=-0.12$ ). Stacking could still explain the observed relationship between PDV and rainfall extremes, based on the spatiotemporal signals of  $\sigma^2_{JLat}$ . Rain-gauges showed field significant anti-correlation with PDV only for daily extremes only (13 rain-gauges; Fig. 8d) but not otherwise (Figs 7d, 9d); with  $\sigma^2_{JLat}$  cluster-wise and gauge-wise field significant anti-correlation for daily extremes (28 rain-gauges and three clusters; Fig 15d), gauge-wise field significant anti-correlation for running-pentad extremes (15 rain-gauges but only one cluster; Fig 17d), and no field significance for hourly extremes (only 11 rain-gauges and no clusters; Fig 13d). Rain-gauges showing anti-correlation with PDV were located over western Japan and Hokkaido (Fig. 8d); rain-gauges showing anti-correlation with  $\sigma^2_{JLat}$  were located along the Pacific coast of western Japan (Fig 15d), stacking with reversed  $\mu_{OV}$  with anti-correlated rain-gauge along the Sea of Japan coast of western Japan and over Hokkaido (Fig. 16b).

Trend+ showed there only one statistically significant  $R$  amongst the regional monsoon indices, with  $\sigma^2_{FLat}$  for JRA55 ( $R=0.29$ , vs d4PDF  $R=-0.08$ ). However,  $\sigma^2_{FLat}$  was not influential for JRA55.  $R$ ’s of stronger magnitude were with  $\mu_{OV}$  for both JRA55 and d4PDF (both  $R=0.21$ ), with JRA55 only ( $R=0.20$ , vs d4PDF  $R=0.04$ ), and with for d4PDF only ( $R=0.19$ , vs JRA55  $R=-0.10$ ). For observation, although  $\mu_{OU}$  and  $\mu_{OV}$  patterns might stack in terms of domain-wide correlation, the significantly correlated rain-gauges were not co-located, with rain-gauges for  $\mu_{OU}$  and  $\mu_{OV}$  concentrated along the Pacific coast and Sea of Japan coast, respectively. Furthermore, correlation with Trend+ was field significant only for hourly extremes (12 rain-gauges; Fig 6c), but correlation with  $\mu_{OU}$  was best for daily extremes with cluster-wise and field significance (36 rain-gauges and four clusters; Fig. 16a). For d4PDF, correlation with Trend+ was concentrated over Hokkaido, and did not resemble the spatial patterns of  $\mu_{OV}$  or  $\sigma^2_{OU(V)}$ . Action through the regional monsoon front or regional monsoon jet does not seem to be a good mechanism to explain the influence of Trend+ on hourly rainfall extremes.

335 Finally, an explanation is proposed for why d4PDF showed stronger and spatially more widespread relationships between rainfall extremes and most of the regional monsoon indices. Considering the three most influential regional monsoon indices of  $\mu_{OU}$ ,  $\mu_{OV}$  and  $\sigma^2_{JLat}$ , we observe that  $\mu_{OU}$  and  $\sigma^2_{JLat}$  had reversed relationships with rainfall extremes. However, observed relationships were uniform, while d4PDF relationships were bipolar and showed strong topographic influence. This suggested that one cause was the movement of the regional monsoon, with d4PDF having a more stable location that allowed topographic influences to strongly manifest.

340 Figure 20 shows the bi-weekly location of the regional monsoon for JRA55 and d4PDF. In early June, the monsoon was located at similar latitudes for both JRA55 and d4PDF, about to move over the study domain (Fig. 20a vs Fig. 20e). In Late June, the monsoon had moved over southern Kyushu for both JRA55 and d4PDF, but even at this time it was slightly more north where it passed over Kyushu for JRA55 (Fig. 20b vs Fig. 20f). In early July, the JRA55 monsoon had passed over Kyushu, and lay over the Sea of Japan coast of western Japan. Over eastern Japan, it lay south of the Pacific coast. In contrast, the d4PDF monsoon was still over northwest Kyushu and lay between Chugoku and Shikoku island in western Japan. Over eastern Japan, it lay along the Pacific Coast. In late July, the JRA55 monsoon had reached the Korean peninsula and lay north of western Japan, then diagonally southeast over eastern Japan into the Pacific. In contrast, the d4PDF monsoon still had the position similar to JRA55's early July position. It had a more zonal orientation extended further over eastern Japan, rather than off the coast as in JRA55. Hence, the monsoon moved two weeks more slowly across the three large Japanese islands for d4PDF.

355 All other things being equal, the same synoptic disturbances travelling from the west would have a larger influence on the study domain in d4PDF, simply from the land regions of Japan capturing more rainfall from them in d4PDF. At least some of the differences between observation and d4PDF originated from the global model driving the regional model. This did not exclude other differences that might have originated from the regional model, but improvement of the monsoon movement in the global model would probably also improve extreme rainfall's global and regional teleconnections in d4PDF. The difference in monsoon position was quite minor, considering that it was only a regional spatiotemporal bias of about 2 weeks and 2 degrees latitude in a global climate model. The difficulty to reproduce correct teleconnections is likely due to the

360 unfortunate combination of a zonally-aligned physical phenomenon with a zonally-aligned geographically narrow island.

Table 2, Spearman correlation coefficients  $R^s$  for the 1958–2010 period between the standardised principal components of five Pacific SST modes (rows) and the seven regional monsoon indices (columns), for JRA55 and d4PDF (sub-rows)

SST mode	Data	Monsoon Front Latitude		Monsoon Jet Latitude		Monsoon Jet Water Vapour Flux		
		anomaly	variance	anomaly	variance	anomaly		variance
		$\mu_{FLat}$	$\sigma^2_{FLat}$	$\mu_{JLat}$	$\sigma^2_{JLat}$	zonal	meridional	$\sigma^2_{OU(OV)}$
ENSO+	JRA55	-0.15	-0.06	-0.20	0.15	-0.20	0.04	0.30
	d4PDF	-0.34	0.15	-0.29	-0.06	-0.07	-0.28	0.31
ENSO-	JRA55	-0.20	-0.15	0.07	-0.05	0.30	0.02	-0.30
	d4PDF	-0.30	0.04	-0.32	-0.32	0.46	0.32	-0.11
Trend+	JRA55	-0.08	0.29	-0.16	-0.14	0.20	0.21	-0.10
	d4PDF	-0.04	-0.03	-0.02	0.01	0.04	0.21	0.19
PDV	JRA55	0.03	0.16	0.14	0.20	-0.12	-0.24	-0.02
	d4PDF	0.05	-0.03	-0.03	0.06	-0.20	0.09	0.10
ENSO-NC	JRA55	-0.10	0.19	-0.07	-0.01	0.08	-0.08	-0.12
	d4PDF	-0.06	-0.27	-0.03	-0.36	0.31	0.12	-0.11

Deleted: CCs

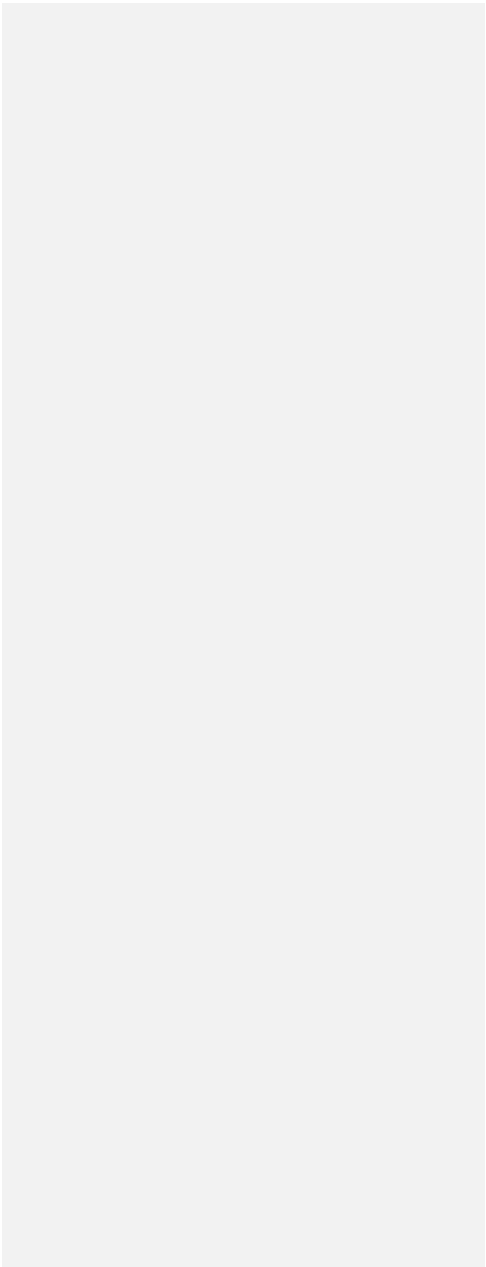
Formatted: Font: Times New Roman

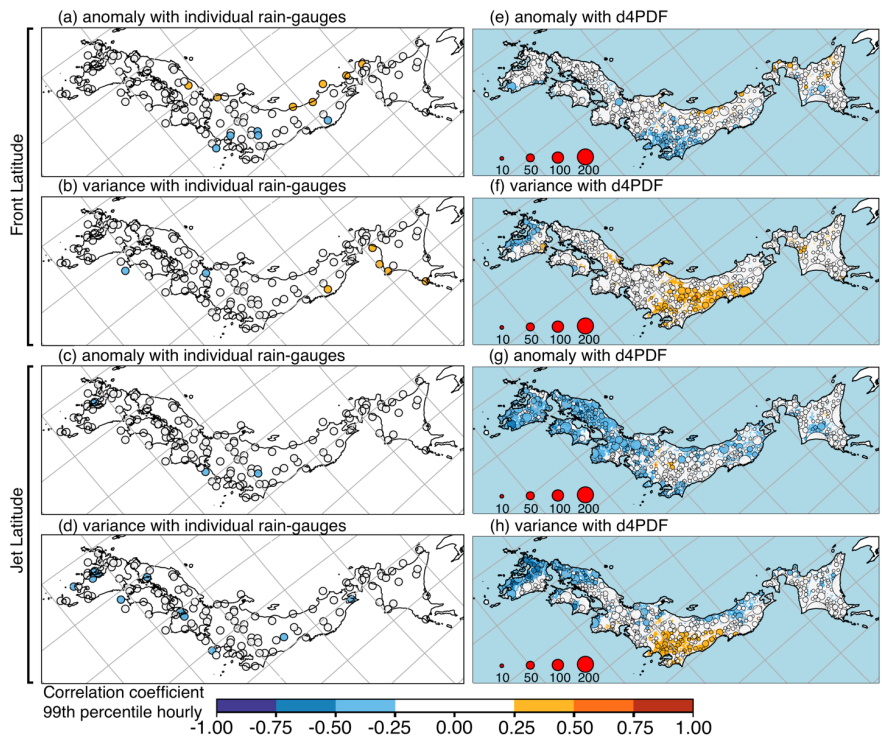
Deleted: monsoon indices related to position

Formatted: Font: Times New Roman

Formatted: Font: Times New Roman

Deleted: June–July 90th upper





**Figure 13. Spearman correlation coefficients  $R$ 's for the 1958–2010 period between monsoon indices related to position (rows) and June–July 99th percentile hourly rainfall from rain-gauges (left column) or d4PDF (right column). Rainfall extremes of individual rain-gauges with JRA55 indices; (a) seasonal anomaly of monsoon front latitude  $\mu_{FLat}$ , (b) seasonal variance of monsoon front latitude  $\sigma^2_{FLat}$ , (c) seasonal anomaly of monsoon jet latitude  $\mu_{JLat}$ , (d) seasonal variance of monsoon jet latitude  $\sigma^2_{JLat}$ . Rainfall extremes of d4PDF sets with d4PDF indices; (e)  $\mu_{FLat}$ , (f)  $\sigma^2_{FLat}$ , (g)  $\mu_{JLat}$ , (h)  $\sigma^2_{JLat}$ . In the right column, circle marker sizes reflect cluster sizes, while single points are shown as coloured dots. A blue mask was used to cover d4PDF data inside the ocean. Longitude-latitude gridlines are shown as grey lines; the map is a rotated projection.**

Deleted: daily

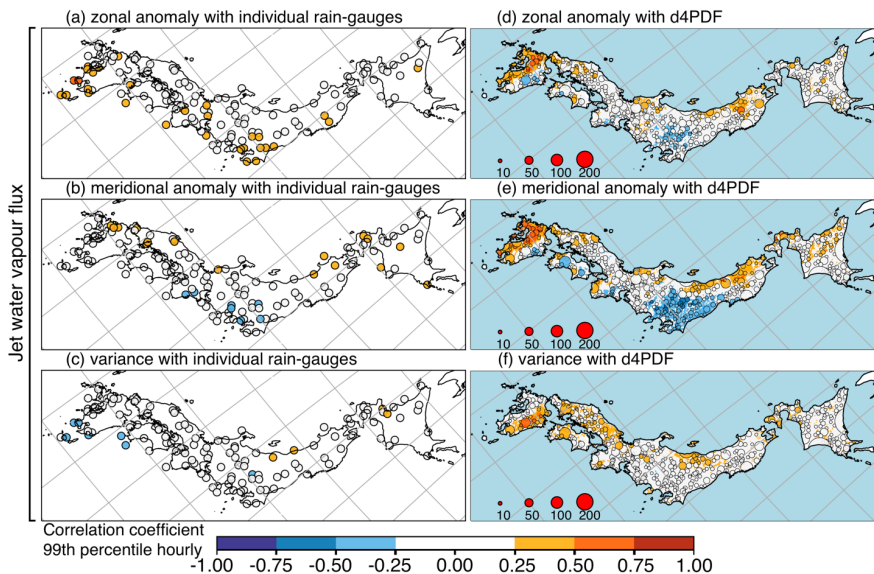
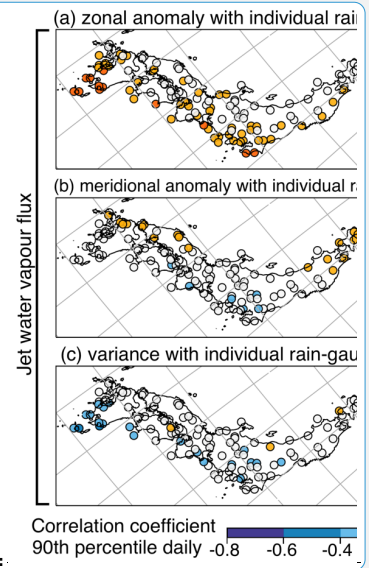


Figure 14. Like Fig. 13, but with monsoon indices related to the strength of the monsoon jet. Rainfall extremes of individual rain-gauges with JRA55 indices; (a) seasonal anomaly of the monsoon jet zonal water vapour flux  $\mu_{QU}$ , (b) seasonal anomaly of the monsoon jet meridional water vapour flux  $\mu_{QV}$ , (c) seasonal variance of the monsoon jet water vapour flux  $\sigma^2_{QU,V}$ . Rainfall extremes of d4PDF sets with d4PDF indices; (d)  $\mu_{QU}$ , (e)  $\mu_{QV}$ , (f)  $\sigma^2_{QU,V}$ .

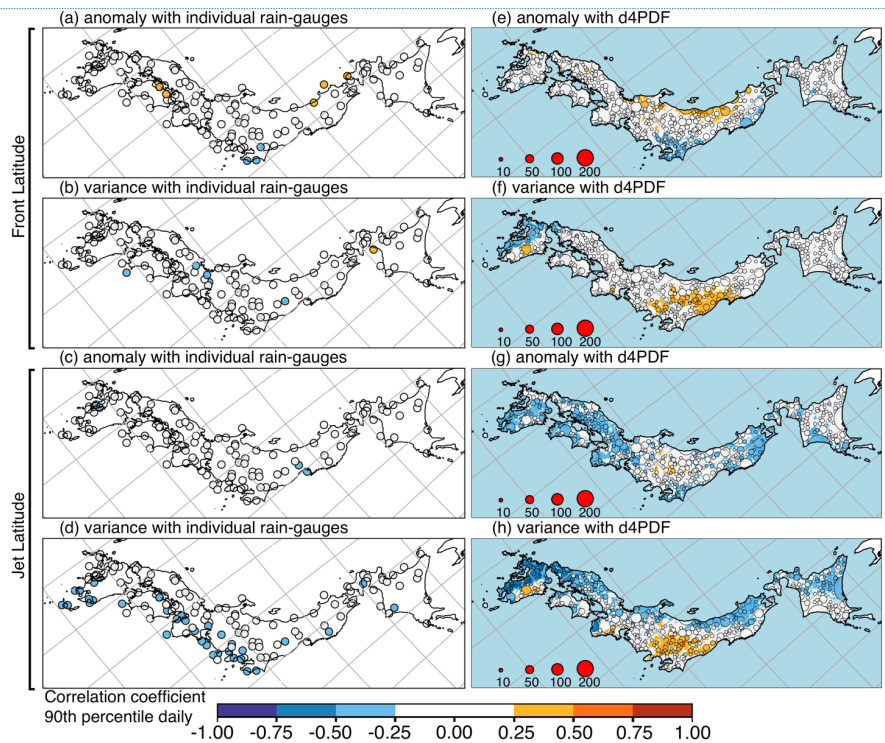


Deleted: 9

Deleted: 8

Formatted: Font: Times New Roman

Deleted: ¶



390 [Figure 15. Like Figure 13, but for 90th percentile daily rainfall.](#)

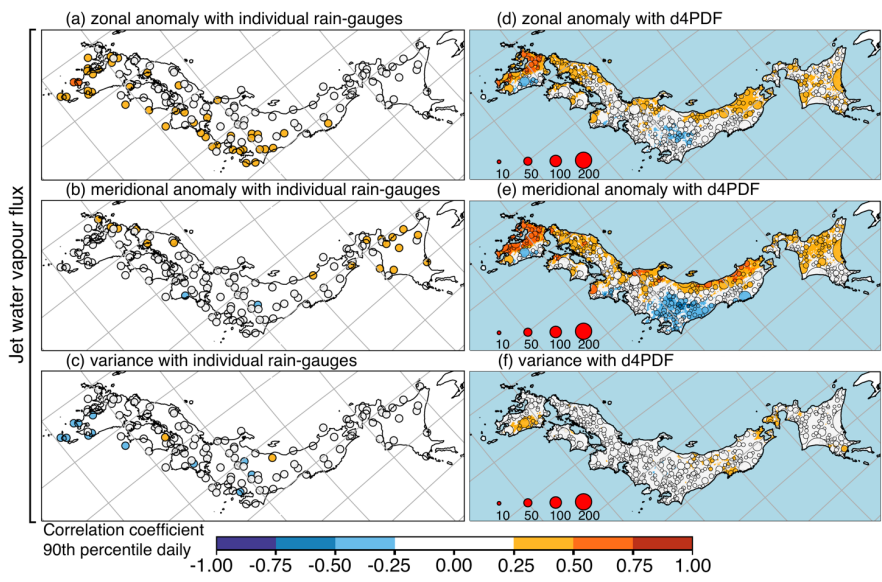


Figure 16. Like Figure 14, but for 90th percentile daily rainfall.

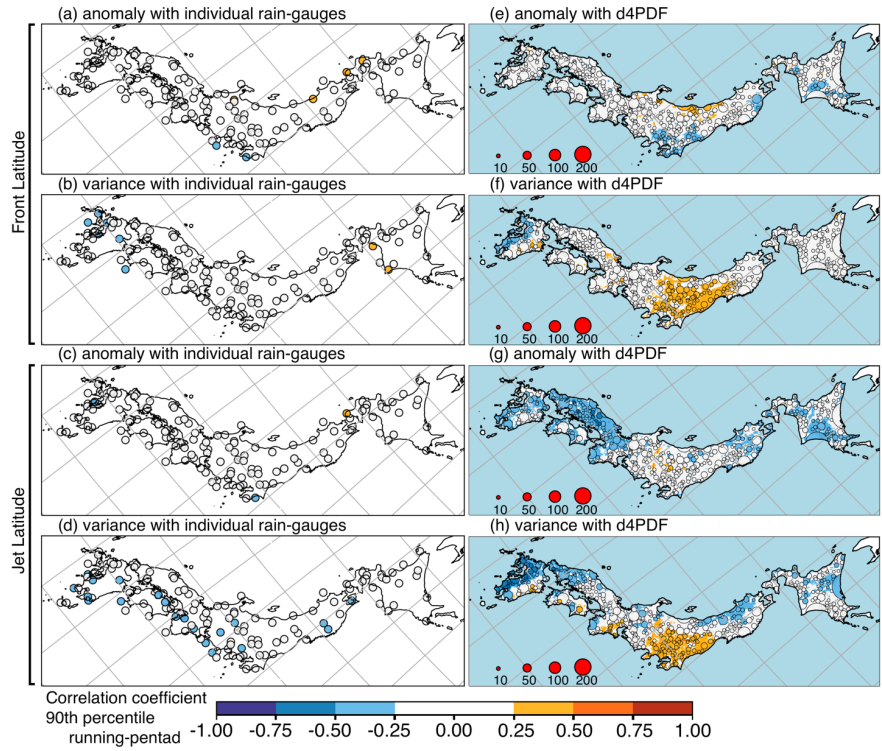
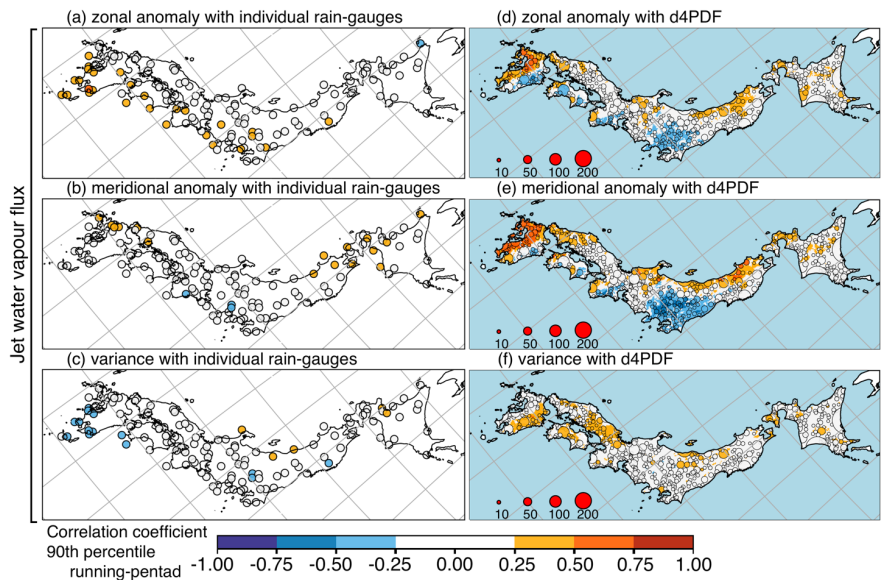


Figure 17. Like Figure 13, but for 90th percentile running-pentad rainfall.





400 [Figure 18. Like Figure 14, but for 90th percentile running-pentad rainfall.](#)

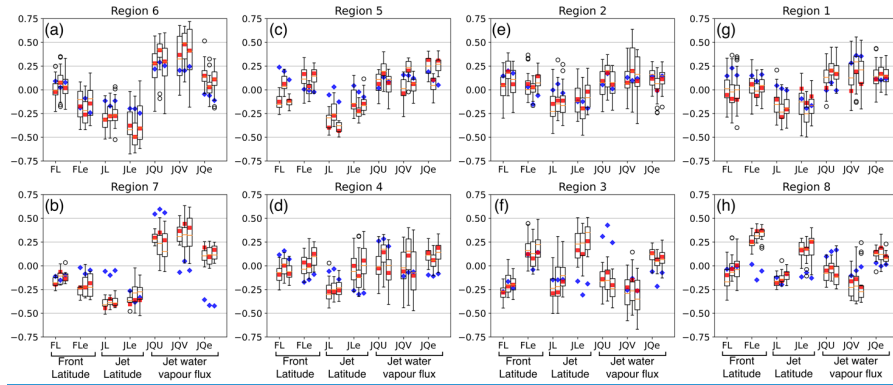


Figure 19. Like Fig. 10 but with the regional monsoon indices. FL and FLc represent monsoon front latitude indices  $\mu_{FL,at}$  and  $\sigma_{FL,at}$ . JL and JLc represent monsoon jet latitude indices  $\mu_{JL,at}$  and  $\sigma_{JL,at}$ . JQU, JQV, and JQc represent monsoon jet water vapour flux indices  $\mu_{QU}$ ,  $\mu_{QV}$ , and  $\sigma_{QU(V)}$ .

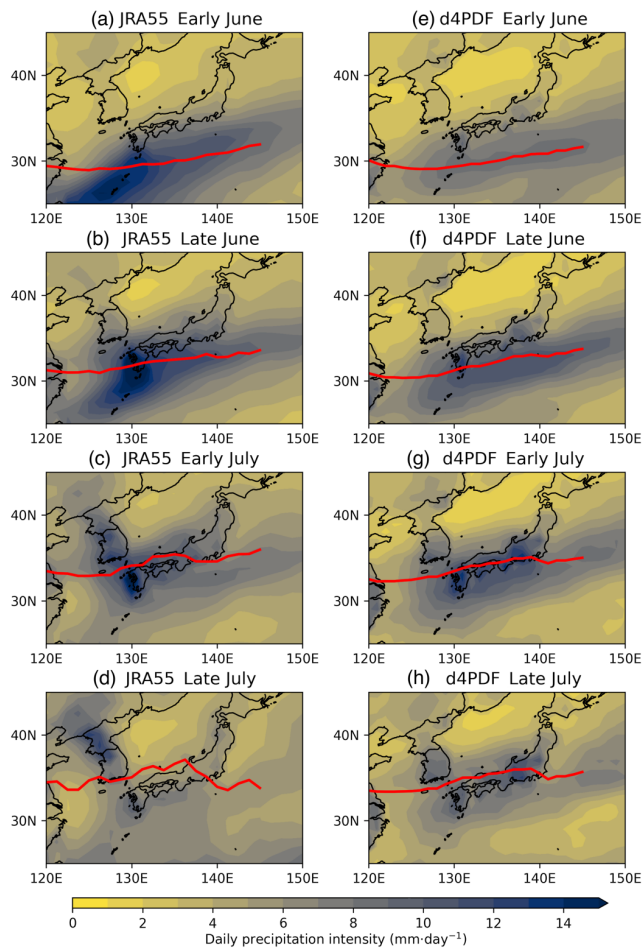


Figure 19. Daily rainfall in mm day<sup>-1</sup> (shading) and monsoon front location (red line) for four two-week periods in June-July (rows), comparing JRA55 (left column) and d4PDF (right column). For JRA55, (a) first two weeks of June, (b) second two weeks of June, (c) first two weeks of July, (d) second two weeks of July. For d4PDF, (e) first two weeks of June, (f) second two weeks of June, (g) first two weeks of July, (h) second two weeks of July.

## 5 Conclusion

This study investigated the relationships between the June–July extreme rainfall over the four largest islands of Japan and the hemispheric-scale climate variability of SST anomalies over the Pacific basin. The 99th percentile hourly, 90th percentile daily, and 90th percentile running-pentad rainfall in the 59-year period of 1952–2010 was compared between d4PDF and rain-gauges (observations). Observed extremes of each temporal resolution were independently clustered using the HDBSCAN algorithm based on their inter-location Spearman correlation. The multi-frequency extremes from the wavelet decomposition of hourly rainfall were then clustered based on a mean metric. Both methods produced similar clusters, and eight analysis regions were identified. The wavelet-method was then applied to cluster d4PDF. Using each d4PDF “set” (cluster or unclassified point) as a spatial sample, Spearman correlation was calculated between the rainfall extremes and the scores of five Pacific SST modes. The modes were obtained by the varimax rotation of extended PCA on Pacific SST anomalies from COBE-SST2, and listed in order of explained variance for 1952–2010, reflected canonical ENSO growth (ENSO+), canonical ENSO decay (ENSO-), warming trend, mixed with other climate variability such as the NPGO (Trend+), a non-canonical ENSO that persisted into summer (ENSO-NC), and IPO-dominated Pacific Decadal Variability (PDV).

Observed and d4PDF correlation coefficients ( $R$ 's) were at most weak ( $|R| < 0.50$ ) over most of Japan. Domain-wide field significance was observed between hourly extremes and Trend+, and between daily extremes and PDV. A group of rain-gauges in northwest Kyushu were significantly related to ENSO+ for daily extremes, consistent with Kawamura et al. (2001) and Jin et al. (2005), which found strong rainfall over Fukuoka after strong La Niña events. In comparison, d4PDF was biased, showing excessive widespread correlation with ENSO+, and excessive anti-correlation with ENSO-NC over eastern Japan. The observed PDV relationship was not reproduced. However, spatial correlation patterns for a smoothed Trend+ was similar between d4PDF and observation. Southern Kyushu showed stronger extremes for all three temporal resolutions.

Rainfall extremes were correlated with regional monsoon indices calculated from JRA55 and d4PDF-AGCM. Based on JRA55 and rain-gauges,  $\mu_{OU}$  was the most influential index, with domain-wide field correlation from 36 of 126 rain-gauges showing significant correlation, and up to moderate correlation at southern Kyushu. For both cases, the three most influential indices were the seasonal anomaly of monsoon jet zonal water vapour flux ( $\mu_{OU}$ ), anomaly of monsoon jet meridional water vapour flux ( $\mu_{OV}$ ), and variance of monsoon jet latitude ( $\sigma^2_{lat}$ ). For both cases,  $\mu_{OU}$  was significantly correlated with ENSO+, For d4PDF,  $\mu_{OV}$  was significantly correlated with ENSO+, but anti-correlated with ENSO+. These relationships are consistent with Naoi et al. (2020) who found atmospheric rivers to be more frequent in years when El Niño transitioned into La Niña; An El Niño transitioning into a La Niña may be interpreted as combining the effects of the ENSO- mode with the reversed effects of the ENSO+ mode, hence associated with increased  $\mu_{OU}$  (both cases) and  $\mu_{OV}$  (d4PDF). The relationships between rainfall extremes and climate variability modes could be explained by the impact of the Pacific SST modes on the regional monsoon, in the form of water vapour flux modulation. The explanation was less successful for the Trend+ mode. The excessive relationships in d4PDF could be explained by the AGCM's slower latitudinal movement of the monsoon.

Since SST anomalies rarely occur as pure modes but as a combination of modes, in a particular year a few climate modes may stack to create a stronger modulating effect on rainfall. Such cases would be exacerbated by the influence of the Trend+ mode in the future warmer climate, specifically the strengthening of hourly extremes (Fig. 5c). The statistical results of this study should be further investigated through sensitivity tests using physics-based numerical weather prediction models. Recently, large ensemble climate prediction datasets such as d4PDF have been widely used in order to extract probabilities of occurrence of extreme weather such as tropical cyclones and heavy rainfalls. Attributing of such extreme events to global warming has been one of the foci in climate and impact assessment studies. In identifying the relationship of extreme events with specific climate modes, special care in evaluating the representation and performance of climate prediction datasets is desirable. This study demonstrates one of the approaches for such evaluations.

**Deleted:** June–July ...9th upper ...ercentile hourly rainfall, June [11]

**Deleted:** CCs/R's were at most weak ( $|CC...| < 0.4...0$ ) over most [12]

**Moved (insertion) [7]**

**Deleted:** moderate CCs ( $0.4 \leq |CC| < 0.6$ ). These regions ... [13]

**Deleted:** Up...ased on JRA55 and rain-gauges,  $\mu_{OU}$  was the most [14]

**Deleted:** Rainfall extremes were observed to be weakly anti-correlated with PDV over many regions, particularly at daily time resolution (Fig. 6d). While the relationships with individual modes were weak, they may stack since the SST anomalies of the PDV are quite ENSO-like. The relationships found in this study are consistent with Kawamura et al.

**Moved up [7]:** (2001) and Jin et al.

**Deleted:** (2005), which found strong rainfall over Fukuoka after strong La Niña events; A La Niña transitioning into an El Niño may be interpreted as combining the effects of the ENSO+ mode (Fig. 6a) and the reversed effects of the ENSO- mode (reversed Fig. 6a). Should this event also occur during the Niña-like phase of the PDV (reversed Fig. 6d), the three modes would stack in their strengthening influence on extreme rainfall such as over northwestern Kyushu.

The Pacific SST modes then seemed to modulate rainfall extremes over Japan through the water vapour flux of the regional ... [15]

1550 **Code availability**

All software used to process the data are publicly available from their respective project webpages.

**Data availability**

1555 COBE-SST may [be](https://ds.data.jma.go.jp/tcc/tcc/products/elnino/cobesst/cobe-sst.html) downloaded from <https://ds.data.jma.go.jp/tcc/tcc/products/elnino/cobesst/cobe-sst.html>. The d4PDF data may be downloaded from <https://diasjp.net/en/service/d4pdf-data-download>. Rainfall from meteorological stations data may be downloaded from the JMA website at <https://www.data.jma.go.jp/gmd/risk/obsdl/index.php>. SOI and TPI climate indices may be downloaded from the NOAA website <https://psl.noaa.gov/data/climateindices/list>.

**Author contribution**

1 Conceptualisation and Writing: Lee and Takemi. Investigation: Lee [and He](#). Supervision and Project administration: Takemi.

**Competing interests**

1560 The authors declare that they have no conflict of interest.

**Acknowledgements**

This work was supported by the MEXT-Program for the advanced studies of climate change projection (SENTAN) Grant Number JPMXD0722678534 and was also supported by the Environment Research and Technology Development Fund Number 2-2303 of the Environmental Restoration and Conservation Agency.

1565 **References**

- Alexander, M. A., Bladé, I., Newman, M., Lanzante, J. R., Lau, N. C., and Scott, J. D.: The atmospheric bridge: The influence of ENSO teleconnections on air–sea interaction over the global oceans. *J. Clim.*, **15**(16), 2205–2231, [https://doi.org/10.1175/1520-0442\(2002\)015<2205:TABTIO>2.0.CO;2](https://doi.org/10.1175/1520-0442(2002)015<2205:TABTIO>2.0.CO;2), 2002.
- 1570 [Bernard, E., Naveau, P., Vrac, M., and Mestre, O.: Clustering of maxima: Spatial dependencies among heavy rainfall in France. \*J. Clim.\*, \*\*26\*\*, 7929–7937, <https://doi.org/10.1175/JCLI-D-12-00836.1>, 2013.](#)
- Bolton, D.: The computation of equivalent potential temperature. *Mon. Wea. Rev.*, **108**(7), 1046–1053, [https://doi.org/10.1175/1520-0493\(1980\)108<1046:TCOEPT>2.0.CO;2](https://doi.org/10.1175/1520-0493(1980)108<1046:TCOEPT>2.0.CO;2), 1980.
- 1575 [Bracken, C., Rajagopalan, B., Alexander, M., and Gangopadhyay, S.: Spatial variability of seasonal extreme precipitation in the western United States, \*J. Geophys. Res. Atmos.\*, \*\*120\*\*, 4522–4533, <https://doi.org/10.1002/2015JD023205>, 2015.](#)
- 1580 Campello, R. J. G. B., Moulavi, D., [and](#) Sander, J.: Density-Based Clustering Based on Hierarchical Density Estimates, in: Advances in Knowledge Discovery and Data Mining. PAKDD 2013. Lecture Notes in Computer Science, vol 7819, edited by Pei, J., Tseng, V.S., Cao, L., Motoda, H., Xu, G., Springer, Berlin, Heidelberg, Germany, 160–172. [https://doi.org/10.1007/978-3-642-37456-2\\_14](https://doi.org/10.1007/978-3-642-37456-2_14), 2013.

585 Di Lorenzo, E., and Coauthors: North Pacific Gyre Oscillation links ocean climate and ecosystem change. *Geophys. Res. Lett.*, **35**, L08607, <https://doi.org/10.1029/2007GL032838>, 2008.

Duan, W., and Coauthors: Changes of precipitation amounts and extremes over Japan between 1901 and 2012 and their connection to climate indices. *Clim. Dyn.*, **45**, 2273–2292, <https://doi.org/10.1007/s00382-015-2778-8>, 2015.

590 Guan, B. and Nigam, S.: Pacific sea surface temperatures in the twentieth century: An evolution-centric analysis of variability and trend. *J. Clim.*, **21**(12), 2790–809, <https://doi.org/10.1175/2007JCLI2076.1>, 2008.

The GNU Image Manipulation Program (GIMP), Version 2.10.14 [Software]. Community, Free Software (license GPLv3), 2019. Available at <https://www.gimp.org>.

595 Harada, Y., Endo, H., and Takemura, K.: Characteristics of large-scale atmospheric fields during heavy rainfall events in western Japan: Comparison with an extreme event in early July 2018. *J. Meteorol. Soc. Japan. Ser. II*, **98**(6), 1207–29, <https://doi.org/10.2151/jmsj.2020-062>, 2020.

1600 Harris, C. R., and Coauthors: Array programming with NumPy. *Nature*, **585**, 357–62, <https://doi.org/10.1038/s41586-020-2649-2>, 2020.

Henley, B. J., and Coauthors: A Tripole Index for the Interdecadal Pacific Oscillation, *Clim. Dyn.*, **45**(11–12), 3077–3090, <http://dx.doi.org/10.1007/s00382-015-2525-1>, 2015. Available at <https://psl.noaa.gov/data/data/timeseries/IPOTPI>.

1605 Hirahara, S., M. Ishii, and Y. Fukuda, 2014: Centennial-scale sea surface temperature analysis and its uncertainty. *J. Clim.*, **27**, 57–75, <https://doi.org/10.1175/JCLI-D-12-00837.1>, 2020.

1610 Horel, J. D., and Wallace, J. M.: Planetary-scale atmospheric phenomena associated with the interannual variability of sea surface temperature in the equatorial Pacific. *Mon. Wea. Rev.*, **109**, 813–829, [https://doi.org/10.1175/1520-0493\(1981\)109<0813:PSAPAW>2.0.CO;2](https://doi.org/10.1175/1520-0493(1981)109<0813:PSAPAW>2.0.CO;2), 1981.

Hoskins, B. J., and Karoly, D. J.: The steady linear response of a spherical atmosphere to thermal and orographic forcing. *J. Atmos. Sci.*, **38**, 1179–1196, [https://doi.org/10.1175/1520-0469\(1981\)038<1179:TSLROA>2.0.CO;2](https://doi.org/10.1175/1520-0469(1981)038<1179:TSLROA>2.0.CO;2), 1981.

1615 Hoyer, S. and Hamman, J.: xarray: N-D labeled Arrays and Datasets in Python. *Journal of Open Research Software*, **5**(1), 10, <https://doi.org/10.5334/jors.148>, 2017.

Hunter, J. D.: Matplotlib: A 2D graphics environment. *Computing in Science & Engineering*, **9**(3), 90–5, <https://doi.org/10.1109/MCSE.2007.55>, 2007.

1620 Ishii, M., Shouji, A., Sugimoto, S., and Matsumoto, T.: Objective Analyses of Sea-Surface Temperature and Marine Meteorological Variables for the 20th Century using ICOADS and the Kobe Collection. *Int. J. Climatol.*, **25**, 865–879, <https://doi.org/10.1002/joc.1169>, 2005.

1625 Ishii M., and Mori, N.: d4PDF: large-ensemble and high-resolution climate simulations for global warming risk assessment. *Prog. Earth Planet Sci.*, **7**(1), 1–22, <https://doi.org/10.1186/s40645-020-00367-7>, 2020.

Japan Meteorological Agency: Characteristics of Global Sea Surface Temperature Analysis Data (COBE-SST) for Climate Use. Monthly Report on Climate System Separated Volume, 12, 116pp, 2006.

1630 Jin, Y. H., Kawamura, A., Jinno, K., and Berndtsson, R.: Quantitative relationship between SOI and observed precipitation in southern Korea and Japan by nonparametric approaches. *Journal of Hydrology*, **301**(1–4), 54–65, <https://doi.org/10.1016/j.jhydrol.2004.06.026>, 2005.

**Moved down [8]:** Met Office: Cartopy: a cartographic python library with a Matplotlib interface, <https://scitools.org.uk/cartopy>, 2010 – 2015.\*  
 Fujibe, F.: Annual variation of extreme precipitation intensity in Japan: Assessment of the validity of Clausius-Clapeyron scaling in seasonal change. *SOLA*, **12**, 106–10, <https://doi.org/10.2151/sola.2016-024>, 2016.\*  
 †

- 1645 Kamae, Y., Imada, Y., Kawase, H., and Mei, W.: Atmospheric rivers bring more frequent and intense extreme rainfall events over East Asia under global warming. *Geophys. Res. Lett.*, **48**, e2021GL096030, <https://doi.org/10.1029/2021GL096030>, 2021.
- Kawamura, A., Eguchi, S., and Jinno, K.: Correlation between Southern Oscillation and monthly precipitation in Fukuoka. *Journal of Japan Society of Civil Engineers*, **2001(691)**, 153-8. [https://doi.org/10.2208/jscej.2001.691\\_153](https://doi.org/10.2208/jscej.2001.691_153), 2001.
- 1650 Kawase, H., and CoAuthors: Identifying robust changes of extreme precipitation in Japan from large ensemble 5-km-grid regional experiments for 4K warming scenario. *J. Geophys. Res.-Atmos.*, **128(18)**, <https://doi.org/10.1029/2023JD038513>, 2023.
- 1655 Kobayashi, S., and CoAuthors: The JRA-55 reanalysis: General specifications and basic characteristics. *J. Meteorol. Soc. Japan. Ser. II*, **93(1)**, 5-48, <https://doi.org/10.2151/jmsj.2015-001>, 2015.
- Kosaka, Y., Xie, S. P., Lau, N. C., and Vecchi, G. A.: Origin of seasonal predictability for summer climate over the Northwestern Pacific. *Proc. Natl. Acad. Sci. U.S.A.*, **110(19)**, 7574-9, <https://doi.org/10.1073/pnas.1215582110>, 2013.
- 1660 Knapp, K. R., Diamond, H. J., Kossin, J. P., Kruk, M. C., and Schreck, C. J.: International Best Track Archive for Climate Stewardship (IBTrACS) Project, Version 4. NOAA National Centers for Environmental Information, <https://doi.org/10.25921/82ty-9e16>, 2018.
- 1665 Lee, G. R., Gommers, R., Wasilewski, F., Wohlfahrt, K., and O'Leary, A.: PyWavelets: A Python package for wavelet analysis. *Journal of Open Source Software*, **4(36)**, 1237, <https://doi.org/10.21105/joss.01237>, 2019.
- Lee, S., L'Heureux, M., Wittenberg, A. T., Seager, R., O'Gorman, P. A., and Johnson, N. C.: On the future zonal contrasts of equatorial Pacific climate: Perspectives from Observations, Simulations, and Theories. *npj Clim. Atmos. Sci.*, **5**, 82, <https://doi.org/10.1038/s41612-022-00301-2>, 2022.
- 1670 Li, Y., Deng, Y., Yang, S., and Zhang, H.: Multi-scale temporospatial variability of the East Asian Meiyu-Baiu fronts: characterization with a suite of new objective indices. *Clim. Dyn.*, **51**, 1659-1670, <https://doi.org/10.1007/s00382-017-3975-4>, 2018.
- 1675 Livezey, R. E., and W. Y. Chen: Statistical field significance and its determination by Monte Carlo techniques, *Mon. Wea. Rev.*, **111**, 46-59, 1983.
- 1680 Ma, Y., Lu, M., Bracken, C., Chen, H.: Spatially coherent clusters of summer precipitation extremes in the Tibetan Plateau: Where is the moisture from?, *Atmos. Res.*, **237**, 104841, <https://doi.org/10.1016/j.atmosres.2020.104841>, 2020.
- Matsumoto, S., Ninomiya, K., and Yoshizumi, S.: Characteristic features of "Baiu" front associated with heavy rainfall. *J. Meteorol. Soc. Japan. Ser. II*, **49(4)**, 267-281, [https://doi.org/10.2151/jmsj1965.49.4\\_267](https://doi.org/10.2151/jmsj1965.49.4_267), 1971.
- 1685 McKinney W.: Data structures for statistical computing in python, in Proceedings of the 9th Python in Science Conference. p. 51-6. <https://doi.org/10.25080/Majora-92bf1922-00a>, 2010.
- 1690 Met Office: Cartopy: a cartographic python library with a Matplotlib interface. <https://scitools.org.uk/cartopy>, 2010 - 2015.
- Fujiie, E.: Annual variation of extreme precipitation intensity in Japan: Assessment of the validity of Clausius-Clapeyron scaling in seasonal change. *SOLA*, **12**, 106-10, <https://doi.org/10.2151/sola.2016-024>, 2016.

Moved (insertion) [8]



- Mizuta, R., and Coauthors: Over 5,000 years of ensemble future climate simulations by 60-km global and 20-km regional atmospheric models. *Bull. Amer. Meteor. Soc.*, **98**(7), 1383-98, <https://doi.org/10.1175/BAMS-D-16-0099.1>, 2017.
- 1695 Mizuta, R., and Coauthors: Climate simulations using MRI-AGCM3.2 with 20-km grid. *J. Meteorol. Soc. Japan. Ser II*, **90**, 233–258, <https://doi.org/10.2151/jmsj.2012-A12>, 2012.
- Mori, N., and Takemi, T.: Impact assessment of coastal hazards due to future changes of tropical cyclones in the North Pacific Ocean. *Weather Clim. Extremes*, **11**, 53-69, <https://doi.org/10.1016/j.wace.2015.09.002>, 2016.
- 1700 Mori, N., and Coauthors: Recent nationwide climate change impact assessments of natural hazards in Japan and East Asia. *Weather Clim. Extremes*, **32**, 100309, <https://doi.org/10.1016/j.wace.2021.100309>, 2021.
- Naka, N., and Takemi, T.: Characteristics of the environmental conditions for the occurrence of recent extreme rainfall events in northern Kyushu, Japan. *Sci. Online Lett. Atmos.*, **19A**, 9-16, <https://doi.org/10.2151/sola.19A-002>, 2023.
- 1705 Naoi, M., Kamae, Y., Ueda, H., and Mei, W.: Impacts of seasonal transitions of ENSO on atmospheric river activity over East Asia. *J. Meteor. Soc. Japan*, **98**, 655–668, <https://doi.org/10.2151/jmsj.2020-027>, 2020.
- Nayak, S., and Takemi, T.: Dependence of extreme precipitable water events on temperature. *Atmósfera*, **32**(2), 159-65, <https://doi.org/10.20937/atm.2019.32.02.06>, 2019.
- 1710 Nayak, S., and Takemi, T.: Atmospheric driving mechanisms of extreme precipitation events in July of 2017 and 2018 in western Japan. *Dynamics of Atmospheres and Oceans*, **93**, 101186, <https://doi.org/10.1016/j.dynatmoce.2020.101186>, 2021.
- 715 The NCAR Command Language (NCL), Version 6.6.2, [Software]. Boulder, Colorado: UCAR/NCAR/CISL/TDD. <https://doi.org/10.5065/D6WD3XH5>, 2019.
- Ninomiya, K., and Mizuno, H.: Variations of Baiu precipitation over Japan in 1951-1980 and large-scale characteristics of wet and dry Baiu. *J. Meteorol. Soc. Japan. Ser. II*, 1987, **65**(1), 115-27, [https://doi.org/10.2151/jmsj1965.65.1\\_115](https://doi.org/10.2151/jmsj1965.65.1_115), 1987.
- 1720 Nitta, T.: Convective activities in the tropical western Pacific and their impact on the Northern Hemisphere summer circulation. *J. Meteorol. Soc. Japan. Ser. II*, **65**(3), 373-90, [https://doi.org/10.2151/jmsj1965.65.3\\_373](https://doi.org/10.2151/jmsj1965.65.3_373), 1987.
- 1725 Ohba, M., Kadokura, S., Yoshida, Y., Nohara, D., and Toyoda, Y.: Anomalous weather patterns in relation to heavy precipitation events in Japan during the Baiu season. *J. Hydrometeorol.*, **16**(2), 688-701, <https://doi.org/10.1175/JHM-D-14-0124.1>, 2015.
- Ropelewski, C. F., and Jones, P. D.: An extension of the Tahiti-Darwin Southern Oscillation Index, *Mon. Wea. Rev.*, **115**, 2161-2165, [https://doi.org/10.1175/1520-0493\(1987\)115<2161:AEOTTS>2.0.CO;2](https://doi.org/10.1175/1520-0493(1987)115<2161:AEOTTS>2.0.CO;2), 1987.
- 1730 Sakashita, W., Yokoyama, Y., Miyahara, H., Yamaguchi, Y. T., Aze, T., Obrochta, S. P., and Nakatsuka, T.: Relationship between early summer precipitation in Japan and the El Niño-Southern and Pacific Decadal Oscillations over the past 400 years. *Quaternary International*, **397**, 300-6, <https://doi.org/10.1016/j.quaint.2015.05.054>, 2016.
- 735 Santos, C. A., Galvão, C. D. O., Suzuki, K., and Trigo, R. M., Matsuyama city rainfall data analysis using wavelet transform. *Proceedings of Hydraulic Engineering*, **45**, 211-216, [https://doi.org/10.2208/prohe.45.21\\_2001](https://doi.org/10.2208/prohe.45.21_2001).
- 1740 Sasaki, H., Murata, A., Hanafusa, M., Oh'izumi, M., and Kurihara, K.: Reproducibility of present climate in a non-hydrostatic regional climate model nested within an atmosphere general circulation model. *SOLA*, **7**, 173–176, <https://doi.org/10.2151/sola.2011-044>, 2011.

Deleted: )

- Schulzweida, U.: CDO User Guide (2.1.0). Zenodo [code], <https://doi.org/10.5281/zenodo.7112925>, 2022.
- 1745 Takaya, Y., Ishikawa, I., Kobayashi, C., Endo, H., and Ose, T.: Enhanced Meiyu-Baiu rainfall in early summer 2020: Aftermath of the 2019 super IOD event. *Geophys. Res. Lett.*, **47**, e2020GL090671, <https://doi.org/10.1029/2020GL090671>, 2020.
- 1750 Takemura, K., Mukougawa, H., and Maeda, S.: large-scale atmospheric circulation related to frequent rossby wave breaking near Japan in boreal summer. *J. Clim.*, **33(15)**, 6731-44, <https://doi.org/10.1175/JCLI-D-19-0958.1>, 2020.
- Takemura, K., Mukougawa, H.: A new perspective of Pacific–Japan pattern: Estimated percentage of the cases triggered by Rossby wave breaking. *J. Meteorol. Soc. Japan. Ser. II*, **100(1)**, 115-39, <https://doi.org/10.2151/jmsj.2022-006>, 2022.
- 1755 Tanaka, M.: Interannual and interdecadal variations of the western North Pacific monsoon and Baiu rainfall and their relationship to the ENSO cycles. *J. Meteorol. Soc. Japan. Ser. II*, **75(6)**, 1109-23, [https://doi.org/10.2151/jmsj1965.75.6\\_1109](https://doi.org/10.2151/jmsj1965.75.6_1109), 1997.
- 1760 [Torrence, C., and Compo, G.P.: A practical guide to wavelet analysis. \*B. Am. Meteorol. Soc.\*, \*\*79\*\*, 61–78, \[https://doi.org/10.1175/1520-0477\\(1998\\)079<0061:APGTWA>2.0.CO;2\]\(https://doi.org/10.1175/1520-0477\(1998\)079<0061:APGTWA>2.0.CO;2\), 1998.](https://doi.org/10.1175/1520-0477(1998)079<0061:APGTWA>2.0.CO;2)
- Unuma, T., and Takemi, T.: Rainfall characteristics and their environmental conditions during the heavy rainfall events over Japan in July of 2017 and 2018. *J. Meteorol. Soc. Japan. Ser. II*, **99(1)**, 165-80, <https://doi.org/10.2151/jmsj.2021-009>, 2021.
- 1765 Vecchi, G. A., Clement, A., and Soden, B. J.: Examining the tropical Pacific's response to global warming. *Eos, Transactions American Geophysical Union*, **89(9)**, 81-3, <https://doi.org/10.1029/2008EO090002>, 2008.
- Virtanen, P., and Coauthors: SciPy 1.0: Fundamental Algorithms for Scientific Computing in Python. *Nature Methods*, **17**, 261–72, <https://doi.org/10.1038/s41592-019-0686-2>, 2020.
- 1770 Wang, B., Wu, R., and Fu, X.: Pacific–East Asian teleconnection: how does ENSO affect East Asian climate?. *J. Clim.*, **13(9)**, 1517-36, [https://doi.org/10.1175/1520-0442\(2000\)013<1517:PEATHD>2.0.CO;2](https://doi.org/10.1175/1520-0442(2000)013<1517:PEATHD>2.0.CO;2), 2000.
- 1775 Webb, A., Shimura, T., and Mori, N.: Global tropical cyclone track detection and analysis of the d4PDF mega-ensemble projection. *Journal of Japan Society of Civil Engineers, Ser. B2 (Coastal Engineering)*, **75(2)**, I\_1207-12, [https://doi.org/10.2208/kaigan.75.I\\_1207](https://doi.org/10.2208/kaigan.75.I_1207), 2019.
- Weare, B. C., and Nasstrom, J. S.: Examples of extended empirical orthogonal function analyses. *Mon. Wea. Rev.*, **110(6)**, 481-5, [https://doi.org/10.1175/1520-0493\(1982\)110<0481:EOEEOF>2.0.CO;2](https://doi.org/10.1175/1520-0493(1982)110<0481:EOEEOF>2.0.CO;2), 1982.
- 1780 Xie, S. P., Kosaka, Y., Du, Y., Hu, K., Chowdary, J. S., and Huang, G.: Indo-western Pacific Ocean capacitor and coherent climate anomalies in post-ENSO summer: A review. *Adv. Atmos. Sci.*, **33(4)**, 411-32, <https://doi.org/10.1007/s00376-015-5192-6>, 2016.
- 1785 Yokoyama, C., Tsuji, H., and Takayabu, Y. N.: The effects of an upper-tropospheric trough on the heavy rainfall event in July 2018 over Japan. *J. Meteorol. Soc. Japan. Ser. II*, **98(1)**, 235-55, <https://doi.org/10.2151/jmsj.2020-013>, 2020.
- 1790 Zhang, W., Huang, Z., Jiang, F., Stuecker, M. F., Chen, G., and Jin, F.-F.: Exceptionally persistent Madden-Julian Oscillation activity contributes to the extreme 2020 East Asian summer monsoon rainfall. *Geophys. Res. Lett.*, **48**, e2020GL091588, <https://doi.org/10.1029/2020GL091588>, 2021.

▼  

Page 6: [1] Deleted	LeeSY	3/8/25 4:57:00 PM
---------------------	-------	-------------------

▼  

Page 8: [2] Deleted	LeeSY	3/8/25 4:57:00 PM
---------------------	-------	-------------------

▼  

Page 13: [3] Deleted	LeeSY	3/8/25 4:57:00 PM
----------------------	-------	-------------------

▼  

Page 13: [4] Deleted	LeeSY	3/8/25 4:57:00 PM
----------------------	-------	-------------------

▼  

Page 13: [5] Deleted	LeeSY	3/8/25 4:57:00 PM
----------------------	-------	-------------------

▼  

Page 15: [6] Deleted	LeeSY	3/8/25 4:57:00 PM
----------------------	-------	-------------------

▼  

Page 15: [7] Deleted	LeeSY	3/8/25 4:57:00 PM
----------------------	-------	-------------------

▼  

Page 21: [8] Deleted	LeeSY	3/8/25 4:57:00 PM
----------------------	-------	-------------------

▼  

Page 26: [9] Deleted	LeeSY	3/8/25 4:57:00 PM
----------------------	-------	-------------------

▼  

Page 26: [9] Deleted	LeeSY	3/8/25 4:57:00 PM
----------------------	-------	-------------------

▼  

Page 26: [9] Deleted	LeeSY	3/8/25 4:57:00 PM
----------------------	-------	-------------------

▼  

Page 26: [9] Deleted	LeeSY	3/8/25 4:57:00 PM
----------------------	-------	-------------------

▼  

Page 26: [9] Deleted	LeeSY	3/8/25 4:57:00 PM
----------------------	-------	-------------------

▼  

Page 27: [10] Deleted	LeeSY	3/8/25 4:57:00 PM
-----------------------	-------	-------------------

▼  

Page 40: [11] Deleted	LeeSY	3/8/25 4:57:00 PM
-----------------------	-------	-------------------

▼  

Page 40: [11] Deleted	LeeSY	3/8/25 4:57:00 PM
-----------------------	-------	-------------------

▼  

Page 40: [11] Deleted	LeeSY	3/8/25 4:57:00 PM
-----------------------	-------	-------------------

▼  

Page 40: [11] Deleted	LeeSY	3/8/25 4:57:00 PM
-----------------------	-------	-------------------

▼  

Page 40: [11] Deleted	LeeSY	3/8/25 4:57:00 PM
-----------------------	-------	-------------------

▼

Page 40: [11] Deleted	LeeSY	3/8/25 4:57:00 PM
-----------------------	-------	-------------------

▼

Page 40: [11] Deleted	LeeSY	3/8/25 4:57:00 PM
-----------------------	-------	-------------------

▼

Page 40: [11] Deleted	LeeSY	3/8/25 4:57:00 PM
-----------------------	-------	-------------------

▼

Page 40: [11] Deleted	LeeSY	3/8/25 4:57:00 PM
-----------------------	-------	-------------------

▼

Page 40: [11] Deleted	LeeSY	3/8/25 4:57:00 PM
-----------------------	-------	-------------------

▼

Page 40: [11] Deleted	LeeSY	3/8/25 4:57:00 PM
-----------------------	-------	-------------------

▼

Page 40: [11] Deleted	LeeSY	3/8/25 4:57:00 PM
-----------------------	-------	-------------------

▼

Page 40: [11] Deleted	LeeSY	3/8/25 4:57:00 PM
-----------------------	-------	-------------------

▼

Page 40: [11] Deleted	LeeSY	3/8/25 4:57:00 PM
-----------------------	-------	-------------------

▼

Page 40: [11] Deleted	LeeSY	3/8/25 4:57:00 PM
-----------------------	-------	-------------------

▼

Page 40: [11] Deleted	LeeSY	3/8/25 4:57:00 PM
-----------------------	-------	-------------------

▼

Page 40: [12] Deleted	LeeSY	3/8/25 4:57:00 PM
-----------------------	-------	-------------------

▼

Page 40: [12] Deleted	LeeSY	3/8/25 4:57:00 PM
-----------------------	-------	-------------------

▼

Page 40: [12] Deleted	LeeSY	3/8/25 4:57:00 PM
-----------------------	-------	-------------------

▼

Page 40: [12] Deleted	LeeSY	3/8/25 4:57:00 PM
-----------------------	-------	-------------------

▼

Page 40: [12] Deleted	LeeSY	3/8/25 4:57:00 PM
-----------------------	-------	-------------------

▼

Page 40: [13] Deleted	LeeSY	3/8/25 4:57:00 PM
-----------------------	-------	-------------------

▼

Page 40: [13] Deleted	LeeSY	3/8/25 4:57:00 PM
-----------------------	-------	-------------------

▼

Page 40: [13] Deleted	LeeSY	3/8/25 4:57:00 PM
-----------------------	-------	-------------------

▼

Page 40: [13] Deleted	LeeSY	3/8/25 4:57:00 PM
-----------------------	-------	-------------------

▼		
▼	Page 40: [13] Deleted	LeeSY 3/8/25 4:57:00 PM
▼		
▼	Page 40: [13] Deleted	LeeSY 3/8/25 4:57:00 PM
▼		
▼	Page 40: [13] Deleted	LeeSY 3/8/25 4:57:00 PM
▼		
▼	Page 40: [14] Deleted	LeeSY 3/8/25 4:57:00 PM
▼		
▼	Page 40: [14] Deleted	LeeSY 3/8/25 4:57:00 PM
▼		
▼	Page 40: [14] Deleted	LeeSY 3/8/25 4:57:00 PM
▼		
▼	Page 40: [14] Deleted	LeeSY 3/8/25 4:57:00 PM
▼		
▼	Page 40: [14] Deleted	LeeSY 3/8/25 4:57:00 PM
▼		
▼	Page 40: [14] Deleted	LeeSY 3/8/25 4:57:00 PM
▼		
▼	Page 40: [14] Deleted	LeeSY 3/8/25 4:57:00 PM
▼		
▼	Page 40: [15] Deleted	LeeSY 3/8/25 4:57:00 PM
▼		
▼	Page 40: [15] Deleted	LeeSY 3/8/25 4:57:00 PM
▼		
▼	Page 40: [15] Deleted	LeeSY 3/8/25 4:57:00 PM
▼		