

Stratospheric circulation response to large Northern high-latitude volcanic eruptions in a global climate model

Hera Guðlaugsdóttir^{1,2}, Yannick Peings², Davide Zanchettin³, Gudrun Magnúsdóttir²

¹University of Iceland, Institute of Earth Sciences, 102 Reykjavík, Iceland

²University of California Irvine, Department of Earth System Science, Irvine CA 92697-3100, United States

³University Ca' Foscari of Venice, Department of Environmental Sciences, Informatics and Statistics, 30123 Venice, Italy

Correspondence to: Hera Guðlaugsdóttir (hera@hi.is)

Abstract

Stratospheric aerosols after major explosive volcanic eruptions can trigger climate anomalies for up to several years following such events. Whereas the mechanisms responsible for the prolonged response to volcanic surface cooling have been extensively investigated for tropical eruptions, less is known about the dynamical response to high-latitude eruptions. Here we use global climate model simulations of an idealized 6 month long northern hemisphere high-latitude eruption to investigate the stratospheric circulation response during the first three post-eruption winters. Two model configurations are used, coupled with an interactive ocean and with prescribed sea surface temperature. Our results reveal significant differences in the response of the polar stratosphere with an interactive ocean: the surface cooling is enhanced and zonal flow anomalies are stronger in the troposphere, which impacts atmospheric waveguides and upward propagation of large-scale planetary waves. We identify two competing mechanisms contributing to the post-eruption evolution of the polar vortex: 1) A local stratospheric top-down mechanism whereby increased absorption of aerosol-induced thermal radiation yields a polar vortex strengthening via thermal wind response; 2) A bottom-up mechanism whereby anomalous surface cooling yields a wave-activity flux increase that propagates into the winter stratosphere. We detect unusually high frequency of Sudden Stratospheric Warmings in the simulations with interactive ocean temperatures that calls for further exploration. In the coupled runs, the top-down mechanism dominates over the bottom-up mechanism in winter 1, while the bottom-up mechanism dominates in the follow-up winters.

Deleted: idealized forcing

1 Introduction

The enhancement of the stratospheric aerosol layer following strong sulfur-rich explosive volcanic eruptions is an important driver of natural climate variability due to the short-lived yet possibly very strong radiative anomalies imposed within the atmospheric column (Robock, 2000; Timmreck, 2012; Zanchettin, 2017). This direct radiative effect can alter both meridional surface and stratospheric temperature gradients that can, in turn, initiate further dynamical climate responses on seasonal to decadal time scales (Church et al., 2005; Gleckler et al., 2006; Stenchikov et al., 2009; Shindell et al., 2009; Otterå et al., 2010; Zanchettin et al., 2012; Swingedouw et al., 2015). Direct radiative and dynamical responses critically depend on the spatiotemporal characteristics of the enhanced stratospheric aerosol layer, which ultimately depends on the characteristics of the eruption, such as magnitude, timing and location (Stenchikov et al., 2009; Shindell et al., 2009; Zanchettin et al., 2012; Swingedouw et al., 2015). Spatiotemporal characteristics of volcanic aerosol from high-latitude (HL), Northern Hemisphere (NH) eruptions are typically very different when compared to tropical eruptions. Accordingly, several studies have shown that HL eruptions typically initiate different climate responses compared to tropical eruptions (Meronen et al., 2012; Pausata et al., 2015; Guðlaugsdóttir et al., 2018; Zambri et al., 2019; Sjolte et al., 2021). Therefore, tropical eruptions cannot be considered close analogs of HL eruptions, underlining the need for more studies on the latter to further quantify their potential climate impacts (Zanchettin et al., 2016). In this study we explore how stratospheric sulfate aerosol enhancements largely constrained in the NH extratropics affect hemispheric-scale atmospheric dynamics, with a focus on the stratospheric polar vortex and on temporal evolution of responses through three perturbed winters.

The winter stratospheric polar vortex is considered to play a deciding role in distinguishing between the response to low- and HL NH enhancements of the stratospheric sulfate aerosol layer, where opposite responses are expected to emerge under the same mechanism: When the stratospheric sulfate aerosol layer is enhanced at low latitudes, e.g., following tropical volcanic eruptions, local warming by infrared absorption increases the meridional stratospheric temperature gradient that can lead to a stratospheric polar vortex strengthening due to a thermal wind response (e.g., Zanchettin et al., 2012; Bittner et al., 2016). Conversely, the local warming from aerosols constrained at higher latitudes decreases the meridional temperature gradient, promoting a

66 weakening of the polar vortex (Kodera, 1994; Perlwitz & Graf, 1995; Stenchikov et al., 2002;
 67 Oman et al., 2005; Sjolte et al., 2021). The downward propagation of the stratospheric polar vortex
 68 anomaly into the troposphere can lead to regime shifts of the tropospheric Arctic Oscillation and
 69 associated anomalous regional surface patterns (e.g., Zanchettin et al., 2012; Zambri et al., 2017).
 70 In the case of polar vortex weakening, a critical role is attributed to increased likelihood of Sudden
 71 Stratospheric Warming events (SSWs) (Haynes, 2005; Domeisen et al., 2020; Huang et al., 2021;
 72 Kolstad et al., 2022, and references therein), whose projection on a negative Arctic Oscillation is
 73 expected to bring a series of consequences, including increased frequency of tropospheric
 74 blockings and mid-latitude cold air outbreaks (e.g., Ma et al., 2024). However, the negative Arctic
 75 Oscillation and associated tropospheric anomalies following SSWs are characterized by a low
 76 signal-to-noise ratio (e.g., Charlton-Perez et al. 2018; Zhang et al. 2019). Accordingly, recent
 77 studies tend to disagree on this top-down mechanism being a robust dominant feature of climate
 78 response to volcanic eruptions (Weierbach et al., 2023; DallaSanta and Polvani, 2023; Kolstad et
 79 al., 2022; Azoulay et al., 2021; Polvani et al., 2019; Zanchettin et al., 2022; Toohey et al., 2014).
 80 The radiative surface cooling following large volcanic eruptions has been shown to affect the
 81 stratospheric polar vortex via a bottom-up mechanism (e.g., Graf et al., 2014; Peings and
 82 Magnusdottir, 2015; Omrani et al., 2022). An example of this bottom-up mechanism following HL
 83 eruptions is demonstrated in Sjolte et al. (2021) where they linked a weak polar vortex to an
 84 increase in wave energy flux from the troposphere into the stratosphere without the meridional
 85 stratospheric temperature gradient playing a major role.
 86 With this in mind, the importance of transient atmospheric eddies (waves) and eddy-mean flow
 87 interactions is becoming increasingly clear in explaining vertical and horizontal propagation of
 88 atmospheric perturbations of various origins (e.g. Smith et al., 2022; Nakamura, 2023). DallaSanta
 89 et al. (2019) used a hierarchy of simplified atmospheric models to show that eddy feedbacks are
 90 crucial in explaining stratosphere-troposphere coupling as well as the stratospheric response alone
 91 following a tropical Pinatubo-like eruption. This demonstrates that the anomalous atmospheric
 92 circulation response to an enhanced stratospheric sulfate aerosol layer cannot be understood as
 93 the mere adjustment to meridional temperature gradients, and that eddy-mean flow interactions
 94 and eddy feedback are an essential contribution to such response. Both mechanisms, i.e., the top-
 95 down mechanism triggered by local stratospheric heating and the bottom-up mechanism triggered
 96 by surface cooling, act together in the real world and in realistic simulations. Therefore, idealized

model experiments are required to assess their relative contribution to uncertainty in regional climate variability during the period following the enhancement of the sulfate aerosol layer (Zanchettin et al., 2016).

Icelandic volcanism has played a role in shaping past NH climate variability and will continue doing so. Two Icelandic eruptions during the past 2000 years, namely Eldgjá in ~939 CE and Laki in 1783 CE, are considered to have had a significant impact on climate variability up to the global scale (Brugnatelli and Tibaldi, 2020; Zambri et al., 2019; Oppenheimer et al., 2018; Thordarson and Self, 2003; Stothers, 1998). These types of effusive eruptions are common in Iceland where their duration can extend over years. During part of the eruption time such eruptions can become explosive (referred to as mixed-phase eruptions) when ascending magma in a conduit comes in contact with water as was considered the case with both Eldgjá and Laki, explaining their widespread impacts. Eruption history as well as dense monitoring network of Icelandic volcanic systems tell us that many of these systems are currently on the verge of an eruption, having already produced some of the largest volcanic eruptions over the past millennia (e.g., Öraefajökull, Bárðabunga and Hekla, Larsen & Guðmundsson, 2014; Barsotti et al., 2018; Einarsson, 2019). Therefore history and current activity makes these types of eruptions an ideal reference case to explore the potential climatic impacts of HL enhancements of the stratospheric sulfate aerosol layer and to test hypotheses about the underlying mechanisms driving the climate response. This is the focal point of this study where we investigate for the first time the role of wave-mean flow interactions and SSWs in the climate response to a HL volcanic eruption. For this we perform idealized, long-lasting HL volcanic perturbation experiments using the Community Earth System Model version 1 (CESM1) in its coupled and atmosphere-standalone configurations. We evaluate the NH response during the first three winters following the eruption, referred to as post-eruption winters in the text, and assess the dominating mechanism in each winter. This paper is organized as follows: Section 2 describes the model, experimental design and diagnostics; results are presented in section 3 followed by discussions in section 4 where we end with concluding our results in section 5.

2 Methods

2.1. Numerical Model

We use the Community Earth System Model (CESM) version 1, developed by the National Center for Atmospheric Research (NCAR). In our configuration of CESM1, the atmospheric component is the Whole Atmosphere Community Climate Model, version 4 (WACCM4, Marsh et al. 2013). WACCM4 includes 66 vertical levels (up to 5.1×10^{-6} hPa, ~ 140 km) and uses CAM4 physics. We use the specified chemistry version of WACCM4 (SC-WACCM4), which is computationally less expensive to run, but simulates dynamical stratosphere-troposphere coupling and stratospheric variability like SSWs and the polar vortex with skills comparable to the interactive chemistry model version (Smith et al., 2014). CESM1/WACCM4 uses the Community Atmospheric Model Radiative Transfer (CAMRT) to parameterize the radiative forcing where it has been shown to accurately represent stratospheric aerosols by f. ex. simulating the temperature response following Mt. Pinatubo in 1991 (Neely et al., 2016). The SC-WACCM4 experiments are run with a horizontal resolution of 1.9° latitude by 2.5° longitude and include present-day (year 2000) radiative forcing. A repeating 28-month full cycle of the Quasi-biennial Oscillation (QBO) is included in the SC-WACCM4 experiments through nudging of the equatorial stratospheric winds to observed radiosonde data. In the coupled ocean-atmosphere configuration, the ocean component of CESM1 is the Parallel Ocean Program version 2 (POP2). CESM1 also includes the Los Alamos sea-ice model (CICE), the Community Land Model version 4 (CLM4) and the River Transport Model (RTM). CLM is run at a horizontal resolution of $1.9^\circ \times 2.5^\circ$, POP2 and CICE are run at nominal 1° resolution with higher resolution near the equator than at the poles. Further details about CESM1 are given in Hurrell et al. (2013).

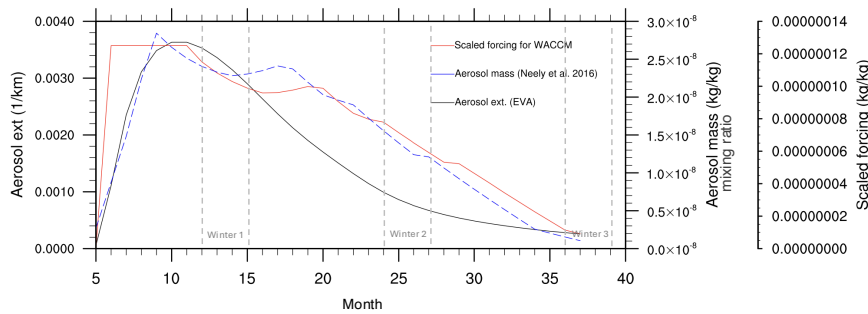
2.2. Volcanic Forcing File

We use the Easy Volcanic Aerosol (EVA) forcing generator (Toohey et al., 2016). EVA provides zonally symmetric stratospheric aerosol optical properties as a function of time, latitude, height, and wavelength (see detailed information on the tool in Toohey et al., 2016). EVA has been used to generate volcanic forcing in both idealized volcanic experiments (e.g., Zanchettin et al., 2016) and realistic paleoclimate simulations (Jungclaus et al., 2017) contributing to the sixth phase of the coupled model intercomparison project.

We use EVA to prescribe the volcanic aerosol loading corresponding to that of the 1991 Mt. Pinatubo eruption (14.04 Tg SO_2), but at 45° N . Since the model reads the volcanic forcing as aerosol mass mixing ratio (kg/kg) while our EVA output is in $1/\text{m}^2$ (aerosol extinction), we scale

158 our forcing file by using the standard aerosol input file for CAM4 and 5 (see Neely et al., 2016,
 159 Table 1) for the same eruption. A monthly scaling factor was derived from this linear relationship
 160 between the aerosol extinction and the aerosol mass mixing ratio that was used to scale the raw
 161 EVA forcing data (Fig. 1). From these scaled forcing data, the aerosol optical properties for our
 162 experiments are obtained with a two-step approach. First, we move the injection location
 163 northwards so that the center of the aerosol mass is at 65° N latitude and spans 10-28 km in altitude.
 164 Then, we define the start of the eruption to be May 1st and prolong the peak of the forcing by
 165 extending in time the highest monthly value in the so-obtained forcing data, so that the decline in
 166 aerosol mass begins 6 months after the start of the eruption or on November 1 (see Fig. 1). We thus
 167 obtain aerosol optical properties for an idealized, long-lasting high-latitude NH eruption. In this
 168 experiment we assume stratospheric injection only, although similar eruptions in the natural world
 169 would likely inject part of the total aerosol mass within the troposphere during the eruption. Past
 170 NH eruptions like Eldgjá and Laki had an atmospheric SO₂ loading of 219Tg and 122Tg
 171 respectively that was carried aloft with the eruptive column up into the upper troposphere with
 172 portions of the aerosols reaching the lower stratosphere during the eruptions (Thordarson et al.,
 173 2001). Hence our experiment can also be considered as a 6-month stratospheric aerosol injection
 174 that is analogous to similar although smaller eruptions (as compared to Laki) without the
 175 tropospheric aerosols.

176



177

178 Figure 1: The time series of the original EVA aerosol extinction output (1/km, black curve) and the
 179 dry aerosol mass mixing ratio of the volcanic forcing file of Neely et al. (2016) (kg/kg, blue dashed
 180 curve) used for deriving the linear scaling coefficient for the conversion of EVA output into
 181 WACCM4 input (kg/kg, red curve). The horizontal axis is time (months) from the start of the

eruption. Here we assume that the aerosol lifetime at 65° N is the same as at 45° N. Dashed vertical lines show the three winters that we focus on in this study.

2.3. Experimental design

We ran two volcanic perturbation experiments with CESM1. The first experiment is conducted with the atmosphere-only version of the model, where boundaries to SC-WACCM4 are provided by prescribed fields of sea-surface temperature (SST) and sea-ice concentration (SIC) corresponding to the 1979-2008 monthly climatology of HadISST observations (Rayner et al., 2003). We refer to this experiment as *atm-only*. The second experiment is conducted with the coupled version of the model, henceforth referred to as *cpl*. For each experiment we run 20 ensemble members including the volcanic forcing and 20 paired ensemble members without the volcanic forcing and otherwise identical to the volcanic simulations, which we refer to as the control.

The atmosphere-only experiments were run over three full years, which provides two full winters after the onset of the eruption. We found that there was no need to extend the simulations further given the duration of the forcing and short memory of the atmosphere. The coupled experiments follow a similar protocol but they were integrated over 15 years to assess the response influenced by oceanic dynamical adjustment. However, in this study we only focus on the first three winters following the eruption, where the January and February forcing of winter 3 are defined to be a continuation of the December value of year 2. We define the first post-volcanic winter as December of the starting year (year 0) and the following January and February (year 1), the second post-volcanic winter is then December of year 1 and the following January and February of year 2 etc. Because the QBO is prescribed, and given its importance for the atmospheric circulation and the distribution of volcanic aerosols within the stratosphere (Thomas et al., 2009; DallaSanta et al., 2021; Brown et al., 2023), we have been careful in homogeneously sampling the QBO phasing that is imposed on the 20 ensemble members. For this, we shift the 28-month QBO cycle by one month for every ensemble member, so that the phasing of the QBO differs from one ensemble member to the next (Elsbury et al., 2021). This avoids potential biases in the climatic response that may be induced by any dominating QBO phase.

2.4. Diagnostics

Model output is analyzed by computing paired anomalies, defined as deviations of each volcanic simulation from the corresponding control simulation (Zanchettin et al., 2022) (volcanic minus control). The statistical significance of the ensemble mean of paired anomalies is assessed at the 95% confidence interval, calculated from all 20 ensemble members, using a two-sided Student's t-test in addition to a Kolmogorov-Smirnov test.

To evaluate the effects of planetary waves on the zonally-averaged stratospheric response, we use the Eliassen Palm (EP) flux and its divergence (Edmon et al., 1980) in addition to the 3D generalization of the EP flux, the Plumb flux (Plumb, 1985), for a longitudinal representation in the lower troposphere and stratosphere. We identify SSW events by using an algorithm following the procedures described in Charlton and Polvani (2007), where mid-winter sudden warming events are determined to take place if the 10 hPa zonal-mean zonal wind at 60°N becomes easterly. Once a warming is identified, no day within 20 days of a central date, defined as the first day in which the daily mean zonal-mean wind at 60N and 10hPa is easterly, can be defined as an SSW. Changes in conditions for large-scale planetary waves propagation (waveguides) are examined using the optimal propagation diagnostic for stationary planetary waves, described in Karami et al. (2016). This metric is based on the construction of Probability Density Functions for positive values of the refractive index (Matsuno 1970), as a function of zonal and meridional wave numbers. The refractive index is calculated using daily zonal wind and temperature at all levels, to derive monthly and zonally-averaged probabilities for stationary Rossby waves to propagate through the atmosphere, in function of latitude and pressure level. This is calculated for zonal wave numbers $k=1,2,3$ and meridional wave numbers $l=1,2,3$ (large-scale waves), and we average the probabilistic refractive index for each of the nine combinations of k and l , to provide a general estimate of chances for propagation of stationary planetary waves. For the eddy feedback calculations we compute the square of the local correlation across the ensemble members between DJF zonal-mean zonal wind and the divergence of the northward EP flux ($\Delta \Phi F \Phi$) averaged over 600-200 hPa (Smith et al. 2022). In addition, we compute the rate of temperature (K) changes in the 2m temperature (T2m) gradient using spherical harmonics to yield a T2m gradient in the meridional ($dZ/dlat$) and zonal ($dZ/dlon$) directions.

3 Results

In the following sections we will investigate the *cpl* experiment to characterize the forced response and identify the mechanism by utilizing the information provided by the *atm-only* experiment. We begin our investigation in the upper atmosphere before making our way towards the surface.

3.1. Volcanic radiative forcing

The net shortwave (SW) and longwave (LW) downward flux at the top of the atmosphere show an expected behavior following a stratospheric sulfate injection where we see a decrease in the SW due to scattering and an increase in the LW due to absorption around the injection location (Fig. 2c-f). Temporal perturbations of SW fluxes for both *cpl* and *atm-only* are influenced by the obvious strong seasonal evolution in solar insolation, where we see strong anomalies during the first summer north of 30° N than then becomes more confined to the mid latitudes as winter progresses with a slow decrease towards the end of the third year (Fig. 2c-d).

LW anomalies also show seasonal evolution with stronger LW flux at mid latitudes compared to at high latitudes during summer that continues into the winter season and remains significant throughout most of these three years. During winter, the LW anomalies are present at high latitudes where the SW anomalies are absent. The latitudinal bands of radiative flux anomalies correspond to the maximum values of the aerosol mass between 60 and 70° N, and the total aerosol mass of 14.04 Tg being largely confined north of 45° N (Fig. 2a-b). Overall, the idealized radiative forcing is largely bounded by the NH extratropics with the exception of a slight significant increase around 30-60° S in the second and third summer (Fig. 2c-d) that is visible at around 14-15 km a.s. (Fig. 2b). This occurs due to spatial features in the Neely et al. (2016) aerosol forcing that we use for scaling, where a slight aerosol increase occurs at lower latitudes, although this is not detectable when the aerosol mass is averaged through the atmospheric column with respect to time (Fig. 2a). We also detect a slight difference in the LW and SW fluxes that arises from differences in high cloud cover between *atm-only* and *cpl*, where *cpl* shows a decrease in high cloud cover in the northern high-latitudes, compared to *atm-only* (not shown).

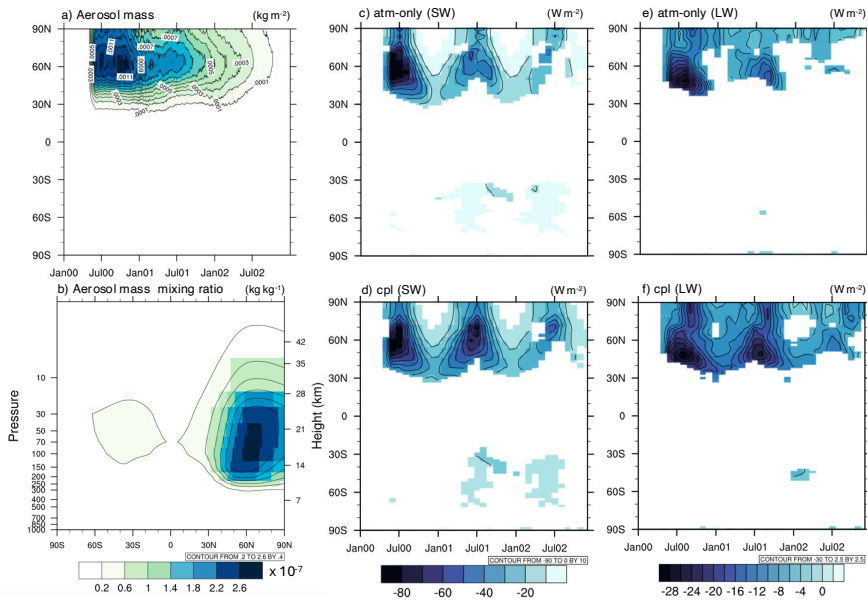


Figure 2: a) Average aerosol column mass time evolution in kg/m^2 and b) pressure vs. latitude slice of the prescribed aerosol dry mass mixing ratio in kg/kg (3-year average). Aerosol mass is the same in *cpl* and *atm-only*. c) and d) show the time evolution of the net SW flux (downward) anomaly at the top of the atmosphere, and e) and f) the same but for net LW flux anomaly, resulting from the volcanic aerosol mass, in c) *atm-only* and d) *cpl* where coloured areas indicate 99% significance compared to the control experiment according to a Student's t-test.

3.2. Stratospheric response

The strong seasonality in the LW perturbations described above also characterizes stratospheric temperatures, where a strong increase in the zonally averaged temperature at 50 hPa (T_{50}) is detected north of 30°N during post-eruption summers in both experiments (Fig. 3a and 3b). This summer warming is followed by a net cooling of the polar stratosphere in the first winter seen for both *cpl* and *atm-only*. A clear difference in the T_{50} response in the two experiments is seen in winter 2, where *cpl* yields warming over polar latitudes while *atm-only* yields cooling (Fig. 3a,b). This reveals the intra-seasonal dynamical effects in the *cpl* experiment beyond the direct radiative

290 response as we will see later on. The contrasting temperature response is accompanied by an
291 opposite response in the zonal-mean zonal winds at 10hPa (U10) between 70 and 80° N. This U10
292 response is an indicator of the state of the polar vortex, where a polar vortex weakening is detected
293 in winter 2 for *cpl* but a strengthening *atm-only* (Fig. 3c-d). Figures 3c-d do show a large ensemble
294 spread in the zonal mean U10 winter response that is evident of a low signal to noise ratio. While
295 the first winter in *cpl* and the first two in *atm-only* show little statistical significance according to
296 a Kolmogorov-Smirnov test, this significance does increase for winter 2 in the *cpl* experiment. We
297 also see this weakening in the zonal mean U50, also showing stronger significance during winter,
298 (Supplementary Fig. S3) but not as clearly as in the zonal mean U10. However, for consistency we
299 will mainly be focusing on the U50 response in the following section where this response is clear
300 over the NH polar cap. The difference between *cpl* and *atm-only* will be in the focus in the
301 following sections.

302

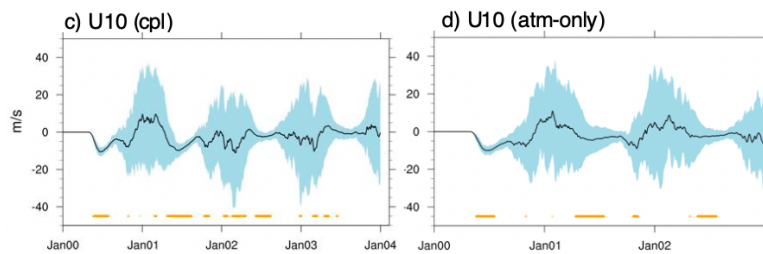
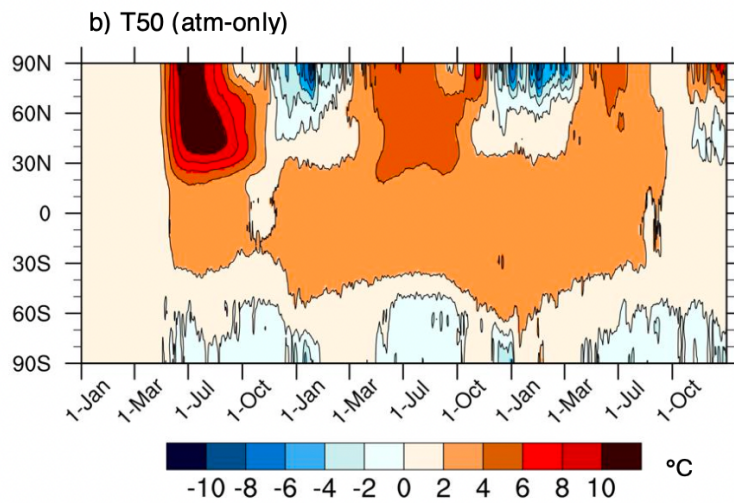
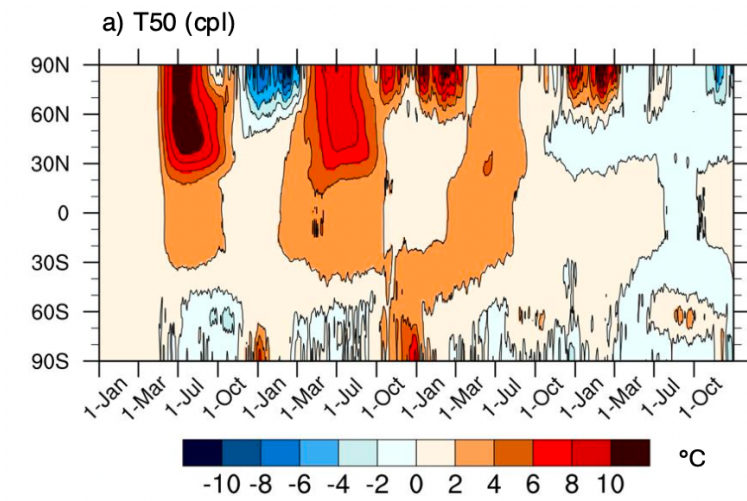
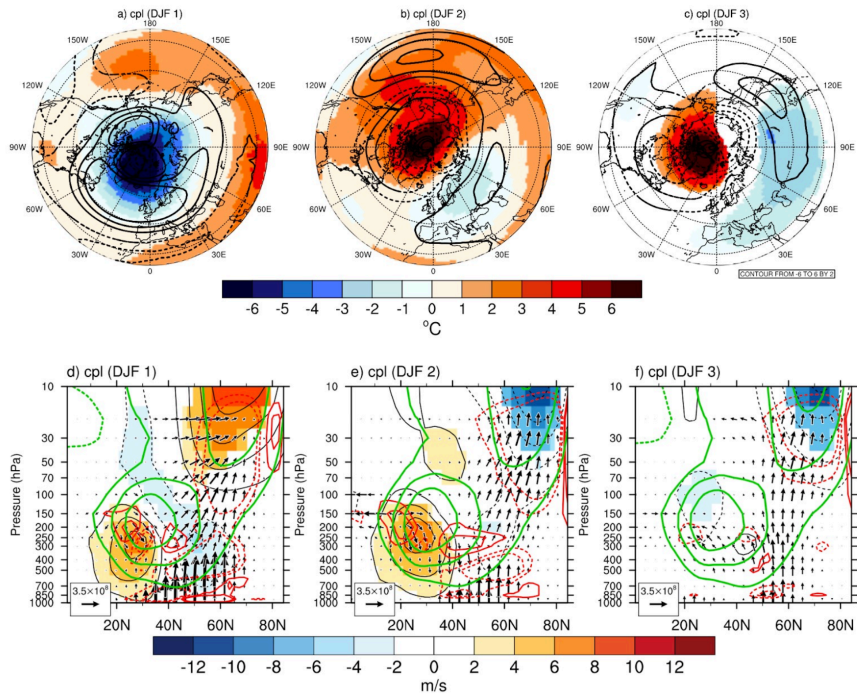


Figure 3. a,b) Latitude versus time response of T50 anomalies over the investigated period in a) *cpl* and b) *atm-only* (note the different time scale). Contours are significant in 95% confidence intervals according to a Student's t-test. c,d) Stratospheric polar vortex response shown as the zonal mean U10 anomalies between 70 and 80° N for c) *cpl* and d) *atm-only*. Black lines show the ensemble mean anomalies and blue shadings show the ensemble ± 2 standard deviation anomaly range. Orange markers indicate when the difference between perturbed and unperturbed experiments becomes significant ($p < 0.05$) according to a Kolmogorov-Smirnov test.

3.2.1 - First post-eruption winter

In the *cpl* experiment, the polar vortex strengthening in winter 1 is associated with extensive anomalies in temperature and zonal wind at 50 hPa (Fig. 4a). The anomalous temperature pattern consists of cooling at high latitudes and into the midlatitudes over the Atlantic, and warming over large swaths of the subtropics (to 20° N) and into the midlatitudes over the Pacific. This temperature pattern is also identified in the zonal mean T50 (Fig. 3b). Similarly, the zonal wind weakens into the midlatitudes over the Pacific while it is stronger in mid to high latitudes over the Atlantic. The strong upward EP flux (black arrows) is an indicator of the direction of propagated waves originating at the surface around the midlatitudes, where the horizontal and vertical EP flux components are proportional to the eddy momentum and heat flux, respectively (Fig. 4d). A convergence (negative divergence, dashed red contours) in the EP flux is detected in the upper troposphere that acts to weaken the tropospheric westerlies (Fig. 4d and Fig. S2). However, the EP flux and its convergence within the stratosphere does not appear to impact the stratospheric mean flow and the polar vortex. Therefore the local heating due to the volcanic aerosols and the associated increase in the meridional temperature gradient in the stratosphere appear to dominate the response of the polar vortex via thermal wind response, also depicted by the LW anomalies (Fig. 2f). Winter 1 in *atm-only* shows a similar thermal wind mechanism at play in the stratosphere as for the *cpl* experiment (Fig. 5a and 4a, respectively). In that case, less obvious tropospheric influences are detected, due to lack of forced surface cooling, as seen in the limited anomalous upward wave activity detected by the EP flux diagnostics (Fig. 5c).



336 Figure 4: Winter stratospheric response in the *cpl* experiment. a-c) U50 (contours) and T50
337 (shading: red = warming, blue = cooling) response for winters 1-3, respectively. d-f) EP flux
338 (arrows) and divergence (red contours) response, along with zonal-mean zonal wind response
339 (black contours and shading: red = strengthening, blue = weakening) and climatology (green
340 contours) in winters 1-3, respectively. Contours and color-shaded areas indicate 95% significance
341 according to a Student's t-test. Only vectors that are significant at the 95% confidence interval are
342 shown.

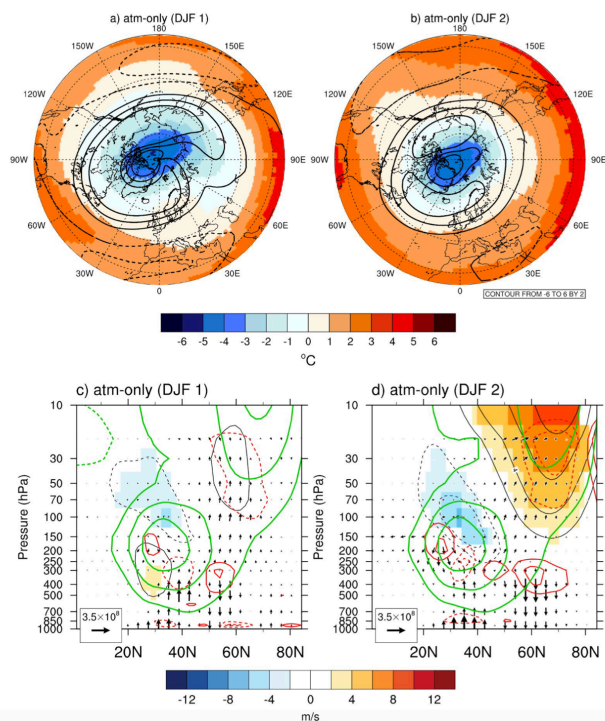


Figure 5: The same as Fig. 4 but for the *atm-only* experiment. a-b) Zonal wind (contours) and temperature (shading) response at 50 hPa for winter 1 and winter 2, respectively. c-d) EP flux (arrows) and divergence (red contours) response along with zonal-mean zonal wind (black contours) and pure climatology (green contours, 2m) in winters 1-2, respectively. Contours and colored area indicate 95% significance according to a Student's t-test.

3.2.2. Second post-eruption winter

A stark difference in the polar vortex response is detected between *cpl* and *atm-only* in winter 2. While *atm-only* exhibits a response similar to winter 1 (Fig. 5b), a significant warming over North America and the North Pacific emerges in *cpl* along with a weakening of U50 at high latitudes (Fig. 4b) indicating a shift of the polar vortex towards Eurasia. This warming at high latitudes then coincides with a slight LW absorption at high latitudes (Fig. 2f). The U50 weakening is not uniform throughout the longitudes explaining the lack of response detected in the zonal mean U50 (Fig.

S3), where one needs to go to U10 to get a clear response in the zonal-mean zonal wind (Fig. 3c). An anomalously strong upward propagation of planetary waves persists in the *cpl* (Fig. 4e), with a stronger upward EP flux now protruding into the stratosphere above 20hPa in contrast to winter 1. The upward EP flux and its convergence in the polar stratosphere are evident of their contribution towards the weakening of the U50 and a general dominance over the effects of thermal forcing by aerosols that have been, at this stage, substantially reduced (Fig. 1). Similar wave propagation pattern as identified in the *cpl* experiment is known to be associated with SSWs. We suspect that the decrease in the T50 difference between mid- and high latitudes can act as a trigger for a weaker polar vortex in addition to the stratosphere absorbing the upward propagating waves that is known to cause warming over the polar cap (Kodera et al., 2016; Kretschmer et al., 2018). We will see further evidence of this in the next section.

3.2.3. Third post-eruption winter

The results in this section only refer to the *cpl* experiment since winter 3 is lacking in *atm-only*. The SSW-like pattern of winter 2 clearly continues into winter 3, where most of the volcanic aerosols have decreased to the extent that their radiative impacts no longer dominate. An exception is the confinement of T50 warming over the polar stratosphere (Fig. 4c). Furthermore, anomalous upward propagation of planetary waves continues to persist (Fig. 4f). This upward wave flux in addition to the T50 warming resembles a pattern that behaves much like absorbing SSWs defined by Kodera et al. (2016). To examine this response further we define SSWs based on the reversal of the zonal-mean zonal winds at 60° N and at 10hPa between November and March according to the method of Charlton and Polvani (2007) .

Results from the SSW analysis are presented in Fig. 6. No significant increase in SSWs is found in winter 2, despite the SSW-like pattern detected. This changes in winter 3 when the difference between perturbed and unperturbed experiment becomes statistically significant, with 27 SSWs occurring in our forced experiment compared to only 6 in the control experiment. This increase in SSWs agrees well with the U50 and T50 anomalies of winter 3 (Fig. 4c). During winter 2, the warming of the polar stratosphere is as strong as in winter 3 but more spread out into midlatitudes. These results are also in agreement with the stratospheric Plumb flux in winter 3 (Fig. S1c) where

the upward flux is mostly circumpolar between 40° and 60° N, showing further evidence of the SSWs detected.

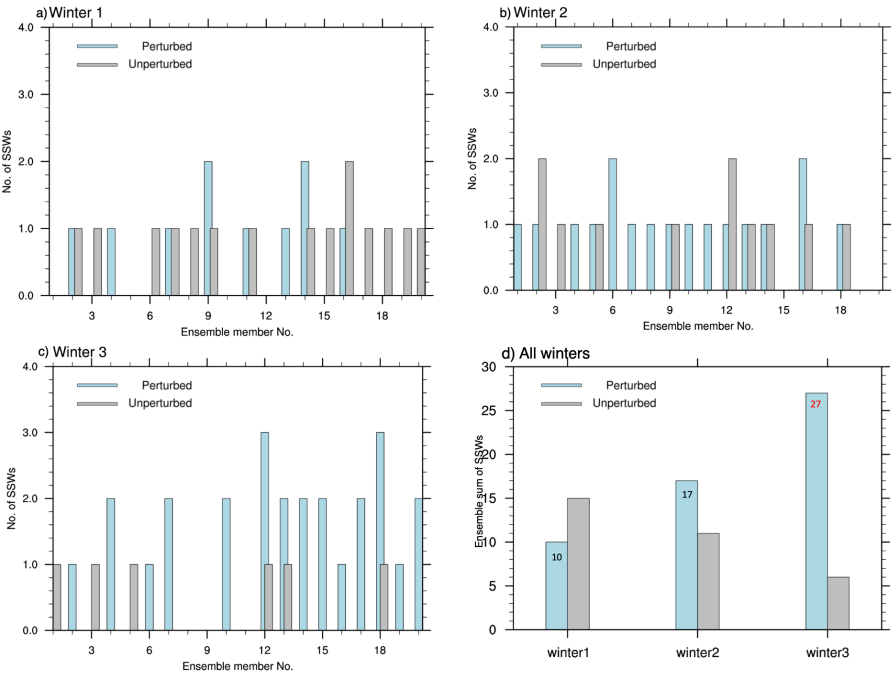


Figure 6: a-c) The number of SSWs during winters 1-3 for each ensemble member in the *cpl* experiment and d) The sum of all SSWs in each experiment for all 20 ensemble members of winters 1-3 both for *cpl* (light-blue bars) and control (gray bars). The color red indicates 95% significance according to a two-sided Student's t test.

When comparing the ensemble sum of SSWs in the perturbed and unperturbed experiment using a Kolmogorov-Smirnov test (Fig. 6d), a significant increase in the number of SSWs occurs in winter 3 ($p=0.0135$). This underlines the generally strong SSW response occurring in winter 3, when the fraction of ensemble members having more than 1 SSW per winter increases to 50% (10 ensemble members) in winter 3 compared to only 10% in winters 1-2. Of these 10 ensemble members, two members show three SSWs per winter that can be considered highly unlikely based

403 on historical records. Although winters with more than 1 SSWs are considered unusual, examples
404 do exist in the observational record of multiple SSWs in one winter, like the winter of 1998/1999
405 and 2009/2010 (Kodera et al., 2016 and Ineson et al., 2023 respectively).

406 To better understand the *cpl* SSWs response, we also did an SSW analysis on *atm-only* (Fig. S7)
407 where 50-75% less SSWs were detected in the perturbed simulation compared to the unperturbed
408 one. Such a response should not be unexpected during the forced polar vortex strengthening as
409 detected in *atm-only* (see Fig. 5). Furthermore, only single SSWs per winter were detected in all
410 20 ensemble members of the perturbed simulation while two (one) ensemble member(s) detected
411 double SSWs per winter 1 (winter 2) in the unperturbed simulation. Although these results do
412 suggest an increase in the number of SSWs in the *cpl* simulation, internal variability is large and
413 the frequency of SSWs fluctuates substantially between the three winters in the unperturbed
414 simulation.

415 We explored the impact of the ensemble size for the ensemble spread of two key diagnostics of
416 our mechanism, namely U10 and SSW, calculated as the standard deviation of post-eruption paired
417 anomalies for the first three post-eruption winters (Supplementary Fig. S8). Winter 3 produces
418 larger spread than winters 1 and 2, indicative of a less constrained forced response, which is
419 especially evident for ensemble sizes larger than 15. Accordingly, this analysis suggests that much
420 larger ensembles are needed to confidently demonstrate the significance of the SSW response (i.e.
421 to provide signals not encompassing the value of zero within uncertainty).

422
423 According to the above, the evolution in *cpl* from winter 1 to winter 3 can be summarized as
424 follows: In the first winter, the thermal forcing appears to be stronger than the upward wave flux
425 because of the large amount of aerosols present, thereby dominating the response that causes the
426 polar vortex strengthening and the inclusion of cold polar air within. In the second winter, the
427 thermal forcing from the volcanic aerosols at midlatitudes has decreased where it is now mostly
428 confined to higher latitudes as seen both in the LW flux and T50 (Fig. 2f and Fig. 3b). We suspect
429 that in addition to the aerosol decrease, this slight decrease in the temperature difference between
430 high and midlatitudes allows the strong upward wave flux to dominate and enter the upper
431 stratosphere. There in the stratosphere, the waves are absorbed that causes further warming over
432 the polar cap in addition to weakening the zonal stratospheric winds (Fig. 5b and Fig. 4b). This
433 upward wave flux and weaker winds continue into the third winter, where winter 2 potentially acts

Deleted: least

Deleted: Therefore

Deleted: only much larger ensembles may provide signals not encompassing the value of zero within uncertainty.

as a precursor, allowing for SSWs to develop more frequently as detected in the T50 warming that is now confined over the polar cap (Fig. 4c and Fig. 5c, respectively). The SSW development is also evident in both U10 and U50 and T50 timeseries (Fig. 3c and Figure S3a-b respectively), where peak T50 warming occurs late in winter 3. The expected absence of a surface response is obvious in our *atm-only* experiment where basic physical mechanism, via the thermal wind balance due to radiative heating, dominates the atmospheric circulation response in the first two post-eruption winters. The strong stratospheric polar vortex then isolates the cold air over the polar regions (Fig. 5a-b) as is the case in winter 1 of the *cpl* experiment (Fig. 4a).

3.3. Tropospheric response

What is it then that drives this polar vortex weakening and the SSW response in the *cpl* experiment? To examine in more detail the origin of the upward wave fluxes in winters 2 and 3 of the *cpl* experiment that causes the detected polar vortex weakening and the SSWs, we now turn our attention towards the troposphere.

We begin by comparing the response of T2m, vertical Plumb flux at 850 hPa and 200 hPa zonal wind, in *cpl* (Fig. 7) and in *atm-only* (Fig. 8).

As a response to the decrease in SW flux following the eruption, extensive and heterogeneous cooling is identified in the T2m anomalies in winters 1-3 (*1-2 for atm-only*) over latitude bands that contain the most significant SW flux decrease (Fig. 2d, Fig. 7a-c and Fig. 8a-b). The strongest cooling occurs over northeastern North America and along the Asian midlatitudes in winter 1, with much larger amplitude in *cpl* than in *atm-only* (Fig. 7a versus Fig. 8a). In *cpl*, a significant cooling is identified in the SST (Fig. S5), extending the area of negative T2m anomalies towards the ocean, in particular over the northwestern North Pacific in winter 1 (Fig. 7a). There it progresses from an initial preferential surface cooling over the midlatitudes in winter 1 to a later cooling of polar regions in winter 3 (Fig. 7c). In *atm-only*, the surface response is hampered over the ocean by the experimental design, and T2m anomalies are therefore confined to landmasses, yielding an overall much weaker temperature response compared to *cpl* (Fig. 8a-b).

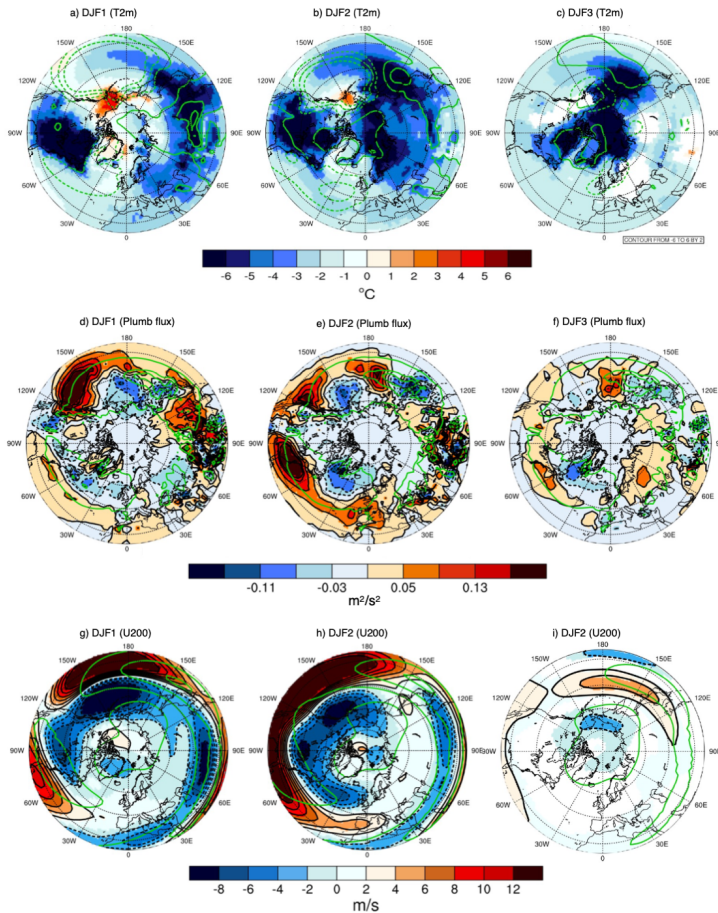


Figure 7. a-c) 2-meter air temperature ($^{\circ}\text{C}$) in *cpl* (color) and sea-level pressure (green contours) anomalies for winters 1-3. d-f) The vertical component of the Plumb flux (m^2/s^2) at 850 hPa in *cpl*, and the climatology as green contours from -8 to 12 by 2, for winters 1-3. g-i) 200 hPa zonal wind (m/s) anomalies in *cpl*, and the climatology as green contours from -0.15 to 0.15 by 0.04, for winters 1-3. Contours and colored areas indicate significance at the 95% confidence interval according to a Student's t-test.

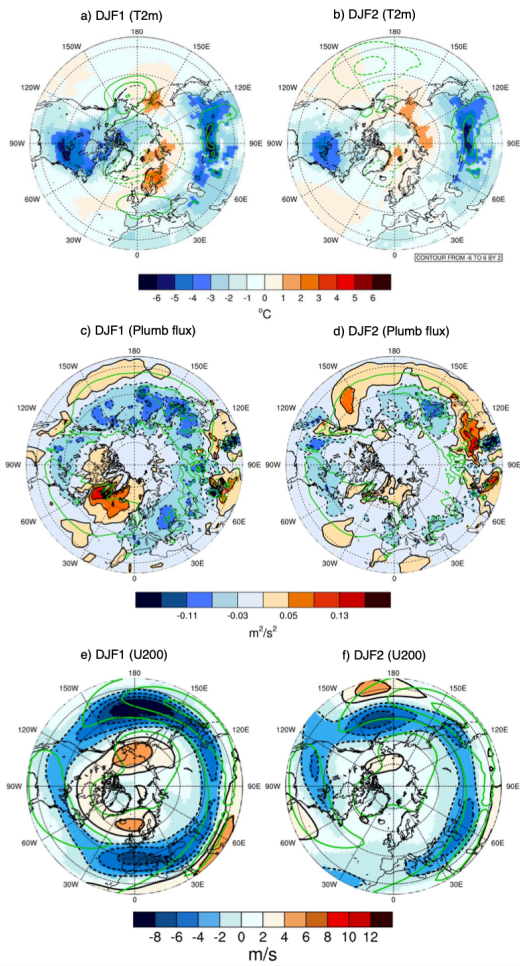


Figure 8. The same as Figure 8 but for the first two winters in atm-only. Contours and shaded areas indicate significance at the 95% confidence interval according to a Student's t-test.

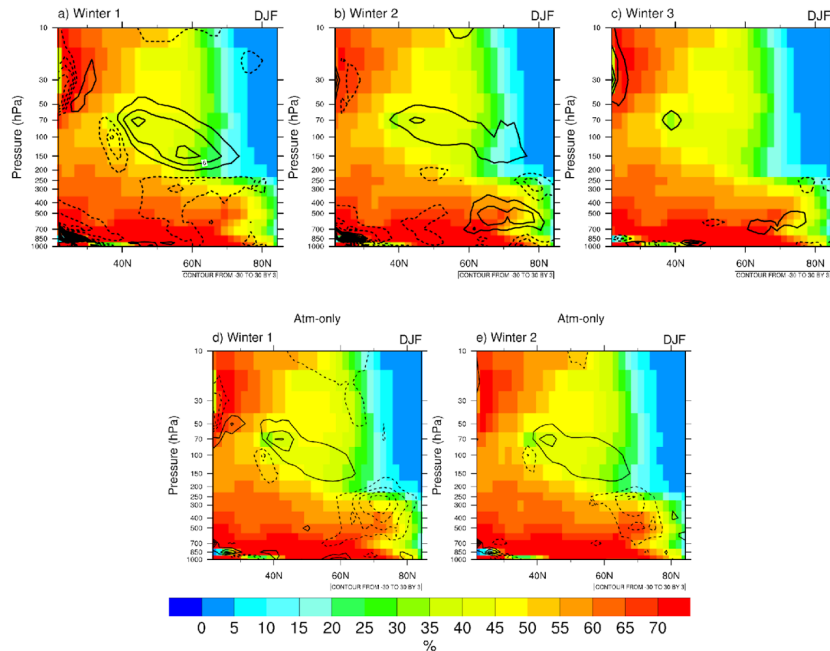


Figure 9. Probability (%) of favorable propagation conditions for large-scale stationary Rossby waves (zonal and meridional wavenumbers 1, 2 and 3) as a function of latitude and pressure levels (shading). Contours show the response in long_summer versus control. a) Winter 1 in *cpl*. b) Winter 2 in *cpl*. c) Winter 3 in *cpl*. d) Winter 1 in *atm-only*. e) Winter 2 in *atm-only*.

The vertical component of the the Plumb flux at 850 hPa (Fig. 7d-f) allows us to locate the origins of the upward EP flux in *cpl* (Fig. 4d-f). It is strongest over the north eastern part of the Pacific Ocean (off the west coast of North America) in winter 1, where it continues up into the lower stratosphere at 150 hPa (see Fig. S1a). In winter 2, the Plumb flux has decreased in the North Pacific and increased over the North Atlantic and Siberia, pointing to a possible influence of the change in land-sea temperature contrast (Fig. 7e). In addition to this upward flux, we also detect downward wave flux over both the Aleutian and Greenland regions at 850 hPa and over a large area south of 45° N at 150 hPa (Figure S1b). This downward Plumb flux is evidence of changes in the planetary wave structure where wave reflection occurs due to the sudden weakening of the zonal winds identified in the U10 (Fig. 3a). In winter 3, the Plumb flux now dominates both at 850

(seen in Fig. 7f) and 150 hPa (Fig. S1c), where it encircles the polar stratosphere north of 60° N. In line with the weak EP-flux response shown in Fig. 5, the Plumb flux anomalies are generally weak in *atm-only* compared to *cpl*, for both winter 1 and 2 (Fig. 8c-d).

Since upward wave activity depends on wave-mean flow interactions, several factors are at play to explain the strong response in *cpl* vs *atm-only*. First, the change in zonal flow is substantially different between the two pairs of experiments, as shown by the U200 anomalies (Fig. 7g-i and Fig. 8e-f). In the first two winters we observe an intense deepening of the Aleutian low in *cpl* (Fig. 7a-b) associated with a large equatorward shift of the subtropical jet over the North Pacific (Fig. 7g-h, also seen in the zonal-mean averages of Fig. 4). The change in zonal flow is not as large in *atm-only*, where there is a general decrease of U200 on the poleward side of the subtropical jets, rather than a marked equatorward shift as in *cpl*. This further emphasizes that amplified surface coupling when the ocean is coupled to the atmosphere has a dramatic impact on the amplitude of the tropospheric response. Because the zonal flow acts as a waveguide for large-scale planetary waves, we expect changes in upward wave propagation in the stratosphere. To measure how waveguides change, we compute the probability of favorable propagation conditions for large-scale stationary waves (Fig. 9). This is averaged for zonal wave numbers $k=1,2,3$ and meridional wave numbers $l=1,2,3$, as a function of pressure and latitude (see section 2 for more details). Areas of high probability show where large-scale waves preferentially propagate, while low probability regions indicate where linear wave propagation is hampered. Generally, the mid-latitude troposphere is more favorable for wave propagation than the high-latitudes and the stratosphere, consistent with the tendency for stationary waves to propagate upwards and to be deflected towards the equator, in climatology. After injection of the volcanic forcing, both *cpl* and *atm-only* exhibit an increase in the probability for wave propagation between 40 and 60 °N in the lower stratosphere during winter 1 and 2, but the responses in the troposphere are markedly different. In *atm-only*, wave propagation is inhibited in the free troposphere north of 60°N, for both winters 1 and 2 (Fig. 9d-e), which is consistent with the EP-flux anomalies of Fig. 5. This response is absent from *cpl* during winter 1 (Fig. 9a), and opposite during winter 2 when an increase of favorable conditions for wave propagation is diagnosed (Fig. 9b). We also see that the waveguide has greatly reduced in the subtropical troposphere in *cpl* winters 1-2 that favor large-scale waves to be redirected towards the pole. This increase in favorable conditions for wave propagation in the troposphere

between 60 and 80 °N persists during winter 3 in *cpl* (Fig. 9c), which is a partial and the most likely explanation for enhanced upward wave propagation in the stratosphere described in Fig. 4f.

In *cpl* winter 3, when the cooling is reduced in the NH mid-latitudes and has migrated towards the polar regions (also evident in SST, see Fig. 5S), the amplitude of the 850 hPa upward Plumb flux anomalies decreases compared to previous winters (Fig. 7f). This suggests that the mid-latitude spatiotemporal cooling pattern plays a part in the strong wave activity detected near the surface. This can be revealed by computing the T2m gradient (Tgrad) where strong land-sea temperature gradients are known for their ability to influence atmospheric wave activity (Hoskins and Valdes, 1990; Brayshaw et al., 2009; He et al., 2014; Wake et al., 2014; Portal et al., 2022). Figure 10a shows sharp significant changes in the meridional gradient that encircles 45° N in winter 1, with positive (negative) gradient anomalies occurring south (north) of 45° N. In winter 2 we still see the gradient present at 45° N but now located over North America and the North Pacific. Winter 3 mostly reveals regional anomalies in the Barents-Kara, Greenland-Iceland and the North Pacific regions (Figure 10b-c), occurring over areas of significant sea ice increase (not shown). The sharp Tgrad change in winter 1 (Fig. 10a) is followed by a reduction of land-sea temperature contrast over eastern Canada and the U.S. in winter 2 (Fig. 10b). This is a known cause of planetary wave enhancement (Portal et al., 2022) and could provide an explanation for the strong surface upward wave flux detected in the second and third post-volcanic winters (Figure 7e-f). Both the zonal and meridional Tgrad components show an increase in the northern part of Alaska that coincides with the region of T2m warming over the Aleutian/Alaska region (Fig. 7a) and the strong upward Plumb flux (Fig. 7d). This warming, in addition to the strong continental cooling over North East America and the general decrease in Tgrad spanning from mid to northern part of North America, might influence this strong Plumb flux anomaly in the North Pacific. Of note, sea-ice extent increases around East Siberia extending into the Chukchi Sea (not shown), highlighting the potential influence of sea ice variability on Tgrad and upward Plumb flux anomalies in the area.

Plotting the average Tgrad for various regions against the average number of SSWs for winters 1-3 (Fig. S6), we do see that the strongest Tgrad reduction occurs over the North East US in the second winter. This is in agreement with the upward Plumb flux over the same region and serving as further evidence for its contribution to the upward EP flux in winter 2. This Tgrad reduction

continues into the third winter where we also detected a reduction in the upward Plumb flux over the same area (Fig. 7f). Looking towards the Barents Sea, a clear spatial difference emerges compared to the North East US, where a clear Tgrad increase occurs in winter 3 related to the SSWs. In general less changes are detected between winters in the North West NA and the North Pacific, reflecting the confined cooling over higher latitudes in winter 3 associated with the SSWs.

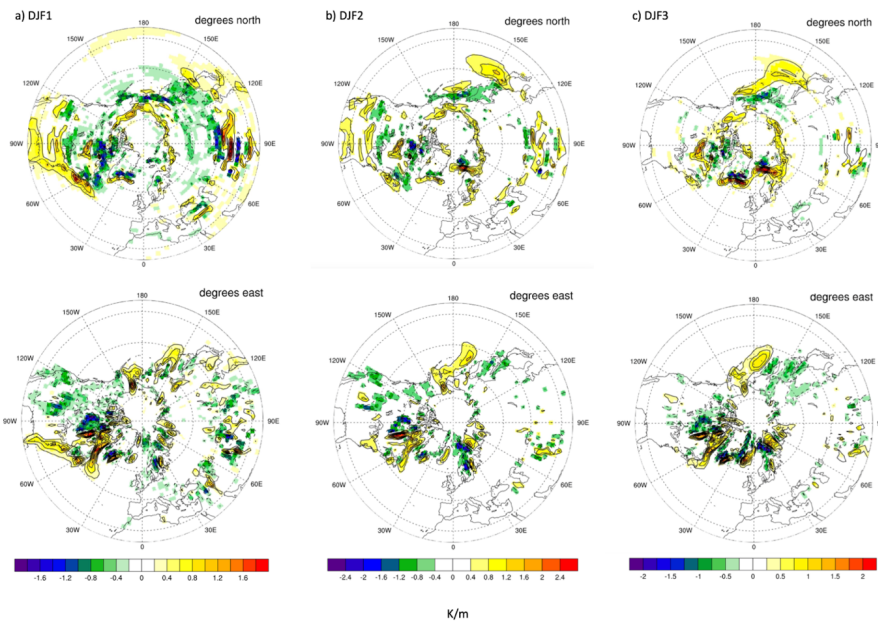


Figure 10: a-c) The zonal (degrees north) and meridional (degrees east) T2m gradient anomalies (perturbed minus unperturbed) for winters 1-3. Contours indicate 95% significance according to a Student's t-test. Note the different colorbar for each winter.

To complete our assessment of the tropospheric response, we examine if eddies play a role in the *cpl* polar vortex response and the anomalous upward EP flux (Fig. 4a-f) as well as SSWs detected in winter 3 by following Smith et al. (2022) (see Methods). This is done for both perturbed (red) and unperturbed (blue) experiments in *cpl* and *atm-only* (Fig. S4). We see an increase in perturbed eddy feedback at around 40-70° N both for *cpl* winter 1 and winters 1-2 in *atm-only* during the polar vortex strengthening (Fig. S4). However, the role of eddies in the polar vortex weakening in

winters 2-3 is unclear, especially considering the eddy feedback increase of the control run in winter 2 (Fig. S4b). In general, these results suggest that the signal-to-noise ratio is too small to identify a role for eddy feedback in our experiments.

4 Discussion

Our two sets of coupled ocean-atmosphere (*cpl*) and atmosphere-only (*atm-only*) experiments examine the large-scale climate response to an idealized long-lasting NH eruption, where their differences give us valuable insight into the volcanically forced mechanisms at play within the coupled climate system in CESM1. Specifically, we analyzed the first three winters of the *cpl* experiment and used the first two winters of *atm-only* as a comparison to investigate the dynamics that govern the post-eruption stratospheric polar vortex and the associated surface response.

Results from the *cpl* experiment show a similar response in the first winter as in the two winters of *atm-only*, with a strengthening of the zonal winds resulting from an aerosol-induced sharp temperature gradient between the mid-latitudes and the pole (Fig. 4a and Fig. 5a). We show that this zonal wind strengthening is not affected by the detected strong upward EP flux, where the LW flux (Fig. 2e-f) supports our conclusions that the polar vortex strengthening is induced by the thermal wind balance. A distinct change to this pattern emerges in *cpl* winter 2 where we detect an SSW-like pattern, with strong negative anomalies emerging in the polar U50 winds and a warming in the T50 field (Fig. 4b). We also detect an LW absorption at high latitudes, that is absent at midlatitudes, where this T50 warming is evident of the potential role of a decreased temperature gradient in the identified polar vortex weakening. Furthermore, the upward wave-activity flux from the troposphere into the stratosphere and the T50 warming indicate absorption of upward propagating waves into the stratosphere that causes this warming and weakening of U10 winds over the polar cap. This pattern is known to be related to SSWs (Kretschmer et al., 2018; Kodera et al., 2016), agreeing with our results in winter 3 where an increase in the occurrence of SSWs is detected. The strong upward EP flux greatly depends on ocean-atmosphere coupling originating in the surface cooling in addition to the changes in upper tropospheric zonal flow. This further contributes to the upward EP flux from the troposphere into the stratosphere that eventually leads to polar vortex weakening and enhanced SSWs.

Although the above coincides with a positive (negative) eddy feedback in the first (second) winter that could in theory play a role in sustaining the strengthening (weakening) of the polar vortex, our

604 eddy feedback results indicate low signal-to-noise ratio where further studies with additional
605 ensemble members would be required to confirm their role in the forced response. We also note
606 that Smith et al. (2022) identified CESM1 WACCM-SC as having one of the weakest eddy
607 feedback of the sixteen models they investigated, so the response of eddy feedback may be more
608 significant in other models. Similar to the eddy feedback, low signal-to-noise ratio is also evident
609 in the SSW analysis. However, the response we detect in the U50 and T50 fields is strong compared
610 to the unperturbed simulation where the SSWs provide an explanation in agreement with the
611 patterns detected. Furthermore, the SSW analysis for *atm-only* and the ensemble size test (Fig. S7
612 and Fig. S8 respectively) both suggest the presence of a robust signal for winter 3 despite the noisy
613 polar vortex and the limited ensemble size. We also see that the large decrease in SSWs in the
614 perturbed simulation of *atm-only* (when compared to unperturbed) is consistent with the detected
615 polar vortex strengthening. This further supports the significance of the signal we detect in *cpl*
616 winter 3 compared to the background noise. In addition, all winters examined, in both *cpl* and *atm-*
617 *only*, showed that there is up to 15% chance of getting more than 1 SSWs per winter in all ensemble
618 members. This is not far from Ineson et al. (2022) who identified a double event once every 9 years
619 in a 66-year ERA5 record. The exception is *cpl* winter 3 that is also the only winter that has 3
620 SSWs, with the average SSW occurrence also being the only winter above 1 (1.17) while all other
621 winters span between 0.15-0.85 per winter. A similar NH high-latitude eruption has not taken place
622 during the observational period, so we have no comparison. Also, to the best of our knowledge, a
623 similar high-latitude sulfur injection study has not been performed before. Therefore, it is difficult
624 to say at this stage if such a response is realistic or not, but in general more than two SSWs per
625 winter can be considered exceptional yet plausible, as is also the case for our idealized eruption.

626
627 Bittner et al. (2016b) identified an opposite response driven by a similar underlying mechanism,
628 when compared to our *cpl* response in winters 2-3 (Fig. 4), following a Tambora-like eruption
629 where a strengthening of the polar vortex due to less wave breaking at high latitudes was
630 considered to be an indirect effect associated with a changes in planetary wave propagation. Since
631 the volcanic aerosols in our experiments have declined extensively in the third winter, making the
632 aerosol thermal forcing a limited factor, we cannot rule out similar indirect effects where changes
633 in wave propagation leads to an increase in wave breaking at high latitudes and hence the increase
634 in SSWs.

Deleted: show strong evidence of

While not directly comparable to our study but still providing an important analog, Muthers et al. (2016) identified an average increase in the number of SSWs during a 30-year (constant) decrease in solar radiation in line with our significant increase in SSWs in winter 3. Our results do support the findings of Sjolte et al. (2019), where the stratospheric temperature gradient does not appear to play a major role in the polar vortex weakening we identify, while the upward wave flux does. The strong surface cooling detected in Fig. 7 is a well-known caveat in CMIP5 models (including CESM1) (Driscoll et al., 2012; Chylek et al., 2020) and is clearly detected in our coupled simulations. Since our results indicate the dominant role of the volcanically induced stratospheric thermal wind response that causes the polar vortex strengthening, the cooling does not appear to impact the response identified in winter 1. This is also revealed by the EP flux. The same cannot be said about winters 2-3, where our results indicate that the exaggerated spatiotemporal T2m pattern might explain the strong upward wave flux and the associated stratospheric response. Interestingly, a slight difference between *atm-only* and *cpl* is detected in both the LW and SW flux that is caused by a strong significant decrease in high cloud cover in the *cpl* simulation (not shown). This cloud cover decrease, especially at mid- to high latitudes, agrees with the increased LW fluxes at higher latitudes in addition to the decrease in SW flux and the associated surface cooling. This raises a question regarding the role of forced surface processes in these high cloud changes, which we leave open for further studies.

As mentioned in the methods section, we assume a similar lifetime of volcanic aerosols at 65° N as at 45° N. When considering the e-folding time in Toohey et al. (2019), a substantial aerosol decrease of about 43% occurs at 17km (a.b.s.) for an eruption at 60° compared to at 0°. However, since our experiment assumes a constant stratospheric injection over 5 months with the aim to simulate a long-lasting HL eruption compared to a single injection at low latitudes, the difference in the e-folding time between low and high-latitudes would be expected to decrease. Using CESM2-WACCM6 with interactive chemistry Zhuo et al. (2023) identified that although an eruption at 64° N did have a shorter aerosol lifetime compared to one at 15° N, it leads to stronger volcanic forcing over the NH extratropics. In addition, one of their conclusions was that different duration and intensity of both tropical and NH extratropical eruptions can lead to different results, stressing that our 6 month long stratospheric sulfate aerosol enhancement is not directly comparable with volcanic eruptions of shorter duration. Although the aerosol lifetime in our

experiment might be exaggerated into the third year, our results do indicate that the polar vortex weakening in winter 2 appears to act as a trigger for further weakening that eventually leads to SSWs in winter 3. In order to increase confidence on such a delayed link, additional sensitivity simulations are required, which we leave that for future studies.

Unlike our eruption simulated using a version of WACCM4, where the chemistry is prescribed, natural volcanic eruptions can contain various chemical compounds that impact the formation and the lifetime of sulfate aerosols as well as affect the atmospheric circulation via, e.g., ozone depletion, like halogens are known to do. More advanced versions as well as models that include interactive chemistry are thus important to reveal in more detail the chemistry-climate interactions that occur in the natural world (Clyne et al., 2021; Case et al., 2023; Fuglestedt et al., 2024). Thus our idealized experiment can be considered primitive in the sense that it only considers sulfate aerosols but sufficient when focusing on answering questions on the basic mechanism that such eruptions can initiate. Another important aspect that we do not focus on in our study is the role of different initial conditions on the forced climate response, where initial atmospheric and climate conditions, including e.g. the stability of the polar vortex, control the lifetime and distribution of the volcanic aerosols as well as the forced dynamic climate response (Zanchettin et al., 2019; Weierbach et al., 2023; Zhuo et al., 2023; Fuglestedt et al., 2024). An exception is our assessment on how the easterly and westerly phase of the QBO affect our results where we compared ensemble members showing easterly phase with the westerly ones to test if the U50 and T50 response patterns would be different. They were not: both phases showed a weakening of the U50 although the zonal winds were more confined and consistent over the higher latitudes of the NH during the easterly phase (not shown). The difference in the number of ensemble members used for these calculations could of course impact the statistics of this test of ours but not the overall pattern detected.

CESM2-WACCM6 has obvious improvements when compared to CESM1-WACCM4 (see e.g. Gettleman et al., 2019, Danabasoglu et al., 2020), among them being an interactive QBO as well as having a slightly higher frequency of SSW occurrence (Holland et al., 2024). Nonetheless, CESM1-WACCM4 has comparable transient climate response to CESM2 as well as the ability to capture the general physical mechanism occurring within the climate system as identified in

various recent studies (Danabasoglu et al., 2020; Zang et al., 2018; Elsbury et al., 2021b; Peings et al., 2023; Ding et al., 2023; Yu et al., 2024).

5 Conclusions

Through comparison of the *cpl* and *atm-only* simulations, our results clearly demonstrates the important role of ocean-atmosphere coupling in the stratospheric response to enhancements of the stratospheric sulfate aerosol layer at higher NH latitudes. We see that this aerosol enhancement layer triggers two competing mechanisms in the first three winters:

i) Winter 1: The stratospheric polar vortex strengthening is triggered by stratospheric aerosol thermal forcing via thermal wind balance. This response is not influenced by the strong upward wave flux identified, originating in the forced surface cooling and changes in tropospheric circulation, and provides strong evidence of two mechanisms that are competing simultaneously: A Top-down and a Bottom-up mechanism, where the Top-down mechanism dominates the response.

ii) Winter 2: The upward wave flux is absorbed in the stratosphere that causes a warming over the polar cap and a polar vortex weakening. This pattern is similar to SSWs although its occurrence is not significant. Here the Bottom-up mechanism dominates.

iii) Winter 3: The persistence of the upward wave flux continuing into the third winter leads to an increase in SSWs with warming now confined over the polar cap, again demonstrating the dominating Bottom-up mechanism as in winter 2.

It is clear from our results that the strong surface cooling following the HL sulphate aerosol injection causes dramatic changes in tropospheric circulation. These changes further modify atmospheric waveguides where we detect an increase in propagation of planetary waves in the lower stratosphere occurring at higher latitudes. Although we do find similarities in the eddy feedback when compared to the general climate signal that we identify, such as the decrease in eddy feedback in winter 1 potentially sustaining the polar vortex strengthening, we emphasize its weak signal. At the same time we encourage further studies on this subject, especially concerning the lack of published comparison studies regarding both high and low latitude volcanic eruptions and SSWs. Ideally such studies would include the latest model generations in addition to observational datasets. They should also consider the impact of different climate realizations and the eruption magnitude on the forced response. Furthermore, these results highlight the importance

of including high-latitude volcanic forcing simulations of various lengths and/or magnitudes in projects such as VolMIP, especially considering the current volcanic unrest and increased activity in some of the major volcanic systems in Iceland.

Data availability

The model output is available upon request by contacting the corresponding author.

Author contribution

HG conceptualized this study along with GM, YP and DZ. *cpl* and *atm-only* experiments were carried out by HG and YP. Analysis and calculations of model output as well as graphical representation was done by HG except for the eddy feedback and the probability of favorable propagation conditions that was done by YP and the ensemble size test that was done by DZ. Manuscript draft was done by HG and editing was done by DZ and YP. GM served as the principal investigator of this work and did the final editing.

Competing interests

The corresponding author declares that none of the authors have any competing interest.

Acknowledgement

This work is supported by the Icelandic Research Fund (IRF), grant No. 2008-0445. HG acknowledges the Fulbright Scholar Program, which is sponsored by the U.S. department of state and Fulbright Iceland, that facilitated the stay of HG and her family in Irvine, CA during this work. We also acknowledge high-performance computing support from Cheyenne (doi:10.5065/D6RX99HX) provided by NCAR's Computational and Information Systems Laboratory, sponsored by the National Science Foundation that we used for our experiments. HG wants to thank the staff at the department of Earth System Science at UCI for the facility and assistance during HG's stay at UCI. Finally, we also want to thank Matthew Toohey for his assistance in the interpolation of the forcing files for WACCM4.

References

- Azoulay, A., Schmidt, H., & Timmreck, C. The Arctic polar vortex response to volcanic forcing of different strengths. *J. Geophys. Res-Atmos.*, 126(11), e2020JD034450, <https://doi.org/10.1029/2020JD034450>, 2021.
- Baldwin, M. P., & Dunkerton, T. J. Propagation of the Arctic Oscillation from the stratosphere to the troposphere. *J. Geophys. Res-Atmos.*, 104(D24), 30937-30946, <https://doi.org/10.1029/1999JD900445>, 1999.
- Barsotti, S., Di Rienzo, D. I., Thordarson, T., Björnsson, B. B., & Karlsdóttir, S. Assessing impact to infrastructures due to tephra fallout from Öräfajökull volcano (Iceland) by using a scenario-based approach and a numerical model. *Front. Earth Sci.*, 6, 196, <https://doi.org/10.3389/feart.2018.00196>, 2018.
- Bittner M, Schmidt H, Timmreck C, Sienz F. Using a large ensemble of simulations to assess the Northern Hemisphere stratospheric dynamical response to tropical volcanic eruptions and its uncertainty. *Geophys Res Lett.*, 43(17), 9324–32, <https://doi.org/10.1002/2016GL070587>, 2016.
- Bittner, M., Timmreck, C., Schmidt, H., Toohey, M. and Krüger, K. The impact of wave-mean flow interaction on the Northern Hemisphere polar vortex after tropical volcanic eruptions. *J. Geophys. Res-Atmos.*, 121(10), 5281-5297, <https://doi.org/10.1002/2015JD024603>, 2016.
- Brayshaw, D. J., B. Hoskins, and M. Blackburn. The basic ingredients of the North Atlantic storm track. Part I: Land–sea contrast and orography. *J. Atmos. Sci.*, 66, 2539–2558, <https://doi.org/10.1175/2009JAS3078.1>, 2009.
- Brown, F., Marshall, L., Haynes, P. H., Garcia, R. R., Birner, T., & Schmidt, A. On the magnitude and sensitivity of the quasi-biennial oscillation response to a tropical volcanic eruption. *Atmos. Chem. Phys.*, 23(9), 5335-5353, <https://doi.org/10.5194/acp-23-5335-2023>, 2023.

Formatted: Font: Not Italic

Formatted: Font: Not Italic

Deleted: (

Deleted:)

Formatted: Font: Not Italic

Formatted: Font: Not Italic

Deleted: (

Deleted:)

Formatted: Font: Not Italic

Formatted: Font: Not Italic

Deleted: (

Deleted:)

Formatted: Font: Not Italic

Deleted: (

Deleted:)

Formatted: Font: Not Italic

Deleted: (

Deleted:)

Formatted: Font: Not Italic

Formatted: Font: Not Italic

Deleted: (

Deleted:)

Formatted: Font: Not Italic

Deleted: (

Deleted:)

Formatted: Font: Not Italic

804 Brugnattelli, V., & Tibaldi, A. Effects in North Africa of the 934–940 CE Eldgjá and 1783–1784
805 CE Laki eruptions (Iceland) revealed by previously unrecognized written sources. *B. Volcanol.*,
806 82(11), 73, <https://doi.org/10.1007/s00445-020-01409-0>, 2020.

807

808 Case, P., Colarco, P. R., Toon, B., Aquila, V., & Keller, C. A. Interactive stratospheric aerosol
809 microphysics-chemistry simulations of the 1991 Pinatubo volcanic aerosols with newly coupled
810 sectional aerosol and stratosphere-troposphere chemistry modules in the NASA GEOS Chemistry-
811 Climate Model (CCM). *J. Adv. Model. Earth Sy.*, 15(8), e2022MS003147,
812 <https://doi.org/10.1029/2022MS003147>, 2023.

813

814 Charlton-Perez AJ, Ferranti L, Lee RW. The influence of the stratospheric state on North Atlantic
815 weather regimes. *Quart. J. Roy. Meteor. Soc.*, 144:1140–1151. <https://doi.org/10.1002/qj.3280>,
816 2018.

817

818 Charlton, A. J., & Polvani, L. M. A new look at stratospheric sudden warmings. Part I: Climatology
819 and modeling benchmarks. *J. Climate*, 20(3), 449–469, <https://doi.org/10.1175/JCLI3996.1>, 2007.

820

821 Church, J.A., White, N.J., Arblaster, J.M. Significant decadal-scale impact of volcanic eruptions
822 on sea level and ocean heat content. *Nature* 438 (7064), 74–77,
823 <https://doi.org/10.1038/nature04237>, 2005.

824

825 Chylek, P., Folland, C., Klett, J. D., & Dubey, M. K. CMIP5 climate models overestimate cooling
826 by volcanic aerosols. *Geophys. Res. Lett.*, 47(3), e2020GL087047,
827 <https://doi.org/10.1029/2020GL087047>, 2020.

828

829 Clyne, M., Lamarque, J.-F., Mills, M. J., Khodri, M., Ball, W., Bekki, S., Dhomse, S. S., Lebas,
830 N., Mann, G., Marshall, L., Niemeier, U., Poulain, V., Robock, A., Rozanov, E., Schmidt, A.,
831 Stenke, A., Sukhodolov, T., Timmreck, C., Toohey, M., Tummon, F., Zanchettin, D., Zhu, Y., and
832 Toon, O. B. Model physics and chemistry causing intermodel disagreement within the VolMIP-
833 Tambora Interactive Stratospheric Aerosol ensemble. *Atmos. Chem. Phys.*, 21(5), 3317–3343,
834 <https://doi.org/10.5194/acp-21-3317-2021>, 2021.

Formatted: Font: Not Italic

Deleted: (

Deleted:)

Formatted: Font: Not Italic

Formatted: Font: Not Italic

Formatted: Font: Not Italic

Deleted: (

Deleted:)

Deleted: (

Deleted:)

Deleted: (

Deleted:)

Formatted: Font: Not Italic

Formatted: Font: Not Italic

Formatted: Font: Not Italic

Deleted: (

Deleted:)

Formatted: Font: Not Italic

Formatted: Font: Not Italic

Deleted: (

Deleted:)

Deleted: (

Deleted:)

Colose CM, LeGrande AN, Vuille M. Hemispherically asymmetric volcanic forcing of tropical hydroclimate during the last millennium. *Earth Sys Dyn.*, 7(3), 681–96. doi:10.5194/esd-7-681-2016, 2016.

DallaSanta, K., Gerber, E. P., & Toohey, M. The circulation response to volcanic eruptions: The key roles of stratospheric warming and eddy interactions. *J. Clim.*, 32(4), 1101-1120, 2019.

DallaSanta, K., & Polvani, L. M. Volcanic stratospheric injections up to 160 Tg (S) yield a Eurasian winter warming indistinguishable from internal variability. *Atm. Chem. Phys.*, 22(13), 8843-8862, <https://doi.org/10.1175/JCLI-D-18-0099.1>, 2022.

Danabasoglu, G., Lamarque, J.F., Bacmeister, J., Bailey, D.A., DuVivier, A.K., Edwards, J., Emmons, L.K., Fasullo, J., Garcia, R., Gettelman, A. and Hannay, C. The community earth system model version 2 (CESM2). *J. Adv. Model Earth Sy.*, 12(2), e2019MS001916, <https://doi.org/10.1029/2019MS001916>, 2020.

Dee, S. G., Cobb, K. M., Emile-Geay, J., Ault, T. R., Edwards, R. L., Cheng, H., & Charles, C. D. No consistent ENSO response to volcanic forcing over the last millennium. *Science*, 367(6485), 1477-1481, DOI: 10.1126/science.aax2000 (2020).

Ding, X., Chen, G., Zhang, P., Domeisen, D. I., & Orbe, C. Extreme stratospheric wave activity as harbingers of cold events over North America. *Commun. Earth Environ.*, 4(1), 187, <https://doi.org/10.1038/s43247-023-00845-y>, 2023.

Domeisen, D. I., Grams, C. M., & Papritz, L. The role of North Atlantic–European weather regimes in the surface impact of sudden stratospheric warming events. *Weather Clim. Dynam.*, 1(2), 373-388, <https://doi.org/10.5194/wcd-1-373-2020>, 2020.

Driscoll, S., Bozzo, A., Gray, L. J., Robock, A., Stenchikov, G. Coupled Model Intercomparison Project 5 (CMIP5) simulations of climate following volcanic eruptions. *J. Geophys. Res-Atmos.*, 117 (D17), <https://doi.org/10.1029/2012JD017607>, 2012.

Deleted: ¶

Formatted: Font: Not Italic

Deleted: (

Deleted:)

Deleted: (

Deleted:)

Formatted: Font: Not Italic

Formatted: Font: Not Italic

Formatted: Font: Not Italic

Formatted: Font: Not Italic

Deleted: (

Deleted:)

Formatted: Font: Not Italic

Formatted: Font: Not Italic

Deleted: (

Deleted:)

Formatted: Font: Not Italic

Formatted: Font: Not Italic

Formatted: Font: Not Italic

Formatted: Font: Not Italic

Deleted: (

Deleted:)

Formatted: Font: Not Italic

Formatted: Font: Not Italic

Deleted: (

Deleted:)

Formatted: Font: Not Italic

Deleted: (

Deleted:)

895 Edmon, H.J., Hoskins, B.J. and McIntyre, M.E. Eliassen-Palm cross sections for the troposphere.
896 J. Atmos. Sci., **37**, 2600–2616,
897 [https://doi.org/10.1175/1520-0469\(1980\)037<2600:EPCSFT>2.0.CO;2](https://doi.org/10.1175/1520-0469(1980)037<2600:EPCSFT>2.0.CO;2), 1980.
898
899 Einarsson, P. Historical accounts of pre-eruption seismicity of Katla, Hekla, Öraefajökull and other
900 volcanoes in Iceland. Jökull, **69**, 35-52, <https://doi.org/10.33799/jokull2019.69.035>, 2019.
901
902 Elsbury, D., Y. Peings and G. Magnusdottir. Variation in the Holton-Tan effect by longitude. Q. J.
903 Roy. Meteor. Soc., DOI: 10.1002/qj.3993, 2021b.
904
905 Elsbury, D., Peings, Y., & Magnusdottir, G. CMIP6 models underestimate the Holton-Tan effect.
906 Geophys. Res. Lett., **48**(24), e2021GL094083, <https://doi.org/10.1029/2021GL094083>, 2021.
907
908 Fuglestad, H. F., Zhuo, Z., Toohey, M., & Krüger, K. Volcanic forcing of high-latitude Northern
909 Hemisphere eruptions. npj Clim. Atmos. Sci., **7**(1), 10, [https://doi.org/10.1038/s41612-023-](https://doi.org/10.1038/s41612-023-00539-4)
910 [00539-4](https://doi.org/10.1038/s41612-023-00539-4), 2024.
911
912 Gettelman, A., Mills, M.J., Kinnison, D.E., Garcia, R.R., Smith, A.K., Marsh, D.R., Tilmes, S.,
913 Vitt, F., Bardeen, C.G., McInerney, J. and Liu, H.L. The whole atmosphere community climate
914 model version 6 (WACCM6). J. Geophys. Res-Atmos., **124**(23), 12380-12403,
915 <https://doi.org/10.1029/2019JD030943>, 2019.
916
917 Gettelman, A., Schmidt, A., & Kristjánsson, J. E. Icelandic volcanic emissions and climate. Nature
918 Geosci., **8**(4), 243-243, <https://doi.org/10.1038/ngeo2376>, 2015.
919
920 Gleckler, P.J., AchutaRao, K., Gregory, J.M., Santer, B.D., Taylor, K.E., Wigley, T.M.L. Krakatoa
921 lives: The effect of volcanic eruptions on ocean heat content and thermal expansion. Geophys. Res.
922 Lett., **17**, 33, <https://doi.org/10.1029/2006GL026771>, 2006.
923
924 Graf, H.F., Perlwitz, J., Kirchner, I. Northern hemisphere tropospheric midlatitude circulation after
925 violent volcanic eruptions. Contr. Atmos. Physics **67** (1), 3–13, 1994.

Deleted: ¶

Formatted: Font: Not Italic

Deleted: (

Deleted:)

Deleted: (

Deleted:)

Formatted: Font: Not Italic

Formatted: Font: Not Italic

Deleted: (

Deleted:)

Formatted: Font: Not Italic

Deleted: (

Deleted:)

Formatted: Font: Not Italic

Formatted: Font: Not Italic

Formatted: Font: Not Italic

Formatted: Font: Not Italic

Deleted: (

Deleted:)

Formatted: Font: Not Italic

Formatted: Font: Not Italic

Deleted: (

Deleted:)

Formatted: Font: Not Italic

Deleted: (

Deleted:)

Formatted: Font: Not Italic

Formatted: Font: Not Italic

Deleted: (

Deleted:)

Deleted: (

Deleted:)

Formatted: Font: Not Italic

945 Graf, H.-F., D. Zanchettin, C. Timmreck and M. Bittner. Observational constraints on the
 946 tropospheric and near-surface winter signature of the Northern Hemisphere stratospheric polar
 947 vortex. *Clim. Dyn.*, 43, 3245, doi:10.1007/s00382-014-2101-0, 2014.

948

949 Guðlaugsdóttir, H., Steen-Larsen, H. C., Sjolte, J., Masson-Delmotte, V., Werner, M., &
 950 Sveinbjörnsdóttir, Á. E. The influence of volcanic eruptions on weather regimes over the North
 951 Atlantic simulated by ECHAM5/MPI-OM ensemble runs from 800 to 2000 CE. *Atm. Res.*, 213,
 952 211-223, <https://doi.org/10.1016/j.atmosres.2018.04.021>, 2018.

953

954 Guðlaugsdóttir, H., Sjolte, J., Sveinbjörnsdóttir, Á. E., Werner, M., & Steen-Larsen, H. C. North
 955 Atlantic weather regimes in $\delta^{18}\text{O}$ of winter precipitation: isotopic fingerprint of the response in
 956 the atmospheric circulation after volcanic eruptions. *Tellus B*, 71(1), 1633848,
 957 <https://doi.org/10.1080/16000889.2019.1633848>, 2019.

958

959 Haynes, P. H. Stratospheric dynamics. *Ann. Rev. Fluid Mech.*, 37(1), 263-293, doi:
 960 10.1146/annurev.fluid.37.061903.175710, 2005.

961

962 He, Y., Huang, J. & Ji, M. Impact of land–sea thermal contrast on interdecadal variation in
 963 circulation and blocking. *Clim Dyn.*, 43, 3267–3279, <https://doi.org/10.1007/s00382-014-2103-y>,
 964 2014.

965

966 Holland, M.M., Hannay, C., Fasullo, J., Jahn, A., Kay, J.E., Mills, M., Simpson, I.R., Wieder, W.,
 967 Lawrence, P., Kluzek, E. and Bailey, D. New model ensemble reveals how forcing uncertainty and
 968 model structure alter climate simulated across CMIP generations of the Community Earth System
 969 Model. *Geosci. Model Dev.*, 17(4), 1585-1602, <https://doi.org/10.5194/gmd-17-1585-2024>, 2024.

970

971 Hoskins, B. J., and P. J. Valdes. On the existence of storm-tracks. *J. Atmos. Sci.*, 47, 1854–1864,
 972 [https://doi.org/10.1175/1520-0469\(1990\)047<1854:OTEOST>2.0.CO;2](https://doi.org/10.1175/1520-0469(1990)047<1854:OTEOST>2.0.CO;2), 1990.

973

Deleted: (

Deleted:)

Formatted: Font: Not Italic

Formatted: Font: Not Italic

Formatted: Font: Not Italic

Deleted: (

Deleted:)

Formatted: Font: Not Italic

Formatted: Font: Not Italic

Deleted: (

Deleted:)

Formatted: Font: Not Italic

Deleted: (

Deleted:)

Formatted: Font: Not Italic

Formatted: Font: Not Italic

Deleted: (

Deleted:)

Deleted: (

Deleted:)

Formatted: Font: Not Italic

Formatted: Font: Not Italic

Formatted: Font: Not Italic

Deleted: (

Deleted:)

988 Huang, J., Hitchcock, P., Maycock, A. C., McKenna, C. M., & Tian, W. Northern hemisphere cold
989 air outbreaks are more likely to be severe during weak polar vortex conditions. *Commun. Earth*
990 *Environ.*, 2(1), 147, <https://doi.org/10.1038/s43247-021-00215-6>, 2021.

991

992 Hurrell, J.W. Decadal trends in the north atlantic oscillation: regional tempera-tures and
993 precipitation. *Science* 269 (5224), 676–679, DOI: [10.1126/science.269.5224.676](https://doi.org/10.1126/science.269.5224.676), 1995.

994

995 Hurrell, J.W., Holland, M.M., Gent, P.R., Ghan, S., Kay, J.E., Kushner, P.J., Lamarque, J.F., Large,
996 W.G., Lawrence, D., Lindsay, K. and Lipscomb. The community earth system model: a framework
997 for collaborative research. *B. Am. Meteorol. Soc.*, 94(9), 1339-1360,
998 <https://doi.org/10.1175/BAMS-D-12-00121.1>, 2013.

999

1000 Ineson, S., Dunstone, N. J., Scaife, A. A., Andrews, M. B., Lockwood, J. F., & Pang, B. Statistics
1001 of sudden stratospheric warmings using a large model ensemble. *Atmos. Sci. Lett.*, 25(3), e1202,
1002 <https://doi.org/10.1002/asl.1202>, 2023.

1003

1004 Jungclaus, J. H., Bard, E., Baroni, M., Braconnot, P., Cao, J., Chini, L. P., Egorova, T., Evans, M.,
1005 González-Rouco, J. F., Goosse, H., Hurtt, G. C., Joos, F., Kaplan, J. O., Khodri, M., Klein
1006 Goldewijk, K., Krivova, N., LeGrande, A. N., Lorenz, S. J., Luterbacher, J., Man, W., Maycock,
1007 A. C., Meinshausen, M., Moberg, A., Muscheler, R., Nehrbass-Ahles, C., Otto-Bliesner, B. I.,
1008 Phipps, S. J., Pongratz, J., Rozanov, E., Schmidt, G. A., Schmidt, H., Schmutz, W., Schurer, A.,
1009 Shapiro, A. I., Sigl, M., Smerdon, J. E., Solanki, S. K., Timmreck, C., Toohey, M., Usoskin, I. G.,
1010 Wagner, S., Wu, C.-J., Yeo, K. L., Zanchettin, D., Zhang, Q., and Zorita, E.: The PMIP4
1011 contribution to CMIP6 – Part 3: The last millennium, scientific objective, and experimental design
1012 for the PMIP4 past1000 simulations. *Geosci. Model Dev.*, 10, 4005-4033,
1013 <https://doi.org/10.5194/gmd-10-4005-2017>, 2017.

1014

1015 Karami, K., Braesicke, P., Sinnhuber, M., and Versick, S. On the climatological probability of the
1016 vertical propagation of stationary planetary waves. *Atmos. Chem. Phys.*, 16, 8447–8460,
1017 <https://doi.org/10.5194/acp-16-8447-2016>, 2016.

1018

Formatted: Font: Not Italic

Deleted: (

Deleted:)

Formatted: Font: Not Italic

Deleted: (

Deleted:)

Formatted: Font: Not Italic

Formatted: Font: Not Italic

Formatted: Font: Not Italic

Deleted: (

Deleted:)

Formatted: Font: Not Italic

Formatted: Font: Not Italic

Deleted: (

Deleted:)

Formatted: Font: Not Italic

Deleted: (

Deleted:)

Formatted: Font: Not Italic

Deleted:

Deleted: (

Deleted:)

1032 Khodri, M., Izumo, T., Vialard, J., Janicot, S., Cassou, C., Lengaigne, M., Mignot, J., Gastineau,
1033 G., Guilyardi, E., Lebas, N. and Robock, A. Tropical explosive volcanic eruptions can trigger El
1034 Niño by cooling tropical Africa. *Nat. Commun.*, 8(1), 778. [https://doi.org/10.1038/s41467-017-](https://doi.org/10.1038/s41467-017-00755-6)
1035 [00755-6](https://doi.org/10.1038/s41467-017-00755-6), 2017.

1036

1037 Kim, B.M., Son, S.W., Min, S.K., Jeong, J.H., Kim, S.J., Zhang, X., Shim, T., Yoon, J.H.
1038 Weakening of the stratospheric polar vortex by arctic sea-ice loss. *Nat.Communs.*, 5, 4646,
1039 <https://doi.org/10.1038/ncomms5646>, 2014.

1040

1041 Kodera, K. Influence of volcanic eruptions on the troposphere through strato-spheric dynamical
1042 processes in the northern hemisphere winter. *J. Geophys. Res.-Atmos.*, 99 (D1), 1273–1282,
1043 <https://doi.org/10.1029/93JD02731>, 1994.

1044

1045 Kodera, K., Mukougawa, H., Maury, P., Ueda, M., & Claud, C. Absorbing and reflecting sudden
1046 stratospheric warming events and their relationship with tropospheric circulation. *J. Geophys. Res-*
1047 *Atmos.*, 121(1), 80-94, <https://doi.org/10.1002/2015JD023359>, 2016.

1048

1049 Kolstad, E. W., Lee, S. H., Butler, A. H., Domeisen, D. I., & Wulff, C. O. Diverse surface signatures
1050 of stratospheric polar vortex anomalies. *J. Geophys. Res-Atmos.*, 127(20), e2022JD037422,
1051 <https://doi.org/10.1029/2022JD037422>, 2022.

1052

1053 Kretschmer, M., Cohen, J., Matthias, V., Runge, J., & Coumou, D. The different stratospheric
1054 influence on cold-extremes in Eurasia and North America. *npj Clim. Atmos. Sci.*, 1(1), 44,
1055 <https://doi.org/10.1038/s41612-018-0054-4>, 2018.

1056

1057 Labe, Z., Peings, Y., & Magnusdottir, G. The effect of QBO phase on the atmospheric response to
1058 projected Arctic sea ice loss in early winter. *Geophys. Res. Lett.*, 46(13), 7663-7671,
1059 <https://doi.org/10.1029/2019GL083095>, 2019.

1060

1061 Larsen, G., & Gudmundsson, M. T. Volcanic system: Bárðarbunga system. *Catalogue of Icelandic*
1062 *Volcanoes*, 1-11, 2014.

Formatted: Font: Not Italic

Deleted: (

Deleted:)

Formatted: Font: Not Italic

Deleted: (

Deleted:)

Formatted: Font: Not Italic

Deleted: (

Deleted:)

Formatted: Font: Not Italic

Deleted: (

Deleted:)

Formatted: Font: Not Italic

Formatted: Font: Not Italic

Formatted: Font: Not Italic

Deleted: (

Deleted:)

Formatted: Font: Not Italic

Formatted: Font: Not Italic

Deleted: (

Deleted:)

Formatted: Font: Not Italic

Formatted: Font: Not Italic

Deleted: (

Deleted:)

Formatted: Font: Not Italic

Deleted: (

Deleted:)

1079 Lehtonen, I., & Karpechko, A. Y. Observed and modeled tropospheric cold anomalies associated
1080 with sudden stratospheric warmings. *J. Geophys. Res-Atmos.*, 121(4), 1591-1610,
1081 <https://doi.org/10.1002/2015JD023860>, 2016,
1082
1083 Ma, J., Chen, W., Yang, R. et al. Downward propagation of the weak stratospheric polar vortex
1084 events: the role of the surface arctic oscillation and the quasi-biennial oscillation. *Clim. Dyn.*, 62,
1085 4117–4131 <https://doi.org/10.1007/s00382-024-07121-5>, 2024,
1086
1087 Matsuno, T. Vertical propagation of stationary planetary waves in the winter Northern Hemisphere.
1088 *J. Atmos. Sci.*, 27, 871–883. 32291, 32292, 32294, 32296, 32306, [https://doi.org/10.1175/1520-0469\(1970\)027<0871:VPOSPW>2.0.CO;2](https://doi.org/10.1175/1520-0469(1970)027<0871:VPOSPW>2.0.CO;2), 1970,
1089
1090
1091 Meronen, H., Henriksson, S. V., Räisänen, P., & Laaksonen, A. Climate effects of northern
1092 hemisphere volcanic eruptions in an Earth System Model. *Atmos. Res.*, 114, 107-118,
1093 <https://doi.org/10.1016/j.atmosres.2012.05.011>, 2012,
1094
1095 Muthers, S., Raible, C. C., Rozanov, E., & Stocker, T. F. Response of the AMOC to reduced solar
1096 radiation—the modulating role of atmospheric chemistry. *Earth Syst. Dynam.*, 7(4), 877-892,
1097 <https://doi.org/10.5194/esd-7-877-2016>, 2016,
1098
1099 Nakamura, N. Large-Scale Eddy-Mean Flow Interaction in the Earth's Extratropical
1100 Atmosphere. *Annu. Rev. Fluid Mech.*, 56(1), 349-377, <https://doi.org/10.1146/annurev-fluid-121021-035602>, 2024,
1101
1102
1103 Neely III, R. R., Conley, A. J., Vitt, F., & Lamarque, J. F. A consistent prescription of stratospheric
1104 aerosol for both radiation and chemistry in the Community Earth System Model (CESM1). *Geosci.*
1105 *Model Dev.*, 9(7), 2459-2470, <https://doi.org/10.5194/gmd-9-2459-2016>, 2016,
1106
1107 Oman, L., Robock, A., Stenchikov, G., Schmidt, G. A., & Ruedy, R. Climatic response to high-
1108 latitude volcanic eruptions. *J. Geophys. Res-Atmos.*, 110(D13),
1109 <https://doi.org/10.1029/2004JD005487>, 2005,

Formatted: Font: Not Italic

Formatted: Font: Not Italic

Deleted: (

Deleted:)

Formatted: Font: Not Italic

Deleted:

Deleted: (

Deleted:)

Formatted: Font: Not Italic

Deleted: (

Deleted:)

Formatted: Font: Not Italic

Formatted: Font: Not Italic

Deleted: (

Deleted:)

Formatted: Font: Not Italic

Formatted: Font: Not Italic

Deleted: (

Deleted:)

Formatted: Font: Not Italic

Formatted: Font: Not Italic

Deleted: (

Deleted:)

Formatted: Font: Not Italic

Deleted: (

Deleted:)

Formatted: Font: Not Italic

Formatted: Font: Not Italic

Formatted: Font: Not Italic

Deleted: (

Deleted:)

1127 Omrani, N.-E., Keenlyside, N., Matthes, K., Boljka, L., Zanchettin, D., Jungclaus, J. H., Lubis, S.
 1128 W. Coupled stratosphere-troposphere-Atlantic multidecadal oscillation and its importance for
 1129 near-future climate projection. *npj Clim. Atmos., Sci*, 5, 59, [https://doi.org/10.1038/s41612-022-](https://doi.org/10.1038/s41612-022-00275-1)
 1130 [00275-1](https://doi.org/10.1038/s41612-022-00275-1), 2022.

1132 Oppenheimer, C., Orchard, A., Stoffel, M., Newfield, T.P., Guillet, S., Corona, C., Sigl, M., Di
 1133 Cosmo, N. and Büntgen, U. The Eldgjá eruption: timing, long-range impacts and influence on the
 1134 Christianisation of Iceland. *Climatic Change*, 147, 369-381, [https://doi.org/10.1007/s10584-018-](https://doi.org/10.1007/s10584-018-2171-9)
 1135 [2171-9](https://doi.org/10.1007/s10584-018-2171-9), 2018.

1137 Otterå, O.H., Bentsen, M., Drange, H., Suo, L., 2010. External forcing as a metronome for Atlantic
 1138 multidecadal variability. *Nat. Geosci.*, 3 (10), 688–694, <https://doi.org/10.1038/ngeo955>, 2018.

1140 Ortega, P., Swingedouw, D., Masson-Delmotte, V., Risi, C., Vinther, B., Yiou, P., Vautard, R.,
 1141 Yoshimura, K. Characterizing atmospheric circulation signals in Greenland ice cores: insights
 1142 from a weather regime approach. *Clim. Dyn.*, 43 (9–10), 2585–2605, doi: [10.1007/S00382-014-](https://doi.org/10.1007/S00382-014-2074-Z)
 1143 [2074-Z](https://doi.org/10.1007/S00382-014-2074-Z), 2014.

1145 Pausata, F. S. R., Chafik, L., Caballero, R. & Battisti, D. S. Impacts of high-latitude volcanic
 1146 eruptions on ENSO and AMOC. *Proc. Natl Acad. Sci.*, 112, 13784–13788,
 1147 <https://doi.org/10.1073/pnas.1509153112>, 2015.

1149 Pausata, F.S.R., Zanchettin, D., Karamperidou, C., Caballero, R., Battisti, D. S. ITCZ shift and
 1150 extratropical teleconnections drive ENSO response to volcanic eruptions. *Sci. Adv.*, 6(23)
 1151 eaaz5006, doi: 10.1126/sciadv.aaz5006, 2020.

1153 Pausata, F. S. R., Zhao, Y., Zanchettin, D., Caballero, R., & Battisti, D. S. Revisiting the
 1154 mechanisms of ENSO response to tropical volcanic eruptions. *Geophys. Res. Lett.*, 50,
 1155 e2022GL102183. <https://doi.org/10.1029/2022GL102183>, 2023.

Formatted: Font: Not Italic

Deleted: (

Deleted:)

Formatted: Font: Not Italic

Formatted: Font: Not Italic

Deleted: (

Deleted:)

Deleted: (

Deleted:)

Formatted: Font: Not Italic

Formatted: Font: Not Italic

Deleted: (

Deleted:)

Formatted: Font: Not Italic

Deleted: (

Deleted:)

Formatted: Font: Not Italic

Deleted: (

Deleted:)

Formatted: Font: Not Italic

Deleted: (

Deleted:)

1171 Perlwitz, J., Graf, H.F. The statistical connection between tropospheric and. stra-tospheric
 1172 circulation of the Northern Hemisphere in winter. *J. Clim.*, (10),2281–2295,
 1173 [https://doi.org/10.1175/1520-0442\(1995\)008<2281:TSCBTA>2.0.CO;2](https://doi.org/10.1175/1520-0442(1995)008<2281:TSCBTA>2.0.CO;2), 1995,
 1174
 1175 Peings, Y., & Magnusdottir, G. Response of the wintertime Northern Hemisphere atmospheric
 1176 circulation to current and projected Arctic sea ice decline: A numerical study with CAM5. *J. Clim.*,
 1177 *27*(1), 244-264, <https://doi.org/10.1175/JCLI-D-13-00272.1>, 2014,
 1178
 1179 Peings, Y., Davini, P., & Magnusdottir, G. Impact of Ural blocking on early winter climate
 1180 variability under different Barents-Kara sea ice conditions. *J. Geophys. Res-Atmos.*, *128*(6),
 1181 e2022JD036994, <https://doi.org/10.1029/2022JD036994>, 2023,
 1182
 1183 Plumb, R. A. On the three-dimensional propagation of stationary waves. *J. Atmos. Sci.*, *42*(3), 217-
 1184 229, [https://doi.org/10.1175/1520-0469\(1985\)042<0217:OTTDPO>2.0.CO;2](https://doi.org/10.1175/1520-0469(1985)042<0217:OTTDPO>2.0.CO;2), 1985,
 1185
 1186 Polvani, L. M., Banerjee, A., & Schmidt, A. Northern Hemisphere continental winter warming
 1187 following the 1991 Mt. Pinatubo eruption: reconciling models and observations. *Atmos. Chem.*
 1188 *Phys.*, *19*(9), 6351-6366, <https://doi.org/10.5194/acp-19-6351-2019>, 2019,
 1189
 1190 Portal, A., Pasquero, C., D'andrea, F., Davini, P., Hamouda, M. E., & Rivière, G. Influence of
 1191 reduced winter land–sea contrast on the midlatitude atmospheric circulation. *J. Clim.*, *35*(19),
 1192 6237-6251, <https://doi.org/10.1175/JCLI-D-21-0941.1>, 2022,
 1193
 1194 Predybaylo, E., Stenchikov, G., Wittenberg, A. T. & Osipov, S. El Niño/ Southern Oscillation
 1195 response to low-latitude volcanic eruptions depends on ocean pre-conditions and eruption timing.
 1196 *Commun. Earth Environ.*, *1*, 1–13, <https://doi.org/10.1038/s43247-020-0013-y>, 2020,
 1197
 1198 Rayner, N.A.A., Parker, D.E., Horton, E.B., Folland, C.K., Alexander, L.V., Rowell, D.P., Kent,
 1199 E.C. and Kaplan, A. Global analyses of sea surface temperature, sea ice, and night marine air
 1200 temperature since the late nineteenth century. *J. Geophys. Res-Atmos.*, *108*(D14),
 1201 <https://doi.org/10.1029/2002JD002670>, 2003,

Formatted: Font: Not Italic

Deleted: (

Deleted:)

Formatted: Font: Not Italic

Deleted: (

Deleted:)

Formatted: Font: Not Italic

Formatted: Font: Not Italic

Formatted: Font: Not Italic

Deleted: (

Deleted:)

Formatted: Font: Not Italic

Formatted: Font: Not Italic

Deleted: (

Deleted:)

Formatted: Font: Not Italic

Deleted: (

Deleted:)

Formatted: Font: Not Italic

Formatted: Font: Not Italic

Formatted: Font: Not Italic

Deleted: (

Deleted:)

Deleted: (

Deleted:)

Formatted: Font: Not Italic

Formatted: Font: Not Italic

Formatted: Font: Not Italic

Deleted: (

Deleted:)

1218 Robock, A., Mao, J. Winter warming from large volcanic eruptions. *Geophys. Res. Lett.*, 19 (24),
1219 2405–2408, <https://doi.org/10.1029/92GL02627>, 1992.
1220
1221 Robock, A. Volcanic eruptions and climate. *Rev. Geophys.*, 38 (2), 191–219,
1222 <https://doi.org/10.1029/1998RG000054>, 2000.
1223
1224 Screen, J.A., Deser, C., Smith, D.M., Zhang, X., Blackport, R., Kushner, P.J., Oudar, T., McCusker,
1225 K.E. and Sun, L. Consistency and discrepancy in the atmospheric response to Arctic sea-ice loss
1226 across climate models. *Nat. Geosci.*, 11(3), 155–163, <https://doi.org/10.1038/s41561-018-0059-y>,
1227 2018.
1228
1229 Shindell, D.T., Schmidt, G.A., Mann, M.E., Faluvegi, G. Dynamic winter. Climate response to
1230 large tropical volcanic eruptions since 1600. *J. Geophys. Res.-Atmos.*, (D5), 109,
1231 <https://doi.org/10.1029/2003JD004151>, 2004.
1232
1233 Sigl, M., Winstrup, M., McConnell, J.R., Welten, K.C., Plunkett, G., Ludlow, F., Buntgen, U.,
1234 Caffee, M., Chellman, N., Dahl-Jensen, D., Fischer, H., 2009. Timing and climate forcing of
1235 volcanic eruptions for the past 2500 years. *Nature* 523 (7562), 543–549,
1236 <https://doi.org/10.1038/nature14565>, 2015.
1237
1238 Sjolte, J., Adolphi, F., Guðlaugsdóttir, H., & Muscheler, R. Major Differences in Regional Climate
1239 Impact Between High-and Low-Latitude Volcanic Eruptions. *Geophys. Res. Lett.*, 48(8),
1240 e2020GL092017, <https://doi.org/10.1029/2020GL092017>, 2021.
1241
1242 Smith, D.M., Eade, R., Andrews, M.B., Ayres, H., Clark, A., Chripko, S., Deser, C., Dunstone,
1243 N.J., García-Serrano, J., Gastineau, G. and Graff, L.S. Robust but weak winter atmospheric
1244 circulation response to future Arctic sea ice loss. *Nat. Commun.*, 13(1), 727,
1245 <https://doi.org/10.1038/s41467-022-28283-y>, 2022.
1246

Formatted: Font: Not Italic

Deleted: (

Deleted:)

Formatted: Font: Not Italic

Deleted: (

Deleted:)

Formatted: Font: Not Italic

Formatted: Font: Not Italic

Deleted: (

Deleted:)

Formatted: Font: Not Italic

Deleted: (

Deleted:)

Formatted: Font: Not Italic

Deleted: (

Deleted:)

Formatted: Font: Not Italic

Formatted: Font: Not Italic

Deleted: (

Deleted:)

Formatted: Font: Not Italic

Formatted: Font: Not Italic

Deleted: (

Deleted:)

1261 Smith, K. L., Neely, R. R., Marsh, D. R., & Polvani, L. M. The specified chemistry whole
 1262 atmosphere community climate model (SC-WACCM). *J. Adv. Model Earth Sy.*, 6(3), 883-901,
 1263 <https://doi.org/10.1002/2014MS000346>, 2014.
 1264
 1265 Stenchikov, G., Robock, A., Ramaswamy, V., Schwarzkopf, M.D., Hamilton, K., Ramachandran,
 1266 S. Arctic Oscillation response to the 1991 Mount Pinatubo eruption: Effects of volcanic aerosols
 1267 and ozone depletion. *J. Geophys. Res.-Atmos.*, (D24), 107,
 1268 <https://doi.org/10.1029/2002JD002090>, 2002.
 1269
 1270 Stenchikov, G., Delworth, T.L., Ramaswamy, V., Stouffer, R.J., Wittenberg, A., Zeng, F. Volcanic
 1271 signals in oceans. *J. Geophys. Res.-Atmos.*, (D16), 114, <https://doi.org/10.1029/2008JD011673>,
 1272 2009.
 1273
 1274 Stothers, R. B. Far reach of the tenth century Eldgjá eruption, Iceland. *Climatic Change*, 39(4),
 1275 715-726, <https://doi.org/10.1023/A:1005323724072>, 1998.
 1276
 1277 Swingedouw, D., Ortega, P., Mignot, J., Guilyardi, E., Masson-Delmotte, V., Butler, P.G., Khodri,
 1278 M., Séférian, R. Bidecadal North Atlantic ocean circulation variability controlled by timing of
 1279 volcanic eruptions. *Nat. Commun.*, 6, 6545, <https://doi.org/10.1038/ncomms7545>, 2015.
 1280
 1281 Thomas, M. A., Giorgetta, M. A., Timmreck, C., Graf, H. F., & Stenchikov, G. Simulation of the
 1282 climate impact of Mt. Pinatubo eruption using ECHAM5—Part 2: Sensitivity to the phase of the
 1283 QBO and ENSO. *Atmos. Chem. Phys.*, 9(9), 3001-3009, [https://doi.org/10.5194/acp-9-3001-](https://doi.org/10.5194/acp-9-3001-2009)
 1284 [2009](https://doi.org/10.5194/acp-9-3001-2009), 2009.
 1285
 1286 Timmreck, C.: Modeling the climatic effects of large explosive volcanic eruptions. *Wiley*
 1287 *Interdisciplinary Reviews: Climate Change*, 3, 545–564, <https://doi.org/10.1002/wcc.192>, 2012,
 1288
 1289 Thordarson, T., & Self, S. Atmospheric and environmental effects of the 1783–1784 Laki eruption:
 1290 A review and reassessment. *J. Geophys. Res.-Atmos.*, 108(D1), AAC-7,
 1291 <https://doi.org/10.1029/2001JD002042>, 2003.

Formatted: Font: Not Italic

Formatted: Font: Not Italic

Deleted: (

Deleted:)

Formatted: Font: Not Italic

Deleted: (

Deleted:)

Formatted: Font: Not Italic

Deleted: (

Deleted:)

Formatted: Font: Not Italic

Formatted: Font: Not Italic

Deleted: (

Deleted:)

Deleted: (

Deleted:)

Formatted: Font: Not Italic

Formatted: Font: Not Italic

Deleted: (

Deleted:)

Formatted: Font: Not Italic

Deleted: (

Deleted:)

Formatted: Font: Not Italic

Formatted: Font: Not Italic

Deleted: (

Deleted:)

1308 Thordarson, T., Miller, D. J., Larsen, G., Self, S., & Sigurdsson, H. New estimates of sulfur
 1309 degassing and atmospheric mass-loading by the 934 AD Eldgjá eruption, Iceland. *J. Volcanol.*
 1310 *Geoth. Res.*, 108(1-4), 33-54, [https://doi.org/10.1016/S0377-0273\(00\)00277-8](https://doi.org/10.1016/S0377-0273(00)00277-8), 2001.

1311

1312 Toohey, M., Stevens, B., Schmidt, H., & Timmreck, C. Easy Volcanic Aerosol (EVA v1. 0): an
 1313 idealized forcing generator for climate simulations. *Geosci. Model Dev.*, 9(11), 4049-4070,
 1314 <https://doi.org/10.5194/gmd-9-4049-2016>, 2016.

1315

1316 Toohey, M., Krüger, K., Schmidt, H., Timmreck, C., Sigl, M., Stoffel, M., & Wilson, R.
 1317 Disproportionately strong climate forcing from extratropical explosive volcanic eruptions. *Nat.*
 1318 *Geosci.*, 12(2), 100-107, <https://doi.org/10.1038/s41561-018-0286-2>, 2019.

1319

1320 Toohey, M., Krüger, K., Bittner, M., Timmreck, C., and Schmidt, H.: The impact of volcanic
 1321 aerosol on the Northern Hemisphere stratospheric polar vortex: mechanisms and sensitivity to
 1322 forcing structure, *Atmos. Chem. Phys.*, 14, 13063–13079, [https://doi.org/10.5194/acp-14-13063-](https://doi.org/10.5194/acp-14-13063-2014)
 1323 [2014](https://doi.org/10.5194/acp-14-13063-2014), 2014.

1324

1325 Wake, B. Land–sea contrast. *Nat. Clim. Change* 4., 326, <https://doi.org/10.1038/nclimate2233>,
 1326 2014.

1327

1328 Weierbach, H., LeGrande, A. N., and Tsigaridis, K.: The impact of ENSO and NAO initial
 1329 conditions and anomalies on the modeled response to Pinatubo-sized volcanic forcing, *Atmos.*
 1330 *Chem. Phys.*, 23, 15491–15505, <https://doi.org/10.5194/acp-23-15491-2023>, 2023.

1331

1332 Yu, Q., Wu, B., & Zhang, W. The atmospheric connection between the Arctic and Eurasia is
 1333 underestimated in simulations with prescribed sea ice. *Commun. Earth Environ.*, 5(1), 435,
 1334 <https://doi.org/10.1038/s43247-024-01605-2>, 2024.

1335

1336 Zambri, B., Robock, A., Mills, M. J., & Schmidt, A. Modeling the 1783–1784 Laki eruption in
 1337 Iceland: 2. Climate impacts. *J. Geophys. Res.-Atmos.*, 124(13), 6770-6790,
 1338 <https://doi.org/10.1029/2018JD029554>, 2019.

Formatted: Font: Not Italic

Deleted: (

Deleted:)

Formatted: Font: Not Italic

Formatted: Font: Not Italic

Formatted: Font: Not Italic

Deleted: (

Deleted:)

Formatted: Font: Not Italic

Deleted: (

Deleted:)

Formatted: Font: Not Italic

Deleted: (

Deleted:)

Formatted: Font: Not Italic

Deleted: ¶

(

Deleted:)

Formatted: Font: Not Italic

Deleted: (

Deleted:)

Formatted: Font: Not Italic

Formatted: Font: Not Italic

Deleted: (

Deleted:)

Formatted: Font: Not Italic

Formatted: Font: Not Italic

Deleted: (

Deleted:)

1356 Zambri B, Slawinska J, Robock A, LeGrande AN. Northern Hemisphere Winter Warming and
 1357 Summer Monsoon Reduction after Volcanic Eruptions over the Last Millennium. *J. Geophys. Res.*
 1358 *Atmos.*, 122 (15) :7971-7989. doi: 10.1002/2017jd026728, 2017.

1359

1360 Zanchettin, D., Timmreck, C., Graf, H.F., Rubino, A., Lorenz, S., Lohmann, K., Jungclaus, J.H. Bi-
 1361 decadal variability excited in the coupled ocean-atmosphere system by strong tropical volcanic
 1362 eruptions. *Clim. Dyn.*, 39 (1–2), 419–444, <https://doi.org/10.1007/s00382-011-1167-1>, 2012.

1363

1364 Zanchettin, D., Timmreck, C., Bothe, O., Lorenz, S.J., Hegerl, G., Graf, H.F., Lutherbacher, J.,
 1365 Jungclaus, J.H. Delayed winter warming: A robust decadal response to strong tropical volcanic
 1366 eruptions. *Geophys. Res. Lett.*, 40 (1), 204–209, <https://doi.org/10.1029/2012GL054403>, 2013.

1367

1368 Zanchettin, D., Khodri, M., Timmreck, C., Toohey, M., Schmidt, A., Gerber, E. P., Hegerl, G.,
 1369 Robock, A., Pausata, F. S. R., Ball, W. T., Bauer, S. E., Bekki, S., Dhomse, S. S., LeGrande, A. N.,
 1370 Mann, G. W., Marshall, L., Mills, M., Marchand, M., Niemeier, U., Poulain, V., Rozanov, E.,
 1371 Rubino, A., Stenke, A., Tsigaridis, K., and Tummon, F.: The Model Intercomparison Project on the
 1372 climatic response to Volcanic forcing (VolMIP): experimental design and forcing input data for
 1373 CMIP6. *Geosci. Model Dev.*, 9, 2701–2719, doi:10.5194/gmd-9-2701-2016, 2016.

1374

1375 Zanchettin, D., C. Timmreck, M. Toohey, J. H. Jungclaus, M. Bittner, S. J. Lorenz, A. Rubino.
 1376 Clarifying the Relative Role of Forcing Uncertainties and Initial-Condition Unknowns in
 1377 Spreading the Climate Response to Volcanic Eruptions. *Geophys. Res. Lett.*, 46, 1602–1611,
 1378 <https://doi.org/10.1029/2018GL081018>, 2019.

1379

1380 Zanchettin, D. Aerosol and Solar Irradiance Effects on Decadal Climate Variability and
 1381 Predictability. *Current Climate Change Reports*, 3, 150, doi:10.1007/s40641-017-0065-y, 2017.

1382

1383 Zanchettin, D., Timmreck, C., Khodri, M., Schmidt, A., Toohey, M., Abe, M., Bekki, S., Cole, J.,
 1384 Fang, S.-W., Feng, W., Hegerl, G., Johnson, B., Lebas, N., LeGrande, A. N., Mann, G. W.,
 1385 Marshall, L., Rieger, L., Robock, A., Rubinetti, S., Tsigaridis, K., and Weierbach, H. Effects of
 1386 forcing differences and initial conditions on inter-model agreement in the VolMIP volc-pinatubo-

Formatted: Font: Not Italic

Deleted: (

Deleted:)

Deleted: (

Deleted:)

Formatted: Font: Not Italic

Deleted: (

Deleted:)

Formatted: Font: Not Italic

Deleted: (

Deleted:)

Formatted: Font: Not Italic

Deleted: .

Formatted: Font: Not Italic

Deleted: (

Deleted:)

Deleted: (

Deleted:)

1400 full experiment. *Geosci. Model Dev.*, 15, 2265–2292, <https://doi.org/10.5194/gmd-15-2265-2022>,
1401 2022,
1402
1403 Zhang, P., Wu, Y., Simpson, I. R., Smith, K. L., Zhang, X., De, B., & Callaghan, P. A stratospheric
1404 pathway linking a colder Siberia to Barents-Kara Sea sea ice loss. *Sci. Adv.*, 4(7), eaat6025,
1405 DOI: 10.1126/sciadv.aat6025, 2018,
1406
1407 Zhang, R., Tian, W., Zhang, J., Huang, J., Xie, F., & Xu, M. The corresponding tropospheric
1408 environments during downward-extending and nondownward-extending events of stratospheric
1409 northern annular mode anomalies. *J. Clim.*, 32(6), 1857–1873, [https://doi.org/10.1175/JCLI-D-18-](https://doi.org/10.1175/JCLI-D-18-0574.1)
1410 [0574.1](https://doi.org/10.1175/JCLI-D-18-0574.1), 2019,
1411
1412 Zhu, F., Emile-Geay, J., Anchukaitis, K.J., Hakim, G.J., Wittenberg, A.T., Morales, M.S., Toohey,
1413 M. and King, J. A re-appraisal of the ENSO response to volcanism with paleoclimate data
1414 assimilation. *Nat. Commun.*, 13(1), 747, <https://doi.org/10.1038/s41467-022-28210-1>, 2022,
1415
1416 Zhuo, Z., Fuglestedt, H. F., Toohey, M., and Krüger, K. Initial atmospheric conditions control
1417 transport of volcanic volatiles, forcing and impacts. *Atmos. Chem. Phys.*, 24, 6233–6249,
1418 <https://doi.org/10.5194/acp-24-6233-2024>, 2024,
1419
1420
1421
1422
1423
1424

Formatted: Font: Not Italic

Deleted: (

Deleted:)

Formatted: Font: Not Italic

Formatted: Font: Not Italic

Deleted: (

Deleted:)

Formatted: Font: Not Italic

Formatted: Font: Not Italic

Deleted: (

Deleted:)

Deleted: (

Deleted:)

Formatted: Font: Not Italic

Formatted: Font: Not Italic

Formatted: Font: Not Italic

Deleted: (

Deleted:)