

Origin of the Bohai Sea, North China Craton and implication for bi-directional back-arc extension in East Asia continental margin

Alan Liu Chen¹, Xuanhua Chen²

¹ Northview High School, Johns Creek, GA 30097, USA

5 ² SinoProbe Laboratory, Chinese Academy of Geological Sciences, Beijing 100037, China

Correspondence to: Xuanhua Chen (xhchen@cags.ac.cn)

Abstract. The Bohai Sea in eastern China is located in the back-arc extensional regime due to **northwest wards subduction of the Philippine Sea Plate and** westward subduction of the Pacific Plate underneath the Eurasian Plate. It is one of the regions with frequent earthquakes. Previous recognition of the origin of the Bohai Sea was limited by the understanding of back-arc extensional mode perpendicular to the subduction zone in eastern Asian continental margin. In this paper, a new model for the genesis of the Bohai Sea is proposed, based on the construction of major fault system and investigation of several main boundaries enclosing the Bohai Sea. **We have made field** investigation and analyses of tectonic landforms and boundary faults on the northwest coast of the Bohai Sea and eastern and western margins of the Liaodong Peninsula, **and** revealed left-lateral strike-slip faults **along** the northwest coast of the Liaodong Bay and western margin of the Liaodong Peninsula. **Then, we conducted** geological correlation of the Liaodong and Jiaodong Peninsulas and surrounding areas, **and a structural interpretation of aeromagnetic anomaly map of this region.** We proposed a right-lateral strike-slip fault between the eastern margin of the Liaodong Peninsula and northwestern margin of the Jiaodong Peninsula. This mode of movement may have been resulted from the NE stretching which is parallel to the subduction zone in northwestern Pacific margin. Therefore, we suggest that the formation of the Bohai Sea is resulted from the superimposition of the NE extension parallel to the subduction zone on the NW extension perpendicular to the subduction zone. We speculate that the two-direction extension perpendicular and parallel to the subduction zone should be the basic pattern of the back-arc extension with spherical-geometric effect.

1 Introduction

The Bohai Sea is located in eastern part of the North China Craton (NCC; Fig. 1; Chen et al., 2022a). Traditionally, the Bohai Sea is included in the Bohai Bay Basin (BBB). The BBB consists of the North China Plain (also known as the North China Basin), Bohai Sea, and Lower Liaohe Plain, with an area of ca. 200,000 km² (Hou et al., 1998). It is always considered as an intracontinental extensional rift basin in back-arc setting, resulted from the westward subduction of the Pacific Plate underneath the Eurasian Plate in late Mesozoic and Cenozoic (Allen et al., 1997; Liang et al., 2016). It is also one of the regions with strong earthquake activities in East Asia (Xiao et al., 2004; Yin et al., 2015; Chen et al., 2020; Fig. 2). The

30 remarkable feature of the BBB is the thinned crust and lithosphere with high geothermal gradient, due to craton deconstruction and mantle uplifting (Guo et al., 2005; Li et al., 2012; Zhu and Xu, 2019; Zhu et al., 2020; Zhou et al., 2022). Although the water depth in the Bohai Sea is only an average of 18 meters, however, the Cenozoic sediments are widely distributed in this area, with a total thickness of over 8000 meters, making them as an important source rock series of oil and gas (Xiao et al., 2004).

35

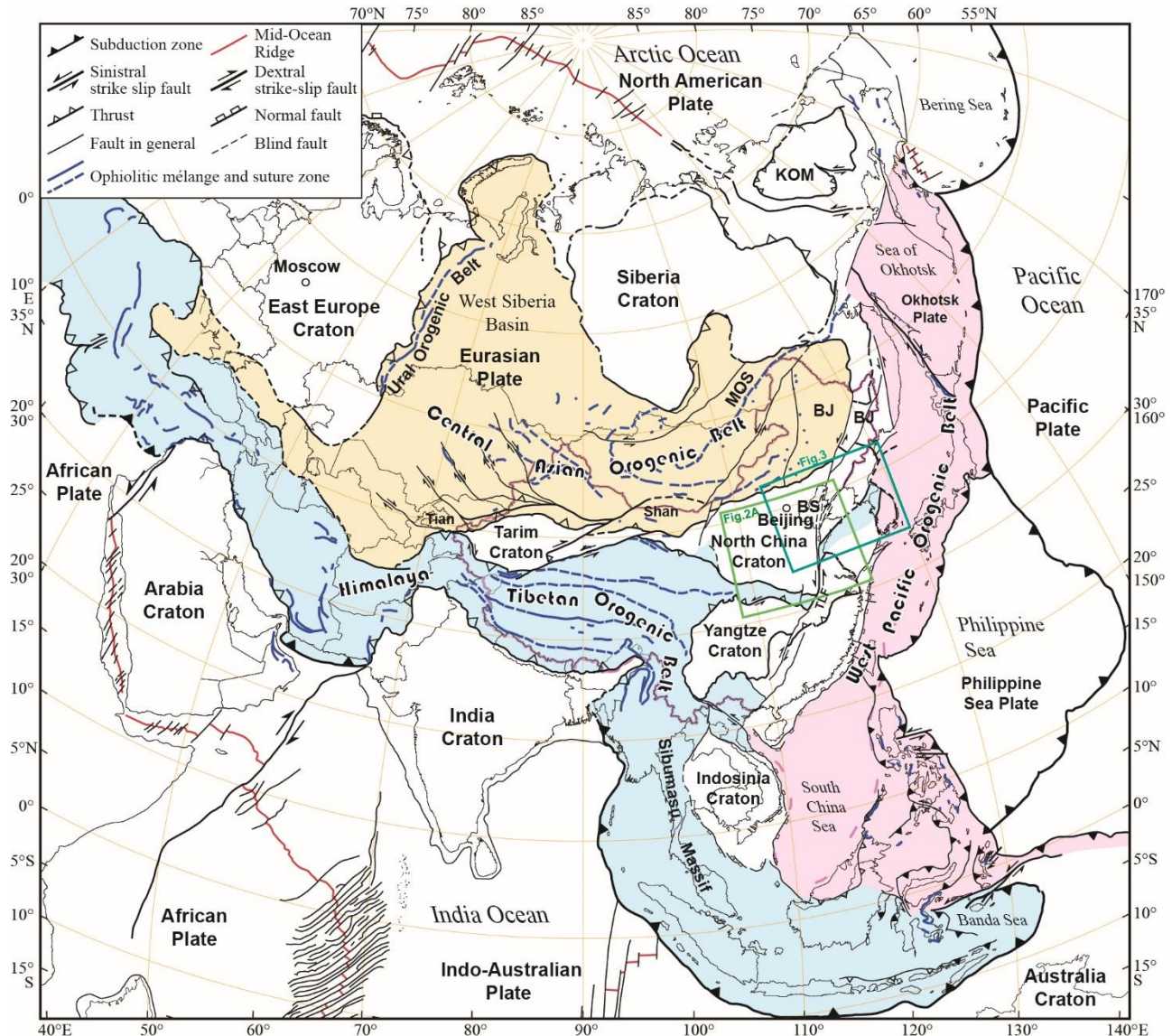


Figure 1: Simplified tectonic map of Asia, showing the location of the Bohai Sea in eastern China. Modified from Chen et al. (2022a). **BS, Bohai Sea**. KOM, Kolyma-Omolon superterrane (Ar-P). BJ, Bureya-Jiamusi superterrane (Ar-J). TLF, the Tan-Lu fault. Locations of Figs. 2A and 3 are also shown.

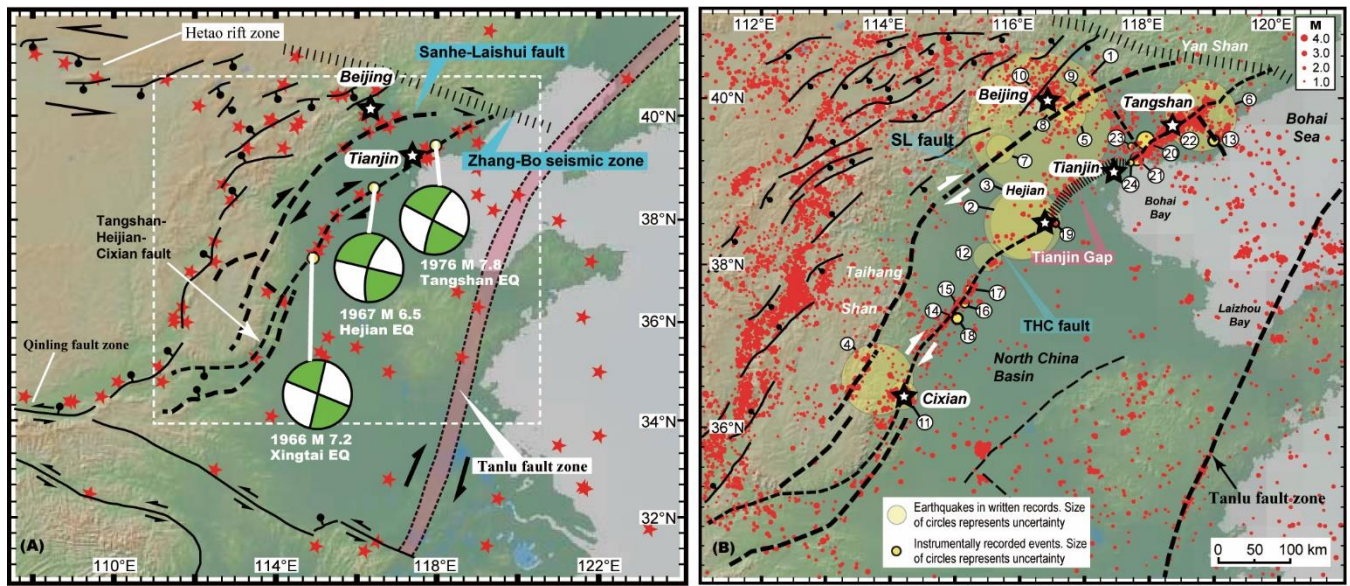


Figure 2: (A) Pre-instrumentation historical earthquakes (EQ) with $M \geq 6$ across north China and focal mechanisms of the A.D. 1966 Xingtai, 1967 Hejian, and 1976 Tangshan earthquakes (mainly right-lateral strike-slipping along the THC; after Yin et al., 2015). (B) $M \geq 6$ earthquakes from A.D. 1000 to the present in the North China Basin against a background of microseismicities between 2009 and 2013 (after Yin et al., 2015). THC—Tangshan-Hejian-Cixian fault; SL—Sanhe-Lushui fault. For earthquakes that occurred in the same year, they are labelled sequentially, such as 1966-1, 1966-2, 1976-1, and 1976-2. Earthquakes: (1) A.D. 1057 S. Beijing Earthquake (M 6.8); (2) A.D. 1068 Hejian Earthquake I (M 6.5); (3) A.D. 1144 Hejian Earthquake II (M 6.0); (4) A.D. 1314 Shexian Earthquake (M 6.0); (5) A.D. 1536 Tongxian Earthquake (M 6.0); (6) A.D. 1624 Luanxian Earthquake (M 7.0); (7) A.D. 1658 Laishui Earthquake (M 6.0); (8) A.D. 1665 W. Tongxian Earthquake (M 6.5); (9) A.D. 1679 Sanhe Earthquake (M 8.0); (10) A.D. 1730 W. Beijing Earthquake (M 6.5); (11) A.D. 1830 Cixian Earthquake (M 7.5); (12) A.D. 1882 Shexian Earthquake (M 6.0); (13) A.D. 1945 Luanhe Earthquake (M 6.3); (14) A.D. 1966-1 Xingtai Earthquake (M 6.8); (15) A.D. 1966-2 Xingtai Earthquake (M 6.7); (16) A.D. 1966-3 Xingtai Earthquake (M 7.2); (17) A.D. 1966-4 Xingtai Earthquake (M 6.2); (18) A.D. 1966-5 Xingtai Earthquake (M 6.0); (19) A.D. 1967 Hejian Earthquake (M 6.5); (20) A.D. 1976-1 Tangshan Earthquake (M 7.8); (21) A.D. 1976-2 Changli Earthquake (M 6.2); (22) A.D. 1976-3 Luanxian Earthquake (M 7.4); (23) A.D. 1976-4 Ninghe Earthquake (M 6.9); (24) A.D. 1977 Tanggu Earthquake (M 6.2) (from Yin et al., 2015).

Regarding to the origin of the Bohai Sea and BBB, there is still significant controversy. The main viewpoints proposed by previous studies are: 1) The BBB is a back-arc intraplate rift basin with lithospheric extension (Guo et al., 2005; Li et al., 2012; Liu et al., 2018; Zhou et al., 2022); 2) a pull-apart basin resulted from right-lateral strike slipping along the Tan-Lu and Taihang Shan faults due to subduction of the Pacific Plate in Cenozoic (Hou et al., 1998; Hu et al., 2022; Liu and Wu, 2022), as a part of the right-lateral pull-apart basin system in NW Pacific region (Xu et al., 2014); 3) a result of active mantle plume with a diameter of ca. 600-800 km (Xiao et al., 2004); 4) superimposed effect of multiple-phase extensions and strike-slip deformations (Allen et al., 1997; Liu and Wu, 2022). The formation and evolution of the BBB reflects superimposed effects of multiple episodes of back-arc extensional and strike-slip deformation (Liu and Wu, 2022). Historically, the BBB area has experienced many strong earthquakes, including the 1597 $M > 7$, 1679 $M 8.0$ Sanhe, 1830 $M 7.5$ Cixian, 1888 $M 7.5$, 1966 $M 7.2$ Xingtai, 1969 $M 7.4$ Bohai Bay, 1975 $M 7.3$ Haicheng, 1976 $M 7.8$ Tangshan, and 1976 $M 7.4$ Luanxian earthquakes

(Fig. 2; Deng et al., 1976; Yin et al., 2015; Chen et al., 2020). Present GPS velocity field and focal mechanism solution of the 1975 M7.3 Haicheng earthquake showed NNW-SSE stretching stress in the Liaodong Bay and surrounding area (Deng et al., 1976; Wang et al., 2014; Zhao et al., 2015).

70 Some unresolved key scientific issues on the genesis of Bohai Sea and BBB are listed as follows: 1) Did the activity of the Tan-Lu fault or other tectonic factors control the formation of the Bohai Sea? 2) Has the Tan-Lu fault extended northward through the Bohai Sea, or has the formation of the Bohai Sea disturbed the Tan-Lu fault, causing a discontinuous gap of the Tan-Lu fault in the Bohai Sea area? In this paper, we propose a new model for the tectonic origin of Bohai Sea, based on detailed analyses on boundary geometry and fault system in the Bohai Sea and BBB, as well as geological correlation of the
75 Jiaodong and Liaodong peninsulas and surrounding area (Figs. 3 and 4).

2 Regional geological background

2.1 Geological overview of the Jiaodong and Liaodong Peninsulas and Jidong Block

The Bohai Sea is surrounded by the Jiaodong Peninsula in southeast, the Liaodong Peninsula in northeast, the Jidong Block and Yanshan orogenic belt in northwest, the North China Plain in south, and the Liaohe Bay Plain in north (Figs. 3 and 4).

80 Structural relationship between the Jiaodong and Liaodong peninsulas is the key issue to solving geological problems of the Bohai Sea. Some of the reasons are listed as following: 1) The two peninsulas together form the waterway through which the seawater enters the Bohai Sea. If they are connected tightly without gap, the seawater will not be able to go into the Bohai Sea; 2) Their connection pattern controlled the faulting feature in the Bohai Sea area, which determined the formation nature of the Bohai Sea.

85 The Jiaodong Peninsula, also known as the Jiaodong Block, is located in the central part of eastern coast of China. It is mainly composed of three major tectonic units: the Jiaobei Terrane in the north, Jiaolai Basin in the central, and Sulu Orogen in the south (Figs. 3 and 4). The Jiaobei Terrane is the most southern part of the NCC, mainly composed of Archean TTG rocks, i.e., tonalites, trondhjemites, and granodiorites, gneisses, such as biotite gneisses and plagioclase amphibolites, and Archean to Paleozoic metamorphic rocks. Intrusive rocks include Triassic granites (225-200 Ma; Koua et al., 2022), Jurassic composite Linglong pluton (170-145 Ma; Yang et al., 2017), and two-stage Early Cretaceous granites (130-126 Ma and 121-116 Ma; Koua et al., 2022; Dong et al., 2023). The Jiaobei Terrane experienced rapid exhumation in 120-95 Ma (Zhang et al., 2022a), with development of extensional structures, such as the Linglong extensional dome (Figs. 3 and 4; Zhu et al., 2020; Yan et al., 2021) or metamorphic core complex (MCC; Charles et al., 2013), as well as supersized Jiaodong-type or decratonization-type gold deposits in late Early Cretaceous (Deng et al., 2020; Zhu et al., 2020, 2024; Yang et al., 2021; Zhang et al., 2022a). The Sulu Orogen is located on the southeast side of the Wulian-Qingdao-Yantai fault zone (WQYF), characterized by the occurrence of high to ultra-high pressure metamorphic rocks. It is considered as the eastern segment of Triassic collisional suture zone between the NCC and South China block (Yin and Nie, 1993; Zhu et al., 2020; Ma et al., 2021; Dong et al., 2023; Li et al., 2023a; Qiu et al., 2023), with similar time to the South China-Indochina collision (Faure et

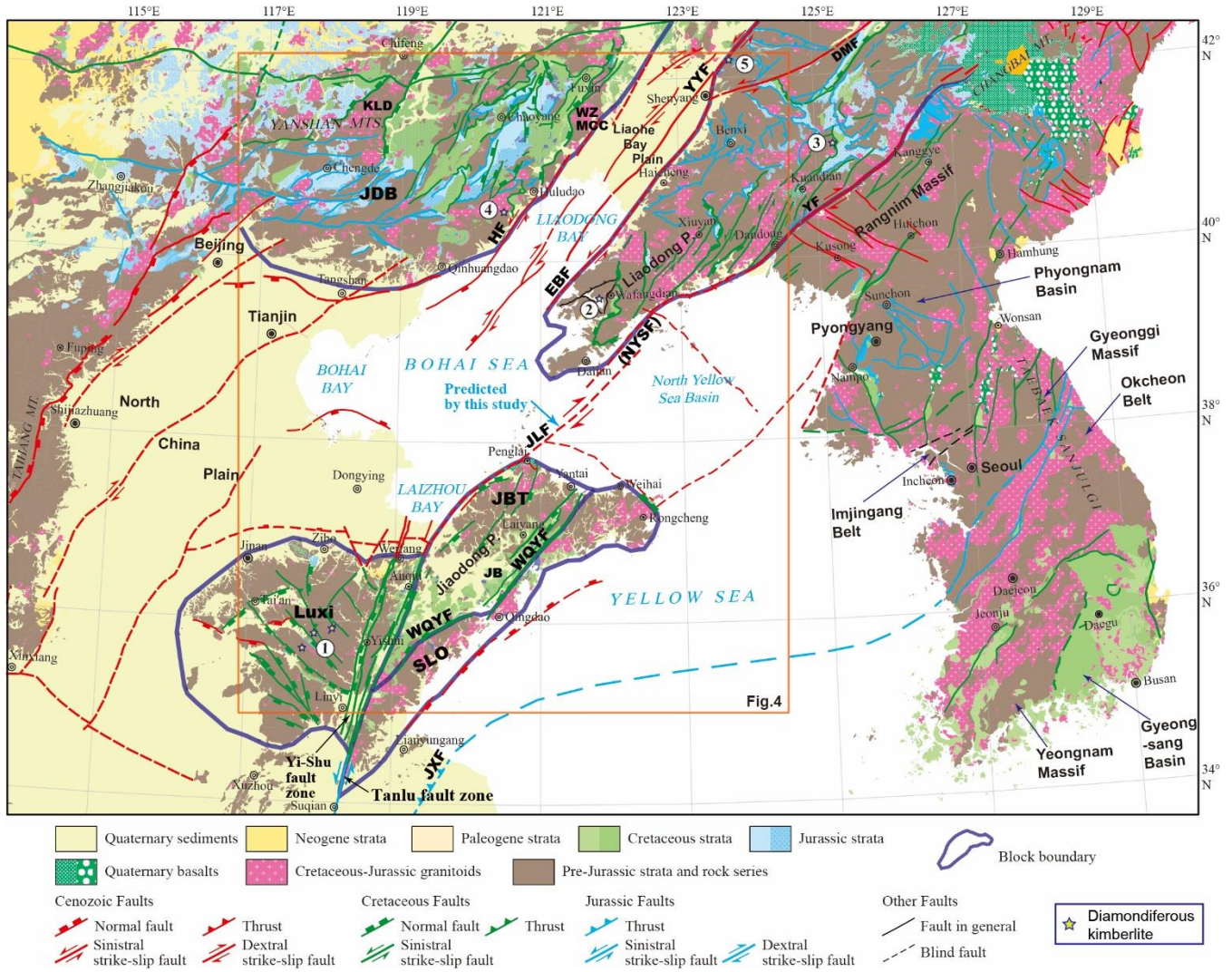


Figure 3: Sketched structural geological map of the Bohai Bay Basin and surrounding region (modified from Allen et al., 1997, China Geological Survey, 2004, Ren et al., 2013, Yin et al., 2015, Kim et al., 2018, Zhai et al., 2019, Yang et al., 2020, Lin et al., 2021, Ren et al., 2023, and Zhu et al., 2024). Diamondiferous kimberlites are from Liu et al., 2019. JDB, Jidong block. JBT, Jiaobei terrane. JB, Jiaolai basin. SLO, Sulu orogen. WZMCC, Waziyu (also named Yiwulvshan) MCC (Sun et al., 2022). KLD, Kalaqin Dome (Yang et al., 2020). HF, Honglazi fault. EBF, East Bohai fault. JLF, Jiao-Liao fault as the boundary faults of the Jiaodong and Liaodong peninsulas predicted in this study. NYSF, North Yellow Sea fault (Tian et al., 2007). YYF, Yilan-Yitong fault. DMF, Dun-Mi fault. YF, Yalvjiang fault. WQYF, Wulian-Qingdao-Yantai fault. JXF, Jiashan-Xiangshui fault. **Diamondiferous kimberlites: 1, Mengyin; 2, Wafangdian; 3, Huanren; 4, Huludao; 5, Tieling.**

The Jiaolai Basin is located between the Jiaobei Terrane and Sulu Orogen, as a graben basin formed in late Early Cretaceous. It has a high elevation ≥ 2.0 km in Late Cretaceous (ca. 80 Ma), which was a part of the coast mountains on the

eastern margin of the Asian continent (Zhang et al., 2016). Cenozoic basalts outcrop in the Penglai area, eastern Jiaodong Peninsula (Figs. 3 and 4).

115 The Liaodong Peninsula, also known as the Liaodong Block, is located in the northeast of the NCC. It is bordered by the North Yellow Sea fault (NYSF) with the North Yellow Sea Basin (Tian et al., 2007). It is mainly composed of Archean TTG rocks, Paleoproterozoic Liaohe Group metamorphic rocks, Mesoproterozoic to Paleozoic metamorphic sedimentary rocks, and Mesozoic to Cenozoic sedimentary and magmatic rocks. It is dominated by a large number of granites with ages of Triassic (231-200 Ma), Jurassic (183-152 Ma), and Cretaceous (139-117 Ma) (Figs. 3 and 4; Yan et al., 2021; Zeng et al., 120 2022; Zhu et al., 2024). It has experienced Yanshanian intracontinental compressional deformation initiated at ca. 171 Ma in Middle Jurassic (Ren et al., 2023), with a mature continental arc formed in Late Jurassic due to the Paleo-Pacific subduction (Zeng et al., 2022; Qiu et al., 2023). Granitoid plutons, such as the Shizhuzi magmatic complex, intruded with ages ranging from 130 to 126 Ma, indicating asthenosphere upwelling-related craton destruction in Early Cretaceous (Wu et al., 2021; Yang et al., 2021; Wang et al., 2022). Simultaneously, extensional structures, such as the Liaonan MCC, developed in late 125 Early Cretaceous (Figs. 3 and 4; Lin et al., 2007, 2008; Charles et al., 2013; Lin and Wei, 2020; Zhu et al., 2020; Yan et al., 2021; Qiu et al., 2023; Ren et al., 2023), accompanied by the occurrence of Cu, Mo, and decratonization-type gold deposits (Wu et al., 2021; Yan et al., 2021; Yang et al., 2021; Zhu et al., 2024). Typical gold deposits in the Wulong-Sidaogou and Xinfang regions, Liaodong Peninsula, have metallogenic ages of ca. 120 Ma (Zhang et al., 2022b).

The Jidong Block and Yanshan orogenic belt is located in northern NCC and northwest coast of the Bohai Sea (Figs. 3 130 and 4). The Archean basement rocks outcrop here are mainly gray gneisses and TTG rocks, as well as supracrustal rock series in granulite facies metamorphism (Zhu et al., 2020). The Jidong Block has experienced the development of Late Paleoproterozoic to Mesoproterozoic Yanliao Rift System (Zhu et al., 2020), and intracontinental Yanshanian orogeny in late Middle Jurassic to early Early Cretaceous (Dong et al., 2015; Yang et al., 2020; Qiu et al., 2023). Post orogenic extension occurred in late Early Cretaceous (135-100 Ma), represented by the Yunmengshan and Yiwulvshan MCCs, as well as the 135 Kalaqin and Fangshan extensional domes (Lin et al., 2008; Charles et al., 2013; Liu et al., 2017; Lin and Wei, 2020; Yang et al., 2020; Zhu et al., 2020; Sun et al., 2022).

The Jiaobei Terrane, Liaodong Peninsula, and Jidong Block are all parts of the NCC, composing of Archean metamorphic rocks and Proterozoic greenstone belts. They have suffered similar geological evolution processes in Phanerozoic. They are all located in the back-arc setting of the subducted west Paleo-Pacific Plate, i.e., the Izanagi Plate. 140 They have undergone intracontinental Yanshanian orogeny in late Middle Jurassic to early Early Cretaceous, and extensional faulting in the late Early Cretaceous, with extensive crustal melting in Mesozoic (Dong et al., 2015; Yang et al., 2017; Clinkscales and Kapp, 2019; Zhu et al., 2020; Yan et al., 2021; Chen et al., 2022a; Sun et al., 2022; Dong et al., 2023; Qiu et al., 2023).

2.2 Fault system of the Bohai Sea, North Yellow Sea, and surrounding areas

145 As a part of the BBB, the Bohai Sea is divided into the main sea and three bays, such as the Bohai Bay in the west, Laizhou

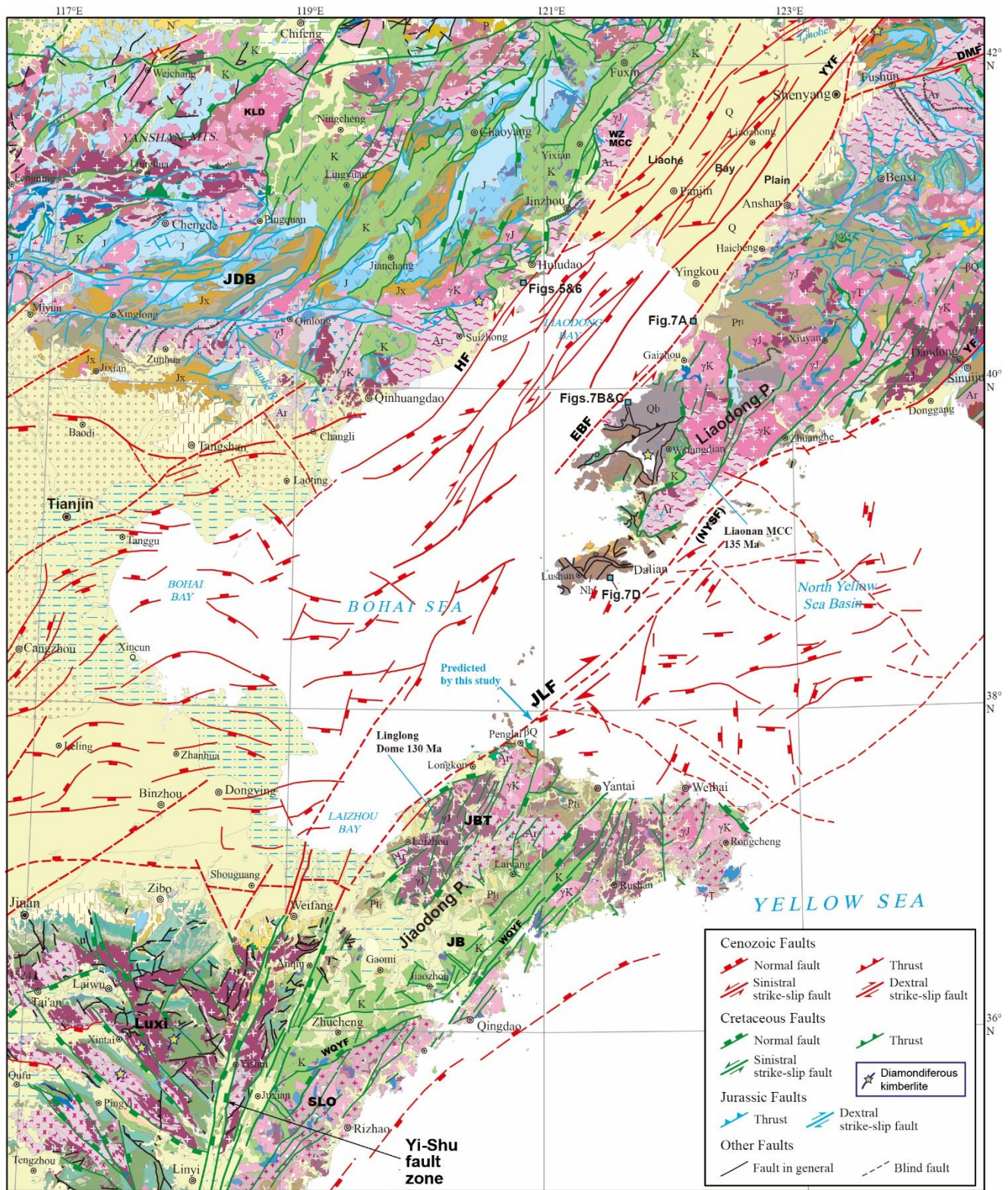


Figure 4: Detailed structural geological map of the Bohai Sea and surrounding region (modified from Allen et al., 1997, China Geological Survey, 2004, Ren et al., 2013, Yin et al., 2015, Yang et al., 2020, Ren et al., 2023, and Zhu et al., 2024), showing distribution of fault system and location of field observation sits (see Figs. 5, 6 and 7). The Liaonan MCC and Linglong dome are from Charles et al., 2013, Zhu et al., 2020, Yan et al., 2021, and Ren et al., 2023. Diamondiferous kimberlites are from Liu et al., 2019. JDB, Jidong block. JBT, Jiaobei terrane. JB, Jiaolai basin. SLO, Sulu orogen. WZMCC, Waziyu (also named Yiwulvshan) MCC (Sun et al., 2022). KLD, Kalaqin Dome (Yang et al., 2020). HF, Honglazi fault. EBF, East Bohai fault. JLF, Jiao-Liao fault as the boundary faults of the Jiaodong and Liaodong peninsulas predicted in this study. NYSF, North Yellow Sea fault (Tian et al., 2007). YYF, Yilan-Yitong fault. DMF, Dun-Mi fault. YF, Yalvjiang fault. WQYF, Wulian-Qingdao-Yantai fault. Strata systems: Q, Quaternary. N, Neogene. K, Cretaceous. Nh, Nanhua. Qb, Qingbaikou. Pt₃, Upper Proterozoic. Jx, Jixian. Pt₁, Lower Proterozoic. Ar, Archean. β Q, Quaternary basalts. Granitoids: γ K, Cretaceous. γ J, Jurassic. γ T, Triassic. γ Pt, Proterozoic. γ Ar, Archean.

Bay in the south, and Liaodong Bay in the north (Figs. 3 and 4). It is an important petroliferous basin and one of oil and gas production bases in China, with extremely complex and diverse fault systems. The Liaodong Bay and western North China Plain are dominated by NNE-SSW trending normal faults and extensional right-lateral strike-slip faults, while the Laizhou Bay and eastern North China Plain is dominated by nearly E-W and NNE-SSW trending normal faults (Figs. 3 and 4; Allen et al., 1997; Ren et al., 2002; Li et al., 2012; Hu et al., 2022; Yuan et al., 2022).

Previous studies have suggested two-phase rifting of the BBB in Cenozoic, controlled by the enhanced back-arc extension due to eastward roll-back of the subducted Pacific Plate (Liu et al., 2017; Allen et al., 1997; Hu et al., 2022). The first phase is the development of elongate half grabens in Paleocene to early Eocene, with deposition of the Kongdian and lower Shahejie Formations (Allen et al., 1997). The second is the development of dextral transtensional pull-apart basin in middle Eocene to early Oligocene, with a transition occurred at ca. 45-43 Ma in middle Eocene (Allen et al., 1997; Chen et al., 2022b). Then, the BBB entered the post-rifting development stage in Neogene and Quaternary (Allen et al., 1997; Chen et al., 2022b). The superimposed strike-slipping on extensional stress field controls the formation and evolution of dextral transtensional BBB fault system in Cenozoic (Liu et al., 2018; Hu et al., 2022).

The North Yellow Sea Basin is located to the east of the Liaodong Peninsula and northeast of the Jiaodong Peninsula, adjacent to the Bohai Sea (Figs. 3 and 4). It has a boundary fault, i.e., the North Yellow Sea Fault in its northwest (Tian et al., 2007). It is characterized by normal faults trending in NE to NNE, ENE to EW, and NW to NNW directions in Neogene and Quaternary (Shen et al., 2013).

175 **3 Field observation and structural analyses**

3.1 Northwest coast of the Bohai Sea and the Liaodong Bay Basin

Near the Honglazi Bay, Huludao City, the northwestern coast of the Liaodong Bay outcrops the Neoproterozoic gneisses, Mesoproterozoic Changcheng system, and Lower Triassic Hongla Formation (T₁h; Li et al., 2020), intruded by Jurassic and Early Cretaceous granitoids (Figs. 3 and 4; Ren et al., 2013). They form coast hills and cliffs with high relieves of tens to one hundred meters. The Hongla Formation is composed of purplish red cobble and sandy conglomerates, sandy mudstones, and

sandstones from the bottom to the top. It is characterized by the development of cross bedding of sandstones and siltstones (Li et al., 2020).

Field observations show several greyish-green mafic **dikes** intruded in clastic rock series of the Hongla Formation, and a series of thrusts, extensional normal faults, and strike-slip faults developed on the outcrop (Figs. 5A and 5B). The **dikes** are nearly parallel to the normal faults with en echelon arrangement (such as the F₁ and F₂ in Fig. 5B). These normal faults and **dikes** are truncated by the normal faults formed in later stage (such as the F₃), and then cut by a detachment fault (the F₄) that developed at the bottom of the conglomerate layer in much later stage (Fig. 5B). The conglomerate layer above the detachment fault has suffered conformal folding, with its front tip (the western wing) inversed (Fig. 5B). A thin layer of fault gouge is also observed on the detachment plane. According to the regional late Mesozoic extension event, we interpret the mafic **dikes** as formed during the lithosphere extension in late Early Cretaceous, and the detachment fault (the F₄) as a result of intensive regional extension in late Early Cretaceous. This is similar to the gravitational collapse in post-orogenic stage, with local thrusting developed in detachment front.

The Honglazi fault (HF in Figs. 3, 5A and 5B) strikes in N30°E, with nearly vertical faulting plane. Thrusts such as the F₆, F₇, and F₈ faults in Figs. 5 and 6, constitutes a flower structure related to the HF, indicating the HF has the feature of left-lateral strike slipping (as shown in Fig. 5A). In the outcrop scale, the occurrence of a stacked anticline in the Hongla Formation indicates imbricate thrusting in the fault system (Fig. 6B), implying also left-lateral slipping along the Honglazi fault. Early developed thrust faults, such as the F₆ and F₇, have cut through the much earlier developed normal faults, such as the F₉, and then were cut by the later normal faults, such as the F₃ and F₄ (Figs. 5B and 6A).

Structural analyses revealed the following deformational and magmatic sequence in the Honglazi area: 1) Regional extension and normal faulting, with mafic **dike** intrusion in the Lower Triassic Hongla Formation along extensional fractures, in late time of Early Cretaceous; 2) Left-lateral strike slipping along the Honglazi fault, accompanied by imbricate thrusts, flower structure, and stacked anticline, in early time of Late Cretaceous; 3) Normal faulting along the Honglazi fault in early Cenozoic. Resulting from the continuous extensional faulting and strike slipping in Cenozoic, the Liaodong Bay area continued to receive fine-grained clay and siltstone sedimentation in the Liaohe River Delta, and subsided to form the Liaohe Bay Basin and therein abundance of wetlands.

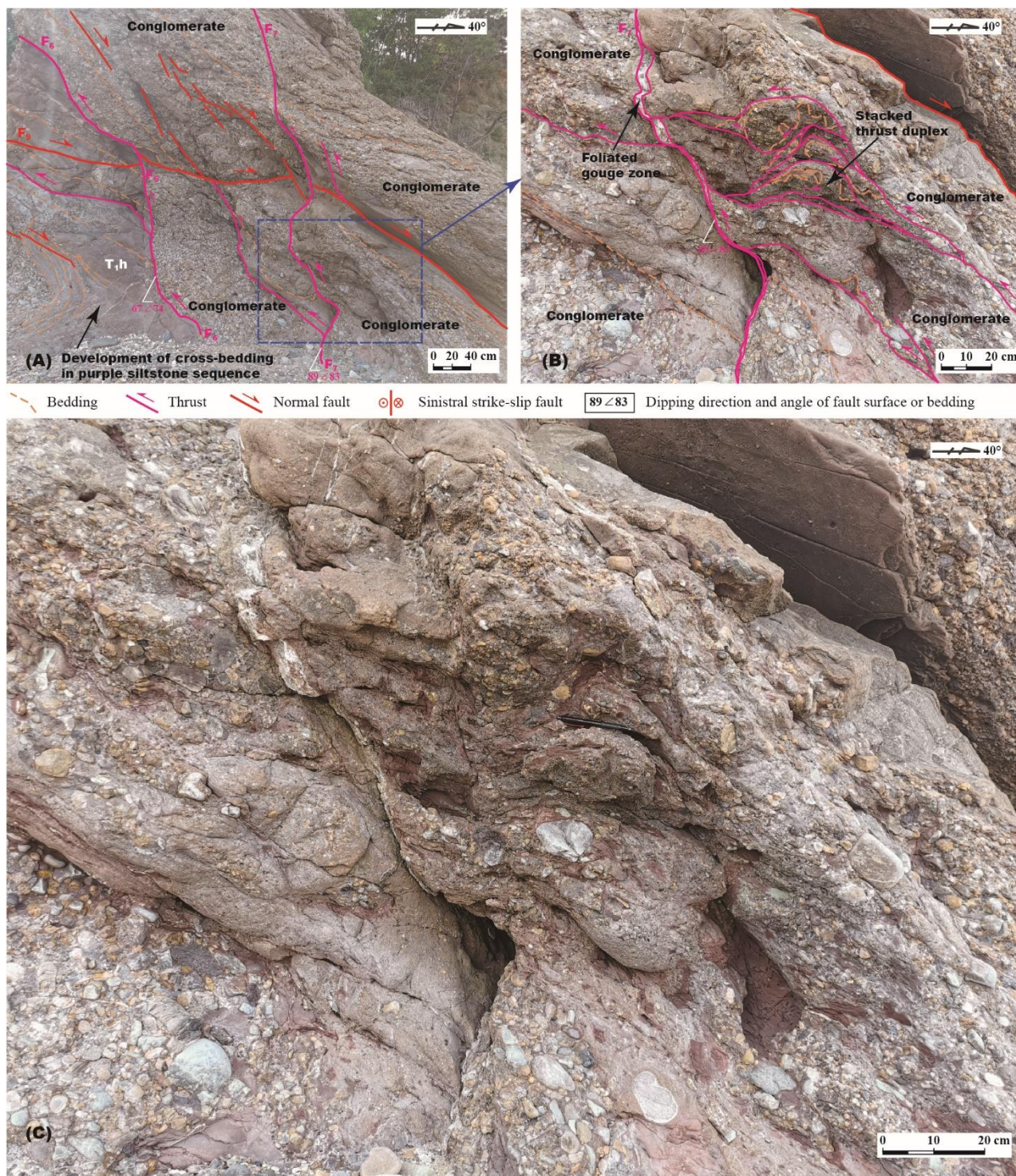
3.2 Northwest coast of the Liaodong Peninsula

In the Beizuizi area, northeast coast of the Liaodong Bay, late Early Cretaceous granitoids, with an age of 127-120 Ma (Wang et al., 2023), intruded into the Paleoproterozoic Gaixian Group sequence (Figs. 3 and 4). A strike-slip fault developed in the granitoids, with a strike of N49°E and dip angle of 76°. We named it as the Beizuizi fault, which could be a branch of the East Bohai fault (EBF in Figs. 3 and 4). Early-stage **extensional fractures** indicate the left-lateral strike slipping along the Beizuizi fault (Fig. 7A), which is consistent with the movement direction of the Honglazi fault in northwest coast of the Liaodong Bay. The fault truncated the two-stage **extensional fractures** in the granitoids (Fig. 7A), implying the faulting later than ca. 120 Ma. Orientated arrangement of potassium feldspars in the granitoids forms general stretching lineation with an



215 **Figure 5:** Structural analyses in northwestern coast of the Bohai Sea. **(A)** The Hongglazi fault (HF) with flower structure in western coast of the Bohai Sea, formed in the Early Cretaceous. The flower structure is truncated by normal fault system. T_{1h}, Hongla

Formation of the Lower Triassic. **(B) Interpretation:** Development of the extensional normal fault system with intrusion of mafic dikes later than the HF and the flower structure. **(C) Uninterpreted picture of (B). Section view.**



220 **Figure 6: (A) The western half thrust system of the flower structure related to the HF. (B) Interpretation: Duplex in the Lower Cretaceous related to the flower structure of the Honglazi fault. (C) Uninterpreted picture of (B). See Fig. 5B for location. Section view.**

orientation of 100° and dip angle of 3°, indicating early-stage horizontal **sinistral shearing** along the Beizuizi fault **during**
225 **intrusion of** Early Cretaceous **granitoids**. Fine-grained quartz veins developed on the fault plane, with occurrence of
bookshelf structures obliquely to the fault, implying transtensional dextral movement along the fault in later relaxation stage.
The arrangement of late-stage joints also reflects the right-lateral transtensional faulting along the Beizuizi fault (Fig. 7A).
This kind of right-lateral transtensional activity could be inferred **to develop in the** early Cenozoic, which is **consistent** with
the widespread right-lateral strike-slip faulting in the Liaodong Bay and surrounding area in early Cenozoic (Figs. 3 and 4;
230 Allen et al., 1997; Hu et al., 2022).

Horizontal left-lateral strike-slip faulting is also found in the Jiangjunshi area, central of northwest coast of the Liaodong
Peninsula. The Qingbaikou **System** (Qb) of the Neoproterozoic in this area is mainly composed of pure white quartz
sandstones in medium to coarse grained, with nearly horizontal bedding (Fig. 7B). Multiple sets of joints are developed
perpendicular to the bedding of the Qingbaikou **System**. Striations on joint surface indicate left-lateral movement in direction
235 of N53°E (Fig. 7C), consistent with the movement direction of the Beizuizi and Honglazi faults. Therefore, we speculate that
there was also Late Cretaceous to early Cenozoic left-lateral strike-slip faulting in southeast coast of the Liaodong Bay,
which could be named as the East Bohai fault (Figs. 3 and 4).

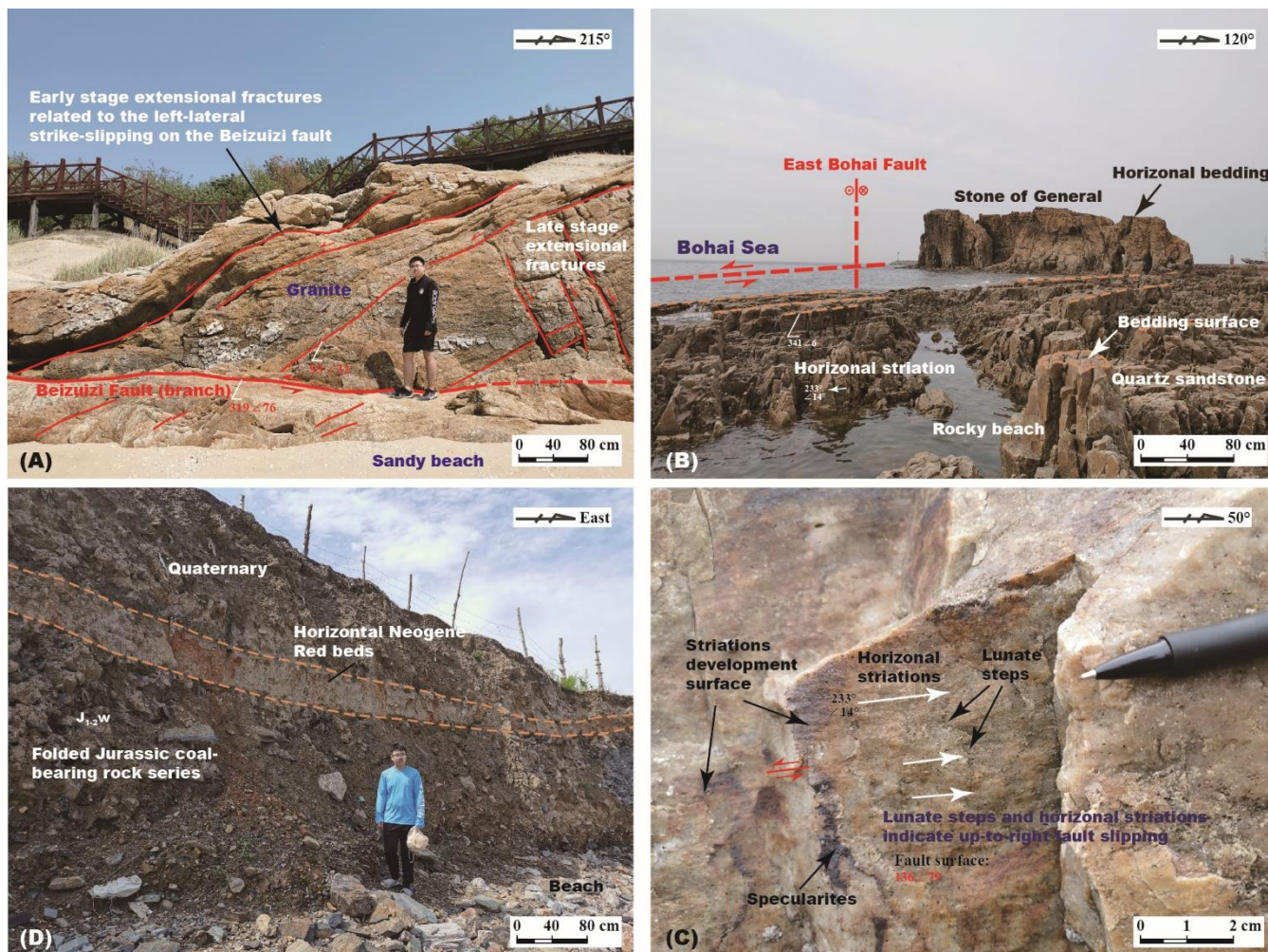
3.3. Southeast coast of the Liaodong Peninsula

Neogene red layer, with nearly horizontal bedding, outcrops in the Dajiao area, Dalian City on southeast coast of the
240 Liaodong Peninsula. It is a kind of residual deposits in paleo-crust of weathering, mainly composed of magenta clay layer
with a thickness of ca. one meter. It is covered by Quaternary clastic deposits in parallel unconformity, and underlain by
folded dark gray shales of the Early-Middle Jurassic Wafangdian Formation (Fig. 7D). The Wafangdian Formation is a set of
fluvial to lacustrine facies coal-bearing strata, mainly composed of sandstones, mudstones, and dark gray shales, interbedded
with mudstones. Significant tectonic relief between the coastal zone and the Cenozoic sediments in the Yellow Sea, implies
245 the existence of an active normal fault at coastal cliff. It may be a branch of the North Yellow Sea fault (NYSF in Figs. 3 and
4). As a reasonable inference, the southwestward extending of the North Yellow Sea fault should form the Jiao-Liao fault that
separates the Jiaodong Peninsula from the Liaodong Peninsula (Figs. 3 and 4).

Active normal faulting also appears in the Laotieshan area, southwest corner of the Liaodong Peninsula. In this area, the
significant tectonic relief occurs between the Neoproterozoic Nanhua System and offshore deposits in the North Yellow Sea,
250 expressed by the coastal landform such as the Elephant Trunk Hill. The Nanhua System here is composed of pure white
medium coarse grained quartz sandstone with thin layers of meta-argillaceous siltstones.

3.4. Aeromagnetic anomaly and fault system

255 Aeromagnetic anomaly map may reflect the distribution of aged basement controlled by fault system. The polarized
 aeromagnetic anomaly map shows that there is a NE extending high aeromagnetic anomaly belt in the Liaodong Bay area
 (Fig. 8; Xiong et al., 2015). This can be explained as a result of uplifted Archean basement, which is similar to those in the
 Liaodong and Jiaodong peninsulas. The uplifting of the Archean basement is corresponding to the NW to NNW extension in
 late Mesozoic and early Cenozoic. Perpendicular to the above-mentioned NE extending anomaly belts, there are also some
 260 NW striking anomaly belts in the Bohai Sea and North Yellow Sea basin, which represent NE extension in the Cenozoic
 (Fig. 8). In the Bohai Bay area, a circular aeromagnetic anomaly indicates a possible small mantle plume since late
 Mesozoic.



265 **Figure 7:** (A) The Beizuizi fault, a branch of the East Bohai fault, occurs in northwestern coast of the Liaodong Peninsula, showing a left-lateral strike-slip movement similar to that on the Honglazi fault in Fig. 5. Section view. Both the Beizuizi and Honglazi faults are considered as relic faults formed before the opening of the Bohai Sea. (B) Topographic feature in western coast of the Liaodong Peninsula, showing geometric properties of the East Bohai fault. (C) Near horizontal striations indicate early stage left-

lateral strike-slipping along the East Bohai fault in western coast of the Liaodong Peninsula. **Section view. (D)** Coastal cliff occurs at the southernmost edge in eastern coast of the Liaodong Peninsula, showing the vertical cutting of the horizontal Neogene red bed due to active normal faulting. **Section view. J_{1-2w}**, Lower-Middle Jurassic Wafangdian Formation.

270

In Fig. 8, the most eastern fault of the Yi-Shu fault zone, part of the Tan-Lu fault, could be tracked along the Jiao-Liao fault (JLF) to the North Yellow Sea fault (NYSF, as northern branch of the Jiao-Liao fault) and Yalvjiang fault (YF) in the north. It separates the Liaodong Peninsula from the Jiaodong Peninsula. However, it is hardly to track the most western boundary fault of the Yi-Shu fault zone to the north, to get connection with the East Bohai fault (EBF) or Yilan-Yitong fault (YYF). Between the Yi-Shu fault zone and East Bohai fault, NW striking aeromagnetic anomaly belts indicate apparently NE extension in Cenozoic, which implies expanding displacement between the Liaodong Peninsula and Laizhou Bay area.

275

4 Geological correlation and proposal of tectonic model

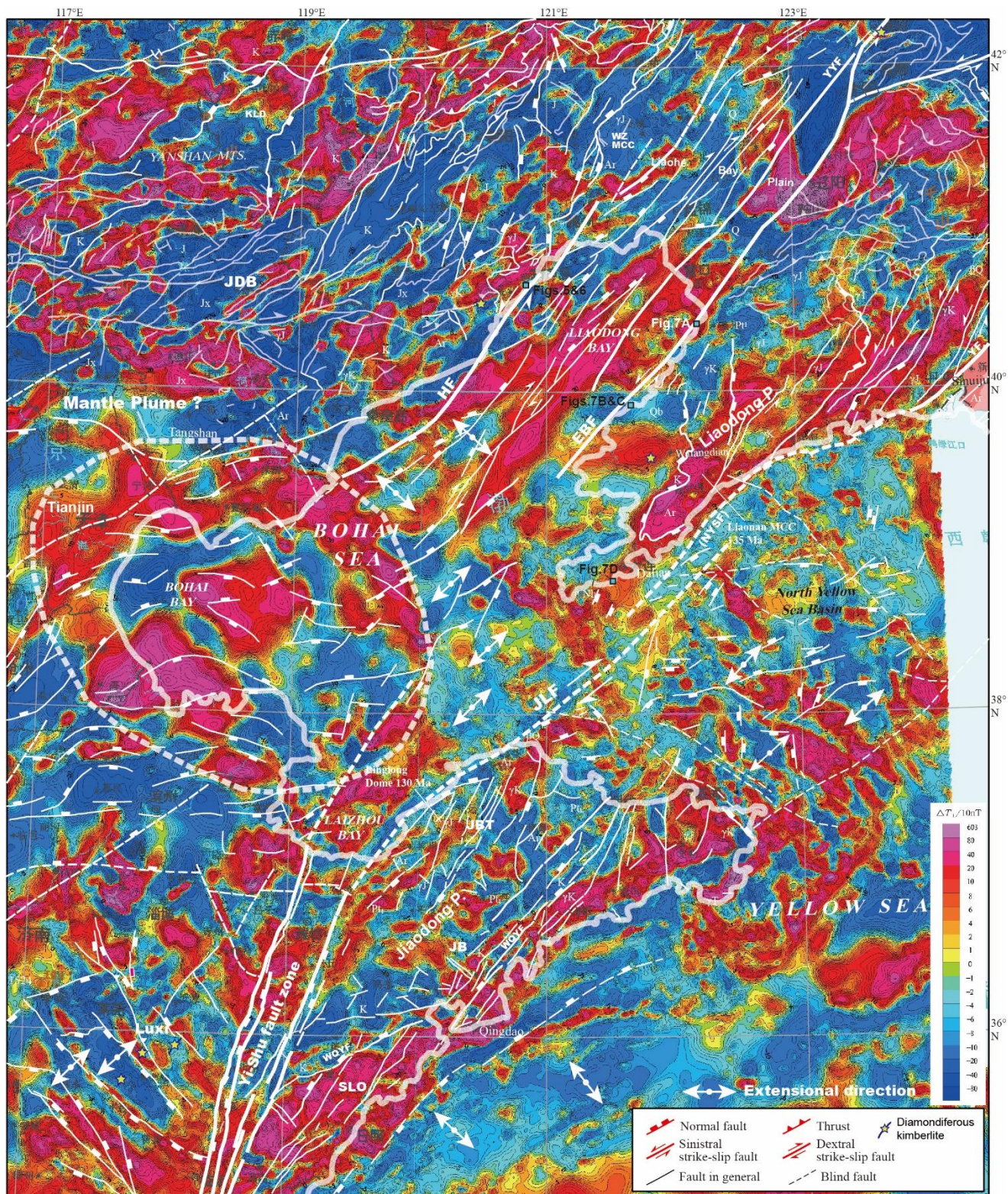
4.1 Tectonic relationship among the Jiaodong and Liaodong Peninsulas and Jidong Block

The Liaodong Peninsula and Jiaobei Terrane are both parts of the NCC. They are commonly referred to as the Jiao-Liao Block or a part of the Jiao-Liao-Jilin tectonic belt (Zhu et al., 2020). However, there is still some controversy over the way in which the two peninsulas are connected. Most researchers believe that both the Jiaodong and Liaodong Peninsulas are located on the eastern side of the Tan-Lu fault zone (Figs. 2 and 9A; Xu et al., 1987; Allen et al., 1997; Wang et al., 2000; Zhu et al., 2004; Li et al., 2012; Clinkscales and Kapp, 2019; Zhu et al., 2020, 2024; Yan et al., 2021; Chen et al., 2022a; Chen et al., 2022b; Hu et al., 2022; Zhou et al., 2022; Qiu et al., 2023; Ren et al., 2023). Additionally, such a configuration does not really resolve the problem that how they are interconnected. Nevertheless, if we take the early Cretaceous granitoids and extensional structures in consideration, the situation will be greatly improved.

285

Early Cretaceous granitic plutons and extensional structures such as MCCs or extensional domes occur in both the Liaodong and Jiaodong Peninsulas (Lin et al., 2007, 2008; Charles et al., 2013; Lin and Wei, 2020; Zhu et al., 2020, 2024; Wu et al., 2021; Yan et al., 2021; Qiu et al., 2023; Ren et al., 2023). The plutons and MCCs are interrelated, just like the case in North America (Zuza et al., 2022). They are the two critical control factors related to the Jiaodong- or decratonization-type gold mineralization in late Early Cretaceous (125-115 Ma; Yang et al., 2021). Therefore, we can take the Early Cretaceous granitoids, extensional structures, and gold deposits as piercing points, to reconstruct the spatial relationship between the two peninsulas in Early Cretaceous. Our reconstruction is shown in Fig. 9B, which predicts the existence of a right-lateral strike-slip fault, referred as the Jiao-Liao fault, between the Jiaodong and Liaodong Peninsulas (Figs. 3, 4 and 9B). Through the recovery of strike-slipping along the Jiao-Liao fault, the Liaonan MCC in the Liaodong Peninsula can be jointed with the Linglong dome in the Jiaodong Peninsula (Fig. 9B). Meanwhile, the gold deposit cluster in the Wulong-Sidaogou area of the Liaodong Peninsula can also be buckled up on that in the Linglong-Jiaojia area of the Jiaodong Peninsula. The northeastward extending of the Jiao-Liao fault may be connected to the Yalvjiang fault (Figs. 3 and 4).

295



300 **Figure 8: Polarized aeromagnetic anomaly map of the Bohai Sea and surrounding region (modified from Xiong et al., 2015), superimposed with the distribution of fault systems and location of field observation points (see Figs. 5, 6 and 7). The dashed grey ellipse delineates the possible range of a mantle plume. See Fig. 4 for other explanations.**

The Jidong and Liaodong Blocks have similar geological compositions and tectonic evolution histories. They share a
305 common tectonic history in Mesozoic, with the typical intracontinental Yanshanian orogeny in Late Jurassic to early Early
Cretaceous, and significant craton destruction and extensional faulting in late Early Cretaceous (Dong et al., 2015; Yang et
al., 2020; Qiu et al., 2023). They have approximately simultaneously granitic intrusion events in Early Cretaceous. With an
assumption of nearly east-west zonal distribution of the Early Cretaceous plutons, our restoration shows that the Liaodong
Bay has opened through the NW-SE extension in late Mesozoic and early Cenozoic, and modified by the left-lateral strike-
310 slipping along the Honglazi and/or East Bohai faults (Fig. 9B). Before the opening of the Liaodong Bay, these two faults
should be branches of the same major fault, which could be inferred as the Honglazi fault zone.

4.2 Tectonic relationship between the Jiaodong and Korean Peninsulas

The Jiaobei Terrane and northern Korean Peninsula are both components of the NCC, with the outcrop of Archean TTG
metamorphic rocks (Zhai et al., 2019). They are characterized by the Early Cretaceous extensional structures with strikes in
315 NE and extension in NW (Dong et al., 2015), as well as the Cenozoic normal faulting with strike in WNW. They are both
suffered from basalt eruption in Quaternary (Fig. 3). This is to say, they have a common pre-Cenozoic history in geological
evolution, and the same tectonic setting in Cenozoic. Previous correlation between the Sulu orogen in the south of the
Wulian-Qingdao-Yantai fault and Gyeonggi Massif in northern Korea, indicates they are both belong to the high- and ultra-
high pressure metamorphic belt formed during the North and South China collision in Triassic (Fig. 3; Li et al., 2012; Kim et
320 al., 2018). Therefore, the Jiaodong Peninsula is not simply connected to the Liaodong Peninsula in NNE direction, but a
wedge-like connection with both the Liaodong and Korean Peninsulas (Figs. 3, 9, and 10). Restoration of tectonic processes,
such as strike slip and normal faulting in an extensional setting, is necessary.

4.3 A genetic model of the Bohai Sea based on tectonic correlation

According to the correlational analyses of the Jiaodong, Liaodong, and Jidong Blocks, combined with field observations and
325 structural analyses, we proposed a three-stage kinematic model for the formation and evolution of the Bohai Sea (Fig. 10).
Stage 1, in early period of Early Cretaceous, strike slip faulting initiated among the Jidong, Liaodong, and Jiaodong Blocks,
parallel to the paleo-subduction zone, forming the Jiao-Liao, East Bohai, and Honglazi faults (Fig. 10A). Stage 2, in late
Early Cretaceous, as a result of the roll-back of subducting Pacific Plate, extensive back-arc extension occurred at the
continental margin of East Asia. The extension deformation is expressed in two directions, i.e., parallel and perpendicular to
330 the subduction zone. The proto-Bohai Sea formed in this stage, as the combined result of the extension and accompanying

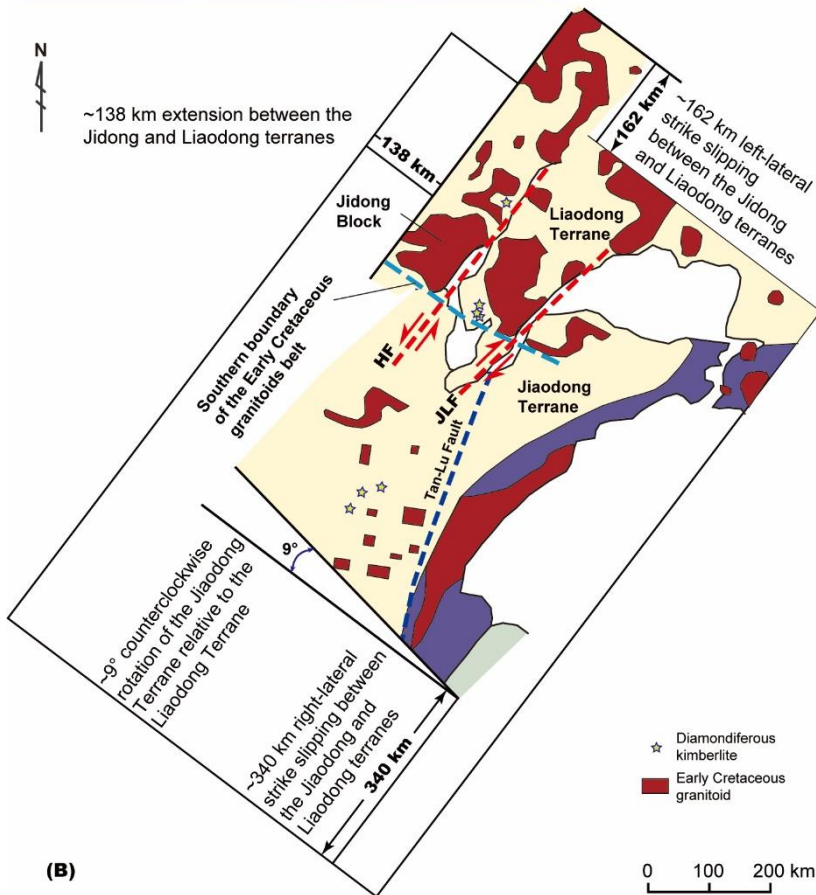
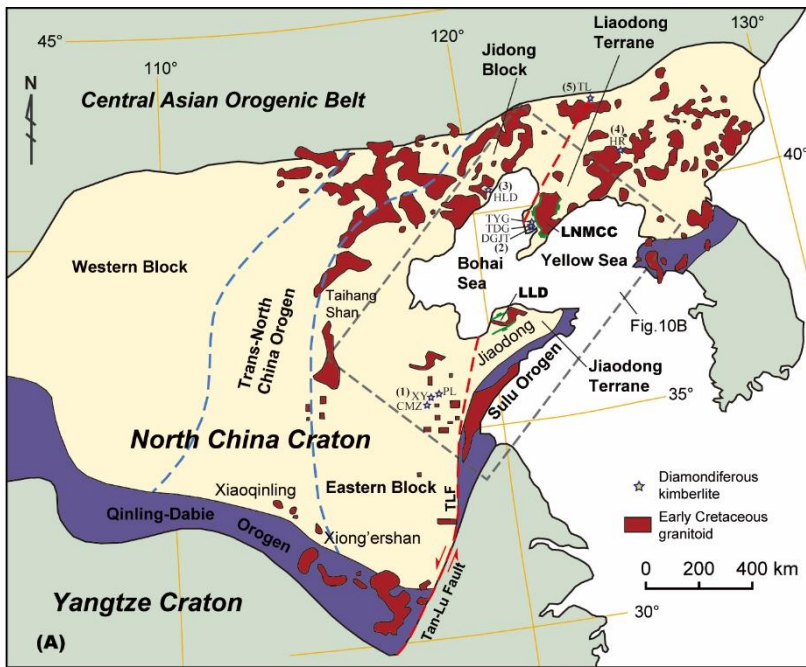


Figure 9: Correlation of the Jidong (Yanshan), Jiaodong and Liaodong terranes, according to the distribution of Early Cretaceous magmatic intrusions and diamondiferous kimberlites. (A) Distribution of Early Cretaceous granitoids and diamondiferous kimberlites in the Jiaodong and Liaodong peninsulas (modified from Liu et al., 2019 and Wu et al., 2021). HF, the Honglazi fault. JLF, the Jiao-Liao fault. TLF, the Tan-Lu fault predicted by previous researches. LLD, the Linglong dome. LNMCC, the Liaonan MCC. Diamondiferous kimberlites: (1) Mengyin area: PL, Poli; XY, Xiyu; CMZ, Changma Zhuang. (2) Wafangdian area: TYG, Taiyang Gou; TDG, Toudao Gou; DGJT, Dagaojia Tun. (3) HLD, Huludao. (4) HR, Huanren. (5) TL, Tieling. (B) Reconstruction of the Ji-Lu-Jiao-Liao Terrane, regarding to the restoration of Early Cretaceous magmatic complex.

335

340 strike slip faulting (Fig. 10B). Stage 3, the present-day Bohai Sea formed as a result of the continuous bi-directional back-arc extension and strike-slipping along the Jiao-Liao, East Bohai, and Honglazi faults in Cenozoic (Fig. 10C).

5 Tectonic significances of the genetic model

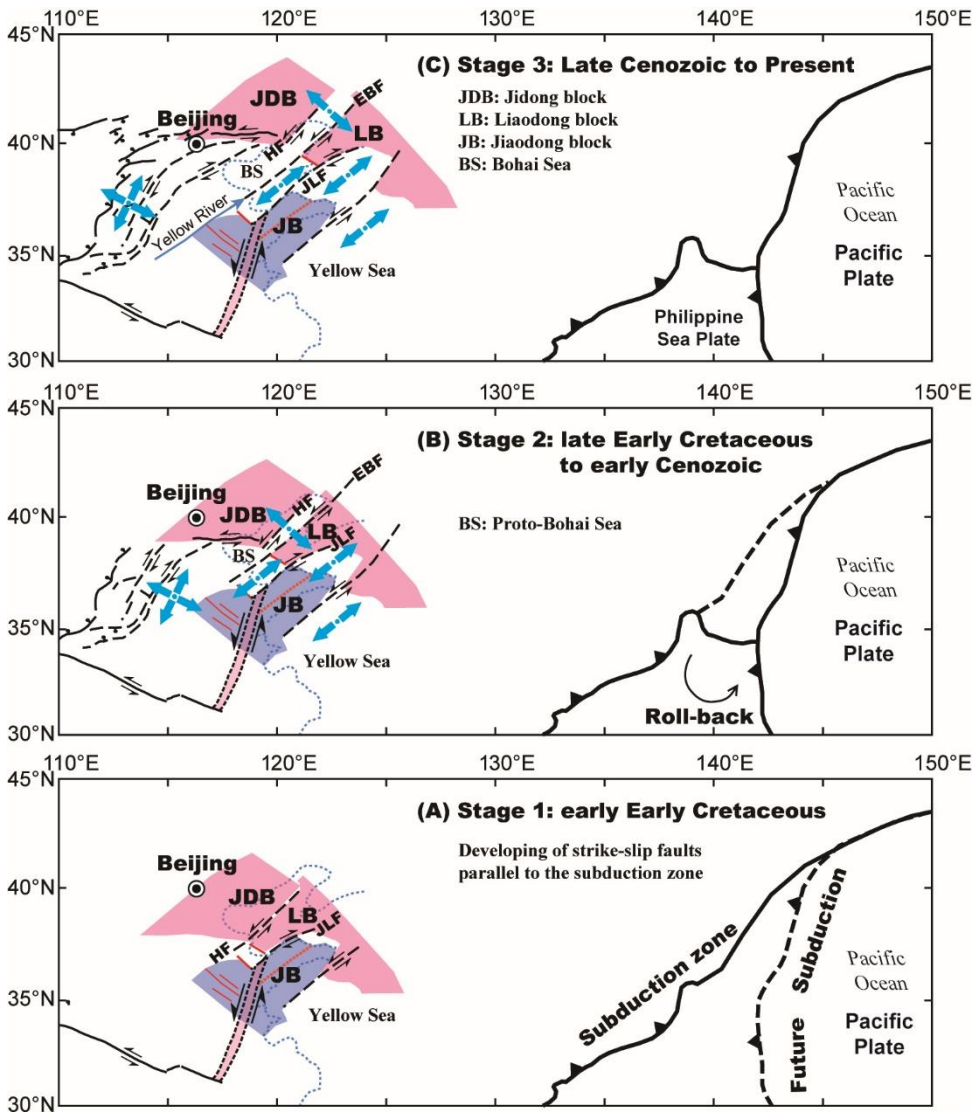
5.1 Reconstruction of the fault system and re-recognition of the Tan-Lu fault

Some researchers believe that the formation of the Bohai Sea is mainly controlled by the northeast-striking left-lateral strike-slipping Tan-Lu fault zone (Zhu et al., 2004; Min et al., 2013; Zhang et al., 2015). The Tan-Lu fault zone is considered as a major **long term** active fault zones in eastern China, starting from the Lujiang City in Anhui Province, with a total length of ca. 2400 km (Xu et al., 1987; Wang et al., 2000; Zhu et al., 2004; Min et al., 2013; Zhang et al., 2015; Zhu et al., 2020). It is divided into several segments, such as the south segment in Anhui and Jiangsu provinces, the Shandong segment (*i.e.*, the Yishu Fault Zone; Figs. 3 and 4), the Bohai Sea segment from the Weifang City in Shandong Province to the Shenyang City in Liaoning Province (Zhang et al., 2015), and the northeast segment in northeast China, with a total left-lateral displacement of 1000-1500 km (Xu et al., 1987). It is considered as the eastern boundary of the Bohai Sea and the BBB (Hou et al., 1998; Zhou et al., 2022). The main extensional structures in the Bohai Sea are considered to be derivatives of the Tan-Lu fault (Hou et al., 1998), or resulted from the dextral transpression of the pre-existing large-scale NNE strike-slipping fault (*i.e.*, the Tan-Lu fault) in the basement (Xiao et al., 2004). Some other researchers believe that the Tan-Lu fault can be divided into two segments, the south and the north, with the Bohai Sea in the middle. These two segments have different faulting histories, and formed the single Tan-Lu fault in Late Jurassic due to opposite growth of the faults (Li et al., 2023b).

The Tan-Lu fault zone is characterized by a large-scale sinistral strike-slip faulting (Xu et al., 1987), especially in its southern segment (Liu et al., 2017). It truncated the Hong'an-Dabie and Sulu high- and ultra-high pressure metamorphic belts, with a sinistral displacement of ca. 540 km (Leech and Webb, 2013). It possibly initiated during the collision between the North China and Yangtze blocks in Triassic (244-209 Ma; Yin and Nie, 1993; Chen et al., 2000), and suffered from counterclockwise rotation of the Lower Yangtze Block, east side of the Tan-Lu fault, in Jurassic (189-164 Ma; Chen et al., 2000; Wang et al., 2000). In late Early and early Late Cretaceous (130-94 Ma), the Tan-Lu fault zone extended northwards into the Yishu fault zone, a rift zone **between the Luxi block and Jiaodong Peninsula** (Figs. 3 and 4; Chen et al., 2000). In this time, both the Luxi and Jiaodong regions are characterized by normal faulting, implying a close connection of the extension with the NCC destruction (Li et al., 2018; Zhu and Xu, 2019; Zhu et al., 2020, 2024). Newly achieved paleomagnetic study

365

yields sinistral slip of ca. 100 km, along the southern segment of the Tan-Lu fault in Anhui and Jiangsu provinces, during early Late Cretaceous (100-80 Ma; Qin et al., 2022).



370 **Figure 10:** Proposed three-stage model for the formation of the Bohai Sea as a result of complex faulting in Bohai Sea area and
 375 **roll-back of the West Pacific and Philippine Sea plate subduction.** JDB, the Jidong Block. LB, the Liaodong Block. JB, the
 Jiaodong Block. BS, the Bohai Sea.

However, there are still some controversies over whether the Bohai Sea segment is a part of the Tan-Lu fault zone
 375 (Zhang et al., 2015), and whether the Tan-Lu fault is connected with the Yilan-Yitong fault and/or Dunmi fault to the north
 (Min et al., 2013). For example, a large number of nearly east-west trending normal faults, as well as some NE-trending

normal faults and right-lateral strike-slip faults, formed in the Dongying Depression, southwestern Laizhou Bay, in Cenozoic (Yuan et al., 2022). That is to say, there is no direct evidence for the continuous NE-wards extending of the Tan-Lu and/or Yishu fault zone in Cenozoic. If the Tan-Lu fault zone be designated as a large-scale left-lateral strike-slip fault in East Asia (Chen et al., 2000), the Cenozoic normal faulting and right-lateral strike slipping activities in the Bohai Sea and surrounding area (Allen et al., 1997; Chen et al., 2022b; Hu et al., 2022; Yuan et al., 2022), should be excluded in the scope of the Tan-Lu and/or Yishu fault zone.

The Luxi block has experienced multi-stage extensional faulting in NE striking, at ca. 61 Ma, 49-42 Ma, and 36-32 Ma, respectively (Li et al., 2018). The extensional direction is parallel to the strike of the Honglazi, East Bohai, and Jiao-Liao faults, implying close connection between the normal faulting and strike-slip movement in Cenozoic. Universally developed right-lateral strike slip faulting in the Bohai Sea area since middle Eocene, should be tightly connected with the right-lateral slipping along the Jiao-Liao fault and its northern branch, the North Yellow Sea fault (NYSF in Figs. 3 and 4). It deeply cuts through the lower crust, and extends northeastward to be connected with the Yalvjiang fault (Tian et al., 2007).

5.2 Tectonic reconstruction of the Bohai Sea area

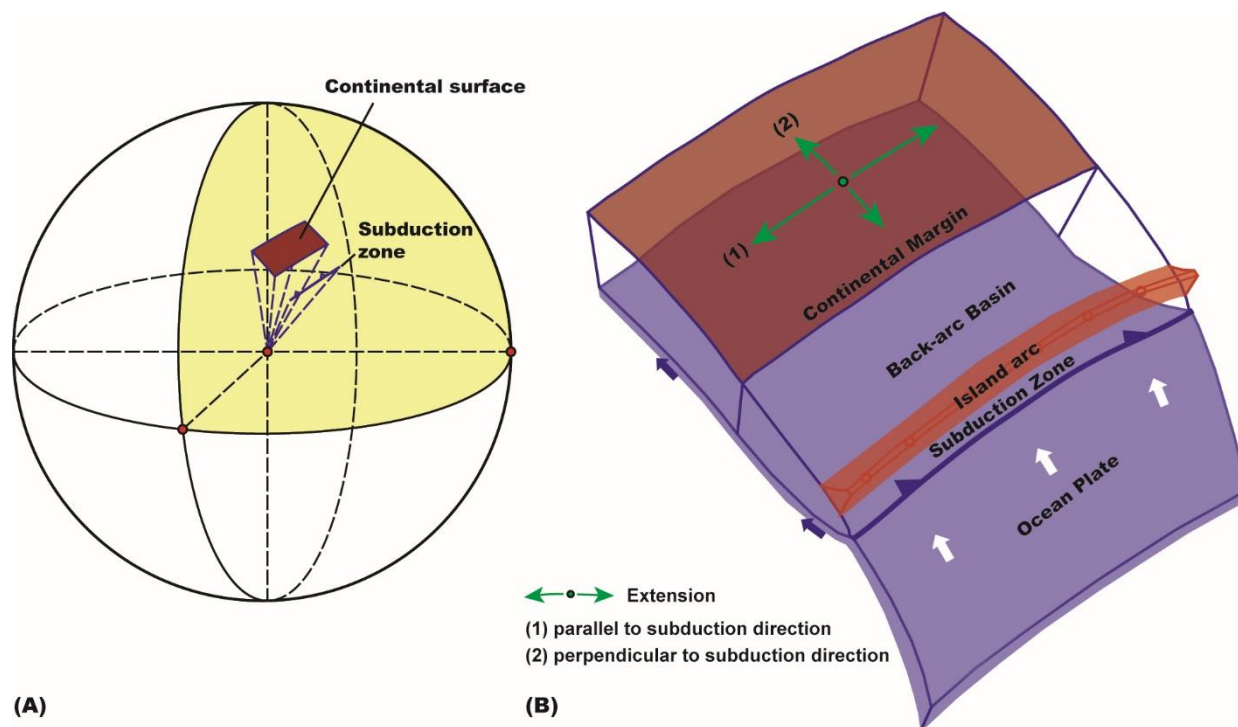
Based on our reconstruction of the fault system and genetic model of the Bohai Sea and surrounding area (Fig. 10), as well as the distribution of Early Cretaceous granites, we got some estimations of the displacement magnitudes among several blocks around the Bohai Sea (Fig. 9B). Among them, the Jiaodong and Liaodong blocks are connected through the Jiao-Liao fault, with a right-lateral displacement of ca. 340 km. Meanwhile, the Jiaodong Block may have undergone a counterclockwise rotation of ca. 9°, relative to the Liaodong Block. The displacement between the Jidong Block (or Yanshan Orogenic Belt) and Liaodong Block can be partitioned into left-lateral displacement of ca. 162 km along the Honglazi fault zone, and stretching displacement of ca. 138 km perpendicular to the strike-slip fault (Fig. 9B). Our model does not need to consider the influence of the Tan-Lu fault in Cenozoic.

Our model has also considered the constraints from distribution of kimberlites which emplaced during Middle Ordovician (470-456 Ma) in the Mengyin (Shandong) and Wafangdian (Liaoning) areas (Fig. 3; Liu et al., 2019). Most of previous studies allocated the diamond-bearing kimberlites on both sides of the Tan-Lu fault, with a north-south distance of ca. 550 km between them. Take these two kimberlites as piercing points, they got a left-lateral displacement of ca. 550 km for the Tan-Lu fault. This magnitude is roughly equivalent to the left-lateral displacement of ca. 540 km estimated by Leech and Webb (2013), with the correlation constrain of the Dabie and Sulu orogens. However, there are also some diamond-bearing kimberlites in other areas, such as the Huanren, Huludao, and Tieling in Liaoning, and Ji'an in Jilin, in eastern China (Fig. 3; Liu et al., 2019). In fact, the distribution of kimberlites in eastern China is oriented in nearly northeast direction, not in the east-west trend (Figs. 3 and 9).

5.3 General pattern of back-arc extension

Back-arc extension and breakup of craton block at continental margin are significant manifestation of craton destruction on

the Earth surface (Zhu et al., 2020). Previous studies have emphasized the back-arc extension which is roughly perpendicular to the front of the island arc (Ren et al., 2002; Artemieva, 2023). Also a few examples involved local extension parallel to the strike of the trench, especially in the case of oblique subduction, with the development of rift basins and conjugate strike-slip fault system controlled by normal faulting (Kneller and van Keken, 2008; Balanyáj et al., 2012; Krstecanic et al., 2022). In this study, we noticed that there are two-direction extensions in the Bohai Sea area during both the Late Cretaceous and Cenozoic, i.e., the extensions perpendicular and parallel to the subduction zone of the West Pacific and Philippine Sea plates. Hence, we propose a general extension model for the back-arc setting, based on spherical geometry consideration (Fig. 11). In this model, the bidirectional extensions perpendicular and parallel to the subduction zone have the same importance.



420 **Figure 11: Proposed model for the back-arc extension in spherical geometry. (A) Spherical geometric diagram of the Earth's surface related to subduction zone. (B) Schematic diagram of bi-directional extension in back-arc continental margin.**

6 Conclusions

Based on field investigation, structural analyses, and geological correlation, we constructed a new framework of the fault system of Bohai Sea and surrounding area, and reach the following conclusions.

1. The fault system of Bohai Sea and surrounding area is mainly composed of normal faults and strike-slip faults. Superimposed on the rift system of Bohai Sea area, a left-lateral strike-slip fault formed in the Liaodong Bay in Late Cretaceous and early Paleogene, while a right-lateral strike-slip fault between the eastern margin of Liaodong Peninsula and

northwestern margin of Jiaodong Peninsula formed at the same time. This new mode of movement may have been resulted from the NE stretching which is parallel to the subduction zone in eastern margin of the Asia Continent.

430 2. We propose that the formation and evolution of Bohai Sea fault system is a result from the superimposition of NE extension parallel to the West Pacific and Philippine Sea subduction zone on the NW extension perpendicular to the subduction zone. The two-direction extension perpendicular and parallel to the subduction zone should be the basic pattern of back-arc extension with spherical-geometric effect, especially in the Bohai Sea area.

435 3. The Tan-Lu fault has at least two-stage evolution, left-lateral strike-slipping in Middle-Late Triassic and Jurassic, and rifting plus left-lateral strike-slipping in Early Cretaceous, respectively. The opening of the Bohai Sea in early Cenozoic has destroyed the previously existing Tan-Lu fault system, resulting in the break-up of Tan-Lu fault into two segments, the south and north segments, respectively. Both the Honglazi and East Bohai faults are belonging to the north segment of the Tan-Lu fault, while only a few remnants of the Tan-Lu fault remain in the Bohai Sea area.

Acknowledgements

440 We appreciate critical reviews and constructive suggestions from the three referees that made significant improvements of the manuscript.

Competing interests

The contact author has declared that none of the authors has any competing interests.

References

445 Allen, M.B., Macdonald, D.I.M., Zhao, X., Vincent, S.J., and Brouet-Menzies, C.: Early Cenozoic two-phase extension and late Cenozoic thermal subsidence and inversion of the Bohai Basin, northern China, *Mar. Petrol. Geol.*, 14, 951–972, 1997.

Artemieva, I.M.: Back-arc basins: A global view from geophysical synthesis and analysis, *Earth-Sci. Rev.*, 236, 104242, doi: 10.1016/j.earscirev.2022.104242, 2023.

450 Balanyaj, C., Crespo-Blanc, A., Dıaz-Azpiroz, M., Exposito, I., Torcal, F., Perez-Pena, V., and Booth-Rea, G.: Arc-parallel vs back-arc extension in the Western Gibraltar arc: Is the Gibraltar forearc still active? *Geol. Acta*, 10, 249–263, doi: 10.1344/105.000001771, 2012.

Charles, N., Augier, R., Gumiaux, C., Monie, P., Chen, Y., Faure, M., and Zhu, R.X.: Timing, duration and role of magmatism in wide rift systems: Insights from the Jiaodong Peninsula (China, East Asia), *Gondwana Res.*, 24, 412–428, 2013.

- 455 Chen, X.H., Wang, X.F., Zhang, Q., Chen, B.L., Chen, Z.L., Harrison, T.M., and Yin, A.: Geochronologic study on the formation and evolution of Tan-Lu fault [in Chinese with English abstract], *J. Changchun Univ. Sci. Tech.*, 30 (3), 215–220, 2000.
- Chen, X.H., Dong, S.W., Shi, W., Ding, W.C., Zhang, Y.P., Li, B., Shao, Z.G., and Wang, Y.: Construction of the continental Asia in Phanerozoic: A review, *Acta Geol. Sin.-Engl.*, 96, 26–51, doi: 10.1111/1755-6724.14867, 2022.
- 460 Chen, X.P., Li, W., Wu, Z.P., Yang, H.F., Zhang, Q., Meng, M.F., Wang, G.Z., and Jia H.B.: The tectonic transition from rifting to strike-slip in the Liaodong Bay Depression, offshore China, *Mar. Petrol. Geol.*, 139, 105598, doi: 10.1016/j.marpetgeo.2022.105598, 2022.
- Chen, Y., Liang, X.F., Yan, H.F., Jiang, M.M., and Ai, Y.S.: Seismicity of the northern section of the Tanlu fault zone in the Bohai Bay and its implications [in Chinese with English abstract], *Chinese J. Geophys.*, 63, 2566–2578, doi: 465 10.6038/cjg2020N0159, 2020.
- China Geological Survey: Geological Map of the People’s Republic of China (1:2500000), with explanation [in Chinese], Beijing, China, SinoMaps Press, 1–246, 2004.**
- Clinkscales, C. and Kapp, P.: Structural style and kinematics of the Taihang-Luliangshan fold belt, North China: Implications for the Yanshanian orogeny, *Lithosphere*, 11, 767–783, doi: 10.1130/L1096.1, 2019.
- 470 Deng, J., Yang, L.Q., Groves, D.I., Zhang, L., Qiu, K.F., and Wang, Q.F.: An integrated mineral system model for the gold deposits of the giant Jiaodong province, eastern China, *Earth-Sci. Rev.*, 208, 103274, doi: 10.1016/j.earscirev.2020.103274, 2020.
- Deng, Q.D., Wang, T.M., Li, J.G., Xiang, H.F., and Cheng, S.P.: A discussion on source model of Haicheng earthquake [in Chinese with English abstract], *Scientia Geol. Sin.*, 11 (3), 3-12, 1976.
- 475 Dong, S.W., Zhang, Y.Q., Zhang, F.Q., Cui, J.J., Chen, X.H., Zhang, S.H., Miao, L.C., Li, J.H., Shi, W., Li, Z.H., Huang, S.Q., and Li, H.L.: Late Jurassic-Early Cretaceous continental convergence and intracontinental orogenesis in East Asia: A synthesis of the Yanshan Revolution, *J. Asian Earth Sci.*, 114, 750–770, doi: 10.1016/j.jseaes.2015.08.011, 2015.
- Dong, L.L., Yang, Z.M., Bai, X., and Deng, C.: Generation of the Early Cretaceous granitoid in the Dazeshan region, Jiaodong Peninsula: Implications for the crustal reworking in the North China Craton, *Front. Earth Sci.*, 10, 1083608, 480 doi: 10.3389/feart.2022.1083608, 2023.
- Faure, M., Lepvrier, C., Nguyen, V.V., Vu, V.T., Lin, W., and Chen, Z.C.: The South China block-Indochina collision: Where, when, and how? *J. Asian Earth Sci.*, 79, 260–274, doi: 10.1016/j.jseaes.2013.09.022, 2014.**
- Guo, H., Xia, B., Chen, G.W., Wang, R.H., Ding, J.H., Wang, J.J., and Huang, T.: Geochemistry of basalts during Oligocene in Huimin depression and its geotectonic significance [in Chinese with English abstract], *Geotectonica et Metallogenia*, 485 29, 303–315, 2005.
- Hou, G.T., Qian, X.L., and Song, X.M.: The origin of the Bohai Bay Basin [in Chinese with English abstract], *Acta Scientiarum Naturalium Universitatis Pekinensis*, 34, 503–509, 1998.
- Hu, P.P., Yang, F.L., Zhang, R.C., Wang, W., and Dong, R.W.: Cenozoic extension to strike-slip transition in the Liaodong

- 490 Bay Subbasin along the Tan-Lu Fault Zone, Bohai Bay Basin: New insights from stress field modelling, *Tectonophysics*,
822, 229163, doi: 10.1016/j.tecto.2021.229163, 2022.
- Kim, H.S., Kwon, S., Kim, S.W., and Santosh, M.: Permo-Triassic high-pressure metamorphism in the central western
Korean Peninsula, and its link to Paleo-Tethyan Ocean closure: Key issues revisited, *Geosci. Front.*, 9, 1325–1335, doi:
10.1016/j.gsf.2018.01.007, 2018.
- Kneller, E.A., and van Keken, P.E.: Effect of three-dimensional slab geometry on deformation in the mantle wedge:
495 Implications for shear wave anisotropy, *Geochem., Geophys., Geosy.*, 9, Q01003, doi: 10.1029/2007GC001677, 2008.
- Koua, K.A.D., Sun, H.S., Li, J.W., Li, H., Xie, J.L., Sun, Q.M., Li, Z.K., Yang, H., Zhang, L.G., and Mondah, O.R.:
Petrogenesis of Early Cretaceous granitoids and mafic enclaves from the Jiaodong Peninsula, eastern China:
Implications for crust-mantle interaction, tectonic evolution and gold mineralization, *J. Asian Earth Sci.*, 228, 105096,
doi: 10.1016/j.jseas.2022.105096, 2022.
- 500 Krstekanic, N., Willingshofer, E., Matenco, L., Toljic, M., and Stojadinovic, U.: The influence of back-arc extension
direction on the strain partitioning associated with continental indentation: Analogue modelling and implications for the
Circum-Moesian Fault System of South-Eastern Europe, *J. Struct. Geol.*, 159, 104599, doi: 10.1016/j.jsg.2022.104599,
2022.
- Leech, M.L. and Webb, L.E.: Is the HP–UHP Hong’an–Dabie–Sulu orogen a piercing point for offset on the Tan–Lu fault? *J.*
505 *Asian Earth Sci.*, 63, 112–129, doi: 10.1016/j.jseas.2012.08.005, 2013.
- Li, S.Z., Zhao, G.C., Dai, L.M., Zhou, L.H., Liu, X., Suo, Y.H., and Santosh, M.: Cenozoic faulting of the Bohai Bay Basin
and its bearing on the destruction of the eastern North China Craton, *J. Asian Earth Sci.*, 47, 80–93, doi:
10.1016/j.jseas.2011.06.011, 2012.
- Li, L., Zhong, D.L., Chen, X.F., and Chen, Y.: Characteristics of NW-trending faults and evidence of fission track in the
510 Luxi Block [in Chinese with English abstract], *Acta Geol. Sin.*, 92 (3), 413–436, 2018.
- Li, X., Wang, Y., Liang, C., Li, B., Zheng, C., and Zhang, M.: Mesozoic stratigraphic sequence and its characteristics in
southern Western Liaoning Province, Northeast China [in Chinese with English abstract], *J. Stratigraphy*, 44 (3), 299–
309, doi: 10.19839/j.cnki.dcxz.2020.0027, 2020.
- Li, H.P., Li, J.L., Luo, S., Bem, T.S., Yao, H.J., Huang, X.L.: Continent-continent collision between the South and North
515 China plates revealed by seismic refraction and reflection at the southern segment of the Tanlu Fault Zone, *JGR Solid
Earth*, 128, e2022JB025748, doi: 10.1029/2022JB025748, 2023a.
- Li, C.M., Zhang, C.H., and Cope, T.D.: A new model for the segmentation, propagation and linkage of the Tan-Lu fault zone,
East Asia, *J. Asian Earth Sci.*, 241, 105466, doi: 10.1016/j.jseas.2022.105466, 2023b.
- Liang, J.T., Wang, H.L., Bai, Y., Ji, X.Y., and Duo, X.M.: Cenozoic tectonic evolution of the Bohai Bay Basin and its
520 coupling relationship with Pacific Plate subduction, *J. Asian Earth Sci.*, 127, 257–266, doi:
10.1016/j.jseas.2016.06.012, 2016.
- Lin, W., Faure, M., Monié, P., and Wang, Q.C.: Polyphase Mesozoic tectonics in the eastern part of the North China Block:

- Insights from the Eastern Liaoning Peninsula massif (NE China), *Geol. Soc. Lond. Spec. Publ.*, 280, 153–169, 2007.
- 525 Lin, W., Faure, M., Monié, P., Schärer, U., and Panis, D.: Mesozoic extensional tectonics in Eastern Asia: The south Liaodong Peninsula metamorphic core complex (NE China), *J. Geol.*, 116, 134–154, 2008.
- Lin, W., and Wei, W.: Late Mesozoic extensional tectonics in the North China Craton and its adjacent regions: A review and synthesis, *Int. Geol. Rev.*, 62, 811–839, doi: 10.1080/00206814.2018.1477073, 2020.
- 530 Lin, W., Zeng, J.P., Meng, L.T., Qiu, H.B., Wei, W., Ren, Z.H., Chu, Y., Li, S.J., Song, C., and Wang, Q.C.: Extensional tectonics and North China Craton destruction: Insights from the magnetic susceptibility anisotropy (AMS) of granite and metamorphic core complex, *Science China Earth Sciences*, 64 (9), 1557–1589, doi: 10.1007/s11430-020-9754-1, 2021.
- Liu, S.F., Gurnis, M., Ma, P.F., and Zhang, B.: Reconstruction of northeast Asian deformation integrated with western Pacific plate subduction since 200 Ma, *Earth-Sci. Rev.*, 175, 114–142. doi: 10.1016/j.earscirev.2017.10.012, 2017.
- 535 Liu, F., Yang, J.S., Lian, D.Y., Yu, X.Y., and Gwandu, K.R.: Metallogenic features of diamondiferous kimberlites in Botswana and China: Enlightenment for exploration of the same type deposits [in Chinese with English abstract], *Geol. Chin.*, 46, 43–76, 2019.
- Liu, Q.Y., He, L.J., and Chen, L.C.: Tectono-thermal modeling of Cenozoic multiple rift episodes in the Bohai Bay Basin, eastern China and its geodynamic implications, *Int. J. Earth Sci.*, 107, 53–69, doi: 10.1007/s00531-017-1550-1, 2018.
- 540 Liu, Y.M., and Wu, Z.P.: Diachronous characteristics and genetic mechanism of the Paleogene tectonic transition in Bohai Bay basin: a case study of the southwest Bohai Sea and Jiyang Depression [in Chinese with English abstract], *J. Central South University (Science and Technology)*, 53, 1095–1110, 2022.
- Ma, Q.L., Yang, J.H., Du, Y.S., Dai, X.D., Chai, R., Guo, H., and Xu, Y.J.: Early Triassic initial collision between the North China and South China blocks in the eastern Qinling Orogenic Belt, *Tectonophysics*, 814, 228965, doi: 10.1016/j.tecto.2021.228965, 2021.
- 545 Min, W., Liu, Y.G., Jiao, D.C., Shen, J., and Pan, X.L.: Evidence for Holocene activity of the Yilan-Yitong fault, northern section of the Tan-Lu fault zone in Northeast China, *J. Asian Earth Sci.*, 67-68, 207–216, doi: 10.1016/j.jseaes.2013.02.031, 2013.
- 550 Qin, H.F., Hao, W.X., Deng, C.L., Zhao, P., Shen, Z.S., Han, F., He, H.Y., Pan, Y.X., and Zhu, R.X.: Sinistral displacement along the Tan–Lu Fault during the Cretaceous induced by Paleo-Pacific subduction: Constraints from new paleomagnetic and U–Pb geochronological data, *J. Asian Earth Sci.*, 237, 105362, doi: 10.1016/j.jseaes.2022.105362, 2022.
- Qiu, H.B., Lin, W., Chen, Y., and Faure, M.: Jurassic-Early Cretaceous tectonic evolution of the North China Craton and Yanshanian intracontinental orogeny in East Asia: New insights from a general review of stratigraphy, structures, and magmatism, *Earth-Science Reviews*, 237, 104320, 2023.
- 555 Ren, J.S., Niu, B.G., Wang, J., Jin, X.C., and Xie, L.Z.: *International Geological Map of Asia (1:5000000)*, Beijing, China, Geological Publishing House, 2013.

- Ren, J.Y., Tamaki, K., Li, S.T., and Zhang, J.X.: Late Mesozoic and Cenozoic rifting and its dynamic setting in Eastern China and adjacent areas, *Tectonophysics*, 344, 175–205, 2002.
- Ren, Z.H., Dong, S.W., Zhang, Y.Q., Chen, X.H., Shi, W., and Zhang, Y.: Middle Jurassic intracontinental evolution of East Asia: Insights from the Tianshifu-Dongyingfang basin of the Liaodong Peninsula, NE China, *Geol. Soc. Am. Bull.*, 135, 915–936, doi: 10.1130/B36373.1, 2023.
- Shen, Z.Y., Gao, J.Y., Yang, C.G., Yang, Y., Zhang, T., and Wu, Z.C.: Characteristics of the Neogene-Quaternary faults in the North Yellow Sea Basin and the inheritance to the Paleogene faults [in Chinese with English abstract], *Earth Sci.*, 38 (Suppl.1), 53–60, 2013.
- 565 Sun, S., Qiu, L., Yan, D.P., Zhou, Z., Zhang, J., Wang, X., Wu, B., Shi, H., Ariser, S., Chu, R., Fu, Y., and Wang, Y.: Formation and evolution of supradetachment basins during continental extension: Insights from the Fuxin Basin in NE China, *Front. Earth Sci.*, 10, 845812, doi: 10.3389/feart.2022.845812, 2022.
- Tian, Z.X., Zhang, X.H., Xiao, G.L., and Meng, X.J.: The north edge fracture of the north Yellow Sea basin and its characters [in Chinese with English abstract], *Mar. Geol. Quat. Geol.*, 27 (2), 59–63, 2007.
- 570 Wang, C., Sun, J., Shen, Y., Tian, T., Li, J., Qian, Y., and Sun, F.: Petrogenesis of Early Cretaceous adakites from the Liaodong Peninsula: insight into the lithospheric thinning of the North China Craton, *Geol. Mag.*, 160, 60–74, doi: 10.1017/S0016756822000644, 2023.
- Wang, K., Wei, B., and Zhao, Z.S.: Magma assembly and evolution of the Early Cretaceous Sanguliu pluton in the Liaodong Peninsula, NE China, *J. Asian Earth Sci.*, 226, 105077, doi: 10.1016/j.jseaes.2021.105077, 2022.
- 575 Wang, W., Wang, D.J., Zhao, B., Huang, Y., Zhang, C.H., Tan, K., and Yang, S.M.: Horizontal crustal deformation in Chinese Mainland analyzed by CMONOC GPS data from 2009–2013, *Geodesy and Geodynamics*, 5 (3), 41–45, doi: 10.3724/sp.j.1246.2014.03041, 2014.
- Wang, X.F., Li, Z.J., Chen, B.L., Chen, X.H., Dong, S.W., and Zhang, Q.: On Tan-Lu Fault Zone [in Chinese with English abstract], Beijing, China, Geological Publishing House, 1–374, 2000.
- 580 Wu, J.J., Zeng, Q.D., Yang, J.H., Li, R., Yu, B., Wang, R.L., Chen, P.W., Zhang, Z.M., and Xie, W.: Petrogenesis and magmatic evolution of the intermediate–felsic Early Cretaceous Shizhuzi magmatic complex on Liaodong Peninsula, NE China, *Lithos*, 398–399, 106338, doi: 10.1016/j.lithos.2021.106338, 2021.
- Xiao, L., Wang, F.Z., Wang, H., and Pirajno, F.: Mantle plume tectonics constraints on the formation of Songliao and Bohaiwan basins [in Chinese with English abstract], *Earth Sci.*, 29 (3), 283–292, 2004.
- 585 Xiong, S.Q., Fan, Z.G., Zhang, H.R., Ding, Y.Y., Huang, X.Z., Li, Z.K., Guo, Z.H., Yang, X., Tong, J., Liu, Q.K., Zhou, D.Q., Tan, L., and Zhang, J.W.: *Aeromagnetic Series Maps of Mainland China (1:2500000), with explanation [in Chinese]*, Beijing, China, Geological Publishing House, 1–19, 2015.
- Xu, J.W., Zhu, G., Tong, W.X., Cui, K.R., and Liu, Q.: Formation and evolution of the Tancheng-Lujiang wrench fault system: a major shear system to the northwest of the Pacific Ocean, *Tectonophysics*, 134, 273–310, 1987.
- 590 Xu, J.Y., Ben-Avraham, Z., Kelty, T., and Yu, H.S.: Origin of marginal basins of the NW Pacific and their plate tectonic

- reconstructions, *Earth-Sci. Rev.*, 130, 154–196, doi: 10.1016/j.lithos.2021.106338, 2014.
- Yan, D.P., Kong, R.Y., Dong, X.Y., Qiu, L., Liu, and H.L.: Late Jurassic-Early Cretaceous tectonic switching in Liaodong Peninsula of the North China Craton and the implications for gold mineralization, *Sci. China Earth Sci.*, 64, 1537–1556, doi: 10.1007/s11430-020-9770-6, 2021.
- 595 Yang, J.H., Xu, L., Sun, J.F., Zeng, Q., Zhao, Y.N., Wang, H., and Zhu, Y.S.: Geodynamics of decratonization and related magmatism and mineralization in the North China Craton, *Sci. China Earth Sci.*, 64, 1409–1427, doi: 10.1007/s11430-020-9732-6, 2021.
- Yang, L. Q., Dilek, Y., Wang, Z. L., Weinberg, R. F., and Liu, Y.: Late Jurassic, high Ba–Sr Linglong granites in the Jiaodong Peninsula, east China: Lower crustal melting products in the eastern north China craton, *Geol. Mag.*, 155, 600 1040–1062, doi:10.1017/ s0016756816001230, 2017.
- Yang, Q., Shi, W., Hou, G.T., Zhang, Y., Wang, T.Y., and Zhao, Z.X.: Late Mesozoic intracontinental deformation at the northern margin of the North China Craton: A case study from the Kalaqin massif, southeastern Inner Mongolia, China, *Tectonophysics*, 793, 228591, doi: 10.1016/j.tecto.2020.228591, 2020.
- Yin, A., and Nie, S.Y.: An indentation model for the North and South China collision and the development of the Tan-Lu and Honam fault systems, eastern Asia, *Tectonics*, 12 (4), 801–813, 1993.
- 605 Yin, A., Yu, X.J., Shen, Z.K., and Liu-Zeng, J.: A possible seismic gap and high earthquake hazard in the North China Basin, *Geology*, 43, 19–22, doi: 10.1130/G35986.1, 2015.
- Yuan, H.W., Chen, S.P., Dai, K., Jia, G.H., Wang, P.F., Li, J.Y., and Gou, Q.W.: Cenozoic tectonic evolution of the Bohai Bay Basin: Constraints from strike-slip activities of the Wangjiagang fault zone, NE China, *J. Asian Earth Sci.*, 233, 610 105262, doi: 10.1016/j.jseaes.2016.06.012, 2022.
- Zeng, R.Y., Allen, M.B., Mao, X.C., Lai, J.Q., Yan, J., and Wan J.J.: Whole-rock and zircon evidence for evolution of the Late Jurassic high-Sr /Y Zhoujiapuzi granite, Liaodong Peninsula, North China Craton, *Solid Earth*, 13, 1259–1280, doi: 10.5194/se-13-1259-2022, 2022.
- Zhai, M.G., Zhang, X.H., Zhang, Y.B., Wu, F.Y., Peng, P., Li, Q.L., Li, Z., Guo, J.H., Li, T.S., Zhao, L., Zhou, L.G., and 615 Zhu, X.Y.: The geology of North Korea: an overview, *Earth-Sci. Rev.*, 194, 57–96, doi: 10.1016/j.earscirev.2019.04.025, 2019.
- Zhang, J.D., Hao, T.Y., Dong, S.W., Chen, X.H., Cui, J.J., Yang, X.Y., Liu, C.Z., Li, T.J., Xu, Y., Huang, S., and Re, F.L.: The structural and tectonic relationships of the major fault systems of the Tan-Lu fault zone, with a focus on the segments within the North China region, *J. Asian Earth Sci.*, 110, 85–100, doi: 10.1016/j.jseaes.2014.11.011, 2015.
- 620 Zhang, L.M., Wang, C.S., Cao, K., Wang, Q., Tan, J., and Gao, Y.: High elevation of Jiaolai Basin during the Late Cretaceous: Implication for the coastal mountains along the East Asian margin, *Earth Planet. Sc. Lett.*, 456, 112–123, doi: 10.1016/j.epsl.2016.09.034, 2016.
- Zhang, Q.B., Song, M.C., Ding, Z.J., Guo, M.L., Zhou, M.L., Dai, C.G., Huo, G., and Zhang, P.: Exhumation history and preservation of the Jiaojia giant gold deposit, Jiaodong Peninsula, *Sci. China Earth Sci.*, 65, 1161–1177, doi:

- 625 10.1007/s11430-021-9887-1, 2022a.
- Zhang, P., Kou, L.L., and Zhao, Y.: Three periods of gold mineralization in the Liaodong Peninsula, North China Craton, *Int. Geol. Rev.*, 64, 2922–2940, doi: 10.1080/00206814.2021.2009046, 2022b.
- Zhao, B., Huang, Y., Zhang, C.H., Wang, W., Tan, K., and Du, R.L.: Crustal deformation on the Chinese mainland during 1998-2014 based on GPS data, *Geodesy and Geodynamics*, 6 (1), 7–15, doi: 10.1016/j.geog.2014.12.006. 2015.
- 630 Zhou, Q.J., Liu, Y.J., Wang, D.Y., Guan, Q.B., Wang, G.Z., Wang, Y., Li, Z.T., and Li, S.Z.: Mesozoic- Cenozoic tectonic evolution and buried hill formation in central Bohai Bay [in Chinese with English abstract], *Earth Sci. Front.*, 29 (5), 147–160, 2022.
- Zhu, G., Wang, D.X., Liu, G.S., Niu, M.L., and Song C.Z.: Evolution of the Tanlu fault zone and its responses to plate movements in west Pacific basin [in Chinese with English abstract], *Scientia Geologica Sinica*, 39 (1), 36–49, 2004.
- 635 Zhu, R.X. and Xu, Y.G., The subduction of the west Pacific plate and the destruction of the North China Craton, *Sci. China Earth Sci.*, 62, 1340–1350, doi: 10.1007/s11430-018-9356-y, 2019.
- Zhu, R.X., Zhu, G., and Li, J.W.: *The North China Craton Destruction* [in Chinese], Beijing, China, Science Press, 1–417, 2020.
- Zhu, R.X., Yang, J.H., Wang, G.W., Zeng, Q.D., Xue, G.Q., Xu, T., Li, X.H., Zhang, P., Lei, D., and Zhu, G.: The genesis and resource potential of gold deposits in the Liaodong Peninsula, *Sci. China Earth Sci.*, doi: 10.1007/s11430-023-1258-4, 2024.
- 640 Zuza, A.V., Levy, D.A., Dee S., DesOrmeau, J.W., Cheng, F., and Li, X.Z.: Structural architecture and attenuation of the ductile lower plate of the Ruby Mountain-East Humboldt Range metamorphic core complex, Northeast Nevada, *Tectonics*, 41, e2021TC007162, 2022.

645