

Two distinct ship emission profiles for organic-sulfate source apportionment of PM in sulfur emission control areas

Kirsten N. Fossum¹, Chunshui Lin^{1,2,3}, Niall O'Sullivan⁴, Lu Lei¹, Stig Hellebust⁴, Darius Ceburnis¹, Aqeel Afzal^{1,5}, Anja Tremper⁶, David Green^{6,7}, Srishti Jain⁴, Steigvilė Byčenkienė⁸, Colin O'Dowd¹, John Wenger⁴, and Jurgita Ovadnevaite¹

¹School of Natural Sciences, Ryan Institute's Centre for Climate & Air Pollution Studies, University of Galway, Galway, H91 CF50, Ireland

²State Key Laboratory of Loess and Quaternary Geology and Key Laboratory of Aerosol Chemistry and Physics, Chinese Academy of Sciences, 710061, Xi'an, China

³Department of Civil and Environmental Engineering, the Hong Kong Polytechnic University, Hong Kong, China

⁴School of Chemistry and Environmental Research Institute, University College Cork, Cork, Ireland

⁵Institute of Energy and Environmental Engineering, University of the Punjab, Lahore, Pakistan

⁶MRC Centre for Environment and Health, Environmental Research Group, Imperial College London, UK

⁷NIHR HPRU in Environmental Exposures and Health, Imperial College London, UK

⁸SRI Center for Physical Sciences and Technology, Lithuania

Correspondence to: Jurgita Ovadnevaite (jurgita.ovadnevaite@universityofgalway.ie)

Formatted: Font: +Body (Times New Roman)

Formatted: Font: (Default) +Body (Times New Roman)

Formatted: Font: (Default) +Body (Times New Roman)

20

25

Abstract. Source apportionment quantitatively links pollution to its source, but can be difficult to perform in areas like ports where emissions from shipping and other port-related activities are intrinsically linked. Here we present the analysis of aerosol chemical speciation monitor (ACSM) data and using combined organic and sulfate ion positive matrix factorization (PMF) during an intensive measurement campaign in Dublin Port. Two main types of ship emissions were identified by this technique: sulfate-rich (S-Ship) and organic-rich (O-Ship). The S-Ship emissions were attributed to heavy fuel oil use and are characterised by particles with standard V/Ni ratios from 2.7-3.9 and a large fraction of acidic sulfate aerosol. The O-Ship emissions were attributed to low-sulfur fuel types and were comprised mostly of organic aerosol (OA) with the V/Ni ratios ranging only from 0-2.3. O-Ship plumes occurred over three-times more frequently than S-Ship plumes during the measurement period. A third minor ship emission factor (X-Ship) was resolved by PMF, but not clearly attributable to any specific fuel type. Overall, S-ship plumes had PM₁ concentrations in the range 4–252 µg m⁻³, with extreme concentrations usually lasting for 5-35 minutes. A third minor ship emission factor (X-Ship) was resolved by PMF, but not clearly attributable to any specific fuel type. Despite their short duration, shipping emission plumes were frequent and contributed to at least 28% of PM₁ (i.e. 14% O-Ship, 12% S-Ship, and 2% X-Ship). Moreover, hydrocarbon-like organic aerosol (HOA) and black carbon could also originate, at least in part, from ship emissions and shipping related activities such as ferry traffic and heavy goods vehicles, suggesting that the overall contribution of shipping activity contribution to ambient PM₁₀ is likely higher, with a maximum upwards of 47%.

1 Introduction

Shipping traffic is set to expand worldwide, increasing pollution in port areas and potentially leading to poorer air quality for 4037% (2.4 billion people) of the world's population living within 100 km of the coast (UN Environment Programme, 2024). A range of emission sources influence the air quality in port areas, including combustion sources such as ocean-going vessels, heavy goods vehicles and land-based industry. These emissions have many similar chemical components, and it can be difficult to separate individual sources, especially when they may be intrinsically related e.g., primary ship emissions and secondary formation of aerosol from ship related precursor gases. However, a combination of chemical analysis methods and source apportionment modelling can be used to successfully determine the contribution of specific sources to the ambient particulate matter measured in port areas. For example: 3.7–6.1% of organic aerosol was related to shipping and industrial plumes in Marseille, France (Chazeau et al., 2022), 1.5% of PM_{2.5} and 18% of particle number concentration was related to shipping traffic in Cork Harbor, Ireland (O'Connor & O'Connor et al., 2013; Healy et al., 2010), shipping emissions were 5–14% of PM_{2.5} in Spanish coasts (Pandolfi et al., 2011; Viana et al., 2009) and were 4–13% of primary PM_{2.5} in Shanghai Port and Hong Kong Ports (Yau et al., 2013; Zhao et al., 2013) and 25% overall in Hong Kong Port (Yau et al., 2013). In Ningbo-Zhoushan Port, China, 18% of polycyclic aromatic hydrocarbons (PAHs) in PM_{2.5} were found to come from heavy Heavy fuel-Fuel oil-Oil (HFO) combustion (Hong et al., 2023), and shipping emissions contributed 6–22% of volatile organic compounds in the Pearl River Delta region (Tong et al., 2024).

Formatted: Font: (Default) +Body (Times New Roman)

Formatted: Font: (Default) +Body (Times New Roman)

Formatted: Font: (Default) +Body (Times New Roman)

Formatted: Font: (Default) +Body (Times New Roman)

Formatted: Font: (Default) +Body (Times New Roman)

Commented [FK1]: RC1: Should be contributed to "PM1" instead of total "PM".

Commented [FK2R1]: corrected

Formatted: Font: (Default) +Body (Times New Roman)

Formatted: Font: (Default) +Body (Times New Roman)

Formatted: Font: (Default) +Body (Times New Roman)

Formatted: Font: (Default) +Body (Times New Roman), Subscript

Formatted: Font: (Default) +Body (Times New Roman)

Formatted: Font: (Default) +Body (Times New Roman)

Formatted: Font: (Default) +Body (Times New Roman)

Formatted: Font: (Default) +Body (Times New Roman)

Formatted: Font: (Default) +Body (Times New Roman)

Formatted: Font: (Default) +Body (Times New Roman)

Formatted: Font: (Default) Times New Roman, 10 pt

Formatted: Font: (Default) +Body (Times New Roman)

Formatted: Font: (Default) +Body (Times New Roman)

Formatted: Font: (Default) +Body (Times New Roman)

Formatted: Font: (Default) +Body (Times New Roman)

Formatted: Font: (Default) +Body (Times New Roman)

Formatted: Font: (Default) +Body (Times New Roman)

High time resolution measurements of aerosol chemical composition can be used to identify different emission sources in port ~~areas~~ areas, as they are capable of reflecting the transient emission sources and changing meteorology. For example, Vanadium (V) and Nickel (Ni) have been used as chemical tracers to identify primary emissions from combustion of ~~Heavy Fuel Oil~~ (HFO) (Healy et al., 2009; Mueller et al., 2011; Agrawal et al., 2009; Zhao et al., 2013) and concentration ratios of V/Ni ranging from 2.5–4.0 are associated with typical ship emissions (Mazzei et al., 2008; Pandolfi et al., 2011; Viana et al., 2009). Different analysis techniques can be used to perform source apportionment; one leading type of multivariate analysis for high-resolution aerosol composition is positive matrix factorisation (PMF), ~~which~~ PMF is capable of resolving distinct primary as well as secondary aerosol sources (e.g. Chazeau et al., 2022; Yau et al., 2013).

There are many regulations and guidelines related to the control of emissions and air quality in port areas. Among these are sulfur emission control areas (SECA), which aim to reduce emissions of sulfur oxides from ~~marine sources~~ ships, by limiting the sulfur-content in marine fuel. These regulations aim to improve health and reduce negative ecosystem impacts of commercial shipping and are enforced in Europe through the EU Sulfur Directive and at the international level by the International Maritime Organisation (IMO). On January 1st, 2015, the IMO reduced the limit on sulfur fuel content in SECA from 1.0% m/m (mass by mass) to 0.1% m/m. Additionally, the maximum sulfur content outside of SECA was reduced from 3.5% m/m to 0.5% m/m on January 1st, 2020 (IMO 2020). Due to the higher cost of low-sulfur (low-S) fuels, many ship operators have instead installed exhaust scrubber systems, which reduce the gaseous sulfur emissions. A common wet scrubber design uses alkaline solution, often seawater pumped from below the ship, to spray through the ship exhaust, scavenge, and reduce gaseous SO₂ emissions. Vessels with exhaust scrubber systems, in accordance with an amendment to the original regulations, are still allowed to use fuels exceeding 0.50% sulfur after March 1st 2020. ~~These systems can be open or closed, with the open system cycling in seawater to use for scrubbing and cycling out the sulfur enriched scrubbing water back into the sea.~~ This has many implications for both the composition of the aerosol emissions and for seawater acidification and pollution (Comer et al. 2020). The transition from HFO (S<3.5% m/m) to ultra-low-S fuel (0.1% m/m) has been shown to improve air quality through ~~to reduce~~ reduced the mass concentration of particulate matter (PM) by 67%, reduced SO₂ emissions by 80% and ~~lead to~~ an overall decrease in volatile organic compounds, including the heavier and carcinogenic PAHs, (Zetterdahl et al., 2016). However, this transition has also been shown to ~~but an~~ increase in the production of monoaromatic and lighter polyaromatic hydrocarbon compounds (Zetterdahl et al., 2016). However, ~~d~~ despite reductions in many pollutants, it is reported that the ~~reduction in~~ lowering of the sulfur fuel content is unlikely to lead to significant changes in either the total particle number concentration or ~~the~~ the black carbon mass concentration (Zetterdahl et al., 2016). Studies have pointed out that low-S fuels contain much lower amounts of metals from the refinery process and therefore will not have the typical chemical markers of HFO traditionally used for tracing ship emissions (Anders et al., 2023; Czech et al., 2017). While it has been proposed that lubricant oil from marine engines could provide a fuel-independent pool of possible marker substances (Eichler et al., 2017), new studies are urgently needed in port areas to derive alternative markers or chemical profiles for ship emissions, as well as diagnostic ratios for both particle-bound and volatile organics (Czech et al., 2017).

Formatted: Font: (Default) +Body (Times New Roman)

Formatted: Font: (Default) +Body (Times New Roman)

Formatted: Font: (Default) +Body (Times New Roman)

Formatted: Font: (Default) +Body (Times New Roman)

Commented [FK3]: RC2: The author spends a considerable amount of content introducing the ship scrubber device, which in my view, is unnecessary to elaborate on to such an extent.

Commented [FK4R3]: We aim to keep the text concise but informative, so we thank the reviewer for the suggestion. However, we believe that our readers will not be familiar with scrubber devices and will therefore benefit from the introduction. However, we have shortened this section somewhat, nevertheless.

Formatted: Font: (Default) +Body (Times New Roman)

Formatted: Font: (Default) +Body (Times New Roman)

Formatted: Font: (Default) +Body (Times New Roman)

Formatted: Font: (Default) +Body (Times New Roman)

Formatted: Font: (Default) +Body (Times New Roman)

Formatted: Font: (Default) +Body (Times New Roman)

Formatted: Font: (Default) +Body (Times New Roman)

Formatted: Font: (Default) +Body (Times New Roman)

Formatted: Font: (Default) +Body (Times New Roman)

Formatted: Font: (Default) +Body (Times New Roman)

Formatted: Font: (Default) +Body (Times New Roman)

Commented [FK5]: RC1: though wet scrubbers or poor quality low-sulfur fuel may have some disadvantages, previous studies (e.g. Yu et al., 2020) have shown that the IMO 2020 regulation will lead to significant reduction of aerosol emissions. Please add some information about the positive part of the new IMO regulations.

Yu, C., Pasternak, D., Lee, J., Yang, M., Bell, T., Bower, K., Wu, H., Liu, D., Reed, C., Bauguitte, S. and Cliff, S., 2020. Characterizing the particle composition and cloud condensation nuclei from shipping emission in Western Europe. Environmental Science & Technology, 54(24), pp.15604-15612.

Commented [FK6R5]: Thank you for this comment, while we agree that there should be a balanced discussion; we do not present any discouraging statements about the IMO regulations. Still, we can add a statement on the positive aims of the IMO regulations, as well as highlight the reductions in pollutants that these aims will achieve. However, we can not add a reduction in CCN emissions as a 'positive' as the net effect could be to decrease global cooling and intensify global warming (Yuan et al. 2024).

Yuan, T., Song, H., Oreopoulos, L. et al. Abrupt reduction in shipping emission as an inadvertent geoeengineering termination

Formatted: Font: (Default) +Body (Times New Roman)

Dublin Port is the largest port in Ireland, classified as a Tier 1 medium port. In 2019, it handled 49.5% (~26.3 million tonnes) of Irish Freight (Transport Omnibus (2019)). For context, the largest port in the EU, Rotterdam Port, has 18-times this capacity. Dublin Port expects to double its capacity by 2040, at a 3.3% expansion rate per annum (Dublin Port Masterplan 2040 (DPCpe, 2018)). Dublin Port is adjacent to the urban centre of Dublin city (< 5 km), where the air quality has been studied at both urban background and roadside monitoring locations (Lin et al. 2018, Lin et al. 2019, Ovadnevaite et al. 2021). Dublin is known to be diurnally affected by poor air quality arising from the burning of domestic solid fuels for home heating during the colder (mainly winter) months, often with night-time peaks exceeding $100 \mu\text{g m}^{-3}$ (sometimes $> 300 \mu\text{g m}^{-3}$) for several hours (Lin et al. 2018, Ovadnevaite et al. 2021). Dublin Port is directly downwind of the prevailing Westerlies (South-Westerlies) and as such is impacted by both the air pollution from the Port and the City Centre of Dublin. As Dublin Port is a SECA, ships either switch to ultra-low-S content ($0.1\% \text{ m/m}$) fuels while at dock or else implement the use of scrubbers aboard the ship to reduce SO_2 emissions from burning fuels with higher S content. The resultant particulate emissions from the use of scrubbers would have the same V/Ni signatures of HFO, while supporting the rapid aqueous phase formation of acidic sulfate (SO_4^{2-}) within the plume stacks. In fact, studies of before and after scrubber system installation confirm the presence of SO_4^{2-} in the aerosol particle phase from ship stacks with scrubbers (Yang et al., 2021). Conversely, ultra-low-S fuels ($\text{S} < 0.1\% \text{ m/m}$) as well as Very Low Sulfur Fuel Oil (VLSFO, $\text{S} < 0.5\% \text{ m/m}$) lack the processing that yield metal tracers (V/Ni) from the combustion of the fuel. The most common fuel use behaviours at Dublin Port were (i) using ultra-low-S fuels only (mainly Marine Gas Oil (MGO)), (ii) using VLSFO to power the engines and MGO for electricity generators when in port, (iii) using HFO for engines (with scrubber) and MGO for generators when in port, and (iv) using HFO with a wet scrubber operated using a closed loop system all the time.

A research project, *Source Apportionment of Air Pollution in the Dublin Port Area* (PortAIR), was initiated to measure the aerosol physical and chemical properties in the port area and assess the impact of Dublin Port activities on air quality before it doubles capacity by 2040. The PortAIR project comprises a 14-month long air quality field campaign (December 2021 – February 2023) and an 8-week long intensive measurement campaign (December 2022 – February 2023) at a monitoring site in Dublin Port, situated ~5 km from the city centre. Here we present results from a 1-month period of the intensive campaign conducted in winter, when air quality was affected both by burning of domestic solid fuels in the city and by peak port activity from goods importation. The comprehensive range of instruments deployed at the monitoring site allowed characterisation of individual ship plumes and classification according to type of fuel used.

2 Methods

2.1 Measurement campaign

This study focuses on an intensive field measurement campaign in Dublin Port where aerosol physico-chemical properties and gaseous pollutants were measured using a suite of instrumentation housed in two containers. The intensive campaign ran from 16 December 2022 through to 7 February 2023. The monitoring site (latitude of 53.348439 and longitude of -6.194657)

Formatted: Font: (Default) +Body (Times New Roman)

Formatted: Font: (Default) +Body (Times New Roman)

Formatted: Font: (Default) +Body (Times New Roman)

Formatted: Font: (Default) +Body (Times New Roman)

Commented [FK7]: RC1: Dublin port is within SECA (regulated fuel sulfur content < 0.1%), and the authors declare that the VLSFO (fuel sulfur content < 0.5%) is used here for the engine. As 0.5% is the regulated level for the open sea shipping lane, is the fuel with fuel sulfur content larger than 0.1% but smaller than 0.1% allowed to be used within SECA?

Commented [FK8R7]: Yes it is allowed under Article 7 of the EU Directive 2016/802

Formatted: Font: (Default) +Body (Times New Roman)

Formatted: Font: (Default) +Body (Times New Roman)

125 was selected to be downwind of most port activity and close to the ferries, which are a major daily source of shipping emissions. The location of the monitoring site in relation to the ferry terminals and other areas of the port is shown in Supplementary Fig. S1, along with a photograph of the two containers *in situ*.

High time resolution chemical composition data from a monitoring site around 5 km from Dublin Port is also used in this study. The site is at University College Dublin (UCD) (53.3089, -6.2242), an urban background location just South of Dublin city centre, close to main roads and residential areas [\(Lin et al. 2020; Lin et al. 2018\)](#).

2.2 Instrumentation

2.2.1 Meteorology

135 Wind direction, wind speed, air temperature, air pressure, relative humidity (RH), rainfall and solar radiation measurements were made using a *Casella* weather station (model Nomad, UK) mounted to the top of the main container. The measured wind speed and direction compared well with the data available from the nearest Met Éireann meteorological station located at Dublin Airport, less than 10 km North of Dublin Port.

[The wind speed and wind direction were compiled into the Igor software compatible tool for geographical origins of atmospheric pollution, ZeFIR \(Petit et al., 2017\), to plot air pollution roses aided by the openair package \(v2.8-3; Carslaw and Ropkins, 2012\).](#)

2.2.2 Q-ACSM

145 A PM₁ quadrupole aerosol chemical speciation monitor (Q-ACSM) from *Aerodyne Inc.* (Billerica, MA, USA) measured the mass concentrations of non-refractory species including organic aerosol (OA), sulfate (SO₄²⁻), nitrate (NO₃⁻), ammonium (NH₄⁺) and chloride (Cl⁻) (Ng et al., 2011). While the intensive campaign ran from 16 December 2022 to 7 February 2023, Q-ACSM data is only available through to January 27, 2023. The Q-ACSM used in the study had a standard vaporiser and was calibrated and maintained following the standard protocol developed by the Cost Action CA16109, COLOSSAL. Details of the Q-ACSM instrument can be found in previous studies (e.g. Ng et al. (2011) and Pieber et al. (2016)). In this study, the Q-ACSM was installed with a PM_{2.5} URG-2000-30ED cyclone connected to 3/8 inch stainless steel tubing and operated using a carrier flow rate of 2.5 (±0.2) LPM with a distance from inlet to Q-ACSM of approximately 2 meters, to keep particle losses to a minimum. A monotube Nafion® membrane dryer was installed to maintain relative humidity (RH) of the sample air in the range 20–40%. The instrument was operated at a time resolution of just over five minutes (five sets of one sample and one filter measurement scans). The response factor (RF) of NO₃⁻ and relative ionization efficiencies (RIE) of NH₄⁺ and SO₄²⁻ were determined following standard operating procedures (COLOSSAL) for ammonium nitrate and ammonium sulfate calibration. OA RIE was experimentally determined through comparison with another PM₁ Q-ACSM

Formatted: Font: (Default) +Body (Times New Roman)

Formatted: Font: (Default) +Body (Times New Roman)

Commented [FK9]: RC2: I didn't see any diagrams or introductions regarding wind direction and air mass trajectories, which makes the reader suspect whether the monitoring site is influenced by emissions from nearby factories.

Commented [FK10R9]: Thank you for calling this to our attention, this information should be provided to the reader and is now added as Fig. S5, and as pollution wind roses in Fig. S13. This study is focused on ship emissions and did not seek to isolate factory influence. Since the PMF did not indicate any strong industry or factory source, we feel a more in depth investigation into this possible source is out of the scope of this paper.

Formatted: Font: (Default) +Body (Times New Roman)

Formatted: Font: (Default) +Body (Times New Roman)

Formatted: Font: (Default) +Body (Times New Roman)

combined with use of a state-of-the-art organic RIE calibration with organic alcohols recommended by the Q-ACSM manufacturer. An RF of 2.81×10^{-11} , NH_4^+ RIE of 4.15, SO_4^{2-} RIE of 0.61, and organic RIE of 1.9 (standard-default is 1.4) was applied after validation during data ratification in the standard Q-ACSM data analysis process. Composition dependent collection efficiency (CDCE) was applied following the (Q-ACSM modified) methods of Middlebrook et al. (2012). The uncertainty in the mass concentration of the non-refractory species is considered $\pm 30\%$. The 30-min average limits of detection for the Q-ACSM were calculated to be $0.110 \mu\text{g m}^{-3}$ for NO_3^- , $0.175 \mu\text{g m}^{-3}$ for SO_4^{2-} , $0.662 \mu\text{g m}^{-3}$ for NH_4^+ , $0.561 \mu\text{g m}^{-3}$ for OA, and $0.105 \mu\text{g m}^{-3}$ for Cl⁻, following the methods of Ng et al. (2011).

2.2.3 Aethalometer AE33

The dual-spot aethalometer (Model AE33, Magee Scientific) operates seven different wavelength channels (370, 470, 520, 590, 660, 880, and 950 nm) to provide optical absorption coefficients by measuring light attenuation every minute through a filter tape that has collected aerosol at a flow rate of 5 (± 0.4) LPM. [The AE33 Dual Spot™ measurement technique allows for the correction of filter loading effects by aerosol in real-time (Drinovec et al., 2015)]. The 880 nm wavelength channel is classically used to measure light absorbing equivalent black carbon (eBC) (Petzold et al., 2013; Bond et al., 2013), using the standard mass-specific absorption cross section (MAC) of $7.77 \text{ m}^2/\text{g}$ (Magee Scientific Inc. (2018);- Drinovec et al., 2015). Multiple scattering effects of the collection tape are accounted for with the correction value (C) of 1.57 that is based on experimental investigations into TFE-coated glass fibre filter tape material (part no. 8050) (Drinovec et al., 2015). The rolling 15-min average was calculated from the 1-min data to reduce noise. This rolling average was used to interpolate eBC concentrations that matched Q-ACSM data points in time.

2.2.4 Xact 625

The Xact 625 (Xact, from this point onward) can measure up to 24 elements between silicon and uranium at hourly time resolution and has been evaluated and described in previous studies (Furger et al. (2017); Tremper et al. (2018)). The instrument has a flow rate of $1 \text{ m}^3 \text{ h}^{-1}$; the inlet tube is heated to $45 \text{ }^\circ\text{C}$ when the ambient relative humidity (RH) exceeds 45%, which was usually the case. The samples are collected onto Teflon tape and subsequently analysed using energy dispersive X-ray fluorescence (EDXRF). The X-ray source used is a Rhodium anode (50 kV, 50 Watt) and the ~~X~~-ray fluorescence is measured using a silicon drift detector. In this study, the instrument measured the elements As, Ba, Ca, Cd, Ce, Cl, Cr, Cu, Fe, K, Mn, Mo, Ni, Pb, Pt, S, Sb, Se, Si, Sr, Ti, V and Zn in $\text{PM}_{2.5}$. Daily automated quality assurance checks were performed at midnight. Further quality assurance checks, such as flow checks and external calibration checks were performed at the start and end of the campaign.

2.2.5 Gas analyzers

Nitrogen oxides (NO_x) and sulfur dioxide (SO_2) were measured throughout the campaign using automated gas analyzers. The NO_x is measured by the Teledyne Instruments Chemiluminescent $\text{NO}/\text{NO}_2/\text{NO}_x$ Analyzer Model 200A which measured NO

Formatted: Font: (Default) +Body (Times New Roman)

Commented [FK11]: RCI: Please give more details how the AE33 is corrected for the multiple-scattering factor.

Commented [FK12R11]: The C – multiple scattering factor for scattering through material and enhancement of the signal is based on the tape used. We used 8050 tape with a c-value of 1.57 (Drinovec 2015)

Formatted: Font: (Default) +Body (Times New Roman)

Formatted: Font: Italic

Formatted: Font: (Default) +Body (Times New Roman)

Formatted: Font: (Default) +Body (Times New Roman)

and NO_x and by calculation NO₂ at 5-min time resolution. The total NO (NO_x) can be measured and are taken as parts per billion (ppb), and NO_x is converted to μg m⁻³ as NO₂ ppb*1.9125 = NO₂ μg m⁻³, and NO ppb*1.28 = NO μg m⁻³ (20°C, 1 atm). The SO₂ was measured at 1-min time resolution by a *Teledyne API Model T100 UV Fluorescence SO₂ Analyzer* that was used throughout the PortAIR project. A small drift in the SO₂ baseline was observed over the yearlong campaign, so the measurements were subsequently corrected using a polynomial function for baseline drift derived from laboratory tests conducted at the end of the campaign.

2.2.6 SMPS

The scanning mobility particle sizer (SMPS) characterises the number-size distribution of the ambient aerosol particles. Particles passing through the system are charge neutralized (Fuchs, 1963) (electrical ionizer model 1090, *MSP*) and then sized by electrical mobility through a differential mobility analyser (DMA, *TSI Inc.* model 3080) and finally counted by a condensation particle counter (CPC, *TSI Inc.* model 3010). The SMPS was operated by passing sample air through a multi-tube Nafion® membrane and into the DMA at a sample flow of ~ 1 LPM with a sheath flow of 5 LPM (Collins et al., 2004). The SMPS was operated at 3-5 min scan duration with *TSI Inc.* AIM software (release version 9.0.0.0) with charge correction applied.

2.3 Source apportionment

Positive matrix factorization (PMF; (Paatero, 1997)) was used to apportion the organic aerosol (OA) measured by the Q-ACSM into different emission source categories. The PMF was conducted on the original 5-min time resolution data using the multilinear-engine (ME-2; (Paatero, 1999)) implemented in the software SoFi (version 9.4.10) (Canonaco et al., 2013).

PMF can be expressed by the bilinear factor model (Paatero and Tapper, 1994):

$$X_{ij} = G_{ik}F_{kj} + E_{ij}$$

Where for Q-ACSM data, X is the measured mass spectrum over time (including negative and zero values) with dimensions $i \times j$, G is the time series of non-negative factors ($i \times k$; k is the number of factors), F is the non-negative factor profiles ($k \times j$), and E is the residuals of the model with the same dimensions as X . The least squared algorithm was employed to minimize the value of Q (sum of squared residuals weighted by respective uncertainties), ensuring a good fit between the model and observed data (Canonaco et al., 2013; Crippa et al., 2014).

In this study, unconstrained PMF solutions were first considered (see Supplementary Fig. S2), but did not yield any physically meaningful separation of factors. Reference mass spectral profiles were used to constrain the ME-2 algorithm (Canonaco et al., 2013) and these reference profiles were left to vary within specified limits using the limits approach (Lin et al., 2021). Different from the a -value approach where all m/z in the mass spectrum vary uniformly, in the limits approach, each m/z in the input mass spectrum was individually varied. For example, one m/z may have a variation of 2% while another may vary by 40%. This approach is commonly used to capture variation in emission conditions, such as different

Formatted: Font: (Default) +Body (Times New Roman)

stove type for burning solid fuels, and can be found when combining multiple profiles into a mean mass spectrum with standard deviations (σ_j) at each ion (m/z_j). The limits were then set for each m/z , with the lower limit ($\overline{m/z_j} - \sigma_j$) and upper limit ($\overline{m/z_j} + \sigma_j$). To assess the robustness of the PMF solution, a Bootstrap resampling strategy was employed (Paatero et al., 2014; Ulbrich et al., 2009; Davison and Hinkley, 1997; Efron, 1979). This method evaluated the statistical uncertainty of the solution, which could, e.g., arise from variations in emission sources.

For the PMF analysis, an inorganic and organic combined matrix was employed, which combined OA ions and directly measured fragment ions for SO_4^{2-} for an organic-sulfate input matrix. The OA mass spectrum was extended up to m/z 120 and additional columns were added for SO_4^{2-} . The error matrix for these ions was generated using the same initial error calculation as for OA. The organic-sulfate input was down weighted cell-wise based on the signal to noise ratio (SNR), where bad or weak signals with $\text{SNR} < 0.2$ (negative and zero included) or $\text{SNR} < 2$, respectively, are down weighted by being given proportionately higher error values in SoFi Pro. Overall, the calculated SNR for the sulfate ions shows that m/z 81 for HSO_3^+ and m/z 98 for H_2SO_4^+ are weak (Fig. S3). Additionally, the CO_2 related OA m/z 16, 17, and 18 were removed to run the PMF but were added back in later using known fragmentation patterns (Chen et al., 2022; Canonaco et al., 2021; Parworth et al., 2015). The SO_4^{2-} fragment ions included were m/z 48 for SO^+ , m/z 64 for SO_2^+ , m/z 80 for SO_3^+ , m/z 81 for HSO_3^+ , and m/z 98 for H_2SO_4^+ (Sun et al., 2012). Since these ions only account for about 54% of the measured SO_4^{2-} (Fig. S4a), the remaining SO_4^{2-} was added back in later to the factors containing SO_4^{2-} . The remaining ion fragments for SO_4^{2-} were calculated based on the ion ratio to m/z 80. This ratio was chosen as this is the m/z value with non-weak SNR that shows the most variation between neutralised and acidic SO_4^{2-} (Chen et al., 2019) and that varied over the intensive campaign between neutralised SO_4^{2-} regional episodes and the acidic SO_4^{2-} in plumes (discussed further in the supplementary material). The organic-sulfate input was well captured by the PMF solution, with a slope between factor mass concentration and input of 1.03 (Fig. S4b).

3 Results and discussion

Wind direction and speed data obtained over during the intensive campaign are shown as a time series and polar plot in Fig. S5 that indicate predominantly West-South-Westerly winds, with several periods also advecting across the two closest ferry berths (Fig. S5). An overview of the high time resolution air quality data from the intensive campaign is shown in Fig. 1. Many high pollution events of short duration were observed, with the peak PM_{10} mass concentration reaching $252 \mu\text{g m}^{-3}$. The pollution events typically lasted 5-35 minutes and were driven by OA, often in combination with SO_4^{2-} and other inorganic species. Elemental sulfur (S), vanadium (V), and nickel (Ni) were also present during pollution plumes that contained SO_4^{2-} . While the V/Ni ratio was often in the range 2.5-4.0 (Fig. 1), consistent with HFO emissions (Viana et al., 2009; Pandolfi et al., 2011), an appreciable number of pollution spikes had occurred when the V/Ni ratio was less than 2.5, suggesting use of a different fuel type in the Port area they did not contain attributable to HFO emissions. The spikes in

Formatted: Font: (Default) +Body (Times New Roman)

Formatted: Font: (Default) +Body (Times New Roman)

Formatted: Font: (Default) +Body (Times New Roman)

Formatted: Font: (Default) +Body (Times New Roman)

Formatted: Font: (Default) +Body (Times New Roman)

Formatted: Font: (Default) +Body (Times New Roman)

Formatted: Font: (Default) +Body (Times New Roman)

Formatted: Font: (Default) +Body (Times New Roman)

Formatted: Font: (Default) +Body (Times New Roman)

Formatted: Font: (Default) +Body (Times New Roman)

Commented [FK13]: RC2: Where does this conclusion come from?

Commented [FK14R13]: We take your point that this conclusion comes at random at this point in the text. It has been removed

Formatted: Font: (Default) +Body (Times New Roman)

Formatted: Font: (Default) +Body (Times New Roman)

Formatted: Font: (Default) +Body (Times New Roman)

250 PM₁ occurred in conjunction with increased SO₂ and NO_x concentrations, and enhanced aerosol number concentration (d_p =10-500 nm). However, enhanced number concentration did not always result in very high mass concentrations of the aerosol as they were driven by smaller diameter aerosol particles (e.g. Fig. S5S6). The very local nature of these pollution spikes is verified by comparing the results with those obtained at the urban background site (UCD) where a PM₁ Q-ACSM and AE33 were deployed. The comparison (Fig. S6S7) shows that while ~~some~~ regional pollution events occur simultaneously at both sites, Dublin port also has unique and localised the pollution spikes at Dublin Port are unique and localised that do not occur at the UCD site. Thus, Source apportionment was thus used to explore and identify the origins of these short-lived pollution episodes.

Formatted: Font: (Default) +Body (Times New Roman)

Formatted: Not Highlight

Formatted: Font: (Default) +Body (Times New Roman)

Formatted: Not Highlight

Formatted: Font: (Default) +Body (Times New Roman)

Formatted: Not Highlight

Formatted: Not Highlight

Formatted: Font: (Default) +Body (Times New Roman)

Formatted: Not Highlight

Formatted: Font: (Default) +Body (Times New Roman)

Formatted: Font: (Default) +Body (Times New Roman)

Formatted: Font: (Default) +Body (Times New Roman)

Formatted: Font: (Default) +Body (Times New Roman)

Formatted: Font: (Default) +Body (Times New Roman)

Formatted: Font: (Default) +Body (Times New Roman)

Formatted: Font: (Default) +Body (Times New Roman)

Formatted: Font: (Default) +Body (Times New Roman)

Formatted: Font: (Default) +Body (Times New Roman)

Formatted: Font: (Default) +Body (Times New Roman)

Formatted: Font: (Default) +Body (Times New Roman)

Formatted: Font: (Default) +Body (Times New Roman)

Formatted: Font: (Default) +Body (Times New Roman)

Formatted: Font: (Default) +Body (Times New Roman)

Formatted: Font: (Default) +Body (Times New Roman)

Formatted: Font: (Default) +Body (Times New Roman)

Formatted: Font: (Default) +Body (Times New Roman)

Formatted: Font: (Default) +Body (Times New Roman)

Formatted: Font: (Default) +Body (Times New Roman)

Formatted: Font: (Default) +Body (Times New Roman)

Formatted: Font: (Default) +Body (Times New Roman)

Formatted: Font: (Default) +Body (Times New Roman)

Formatted: Font: (Default) +Body (Times New Roman)

Formatted: Font: (Default) +Body (Times New Roman)

Formatted: Font: (Default) +Body (Times New Roman)

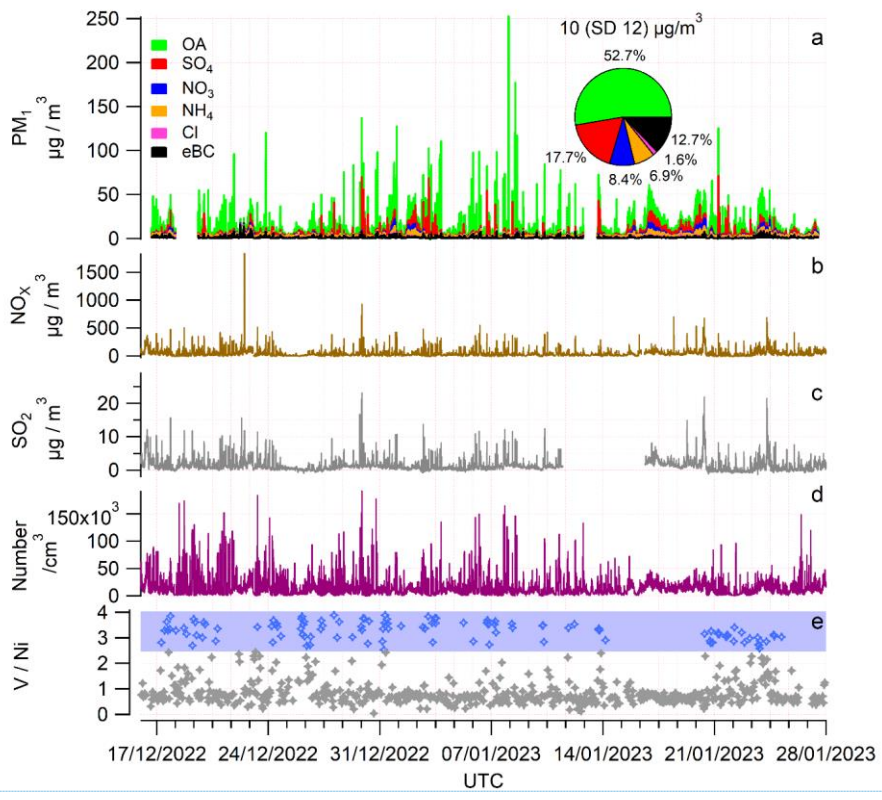
Formatted: Font: (Default) +Body (Times New Roman)

Formatted: Font: (Default) +Body (Times New Roman)

Formatted: Font: (Default) +Body (Times New Roman)

Formatted: Font: (Default) +Body (Times New Roman)

Formatted: Font: (Default) +Body (Times New Roman)



260 **Figure 1: Time series of the high-time resolution ambient measurements during the intensive PortAIR campaign. From top to**
265 **bottom panels: (a) reconstructed PM₁ on the left axis formed from stacked species along with a pie chart of the average**
contributions of each (above: mean PM₁ (standard deviation)); (b) NO_x in brown; (c) SO₂ in grey; (d) number concentration of
particles from 10-500 nm in dry electrical mobility diameter (d_m) from the SMPS; (e) Vanadium to Nickel ratio (V/Ni) as
measured by the Xact with blue shaded area denoting the range of V/Ni traditionally associated with HFO and blue markers
showing data in the range (grey when not).

3.1 Ship profile identification

To derive a ship emission profile, data time series were used to search for plumes with known markers, namely including V/Ni ratios, SO₂ and NO_x concurrent spikes, and OA with a mass spectral profile indicative of oil or petrol fuel burning. Since the Xact was measuring at hourly time resolution, the V and Ni data were treated as an indicator of a shipping emission plume within that hour. The presence of concurrent spikes in the higher time resolution SO₂ and NO_x data was subsequently used to determine the time and duration of the likely shipping plumes. Using this approach the aforementioned markers, around 50 plumes were manually identified with the V/Ni ratio in the expected range for HFO emissions; and occurred when the wind direction was primarily from the South (Southwest to Southeast included), inferring advection of plumes from nearby ferry berths, the marine shipping channel, and South Dublin Port. However, there were many OA-dominated plumes that lacked V and Ni in either significant concentrations or when the ratio was lower than the expected range for HFO. In these cases, the OA-dominated plumes still contained concurrent spikes in SO₂ and NO_x concentrations, and occurred when the wind direction came from the South-Western side of the port across a nearby ferry berth or and occurred at times when ships were either in the process of docking or docked. Since the classical V/Ni ratio may no longer be a reliable marker for emissions from ships using low sulfur marine fuels (Anders et al., 2023; Czech et al., 2017), the results obtained here were used to categorise two different types of ship plumes as follows:

S-Ship – Sulfate-rich Ship emissions that are characterised by elevated V (0.55 - 0.17 µg m⁻³) and Ni (0.16 - 0.05 µg m⁻³) concentrations, have the well documented V/Ni ratio of 2.5–4.0 associated with HFO, have high elemental sulfur concentrations, and have elevated SO₂ and NO_x concentrations. These pollution spikes are also associated with significant concentrations of particulate SO₄²⁻ relative to OA.

O-Ship – Organic-rich Ship emissions that are dominated by OA, have elevated SO₂ and NO_x concentrations, but do not have the V/Ni ratio associated with HFO and with significantly lower V (< 0.04 µg m⁻³) and Ni (< 0.02 µg m⁻³) concentrations.

To derive the Q-ACSM mass spectral signatures for S-Ship and O-Ship, five exemplary plumes of each type were selected for detailed analysis. The strict criteria for selecting the exemplary plumes were; (i) mean PM₁ concentration was greater than 20 µg m⁻³, (ii) the Q-ACSM sampled the plume for at least two data points (more than five minutes), (iii) the plume occurred when the two closest ferry perts-berths had ships manoeuvring in and out of docks or docked at port, as confirmed

Commented [FK15]: RC2: The core of this article is based on the ratio of vanadium to nickel and sulfate fragments; however, to my knowledge, ship emissions cannot be solely reliant on the ratio of V to Ni. The V/Ni ratio is also not a standard tracer for ship emissions. Especially since 2020, there have been strict regulations on the fuel used by ships in emission control areas, which necessarily affects the usability of the V/Ni ratio. The author needs to provide more direct evidence. Furthermore, the measurement of vanadium and nickel is conducted in PM2.5, whereas ACSM measures PM1. How does the author account for this discrepancy?

Commented [FK16R15]: This study uses V/Ni ratios to aid in the identification of emissions from HFO use, which is a well-established range in the literature used widely in many port studies (e.g. Mazzei et al., 2008; Pandolfi et al., 2011; Viana et al., 2009). As the reviewer correctly points out, recently this has become a less reliable tracker for ship emissions with fuel regulations changing marine fuel usage, with less using HFO. Therefore, the V/Ni ratios are only used as a starting point in identifying ship emissions from HFO. We then combine other tracers to aid in the identification of ship plumes including SO₂, NO_x, OA profiles, and finally wind direction and shipping logs. Section 3.1 outlines this process. However, we have slightly adjusted the text to be clearer.

There is no discrepancy in using a plume tracer derived from PM2.5 measurements, as this is an indicator of the plume. The PM1 data from the ACSM is from the same plume period. Since the V and Ni are also used as a ratio, it is more important that this be consistent with the literature, where studies have derived the HFO V/Ni ratio (2.5-4) from PM2.5.

To conclude, the V/Ni tracers were just helping in the initial identification of the plumes, but were not used in the PMF analysis which is the core of this article.

Formatted: Font: (Default) +Body (Times New Roman)

Formatted: Font: (Default) +Body (Times New Roman)

Formatted: Not Highlight

Formatted: Not Highlight

Formatted: Font: (Default) +Body (Times New Roman)

Formatted: Font: (Default) +Body (Times New Roman)

Formatted: Font: (Default) +Body (Times New Roman)

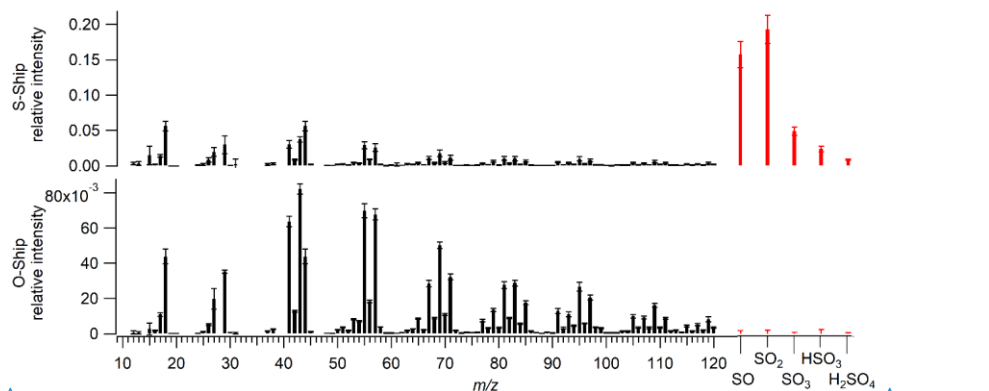
Formatted: Font: (Default) +Body (Times New Roman)

Formatted: Font: (Default) +Body (Times New Roman)

Formatted: Font: (Default) +Body (Times New Roman)

Formatted: Font: (Default) +Body (Times New Roman)

295 by Dublin Port shipping logs, and the wind direction was from these respective locations. Additionally, the selected plumes had significantly high OA and SO₂ concentrations, but concentrations but were isolated plumes without overlapping regional pollution. The characteristics of the exemplary plumes are described in Table S1. The five exemplary S-Ship plumes had an average PM₁ concentration of 61 ± 36 μg m⁻³, with the following composition: SO₄²⁻ (52%), OA (41%), eBC (6%), NO₃⁻ (1%), Cl⁻ (0.4%) and near zero NH₄⁺ contribution, indicating the plumes were acidic. The five exemplary O-Ship plumes had an average PM₁ concentration of 114 ± 29 μg m⁻³, with the following composition: OA (92.5%), eBC (6%), SO₄²⁻ (2%), NO₃⁻ (0.4%), Cl⁻ (0.2%), and NH₄⁺ (0.2%). These O-Ship plumes were also acidic with extremely low NH₄⁺ contribution. The mean OA profiles for mean ship O-Ship and S-Ship profiles are compared in Fig. S7a-S8a. While the OA mass spectrum (in unit mass resolution (UMR)) was similar (r²=0.688), S-Ship contained more signal intensity at *m/z* 15, 17, 18, 27, 44. Yet, it was apparent that the S-Ship and O-Ship mass spectral profiles of OA showed low variance from each other, which could make them hard to distinguish by PMF if only the OA ions are used in the model matrix. Since S-Ship emissions also had a very strong SO₄²⁻ contribution, the combined OA and SO₄²⁻ data was used to derive the final ship profiles (Fig. 2). O-Ship SO₄²⁻ ions were present at low relative contributions, but since the profile did not show any realistic fragmentation pattern (SO₄²⁻ 8.24 × 10⁻³, SO₂ 4.96 × 10⁻³, SO₃ 5.23 × 10⁻³, HSO₃ 1.505 × 10⁻², and H₂SO₄ 9.96 × 10⁻⁴) the ion fragments were set to zero with standard deviation shown in Fig. 2. A comparison was made between the S-Ship and O-Ship mass spectral profiles obtained in this work with the ship profile derived from ACSM measurements in Dunkerque, France (Zhang, 2016), which is also in a SECA zone. The O-Ship profile compared extremely well (r² = 0.986) to the Ship-like OA (Sh-OA) profile obtained in Dunkerque (Fig. S13-S9) and confirms O-Ship and (Sh-OA) as a good reference profile for low-S ship fuel emissions.



Formatted: Font: (Default) +Body (Times New Roman)

Formatted: Font: (Default) +Body (Times New Roman)

Formatted: Font: (Default) +Body (Times New Roman)

Formatted: Font: (Default) +Body (Times New Roman)

Formatted: Font: (Default) +Body (Times New Roman)

Formatted: Font: (Default) +Body (Times New Roman)

Formatted: Font: (Default) +Body (Times New Roman)

Formatted: Font: (Default) +Body (Times New Roman)

Formatted: Font: (Default) +Body (Times New Roman)

Formatted: Font: (Default) +Body (Times New Roman)

Formatted: Font: (Default) +Body (Times New Roman)

Formatted: Font: (Default) +Body (Times New Roman)

Formatted: Font: (Default) +Body (Times New Roman)

Formatted: Font: (Default) +Body (Times New Roman)

Formatted: Font: (Default) +Body (Times New Roman)

Formatted: Font: (Default) +Body (Times New Roman)

320 **Figure 2: Reference mass spectra profiles of S-Ship (top) and O-Ship (bottom) plumes. The OA mass spectra are shown in black. The sulfate-related ions SO^+ , SO_2^+ , SO_3^+ , HSO_4^+ , and H_2SO_4^+ (m/z 48, 64, 80, 81, and 98, respectively (see methods in Sun et al. (2012)) are shown in red and placed at m/z 125, 130, 135, 140, and 145, respectively to run PMF. Error bars indicate the standard deviation of the sample from mean for the five exemplary plumes.**

3.2 Organic-sulfate source apportionment

3.2.1 PMF results

325 **Unconstrained PMF solutions with 2–10 factors were tested as a first step (see Supplementary discussion S1.1). Only the two-factor solution resulted in reasonable profiles, comprised of generic hydrocarbon-like organic aerosol (HOA) and an aged organic aerosol. The rest of the solutions resulted in some particular ions separating out as individual factors that, however, are not physically meaningful. Despite the measurements being conducted in a port environment, no sea salt factor (see Supplementary) was resolved by the unconstrained PMF solution for the intensive campaign period. This was supported by evaluation of elemental Cl (Xact) that showed comparable contributions from the directions of the city and of the sea.**

330 To direct the PMF model towards a physically meaningful solution, the mass spectra of reference primary OA factors were constrained using the ME-2 algorithm (Canonaco et al., 2013). The organic-sulfate combined PMF was run by combining the two constrained ship type factors with other constrained factors expected to be present. These include a traffic ~~hydrocarbon-like-organic-aerosol~~ (HOA) derived from a previous curb side study in Dublin, Ireland (see Fig. S8S10) (Lin et al., 2020), as well as individual solid fuel burning (SFB) factors for peat, wood, and coal from a previous Irish study (Lin et al., 2021), a sea-salt factor, and the S-Ship and O-Ship factors discussed above. While finding the most reasonable solution is somewhat subjective, the best solution occurs when increasing the number of factors leads to avoidable splitting of the factors or when reducing the number of factors leads to avoidable mixing of factors. Whether factors are split or mixed in a solution was evaluated by looking at [the solution residuals](#), correlations to other factors as well as external time series (e.g. NO_3^- , NH_2NH_4^+ , eBC, metals, etc.) and checking if diurnal patterns looked representative of real port or city activities (e.g. traffic patterns). The best solution was determined to be with 6-factors, two unconstrained and four constrained factors: ~~S-Ship emissions, O-Ship emissions, Peat, and traffic HOA~~. Increasing the number of factors for the ME-2 solution beyond six could not resolve any more reasonable solutions, with extra factors being separated into unrealistic profiles with poor correlation to external tracers. The six-factor solution was then run with bootstrap resampling (50 runs) and found to be very stable, where the standard deviation of the profiles or time series was 2-23%. The factor profiles derived from the 6-factor bootstrap solution for the organic-sulfate source apportionment are shown as factor profiles in Fig. 3a. The time series and diurnal trends for the four constrained factors (S-Ship, O-Ship, HOA, Peat) and the two unconstrained factors (OOA, X-Ship) are presented in Fig. 3b and Fig. 3c, respectively.

340 The diurnal variations (Fig. 3c) between the S-Ship and O-Ship factors were similar, while the time series shows differences in the patterns observed for the factors, as well as some periods where the factors overlap but peak at slightly different times.

Commented [FK17]: RC2: The author mentions in Section 3.2.1 that Appendix Figure S2 shows the results for 2 to 10 factors, but where is this information in Appendix Figure S2?

Commented [FK18R17]: Thank you for pointing out this discrepancy. This statement has been changed as follows; 'Unconstrained PMF solutions with 2–10 factors were tested as a first step (see Supplementary discussion S1.1).

Formatted: Font: (Default) +Body (Times New Roman)

Formatted: Font: (Default) +Body (Times New Roman)

Formatted: Font: (Default) +Body (Times New Roman)

Formatted: Font: (Default) +Body (Times New Roman)

Commented [FK19]: RC1: The terms given to the shipping emission types throughout the manuscript are inconsistent. In the PMF section (Section 3.2), the authors identify the reference mass spectra profiles as "O-ship" and "S-ship" (Figure 3). However, these terms change to "VLSFO" and "HFO" in Figure 5 (Section 3.3), with additional discussions on the usage of "MGO" fuel. In the conclusions section, the authors state in Lines 486–487 that the organic-sulfate PMF can identify "HFO" and "VLSFO" emissions. I suggest the authors revise their terminology and provide clear definitions for each term.

Commented [FK20R19]: The difference in terminology from Section 3.2 to 3.3 reflects additional data processing of the PMF-derived factors to determine source contributions more accurately. We accept that the mixed use of PMF factors and fuel types could create some confusion and have therefore reviewed the text and made several amendments. We have clarified the terminology in section 3.3 and now use S-Ship* and O-Ship* to denote the source contributions resulting from the related PMF factors, which have been adjusted for regional sulfate and black carbon emissions. The terms HFO and VLSFO in Figure 5 panel 4 (Figure 7 in the revised manuscript) have been removed and replaced with the PMF factors that include S-Ship and O-Ship, respectively. We have also separated the pie charts in Figure 4 and moved another pie chart from the Supplement to the main manuscript to help improve understanding. Figure 4 in the revised manuscript now shows the average composition breakdown of the O-Ship and S-Ship plumes, while a new figure (Figure 6) has been created to show the PMF factors and other species contributing to PM_{10} , as well as the source contributions. Finally, we have also reworded the statement in the conclusions section. We believe the terminology has now been successfully revised and clear definitions provided.

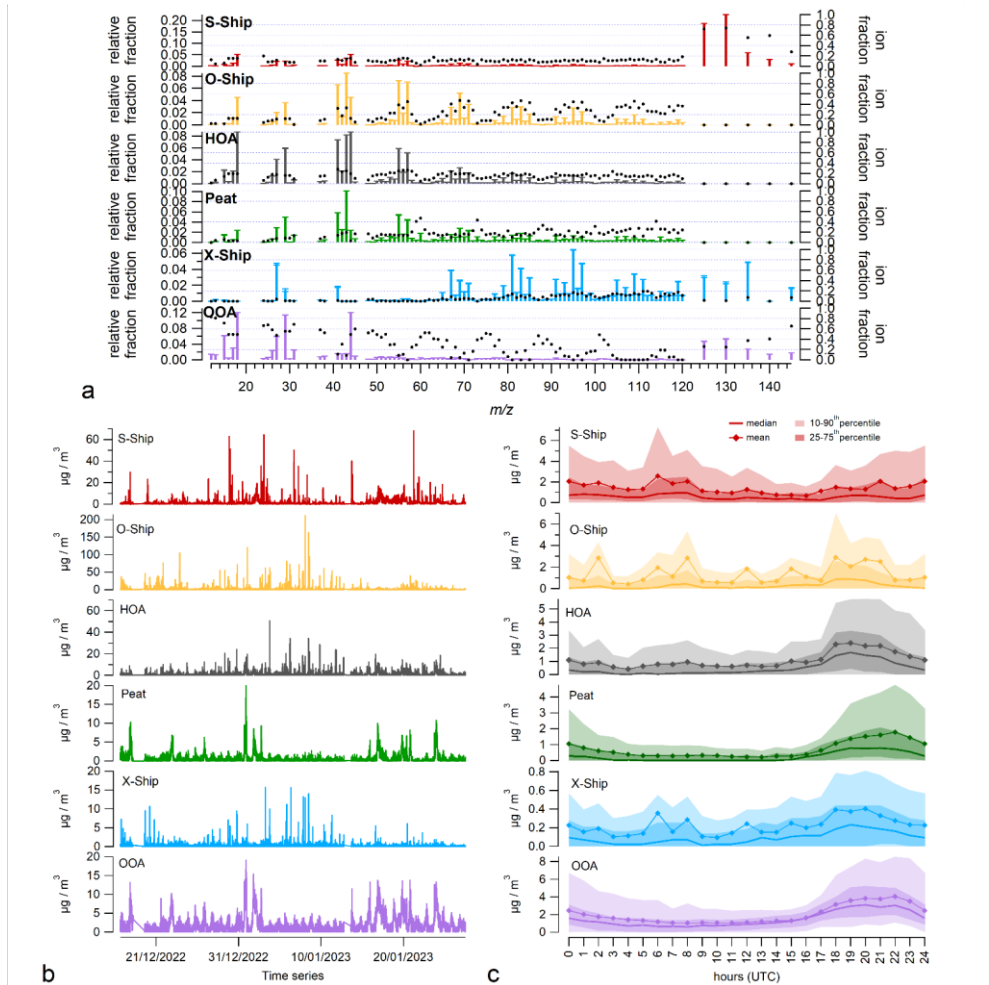
Formatted: Font: (Default) +Body (Times New Roman)

This may indicate intrinsically linked emissions from different emission sources. The HOA factor had a diurnal pattern with small peaks occurring at the same times as the peaks in the ship factors, which is not surprising given the flow of vehicular traffic linked with ship arrivals and departures. However, the HOA factor also had an evening peak, which could be caused by the HOA traffic mass spectra being very similar to those for home heating oil at UMR and $m/z < 120$ (Lin et al., 2020).

355 The correlation matrices (Fig. S9S11) showed HOA correlating with SFB-related factors (peat, OOA) and elemental tracers (As and K), as well as with shipping-related tracers (i.e. SO₂ and the X-Ship factor). The HOA factor seemed split between traffic from the port and a city source that peaks in the evening, likely oil burning for residential heating. Peat showed time trends that match the regional pollution episodes in Fig. S6.S7 and diurnal patterns that are dissimilar to the ship emissions, with a clear evening peak. The increase in the evening is expected for factors associated with residential SFB for home
360 heating.

Formatted: Font: (Default) +Body (Times New Roman)

Formatted: Font: (Default) +Body (Times New Roman)



365 **Figure 3: The 6-factor PMF solution showing (a) factor profiles, (b) the factor time series and (c) the diurnal profiles. The colors of each factor are consistent throughout; S-Ship in red, O-Ship in orange, HOA in charcoal, Peat in green, X-Ship in blue, and OOA in purple. In (a), the left axis is the relative ion fraction of the mass spectrum, with error bars indicating the variation from the bootstrap resampling. Right axis is the relative ion fraction of each m/z in that profile compared with the total for that m/z (markers). In (b), the left axis shows mass concentration ($\mu\text{g m}^{-3}$) as a function of time for each factor. In (c), the left axis shows the median and mean diurnal cycle of the full time series with 25-75th percentiles (dark shaded) and 10-90th percentiles (light shaded) indicated.**

370

Commented [FK21]: RCI: Page 14, Figure 3. Although all PMF factors have distinctive mass spectrum profiles and generally weak correlations over the entire campaign period, S-ship related OA shows a peak during nighttime (from 8 pm to 3 am), which is similar to the trend of peat-related OA. In contrast, the diurnal pattern of O-ship related OA is more irregular which makes sense. Given that residential solid fuel combustion may also contribute to sulfate emissions (Lin et al., 2021), is the S-ship factor slightly influenced by regional emissions, particularly during the night period?

Commented [FK22R21]: Yes, the S-Ship factor is slightly influenced by regional emissions of sulfate, as discussed in lines 418 – 423 in the original manuscript. During PMF analysis, the possible contributions from coal, peat and wood burning were all investigated using well known OA mass spectral profiles (Lin et al. 2017). While peat was found to contribute 6% to the reconstructed PM1 mass concentration, the amounts of OA from coal and wood burning were negligible. While coal and wood are historically present in Dublin residential areas, this finding is consistent with previous wintertime observations in Dublin showing peat as the dominant contributor (Lin et al. 2020). Since coal combustion is the only solid fuel that produces appreciable amounts of sulfate (Trubetskaya et al. 2021), we are confident that local residential solid fuel combustion does not contribute significantly to the S-Ship factor and assign the observed sulfate to regional emissions. Note that there may be a diurnal pattern to the regional sulfate as with the OOA, but not necessarily from solid fuel burning. This is verified when considering the diurnal trend of S-Ship* (formerly referred to as HFO), which has the regional sulfate contribution removed, and shows a pattern which is more closely related to the shipping activity than the S-Ship factor. To make this point clearer to the reader we have included this new figure in the Supplementary Information (Fig. S14), which shows pollution roses, time series, and diurnal trends for S-Ship and S-Ship* for comparison purposes.

Trubetskaya, A., Lin, C., Ovadnevaite, J., Ceburnis, D., O'Dowd, C., Leahy, J. J., Monaghan, R. F. D., Johnson, R., Layden, P., and Smith, W.: Study of Emissions from Domestic Solid-Fuel Stove Combustion in Ireland, *Energy & Fuels*, 35, 4966-4978, 10.1021/acs.energyfuels.0c04148, 2021.

375 One of the unconstrained factors is attributed to oxygenated OA (OOA). This factor followed a very similar diurnal pattern and time series to Peat, which points to OOA being present or produced during SFB pollution episodes. The factor correlation matrix (Fig. S9S11) also supports this assertion, with strong correlations for OOA with Peat ($r = 0.74$), elemental As ($r = 0.64$), elemental K ($r = 0.62$), and Cl^- ($r = 0.62$) potentially related to the build-up of local pollution, which can be dominated in winter by SFB related pollution (e.g. Lin et al. (2023)). On the other hand, the correlation of OOA with NO_3^- , NH_4^+ and Cl^- could be related to regional pollution during stagnant weather, so all or some portion of OOA may be independent of SFB. The strong correlation of OOA with NO_3^- ($r = 0.77$) could indicate the OOA was semi-volatile, freshly formed secondary OA, which would point to the formation of OOA along the route to the port. As a result, OOA is probably a combination of contributions from regional secondary production, including from SFB sources, and freshly formed secondary aerosol.

380

Formatted: Font: (Default) +Body (Times New Roman)

Formatted: Font: (Default) +Body (Times New Roman)

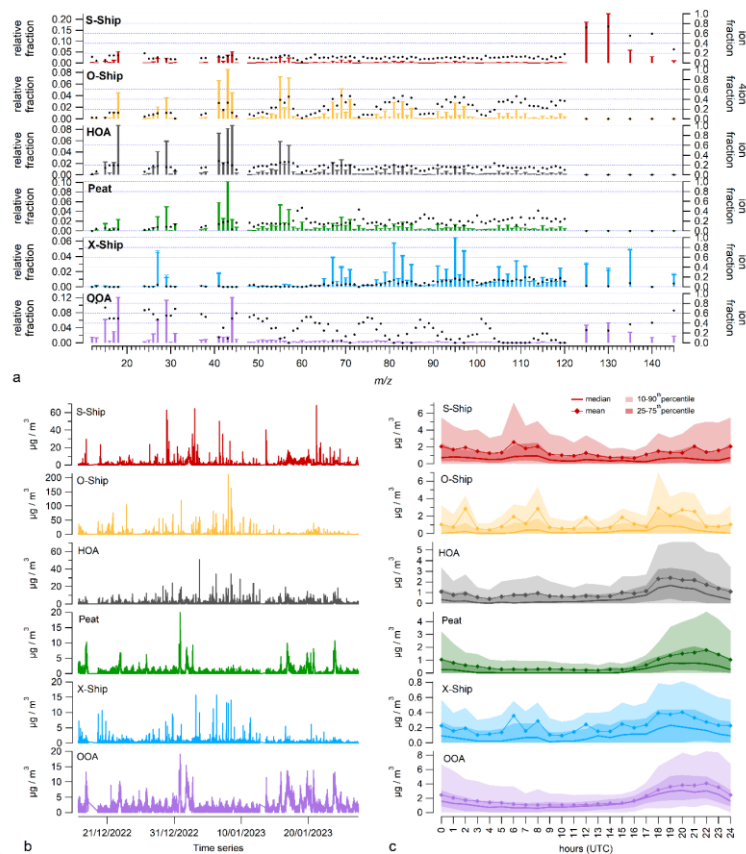


Figure 3: The 6-factor PMF solution showing (a) factor profiles, (b) the factor times series and (c) the diurnal profiles. The colors of each factor are consistent throughout; S-Ship in red, O-Ship in orange, HOA in charcoal, Peat in green, X-Ship in blue, and OOA in purple. In (a), the left axis is the relative ion fraction of the mass spectrum, with error bars indicating the variation from the bootstrap resampling. Right axis is the relative ion fraction of each m/z in that profile compared with the total for that m/z (markers). In (b), the left axis shows mass concentration ($\mu\text{g m}^{-3}$) as a function of time for each factor. In (c), the left axis shows the median and mean diurnal cycle of the full time series with 25-75th percentiles (dark shaded) and 10-90th percentiles (light shaded) indicated.

The other second unconstrained factor contained heavier ions, without fragmentation at lower m/z that would be associated with further fragmentation of the molecular clusters, and lacked m/z 44, indicating no ageing. This factor time series is well closely matched peaks in the time series of O-Ship, and to a lesser extent S-Ship as well, and matched the diurnal profiles of

Formatted: Font: (Default) +Body (Times New Roman)

Formatted: Font: (Default) +Body (Times New Roman)

Formatted: Font: (Default) +Body (Times New Roman)

Formatted: Font: (Default) +Body (Times New Roman)

the shipping-related factors. It correlated with O-Ship and to a lesser extent with HOA and S-Ship. It is unlikely to be a split factor due to association with both shipping factors, which points to a source related to ship engines, mostly to vessels using low sulfur fuels. For these reasons, we call this factor the X-Ship factor. The ions at m/z 81 and 95 are typical for exo-sulfur aromatics while there are also $C_nH_{2n-1}^+$ ions for m/z 41 and 55, as well as m/z 105 and 119 that could be carboxylic acids, possibly naphthenic acid. Some of these ions point towards this split-factor being an indicator of engine oil lubricant (Anders et al., 2023; Czech et al., 2017). The X-Ship OA ions are poorly correlated with the S-Ship ($r^2 = 0.007$) and O-Ship ($r^2 = 0.089$) factors (see Fig. S7b-S8b and Fig. S7c-S8c). In both cases, the majority of X-Ship ions, especially at higher m/z , have stronger relative intensities. The major difference is that X-Ship does not contain m/z 18, 41, 43, 44, 55, and 57, indicating a lack of hydrocarbon content and ageing. The X-Ship factor also appeared in unconstrained PMF runs of the matrices, therefore, it was mathematically divergent and found in most solutions with a few unconstrained factors.

3.2.2 Source apportioned ship plumes

The organic-sulfate PMF resolved 58 S-Ship plumes and 190 O-Ship plumes over the intensive campaign. The average chemical breakdown of PM_{10} , along with NO_x and SO_2 , is shown in Fig. 4b-4a for S-Ship and Fig. 4e-4b for O-Ship. The S-Ship factor plumes were comprised mostly of SO_4^{2-} (57%), followed by OA (35%), eBC (6%), NO_3^- (1%), with negligible contributions from NH_4^+ and Cl. There is slightly more SO_4^{2-} and less OA than the average of the exemplary S-ship plumes, caused by the inclusion of plumes with lower PM_{10} concentrations. O-Ship plumes were comprised mostly of OA (77%), followed by eBC (9%), SO_4^{2-} (7%), NO_3^- (3%), NH_4^+ (3%) and Cl (1%). The increased contribution from inorganic species compared to the average of the exemplary O-Ship plumes is caused by the presence of plumes on top of regional secondary aerosol. Overall, 7% of the S-Ship plumes and 27% of O-Ship plumes had PM_{10} concentrations less than $15 \mu g m^{-3}$. The 99th percentile of PM_{10} statistically represents extreme pollution episodes, which was $PM_{10} > 53.5 \mu g m^{-3}$ during the PortAIR intensive campaign. The O-Ship factor included 33 plumes where PM_{10} reached at least $53.5 \mu g m^{-3}$ (99th percentile of PM_{10}). Whereas the S-Ship factor only had 10 plumes where PM_{10} reached $53.5 \mu g m^{-3}$.

Using the PMF solution to identify S-Ship and O-Ship plumes, particle mass concentration and other components of these two Ship factor types can also be compared. In the PMF solution, despite the higher frequency of occurrences of O-Ship pollution plumes, S-Ship and O-Ship plumes had nominal average PM_{10} concentrations of $29 \pm 22 \mu g m^{-3}$ and $32 \pm 26 \mu g m^{-3}$, respectively. This was due to S-Ship pollution events having significant fractions of SO_4^{2-} , such that mean OA was $10 \pm 10 \mu g m^{-3}$ and mean SO_4^{2-} was $17 \pm 12 \mu g m^{-3}$ for S-Ship. O-Ship however had $25 \pm 24 \mu g m^{-3}$ of OA and $2 \pm 2 \mu g m^{-3}$ of SO_4^{2-} on average. S-Ship PM_{10} ranged from 9-135 $\mu g m^{-3}$ and O-Ship ranged from 4-252 $\mu g m^{-3}$.

Formatted: Font: (Default) +Body (Times New Roman)

Formatted: Font: (Default) +Body (Times New Roman)

Formatted: Font: (Default) +Body (Times New Roman)

Formatted: Font: (Default) +Body (Times New Roman)

Formatted: Font: (Default) +Body (Times New Roman)

Formatted: Font: (Default) +Body (Times New Roman)

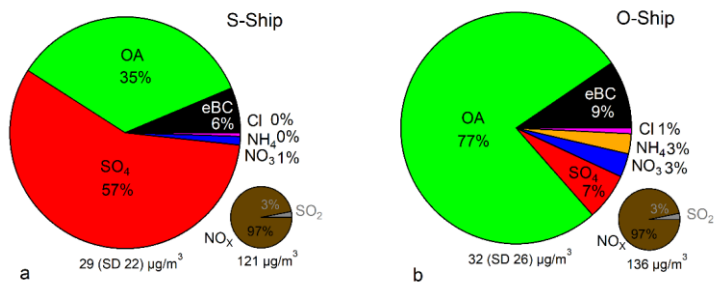


Figure 4: Pie charts of the composition breakdown of PM₁ for (a) S-Ship plumes and (b) O-Ship plumes with gas data pie of SO₂ and NO_x also shown, respectively.

Average particle number concentrations were $(1.52 \pm 1.55) \times 10^4 \text{ cm}^{-3}$ and $(3.75 \pm 2.28) \times 10^4 \text{ cm}^{-3}$ for S-Ship and O-Ship respectively. Although the number concentration varied widely across the ship plumes, on average O-Ship had more particles associated with this plume type. Additionally, while there were variations in size modal distributions over the duration of the plume and larger variation from plume to plume, the number-size distributions of O-Ship emissions were shifted to smaller sizes than S-Ship (Fig. S10). The combined smaller diameter particles at higher number concentration from O-Ship could have more adverse health impacts as these particles ($d_m < 100 \text{ nm}$) penetrate into the bloodstream and translocate to all organs in the body (Schraufnagel, 2020). While it seems that some variation in number-size distribution and absolute number concentration may be due to fuel type, it is important to note that in-additional factors such as variations in engine loadings and the use of lubricating oil may also influence the emissions patterns. Furthermore, the measurements in this study are expected to represent diluted and mixed plumes after undergoing transport, since these are ambient plume detections rather than measurements directly from the stack.

In terms of NO_x and SO₂, both median and average-mean values were similar for the two types, with S-Ship plumes having an average concentration of $(117.6 \pm 118.0) \mu\text{g m}^{-3}$ of NO_x and $(3.5 \pm 3.4) \mu\text{g m}^{-3}$ of SO₂ and O-Ship having an average of $(132.3 \pm 108.7) \mu\text{g m}^{-3}$ of NO_x and $(3.9 \pm 3.2) \mu\text{g m}^{-3}$ of SO₂. The eBC concentrations were also similar with S-Ship having $(1.8 \pm 1.4) \mu\text{g m}^{-3}$ and O-Ship having $(3.0 \pm 1.8) \mu\text{g m}^{-3}$ of eBC on average. The V/Ni median ratio for S-Ship events was 3.41 (range 2.7–3.9) in line with the literature, but was 0.74 (range 0–2.3) for O-Ship, which is in line with a study that found V/Ni = 0.6–1.1 after the Global Sulfur Cap 2020 regulation (Tauchi et al., 2022). A summary of the mean characteristics of the two types of ship plumes. All the ship-emission-types can be found summarized in Table S2.

Formatted: Font: (Default) +Body (Times New Roman)

Formatted: Font: (Default) +Body (Times New Roman)

Formatted: Font: (Default) +Body (Times New Roman)

Formatted: Font: (Default) +Body (Times New Roman)

Formatted: Font: (Default) +Body (Times New Roman)

Formatted: Font: (Default) +Body (Times New Roman)

Commented [FK23]: RCI: please bring the SMPS results in Figure S10 to the main context to support your discussions about the size modes of ship plumes.

Commented [FK24R23]: Done. Fig. S10 is now Fig. 5 in the revised manuscript.

Formatted: Font: (Default) +Body (Times New Roman)

Commented [FK25]: RCI: Page 16, Line 396 – 402. In addition to the fuel types, other factors such as variations in engine loadings and the use of lubricating oil may also influence the absolute number concentrations. Furthermore, since the measurements were not taken directly at the stack, the absolute concentrations may be diluted during plume transport.

Commented [FK26R25]: Yes, we agree. We have now included this perspective in the discussion for the readers

Formatted: Font: (Default) +Body (Times New Roman)

Formatted: Font: (Default) +Body (Times New Roman)

Formatted: Font: (Default) +Body (Times New Roman)

Formatted: Font: (Default) +Body (Times New Roman)

Formatted: Font: (Default) +Body (Times New Roman)

Formatted: Font: (Default) +Body (Times New Roman)

Formatted: Font: (Default) +Body (Times New Roman)

Formatted: Font: (Default) +Body (Times New Roman)

Formatted: Font: (Default) +Body (Times New Roman)

Formatted: Font: (Default) +Body (Times New Roman)

Formatted: Font: (Default) +Body (Times New Roman)

Formatted: Font: (Default) +Body (Times New Roman)

Formatted: Font: (Default) +Body (Times New Roman)

Formatted: Font: (Default) +Body (Times New Roman)

Formatted: Font: (Default) +Body (Times New Roman)

Formatted: Font: (Default) +Body (Times New Roman)

Formatted: Font: (Default) +Body (Times New Roman)

Formatted: Font: (Default) +Body (Times New Roman)

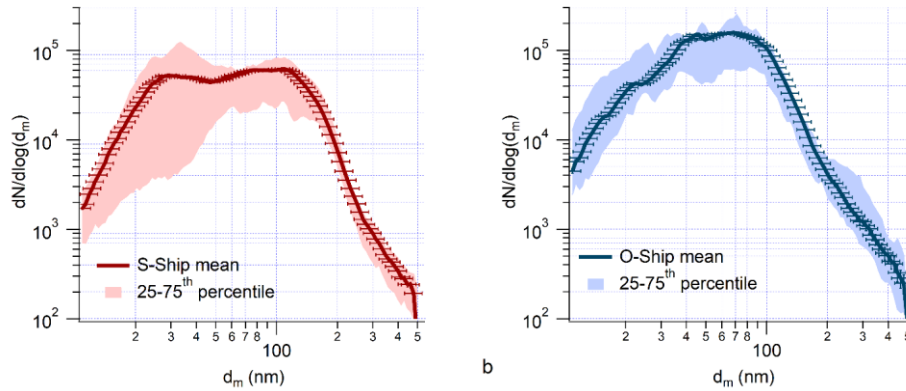


Figure 5. Number-size distributions showing mean (error bars show uncertainty) and 25th-75th percentiles of the exemplary (Table S1) pollution plumes for (a) S-Ship and (b) O-Ship emissions. The y-axis is average sum of the number concentration in log space ($dN/d\log(d_m)$), and the x-axis is the particle dry electrical mobility diameter (d_m) in nm. Percentiles are noisy due to low sample size ($n=19$ (S-Ship) and $n=15$ (O-Ship)).

3.2.3 Quantification of sources

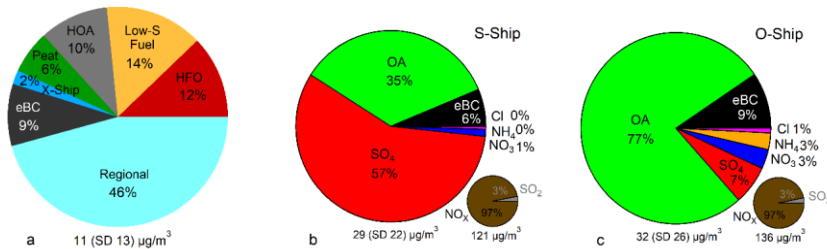


Figure 4: Pie charts of the composition breakdown of the (a) source-apportioned PM_{10} data, (b) S-Ship plumes breakdown of PM_{10} measured with gas data pie of SO_2 and NO_x , and (c) the same for O-Ship.

Factors from the PMF, inorganic species, and eBC were used to quantify the relative contribution of sources to measured PM_{10} (breakdown shown in Fig. 4a). This quantification is explained below. Where possible, primary combustion emissions were categorised by fuel type. Since the PMF only included the directly measured SO_4^{2-} ions, the SO_4^{2-} fragments that are normally calculated from the measured ones were added back in after to get the true SO_4^{2-} mass concentration. The S-Ship factor and OOA factor contained all significant fractions of the SO_4^{2-} ions (Fig. 3a), so these factors were affected by the

Formatted: Font: (Default) +Body (Times New Roman)

Formatted: Font: (Default) +Body (Times New Roman)

Formatted: Font: (Default) +Body (Times New Roman)

Formatted: Subscript

Formatted: Font: (Default) +Body (Times New Roman)

Formatted: Font: (Default) +Body (Times New Roman)

Formatted: Not Superscript/ Subscript

Formatted: Not Superscript/ Subscript

Formatted: Not Superscript/ Subscript

Formatted: Not Superscript/ Subscript

Formatted: Font: (Default) +Body (Times New Roman)

addition of the non-measured SO_4^{2-} fragments (see Sect. 2.3 and supplementary discussion). The PM_{10} breakdown using these factors from the PMF is shown in Supplementary-Fig. S11-6a.

465 However, the factors from the PMF are not true representations of the mass contribution of sources since they only take into account OA-related SO_4^{2-} input. Therefore, we use the time series of factors from the PMF and other ambient observations to quantify the relative contribution of sources, separating them into primary and regional sources where possible. As outlined in detail below, the result of this separation is shown in Figure 6b. (The procedure for quantification of the sources is explained in further detail below, including including separating regional SO_4^{2-} from S-Ship SO_4^{2-} and included attributing a fraction of eBC into the ship emissions. The result of this separation procedure is the source contribution estimates is shown in Figure 6b.

475 The PMF solution has trouble separating the regional SO_4^{2-} from S-Ship SO_4^{2-} . This is partly because the measured SO_4^{2-} ions have low variability in the ACSM mass spectra, with ammonium sulfate and acidic sulfate having similar relative intensities (Chen et al., 2019) and fragmentation patterns (see discussion in supplementary material and Fig. S14-S12). The overall effect on the data is that the relative fraction of S-Ship is was overestimated by about 8% of the total, owing to regional SO_4^{2-} . This includes various nighttime periods of elevated regional sulfate, but that is were not attributed to solid fuel burning because coal is the only solid fuel used in Dublin that produces appreciable amounts of sulfate (Trubetskaya et al., 2021 reference) and it was found to have a negligible contribution to. This is because only coal is known to emit SO_4^{2-} (Trubetskaya et al. 2021) while only peat was found to contribute significantly to PM_{10} when constraining for these solid fuels in during PMF runs.

485 While the separation of regional and ship sulfate is a limitation of the organic-sulfate PMF, we can still isolate the real S-Ship emissions by manually subtracting the contribution of regional SO_4^{2-} sulfate was subtracted from the S-Ship factor to isolate HFO emissions. This adjusted S-Ship is called S-Ship* and reflects S-Ship emissions with regional SO_4^{2-} subtracted out. The pollution rose of S-Ship* indicates an emission source from a nearby ferry terminal (Fig. S13 and S14), and no longer includes any diurnal pattern indicated a nighttime increase in the diurnal profiles (Fig. S14).

490 Since eBC is observed to be part of the ship emissions, it was apportioned to the S-Ship and O-Ship factors using the estimated eBC/(OA+ SO_4^{2-}) ratios (eBCr). The ratios from the observed five exemplary plumes for S-Ship (eBCr = 0.066) and O-Ship (eBCr = 0.047) were compared to those derived from the source apportioned S-Ship and O-Ship plumes. The S-Ship was comparable with an average eBCr of 0.068, close to 0.066 from the S-Ship five exemplary plumes. However, the O-Ship eBCr differed from 0.047 for the five exemplary plumes to an average of 0.113 for the source apportioned plumes. This difference was caused by the much larger OA contribution during the exemplary plumes than for the average taken over

Formatted: Font: (Default) +Body (Times New Roman)

Formatted: Font: (Default) +Body (Times New Roman)

Formatted: Font: (Default) +Body (Times New Roman)

Commented [FK27]: RC2: In the manuscript, the author notes that Dublin experiences poor air quality daily due to the burning of domestic solid fuel for home heating, particularly during the colder months (mainly winter), especially at night. This could have a significant impact on the results of this study. Since another assumption of this study is that sulfate fragments are primarily derived from ship emissions, the author should provide more convincing discussions.

Commented [FK28R27]: Although Dublin does often experience poor air quality in winter due to residential solid fuel burning, the dominant fuel type is peat, which does not produce sulfate (Trubetskaya et al. 2021). Coal does produce sulfate, but the PMF analysis showed that the contribution of coal and wood burning were both negligible. We are therefore confident that local residential solid fuel combustion does not contribute significantly to the S-Ship factor and assign the other sulfate component to regional emissions. This is now reflected in the pollution roses for S-Ship and S-Ship* shown in Fig. S14, which highlight a nearby ferry berth in the southerly direction as the main source of ship-related sulfate emissions. The other sulfate component originates from the westerly direction along with OOA, and together these species are both attributed to regional source emissions (Fig S13).

Trubetskaya, A., Lin, C., Ovadnevaite, J., Ceburnis, D., O'Dowd, C., Leahy, J. J., Monaghan, R. F. D., Johnson, R., Layden, P., and Smith, W.: Study of Emissions from Domestic Solid-Fuel Stove Combustion in Ireland, Energy & Fuels, 35, 4966-4978, 10.1021/acs.energyfuels.0c04148, 2021.

Formatted: Font: (Default) +Body (Times New Roman)

Formatted: Font: (Default) +Body (Times New Roman)

Formatted: Font: (Default) +Body (Times New Roman)

Formatted: Not Highlight

Formatted: Font: (Default) +Body (Times New Roman)

Formatted: Font: (Default) +Body (Times New Roman)

Formatted: Font: (Default) +Body (Times New Roman)

Formatted: Font: (Default) +Body (Times New Roman)

Formatted: Not Highlight

Formatted: Not Highlight

Formatted: Font: (Default) +Body (Times New Roman)

Formatted: Font: (Default) +Body (Times New Roman), Check spelling and grammar

Formatted: Normal

all O-Ship factor plumes. Therefore, one ratio was applied for all O-Ship plumes where $PM_{10} > 53.5 \mu g m^{-3}$, and for the rest of the period another ratio was applied, $eBCr = 0.063$ and $eBCr = 0.141$, respectively. These $eBCr$ ratios were used to re-apportion eBC , amounting to 11% of total eBC to ~~HFO-S-Ship*~~ and 13% to ~~low-S-fuels-O-Ship*~~, which denotes ~~(O-Ship plus the eBC fraction)~~. The eBC shown in the pie chart (Fig. 4a6b) is adjusted (eBC^*) and reflects a subtraction of the 24% of eBC (only 2.9% of PM_{10}) already accounted for in the ship fuels. Nevertheless, the pollution rose of eBC^* (Fig. S13) suggests a significant influence from the East-Southeast that could reflect shipping related traffic through Dublin Port and the wider channel.

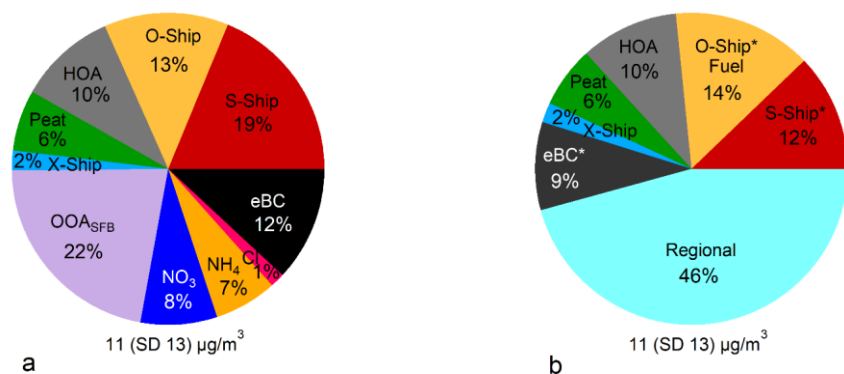


Figure 6: Pie charts of the composition breakdown of the (a) the PMF factors from the PMF and other species contributing to PM_{10} and (b) source attributed contribution estimates to PM_{10} with adjusted O-Ship, S-Ship, and eBC . Mean PM_{10} is shown at the bottom of the pie (brackets show standard deviation of the mean).

Factors and chemical components that belong to regional sources were combined and called Regional source, which includes the OOA, NO_3^- , NH_4^+ , Cl, and regional sulfate subtracted from S-Ship. Just to note, an estimated 1% of PM_{10} from the combined NO_3^- , NH_4^+ , and Cl could be associated with ~~low-SO-Ship~~ fuel emissions rather than Regional, however, there was enough uncertainty in this estimation that the 1% has been left associated with Regional. The pollution rose of the regional source shows two major emissions-source pattern origins, one from the west and one from the northeast, and very little from the ocean or nearby ferry terminals, which also confirms that most of the inorganics (other than sulfate) did not originate from shipping emissions. The ~~HFO-S-Ship*~~ and ~~low-S-fuel-O-Ship*~~ contains the apportioned eBC , as explained above. Across the campaign, the source contributions to the measured PM_{10} were Regional (46%), ~~Low-S-Fuel-O-Ship* emissions~~ ship emissions (14%), ~~HFO-ship emissions~~ S-Ship* (emissions) (12%), HOA due to traffic or oil burning (10%),

Formatted: Font: (Default) +Body (Times New Roman)

Formatted: Font: (Default) +Body (Times New Roman)

Formatted: Font: (Default) +Body (Times New Roman)

Formatted: Font: (Default) +Body (Times New Roman)

Formatted: Font: (Default) +Body (Times New Roman)

Formatted: Font: (Default) +Body (Times New Roman)

Formatted: Font: (Default) +Body (Times New Roman)

Formatted: Font: (Default) +Body (Times New Roman)

Formatted: Font: (Default) +Body (Times New Roman)

Formatted: Font: (Default) +Body (Times New Roman)

Formatted: Font: (Default) +Body (Times New Roman)

Formatted: Font: (Default) +Body (Times New Roman)

Formatted: Font: (Default) +Body (Times New Roman)

Formatted: Font: (Default) +Body (Times New Roman)

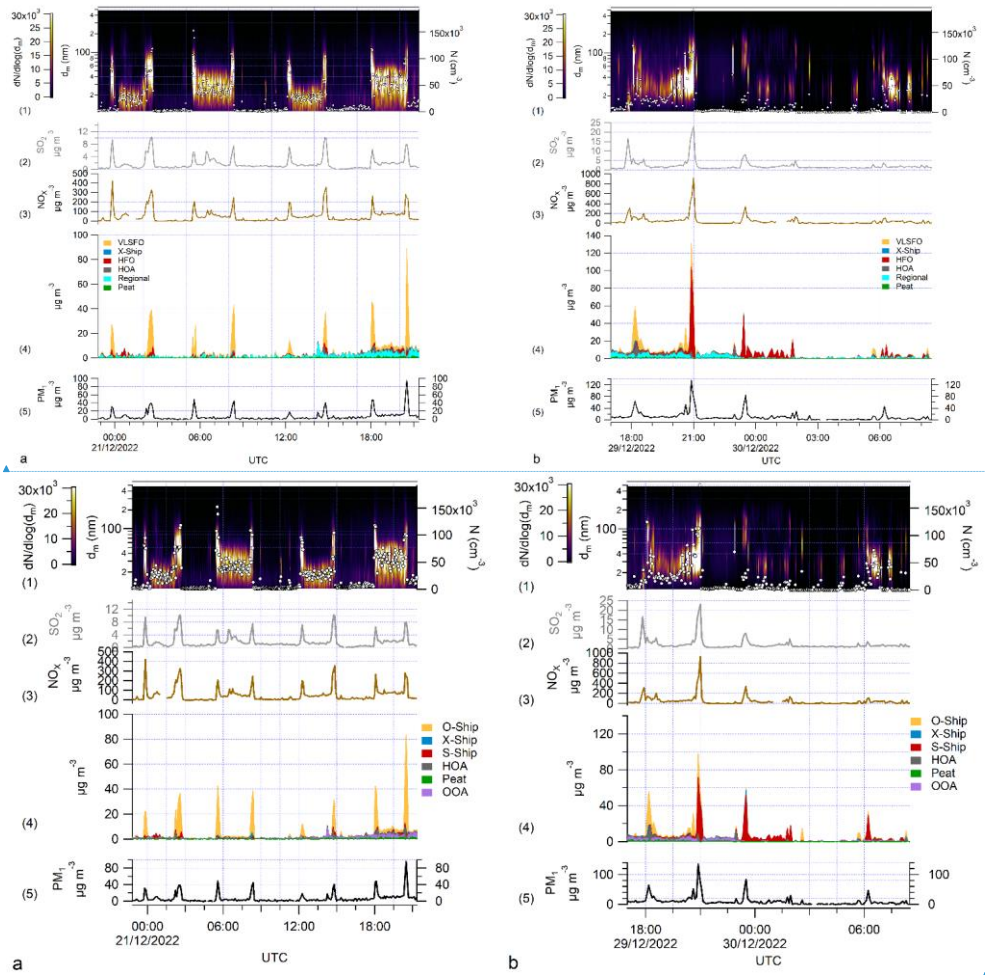
Formatted: Font: (Default) +Body (Times New Roman)

Formatted: Font: (Default) +Body (Times New Roman)

Formatted: Font: (Default) +Body (Times New Roman)

This drop in PM_{10} is partially due to the sampling technique ~~from~~ used by the ACSM, as it has a lower particle size cut-off of roughly 40 nm vacuum aerodynamic diameter (equivalent to ~ 32 nm electrical mobility diameter (d_m) (DeCarlo et al., 2004)).

555



Formatted: Font: (Default) +Body (Times New Roman), Subscript

Formatted: Font: (Default) +Body (Times New Roman)

Formatted: Font: (Default) +Body (Times New Roman)

Formatted: Font: (Default) +Body (Times New Roman)

Formatted: Font: (Default) +Body (Times New Roman)

Formatted: Font: (Default) +Body (Times New Roman)

Formatted: Font: (Default) +Body (Times New Roman)

Formatted: Font: Not Bold

Formatted: Font: (Default) +Body (Times New Roman)

Formatted: Font: (Default) +Body (Times New Roman)

Formatted: Font: (Default) +Body (Times New Roman)

Figure 57: Time series of data during 'bat ear' ship emission events for (a) ~~isolated O-Ship-VLSFO-MGO-VLSFO plumes (fuel switching pattern VLSFO-MGO-VLSFO)~~ and (b) ~~some time series of both O-Ship-VLSFO and HFO and S-Ship plumes~~. Panel (1) shows a curtain plot of particle number-size distribution data with particle diameter (d_m (nm)) (left axis) and lognormal ~~particle concentration ($dN/d\log(d_m)$) indicated by color~~. The particle number concentration (cm^{-3}) is ~~overlaid shown as with white circles markers~~ (right axis). Panel (2) shows ~~shows~~ SO_2 data (grey) and (23) shows NO_x data (brown). Panel (34) shows ~~stacked sources/factors from PMF~~ (as in Fig. 4a3), and panel (45) shows PM_{10} .

Formatted

The ~~low-SO-Ship 'bat ear' profiles in~~ (Fig. 5a7a) were ~~often~~ the result of ~~a-VLSFO-powered vessels fuel-switching from to VLSFO at docking to~~ marine gas oil (MGO) ~~while-when~~ docked. While ~~low-in~~not as visible in the ACSM sampled mass concentration, MGO ~~fuels-emissions~~ are visible in the number-size distribution as large concentrations (e.g. $6 \times 10^4 \text{ cm}^{-3}$) of tiny particles ~~with ($d_m < 50 \text{ nm}$)~~ (Fig. S12S15). It is also important to note that, these ~~hoteling periods~~ periods are characterised by particles with $d_m < 32 \text{ nm}$ contributing 51-100% of the estimated SMPS particle volume, which is smaller than ~~the lower size cut-off of the aerodynamic lens in the ACSM-PM₄ lens~~. This means that a significant portion of MGO ~~particle emissions mass concentration is~~ are ~~not well-captured by the ACSM and do not contribute to the reconstructed PM₄ mass concentration or source contribution estimates shown in Figure 6~~ ~~therefore the PMF solution~~. Nonetheless, estimates of the mass concentration during the four ~~hoteling periods~~ periods (in chronological order) have been determined from the SMPS data (assuming OA spherical particles with a density of 1.27 g cm^{-3}) to be 11, 30, 15, and $54 \mu\text{g m}^{-3}$ respectively.

Formatted

The first and third bat ear profile in Figure 5a-67a were from one specific vessel and the second and fourth from another, which may reflect differences in the fuel or engine design. Fewer bat ears attributed to ~~scrubbed HFO-S-Ship~~ emissions were captured due to the lower frequency of these vessels and changing meteorology, but a few are shown in Fig. 5b7b. At the start of the time series in ~~Figure 5b6b~~this period, the wind direction ~~is-was transitioning from originally~~ crossing a VLSFO vessel berth ~~before changing to pass over a berth one~~ with a HFO-powered vessel ~~and staying~~. Then the wind direction ~~stays~~ steady. The emissions observed from 23:00 on December 29th to 02:00 on 30th December (Fig. 5b7b) originated from a vessel that used HFO with a wet scrubber system (closed loop) all the time. This emission profile was created with different engine loads, as fuel type did not change. The ~~preceeding-preceding~~ (December 29th ~21:00) and following (30th December ~06:15) ~~HFO-S-Ship~~ bat ear emission profile was from a vessel that used HFO (with scrubber) during manoeuvring and MGO for ~~electricity generation~~ers when in port. Overall, these patterns confirm that ~~the low-S-fuels from O-Ship emissions from vessels using low-S fuels emit-yield~~ higher concentrations of particles that are shifted to smaller sizes, while ~~S-Ship emissions from HFO-powered vessels with scrubbers often yield relatively less particles~~ ~~HFO-fuels with scrubber systems from S-Ship emissions often yield~~ ~~emit relatively less particles~~ (as seen in Fig. S105).

Formatted: Subscript

Formatted

Formatted

4 Conclusions

This work shows that a combination of organic-sulfate PMF is effective in identifying and separating ~~sulfate-rich ship (S-Ship) and organic-rich ship (O-Ship) ship emissions in a SECA port, and, thus, can help in quantifying their contributions to PM even when S-Ship and O-Ship mass concentrations are as low as $4 \mu\text{g m}^{-3}$ based on fuel type when scrubbed heavy fuel~~

Formatted

oil (HFO) and very low sulfur fuel oil (VLSFO) emissions are present and, thus, can help in quantifying their contributions to PM even when mass concentrations are as low as $4 \mu\text{g m}^{-3}$. Over the month-long winter intensive campaign, 58 sulfate-rich (S-Ship) plumes and 190 organic-rich (O-Ship) plumes occurred were identified, of which 43 ship plume events reached over $53.5 \mu\text{g m}^{-3}$ of PM_{10} (33 O-Ship and 10 S-Ship). Close investigation of source apportionment factors, information on vessel fuel use, wind direction, and shipping logs indicate that the S-Ship relates to ships that use HFO but have a scrubber system, and O-Ship relates to ships that use low-sulfur (low-S) marine fuels, primarily VLSFO. These two distinct types of ship emission profiles enable organic-sulfate source apportionment with the advantage of distinguishing scrubbed HFO emissions from low-S/VLSFO fuel emissions without the use of V/Ni tracers.

Ship plumes were observed to last up to 2.5 hours given steady wind direction and fuel use while a ship was in port. Although, the more extreme pollution peaks ($\text{PM}_{10} > 53.5 \mu\text{g m}^{-3}$) only lasted 5–35 minutes and were specifically caused when ships were manoeuvring in or out of berth. While cold ironing periods at dock were characterised by lower PM emissions, number concentrations remained extremely high for submicron particles ($d_m < 50 \text{ nm}$), especially when ships were switched over to Marine Gas Oil (MGO) for power. In fact, MGO emissions were only characterised by these large number-concentrations of small particles, as PM mass concentrations from were MGO was not as clearly neither clearly noticeable as plumes, noticeable ($\text{PM}_{10} < 15 \mu\text{g m}^{-3}$) nor from the mass spectra of OA (noisy), mostly due to instrumental limitations of measuring these very small particles with an ACSM. This limitation leads to an underestimation of the PM_{10} contribution of low-sulfur fuels to PM_{10} and highlights the need for monitoring the aerosol number-size distribution in ship emission studies of MGO or alternative shipping fuels.

Overall, shipping-related emissions in Dublin Port contributed at least 28–47% of PM_{10} measured in the port location, with the caveat of missing significant PM_{10} contributions from MGO fuelled ships that make up a significant portion of vessel traffic at Dublin Port. There were also several cases of stagnant and cold weather conditions, lasting days at a time, that resulted in the build-up of regional and city pollutants that were found to contribute 46% of PM_{10} . Despite the transient and short-lived nature of shipping emission plumes in Dublin Port, however, the ship emissions from HFO with scrubber systems and VLSFO S-Ship and O-Ship emissions combine to contribute a surprisingly significant fraction of PM_{10} and submicron particle number concentration in the port area with a potential to increase even further with the planned port activity expansion. With more and more ships investing in low-S and alternative fuels, future studies on air quality in ports will be needed to better capture and investigate the very high concentrations of small particles ($< 50 \text{ nm}$ diameter) expected from cleaner fuels, including (e.g. MGO), as there are potentially serious implications for particle transport, toxicity, and climate forcing.

Code Availability

Software for PMF analyses are run using Igor Pro® from WaveMetrics® (<https://www.wavemetrics.com/>) and SoFi Pro from Datalystica (<https://datalystica.com/sofi-pro/>) that are available for purchase.

Formatted: Font: (Default) +Body (Times New Roman)

Formatted: Font: (Default) +Body (Times New Roman)

Formatted: Font: (Default) +Body (Times New Roman)

Formatted: Font: (Default) +Body (Times New Roman)

Formatted: Font: (Default) +Body (Times New Roman)

Formatted: Font: (Default) +Body (Times New Roman)

Formatted: Font: (Default) +Body (Times New Roman)

Formatted: Subscript

Formatted: Font: (Default) +Body (Times New Roman)

Formatted: Font: (Default) +Body (Times New Roman)

Formatted: Subscript

Formatted: Font: (Default) +Body (Times New Roman)

Formatted: Font: (Default) +Body (Times New Roman)

Formatted: Font: (Default) +Body (Times New Roman)

Formatted: Font: (Default) +Body (Times New Roman)

Formatted: Font: (Default) +Body (Times New Roman)

Formatted: Font: (Default) +Body (Times New Roman)

Formatted: Font: (Default) +Body (Times New Roman)

Data availability

Raw data from the study as well as details on the analyses are available upon request to the contact author(s) Kirsten N.

625 Fossom (kirstennicole.fossum@universityofgalway.ie) and Jurgita Ovadnevaite
(jurgita.ovadnevaite@universityofgalway.ie).

Formatted: Font: (Default) +Body (Times New Roman)

Formatted: Font: (Default) +Body (Times New Roman)

Formatted: Font: (Default) +Body (Times New Roman)

Formatted: Font: (Default) +Body (Times New Roman)

Supplement link:

Author contribution:

630 JO, COD, and JW designed the research. KNF, NOS, and SJ, carried out the measurements with technical support from SH, AT and DC. AT and DG supplied the Xact and SB supplied the Q-ACSM. KNF and CL performed the analysis. KNF wrote the paper with support from all authors who commented on the paper.

Competing interests:

The authors declare that they have no conflict of interest.

Acknowledgements

635 This work was funded by the Irish Environmental Protection Agency (EPA) under grant number: 2020-CCRP-LS.6, AC3/AEROSOURCE project, supported by EPA-Ireland and the Department of Environment, Climate and Communications.

The PM₁ Q-ACSM used in the intensive campaign was provided by Steigvilė Byčėnienė and Vadimas Dudoitis from the SRI Center for Physical Sciences and Technology, Lithuania.

640 KNF acknowledges and thanks Doug Worsnop for advice on selection of PMF solution, Teresa Spohn for on-site support during the PortAIR campaign, Eamon McElroy, Ken Rooney, and John Dungan and colleagues in Dublin Port Company for access, ongoing support and port-related information, Stenaline, especially Eamon Fortune, for providing insight, access to facilities, and accommodating the sampling site, and also to representatives from the shipping companies that provided details of ship fuel use.

645 References

Transport Omnibus 2019, An Phrómh-Oifig Staidrimh - Central Statistics Office, www.cso.ie, 2019.

- Agrawal, H., Eden, R., Zhang, X., Fine, P. M., Katzenstein, A., Miller, J. W., Ospital, J., Teffera, S., and Cocker, D. R., III: Primary Particulate Matter from Ocean-Going Engines in the Southern California Air Basin, *Environmental Science & Technology*, 43, 5398-5402, 10.1021/es8035016, 2009.
- 650 Anders, L., Schade, J., Rosewig, E. I., Kroeger-Badge, T., Irsig, R., Jeong, S., Bendl, J., Saraji-Bozorgzad, M., Huang, J.-H., Zhang, F.-Y., Wang, C. C., Adam, T., Sklorz, M., Etzien, U., Buchholz, B., Czech, H., Streibel, T., Passig, J., and Zimmermann, R.: Detection of Ship Emissions from Distillate Fuel Operation via Single-Particle Profiling of Polycyclic Aromatic Hydrocarbons, *Environmental Science: Atmospheres*, 10.1039/D3EA00056G, 2023.
- Anderson, M., Salo, K., Hallquist, Å. M., and Fridell, E.: Characterization of particles from a marine engine operating at low
655 loads, *Atmospheric Environment*, 101, 65-71, <https://doi.org/10.1016/j.atmosenv.2014.11.009>, 2015.
- Bond, T. C., Doherty, S. J., Fahey, D. W., Forster, P. M., Bernsten, T., DeAngelo, B. J., Flanner, M. G., Ghan, S., Kärcher, B., Koch, D., Kinne, S., Kondo, Y., Quinn, P. K., Sarofim, M. C., Schultz, M. G., Schulz, M., Venkataraman, C., Zhang, H., Zhang, S., Bellouin, N., Guttikunda, S. K., Hopke, P. K., Jacobson, M. Z., Kaiser, J. W., Klimont, Z., Lohmann, U., Schwarz, J. P., Shindell, D., Storelvmo, T., Warren, S. G., and Zender, C. S.: Bounding the role of black carbon in the
660 climate system: A scientific assessment, 118, 5380-5552, <https://doi.org/10.1002/jgrd.50171>, 2013.
- Canonaco, F., Crippa, M., Slowik, J. G., Baltensperger, U., and Prévôt, A. S. H.: SoFi, an IGOR-based interface for the efficient use of the generalized multilinear engine (ME-2) for the source apportionment: ME-2 application to aerosol mass spectrometer data, *Atmos. Meas. Tech.*, 6, 3649-3661, 10.5194/amt-6-3649-2013, 2013.
- Canonaco, F., Tobler, A., Chen, G., Sosedova, Y., Slowik, J. G., Bozzetti, C., Daellenbach, K. R., El Haddad, I., Crippa, M.,
665 Huang, R. J., Furger, M., Baltensperger, U., and Prévôt, A. S. H.: A new method for long-term source apportionment with time-dependent factor profiles and uncertainty assessment using SoFi Pro: application to 1 year of organic aerosol data, *Atmos. Meas. Tech.*, 14, 923-943, 10.5194/amt-14-923-2021, 2021.
- [Cappa, C. D., Williams, E. J., Lack, D. A., Buffaloe, G. M., Coffman, D., Hayden, K. L., Herndon, S. C., Lerner, B. M., Li, S. M., Massoli, P., McLaren, R., Nuaaman, I., Onasch, T. B., and Quinn, P. K.: A case study into the measurement of ship emissions from plume intercepts of the NOAA ship <i>Miller Freeman</i>, *Atmos. Chem. Phys.*, 14, 1337-1352, 10.5194/acp-14-1337-2014, 2014.](#)
- [Carslaw, D. C. and Ropkins, K.: openair - An R package for air quality data analysis, *Environ. Model. Softw.*, 27-28, 52-61, 10.1016/j.envsoft.2011.09.008, 2012.](#)
- [Chazeau, B., El Haddad, I., Canonaco, F., Temime-Roussel, B., D'Anna, B., Gille, G., Mesbah, B., Prévôt, A. S. H.,
675 Wortham, H., and Marchand, N.: Organic aerosol source apportionment by using rolling positive matrix factorization: Application to a Mediterranean coastal city, *Atmospheric Environment*, X, 14, 100176, <https://doi.org/10.1016/j.aeaoa.2022.100176>, 2022.](#)
- Chen, G., Canonaco, F., Tobler, A., Aas, W., Alastuey, A., Allan, J., Atabakhsh, S., Aurela, M., Baltensperger, U., Bougiatioti, A., De Brito, J. F., Ceburnis, D., Chazeau, B., Chebaicheb, H., Daellenbach, K. R., Ehn, M., El Haddad, I.,
680 Eleftheriadis, K., Favez, O., Flentje, H., Font, A., Fossom, K., Freney, E., Gini, M., Green, D. C., Heikkinen, L., Herrmann,

Formatted: Font: (Default) +Body (Times New Roman)

- H., Kalogridis, A.-C., Keernik, H., Lhotka, R., Lin, C., Lunder, C., Maasikmets, M., Manousakas, M. I., Marchand, N., Marin, C., Marmureanu, L., Mihalopoulos, N., Močnik, G., Nečki, J., O'Dowd, C., Ovadnevaite, J., Peter, T., Petit, J.-E., Pikridas, M., Matthew Platt, S., Pokorná, P., Poulain, L., Priestman, M., Riffault, V., Rinaldi, M., Rózański, K., Schwarz, J., Sciare, J., Simon, L., Skiba, A., Slowik, J. G., Sosedova, Y., Stavroulas, I., Styszko, K., Teinmaa, E., Timonen, H.,
685 Tremper, A., Vasilescu, J., Via, M., Vodička, P., Wiedensohler, A., Zografou, O., Cruz Minguillón, M., and Prévôt, A. S. H.: European aerosol phenomenology – 8: Harmonised source apportionment of organic aerosol using 22 Year-long ACSM/AMS datasets, *Environment International*, 166, 107325, <https://doi.org/10.1016/j.envint.2022.107325>, 2022.
- Chen, Y., Xu, L., Humphry, T., Hettiyadura, A. P. S., Ovadnevaite, J., Huang, S., Poulain, L., Schroder, J. C., Campuzano-Jost, P., Jimenez, J. L., Herrmann, H., O'Dowd, C., Stone, E. A., and Ng, N. L.: Response of the Aerodyne Aerosol Mass
690 Spectrometer to Inorganic Sulfates and Organosulfur Compounds: Applications in Field and Laboratory Measurements, *Environmental Science & Technology*, 53, 5176-5186, [10.1021/acs.est.9b00884](https://doi.org/10.1021/acs.est.9b00884), 2019.
- Collins, D. R., Cocker, D. R., Flagan, R. C., and Seinfeld, J. H.: The Scanning DMA Transfer Function, *Aerosol Science and Technology*, 38, 833-850, [10.1080/027868290503082](https://doi.org/10.1080/027868290503082), 2004.
- [Comer, B., Georgeff, E., and Osipova, L.: Air emissions and water pollution discharges from ships with scrubbers, *https://theicct.org/*, 2020.](https://theicct.org/)
- ~~Crippa, M., El Haddad, I., Slowik, J. G., DeCarlo, P. F., Mohr, C., Heringa, M. E., Chirico, R., Marchand, N., Sciare, J., Baltensperger, U., and Prévôt, A. S. H.: Identification of marine and continental aerosol sources in Paris using high resolution aerosol mass spectrometry, *Journal of Geophysical Research: Atmospheres*, 118, 1950-1963, [doi:10.1002/jgrd.50151](https://doi.org/10.1002/jgrd.50151), 2013.~~
- 700 COST Action CA16109 COLOSSAL Chemical On-Line cOmposition and Source Apportionment of fine aerosol, Working Group 1. Quadrupole Aerosol Chemical Speciation Monitor (Q-ACSM) - Standard Operating Procedure. Deliverable 1.1. Released in May 2021. <https://www.actris-ecac.eu/pmc-non-refractory-organics-and-inorganics.html>.
- ~~Crippa, M., El Haddad, I., Slowik, J. G., DeCarlo, P. F., Mohr, C., Heringa, M. E., Chirico, R., Marchand, N., Sciare, J., Baltensperger, U., and Prévôt, A. S. H.: Identification of marine and continental aerosol sources in Paris using high resolution aerosol mass spectrometry, *Journal of Geophysical Research: Atmospheres*, 118, 1950-1963, [doi:10.1002/jgrd.50151](https://doi.org/10.1002/jgrd.50151), 2013.~~
- 705 ~~Crippa, M., Canonaco, F., Lanz, V. A., Äijälä, M., Allan, J. D., Carbone, S., Capes, G., Ceburnis, D., Dall'Osto, M., Day, D. A., DeCarlo, P. F., Ehn, M., Eriksson, A., Freney, E., Hildebrandt Ruiz, L., Hillamo, R., Jimenez, J. L., Junninen, H., Kiendler-Scharr, A., Kortelainen, A. M., Kulmala, M., Laaksonen, A., Mensah, A. A., Mohr, C., Nemitz, E., O'Dowd, C., Ovadnevaite, J., Pandis, S. N., Petäjä, T., Poulain, L., Saarikoski, S., Sellegri, K., Swietlicki, E., Tiitta, P., Worsnop, D. R., Baltensperger, U., and Prévôt, A. S. H.: Organic aerosol components derived from 25 AMS data sets across Europe using a consistent ME-2 based source apportionment approach, *Atmos. Chem. Phys.*, 14, 6159-6176, [10.5194/acp-14-6159-2014](https://doi.org/10.5194/acp-14-6159-2014), 2014.~~

Formatted: Font: (Default) +Body (Times New Roman)

Formatted: Font: (Default) +Body (Times New Roman)

- Czech, H., Schnelle-Kreis, J., Streibel, T., and Zimmermann, R.: New directions: Beyond sulphur, vanadium and nickel –
715 About source apportionment of ship emissions in emission control areas, *Atmospheric Environment*, 163, 190-191,
<https://doi.org/10.1016/j.atmosenv.2017.05.017>, 2017.
- Davison, A. C. and Hinkley, D. V.: *Bootstrap Methods and their Application*, Cambridge Series in Statistical and
Probabilistic Mathematics, Cambridge University Press, Cambridge, DOI: 10.1017/CBO9780511802843, 1997.
- [DeCarlo, P. F., Slowik, J. G., Worsnop, D. R., Davidovits, P., and Jimenez, J. L.: Particle Morphology and Density
720 Characterization by Combined Mobility and Aerodynamic Diameter Measurements. Part 1: Theory, *Aerosol Science and
Technology*, 38, 1185-1205, \[10.1080/027868290903907\]\(https://doi.org/10.1080/027868290903907\), 2004.](#)
- DPC: Dublin Port Masterplan 2040; Reviewed 2018, -2018.
- Drinovec, L., Močnik, G., Zotter, P., Prévôt, A. S. H., Ruckstuhl, C., Coz, E., Rupakheti, M., Sciare, J., Müller, T.,
Wiedensohler, A., and Hansen, A. D. A.: The "dual-spot" Aethalometer: an improved measurement of aerosol black carbon
725 with real-time loading compensation, *Atmos. Meas. Tech.*, 8, 1965-1979, [10.5194/amt-8-1965-2015](https://doi.org/10.5194/amt-8-1965-2015), 2015.
- Efron, B.: Bootstrap Methods: Another Look at the Jackknife, *The Annals of Statistics*, 7, 1-26, [10.1214/aos/1176344552](https://doi.org/10.1214/aos/1176344552),
1979.
- Eichler, P., Müller, M., Rohmann, C., Stengel, B., Orasche, J., Zimmermann, R., and Wisthaler, A.: Lubricating Oil as a
Major Constituent of Ship Exhaust Particles, *Environmental Science and Technology Letters*, 4, 54-58,
730 [10.1021/acs.estlett.6b00488](https://doi.org/10.1021/acs.estlett.6b00488), 2017.
- Fuchs, N. A.: On the stationary charge distribution on aerosol particles in a bipolar ionic atmosphere, *Pure and Applied
Geophysics*, 185-186, <https://doi.org/10.1007/BF01993343>, 1963.
- Furger, M., Minguillón, M. C., Yadav, V., Slowik, J. G., Hüglin, C., Fröhlich, R., Petterson, K., Baltensperger, U., and
Prévôt, A. S. H.: Elemental composition of ambient aerosols measured with high temporal resolution using an online XRF
735 spectrometer, *Atmos. Meas. Tech.*, 10, 2061-2076, [10.5194/amt-10-2061-2017](https://doi.org/10.5194/amt-10-2061-2017), 2017.
- Healy, R. M., O'Connor, I. P., Hellebust, S., Allanic, A., Sodeau, J. R., and Wenger, J. C.: Characterisation of single particles
from in-port ship emissions, *Atmospheric Environment*, 43, 6408-6414, <https://doi.org/10.1016/j.atmosenv.2009.07.039>,
2009.
- Healy, R. M., Hellebust, S., Kourtchev, I., Allanic, A., O'Connor, I. P., Bell, J. M., Healy, D. A., Sodeau, J. R., and Wenger,
740 J. C.: Source apportionment of PM_{2.5} in Cork Harbour, Ireland using a combination of single particle mass
spectrometry and quantitative semi-continuous measurements, *Atmos. Chem. Phys.*, 10, 9593-9613, [10.5194/acp-10-9593-
2010](https://doi.org/10.5194/acp-10-9593-2010), 2010.
- Hong, W.-J., Dong, W.-J., Zhao, T.-T., Zheng, J.-Z., Lu, Z.-G., and Ye, C.: Ambient PM_{2.5}-bound polycyclic aromatic
hydrocarbons in Ningbo Harbor, eastern China: seasonal variation, source apportionment, and cancer risk assessment, *Air
745 Quality, Atmosphere & Health*, 16, 1809-1821, [10.1007/s11869-023-01373-6](https://doi.org/10.1007/s11869-023-01373-6), 2023.

Formatted: Font: (Default) +Body (Times New Roman)

- Lin, C., Ceburnis, D., Trubetskaya, A., Xu, W., Smith, W., Hellebust, S., Wenger, J., O'Dowd, C., and Ovadnevaite, J.: On the use of reference mass spectra for reducing uncertainty in source apportionment of solid-fuel burning in ambient organic aerosol, *Atmos. Meas. Tech.*, 14, 6905-6916, 10.5194/amt-14-6905-2021, 2021.
- 750 Lin, C., Ceburnis, D., Xu, W., Heffernan, E., Hellebust, S., Gallagher, J., Huang, R. J., O'Dowd, C., and Ovadnevaite, J.: The impact of traffic on air quality in Ireland: insights from the simultaneous kerbside and suburban monitoring of submicron aerosols, *Atmos. Chem. Phys.*, 20, 10513-10529, 10.5194/acp-20-10513-2020, 2020.
- Lin, C., Huang, R.-J., Ceburnis, D., Buckley, P., Preissler, J., Wenger, J., Rinaldi, M., Facchini, M. C., O'Dowd, C., and Ovadnevaite, J.: Extreme air pollution from residential solid fuel burning, *Nature Sustainability*, 1, 512-517, 10.1038/s41893-018-0125-x, 2018.
- 755 Lin, C., Ceburnis, D., Vaishya, A., Trubetskaya, A., Tan, Y., Wang, T., Smith, W., Johnson, R., Xu, W., Monaghan, R. F. D., O'Dowd, C., and Ovadnevaite, J.: Air quality—climate forcing double whammy from domestic firelighters, *npj Climate and Atmospheric Science*, 6, 101, 10.1038/s41612-023-00427-x, 2023.
- Lin, C., Ceburnis, D., Huang, R. J., Xu, W., Spohn, T., Martin, D., Buckley, P., Wenger, J., Hellebust, S., Rinaldi, M., Facchini, M. C., O'Dowd, C., and Ovadnevaite, J.: Wintertime aerosol dominated by solid-fuel-burning emissions across
760 Ireland: insight into the spatial and chemical variation in submicron aerosol, *Atmos. Chem. Phys.*, 19, 14091-14106, 10.5194/acp-19-14091-2019, 2019.
- Liu, Y., Ge, Y., Tan, J., Fu, M., Shah, A. N., Li, L., Ji, Z., and Ding, Y.: Emission characteristics of offshore fishing ships in the Yellow Bo Sea, China, *Journal of environmental sciences (China)*, 65, 83-91, 10.1016/j.jes.2017.02.020, 2018.
- Magee Scientific Inc. (2018) 'Aethalometer® Model AE33 User Manual', (August).
- 765 Mazzei, F., D'Alessandro, A., Lucarelli, F., Nava, S., Prati, P., Valli, G., and Vecchi, R.: Characterization of particulate matter sources in an urban environment, *Science of The Total Environment*, 401, 81-89, <https://doi.org/10.1016/j.scitotenv.2008.03.008>, 2008.
- Middlebrook, A. M., Bahreini, R., Jimenez, J. L., and Canagaratna, M. R.: Evaluation of Composition-Dependent Collection Efficiencies for the Aerodyne Aerosol Mass Spectrometer using Field Data, *Aerosol Science and Technology*, 46, 258-271,
770 10.1080/02786826.2011.620041, 2012.
- Mueller, D., Uibel, S., Takemura, M., Klingelhofer, D., and Groneberg, D. A.: Ships, ports and particulate air pollution - an analysis of recent studies, *Journal of Occupational Medicine and Toxicology*, 6, 31, 10.1186/1745-6673-6-31, 2011.
- Ng, N. L., Herndon, S. C., Trimborn, A., Canagaratna, M. R., Croteau, P. L., Onasch, T. B., Sueper, D., Worsnop, D. R., Zhang, Q., Sun, Y. L., and Jayne, J. T.: An Aerosol Chemical Speciation Monitor (ACSM) for Routine Monitoring of the
775 Composition and Mass Concentrations of Ambient Aerosol, *Aerosol Science and Technology*, 45, 780-794, 10.1080/02786826.2011.560211, 2011.
- O'Connor, I. P., Allanic, A., Hellebust, S., Kourtchev, I., Healy, R. M., Healy, D. A., Bell, J. M., Wenger, J. C., and Sodeau, J. R.: Composition and Sources of Particulate Air Pollution in a Port Environment, Cork, Ireland, Environmental Protection Agency & University College Cork, www.epa.ie, 2013.

- 780 Ovadnevaite, J., Lin, C., Rinaldi, M., Ceburnis, D., Buckley, P., Coleman, L., Facchini, M. C., Wenger, J., and O'Dowd, C.:
Air Pollution Sources in Ireland; 2016-CCRP-MS.31, National University of Ireland Galway, Istituto di Scienze
dell'Atmosfera e del Clima and University College Cork www.epa.ie, 60, 2021.
- Paatero, P.: Least squares formulation of robust non-negative factor analysis, *Chemometrics and Intelligent Laboratory
Systems*, 37, 23-35, [https://doi.org/10.1016/S0169-7439\(96\)00044-5](https://doi.org/10.1016/S0169-7439(96)00044-5), 1997.
- 785 Paatero, P. and Tapper, U.: Positive matrix factorization: A non-negative factor model with optimal utilization of error
estimates of data values, *Environmetrics*, 5, 111-126, 10.1002/env.3170050203, 1994.
- Paatero, P., Eberly, S., Brown, S. G., and Norris, G. A.: Methods for estimating uncertainty in factor analytic solutions,
Atmos. Meas. Tech., 7, 781-797, 10.5194/amt-7-781-2014, 2014.
- Pandolfi, M., Gonzalez-Castanedo, Y., Alastuey, A., de la Rosa, J. D., Mantilla, E., de la Campa, A. S., Querol, X., Pey, J.,
790 Amato, F., and Moreno, T.: Source apportionment of PM10 and PM2.5 at multiple sites in the strait of Gibraltar by PMF:
impact of shipping emissions, *Environmental Science and Pollution Research*, 18, 260-269, 10.1007/s11356-010-0373-4,
2011.
- Parworth, C., Fast, J. D., Mei, F., Shippert, T., Sivaraman, C., Tilp, A., Watson, T. B., and Zhang, Q. J. A. E.: Long-term
measurements of submicrometer aerosol chemistry at the Southern Great Plains (SGP) using an Aerosol Chemical
795 Speciation Monitor (ACSM), *Atmospheric Environment*, 106, 43-55, 2015.
- [Petit, J. E., Favez, O., Albinet, A., and Canonaco, F.: A user-friendly tool for comprehensive evaluation of the geographical
origins of atmospheric pollution: Wind and trajectory analyses, *Environmental Modelling & Software*, 88, 183-187,
<https://doi.org/10.1016/j.envsoft.2016.11.022>, 2017.](https://doi.org/10.1016/j.envsoft.2016.11.022)
- Petzold, A., Ogren, J. A., Fiebig, M., Laj, P., Li, S. M., Baltensperger, U., Holzer-Popp, T., Kinne, S., Pappalardo, G.,
800 Sugimoto, N., Wehrli, C., Wiedensohler, A., and Zhang, X. Y.: Recommendations for reporting "black carbon"
measurements, *Atmos. Chem. Phys.*, 13, 8365-8379, 10.5194/acp-13-8365-2013, 2013.
- Pieber, S. M., El Haddad, I., Slowik, J. G., Canagaratna, M. R., Jayne, J. T., Platt, S. M., Bozzetti, C., Daellenbach, K. R.,
Fröhlich, R., Vlachou, A., Klein, F., Dommen, J., Miljevic, B., Jiménez, J. L., Worsnop, D. R., Baltensperger, U., and
Prévôt, A. S. H.: Inorganic Salt Interference on CO₂⁺ in Aerodyne AMS and ACSM Organic Aerosol Composition Studies,
805 *Environmental Science & Technology*, 50, 10494-10503, 10.1021/acs.est.6b01035, 2016.
- Schraufnagel, D. E.: The health effects of ultrafine particles, *Experimental & Molecular Medicine*, 52, 311-317,
10.1038/s12276-020-0403-3, 2020.
- Sun, Y. L., Zhang, Q., Schwab, J. J., Yang, T., Ng, N. L., and Demerjian, K. L.: Factor analysis of combined organic and
inorganic aerosol mass spectra from high resolution aerosol mass spectrometer measurements, *Atmos. Chem. Phys.*, 12,
8537-8551, 10.5194/acp-12-8537-2012, 2012.
- 810 Tauchi, M., Yamaji, K., Nakatsubo, R., Oshita, Y., Kawamoto, K., Itano, Y., Hayashi, M., Hiraki, T., Takaishi, Y., and
Futamura, A.: Evaluation of the effect of Global Sulfur Cap 2020 on a Japanese inland sea area, *Case Studies on Transport
Policy*, 10, 785-794, <https://doi.org/10.1016/j.cstp.2022.02.006>, 2022.

Formatted: Font: (Default) +Body (Times New Roman)

- 815 Tong, M., Zhang, Y., Zhang, H., Chen, D., Pei, C., Guo, H., Song, W., Yang, X., and Wang, X.: Contribution of Ship Emission to Volatile Organic Compounds Based on One-Year Monitoring at a Coastal Site in the Pearl River Delta Region, *Journal of Geophysical Research: Atmospheres*, 129, e2023JD039999, <https://doi.org/10.1029/2023JD039999>, 2024.
- Trempere, A. H., Font, A., Priestman, M., Hamad, S. H., Chung, T. C., Pribadi, A., Brown, R. J. C., Goddard, S. L., Grassineau, N., Petterson, K., Kelly, F. J., and Green, D. C.: Field and laboratory evaluation of a high time resolution x-ray fluorescence instrument for determining the elemental composition of ambient aerosols, *Atmos. Meas. Tech.*, 11, 3541-3557, 10.5194/amt-11-3541-2018, 2018.
- 820 [Trubetskaya, A., Lin, C., Ovadnevaite, J., Ceburnis, D., O'Dowd, C., Leahy, J. J., Monaghan, R. F. D., Johnson, R., Layden, P., and Smith, W.: Study of Emissions from Domestic Solid-Fuel Stove Combustion in Ireland, *Energy & Fuels*, 35, 4966-4978, 10.1021/acs.energyfuels.0c04148, 2021.](#)
- Ulbrich, I. M., Canagaratna, M. R., Zhang, Q., Worsnop, D. R., and Jimenez, J. L.: Interpretation of organic components from Positive Matrix Factorization of aerosol mass spectrometric data, *Atmos. Chem. Phys.*, 9, 2891-2918, 10.5194/acp-9-2891-2009, 2009.
- 825 [UN Environment Programme: <https://www.unep.org/topics/ocean-seas-and-coasts/regional-seas-programme/coastal-zone-management>, access: 31/07/2024, 2024.](#)
- Viana, M., Amato, F., Alastuey, A., Querol, X., Moreno, T., García Dos Santos, S., Herce, M. D., and Fernández-Patier, R.: Chemical Tracers of Particulate Emissions from Commercial Shipping, *Environmental Science & Technology*, 43, 7472-7477, 10.1021/es901558t, 2009.
- 830 [Wu, Y., Liu, D., Wang, X., Li, S., Zhang, J., Qiu, H., Ding, S., Hu, K., Li, W., Tian, P., Liu, Q., Zhao, D., Ma, E., Chen, M., Xu, H., Ouyang, B., Chen, Y., Kong, S., Ge, X., and Liu, H.: Ambient marine shipping emissions determined by vessel operation mode along the East China Sea, *Science of The Total Environment*, 769, 144713, <https://doi.org/10.1016/j.scitotenv.2020.144713>, 2021.](#)
- 835 Yang, J., Tang, T., Jiang, Y., Karavalakis, G., Durbin, T. D., Wayne Miller, J., Cocker, D. R., and Johnson, K. C.: Controlling emissions from an ocean-going container vessel with a wet scrubber system, *Fuel*, 304, 121323, <https://doi.org/10.1016/j.fuel.2021.121323>, 2021.
- Yau, P. S., Lee, S. C., Cheng, Y., Huang, Y., Lai, S. C., and Xu, X. H.: Contribution of ship emissions to the fine particulate in the community near an international port in Hong Kong, *Atmospheric Research*, 124, 61-72, <https://doi.org/10.1016/j.atmosres.2012.12.009>, 2013.
- Zetterdahl, M., Moldanová, J., Pei, X., Pathak, R. K., and Demirdjian, B.: Impact of the 0.1% fuel sulfur content limit in SECA on particle and gaseous emissions from marine vessels, *Atmospheric Environment*, 145, 338-345, <https://doi.org/10.1016/j.atmosenv.2016.09.022>, 2016.
- 845 Zhang, S.: Dynamic analysis, in near field and with a finer temporal resolution, of a sub-micron aerosol in urban situation under industrial influence - Analyse dynamique, en champ proche et à résolution temporelle fine, de l'aérosol submicronique en situation urbaine sous influence industrielle, Université du Littoral Côte d'Opale, 2016.

Formatted: Font: (Default) +Body (Times New Roman)

Formatted: Font: (Default) +Body (Times New Roman)

Formatted: Font: (Default) +Body (Times New Roman)

Zhao, M., Zhang, Y., Ma, W., Fu, Q., Yang, X., Li, C., Zhou, B., Yu, Q., and Chen, L.: Characteristics and ship traffic source identification of air pollutants in China's largest port, *Atmospheric Environment*, 64, 277-286,

850 <https://doi.org/10.1016/j.atmosenv.2012.10.007>, 2013.