

Does nitrate regulate dissolved organic matter mobilization and export in the riparian soils of an agricultural catchment?

Thibault Lambert¹, Rémi Dupas^{1,*}, Patrick Durand¹

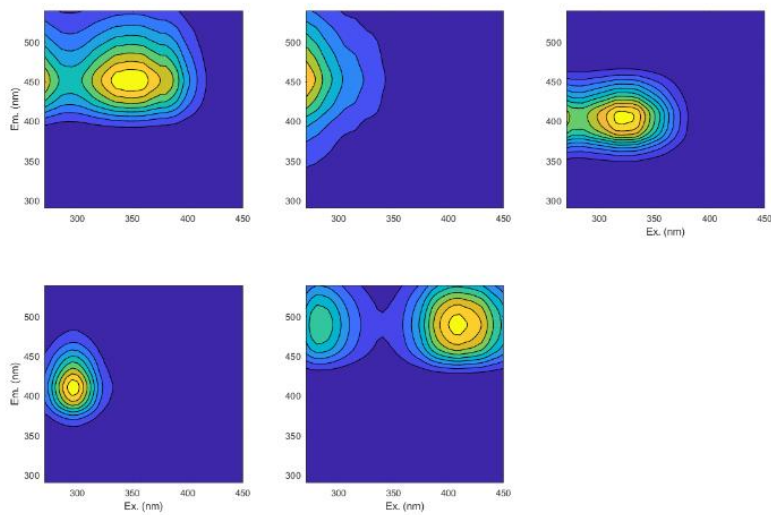
¹ INRAE, UMR SAS 1069, L'Institut Agro, Rennes, France

* Corresponding author

Supplementary Information

Figure S1 – A) Loadings of PARAFAC components identified in this study and B) results from the split half analysis.

A)



B)

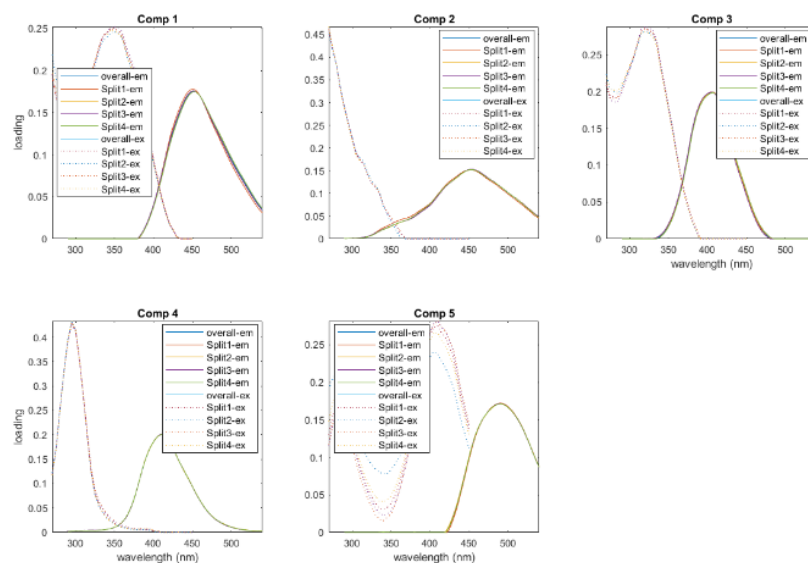


Figure S2 – Long-term trends in dissolved organic carbon (DOC) concentrations measured in streams in Brittany over the 2007-2020 period based on public data. Trends were determined based on Mann-Kendall tests with a level of p-value of 0.05. Over 76 streams, 11 showed a positive increasing trend, 2 a negative trend, and the rest no significant evolution.

