

Review Response IMC for CL

All the modified sections are kept in blue font.

Reviewer's Comments:

- 1. Line 12: "retrospective and prospective analyses at various temporal resolutions" is repeated**

Thank you for your comment. The error is now corrected.

- 2. Line 23: check formatting of citations**

Thank you for your comment. The citations are now properly formatted based on the guidelines from the Journal's submission page.

- 3. Line 42: check formatting of citation, and similar instances throughout the entire manuscript**

Thank you for your comment. The citations are now properly formatted based on the guidelines from the Journal's submission page.

- 4. Table 1: define units of each parameter and in the caption, you need to explain the sensitivity scoring that you've provided**

Thank you for your comment.

The caption of Table1, is updated with explanation of the sensitivity scoring. The table entries are also updated with units of the parameters wherever possible since many of them are dimensionless.

- 5. Figure 3: label axis using conventional methods e.g. Time (hr), Rainfall (mm), add scale bar to map, and provide legend for DEM values**

Thank you for your comment.

We have now updated the rainfall data with standard x and y labels, added scale bar to the map and included legend for the DEM.

- 6. Section 4.2: describe the DEM data. For example, how was the DEM acquired, what is the spatial resolution and accuracy (vertical and horizontal)**

Thank you for your comment.

All relevant information related to the acquisition of the DEMs, resolution and accuracy is now included in section:4.2

- 7. Line 255: need to state earlier in the methods that you will compare uncalibrated, manually calibrated, and automated calibration outputs because introducing this in the results is confusing. Okay, I see that you have introduced this explanation on lines 261-265, but consider providing this before you present the calibration results.**

Thank you for your comment.

We have now included the mentioned information before the presentation of calibration results for better understanding.

- 8. Table 2: erosion volume needs units and state time period of simulation in caption**

Thank you for your comment.

The table is updated with the unit for erosion volume. The time-period details of the calibration epochs are now included in the caption.

- 9. Fig 5: overall the figure is not clear and contains redundancy. Improvement can be made by visualizing the DODs on top of a hill-shade of the 2021 DEM and make topographic changes that are near zero transparent. To provide a fair comparison, make sure that the DOD values have the same range across all maps. Provide units for the legend and a scale bar for the maps. These maps will provide a spatial comparison across calibration methods.**

We have now replaced the 2D DOD column in the figure with the advised visualization of placing DODs on hill-shade of 2021 DEM and setting the near zero volume to transparent. The legends and symbology value ranges are kept same and scales provided in each map.

- 10. The 3D plots are very difficult to understand and should be omitted. Instead, a quantitative analysis should be provided by comparing distributions (e.g. density plot) of topographic change per calibration method or another type of visualization (e.g. scatterplots). If you decide to keep the 3D plots, add axis labels and increase the font size of the tick labels. Also, max values on z-axis across all plots should be the same to aid comparison.**

Thank you for your comment.

We have retained the 3D plots and have modified them addressing your concerns. We have added the axis label, increased the font size and made the z-axis max value same across all the plots for easy comparison.

- 11. Table 3: parameters need units, also check if this table is mentioned in the text.**

Thank you for your comment. The parameters were updated with units and the table is now referenced in the text.

12. Line 264: w.r.t.?

13. This error is now corrected.

14. Section 4.3.3.: explain in the text what you mean by justifiable landscape changes in the amount of time stated. In addition, state what rainfall are you using for the future, are you just repeating the rainfall file? Overall, I don't understand what you are trying to prove by comparing the output from an uncalibrated and calibrated model. If you are trying to demonstrate that an IMC calibrated model can produce physically plausible predictions, you will need observations in the future (e.g. 2023). Without this data your conclusions about the IMC calibrated future output remain speculative and don't add useful information to the manuscript. Consider rewriting or removing this section.

Thank you for your comment.

We have now rewritten and retitled the subsection (4.3.3.). The images are demonstrative projections and illustrates that IMC calibrated CL can generate consistent and logical predictions of present and future land evolution compared to uncalibrated approaches.

The predicted landscape changes follow consistent trend over time (compare with current predictions i.e. year 2021 in Fig 4p), aligning with the natural progression of erosion.

15. Figure 6: max value on z-axis across all plots should be the same for a fair comparison. Z-axis needs labels and tick label font size should be larger.

Thank you for your comment.

All the plots in Fig.6, now have been updated with all having the same maximum z-axis value. Separate Colorbars have also been added for each plot.

16. Section 5: what is an ablation study?

'Ablation study' is a term popularly used in Machine Learning and Computer science disciplines. It is a research method used to evaluate the impact of different components or features of a system, model, or process by systematically removing or altering them and observing the effects on performance.

We have now replaced it with 'Experimental study' to avoid any confusion.

17. Check if figure 7 is referenced in the text.

Thank you for pointing out the error.

We have now corrected it and included the reference to Fig.7 in text.

18. Figure 8: need labels and units on x-axis

Thank you for pointing out the error.

We have now updated the figures with relevant x-axis label and unit.

Introducing Iterative Model Calibration (IMC) v1.0: A Generalizable Framework for Numerical Model Calibration with a CAESAR-Lisflood Case Study

Chayan Banerjee¹, Kien Nguyen*¹, Clinton Fookes¹, Gregory Hancock², and Thomas Coulthard³

¹School of Electrical Engineering and Robotics, Queensland University of Technology, Australia

²School of Environmental and Life Sciences, University of Newcastle, Australia.

³Geography Department, University of Hull, UK.

Correspondence: Kien Nguyen* (k.nguyenthanh@qut.edu.au)

Abstract. In geosciences, including hydrology and geomorphology, the reliance on numerical models necessitates the precise calibration of their parameters to effectively translate information from observed to unobserved settings. Traditional calibration techniques, however, are marked by poor generalizability, demanding significant manual labor for data preparation and the calibration process itself. Moreover, the utility of machine learning-based and data-driven approaches is curtailed by the requirement for the numerical model to be differentiable for optimization purposes, which challenges their generalizability across different models. Furthermore, the potential of freely available geomorphological data remains underexploited in existing methodologies. In response to these challenges, we introduce a generalizable framework for calibrating numerical models, with a particular focus on geomorphological models, named Iterative Model Calibration (IMC). This approach efficiently identifies the optimal set of parameters for a given numerical model through a strategy based on a Gaussian neighborhood algorithm. We demonstrate the efficacy of IMC by applying it to the calibration of the widely-used Landscape Evolution Model, CAESAR-Lisflood, achieving high precision. Once calibrated, this model is capable of generating geomorphic data for both retrospective and prospective analyses at various temporal resolutions, specifically tailored for scenarios such as gully catchment landscape evolution.

1 Introduction

Parameters of numerical (e.g. geomorphic) models play a crucial role in predicting their behavior. These models are usually calibrated based on observations at known data points or settings. However, it is often necessary to forecast how the system would behave at test data points or settings where direct observations are not possible.

A qualitative calibration approach involves a manual comparison of model and field data making it time-consuming and less likely to reveal the optimal model parameter configuration. On the other hand, a quantitative calibration of a numerical model involves assessing the model's error using statistics and is more suitable for complicated models with many parameters. Recently, there has been renewed interest in developing such automatic calibration routines to explore a model's parameter space (Becker et al., 2019; Brunetti et al., 2022; Beck et al., 2018; Tsai et al., 2021). Still, a large number of conventional

approaches suffer from limitations like calibration of selective parameters, poor generalizability, extensive manual components in data pre-processing and model calibration, and restrictive assumptions like differentiable and learning data-driven surrogate numerical models.

We propose a novel calibration algorithm: Iterative Model Calibration (IMC). The IMC is a fully automated calibration approach, which needs minimal manual interference and requires minimal data pre-processing. The method operates on a simple but effective concept of Gaussian-guided iterative parameter search. The process calibrates a defined list of parameters sequentially (high to low priority), with one parameter being adjusted at a time, keeping others fixed. The parameter values are sampled from a Gaussian neighborhood surrounding the latest parameter value. The model's output due to each predicted parameter is then compared to the observed ground-truth data, and an error is calculated. This error serves as a fitness measure and a minimum threshold for finalizing the value corresponding to that particular parameter.

In the following segment, we present a brief review of conventional approaches for calibrating geoscientific numerical models, specifically concerning LEMs such as CAESAR-Lisflood (CL). Some qualitative calibration strategies concentrate on one or a few chosen model parameters for calibration. For example, in (Ramirez et al., 2022), the focus was on the “m-value” of CL's hydrology model (TOPMODEL), which is responsible for controlling the change in soil moisture storage for ungauged primary sub-catchments. They used a three-step approach: first, they ran a five-year simulation of the CL model with a 1km spatial resolution. Second, they repeated this process for a secondary sub-catchment, using the same rainfall input and calibrated parameters, lumped and spatially distributed. Lastly, they ran the calibrated primary sub-catchment hydrological model, which had spatially distributed m values, for a crucial short-term (3 h) extreme weather event, obtaining a simulated discharge from the primary sub-catchment.

In a study by Peleg et al. (2020), the hydrological TOPMODEL parameter “m” and Courant number were calibrated through selective calibration. This was done by finding an optimal fit between simulated hydrographs of 14 days and observed hydrographs. While carrying out this calibration, a number of parameters were manually set, with the help of published data from nearby locations and domain knowledge. In another work by Wang et al. (2022), CL calibration was carried out at selected locations by reproducing the geomorphic changes and water depth driven by an extreme rainfall event. The parameter settings were set manually, based on domain knowledge and research data. Feeney et al. (2020) started with choosing CL parameter values from prior published literature. They then tested various combinations of the values to satisfy the two equations utilized in the lateral erosion algorithm in CL. Additionally, during calibration, they modified one parameter at a time while keeping the others constant. Skinner et al. (2018) employed the Morris Method on the CL model in two diverse catchments to discern the impact of parameters on model behavior. Though centered on sensitivity analysis, this work indirectly aids model calibration by pinpointing key parameters for effective adjustments, thereby refining the calibration process.

The tool described in (Beck et al., 2018) serves to calibrate the Lisflood hydrological model for designated catchment areas, deliberately omitting the upstream catchment region. It employs a genetic algorithm, LEAP, for the calibration process and is developed using Python. Nevertheless, a considerable amount of manual preprocessing of the input files, specifically scripts, is necessary prior to initiating calibration epochs. In contrast to the previous approaches, Tsai et al. (2021) proposes a couple of data-driven approaches that can be applied to calibrate numerical models. One such approach is differentiable parameter

learning (dPL), which involves a parameter estimation module that maps raw input data to model parameters. These parameters are then fed into a differentiable model or its surrogate, i.e. a learned neural network-based model.

60 Differentiability allows for gradient calculation with respect to model variables or parameters, facilitating the discovery of hidden relationships in high-dimensional data through variable optimization. However, many physical or numerical models are not fully differentiable. Re-implementing a non-differentiable model into a differentiable one demands significant domain knowledge (Shen et al., 2023). Alternatively, a differentiable model can be developed from data using neural networks as surrogate models (Tang et al., 2020; McCabe et al., 2023), but this method requires extensive, often costly, field data collection and may struggle without specific historical data. These challenges limit the applicability and generalization of differentiable models and data-driven surrogates to complex numerical models like CL. A number of approaches leverage ML algorithms and general optimization algorithms for calibration. Brunetti et al. (2022) introduces a hybrid strategy calibration approach for hydrological models, combining precision ML algorithms like Marquardt–Levenberg with Comprehensive Learning Particle Swarm Optimization (CLPSO). Central to this approach is an objective function aimed at reducing the gap between HYDRUS
70 model forecasts and empirical observations.

To sum up, the calibration of numerical models is hindered by reliance on extensive domain knowledge, manual tuning, and the high cost of data collection for ML approaches restricts their effectiveness and applicability. The expertise needed for model differentiation further limits widespread usage, underscoring the demand for adaptable and data-efficient calibration strategies in geoscientific modeling. Besides a large number of conventional calibration techniques are tailored for hydrological models and have access to their wealth of data from global networks. But they fall short for geomorphological models (Abbaspour et al., 2004; Jetten et al., 2003) due to a lack of diverse and accessible data such as DEMs and information on soil, sediment, vegetation, and geology. This data scarcity undermines traditional calibration methods and hampers the use of newer data-driven ML in geomorphology, which depends on large datasets for accuracy. Our calibration approach innovatively leverages limited DEM data to effectively calibrate geomorphological models, bridging this gap.

80 Our IMC algorithm introduces the following unique contributions:

1. Highly customizable approach: Due to the simplicity of the underlying process of iterative error-based search and parameter calibration, the algorithm is adaptable to any numerical model. Besides depending on the application, input-output files, and loss functions may be customized and substituted with ease.
2. Capable of calibrating a large number of parameters: The IMC is highly scalable and can calibrate for any number of
85 numeric valued parameters of numerical models.
3. Minimal manual involvement requirement with a complete automated process: Apart from minimal data pre-processing and parameter initialization, IMC can run without any human supervision.
4. Generalizable for any numerical model: The algorithm doesn't have any restrictions regarding the type of numerical model. Being gradient-free, our approach requires neither the differentiability of the numerical model nor a neural
90 network-based surrogate. With its generalization, it can be used as an add-on module and patched with any numerical model for calibration.

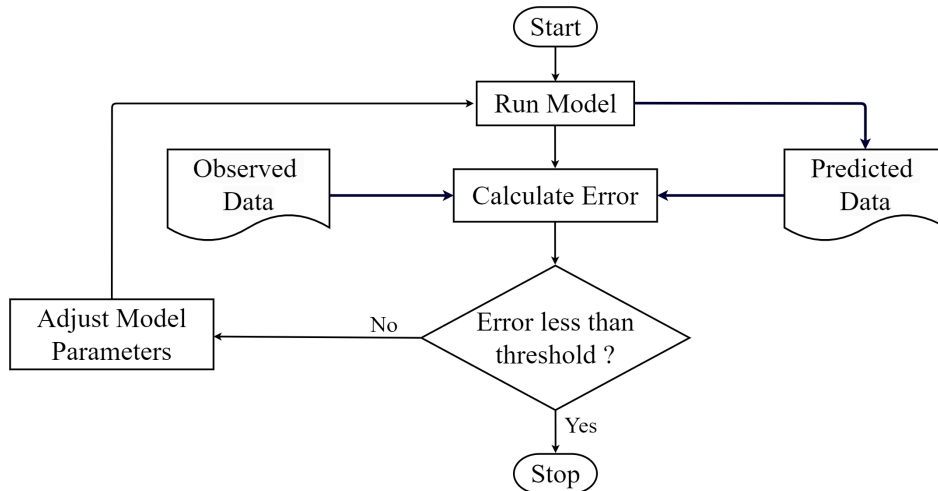


Figure 1. Overview of a typical calibration process.

The structure of the rest of the paper is organized as follows: Section 2 introduces the foundational concepts of model calibration techniques and establishes a general mathematical framework for addressing the problem. Section 3A is dedicated to a comprehensive exposition of our proposed IMC algorithm, including a detailed description of the algorithm itself and a discussion on each component of the IMC, referenced against the functional diagram shown in Fig. 2. In subsection B of Section 3, we offer a concise rationale for choosing Mean Square Error (MSE) as the metric for performance evaluation in our IMC algorithm. Section 4 outlines our case study, including the problem statement, details about the study location, and a discussion of the calibration results, supported by various tables and figures. In Section 5, we present a factual comparison of different calibration methods reviewed in this study against our IMC, complemented by an in-depth ablation study and additional experiments. The paper concludes with Section 6, where we summarize our findings and suggest promising directions for future enhancements to our work.

2 Preliminaries of Model Calibration

Calibration is an essential process in which the parameters of a model are adjusted to ensure that its output matches the observed historical data. The objective is to determine a set of parameter values enabling the model to produce data similar to the studied system (Oreskes et al., 1994; Gupta et al., 1998; Beven, 2006). Usually, a single fitness or loss value is sought to summarise the relationship between the predicted and observed data. As shown in Fig. 1, the model's parameters are adjusted repeatedly until the difference between the model output and the observed data is reduced below a certain threshold. Once a predetermined level of accuracy or error is attained, the calibration process is concluded and the model is deemed effective in simulating the real system or scenario.

110 When it comes to simple models, adjusting parameters and calculating errors is usually straightforward. However, numerical geomorphic models, e.g. Landscape Evolution Models, are more complex and have many configurable parameters. These model parameters can often have inter-related nonlinear effects on the model's behavior, making it challenging to anticipate how the model will behave with new parameter configurations (Skinner et al., 2018; Tucker and Hancock, 2010; Coulthard et al., 2007; Braun and Willett, 2013). As a result, doing trial and error matching of a model's parameters to specific field conditions is often complex, intricate, and time-consuming.

115 Furthermore LEMs often exhibit equifinality, where diverse parameter sets yield similar outcomes, highlighting the complexity of interpreting these models (Phillips, 2003). This phenomenon suggests multiple evolutionary pathways can lead to comparable landscapes, challenging model solution uniqueness and necessitating meticulous calibration and validation efforts (Beven and Freer, 2001). Additionally, equifinality may result in seemingly accurate landscape representations for incorrect reasons, pointing to the oversimplification of geomorphic processes (Lane et al., 1999).

120 Here we introduce mathematical notation to explain the calibration mechanism in general. Let \mathbf{p} and θ denote the vectors of constant and calibration input parameters of dimension d_1 and d_2 respectively, of a certain numerical model M . Constant input parameters stay the same over the whole calibration process, while the calibration parameters are sequentially optimized by the IMC algorithm. Also, let S represent a collection of all input data, typically constituting DEMs, rainfall and soil data, etc. Formally we can describe the mapping of the constant, calibration input parameters, and input data to the expected model output as follows:

$$y(\mathbf{p}, \theta, \mathbf{S}) = \eta(\mathbf{p}, \theta, \mathbf{S}) + \xi$$

130 here ξ represents the inherent randomness in the output of the numerical model, which is the uncertainty or variability that arises due to certain features within the simulation process. Sources of inherent randomness include system variability, incomplete knowledge, model imperfections, and numerical approximations. Here, the output of the numerical model is denoted by $y(\cdot)$, it's a function of constant and calibration input parameters as well as input data. When calibrating a certain numerical model (M), we assume we have certain information available to us.

1. The n observations of the real system (e.g. natural processes) response $\mathbf{x} = \{x_1, \dots, x_n\}$, corresponding to n initial condition data $B_1 = \{\mathbf{S}_1, \dots, \mathbf{S}_n\}$
- 135 2. The n outputs generated by the numerical model $\mathbf{y} = \{y_1, \dots, y_n\}$ for n given input (initial condition) data and constant and calibration parameter vectors, i.e. $B_2 = \{(\mathbf{S}_1, \mathbf{p}_1, \theta_1), \dots, (\mathbf{S}_n, \mathbf{p}_n, \theta_n)\}$.

The objective of the calibration algorithm is to iterative search for the unknown true calibration parameter vector θ^* , which is the θ that parameterizes the numerical model to best match the observation of the real system or physical process. This naive calibration approach or direct calibration may be typically formulated as the following optimization problem:

$$140 \min_{\theta \in \Theta} L(x, y(\mathbf{p}, \theta, \mathbf{S}))$$

Where the goal is to find the θ , such that it minimizes the above loss $L(\cdot)$. The loss is calculated considering the observed response x and the model generated output $y(\mathbf{p}, \theta, \mathbf{S})$.

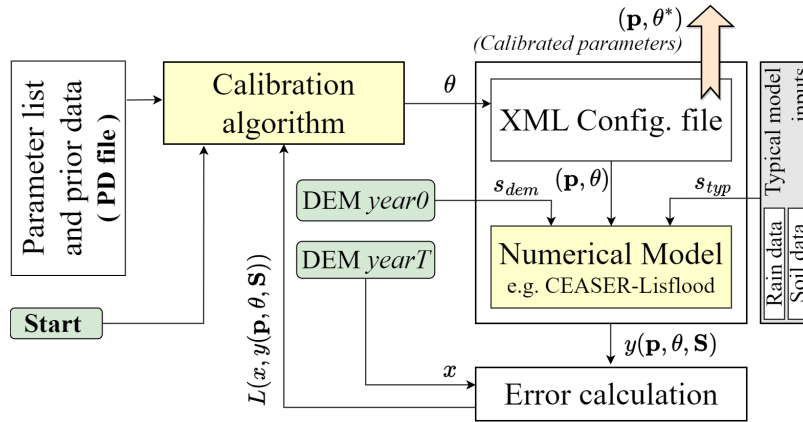


Figure 2. The calibration algorithm with a LEM numerical model presented here works in the following way. Firstly, the algorithm reads information regarding parameters from a PD file and updates the parameter suggestions in the XML file. Then, the numerical model reads the parameter values from the XML file and generates the output. The generated and target data are then compared, and the error is calculated based on a loss function. This loss is fed back to the algorithm, which uses it to set or update its loss threshold. The algorithm uploads a new parameter suggestion in the XML. This cycle continues until a stopping criterion is reached.

3 Iterative Model Calibration (IMC)

3.1 Details of IMC algorithm

145 Fig. 2 presents a high-level overview of the interface of the IMC (proposed calibration algorithm) with the numerical model and their connection with other components and operations. The following list briefly introduces the primary components of the setup:

1. Parameter list and prior data (**PD file**): contains a list of all the parameters θ , that need to be calibrated. Along with the list, the file also contains prior best-known values of these parameters, the value's lower-upper limits (up_{θ}, lw_{θ}) and standard deviation σ_{θ} values, which is used to range the Gaussian search neighborhood. For more details on the contents and structure of this file, refer to Appendix and Table A2.
- 150 2. Calibration algorithm: is the proposed IMC algorithm that initiates by reading the calibrated parameter list, corresponding prior best-known values, value limits, and constraints (from the PD file) and outputs a new parameter value. This parameter value is then passed on to the XML configuration file, which updates its parameter vector and forwards it to the Numerical model. The IMC later reads the error calculated from comparing the model output and observed data.
- 155 3. XML configuration file: holds the intermediate parameter values after being generated by the calibration algorithm. The numerical model reads the updated parameter vector from this file and generates simulated results accordingly. After the

completion of the calibration process, the same file serves as the output, since the final calibrated values of the parameters are updated to the file.

- 160 4. Numerical model (M): is the model whose parameters are being calibrated. The model loads the constant and calibrated parameter vector sets (\mathbf{p}, θ) along with input data $S(= s_{dem} \cup s_{typ})$ and generates output $y(\mathbf{p}, \theta, \mathbf{S})$. Here s_{dem} refers to the initial year DEM (i.e. DEM year-0) and s_{typ} represents all the other types of typical data inputs that are loaded by the model e.g. Rainfall data and soil data.
- 165 5. Error calculation: Based on a predetermined loss function, this module compares the observed system response (x) with the model's output and quantifies the difference or similarity between them through a numerical value or score. We have used Mean Squared Error (MSE) as the error-generating function which is represented as follows:

$$L(x, y(\mathbf{p}, \theta, \mathbf{S})) = \frac{1}{a_1 a_2} [\sum_{q=1}^{a_1} \sum_{r=1}^{a_2} (K(q, r), P(q, r))]^2$$

where $x = K(\cdot)$ and $y(\cdot) = P(\cdot)$ are ground truth and model predicted 2D numeric arrays respectively of dimension $i \times j$.

- 170 In the below explanation and the algorithm that follows, we have relaxed the dependence of y on input data \mathbf{S} from the notations but it is understood that outputs are with respect to these inputs. The calibration algorithm is a Gaussian neighborhood search algorithm. For every parameter $\theta_i \in \theta$ where $i = 1, \dots, d_2$ the algorithm runs $J \times C$ rounds of optimal parameter value search, where J is the number of iterations per parameter and C is the number of rounds per iteration. The calibration is sequential and while calibrating for a certain parameter say θ_i all other $\theta \setminus \theta_i$ parameter values are kept constant. Each j^{th} iteration (where $j = 1, \dots, J$) runs multiple rounds of random search in the Gaussian neighborhood of the last best-known parameter value.

180 The Gaussian neighborhood is determined by the parameter's best-known value θ_i^b (known as prior information or passed on from previous iteration) and its fixed standard deviation σ_{θ_i} , i.e. $\mathcal{N}(\theta_i^b, \sigma_{\theta_i})$. A randomly sampled data point (γ) from this neighborhood serves as the parameter value for the current round. It is also ensured that the sampled value γ is well within the upper and lower value limits of the current parameter i.e. $up_{\theta_i} < \gamma < lw_{\theta_i}$.

Each iteration also keeps track of the best parameter value $\theta_i^{b',c}$ across its C rounds, based on the minimum loss scored L_{min}^c . Besides a minimum loss threshold \mathcal{L} is also maintained across all iterations and parameters. After each iteration if the $L_{min}^c < \mathcal{L}$ then its corresponding best parameter $\theta_i^{b',c}$ is saved as best value of the current parameter θ_i i.e. $\theta_i^b \leftarrow \theta_i^{b',c}$ and the min loss threshold is updated i.e. $\mathcal{L} \leftarrow L_{min}^c$. The whole process is elaborated as an algorithm as follows:

185

3.2 Choosing LEM performance evaluation metric

Assessing model performance is crucial for accurately depicting geomorphic changes. Choosing the right evaluation metrics, like the MSE of DEMs, is an efficient metric since directly measures topographic accuracy, a fundamental aspect of landscape studies.

Algorithm 1 The complete IMC algorithm

Require: Read parameter list θ , their corresponding values (prior), s.d. (σ_θ) and value limits up_θ, lw_θ from file.

Ensure: Updated values for θ based on optimization criteria.

```
1: for all  $\theta_i \in \{\theta\}$  do
2:   for  $j = 1$  to  $J$  do
3:     for  $c = 1$  to  $C$  do
4:       Obtain  $\theta_i^c \leftarrow \gamma$ , where  $\gamma \sim \mathcal{N}(\theta_i^b, \sigma_{\theta_i})$  s.t.  $lw_{\theta_i} < \gamma < up_{\theta_i}$ 
5:       Calculate  $y(\mathbf{p}, \theta)$  where  $\theta = (\theta \setminus \theta_i) \cup \theta_i^c$ 
6:       Evaluate loss  $L^c = L(y(\mathbf{p}, \theta_i^c), x_i)$ 
7:       Update  $\theta_i^{c+1} \leftarrow \theta_i^c$ 
8:       Save  $(L_{min}^c, \theta_i^{b',c})$ 
9:       if  $L_{min}^c < \mathcal{L}$  then
10:        Update  $\theta_i^b \leftarrow \theta_i^{b',c}$  and  $\mathcal{L} \leftarrow L_{min}^c$ 
11:       end if
12:     end for
13:   end for
14: end for
```

190 LEM performance can be evaluated through various lenses, including erosion and deposition rates, sediment yield, hydro-
logical accuracy, and more. These metrics serve to assess different facets of landscape dynamics and processes simulated by
the model (Coulthard et al., 2002; Hancock and Willgoose, 2001; Tucker and Slingerland, 1997; Skinner et al., 2018; Barn-
hart et al., 2020; Skinner and Coulthard, 2023). Each metric focuses on specific attributes of landscape evolution, from the
quantification of sediment transport to the replication of hydrological responses under varying climatic conditions. Notably,
195 topographic accuracy emerges as a fundamental criterion, as it encapsulates the geomorphological fidelity of model simulations
in replicating real-world landscapes (Temme and Schoorl, 2009).

The rationale for employing MSE between observed and LEM-estimated DEMs as a metric lies in its direct quantification
of the discrepancy in topographical features. This approach allows for a granular assessment of model performance in simu-
lating the spatial configuration of landscapes. Given the critical role of topography in governing hydrological and geomorphic
200 processes, the accuracy of DEM simulations directly influences the reliability of LEM outputs in representing erosion patterns,
sediment transport, and hydrological dynamics.

Moreover, the use of MSE aligns with the principle of evaluating model efficiency through quantitative measures that provide
clear benchmarks for improvement Nash and Sutcliffe (1970). By quantifying errors in elevation across the landscape, MSE
offers a comprehensive overview of model performance in capturing the intricate details of terrain morphology.

205 Additionally, the comparison of DEMs through MSE facilitates the identification of systematic biases or inaccuracies in
model simulations, guiding further calibration and refinement of LEM parameters (Beven and Binley, 1992). This aspect is

particularly crucial in landscape evolution modeling, where the spatial distribution of elevation changes significantly influences erosion and sedimentation processes.

4 Case Study: Calibration of LEMs for predicting Gully Evolution

210 4.1 Problem statement

The primary objective is to calibrate the numerical model (here CL) based on geo-morphological data from two separate temporal instances (years). The secondary objective or application of this calibrated numerical model is to predict the landscape evolution of past or future years (or days or months), of the same geographical region with accuracy.

To elaborate, we have geo-morphological information regarding gully catchment areas at two separate temporal instances, 215 i.e. year 2019 and year 2021, in the form of DEMs, soil, and rainfall data. First, we want to calibrate the CL on such data with high accuracy. Second, we want the calibrated-CL to perform interpolation and generate DEM data for different temporal resolutions like days, weeks, months, and years, within or outside (past/future) the 2019-2021 period.

4.2 Study area and data

The study area is a gully catchment region situated 20 kms to the east of Mount Abbot National Park (Scientific) in the Bowen 220 Basin region of Northern Queensland, at a location: $20^{\circ}13'S, 147^{\circ}33'20''E$, see Fig. 3. For hourly rainfall data (see Fig. 3(b)) we have used pluviometer reading from Ernest Creek Pluvio of Burdekin basin, Queensland (WMIP), between the dates 1st July 2019 – 2021. The DEMs are collected using Airborne Laser Scanning (ALS) by Department of Agriculture Water and the Environment, Australia under project names Bogie 2019 and Strath Bogie 2021 and hosted on online repository (ELVIS). The required DEMs are downloaded from the above source with the following specifications: Resolution: 0.5m, Vertical Accuracy: 225 $\pm 0.15\text{ m}@67\% \text{ CI}$, Horizontal Accuracy: $\pm 0.3\text{ m}@67\% \text{ CI}$. For ease of computation we have used a downsampled version (i.e. 1m) of the original DEMs, in all our experiments.

4.3 Calibration experiments and results

In the following sections, we introduce the study area and present the essential parameters and settings used for running IMC in 230 CL parameter calibration. Additionally, we provide comparative results from the experiments, including CL with uncalibrated parameters, CL with manually calibrated parameters, and CL with manual + IMC calibrated parameters.

4.3.1 Calibration details and experimental setup

We present Table 1, which summarizes essential information regarding the primary parameters of the CL numerical model, including numerical values from existing literature. Additionally, the table shows the prior values used to initialize the IMC 235 for each parameter to be calibrated in the *PD file*. In the IMC's calibration process, the loss function is very important. As

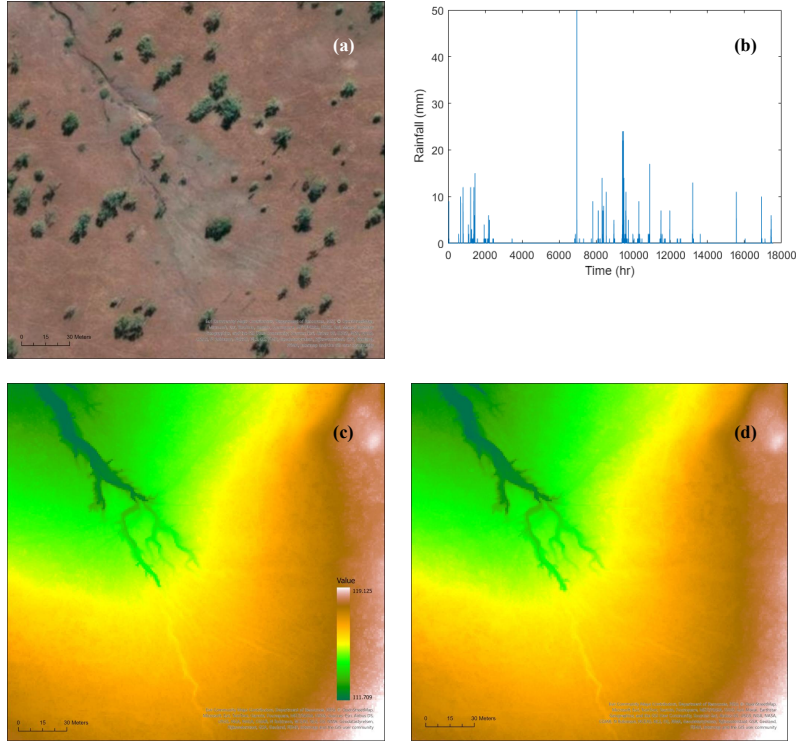


Figure 3. Study site information (a) Satellite image of study location, (b) Hourly rainfall data between July 2019-2021, pluviometer reading, (c) 2019 DEM of the study area, (d) 2021 DEM of the study area.

mentioned in Section 4, we consider the MSE of ground truth target data and CL predicted data in image format, for calculation of error at each round. We explore different forms of ground truth and CL predicted data (such as DEMs and difference of DEMs i.e. DOD) and show how they can be purposed for specific experimentation.

Our primary experiments investigate the effectiveness of the IMC approach in calibrating the parameters of CL, with a particular focus on accurately predicting erosion volume. This is important because erosion volume impacts landform stability, environmental health, and cost-effectiveness, and is significant for landform design and risk assessment. We use the input and predicted DEMs (i.e. DEM_{year0} , DEM_{yearT} and $D\hat{E}M_{yearT}$), to generate the target and predicted difference of DEMs i.e. DOD and $D\hat{O}D$ as follows:

$$DOD_{Target} = DEM_{year0} - DEM_{yearT}$$

$$DOD_{Predicted} = DEM_{year0} - D\hat{E}M_{yearT}$$

Table 1. Primary CL parameters, their values from manual, literature, and their model’s sensitivity. Sensitivity scoring uses asterisks (*) to indicate impact of parameters on model outcomes, from very high “****” to low “*”. The table also presents default parameter and prior values assumed by the IMC algorithm.

Parameter Names	Model Sensitivity (Skinner et al., 2018)	CL Reference Manual	Tin Creek (Australia)	IMC algorithm Search Range	IMC priors (μ, σ)
Max erode limit (m)	***	0.01(10m)	0.001 – 0.003	0.001 – 0.01	0.003, 0.001
In-channel lat. Erosion	***	5 – 50, 200 – 1000	10.0 – 30.0	10.0 – 30.0	20, 05
Vegetation crit. Shear stress (Pa)	***	Not specified	2.0 – 7.0	2.0 – 7.0	3, 1
Min Q for depth calculation (m)	***	DEM resol./ 100	0.025 – 0.075	0.009 – 0.01	0.01, 0.001
Slope failure threshold (°)	***	Not specified	40 – 50	40 – 60	50, 5
Evaporation rate (m/day)	***	Not specified	0.0025 – 0.01	0.002 – 0.01	0.005, 0.001
Soil creep rate (m/yr)	**	0.0025	0.00125 – 0.00375	0.001 – 0.004	0.0025, 0.001
In-out difference allowed (m ³ /s)	**	Not specified	0.1 – 0.4	0.1 – 0.4	0.2, 0.1
Slope for edge cells	**	Not specified	0.0025 – 0.0075	0.002 – 0.01	0.005, 0.001
Manning n	**	Variable	0.03 – 0.04	0.005 – 0.2	0.01, 0.001
Grass maturity rate (yr)	*	from 0 to 1	0.5 - 2.0	0.1 – 2.0	0.5, 0.1
m value	*	0.02, 0.005	-	0.005 – 0.02	0.01, 0.001

In order to focus the calibration on the erosion volume we multiplied the DODs with a mask ($= m(e, f)$), which can be defined as follows:

$$m(e, f) = 0, \text{val}(e, f) < 0$$

$$= 1, \text{val}(e, f) > 0$$

250 where (e, f) represents a location on a DOD and $\text{val}(e, f)$ represents the signed magnitude of that data-point. Such that the final DODs can be written as

$$DOD_{Target} = DOD_{Target} * m(e, f),$$

$$DOD_{Predicted} = DOD_{Predicted} * m(e, f).$$

In later experiments (Section 5.3) we also investigated the accuracy of IMC-based calibration of CL’s default parameters.
 255 In the experiments we try to estimate a single parameter at a time from a perturbed value, keeping all other parameters fixed. Here we have simply considered the following:

$$DEM_{Target} = DEM_{yearT}$$

$$DEM_{Predicted} = \hat{DEM}_{yearT}$$

See the relevant section for more details on the experiments.

260 4.3.2 Calibration results

In this section, we present and discuss the results of the calibration process. Comparative results are presented in Table 2 and Fig.4, highlighting the differences between the CL model results obtained using different variations of calibrated and

265 uncalibrated parameter sets. For the *uncalibrated* set, we consider the default CL parameters and simply adapt it to our study area and DEM dimension. In the (*manual calibration*) set, we use existing literature-based knowledge of parametric values w.r.t the study area and update the default CL parameter set. Finally, in *manual + IMC* set (also referred as IMC for brevity), we start or initialize the IMC calibration process with the (*manual calibration*) set data. Additionally, Table3 provides the comprehensive results of the IMC calibration process for all CL parameters, across three separate calibration epochs of the same length (5×5).

270 In details, Table 2 numerically shows that IMC-based calibration of CL parameters encourages the CL to predict future erosion volume with substantial accuracy as compared to the CL's results with uncalibrated and manually calibrated parameters. We also show that using only basic knowledge of the value range of parameters of the study region, two temporally separated DEMs (i.e. 2019 and 2021), and the rainfall data over this period the IMC can calibrate the CL parameters, evident by its prediction of the target erosion volume. The target erosion volume is of the 2021 DEM that we have used from the study area.

Table 2. Comparison of Total Erosion Volume: Actual vs. CL Using Uncalibrated, Manually Calibrated, and IMC Calibrated Parameters. The results presented below are from three separate calibration runs, each with fixed-length epochs (5×5) and taking around 5 hrs. Due to the stochastic nature of the calibration process, the mean values are reported along with their standard deviations (mean \pm std. dev.).

Case	Erosion volume (m ³)	MSE
DOD Actual	49.551	–
DOD Uncalibrated parameters (CL config. adapted for 1m DEM, DEM ours, rain ours)	21.756	–
DOD Calibrated parameters (manual)	38.819	–
DOD Calibrated parameters (manual + IMC) [Mean \pm std]*	50.068 \pm 2.161	0.000333 \pm 2.1 $\times 10^{-6}$
DOD Calibrated parameters (manual + IMC) [Best]	51.495	0.000328

Table 3. CL parameters calibrated via IMC across three separate calibration epochs of fixed length (5×5), denoted as “Run01, Run02, and Run03”. An “IMC initial value” column presents the parameter initialization value for each epoch, with the final columns displaying standard deviation, highlighting high variability in parameters 10, 11, and 12 (see also Fig. 5). The concluding row, showcasing MSE loss, identifies “Run03” as the most optimal calibration epoch.

Sl no.	Parameter names	IMC	Separate IMC calibration epochs			Mean \pm
		initial value	Run_01	Run_02	Run_03	Std. deviation
1	slope of edge cell (initialq)	0.005	0.00452	0.00657	0.00238	0.0045 \pm 0.0020
2	Max erode limit (m)	0.3	0.0087	0.005	0.00358	0.0057 \pm 0.0026
3	Evaporation rate (m/day)	0.005	0.004	0.005	0.00905	0.0060 \pm 0.00267
4	In-out difference (initscans) (m ³ /s)	0.2	0.2619	0.15967	0.11447	0.1787 \pm 0.0755
5	In-channel lat. Erosion	20	15.554	12.893	24.1937	17.5469 \pm 5.9080
6	Grass maturity rate (yr)	0.5	0.3509	0.515	0.6736	0.5131 \pm 0.1613
7	m value	0.01	0.00687	0.0118	0.00862	0.0091 \pm 0.0024
8	Manning n	0.01	0.0111	0.012	0.00714	0.0101 \pm 0.0025
9	Vegetation crit. Shear stress (Pa)	3	4.0934	2.765	3.6401	3.4995 \pm 0.6752
10	Soil creep rate (m/yr)	0.0025	0.00343	0.0039	0.00397	0.0038 \pm 0.0003
11	Min Q (m)	0.01	0.00965	0.0097	0.01059	0.0099 \pm 0.00052
12	Slope failure threshold (°)	50	41.2818	40.372	40.2236	40.6258 \pm 0.5729
-	MSE loss	-	0.000332	0.000329	0.000328	-

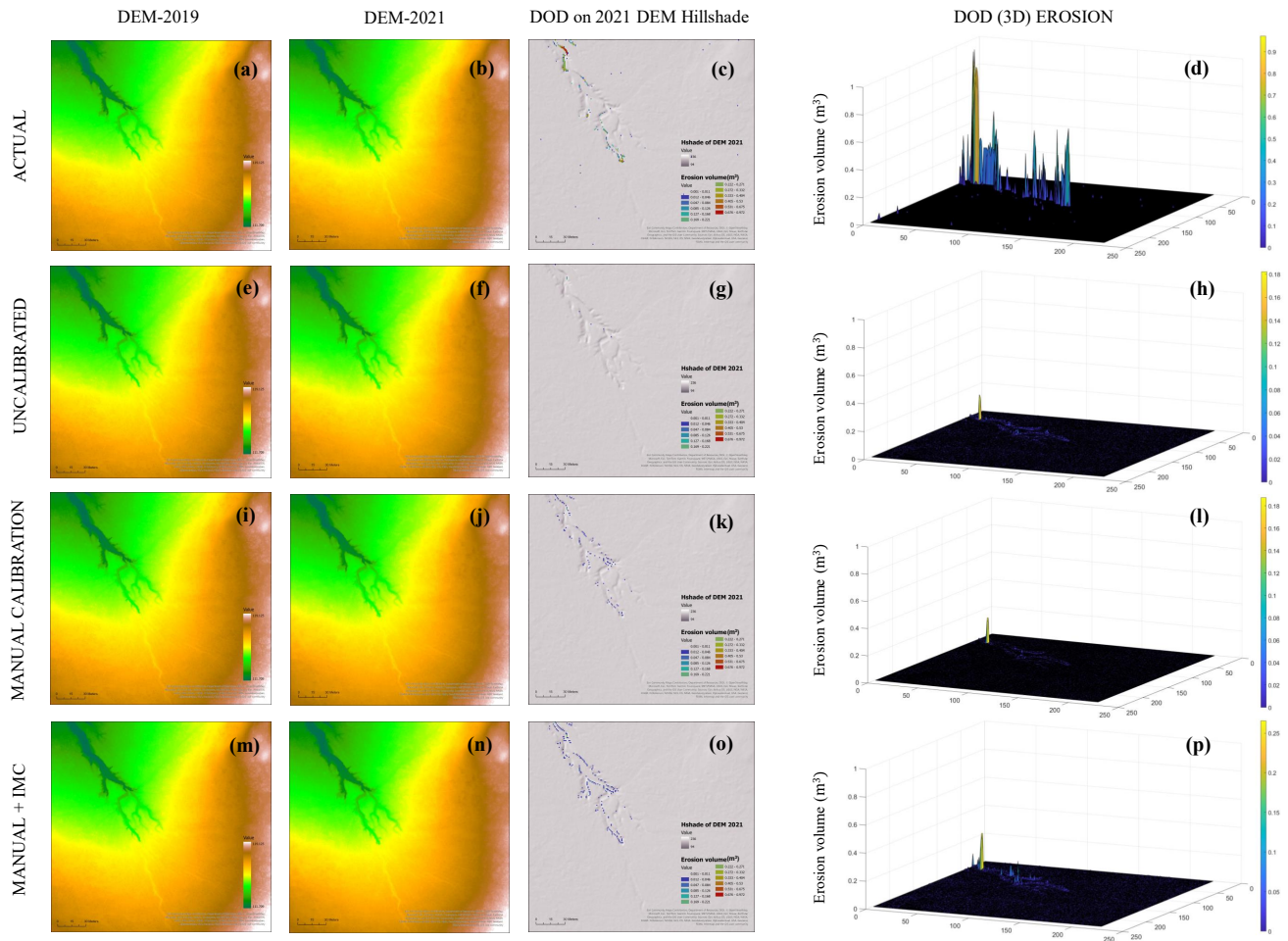


Figure 4. Each column of the above figure-matrix compares the different results of CL, with the use of different parameter sets. The leftmost column presents the initial DEMs (year 2019), which are used as CL's input. Column two presents the 2021 DEM, which in row one is the actual observed data from the study area and the rest are CL predicted. **The third column presents the DOD of the first two DEMs, showing only erosion volume, placed on the 2021 DEM hillshade, with near zero erosion volume shown as transparent.** The final column presents a surface plot of the same DODs highlighting erosion. Compared to all other parameters, the IMC+manual parameters (*p*) show the closest resemblance of erosion volume to the actual (*d*), both spatially and volumetrically.

We provide a visual comparison of the same in Fig. 4, where we test the CL's prediction of erosion volume using three
 275 different sets of parameters i.e. the *uncalibrated*, *manual* and (*manual + IMC*). The results show that basic manual calibration accompanied with an automated IMC process enables CL to provide substantially better prediction of target erosion volume.

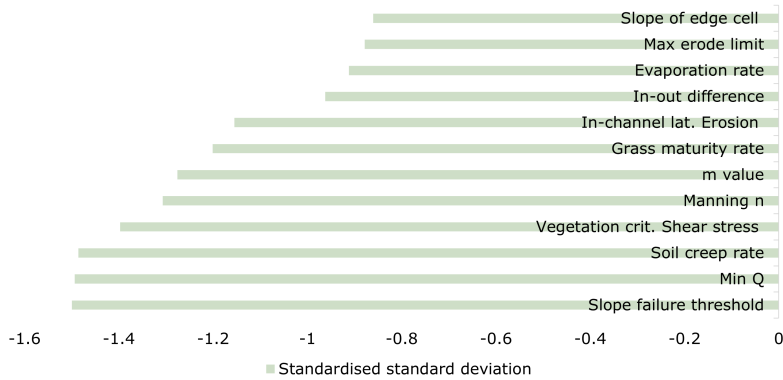


Figure 5. Comparing variability of estimated parameter values over three individual calibration epochs, using standardized standard deviation.

4.3.3 Future land evolution: Demonstrative projections

In this section, we demonstrate the applicability of IMC-calibrated parameters in predicting landscape evolution across unseen temporal resolutions using CL. The objective is to illustrate that the IMC-calibrated CL can generate consistent and logical predictions of present and future land evolution compared to uncalibrated approaches. The predicted landscape changes follow a consistent trend over time (compare with current predictions i.e. year 2021 in Fig 4p), aligning with the natural progression of erosion. However, we do not test the accuracy of these predictions here. In this demonstration, the CL parameters are pre-calibrated on the same study-area data with a temporal resolution of two years. We show that, compared to uncalibrated parameters, IMC-calibrated parameters enable CL to predict justifiable landscape changes in terms of erosion volume over three years (see Fig. 6b) and five years (see Fig. 6d) of simulation.

5 Comparisons and Ablation Studies

5.1 Comparison with existing calibration approaches

A majority of calibration approaches surveyed so far calibrate for specific and partial parameters only, involve a considerable human effort towards parameter value selection/customization (Wang et al., 2022; Peleg et al., 2020; Ramirez et al., 2022; Feeney et al., 2020), and operate for a fixed type of numerical model e.g. Lisflood (Beck et al., 2018), CAESAR-Lisflood(CL) (Wang et al., 2022; Peleg et al., 2020; Ramirez et al., 2022; Feeney et al., 2020), HYDRUS (Brunetti et al., 2022) and Victoria(Tsai et al., 2021) numerical models.

The usability and generalizability of a certain approach directly depends on the set of input data required during parameter calibration. The requirement of data in addition to the ones used by the target numerical model increases the complexity to

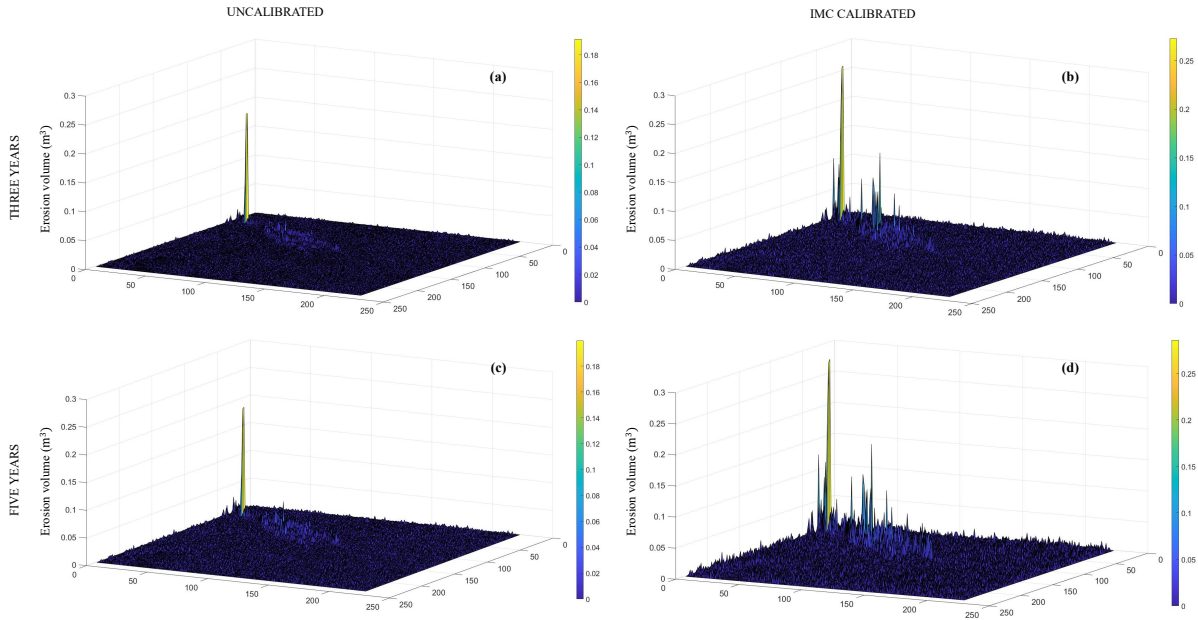


Figure 6. Demonstrating projections of future land evolution using CL and IMC calibrated parameters, at different temporal scales. The figures show predicted erosion volume after three and five years, using un-calibrated parameters (a,c) and IMC calibrated parameters (b,d). IMC parameters and the experiments are all performed on the same DEMs and using the same rainfall data.

adapt the calibration for different settings and adds a heavy overhead. The following table summarizes the differences between the existing calibration approaches for LEMs, specifically CL.

Table 4. Comparison of different calibration approaches

-	Input files and preliminary assumptions	Param. calibrated	Manual comp.	Target Model
(Beck et al., 2018)	TS observed discharge, Static maps (DEM, land use, etc.) TS input meteo variables over calibration period	All	High	Lisflood
(Wang et al., 2022)	Typical CL inputs	Hydrology param.	Very high	CL
(Peleg et al., 2020)	Typical CL inputs, hydrograph	Hydrology param.	Very High	CL
(Ramirez et al., 2022)	Typical CL inputs	Hydrology param.	Very High	CL
(Feeney et al., 2020)	Typical CL inputs	Partial	Very high	CL
(Skinner et al., 2018)	Typical CL inputs	All	Low	CL
(Brunetti et al., 2022)	Hydrology parameters	-	Low	HYDRUS Simunek et al. (2016)
(Tsai et al., 2021)	Typical model inputs Differentiable model or NN-based model surrogate	All	Low	VIC model (Hamman et al., 2018)
Ours	Typical CL inputs	All	Very low	CL (customizable)

5.2 Experimental analysis

In this section we discuss experiments with different lengths of calibration epochs, which is equal to the total rounds (= 300 $\text{rounds} \times \text{iterations}$) of calibration run per parameter (see Fig. 7). It is important to understand that the quality of calibration

of CL parameters using IMC would be reflected through a couple of quantities. First, the proximity of the predicted and the actual DODs in terms of the total volume of erosion (numerically). Second, both volumetric and spatial similarity of the erosion and their location of occurrence, are quantifiable by the MSE loss. Also, the similarity of total erosion volume of the predicted and actual DODs/ DEMs doesn't alone guarantee actual similarity and they still may be far apart if their MSEs are substantially different.

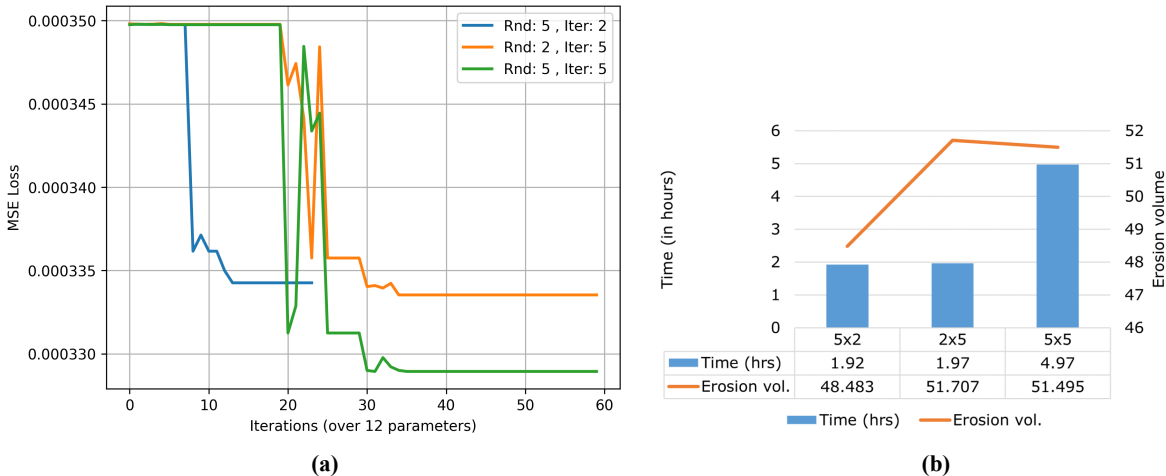


Figure 7. Calibration epoch/ duration (a) Shows comparison of error or calibration losses for different lengths of calibration epochs (= $rounds \times iterations$) run for 1m resolution DEM (b) Shows a side-by-side comparison of the total time taken by different calibration epochs and the erosion volume achieved (target being 49.551).

This phenomenon can be seen in Fig. 7b, where the calibrations with lesser calibration (i.e. 2x5 and 5x2) duration though have a close enough erosion volume to the actual but show higher MSE. This portrays that the parameter exploration has been inadequate and due to the selection of sub-optimal parameters the end resulting erosion volume though numerically similar is spatially misplaced or distributed on the surface.

310 5.3 Further experiments: evaluating IMC's Efficiency in CL parameter re-estimation

In this experiment, we aim to demonstrate the accuracy and efficiency of IMC in re-estimating known optimal (or actual) CL parameter values, from their deliberately perturbed versions. To ensure the experiment remains both insightful and manageable, we focus on two key parameters: Maximum erode limit and Lateral erosion rate. They are selected due to CL's pronounced sensitivity to these, as seen in (Skinner et al., 2018) and listed in Table 1. In this experiment we start with producing a target DEM (i.e. $DOD_{Target} = DEM_{year0} - DEM_{yearT}$, where $T = 2$ years) entirely using CL's default parameter and dataset (provided with distribution (Coulthard et al., 2024)). Next we individually altered each of these two key parameters mentioned earlier, maintaining the rest at their original values. Subsequently, we employed the IMC algorithm to accurately estimate the true values of these parameters from their altered states.

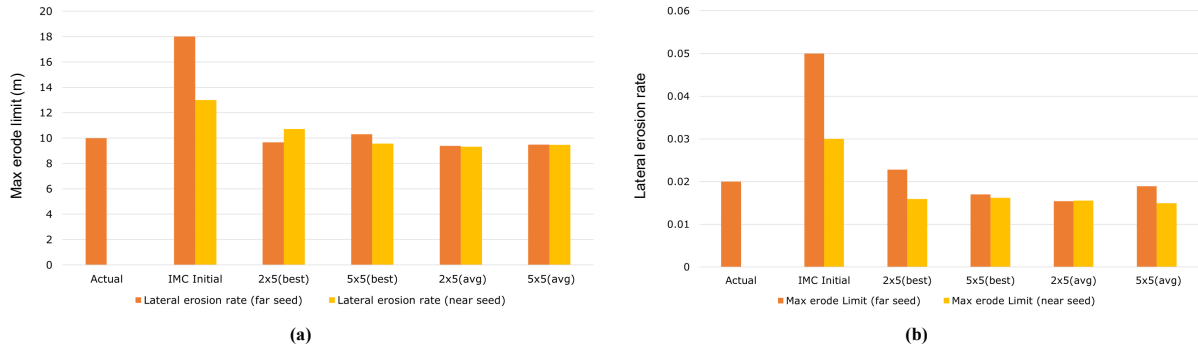


Figure 8. Estimating known optimal values of CL parameters from their deliberately perturbed versions (a) Estimation of *Max erode limit* parameter (b) Estimation of *Lateral erosion rate* parameter. *Actual* refers to “known optimal” CL parameter value and *IMC initial* is the perturbed version of the same, from where the IMC starts calibrating. IMC is run at different lengths (= *round* × *iteration*) repeatedly and the best and average (of three separate calibration runs/ epochs) of estimated parameter values are presented.

Table 5. Calibration data regarding CL know parameter re-estimation experiment, detailed in Sec 5.3

	Actual	IMC initial (far seed)	IMC initial (near seed)	IMC search range	IMC priors (μ, σ)
Max erode limit (m)	0.02	0.05	0.03	0.01 - 0.06	(IMC initial, 0.01)
Lateral erosion rate	10	18	13	8 - 20	(IMC initial, 5)

The parameters are estimated through individual IMC calibration epochs, which are repeated three times to account for the stochastic nature of the process. The mean value of the repeated epochs is calculated and presented alongside the best value, which is closest to the actual. Please refer to Fig. 8 for a visual representation of this data.

At the beginning of each calibration, we set the values of the “Maximum erode limit” and “Lateral erosion rate” parameters to their respective “IMC initial” values, which are deliberately perturbed from actual values. We conducted the experiments using “IMC initial” values selected from positions both proximal (termed “near seed”) and distal (termed “far seed”) relative to the actual values of each parameter. This approach was designed to affirm IMC’s effectiveness irrespective of the initial proximity of the “IMC initial” values to their actual counterparts.

The experimental outcomes are detailed in Fig. 8, with corresponding calibration data provided in Table 5. These results illustrate IMC’s capability to accurately estimate the true values of both the evaluated parameters. Specifically, for the *Maximum Erode Limit*, we observed a minimum absolute error of 0.0028 (= $|Actual - Estimated|$), with the best-estimated value being 0.0228 (2x5(best)) compared to the actual value of 0.02. In the case of the *Lateral Erosion Rate*, the minimum absolute error recorded was 0.302, where the best-estimated value reached 10.302 (5x5(best)), closely aligning with the actual value of 10.

The slight deviations in accurately estimating the actual parameter values can potentially be linked to the sensitivity of the MSE loss function to noise, wherein minor discrepancies could be amplified into seemingly larger differences. Moreover, the intricate nonlinear relationship between a parameter in the CL model and its resultant geomorphic output can occasionally lead

335 IMC into local optima traps. These challenges could be mitigated by adopting a tailored loss function specifically designed to capture the complex geomorphological dynamics more effectively. Additionally, incorporating strategies such as stochastic perturbation and advanced optimization techniques may facilitate overcoming the hurdles of local minima, thereby enhancing the fidelity of parameter estimation in geomorphological simulations.

6 Conclusions

340 This study introduces a versatile, adaptable, and scalable calibration algorithm for numerical models, demonstrated through its application in calibrating the Landscape Evolution Model: CAESAR-Lisflood. The outcome of this calibration is the generation of geomorphic data for a gully catchment landscape evolution scenario, which can be utilized for temporal resolutions ranging from days to weeks and months.

The proposed calibration technique is adaptable to various numerical models and requires minimal extra input beyond
345 conventional CL inputs. However, it has its limitations. Although erosion volumes are similar to target patterns in both space and volume, discrepancies remain. Specifically, the “IMC + manual” approach tends to spread erosion volume across the study area in small amounts, affecting calibration precision. Additionally, the calibration process is inherently stochastic, resulting in non-unique, varying parametric vectors across calibration sessions, even under identical conditions. We used Mean Squared Error (MSE) for its ease and ability to emphasize large errors, widely applied in areas such as computer vision. However,
350 MSE’s equal treatment of all data points overlooks differences in regional importance, potentially resulting in high MSE scores that fail to reflect true perceptual resemblance.

In future work, the development of a custom loss function tailored to intricately capture the dynamic complexities present in geomorphic imagery is proposed. Such advancement aims to refine the measure of similarity between modeled and real landscapes, resulting in a more accurate and precise loss function. This enhancement is anticipated to significantly improve
355 calibration accuracy within geomorphological modeling. Moreover, exploring the applicability and effectiveness of the IMC approach in calibrating other physical or numerical models beyond the CL model warrants investigation.

Assessing the IMC method’s performance across diverse geomorphic environments, spanning various geographical locations and temporal scales, is crucial. Such comprehensive evaluation will illuminate the strengths and potential limitations of the IMC approach when applied to specific geomorphic contexts or environmental settings. Additionally, it would be intriguing to
360 create a synthetic final landscape or DEM. Investigating how the IMC method autonomously calibrates CL or other numerical geomorphic models to achieve this predetermined end state could offer novel insights into the method’s predictive capabilities and its utility in forward modeling geomorphological changes.

Code and data availability. The executable code, data and other relevant files are publicly available at <https://github.com/cbanerji/IMC>

Appendix A

365 A1 Parameter list preparation and value selection

In table A1, we present the exact structure of the PD file for reference. The names of all the parameters that need to be calibrated are included in the top row. In the second row, we include the names of these parameters as represented in the CL configuration xml file, e.g. the parameter “max erode limit” is represented using “maxerodelimit”. The next two rows present the numeric upper and lower limits of the IMC search for a certain parameter. Finally, the last two rows present the prior (μ, σ) or (mean, 370 std) values that define the Gaussian distribution from where the IMC starts its search. The prior (mean) also called the *IMC initial* values can be adjusted with the help of values published in the literature. The prior(std) value is set on intuition and may be updated based on the search space and the scale of values, for a certain parameter.

Table A1. Structure and default values of the *Parameter List and Prior data (PD file)*

Parameter name	Maximum erode limit	In-channel lateral erosion	Vegetation critical shear stress	Min Q	Slope failure threshold	Evaporation rate	Soil creep rate	I/P O/P difference	Slope edge cells	“m” value
Parameter name (in CL config. file)	max-erodelimit	lateral-erosionrate	vegcritshear	minq	slopefailure-threshold	evaporation	creerate	initscans	initialq	mvalue
lower-limit	0.001	15	80	0.001	20	0.002	0.0015	0.3	0.001	0.0057
upper-limit	0.005	25	120	0.015	85	0.006	0.0035	0.7	0.1	0.02
prior(mean)	0.003	20	100	0.01	50	0.004	0.0025	0.5	0.01	0.005
prior(std.)	0.001	5	10	0.001	10	0.001	0.001	0.1	0.001	0.001

A2 Procedure to setup the calibration

A2.1 Data preparation

375 The DEMs should be aligned, of the same resolution, and set all no-data values of the DEMs to “-9999”. One can use the “setnull” tool from ArcGis-Pro for the same. We tested with DEM rasters that have been converted to Esri ASCII text files (with .txt extension).

A2.2 Initializing the calibration

As mentioned before the xml file serves as a read-write center for the calibration algorithm and the numerical algorithm, 380 respectively. So we follow the following two-step for initiating the calibration process:

- Prepare your template xml and take care of all warnings: Open a CL (orig.) exe and load the template xml file. Next, browse and select each of the relevant DEM and rainfall time series data files. Finally, save the changes back to the xml template and load the data to check for warnings.

Some parameters also need to be adjusted depending on the data/ DEM and the temporal separation between DEM *year-0* and DEM *year-T*. Calculate hour (*hrs*) and minute (*mins*) equivalent of the time difference between the two DEMs. 385

Update parameter “Save file every min.” with $mins$, and all other time parameters on “Files” page on CL(orig.). Next on “Numerical” page, update “max. run duration” with $hrs + 1$. For example, in case, DEM year-0 (= July, 2019) and DEM year-T (= July, 2021), i.e. a difference of 3 years, so $hrs = 17544$, $mins = 1052640$.

Resolve all the warnings and exit.

390 These changes can also be made directly in the template xml file through an xml editor but using the CL GUI is more efficient and error-free.

- Use updated template xml: Now this template xml, is updated with the relevant file locations and other data, relevant to the experiment. It should be placed in the Calibration-*alg.* package and calibration may be initiated from the console.

395 *Author contributions.* Chayan Banerjee led the research on the topic, designed, and implemented the IMC algorithm, making substantial contributions to the conception and execution of the study. Kien Nguyen, whose vision inspired this work, provided critical insights, played a significant role in drafting the manuscript, and contributed to substantial revisions that enhanced the intellectual content. Clinton Fookes, Gregory Hancock, and Thomas Coulthard significantly contributed through their insightful feedback and thorough review of both the technical content and the overall manuscript. Their rigorous assessments were crucial in ensuring the accuracy, validity, and robustness of the research article.

400 *Competing interests.* There are no competing interests.

Acknowledgements. This research was partly supported by the Advance Queensland Industry Research Fellowship AQIRF024-2021RD4.

References

- Abbaspour, K. C., Johnson, C. A., and van Genuchten, M. T.: Estimating uncertain flow and transport parameters using a sequential uncertainty fitting procedure, *Vadose Zone Journal*, 3, 1340–1352, <https://doi.org/10.2136/vzj2004.1340>, 2004.
- 405 Barnhart, K. R., Tucker, G. E., Doty, S. G., Shobe, C. M., Glade, R. C., Rossi, M. W., and Hill, M. C.: Inverting topography for landscape evolution model process representation: 1. Conceptualization and sensitivity analysis, *Journal of Geophysical Research: Earth Surface*, 125, e2018JF004961, 2020.
- Beck, H., Hirpa, F. A., Lorini, V., Lorenzo, A., and Tomer, S. K.: LISFLOOD Hydrological Model Calibration Tool, Joint Research Centre (JRC), Princeton; European Commission, https://ec-jrc.github.io/lisflood-calibration/1_introduction/, accessed on 02-01-2024, 2018.
- 410 Becker, R., Koppa, A., Schulz, S., Usman, M., aus der Beek, T., and Schueth, C.: Spatially distributed model calibration of a highly managed hydrological system using remote sensing-derived ET data, *Journal of Hydrology*, 577, 123–144, 2019.
- Beven, K.: A manifesto for the equifinality thesis, *Journal of Hydrology*, 320, 18–36, 2006.
- Beven, K. and Binley, A.: The future of distributed models: Model calibration and uncertainty prediction, *Hydrological Processes*, 6, 279–298, 1992.
- 415 Beven, K. and Freer, J.: Equifinality, data assimilation, and uncertainty estimation in mechanistic modelling of complex environmental systems using the GLUE methodology, *Journal of Hydrology*, 249, 11–29, 2001.
- Braun, J. and Willett, S. D.: A very efficient $O(n)$, implicit and parallel method to solve the stream power equation governing fluvial incision and landscape evolution, *Geomorphology*, 180–181, 170–179, 2013.
- Brunetti, G., Stumpp, C., and Simunek, J.: Balancing exploitation and exploration: A novel hybrid global-local optimization strategy for hydrological model calibration, *Environmental Modelling & Software*, 150, 105–134, 2022.
- 420 Coulthard, T., Macklin, M., and Kirkby, M.: A cellular model of holistic catchment processes and sediment delivery, *Hydrology and Earth System Sciences*, 6, 87–100, <https://doi.org/10.5194/hess-6-87-2002>, 2002.
- Coulthard, T. J., Kirkby, M. J., and Macklin, M. G.: Modelling geomorphic response to environmental change in an upland catchment, *Hydrological Processes*, 21, 2895–2913, 2007.
- 425 Coulthard, T. J., Neal, J. C., Bates, P. D., Ramirez, J., de Almeida, G. A., and Hancock, G. R.: CAESAR Lisflood Download-1.9j, <https://sourceforge.net/projects/caesar-lisflood/>, [Accessed 28-02-2024], 2024.
- ELVIS: ELVIS-Elevation and Depth - Foundation Spatial Data, <https://elevation.fsd.org.au/>.
- Feeney, C. J., Chiverrell, R. C., Smith, H. G., Hooke, J. M., and Cooper, J. R.: Modelling the decadal dynamics of reach-scale river channel evolution and floodplain turnover in CAESAR-Lisflood, *Earth Surface Processes and Landforms*, 45, 1273–1291, 2020.
- 430 Gupta, H. V., Sorooshian, S., and Yapo, P. O.: Toward improved calibration of hydrologic models: Multiple and noncommensurable measures of information, *Water Resources Research*, 34, 751–763, 1998.
- Hamman, J. J., Nijssen, B., Bohn, T. J., Gergel, D. R., and Mao, Y.: The Variable Infiltration Capacity model version 5 (VIC-5): infrastructure improvements for new applications and reproducibility, *Geosci. Model Dev.*, 11, 3481–3496, <https://doi.org/10.5194/gmd-11-3481-2018>, 2018.
- 435 Hancock, G. and Willgoose, G.: The use of a landscape simulator in the validation of the SIBERIA catchment evolution model: Transient landform evolution, *Water Resources Research*, 37, 3381–3392, <https://doi.org/10.1029/2001WR000281>, 2001.
- Jetten, V., Govers, G., and Hessel, R.: Erosion models: quality of spatial predictions, *Hydrological Processes*, 17, 887–900, <https://doi.org/10.1002/hyp.1131>, 2003.

- Lane, S. N., Richards, K. S., and Chandler, J. H.: Landform monitoring, modelling, and analysis, John Wiley & Sons, 1999.
- 440 McCabe, M., Blancard, B. R.-S., Parker, L. H., Ohana, R., Cranmer, M., Bietti, A., Eickenberg, M., Golkar, S., Krawezik, G., Lanusse, F.,
et al.: Multiple physics pretraining for physical surrogate models, arXiv preprint arXiv:2310.02994, 2023.
- Nash, J. and Sutcliffe, J.: River flow forecasting through conceptual models part I — A discussion of principles, *Journal of Hydrology*, 10,
282–290, 1970.
- Oreskes, N., Shrader-Frechette, K., and Belitz, K.: Verification, validation, and confirmation of numerical models in the earth sciences,
445 *Science*, 263, 641–646, 1994.
- Peleg, N., Skinner, C., Fatichi, S., and Molnar, P.: Temperature effects on the spatial structure of heavy rainfall modify catchment hydro-
morphological response, *Earth Surface Dynamics*, 8, 17–36, 2020.
- Phillips, J. D.: Sources of nonlinearity and complexity in geomorphic systems, *Progress in Physical Geography*, 27, 1–23, 2003.
- Ramirez, J. A., Mertin, M., Peleg, N., Horton, P., Skinner, C., Zimmermann, M., and Keiler, M.: Modelling the long-term geomorphic
450 response to check dam failures in an alpine channel with CAESAR-Lisflood, *International journal of sediment research*, 37, 687–700,
2022.
- Shen, C., Appling, A. P., Gentine, P., Bandai, T., Gupta, H., Tartakovsky, A., Baity-Jesi, M., Fenicia, F., Kifer, D., Li, L., et al.: Differentiable
modelling to unify machine learning and physical models for geosciences, *Nature Reviews Earth & Environment*, 4, 552–567, 2023.
- Simunek, J., Van Genuchten, M. T., and Sejna, M.: Recent developments and applications of the HYDRUS computer software packages,
455 *Vadose Zone Journal*, 15, vzj2016–04, 2016.
- Skinner, C. J. and Coulthard, T. J.: Testing the sensitivity of the CAESAR-Lisflood landscape evolution model to grid cell size, *Earth Surface
Dynamics*, 11, 695–711, 2023.
- Skinner, C. J., Coulthard, T. J., Schwanghart, W., Van De Wiel, M. J., and Hancock, G.: Global sensitivity analysis of parameter uncertainty
in landscape evolution models, *Geoscientific Model Development*, 11, 4873–4888, 2018.
- 460 Tang, M., Liu, Y., and Durlofsky, L. J.: A deep-learning-based surrogate model for data assimilation in dynamic subsurface flow problems,
Journal of Computational Physics, 413, 109 456, 2020.
- Temme, A. and Schoorl, J.: Quantitative modeling of landscape evolution, *Netherlands Journal of Geosciences*, 88, 207–224, 2009.
- Tsai, W.-P., Feng, D., Pan, M., Beck, H., Lawson, K., Yang, Y., Liu, J., and Shen, C.: From calibration to parameter learning: Harnessing the
scaling effects of big data in geoscientific modeling, *Nature communications*, 12, 5988, 2021.
- 465 Tucker, G. and Slingerland, R.: Drainage basin responses to climate change, *Water Resources Research*, 33, 2031–2047,
<https://doi.org/10.1029/97WR00409>, 1997.
- Tucker, G. E. and Hancock, G. R.: Modelling landscape evolution, *Earth Surface Processes and Landforms*, 35, 28–50, 2010.
- Wang, D., Wang, M., and Liu, K.: Assessment of Short-medium Term Intervention Effects Using CAESAR-Lisflood in Post-earthquake
Mountainous Area, *Natural Hazards and Earth System Sciences Discussions*, 2022, 1–36, 2022.
- 470 WMIP, Q. G.: Water monitoring information, QLD., <https://water-monitoring.information.qld.gov.au/>.