

Catchment Response to Climatic Variability: Implications for Root Zone Storage and Streamflow Predictions

Nienke Tempel¹, Laurene Bouaziz², Riccardo Taormina¹, Ellis van Noppen¹, Jasper Stam³, Eric Sprokkereef³ and Markus Hrachowitz¹

5 ¹Department of Water Management, Faculty of Civil Engineering and Geosciences, Delft University of Technology, Stevinweg 1, 2628CN Delft, Netherlands

²Department Catchment and Urban Hydrology, Deltares, Boussinesqweg 1, 2629 HV Delft, The Netherlands

³Ministry of Infrastructure and Water Management, Zuiderwagenplein 2, 8224 AD Lelystad, The Netherlands

Correspondence to: Nienke Tempel (nienketessatempel@gmail.com)

10

Summary. This study explores the impact of climatic variability on root zone water storage capacities thus on hydrological predictions. Analysing data from 286 areas in Europe and the US, we found that despite some variations in root zone storage capacity due to changing climatic conditions over multiple decades, these changes are generally minor and have a limited effect on water storage and river flow predictions.

15

Abstract. This paper investigates the influence of multi-decadal climatic variability on the temporal evolution of root zone storage capacities ($S_{r,max}$) and its implications for streamflow predictions in the Meuse basin. Through a comprehensive analysis of 286 catchments across Europe and the US that are hydro-climatically comparable to the Meuse basin, we construct inter-decadal distributions of past deviations in evaporative ratios (I_E) from expected values based on catchment aridity (I_A). These distributions of ΔI_E were then used to estimate inter-decadal changes in $S_{r,max}$ and to quantify the associated consequences on stream flow predictions in the Meuse basin. Our findings reveal that while catchments do not strictly adhere to their specific parametric Budyko curves over time, the deviations in I_E are generally very minor, with an average $\Delta I_E = 0.01$ and an interquartile range $IQR = -0.01$ to 0.03 . Consequently, these minor deviations lead to limited inter-decadal changes in $S_{r,max}$, mostly ranging between -10 and $+21$ mm (-5% to $+10\%$). When these changes $\Delta S_{r,max}$ are accounted for in hydrological models, the impact on streamflow predictions in the Meuse basin is found to be marginal, with the most significant shifts in monthly evaporation and streamflow not exceeding 4% and 12% , respectively. Our study underscores the utility of parametric Budyko-style equations for first order estimates of future $S_{r,max}$ in hydrological models, even in the face of climate change and variability. This research contributes to a more nuanced understanding of hydrological responses to changing climatic conditions and offers valuable insights for future climate impact studies in hydrology.

20

25

1 Introduction

30

Transpiration from vegetation is, on average, the largest water flux that leaves terrestrial hydrological systems (Jasechko, 2018). In spite of some uncertainty (Coenders-Gerrits et al., 2014), its magnitude is controlled by the interplay between sub-

surface water supply and canopy water demand (Eagleson, 1982; Milly, 1994; Rodriguez-Iturbe et al., 2007; Donohue et al., 2007; Jaramillo et al., 2018). Both, individual plants but also the composition of plant communities within given spatial domains (for brevity hereafter referred to as vegetation), have over the past adapted to local environmental and hydro-climatic conditions to ensure continuous and sufficient access to water, nutrients and light which has allowed their survival (Yuan et al., 2019; Ma et al., 2021). Adaptation strategies include, besides others, the regulation of water use efficiency (e.g. Troch et al., 2009; Flo et al., 2021) or the adaptation of the extent of root systems so that roots penetrate large enough subsurface pore volumes for water supply to satisfy transpiration demand during dry periods (e.g. Gao et al., 2014; Fan et al., 2017). This subsurface pore volume between field capacity and permanent wilting point defines the *maximum* water volume that is within the reach of roots and thus available for plant transpiration, hereafter referred to as root zone storage capacity $S_{r,max}$ (mm). Indeed, $S_{r,max}$ is a core property of terrestrial hydrological systems as it regulates to a large part the partitioning of water fluxes into drainage of liquid water, and thus eventually stream flow Q (mm d^{-1}), and vapour released to the atmosphere as transpiration E_T (mm d^{-1}) and interception/soil evaporation E_I (mm d^{-1}) (Savenije and Hrachowitz, 2017).

At the catchment scale, $S_{r,max}$ has in the past been quantified with three methods. Firstly, by calibration as parameter of hydrological models (e.g. Fenicia et al., 2008; Coxon et al., 2014; Fowler et al., 2020; Bouaziz et al., 2021; Hanus et al., 2021; Wang et al., 2023), secondly as product from estimates of average root depth, soil porosity and water content at field capacity (e.g. Clark et al., 2008; Maxwell et al., 2015) and thirdly by following optimality principles and thus maximizing variables such as net primary production, transpiration rates or others (e.g. Kleidon, 2004; Guswa, 2008; Sivandran and Bras, 2012; Speich et al., 2020). Although all three methods above are correct in principle, insufficient data often limits their use. For example, although there are observations of root-depth of several thousand individual plants worldwide (Guerrero-Ramírez et al., 2021), it is difficult to meaningfully upscale these values to plant communities with different compositions, ages or densities. In addition, these estimates are mostly snapshots in time reflecting past conditions and, similar to the calibration method, do not give any indication about the potential future evolution of $S_{r,max}$.

Alternatively, there is increasing evidence that $S_{r,max}$ can be robustly estimated exclusively based on water balance data, i.e. long-term estimates of precipitation P (mm d^{-1}) and actual evaporation $E_A = E_T + E_I$ (e.g. Donohue et al., 2012; Gentine et al., 2012; Gao et al., 2014, 2016; DeBoer-Euser et al., 2016; Wang-Erlandsson et al., 2016; Dralle et al., 2021; Hrachowitz et al., 2021; McCormick et al., 2021; van Oorschot et al., 2021; Stocker et al., 2023). Under the assumption that vegetation allocates resources in an efficient way between above- and sub-surface growth (Guswa, 2008; Schymanski et al., 2008), root systems and thus $S_{r,max}$ will not be larger than necessary to guarantee access to sufficient water during dry periods with certain return periods. The water volume that in the past has been transpired during the driest periods and that can be estimated via the water balance must have been accessible to roots and therefore reflect the magnitude of the water volume that was stored in the sub-surface and accessible to plants during these dry periods, i.e. $S_{r,max}$.

This approach offers the advantage that an evolution of $S_{r,max}$ over time, either through natural adaptation to changing hydro-climatic conditions (e.g. Jaramillo et al., 2018) or through human interventions such as deforestation (e.g. Nijzink et al., 2016a; Hrachowitz et al., 2021) and irrigation (van Oorschot et al., 2024), is manifest in changes in dry period transpiration

E_T . This offers an opportunity to not only trace the past evolution of $S_{r,max}$ over time, but together with projections of future hydro-climatic conditions, including P and E_P , also to quantify its potential future trajectories and the associated effects of this temporal evolution of $S_{r,max}$ on the hydrological response.

More specifically, estimating $S_{r,max}$ from the water balance requires knowledge of E_A . For past conditions this can be robustly estimated from the water balance by assuming negligible storage change, i.e. $dS/dt \sim 0$, which is satisfied for the vast majority of catchments world-wide over time-scales of around 10 years (Han et al., 2020). Climate model projections can generate, besides estimates of future P and potential evaporation E_P (mm d^{-1}), also estimates of future E_A . However, the latter are subject to major uncertainties (e.g. van Oorschot et al., 2021). As an alternative method, non-parametric formulations of the Budyko hypothesis demonstrate that the long-term partitioning of water fluxes, expressed as the evaporative index $I_E = E_A/P = 1 - Q/P$ (-), and thus the hydrological response of catchments globally is to the first order controlled by the aridity index $I_A = E_P/P$ (Schreiber, 1904; Oldekop, 1911; Budyko, 1948). To reduce the scatter around this non-parametric Budyko-style curves and to assign catchments a unique position in the $I_A - I_E$ space, parametric re-formulations as for example the Tixeront-Fu equation (Tixeront, 1964; Fu, 1981; Zhang et al., 2004) and similar expressions (see Andreassian et al., 2016) were developed:

$$\frac{E_A}{P} = 1 + \frac{E_P}{P} - \left[1 + \left(\frac{E_P}{P} \right)^\omega \right]^{\frac{1}{\omega}} \quad (1)$$

where ω (-) $[1, \infty)$ is a catchment specific effective parameter, that aggregates all other influences on I_E next to I_A (Berghuijs and Woods, 2016). Higher values of ω indicate higher E_A/P .

As this relationship has emerged from catchment responses, and thus also vegetation, having adapted to past hydro-climatic conditions, expressed by I_A , it is plausible to assume that the hydrological partitioning I_E of a catchment will eventually adapt to a changing future I_A in a corresponding way by moving along its catchment specific curve defined by ω . This reasoning then allows to estimate future E_A based on future projections of P and E_P (Roderick and Farquhar, 2011; Wang et al., 2016; Liu et al., 2020). As a consequence, the effects of a changing future E_A on the future root zone storage capacity $S_{r,max}$ can be quantified. In contrast to the vast majority of climate impact studies, which in the absence of further information, assume time-invariant $S_{r,max}$ even under changing future climate (e.g. Prudhomme et al., 2014; Brunner et al., 2019; Hakala et al., 2020; Rottler et al., 2020; Hanus et al., 2021), the use of such a time-variant formulation of $S_{r,max}$ as parameter in hydrological models has the potential to provide more reliable predictions of the future hydrological response of catchments, as for example demonstrated in a recent proof-of-concept study by Bouaziz et al. (2022) for the Meuse basin in North-West Europe. They found with model simulations that the adaptation of $S_{r,max}$ to future climate conditions, expressed as I_A , can cause major shifts in seasonal water supply. This involved future increases of $S_{r,max}$, and thus increases vegetation-accessible sub-surface water volumes which lead to increases in Summer E_A by up to 15%, which in turn reduced groundwater recharge that resulted in 10% decreases in late-summer and autumn groundwater storage, eventually causing winter flows that can be up to 20% lower as compared to model runs that used constant values of $S_{r,max}$ estimated from past hydro-climatic conditions. These findings

are qualitatively consistent with the results of Speich et al. (2020), who reported significant changes in modelled stream flow when replacing a static parameter to describe $S_{r,max}$ by a forest dynamics model. More generally, Wagener et al. (2003) and Merz et al. (2011) documented the role of time-variant model parameters including $S_{r,max}$ (in their papers referred to as root constant and FC, respectively) by comparing model calibrations over multiple time windows. In a different approach, the importance of time-variable vegetation dynamics was demonstrated by Duethmann et al. (2020), who used remotely sensed vegetation indices including NDVI to account for temporal variations in evaporation surface resistance in the Penman equation, leading to considerably improved model skill to reproduce observed river flow over multiple decades.

A major assumption underlying the approach of Bouaziz et al. (2022) is that under changing future conditions, catchments will indeed follow their specific Budyko curve as defined by the time-invariant parameter ω , which describes the long-term average past conditions. The resulting I_E is in the following referred to as the expected $I_{E,exp}$. Several recent studies have pointed out that this assumption may not strictly hold and that ω itself may be subject to fluctuations over time (e.g. Berghuijs and Woods, 2016; Reaver et al., 2022). While of minor relevance for humid environments, I_E , and thus E_A , becomes proportionally more sensitive to fluctuations in ω with increasing aridity I_A (Gudmundsson et al., 2016). As a consequence, it has to be expected that estimates of future E_A and the associated $S_{r,max}$, are subject to uncertainties or deviations $\Delta I_{E,exp}$ from $I_{E,exp}$ that are not accounted for by Bouaziz et al. (2022).

The overall objectives of this paper are thus to (1) quantify the deviations in I_E following changes in I_A based on historical observations and (2) to analyse how this has in the past propagated further into uncertainties in time-variant estimates of $S_{r,max}$ in contrasting environments over multiple decades in a large sample approach using long-term water balance data from 286 catchments from Great Britain (GB), the US and the Meuse basin. In a direct follow up to Bouaziz et al. (2022), who modelled the impact of a changing future climate, *without* accounting for deviations in I_E and thus uncertainties in $S_{r,max}$, on the hydrological response in several catchments of the Meuse basin, we will then in a third step, using the same model, (3) quantify the additional effect of deviations in I_E and thus uncertainties in $S_{r,max}$ on the hydrological response in the Meuse basin and compare it to previous stream flow predictions in the Meuse basin (Bouaziz et al., 2022), that do not account for these uncertainties. Specifically, we will test the hypothesis that inter-decadal evolution of $S_{r,max}$, reflecting vegetation adaptation to factors other than I_A , which is manifest in deviations from the expected future $I_{E,exp}$ and thus from the associated future $S_{r,max}$, lead to significant changes in the predicted future hydrological response in the Meuse basin and need to be accounted for in hydrological climate impact studies.

2 Study area & Data

2.1 Study area

The hydrological model experiment in this study is done for the Meuse river basin upstream of Borgharen at the border between Belgium and the Netherlands (Figure 1), which spans an area of 21,300 km² in North-West Europe. To a large part

located in the Ardennes, a rolling hill landscape characterized by ridges and incised valleys, the elevation reaches up to around 650m. Approximately 60% of the basin is used for agriculture, while 30% is covered by forests (Bouaziz et al., 2022).

135 The Meuse basin is characterized by a temperate humid climate with average annual precipitation of around 920 mm yr⁻¹, potential evaporation of around 610 mm yr⁻¹, and streamflow of around 400 mm yr⁻¹. The Meuse is a rain-fed river with a response time of several hours up to a few days. Transient snow packs can be present for a few days in some parts of the basin but are overall of minor importance (Bouaziz et al., 2021). The streamflow has strong seasonality, with summer low flows and high winter flows, which are on average four times higher than the summer flow (De Wit et al., 2007). Precipitation falls relatively homogeneously throughout the year and the seasonality of the streamflow is thus mainly caused by the seasonal differences in solar energy input and thus evaporation.

140 2.2 Data

To quantify the deviations $\Delta I_{E,exp}$ from expected $I_{E,exp}$, we adopted a large sample strategy using long-term water balance data from catchments in contrasting environments.

For the Meuse river basin, daily precipitation, temperature and radiation was obtained for the 1989 – 2018 period from the E-OBS v20.0 dataset (Cornes et al., 2018) and pre-processed as described by Bouaziz et al. (2022). Temperature was 145 downscaled using a digital elevation model and a fixed temperature lapse rate, while potential evaporation was estimated using the Makkink method (Hooghart and Lablans, 1988). This method was chosen to balance availability of the required data with its suitability for hydrological model applications (Oudin et al., 2005). Monthly bias correction was applied to address underestimation of precipitation. Daily stream flow data was available for 23 catchments within the Meuse basin from water authorities in Belgium (Service publique de Wallonie), France (Eau France) and the Netherlands (Rijkswaterstaat) for various 150 time periods between 1989 – 2018 (Table 1). Note, that the stream flow data at station Borgharen in the Netherlands is constructed by combining observations from the nearby stations St. Pieter on the Meuse and Kanne on the Albert Canal (De Wit et al., 2007).

Long-term temporal changes in $I_{E,exp}$ and deviations $\Delta I_{E,exp}$ therefrom that can be quantified in the Meuse basin remain limited to the 23 catchments that are gauged and stream flow records of 30 years at most. To increase the sample size in space 155 and time, and to encompass a broader range of climates, we have in addition included data from catchments in GB and the US, available through the CAMELS GB (Coxon et al., 2020) and CAMELS US (Addor et al., 2017) databases for the time-periods indicated in Table 1. To ensure consistency, potential evaporation across all datasets was recalculated using the Makkink equation based on mean daily temperature and shortwave radiation (Hooghart and Lablans, 1988). From the full set of 671 catchments available in each of the two CAMELS databases, we excluded those from the analysis that exhibited long-term I_E 160 $> I_A$, indicating that E_A exceeds E_P and thus the energy limit, which is an indicator of major data errors or significant unaccounted water export to adjacent catchments for example via groundwater exchange or irrigation water abstraction (Bouaziz et al., 2018). This does not imply that catchments retained for our analysis are not subject to data errors or

unaccounted water exports. Although the effect of spurious results cannot be completely avoided, removing catchments which exhibit clear evidence for water balance deficits can at least reduce the impact of spurious effects.

165

In addition, catchments were excluded from the analysis if they did not meet the criteria of minimal human impact or received more than 10% of their annual precipitation as snow. The exclusion of catchments with snowfall was necessary due to the temporary water storage capacity of snow, which can lead to inaccurate estimation of root zone storage capacity due to delayed water input (Dralle et al., 2021). This resulted in a total of 286 catchments we have used for the subsequent analysis (23 – Meuse basin; 94 – CAMELS GB; 169 – CAMELS USA; Figure 2) and which cover a wide range of hydro-climatic conditions, with the catchments in the Meuse basin being located at an intermediate position between the GB and US catchments (Figure 3). Finally, the data were segmented into distinct 10-year periods (Table 1), allowing us to quantify decadal changes in I_A , I_E and the associated $S_{r,max}$ as well as their decadal deviations from the expected values, i.e. $\Delta I_{E,exp}$ and $\Delta S_{r,max,exp}$.

170

175 3 Methods

Following the three specific research objectives as formulated in Section 1, the experiment of this study is executed in several subsequent steps, shown in Figure 4: for each of the 286 study catchments (a) estimate $I_{E,obs}$, and thus ω_{obs} and $E_{A,obs}$ from water balance data of multiple past individual decades in the period 1989-2018 (Section 3.1), (b) quantify the distributions of deviations $\Delta I_{E,exp}$ and thus $\Delta E_{A,exp}$ from the expected $I_{E,exp}$ and $E_{A,exp}$ between subsequent decades (Section 3.1), (c) estimate $S_{r,max,obs}$ from past water balance data and thus from $E_{A,obs}$ of multiple past individual decades (Section 3.2), (d) quantify the distribution of deviations $\Delta S_{r,max,exp}$ from the expected $S_{r,max,exp}$ between subsequent decades based on $\Delta E_{A,exp}$ (Section 3.2). For the 23 Meuse catchments then (e) for the 2009-2018 decade sample $S_{r,max,sam}$ from the distribution $\Delta S_{r,max,exp}$ (Section 3.2) and finally (f) quantify the effect of uncertainties in $S_{r,max}$ on the hydrological response by using the sampled values $S_{r,max,sam}$ as parameters in multiple runs and compare the results to model runs that assume $\Delta I_{E,exp} = 0$ and thus $\Delta S_{r,max,exp} = 0$ (Section 3.3).

180

185 3.1 Estimate I_E , E_A and their deviations from expected values over time

For each of the 286 study catchments we estimated for each individual decade i with a data record (see Table 1) the decadal average evaporation and the associated decadal average evaporative indices from the observed decadal average balance data:

$$E_{A,obs,i} = P_{obs,i} - Q_{obs,i} \quad (2)$$

190

$$I_{E,obs,i} = E_{A,obs,i}/P_{obs,i} \quad (3)$$

Together with $P_{obs,i}$ and $E_{P,obs,i}$, expressed as aridity index $I_{A,obs,i}$, we then use $E_{A,obs,i}$ to solve the parametric Tixeront-Fu formulation of the Budyko hypothesis (Eq.1) for $\omega_{obs,i}$ for each decade for each individual catchment.

In a next step, assuming that $P_{obs,i+1}$ and $E_{P,obs,i+1}$ of the following decade $i+1$ are projections of an unknown future, we solve Eq.(1) for I_E to “predict” the expected evaporative index of that following decade, i.e. $I_{E,exp,i+1} = E_{A,exp,i+1}/P_{obs,i+1}$, based on $I_{A,obs,i+1}$ together with $\omega_{obs,i}$ from the current decade, implying that each catchment will follow its specific curve defined by $\omega_{obs,i}$. The difference of the expected $I_{E,exp,i+1}$ to the actually observed $I_{E,obs,i+1}$ then represents the deviation $\Delta I_{E,exp,i+1}$ and thus $\Delta E_{A,exp,i+1}$ for that decade $i+1$ for each individual catchment. The deviations for all decades of all catchments are then aggregated to an individual distribution of deviations for each of the three datasets, i.e. $\Delta I_{E,Meuse}$, $\Delta I_{E,GB}$, $\Delta I_{E,US}$ and for one distribution of all three data sets combined, i.e. ΔI_E . The general procedure is illustrated in Figure 5.

3.2 Estimate root zone storage capacity $S_{r,max}$ and its deviations from expected values over time

For each study catchment and each decade i with a data record we estimated the root zone storage capacity $S_{r,max,obs,i}$. This was done on basis of observed decadal water balance data as described elsewhere in detail (e.g. Nijzink et al., 2016a; Bouaziz et al., 2020; Hrachowitz et al., 2021).

Briefly, the decadal averages $E_{A,obs,i}$ (Eq.2) of each study catchment were redistributed to daily values $E_{A,obs,i}(t)$ by rescaling daily observed values of $E_{P,obs,i}(t)$ according to:

$$E_{A,obs,i}(t) = \frac{E_{P,obs,i}(t)}{E_{P,obs,i}} E_{A,obs,i} \quad (4)$$

210

where t is any given day within a decade i . Note, that the rescaling in Eq.4 is based on the simplifying assumption of a constant E_A/E_P ratio. This does not account for the effects of vegetation water stress and may cause inflated $S_{r,max}$ estimates in regions with pronounced dry periods (e.g. van Oorschot et al., 2021). The catchments of the Meuse basin for which $S_{r,max}$ was estimated in this study are characterized by abundant summer precipitation and rather short dry spells. The effect of a constant scaling factor on $S_{r,max}$ is therefore minor.

215

These daily estimates of evaporation $E_{A,obs,i}(t)$ were then used together with daily observed precipitation $P_{obs,i}(t)$ to compute the time series of daily cumulative storage deficits for a specific year j according to:

$$S_{D,j,i}(t) = \begin{cases} \int_{t_0}^t (P_{obs,i}(t) - E_{A,obs,i}(t)) dt, & \text{if } \int_{t_0}^t (P_{obs,i}(t) - E_{A,obs,i}(t)) dt \leq 0 \\ 0, & \text{if } \int_{t_0}^t (P_{obs,i}(t) - E_{A,obs,i}(t)) dt > 0 \end{cases} \quad (5)$$

220

Where t_0 is the last preceding day on which the cumulative storage deficit $S_{D,j,i}(t) = 0$. Note, that the effects of interception evaporation E_I on the estimation of storage deficits are negligible as demonstrated by Bouaziz et al. (2020) and we therefore assumed that $E_A = E_T$.

The maximum annual storage deficit $S_{D,j,i}$ represents the volume of water that needs to be stored within the reach of roots
225 to provide vegetation with continuous access to water in that year j is then obtained as:

$$S_{D,j,i} = \max(|S_{D,j,i}(t)|) \quad (6)$$

Previous studies suggested that in a wide spectrum of environments vegetation develops root systems that allow access to
230 sufficient water to bridge dry spells with return periods of around 20 years (Gao et al., 2014; Nijzink et al., 2016a). The annual
storage deficits $S_{D,j,i}$ of all years j in a specific decade i and catchment were therefore used to fit Generalized Extreme Value
distribution. This then allowed to estimate the storage deficit with a 20-year return period which here was defined as root zone
storage capacity for that decade $S_{r,max,obs,i} = S_{D,20yr,i}$. Note, that strictly seen, $S_{r,max}$ is a lower limit of the magnitude of vegetation
accessible subsurface water volumes. Based on Eq. 2 – 6 it is an estimate of the water volume that was required in the past to
235 meet the estimated E_A (Eq. 2). In principle, to the total volume of $S_{r,max}$ could be higher. However, several previous studies
have shown that estimating $S_{r,max}$ as parameter of a hydrological model calibrated to observed stream flow, leads to very similar
values of $S_{r,max}$ in many regions world-wide (e.g. Gao et al., 2014; de Boer-Euser et al., 2016; Nijzink et al., 2016; Hrachowitz
et al., 2021; Wang et al., 2024). In other words, this is evidence that models can only reproduce observed stream flow if $S_{r,max}$
does indeed represent a maximum vegetation accessible water volume and thus an upper limit.

240 In a next step, assuming that $P_{obs,i+1}$ of the following decade $i+1$ is a projection of an unknown future, we follow the same
procedure described above by Eqs.(4) – (6) but using $\Delta E_{A,exp,i+1}$ to “predict” the expected root zone storage capacity of the
following decade $S_{r,max,exp,i+1}$. The difference between the expected $S_{r,max,exp,i+1}$ and the actually observed $S_{r,max,obs,i+1}$ then
represents the deviation $\Delta S_{R,max,exp,i+1}$ for that specific catchment for decade $i+1$. The deviations for all decades of all catchments
are then aggregated to an individual distribution of deviations for each of the three datasets, i.e. $\Delta S_{r,max,Meuse}$, $\Delta S_{r,max,GB}$, and
245 $\Delta S_{r,max,US}$.

3.3 Effect of $\Delta S_{r,max}$ on stream flow

To isolate and quantify the effect of uncertainties $\Delta S_{r,max}$ in predicted $S_{r,max}$ on predictions of the hydrological response we
run several simulation scenarios with a process-based model for the 23 study catchments in the Meuse basin.

250 3.3.1 Hydrological model

The hydrological model used in this study is wflow-FlexTopo (de Boer-Euser, 2017; Verseveld et al., 2022), a fully
distributed process-based model designed to represent spatial variability in hydrological processes. The modular model uses
flexible model structures for selection of Hydrological Response Units (HRUs), which are delineated based on topography and
land use. See Figure 6 for the a schematic representation of wflow-FlexTopo within one HRU.

255 Briefly, the each HRU consists of several storage components linked by fluxes, similar to comparable process-based models
successfully used in previous studies (e.g. Fenicia et al., 2006; Euser et al., 2015; Gao et al., 2016; Fowler et al., 2020). Here,
we have defined three HRUs that represent wetlands, hillslopes and plateaus, respectively and which are connected through a
common groundwater storage (e.g. Hulsman et al., 2021). The HRUs were delineated using the MERIT hydro dataset at 60 m
x 90 m resolution (Yamazaki et al., 2019), with a threshold of 5.9 m for the height above the nearest drainage (HAND; Renno
260 et al., 2008) and a slope threshold of 0.13, following the methodology proposed by Gharari et al. (2011). The hillslopes are
associated with forest and the largest part of plateaus are used for crop cultivation agriculture in the study region, as identified
using CORINE land cover data (European Environment Agency, 2018). The areal fraction of each of the three HRUs was
derived for each cell at a model resolution of approximately 600 m x 900 m similar to the sub-grid landscape variability
implemented by Nijzink et al. (2016b) in the distributed mhM-model. All relevant model equations are given in Table 2. Note
265 that Horton ponding and Horton runoff processes (Figure 6) have minor importance in the study region and were therefore
switch-off for the model implementation in this study.

The model was previously calibrated for at the most downstream gauge at Borgharen (Bouaziz et al., 2022) using a multi-
objective calibration strategy based on the Nash-Sutcliffe efficiencies of flows (E_{NS}) as well as of the logarithm of flows
($E_{NS,log}$), the Kling-Gupta efficiency of flow (E_{KG}) and the monthly runoff coefficients as performance metrics (Bouaziz et al.,
270 2022). The model was subsequently evaluated for its skill to reproduce stream flow for at all other 22 stream gauges in the
Meuse basin on basis of the same performance metrics.

3.3.2 Scenarios

The effect of uncertainties $\Delta S_{r,max}$ in predicted $S_{r,max}$ on predictions of the hydrological response in the 23 study catchments
275 was then quantified by running the calibrated model for the 2009 – 2018 period and replacing $S_{r,max}$ with different “predictions”
thereof for that period. Following the procedure to predict $S_{r,max}$ and $\Delta S_{r,max}$ (Section 3.2) from I_E and ΔI_E (Section 3.1), we
have for this experiment used the decadal period 1999 – 2008 (p_1) as basis to predict $S_{r,max}$ and $\Delta S_{r,max}$ for the period 2009 –
2018 (p_2) in three scenarios.

- **Baseline scenario ($\Delta S_{r,max} = 0$):** estimate $\omega_{obs,p1}$ of the first decade p_1 based on observed data $P_{obs,p1}$, $E_{P,obs,p1}$ and $Q_{obs,p1}$
280 of that period. Subsequently, we have used these values together with $P_{obs,p2}$ and $E_{P,obs,p2}$ of the second decade p_2 to
predict the expected $I_{E,exp,p2}$ and finally $S_{r,max,exp,p2}$ for that second period p_2 in each catchment. The calibrated $S_{r,max}$ are
then replaced in the model by the predicted values $S_{r,max,p2}$. Re-running the model with $S_{r,max,p2}$ for period p_2 then
provides the baseline output of the hydrological response assuming that the catchments follow their specific Budyko
curves as defined by their individual $\omega_{obs,p1}$ and that therefore $\Delta I_{E,p2} = 0$ and $\Delta S_{r,max,p2} = 0$. **This scenario is equivalent**
285 **to the approach used by Bouaziz et al. (2022).**

- **Scenario A ($\Delta S_{r,max} \neq 0$):** the catchments do not follow their specific Budyko curves. In this case, we used the combined
distributions of historical deviations ΔI_E from Meuse, GB and US datasets to determine $\Delta S_{r,max,p2}$. The predicted $I_{E,pred,p2}$

for decade p_2 was thus estimated by sampling 100 times from the distribution of deviations ΔI_E and adding the sampled values to the expected value I_{E,exp,p_2} . This sample of 100 values of $I_{E,pred,p_2}$ then allowed to generate a distribution of 100 values $S_{r,max,pred,p_2}$ to be used in 100 model re-runs. Thus, each model run represents the effect of an error ΔI_E in the estimation of I_{E,exp,p_2} . The differences in the hydrological responses with respect to the baseline scenario were then quantified (Figure 7a). The distributions of ΔI_E sampled in this scenario are based on all 286 catchments. They reflect a plausible *overall* distribution of ΔI_E in rather cool, humid climates with comparable aseasonal precipitation distribution, similar to the Meuse basin.

290

295

- *Scenario B* ($\Delta S_{r,max} \neq 0$): the same as Scenario A, with the only difference that the not the full distribution of ΔI_E from all three data sets combined was used. Instead, we have here limited the sampling distribution of deviations to $\Delta I_{E,Meuse}$, and thus to historical deviations in the Meuse basin only to account for potential effects of regionally different distributions of ΔI_E (Figure 7b).

300

4 Results

4.1 Historical I_E and deviations ΔI_E from expected values over time

305

310

315

For historical water balance observations of all three datasets, i.e. Meuse, GB and US, the decadal $I_{E,obs}$ exhibits deviations ΔI_E from the expected values $I_{E,exp}$ (Figures 8b,d,f, 9), following decadal shifts in I_A with medians of between $\Delta I_A = -0.05 - 0.11$ (Figure 8a,c,e; [Supplementary Figures S1 – S3](#)) or $\sim -8.03\% - 18.12\%$ in relative terms. Overall, the ΔI_E remains minor, and the distributions largely centre around zero although they do not generally follow Normal distributions as indicated by an analysis of Q-Q plots and Shapiro-Wilk tests for normality (Shapiro and Wilk, 1965). Differences are evident as indicated by non-parametric Wilcoxon rank-sum tests, that suggest significant differences ($p < 0.05$) in the ΔI_E distributions of the different data sets and different decades. The median $\Delta I_{E,GB}$ for GB is rather stable and varies only between 0 and 0.01 with rather narrow spread es shown by the interquartile ranges $IQR \sim 0.03$. This narrow scatter around zero and the stability over time allow balanced and rather robust predictions of I_E with this data set. On the other hand, the distributions $\Delta I_{E,US}$ for the US catchments are characterized by stronger fluctuations, with medians changing from -0.01 to 0.04 between the decades, and a somewhat wider spread with $IQR \sim 0.04$.

The noticeable and significant shift towards higher, i.e. more positive $\Delta I_{E,US}$ between these decadal distributions entail proportionally higher-than-expected evaporation for the later decade. In contrast, while for the first decade the catchments in Meuse basin have a median $\Delta I_{E,Meuse} \sim 0$ that is broadly consistent with the GB and the US catchments, the distribution experiences a major shift towards lower, i.e. more negative values with a median $\Delta I_{E,Meuse} \sim -0.06$ in the second decade, suggesting lower-than-expected proportional evaporation. However, this pattern may be an artefact of the limited sample size, consisting of only 9 and 23 catchments, respectively, in the Meuse basin, and should be interpreted with due care to avoid misinterpretations.

320 In the deviations ΔI_E from the expected I_E no apparent geographically pattern can be distinguished from visual analysis (Supplementary Material Figure S4). In particular for GB, adjacent catchments do frequently display opposing signs in ΔI_E , indicating positive and negative deviations from expected I_E within very close distances.

Similarly, aggregating the individual distributions of ΔI_E of all three data sets and all decades into one full distribution and stratifying this distribution in to individual distributions according to their aridity index I_A in bins of 0.2 width (Figure 9), also
325 does not exhibit systematic differences between the distributions. The median of all five distributions with $\Delta I_E = 0.00 - 0.01$ close to zero and the spreads are characterized by only minor differences with values of IQR ~ 0.02 for $I_A = 0.2 - 0.4$ and IQR ~ 0.06 for $I_A = 0.8 - 1.0$.

To avoid the need to base the further analysis in the Meuse exclusively on the small sample of $\Delta I_{E,Meuse}$, we initially intended to construct more robust estimates of ΔI_E in the Meuse by further stratifying the above according hydro-climatic and landscape
330 indicators. However, this further attempt to find multi-variate relationships that link ΔI_E with hydro-climatic and landscape indicators did not show clear and consistent results and is not further reported here. As alternative, we therefore decided use two extreme cases of distributions to sample ΔI_E for the Meuse basins, i.e. Scenario A and Scenario B (Figure 9c; Section 3.2.2.), in the subsequent modelling experiment. Based on the results above, the rationale behind using Scenario A is that the full distribution ΔI_E describes a large sample of catchments. In the absence of clear pattern of which distribution of deviations
335 ΔI_E is more suitable for which type of environments, the full distribution, combing all data allows a conservative perspective as it contains a wide range of historically observed ΔI_E in a wide range of different environments. In addition, note that the full distribution of ΔI_E from all data with a median $\Delta I_E = 0.01$ and IQR = 0.04 is very similar to the distribution associated with the I_A -bin 0.6 – 0.8 into which most of the Meuse basins fall. The use of the full ΔI_E distribution in Scenario A is contrasted by Scenario B and its small sample distribution $\Delta I_{E,Meuse}$. The rationale of Scenario B is to conserve potentially relevant regional
340 information that contained in $\Delta I_{E,Meuse}$ and which may be under-represented in the full distribution due to the differences in the sample sizes.

4.2 Historical $S_{r,max}$ and its deviations $\Delta S_{r,max}$ from expected values over time

The general pattern of $S_{r,max}$ estimated from historical water balance data following the procedure described in Section 3.2,
345 is broadly consistent with previous studies (Gao et al., 2014; Wang-Erlandsson et al., 2016; deBoer-Euser et al., 2016; Stocker et al., 2023) and reflects the overall role of hydro-climatic conditions as control in water storage in the root zone of vegetation (Figure 10a). While in catchments in humid regions with low I_A root zone storage capacities as low as $S_{r,max} < 100\text{mm}$ are predominant, more arid regions with $I_A > 1$ are characterized by significantly higher values of $S_{r,max} > 300\text{mm}$. In other words, vegetation in humid climates has developed smaller root systems due to shorter and less frequent dry spells, which ensure
350 more regular rain water supply which can be directly used for transpiration. In contrast, vegetation in arid climates requires more extensive root systems to access sufficient water throughout the longer and more frequent dry spells.

The changing hydro-climatic conditions between periods p_1 and p_2 , expressed as changes in I_A in Fig. 8, resulted in shifts in $\Delta S_{r,max,obs}$ for p_2 . Depending on the data set, the median $\Delta S_{r,max,obs}$ was between -24.9 for the Meuse data set and 13.6 mm for the US data set (Figure 11). The deviations ΔI_E (Section 4.1) between p_1 and p_2 then caused corresponding deviations $\Delta S_{r,max,exp}$ from the expected $S_{r,max,exp}$. The results illustrate that the absolute magnitudes and spreads of the deviations from expected root zone storage capacities, i.e. $\Delta S_{r,max,exp}$ remain in general rather limited and closely centred around zero (Figure 11), with a median $\Delta S_{r,max,exp} = 1.39$ mm (IQR = 19.2 mm) in GB and slightly more pronounced values of $\Delta S_{r,max,exp} = 13.6$ mm (IQR = 43.7 mm) in the US. The relative deviations show a similar picture with medians of 0.8% (IQR = 11.9%) in GB and 4.8% (IQR = 16.5%) in the US. Reflecting the higher $\Delta I_{E,Meuse}$, $\Delta S_{r,max,exp}$ with a median of -24.9 mm is characterized by more marked negative deviations in the Meuse basin, suggesting that the expected root zone storage capacity is overestimated and therefore smaller than expected.

As shown in Figure 10, both the absolute and relative magnitudes of $\Delta S_{r,max,exp}$ do not show a clear relationship with I_A . Throughout all types of environments, from humid to arid, most deviations $\Delta S_{r,max,exp}$ remain closely confined to the range -25 – 25 mm or -5% - 5% in relative terms. The only exception are that the highest positive and negative $\Delta S_{r,max,exp}$ occur in the aridity 0.75 – 1.0 aridity bin, with values reaching extreme values of -124 mm and + 147 mm, which may however also be a mere artefact of the considerably larger sample of catchments in this aridity zones than for more humid or more arid regions.

4.3 Effect of $\Delta S_{r,max}$ on stream flow predictions

4.3.1 Overall model performance

The model calibrated to observed stream flow at station Borgharen at the outlet of the Meuse basin captures the main features of the hydrological response at that location. Slightly underestimating low flows and overestimating a few peaks, such as in January 2011, the model performance at Borgharen was obtained as $E_{NS} = 0.85$, $E_{NS,log} = 0.72$ and $E_{KG} = 0.88$ (Supplementary Figure S5a). This is mirrored by the model's ability to reproduce stream flow in the remaining 22 sub-catchments (Supplementary Figure S5b,c), which largely exhibit only moderately lower performances with median $E_{NS} = 0.72$, $E_{NS,log} = 0.75$ and $E_{KG} = 0.80$ (Supplementary Figure S5d). However, for two of the catchments (Modave and Jemelle) the model could not well reproduce the hydrological response. The underlying geology of these catchments is complex and they are likely experiencing major groundwater losses which are not accounted for in this model (Bouaziz et al., 2018).

4.3.2 Changes in the hydrological response due to $\Delta S_{r,max}$ – Scenario A

Sampling from the full distribution ΔI_E of all 286 catchments, as described in Section 3.3.2, and re-running the model for period p_2 with the associated values $\Delta S_{r,max}$ the resulting modelled evaporation and stream flow were compared to that of the baseline scenario ($\Delta I_E = 0$ and $\Delta S_{r,max} = 0$). Overall, it was found that the modelled annual average evaporation and stream

flow was affected only to a minor degree by $\Delta S_{r,max}$ with respect to the baseline scenario, with median values of between ΔE_A $< \sim 5 \text{ mm yr}^{-1}$ ($< 1\%$) and $\Delta Q > \sim -6 \text{ mm yr}^{-1}$ (-1%) for all catchments.

385 However, minor but distinguishable shifts in seasonal re-distribution of water fluxes compared to the baseline scenario could be observed. Early summer to early autumn E_A increases on average by up to $\sim 0.5 \text{ mm month}^{-1}$, depending on the catchment. In relative terms this is equivalent to increases of up to $\sim 0.6\%$ (Figure 12a). More specifically, at station Borgharen, $\Delta S_{r,max}$ causes the highest annual change in June with a median $\Delta E_A \sim 0.4 \text{ mm month}^{-1}$ ($\sim 0.5\%$ Figure 12b). Similar changes can be observed in other catchments (Figure 12c, d and Supplementary Material Figures S9 – S31). Higher summer E_A due to $\Delta S_{r,max}$ is contrasted by reduced winter stream flow, which generally reaches values of ΔQ that do not exceed $\pm \sim -0.3 \text{ mm month}^{-1}$ ($\sim -1\%$; Figure 12e). At Borgharen, the most pronounced changes occur in December with median $\Delta Q \sim -0.1 \text{ mm month}^{-1}$ ($\sim -1\%$; Figure 12f).

390 Differences between the baseline scenario and Scenario A also remain rather limited in terms of modelled annual maximum flow with a median ΔQ_{max} , $\sim -0.1 \text{ mm d}^{-1}$ ($< -1\%$) across all 23 study catchments in the Meuse basin, (Figure 13a). The most pronounced $\Delta Q_{max} \sim -0.3 \text{ mm d}^{-1}$ ($\sim -1\%$) was observed in the Le Mouzon Circourt-sur-Mouzon catchment, while at Borgharen $\Delta Q_{max} \sim -0.1 \text{ mm d}^{-1}$ ($\sim -1\%$) was found (Figure 13b). Annual minimum flows experienced only negligible overall increases of $\Delta Q_{min} \ll 1\%$ caused by $\Delta S_{r,max}$ (Figure 13a).

4.3.3 Changes in the hydrological response due to $\Delta S_{r,max}$ – Scenario B

400 Alternatively, sampling from the sparse, regional distribution $\Delta I_{E,Meuse}$ as described in Section 3.3.2 to estimate $\Delta S_{r,max}$ for model re-runs, provided a perspective on how more extreme, regionally confined distributions of ΔI_E may affect the hydrological response. Similar to Scenario A, the modelled average annual changes of ΔE_A does not exceed $\sim -38 \text{ mm yr}^{-1}$ ($\sim -4\%$) and ΔQ does not exceed $\sim 44 \text{ mm yr}^{-1}$ ($\sim 12\%$), compared to the baseline scenario. The effects of $\Delta S_{r,max}$ thus remained modest across all study catchments in the Meuse basin, albeit slightly more pronounced than for Scenario A.

405 In contrast, major differences were detected in the modelled seasonal water fluxes. On average, catchments experienced a reduction of summer evaporation, in particular in the months June and July, with ΔE_A reaching up to $\sim -3 \text{ mm month}^{-1}$ (-4%) as shown in Figure 14a. Zooming in to the selected stations Borgharen, Ortho and Chooz, corresponding pattern of ΔE_A can be found (Figures 14b-d) with the most pronounced $\Delta E_A = -0.56 \text{ mm month}^{-1}$ (-1%) at station La Meuse Goncourt (Supplementary Material Figure S28). Seasonal stream flow experienced partly considerable increases. The modelled increases ΔQ were, on average, most pronounced in late autumn and early winter across all catchments, with median increases of up to $\sim 3 \text{ mm month}^{-1}$ ($\sim 12\%$) in November and $\sim 4 \text{ mm month}^{-1}$ ($\sim 8\%$) in December (Figure 14e). Similarly, at Borgharen median increases of $\Delta Q = \sim 1 \text{ mm month}^{-1}$ ($\sim 12\%$) in November accompanied by minor decreases in the summer months were found (Figure 14f).

415 The modelled annual maximum flows increased through for Scenario B with a median $\Delta Q_{max} \sim 0.35 \text{ mm d}^{-1}$ ($\sim 5\%$) across all study catchments in the Meuse basin (Figure 13a). The most pronounced $\Delta Q_{max} \sim 1 \text{ mm d}^{-1}$ ($\sim 6\%$) was observed in the La

Meuse Goncourt catchment, while at Borgharen $\Delta Q_{\max} \sim 0.2 \text{ mm d}^{-1}$ (~5%) was found (Figure 13b). In spite of these partly marked increases in Q_{\max} , the effect of $\Delta S_{r,\max}$ on annual minimum flows in Scenario B remained low and comparable to those from Scenario A. For all catchments ΔQ_{\min} was found to be close to zero (Figure 13a,b).

420 5 Discussion

Parametric formulations of the Budyko hypothesis, such as the Tixeront-Fu equation (Eq.1; Tixeront, 1964; Fu, 1981) have in the past been used to predict I_E and thus future water partitioning based on changes in I_A under the assumption that catchments follow their specific curves in the I_A - I_E space, as defined by parameter ω that is obtained from long-term historical water balance data (Roderick and Farquhar, 2011; Wang et al., 2016; Liu et al., 2020). Recently, several studies correctly
425 observed that catchments do not necessarily follow their specific curves under changing environmental conditions raising the concern that parametric Budyko-style equations may therefore have little predictive power (Berghuijs and Woods, 2016; Reaver et al., 2022; Jaramillo et al., 2022). The absolute decadal fluctuations $\Delta I_A = -0.05 - 0.11$ across all data sets in our study are rather minor and closely corresponding to those reported by previous studies (e.g. Jaramillo et al., 2022; Ibrahim et al., 2024), although the relative changes may be somewhat higher. Following these absolute values ΔI_A , our results indeed
430 provide further evidence that such deviations ΔI_E from expected I_E are a widespread phenomenon. However, our results also illustrate that, although catchments do not strictly follow their specific curves at decadal time scales, the magnitude of deviations remains, overall, rather minor with a median of $\Delta I_E = 0.01$ and an IQR = $-0.01 - 0.03$ across all catchments in this study (Figure 10). In spite of some differences in detail, the general distributions of ΔI_E from different datasets, regions and hydro-climatic conditions are broadly similar and no systematic differences linked to catchment properties or hydro-climatic
435 conditions could be identified (Figures 9, 10).

The root zone storage capacity $S_{r,\max}$ as a core property of terrestrial hydrological systems and parameter in hydrological models, can together with its evolution over time be robustly estimated at the catchment-scale based on water balance data (Gao et al., 2014; DeBoer-Euser et al., 2016; Wang-Erlandsson et al., 2016; Dralle et al., 2021; Hrachowitz et al, 2021; McCormick et al., 2021; van Oorschot et al., 2021, 2024; Stocker et al., 2023). This offers an opportunity to account for
440 vegetation adaptation to changing hydro-climatic conditions with a time-variable parameter $S_{r,\max}$ for predictions with hydrological models. Bouaziz et al. (2022) were the first to demonstrate the potential of doing that in a recent proof-of-concept study. However, they estimated future $S_{r,\max}$ under the assumption that their catchments will *strictly follow* their specific curves in the $I_A - I_E$ space as determined by parameter ω which was obtained from historical water balance data. In other words, they did not account for deviations $\Delta S_{r,\max}$ that result from deviations ΔI_E . In addition, the analysis of Bouaziz et al. (2022),
445 predicting future stream flow based on projected future water balance data, remained scenario analyses which they could not evaluate against actual observations. Sequentially addressing these knowledge gap, we here quantify distributions ΔI_E from historical observed water balance and used these observed past deviations ΔI_E to estimate past deviations $\Delta S_{r,\max}$, which was not accounted for by Bouaziz et al. (2022). In a first step, we found that for the vast majority of 286 catchments analysed in

450 this study, characterized by a median historical $S_{r,max} = 239.2$ mm, the limited deviations ΔI_E also resulted in $\Delta S_{r,max}$ that remained narrowly confined between $\sim -10 - 25$ mm or $-5 - 10$ % (Figure 11), although some few regional outliers can reach higher values.

455 In a second step, using samples of ΔI_E from two distinct distributions in Scenarios A and B we estimated $\Delta S_{r,max}$ for use as parameter in model simulations. Overall it was found with the more balanced Scenario A that $\Delta S_{r,max}$ caused shifts in seasonal E_A and Q , however, characterized by marginal magnitudes with the most pronounced changes $\Delta E_A < 1$ %, on average, occurring in June and for $\Delta Q \sim -1\%$ in December, with similar pattern for the annual maximum and minimum flows, ΔQ_{max} and ΔQ_{min} , respectively. For Scenario B, an example of a rather extreme, regionally confined ΔI_E , the deviations showed somewhat higher magnitudes with $\Delta E_A \sim -4$ % in July and $\Delta Q \sim 12\%$ in November and comparable pattern for ΔQ_{max} and ΔQ_{min} .

460 Notwithstanding the above, it is important to bear in mind that, as in any catchment-scale hydrological experiment, the available data may be subject to various types of uncertainties, which can be further exacerbated by decisions in the modelling process (e.g. Beven, 2016; Nearing et al., 2016; Hrachowitz and Clark, 2017; McMillan et al., 2018) so that results have to be interpreted with due care. This is in particular true for the use of long time-series of data records generated by different data providers, potentially also using changing observation methods over time and for which, in many cases, homogenization to make them comparable is not a trivial task. In this study, the use of E-OBS precipitation data together with stream flow data from various data providers in Belgium, France and the Netherlands for the Meuse basin, as well as the CAMELS GB and US datasets initial analysis illustrated the presence of systematic differences in the water balances between the three individual groups of data sets. These differences could in a preliminary analysis here be largely attributed to different methods to estimate E_P . While for the data record of the Meuse basin, the lack of more detailed consistent long-term data dictated the use of the Makkink equation based on temperature and incoming short-wave radiation, E_P was estimated using the Penman-Monteith method in the CAMELS GB catchments and the Priestley-Taylor method in the CAMELS US catchments, respectively. In an attempt to homogenize across the data sets we therefore re-estimated E_P in the GB and US catchments with the Makkink equation. Its simplicity and the exclusion of factors such as vapour pressure deficit or wind speed may have the potential to cause a certain level uncertainty, although it has previously been shown to produce plausible estimates of E_P for use in hydrological models (Oudin et al., 2005).

475 Another unresolved issue that emerged from our analysis is the considerable reduction of evaporation in the Meuse basin between the two study periods p_1 (1999 – 2008) and p_2 (2009 – 2018), as illustrated by the distribution of ΔI_E that is characterized by remarkably more negative bias (Figure 9) than in any other study catchment. The origin of this pattern is unclear, but similar anomalies in the hydrological response have previously been reported for the mid-20th century by others (Fenicia et al., 2009). They put forward the hypothesis that major decadal fluctuations of I_E in the Meuse basin may have been the result of active, large scale forest management. More specifically, forest rotation and a shift from deciduous to coniferous forest together with an increase in average forest age towards the end of the 20th century was hypothesized to have caused I_E fluctuations observed in the Meuse basin. While the relationship between stand age and evaporation is still under investigation

(Teuling and Hoek van Dijke, 2020), there is evidence that young forests tend to evaporate more than mature forests (e.g. Vertessy, 2001; Brown et al., 2005). Together with Dirkse and Daamen (2004) who noted that in the Netherlands, changes in
485 forest management practices from clear-cutting and increased thinning resulted in a 10-year increase in the average age of trees between 1980 and 2001, from 43 to 53 years, this may indeed explain at least some of the ΔI_E observed in the Meuse basin, although it remains unclear why similar pattern were not observed elsewhere.

Together, the results of this study suggest that although most catchments do not strictly follow their specific curves in the $I_A - I_E$ space over time, the general magnitudes of deviations ΔI_E are in general low enough to cause only very minor deviations
490 $\Delta S_{r,max}$ in predictions of root zone storage capacities. As a consequence, even under the assumption of rather exceptional ΔI_E and thus $\Delta S_{r,max}$ in Scenario B, the effects on the hydrological response remain limited. This further suggests that vegetation adaptation to factors other than I_A and which are manifest in the deviations ΔI_E and eventually in $\Delta S_{r,max}$, does overall not lead to major changes in the predicted future hydrological response in the Meuse basin. However, it is plausible to assume that in
495 other regions that are characterized by stronger seasonal contrasts in liquid water supply – related to both, seasonal rainfall distribution and snow melt – similar deviations in ΔI_E may lead to larger $\Delta S_{r,max}$ and thus more pronounced effects on streamflow dynamics. Irrespective of that and in spite of not strictly following their specific curves, catchment estimates of future I_E , based on changes in future I_A may therefore still be considered useful as first order estimates to quantify the future evolution of parameter $S_{r,max}$ in hydrological models for climate impact studies over decadal time scales.

500 6 Conclusions

In this study we have quantified the cascading effects of uncertainties in decadal predictions of evaporative ratios I_E as a
function of changes in catchment aridity I_A on predictions of root zone storage capacities $S_{r,max}$ and eventually on predictions
of stream flow. In this study in the Meuse basin it was found (1) that, inferred from long-term data from 286 catchments in
Europe and the US that are hydro-climatically similar to the Meuse basin, catchments do not strictly follow their specific
505 curves defined by parameter ω in the $I_A - I_E$ Budyko space over multiple decades, but these deviations are characterized by limited magnitudes with average $\Delta I_E = 0.01$ (0.89%), (2) that the deviations ΔI_E have a minor impact on predictions of $S_{r,max}$ with the resulting deviations $\Delta S_{r,max}$ ranging mostly between -10 – 20 mm or -5 – 10 % finally (3) that these uncertainties $\Delta S_{r,max}$ have only limited effect on the hydrological response in the Meuse basin: in spite of causing shifts in seasonal water supply, the magnitudes of these shifts in monthly E_A and Q largely remain very minor (< 1%) and do not, even in the
510 exceptional Scenario B, exceed 4% (E_A) to 12% (Q). Overall, this suggests that uncertainties in predictions of I_E based on parametric Budyko-style equations and the associated uncertainties in predictions of model parameter $S_{r,max}$ do not cause major uncertainties in stream flow predictions in the Meuse basin and can thus be considered useful first order estimates in the absence of more detailed information.

515 *Competing interests*: At least one of the (co-)authors is a member of the editorial board of Hydrology and Earth System Sciences.

Bibliography

- Addor, N., Newman, A. J., Mizukami, N., & Clark, M. P. (2017). The CAMELS data set: catchment attributes and meteorology
520 for large-sample studies. *Hydrology and Earth System Sciences*, 21, 5293–5313.
- Allen, R. G., Pereira, L. S., Raes, D., Smith, M., & others. (1998). Crop evapotranspiration-Guidelines for computing crop water requirements-FAO Irrigation and drainage paper 56. *Fao, Rome*, 300, D05109.
- Berghuijs, W. R., & Woods, R. A. (2016). A simple framework to quantitatively describe monthly precipitation and temperature climatology. *International Journal of Climatology*, 36, 3161–3174.
- 525 Berghuijs, W. R., Sivapalan, M., Woods, R. A., & Savenije, H. H. (2014). Patterns of similarity of seasonal water balances: A window into streamflow variability over a range of time scales. *Water Resources Research*, 50, 5638–5661.
- Berghuijs, W. R., & Woods, R. A. (2016). Correspondence: Space-time asymmetry undermines water yield assessment. *Nature Communications*, 7(1), 11603.
- Betts, R. A., Boucher, O., Collins, M., Cox, P. M., Falloon, P. D., Gedney, N., . . . others. (2007). Projected increase in
530 continental runoff due to plant responses to increasing carbon dioxide. *Nature*, 448, 1037–1041.
- Beven, K. (2016). Facets of uncertainty: epistemic uncertainty, non-stationarity, likelihood, hypothesis testing, and communication. *Hydrological Sciences Journal*, 61(9), 1652-1665.
- Blöschl, G., Hall, J., Parajka, J., Perdigão, R. A., Merz, B., Arheimer, B., . . . others. (2017). Changing climate shifts timing of European floods. *Science*, 357, 588–590.
- 535 Blöschl, G., Viglione, A., Merz, R., Parajka, J., Salinas, J. L., & Schöner, W. (2011). Auswirkungen des Klimawandels auf Hochwasser und Niederwasser. *Österreichische Wasser-und Abfallwirtschaft*, 63, 21–30.
- Bouaziz, L. J., Aalbers, E. E., Weerts, A. H., Hegnauer, M., Buiteveld, H., Lammersen, R., . . . Hrachowitz, M. (2021). The importance of ecosystem adaptation on hydrological model predictions in response to climate change. *Hydrology and Earth System Sciences Discussions*, 2021, 1–39.
- 540 Bouaziz, L. J., Aalbers, E. E., Weerts, A. H., Hegnauer, M., Buiteveld, H., Lammersen, R., . . . Hrachowitz, M. (2022). Ecosystem adaptation to climate change: the sensitivity of hydrological predictions to time-dynamic model parameters. *Hydrology and Earth System Sciences*, 26, 1295–1318.
- Bouaziz, L. J., Steele-Dunne, S. C., Schellekens, J., Weerts, A. H., Stam, J., Sprokkereef, E., . . . Hrachowitz, M. (2020). Improved understanding of the link between catchment-scale vegetation accessible storage and satellite-derived Soil
545 Water Index. *Water Resources Research*, 56, e2019WR026365.

- Bouaziz, L., Weerts, A., Schellekens, J., Sprokkereef, E., Stam, J., Savenije, H., & Hrachowitz, M. (2018). Redressing the balance: quantifying net intercatchment groundwater flows. *Hydrology and Earth System Sciences*, *22*, 6415–6434.
- Brown, A. E., Zhang, L., McMahon, T. A., Western, A. W., & Vertessy, R. A. (2005). A review of paired catchment studies for determining changes in water yield resulting from alterations in vegetation. *Journal of hydrology*, *310*, 28–61.
- 550 Budyko, M. I. (1961). The heat balance of the earth's surface. *Soviet Geography*, *2*, 3–13.
- Cheng, L., Yaeger, M., Viglione, A., Coopersmith, E., Ye, S., & Sivapalan, M. (2012). Exploring the physical controls of regional patterns of flow duration curves—Part 1: Insights from statistical analyses. *Hydrology and Earth System Sciences*, *16*, 4435–4446.
- Cornes, R. C., van der Schrier, G., van den Besselaar, E. J., & Jones, P. D. (2018). An ensemble version of the E-OBS
555 temperature and precipitation data sets. *Journal of Geophysical Research: Atmospheres*, *123*, 9391–9409.
- Coxon, G., Addor, N., Bloomfield, J. P., Freer, J., Fry, M., Hannaford, J., . . . others. (2020). CAMELS-GB: hydrometeorological time series and landscape attributes for 671 catchments in Great Britain. *Earth System Science Data*, *12*, 2459–2483.
- Clark, M. P., Rupp, D. E., Woods, R. A., Zheng, X., Ibbitt, R. P., Slater, A. G., ... & Uddstrom, M. J. (2008). Hydrological
560 data assimilation with the ensemble Kalman filter: Use of streamflow observations to update states in a distributed hydrological model. *Advances in water resources*, *31*(10), 1309-1324.
- de Boer-Euser, T. (2017). Added value of distribution in rainfall-runoff models for the Meuse Basin.
- de Boer-Euser, T., McMillan, H. K., Hrachowitz, M., Winsemius, H. C., & Savenije, H. H. (2016). Influence of soil and climate on root zone storage capacity. *Water Resources Research*, *52*, 2009–2024.
- 565 De Wit, M. J., Van Den Hurk, B. J., Warmerdam, P. M., Torfs, P. J., Roulin, E., & Van Deursen, W. P. (2007). Impact of climate change on low-flows in the river Meuse. *Climatic change*, *82*, 351–372.
- Dirkse, G. M., & Daamen, W. P. (2004). Dutch forest monitoring network, design and results. *Community Ecology*, *5*, 115–120.
- Dixon, H., Hannaford, J., & Fry, M. J. (2013). The effective management of national hydrometric data: experiences from the
570 United Kingdom. *Hydrological Sciences Journal*, *58*, 1383–1399.
- Dralle, D. N., Hahm, W. J., Chadwick, K. D., McCormick, E., & Rempe, D. M. (2021). Accounting for snow in the estimation of root zone water storage capacity from precipitation and evapotranspiration fluxes. *Hydrology and Earth System Sciences*, *25*(5), 2861-2867.
- Eilander, D., Van Verseveld, W., Yamazaki, D., Weerts, A., Winsemius, H. C., & Ward, P. J. (2021). A hydrography upscaling
575 method for scale-invariant parametrization of distributed hydrological models. *Hydrology and Earth System Sciences*, *25*, 5287–5313.
- European Environment Agency. (2018). Corine Land Cover (CLC) 2018, Version 2020 20u1. *Corine Land Cover (CLC) 2018, Version 2020 20u1*. Retrieved from <https://land.copernicus.eu/pan-european/corine-land-cover/>

- Euser, T., Hrachowitz, M., Winsemius, H. C., & Savenije, H. H. (2015). The effect of forcing and landscape distribution on performance and consistency of model structures. *Hydrological Processes*, 29(17), 3727-3743.
- 580
- Falcone, J. A. (2011). *GAGES-II: Geospatial attributes of gages for evaluating streamflow*. Tech. rep., US Geological Survey.
- Falcone, J. A., Carlisle, D. M., Wolock, D. M., & Meador, M. R. (2010). GAGES: A stream gage database for evaluating natural and altered flow conditions in the conterminous United States: Ecological archives E091-045. *Ecology*, 91, 621–621.
- 585
- Fan, Y., Miguez-Macho, G., Jobbágy, E. G., Jackson, R. B., & Otero-Casal, C. (2017). Hydrologic regulation of plant rooting depth. *Proceedings of the National Academy of Sciences*, 114, 10572–10577.
- Fenicia, F., Savenije, H. H. G., Matgen, P., & Pfister, L. (2006). Is the groundwater reservoir linear? Learning from data in hydrological modelling. *Hydrology and Earth System Sciences*, 10(1), 139-150.
- Fenicia, F., Savenije, H. H., & Avdeeva, Y. (2009). Anomaly in the rainfall-runoff behaviour of the Meuse catchment. Climate, land-use, or land-use management? *Hydrology and Earth System Sciences*, 13, 1727–1737.
- 590
- Fowler, K., Knoben, W., Peel, M., Peterson, T., Ryu, D., Saft, M., ... & Western, A. (2020). Many commonly used rainfall-runoff models lack long, slow dynamics: Implications for runoff projections. *Water Resources Research*, 56(5), e2019WR025286.
- Fu, B. P. (1981). On the calculation of the evaporation from land surface. *Sci. Atmos. Sin*, 5, 23–31.
- 595
- Gao, H., Hrachowitz, M., Schymanski, S. J., Fenicia, F., Sriwongsitanon, N., & Savenije, H. H. (2014). Climate controls how ecosystems size the root zone storage capacity at catchment scale. *Geophysical Research Letters*, 41, 7916–7923.
- Gao, H., Hrachowitz, M., Sriwongsitanon, N., Fenicia, F., Gharari, S., & Savenije, H. H. (2016). Accounting for the influence of vegetation and landscape improves model transferability in a tropical savannah region. *Water Resources Research*, 52(10), 7999-8022.
- 600
- Gharari, S., Hrachowitz, M., Fenicia, F., & Savenije, H. H. (2011). Hydrological landscape classification: investigating the performance of HAND based landscape classifications in a central European meso-scale catchment. *Hydrology and Earth System Sciences*, 15, 3275–3291.
- Guhathakurta, P., & Saji, E. (2013). Detecting changes in rainfall pattern and seasonality index vis-à-vis increasing water scarcity in Maharashtra. *Journal of Earth System Science*, 122, 639–649.
- 605
- Guhathakurta, P., & Saji, E. (2013). Detecting changes in rainfall pattern and seasonality index vis-à-vis increasing water scarcity in Maharashtra. *Journal of Earth System Science*, 122, 639–649.
- Guswa, A. J. (2008). The influence of climate on root depth: A carbon cost-benefit analysis. *Water Resources Research*, 44(2).
- Hannaford, J. (2004). Development of a strategic data management system for a national hydrological database, the uk national river flow archive. In *Hydroinformatics: (In 2 Volumes, with CD-ROM)* (pp. 637–644). World Scientific.
- 610
- Hanus, S., Hrachowitz, M., Zekollari, H., Schoups, G., Vizcaino, M., & Kaitna, R. (2021). Future changes in annual, seasonal and monthly runoff signatures in contrasting Alpine catchments in Austria. *Hydrology and Earth System Sciences*, 25, 3429–3453.

- Helsel, D. R., & Hirsch, R. M. (1992). *Statistical methods in water resources* (Vol. 49). Elsevier.
- Hiemstra, P., & Sluiter, R. (2011). Interpolation of Makkink evaporation in the Netherlands.
- 615 Hooghart, J. C., & Lablans, W. N. (1988). Van Penman naar Makkink: een nieuwe berekeningswijze voor de klimatologische verdampingsgetallen. *De Bilt, Royal Netherlands Meteorological Institute (KNMI), De Bilt, the Netherlands*, 745.
- Hough, M. N., & Jones, R. J. (1997). The United Kingdom Meteorological Office rainfall and evaporation calculation system: MORECS version 2.0-an overview. *Hydrology and Earth System Sciences*, 1, 227–239. doi:10.5194/hess-1-227-1997
- Hrachowitz, M., & Clark, M. P. (2017). HESS Opinions: The complementary merits of competing modelling philosophies in
620 hydrology. *Hydrology and Earth System Sciences*, 21(8), 3953-3973.
- Hrachowitz, M., Stockinger, M., Coenders-Gerrits, M., van der Ent, R., Bogena, H., Lücke, A., & Stumpp, C. (2021). Reduction of vegetation-accessible water storage capacity after deforestation affects catchment travel time distributions and increases young water fractions in a headwater catchment. *Hydrology and earth system sciences*, 25, 4887–4915.
- 625 Hulsman, P., Hrachowitz, M., & Savenije, H. H. (2021). Improving the representation of long-term storage variations with conceptual hydrological models in data-scarce regions. *Water Resources Research*, 57(4), e2020WR028837.
- Jaramillo, F., Cory, N., Arheimer, B., Laudon, H., Van Der Velde, Y., Hasper, T. B., . . . Uddling, J. (2018). Dominant effect of increasing forest biomass on evapotranspiration: interpretations of movement in Budyko space. *Hydrology and Earth System Sciences*, 22, 567–580.
- 630 Jin, S., Yang, L., Danielson, P., Homer, C., Fry, J., & Xian, G. (2013). A comprehensive change detection method for updating the National Land Cover Database to circa 2011. *Remote sensing of environment*, 132, 159–175.
- Kanellopoulou, E. A. (2002). Spatial distribution of rainfall seasonality in Greece. *Weather*, 57, 215–219.
- Keller, V. D., Tanguy, M., Prosdocimi, I., Terry, J. A., Hitt, O., Cole, S. J., . . . Dixon, H. (2015). CEH-GEAR: 1 km resolution daily and monthly areal rainfall estimates for the UK for hydrological and other applications. *Earth System Science Data*, 7, 143–155.
- 635 Kleidon, A. (2004). Global datasets of rooting zone depth inferred from inverse methods. *Journal of Climate*, 17(13), 2714-2722.
- Lins, H. F. (2012). USGS hydro-climatic data network 2009 (HCDN-2009). *US Geological Survey Fact Sheet*, 3047.
- Maxwell, R. M., Condon, L. E., & Kollet, S. J. (2015). A high-resolution simulation of groundwater and surface water over
640 most of the continental US with the integrated hydrologic model ParFlow v3. *Geoscientific model development*, 8(3), 923-937.
- McMillan, H. K., Westerberg, I. K., & Krueger, T. (2018). Hydrological data uncertainty and its implications. *Wiley Interdisciplinary Reviews: Water*, 5, e1319.
- Merz, R., Parajka, J., & Blöschl, G. (2011). Time stability of catchment model parameters: Implications for climate impact
645 analyses. *Water resources research*, 47.

- Ministère de l'Écologie, du Développement Durable et de l'Énergie, Banque Hydro. (2022). *Banque Hydro*. Retrieved from Banque Hydro: <http://hydro.eaufrance.fr/>
- Muchan, K., & Dixon, H. (2014). Ensuring hydrometric data are fit-for-purpose through a national Service Level Agreement. *Hydrology in a changing world: environmental and human dimensions*, edited by: Daniell, TM, 323–329.
- 650 Nearing, G. S., Tian, Y., Gupta, H. V., Clark, M. P., Harrison, K. W., & Weijs, S. V. (2016). A philosophical basis for hydrological uncertainty. *Hydrological Sciences Journal*, 61(9), 1666-1678.
- Newman, A. J., Clark, M. P., Sampson, K., Wood, A., Hay, L. E., Bock, A., . . . others. (2015). Development of a large-sample watershed-scale hydrometeorological data set for the contiguous USA: data set characteristics and assessment of regional variability in hydrologic model performance. *Hydrology and Earth System Sciences*, 19, 209–223.
- 655 Nijzink, R., Hutton, C., Pechlivanidis, I., Capell, R., Arheimer, B., Freer, J., . . . others. (2016a). The evolution of root-zone moisture capacities after deforestation: a step towards hydrological predictions under change? *Hydrology and Earth System Sciences*, 20, 4775–4799.
- Nijzink, R. C., Samaniego, L., Mai, J., Kumar, R., Thober, S., Zink, M., ... & Hrachowitz, M. (2016b). The importance of topography-controlled sub-grid process heterogeneity and semi-quantitative prior constraints in distributed hydrological models. *Hydrology and Earth System Sciences*, 20(3), 1151-1176.
- 660 Oudin, L., Hervieu, F., Michel, C., Perrin, C., Andréassian, V., Anctil, F., & Loumagne, C. (2005). Which potential evapotranspiration input for a lumped rainfall–runoff model?: Part 2—Towards a simple and efficient potential evapotranspiration model for rainfall–runoff modelling. *Journal of hydrology*, 303(1-4), 290-306.
- Parajka, J., Blaschke, A. P., Blöschl, G., Haslinger, K., Hepp, G., Laaha, G., . . . Zessner, M. (2015). Uncertainty contributions to low flow projections in Austria. *Hydrol Earth Syst Sci Discuss*, 12, 12395–12431.
- 665 Rennó, C. D., Nobre, A. D., Cuartas, L. A., Soares, J. V., Hodnett, M. G., & Tomasella, J. (2008). HAND, a new terrain descriptor using SRTM-DEM: Mapping terra-firme rainforest environments in Amazonia. *Remote Sensing of Environment*, 112, 3469–3481.
- Rijkswaterstaat. (2022). Water flow data at Albert canal. *Water flow data at Albert canal*. Retrieved from <https://waterinfo.rws.nl/>
- 670 Robinson, E. L., Blyth, E. M., Clark, D. B., Finch, J., & Rudd, A. C. (2017). Trends in atmospheric evaporative demand in Great Britain using high-resolution meteorological data. *Hydrology and Earth System Sciences*, 21, 1189–1224.
- Royston, P. (1992). Approximating the Shapiro-Wilk W-test for non-normality. *Statistics and computing*, 2, 117–119.
- Savenije, H. H., & Hrachowitz, M. (2017). HESS Opinions Catchments as meta-organisms—a new blueprint for hydrological modelling. *Hydrology and Earth System Sciences*, 21, 1107–1116.
- 675 Schneider, A., Hommel, G., & Blettner, M. (2010). Linear regression analysis: part 14 of a series on evaluation of scientific publications. *Deutsches Ärzteblatt International*, 107, 776.
- Schymanski, S. J., Sivapalan, M., Roderick, M. L., Beringer, J., & Hutley, L. B. (2008). An optimality-based model of the coupled soil moisture and root dynamics. *Hydrology and earth system sciences*, 12(3), 913-932.

- 680 Scott, D. F., & Lesch, W. (1997). Streamflow responses to afforestation with *Eucalyptus grandis* and *Pinus patula* and to felling in the Mokobulaan experimental catchments, South Africa. *Journal of Hydrology*, 199, 360–377.
- Service Public de Wallonie. (2018).
- Service Public de Wallonie: Direction générale opérationnelle de la Mobilité et des Voies hydrauliques, Département des Etudes et de l'Appui à la Gestion, Direction de la Gestion hydrologique. (2018). *Rapport annuel 2018*. Tech. rep., Service Public de Wallonie, Bld du Nord 8-5000 Namur, Belgium.
- 685 Shapiro, S. S., & Wilk, M. B. (1965). An analysis of variance test for normality (complete samples). *Biometrika*, 52, 591–611.
- Sivandran, G., & Bras, R. L. (2012). Identifying the optimal spatially and temporally invariant root distribution for a semiarid environment. *Water Resources Research*, 48(12).
- Speich, M. J., Zappa, M., Scherstjanoi, M., & Lischke, H. (2020). FORests and HYdrology under Climate Change in Switzerland v1. 0: a spatially distributed model combining hydrology and forest dynamics. *Geoscientific Model Development*, 13(2), 537-564.
- 690 Tanguy, M., Dixon, H., Prosdocimi, I., Morris, D. G., & Keller, V. D. (2016). Gridded estimates of daily and monthly areal rainfall for the United Kingdom (1890–2015)[CEH-GEAR]. *NERC Environmental Information Data Centre*, 10.
- Teegavarapu, R. S. (2019). Changes and trends in precipitation extremes and characteristics: Links to climate variability and change. In *Trends and changes in hydroclimatic variables* (pp. 91–148). Elsevier.
- 695 Teuling, A. J., & Hoek van Dijke, A. J. (2020). Forest age and water yield. *Nature*, 578(7794), E16-E18.
- Thomson, N., Barrie, L. A., & Ayles, M. (1981). *The Meteorological Office's Rainfall and Evaporation Calculation system; MORECS. Met.* Tech. rep., Office Hydrological Memorandum.
- Troch, P. A., Carrillo, G., Sivapalan, M., Wagener, T., & Sawicz, K. (2013). Climate-vegetation-soil interactions and long-term hydrologic partitioning: signatures of catchment co-evolution. *Hydrology and Earth System Sciences*, 17, 2209–2217.
- 700 Tu, M., Hall, M. J., de Laat, P. J., & de Wit, M. J. (2005). Extreme floods in the Meuse river over the past century: aggravated by land-use changes? *Physics and Chemistry of the Earth, Parts A/B/C*, 30, 267–276.
- van Oorschot, F., van der Ent, R. J., Hrachowitz, M., & Alessandri, A. (2021). Climate-controlled root zone parameters show potential to improve water flux simulations by land surface models. *Earth System Dynamics*, 12(2), 725-743.
- 705 van Oorschot, F., van der Ent, R. J., Alessandri, A., & Hrachowitz, M. (2024). Influence of irrigation on root zone storage capacity estimation. *Hydrology and Earth System Sciences*, 28(10), 2313-2328.
- Verseveld, W. v., Visser, M., Boissongtier, H., Bootsma, H., Bouaziz, L., Buitink, J., . . . Hegnauer, M. (2022). *Wflow.jl*. *Wflow.jl*. Zenodo. doi:10.5281/zenodo.7040513
- 710 Vertessy, R. A., Watson, F. G., Sharon, K. O., & others. (2001). Factors determining relations between stand age and catchment water balance in mountain ash forests. *Forest Ecology and Management*, 143, 13–26.
- Wagener, T. (2007). Can we model the hydrological impacts of environmental change? *Hydrological Processes: An International Journal*, 21, 3233–3236.

- Walsh, R. P., & Lawler, D. M. (1981). Rainfall seasonality: description, spatial patterns and change through time. *Weather*, 36, 201–208.
- 715 Wang, S., Hrachowitz, M., Schoups, G., & Stumpp, C. (2023). Stable water isotopes and tritium tracers tell the same tale: no evidence for underestimation of catchment transit times inferred by stable isotopes in StorAge Selection (SAS)-function models. *Hydrology and Earth System Sciences*, 27(16), 3083-3114.
- Wang, W., Zou, S., Shao, Q., Xing, W., Chen, X., Jiao, X., ... & Yu, Z. (2016). The analytical derivation of multiple elasticities of runoff to climate change and catchment characteristics alteration. *Journal of Hydrology*, 541, 1042-1056.
- 720 Wang, S., Hrachowitz, M., & Schoups, G. (2024). Multi-decadal fluctuations in root zone storage capacity through vegetation adaptation to hydro-climatic variability has minor effects on the hydrological response in the Neckar basin, Germany. *Hydrology and Earth System Sciences Discussions*, 2024, 1-34.
- Wei, M. (2020). Influence of Climate and Vegetation on Root Zone Storage Capacity: A case study in Australia.
- Yamazaki, D., Ikeshima, D., Sosa, J., Bates, P. D., Allen, G. H., & Pavelsky, T. M. (2019). MERIT Hydro: a high-resolution global hydrography map based on latest topography dataset. *Water Resources Research*, 55, 5053–5073.
- 725 Young, A. R., Round, C. E., & Gustard, A. (2000). Spatial and temporal variations in the occurrence of low flow events in the UK. *Hydrology and Earth System Sciences*, 4, 35–45.
- Yu, Z., Jiang, P., Gautam, M. R., Zhang, Y., & Acharya, K. (2015). Changes of seasonal storm properties in California and Nevada from an ensemble of climate projections. *Journal of Geophysical Research: Atmospheres*, 120, 2676–2688.
- 730 Zhang, L., Hickel, K., Dawes, W. R., Chiew, F. H., Western, A. W., & Briggs, P. R. (2004). A rational function approach for estimating mean annual evapotranspiration. *Water resources research*, 40.

735

List of Figures

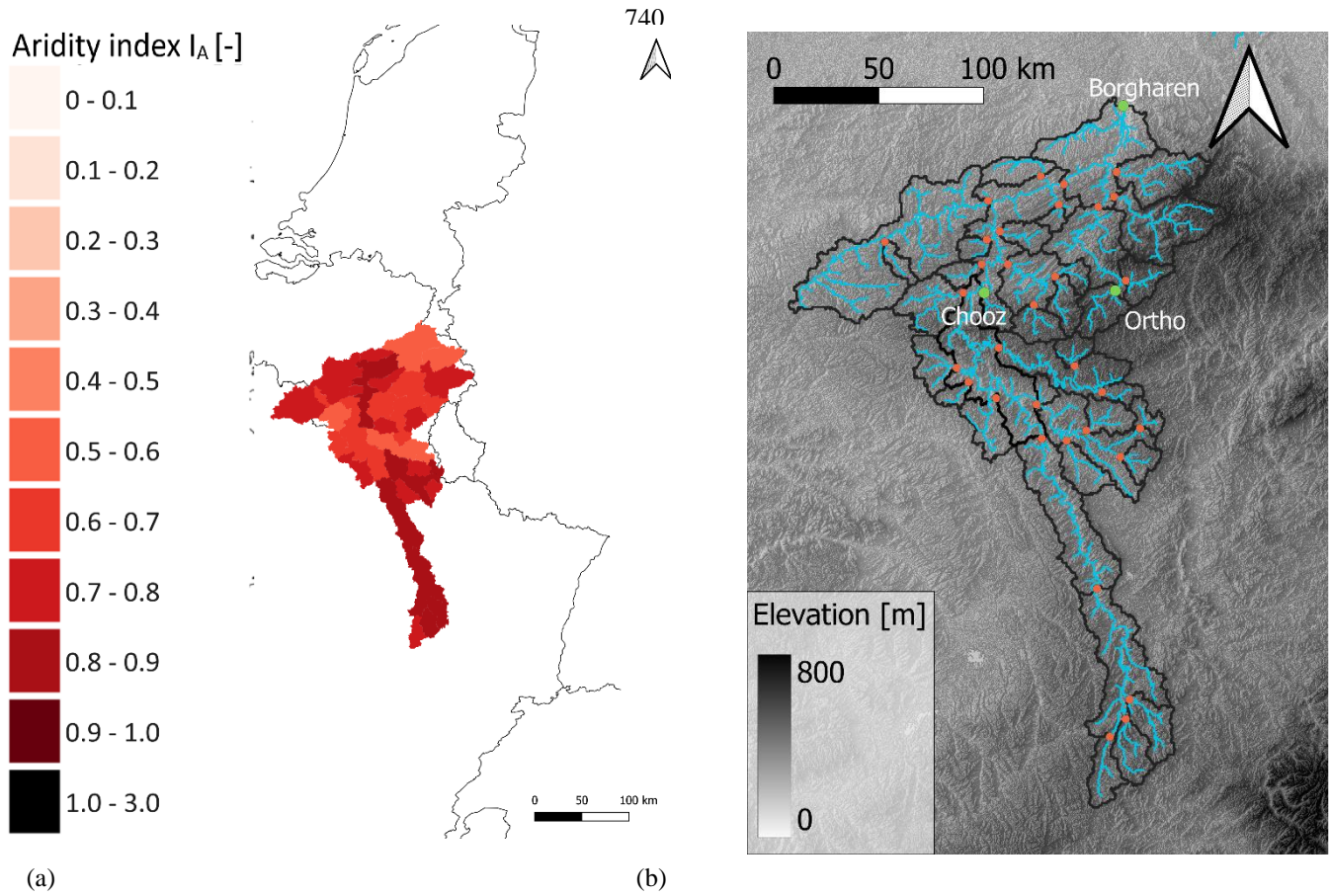


Figure 1: (a) The location of the Meuse basin in North-West Europe, where the red color indicates the aridity index (I_A) of the catchment, (b) The elevation range, river trajectory and gauges in the Meuse river basin. Gauges are indicated with orange dots. The catchments of Borgharen, Ortho, and Chooz are specifically highlighted (with green), as they are separately emphasized in some of the results and analyses.

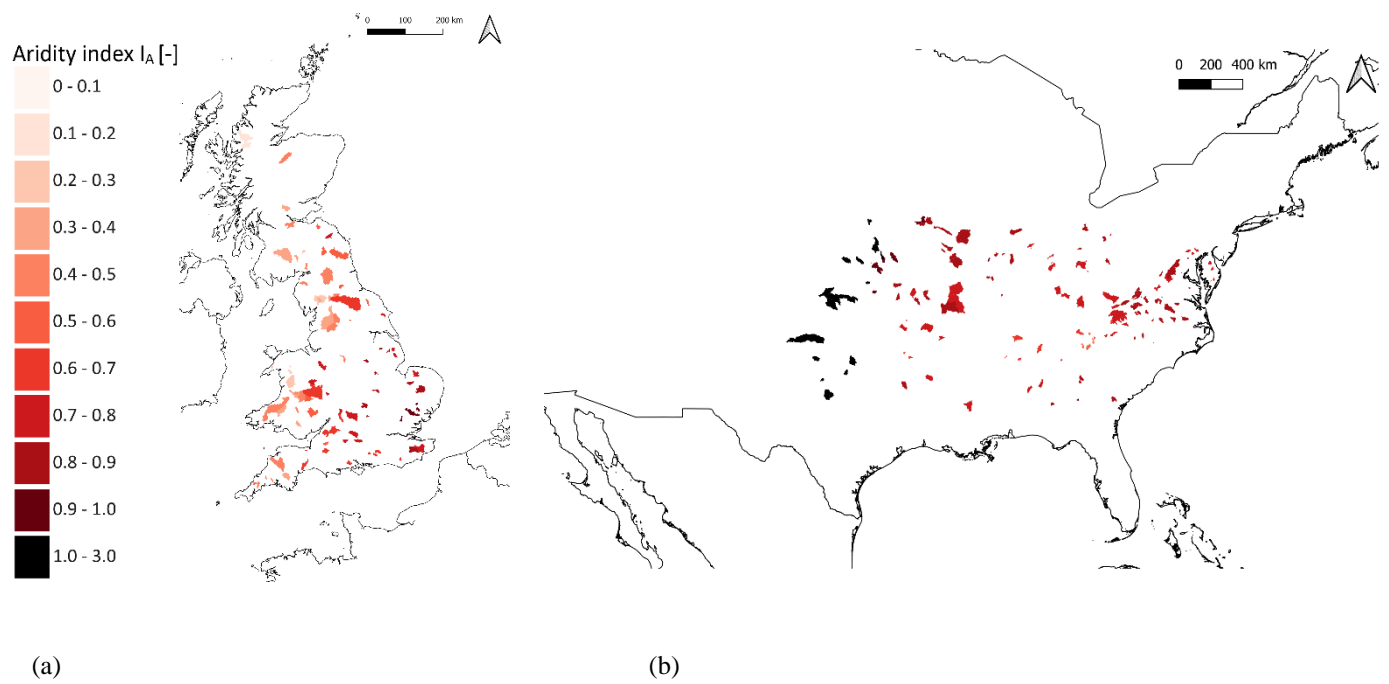
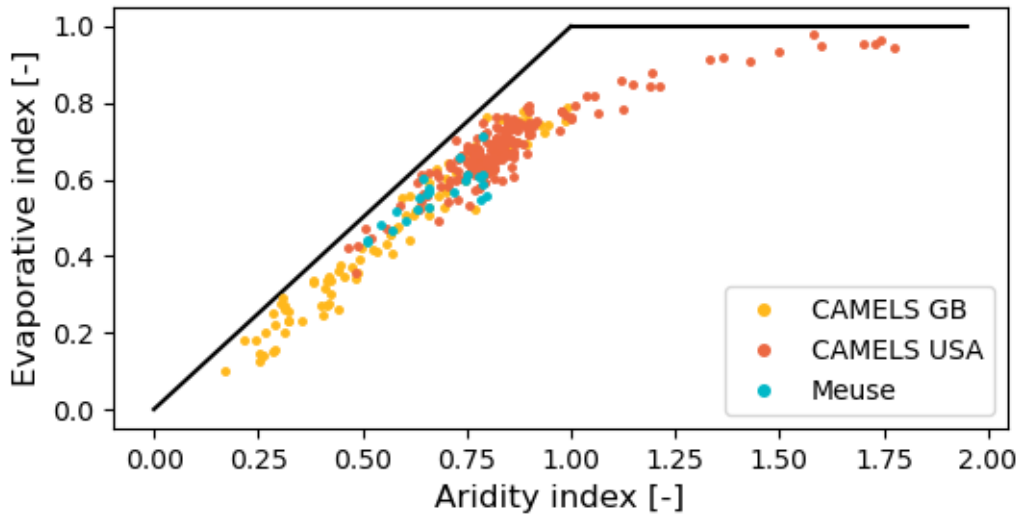


Figure 2: The locations of the catchments that are provided by the large sample datasets (a) CAMELS GB, (b) CAMELS USA. The red color indicates the aridity index (I_A) of the catchment.



745

Figure 3: Illustration of the long-term average values for the entire period of data analysis.

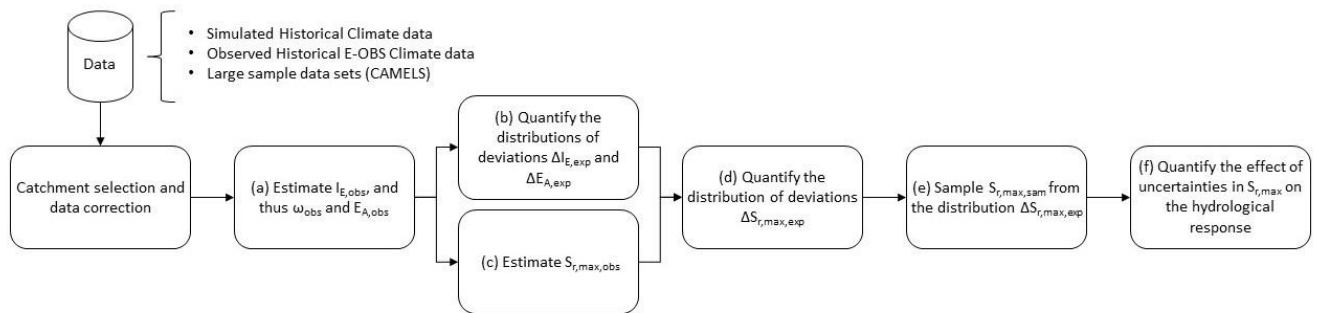
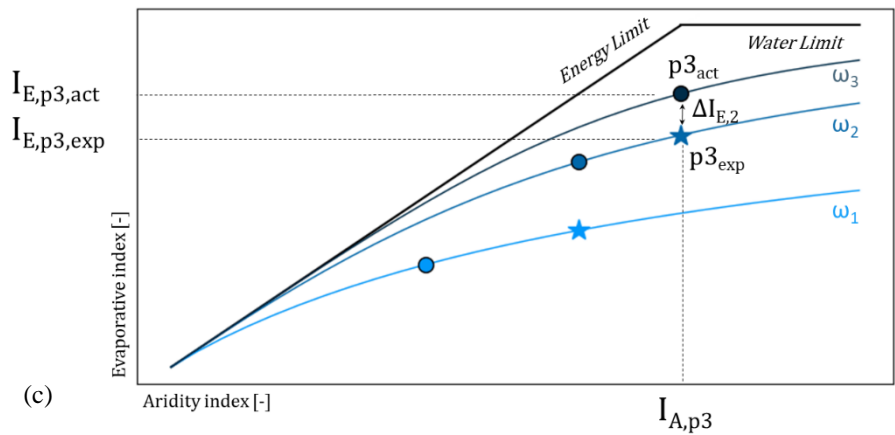
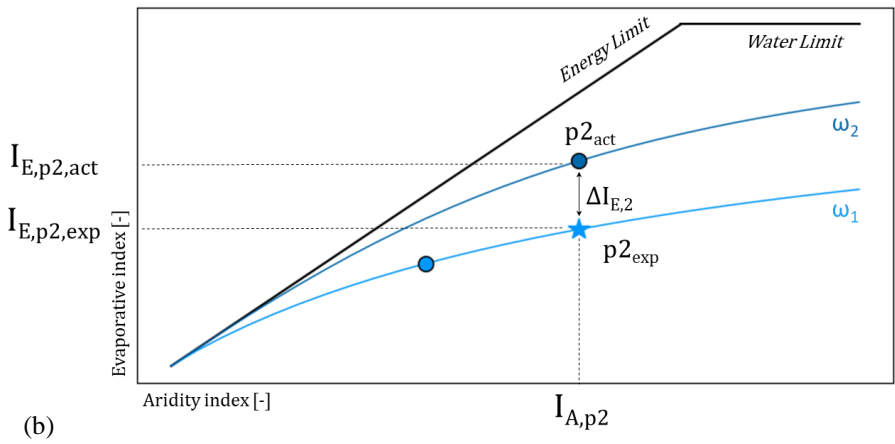
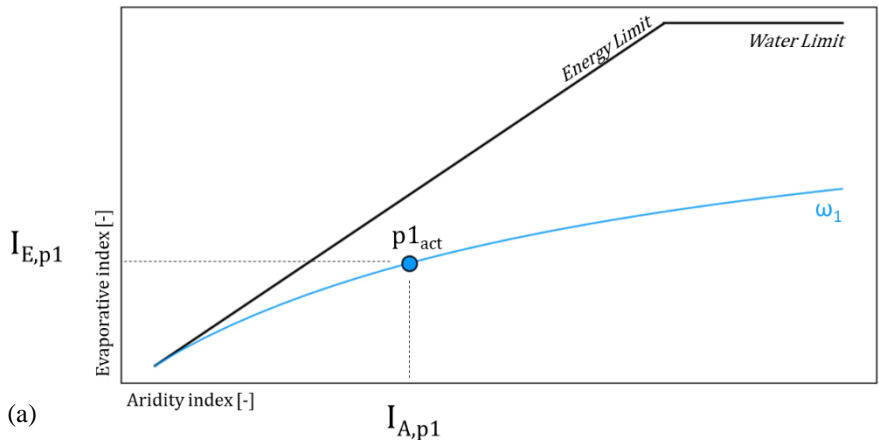


Figure 4: Overview of the methodological procedure.



75(Figure 5: The step-by-step process for calculating the error in I_E (ΔI_E) using data with three decades as an example.

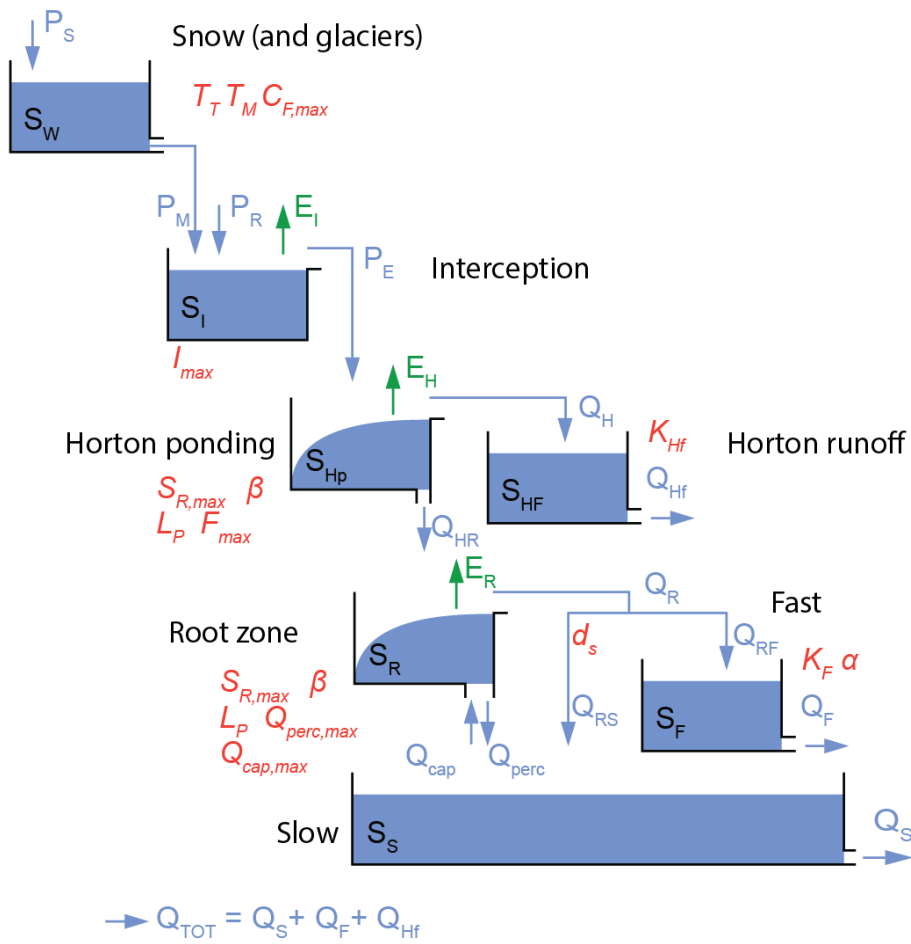


Figure 6: Schematic representation of the wflow FlexTopo model for a single class model including all storages and fluxes (Verseveld et al., 2022).

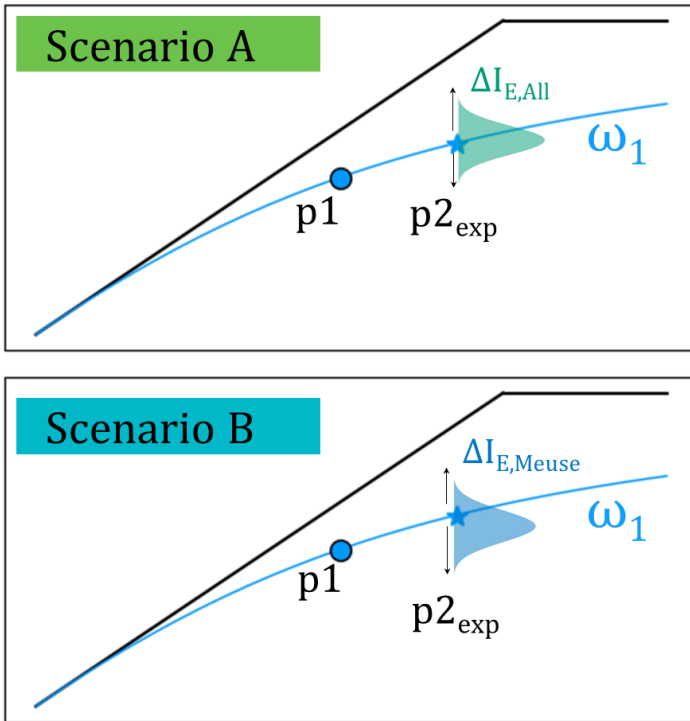


Figure 7: Overview of the scenario structure. p1 is the time period of 1999-2008 and p2 of 2009-2018.

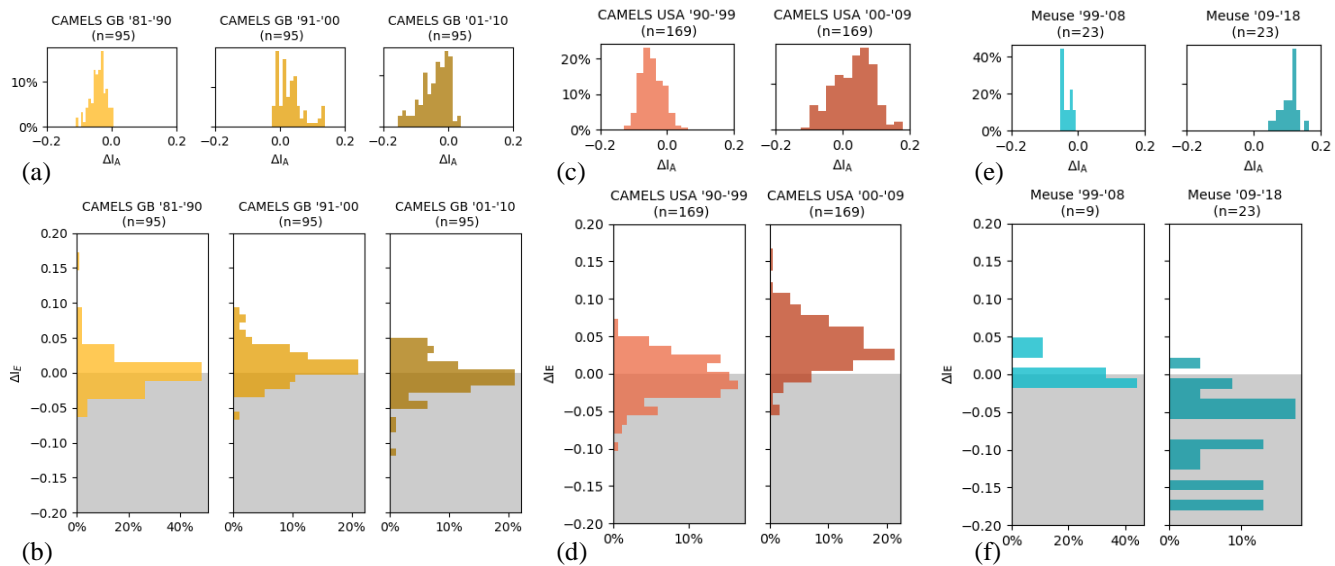


Figure 8: Distributions of ΔI_A per decade and per dataset CAMELS GB (a), CAMELS USA (c) and Meuse (e), and the deviations in estimating I_E (ΔI_E) for the different datasets CAMELS GB (b), CAMELS USA (d) and Meuse (f).

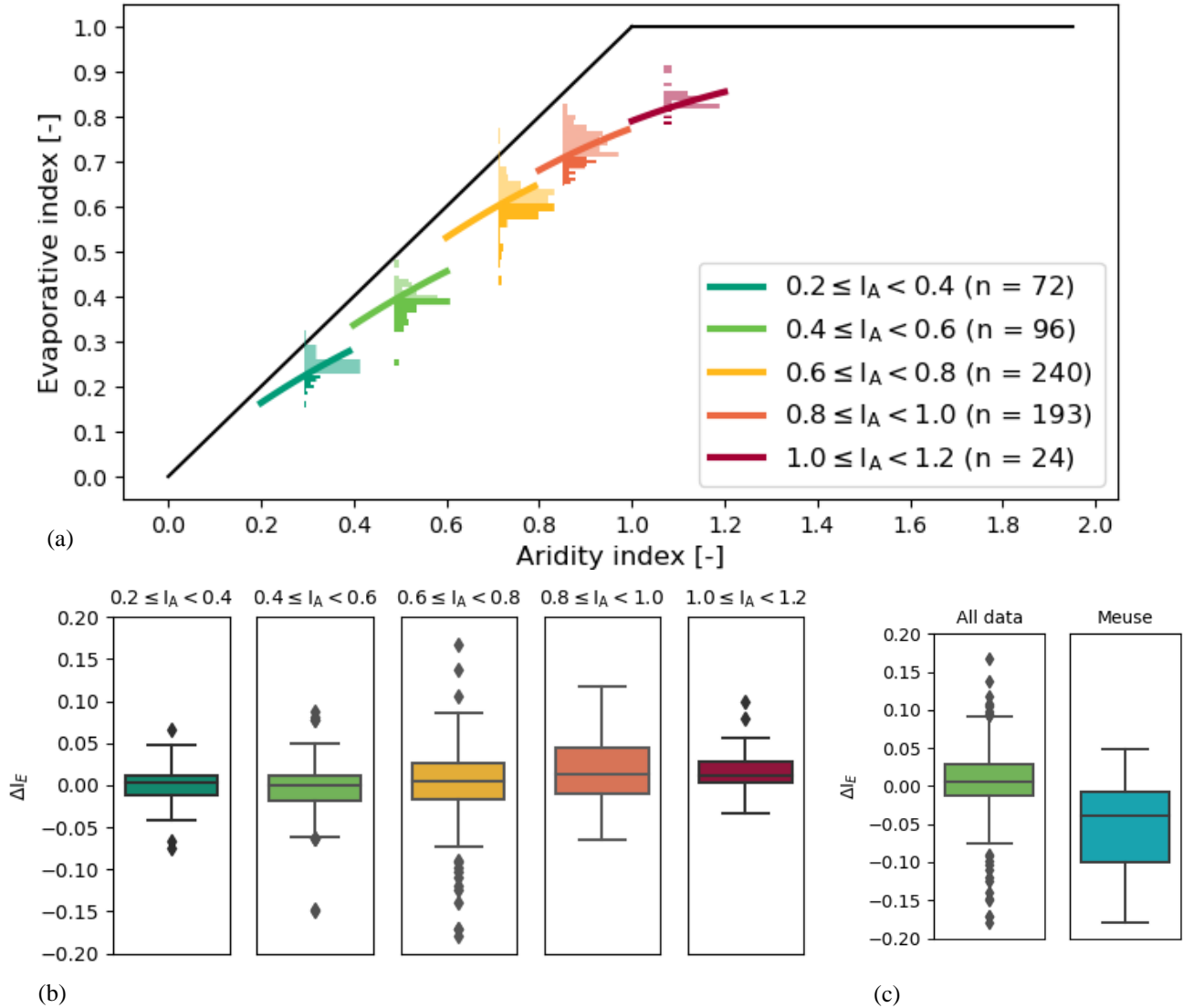


Figure 9: (a) I_E deviations (ΔI_E) plotted per aridity index in the Budyko framework, for all datasets combined, (b) Distributions of I_E deviations (ΔI_E) corresponding to the aridity index groups from (a), (c) Distributions of I_E deviations (ΔI_E) for all data combined and Meuse data.

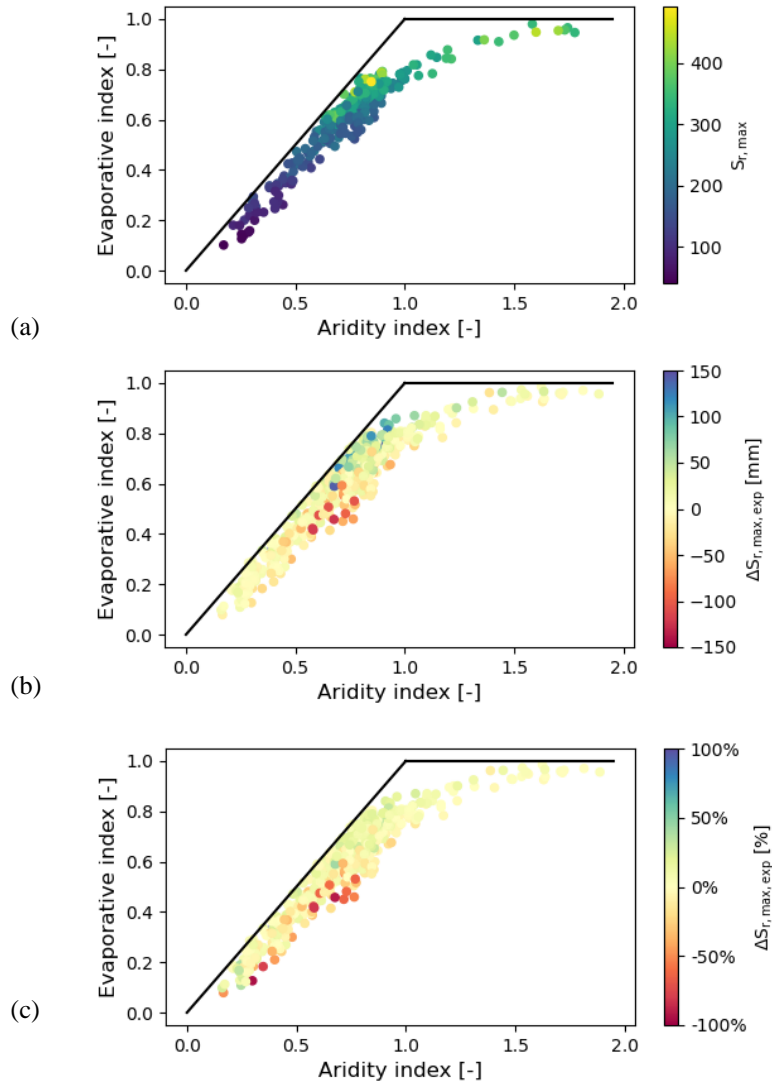


Figure 10: (a) Root zone storage capacities ($S_{r,max}$) in the Budyko framework for Meuse, CAMELS GB, and CAMELS USA catchments. (b) and (c) show the error in estimating the root zone storage capacity ($\Delta S_{r,max,exp}$) plotted in the Budyko framework by colour scale, in absolute values [mm] and in percentages [%] respectively.

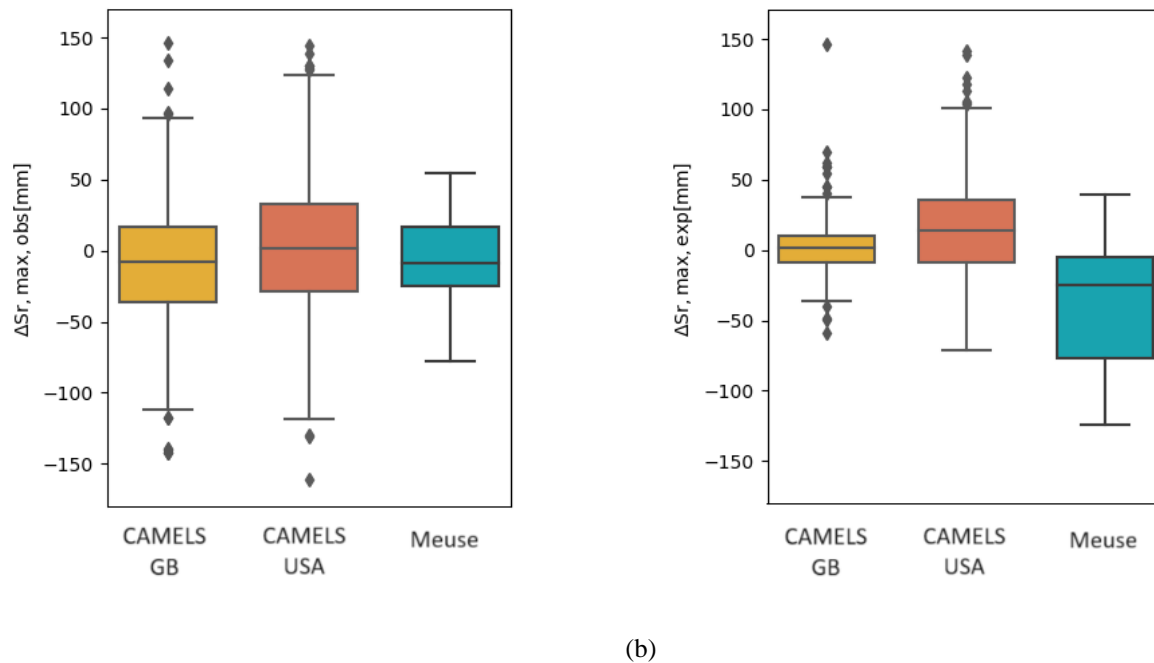


Figure 11: The distributions of shifts in (a) $\Delta S_{r,\max,obs}$, observed root zone storage capacity and (b) $\Delta S_{r,\max,exp}$ expected root zone storage capacity for the different datasets.

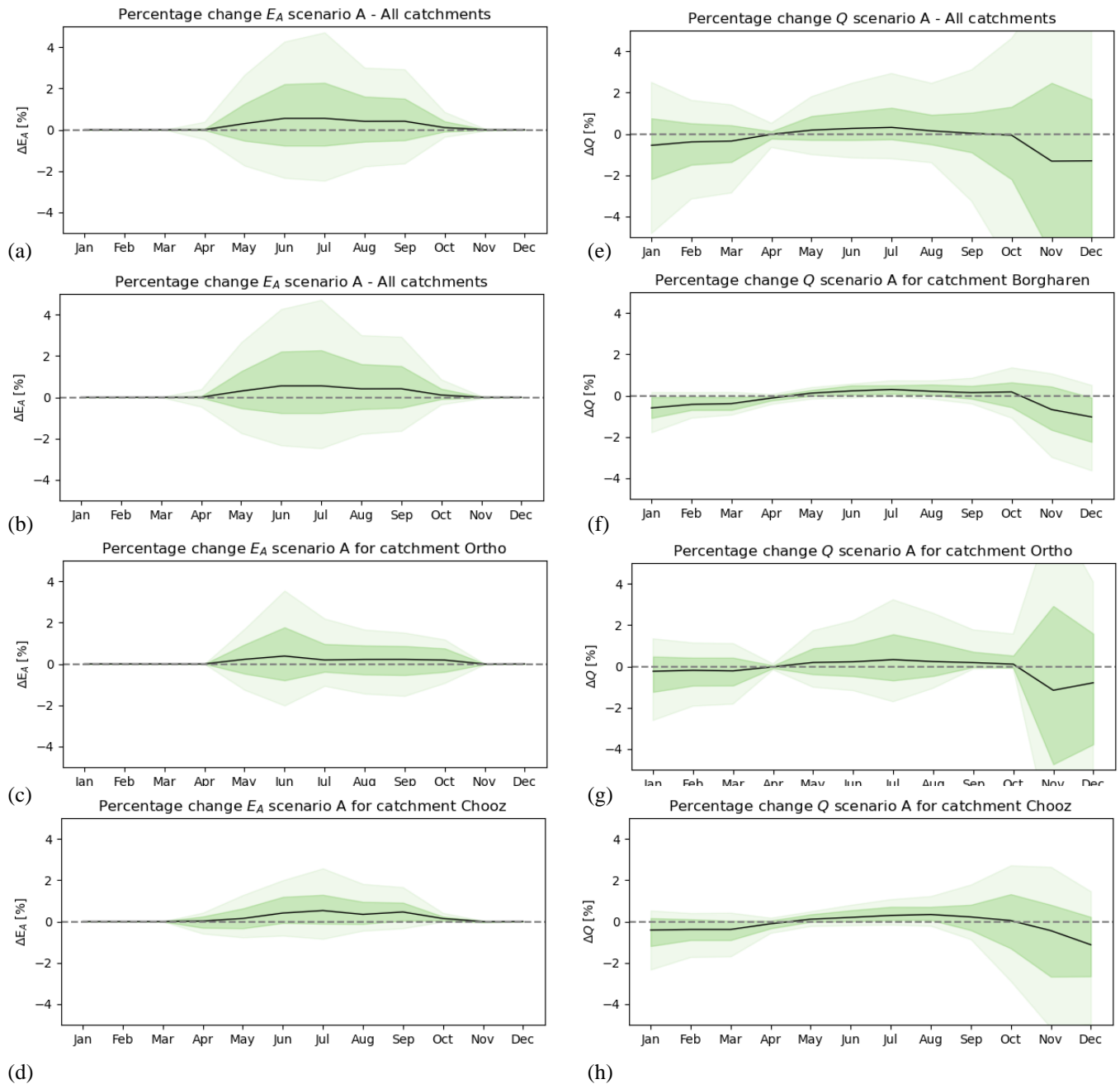


Figure 12: Change in evaporation and streamflow for scenario A. The change is calculated for every run as the difference between the evaporation (a-d) or streamflow (e-h) with the reference run ($\Delta I_E = 0$). The output for all years, and runs has been put together. The lightly shaded area represents the 90th and 10th percentiles, while the slightly darker shaded area represents the 25th to 75th percentiles. The black line represents the median. Images (a) and (e) display all catchments, (b) and (f) Borgharen, (c) and (g) Ortho and (d) and (h) Chooz.

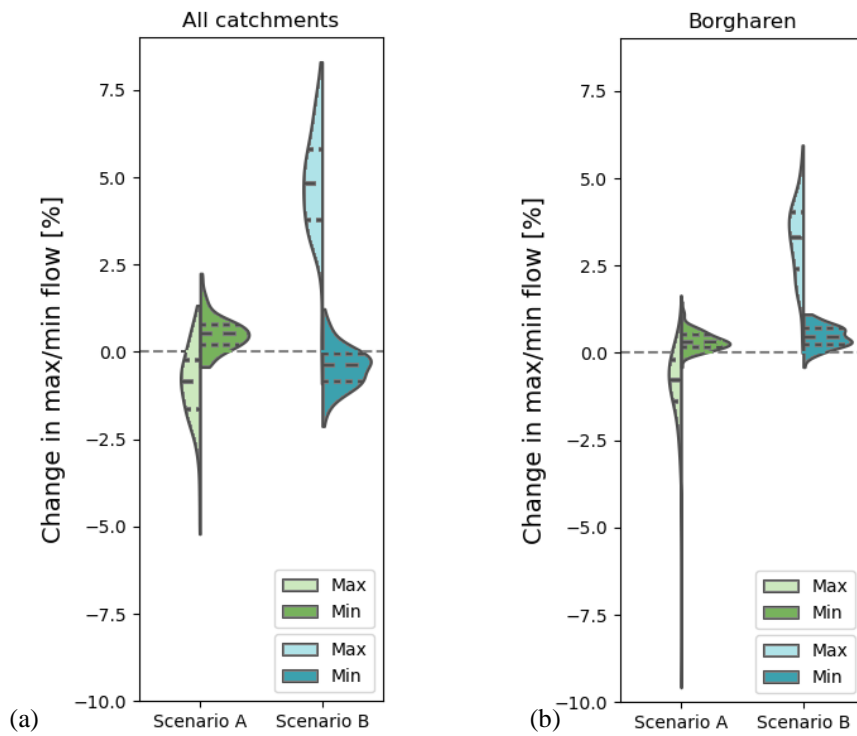


Figure 13: Change in maximum flow (Q_{max} , left part of the violin) and 7-day minimum flow (Q_{min} , right part of the violin), in percentage of the reference run. The quartiles are indicated with dashed lines, for (a) all catchments and (b) Borgharen.

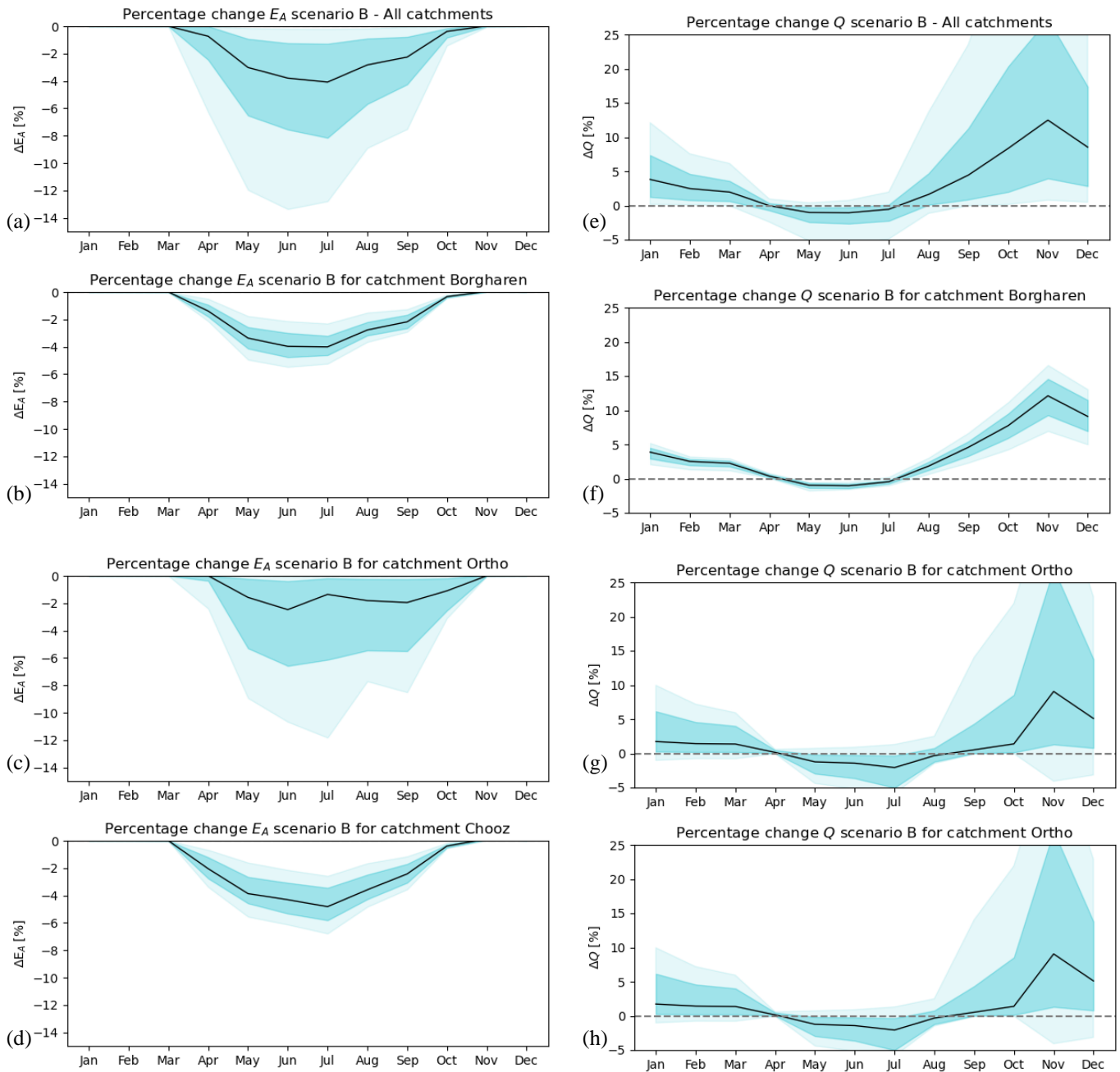


Figure 14: Change in evaporation and streamflow for scenario B. The change is calculated for every run as the difference between the evaporation (a-d) or streamflow (e-h) with the reference run ($\Delta I_E = 0$). The output for all years, and runs has been put together. The lightly shaded area represents the 90th and 10th percentiles, while the slightly darker shaded area represents the 25th to 75th percentiles. The black line represents the median.

Table 1: Segmentation of data by 10-year periods, with exception of the CAMELS USA which has two periods of 9 years. Note the extra time period for the France Meuse data, in comparison with the Belgium/Netherlands data.

Dataset	Data periods (1ST Jan. first year – 31ST dec. last year)				
Camels GB	1971 – 1980	1981 – 1990	1991 – 2000	2001 – 2010	
Camels USA	1981 – 1989		1990 – 1999	2000 – 2009	
Meuse Belgium and The Netherlands				1999 – 2008	2009 – 2018
Meuse France			1989 – 1998	1999 – 2008	2009 – 2018

Table 2: Water balance and flux equations used in the hydrological model, with variables: P_S is Snowfall [mm t^{-1}], Q_M is Snowmelt [mm t^{-1}], Q_R is Refreezing snow [mm t^{-1}], T_{thresh} is Melting temperature threshold [$^{\circ}\text{C}$], T_{range} is the range over which precipitation is partly falling as snow and partly as rainfall [$^{\circ}\text{C}$], T is Air temperature [$^{\circ}\text{C}$], $Q_{R,\text{pot}}$ is Potential Snowmelt [mm t^{-1}], s_{DDF} is Degree-day factor [mm $t^{-1} \text{ } ^{\circ}\text{C}$], s_{RF} is a coefficient of refreezing [-], P_R is Rainfall [mm t^{-1}], I_{max} is Maximum interception storage for each class [mm], E_I is Interception evaporation [mm t^{-1}], P_E is Effective precipitation [mm t^{-1}], L_P is Threshold parameter for water stress [-], F_{max} is Maximum infiltration capacity [mm t^{-1}], F_{dec} is Decay coefficient [-], $S_{R,\text{max}}$ is the root zone storage capacity [mm], $Q_{R,\text{direct}}$ is Direct runoff [mm t^{-1}], $Q_{R,\text{in,net}}$ is Net infiltration in the root zone storage [mm t^{-1}], E_R is Evaporation from the root zone storage [mm t^{-1}], Q_R is Runoff [mm t^{-1}], Q_{perc} is Percolation to the slow groundwater [mm t^{-1}], Q_{cap} is Capillary rise from the slow groundwater [mm t^{-1}], $Q_{\text{perc,max}}$ is Maximum percolation parameter [mm t^{-1}], $Q_{\text{cap,max}}$ is Maximum capillary rise flux parameter [mm t^{-1}], Q_{RF} is Inflow in the fast storage [mm t^{-1}], Q_F is Fast runoff [mm t^{-1}], K_F is Recession constant [t^{-1}], Q_{RS} is Preferential recharge from the outflow of the root zone storage [mm t^{-1}], Q_S is Linear outflow from the slow groundwater storage [mm t^{-1}], K_S is Recession timescale coefficient, Q_{TOT} is Total streamflow [mm t^{-1}], F_{hrfrac} is Fraction of each class in a cell [-].

800

805

810

Storage component	Water balance	Constitutive equations
Snow storage	$\frac{dS_w}{dt} = P_S - Q_M + Q_R$	$P_S = P * \max(0, \min(1, \frac{T_{\text{thresh}} - T}{T_{\text{range}}}))$ $Q_M = \max(0, s_{\text{DDF}} * s_{\text{RF}} * (T - T_{\text{thresh}}))$ $Q_R = \min(S_w * s_{\text{DDF}} * s_{\text{RF}} * (T_{\text{thresh}} - T))$
Interception storage	$dS_I/dt = (P_R + P_M) - E_I - P_E$	$P_E = \max(0, (S_I - I_{\text{max}})/dt)$ $P_R = P - P_S$ $E_I = \min(E_p, S_I/dt)$
Root zone storage	$dS_R/dt = P_E - E_R - Q_R - Q_{\text{perc}} + Q_{\text{cap}}$	$Q_{R,\text{direct}} = \max((S_R + P_E - S_{R,\text{max}}); 0.0)$ $Q_{R,\text{in,net}} = Q_{\text{HR}} - Q_{R,\text{direct}}$ $\bar{S}_R = S_R/S_{R,\text{max}}$

		$E_R = \min \left((E_P - E_I) \cdot \min(\overline{S}_R / L_P, 1), S_R \right)$ $Q_R = Q_{R, \text{in}, \text{net}} \cdot \left(1 - (1 - \overline{S}_R)^\beta \right)$ $Q_{\text{perc}} = Q_{\text{perc}, \text{max}} \cdot \overline{S}_R$ $Q_{\text{cap}} = Q_{\text{cap}, \text{max}} \cdot (1 - \overline{S}_R)$
Fast-responding storage	$dS_F/dt = Q_{RF} - Q_F$	$Q_{RF} = Q_R \cdot (1 - d_s)$ $Q_F = K_F \cdot S_F^\alpha$
Slow-responding storage	$dS_S/dt = Q_{RS} + Q_{\text{perc}} - Q_S - Q_{\text{cap}}$	$Q_{RS} = Q_R \cdot d_s$ $Q_S = K_S \cdot S_S$ $Q_{\text{TOT}} = Q_S + \sum_{\text{class}=1}^n (Q_F) \cdot F_{\text{hrfrac}}$