

# Calibration of Low-Cost Particulate Matter Sensors PurpleAir: Model Development for Air Quality under High Relative Humidity Conditions

5 Martine E. Mathieu-Campbell<sup>1</sup>, Chuqi Guo<sup>2</sup>, Andrew Grieshop<sup>3</sup>, Jennifer Richmond-Bryant<sup>1,2</sup>

<sup>1</sup> Center for Geospatial Analytics, North Carolina State University, Raleigh, NC 27695, USA

<sup>2</sup> Department of Forestry and Environmental Resources, North Carolina State University, Raleigh, NC 27695, USA

10 <sup>3</sup> Department of Civil, Construction and Environmental Engineering, North Carolina State University, Raleigh, NC 27695, USA

*Correspondence to:* Jennifer Richmond-Bryant ([jrbryan3@ncsu.edu](mailto:jrbryan3@ncsu.edu))

15 **Abstract.** The primary source of measurement error from the widely-used particulate matter (PM) PurpleAir sensors is ambient relative humidity (RH). Recently, the U.S. EPA developed a national correction model for PM<sub>2.5</sub> concentrations measured by PurpleAir sensors (Barkjohn model). However, their study included few sites in the Southeastern U.S., the most humid region of the country. To provide high-quality spatial and temporal data and inform community exposure risks in this area, our study developed and evaluated PurpleAir correction models for use in the warm-humid climate zones of the U.S. We used hourly  
20 PurpleAir data and hourly reference grade PM<sub>2.5</sub> data from the EPA Air Quality System database from January 2021 to August 2023. Compared with the Barkjohn model, we found improved performance metrics with error metrics decreasing by 16-23 % when applying a multi linear regression (MLR) model with RH and temperature as predictive variables. We also tested a novel semi-supervised clustering (SSC) method and found that a nonlinear effect between PM<sub>2.5</sub> and RH emerges around a RH of 50 % with slightly greater accuracy. Therefore, our results suggested that a clustering approach might be more accurate  
25 in high humidity conditions to capture the non-linearity associated with PM particle hygroscopic growth.

## 1 Introduction

In recent years, many communities started using low-cost particulate matter sensors to predict community exposure risks (Bi et al., 2020, 2021; L. J. Chen et al., 2017; Jiao et al., 2016; Kim et al., 2019; Kramer et al., 2023; Lu et al., 2022; Snyder et al., 2013; Stavroulas et al., 2020), since short-term and long-term exposures to particulate matter (PM) with an aerodynamic  
30 diameter of 2.5  $\mu\text{m}$  or smaller (PM<sub>2.5</sub>) are associated with several adverse health effects (Brook et al., 2010; R. Chen et al., 2016; Cohen et al., 2017; Health Effects Institute, 2020; Landrigan et al., 2018; Olstrup et al., 2019; Pope & Dockery, 2006).

These low-cost sensors have been used to inform exposure risks in different applications including environmental justice (Kramer et al., 2023; Lu et al., 2022), wildfire exposure (Kramer et al., 2023), traffic-related exposure (Lu et al., 2022), and indoor exposure (Bi et al., 2021; Lu et al., 2022). The dense monitoring network enabled by deploying low-cost sensors provides the potential to understand the PM<sub>2.5</sub> exposure risk at a higher spatial and temporal resolution than the established regulatory air quality monitoring system. Federal Reference Method or Federal Equivalence Method (FRM/FEM) monitors tend to be sparsely sited due to the cost and complexity of this instrumentation.

Several studies have evaluated the performance of low-cost PM sensors for different sources and meteorological conditions, with bias and low precision reported in several cases (Ardon-Dryer et al., 2020; Barkjohn et al., 2021; Bi et al., 2020, 2021; He et al., 2020; Holder et al., 2020; Jayaratne et al., 2018; Kelly et al., 2017; Kim et al., 2019; Magi et al., 2020; Malings et al., 2020; Sayahi et al., 2019; Stavroulas et al., 2020; Tryner et al., 2020; Wallace et al., 2021). A study conducted in 2016 (AQ-SPEC, 2016) to evaluate low-cost PM<sub>2.5</sub> sensors showed an overall good agreement between PurpleAir PM sensors and two reference monitors with R<sup>2</sup> of 78 % and 90 % (AQ-SPEC, 2016). However, an overestimation of 40 % was found for PurpleAir PM<sub>2.5</sub> concentrations compared with the reference monitors (AQ-SPEC, 2016; Wallace et al., 2021). Humidity has been documented as an important parameter that could greatly reduce the performance of low-cost sensors (Rueda et al., 2023; Wallace et al., 2021; Zusman et al., 2020). Most low-cost PM sensors, including the PurpleAir sensor, utilize optical sensors based on the light-scattering principle to estimate PM mass concentration. Thus, they are subject to measurement errors from various factors, including particle size, composition, optical properties, and interactions of particles with atmospheric water vapor (Hagan & Kroll, 2020; Rueda et al., 2023; Zheng et al., 2018; Zusman et al., 2020). In a high humidity environment, accurate detection of particle size and concentration may be affected by hygroscopic growth of particles (Carrico et al., 2010; L. Chen et al., 2022; Healy et al., 2014; Jamriska et al., 2008; Wallace et al., 2021). Water vapor may also damage the circuitry of the sensors (Jamriska et al., 2008; Wallace et al., 2021). Relative Humidity (RH) has therefore been confirmed to be a primary source of measurement error that requires concentration correction in low-cost PM sensors (Barkjohn et al., 2021; Sayahi et al., 2019; Wallace et al., 2021; Zusman et al., 2020).

The PurpleAir PM sensor is one of the most widely used low-cost PM sensors (Bi et al., 2021; Wallace et al., 2021). As of April 2022, there were more than 30,000 networked PurpleAir sensors, providing geolocated real-time air quality information (<https://www2.purpleair.com>, <https://www.airnow.gov>). Recently, the U.S. Environmental Protection Agency (EPA), after an evaluation of the sensors, developed a national correction model for PurpleAir sensors (Barkjohn et al., 2021). However, this evaluation included few sites in the Southeastern U.S. (Barkjohn et al., 2021). The study covered 16 states using 39 sites selected according to their collocation with an FRM/FEM monitor. In this study, the Southeastern U.S., the most humid region of the U.S., characterized by a humid subtropical climate (Konrad et al., 2013), was represented by only 5 sites and encompassed 4 states. The EPA correction model used multi-linear regression (MLR) (Barkjohn et al., 2021). Some recent studies used model-based clusters (MBC) to improve performance metrics compared with their MLR models. McFarlane et

al. (2021) and Raheja et al. (2023) applied a Gaussian Mixture Regression (GMR) bias correction model to PM<sub>2.5</sub> PurpleAir sensors in Accra, Ghana. The GMR-based model developed by McFarlane et al. (2021) used daily data from one PurpleAir sensor collocated with one Met One Beta Attenuation Monitor 1020 from March 2020 to March 2021. Raheja et al. (2023) used 3 different brands of low-cost sensors including PurpleAir PA-II collocated with a Teledyne T640 as the reference grade  
70 monitor at the University of Ghana, in Accra, Ghana, from May to September 2021. However, a GMR-based model is not transferable to new settings (Raheja et al., 2023), since the regression function in a GMR is derived from input from modeling the joint probability distribution of the data (Maugis et al., 2009; McFarlane et al., 2021; Shi & Choi, 2011). The model is not flexible enough to handle differences in proportions of the input variables observed at different locations.

75 The objective of this study is to develop and evaluate PurpleAir bias correction models for use in the warm humid climate zones (2A and 3A) of the U.S. (Antonopoulos et al., 2022). First, we tested an MLR with different combinations of predictive variables. To avoid the transferability constraints observed for the GMR, our study then tested a novel semi-supervised clustering method. We used PurpleAir data and the FRM/FEM PM<sub>2.5</sub> data from the EPA Air Quality System (AQS) database from January 2021 to August 2023. We tested new correction models developed for the high-humidity Southeastern region of  
80 the country and compared them with the EPA nationwide PurpleAir data correction model proposed by Barkjohn et al. (2021).

## 2 Methods

### 2.1 Study area

The study area includes the “warm-humid and moist” climate zone of the United States, as defined by the International Energy Conservation Code (EICC) in 2021. The 2021 EICC identifies the appropriate climate zone designation for each county in the  
85 U.S. (Antonopoulos et al., 2022). The climate zone map comprises eight regions at county level, with seven represented in the continental U.S. (Antonopoulos et al., 2022; International Energy Conservation Code, 2021). The thermal climate zones are based on meteorological parameters (designated as 1 to 8) including precipitation, temperature, and humidity and a moisture regime (designated as A, B, C for Humid/Moist, Dry, and Marine respectively). The thermal climate is determined using the heating degree-days (HDD) and cooling degree-days (CDD), and the moisture regime is based on monthly average temperature  
90 and precipitation (Antonopoulos et al., 2022; International Energy Conservation Code, 2021).

The study area was composed of climate zones and moisture regimes 2A and 3A. The “warm-humid” climate zone designation corresponds to a specific area of the climate zone map that includes Zones 2A and 3A (Fig. 1). Zone 1A is excluded, given that its tropical characteristics are sufficiently different from most of the Southeast. A warm and humid climate is characterized  
95 by high levels of humidity and high temperatures throughout the year and receives more than 20 inches (50 cm) of precipitation per year (Baechler et al., 2015). This area presents a state average annual humidity varying between 65.5 and 74.0 % and an

average temperature per state varying between 55.1 and 70.7° F. These 12 states have the 12 highest annual average dewpoint temperatures in the Continental U.S.

100 The study area includes 799 counties distributed into the 12 states as shown in the table in Fig. 1. Excepting Kentucky, all of the Southeastern U.S. states are partially or entirely characterized by a warm-humid climate zone and included in our study area. The high humidity condition in this part of the U.S. might affect particle composition and size distribution due to water uptake (Hagan & Kroll, 2020; Jaffe et al., 2023; Patel et al., 2024; Rueda et al., 2023). A study conducted in 2018 (Carlton et al., 2018) found large contributions (50 %) to PM<sub>2.5</sub> from biogenic secondary organic aerosols (BSOA) in the Southeast U.S. region compared with the rest of the country. The elevated BSOA are attributed to heavily forested areas and large urban areas in the region (Carlton et al., 2018; U.S. EPA, 2018).

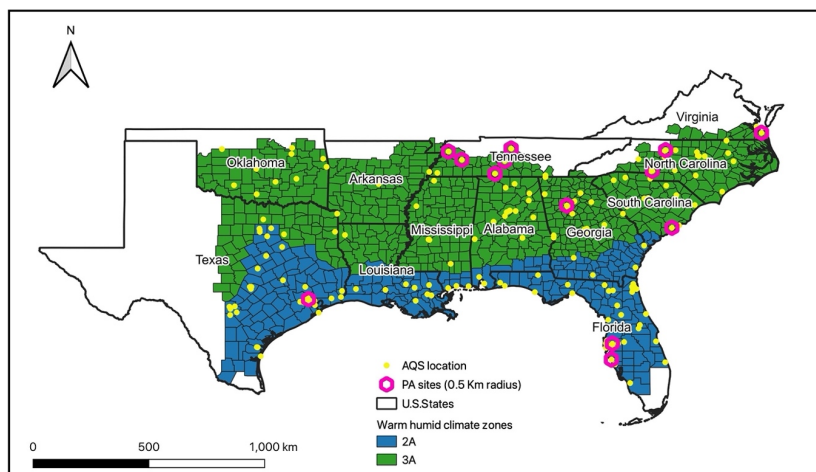


Figure 1: Study area showing the warm humid climate zones classification. The map also shows the distribution of available AQS monitors and the distribution of the PurpleAir sensors located at 0.5-km radius of an AQS monitor.

## 110 2.2 Data collection

The PurpleAir (PA-II-SD) contains two Plantower PMS5003 laser scattering particle sensors, a pressure-temperature-humidity sensor (BME280), and a Wi-Fi module (Magi et al., 2020). PM<sub>2.5</sub> data from the PurpleAir sensors were obtained from the PurpleAir data repository (API PurpleAir. <https://api.purpleair.com>), and PM<sub>2.5</sub> data from the State and Local Air Monitoring System (SLAMS) were retrieved from the U.S. Environmental Protection Agency (EPA) Air Quality System (AQS) (U.S. EPA, 2023) for the period from 1 January 2021 to 28 August 2023 using their respective application programming interfaces

(API). To obtain data for the study area, we used a bounding box (-100.01° W, -75.50° E and 25.81° S, 37.01° N) to find all outdoor sensors available for this geographical area. We identified 997 available sensors. We used the PM<sub>2.5</sub> dataset related to a standard environment, which was reported in the PurpleAir output as cf\_1 (correction factor = 1). This represents a more appropriate raw measurement of PM concentrations without any nonlinear transformation (McFarlane et al., 2021), and has been used for several other studies (Barkjohn et al., 2021; Raheja et al., 2023; Tryner et al., 2020; Wallace et al., 2021). Hourly average PM<sub>2.5</sub> concentrations were downloaded for both PurpleAir sensors and AQS monitors.

SLAMS data are collected by local, state, and tribal government agencies and made available via the AirNow API (U.S. EPA, 2023a). To ensure data accuracy, AQS data are collected by FRM or FEM (U.S. EPA, 2023b). These methods are primarily maintained to evaluate compliance with the National Ambient Air Quality Standards (NAAQS), although the data are often used for air pollution exposure and epidemiology research. We identified 181 FEM or FRM monitors in our study area.

Deleted: , which are typically filter-based monitors

### 2.3 Selection of PurpleAir sensors and data quality control criteria

We selected PurpleAir sensors within fixed radii of each FRM or FEM monitor. The R Statistical Software (version R 4.3.1) was employed for data selection, data quality control, and statistical modeling. We identified outdoor PurpleAir sensors within 2.0, 1.0, and 0.5 km of each FRM or FEM monitor. When a PurpleAir sensor fell within the buffers of 2 or more AQS monitors, the shorter distance to the AQS buffer centroid was applied to ensure better spatial join accuracy.

We applied a series of data exclusion criteria for quality control. First, we used a detection limit of 1.5  $\mu\text{g m}^{-3}$  for the PurpleAir data. This value is equivalent to the average of the values reported by Tryner et al. (2020) and Wallace et al. (2021) for the cf\_1 data series. We also excluded all PM<sub>2.5</sub> data points that were greater than 1000  $\mu\text{g m}^{-3}$ . Then, we applied data exclusion criteria to clean the PurpleAir data based on agreement between the concentrations reported for the two Plantower PMS5003 sensors provided in the PurpleAir housing, labeled arbitrarily as Channels A and B. We considered low and high concentrations separately. For low PM<sub>2.5</sub> concentrations (less than or equal to 25  $\mu\text{g m}^{-3}$ ), we removed observations where the concentration difference between Channels A and B was greater than 5  $\mu\text{g m}^{-3}$  and the percent error deviation was greater than 20 %. For high PM<sub>2.5</sub> concentrations (greater than 25  $\mu\text{g m}^{-3}$ ), we removed data records when the percent error deviation between Channels A and B was greater than 20 %. Similar cleaning criteria were used for quality assurance by Barkjohn et al. (2021) and Tryner et al. (2020), where data with a difference between Channels A and B less than 5  $\mu\text{g m}^{-3}$  for low PM<sub>2.5</sub> concentration were considered valid. Bi et al. (2020) removed data with the 5 % largest percent error difference between Channels A and B. Additionally, Barkjohn et al. (2021) excluded data points where Channels A and B that deviated by more than 61 %. However, we decided to employ a more stringent criterion for our high concentration data records (20 % deviation) considering that our study only included reported PurpleAir data available via the API and only for one region of the United States. Following data cleaning, the final PurpleAir concentration ( $C_{PA}$ ) dataset used in our study was obtained by averaging

Channels A and B and included only hourly average PurpleAir data points that had a spatial (within the calculated radius) correspondence to hourly FEM<sup>1</sup> concentration (C<sub>AQS</sub>) data. Missing C<sub>AQS</sub> data points were excluded before applying the radius-related spatial join.

Deleted: FRM or

To ensure data quality, the relative humidity measured by the BME280 sensor within the PurpleAir housing was evaluated. We compared hourly RH from the PurpleAir with the corresponding hourly RH from the National Oceanic and Atmospheric Administration (NOAA) database. The NOAA data were downloaded using the R package *worldmet* (Carslaw, 2023). The nearest NOAA station to each PurpleAir sensor was considered for the comparison. The average distance between a NOAA station and a PurpleAir sensor was approximately 10 miles with a minimum of 1.65 miles and a maximum of 25.50 miles. All PurpleAir sensors that presented a correlation of less than 0.80 with the corresponding RH from NOAA were excluded.

## 2.4 Model correction

### 2.4.1 Model inputs

~~Because measurement errors are related to water uptake by particles (Hagan & Kroll, 2020; Rueda et al., 2023; Wallace et al., 2021), temperature (T) and relative humidity (RH) are the most commonly found bias correction parameters in the literature (Ardon-Dryer et al., 2020; Bi et al., 2020; Magi et al., 2020; Malings et al., 2020; Wallace et al., 2021) for the PurpleAir. Thus, our meteorological data (hourly T, hourly RH) were taken from the PurpleAir sensor, similar to the analysis conducted by Barkjohn et al. (2021). Barkjohn et al. (2021) included dewpoint temperature (DP) in addition to T and RH as input predictors in their modeling process. However, DP was excluded as a predictor in our study. DP exhibited collinearity with both RH and T when testing for variance inflation factor. In fact, a high correlation of 95 % was found between DP and T. Therefore, including it would inflate the goodness of fit of the model. This result is not surprising considering the interdependent atmospheric thermodynamic relationship of DP with RH and T. For data quality assurance, we only included data records within a range of 0-130 °F for T and 0-100 % for RH, respectively. Similar quality assurance criteria were employed by Wallace et al. (2021) where data records with abnormal temperature and relative humidity measurements were removed.~~

Deleted: Because of the constraints

Deleted: Based on the electronic effects of

Deleted: T

Deleted: R

Deleted: H

The final dataset used for our model calibration included C<sub>PA</sub>, C<sub>AQS</sub>, RH, and T. We tested several multilinear regression models, and we defined a supervised clustering approach.

### 2.4.2 Multilinear Regression

Our study tested five Multilinear Regression (MLR) models (Equations 1-5) including the model proposed by Barkjohn et al. (2021) (Model Bj). The models were structured as follows:

<sup>1</sup> The AQS reference monitors used in our study were FEM monitors.

Formatted: English (US)

Model 1:  $C_{AQ5} = \beta_0 + \beta_1 C_{PA} + \varepsilon$  (1)

185 Model 2:  $C_{AQ5} = \beta_0 + \beta_1 C_{PA} + \beta_2 RH + \varepsilon$  (2)

Model 3:  $C_{AQ5} = \beta_0 + \beta_1 C_{PA} + \beta_2 T + \varepsilon$  (3)

Model 4:  $C_{AQ5} = \beta_0 + \beta_1 C_{PA} + \beta_2 RH + \beta_3 T + \varepsilon$  (4)

Model Bj:  $C_{AQ5}^2 = 5.72 + 0.524 * C_{PA} - 0.0852 * RH$  (5)

### 2.4.3 Semi-supervised Clustering

190 Alternative bias correction methods to MLR have been developed (Bi et al., 2020; McFarlane et al., 2021; Raheja et al., 2023) to capture complex nonlinear hygroscopic growth of particles (Hagan & Kroll, 2020; bark et al., 2023). Some of these alternative techniques include model-based clusters (MBC) (McFarlane et al., 2021; Raheja et al., 2023). An MBC assumes that the data are composed of more than one subpopulations (Raftery & Dean, 2006). The influence of RH on PurpleAir PM<sub>2.5</sub> measurements, specifically at high ambient RH (Wallace et al., 2021), may be non-linear, suggesting formation of subgroups

195 in our dataset. Therefore, our study tested a semi-supervised clustering (SSC) approach that combines unsupervised and supervised clustering processes to develop a non-linear MBC (Raftery & Dean, 2006). Before implementing the SSC, we carried out two pre-processing steps. The first pre-processing step consisted of finding the optimal predictors for the clusters by applying a Gaussian Mixture Model (GMM) variable selection function (forward-backward) for MBC (Raftery & Dean, 2006). The GMM variable selection process uses the expectation-maximization (EM) algorithm to determine the maximum

200 likelihood estimate for GMM (Raftery & Dean, 2006). The optimal variables are then selected using the Bayesian information criterion (BIC). The list of potential variables included RH and T (the variable DP was excluded in this process because of multicollinearity with RH and T). The second pre-processing step was to determine the optimal number of clusters. For this, we used a combination of 26 clustering methods via the NbClust R package (Boehmke & Greenwell, 2019; Charrad et al., 2014). Knowing the optimal variable predictors and the optimal number of clusters, we initiated the unsupervised portion of

205 our SSC using the K-means clustering algorithm. K-means, one of the most commonly employed clustering methods, is an unsupervised machine learning partitioning distance-based algorithm that computes the total within-cluster variation as the sum of squared (SS) Euclidian distances between the centroid of a cluster  $C_k$  and an observation  $x_i$  based on the Hartigan-Wong algorithm (Hartigan & Wong, 1979; Yuan & Yang, 2019). Last, we applied a supervised clustering process built upon the results obtained for the unsupervised clustering approach. The supervised process allowed for distribution of the dataset

210 within well-defined subsets. For each subset of the dataset associated with a cluster, an MLR was developed, defining a non-linear MBC (Equation 6).

---

<sup>2</sup>  $C_{AQ5}$  here represents the reference PM<sub>2.5</sub> monitors used in Barkjohn et al. (2021).

$$y = \begin{cases} \beta_0 + \beta_1 x_{i1} \in C_1 + \dots + \beta_p x_{ip} \in C_1 + \epsilon \\ \beta_0 + \beta_1 x_{i1} \in C_k + \dots + \beta_p x_{ip} \in C_k + \epsilon \end{cases} \quad (6)$$

215 where  $C_k$  is the number  $k$  of clusters regrouping  $x_i$  observations for each  $p$  explanatory variable.

#### 2.4.4 Model validation

For each of the evaluated models, the coefficient of determination,  $R^2$ , was calculated to understand how well the regression model performs with the selected predictors. The predictive performance of each model was evaluated by estimating Root Mean Square Error (RMSE) and Mean Absolute Error (MAE). RMSE is the standard deviation of the prediction errors. MAE  
 220 measures the mean absolute difference between the predicted values and the actual values in a dataset. Standard deviation (SD),  $R^2$  and RMSE are EPA's recommended performance metrics to evaluate a sensor's precision, linearity, and uncertainty, respectively (Duvall et al., 2021). We compared EPA's target value for SD, which refers to collocated identical sensors, with the estimated mean deviation or MAE for each paired observation of  $C_{AQ5}$  and  $C_{PA}$ .

#### 2.4.5 Cross-validation

225 Building the correction model based on the full dataset could overfit the model (Barkjohn et al., 2021). Therefore, we used leave-one-group-out cross-validation (LOGOCV) methods to evaluate how the model performs for an independent test dataset. LOGOCV involves splitting the dataset into specific or random groups, then predicting each group as testing data with the other groups used for training. We used an automatic LOGOCV, in which a random set of training data was composed to predict  $PM_{2.5}$  concentrations at each iteration. An 80/20 ratio was defined between the training and test groups with 25  
 230 iterations. Then, we applied a leave-one-state-out cross-validation (LOSOCV) that involves splitting the dataset into specific states to evaluate the performance of the model. In our LOSOCV, every U.S. state was left out successively and used in a validation test, while the remaining states were used to train the model. We used  $R^2$ , RMSE, and MAE as performance metrics to evaluate the cross-validation results.

#### 2.4.6 Sensitivity analysis

235 Sensitivity analyses were performed to determine how predictions of  $PM_{2.5}$  concentrations would vary under different temporal resolution. The sensitivity analysis applied the models, developed from hourly data at 0.5-km, 1.0-km, and 2.0-km buffers, to daily averaged data for the same buffers. We applied a completeness criterion of 90 %, or 21 hours, following Barkjohn et al. (2021)



### 3 Results and Discussion

240 After applying all the quality assurance (QA) criteria to the raw datasets, we obtained 159,648 observations (18 PurpleAir sites), 238,047 observations (28 PurpleAir sites), and 394,010 observations (50 PurpleAir sites) for buffers of 0.5 km, 1.0 km, and 2.0 km respectively, all at hourly temporal resolution. The QA process removed about 22 % (Table S1) of the raw data, with data from 3 PurpleAir sites completely removed for the 0.5-km radius because RH from the humidity sensors correlated poorly with RH reported by NOAA stations (Fig. S1). We found that two of these same 3 PurpleAir sites exhibited poor correlation for temperature as well. Moreover, the slope of the linear regression estimated for each PurpleAir sensor (Fig. 1) shows that RH from these 3 PurpleAir sites exhibited the larger bias metrics. All 18 retained PurpleAir sites presented RH data that strongly correlated with NOAA stations (88-96 %), with 16 of them presenting an R equal or greater than 90 % (Fig. S1). As reported by recent studies (Barkjohn et al., 2022; Giordano et al., 2021; Magi et al., 2020; Tryner et al., 2020), PurpleAir sensors tend to report dryer humidity measurements than ambient conditions. The comparison of our PurpleAir sensors with NOAA stations showed that each of the 18 retained PurpleAir sites reported lower humidity measurements than their corresponding NOAA station. They presented a negative difference in RH varying between 10-20 %, with uncertainty increasing with increased RH (Fig. S2). In addition to the 3 PurpleAir sites removed for the 0.5-km radius, 1 and 2 additional PurpleAir sites were removed for the 1.0 km and 2.0 km buffers, respectively. We did not detect any additional instrument error for temperature. Most of the retained PurpleAir sites had a strong correlation of 95-99 % for temperature with NOAA stations.

245

250

255

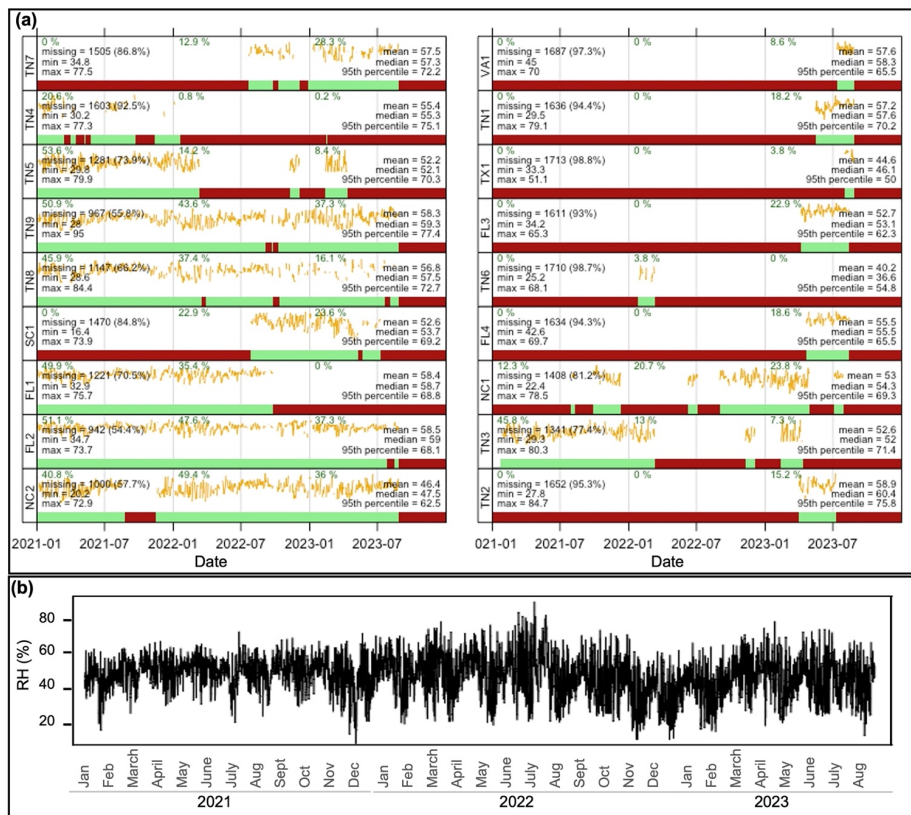


Figure 2: (a) Summary statistics and time series (yellow lines) of daily average RH for each PurpleAir site showing the presence of data (green) and missing data (red). The represent RH scaled from  $z$  to the maximum daily value. The percentage of data captured per year is also provided. (b) Time series of daily average RH for the entire dataset.

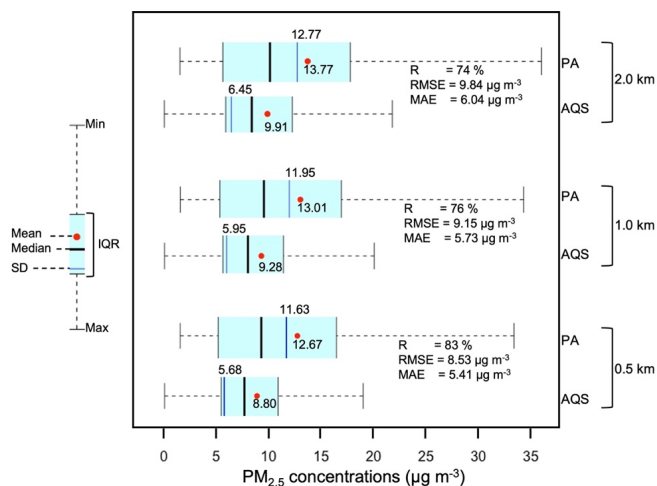
260

Summary statistics were explored to describe the main characteristics of our datasets (Fig. 2 and 3). Meteorological parameters for our three buffers (0.5 km, 1.0 km and 2.0 km) exhibit roughly the same distribution (Fig. S3). Further evaluation of our 0.5-km radius dataset revealed that 63 % of the hourly data for RH are greater than 50 % with temperatures varying between -17.13 and 38.83 °C. RH for the 0.5-km radius dataset showed some monthly seasonality (Fig. 2B). However, independent of the number of months of data reported by a PurpleAir sensor, the distribution of RH is relatively consistent for individual

265

PurpleAir sites (Fig. 2A). For this same radius, the number of complete months of data per PurpleAir sensor varied from approximately 1 to 29 months, with 11 sensors covering at least 10 months of hourly data (Fig. 2A).

For the  $PM_{2.5}$  concentration data, Fig. 2 displays the mean and SD for the  $C_{AQS}$  and  $C_{PA}$  data for all three analyzed buffers. The Pearson correlation ( $R$ ),  $R^2$ , RMSE and MAE between  $C_{AQS}$  and  $C_{PA}$  before fitting any model were also estimated for each radius (Fig. 2). All of the metrics,  $R^2$ , MAE and RMSE exceeded the target values<sup>2</sup> ( $R^2 \geq 70\%$ ,  $SD \leq 5 \mu g m^{-3}$  and  $RMSE \leq 7 \mu g m^{-3}$ ) recommended by EPA (Duvall et al., 2021). Raw  $C_{PA}$  presented greater magnitude and variability than  $C_{AQS}$  (Fig. 2). The performance metrics (Tables 1 and 2, Tables S2-S5) indicated less error with successively smaller buffer size, which suggests that model fit improves with decreased distance between the AQS monitors and PurpleAir sensors. The distance factor might be attributed to spatial variability between AQS monitors and PurpleAir sensors and the effect of various potential PM sources around the air monitors. Therefore, we present only the results for the 0.5-km buffer analysis. Tables S2-S5 contain the results for the 1.0-km and 2.0-km buffers, respectively. Wallace et al. (2021) and Bi et al. (2021) also used a 0.5-km buffer around the AQS monitors in their low-cost sensor data calibration studies.



280 **Figure 3: Descriptive and error metrics for  $C_{AQS}$  and raw  $C_{PA}$  for PurpleAir sensors within a 0.5-km, 1.0-km and 2.0-km radii of each FRM or FEM monitor.**

### 3.1 MLR Bias-Correction Model

The bias-correction models, including the Barkjohn model (2021), and their performance metrics are presented in Table 1. All four MLR-fitted models exhibited an average concentration of  $8.80 \mu\text{g m}^{-3}$ , with a SD varying between  $4.71$ -  $4.84 \mu\text{g m}^{-3}$ . The Barkjohn model had a mean of  $7.67 \mu\text{g m}^{-3}$  and a SD of  $6.08 \mu\text{g m}^{-3}$ . RMSE and MAE, which summarize the error on hourly  $\text{PM}_{2.5}$  averages, exhibited relatively low values for the four fitted models when we consider the average  $C_{\text{AQs}}$  in the dataset and its SD, and the EPA's target value<sup>3</sup> ( $\leq 7 \mu\text{g m}^{-3}$ ) for RMSE. Our dataset illustrates improved predictive performance for our four MLR-fitted models compared with the Barkjohn model (Table 1). The Barkjohn model presented a higher  $R^2$ , as a measure of the goodness of fit, than Model 1, however Model 1 is improved with respect to all error metrics. The Barkjohn model resulted in a higher MAE than the four models developed for this study. The best model fit was observed for Model 4, incorporating  $C_{\text{PA}}$ , T, and RH, with substantially better prediction performance metrics compared with the other models (Table 1). The model would, however, be further improved with use of newer PurpleAir sensors because, over time, the quality of the sensors degrades. This is particularly true in the hot and humid climate zone (deSouza et al., 2023). Similarly, the presence of Teledyne T640s among our AQS monitors may have affected the performance of our models since positive bias of approximately 20 % has been reported with T640s compared with other FEM or FRM monitors (U.S. EPA, 2024). Additionally, a study conducted by Searle et al. (2023) found that 12.9 % of the sensors deployed by PurpleAir between June 2021 and May 2023 reported negative bias of approximately  $3 \mu\text{g m}^{-3}$ . These PurpleAir sensors, specifically deployed between June 2021 and January 2022, and between March to May 2023, used an alternative Plantower PMS5003 that affected the reported particle size distributions and concentrations (Searle et al., 2023). Based on the technique developed by Searle et al. (2023) to identify PMS5003 sensors, we estimated that only one of our sensors (sensor ID: 116559), representing 0.62 % of our data, fell into this category. This may have a slight effect on the performance of our models. Furthermore, unlike our fitted models, Model Bj applied to our dataset displayed some negative values. Model 2 was similar in structure to the selected model from Barkjohn et al. (2021), with  $C_{\text{PA}}$  and RH as predictors. All predictors for every model were statistically significant. Validation testing using the LOGOCV (Table S6) presented nearly identical results to models using the entire dataset, building confidence in the models. The LOSOCV resulted in a RMSE and a MAE of  $3.32 \mu\text{g m}^{-3}$  and  $2.29 \mu\text{g m}^{-3}$  respectively for Model 4. These values were higher than those for the LOGOCV process, which is not surprising considering the variability between states.

Our findings align with some previous low-cost sensor data calibration work (Barkjohn et al., 2021; Magi et al., 2020; Zheng et al., 2018), where relatively simple calibration models provided reasonable bias correction. Zheng et al. (2018), evaluating the performance of Plantower PMS3003, which is similar to the  $\text{PM}_{2.5}$  sensor used in PurpleAir, found an  $R^2$  value of 66 % for a 1-h averaging period after applying an MLR calibration equation to compare three Plantower sensors against each other and a co-located reference monitor over a period of 30 days. A study conducted by Magi et al. (2020), involving a sixteen-

<sup>3</sup> The EPA's target values were estimated for 24h average data.

- Deleted: over the long term
- Deleted: ,
- Deleted: (
- Deleted: ,
- Deleted: alternative
- Deleted: found
- Deleted: Although
- Deleted: 1
- Deleted: 5
- Deleted: about 7
- Deleted: e reported time periods (Fig. 2)
- Deleted: ,
- Deleted: the potential presence of the alternative PMS5003 in our study which
- Deleted: which
- Deleted: affected very slightly
- Deleted: 1
- Deleted: PurpleAir

month PurpleAir PM<sub>2.5</sub> data collection in an urban setting in Charlotte, North Carolina, resulted in R<sup>2</sup> of 60 % for an MLR including C<sub>PA</sub>, RH and T. Barkjohn et al. (2021) estimated an RMSE of 3 μg m<sup>-3</sup> (no decimal specified) when fitting a model with RH for a mean concentration of 9 μg m<sup>-3</sup> for FRM or FEM monitors. Moreover, the negative coefficient obtained for RH for Model 2 and Model 4 is not surprising considering that high RH can lead to hygroscopic growth of the particles, and therefore cause uncertainties and overestimation in PurpleAir PM<sub>2.5</sub> concentration readings (Bi et al., 2021; Wallace et al., 2021). The model developed by Barkjohn et al. (2021), as well as the MLR model developed by Raheja et al. (2023) using data in Accra, Ghana, had a negative coefficient for RH.

Table 1: MLR model development (model fit using hourly data) and application of the hourly model to daily data.

Parameters		Model fit with hourly data				Model fit to daily data			
		R <sup>2</sup> (%)	RMSE (μg m <sup>-3</sup> )	MAE (μg m <sup>-3</sup> )	R (%)	R <sup>2</sup> (%)	RMSE (μg m <sup>-3</sup> )	MAE (μg m <sup>-3</sup> )	R (%)
Model 1	3.6667550 + 0.4053418PA <sub>i</sub>	69	3.16	2.13	83	76	2.39	1.67	87
Model 2	6.3384228 + 0.4143437PA <sub>i</sub> - 0.0506037RH <sub>i</sub>	71	3.05	2.05	84	76	2.35	1.64	87
Model 3	1.7642336 + 0.4109897PA <sub>i</sub> + 0.0847196T <sub>i</sub>	71	3.04	2.06	84	77	2.32	1.67	88
Model 4	4.3295358 + 0.4182906PA <sub>i</sub> - 0.0445768RH <sub>i</sub> + 0.0752867T <sub>i</sub>	73	2.96	1.99	85	79	2.24	1.59	89
Model Bj	5.72 + 0.524PA <sub>i</sub> - 0.0852RH <sub>i</sub>	71	3.52	2.51	84	76	2.76	2.06	87

Following removal of datapoints that did not fit the QA criteria, the 0.5-km daily dataset included 5,666 observations for the same 18 sensors when applying the hourly model to daily data. These produced a substantial improvement in the performance metrics compared with those of the hourly models (Table 1). Model 4 presented better performance metrics compared to the other models (Table 1). Figure 4 shows the correlation between the predicted C<sub>PA</sub> and C<sub>AQS</sub> for Model 4 and Model Bj along with the distribution of RH. The model developed by Barkjohn et al. (2021) used only daily averaged data, thus, it was directly comparable with our application of the model to daily data. An aggregate of datapoints can be seen on the left-hand side of the correlation plots (Fig. 4) to deviate from the model fit line. These data probably influenced the performance metrics of the models. An evaluation of Model Bj applied to our warm-humid climate zone daily PurpleAir datasets revealed substantially higher error metrics than the other models (Table 1).

**Deleted:** with an SD of 5.14 μg m<sup>-3</sup>

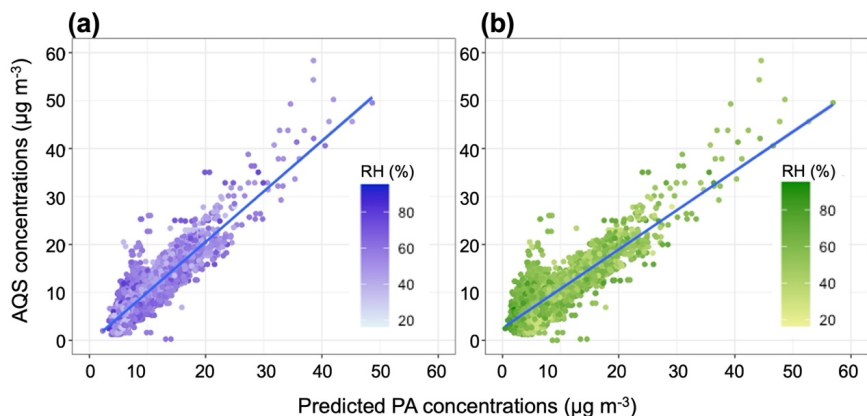


Figure 4: Positive linear correlation between daily AQS and daily predicted  $PM_{2.5}$  concentrations with RH distribution (a) AQS and predicted  $PM_{2.5}$  concentrations using Model 4 of the MLR process shown in purple (b) AQS and predicted  $PM_{2.5}$  concentrations using the Barkjohn model shown in green.

Deleted:

Deleted: using the Barkjohn model

Deleted:

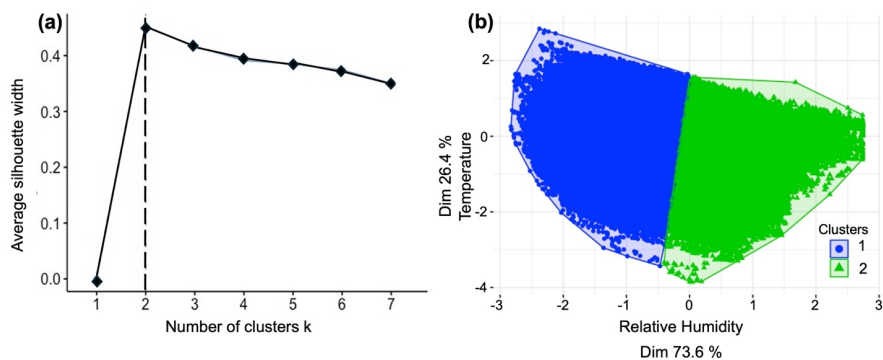
Deleted: using Model 4 of the MLR process

### 3.2 SSC Model Predictions

The SSC model included the same predictors as Model 4 ( $C_{PA}$ , RH and T) as the best MLR model obtained. The GMM process, discerning complex relationships between variables, found that RH and T are optimal predictors to use in the clustering process.

360 Among the twenty-six indices evaluated, we found that eight of them proposed  $k=2$  as the optimal number of clusters (Table S9). Thus, we set  $k=2$  clusters for the unsupervised aspect of our SSC process. Figure 5A shows the  $k$  clusters result for the silhouette algorithm, which is based on two factors, cohesion (similarity between the object and the cluster) and separation (comparison with other clusters) (Yuan & Yang, 2019). The unsupervised clustering suggested a distribution of the dataset into two well-defined clusters based on the RH predictor (Fig. 5B). For T, the same range of values was found within each

365 defined cluster. RH, being the most important variable that determined the clustering subdivision (Fig. 5B), therefore, we considered only RH for the cluster subdivision and then we applied the supervised phase of the SSC process to adjust the random subdivision of the clusters and eliminate overlaps. The two clusters were  $RH \leq 50\%$  (Cluster 1) and  $RH > 50\%$  (Cluster 2) (Table 2). This result aligns with Wallace et al. (2021), showing that the nonlinear effect between  $PM_{2.5}$  and RH emerges around a RH of 50%, similar to our cluster division (Fig. S4).



375 **Figure 5: Unsupervised clustering results: (a) Number of clusters k using the silhouette algorithm; (b) Clustering subsets based on**  
**RH and T showing that RH has a greater influence in the process. The axis values correspond to covariance, and the dimensionality**  
**corresponds to how much of each variable participated in the clustering process.**

The SSC approach provides improved model fits compared with the MLR models for our hourly data. Table 2 presents the modeling results of the RH-based semi-supervised clustering process. The difference between the two models resides primarily  
 380 in their intercepts and their RH coefficients (Table 2). The RH factor is 10 times greater in Cluster 2 than Cluster 1, and the intercept of Cluster 2 is about  $5.5 \mu\text{g m}^{-3}$  greater than Cluster 1. All predictors were statistically significant. Models from both clusters are within the range of the EPA's target values for linearity and error performance metrics (Table 2). Except for MAE that is much lower for Cluster 1, the Cluster 2 model presented better performance metrics compared with the Cluster 1 model (Table 2). Compared with Model 4 from the MLR models, results from Cluster 1 showed equal RMSE and a very low MAE,  
 385 while estimated metrics from Cluster 2 are greatly improved with the exception of MAE (Table 2). The combined predicted PurpleAir concentrations from the two SSC clusters resulted in an RMSE of  $2.94 \mu\text{g m}^{-3}$  and a MAE of  $1.96 \mu\text{g m}^{-3}$ . Click or tap here to enter text. Similar to the MLR validation testing, LOGOCV for SSC (Table S7) produced similar metrics compared with the models using the entire dataset. LOSOCV for SSC showed improved performance on average compared with the same process for Model 4 (Table S8), with every state exhibiting lower error metrics than the EPA's target value ( $\leq 7 \mu\text{g m}^{-3}$ )  
 390 for RMSE. Thus, the cluster-based models may be valid for any state in the study area.

The previous studies (McFarlane et al., 2021; Raheja et al., 2023) using an MBC to calibrate low-cost sensors are consistent with our SSC results with lower MAEs/RMSEs for their GMR-based model compared with their MLR, indicating that an MBC is superior to an MLR approach. McFarlane et al. (2021) in their studies found for their GMR model a MAE of 0.5 less  
 395 for their MLR of  $2.2 \mu\text{g m}^{-3}$ . Similarly, Raheja et al. (2023), for their GMR model using PurpleAir sensors, found a MAE of  $1.93 \mu\text{g m}^{-3}$  and a RMSE of  $2.58 \mu\text{g m}^{-3}$ , corresponding to  $0.17 \mu\text{g m}^{-3}$  and  $0.30 \mu\text{g m}^{-3}$  less than their MLR model respectively.

However, because of transferability (Raheja et al., 2023) constraints with GMR-based models, Raheja et al. (2023), recommended to use their MLR model for future applications, although they obtained an improved model using the GMR.

400 Table 2: Semi-supervised clustering model development (model fit with hourly data) and application of the hourly model to daily data.

Parameters		Model fit with hourly data				Model fit to daily data			
Clusters (Number of observations)	Models	R <sup>2</sup> (%)	RMSE (µg m <sup>-3</sup> )	MAE (µg m <sup>-3</sup> )	R (%)	R <sup>2</sup> (%)	RMSE (µg m <sup>-3</sup> )	MAE (µg m <sup>-3</sup> )	R (%)
RH ≤ 50 (59405)	2.738732 + 0.425834 PA <sub>i</sub> - 0.008944 RH <sub>i</sub> + 0.079210 T <sub>i</sub>	71	2.96	1.86	84	88	2.04	1.46	94
RH > 50 (100243)	7.230374 + 0.412683 PA <sub>i</sub> - 0.085278 RH <sub>i</sub> + 0.070655 T <sub>i</sub>	74	2.92	2.02	86	73	2.33	1.68	85

405 We compared our results with three nonlinear models that were previously tested for PurpleAir sensors. Two of these studies were not fit with data for our warm-humid climate zone study area. Malings et al. (2020) developed a two-piecewise linear model based on a threshold of 20 µg m<sup>-3</sup> PM<sub>2.5</sub> concentrations using 11 PurpleAir sensors at 2 sites in Pittsburgh. The Malings et al. (2020) paper includes DP as one of the predictors (Table 3), which violates the assumption of predictor variable independence in the correction model since a high correlation was found between DP and T. Performance metrics for the Malings et al. (2020) model were inferior to those for our models and for the models developed by other authors (Table 3). Wallace et al. (2021, 2022) estimated correction factors based on the ratio of the mean AQS to the mean PurpleAir for all pairs of PurpleAir/AQS sites from California (Wallace et al., 2021) and from California, Washington and Oregon (Wallace et al., 410 2022) in separate models. Using the correction factor of 3 (ALT-CF3) recommended in Wallace et al. (2021), we calculated higher MAE and RMSE (Table 3) than for any of our models and for the Barkjohn model. Similarly, the correction model developed by Nilson et al. (2022) to the cf=Atm data (same type of data used in their model) yielded similar R<sup>2</sup> and even higher RMSE and MAE than found with the ALT-CF3 model (Table S9). Nilson et al. (2022) used 35 PurpleAir/FEM sites 415 in the U.S. and Canada including 2 sites in our study area.

Table 3: Other previously developed nonlinear correction models

Correction models	Model fit with hourly data			
	R <sup>2</sup>	RMSE	MAE	R

Deleted: some ...three nonlinear models that were previously tested for PurpleAir sensors. Two of these studies did...ere not specifically cover (... [1])

Deleted: The models included C<sub>PA</sub>, T, RH and DP as predictors.

Deleted: Because...DP w...s one of the predictors (Table 3), this...high violates the assumption of predictor variable independence in the correction model is not applicable to our dataset since a high correlation was found between DP and T. ...Moreover, Moreover, we found a very low level of p...formance metrics for this (... [2])

Deleted: They found a correlation below 50 % and a MAE ranging from 3 to 5 µg m<sup>-3</sup> (Malings et al., 2020).

Deleted: Some other studies

Deleted: (...W...llace et al., (... [3])

Deleted: using 33 PurpleAir sensors ...rom 1 state (...alifo (... [4])

Deleted:

Deleted: thenand

Deleted: 182 PurpleAir sensors ...rom 3 states (...alifornia, Washington and Oregon) (... [5])

Deleted:

Deleted: Their studies evaluated

Deleted: their alternative PM<sub>2.5</sub> PurpleAir estimates from our PurpleAir sensors with ...he correction factors...of 3 (ALT-CF3) recommended in Wallace et al. (2021), we found...alculated higher error metrics...AE and RMSE (Table 3) than for all...ny of our estimated ...odels and for the Barkjohn model. Similarly, applying the correction model developed by Nilson et al. (2022) to the cf=Atm data (same type of data used in their model) from our PurpleAir sensors, we found (... [6])

Formatted: Superscript

Deleted: the results

Deleted: , however Wallace et al. (2021) also developed a correction factor for the cf\_1 PM<sub>2.5</sub> PurpleAir estimates... Nilson et al. (2022) used 35 PurpleAir/FEM sites in the U.S. and Canada including 2 sites in our study area. They found a range of correction factors between 0.65 and 0.72 resulting in an overestimation of PM<sub>2.5</sub> of 40 % compared with AQS monitors (Wallace et al., (... [7])

Formatted: (... [8])

Formatted: Font: 10 pt

Formatted Table



		(%)	( $\mu\text{g m}^{-3}$ )	( $\mu\text{g m}^{-3}$ )	(%)
<b>Wallace et al. (2021)</b>	ALT-CF3	68	3.88	2.86	82
<b>Nilson et al. (2022)</b>	$\text{pm}_{25} \text{ atm}/(1 + 0.24/(100/\text{RH} - 1))$	68	4.14	2.98	82
<b>Malings et al. (2020)</b>	$75 + 0.60 \text{ PA}_i - 2.50 \text{ T}_i - 0.82 \text{ RH}_i + 2.9 \text{ DP}_i$ (for $\text{PA} > 20 \mu\text{g m}^{-3}$ )	22	11.08	9.56	47
	$21 + 0.43 \text{ PA}_i - 0.58 \text{ T}_i - 0.22 \text{ RH}_i + 0.73 \text{ DP}_i$ (for $\text{PA} \leq 20 \mu\text{g m}^{-3}$ )				

Formatted: Font: 10 pt

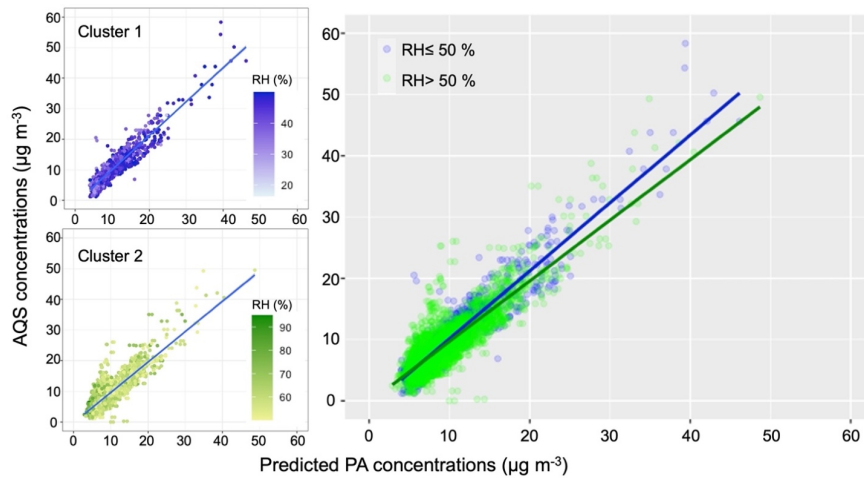
Formatted: Font: 10 pt

Formatted: Font: 10 pt

525

As for the MLR, the SSC hourly model was applied to the daily average dataset. Figure 6 shows the nonlinearity of our dataset with the slope varying for each cluster for the correlation between  $C_{\text{AQS}}$  and  $C_{\text{PA}}$ . The same aggregate of datapoints seen in Fig. 4 is also observed in the SSC models, but only in Cluster 2 (Fig. 6). This may have affected the accuracy of the model (Table 1). Applying the hourly models to daily data resulted in substantial improvement with lower uncertainties in each SSC model compared with the hourly dataset (Table 2). Compared with the fit for Model 4 from the MLR (Table 1) to daily data, we observed that Cluster 1 presented better performance metrics than Cluster 2 (Tables 1 and 2). Compared with Model Bj applied to our daily dataset in Table 1, the daily SSC models display improved results (lower RMSE and MAE) for each cluster.

530



535

**Figure 6: Correlation between daily AQS and daily predicted PM<sub>2.5</sub> concentrations using the SSC model. Each cluster is presented separately on the left, and both clusters are shown on the right.**

To further assess the model performance in subgroups, Model 4 from the MLR and the SSC models were applied to daily data from 5 states of the warm-humid climate zones (Table 4). For the SSC, both models presented good results for all the metrics compared with the hourly-data-fitted models and their application to daily data. Except for VA, where Model 4 produced lower error metric values, the SSC model outperformed the MLR for all the states.

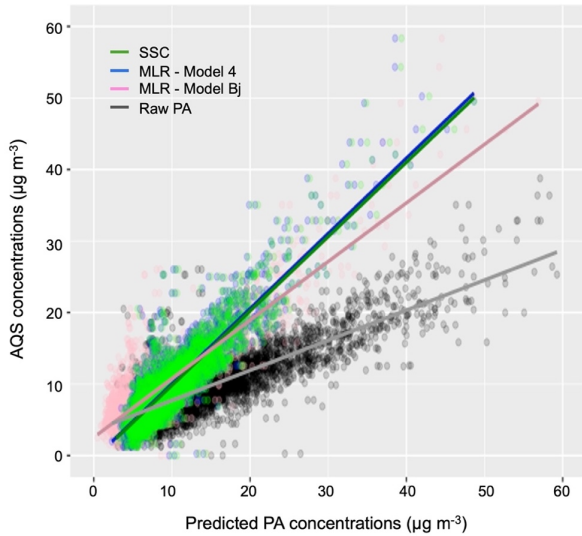
**Table 4: Application of MLR- Model 4 and SSC model to individual state. The SSC combined clusters result is the result obtained after applying each cluster to the daily data, then added together.**

States	MLR			SSC combined Clusters		
	RMSE ( $\mu\text{g m}^{-3}$ )	MAE ( $\mu\text{g m}^{-3}$ )	R (%)	RMSE ( $\mu\text{g m}^{-3}$ )	MAE ( $\mu\text{g m}^{-3}$ )	R (%)
SC	2.11	1.5	85	2.06	1.45	85
NC	2.81	1.82	89	2.76	1.76	90
VA	2.38	2.2	97	2.63	2.46	97
FL	2.63	1.64	81	2.58	1.62	81
TN	3.11	2.21	87	3.10	2.19	87

### 3.3 Final Model Selection

Deleted: 3

Deleted: 3



550

**Figure 7: Correlations and regression lines between daily AQS and daily raw/predicted  $PM_{2.5}$  concentrations using the MLR, the SSC and Model Bj.**

Both Model 4 from the MLR models and the SSC models align with previous studies, producing low error and high correlation  $R^2$ . After comparing NOAA and PurpleAir meteorological data (Fig. S5), we included in the supplemental information (Table S10) these two sets of models (Model 4 from the MLR models and the SSC models) using NOAA meteorological data for RH and T that can be applied when meteorological information from PurpleAir sensors is biased or missing. Figure 7 summarizes the results of our study by presenting the correlation fit for the MLR (Model 4 from the MLR models), the combined clusters from the SSC, the Model Bj and the raw PurpleAir data together. Tables S11 and S12 provide an evaluation of performance of the models by Air Quality Index (AQI) categories. Our results showed that applying Model Bj to our hourly dataset improved our error metric, RMSE, of 58.73 % from the raw data. The MLR and the SSC model have lower error and higher correlation than Model Bj. A decrease of 15.91 % was obtained for RMSE from Model Bj to Model 4. However, Model 4  $PM_{2.5}$  concentrations had a higher average mean deviation ( $1.99 \mu g m^{-3}$ ) from  $C_{AQS}$  than  $PM_{2.5}$  concentrations from the SSC model ( $1.96 \mu g m^{-3}$ ). Moreover, Model 4  $PM_{2.5}$  concentrations from the MLR models tend to be slightly higher than  $PM_{2.5}$  concentrations from the SSC model at high RH and slightly lower at lower RH.

565 **4. Conclusion**

In conclusion, Model 4 from the MLR and the SSC model improved the error performance metrics by 16-23 % compared with the model developed by Barkjohn et al. (2021). The SSC model presented slightly better results than the overall MLR, suggesting that a clustering approach might be more accurate in areas with high humidity conditions to capture the non-linearity associated with hygroscopic growth of particles in such conditions. Therefore, the SSC model is recommended to be used for bias correction for the Southeastern United States. However, Model 4 might be an acceptable alternative for its parsimony. Applying these models to PM<sub>2.5</sub> PurpleAir concentrations collected in high humidity areas will help to inform communities with a high-quality estimation of their exposure. These models might also benefit communities in high humidity regions outside of the U.S. Next steps in model development may include evaluation of the transferability of these models to other humid locations in the world.

575

**Data availability**

All raw data can be provided by the corresponding authors upon request.

**Author contributions**

MEM-C, AG and JR-B conceptualized the work and developed the methods. MEM-C curated the data, completed the formal analysis and figure visualizations. MEM-C and CG wrote the original draft. MEM-C, CG, AG and JR-B reviewed and edited the manuscript. JR-B acquired funding.

580

**Competing interests**

The authors declare that they have no conflict of interest.

**Acknowledgements**

We thank the PurpleAir team for their support in obtaining PM<sub>2.5</sub> concentrations and meteorological PurpleAir data.

585

**Financial support**

This work was supported by the National Institute for Environmental Health Sciences (P42 ES013638, P30 ES025128).

## References

- 590 Antonopoulos, C., Gilbride, T., Margiotta, E., and Kaltreider, C.: Guide to Determining Climate Zone by County: Building  
America and IECC 2021 Updates, Richland, WA (United States), <https://doi.org/10.2172/1893981>, 2022.
- API PurpleAir. <https://www.api.purpleair.com>. Accessed on 07/23/2023.
- 595 AQ-SPEC. <http://www.aqmd.gov/docs/default-source/aq-spec/field-evaluations/purpleair-field-evaluation.pdf>. Accessed  
on 02/20/2024.
- Ardon-Dryer, K., Dryer, Y., Williams, J. N., and Moghimi, N.: Measurements of PM<sub>2.5</sub> with PurpleAir under atmospheric  
conditions, *Atmos Meas Tech*, 13, <https://doi.org/10.5194/amt-13-5441-2020>, 2020.
- 600 Baechler, M. C., Gilbride, T. L., Cole, P. C., Hefty, M. G., and Ruiz, K.: Guide to Determining Climate Regions by County,  
Pacific Northwest National Laboratory & Oak Ridge National Laboratory, 2015.
- Barkjohn, K. K., Gantt, B., and Clements, A. L.: Development and application of a United States-wide correction for PM<sub>2.5</sub>  
data collected with the PurpleAir sensor, *Atmos Meas Tech*, 14, <https://doi.org/10.5194/amt-14-4617-2021>, 2021.
- 605 Barkjohn, K. K., Holder, A. L., Frederick, S. G., and Clements, A. L.: Correction and Accuracy of PurpleAir PM<sub>2.5</sub>  
Measurements for Extreme Wildfire Smoke, *Sensors*, 22, <https://doi.org/10.3390/s22249669>, 2022.
- Bi, J., Wildani, A., Chang, H. H., and Liu, Y.: Incorporating Low-Cost Sensor Measurements into High-Resolution PM<sub>2.5</sub>  
610 Modeling at a Large Spatial Scale, *Environ Sci Technol*, 54, 2152–2162, <https://doi.org/10.1021/acs.est.9b06046>, 2020.
- Bi, J., Wallace, L. A., Sarnat, J. A., and Liu, Y.: Characterizing outdoor infiltration and indoor contribution of PM<sub>2.5</sub> with  
citizen-based low-cost monitoring data, *Environmental Pollution*, 276, 116763,  
615 <https://doi.org/10.1016/j.envpol.2021.116763>, 2021.
- Boehmke, B. and Greenwell, B.: Hands-On Machine Learning with R, <https://doi.org/10.1201/9780367816377>, 2019.
- Brook, R. D., Rajagopalan, S., Pope, C. A., Brook, J. R., Bhatnagar, A., Diez-Roux, A. V., Holguin, F., Hong, Y., Luepker,  
R. V., Mittleman, M. A., Peters, A., Siscovick, D., Smith, S. C., Whitsel, L., and Kaufman, J. D.: Particulate matter air pollution

- 620 and cardiovascular disease: An update to the scientific statement from the american heart association,  
<https://doi.org/10.1161/CIR.0b013e3181dbee1>, 2010.
- Carlton, A. G., Pye, H. O. T., Baker, K. R., and Hennigan, C. J.: Additional Benefits of Federal Air-Quality Rules: Model  
Estimates of Controllable Biogenic Secondary Organic Aerosol, *Environ Sci Technol*, **52**, 9254–9265,  
625 <https://doi.org/10.1021/acs.est.8b01869>, 2018.
- Carrico, C. M., Petters, M. D., Kreidenweis, S. M., Sullivan, A. P., McMeeking, G. R., Levin, E. J. T., Engling, G., Malm, W.  
C., and Collett, J. L.: Water uptake and chemical composition of fresh aerosols generated in open burning of biomass, *Atmos  
Chem Phys*, **10**, 5165–5178, <https://doi.org/10.5194/acp-10-5165-2010>, 2010.
- 630 Carslaw, D.: worldmet: Import Surface Meteorological Data from NOAA Integrated Surface Database (ISD),  
<https://davidcarslaw.github.io/worldmet/index.html>, <http://davidcarslaw.github.io/worldmet/>.
- Charrad, M., Ghazzali, N., Boiteau, V., and Niknafs, A.: Nbclust: An R package for determining the relevant number of clusters  
in a data set, *J Stat Softw*, **61**, <https://doi.org/10.18637/jss.v061.i06>, 2014.
- 635 Chen, L., Zhang, F., Zhang, D., Wang, X., Song, W., Liu, J., Ren, J., Jiang, S., Li, X., and Li, Z.: Measurement report:  
Hygroscopic growth of ambient fine particles measured at five sites in China, *Atmos Chem Phys*, **22**,  
<https://doi.org/10.5194/acp-22-6773-2022>, 2022.
- 640 Chen, L. J., Ho, Y. H., Lee, H. C., Wu, H. C., Liu, H. M., Hsieh, H. H., Huang, Y. Te, and Lung, S. C. C.: An Open Framework  
for Participatory PM2.5 Monitoring in Smart Cities, *IEEE Access*, **5**, <https://doi.org/10.1109/ACCESS.2017.2723919>, 2017.
- Chen, R., Hu, B., Liu, Y., Xu, J., Yang, G., Xu, D., and Chen, C.: Beyond PM2.5: The role of ultrafine particles on adverse  
645 health effects of air pollution, *Biochim Biophys Acta Gen Subj*, **1860**, <https://doi.org/10.1016/j.bbagen.2016.03.019>, 2016.
- Cohen, A. J., Brauer, M., Burnett, R., Anderson, H. R., Frostad, J., Estep, K., Balakrishnan, K., Brunekreef, B., Dandona, L.,  
Dandona, R., Feigin, V., Freedman, G., Hubbell, B., Jobling, A., Kan, H., Knibbs, L., Liu, Y., Martin, R., Morawska, L., Pope,  
C. A., Shin, H., Straif, K., Shaddick, G., Thomas, M., van Dingenen, R., van Donkelaar, A., Vos, T., Murray, C. J. L., and  
650 Forouzanfar, M. H.: Estimates and 25-year trends of the global burden of disease attributable to ambient air pollution: an  
analysis of data from the Global Burden of Diseases Study 2015, *The Lancet*, **389**, [https://doi.org/10.1016/S0140-6736\(17\)30505-6](https://doi.org/10.1016/S0140-6736(17)30505-6), 2017.

- 655 [deSouza, P., Karoline Barkjohn, ab, Clements, A., Lee, J., Kahn, R., Crawford, B., and Kinney, P.: An analysis of degradation in low-cost particulate matter sensors †, Environ. Sci.: Atmos, 521, <https://doi.org/10.1039/d2ea00142j>, 2023.](#)
- [Duvall, R. M., Clements, A. L., Hagler, G., Kamal, A., Kilaru, V., Goodman, L., Frederick, S., Barkjohn, K. K., VonWald, L., Greene, D., and Dye, T.: Performance Testing Protocols, Metrics, and Target Values for Fine Particulate Matter Air Sensors: Use in Ambient, Outdoor, Fixed Site, Non-Regulatory Supplemental and Informational Monitoring Applications, 2021.](#)
- 660 [Giordano, M. R., Malings, C., Pandis, S. N., Presto, A. A., McNeill, V. F., Westervelt, D. M., Beekmann, M., and Subramanian, R.: From low-cost sensors to high-quality data: A summary of challenges and best practices for effectively calibrating low-cost particulate matter mass sensors, J Aerosol Sci, 158, <https://doi.org/10.1016/j.jaerosci.2021.105833>, 2021.](#)
- 665 [Hagan, D. H. and Kroll, J. H.: Assessing the accuracy of low-cost optical particle sensors using a physics-based approach, Atmos Meas Tech, 13, <https://doi.org/10.5194/amt-13-6343-2020>, 2020.](#)
- [Hartigan, J. A. and Wong, M. A.: Algorithm AS 136: A K-Means Clustering Algorithm, Appl Stat, 28, <https://doi.org/10.2307/2346830>, 1979.](#)
- 670 [He, M., Kuerbanjiang, N., and Dhaniyala, S.: Performance characteristics of the low-cost Plantower PMS optical sensor, Aerosol Science and Technology, 54, <https://doi.org/10.1080/02786826.2019.1696015>, 2020.](#)
- 675 [Health Effects Institute: State of Global Air 2020. Special Report, MA:Health Effects Instiute, 2020.](#)
- [Healy, R. M., Evans, G. J., Murphy, M., Jurányi, Z., Tritscher, T., Laborde, M., Weingartner, E., Gysel, M., Poulain, L., Kamilli, K. A., Wiedensohler, A., O'Connor, I. P., McGillicuddy, E., Sodeau, J. R., and Wenger, J. C.: Predicting hygroscopic growth using single particle chemical composition estimates, J Geophys Res, 119, <https://doi.org/10.1002/2014JD021888>,](#)
- 680 [2014.](#)
- [Holder, A. L., Mebust, A. K., Maghran, L. A., McGown, M. R., Stewart, K. E., Vallano, D. M., Elleman, R. A., and Baker, K. R.: Field evaluation of low-cost particulate matter sensors for measuring wildfire smoke, Sensors \(Switzerland\), 20, <https://doi.org/10.3390/s20174796>, 2020.](#)
- 685 [International Energy Conservation Code. Chapter 3, General requirements, 2021 International Energy Conservation Code \(IECC\): <https://codes.iccsafe.org/content/IECC2021P2/chapter-3-re-general-requirements>.](#)

- 690 Jaffe, D. A., Miller, C., Thompson, K., Finley, B., Nelson, M., Ouimette, J., and Andrews, E.: An evaluation of the U.S. EPA's correction equation for PurpleAir sensor data in smoke, dust, and wintertime urban pollution events, *Atmos Meas Tech*, 16, <https://doi.org/10.5194/amt-16-1311-2023>, 2023.
- Jamriska, M., Morawska, L., and Mergersen, K.: The effect of temperature and humidity on size segregated traffic exhaust particle emissions, *Atmos Environ*, 42, <https://doi.org/10.1016/j.atmosenv.2007.12.038>, 2008.
- 695 Jayaratne, R., Liu, X., Thai, P., Dunbabin, M., and Morawska, L.: The influence of humidity on the performance of a low-cost air particle mass sensor and the effect of atmospheric fog, *Atmos Meas Tech*, 11, <https://doi.org/10.5194/amt-11-4883-2018>, 2018.
- 700 Jiao, W., Hagler, G., Williams, R., Sharpe, R., Brown, R., Garver, D., Judge, R., Caudill, M., Rickard, J., Davis, M., Weinstock, L., Zimmer-Dauphinee, S., and Buckley, K.: Community Air Sensor Network (CAIRSENSE) project: Evaluation of low-cost sensor performance in a suburban environment in the southeastern United States, *Atmos Meas Tech*, 9, <https://doi.org/10.5194/amt-9-5281-2016>, 2016.
- 705 Kelly, K. E., Whitaker, J., Petty, A., Widmer, C., Dybwad, A., Sleeth, D., Martin, R., and Butterfield, A.: Ambient and laboratory evaluation of a low-cost particulate matter sensor, *Environmental Pollution*, 221, <https://doi.org/10.1016/j.envpol.2016.12.039>, 2017.
- Kim, S., Park, S., and Lee, J.: Evaluation of performance of inexpensive laser based PM2.5 sensor monitors for typical indoor and outdoor hotspots of South Korea, *Applied Sciences (Switzerland)*, 9, <https://doi.org/10.3390/app9091947>, 2019.
- 710 Konrad, C. E., Fuhrmann, C. M., Billiot, A., Keim, B. D., Kruk, M. C., Kunkel, K. E., Needham, H., Shafer, M., and Stevens, L.: Climate of the southeast USA: past, present, and future., in: *Climate of the southeast United States: Variability, change, impacts, and vulnerability*, vol. Washington, DC., 8–42, 2013.
- 715 Kramer, A. L., Liu, J., Li, L., Connolly, R., Barbato, M., and Zhu, Y.: Environmental justice analysis of wildfire-related PM2.5 exposure using low-cost sensors in California, *Science of The Total Environment*, 856, 159218, <https://doi.org/10.1016/J.SCITOTENV.2022.159218>, 2023.
- 720 Landrigan, P. J., Fuller, R., Acosta, N. J. R., Adeyi, O., Arnold, R., Basu, N. (Nil), Baldé, A. B., Bertollini, R., Bose-O'Reilly, S., Boufford, J. I., Breyse, P. N., Chiles, T., Mahidol, C., Coll-Seck, A. M., Cropper, M. L., Fobil, J., Fuster, V., Greenstone,



- M., Haines, A., Hanrahan, D., Hunter, D., Khare, M., Krupnick, A., Lanphear, B., Lohani, B., Martin, K., Mathiasen, K. V., McTeer, M. A., Murray, C. J. L., Ndahimananjara, J. D., Perera, F., Potočník, J., Preker, A. S., Ramesh, J., Rockström, J., Salinas, C., Samson, L. D., Sandilya, K., Sly, P. D., Smith, K. R., Steiner, A., Stewart, R. B., Suk, W. A., van Schayck, O. C. P., Yadama, G. N., Yumkella, K., and Zhong, M.: The Lancet Commission on pollution and health, [https://doi.org/10.1016/S0140-6736\(17\)32345-0](https://doi.org/10.1016/S0140-6736(17)32345-0), 2018.
- 725
- Lu, T., Liu, Y., Garcia, A., Wang, M., Li, Y., Bravo-villasenor, G., Campos, K., Xu, J., and Han, B.: Leveraging Citizen Science and Low-Cost Sensors to Characterize Air Pollution Exposure of Disadvantaged Communities in Southern California, *Int J Environ Res Public Health*, 19, <https://doi.org/10.3390/ijerph19148777>, 2022.
- 730
- Magi, B. I., Cupini, C., Francis, J., Green, M., and Hauser, C.: Evaluation of PM<sub>2.5</sub> measured in an urban setting using a low-cost optical particle counter and a Federal Equivalent Method Beta Attenuation Monitor, *Aerosol Science and Technology*, 54, <https://doi.org/10.1080/02786826.2019.1619915>, 2020.
- 735
- Malings, C., Tanzer, R., Haurlyuk, A., Saha, P. K., Robinson, A. L., Presto, A. A., and Subramanian, R.: Fine particle mass monitoring with low-cost sensors: Corrections and long-term performance evaluation, *Aerosol Science and Technology*, 54, <https://doi.org/10.1080/02786826.2019.1623863>, 2020.
- 740
- Maugis, C., Celeux, G., and Martin-Magniette, M. L.: Variable selection for clustering with gaussian mixture models, *Biometrics*, 65, <https://doi.org/10.1111/j.1541-0420.2008.01160.x>, 2009.
- McFarlane, C., Raheja, G., Malings, C., Appoh, E. K. E., Hughes, A. F., and Westervelt, D. M.: Application of Gaussian Mixture Regression for the Correction of Low Cost PM<sub>2.5</sub> Monitoring Data in Accra, Ghana, *ACS Earth Space Chem*, 5, <https://doi.org/10.1021/acsearthspacechem.1c00217>, 2021.
- 745
- Nilson, B., Jackson, P. L., Schiller, C. L., and Parsons, M. T.: Development and evaluation of correction models for a low-cost fine particulate matter monitor, *Atmos Meas Tech*, 15, <https://doi.org/10.5194/amt-15-3315-2022>, 2022.
- 750
- Olstrup, H., Johansson, C., Forsberg, B., Tornevi, A., Ekeboom, A., and Meister, K.: A multi-pollutant air quality health index (AQHI) based on short-term respiratory effects in Stockholm, Sweden, *Int J Environ Res Public Health*, 16, <https://doi.org/10.3390/ijerph16010105>, 2019.
- Patel, M. Y., Vannucci, P. F., Kim, J., Berelson, W. M., and Cohen, R. C.: Towards a hygroscopic growth calibration for low-cost PM<sub>2.5</sub> sensors, *Atmos Meas Tech*, 17, 1051–1060, <https://doi.org/10.5194/amt-17-1051-2024>, 2024.
- 755

- Pope, C. A. and Dockery, D. W.: Health effects of fine particulate air pollution: Lines that connect, *J Air Waste Manage Assoc*, 56, <https://doi.org/10.1080/10473289.2006.10464485>, 2006.
- 760 Raftery, A. E. and Dean, N.: Variable selection for model-based clustering, *J Am Stat Assoc*, 101, <https://doi.org/10.1198/01621450600000113>, 2006.
- Raheja, G., Nimo, J., Appoh, E. K. E., Essien, B., Sunu, M., Nyante, J., Amegah, M., Quansah, R., Arku, R. E., Penn, S. L., Giordano, M. R., Zheng, Z., Jack, D., Chillrud, S., Amegah, K., Subramanian, R., Pinder, R., Appah-Sampong, E., Tetteh, E.
- 765 N., Borketey, M. A., Hughes, A. F., and Westervelt, D. M.: Low-Cost Sensor Performance Intercomparison, Correction Factor Development, and 2+ Years of Ambient PM<sub>2.5</sub> Monitoring in Accra, Ghana, *Environ Sci Technol*, 57, <https://doi.org/10.1021/acs.est.2c09264>, 2023.
- Rueda, E. M., Carter, E., Orange, C. L., Quinn, C., and Volckens, J.: Size-Resolved Field Performance of Low-Cost Sensors for Particulate Matter Air Pollution, *Cite This: Environ. Sci. Technol. Lett*, 10, 247–253, <https://doi.org/10.1021/acs.estlett.3c00030>, 2023.
- 770
- Sayahi, T., Butterfield, A., and Kelly, K. E.: Long-term field evaluation of the Plantower PMS low-cost particulate matter sensors, *Environmental Pollution*, 245, <https://doi.org/10.1016/j.envpol.2018.11.065>, 2019.
- 775
- Searle, N., Kaur, K., and Kelly, K.: Technical note: Identifying a performance change in the Plantower PMS 5003 particulate matter sensor, *J Aerosol Sci*, 174, <https://doi.org/10.1016/j.jaerosci.2023.106256>, 2023.
- Shi, J. Q. and Choi, T.: Gaussian process regression analysis for functional data, <https://doi.org/10.1201/b11038>, 2011.
- 780
- Snyder, E. G., Watkins, T. H., Solomon, P. A., Thoma, E. D., Williams, R. W., Hagler, G. S. W., Shelow, D., Hindin, D. A., Kilaru, V. J., and Preuss, P. W.: The changing paradigm of air pollution monitoring, *Environ Sci Technol*, 47, <https://doi.org/10.1021/es4022602>, 2013.
- 785
- Stavroulas, I., Grivas, G., Michalopoulos, P., Liakakou, E., Bougiatioti, A., Kalkavouras, P., Fameli, K. M., Hatzianastassiou, N., Mihalopoulos, N., and Gerasopoulos, E.: Field evaluation of low-cost PM sensors (Purple Air PA-II) Under variable urban air quality conditions, in Greece, *Atmosphere (Basel)*, 11, <https://doi.org/10.3390/atmos11090926>, 2020.

790 Tryner, J., L'Orange, C., Mehaffy, J., Miller-Lionberg, D., Hofstetter, J. C., Wilson, A., and Volckens, J.: Laboratory  
 evaluation of low-cost PurpleAir PM monitors and in-field correction using co-located portable filter samplers, *Atmos Environ*,  
 220, <https://doi.org/10.1016/j.atmosenv.2019.117067>, 2020.

U.S. Environmental Protection Agency. Understanding Air Pollution in the Southeastern United States, 3 December 2018.  
<https://www.epa.gov/sciencematters/understanding-air-pollution-southeastern-united-states>. Accessed on 06/27/2024.

795 U.S. Environmental Protection Agency: List of designated reference and equivalent methods, Research Triangle Park, NC  
 27711, 2023.

U.S. Environmental Protection Agency. AirNow API. [www.docs.airnowapi.org/Data/query](http://www.docs.airnowapi.org/Data/query). Accessed on 05/26/2023.

800 U.S. Environmental Protection Agency (EPA). Air Quality System (AQS). <https://www.epa.gov/aqs>. Accessed on 05/26/2023.

Wallace, L., Bi, J., Ott, W. R., Sarnat, J., and Liu, Y.: Calibration of low-cost PurpleAir outdoor monitors using an improved  
 method of calculating PM<sub>2.5</sub>, *Atmos Environ*, 256, <https://doi.org/10.1016/j.atmosenv.2021.118432>, 2021.

805 Wallace, L., Zhao, T., and Klepeis, N. E.: Calibration of PurpleAir PA-I and PA-II Monitors Using Daily Mean PM<sub>2.5</sub>  
 Concentrations Measured in California, Washington, and Oregon from 2017 to 2021, <https://doi.org/10.3390/s22134741>, 2022.

Yuan, C. and Yang, H.: Research on K-Value Selection Method of K-Means Clustering Algorithm, *J (Basel)*, 2,  
 810 <https://doi.org/10.3390/j2020016>, 2019.

Zheng, T., Bergin, M. H., Johnson, K. K., Tripathi, S. N., Shirodkar, S., Landis, M. S., Sutaria, R., and Carlson, D. E.: Field  
 evaluation of low-cost particulate matter sensors in high-and low-concentration environments, *Atmos Meas Tech*, 11, 4823–  
 4846, <https://doi.org/10.5194/amt-11-4823-2018>, 2018.

815 Zusman, M., Schumacher, C. S., Gassett, A. J., Spalt, E. W., Austin, E., Larson, T. V., Carvlin, G., Seto, E., Kaufman, J. D.,  
 and Sheppard, L.: Calibration of low-cost particulate matter sensors: Model development for a multi-city epidemiological  
 study, *Environ Int*, 134, <https://doi.org/10.1016/j.envint.2019.105329>, 2020.

**Deleted: References**

Antonopoulos, C.; Gilbride, T.; Margiotta, E.; Kaltreider, C. *Guide to Determining Climate Zone by County: Building America and IECC 2021 Updates*; Richland, WA (United States), 2022. <https://doi.org/10.2172/1893981>.

API PurpleAir. <https://www.api.purpleair.com>. Accessed on 08/23/2023.

AQ-SPEC. <http://www.aqmd.gov/docs/default-source/aq-spec/field-evaluations/purpleair-field-evaluation.pdf>. Accessed on 02/20/2024.

Ardon-Dryer, K.; Dryer, Y.; Williams, J. N.; Moghimi, N. Measurements of PM<sub>2.5</sub> with PurpleAir under Atmospheric Conditions. *Atmos Meas Tech* 2020, 13 (10). <https://doi.org/10.5194/amt-13-5441-2020>.

Baechler, M. C.; Gilbride, T. L.; Cole, P. C.; Hefty, M. G.; Ruiz, K. *Guide to Determining Climate Regions by County*; 2015; Vol. 7.

Barkjohn, K. K.; Gantt, B.; Clements, A. L. Development and Application of a United States-Wide Correction for PM<sub>2.5</sub> Data Collected with the PurpleAir Sensor. *Atmos Meas Tech* 2021, 14 (6). <https://doi.org/10.5194/amt-14-4617-2021>.

Barkjohn, K. K.; Holder, A. L.; Frederiek, S. G.; Clements, A. L. Correction and Accuracy of PurpleAir PM<sub>2.5</sub> Measurements for Extreme Wildfire Smoke. 2022. <https://doi.org/10.3390/s22249669>.

Bi, J.; Wallace, L. A.; Sarnat, J. A.; Liu, Y. Characterizing Outdoor Infiltration and Indoor Contribution of PM<sub>2.5</sub> with Citizen-Based Low-Cost Monitoring Data. *Environmental Pollution* 2021, 276, 116763. <https://doi.org/10.1016/j.envpol.2021.116763>.

Bi, J.; Wildani, A.; Chang, H. H.; Liu, Y. Incorporating Low-Cost Sensor Measurements into High-Resolution PM<sub>2.5</sub> Modeling at a Large Spatial Scale. *Environ Sci Technol* 2020, 54 (4), 2152–2162. <https://doi.org/10.1021/acs.est.9b06046>.

Boehmke, B.; Greenwell, B. *Hands-On Machine Learning with R*; 2019. <https://doi.org/10.1201/9780367816377>.

Brook, R. D.; Rajagopalan, S.; Pope, C. A.; Brook, J. R.; Bhatnagar, A.; Diez-Roux, A. V.; Holguin, F.; Hong, Y.; Luepker, R. V.; Mittleman, M. A.; Peters, A.; Siscovick, D.; Smith, S. C.; Whitsett, L.; Kaufman, J. D. Particulate Matter Air Pollution and Cardiovascular Disease: An Update to the Scientific Statement from the American Heart Association. *Circulation*. 2010. <https://doi.org/10.1161/CIR.0b013e3181d8bece1>.

Carlton, A. G.; Pyc, H. O. T.; Baker, K. R., and Hennigan, C. J. Additional Benefits of Federal Air-Quality Rules: Model Estimates of Controllable Biogenic Secondary Organic Aerosol. *Environ Sci Technol* 2018, 52, 9254–9265. <https://doi.org/10.1021/acs.est.8b01869>.

Carrico, C. M.; Petters, M. D.; Kreidenweis, S. M.; Sullivan, A. P.; McMeeking, G. R.; Levin, E. J. T.; Engling, G.; Malm, W. C.; Collett, J. L. Water Uptake and Chemical Composition of Fresh Aerosols Generated in Open Burning of Biomass. *Atmos Chem Phys* 2010, 10 (11), 5165–5178. <https://doi.org/10.5194/acp-10-5165-2010>.

Carlsaw, D. *worldmet: Import Surface Meteorological Data from NOAA Integrated Surface Database (ISD)*. <https://davidcarslaw.github.io/worldmet/index.html>, <http://davidcarslaw.github.io/worldmet/>.

Charrad, M.; Ghazzali, N.; Boiteau, V.; Niknafs, A. Nblcut: An R Package for Determining the Relevant Number of Clusters in a Data Set. *J Stat Softw* 2014, 61 (6). <https://doi.org/10.18637/jss.v061.i06>.

Chen, L. J.; Ho, Y. H.; Lee, H. C.; Wu, H. C.; Liu, H. M.; Hsieh, H. H.; Huang, Y. Te; Lung, S. C. C. An Open Framework for Participatory PM<sub>2.5</sub> Monitoring in Smart Cities. *IEEE Access* 2017, 5. <https://doi.org/10.1109/ACCESS.2017.2723919>.

▼  
▲  
**Page 16: [1] Deleted      Jennifer Richmond-Bryant      8/10/24 10:00:00 PM**

▼  
▲  
**Page 16: [1] Deleted      Jennifer Richmond-Bryant      8/10/24 10:00:00 PM**

▼  
▲  
**Page 16: [1] Deleted      Jennifer Richmond-Bryant      8/10/24 10:00:00 PM**

▼  
▲  
**Page 16: [2] Deleted      Jennifer Richmond-Bryant      8/10/24 10:03:00 PM**

▼  
▲  
**Page 16: [2] Deleted      Jennifer Richmond-Bryant      8/10/24 10:03:00 PM**

▼  
▲  
**Page 16: [2] Deleted      Jennifer Richmond-Bryant      8/10/24 10:03:00 PM**

▼  
▲  
**Page 16: [2] Deleted      Jennifer Richmond-Bryant      8/10/24 10:03:00 PM**

▼  
▲  
**Page 16: [2] Deleted      Jennifer Richmond-Bryant      8/10/24 10:03:00 PM**

▼  
▲  
**Page 16: [2] Deleted      Jennifer Richmond-Bryant      8/10/24 10:03:00 PM**

▼  
▲  
**Page 16: [2] Deleted      Jennifer Richmond-Bryant      8/10/24 10:03:00 PM**

▼  
▲  
**Page 16: [3] Deleted      Jennifer Richmond-Bryant      8/10/24 10:07:00 PM**

▼  
▲  
**Page 16: [3] Deleted      Jennifer Richmond-Bryant      8/10/24 10:07:00 PM**

▼  
▲  
**Page 16: [3] Deleted      Jennifer Richmond-Bryant      8/10/24 10:07:00 PM**

▼  
▲  
**Page 16: [4] Deleted      Elisabeth Mathieu      8/9/24 1:27:00 PM**

▼  
▲  
**Page 16: [4] Deleted      Elisabeth Mathieu      8/9/24 1:27:00 PM**

▼

▲ Page 16: [4] Deleted Elisabeth Mathieu 8/9/24 1:27:00 PM

▼

▲ Page 16: [5] Deleted Elisabeth Mathieu 8/9/24 1:27:00 PM

▼

▲ Page 16: [5] Deleted Elisabeth Mathieu 8/9/24 1:27:00 PM

▼

▲ Page 16: [5] Deleted Elisabeth Mathieu 8/9/24 1:27:00 PM

▼

▲ Page 16: [6] Deleted Jennifer Richmond-Bryant 8/10/24 10:26:00 PM

▼

▲ Page 16: [6] Deleted Jennifer Richmond-Bryant 8/10/24 10:26:00 PM

▼

▲ Page 16: [6] Deleted Jennifer Richmond-Bryant 8/10/24 10:26:00 PM

▼

▲ Page 16: [6] Deleted Jennifer Richmond-Bryant 8/10/24 10:26:00 PM

▼

▲ Page 16: [6] Deleted Jennifer Richmond-Bryant 8/10/24 10:26:00 PM

▼

▲ Page 16: [6] Deleted Jennifer Richmond-Bryant 8/10/24 10:26:00 PM

▼

▲ Page 16: [6] Deleted Jennifer Richmond-Bryant 8/10/24 10:26:00 PM

▼

▲ Page 16: [6] Deleted Jennifer Richmond-Bryant 8/10/24 10:26:00 PM

▼

▲ Page 16: [7] Deleted Elisabeth Mathieu 8/9/24 1:30:00 PM

▼

▲ Page 16: [7] Deleted Elisabeth Mathieu 8/9/24 1:30:00 PM

▼

▲ Page 16: [8] Formatted Elisabeth Mathieu 8/11/24 6:29:00 AM

▲  
**Page 16: [8] Formatted Elisabeth Mathieu 8/11/24 6:29:00 AM**

Font: 10 pt, Not Bold, Font color: Auto, English (US)

▲  
**Page 27: [9] Deleted Elisabeth Mathieu 8/11/24 2:20:00 PM**

✖