

The Spatial, ~~and~~ Temporal, and Meteorological Impact of the 26 February ~~26~~, 2023, Dust Storm, Increase of ~~on the Meteorological Conditions~~ and Particulate Matter Concentrations Across New Mexico and West Texas

5 Robinson. C. Mary.¹ Schueth Kaitlin.² and Ardon-Dryer Karin.¹

1 Department of Geosciences, Texas Tech University, Lubbock TX, USA 79409.

2 NOAA/National Weather Service, 2579 S Loop 289, Lubbock, Texas 79423 USA

Correspondence to: Karin Ardon-Dryer (karin.ardon-dryer@ttu.edu)

10 **Abstract.** The Southwestern portions of the United States experience dust events frequently due to the arid and semi-arid environments and close proximity to multiple deserts. On 26 February ~~26~~, 2023, a dust event was initiated in New Mexico due to strong winds aloft mixing down to the surface. The dust intensified as it moved eastward into West Texas, and developed
15 ~~turned~~ into a dust storm (visibility < 1 km) ~~in-for~~ multiple locations. This study examined the meteorological characteristics of this dust storm using 21-28 meteorological stations and ~~examines~~ examined the impacts on PM_{2.5} and/or PM₁₀ (particulate matter with an aerodynamic diameter < 10 and 2.5 μm) concentrations using 19 air quality stations. The dust event lasted up to 18-16 hours, ~~and locations experienced~~ dust storm conditions lasted from five minutes up to 65-120 minutes, ~~with even zero visibility~~. The highest wind speed and wind gust recorded during the dust were 27.3 m s⁻¹ and 37 m s⁻¹ respectively. This dust had a strong impact on the air quality in the area, as very high PM values were recorded across the region, and nine of the PM stations exceeded the EPA daily threshold. The maximum hourly PM_{2.5} and PM₁₀ concentrations recorded were 518.4 μg m⁻³ and 9,983 μg m⁻³ respectively. These concentrations at the peak of the dust were an order of magnitude higher than the minimum hourly PM_{2.5} and PM₁₀ concentrations recorded on the dust day. The highest hourly PM₁₀-PM_{2.5} concentration recorded was 759.8 ± 1000.3 μg m⁻³, while the lowest hourly PM_{2.5}/PM₁₀ concentration measured was 0.05 ± 0.01. ~~times higher compared to the background concentrations. For some locations (e.g., Lubbock Texas), these high PM_{2.5} concentrations were the highest ever recorded, highlighting this dust storm the significance of this dust storm.~~

25 1 Introduction

Dust events are a meteorological phenomenon that occurs when dust particles are suspended ~~lifted into~~ the atmosphere by strong winds and reduce visibility. Visibility during dust events ranges s between 1 to 10 km, while dust storms are classified when visibility drops below 1 km (WMO, 2019). Dust events are prominent in arid and semi-arid environments, but can influence other types of environments (Middleton, 2019). The strength of the dust events ~~s~~ is dependent on multiple factors.
30 Strong winds are very important for dust initiation, generally caused by a synoptic or convective meteorological disturbance (Kelley and Ardon-Dryer, 2021). Drought conditions (Arcusa et al., 2020) and vegetation cover (Stout, 2001) are also important factors that contribute to dust initiation.

There are multiple hazards associated with dust events. Lower visibility increases the chances of traffic and aviation accidents (Li et al., 2018; Al Kheder and Al Kandari, 2020; Tong et al., 2023). The blowing dust particles can cause abrasions and damage to crops (Middleton, 2019) and health complications for livestock (Mu et al., 2013). High particulate matter (PM) concentrations can result in poor air quality (Achakulwisut et al., 2017; Ardon-Dryer and Kelley, 2022; Ardon-Dryer et al., 2023a), leading to different health and wellbeing impacts. Exposure to dust particles during dust events can cause significant health problems such as respiratory issues (Toure et al., 2019; Herrera-Molina et al., 2023), cardiovascular issues (Goudarzi et al., 2017), stroke (Schweitzer et al., 2018), toxemia of pregnancy (Bogan et al., 2021), Valley Fever (Tong et al., 2022; Gorris et al., 2023), and even lead to death (Pérez et al., 2008; Malig and Ostro, 2009). Therefore, the United States Environmental Protection Agency (EPA) and the World Health Organization (WHO) have set standards for PM₁₀ and PM_{2.5} (particulate matter with an aerodynamic diameter below 10 and 2.5 μm, respectively) to determine poor air quality conditions. The EPA PM_{2.5} and PM₁₀ daily standards are 35 μg m⁻³ and 150 μg m⁻³, respectively (EPA, 2023), while the WHO updated daily thresholds are 15 μg m⁻³ and 45 μg m⁻³ for PM_{2.5} and PM₁₀, respectively (WHO, 2023).

Dust events and storms occur across the United States (Tong et al., 2023), mainly across the southwestern portions, due to its drier and warmer conditions with low soil moisture from desert regions (Achakulwisut et al., 2017). Among the states, the most susceptible to dust events are Arizona (Nickling and Brazel, 1984; Lei et al., 2016; White et al., 2023), southern California (Bach et al., 1996; Evan, 2019; Huang et al., 2022), Utah (Hahnenberger and Nicoll, 2012; Hennen et al., 2022) and states across the Great Plains, mainly the Southern Great Plains area including New Mexico and Texas (Kandakji et al., 2020; Hennen et al., 2022; Ardon-Dryer et al., 2023b; Robinson and Ardon-Dryer, 2024). The multiple dust sources in the region, mainly cropland, contribute to the high number of dust events (Lee et al., 2012). In a recent study, Robinson and Ardon-Dryer (2024) found an average of 22 dust events annually (between 2000 to 2021) across four dust-prone regions in West Texas. Most of the dust events in the region occur in the spring to early summer months, mainly due to synoptic disturbances, while a smaller percentage of dust events are formed by convective disturbances, and rarely are dust events formed by the combinations of these two disturbances (Robinson and Ardon-Dryer, 2024).

The air quality across West Texas and New Mexico is good overall (Zanobetti and Schwartz, 2009; Kelley et al. 2020). Anthropogenic pollution such as industrial facilities and transportation emissions, which can lead to Ozone, can be found mainly in the two large urban cities of El Paso, Texas, and Albuquerque, New Mexico (Gaffney et al., 1997; Chen et al., 2012; Kavouras et al., 2015; Craig et al., 2020; Karle et al., 2020; Van Pelt et al 2020; Huang et al., 2023). The entire area is impacted by dust events and dust storms which lead to an increase in PM and degradation of the air quality (Tong et al., 2012; Stout, 2015; Herrera-Molina et al., 2021; Kelley and Ardon-Dryer, 2021; Ardon-Dryer et al., 2023b; Albuquerque-Bernalillo County, 2024). In Sunland Park, New Mexico, Li et al. (2005) found during dust events that PM_{2.5} and PM₁₀ hourly concentrations were 170 μg m⁻³ and 2346 μg m⁻³, respectively, while daily averages were 12 ± 8 μg m⁻³ and 68.5 ± 72 μg m⁻³, respectively.

70 Kelley et al. (2020) analyzed PM_{2.5} concentrations in Lubbock, Texas over 17 years (2001 – 2018) and found that the majority of the hourly PM_{2.5} concentrations were lower than 10 µg m⁻³ (80%), but there were several days with high PM including 15 April 2003 and 15 December 2003 that had PM_{2.5} hourly values of 433 and 486 µg m⁻³, respectively. Rivera Rivera et al. (2009) also examined the impact of these two dust storms in El Paso and found on 15 April 2003 hourly PM₁₀ concentrations of 4724 µg m⁻³ with a daily PM₁₀ concentration of 375 µg m⁻³, while the hourly PM₁₀ concentrations on 15 December 2003, was >1200 µg m⁻³. Daily PM₁₀ concentrations on 15 December 2003, for another site in Texas, was >160 µg m⁻³ (Tong et al., 2012). Yin et al. (2005) examined hourly PM_{2.5} and PM₁₀ measurements from different stations across New Mexico and Texas

75 during the same dust storm (15 December 2003). They found hourly PM₁₀ concentrations in New Mexico >700 µg m⁻³, while PM_{2.5} hourly concentrations ranged from 12 up to 36 µg m⁻³ (Yin et al., 2005). Both of these dust storms were caused by synoptic disturbances. In Lubbock Texas, it was found that PM_{2.5} daily concentrations during synoptic dust events had slightly higher PM_{2.5} average concentrations compared to convective dust events. Ardon-Dryer and Kelley (2022) also found that synoptic dust events had higher PM_{2.5} and PM₁₀ daily concentrations compared to convective dust events, but short-term

80 observation (based on 10 minutes) showed that convective have much higher PM concentrations. The impact of PM_{2.5}/PM₁₀ and PM₁₀-PM_{2.5} values during, dust events in the region, were examined but only by a handful of studies. In New Mexico, PM_{2.5}/PM₁₀ values ranged from 0.05 up to 0.58, and the PM_{2.5}/PM₁₀ ratio was extremely low (0.079 up to 0.093) during dust events (Li et al., 2005). Measurements of daily PM_{2.5} and PM₁₀ using multiple Interagency Monitoring of Protected Visual Environments (IMPROVE) stations in New Mexico and Texas also found a significant drop in the PM_{2.5}/PM₁₀ ratio during

85 dust events, with daily means that ranged from 0.22 to 0.24 during dust events (Tong et al., 2012).

The dust storm of 26 February 2023 was one the strongest and significant dust storms that occurred in this region over the last two decades. This study aimed to understand the meteorological conditions that initiated this dust storm and those measured during it using multiple meteorological stations across New Mexico and Texas, capturing its Spatial and Temporal changes.

90 The impact this dust storm had on air quality over the two states was of interest to understand if and how significant its impact on PM concentrations in the region was and to evaluate its similarity to previous dust events in this region.

The southwestern United States is prone to dust events and dust storms. One of the most significant dust storms that have occurred in this region over the last decade occurred on February 26, 2023. This study presents the meteorological conditions that initiated this dust storm and those measured during it, as well as the impact it had on the air quality across New Mexico and West Texas.

95

2. Methods

2.1 Automatic Surface Observation Station (ASOS)

Automatic surface observation systems (ASOS) are meteorological stations located at most airports across the United States that provide meteorological measurements released to the public via Meteorological Aerodrome Reports (METARs). The meteorological measurements include 5-minute to 1-hour measurements of temperature, dew point, relative humidity, wind speed, wind direction, wind gust, pressure, visibility, precipitation, and a Present Weather code. Some stations are continuously monitored by a contracted weather observer while others are mostly automatic (Ardon-Dryer et al., 2023b). The purpose of the weather observer is to back up any instrumentation outages and augment any weather information the ASOS station cannot automatically record. The Present Weather code (entered automatically by the station or manually by the on-duty observer) is an important aspect of the METAR as it provides information on the current weather, such as thunderstorms, fog, hail, and dust events. The classification of the dust event in this study was based on the combination of present weather codes such as BLDU (blowing dust), VCBLDU (vicinity blowing dust), DU (widespread dust), DS (dust storm), and HZ (haze), with the reduction of horizontal visibility (< 10 km) and increase of wind speed (> 6 m s⁻¹); but without precipitation, similar to the method used in ~~Kelley and Ardon-Dryer (2021)~~ and Ardon-Dryer et al. (2023b) and Robinson and Ardon-Dryer (2024). The different present weather codes for dust are defined by the World Meteorological Organization (WMO) and the Federal Aviation Administration (FAA). BLDU represents a case when the dust is present in the atmosphere and visibility drops below 11 km. DU indicates that dust is present and gives distant objects a tan or gray tinge. DS represents when dust drops the visibility to 1 km or less, and VCBLDU refers to that the dust is present within 8 to 16 km away from the station. Each of these codes can only be entered manually by a weather observer (WHO, 2019; FAA,2021). It should be noted that 16.1 km is the maximum visibility that should be reported by the ASOS (ASOS User's Guide, 1998). Many studies have used the present weather codes to identify dust events in this region (Kandakji et al., 2020; Herrera-Molina et al., 2021; Kelley and Ardon-Dryer, 2021; Robinson and Ardon-Dryer, 2024). METAR data from ~~24-28~~ ASOS stations across West Texas and New Mexico were downloaded from the Iowa University Mesonet (Iowa Mesonet, 2023) for February ~~26-27, 2023, from midnight to 23:59~~ ~~local time~~. Table S1 provides information on each of the ASOS stations utilized in this study, while Fig. 1A shows their location. Additional ASOS stations (13 in total) from the region could not be used, since they either had missing measurements or they did not have dust conditions on February 26. It should be noted that there are some limitations to the use of ASOS stations, as there were only four stations with full-time weather observed, while the remaining were semi-/fully automated. In a recent study (Robinson and Ardon-Dryer, 2024), it was found that there could be mistakes in dust identifications. To make sure such will not happen, this study follows the guidance provided by Robinson and Ardon-Dryer (2024) to remove such cases. Another related issue is the fact that the automated stations can stop operating due to outages and in some cases, cannot be backed up, which has happened to some of the stations in this study limiting the ability to use the data. Regardless of these

limitations, the usage of the ASOS with the spatial and temporal coverage allowed examination into the development and movement of the dust event.

130 2.2 Particulate Matter

Hourly concentrations for PM₁₀ and PM_{2.5} from 6 stations across West Texas were taken from the Texas Commission on Environmental Quality (TCEQ, 2023), while hourly PM₁₀ and PM_{2.5} concentrations for 13 stations across New Mexico were taken from the New Mexico Environment Department (New Mexico Environmental Department, 2023) or provided by Mr. Patrick Hudson, a Senior Environment Health scientist for the City of Albuquerque. All of the PM sensors are Federal
135 Equivalent Methods (FEMs). Each FEM instrument had a different resolution depending on the operated unit (See Table S2), some units ranged from 0.1 up to 10,0000 $\mu\text{g m}^{-3}$ (T640, 2024), or -15 up to 10,0000 $\mu\text{g m}^{-3}$ (BAM 1022, 2024), other had an upper limit of 5,0000 $\mu\text{g m}^{-3}$ (R & P Model 2025; EPA, 2024). The PM data included hourly measurements for February ~~26-27, 2023, from midnight to 23:59 local time.~~ Calculations of the daily average were made for each day based on hourly
140 measurements from midnight to 23:00 local time (LT). Table S2 outlines each of the PM sensors used in this study, while Fig. 1B shows the geographical spread of PM sensors. Six stations only measured PM_{2.5} (5ZS, 6Q, C320, C1025, C1014, and C37) concentrations, and four only measured PM₁₀ (6ZK, 6ZL, 6ZM, and 6WM) concentrations, while the remaining nine stations had both PM_{2.5} and PM₁₀ (6CM, Del Norte HS, Foothills, Jefferson, North Valley, San Jose, South Valley, C49, and C41). The majority of the stations across West Texas contain only PM_{2.5} measurements while other locations including El Paso, Texas, and Albuquerque, New Mexico contain both PM_{2.5} and PM₁₀. Calculations of PM_{10-2.5} and PM_{2.5}/PM₁₀ were performed for
145 stations that contained both PM_{2.5} and PM₁₀. Almost all PM sensors had meteorological measurements such as hourly ambient temperature, wind direction, and wind speed. If these variables were not available, meteorological measurements from the nearest ASOS or PM station were used. For example, station 6Q in Las Cruces, New Mexico did not have wind measurements and therefore wind measurements from the closest station (6WM in West Mesa, which is 10.6 km away) were used to supplement the missing data. Additionally, station C320 in Amarillo, Texas did not have wind measurements and therefore
150 wind measurements were taken from the ~~K~~Amarillo (AMA) ASOS station (11.8 km away). Lastly, the San Jose and North Valley (in Albuquerque, New Mexico) stations did not have wind measurements and therefore wind measurements from the South Valley station (5.7 and 5.2 km away, respectively) were used. It should be noted (as shown in Fig. 1B) that there is a wide spatial gap between the PM sensors, as these are the only active sensors in the area. Also, most of the PM sensors in Texas (except those in El Paso) only provide PM_{2.5} meaning the impact of PM₁₀ in West Texas will not be provided in this
155 study.

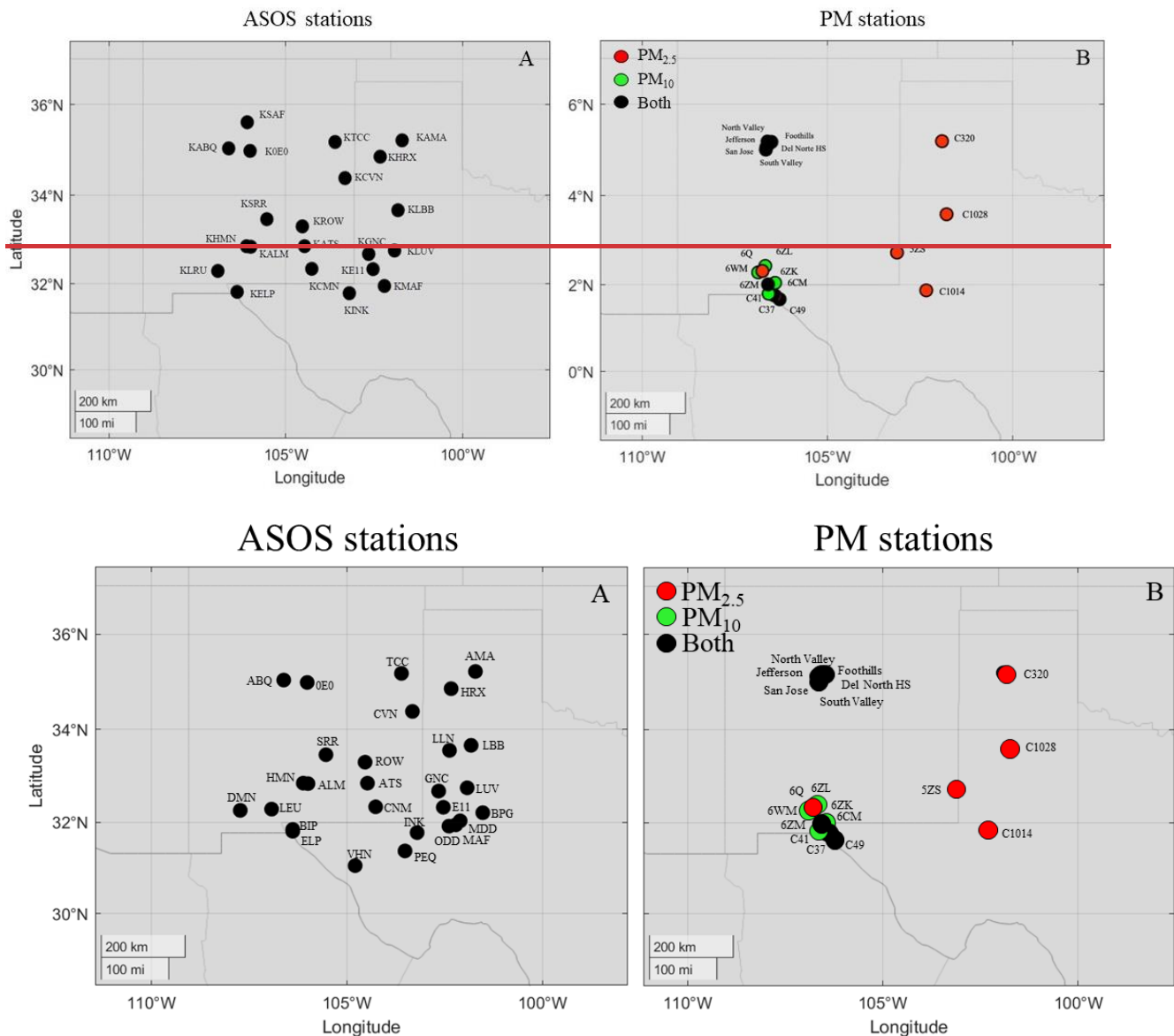


Figure 1. Distribution of ASOS (A) and PM (B) stations spread across New Mexico and West Texas used in this study.

160 2.3 Meteorology Overview Maps

The synoptic maps were made using the North American Rapid Refresh version 3 (RAPv3) with a horizontal grid spacing of 13 km and 51 vertical levels (Benjamin et al., 2016). The RAPv3 was selected to illustrate the meteorology due to its has a one-hour assimilation frequency and ability to provide one of the best forecasts in the rapidly changing atmosphere. with only

165 Only the initialization hours and no forecast were hours used in this study. Each synoptic map was made using the Metpy python package (May et al., 2023), with several meteorological variables layered. The following variables were chosen to analyze the meteorology: geopotential heights (mid-level and surface), wind speed and direction (mid-level and surface), temperatures (mid-level), and dewpoint temperatures (surface).

170 The Geostationary Operational Environmental Satellite (GOES) imagery over eastern North America (GOES-East, also known as GOES-16) encompasses the research area and provides 5-minute updates. The satellite data was pulled from Amazon Web Services and plotted with the GOES-2-Go python package (Blaylock, 2022). The Dust RGB derived satellite product was utilized to highlight the progression of the dust throughout the dust event. The Dust RGB, which consists of band differencing and IR thermal channel, allows dust to be observed through satellite imagery during both the day and night. The density of the dust particles was inferred by the range of the magenta/pink color. This method is commonly used to detect and identify dust events (Fuell et al., 2016; Ardon-Dryer et al., 2023b).

Nexrad WSR-88D radars were also used to visualize thunderstorms and mesoscale boundaries. The data from various radars across the Southern Plains (Lubbock, Midland/Odessa, Amarillo, Clovis, San Angelo, Dyess Air Force Base, and Frederick) was retrieved via Amazon Web Services to plot a mosaic radar image using a Pyart python package (Helmus and Collis, 2016).

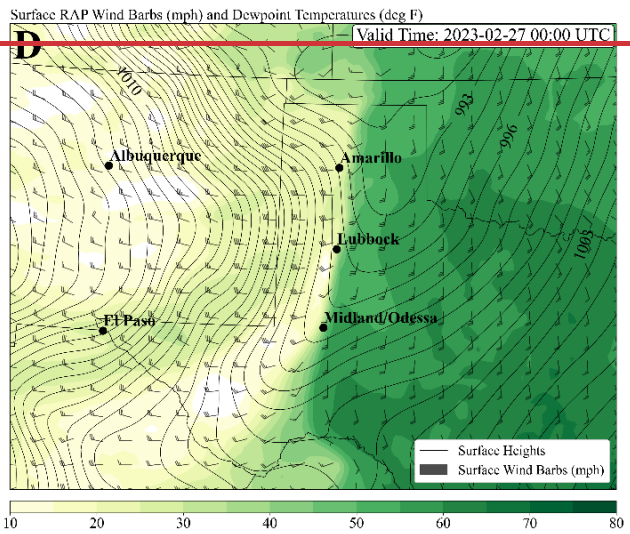
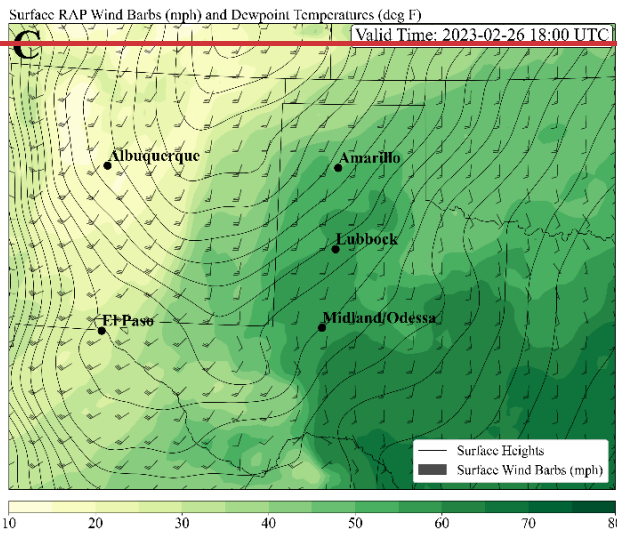
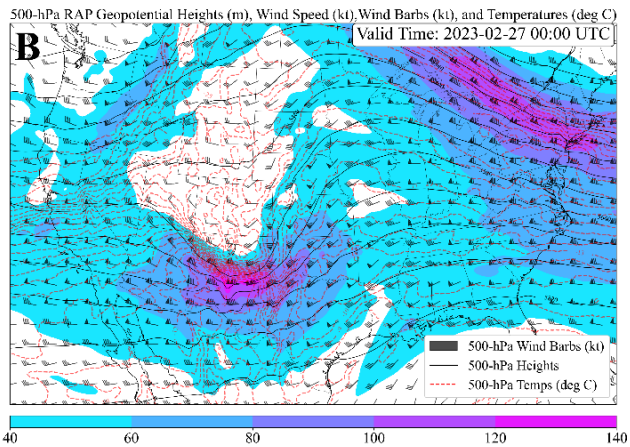
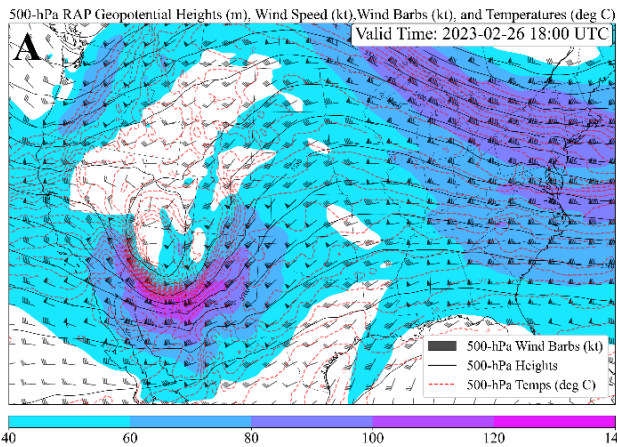
180 **3. Results**

3.1 The Meteorological Conditions Resulted in the Formation of the Dust Storm

185 During the morning and afternoon hours on ~~February 26~~ February, 2023, a robust and slightly negatively tilted 500 mb closed low ejected eastward from Southern California across the Four Corners region of the United States (Fig. 2A). The right exit region (Fig. 2B) of the nearly 51-62 m s⁻¹ (100-120 knot) 500 mb jet streak, associated with the upper low, entered the Chihuahuan Desert region of Mexico, Texas, and New Mexico around early to mid-afternoon (18:00 ~~local time~~ LT; 00:00 UTC). A stacked 700 mb trough axis brought a 31-36 m s⁻¹ (60-70 knot) jet axis over the aforementioned area at the same time (data not shown). In conjunction with the approaching upper low, intense surface cyclogenesis developed along the leeward side of the Rockies before sliding eastward across the Oklahoma Panhandle and then pushing farther northeast into Kansas by midnight. Warm air advection from southerly surface winds led to sufficient daytime heating and mixing of the strong winds aloft to the surface. In addition, the south winds advected low level moisture into the Southern Plains with a weak dryline present and near 40-to-50-degree dewpoints east of the boundary (Fig. 2C). Instability in the atmosphere combined with this boundary led to thunderstorm development across the far southern Texas Panhandle through the afternoon hours (starting around 17:00 ~~local time~~ LT; 23:00 UTC). As the upper level closed low continued to swing eastward through the evening, so did the corresponding north-south extending Pacific cold front. The front eventually caught up with the dryline just east of

195 Lubbock where additional storms initiated along the colliding boundaries as shown in the radar reflectivity (Fig. ~~S13A~~), along with both of the boundaries (dryline and Pacific cold front) at 17:00 Central time for Texas (23:00 UTC). These thunderstorms created very strong wind gusts up to 51 m s^{-1} across West Texas (shown in Fig. ~~S2S1~~).

The south-southwest winds began to increase through the morning hours and into the afternoon, with several severe wind gusts (> 26 m s^{-1}) reported across eastern New Mexico and West Texas. Multiple National Weather Service (NWS) offices across the Southern High Plains and Southern Great Plains highlighted the wind potential through products such as High Wind Warnings and Wind Advisories. As the south-southwest surface winds increased, dust particles began to be lofted and started to cause a reduction in visibility. When the Pacific front began to move eastward across New Mexico, winds began to shift out of the west and continued to exhibit strong to severe wind speeds. Additional dust particles were ~~suspended~~ ~~lifted~~ along the quick moving boundary. Both ~~radar reflectivity and~~ satellite imagery (Fig. S3) ~~and radar reflectivity (Fig. S1)~~ reveal the evolution and intensity of the dust along this front during the afternoon hours across West Texas. One of the biggest factors that made this event an anomaly was the already advected dust across a large area ($\sim 4 \times 10^5 \text{ km}^2$) prior to the frontal passage due to the strong to severe winds from the south-southwest during the morning hours, as shown in Fig. 3B. Some of the locations mentioned throughout this study (e.g., Lubbock, Texas) may experience both synoptic and convective disturbances, which may assist in the duration of high wind gusts along with the severity of dust in the region. The fact that some of the locations had both synoptic and convective disturbances (also known as combinations) is a rare aspect of this region, as only a handful of the dust events were caused by such conditions, for the case of Lubbock Texas, ~15% of the past DS (2000-2021) were caused by a combination of disturbances (Robinson and Ardon-Dryer, 2024).



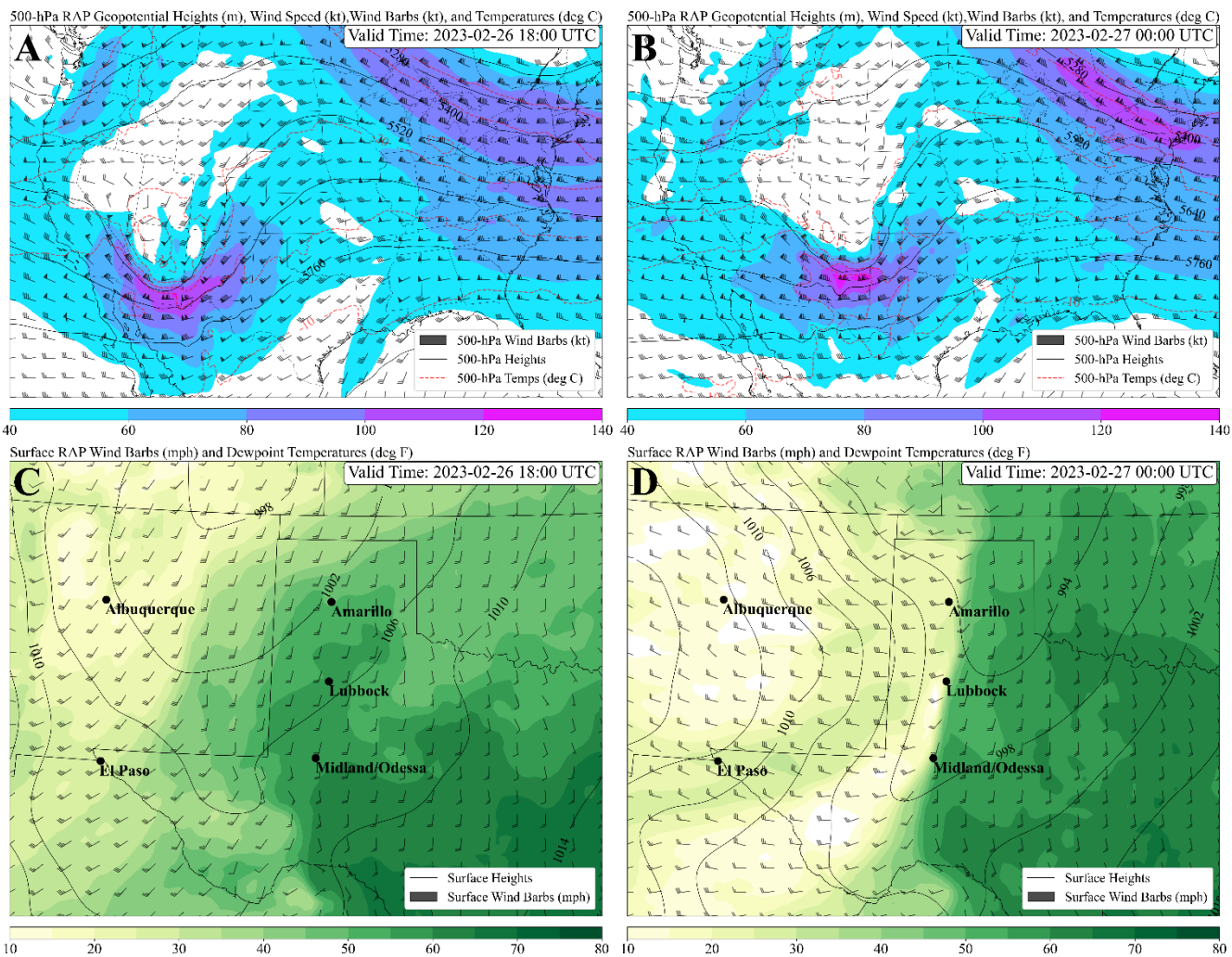
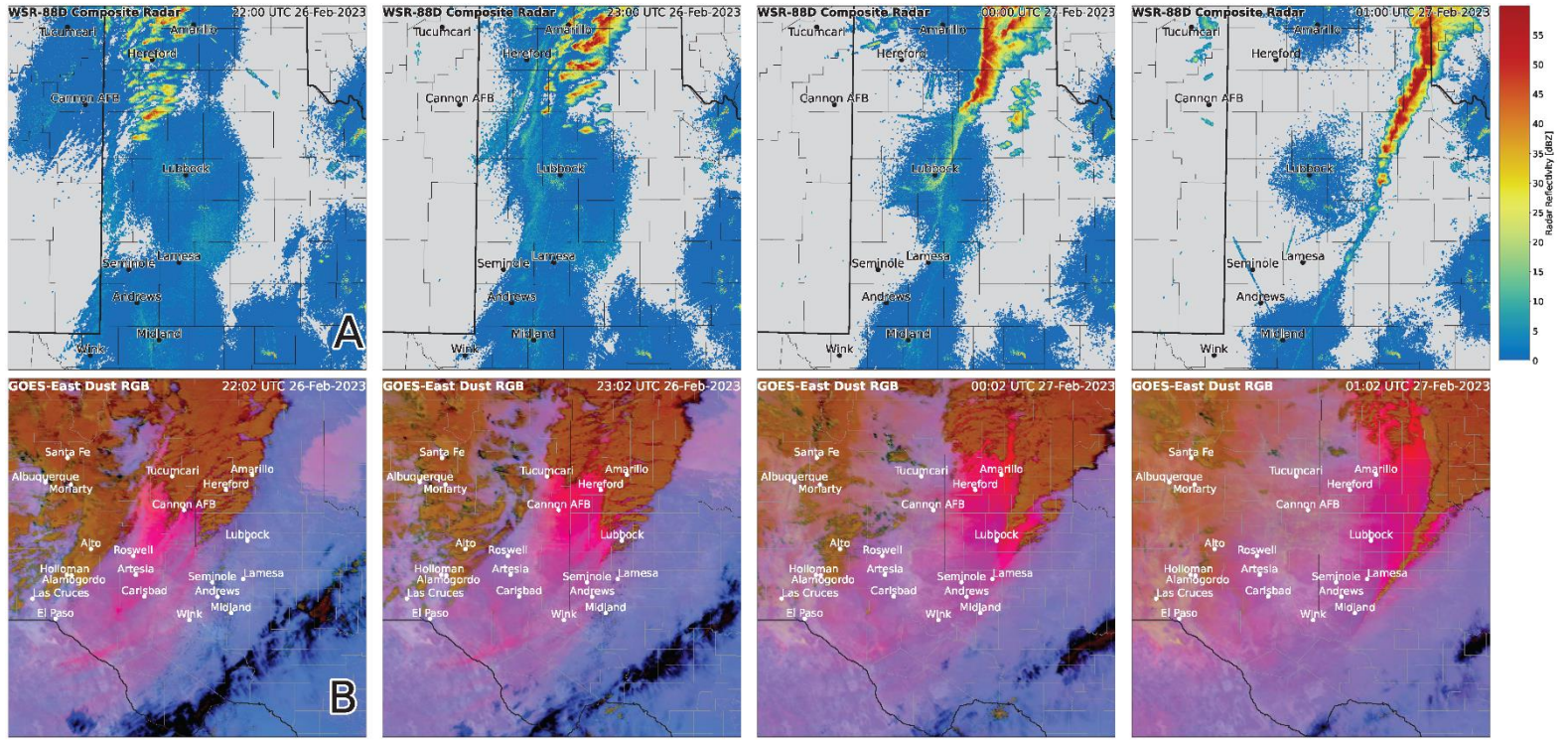


Figure 2. 500 mb geopotential heights (m), wind speed (kt, **shaded**), wind barbs (kt), and temperature ($^{\circ}\text{C}$) for **26 February 2023** at 18:00 UTC, 12:00 central time, **when the dust started** (A) and 27 at 00:00 UTC, 18:00 central time, **when the dust intensified across west Texas** (B) and surface wind barbs (mph) and dew point temperature ($^{\circ}\text{C}$, **shaded**) for February 26 at 18:00 UTC, 12:00 central time (C) and 27 at 00:00 UTC, 18:00 central time (D).

215

220

225



230 **Figure 3. Radar imagery (A) and GOES-East Dust RGB (B) of the dust storm from 26-27 February at four different times (16:00, 17:00, 18:00 and 19:00 central local time; 22:00, 23:00, 00:00 01:00 UTC, respectively).**

3.2 Meteorological Observations During the Dust Storm

Observations of wind speed, wind gust, and visibility were collected from each of the ~~24-28~~ active ASOS units. ASOS units with on-duty observers (such as ~~K~~LBB for Lubbock, ~~K~~ELP for El Paso, and ~~K~~ABQ for Albuquerque) had present weather codes that represent dust (e.g., ~~blowing dust: BLDU, vicinity blowing dust: VCBLDU, and dust storm: DS~~ and ~~SS, Sand Storm~~), while the remaining automated ASOS units had a present weather code of haze (HZ). ~~Some of the stations reported a dust weather code before the visibility was reduced (<10 km), but since this work follows the WMO (2019) dust events definition, these times were not included. The first observation of dust was when the visibility was reduced below 10 km and the end of the dust event was when visibility first exceeded 10 km.~~ Observations of visibility showed that the dust event initiated in New Mexico during the morning hours and was first observed in Texas around noon local time. The first report of dust across New Mexico in the present weather code was in ~~Albuquerque-Deming (KABQDMN)~~ at ~~10:15-00 local time-LT,~~ with ~~BLDU-HZ~~ reported ~~despite and visibility being dropped below > 10 km to 6.4 km.~~ ~~Visibility was reduced to < 10 km at 10:21 local time,~~ making it officially a dust event based on the World Meteorological Organization (WMO, 2019). ~~At 10:21 in Albuquerque (ABQ) visibility reduced to < 10 km at 10:21 LT. According to the WMO (2019), dust events should be defined based on visibility < 10 km; although we determined the duration of the dust based on times when dust particles were present in the air, based on duration when visibility was below 16.1 km (maximum visibilities reported in the ASOS; ASOS User's Guide, 1998). In Texas, the first observations of dust were in El Paso (ELP) at 11:10 LT when the visibility dropped to 8.0 km. The dust moved northeast and reached the West Texas region about an hour later. The last station that had observation of dust was Midland-Odessa (MDD). Despite the strong winds that started in the morning hours, the first reduction of visibility only happened at 18:35 LT. All three Midland-Odessa stations experienced the dust at a later time when the Pacific cold front and dryline moved across the area. The last report of dust was on February 27 at 04:55 LT at the LLN station in Levelland, Texas. The ASOS stations LBB and LUV, which are near LLN, also had reports of dust until after 03:00 LT. The presence of dust at some of the stations (based on duration with visibility <10 km) varies. On average the dust across all stations lasted for 5:36 ± 3:31 hours since some stations experienced dust for short duration, while others for long durations. The station with the shortest duration was MDD where the dust lasted only 80 minutes. For the ASOS in New Mexico, the average duration of dust was 4:07 hours, ranging from 1:40 hours (OE0) up to 6:27 hours (HNM). In Texas, on average the reported dust was 6:42 hours, with the shorter duration in MDD, and the longest duration 15:20 hours in LUV.~~

~~Based on this definition the duration of the dust event across New Mexico lasted from 25 minutes (KSAF in Santa Fe) up to eight hours (KALM in Alamogordo White), while across Texas, it lasted from three hours (KE11 in Andrews) up to 16 hours (KLBB in Lubbock). Calculations of duration based on WMO (2019) criteria when visibility was < 10 km were similar range.~~

Duration ranged from 20 minutes (Santa Fe, New Mexico) up to 13 hours (Lubbock and Lamesa, Texas). The last report of dust was on February 27 at 03:55 local time at the KLBB station in Lubbock, Texas. The durations of the dust events on February 26 varied between stations over many hours from 1:20 hours up to 15:20 hours. Although ~~This overall this~~ dust event lasted ~~much~~ longer than previous dust events reported in the area (Doggett IV et al., 2002; Kelley and Ardon-Dryer, 2021). Shorter dust events were also reported in Arizona (Nickling and Brazel, 1984; Raman et al., 2014; Eagar et al., 2017) and in other locations around the world such as China (Wang et al., 2005; Guan et al., 2015) and Turkmenistan (Orlovsky et al., 2005). Yet, some of the durations reported by other studies were similar to those found in this study. For example, Novlan et al. (2007) found for El Paso that most dust events lasted on average 3–4 hours, and the longest lasted for 24 hours. Robinson and Ardon-Dryer (2024) examined hundreds of dust events across West Texas and found that most of the dust events lasted less than 5 hours, which is around the average duration found in this study. Although many of the dust events were less than 1 hour the longest dust event reported was even longer than the one reported here. Similar duration times have been reported in other locations, for example, in Mongolia, dust events last on average 2-6 hours (Natsagdorj et al., 2003). Yet, long lasting dust events (two days and more) have been reported in other locations around the world such as in the Middle East (Birinci et al., 2023) and Europe (Sorribas et al., 2017). and also compared to those reported in Arizona (Nickling and Brazel, 1984; Raman et al., 2014).

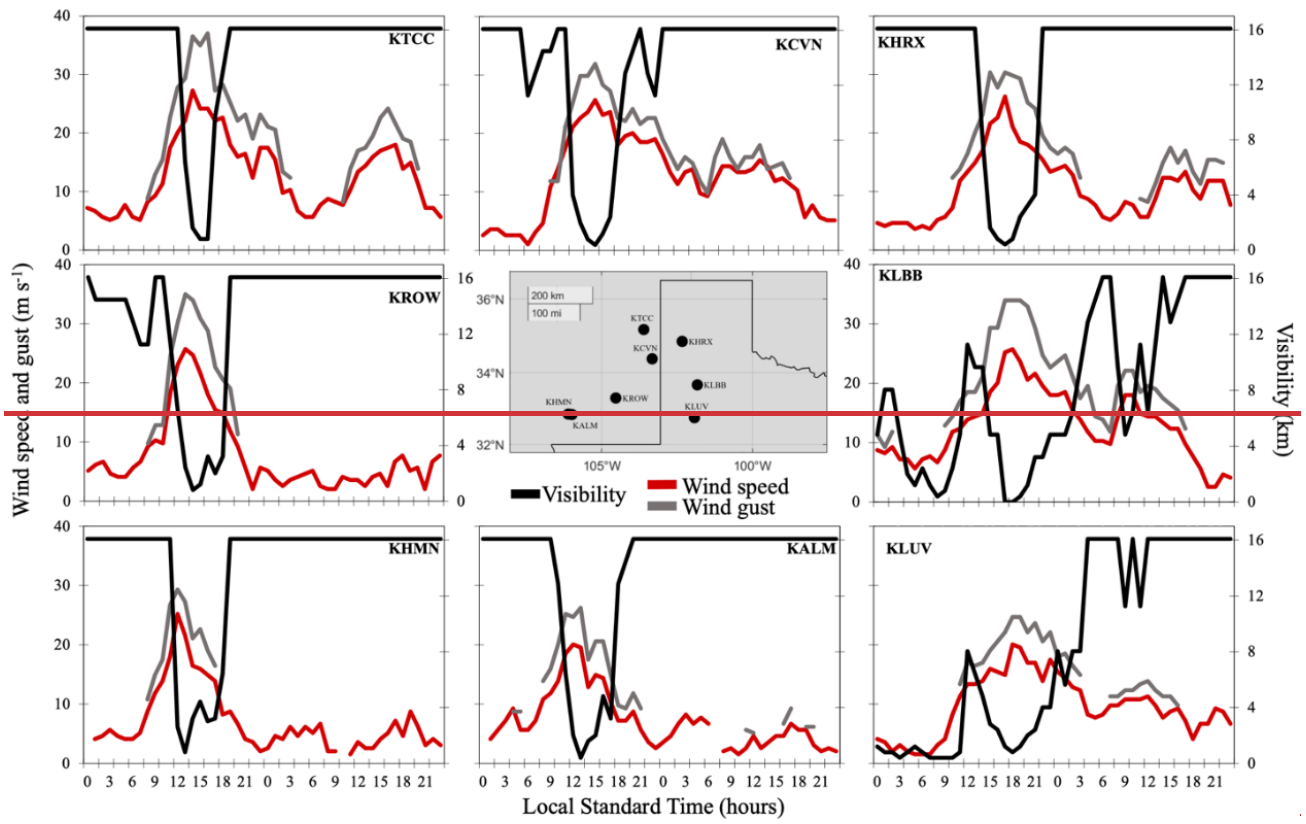
The wind speed measured ~~at the beginning of~~ during the dust event (~~first visibility observation <10 km~~) ranged from ~~9.7~~12.3 m s⁻¹ (~~MAF~~)(~~KHMN at Alamogordo, New Mexico~~) up to 25.2-7 m s⁻¹ (~~K~~SRR at Alto, New Mexico) ~~and with~~ wind gusts measured from 15.4-9 m s⁻¹ (~~KLUV at Lamesa, Texas and KMAF at Midland, Texas~~) up to ~~34~~33.4 m s⁻¹ (~~K~~SRR at Alto, New Mexico). The highest wind speed and wind gust (27.3 m s⁻¹ and 37 m s⁻¹, respectively) ~~were~~ recorded ~~during the dust event was~~ in New Mexico (~~K~~TCC at Tucumcari) ~~at 12:20 local time~~. Calculation of the average wind speed and wind gust for the duration of the dust event was performed for each station. The average wind speed during the duration of the dust events across all the ASOS stations was 16.6 ± 2.4 m s⁻¹, these values vary from 11.9 ± 3.1 m s⁻¹ up to 21.7 ± 1.5 m s⁻¹. The average wind gust reported across all the ASOS stations at the time of the dust was 22.7 ± 2.7 m s⁻¹, these values vary from 16.8 ± 2.6 m s⁻¹ up to 28.9 ± 2.2 m s⁻¹. Information from each ASOS station including duration, maximum wind speed, and wind gust at the beginning and during the dust event can be found in Table S3. ~~These wind speeds and wind gusts measured during the dust events were 3.2 times higher than the average wind speed and wind gust recorded in the month of February 2023 (shown in Table S3). The difference was much stronger for the strongest recorded wind speed and wind gust, up to 5.9 times and 8.3 times (respectively) compared to the month of February. These big differences indicate how strong this dust event was. But looking at the overall meteorological conditions during this month, it seems that there were additional dust events during that month (e.g., February 9 and 22), but were not as strong as the one reported here (data not shown). Perhaps if these dust times would have been removed from the monthly analysis the difference between the meteorological conditions had been stronger.~~

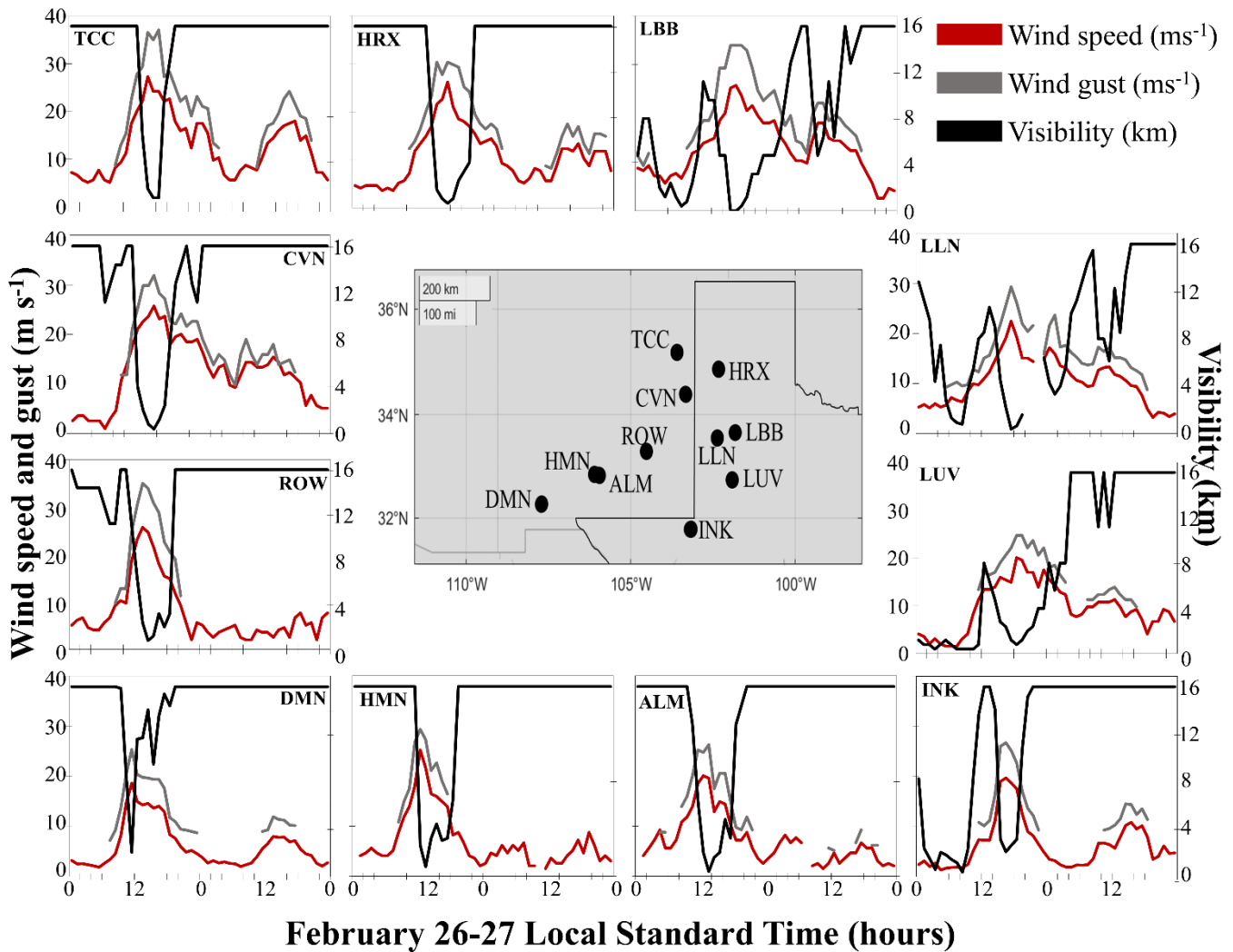
Most of the wind speeds at the beginning of the dust event ($\rightarrow 10.5 \text{ m s}^{-1}$) were above the wind speed reported by Stout and Arimoto (2010) as a threshold for dust to be suspended~~lifted~~. The wind speeds during this event were in the range of wind speeds reported in Hagen and Woodruff (1973) for dust events that occurred in the Great Plains in the 1950s. All ~~21~~-ASOS locations examined; showed wind speed values at the beginning of the dust event that were higher than the wind speed reported by Zobeck and Van Pelt (2006) during the March 2003 dust storms in the region. Similar maximum wind speed values were measured in the area during the ~~15~~ December ~~15~~, 2003, dust storm (Lee et al., 2009). However, much higher wind speeds were measured in the July 2014 dust storm in Phoenix, Arizona (Eagar et al., 2017), perhaps since the one in Arizona was mainly convective.

The reduction of visibility during the dust event varied from station to station, the average visibility for the duration of the dust event was 5.4 ± 1.5 km, with these values varying from 3.2 ± 2.3 up to 9.2 ± 5.4 km. The average of the lowest visibility reported during the dust event was 1.5 ± 1.0 km. Although all the ASOS units in the region experienced dust event conditions, not all experienced ~~conditions of dust storms~~storm conditions (visibility < 1 km), as shown in Table S3. A total of ~~eight~~11 ASOS stations (~~five~~six in New Mexico and ~~three~~five in Texas) reported visibility below 1 km and therefore experienced dust storm conditions. The remaining stations had a reduction in visibility but not below 1 km (shown in Table S3). The visibility values of stations that experienced~~ing~~ dust storm conditions ranged from 0.8 km down to 0 km, as shown in Fig. ~~34~~. The duration of the dust storm conditions (~~when visibility was < 1 km~~) ranged from 5 minutes (~~KROW at Roswell, New Mexico~~INK); up to ~~2:00 hours~~65 minutes (LLNKHRX at Hereford, Texas). The ASOS station in Lubbock, Texas (~~KLBB~~) reported 0 km visibility for a continuous ~~40~~13 minutes, which highlights the severity of this dust storm. It should be noted that several of the West Texas stations that experienced DS conditions (including LBB, LLN, LUV, and INK) had fog conditions in the morning hours of this dust event day, which could explain the low visibility values in the morning hours (Fig. 4). Almost all stations showed a peak wind speed and wind gust at the time of minimum visibility, as shown in Fig. 4. The western stations ~~in~~ (New Mexico) experienced dust storm conditions around noon LT when wind speeds reached their maximum. Meanwhile, the eastern stations (mainly those in West Texas) experienced dust storm conditions in the late afternoon when the front collided with the dryline. Satellite observations from the GOES-16 Dust RGB (shown in Fig. ~~S3B~~) highlight the high concentrations of dust particles during these times. Satellite observations from GOES-16 showed that the dust particles from this dust storm made it to Oklahoma, Kansas, and Arkansas (data not shown). Previous studies also found that dust particles from this region are capable of traveling to neighboring states including Oklahoma (Park et al., 2007; Kandakji et al., 2020) and as far as the northeastern states, even into Canada (Doggett IV et al., 2002; Park et al., 2007) depending on the synoptic setup.

This region of New Mexico and West Texas is prone to dust events (Park et al., 2009; Kandakji et al., 2020; Kelley and Ardon-Dryer, 2021); due to the proximity to the Chihuahuan Desert and many agriculture fields (Rivera Rivera et al., 2009; Lee et al., 2012). Studies found that many of the dust events in this region occur during December – May and more so in the springtime

months (Stout, 2001; Novlan et al., 2007; Rivera Rivera et al., 2009). Severe dust storms have been observed in the past in this region (Lee and Tchakerian, 1995; Lee et al., 2009). Lee et al. (2009) analyzed the 15 December ~~15~~, 2003, dust storm that started in New Mexico and moved eastward through West Texas. The dust storm was caused by an upper low-pressure system that brought in a cold front. During this dust storm, wind gusts in Lubbock, Texas were over 28 m s^{-1} and visibility was reduced to 0.4 km. In El Paso, Texas the minimum visibility reported was 2.8 km and wind gusts reached 23 m s^{-1} (Lee et al., 2009). The DS conditions during the event presented in this work were more severe compared to the DS on 15 December ~~15~~, 2003, presented in Lee et al. (2009). The conditions of the current DS were also stronger (higher maximum wind gust and lower visibility values) than those reported in El Paso during the 15 April ~~15~~, 2003, dust storm (Park et al., 2009; Rivera Rivera et al., 2009). Strong dust storms with similar meteorological conditions have been observed in other locations across the United States, including Arizona (Raman et al., 2014; Kim et al., 2017) and Utah (Nicoll et al., 2020). In Utah, Nicoll et al. (2020) examined a dust storm that occurred on ~~April~~-14-15 April, 2015. An intense intermountain cyclone caused high wind gusts (up to 35 m s^{-1}) and dust storm conditions, with visibility down to 0.4 km. In Arizona, dust storms are common (Lei et al., 2016; Ardon-Dryer et al., 2023b). One of the largest and most famous dust storms recorded in Arizona (near Phoenix and Tucson), occurred on July 5, 2011 (Raman et al., 2014; Vukovic, et al., 2014; Lader et al., 2016). This dust storm developed due to thunderstorms (Lader et al., 2016) and had a peak wind gust of 29 m s^{-1} and visibility of 0 km (Raman et al., 2014; Vukovic, et al., 2014), similar to the conditions presented in this work.





350 **Figure 34.** Observations of wind speed (red) and wind gust (gray) as well as visibility (black) from ASOS stations that experienced dust storm conditions (visibility < 1 km).

3.3 Impact of Dust Storm on PM Concentrations and Air Quality

Nineteen air quality stations were active across the New Mexico and West Texas region during the dust event presented in this study. Each of the PM stations showed an increase in PM values during the dust event, but not all PM stations had a strong impact by the dust event as indicated by the varying hourly PM measurements across the region (Fig. 45). The maximum PM values at the peak of the dust for each station ranged from $13.6 \mu\text{g m}^{-3}$ (Foothills station at-in Albuquerque, New Mexico) up to $518.4 \mu\text{g m}^{-3}$ (station C1028 at-in Lubbock, Texas) for $\text{PM}_{2.5}$ and from $197.5 \mu\text{g m}^{-3}$ (Foothills station at-in Albuquerque,

360 New Mexico) up to 9,983 $\mu\text{g m}^{-3}$ (station 6ZM ~~at-in~~ Desert View, New Mexico) for PM_{10} . Details for each station can be found in Table S4. High PM concentrations during dust storms are common in this area (Ardon-Dryer et al., 2022a,b; Kelley and Ardon-Dryer, 2021), along with other locations across the United States (Hahnenberger and Nicoll, 2012; Lei et al., 2016; Achakulwisut et al., 2017) and around the world (Ardon-Dryer and Levin, 2014; Mamouri et al., 2016; Arhami et al., 2017; [Milford et al., 2020](#)).

365 The duration when dust particles were in the air based on an increase in PM values was similar to the duration based on visibility, mentioned in section 3.2. These durations based on PM values varied, some stations had an increase in PM values for a duration of 2 hours, while others for up to 12 hours. Despite the reduced visibility to 1.6 km during the dust event at the Albuquerque ASOS (~~K~~ABQ), most of the PM stations in the area witnessed a small increase in $\text{PM}_{2.5}$ but a more significant increase in PM_{10} concentrations (as can be seen in Fig. 4-5 and Table S4). A spatial impact of the dust was also observed in Albuquerque, as stations in the southern part of Albuquerque had higher PM concentrations (with a stronger increase) compared to those located in the northern part of Albuquerque. When calculating the increased ratio of PM, which is indicated by the ratio of PM concentrations at the peak of the dust compared to the ~~PM concentrations right~~~~time~~ before the dust, results showed an increase in PM across the region, even across Albuquerque. $\text{PM}_{2.5}$ concentrations during the dust event were on average ~~13.5~~12.8 times higher compared to the time before the dust event (ratios vary from 3.0 up to ~~3936.3-8~~), while ~~for~~ PM_{10} ~~the concentrations~~ during the dust event ~~was-were~~ on average 216.9 times higher compared to before the dust event (ratios vary from 11.3 up to 1426.1). When we examined the same ratio aspect for the lowest PM concentrations recorded on February 26 (shown in Table S4) the differences were much higher, $\text{PM}_{2.5}$ and PM_{10} concentrations at the peak of the dust were higher by more than an order of magnitude (on average) than the minimum daily PM concentration recorded on the same day.

380 Higher hourly $\text{PM}_{2.5}$ concentrations for Lubbock, Texas (518.4 $\mu\text{g m}^{-3}$ at peak of dust) were measured during this dust storm compared to those measured during the past dust storm of 15 December ~~15~~, 2003, when $\text{PM}_{2.5}$ concentrations reached 485.5 $\mu\text{g m}^{-3}$ (Lee et al., 2009; Park et al., 2009). The hourly $\text{PM}_{2.5}$ concentration measured in Lubbock was higher than any hourly $\text{PM}_{2.5}$ concentration recorded over the last 20 years. In El Paso Texas, during the same 15 December 2003 dust events the hourly PM_{10} concentration was $>1200 \mu\text{g m}^{-3}$ (Rivera Rivera et al. 2009), which was higher compared to the hourly PM_{10} concentration measured in El Paso (999.4 $\mu\text{g m}^{-3}$ by station C41) during this dust storm. However, several New Mexico PM stations measured concentrations $>9868 \mu\text{g m}^{-3}$ (PM stations 6ZM and 6ZL). Most of the maximum hourly PM_{10} concentrations in this study were higher compared to the hourly maximum PM_{10} concentration measured during three previous dust events in 2019 in Lubbock, Texas (Ardon-Dryer and Kelley, 2022). Many of the hourly maximum $\text{PM}_{2.5}$ concentrations measured by Ardon-Dryer and Kelley (2022) were higher than the hourly $\text{PM}_{2.5}$ concentrations presented in this study.

390 Observations of hourly $\text{PM}_{2.5}$ and PM_{10} concentrations in this study were in a similar range to PM concentrations ~~in~~for other dust storms measured across the United States. For example, Nicoll et al. (2020) examined a dust storm that occurred across the Great Basin region of Utah in April 2015, where $\text{PM}_{2.5}$ and PM_{10} hourly concentrations reached 297.8 $\mu\text{g m}^{-3}$ and 890 $\mu\text{g m}^{-3}$.

m^{-3} , respectively. Measurements of PM concentrations during various dust storms in Arizona also showed similar values of PM in comparison to the results of this dust event (Raman et al., 2014; Kim et al., 2017). There were some dust events in Arizona with much higher PM hourly concentrations (Eagar et al., 2017; Hyde et al., 2018) compared to this study. For example, Raman et al. (2014) reported high PM values in Phoenix, Arizona during a convective dust event, with hourly maximum $\text{PM}_{2.5}$ and PM_{10} concentrations of $907 \mu\text{g m}^{-3}$ and $1974 \mu\text{g m}^{-3}$, respectively. These different PM values could be attributed to the differences in regions, along with and the cause of the dust event.

~~However, daily values during this dust storm were lower compared to the highest daily record for Lubbock (Kelley et al., 2020). Higher hourly $\text{PM}_{2.5}$ and PM_{10} concentrations were measured in El Paso, Texas during previous dust storms (December 15, 2003, and April 15, 2003) compared to the one presented in this work (Rivera et al., 2009; Park et al., 2009). Observations of $\text{PM}_{2.5}$ and PM_{10} concentrations in this study were in a similar range to PM concentrations in other dust storms measured across the United States. For example, Nicoll et al. (2020) examined a dust storm that occurred across the Great Basin region of Utah in April 2015, where $\text{PM}_{2.5}$ and PM_{10} hourly concentrations reached $297.8 \mu\text{g m}^{-3}$ and $890 \mu\text{g m}^{-3}$, respectively. Measurements of PM concentrations during various dust storms in Arizona also showed similar values of PM in comparison to the results of this dust event (Raman et al., 2014; Kim et al., 2017). There were some dust events in Arizona with much higher PM hourly concentrations (Eagar et al., 2017; Hyde et al., 2018) compared to this study. For example, Raman et al. (2014) reported high PM values in Phoenix Arizona during a convective dust event, with hourly maximum $\text{PM}_{2.5}$ and PM_{10} concentrations of $907 \mu\text{g m}^{-3}$ and $1974 \mu\text{g m}^{-3}$, respectively. These different PM values could be attributed to the differences in regions and the cause of the dust event.~~

Observations of the changes in PM concentrations and wind speed as shown in Fig. 4 indicate ~~indicated on~~ a relationship between the two variables. Some studies found a correlation between wind speed and PM concentrations (Karami et al., 2017; Kim et al., 2017), while others could not find a strong relationship between the two (Kelley and Ardon-Dryer, 2021). Calculations of regression (linear and polynomial) were made based on hourly PM concentrations and wind speeds from the PM stations with measurements from February 26 and showed a low linear correlation for most of the stations (Table S4). For stations that measured $\text{PM}_{2.5}$ concentrations, R^2 values for linear regression were not significant and ranged from 0.01 (North Valley station at Albuquerque, New Mexico) up to 0.47 (station 5ZS at Hobbs, New Mexico, and station C49 at El Paso, Texas). For stations that measure PM_{10} concentrations, R^2 values ranged from 0.3 (Jefferson station at Albuquerque, New Mexico) up to 0.6 (station C49 in El Paso, Texas). Only three PM_{10} stations (station C49 at El Paso, Texas, station 6CM at Anthony, New Mexico, and North Valley station at Albuquerque, New Mexico) had high linear correlation values ($R^2 \geq 0.5$). Other regression models were also examined, to potentially find a better regression value between wind speed and PM values. The Polynomial regression (with 2nd-degree polynomial) presented much higher R^2 values compared to a linear regression. With R^2 values that ranged from 0.37 up to 0.9 for $\text{PM}_{2.5}$ and from 0.18 up to 0.9 for PM_{10} , 73.3% of the $\text{PM}_{2.5}$ stations and 84.6% of the PM_{10} stations had $R^2 \geq 0.5$ (see R^2 values in Table S4).

430 The calculations of PM concentrations during the time of dust were performed for each station. The PM concentrations during the time of dust, which varied per station were on average $69.5 \pm 49.5 \mu\text{g m}^{-3}$ for $\text{PM}_{2.5}$ and $686.3 \pm 689.4 \mu\text{g m}^{-3}$ for PM_{10} . The $\text{PM}_{2.5}$ concentrations during the time of dust ranged from $8.4 \pm 4.0 \mu\text{g m}^{-3}$ in the Foothills station in Albuquerque, New Mexico up to $153.9 \pm 134.7 \mu\text{g m}^{-3}$ at station C1028 in Lubbock, Texas. The PM_{10} concentrations during the time of dust ranged from $104.3 \pm 65.2 \mu\text{g m}^{-3}$ at the Foothills station in Albuquerque, New Mexico up to $2353.7 \pm 3745 \mu\text{g m}^{-3}$ at station 6ZL in Desert View, New Mexico (values for each sensor are shown in Table S4). The $\text{PM}_{2.5}$ and PM_{10} concentrations during the time with dust were 2.0 and 3.3 times lower (for $\text{PM}_{2.5}$ and PM_{10} , respectively) compared to those measured at the peak of the dust. Since EPA and WHO refer to air quality levels based on daily values, daily average concentrations for February 26 were calculated for each of the PM stations (shown in Table S4). The e

435 Calculation of daily values for each station (calculated for February 26 from midnight to 23:00 LT for each sensor) showed a wide range of values. $\text{PM}_{2.5}$ daily concentrations ranged from $3.8 \pm 2.7 \mu\text{g m}^{-3}$ (Foothills station at-in Albuquerque, New Mexico) up to $69.3 \pm 121.3 \mu\text{g m}^{-3}$ (station C1028 at-in Lubbock, Texas), while PM_{10} daily concentrations ranged from $28.1 \pm 42.3 \mu\text{g m}^{-3}$ (Foothills station at-in Albuquerque, New Mexico) up to $748.4 \pm 2089.7 \mu\text{g m}^{-3}$ (station 6ZM at-in Desert View, New Mexico). On average the PM concentrations during the time

440 of the dust were 3.2 times higher compared to the daily concentrations (for both $\text{PM}_{2.5}$ and PM_{10}), the difference ranged from 1.4 to 5.7 for $\text{PM}_{2.5}$ and from 2.0 up to 7.6 for PM_{10} , as shown in Table S4. The concentrations at the peak of the dust were also higher compared to daily values. The peak of the dust had concentrations 6.1 and 10.5 times higher (average for $\text{PM}_{2.5}$ and PM_{10} , respectively) compared to the daily average, the difference ranged from 2.4 (for North Valley) up to 11.7 (for 6CM) for $\text{PM}_{2.5}$ and from 4.0 (for North Valley) up to 21.1 (for San Jose) for PM_{10} . Similar differences of higher PM concentrations

445 at the peak of dust compared to daily values are shown in Hahnenberger and Nicoll (2012) for Utah dust storms when the daily concentrations were 3.8 and 11.5 times lower (for both $\text{PM}_{2.5}$ and PM_{10} , respectively) compared to those measured at the peak of the dust.

450 To examine the impact of the 26 February 2023 dust event on the overall PM concentrations, daily PM concentrations were calculated, for each PM sensor, for each day during February 2023 (shown in Fig. S2). The daily average for February 26 seems high (for most sensors) compared to the other February day's daily average, it also seems to have much higher SD values compared to many of the other days. The lowest impact seems to be in the Albuquerque stations, perhaps since the area is also impacted by anthropogenic pollution. The southern part of New Mexico and many of the stations in West Texas seem to have had a bigger impact on this dust event, as daily values for the dust day (February 26) were on average 12 times higher

455 compared to the overall daily $\text{PM}_{2.5}$ concentrations and 27.5 times higher compared to the PM_{10} daily concentrations. These differences could have been higher, but it seems there were additional pollution events (other dust events, as indicated above) in some of the locations, which increased the daily PM concentration for some days in some of the stations. Observations of daily $\text{PM}_{2.5}$ concentrations from the different Albuquerque PM stations show that the dust was not as strong as it was for other locations such as South New Mexico and West Texas. Next, the monthly $\text{PM}_{2.5}$ and PM_{10} concentrations for the entire February

460 month were calculated (for each sensor), without February 26 PM concentrations (Table S4). The monthly PM_{2.5} and PM₁₀
concentrations were on average 4.0 and 9.3 times lower, for PM_{2.5} and PM₁₀ concentrations respectively, compared to the daily
concentrations measured on February 26. The monthly PM concentrations were 13.6 and 26.7 times lower compared to the
PM_{2.5} and PM₁₀ concentrations (respectively) measured during the time of the dust, and 26.4 and 104.9 times lower (for PM_{2.5}
465 and PM₁₀ concentrations, respectively) compared to the PM concentrations at the peak of the dust. These large differences
between the concentrations of PM_{2.5} and PM₁₀ during the dust to those over the month indicate that while the background PM
across the region might be low (except for Albuquerque) dust events in this region can have a significant impact on both PM_{2.5}
and PM₁₀ concentrations in the region which will impact on the air quality wellbeing and peoples health.

Since EPA and WHO refer to air quality levels based on daily values, the daily concentrations for both PM_{2.5} and PM₁₀ on
470 February 26 were examined and compared to the EPA and WHO daily threshold. Only nine PM stations (three PM_{2.5} and six
PM₁₀) exceeded the EPA daily thresholds (35 µg m⁻³ for PM_{2.5} and 150 µg m⁻³ for PM₁₀), indicated by the red daily average
values in Fig. 45. Five of them were in southern New Mexico (6ZK, 6ZM, 6ZL, 6CM, and 6WM) and the remaining four were
in West Texas (Lubbock, Amarillo, and two in El Paso). The stations ~~whose~~ where PM₁₀ daily values exceeded the EPA daily
threshold ranged from 205.1 ± 320.9 µg m⁻³ (station C49 ~~at-in~~ El Paso, Texas) up to 748.4 ± 2089.7 µg m⁻³ (station 6ZM ~~at-in~~
475 Desert View, New Mexico). PM_{2.5} daily values for stations that exceeded the EPA daily values ranged from 36 ± 39.9 µg m⁻³
(station C320 at Amarillo, Texas) up to 69.3 ± 121.2 µg m⁻³ (station C1028 ~~at-in~~ Lubbock, Texas). Analysis based on the new
WHO thresholds for PM_{2.5} (daily values of 15 µg m⁻³) and PM₁₀ (daily values of 45 µg m⁻³), showed that nine of the PM_{2.5}
stations (60%) and 11 of the PM₁₀ stations (84.6%), were above the WHO thresholds considered these locations experience a
bad air quality level. Many studies use daily average to represent the PM concentration during dust (Tong et al., 2012; Ardon-
480 Dryer and Levin, 2014; Achilleos et al., 2016; Reynolds et al., 2016; Milford et al., 2020), which makes sense when the dust
lasts for many hours or even longer than a day (Krasnov et al., 2016; Sugimoto et al., 2016). However, many of the dust events
across the United States last for only a short period of a few hours or less (Claiborn et al., 2000; Kelley et al., 2020; Joshi,
2021; Robinson and Ardon-Dryer, 2024). As shown in this analysis, and suggested in Ardon-Dryer et al. (2023a), the daily
values underestimate and mask the concentration of both PM_{2.5} and PM₁₀ concentrations. These high hourly concentrations are
485 imported as studies, that used hourly maximum PM concentrations during dust events from this region (El Paso and Lubbock)
found that dust events can lead to significant increases in hospitalizations on the day of dust and the following days. Different
health impacts observed included diseases such as respiratory, asthma, mental, stroke, and many others (Herrera-Molina et al.,
2021; 2024).

490

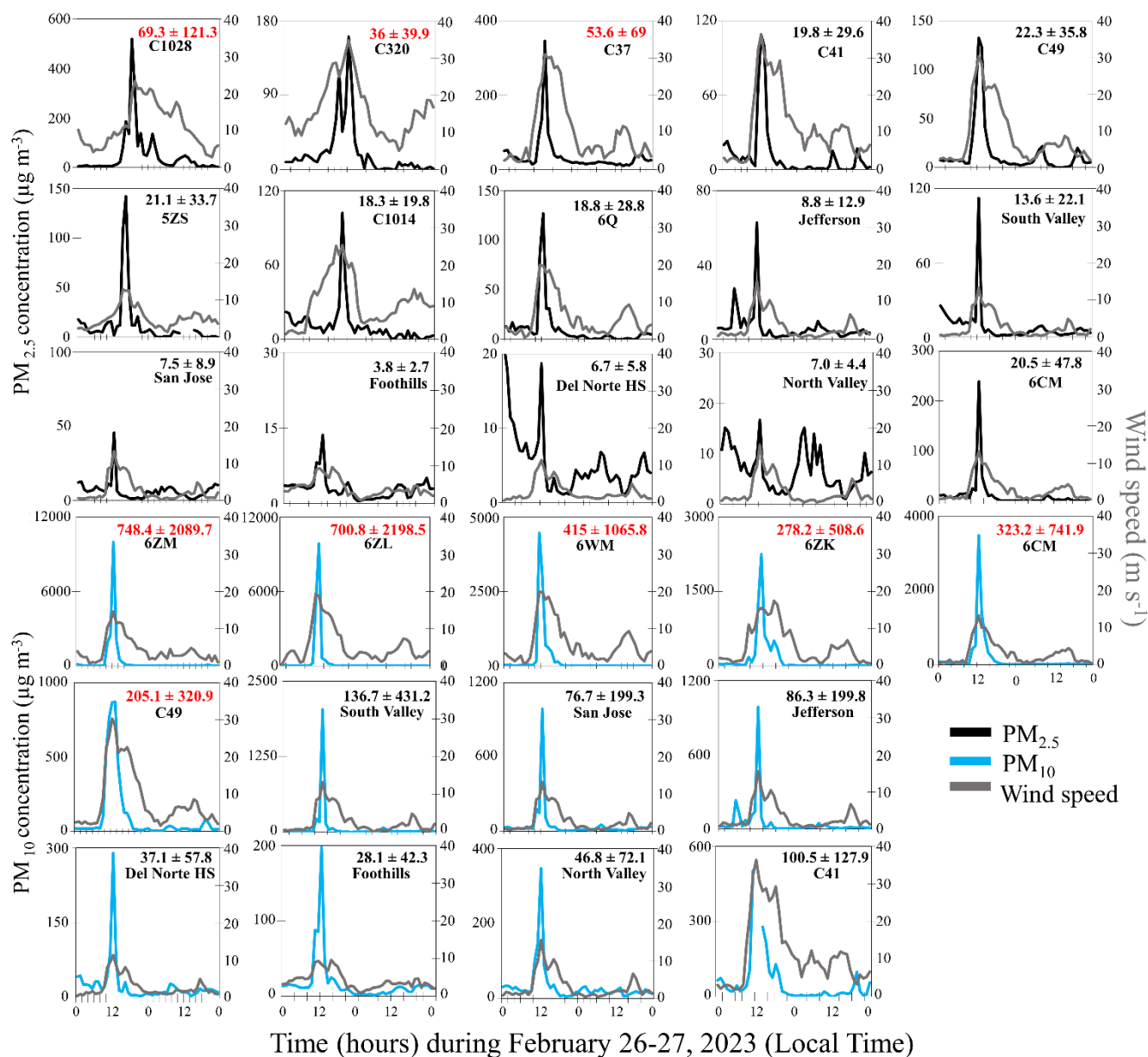


Figure 5. Changes in $PM_{2.5}$ (black) and PM_{10} (blue) with wind speeds (grey) measured during the dust storm. The name of the station and daily average \pm SD values for February 26 are presented in black. Daily average \pm SD values for stations that exceeded the EPA daily standards are presented in red.

Some stations had low PM daily values, even below the EPA daily threshold, but high hourly values were measured during the time of the dust. On average hourly values were 2.9 times higher than the daily average values (shown in Table S4). For example station 5ZS in Hobbs, New Mexico had a $PM_{2.5}$ daily average concentration of $21.1 \pm 33.7 \mu g m^{-3}$, while the

concentrations during the dust were 4.7 times higher (average of $99.7 \pm 57.1 \mu\text{g m}^{-3}$). Station 6Q in Las Cruces, New Mexico had $\text{PM}_{2.5}$ average concentration of $107 \pm 28.3 \mu\text{g m}^{-3}$ which was 5.7 times higher than the daily average value ($18.8 \pm 28.8 \mu\text{g m}^{-3}$). The $\text{PM}_{2.5}$ daily average concentration for C1028 in Lubbock, Texas, was $69.3 \pm 121.3 \mu\text{g m}^{-3}$ while the average concentration during the dust was 2.2 times higher ($153.9 \pm 134.7 \mu\text{g m}^{-3}$). Similar observations were found for PM_{10} stations. For example, the station Jefferson in Albuquerque, New Mexico had a daily PM_{10} concentration of $76.7 \pm 199.3 \mu\text{g m}^{-3}$, while the average concentration during the dust was $332.5 \pm 435.8 \mu\text{g m}^{-3}$, 4.7 times higher. Station 6ZM in Desert View, New Mexico, had PM_{10} daily average concentration of $748.4 \pm 2089.7 \mu\text{g m}^{-3}$, while the average PM_{10} concentration during the dust was 2.3 times higher ($1752.6 \pm 3039 \mu\text{g m}^{-3}$). These examples highlight the fact that daily values might mask the true exposure and perhaps impact dust events might have, perhaps there is a need to find a better way to examine the impact of dust on air quality as suggested in Ardon-Dryer et al. (2023a).

Some studies found a correlation between wind speed and PM concentrations (Karami et al., 2017; Kim et al., 2017), while others could not find a strong relationship between the two (Kelley and Ardon-Dryer., 2021). Comparison of hourly PM concentrations and wind speeds for February 26, showed a low linear correlation for most of the stations (Table S4). For stations that measured $\text{PM}_{2.5}$ concentrations, R^2 values for linear regression ranged from 0.01 (North Valley station at Albuquerque, New Mexico) up to 0.47 (station 5ZS at Hobbs, New Mexico, and station C49 at El Paso, Texas). For stations that measure PM_{10} concentrations, R^2 values ranged from 0.3 (Jefferson station at Albuquerque, New Mexico) up to 0.6 (station C49 at El Paso, Texas). Only three PM_{10} stations (station C49 at El Paso, Texas, station 6CM at Anthony, New Mexico, and North Valley station at Albuquerque, New Mexico) had high linear correlation values ($R^2 \geq 0.5$). Other regression models were also examined, to potentially find a better regression value between wind speed and PM values. A Polynomial regression (with 2nd degree polynomial) presented much higher R^2 values compared to a linear regression. With R^2 values that ranged from 0.37 up to 0.9 for $\text{PM}_{2.5}$ and from 0.18 up to 0.9 for PM_{10} . 73.3% of the $\text{PM}_{2.5}$ stations and 84.6% of the PM_{10} stations had $R^2 \geq 0.5$ (see R^2 values in Table S4).

Next, the impact of this dust event on the presence of coarse particles (PM_{10} - $\text{PM}_{2.5}$) and the ratio between $\text{PM}_{2.5}/\text{PM}_{10}$ was examined. Across the study area, there were only nine stations that measured both $\text{PM}_{2.5}$ and PM_{10} . The majority (six) were in Albuquerque, while the remaining three were around the El Paso area. Calculations of $\text{PM}_{2.5}/\text{PM}_{10}$ and PM_{10} - $\text{PM}_{2.5}$ were made for each sensor for every hour. High PM_{10} - $\text{PM}_{2.5}$ values indicate the presence of coarse dust particles in the air. In Albuquerque, coarse particle concentrations were present in the air for 3-5 hours with concentrations that ranged from 40.9-37 $\mu\text{g m}^{-3}$ up to 2031 $\mu\text{g m}^{-3}$. The south ern part of Albuquerque had a stronger impact by the dust storm as these stations (San Jose, Jefferson, and South Valley) showed higher PM_{10} - $\text{PM}_{2.5}$ values, with maximum values of 922.7 $\mu\text{g m}^{-3}$ up to 2030.9 $\mu\text{g m}^{-3}$ at the peak of the dust. This could explain the small increase of $\text{PM}_{2.5}$ and PM_{10} found for the northern Albuquerque stations, as it seems the dust was not that strong in that area. In the El Paso area, the PM_{10} - $\text{PM}_{2.5}$ values during the dust event had a slightly wider range

from $53 \mu\text{g m}^{-3}$ to $3236 \mu\text{g m}^{-3}$. At the peak of the dust, $\text{PM}_{10}\text{-PM}_{2.5}$ values ranged from $870.5 \mu\text{g m}^{-3}$ to $3236 \mu\text{g m}^{-3}$ (sensor C41 is missing 2 hours of data ~~from~~ during the peak of the dust). The presence of coarse particles in the El Paso area (stations C41, C49, and 6CM) lasted for 8-10 hours, as shown in Fig. S46. Daily $\text{PM}_{10}\text{-PM}_{2.5}$ for February 26 were lower (3.8 up to 7.3 times, average of 5.8) compared to the $\text{PM}_{10}\text{-PM}_{2.5}$ calculated during the time of dust (Table S5). Also, $\text{PM}_{10}\text{-PM}_{2.5}$ at the peak of the dust was 16.6 times higher compared to the daily values. Calculations based on $\text{PM}_{10}\text{-PM}_{2.5}$ for each station for February showed that most stations had a low impact of coarse particles (except for San Jose and 6CM, which had higher monthly $\text{PM}_{10}\text{-PM}_{2.5}$ values, most likely due to the other dust events earlier that month). Both the $\text{PM}_{10}\text{-PM}_{2.5}$ values during the time of dust were higher (3.1 to 18.7 times, 11.9 on average) than the $\text{PM}_{10}\text{-PM}_{2.5}$ monthly values. Even the daily $\text{PM}_{10}\text{-PM}_{2.5}$ averages for February 26 were higher (on average 2.2 times) than the monthly values. The hourly $\text{PM}_{10}\text{-PM}_{2.5}$ values from this study were higher, for most stations, compared to values measured in three different dust events in Lubbock Texas, perhaps because this dust event was stronger (Ardon-Dryer and Kelley, 2022). The $\text{PM}_{10}\text{-PM}_{2.5}$ values were higher than those reported in the Rocky Mountains (Reynold et al., 2016) and Utah (Hahnenberger and Nicoll, 2012). Similar ranges of $\text{PM}_{10}\text{-PM}_{2.5}$ values were measured during dust storms in Israel (Krasnov et al., 2016). The daily values were lower compared to those measured in Israel, although the values at the peak of the dust were in the same range (Ardon-Dryer and Levin, 2014). However, the peak $\text{PM}_{10}\text{-PM}_{2.5}$ values were lower compared to the average $\text{PM}_{10}\text{-PM}_{2.5}$ values measured during multiple dust storms in China (Shao and Mao, 2016). Daily $\text{PM}_{10}\text{-PM}_{2.5}$ values in this dust event (for some of the stations) were in a similar range to those measured by Tong et al (2012), who examined multiple dust events in the same area as the one in this study. Some of the $\text{PM}_{10}\text{-PM}_{2.5}$ values were similar to those measured in past dust events in the region and also in other locations (Alghamdi et al., 2015; Ardon-Dryer and Kelley, 2022).

Observations based on $\text{PM}_{2.5}/\text{PM}_{10}$ were also performed. The $\text{PM}_{2.5}/\text{PM}_{10}$ ratio is an important indicator used to characterize the underlying atmospheric processes within the local environment, which allows for the identification of the source of the particles (Yu and Wang, 2010). Higher $\text{PM}_{2.5}/\text{PM}_{10}$ ratios (> 0.6) are generally associated with anthropogenic pollution, while lower ratios are associated with dust events (Jugder et al., 2014; Sugimoto et al., 2016; Jaafari et al., 2018; Fan et al., 2021; Ardon-Dryer et al., 2022b). $\text{PM}_{2.5}/\text{PM}_{10}$ values across the nine sensors decreased during the dust event mainly between 11:00 to 18:00 local time LT (Fig. S46). $\text{PM}_{2.5}/\text{PM}_{10}$ values across the nine stations ranged from 0.03 to 0.13 with an average of 0.07 ± 0.02 across all stations and times. These ratios were lower than compared to the values reported by Tong et al. (2012), which were 0.22-0.24, for this area combined from with multiple values reported during many other dust events in this area. Since Tong et al. (2012) $\text{PM}_{2.5}/\text{PM}_{10}$ values were based on daily values calculations of daily values for each sensor were made (Table S5). The daily $\text{PM}_{2.5}/\text{PM}_{10}$ values were in the same range (and even slightly higher, 0.24 -0.3) as those in Tong et al. (2012). However, observations of these ratios during the time of dust (which were shorter than the duration of the day, as discussed above) were lower, with the average $\text{PM}_{2.5}/\text{PM}_{10}$ value of 0.07 (values across all stations ranged from 0.05 to 0.09). These values were similar to those measured by Li et al. (2005) during dust events in the El Paso region. The hourly $\text{PM}_{2.5}/\text{PM}_{10}$ values at the peak of the dust were lower compared to those also measured at the peak in multiple dust storms in Utah

(Hahnenberger and Nicoll, 2012; Nicoll et al., 2020). In Washington state, a similar range of daily $PM_{2.5}/PM_{10}$ values ranged ~~were~~ was measured from 0.2 to 0.37 (Claiborn et al., 2000). The daily $PM_{2.5}/PM_{10}$ values were in a similar range to those measured during dust events around the world (Alghamdi et al., 2015; Malaguti et al., 2015; Sugimoto et al., 2016; Jaafari et al., 2018).

570

Observations of the monthly $PM_{2.5}/PM_{10}$ values for February (without the February 26 day, shown in Table S5), ranged from 0.1 ± 0.08 (for 6CM) up to 0.43 ± 0.24 (for C41). Most of the stations had lower monthly values compared to the daily $PM_{2.5}/PM_{10}$ values, some stations had similar values of ~ 1 . The February 26 daily $PM_{2.5}/PM_{10}$ values were on average 3.6 times lower than the monthly values while the $PM_{2.5}/PM_{10}$ values at the peak of the dust were on average 6.2 times lower. The difference was slightly higher when monthly $PM_{2.5}/PM_{10}$ values were calculated without all the other suspected dust events (as mentioned in section 3.2).

575

It seems that in some of the locations, the contribution of coarse particles was more crucial than those of fine particles as shown by the low $PM_{2.5}$ and high PM_{10} concentrations, and by the high $PM_{10}-PM_{2.5}$ values and low $PM_{2.5}/PM_{10}$ ratios (at least for the stations that had measurements for both $PM_{2.5}$ and PM_{10}). However, several of the stations showed higher $PM_{2.5}$ concentrations during the dust events, even 5 times higher (as C1028, in Lubbock). This location and many of the others only contain measurements of $PM_{2.5}$ leading to speculation if the lower contribution for $PM_{2.5}$ would be across the region or just in sites examined (the majority of them were in an urban site). Additional studies are needed during dust events and dust storms across the region to provide measurements for both PM_{10} and $PM_{2.5}$. Additional measurements of particle size distribution are important, as such information will give critical knowledge related to health impact (inhalation of particles into the respiratory system), as well as on radiation and perhaps on cloud formation and precipitation processes.

585

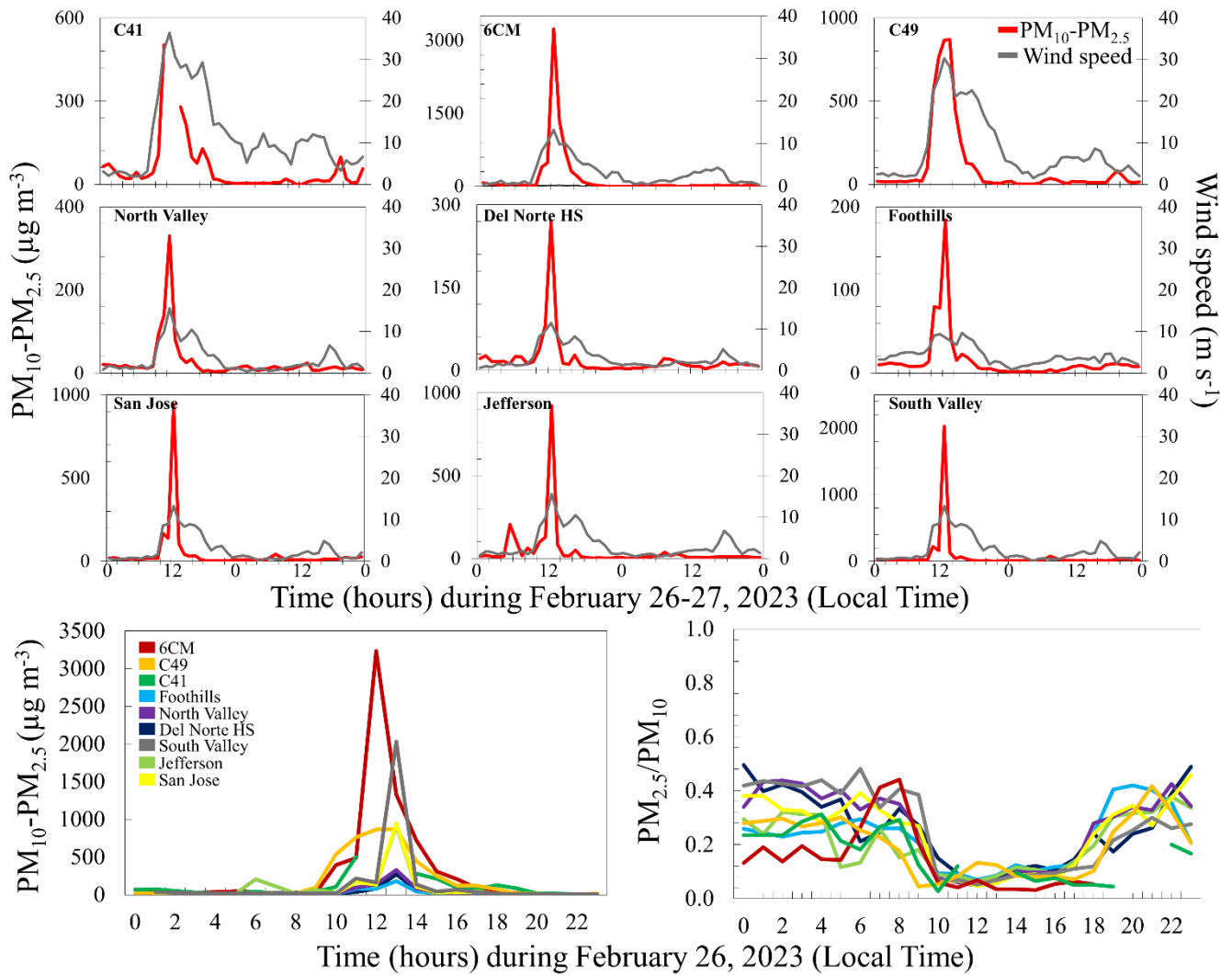


Figure 6. Measurements of $PM_{10-2.5}$ concentrations (in red) and wind speed (in gray) for each station. $PM_{10-PM_{2.5}}$ concentrations and the ratios of $PM_{2.5}/PM_{10}$ from stations, each color represents a different station.

For example, the ratio during a dust event was 0.4 in Taiwan (Tsai et al., 2012), 0.32 in Italy (Malaguti et al., 2015), 0.28 in Saudi Arabia (Alghamdi et al., 2015), and 0.25 in Tehran, Iran (Jaafari et al., 2018). In Washington state, $PM_{2.5}/PM_{10}$ values ranged from 0.2 to 0.37 (Claiborn et al., 2000). These $PM_{2.5}/PM_{10}$ values were higher than those measured during this study's dust storm. Values of $PM_{2.5}/PM_{10}$ below 0.2 have been observed during dust events (Tong et al., 2012; Jaafari et al., 2018). Tong et al. (2012) examined the $PM_{2.5}/PM_{10}$ over multiple sites in the western United States and found the $PM_{2.5}/PM_{10}$ ratio ranged from 0.1 to 0.31. Although some of the $PM_{2.5}/PM_{10}$ values in this study were in that range majority were lower. Perhaps the differences in $PM_{2.5}/PM_{10}$ ratios found in this study were based on the fact that they represented hourly values, while most

of the other studies were based on daily $PM_{2.5}/PM_{10}$ ratios. Calculations of daily $PM_{2.5}/PM_{10}$ values were found to be slightly higher (0.08 to 0.22) and in a similar range to those found in Tong et al. (2012).

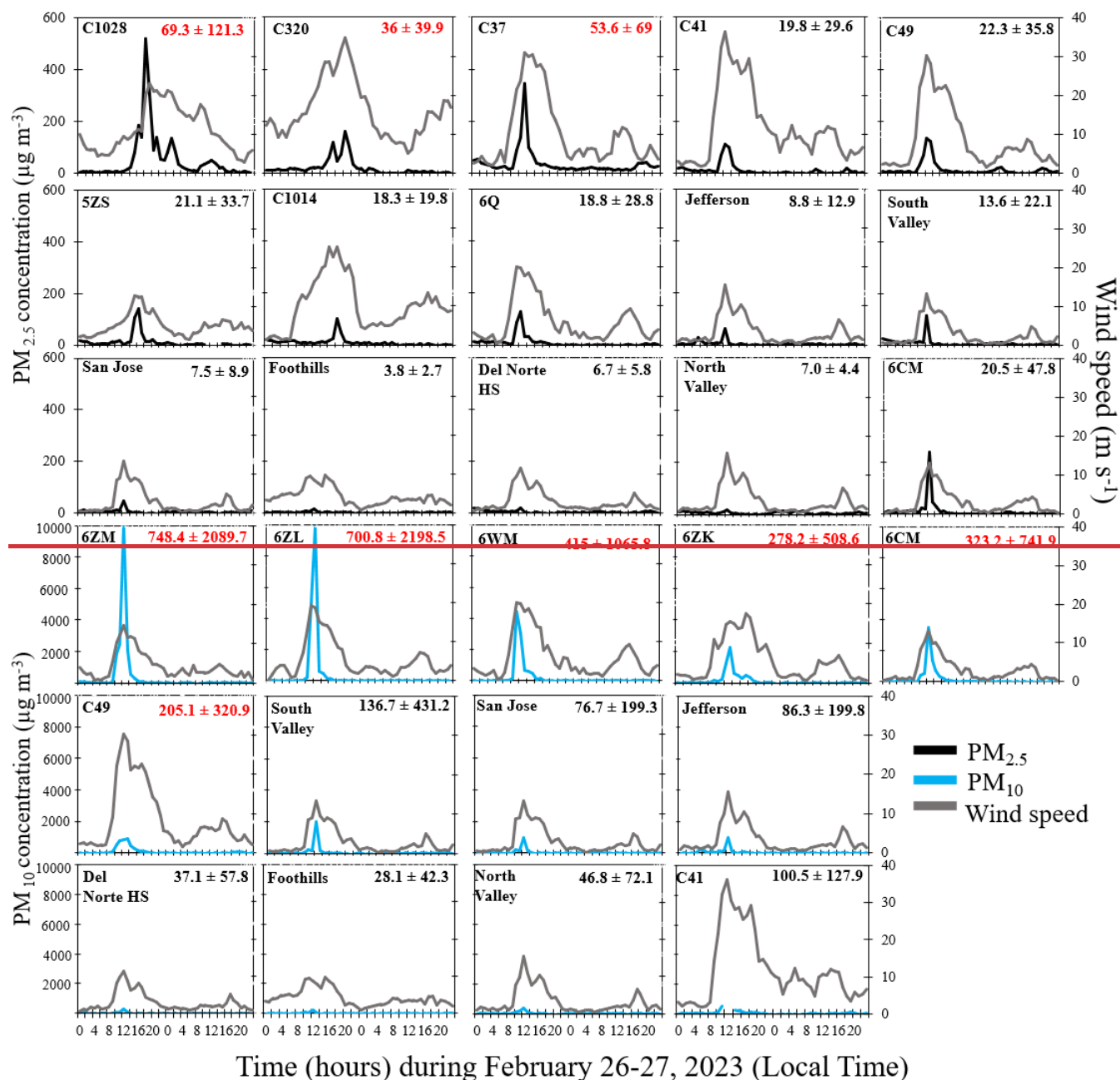


Figure 4. Changes in $PM_{2.5}$ (black) and PM_{10} (blue) with wind speeds (grey) measured during the dust storm. The name of the station and daily average \pm SD values for February 26 are presented in black. Daily average \pm SD values for stations that exceeded the EPA daily standards are presented in red.

4 Conclusion

On ~~26~~ February ~~26~~, 2023, an upper-level low-pressure system with a strong jet streak aided in the mixing of strong winds to the surface, which resulted in the formation of a dust storm over portions of New Mexico and West Texas. The dust first initiated in New Mexico during the morning hours and intensified as it moved eastward into West Texas. The average wind speed at the beginning of the dust storm was 15.6 m s^{-1} and during the dust storm wind speeds reached up to 26.2 m s^{-1} with wind gusts up to 37 m s^{-1} . Visibilities ranged from 4 km down to 0 km defining the event as a dust storm (visibility $< 1 \text{ km}$). ~~Eight~~ 11 ASOS stations reported dust storm conditions for about 5 to ~~65-120~~ minutes. This dust storm had a big impact on the air quality in the area. Daily PM concentrations that exceeded the EPA daily threshold ranged from $36 \pm 39.9 \mu\text{g m}^{-3}$ up to $69.3 \pm 121.3 \mu\text{g m}^{-3}$ for $\text{PM}_{2.5}$ and $205.1 \pm 320.9 \mu\text{g m}^{-3}$ up to $748.4 \pm 2089.7 \mu\text{g m}^{-3}$ for PM_{10} . Nine PM stations exceeded the EPA daily threshold. High hourly $\text{PM}_{2.5}$ and PM_{10} concentrations during the dust storm reached a maximum of $518.4 \mu\text{g m}^{-3}$ and $9983 \mu\text{g m}^{-3}$ respectively. $\text{PM}_{10}\text{-PM}_{2.5}$ at the time of the dust, based on nine stations ranged from $95.9 \pm 61.3 \mu\text{g m}^{-3}$ up to $759.8 \pm 1000.3 \mu\text{g m}^{-3}$, which is approximately 6 times higher than the daily $\text{PM}_{10}\text{-PM}_{2.5}$ values and 12 times higher than than monthly $\text{PM}_{10}\text{-PM}_{2.5}$ values. $\text{PM}_{2.5}/\text{PM}_{10}$ during the dust time, ranged from 0.05 ± 0.01 up to 0.09 ± 0.03 , which were 3.6 times lower than the daily and monthly $\text{PM}_{2.5}/\text{PM}_{10}$ values. Dust particles were present in the air for ~~up to~~ approximately 16 hours impacting millions of citizens across eastern New Mexico and West Texas. In some locations (e.g., Lubbock), this dust storm was the strongest ~~ever~~-reported, as it had the highest $\text{PM}_{2.5}$ concentrations recorded since the station became ~~operational~~ operational in 2001. Perhaps the meteorological conditions that initiated the dust for Lubbock (synoptic with convective) led to these high PM concentrations. Additional studies across the region are needed to understand how meteorological conditions that initiate dust events might impact the PM concentrations, as such information could be critical for prediction purposes which will help alert the public.

Data availability

Automatic surface observation systems (ASOS) are available from the Iowa University Mesonet (Iowa Mesonet, 2023). PM measurements for Texas were retrieved from the Texas Commission on Environmental Quality (TCEQ, 2023), while PM measurements from New Mexico were downloaded from the New Mexico Environment Department (New Mexico Environmental Department, 2023). PM for Albuquerque was provided from Mr. Patrick Hudson, a Senior Environment Health scientist for the city of Albuquerque's air quality program monitoring section. All measurements are available from the authors upon request.

Author contributions

635 KS performed the dust event meteorological overview. MR performed the meteorological data analysis from ASOS and PM analysis. KAD designed the study and coordinated the different aspects of the manuscript. All authors were actively involved in interpreting the results and in discussions on the manuscript.

Competing interests

The contact author has declared that none of the authors has any competing interests.

640 Acknowledgment

This research did not receive any specific grant from funding agencies in the public, commercial, or not-for-profit sectors. The authors would like to thank Texas Tech University for the support of Mary Kelley's scholarship and to Mr. Patrick Hudson a Senior Environment Health scientist from the city of Albuquerque, for providing us with the Albuquerque PM_{2.5}, PM₁₀, and wind speed measurements.

645 References

Achakulwisut, P., Shen, L., and Mickley, L. J.: What controls springtime fine dust variability in the western United States? Investigating the 2002–2015 increase in fine dust in the U.S. Southwest. *J. Geophys. Res.* 122 (12), 449–12,467. <https://doi.org/10.1002/2017JD027208>, 2017.

650 [Achilleos, S., Wolfsona, M.J., Ferguson, S.T., Kanga, C.M., Hadjimitsis, D.G., Hadjicharalambous, G., Achilleos, C., Christodoulou, A., Nisanzi, A., Papoutsas, C., Themistocleous, K., Spyros, S., Perdikou, S., Koutrakis, P.: Spatial variability of fine and coarse particle composition and sources in Cyprus. *Atmos. Res.* 169, 255–270 <https://doi.org/10.1016/j.atmosres.2015.10.005>, 2016.](#)

655 [Albuquerque-Bernalillo County. \(2024\). High Wind Fugitive Dust Mitigation Plan. <https://www.cabq.gov/airquality/regulation-development/abq-bc-fugitive-dust-mitigation-plan-final-draft-1.pdf>, last accessed: July 25, 2024.](#)

Alghamdi, M.A., Almazroui, M., Shamy, M., Redal, M. A., Alkhalaf, A.K., Hussein, M.A., and Khoder, M.I.: Characterization and Elemental Composition of Atmospheric Aerosol Loads during Springtime Dust Storm in Western Saudi Arabia. *Aerosol Air Qual. Res.* 15: 440-453. <https://doi.org/10.4209/aaqr.2014.06.0110>, 2015.

- 660 Al Kheder, S., and Al Kandari, A.: The impact of dust on Kuwait International Airport operations: a case study. *Int. J. Environ. Sci. Technol.* 17, 3467 – 3474, <https://doi.org/10.1007/s13762-020-02710-3>, 2020.
- Arcusa, S. H., McKay, N. P., Carrillo, C. M., and Ault, T. R.: Dust-drought nexus in the southwestern United States: A proxy-model comparison approach. *Paleoceanogr. Paleoclimatol.*, 35, e2020PA004046. <https://doi.org/10.1029/2020PA004046>, 2020.
- 665 Ardon-Dryer, K. and Kelley, M. C.: Particle size distribution and particulate matter concentrations during synoptic and convective dust events in West Texas, *Atmos. Chem. Phys.*, 22, 9161–9173, <https://doi.org/10.5194/acp-22-9161-2022>, 2022.
- Ardon-Dryer, K. and Levin, Z.: Ground-based measurements of immersion freezing in the eastern Mediterranean, *Atmos. Chem. Phys.*, 14, 5217–5231, <https://doi.org/10.5194/acp-14-5217-2014>, 2014.
- 670 Ardon-Dryer, K., Chmielewski, V., Burning E., and Xueting X.: Changes of Electric Field, Aerosol, and Wind Covariance in Different Blowing Dust Days in West Texas, *Aeolian Res.*, 54, 100762, <https://doi.org/10.1016/j.aeolia.2021.100762>, 2022a.
- Ardon-Dryer, K., Kelley, M. C., Xueting, X., and Dryer, Y.: The Aerosol Research Observation Station (AEROS), *Atmos. Meas. Tech.*, 15, 2345–2360, <https://doi.org/10.5194/amt-15-2345-2022>, 2022b.
- 675 Ardon-Dryer, K., Clifford, K. R., and Hand, J. L.: Dust under the radar: Rethinking how to evaluate the impacts of dust events on air quality in the United States. *GeoHealth*, 7, e2023GH000953. <https://doi.org/10.1029/2023GH000953>. 2023a
- Ardon-Dryer, K., Gill, T. E., and Tong, D. Q.: When a dust storm is not a dust storm: Reliability of dust records from the Storm Events Database and implications for geohealth applications. *GeoHealth*, 7, e2022GH000699. <https://doi.org/10.1029/2022GH000699>, 2023b.
- 680 Arhami, M., Hosseini, V., Shahne, M. Z., Bigdeli, M., Lai, A., and Shauer, J. J.: Seasonal trends, chemical speciation and source apportionment of fine PM in Tehran, *J. Atmo. Environ.*, 153, 70-82, <https://doi.org/10.1016/j.atmosenv.2016.12.046>, 2017.
- ASOS (Automatic Surface Observation System) User's Guide: <https://apps.dtic.mil/sti/pdfs/ADA354716.pdf>, Last
685 accessed 11 January 2023, 1998.
- [Bach, A.J., Brazel, A.J. and Lancaster N.: Temporal and spatial aspects of blowing dust in the Mojave and Colorado deserts of Southern California, 1973–1994. *Analytic Serial. Physical Geography.* 17\(4\):329–353. doi:10.1080/02723646.1996.10642589. 1996.](#)
- [BAM 1022, Met One Instruments: BAM 1022 Beta Attenuation Mass Monitor, <https://metone.com/products/bam-1022/>, Last accessed: 25 July 2024.](#)
- 690

Baylock, B. K.: GOES-2-go: Download and display GOES-East and GOES-west data, Github [code], <https://github.com/blaylockbk/goes2go>.

695 Benjamin, S. G., Weygandt, S. S., Brown, J. M., Hu, M., Alexander, C., Smirnova, T. G., Olson, J. B., James, E., Dowell, D. C., Grell, G. A., Lin, H., Peckham, S. E., Smith, T. L., Moninger, W. R., Kenyon, J. S., and Minikan, G. S.: A North American hourly assimilation and model forecast cycle: The rapid refresh, *Mon. Weather Rev.* 144, 1669–1694, <https://doi.org/10.1175/MWR-D-15-0242.1>, 2016.

[Birinci, E., Özdemir, E.T., and Deniz, A.: An investigation of the effects of sand and dust storms in the North East Sahara Desert on Turkish airports and PM10 values: 7 and 8 April, 2013 events, Environ. Monit. Assess., 195, 708, https://doi-org.lib-e2.lib.ttu.edu/10.1007/s10661-023-11288-5, 2023.](https://doi-org.lib-e2.lib.ttu.edu/10.1007/s10661-023-11288-5)

700 Bogan, M., Al, B., Kul, S., Zengin, S., Oktay, M., Sabak, M., Gumusboga, H., and Bayram, H.: The effects of desert dust storms, air pollution, and temperature on morbidity due to spontaneous abortions and toxemia of pregnancy: 5-year analysis. *Int. J. Biometeorol.* <https://doi.org/10.1007/s00484-021-02127-8>, 2021.

705 [Chen, L.W.A., Tropp, R.J., Li, W.W., Zhu, D., Chow, J.C., Watson, J.G. and Zielinska, B.: Aerosol and Air Toxics Exposure in El Paso, Texas: A Pilot Study. Aerosol Air Qual. Res. 12: 169-179. https://doi.org/10.4209/aaqr.2011.10.0169, 2012.](https://doi.org/10.4209/aaqr.2011.10.0169)

Claiborn, C.S., Finn, D., Larson, T.V., and Koenig, J.Q.: Windblown Dust Contributes to High PM_{2.5} Concentrations, *J. Air Waste Manag. Assoc.*, 50:8, 1440-1445, DOI: 10.1080/10473289.2000.10464179, 2000.

710 [Craig, K., Erdakos, G., Chang, S.Y., Baringer, L.: Air quality and source apportionment modeling of year 2017 ozone episodes in Albuquerque/Bernalillo County, New Mexico. J. Air Waste Manage. Assoc. 70, 1101–1120, 2020.](https://doi.org/10.1080/10473289.2020.1811101)

Doggett IV, A. L., Gill, T. E., Peterson, R. E., Bory, A. J.-M., and Biscaye, P. E.: Meteorological characteristics of a severe wind and dust emission event; Southwestern USA 6-7 April 2001, 21st AMS Conference on Severe Local Storms, August, American Meteorological Society, Boston, MA, San Antonio, TX, 2002.

715 Eagar, J., Herckes, P., and Hartnett, H.: The characterization of haboobs and the deposition of dust in Tempe, Arizona from 2005 to 2014, *Aeol. Res.*, 24, 81-91, <https://doi.org/10.1016/j.aeolia.2016.11.004>, 2017.

EPA NAAQS Table: <https://www.epa.gov/criteria-air-pollutants/naaqs-table>, last access: 30 ~~December~~, December 2023.

720 [EPA.: Sampling Methods for PM2.5 Speciation parameters. https://aq5.epa.gov/aqsweb/documents/codetables/methods_speciation.html, Last accessed: 25 July 2024.](https://aq5.epa.gov/aqsweb/documents/codetables/methods_speciation.html)

Evan, A. T.: Downslope Winds and Dust Storms in the Salton Basin. Mon. Wea. Rev., 147, 2387–2402. <https://doi.org/10.1175/MWR-D-18-0357.1>, 2019.

FAA.: Air traffic organization policy JO 7900.5E. https://www.faa.gov/documentLibrary/media/Order/Order_JO_7900.5E.pdf, last accessed 10 May 2021.

725 Fan, H., Zhao, C., Yang, Y., and Yang, X.: Spatio-Temporal Variations of the PM_{2.5}/PM₁₀ Ratios and Its Application to Air Pollution Type Classification in China. *Front. Environ. Sci.* 9:692440. doi: 10.3389/fenvs.2021.692440, 2021.

Fuell, K. K., Guyer, B. J., Kann, D., Molthan, A. L., and Elmer, N.: Next generation satellite RGB dust imagery leads to operational changes at NWS Albuquerque. *J. Operational Meteor.*, 4 (6), 75, 91, doi: <http://dx.doi.org/10.15191/nwajom.2016.0406>, 2016.

730

Gaffney, J. S., Marley, N. A., Martin, R. S., Dixon, R. W., Reyes, L. G., Popp, C. J.: Potential Air Quality Effects of Using Ethanol–Gasoline Fuel Blends: A Field Study in Albuquerque, New Mexico. *Environ. Sci. Technol.* 31 (11), 3053–3061. DOI: 10.1021/es9610388, 1997.

735

Gorris, M.E., Ardon-Dryer, K., Campuzano, A., Castañón-Olivares, L.R, Gill, T.E., Greene, A., Hung, C-Y., Kaufeld KA., Lacy, M., and Sánchez-Paredes, E.: Advocating for coccidioidomycosis as a nationally reportable disease in the United States and encouraging disease surveillance across North and South America, *J. Fungi*, 9, 83. <https://doi.org/10.3390/jof9010083>, 2023.

740

Goudarzi, G., Daryanoosh, S. M., Gidini, H., Hopke, P. K., Sicard, P., De Marco, A., Rad, H.D., Harbizadeh, A., Jahedi, F., Mohammadi, M. J., Savari, J., Sadeghi, S., Kaabi, Z., and Omidi Khaniabadi, O.: Health risk assessment of exposure to the Middle-Eastern Dust storms in the Iranian megacity of Kermanshah. *J. Pub Health.*, 148, 109–116, <http://dx.doi.org/10.1016/j.puhe.2017.03.009>, 2017.

Guan, Q., Yang, J., Zhao, S., Pan, B., Liu, C., Zhang, D., and Wu, T.: Climatological analysis of dust storms in the area surrounding the Tengger Desert during 1960–2007, *Clim. Dynam.*, 45, 903–913, <https://doi.org/10.1007/s00382-014-2321-3>, 2015.

745

Hagen, L. J. and Woodruff, N. P.: Air Pollution from Duststorms in the Great Plains, *J. Atmo. Environ.*, 7, 323–332, 1973.

Hahnenberger, M., and Nicoll, K.: Meteorological Characteristics of Dust Storm Events in the Eastern Great Basin of Utah, U.S.A. *Atmos. Environ.*, 60, 601–12, <https://doi.org/10.1016/j.atmosenv.2012.06.029>, 2012.

750

Helmus, J. J., and Collis, S. M.: The Python ARM Radar Toolkit (Py-ART), a library for working with weather radar data in the Python programming language. United States: N. p., Web. doi:10.5334/jors.119, 2016.

- Hennen, M., Chappell, A., Edwards, B.L., Faist, A.M., Kandakji, T., Baddock, M.C., Wheeler, B., Tyree, G., Treminio, R., Webb, N.P.: A North American dust emission climatology (2001– 2020) calibrated to dust point sources from satellite observations. *Aeolian Res.* 100766 <https://doi.org/10.1016/j.aeolia.2021.100766>, 2022.
- 755 [Herrera-Molina, E., Gill, T.E., Ibarra-Mejia, G., Jeon, S.: Associations between dust exposure and hospitalizations in El Paso, Texas, USA. *Atmos.* 12 \(11\), 1413. <https://doi.org/10.3390/atmos12111413>, 2021.](#)
- Herrera-Molina, E. Gill, T.E., Ibarra-Mejia, G. Jeon, S. and Ardon-Dryer, K. Associations Between Dust Exposure and Hospitalizations in a dust-prone city, Lubbock, Texas, USA, *Air Qual. Atmos. Health*, <https://doi.org/10.1007/s11869-023-01489-9>. 2023/2024.
- 760 [Huang, H., Qian, Y., Liu, Y., He, C., Zheng, J., Zhang, Z., and Gkikas, A.: Where does the dust deposited over the Sierra Nevada snow come from?, *Atmos. Chem. Phys.*, 22, 15469–15488, <https://doi.org/10.5194/acp-22-15469-2022>, 2022.](#)
- [Huang, Y., Gong, X., Liu, L. et al. Maternal exposure to metal components of PM_{2.5} and low birth weight in New Mexico, USA. *Environ Sci Pollut Res* 30, 98526–98535, <https://doi.org/10.1007/s11356-023-29291-1>, 2023.](#)
- 765 Hyde, P., Alex Mahalov, A., and Li, J.: Simulating the meteorology and PM10 concentrations in Arizona dust storms using the Weather Research and Forecasting model with Chemistry (Wrf-Chem), *J. Air –Waste Manag. Assoc.*, 68:3, 177-195, DOI: 10.1080/10962247.2017.1357662, 2018.
- Iowa State University Iowa Environmental Mesonet (IEM) ASOS-AWOS-METAR Data Download: https://www.mesonet.agron.iastate.edu/request/download.phtml?network=TX_ASOS, last accessed: 30
- 770 December 2023.
- Jaafari, J., Naddafi, K., Yunesian, M., Nabizadeh, R., Hassanvand, M. S., Ghozikali, M. G., Nazmara, S., Shamsollahi, H. R and Yaghmaeian, K.: Study of PM10, PM2.5, and PM1 levels in during dust storms and local air pollution events in urban and rural sites in Tehran, *Hum. Ecol. Risk Assess.*, 24:2, 482-493, DOI: 10.1080/10807039.2017.1389608, 2018.
- 775 [Joshi, J. R.: Quantifying the impact of cropland wind erosion on air quality: A high-resolution modelling case study of an Arizona dust storm, *Atmos. Environ.*, 263, 118658, <https://doi.org/10.1016/j.atmosenv.2021.118658>, 2021.](#)
- Jugder, D., Shinoda, M., Kimura, R., Batbold, A., and Amarjargal, D.: Quantitative analysis on windblown dust concentrations of PM₁₀ (PM_{2.5}) during dust events in Mongolia. *Aeolian Res.* 14, 3–13, <https://doi.org/10.1016/j.aeolia.2014.04.005>, 2014.
- 780

- Kandakji, T., Gill, T. E., and Lee, J. A.: Identifying and characterizing dust point sources in the southwestern United States using remote sensing and GIS. *Geomorphology*, 353, 107019. <https://doi.org/10.1016/j.geomorph.2019.107019>, 2020.
- 785 Karami, S., Ranjbar, A., Mohebalhojeh, A. R., and Moradi, M.: A rare case of haboob in Tehran: Observational and Numerical study, *J. Atmo. Res.*, 185, 169-185, <https://doi.org/10.1016/j.atmosres.2016.10.010>, 2017.
- [Karle, N.N.; Mahmud, S.; Sakai, R.K.; Fitzgerald, R.M.; Morris, V.R.; Stockwell, W.R. Investigation of the Successive Ozone Episodes in the El Paso–Juarez Region in the Summer of 2017. *Atmosphere*, 11, 532. https://doi.org/10.3390/atmos11050532, 2020.](https://doi.org/10.3390/atmos11050532)
- 790 [Kavouras, I.G., DuBois, D.W., Nikolich, G. and Etyemezian, V.: Monitoring, Source Identification and Health Risks of Air Toxics in Albuquerque, New Mexico, U.S.A.. *Aerosol Air Qual. Res.* 15: 556-571. https://doi.org/10.4209/aaqr.2014.04.0075,2020.](https://doi.org/10.4209/aaqr.2014.04.0075)
- Kelley, M.C., Brown, M.M., Fedler, C.B., and Ardon-Dryer, K.: Long-term measurements of PM 2.5 concentrations in Lubbock, Texas. *Aerosol and Air Qual. Res.* 20, 1306–1318. <https://doi.org/10.4209/aaqr.2019.09.0469>, 2020.
- 795 Kelley, M.C., and Ardon-Dryer, K., Analyzing Two Decades of Dust Events on the Southern Great Plains Region of West Texas, *Atmos. Pollut. Res.*, 101091, <https://doi.org/10.1016/j.apr.2021.101091>, 2021.
- Kim, D., Chin, M., Kemp, E. M., Tao, Z., Peters-Lidard, C. D., and Ginoux, P.: Development of high-resolution dynamic dust source function – A case study with a strong dust storm in a regional model, *J. Atmo. Environ.*, 159, 11-25, <http://dx.doi.org/10.1016/j.atmosenv.2017.03.045>, 2017.
- 800 [Krasnov, H., Kloog, I., Friger, M. and Katra I.: The Spatio-Temporal Distribution of Particulate Matter during Natural Dust Episodes at an Urban Scale. *PLoS One*. 11\(8\), e0160800. https://doi:10.1371/journal.pone.0160800, 2016.](https://doi.org/10.1371/journal.pone.0160800)
- Lader G, Raman A, Davis JT, and Waters, K.: Blowing dust and dust storms: one of Arizona’s most underrated weather hazards. NOAA tech Memor NWS-WR-290, 2016.
- 805 Lee, J. A. and Tchakerian, V. P.: Magnitude and Frequency of Blowing Dust on the Southern High Plains of the United States, 1947–1989, *Ann. Am. Assoc. Geogr.*, 85:4, 684-693, 10.1111/j.1467-8306.1995.tb01820.x, 1995.
- Lee, J., Gill, T., Mulligan, K., Acosta, M., and Perez, A.: Land use/land cover and point sources of the 15 December 2003 dust storm in southwestern North America. *Geomorphology*, 105 (1-2), 18-27, <https://doi.org/10.1016/j.geomorph.2007.12.016>, 2009.
- 810

- Lee, J., Baddock, M., Mbuh, M., and Gill, T.: Geomorphic and land cover characteristics of Aeolian dust storces in West Texas and eastern New Mexico, USA. *Aeol. Res.*, 3(4) 459-466. <https://doi.org/10.1016/j.aeolia.2011.08.001>, 2012.
- 815 Lei, H., Wang, J.X.L., Tong, D.Q., and Lee, P.: Merged dust climatology in Phoenix, Arizona based on satellite and station data. *Clim Dyn* **47**, 2785–2799. <https://doi.org/10.1007/s00382-016-2997-7>, 2016.
- Li, J., T. Kandakji, J. A. Lee, J. Tatarko, J. Blackwell, T. E. Gill, and Collins, J. D.: Blowing Dust and Highway Safety in the Southwestern United States: Characteristics of Dust Emission “Hotspots” and Management Implications. *Sci. Total Environ.*, 621, 1023–32, <https://doi.org/10.1016/j.scitotenv.2017.10.124>, 2018.
- 820 [Li, W-W., Cardenas, N., Walton, J., Trujillo, D., and Morales, H.: PM Source Identification at Sunland Park, New Mexico, Using a Simple Heuristic Metrological and Chemical Analysis, *J. Air Waste Manage. Assoc.* **55**, 352-364, <https://doi.org/10.1080/10473289.2005.10464623>, 2005.](https://doi.org/10.1080/10473289.2005.10464623)
- Malaguti, A., Mircea, M., La Torretta, T.M., Telloli, C., Petralia, E., Stracquadano, M. and Berico, M.: Chemical Composition of Fine and Coarse Aerosol Particles in the Central Mediterranean Area during Dust and Non-Dust Conditions. *Aerosol Air Qual. Res.* 15: 410-425. <https://doi.org/10.4209/aaqr.2014.08.0172>, 2018.
- 825 Malig, B. J. and Ostro, B. D.: Coarse particles and mortality: evidence from a multi-city study in California, *J. Occup. Environ. Med.*, 66, 832–839, <https://doi.org/10.1136/oem.2008.045393>, 2009.
- Mamouri, R.-E., Ansmann, A., Nisantzi, A., Solomos, S., Kallos, G., and Hadjimitsis, D. G.: Extreme dust storm over the eastern Mediterranean in September 2015: satellite, lidar, and surface observations in the Cyprus region, *Atmos. Chem. Phys.*, 16, 13711–13724, <https://doi.org/10.5194/acp-16-13711-2016>, 2016.
- 830 May, R. M., Goebbert, K. H., Thielen, J. E., Leeman, J. R., Camron, M. D., Bruick, Z., Bruning, E. C., Manser, R. P., Arms, S. C., and Marsh, P. T.: MetPy: A meteorological python library for data analysis and visualization [Software]. *Bull. Am. Meteorol. Soc.*, 103(10), E2273–E2284. <https://doi.org/10.1175/BAMS-D-21-0125.1>, 2022.
- Middleton, N., Tozer, P., and Tozer, B.: Sand and dust storms: underrated natural hazards. 43 (2), 390-409. <https://doi.org/10.1111/disa.12320>, 2019.
- 835 [Milford, C., Cuevas, E., Marrero, C.L., Bustos, J.J., Gallo, V., Rodríguez, S., Romero-Campos, P.M., Torres, C.: Impacts of Desert Dust Outbreaks on Air Quality in Urban Areas. *Atmosphere*, **11**, 23. <https://doi.org/10.3390/atmos11010023>, 2020.](https://doi.org/10.3390/atmos11010023)
- 840 Mu, H., Otani, S., Shinoda, M., Yokoyama, Y., Onishi, K., Hosoda, T., Okamoto, M., and Kurozawa, Y.: Long-Term Effects of Livestock Loss Caused by Dust Storm on Mongolian Inhabitants: A Survey 1 Year after the Dust Storm. *Yonago Acta Medica*, 56, no. 1, 39–42, 2013.

New Mexico Environmental Department Current Air Quality: <https://aqi.air.env.nm.gov/>, last accessed: 5 January 2023.

845 Nickling, W.G. and Brazel, A.J.: Temporal and spatial characteristics of Arizona dust storms (1965-1980). *J. Climatol.*, 4:645-660, <https://doi.org/10.1002/joc.3370040608>, 1984.

Nicoll, K., Hahnenberger, M., and Goldstein, H. L.: ‘Dust in the wind’ from source-to-sink: analysis of the 14-15 April 2015 storm in Utah, *Aeolian Res.*, 46, 100532, <https://doi.org/10.1016/j.aeolia.2019.06.002>, 2020.

850 Novlan, D. J., Hardiman, M., and Gill, T. E.: A synoptic climatology of blowing dust events in El Paso, Texas from 1932 – 2005, paper presented at the 16th Conference on Applied Climatology, Am. Meteorol. Soc., San Antonio, TX, 2007.

[Orlovsky, L., Orlovsky, N., and Durdyev, A.: Dust storms in Turkmenistan, *J. Arid Environ.*, 60, 83-97, https://doi.org/10.1016/j.jaridenv.2004.02.008, 2005.](https://doi.org/10.1016/j.jaridenv.2004.02.008)

855 Park, S. H., Gong, S. L., Zhao, T. L., Vet, R. J., Bouchet, V. S., Gong, W., Makar, P. A., Moran, M. D., Stroud, C., and Zhang, J.: Simulation of entrainment and transport of dust particles within North America in April 2001 (“Red Dust Episode”), *J. Geophys. Res. Atmos.*, 112, D20209, doi:10.1029/2007JD008443, 2007.

Park, S. H., Gong, S. L., Gong, W., Makar, P. A., Moran, M. D., Stroud, C. A., and Zhang, J.: Sensitivity of surface characteristics on the simulation of windblown dust source in North America, *Atmos. Environ.*, **43**, 3122–3129, 2009.

860 Pérez, L., Tobias, A., Querol, X., Kunzli, N., Pey, J., Alastuey, A., Viana, M., Valero, N., Gonzalez-Cabre, M., and Sunyer, J.: Coarse particles from Saharan dust and daily mortality, *Epidemiol.*, 19, 800–807, <https://doi.org/10.1097/ede.0b013e31818131cf>, 2008.

Raman, A., Arellano Jr, A., and Brost, J.: Revisiting haboobs in the southwestern United States: An observational case study of the 5 July 2011 Phoenix dust storm. *Atmo. Environ.* 89, 179-188. <https://doi.org/10.1016/j.atmosenv.2014.02.026>, 2014.

865 [Reynolds, R. L., Munson, S. M., Fernandez, D., Goldstein, H. L., and Neff, J. C.: Concentrations of mineral aerosol from desert to plains across the central Rocky Mountains, western United States. *Aeolian Res.*, 23, 21–35. https://doi.org/10.1016/j.aeolia.2021.100766, 2016.](https://doi.org/10.1016/j.aeolia.2021.100766)

870 Rivera Rivera, N. I., Gill, T. E., Gebhart, K. A., Hand, J. L., Bleiwess, M. P., and Fitzgerald, R. M.: Wind modeling of Chihuahuan Desert, *J. Atmo. Environ.*, 43, 2, 347-354, <https://doi.org/10.1016/j.atmosenv.2008.09.069>, 2009.

[Robinson, M.C. and Ardon-Dryer, K.: Characterization of 21 Years of Dust Events Across Four West Texas Regions. *Aeolian Res.*, 67-69. 100930., https://doi.org/10.1016/j.aeolia.2024.100930, 2024.](https://doi.org/10.1016/j.aeolia.2024.100930)

- Schultz, J.A., and Meisner, B.N.: The 24 February 2007 North Texas wind and dust storm: An impact weather event. *Natl. Weather Dig.*, 33, 165–184, 2009.
- 875 Schweitzer, M., Calzadilla, A., Salamo, O., Sharifi, A., Kumar, N., Holt, G., Campos, M., and Mirsaedi, M.: Lung health in era of climate change and dust storms. *Environ Res.* 163, 36–42. <https://doi.org/10.1016/j.envres.2018.02.001>, 2018.
- [Shao, J. and Mao, J.: Dust particle size distributions during spring in Yinchuan, China. *Adv. Meteorol.*, 2016, 6940502. https://doi.org/10.1155/2016/6940502, 2016.](https://doi.org/10.1155/2016/6940502)
- 880 [Sorribas, M., Adame, J.A., Andrews, E., Yela, M., An anomalous African dust event and its impact on aerosol radiative forcing on the Southwest Atlantic coast of Europe in February 2016. *Sci. Total Environ.* 583, 269–279. https://doi.org/10.1016/j.scitotenv.2017.01.064, 2017.](https://doi.org/10.1016/j.scitotenv.2017.01.064)
- Stout, J.E.: Dust and environment in the southern high Plains of North America. *J. Arid Environ.* 47 (4), 425–441. <https://doi.org/10.1006/jare.2000.0732>, 2001.
- 885 [Stout, J.E. Diurnal patterns of blowing dust on the Llano Estacado, *J. Arid Environ.*, 122, 85–92, 2015. http://dx.doi.org/10.1016/j.jaridenv.2015.06.013.](http://dx.doi.org/10.1016/j.jaridenv.2015.06.013)
- Stout, J. E. and Arimoto, R.: Threshold wind velocities for sand movement in the Mescalero Sands of Southeastern New Mexico, *J. Arid Environ.*, 74, 11, 1456–1460, <https://doi.org/10.1016/j.jaridenv.2010.05.011>, 2010.
- Sugimoto, N., Shimizu, A., Matsui, I., and Nishikawa, M.: A method for estimating the fraction of mineral dust in particulate matter using PM_{2.5}-to-PM₁₀ ratios. *Particuology*, 28, 114–120. <https://doi.org/10.1016/j.partic.2015.09.005>, 2016.
- 890 [T640.: Teledyne API: Model T640 PM Mass Monitor. https://www.teledyne-api.com/prod/Downloads/SAL000090E%20-%20T640.pdf. Last accessed: 25 July 2024.](https://www.teledyne-api.com/prod/Downloads/SAL000090E%20-%20T640.pdf)
- Texas Commission on Environmental Quality (TCEQ) Air Quality and Monitoring: <https://www.tceq.texas.gov/airquality/monops>, last access: 30 December 2023.
- 895
- Tong, D. Q., Dan, M., Wang, T., and Lee, P.: Long-term dust climatology in the western United States reconstructed from routine aerosol ground monitoring, *Atmos. Chem. Phys.*, 12, 5189–5205, <https://doi.org/10.5194/acp-12-5189-2012>, 2012.
- Tong, D. Q., Gorris, M. E., Gill, T.E., Ardon-Dryer, K., Wang, J., and Ren, L.: Dust storms, Valley fever, and public awareness. *GeoHealth*, 6, e2022GH000642. <https://doi.org/10.1029/2022GH000642>, 2022.
- 900
- Tong, D., Feng, I., Gill, T. E., Shepenski, K., and Wang, J.: How Many People Were Killed by Windblown Dust Events in the United States? *Bull. Am. Meteorol. Soc.*, 104 (5), 1067–1084, <https://doi.org/10.1175/BAMS-D-22-0186.1>, 2023.

- 905 Toure, N. O., Gueye, N. R.-D., Diokhane, A. M., Jenkins, G. S., Li, M., Drame, M. S., Coker, K. R., and Thiam, K.: Observed and modeled seasonal air quality and respiratory health in Senegal during 2015 and 2016. *GeoHealth*, 3, 423–442. [10.1029/2019GH000214](https://doi.org/10.1029/2019GH000214), 2019.
- ~~Tsai, J.H., Huang, K.L., Lin, N.H., Chen, S.J., Lin, T.C., Chen, S.C., Lin, C.C., Hsu, S.C. and Lin, W.Y.: Influence of an Asian Dust Storm and Southeast Asian Biomass Burning on the Characteristics of Seashore Atmospheric Aerosols in Southern Taiwan. *Aerosol Air Qual. Res.* 12: 1105–1115. <https://doi.org/10.4209/aaqr.2012.07.0201>, 2012.~~
- ~~Van Pelt, R.S., Shekhter, E.G., Barnes, M.A.W., Duke, S.E., Gill, T.E., Pannell, K.H.: Spatial and temporal patterns of heavy metal deposition resulting from a smelter in El Paso, Texas. *J. Geochem. Explor.* 210, 1–8. <https://doi.org/10.1016/j.gexplo.2019.106414>, 2020.~~
- 915 Vukovic, A., Vujadinovic, M., Pejanovic, G., Andric, J., Kumjian, M.R., Djurdjevic, V., Dacic, M., Prasad, A.K., El-Askary, H.M., Paris, B.C., Petkovic, S., Nickovic, S., Sprigg, W.A., apr 2014. Numerical simulation of an “American haboob.”. *Atmos. Chem. Phys.* 14 (7), 3211–3230. <https://doi.org/10.5194/acp-14-3211-2014>.
- ~~Yin, D., Nickovic, S., Barbaris, B., Chandy, B., Sprigg, W.A.: Modeling windblown desert dust in the southwestern United States for public health warning: a case study. *Atmos. Environ.* 39, 6243 - 6254. <https://doi.org/10.1016/j.aeolia.2024.100930>, 2005.~~
- 920 Yu, H.L. and Wang, C.H.: Retrospective prediction of intraurban spatiotemporal distribution of PM_{2.5} in Taipei. *Atmos. Environ.* 44 (25), 3053–3065, <https://doi.org/10.1016/j.atmosenv.2010.04.030>, 2010.
- ~~Wang, S., Wang, J., Zhou, Z., and Shang, K.: Regional characteristics of three kinds of dust storm events in China. *Atmos. Environ.*, 39, 509-520, <https://doi.org/10.1016/j.atmosenv.2004.09.033>, 2005.~~
- 925 ~~White, J.R., Balling, R.C. and Cerveny, R.S.: Trajectory analysis of central Sonoran Desert dust storms, *J. Arid. Environ.*, 219, 105077, <https://doi.org/10.1016/j.jaridenv.2023.105077>, 2023.~~
- World Health Organization (WHO) global air quality guidelines: <https://iris.who.int/bitstream/handle/10665/345329/9789240034228-eng.pdf>, last accessed: 30 December 2023.
- 930 WMO (World Meteorological Organization): WMO Technical Regulations Annex II Manual on Codes International Codes. I.1, 2019.
- ~~Zanobetti, A. and Schwartz, J. The effect of fine and coarse particulate air pollution on mortality: a national analysis. *Environ. Health Perspect.* 117, 898–903, <https://doi.org/10.1289/ehp.0800108>, 2009.~~

Zobeck, T. M. and VanPelt, R. S.: Wind induced dust generation and transport mechanics on a bare agriculture field, *J. Haz. Mat.*, 132, 26-38, <https://doi.org/10.1016/j.jhazmat.2005.11.090>, 2006.

935