

This study presents a long term hindcast (1970 to 2022) of the carbonate system on the Bering Sea shelf. Such long term hindcasts are very useful to understand the impact of environmental changes on the ecosystem and are very useful for fisheries management. The model results show an acidification trend, which is more important at the bottom than at the surface. The trends of the different OA variables are reasonable and within the range observed elsewhere. However, there is no atmospheric forcing data that covers the whole period of the hindcast and thus 3 different products were used. This approach seems to introduce an artificial trend when the forcing is switched from one product to the other. This issue is well discussed in the manuscript but unfortunately it creates uncertainty in the results. I think a little more could be done to understand what is going on when moving from the CORE forcing to the CFSR forcing. It would be very useful to know how the temperature and salinity change at the open boundaries of the model, is it why a general decrease in salinity is observed? How is the salinity-DIC relationship modified, does this lead to more or less DIC flowing into the system. Water from which depth at the boundary will affect the Bering Sea shelf? What is the impact of not modifying the TA relationship at the boundary? Some processes affecting DIC (not the air-sea flux), water mass changes, can also slightly affect TA and thus the relationship. Modifying one variable but not the other could introduce a bias in pH and omega. Was this explored with the Earth System Models or only dismissed? And finally, the large trend towards the end of the hindcast was attributed to an increase in primary production. Could you explain why PP is increasing? The salinity gradient between the surface and the bottom seems smaller with the CFSR forcing, is there a decrease in stratification that leads to a greater nutrient availability? Or is there more light available? How does the PAR forcing (SW, clouds) compare between the different products? Is it a temperature effect (no info is given on the temperature change)?

To summarize, I think it is a very useful study but giving a little more information on the differences between the different forcing, and some explanations on the causes of the observed changes (i.e., salinity, primary production) would help build confidence in the results. The manuscript is very well written and clear. I think once some of the above questions are answered and dealt with if necessary, the manuscript would meet all the criteria for publication in this journal.

RESPONSE: We thank the reviewer for these insightful comments and positive feedback on our manuscript and have further commented on the points raised below. Overall, we agree with many of the points raised and have furthered our analysis and added some additional text to help clarify the concerns. Specifically, we note that there was confusion regarding how the DIC and TA boundary conditions were generated, which was also reflected by Reviewer 1. Thus, we've added some additional details to help clarify and also now discuss the effect of the shift in salinity from the model forcing on our DIC and TA boundary conditions. Furthermore, we have added some additional discussion concerning the effect that the shift in forcing has on the underlying model trends, which was a concern also raised by Reviewer 1. Lastly, we have included some additional analysis on the mechanisms for the increase in primary productivity within the model. Detailed descriptions of these points are described below under the specific comments.

Specific and technical comments :

Line 58 : Could refer to Figure 1

RESPONSE: Great suggestion, we now refer here to Fig. 1

Line 107: lower pH values -> not clear lower than what. It would be better to actually put the pH values.

RESPONSE: We now specifically note lower than pH of 7.8

Line 110: Seung and Punt not in the reference list.

RESPONSE: Thank you for catching this, missing references are now included.

Line 111: on the Bering ...

RESPONSE: Changed “to” to “on”.

Line 112: some discussion on the role of OA: who had these discussions, any ref to a workshop or something like that?

RESPONSE: Reference included.

Line 125: could you specify what was the length of the previous hindcast?

RESPONSE: Previous hindcast timeframe of 2002-2012 now included.

Line 147: add parenthesis (2020).

RESPONSE: Added

Line 160: How many rivers are there in the model? How many rivers have discharge and DIC, TA values? The same values are added to all the rivers that do not have measurements (if that is the case)? What do the TA and DIC values look like (i.e. range of values). What are the largest rivers in term of runoff. I think some more info would be useful especially that the river data seem to have a large impact in some regions of the Bering Sea.

RESPONSE: This is a great suggestion and we have expanded this section as follows:

“Riverine freshwater runoff flux is prescribed following freshwater discharge data from 28 watersheds in Alaska and Russia, including the Yukon River which supplies roughly 50% of the total freshwater flux to the Bering Sea shelf (Kearney, 2019). This river runoff contains seasonally varying concentrations of DIC (1480-4100 $\mu\text{mol/kg}$) and TA (1238-2743 $\mu\text{mol/kg}$)

following data collected at Pilot Station at the mouth of the Yukon River (Striegl et al., 2007; PARTNERS, 2010, Pilcher et al., 2019)."

Line 166: 1995-2010 instead of 2011? Why didn't you use the CFSv2 reforecast for your whole 1995-2021 period? These 3 different forcing actually creates 2 transitions.

RESPONSE: This may be somewhat of a semantics issue. The "Climate Forecast System" provides at least 5 different data products, two of which are the CFS[v1] Reanalysis and CFSv2 Operational Analysis. The latter uses updated versions of the CFS model components and assimilation framework, and also began incorporating near-real-time data. But there is no overlap between the two (i.e., there is no CFSv2 or CFSv1 operational analysis), just a switch in March 2011.

Lines 175 and following: The adjustments made to the relationship and the resulting DIC over the full salinity range is not clear to me. I think a figure would help. Also could you name the 3 ESMs used? In the earth system models the DIC changes include more than the results of atmospheric CO₂ influx and other processes could impact TA as well. So at depth it might be relevant to include the changes in TA as well (from the ESMs) to preserve the TA-DIC balance.

RESPONSE: We have expanded the description of our lateral boundary conditions and have included the equations to help clarify how these values are generated. The reviewer is correct that TA also changes over the historical timeframe of the ESM, however, these changes are very small (figure below). Furthermore, part of these changes will be driven by changes in salinity. Because our salinity boundary conditions are tied to the CFS forcing, we don't want to decouple changes in salinity-TA by incorporating TA output from the ESM, but salinity changes from the forcing product. Thus, we decided to not include this relatively small effect for model simplicity and to minimize additional external forcings that can add further uncertainty. DIC was treated differently, since the trend from atmospheric CO₂ is significant over this timeframe. We have modified and added to the manuscript text as follows below:

"The lateral boundary conditions for DIC and TA are calculated via linear regressions with salinity through the following equations below, derived from observational data collected primarily from 2008-2010 (Pilcher et al., 2019).

$$S < 32.6 \text{ DIC} = 58.5 * S + 191.2 + \Delta \text{DIC}(t)^{atmo} \quad (1)$$

$$S \geq 32.6 \text{ DIC} = 140.4 * S - 2478.7 + \Delta \text{DIC}(t)^{atmo} \quad (2)$$

$$S < 33.6 \text{ TA} = 49.6 * S + 600.6 \quad (3)$$

$$S \geq 33.6 \text{ TA} = 141.8 * S - 2494.4 \quad (4)$$

The salinity-DIC regression has changed over time as the oceanic uptake of CO₂ has increased the DIC concentration of waters, with no effect on salinity. Thus, using this same relationship for the boundary conditions at the start of the hindcast in 1970 would introduce a high DIC bias. To account for changes in DIC over time, we center the DIC-salinity relationship on the year 2009 (i.e. midpoint of 2008-2010 sampling timeframe) and subtract (add) DIC for years

before (after) 2009. The DIC value added or subtracted (ΔDIC^{atmo} in equations 1-2) for year(t) is calculated from the linear trend in DIC (Fig. S1) calculated from the historical runs of the Coupled Model Intercomparison Phase 6 (CMIP6) over the 1970-2009 timeframe from the mean of three different Earth System Models (GFDL-ESM4, CESM2, and MIROC-ES2L). These three ESMs were selected as they have been coupled previously with the Bering10K regional model (Cheng et al., 2021; Pilcher et al., 2022). We chose to use this method to gain the higher spatial resolution, particularly in the vertical, provided by the ESM output. We only use the DIC trend from the CMIP6 ESMs and omit any TA trend because the TA trends over this timeframe are much smaller and are tied to changes in salinity (Hinrichs et al., 2023), which is accounted for in our salinity-TA relationship at the boundary.”

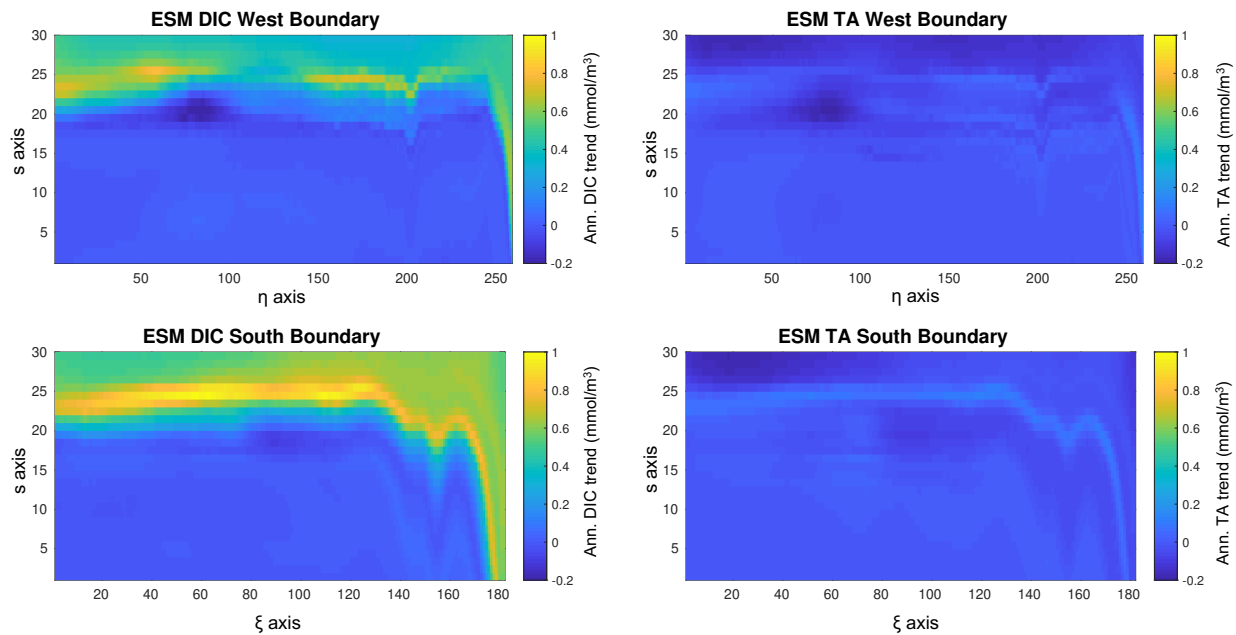


Figure: Ensemble mean annual trends in DIC and TA from the 3 Earth System Models, downscaled to our west and south boundary conditions. The West and South boundaries on the respective η -axis and ξ -axis are shown in Figure 1.

Line 120. Wd should be in italics

RESPONSE: Change made

Line 265: How are the off shelf break water affecting shelf water? A related question is how are the model boundary conditions affecting the shelf water, i.e. only the properties at similar depths (down to 200 m) or deeper?

RESPONSE: We have added the following text and reference:

“Modeled transport across the shelf break is relatively small, with most on-shelf water arriving through the Aleutian Islands, with shelf water residence times generally less than 3 years (Mordy et al., 2021).”

Line 282: Why is omega more variable?

RESPONSE: Good question, we think it may be due to underlying complexities and nonlinearity of the marine carbonate system. It's the only variable with lower variability than the observations, which is apparent both in this Target diagram and when comparing the standard deviations between the model and the observations. For the observations to have higher variability in temperature, salinity, DIC, and total alkalinity, but the model to have higher variability in Ω_{arag} (which is a function of those 4 variables), may indicate that some of the model-data differences are combining in a way that amplifies variability in the model. The fact that this is not the case for pH may suggest that temperature is playing a role, since temperature has a relatively greater effect on Ω_{arag} than pH.

Figure 4: There is a smaller peak that precedes the larger peak in the model. What is it caused by? In the observation we rather see a slowdown of the increase.

RESPONSE: We think the reviewer here is referring to the gradual pCO_2 increase in summer (following the sharp drawdown from the spring bloom), which in some years appears as a peak due to a smaller magnitude pCO_2 drawdown in fall (e.g. 2020), though not always (e.g. 2018). The modeled smaller drawdown in fall is from a fall phytoplankton bloom that often develops as stratification breaks down and there is a pulse of nutrients into the euphotic zone, while light and temperature conditions are still sufficient. This bloom is relatively short-lived though, before late fall mixing brings subsurface carbon back to the surface layer, generating relatively high pCO_2 values for both the model, and the mooring when it is deployed late enough into the year.

Line 330: Would the TA and DIC bias originate from your treatment at the open boundary (i.e, increasing DIC and not TA).

RESPONSE: Biases arising from lateral boundary conditions are certainly one possibility, but it's unlikely that our relatively small biases in DIC and TA are related specifically to incorporating a trend in DIC but not TA. First, the model data comparison is over 2008-2010, which is when the DIC trend is near 0. This is because the salinity-DIC empirical fit used these same observational data points, thus any accumulation of atmospheric CO_2 is accounted for, centered on 2009. Second, the slight trend in TA from the ESMs is negative, therefore, incorporating this would only add to the negative model TA bias.

Line 356: This decrease in salinity will lead to important changes in the DIC at your open boundary (?) and thus to the important change in H^+ , pH and omega on the bottom? This comes back to my previous comments about the usefulness of actually displaying the changes in the S-DIC relationship and mentioning the importance of the OBC on the shelf conditions.

RESPONSE: This is a really great point raised by the reviewer that we originally overlooked in our description of the salinity decrease. We expect this change in salinity to decrease DIC, but also TA, thus the effects on carbonate variables will be more muted, since both values are simultaneously decreasing (also see comment in response to Reviewer 1). We now include an additional figure in the supplement which illustrates the change in the open boundary conditions for DIC and TA that directly results from this change in salinity. This comparison illustrates that surface DIC and TA changes at the open boundary are relatively small (mostly 10-20 mmol/m³) and of the same sign. There are some higher magnitude differences in intermediate waters, particularly for the southern boundary, where a relatively large decrease in salinity leads to larger changes in DIC (80-130 mmol/m³) and TA (40-70 mmol/m³). At our mean shelf values of temperature (3.5°C), salinity (32 psu), DIC (2078 mmol/m³), and TA (2224 mmol/m³), we would expect this change to yield a pH and Ω_{arag} increase of 0.11-0.16 and 0.34-0.50, respectively. Thus, these changes generated by the decrease in salinity would work to counteract the ocean acidification trends in the model, particularly the subsurface trends (where we see the highest OA rates). We have included additional explanation in the text as excerpted below:

“This shift in salinity will also impact DIC and total alkalinity through the salinity regression equations used to calculate the horizontal open boundary conditions (Equations 1-4). This leads to a decrease in DIC and total alkalinity within the open boundary conditions that is greater in magnitude in intermediate waters (Fig. S3). The effect is greater on DIC relative to TA due differences in the regression equations. The net effect on shelf-wide conditions is readily apparent for total alkalinity (Fig. S4), but is more muted with DIC, likely due to the relatively stronger effect of biology and air-sea gas exchange.”

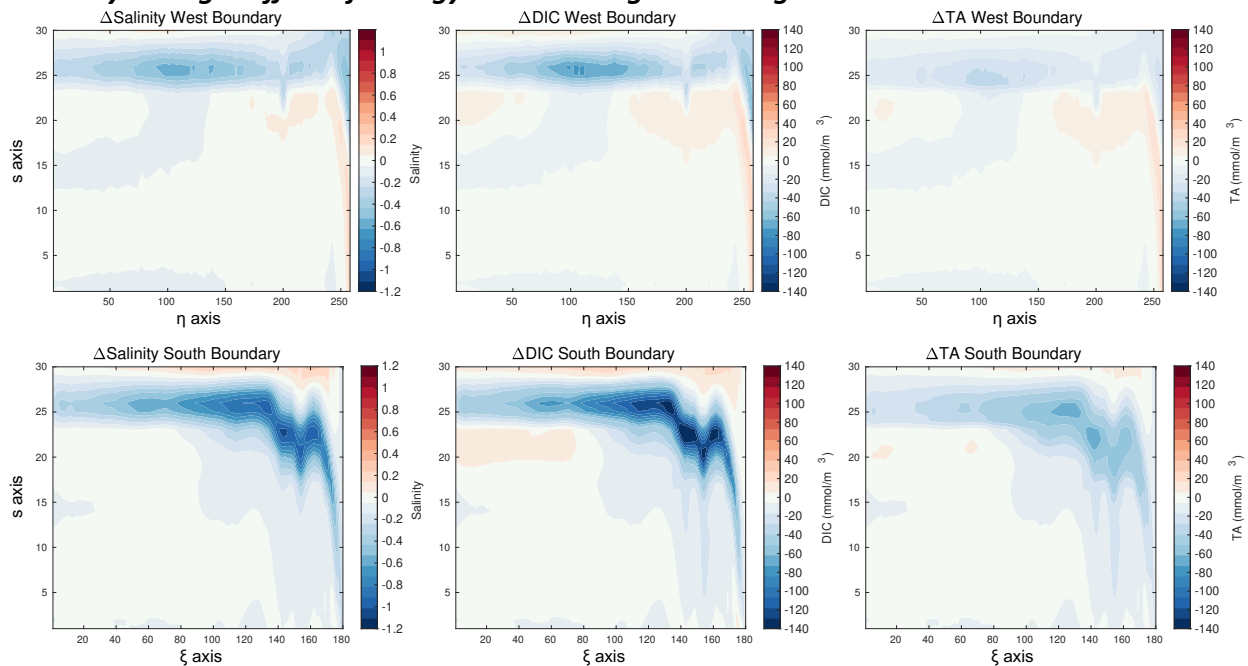


Figure S3: Changes in the western and eastern boundary for salinity (left column), DIC (middle), and TA (right) that result from the shift in forcing from CORE to CFSR in 1995. Delta values are specifically calculated between the two timeframes of 1985-1994 and 1995-2004. The West and South boundaries on the respective η -axis and ξ -axis are shown in Figure 1.

Line 397: Could you add a reference?

RESPONSE: References added.

Line 417: Wrong x axis at M8

RESPONSE: Thank you for catching this, we have corrected the axis label.

Line 460-461: Could you say why? What are the changes in temperature between the two forcings?

RESPONSE: The difference in $DpCO_2$ between the two forcings generates the difference in CO_2 flux. That difference in $DpCO_2$ is likely not driven by temperature as temperature trends throughout the model timeseries are fairly minimal. This is also apparent in the Taylor series decomposition recommended by Reviewer 1, where temperature is a minimal driver over the entire timeseries, and a slight, positive driver (i.e. warming) over the CFSR timeframe. Primary production is greater in the outer shelf during CFSR, so this may be partly the driver of the more negative $DpCO_2$, but it also could be a product of changes in shelf mixing or incoming waters from the Alaska Coastal Current.

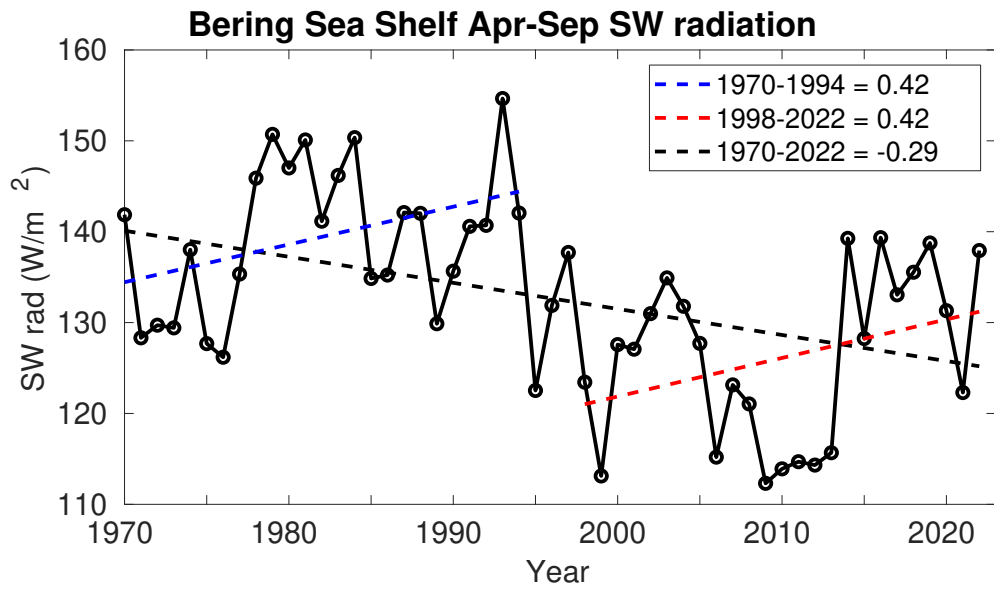
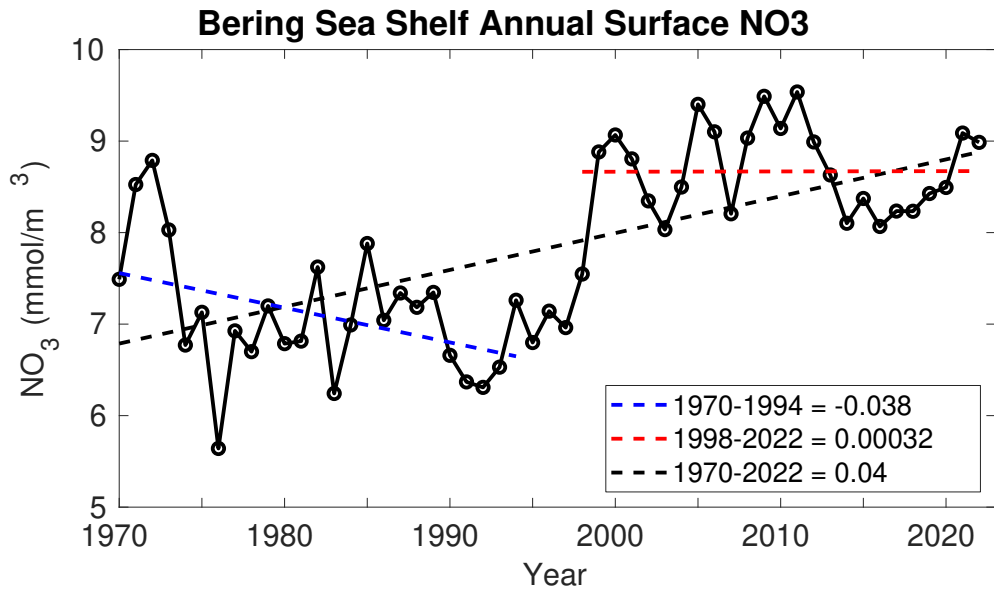
Figure 10: p missing in $DpCO_2$ panel title.

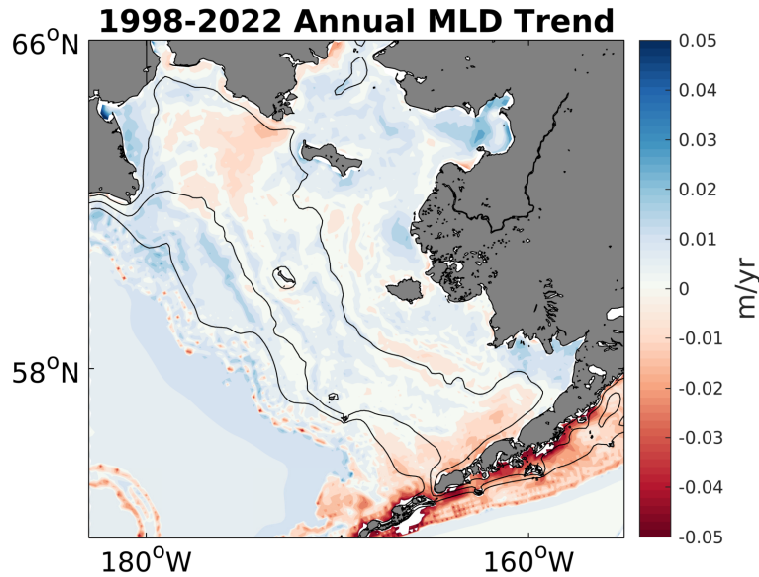
RESPONSE: Figure panel title changed

Line 510: Why is primary production increasing with the CFSR forcing? Is there a change in stratification (the difference in surface and bottom salinities seems to suggest that) that would provide more nutrients to the upper layer? Any changes in PAR from atmospheric forcing?

RESPONSE: This is a great question and there are two parts to the answer. First, the increase in primary production between the CORE and CFSR forcing is tied to an increase in nutrient concentrations. However, the CFSR forcing also displays somewhat reduced shortwave radiation, but there is a positive trend in shortwave radiative forcing during the CFSR timeframe. This is likely due to the impact of relatively high, late sea ice extent during the cold years (e.g. 2008-2012), compared to the opposite during the warm years (e.g. 2017-2019). Mixed layer depths increase slightly throughout the CFSR timeframe, but the overall trends are fairly low. We have added some additional clarifying text to the manuscript below.

“This increase in productivity is tied to an increase in nitrate concentrations from the CORE to CFSR forcing, along with a positive trend in shortwave radiative forcing during the CFSR forced timeframe.”





Line 511: Any oxygen observations that would support the remineralization rates at the bottom?

RESPONSE: There are some bottom water observations that have been collected by the Ecosystems & Fisheries-Oceanography Coordinated Investigations (EcoFOCI) program, but unfortunately these discrete measurements are not of sufficient temporal resolution to identify any long-term changes, especially given the relatively high recent natural variability. However, EcoFOCI has deployed a moored high-resolution Profiling Crawler over the past several years which captures depth-resolved oxygen at very high temporal frequency (Nielsen et al., 2023, doi:10.1029/2022JC019076). With continued future deployments, it's possible that this dataset will soon acquire the temporal resolution necessary to resolve any long-term trend.

Figure 15: replace are by area in legend

RESPONSE: Change made

Citation: <https://doi.org/10.5194/egusphere-2024-1096-RC2>