



Implementation of multi-layer snow scheme in seasonal forecast system and its impact on model climatological bias

Eunkyo Seo^{1,2}, Paul A. Dirmeyer²

¹ Department of Environmental Atmospheric Sciences, Pukyong National University, Busan, 48513, Republic of Korea

5 ² Center for Ocean-Land-Atmosphere Studies, George Mason University, Fairfax, Virginia, 22030, United States

Correspondence to: Eunkyo Seo (eseo@pknu.ac.kr)

Abstract. This study explores the influence of implementing a multi-layer snow scheme on the climatological bias within a seasonal forecast system. A single-layer snow schemes in land surface models often inadequately represent the insulating effect of snowpack, resulting in warm and cold biases during winter and snow melting seasons, respectively. By contrast, multi-layer snow schemes enable enhanced energy transport between the land and atmosphere. To investigate this impact, two versions of the Global Seasonal Forecast System (GloSea) – GloSea5 with a single-layer snow scheme and GloSea6 with a multi-layer snow scheme – are compared over 24 years (1993–2016). Results shed light on the significance of accurately representing the insulating effect of snow in improving retrospective seasonal forecasts. The GloSea6 shows that the snow melting season shifts two weeks later, accompanied by a significant improvement in surface temperature and permafrost extent. The extended snow cover delays the onset of evaporation in spring season, which slows down the physical process of drying out the soil moisture, resulting in the improvement in its climatology and memory. The abundant soil moisture enhances the partitioning of incoming energy into latent heat flux, allowing for more evaporative cooling at the surface, and constrains water-limited coupling. Such improvements in the land surface processes, especially over the mid-latitudes, mitigate the near-surface warming bias over the entire diurnal period and the oversensitivity of atmospheric conditions to the land surface variability. The model performance in simulating precipitation is also improved with the increase in precipitation occurrence over snow-covered regions, significantly reducing model error in the Great Plains, Europe, and South and East Asia. Above all, this study demonstrates the value of implementing a multi-layer snowpack scheme in seasonal forecast models, not only during the snowmelt season but also for the subsequent summer season, for model fidelity in simulating temperature and precipitation along with the reality of land-atmosphere interactions.

25 1 Introduction

Subseasonal-to-seasonal (S2S) forecasts have become increasingly pivotal in numerous fields, encompassing agriculture, water resource management, energy, transportation, and disaster preparedness. The significance of S2S forecasting stems from their ability to provide actionable insights into forthcoming weather and climate conditions over the span of weeks to months. The predictability of S2S forecasts is strongly tied to the quality of the initial conditions and data assimilation technique, which



30 mathematically finds optimal values with minimized analysis errors to merge observations into a dynamical model, has been
employed to create improved global analyses (Seo et al., 2021; Kumar et al., 2022). Forecasts across various time scales
underscore the necessity for precise initial states of distinct components within the forecast model, as each component retains
information over inherently disparate time scales (Richter et al., 2024). As the memory of initial land conditions can extend
out to approximately 2 months, the importance of realistic land surface initialization in determining skill of the subseasonal
35 forecast is paramount (Koster et al., 2011; Guo et al., 2011; Seo et al., 2019).

In particular, soil moisture (SM) plays a pivotal role in hydrological and meteorological dynamics, acknowledged as an
essential climate variable by the World Meteorological Organization (WMO) (Seneviratne et al., 2010; Santanello et al., 2018).
Its persistence or memory can significantly enhance forecast accuracy, particularly at time scales extending to 1–2 months
(Dirmeyer et al., 2016; Dirmeyer et al., 2018; Seo and Dirmeyer, 2022a). The fidelity of modelled SM contributes to a more
40 accurate portrayal of land-atmosphere interactions, facilitating the exchange of water and energy fluxes at the land surface
(Seo et al., 2024). This enhanced representation holds potential for predicting extreme climate events, particularly those
intensified by land-atmosphere feedbacks within extended range forecast systems (Seo et al., 2020; Dirmeyer et al., 2021; Tak
et al., 2024). SM is directly constrained by the components of the typical water balance equation: precipitation, latent heat
flux, and runoff, but the modelled snow affects the representation of snow characteristics.

45 The pivotal role of snow in land-atmosphere interactions highlights the significance of accurately representing cold processes
related to snow in hydrometeorology and dynamical predictions. Compared to other land surface variables, snow exhibits
distinctive characteristics such as high albedo, high thermal emissivity, and low thermal conductivity, which profoundly
influence radiation budget and surface moisture and energy fluxes to the atmosphere. The presence or absence of snow can
result in a disparity of approximately 10 K in the climatology of surface air temperature (Betts et al., 2014). This discrepancy
50 primarily stems from the reduction in net shortwave radiation attributable to the high albedo of snow. Snow-atmosphere
feedback is evolved in three distinct stages: before, during, and after snowmelt. Meanwhile, the coupling strength is strongest
during snowmelt and the coupling strength after snowmelt (delayed soil moisture impact) is stronger than that before snowmelt
(radiative impact from surface albedo) (Xu and Dirmeyer, 2011). Therefore, during the warm season, SM dynamics are
intricately linked to the physical characteristics of snow, affecting the initiation of evaporation due to snowmelt. It plays a
55 crucial role in determining the model's ability to accurately simulate atmospheric variables through land-atmosphere coupling
processes.

Land surface models (LSMs) have often utilized a single-layer snowpack scheme, which has proven insufficient in accurately
capturing the seasonal evolution of snow cover. Consequently, this approach tends to result in warm and cold biases during
winter and snow melting seasons, respectively. Addressing these limitations, recent advancements in LSMs aim to integrate a
60 multi-layer snow scheme to enhance the representation of snow dynamics and mitigate associated biases. For instance, Noah-
MP represents the latest iteration of Noah LSM which is a land component in many regional and global operational forecast
models, featuring numerous enhancements to improve the realism of biophysical and hydrological processes (Niu et al., 2011).
Notably, for a more accurate representation of snow physics, Noah-MP integrates a layered snowpack scheme. This scheme



65 dynamically adjusts the number of snow layers based on the depth of snow, ensuring a more realistic conceptualization of
snow accumulation and melt processes. The Joint UK Land Environment Simulator (JULES) Land Surface Model (LSM)
features the utilization of a multi-layer snow scheme in its current operational system. This implementation also demonstrates
enhancements in the representation of land surface processes (Walters et al., 2017). JULES is incorporated within the GloSea
forecast system (Maclachlan et al., 2015).

70 Numerous studies have aimed to improve the sophistication of snow physics and highlighted its advancement in numerical
models (Xue et al., 2003; Arduini et al., 2019; Cristea et al., 2022). The impact of multi-layer schemes on S2S forecasts remains
inadequately explored and understood, even though all but three of 13 S2S models (BoM: POAMA P24, CNR-ISAC: GLOBO,
and NCEP: CFSv2) now use multi-layer snow schemes. Hence, this study conducts a comparative analysis between GloSea5
(single-layer snowpack) and GloSea6 (multi-layer snowpack), past and present operational forecast systems at the UK Met
Office and the Korea Meteorological Administration (KMA), in retrospective forecasting in order to investigate the impact of
75 an advanced snow scheme. The primary objective of this study is to assess the seasonal cycle of snow and land surface variables
throughout the snow-covered period. Furthermore, this study assesses the model's capability to replicate the mean climatology
of key land surface and near-surface variables, e.g., surface SM, surface air temperature, and precipitation, during boreal warm
season. Daily mean, maximum, and minimum temperatures are validated at subdaily time scales to elucidate the time of
significant improvements in model performance. The model fidelity in the simulation of land-atmosphere interactions,
80 corresponding to water- and energy-limited processes, is also diagnosed to identify the realism of land coupling regime.

The paper is organized as follows. Section 2 describes the GloSea5 and GloSea6 models, and the validation datasets used in
this study. Section 3 provides the methodology to evaluate the model performance. Section 4 presents and discusses the results
of this study. Finally, Section 5 summarizes the results and their implications for future applications.

85 **2 Data**

2.1 Forecast Model

This study explores the performance of the Global Seasonal forecast system (GloSea) version 5 and 6, which are abbreviated
as GloSea5 and GloSea6, respectively. These are the fully coupled ensemble forecast models with atmosphere-land-ocean-sea
ice components, being developed by the UK Met Office. GloSea5 (Maclachlan et al., 2015) Global Coupled model 2.0 (GC2;
90 Williams et al., 2015) configuration consist of UM (Unified Model) version 8.6 atmospheric component (GA6.0; Walters et
al., 2017) having N216 horizontal resolution of 0.56° latitude \times 0.83° longitude with vertically 85 hybrid-sigma coordinates
topped at 85 km, JULES (Joint UK Land Environment Simulator) version 4.7 land surface model (GL6.0; Best et al., 2011)
with four soil layers (0–10-, 10–35-, 35–100-, and 100–300-cm depth), as well as NEMO (Nucleus for European Modelling
of the Ocean) version 3.4 oceanic component (GO5.0; Megann et al., 2014) and CICE (Los Alamos Sea-ice Model) version
95 4.1 sea-ice component (GSI6.0; Rae et al., 2015) on an ORCA tripolar 0.25° global grid with 75 vertical levels. Those

components exchange interactive variables with the OASIS3 coupler (Valcke, 2013). GloSea6 Global Coupled model 3.2 (GC3.2) updates the atmospheric, land, ocean, and sea-ice components to the version of UM vn11.5 (GA7.2), JULES vn5.6 (GL8.0), NEMO vn3.6 (GO6.0; Storkey et al., 2018), and CICE vn5.1.2 (GS18.1; Ridley et al., 2018) without any modification in the resolution. The model components of GloSea6 are coupled with the OASIS3-MCT (Model Coupling Toolkit; Craig et al., 2017). We refer GloSea5 GC2 and GloSea6 GC3.2 to GloSea5 and GloSea6, respectively, throughout this paper.

Substantive changes in the GloSea6 compared with GloSea5, mostly in model physics, have been implemented throughout all model components (Kim et al., 2021). For instance, the atmospheric physics are modified in radiation (improving gaseous absorption through upgrades in McICA (Monte Carlo Independent Column Approximation) and parameterization in ice optical properties), microphysics (updates in warm rain parameterization and newly implementing ice particle size-dependent parameterization), cloud physics (including radiative effects from convective cores), gravity wave drag (implement heating from gravity-wave dissipation), boundary layer (correcting cloud top entrainment during decoupling to the land), cumulus parameterization (improving updraught numeric in convective process and updating CAPE closure as a function of large-scale vertical velocity), and new modal aerosol scheme (UKCA GLOMAP (Global Model of Aerosol Processes) scheme; Mann et al., 2010). Aforementioned atmospheric physics updates in the GloSea6 are likely to improve the performance of model systemic errors, particularly in the overestimated vertical profile of cloud fraction at upper troposphere, tropospheric cold and dry biases, the underestimated jet stream, the overestimated precipitation, and the negative bias of troposphere geopotential height during boreal summer (Williams et al., 2018). In addition, there are two major updates in land physics: the implementation of a multi-layer snow scheme and the realization of shortwave surface albedo with wavelength dependence.

The single-layer snow scheme allows the surface layer of the atmosphere to directly access the heat in the soil, thereby poorly representing the insulating effect of the snowpack. The improvement from the implementation of the multi-layer snow scheme is shown not only in the realization of the snow melt season (Niu et al., 2011), but also in the soil temperature and permafrost extent (Walters et al., 2017). For instance, the multi-layer snow scheme leads to surface warming of the soil temperature during the winter season, as the heat flux from the soil to the atmosphere is reduced, but shows a surface cooling in the spring season, as the increase in insulating radiation inhibits snowmelt. In the snow frontal regions, the increase in land surface albedo is due to the delay in the onset of snowmelt by the multi-layer snowpack, while the decrease in surface albedo over the Sahara, the Arabian Peninsula, and India is related to the modification in land surface albedo physics as a function of shortwave wavelength. Therefore, the climate sensitivity over mid-latitude snow frontal regions is attributable to the implementation of the multi-layer snow scheme in the GloSea6.

In terms of initial conditions for each model component, GloSea5 and GloSea6 commonly utilize ERA-interim and a variational data assimilation system for the NEMO ocean model (NEMOVAR; Mogensen et al., 2012) analysis for the atmospheric and ocean and sea-ice initializations, respectively. Land surface reanalysis, where the land offline simulation is forced by atmospheric boundary conditions from Japanese 55 years Reanalysis (JRA-55; Kobayashi et al., 2015) and European Centre for Medium-Range Weather Forecasts (ECMWF) Reanalysis version 5 (ERA5; Hersbach et al., 2020) reanalysis, is used to initialize land surface variables for GloSea5 and GloSea6, respectively. GloSea5 and GloSea6 have been used to carry



130 out 60-day (depending on ensemble or variable, 6-month forecast is conducted for the seasonal prediction) retrospective
forecasts starting on the 1st, 9th, 17th, and 25th of every month for 26 years (1991–2016) and 24 years (1993–2016), respectively,
but evaluations are conducted with 24-year forecasts for the fair comparison between both systems. To operate ensemble
forecasts, the Stochastic Kinetic Energy Backscatter (SKEB2; Tennant et al., 2011) and the Stochastic Perturbation of
Tendencies (SPT; Sanchez et al., 2016) scheme is used to perturb initial states in GloSea5 and GloSea6, respectively.
135 Compared to the SKEB2, the SPT scheme imposes additional constraints on energy and water conservation, leading to an
increase in the ensemble spread without degrading ensemble mean fields, which is especially beneficial over the tropics. Based
on these methods, GloSea5 and GloSea6 operate 3 and 7 ensemble forecasts and have been implemented by the KMA in
international S2S prediction project for 2020–2022 and 2023–present, respectively. The description of their model
configuration is summarized in Table 1.

140

		GloSea5	GloSea6
Hindcast period		26 years (1991–2016)	24 years (1993–2016)
Ensemble	Method	Stochastic Kinetic Energy Backscatter (SKEB2)	Stochastic Perturbation of Tendencies (SPT)
	numbers	3	7
Resolution	Atmosphere	Horizontal: N216 (0.83°×0.56°) Vertical: L85 (~85 km)	
	Atmosphere	ECMWF ERA-interim	
Initial conditions	Land	JULES offline run (JRA55 atmospheric forcing)	JULES offline run (ERA5 atmospheric forcing)
	Ocean/Sea-ice	NEMOVAR (UKMO)	
	Atmosphere	GA6.0	GA7.2
Model physics	Land	GL6.0	GL8.0
	Ocean	GO5.0	GO6.0
	Sea-ice	GSI6.0	GSI8.1
	Coupler	OASIS3	OASIS3-MCT

Table 1: Description of the GloSea5 and GloSea6 model configurations.

2.2 Validation Data

The daily maximum and minimum temperature over land at a height of 2 meters are sourced from NCEP CPC analysis
145 produced by NOAA Physical Sciences Laboratory (PSL; <https://psl.noaa.gov>). The temperature data have a 0.5° horizontal
resolution and are available for 1979–present. The daily mean temperature is acquired by arithmetically averaging maximum
and minimum temperature. Hereafter, daily mean, maximum, and minimum temperature will be referred to as Tmean, Tmax,
Tmin, respectively.



The ERA5-Land is an offline land reanalysis (Muñoz-Sabater et al., 2021) of the Tiled ECMWF Scheme for Surface Exchanges
150 over Land incorporating land surface hydrology (H-TESSSEL) land surface model with four soil layers (0–7-, 7–28-, 28–100-,
and 100–289-cm depth), forced by the ERA5 atmospheric reanalysis. ERA5-Land has a horizontal resolution of ~0.18 and an
hourly temporal resolution. To enhance the spatial resolution of the ERA5-Land, ERA5 near surface atmospheric variables
(e.g., temperature, humidity, and pressure) used for boundary conditions are corrected to account for the altitude difference
that came from the lower resolution of ERA5. This study uses ERA5-land as a reference for snow cover extent to diagnose the
155 modelled snow. Compared to the satellite-based datasets, the snow cover is accurately described in ERA5-Land whereas ERA5
is notably overestimated (Kouki et al., 2023). ERA5 assimilates snow depth and cover information from several SYNOP
(surface synoptic observation) stations and IMS (Interactive Multisensor Snow and Ice Mapping System) data over the
Northern Hemisphere.

In situ observations of surface SM are employed to evaluate the model climatological bias and SM memory (SMM) across the
160 globe. International Soil Moisture Network (ISMN; Dorigo et al., 2021) is used to obtain daily mean SM sensed from 5-cm to
10-cm. While flagged measurements classified as “good” quality are used, additional quality control procedures are applied to
avoid data redundancy and spurious SM characteristics. First, we exclude the Snowpack Telemetry network (SNOTEL) which
has large uncertainty in SM estimates because it is designed to measure snow variables. Second, if observations at one site are
made at several depths within that range, it will be represented as a value close to 5-cm. Despite the previous steps, if SM is
165 measured at the same location and depth by different sensors, only one of them is selected to avoid the loss of SM
characteristics from simple averaging of many sensors. Lastly, the z-score of SM measured from each sensor is calculated and
the sensor with the lowest value is selected. The SM z-score is defined as:

$$Z = \frac{\sum_{t=1}^N \frac{X_t - \bar{X}}{\sigma_x}}{\sqrt{\frac{N}{1 + \tau}}} \quad (1)$$

where X_t , \bar{X} , and σ_x are the daily time series, timely averaged value, and temporal standard deviation of SM in daily time scale
(t), respectively. N and τ represent the sample number of daily time series and corrected SMM (described in subsection
170 3.1), respectively.

A time-filtered satellite product of daily surface SM, originated from the COMBINED European Space Agency (ESA) Climate
Change Initiative (CCI) Soil Moisture v06.1 dataset (Dorigo et al., 2017), is used to assess the global SMM simulated by
forecast models. Remotely sensed SM datasets inherently contain random and periodic errors, particularly in high-frequency
variability, due to the radiometric instrument performance, viewing angle variations, spatial resampling, imperfect
parameterizations used in retrieval algorithms, and so on. These errors hamper the representation of realistic SM dynamics and
175 land-atmosphere interactions due to a decrease in the SM autocorrelation value. To avoid the underestimation of SMM
attributed by the inherent error in satellite, this study uses the time-filtered surface SM product covering 21 years (2000–2020)
with 0.25° spatial resolution, using a Fourier transform with LSM datasets (Seo and Dirmeyer, 2022a). Hereafter, we refer to
the adjusted ESA CCI SM based on the LSM simulations as ESACCI_{adj}.



180 The Global Land Evaporation Amsterdam Model (GLEAM; Martens et al., 2017) provides a dataset of terrestrial heat fluxes
and soil wetness derived from algorithms integrating satellite-observed geophysical variables. Based on the Priestley and
Taylor equation, GLEAM estimates potential evaporation from net radiation and near-surface air temperature observations.
They are converted into actual evaporation through a multiplicative evaporative stress factor based on observed Vegetation
Optical Depth (VOD) and estimated root-zone SM. This study uses the daily surface SM, net radiation, latent heat flux, and
185 sensible heat flux from version 3.5a (<https://www.gleam.eu/>) covering 21 years (2000–2020) with a 0.25° spatial resolution.
The Multi-Source Weighted-Ensemble Precipitation (MSWEP) Version 2.8 is the gauge-, satellite-, and reanalysis-based
precipitation dataset with are available for 1979–present. The precipitation data have a 0.1° horizontal resolution and 3-hourly
temporal resolution (Beck et al., 2019a). Its superior performance is primarily attributable to the inclusion of daily gauge
observations compared with 26 gridded precipitation datasets (Beck et al., 2019b).

190

3 Methodology

This study aims to investigate the impact of an improved snow scheme in the seasonal forecast system on the fidelity of snow
behavior on contemporaneously and during the next warm season after snow melt. To compare model performance between
GloSea6 and GloSea5 in the physics of snow freezing and melting, 100-day long retrospective forecasts initiated on the 1st day
195 of October–April spanning 24 years (1993–2016) are used. Although ensemble simulations are carried out in both models, a
single member run is used in this study because 24 yearly samples are sufficient to represent the climatology of the seasonal
cycle. The shift of the snow melting season alters the availability and variability of SM for spring and summer season. 60-day
long retrospective forecasts starting on 1st, 9th, 17th, 25th of May–August of 24 years are used to demonstrate the snow effect
on the model climatological bias of surface SM, surface air temperature, and precipitation during northern hemisphere warm
200 season when land-atmosphere feedback is most active. Most of the evaluations are accounted for by the fidelity of the modeled
land-atmosphere interactions calculated by the daily mean time series of all simulations during boreal summer, thereby
representing the climatology of coupling metrics. The ensemble mean values are used in the climatological bias analysis, while
the coupling metrics are calculated with each ensemble, and each ensemble result is averaged to avoid the physical correlation
between variables fading out in the ensemble-averaged time series. To identify the model improvement with testing statistical
205 significance, 384 initiated forecast runs are validated in each forecast system and tested for statistical significance using a
Student's *t* test. Model prediction skill as a function of forecast lead time is not evaluated in this study, because the result is
sensitive to the number of ensembles rather than the version upgrade of the forecast model (not shown here).

3.1 Soil moisture memory

To evaluate the SM persistence simulated in the model, the autocorrelation-based SMM is employed. First, assuming that the
210 evolution of the daily SM time series follows a first-order Markov process (Vinnikov and Yesserkepova, 1991), the decay



frequency (f) of SM can be defined by a function of SM autocorrelation (AR) at lag day (τ) (Dirmeyer et al., 2016; Seo and Dirmeyer, 2022a). Its formulation is followed as:

$$AR(\tau) = \exp(-f\tau) \quad (2)$$

The SMM is defined with an e-folding decay time, at which the autocorrelation of SM drops to $1/e$. By a linear fitting of $\ln[AR(\tau)]$, the memory is calculated as the value of τ , when the linear extrapolation between $\ln[AR(\tau = 1)]$ and $\ln[AR(\tau = 2)]$ is intersected to $\ln[AR(\tau)] = -1$. Since the SM behavior is not perfectly fitted on the first-order Markov process, the displacement of the extrapolated linear fit at $\tau = 0$ is defined with the measurement error mostly attributed to random errors (Robock et al., 1995). To measure the SMM under the assumption that there is no measurement error, the extrapolated linear fit is shifted to intersect origin point and the intersected τ value between the shifted linear fit and $\ln[AR(\tau)] = -1$ is the corrected SMM. Time-filtered ESA CCI and modeled SM products exhibit the marginal measurement error (Seo and Dirmeyer, 2022a), so that this study focuses on the improvement in the representation of the corrected SMM in the model simulations. Due to the data availability of the time-filtered satellite dataset, the SMM analysis is conducted during the 17-year period 1993–2016. The autocorrelation is calculated by concatenated time series of daily SM over JJA (June–August) of 17 years, and the SMM is calculated in each ensemble forecast and represented by the median of the ensemble values.

3.2 Time-lagged terrestrial coupling index

To characterize the causality of land-atmosphere interactions, this study adopts time-lagged terrestrial coupling index (LTCI). The original terrestrial coupling index quantitatively measures the sensitivity of target variable (TV : responding to a feedback) to source variable (SV : triggering to a feedback) to demonstrate their physical process connection across a range of time scales (e.g., hourly, daily, monthly, or yearly time series) (Dirmeyer, 2011; Seo and Dirmeyer, 2022b). Based on this matrix, the causality of the land-atmosphere feedback is applied by setting a 1-day time lag in the time series of TV compared with SV . This is formulated as:

$$LTCI_d(SV_t, TV_{t+1}) = R(SV_t, TV_{t+1}) \times \sigma_{TV_{t+1}} \quad (3)$$

the subscript d refers to using daily time series and $t + 1$ denotes 1-day time lag against the raw time series (t). R and σ represent the temporal correlation coefficient, and the temporal standard deviation, respectively. To explore the quantitative response of precipitation variability to the land surface flux partitioning, this study sets the source and target variables as precipitation (PR) and evaporative fraction ($EF = LE/(H + LE)$), respectively, referred to as $LTCI_d(EF_t, PR_{t+1})$.

3.3 Methodology to define land coupling regime

This study evaluates model performance in the simulation of land coupling regimes in GloSea5 and GloSea6. Land-atmosphere interaction is controlled by land surface energy and water exchanges. Depending on their relative dominance, water- and energy-limited regimes are categorized, where the flux partitioning between sensible and latent heat flux are controlled by the



240 availability and variability of SM or by net radiation mainly dictated by the atmosphere, respectively. They are separated by a
critical value of SM at each location; the dry and wet side of the critical value exhibits water- and energy-limited coupling
processes, respectively. Corresponding to the dominant response of the partitioning of land heat fluxes attributed to either the
land state or the atmosphere, the direction of land-atmosphere coupling is land-to-atmosphere or atmosphere-to-land,
respectively (see Fig. 2 in Seo et al., 2024).

245 To quantify the strength of land-atmosphere coupling based on either the water- or energy-budget predominance, this study
compares the temporal correlation of latent heat flux (the key variable linking water and energy budgets) with the surface SM
 $[R(SSM, LH)]$ and net radiation $[R(R_n, LH)]$, respectively. Thus, both independent proxies, measuring two distinct land
coupling processes, serve as the x- and y-axes in a colour square, and the comparison between them indicates the relative
dominance in the definition of land coupling regime (Seo et al., 2024).

250

4 Results

4.1 Seasonality of land surface variables

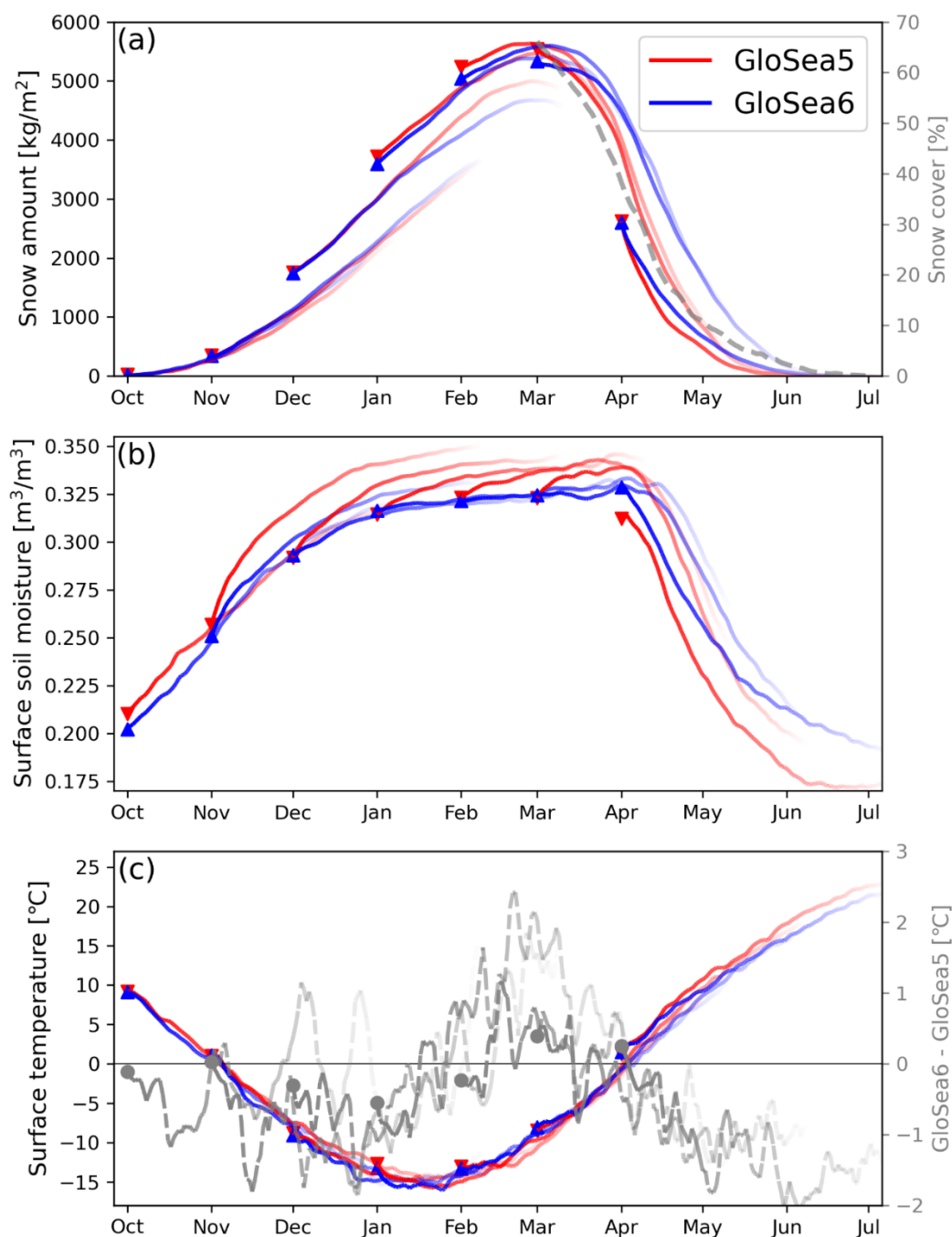
To assess the model performance in simulating snow freezing and melting processes, this study compares the representation
of the seasonal cycle of land surface variables between GloSea6 and GloSea5. Although the land initial conditions are
255 generated by different atmospheric forcing in both forecast models, the difference in initiated snow amount appears to be
insignificant throughout the entire snow season (Fig. 1a). GloSea5 and GloSea6 simulate the seasonal cycle of snow freezing
process over the Eurasian continent similarly regardless of which the snow scheme is used, while snow melts 2 weeks earlier
in the early summer when a single-layer snowpack is adopted. For instance, both models consistently simulate a snow peak in
March and are initiated with similar snow conditions in that month, but the snow in GloSea5 disappears before June while it
260 persists until early June in GloSea6. The result resembles the snow melting season represented by ERA5-Land.

Although similar SM states are initialized in both forecast models for the entire analysis period, GloSea5 shows a model
forecast drift in the wet direction from October to March, indicating the systemic inconsistency between the initial SM state
from the LSM offline simulation and the coupled model climatology (Fig. 1b). Because the snowpack serves as a barrier to
energy and water exchange between the land and the atmosphere, later snowmelt delays the onset of evaporation, which slows
265 the physical process of drying out SM. Thus, the implementation of the multi-layer snowpack results in the climatologically
wetter SM following the onset of snowmelt (May and June). The SM difference between GloSea6 and GloSea5 deepens toward
the middle of the summer season.

The effect of the multi-layer snow scheme on surface temperature depends on the snow accumulation, snow peak, and snow
melting seasons. The snowpack plays a role of insulating the near-surface atmosphere from direct access to the heat in the
270 ground. Therefore, the single-layer snow scheme provides a weaker insulating effect, simulating relatively colder and warmer
surface temperatures during thick (snow peak season) and thin (snow melting or freezing season) snow cover, respectively



(Fig. 1c). During the summer season, the surface cooling in GloSea6 is accounted for by the abundance of SM. Increased partitioning of land heat fluxes to latent heat leads to stronger evaporative cooling.



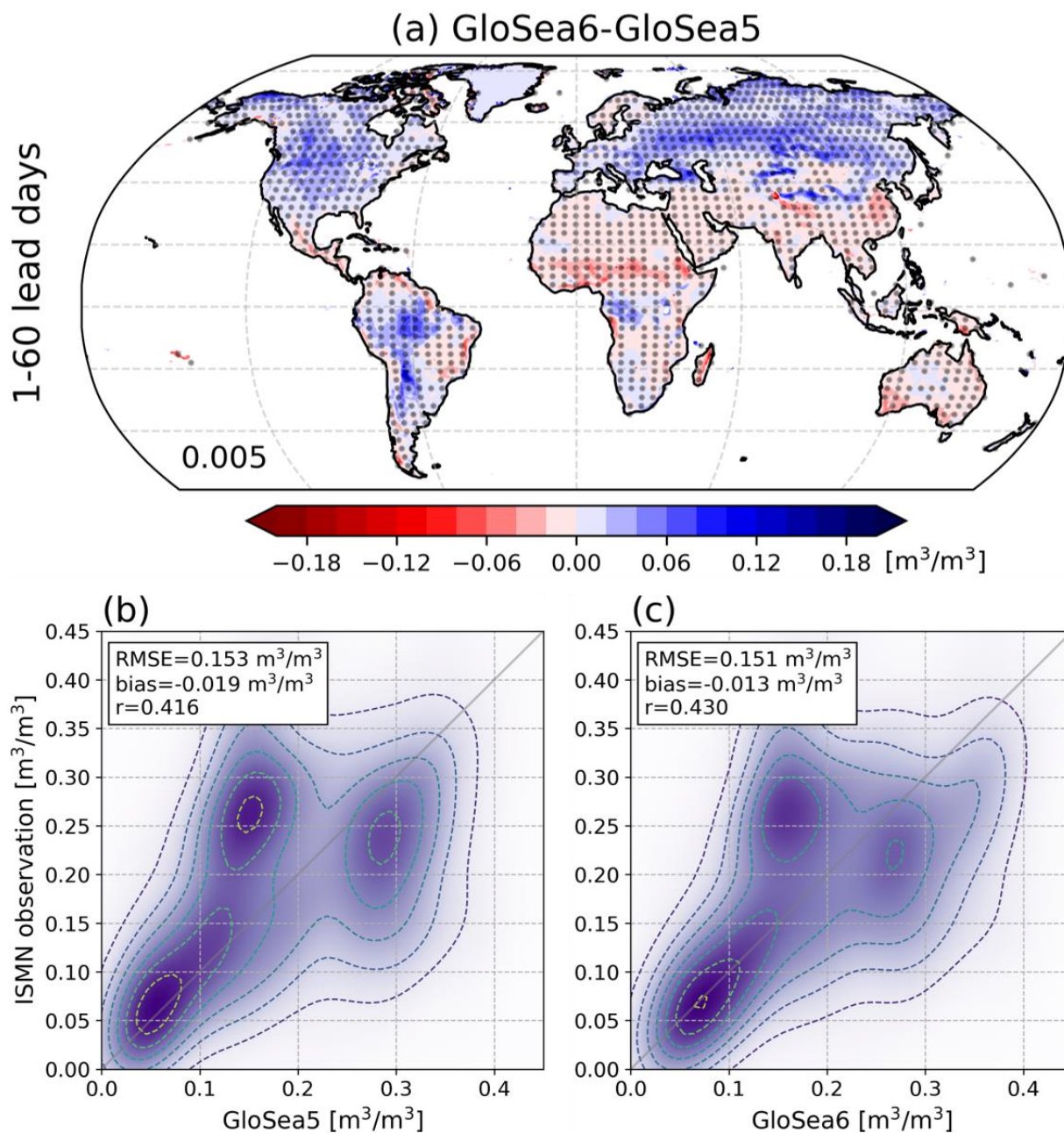
275 **Figure 1:** Climatological seasonal cycle of 24-year (1993–2016) averaged (a) snow amount, (b) surface soil moisture, and (c) surface temperature simulated by GloSea5 (red) and GloSea6 (blue) over the Eurasian continent (0–130E, 45–55N), where 100-day forecast



lines fade at increasing lead forecasts and coloured marks indicate initial states on the first day of each month. To validate the snow melting processes in the model simulations, the gray dashed line in (a) denotes ERA5-Land snow cover. Additionally, to denote the response of surface temperature to the snow physics scheme, gray dashed lines display the difference between GloSea6 and GloSea5 throughout the snow accumulation and melting seasons.

4.2 Evaluation of model climatological error and bias over the globe

Although soil moisture has historically not been a verifiable quantity in weather forecast models (Koster et al., 2009), the adoption of soil moisture data assimilation makes soil moisture a variable for validation (Seo et al., 2021). To identify the representation of surface SM, this study compares the climatological mean between both forecast models and evaluates their model error against in-situ measurements. The difference in SM simulation between GloSea6 and GloSea5 is large above 40°N regions across all forecast lead times (Fig. 2a). In particular, the difference is dominant over the snow frontal region, indicating that the difference is related to the additional snow insulating effect in the GloSea6 LSM. Differences at lower latitudes are likely due to other model changes. To assess model fidelity, SM simulated by GloSea5 (Fig. 2b) and GloSea6 (Fig. 2c) are validated against in-situ measurements (mostly distributed over the North America and Europe). Although both models simulate a reliable SM climatology over relatively dry regions ($\sim 0.1 \text{ m}^3 \text{ m}^{-3}$), modeled SM is systematically underestimated when model values are between 0.1 and $0.2 \text{ m}^3 \text{ m}^{-3}$. Most of the underestimated sites are located above 40°N (SF. 1). Although model errors still remain in GloSea6, the drying errors are significantly improved as the SM becomes wetter and the spatial agreement, as measured by the correlation coefficient, is also increased.

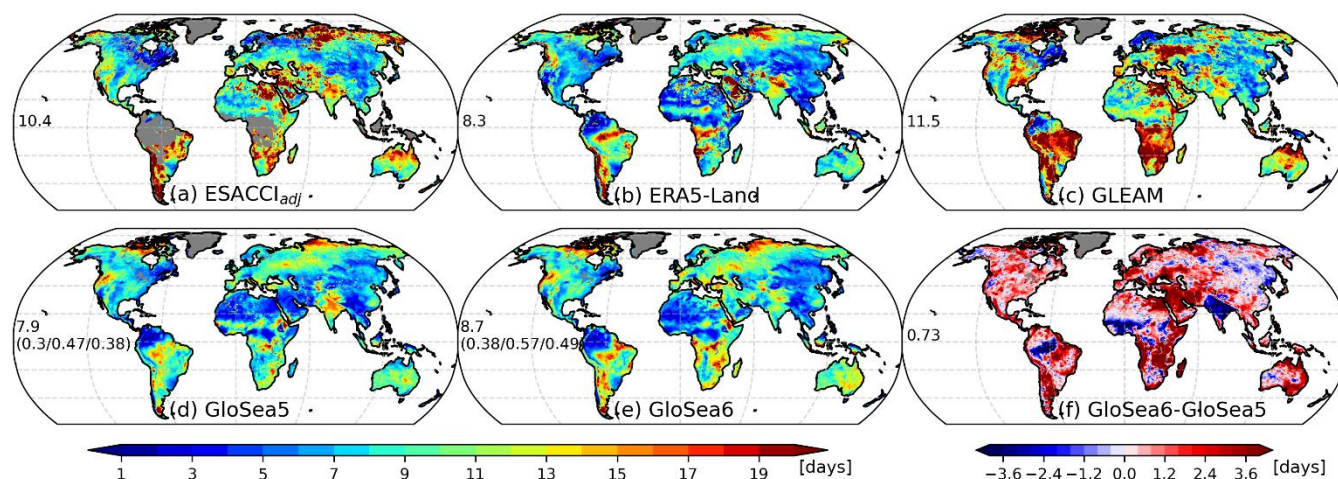


295 **Figure 2:** (a) Spatial distribution of climatological surface soil moisture difference between GloSea6 and GloSea5 of 60-day forecasts initiated in May–August of 1993–2016. The dotted area indicates the difference is statistically significant at a 95% confidence level and global averaged value is indicated in the lower-left corner. 2-dimensional density of modelled surface soil moisture in (b) GloSea5 and (c) GloSea6 against in situ ISMN observations (1720 measurement sites), where RMSE, bias, and Pearson correlation coefficient are denoted in the upper-left corner.

300



Since SMM is a key factor in the subseasonal forecasting because its persistence over a few weeks, model fidelity of SMM is crucial for forecast skill. Because memory is shortened by occurrences of precipitation, it is prolonged where the climate is relatively dry. For instance, SM persistence is relatively short over East Asia where the monsoon flow throughout the summer season leads to an increasing likelihood of rainfall, accompanying wet soil. The spatial patterns of SMM from ESACCI_{adj}, ERA5-Land, and GLEAM are similar (Figs. 3a,b,c), but ESACCI_{adj} is noisy at high-latitudes because SM dynamics are not perceived by the satellite when the surface is frozen. The globally averaged values of SMM from ESACCI_{adj}, ERA5-Land, and GLEAM are 10.4, 8.3, 11.5 days, but the Amazon, tropical Africa and Southeast Asia, which have dense vegetation but short SMM, are not sensed by satellite. This likely biases the global SMM estimate from ESACCI_{adj} toward shorter timescales. The spatial distribution of SMM determined from the observational products is reliably simulated over the globe in GloSea5 and GloSea6. Improvements in SMM bias and spatial agreement are shown in GloSea6 (Figs. 3d,e). The underestimated SMM in GloSea5 is increased by 0.8 days and the spatial correlation of the SMM with the observed fields is also improved. When the assessment is performed with in-situ measurements (SF. 2), the model-based SMM is the better match to the observations (SFs. 2b,c) and there is a significant improvement to simulate the SMM in GloSea6 compared to the GloSea5 (SFs. 2d,e). When the soil becomes wet due to the late onset of snow melt, the SM decay in response to rainfall is slow, thereby increasing the SMM in mid-latitude regions (Fig. 3e). In contrast, there are some regions (e.g., the southern region of the Amazon, central West Africa, and India) where SMM decreases, the main reason being an increase in rainfall.



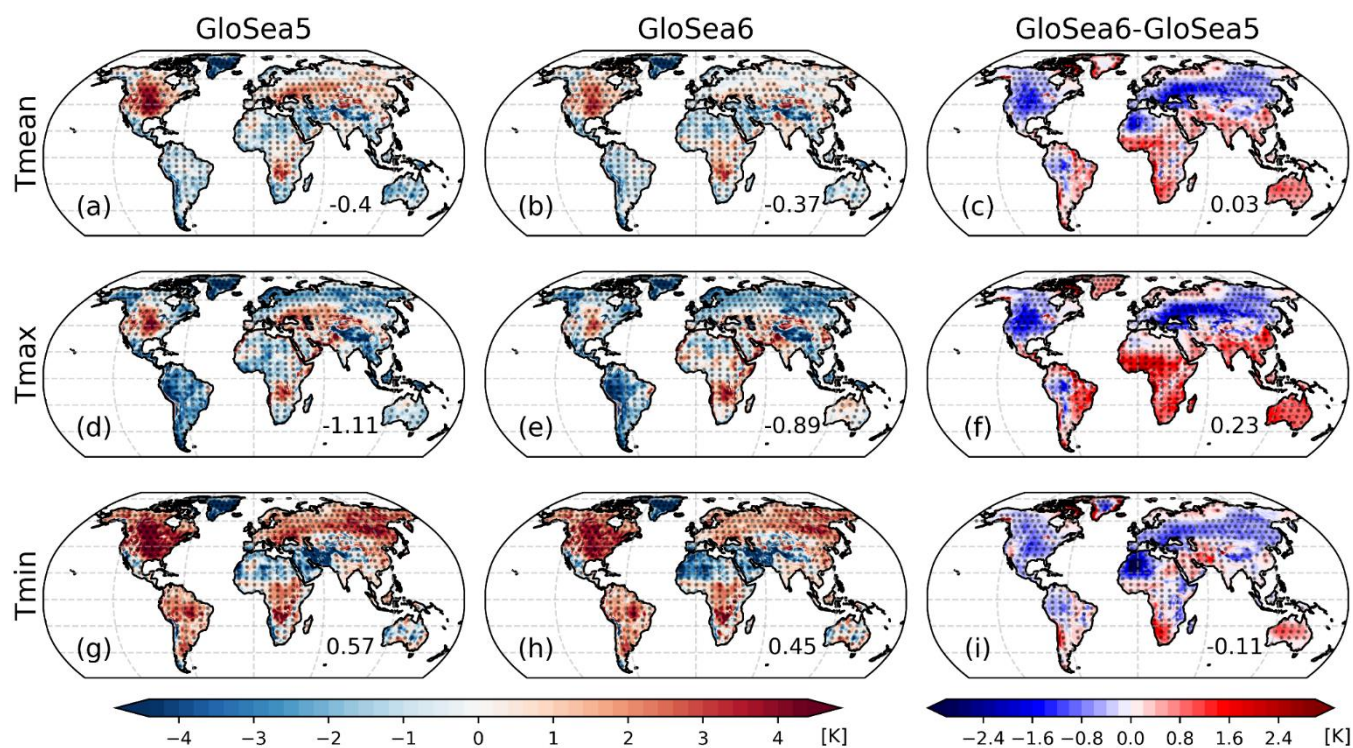
320 **Figure 3: Surface soil moisture memory from (a) ESACCI_{adj}, (b) ERA5-Land, (c) GLEAM, (d) GloSea5, (e) GloSea6, and (f) the difference between GloSea6 and GloSea5. Global mean values are denoted in the middle-left in each panel. The bracketed values indicate the spatial correlation of the modelled soil moisture memory compared to ESACCI_{adj} (left), ERA5-Land (middle), and GLEAM (right).**

Features of the simulation of surface air temperature in GloSea6 include reduced bias for daily mean and subdaily time scales across all forecast lead times, explainable by the changes in land physics. GloSea6 represents a decrease in Tmean bias despite the existence of significant positive bias over North America (Fig. 4b). GloSea6 simulates warmer and colder temperatures over the tropics and mid-latitudes, respectively, compared to GloSea5 (Fig. 4c). To identify the impact of two major

325



330 modifications in the LSM on temperature simulation, when the assessment of Tmean is decomposed into the Tmax and Tmin, the results are not consistent with the daily mean. Although the Tmean bias is small in both forecast systems, it results from the cancellation of biases for Tmin and Tmax. Tmax shows a large negative bias north of 50°N and a positive bias over warm arid regions (e.g., Southwest Asia) (Figs. 4d,e). Tmin appears to have a large positive bias over the globe, except for the Sahara and Southwest Asia, which have a negative bias (Figs. 4g,h). The effect of the multi-layer snow scheme on forecasting temperature is primarily surface cooling over snow frontal areas throughout the entire day (Fig. 4c), even though the temperature response is more sensitive during the daytime (Figs. 4f,i). This is because there is a larger latent heat flux during the daytime, resulting in a larger evaporative cooling. On the other hand, GloSea6 simulates warmer Tmean over the tropics, particularly in Tmax, which likely results from updating the land surface albedo as a function of shortwave wavelength.



335

Figure 4: Spatial distribution of daily mean (upper row; a–c), maximum (middle row; d–f), and minimum (lower row; g–i) surface air temperature bias of 60 days forecast in GloSea5 (first column), GloSea6 (second column), and the difference between both models (last column). Area averaged bias is denoted in the lower-right corner in each panel. Dotted areas indicate the bias is statistically significant at a 95% confidence level.

340 The systemic error of surface air temperatures, measured by root-mean-square error (RMSE), is further investigated using 60-day lead forecasts. In general, the error in Tmean, Tmax, and Tmin from GloSea6 is largely reduced compared to that from GloSea5. In particular, GloSea5 shows a large Tmean RMSE over the eastern US, Siberia, and Australia (Fig. 5a), but the error is significantly mitigated in GloSea6 (Fig. 5c). Tmean errors in the eastern US and Siberia are influenced by both Tmax and Tmin. Based on the temperature bias analysis, this result is attributed by the improvement in the snow scheme that has effects



345 throughout the day. Over Australia, the decrease of Tmean error is mostly influenced by Tmax, which is accounted for by the improvement of land-atmosphere interactions during the daytime (cf., Fig. 10d).

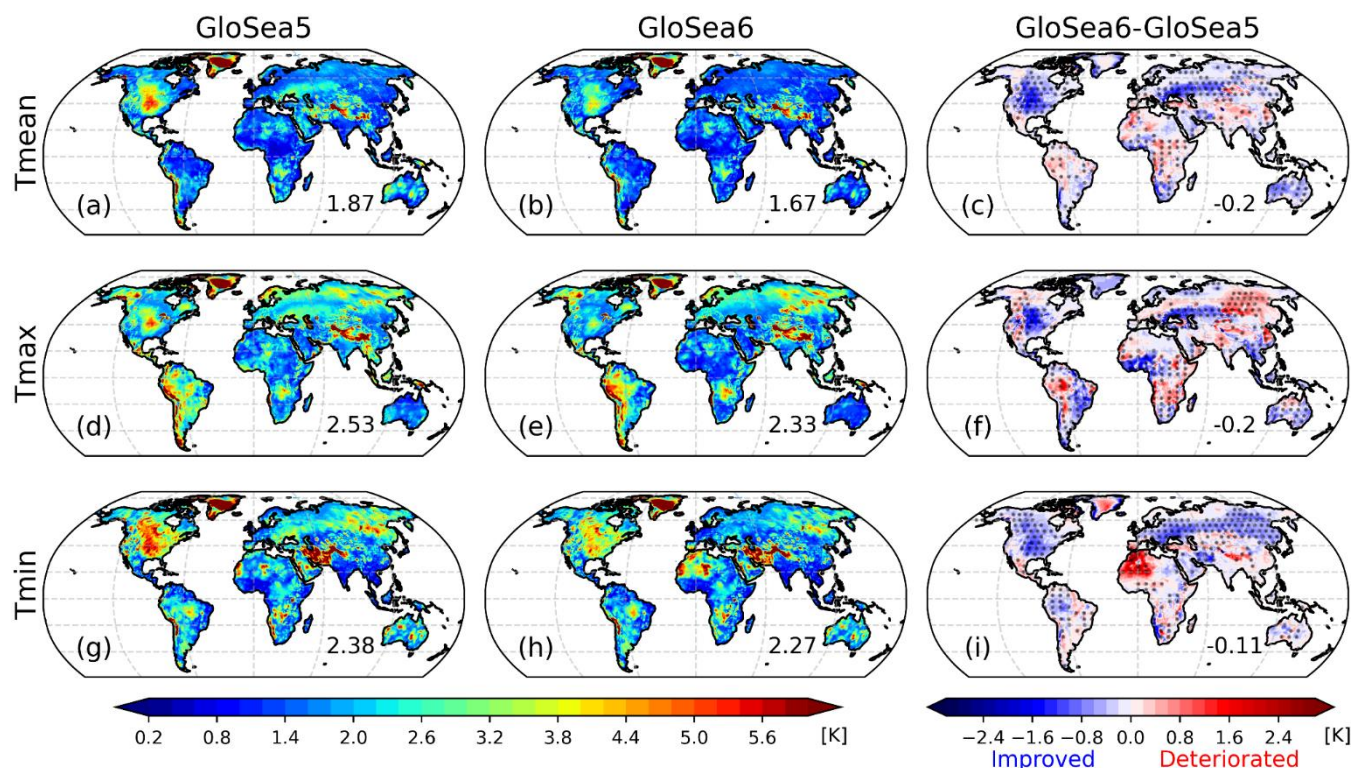
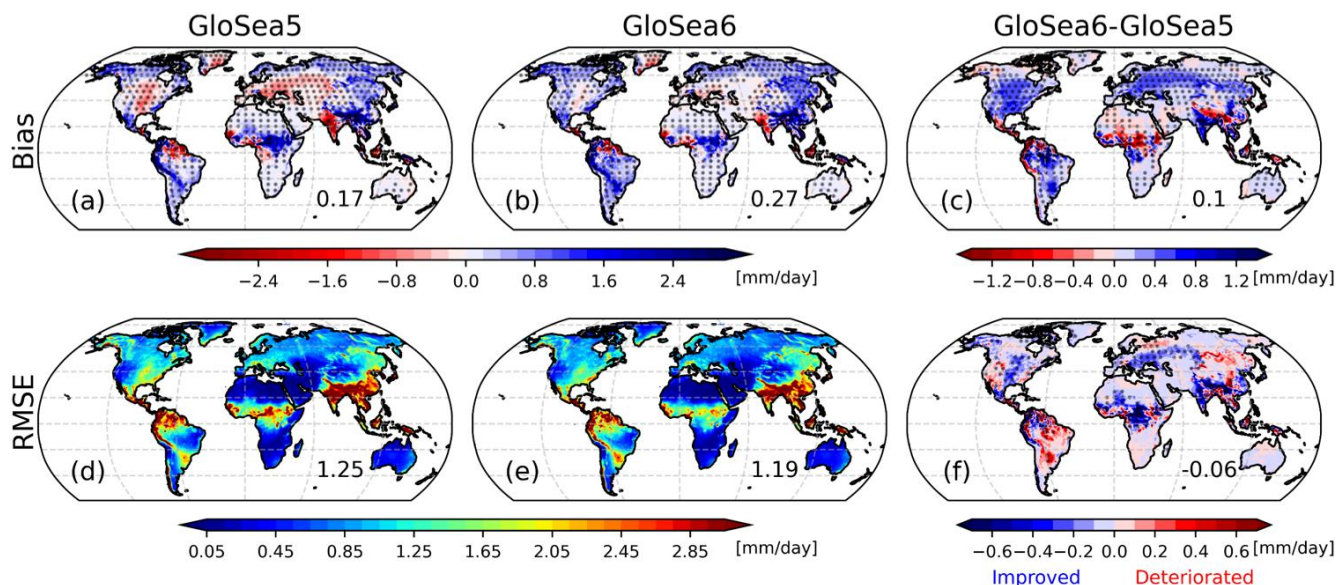


Figure 5: Same as Fig. 4, but for RMSE of surface air temperature variables. Blue and red shading in difference maps (c, f, and i) indicate the improved and deteriorated forecast performance of GloSea6, compared with the GloSea5.

350 Model performance in simulating precipitation is also evaluated in GloSea5 and GloSea6. Both models show an overestimation of precipitation across the globe because of the wet bias over South America, central Africa, southern China, and northeastern Eurasia (Figs. 6a,b). Although the globally averaged bias increases in GloSea6, this is largely due to a reduction in the negative bias over the continental United States (CONUS) and western and central Eurasia, as the positive bias is amplified or maintained in areas that have wet biases in GloSea5 (Fig. 6c). The increased precipitation over the mid-latitude regions is explained by the abundant SM from snow melting process under positive evapotranspiration-precipitation feedbacks (cf., Fig. 7). The precipitation errors of GloSea5 and GloSea6 appear to be spatially large over the areas where the mean precipitation climatology is high (e.g., East America, Central America, South and East Asia, and Central Africa) (Figs. 6d,e). The difference of precipitation RMSE maps between GloSea6 and GloSea5 reveals a significant improvement in the simulation of precipitation over central CONUS, western and central Eurasia, Central Africa, and South Asia (Fig. 6f). Although entire regions where the error is reduced cannot be explained solely by advances in land processes, the improvement in the mid- and high-latitude regions of the Northern Hemisphere is likely due to the improved snow physics.

360

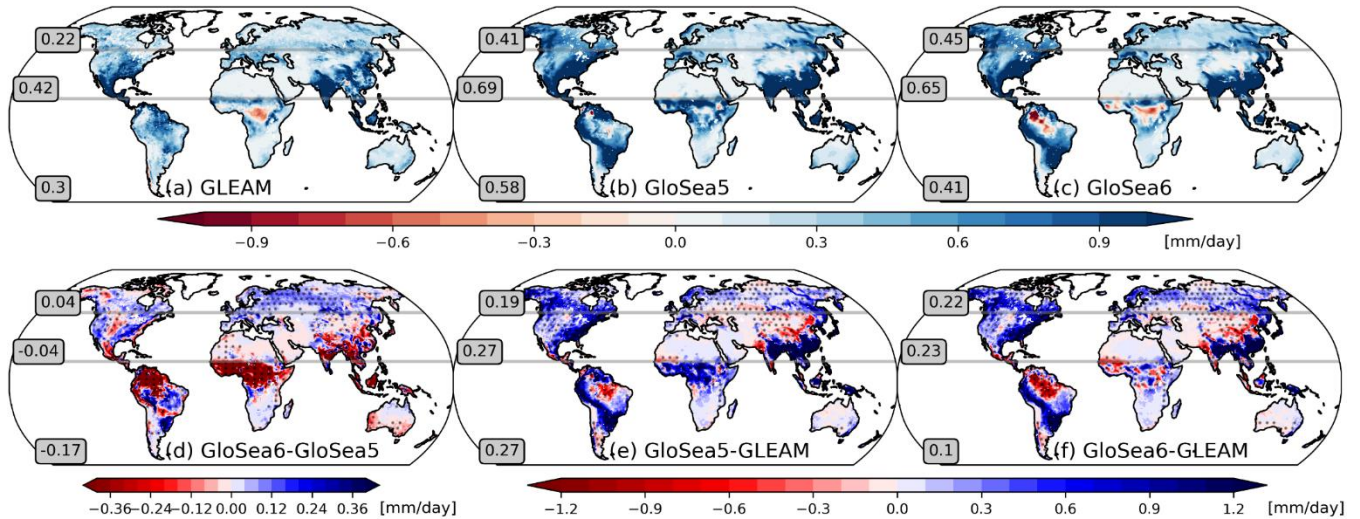


365 **Figure 6: Spatial distribution of daily mean precipitation bias (upper row; a–c) and RMSE (lower row; d–f) of 60 days forecast in GloSea5 (first column), GloSea6 (second column), and the difference between both models (last column). Dotted areas indicate that bias (a, b, and c) and RMSE (f) are statistically significant at a 95% confidence level.**

To demonstrate the impact of land-atmosphere interactions on the model ability to simulate precipitation, this study assesses the time-lagged terrestrial coupling index ($LTCI$). The observed $LTCI_d(EF_t, PR_{t+1})$ generally represents a positive coupling to precipitation over the globe due to the positive correlation $R(EF_t, PR_{t+1})$, with particularly strong feedbacks over the areas where precipitation variability $\sigma_{PR_{t+1}}$ is high (e.g., Central America, Eastern CONUS, South Asia, and East Asia) (Fig. 7a).

370 The spatial pattern of $LTCI_d(EF_t, PR_{t+1})$ simulated by GloSea5 and GloSea6 is similar to the observed distribution, whereas there is an overall overestimation of coupling strength (Figs. 7b,c). Both models commonly overestimate the $LTCI_d(EF_t, PR_{t+1})$ over the Americas (except for the Amazon), northern Eurasia, and South Asia, but the positive bias is mitigated in GloSea6 (Figs. 7e,f). For GloSea6, the large positive bias over the tropics, also simulated by GloSea5, is significantly reduced, attributable to the decrease in $R(EF_t, PR_{t+1})$, while the positive bias over high-latitude regions is

375 slightly amplified by increased $\sigma_{PR_{t+1}}$ (Fig. 7d). The increased variability of daily precipitation in GloSea6 is associated with an increase in mean precipitation (cf., Fig. 6c).



380

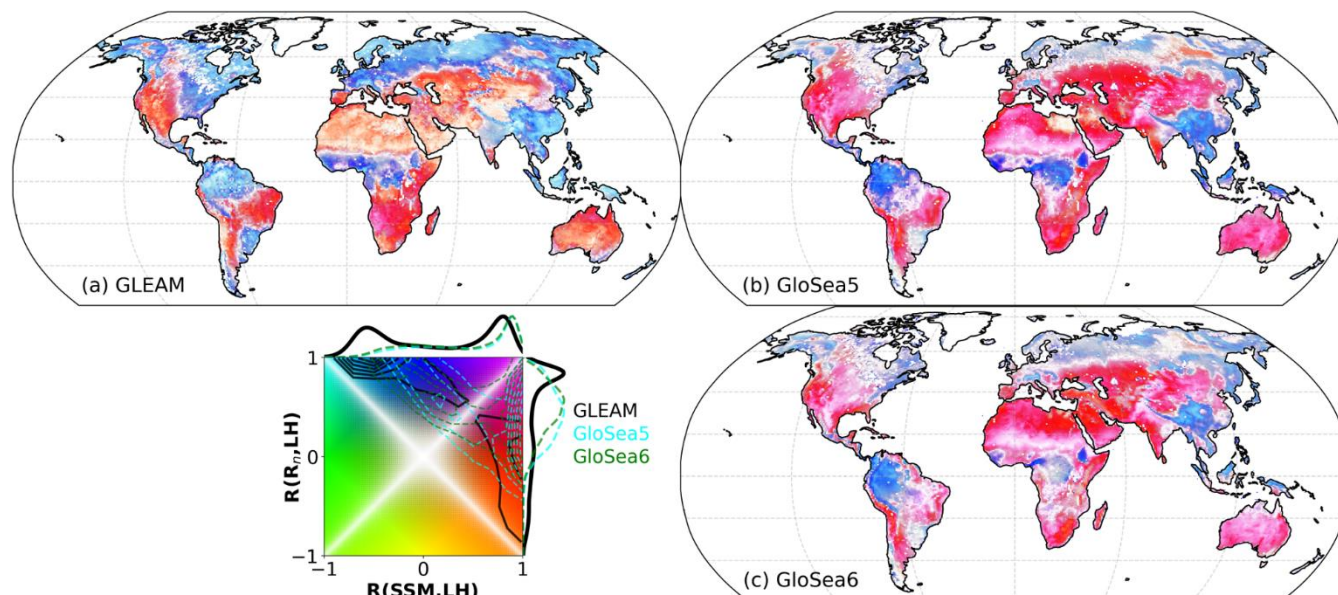
Figure 7: Spatial distribution of $LTCl_d(EF_t, PR_{t+1})$ of 60-day forecasts in (a) GLEAM, (b) GloSea5, and (c) GloSea6. (d) The difference between GloSea6 and GloSea5 and the bias of the 1-day lagged TCI simulated by (e) GloSea5 and (f) GloSea6 are displayed, where the dotted areas indicate statistical significance at a 95% confidence level. In each panel, gray horizontal lines isolate three areas (bottom: 60S–15N, middle: 15–50N, and top: 50–90N) and area averaged values is denoted within gray shaded box.

4.3 Representation of land coupling processes

385

The exchanges at the land surface are constrained by the water and energy balance equations, and the strength of water- versus energy-limited processes is quantified by the temporal correlation coefficient of latent heat flux to surface SM or net radiation, respectively, as described in subsection 3.3. In Figure 8, the colour square consists of $R(SSM, LH)$ and $R(R_n, LH)$ on the x- and y-axis, respectively, indicating the relative dominance of water- and energy-limited coupling. The spatial pattern of the GLEAM land coupling regimes is similar to the distribution of the SM climatology, such that water-limited processes are pronounced over climatologically dry areas and vice versa. The classification of the land coupling regime results from the synthetization of the spatial pattern of $R(SSM, LH)$ (Fig. 9a) and $R(R_n, LH)$ (Fig. 10a). The kernel density plot of $R(SSM, LH)$ is bimodal, with clearly separated peaks on either side of zero, while there is a double peak in $R(R_n, LH)$ with a broad peak centered near zero and a pronounced positive peak. For instance, the spatial distribution of $R(SSM, LH)$ and $R(R_n, LH)$ is a zonal dipole structure over CONUS but is meridionally banded over Eurasia.

390



395 **Figure 8: Spatial distribution of land coupling regime in (a) GLEAM, (b) GloSea5, and (f) GloSea6. Shadings indicate correlations indicated in the coloured square: latent heat flux to surface soil moisture (x-axis) and net radiation (y-axis). The global frequency distributions from GLEAM (black), GloSea5 (cyan), and GloSea6 (green) are shown in the lower-left 2-dimensional coloured square. Their kernel density estimations are along the edges of the coloured square, where each curve has been normalized for the same maximum value.**

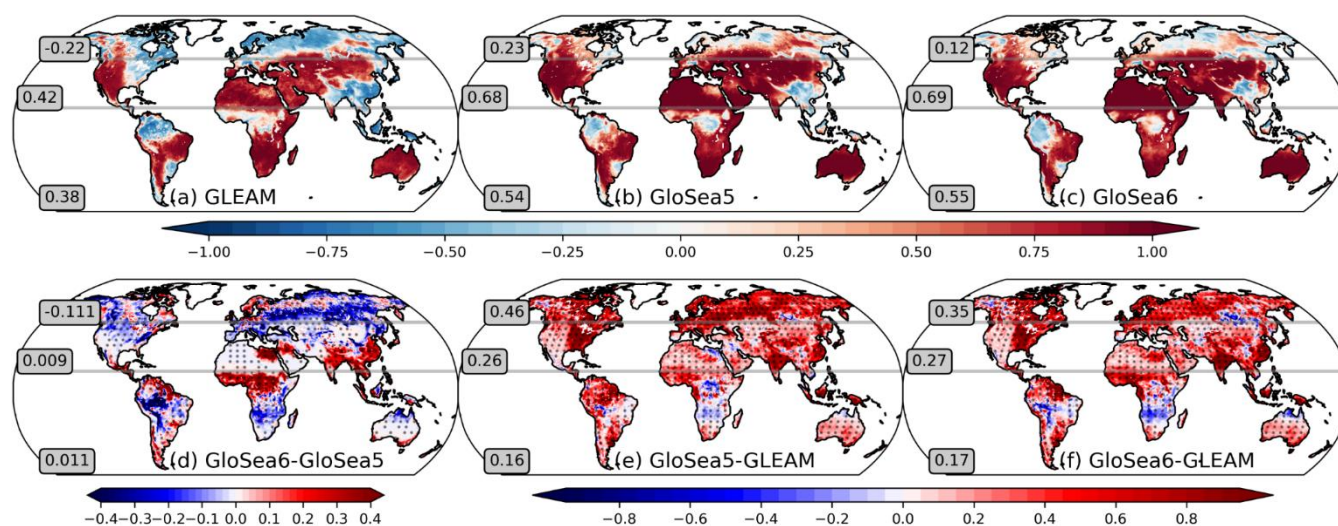
400 GloSea5 and GloSea6 show a single peak on the positive side of the kernel density estimation of $R(SSM, LH)$, which is explained by an overall overestimation of $R(SSM, LH)$ resulting in the expansion of water-limited areas and the degradation of the spatial characteristics in the observation (Figs. 9b,c). The strength of the water-limited coupling is overestimated over the globe, but the positive bias is particularly evident over high-latitude regions (Figs. 9e,f). Nevertheless, the difference between the two forecast system kernel density estimates of $R(SSM, LH)$ is not significant. This does not indicate that the spatial distributions are the same, but rather a cancellation of the changed areas of increase and decrease of $R(SSM, LH)$ in
 405 GloSea6 over the tropics and high-latitude areas (Fig. 9d), respectively.

On the other hand, both forecast models show a single peak on the positive side of the kernel density estimation of $R(R_n, LH)$, even though the underestimated energy-limited coupling strength in GloSea5 is greater in GloSea6. The spatial distributions of $R(R_n, LH)$ simulated by the two models similarly underestimate the spatial dependency (Figs. 10b,c), compared to the
 410 GLEAM. For instance, in GLEAM, dry and high-latitude regions show negative and large positive values of $R(R_n, LH)$, respectively, but the models reveal positive and negative biases for each region (Figs. 10e,f). Nevertheless, GloSea6 significantly increases the energy-limited coupling strength, which mitigates the negative bias of $R(R_n, LH)$, especially over the high-latitude areas, whereas the underestimation still exists (Fig. 10d). Because the late onset of snowmelt leads to wetter SM over the mid- to high-latitudes during the warm season, the wetter SM climatology limits the sensitivity of land heat fluxes
 415 to SM variability, leading to a regime shift of land coupling from water-limited to energy-limited processes.



As a result, GloSea5 and GloSea6 have a limited ability to simulate the observed land coupling regime distributions; the comparison of the 2-dimensional density function for GloSea5 (cyan line) and GloSea6 (green line) in the coloured square. While the water-limited coupling is generally overestimated in both forecast models, the improvement of the energy-limited process in GloSea6 leads to a better classification of the land coupling regime over the globe (Fig. 8b,c). For instance, GloSea5 has an excessive area of red-coloured grid points, indicating the relative dominance of water-limited coupling, while GloSea6 better simulates the spatial pattern of land coupling regimes. In particular, the zonally and meridionally classified dipole pattern over the CONUS and the snow frontal area of Eurasia, respectively, become clear.

420



425

Figure 9: Same as Fig. 7, but for the correlation coefficient between daily latent heat flux and surface soil moisture, to illustrate water-limited processes.

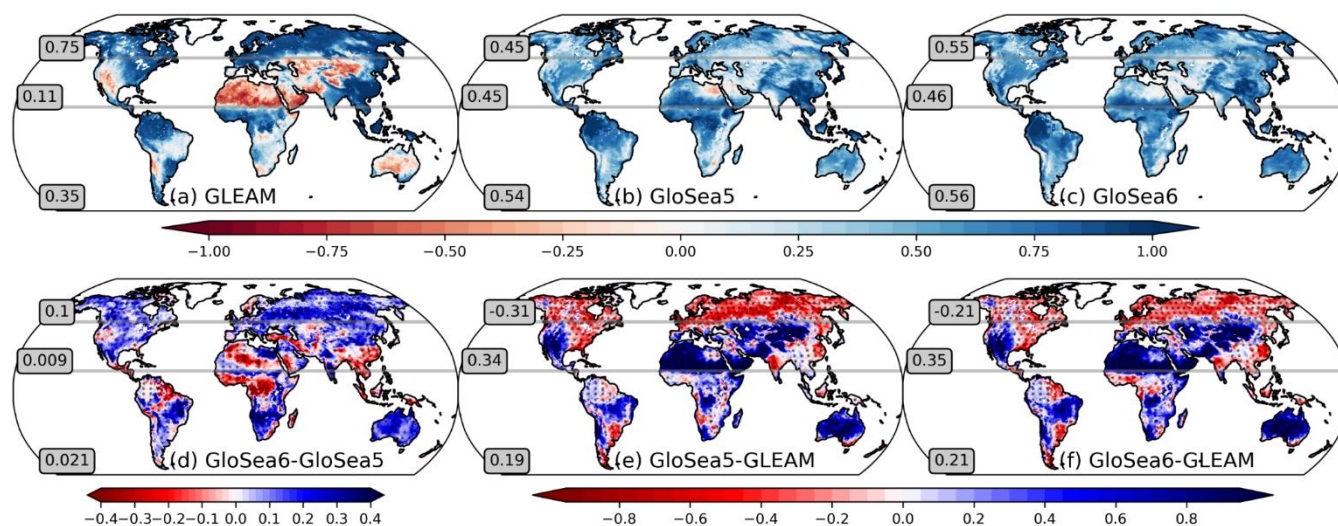


Figure 10: Same as Fig. 9, but for the correlation coefficient between daily latent heat flux and net radiation, to illustrate energy-limited processes.



430 5 Summary and Conclusions

Most land surface models have employed a single-layer snow scheme that insulates the near-surface atmosphere from direct access to the heat in the ground. While effective for very thin snow cover, such a scheme fails to simulate the true insulating effect of the snowpack by prohibiting energy transport between land and atmosphere in deeper snow. This study primarily explores the impact of implementing a multi-layer snow scheme on the climatological bias of the seasonal forecast system. 435 Two sets of the GloSea global retrospective seasonal forecasts over 24 years (1993–2016), from the latest version (GloSea6) and its predecessor (GloSea5), which implement the multi-layer and single-layer snow schemes, respectively, are examined to elucidate the role of the insulating effect of snow.

The improved snow physics with a multi-layer snowpack better captures the observed snow dissipation season (Fig. 1a) and affects land and near-surface variables throughout the snow accumulation and melting seasons. The land surface warming and 440 cooling due to the insulating effect of the snowpack during the snow peak and melting seasons (Fig. 1c) results in a late onset of snow melt and wetter SM during the following summer season, especially in mid- to high-latitude regions (Fig. 1b and 2a), leading to reduced error in surface SM (Figs. 2b,c). The changes in land surface processes also affects land surface characteristics, e.g. SMM is generally increased, which reduces model error in the memory and improves spatial agreement compared to the observational analysis (Fig. 3). Moreover, the greater SM from the advanced snow physics leads to a decrease 445 in temperature with evaporative cooling throughout the entire day (Fig. 4) and an increase in the likelihood of precipitation explained by evapotranspiration-precipitation feedbacks (Fig. 6). The climatological mean shift in temperature and precipitation through implementing the multi-layer snow scheme in GloSea6 significantly reduces the error in the mid- and high-latitude regions, as the reduced temperature and increased precipitation offset GloSea5's climatological warm and dry bias. On the other hand, the other physics update in the LSM is the land surface albedo, which now varies with shortwave 450 wavelength. Its effect is significant only during the daytime over the tropics, because the effect of surface albedo on the surface energy budget is dominant during daytime.

The spatial distribution of the land coupling regime is similar to that of the SM climatology, with the majority of water- and energy-limited coupling occurring over relatively dry and wet soils (Fig. 8). Assessment of model performance is critical to understanding the issues associated with land-atmosphere coupling processes. Comparing the land coupling regime simulated 455 by GloSea5 and GloSea6, the increased SM in GloSea6 alters land-atmosphere interactions, limiting the strength of water-limited coupling (Fig. 9) along with enhance energy-limited processes (Fig. 10). Although the relative dominance of water-limited coupling is still overestimated in both GloSea5 and GloSea6, this problem is corrected over mid- and high-latitude regions when the multi-layer snow scheme is implemented. The increased SM due to the late onset of snowmelt restricts water-limited coupling. This results in an increase in $R(R_n, LH)$ complemented by a decrease in $R(SSM, LH)$.

460 Because the simulation of realistic snow states affects the water and energy budgets not only in winter also in spring and summer, the realization of snow characteristics should be a priority in the process of developing a model. For instance, if the



land surface model is modified to improve land processes for the warm season, when land-atmosphere feedbacks are evident, without any assessment and improvement of snow behaviour, the model is likely to have a larger error, even if the snow is simulated realistically. Note that the climatological improvements do not imply an increase in the predictability of forecast systems, as the increase in forecast skill of temperature and precipitation in GloSea6 is primarily due to the larger ensemble size (SFs. 3 and 4). Therefore, this study suggests that the implementation of a multi-layer snow scheme is necessary to simulate the realistic land surface processes in dynamical forecast systems on the subseasonal to seasonal time scale. From a climate perspective, as global warming increases the variability and uncertainty of modelled snow, reliable future projections for climate change can be presented with the results of selective use of models that are able to simulate realistic snow characteristics.

Acknowledgements

This study was supported by Korea Meteorological Administration Research and Development program under grant RS-2023-00241809. We also wish to thank Sunlae Tak for sharing retrospective forecast datasets which helped us perform the model evaluation.

Code availability

The MetUM is available for use under licence. The source code for the Met Office Unified Model (MetUM) cannot be provided due to intellectual property right restrictions. For further information on how to apply for a licence, see <https://www.metoffice.gov.uk/research/approach/collaboration/unified-model/partnership>. The source code used in the model evaluation of this study is shared on the GitHub (https://github.com/ekseo/Multi-layer_snowpack_GloSea.git, last access: 31 May 2024; <https://doi.org/10.5281/zenodo.11243938>, Seo, 2024).

Data availability

The Copernicus Climate Change Service (C3S) provides access to ERA5-Land data freely through its online portal at <https://cds.climate.copernicus.eu/cdsapp#!/dataset/10.24381/cds.e2161bac?tab=overview>. ISMN soil moisture observation is publicly available through its online website at <https://ismn.earth/en/>. CPC Global Unified Temperature data is provided by the NOAA/OAR/ESRL PSL, Boulder, Colorado, USA, can be downloaded from their website at <https://psl.noaa.gov/data/gridded/>. MSWEP precipitation dataset can be accessed at <https://www.gloh2o.org/mswep/>. GLEAM data is publicly available at the website: <https://www.gleam.eu/>. The ECMWF provides access to GloSea6-GC3.2 hindcast



490 data freely through its online portal at <https://apps.ecmwf.int/datasets/data/s2s/>. Other GloSea retrospective datasets and time-
filtered ESA CCI SM product used in this study are available upon request from the authors.

Author contributions

ES led manuscript writing and performed most of the data analysis. PD contributed to the interpretation of results and manuscript writing.

495 **Competing interests**

The authors have no competing interests to declare.



References

- Arduini, G., Balsamo, G., Dutra, E., Day, J. J., Sandu, I., Boussetta, S., and Haiden, T.: Impact of a multi-layer snow scheme on near-surface weather forecasts, *Journal of Advances in Modeling Earth Systems*, 11, 4687-4710, 2019.
- 500 Beck, H. E., Wood, E. F., Pan, M., Fisher, C. K., Miralles, D. G., Van Dijk, A. I., McVicar, T. R., and Adler, R. F.: MSWEP V2 global 3-hourly 0.1 precipitation: methodology and quantitative assessment, *Bulletin of the American Meteorological Society*, 100, 473-500, 2019a.
- Beck, H. E., Pan, M., Roy, T., Weedon, G. P., Pappenberger, F., Van Dijk, A. I., Huffman, G. J., Adler, R. F., and Wood, E. F.: Daily evaluation of 26 precipitation datasets using Stage-IV gauge-radar data for the CONUS, *Hydrology and Earth System Sciences*, 23, 207-224, 2019b.
- 505 Best, M., Pryor, M., Clark, D., Rooney, G., Essery, R., Ménard, C., Edwards, J., Hendry, M., Porson, A., and Gedney, N.: The Joint UK Land Environment Simulator (JULES), model description—Part 1: energy and water fluxes, *Geoscientific Model Development*, 4, 677-699, 2011.
- Betts, A. K., Desjardins, R., Worth, D., Wang, S., and Li, J.: Coupling of winter climate transitions to snow and clouds over the Prairies, *Journal of Geophysical Research: Atmospheres*, 119, 1118-1139, 2014.
- 510 Craig, A., Valcke, S., and Coquart, L.: Development and performance of a new version of the OASIS coupler, OASIS3-MCT_3. 0, *Geoscientific Model Development*, 10, 3297-3308, 2017.
- Cristea, N. C., Bennett, A., Nijssen, B., and Lundquist, J. D.: When and where are multiple snow layers important for simulations of snow accumulation and melt?, *Water Resources Research*, 58, e2020WR028993, 2022.
- Dirmeyer, P. A.: The terrestrial segment of soil moisture–climate coupling, *Geophysical Research Letters*, 38, 2011.
- 515 Dirmeyer, P. A., Halder, S., and Bombardi, R.: On the harvest of predictability from land states in a global forecast model, *Journal of Geophysical Research: Atmospheres*, 123, 111-113, 127, 2018.
- Dirmeyer, P. A., Balsamo, G., Blyth, E. M., Morrison, R., and Cooper, H. M.: Land-atmosphere interactions exacerbated the drought and heatwave over northern Europe during summer 2018, *AGU Advances*, 2, e2020AV000283, 2021.
- 520 Dirmeyer, P. A., Wu, J., Norton, H. E., Dorigo, W. A., Quiring, S. M., Ford, T. W., Santanello Jr, J. A., Bosilovich, M. G., Ek, M. B., and Koster, R. D.: Confronting weather and climate models with observational data from soil moisture networks over the United States, *Journal of Hydrometeorology*, 17, 1049-1067, 2016.
- Dorigo, W., Himmelbauer, I., Aberer, D., Schremmer, L., Petrakovic, I., Zappa, L., Preimesberger, W., Xaver, A., Annor, F., and Ardö, J.: The International Soil Moisture Network: serving Earth system science for over a decade, *Hydrology and Earth System Sciences Discussions*, 2021, 1-83, 2021.
- 525 Dorigo, W., Wagner, W., Albergel, C., Albrecht, F., Balsamo, G., Brocca, L., Chung, D., Ertl, M., Forkel, M., and Gruber, A.: ESA CCI Soil Moisture for improved Earth system understanding: State-of-the art and future directions, *Remote Sensing of Environment*, 203, 185-215, 2017.
- Guo, Z., Dirmeyer, P. A., and DelSole, T.: Land surface impacts on subseasonal and seasonal predictability, *Geophysical Research Letters*, 38, 2011.
- 530 Hersbach, H., Bell, B., Berrisford, P., Hirahara, S., Horányi, A., Muñoz-Sabater, J., Nicolas, J., Peubey, C., Radu, R., and Schepers, D.: The ERA5 global reanalysis, *Quarterly Journal of the Royal Meteorological Society*, 146, 1999-2049, 2020.
- Kim, H., Lee, J., Hyun, Y.-K., and Hwang, S.-O.: The KMA Global Seasonal forecasting system (GloSea6)—Part 1: operational system and improvements, *Atmosphere*, 31, 341-359, 2021.
- 535 Kobayashi, S., Ota, Y., Harada, Y., Ebata, A., Moriya, M., Onoda, H., Onogi, K., Kamahori, H., Kobayashi, C., and Endo, H.: The JRA-55 reanalysis: General specifications and basic characteristics, *Journal of the Meteorological Society of Japan. Ser. II*, 93, 5-48, 2015.
- Koster, R., Mahanama, S., Yamada, T., Balsamo, G., Berg, A., Boissier, M., Dirmeyer, P., Doblas-Reyes, F., Drewitt, G., and Gordon, C.: The second phase of the global land–atmosphere coupling experiment: soil moisture contributions to subseasonal forecast skill, *Journal of Hydrometeorology*, 12, 805-822, 2011.
- 540 Koster, R. D., Guo, Z., Yang, R., Dirmeyer, P. A., Mitchell, K., and Puma, M. J.: On the nature of soil moisture in land surface models, *Journal of Climate*, 22, 4322-4335, 2009.
- Kouki, K., Luoju, K., and Riihelä, A.: Evaluation of snow cover properties in ERA5 and ERA5-Land with several satellite-based datasets in the Northern Hemisphere in spring 1982–2018, *The Cryosphere*, 17, 5007-5026, 10.5194/tc-17-5007-2023, 2023.
- Kumar, S., Kolassa, J., Reichle, R., Crow, W., de Lannoy, G., de Rosnay, P., MacBean, N., Giroto, M., Fox, A., and Quaipe, T.: An agenda for land data assimilation priorities: Realizing the promise of terrestrial water, energy, and vegetation observations from space, *Journal of Advances in Modeling Earth Systems*, 14, e2022MS003259, 2022.
- 545 MacLachlan, C., Arribas, A., Peterson, K., Maidens, A., Fereday, D., Scaife, A., Gordon, M., Vellinga, M., Williams, A., and Comer, R.: Global Seasonal forecast system version 5 (GloSea5): a high-resolution seasonal forecast system, *Quarterly Journal of the Royal Meteorological Society*, 141, 1072-1084, 2015.



- 550 Mann, G., Carslaw, K., Spracklen, D., Ridley, D., Manktelow, P., Chipperfield, M., Pickering, S., and Johnson, C.: Description and evaluation of GLOMAP-mode: A modal global aerosol microphysics model for the UKCA composition-climate model, *Geoscientific Model Development*, 3, 519-551, 2010.
- Martens, B., Miralles, D. G., Lievens, H., Van Der Schalie, R., De Jeu, R. A., Fernández-Prieto, D., Beck, H. E., Dorigo, W. A., and Verhoest, N. E.: GLEAM v3: Satellite-based land evaporation and root-zone soil moisture, *Geoscientific Model Development*, 10, 1903-1925, 2017.
- 555 Megann, A., Storkey, D., Aksenov, Y., Alderson, S., Calvert, D., Graham, T., Hyder, P., Siddorn, J., and Sinha, B.: GO5. 0: the joint NERC–Met Office NEMO global ocean model for use in coupled and forced applications, *Geoscientific Model Development*, 7, 1069-1092, 2014.
- Mogensen, K., Balmaseda, M. A., and Weaver, A.: The NEMOVAR ocean data assimilation system as implemented in the ECMWF ocean analysis for System 4, 2012.
- Muñoz-Sabater, J., Dutra, E., Agustí-Panareda, A., Albergel, C., Arduini, G., Balsamo, G., Boussetta, S., Choulga, M., Harrigan, S., and Hersbach, H.: ERA5-Land: A state-of-the-art global reanalysis dataset for land applications, *Earth system science data*, 13, 4349-4383, 2021.
- 560 Niu, G. Y., Yang, Z. L., Mitchell, K. E., Chen, F., Ek, M. B., Barlage, M., Kumar, A., Manning, K., Niyogi, D., and Rosero, E.: The community Noah land surface model with multiparameterization options (Noah-MP): 1. Model description and evaluation with local-scale measurements, *Journal of Geophysical Research: Atmospheres*, 116, 2011.
- Rae, J., Hewitt, H., Keen, A., Ridley, J., West, A., Harris, C., Hunke, E., and Walters, D.: Development of the global sea ice 6.0 CICE configuration for the met office global coupled model, *Geoscientific Model Development*, 8, 2221-2230, 2015.
- 565 Richter, J. H., Glanville, A. A., King, T., Kumar, S., Yeager, S. G., Davis, N. A., Duan, Y., Fowler, M. D., Jaye, A., and Edwards, J.: Quantifying sources of subseasonal prediction skill in CESM2, *npj Climate and Atmospheric Science*, 7, 59, 2024.
- Ridley, J. K., Blockley, E. W., Keen, A. B., Rae, J. G., West, A. E., and Schroeder, D.: The sea ice model component of HadGEM3-GC3. 1, *Geoscientific Model Development*, 11, 713-723, 2018.
- 570 Robock, A., Vinnikov, K. Y., Schlosser, C. A., Speranskaya, N. A., and Xue, Y.: Use of midlatitude soil moisture and meteorological observations to validate soil moisture simulations with biosphere and bucket models, *Journal of Climate*, 8, 15-35, 1995.
- Sanchez, C., Williams, K. D., and Collins, M.: Improved stochastic physics schemes for global weather and climate models, *Quarterly Journal of the Royal Meteorological Society*, 142, 147-159, 2016.
- Santanello, J. A., Dirmeyer, P. A., Ferguson, C. R., Findell, K. L., Tawfik, A. B., Berg, A., Ek, M., Gentine, P., Guillod, B. P., and Van Heerwaarden, C.: Land–atmosphere interactions: The LoCo perspective, *Bulletin of the American Meteorological Society*, 99, 1253-1272, 2018.
- 575 Seneviratne, S. I., Corti, T., Davin, E. L., Hirschi, M., Jaeger, E. B., Lehner, I., Orlowsky, B., and Teuling, A. J.: Investigating soil moisture–climate interactions in a changing climate: A review, *Earth-Science Reviews*, 99, 125-161, 2010.
- Seo, E. and Dirmeyer, P. A.: Improving the ESA CCI Daily Soil Moisture Time Series with Physically Based Land Surface Model Datasets Using a Fourier Time-Filtering Method, *Journal of Hydrometeorology*, 23, 473-489, 2022a.
- 580 Seo, E. and Dirmeyer, P. A.: Understanding the diurnal cycle of land–atmosphere interactions from flux site observations, *Hydrology and Earth System Sciences*, 26, 5411-5429, 2022b.
- Seo, E., Lee, M.-I., and Reichle, R. H.: Assimilation of SMAP and ASCAT soil moisture retrievals into the JULES land surface model using the Local Ensemble Transform Kalman Filter, *Remote Sensing of Environment*, 253, 112222, 2021.
- 585 Seo, E., Dirmeyer, P. A., Barlage, M., Wei, H., and Ek, M.: Evaluation of Land–Atmosphere Coupling Processes and Climatological Bias in the UFS Global Coupled Model, *Journal of Hydrometeorology*, 25, 161-175, 2024.
- Seo, E., Lee, M.-I., Schubert, S. D., Koster, R. D., and Kang, H.-S.: Investigation of the 2016 Eurasia heat wave as an event of the recent warming, *Environmental Research Letters*, 15, 114018, 2020.
- Seo, E., Lee, M.-I., Jeong, J.-H., Koster, R. D., Schubert, S. D., Kim, H.-M., Kim, D., Kang, H.-S., Kim, H.-K., and MacLachlan, C.: Impact of soil moisture initialization on boreal summer subseasonal forecasts: mid-latitude surface air temperature and heat wave events, *Climate Dynamics*, 52, 1695-1709, 2019.
- 590 Seo, E.: ekseo/Multi-layer_snowpack_GloSea: Python code (v1.0), Zenodo [code], <https://doi.org/10.5281/zenodo.11243938>, 2024.
- Storkey, D., Blaker, A. T., Mathiot, P., Megann, A., Aksenov, Y., Blockley, E. W., Calvert, D., Graham, T., Hewitt, H. T., and Hyder, P.: UK Global Ocean GO6 and GO7: A traceable hierarchy of model resolutions, *Geoscientific Model Development*, 11, 3187-3213, 2018.
- 595 Tak, S., Seo, E., Dirmeyer, P. A., and Lee, M.-I.: The role of soil moisture-temperature coupling for the 2018 Northern European heatwave in a subseasonal forecast, *Weather and Climate Extremes*, 100670, 2024.
- Tennant, W. J., Shutts, G. J., Arribas, A., and Thompson, S. A.: Using a stochastic kinetic energy backscatter scheme to improve MOGREPS probabilistic forecast skill, *Monthly Weather Review*, 139, 1190-1206, 2011.
- Valcke, S.: The OASIS3 coupler: A European climate modelling community software, *Geoscientific Model Development*, 6, 373-388, 2013.
- 600 Vinnikov, K. Y. and Yeserkepova, I.: Soil moisture: Empirical data and model results, *Journal of Climate*, 66-79, 1991.
- Walters, D., Boutle, I., Brooks, M., Thomas, M., Stratton, R., Vosper, S., Wells, H., Williams, K., Wood, N., and Allen, T.: The Met Office unified model global atmosphere 6.0/6.1 and JULES global land 6.0/6.1 configurations, *Geoscientific Model Development*, 10, 1487, 2017.
- Williams, K., Copsey, D., Blockley, E., Bodas-Salcedo, A., Calvert, D., Comer, R., Davis, P., Graham, T., Hewitt, H., and Hill, R.: The Met Office global coupled model 3.0 and 3.1 (GC3. 0 and GC3. 1) configurations, *Journal of Advances in Modeling Earth Systems*, 10, 357-380, 2018.



- 605 Williams, K., Harris, C., Bodas-Salcedo, A., Camp, J., Comer, R., Copsey, D., Fereday, D., Graham, T., Hill, R., and Hinton, T.: The met office global coupled model 2.0 (GC2) configuration, *Geoscientific Model Development*, 8, 1509-1524, 2015.
Xu, L. and Dirmeyer, P.: Snow-atmosphere coupling strength in a global atmospheric model, *Geophysical Research Letters*, 38, 2011.
Xue, Y., Sun, S., Kahan, D. S., and Jiao, Y.: Impact of parameterizations in snow physics and interface processes on the simulation of snow cover and runoff at several cold region sites, *Journal of Geophysical Research: Atmospheres*, 108, 2003.

610