

Soil contamination in arid environments and assessment of remediation applying surface evaporation capacitor model; a case study from the Judean Desert, Israel

Rotem Golan¹, Ittai Gavrieli², Roe Katzir¹, Galit Sharabi², Uri Nachshon¹

5 ¹Institute of soil, water and environmental sciences, Agricultural Research Organization, Volcani Center, Rishon-Letsioz, 7505101, Israel.

²Geological Survey of Israel, 32 Yisha'ayahu Leibowitz St. Jerusalem, 9692100, Israel.

Correspondence to: Uri Nachshon (urina@agri.gov.il)

Abstract. Due to the presence of highly pollutant industries in arid areas, many of the globe's arid areas are exposed to severe
10 local soil contamination events. In this work, the nature of solutes and contaminants transport in sandy terraces of an ephemeral stream that was exposed to a severe pollution event was examined, taking the Ashalim Basin in the Judean desert, Israel, as a case study.

In order to shed new light on contaminants distribution along the soil profile and transport mechanisms, in arid environments, three complimentary approaches were used: (1) Periodic on-site soil profile sampling, recording the annual solute transport
15 dynamics; (2) Laboratory analyses and controlled experiments in a rain simulator, to characterize solutes release and transport; and (3) Numerical simulation used to define and understand the main associated processes.

The study highlights the persistent nature of the pollutants in these natural settings, which dictates that they remain near the soil surface, despite the presence of sporadic rain events. It was shown that a vertical circulation of the contaminates is
20 occurring with soil wetting and drying cycles. The 'surface evaporation capacitor' concept of Or and Lehmann (2019) was examined and compared to field measurements and numerical simulations, and found to be a useful tool for predicting the fate of the contaminants along the soil profile.

1 Introduction

Arid and semi-arid areas are defined as areas, beyond the polar and subpolar regions, where the aridity index, which is the ratio of annual precipitation to potential evapotranspiration is within the range of 0.05 to 0.65 (Gratzfeld, 2003). These areas,
25 cover approximately 32% of Asia, 22% of Africa, 17% and 14% of North and South America, respectively, 7% of Europe, and 18% of Australia (Effat and Elbeih, 2020). Many of the earth deserts contain unique natural resources such as evaporative minerals (Reynolds et al., 2007), oil (Leaver, 1990), commercially important rocks such as phosphorites, and limestones (Abdel-Hakeem and El-Habaak, 2021; Sharma et al., 2000) and rare minerals or elements such as diamonds and uranium (Salom and Kivinen, 2020). Consequently, combined with low population density, low demand for agriculture lands and the

30 low land cost, large areas in arid and semi-arid environments are being used for industrial activities that involve highly
polluting facilities. These include mines of different types (Abdel-Hakeem and El-Habaak, 2021; Effat and Elbeih, 2020;
Portnov and Safriel, 2004), evaporation pans (Marazuela et al., 2020), oil production facilities (Luna et al., 2014), heavy and
pollutant chemical industries (Dou et al., 2015; Effat and Elbeih, 2020; Portnov and Safriel, 2004) and landfills of different
types (Cohen, 2007), including radioactive waste disposal sites (Shumway and Jackson, 2008).

35 Improper operational and management actions of these industrial activities, as well as uncontrolled and unpredicted accidents
may cause severe soil, water and atmospheric contaminations. Often, such contamination events are associated with extreme
climatic events such as floods (Sen et al., 2013; El Bastawesy and Abu El Ella, 2017; Becker et al., 2020; Gordon et al., 2018;
Greenbaum, 2007; Izquierdo et al., 2020). With increasing risks for contamination events due to global climate change that
includes higher probabilities of extreme rain events and floods (IPCC, 2007; Schewe et al., 2014), it is essential to better
40 understand the hydrological processes associated with such contaminations, in particular the nature of contaminants transport
dynamics in arid environments and their fate thereafter. This understanding is a key for future prevention and mitigation of
flood-associated contaminations in arid areas.

Natural flash flood events in arid environments occur during or following strong rain events. Water flow is typically restricted
to the mainstream flow channel (MFC), whereas the elevated alluvial terraces are usually exposed to limited levels of moisture
45 (**Fig. 1A**). However, during rare and extreme rain events, which may also induce catastrophic pollution spills, the flow may
reach areas beyond the MFC (**Fig. 1B**), exposing the rock slopes and terraces to unique hydrological conditions and processes.
While a contaminated MFC is expected to experience natural processes of leaching, and contaminants removal during natural
events of flash floods, the terraces and hill slopes are less likely to be exposed to significant natural wetting and flushing. Thus,
the natural attenuation of the pollution in these terrains is expected to be significantly limited. Previous studies of water
50 infiltration processes and solute transport dynamics concentrated on the processes taking place beneath the MFC of ephemeral
rivers in arid region, during and after flash floods (Amiaz et al., 2011; Basahi et al., 2018; Masoud et al., 2018). The present
study focuses on governing solute transport processes that dictate the long-term fate of pollutants in the sandy terraces
bordering the MFC. We also present a novel use of the surface evaporation capacitor (SEC) model of Or et al. (2019), as a tool
to predict the fate of solutes in the examined system and to assess the likelihood of natural soil remediation, by soil leaching
55 with local rains. Our case study is a severe contamination event in the Ashalim Basin, an ephemeral stream in the Judean
desert, described hereafter.

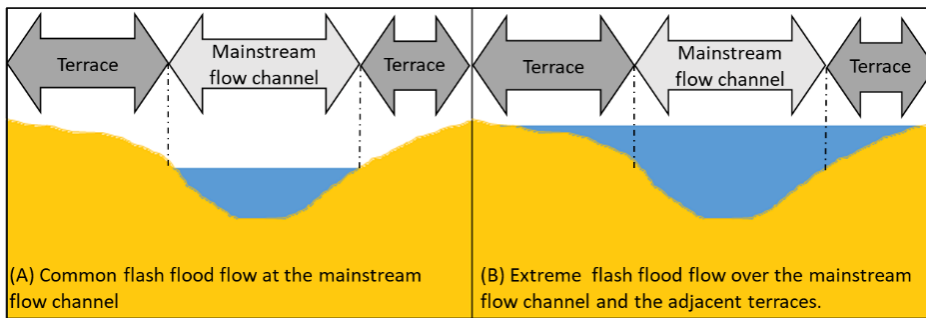


Figure 1: conceptual representations of: (A) common flash flood event, where the flow is restricted to the mainstream flow channel; and (B) extreme flash flood, in which the uplands and terraces beyond the mainstream flow channel are exposed to the flood.

60

1.1 The Ashalim Basin and contamination event of 2017

The Ashalim Basin, located in the Judean Desert, Israel (**Fig. 2A**), drains an area of ~80 square kilometers between Rotem Plain in the west and the Dead-Sea transform depression in the east (**Fig. 2A**). At its highest point in the west the basin is approximately 450 m above sea level, while its outlet elevation, ~15 km to the east is about 390 m below sea level, with the Ashalim stream course curving ~ 26 km (Becker et al., 2020; Greenbaum, 2007). In the upper, western part of the basin, the MFC curves through a 4-5 km sandy to carbonate terrain, and is characterized by a shallow and wide stream channel, with adjacent sandy terraces to the sides, bordering the hilly rock slopes (**Fig. 2B**). Towards the east, the landscape changes to a rocky terrain (mainly carbonates) and the stream channel narrows to form a deep gorge (**Fig. 2C**). The regional climate is arid with average annual precipitation of less than 100 mm, characterized by sporadic and short rain events during winter months, in between October and March (Zoccatelli et al., 2020). Thus, throughout most of the year the basin is dry whereas in winter flash floods may develop following strong rain events. Annual potential evaporation (PET) is higher than 2500 mm, as measured in a meteorological station located at the south-western edge of the basin, over a time span of nine years (2013-2022). The eastern part of the basin is part of the Judean Desert Nature Reserve (<https://en.parks.org.il/map/>).

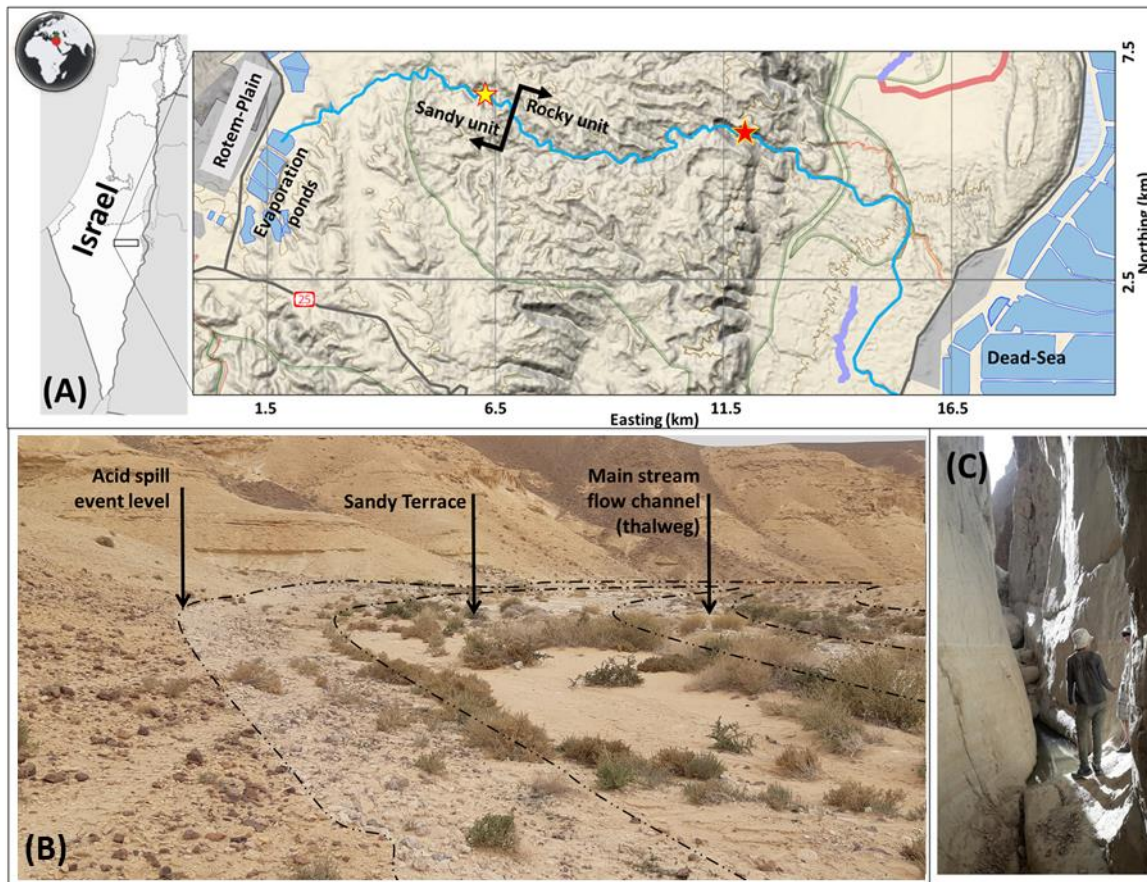
65

70

The Rotem Plain complex, in the western part of the Ashalim Basin, is a chemical-industrial zone (**Fig. 2A**). One of the major facilities on site is the 'Rotem-ICL' chemical plant, which produces phosphate from phosphorite rocks for the fertilizer industry and for other phosphate-based products. A by-product of the phosphate production is phosphogypsum, which is operationally stockpiled in high mounds overlooking the Ashalim Basin. Operational ponds were constructed on the mounds' tops, to circulate the production fluids and deposit the phosphogypsum. The latter accumulates at the bottom of the ponds, thus gradually elevating the acidic pond and forming the phosphogypsum stockpile. In June 2017, one of the dikes of the operational ponds breached, releasing about 300,000 cubic meters of highly acidic eluents and phosphogypsum slurry into the Ashalim stream (Becker et al., 2020; Rudnik, 2019). The acidic slurry contained also high concentrations of dissolved salts and heavy metals, derived from the phosphorite rocks as well as from the industrial process itself. The catastrophic spill event developed into a man-made flashflood in which flow levels reached elevation significantly higher than the MFC, covering large areas of the sandy terraces and bordering hillslopes, which commonly are not exposed to flow during natural flash-floods. Several years

80

85 after the event the mark of maximal height of the acidic flow is still easily observed in the field, in the form of a bright light coloring of the surface and sediments, in contrast to the above unaffected darker rocks and sediment (**Fig. 2B**). The pollution event caused an immediate extinction of local fauna and flora, including the death of an entire herd of the local desert mountain goat, the Nubian Ibex (*Capra nubiana*).



90 **Figure 2: Location map of the Ashalim Basin and the field site (A). The light blue curve follows the main channel of the Ashalim stream. Yellow and red stars designate the location of the sandy unit (picture B) and the deep gorge unit (picture C), respectively. Whitish coloring of surface in picture B is the coloring due to the spill event. The picture was taken at the vicinity of field monitoring station.**

1.2 Surface Evaporation Capacitor model

95 Or and Lehmann (2019) termed the topsoil layer that contributes water to evaporation at soil surface during first stage of evaporation (S1) as 'Surface Evaporation Capacitor' (SEC). S1 functions as such, and evaporation is maximal, as long as there is hydraulic connection between the drying front and the soil surface (Lehmann et al., 2008). The SEC model predicts if pore water at the subsurface will be flowing by capillarity towards the evaporation front and evaporates, or if it will infiltrate

downwards to deeper soil levels and the groundwater, where the latter exists. Here, we use the SEC model to estimate the fate
 100 of conservative solutes and pollutants at the soil, which are being transported with the flowing pore water.

The thickness of the SEC layer that contributes water to evaporation at the soil surface is determined by the soil characteristic
 evaporation length, L_C (m), which combines gravity and viscous forces, and is also determined by the potential evaporation at
 the soil surface, E_0 (m/s), and the soil hydraulic properties (Or and Lehmann, 2019):

$$L_C = \frac{L_G}{1 + \frac{E_0}{K_{eff}}} \quad (1)$$

105 where K_{eff} (m/s) is the effective soil hydraulic conductivity within the SEC, and L_G (m) is the maximum length for capillary
 flow against gravity to sustain evaporation from the surface. L_G is determined solely by the soil physical properties, its texture
 and the difference in air entry pressure between the largest soil pores, h_L (m), and the smallest hydraulically connected pore,
 h_S (m).

$$L_G = h_S - h_L = \frac{(1-m)}{\alpha} \left(1 + \frac{1}{m}\right)^{(1+m)} \quad (2)$$

110 where

$$m = 1 - \frac{1}{n} \quad (3)$$

and α (1/m) and n (-) are the van Genuchten parameters which describe the connection between matric suction and soil water
 content, for different soil textural properties (van Genuchten, 1983).

During S1, the effective soil hydraulic conductivity (K_{eff}) is affected by the matric suction of the small pores at the soil surface,
 115 and the soil hydraulic parameters:

$$K_{eff} = 4K_S \sqrt{(1 + (\alpha \cdot h_S)^n)^{-m} \left(1 - \left(1 - \frac{1}{1 + (\alpha \cdot h_S)^n}\right)^m\right)^2} \quad (4)$$

Where K_S (m/s) is the soil hydraulic conductivity at saturation.

Determining the soil characteristic evaporation length, L_c , based upon soil properties and environmental conditions, enables to
 predict the flow direction of the pore water and solutes within, including contaminates, if present. In principle, following soil
 120 wetting event, a drop of water within the SEC may undergo one of the three following processes: (i) downward infiltration, to
 depths greater than L_C ; (ii) upward flow to the soil surface, by capillarity, and evaporation at the soil surface; or (iii) no flow,
 provided that the SEC water content is low (~residual water content), and the hydraulic conductivity approaches zero, i.e., the
 pore water will not flow out of the pores. In this latter case, the water may be exposed to slow diffusive evaporation process,
 i.e., second stage of evaporation (S2). Downward Infiltration from the SEC initiates when the SEC mean water content exceeds
 125 a critical water content, θ_{crit} , that corresponds to the matric suction of the smallest hydraulically connected pores of the medium
 h_S (Or and Lehmann, 2019), and is equal to:

$$\theta_{crit} = \theta_{res} + (\theta_{sat} - \theta_{res}) \left[1 + \left(\frac{1}{m^{1+m}}\right)^n\right]^{-m} \quad (5)$$

For conservative solutes or pollutants that are being transported with pore water and do not interact with soil particles, the SEC model may be used to determine the fate and location of solutes accumulation. Water flow upward to the soil surface and evaporation during S1 will result in substantial accumulation of the solutes near the soil surface, and eventually may lead to salt precipitation above (efflorescence) or below (subflorescence) the soil surface (Dai et al., 2016; Nachshon et al., 2018). Water that infiltrates downward, to below the L_C will carry away the solutes and the pollutants to deeper soil levels, removing them permanently from the soil surface and the root zone. Retained pore water, at conditions of residual water content will maintain the solutes in their location while S2 evaporation will concentrate them *in situ*. Here we combine laboratory measurements, field observations, numerical modelling and estimation of the SEC thickness at the sandy soils of the Ashalim Basin to better understand pollutants dynamics and solute transport processes at sandy soils in arid environments.

2 Materials and methods

In order to better understand solute transport processes at the sandy terraces of the contaminated Ashalim Basin, two series of experiments were conducted in the laboratory; long term monitoring of solute distribution along the soil profile was conducted in the field; and a transport model was formulated, using HYDRUS-1D (Simunek et al., 2005). In addition, the SEC model was evaluated in the light of the field measurements and numerical model results.

The soil of the sandy terraces was characterized by the hydrometer method to determine soil particle size distribution (Ashworth et al., 2001), and the hanging column approach was used to define soil water retention properties (Schelle et al., 2013) and the van Genuchten parameters (van Genuchten, 1980). Hydraulic conductivity at saturation was measured by a Darcy column test, over a 10 cm long tube, with pressure head difference of 25 cm. These hydrological properties, along with **Equations 1-4** and combined with field data of precipitation and evaporation, measured at a nearby meteorological station, were used to determine the thickness of the SEC layer at the sandy terraces of the Ashalim Basin. Field measurements and numerical model results were compared to and discussed in the light of the SEC model, as detailed below.

2.1 Laboratory experiments

Two laboratory experiments were conducted: (i) Batch leaching experiments, aimed to examine the dissolution and release dynamics of selected solutes out of the contaminated soil; and (ii) experiments in a rain simulator to study the release and transport of the solutes during rain events. For the experiments, contaminated sandy soil was collected from the contaminated terraces along the mainstream channel (yellow star in **Fig. 2A and B**). The soil samples were collected in June 2019, two years after the contamination event. Prior to any experiment or analysis in the laboratory, the collected soil was dried in an oven at 50°C for 48 hours, disintegrated by hand, and sieved through a 2 mm sieve.

2.1.1 Batch leaching experiments

In order to determine the composition of the major ions in the contaminated soils and the dynamics of dissolution and extraction of the substances from the soil, batch-dissolution experiments were conducted. 30 gr of the contaminated sandy soil and 30 ml of deionized water were mixed and shaken well for 10 minutes in 50 ml test tubes. The tubes were then centrifuged (3500 RPM) and the solutes decanted and filtered before being analyzed for their chemical composition, as detailed in **Table 1**. The solids in the test tube were then saturated again with 30 ml distilled water and the process repeated five times. The leaching experiments were done in triplicates.

Table 1: Chemical analyses methods:

Parameter	Instrumentation	Error
EC, pH	Eutech PC 450, Thermo-Fisher, Waltham, MA, USA.	0.01 dS/m; 0.02 pH units
Na, K	420 Clinical Flame Photometer, Sherwood Scientific Ltd, Cambridge, UK	<10%
Ca, Mg	AAAnalyst 400 Spectrometer, PerkinElmer Inc, Waltham, MA	<10%
Cl, SO ₄ , PO ₄	Gallery Discrete Analyzer, Thermo-Fisher, Waltham, MA, USA	<5%

2.1.2 Rain simulator experiments

The rain simulation experiments aimed to shed light on dissolution and transport processes of the solutes during rain events. The experiments were conducted in a Morin-type rainfall simulator, which enables to simulate rainstorms with different rainfall intensities on inclined surfaces (Morin et al., 1967). The simulated rain events were of a 43.0 mm cumulative rain, with rain intensity of 48.0 mm/h. The rainwater used for the simulations were deionized water, to closely mimic natural rainwater. For the experiments, the examined sandy soil samples were packed in tin trays, 4 cm deep, 45 cm long and 30 cm wide, which were placed in the simulator at a slope of 9%, with four replicates. Rain experiments were conducted for three setups: (i) the contaminated sand samples as collected from the field; (ii) the contaminated sand samples from the first rain experiment after being dried in the trays in free air for two weeks; and (iii) control sand samples collected from a nearby stream which was not exposed to the contamination event, tributary of Gmalim stream, located ~1 km north of the Ashalim Basin. The control samples were not exposed to a consecutive rain event, as done for the contaminated samples, since it was assumed that they will be highly depleted of salts following the first rain event. This is presented in the results section below.

The rain simulator allows the collection of water infiltrating through the soil, as well as surface water. Infiltrating water samples were collected every few seconds at the beginning of each simulated rain event and every few minutes in the later stages of the experiments. Surface water, which had lower volumes compared to the infiltrating water were collected in ~20 minutes intervals. Water samples were analyzed in the laboratory for the chemical concentrations of selected components (**Table 1**).

2.2 Field monitoring

Field measurements were conducted to characterize solute transport and accumulation processes at the terraces of the sandy unit. On Sept. 29th, 2020, two contaminated sandy terraces, located within the sandy unit (yellow star in **Fig. 2A**; **Fig. 3A**), adjacent and above to the MFC were randomly selected to be monitored for their solutes transport processes over a one-year period. The two sites were referred to as ‘West plot’ (31.077421°N35.256586°E) and ‘East plot’ (31.077722°N35.258020°E). At each location soil profiling, down to a depth of ~50 cm, was done every few months. In addition, during winter, soil profiles were collected following each rain event. For chemical analyses, the collected samples were oven dried for 48 hours at 50°C, hand crushed, sieved, and mixed and shaken with deionized water at 1:1 ratio for two hours. Then chemical composition of the extracted water was determined (**Table 1**). Mass water content (θ_m) in the collected soil samples was determined by weighing moist samples in a high-precision scale (Precision Balance PFB, Kern, Germany, 0.001 mg accuracy), prior to and after oven-drying of the samples at 105°C for 24 hours. Then, the mass of water in the moist sample was divided by the mass of the dry sample. Volumetric water content (θ_v) was computed as:

$$\theta_v = \theta_m \frac{\rho_b}{\rho_w} \quad (6)$$

where ρ_w is water density (=1 g/cm³) and ρ_b (g/cm³) is the bulk density of the sample, which is proportional to soil porosity, \emptyset , and the density of the solid particles in the sample, ρ , (commonly taken as 2.65 g/cm³) (Skopp, 2001):

$$\rho_b = (1 - \emptyset)\rho_s \quad (7)$$

\emptyset was determined at the hanging column procedure, by weighing the amount of water needed to saturate the oven dry soil.

Daily rain depth data was available from the Israeli Nature and Parks Authority, that measured rain depth at a station located ~1 km northeast of the selected terraces.

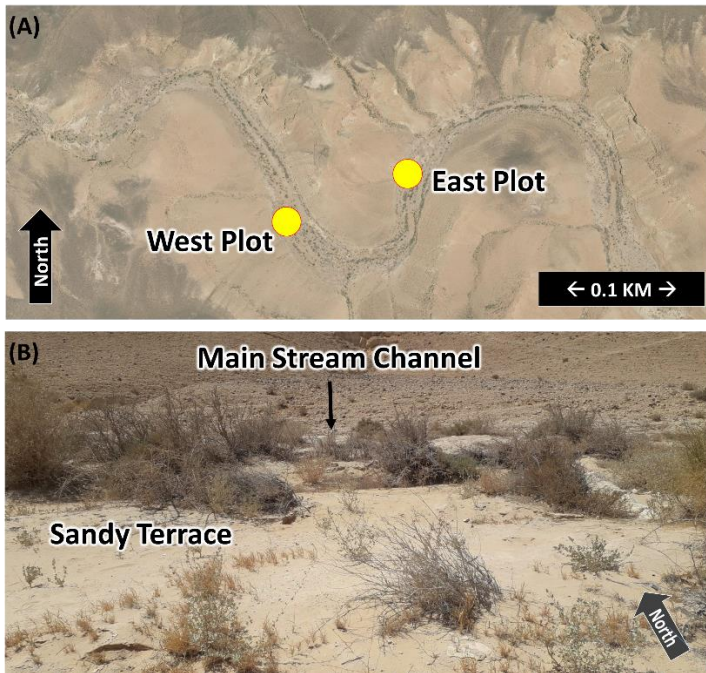


Figure 3: Aerial location map view of the ‘west’ (31.077421°N35.256586°E) and ‘east’ (31.077722°N35.258020°E) monitoring plots (A); and characteristic view of a sandy terrace, specifically at the West Plot, adjacent to the mainstream channel (B).

205

2.3 Numerical model

A numerical simulation in HYDRUS-1D (Schaap et al., 2001; Simunek et al., 2005) was applied to estimate the general leaching potential of solutes in sandy soils under arid climatic conditions. For this purpose, a one dimensional model was constructed and solute transport was simulated over a one-year course. The modelled domain was composed of a sandy soil with hydrological parameters as determined for the collected soil samples by the hanging column, Darcy column test, and hydrometer procedures (Ashworth et al., 2001; Schelle et al., 2013). Initial conditions were set as matric suction of -100 cm throughout the entire domain, corresponding to saturation degree of residual water content. The simulated polluted layer was represented as a 10 cm top layer containing a conservative solute. The solute concentration was set with a linear distribution of 10 and 0 mmol/cm³ at the soil surface and the lower boundary of the 10 cm layer, respectively. Domain’s lower boundary, at depth of 100 cm, was set as free drainage, and upper boundary was set as atmospheric boundary, with precipitation events corresponding to daily rain depths as measured at the Ashalim Basin during the winter of 2020-2021. Daily potential evaporation was set following long-term measurements conducted in the nearby meteorological station (**Table 2**). Note the scarce daily precipitation in the Ashalim region alongside the calculated aridity index (precipitation/potential evaporation), indicating high levels of aridity for the region (**Table 2**).

210

215

220 In addition, in order to study and better understand the impact of rain depth on solutes removal, similar simulations were performed with rain depths two and five fold higher than measured rains. The excess rain simulations were added to test and emphasize the effect of different rain depths on solutes leaching processes in high aridity locations.

225 **Table 2: Averaged daily potential evaporation and precipitation over a year (data from a nearby meteorological station of the Israeli Nature and Parks Authority 2013-2022). The aridity index is the ratio between precipitation to potential evaporation.**

Month	1	2	3	4	5	6	7	8	9	10	11	12
Averaged daily potential evaporation, (mm)	3.2	4.2	5.6	8.4	10.1	11.0	10.9	9.6	8.1	6.6	4.9	3.3
Averaged daily precipitation (mm)	1.2	1.1	0.5	0.5	0.0	0.0	0.0	0.0	0.1	0.3	0.5	0.6
Aridity index (-)	0.38	0.26	0.08	0.05	0.00	0.00	0.00	0.00	0.01	0.04	0.10	0.20

3 Results and discussion

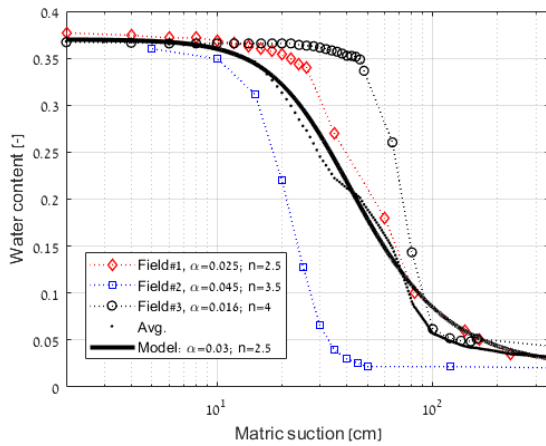
230 The results will be presented in the following order to allow meaningful discussion; first, the physical measurements and hydrological properties of the examined sandy soil at the Ashalim Basin will be introduced. Following, the dynamic release of solutes from the soil will be discussed based upon the batch extraction experiments and the rain simulator experimental results. Next, the long-term field monitoring measurements will be presented, followed by the numerical model results alongside with the SEC model.

3.1 Soil physical properties

235 As detailed above, all laboratory experiments and analyses were done for soil samples collected in the field from the sandy terraces in the Ashalim Basin. Soil texture as defined by the hydrometer method and the USDA soil texture triangle (Shirazi and Boersma, 1984) was characterized as sandy loam, corresponding to 79% sand, 1.5% silt, and 19.5% clay. **Figure 4 presents water retention curves of three sand samples from the field site, as measured by the hanging column method. It is evident that there are differences in between the three curves, that could be a result of small differences in sand packing in the columns, or small variations in soil texture in between the three different sand samples. α and n values were determined for each sample as detailed in the legend of Figure 4. A fitted curve, derived from the average of the three samples and exhibiting good agreement with Sample #1, was used to determine the α and n values of a modelled soil, which will be used hereon for the numerical simulations and SEC analyses. These α and n values, and other soil physical properties measured physically by the**

240

245 hanging column method and the Darcy column test, are detailed in **Table 3**. The impact of variations in α and n values on the thickness of the SEC layer and potential leakage of water and solutes out of the SEC are discussed below in **section 3.5**.



250 **Figure 4: Soil Water retention curves of the three sand samples from the sandy terraces (Field #1, #2, #3), along with their average curve (Avg.). The curve of a modelled soil (Model), fitted to the average measured curve, is also shown. The van Genuchten parameters derived from this fitted curve were used for subsequent SEC analyses and numerical simulations.**

Table 3: Hydraulic properties of the modelled soil.

Property	Value
Residual water content, θ_r [-]	0.02
Saturation water content, θ_s [-]	0.37
van Genuchten α [1/cm]	0.03
van Genuchten n [-]	2.5
Saturated hydraulic conductivity, K_s [cm/d]	250
Soil bulk density, ρ_b [g/cm ³]	1.67

3.2 Solutes release

255 As detailed above, solutes release was examined experimentally by the batch and rain simulator experiments. Both tests pointed on similar dynamics of salts and minerals dissolution and solutes release, as detailed below.

3.2.1 Batch experiments

260 The dynamic extraction of solutes from the soil to the water, as measured in the five cycles of wetting and extraction of the batch experiment, is presented in **Figure 5**. Over the five cycles of leaching EC dropped from average value of ~ 2.9 dS/m to ~ 2.2 dS/m (**Fig. 5A**). Concurrently, Na, Cl, K, and Mg concentrations were largely depleted by the five cycles of extraction, with most of the depletion occurring during the first two cycles. The observed rapid extraction of these solutes from the polluted soil indicates that they most likely originated from pollution-associated salts with relatively high solubility, such as NaCl,

Na_2SO_4 , KCl , and MgSO_4 . In addition, their relatively low initial concentrations are indicative of lower quantities of these salts in the soil itself. In contrast, Ca , and SO_4 maintained relatively constant concentration levels over the five cycles of extraction, with close to 1:1 stoichiometric relation, pointing on gypsum ($\text{CaSO}_4 \cdot 2\text{H}_2\text{O}$) as the likely source mineral, in line with one of the main components in the Ashalim pollution event (phosphogypsum). All extracts are saturated with respect to gypsum ($\text{SI} = 0.02$, calculated by Phreeqc Interactive 3.7.3, using phreeqc database (Parkhurst and Appelo, 2013)). Noteworthy is that their dominance in the solution determines the overall salinity and the EC in the last leachings. A slight decline in SO_4 concentration is seen between cycles #1 and #2 (from ~ 33 to ~ 30 meq/l), while Ca concentrations remain relatively stable, at ~ 34 meq/l. This decline could point to the presence of minor amounts of relatively highly soluble sulfate minerals such as sodium sulfate and magnesium sulfate. The slight excess of Ca over SO_4 in the remaining cycles is likely due to dissolution of some carbonate minerals, which are present in the local sands.

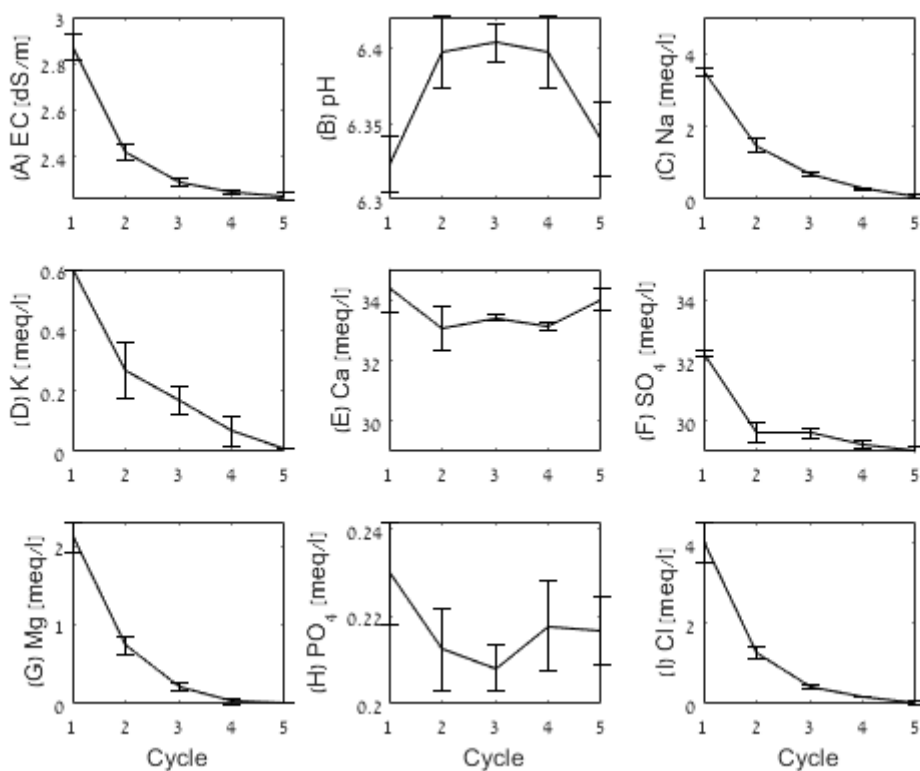
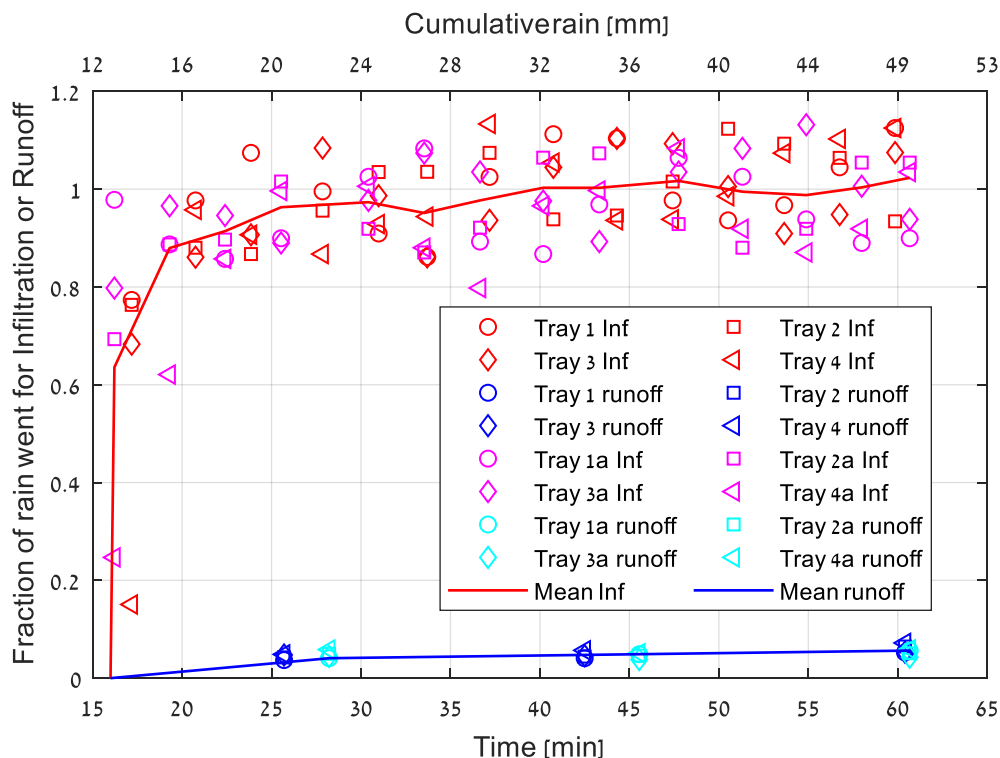


Figure 5: Chemical properties of leachate water from the five cycles of batch experiments. Error bars represent standard deviation of the three replicates.

3.2.2 Rain simulator experiments

In the rain simulator experiments, more than 95% of rainwater percolated through the soil, and less than five percent of the rainwater drained along the inclined sandy slopes as runoff (Fig. 6). This means that for the examined conditions, the potential of lateral transport of salts and other contaminants by surface water is limited as most of the rainwater infiltrates downward through the soil.



285 **Figure 6:** Fractions of rainwater volume infiltrated through the soil layers (red and pink symbols) and surface runoff water (blue and aqua), as measured in the rain simulator experiments. All measurements of the four repetitions (Trays) and the two simulated rain events are marked as detailed by the legend.

The patterns of solutes release observed in the batch experiments were also found in the rain simulator experiments, in which the concentrations of Na, Cl, Ca, and SO₄ were measured in samples from surface runoff and water that infiltrated through the soil (Fig. 7). The initial Na and Cl concentrations in the infiltrating water samples were at the order of ~40 meq/l, with the concentrations quickly dropping off. The most likely source for these solutes is the highly soluble halite (NaCl). These initial concentrations are much higher than those measured in the batch experiments since the water to soil ratio in the batch experiments (1:1) was higher than the ratio of the first infiltrating water collected from the simulated rain events. The water to soil ratio of the infiltrating water in the rain simulator experiment was estimated by dividing the cumulative mass of collected

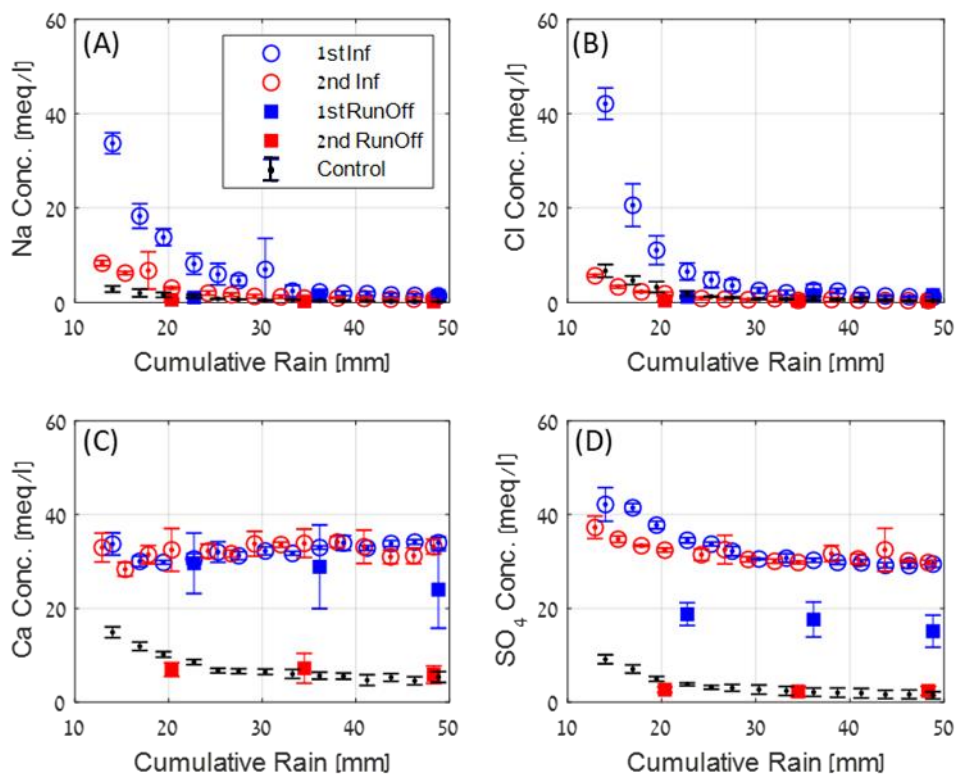
water at the first reading of Na and Cl concentrations (15 mm rain depth), by the mass of soil through which the water
295 percolated. The mass of soil was computed for a 4 cm soil thickness, with estimated density of 1.7 g/cm³, yielding a water to
soil ratio of only ~1:7, which explains the elevated Na and Cl concentrations in this first infiltrating water sample.

In agreement with the batch extraction results, Na and Cl concentrations in the infiltrating water rapidly declined during the
simulated rain event and after a cumulative rain of ~30 mm, both ions concentrations were reduced to levels of about 2 meq/l,
similar to the control (**Fig. 7A and 7B**). These concentrations drop indicate a fast and efficient dissolution process and transport
300 of the dissolved Na and Cl ions downward with the infiltrating water. In line with that, in the consecutive simulated rain event,
the initial concentrations of Na and Cl were relatively low, on the order of 5-10 meq/l, indicating that the reservoir of this salt
in the washed soil layer was effectively lowered compared to the initial conditions of the first simulation. However, the Na
and Cl concentrations at the beginning of the second rain simulation (using the contaminated sand from the first rain experiment
after being dried in the trays in free air for two weeks) are higher than the concentrations measured at the end of the first rain
305 event. This is likely related to accumulation of salts near the soil surface during the drying and evaporation period between the
two simulated rain events, a result of capillary water flow towards the evaporation front at the soil surface. This process
enforced the accumulation and precipitation of NaCl at the soil surface. Consequently, the water infiltrated through the soil at
the beginning of the second rain event dissolved the cumulated salt and pushed the solutes downward, at relatively high
concentration. Similarly to the first rain event, after cumulative rain of ~20 mm, both Na and Cl concentrations in both the
310 infiltrated and runoff waters were reduced to low levels, of less than 2 meq/l.

Contrary to the above, Ca and SO₄, which are associated with the phosphogypsum that was deposited during the pollution
event, and is much less soluble than halite, maintained high concentration levels of ~40 meq/l in the infiltrating water during
both cycles of simulated rain events. These concentrations are much higher than those measured in the control experiment. As
aforementioned, the high and relatively stable Ca and SO₄ concentration levels are indicative of the high content of
315 phosphogypsum in the polluted sand, which effectively acts as a slow release source for both ions. In concur with the batch
experiment results, and for the same reasons (some Ca-carbonate dissolution), the Ca concentrations were more stable than the
SO₄ concentrations, which exhibited some decline with time (from ~40 to ~30 meq/l).

As detailed above, due to rapid NaCl dissolution and transport of the ions downward, only minor concentrations of Na and Cl
were measured in the surface runoff water from the two simulated rain events (**Fig. 7A and 7B**). On the other hand, Ca and
320 SO₄ concentrations in the runoff water from the first simulated rain event were high and similar to those measured in the
infiltrating water. This indicates the presence of sufficient amount of gypsum at the soil surface to interact and dissolve in the
surface water. However, in the second simulated rain event, both Ca and SO₄ concentrations at the surface runoff water were
lower, probably due to substantial dissolution and removal of the gypsum from the very top levels of the soil profile during
the first rain event.

325 Given the above detailed experimental results and observations, a similar process is expected under natural conditions, whereby
the contaminates and solutes from the upper soil will be mobilized by the infiltrating rain water to the lower and deeper parts
of the soil profile. This process was further studied in the field and by numerical modelling.



330 **Figure 7: Measured concentrations of Na (A), Cl (B), Ca (C), and SO₄ (D) in runoff water (squares) and infiltrating water (open circles) during two consecutive simulated rain events. Blue and red symbols are for first and second simulated rain events, respectively. Black symbols represent the measurements of the infiltrating water from the uncontaminated control soil. Error bars are from the four replicas.**

3.3 Field measurements - annual salt dynamic in sandy alluvial terraces

Temporal monitoring of the soil profiles in two sandy alluvial terraces was carried between the summers of 2020 and 2021. Major ions compositions along the soil profiles were characterized following extraction of the soluble salts with de-ionized water (1:1 dry soil : water ratio), as detailed above. The Cl and Ca measurements are hereafter presented and discussed, as these originate from two different salts, with markedly different solubilities and sources, namely halite and phosphogypsum, respectively. In addition, Cl is a conservative anion that does not interact with the soil, while the Ca cation may be absorbed to clay particles.

340 **Figure 8** present the results from the field study. On an annual scale, no change was found in Cl and Ca concentrations at the soil surface of the eastern plot between September 2020 and September 2021. Cl concentrations were on the order of 1.5 meq/l (**Fig. 8C-D**), and Ca concentrations were on the order of 37 meq/l (**Fig. 8E-F**). The difference in concentrations between Cl and Ca are in accordance with the laboratory experiments, reflecting the abundance of gypsum in the contaminated soils. In the western plot, no changes in Cl concentrations at the soil surface were observed between September 2020 and September 345 2021 (**Fig. 8G-H**). However, Ca concentrations declined by ~20% between September 2020 to September 2021 (**Fig. 8I-J**).

When examining the ions concentrations dynamics along the soil profiles in higher temporal resolution, between September 2020 and September 2021, it is evident that in both plots, during the winter months (October – March) Cl and Ca concentrations at the upper levels of the soil profiles were reduced. These concentrations drop are explained by dissolution of the salts and the leaching of the solutes downward with the infiltrating rainwater. Consequently, the concentrations of the ions were elevated at the subsurface, at depths of 30-40 cm, and 50-60 cm for the East and West Plots, respectively. These observations, point to the dynamic nature of salts dissolution and solutes transport processes in the examined system. However, despite the high mobility of the solutes, under the arid conditions of the Ashalim Basin, the overall flushing and removal of the solutes and contaminants to significant depths is negligible. Apparently, the winter infiltration and leaching processes are not sufficient to mobilize the solutes deep enough to prevent their rise back by capillarity, during the long summer months, to the evaporation front at the soil surface.

As detailed above, the SEC model may be used to assess the effective depth from which contaminated pore water will not return by capillarity to the soil surface. The thickness of the SEC layer was calculated for the field site based on its hydrological properties (Table 3) and local climatic conditions (Fig. 8 I-J). The lower boundary of the SEC layer is depicted in Fig. 8 by the red contours but its depth changes over the year due to temporal changes in the potential evaporation, E_0 . In the east plot, the winter downward leaching of both Ca and Cl solutes did not pass the lower boundary of the SEC (Fig. 8C, E). Consequently, during the dry summer months, from April onward, pore water and associated dissolved solutes were available for upward capillary flow towards the soil surface, where evaporation takes place. At the evaporation front, the solutes become concentrated in the solution and salts and minerals precipitate to form solid crusts at the soil surface (Fig. 9). Figure 8D illustrates a pronounced increase in chloride (Cl) concentration at the soil surface during the summer of 2021 compared to 2020, approximately doubling in magnitude. This enhancement is attributed to a thinner but more concentrated solute profile near the soil surface in 2021 relative to 2020. As corroborated by Figure 8C, Cl accumulation at the end of the monitoring period in 2021 was confined to a ~10 cm layer, whereas in September 2020, it was distributed across a broader layer, ~20 cm. In the West plot however, some leaching of the solutes to depths of ~40 cm was recorded, yet no significant leaching of the solutes to depths greater than the SEC lower boundary were observed. The disparities between the East and West plots could be attributed to more efficient leaching processes that occurred in the West plot, due to slight differences in local meso-topography and soil properties. However, throughout the entire period of measurements, in both plots, averaged measured θ_m along the soil profiles were on the order of 0.015, with maximal and rare values of 0.03, which were measured following the consecutive strong rain events of February 2021. These θ_m values correspond to θ_v of 0.025 and 0.05, respectively, and are consistently smaller than θ_{crit} , which is equal to 0.11 (Eq. 5) for the measured hydraulic properties of the examined sand (Table 3). The fact that θ_v did not exceed θ_{crit} supports other observations and understanding that there was no significant leaching of water and solutes from the SEC downward.

The data from the field sites demonstrate the dynamic nature of the solutes as they move vertically along the soil profile with wetting and drying events. In accordance with the SEC model, as long as $\theta_v < \theta_{crit}$ the solutes are not mobilized below the lower boundary of the SEC layer and are expected to migrate upward during the dry summer months towards the evaporation

380 front at the soil surface. As illustrated in **Figure 8**, Ca exhibits lower mobility compared to Cl within the soil profile, resulting
in wider and deeper Ca distribution. This disparity can be attributed to the elevated Ca concentration in the contaminant
effluent, the reduced solubility of gypsum relative to halite, and the propensity of Ca to be adsorbed onto soil clay particles.
Presently (2024), more than six years since the contamination event, salt crusts, mainly of phosphogypsum, are still widely
385 seen in the contaminated basin (**Fig. 9**). For additional evaluation and understanding of water flow processes and solute
transport dynamics, a numerical model was used to examine the system, as detailed below.

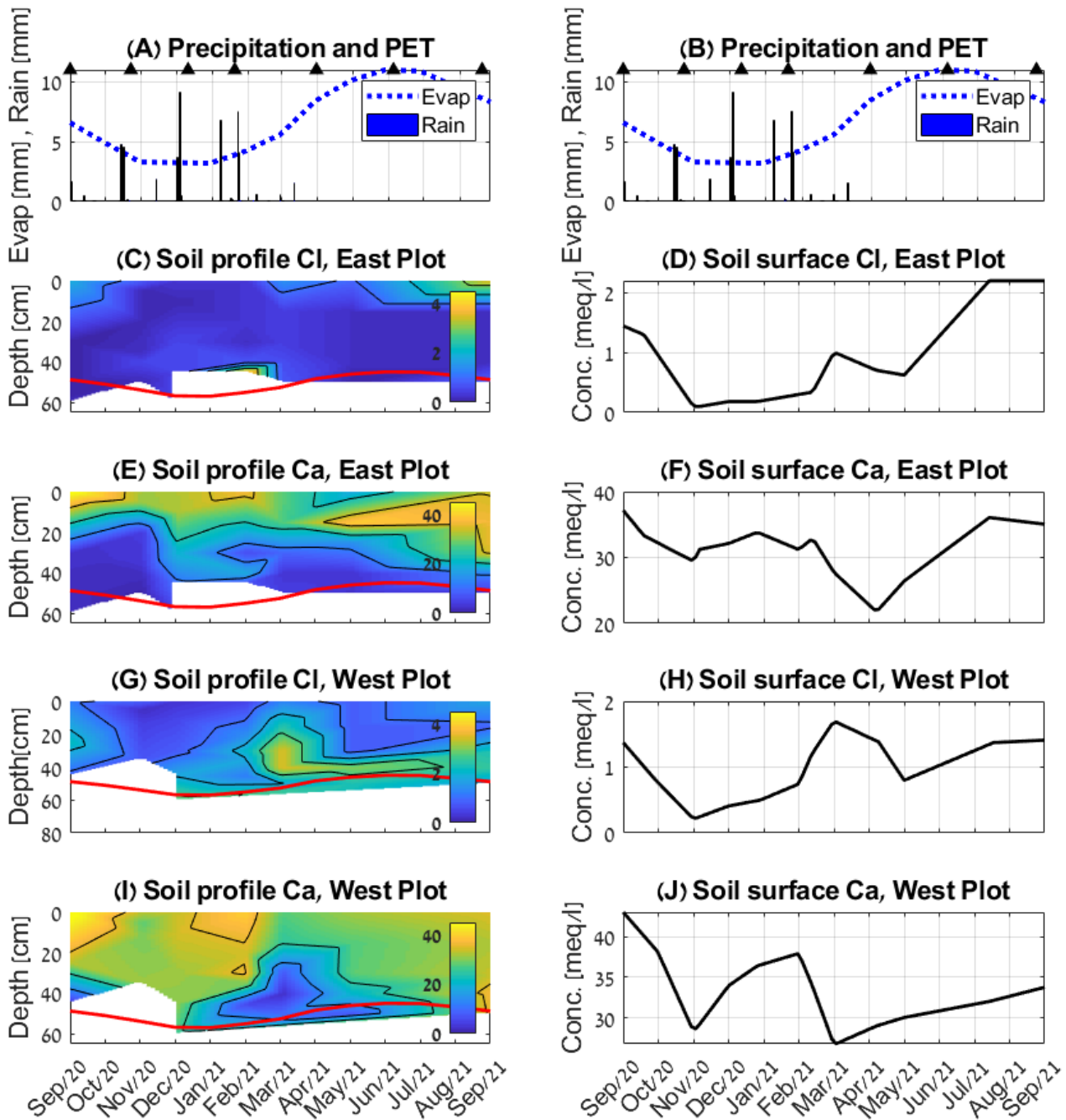


Figure 8: Measured precipitation and potential evaporation (PET) are presented in (A-B). Triangles indicate time of soil sampling. Temporal changes in Ca and Cl depth profiles in the sandy terraces, as measured at the East (C-F) and West Plots (G-J). The left panels present Cl and Ca concentrations (meq/l) over the entire soil profiles, down to the maximal depth that was sampled. The red contours mark the lower boundary of the SEC layer. The right panels present ions concentrations at the soil surface only.

390

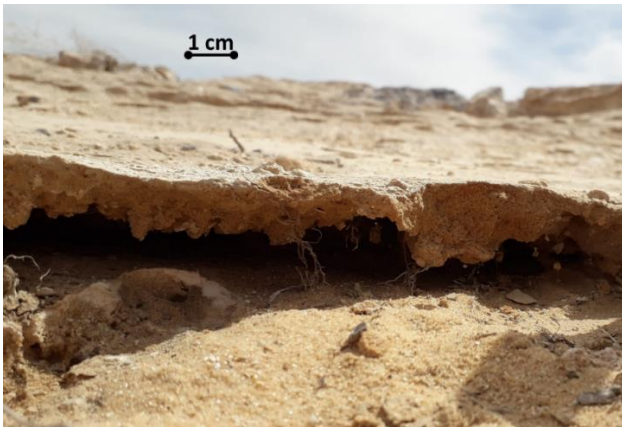


Figure 9: Thin and brittle crust of gypsum that formed over the contaminated sandy soils.

3.4 Numerical simulation model

395 The numerical model presents solute concentration levels (**Fig. 10C, E, G**), and water flow directions and velocities (**Fig. 10D, F, H**) along a 100 cm soil profile over a time period of 12 months. The solute simulated in the model is considered conservative, implying that it does not undergo sorption onto soil particles, similar to the behaviour of Cl. Precipitation and **potential** evaporation conditions measured at the field site between September 2020 and September 2021 (**Fig. 10A-B**) were used to define the upper boundary condition for the reference simulation. Additional two simulations were done for increased precipitation by two and five folds.

400 Model results for the actual (measured) rain conditions demonstrate that the removal of solutes to depths greater than 30 cm is negligible. It is seen in **Fig. 10C** that for the examined setup and typical climatic conditions, the solutes are being leached downward during and following rain events, whereas in the following dry periods they are being transported upward by rising capillary water towards the evaporation front at the soil surface. Therefore, and in agreement with field measurements, mainly
405 for Cl, over a full winter-summer cycle, the high concentration of the solutes at the upper levels of the soil profile is maintained. **Figure 10D** presents water flow directions and velocities along the soil profile, where negative values (bluish colours) indicate downward infiltration, and positive values (yellowish colours) indicate upward capillary flow. It is seen that for the prevailing climatic conditions, which included only three rain events, a notable downward transport of the solutes to depths of about 20 cm took place. Each rain event was followed by a reversed water flow direction that occurred immediately after the rain event
410 ended (**Fig. 10D**). This is in accordance with field measurements and the SEC model, with its lower boundary marked by the red contours in **Fig. 10**. As aforementioned, solutes that do not leach to depths greater than this SEC lower boundary are available for upward capillary flow towards the evaporation front, at the soil surface.

In the simulated conditions of doubled rain depth, during the two rain events (December 2020, and February 2021) the maximal depth of infiltrating water approaches the lower boundary of the SEC layer (**Fig. 10F**), and consequently, a minor reduction in
415 solutes concentration at the upper levels of the soil profile is simulated. For the extreme simulated conditions of five times

greater rain depth than the natural conditions, the depth of the infiltrating water is much deeper than the SEC depth (**Fig. 10H**), and indeed the upper levels of the soil profile are completely depleted of the solutes (**Fig. 10G**). The differences in water flow and solute leaching dynamics between the three simulated precipitation conditions are in line with simulated water content of the SEC layer and estimated θ_{crit} . As detailed in section 1.2, θ_{crit} denotes the minimal level of water content at the SEC that is needed to support water infiltration and solute transport to depths greater than the lower boundary of the SEC. **Figure 11** presents averaged water content of the SEC, based on simulated water content levels at depths of 0, 10, 20, 30, 40, and 50 cm. For the actual rain conditions, as monitored in the field, the simulated (and measured) maximal SEC water content, following the strong rain event of December 2020, was at the order of 0.05, much lower than θ_{crit} , that is equal to 0.11. Consequently, water flow below the SEC was not observed in the simulation. For the doubled rain scenario, maximal SEC water contents were elevated to levels of about 0.07, closer to θ_{crit} , leading to minor leaching of the solute downward as seen in **Figure 10E**. It is only in the extreme simulated climatic conditions of increased precipitation by five folds, that the SEC averaged water content levels were higher than θ_{crit} , and a substantial leaching of solutes from the SEC is modelled (**Fig. 10G**). **Figure 11** also presents averaged water content levels at the SEC, as measured in the field for the East and West plots. In agreement with the numerical simulation, it is seen that water content levels in the field were much lower than the needed θ_{crit} of 0.11, to support downward infiltration from the SEC.

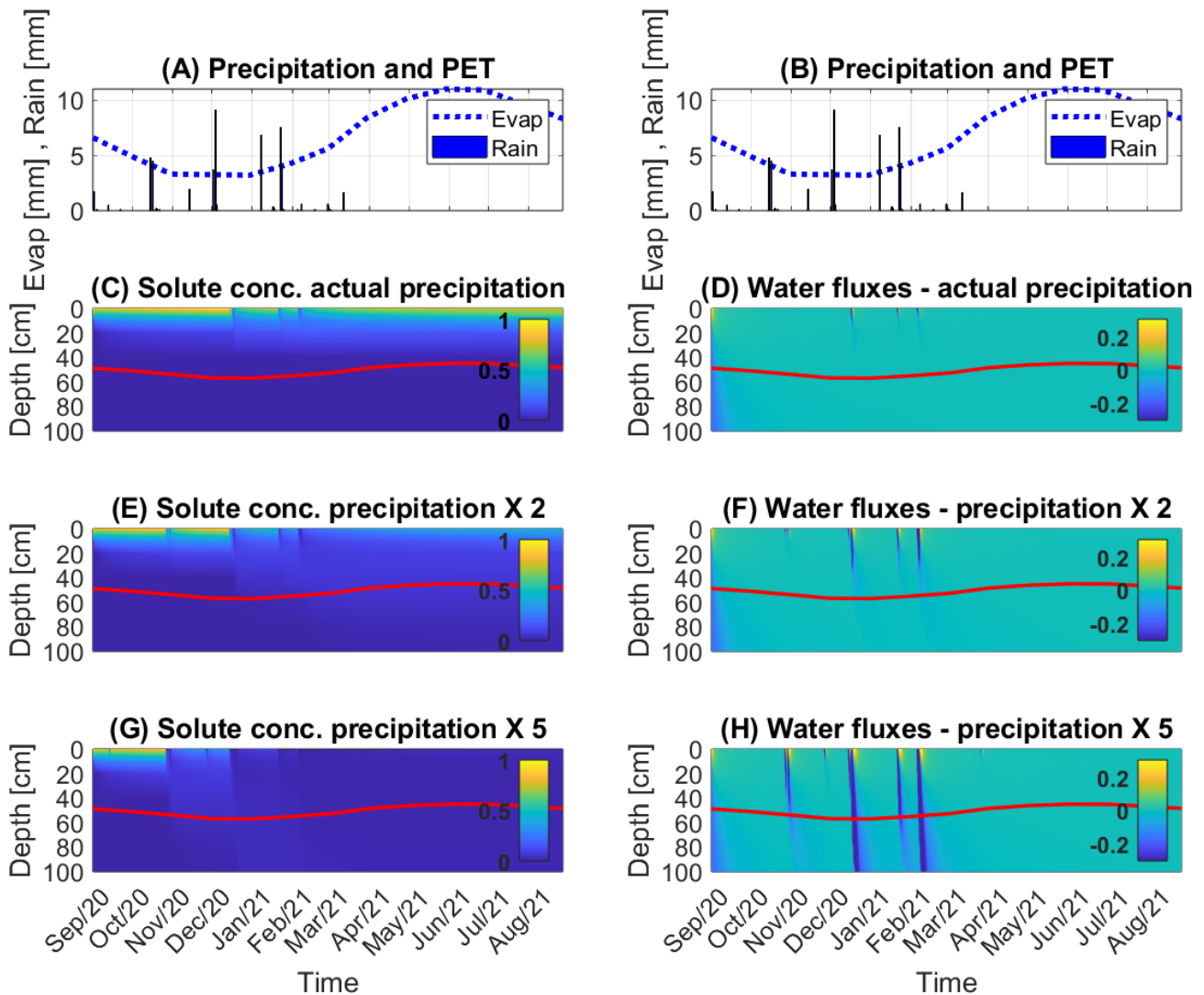
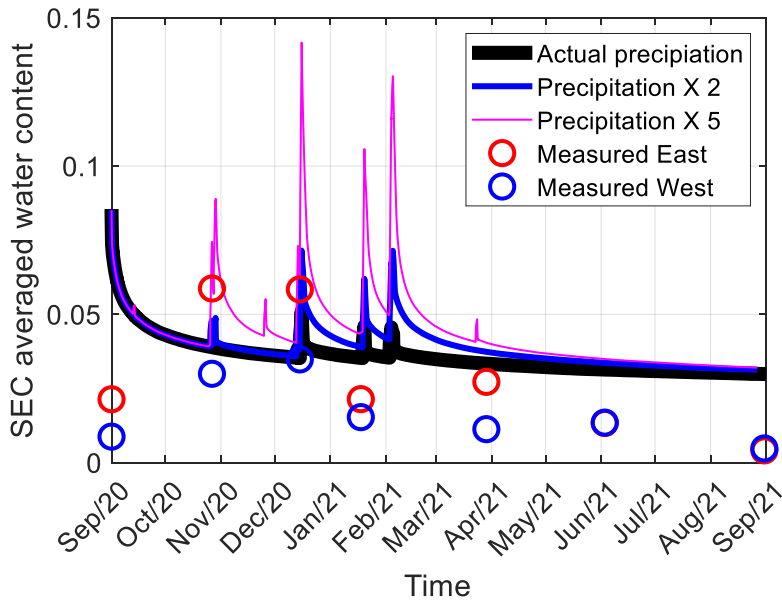


Figure 10: Numerical simulation results for solute concentration (left panels) and water fluxes (right panels) for three precipitation scenarios. (A) and (B) present the measured precipitation and potential evaporation (PET) conditions used for the simulation. (C, D) present computed solute concentration and water flow velocities, respectively, for actual climatic conditions. (E, F), and (G, H), present the same properties, for two and five folds elevated precipitation, respectively. Positive values in (B, D, F, H) indicate upward water flow. Red line signifies the calculated characteristic evaporation length of the soil, L_c , which is the lower boundary of the SEC.

435



440 **Figure 11:** Averaged SEC water content over time for numerical simulations (solid curves) and field measurements at the East and West plots (circles).

3.5 Applying the SEC model to predict the potential of solutes and contaminants leaching from different soil textures

445 Following the experimental results, field measurements and the numerical model presented above, it is hereby proposed to use the SEC model as a tool to estimate solutes and contaminants transport and accumulation along the soil profile, for non-reactive elements. This will be done by estimating the net amount of water entering the SEC and its impact on the average water content of the SEC, which affects water flow and solutes transport processes along the soil profile. For arid environments where sandy soils can be assumed to be fully dry, most of the time, the water content of the SEC (θ_{SEC}), following rain event, can be calculated by dividing the net length of water entering the SEC, by the SEC depth (i.e. L_C (mm)):

$$\theta_{SEC} = \frac{(P-E)}{L_C} \quad (8)$$

where P (mm) and E (mm) are precipitation and evaporation, respectively, over the examined time period. As aforementioned, in order to initiate water flow through the SEC lower boundary, θ_{SEC} need to be equal to or higher than θ_{crit} . Consequently, by substituting θ_{SEC} by θ_{crit} in **Equation 8** and rearranging the equation, it is possible to depict the required P , for a given E , to allow water flow and leach of solutes and contaminates out of the SEC, for a single rain event:

$$P = \theta_{crit} \cdot L_C + E \quad (9)$$

Figure 12 presents computed L_C , based on **Equations 1-4**, for various soil textures and five daily evaporative scenarios. **Table 4** presents the physical and hydraulic properties of the examined soils, used for the calculations, as taken from the HYDRUS-

1D library (Schaap,2001), and as measured physically for the three soil samples from the field site, and the modelled soil, as depicted in Figure 4.

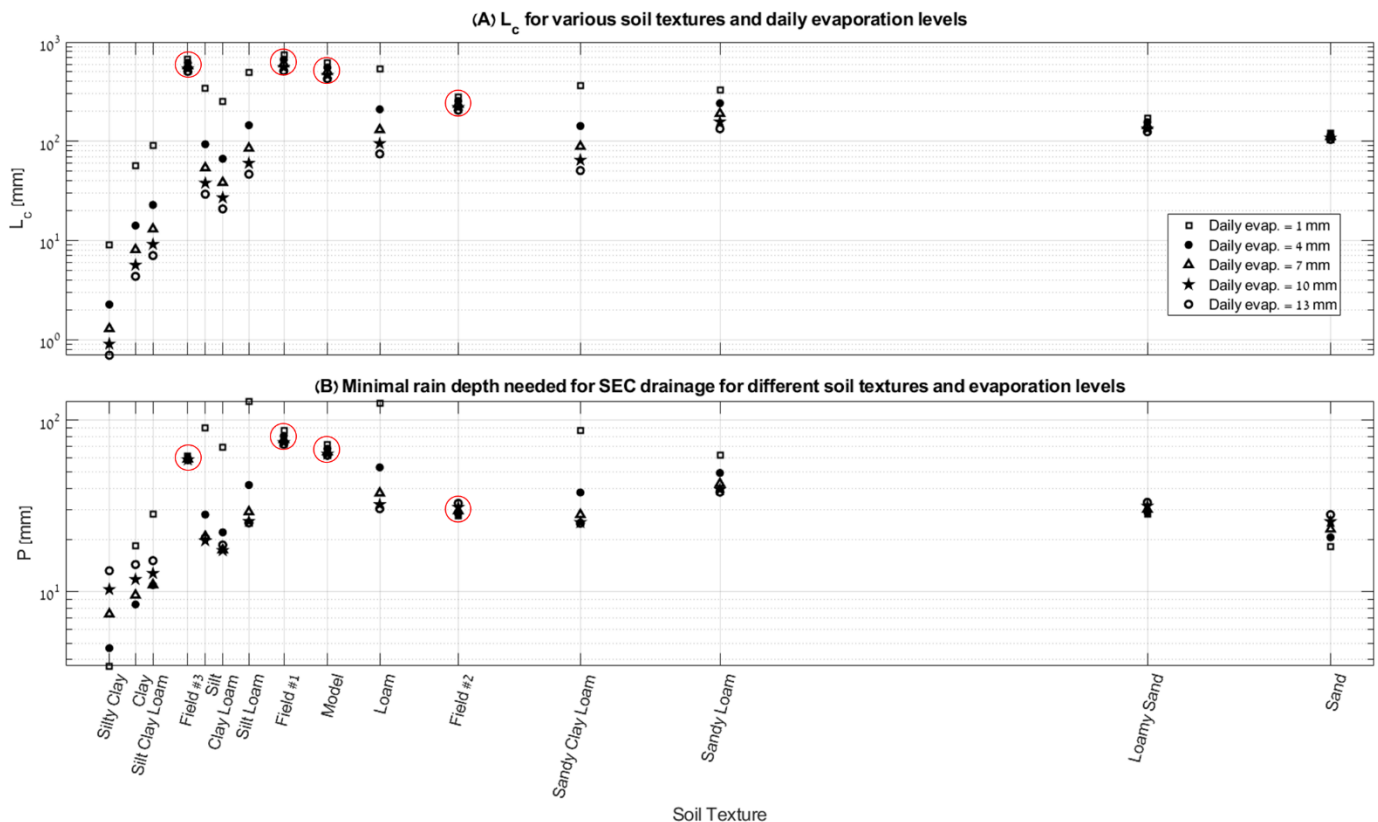
In agreement with previous calculations (Or and Lehmann, 2019), the medium texture soils have the deepest L_C (Fig. 12A). For coarser texture soils, L_C is shorter due to limited pore size distribution and minor capillary gradient. For finer texture soils, high viscous resistance and low hydraulic conductivities also lead to short L_C (Or and Lehmann, 2019). Moreover, it is seen in Figure 12A that for the relatively high evaporative levels (daily evaporation of 7-13 mm), L_C is quite short and with small differences between the different soil types. Since high evaporation rates usually characterize the dry season, especially in arid areas, (see Fig's 8 and 10), there is no practical influence of these short L_C values on solutes and contaminants leaching. However, for low evaporative levels (daily evaporation of 1-4 mm), that are commonly associated with rainy periods, a notable difference in L_C length is observed, mainly for the fine-medium texture soils. Figure 12B demonstrates that relatively low P levels are sufficient to drain the SEC of fine texture soils, due to the very short L_c of such clayey soils. Highest P levels are needed to drain the SEC of the middle texture and leach down its solutes and contaminants. This is a result of the long L_c of soils such as loamy soils, mainly at the low evaporation rates conditions. Shorter P depth are also needed for the drainage of SEC of sandy soils, due to the low θ_{crit} values and relatively short L_c of these soils.

Field samples #1, #3, and the modelled soil had relatively high L_c and P values, at the order of 50-60 cm, and 60-80 mm, respectively. For field sample #2 P was equal to ~30 mm and L_c was shallower than other field samples by approximately 25 cm. This disparity emphasizes the major impact that α and n may have on the estimation of SEC thickness and associated solute transport and leaching dynamics. The good agreement observed between the numerical model results, field measurements, and the SEC model of the modelled soil supports the hypothesis that the modelled soil accurately represents the local soil within the Ashalim Basin. However, future research should further investigate the sensitivity of the SEC model to variations in soil physical parameters and environmental properties.

Table 4: Soil textural and physical properties from HYDRUS-1D library, used for calculations of K_{eff} and θ_{crit} , (in table), and L_C and P , (in Figure 12).

Soil textural properties given from HYDRUS library							
Soil texture	Residual water content θ_{res} [-]	Saturated water content θ_{sat} [-]	van Genuchten parameters			Saturated hydraulic conductivity K_S [mm/day]	water content needed to drain SEC θ_{crit} [-]
			α [1/mm]	n [-]	m [-]		
Clay	0.068	0.38	0.0008	1.09	0.082569	48	0.38
Silty Clay	0.07	0.36	0.0005	1.09	0.082569	4.8	0.36
Silt Clay Loam	0.089	0.43	0.001	1.23	0.186992	16.8	0.43
Silt	0.034	0.46	0.0016	1.37	0.270073	60	0.46
Field #3	0.02	0.37	0.0016	4	0.75	2500	0.09

Clay Loam	0.095	0.41	0.0019	1.31	0.236641	62.4	0.41
Silt Loam	0.067	0.45	0.002	1.41	0.29078	108	0.45
Field #1	0.02	0.37	0.0025	2.5	0.6	2500	0.12
Model	0.02	0.37	0.003	2.5	0.6	2500	0.11
Loam	0.078	0.43	0.0036	1.56	0.358974	249.6	0.42
Field #2	0.02	0.37	0.0045	3.5	0.714285	2500	0.096
Sandy Clay Loam	0.1	0.39	0.0059	1.48	0.324324	314.4	0.38
Sandy Loam	0.065	0.41	0.0075	1.89	0.470899	1061	0.31
Loamy Sand	0.057	0.41	0.0124	2.28	0.561404	3502	0.23
Sand	0.045	0.43	0.0145	2.68	0.626866	7128	0.21



485 **Figure 12:** The impact of different evaporative conditions and soil textures on L_c (A), and minimal amount of daily precipitation, P , needed to initiate drainage from the SEC (B) in arid environments. **Red contours mark computed L_c and P for the three soil samples from the field and the modelled soil (Model).** The soils are organized along the X axis, in proportion to their α value.

As aforementioned, the use of **Equation 9** and **Figure 12** to estimate the needed amount of rain to initiate water flow through the SEC lower boundary is valid for arid conditions, where rain events are scarce. Under such conditions, the time gap between rain events would suffice for effective drying by the prevailing high capacity of the evaporation processes. For wetter climatic conditions, there is a need to consider cumulative evaporation and precipitation, as there may be an accumulation of water at the SEC, over consecutive rain events, until reaching water levels that are equal to or higher than θ_{crit} , and downward water flow out of the SEC will occur. Following Lehmann et al. (2019) it is proposed here to consider monthly cumulative precipitation to estimate if and how much water would be leached out of the SEC. While Lehmann et al. (2019) neglected cumulative evaporation during the rainy months, inhere it is proposed to consider both monthly cumulative precipitation, P_{cum} (mm), and monthly cumulative evaporation, E_{cum} (mm), in order to determine the amount of water drained off the SEC:

$$D = (P_{cum} - E_{cum}) \cdot L_c \cdot (\theta_{crit} - \theta_r) \quad (10)$$

Where D (mm) is depth of water drained off the SEC and θ_r is the residual water content of the soil. **Figure 13A** presents monthly cumulative precipitation, as measured at the field site and monthly cumulative actual evaporation as simulated by the HYDRUS-1D model, in response to measured potential evaporation. In addition, it presents how much water drained to depths greater than L_c , based on SEC model (**Eq. 10**), and as predicted by the HYDRUS-1D model. For the local climatic conditions in the Ashalim Basin, and in agreement with field measurements and the HYDRUS-1D model (**Fig. 10C-D**), it is seen in **Figure 13A**, that no drainage occurred over the period of interest.

Figures 13B and **13C** present P_{cum} , E_{cum} , and D for the climatic conditions of doubled and five times more rain than actual measured precipitation at the field site, respectively. For the conditions of doubled precipitation, it is only in December when cumulative monthly precipitation (13.3 mm) was higher than cumulative evaporation (12.5 mm). Computed D for December was minor, at the order of 1 mm, as computed both by **Equation 10**, and HYDRUS-1D. In February the HYDRUS-1D model predicted another minor flow of water out of the SEC, while **Equation 10** did not account for any flow, since the overall evaporation during this month exceeded precipitation. This discrepancy highlights a limitation of using the cumulative evaporation and precipitation analysis, as it overlooks intense and short rain events that may generate some flow of water out of the SEC, for a short period, even if the monthly cumulative evaporation is higher than cumulative precipitation. For the extreme wet conditions of fivefold more rain than actual measurements, it is seen in **Figure 13C** that during December, January, and February, cumulative precipitation was notably higher than cumulative evaporation and consequently relatively high D values were predicted both by **Equation 10**, and the HYDRUS model. The good agreement in between the monthly cumulative precipitation-evaporation analysis and the HYDRUS model indicates on the high validity of the cumulative evaporation-precipitation method to estimate water and solutes flow through the lower boundary of the SEC, for wetter climatic conditions.

520

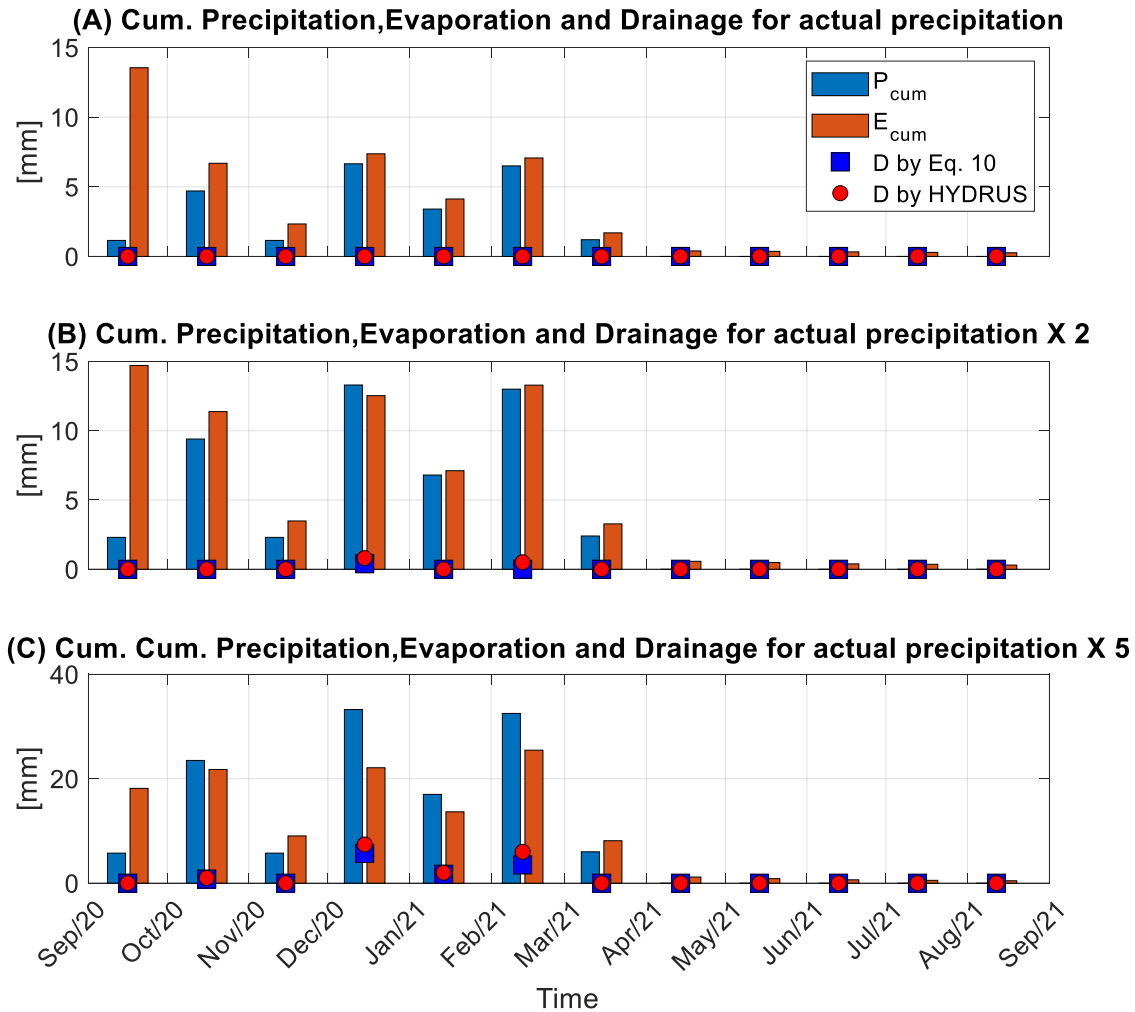


Figure 13: Monthly cumulative precipitation (P_{cum}) and evaporation (E_{cum}) for actual rain conditions at the Ashalim Basin (A), and for the climatic conditions of doubled (B) and fivefold (C) higher precipitation. For all precipitation conditions, water drained out off the SEC (D) is presented for each month as computed by Equation 10 for the SEC model (blue squares), and as simulated by the HYDRUS-1D model (red circles).

4 Summary and conclusions

Experimental results, field measurements, and numerical model simulations all indicate that under arid conditions and environments, the mobilization and removal of solutes and pollutants to substantial depths in sandy soils is a minor process even when considering solutes that do not tend to be absorbed to soil particles. Given the relatively high hydraulic conductivities of the sandy soils it is apparent that similar conclusions can be drawn for heavier and less permeable soils under arid conditions. The sporadic rain events that occur in arid environments enable only minor downward mobilization of the solutes, whereas the dry periods between such rain events are sufficient to force capillary upward transport of the solutes and

dissolved pollutants. **Figure 14** is a conceptual model that illustrates the dynamics of water flow and solute transport processes, as demonstrated in this work. The soil evaporation capacitor (SEC) model (Or and Lehmann, 2019) which describes the depth of soil that contributes water for the first stage of evaporation, was applied to estimate the depth to which the solutes and contaminants circulate vertically, further supporting the conceptual model. It was shown that for arid conditions the SEC water content levels, in between the short and infrequent rain events, are very low, hence it is possible to assume that infiltration processes into the SEC are taking action into dry soil. However, for wetter climatic conditions, it is crucial to consider the cumulative effect of water at the SEC layer. The sensitivity of the SEC model to the van Genuchten n and α parameters was demonstrated as inaccurate estimations of these properties may affect the computed thickness of the SEC layer and consequent water flow and solutes transport processes. Therefore, these parameters have to be characterized as accurately as possible, and the results should be compared and validated in comparison to field measurements and other models. Once validated, the SEC model can be used to determine future dynamic flow of the pore water and solutes and contaminants transport at the upper soil layers, which are usually the most important from ecological perspectives.

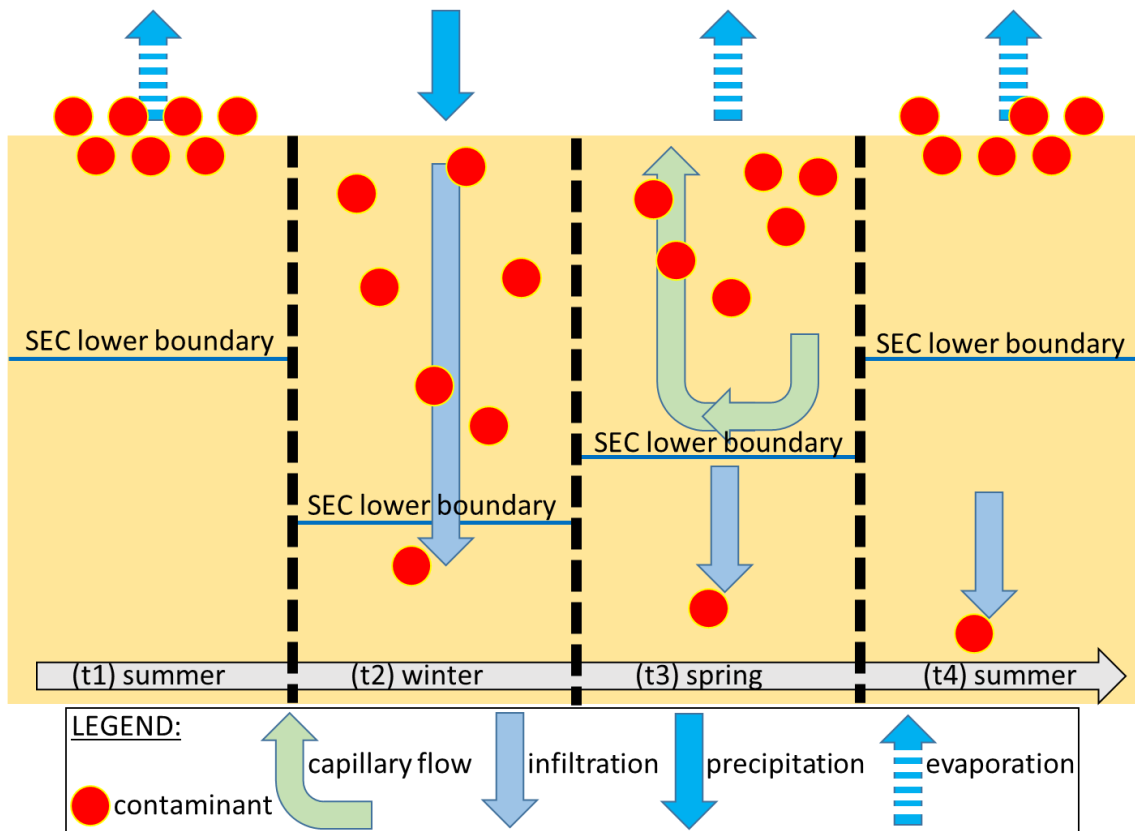


Figure 14: Conceptual model describing the fate of solutes along a soil profile under arid environments following the SEC concept. During rain events the solutes are being leached downward, but as long as they remain within the SEC zone, they can move upward with capillary water, towards the evaporation front at the soil surface. Solutes that are mobilized to depths greater than the SEC lower boundary can no longer flow upward towards the soil surface.

555 Since catastrophic pollution events in arid environments are in many cases of extreme magnitude, and related to extreme flash
flood events, it is likely that vast areas beyond the MFC will be exposed to the contamination. These areas, however, do not
experience regular and natural flash floods, and thus their natural attenuation processes driven by water are expected to be very
limited. Therefore, it is estimated that areas like the sandy terraces of the Ashalim stream will remain polluted long after the
spill event, imposing significant chemical stress to the habitat and rendering it to slow remediation. During this period, it may
also act as a slow release source of contamination to the environment.

560 Based on the various observations and analyses presented in this study, it is proposed to apply the SEC model as a practical
tool for estimating the potential mobility of solutes and contaminants from the upper part of the soil profile, for different soil
types and climatic conditions. The soil textural properties and evaporative conditions determine the SEC depth, and the
minimal water content of the SEC soil that is needed to initiate effective drainage and solutes removal from the SEC to deeper
horizons of the soil profile. Therefore, simple and basic information about the soil properties and climatic conditions of a
contaminated area may be sufficient to provide an estimate as to the removal efficiency of the contaminated layer by leaching
565 processes, a critical information when considering bioavailability of contaminants.

References

- Abdel-Hakeem, M. and El-Habaak, G.: The potential production of rock-based fertilizer and soil conditioner from phosphate
mine wastes: A case study from Abu-Tartur plateau in the Western Desert of Egypt, *J. Clean. Prod.*, 329, 129761,
doi:10.1016/j.jclepro.2021.129761, 2021.
- 570 Amiaz, Y., Sorek, S., Enzel, Y. and Dahan, O.: Solute transport in the vadose zone and groundwater during flash floods, *Water
Resour. Res.*, 47(10), doi:10.1029/2011WR010747, 2011.
- Ashworth, J., Keyes, D., Kirk, R. and Lessard, R.: STANDARD PROCEDURE IN THE HYDROMETER METHOD FOR
PARTICLE SIZE ANALYSIS, *Commun. Soil Sci. Plant Anal.*, 32(5–6), 633–642, doi:10.1081/CSS-100103897, 2001.
- Basahi, J. M., Masoud, M. H. Z. and Rajmohan, N.: Effect of flash flood on trace metal pollution in the groundwater - Wadi
575 Baysh Basin, western Saudi Arabia, *J. African Earth Sci.*, 147, 338–351, doi:10.1016/j.jafrearsci.2018.06.032, 2018.
- El Bastawesy, M. and Abu El Ella, E. M.: Quantitative estimates of flash flood discharge into waste water disposal sites in
Wadi Al Saaf, the Eastern Desert of Egypt, *J. African Earth Sci.*, 136, 312–318, doi:10.1016/j.jafrearsci.2017.03.008, 2017.
- Becker, N., Gross, Y. and Lavee, D.: Cost–benefit analysis of restoring an ephemeral desert stream after an ecological accident,
Water Policy, 22(3), 328–347, doi:10.2166/wp.2020.014, 2020.
- 580 Cohen, N.: Ramat Hovav industrial park in the Negev desert–Israel, *Present Environ. Sustain. Dev.*, 1, 3–14, 2007.

- Dai, S., Shin, H. and Santamarina, J. C.: Formation and development of salt crusts on soil surfaces, *Acta Geotech.*, 11(5), 1103–1109, doi:10.1007/s11440-015-0421-9, 2016.
- Dou, M., Mi, Q., Li, C. and Wang, Y.: Ecological desert environment suffers from industrial wastewater pollution in northwestern China, *Environ. Earth Sci.*, 74(4), 3681–3683, doi:10.1007/s12665-015-4438-z, 2015.
- 585 Effat, H. A. and Elbeih, S. F.: A geospatial model for allocating potential urban–industrial zones in a desert: Case study Matrouh, Egypt, *Model. Earth Syst. Environ.*, 6(4), 2033–2046, doi:10.1007/s40808-020-00806-w, 2020.
- van Genuchten, M. T.: A Closed-form Equation for Predicting the Hydraulic Conductivity of Unsaturated Soils, *Soil Sci. Soc. Am. J.*, 44(5), 892–898, 1980.
- van Genuchten, M. T.: Analyzing crop salt tolerance data: Model description and user’s manual, Washington, DC., 1983.
- 590 Gordon, G., Stavi, I., Shavit, U. and Rosenzweig, R.: Oil spill effects on soil hydrophobicity and related properties in a hyper-arid region, *Geoderma*, 312, 114–120, doi:10.1016/j.geoderma.2017.10.008, 2018.
- Gratzfeld, J.: Extractive industries in arid and semi-arid zones: Environmental planning and management, edited by J. Gratzfeld, IUCN., 2003.
- Greenbaum, N.: Assessment of dam failure flood and a natural, high-magnitude flood in a hyperarid region using paleoflood hydrology, Nahal Ashalim catchment, Dead Sea, Israel, *Water Resour. Res.*, 43(2), doi:10.1029/2006WR004956, 2007.
- 595 IPCC: *Climate Change 2007: The Physical Science Basis.*, 2007.
- Izquierdo, T., Bonnail, E., Abad, M., Dias, M. I., Prudêncio, M. I., Marques, R., Rodríguez-Vidal, J. and Ruiz, F.: Pollution and potential risk assessment of flood sediments in the urban area of the mining Copiapó basin (Atacama Desert), *J. South Am. Earth Sci.*, 103, 102714, doi:10.1016/j.jsames.2020.102714, 2020.
- 600 Leaver, R.: International oil and international regimes: Mirages in a desert, *Aust. J. Int. Aff.*, 44(2), 143–154, doi:10.1080/10357719008445028, 1990.
- Lehmann, P., Berli, M., Koonce, J. E. and Or, D.: Surface evaporation in arid regions: Insights from lysimeter decadal record and global application of a surface evaporation capacitor (SEC) model. *Geophys. Res. Lett.*, 46(16), 9648-9657, doi:10.1029/2019GL083932, 2019.
- 605 Lehmann, P., Assouline, S. and Or, D.: Characteristic lengths affecting evaporative drying of porous media, *Phys. Rev. E*, 77(5), 056309, doi:10.1103/PhysRevE.77.056309, 2008.
- Luna, D., Calero, J., Sancho, E. D., Luna, C., Posadillo, A., Bautista, F. M., Romero, A. A., Berbel, J. and Verdugo, C.: Technological challenges for the production of biodiesel in arid lands, *J. Arid Environ.*, 102, 127–138,

doi:10.1016/j.jaridenv.2013.11.014, 2014.

610 Marazuela, M. A., Vázquez-Suñé, E., Ayora, C. and García-Gil, A.: Towards more sustainable brine extraction in salt flats: Learning from the Salar de Atacama, *Sci. Total Environ.*, 703, 135605, doi:10.1016/j.scitotenv.2019.135605, 2020.

Masoud, M. H. Z., Basahi, J. M. and Rajmohan, N.: Impact of flash flood recharge on groundwater quality and its suitability in the Wadi Baysh Basin, Western Saudi Arabia: an integrated approach, *Environ. Earth Sci.*, 77(10), 395, doi:10.1007/s12665-018-7578-0, 2018.

615 Morin, J., Goldberg, D. and Seginer, I.: A Rainfall Simulator with a Rotating Disk, *Trans. ASAE*, 10(1), 0074–0077, doi:10.13031/2013.39599, 1967.

Nachshon, U., Weisbrod, N., Katzir, R. and Nasser, A.: NaCl Crust Architecture and Its Impact on Evaporation: Three-Dimensional Insights, *Geophys. Res. Lett.*, 45(12), 6100–6108, doi:10.1029/2018GL078363, 2018.

Or, D. and Lehmann, P.: Surface Evaporative Capacitance: How Soil Type and Rainfall Characteristics Affect Global-Scale
620 Surface Evaporation, *Water Resour. Res.*, 55(1), 519–539, doi:10.1029/2018WR024050, 2019.

Parkhurst, D. L. and Appelo, C. A. J.: Description of input and examples for PHREEQC version 3—a computer program for speciation, batch-reaction, one-dimensional transport, and inverse geochemical calculations, in *US geological survey techniques and methods*, vol. 6(A43), p. 497., 2013.

Portnov, B. A. and Safriel, U. N.: Combating desertification in the Negev: dryland agriculture vs. dryland urbanization, *J. Arid Environ.*, 56(4), 659–680, doi:10.1016/S0140-1963(03)00087-9, 2004.

Reynolds, R. L., Yount, J. C., Reheis, M., Goldstein, H., Chavez, P., Fulton, R., Whitney, J., Fuller, C. and Forester, R. M.: Dust emission from wet and dry playas in the Mojave Desert, USA, *Earth Surf. Process. Landforms*, 32(12), 1811–1827, doi:10.1002/esp.1515, 2007.

Rudnik, G.: 2D Hydrodynamic Modelling of the 2017 Reservoir Dam Failure at Ashalim River Catchment, Dead Sea, Israel,
630 Brandenburg University of Technology., 2019.

Salom, A. T. and Kivinen, S.: Closed and abandoned mines in Namibia: a critical review of environmental impacts and constraints to rehabilitation, *South African Geogr. J.*, 102(3), 389–405, doi:10.1080/03736245.2019.1698450, 2020.

Şen, Z., Al Alsheikh, A., Al-Turbak, A. S., Al-Bassam, A. M. and Al-Dakheel, A. M.: Climate change impact and runoff harvesting in arid regions. *Arabian Journal of Geosciences*, 6, 287-295, 2013.

635 Schaap, M. G., Leij, F. J. and van Genuchten, M. T.: rosetta : a computer program for estimating soil hydraulic parameters with hierarchical pedotransfer functions, *J. Hydrol.*, 251(3–4), 163–176, doi:10.1016/S0022-1694(01)00466-8, 2001.

- Schelle, H., Heise, L., Jänicke, K. and Durner, W.: Water retention characteristics of soils over the whole moisture range: a comparison of laboratory methods, *Eur. J. Soil Sci.*, 64(6), 814–821, doi:10.1111/ejss.12108, 2013.
- Schewe, J., Heinke, J., Gerten, D., Haddeland, I., Arnell, N. W., Clark, D. B., Dankers, R., Eisner, S., Fekete, B. M., Colón-González, F. J., Gosling, S. N., Kim, H., Liu, X., Masaki, Y., Portmann, F. T., Satoh, Y., Stacke, T., Tang, Q., Wada, Y., Wissler, D., Albrecht, T., Frieler, K., Piontek, F., Warszawski, L. and Kabat, P.: Multimodel assessment of water scarcity under climate change., *Proc. Natl. Acad. Sci. U. S. A.*, 111(9), 3245–3250, doi:10.1073/pnas.1222460110, 2014.
- Sharma, K. D., Kumar, S. and Gough, L. P.: Rehabilitation of lands mined for limestone in the Indian desert, *L. Degrad. Dev.*, 11(6), 563–574, doi:10.1002/1099-145X(200011/12)11:6<563::AID-LDR414>3.0.CO;2-I, 2000.
- 645 Shirazi, M. A. and Boersma, L.: A Unifying Quantitative Analysis of Soil Texture, *Soil Sci. Soc. Am. J.*, 48(1), 142–147, doi:10.2136/sssaj1984.03615995004800010026x, 1984.
- Shumway, J. M. and Jackson, R. H.: Place Making, Hazardous Waste, And The Development Of Tooele County, Utah*, *Geogr. Rev.*, 98(4), 433–455, doi:10.1111/j.1931-0846.2008.tb00311.x, 2008.
- Simunek, J., Van Genuchten, M. and Sejna, M.: The HYDRUS-1D software package for simulating the one-dimensional
650 movement of water, heat, and multiple solutes in variably-saturated media., 2005.
- Zoccatelli, D., Marra, F., Smith, J., Goodrich, D., Unkrich, C., Rosensaft, M. and Morin, E.: Hydrological modelling in desert areas of the eastern Mediterranean, *J. Hydrol.*, 587, 124879, doi:10.1016/j.jhydrol.2020.124879, 2020.