

21st century global glacier evolution under CMIP6 scenarios and the role of glacier-specific observations

Harry Zekollari^{1,2,3,4}, Matthias Huss^{1,2,5}, Lilian Schuster⁶, Fabien Maussion^{6,7}, David R. Rounce⁸, Rodrigo Aguayo³, Nicolas Champollion⁹, Loris Compagno^{1,2,10}, Romain Hugonnet^{1,2,11}, Ben Marzeion^{12,13},
5 Seyedhamidreza Mojtabavi^{12,14}, Daniel Farinotti^{1,2}

¹ Laboratory of Hydraulics, Hydrology and Glaciology (VAW), ETH Zurich, Zurich, Switzerland

² Swiss Federal Institute for Forest, Snow and Landscape Research (WSL), Birmensdorf, Switzerland

³ Department of Water and Climate, Vrije Universiteit Brussel, Brussels, Belgium

⁴ Laboratoire de Glaciologie, Université libre de Bruxelles, Brussels, Belgium

10 ⁵ Department of Geosciences, University of Fribourg, Fribourg, Switzerland

⁶ Department of Atmospheric and Cryospheric Sciences (ACINN), Universität Innsbruck, Innsbruck, Austria

⁷ Bristol Glaciology Centre, School of Geographical Sciences, University of Bristol, Bristol, UK

⁸ Department of Civil and Environmental Engineering, Carnegie Mellon University, Pittsburgh, PA, USA

⁹ Institut des Géosciences de l'Environnement (IGE), CNES, Grenoble, France

15 ¹⁰ Swiss Reinsurance Company Ltd (Swiss Re), Zürich, Switzerland

¹¹ University of Washington, Civil and Environmental Engineering, Seattle, WA, USA

¹² Institute of Geography, University of Bremen, Bremen, Germany

¹³ MARUM – Center for Marine Environmental Sciences, University of Bremen, Bremen, Germany

20 ¹⁴ Center for International Development and Environmental Research, Justus Liebig University of Giessen, Giessen, Germany

Correspondence to: Harry Zekollari (zharry@ethz.ch, harry.zekollari@vub.be)

Abstract

Projecting the global evolution of glaciers is crucial to quantify future sea-level rise and changes in glacier-fed rivers. Recent
25 intercomparison efforts have shown that a large part of the uncertainties in the projected glacier evolution is driven by the
glacier model itself and by the data used for initial conditions and calibration. Here, we quantify the effect that mass balance
observations, one of the most crucial data sources used in glacier modelling, have on glacier projections. For this, we model
the 21st century global glacier evolution under CMIP6 climate scenarios with the Global Glacier Evolution Model (GloGEM)
calibrated to match glacier-specific mass balance observations, as opposed to relying on regional mass balance observations.
30 We find that the differences in modelled 21st century glacier changes can be large at the scale of individual glaciers (up to
several tens of percent), but tend to average out at regional to global scales (a few percent at most). Our study thus indicates
that the added value of relying on glacier-specific observations is at the subregional and local scale, which will increasingly
allow projecting the glacier-specific evolution and local impacts for every individual glacier on Earth. To increase the ensemble
of models that project global glacier evolution under CMIP6 scenarios, simulations are also performed with the Open Global
35 Glacier Model (OGGM). We project the 2015-2100 global glacier loss to vary between 25±15% (GloGEM) and 29±14%
(OGGM) under SSP1-2.6 to 46±26% and 54±29% under SSP5-8.5 (ensemble median, with 95% confidence interval;

calibration with glacier-specific observations). Despite some differences at the regional scale and a slightly more pronounced sensitivity to changing climatic conditions, our results agree well with the recent projections by Rounce et al. (2023), thereby projecting, for any emission scenario, a higher 21st century mass loss than the current community estimate from the second phase of the Glacier Model Intercomparison Project (GlacierMIP2).

1 Introduction

Glaciers outside the ice sheets profoundly impact our society and the natural environment (IPCC, 2023): they act as important sea-level contributors (Edwards et al., 2021; Marzeion et al., 2020; Slangen et al., 2022), are crucial fresh water resources (Aguayo et al., 2023; Ultee et al., 2022; Van Tiel et al., 2021; Yao et al., 2022; Zanoni et al., 2023), trigger natural hazards (Compagno et al., 2022a; Furian et al., 2022; Veh et al., 2023), regulate biodiversity (Bosson et al., 2023; Gobbi et al., 2021; Stibal et al., 2020), influence hydropower generation (Farinotti et al., 2019b; Li et al., 2022; Wasti et al., 2022), and have considerable touristic value (Abrahams et al., 2022; Purdie et al., 2020; Salim, 2023). To predict the evolution of glaciers at regional to global scales under changing climatic conditions, various types of large-scale glacier evolution models have been developed over the past two decades (for an overview see Hock et al., 2019; Marzeion et al., 2020; Zekollari et al., 2022). Recently, these models have rapidly evolved to represent, among others, the flow of ice within glaciers (Bolibar et al., 2023; Maussion et al., 2019; Rounce et al., 2023; Zekollari et al., 2019), an advanced representation of mass balance processes (Bolibar et al., 2022; Rounce et al., 2020a; Schuster et al., 2023a), the role of (evolving) debris cover (Compagno et al., 2022b; Postnikova et al., 2023; Rounce et al., 2023), and a more realistic representation of frontal ablation and glacier calving (Huss and Hock, 2015; Malles et al., 2023; Recinos et al., 2021, 2023; Rounce et al., 2023). Equally important are the many new datasets that have been made available, which are used for model input, calibration and evaluation, including (near) global datasets on glacier outlines (RGI Consortium, 2017, 2023), ice thickness reconstructions (Farinotti et al., 2019a; Millan et al., 2022), surface velocities (Friedl et al., 2021; Millan et al., 2022), geodetic mass balances (Hugonnet et al., 2021), supraglacial debris extent and thickness (Herreid and Pellicciotti, 2020; Rounce et al., 2021; Scherler et al., 2018) and frontal ablation (Kochtitzky et al., 2022). In the second phase of the Glacier Model Intercomparison (GlacierMIP2; Marzeion et al., 2020), these glacier evolution models and how/if they integrate the various observations were found to be the major source of uncertainty in projected glacier changes in the coming decades, as opposed to the emission scenario, the climate model providing boundary conditions, or natural variability. As such, it is of major interest to better quantify the impact that glacier evolution models and their data have on the projected glacier changes.

Projections of the global evolution of glaciers strongly depend on how glacier evolution models are calibrated to match observations (Schuster et al., 2023a). In this respect, the calibration of the mass balance component is especially important given that it determines the input and output of mass at the glacier surface (Silwal et al., 2023; Sjursen et al., 2023). Such a calibration of the mass balance component is required, since atmospheric conditions over individual glaciers cannot accurately

70 be represented in global-scale datasets (Aguayo et al., 2024), a problem that can only slightly be mitigated through a
downscaling and bias correction of meteorological variables (Rounce et al., 2020b). Moreover, a regional to global scale glacier
model is not able to resolve all processes that determine its mass balance, nor can it fully capture the sensitivity of each
individual glacier to climatic conditions due to microclimatic effects and/or characteristics that are not resolved in large-scale
input datasets. A detailed model calibration ensures a correct representation of the current glacier state and of its sensitivity to
changing climatic conditions. Therefore, a well-calibrated model is the prerequisite to obtain confident projections of glacier
75 evolution and to assess corresponding impacts.

Various approaches to calibrate the mass balance component of global glacier models have been developed. One approach
consists of calibrating the mass balance model to reproduce in-situ mass balance observations, which are available for a few
hundred glaciers worldwide (Radić and Hock, 2011; Marzeion et al., 2012; Maussion et al., 2019; Shannon et al., 2019). In
80 this calibration approach, initial parameters can be calibrated for glaciers that have mass balance measurements, after which
they need to be transferred to glaciers without mass balance measurements (Marzeion et al., 2012; Giesen and Oerlemans,
2013), or alternatively, regional (uniform) parameters can be calibrated to minimize the misfit with the mass balance
observations (Radić and Hock, 2011). A downside of the approach is that the modelled mass balance for the unmeasured
glaciers can be unrealistically negative or positive. Moreover, the modelled regional mass balance obtained from the
85 extrapolation can substantially deviate from the real regional mass balance.

A second approach calibrates the mass balance model component to match regional mass balance observations (Bliss et al.,
2014; Radić et al., 2014; Huss and Hock, 2015). This match with the regional mass balance can be obtained by assuming
model parameters to be constant for all glaciers or by varying them according to prescribed transfer functions (Bliss et al.,
90 2014; Radić et al., 2014). The advantage of this approach is that the obtained mass balance parameters have (physically)
realistic values, which fall within the literature ranges. However, when considering the mass balance at the individual glacier
level, sometimes highly unrealistic mass balances are obtained, resulting in an inaccurate glacier sensitivity to changing
climatic conditions. Therefore, an alternative approach which ensures a match with the regional mass balance, consists of
supposing that all glaciers within a region have the same mass balance - that is the regional mass balance (Huss and Hock,
95 2015). With this approach, strongly unrealistic mass balances at the individual glacier level are prevented. However, given
that in reality individual glaciers within a specific region have a strongly varying mass balance (i.e., neighbouring glaciers can
have a very different mass balance; e.g. Brun et al. (2019), WGMS (2021)), calibrating to the regional mean can lead to
substantial biases at the single-glacier level.

100 Until recently, the approaches presented above were considered state-of-the-art strategies when calibrating large-scale glacier
models, and the majority of the models participating in the Glacier Model Intercomparison Project (GlacierMIP; Hock et al.,
2019; Marzeion et al., 2020) relied on such approaches. A new approach now consists of calibrating the mass balance

component for every individual glacier to match glacier-specific mass balance observations. Working with such glacier-specific (geodetic) mass balance observations allows for a leap-step in the calibration of large-scale glacier evolution models, since most of the calibration limitations described above (i.e., mismatch of regional mass balance and/or unrealistic local mass balances) disappear. More specifically, by calibrating mass balance parameters for every glacier individually, one can match the observed mass balance for every glacier, which ensures a correct sensitivity of the glacier mass balance with respect to changing climatic conditions (assuming observations to be accurate), while also matching regional observations. Driven by the first glacier-specific mass balance observations at regional scales (Brun et al., 2017; Dussaillant et al., 2019; Fischer et al., 2015; Shean et al., 2020), a glacier-specific calibration was first used in some regional studies (Aguayo et al., 2023; Caro et al., 2023; Compagno et al., 2021b, 2022b; Malles et al., 2023; Postnikova et al., 2023; Rounce et al., 2020a; Schuster et al., 2023a; Zekollari et al., 2019). Now, with the release of the first dataset on geodetic mass balances for every glacier on Earth (Hugonnet et al., 2021), the possibility exists to calibrate the mass balance component for every individual glacier in the world. Recently, Rounce et al. (2023) used the coupled Python Glacier Evolution Model (PyGEM, for mass balance) – Open Global Glacier Model (OGGM for ice flow and glacier evolution) model setup (hereafter referred to as “PyGEM”) to project the future global glacier evolution under various climate warming targets. This study was the first global glacier study to entirely rely on the geodetic mass balance at the individual glacier scale when calibrating the glacier-specific mass balance component. Since the work by Rounce et al. (2023) includes many novel approaches to, among others, better represent frontal ablation (glacier calving and other processes removing mass at the glacier front), debris cover, and mass balance calibration (e.g., relying on Bayesian approaches), it is not straightforward to disentangle the effect that using these new glacier-specific geodetic mass balances has on the future modelled glacier evolution compared to the improved representation of processes.

Our study has two major objectives. First, we quantify how the data used for calibrating the mass balance model affects the projected glacier evolution. For this, we calibrate the Global Glacier Evolution Model (GloGEM; Huss and Hock, 2015) to match (i) glacier-specific and (ii) regional mass balance observations. By comparing setups with these two distinct model calibration approaches, we isolate the effect that the mass balance calibration data has on future modelled glacier changes on various spatial scales: ranging from the glacier-specific scale, through the regional scale, to the global scale. Our second major objective is to provide new estimates on the global evolution of glaciers under CMIP6 scenarios to complement the study by Rounce et al. (2023). For this, we simulate global glacier evolution with GloGEM and the Open Global Glacier Model (OGGM; Maussion et al., 2019), with both models being calibrated at the single glacier level to match the glacier-specific geodetic mass balance observations by Hugonnet et al. (2021). Through this effort, we aim to increase the sample of glacier models that project future glacier evolution under CMIP6 scenarios, allowing for an ensemble approach to be used when considering future glacier evolution under this latest generation of climate scenarios.

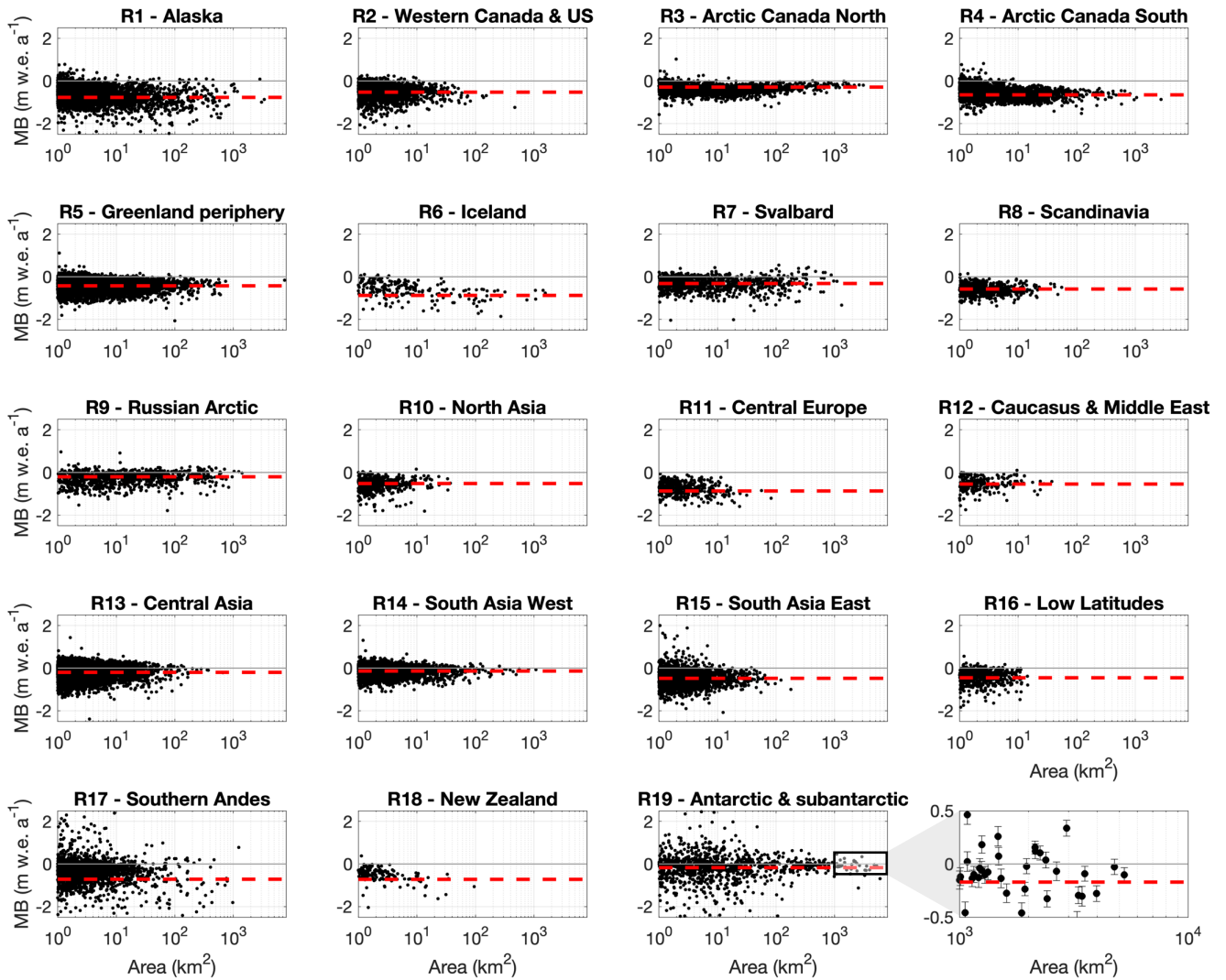
2 Data

135 2.1 Glacier geometry

In all simulations, glaciers are as outlined in the Randolph Glacier Inventory (RGI) version 6.0 (RGI Consortium, 2017). In GloGEM, the ice thickness is from the consensus estimate of Farinotti et al. (2019a) at the RGI inventory date, which is deduced from the surface elevation (as provided in Farinotti et al., 2019a) to reconstruct the bedrock elevation. In OGGM, the ice thickness is inversed assuming the Shallow Ice Approximation and mass conservation along flowlines. In the used OGGM
140 version (v1.6.1), glacier volume is matched to Farinotti et al. (2019a) at the RGI region level, and the RGI area is matched by a dynamical spin-up (see section 3.2.2).

2.2 Geodetic mass balance

For every glacier on Earth, a geodetic mass balance estimate is available from the global glacier elevation change dataset by Hugonnet et al. (2021). Whereas the estimates are reported at a 5-year resolution for every glacier, we here consider the trend
145 over the full 2000-2019 period, which comes with lower uncertainties. The glacier elevation estimates of Hugonnet et al. (2021) are mostly derived from time series of Advanced Spaceborne Thermal Emission and Reflection Radiometer (ASTER) digital elevation models (DEMs) (NASA/METI/AIST/Japan Spacesystems And U.S./Japan ASTER Science Team, 2001). Additionally, ArcticDEM DEMs are included when considering elevation changes of polar glaciers in the northern hemisphere (Porter et al., 2022), while Reference Elevation Model of Antarctica (REMA) DEMs are utilized for glaciers in the Antarctic
150 periphery (Howat et al., 2019). The geodetic mass balances by Hugonnet et al. (2021) clearly illustrates that within every region the spread in glacier-specific mass balances is considerable (Figure 1). This spread is particularly pronounced for small glaciers, whereas large glaciers, which dominate the (area-weighted) regional signal, are consequently closer to the regional mean. The uncertainty on these mass balance estimates partly relates to the glacier size: at the global scale, the average 1-sigma uncertainty is ~ 0.2 m w.e. yr^{-1} for glaciers of 1 km^2 , ~ 0.15 m w.e. yr^{-1} for 10 km^2 , and then goes down to around ~ 0.1
155 m w.e. $\text{yr}^{-1} \text{ km}^2$ for larger areas, which is the lower bound (incompressible error) due to uncertainties in density conversion and uncertainties in temporal interpolation to match an exact period. The mass balance variance of individual glacier estimates is thus primarily explained by mass balance variability as opposed to their much smaller uncertainty (highlighted for RGI region 19 in Figure 1), which becomes even more relevant given that the uncertainties reported in Hugonnet et al. (2021) are slightly overestimated on average compared to validation.



160

Figure 1: Distribution of glacier-specific geodetic mass balances (MB, in m w.e. a^{-1}). In these plots, every point represents the 2000-2019 geodetic mass balance for an individual glacier (Hugonnet et al., 2021), whereas the red dotted line represents the region-specific (area-weighted) mean geodetic mass balance (also based on the Hugonnet et al. (2021) dataset). Every panel represents an RGI region, while the panel in lower-right corner is a zoom for the largest glaciers in RGI region 19, highlighting the relatively small uncertainties on the mass balances with respect to the mass balance variability (for the highlighted glaciers that have an area larger than 1000 km^2 in RGI region 19, the mean uncertainty is $0.082 \text{ m w.e. a}^{-1}$).

165

2.3 Climate forcing

In GloGEM, the past climate (1980 until 2020) is taken from the fifth generation ECMWF reanalysis ERA5 (Hersbach et al., 2020), which combines model data with observations from across the world into a globally complete and consistent dataset. OGGM v1.6.1 uses W5E5v2.0, which bias-adjusts ERA5 reanalysis data over land (Lange et al., 2021). For the future (from 2020 until 2100), in both models (GloGEM and OGGM) the global glacier evolution is modelled under various climatic conditions that are derived from simulations performed with 12 climate models (Global Circulation Models and Earth System Models) from the Coupled Model Intercomparison Phase 6 project (CMIP6; Eyring et al., 2016): BCC-CSM2-MR, CESM2-WACCM, CESM2, EC-Earth3-Veg, EC-Earth3, FGOALS-f3-L, GFDL-ESM4, INM-CM4-8, INM-CM5-0, MPI-ESM1-2-HR, MRI-ESM2-0, NorESM2-MM. All these climate models are run for four Shared Socio-economic Pathways (SSPs; Meinshausen et al., 2020): SSP1-2.6, SSP2-4.5, SSP3-7.0 and SSP5-8.5 (Table S 1). The EC-Earth3-Veg, GFDL-ESM4, and MRI-ESM2 climate models are also forced under SSP1-1.9 (Table S 1) but given the lower number of members ($n=3$), the results are not deemed representative for this emission scenario, and are therefore not discussed in this study (the glacier projections under SSP1-1.9 are however provided; see ‘Data availability’ section). To ensure consistency between the observational/past (ERA5) and the future climate model data, a debiasing procedure is applied over the common 2000-2019 time period following the procedure described in Huss and Hock (2015). For SSP1-2.6 to SSP5-8.5, these climate models are the same as used in Rounce et al. (2023), allowing for a comparison of the modelled future glacier evolution under these climate scenarios.

3 Methods

3.1 Mass balance calibration strategy

Here, we enforce the modelled specific glacier-wide mass balance ($\Delta M_{g,mod}$ modelled for each glacier g , in meter water equivalent (m w.e.)) to match the observed glacier-specific geodetic mass balance ($\Delta M_{g,obs}$) by Hugonnet et al. (2021):

$$\Delta M_{g,mod} = \Delta M_{g,obs} \quad (\text{Eq. 1})$$

Through specifically calibrated model parameters (see section 3.2), the actual mass balance of each individual glacier is thus captured, and not just the mass balance of all glaciers aggregated over an entire region. This method has been used in recent studies with the GloGEM architecture (Compagno et al., 2021a, b, 2022a, b; Postnikova et al., 2023; Zekollari et al., 2019, 2020), OGGM (Aguayo et al., 2023; Caro et al., 2023; Malles et al., 2023; Schuster et al., 2023a), and PyGEM (Rounce et al., 2020a, 2023). Additionally, we also evaluate how calibrating the mass balance model for every glacier to match the regional mass balance (‘regional approach’, commonly used until recently) affects the modelled future glacier evolution. In this regional approach, each individual glacier’s specific mass balance is calibrated to match the mean regional specific mass balance during the same multi-year time period:

$$\Delta M_{g,mod} = \Delta M_{reg,obs} \quad (\text{Eq. 2})$$

Here, $\Delta M_{\text{reg,obs}}$ is the observed regional mass balance in m w.e. a^{-1} derived from the glacier-specific observations by Hugonnet et al. (2021). Hence, to match the regional mass balance, each glacier has a unique set of calibrated model parameters.

200 3.2 Specific setup for GloGEM and OGGM

3.2.1 GloGEM

In GloGEM (Huss and Hock, 2015; Table S2), the mass balance is the sum of the (i) ablation, calculated with a degree-day model, (ii) accumulation, calculated from the precipitation and a temperature threshold to account for precipitation type, and (iii) refreezing, calculated from modelled snow and firn temperatures. The mass balance is updated annually while accounting for the evolving glacier geometry and climatic conditions. Based on this calculated mass balance, the volume change of the glacier is determined, which is then applied through elevation change hypsometric profiles that rely on observations that indicate that retreating glaciers mostly lose mass at low elevations and are relatively stable at higher elevations (referred to as “retreat parameterization” or “delta-H parameterization”; Huss et al., 2010). The mass balance calibration in GloGEM relies on a three-step calibration procedure (Huss and Hock, 2015) where, for every individual glacier, the aim is to optimally constrain (i) a multiplicative precipitation parameter (c_{prec}), allowing adjusting the precipitation from the climate dataset, (ii) two melt parameters, f_{snow} and f_{ice} , relating local air temperatures and monthly melt rates over snow and ice surfaces, respectively, and (iii) a local temperature correction (ΔT). The model is run over the calibration period 2000-2019 with initial estimates for the parameters $c_{\text{prec}} = 1.0\text{-}2.0$ (region-specific, Table S 3), $f_{\text{snow}} = 3 \text{ mm d}^{-1} \text{ K}^{-1}$, $f_{\text{ice}} = 6 \text{ mm d}^{-1} \text{ K}^{-1}$ (based on literature values; Hock, 2003; Braithwaite, 2008), $\Delta T = 0^\circ\text{C}$. The glacier geometry is kept constant during the calibration period, and frontal mass loss for marine-terminating glaciers is computed based on this stable geometry (see Huss and Hock, 2015, for details). If the modelled glacier-wide specific mass balance of a glacier agrees with the observed geodetic mass balance (Eq. 1) within an arbitrarily set threshold of 0.01 to 0.05 m w.e. a^{-1} to ensure convergence, the meteorological forcing series is considered to describe the climatic conditions for this glacier well, and no further changes to the parameter values are applied. If deviations are greater, c_{prec} is varied between region-specific boundaries (see Table S 3) to minimize the misfit with the glacier-specific observations, until agreement is achieved (calibration step 1). The bias in precipitation is chosen as primary calibration parameter as it is expected to be most poorly captured by the climate re-analysis data and to show large small-scale variability among nearby glaciers, e.g., due to wind drift, orographic effects, and/or avalanches. If no agreement is found within the tested range, c_{prec} is set to the value that result in the smallest deviation from ΔM_{obs} , and f_{snow} is varied, while f_{ice} is adjusted so that the ratio $f_{\text{ice}}/f_{\text{snow}}=2$ is preserved (calibration step 2). If the target mass balance cannot be reproduced within these parameter ranges, we assume that there is a systematic error in the temperature forcing over the glacier. Thus, in a final step, we systematically shift the air temperature series by ΔT until agreement between the glacier's specific mass balance and the observed value is achieved (calibration step 3). Finally, in addition to the original calibration scheme as proposed in Huss and Hock (2015), this three-step calibration procedure is repeated iteratively by averaging the required shifts in the air temperature series (ΔT) over every re-analysis grid cell and imposing these averages a priori before restarting the 3-step calibration cycle.

230 This addition aims at reducing consistent strong positive/negative temperature offsets for some re-analysis grid cells, thereby shifting c_{prec} and $f_{\text{snow}}/f_{\text{ice}}$ away from their (unrealistic) extreme bounds.

3.2.2 OGGM

In OGGM (Maussion et al., 2019; Table S2), glaciers are represented through a flowline approach. Here we rely on OGGM v1.6.1. The glacier evolution is calculated by solving the continuity equation for ice thickness at every point along the glacier
235 flowline, which accounts for the local mass balance and ice flow processes. In the OGGM setup that we use here, the glacier is represented along one central flowline that follows the elevation bands (in a fashion similar to GloGEMflow; Zekollari et al., 2019).

OGGM offers the possibility to calculate the mass balance in various ways (Maussion et al., 2019; Schuster et al., 2023a).
240 Here, we rely on OGGM's standard method that describes the mass balance through an extended version of the temperature-index model presented by Marzeion et al. (2012). In this approach, the monthly mass balance at a given elevation is calculated from the monthly solid precipitation and temperature, where the latter is linked to the mass balance through a temperature sensitivity factor (μ^*), which needs to be calibrated. Like GloGEM (and PyGEM; Rounce et al., 2020b), OGGM v1.6.1 also calibrates two additional parameters at the glacier level: a multiplicative precipitation factor and a temperature bias correction
245 (equivalent to GloGEM's c_{prec} and ΔT), ensuring that the model matches observations while maintaining parameters within a physically plausible range (Rounce et al., 2020b). The multiplicative precipitation factor is derived from an empirical relationship between total winter precipitation and an "optimal" precipitation factor, calibrated across 114 glaciers with in-situ winter mass balance observations (Schuster et al., 2023a, Fig. S2), applying smaller corrections for glaciers in wetter climates. The temperature bias is determined at the climate grid point level, by fixing the melt factor to a physically reasonable value of
250 $5 \text{ mm d}^{-1} \text{ K}^{-1}$ and allowing only the temperature bias to vary for calibration. The temperature bias is then fixed to the median value of all calibrated values within that grid point. Like Rounce et al. (2020b), this calibration method results in a spatially coherent field of temperature bias across neighbouring grid points, indicating that the temperature correction is necessary and not purely random. Building on these initial estimates for temperature and precipitation corrections, μ^* is then calibrated at the glacier level in a three-step process similar to GloGEM, but with parameters varying within a tighter range around the
255 initial estimates. After this initial calibration with fixed glacier geometry, the OGGM workflow ensures that glacier mass balance during the 2000-2020 simulation still matches observations taking elevation feedbacks into account, by recalibrating μ^* iteratively during a dynamical spin-up until observations are matched within 20% of the error estimate provided by Hugonnet et al. (2021). This calibration process is detailed further in Aguayo et al. (2023) and in the OGGM online documentation.

4.1 Effect of glacier-specific mass balance calibration on future glacier evolution

We start by analysing how the future glacier evolution is affected when calibrating GloGEM's mass balance component for every individual glacier to match the glacier-specific mass balance observation (hereafter termed 'glacier-specific calibration') instead of using a regional mass balance for model calibration (hereafter 'regional calibration'; widely used approach in recent past).

4.1.1 Glacier scale

At the individual glacier scale, we find that differences in the modelled future glacier evolution can be substantial, particularly when the glacier-specific mass balance strongly deviates from the regional mean specific mass balance. In general, for glaciers with a mass balance lower than the regional one, the mass balance model parameters are calibrated to produce a more negative present-day mass balance, which translates into a more negative future mass balance and thus more substantial projected ice loss, and vice versa for higher mass balance. This is for instance clear when considering the evolution of glaciers in the European Alps (RGI region 11 'Central Europe', Figure 2), where many of the large glaciers tend to have a mass balance that is more negative than the regional one (-0.87 m w.e. a^{-1}), resulting in stronger mass losses for the glacier-specific calibration. A clear example is Unteraargletscher (Switzerland; RGIv6.0 ID 11-01328; upper row in Figure 2), which – when calibrated to its strongly negative mass balance of -1.59 m w.e. a^{-1} – results in a 2015-2100 volume change of -94% under the SSP1-2.6 scenario ($n=12$; multi-climate model median), while this change amounts to only -73% for the regional calibration. These differences directly relate to the calibrated mass balance parameters: whereas ΔT is very similar (0.43°C vs. 0.50°C , glacier-specific vs. regional calibration, respectively), the glacier-specific calibration results in less precipitation (c_{prec} of 1.30 vs. 1.57) and more melt (f_{snow} of 3.15 vs. 3.00) compared to the regional calibration (Figure 3). Under a high-emission scenario (SSP5-8.5), Unteraargletscher vanishes by 2100 for both calibration cases (volume -100% and -99% vs. 2015 for glacier-specific and regional calibration, respectively), but here the calibration approach has an important effect on the 21st century transient evolution towards this deglaciation: e.g., the 2015-2050 volume change is -61% for the glacier-specific calibration, while the regional calibration results in a -42% change over the same time period. For Central Europe (RGI region 11), we model that for 17-25% of all glaciers (with volume $>0.1\text{km}^3$) the 2015-2050 volume projections differ by more than 10% depending on the calibration approach (Table S 4). For most other regions, there is an even larger proportion of glaciers which show large differences in volume projections. For instance, in High-Mountain Asia (RGI regions 13, 14, 15), between 35-55% of all glaciers (with volume $>0.1\text{km}^3$) have differences in the 2015-2050 volume projections of more than 10% depending on the calibration approach (Table S 4). When considering the 2015-2100 volume evolution, the differences resulting from the calibration approaches are generally smaller, since a lot of the regions lose a large part of their mass, evolving to a similar (almost ice-free) state, independent of the calibration methodology (Table S 4).

These differences in transient evolution directly affect projected glacier change impacts, such as those related to glacier water discharge (Figure 3; calculated over the initial glacier area, i.e. with fixed watershed area, following the method presented in Huss and Hock (2018), accounting for glacier and non-glacier runoff, but not including possible changes in evapotranspiration). For Unteraargletscher for instance, with the glacier-specific calibration under SSP5-8.5, the annual discharge increases and peaks at values that are 15% higher, relative to 2015, in 2050. In contrast, with the regional calibration, Unteraargletscher's annual discharge increases in the coming decades, peaking at levels 25% higher than present in 2065. Interestingly, in the first decades (until ca. 2035-2040), the differences in discharge between the calibration approaches are relatively limited, since the lower precipitation for the glacier-specific calibration (c_{prec} of 1.30 vs. 1.57) is in part compensated by the higher melt (f_{snow} of 3.15 vs. 3.00). However, as the glacier melts and shrinks, the effect of the melt parameter reduces, and the difference in c_{prec} determines the differences in precipitation and thus discharge (since discharge is calculated over initial glacier area, differences in precipitation result in differences in discharge) (Schuster et al., 2023a).

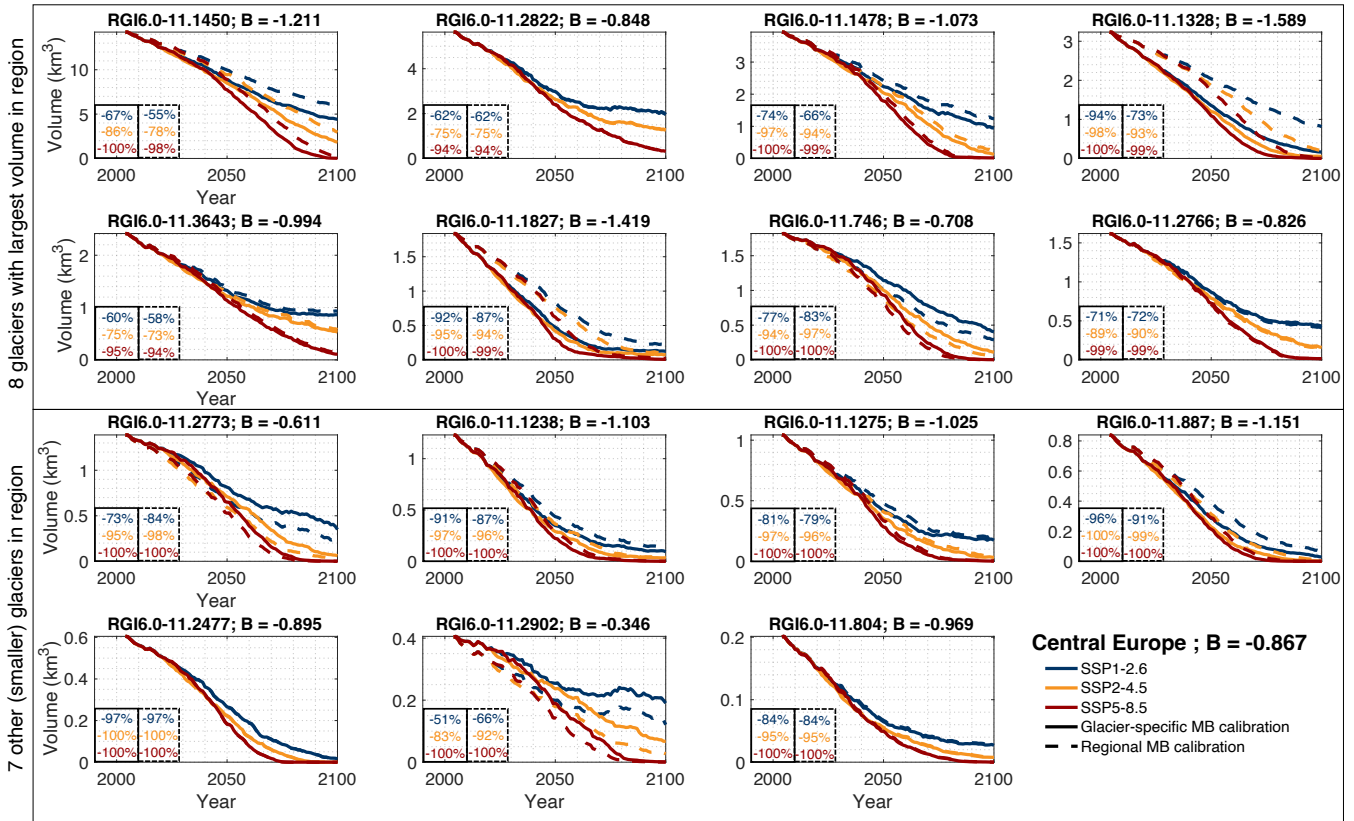
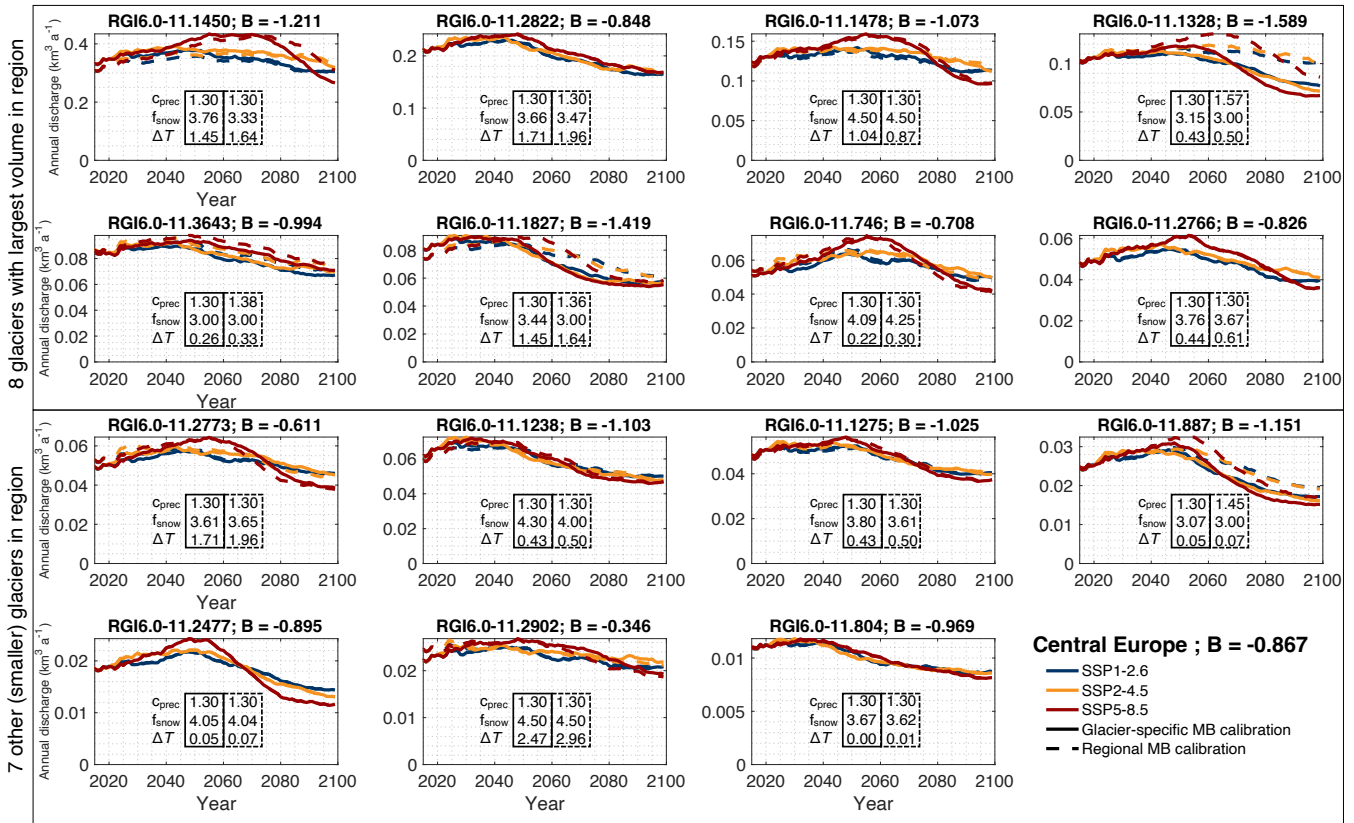


Figure 2: Projected glacier evolution with GloGEM for 15 glaciers in RGI region 11 (Central Europe) when calibrated to glacier-specific mass balances (full line) and the regional mass balance (dotted line) under various future climate projections (multi climate-model median shown here for every SSP). The two upper rows of panels represent the eight largest glaciers in

the region, while the lowest two rows are sampled from seven other glaciers in the region to cover the glacier volume range. The title of every panel is the RGIv6.0 glacier ID and the corresponding glacier-specific mass balance (B) for the period 2000-2019 in m w.e. a^{-1} (from Hugonnet et al., 2021). Note that the y-axis scale differs among the panels. For every glacier (panel), the numbers in the lower left corner correspond to the 2015-2100 volume change, when calibrated to the glacier-specific mass balances (full box; left) and the regional mass balance (dotted box; right). For visual clarity, the results are here shown for selected SSPs (SSP1-2.6, SSP2-4.5, and SSP5-8.5). The calibrated mass balance parameters for these 15 glaciers are shown in Figure 3.



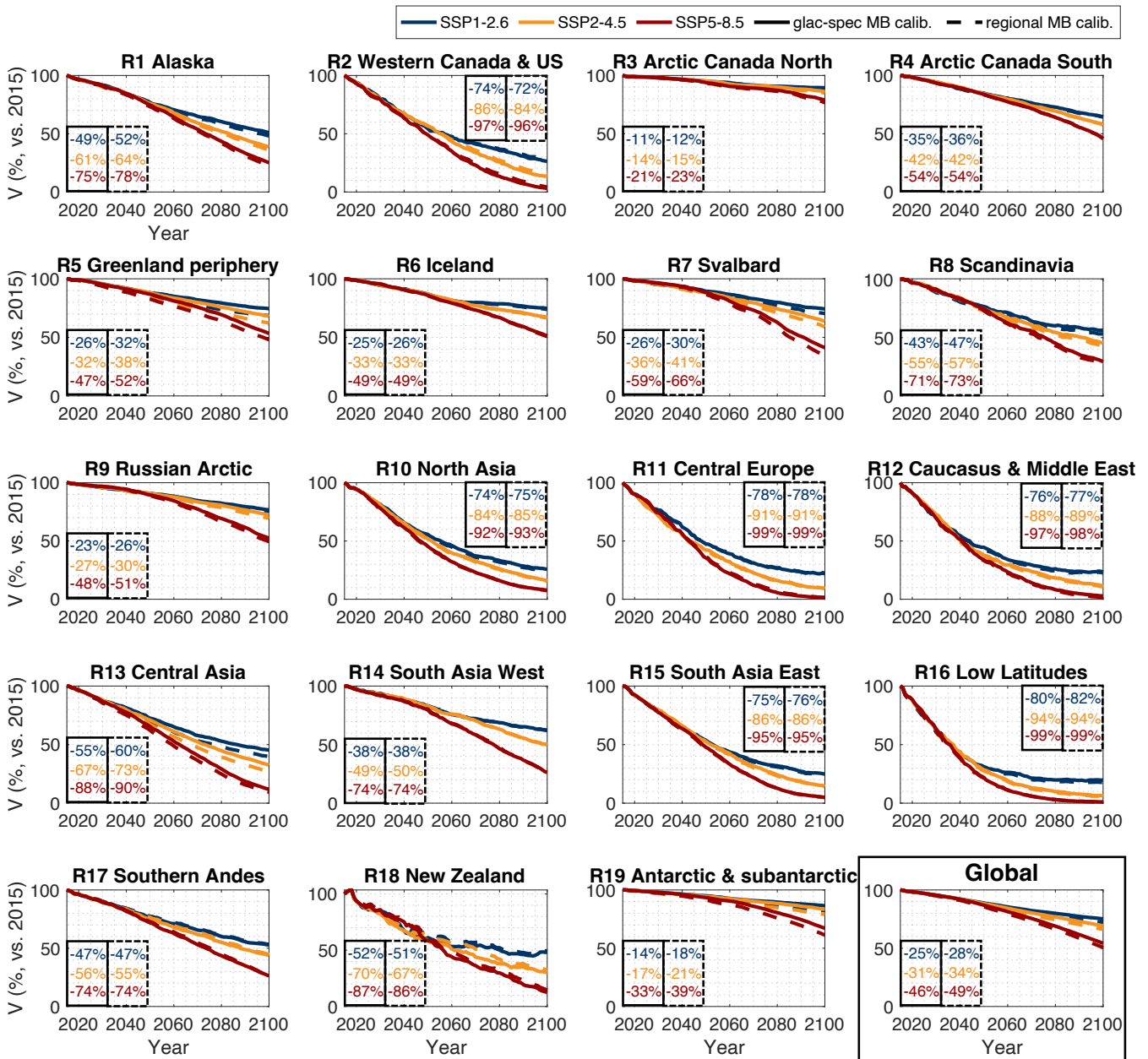
315 **Figure 3:** Projected annual glacier discharge in $\text{km}^3 \text{a}^{-1}$ as modelled with GloGEM for 15 glaciers in RGI region 11 (Central Europe) when calibrated to glacier-specific mass balances (full line) and the regional mass balance (dotted line) under various future climate projections (multi climate-model median shown here for every SSP; 20-yr running average filter). The two upper rows represent the eight largest glaciers in the region, while the lowest two rows are sampled from seven other glaciers in the region to cover the glacier volume range. The title of every panel is the RGIv6.0 glacier ID and the corresponding glacier-specific mass balance (B) for the period 2000-2019 in m w.e. a^{-1} (from Hugonnet et al., 2021). Note that the y-axis scale differs among the panels. For every glacier (panel), the calibrated values for C_{prec} , f_{snow} , and ΔT , are shown for the glacier-specific calibration (full box; left) and the regional mass balance (dotted box; right). For visual clarity, the results are here shown for selected SSPs (SSP1-2.6, SSP2-4.5, and SSP5-8.5). For every glacier (panel), the calibrated mass balance parameters for these 15 glaciers are shown in Figure 3.

box; left) and the regional mass calibration (dotted box; right). The range over which c_{prec} can vary differs regionally (for the European Alps this is between 1.3 and 2.3, see Table S 3).

4.1.2 Regional scale

Generally, the differences in projected volume change at the glacier-specific scale (Figure 2) largely even out at the regional scale: the glaciers that have a more positive mass balance (vs. regional average) are projected to lose less mass, which is compensated by glaciers with a more negative mass balance, translating into a stronger future loss. As a consequence, differences in the 2015-2100 regional volume change projections are generally small (Figure 4), i.e., within 3% for most regions and climate scenarios. This is for instance the case for Western Canada and the United States (RGI region 2; Figure 5a), where the differences in 2015-2100 regional volume change arising from the calibration approach are <2% under all climate scenarios (Figure 4). In this region, the volume change is slightly more pronounced with the glacier-specific calibration. This very subtle difference is due to the fact that for Western Canada and the United States, under extreme warming, the little remaining regional ice volume is typically located in the largest glaciers (which have longer response times and thus take longer to disappear), which here tend to have a mass balance that is more negative than the regional one (Figure 5a; see signal from largest glaciers/symbols).

In various polar regions, there is a slight tendency for the glacier-specific calibration to result in less loss than the regional calibration. This difference is the most apparent in RGI region 7 (Svalbard) and RGI region 19 (Antarctic and subantarctic), where the regional calibration results in 2015-2100 volume losses that are 4 to 6% greater compared to the glacier-specific calibration (Figure 4). This difference partly originates from the glaciers that are most resistant to warming, i.e. the glaciers that lose least mass when forced to a similar mass balance (e.g., the regional mass balance), which tend to have a mass balance that is less negative (more positive) than the regional one (Figure 5b; glaciers in the right upper side). As a consequence, the absolute volume difference that arises from the two calibration approaches for these glaciers outweighs the signal from the glaciers with a more negative mass balance (Figure 5b; glaciers in the lower left side). A similar mechanism is at play in other polar regions (Arctic Canada North, Greenland Periphery, Svalbard, Russian Arctic), where the glaciers that are the most resistant to warming (i.e. least relative loss when calibrated to regional mass balance) typically also have a glacier-specific mass balance that is less negative (more positive) than the regional one (Figure S 1), resulting in a more pronounced loss under the regional calibration (Figure 4). Additionally, the less negative (more positive) mass balance of these more resistant glaciers allows these ice bodies to lose less mass (partly grow) and suffer less (profit more) from the mass balance – elevation feedback.



355 **Figure 4:** Evolution of 21st century regional glacier volume as modelled with GloGEM when the mass balance component is
 360 calibrated to match glacier-specific observations (full line) and regional observations (dotted line) (all mass balance
 observations from the Hugonnet et al., 2021 dataset). Multi climate-model median shown for every SSP (for a quantification
 of the spread around these values and more in-depth focus on the glacier evolution as opposed to differences related to model
 calibration, refer to Figure 7, Figure 8 and section 4.2). For visual clarity, the results are here shown for selected SSPs (SSP1-
 2.6, SSP2-4.5, and SSP5-8.5).

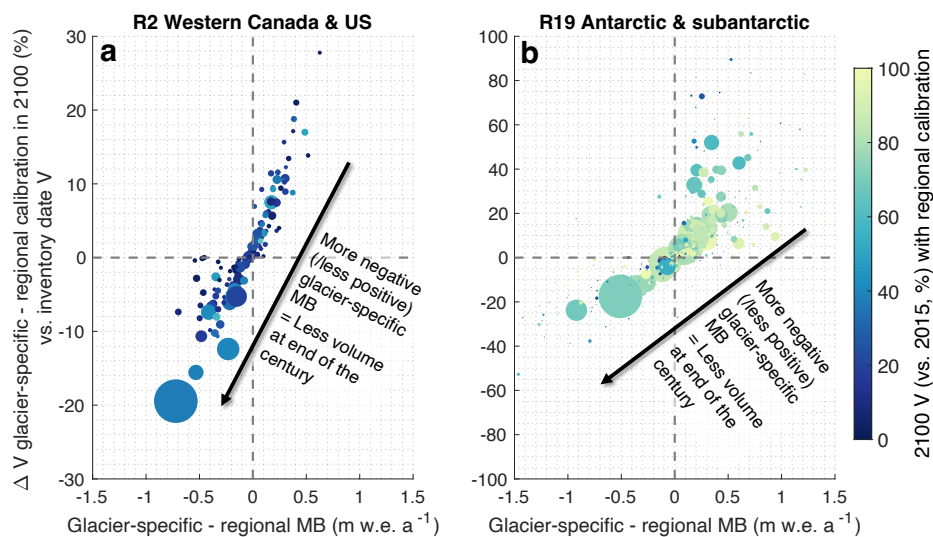


Figure 5: Difference in the projected volume change (between inventory date and 2100 under SSP2-4.5) for the glacier-specific vs. regional mass balance calibration under SSP2-4.5 (multi-climate model median shown here). Here, two RGI regions are highlighted: (a) Western Canada and US (RGI region 2) and (b) Antarctic and subantarctic (RGI region 19), while other regions are shown in the suppl. mat. (Figure S 1). Every dot represents an individual glacier with a volume $>1\text{km}^3$, where the size of the dot relates to the glacier consensus volume estimate (Farinotti et al., 2019a) and the colour represents the 2100 volume change (vs. 2015) for the projections with the regional calibration (i.e., same mass balance forcing for every glacier). Note that the y-axis scale differs among the two panels.

370 4.1.3 Global scale

At the global level, we find that the projected evolution is only slightly affected by the calibration data, with mass loss differences over the period 2015-2100 being around 3% under all SSPs (Figure 4). This global difference, with slightly less loss when the model is calibrated to glacier-specific mass balance observations arises primarily from the signal from the Antarctic and subantarctic glaciers (RGI region 19), since this is the most voluminous region on Earth and the one for which differences resulting from the calibration technique are the most prevalent (Figure 4). From these findings, we argue that the largest added value of relying on the glacier-specific calibrations is not for regional and global projections but rather at the glacier level. However, we do note that for the regional to global level, the effect of the calibration strategy on projections is not negligible, and that when considering the long-term evolution of glaciers (i.e. post 2100), differences between both calibration approaches could become larger, particularly for large glaciers that considerably differ from the regional mean. At the glacier level, the mass balance calibration with glacier-specific data increasingly allows projecting the glacier-specific evolution around the globe and assessing related impacts (e.g. related to runoff, as highlighted in Figure 3).

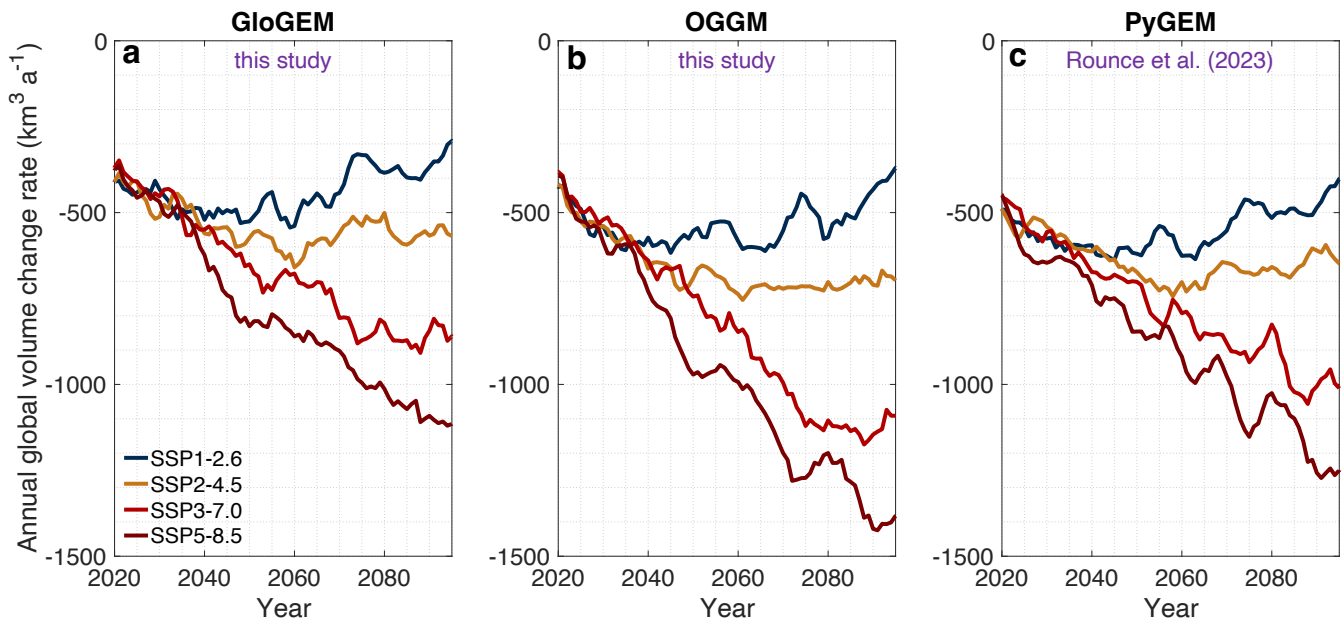
4.2 Regional and global 21st century glacier evolution under CMIP6 scenarios

Here, we extend the GloGEM simulations that were calibrated to match the glacier-specific mass balance with new simulations performed with the OGGM v1.6.1 (Schuster et al., 2023b). Through these GloGEM and OGGM simulations, we provide new estimates on the global glacier evolution under CMIP6 and thereby expand the recent estimates obtained from the coupled PyGEM model by Rounce et al. (2023). In order to allow for a direct comparison, the GloGEM and OGGM simulations are run with the same future climatic forcing as the PyGEM simulations by Rounce et al. (2023).

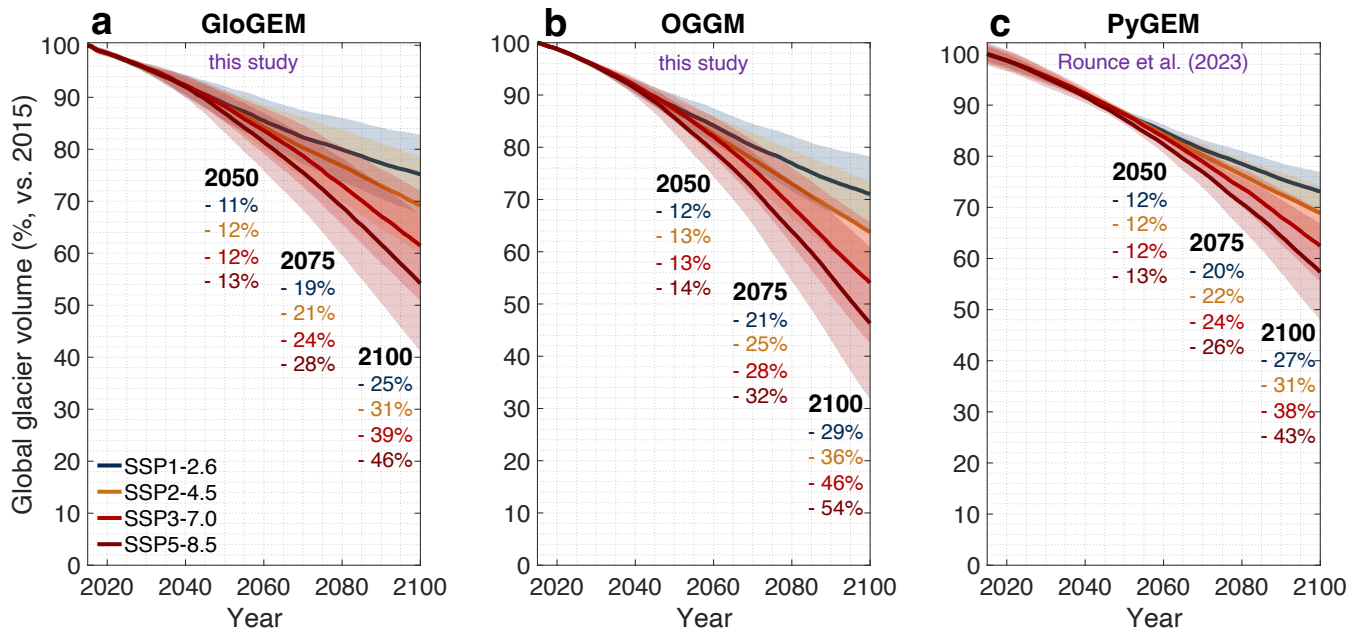
4.2.1 GloGEM and OGGM

At present (2020-2025), annual global glacier losses modelled with GloGEM and OGGM are around 350-400 km³ yr⁻¹. Assuming a density conversion of 900 kg m⁻³ for ice (Cuffey and Paterson, 2010), these losses agree well with Hugonnet et al. (2021)'s observations (e.g., 298±24 Gt yr⁻¹ for 2015-2019 time period) to which our models are calibrated. The annual global glacier loss is projected to increase in the coming 10-15 years, irrespective of the climate scenario, reaching losses for the year 2035 of around 450-550 km³ yr⁻¹ for GloGEM to 550-600 km³ yr⁻¹ for OGGM (Figure 6). After this, the losses become more scenario-dependent, but by the mid-century the differences in global glacier evolution arising from different climatic scenarios are still very limited: GloGEM projects 2015-2050 volume loss between 11±7% (SSP1-2.6) and 13±7% (SSP5-8.5), while OGGM projects losses between 12±5% (SSP1-2.6) and 14±6% (SSP5-8.5) (Figure 7; multi-climate model median, with 95% confidence interval).

Under a low-emission scenario (SSP1-2.6), annual losses decrease throughout the second half of the century, and eventually reach values of 300-400 km³ yr⁻¹ by 2100 (Figure 6), which is close to current losses. In contrast, under high-emission scenarios, annual losses unabatedly increase and by the late 21st century reach about 1100-1200 km³ yr⁻¹ (GloGEM; Figure 6a) to 1300-1400 km³ yr⁻¹ (OGGM; Figure 6b) under SSP5-8.5, i.e. values that are about three times as large as current losses. Consequently, the impact of the climate scenario is very pronounced at the end of century: under SSP1-2.6 the 2015-2100 global glacier volume is projected to decrease by 25±15% (GloGEM; multi-climate model median; Figure 7) to 29±14% (OGGM), while under SSP5-8.5 losses of 46±26% (GloGEM) to 54±29% (OGGM) are projected.



410 **Figure 6:** Annual global glacier volume change rate as projected with (a) GloGEM (this study), (b) OGGM (this study), and (c) PyGEM (Rounce et al., 2023) under various future climate scenarios (multi climate-model median shown for every SSP, filtered with 5-yr running mean).



415 **Figure 7:** Evolution of 21st century global glacier volume compared to 2015 as modelled with (a) GloGEM (this study), (b) OGGM (this study), and (c) PyGEM (Rounce et al., 2023) under various future climate scenarios (multi climate-model median

shown for every SSP). Shading indicates ± 1 standard deviation of climate model ensemble. As opposed to GloGEM and OGGM, for PyGEM (Rounce et al., 2023) the initial volume is dependent on the climate scenario, hence the spread in projected global glacier volume from 2015 onwards.

420 At the global level, OGGM projects more global volume loss than GloGEM, with a 4% (SSP1-2.6) to 8% (SSP5-8.5) higher
2015-2100 volume loss (vs. GloGEM, Figure 7; Table 1). This difference mainly results from the projections for the Antarctic
and subantarctic glaciers (RGI region 19), which is the largest of the RGI regions (Farinotti et al., 2019a; RGI Consortium,
2017), and where differences in projected ice volume significantly differ under all climate scenarios (t-test, 1% significance
425 level; Table 1). For the Antarctic and subantarctic glaciers, GloGEM projects a 2015-2100 mass loss of $14\pm 13\%$ to $33\pm 24\%$,
while with OGGM this loss varies between $21\pm 18\%$ to $52\pm 32\%$ (range is multi-climate model median between SSP1-2.6 and
SSP5-8.5, respectively; Figure 8; Table 1). A part of this projected difference is linked to the inclusion of frontal ablation,
which is represented through a simplified approach in GloGEM (based on Oerlemans and Nick, 2005), whereas frontal ablation
is not explicitly represented in the OGGM setup that we utilize here (new representations of frontal ablation exist for OGGM,
e.g. Malles et al., 2023, but are not available for Antarctica). In GloGEM, since frontal ablation contributes to the total mass
430 balance, a higher surface mass balance is needed to result in the same total mass balance as for the case without frontal ablation.
As a consequence, if frontal ablation decreases (e.g. loss contact with ocean), the more positive mass balance dominates (vs.
case without frontal ablation), resulting in less future ice loss. Given the very large uncertainties in modelled present-day and
future frontal ablation, it is currently difficult to judge whether results from a setup with a relatively uncertain frontal ablation
(GloGEM) or one in which it is not explicitly represented (OGGM setup used in this study) should be more trusted.

435

In other polar regions, the projected mass loss is generally relatively similar for both models, with a minor (non-significant)
tendency for most regions to have a stronger mass loss in OGGM (Arctic Canada North, Arctic Canada South, Greenland
Periphery, Iceland, Svalbard), except for Russian Arctic, where GloGEM projects slightly more loss (Figure 8, Figure 10,
Table 1). The relative similarity in projected changes for polar regions is also apparent from the similar global volume evolution
440 when excluding the Antarctic and subantarctic glaciers (i.e., summing glacier changes over RGI regions 1 to 18; Figure S 2 in
suppl. mat.): in this case GloGEM projects a 2015-2100 mass loss of $30\pm 18\%$ to $52\pm 28\%$, while OGGM projects losses of
 $32\pm 20\%$ to $54\pm 41\%$ (multi-climate model median between SSP1-2.6 and SSP5-8.5, respectively).

For mountain glaciers, various regions have similar projections, with insignificant differences for all climate scenarios for
445 Alaska, North Asia, Central Europe, Central Asia, South Asia West, and New Zealand. In other mountain regions, some
significant differences exist, with OGGM projecting a larger loss for Western Canada & US (under SPP1-2.6 and SSP2-4.5)
and Scandinavia (all SSPs), whereas GloGEM projects stronger losses for Caucasus (SSP1-2.6), South Asia East (SPP1-2.6
and SSP2-4.5), Low Latitudes (SPP1-2.6 and SSP2-4.5), and Southern Andes (SSP3-7.0 and SSP5-8.5) (Table 1).

450

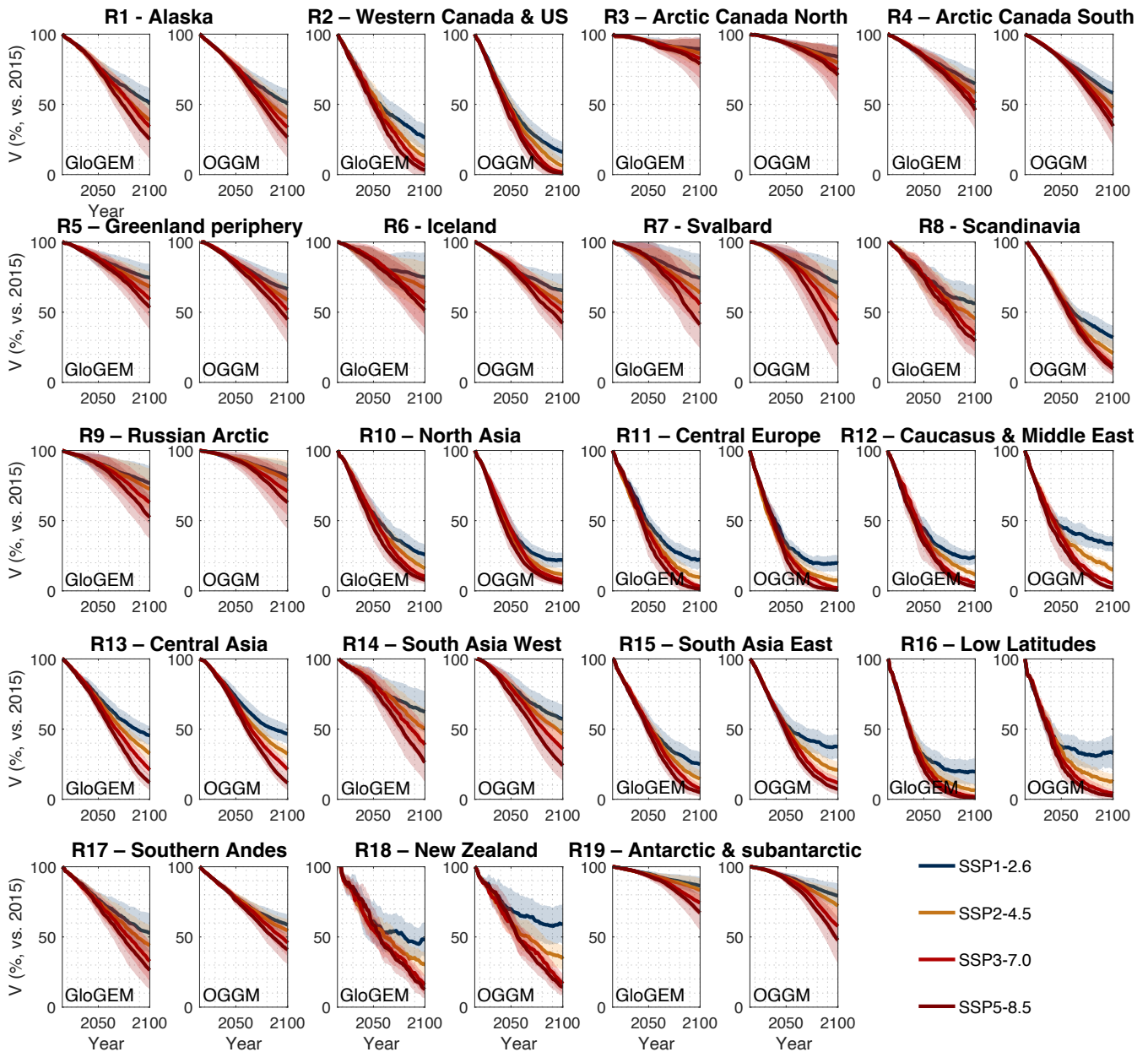


Figure 8: Evolution of 21st century glacier volume compared to 2015 as modelled with GloGEM and OGGM for every region of the Randolph Glacier Inventory (RGI v6.0) under various future climate projections (multi climate-model median shown for every SSP). Shading indicates ± 1 standard deviation of climate model ensemble. In these simulations, the mass balance forcing component is calibrated for every glacier to match the glacier-specific geodetic mass balance observations by Hugonnet et al. (2021). Similar plots are presented for the PyGEM simulations by Rounce et al. (2023) in Figure S 3, whereas the 2015-2100 projected changes are directly compared for the three glacier models in Table 1 and Figure 10.

RGI	Region	GloGEM (this study)				OGGM v1.6.1 (this study)				PyGEM (Rounce et al., 2023)			
		SSP1 2.6	SSP2 4.5	SSP3 7.0	SSP5 8.5	SSP1 2.6	SSP2 4.5	SSP3 7.0	SSP5 8.5	SSP1 2.6	SSP2 4.5	SSP3 7.0	SSP5 8.5
1	Alaska	49±21	61±25	66±23	75±27	49±20	59±26	67±25	73±29	51±16	58±20	66±20	72±24
2	Western Canada & US	74±19	86±15	94±11	97±10	84±14	94±10	98±4	99±4	87±13	95±9	99±5	99±3
3	Arctic Canada North	11±16	14±20	17±28	21±37	16±17	20±22	26±31	29±40	16±7	18±11	21±17	24±26
4	Arctic Canada South	35±19	42±21	49±23	54±28	42±15	52±18	60±22	66±28	45±15	52±17	58±21	65±27
5	Greenland periphery	26±19	32±21	41±25	47±31	34±21	41±22	48±27	55±33	33±13	38±15	44±21	49±27
6	Iceland	25±34	33±37	44±35	49±35	35±24	44±26	50±25	58±26	39±22	47±25	54±25	61±27
7	Svalbard	26±34	36±35	45±34	59±33	29±31	40±38	56±37	73±33	29±21	37±27	48±32	63±30
8	Scandinavia	43±26	55±27	66±24	71±24	68±16	79±17	88±11	90±10	75±18	87±18	94±10	96±7
9	Russian Arctic	23±24	27±29	37±30	48±30	19±19	21±28	29±34	37±37	22±12	26±19	35±23	42±26
10	North Asia	74±14	84±11	90±8	92±6	78±10	88±7	92±5	94±5	81±10	89±6	93±5	95±4
11	Central Europe	78±12	91±7	97±4	99±3	81±11	93±6	98±3	99±1	86±8	95±4	99±2	99±1
12	Caucasus	76±10	88±6	94±3	97±3	67±11	85±6	95±3	98±3	72±9	87±5	95±3	98±2
13	Central Asia	55±13	67±11	79±10	88±10	53±13	68±9	79±9	88±10	50±10	62±7	72±7	80±9
14	South Asia West	38±29	49±29	61±27	74±27	43±20	53±21	64±20	76±22	40±14	48±16	57±17	67±19
15	South Asia East	75±17	86±12	92±7	95±6	63±17	79±12	88±8	93±8	77±12	85±8	91±5	94±5
16	Low Latitudes	80±19	94±9	98±4	99±3	67±24	88±11	96±5	97±4	77±18	91±9	97±4	99±3
17	Southern Andes	47±28	56±28	67±27	74±27	41±15	46±15	54±19	59±20	49±19	57±19	68±21	73±22
18	New Zealand	52±23	70±17	84±14	87±12	41±27	66±17	83±14	86±11	64±22	81±12	93±8	94±7
19	Antarctic and subantarctic	14±13	17±17	26±18	33±24	21±18	28±22	42±24	52±32	14±4	16±5	21±7	25±11
	Global	25±15	31±18	39±21	46±26	29±14	36±19	46±23	54±29	27±8	31±11	38±14	43±19

Table 1: Relative regional and global glacier volume loss over the 2015-2100 period (in %) as modelled in this study with

460 GloGEM and OGGM, and in Rounce et al. (2023; PyGEM). Values are the multi-climate model median and the corresponding 95% confidence intervals (see Text S1 for calculation). Colour coding indicates cases where the differences are statistically significant (t-test, 1% significance level) with respect to another glacier model, where the colour refers to the glacier model against which the difference is significant. When the projection is significantly different compared to the two other glacier models, this is highlighted in dark orange.

465 4.2.2 Towards a CMIP6 global glacier evolution ensemble: comparison with PyGEM (Rounce et al., 2023)

Our modelled regional and global glacier volume changes agree well with those simulated with PyGEM by Rounce et al. (2023). At the global scale, the 2015-2100 projected PyGEM losses are close to those we project here with GloGEM (Figure 9), with SSP1-2.6 losses of 25±15% (GloGEM) and 27±8% (PyGEM), and SSP5-8.5 losses of 46±26% (GloGEM) and 43±19% (PyGEM). The difference in projected mass loss is more scenario-dependent in GloGEM, with a difference in the 470 2015-2100 mass loss between SSP1-2.6 and SSP5-8.5 of 21% (GloGEM) vs. 16% (PyGEM). For OGGM, the SSP-dependence is the most pronounced, with a 25% difference in 2015-2100 mass loss between SSP1-2.6 and SSP5-8.5, while the total mass loss is slightly more pronounced than for PyGEM (Table 1; Figure 7; Figure 9). A noteworthy distinction is that in PyGEM the uncertainty is greatly reduced around 2040, which results from the initialization of PyGEM that accounts for differences in climate models (resulting in a different initial volume), while for OGGM and GloGEM, at initialisation, all projections start

475 at the same volume. In PyGEM simulations, the climate model that has the largest initial volume results in the smallest volume
at the end (and vice-versa), so the simulations converge around 2040 resulting in relatively small absolute uncertainties
(Rounce et al., 2023).

The global differences in the projected global losses for the three models are mostly determined by the regional evolution of
480 the Antarctic and subantarctic glaciers (RGI region 19), where the projected losses with PyGEM and GloGEM are relatively
similar, and thus less pronounced than for OGGM (Table 1 and Figure 10; see also GloGEM vs. OGGM comparison in section
4.2.1). A direct comparison is difficult, since processes such as frontal ablation are accounted for differently, and also the
initial absolute volume difference differs, since Rounce et al. (2023) set up PyGEM to match the land-terminating ice volume
from Farinotti et al. (2019a), after which the ice thickness inversion that included frontal ablation was performed which
485 increased the initial ice volume. Other differences relate to the mass balance model, where GloGEM and PyGEM have a
similar architecture with a surface-type distinction and rely on variable temperature lapse rates (from ERA5), while the utilized
OGGM setup does not distinguish surface types and uses default temperature lapse rates, which impacts projected losses
(Schuster et al., 2023a). Another difference relates to the evolution framework, which accounts for ice dynamics in OGGM
and PyGEM, whereas GloGEM does not explicitly represent ice dynamical processes and evolves its glacier geometry through
490 a retreat parameterization.

Despite these differences in model setup and architecture, in the majority of regions, the projected changes with GloGEM and
OGGM are close to the PyGEM projections (Figure 10; Table 1). In 14 RGI regions, the PyGEM projections are similar to
those from GloGEM and OGGM presented here, with insignificant differences (under all climate scenarios) to both models
495 (Alaska, Arctic Canada North, Greenland periphery, Iceland, Svalbard, Russian Arctic), GloGEM (South Asia West, South
Asia East, Low Latitudes, Southern Andes, Antarctic and subantarctic), or OGGM (Western Canada & US, Arctic Canada
South, North Asia). In the other five RGI regions, PyGEM is significantly different to the two other models, with cases where
the mass loss is consistently higher (Scandinavia (SSP3-7.0 and SSP5-8.5), Central Europe (SSP1-2.6), New Zealand (all
SSPs)), consistently lower (Central Asia (SSP2-4.5 to SSP5-8.5)), or consistently in between both models (Caucasus (SSP1-
500 2.6)).

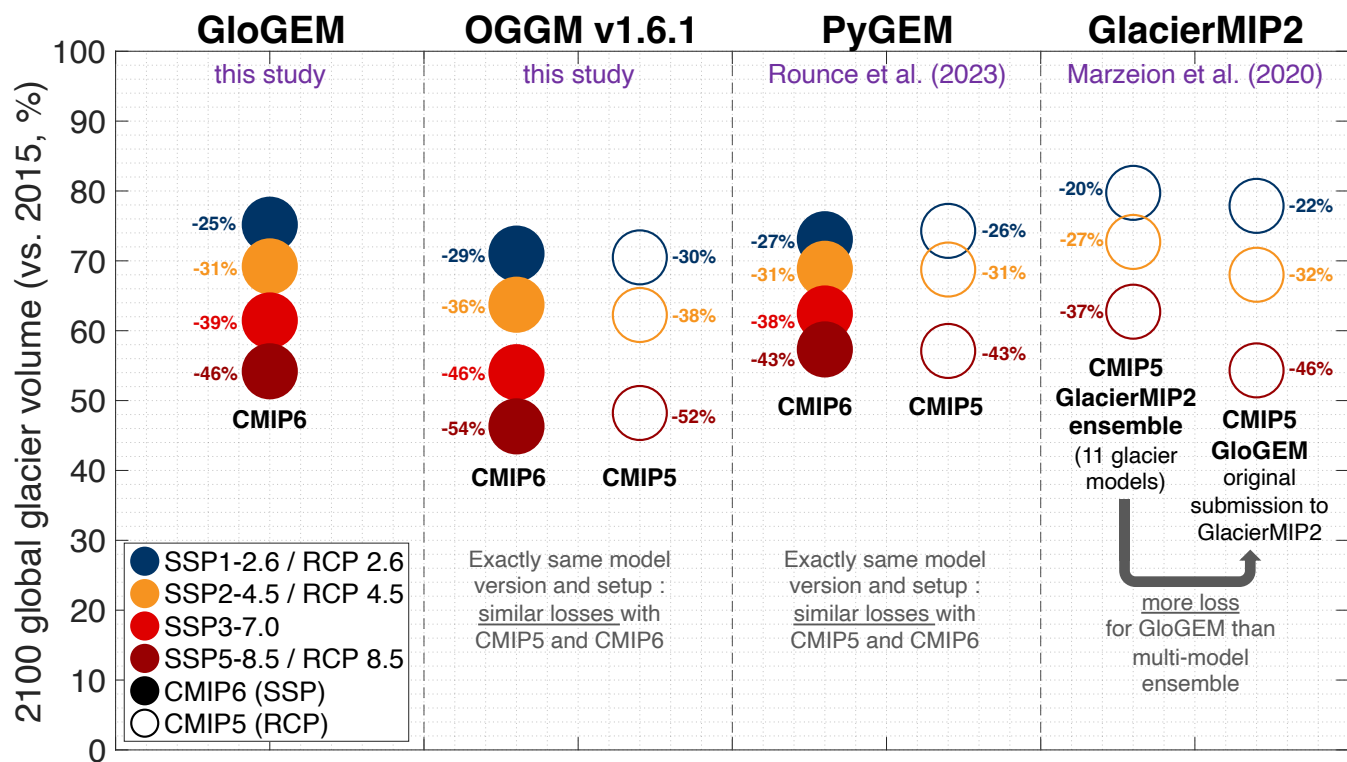


Figure 9: Comparison of global 2015-2100 volume change (multi-climate model median) as modelled in this study (GloGEM and OGGM; Figure 7), with PyGEM (Rounce et al., 2023), and in GlacierMIP2 (Marzeion et al., 2020). The solid circles represent the evolution as modelled with CMIP6 climate models under SSP scenarios, whereas the transparent symbols correspond to the evolution as modelled with the CMIP5 climate model ensemble that was used in GlacierMIP2 (Marzeion et al., 2020) under RCP scenarios. For GloGEM, the original CMIP5 GlacierMIP2 simulation is shown (i.e., part of the GlacierMIP2 ensemble), whereas for OGGM and PyGEM the CMIP5 simulations were re-run with the same setup as the CMIP6 simulations.

4.2.3 Comparison to the second phase of the Glacier Model Intercomparison Project (GlacierMIP2)

510 We also compare our projected glacier evolution to the current community estimate of global glacier change which was performed within the second phase of the Glacier Model Intercomparison Project (GlacierMIP2; Marzeion et al., 2020), in which eleven glacier models of varying complexity were used to model the regional to global scale evolution of glaciers. This comparison is not straightforward, since GlacierMIP2 relied on the climate model simulations from the CMIP5 ensemble (Taylor et al., 2012), which consist of different CO₂-emission scenarios and different climate models compared to the CMIP6 ensemble that we consider here. For a given radiative forcing level (e.g., 2.6 W/m², corresponding to RCP2.6 and SSP1-2.6), under all scenarios, the projected 2015-2100 CMIP6 loss is substantially higher with GloGEM, OGGM, and PyGEM compared to the GlacierMIP2 CMIP5 ensemble (Figure 9): with 2015-2100 volume differences ranging from 5% (SSP1-2.6/RCP2.6: -

25% loss in GloGEM vs. -20% in GlacierMIP2) to 17% (SSP5-8.5/RCP8.5: -54% loss in OGGM vs. -37% in GlacierMIP2). The differences are particularly pronounced in Alaska, Western Canada & US, Arctic Canada South, High-Mountain Asia (Central Asia, South Asia West, South Asia East), and Southern Andes, for which, for a given radiative level, the CMIP6 losses for all three individual models (GloGEM, OGGM, and PyGEM) are larger than the CMIP5 GlacierMIP2 losses (Figure 10).

Whereas a direct and in-depth comparison is not straightforward, relating GloGEM, OGGM, and PyGEM simulations forced with the same CMIP5 ensemble as GlacierMIP2 offers insights in a part of the projected differences. Generally, temperatures in CMIP6 climate simulations are known to be more sensitive to radiative forcing than in CMIP5, resulting in higher temperatures for same radiative forcing levels (Hausfather et al., 2022; Tokarska et al., 2020). However, for the ensembles considered here (CMIP5 GlacierMIP2 ensemble vs. CMIP6 ensemble used in our study and in Rounce et al. (2023)), temperatures are relatively similar, resulting in very similar losses for CMIP6 compared to CMIP5 for the OGGM and PyGEM simulations (Figure 9). To understand the effect of the glacier model on the differences, the original GlacierMIP2 study offers interesting insights, where GloGEM and OGGM projected losses that were substantially larger than the multi-model median (shown in Figure 9 for GloGEM; not shown for OGGM, which was not run globally in GlacierMIP2). Newly performed OGGM and PyGEM CMIP5 simulations (with exactly same model setup as CMIP6 simulations; not available from GloGEM) support this higher model-specific loss (Figure 9), although differences in actual model setup hinder a direct comparison (e.g., different mass balance data used for calibration in GlacierMIP2 (e.g. Gardner et al., 2013; Zemp et al., 2019) compared to new simulations relying on Hugonnet et al. (2021)). For OGGM, the new CMIP5 projections (v1.6.1) and the older ones submitted to GlacierMIP2 are very similar at the regional scale (except for Svalbard, where the loss is more limited in the newest version; and some regions where the differences between the scenarios was less pronounced in GlacierMIP2: High-Mountain Asia, Low Latitudes, Southern Andes, New Zealand), indicating a limited effect of changes in model architecture, input, and calibration data on projected changes (Figure 10). From these comparisons, we conclude that an important part of our higher projected loss results from the selected set of glacier models, rather than from differences in climate forcing and/or other changes in model parameters and input (in our study vs. in GlacierMIP2). Therefore, we expect models that predicted less glacier loss in GlacierMIP2, i.e. mostly the more simplified volume-area scaling models (some of which rely on energy-balance modelling), to likely predict a reduced mass loss compared to our new projections (GloGEM and OGGM) and those by Rounce et al. (2023; PyGEM) when forced with the same CMIP6 ensemble.

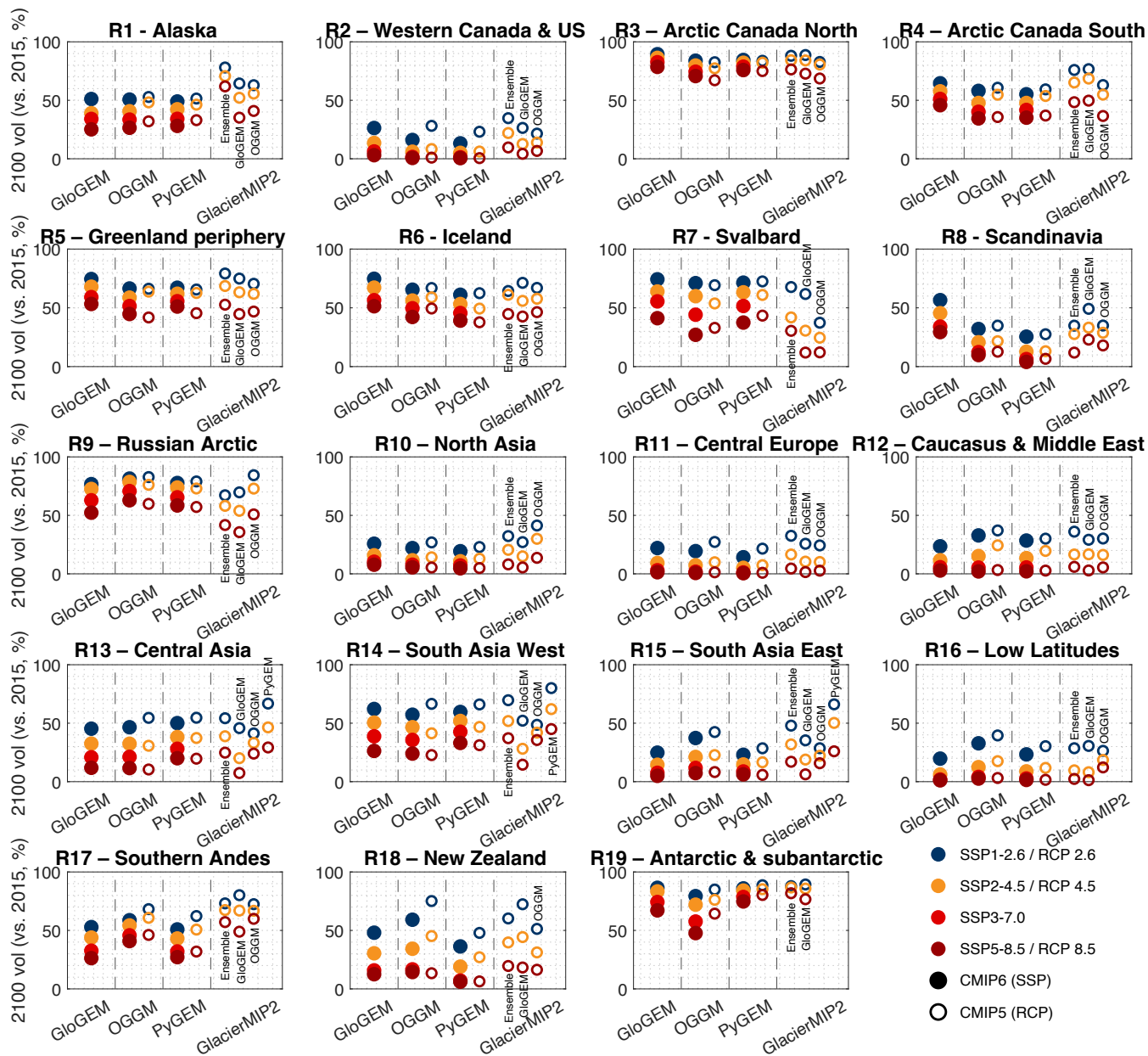


Figure 10: Comparison of regional 2015-2100 volume change (multi-climate model median) as modelled in this study (GloGEM and OGGM; Figure 8), with PyGEM (Rounce et al., 2023), and in GlacierMIP2 (Marzeion et al., 2020). The solid circles represent the evolution as modelled with CMIP6 climate models under SSP scenarios, whereas the transparent symbols correspond to the evolution as modelled with the CMIP5 climate model ensemble that was used in GlacierMIP2 (Marzeion et al., 2020) under RCP scenarios. We here also show the GloGEM and PyGEM submission to GlacierMIP2, which were not included in Figure 9 since the models did not have a global coverage (available for 18 and 3 RGI regions, respectively).

550

5. Conclusions

555 The calibration of glacier evolution models is of large importance since it directly determines the modelled glacier sensitivity to changing climatic conditions. Whereas up to a few years ago global glacier models could only be constrained based on scattered mass balance observations on a few glaciers or regional mass balance estimates, new datasets now allow for a calibration of models to match glacier-specific observed changes for every glacier on Earth. Our study quantifies how calibrating glacier evolution models to match glacier-specific geodetic mass balances influences the projected glacier
560 evolution. This comparison is important since glacier-specific mass balance observations such as those provided by Hugonnet et al. (2021) are now becoming the new standard when calibrating the mass balance component in global glacier evolution models. Our analysis isolates the effect that glacier-specific mass balance observations have on projections at various spatial scales, highlighting that:

- At the glacier-specific scale, the type of mass balance observation (glacier-specific vs. regional) used for model
565 calibration has a substantial effect on modelled future changes. For some glaciers, differences in the projected 2015-2100 volume loss can be on the order of tens of percent. These differences at the glacier level are very apparent in some regions, e.g., in High-Mountain Asia, 35-55% of all glaciers have differences in the modelled 2015-2050 volume changes that exceed 10% depending on the data used for model calibration. These pronounced differences suggest that a calibration to glacier-specific mass balance observations now also progressively allows for global-scale model
570 results to be used for small-scale applications and for assessing local glacier impacts. In combination with future glacier model advances and an integration of additional types of observations, this will increasingly allow quantifying the water supply from glaciers in small catchments, or glacier-related hazards, both of which strongly depend on the glacier-specific evolution.
- At regional to global scales, the effect of the calibration strategy on future projections is generally more limited, but
575 not negligible. Projected 2015-2100 volume differences between both approaches are around 3% globally, and up to 6-7% at a regional scale in the most extreme cases. These differences in projected glacier changes mostly arise from the signal from the glaciers that are most resistant to warming in the 21st century. When considering the longer-term glacier evolution (i.e. multi-century), the effect of the calibration strategy on future projections could become important, particularly for large glaciers for which the mass balance considerably differs from the regional mean.

580

Additionally, our newly performed simulations contribute to creating an ensemble of global glacier projections under CMIP6 scenarios by complementing the first global CMIP6 glacier projections by Rounce et al. (2023; with PyGEM)

In our GloGEM and OGGM simulations, we project that the annual global glacier volume loss is to increase under all climatic
585 scenarios until 2035, reaching values that are about 30-70% more than present-day (2020-2025) losses. Throughout the second half of the century, under a low-emission scenario (SSP1-2.6), annual losses decrease and eventually reach present-day levels

by 2100, resulting in a global volume loss of around 25-29% (2100 vs. 2015). In contrast, under high-emission scenarios, we project annual losses to continuously increase until 2100, peaking around three times current losses, and translating into losses of 46-54% over the 2015-2100 time period. These projected 21st century losses generally agree well with those simulated with
590 PyGEM by Rounce et al. (2023). Despite some regional differences and a slightly higher projected sensitivity of glacier loss to climatic conditions in our simulations, a good agreement exists globally, thereby confirming Rounce et al. (2023)'s larger mass loss compared to the GlacierMIP2 values for a given radiative forcing level (Marzeion et al., 2020). Our analysis suggests that the larger loss mainly originates from the considered models (GloGEM, OGGM, PyGEM), rather than the differences in model input (geometry and mass balance) and climatic forcing (CMIP5 vs. CMIP6 ensemble).

595

In the coming years, a more comprehensive picture of global glacier evolution under the latest CMIP6 scenarios will be obtained as other glacier models will be forced with the same climatic forcing, thereby further expanding the current ensemble. In this respect, new glacier outlines (RGI v7.0, RGI Consortium, 2023) and other datasets with a (near) global coverage (e.g., on ice surface velocities and ice thickness reconstructions (e.g. Millan et al., 2022), and frontal ablation estimates (Kochtitzky
600 et al., 2022)) will allow inverting glacier properties, calibrating model parameters, and evaluating model performance in a more advanced way. To combine this broad variety of datasets and observations, the field of large-scale glacier modelling will increasingly rely on machine learning and data assimilation (e.g. Bolibar et al., 2023; Cook et al., 2023; Jouvett and Cordonnier, 2023). These advances are likely to improve the credibility of future glacier projections at various spatial scales (from glacier-specific to global) and spanning over a range of time scales (from decadal to multi-centennial).

605 **Data availability**

The GloGEM simulations as presented in this manuscript are available from Zekollari et al. (2024), while OGGM simulations presented in this manuscript are available from Schuster et al. (2023b). The PyGEM simulations are available at https://nsidc.org/data/hma2_ggp/versions/1.

610 **Author contributions**

HZ designed the study, performed the analyses of the simulations, wrote the manuscript, and made the figures, in direct collaboration with MH and DF. MH ran the GloGEM simulations, while LS and FM ran the OGGM simulations. LS and RA assisted with data processing. All co-authors were involved in the scientific discussions that lead to this study, with major and detailed contributions from MH, LS, FM, RH, BM, DR, and DF. All authors provided feedback on the manuscript.

615

Competing interests

Ben Marzeion and Daniel Farinotti are members of the editorial board of The Cryosphere.

620 **Financial support**

HZ, MH, DF, BM, NC, and SM were supported by the European Union’s Horizon 2020 research and innovation programme (PROTECT; grant agreement number 869304). HZ and RA acknowledge the funding received from the European Research Council (ERC) under the European Union's Horizon Framework research and innovation programme (grant agreement No 101115565; ‘ICE³’ project). HZ was also supported through a postdoctoral fellowship (chargé de recherches) of the Fonds de
625 la Recherche Scientifique (FNRS) and by the research foundation – Flanders (FWO) through an Odysseus Type II project (grant agreement G0DCA23N; ‘GlaciersMD’ project). LS is recipient of a DOC Fellowship of the Austrian Academy of Sciences at the Department of Atmospheric and Cryospheric Sciences, Universität Innsbruck (No. 25928). LS and FM have received funding from the European Union’s Horizon 2020 research and innovation programme under grant agreement (PROVIDE; No. 101003687). This text reflects only the author’s view and the Agency is not responsible for any use that may
630 be made of the information it contains. DR was supported by National Aeronautics and Space Administration grant 80NSSC20K1296 and the Gulf Research Program of the National Academies of Sciences, Engineering, and Medicine under award number 2000013282. LC and RH benefited from financial support of the Swiss National Sciences Foundation (grant no. 184634, project "PROGGRES").

References

- 635 Abrahams, Z., Hoogendoorn, G., and Fitchett, J. M.: Glacier tourism and tourist reviews: an experiential engagement with the concept of “Last Chance Tourism,” *Scandinavian Journal of Hospitality and Tourism*, 22, 1–14, <https://doi.org/10.1080/15022250.2021.1974545>, 2022.
- Aguayo, R., Maussion, F., Schuster, L., Schaefer, M., Caro, A., Schmitt, P., Mackay, J., Ultee, L., Leon-Muñoz, J., and
640 Aguayo, M.: Assessing the glacier projection uncertainties in the Patagonian Andes (40–56° S) from a catchment perspective, *EGUsphere*, 1–41, <https://doi.org/10.5194/egusphere-2023-2325>, 2023.
- Aguayo, R., León-Muñoz, J., Aguayo, M., Baez-Villanueva, O. M., Zambrano-Bigiarini, M., Fernández, A., and Jacques-Coper, M.: PatagoniaMet: A multi-source hydrometeorological dataset for Western Patagonia, *Sci Data*, 11, 6, <https://doi.org/10.1038/s41597-023-02828-2>, 2024.
- Bliss, A., Hock, R., and Radić, V.: Global response of glacier runoff to twenty-first century climate change, *Journal of*
645 *Geophysical Research*, 119, 717–730, <https://doi.org/10.1002/2013JF002931>, 2014.
- Bolibar, J., Rabatel, A., Gouttevin, I., Zekollari, H., and Galiez, C.: Nonlinear sensitivity of glacier mass balance to future climate change unveiled by deep learning, *Nature Communications*, 13, 409, <https://doi.org/10.1038/s41467-022-28033-0>, 2022.
- Bolibar, J., Sapienza, F., Maussion, F., Lguensat, R., Wouters, B., and Pérez, F.: Universal differential equations for glacier
650 ice flow modelling, *Geoscientific Model Development*, 16, 6671–6687, <https://doi.org/10.5194/gmd-16-6671-2023>, 2023.

- Bosson, J. B., Huss, M., Cauvy-Fraunié, S., Clément, J. C., Costes, G., Fischer, M., Poulénard, J., and Arthaud, F.: Future emergence of new ecosystems caused by glacial retreat, *Nature*, 620, 562–569, <https://doi.org/10.1038/s41586-023-06302-2>, 2023.
- 655 Braithwaite, R. J.: Temperature and precipitation climate at the equilibrium-line altitude of glaciers expressed by the degree-day factor for melting snow, *Journal of Glaciology*, 54, 437–444, 2008.
- Brun, F., Berthier, E., Wagnon, P., Kääb, A., and Treichler, D.: A spatially resolved estimate of High Mountain Asia glacier mass balances from 2000 to 2016, *Nature Geoscience*, 10, 668–673, <https://doi.org/10.1038/NGEO2999>, 2017.
- 660 Brun, F., Wagnon, P., Berthier, E., Jomelli, V., Maharjan, S. B., Shrestha, F., and Kraaijenbrink, P. D. A.: Heterogeneous Influence of Glacier Morphology on the Mass Balance Variability in High Mountain Asia, *Journal of Geophysical Research: Surface*, 124, 1–15, <https://doi.org/10.1029/2018JF004838>, 2019.
- Caro, A., Condom, T., Rabatel, A., Champollion, N., García, N., and Saavedra, F.: Hydrological Response of Andean Catchments to Recent Glacier Mass Loss, *EGU Sphere*, 1–26, <https://doi.org/10.5194/egusphere-2023-888>, 2023.
- Compagno, L., Eggs, S., Huss, M., Zekollari, H., and Farinotti, D.: Brief communication: Do 1.0, 1.5, or 2.0 °C matter for the future evolution of Alpine glaciers?, *The Cryosphere*, 15, 2593–2599, <https://doi.org/10.5194/tc-15-2593-2021>, 2021a.
- 665 Compagno, L., Zekollari, H., Huss, M., and Farinotti, D.: Limited impact of climate forcing products on future glacier evolution in Scandinavia and Iceland, *Journal of Glaciology*, 67, 727–743, <https://doi.org/10.1017/jog.2021.24>, 2021b.
- Compagno, L., Huss, M., Zekollari, H., Miles, E. S., and Farinotti, D.: Future growth and decline of high mountain Asia’s ice-dammed lakes and associated risk, *Communications Earth & Environment*, 3, 191, <https://doi.org/10.1038/s43247-022-00520-8>, 2022a.
- 670 Compagno, L., Huss, M., Miles, E. S., McCarthy, M. J., Zekollari, H., Dehecq, A., Pellicciotti, F., and Farinotti, D.: Modelling supraglacial debris-cover evolution from the single-glacier to the regional scale: an application to High Mountain Asia, *The Cryosphere*, 16, 1697–1718, <https://doi.org/10.5194/tc-16-1697-2022>, 2022b.
- Cook, S. J., Jouvét, G., Millan, R., Rabatel, A., Zekollari, H., and Dussaillant, I.: Committed Ice Loss in the European Alps Until 2050 Using a Deep-Learning-Aided 3D Ice-Flow Model With Data Assimilation, *Geophysical Research Letters*, 50, e2023GL105029, <https://doi.org/10.1029/2023GL105029>, 2023.
- 675 Cuffey, K. M. and Paterson, W. S. B.: *The physics of glaciers*, Butterworth-Heinemann, Oxford, [https://doi.org/10.1016/0016-7185\(71\)90086-8](https://doi.org/10.1016/0016-7185(71)90086-8), 2010.
- Dussaillant, I., Berthier, E., Brun, F., Masiokas, M., Hugonnet, R., Favier, V., Rabatel, A., Pitte, P., and Ruiz, L.: Two decades of glacier mass loss along the Andes, *Nature Geoscience*, <https://doi.org/10.1038/s41561-019-0432-5>, 2019.
- 680 Edwards, T. L., Nowicki, S., Marzeion, B., Hock, R., Goelzer, H., Seroussi, H., Smith, C. J., Jourdain, N. C., Slater, D., McKenna, C. M., Simon, E., Abe-Ouchi, A., Gregory, J. M., Larour, E., Lipscomb, W. H., Payne, A. J., Shepherd, A., Turner, F., Agosta, C., Alexander, P., Albrecht, T., Anderson, B., Asay-Davis, X., Aschwanden, A., Barthel, A., Bliss, A., Calov, R., Chambers, C., Champollion, N., Choi, Y., Cullather, R., Cuzzzone, J., Dumas, C., Felikson, D., Fettweis, X., Fujita, K., Galton-Fenzi, B. K., Gladstone, R., Gollledge, N. R., Greve, R., Hattermann, T., Hoffman, M. J., Humbert, A., Huss, M., Huybrechts, P., Immerzeel, W., Kleiner, T., Kraaijenbrink, P., Le clec’h, S., Lee, V., Leguy, G. R., Little, C. M., Lowry, D. P., Malles, J.-H., Martin, D. F., Maussion, F., Morlighem, M., O’Neill, J. F., Nias, I., Pattyn, F., Pelle, T., Price, S., Quiquet, A., Radić, V., Reese, R., Rounce, D. R., Rückamp, M., Sakai, A., Shafer, C., Schlegel, N.-J., Shannon, S., Smith, R. S., Straneo, F., Sun, S.,
- 685

- 690 Tarasov, L., Trusel, L. D., Van Breedam, J. V., van de Wal, R., van den Broeke, M., Winkelmann, R., Zekollari, H., Zhao, C., Zhang, T., and Zwinger, T.: Projected land ice contributions to 21st century sea level rise, *Nature*, 593, 74–82, <https://doi.org/10.1038/s41586-021-03302-y>, 2021.
- Eyring, V., Bony, S., Meehl, G. A., Senior, C. A., Stevens, B., Stouffer, R. J., and Taylor, K. E.: Overview of the Coupled Model Intercomparison Project Phase 6 (CMIP6) experimental design and organization, *Geoscientific Model Development*, 9, 1937–1958, <https://doi.org/10.5194/gmd-9-1937-2016>, 2016.
- 695 Farinotti, D., Huss, M., Fürst, J. J., Landmann, J., Machguth, H., Maussion, F., and Pandit, A.: A consensus estimate for the ice thickness distribution of all glaciers on Earth, *Nature Geoscience*, 12, 168–173, <https://doi.org/10.1038/s41561-019-0300-3>, 2019a.
- Farinotti, D., Round, V., Huss, M., Compagno, L., and Zekollari, H.: Large hydropower and water storage potential in future glacier-free basins, *Nature*, 575, 341–344, <https://doi.org/10.1038/s41586-019-1740-z>, 2019b.
- 700 Fischer, M., Huss, M., and Hoelzle, M.: Surface elevation and mass changes of all Swiss glaciers 1980-2010, *The Cryosphere*, 9, 525–540, <https://doi.org/10.5194/tc-9-525-2015>, 2015.
- Friedl, P., Seehaus, T., and Braun, M.: Global time series and temporal mosaics of glacier surface velocities derived from Sentinel-1 data, *Earth System Science Data*, 13, 4653–4675, <https://doi.org/10.5194/essd-13-4653-2021>, 2021.
- Furian, W., Maussion, F., and Schneider, C.: Projected 21st-Century Glacial Lake Evolution in High Mountain Asia, *Frontiers in Earth Science*, 10, 821798, 2022.
- 705 Gardner, A. S., Moholdt, G., Cogley, J. G., Wouters, B., Arendt, A. A., Wahr, J., Berthier, E., Hock, R., Pfeffer, W. T., Kaser, G., Ligtenberg, S. R. M., Bolch, T., Sharp, M. J., Hagen, J. O., van den Broeke, M. R., and Paul, F.: A reconciled estimate of glacier contributions to sea level rise: 2003 to 2009, *Science*, 340, 852–857, <https://doi.org/10.1126/science.1234532>, 2013.
- Giesen, R. H. and Oerlemans, J.: Climate-model induced differences in the 21st century global and regional glacier contributions to sea-level rise, *Climate Dynamics*, 41, 3283–3300, <https://doi.org/10.1007/s00382-013-1743-7>, 2013.
- 710 Gobbi, M., Ambrosini, R., Casarotto, C., Diolaiuti, G., Ficetola, G. F., Lencioni, V., Seppi, R., Smiraglia, C., Tampucci, D., Valle, B., and Caccianiga, M.: Vanishing permanent glaciers: climate change is threatening a European Union habitat (Code 8340) and its poorly known biodiversity, *Biodivers Conserv*, 30, 2267–2276, <https://doi.org/10.1007/s10531-021-02185-9>, 2021.
- 715 Hausfather, Z., Marvel, K., Schmidt, G. A., Nielsen-Gammon, J. W., and Zelinka, M.: Climate simulations: recognize the ‘hot model’ problem, *Nature*, 605, 26–29, <https://doi.org/10.1038/d41586-022-01192-2>, 2022.
- Herreid, S. and Pellicciotti, F.: The state of rock debris covering Earth’s glaciers, *Nature Geoscience*, 13, 621–627, <https://doi.org/10.1038/s41561-020-0615-0>, 2020.
- 720 Hersbach, H., Bell, B., Berrisford, P., Hirahara, S., Horányi, A., Muñoz-Sabater, J., Nicolas, J., Peubey, C., Radu, R., Schepers, D., Simmons, A., Soci, C., Abdalla, S., Abellan, X., Balsamo, G., Bechtold, P., Biavati, G., Bidlot, J., Bonavita, M., De Chiara, G., Dahlgren, P., Dee, D., Diamantakis, M., Dragani, R., Flemming, J., Forbes, R., Fuentes, M., Geer, A., Haimberger, L., Healy, S., Hogan, R. J., Hólm, E., Janisková, M., Keeley, S., Laloyaux, P., Lopez, P., Lupu, C., Radnoti, G., de Rosnay, P., Rozum, I., Vamborg, F., Villaume, S., and Thépaut, J.-N.: The ERA5 global reanalysis, *Quarterly Journal of the Royal Meteorological Society*, 146, 1999–2049, <https://doi.org/10.1002/qj.3803>, 2020.

- 725 Hock, R.: Temperature index melt modelling in mountain areas, *Journal of Hydrology*, 282, 104–115, [https://doi.org/10.1016/S0022-1694\(03\)00257-9](https://doi.org/10.1016/S0022-1694(03)00257-9), 2003.
- Hock, R., Bliss, A., Marzeion, B., Giesen, R. H., Hirabayashi, Y., Huss, M., Radic, V., and Slangen, A. B. A.: GlacierMIP – A model intercomparison of global-scale glacier mass-balance models and projections, *Journal of Glaciology*, 65, 453–467, <https://doi.org/10.1017/jog.2019.22>, 2019.
- 730 Howat, I. M., Porter, C., Smith, B. E., Noh, M., and Morin, P.: The Reference Elevation Model of Antarctica, *The Cryosphere*, 13, 665–674, 2019.
- Hugonnet, R., McNabb, R., Berthier, E., Menounos, B., Nuth, C., Girod, L., Farinotti, D., Huss, M., Dussailant, I., Brun, F., and Kääb, A.: Accelerated global glacier mass loss in the early twenty-first century, *Nature*, 592, 726–731, <https://doi.org/10.1038/s41586-021-03436-z>, 2021.
- 735 Huss, M. and Hock, R.: A new model for global glacier change and sea-level rise, *Frontiers in Earth Science*, 3, 54, <https://doi.org/10.3389/feart.2015.00054>, 2015.
- Huss, M. and Hock, R.: Global-scale hydrological response to future glacier mass loss, *Nature Climate Change*, 8, 135–140, <https://doi.org/10.1038/s41558-017-0049-x>, 2018.
- Huss, M., Joutet, G., Farinotti, D., and Bauder, A.: Future high-mountain hydrology: A new parameterization of glacier retreat, *Hydrology and Earth System Sciences*, 14, 815–829, <https://doi.org/10.5194/hess-14-815-2010>, 2010.
- 740 IPCC: *Climate Change 2023: Synthesis Report. A Report of the Intergovernmental Panel on Climate Change. Contribution of Working Groups I, II and III to the Sixth Assessment Report of the Intergovernmental Panel on Climate Change* [Core Writing Team, H. Lee and J. Romero (eds.)], Geneva (Switzerland), 2023.
- 745 Kochtitzky, W., Copland, L., Van Wychen, W., Hugonnet, R., Hock, R., Dowdeswell, J. A., Benham, T., Strozzi, T., Glazovsky, A., Lavrentiev, I., Rounce, D. R., Millan, R., Cook, A., Dalton, A., Jiskoot, H., Cooley, J., Jania, J., and Navarro, F.: The unquantified mass loss of Northern Hemisphere marine-terminating glaciers from 2000–2020, *Nature Communications*, 13, 5835, <https://doi.org/10.1038/s41467-022-33231-x>, 2022.
- Lange, S., Menz, C., Gleixner, S., Cucchi, M., Weedon, G. P., Amici, A., Bellouin, N., Schmied, H. M., Hersbach, H., Buontempo, C., and Cagnazzo, C.: WFDE5 over land merged with ERA5 over the ocean (W5E5 v2.0), , <https://doi.org/10.48364/ISIMIP.342217>, 2021.
- 750 Li, D., Lu, X., Walling, D. E., Zhang, T., Steiner, J. F., Wasson, R. J., Harrison, S., Nepal, S., Nie, Y., Immerzeel, W. W., Shugar, D. H., Koppes, M., Lane, S., Zeng, Z., Sun, X., Yegorov, A., and Bolch, T.: High Mountain Asia hydropower systems threatened by climate-driven landscape instability, *Nat. Geosci.*, 15, 520–530, <https://doi.org/10.1038/s41561-022-00953-y>, 2022.
- 755 Malles, J.-H., Maussion, F., Ultee, L., Kochtitzky, W., Copland, L., and Marzeion, B.: Exploring the impact of a frontal ablation parameterization on projected 21st-century mass change for Northern Hemisphere glaciers, *Journal of Glaciology*, 1–16, <https://doi.org/10.1017/jog.2023.19>, 2023.
- Marzeion, B., Jarosch, A. H., and Hofer, M.: Past and future sea-level change from the surface mass balance of glaciers, *The Cryosphere*, 6, 1295–1322, <https://doi.org/10.5194/tc-6-1295-2012>, 2012.

- 760 Marzeion, B., Hock, R., Anderson, B., Bliss, A., Champollion, N., Fujita, K., Huss, M., Immerzeel, W. W., Kraaijenbrink, P. D. A., Malles, J.-H., Maussion, F., Radic, V., Rounce, D., Sakai, A., Shannon, S. R., van de Wal, R. S. W., and Zekollari, H.: Partitioning the Uncertainty of Ensemble Projections of Global Glacier Mass Change, *Earth's Future*, 8, e2019EF001470, <https://doi.org/10.1029/2019EF001470>, 2020.
- 765 Maussion, F., Butenko, A., Champollion, N., Dusch, M., Eis, J., Fourteau, K., Gregor, P., Jarosch, A. H., Landmann, J., Oesterle, F., Recinos, B., Rothenpieler, T., Vlug, A., Wild, C. T., and Marzeion, B.: The Open Global Glacier Model (OGGM) v1.1, *Geoscientific Model Development*, 12, 909–931, <https://doi.org/10.5194/gmd-12-909-2019>, 2019.
- 770 Meinshausen, M., Nicholls, Z. R. J., Lewis, J., Gidden, M. J., Vogel, E., Freund, M., Beyerle, U., Gessner, C., Nauels, A., Bauer, N., Canadell, J. G., Daniel, J. S., John, A., Krummel, P. B., Luderer, G., Meinshausen, N., Montzka, S. A., Rayner, P. J., Reimann, S., Smith, S. J., van den Berg, M., Velders, G. J. M., Vollmer, M. K., and Wang, R. H. J.: The shared socio-economic pathway (SSP) greenhouse gas concentrations and their extensions to 2500, *Geoscientific Model Development*, 13, 3571–3605, <https://doi.org/10.5194/gmd-13-3571-2020>, 2020.
- Millan, R., Mouginot, J., Rabatel, A., and Morlighem, M.: Ice velocity and thickness of the world's glaciers, *Nature Geoscience*, 15, 124–129, <https://doi.org/10.1038/s41561-021-00885-z>, 2022.
- NASA/METI/AIST/Japan Spacesystems And U.S./Japan ASTER Science Team: ASTER Level 1A Data Set - Reconstructed, unprocessed instrument data, https://doi.org/10.5067/ASTER/AST_L1A.003, 2001.
- 775 Oerlemans, J. and Nick, F. M.: A Minimal Model of a tidewater glacier, *Annals of Glaciology*, 42, 1–6, <https://doi.org/10.3189/172756405781813023>, 2005.
- 780 Porter, C., Morin, P., Howat, I., Noh, M.-J., Bates, B., Peterman, K., Keeseey, S., Schlenk, M., Gardiner, J., Tomko, K., Willis, M., Kelleher, C., Cloutier, M., Husby, E., Foga, S., Nakamura, H., Platson, M., Wethington, M., Williamson, C., Bauer, G., Enos, J., Arnold, G., Kramer, W., Becker, P., Doshi, A., D'Souza, C., Cummens, P., Laurier, F., and Bojesen, M.: ArcticDEM, Version 3, <https://doi.org/10.7910/DVN/OHHUKH>, 2022.
- Postnikova, T., Rybak, O., Gubanov, A., Zekollari, H., Huss, M., and Shahgedanova, M.: Debris cover effect on the evolution of Northern Caucasus glaciers in the 21st century, *Frontiers in Earth Science*, 11, 2023.
- 785 Purdie, H., Hughes, J., Stewart, E., and Espiner, S.: Journal of Outdoor Recreation and Tourism Implications of a changing alpine environment for geotourism: A case study from Aoraki / Mount Cook , New Zealand, *Journal of Outdoor Recreation and Tourism*, 29, 100235, <https://doi.org/10.1016/j.jort.2019.100235>, 2020.
- Radić, V. and Hock, R.: Regionally differentiated contribution of mountain glaciers and ice caps to future sea-level rise, *Nature Geoscience*, 4, 91–94, <https://doi.org/10.1038/ngeo1052>, 2011.
- 790 Radić, V., Bliss, A., Beedlow, A. C., Hock, R., Miles, E., and Cogley, J. G.: Regional and global projections of twenty-first century glacier mass changes in response to climate scenarios from global climate models, *Climate Dynamics*, 42, 37–58, <https://doi.org/10.1007/s00382-013-1719-7>, 2014.
- Recinos, B., Maussion, F., Noël, B., Möller, M., and Marzeion, B.: Calibration of a frontal ablation parameterisation applied to Greenland's peripheral calving glaciers, *Journal of Glaciology*, 67, 1177–1189, <https://doi.org/10.1017/jog.2021.63>, 2021.
- 795 Recinos, B., Maussion, F., and Marzeion, B.: Advances in data availability to constrain and evaluate frontal ablation of ice-dynamical models of Greenland's tidewater peripheral glaciers, *Annals of Glaciology*, <https://doi.org/10.1017/aog.2023.11>, 2023.

- RGI Consortium: Randolph Glacier Inventory – A Dataset of Global Glacier Outlines: Version 6.0: Technical Report, Global Land Ice Measurements from Space, Colorado, USA. Digital Media, , <https://doi.org/10.7265/N5-RGI-60>, 2017.
- RGI Consortium: Randolph Glacier Inventory v7.0. https://github.com/GLIMS-RGI/rgi7_scripts, 2023.
- 800 Rounce, D., Hock, R., and Shean, D.: Glacier mass change in High Mountain Asia through 2100 using the open-source Python Glacier Evolution Model (PyGEM), *Frontiers in Earth Science*, 7, 331, <https://doi.org/10.3389/feart.2019.00331>, 2020a.
- Rounce, D., Khurana, T., Short, M., Hock, R., Shean, D., and Brinkerhoff, D. J.: Quantifying parameter uncertainty in a large-scale glacier evolution model with a Bayesian model: Application to High Mountain Asia, *Journal of Glaciology*, 66, 175–187, 2020b.
- 805 Rounce, D. R., Hock, R., McNabb, R. W., Millan, R., Sommer, C., Braun, M. H., Malz, P., Maussion, F., Mouginit, J., Seehaus, T. C., and Shean, D. E.: Distributed global debris thickness estimates reveal debris significantly impacts glacier mass balance, *Geophysical Research Letters*, <https://doi.org/10.1029/2020gl091311>, 2021.
- Rounce, D. R., Hock, R., Maussion, F., Hugonnet, R., Kochtitzky, W., Huss, M., Berthier, E., Brinkerhoff, D., Compagno, L., Copland, L., Farinotti, D., Menounos, B., and McNabb, R. W.: Global glacier change in the 21st century: Every increase in temperature matters, *Science*, 379, 78–83, <https://doi.org/10.1126/science.abo1324>, 2023.
- 810 Salim, E.: Glacier tourism without ice: Envisioning future adaptations in a melting world, *Frontiers in Human Dynamics*, 5, 2023.
- Scherler, D., Wulf, H., and Gorelick, N.: Global Assessment of Supraglacial Debris Cover Extents, *Geophysical Research Letters*, 45, 11798–11805, <https://doi.org/10.1029/2018GL080158>, 2018.
- 815 Schuster, L., Rounce, D., and Maussion, F.: Glacier projections sensitivity to temperature-index model choices and calibration strategies, *Annals of Glaciology*, <https://doi.org/10.1017/aog.2023.57>, 2023a.
- Schuster, L., Schmitt, P., Vlug, A., and Maussion, F.: OGGM/oggm-standard-projections-csv-files: v1.0 (v1.0), <https://doi.org/10.5281/zenodo.8286065>, 2023b.
- 820 Shannon, S., Smith, R., Wiltshire, A., Payne, T., Huss, M., Betts, R., Caesar, J., Koutroulis, A., Jones, D., and Harrison, S.: Global glacier volume projections under high-end climate change scenarios, *The Cryosphere*, 13, 325–350, <https://doi.org/10.5194/tc-13-325-2019>, 2019.
- Shean, D. E., Bhushan, S., Montesano, P., Rounce, D. R., Arendt, A., and Osmanoglu, B.: A Systematic, Regional Assessment of High Mountain Asia Glacier Mass Balance, *Frontiers in Earth Science*, 7, <https://doi.org/10.3389/feart.2019.00363>, 2020.
- 825 Silwal, G., Ammar, M. E., Thapa, A., Bonsal, B., and Faramarzi, M.: Response of glacier modelling parameters to time, space, and model complexity: Examples from eastern slopes of Canadian Rocky Mountains, *Science of The Total Environment*, 872, 162156, <https://doi.org/10.1016/j.scitotenv.2023.162156>, 2023.
- Sjursen, K. H., Dunse, T., Tambue, A., Schuler, T. V., and Andreassen, L. M.: Bayesian parameter estimation in glacier mass-balance modelling using observations with distinct temporal resolutions and uncertainties, *Journal of Glaciology*, <https://doi.org/10.1017/jog.2023.62>, 2023.

- 830 Slangen, A. B. A., Palmer, M. D., Camargo, C. M. L., Church, J. A., Edwards, T. L., Hermans, T. H. J., Hewitt, H., Garner, G. G., Gregory, J. M., Kopp, R. E., Santos, V. M., and Wal, R. S. W. van de: The evolution of 21st century sea-level projections from IPCC AR5 to AR6 and beyond, *Cambridge Prisms: Coastal Futures*, <https://doi.org/10.1017/cft.2022.8>, 2022.
- Stibal, M., Bradley, J. A., Edwards, A., Hotaling, S., Zawierucha, K., Rosvold, J., Lutz, S., Cameron, K. A., Mikucki, J. A., Kohler, T. J., Šabacká, M., and Anesio, A. M.: Glacial ecosystems are essential to understanding biodiversity responses to glacier retreat, *Nature Ecology and Evolution*, 4, 686–687, <https://doi.org/10.1038/s41559-020-1163-0>, 2020.
- 835 Taylor, K. E., Stouffer, R. J., and Meehl, G. A.: An overview of CMIP5 and the experiment design, *Bulletin of the American Meteorological Society*, 93, 485–498, <https://doi.org/10.1175/BAMS-D-11-00094.1>, 2012.
- Tokarska, K. B., Stolpe, M. B., Sippel, S., Fischer, E. M., Smith, C. J., Lehner, F., and Knutti, R.: Past warming trend constrains future warming in CMIP6 models, *Science Advances*, 6, eaaz9549, <https://doi.org/10.1126/sciadv.aaz9549>, 2020.
- 840 Ultee, L., Coats, S., and Mackay, J.: Glacial runoff buffers droughts through the 21st century, *Earth System Dynamics*, 13, 935–959, <https://doi.org/10.5194/esd-13-935-2022>, 2022.
- Van Tiel, M., Van Loon, A. F., Seibert, J., and Stahl, K.: Hydrological response to warm and dry weather: do glaciers compensate?, *Hydrology and Earth System Sciences*, 25, 3245–3265, <https://doi.org/10.5194/hess-25-3245-2021>, 2021.
- Veh, G., Lützow, N., Tamm, J., Luna, L. V., Hugonnet, R., Vogel, K., Geertsema, M., Clague, J. J., and Korup, O.: Less extreme and earlier outbursts of ice-dammed lakes since 1900, *Nature*, 614, 701–707, <https://doi.org/10.1038/s41586-022-05642-9>, 2023.
- 845 Wasti, A., Ray, P., Wi, S., Folch, C., Ubierna, M., and Karki, P.: Climate change and the hydropower sector: A global review, *WIREs Climate Change*, 13, e757, <https://doi.org/10.1002/wcc.757>, 2022.
- WGMS: Global Glacier Change Bulletin No. 4 (2018-2019), World Glacier Monitoring Service, Zurich, 278 pp., 2021.
- 850 Yao, T., Bolch, T., Chen, D., Gao, J., Immerzeel, W., Piao, S., Su, F., Thompson, L., Wada, Y., Wang, L., Wang, T., Wu, G., Xu, B., Yang, W., Zhang, G., and Zhao, P.: The imbalance of the Asian water tower, *Nature Reviews Earth & Environment*, 3, 618–632, <https://doi.org/10.1038/s43017-022-00299-4>, 2022.
- Zanoni, M. G., Stella, E., and Bellin, A.: Long-term hydrological behavior of an Alpine glacier, *Journal of Hydrology*, 130316, <https://doi.org/10.1016/j.jhydrol.2023.130316>, 2023.
- 855 Zekollari, H., Huss, M., and Farinotti, D.: Modelling the future evolution of glaciers in the European Alps under the EURO-CORDEX RCM ensemble, *The Cryosphere*, 13, 1125–1146, <https://doi.org/10.5194/tc-13-1125-2019>, 2019.
- Zekollari, H., Huss, M., and Farinotti, D.: On the imbalance and response time of glaciers in the European Alps, *Geophysical Research Letters*, 47, e2019GL085578, <https://doi.org/10.1029/2019GL085578>, 2020.
- Zekollari, H., Huss, M., Farinotti, D., and Lhermitte, S.: Ice-Dynamical Glacier Evolution Modeling—A Review, *Reviews of Geophysics*, 60, e2021RG000754, <https://doi.org/10.1029/2021RG000754>, 2022.
- 860 Zekollari, H., Huss, M., Schuster, L., Maussion, F., Rounce, D. R., Aguayo, R., Champollion, N., Compagno, L., Hugonnet, R., Marzeion, B., Mojtavavi, S., and Farinotti, D.: GloGEM CMIP6 global glacier projections (v1.0), <https://doi.org/10.5281/zenodo.10908278>, 2024.

865 Zemp, M., Huss, M., Thibert, E., Eckert, N., McNabb, R., Huber, J., Barandun, M., Machguth, H., Nussbaumer, S., Gaertner-Roer, I., Thomson, L., Paul, F., Maussion, F., Kutuzov, S., and Cogley, J. G.: Global glacier mass balances and their contributions to sea-level rise from 1961 to 2016, *Nature*, 568, 368–386, <https://doi.org/10.1038/s41586-019-1071-0>, 2019.