

Aerosol layer height (ALH) retrievals from oxygen absorption bands: Intercomparison and validation among different satellite platforms, GEMS, EPIC, and TROPOMI

Hyerim Kim¹, Xi Chen¹, Jun Wang^{1,2}, Zhendong Lu², Meng Zhou², Gregory R. Carmichael¹, Sang Seo Park³, Jhoon Kim⁴

¹Department of Chemical and Biochemical Engineering, Center for Global and Regional Environmental Research, Iowa Technology Institute, The University of Iowa, Iowa City, 52242, USA

²Interdisciplinary Graduate Program in Informatics, The University of Iowa, Iowa City, 52242, USA

³School of Urban and Environmental Engineering, Ulsan National Institute of Science and Technology (UNIST), Ulsan 689-798, Republic of Korea

⁴Department of Atmospheric Sciences, Yonsei University, Seoul 03722, South Korea

Correspondence to: Xi Chen (xi-chen-4@uiowa.edu); Jun Wang (jun-wang-1@uiowa.edu)

Abstract.

Aerosol vertical distribution is crucial for assessing surface air quality and the impact of aerosols on climate. Although aerosol vertical structures can be complex, assuming a shape of the aerosol vertical profile enables the retrieval of a single parameter, aerosol layer height (ALH), from passive remote sensing measurements. In this study, we compare ALH products retrieved using oxygen absorption measurements across multiple satellite platforms: the Geostationary Environment Monitoring Spectrometer (GEMS) focusing on Asia, the Earth Polychromatic Imaging Camera (EPIC) in deep space, and the polar-orbiting Tropospheric Monitoring Instrument (TROPOMI). All analyses are conducted for selected "golden days", which represent ideal viewing conditions for typical dust and smoke cases. Adjustments have been made to standardize the definitions of ALH among different products, ensuring an apple-to-apple comparison. We validate these products using spaceborne lidar (CALIOP) measurements. Compared to CALIOP ALH, both EPIC and TROPOMI ALH show a high correlation coefficient ($R \geq 0.7$) but an overestimation of ~0.8 km. GEMS ALH displays minimal bias (0.1 km) but a slightly lower correlation ($R \approx 0.64$). When comparing GEMS ALH to TROPOMI and EPIC, GEMS shows a narrower range and correlation coefficients are both below 0.4 ($R < 0.4$). Categorizing GEMS retrievals with an ultraviolet aerosol index (UVAI) ≥ 3 improves the agreement with CALIOP. GEMS ALH demonstrates a narrower range and lower mean value compared to EPIC and TROPOMI, with improved correlation for UVAI ≥ 3 . Considering the significant role of aerosol optical depth (AOD) in ALH retrieval, we found that GEMS AOD at 680 nm correlates well with AERONET AOD ($R \approx 0.9$) but shows a negative bias of -0.2. In dust cases, EPIC and TROPOMI tend to overestimate AOD by 0.33 and 0.23, respectively. Furthermore, diurnal variations of ALH from GEMS and EPIC is shown. Finally, we analyze a dust and a smoke case in detail to explore ALH variation during plume transport using multiple data sources.

1 Introduction

Atmospheric aerosols influence the Earth's energy budget and climate system by absorbing and scattering solar and terrestrial radiation (Wang and Christopher, 2003). The aerosol vertical distribution is one of the most important factors determining the aerosol radiative effects (Zhang et al., 2013). The altitude of absorbing aerosols such as dust and smoke affect the vertical distribution of radiative heating and modify the stability of the atmosphere (Babu et al., 2011; Koch and

Formatted: Left: 0.75", Right: 0.75", Top: 1", Bottom: 1", Width: 8.26", Height: 11.69"

Deleted: Although containing only single piece of information, aerosol layer height (ALH) indicates the altitude of aerosol layer in

Deleted: coordinate which

Deleted: essential

Deleted: assessment of

Deleted: aerosol

Deleted: impact. Passive

Deleted: in oxygen (O₂) absorption bands are sensitive to ALH, providing an opportunity to derive global or regional ALH information from satellite observations.

Deleted: from near-infrared O₂

Deleted: from

Deleted: including

Deleted:

Deleted: satellite

Deleted:), and validate them using spaceborne lidar (CALIOP) measurements

Deleted: plumes

Deleted: account for the inherent variations in

Deleted: an

Deleted: In comparison with

Deleted: display

Deleted:) higher than

Deleted: and

Deleted: by ~

Deleted: , whereas

Deleted: exhibits

Deleted: with

Deleted: of

Deleted: .

Deleted: and their correlation is further

Deleted: when UVAI ≥ 3 . Furthermore, diurnal variation of GEMS and EPIC ALH, especially

Deleted: , aligns with boundary layer development.

Deleted: important

Deleted: ~

Deleted: features

Deleted: km

Deleted: km

Deleted: , in dust cases.

Deleted: are analysed

Deleted: the

Deleted: of ALH

Deleted: from

Deleted: (

Del Genio, 2010; Wendisch et al., 2008; Wang and Christopher, 2006). When aerosols are lifted to high altitudes in upper troposphere and lower stratosphere, they can have longer residence times and transport over longer distance, influencing global radiative energy budget (Christian et al., 2019; Peterson et al., 2014). Aerosol vertical distribution influence the derivation of aerosol optical properties, such as [aerosol optical depth \(AOD\)](#) and single scattering albedo ([SSA](#)) in the [ultra-violet \(UV\)](#) spectrum where the top-of-atmosphere (TOA) radiance is also sensitive to the vertical variation of aerosols (Torres et al., 1998). Furthermore, estimates of surface concentration of particulate matter (PM) from the total columnar aerosol loading or AOD requires the knowledge or assumption about aerosol vertical distribution (Wang and Christopher, 2003). Aerosol profile is controlled by diverse processes, such as convective transport, in-cloud scavenging, particle growth by condensation, biomass burning emission and injection height, boundary layer mixing and more, depending on different sources and aerosol properties (Wang et al., 2006; Kipling et al., 2013; Yang et al., 2013; Kipling et al., 2016). Due to the complexity in these processes and lack of temporal and spatially resolved information, aerosol vertical profile has large uncertainty and diversity in chemical transport models (Wang et al., 2013; Yang et al., 2013; Koffi et al., 2016). Therefore, measuring accurate aerosol vertical distribution is still a challenge but critical in many research areas.

Satellite remote sensing techniques are effective [for globally monitoring](#) aerosol vertical [profiles](#). Active satellite remote sensing, especially space-borne lidar such as Cloud-Aerosol Lidar with Orthogonal Polarization (CALIOP), on board with the Cloud-Aerosol Lidar and Infrared Pathfinder Satellite Observation (CALIPSO) platform, [acquires backscatter profiles and retrieves](#) aerosol [extinction profiles](#) with [high](#) vertical resolution (Winker et al., 2013). However, the global coverage of CALIOP is less than 0.2% due to its narrow swath and wide gaps between orbits. In contrast, the larger spatial coverage of passive remote sensing measurements overcomes this shortcoming. [With the retirement of CALIPSO in August 2023,](#) passive remote sensing will become the only routine technique [accessible for the public at present,](#) from space for filling the data gap of measuring aerosol vertical distribution before next lidar dedicated to measure aerosols are launched into space. However, only limited information for aerosol extinction vertical profile can be obtained in passive remote sensing due to the need for multiple assumptions regarding surface and aerosol properties in the retrieval process (Geddes and Bösch, 2015; Rao et al., 2022). Several parameters, including spectral coverage, radiance, polarization, spectral resolution, signal-to-noise ratio (SNR), and the number of viewing angles, can influence the information content and retrieval uncertainties of aerosol profiles. [\(Chen et al., 2021a\), Choi et al. \(2021\) found that the degrees of freedom for signal \(DOFS\)](#) [for](#) a single California Laboratory for Atmospheric Remote Sensing Fourier Transform Spectrometer (CLARS-FTS) measurement [becomes sufficient to retrieve three key aerosol parameters—AOD, aerosol peak height, and aerosol layer thickness in the planetary boundary layer \(PBL\)—when adding a high spectral resolution \(with a full-width half-maximum of 3 cm⁻¹ or better\), polarimetric measurements with SNR of at least 212, and radiance measurements with SNR of 300 for both oxygen \(O₂\) A and Δ bands.](#) [While](#) satellite instruments, such as TROPOMI and EPIC, lack adequate [DOFS](#) on an individual basis, their integration with joint radiometric and polarimetric measurements of the O₂ A and B bands—with a resolution of 3 cm⁻¹, a radiance SNR of 500, and a polarization SNR of 353—acquired at three viewing angles, enables the simultaneous retrieval of the three aerosol parameters (Choi et al., 2021).

Hence, [many algorithms have been developed to extract a single piece of information regarding aerosol vertical distribution, with a primary emphasis on aerosol layer height, which approximates the altitude of aerosols of a presumed aerosol vertical profile. Passive sensing techniques to retrieve aerosol layer height \(ALH\) information include stereo](#)

- Deleted:** methods to monitor the
- Deleted:** profile globally
- Deleted:**)
- Deleted:** detects
- Deleted:** backscattering
- Deleted:** fine
- Formatted:** Font color: Black, Pattern: Clear (White)
- Formatted:** Font color: Black, Pattern: Clear (White)
- Deleted:** .
- Deleted:** Choi
- Deleted:** (
- Deleted:** found that in
- Deleted:** , the degrees of freedom for signal (DOFS) increase from 2.1 to 2.8, which
- Deleted:** for
- Deleted:** parameter retrievals (
- Deleted:**),
- Deleted:**) and incorporating
- Deleted:** , ensuring a
- Deleted:** in conjunction with
- Deleted:** featuring an
- Formatted:** Superscript
- Deleted:** Moreover, while
- Deleted:** degrees of freedom for signal (DOFS)
- Formatted:** Subscript
- Formatted:** Superscript
- Formatted:** Subscript
- Formatted:** Superscript
- Deleted:** instead of retrieving multi-layered aerosol extinction, many algorithms have been developed to derive one piece information of aerosol vertical distribution, aerosol layer height (Aragão et al.)ALH), approximating the altitude of aerosol layer. These passive sensing techniques include stereo photogrammetry, polarimetric techniques in UV-VIS spectrum, IR technique, and atmospheric oxygen (O₂) absorption change Kim et al., 2023)

photogrammetry, polarimetric techniques in UV-VIS spectrum, infrared (IR) technique, and atmospheric oxygen (O₂) absorption (Pierangelo et al., 2004; Muller et al., 2007; Zeng et al., 2008; Vandenbussche et al., 2013; Wu et al., 2016; Xu et al., 2018; Kim et al., 2023). Not only different physical theories are these techniques based on, but each product has different definitions of ALH and parameterizations of aerosol profiles, including aerosol optical central height (AOCH), aerosol effective height (AEH), etc. Part of this study will analyse how the assumption of the shape of aerosol vertical profiles in the retrieval may lead to inherent differences in the retrieval product. Beyond this theoretical analysis, this study mainly focuses on evaluating three ALH data products retrieved from three different satellite sensors that detect the TOA measurements in various O₂ absorption from visible to near-infrared bands.

Aerosols positioned at lower altitudes cause light to travel a longer path, resulting in increased absorption by O₂ molecules along the extended path (Ding et al., 2016; Xu et al., 2019). Consequently, the amount of scattered radiation received by satellites decreases as aerosol layer decreases in altitude. Kokhanovsky and Rozanov (2010) retrieved the top height of dust layer by fitting spectral TOA reflectance measurements from the O₂ A band (around 760 nm) of the Scanning Imaging Absorption spectroMeter for Atmospheric CHartographY (SCIAMACHY). Similarly, the official operational ALH product of TROPOspheric Monitoring Instrument (TROPOMI) uses measurements of the O₂ A band to retrieve the centroid pressure or height of a presumed single aerosol layer (Nanda et al., 2020). However, retrieving ALH information over land, including areas with vegetation and soil surfaces, from the O₂ A band presents challenges. This is because the TOA reflectance in this band is dominated by high surface reflectance instead of aerosol scattering. Consequently, TOA reflectance becomes less sensitive to ALH, and errors in surface reflectance contribute to significant uncertainties in ALH retrieval (Xu et al., 2019).

Despite the weaker oxygen absorption in the O₂ B band (near 688 nm) than in the O₂ A band, the surface reflectance is significantly lower in the O₂ B band across all land types, which proves advantageous for aerosol retrieval. Based on this principle, (Xu et al., 2017; Xu et al., 2019) have developed a retrieval algorithm that use measurements from both O₂ A and B bands, applying it to observations from the Earth Polychromatic Imaging Camera (EPIC)/Deep Space Climate Observatory (DISCOVR) to produce a product known as aerosol optical central height (AOCH). Based on this algorithm, with several adjustments, an enhanced algorithm was developed and implemented in hyperspectral measurements from TROPOMI (Chen et al., 2021) as TROPOMI AOCH. In comparison with the operational TROPOMI ALH product, which shows a bias of 2 km over land, TROPOMI AOCH shows a bias of approximately 0.5 km over both ocean and land (Chen et al., 2021b; Nanda et al., 2020). Hence, in the context of this study, we employ TROPOMI AOCH retrieved through the combined utilization of the O₂ A and B bands, favoring it over the operational TROPOMI ALH product retrieved solely from the O₂ A band.

Furthermore, oxygen-dimer (O₂-O₂) absorption bands exhibit sensitivity to ALH similar to O₂ absorption bands. Aimed to observe from 300 to 500 nm range, the Geostationary Environment Monitoring Spectrometer (GEMS) can measure radiation across multiple O₂-O₂ absorption bands, including 340, 360, 380 and 477 nm, with 477 nm found to be the most sensitive to the ALH due to its largest O₂-O₂ absorption (Chimot et al., 2017; Cho et al., 2024; Kim et al., 2020; Park et al., 2016). GEMS provides an aerosol layer height product, termed aerosol effective height (AEH), retrieved from the 477 nm O₂-O₂ absorption band. This algorithm has been applied in the Ozone Monitoring Instrument (OMI) measurements,

- Deleted: oid...l height (AOCH), aerosol effective height (A... [1]
- Formatted [2]
- Deleted: The...erosols positioned at lower altitudes cause l... [3]
- Formatted [4]
- Deleted: close to
- Deleted: Moreover
- Deleted: on board the Sentinel-5 Precursor (S5P) mission [5]
- Formatted [6]
- Deleted: (Veeffkind et al., 2012). However, it is challenging [7]
- Formatted [8]
- Deleted: since...resents challenges. This is because the TO... [9]
- Deleted: In contrast, although
- Formatted [10]
- Deleted: is weaker
- Formatted [11]
- Deleted: close to
- Formatted [12]
- Deleted: much
- Formatted [13]
- Deleted: for...cross all land types and beneficial... which [14]
- Formatted [15]
- Deleted: also
- Formatted [16]
- Deleted: applied
- Formatted [17]
- Deleted: , shorten as O₂AB-UI algorithm hereafter. Comp... [18]
- Formatted [19]
- Deleted: 2km
- Deleted: the
- Deleted: ALH from O₂AB-UI algorithm
- Deleted: ~
- Deleted: bias
- Formatted [20]
- Formatted [21]
- Formatted [22]
- Formatted [23]
- Formatted [24]
- Deleted: Therefore
- Deleted: use
- Deleted: L
- Deleted: from a
- Formatted [25]
- Formatted [26]
- Formatted [27]
- Formatted [28]
- Deleted: use
- Deleted: developed by O₂AB-UI rather than KNMI's official
- Formatted [29]
- Formatted [30]
- Deleted: single
- Formatted [31]
- Deleted: In addition...urthermore, oxygen-dimer (O₂-O₂) [32]
- Deleted: in...cross multiple O₂-O₂ absorption bands, such... [33]

and recently been evaluated with CALIOP, revealing negligible bias and a standard deviation of 1.4 km in the AEH difference across the GEMS observation domain from January to June 2021 (Park et al., 2024; Park et al., 2016).

The three oxygen-related bands, namely, O₂-O₂ 477 nm band, and the O₂ A and B bands, have differences in terms of oxygen absorption strength and surface reflectance, leading to their diverse sensitivities to ALH. Hence, comparing retrievals from different O₂ absorption bands can offer valuable insights into their respective advantages and limitations in ALH retrieval. This motivates us to validate three different satellite ALH products, GEMS, EPIC and TROPOMI, using CALIOP three-dimensional aerosol extinction product and conduct intercomparisons among them. While the validation of diurnal variations in ALH currently remains challenging, leveraging GEMS' hourly products alongside the close-hourly EPIC global retrievals allows us to conduct comparative analyses with the available data at hand.

Additionally, evaluation of ALH retrievals should consider the context of other retrieval parameters, such as AOD and UV aerosol index (UVAI). UVAI quantifies the difference between measured and calculated near-UV spectral dependence, with values near zero indicating an aerosol-free atmosphere or the presence of non-absorbing aerosols and clouds, while positive values are associated with UV-absorbing aerosols like carbonaceous aerosols, volcanic ash, and desert dust (Torres et al., 2007). Accurate retrieval of ALH requires reliable retrieval of AOD, since the retrieval sensitivity is strongly dependent. Park et al. (2016) showed higher sensitivity of oxygen-dimer (O₄) slant column density to aerosol effective height at 477 nm with higher AOD. Xu et al. (2019) showed the sensitivity of Differential optical absorption spectroscopy (DOAS) ratios—the ratio of TOA reflectance between the absorption band and the continuum band—to ALH is enhanced for lower surface reflectance and higher AOD. Moreover, the sensitivity of UVAI to ALH, along with their correlation, rises with increasing AOD levels (Xu et al., 2019; Xu et al., 2017). Therefore, we evaluate AOD with AERONET, cross-compare AOD and UVAI products from different platforms as well as the relationship of ALH between products with different UVAI to see its impact.

Considering that the spatial coverage of CALIOP is limited, we carefully selected “golden” cases where dust and smoke events favor the retrievals from all three sensors. This selection can maximize the signal to noise ratio for ALH retrieval, and hence, the evaluation can shed light on the future improvement to bring the closure of various types of retrievals. Note that these conditions may differ from those observed on non-selected days. In addition to pixel-by-pixel comparison of these passive satellite products, they are also assessed with CALIOP aerosol extinction profiles along CALIOP's track. We provide a detailed comparison with CALIOP profiles for a dust and a smoke plume case. This paper outlines the data and comparison approach in section 2, followed by the comparison results for all data used in this study in section 3. Section 4 shows the investigation of the ALH variation during transport for selected dust and smoke cases. Lastly, conclusions and discussions are provided in section 5.

2 Data and methodology

The ALH products compared in this study share similarities in that they are all derived using oxygen (or its dimer) absorption bands and assume the same aerosol vertical profile shape. However, there are distinct variations in the specifics of each algorithm, including the definition of ALH, which may result in inherent differences in ALH retrievals. In section 2.1, we first introduce the characteristics of each passive product, providing some details of each retrieval algorithm, as well as presenting the retrieval performance from previous studies. The difference of ALH definitions is compared in

Deleted: 3

Deleted: and different influences on the ALH retrievals.... Hence, comparing the ...retrievals from different O₂ absorption bands can help us better understand...ffer valuable insights into their different...espective advantages and disadvantages...imitations in ALH retrieval. This motivates us to validate three different satellite ALH products, GEMS, EPIC and TROPOMI, using CALIOP three-dimensional aerosol extinction product and intercompare...onduct intercomparisons among them. Furthermore...hile the validation of diurnal variation of ...ariations in ALH can be found from...urrently remains challenging, leveraging GEMS' hourly GEMS' ...roducts as a big advantage, but it is a challenge to validate their accuracy. The alongside the close-hourly EPIC global ALH ...etrievals provide a significant...llows us to conduct comparative analyses with the available data source for evaluation of the diurnal variation from GEMS. ... [34]

Formatted: English (US)

Deleted: Evaluation...ditionally, evaluation of ALH retrievals cannot be isolated without providing...hould consider the context of other retrieval context in which [35]

Deleted: important factors...associated with UV-absorbing aerosols like carbonaceous aerosols, volcanic ash, and desert dust (Torres et al., 2007). Accurate retrieval of ALH requires reliable retrieval of AOD, and past studies have shown that...since the retrieval sensitivity is strongly dependent. Park et al. (2016) showed higher sensitivity of oxygen-dimer (O₄) slant column density to aerosol effective height at 477 nm with higher AOD. Xu et al. (2019) showed the sensitivity of Differential optical absorption spectroscopy (DOAS) ratios—the ratio of TOA reflectance between the absorption band and the continuum band—to ALH and UVAI ...s enhanced for lower surface reflectance and higher AOD. Moreover, the sensitivity of UVAI to ALH, along with their correlation, rises with increasing AOD levels (Xu et al., 2019; Xu et al., 2017). Therefore, we evaluate AOD with AERONET, cross-compare AOD and UVAI products from different platforms as well as the relationship can change with AOD (Xu et al., 2017). Hence, AOD and UVAI will also be evaluated. [36]

Formatted: Font color: Text 1

Deleted: u... the retrievals from all three sensors. This selection can maximize the signal to noise ratio for ALH retrieval, and hence, the evaluation can shed light on the future improvement to bring the closure of these three...arious types of retrievals. Note that these conditions may differ from those observed on non-selected days. In addition to pixel-by-pixel comparison of these passive satellite products, they are also assessed with CALIOP aerosol extinction profiles along CALIOP's track. We provide a detailed compar... [37]

Deleted: Although the three

Deleted: retrieved from

Formatted

Formatted: Font color: Text 1

Deleted: band,

Deleted: still some distinctions about

Deleted: details in

Formatted: Font color: Text 1

Formatted: Font color: Text 1

Deleted: of three algorithms that

Deleted: lead to

Deleted: However, consistency exists in three algorithms in terms of aerosol vertical profile shape is assumed; all algorithms a... [39]

Formatted: Font color: Text 1

Formatted: Font color: Text 1

Formatted: Font color: Text 1

section 2.2. Lastly, the approaches for comparing ALH data and evaluating them with ground-based observations or active measurements are illustrated in section 2.3.

495

2.1 Satellite data

2.1.1 GEMS

From a geostationary orbit about 36000 km above the equator, GEMS provides hourly measurements over Asia within the latitudes of 5°S to 45°N and the longitudes of 80°E to 152°E (Kim et al., 2020). Given the lower SNR in the morning due to large solar zenith angle (SZA), GEMS only scan the east half of the field of regard, leading to less products available over west region. The total amount of hourly products in each day also depends on the SZA in different seasons. The spatial resolution of GEMS products is 3.5×8 km (north-south and east-west) at Seoul, South Korea.

500

GEMS offers two products describing aerosol altitude, AEH and aerosol loading height, each derived from different algorithms. GEMS aerosol loading height, included in the level 2 GEMS aerosol product (L2AERAOD), employs an optimal estimation method, incorporating measurements at six wavelengths, including the O₂-O₂ band at 477 nm (Cho et al., 2024; Kim et al., 2018). In contrast, GEMS AEH algorithm uses the sensitivity of the O₂-O₂ band to the ALH similar to TROPOMI and EPIC using O₂ A and B bands, which will be discussed in the following subsection. Therefore, this study specifically focuses on analyzing GEMS AEH version 2.0.

505

GEMS AEH is retrieved using the O₂-O₂ slant column density (SCD) at 477 nm with a look-up table (LUT) approach adopting aerosol types, AOD, and SSA at 550 nm from L2AERAOD, and surface reflectance from the GEMS standard product for surface reflectance (Park et al., 2024). Three aerosol types were classified using UVAI and the Visible Aerosol Index (VisAI), which, similar to UVAI but with visible channels, categorizes aerosols into highly absorbing fine (HAF), dust, and non-absorbing (NA) aerosols. NA aerosols are selected when UVAI yields a negative value, the dust type is determined when both UVAI and VisAI are positive, and HAF is selected when UVAI is positive, but VisAI is negative (Cho et al., 2024). For LUT generation, aerosols are assumed to be spherical due to the computationally intensive spectral binning method, and the particle size distribution, refractive index, and fine mode fraction for each aerosol type are derived from the global Aerosol Robotic Network (AERONET) inversion climatology (Cho et al., 2024).

510

Cho et al. (2024) validated GEMS AOD at 443 nm against AERONET data across the entire GEMS domain from November 1, 2021, to October 31, 2022. They found the total GEMS AOD showed a R value of 0.792, a root mean square error (RMSE) of 0.227, and a mean bias error (MBE) of 0.038. Park et al. (2024) retrieved and validated GEMS AEH with CALIOP AEH. The differences in AEH between GEMS and CALIOP for dust plume cases were -0.07 ± 1.09 and -0.11 ± 1.27 km, with 53.8% and 72.9% of all pixels showing differences less than 1.0 and 1.5 km, respectively. Moreover, during the period from January to June 2021, they observed an average AEH difference of -0.03 km.

520

2.1.2 EPIC / DSCOVR

Carried on the DSCOVR spacecraft at the Sun-Earth Lagrange-1 point (L1) 1.5 million km from the Earth, EPIC captures the image for sunlit disk of Earth every 60-100 mins per day. As a result, EPIC monitors the half globe close-hourly, rendering a full disk of 2048×2048 pixels at the spatial resolution of size of 12 km at the Earth surface (Marshak et al., 2018). With 10 narrow channels, EPIC detects the Earth-reflected solar radiance from ultraviolet, visible, to near-infrared (NIR) bands, including both O₂ A and B bands. The fact that the lower surface reflectance in O₂ B band than O₂ A band

530

Deleted: for

Moved (insertion) [1]

Deleted: effective...ading height (AEH) and ALH... each derived from different algorithms. GEMS ALH ... [40]

Deleted: -

Formatted: Subscript

Formatted: Subscript

Deleted: 3

Deleted: -

Formatted: Subscript

Formatted: Subscript

Deleted: the O₂AB-UI algorithm using O₂A and B band for TROPOMI and EPIC... using O₂ A and B bands, which will be discussed in the following subsection. Therefore, this study specifically focuses on analyzing GEMS AEH version 2.0. Based on the ... [41]

Deleted: algorithm by Park et al. (2016), a look-up table (LUT) was generated from radiative transfer simulation connecting the ... s retrieved using the O₂-O₂ slant column density (SCD) in ... t 477 nm with AEH for different... look-up table (LUT) approach adopting aerosol types, AOD, and SSA at 550 nm from L2AERAOD, and surface reflectance. Hence, using the inputs of O₂-O₂ SCD derived... from GEMS observations, as well as the additional information about aerosol types and AOD from GEMS AOD retrievals (Kim et al., 2018) and ...he GEMS standard product for surface Lambertian equivalent ... efluenceance (LER) climatology, the AEH is derived from the LUT approach. [42]

Deleted: including

Formatted: Font color: Text 1

Deleted: particles (i.e., smoke

Formatted: Font color: Text 1

Formatted

... [43]

Deleted: scattering

Deleted: with different optical properties

Deleted: considered in GEMS aerosol retrieval; aerosol types

Formatted: Font color: Text 1

Formatted: Font color: Text 1

Deleted: classified by the ultraviolet aerosol index (UVAI) and visible aerosol index derived from GEMS observations (Cho et al., 2023).

Formatted: Font color: Text 1

Deleted: and their

Formatted: Font color: Text 1

Deleted: s

Formatted

... [44]

Formatted

... [45]

Moved up [1]: in the morning due to large solar zenith angle (SZA), GEMS only scan the east half of the field of regard, leading to less products available over west region. The total amount of hourly products in each day also depends on the SZA in different

Deleted: . From a geostationary orbit about 36000 km abo... [46]

Deleted:

Deleted: Deep Space Climate Observatory

... [47]

Formatted

... [48]

over land (Xu et al., 2019) motives us to use O_2 B band to improve the ALH retrievals that use the O_2 A band solely. Xu et al. (2017) developed an algorithm to retrieve aerosol optical central height (AOCH) from EPIC measurements in O_2 A and B bands at the first time and applied it for dust plumes in Atlantic Ocean. Later, Xu et al. (2019) added a smoke model in the LUT and applied it into several smoke plume cases over the Hudson Bay-Great Lakes area in North America. They found that over 77% collocated AOD pairs fell within an uncertainty envelope of $\pm (0.05 + 0.1 \text{ AOD})$, with a coefficient of determination (R^2) of 0.54. Based on this algorithm, Lu et al. (2021) updated the calibration of EPIC level 1 data and analysed the EPIC AOC for U.S. smoke plumes during 2020 California big wildfires. The validation of EPIC AOC against the extinction-weighted AOC from lidar observations, CALIOP, in these papers show a high level of accuracy, with a correlation coefficient of 0.885 and a RMSE of 0.92 km for absorbing aerosols. The surface reflectance data involves two sources: land surface reflectance is obtained from the MODIS surface bi-directional reflectance climatology, while water surface reflectance is derived from the GOME-2 surface Lambert-equivalent reflectivity (LER) database. Furthermore, a new LUT developed specifically for dust plumes in the East Asian region, based on multi-year AERONET inversion products, has been incorporated, as detailed in Lu et al. (2023).

2.1.3 TROPOMI / S5P

TROPOMI on board the Copernicus Sentinel-5 Precursor satellite was launched in October 2017 to measure solar radiation reflected by Earth from UV to shortwave infrared (SWIR) bands including many trace gases absorption bands and the surface and aerosol information. Flying on a polar satellite, TROPOMI provides global atmospheric components products on a high spatial resolution, $5.5 \text{ km} \times 3.5 \text{ km}$ (improved from $7 \text{ km} \times 3.5 \text{ km}$ since August 2019) once every day. TROPOMI measures both O_2 A and B absorption bands, yet its official ALH product utilizes solely the O_2 A band measurements in its retrieval algorithm (Nanda et al., 2020). Chen et al. (2021b) developed an alternative algorithm suitable for TROPOMI data, enabling AOC retrieval using both O_2 A and B bands. This approach draws upon the EPIC AOC retrieval algorithm by Xu et al. (2019), employing the same look-up table (LUT) and least square method to optimize AOC from the ratio of O_2 absorption to its nearby continuum band. Enhancements include spectral resolution convolution into multiple narrow channels, a new cloud mask, and dust/smoke classification, with results reported in a standard latitude-longitude grid ($0.05^\circ \times 0.05^\circ$). Comparative analysis reveals that the AOC exhibits approximately a 0.5 km bias over both ocean and land, contrasting with the 2 km bias observed in the operational ALH product from TROPOMI (Chen et al., 2021b; Nanda et al., 2020). Consequently, this study employs TROPOMI AOC retrieval data, as previously highlighted in the introduction. Furthermore, the new LUT developed for Asian dust plumes in EPIC retrievals has been integrated into the algorithm for application in East Asia. The surface reflectance data is the same used in the EPIC retrieval algorithm. The operational TROPOMI level 2 UVAI product (Stein Zweers, 2022) is used to retrieve only pixels covered by absorbing aerosols with UVAI greater than 0.5.

2.2 Comparison of ALH Definitions

GEMS, TROPOMI, and EPIC algorithms all operate under the assumption that quasi-Gaussian vertical distribution of aerosol extinction described by parameters of loading, peak height (H), and half width parameter at half maxima (η) fixed at 1 km. The assumption of a 1 km half width is grounded in typical Lidar observations for dust and smoke aerosols, as indicated by Reid et al. (2003). This value has also been used in the retrieval of AOD from UV observations by both the

- Deleted: n...ely. (... [50])
- Formatted (... [49])
- Formatted (... [51])
- Deleted: (O_2 AB-UI algorithm) ...t the first time and appli (... [52])
- Formatted (... [53])
- Deleted: calibration...and analysed the EPIC AOC for (... [54])
- Deleted: Asia
- Deleted: the
- Formatted (... [55])
- Formatted (... [56])
- Formatted (... [57])
- Deleted: in this region is added
- Deleted: The method to select dust inversions from AER (... [59])
- Formatted (... [58])
- Deleted: The TROPospheric Monitoring Instrument
- Deleted: also includes
- Deleted: to be used for AOC retrieval. However,
- Deleted: hyperspectral
- Formatted (... [61])
- Formatted (... [62])
- Formatted (... [63])
- Formatted (... [64])
- Deleted: from TROPOMI, unlike the EPIC measurement
- Deleted: narrow channels, prevent us to applying the EPIC AOC
- Deleted: in TROPOMI L1B data directly. Instead,
- Formatted (... [65])
- Formatted (... [66])
- Formatted (... [67])
- Deleted: to retrieve
- Deleted: with a few improvements. Besides convolving (... [69])
- Formatted (... [68])
- Formatted (... [70])
- Deleted: several steps for
- Deleted: are implemented according to the unique chann (... [72])
- Formatted (... [71])
- Formatted (... [73])
- Deleted: , the TROPOMI AOC product used is from thi (... [74])
- Deleted: in EPIC retrievals
- Deleted: added in
- Formatted (... [75])
- Formatted (... [76])
- Formatted (... [77])
- Deleted: to be applied
- Deleted: as well. Applying
- Formatted (... [78])
- Formatted (... [79])
- Deleted: L
- Deleted: , only pixels covered by absorbing aerosols with (... [81])
- Formatted (... [80])
- Deleted: GEMS, TROPOMI, and EPIC algorithms all op (... [82])

Total Ozone Mapping Spectrometer (TOMS) and OMI, as emphasized in the work by Torres et al. (1998). Presently, it is widely accepted as a standard parameter value, evident in products presented in this study. The aerosol extinction profile where z is the altitude with respect to surface can be expressed by a generalized distribution function as specified in Eq. (1):

$$\beta(z) = W \frac{\exp(-\sigma_H|z - H|)}{[1 + \exp(-\sigma_H|z - H|)]^2} \quad \text{Eq. (1)}$$

where H is the altitude with peak aerosol extinction, W is normalization constant related to the columnar loading, and σ_H is defined as: $\sigma_H = \ln(3 + \sqrt{8})/\eta$ (Spurr and Christi, 2014). However, ALH is a general term to describe the altitude of aerosol layer, while the definition of the retrieved ALH varies by algorithm. EPIC and TROPOMI defined their retrieved ALH as H in Eq. (1) and called AOC (Chen et al., 2021b; Lu et al., 2023; Lu et al., 2021; Xu et al., 2019; Xu et al., 2017). GEMS AEH is defined as the altitude above which the aerosol extinction is the $1/e$ of total columnar AOD, as described in Eq. (2):

$$\frac{\int_0^{AEH} \beta(z) dz}{\int_0^{TOA} \beta(z) dz} = 1 - e^{-1} \quad \text{Eq. (2)}$$

In addition, AOC retrieved from EPIC and TROPOMI O2AB-UI is relative to geographic (ground) surface, whereas GEMS AEH is relative to sea level. Henceforth, for simplicity and consistency, the term ALH will be used to refer to all aerosol height products used in this study, including GEMS AEH, TROPOMI AOC, and EPIC AOC. To validate retrievals from passive remote sensing with lidar data, the optical depth weighted heights derived from CALIOP 5 km level 2 aerosol extinction profile product at 532 nm following previous studies are used (Chen et al., 2021b; Lu et al., 2023; Lu et al., 2021; Xu et al., 2019). We define CALIOP AOC as the optical depth weighted height, as specified in Eq. (3):

$$AOC_{CALIOP} = \frac{\sum_{i=1}^n \beta(z_i) \Delta z_i z_i}{\sum_{i=1}^n \beta(z_i) \Delta z_i} \quad \text{Eq. (3)}$$

where $\beta_{ext,i}$ represents the 532 nm aerosol extinction coefficient at vertical level i with an altitude of z , while Δz_i denotes the thickness of the vertical layer i .

The comparison of different definitions of ALH for the same aerosol vertical distribution is shown in Fig. 1. In an example aerosol extinction profile with EPIC or TROPOMI AOC at 1.5 km, CALIOP AOC stands higher at 1.65 km, with GEMS AEH being the highest at 1.87 km (Fig. 1a). The difference between EPIC/TROPOMI and CALIOP AOC decreases as AOC increases, ultimately disappears when CALIOP AOC reaches approximately 4 km and beyond. When CALIOP AOC is below ~1 km, EPIC/TROPOMI AOC can be as large as 0.5 km lower than CALIOP. GEMS AEH exhibits a larger difference compared to CALIOP AOC for higher AOC, and this difference remains relatively constant at approximately 0.3 km for altitudes above ~3 km. Figure 1c illustrates that the difference between GEMS AEH and EPIC/TROPOMI AOC can reach around 0.8 km near the surface. However, this difference decreases as AOC increases, ultimately reaching 0.1 km for altitudes above ~3 km. In our further comparison of ALH, we count for these inherent differences by converting one definition to another to ensure consistency.

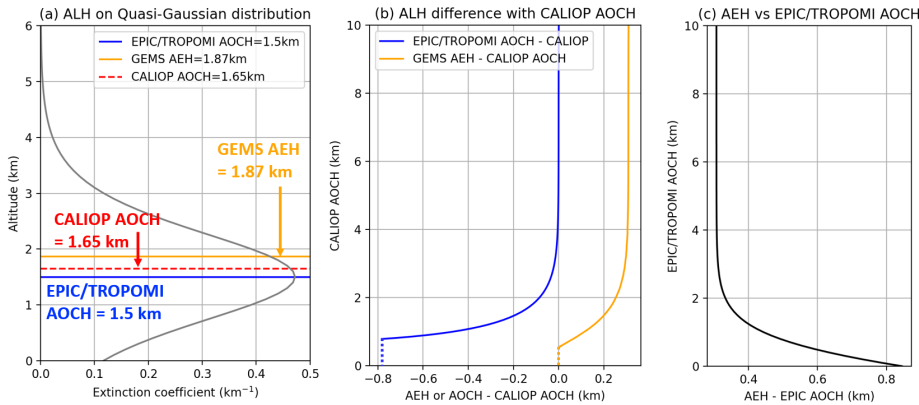
Deleted: defines its ALH retrieval

Deleted: AEH,

Deleted: extinction

Deleted: extinction-

Deleted: ¶



865 Figure 1. Comparison of ALH definition (GEMS, EPIC, TROPOMI, and CALIOP). (a) Relative heights within the quasi-Gaussian distribution when EPIC/TROPOMI AOC is 1.5 km. (b) Difference between ALH from passive satellite with CALIOP AOC. Note that EPIC/TROPOMI AOC is depicted as dotted vertical lines when it becomes negative below a specific CALIOP AOC. (c) Difference between GEMS AEH and EPIC/TROPOMI AOC definitions with respect to the altitude of EPIC/TROPOMI AOC.

870

2.3 Comparison Approach

Given the availability of EPIC/TROPOMI retrievals for absorbing aerosols, we focus our comparison on a selection of “golden days” characterized by ideal viewing conditions for dust and smoke cases, excluding cloud-covered areas, as observed within GEMS field of regard from 2021 to 2023. These selected days are listed in Table 1 and correspond to the study domain depicted in Fig. 2. Classification of dust and smoke cases is determined by the predominant aerosol type identified in the CALIOP lidar data. Although EPIC products have similar temporal resolution to GEMS, observations over the research domain vary from 3 to 8 per day depending on the solar geometry. Flying on a polar orbit, TROPOMI only observed the whole globe once each day, but depending on the latitude of each case, TROPOMI ground track may overlap, which can lead to the possibility of two TROPOMI observations for some cases. Considering the differences in spatial and temporal resolutions among these three products, we first resample the GEMS product to TROPOMI and EPIC spatial resolution using the pixel area weighted method, and then linearly interpolate the GEMS product with time to match the observation time for the paired TROPOMI and EPIC data (Wang et al., 2020).

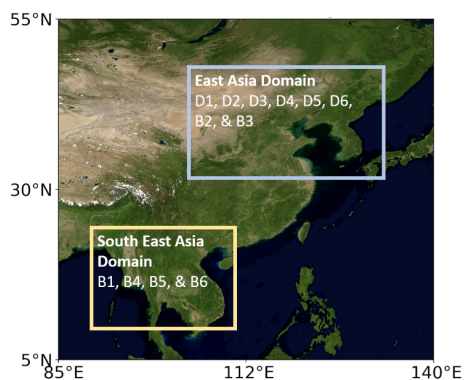
Deleted: gold”

Deleted: , as

Deleted: ing

Deleted: 2

Deleted: ped



890 Figure 2. Study domains and cases. "D" represents dust cases, while "B" represents smoke cases ("B" for biomass burning). See Table 1 for more information. Map from Blue Marble: Next Generation from NASA Earth Observatory.

Table 1. Case study dates and the number of observations of each sensor for each domain.

Case no.	Date	Domain	Number of orbits (or granules)		
			GEMS	TROPOMI	EPIC
D1 ^a	2021-03-28	East Asia	7	2	4
D2	2021-04-26	East Asia	8	2	7
D3	2022-04-10	East Asia	8	2	5
D4	2023-03-10	East Asia	7	2	3
D5	2023-05-19	East Asia	8	2	8
D6	2023-05-20	East Asia	8	2	7
B1	2021-03-31	Southeast Asia	6	1	5
B2	2021-08-10	East Asia	8	1	8
B3	2021-08-11	East Asia	6	2	8
B4	2022-04-09	Southeast Asia	8	2	5
B5	2023-03-26	Southeast Asia	6	1	5
B6	2023-04-17	Southeast Asia	8	1	4

^a: The initial "D" means dust case and "B" represents smoke case from biomass burning.

895 UVAI data from GEMS, EPIC, and TROPOMI are also cross compared as UVAI is used in all retrieval algorithms. The ALH comparison and validation for different GEMS UVAI is conducted to analyze the possible distinction of GEMS AEH retrieval accuracy for different UVAI values. Furthermore, as the accuracy of each AOD product also influences corresponding ALH retrieval, AOD will be validated by the ground-based AERONET inversions. When matching satellite pixels with ground sites, we consider the number of valid satellite retrievals within a 0.2° radius around AERONET sites. If the number of valid retrievals exceeds 30% of the total number of pixels, we compute the mean value of these retrievals and compare it with the corresponding AERONET AOD. The AERONET AOD is averaged for a period of 30 minutes

900

Deleted: Since the
Deleted: product is used in O₂AB-UI algorithm to pick up absorbing aerosols, the
Deleted: UVAI products
Deleted: with GEMS since different thresholds might be selected.
Formatted: Space Before: 12 pt, After: 12 pt
Deleted: also
Deleted: L
Deleted: aerosol types.
Deleted: in both O₂AB-UI and GEMS algorithm, AOD derived from other window channels is required for retrieving ALH. Hence,
Deleted: which
Deleted: here
Deleted: Aerosol Robotic Network (
Deleted:)
Deleted: as well
Deleted: collocating
Formatted: Font color: Text 1, English (US)
Formatted: Font color: Text 1, English (US)
Deleted: if
Deleted: is more than 30 % of the total number of pixels
Deleted: .
Formatted: Font color: Text 1, English (US)
Formatted: Font color: Text 1, English (US)
Formatted: Font color: Text 1, English (US)
Deleted: those valid satellite AOD
Formatted: Font color: Text 1, English (US)
Formatted: Font color: Text 1, English (US)
Deleted: is compared
Deleted: Given satellite overpass time (or observation time for GEMS),...
Deleted: also
Deleted: between
Formatted: Font color: Text 1, English (US)
Formatted: Font color: Text 1, English (US)
Formatted: Font color: Text 1, English (US)
Formatted: Font: 10 pt, Font color: Text 1, English (US)
Formatted: Font color: Text 1, English (US)
Formatted: Font color: Text 1, English (US)
Formatted: Font color: Text 1, English (US)

before and after each satellite observation, aligning with the satellite overpass time (or observation time for GEMS). Furthermore, we only include satellite data points with a spatial standard deviation less than 0.3 to ensure spatial consistency in the comparison. Since TROPOMI and EPIC AOD are retrieved at 680 nm, whereas GEMS AOD is retrieved at 443 nm, we estimate GEMS AOD at 680 nm from its AOD at 443 nm. This estimation is based on a combination of aerosol type (dust, HAF, NA) for each pixel and the Angstrom exponent (440 nm – 677 nm) from the GEMS aerosol model corresponding to the aerosol type (Kim et al., 2018). When co-locating passive satellite products with CALIOP pixels along the track, we employ a similar approach to the comparison with AERONET. This involves calculating the distance from the center of the CALIPSO ground track within a range of 0.2° and adjusting the threshold for valid retrieval to exceed 30%.

3 Results

For all the dust and smoke cases listed in Table 1, the AOD products from GEMS, TROPOMI, and EPIC are first validated against the ground-based AERONET AOD data. Subsequently, a pixel-by-pixel intercomparison is conducted among the satellite products. Additionally, the ALH products from the three passive satellite measurements undergo validation using CALIOP level 2 aerosol extinction profile. These validated ALH products are then intercompared.

3.1 AOD intercomparison and validation with AERONET

The validation of the AOD products from GEMS, TROPOMI, and EPIC against AERONET AOD is shown in Fig. 3. GEMS AOD at 443 nm exhibits a strong positive correlation with AERONET AOD at 440 nm, with correlation coefficients (R) of 0.9 for dust cases and 0.88 for smoke cases (Fig. 3a). The validation results for GEMS AOD at 680 nm for smoke cases indicate a similar statistical agreement (R = 0.84) with 443 nm. In contrast, for dust cases at 680 nm compared with 443 nm, there are notable differences with decreased correlation coefficient (R = 0.73) and a 20 % decrease of RMSE. This indicates possible inaccuracies in the GEMS dust aerosol model but confirms the reliability of the smoke model. GEMS AOD at 680 nm show stronger underestimation than 443 nm, particularly noticeable when AERONET AOD exceeds 0.5. Furthermore, the bias increases with higher AOD levels, as shown in Fig. S1. The observed underestimation of GEMS AOD at 680 nm can be in part due to an overestimation of the Angstrom Exponent (AE), which can be affected from inaccurate particle size or refractive index in the wavelength-dependent aerosol model.

For dust cases, both TROPOMI and EPIC AOD show a positive bias compared to AERONET AOD, with values of 0.23 and 0.33 for TROPOMI and EPIC, respectively. Additionally, the comparison between EPIC and TROPOMI AOD with AERONET reveals a slope close to unity for dust cases (EPIC: 0.76, TROPOMI: 1.04), indicating the effectiveness of the dust aerosol model. In contrast to the dust cases, TROPOMI and EPIC AOD exhibit a negligible bias for smoke cases. Furthermore, the lower slope observed in the comparison for smoke cases (EPIC: 0.48, TROPOMI: 0.62) suggests that the smoke aerosol model is not as accurate as the dust aerosol model. The positive y-intercept observed for both EPIC and TROPOMI suggests that the surface reflectance employed in the dust aerosol model may be underestimated, resulting in an overestimation in AOD retrieval. For TROPOMI and EPIC retrievals over land, climatological surface reflectance data from MODIS is employed. Additionally, unlike GEMS AEH retrieval algorithm that uses GEMS level 2 surface reflectance data, Cho et al. (2024) developed a new method for GEMS AOD retrieval, employing a novel hourly surface reflectance database generated through the minimum reflectance method, which integrates climatological minimum reflectance values for each pixel within a ±15-day window over a two-year period, along with monthly background AOD data. This novel

- Deleted:** time. In addition,
- Deleted:** these
- Deleted:** are considered in the comparison for
- Formatted:** Font color: Text 1, English (US)
- Formatted:** Font color: Text 1, English (US)
- Formatted:** Font color: Text 1, English (US)
- Deleted:** .
- Deleted:** products
- Deleted:** the wavelength of
- Deleted:** products are
- Formatted:** Font color: Text 1, English (US)
- Formatted:** Font color: Text 1, English (US)
- Formatted:** Font color: Text 1, English (US)
- Formatted:** Font color: Text 1, English (US)
- Formatted:** Font color: Text 1, English (US)
- Deleted:** 354,
- Deleted:** , and, 550
- Deleted:** d
- Deleted:** 443nm by a combined use
- Formatted:** Font color: Text 1, English (US)
- Formatted:** Font color: Text 1, English (US)
- Formatted:** Font color: Text 1, English (US)
- Formatted:** Font color: Text 1
- Formatted:** Font color: Text 1
- Deleted:** smoke, non-absorbing) of
- Formatted:** Font color: Text 1
- Formatted:** Font color: Text 1
- Deleted:** for the
- Formatted:** Font color: Text 1
- Formatted:** Font color: Text 1
- Formatted:** Font color: Text 1
- Formatted:** Font color: Text 1
- Deleted:** is applied
- Formatted:** Font color: Text 1
- Formatted:** Font color: Text 1
- Formatted:** Font color: Text 1
- Formatted:** Font color: Text 1
- Deleted:** %.
- Deleted:** of
- Deleted:** , followed by
- Deleted:** Second
- Deleted:** are validated
- Deleted:** the
- Deleted:** , which are further inter-compared among each other
- Deleted:** 1
- Deleted:** exhibit

surface reflectance estimation from GEMS AOD retrieval is shown effective. In summary, GEMS consistently underestimates AOD, especially at 680 nm, compared to AERONET AOD. EPIC and TROPOMI, while tending to overestimate AOD in dust cases due to underestimated surface reflectance, show a more accurate dust aerosol model than for smoke.

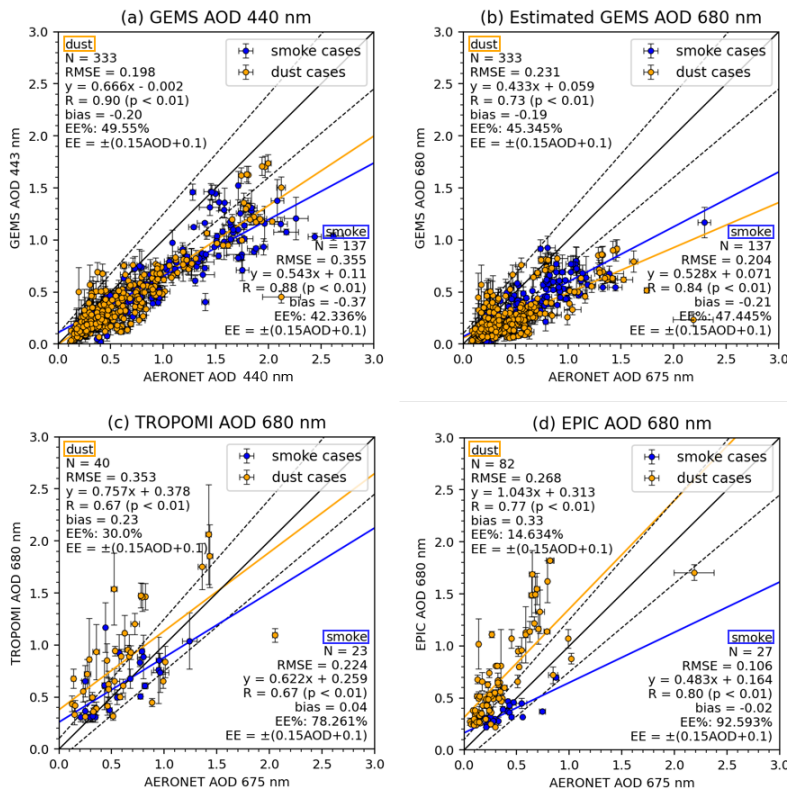


Figure 3. Comparison of GEMS, TROPOMI, and EPIC AOD with AERONET AOD for all cases. The blue and yellow dots denote smoke and dust cases, respectively. (a) Comparison of GEMS AOD at 443 nm with AERONET AOD at 440 nm. (b) Comparison of estimated GEMS AOD at 680 nm, (c) TROPOMI AOD at 680 nm, and (d) EPIC AOD at 680 nm with AERONET AOD at 675 nm. The solid black line is the 1:1 line, the solid lines are the regression lines, and the dotted lines are error envelopes for AOD ($EE = \pm(0.15 AOD + 0.1)$). Annotated are the number of scatter points (N), root mean square error (RMSE), correlation coefficient (R), significance level (p), mean bias, and the percentage of data points within the error envelop (EE). Satellite data points only with a standard deviation less than 0.3 are shown for spatial consistency.

Following the validation with AERONET AOD, Fig. 4 shows the comparison of GEMS AOD with TROPOMI and EPIC AOD, presented separately for dust and smoke cases. For dust cases, GEMS AOD is significantly lower compared with TROPOMI and EPIC, with negative mean biases of -0.44 and -0.53 for EPIC and TROPOMI, respectively. The inaccuracy of the GEMS dust aerosol model, as identified in the previous AERONET validation (Fig. 3), have notable impact on the

Deleted: (b) Estimated

Deleted: line is

Formatted: Justified

Deleted: ¶

significant difference of GEMS AOD with TROPOMI and EPIC. Furthermore, surface reflectance issues observed in TROPOMI and EPIC further contribute to this disparity. Specifically, surface reflectance estimates for land surfaces from TROPOMI and EPIC may need refinement, as GEMS AOD values close to zero tend to be higher in TROPOMI and EPIC over land but not observed over water (Fig. S3). The smoke cases show a stronger agreement compared to dust cases, as indicated by decreased negative biases from -0.44 (-0.53) to -0.08 (-0.12) and RMSE values from 0.42 (0.45) to 0.24 (0.17) for TROPOMI (EPIC). The agreement is particularly robust between GEMS and EPIC, as indicated by a high R-value of 0.73. While the smoke aerosol model employed in TROPOMI and EPIC is not as effective as the dust model, its impact on the comparison is relatively minor. These factors on the aerosol model including aerosol properties, fine mode fraction, and the phase function, as well as the SSA, can largely influence the accuracy of AOD retrievals. Furthermore, AOD sensitivity on changing SSA and surface reflectance is shown in Fig. S4. A detailed table including the aerosol models employed in the AOD retrieval is provided in Table S1.

Deleted: the

Deleted: s

Moved (insertion) [2]

Deleted: single scattering albedo

Deleted: the Supplementary (

Deleted:).

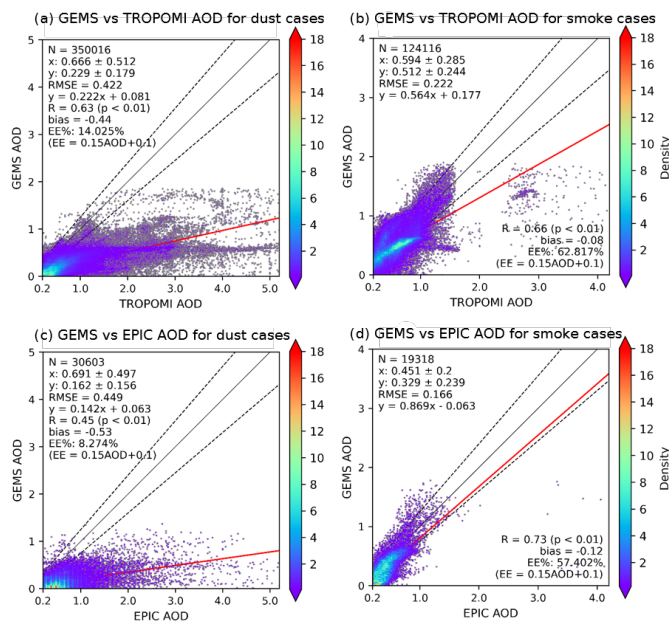


Figure 4. GEMS AOD compared with the corresponding TROPOMI and EPIC products for dust and smoke cases. Scatter density plots of (a) GEMS AOD versus TROPOMI AOD for dust cases, (b) same as (a) but for smoke cases, (c) GEMS AOD versus EPIC AOD for dust cases, and (d) same as (c) but for smoke cases. Black solid line is the one-to-one line, and the red solid line is the regression line. The dotted lines on the AOD comparison plots (a), (c), indicates error envelopes ($EE = \pm 0.15 AOD + 0.1$). TROPOMI and EPIC AOD does not have retrieval for less than 0.2, therefore, the figures axis start from where the data exists.

3.2 UVAI intercomparison

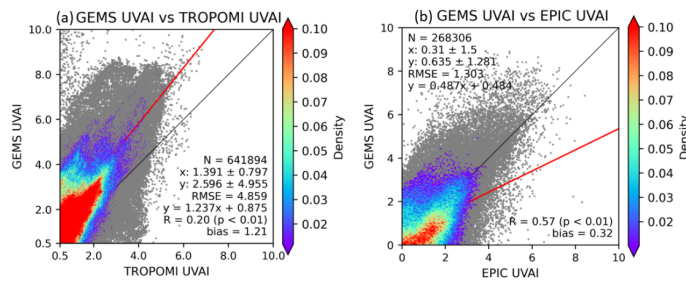
1040 The UVAI products of the three satellites are compared, [since UVAI is used as a criterion to focus on retrieving](#) absorbing aerosols for the current TROPOMI and EPIC AOC retrievals. Figure 5 compares GEMS UVAI with TROPOMI UVAI (Fig. 5a) and EPIC UVAI (Fig. 5b) for all cases. Compared with TROPOMI, GEMS UVAI is systematically higher with a positive mean difference of 1.21. Compared with EPIC, GEMS also exhibits a positive bias, although to a lesser extent (0.32), and shows a higher correlation ($R = 0.57$). This suggests that when employing UVAI as a filtering criterion for identifying absorbing aerosols in the EPIC and TROPOMI AOC retrievals, it is important to establish a threshold that takes into account the differences among these distinct products. The differences in the GEMS, TROPOMI, and EPIC UVAI products can be caused by several reasons. First, different wavelengths are used to derive the UVAI product: GEMS UVAI is derived from radiances at 354 nm and 388 nm, whereas TROPOMI and EPIC UVAs are derived from radiances at 340 nm and 380 nm. Additionally, [pressure assumption](#) and [resolution differences](#) can cause the differences of their UVAI retrievals. [We included EPIC and TROPOMI UVAI comparison scatter plot in Fig. S5.](#) To summarize, GEMS UVAI is systematically higher than TROPOMI and is more comparable to EPIC.

Deleted: because

Deleted: exclude non-

Deleted: different surface altitude

Deleted: reflectance



1055 **Figure 5.** Comparison of GEMS UVAI with corresponding TROPOMI and EPIC products. Scatter density plots illustrating (a) GEMS UVAI vs. TROPOMI UVAI and (b) GEMS UVAI vs. EPIC UVAI. The one-to-one line is represented by a black solid line, while the regression line is shown in red. Dust and smoke cases are combined due to their similarity. Note that TROPOMI UVAI does not include retrieval values below 0.5, thus the axis begins at a minimum value of 0.5.

3.3 ALH validation with CALIOP

1060 To ensure the comparison of the same variable, it is critical to account for differences arising from different ALH definitions as detailed in Section 2.2. As such, the ALH values of all passive sensors are converted to AOC following the CALIOP AOC definition when validated by CALIOP data. The comparison between the derived AOC for the three passive sensors and the CALIOP AOC is depicted in Fig. 6. Both EPIC and TROPOMI show higher AOC values compared to CALIOP, with a bias of 0.8 km for both sensors. Additionally, the RMSE for EPIC and TROPOMI are 1.25 km and 1.31 km, respectively. In contrast, GEMS shows a minimal bias, accompanied by a lower RMSE of 0.75. Despite the overestimation observed in EPIC and TROPOMI, their correlation with CALIOP is notably high ($R=0.75$ and $R=0.71$ respectively), while GEMS exhibits a slightly lower correlation ($R=0.64$). The major contribution to the overestimations observed in EPIC and TROPOMI come from the smoke cases over Southeast Asia (B4, B5, and B6). This suggests a potential issue with the smoke aerosol model in the EPIC and [TROPOMI AOC algorithms](#) when applied over Southeast

Deleted: GEMS

Asia, which warrants further investigation. Furthermore, AOCCH sensitivity on changing surface reflectance and SSA is shown in Fig. S4.

GEMS AEH algorithm retrieves both absorbing and non-absorbing aerosols, resulting in a larger dataset available for comparison. In contrast, EPIC and TROPOMI exclusively retrieve AOCCH for absorbing aerosols, which are determined based on UVAI (e.g., UVAI > 1 for TROPOMI and UVAI > 1.5 for EPIC). It is therefore desirable to assess the GEMS AEH retrieval accuracy under different aerosol characteristics. We categorize GEMS aerosol retrievals into two groups using a GEMS UVAI threshold of 3 (UVAI < 3 and UVAI ≥ 3) in the subsequent analyses (Fig. 6c-d). The overall agreement between GEMS and CALIOP is better for aerosols with UVAI ≥ 3 than those with UVAI < 3, particularly for dust cases, as evidenced by a higher R-value (0.75 compared to 0.42) and a lower RMSE (0.33 compared to 0.89). The improved performance for UVAI ≥ 3 can be attributed to the stronger signals of aerosol layers detected in the O₂-O₂ absorption band. Furthermore, as observed in Fig. 6b, the mean bias of AOCCH tends to be higher at 0.2 in smoke cases compared to -0.01 in dust cases.

Table 2. Comparison of GEMS, TROPOMI, and EPIC AOCCH with CALIOP AOCCH measurements in Figure 6a.

	N	EE (km)	RMSE (km)	Regression equation	\bar{x}	\bar{y}	R
GEMS	643	± 0.7	0.75	$y = 0.614x + 0.918$	2.1 ± 0.9	2.2 ± 0.9	0.64
EPIC	165	± 1.2	1.25	$y = 1.025x + 0.749$	2.5 ± 1.1	3.3 ± 1.4	0.75
TROPOMI	144	± 1.2	1.3	$y = 1.111x + 0.510$	2.4 ± 1.0	3.2 ± 1.5	0.71

Table 3. Comparison of GEMS with CALIOP AOCCH for dust and smoke cases in Figure 6b-d.

	Dust cases					Smoke cases				
	N	R	RMSE (km)	Bias (km)	Regression equation	N	R	RMSE (km)	Bias (km)	Regression equation
All	267	0.46	0.771	0	$y = 0.684x + 0.63$	376	0.52	0.707	0.2	$y = 0.293x + 1.949$
UVAI < 3	193	0.42	0.884	-0.01	$y = 0.562x + 0.684$	308	0.55	0.656	0.34	$y = 0.315x + 1.931$
UVAI ≥ 3	74	0.75	0.328	0.03	$y = 0.636x + 0.511$	68	0.57	0.542	-0.46	$y = 0.468x + 1.239$

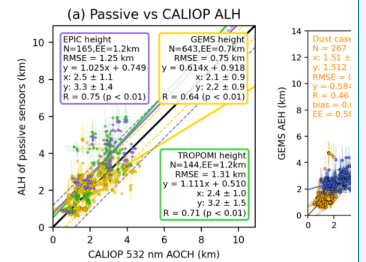
Deleted: AEH for

Deleted: L

Formatted: Subscript

Formatted: Subscript

Deleted: L



Deleted:

Moved down [3]: Figure 6.

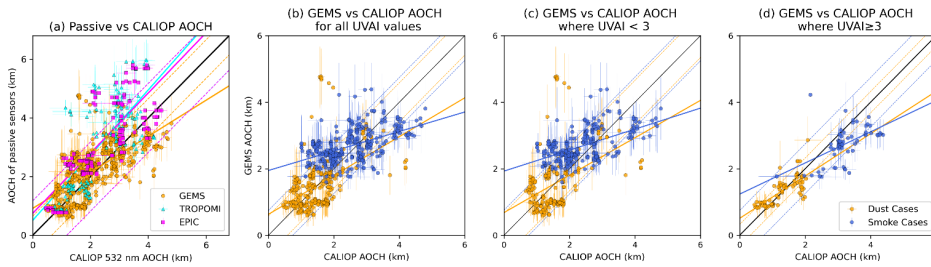


Figure 6. Comparison of GEMS, TROPOMI, and EPIC AOCCH with CALIOP measurements for all cases. (a) Scatterplot of GEMS (orange), TROPOMI (cyan), and EPIC (magenta) AOCCH versus CALIOP AOCCH. The black solid line indicates one-to-one line and the dotted lines represent error envelop within which one standard deviation data points are for each passive satellite product. Panels (b) – (d) are scatter plots of GEMS versus CALIOP AOCCH: (b) is for all data points, (c) is AOCCH where GEMS UVAI < 3, and (d) is for AOCCH where GEMS UVAI ≥ 3. For (b) – (d), orange dots indicate data points for dust cases and blue dots for smoke cases.

Based on a 2% measurement uncertainty for the EPIC DOAS ratios Geogdzhayev and Marshak (2018), the theoretical AOCCH retrieval error is shown to remain below 1.25 km for vegetated surface when AOCCH exceeds 1 km (Xu et al., 2019). Our analysis shows that the RMSE from all error sources, including measurement and retrieval uncertainties, evaluated between EPIC and CALIOP is approximately 1.25 km, which aligns with the retrieval error. The TROPOMI AOCCH algorithm builds upon the framework established by the EPIC algorithm (Xu et al., 2019), with some adjustments for TROPOMI. Measurement uncertainty for TROPOMI is estimated to be 1 – 2 % (Kleipool et al., 2018). In addition to instrument errors, TROPOMI AOCCH algorithm incorporates the convolution of TROPOMI spectral data, introducing potential additional uncertainty. Our study indicates an RMSE of 1.31 km for all error sources for TROPOMI AOCCH. Assuming retrieval error similar to EPIC, this uncertainty appears reasonable. The GEMS AEH algorithm originates from Park et al. (2016), who performed an error analysis for OMI. The instrument error was indicated to be less than 10 m, stemming from a spectral wavelength error of 0.02 nm, with the total error ranging from 739 to 1276 m depending on aerosol types. Meanwhile GEMS has a spectral calibration accuracy of 0.002 nm (Kang et al., 2020). Our study demonstrates an RMSE of GEMS ALH at 0.75 km, falling within the theoretical retrieval error.

3.4 Passive ALH inter-comparison

Upon resampling GEMS products to match the spatial resolution of TROPOMI and EPIC, we synchronize the observation times through linear interpolation of the hourly GEMS products to facilitate a pixel-by-pixel comparison for all ALH products. To address the possible discrepancies stemming from different ALH definitions mentioned in Section 2.2, GEMS AEH is converted to align with the EPIC and TROPOMI AOCCH definition. Furthermore, we categorize GEMS aerosol retrievals into two groups (UVAI < 3 and UVAI ≥ 3), similar to the analyses in Section 3.3.

The results of the ALH inter-comparison for both dust and smoke cases are given in Fig. 7. GEMS AOCCH exhibits a narrower range compared to TROPOMI and EPIC, which can be attributed to the different range limits used in their algorithm lookup table (LUT). GEMS only allows AEH to vary within the range from 0.2 to 5 km (Park et al., 2023), while EPIC and TROPOMI AOCCH ranges from 0 to 9 km. Moreover, GEMS exhibits a negative mean difference of -0.25 and -0.62 when compared to EPIC and TROPOMI AOCCH, observed across all dust and smoke cases, and across both UVAI

- Moved (insertion) [3]
- Deleted: ALH
- Deleted: yellow
- Deleted: green
- Deleted: purple) ALH
- Deleted: AEH
- Deleted: ALH comparison for less absorbing aerosols (
- Deleted:),
- Deleted: absorbing aerosols (
- Deleted:),
- Deleted: cases. Annotated in blue are the statistics for smoke cases, and orange are for dust

Formatted: Keep with next

- Deleted: between GEMS
- Deleted: and TROPOMI and EPIC ALH

- Deleted: The
- Deleted: L
- Deleted: L
- Deleted: ,
- Deleted: use a LUT allowing the ALH to extend
- Deleted: (Park et al., 2023).
- Deleted: ALH

classifications. It is observed that aerosols with $UVAI \geq 3$ exhibit a stronger correlation with GEMS A_{OC}H compared with aerosols with $UVAI < 3$. This can be attributed to the O_2 or O_2-O_2 absorption band being more sensitive to aerosols with higher $UVAI$ values. Setting the $UVAI$ threshold to 4 enhances the statistical performance for $UVAI \geq 4$, with an increase in correlation coefficients from 0.48 to 0.61 for TROPOMI and 0.39 to 0.46 for EPIC (Fig. S6).

Although our study cases show no CALIOP A_{OC}H values above 5 km (Fig.6), TROPOMI and EPIC A_{OC}H retrievals indicate values exceeding this altitude. This is a combination of inaccurate cloud detection and inherent sensitivity in the retrieval process. While some areas are influenced by cloud contamination, most of the high A_{OC}H areas tend to have low AOD and not being influenced by clouds (Fig. S8 & S10). Since A_{OC}H is more sensitive to higher AOD (Xu et al., 2017), there is greater uncertainty in A_{OC}H retrievals in regions with lower AOD. Furthermore, these high A_{OC}H areas do not show high $UVAI$ values greater than 4; instead, they exhibit values around 1-2, using GEMS $UVAI$ as a reference. Therefore, both cloud detection inaccuracies and the low sensitivity of A_{OC}H retrieval to low AOD contribute to the observed high A_{OC}H in these areas, with the latter being more dominant in our selected cases.

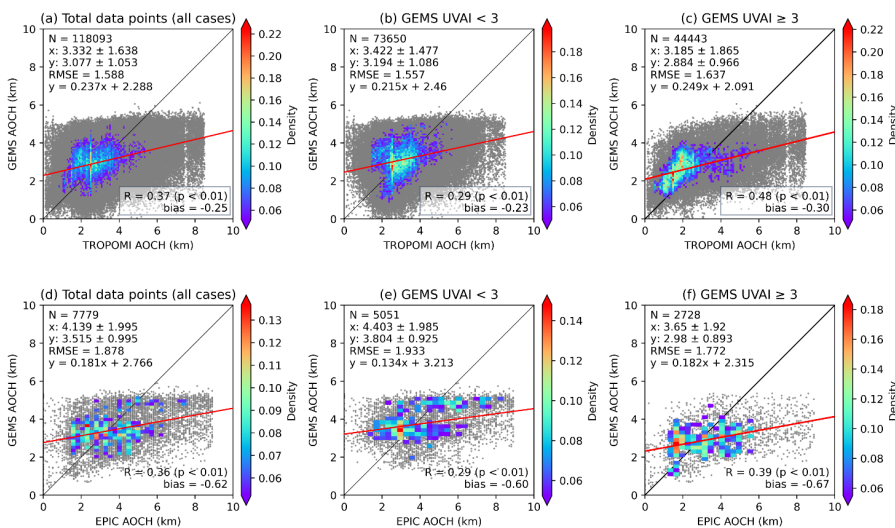


Figure 7. Intercomparison of GEMS, TROPOMI and EPIC A_{OC}H for dust and smoke cases as a function of $UVAI$. Density scatter plot of (a) GEMS and TROPOMI A_{OC}H comparison and (d) GEMS and EPIC A_{OC}H comparison for all dust cases. (b) and (c) are same as (a) but for GEMS $UVAI < 3$ and $UVAI \geq 3$, respectively. (e) and (f) are same as (d) but for GEMS $UVAI < 3$ and $UVAI \geq 3$, respectively. GEMS AEH converted into EPIC (or TROPOMI) A_{OC}H definition.

3.5 Diurnal variation of GEMS and EPIC ALH

We present a comparison of the diurnal variations of ALH in GEMS hourly observations with close-hourly EPIC measurements, which provide between two to six daily observations within our region of interest. Our study domain encompasses a wide geographical area, with selected cases spanning from March to August, introducing seasonal changes that result in significant shifts in the sun's position. Therefore, we define the relative local solar noon time for a given day

Deleted: E
 Formatted: Subscript
 Formatted: Subscript
 Formatted: Subscript
 Deleted: (
 Deleted: (EPIC) to 0.61 (TROPOMI) and
 Deleted: (EPIC). Detailed results are provided in the Supplementary (S2)
 Deleted:Page Break.....
 ... [83]

Deleted: ALH products from
 Deleted: L
 Deleted: L
 Deleted: the
 Deleted: variation
 Formatted: Font color: Text 1, English (UK)
 Formatted: Font color: Text 1, English (UK)
 Formatted: Font color: Text 1, English (UK)
 Formatted: Space Before: 12 pt, After: 12 pt
 Deleted: the
 Formatted: Font color: Text 1, English (UK)
 Deleted: ALH retrievals
 Formatted: Font color: Text 1, English (UK)
 Formatted: Font color: Text 1, English (UK)
 Deleted: broad
 Deleted: and the
 Deleted: ity
 Formatted: Font color: Text 1, English (UK)
 Formatted: Font color: Text 1, English (UK)
 Formatted: Font color: Text 1, English (UK)
 Formatted: Font color: Text 1, English (UK)
 Deleted: resulting
 Deleted: local
 Formatted: Font color: Text 1, English (UK)
 Formatted: Font color: Text 1, English (UK)
 Formatted: Font color: Text 1, English (UK)

200 as the point when the solar zenith angle at a particular location reaches its minimum value. Using this relative local solar noon time as the central reference point, GEMS and EPIC products for the day are adjusted to relative local solar time (LST) accordingly. Additionally, GEMS AEH was converted into the AOCHE definition. Figure 8 illustrates the hourly diurnal variations of both GEMS and EPIC AOCHE.

205 The diurnal pattern of EPIC AOCHE values reveals a notable ascent in the morning, starting from heights below 3 km around 7-8 LST, peaking at approximately 4.5 km during 11-12 LST, followed by a marginal decline to approximately 3.5 km at 14-15 LST. Conversely, GEMS AOCHE remains relatively stable (around 4 km) until a more pronounced descent occurs after 10 LST, reaching less than 3 km at 14-15 LST. Note that most of the time, GEMS AOCHE values are lower compared to EPIC. The diurnal variation of AOCHE reveals a slightly different pattern when UVAI exceeds 3 (Fig. 8b). GEMS AOCHE when UVAI > 3 shows a gradual increase until around 10-11 LST, followed by a notable decline, consistently maintaining lower AOCHE values compared to the dataset inclusive of all UVAI values. Conversely, EPIC AOCHE remains relatively steady until experiencing a rise between 10-14 LST, subsequently declining at 14-15 LST. 210 There are notable differences in AOCHE diurnal variation between GEMS and EPIC, with GEMS showing a significant decrease throughout the daytime, whereas EPIC exhibits a gradual increase followed by a subsequent drop.

215 Previous studies indicate that ALH tends to be higher in the afternoon, a phenomenon that may be partially affected by the PBLH. Xu et al. (2017) found higher EPIC AOCHE in the afternoon, possibly indicating a relationship with the diurnal evolution of tropospheric convection. Lee et al. (2019) observed that aerosol heights tend to rise in the afternoon and early evening, likely due to the development of the boundary layer's mixed layer. Lu et al. (2023) conjecture that the diurnal cycle (rising in the morning and descending in the afternoon) of Saharan dust plume height is a consequence of the diurnal variation in solar heating, which leads to thermal buoyancy lifting the dust layer, combined with the diurnal evolution of the boundary layer. Unfortunately, our dataset lacks sufficient information beyond 15 LST, making it challenging to discern the relationship between AOCHE and PBLH, particularly when the PBL collapses in the late afternoon. Therefore, we 220 examined three years of Modern-Era Retrospective Analysis for Research and Applications, Version 2 (MERRA-2) data from 2021 to 2023, focusing on March within the East Asia domain. MERRA-2 AOCHE is defined same as the CALIOP AOCHE in the manuscript, weighted by optical depth at each vertical layer using aerosol extinction vertical profiles. A similar diurnal variation is observed between the PBLH and MERRA-2 AOCHE calculated with the aerosol extinction below the PBLH (Fig. S7). This indicates that when most aerosols locate within the PBL, diurnal variation is affected by the PBL process, which changes the PBLH during daytime. The diurnal variation of EPIC AOCHE from Fig. 8 is consistent with the MERRA-2 PBLH and AOCHE calculated by extinction below the PBL, as ascending throughout the morning and descending after 2 pm local time, although EPIC AOCHE values are higher than MERRA-2 AOCHE, due to its constraint by PBLH. The diurnal variation of GEMS and MERRA-2 AOCHE show similarities for the afternoon decrease. However, GEMS AOCHE, which shows an overall decrease throughout the day, does not coincide with the MERRA-2 data, which 225 shows an increase until 14 local time. Despite the comparison of ALH diurnal variation from satellite observations and model reanalysis, the validation of the diurnal variation of ALH still remains a significant challenge due to a lack of spatially and temporally resolved active remote sensing measurements. In addition, for passive remote sensing, potential artifacts such as scattering angle bias for geostationary satellites and contamination of cloud edges may influence the diurnal cycle of aerosol height. Additionally, the limited data points obtained from selected case study dates could introduce 230 uncertainty when attempting to generalize the ALH diurnal cycle.

- Deleted: attains
- Deleted: With the
- Formatted ... [84]
- Formatted ... [85]
- Deleted: local
- Deleted: serving
- Deleted: local
- Formatted ... [86]
- Formatted ... [87]
- Formatted ... [88]
- Deleted: displays
- Formatted ... [89]
- Deleted: ALH within bi-hourly intervals. The colors of th ... [90]
- Formatted ... [91]
- Deleted: variation
- Deleted: L
- Deleted: exhibits a
- Deleted: rise
- Deleted: ~ 4
- Deleted: , reaching its peak
- Formatted ... [92]
- Formatted ... [93]
- Formatted ... [94]
- Formatted ... [95]
- Formatted ... [96]
- Formatted ... [97]
- Deleted: local noon (~
- Formatted ... [98]
- Deleted:),
- Formatted ... [99]
- Deleted: an afternoon
- Formatted ... [100]
- Deleted: (4
- Formatted ... [101]
- Deleted:). This diurnal variation of EPIC ALH reflects ... [102]
- Formatted ... [103]
- Deleted: ALH also show morning ascending and afterno ... [104]
- Formatted ... [105]
- Deleted: EPIC to be as low as 3 km. Furthermore
- Formatted ... [106]
- Deleted: ALH is consistently
- Formatted ... [107]
- Deleted: than that of EPIC ALH. For aerosols of UVAI ... [108]
- Formatted ... [109]
- Deleted: This implies
- Deleted: smoke and dust plumes, primarily consisting of ... [112]
- Deleted: UVAI values,
- Formatted ... [110]
- Formatted ... [111]
- Formatted ... [113]
- Deleted: adhere to
- Formatted ... [114]
- Formatted ... [115]
- Deleted: dynamics consistently
- Deleted: day.
- Formatted ... [116]
- Formatted ... [117]

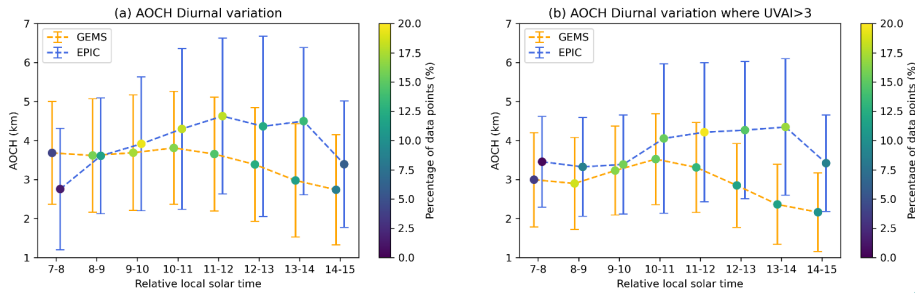


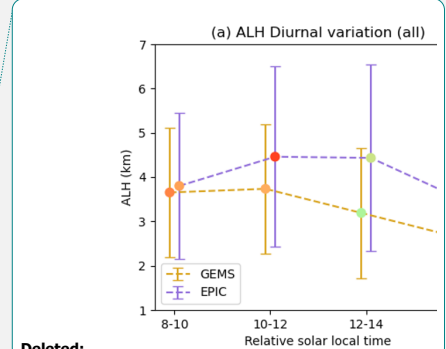
Figure 8. Diurnal variation of AOCCH between GEMS and EPIC at relative local solar times. (a) AOCCH diurnal variation for all pixels, (b) same as (a), but only for UVAI > 3. Yellow lines indicate GEMS AOCCH error bar (standard deviation), blue indicates the corresponding of EPIC AOCCH, dots represent the percentage of data points during each hour. GEMS AEH has been adjusted to match the EPIC AOCCH definition.

4 Case study

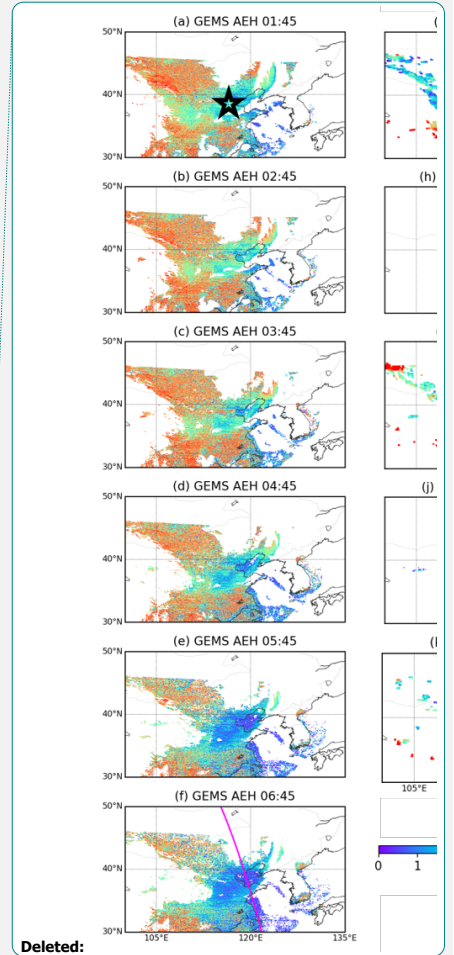
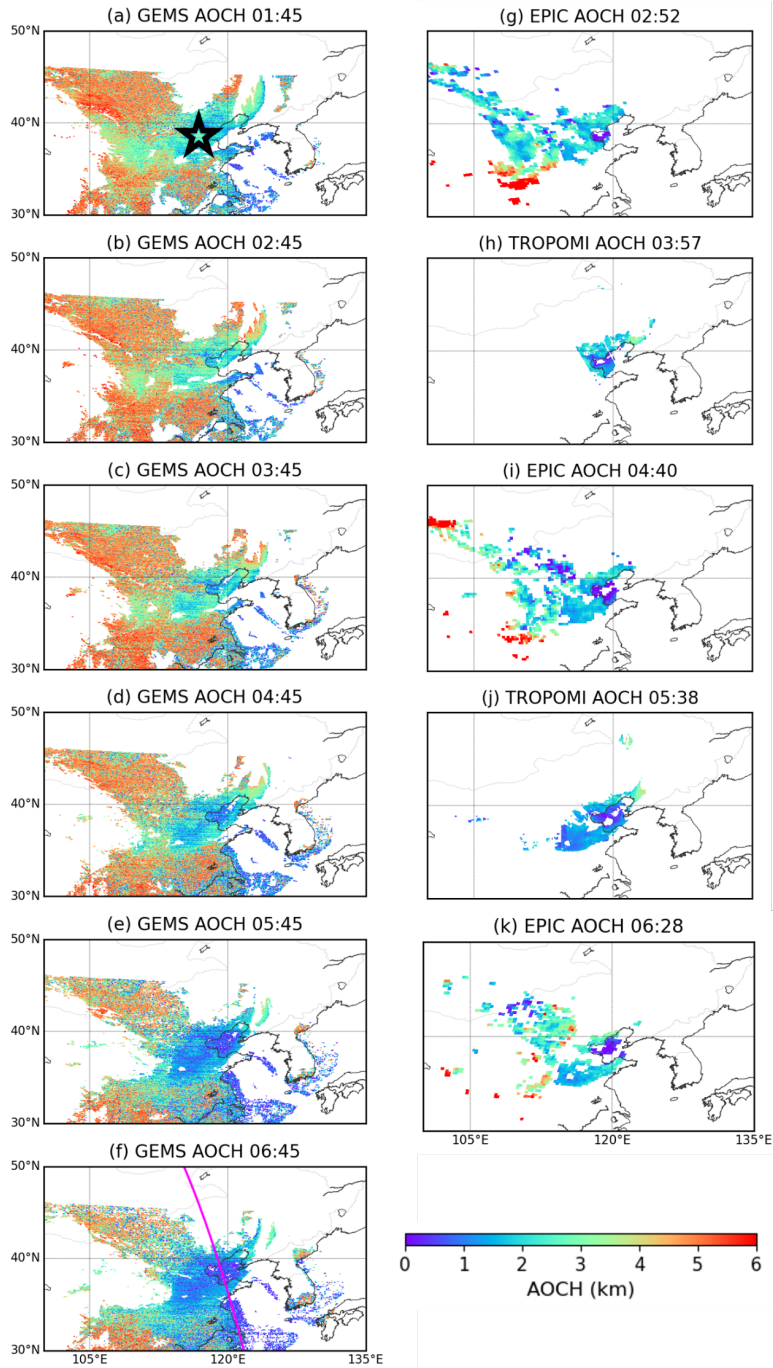
We present detailed analysis of GEMS, EPIC, and TROPOMI ALH retrievals during transport for a dust (D1) and a smoke plume (B6). Diurnal variations of ALH from GEMS and EPIC for the dust or smoke cases are also discussed.

4.1 Dust plume case

Figure 9 shows GEMS, TROPOMI and EPIC ALH retrievals for a selected dust case on March 28, 2021 (D1). GEMS AEH was adjusted to EPIC/TROPOMI AOCCH definition for consistent comparison. The first row presents GEMS AOCCH, with magenta lines depicting CALIOP ground track over the GEMS map at the closest time of CALIOP measurement and the second row shows EPIC and TROPOMI AOCCH aligned with the closest GEMS measurement time. The AOD, UVAI maps for all satellites are shown in the Fig. S8. This case is a spring dust event, originating from the Gobi Desert a few days before it reached over China on 28 March 2021, specifically near Beijing, indicated by the black star on the middle of the research domain (Fig. 9a). In the dust plume area, GEMS AOCCH peaks at high values (~3 km) at 01:45 and 02:45 (Fig. 9a-b) before gradually decreasing to ~1.5 km by 06:45 (Fig. 9f). In contrast, EPIC and TROPOMI AOCCH maintain a relatively consistent values at ~2 km. Likely, hourly GEMS observations reveal clear hourly variations, whereas discerning diurnal changes is challenging with TROPOMI and EPIC.



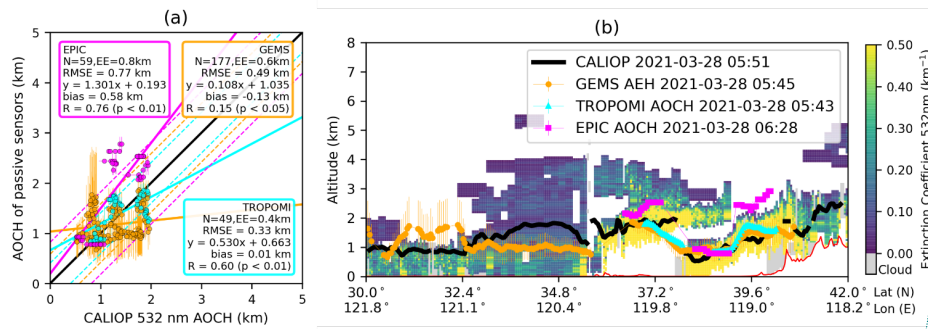
- Deleted:
- Deleted: L
- Deleted: local
- Deleted: of 8:00 – 10:00, 10:00 – 12:00, 12:00 – 14:00, and 14:00 – 16:00. (a) ALH
- Deleted: purple
- Deleted: number
- Deleted: time frame
- Deleted: In particular, the diurnal variation
- Deleted: plumes is
- Deleted: L
- Deleted: L
- Deleted: GEMS AEH was adjusted to EPIC/TROPOMI AOCCH definition for consistent comparison.
- Moved up [2]: S3).
- Deleted: products
- Deleted: Supplementary (
- Deleted: L
- Deleted: L
- Deleted: ~
- Deleted: multiple



1355 Figure 9. The first column (a – f) shows hourly GEMS A_{OC}H (GEMS AEH adjusted to EPIC/TROPOMI A_{OC}H definition) from (a) 01:45 to (f) 06:45 (UTC). Second column (g – k) EPIC and TROPOMI A_{OC}H aligned with the nearest GEMS observation times for a dust plume event on 28 March 2021. The magenta line on the GEMS maps in the first column, indicates the CALIOP ground tracks, which have the closest observation times with GEMS.

1360 After converting all passive ALH products to the CALIOP A_{OC}H definition, the comparison of GEMS, TROPOMI, and EPIC A_{OC}H with CALIOP A_{OC}H for this dust case was conducted and is shown in Fig. 10. GEMS has the greatest number of data points due to its valid retrievals for both scattering and absorbing aerosols and its high spatial resolution. For this specific case, EPIC A_{OC}H show the highest correlation coefficient among all ($R = 0.74$) and TROPOMI A_{OC}H also has a high correlation coefficient ($R = 0.6$) and the lowest RMSE of 0.33 km. Although CALIOP can capture multiple layers of aerosols from extinction coefficients, passive sensors used in this study assume single vertical profile, thereby retrieving A_{OC}H where stronger signal is detected. In Fig. 10b, CALIOP identifies discontinuous high extinction coefficients at 38° N latitude and 119.5° E longitude, leading to a discontinuous CALIOP A_{OC}H. While EPIC A_{OC}H shows the discontinuity from the absence of the retrieval in between the two layers, GEMS and TROPOMI exhibit continuous retrievals, consistently following the stronger signal. Consequently, discrepancies between CALIOP and passive sensors may be more pronounced in the presence of multiple aerosol layers. Further investigation is needed for a comprehensive study of multi-layered aerosol plumes.

1370

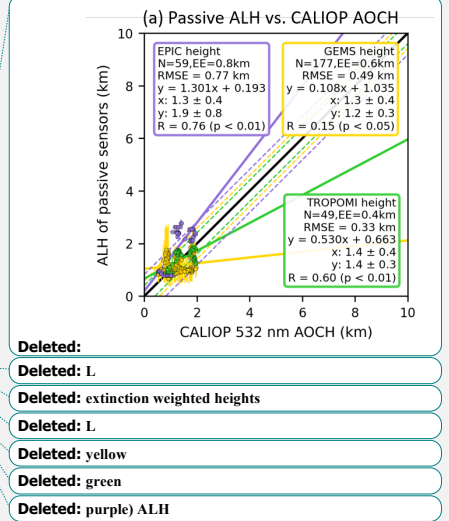


1375 Figure 10. Comparison of GEMS, TROPOMI and EPIC A_{OC}H with CALIOP A_{OC}H for a dust case over East Asia on 28 March 2021. (a) GEMS, TROPOMI, and EPIC A_{OC}H on the vertical profile of CALIOP aerosol extinction curtain plot. (b) Scatterplot of GEMS (orange), TROPOMI (cyan), and EPIC (magenta) versus CALIOP A_{OC}H. All ALH products converted into the CALIOP A_{OC}H definition.

1380 Figure 11 shows the regional averaged ALH during this dust plume transport from 27 to 29 March 2021. To focus on the consistent area covered by the thickest dust plume, different UVAI thresholds were empirically selected. Pixels where UVAI values of their own products are higher than 3, 1, and 2 were considered for GEMS, TROPOMI, and EPIC, respectively. For CALIOP, collocated pixels along the track with GEMS UVAI > 3 were considered. Maps of regional ALH and UVAI for all products are provided in Fig. S9. The mean A_{OC}H values of the dust plume from all products show good agreement, falling within reasonable error range of < 1 km. From GEMS measurements, the dust plume locates at 4-5 km on 27th March, then descends to ~3 km during 28th March and keeps until 29th, similar as EPIC and TROPOMI measurements, indicating the deposition process of dust aerosols during transport. Although daily mean of the A_{OC}H

1385

- Deleted: First
- Deleted: ALH products presented in timely order
- Deleted: L
- Deleted: time of
- Deleted: measurement time
- Deleted: case
- Deleted: CALIOP ground tracks are shown as the
- Deleted: ALH map (
- Deleted:) where it has
- Deleted: Comparison
- Deleted: L
- Deleted: L
- Deleted: L
- Deleted: L
- Deleted: aerosol layer
- Deleted: L
- Deleted: two aerosol layers with a
- Deleted: . In contrast, passive sensors like



- Deleted:
- Deleted: L
- Deleted: extinction weighted heights
- Deleted: L
- Deleted: yellow
- Deleted: green
- Deleted: purple) ALH

- Deleted: the Supplementary (S4).
- Deleted: L

- Deleted: Since the number
- Deleted: GEMS measurement reach from 6 to 10 a day, GEMS ALH could catch ...

values change during the plume transport. GEMS show similar diurnal variation each day, increase in early morning followed by a consistent decrease throughout the daytime.

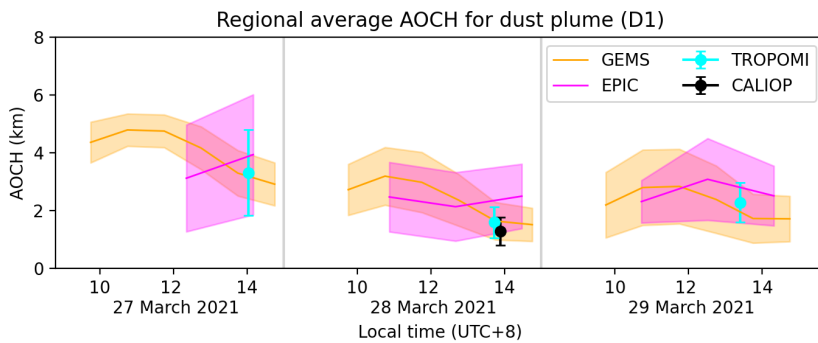
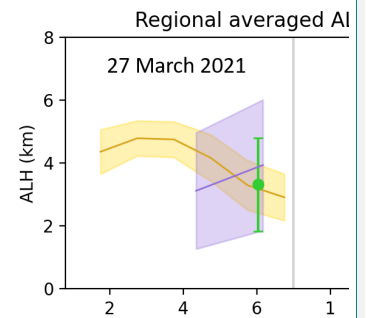


Figure 11. Time series plot of regional average AOCHE for a dust plume on 28 March 2021 (D1). AOCHE of GEMS, TROPOMI, and EPIC is represented as orange, cyan, and magenta, respectively. The lines and shadows indicate the mean and the standard deviation, respectively. CALIOP AOCHE is represented by the black error bar. GEMS AEH, EPIC AOCHE, and TROPOMI AOCHE are all converted to the CALIOP AOCHE definition.

4.2 Smoke plume case

Figure 12 displays ALH retrievals from GEMS with TROPOMI and EPIC for one of the selected smoke case on April 17, 2023 (B6). The first row displays GEMS AOCHE, converted from GEMS AEH to match the EPIC/TROPOMI AOCHE definition. The second row shows EPIC and TROPOMI AOCHE aligned with the closest GEMS measurement time. In addition, AOD and UVAI maps are provided in Fig. S10. This particular case is a smoke event in Southeast Asia, with the identified smoke plume situated predominantly over the northern areas of Laos and Thailand, shown in the central part of the domain (20° N, 100° E) indicated by the black star on Fig. 12a. Over the previous decades, the air quality in Southeast Asia has been periodically affected by the transboundary smoke and haze issue, primarily linked to slash-and-burn agriculture and land clearing practices, particularly during the dry season (Shi et al., 2014; Chang and Song, 2010). Focusing on the smoke plume that can be identified from EPIC/TROPOMI AOCHE retrieval for absorbing aerosols, GEMS AOCHE ranges from 3 to 5 km, while EPIC and TROPOMI consistently show values predominantly exceeding 4 km over land. The decrease in EPIC AOCHE spatial coverage throughout the day, coupled with an increase in AOCHE values (Fig. 12i & j), indicates the dissipation process of the smoke plume.

Deleted: dust
Deleted: during transport, compensating for
Deleted: lack of measurements from other satellite platforms (CALIOP, TROPOMI, EPIC).



Deleted:
Deleted: averaged ALH for absorbing aerosol
Deleted: case (
Deleted:). ALH
Deleted: yellow, green
Deleted: purple
Deleted: L

Deleted: ALH and
Deleted: ALH aligned with the closest GEMS measurement time. The second row features EPIC and TROPOMI ALH data,
Deleted: the Supplementary (S5). GEMS AEH was adjusted for consistent comparison with EPIC/TROPOMI AOCHE

Deleted: (Chang and Song, 2010; Shi et al., 2014). GEMS ALH, which retrieves both absorbing and non-absorbing aerosols, has broader coverage compared to EPIC/TROPOMI, which exclusively retrieves absorbing aerosols.
Deleted: solely
Deleted: , GEMS ALH
Deleted: ALH
Deleted: in
Deleted: pixels

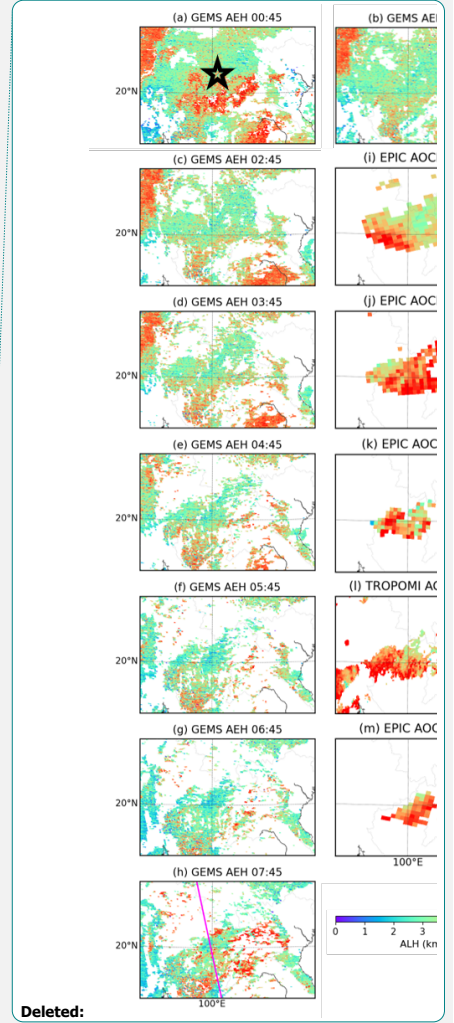
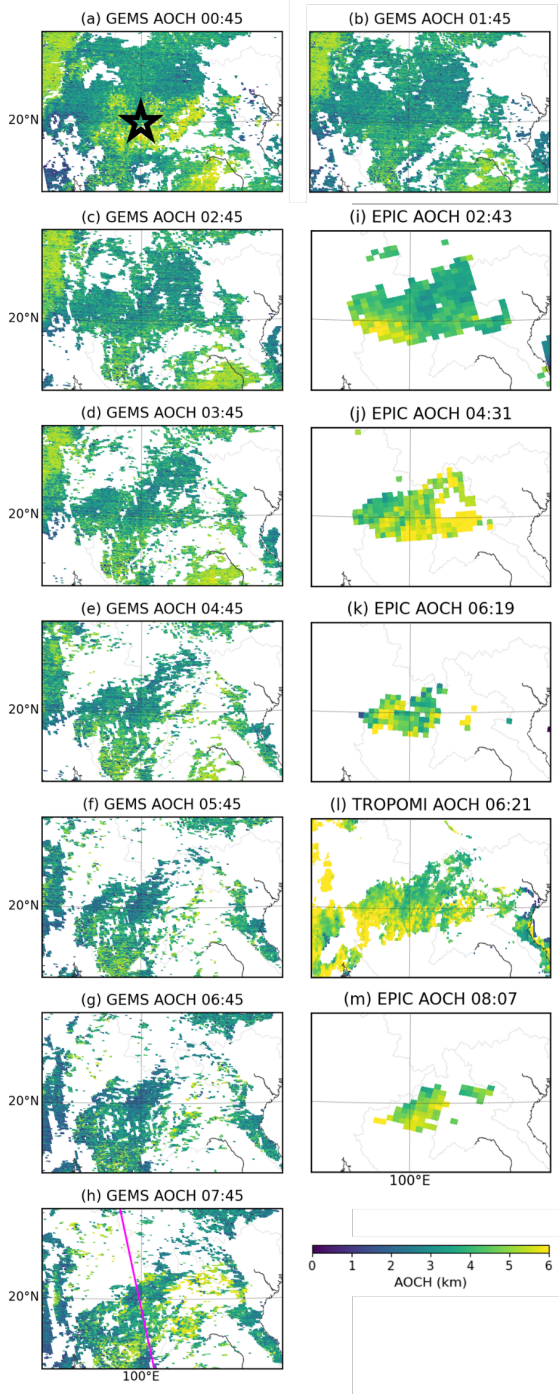


Figure 12. The first row (a – f) shows hourly GEMS A_{OC}H (GEMS AEH adjusted to EPIC/TROPOMI A_{OC}H definition) from (a) 00:45 to (f) 07:45 (UTC). Second row (g – i) EPIC and TROPOMI A_{OC}H aligned on the nearest GEMS measurement times for a smoke plume event on 17 April 2023. The magenta line on the GEMS maps in the first column indicates the CALIOP ground tracks, which have the closest observation times with GEMS.

Figure 13 presents a comparison with CALIOP A_{OC}H, specifically highlighting the northern regions of Laos and Thailand where the smoke plume is detected along the CALIOP ground track. GEMS AEH and EPIC/TROPOMI A_{OC}H values have been converted to the CALIOP A_{OC}H definition. GEMS and CALIOP A_{OC}H show comparability within the range of 2–4 km, as evidenced by a smaller RMSE of 0.75 km. On the contrary, EPIC and TROPOMI ALH values are approximately 2 km higher than CALIOP ALH, yet they display similar vertical distribution patterns of the smoke plume over the region of 19–20° N. This suggests that EPIC and TROPOMI A_{OC}H retrievals exhibit a systematic positive bias for aerosols over Southeast Asia, indicating the potential need for tuning in the related smoke model, including surface reflectance and aerosol properties like size distribution, refractive index, single scattering albedo. In general, GEMS demonstrates comparability with CALIOP A_{OC}H, whereas both EPIC and TROPOMI ALH tend to overestimate.

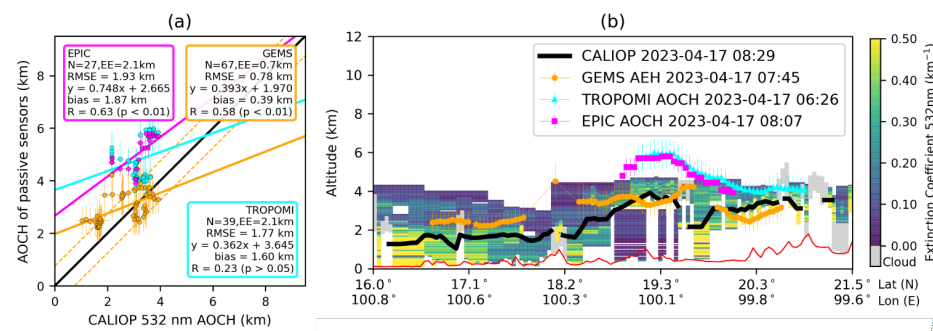
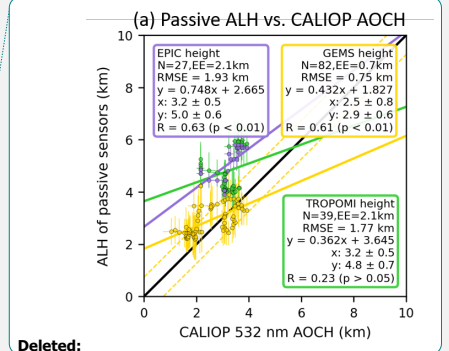


Figure 13. Same as Figure 11 but for a smoke case over Southeast Asia on 17 April 2023.

In Fig. 14, we present the regional averaged ALH for absorbing aerosols for this smoke case. UVAI thresholds are chosen to facilitate the comparison of ALH among GEMS, EPIC, and TROPOMI, ensuring a consistent focus on regions with comparable coverage of absorbing aerosols. UVAI thresholds for GEMS, TROPOMI, and EPIC, are set as 3, 1.5, and 2, respectively. Detailed regional ALH map from all products are provided in Fig. S11. Notably, since the CALIOP product is included, all GEMS AEH and EPIC/TROPOMI A_{OC}H values have been converted to the CALIOP A_{OC}H definition. In contrast to the dust case discussed in Section 4.1, this smoke plume shows little diurnal variation throughout the day, according to GEMS, and an overall slight increase observed by EPIC. Post 5 UTC time, GEMS and EPIC exhibit similar patterns, yet EPIC consistently registers ALH values approximately 2 km higher throughout the day. While the observation times of CALIOP do not align with the consecutive data of GEMS, the regional average of CALIOP A_{OC}H falls within the range of GEMS A_{OC}H. Additionally, the regional mean of TROPOMI A_{OC}H is higher than that of GEMS but lower than EPIC for this smoke plume.

- Deleted: First
- Deleted: products presented in timely order
- Deleted: times of
- Deleted: case
- Deleted: CALIOP ground tracks are shown in
- Deleted: s
- Deleted: ALH map of
- Deleted: time
- Deleted: L
- Deleted: In Fig. 13 and Fig. 14,
- Deleted: L
- Deleted: L
- Deleted: .
- Deleted: ALH
- Deleted: L



- Deleted:
- Deleted: the Supplementary (S6).
- Deleted: .
- Deleted: L
- Deleted: L
- Deleted: L

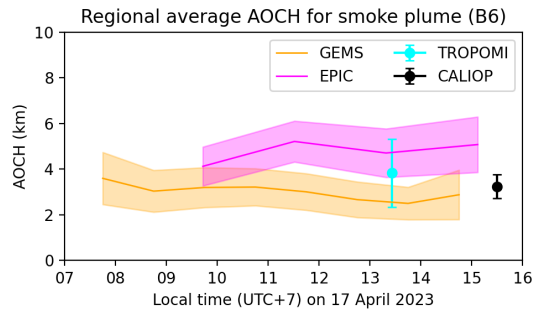


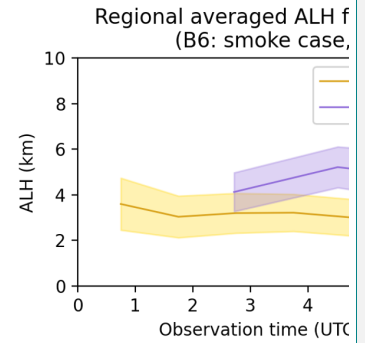
Figure 14. Time series plot of regional average APOCH for a smoke plume on 17 April 2023. APOCH of GEMS, TROPOMI, and EPIC is represented as orange, cyan, and magenta, respectively. The lines and shadows indicate the mean and the standard deviation, respectively. CALIOP APOCH is represented by the black error bar. GEMS AEH, EPIC APOCH, and TROPOMI APOCH are all converted to CALIOP APOCH definition.

5 Conclusion and discussion

Aerosol vertical distribution is important for assessing aerosol climate impact, surface air quality, and remote sensing of aerosols. In this study, we compared multiple aerosol layer height (ALH) products from satellite platforms of GEMS, EPIC, and TROPOMI that use oxygen (or oxygen dimer) absorption bands, specifically O_2-O_2 band for GEMS, and O_2-A and B bands for TROPOMI and EPIC. Several dust and smoke plume cases over different regions in Asia covered by the field of regard of GEMS were selected for comparison. Adjustments have been made to account for the inherent variations in the definitions of ALH among different products, ensuring an apple-to-apple comparison.

As part of the ALH retrieval evaluation, we also evaluated the AOD retrievals from GEMS, EPIC and TROPOMI with AERONET AOD and compared the UVAI among these satellite platforms. Compared with AERONET, GEMS AOD at 443 nm demonstrates a strong positive correlation in both dust ($R = 0.9$) and smoke cases ($R = 0.88$). Discrepancies arise at 680 nm for dust cases, indicating potential inaccuracies in GEMS dust aerosol model. TROPOMI and EPIC tend to overestimate AOD in dust cases due to underestimated surface reflectance. The inaccuracies in the GEMS dust aerosol model significantly contribute to the substantial differences in GEMS AOD compared to TROPOMI and EPIC, further compounded by inaccurate surface reflectance in TROPOMI and EPIC. In addition, GEMS UVAI is consistently larger than TROPOMI UVAI, by 1.2, whereas it shows a better agreement with EPIC UVAI with a smaller bias of 0.32.

Both EPIC and TROPOMI consistently overestimates ALH in comparison to CALIOP, with an approximate bias of 0.8 km. In contrast, GEMS ALH demonstrated minimal bias but exhibited a slightly lower correlation coefficient ($R = 0.64$). Categorizing GEMS aerosol retrievals based on a UVAI threshold of 3 revealed better overall agreement with CALIOP ALH for aerosols with $UVAI \geq 3$. While comparing GEMS with EPIC and TROPOMI, a narrower range in GEMS AEH was seen due in part to limitations in its algorithm lookup table (LUT) within the range of 0.2 to 5 km, while EPIC and TROPOMI had LUTs extending from 0 to 9 km.



- Deleted:
- Deleted: averaged ALH for absorbing aerosol
- Deleted: case (
- Deleted:)
- Deleted: L
- Deleted: yellow, green
- Deleted: purple
- Deleted: L
- Formatted: Normal
- Deleted: -
- Formatted: Subscript
- Formatted: Subscript
- Formatted: Subscript
- Deleted: aerosol layer height

1560 The diurnal pattern of EPIC AOCHE values shows a morning ascent and declining after noon, while GEMS remains
relatively stable until a more pronounced descent in the late morning and early afternoon. MERRA-2 data analysis indicates
a similar diurnal variation between PBLH and MERRA-2 AOCHE, suggesting that when most aerosols are within the PBL,
their diurnal variation is affected by the PBL process. The validation of the diurnal variation of ALH is very challenging
due to limited spatial and temporal resolution in active remote sensing measurements and potential artifacts in passive
remote sensing data.

Deleted: EPIC ALH showed a characteristic diurnal cycle aligning with conventional boundary layer development, whereas GEMS ALH values showed minimal morning variation and a subsequent afternoon decrease. Notably, for smoke and dust plumes, predominantly composed of absorbing aerosols with UVAI values exceeding 3, consistently follow the dynamics of the boundary layer throughout the day.

1565 Lastly, we presented a detailed analysis on both a dust case and a smoke case to compare differences in spatial and vertical distribution of ALH products, along with diurnal variations. EPIC and TROPOMI ALH show a strong correlation with CALIOP for both the discussed dust and smoke events; however, they tend to overestimate in the smoke case. In contrast, while GEMS ALH has a lower correlation, it consistently shows a smaller mean bias. Additionally, hourly GEMS ALH
1570 have the power to catch the diurnal variation of aerosol plumes during transport, compensating for the lack of measurements from other satellite platforms.

In conclusion, our comprehensive analysis provides a thorough evaluation of the performance and comparative assessment of ALH, AOD, and UVAI retrievals from GEMS, EPIC, and TROPOMI. The comparison of the ALH definition among
1575 different sensors highlights the need for standardization, ensuring a consistent basis for comparisons. Results from this study help enhance our understanding of aerosol plume characteristics, overcoming challenges associated with previously difficult aspects such as the comparison of ALH diurnal variations. Furthermore, we offer insights for future ALH product development by identifying and addressing the limitations in inputs from each retrieval algorithm, such as the impact of aerosol models and surface reflectance.

1580 Appendix A: List of acronyms

<u>AOD</u>	<u>Aerosol optical depth</u>
<u>SSA</u>	<u>Single scattering albedo</u>
<u>UV</u>	<u>Ultra-violet</u>
<u>TOA</u>	<u>Top of atmosphere</u>
<u>PM</u>	<u>Particulate matter</u>
<u>CALIOP</u>	<u>Cloud-Aerosol Lidar with Orthogonal Polarization</u>
<u>CALIPSO</u>	<u>Cloud-Aerosol Lidar and Infrared Pathfinder Satellite Observation</u>
<u>SNR</u>	<u>Signal-to-noise ratio</u>
<u>DOFS</u>	<u>Degrees of freedom for signal</u>
<u>PBL(H)</u>	<u>Planetary boundary layer (height)</u>
<u>CLARS-FTS</u>	<u>California Laboratory for Atmospheric Remote Sensing Fourier Transform Spectrometer</u>
<u>ALH</u>	<u>Aerosol layer height</u>
<u>IR</u>	<u>Infrared</u>
<u>AOCHE</u>	<u>Aerosol optical central height</u>
<u>AEH</u>	<u>Aerosol effective height</u>

<u>SCIAMACHY</u>	<u>Scanning Imaging Absorption spectroMeter for Atmospheric CHartographY</u>
<u>TROPOMI</u>	<u>TROPOspheric Monitoring Instrument</u>
<u>EPIC</u>	<u>Earth Polychromatic Imaging Camera</u>
<u>DSCOVR</u>	<u>Deep Space Climate Observatory</u>
<u>GEMS</u>	<u>Geostationary Environment Monitoring Spectrometer</u>
<u>OMI</u>	<u>Ozone Monitoring Instrument</u>
<u>UVAI</u>	<u>UV aerosol index</u>
<u>DOAS</u>	<u>Differential optical absorption spectroscopy</u>
<u>SZA</u>	<u>Solar zenith angle</u>
<u>SCD</u>	<u>Slant column density</u>
<u>LUT</u>	<u>Look-up table</u>
<u>VisAI</u>	<u>Visible aerosol index</u>
<u>HAF</u>	<u>Highly absorbing fine</u>
<u>NA</u>	<u>Non-absorbing</u>
<u>AERONET</u>	<u>AERosol RObotic NETwork</u>
<u>RMSE</u>	<u>Root mean square error</u>
<u>MBE</u>	<u>Mean bias error</u>
<u>NIR</u>	<u>Near-infrared</u>
<u>AOCH</u>	<u>Aerosol optical central height</u>
<u>SWIR</u>	<u>Shortwave infrared</u>
<u>TOMS</u>	<u>Total Ozone Mapping Spectrometer</u>
<u>AE</u>	<u>Angstrom exponent</u>
<u>LST</u>	<u>Local solar time</u>
<u>MERRA-2</u>	<u>Modern-Era Retrospective Analysis for Research and Applications, Version 2</u>
<u>MPLNET</u>	<u>NASA Micro-Pulse Lidar Network</u>

Code availability

Aerosol layer height and aerosol optical depth analysis codes are available at <https://doi.org/10.5281/zenodo.10408292>.

Data availability

1595 TROPOMI AOC_H dataset used in this study can be found at <http://doi.org/10.5281/zenodo.10407271>. EPIC level 2 AOC_H data can be found at https://opendap.larc.nasa.gov/opendap/DSCOVR/EPIC/L2_AOCH_01/contents.html. GEMS L2 AEH V2.0 and AERAOD V2.0 can be downloaded from the Environmental Satellite Center website (<https://nesc.nier.go.kr/en/html/datasvc/index.do>). CALIOP level 2 data are from <https://asdc.larc.nasa.gov/data/>. Earthdata registration is required for the access to the CALIOP level 2 data.

Deleted: with UIowa's AOC_H-O2AB algorithm

Deleted: (from UIowa's AOC_H-O2AB algorithm)

Author contribution

1600 HK performed data curation, formal analysis, visualization, and writing most of the original draft. XC was responsible for conceptualization, formal analysis, methodology, writing parts of the original draft, and supervision. XC also provided TROPOMI AOC_H data and ZL provided the EPIC AOC_H data. JW provided comments on the research design and supervision. MZ contributed on formal analysis and GRC provided comments on writing focus and structure. SSP provided GEMS AEH V2.0 data. All authors including JK provided comments and edited the manuscript.

1605 Competing interests

Jun Wang is a member of the editorial board of *Atmospheric Measurement Techniques*.

Acknowledgements

1610 This was supported by NASA EPIC/DSCOVR Science team program (80NSSC22K0503), NOAA (1305M322PNRMT0542, 1305M323PNRMN0450, NA23OAR4310303), and the NASA SERVIR grant (80NSSC23K0244). We thank the National Institute of Environmental Research of South Korea for providing GEMS satellite data. We acknowledge the public availability of CALIOP level 2 aerosol profile data from the NASA Langley Research Center Atmospheric Science Data Center. We thank all Principal Investigators, Co-Principal Investigators and their staff for establishing and maintaining the AERONET sites used in this investigation.

Deleted:) and

Deleted: L

References

- 1620 Babu, S. S., Moorthy, K. K., Manchanda, R. K., Sinha, P. R., Satheesh, S. K., Vajja, D. P., Srinivasan, S., and Kumar, V. H. A.: Free-tropospheric black carbon aerosol measurements using high altitude balloon: Do BC layers build "their own homes" up in the atmosphere?, *Geophys Res Lett*, 38, <https://doi.org/10.1029/2011gl046654>, 2011.
- Chang, D. and Song, Y.: Estimates of biomass burning emissions in tropical Asia based on satellite-derived data, *Atmos. Chem. Phys.*, 10, 2335-2351, <https://doi.org/10.5194/acp-10-2335-2010>, 2010.
- 1625 Chen, X., Xu, X. G., Wang, J., and Diner, D. J.: Can multi-angular polarimetric measurements in the oxygen-A and B bands improve the retrieval of aerosol vertical distribution?, *J Quant Spectrosc Ra*, 270, <https://doi.org/10.1016/j.jqsrt.2021.107679>, 2021a.
- Chen, X., Wang, J., Xu, X. G., Zhou, M., Zhang, H. X., Garcia, L. C., Colarco, P. R., Janz, S. J., Yorks, J., McGill, M., Reid, J. S., de Graaf, M., and Kondragunta, S.: First retrieval of absorbing aerosol height over dark target using TROPOMI oxygen B band: Algorithm development and application for surface particulate matter estimates, *Remote Sensing of Environment*, 265, 18, <https://doi.org/10.1016/j.rse.2021.112674>, 2021b.
- 1630 Chimot, J., Veeffkind, J. P., Vlemmix, T., de Haan, J. F., Amiridis, V., Proestakis, E., Marinou, E., and Levelt, P. F.: An exploratory study on the aerosol height retrieval from OMI measurements of the 477 nm O₂-O₂ spectral band using a neural network approach, *Atmos Meas Tech*, 10, 783-809, <https://doi.org/10.5194/amt-10-783-2017>, 2017.
- 1635 Cho, Y., Kim, J., Go, S., Kim, M., Lee, S., Kim, M., Chong, H., Lee, W. J., Lee, D. W., Torres, O., and Park, S. S.: First Atmospheric Aerosol Monitoring Results from Geostationary Environment Monitoring Spectrometer (GEMS) over Asia[preprint], <https://doi.org/10.5194/amt-2023-221>, 23 October 2023.
- Choi, M., Sander, S. P., Spurr, R. J. D., Pongetti, T. J., van Harten, G., Drouin, B. J., Diner, D. J., Crisp, D., Eldering, A., Kalashnikova, O. V., Jiang, J. H., Hyon, J. J., and Fu, D. J.: Aerosol profiling using radiometric and polarimetric spectral measurements in the O₂-sub>2</sub> near infrared bands: Estimation of information content and measurement uncertainties, *Remote Sensing of Environment*, 253, 20, <https://doi.org/10.1016/j.rse.2020.112179>, 2021.
- 1640 Christian, K., Wang, J., Ge, C., Peterson, D., Hyer, E., Yorks, J., and McGill, M.: Radiative Forcing and Stratospheric Warming of Pyrocumulonimbus smoke Aerosols: First Modeling Results With Multisensor (EPIC, CALIPSO, AND CATS) Views from Space, *Geophys Res Lett*, 46, 10061-10071, <https://doi.org/10.1029/2019gl082360>, 2019.
- 1645 Ding, S. G., Wang, J., and Xu, X. G.: Polarimetric remote sensing in oxygen A and B bands: sensitivity study and information content analysis for vertical profile of aerosols, *Atmos Meas Tech*, 9, 2077-2092, <https://doi.org/10.5194/amt-9-2077-2016>, 2016.
- Geddes, A. and Bösch, H.: Tropospheric aerosol profile information from high-resolution oxygen A-band measurements from space, *Atmos Meas Tech*, 8, 859-874, <https://doi.org/10.5194/amt-8-859-2015>, 2015.
- Geogdzhayev, I. V. and Marshak, A.: Calibration of the DSCOVR EPIC visible and NIR channels using MODIS Terra and Aqua data and EPIC lunar observations, *Atmos. Meas. Tech.*, 11, 359-368, <https://doi.org/10.5194/amt-11-359-2018>, 2018.
- 1650 Kang, M., Ahn, M.-H., Liu, X., Jeong, U., and Kim, J.: Spectral Calibration Algorithm for the Geostationary Environment Monitoring Spectrometer (GEMS), *Remote Sens-Basel*, 12, 2846, 2020.
- Kim, J., Jeong, U., Ahn, M. H., Kim, J. H., Park, R. J., Lee, H., Song, C. H., Choi, Y. S., Lee, K. H., Yoo, J. M., Jeong, M. J., Park, S. K., Lee, K. M., Song, C. K., Kim, S. W., Kim, Y. J., Kim, S. W., Kim, M., Go, S., Liu, X., Chance, K., Chan Miller, C., Al-Saadi, J., Veihelmann, B., Bhartia, P. K., Torres, O., Abad, G. G., Haffner, D. P., Ko, D. H., Lee, S. H., Woo, J. H., Chong, H., Park, S. S., Nickels, D., Choi, W. J., Moon, K. J., Cho, A., Yoon, J., Kim, S. K., Hong, H., Lee, K., Lee, H., Lee, S., Choi, M., Veeffkind, P., Levelt, P. F., Edwards, D. P., Kang, M., Eo, M., Bak, J., Baek, K., Kwon, H. A., Yang, J., Park, J., Han, K. M., Kim, B. R., Shin, H. W., Choi, H., Lee, E., Chong, J., Cha, Y., Koo, J. H., Irie, H., Hayashida, S., Kasai, Y., Kanaya, Y., Liu, C., Lin, J., Crawford, J. H., Carmichael, G. R., Newchurch, M. J., Lefer, B. L., Herman, J. R., Swap, R. J., Lau, A. K. H., Kurosu, T. P., Jaross, G., Ahlers, B., Dobber, M., McElroy, C. T., and Choi, Y.: New Era of Air Quality Monitoring from Space: Geostationary Environment Monitoring Spectrometer (GEMS), *B Am Meteorol Soc*, 101, E1-E22, <https://doi.org/10.1175/bams-d-18-0013.1>, 2020.
- 1660 Kim, M., Kim, J., Lim, H., Lee, S., Cho, Y., Yeo, H., and Kim, S. W.: Exploring geometrical stereoscopic aerosol top height retrieval from geostationary satellite imagery in East Asia, *Atmos Meas Tech*, 16, 2673-2690, <https://doi.org/10.5194/amt-16-2673-2023>, 2023.
- 1665 Kim, M., Kim, J., Torres, O., Ahn, C., Kim, W., Jeong, U., Go, S., Liu, X., Moon, K. J., and Kim, D. R.: Optimal Estimation-Based Algorithm to Retrieve Aerosol Optical Properties for GEMS Measurements over Asia, *Remote Sens-Basel*, 10, <https://doi.org/10.3390/rs10020162>, 2018.
- Kipling, Z., Stier, P., Schwarz, J. P., Perring, A. E., Spackman, J. R., Mann, G. W., Johnson, C. E., and Telford, P. J.: Constraints on aerosol processes in climate models from vertically-resolved aircraft observations of black carbon, *Atmos Chem Phys*, 13, 5969-5986, <https://doi.org/10.5194/acp-13-5969-2013>, 2013.
- 1670 Kipling, Z., Stier, P., Johnson, C. E., Mann, G. W., Bellouin, N., Bauer, S. E., Bergman, T., Chin, M., Diehl, T., Ghan, S. J., Iversen, T., Kirkevåg, A., Kokkola, H., Liu, X. H., Luo, G., van Noije, T., Pringle, K. J., von Salzen, K., Schulz, M., Seland, O., Skeie, R. B., Takemura, T., Tsigaridis, K., and Zhang, K.: What controls the vertical distribution of aerosol? Relationships between process sensitivity in HadGEM3-UKCA and inter-model variation from AeroCom Phase II, *Atmos Chem Phys*, 16, 2221-2241, <https://doi.org/10.5194/acp-16-2221-2016>, 2016.
- 1675 Kleipool, O., Ludewig, A., Babić, L., Bartstra, R., Braak, R., Dierssen, W., Dewitte, P. J., Kenter, P., Landzaat, R., Leloux, J., Loots, E., Meijering, P., van der Plas, E., Rozemeijer, N., Schepers, D., Schiavini, D., Smeets, J., Vacanti, G., Vonk, F., and Veeffkind, P.: Pre-launch calibration results of the TROPOMI payload on-board the Sentinel-5 Precursor satellite, *Atmos. Meas. Tech.*, 11, 6439-6479, <https://doi.org/10.5194/amt-11-6439-2018>, 2018.
- 1680 Koch, D. and Del Genio, A. D.: Black carbon semi-direct effects on cloud cover: review and synthesis, *Atmos Chem Phys*, 10, 7685-7696, <https://doi.org/10.5194/acp-10-7685-2010>, 2010.
- Koffi, B., Schulz, M., Breon, F. M., Dentener, F., Steensen, B. M., Griesfeller, J., Winker, D., Balkanski, Y., Bauer, S. E., Bellouin, N., Bernsten, T., Bian, H. S., Chin, M., Diehl, T., Easter, R., Ghan, S., Hauglustaine, D. A., Iversen, T., Kirkevåg, A., Liu, X. H., Lohmann, U., Myhre, G., Rasch, P., Seland, O., Skeie, R. B., Steenrod, S. D., Stier, P., Tackett, J., Takemura, T., Tsigaridis,

Deleted: Aragão, L. E. O. C., Anderson, L. O., Fonseca, M. G., Rosan, T. M., Vedovato, L. B., Wagner, F. H., Silva, C. V. J., Silva Junior, C. H. L., Arai, E., Aguiar, A. P., Barlow, J., Berenguer, E., Deeter, M. N., Domingues, L. G., Gatti, L., Gloor, M., Malhi, Y., Marengo, J. A., Miller, J. B., Phillips, O. L., and Saatchi, S.: 21st Century drought-related fires counteract the decline of Amazon deforestation carbon emissions, *Nature Communications*, 9, 536, <https://doi.org/10.1038/s41467-017-02771-y>, 2018.

Formatted: Space After: 0 pt

Formatted: Space After: 0 pt

Deleted: Dubovik, O., Smirnov, A., Holben, B. N., King, M. D., Kaufman, Y. J., Eck, T. F., and Slutsker, I.: Accuracy assessments of aerosol optical properties retrieved from Aerosol Robotic Network (AERONET) Sun and sky radiance measurements, *J Geophys Res-Atmos*, 105, 9791-9806, <https://doi.org/10.1029/2000jd900040>, 2000.

Formatted: Space After: 0 pt

Formatted: Space After: 0 pt

1700 K., Vuolo, M. R., Yoon, J., and Zhang, K.: Evaluation of the aerosol vertical distribution in global aerosol models through comparison against CALIOP measurements: AeroCom phase II results, *J Geophys Res-Atmos*, 121, 7254-7283, <https://doi.org/10.1002/2015jd024639>, 2016.

| Kokhanovsky, A. A. and Rozanov, V. V.: The determination of dust cloud altitudes from a satellite using hyperspectral measurements in the gaseous absorption band, *Int J Remote Sens*, 31, 2729-2744, <https://doi.org/10.1080/01431160903085644>, 2010.

1705 | Lee, L., Zhang, J., Reid, J. S., and Yorks, J. E.: Investigation of CATS aerosol products and application toward global diurnal variation of aerosols, *Atmos. Chem. Phys.*, 19, 12687-12707, <https://doi.org/10.5194/acp-19-12687-2019>, 2019.

| Lu, Z. D., Wang, J., Xu, X. G., Chen, X., Kondragunta, S., Torres, O., Wilcox, E. M., and Zeng, J.: Hourly Mapping of the Layer Height of Thick Smoke Plumes Over the Western US in 2020 Severe Fire Season, *Front. Remote Sens.*, 2, 13, <https://doi.org/10.3389/frsen.2021.766628>, 2021.

1710 | Lu, Z. D., Wang, J., Chen, X., Zeng, J., Wang, Y., Xu, X. G., Christian, K. E., Yorks, J. E., Nowotnick, E. P., Reid, J. S., and Xian, P.: First Mapping of Monthly and Diurnal Climatology of Saharan Dust Layer Height Over the Atlantic Ocean From EPIC/DSCOVER in Deep Space, *Geophys Res Lett*, 50, 10, <https://doi.org/10.1029/2022gl102552>, 2023.

| Marshak, A., Herman, J., Szabo, A., Blank, K., Cam, S., Cede, A., Geogdzhayev, I., Huang, D., Huang, L. K., Knyazikhin, Y., Kowalewski, M., Krotkov, N., Lyapustin, A., McPeters, R., Meyer, K. G., Torres, O., and Yang, Y. K.: Earth Observations from Dscovr Epic Instrument, *B Am Meteorol Soc*, 99, 1829-1850, <https://doi.org/10.1175/Bams-D-17-0223.1>, 2018.

1715 | Muller, J. P., Denis, M. A., Dundas, R. D., Mitchell, K. L., Naud, C., and Mannstein, H.: Stereo cloud-top heights and cloud fraction retrieval from ATSR-2, *Int J Remote Sens*, 28, 1921-1938, <https://doi.org/10.1080/01431160601030975>, 2007.

| Nanda, S., de Graaf, M., Veeffkind, J. P., Sneep, M., ter Linden, M., Sun, J. Y. T., and Levelt, P. F.: A first comparison of TROPOMI aerosol layer height (ALH) to CALIOP data, *Atmos Meas Tech*, 13, 3043-3059, <https://doi.org/10.5194/amt-13-3043-2020>, 2020.

1720 | Park, S. S., Kim, J., Lee, H., Torres, O., Lee, K. M., and Lee, S. D.: Utilization of O-4 slant column density to derive aerosol layer height from a space-borne UV-visible hyperspectral sensor: sensitivity and case study, *Atmos Chem Phys*, 16, 1987-2006, <https://doi.org/10.5194/acp-16-1987-2016>, 2016.

| Park, S. S., Kim, J., Cho, Y., Lee, H., Park, J., Lee, D. W., Lee, W. J., and Kim, D. R.: Retrieval Algorithm for Aerosol Effective Height from the Geostationary Environment Monitoring Spectrometer (GEMS)[preprint], <https://doi.org/10.5194/amt-2023-136>, 04 July 2023.

1725 | Peterson, D., Hyer, E., and Wang, J.: Quantifying the potential for high-altitude smoke injection in the North American boreal forest using the standard MODIS fire products and subpixel-based methods, *J Geophys Res-Atmos*, 119, 3401-3419, <https://doi.org/10.1002/2013jd021067>, 2014.

1730 | Pierangelo, C., Chedin, A., Heilliette, S., Jacquinet-Husson, N., and Armante, R.: Dust altitude and infrared optical depth from AIRS, *Atmos Chem Phys*, 4, 1813-1822, <https://doi.org/10.5194/acp-4-1813-2004>, 2004.

| Rao, L. L., Xu, J., Efremenko, D. S., Loyola, D. G., and Doicu, A.: Hyperspectral Satellite Remote Sensing of Aerosol Parameters: Sensitivity Analysis and Application to TROPOMI/SSP, *Front. Environ. Sci.*, 9, 16, <https://doi.org/10.3389/fenvs.2021.770662>, 2022.

1735 | Reid, J. S., Kinney, J. E., Westphal, D. L., Holben, B. N., Welton, E. J., Tsay, S.-C., Elcutterio, D. P., Campbell, J. R., Christopher, S. A., Colarco, P. R., Jonsson, H. H., Livingston, J. M., Maring, H. B., Meier, M. L., Pilewskie, P., Prospero, J. M., Reid, E. A., Remer, L. A., Russell, P. B., Savoie, D. L., Sminov, A., and Tanré, D.: Analysis of measurements of Saharan dust by airborne and ground-based remote sensing methods during the Puerto Rico Dust Experiment (PRIDE), *Journal of Geophysical Research: Atmospheres*, 108, <https://doi.org/https://doi.org/10.1029/2002JD002493>, 2003.

1740 | Shi, Y. S., Sasaki, T., and Yamaguchi, Y.: Spatio-temporal evaluation of carbon emissions from biomass burning in Southeast Asia during the period 2001-2010, *Ecol Model.*, 272, 98-115, <https://doi.org/10.1016/j.ecolmodel.2013.09.021>, 2014.

| Spurr, R. and Christi, M.: On the generation of atmospheric property Jacobians from the (V)LIDORT linearized radiative transfer models, *J Quant Spectrosc Ra*, 142, 109-115, <https://doi.org/10.1016/j.jqsrt.2014.03.011>, 2014.

1745 | Stein Zweers, D. C.: TROPOMI ATBD of the UV aerosol index, S5P-KNMI-L2-0008-RP-<https://sentinel.esa.int/documents/247904/2476257/Sentinel-5P-TROPOMI-ATBD-UV-Aerosol-Index.pdf>, last access: 17 December 2023.

| Torres, O., Bhartia, P. K., Herman, J. R., Ahmad, Z., and Gleason, J.: Derivation of aerosol properties from satellite measurements of backscattered ultraviolet radiation: Theoretical basis, *J Geophys Res-Atmos*, 103, 17099-17110, <https://doi.org/10.1029/98jd00900>, 1998.

1750 | Torres, O., Tanskanen, A., Veihelmann, B., Ahn, C., Braak, R., Bhartia, P. K., Veeffkind, P., and Levelt, P.: Aerosols and surface UV products from Ozone Monitoring Instrument observations: An overview, *J Geophys Res-Atmos*, 112, <https://doi.org/10.1029/2007jd008809>, 2007.

| Vandembussche, S., Kochenova, S., Vandaele, A. C., Kumps, N., and De Maziere, M.: Retrieval of desert dust aerosol vertical profiles from IASI measurements in the TIR atmospheric window, *Atmos Meas Tech*, 6, 2577-2591, <https://doi.org/10.5194/amt-6-2577-2013>, 2013.

1755 | Wang, J. and Christopher, S. A.: Intercomparison between satellite-derived aerosol optical thickness and PM2.5 mass: Implications for air quality studies, *Geophys Res Lett*, 30, <https://doi.org/10.1029/2003gl018174>, 2003.

| Wang, J. and Christopher, S. A.: Mesoscale modeling of Central American smoke transport to the United States: 2. Smoke radiative impact on regional surface energy budget and boundary layer evolution, *J Geophys Res-Atmos*, 111, <https://doi.org/10.1029/2005jd006720>, 2006.

1760 | Wang, J., Christopher, S. A., Nair, U. S., Reid, J. S., Prins, E. M., Szykman, J., and Hand, J. L.: Mesoscale modeling of Central American smoke transport to the United States: 1. "Top-down" assessment of emission strength and diurnal variation impacts, *J Geophys Res-Atmos*, 111, <https://doi.org/10.1029/2005jd006416>, 2006.

| Wang, J., Ge, C., Yang, Z. F., Hyer, E. J., Reid, J. S., Chew, B. N., Mahmud, M., Zhang, Y. X., and Zhang, M. G.: Mesoscale modeling of smoke transport over the Southeast Asian Maritime Continent: Interplay of sea breeze, trade wind, typhoon, and topography, *Atmos Res*, 122, 486-503, <https://doi.org/10.1016/j.atmosres.2012.05.009>, 2013.

1765

Formatted: Space After: 0 pt

Deleted: Marlier, M. E., DeFries, R. S., Voulgarakis, A., Kinney, P. L., Randerson, J. T., Shindell, D. T., Chen, Y., and Faluvegi, G.: El Niño and health risks from landscape fire emissions in southeast Asia, *Nature Climate Change*, 3, 131-136, <https://doi.org/10.1038/nclimate1658>, 2013.†

Formatted: Space After: 0 pt

Deleted: Veeffkind, J. P., Aben, I., McMullan, K., Förster, H., de Vries, J., Otter, G., Claas, J., Eskes, H. J., de Haan, J. F., Kleipool, Q., van Weele, M., Hasekamp, O., Hoogeveen, R., Landgraf, J., Snel, R., Tol, P., Ingmann, P., Voors, R., Kruizinga, B., Vink, R., Visser, H., and Levelt, P. F.: TROPOMI on the ESA Sentinel-5 Precursor: A GMES mission for global observations of the atmospheric composition for climate, air quality and ozone layer applications, *Remote Sensing of Environment*, 120, 70-83, <https://doi.org/https://doi.org/10.1016/j.rse.2011.09.027>, 2012.†

- Wang, J., Roudini, S., Hyer, E. J., Xu, X. G., Zhou, M., Garcia, L. C., Reid, J. S., Peterson, D. A., and da Silva, A. M.: Detecting nighttime fire combustion phase by hybrid application of visible and infrared radiation from Suomi NPP VIIRS, *Remote Sensing of Environment*, 237, 14, <https://doi.org/10.1016/j.rse.2019.111466>, 2020.
- 1785 Wendisch, M., Hellmuth, O., Ansmann, A., Heintzenberg, J., Engelmann, R., Althausen, D., Eichler, H., Wuller, D., Hu, M., Zhang, Y., and Mao, J.: Radiative and dynamic effects of absorbing aerosol particles over the Pearl River Delta, China, *Atmos Environ*, 42, 6405-6416, <https://doi.org/10.1016/j.atmosenv.2008.02.033>, 2008.
- Winker, D. M., Tackett, J. L., Getzewich, B. J., Liu, Z., Vaughan, M. A., and Rogers, R. R.: The global 3-D distribution of tropospheric aerosols as characterized by CALIOP, *Atmos Chem Phys*, 13, 3345-3361, <https://doi.org/10.5194/acp-13-3345-2013>, 2013.
- 1790 Wu, L. H., Hasekamp, O., van Diedenhoven, B., Cairns, B., Yorks, J. E., and Chowdhary, J.: Passive remote sensing of aerosol layer height using near-UV multiangle polarization measurements, *Geophys Res Lett*, 43, 8783-8790, <https://doi.org/10.1002/2016gl069848>, 2016.
- Xu, X., Wang, J., Wang, Y., and Kokhanovsky, A.: Chapter 1 - Passive Remote Sensing of Aerosol Height, in: *Remote Sensing of Aerosols, Clouds, and Precipitation*, edited by: Tanvir Islam, Y. H., Alexander Kokhanovsky, Jun Wang, Elsevier, Cambridge, MA, 1-22, <https://doi.org/10.1016/B978-0-12-810437-8.00001-3>, 2018.
- 1795 Xu, X. G., Wang, J., Wang, Y., Zeng, J., Torres, O., Reid, J. S., Miller, S. D., Martins, J. V., and Remer, L. A.: Detecting layer height of smoke aerosols over vegetated land and water surfaces via oxygen absorption bands: hourly results from EPIC/DSCOVER in deep space, *Atmos Meas Tech*, 12, 3269-3288, <https://doi.org/10.5194/amt-12-3269-2019>, 2019.
- Xu, X. G., Wang, J., Wang, Y., Zeng, J., Torres, O., Yang, Y. K., Marshak, A., Reid, J., and Miller, S.: Passive remote sensing of altitude and optical depth of dust plumes using the oxygen A and B bands: First results from EPIC/DSCOVER at Lagrange-1 point, *Geophys Res Lett*, 44, 7544-7554, <https://doi.org/10.1002/2017gl073939>, 2017.
- 1800 Yang, Z. F., Wang, J., Ichoku, C., Hyer, E., and Zeng, J.: Mesoscale modeling and satellite observation of transport and mixing of smoke and dust particles over northern sub-Saharan African region, *J Geophys Res-Atmos*, 118, 12139-12157, <https://doi.org/10.1002/2013jd020644>, 2013.
- Zeng, J., Han, Q. Y., and Wang, J.: High-spectral resolution simulation of polarization of skylight: Sensitivity to aerosol vertical profile, *Geophys Res Lett*, 35, <https://doi.org/10.1029/2008gl035645>, 2008.
- 1805 Zhang, L., Li, Q. B., Gu, Y., Liou, K. N., and Meland, B.: Dust vertical profile impact on global radiative forcing estimation using a coupled chemical-transport-radiative-transfer model, *Atmos Chem Phys*, 13, 7097-7114, <https://doi.org/10.5194/acp-13-7097-2013>, 2013.

1810

Page 3: [1] Deleted **Kim, Hyerim** **6/17/24 11:39:00 AM**

Page 3: [1] Deleted **Kim, Hyerim** **6/17/24 11:39:00 AM**

Page 3: [1] Deleted **Kim, Hyerim** **6/17/24 11:39:00 AM**

Page 3: [2] Formatted **Kim, Hyerim** **6/17/24 11:39:00 AM**

normaltexttrun, Font color: Text 1

Page 3: [3] Deleted **Kim, Hyerim** **6/17/24 11:39:00 AM**

Page 3: [3] Deleted **Kim, Hyerim** **6/17/24 11:39:00 AM**

Page 3: [3] Deleted **Kim, Hyerim** **6/17/24 11:39:00 AM**

Page 3: [3] Deleted **Kim, Hyerim** **6/17/24 11:39:00 AM**

Page 3: [3] Deleted **Kim, Hyerim** **6/17/24 11:39:00 AM**

Page 3: [3] Deleted **Kim, Hyerim** **6/17/24 11:39:00 AM**

Page 3: [3] Deleted **Kim, Hyerim** **6/17/24 11:39:00 AM**

Page 3: [4] Formatted **Kim, Hyerim** **6/17/24 11:39:00 AM**

normaltexttrun, Font color: Text 1

Page 3: [4] Formatted **Kim, Hyerim** **6/17/24 11:39:00 AM**

normaltexttrun, Font color: Text 1

Page 3: [5] Deleted **Kim, Hyerim** **6/17/24 11:39:00 AM**

Page 3: [6] Formatted **Kim, Hyerim** **6/17/24 11:39:00 AM**

normaltexttrun, Font color: Text 1

Page 3: [6] Formatted **Kim, Hyerim** **6/17/24 11:39:00 AM**

normaltexttrun, Font color: Text 1

Page 3: [7] Deleted **Kim, Hyerim** **6/17/24 11:39:00 AM**

Page 3: [7] Deleted **Kim, Hyerim** **6/17/24 11:39:00 AM**



Page 3: [8] Formatted **Kim, Hyerim** **6/17/24 11:39:00 AM**

normaltexttrun, Font color: Text 1

Page 3: [8] Formatted **Kim, Hyerim** **6/17/24 11:39:00 AM**

normaltexttrun, Font color: Text 1

Page 3: [9] Deleted **Kim, Hyerim** **6/17/24 11:39:00 AM**



Page 3: [9] Deleted **Kim, Hyerim** **6/17/24 11:39:00 AM**



Page 3: [9] Deleted **Kim, Hyerim** **6/17/24 11:39:00 AM**



Page 3: [9] Deleted **Kim, Hyerim** **6/17/24 11:39:00 AM**



Page 3: [9] Deleted **Kim, Hyerim** **6/17/24 11:39:00 AM**



Page 3: [9] Deleted **Kim, Hyerim** **6/17/24 11:39:00 AM**



Page 3: [9] Deleted **Kim, Hyerim** **6/17/24 11:39:00 AM**



Page 3: [9] Deleted **Kim, Hyerim** **6/17/24 11:39:00 AM**



Page 3: [9] Deleted **Kim, Hyerim** **6/17/24 11:39:00 AM**



Page 3: [10] Formatted **Kim, Hyerim** **6/17/24 11:39:00 AM**

English (US)

Page 3: [10] Formatted **Kim, Hyerim** **6/17/24 11:39:00 AM**

English (US)

Page 3: [11] Formatted **Kim, Hyerim** **6/17/24 11:39:00 AM**

English (US)

Page 3: [11] Formatted **Kim, Hyerim** **6/17/24 11:39:00 AM**

English (US)

Page 3: [11] Formatted **Kim, Hyerim** **6/17/24 11:39:00 AM**

English (US)

Page 3: [12] Formatted Kim, Hyerim 6/17/24 11:39:00 AM

normaltexttrun, Font color: Text 1

Page 3: [12] Formatted Kim, Hyerim 6/17/24 11:39:00 AM

normaltexttrun, Font color: Text 1

Page 3: [13] Formatted Kim, Hyerim 6/17/24 11:39:00 AM

normaltexttrun, Font color: Text 1

Page 3: [13] Formatted Kim, Hyerim 6/17/24 11:39:00 AM

normaltexttrun, Font color: Text 1

Page 3: [14] Deleted Kim, Hyerim 6/17/24 11:39:00 AM

▼

Page 3: [14] Deleted Kim, Hyerim 6/17/24 11:39:00 AM

▼

Page 3: [14] Deleted Kim, Hyerim 6/17/24 11:39:00 AM

▼

Page 3: [14] Deleted Kim, Hyerim 6/17/24 11:39:00 AM

▼

Page 3: [14] Deleted Kim, Hyerim 6/17/24 11:39:00 AM

▼

Page 3: [14] Deleted Kim, Hyerim 6/17/24 11:39:00 AM

▼

Page 3: [14] Deleted Kim, Hyerim 6/17/24 11:39:00 AM

▼

Page 3: [15] Formatted Kim, Hyerim 6/17/24 11:39:00 AM

English (UK)

Page 3: [16] Formatted Kim, Hyerim 6/17/24 11:39:00 AM

English (UK)

Page 3: [17] Formatted Kim, Hyerim 6/17/24 11:39:00 AM

English (UK)

Page 3: [18] Deleted Kim, Hyerim 6/17/24 11:39:00 AM

▼

Page 3: [19] Formatted Kim, Hyerim 6/17/24 11:39:00 AM

English (UK)

Page 3: [20] Formatted Kim, Hyerim 6/17/24 11:39:00 AM

English (UK)

Page 3: [21] Formatted Kim, Hyerim 6/17/24 11:39:00 AM

English (UK)

Page 3: [22] Formatted Kim, Hyerim 6/17/24 11:39:00 AM

English (UK)

Page 3: [23] Formatted Kim, Hyerim 6/17/24 11:39:00 AM

English (UK)

Page 3: [24] Formatted Kim, Hyerim 6/17/24 11:39:00 AM

English (UK)

Page 3: [24] Formatted Kim, Hyerim 6/17/24 11:39:00 AM

English (UK)

Page 3: [25] Formatted Kim, Hyerim 6/17/24 11:39:00 AM

English (UK)

Page 3: [25] Formatted Kim, Hyerim 6/17/24 11:39:00 AM

English (UK)

Page 3: [26] Formatted Kim, Hyerim 6/17/24 11:39:00 AM

English (UK)

Page 3: [27] Formatted Kim, Hyerim 6/17/24 11:39:00 AM

English (UK)

Page 3: [28] Formatted Kim, Hyerim 6/17/24 11:39:00 AM

English (UK)

Page 3: [29] Formatted Kim, Hyerim 6/17/24 11:39:00 AM

English (UK)

Page 3: [29] Formatted Kim, Hyerim 6/17/24 11:39:00 AM

English (UK)

Page 3: [29] Formatted Kim, Hyerim 6/17/24 11:39:00 AM

English (UK)

Page 3: [29] Formatted Kim, Hyerim 6/17/24 11:39:00 AM

English (UK)

Page 3: [30] Formatted Kim, Hyerim 6/17/24 11:39:00 AM

English (UK)

Page 3: [30] Formatted Kim, Hyerim 6/17/24 11:39:00 AM

English (UK)

Page 3: [30] Formatted Kim, Hyerim 6/17/24 11:39:00 AM

English (UK)

Page 3: [31] Formatted Kim, Hyerim 6/17/24 11:39:00 AM

English (UK)

Page 3: [31] Formatted Kim, Hyerim 6/17/24 11:39:00 AM

English (UK)

Page 3: [31] Formatted Kim, Hyerim 6/17/24 11:39:00 AM

English (UK)

Page 3: [31] Formatted Kim, Hyerim 6/17/24 11:39:00 AM

English (UK)

Page 3: [32] Deleted Kim, Hyerim 6/17/24 11:39:00 AM

▼

Page 3: [32] Deleted Kim, Hyerim 6/17/24 11:39:00 AM

▼

Page 3: [33] Deleted Kim, Hyerim 6/17/24 11:39:00 AM

▼

Page 3: [33] Deleted Kim, Hyerim 6/17/24 11:39:00 AM

▼

Page 3: [33] Deleted Kim, Hyerim 6/17/24 11:39:00 AM

▼

Page 3: [33] Deleted Kim, Hyerim 6/17/24 11:39:00 AM

▼

Page 3: [33] Deleted Kim, Hyerim 6/17/24 11:39:00 AM

▼

Page 3: [33] Deleted Kim, Hyerim 6/17/24 11:39:00 AM

▼

Page 3: [33] Deleted Kim, Hyerim 6/17/24 11:39:00 AM

▼

Page 3: [33] Deleted Kim, Hyerim 6/17/24 11:39:00 AM

▼

Page 3: [33] Deleted Kim, Hyerim 6/17/24 11:39:00 AM

▼

Page 4: [34] Deleted Kim, Hyerim 6/17/24 11:39:00 AM

▼
Page 4: [34] Deleted Kim, Hyerim 6/17/24 11:39:00 AM

▼
Page 4: [34] Deleted Kim, Hyerim 6/17/24 11:39:00 AM

▼
Page 4: [34] Deleted Kim, Hyerim 6/17/24 11:39:00 AM

▼
Page 4: [34] Deleted Kim, Hyerim 6/17/24 11:39:00 AM

▼
Page 4: [34] Deleted Kim, Hyerim 6/17/24 11:39:00 AM

▼
Page 4: [34] Deleted Kim, Hyerim 6/17/24 11:39:00 AM

▼
Page 4: [34] Deleted Kim, Hyerim 6/17/24 11:39:00 AM

▼
Page 4: [34] Deleted Kim, Hyerim 6/17/24 11:39:00 AM

▼
Page 4: [34] Deleted Kim, Hyerim 6/17/24 11:39:00 AM

▼
Page 4: [34] Deleted Kim, Hyerim 6/17/24 11:39:00 AM

▼
Page 4: [34] Deleted Kim, Hyerim 6/17/24 11:39:00 AM

▼
Page 4: [34] Deleted Kim, Hyerim 6/17/24 11:39:00 AM

▼
Page 4: [34] Deleted Kim, Hyerim 6/17/24 11:39:00 AM

▼
Page 4: [35] Deleted Kim, Hyerim 6/17/24 11:39:00 AM

▼
Page 4: [35] Deleted Kim, Hyerim 6/17/24 11:39:00 AM

▼
Page 4: [35] Deleted Kim, Hyerim 6/17/24 11:39:00 AM

Page 4: [36] Deleted **Kim, Hyerim** **6/17/24 11:39:00 AM**

Page 4: [36] Deleted **Kim, Hyerim** **6/17/24 11:39:00 AM**

Page 4: [36] Deleted **Kim, Hyerim** **6/17/24 11:39:00 AM**

Page 4: [36] Deleted **Kim, Hyerim** **6/17/24 11:39:00 AM**

Page 4: [37] Deleted **Kim, Hyerim** **6/17/24 11:39:00 AM**

Page 4: [37] Deleted **Kim, Hyerim** **6/17/24 11:39:00 AM**

Page 4: [37] Deleted **Kim, Hyerim** **6/17/24 11:39:00 AM**

Page 4: [37] Deleted **Kim, Hyerim** **6/17/24 11:39:00 AM**

Page 4: [37] Deleted **Kim, Hyerim** **6/17/24 11:39:00 AM**

Page 4: [37] Deleted **Kim, Hyerim** **6/17/24 11:39:00 AM**

Page 4: [37] Deleted **Kim, Hyerim** **6/17/24 11:39:00 AM**

Page 4: [37] Deleted **Kim, Hyerim** **6/17/24 11:39:00 AM**

Page 4: [38] Formatted **Kim, Hyerim** **6/17/24 11:39:00 AM**

Font color: Text 1

Page 4: [38] Formatted **Kim, Hyerim** **6/17/24 11:39:00 AM**

Font color: Text 1

Page 4: [39] Deleted **Kim, Hyerim** **6/17/24 11:39:00 AM**

Page 4: [39] Deleted **Kim, Hyerim** **6/17/24 11:39:00 AM**

Page 4: [39] Deleted **Kim, Hyerim** **6/17/24 11:39:00 AM**

Page 5: [40] Deleted **Kim, Hyerim** **6/17/24 11:39:00 AM**



Page 5: [40] Deleted **Kim, Hyerim** **6/17/24 11:39:00 AM**



Page 5: [40] Deleted **Kim, Hyerim** **6/17/24 11:39:00 AM**



Page 5: [41] Deleted **Kim, Hyerim** **6/17/24 11:39:00 AM**



Page 5: [41] Deleted **Kim, Hyerim** **6/17/24 11:39:00 AM**



Page 5: [41] Deleted **Kim, Hyerim** **6/17/24 11:39:00 AM**



Page 5: [42] Deleted **Kim, Hyerim** **6/17/24 11:39:00 AM**



Page 5: [42] Deleted **Kim, Hyerim** **6/17/24 11:39:00 AM**



Page 5: [42] Deleted **Kim, Hyerim** **6/17/24 11:39:00 AM**



Page 5: [42] Deleted **Kim, Hyerim** **6/17/24 11:39:00 AM**



Page 5: [42] Deleted **Kim, Hyerim** **6/17/24 11:39:00 AM**



Page 5: [42] Deleted **Kim, Hyerim** **6/17/24 11:39:00 AM**



Page 5: [42] Deleted **Kim, Hyerim** **6/17/24 11:39:00 AM**



Page 5: [43] Formatted **Kim, Hyerim** **6/17/24 11:39:00 AM**

Font color: Text 1

Page 5: [43] Formatted **Kim, Hyerim** **6/17/24 11:39:00 AM**

Font color: Text 1

Page 5: [44] Formatted **Kim, Hyerim** **6/17/24 11:39:00 AM**

Font color: Text 1

Page 5: [44] Formatted **Kim, Hyerim** **6/17/24 11:39:00 AM**

Font color: Text 1

Page 5: [45] Formatted Kim, Hyerim 6/17/24 11:39:00 AM

Font color: Text 1

Page 5: [45] Formatted Kim, Hyerim 6/17/24 11:39:00 AM

Font color: Text 1

Page 5: [45] Formatted Kim, Hyerim 6/17/24 11:39:00 AM

Font color: Text 1

Page 5: [45] Formatted Kim, Hyerim 6/17/24 11:39:00 AM

Font color: Text 1

Page 5: [46] Deleted Kim, Hyerim 6/17/24 11:39:00 AM

▼

Page 5: [47] Deleted Kim, Hyerim 6/17/24 11:39:00 AM

▼

Page 5: [47] Deleted Kim, Hyerim 6/17/24 11:39:00 AM

▼

Page 5: [47] Deleted Kim, Hyerim 6/17/24 11:39:00 AM

▼

Page 5: [47] Deleted Kim, Hyerim 6/17/24 11:39:00 AM

▼

Page 5: [47] Deleted Kim, Hyerim 6/17/24 11:39:00 AM

▼

Page 5: [47] Deleted Kim, Hyerim 6/17/24 11:39:00 AM

▼

Page 5: [48] Formatted Kim, Hyerim 6/17/24 11:39:00 AM

English (US)

Page 5: [48] Formatted Kim, Hyerim 6/17/24 11:39:00 AM

English (US)

Page 5: [48] Formatted Kim, Hyerim 6/17/24 11:39:00 AM

English (US)

Page 5: [48] Formatted Kim, Hyerim 6/17/24 11:39:00 AM

English (US)

Page 5: [48] Formatted Kim, Hyerim 6/17/24 11:39:00 AM

English (US)

Page 5: [48] Formatted Kim, Hyerim 6/17/24 11:39:00 AM

English (US)

Page 6: [49] Formatted Kim, Hyerim 6/17/24 11:39:00 AM

English (US)

Page 6: [49] Formatted Kim, Hyerim 6/17/24 11:39:00 AM

English (US)

Page 6: [49] Formatted Kim, Hyerim 6/17/24 11:39:00 AM

English (US)

Page 6: [49] Formatted Kim, Hyerim 6/17/24 11:39:00 AM

English (US)

Page 6: [50] Deleted Kim, Hyerim 6/17/24 11:39:00 AM

▼

Page 6: [50] Deleted Kim, Hyerim 6/17/24 11:39:00 AM

▼

Page 6: [51] Formatted Kim, Hyerim 6/17/24 11:39:00 AM

English (US)

Page 6: [51] Formatted Kim, Hyerim 6/17/24 11:39:00 AM

English (US)

Page 6: [52] Deleted Kim, Hyerim 6/17/24 11:39:00 AM

▼

Page 6: [52] Deleted Kim, Hyerim 6/17/24 11:39:00 AM

▼

Page 6: [53] Formatted Kim, Hyerim 6/17/24 11:39:00 AM

English (US)

Page 6: [54] Deleted Kim, Hyerim 6/17/24 11:39:00 AM

▼

Page 6: [54] Deleted Kim, Hyerim 6/17/24 11:39:00 AM

▼

Page 6: [54] Deleted Kim, Hyerim 6/17/24 11:39:00 AM

▼

Page 6: [54] Deleted Kim, Hyerim 6/17/24 11:39:00 AM

▼

Page 6: [54] Deleted Kim, Hyerim 6/17/24 11:39:00 AM

▼

Page 6: [54] Deleted **Kim, Hyerim** **6/17/24 11:39:00 AM**

▼
Page 6: [55] Formatted **Kim, Hyerim** **6/17/24 11:39:00 AM**

Font color: Text 1

Page 6: [55] Formatted **Kim, Hyerim** **6/17/24 11:39:00 AM**

Font color: Text 1

Page 6: [55] Formatted **Kim, Hyerim** **6/17/24 11:39:00 AM**

Font color: Text 1

Page 6: [56] Formatted **Kim, Hyerim** **6/17/24 11:39:00 AM**

Font color: Text 1

Page 6: [57] Formatted **Kim, Hyerim** **6/17/24 11:39:00 AM**

Font color: Text 1

Page 6: [58] Formatted **Kim, Hyerim** **6/17/24 11:39:00 AM**

Font color: Text 1

Page 6: [59] Deleted **Kim, Hyerim** **6/17/24 11:39:00 AM**

▼
Page 6: [60] Deleted **Kim, Hyerim** **6/17/24 11:39:00 AM**

▼
Page 6: [60] Deleted **Kim, Hyerim** **6/17/24 11:39:00 AM**

▼
Page 6: [60] Deleted **Kim, Hyerim** **6/17/24 11:39:00 AM**

▼
Page 6: [61] Formatted **Kim, Hyerim** **6/17/24 11:39:00 AM**

Font color: Text 1

Page 6: [62] Formatted **Kim, Hyerim** **6/17/24 11:39:00 AM**

Font color: Text 1

Page 6: [62] Formatted **Kim, Hyerim** **6/17/24 11:39:00 AM**

Font color: Text 1

Page 6: [62] Formatted **Kim, Hyerim** **6/17/24 11:39:00 AM**

Font color: Text 1

Page 6: [62] Formatted **Kim, Hyerim** **6/17/24 11:39:00 AM**

Font color: Text 1

Page 6: [62] Formatted **Kim, Hyerim** **6/17/24 11:39:00 AM**

Font color: Text 1

Page 6: [63] Formatted **Kim, Hyerim** **6/17/24 11:39:00 AM**

Font color: Text 1

Page 6: [64] Formatted **Kim, Hyerim** **6/17/24 11:39:00 AM**

Font color: Text 1

Page 6: [65] Formatted **Kim, Hyerim** **6/17/24 11:39:00 AM**

Font color: Text 1

Page 6: [66] Formatted **Kim, Hyerim** **6/17/24 11:39:00 AM**

Font color: Text 1

Page 6: [67] Formatted **Kim, Hyerim** **6/17/24 11:39:00 AM**

Font color: Text 1

Page 6: [67] Formatted **Kim, Hyerim** **6/17/24 11:39:00 AM**

Font color: Text 1

Page 6: [68] Formatted **Kim, Hyerim** **6/17/24 11:39:00 AM**

Font color: Text 1

Page 6: [69] Deleted **Kim, Hyerim** **6/17/24 11:39:00 AM**

▼

Page 6: [70] Formatted **Kim, Hyerim** **6/17/24 11:39:00 AM**

Font color: Text 1

Page 6: [70] Formatted **Kim, Hyerim** **6/17/24 11:39:00 AM**

Font color: Text 1

Page 6: [71] Formatted **Kim, Hyerim** **6/17/24 11:39:00 AM**

Font color: Text 1

Page 6: [71] Formatted **Kim, Hyerim** **6/17/24 11:39:00 AM**

Font color: Text 1

Page 6: [72] Deleted **Kim, Hyerim** **6/17/24 11:39:00 AM**

▼

Page 6: [73] Formatted **Kim, Hyerim** **6/17/24 11:39:00 AM**

Font color: Text 1

Page 6: [73] Formatted **Kim, Hyerim** **6/17/24 11:39:00 AM**

Font color: Text 1

Page 6: [74] Deleted **Kim, Hyerim** **6/17/24 11:39:00 AM**

▼

Page 6: [75] Formatted Kim, Hyerim 6/17/24 11:39:00 AM

Font color: Text 1

Page 6: [76] Formatted Kim, Hyerim 6/17/24 11:39:00 AM

Font color: Text 1

Page 6: [76] Formatted Kim, Hyerim 6/17/24 11:39:00 AM

Font color: Text 1

Page 6: [77] Formatted Kim, Hyerim 6/17/24 11:39:00 AM

Font color: Text 1

Page 6: [78] Formatted Kim, Hyerim 6/17/24 11:39:00 AM

Font color: Text 1

Page 6: [78] Formatted Kim, Hyerim 6/17/24 11:39:00 AM

Font color: Text 1

Page 6: [79] Formatted Kim, Hyerim 6/17/24 11:39:00 AM

Font color: Text 1

Page 6: [79] Formatted Kim, Hyerim 6/17/24 11:39:00 AM

Font color: Text 1

Page 6: [80] Formatted Kim, Hyerim 6/17/24 11:39:00 AM

Font color: Text 1

Page 6: [81] Deleted Kim, Hyerim 6/17/24 11:39:00 AM

Page 6: [82] Deleted Kim, Hyerim 6/17/24 11:39:00 AM

Page 16: [83] Deleted Kim, Hyerim 6/17/24 11:39:00 AM

Page 17: [84] Formatted Kim, Hyerim 6/17/24 11:39:00 AM

Font color: Text 1, English (UK)

Page 17: [85] Formatted Kim, Hyerim 6/17/24 11:39:00 AM

Font color: Text 1, English (UK)

Page 17: [85] Formatted Kim, Hyerim 6/17/24 11:39:00 AM

Font color: Text 1, English (UK)

Page 17: [86] Formatted Kim, Hyerim 6/17/24 11:39:00 AM

Font color: Text 1, English (UK)

Page 17: [87] Formatted Kim, Hyerim 6/17/24 11:39:00 AM

Font color: Text 1, English (UK)

Page 17: [87] Formatted Kim, Hyerim 6/17/24 11:39:00 AM

Font color: Text 1, English (UK)

Page 17: [88] Formatted Kim, Hyerim 6/17/24 11:39:00 AM

Font color: Text 1, English (UK)

Page 17: [88] Formatted Kim, Hyerim 6/17/24 11:39:00 AM

Font color: Text 1, English (UK)

Page 17: [88] Formatted Kim, Hyerim 6/17/24 11:39:00 AM

Font color: Text 1, English (UK)

Page 17: [89] Formatted Kim, Hyerim 6/17/24 11:39:00 AM

Font color: Text 1

Page 17: [89] Formatted Kim, Hyerim 6/17/24 11:39:00 AM

Font color: Text 1

Page 17: [89] Formatted Kim, Hyerim 6/17/24 11:39:00 AM

Font color: Text 1

Page 17: [90] Deleted Kim, Hyerim 6/17/24 11:39:00 AM

▼

Page 17: [91] Formatted Kim, Hyerim 6/17/24 11:39:00 AM

Font color: Text 1

Page 17: [92] Formatted Kim, Hyerim 6/17/24 11:39:00 AM

Font color: Text 1

Page 17: [93] Formatted Kim, Hyerim 6/17/24 11:39:00 AM

Font color: Text 1

Page 17: [94] Formatted Kim, Hyerim 6/17/24 11:39:00 AM

Font color: Text 1

Page 17: [95] Formatted Kim, Hyerim 6/17/24 11:39:00 AM

Font color: Text 1

Page 17: [96] Formatted Kim, Hyerim 6/17/24 11:39:00 AM

Font color: Text 1

Page 17: [97] Formatted Kim, Hyerim 6/17/24 11:39:00 AM

Font color: Text 1

Page 17: [98] Formatted Kim, Hyerim 6/17/24 11:39:00 AM

Font color: Text 1

Page 17: [99] Formatted Kim, Hyerim 6/17/24 11:39:00 AM

Font color: Text 1

Page 17: [100] Formatted **Kim, Hyerim** **6/17/24 11:39:00 AM**

Font color: Text 1

Page 17: [101] Formatted **Kim, Hyerim** **6/17/24 11:39:00 AM**

Font color: Text 1

Page 17: [102] Deleted **Kim, Hyerim** **6/17/24 11:39:00 AM**

▼

Page 17: [103] Formatted **Kim, Hyerim** **6/17/24 11:39:00 AM**

Font color: Text 1

Page 17: [104] Deleted **Kim, Hyerim** **6/17/24 11:39:00 AM**

▼

Page 17: [105] Formatted **Kim, Hyerim** **6/17/24 11:39:00 AM**

Font color: Text 1

Page 17: [106] Formatted **Kim, Hyerim** **6/17/24 11:39:00 AM**

Font color: Text 1

Page 17: [107] Formatted **Kim, Hyerim** **6/17/24 11:39:00 AM**

Font color: Text 1

Page 17: [108] Deleted **Kim, Hyerim** **6/17/24 11:39:00 AM**

▼

Page 17: [109] Formatted **Kim, Hyerim** **6/17/24 11:39:00 AM**

Font color: Text 1

Page 17: [110] Formatted **Kim, Hyerim** **6/17/24 11:39:00 AM**

Space Before: 12 pt, After: 12 pt

Page 17: [111] Formatted **Kim, Hyerim** **6/17/24 11:39:00 AM**

Font color: Text 1

Page 17: [112] Deleted **Kim, Hyerim** **6/17/24 11:39:00 AM**

▼

Page 17: [113] Formatted **Kim, Hyerim** **6/17/24 11:39:00 AM**

Font color: Text 1

Page 17: [114] Formatted **Kim, Hyerim** **6/17/24 11:39:00 AM**

Font color: Text 1

Page 17: [115] Formatted **Kim, Hyerim** **6/17/24 11:39:00 AM**

Font color: Text 1

Page 17: [116] Formatted **Kim, Hyerim** **6/17/24 11:39:00 AM**

Font color: Text 1

Page 17: [117] Formatted **Kim, Hyerim** **6/17/24 11:39:00 AM**

Font color: Text 1