

# Evaluation of modelled versus observed NMVOC compounds at EMEP sites in Europe

Yao Ge<sup>1,2,a</sup>, Sverre Solberg<sup>3</sup>, Mathew R. Heal<sup>4</sup>, Stefan Reimann<sup>5</sup>, Willem van Caspel<sup>1</sup>, Bryan Hellack<sup>6</sup>, Thérèse Salameh<sup>7</sup>, and David Simpson<sup>1,8</sup>

<sup>1</sup>Division for Climate Modelling and Air Pollution, Norwegian Meteorological Institute, 0313 Oslo, Norway

<sup>2</sup>UK Centre for Ecology & Hydrology, Bush Estate, Penicuik, EH26 0QB, UK

<sup>3</sup>NILU, 2027 Kjeller, Norway

<sup>4</sup>School of Chemistry, University of Edinburgh, Joseph Black Building, Edinburgh, EH9 3FJ, UK

<sup>5</sup>Empa - Laboratory for Air Pollution/Environmental Technology, Swiss Federal Laboratories for Materials Science and Technology, CH-8600 Dübendorf, Switzerland.

<sup>6</sup>German Environment Agency, Dessau, Germany

<sup>7</sup>IMT Nord Europe, Institut Mines-Télécom, Univ. Lille, Centre for Energy and Environment, 59000, Lille, France

<sup>8</sup>Department of Space, Earth and Environment, Chalmers University of Technology, 412 96 Gothenburg, Sweden

<sup>a</sup>now at: Yusuf Hamied Department of Chemistry, University of Cambridge, Cambridge, CB2 1EW, UK

**Correspondence:** Yao Ge (yaog@met.no) and David Simpson (davids@met.no)

## Abstract.

Atmospheric volatile organic compounds (VOC) constitute a wide range of species, acting as precursors to ozone and aerosol formation. Atmospheric chemistry and transport models (CTMs) are crucial to understanding the emissions, distribution, and impacts of VOCs. Given the uncertainties in VOC emissions, lack of evaluation studies, and recent changes in emissions, this work adapts the European Monitoring and Evaluation Programme Meteorological Synthesizing Centre – West (EMEP MSC-W) CTM to evaluate emission inventories in Europe. Here we undertake the first intensive model-measurement comparison of VOCs in two decades. The modelled surface concentrations are evaluated both spatially and temporally, using measurements from the regular EMEP monitoring network in 2018 and 2019, and a 2022 campaign. To achieve this, we utilised the UK National Atmospheric Emission Inventory to derive explicit emission profiles for individual species and employed a ‘tracer’ method to produce pure concentrations that are directly comparable to observations.

The degree to which the modelled and measured VOCs agree varies depending on the specific species. The model successfully captures the overall spatial and temporal variations of major alkanes (e.g. ethane, n-butane) and unsaturated species (e.g. ethene, benzene), but less though for propane, i-butane, and ethyne. This discrepancy underscores potential issues in the boundary conditions for these latter species and in their primary emissions from in particular the solvent and road transport sectors. Specifically, potential missing propane emissions and issues with its boundary conditions are highlighted by large model underestimations and smaller propane to ethane ratios compared to the measurement. Meanwhile, both the model and measurement show strong linear correlations among butane isomers and among pentane isomers, indicating common sources for these pairs of isomers. However, modelled ratios of i- to n-butane and i- to n-pentane are approximately one-third of the measured ratios, which is largely driven by significant emissions of n-butane and n-pentane from the solvent sector. This suggests issues with the speciation profile of the solvent sector, or underrepresented contributions from transport and fuel evaporation sectors in

current inventories, or both. Furthermore, the modelled ethene-to-ethyne and benzene-to-ethyne ratios differ significantly from measured ratios. The different model performance strongly points to shortcomings in the spatial and temporal patterns and magnitudes of ethyne emissions, especially during winter. For OVOCs, the modelled and measured concentrations of methanal and methylglyoxal show a good agreement, despite a moderate underestimation by the model in summer. This discrepancy could be attributed to an underestimation of contributions from biogenic sources, or possibly a model overestimation of their photolytic loss in summer. However, the insufficiency of suitable measurements limits the evaluation of other OVOCs. Finally, model simulations employing the CAMS inventory show slightly better agreements with measurements than those using the CEIP inventory. This enhancement is likely due to the CAMS inventory's detailed segmentation of the Road Transport sector, including its associated subsector-specific emission profiles. Given this improvement, alongside the previously mentioned concerns about the model's biased estimations of various VOC ratios, future efforts should focus on a more detailed breakdown of dominant emission sectors (e.g. Solvents) and the refinement of their speciation profiles to improve model accuracy.

## 1 Introduction

Non-methane volatile organic compounds (NMVOCs) constitute a diverse category of organic chemicals. While only a limited number of VOCs emitted to air are known to be directly detrimental to health, they predominantly serve as precursors to the formation of ozone and particulate matter (PM) (Seinfeld and Pandis, 1998; Ait-Helal et al., 2014; Li et al., 2020; Pye et al., 2022). Upon their release into the atmosphere, VOCs undergo a series of photochemical reactions that lead to the generation of ground-level ozone that has well-known adverse effects on air quality, human health, crops and natural vegetation (Filleul et al., 2006; Hoor et al., 2009; Mills et al., 2018; Li et al., 2019; Emberson, 2020). Concurrently, VOCs also affect the mass, number, and chemical composition of PM through their contributions to primary and secondary organic aerosols (Kanakidou et al., 2005; Kroll and Seinfeld, 2008; Hallquist et al., 2009). Consequently, the reduction of VOC levels remains a critical factor in mitigating both surface ozone and PM pollution.

The spatial and temporal concentrations of VOCs are influenced by a range of atmospheric processes. These include primary emissions from a number of sources, chemical transformations, regional transport, and variations in meteorological conditions. Further, difficulties in emissions estimation and model parameterisation of these processes, combined with technical challenges in accurately measuring ambient speciated VOC levels, often leads to varying agreements between model and measurement (Solberg et al., 2001; Pfister et al., 2008; Veefkind et al., 2012; Huang et al., 2017; Dalsøren et al., 2018; Bray et al., 2019; von Schneidmesser et al., 2023).

Comparison of modelled VOC results with observations presents a number of challenges beyond those of other compounds such as NO<sub>x</sub>, SO<sub>x</sub> or NH<sub>3</sub> whose emissions are compiled annually. In contrast, the regular assessment of speciated emission data for VOCs is much rarer. In many cases, emissions are input to an CTM as total non-methane VOC, but these emissions then need to be converted to inputs of specific species (C<sub>2</sub>H<sub>6</sub>, C<sub>3</sub>H<sub>8</sub> etc) because each VOC has different ozone and aerosol formation potential, and few data are available to support this speciation. Thus, results from models can diverge significantly based on different VOC emission profiles used. Also, the lifetime of many VOCs is so short that a sound comparison of mea-

sured and modelled levels is difficult. Moreover, a particular monitoring site's representativeness of its surrounding air, and the quality of its measurement data, can also vary dramatically. In response to these challenges, continuous efforts have been invested in implementing long-term VOC measurements across Europe (e.g. the pan-European research infrastructure ACTRIS) and enhancing chemistry mechanisms in the European Monitoring and Evaluation Programme Meteorological Synthesizing Centre – West (EMEP MSC-W) CTM in recent years.

A further crucial issue is that real-world VOCs comprise many 1000s of species, but chemical transport model schemes can only cope with a much smaller number of compounds, typically in the 100s. In the default chemistry mechanisms of the EMEP model, EmChem19a (Simpson et al., 2020; Bergström et al., 2022), and the update, EmChem19rc, most emitted VOCs are lumped into different groups (e.g. most alkanes are treated as n-butane), with only a few VOC species having explicit emissions and chemistry. This approach offers the dual benefit of maintaining an accurate description of ozone generation compared to more complex schemes (Andersson-Sköld and Simpson, 1999; Bergström et al., 2022) and promoting computational efficiency. However, it presents challenges when attempting to produce specific VOC concentrations for comparison with observation data.

In recent decades, considerable declines have been observed in those VOCs that are primarily derived from transport, combustion and fossil fuel extraction and distribution (sectors that were dominant emission sources in the 1990s) due to changes in emission regulation and fuel quality, as well as increases in the usage of renewable energy. Meanwhile, emissions from solvents, and the use of chemicals in industry and domestic products, as well as other sources like agricultural activities, are gaining in significance (von Schneidemesser et al., 2016; Mo et al., 2021). These changes in major emitting sectors have consequently led to changes in VOC emission profiles. For instance, there has been a notable reduction in emissions of short-chain non-methane hydrocarbons (NMHCs) associated with fossil fuels and combustion, and an increase in the relative contributions of oxygenated VOCs (OVOCs) which primarily emanate from solvent usage and consumer products (von Schneidemesser et al., 2023; Lewis et al., 2020; Read et al., 2012).

In light of the substantial shifts observed in real-world VOC emission profiles, our objective is to assess the extent to which current emission inventories accurately reflect these changes. Furthermore, given the significant advancements in the physical and chemical formulation of the EMEP model since the last evaluative studies on VOCs that were conducted in the 1990s (Hov et al., 1997; Solberg et al., 2001), it is important to update our understanding of the model's current performance and identify the factors influencing it. Therefore, the aims of this study are (a) to augment the VOC species set in the EMEP model with tracers for individual VOC compounds, (b) conduct a comprehensive comparison of some key VOCs between the EMEP model and ambient measurements, and (c) to employ the model in assessing the 'goodness' of speciated emissions, providing insights into their quality and impact. For these purposes, we deployed a 'tracer' method, which allows us to input explicit emissions into the model and compute concentrations of individual VOCs. This tracer method has been used for whole-year comparisons in 2018 and 2019, and for comparisons during the 2022 EMEP intensive measurement period (IMP), as presented in Sect. 3. The methodology is described in Sect. 2.

It is important to note that this work mainly concentrates on VOCs with simpler structures and shorter chains. This focus is due to the greater availability of measurement datasets and emission estimates that underpin the model's parameterisation and evaluation for these compounds, in comparison to VOCs with more complex structures, such as longer-chain hydrocarbons

(e.g. greater than C7), acids, and esters. As more data becomes accessible, particularly regarding boundary conditions and  
90 sector-specific emission profiles, we intend to refine and update the model configuration in the future.

## 2 Methods

### 2.1 The EMEP MSC-W model

The EMEP MSC-W atmospheric chemistry transport model has been developed by the European Monitoring and Evaluation Programme Meteorological Synthesizing Centre – West. It is an open-source Eulerian grid model used for applications ranging  
95 from scientific research to policy development (Simpson et al., 2012, 2020; Jonson et al., 2006, 2017; Ge et al., 2021, 2023b; van Caspel et al., 2023). In the default setup for European simulations as used here, the model uses 20 terrain-following vertical layers, with the pressure ranging from around 1000 hPa (surface level) to 100 hPa (highest level). The lowest layer has a height of about 50 m. The model output of surface concentrations are adjusted to be equivalent to 3 m above the surface as described in Simpson et al. (2012). In this study, we utilise the most recent EMEP MSC-W model version rv5 (Simpson et al., 2023),  
100 which features a significantly revised photolysis scheme (*Cloud-J*) compared to previous EMEP versions. As described in van Caspel et al. (2023), the *Cloud-J* implementation was specifically developed to include each of the photolysis reaction rates (*J*-values) present in the CRIv2R5Em chemical mechanism described below.

### 2.2 Chemistry mechanisms

Two chemistry mechanisms, CRIv2R5Em and EmChem19rc, have been utilised to develop VOC tracers and to investigate the  
105 difference in model performance across different mechanisms.

The CRIv2R5Em chemical mechanism is an EMEP adaptation (Bergström et al., 2022) of the Common Representative Intermediates (CRI) v2-R5 mechanism (Watson et al., 2008). This mechanism is the simplest variant of CRI v2, considered suitable as a reference mechanism in large-scale chemistry-transport models. The CRIv2R5Em also includes a recently developed isoprene reaction scheme (CRI v2.2a) that describes updates to the major HOx recycling routes (Jenkin et al., 2019). A  
110 selection of 24 anthropogenic and 3 biogenic species are chosen to represent all NMVOCs emitted in CRIv2R5Em, based on their Photochemical Ozone Creation Potentials (POCP, e.g. Jenkin et al. 2017), abundance, and simplicity of mechanism. This EMEP adaptation (derived from a version based on CRIv2.1), CRIv2R5Em, was created prior to the release of the latest CRI v2.2, hence it slightly differs from the current official CRIv2R5 version.

EmChem19rc is the default chemical mechanism used in v5.0 of the EMEP model. This mechanism is a small update  
115 (Simpson et al., 2023) of EmChem19a. Both EmChem19a and CRIv2R5Em are described in detail in Bergström et al. (2022). It typically employs primary emissions from 17 NMVOC species and surrogates (14 anthropogenic and 3 biogenic) to represent a wide variety of VOCs that are actually emitted into the atmosphere (Bergström et al., 2022). For instance, n-butane (model species nC4H10) is utilised to represent both itself and other alkanes that contain more than three carbon atoms, alongside a handful of other species with similar POCP. Similarly, benzene and toluene are explicit aromatic VOC species, but then

120 o-xylene is used as a surrogate for itself and all other aromatic VOCs having more than seven carbon atoms. A detailed species list is presented in Supplement A, Table S1.

In order to obtain VOC concentrations from the model that are directly comparable with measurements, without affecting computational efficiency and the mechanism's innate capability for ozone production, we employ a 'tracer' method. This method retains the normal species set of CRIv2R5Em and EmChem19rc mechanisms for the calculation of photochemistry (and hence OH, O<sub>3</sub> and NO<sub>3</sub> radical concentrations), but additionally introduces individual VOC tracers (denoted by the suffix "\_T") that take explicit emissions from a certain species and follow species-specific loss processes to yield precise concentrations of that species. These tracers neither consume any atmospheric oxidants, like the OH radical, nor generate any products; they are created solely to track VOC concentrations. For example, although emissions of i-butane (iC<sub>4</sub>H<sub>10</sub>) are lumped with those of other heavy alkanes into the surrogate nC<sub>4</sub>H<sub>10</sub> species for the standard photochemical calculations, we also track the emissions and losses (using explicit OH + iC<sub>4</sub>H<sub>10</sub> reaction rates) for the tracer species iC4H10\_T. This procedure should give the best estimate of its concentrations, assuming that the standard CRIv2R5Em and EmChem19rc model concentrations of OH are reasonable – something which was demonstrated by Bergström et al. (2022).

Table 1 summarises available VOC species in the adapted CRIv2R5Em mechanism. Based on chemical species and reactions in CRIv2.2, several new species (coloured in blue in Table 1) are added to CRIv2R5Em as VOC tracers, which not only enable a comparison with EmChem19rc, but also with more measurements. Alongside these new species, additional tracers have also been created for existing lumped surrogates such as NC4H10\_T, OXYL\_T, and others (coloured in green in Table 1). For example, benzene is explicitly simulated within the model, meaning that it is processed based on its own individual emissions, thus eliminating the need for a tracer. Conversely, o-xylene is itself a lumped surrogate within the model, which relies on aggregated emissions data. As a result, a tracer OXYL\_T is necessary to obtain 'pure' concentrations that can be directly compared to ambient measurements.

**Table 1.** Summary of current primary VOC species in CRIv2R5Em. Species coloured in blue are newly added VOC tracers; green indicates tracers for existing lumped surrogates; orange indicates species that have secondary production from lumped surrogates. TBUT2ENE represents 2-butene; NPROPOL and IPROPOL represent 1-propanol and 2-propanol respectively; GLYOX and MGLYOX represent glyoxal and methylglyoxal respectively; MEK represents methyl ethyl ketone. XTERPENE is a lumped surrogate for other biogenic species.

CRIv2R5Em	Species				
Shorter-chain alkane	C2H6_T	C3H8	NC4H10_T	IC4H10_T	
Longer-chain alkane	NC5H12_T	IC5H12_T	NC6H14_T	NC7H16_T	
Alkene	C2H4_T	C3H6_T	TBUT2ENE		
Alkyne	C2H2				
Aromatics	BENZENE	TOLUENE	OXYL_T		
Alcohol	CH3OH	C2H5OH_T	NPROPOL	IPROPOL	
Aldehyde	HCHO	CH3CHO			
Dialdehyde	GLYOX	MGLYOX			
Ketone	CH3COCH3	MEK			
Carboxylic acid	HCOOH	CH3CO2H			
Biogenic VOC	C5H8	α-PINENE	β-PINENE	XTERPENE	
Rest <sup>†</sup>	OTH_ALKANE_T				

Notes †: Rest includes other alkanes and some other species.

In summary, the difference between the two mechanisms is that CRIv2R5Em contains a wider array of VOC species and more detailed chemistry compared to the EmChem19rc, thus providing an illustrative example of applying CRI schemes within the EMEP MSC-W model. The rationale behind selecting these two mechanisms was to assess the difference in model performance when employing either scheme. The results of this study (Sect. 3) indicate that the default EmChem19rc mechanism is on a par with CRIv2R5Em. We mainly present results from CRIv2R5Em in this study because we aim to highlight findings using the most elaborate scheme available, which, theoretically, should enhance model performance. Nevertheless, it is crucial to mention that no significant difference was observed between the two schemes in terms of their agreement with measurements at least as regards the measurement data available at this time. However, running simulations with CRIv2R5Em incurs substantially higher computational costs than with EmChem19rc. In other words, this research illustrates that the default Em-  
145 Chem19rc scheme, despite having a smaller set of VOC species and simpler chemistry, offers the advantages of speed and  
150 reasonable accuracy.

## 2.3 Emissions

### 2.3.1 Current challenges

Ideally we hope to use individual species, or ratios of species, to identify particular emission sources. For example, Peischl et al. (2013) suggested that ethane emissions are dominated by natural gas supply infrastructure, whilst ethene, propene, and ethyne mainly originate from tailpipe exhaust (Coggon et al., 2021). However, concentrations of VOCs at measurement stations, often situated away from urban or industrial emission sources, are influenced by multiple contributors. VOCs with lifetimes of several days or longer become mixed with emissions from various sources by the time they are detected at the background stations. For instance, aromatic species such as toluene are emitted from both vehicular transport (Gkatzelis et al., 2021) and solvent usage (Mo et al., 2021). Similarly, butanes are released from fossil fuel usage but are also commonly used as aerosol propellants in various chemical products (Lewis et al., 2020).  
155  
160

Another significant challenge in creating speciated emissions for atmospheric models arises from the grouping of emissions in inventories. For instance, methanol, which has substantial biogenic emissions, is incorporated into several inventories (Guenther et al., 2012) and atmospheric models. Nevertheless, the representation of anthropogenic emissions in databases such as EDGAR (Huang et al., 2017) or CAMS (Kuenen et al., 2022) is more generic, listing alcohols as a collective category without specifying the proportions of methanol, ethanol, or other alcohols. This aggregation in global and regional anthropogenic VOC (AVOC) inventories no longer aligns with the advanced chemical mechanisms now employed in atmospheric models.  
165

### 2.3.2 Emissions in the EMEP model

To address these challenges, we utilised the UK National Atmospheric Emission Inventory (UK NAEI), provided by the NAEI team upon email request in 2022, as the primary source of AVOC emission profiles for the work presented here. The key advantage of this inventory is its extensive coverage: it offers emissions data for 664 VOC species across 249 sectors, spanning the period from 1990 to 2019. Despite being based on a somewhat dated speciation profile developed in the early 2000s  
170

(Passant, 2002), this inventory is highly valuable. Given the paucity of national speciated VOC emission inventories reported by other European countries, the UK NAEI remains a valuable reference source.

175 The VOC emissions in the EMEP model consist of biogenic VOC (BVOC), which are calculated online from temperature, radiation and land-cover data (Simpson et al., 1999, 2012), biomass-burning emissions from the Fire INventory from NCAR (FINN) v2.5 (Wiedinmyer et al., 2023), and gridded AVOC inventories provided by the EMEP Centre for Emission Inventories and Projections (CEIP, [www.emep.int](http://www.emep.int)), or through the Copernicus Atmosphere Monitoring Service (CAMS) projects (Kuenen et al., 2022; Denier van der Gon et al., 2023). The AVOC emissions (here we used the dataset CAMS-REG-v5.1.) are provided  
180 as sector-specific totals (e.g. VOC from solvents or road traffic sectors), and are the main focus of this study.

Monthly (and also day-to-day and hourly) time-factors are specified in the model as described in Simpson et al. (2023). Briefly, these time-factors (CAMS\_TEMPO\_CLIM in EMEP notation) correspond to the CAMS-REG-TEMPO v3.2 simplified climatological temporal profiles (Guevara et al., 2021; Guevara, 2023), but are updated for non-livestock agricultural emissions (GNFR Sector L) from CAMS-REG-TEMPO v4.1. Fig. S1 and S2 illustrate these monthly factors for two countries, the UK  
185 and Switzerland.

### 2.3.3 Emissions sector mapping

Emission sectors in the UK NAEI are mapped to the 19 EMEP sectors as shown in Table S2. The CAMS inventory reports emissions from sector-A (Public Power, abbreviated to PP) through A1 (PP-Point) and A2 (PP-Area), and emissions from sector-F (Road Transport) through F1 (Gasoline), F2 (Diesel), F3 (LPG), F4 (Non-exhaust). In contrast, the CEIP inventory  
190 only reports sector totals from A and F without specifying the exact emissions from each sub-sector. Given that most activities in the UK NAEI are classified into various Nomenclature for Reporting (NFR) sectors (which refers to the format for the reporting of national data in accordance with the Convention on Long-Range Transboundary Air Pollution), this mapping is achieved using a cross-walk between NFR and gridded aggregated nomenclature for reporting (GNFR) sectors as detailed in Matthews and Wankmüller (2021). Most sources in the UK NAEI have corresponding emission profiles, with the exception of  
195 activities falling under GNFR sectors A1, A2, F3, K (Agriculture-Livestock) and L (Agriculture-Other).

The VOC speciation for A1 and A2 is set to be the same as the sector A since UK NAEI does not include emissions from such sub-categories for sector A. For sector F3, the VOC speciation for LPG exhaust is derived from the EMEP/CORINAIR Emission Inventory Guidebook<sup>1</sup>.

For sector K, we make use of data supplied by the Netherlands Organisation for Applied Scientific Research (TNO, A. Visschedijk and J. Kuenen, pers.comm., 2023). These data consisted of European-scale country-specific emissions for individual K sub-sectors (e.g. cattle, sheep, etc.) and for 25 VOC species or groups (e.g. voc01 alcohols, voc02 ethane, and voc04 butanes, consistent with those used by Huang et al. 2017). For the grouped emissions in TNO dataset, we have utilised the following references to split emissions from a certain group (e.g. voc01 alcohols) into individual species (e.g. methanol, ethanol, etc.) for each country. For activities relating to poultry, cattle, and pigs, emission profiles reported by the EEA emission inventory

<sup>1</sup><https://www.eea.europa.eu/publications/EMEPCORINAIR5/B710vs6.0.pdf/view>

205 guidebook Chapter 3.B Manure management<sup>2</sup> are used. As for sheep-related activities, speciated VOC emissions from Hobbs et al. (2004) are used.

Sector L encompasses activities such as the application of animal manure to soils and field burning of agricultural residues, that can have vastly different emission profiles. Therefore, as well as the above-mentioned references, emission profiles for field burning of agricultural residues from Andreae (2019) are also used to assign TNO's grouped emissions from this specific  
210 sector to separate VOCs. For other sectors that do not have detailed speciation profiles available (e.g. sewage applied to soils; cultivated crops; farm-level agricultural operations including storage, handling and transport of agricultural products), TNO's grouped emissions are directly mapped to lumped surrogates in the EMEP model. The primary issue is the lack of publicly available and speciated emission data for these activities. Moreover, in case that there are areas that are not covered by TNO emissions in the modelled domain, a default emission speciation based on the EEA emission inventory guidebook<sup>2</sup> and Hobbs  
215 et al. (2004) has been established for sector K and L at present. We plan to review these speciations when relevant data becomes available in the future.

### 2.3.4 Emissions species mapping

The original species mapping between the NAEI species and EMEP compounds was developed by Garry D. Hayman<sup>3</sup> as part of the study that was eventually published as Bergström et al. (2022). This mapping was based on an older version of  
220 the UK NAEI, and used EmChem09 chemical compounds (Simpson et al., 2012) and SNAP emissions sectors. Updates to EmChem19a were conducted by Bergström et al. (2022), and we have further updated the mapping for the VOC speciation described here. Figure 1 illustrates the mapping process from the NAEI sectors (*NS*) and VOC (*NV*) emissions to EMEP VOCs (*EV*) and EMEP sectors (*ES*). Utilising raw data from the NAEI for a selected year, the total emissions for EMEP sector *i*, denoted  $ES_i$ , are calculated as follows:

$$225 \quad ES_i = \sum_{j=1}^n EV_{j,1} + EV_{j,2} + \dots + EV_{j,44}$$

where *j* is the corresponding NAEI sector, *n* is the total number of NAEI sectors that belong to *i*, and  $EV_{j,1}$  to  $EV_{j,44}$  represent emitted masses of up to 44 EMEP species (VOC tracers + lumped surrogates). In EMEP sector *i*, the percentage of the EMEP VOC *x*,  $P_{i,x}$ , is calculated as follows:

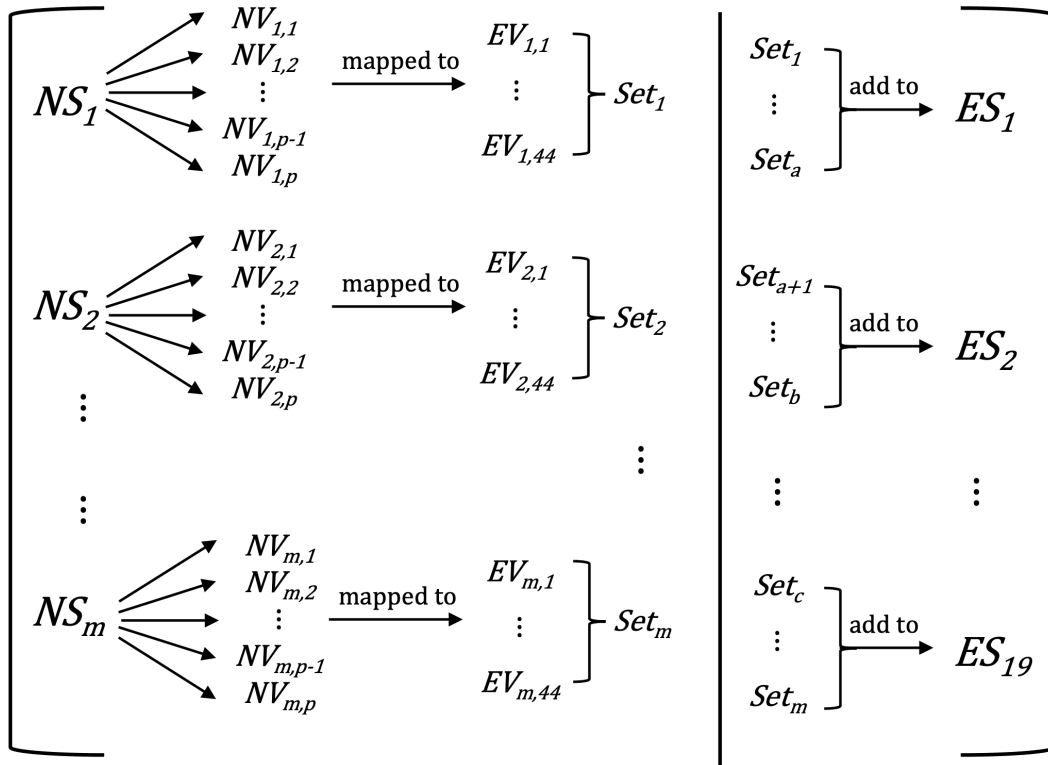
$$P_{i,x} = \frac{\sum_{j=1}^n EV_{j,x}}{ES_i} \times 100\%$$

230 Figure 2 presents the annual total VOC emissions for individual EMEP sectors in both inventories, as well as each sector's emission profiles implemented in the model (CRIv2R5Em). For the sector-K Agri-Livestock and sector-L Agri-Other, the country-specific speciation vary from one country to another, thus only the default speciation is shown.

<sup>2</sup> <https://www.eea.europa.eu/publications/emep-eea-guidebook-2019/part-b-sectoral-guidance-chapters/4-agriculture/3-b-manure-management/view>

<sup>3</sup> now at UK Centre for Ecology and Hydrology





**Figure 1.** The emission mapping of NAEI VOCs ( $NV$ ) from NAEI sectors ( $NS$ ) to EMEP VOCs ( $EV$ ) and EMEP sectors ( $ES$ ). The total number of  $NS$  is denoted by  $m$ ; the total number of  $NV$  is denoted by  $p$ .

As described in Section 2.3.3, in the CAMS inventory emissions from the sector-F Road Transport (RT) are reported in four sub-sectors (i.e., F1 = RT-Gasoline, F2 = RT-Diesel, F3 = RT-LPG, and F4 = RT-Non-exhaust), and thus its total is shown as the sum of emissions from these sub-sectors. In contrast, the CEIP inventory only reports emissions from sector-F as a whole, and emissions for its sub-sectors are all set to zero (hence, emission profiles for these sub-sectors are not used in model simulations). The speciation profile of sector-F that is actually used for the CEIP inventory is derived from the individual speciation profile of F1, F2, F3, F4 and total emissions of these sub-sectors reported by the CAMS inventory. For a given EMEP VOC  $x$ , its percentage in sector-F,  $P_{F,x}$ , is calculated as follows:

$$P_{F,x} = \frac{\sum_{i=1}^4 ST_{Fi} \times P_{Fi,x}}{\sum_{i=1}^4 ST_{Fi}} \times 100\%$$

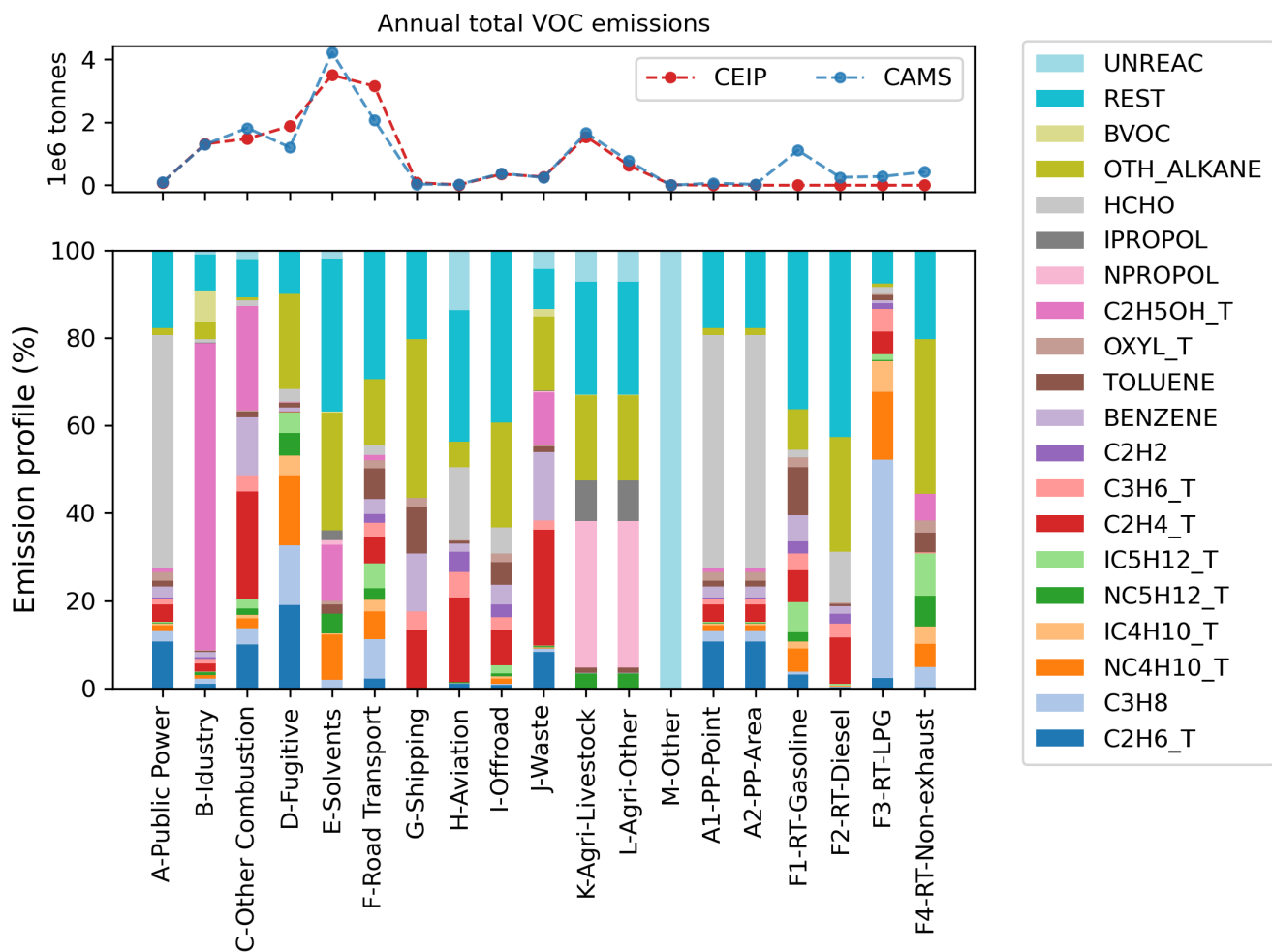
where  $ST_{Fi}$  represents the sector total emissions of each F sub-sector (F1, F2, F3, F4), and  $P_{Fi,x}$  is the percentage of the EMEP VOC  $x$  within the individual profile of each sub-sector

For the sector-A Public Power and its two sub-sectors, the same emission profile developed for PP using the NAEI data is used for all these sectors. The reason why there are three sectors for PP is because different inventories report emissions

245 in different formats. The CAMS inventory reports PP emissions in the format of PP-Point and PP-Area, whereas the CEIP  
inventory only reports emissions from the PP sector. Apart from these differences, both inventories indicate that the significant  
VOC emitting sectors include Fugitive, Solvents, and Road Transport.

Utilizing 2018 anthropogenic emissions data, more than 600 VOCs from the NAEI, in addition to several other VOCs from  
the EEA emission inventory guidebook, are mapped to 44 EMEP species or groups. Figure 2 illustrates the 19 most substantially  
250 emitted species or groups, with less-emitted species and most lumped surrogates incorporated into the REST group.

It is worth noting that there are anthropogenic emissions of what are traditionally recognised as biogenic VOCs, and these  
are incorporated within the BVOC group in Fig. 2. This group represents anthropogenic emissions of isoprene,  $\alpha$ -pinene,  $\beta$ -  
pinene, and some terpene species. Anthropogenic emissions of the BVOC group are mainly from the Industry sector and are  
considerably smaller than their biogenic emissions (Borbon et al., 2023). The OTH\_ALKANE group signifies emissions of  
255 higher alkanes, as well as some other complex VOCs. The UNREAC group represents emissions of species with low or no  
reactivity.



**Figure 2.** Annual total emissions (upper panel) from CAMS and CEIP inventories based on the same model domain (i.e., Longitude  $-29.95^{\circ}$  to  $44.95^{\circ}$  and Latitude  $30.05^{\circ}$  to  $75.95^{\circ}$ ), and VOC profiles (lower panel) of individual EMEP sectors in CRIV2R5Em mechanism in 2018. Among the last 6 subsectors, PP stands for Public Power, RT stands for Road Transport. The speciation of sector F is an overall reflection of F1–F4. Note that CEIP do not provide data for the last six sectors (A1,A2,F1–F4), so emissions are zero for these sectors.

### 2.3.5 Speciation of biomass burning emissions

Table 2 displays the emission splitting factors used in the EMEP model for biomass burning species in the FINN inventory. While FINN typically provides emissions data for individual species, it only offers a combined emission for butane species. Consequently, the VOC speciation data derived from Andreae (2019) is employed to determine the ratios of n-butane to i-butane.

**Table 2.** The mapping between biomass burning species in the FINN inventory and CRIv2R5Em species in the EMEP model.

FINN species	model species	Factor
C2H6	C2H6_T	1
C3H8	C3H8	1
ALK4	NC4H10_T	0.6255
ALK4	IC4H10_T	0.3745
C2H4	C2H4_T	1
C2H2	C2H2	1
PRPE	C3H6_T	1
XYLE	OXYL_T	1
BENZ	BENZENE	1
TOLU	TOLUENE	1
CH2O	HCHO	1
ALD2	CH3CHO_T	1
GLYX	GLYOX	1
MGLY	MGLYOX	1
ACET	CH3COCH3	1
MEK	MEK_T	1

### 2.3.6 Boundary and initial conditions

The EMEP model specifies the boundary and initial conditions (BICs) of a number of compounds, including VOCs, using simple functions to describe changes from month to month, and accounting for latitude effects (Simpson et al., 2012, 2015). BICs are specified using a cosine function:  $\chi_0 = \chi_{\text{mean}} + \Delta\chi \cos\left(2\pi \frac{(d_{\text{mm}} - d_{\text{max}})}{n_y}\right)$ , where  $\chi_0$  is the monthly near-surface concentration,  $\chi_{\text{mean}}$  is the annual mean near-surface concentration,  $\Delta\chi$  the amplitude of the cycle,  $n_y$  is the number of days per year,  $d_{\text{mm}}$  is the day number of mid-month (assumed to be the 15th), and  $d_{\text{max}}$  is day number at which  $\chi_0$  maximises. Changes in the vertical are specified with a scale-height, set to 10 km for C2H6 and 6 km for other VOC. Since different species have different annual means and amplitudes, the impact of BICs on the concentrations of different VOC species varies.

We endeavoured to base the BICs for the VOCs in this study predominantly on data from peer-reviewed literature. Table 3 shows the BICs used for the VOC compounds. The BICs for propane, n-butane, i-butane, n-pentane, and i-pentane are derived from the average concentrations from a five-year dataset of high-frequency, in-situ VOC measurements taken at Mace Head, Ireland, as documented by Grant et al. (2011). A numerical factor is used to partition the boundary condition of the lumped species C4H10 into six VOC species or groups: C3H8, NC4H10\_T, IC4H10\_T, NC5H12\_T, IC5H12\_T, and OTH\_ALKANE\_T. For

275 ethane and ethyne, their BICs are derived from ten-year average concentrations measured at three French rural background sites reported by Waked et al. (2016).

**Table 3.** The boundary and initial conditions (BICs) for VOC species in the EMEP model. See text for explanation of terms.

Model species	$\chi_{mean}$ (ppb)	$\Delta\chi_{mean}$ (ppb)	$d_{max}$
C2H6_T	1.544	0.77	75
C2H2	0.456	0.23	75
C3H8	0.263	0.13	45
NC4H10_T	0.095	0.05	45
IC4H10_T	0.044	0.02	45
NC5H12_T	0.026	0.01	45
IC5H12_T	0.026	0.01	45
OTH_ALKANE_T	1.546	0.77	45
HCHO	0.7	0.3	180

## 2.4 Measurements

The measurement data in the regular EMEP monitoring network are documented in the EMEP annual VOC reports (e.g. Solberg et al., 2020, 2022) and references therein. Detailed measurement guidelines such as analytical techniques, calibration  
280 procedures, and QA/QC measures are described in Reimann et al. (2018). Measurement data used in this study are compiled from the Ebas platform (ebas-data.nilu.no, last access: March 2024), including both regular measurements for the year 2018 and 2019, and the 2022 EMEP Intensive Measurement Period (IMP) campaign. The IMP was organised by the EMEP Task Force on Measurement and Modelling (TFMM) in 12-19 July 2022. One-week observations of VOCs relevant as ozone precursors was conducted, covering both EMEP background sites and many urban sites. In this work, only some OVOC measurements  
285 from IMP are used as a supplement since the normal EMEP monitoring network only has one or two sites available for OVOC species. A separate IMP-focused paper is in preparation by other research teams, with the purpose of improving our current understanding of the formation of ozone during heat waves.

Table 4 presents a summary of the codes, names, and altitudes of all stations referenced in this study, for both the whole year of 2018 and 2019, and the 2022 IMP. The locations of these sites are shown in Supplement, Fig. S3. Stations situated  
290 above 800 m in altitude are omitted from all analyses, to reduce problems associated with comparison with modelled surface concentrations.

It is worth noting that the model-measurement comparison is complicated by the variation in the number of monitoring sites per species and in the frequency and duration of sampling time across stations. For example, the sampling duration for benzene varies from 5 to 40 minutes from DE0002R to GB0048R sites, while the model only calculates standard hourly concentra-  
295 tions. For this work we have matched the hourly model outputs with valid measurements at their native temporal resolution wherever we can. For instance, when using online Gas Chromatography (GC) measurements with an hourly resolution, such as CH0053R, we utilise the standard hourly model outputs. In contrast, for VOC measurements collected using the steel canister

**Table 4.** Codes, names, countries, and altitudes (m) of stations providing VOC measurements used in this study.

Code	Name	Country	Altitude/m	Code	Name	Country	Altitude/m
AT0002R	Illmitz	Austria	117	FI0096G	Pallas	Finland	565
BE0007R	Vielsalm	Belgium	496	FR0013R	Peyrusse Vieille	France	200
CH0053R	Beromünster	Switzerland	797	FR0015R	La Tardière	France	133
CZ0003R	Kosetice	Czechia	535	GB0048R	Auchencorth Moss	UK	260
DE0002R	Waldhof	Germany	74	GB1055R	Chilbolton Observatory	UK	78
DE0007R	Neuglobsow	Germany	62	IE0031R	Mace Head	Ireland	5
DE0009R	Zingst	Germany	1	IT0004R	Ispra	Italy	209
ES0021U	Madrid	Spain	669	NO0002R	Birkenes II	Norway	219
FI0050R	Hyytiälä	Finland	181				

method (for example, FR0013R), these are compared with four-hour model averages (spanning 12:00 to 16:00) on the sampling day. This time frame is commonly used for canister sampling analysis, and the precise timing and duration of sampling within this time window often vary from one station to another. Therefore, due to the challenge in ascertaining these operational specifics for each station and species, we employ a model average over this period for comparison with the measured concentrations. Moreover, the annual mean concentrations discussed in this section are derived from hours with valid measurements, and where the sites have at least 65% data capture in a year.

Another factor adding complexity to the comparisons between model predictions and actual measurements is the variation in measurement techniques and the inherent analytical uncertainties associated with each method. For example, of the nine valid sites providing observations of ethyne, three utilise online gas chromatography (GC) and six employ steel canisters for sample collection coupled with offline GC. The former method uses continuous online monitors which offer hourly data, while the latter uses manual grab samples in canisters which essentially provide a snapshot measurement at specific time points, typically collected two to three times per week. Moreover, even within the same measurement technique, there are discrepancies in detection limits. For instance, the online GC at site CH0053R has a reported ethyne detection limit of 4.0 pmol/mol, in contrast to the online GC at site FI0096G, which has a significantly higher detection limit of 39.0 pmol/mol. These differences further underscore the challenges in achieving good model-measurement alignment when comparing data across different stations.

## 2.5 Model experiments

The meteorology data is generated using the European Centre for Medium-Range Weather Forecasts (ECMWF) model. The VOC tracers and their related code are integrated into the EMEP model via the GenChem system (Simpson et al., 2020). It utilises a chemical pre-processor GenChem.py to convert chemical equations into differential form and generate the corresponding FORTRAN code for use in the EMEP model. Given the differences in emissions between CEIP and CAMS, especially for some key sectors (c.f. Fig. 2), we run simulations with both inventories, and also with both EmChem19rc and CRIv2R5Em.

For the model evaluation purpose, six model simulations (Table 5) were carried out at a grid resolution of  $0.1^\circ \times 0.1^\circ$  over the Europe domain, covering the 2018, 2019 and 2022 periods. Owing to constraints in the availability of both emissions data and measurements, the analysis delineated herein mainly focuses on 2018, a year for which we had comprehensive access to the

sector-specific CAMS inventory, the NAEI emission profile, and an adequate number of high-temporal-resolution (e.g. hourly) measurements. Model evaluations for 2019 and 2022 were carried out as supplementary activities, which were designed to make efficient use of both available regular monitoring and short-duration campaign measurements, providing additional evidence for robustness of our modelling results.

Additionally, although a full evaluation of the impacts of uncertainties in VOC speciation on ozone is beyond the scope of this study, we have set up two additional model runs for 2018 (Table 5), Em-CAMS-2018-nDef (abbreviated to nDef hereinafter) and Em-CAMS-2018-Sol6 (Sol6), to output extra model variables for ozone and compared their differences between the two runs. The VOC speciation used in nDef is the same as the one used in the Em-CAMS-2018 model run, while in Sol6 the speciation of the sector E (Solvents) has been replaced by that of sector F1 (Road Transport-Gasoline). Detailed information on this sensitivity test is given at Sect. 3.6 and in the Supplement, Sect. S8.

**Table 5.** Configuration of model simulations.

<b>Simulation</b>	<b>Mechanism</b>	<b>Emission</b>
Em-CEIP-2018	EmChem19rc	CEIP
Em-CAMS-2018	EmChem19rc	CAMS-REG-v5.1
CRI-CEIP-2018	CRIv2R5Em	CEIP
CRI-CAMS-2018	CRIv2R5Em	CAMS-REG-v5.1
CRI-CAMS-2019	CRIv2R5Em	CAMS-REG-v5.1
CRI-CAMS-2022 IMP	CRIv2R5Em	CAMS-REG-v5.1
Em-CAMS-2018-nDef	EmChem19rc	CAMS-REG-v5.1
Em-CAMS-2018-Sol6	EmChem19rc	CAMS-REG-v5.1

### 3 Results and discussions

This section provides a comparative analysis between modelled and measured surface VOC concentrations for the full years 2018 and 2019, and July 2022, using measurements from the standard EMEP monitoring network (Solberg et al., 2020) and 2022 IMP. The analyses for the years 2018 and 2019 reveal similar characteristics, and the model simulations employing varied mechanisms exhibit similar results as well. To avoid repetition, figures in this section are derived from the 2018 model simulation utilising the CRIv2R5Em mechanism alongside the CAMS inventory, except where indicated otherwise.

#### 3.1 Alkane species

##### 3.1.1 Shorter-chain alkanes

Scatter plots comparing the modelled and measured annual mean concentrations of four shorter-chain alkane species, ethane, propane, n-butane, and i-butane (also known as 2-methylpropane) from the CRI-CAMS model runs are depicted in Figs. 3 and 4 for 2018 and 2019, respectively. A summary of the evaluation statistics for each model simulation is provided in Table 6.

The model and measurements agree that ethane has the highest annual concentrations of these alkanes, at around 1.7 ppb, followed by propane and n-butane. While the model-measurement comparisons in 2019 demonstrate slightly improved linear correlation coefficients relative to those in 2018 as shown in Figs. 3 and 4, modelled concentrations of these species at both years show consistent underpredictions for propane (up to -54%) and i-butane (up to -38%) but overpredictions (up to +55%) for n-butane as shown in Table 6.

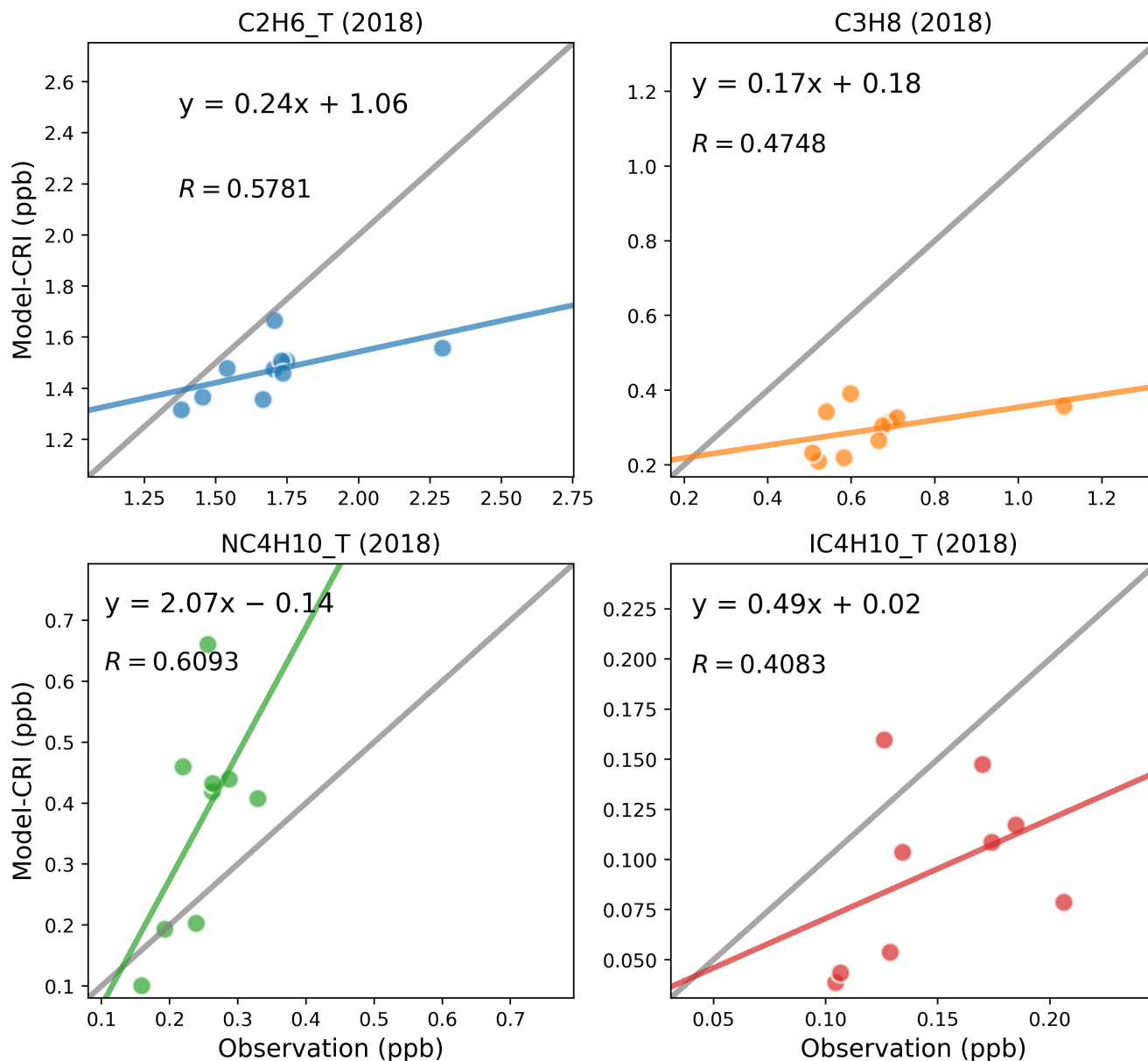
Issues with boundary conditions could partially account for the significant underestimation by the model, particularly concerning propane. Noticeable spatial variations in propane concentrations at background stations are observed in several studies. Grant et al. (2011) reported average concentrations of propane over a 2005-2009 period at the representative Northern Hemisphere background station of Mace Head of 263 ppt in baseline air and 452 ppt in European transported air masses. Sauvage et al. (2009) showed that multi-year average propane levels in early 2000s varied in the range 576-731 ppt among three French rural sites. Dollard et al. (2007) reported an annual mean value of 832 ppt at rural UK sites in 2000. Consequently, the BICs used in our model, which is derived from five-year averages in the clean baseline air masses as reported by Grant et al. (2011), may not effectively capture such spatial fluctuations.

Another contributing explanation may simply be an underprediction of propane emissions. Dalsøren et al. (2018) found much better agreement between modelled and observed propane when updated emissions from both natural and anthropogenic sources were included in place of their base CEDS emissions (Hoesly et al., 2018), and emissions of propane due to leakage from pipelines and other sources is hard to estimate reliably; it is not clear if the European EMEP emissions suffer from similar underestimates.

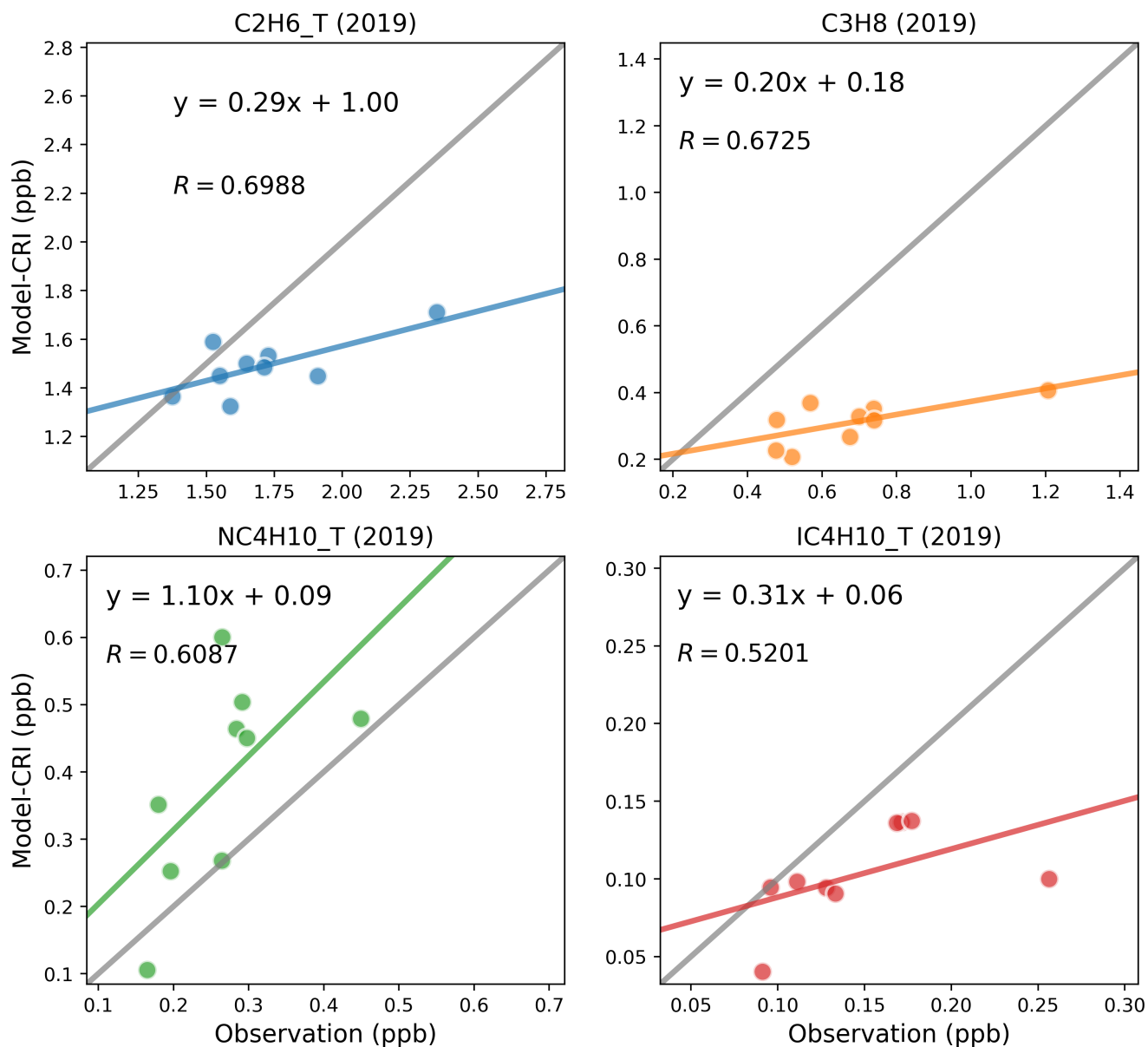
The simulations in 2018 using the four model setups produce very similar statistical results for each alkane (Table 6). Ranking the model performances between different model simulations, those utilizing the CAMS inventory display slightly better comparison results than those utilizing the CEIP inventory. Possible reasons for improvement include the inclusion of



more detail in the road traffic emissions sectors (F1–F4) in CAMS, and differences in absolute amounts and spatial distributions  
365 of the emissions, but the modelled results for alkanes are obviously not particularly sensitive to these differences.



**Figure 3.** Scatter plots of annual mean modelled and measured shorter-chain alkanes concentrations in 2018. The term ‘CRI’ indicates that the model data is calculated using the CRIv2R5Em mechanism. In each plot, the grey line is the 1:1 line, and the other coloured line is the least-squares regression line. The site codes and their respective data values for each figure panel are provided in the Supplement, Table S4.



**Figure 4.** Scatter plots of annual mean modelled and measured shorter-chain alkanes concentrations in 2019. The term ‘CRI’ indicates that the model data is calculated using the CRIv2R5Em mechanism. In each plot, the grey line is the 1:1 line, and the other coloured line is the least-squares regression line. The site codes and their respective data values for each figure panel are provided in the Supplement, Table S5.

### 3.1.2 VOC ratios: propane/ethane

The agreement between modelled and measured VOCs varies with species, even among VOCs that are commonly understood to originate from the same emission sources. Comparisons of ethane and propane are a good example. Ambient levels of ethane

**Table 6.** Summary of the comparison statistics between the model (*M*) and observation (*O*) for shorter-chain alkane species. *N* is the number of sites. *R* is the Pearson's correlation coefficient between annual means at various sites. Mean\_O and Mean\_M refer to the annual average concentrations (in ppb) of *O* and *M* over all sites, respectively. NMB is the Normalised Mean Bias, and NME is the Normalised Mean Error.

<b>C2H6_T</b>	<b>N</b>	<b>R</b>	<b>Mean_O</b>	<b>Mean_M</b>	<b>NMB</b>	<b>NME</b>
Em-CEIP-2018	10	0.5400	1.695	1.478	-13%	13%
Em-CAMS-2018	10	0.5884	1.695	1.463	-14%	14%
CRI-CEIP-2018	10	0.5318	1.695	1.484	-12%	13%
CRI-CAMS-2018	10	0.5781	1.695	1.469	-13%	13%
CRI-CAMS-2019	9	0.6988	1.709	1.489	-13%	14%
<b>C3H8</b>	<b>N</b>	<b>R</b>	<b>Mean_O</b>	<b>Mean_M</b>	<b>NMB</b>	<b>NME</b>
Em-CEIP-2018	10	0.3343	0.660	0.330	-50%	50%
Em-CAMS-2018	10	0.4858	0.660	0.292	-56%	56%
CRI-CEIP-2018	10	0.3263	0.660	0.335	-49%	49%
CRI-CAMS-2018	10	0.4748	0.660	0.296	-55%	55%
CRI-CAMS-2019	9	0.6725	0.678	0.310	-54%	54%
<b>NC4H10_T</b>	<b>N</b>	<b>R</b>	<b>Mean_O</b>	<b>Mean_M</b>	<b>NMB</b>	<b>NME</b>
Em-CEIP-2018	9	0.6003	0.245	0.373	52%	60%
Em-CAMS-2018	9	0.6130	0.245	0.361	47%	56%
CRI-CEIP-2018	9	0.5963	0.245	0.381	55%	62%
CRI-CAMS-2018	9	0.6093	0.245	0.368	50%	59%
CRI-CAMS-2019	9	0.6087	0.266	0.386	45%	50%
<b>IC4H10_T</b>	<b>N</b>	<b>R</b>	<b>Mean_O</b>	<b>Mean_M</b>	<b>NMB</b>	<b>NME</b>
Em-CEIP-2018	9	0.3935	0.148	0.097	-35%	41%
Em-CAMS-2018	9	0.4038	0.148	0.093	-38%	42%
CRI-CEIP-2018	9	0.3974	0.148	0.099	-34%	40%
CRI-CAMS-2018	9	0.4083	0.148	0.095	-36%	41%
CRI-CAMS-2019	9	0.5201	0.148	0.103	-30%	30%

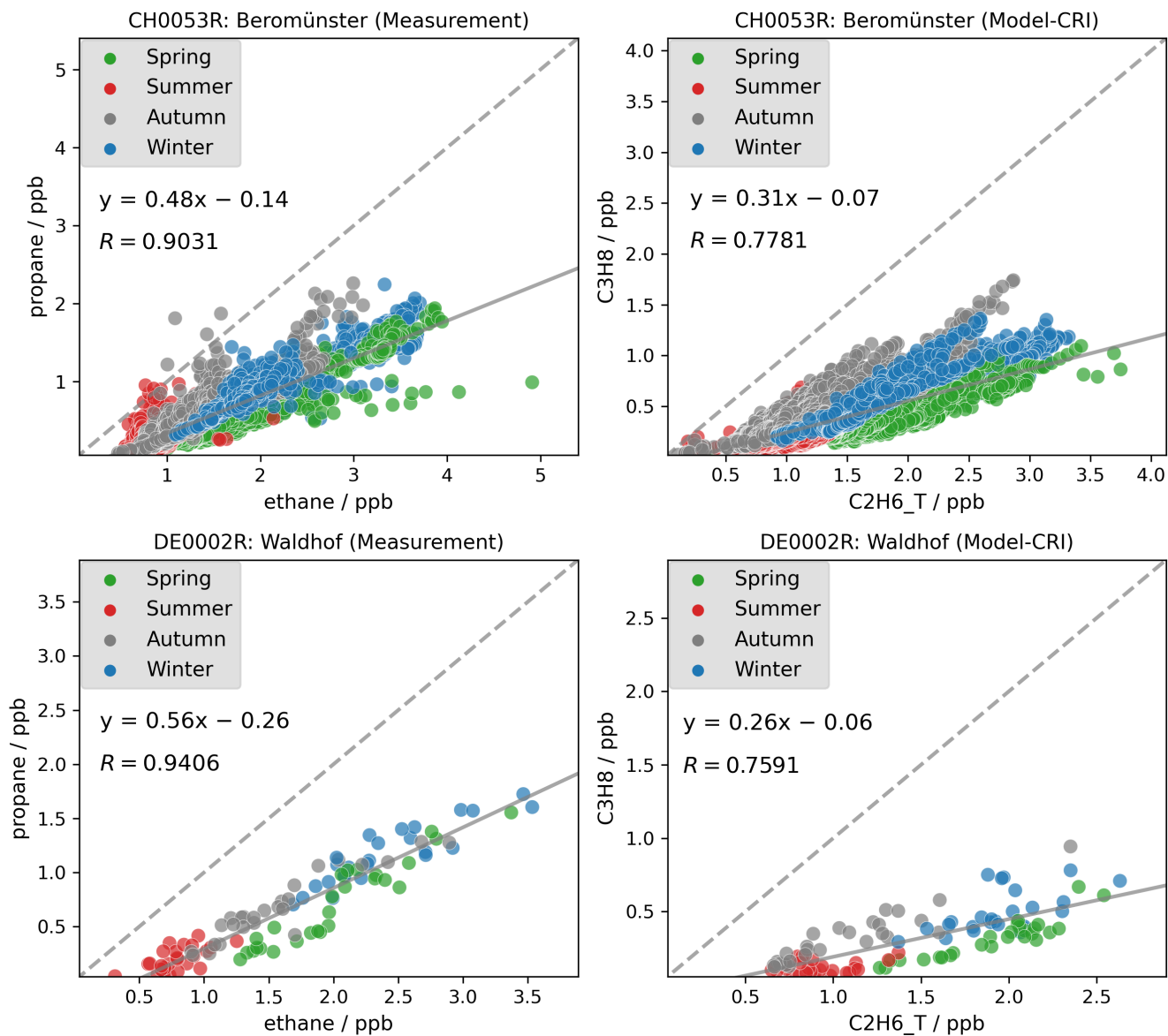
and propane are primarily influenced by leakage from the production and usage of oil and natural gas (von Schneidemesser et al., 2010; Aydin et al., 2011; Malley et al., 2015). Ethane, with a relatively long lifetime of around 1 month, exhibits a relatively low sensitivity to local emissions and is therefore an ideal species for the evaluation of a regional model at 0.1 degree. In contrast, spatial concentrations of propane, which has a lifetime approximately one-fourth that of ethane (c.f. Table S3 in the Supplement), are more sensitive to local emissions (Plass-Dülmer et al., 2002; Franco et al., 2015; Helmig et al., 2016).

Our time series comparisons reveal a consistent temporal pattern between the model and measurement for ethane (Fig. S4), but a larger discrepancy between modelled and measured propane concentrations (Fig. S5), particularly during winter and early spring months when modelled concentrations are considerably smaller than measurement peaks. Considering that both species have well-constrained OH loss rates and their rate coefficients have similar temperature dependence (Jenkin et al., 1997, 2008; Saunders et al., 2003; Watson et al., 2008), it is highly unlikely that the kinetics for these very straightforward reactions are not described properly in the chemical mechanism. More importantly, given the increased usage of fossil fuels in winter for e.g. domestic heating and road transport purposes, this discrepancy likely indicates either missing propane emissions from sources

like natural gas, or an underestimation of total sector emissions from the LPG sector, where propane emissions are predominant (see Fig. 2) — or possibly both.

385 Additionally, the GB1055R site (Chilbolton Observatory), while set up as a rural background site, exhibits a year-round pattern of pronounced spikes in measured propane concentrations, in contrast to modelled values. These spikes, often exceeding 10 ppb – while peak concentrations at other sites remain below 2 ppb – suggest that there are strong local sources nearby or pollution plumes regularly passing over possibly originating from urban areas such as London. This pattern further underscores the significant impact of local emissions on ambient propane levels.

390 Figure 5 illustrates a strong correlation between ethane and propane for both modelled and measured concentrations at two representative sites from Switzerland and Germany, which indicates common sources for the two species in all seasons. The measured propane-to-ethane ratios vary around 0.5, whereas the modelled ratios are around half of that value. These modelled ratios display even lower values during the spring months compared to those in autumn, which aligns with the aforementioned model underestimation of propane concentrations in early spring. This discrepancy underlines the necessity for more investigations into the seasonal variations in emission profiles and sector-specific contributions in the inventory to more accurately reflect real-world ratios of the two species.



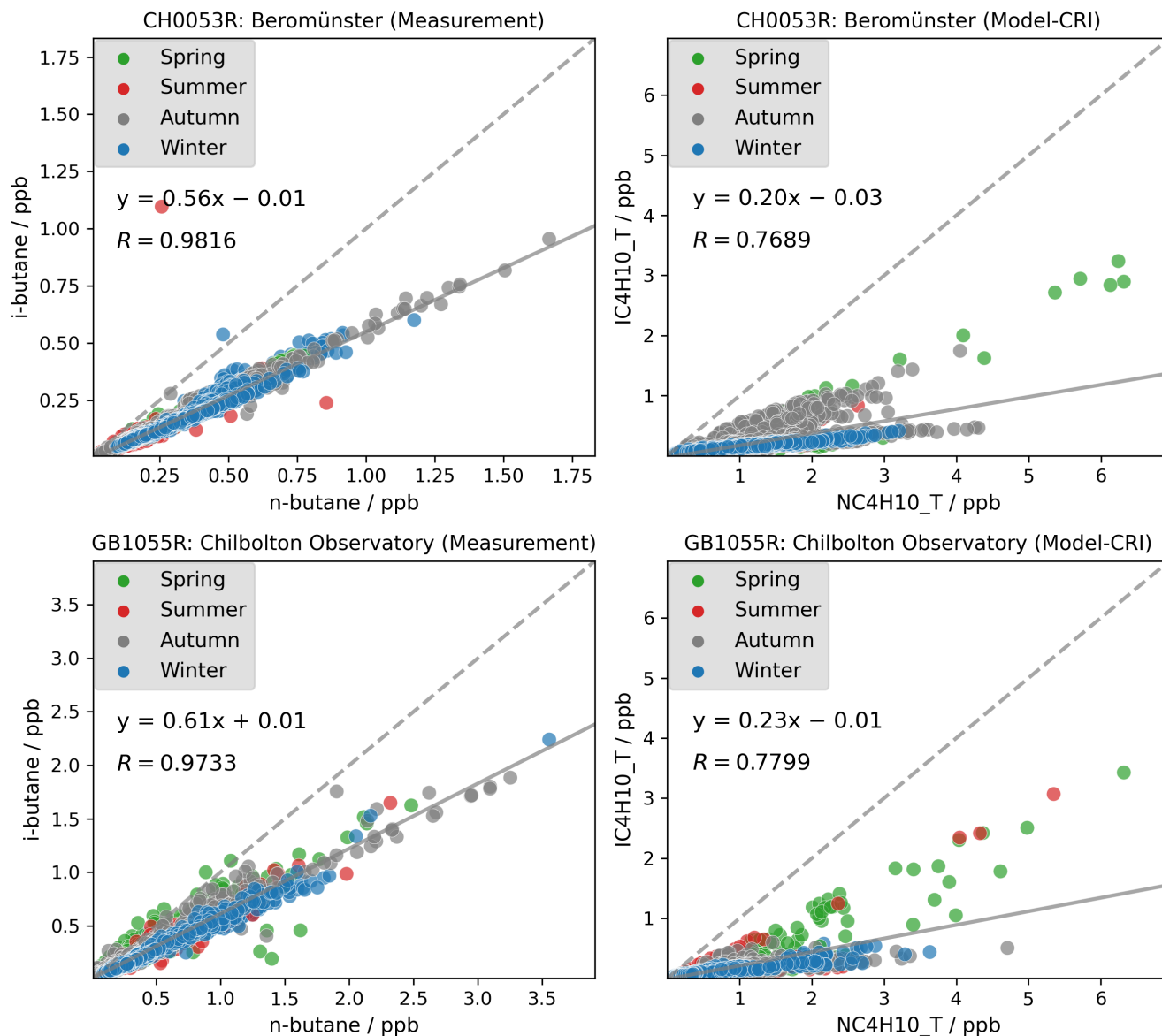
**Figure 5.** Measured (left) and modelled (right) propane to ethane ratios at Swiss and German sites in 2018. Spring: Mar-May; Summer: Jun-Aug; Autumn: Sep-Nov; Winter: Dec, Jan-Feb

Our study also highlights issues concerning the ratios among VOC isomers such as i-butane and n-butane. Several studies have reported that the i-/n-butane ratio has remained relatively constant at around 0.6 in recent decades (Helmig et al., 2014; Zhang et al., 2013; Parrish et al., 1998). However, as discussed in Sect. 3.1.1, the model tends to overestimate n-butane concentrations whilst underestimating those of i-butane. Consequently, the model simulates lower i-/n-butane ratios than those  
400 observed in measurements. As the two isomers have rather similar chemical loss rates (with lifetimes of ca. 3-4 days at  $[OH] = 1.5 \times 10^6 \text{ molec.cm}^{-3}$ , c.f. Table S3, or 1 day at more typical summertime level of  $[OH] = 5.0 \times 10^6 \text{ molec.cm}^{-3}$ ), one would expect good correlation between the two. Figure 6 shows that strong linear correlations are indeed observed between individual measured i- and n-butane samples at two example sites in Switzerland and the UK. The measured i-/n-butane ratios are approximately 0.6 and are similar across different seasons, implying that both isomers are likely to originate from the  
405 same sources throughout the year but with differing emission strengths. In contrast, although the model simulates strong linear correlations between the two isomers at both sites, the ratio is notably lower, ranging between 0.20 and 0.23. The modelled ratios are consistently lower than the observed ratios at other sites also.

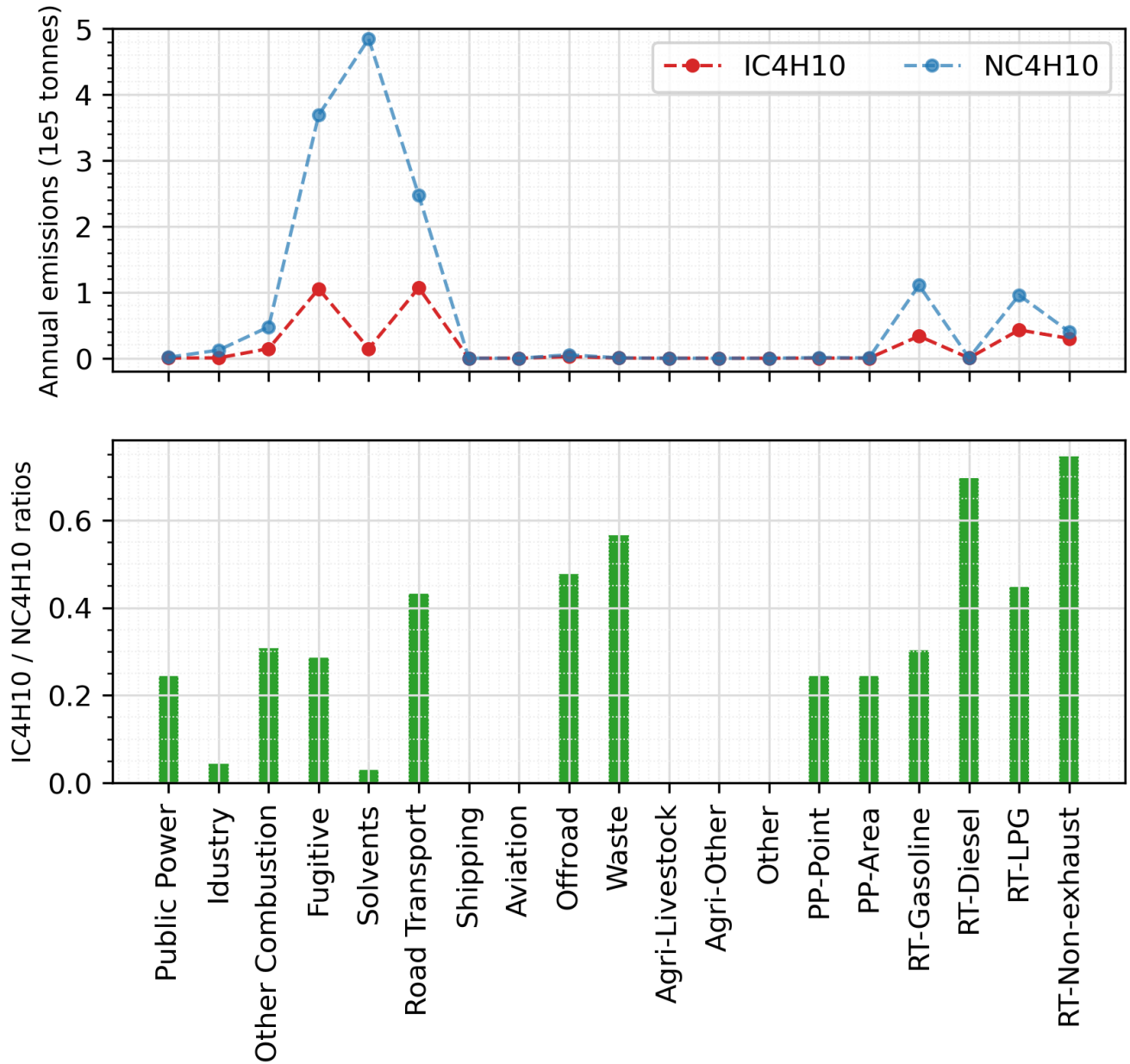
From Table 2 we can calculate an i- to n-butane ratio in biomass burning emissions of 0.6, so wildfires episodes would not lower the ratio. Considering that there is no substantial difference in the atmospheric lifetimes of the two isomers, the smaller  
410 modelled ratios must be attributable to smaller ratios in the anthropogenic emissions. The overall emission ratios using the CAMS inventory data, as shown in Fig. S6, differ significantly among countries, ranging from around 0.1 in western Europe to around 0.4 in northern Europe. Examining individual emission sectors, Figure 7 identifies the solvent sector as the largest contributor to n-butane emissions, with an i-/n-butane ratio below 0.05. This is followed by the fugitive sector, which has a ratio of approximately 0.28. Consequently, a model grid with a larger proportion of emissions from the solvent and fugitive  
415 sectors would exhibit smaller ratios. In contrast, a greater contribution from biomass burning emissions or the RT-Non-exhaust sector (which has a ratio of 0.75) in a model grid on a specific day would yield larger ratios. This explains why in Fig. 6 certain model data points in winter exhibit substantially lower ratios compared to those in spring. Indeed, Figs. S1, S2 further confirm that while solvent sector does not show large seasonal variations in Switzerland and the UK, VOC emissions from the other combustion and fugitive sectors are higher in winter (both have low ratios), which is consistent with the lower modelled ratios  
420 in winter at the two sites.

Our results also align with UK-AQEG (2020) who reported that the contribution of solvents to UK emissions was approximately 74% in 2017. Moreover, n-butane – primarily originating from solvents and fugitive losses – was as the second most abundant VOC by mass in the UK NAEI inventory, after ethanol. However, the divergence in modelled and measured i-/n-butane ratios revealed in this work suggests that this may not be the case in reality. Several studies have highlighted consid-  
425 erable discrepancies between emission inventories and ambient observations, particularly in relation to the dominant sources of VOC emissions (Niedojadlo et al., 2007; Lanz et al., 2008; Gaimoz et al., 2011). For instance, Borbon et al. (2013) suggested that emissions from gasoline-powered vehicles continue to be the dominant source of NMHC in northern mid-latitude urban areas, whereas several European regional inventories have identified solvent usage as the new leading urban VOC source.

Oliveira et al. (2023) also noted that estimates of solvent speciation differed considerably between different sources. Consequently, it is possible that emissions of i-butane from the solvent sector may be unaccounted for, or that contributions from road transport-related sectors are underestimated, or both. Hence, further examination is required both of the sector that dominates emissions and of the specific emission profiles within each sector.



**Figure 6.** Measured (left) and modelled (right) i-butane to n-butane ratios at Swiss and UK sites in 2018. Spring: Mar-May; Summer: Jun-Aug; Autumn: Sep-Nov; Winter: Dec, Jan-Feb



**Figure 7.** Annual total emissions of i-butane and n-butane from individual sectors in the 2018 CAMS inventory, and their emitted ratios.



### 3.1.4 Longer-chain alkanes

Figure 8 compares the modelled and measured annual mean concentrations of longer-chain alkane species – n-pentane, i-  
435 pentane, and n-hexane – for the CRI-CAMS-2018 model run. These species exhibit generally lower concentrations than shorter-chain alkanes with most sites reporting annual averages below 0.2 ppb. Despite the low concentrations, there is a good agreement between the model and measurement for all species, with linear correlation coefficients ranging from 0.53 to 0.93.

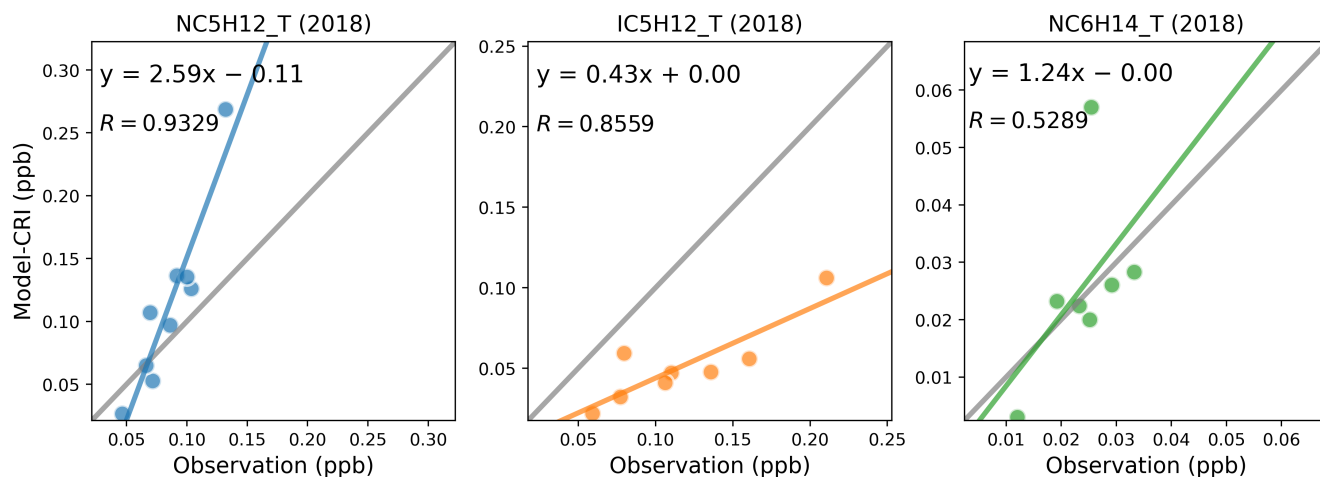
Table 7 summaries the model-measurement comparison statistics of these species for each model simulation. In general,  
440 simulations employing the CAMS inventory, which benefits from more detailed emissions data within CAMS’s sub-sectors, demonstrate stronger linear correlations compared to those utilising the CEIP inventory. No distinct differences are apparent between simulations employing different chemical mechanisms. Similarly, the model’s performance for all species remains consistently good for both the 2018 and 2019 simulations.

Additionally, it is worth noting that although i-pentane contributes a notable amount of VOC emissions, comparable to  
445 those of n-pentane within sectors such as Fugitive, RT-Gasoline, and RT-Non exhaust (Fig. 2), the modelled concentrations of i-pentane are not as overestimated as those for n-pentane (up to +44%). On the contrary, the model significantly underestimates i-pentane concentrations, by as much as -59% (Table 7). This discrepancy necessitates further investigation to determine whether it stems from inaccuracies in the speciation profiles of existing emission activities or whether it highlights the lack of representation of another source. Coll et al. (2010) reported similar issues with the underestimation of i-pentane and highlighted  
450 its significance as a component of gasoline evaporation. Several studies suggest that this aspect is not adequately captured in emission inventories, albeit it is expected to account for a significant proportion of emissions within urban environments (Borbon et al., 2002; Möllmann-Coers et al., 2002). An analysis of the ratios of i- to n-pentane is presented in the subsequent section (Sect. 3.1.5).

### 3.1.5 VOC ratios: i-/n-pentane

The dominant anthropogenic sources of pentane species are traffic exhaust and fuel evaporation (Wilde et al., 2021; Li et al.,  
455 2017; Gilman et al., 2013; Swarthout et al., 2013). Helmig et al. (2014) noted that measurements influenced by anthropogenic emission sources displayed i-/n-pentane ratios ranging from 1.8 to 2.5. Bourtsoukidis et al. (2019) reported an i-/n-pentane ratio of 1.7 above the Suez Canal, which is indicative of ship emissions, and a ratio of 2.9 in areas under the influence of considerable vehicle emissions. In contrast, sources such as biomass burning and oceanic emissions preferentially emit n-pentane, resulting  
460 in lower i-/n-pentane ratios of around 0.5 to 0.7 (Andreae, 2019; Lewis et al., 2001; Broadgate et al., 1997). In the absence of parameterisation data for biomass burning and oceanic emissions of pentane species at the time of our model experiments, the model results are primarily determined by anthropogenic emissions.

Considering that the two pentane isomers are commonly co-emitted and have rather similar atmospheric lifetimes (ca.  
2 days, Table S3), their concentration ratios are relatively indicative of their overall emission ratios. Figure 9 reveals that  
465 although strong linear correlations are present in both the modelled and measured datasets across all seasons, the measured



**Figure 8.** Scatter plots of annual mean modelled and measured longer-chain alkanes concentrations in 2018. The term ‘CRI’ indicates that the model data is calculated using the CRIv2R5Em mechanism. In each plot, the grey line is the 1:1 line, and the other coloured line is the least-squares regression line. The site codes and their respective data values for each figure panel are provided in Supplement Table S6.

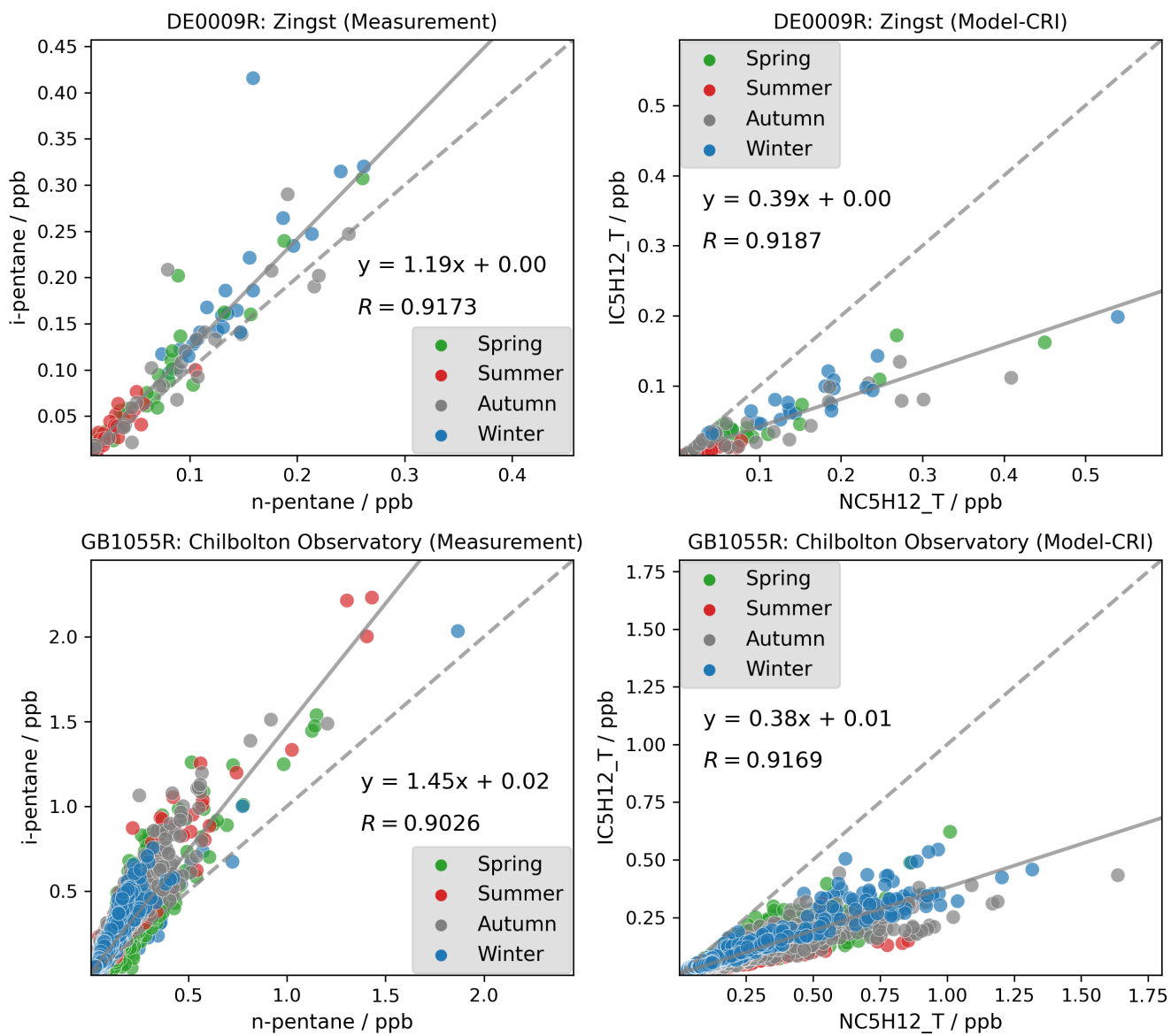
**Table 7.** Summary of the comparison statistics between the model ( $M$ ) and observation ( $O$ ) for longer-chain alkane species.  $N$  is the number of sites.  $R$  is the Pearson’s correlation coefficient between annual means at various sites. Mean\_O and Mean\_M refer to the annual average concentrations (in ppb) of  $O$  and  $M$  over all sites, respectively. NMB is the Normalised Mean Bias, and NME is the Normalised Mean Error.

NC5H12_T	N	R	Mean_O	Mean_M	NMB	NME
Em-CEIP-2018	9	0.9100	0.085	0.107	26%	38%
Em-CAMS-2018	9	0.9331	0.085	0.109	28%	40%
CRI-CEIP-2018	9	0.9105	0.085	0.110	30%	42%
CRI-CAMS-2018	9	0.9329	0.085	0.113	32%	43%
CRI-CAMS-2019	9	0.8775	0.081	0.116	44%	50%
IC5H12_T	N	R	Mean_O	Mean_M	NMB	NME
Em-CEIP-2018	8	0.7422	0.117	0.048	-59%	59%
Em-CAMS-2018	8	0.8592	0.117	0.050	-58%	58%
CRI-CEIP-2018	8	0.7382	0.117	0.050	-58%	58%
CRI-CAMS-2018	8	0.8559	0.117	0.051	-56%	56%
CRI-CAMS-2019	6	0.8866	0.107	0.050	-53%	53%
NC6H14_T	N	R	Mean_O	Mean_M	NMB	NME
Em-CEIP-2018	7	0.4428	0.024	0.022	-8%	44%
Em-CAMS-2018	7	0.5251	0.024	0.025	3%	36%
CRI-CEIP-2018	7	0.4479	0.024	0.023	-4%	43%
CRI-CAMS-2018	7	0.5289	0.024	0.026	7%	35%
CRI-CAMS-2019	7	0.4984	0.023	0.025	9%	42%

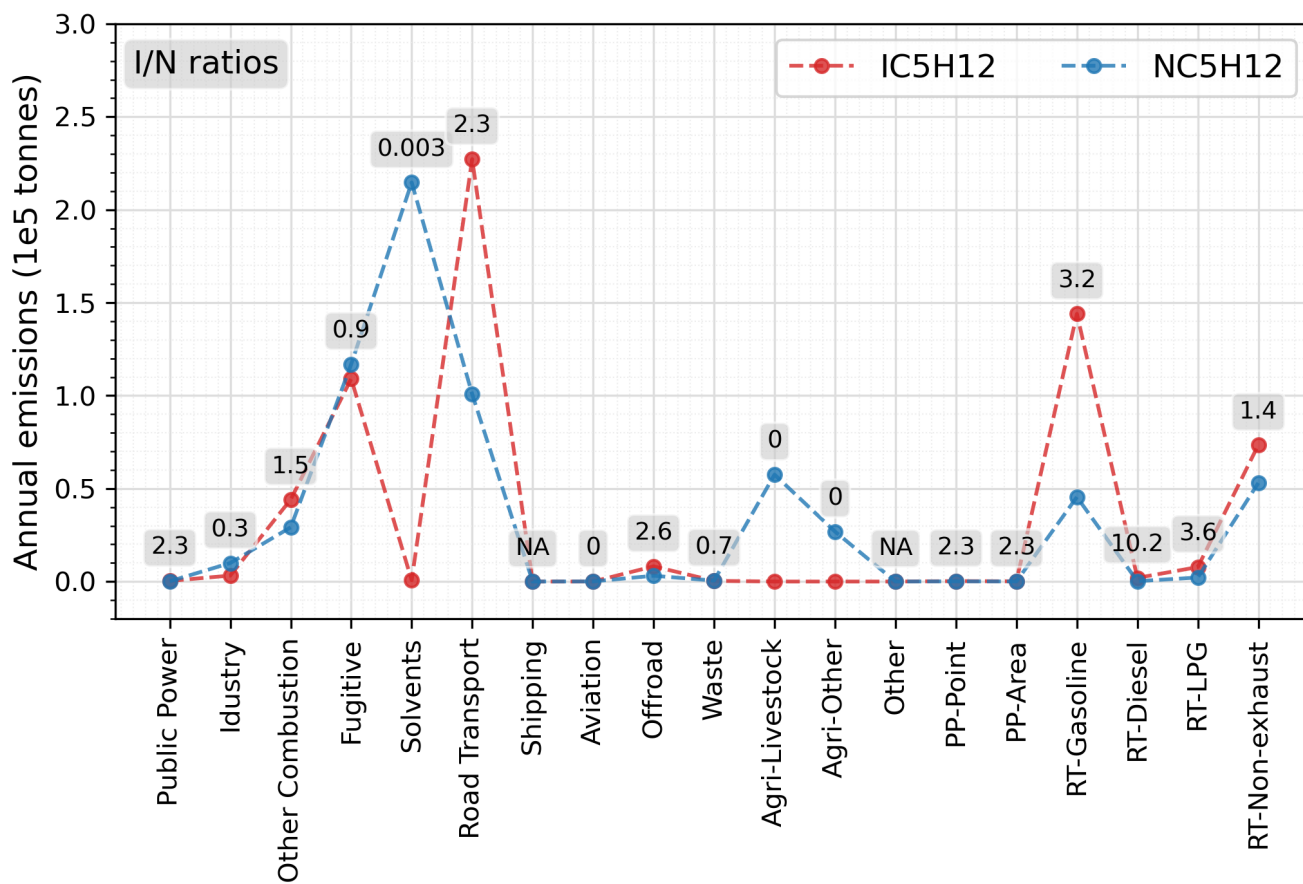
*i*-*n*-pentane ratios (around 1.45) are more than three times higher than the modelled ratios (around 0.39). As with the model’s underestimation of *i*-*n*-butane ratios, this smaller modelled *i*-*n*-pentane ratio is largely driven by abundant *n*-pentane emissions from the solvent sector, which exhibits an exceedingly low emission ratio of only 0.003, as indicated in Fig. 10.

Besides potential speciation inaccuracies within the solvent sector, an alternative explanation for the discrepancy between  
470 modelled and measured ratios could be that current inventories underestimate total emissions from transport activities and fuel  
evaporation. In this case, the likelihood of the first hypothesis is supported by measurement data, which exhibit a strong linear  
correlation between the two species, with data points tightly clustered around the regression line and a slope representing one  
dominant emitting ratio, rather than displaying multiple trend lines with varying slopes. However, pinpointing which of the  
two possibilities accounts for the model's underestimation of i-/n-pentane ratios remains a challenge.

475 Additionally, it is pertinent to note that the current speciation for agricultural sectors, derived from available literature  
(Sect. 2.3.3), only contains n-pentane and not i-pentane, thereby contributing to the lower i-/n-pentane ratio calculated in the  
model. In fact, there is a general lack of emission measurements to support a detailed and accurate speciation of VOC emissions  
from agricultural sectors. These sectors contains a variety of activities, each with potentially different emission profiles and  
uncertainties. For instance, the Agri-Livestock sector comprises emissions from diverse animal categories such as poultry,  
480 cattle, sheep, and swine. Similarly, the Agri-Other sector includes activities ranging from the application of animal manure  
and the cultivation of crops to the field burning of agricultural residues. Figure 10 suggests that the contributions of emissions  
from agricultural sectors are not insignificant. As such, there is a pressing need for more emission measurements to enhance  
the accuracy of VOC emission speciation in these sectors.



**Figure 9.** Measured (left) and modelled (right) i-pentane to n-pentane ratios at German and UK sites in 2018. Spring: Mar-May; Summer: Jun-Aug; Autumn: Sep-Nov; Winter: Dec, Jan-Feb



**Figure 10.** Annual total emissions of NC5H12 and IC5H12 from individual sectors and their emitted ratios using the CAMS inventory. 'NA' means there is no NC5H12 emissions

## 3.2 Unsaturated NMHCs

### 485 3.2.1 Ethene, ethyne and isoprene

Figure 11 presents a comparison of the annual mean concentrations of ethene, ethyne, and isoprene for the year 2018. The comparison statistics are presented in Table 8. Results are mixed, with rather good results for ethene, but poorer results for ethyne. As for isoprene, an outlier station is found for comparisons in both 2018 (Fig. 11) and 2019 (Fig. S7).

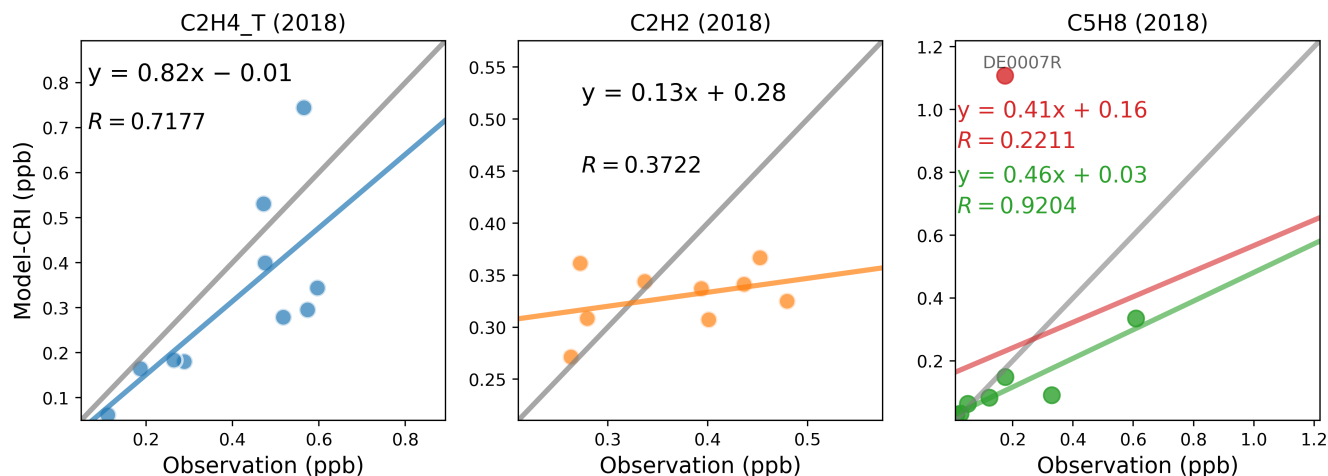
The statistical metrics for ethyne remained consistently poor in all 2018 simulations, in contrast to the much better performance for ethene. This is interesting given that both are emitted from similar anthropogenic activities and have well-constrained OH loss rates (Jenkin et al., 1997, 2008; Saunders et al., 2003; Watson et al., 2008). The different model performance strongly points to shortcomings in the spatial and temporal patterns and magnitudes of ethyne emissions. Moreover, the model's poor performance for ethyne are twofold: it underestimates ethyne concentrations at most sites and fails to reflect the spatial distribution evident in the measurements. As illustrated in Figure 11, the dispersion of the data points along the measurement axis is  
495 considerable, indicating variability in the actual concentrations. In contrast, the model results tightly cluster around 0.35 ppb, indicating little spatial variation. This clustering suggests that the modelled concentrations of ethyne are heavily influenced by its BICs, approximately 0.46 ppb, which are derived from ten-year average concentrations of measurements at three rural background sites in France reported by Waked et al. (2016). In our previous model runs in which similar anthropogenic emission profiles are used but the BICs and biomass burning emissions of ethyne had not been developed, the model underestimation  
500 was even larger at -91% and the linear correlation remained poor ( $R = -0.18$ ) (Ge et al., 2023a). With the BICs and biomass burning emissions for ethyne applied for model runs in this work, it appears that the inputs of anthropogenic emissions from both inventories are too small to significantly affect the model outputs.

A detailed time series comparison of ethyne at example stations (Fig. S8) reinforces this hypothesis. Compared to the measurement data, the model predicts lower concentrations of ethyne during the winter and early spring, with little seasonal  
505 fluctuations. Given that the model aligns relatively well with the observed low concentrations during the summer months, the discrepancies likely stem from an underestimation of ethyne emissions from sources such as road transport activities or other combustion processes especially during winter.

Considering that ethyne is commonly used as a tracer of anthropogenic emissions, these discrepancies are important. von Schneidmesser et al. (2023) used ratios of VOC to ethyne, rather than VOC to CO to evaluate global inventories, because  
510 of measurement availability; but as they noted, the validity of such comparisons depend crucially on how well ethyne is represented in the inventory. In fact, the observed peak concentrations of ethyne far exceed those we can model using the current inventories. A discussion on VOC to ethyne ratios is presented in Sect. 3.2.3 and 3.2.4 to delve into this issue in more detail.

For isoprene, it is one of the most important biogenic VOCs, whose emissions are dominated by its biogenic sources (Guenther et al., 2012; Simpson et al., 1999). Traffic related sources can also be important in wintertime (Reimann et al., 2000; Borbon et al., 2001). Figure 11 and S7 show that an outlier station DE0007R, characterised by a large model overestimation, drives an overall very poor linear correlation coefficient ( $R = 0.22$ ) in both 2018 and 2019. Figure S9 shows that both the

model and the measurement show peak concentrations in summer and very low concentrations in winter. The comparison is challenged by the model overestimation at site DE0007R, which is likely due to inaccuracies in simulating isoprene emissions from vegetation within this specific model grid. The biogenic emission field for isoprene is predominantly influenced by the estimated locations of certain key species, such as the European oak, known for their high emission factors (Wiedinmyer et al., 2006). Consequently, the emission field can appear quite ‘spotty’. Further investigation into the geographical characteristics of this site, both in the actual world and as represented in the model, indicates that it is situated in a forest hot spot in both scenarios. This leads to the possibility of a discrepancy in the exact type of forest depicted by the model compared to the actual one. Nevertheless, apart from this anomaly, the data points of other locations in both years show excellent linear correlations between model and measurement, with R values equal to 0.92 in 2018 and 0.99 in 2019, despite a consistent model underestimation. The good agreements at those sites for this species are somewhat surprising due to both the difficulties associated with estimating the magnitude and spatial distribution of its biogenic sources (Simpson et al., 1999; Keenan et al., 2009) and its short lifetime, demonstrating that the model calculation of biogenic emissions for isoprene and its chemistry and transport is being captured reasonably well at least at these locations.



**Figure 11.** Scatter plots of annual mean modelled and measured ethene, ethyne, and isoprene concentrations in 2018. The term ‘CRI’ indicates that the model data is calculated using the CRIv2R5Em mechanism. In each plot, the grey line is the 1:1 line, and the other coloured line is the least-squares regression line. For isoprene, the outlier site is plotted in red; the red line is the regression line with the outlier; the green line is the regression line without the outlier. The site codes and their respective data values for each figure panel are provided in Supplement Table S7.

**Table 8.** Summary of the comparison statistics between the model ( $M$ ) and observation ( $O$ ) for ethene and ethyne.  $N$  is the number of sites.  $R$  is the Pearson’s correlation coefficient between annual means at various sites. Mean\_O and Mean\_M refer to the annual average concentrations (in ppb) of  $O$  and  $M$  over all sites, respectively. NMB is the Normalised Mean Bias, and NME is the Normalised Mean Error.

<b>C2H4_T</b>	<b>N</b>	<b>R</b>	<b>Mean_O</b>	<b>Mean_M</b>	<b>NMB</b>	<b>NME</b>
Em-CEIP-2018	10	0.6472	0.405	0.287	-29%	40%
Em-CAMS-2018	10	0.7107	0.405	0.302	-25%	34%
CRI-CEIP-2018	10	0.6546	0.405	0.303	-25%	38%
CRI-CAMS-2018	10	0.7177	0.405	0.318	-21%	33%
CRI-CAMS-2019	7	0.7519	0.375	0.358	-5%	24%
<b>C2H2</b>	<b>N</b>	<b>R</b>	<b>Mean_O</b>	<b>Mean_M</b>	<b>NMB</b>	<b>NME</b>
Em-CEIP-2018	9	0.3628	0.368	0.321	-13%	20%
Em-CAMS-2018	9	0.3557	0.368	0.324	-12%	19%
CRI-CEIP-2018	9	0.3829	0.368	0.326	-11%	19%
CRI-CAMS-2018	9	0.3722	0.368	0.329	-11%	19%
CRI-CAMS-2019	9	0.5866	0.376	0.348	-7%	21%



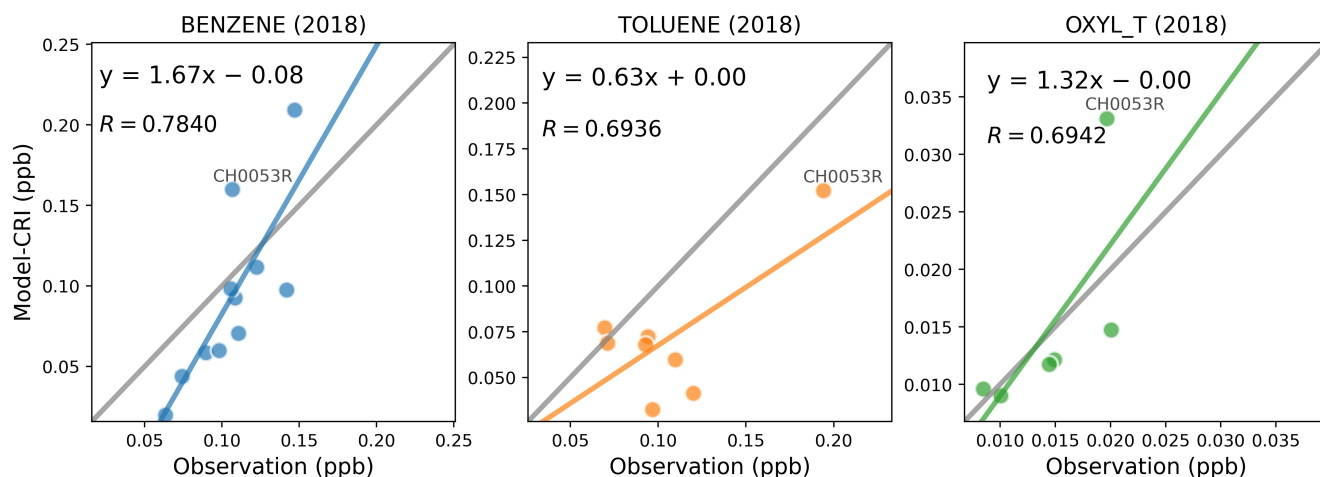
### 3.2.2 Aromatic species

Figure 12 presents the comparisons of benzene, toluene, and o-xylene concentrations. Both the model and the measurements indicate that the concentrations of benzene and toluene are an order of magnitude higher than those of o-xylene. All three aromatic species demonstrate good model-measurement agreements. For benzene, the NMB values are relatively small across the  
535 different model runs, whilst for toluene there is a moderate model underestimation of -33% to -39%, as presented in Table 9. The model's performance for o-xylene varies slightly between 2018 and 2019 comparisons, with better model-measurement agreement in 2018 than in 2019. However, only 4 valid sites are available in 2019, so the measurement data set is less representative. Furthermore, the observed o-xylene concentrations are so low (typically below 0.02 ppb) that these values may be artificially scattered due to uncertainties in the measurement.

540 In addition, the site CH0053R might initially appear as an anomaly, particularly in the comparisons of toluene and o-xylene. However, a detailed examination of the time series for these compounds at this site does not reveal any anomalies (as illustrated in Fig. 13). For benzene, there is good agreement between model predictions and measurements, with both indicating higher concentrations during winter and lower concentrations in summer, reflecting the expected seasonal variation.

In the case of toluene, the seasonal pattern is less pronounced. The measurements indicate several spikes in concentrations  
545 reaching 2 ppb during August and November, while the model suggests multiple peaks in April. Despite these discrepancies, for most of the year, the model and measurement data align reasonably well, both showing toluene concentrations fluctuating between 0.1 and 0.5 ppb.

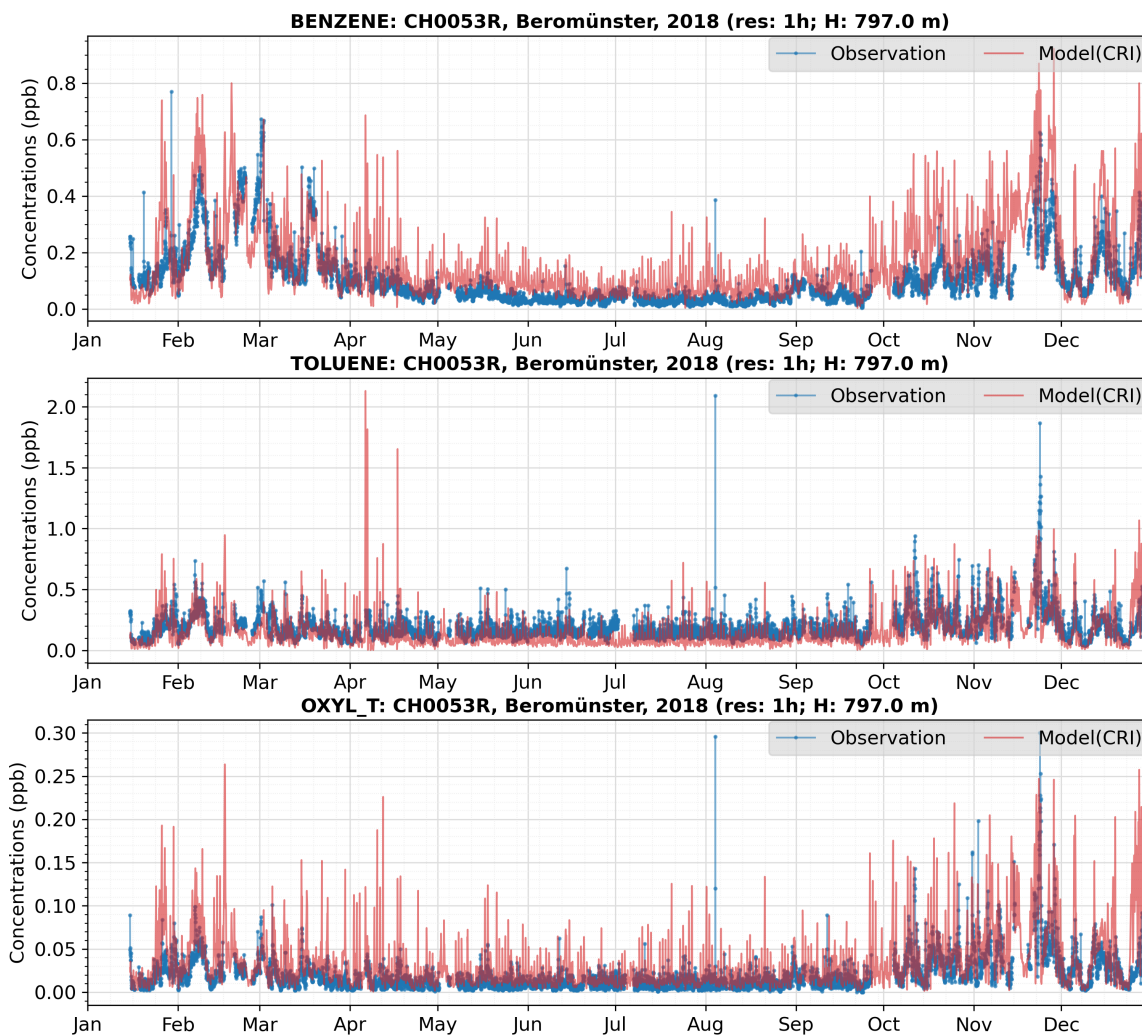
Regarding o-xylene, the measured concentrations are consistently low throughout most of the year, typically close to zero, leading to significant analytical uncertainties. In comparison, the model predicts generally higher concentrations of o-xylene,  
550 with numerous peaks exceeding 0.05 ppb throughout the year. This discrepancy may arise from inaccuracies in the model's input data, suggesting a potential overestimation of emission sources within the single model grid considered. Nonetheless, considering the limited data available for this compound, and its low ambient levels, both model predictions and observed values are subject to considerable uncertainties. Consequently, there is a need for more measurements focusing on not only air concentrations but also on emissions to enhance the accuracy of these estimates.



**Figure 12.** Scatter plots of annual mean modelled and measured benzene, toluene, and o-xylene concentrations in 2018. The term ‘CRI’ indicates that the model data is calculated using the CRIv2R5Em mechanism. In each plot, the grey line is the 1:1 line, and the other coloured line is the least-squares regression line. The site codes and their respective data values for each figure panel are provided in Supplement Table S9.

**Table 9.** Summary of the comparison statistics between the model ( $M$ ) and observation ( $O$ ) for benzene, toluene, and o-xylene.  $N$  is the number of sites.  $R$  is the Pearson’s correlation coefficient between annual means at various sites. Mean\_O and Mean\_M refer to the annual average concentrations (in ppb) of  $O$  and  $M$  over all sites, respectively. NMB is the Normalised Mean Bias, and NME is the Normalised Mean Error.

<b>BENZENE</b>	<b>N</b>	<b>R</b>	<b>Mean_O</b>	<b>Mean_M</b>	<b>NMB</b>	<b>NME</b>
Em-CEIP-2018	11	0.7680	0.106	0.088	-17%	37%
Em-CAMS-2018	11	0.7858	0.106	0.092	-14%	33%
CRI-CEIP-2018	11	0.7666	0.106	0.090	-16%	36%
CRI-CAMS-2018	11	0.7840	0.106	0.093	-13%	32%
CRI-CAMS-2019	9	0.6761	0.102	0.089	-12%	33%
<b>TOLUENE</b>	<b>N</b>	<b>R</b>	<b>Mean_O</b>	<b>Mean_M</b>	<b>NMB</b>	<b>NME</b>
Em-CEIP-2018	8	0.6249	0.106	0.066	-38%	40%
Em-CAMS-2018	8	0.6938	0.106	0.069	-35%	36%
CRI-CEIP-2018	8	0.6290	0.106	0.068	-36%	38%
CRI-CAMS-2018	8	0.6936	0.106	0.071	-33%	34%
CRI-CAMS-2019	8	0.6481	0.115	0.070	-39%	39%
<b>OXYL_T</b>	<b>N</b>	<b>R</b>	<b>Mean_O</b>	<b>Mean_M</b>	<b>NMB</b>	<b>NME</b>
Em-CEIP-2018	6	0.7496	0.015	0.013	-11%	26%
Em-CAMS-2018	6	0.7038	0.015	0.014	-3%	31%
CRI-CEIP-2018	6	0.7365	0.015	0.014	-6%	25%
CRI-CAMS-2018	6	0.6942	0.015	0.015	3%	30%
CRI-CAMS-2019	4	0.3953	0.019	0.017	-13%	43%



**Figure 13.** Time series of modelled and measured benzene, toluene, and o-xylene concentrations at the CH0053R site in 2018.

### 555 3.2.3 VOC ratios: ethene/ethyne

Ethyne is widely acknowledged as an important tracer for combustion-related activities, particularly those connected to vehicular and residential sources. Ambient levels of ethyne typically rise during the winter, likely due to increased vehicle emissions and domestic heating (Dollard et al., 2007; Russo et al., 2010; McDonald et al., 2013). Consequently, numerous studies utilise VOC-to-ethyne ratios to identify combustion-related sources and to evaluate and constrain emission inventories (von Schneidemesser et al., 2023; Dominutti et al., 2020; Salameh et al., 2017).

Our findings show satisfactory model-measurement spatial correlations for ethene, but not for ethyne. A closer examination of the time series for these species shows that the modelled ethene concentrations (Fig. S10) align well with the observed temporal patterns, whereas the modelled ethyne concentrations (Fig. S8) are significantly lower during the winter months.

The modelled ratios of ethene to ethyne are influenced by these discrepancies between model and measurement. Table 10 presents both the measured and modelled ratios, calculated as the slope term of the least squares regression line between ethene and ethyne, along with their corresponding linear regression coefficients for summer and winter, at available EMEP sites.

At most EMEP sites, linear correlations between measured ethene and ethyne are greater and ethene-to-ethyne ratios are higher (typically above 1) in winter compared to those in summer (typically below 1). The exception is the UK site at Auchen-corth Moss, where the summer observations exhibit a larger ratio. The study by Boynard et al. (2014) reported an ethene-to-ethyne ratio of 2.78 in summer and 2.30 in winter in Paris during 2009-2010. In contrast, in Strasbourg there was a lower ratio in summer (1.65) and a higher one in winter (2.01). These findings underscore that the dominant source of these two VOCs varies both seasonally and geographically.

In contrast to the measured data, the modelled ethene-to-ethyne ratios demonstrate weaker linear correlations and less pronounced seasonal patterns. The closest agreement between model and measurement is observed at the Beromünster site, where the model shows fairly good linear correlation coefficients of 0.71 in summer and 0.67 in winter. However, the modelled winter ratio at this site (3.94) is more than twice the measured value (1.64). This discrepancy aligns with the previously noted underestimation of ethyne concentrations by the model during winter, as depicted in Fig. S8. At the rest of the sites, the modelled linear correlations between ethene and ethyne are too weak to derive any sensible ratios between the two species. Similar issues are found for the modelled benzene-to-ethyne ratios as well which is presented in Sect. 3.2.4. Furthermore, a detailed discussion on potential measurement issues for ethyne is presented in Sect. 3.4.

**Table 10.** Ethene to ethyne ratios in 2018 at each site, calculated as the slope term of the least squares regression line between ethene(y) and ethyne(x). The linear correlation coefficient R of the regression is indicated in brackets.

C2H4_T/C2H2	Summer		Winter	
	Obs	Mod	Obs	Mod
Beromünster	1.04 (0.71)	1.65 (0.71)	1.64 (0.92)	3.94 (0.67)
Kosetice	0.60 (0.41)	1.43 (0.71)	1.67 (0.93)	0.99 (0.08)
Waldhof	0.23 (0.21)	0.25 (0.44)	1.76 (0.89)	-0.84 (-0.13)
Neuglobsow	0.44 (0.45)	0.15 (0.21)	1.89 (0.97)	-0.27 (-0.02)
Zingst	0.64 (0.80)	0.03 (0.08)	1.71 (0.95)	-3.11 (-0.40)
Pallas	0.10 (0.12)	-0.02 (-0.14)	1.07 (0.84)	-0.19 (-0.08)
Peyrusse Vieille	0.07 (0.03)	-0.03 (-0.27)	1.56 (0.85)	-1.98 (-0.27)
La Tardiere	0.79 (0.43)	-0.05 (-0.37)	1.08 (0.83)	0.62 (0.14)
Auchencorth Moss	1.11 (0.76)	1.12 (0.63)	0.66 (0.66)	0.20 (0.06)

### 3.2.4 VOC ratios: benzene/ethyne

Similar discrepancies are also found for benzene to ethyne ratios. Table 11 shows the measured and modelled benzene-to-ethyne ratios and their corresponding linear regression coefficients in summer and winter. In general, biases in meteorology and chemistry are likely to affect all species uniformly. During winter, the lifetimes of ethene, benzene, and ethyne should  
585 become longer to a similar extent, implying that when examining ratios such as ethene-to-ethyne and benzene-to-ethyne, changes in their lifetimes should not significantly impact the results.

The measured benzene concentrations are positively correlated with ethyne during summer with linear correlation coefficients typically above 0.40. In winter, the correlation is stronger with R value exceeding 0.89 at all sites, indicating common sources of the two species. The measured benzene-to-ethyne ratios at EMEP sites do not show large spatial nor seasonal variations, varying around 0.2. Boynard et al. (2014) reported similar values in summer and winter with their benzene to ethyne  
590 ratios being 0.20-0.26 in Paris and 0.17-0.23 in Strasbourg.

By comparison, the modelled ratios vary seasonally at the Beromünster site. During summer, the modelled ratio of 0.33 approximates the measured value of 0.26 at this site. However, in winter, the modelled ratio of 0.98 is significantly higher than the measured winter ratio of 0.34. Given that Fig. S11 shows that the modelled benzene concentrations agree well with the measured values in both summer and winter, this is mainly caused by the model underestimation of winter ethyne concentrations  
595 at this site.

Meanwhile, the negative linear correlation coefficients between modelled benzene and ethyne at most other sites point out significant deficiencies in the representation of ethyne emissions within current inventories. As shown in Table 11, in the majority of cases the correlations between benzene and ethyne are so poor that the value of their ratio becomes not relevant  
600 anymore. This is particularly concerning given that ethyne and benzene have comparable atmospheric lifetimes of 6-10 days (Table S3), and are emitted from similar human activities, such as fuel consumption and combustion processes (Waked et al., 2016; Badol et al., 2008). In theory, this would result in similar spatial and temporal variation patterns for both species. If the model demonstrates a good spatial and temporal agreement with the measurement for benzene (as illustrated in Fig. 12 and S11) but fails to do so for ethyne – as observed in this study – it suggests that the problem may be specifically with the accuracy of ethyne emissions data. Such a discrepancy implies that the fundamental modelling of chemical reactions and transport  
605 processes is sound, but the emission inputs need to be scrutinized and potentially revised to better reflect real-world conditions. For instance, initiating measurement campaigns to assess ethyne emission factors, specifically targeting periods of high emissions such as winter, and focusing on proximate emission sources, including gasoline vehicles, shipping, industrial and residential combustion of natural gas, waste incineration, domestic wood fireplaces, and so on. More emission measurements  
610 will be required for different emission activities. These targeted campaigns would likely provide valuable insights into seasonal variations and the impact of specific sources on overall emissions.

Furthermore, the model more accurately captures the linear correlation between ethene and ethyne, as well as between benzene and ethyne, only at the Beromünster site; at other locations the model's performance for these species is markedly poorer. In such cases, drawing a comparison between modelled and observed ratios becomes impractical for most sites. The

615 relative success at the Beromünster site for both ethene-to-ethyne and benzene-to-ethyne ratios, could provide insights for potential enhancements in both modelling and measurement methodologies.

In summary, the key difference is the model's strong agreement with the spatial correlations and time series for ethene and benzene measurements, but not for ethyne. While the modelled ethyne concentrations align closely with measurements during summer, they diverge significantly in winter. In contrast, modelled concentrations of ethene and benzene consistently match observations across all seasons. More importantly, measurement data reveal a strong linear correlation between ethene and ethyne, and between benzene and ethyne, during winter across all sites, suggesting they share common emission sources. However, the model fails to predict this correlation. This discrepancy highlights potential inaccuracies in ethyne emissions, given that all three compounds are commonly emitted from combustion-related activities. In other words, there appears to be a systematic underestimation of either the total emissions from the road transport and combustion-related sectors in the existing inventory or of the proportions of ethyne within these emissions. The current differences between the modelled and measured data indicate room for significant improvement, especially regarding ethyne sources during the winter months. More measurement evidence is therefore required to improve both the quantification of sector total emissions and the speciation within each sector.

**Table 11.** Benzene to ethyne ratios in 2018 which are calculated as the slope term of the least squares regression line between ethene(y) and ethyne(x). The linear correlation coefficient R is indicated in brackets.

BENZENE/C2H2	Summer		Winter	
	Obs	Mod	Obs	Mod
Beromünster	0.26 (0.82)	0.33 (0.57)	0.34 (0.96)	0.98 (0.63)
Kosetice	0.26 (0.47)	0.35 (0.62)	0.29 (0.93)	0.46 (0.15)
Waldhof	0.24 (0.77)	-0.00 (-0.01)	0.30 (0.99)	-0.20 (-0.11)
Neuglobsow	0.31 (0.88)	0.00 (0.01)	0.31 (0.99)	-0.02 (-0.01)
Zingst	0.17 (0.83)	-0.03 (-0.13)	0.30 (0.97)	-0.77 (-0.40)
Pallas	0.11 (0.43)	-0.03 (-0.48)	0.28 (0.94)	-0.04 (-0.06)
Peyrusse Vieille	0.04 (0.09)	-0.07 (-0.58)	0.24 (0.91)	-0.40 (-0.22)
La Tardiere	0.25 (0.41)	-0.10 (-0.63)	0.29 (0.93)	0.17 (0.15)
Auchencorth Moss	0.18 (0.76)	0.08 (0.34)	0.19 (0.89)	0.03 (0.04)

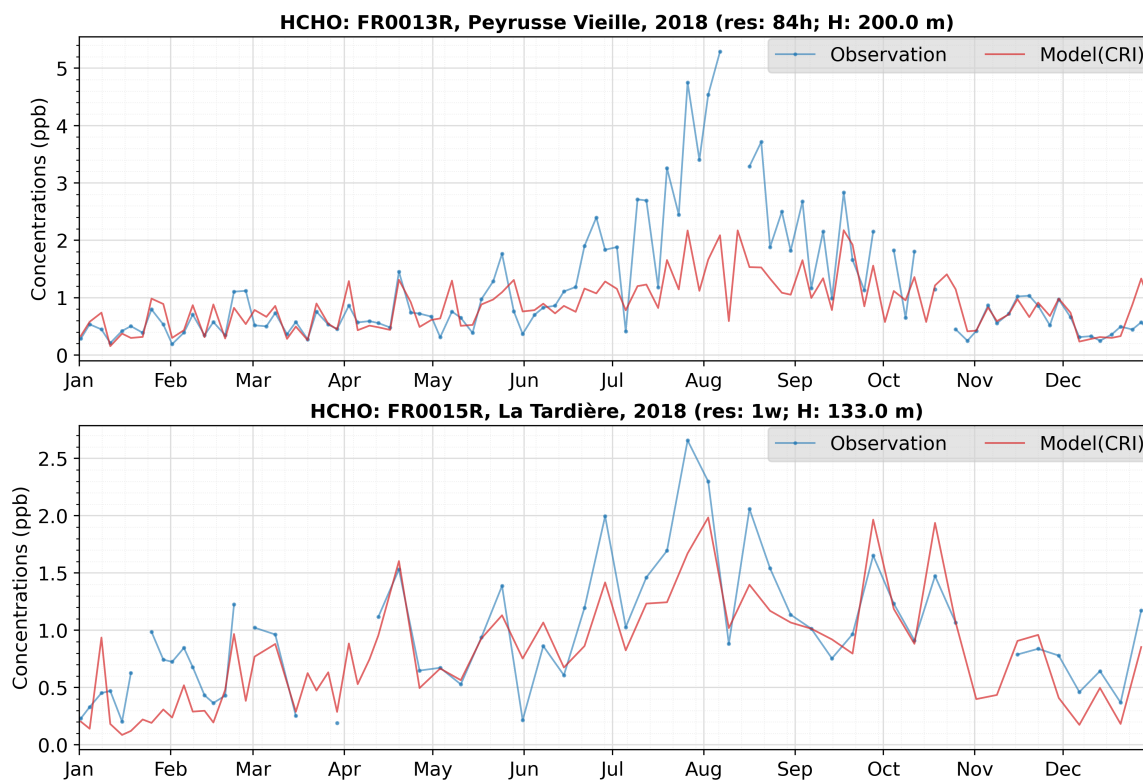
### 3.3 OVOCs

630 The assessment of the model's performance in predicting OVOC concentrations is constrained by the scarcity of available measurements. The EMEP regular monitoring network only has a few stations (often one or two) for a certain VOC and these stations do not measure the same set of OVOCs, so there is essentially no spatial information. Consequently, the EMEP IMP campaign for VOCs, conducted from 12 to 19 July 2022, serves as a valuable supplementary dataset. The following sections present comparisons with both regular 2018 measurements and the 2022 IMP campaign, utilising the CRIv2R5Em mechanism and the CAMS inventory.

### 3.3.1 Methanal and methylglyoxal in 2018

Figures 14 and S12 (in the Supplement) show the time series of available measured and modelled methanal (also known as formaldehyde) and methylglyoxal, respectively. The sampling of both species is taken over a 4-hour period, as evidenced by the start and end times specified in the raw data. To facilitate a fair comparison with the measured data, the hourly model output  
640 at a specific station is averaged over the corresponding sampling duration.

The model successfully captures the temporal fluctuations of methanal and methylglyoxal at the FR0015R station through the year, and at the FR0013R station in the winter months. Generally, it tends to underestimate the peak concentrations during summer, particularly at the FR0013R station. However, the overall seasonal pattern and the concentration range of the model data aligns reasonably well with the measurements, suggesting that the chemistry (and precursor emissions) associated with  
645 methanal and methylglyoxal are reasonably well-represented in the model.



**Figure 14.** Time series of methanal concentrations in ppb at two available monitoring sites in 2018. 'res:' denotes time-resolution; e.g. 'res: 3d' means that the measurements are conducted every three days (1w: one week). The letter 'H' denotes the site altitude.

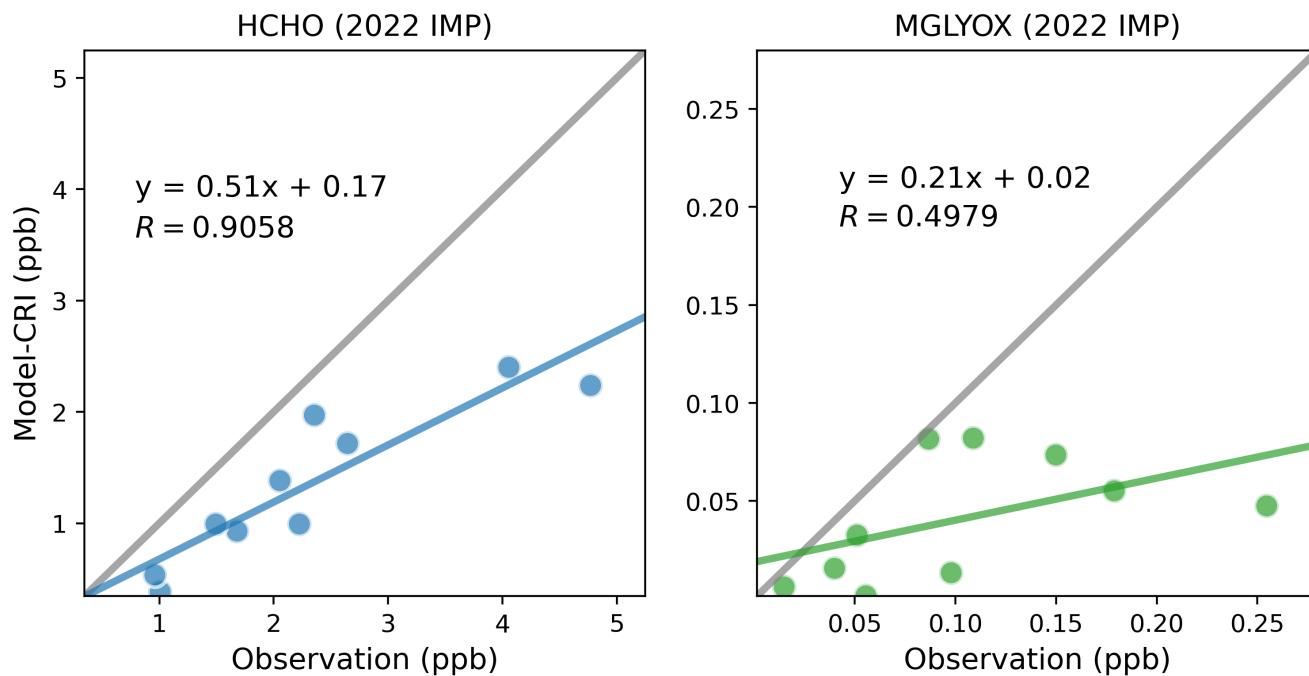


### 3.3.2 Methanal and methylglyoxal in 2022 IMP

Whilst the 2022 IMP campaign was designed to produce high-resolution measurements, the OVOC measurement was still carried out on a limited temporal scale. The majority of OVOCs are measured only once per day, and at inconsistent times across different stations. Consequently, there are at most 10 data points available for a particular OVOC at a specific station, although in many instances the availability is further reduced to 3-5 data points due to the presence of invalid measurements. To accommodate this limitation, average concentrations over the campaign period have been utilised to conduct linear correlation analyses between contemporaneous model and measurement data.

Figure 15 shows the linear correlation relationships between modelled and measured concentrations of methanal and methylglyoxal. The measured and modelled methanal concentrations align well, yielding a correlation coefficient of 0.91, despite a moderate model underestimation. For such short time periods, this is excellent model-measurement agreement. As methanal is a crucial intermediate in the oxidation of numerous other VOCs, this further illustrates that the model is effectively capturing the overall photo-oxidation chemistry, despite the differing lumping processes applied to various VOC groups. Moreover, the model underestimation for HCHO during the IMP, which took place in July 2022, is consistent with the model underestimation at some sites in July 2018 shown in Fig. 14. Inaccuracy in modelled HCHO photolysis rate could be one explanation, which would manifest more in summer.

Similar model underestimation is also observed for methylglyoxal (Fig. 15 ). Atmospheric sources of methylglyoxal are multiple and include direct emissions from, for example, industrial emissions, vehicle exhausts, biomass burning and biofuel combustion, and secondary formation from the oxidation of biogenic and anthropogenic precursors (e.g. isoprene, aromatics) (Stavrakou et al., 2009; Rodigast et al., 2016; Li et al., 2022). It is possible that the model overestimates the rate of photolytic loss for this period in July, when solar flux is at its maximum. van Caspel et al. (2023) report that the EMEP model's  $J$ -values for methylglyoxal are larger than the observed value by a factor of 2 at the Chilbolton site during wintertime, highlighting the large degree of uncertainty in this photolysis rate. Given that photolysis is an important loss mechanism for methylglyoxal (Chen et al., 2000), and given that it is likely that the overestimated modeled  $J$ -values also occur during summertime, this has the potential to cause the EMEP model to underestimate methylglyoxal concentrations during the IMP.



**Figure 15.** Scatter plots of average modelled and measured methanal and methylglyoxal concentrations during 2022 IMP. The site codes and their respective data values for each figure panel are provided in Supplement Table S10.

The evaluation of model performance is inherently constrained by uncertainties in emissions, meteorological conditions, model parameterisation, and measurements. It is essential to recognise that any analysis comparing modelled and measured data will have limitations due to these uncertainties. A robust evaluation necessitates high-quality measurements. Owing to the extensive chemical variation across VOC species, no singular analytical method is capable of identifying all atmospheric VOCs. Consequently, various methods must be employed, introducing variability in speciation, temporal resolution, and analytical uncertainties across datasets. For example, many VOC inter-comparison studies have revealed significant discrepancies among participating laboratories, especially at low concentrations and when analysing real-world air samples as opposed to synthetic calibration gas mixtures (Ballesta et al., 2001; Slemr et al., 2002; Apel et al., 2003; Plass-Dülmer et al., 2006).

In particular, the accurate determination of ethyne presents a distinct challenge relative to other atmospherically significant VOCs such as propane, butane, isoprene, and benzene (Badol et al., 2004; Rappenglück et al., 2006; Hoerger et al., 2015). The observed poor spatial correlation between model and measurement for ethyne in this study is speculated to be at least partly attributable to inconsistencies in methodology across different laboratories. Hoerger et al. (2015) pointed out that variations in laboratory performance could arise from two key factors. Firstly, a loss of ethyne due to breakthrough in the adsorption trap; secondly, different analytical systems may respond inconsistently to the same calibration standards. These factors contribute to significant discrepancies between the measured and pre-assigned concentrations of ethyne in mixed hydrocarbon standards. Moreover, insufficient characterisation of the analytical system's response to both dry calibration standards and humid real-world air samples can introduce significant biases in the reported concentrations.

Furthermore, Hoerger et al. (2015) and Plass-Dülmer et al. (2006) reported artefacts affecting the measurement of alkenes, albeit arising from different sources. Hoerger et al. (2015) identified that instruments employing a Nafion® Dryer to remove humidity produced blank values up to 0.35 ppb for C<sub>2</sub>–C<sub>3</sub> alkenes. These blank values necessitate subtraction during either calibration or ambient air measurements to ensure accuracy. On the other hand, Plass-Dülmer et al. (2006) observed that the use of canisters led to increased concentrations of alkenes. This phenomenon was attributed to slow production of alkenes from the inner walls of the canisters themselves. Collectively, these artefacts could lead to systematic biases in measured concentrations of alkene species, and explain, at least in part, the discrepancies between measured and modelled concentrations observed in this study.

Last, but not least, although numerous inter-comparisons of NMHC measurements have been conducted over the years, assessments of measurement accuracy and consistency for OVOCs such as alcohols, aldehydes, and ketones, are notably sparse. Recently, a few OVOCs intercomparison projects have commenced within ACTRIS. However, as of now, no official reports have been released. At present, our model evaluation of OVOCs is very limited in scope, being able to focus on two OVOC species measured at only a few stations or over brief periods. Statistically speaking, the available measurement datasets are insufficient for drawing robust conclusions. Compounds like methanal and methyglyoxal have both primary anthropogenic and biogenic sources and are also commonly generated as oxidation products from other VOCs. This complexity makes it challenging to determine whether the model's underestimation of these compounds arises from missing primary emissions,

underrepresented secondary chemical production, overestimated chemical and deposition loss, or possibly a combination of all these. In light of the general increase in domestic solvent consumption and the growing use of alcohols in fuels (UK-AQEG, 2020; Whalley et al., 2018; Dunmore et al., 2016), the relative abundance and subsequent impact of OVOCs compared to NMHCs on ozone and aerosol chemistry are likely to become increasingly significant in future. Therefore, there is a pressing need for more robust, long-term, and multi-station OVOC monitoring efforts moving forward.

In summary, it is essential to more accurately characterise and quantify the uncertainty associated with individual VOC measurements. It is imperative to harmonise analytical procedures, particularly in relation to real-world air sampling methods. Concurrently, the implementation of more stringent quality assurance and quality control checks is crucial, akin to the procedures being developed within ACTRIS. This would not only ensure the submission of high-quality measurement data to public data repositories and end-users but also facilitate the development of more precise VOC emission speciations. Such advancements would, in turn, contribute to achieving a higher degree of agreement between modelled and measured data.

### 715 **3.5 Impacts of changing inventories and mechanisms on model performance**

One of the biggest challenges in accurately representing VOCs in atmospheric chemistry models lies in the manner in which these compounds are reported by emission inventories. Typically, VOCs emissions are presented as aggregate values, necessitating the use of sector-specific speciation profiles to apportion these lumped masses into individual VOC species. Achieving good agreement between the model and the measurement therefore depends on the accurate estimation of two factors: total VOC emissions and VOC speciation. However, it remains an open question as to whether one of these factors holds greater importance than the other in determining the accuracy of the modelled VOC concentrations.

Our model experiments offer an opportunity to address this question. The two emission inventories utilised in this study report slightly differing total emissions for individual sectors. For instance, the CEIP inventory identifies sector-E Solvents (24% of its total, similarly hereinafter) and sector-F Road Transport (22%) as major emitters (Fig. 2). In contrast, the CAMS inventory highlights Solvents as the most dominant sector (31%), which significantly surpasses other sectors. The second largest sector, Road Transport, which is further broken down into four sub-sectors each with their own distinct emission profiles, accounts for 15% of CAMS's annual total.

Results from Sect. 3 reveal that model simulations based on the two emission inventories yield very similar statistical metrics. Table 12 summarises the descriptive statistics of linear correlation coefficients between modelled and measured annual average concentrations of the 12 NMHCs investigated in this study (i.e., 12 species listed in Tables 6-9). In general, model simulations using the CAMS inventory show slightly better agreements with measurements than those using the CEIP inventory, which is likely attributable to the detailed segmentation of the Road Transport sector within the CAMS inventory. For example, using the CRIV2R5Em mechanism in 2018, the mean correlation coefficient is 0.59 for CEIP and 0.64 for CAMS. Moreover, both inventories result in model overestimation of n-butane and n-pentane but underestimation of i-butane and i-pentane, which is linked to the notably low i-to-n ratios of these species emanating from the solvent sector. Such findings imply that the emission profiles have considerable influence on the agreement between modelled and measured VOC concentrations, particularly for

sectors with substantial emissions. Therefore, future focus to improve model accuracy may need to shift towards a more detailed breakdown of dominant emission sectors (e.g. Solvents) and the refinement of their speciation profiles.

740 Compared to 2018, the model's performance in the 2019 simulation improves for some VOCs but deteriorates for others. For instance, the correlation coefficient for ethane in 2019 is 0.70, compared to 0.58 in 2018. Conversely, for o-xylene, the correlation coefficient decreases to 0.39 in 2019 from 0.69 in 2018. As previously discussed, such variations in model performance between the two years can be attributed to changes in the specific stations and the amount of valid sites available in each year, as well as in meteorology and local emissions. More importantly, for most species, the model performance does not significantly differ between the two years, as evidenced by the similar statistical data presented in Table 12 and previous tables.

**Table 12.** Summary of linear correlation coefficients between modelled and measured annual average concentrations of the 13 discussed NMHCs in different model runs.

<i>R</i>	Min	Max	Median	Mean
Em-CEIP-2018	0.3343	0.9100	0.6126	0.5930
Em-CAMS-2018	0.3557	0.9331	0.6534	0.6382
CRI-CEIP-2018	0.3263	0.9105	0.6126	0.5932
CRI-CAMS-2018	0.3722	0.9329	0.6514	0.6375
CRI-CAMS-2019	0.3953	0.8866	0.6603	0.6517

745 Finally, the discrepancies between model outputs using the two different chemical mechanisms, EmChem19rc and CRIV2R5Em, are negligible. Utilising the CAMS inventory in 2018, the mean linear correlation coefficient across the 12 VOCs is 0.64 for both mechanisms. This further demonstrates that the performance of EmChem19rc is comparable to that of CRIV2R5Em, and that the choice of chemical mechanism amongst those used here does not substantially affect the model-measurement agreement. Such close alignment demonstrates the robustness of the overall chemistry and transport processes parameterised within  
750 the EMEP model.

### 3.6 Impacts of changing emission speciation on modelled ozone concentrations

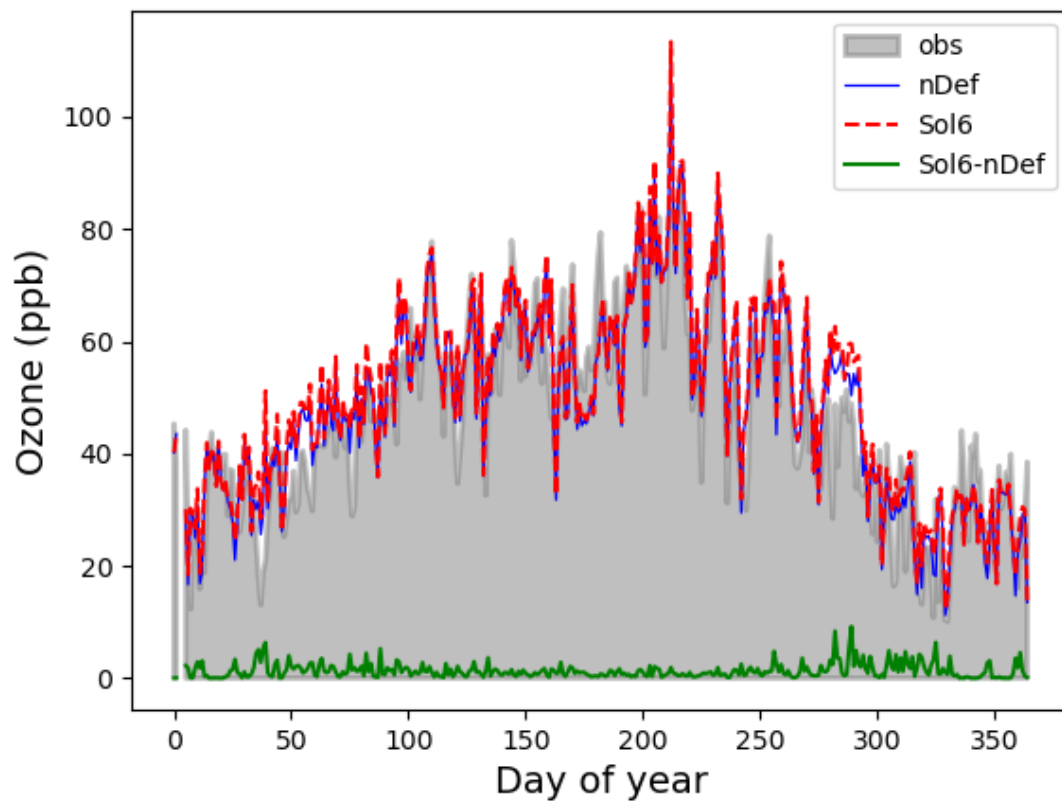
A relevant question is the extent to which regional transport model results are sensitive to details of the VOC speciation. To a first approximation, the ozone production from a VOC is proportional to the amount of VOC that has time to react with OH or other oxidants. Thus, close to source areas, the fast-reacting VOC such as ethene make immediate contributions to ozone,  
755 but these VOC are quickly consumed. Further downwind, other species such as alkanes are degraded and their contribution builds up. Thus, metrics of ozone production such as POCP (which uses ethene as the reference value of 100%) show that over short time periods alkanes have low POCPs, but over longer time-periods and greater geographical extent the POCP of alkanes become significant (Andersson-Sköld et al., 1992; Stockwell et al., 2001). For example, Simpson (1995) calculated POCP values of n-butane from ca. 30% in NW Europe to ca. 80% in southern and eastern areas. Although a full evaluation of  
760 the impacts of uncertainties in VOC speciation on ozone is beyond the scope of this study, we have compared two model runs for 2018:

1. nDef - default VOC speciation for this study, using the EmChem19rc chemistry mechanism and the CAMS inventory as described in Sect. 2.3.
2. Sol6 - in which the same chemistry mechanism and emission inventory are used, but the VOC speciation of solvent sector has been replaced by that of gasoline vehicles (exhaust, sector F1, emep code 6 - see Table S2).

765 The second run, Sol6, is purely for illustration, but lets us examine the extent to which the speciation of this very uncertain sector matters. The choice of the F1 speciation was pragmatic – it was technically easy to implement, but provides a more reactive mixture than our default solvent splits. In particular, the gasoline profile contains more alkene species, which could be expected to influence short-term ozone formation. It is also clear (e.g. Oliveira et al., 2023) that solvent speciation is extremely  
770 uncertain, and it is not clear which alternative speciation best fits the European situation.

Both runs have been conducted using the CAMS-REG emissions,  $0.1^\circ \times 0.1^\circ$  resolution, and for 2018. Fig. 16 shows the modelled  $O_3$  from these two model runs, along with the difference. It can be seen that on most days the change of speciation makes little difference to the modelled  $O_3$ , but changes of up to 9 ppb are calculated. Comparing with 103 sites (altitude <1000 m) from the full EMEP network, the overall statistics are remarkably unchanged: normalised mean bias is 4% for nDef  
775 and 5% for Sol6, spatial correlation coefficients are 0.85 and 0.84 respectively, and temporal correlation coefficients are 0.95 for both runs.

In the Supplement, Sect. S8, we illustrate changes in ozone and associated metrics at the European scale, and with a focus over Madrid in Spain. These comparisons confirm that changes in VOC speciation have little impact on mean ozone levels, but changes can be significant close to major  $NO_x$  sources.



**Figure 16.** Impacts of VOC sensitivity tests on modelled daily maximum  $O_3$  at Beromünster. nDef and Sol6 are two model runs, and the lowest line gives the difference, Sol6-nDef. Observed  $O_3$  shown by shaded area. Model runs for 2018.

## 780 4 Conclusions

This model evaluation study is the first intensive comparison of VOCs between the EMEP model and measurements for many years. Considering that the composition of VOCs has undergone significant changes over the past several decades, and that there is lack of evaluation studies, we are keen to know how accurately these real-world changes in VOC profiles are captured in recent emission inventories, and how well the model's VOC concentrations agree with measured values.

785 To address these research questions, a comprehensive spatial and temporal evaluation of model outputs with VOC measurements from the EMEP network was carried out for the year 2018 and 2019, and for the IMP campaign in summer 2022. Both CEIP and CAMS emission inventories were utilised, along with two different chemistry mechanisms – EmChem19rc and CRIv2R5Em. To model pure VOC concentrations for comparison with measurement data, we have developed a detailed VOC emission speciation for all EMEP sectors based on data sourced from the UK NAEI, EEA emission inventory guidebook, and  
790 several academic studies.

The degree to which the modelled and measured VOCs agree varies depending on the specific species, suggesting potential issues with the boundary conditions and emission speciation for these species. For most species, the model's performance across 2018 and 2019 exhibits considerable similarity when evaluated against regular, year-round monitoring measurements. In general, the model successfully captures the overall spatial and temporal variations of major alkanes such as ethane and  
795 n-butane, but less so for propane and i-butane.

The model's underestimation of propane concentrations and the smaller propane-to-ethane ratios compared to measurements are likely caused by a combination of issues with the boundary conditions and potential missing propane emissions from the oil, natural gas and LPG sectors in current inventories.

Interestingly, the model overestimates n-butane and n-pentane while underestimating i-butane and i-pentane. Further anal-  
800 ysis of the ratios among the butane and pentane isomers reveals that both model and measurement data exhibit strong linear correlations between i-butane and n-butane, as well as between i-pentane and n-pentane, with correlation coefficients typically exceeding 0.8. This suggests common sources for these pairs of butane and pentane isomers. However, modelled ratios of i- to n-butane and i- to n-pentane are approximately one-third of the measured ratios. Given that i-butane and n-butane have similar atmospheric lifetimes (as do i-pentane and n-pentane), such a discrepancy in their ratios likely stems from differences in their  
805 emissions. Indeed this disparity is largely driven by significant emissions of n-butane and n-pentane from the Solvent sector. It is possible that emissions of i-butane and i-pentane in the speciation profile of the Solvent sector may be underrepresented, or that the total emissions from transport activities and fuel evaporation are higher than what is currently included in the emission inventories. Alternatively, both scenarios might be true.

For unsaturated NMHCs, results are very mixed, with good results for ethene and aromatics, but very poor results for ethyne.  
810 In addition, the model underestimates ethyne concentrations significantly during winter. The different model performance strongly points to shortcomings in the spatial and temporal patterns and magnitudes of ethyne emissions. The modelled ethene-to-ethyne and benzene-to-ethyne ratios differ significantly from measured ratios. In general, most EMEP sites display stronger



linear correlations and smaller VOC-to-ethyne ratios, while the model data shows poor correlations and therefore the modelled ratios become impractical for most sites.

815 For OVOCs, methanal and methylglyoxal demonstrate reasonably good agreement between modelled and measured time series throughout the year 2018 simulations, though both are underestimated in the 2022 IMP campaign. As both species have significant secondary sources from the oxidation of numerous other VOCs, this further illustrates that the model is effectively capturing the overall photo-oxidation chemistry processes. Additionally, it is also important to note that the lack of measurement data seriously limits the evaluation of other OVOC species.

820 Generally, simulations that employed the CAMS inventory displayed slightly better comparison results for certain VOCs compared to those utilizing the CEIP inventory, which is likely due to the inclusion of more detail in the road traffic emissions sectors (F1–F4) in CAMS. Given this better model performance offered by CAMS, alongside the previously mentioned concerns about the model's biased estimations of various VOC ratios, future efforts should focus on a more detailed breakdown of dominant emission sectors (e.g. Solvents) and the refinement of their speciation profiles to improve model accuracy.

825 In summary, the model seems to do a reasonable job of capturing spatial patterns and time series of some VOC species (e.g. n-butane, longer-chain alkanes, aromatics, HCHO), but performs less well for others (e.g. propane, ethyne). Such discrepancy in model performance indicates potential issues pertaining to certain VOC emissions and to the model setup of boundary and initial conditions. It would be beneficial to engage in further discussions with measurement teams to possibly incorporate insights from measurement data to refine the emission speciation applied in the model. Despite certain limitations  
830 in model-measurement comparisons, the detailed evaluations in this study support the use of the EMEP model for analysing the significance of different types of VOCs to ozone and aerosol formation, and illustrate the benefits of the VOC measurement data for model and emissions evaluation. Moreover, this study also provides a valuable reference for VOC speciation and evaluation in other modelling studies.

*Code and data availability.* As described and referenced in Sect. 2.1 of this paper, this study used EMEP MSC-W model version rv5 (Simpson et al., 2023), with source code available at EMEP MSC-W (a) (last access: 20th December 2023). The VOC tracers and their related code are integrated into the EMEP model via the GenChem system (Simpson et al., 2020), with source code available at EMEP MSC-W (b) (last access: 20th December 2023). All measurements are available on the platform of EBAS (last access: 20th December 2023). The model outputs and measurement data presented in the figures and tables in this paper as well as the corresponding Python scripts are available at Ge (2023).

840 *Author contributions.* YG, DS, and SS conceptualized and designed the study. YG wrote the initial manuscript and undertook model simulations, downloaded and prepared measurement data sets, and visualised the results of model-measurement comparisons. DS contributed to the development of chemistry mechanisms and provided modelling support. SS contributed to the checking and the interpretation of VOC measurements. MRH contributed to the discussion materials and editing of the manuscript. WVC contributed to the Cloud-J related modelling

and data interpretation. SR, BH, and TS contributed to the proofreading and discussion materials on measurements. All authors provided  
845 review comments and approval of the final version.

*Competing interests.* The authors declare that no competing interests are present.

*Acknowledgements.* This work has been in part funded by the EMEP Trust Fund, and by the EU RI-Urbans project (<https://riurbans.eu/>, last  
access May 2024). We acknowledge all data providers and the great efforts of EMEP and ACTRIS to make long-term measurements public  
and available, and for the work with quality assurance and quality control of VOC data in Europe. All measurement data used in this study  
850 are obtained from the EBAS database.

The Norwegian Ministry of Climate is also greatly acknowledged for supporting both model and database development at the EMEP  
Centres, MSC-W and CCC. Measurements in Beromünster were supported by FOEN (Swiss Federal Office for the Environment) and by  
ACTRIS-CH. We are also grateful to Adéla Holubová and the whole measurement team from Czech Hydrometeorological Institute, for their  
contribution to the measurement data in Košetice. We also extend our gratitude to the UK NAEI team for supplying the speciated VOC  
855 emissions data. Our thanks are due as well to Antoon Visschedijk, Jeroen Kuenen, and the TNO team for their valuable assistance with the  
VOC speciation of agricultural emissions. We also acknowledge the use of Pyaerocom version v0.15.0 (AeroCom, 2023) for the comparison  
of EBAS data against simulations in Section 3.6.

## References

- AeroCom: metno/pyaerocom, Zenodo [code], <https://doi.org/10.5281/zenodo.10374181>, 2023.
- 860 Ait-Helal, W., Borbon, A., Sauvage, S., de Gouw, J. A., Colomb, A., Gros, V., Freutel, F., Crippa, M., Afif, C., Baltensperger, U., Beekmann, M., Doussin, J. . F., Durand-Jolibois, R., Fronval, I., Grand, N., Leonardis, T., Lopez, M., Michoud, V., Miet, K., Perrier, S., Prevot, A. S. H., Schneider, J., Siour, G., Zapf, P., and Locoge, N.: Volatile and intermediate volatility organic compounds in suburban Paris: variability, origin and importance for SOA formation, *Atmos. Chem. Physics*, 14, 10439–10464, <https://doi.org/10.5194/acp-14-10439-2014>, 2014.
- 865 Andersson-Sköld, Y. and Simpson, D.: Comparison of the chemical schemes of the EMEP MSC-W and the IVL photochemical trajectory models, *Atmos. Environ.*, 33, 1111–1129, 1999.
- Andersson-Sköld, Y., Grennfelt, P., and Pleijel, K.: Photochemical Ozone Creation Potentials: A study of Different Concepts, *J. Air Waste Manage. Assoc.*, 42, 1152–1158, <https://doi.org/10.1080/10473289.1992.10467060>, 1992.
- Andreae, M. O.: Emission of trace gases and aerosols from biomass burning – an updated assessment, *Atmos. Chem. Physics*, 19, 8523–8546, <https://doi.org/10.5194/acp-19-8523-2019>, 2019.
- 870 Apel, E. C., Calvert, J. G., Gilpin, T. M., Fehsenfeld, F., and Lonneman, W. A.: Nonmethane Hydrocarbon Inter-comparison Experiment (NOMHICE): Task 4, ambient air, *Journal of Geophysical Research: Atmospheres*, 108, <https://doi.org/https://doi.org/10.1029/2002JD002936>, 2003.
- Aydin, M., Verhulst, K. R., Saltzman, E. S., Battle, M. O., Montzka, S. A., Blake, D. R., Tang, Q., and Prather, M. J.: Recent decreases in   
875 fossil-fuel emissions of ethane and methane derived from firn air, *Nature*, 476, 198–201, <https://doi.org/10.1038/nature10352>, 2011.
- Badol, C., Borbon, A., Locoge, N., Léonardis, T., and Galloo, J.-C.: An automated monitoring system for VOC ozone precursors in ambient air: development, implementation and data analysis, *Analytical and Bioanalytical Chemistry*, 378, 1815–1827, <https://doi.org/https://doi.org/10.1007/s00216-003-2474-0>, 2004.
- Badol, C., Locoge, N., Léonardis, T., and Galloo, J.-C.: Using a source–receptor approach to characterise VOC behaviour in a French urban   
880 area influenced by industrial emissions Part I: Study area description, data set acquisition and qualitative data analysis of the data set, *Science of The Total Environment*, 389, 441–452, <https://doi.org/https://doi.org/10.1016/j.scitotenv.2007.09.003>, 2008.
- Ballesta, P., Field, R., and De Saeger, E.: Interlaboratory exercises for volatile organic compound determination, *Atmospheric Environment*, 35, 5729–5740, [https://doi.org/https://doi.org/10.1016/S1352-2310\(01\)00372-7](https://doi.org/https://doi.org/10.1016/S1352-2310(01)00372-7), 2001.
- Bergström, R., Hayman, G. D., Jenkin, M. E., and Simpson, D.: Update and comparison of atmospheric chemistry mechanisms for the EMEP   
885 MSC-W model system — EmChem19a, EmChem19X, CRIV2R5Em, CB6r2Em, and MCMv3.3Em, EMEP Technical Report 1/2022, The Norwegian Meteorological Institute, Oslo, Norway, 2022.
- Borbon, A., Fontaine, H., Veillerot, M., Locoge, N., Galloo, J. C., and Guillermo, R.: An investigation into the traffic-related fraction of isoprene at an urban location, *Atmos. Environ.*, 35, 3749–3760, [https://doi.org/10.1016/S1352-2310\(01\)00170-4](https://doi.org/10.1016/S1352-2310(01)00170-4), 2001.
- Borbon, A., Locoge, N., Veillerot, M., Galloo, J., and Guillermo, R.: Characterisation of NMHCs in a French urban atmosphere: overview   
890 of the main sources, *Science of The Total Environment*, 292, 177–191, [https://doi.org/https://doi.org/10.1016/S0048-9697\(01\)01106-8](https://doi.org/https://doi.org/10.1016/S0048-9697(01)01106-8), 2002.
- Borbon, A., Gilman, J. B., Kuster, W. C., Grand, N., Chevaillier, S., Colomb, A., Dolgorouky, C., Gros, V., Lopez, M., Sarda-Esteve, R., Holloway, J., Stutz, J., Petetin, H., McKeen, S., Beekmann, M., Warneke, C., Parrish, D. D., and de Gouw, J. A.: Emission ratios of

- anthropogenic volatile organic compounds in northern mid-latitude megacities: Observations versus emission inventories in Los Angeles and Paris, *Journal of Geophysical Research: Atmospheres*, 118, 2041–2057, <https://doi.org/https://doi.org/10.1002/jgrd.50059>, 2013.
- 895 Borbon, A., Dominutti, P., Panopoulou, A., Gros, V., Sauvage, S., Farhat, M., Afif, C., Elguindi, N., Fornaro, A., Granier, C., Hopkins, J. R., Liakakou, E., Nogueira, T., Corrêa dos Santos, T., Salameh, T., Armangaud, A., Piga, D., and Perrussel, O.: Ubiquity of Anthropogenic Terpenoids in Cities Worldwide: Emission Ratios, Emission Quantification and Implications for Urban Atmospheric Chemistry, *Journal of Geophysical Research: Atmospheres*, 128, e2022JD037566, <https://doi.org/https://doi.org/10.1029/2022JD037566>, e2022JD037566
- 900 2022JD037566, 2023.
- Bourtsoukidis, E., Ernle, L., Crowley, J. N., Lelieveld, J., Paris, J.-D., Pozzer, A., Walter, D., and Williams, J.: Non-methane hydrocarbon ( $C_2$ – $C_8$ ) sources and sinks around the Arabian Peninsula, *Atmospheric Chemistry and Physics*, 19, 7209–7232, <https://doi.org/10.5194/acp-19-7209-2019>, 2019.
- Boynard, A., Borbon, A., Leonardis, T., Barletta, B., Meinardi, S., Blake, D. R., and Locoge, N.: Spatial and seasonal variability of measured anthropogenic non-methane hydrocarbons in urban atmospheres: Implication on emission ratios, *Atmos. Environ.*, 82, 258–267, <https://doi.org/https://doi.org/10.1016/j.atmosenv.2013.09.039>, 2014.
- 905 Bray, C. D., Strum, M., Simon, H., Riddick, L., Kosusko, M., Menetrez, M., Hays, M. D., and Rao, V.: An assessment of important SPECIATE profiles in the EPA emissions modeling platform and current data gaps, *Atmos. Environ.*, 207, 93 – 104, <https://doi.org/https://doi.org/10.1016/j.atmosenv.2019.03.013>, 2019.
- 910 Broadgate, W. J., Liss, P. S., and Penkett, S. A.: Seasonal emissions of isoprene and other reactive hydrocarbon gases from the ocean, *Geophysical Research Letters*, 24, 2675–2678, <https://doi.org/https://doi.org/10.1029/97GL02736>, 1997.
- Chen, Y., Wang, W., and Zhu, L.: Wavelength-dependent photolysis of methylglyoxal in the 290– 440 nm region, *The Journal of Physical Chemistry A*, 104, 11 126–11 131, <https://doi.org/10.1021/jp002262t>, 2000.
- Coggon, M. M., Gkatzelis, G. I., McDonald, B. C., Gilman, J. B., Schwantes, R. H., Abuhassan, N., Aikin, K. C., Arend, M. F., Berkoff, T. A., Brown, S. S., Campos, T. L., Dickerson, R. R., Gronoff, G., Hurley, J. F., Isaacman-VanWertz, G., Koss, A. R., Li, M., McKeen, S. A., Moshary, F., Peischl, J., Pospisilova, V., Ren, X., Wilson, A., Wu, Y., Trainer, M., and Warneke, C.: Volatile chemical product emissions enhance ozone and modulate urban chemistry, *Proceedings of the National Academy of Sciences*, 118, e2026653 118, <https://doi.org/10.1073/pnas.2026653118>, 2021.
- 915 Coll, I., Rousseau, C., Barletta, B., Meinardi, S., and Blake, D. R.: Evaluation of an urban NMHC emission inventory by measurements and impact on CTM results, *Atmospheric Environment*, 44, 3843–3855, <https://doi.org/https://doi.org/10.1016/j.atmosenv.2010.05.042>, 2010.
- 920 Dalsøren, S. B., Myhre, G., Hodnebrog, Ø., Myhre, C. L., Stohl, A., Pisso, I., Schwietzke, S., Höglund-Isaksson, L., Helmig, D., Reimann, S., Sauvage, S., Schmidbauer, N., Read, K. A., Carpenter, L. J., Lewis, A. C., Punjabi, S., and Wallasch, M.: Discrepancy between simulated and observed ethane and propane levels explained by underestimated fossil emissions, *Nature Geoscience*, 11, 178–184, <https://doi.org/10.1038/s41561-018-0073-0>, 2018.
- 925 Denier van der Gon, H., Gauss, M., Granier, C., Arellano, S., Benedictow, A., Darras, S., Dellaert, S., Guevara, M., Jalkanen, J.-P., Krueger, K., Kuenen, J., Liaskoni, M., Liousse, C., Markova, J., Perez, A. P., Quack, B., Simpson, D., Sindelarova, K., and Soulie, A.: CAMS2\_61 – Global and European emission inventories. Documentation of CAMS emission inventory products, Copernicus Atmosphere Monitoring Service, <https://doi.org/10.24380/q2si-ti6i5>, 2023.
- Dollard, G., Dumitrean, P., Telling, S., Dixon, J., and Derwent, R.: Observed trends in ambient concentrations of  $C_2$ – $C_8$  hydrocarbons in the United Kingdom over the period from 1993 to 2004, *Atmospheric Environment*, 41, 2559–2569, <https://doi.org/https://doi.org/10.1016/j.atmosenv.2006.11.020>, 2007.
- 930

- Dominutti, P., Nogueira, T., Fornaro, A., and Borbon, A.: One decade of VOCs measurements in São Paulo megacity: Composition, variability, and emission evaluation in a biofuel usage context, *Science of The Total Environment*, 738, 139790, <https://doi.org/https://doi.org/10.1016/j.scitotenv.2020.139790>, 2020.
- 935 Dunmore, R. E., Whalley, L. K., Sherwen, T., Evans, M. J., Heard, D. E., Hopkins, J. R., Lee, J. D., Lewis, A. C., Lidster, R. T., Rickard, A. R., and Hamilton, J. F.: Atmospheric ethanol in London and the potential impacts of future fuel formulations, *Faraday Discuss.*, 189, 105–120, <https://doi.org/10.1039/C5FD00190K>, 2016.
- EBAS: EBAS database infrastructure, <https://ebas-data.nilu.no/Default.aspx>, 2023.
- Emberson, L.: Effects of ozone on agriculture, forests and grasslands, *Philosophical Transactions of the Royal Society A: Mathematical, Physical and Engineering Sciences*, 378, 20190327, <https://doi.org/10.1098/rsta.2019.0327>, 2020.
- 940 EMEP MSC-W: Open Source GenChem 1.0.0 documentation, <https://genchem.readthedocs.io/en/latest/index.html>, 2020b.
- EMEP MSC-W: Open Source EMEP/MSW model v5.0 (202310), <https://doi.org/10.5281/zenodo.8431553>, 2023a.
- Filleul, L., Cassadou, S., Médina, S., Fabres, P., Lefranc, A., Eilstein, D., Tertre, A. L., Pascal, L., Chardon, B., Blanchard, M., Declercq, C., Jusot, J.-F., Prouvost, H., and Ledrans, M.: The Relation Between Temperature, Ozone, and Mortality in Nine French Cities During the Heat Wave of 2003, *Environmental Health Perspectives*, 114, 1344–1347, <https://doi.org/10.1289/ehp.8328>, 2006.
- 945 Franco, B., Bader, W., Toon, G., Bray, C., Perrin, A., Fischer, E., Sudo, K., Boone, C., Bovy, B., Lejeune, B., Servais, C., and Mahieu, E.: Retrieval of ethane from ground-based FTIR solar spectra using improved spectroscopy: Recent burden increase above Jungfraujoch, *Journal of Quantitative Spectroscopy and Radiative Transfer*, 160, 36–49, <https://doi.org/https://doi.org/10.1016/j.jqsrt.2015.03.017>, 2015.
- Gaimoz, C., Stéphane, S., Valérie, G., Frank, H., Jonathan, W., Nadine, L., Olivier, P., Bernard, B., d'Argouges Odile, Roland, S.-E., and Jean, S.: Volatile organic compounds sources in Paris in spring 2007. Part II: source apportionment using positive matrix factorisation, *Environmental Chemistry*, 8, 91–103, <https://doi.org/10.1071/EN10067>, 2011.
- 950 Ge, Y.: Data for evaluation of modelled versus observed NMVOC compounds at EMEP sites in Europe, <https://doi.org/10.5281/zenodo.10417827>, 2023.
- Ge, Y., Heal, M. R., Stevenson, D. S., Wind, P., and Vieno, M.: Evaluation of global EMEP MSC-W (rv4.34) WRF (v3.9.1.1) model surface concentrations and wet deposition of reactive N and S with measurements, *Geoscientific Model Development*, 14, 7021–7046, <https://doi.org/10.5194/gmd-14-7021-2021>, 2021.
- 955 Ge, Y., Simpson, D., and Solberg, S.: Comparisons of modelled versus observed NMVOC, 2018 and IMP periods, EMEP Technical Report 1/2023, The Norwegian Meteorological Institute, Oslo, Norway, 2023a.
- Ge, Y., Vieno, M., Stevenson, D. S., Wind, P., and Heal, M. R.: Global sensitivities of reactive N and S gas and particle concentrations and deposition to precursor emissions reductions, *Atmospheric Chemistry and Physics*, 23, 6083–6112, <https://doi.org/10.5194/acp-23-6083-2023>, 2023b.
- 960 Gilman, J. B., Lerner, B. M., Kuster, W. C., and de Gouw, J. A.: Source Signature of Volatile Organic Compounds from Oil and Natural Gas Operations in Northeastern Colorado, *Environmental Science & Technology*, 47, 1297–1305, <https://doi.org/10.1021/es304119a>, 2013.
- Gkatzelis, G. I., Coggon, M. M., McDonald, B. C., Peischl, J., Gilman, J. B., Aikin, K. C., Robinson, M. A., Canonaco, F., Prevot, A. S. H., Trainer, M., and Warneke, C.: Observations Confirm that Volatile Chemical Products Are a Major Source of Petrochemical Emissions in U.S. Cities, *Environmental Science & Technology*, 55, 4332–4343, <https://doi.org/10.1021/acs.est.0c05471>, 2021.
- 965 Grant, A., Yates, E. L., Simmonds, P. G., Derwent, R. G., Manning, A. J., Young, D., Shallcross, D. E., and O'Doherty, S.: A five year record of high-frequency in situ measurements of non-methane hydrocarbons at Mace Head, Ireland, *Atmos. Measurement Techniques*, 4, 955–964, <https://doi.org/10.5194/amt-4-955-2011>, 2011.

- 970 Guenther, A. B., Jiang, X., Heald, C. L., Sakulyanontvittaya, T., Duhl, T., Emmons, L. K., and Wang, X.: The Model of Emissions of Gases and Aerosols from Nature version 2.1 (MEGAN2.1): an extended and updated framework for modeling biogenic emissions, *Geoscientific Model Dev.*, 5, 1471–1492, <https://doi.org/10.5194/gmd-5-1471-2012>, 2012.
- Guevara, M.: The CAMS anthropogenic temporal profiles: CAMS-TEMPO, in: CAMS2\_61 – Global and European emission inventories. Documentation of CAMS emission inventory products, cams261\_2022sc1 – product documentation 6, pp. 32–47, Copernicus Atmosphere Monitoring Service, <https://doi.org/10.24380/q2si-ti6i5>, 2023.
- 975 Guevara, M., Jorba, O., Tena, C., Denier van der Gon, H., Kuenen, J., Elguindi, N., Darras, S., Granier, C., and Pérez García-Pando, C.: Copernicus Atmosphere Monitoring Service TEMPORal profiles (CAMS-TEMPO): global and European emission temporal profile maps for atmospheric chemistry modelling, *Earth System Sci. Data.*, 13, 367–404, <https://doi.org/10.5194/essd-13-367-2021>, 2021.
- Hallquist, M., Wenger, J. C., Baltensperger, U., Rudich, Y., Simpson, D., Claeys, M., Dommen, J., Donahue, N. M., George, C., Goldstein, A. H., Hamilton, J. F., Herrmann, H., Hoffmann, T., Iinuma, Y., Jang, M., Jenkin, M. E., Jimenez, J. L., Kiendler-Scharr, A., Maenhaut, W., McFiggans, G., Mentel, T. F., Monod, A., Prévôt, A. S. H., Seinfeld, J. H., Surratt, J. D., Szmigielski, R., and Wildt, J.: The formation, properties and impact of secondary organic aerosol: current and emerging issues, *Atmospheric Chemistry and Physics*, 9, 5155–5236, <https://doi.org/10.5194/acp-9-5155-2009>, 2009.
- 980 Helmig, D., Petrenko, V., Martinerie, P., Witrant, E., Röckmann, T., Zuiderweg, A., Holzinger, R., Hueber, J., Thompson, C., White, J. W. C., Sturges, W., Baker, A., Blunier, T., Etheridge, D., Rubino, M., and Tans, P.: Reconstruction of Northern Hemisphere 1950–2010 atmospheric non-methane hydrocarbons, *Atmospheric Chemistry and Physics*, 14, 1463–1483, <https://doi.org/10.5194/acp-14-1463-2014>, 2014.
- 985 Helmig, D., Rossabi, S., Hueber, J., Tans, P., Montzka, S. A., Masarie, K., Thoning, K., Plass-Duelmer, C., Claude, A., Carpenter, L. J., Lewis, A. C., Punjabi, S., Reimann, S., Vollmer, M. K., Steinbrecher, R., Hannigan, J. W., Emmons, L. K., Mahieu, E., Franco, B., Smale, D., and Pozzer, A.: Reversal of global atmospheric ethane and propane trends largely due to US oil and natural gas production, *Nature Geoscience*, 9, 490–495, <https://doi.org/10.1038/ngeo2721>, 2016.
- Hobbs, P., Webb, J., Mottram, T., Grant, B., and Misselbrook, T.: Emissions of volatile organic compounds originating from UK livestock agriculture, *Journal of the Science of Food and Agriculture*, 84, 1414–1420, <https://doi.org/https://doi.org/10.1002/jsfa.1810>, 2004.
- 995 Hoerger, C. C., Claude, A., Plass-Duelmer, C., Reimann, S., Eckart, E., Steinbrecher, R., Aalto, J., Arduini, J., Bonnaire, N., Cape, J. N., Colomb, A., Connolly, R., Diskova, J., Dumitrean, P., Ehlers, C., Gros, V., Hakola, H., Hill, M., Hopkins, J. R., Jäger, J., Junek, R., Kajos, M. K., Klemp, D., Leuchner, M., Lewis, A. C., Locoge, N., Maione, M., Martin, D., Michl, K., Nemitz, E., O’Doherty, S., Pérez Ballesta, P., Ruuskanen, T. M., Sauvage, S., Schmidbauer, N., Spain, T. G., Straube, E., Vana, M., Vollmer, M. K., Wegener, R., and Wenger, A.: ACTRIS non-methane hydrocarbon intercomparison experiment in Europe to support WMO GAW and EMEP observation networks, *Atmos. Measurement Techniques*, 8, 2715–2736, <https://doi.org/10.5194/amt-8-2715-2015>, 2015.
- 1000 Hoesly, R. M., Smith, S. J., Feng, L., Klimont, Z., Janssens-Maenhout, G., Pitkanen, T., Seibert, J. J., Vu, L., Andres, R. J., Bolt, R. M., Bond, T. C., Dawidowski, L., Kholod, N., Kurokawa, J.-I., Li, M., Liu, L., Lu, Z., Moura, M. C. P., O’Rourke, P. R., and Zhang, Q.: Historical (1750–2014) anthropogenic emissions of reactive gases and aerosols from the Community Emissions Data System (CEDS), *Geoscientific Model Dev.*, 11, 369–408, <https://doi.org/10.5194/gmd-11-369-2018>, 2018.
- 1005 Hoor, P., Borken-Kleefeld, J., Caro, D., Dessens, O., Endresen, O., Gauss, M., Grewe, V., Hauglustaine, D., Isaksen, I. S. A., Jöckel, P., Lelieveld, J., Myhre, G., Meijer, E., Olivie, D., Prather, M., Schnadt Poberaj, C., Shine, K. P., Staehelin, J., Tang, Q., van Aardenne, J., van Velthoven, P., and Sausen, R.: The impact of traffic emissions on atmospheric ozone and OH: results from QUANTIFY, *Atmospheric Chemistry and Physics*, 9, 3113–3136, <https://doi.org/10.5194/acp-9-3113-2009>, 2009.

- Hov, Ø., Sorteberg, A., Schmidbauer, N., Solberg, S., Stordal, F., Simpson, D., Lindskog, A., Areskoug, H., Pedro, O., Lättilä, H., and Heidam, N. Z.: European VOC Emission Estimates Evaluated by Measurements and Model Calculations, *J. Atmos. Chem.*, 28, 173–193, 1997.
- 1010 Huang, G., Brook, R., Crippa, M., Janssens-Maenhout, G., Schieberle, C., Dore, C., Guizzardi, D., Muntean, M., Schaaf, E., and Friedrich, R.: Speciation of anthropogenic emissions of non-methane volatile organic compounds: a global gridded data set for 1970–2012, *Atmos. Chem. Physics*, 17, 7683–7701, <https://doi.org/10.5194/acp-17-7683-2017>, 2017.
- Jenkin, M., Derwent, R., and Wallington, T.: Photochemical ozone creation potentials for volatile organic compounds: Rationalization and estimation, *Atmospheric Environment*, 163, 128 – 137, <https://doi.org/https://doi.org/10.1016/j.atmosenv.2017.05.024>, 2017.
- 1015 Jenkin, M., Khan, M., Shallcross, D., Bergström, R., Simpson, D., Murphy, K., and Rickard, A.: The CRI v2.2 reduced degradation scheme for isoprene, *Atmos. Environ.*, 212, 172 – 182, <https://doi.org/https://doi.org/10.1016/j.atmosenv.2019.05.055>, 2019.
- Jenkin, M. E., Saunders, S. M., and Pilling, M. J.: The tropospheric degradation of volatile organic compounds: a protocol for mechanism development, *Atmos. Environ.*, 31, 81–104, 1997.
- Jenkin, M. E., Watson, L. A., Utembe, S. R., and Shallcross, D. E.: A Common Representative Intermediates (CRI) mechanism for VOC degradation. Part 1: Gas phase mechanism development, *Atmos. Environ.*, 42, 7185–7195, <https://doi.org/10.1016/j.atmosenv.2008.07.028>, 2008.
- 1020 Jonson, J., Simpson, D., Fagerli, H., and Solberg, S.: Can we explain the trends in European ozone levels?, *Atmos. Chem. Physics*, 6, 51–66, <http://http://www.atmos-chem-phys.net/6/51/2006/>, sRef-ID: 1680-7324/acp/2006-6-51, 2006.
- Jonson, J. E., Borken-Kleefeld, J., Simpson, D., Nyíri, A., Posch, M., and Heyes, C.: Impact of excess NO<sub>x</sub> emissions from diesel cars on air quality, public health and eutrophication in Europe, *Environ. Res. Lett.*, 12, 094017, <http://stacks.iop.org/1748-9326/12/i=9/a=094017>, 2017.
- 1025 Kanakidou, M., Seinfeld, J. H., Pandis, S. N., Barnes, I., Dentener, F. J., Facchini, M. C., Van Dingenen, R., Ervens, B., Nenes, A., Nielsen, C. J., Swietlicki, E., Putaud, J. P., Balkanski, Y., Fuzzi, S., Horth, J., Moortgat, G. K., Winterhalter, R., Myhre, C. E. L., Tsigaridis, K., Vignati, E., Stephanou, E. G., and Wilson, J.: Organic aerosol and global climate modelling: a review, *Atmospheric Chemistry and Physics*, 5, 1053–1123, <https://doi.org/10.5194/acp-5-1053-2005>, 2005.
- 1030 Keenan, T., Niinemets, U., Sabate, S., Gracia, C., and Penuelas, J.: Process based inventory of isoprenoid emissions from European forests: model comparisons, current knowledge and uncertainties, *Atmos. Chem. Physics*, 9, 4053–4076, 2009.
- Kroll, J. H. and Seinfeld, J. H.: Chemistry of secondary organic aerosol: Formation and evolution of low-volatility organics in the atmosphere, *Atmospheric Environment*, 42, 3593–3624, <https://doi.org/https://doi.org/10.1016/j.atmosenv.2008.01.003>, 2008.
- 1035 Kuenen, J., Dellaert, S., Visschedijk, A., Jalkanen, J., Super, I., and Denier van der Gon, H.: CAMS -REG-v4: a state-of-the-art high-resolution European emission inventory for air quality modelling, *Earth System Sci. Data.*, pp. 491–515, <https://doi.org/10.5194/essd-14-491-2022>, 2022.
- Lanz, V. A., Hueglin, C., Buchmann, B., Hill, M., Locher, R., Staehelin, J., and Reimann, S.: Receptor modeling of C<sub>2</sub>-C<sub>7</sub> hydrocarbon sources at an urban background site in Zurich, Switzerland: changes between 1993-1994 and 2005-2006, *Atmospheric Chemistry and Physics*, 8, 2313–2332, <https://doi.org/10.5194/acp-8-2313-2008>, 2008.
- 1040 Lewis, A. C., Carpenter, L. J., and Pilling, M. J.: Nonmethane hydrocarbons in Southern Ocean boundary layer air, *Journal of Geophysical Research: Atmospheres*, 106, 4987–4994, <https://doi.org/https://doi.org/10.1029/2000JD900634>, 2001.
- Lewis, A. C., Hopkins, J. R., Carslaw, D. C., Hamilton, J. F., Nelson, B. S., Stewart, G., Dernie, J., Passant, N., and Murrells, T.: An increasing role for solvent emissions and implications for future measurements of volatile organic compounds, *Philosophical Transactions of the Royal Society A: Mathematical, Physical and Engineering Sciences*, 378, 20190328, <https://doi.org/10.1098/rsta.2019.0328>, 2020.
- 1045

- Li, B., Ho, S. S. H., Xue, Y., Huang, Y., Wang, L., Cheng, Y., Dai, W., Zhong, H., Cao, J., and Lee, S.: Characterizations of volatile organic compounds (VOCs) from vehicular emissions at roadside environment: The first comprehensive study in Northwestern China, *Atmospheric Environment*, 161, 1–12, <https://doi.org/https://doi.org/10.1016/j.atmosenv.2017.04.029>, 2017.
- 1050 Li, B., Ho, S. S. H., Gong, S., Ni, J., Li, H., Han, L., Yang, Y., Qi, Y., and Zhao, D.: Characterization of VOCs and their related atmospheric processes in a central Chinese city during severe ozone pollution periods, *Atmospheric Chemistry and Physics*, 19, 617–638, <https://doi.org/10.5194/acp-19-617-2019>, 2019.
- Li, C., Li, Q., Tong, D., Wang, Q., Wu, M., Sun, B., Su, G., and Tan, L.: Environmental impact and health risk assessment of volatile organic compound emissions during different seasons in Beijing, *Journal of Environmental Sciences*, 93, 1–12, <https://doi.org/https://doi.org/10.1016/j.jes.2019.11.006>, 2020.
- 1055 Li, Q., Gong, D., Wang, H., Wang, Y., Han, S., Wu, G., Deng, S., Yu, P., Wang, W., and Wang, B.: Rapid increase in atmospheric glyoxal and methylglyoxal concentrations in Lhasa, Tibetan Plateau: Potential sources and implications, *Sci. of the Total Environ.*, 824, 153 782, <https://doi.org/https://doi.org/10.1016/j.scitotenv.2022.153782>, 2022.
- Malley, C. S., Braban, C. F., Dumitrean, P., Cape, J. N., and Heal, M. R.: The impact of speciated VOCs on regional ozone increment derived from measurements at the UK EMEP supersites between 1999 and 2012, *Atmos. Chem. Physics*, 15, 8361–8380, <https://doi.org/10.5194/acp-15-8361-2015>, 2015.
- 1060 Matthews, B. and Wankmüller, R.: Methodologies applied to the CEIP GNFR gap-filling 2021 Part I: Main Pollutants (NO<sub>x</sub>, NMVOCs, SO<sub>x</sub>, NH<sub>3</sub>, CO), Particulate Matter (PM<sub>2.5</sub>, PM<sub>10</sub>, PM<sub>coarse</sub>) and Black Carbon (BC) for the years 2000 to 2019., EMEP/CEIP Technical Report 2/2021, CEIP Vienna, [https://www.ceip.at/fileadmin/inhalte/ceip/00\\_pdf\\_other/2021/main\\_pm\\_bc\\_gap-filling\\_documentation\\_2021\\_final.pdf](https://www.ceip.at/fileadmin/inhalte/ceip/00_pdf_other/2021/main_pm_bc_gap-filling_documentation_2021_final.pdf), 2021.
- 1065 McDonald, B. C., Gentner, D. R., Goldstein, A. H., and Harley, R. A.: Long-Term Trends in Motor Vehicle Emissions in U.S. Urban Areas, *Environmental Science & Technology*, 47, 10 022–10 031, <https://doi.org/10.1021/es401034z>, 2013.
- Mills, G., Sharps, K., Simpson, D., Pleijel, H., Broberg, M., Uddling, J., Jaramillo, F., Davies, William, J., Dentener, F., Berg, M., Agrawal, M., Agrawal, S. B., Ainsworth, E. A., Büker, P., Emberson, L., Feng, Z., Harmens, H., Hayes, F., Kobayashi, K., Paoletti, E., and Dingenen, R.: Ozone pollution will compromise efforts to increase global wheat production, *Global Change Biol.*, 24, 3560–3574, <https://doi.org/10.1111/gcb.14157>, 2018.
- 1070 Mo, Z., Cui, R., Yuan, B., Cai, H., McDonald, B. C., Li, M., Zheng, J., and Shao, M.: A mass-balance-based emission inventory of non-methane volatile organic compounds (NMVOCs) for solvent use in China, *Atmospheric Chemistry and Physics*, 21, 13 655–13 666, <https://doi.org/10.5194/acp-21-13655-2021>, 2021.
- Möllmann-Coers, M., Klemp, D., Mannschreck, K., and Slemr, F.: Statistical study of the diurnal variation of modeled and measured NMHC contributions, *Atmospheric Environment*, 36, 109–122, [https://doi.org/https://doi.org/10.1016/S1352-2310\(02\)00217-0](https://doi.org/https://doi.org/10.1016/S1352-2310(02)00217-0), evaluation of Modeled Emission Inventories of Ozone Precursors. A Case Study for an Urban Area (Augsburg, Germany), 2002.
- 1075 Niedojadlo, A., Becker, K. H., Kurtenbach, R., and Wiesen, P.: The contribution of traffic and solvent use to the total NMVOC emission in a German city derived from measurements and CMB modelling, *Atmospheric Environment*, 41, 7108–7126, <https://doi.org/https://doi.org/10.1016/j.atmosenv.2007.04.056>, 2007.
- 1080 Oliveira, K., Guevara, M., Jorba, O., Querol, X., and García-Pando, C. P.: A new NMVOC speciated inventory for a reactivity-based approach to support ozone control strategies in Spain, *Sci. of the Total Environ.*, 867, 161 449, <https://doi.org/https://doi.org/10.1016/j.scitotenv.2023.161449>, 2023.



- Parrish, D. D., Trainer, M., Young, V., Goldan, P. D., Kuster, W. C., Jobson, B. T., Fehsenfeld, F. C., Lonneman, W. A., Zika, R. D., Farmer, C. T., Riemer, D. D., and Rodgers, M. O.: Internal consistency tests for evaluation of measurements of anthropogenic hydrocarbons in the troposphere, *Journal of Geophysical Research: Atmospheres*, 103, 22 339–22 359, <https://doi.org/https://doi.org/10.1029/98JD01364>, 1998.
- Passant, N.: Speciation of UK emissions of non-methane volatile organic compounds, Report ENV-0545 ENV-0545, AEA Technology, Culham, Abingdon, United Kingdom, 2002.
- Peischl, J., Ryerson, T. B., Brioude, J., Aikin, K. C., Andrews, A. E., Atlas, E., Blake, D., Daube, B. C., de Gouw, J. A., Dlugokencky, E., Frost, G. J., Gentner, D. R., Gilman, J. B., Goldstein, A. H., Harley, R. A., Holloway, J. S., Kofler, J., Kuster, W. C., Lang, P. M., Novelli, P. C., Santoni, G. W., Trainer, M., Wofsy, S. C., and Parrish, D. D.: Quantifying sources of methane using light alkanes in the Los Angeles basin, California, *Journal of Geophysical Research: Atmospheres*, 118, 4974–4990, <https://doi.org/https://doi.org/10.1002/jgrd.50413>, 2013.
- Pfister, G. G., Emmons, L. K., Hess, P. G., Lamarque, J. F., Orlando, J. J., Walters, S., Guenther, A., Palmer, P. I., and Lawrence, P. J.: Contribution of isoprene to chemical budgets: A model tracer study with the NCAR CTM MOZART-4, *J. Geophys. Res.*, 113, D05 308, 2008.
- Plass-Dülmer, C., Michl, K., Ruf, R., and Berresheim, H.: C<sub>2</sub>–C<sub>8</sub> Hydrocarbon measurement and quality control procedures at the Global Atmosphere Watch Observatory Hohenpeissenberg, *Journal of Chromatography A*, 953, 175–197, [https://doi.org/https://doi.org/10.1016/S0021-9673\(02\)00128-0](https://doi.org/https://doi.org/10.1016/S0021-9673(02)00128-0), 2002.
- Plass-Dülmer, C., Schmidbauer, N., Slemr, J., Slemr, F., and D’Souza, H.: European hydrocarbon intercomparison experiment AMOHA part 4: Canister sampling of ambient air, *Journal of Geophysical Research: Atmospheres*, 111, <https://doi.org/https://doi.org/10.1029/2005JD006351>, 2006.
- Pye, H. O. T., Appel, K. W., Seltzer, K. M., Ward-Caviness, C. K., and Murphy, B. N.: Human-Health Impacts of Controlling Secondary Air Pollution Precursors, *Environmental Science & Technology Letters*, 9, 96–101, <https://doi.org/10.1021/acs.estlett.1c00798>, 2022.
- Rappenglück, B., Apel, E., Bauerfeind, M., Bottenheim, J., Brickell, P., Čavolka, P., Cech, J., Gatti, L., Hakola, H., Honzak, J., Junek, R., Martin, D., Noone, C., Plass-Dülmer, C., Travers, D., and Wang, D.: The first VOC intercomparison exercise within the Global Atmosphere Watch (GAW), *Atmospheric Environment*, 40, 7508–7527, <https://doi.org/https://doi.org/10.1016/j.atmosenv.2006.07.016>, 2006.
- Read, K. A., Carpenter, L. J., Arnold, S. R., Beale, R., Nightingale, P. D., Hopkins, J. R., Lewis, A. C., Lee, J. D., Mendes, L., and Pickering, S. J.: Multiannual Observations of Acetone, Methanol, and Acetaldehyde in Remote Tropical Atlantic Air: Implications for Atmospheric OVOC Budgets and Oxidative Capacity, *Environmental Science & Technology*, 46, 11 028–11 039, <https://doi.org/10.1021/es302082p>, PMID: 22963451, 2012.
- Reimann, S., Calanca, P., and Hofer, P.: The anthropogenic contribution to isoprene concentrations in a rural atmosphere, *Atmos. Environ.*, 34, 109 – 115, [https://doi.org/10.1016/S1352-2310\(99\)00285-X](https://doi.org/10.1016/S1352-2310(99)00285-X), 2000.
- Reimann, S., Wegener, R., Claude, A., and Sauvage, S.: Updated Measurement Guideline for NO<sub>x</sub> and VOCs (deliverable 3.17 of ACTRIS-2), [https://www.actris.eu/sites/default/files/inline-files/WP3\\_D3.1](https://www.actris.eu/sites/default/files/inline-files/WP3_D3.1), 2018.
- Rodigast, M., Mutzel, A., Schindelka, J., and Herrmann, H.: A new source of methylglyoxal in the aqueous phase, *Atmos. Chem. Physics*, 16, 2689–2702, <https://doi.org/10.5194/acp-16-2689-2016>, 2016.
- Russo, R. S., Zhou, Y., White, M. L., Mao, H., Talbot, R., and Sive, B. C.: Multi-year (2004–2008) record of nonmethane hydrocarbons and halocarbons in New England: seasonal variations and regional sources, *Atmospheric Chemistry and Physics*, 10, 4909–4929, <https://doi.org/10.5194/acp-10-4909-2010>, 2010.

- Salameh, T., Borbon, A., Afif, C., Sauvage, S., Leonaridis, T., Gaimoz, C., and Locoge, N.: Composition of gaseous organic carbon during ECOCEM in Beirut, Lebanon: new observational constraints for VOC anthropogenic emission evaluation in the Middle East, *Atmos. Chem. Physics*, 17, 193–209, <https://doi.org/10.5194/acp-17-193-2017>, 2017.
- 1125 Saunders, S. M., Jenkin, M. E., Derwent, R. G., and Pilling, M. J.: Protocol for the development of the Master Chemical Mechanism, MCM v3 (Part A): tropospheric degradation of non-aromatic volatile organic compounds, *Atmos. Chem. Physics*, 3, 161–180, <http://www.atmos-chem-phys.net/3/161/2003/>, 2003.
- Sauvage, S., Plaisance, H., Locoge, N., Wroblewski, A., Coddeville, P., and Galloo, J.: Long term measurement and source apportionment of non-methane hydrocarbons in three French rural areas, *Atmos. Environ.*, 43, 2430–2441, <https://doi.org/https://doi.org/10.1016/j.atmosenv.2009.02.001>, 2009.
- 1130 Seinfeld, J. and Pandis, S.: *Atmospheric chemistry and physics. From air pollution to climate change*, John Wiley and Sons, inc., New York, 1998.
- Simpson, D.: Hydrocarbon reactivity and ozone formation in Europe, *J. Atmos. Chem.*, 20, 163–177, <https://doi.org/10.1007/BF00696556>, 1995.
- Simpson, D., Winiwarer, W., Börjesson, G., Cinderby, S., Ferreiro, A., Guenther, A., Hewitt, C. N., Janson, R., Khalil, M. A. K., Owen, S., 1135 Pierce, T. E., Puxbaum, H., Shearer, M., Skiba, U., Steinbrecher, R., Tarrasón, L., and Öquist, M. G.: Inventorying emissions from Nature in Europe, *J. Geophys. Res.*, 104, 8113–8152, 1999.
- Simpson, D., Benedictow, A., Berge, H., Bergström, R., Emberson, L. D., Fagerli, H., Flechard, C. R., Hayman, G. D., Gauss, M., Jonson, J. E., Jenkin, M. E., Nyíri, A., Richter, C., Semeena, V. S., Tsyro, S., Tuovinen, J.-P., Valdebenito, A., and Wind, P.: The EMEP MSC-W chemical transport model – technical description, *Atmos. Chem. Physics*, 12, 7825–7865, <https://doi.org/10.5194/acp-12-7825-2012>, 1140 2012.
- Simpson, D., Tsyro, S., and Wind, P.: Updates to the EMEP/MSC-W model, in: *Transboundary particulate matter, photo-oxidants, acidifying and eutrophying components. EMEP Status Report 1/2015*, pp. 129–138, The Norwegian Meteorological Institute, Oslo, Norway, 2015.
- Simpson, D., Bergström, R., Briolat, A., Imhof, H., Johansson, J., Priestley, M., and Valdebenito, A.: GenChem v1.0 – a chemical pre-processing and testing system for atmospheric modelling, *Geoscientific Model Dev.*, 13, 6447–6465, <https://doi.org/10.5194/gmd-13-6447-2020>, 1145 2020.
- Simpson, D., van Caspel, W., Benedictow, A., Fagerli, H., Jonson, J., Tsyro, S., Valdebento, A., and Wind, P.: Updates to the EMEP/MSC-W model, 2022–2023, in: *Transboundary particulate matter, photo-oxidants, acidifying and eutrophying components. EMEP Status Report 1/2023*, pp. 159–179, The Norwegian Meteorological Institute, Oslo, Norway, available from [www.emep.int](http://www.emep.int), 2023.
- Slemr, J., Slemr, F., Partridge, R., D’Souza, H., and Schmidbauer, N.: Accurate Measurements of Hydrocarbons in the Atmosphere (AMOHA): Three European intercomparisons, *Journal of Geophysical Research: Atmospheres*, 107, ACH 15–1–ACH 15–25, <https://doi.org/https://doi.org/10.1029/2001JD001357>, 2002.
- 1150 Solberg, S., Dye, C., Walker, S., and Simpson, D.: Long-term measurements and model calculations of formaldehyde at rural European monitoring sites, *Atmos. Environ.*, 35, 195–207, 2001.
- Solberg, S., Claude, A., Reimann, S., and Sauvage, S.: VOC measurements 2018, EMEP/CCC-Report 4/2020, Norwegian Institute for Air Research, [projects.nilu.no/ccc/reports/ccc4-2020\\_VOC\\_2018.pdf](http://projects.nilu.no/ccc/reports/ccc4-2020_VOC_2018.pdf), 2020.
- 1155 Solberg, S., Claude, A., Reimann, S., Sauvage, S., and Walker, S.-E.: VOC measurements 2020, EMEP/CCC-Report 4/2022, Norwegian Institute for Air Research, [projects.nilu.no/ccc/reports/EMEP\\_CCC-Report\\_4\\_2022\\_VOC\\_measurements\\_2020.pdf](http://projects.nilu.no/ccc/reports/EMEP_CCC-Report_4_2022_VOC_measurements_2020.pdf), 2022.

- Stavrakou, T., Mueller, J.-F., De Smedt, I., Van Roozendaal, M., Kanakidou, M., Vrekoussis, M., Wittrock, F., Richter, A., and Burrows, J. P.: The continental source of glyoxal estimated by the synergistic use of spaceborne measurements and inverse modelling, *Atmos. Chem. Physics*, 9, 8431–8446, <https://doi.org/10.5194/acp-9-8431-2009>, 2009.
- 1160 Stockwell, W. R., Geiger, H., and Becker, K. H.: Estimation of incremental reactivities for multiple day scenarios: an application to ethane and dimethoxymethane, *Atmos. Environ.*, 35, 929–939, 2001.
- Swarthout, R. F., Russo, R. S., Zhou, Y., Hart, A. H., and Sive, B. C.: Volatile organic compound distributions during the NACHTT campaign at the Boulder Atmospheric Observatory: Influence of urban and natural gas sources, *Journal of Geophysical Research: Atmospheres*, 118, 10,614–10,637, <https://doi.org/https://doi.org/10.1002/jgrd.50722>, 2013.
- 1165 UK-AQEG: Non-methane Volatile Organic Compounds in the UK, AQEG Report 2/2020, UK Air Quality Expert Group, [https://uk-air.defra.gov.uk/assets/documents/reports/cat09/2006240803\\_Non\\_Methane\\_Volatile\\_Organic\\_Compounds\\_in\\_the\\_UK.pdf](https://uk-air.defra.gov.uk/assets/documents/reports/cat09/2006240803_Non_Methane_Volatile_Organic_Compounds_in_the_UK.pdf), 2020.
- van Caspel, W. E., Simpson, D., Jonson, J. E., Benedictow, A. M. K., Ge, Y., di Sarra, A., Pace, G., Vieno, M., Walker, H. L., and Heal, M. R.: Implementation and evaluation of updated photolysis rates in the EMEP MSC-W chemistry-transport model using *Cloud-J v7.3e*, *Geoscientific Model Development*, 16, 7433–7459, <https://doi.org/10.5194/gmd-16-7433-2023>, 2023.
- 1170 Veefkind, J., Aben, I., McMullan, K., Förster, H., de Vries, J., Otter, G., Claas, J., Eskes, H., de Haan, J., Kleipool, Q., van Weele, M., Hasekamp, O., Hoogeveen, R., Landgraf, J., Snel, R., Tol, P., Ingmann, P., Voors, R., Kruizinga, B., Vink, R., Visser, H., and Levelt, P.: TROPOMI on the ESA Sentinel-5 Precursor: A GMES mission for global observations of the atmospheric composition for climate, air quality and ozone layer applications, *Remote Sensing of Environment*, 120, 70–83, <https://doi.org/https://doi.org/10.1016/j.rse.2011.09.027>, the Sentinel Missions - New Opportunities for Science, 2012.
- von Schneidmesser, E., Monks, P. S., and Plass-Duelmer, C.: Global comparison of VOC and CO observations in urban areas, *Atmospheric Environment*, 44, 5053–5064, <https://doi.org/https://doi.org/10.1016/j.atmosenv.2010.09.010>, 2010.
- von Schneidmesser, E., Coates, J., Denier van der Gon, H., Visschedijk, A., and Butler, T.: Variation of the NMVOC speciation in the solvent sector and the sensitivity of modelled tropospheric ozone, *Atmospheric Environment*, 135, 59–72, <https://doi.org/https://doi.org/10.1016/j.atmosenv.2016.03.057>, 2016.
- 1180 von Schneidmesser, E., McDonald, B. C., Denier van der Gon, H., Crippa, M., Guizzardi, D., Borbon, A., Dominutti, P., Huang, G., Jansens-Maenhout, G., Li, M., Ou-Yang, C.-F., Tisinai, S., and Wang, J.-L.: Comparing Urban Anthropogenic NMVOC Measurements With Representation in Emission Inventories—A Global Perspective, *J. Geophys. Res.*, 128, e2022JD037906, <https://doi.org/https://doi.org/10.1029/2022JD037906>, e2022JD037906 2022JD037906, 2023.
- 1185 Waked, A., Sauvage, S., Borbon, A., Gauduin, J., Pallares, C., Vagnot, M.-P., Léonardis, T., and Locoge, N.: Multi-year levels and trends of non-methane hydrocarbon concentrations observed in ambient air in France, *Atmos. Environ.*, 141, 263–275, <https://doi.org/https://doi.org/10.1016/j.atmosenv.2016.06.059>, 2016.
- Watson, L. A., Shallcross, D. E., Utembe, S. R., and Jenkin, M. E.: A Common Representative Intermediates (CRI) mechanism for VOC degradation. Part 2: Gas phase mechanism reduction, *Atmos. Environ.*, 42, 7196–7204, <https://doi.org/10.1016/j.atmosenv.2008.07.034>, 2008.
- 1190 Whalley, L. K., Stone, D., Dunmore, R., Hamilton, J., Hopkins, J. R., Lee, J. D., Lewis, A. C., Williams, P., Kleffmann, J., Laufs, S., Woodward-Massey, R., and Heard, D. E.: Understanding in situ ozone production in the summertime through radical observations and modelling studies during the Clean air for London project (ClearfLo), *Atmospheric Chemistry and Physics*, 18, 2547–2571, <https://doi.org/10.5194/acp-18-2547-2018>, 2018.

- 1195 Wiedinmyer, C., Tie, X., Guenther, A., Neilson, R., and Granier, C.: Future Changes in Biogenic Isoprene Emissions: How Might They Affect Regional and Global Atmospheric Chemistry?, *Earth Interactions*, 10, 1 – 19, <https://doi.org/https://doi.org/10.1175/EI174.1>, 2006.
- Wiedinmyer, C., Kimura, Y., McDonald-Buller, E. C., Emmons, L. K., Buchholz, R. R., Tang, W., Seto, K., Joseph, M. B., Barsanti, K. C., Carlton, A. G., and Yokelson, R.: The Fire Inventory from NCAR version 2.5: an updated global fire emissions model for climate and chemistry applications, *Geoscientific Model Dev.*, 16, 3873–3891, <https://doi.org/10.5194/gmd-16-3873-2023>, 2023.
- 1200 Wilde, S. E., Dominutti, P. A., Allen, G., Andrews, S. J., Bateson, P., Bauguitte, S. J.-B., Burton, R. R., Colfescu, I., France, J., Hopkins, J. R., Huang, L., Jones, A. E., Lachlan-Cope, T., Lee, J. D., Lewis, A. C., Mobbs, S. D., Weiss, A., Young, S., and Purvis, R. M.: Speciation of VOC emissions related to offshore North Sea oil and gas production, *Atmospheric Chemistry and Physics*, 21, 3741–3762, <https://doi.org/10.5194/acp-21-3741-2021>, 2021.
- Zhang, Y., Wang, X., Zhang, Z., Lü, S., Shao, M., Lee, F. S., and Yu, J.: Species profiles and normalized re-  
1205 activity of volatile organic compounds from gasoline evaporation in China, *Atmospheric Environment*, 79, 110–118, <https://doi.org/https://doi.org/10.1016/j.atmosenv.2013.06.029>, 2013.