

Evaluation of modelled versus observed NMVOC compounds at EMEP sites in Europe

Yao Ge^{1,2}, Sverre Solberg³, Mathew R. Heal⁴, Stefan Reimann⁵, Willem van Caspel¹, Bryan Hellack⁶, Thérèse Salameh⁷, and David Simpson^{1,8}

¹Division for Climate Modelling and Air Pollution, Norwegian Meteorological Institute, 0313 Oslo, Norway

²UK Centre for Ecology & Hydrology, Bush Estate, Penicuik, EH26 0QB, UK

³NILU, 2027 Kjeller, Norway

⁴School of Chemistry, University of Edinburgh, Joseph Black Building, Edinburgh, EH9 3FJ, UK

⁵Empa - Laboratory for Air Pollution/Environmental Technology, Swiss Federal Laboratories for Materials Science and Technology, CH-8600 Dübendorf, Switzerland.

⁶German Environment Agency, Dessau, Germany

⁷IMT Nord Europe, Institut Mines-Télécom, Univ. Lille, Centre for Energy and Environment, 59000, Lille, France

⁸Department of Space, Earth and Environment, Chalmers University of Technology, 412 96 Gothenburg, Sweden

Correspondence: Yao Ge (yaog@met.no) and David Simpson (davids@met.no)

Abstract.

Atmospheric volatile organic compounds (VOC) constitute a wide range of species, acting as precursors to ozone and aerosol formation. Atmospheric chemistry and transport models (CTMs) are crucial to understanding the emissions, distribution, and impacts of VOCs. Given the uncertainties in VOC emissions, lack of evaluation studies, and recent changes in emissions, this work adapts the European Monitoring and Evaluation Programme Meteorological Synthesizing Centre – West (EMEP MSC-W) CTM to evaluate emission inventories in Europe. Here we undertake the first intensive model-measurement comparison of VOCs in two decades. The modelled surface concentrations are evaluated both spatially and temporally, using measurements from the regular EMEP monitoring network in 2018 and 2019, and a 2022 campaign. To achieve this, we utilised the UK National Atmospheric Emission Inventory to derive explicit emission profiles for individual species and employed a ‘tracer’ method to produce pure concentrations that are directly comparable to observations.

The degree to which the modelled and measured VOCs agree varies depending on the specific species. The model successfully captures the overall spatial and temporal variations of major alkanes (e.g., ethane, n-butane) and unsaturated species (e.g., ethene, benzene), but less though for propane, i-butane, and ethyne. This discrepancy underscores potential issues in the boundary conditions for these latter species and in their primary emissions from in particular the solvent and road transport sectors. Specifically, potential missing propane emissions and issues with its boundary conditions are highlighted by large model underestimations and smaller propane to ethane ratios compared to the measurement. Meanwhile, both the model and measurement show strong linear correlations among butane isomers and among pentane isomers, indicating common sources for these pairs of isomers. However, modelled ratios of i- to n-butane and i- to n-pentane are approximately one-third of the measured ratios, which is largely driven by significant emissions of n-butane and n-pentane from the solvent sector. This suggests issues with the speciation profile of the solvent sector, or underrepresented contributions from transport and fuel evaporation sectors in

current inventories, or both. Furthermore, the modelled ethene-to-ethyne and benzene-to-ethyne ratios differ significantly from measured ratios. The different model performance strongly points to shortcomings in the spatial and temporal patterns and magnitudes of ethyne emissions, especially during winter. For OVOCs, the modelled and measured concentrations of methanal and methylglyoxal show a good agreement, despite a moderate underestimation by the model in summer. This discrepancy could be attributed to an underestimation of contributions from biogenic sources, or possibly a model overestimation of their photolytic loss in summer. However, the insufficiency of suitable measurements limits the evaluation of other OVOCs. Finally, model simulations employing the CAMS inventory show slightly better agreements with measurements than those using the CEIP inventory. This enhancement is likely due to the CAMS inventory's detailed segmentation of the Road Transport sector, including its associated subsector-specific emission profiles. Given this improvement, alongside the previously mentioned concerns about the model's biased estimations of various VOC ratios, future efforts should focus on a more detailed breakdown of dominant emission sectors (e.g., Solvents) and the refinement of their speciation profiles to improve model accuracy.

1 Introduction

Non-methane volatile organic compounds (NMVOCs) constitute a diverse category of organic chemicals. While only a limited number of VOCs emitted to air are known to be directly detrimental to health, they predominantly serve as precursors to the formation of ozone and particulate matter (PM) (Seinfeld and Pandis, 1998; Ait-Helal et al., 2014; Li et al., 2020; Pye et al., 2022). Upon their release into the atmosphere, VOCs undergo a series of photochemical reactions that lead to the generation of ground-level ozone that has well-known adverse effects on air quality, human health, crops and natural vegetation (Filleul et al., 2006; Hoor et al., 2009; Mills et al., 2018; Li et al., 2019; Emberson, 2020). Concurrently, VOCs also affect the mass, number, and chemical composition of PM through their contributions to primary and secondary organic aerosols (Kanakidou et al., 2005; Kroll and Seinfeld, 2008; Hallquist et al., 2009). Consequently, the reduction of VOC levels remains a critical factor in mitigating both surface ozone and PM pollution.

The spatial and temporal concentrations of VOCs are influenced by a range of atmospheric processes. These include primary emissions from a number of sources, chemical transformations, regional transport, and variations in meteorological conditions. Further, difficulties in emissions estimation and model parameterisation of these processes, combined with technical challenges in accurately measuring ambient speciated VOC levels, often leads to varying agreements between model and measurement (Solberg et al., 2001; Pfister et al., 2008; Veefkind et al., 2012; Huang et al., 2017; Dalsøren et al., 2018; Bray et al., 2019; von Schneidmesser et al., 2023).

Comparison of modelled VOC results with observations presents a number of challenges beyond those of other compounds such as NO_x, SO_x or NH₃ whose emissions are compiled annually. In contrast, the regular assessment of speciated emission data for VOCs is much rarer. In many cases, emissions are input to an CTM as total non-methane VOC, but these emissions then need to be converted to inputs of specific species (C₂H₆, C₃H₈ etc) because each VOC has different ozone and aerosol formation potential, and few data are available to support this speciation. Thus, results from models can diverge significantly based on different VOC emission profiles used. Also, the lifetime of many VOCs is so short that a sound comparison of measured and

modelled levels is difficult. Moreover, a particular monitoring site's representativeness of its surrounding air, and the quality
55 of its measurement data, can also vary dramatically. In response to these challenges, continuous efforts have been invested
in implementing long-term VOC measurements across Europe (e.g., the pan-European research infrastructure ACTRIS) and
enhancing chemistry mechanisms in the European Monitoring and Evaluation Programme Meteorological Synthesizing Centre
– West (EMEP MSC-W) CTM in recent years.

A further crucial issue is that real-world VOCs comprise many 1000s of species, but chemical transport model schemes can
60 only cope with a much smaller number of compounds, typically in the 100s. In the default chemistry mechanisms of the EMEP
model, EmChem19a (Simpson et al., 2020; Bergström et al., 2022), and the update, EmChem19rc, most emitted VOCs are
lumped into different groups (e.g. most alkanes are treated as n-butane), with only a few VOC species having explicit emissions
and chemistry. This approach offers the dual benefit of maintaining an accurate description of ozone generation compared to
more complex schemes (Andersson-Sköld and Simpson, 1999; Bergström et al., 2022) and promoting computational efficiency.
65 However, it presents challenges when attempting to produce specific VOC concentrations for comparison with observation data.

In recent decades, considerable declines have been observed in those VOCs that are primarily derived from transport, com-
bustion and fossil fuel extraction and distribution (sectors that were dominant emission sources in the 1990s) due to changes
in emission regulation and fuel quality, as well as increases in the usage of renewable energy. Meanwhile, emissions from
solvents, and the use of chemicals in industry and domestic products, as well as other sources like agricultural activities, are
70 gaining in significance (von Schneidemesser et al., 2016; Mo et al., 2021). These changes in major emitting sectors have con-
sequently led to changes in VOC emission profiles. For instance, there has been a notable reduction in emissions of short-chain
non-methane hydrocarbons (NMHCs) associated with fossil fuels and combustion, and an increase in the relative contributions
of oxygenated VOCs (OVOCs) which primarily emanate from solvent usage and consumer products (von Schneidemesser
et al., 2023; Lewis et al., 2020; Read et al., 2012).

In light of the substantial shifts observed in real-world VOC emission profiles, our objective is to assess the extent to which
75 current emission inventories accurately reflect these changes. Furthermore, given the significant advancements in the physical
and chemical formulation of the EMEP model since the last evaluative studies on VOCs that were conducted in the 1990s
(Hov et al., 1997; Solberg et al., 2001), it is important to update our understanding of the model's current performance and
identify the factors influencing it. Therefore, the aims of this study are (a) to augment the VOC species set in the EMEP model
80 with tracers for individual VOC compounds, (b) conduct a comprehensive comparison of some key VOCs between the EMEP
model and ambient measurements, and (c) to employ the model in assessing the 'goodness' of speciated emissions, providing
insights into their quality and impact. For these purposes, we deployed a 'tracer' method, which allows us to input explicit
emissions into the model and compute concentrations of individual VOCs. This tracer method has been used for whole-year
comparisons in 2018 and 2019, and for comparisons during the 2022 EMEP intensive measurement period (IMP), as presented
85 in Sect. 3. The methodology is described in Sect. 2.

It is important to note that this work mainly concentrates on VOCs with simpler structures and shorter chains. This focus is
due to the greater availability of measurement datasets and emission estimates that underpin the model's parameterisation and
evaluation for these compounds, in comparison to VOCs with more complex structures, such as longer-chain hydrocarbons

(e.g., greater than C7), acids, and esters. As more data becomes accessible, particularly regarding boundary conditions and
90 sector-specific emission profiles, we intend to refine and update the model configuration in the future.

2 Methods

2.1 The EMEP MSC-W model

The EMEP MSC-W atmospheric chemistry transport model has been developed by the European Monitoring and Evaluation
Programme Meteorological Synthesizing Centre – West. It is an open-source Eulerian grid model used for applications ranging
95 from scientific research to policy development (Simpson et al., 2012, 2020; Jonson et al., 2006, 2017; Ge et al., 2021, 2023b;
van Caspel et al., 2023). In the default setup for European simulations as used here, the model uses 20 terrain-following vertical
layers, with the pressure ranging from around 1000 hPa (surface level) to 100 hPa (highest level). The lowest layer has a height
of about 50 m. The model output of surface concentrations are adjusted to be equivalent to 3 m above the surface as described
in Simpson et al. (2012). In this study, we utilise the most recent EMEP MSC-W model version rv5 (Simpson et al., 2023),
100 which features a significantly revised photolysis scheme (*Cloud-J*) compared to previous EMEP versions. As described in van
Caspel et al. (2023), the *Cloud-J* implementation was specifically developed to include each of the photolysis reaction rates
(*J*-values) present in the CRIv2R5Em chemical mechanism described below.

2.2 Chemistry mechanisms

Two chemistry mechanisms, CRIv2R5Em and EmChem19rc, have been utilised to develop VOC tracers and to investigate the
105 difference in model performance across different mechanisms. The CRIv2R5Em chemical mechanism is an EMEP adaptation
(Bergström et al., 2022) of the Common Representative Intermediates (CRI) v2-R5 mechanism (Watson et al., 2008). This
mechanism is the simplest variant of CRI v2, considered suitable as a reference mechanism in large-scale chemistry-transport
models. The CRIv2R5Em also includes a recently developed isoprene reaction scheme (CRI v2.2a) that describes updates to
the major HO_x recycling routes (Jenkin et al., 2019). A selection of 24 anthropogenic and 3 biogenic species are chosen to
110 represent all NMVOCs emitted in CRIv2R5Em, based on their Photochemical Ozone Creation Potentials (POCP, e.g. Jenkin
et al. 2017), abundance, and simplicity of mechanism. This EMEP adaptation (derived from a version based on CRIv2.1),
CRIv2R5Em, was created prior to the release of the latest CRI v2.2, hence it slightly differs from the current official CRIv2R5
version.

The EmChem19rc mechanism is a small update (Simpson et al., 2023) of EmChem19a. Both EmChem19a and CRIv2R5Em
115 are described in detail in Bergström et al. (2022). EmChem19rc is now the default chemical mechanism used in v5.0 of the
EMEP model. It typically employs primary emissions from 17 NMVOC species and surrogates (14 anthropogenic and 3
biogenic) to represent a wide variety of VOCs that are actually emitted into the atmosphere (Bergström et al., 2022). For
instance, n-butane (model species nC4H10) is utilised to represent both itself and other alkanes that contain more than three
carbon atoms, alongside a handful of other species with similar POCP. Similarly, benzene and toluene are explicit aromatic

120 VOC species, but then o-xylene is used as a surrogate for itself and all other aromatic VOCs having more than seven carbon atoms. A detailed species list is presented in Supplement A Table A1

In order to obtain VOC concentrations from the model that are directly comparable with measurements, without affecting computational efficiency and the mechanism's innate capability for ozone production, we employ a 'tracer' method. This method retains the normal species set of CRIv2R5Em and EmChem19rc mechanisms for the calculation of photochemistry (and hence OH, O₃ and NO₃ radical concentrations), but additionally introduces individual VOC tracers (denoted by the suffix "_T") that take explicit emissions from a certain species and follow species-specific loss processes to yield precise concentrations of that species. These tracers neither consume any atmospheric oxidants, like the OH radical, nor generate any products; they are created solely to track VOC concentrations. For example, although emissions of i-butane (iC₄H₁₀) are lumped with those of other heavy alkanes into the surrogate nC₄H₁₀ species for the standard photochemical calculations, we also track the emissions and losses (using explicit OH + iC₄H₁₀ reaction rates) for the tracer species iC4H10_T. This procedure should give the best estimate of its concentrations, assuming that the standard CRIv2R5Em and EmChem19rc model concentrations of OH are reasonable – something which was demonstrated by Bergström et al. (2022).

Table 1 summarises available VOC species in the adapted CRIv2R5Em mechanism. Based on chemical species and reactions in CRIv2.2, several new species (coloured in blue in Table 1) are added to CRIv2R5Em as VOC tracers, which not only enable a comparison with EmChem19rc, but also with more measurements. Alongside these new species, additional tracers have also been created for existing lumped surrogates such as NC4H10_T, OXYL_T, and others (coloured in green in Table 1).

Table 1. Summary of current primary VOC species in CRIv2R5Em. Species coloured in blue are newly added VOC tracers; green indicates tracers for existing lumped surrogates; orange indicates species that have secondary production from lumped surrogates. TBUT2ENE represents 2-butene; NPROPOL and IPROPOL represent 1-propanol and 2-propanol respectively; GLYOX and MGLYOX represent glyoxal and methylglyoxal respectively; MEK represents methyl ethyl ketone. XTERPENE is a lumped surrogate for other biogenic species.

| CRIv2R5Em | Species | | | |
|----------------------|--------------|----------|----------|----------|
| Shorter-chain alkane | C2H6_T | C3H8 | NC4H10_T | IC4H10_T |
| Longer-chain alkane | NC5H12_T | IC5H12_T | NC6H14_T | NC7H16_T |
| Alkene | C2H4_T | C3H6_T | TBUT2ENE | |
| Alkyne | C2H2 | | | |
| Aromatics | BENZENE | TOLUENE | OXYL_T | |
| Alcohol | CH3OH | C2H5OH_T | NPROPOL | IPROPOL |
| Aldehyde | HCHO | CH3CHO | | |
| Dialdehyde | GLYOX | MGLYOX | | |
| Ketone | CH3COCH3 | MEK | | |
| Carboxylic acid | HCOOH | CH3CO2H | | |
| Biogenic VOC | C5H8 | α-PINENE | β-PINENE | XTERPENE |
| Rest [†] | OTH_ALKANE_T | | | |

Notes †: Rest includes other alkanes and some other species.

2.3 Emissions

2.3.1 Current challenges

Ideally we hope to use individual species, or ratios of species, to identify particular emission sources. For example, Peischl et al. (2013) suggested that ethane emissions are dominated by natural gas supply infrastructure, whilst ethene, propene, and ethyne mainly originate from tailpipe exhaust (Coggon et al., 2021). However, concentrations of VOCs at measurement stations, often situated away from urban or industrial emission sources, are influenced by multiple contributors. VOCs with lifetimes of several days or longer become mixed with emissions from various sources by the time they are detected at the background stations. For instance, aromatic species such as toluene are emitted from both vehicular transport (Gkatzelis et al., 2021) and solvent usage (Mo et al., 2021). Similarly, butanes are released from fossil fuel usage but are also commonly used as aerosol propellants in various chemical products (Lewis et al., 2020).

Another significant challenge in creating speciated emissions for atmospheric models arises from the grouping of emissions in inventories. For instance, methanol, which has substantial biogenic emissions, is incorporated into several inventories (Guenther et al., 2012) and atmospheric models. Nevertheless, the representation of anthropogenic emissions in databases such as EDGAR (Huang et al., 2017) or CAMS (Kuenen et al., 2022) is more generic, listing alcohols as a collective category without specifying the proportions of methanol, ethanol, or other alcohols. This aggregation in global and regional anthropogenic VOC (AVOC) inventories no longer aligns with the advanced chemical mechanisms now employed in atmospheric models.

2.3.2 Emissions in the EMEP model

To address these challenges, we utilised the UK National Atmospheric Emission Inventory (UK NAEI), provided by the NAEI team upon email request in 2022, as the primary source of AVOC emission profiles for the work presented here. The key advantage of this inventory is its extensive coverage: it offers emissions data for 664 VOC species across 249 sectors, spanning the period from 1990 to 2019. Despite being based on a somewhat dated speciation profile developed in the early 2000s (Passant, 2002), this inventory is highly valuable. Given the paucity of national speciated VOC emission inventories reported by other European countries, the UK NAEI remains a valuable reference source.

The VOC emissions in the EMEP model consist of biogenic VOC (BVOC), which are calculated online from temperature, radiation and land-cover data (Simpson et al., 1999, 2012), biomass-burning emissions from the Fire INventory from NCAR (FINN) v2.5 (Wiedinmyer et al., 2023), and gridded AVOC inventories provided by the EMEP Centre for Emission Inventories and Projections (CEIP, www.emep.int), or through the Copernicus Atmosphere Monitoring Service (CAMS) projects (Kuenen et al., 2022; Denier van der Gon et al., 2023). The AVOC emissions (here we used the dataset CAMS-REG-v5.1.) are provided as sector-specific totals (e.g. VOC from solvents or road traffic sectors), and are the main focus of this study.

Monthly (and also day-to-day and hourly) time-factors are specified in the model as described in Simpson et al. (2023). Briefly, these time-factors (CAMS_TEMPO_CLIM in EMEP notation) correspond to the CAMS-REG-TEMPO v3.2 simplified climatological temporal profiles (Guevara et al., 2021; Guevara, 2023), but are updated for non-livestock agricultural emissions

(GNFR Sector L) from CAMS-REG-TEMPO v4.1. Fig. B1 and B2 illustrate these monthly factors for two countries, the UK
170 and Switzerland.

2.3.3 Emissions sector mapping

Emission sectors in the UK NAEI are mapped to the 19 EMEP sectors as shown in Table B1. The CAMS inventory reports
emissions from sector-A (Public Power, abbreviated to PP) through A1 (PP-Point) and A2 (PP-Area), and emissions from
sector-F (Road Transport) through F1 (Gasoline), F2 (Diesel), F3 (LPG), F4 (Non-exhaust). In contrast, the CEIP inventory
175 only reports sector totals from A and F without specifying the exact emissions from each sub-sector. Given that most activities
in the UK NAEI are classified into various Nomenclature for Reporting (NFR) sectors (which refers to the format for the
reporting of national data in accordance with the Convention on Long-Range Transboundary Air Pollution), this mapping is
achieved using a cross-walk between NFR and gridded aggregated nomenclature for reporting (GNFR) sectors as detailed in
Matthews and Wankmüller (2021). Most sources in the UK NAEI have corresponding emission profiles, with the exception of
180 activities falling under GNFR sectors A1, A2, F3, K (Agriculture-Livestock) and L (Agriculture-Other).

The VOC speciation for A1 and A2 is set to be the same as the sector A since UK NAEI does not include emissions from
such sub-categories for sector A. For sector F3, the VOC speciation for LPG exhaust is derived from the EMEP/CORINAIR
Emission Inventory Guidebook¹.

For sector K, we make use of data supplied by the Netherlands Organisation for Applied Scientific Research (TNO, A. Viss-
185 chedijk and J. Kuenen, pers.comm., 2023). These data consisted of European-scale country-specific emissions for individual K
sub-sectors (e.g., cattle, sheep, etc.) and for 25 VOC species or groups (e.g., voc01 alcohols, voc02 ethane, and voc04 butanes,
consistent with those used by Huang et al. 2017). For the grouped emissions in TNO dataset, we have utilised the following
references to split emissions from a certain group (e.g., voc01 alcohols) into individual species (e.g., methanol, ethanol, etc.)
for each country. For activities relating to poultry, cattle, and pigs, emission profiles reported by the EEA emission inventory
190 guidebook Chapter 3.B Manure management² are used. As for sheep-related activities, speciated VOC emissions from Hobbs
et al. (2004) are used.

Sector L encompasses activities such as the application of animal manure to soils and field burning of agricultural residues,
that can have vastly different emission profiles. Therefore, as well as the above-mentioned references, emission profiles for
field burning of agricultural residues from Andreae (2019) are also used to assign TNO's grouped emissions from this specific
195 sector to separate VOCs. For other sectors that do not have detailed speciation profiles available (e.g., sewage applied to soils;
cultivated crops; farm-level agricultural operations including storage, handling and transport of agricultural products), TNO's
grouped emissions are directly mapped to lumped surrogates in the EMEP model. The primary issue is the lack of publicly
available and speciated emission data for these activities. Moreover, in case that there are areas that are not covered by TNO
emissions in the modelled domain, a default emission speciation based on the EEA emission inventory guidebook³ and Hobbs

¹<https://www.eea.europa.eu/publications/EMEPCORINAIR5/B710vs6.0.pdf/view>

²<https://www.eea.europa.eu/publications/emep-eea-guidebook-2019/part-b-sectoral-guidance-chapters/4-agriculture/3-b-manure-management/view>

³<https://www.eea.europa.eu/publications/emep-eea-guidebook-2019/part-b-sectoral-guidance-chapters/4-agriculture/3-b-manure-management/view>

200 et al. (2004) has been established for sector K and L at present. We plan to review these speciations when relevant data becomes available in the future.

2.3.4 Emissions species mapping

The original species mapping between the NAEI species and EMEP compounds was developed by Garry D. Hayman⁴ as part of the study that was eventually published as Bergström et al. (2022). This mapping was based on an older version of the UK NAEI, and used EmChem09 chemical compounds (Simpson et al., 2012) and SNAP emissions sectors. Updates to 205 EmChem19a were conducted by Bergström et al. (2022), and we have further updated the mapping for the VOC speciation described here. Figure 1 illustrates the mapping process from the NAEI sectors (NS) and VOC (NV) emissions to EMEP VOCs (EV) and EMEP sectors (ES). Utilising raw data from the NAEI for a selected year, the total emissions for EMEP sector i , denoted ES_i , are calculated as follows:

$$210 \quad ES_i = \sum_{j=1}^n EV_{j,1} + EV_{j,2} + \dots + EV_{j,44}$$

where j is the corresponding NAEI sector, n is the total number of NAEI sectors that belong to i , and $EV_{j,1}$ to $EV_{j,44}$ represent emitted masses of up to 44 EMEP species (VOC tracers + lumped surrogates). In EMEP sector i , the percentage of the EMEP VOC x , $P_{i,x}$, is calculated as follows:

$$P_{i,x} = \frac{\sum_{j=1}^n EV_{j,x}}{ES_i} \times 100\%$$

215 Figure 2 presents the annual total VOC emissions for individual EMEP sectors in both inventories, as well as each sector's emission profiles implemented in the model (CRIV2R5Em). For the sector-K Agri-Livestock and sector-L Agri-Other, the country-specific speciation vary from one country to another, thus only the default speciation is shown.

As described in Section 2.3.3, in the CAMS inventory, emissions from the sector-F Road Transport (RT) are reported in four sub-sectors (i.e., F1 = RT-Gasoline, F2 = RT-Diesel, F3 = RT-LPG, and F4 = RT-Non-exhaust), and thus its total is shown as the 220 sum of emissions from these sub-sectors. In contrast, the CEIP inventory only reports emissions from sector-F as a whole, and emissions for its sub-sectors are all set to zero (hence, emission profiles for these sub-sectors are not used in model simulations). The speciation profile of sector-F that is actually used for the CEIP inventory is derived from the individual speciation profile of F1, F2, F3, F4 and total emissions of these sub-sectors reported by the CAMS inventory. For a given EMEP VOC x , its percentage in sector-F, $P_{F,x}$, is calculated as follows:

$$225 \quad P_{F,x} = \frac{\sum_{i=1}^4 ST_{Fi} \times P_{Fi,x}}{\sum_{i=1}^4 ST_{Fi}} \times 100\%$$

where ST_{Fi} represents the sector total emissions of each F sub-sector (F1, F2, F3, F4), and $P_{Fi,x}$ is the percentage of the EMEP VOC x within the individual profile of each sub-sector

⁴now at UK Centre for Ecology and Hydrology

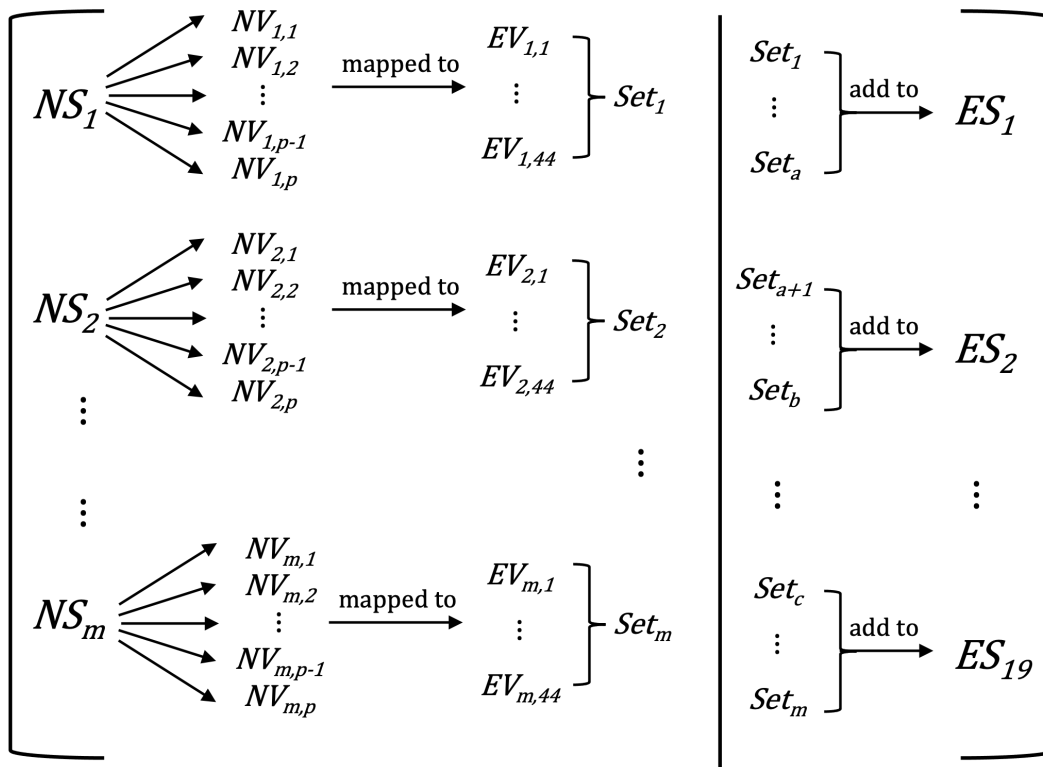


Figure 1. The emission mapping of NAEI VOCs (NV) from NAEI sectors (NS) to EMEP VOCs (EV) and EMEP sectors (ES). The total number of NS is denoted by m ; the total number of NV is denoted by p .

For the sector-A Public Power and its two sub-sectors, the same emission profile developed for PP using the NAEI data is used for all these sectors. The reason why there are three sectors for PP is because different inventories report emissions in different formats. The CAMS inventory reports PP emissions in the format of PP-Point and PP-Area, whereas the CEIP inventory only reports emissions from the PP sector. Apart from these differences, both inventories indicate that the significant VOC emitting sectors include Fugitive, Solvents, and Road Transport.

Utilizing 2018 anthropogenic emissions data, more than 600 VOCs from the NAEI, in addition to several other VOCs from the EEA emission inventory guidebook, are mapped to 44 EMEP species or groups. Figure 2 illustrates the 19 most substantially emitted species or groups, with less-emitted species and most lumped surrogates incorporated into the REST group.

It is worth noting that there are anthropogenic emissions of what are traditionally recognised as biogenic VOCs, and these are incorporated within the BVOC group in Fig. 2. This group represents anthropogenic emissions of isoprene, α -pinene, β -pinene, and some terpene species. Anthropogenic emissions of the BVOC group are mainly from the Industry sector and are considerably smaller than their biogenic emissions (Borbon et al., 2023). The OTH_ALKANE group signifies emissions of

240 higher alkanes, as well as some other complex VOCs. The UNREAC group represents emissions of species with low or no reactivity.

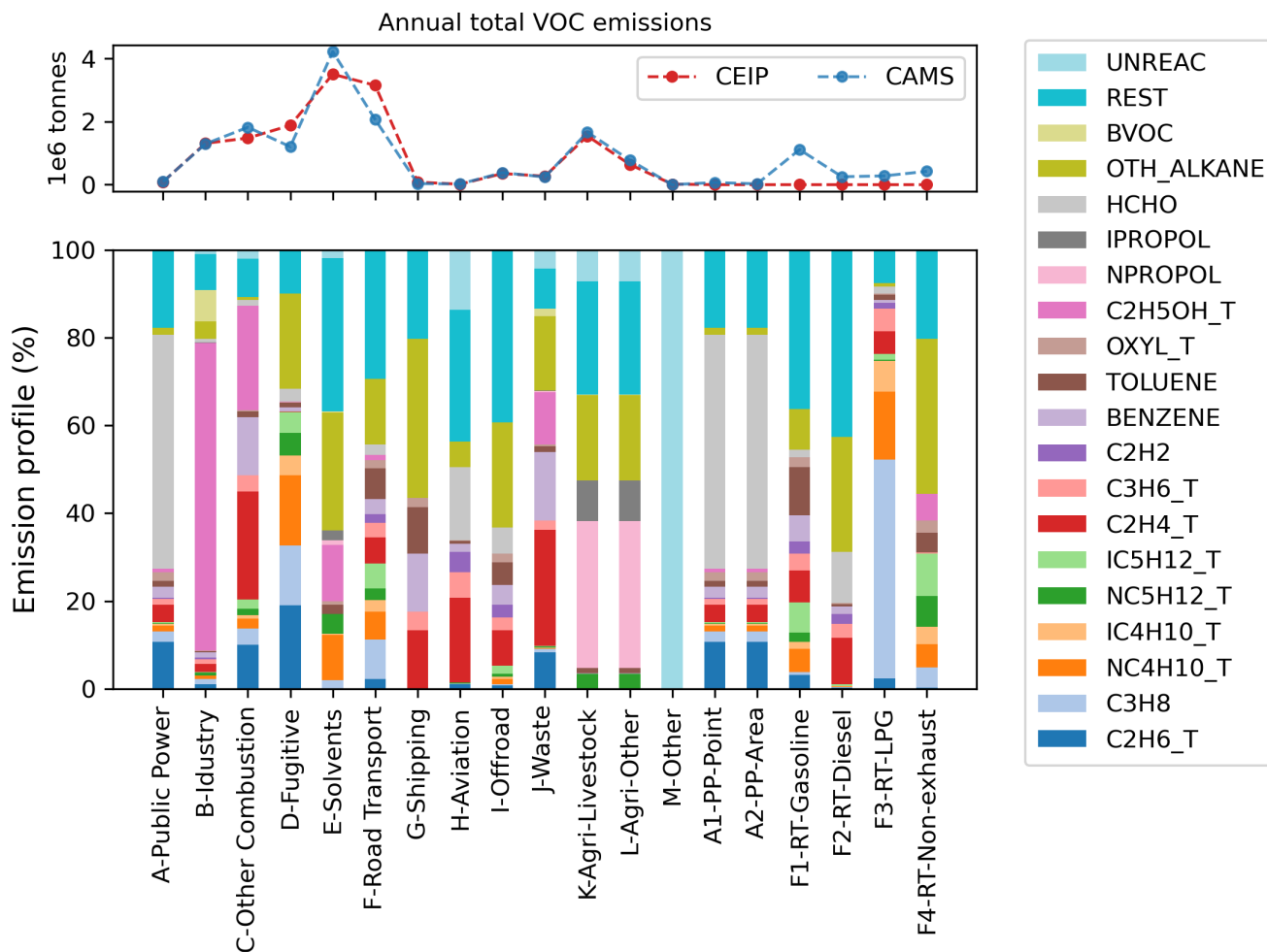


Figure 2. Annual total emissions (upper panel) from CAMS and CEIP inventories based on the same model domain (i.e., Longitude -29.95° to 44.95° and Latitude 30.05° to 75.95°), and VOC profiles (lower panel) of individual EMEP sectors in CR1v2R5Em mechanism in 2018. Among the last 6 subsectors, PP stands for Public Power, RT stands for Road Transport. The speciation of sector F is an overall reflection of F1–F4. Note that CEIP do not provide data for the last six sectors (A1,A2,F1–F4), so emissions are zero for these sectors.

2.3.5 Speciation of biomass burning emissions

Table 2 displays the emission splitting factors used in the EMEP model for biomass burning species in the FINN inventory. While FINN typically provides emissions data for individual species, it only offers a combined emission for butane species. Consequently, the VOC speciation data derived from Andreae (2019) is employed to determine the ratios of n-butane to i-butane.

Table 2. The mapping between biomass burning species in the FINN inventory and CRIv2R5Em species in the EMEP model.

| FINN species | model species | Factor |
|--------------|---------------|--------|
| C2H6 | C2H6_T | 1 |
| C3H8 | C3H8 | 1 |
| ALK4 | NC4H10_T | 0.6255 |
| ALK4 | IC4H10_T | 0.3745 |
| C2H4 | C2H4_T | 1 |
| C2H2 | C2H2 | 1 |
| PRPE | C3H6_T | 1 |
| XYLE | OXYL_T | 1 |
| BENZ | BENZENE | 1 |
| TOLU | TOLUENE | 1 |
| CH2O | HCHO | 1 |
| ALD2 | CH3CHO_T | 1 |
| GLYX | GLYOX | 1 |
| MGLY | MGLYOX | 1 |
| ACET | CH3COCH3 | 1 |
| MEK | MEK_T | 1 |

2.3.6 Boundary and initial conditions

The EMEP model specifies the boundary and initial conditions (BICs) of a number of compounds, including VOCs, using simple functions to describe changes from month to month, and accounting for latitude effects (Simpson et al., 2012, 2015). BICs are specified using a cosine function: $\chi_0 = \chi_{\text{mean}} + \Delta\chi \cos\left(2\pi \frac{d_{\text{mm}} - d_{\text{max}}}{n_y}\right)$, where χ_0 is the monthly near-surface concentration, χ_{mean} is the annual mean near-surface concentration, $\Delta\chi$ the amplitude of the cycle, n_y is the number of days per year, d_{mm} is the day number of mid-month (assumed to be the 15th), and d_{max} is day number at which χ_0 maximises. Changes in the vertical are specified with a scale-height, set to 10 km for C2H6 and 6 km for other VOC. Since different species have different annual means and amplitudes, the impact of BICs on the concentrations of different VOC species varies.

255 We endeavoured to base the BICs for the VOCs in this study predominantly on data from peer-reviewed literature. Table 3 shows the BICs used for the VOC compounds. The BICs for propane, n-butane, i-butane, n-pentane, and i-pentane are derived from the average concentrations from a five-year dataset of high-frequency, in-situ VOC measurements taken at Mace Head, Ireland, as documented by Grant et al. (2011). A numerical factor is used to partition the boundary condition of the lumped species C4H10 into six VOC species or groups: C3H8, NC4H10_T, IC4H10_T, NC5H12_T, IC5H12_T, and OTH_ALKANE_T. For
 260 ethane and ethyne, their BICs are derived from ten-year average concentrations measured at three French rural background sites reported by Waked et al. (2016).

Table 3. The boundary and initial conditions (BICs) for VOC species in the EMEP model. See text for explanation of terms.

| model species | χ_{mean} (ppb) | $\Delta\chi_{mean}$ (ppb) | d_{max} |
|----------------------|---------------------|---------------------------|-----------|
| C2H6_T | 1.544 | 0.77 | 75 |
| C2H2 | 0.456 | 0.23 | 75 |
| C3H8 | 0.263 | 0.13 | 45 |
| NC4H10_T | 0.095 | 0.05 | 45 |
| IC4H10_T | 0.044 | 0.02 | 45 |
| NC5H12_T | 0.026 | 0.01 | 45 |
| IC5H12_T | 0.026 | 0.01 | 45 |
| OTH_ALKANE_T | 1.546 | 0.77 | 45 |
| HCHO | 0.7 | 0.3 | 180 |

2.4 Measurements

The measurement data in the regular EMEP monitoring network are documented in the EMEP annual VOC reports (e.g. Solberg et al., 2020, 2022) and references therein. Detailed measurement guidelines such as analytical techniques, calibration
 265 procedures, and QA/QC measures are described in (Reimann et al., 2018). Measurement data used in this study are compiled from the Ebas platform (ebas-data.nilu.no, last access: March 2024), including both regular measurements for the year 2018 and 2019, and the 2022 EMEP Intensive Measurement Period (IMP) campaign. The IMP was organised by the EMEP Task Force on Measurement and Modelling (TFMM) in 12-19 July 2022. One-week observations of VOCs relevant as ozone precursors was conducted, covering both EMEP background sites and many urban sites. In this work, only some OVOC measurements
 270 from IMP are used as a supplement since the normal EMEP monitoring network only has one or two sites available for OVOC species. A separate IMP-focused paper is in preparation by other research teams, with the purpose of improving our current understanding of the formation of ozone during heat waves.

Table 4 presents a summary of the codes, names, and altitudes of all stations referenced in this study, for both the whole year of 2018 and 2019, and the 2022 IMP. The locations of these sites are shown in Sect. C Fig. C1. Stations situated above 800 m in
 275 altitude are omitted from all analyses, to reduce problems associated with comparison with modelled surface concentrations.

Table 4. Codes, names, countries, and altitudes (m) of stations providing VOC measurements used in this study.

| Code | Name | Country | Altitude/m | Code | Name | Country | Altitude/m |
|---------|-------------|-------------|------------|---------|------------------------|---------|------------|
| AT0002R | Illmitz | Austria | 117 | FI0096G | Pallas | Finland | 565 |
| BE0007R | Vielsalm | Belgium | 496 | FR0013R | Peyrusse Vieille | France | 200 |
| CH0053R | Beromünster | Switzerland | 797 | FR0015R | La Tardière | France | 133 |
| CZ0003R | Kosetice | Czechia | 535 | GB0048R | Auchencorth Moss | UK | 260 |
| DE0002R | Waldhof | Germany | 74 | GB1055R | Chilbolton Observatory | UK | 78 |
| DE0007R | Neuglobsow | Germany | 62 | IE0031R | Mace Head | Ireland | 5 |
| DE0009R | Zingst | Germany | 1 | IT0004R | Ispra | Italy | 209 |
| ES0021U | Madrid | Spain | 669 | NO0002R | Birkenes II | Norway | 219 |
| FI0050R | Hyytiälä | Finland | 181 | | | | |

It is worth noting that the model-measurement comparison is complicated by the variation in the number of monitoring sites per species and in the frequency and duration of sampling time across stations. For example, the sampling duration for benzene varies from 5 to 40 minutes from DE0002R to GB0048R sites, while the model only calculates standard hourly concentrations. For this work we have matched the hourly model outputs with valid measurements at their native temporal resolution wherever we can. For instance, when using online Gas Chromatography (GC) measurements with an hourly resolution, such as CH0053R, we utilise the standard hourly model outputs. In contrast, for VOC measurements collected using the steel canister method (for example, FR0013R), these are compared with four-hour model averages (spanning 12:00 to 16:00) on the sampling day. This time frame is commonly used for canister sampling analysis, and the precise timing and duration of sampling within this time window often vary from one station to another. Therefore, due to the challenge in ascertaining these operational specifics for each station and species, we employ a model average over this period for comparison with the measured concentrations. Moreover, the annual mean concentrations discussed in this section are derived from hours with valid measurements, and where the sites have at least 65% data capture in a year.

Another factor adding complexity to the comparisons between model predictions and actual measurements is the variation in measurement techniques and the inherent analytical uncertainties associated with each method. For example, of the nine valid sites providing observations of ethyne, three utilise online gas chromatography (GC) and six employ steel canisters for sample collection coupled with offline GC. The former method uses continuous online monitors which offer hourly data, while the latter uses manual grab samples in canisters which essentially provide a snapshot measurement at specific time points, typically collected two to three times per week. Moreover, even within the same measurement technique, there are discrepancies in detection limits. For instance, the online GC at site CH0053R has a reported ethyne detection limit of 4.0 pmol/mol, in contrast to the online GC at site FI0096G, which has a significantly higher detection limit of 39.0 pmol/mol. These differences further underscore the challenges in achieving good model-measurement alignment when comparing data across different stations.

2.5 Model experiments

The meteorology data is generated using the European Centre for Medium-Range Weather Forecasts (ECMWF) model. The VOC tracers and their related code are integrated into the EMEP model via the GenChem system (Simpson et al., 2020).
300 It utilises a chemical pre-processor GenChem.py to convert chemical equations into differential form and generate the corresponding FORTRAN code for use in the EMEP model. Given the differences in emissions between CEIP and CAMS, especially for some key sectors (c.f. Fig. 2), we run simulations with both inventories, and also with both EmChem19rc and CRIv2R5Em.

For the model evaluation purpose, six model simulations (Table 5) were carried out at a grid resolution of $0.1^\circ \times 0.1^\circ$ over the Europe domain, covering the 2018, 2019 and 2022 periods. Owing to constraints in the availability of both emissions data and
305 measurements, the analysis delineated herein mainly focuses on 2018, a year for which we had comprehensive access to the sector-specific CAMS inventory, the NAEI emission profile, and an adequate number of high-temporal-resolution (e.g., hourly) measurements. Model evaluations for 2019 and 2022 were carried out as supplementary activities, which were designed to make efficient use of both available regular monitoring and short-duration campaign measurements, providing additional evidence for robustness of our modelling results.

310 Additionally, although a full evaluation of the impacts of uncertainties in VOC speciation on ozone is beyond the scope of this study, we have set up two additional model runs for 2018 ((Table 5)), Em-CAMS-2018-nDef (abbreviated to nDef hereinafter) and Em-CAMS-2018-Sol6 (Sol6), to output extra model variables for ozone and compared their differences between the two runs. The VOC speciation used in nDef is the same as the one used in the Em-CAMS-2018 model run, while in Sol6 the speciation of the sector E (Solvents) has been replaced by that of sector F1 (Road Transport-Gasoline). Detailed information
315 on this sensitivity test is given at Sect. 3.6 and in the Supplement Sect.H.

Table 5. Configuration of model simulations.

| Simulation | Mechanism | Emission |
|-------------------|------------------|-----------------|
| Em-CEIP-2018 | EmChem19rc | CEIP |
| Em-CAMS-2018 | EmChem19rc | CAMS-REG-v5.1 |
| CRI-CEIP-2018 | CRIv2R5Em | CEIP |
| CRI-CAMS-2018 | CRIv2R5Em | CAMS-REG-v5.1 |
| CRI-CAMS-2019 | CRIv2R5Em | CAMS-REG-v5.1 |
| CRI-CAMS-2022 IMP | CRIv2R5Em | CAMS-REG-v5.1 |
| Em-CAMS-2018-nDef | EmChem19rc | CAMS-REG-v5.1 |
| Em-CAMS-2018-Sol6 | EmChem19rc | CAMS-REG-v5.1 |

3 Results and discussions

This section provides a comparative analysis between modelled and measured surface VOC concentrations for the full years 2018 and 2019, and July 2022, using measurements from the standard EMEP monitoring network (Solberg et al., 2020) and 2022 IMP. The analyses for the years 2018 and 2019 reveal similar characteristics, and the model simulations employing
320 varied mechanisms exhibit similar results as well. To avoid repetition, figures in this section are derived from the 2018 model simulation utilising the CRIv2R5Em mechanism alongside the CAMS inventory, except where indicated otherwise.

3.1 Alkane species

3.1.1 Shorter-chain alkanes

Scatter plots comparing the modelled and measured annual mean concentrations of four shorter-chain alkane species, ethane,
325 propane, n-butane, and i-butane (also known as 2-methylpropane) from the CRI-CAMS model runs are depicted in Figs. 3 and 4 for 2018 and 2019, respectively. A summary of the evaluation statistics for each model simulation is provided in Table 6.

The model and measurements agree that ethane has the highest annual concentrations of these alkanes, at around 1.7 ppb, followed by propane and n-butane. While the model-measurement comparisons in 2019 demonstrate slightly improved linear correlation coefficients relative to those in 2018 as shown in Figs. 3 and 4, modelled concentrations of these species at both
330 years show consistent underpredictions for propane (up to -54%) and i-butane (up to -38%) but overpredictions (up to +55%) for n-butane as shown in Table 6.

Issues with boundary conditions could partially account for the significant underestimation by the model, particularly concerning propane. Noticeable spatial variations in propane concentrations at background stations are observed in several studies. Grant et al. (2011) reported average concentrations of propane over a 2005-2009 period at the representative Northern Hemi-
335 sphere background station of Mace Head of 263 ppt in baseline air and 452 ppt in European transported air masses. Sauvage et al. (2009) showed that multi-year average propane levels in early 2000s varied in the range 576-731 ppt among three French rural sites. Dollard et al. (2007) reported an annual mean value of 832 ppt at rural UK sites in 2000. Consequently, the BICs used in our model, which is derived from five-year averages in the clean baseline air masses as reported by Grant et al. (2011), may not effectively capture such spatial fluctuations.

Another contributing explanation may simply be an underprediction of propane emissions. Dalsøren et al. (2018) found
340 much better agreement between modelled and observed propane when updated emissions from both natural and anthropogenic sources were included in place of their base CEDS emissions (Hoesly et al., 2018), and emissions of propane due to leakage from pipelines and other sources is hard to estimate reliably; it is not clear if the European EMEP emissions suffer from similar underestimates.

The simulations in 2018 using the four model setups produce very similar statistical results for each alkane (Table 6).
345 Ranking the model performances between different model simulations, those utilizing the CAMS inventory display slightly better comparison results than those utilizing the CEIP inventory. Possible reasons for improvement include the inclusion of

more detail in the road traffic emissions sectors (F1–F4) in CAMS, and differences in absolute amounts and spatial distributions of the emissions, but the modelled results for alkanes are obviously not particularly sensitive to these differences.

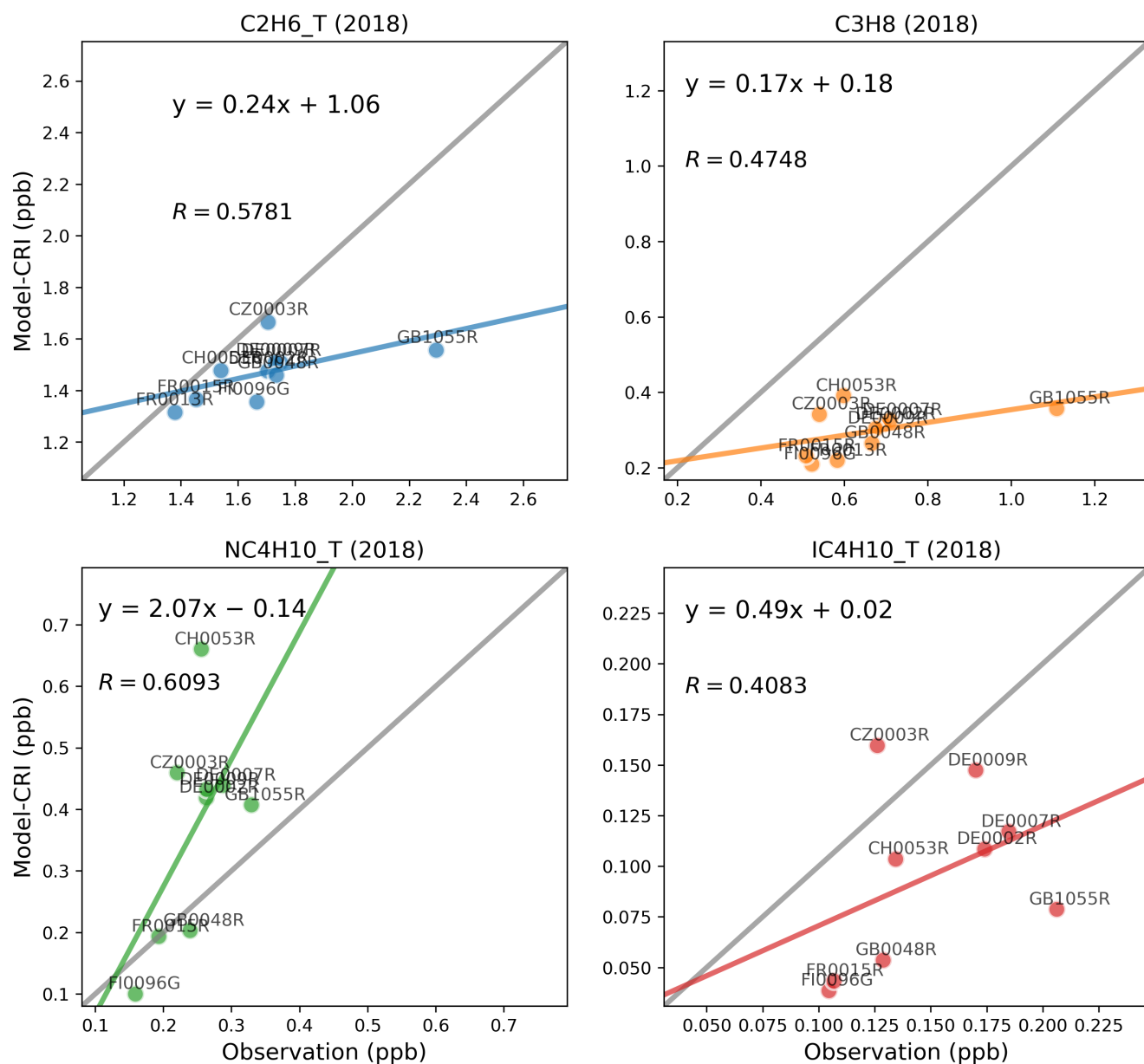


Figure 3. Scatter plots of annual mean modelled and measured shorter-chain alkanes concentrations in 2018. The term 'CRI' indicates that the model data is calculated using the CRIv2R5Em mechanism. In each plot, the grey line is the 1:1 line, and the other coloured line is the least-squares regression line.

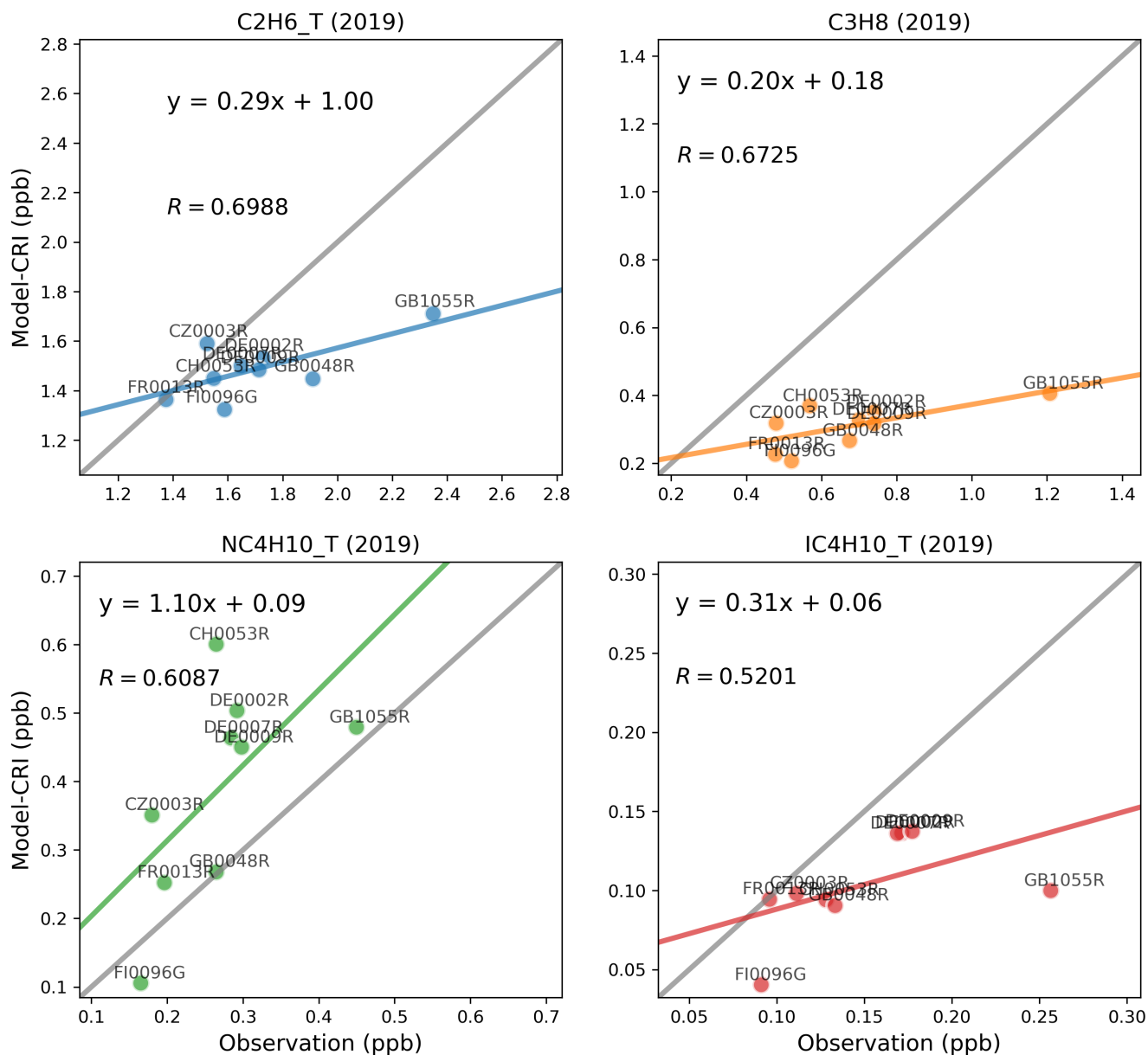


Figure 4. Scatter plots of annual mean modelled and measured shorter-chain alkanes concentrations in 2019. The term 'CRI' indicates that the model data is calculated using the CRIv2R5Em mechanism. In each plot, the grey line is the 1:1 line, and the other coloured line is the least-squares regression line.

Table 6. Summary of the comparison statistics between the model (M) and observation (O) for shorter-chain alkane species. N is the number of sites. R is the Pearson's correlation coefficient between annual means at various sites. Mean_O and Mean_M refer to the annual average concentrations (in ppb) of O and M over all sites, respectively. NMB is the Normalised Mean Bias, and NME is the Normalised Mean Error.

| C2H6_T | N | R | Mean_O | Mean_M | NMB | NME |
|-----------------|----------|----------|---------------|---------------|------------|------------|
| Em-CEIP-2018 | 10 | 0.5400 | 1.695 | 1.478 | -13% | 13% |
| Em-CAMS-2018 | 10 | 0.5884 | 1.695 | 1.463 | -14% | 14% |
| CRI-CEIP-2018 | 10 | 0.5318 | 1.695 | 1.484 | -12% | 13% |
| CRI-CAMS-2018 | 10 | 0.5781 | 1.695 | 1.469 | -13% | 13% |
| CRI-CAMS-2019 | 9 | 0.6988 | 1.709 | 1.489 | -13% | 14% |
| C3H8_T | N | R | Mean_O | Mean_M | NMB | NME |
| Em-CEIP-2018 | 10 | 0.3343 | 0.660 | 0.330 | -50% | 50% |
| Em-CAMS-2018 | 10 | 0.4858 | 0.660 | 0.292 | -56% | 56% |
| CRI-CEIP-2018 | 10 | 0.3263 | 0.660 | 0.335 | -49% | 49% |
| CRI-CAMS-2018 | 10 | 0.4748 | 0.660 | 0.296 | -55% | 55% |
| CRI-CAMS-2019 | 9 | 0.6725 | 0.678 | 0.310 | -54% | 54% |
| NC4H10_T | N | R | Mean_O | Mean_M | NMB | NME |
| Em-CEIP-2018 | 9 | 0.6003 | 0.245 | 0.373 | 52% | 60% |
| Em-CAMS-2018 | 9 | 0.6130 | 0.245 | 0.361 | 47% | 56% |
| CRI-CEIP-2018 | 9 | 0.5963 | 0.245 | 0.381 | 55% | 62% |
| CRI-CAMS-2018 | 9 | 0.6093 | 0.245 | 0.368 | 50% | 59% |
| CRI-CAMS-2019 | 9 | 0.6087 | 0.266 | 0.386 | 45% | 50% |
| IC4H10_T | N | R | Mean_O | Mean_M | NMB | NME |
| Em-CEIP-2018 | 9 | 0.3935 | 0.148 | 0.097 | -35% | 41% |
| Em-CAMS-2018 | 9 | 0.4038 | 0.148 | 0.093 | -38% | 42% |
| CRI-CEIP-2018 | 9 | 0.3974 | 0.148 | 0.099 | -34% | 40% |
| CRI-CAMS-2018 | 9 | 0.4083 | 0.148 | 0.095 | -36% | 41% |
| CRI-CAMS-2019 | 9 | 0.5201 | 0.148 | 0.103 | -30% | 30% |

350 3.1.2 VOC ratios: propane/ethane

The agreement between modelled and measured VOCs varies with species, even among VOCs that are commonly understood to originate from the same emission sources. Comparisons of ethane and propane are a good example. Ambient levels of ethane and propane are primarily influenced by leakage from the production and usage of oil and natural gas (von Schneidmesser et al., 2010; Aydin et al., 2011; Malley et al., 2015). Ethane, with a relatively long lifetime of around 1 month, exhibits a

355 relatively low sensitivity to local emissions and is therefore an ideal species for the evaluation of a regional model at 0.1 degree. In contrast, spatial concentrations of propane, which has a lifetime approximately one-fourth that of ethane (c.f. Table. D1 in the Supplement), are more sensitive to local emissions (Plass-Dülmer et al., 2002; Franco et al., 2015; Helmig et al., 2016).

Our time series comparisons reveal a consistent temporal pattern between the model and measurement for ethane (Fig. E1), but a larger discrepancy between modelled and measured propane concentrations (Fig. E2), particularly during winter and early
360 spring months when modelled concentrations are considerably smaller than measurement peaks. Considering that both species have well-constrained OH loss rates and their rate coefficients have similar temperature dependence (Jenkin et al., 1997, 2008; Saunders et al., 2003; Watson et al., 2008), it is highly unlikely that the kinetics for these very straightforward reactions are not described properly in the chemical mechanism. More importantly, given the increased usage of fossil fuels in winter for e.g. domestic heating and road transport purposes, this discrepancy likely indicates either missing propane emissions from sources
365 like natural gas, or an underestimation of total sector emissions from the LPG sector, where propane emissions are predominant (see Fig. 2) — or possibly both.

Additionally, the GB1055R site (Chilbolton Observatory), while set up as a rural background site, exhibits a year-round pattern of pronounced spikes in measured propane concentrations, in contrast to modelled values. These spikes, often exceeding 10 ppb—while peak concentrations at other sites remain below 2 ppb—suggest that there are strong local sources nearby or
370 pollution plumes regularly passing over possibly originating from urban areas such as London. This pattern further underscores the significant impact of local emissions on ambient propane levels.

Figure 5 illustrates a strong correlation between ethane and propane for both modelled and measured concentrations at two representative sites from Switzerland and Germany, which indicates common sources for the two species in all seasons. The measured propane-to-ethane ratios vary around 0.5, whereas the modelled ratios are around half of that value. These
375 modelled ratios display even lower values during the spring months compared to those in autumn, which aligns with the aforementioned model underestimation of propane concentrations in early spring. This discrepancy underlines the necessity for more investigations into the seasonal variations in emission profiles and sector-specific contributions in the inventory to more accurately reflect real-world ratios of the two species.

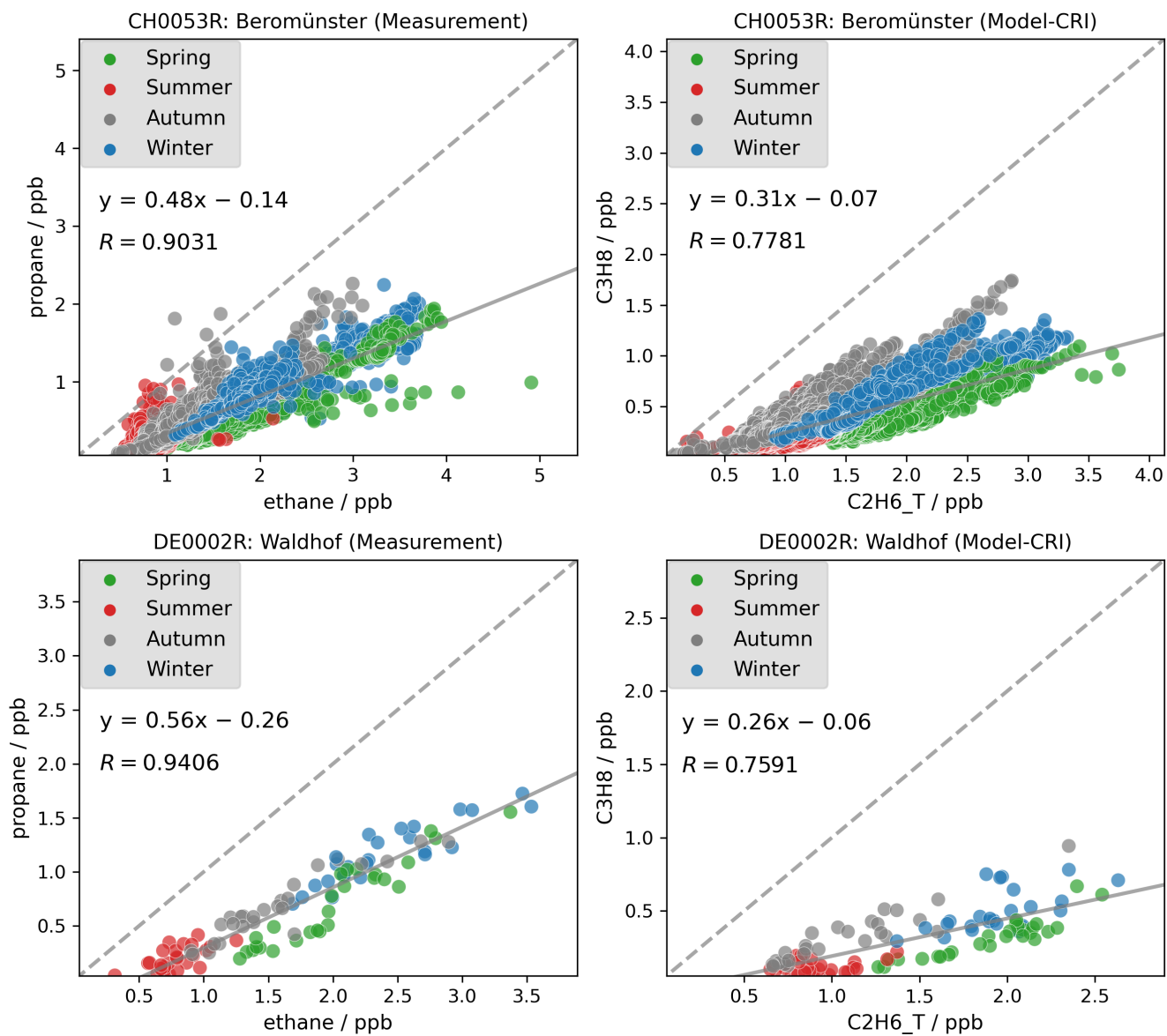


Figure 5. Measured (left) and modelled (right) propane to ethane ratios at Switzerland and German sites in 2018. Spring: Mar-May; Summer: Jun-Aug; Autumn: Sep-Nov; Winter: Dec, Jan-Feb

3.1.3 VOC ratios: i-/n-butane

380 Our study also highlights issues concerning the ratios among VOC isomers such as i-butane and n-butane. Several studies have reported that the i-/n-butane ratio has remained relatively constant at around 0.6 in recent decades (Helmig et al., 2014; Zhang et al., 2013; Parrish et al., 1998). However, as discussed in Sect. 3.1.1, the model tends to overestimate n-butane concentrations whilst underestimating those of i-butane. Consequently, the model simulates lower i-/n-butane ratios than those observed in measurements. As the two isomers have rather similar chemical loss rates (with lifetimes of ca. 3-4 days at
385 $[\text{OH}] = 1.5 \times 10^6 \text{ molec} \cdot \text{cm}^{-3}$, c.f. Table. D1, or 1 day at more typical summertime $[\text{OH}] = 5.0 \times 10^6 \text{ molec} \cdot \text{cm}^{-3}$), one would expect good correlation between the two. Figure 6 shows that strong linear correlations are indeed observed between individual measured i- and n-butane samples at two example sites in Switzerland and the UK. The measured i-/n-butane ratios are approximately 0.6 and are similar across different seasons, implying that both isomers are likely to originate from the same sources throughout the year but with differing emission strengths. In contrast, although the model simulates strong linear
390 correlations between the two isomers at both sites, the ratio is notably lower, ranging between 0.20 and 0.23. The modelled ratios are consistently lower than the observed ratios at other sites also.

From Table 2 we can calculate an i- to n-butane ratio in biomass burning emissions of 0.6, so wildfires episodes would not lower the ratio. Considering that there is no substantial difference in the atmospheric lifetimes of the two isomers, the smaller modelled ratios must be attributable to smaller ratios in the anthropogenic emissions. The overall emission ratios using the
395 CAMS inventory data, as shown in Fig. E3, differ significantly among countries, ranging from around 0.1 in western Europe to around 0.4 in northern Europe. Examining individual emission sectors, Figure 7 identifies the solvent sector as the largest contributor to n-butane emissions, with an i-/n-butane ratio below 0.05. This is followed by the fugitive sector, which has a ratio of approximately 0.28. Consequently, a model grid with a larger proportion of emissions from the solvent and fugitive sectors would exhibit smaller ratios. In contrast, a greater contribution from biomass burning emissions or the RT-Non-exhaust sector
400 (which has a ratio of 0.75) in a model grid on a specific day would yield larger ratios. This explains why in Fig. 6 certain model data points in winter exhibit substantially lower ratios compared to those in spring. Indeed, Fig. B1 and B2 further confirms that while solvent sector does not show large seasonal variations in Switzerland and the UK, VOC emissions from the other combustion and fugitive sectors are higher in winter (both have low ratios), which is consistent with the lower modelled ratios in winter at the two sites.

405 Our results also align with UK-AQEG (2020) who reported that the contribution of solvents to UK emissions was approximately 74% in 2017. Moreover, n-butane — primarily originating from solvents and fugitive losses — was as the second most abundant VOC by mass in the UK NAEI inventory, after ethanol. However, the divergence in modelled and measured i-/n-butane ratios revealed in this work suggests that this may not be the case in reality. Several studies have highlighted considerable discrepancies between emission inventories and ambient observations, particularly in relation to the dominant sources of
410 VOC emissions (Niedojadlo et al., 2007; Lanz et al., 2008; Gaimoz et al., 2011). For instance, Borbon et al. (2013) suggested that emissions from gasoline-powered vehicles continue to be the dominant source of NMHC in northern mid-latitude urban areas, whereas several European regional inventories have identified solvent usage as the new leading urban VOC source.

Oliveira et al. (2023) also noted that estimates of solvent speciation differed considerably between different sources. Consequently, it is possible that emissions of i-butane from the solvent sector may be unaccounted for, or that contributions from road transport-related sectors are underestimated, or both. Hence, further examination is required both of the sector that dominates emissions and of the specific emission profiles within each sector.

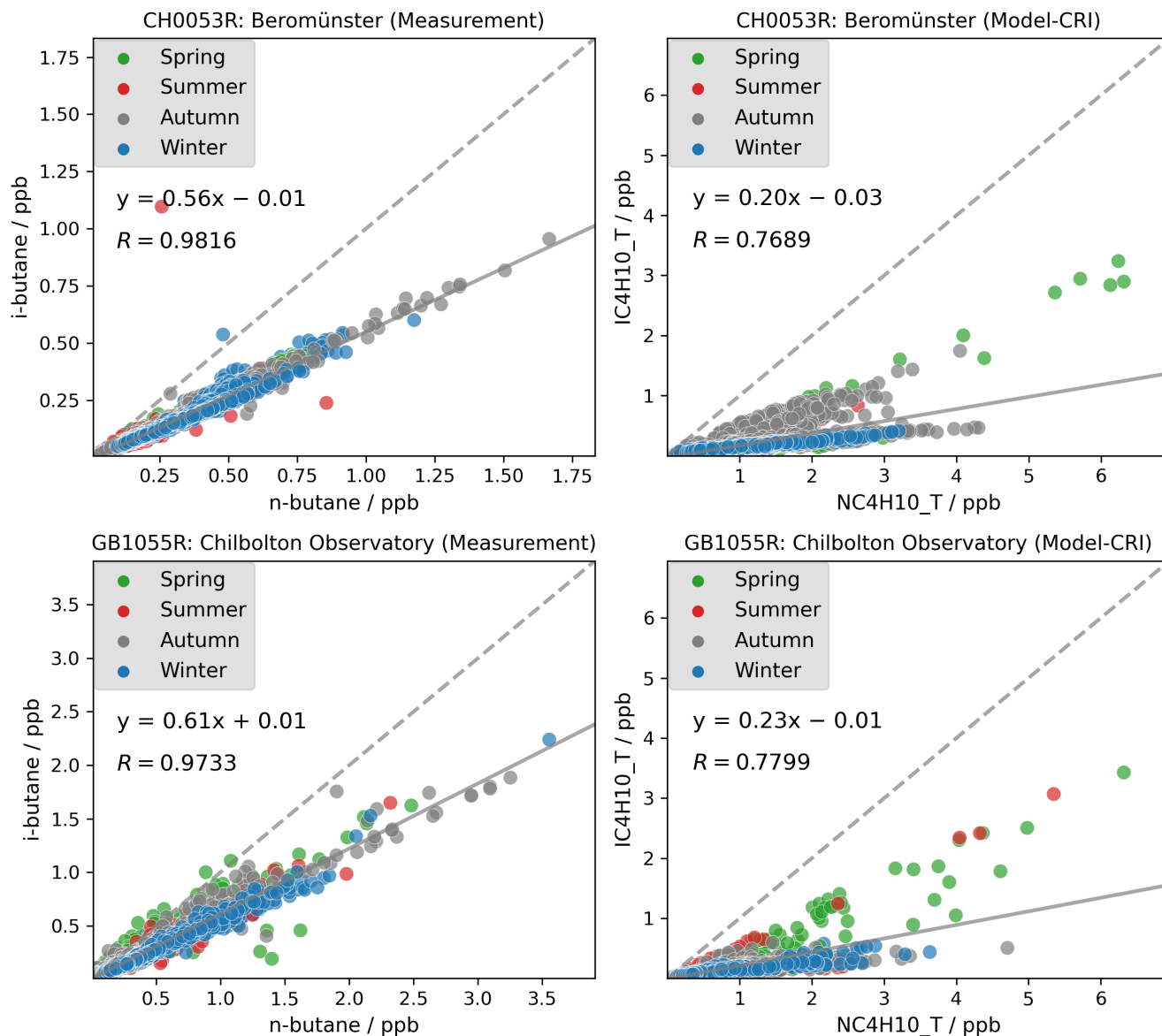


Figure 6. Measured (left) and modelled (right) i-butane to n-butane ratios at Switzerland and UK sites in 2018. Spring: Mar-May; Summer: Jun-Aug; Autumn: Sep-Nov; Winter: Dec, Jan-Feb

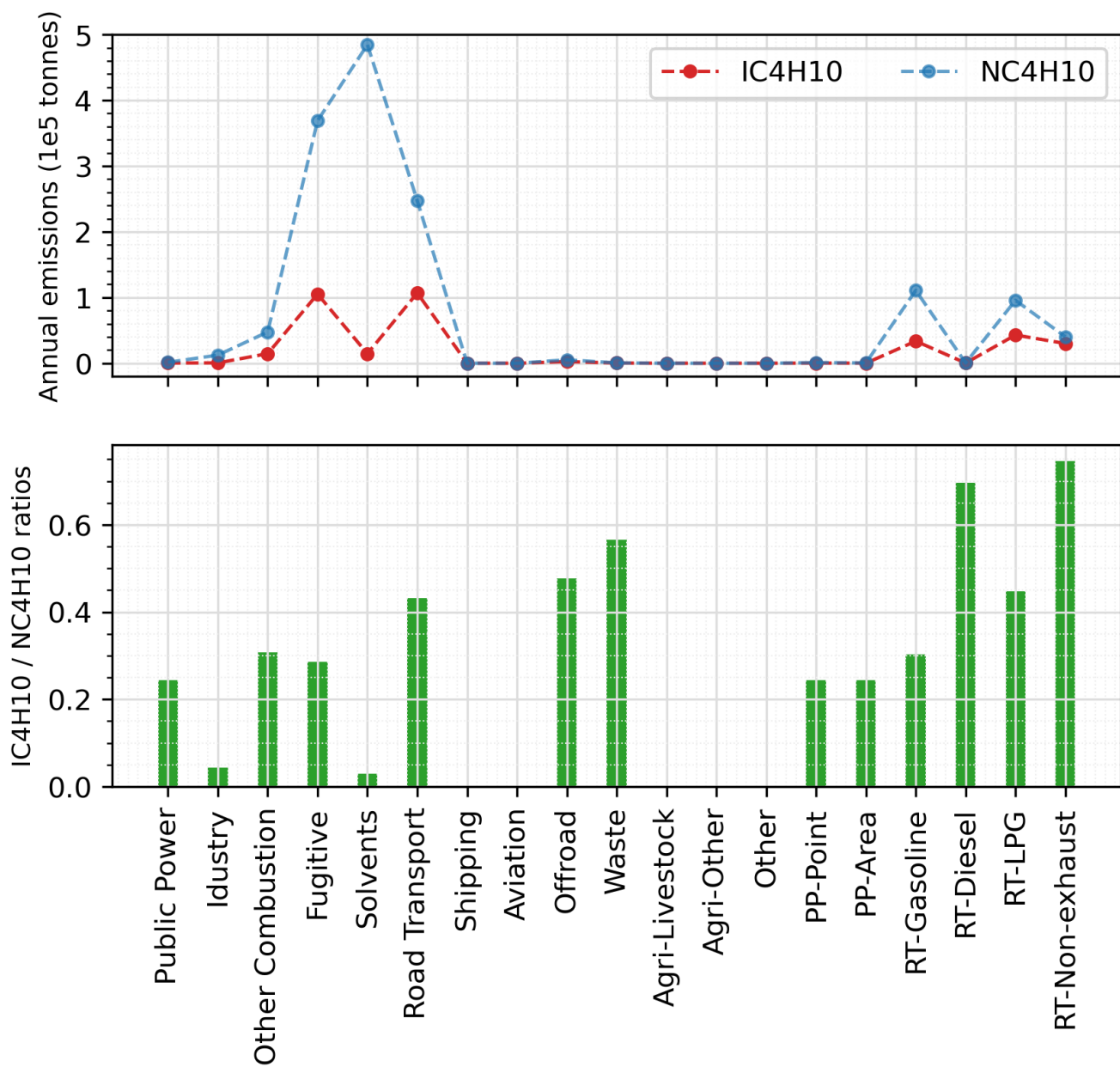


Figure 7. Annual total emissions of i-butane and n-butane from individual sectors in the 2018 CAMS inventory, and their emitted ratios.

3.1.4 Longer-chain alkanes

Figure 8 compares the modelled and measured annual mean concentrations of longer-chain alkane species — n-pentane, i-pentane, and n-hexane — for the CRI-CAMS-2018 model run. These species exhibit generally lower concentrations than shorter-chain alkanes with most sites reporting annual averages below 0.2 ppb. Despite the low concentrations, there is a good agreement between the model and measurement for all species, with linear correlation coefficients ranging from 0.53 to 0.93.

Table 7 summaries the model-measurement comparison statistics of these species for each model simulation. In general, simulations employing the CAMS inventory, which benefits from more detailed emissions data within CAMS's sub-sectors, demonstrate stronger linear correlations compared to those utilising the CEIP inventory. No distinct differences are apparent between simulations employing different chemical mechanisms. Similarly, the model's performance for all species remains consistently good for both the 2018 and 2019 simulations.

Additionally, it is worth noting that although i-pentane contributes a notable amount of VOC emissions, comparable to those of n-pentane within sectors such as Fugitive, RT-Gasoline, and RT-Non exhaust (Fig. 2), the modelled concentrations of i-pentane are not as overestimated as those for n-pentane (up to +44%). On the contrary, the model significantly underestimates i-pentane concentrations, by as much as -59% (Table. 7). This discrepancy necessitates further investigation to determine whether it stems from inaccuracies in the speciation profiles of existing emission activities or whether it highlights the lack of representation of another source. Coll et al. (2010) reported similar issues with the underestimation of i-pentane and highlighted its significance as a component of gasoline evaporation. Several studies suggest that this aspect is not adequately captured in emission inventories, albeit it is expected to account for a significant proportion of emissions within urban environments (Borbon et al., 2002; Möllmann-Coers et al., 2002). An analysis of the ratios of i- to n-pentane is presented in the subsequent section (Sect. 3.1.5).

3.1.5 VOC ratios: i-/n-pentane

The dominant anthropogenic sources of pentane species are traffic exhaust and fuel evaporation (Wilde et al., 2021; Li et al., 2017; Gilman et al., 2013; Swarthout et al., 2013). Helmig et al. (2014) noted that measurements influenced by anthropogenic emission sources displayed i-/n-pentane ratios ranging from 1.8 to 2.5. Bourtsoukidis et al. (2019) reported an i-/n-pentane ratio of 1.7 above the Suez Canal, which is indicative of ship emissions, and a ratio of 2.9 in areas under the influence of considerable vehicle emissions. In contrast, sources such as biomass burning and oceanic emissions preferentially emit n-pentane, resulting in lower i-/n-pentane ratios of around 0.5 to 0.7 (Andreae, 2019; Lewis et al., 2001; Broadgate et al., 1997). In the absence of parameterisation data for biomass burning and oceanic emissions of pentane species at the time of our model experiments, the model results are primarily determined by anthropogenic emissions.

Considering that the two pentane isomers are commonly co-emitted and have rather similar atmospheric lifetimes (ca. 2 days, Table D1), their concentration ratios are relatively indicative of their overall emission ratios. Figure 9 reveals that although strong linear correlations are present in both the modelled and measured datasets across all seasons, the measured i-/n-pentane ratios (around 1.45) are more than three times higher than the modelled ratios (around 0.39). As with the model's

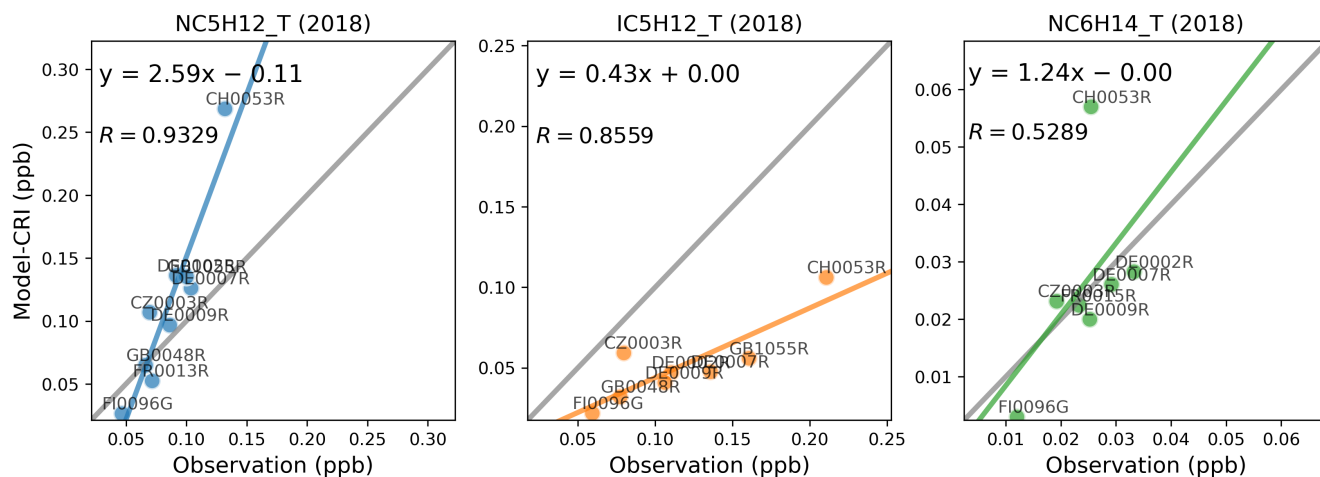


Figure 8. Scatter plots of annual mean modelled and measured longer-chain alkanes concentrations in 2018. The term 'CRI' indicates that the model data is calculated using the CRIv2R5Em mechanism. In each plot, the grey line is the 1:1 line, and the other coloured line is the least-squares regression line.

450 underestimation of *i*-*n*-butane ratios, this smaller modelled *i*-*n*-pentane ratio is largely driven by abundant *n*-pentane emissions from the solvent sector, which exhibits an exceedingly low emission ratio of only 0.003, as indicated in Fig. 10.

Besides potential speciation inaccuracies within the solvent sector, an alternative explanation for the discrepancy between modelled and measured ratios could be that current inventories underestimate total emissions from transport activities and fuel evaporation. In this case, the likelihood of the first hypothesis is supported by measurement data, which exhibit a strong linear
 455 correlation between the two species, with data points tightly clustered around the regression line and a slope representing one dominant emitting ratio, rather than displaying multiple trend lines with varying slopes. However, pinpointing which of the two possibilities accounts for the model's underestimation of *i*-*n*-pentane ratios remains a challenge.

Additionally, it is pertinent to note that the current speciation for agricultural sectors, derived from available literature (Sect. 2.3.3), only contains *n*-pentane and not *i*-pentane, thereby contributing to the lower *i*-*n*-pentane ratio calculated in the
 460 model. In fact, there is a general lack of emission measurements to support a detailed and accurate speciation of VOC emissions from agricultural sectors. These sectors contains a variety of activities, each with potentially different emission profiles and uncertainties. For instance, the Agri-Livestock sector comprises emissions from diverse animal categories such as poultry, cattle, sheep, and swine. Similarly, the Agri-Other sector includes activities ranging from the application of animal manure and the cultivation of crops to the field burning of agricultural residues. Figure 10 suggests that the contributions of emissions
 465 from agricultural sectors are not insignificant. As such, there is a pressing need for more emission measurements to enhance the accuracy of VOC emission speciation in these sectors.

Table 7. Summary of the comparison statistics between the model (M) and observation (O) for longer-chain alkane species. N is the number of sites. R is the Pearson's correlation coefficient between annual means at various sites. Mean_O and Mean_M refer to the annual average concentrations (in ppb) of O and M over all sites, respectively. NMB is the Normalised Mean Bias, and NME is the Normalised Mean Error.

| NC5H12_T | N | R | Mean_O | Mean_M | NMB | NME |
|-----------------|----------|----------|---------------|---------------|------------|------------|
| Em-CEIP-2018 | 9 | 0.9100 | 0.085 | 0.107 | 26% | 38% |
| Em-CAMS-2018 | 9 | 0.9331 | 0.085 | 0.109 | 28% | 40% |
| CRI-CEIP-2018 | 9 | 0.9105 | 0.085 | 0.110 | 30% | 42% |
| CRI-CAMS-2018 | 9 | 0.9329 | 0.085 | 0.113 | 32% | 43% |
| CRI-CAMS-2019 | 9 | 0.8775 | 0.081 | 0.116 | 44% | 50% |
| IC5H12_T | N | R | Mean_O | Mean_M | NMB | NME |
| Em-CEIP-2018 | 8 | 0.7422 | 0.117 | 0.048 | -59% | 59% |
| Em-CAMS-2018 | 8 | 0.8592 | 0.117 | 0.050 | -58% | 58% |
| CRI-CEIP-2018 | 8 | 0.7382 | 0.117 | 0.050 | -58% | 58% |
| CRI-CAMS-2018 | 8 | 0.8559 | 0.117 | 0.051 | -56% | 56% |
| CRI-CAMS-2019 | 6 | 0.8866 | 0.107 | 0.050 | -53% | 53% |
| NC6H14_T | N | R | Mean_O | Mean_M | NMB | NME |
| Em-CEIP-2018 | 7 | 0.4428 | 0.024 | 0.022 | -8% | 44% |
| Em-CAMS-2018 | 7 | 0.5251 | 0.024 | 0.025 | 3% | 36% |
| CRI-CEIP-2018 | 7 | 0.4479 | 0.024 | 0.023 | -4% | 43% |
| CRI-CAMS-2018 | 7 | 0.5289 | 0.024 | 0.026 | 7% | 35% |
| CRI-CAMS-2019 | 7 | 0.4984 | 0.023 | 0.025 | 9% | 42% |

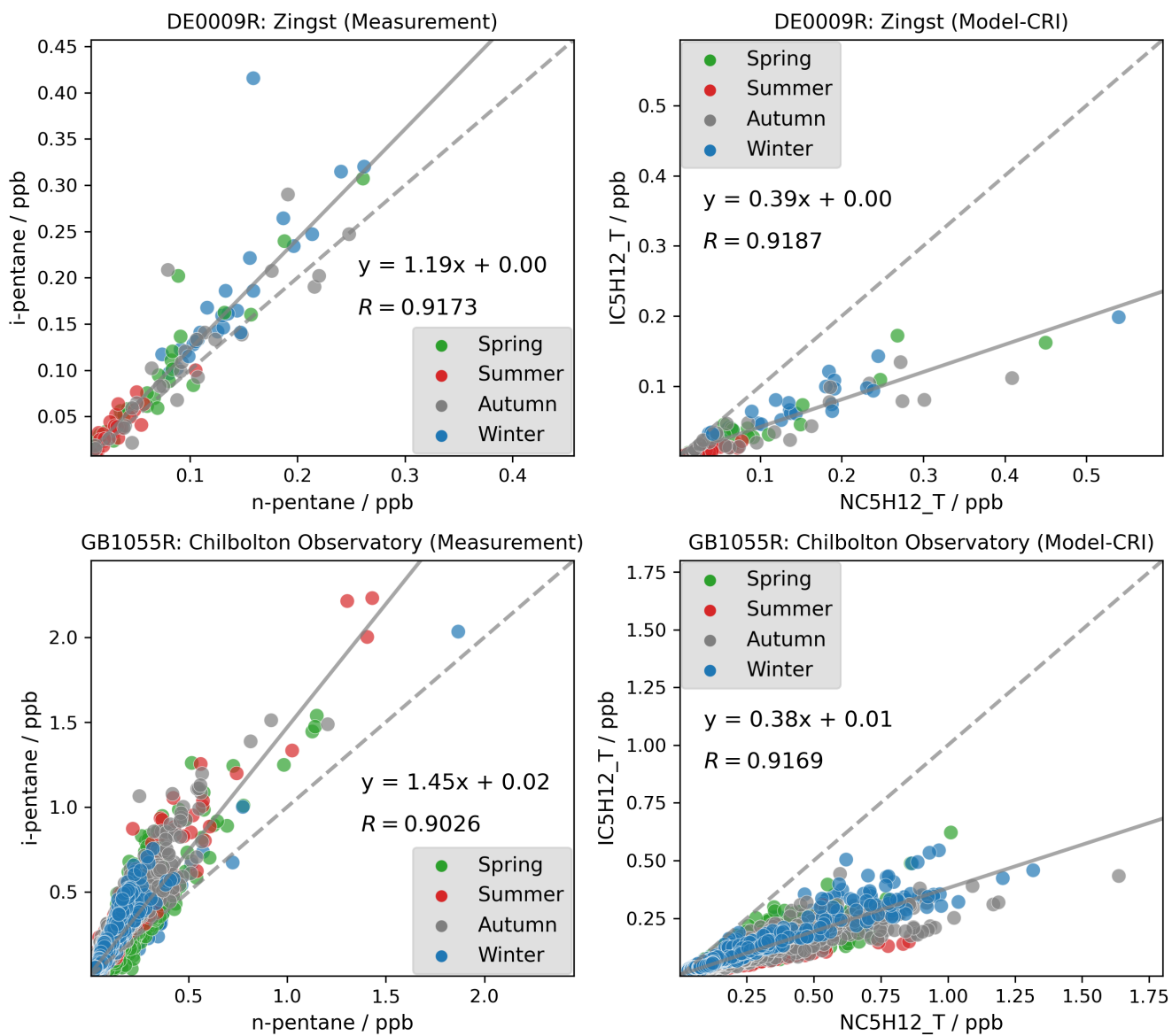


Figure 9. Measured (left) and modelled (right) i-pentane to n-pentane ratios at Germany and UK sites in 2018. Spring: Mar-May; Summer: Jun-Aug; Autumn: Sep-Nov; Winter: Dec, Jan-Feb

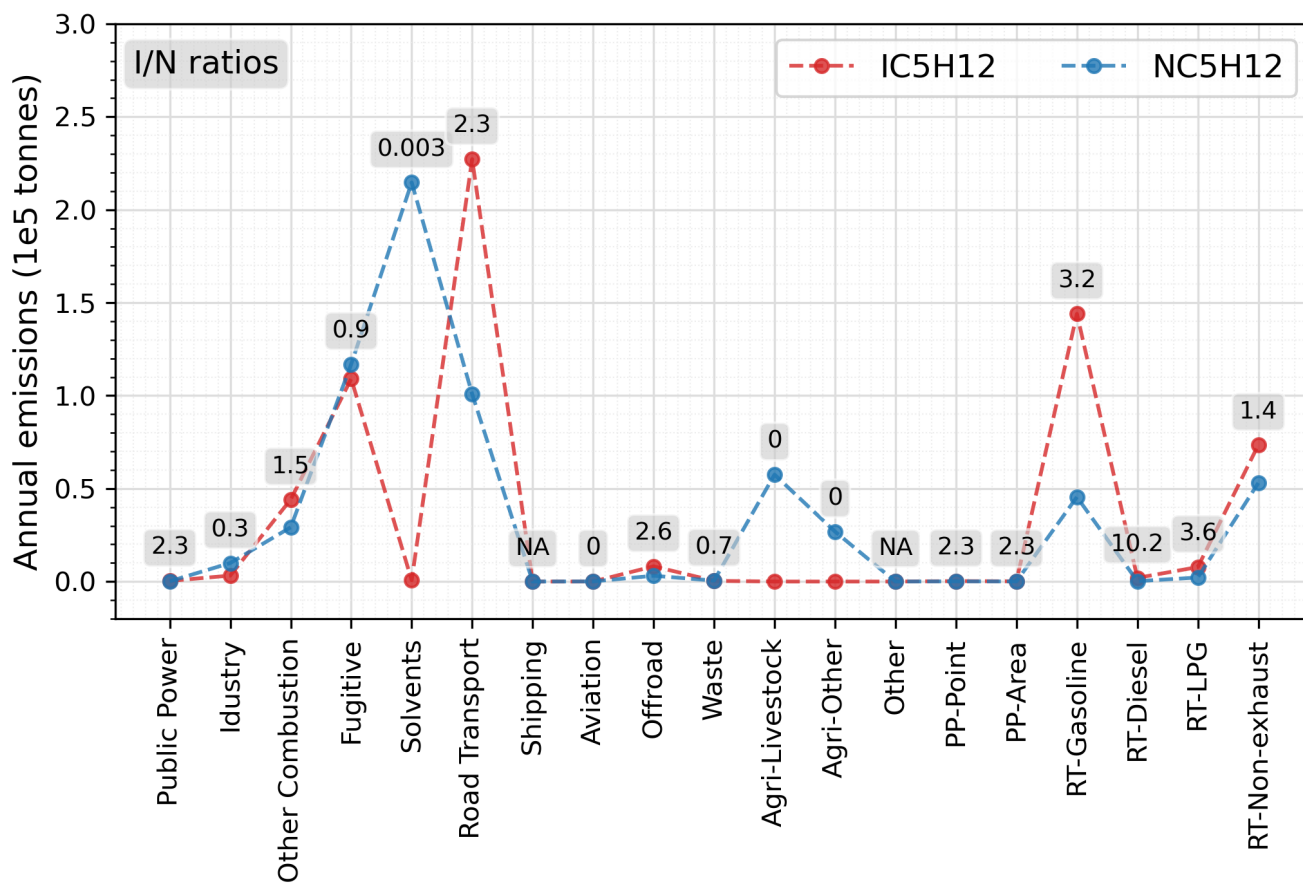


Figure 10. Annual total emissions of NC5H12 and IC5H12 from individual sectors and their emitted ratios using the CAMS inventory. 'NA' means there is no NC5H12 emissions

3.2 Unsaturated NMHCs

3.2.1 Ethene, ethyne and isoprene

Figure 11 presents a comparison of the annual mean concentrations of ethene, ethyne, and isoprene for the year 2018. The comparison statistics are presented in Table 8. Results are mixed, with rather good results for ethene, but poorer results for ethyne. As for isoprene, an outlier station is found for comparisons in both 2018 (Fig. 11) and 2019 (Fig. F1).

The statistical metrics for ethyne remained consistently poor in all 2018 simulations, in contrast to the much better performance for ethene. This is interesting given that both are emitted from similar anthropogenic activities and have well-constrained OH loss rates (Jenkin et al., 1997, 2008; Saunders et al., 2003; Watson et al., 2008). The different model performance strongly points to shortcomings in the spatial and temporal patterns and magnitudes of ethyne emissions. Moreover, the model's poor performance for ethyne are twofold: it underestimates ethyne concentrations at most sites and fails to reflect the spatial distribution evident in the measurements. As illustrated in Figure 11, the dispersion of the data points along the measurement axis is considerable, indicating variability in the actual concentrations. In contrast, the model results tightly cluster around 0.35 ppb, indicating little spatial variation. This clustering suggests that the modelled concentrations of ethyne are heavily influenced by its BICs, approximately 0.46 ppb, which are derived from ten-year average concentrations of measurements at three rural background sites in France reported by Waked et al. (2016). In our previous model runs in which similar anthropogenic emission profiles are used but the BICs and biomass burning emissions of ethyne had not been developed, the model underestimation was even larger at -91% and the linear correlation remained poor ($R = -0.18$) (Ge et al., 2023a). With the BICs and biomass burning emissions for ethyne applied for model runs in this work, it appears that the inputs of anthropogenic emissions from both inventories are too small to significantly affect the model outputs.

A detailed time series comparison of ethyne at example stations (Fig. F2) reinforces this hypothesis. Compared to the measurement data, the model predicts lower concentrations of ethyne during the winter and early spring, with little seasonal fluctuations. Given that the model aligns relatively well with the observed low concentrations during the summer months, the discrepancies likely stem from an underestimation of ethyne emissions from sources such as road transport activities or other combustion processes especially during winter.

Considering that ethyne is commonly used as a tracer of anthropogenic emissions, these discrepancies are important. von Schneidmesser et al. (2023) used ratios of VOC to ethyne, rather than VOC to CO to evaluate global inventories, because of measurement availability; but as they noted, the validity of such comparisons depend crucially on how well ethyne is represented in the inventory. In fact, the observed peak concentrations of ethyne far exceed those we can model using the current inventories. A discussion on VOC to ethyne ratios is presented in Sect. 3.2.3 and 3.2.4 to delve into this issue in more detail.

For isoprene, it is one of the most important biogenic VOCs, whose emissions are dominated by its biogenic sources (Guenther et al., 2012; Simpson et al., 1999). Traffic related sources can also be important in wintertime (Reimann et al., 2000; Borbon et al., 2001). Figure 11 and F1 show that an outlier station DE0007R, characterised by a large model overestimation, drives an overall very poor linear correlation coefficient ($R = 0.22$) in both 2018 and 2019. Figure F3 shows that both the

model and the measurement show peak concentrations in summer and very low concentrations in winter. The comparison is challenged by the model overestimation at site DE0007R, which is likely due to inaccuracies in simulating isoprene emissions from vegetation within this specific model grid. The biogenic emission field for isoprene is predominantly influenced by the estimated locations of certain key species, such as the European oak, known for their high emission factors (Wiedinmyer et al., 2006). Consequently, the emission field can appear quite 'spotty'. Further investigation into the geographical characteristics of this site, both in the actual world and as represented in the model, indicates that it is situated in a forest hot spot in both scenarios. This leads to the possibility of a discrepancy in the exact type of forest depicted by the model compared to the actual one. Nevertheless, apart from this anomaly, the data points of other locations in both years show excellent linear correlations between model and measurement, with R values equal to 0.92 in 2018 and 0.99 in 2019, despite a consistent model underestimation. The good agreements at those sites for this species are somewhat surprising due to both the difficulties associated with estimating the magnitude and spatial distribution of its biogenic sources (Simpson et al., 1999; Keenan et al., 2009) and its short lifetime, demonstrating that the model calculation of biogenic emissions for isoprene and its chemistry and transport is being captured reasonably well at least at these locations.

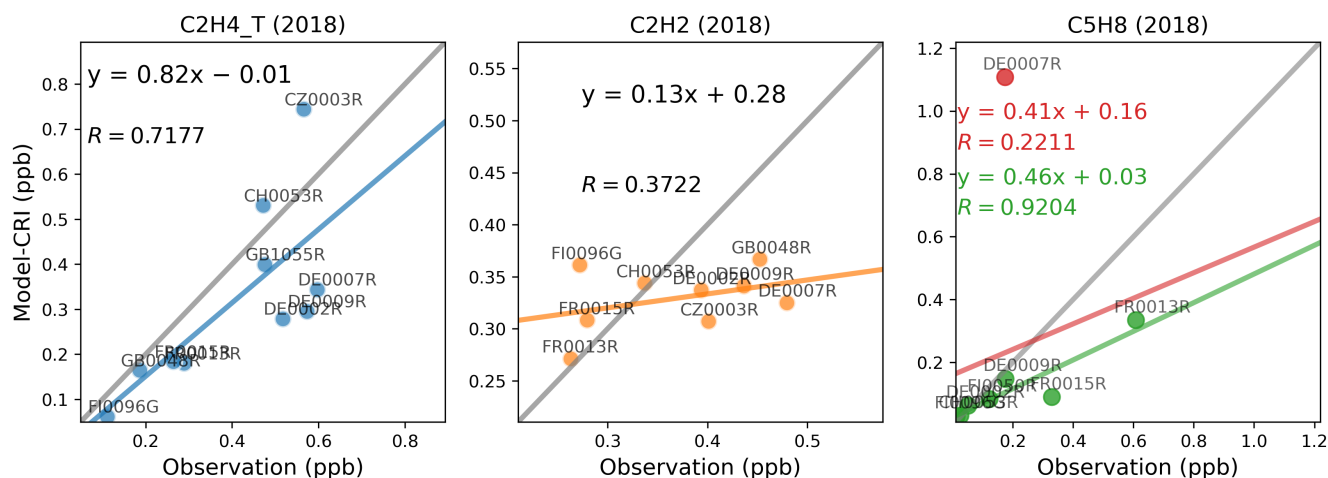


Figure 11. Scatter plots of annual mean modelled and measured ethene, ethyne, and isoprene concentrations in 2018. The term 'CRI' indicates that the model data is calculated using the CRIv2R5Em mechanism. In each plot, the grey line is the 1:1 line, and the other coloured line is the least-squares regression line. For isoprene, the outlier site is plotted in red; the red line is the regression line with the outlier; the green line is the regression line without the outlier.

Table 8. Summary of the comparison statistics between the model (M) and observation (O) for ethene and ethyne. N is the number of sites. R is the Pearson’s correlation coefficient between annual means at various sites. Mean_O and Mean_M refer to the annual average concentrations (in ppb) of O and M over all sites, respectively. NMB is the Normalised Mean Bias, and NME is the Normalised Mean Error.

| C2H4_T | N | R | Mean_O | Mean_M | NMB | NME |
|---------------|----------|----------|---------------|---------------|------------|------------|
| Em-CEIP-2018 | 10 | 0.6472 | 0.405 | 0.287 | -29% | 40% |
| Em-CAMS-2018 | 10 | 0.7107 | 0.405 | 0.302 | -25% | 34% |
| CRI-CEIP-2018 | 10 | 0.6546 | 0.405 | 0.303 | -25% | 38% |
| CRI-CAMS-2018 | 10 | 0.7177 | 0.405 | 0.318 | -21% | 33% |
| CRI-CAMS-2019 | 7 | 0.7519 | 0.375 | 0.358 | -5% | 24% |
| C2H2 | N | R | Mean_O | Mean_M | NMB | NME |
| Em-CEIP-2018 | 9 | 0.3628 | 0.368 | 0.321 | -13% | 20% |
| Em-CAMS-2018 | 9 | 0.3557 | 0.368 | 0.324 | -12% | 19% |
| CRI-CEIP-2018 | 9 | 0.3829 | 0.368 | 0.326 | -11% | 19% |
| CRI-CAMS-2018 | 9 | 0.3722 | 0.368 | 0.329 | -11% | 19% |
| CRI-CAMS-2019 | 9 | 0.5866 | 0.376 | 0.348 | -7% | 21% |

3.2.2 Aromatic species

515 Figure 12 presents the comparisons of benzene, toluene, and o-xylene concentrations. Both the model and the measurements indicate that the concentrations of benzene and toluene are an order of magnitude higher than those of o-xylene. All three aromatic species demonstrate good model-measurement agreements. For benzene, the NMB values are relatively small across the different model runs, whilst for toluene there is a moderate model underestimation of -33% to -39%, as presented in Table 9. The model's performance for o-xylene varies slightly between 2018 and 2019 comparisons, with better model-measurement
520 agreement in 2018 than in 2019. However, only 4 valid sites are available in 2019, so the measurement data set is less representative. Furthermore, the observed o-xylene concentrations are so low (typically below 0.02 ppb) that these values may be artificially scattered due to uncertainties in the measurement.

In addition, the site CH0053R might initially appear as an anomaly, particularly in the comparisons of toluene and o-xylene. However, a detailed examination of the time series for these compounds at this site does not reveal any anomalies (as illustrated
525 in Fig. 13). For benzene, there is good agreement between model predictions and measurements, with both indicating higher concentrations during winter and lower concentrations in summer, reflecting the expected seasonal variation.

In the case of toluene, the seasonal pattern is less pronounced. The measurements indicate several spikes in concentrations reaching 2 ppb during August and November, while the model suggests multiple peaks in April. Despite these discrepancies, for most of the year, the model and measurement data align reasonably well, both showing toluene concentrations fluctuating
530 between 0.1 and 0.5 ppb.

Regarding o-xylene, the measured concentrations are consistently low throughout most of the year, typically close to zero, leading to significant analytical uncertainties. In comparison, the model predicts generally higher concentrations of o-xylene, with numerous peaks exceeding 0.05 ppb throughout the year. This discrepancy may arise from inaccuracies in the model's input data, suggesting a potential overestimation of emission sources within the single model grid considered. Nonetheless,
535 considering the limited data available for this compound, and its low ambient levels, both model predictions and observed values are subject to considerable uncertainties. Consequently, there is a need for more measurements focusing on not only air concentrations but also on emissions to enhance the accuracy of these estimates.

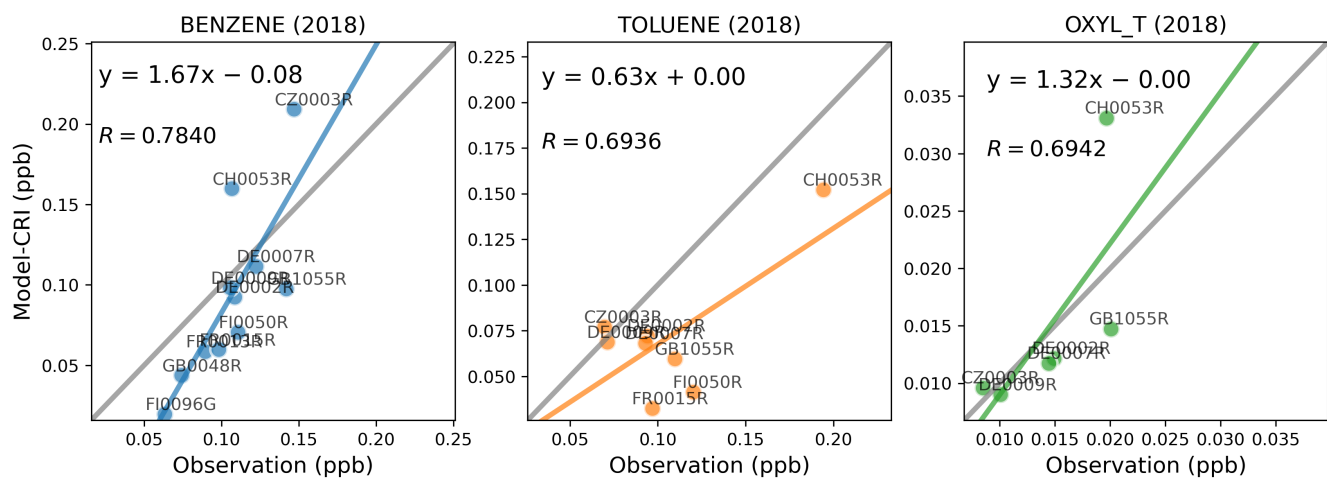


Figure 12. Scatter plots of annual mean modelled and measured benzene, toluene, and o-xylene concentrations in 2018. The term 'CRI' indicates that the model data is calculated using the CRIv2R5Em mechanism. In each plot, the grey line is the 1:1 line, and the other coloured line is the least-squares regression line.

Table 9. Summary of the comparison statistics between the model (M) and observation (O) for benzene, toluene, and o-xylene. N is the number of sites. R is the Pearson's correlation coefficient between annual means at various sites. Mean_O and Mean_M refer to the annual average concentrations (in ppb) of O and M over all sites, respectively. NMB is the Normalised Mean Bias, and NME is the Normalised Mean Error.

| BENZENE | N | R | Mean_O | Mean_M | NMB | NME |
|----------------|----------|----------|---------------|---------------|------------|------------|
| Em-CEIP-2018 | 11 | 0.7680 | 0.106 | 0.088 | -17% | 37% |
| Em-CAMS-2018 | 11 | 0.7858 | 0.106 | 0.092 | -14% | 33% |
| CRI-CEIP-2018 | 11 | 0.7666 | 0.106 | 0.090 | -16% | 36% |
| CRI-CAMS-2018 | 11 | 0.7840 | 0.106 | 0.093 | -13% | 32% |
| CRI-CAMS-2019 | 9 | 0.6761 | 0.102 | 0.089 | -12% | 33% |
| TOLUENE | N | R | Mean_O | Mean_M | NMB | NME |
| Em-CEIP-2018 | 8 | 0.6249 | 0.106 | 0.066 | -38% | 40% |
| Em-CAMS-2018 | 8 | 0.6938 | 0.106 | 0.069 | -35% | 36% |
| CRI-CEIP-2018 | 8 | 0.6290 | 0.106 | 0.068 | -36% | 38% |
| CRI-CAMS-2018 | 8 | 0.6936 | 0.106 | 0.071 | -33% | 34% |
| CRI-CAMS-2019 | 8 | 0.6481 | 0.115 | 0.070 | -39% | 39% |
| OXYL_T | N | R | Mean_O | Mean_M | NMB | NME |
| Em-CEIP-2018 | 6 | 0.7496 | 0.015 | 0.013 | -11% | 26% |
| Em-CAMS-2018 | 6 | 0.7038 | 0.015 | 0.014 | -3% | 31% |
| CRI-CEIP-2018 | 6 | 0.7365 | 0.015 | 0.014 | -6% | 25% |
| CRI-CAMS-2018 | 6 | 0.6942 | 0.015 | 0.015 | 3% | 30% |
| CRI-CAMS-2019 | 4 | 0.3953 | 0.019 | 0.017 | -13% | 43% |

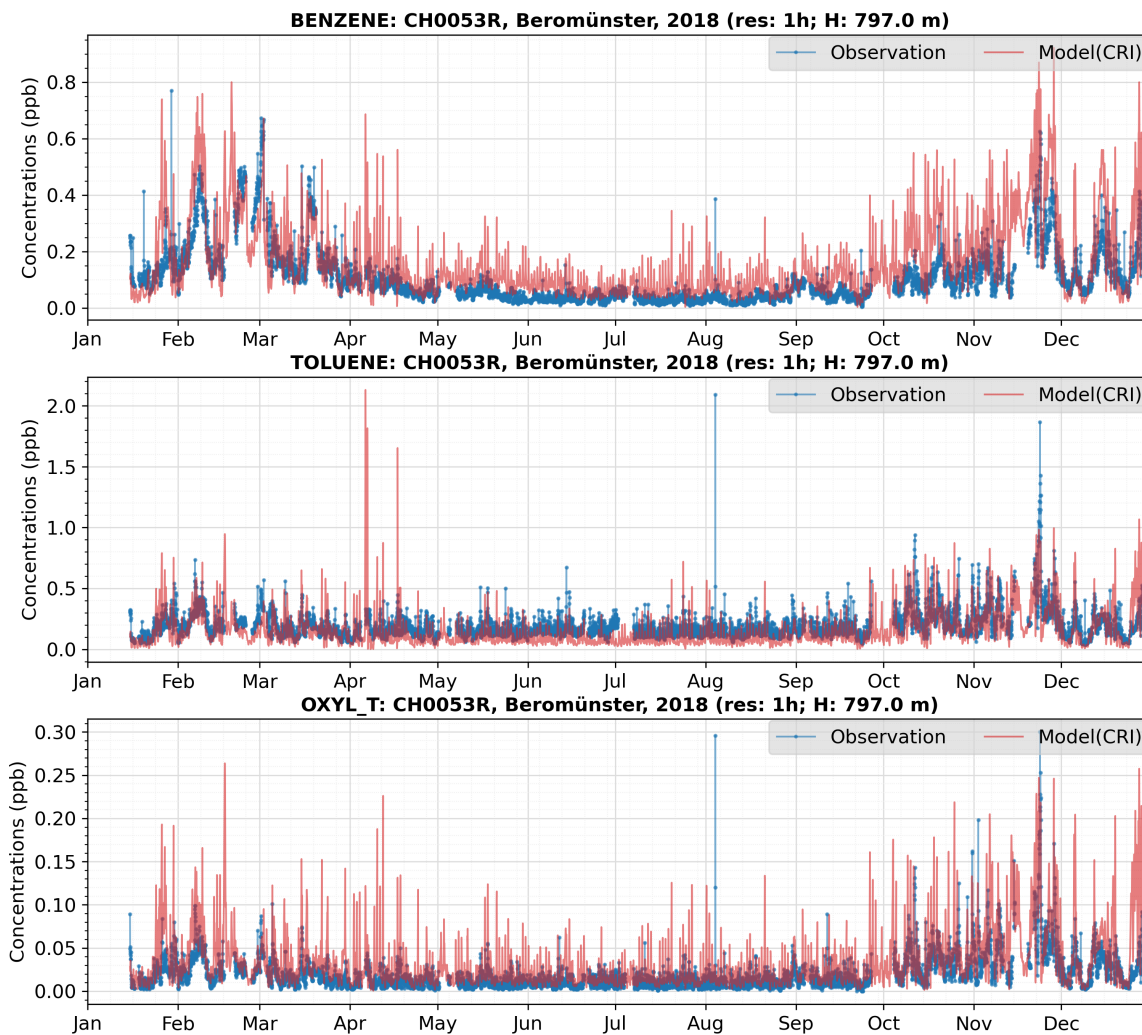


Figure 13. Time series of modelled and measured benzene, toluene, and o-xylene concentrations at CH0053R site in 2018.

3.2.3 VOC ratios: ethene/ethyne

Ethyne is widely acknowledged as an important tracer for combustion-related activities, particularly those connected to vehicular and residential sources. Ambient levels of ethyne typically rise during the winter, likely due to increased vehicle emissions and domestic heating (Dollard et al., 2007; Russo et al., 2010; McDonald et al., 2013). Consequently, numerous studies utilise VOC-to-ethyne ratios to identify combustion-related sources and to evaluate and constrain emission inventories (von Schneidemesser et al., 2023; Dominutti et al., 2020; Salameh et al., 2017).

Our findings show satisfactory model-measurement spatial correlations for ethene, but not for ethyne. A closer examination of the time series for these species shows that the modelled ethene concentrations (Fig. F4) align well with the observed temporal patterns, whereas the modelled ethyne concentrations (Fig. F2) are significantly lower during the winter months.

The modelled ratios of ethene to ethyne are influenced by these discrepancies between model and measurement. Table 10 presents both the measured and modelled ratios, calculated as the slope term of the least squares regression line between ethene and ethyne, along with their corresponding linear regression coefficients for summer and winter, at available EMEP sites.

At most EMEP sites, linear correlations between measured ethene and ethyne are greater and ethene-to-ethyne ratios are higher (typically above 1) in winter compared to those in summer (typically below 1). The exception is the UK site at Auchen-corth Moss, where the summer observations exhibit a larger ratio. The study by Boynard et al. (2014) reported an ethene-to-ethyne ratio of 2.78 in summer and 2.30 in winter in Paris during 2009-2010. In contrast, in Strasbourg there was a lower ratio in summer (1.65) and a higher one in winter (2.01). These findings underscore that the dominant source of these two VOCs varies both seasonally and geographically.

In contrast to the measured data, the modelled ethene-to-ethyne ratios demonstrate weaker linear correlations and less pronounced seasonal patterns. The closest agreement between model and measurement is observed at the Beromünster site, where the model shows fairly good linear correlation coefficients of 0.71 in summer and 0.67 in winter. However, the modelled winter ratio at this site (3.94) is more than twice the measured value (1.64). This discrepancy aligns with the previously noted under-estimation of ethyne concentrations by the model during winter, as depicted in Fig. F2. At the rest of the sites, the modelled ratios diverge substantially from the measured values in both summer and winter. A detailed discussion on measurement issues for ethyne is presented in Sect. 3.4.

Table 10. Ethene to ethyne ratios in 2018 at each site, calculated as the slope term of the least squares regression line between ethene(y) and ethyne(x). The linear correlation coefficient R of the regression is indicated in brackets.

| C2H4_T/C2H2 | Summer | | Winter | |
|--------------------|---------------|---------------|---------------|---------------|
| | Obs | Mod | Obs | Mod |
| Beromünster | 1.04 (0.71) | 1.65 (0.71) | 1.64 (0.92) | 3.94 (0.67) |
| Kosetice | 0.60 (0.41) | 1.43 (0.71) | 1.67 (0.93) | 0.99 (0.08) |
| Waldhof | 0.23 (0.21) | 0.25 (0.44) | 1.76 (0.89) | -0.84 (-0.13) |
| Neuglobsow | 0.44 (0.45) | 0.15 (0.21) | 1.89 (0.97) | -0.27 (-0.02) |
| Zingst | 0.64 (0.80) | 0.03 (0.08) | 1.71 (0.95) | -3.11 (-0.40) |
| Pallas | 0.10 (0.12) | -0.02 (-0.14) | 1.07 (0.84) | -0.19 (-0.08) |
| Peyrusse Vieille | 0.07 (0.03) | -0.03 (-0.27) | 1.56 (0.85) | -1.98 (-0.27) |
| La Tardiere | 0.79 (0.43) | -0.05 (-0.37) | 1.08 (0.83) | 0.62 (0.14) |
| Auchencorth Moss | 1.11 (0.76) | 1.12 (0.63) | 0.66 (0.66) | 0.20 (0.06) |

3.2.4 VOC ratios: benzene/ethyne

Similar discrepancies are also found for benzene to ethyne ratios. Table 11 shows the measured and modelled benzene-to-ethyne ratios and their corresponding linear regression coefficients in summer and winter.

The measured benzene concentrations are positively correlated with ethyne during summer with linear correlation coefficients typically above 0.40. In winter, the correlation is stronger with R value exceeding 0.89 at all sites, indicating common sources of the two species. The measured benzene-to-ethyne ratios at EMEP sites do not show large spatial nor seasonal variations, varying around 0.2. Boynard et al. (2014) reported similar values in summer and winter with their benzene to ethyne ratios being 0.20-0.26 in Paris and 0.17-0.23 in Strasbourg.

By comparison, the modelled ratios vary seasonally at the Beromünster site. During summer, the modelled ratio of 0.33 approximates the measured value of 0.26 at this site. However, in winter, the modelled ratio of 0.98 is significantly higher than the measured winter ratio of 0.34. Given that Fig. F5 shows that the modelled benzene concentrations agree well with the measured values in both summer and winter, this is mainly caused by the model underestimation of winter ethyne concentrations at this site.

Meanwhile, the negative linear correlation coefficients between modelled benzene and ethyne at most other sites point out significant deficiencies in the representation of ethyne emissions within current inventories. As shown in Table 11, in the majority of cases the correlations between benzene and ethyne are so poor that the value of their ratio becomes not relevant anymore. This is particularly concerning given that ethyne and benzene have comparable atmospheric lifetimes of 6-10 days (Table. D1), and are emitted from similar human activities, such as fuel consumption and combustion processes (Waked et al., 2016; Badol et al., 2008). In theory, this would result in similar spatial and temporal variation patterns for both species. If the model demonstrates a good spatial and temporal agreement with the measurement for benzene but fails to do so for ethyne — as observed in this study — it suggests that the problem may be specifically with the accuracy of ethyne emissions data. Such a discrepancy implies that the fundamental modelling of chemical reactions and transport processes is sound, but the emission inputs need to be scrutinized and potentially revised to better reflect real-world conditions. For instance, initiating measurement campaigns to assess ethyne emission factors, specifically targeting periods of high emissions such as winter, and focusing on proximate emission sources, including gasoline vehicles, shipping, industrial and residential combustion of natural gas, waste incineration, domestic wood fireplaces, and so on. More emission measurements will be required for different emission activities. These targeted campaigns would likely provide valuable insights into seasonal variations and the impact of specific sources on overall emissions.

Furthermore, the model more accurately captures the linear correlation between ethene and ethyne, as well as between benzene and ethyne, only at the Beromünster site; at other locations the model's performance for these species is markedly poor. In such cases, drawing a comparison between modelled and observed ratios becomes impractical for most sites. The relative success at the Beromünster site for both ethene-to-ethyne and benzene-to-ethyne ratios, could provide insights for potential enhancements in both modelling and measurement methodologies.

In summary, there appears to be a systematic underestimation of either the total emissions from the road transport and combustion-related sectors in the existing inventory or of the proportions of ethyne within these emissions. The current differences between the modelled and measured data indicate room for significant improvement, especially regarding ethyne sources during the winter months. More measurement evidence is therefore required to improve both the quantification of sector total emissions and the speciation within each sector.

Table 11. Benzene to ethyne ratios in 2018 which are calculated as the slope term of the least squares regression line between ethene(y) and ethyne(x). The linear correlation coefficient R is indicated in brackets.

| BENZENE/C2H2 | Summer | | Winter | |
|------------------|-------------|---------------|-------------|---------------|
| | Obs | Mod | Obs | Mod |
| Beromünster | 0.26 (0.82) | 0.33 (0.57) | 0.34 (0.96) | 0.98 (0.63) |
| Kosetice | 0.26 (0.47) | 0.35 (0.62) | 0.29 (0.93) | 0.46 (0.15) |
| Waldhof | 0.24 (0.77) | -0.00 (-0.01) | 0.30 (0.99) | -0.20 (-0.11) |
| Neuglobsow | 0.31 (0.88) | 0.00 (0.01) | 0.31 (0.99) | -0.02 (-0.01) |
| Zingst | 0.17 (0.83) | -0.03 (-0.13) | 0.30 (0.97) | -0.77 (-0.40) |
| Pallas | 0.11 (0.43) | -0.03 (-0.48) | 0.28 (0.94) | -0.04 (-0.06) |
| Peyrusse Vieille | 0.04 (0.09) | -0.07 (-0.58) | 0.24 (0.91) | -0.40 (-0.22) |
| La Tardiere | 0.25 (0.41) | -0.10 (-0.63) | 0.29 (0.93) | 0.17 (0.15) |
| Auchencorth Moss | 0.18 (0.76) | 0.08 (0.34) | 0.19 (0.89) | 0.03 (0.04) |

3.3 OVOCs

The assessment of the model's performance in predicting OVOC concentrations is constrained by the scarcity of available measurements. The EMEP regular monitoring network only has a few stations (often one or two) for a certain VOC and these stations do not measure the same set of OVOCs, so there is essentially no spatial information. Consequently, the EMEP IMP campaign for VOCs, conducted from 12 to 19 July 2022, serves as a valuable supplementary dataset. The following sections present comparisons with both regular 2018 measurements and the 2022 IMP campaign, utilising the CRIV2R5Em mechanism and the CAMS inventory.

3.3.1 Methanal and methylglyoxal in 2018

Figures 14 and G1 (in the Supplement) show the time series of available measured and modelled methanal (also known as formaldehyde) and methylglyoxal, respectively. The sampling of both species is taken over a 4-hour period, as evidenced by the start and end times specified in the raw data. To facilitate a fair comparison with the measured data, the hourly model output at a specific station is averaged over the corresponding sampling duration.

The model successfully captures the temporal fluctuations of methanal and methylglyoxal at the FR0015R station through the year, and at the FR0013R station in the winter months. Generally, it tends to underestimate the peak concentrations during

615 summer, particularly at the FR0013R station. However, the overall seasonal pattern and the concentration range of the model data aligns reasonably well with the measurements, suggesting that the chemistry (and precursor emissions) associated with methanal and methylglyoxal are reasonably well-represented in the model.

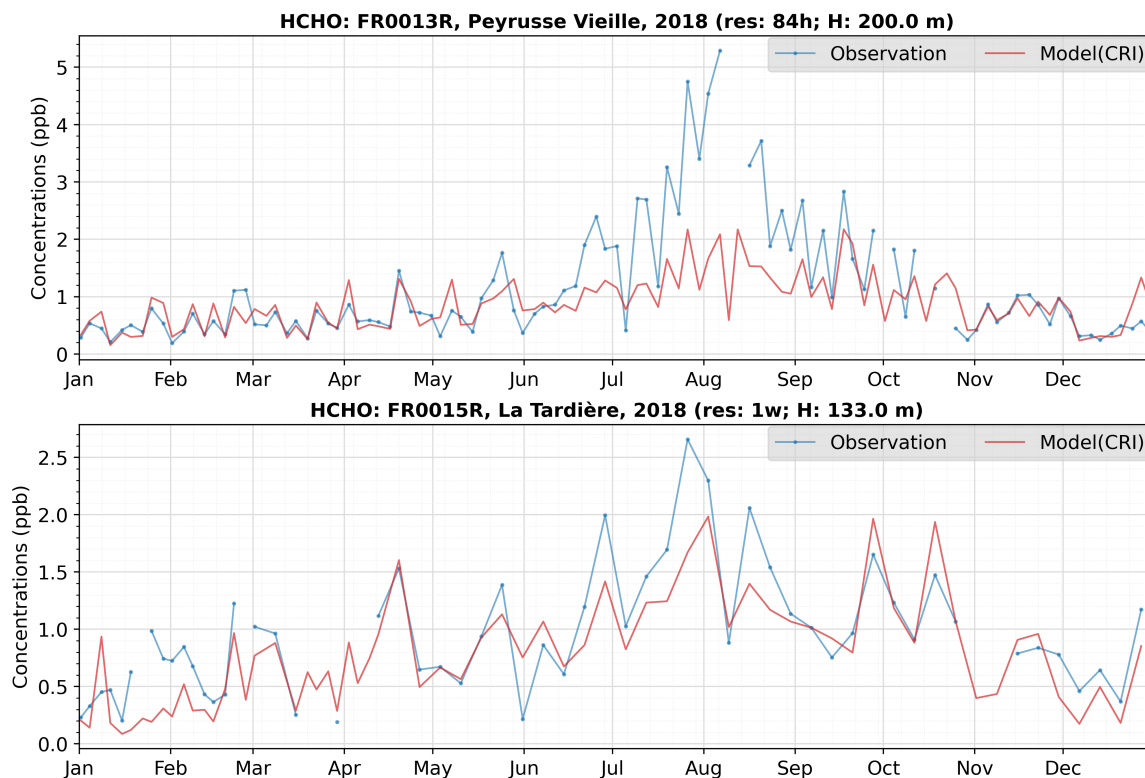


Figure 14. Time series of methanal concentrations in ppb at two available monitoring sites in 2018. 'res:' denotes time-resolution; e.g. 'res: 3d' means that the measurements are conducted every three days (1w: one week). The letter 'H' denotes the site altitude.

3.3.2 Methanal and methylglyoxal in 2022 IMP

620 Whilst the 2022 IMP campaign was designed to produce high-resolution measurements, the OVOC measurement was still carried out on a limited temporal scale. The majority of OVOCs are measured only once per day, and at inconsistent times across different stations. Consequently, there are at most 10 data points available for a particular OVOC at a specific station, although in many instances, the availability is further reduced to 3-5 data points due to the presence of invalid measurements. To accommodate this limitation, average concentrations over the campaign period have been utilised to conduct linear correlation analyses between contemporaneous model and measurement data.

625 Figure 15 shows the linear correlation relationships between modelled and measured concentrations of methanal and methylglyoxal. The measured and modelled methanal concentrations align well, yielding a correlation coefficient of 0.91, despite a moderate model underestimation. For such short time periods, this is excellent model-measurement agreement. As methanal is a crucial intermediate in the oxidation of numerous other VOCs, this further illustrates that the model is effectively capturing the overall photo-oxidation chemistry, despite the differing lumping processes applied to various VOC groups. Moreover, the model underestimation for HCHO during the IMP, which took place in July 2022, is consistent with the model underestimation at some sites in July 2018 shown in Fig. 14. Inaccuracy in modelled HCHO photolysis rate could be one explanation, which would manifest more in summer.

635 Similar model underestimation is also observed for methylglyoxal (Fig. 15). Atmospheric sources of methylglyoxal are multiple and include direct emissions from, for example, industrial emissions, vehicle exhausts, biomass burning and biofuel combustion, and secondary formation from the oxidation of biogenic and anthropogenic precursors (e.g., isoprene, aromatics) (Stavrakou et al., 2009; Rodigast et al., 2016; Li et al., 2022). It is possible that the model overestimates the rate of photolytic loss for this period in July, when solar flux is at its maximum. van Caspel et al. (2023) report that the EMEP model's J -values for methylglyoxal are larger than the observed value by a factor of 2 at the Chilbolton site during wintertime, highlighting the large degree of uncertainty in this photolysis rate. Given that photolysis is an important loss mechanism for methylglyoxal (Chen et al., 2000), and given that it is likely that the overestimated modeled J -values also occur during summertime, this has 640 the potential to cause the EMEP model to underestimate methylglyoxal concentrations during the IMP.

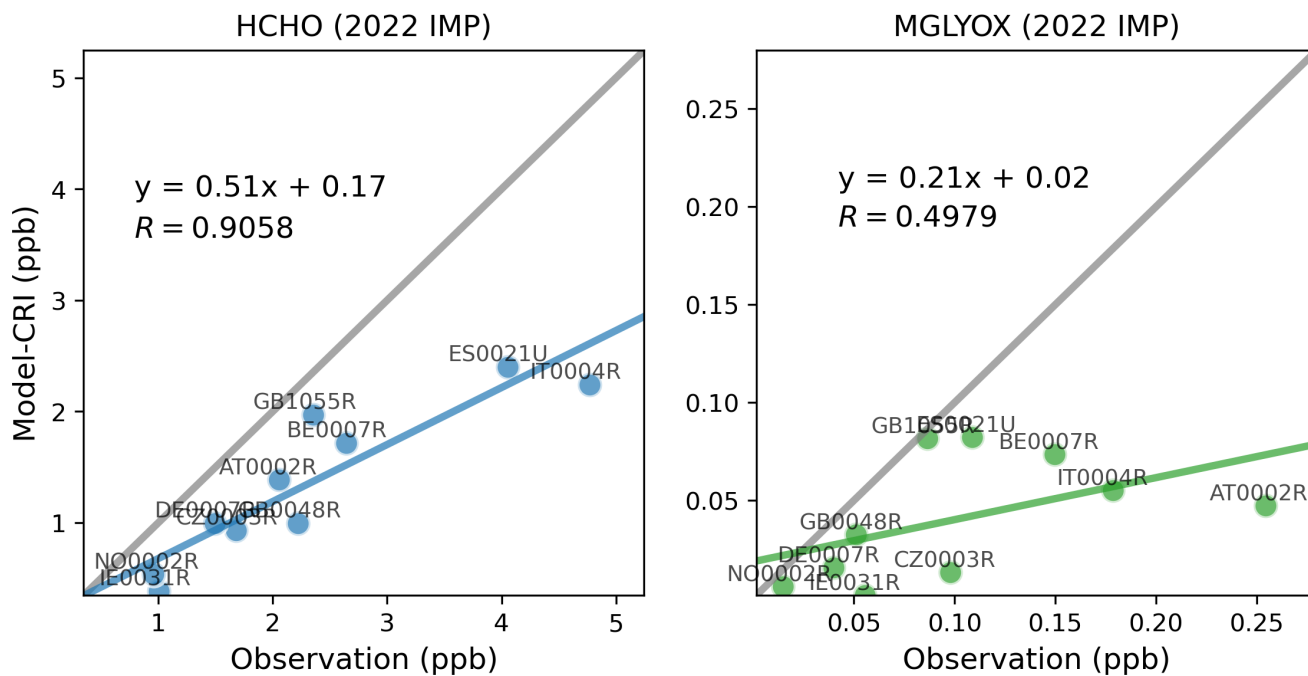


Figure 15. Scatter plots of average modelled and measured methanal and methylglyoxal concentrations during 2022 IMP.

3.4 Discussions on measurement issues

The evaluation of model performance is inherently constrained by uncertainties in emissions, meteorological conditions, model parameterisation, and measurements. It is essential to recognise that any analysis comparing modelled and measured data will have limitations due to these uncertainties. A robust evaluation necessitates high-quality measurements. Owing to the extensive chemical variation across VOC species, no singular analytical method is capable of identifying all atmospheric VOCs. Consequently, various methods must be employed, introducing variability in speciation, temporal resolution, and analytical uncertainties across datasets. For example, many VOC inter-comparison studies have revealed significant discrepancies among participating laboratories, especially at low concentrations and when analysing real-world air samples as opposed to synthetic calibration gas mixtures ((Ballesta et al., 2001; Slemr et al., 2002; Apel et al., 2003; Plass-Dülmer et al., 2006)).

In particular, the accurate determination of ethyne presents a distinct challenge relative to other atmospherically significant VOCs such as propane, butane, isoprene, and benzene (Badol et al., 2004; Rappenglück et al., 2006; Hoerger et al., 2015). The observed poor spatial correlation between model and measurement for ethyne in this study is speculated to be at least partly attributable to inconsistencies in methodology across different laboratories. Hoerger et al. (2015) pointed out that variations in laboratory performance could arise from two key factors. Firstly, a loss of ethyne due to breakthrough in the adsorption trap; secondly, different analytical systems may respond inconsistently to the same calibration standards. These factors contribute to significant discrepancies between the measured and pre-assigned concentrations of ethyne in mixed hydrocarbon standards. Moreover, insufficient characterisation of the analytical system's response to both dry calibration standards and humid real-world air samples can introduce significant biases in the reported concentrations.

Furthermore, Hoerger et al. (2015) and Plass-Dülmer et al. (2006) reported artefacts affecting the measurement of alkenes, albeit arising from different sources. Hoerger et al. (2015) identified that instruments employing a Nafion® Dryer to remove humidity produced blank values up to 0.35 ppb for C₂-C₃ alkenes. These blank values necessitate subtraction during either calibration or ambient air measurements to ensure accuracy. On the other hand, Plass-Dülmer et al. (2006) observed that the use of canisters led to increased concentrations of alkenes. This phenomenon was attributed to slow production of alkenes from the inner walls of the canisters themselves. Collectively, these artefacts could lead to systematic biases in measured concentrations of alkene species, and explain, at least in part, the discrepancies between measured and modelled concentrations observed in this study.

Last but not least, although numerous inter-comparisons of NMHC measurements have been conducted over the years, assessments of measurement accuracy and consistency for OVOCs such as alcohols, aldehydes, and ketones, are notably sparse. Recently, a few OVOCs intercomparison projects have commenced within ACTRIS. However, as of now, no official reports have been released. At present, our model evaluation of OVOCs is very limited in scope, being able to focus on two OVOC species measured at only a few stations or over brief periods. Statistically speaking, the available measurement datasets are insufficient for drawing robust conclusions. Compounds like methanal and methyglyoxal have both primary anthropogenic and biogenic sources and are also commonly generated as oxidation products from other VOCs. This complexity makes it challenging to determine whether the model's underestimation of these compounds arises from missing primary emissions,

underrepresented secondary chemical production, overestimated chemical and deposition loss, or possibly a combination of all these. In light of the general increase in domestic solvent consumption and the growing use of alcohols in fuels (UK-AQEG, 2020; Whalley et al., 2018; Dunmore et al., 2016), the relative abundance and subsequent impact of OVOCs compared to NMHCs on ozone and aerosol chemistry are likely to become increasingly significant in future. Therefore, there is a pressing
680 need for more robust, long-term, and multi-station OVOC monitoring efforts moving forward.

In summary, it is essential to more accurately characterise and quantify the uncertainty associated with individual VOC measurements. It is imperative to harmonise analytical procedures, particularly in relation to real-world air sampling methods. Concurrently, the implementation of more stringent quality assurance and quality control checks is crucial, akin to the procedures being developed within ACTRIS. This would not only ensure the submission of high-quality measurement data
685 to public data repositories and end-users but also facilitate the development of more precise VOC emission speciations. Such advancements would, in turn, contribute to achieving a higher degree of agreement between modelled and measured data.

3.5 Impacts of changing inventories and mechanisms on model performance

One of the biggest challenges in accurately representing VOCs in atmospheric chemistry models lies in the manner in which these compounds are reported by emission inventories. Typically, VOCs emissions are presented as aggregate values, necessi-
690 tating the use of sector-specific speciation profiles to apportion these lumped masses into individual VOC species. Achieving good agreement between the model and the measurement therefore depends on the accurate estimation of two factors: total VOC emissions and VOC speciation. However, it remains an open question as to whether one of these factors holds greater importance than the other in determining the accuracy of the modelled VOC concentrations.

Our model experiments offer an opportunity to address this question. The two emission inventories utilised in this study
695 report slightly differing total emissions for individual sectors. For instance, the CEIP inventory identifies sector-E Solvents (24% of its total, similarly hereinafter) and sector-F Road Transport (22%) as major emitters (Fig. 2). In contrast, the CAMS inventory highlights Solvents as the most dominant sector (31%), which significantly surpasses other sectors. The second largest sector, Road Transport, which is further broken down into four sub-sectors each with their own distinct emission profiles, accounts for 15% of CAMS's annual total.

700 Results from Sect. 3 reveal that model simulations based on the two emission inventories yield very similar statistical metrics. Table 12 summarises the descriptive statistics of linear correlation coefficients between modelled and measured annual average concentrations of the 12 NMHCs investigated in this study (i.e., 12 species listed in Table 6-9). In general, model simulations using the CAMS inventory show slightly better agreements with measurements than those using the CEIP inventory, which is likely attributable to the detailed segmentation of the Road Transport sector within the CAMS inventory. For example, using
705 the CRIV2R5Em mechanism in 2018, the mean correlation coefficient is 0.59 for CEIP and 0.64 for CAMS. Moreover, both inventories result in model overestimation of n-butane and n-pentane but underestimation of i-butane and i-pentane, which is linked to the notably low i-to-n ratios of these species emanating from the solvent sector. Such findings imply that the emission profiles have considerable influence on the agreement between modelled and measured VOC concentrations, particularly for

sectors with substantial emissions. Therefore, future focus to improve model accuracy may need to shift towards a more detailed
710 breakdown of dominant emission sectors (e.g., Solvents) and the refinement of their speciation profiles.

Compared to 2018, the model's performance in the 2019 simulation improves for some VOCs but deteriorates for others. For instance, the correlation coefficient for ethane in 2019 is 0.70, compared to 0.58 in 2018. Conversely, for o-xylene, the correlation coefficient decreases to 0.39 in 2019 from 0.69 in 2018. As previously discussed, such variations in model performance between the two years can be attributed to changes in the specific stations and the amount of valid sites available in
715 each year, as well as in meteorology and local emissions. More importantly, for most species, the model performance does not significantly differ between the two years, as evidenced by the similar statistical data presented in Table 12 and previous tables.

Table 12. Summary of linear correlation coefficients between modelled and measured annual average concentrations of the 13 discussed NMHCs in different model runs.

| <i>R</i> | Min | Max | Median | Mean |
|---------------|--------|--------|--------|--------|
| Em-CEIP-2018 | 0.3343 | 0.9100 | 0.6126 | 0.5930 |
| Em-CAMS-2018 | 0.3557 | 0.9331 | 0.6534 | 0.6382 |
| CRI-CEIP-2018 | 0.3263 | 0.9105 | 0.6126 | 0.5932 |
| CRI-CAMS-2018 | 0.3722 | 0.9329 | 0.6514 | 0.6375 |
| CRI-CAMS-2019 | 0.3953 | 0.8866 | 0.6603 | 0.6517 |

Finally, the discrepancies between model outputs using the two different chemical mechanisms, EmChem19rc and CRIV2R5Em, are negligible. Utilising the CAMS inventory in 2018, the mean linear correlation coefficient across the 12 VOCs is 0.64 for both mechanisms. This further demonstrates that the performance of EmChem19rc is comparable to that of CRIV2R5Em, and
720 that the choice of chemical mechanism amongst those used here does not substantially affect the model-measurement agreement. Such close alignment demonstrates the robustness of the overall chemistry and transport processes parameterised within the EMEP model.

3.6 Impacts of changing emission speciation on modelled ozone concentrations

A relevant question is the extent to which regional transport model results are sensitive to details of the VOC speciation. To a
725 first approximation, the ozone production from a VOC is proportional to the amount of VOC that has time to react with OH or other oxidants. Thus, close to source areas, the fast-reacting VOC such as ethene make immediate contributions to ozone, but these VOC are quickly consumed. Further downwind, other species such as alkanes are degraded and their contribution builds up. Thus, metrics of ozone production such as POCP (which uses ethene as the reference value of 100%) show that over short time periods alkanes have low POCPs, but over longer time-periods and greater geographical extent the POCP of
730 alkanes become significant (Andersson-Sköld et al., 1992; Stockwell et al., 2001). For example, Simpson (1995) calculated POCP values of n-butane from ca. 30% in NW Europe to ca. 80% in southern and eastern areas. Although a full evaluation of the impacts of uncertainties in VOC speciation on ozone is beyond the scope of this study, we have compared two model runs for 2018:

- 735
1. nDef - default VOC speciation for this study, using the EmChem19rc chemistry mechanism and the CAMS inventory as described in Sect. 2.3.
 2. Sol6 - in which the same chemistry mechanism and emission inventory are used, but the VOC speciation of solvent sector has been replaced by that of gasoline vehicles (exhaust, sector F1, emep code 6 - see Table B1).

740 The second run, Sol6, is purely for illustration, but lets us examine the extent to which the speciation of this very uncertain sector matters. The choice of the F1 speciation was pragmatic – it was technically easy to implement, but provides a more reactive mixture than our default solvent splits. In particular, the gasoline profile contains more alkene species, which could be expected to influence short-term ozone formation. It is also clear (e.g Oliveira et al., 2023) that solvent speciation is extremely uncertain, and it is not clear which alternative speciation best fits the European situation.

745 Both runs have been conducted using the CAMS-REG emissions, $0.1^\circ \times 0.1^\circ$ resolution, and for 2018. Fig. 16 shows the modelled O_3 from these two model runs, along with the difference. It can be seen that on most days the change of speciation makes little difference to the modelled O_3 , but changes of up to 9 ppb are calculated. Comparing with 103 sites (altitude <1000 m) from the full EMEP network, the overall statistics are remarkably unchanged: normalised mean bias is 4% for nDef and 5% for Sol6, spatial correlation coefficients are 0.85 and 0.84 respectively, and temporal correlation coefficients are 0.95 for both runs.

750 In the Supplement, Sect. H, we illustrate changes in ozone and associated metrics at the European scale, and with a focus over Madrid in Spain. These comparisons confirm that changes in VOC speciation have little impact on mean ozone levels, but changes can be significant close to major NO_x sources.

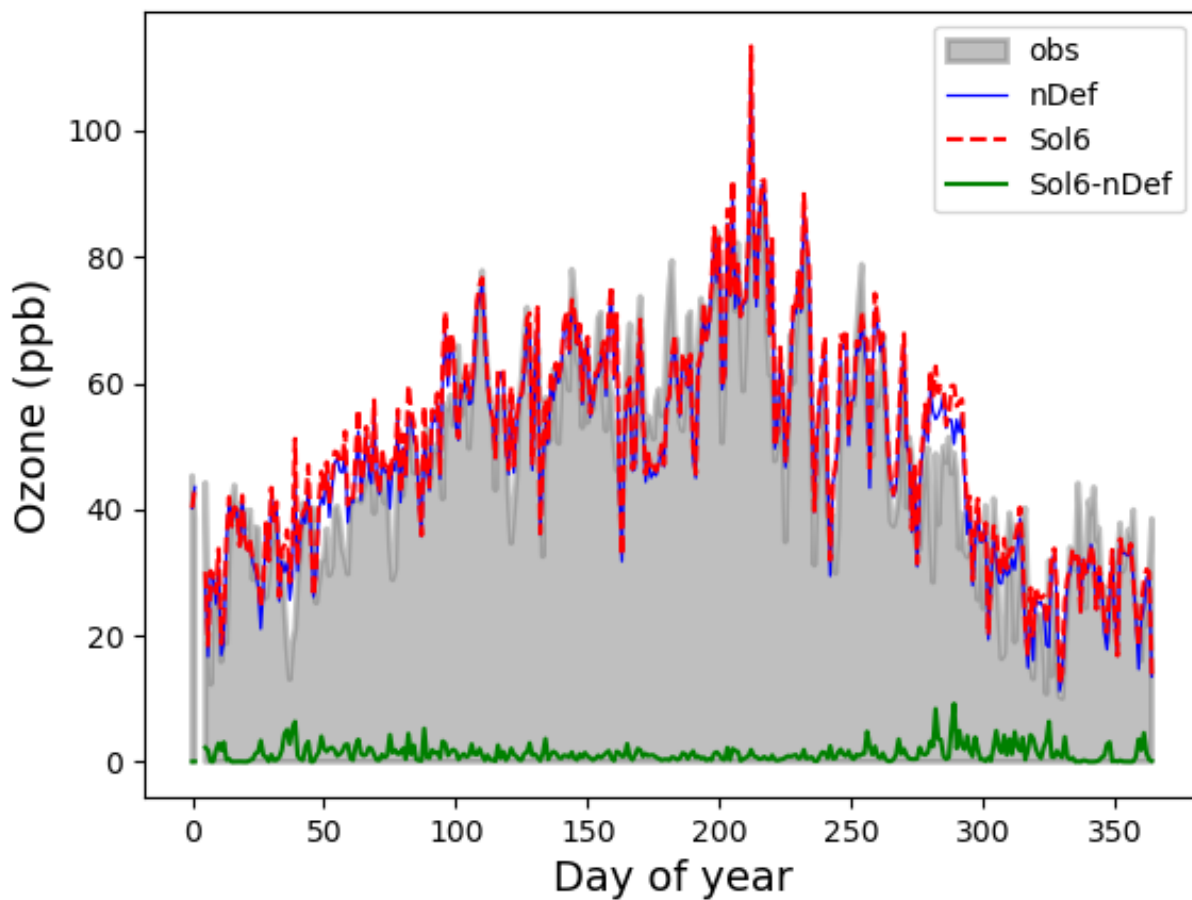


Figure 16. Impacts of VOC sensitivity tests on modelled daily maximum O₃ at Beromünster. nDef and Sol6 are two model runs, and the lowest line gives the difference, Sol6-nDef. Observed O₃ shown by shaded area. Model runs for 2018.

4 Conclusions

This model evaluation study is the first intensive comparison of VOCs between the EMEP model and measurements for many years. Considering that the composition of VOCs has undergone significant changes over the past several decades, and that there is lack of evaluation studies, we are keen to know how accurately these real-world changes in VOC profiles are captured in recent emission inventories, and how well the model's VOC concentrations agree with measured values.

To address these research questions, a comprehensive spatial and temporal evaluation of model outputs with VOC measurements from the EMEP network was carried out for the year 2018 and 2019, and for the IMP campaign in summer 2022. Both CEIP and CAMS emission inventories were utilised, along with two different chemistry mechanisms—EmChem19rc and CRIv2R5Em. To model pure VOC concentrations for comparison with measurement data, we have developed a detailed VOC emission speciation for all EMEP sectors based on data sourced from the UK NAEI, EEA emission inventory guidebook, and several academic studies.

The degree to which the modelled and measured VOCs agree varies depending on the specific species, suggesting potential issues with the boundary conditions and emission speciation for these species. For most species, the model's performance across 2018 and 2019 exhibits considerable similarity when evaluated against regular, year-round monitoring measurements. In general, the model successfully captures the overall spatial and temporal variations of major alkanes such as ethane and n-butane, but less so for propane and i-butane.

The model's underestimation of propane concentrations and the smaller propane-to-ethane ratios compared to measurements are likely caused by a combination of issues with the boundary conditions and potential missing propane emissions from the oil, natural gas and LPG sectors in current inventories.

Interestingly, the model overestimates n-butane and n-pentane while underestimating i-butane and i-pentane. Further analysis of the ratios among the butane and pentane isomers reveals that both model and measurement data exhibit strong linear correlations between i-butane and n-butane, as well as between i-pentane and n-pentane, with correlation coefficients typically exceeding 0.8. This suggests common sources for these pairs of butane and pentane isomers. However, modelled ratios of i- to n-butane and i- to n-pentane are approximately one-third of the measured ratios. Given that i-butane and n-butane have similar atmospheric lifetimes (as do i-pentane and n-pentane), such a discrepancy in their ratios likely stems from differences in their emissions. Indeed this disparity is largely driven by significant emissions of n-butane and n-pentane from the Solvent sector. It is possible that emissions of i-butane and i-pentane in the speciation profile of the Solvent sector may be underrepresented, or that the total emissions from transport activities and fuel evaporation are higher than what is currently included in the emission inventories. Alternatively, both scenarios might be true.

For unsaturated NMHCs, results are very mixed, with good results for ethene and aromatics, but very poor results for ethyne. In addition, the model underestimates ethyne concentrations significantly during winter. The different model performance strongly points to shortcomings in the spatial and temporal patterns and magnitudes of ethyne emissions. The modelled ethene-to-ethyne and benzene-to-ethyne ratios differ significantly from measured ratios. In general, most EMEP sites display stronger

785 linear correlations and smaller VOC-to-ethyne ratios, while the model data shows poor correlations and therefore the modelled ratios become impractical for most sites.

For OVOCs, methanal and methylglyoxal demonstrate reasonably good agreement between modelled and measured time series throughout the year 2018 simulations, though both are underestimated in the 2022 IMP campaign. As both species have significant secondary sources from the oxidation of numerous other VOCs, this further illustrates that the model is effectively capturing the overall photo-oxidation chemistry processes. Additionally, it is also important to note that the lack of measurement data seriously limits the evaluation of other OVOC species.

Generally, simulations that employed the CAMS inventory displayed slightly better comparison results for certain VOCs compared to those utilizing the CEIP inventory, which is likely due to the inclusion of more detail in the road traffic emissions sectors (F1–F4) in CAMS. Given this better model performance offered by CAMS, alongside the previously mentioned concerns about the model's biased estimations of various VOC ratios, future efforts should focus on a more detailed breakdown of dominant emission sectors (e.g., Solvents) and the refinement of their speciation profiles to improve model accuracy.

In summary, the model seems to do a reasonable job of capturing spatial patterns and time series of some VOC species (e.g. n-butane, longer-chain alkanes, aromatics, HCHO), but performs less well for others (e.g. propane, ethyne). Such discrepancy in model performance indicates potential issues pertaining to certain VOC emissions and to the model setup of boundary and initial conditions. It would be beneficial to engage in further discussions with measurement teams to possibly incorporate insights from measurement data to refine the emission speciation applied in the model. Despite certain limitations in model-measurement comparisons, the detailed evaluations in this study support the use of the EMEP model for analysing the significance of different types of VOCs to ozone and aerosol formation, and illustrate the benefits of the VOC measurement data for model and emissions evaluation. Moreover, this study also provides a valuable reference for VOC speciation and evaluation in other modelling studies.

Code and data availability. As described and referenced in Sect. 2.1 of this paper, this study used the latest EMEP MSC-W model version rv5 (Simpson et al., 2023), with source code available at MSC-W (2023) (last access: 20th December 2023). The VOC tracers and their related code are integrated into the EMEP model via the GenChem system (Simpson et al., 2020), with source code available at MSC-W (2020) (last access: 20th December 2023). All measurements are available on the platform of EBAS (2023) (last access: 20th December 2023). The model outputs and measurement data presented in the figures and tables in this paper as well as the corresponding Python scripts are available at Ge (2023).

Author contributions. YG, DS, and SS conceptualized and designed the study. YG wrote the initial manuscript and undertook model simulations, downloaded and prepared measurement data sets, and visualised the results of model-measurement comparisons. DS contributed to the development of chemistry mechanisms and provided modelling support. SS contributed to the checking and the interpretation of VOC measurements. MRH contributed to the discussion materials and editing of the manuscript. WVC contributed to the Cloud-J related modelling

and data interpretation. SR, BH, and TS contributed to the proofreading and discussion materials on measurements. All authors provided review comments and approval of the final version.

Competing interests. The authors declare that no competing interests are present.

820 *Acknowledgements.* We acknowledge all data providers and the great efforts of EMEP and ACTRIS to make long-term measurements public and available, and for the work with quality assurance and quality control of VOC data in Europe. All measurement data used in this study are obtained from the EBAS database.

825 The Norwegian Ministry of Climate is also greatly acknowledged for supporting both model and database development at the EMEP Centres, MSC-W and CCC. Measurements in Beromünster were supported by FOEN (Swiss Federal Office for the Environment) and by ACTRIS-CH. We are also grateful to Adéla Holubová and the whole measurement team from Czech Hydrometeorological Institute, for their contribution to the measurement data in Košetice. We also extend our gratitude to the UK NAEI team for supplying the speciated VOC emissions data. Our thanks are due as well to Antoon Visschedijk, Jeroen Kuenen, and the TNO team for their valuable assistance with the VOC speciation of agricultural emissions.

We also acknowledge the use of Pyaerocom version v0.15.0 (AeroCom, 2023) for the comparison of EBAS data against simulations in Section 3.6.

830 **References**

- AeroCom: metno/pyaerocom, Zenodo [code], <https://doi.org/10.5281/zenodo.10374181>, 2023.
- Ait-Helal, W., Borbon, A., Sauvage, S., de Gouw, J. A., Colomb, A., Gros, V., Freutel, F., Crippa, M., Afif, C., Baltensperger, U., Beekmann, M., Doussin, J. . F., Durand-Jolibois, R., Fronval, I., Grand, N., Leonardis, T., Lopez, M., Michoud, V., Miet, K., Perrier, S., Prevot, A. S. H., Schneider, J., Siour, G., Zapf, P., and Locoge, N.: Volatile and intermediate volatility organic compounds in suburban Paris: 835 variability, origin and importance for SOA formation, *Atmos. Chem. Physics*, 14, 10439–10464, <https://doi.org/10.5194/acp-14-10439-2014>, 2014.
- Andersson-Sköld, Y. and Simpson, D.: Comparison of the chemical schemes of the EMEP MSC-W and the IVL photochemical trajectory models, *Atmos. Environ.*, 33, 1111–1129, 1999.
- Andersson-Sköld, Y., Grennfelt, P., and Pleijel, K.: Photochemical Ozone Creation Potentials: A study of Different Concepts, *J. Air Waste 840 Manage. Assoc.*, 42, 1152–1158, <https://doi.org/10.1080/10473289.1992.10467060>, 1992.
- Andreae, M. O.: Emission of trace gases and aerosols from biomass burning – an updated assessment, *Atmos. Chem. Physics*, 19, 8523–8546, <https://doi.org/10.5194/acp-19-8523-2019>, 2019.
- Apel, E. C., Calvert, J. G., Gilpin, T. M., Fehsenfeld, F., and Lonneman, W. A.: Nonmethane Hydrocarbon Inter-comparison Experiment (NOMHICE): Task 4, ambient air, *Journal of Geophysical Research: Atmospheres*, 108, 845 <https://doi.org/https://doi.org/10.1029/2002JD002936>, 2003.
- Aydin, M., Verhulst, K. R., Saltzman, E. S., Battle, M. O., Montzka, S. A., Blake, D. R., Tang, Q., and Prather, M. J.: Recent decreases in fossil-fuel emissions of ethane and methane derived from firn air, *Nature*, 476, 198–201, <https://doi.org/10.1038/nature10352>, 2011.
- Badol, C., Borbon, A., Locoge, N., Léonardis, T., and Galloo, J.-C.: An automated monitoring system for VOC ozone precursors in ambient air: development, implementation and data analysis, *Analytical and Bioanalytical Chemistry*, 378, 1815–1827, 850 <https://doi.org/https://doi.org/10.1007/s00216-003-2474-0>, 2004.
- Badol, C., Locoge, N., Léonardis, T., and Galloo, J.-C.: Using a source–receptor approach to characterise VOC behaviour in a French urban area influenced by industrial emissions Part I: Study area description, data set acquisition and qualitative data analysis of the data set, *Science of The Total Environment*, 389, 441–452, <https://doi.org/https://doi.org/10.1016/j.scitotenv.2007.09.003>, 2008.
- Ballesta, P., Field, R., and De Saeger, E.: Interlaboratory exercises for volatile organic compound determination, *Atmospheric Environment*, 855 35, 5729–5740, [https://doi.org/https://doi.org/10.1016/S1352-2310\(01\)00372-7](https://doi.org/https://doi.org/10.1016/S1352-2310(01)00372-7), 2001.
- Bergström, R., Hayman, G. D., Jenkin, M. E., and Simpson, D.: Update and comparison of atmospheric chemistry mechanisms for the EMEP MSC-W model system — EmChem19a, EmChem19X, CRIV2R5Em, CB6r2Em, and MCMv3.3Em, EMEP Technical Report 1/2022, The Norwegian Meteorological Institute, Oslo, Norway, 2022.
- Borbon, A., Fontaine, H., Veillerot, M., Locoge, N., Galloo, J. C., and Guillermo, R.: An investigation into the traffic-related fraction of 860 isoprene at an urban location, *Atmos. Environ.*, 35, 3749–3760, [https://doi.org/10.1016/S1352-2310\(01\)00170-4](https://doi.org/10.1016/S1352-2310(01)00170-4), 2001.
- Borbon, A., Locoge, N., Veillerot, M., Galloo, J., and Guillermo, R.: Characterisation of NMHCs in a French urban atmosphere: overview of the main sources, *Science of The Total Environment*, 292, 177–191, [https://doi.org/https://doi.org/10.1016/S0048-9697\(01\)01106-8](https://doi.org/https://doi.org/10.1016/S0048-9697(01)01106-8), 2002.
- Borbon, A., Gilman, J. B., Kuster, W. C., Grand, N., Chevaillier, S., Colomb, A., Dolgorouky, C., Gros, V., Lopez, M., Sarda-Esteve, R., 865 Holloway, J., Stutz, J., Petetin, H., McKeen, S., Beekmann, M., Warneke, C., Parrish, D. D., and de Gouw, J. A.: Emission ratios of

- anthropogenic volatile organic compounds in northern mid-latitude megacities: Observations versus emission inventories in Los Angeles and Paris, *Journal of Geophysical Research: Atmospheres*, 118, 2041–2057, <https://doi.org/https://doi.org/10.1002/jgrd.50059>, 2013.
- 870 Borbon, A., Dominutti, P., Panopoulou, A., Gros, V., Sauvage, S., Farhat, M., Afif, C., Elguindi, N., Fornaro, A., Granier, C., Hopkins, J. R., Liakakou, E., Nogueira, T., Corrêa dos Santos, T., Salameh, T., Armangaud, A., Piga, D., and Perrussel, O.: Ubiquity of Anthropogenic Terpenoids in Cities Worldwide: Emission Ratios, Emission Quantification and Implications for Urban Atmospheric Chemistry, *Journal of Geophysical Research: Atmospheres*, 128, e2022JD037566, <https://doi.org/https://doi.org/10.1029/2022JD037566>, e2022JD037566 2022JD037566, 2023.
- 875 Bourtsoukidis, E., Ernle, L., Crowley, J. N., Lelieveld, J., Paris, J.-D., Pozzer, A., Walter, D., and Williams, J.: Non-methane hydrocarbon (C₂–C₈) sources and sinks around the Arabian Peninsula, *Atmospheric Chemistry and Physics*, 19, 7209–7232, <https://doi.org/10.5194/acp-19-7209-2019>, 2019.
- Boynard, A., Borbon, A., Leonardis, T., Barletta, B., Meinardi, S., Blake, D. R., and Locoge, N.: Spatial and seasonal variability of measured anthropogenic non-methane hydrocarbons in urban atmospheres: Implication on emission ratios, *Atmos. Environ.*, 82, 258–267, <https://doi.org/https://doi.org/10.1016/j.atmosenv.2013.09.039>, 2014.
- 880 Bray, C. D., Strum, M., Simon, H., Riddick, L., Kosusko, M., Menetrez, M., Hays, M. D., and Rao, V.: An assessment of important SPECIATE profiles in the EPA emissions modeling platform and current data gaps, *Atmos. Environ.*, 207, 93 – 104, <https://doi.org/https://doi.org/10.1016/j.atmosenv.2019.03.013>, 2019.
- Broadgate, W. J., Liss, P. S., and Penkett, S. A.: Seasonal emissions of isoprene and other reactive hydrocarbon gases from the ocean, *Geophysical Research Letters*, 24, 2675–2678, <https://doi.org/https://doi.org/10.1029/97GL02736>, 1997.
- 885 Chen, Y., Wang, W., and Zhu, L.: Wavelength-dependent photolysis of methylglyoxal in the 290– 440 nm region, *The Journal of Physical Chemistry A*, 104, 11 126–11 131, <https://doi.org/10.1021/jp002262t>, 2000.
- Coggon, M. M., Gkatzelis, G. I., McDonald, B. C., Gilman, J. B., Schwantes, R. H., Abuhassan, N., Aikin, K. C., Arend, M. F., Berkoff, T. A., Brown, S. S., Campos, T. L., Dickerson, R. R., Gronoff, G., Hurley, J. F., Isaacman-VanWertz, G., Koss, A. R., Li, M., McKeen, S. A., Moshary, F., Peischl, J., Pospisilova, V., Ren, X., Wilson, A., Wu, Y., Trainer, M., and Warneke, C.: Volatile chemical product emissions enhance ozone and modulate urban chemistry, *Proceedings of the National Academy of Sciences*, 118, e2026653 118, 890 <https://doi.org/10.1073/pnas.2026653118>, 2021.
- Coll, I., Rousseau, C., Barletta, B., Meinardi, S., and Blake, D. R.: Evaluation of an urban NMHC emission inventory by measurements and impact on CTM results, *Atmospheric Environment*, 44, 3843–3855, <https://doi.org/https://doi.org/10.1016/j.atmosenv.2010.05.042>, 2010.
- 895 Dalsøren, S. B., Myhre, G., Hodnebrog, Ø., Myhre, C. L., Stohl, A., Pisso, I., Schwietzke, S., Höglund-Isaksson, L., Helmig, D., Reimann, S., Sauvage, S., Schmidbauer, N., Read, K. A., Carpenter, L. J., Lewis, A. C., Punjabi, S., and Wallasch, M.: Discrepancy between simulated and observed ethane and propane levels explained by underestimated fossil emissions, *Nature Geoscience*, 11, 178–184, <https://doi.org/10.1038/s41561-018-0073-0>, 2018.
- Denier van der Gon, H., Gauss, M., Granier, C., Arellano, S., Benedictow, A., Darras, S., Dellaert, S., Guevara, M., Jalkanen, J.-P., Krueger, K., Kuenen, J., Liaskoni, M., Liousse, C., Markova, J., Perez, A. P., Quack, B., Simpson, D., Sindelarova, K., and Soulie, A.: CAMS2_61 – Global and European emission inventories. Documentation of CAMS emission inventory products, Copernicus Atmosphere Monitoring 900 Service, <https://doi.org/10.24380/q2si-ti6i5>, 2023.
- Dollard, G., Dumitrean, P., Telling, S., Dixon, J., and Derwent, R.: Observed trends in ambient concentrations of C₂–C₈ hydrocarbons in the United Kingdom over the period from 1993 to 2004, *Atmospheric Environment*, 41, 2559–2569, <https://doi.org/https://doi.org/10.1016/j.atmosenv.2006.11.020>, 2007.

- Dominutti, P., Nogueira, T., Fornaro, A., and Borbon, A.: One decade of VOCs measurements in São Paulo megacity: Com-
905 position, variability, and emission evaluation in a biofuel usage context, *Science of The Total Environment*, 738, 139790, <https://doi.org/https://doi.org/10.1016/j.scitotenv.2020.139790>, 2020.
- Dunmore, R. E., Whalley, L. K., Sherwen, T., Evans, M. J., Heard, D. E., Hopkins, J. R., Lee, J. D., Lewis, A. C., Lidster, R. T., Rickard, A. R., and Hamilton, J. F.: Atmospheric ethanol in London and the potential impacts of future fuel formulations, *Faraday Discuss.*, 189, 105–120, <https://doi.org/10.1039/C5FD00190K>, 2016.
- 910 EBAS: EBAS database infrastructure, <https://ebas-data.nilu.no/Default.aspx>, 2023.
- Emberson, L.: Effects of ozone on agriculture, forests and grasslands, *Philosophical Transactions of the Royal Society A: Mathematical, Physical and Engineering Sciences*, 378, 20190327, <https://doi.org/10.1098/rsta.2019.0327>, 2020.
- Filleul, L., Cassadou, S., Médina, S., Fabres, P., Lefranc, A., Eilstein, D., Tertre, A. L., Pascal, L., Chardon, B., Blanchard, M., Declercq, C., Jusot, J.-F., Prouvost, H., and Ledrans, M.: The Relation Between Temperature, Ozone, and Mortality in Nine French Cities During the
915 Heat Wave of 2003, *Environmental Health Perspectives*, 114, 1344–1347, <https://doi.org/10.1289/ehp.8328>, 2006.
- Franco, B., Bader, W., Toon, G., Bray, C., Perrin, A., Fischer, E., Sudo, K., Boone, C., Bovy, B., Lejeune, B., Servais, C., and Mahieu, E.: Retrieval of ethane from ground-based FTIR solar spectra using improved spectroscopy: Recent burden increase above Jungfraujoch, *Journal of Quantitative Spectroscopy and Radiative Transfer*, 160, 36–49, <https://doi.org/https://doi.org/10.1016/j.jqsrt.2015.03.017>, 2015.
- Gaimoz, C., Stéphane, S., Valérie, G., Frank, H., Jonathan, W., Nadine, L., Olivier, P., Bernard, B., d'Argouges Odile, Roland, S.-E., and
920 Jean, S.: Volatile organic compounds sources in Paris in spring 2007. Part II: source apportionment using positive matrix factorisation, *Environmental Chemistry*, 8, 91–103, <https://doi.org/10.1071/EN10067>, 2011.
- Ge, Y.: Data for evaluation of modelled versus observed NMVOC compounds at EMEP sites in Europe, <https://doi.org/10.5281/zenodo.10417827>, 2023.
- Ge, Y., Heal, M. R., Stevenson, D. S., Wind, P., and Vieno, M.: Evaluation of global EMEP MSC-W (rv4.34) WRF (v3.9.1.1) model
925 surface concentrations and wet deposition of reactive N and S with measurements, *Geoscientific Model Development*, 14, 7021–7046, <https://doi.org/10.5194/gmd-14-7021-2021>, 2021.
- Ge, Y., Simpson, D., and Solberg, S.: Comparisons of modelled versus observed NMVOC, 2018 and IMP periods, EMEP Technical Report 1/2023, The Norwegian Meteorological Institute, Oslo, Norway, 2023a.
- Ge, Y., Vieno, M., Stevenson, D. S., Wind, P., and Heal, M. R.: Global sensitivities of reactive N and S gas and particle concentrations and
930 deposition to precursor emissions reductions, *Atmospheric Chemistry and Physics*, 23, 6083–6112, <https://doi.org/10.5194/acp-23-6083-2023>, 2023b.
- Gilman, J. B., Lerner, B. M., Kuster, W. C., and de Gouw, J. A.: Source Signature of Volatile Organic Compounds from Oil and Natural Gas Operations in Northeastern Colorado, *Environmental Science & Technology*, 47, 1297–1305, <https://doi.org/10.1021/es304119a>, 2013.
- Gkatzelis, G. I., Coggon, M. M., McDonald, B. C., Peischl, J., Gilman, J. B., Aikin, K. C., Robinson, M. A., Canonaco, F., Prevot, A. S. H.,
935 Trainer, M., and Warneke, C.: Observations Confirm that Volatile Chemical Products Are a Major Source of Petrochemical Emissions in U.S. Cities, *Environmental Science & Technology*, 55, 4332–4343, <https://doi.org/10.1021/acs.est.0c05471>, 2021.
- Grant, A., Yates, E. L., Simmonds, P. G., Derwent, R. G., Manning, A. J., Young, D., Shallcross, D. E., and O'Doherty, S.: A five year record of high-frequency in situ measurements of non-methane hydrocarbons at Mace Head, Ireland, *Atmos. Measurement Techniques*, 4, 955–964, <https://doi.org/10.5194/amt-4-955-2011>, 2011.

- 940 Guenther, A. B., Jiang, X., Heald, C. L., Sakulyanontvittaya, T., Duhl, T., Emmons, L. K., and Wang, X.: The Model of Emissions of Gases and Aerosols from Nature version 2.1 (MEGAN2.1): an extended and updated framework for modeling biogenic emissions, *Geoscientific Model Dev.*, 5, 1471–1492, <https://doi.org/10.5194/gmd-5-1471-2012>, 2012.
- Guevara, M.: The CAMS anthropogenic temporal profiles: CAMS-TEMPO, in: CAMS2_61 – Global and European emission inventories. Documentation of CAMS emission inventory products, cams261_2022sc1 – product documentation 6, pp. 32–47, Copernicus Atmosphere Monitoring Service, <https://doi.org/10.24380/q2si-ti6i5>, 2023.
- 945 Guevara, M., Jorba, O., Tena, C., Denier van der Gon, H., Kuenen, J., Elguindi, N., Darras, S., Granier, C., and Pérez García-Pando, C.: Copernicus Atmosphere Monitoring Service TEMPORal profiles (CAMS-TEMPO): global and European emission temporal profile maps for atmospheric chemistry modelling, *Earth System Sci. Data.*, 13, 367–404, <https://doi.org/10.5194/essd-13-367-2021>, 2021.
- Hallquist, M., Wenger, J. C., Baltensperger, U., Rudich, Y., Simpson, D., Claeys, M., Dommen, J., Donahue, N. M., George, C., Goldstein, A. H., Hamilton, J. F., Herrmann, H., Hoffmann, T., Iinuma, Y., Jang, M., Jenkin, M. E., Jimenez, J. L., Kiendler-Scharr, A., Maenhaut, W., McFiggans, G., Mentel, T. F., Monod, A., Prévôt, A. S. H., Seinfeld, J. H., Surratt, J. D., Szmigielski, R., and Wildt, J.: The formation, properties and impact of secondary organic aerosol: current and emerging issues, *Atmospheric Chemistry and Physics*, 9, 5155–5236, <https://doi.org/10.5194/acp-9-5155-2009>, 2009.
- 950 Helmig, D., Petrenko, V., Martinerie, P., Witrant, E., Röckmann, T., Zuiderweg, A., Holzinger, R., Hueber, J., Thompson, C., White, J. W. C., Sturges, W., Baker, A., Blunier, T., Etheridge, D., Rubino, M., and Tans, P.: Reconstruction of Northern Hemisphere 1950–2010 atmospheric non-methane hydrocarbons, *Atmospheric Chemistry and Physics*, 14, 1463–1483, <https://doi.org/10.5194/acp-14-1463-2014>, 2014.
- 955 Helmig, D., Rossabi, S., Hueber, J., Tans, P., Montzka, S. A., Masarie, K., Thoning, K., Plass-Duelmer, C., Claude, A., Carpenter, L. J., Lewis, A. C., Punjabi, S., Reimann, S., Vollmer, M. K., Steinbrecher, R., Hannigan, J. W., Emmons, L. K., Mahieu, E., Franco, B., Smale, D., and Pozzer, A.: Reversal of global atmospheric ethane and propane trends largely due to US oil and natural gas production, *Nature Geoscience*, 9, 490–495, <https://doi.org/10.1038/ngeo2721>, 2016.
- Hobbs, P., Webb, J., Mottram, T., Grant, B., and Misselbrook, T.: Emissions of volatile organic compounds originating from UK livestock agriculture, *Journal of the Science of Food and Agriculture*, 84, 1414–1420, <https://doi.org/https://doi.org/10.1002/jsfa.1810>, 2004.
- 965 Hoerger, C. C., Claude, A., Plass-Duelmer, C., Reimann, S., Eckart, E., Steinbrecher, R., Aalto, J., Arduini, J., Bonnaire, N., Cape, J. N., Colomb, A., Connolly, R., Diskova, J., Dumitrean, P., Ehlers, C., Gros, V., Hakola, H., Hill, M., Hopkins, J. R., Jäger, J., Junek, R., Kajos, M. K., Klemp, D., Leuchner, M., Lewis, A. C., Locoge, N., Maione, M., Martin, D., Michl, K., Nemitz, E., O’Doherty, S., Pérez Ballesta, P., Ruuskanen, T. M., Sauvage, S., Schmidbauer, N., Spain, T. G., Straube, E., Vana, M., Vollmer, M. K., Wegener, R., and Wenger, A.: ACTRIS non-methane hydrocarbon intercomparison experiment in Europe to support WMO GAW and EMEP observation networks, *Atmos. Measurement Techniques*, 8, 2715–2736, <https://doi.org/10.5194/amt-8-2715-2015>, 2015.
- 970 Hoesly, R. M., Smith, S. J., Feng, L., Klimont, Z., Janssens-Maenhout, G., Pitkanen, T., Seibert, J. J., Vu, L., Andres, R. J., Bolt, R. M., Bond, T. C., Dawidowski, L., Kholod, N., Kurokawa, J.-I., Li, M., Liu, L., Lu, Z., Moura, M. C. P., O’Rourke, P. R., and Zhang, Q.: Historical (1750–2014) anthropogenic emissions of reactive gases and aerosols from the Community Emissions Data System (CEDS), *Geoscientific Model Dev.*, 11, 369–408, <https://doi.org/10.5194/gmd-11-369-2018>, 2018.
- 975 Hoor, P., Borken-Kleefeld, J., Caro, D., Dessens, O., Endresen, O., Gauss, M., Grewe, V., Hauglustaine, D., Isaksen, I. S. A., Jöckel, P., Lelieveld, J., Myhre, G., Meijer, E., Olivie, D., Prather, M., Schnadt Poberaj, C., Shine, K. P., Staehelin, J., Tang, Q., van Aardenne, J., van Velthoven, P., and Sausen, R.: The impact of traffic emissions on atmospheric ozone and OH: results from QUANTIFY, *Atmospheric Chemistry and Physics*, 9, 3113–3136, <https://doi.org/10.5194/acp-9-3113-2009>, 2009.

- Hov, Ø., Sorteberg, A., Schmidbauer, N., Solberg, S., Stordal, F., Simpson, D., Lindskog, A., Areskoug, H., Pedro, O., Lättilä, H., and Heidam, N. Z.: European VOC Emission Estimates Evaluated by Measurements and Model Calculations, *J. Atmos. Chem.*, 28, 173–193, 1997.
- 980 Huang, G., Brook, R., Crippa, M., Janssens-Maenhout, G., Schieberle, C., Dore, C., Guizzardi, D., Muntean, M., Schaaf, E., and Friedrich, R.: Speciation of anthropogenic emissions of non-methane volatile organic compounds: a global gridded data set for 1970–2012, *Atmos. Chem. Physics*, 17, 7683–7701, <https://doi.org/10.5194/acp-17-7683-2017>, 2017.
- Jenkin, M., Derwent, R., and Wallington, T.: Photochemical ozone creation potentials for volatile organic compounds: Rationalization and estimation, *Atmospheric Environment*, 163, 128 – 137, <https://doi.org/https://doi.org/10.1016/j.atmosenv.2017.05.024>, 2017.
- 985 Jenkin, M., Khan, M., Shallcross, D., Bergström, R., Simpson, D., Murphy, K., and Rickard, A.: The CRI v2.2 reduced degradation scheme for isoprene, *Atmos. Environ.*, 212, 172 – 182, <https://doi.org/https://doi.org/10.1016/j.atmosenv.2019.05.055>, 2019.
- Jenkin, M. E., Saunders, S. M., and Pilling, M. J.: The tropospheric degradation of volatile organic compounds: a protocol for mechanism development, *Atmos. Environ.*, 31, 81–104, 1997.
- Jenkin, M. E., Watson, L. A., Utembe, S. R., and Shallcross, D. E.: A Common Representative Intermediates (CRI) mechanism for VOC degradation. Part 1: Gas phase mechanism development, *Atmos. Environ.*, 42, 7185–7195, <https://doi.org/10.1016/j.atmosenv.2008.07.028>, 2008.
- 990 Jonson, J., Simpson, D., Fagerli, H., and Solberg, S.: Can we explain the trends in European ozone levels?, *Atmos. Chem. Physics*, 6, 51–66, <http://http://www.atmos-chem-phys.net/6/51/2006/>, sRef-ID: 1680-7324/acp/2006-6-51, 2006.
- Jonson, J. E., Borken-Kleefeld, J., Simpson, D., Nyíri, A., Posch, M., and Heyes, C.: Impact of excess NO_x emissions from diesel cars on air quality, public health and eutrophication in Europe, *Environ. Res. Lett.*, 12, 094017, <http://stacks.iop.org/1748-9326/12/i=9/a=094017>, 2017.
- 995 Kanakidou, M., Seinfeld, J. H., Pandis, S. N., Barnes, I., Dentener, F. J., Facchini, M. C., Van Dingenen, R., Ervens, B., Nenes, A., Nielsen, C. J., Swietlicki, E., Putaud, J. P., Balkanski, Y., Fuzzi, S., Horth, J., Moortgat, G. K., Winterhalter, R., Myhre, C. E. L., Tsigaridis, K., Vignati, E., Stephanou, E. G., and Wilson, J.: Organic aerosol and global climate modelling: a review, *Atmospheric Chemistry and Physics*, 5, 1053–1123, <https://doi.org/10.5194/acp-5-1053-2005>, 2005.
- 1000 Keenan, T., Niinemets, U., Sabate, S., Gracia, C., and Penuelas, J.: Process based inventory of isoprenoid emissions from European forests: model comparisons, current knowledge and uncertainties, *Atmos. Chem. Physics*, 9, 4053–4076, 2009.
- Kroll, J. H. and Seinfeld, J. H.: Chemistry of secondary organic aerosol: Formation and evolution of low-volatility organics in the atmosphere, *Atmospheric Environment*, 42, 3593–3624, <https://doi.org/https://doi.org/10.1016/j.atmosenv.2008.01.003>, 2008.
- 1005 Kuenen, J., Dellaert, S., Visschedijk, A., Jalkanen, J., Super, I., and Denier van der Gon, H.: CAMS -REG-v4: a state-of-the-art high-resolution European emission inventory for air quality modelling, *Earth System Sci. Data.*, pp. 491–515, <https://doi.org/10.5194/essd-14-491-2022>, 2022.
- Lanz, V. A., Hueglin, C., Buchmann, B., Hill, M., Locher, R., Staehelin, J., and Reimann, S.: Receptor modeling of C₂-C₇ hydrocarbon sources at an urban background site in Zurich, Switzerland: changes between 1993-1994 and 2005-2006, *Atmospheric Chemistry and Physics*, 8, 2313–2332, <https://doi.org/10.5194/acp-8-2313-2008>, 2008.
- 1010 Lewis, A. C., Carpenter, L. J., and Pilling, M. J.: Nonmethane hydrocarbons in Southern Ocean boundary layer air, *Journal of Geophysical Research: Atmospheres*, 106, 4987–4994, <https://doi.org/https://doi.org/10.1029/2000JD900634>, 2001.
- Lewis, A. C., Hopkins, J. R., Carslaw, D. C., Hamilton, J. F., Nelson, B. S., Stewart, G., Dernie, J., Passant, N., and Murrells, T.: An increasing role for solvent emissions and implications for future measurements of volatile organic compounds, *Philosophical Transactions of the Royal Society A: Mathematical, Physical and Engineering Sciences*, 378, 20190328, <https://doi.org/10.1098/rsta.2019.0328>, 2020.
- 1015

- Li, B., Ho, S. S. H., Xue, Y., Huang, Y., Wang, L., Cheng, Y., Dai, W., Zhong, H., Cao, J., and Lee, S.: Characterizations of volatile organic compounds (VOCs) from vehicular emissions at roadside environment: The first comprehensive study in Northwestern China, *Atmospheric Environment*, 161, 1–12, <https://doi.org/https://doi.org/10.1016/j.atmosenv.2017.04.029>, 2017.
- Li, B., Ho, S. S. H., Gong, S., Ni, J., Li, H., Han, L., Yang, Y., Qi, Y., and Zhao, D.: Characterization of VOCs and their related atmospheric processes in a central Chinese city during severe ozone pollution periods, *Atmospheric Chemistry and Physics*, 19, 617–638, <https://doi.org/10.5194/acp-19-617-2019>, 2019.
- Li, C., Li, Q., Tong, D., Wang, Q., Wu, M., Sun, B., Su, G., and Tan, L.: Environmental impact and health risk assessment of volatile organic compound emissions during different seasons in Beijing, *Journal of Environmental Sciences*, 93, 1–12, <https://doi.org/https://doi.org/10.1016/j.jes.2019.11.006>, 2020.
- 1025 Li, Q., Gong, D., Wang, H., Wang, Y., Han, S., Wu, G., Deng, S., Yu, P., Wang, W., and Wang, B.: Rapid increase in atmospheric glyoxal and methylglyoxal concentrations in Lhasa, Tibetan Plateau: Potential sources and implications, *Sci. of the Total Environ.*, 824, 153 782, <https://doi.org/https://doi.org/10.1016/j.scitotenv.2022.153782>, 2022.
- Malley, C. S., Braban, C. F., Dumitrean, P., Cape, J. N., and Heal, M. R.: The impact of speciated VOCs on regional ozone increment derived from measurements at the UK EMEP supersites between 1999 and 2012, *Atmos. Chem. Physics*, 15, 8361–8380, <https://doi.org/10.5194/acp-15-8361-2015>, 2015.
- 1030 Matthews, B. and Wankmüller, R.: Methodologies applied to the CEIP GNFR gap-filling 2021 Part I: Main Pollutants (NO_x, NMVOCs, SO_x, NH₃, CO), Particulate Matter (PM_{2.5}, PM₁₀, PM_{coarse}) and Black Carbon (BC) for the years 2000 to 2019., EMEP/CEIP Technical Report 2/2021, CEIP Vienna, https://www.ceip.at/fileadmin/inhalte/ceip/00_pdf_other/2021/main_pm_bc_gap-filling_documentation_2021_final.pdf, 2021.
- 1035 McDonald, B. C., Gentner, D. R., Goldstein, A. H., and Harley, R. A.: Long-Term Trends in Motor Vehicle Emissions in U.S. Urban Areas, *Environmental Science & Technology*, 47, 10 022–10 031, <https://doi.org/10.1021/es401034z>, 2013.
- Mills, G., Sharps, K., Simpson, D., Pleijel, H., Broberg, M., Uddling, J., Jaramillo, F., Davies, William, J., Dentener, F., Berg, M., Agrawal, M., Agrawal, S. B., Ainsworth, E. A., Büker, P., Emberson, L., Feng, Z., Harmens, H., Hayes, F., Kobayashi, K., Paoletti, E., and Dingenen, R.: Ozone pollution will compromise efforts to increase global wheat production, *Global Change Biol.*, 24, 3560–3574, <https://doi.org/10.1111/gcb.14157>, 2018.
- 1040 Mo, Z., Cui, R., Yuan, B., Cai, H., McDonald, B. C., Li, M., Zheng, J., and Shao, M.: A mass-balance-based emission inventory of non-methane volatile organic compounds (NMVOCs) for solvent use in China, *Atmospheric Chemistry and Physics*, 21, 13 655–13 666, <https://doi.org/10.5194/acp-21-13655-2021>, 2021.
- MSC-W, E.: Open Source GenChem 1.0.0 documentation, <https://genchem.readthedocs.io/en/latest/index.html>, 2020.
- 1045 MSC-W, E.: Open Source EMEP/MSW model v5.0 (202310), <https://doi.org/10.5281/zenodo.8431553>, 2023.
- Möllmann-Coers, M., Klemp, D., Mannschreck, K., and Slemr, F.: Statistical study of the diurnal variation of modeled and measured NMHC contributions, *Atmospheric Environment*, 36, 109–122, [https://doi.org/https://doi.org/10.1016/S1352-2310\(02\)00217-0](https://doi.org/https://doi.org/10.1016/S1352-2310(02)00217-0), evaluation of Modeled Emission Inventories of Ozone Precursors. A Case Study for an Urban Area (Augsburg, Germany), 2002.
- Niedojadlo, A., Becker, K. H., Kurtenbach, R., and Wiesen, P.: The contribution of traffic and solvent use to the total NMVOC emission in a German city derived from measurements and CMB modelling, *Atmospheric Environment*, 41, 7108–7126, <https://doi.org/https://doi.org/10.1016/j.atmosenv.2007.04.056>, 2007.
- 1050

- Oliveira, K., Guevara, M., Jorba, O., Querol, X., and García-Pando, C. P.: A new NMVOC speciated inventory for a reactivity-based approach to support ozone control strategies in Spain, *Sci. of the Total Environ.*, 867, 161449, <https://doi.org/https://doi.org/10.1016/j.scitotenv.2023.161449>, 2023.
- 1055 Parrish, D. D., Trainer, M., Young, V., Goldan, P. D., Kuster, W. C., Jobson, B. T., Fehsenfeld, F. C., Lonneman, W. A., Zika, R. D., Farmer, C. T., Riemer, D. D., and Rodgers, M. O.: Internal consistency tests for evaluation of measurements of anthropogenic hydrocarbons in the troposphere, *Journal of Geophysical Research: Atmospheres*, 103, 22 339–22 359, <https://doi.org/https://doi.org/10.1029/98JD01364>, 1998.
- Passant, N.: Speciation of UK emissions of non-methane volatile organic compounds, Report ENV-0545 ENV-0545, AEA Technology, Culham, Abingdon, United Kingdom, 2002.
- 1060 Peischl, J., Ryerson, T. B., Brioude, J., Aikin, K. C., Andrews, A. E., Atlas, E., Blake, D., Daube, B. C., de Gouw, J. A., Dlugokencky, E., Frost, G. J., Gentner, D. R., Gilman, J. B., Goldstein, A. H., Harley, R. A., Holloway, J. S., Kofler, J., Kuster, W. C., Lang, P. M., Novelli, P. C., Santoni, G. W., Trainer, M., Wofsy, S. C., and Parrish, D. D.: Quantifying sources of methane using light alkanes in the Los Angeles basin, California, *Journal of Geophysical Research: Atmospheres*, 118, 4974–4990, <https://doi.org/https://doi.org/10.1002/jgrd.50413>, 2013.
- 1065 Pfister, G. G., Emmons, L. K., Hess, P. G., Lamarque, J. F., Orlando, J. J., Walters, S., Guenther, A., Palmer, P. I., and Lawrence, P. J.: Contribution of isoprene to chemical budgets: A model tracer study with the NCAR CTM MOZART-4, *J. Geophys. Res.*, 113, D05 308, 2008.
- Plass-Dülmer, C., Michl, K., Ruf, R., and Berresheim, H.: C₂–C₈ Hydrocarbon measurement and quality control procedures at the Global Atmosphere Watch Observatory Hohenpeissenberg, *Journal of Chromatography A*, 953, 175–197, [https://doi.org/https://doi.org/10.1016/S0021-9673\(02\)00128-0](https://doi.org/https://doi.org/10.1016/S0021-9673(02)00128-0), 2002.
- 1070 Plass-Dülmer, C., Schmidbauer, N., Slemr, J., Slemr, F., and D'Souza, H.: European hydrocarbon intercomparison experiment AMOHA part 4: Canister sampling of ambient air, *Journal of Geophysical Research: Atmospheres*, 111, <https://doi.org/https://doi.org/10.1029/2005JD006351>, 2006.
- 1075 Pye, H. O. T., Appel, K. W., Seltzer, K. M., Ward-Caviness, C. K., and Murphy, B. N.: Human-Health Impacts of Controlling Secondary Air Pollution Precursors, *Environmental Science & Technology Letters*, 9, 96–101, <https://doi.org/10.1021/acs.estlett.1c00798>, 2022.
- Rappenglück, B., Apel, E., Bauerfeind, M., Bottenheim, J., Brickell, P., Čavolka, P., Cech, J., Gatti, L., Hakola, H., Honzak, J., Junek, R., Martin, D., Noone, C., Plass-Dülmer, C., Travers, D., and Wang, D.: The first VOC intercomparison exercise within the Global Atmosphere Watch (GAW), *Atmospheric Environment*, 40, 7508–7527, <https://doi.org/https://doi.org/10.1016/j.atmosenv.2006.07.016>, 2006.
- 1080 Read, K. A., Carpenter, L. J., Arnold, S. R., Beale, R., Nightingale, P. D., Hopkins, J. R., Lewis, A. C., Lee, J. D., Mendes, L., and Pickering, S. J.: Multiannual Observations of Acetone, Methanol, and Acetaldehyde in Remote Tropical Atlantic Air: Implications for Atmospheric OVOC Budgets and Oxidative Capacity, *Environmental Science & Technology*, 46, 11 028–11 039, <https://doi.org/10.1021/es302082p>, PMID: 22963451, 2012.
- Reimann, S., Calanca, P., and Hofer, P.: The anthropogenic contribution to isoprene concentrations in a rural atmosphere, *Atmos. Environ.*, 34, 109 – 115, [https://doi.org/10.1016/S1352-2310\(99\)00285-X](https://doi.org/10.1016/S1352-2310(99)00285-X), 2000.
- 1085 Reimann, S., Wegener, R., Claude, A., and Sauvage, S.: Updated Measurement Guideline for NO_x and VOCs (deliverable 3.17 of ACTRIS-2), https://www.actris.eu/sites/default/files/inline-files/WP3_D3.1, 2018.
- Rodigast, M., Mutzel, A., Schindelka, J., and Herrmann, H.: A new source of methylglyoxal in the aqueous phase, *Atmos. Chem. Physics*, 16, 2689–2702, <https://doi.org/10.5194/acp-16-2689-2016>, 2016.

- 1090 Russo, R. S., Zhou, Y., White, M. L., Mao, H., Talbot, R., and Sive, B. C.: Multi-year (2004–2008) record of nonmethane hydrocarbons and halocarbons in New England: seasonal variations and regional sources, *Atmospheric Chemistry and Physics*, 10, 4909–4929, <https://doi.org/10.5194/acp-10-4909-2010>, 2010.
- Salameh, T., Borbon, A., Afif, C., Sauvage, S., Leonardis, T., Gaimoz, C., and Locoge, N.: Composition of gaseous organic carbon during ECOCEM in Beirut, Lebanon: new observational constraints for VOC anthropogenic emission evaluation in the Middle East, *Atmos. Chem. Physics*, 17, 193–209, <https://doi.org/10.5194/acp-17-193-2017>, 2017.
- 1095 Saunders, S. M., Jenkin, M. E., Derwent, R. G., and Pilling, M. J.: Protocol for the development of the Master Chemical Mechanism, MCM v3 (Part A): tropospheric degradation of non-aromatic volatile organic compounds, *Atmos. Chem. Physics*, 3, 161–180, <http://www.atmos-chem-phys.net/3/161/2003/>, 2003.
- Sauvage, S., Plaisance, H., Locoge, N., Wroblewski, A., Coddeville, P., and Galloo, J.: Long term measurement and source apportionment of non-methane hydrocarbons in three French rural areas, *Atmos. Environ.*, 43, 2430–2441, <https://doi.org/https://doi.org/10.1016/j.atmosenv.2009.02.001>, 2009.
- 1100 Seinfeld, J. and Pandis, S.: *Atmospheric chemistry and physics. From air pollution to climate change*, John Wiley and Sons, inc., New York, 1998.
- Simpson, D.: Hydrocarbon reactivity and ozone formation in Europe, *J. Atmos. Chem.*, 20, 163–177, <https://doi.org/10.1007/BF00696556>,
- 1105 1995.
- Simpson, D., Winiwarer, W., Börjesson, G., Cinderby, S., Ferreiro, A., Guenther, A., Hewitt, C. N., Janson, R., Khalil, M. A. K., Owen, S., Pierce, T. E., Puxbaum, H., Shearer, M., Skiba, U., Steinbrecher, R., Tarrasón, L., and Öquist, M. G.: Inventorying emissions from Nature in Europe, *J. Geophys. Res.*, 104, 8113–8152, 1999.
- Simpson, D., Benedictow, A., Berge, H., Bergström, R., Emberson, L. D., Fagerli, H., Flechard, C. R., Hayman, G. D., Gauss, M., Jonson, J. E., Jenkin, M. E., Nyíri, A., Richter, C., Semeena, V. S., Tsyro, S., Tuovinen, J.-P., Valdebenito, A., and Wind, P.: The EMEP MSC-W chemical transport model – technical description, *Atmos. Chem. Physics*, 12, 7825–7865, <https://doi.org/10.5194/acp-12-7825-2012>,
- 1110 2012.
- Simpson, D., Tsyro, S., and Wind, P.: Updates to the EMEP/MS-CW model, in: *Transboundary particulate matter, photo-oxidants, acidifying and eutrophying components. EMEP Status Report 1/2015*, pp. 129–138, The Norwegian Meteorological Institute, Oslo, Norway, 2015.
- 1115 Simpson, D., Bergström, R., Briolat, A., Imhof, H., Johansson, J., Priestley, M., and Valdebenito, A.: GenChem v1.0 – a chemical pre-processing and testing system for atmospheric modelling, *Geoscientific Model Dev.*, 13, 6447–6465, <https://doi.org/10.5194/gmd-13-6447-2020>, 2020.
- Simpson, D., van Caspel, W., Benedictow, A., Fagerli, H., Jonson, J., Tsyro, S., Valdebento, A., and Wind, P.: Updates to the EMEP/MS-CW model, 2022–2023, in: *Transboundary particulate matter, photo-oxidants, acidifying and eutrophying components. EMEP Status Report 1/2023*, pp. 159–179, The Norwegian Meteorological Institute, Oslo, Norway, available from www.emep.int, 2023.
- 1120 Slemr, J., Slemr, F., Partridge, R., D’Souza, H., and Schmidbauer, N.: Accurate Measurements of Hydrocarbons in the Atmosphere (AMOHA): Three European intercomparisons, *Journal of Geophysical Research: Atmospheres*, 107, ACH 15–1–ACH 15–25, <https://doi.org/https://doi.org/10.1029/2001JD001357>, 2002.
- Solberg, S., Dye, C., Walker, S., and Simpson, D.: Long-term measurements and model calculations of formaldehyde at rural European monitoring sites, *Atmos. Environ.*, 35, 195–207, 2001.
- 1125 Solberg, S., Claude, A., Reimann, S., and Sauvage, S.: VOC measurements 2018, EMEP/CCC-Report 4/2020, Norwegian Institute for Air Research, projects.nilu.no/ccc/reports/cccr4-2020_VOC_2018.pdf, 2020.

- Solberg, S., Claude, A., Reimann, S., Sauvage, S., and Walker, S.-E.: VOC measurements 2020, EMEP/CCC-Report 4/2022, Norwegian Institute for Air Research, projects.nilu.no/ccc/reports/EMEP_CCC-Report_4_2022_VOC_measurements_2020.pdf, 2022.
- 1130 Stavrakou, T., Mueller, J.-F., De Smedt, I., Van Roozendaal, M., Kanakidou, M., Vrekoussis, M., Wittrock, F., Richter, A., and Burrows, J. P.: The continental source of glyoxal estimated by the synergistic use of spaceborne measurements and inverse modelling, *Atmos. Chem. Physics*, 9, 8431–8446, <https://doi.org/10.5194/acp-9-8431-2009>, 2009.
- Stockwell, W. R., Geiger, H., and Becker, K. H.: Estimation of incremental reactivities for multiple day scenarios: an application to ethane and dimethoxymethane, *Atmos. Environ.*, 35, 929–939, 2001.
- 1135 Swarthout, R. F., Russo, R. S., Zhou, Y., Hart, A. H., and Sive, B. C.: Volatile organic compound distributions during the NACHTT campaign at the Boulder Atmospheric Observatory: Influence of urban and natural gas sources, *Journal of Geophysical Research: Atmospheres*, 118, 10,614–10,637, <https://doi.org/https://doi.org/10.1002/jgrd.50722>, 2013.
- UK-AQEG: Non-methane Volatile Organic Compounds in the UK, AQEG Report 2/2020, UK Air Quality Expert Group, https://uk-air.defra.gov.uk/assets/documents/reports/cat09/2006240803_Non_Methane_Volatile_Organic_Compounds_in_the_UK.pdf, 2020.
- 1140 van Caspel, W. E., Simpson, D., Jonson, J. E., Benedictow, A. M. K., Ge, Y., di Sarra, A., Pace, G., Vieno, M., Walker, H. L., and Heal, M. R.: Implementation and evaluation of updated photolysis rates in the EMEP MSC-W chemistry-transport model using Cloud-*J* v7.3e, *Geoscientific Model Development*, 16, 7433–7459, <https://doi.org/10.5194/gmd-16-7433-2023>, 2023.
- Veefkind, J., Aben, I., McMullan, K., Förster, H., de Vries, J., Otter, G., Claas, J., Eskes, H., de Haan, J., Kleipool, Q., van Weele, M., Hasekamp, O., Hoogeveen, R., Landgraf, J., Snel, R., Tol, P., Ingmann, P., Voors, R., Kruizinga, B., Vink, R., 1145 Visser, H., and Levelt, P.: TROPOMI on the ESA Sentinel-5 Precursor: A GMES mission for global observations of the atmospheric composition for climate, air quality and ozone layer applications, *Remote Sensing of Environment*, 120, 70–83, <https://doi.org/https://doi.org/10.1016/j.rse.2011.09.027>, the Sentinel Missions - New Opportunities for Science, 2012.
- von Schneidmesser, E., Monks, P. S., and Plass-Duelmer, C.: Global comparison of VOC and CO observations in urban areas, *Atmospheric Environment*, 44, 5053–5064, <https://doi.org/https://doi.org/10.1016/j.atmosenv.2010.09.010>, 2010.
- 1150 von Schneidmesser, E., Coates, J., Denier van der Gon, H., Visschedijk, A., and Butler, T.: Variation of the NMVOC speciation in the solvent sector and the sensitivity of modelled tropospheric ozone, *Atmospheric Environment*, 135, 59–72, <https://doi.org/https://doi.org/10.1016/j.atmosenv.2016.03.057>, 2016.
- von Schneidmesser, E., McDonald, B. C., Denier van der Gon, H., Crippa, M., Guizzardi, D., Borbon, A., Dominutti, P., Huang, G., Jansens-Maenhout, G., Li, M., Ou-Yang, C.-F., Tisnaini, S., and Wang, J.-L.: Comparing Urban Anthropogenic NMVOC 1155 Measurements With Representation in Emission Inventories—A Global Perspective, *J. Geophys. Res.*, 128, e2022JD037906, <https://doi.org/https://doi.org/10.1029/2022JD037906>, e2022JD037906 2022JD037906, 2023.
- Waked, A., Sauvage, S., Borbon, A., Gauduin, J., Pallares, C., Vagnot, M.-P., Léonardis, T., and Locoge, N.: Multi-year levels and trends of non-methane hydrocarbon concentrations observed in ambient air in France, *Atmos. Environ.*, 141, 263–275, <https://doi.org/https://doi.org/10.1016/j.atmosenv.2016.06.059>, 2016.
- 1160 Watson, L. A., Shallcross, D. E., Utembe, S. R., and Jenkin, M. E.: A Common Representative Intermediates (CRI) mechanism for VOC degradation. Part 2: Gas phase mechanism reduction, *Atmos. Environ.*, 42, 7196–7204, <https://doi.org/10.1016/j.atmosenv.2008.07.034>, 2008.
- Whalley, L. K., Stone, D., Dunmore, R., Hamilton, J., Hopkins, J. R., Lee, J. D., Lewis, A. C., Williams, P., Kleffmann, J., Laufs, S., Woodward-Massey, R., and Heard, D. E.: Understanding in situ ozone production in the summertime through radical observa-

- 1165 tions and modelling studies during the Clean air for London project (ClearfLo), *Atmospheric Chemistry and Physics*, 18, 2547–2571, <https://doi.org/10.5194/acp-18-2547-2018>, 2018.
- Wiedinmyer, C., Tie, X., Guenther, A., Neilson, R., and Granier, C.: Future Changes in Biogenic Isoprene Emissions: How Might They Affect Regional and Global Atmospheric Chemistry?, *Earth Interactions*, 10, 1 – 19, <https://doi.org/https://doi.org/10.1175/EI174.1>, 2006.
- Wiedinmyer, C., Kimura, Y., McDonald-Buller, E. C., Emmons, L. K., Buchholz, R. R., Tang, W., Seto, K., Joseph, M. B., Barsanti, K. C.,
1170 Carlton, A. G., and Yokelson, R.: The Fire Inventory from NCAR version 2.5: an updated global fire emissions model for climate and chemistry applications, *Geoscientific Model Dev.*, 16, 3873–3891, <https://doi.org/10.5194/gmd-16-3873-2023>, 2023.
- Wilde, S. E., Dominutti, P. A., Allen, G., Andrews, S. J., Bateson, P., Bauguitte, S. J.-B., Burton, R. R., Colfescu, I., France, J., Hopkins, J. R., Huang, L., Jones, A. E., Lachlan-Cope, T., Lee, J. D., Lewis, A. C., Mobbs, S. D., Weiss, A., Young, S., and Purvis, R. M.: Speciation of VOC emissions related to offshore North Sea oil and gas production, *Atmospheric Chemistry and Physics*, 21, 3741–3762,
1175 <https://doi.org/10.5194/acp-21-3741-2021>, 2021.
- Zhang, Y., Wang, X., Zhang, Z., Lü, S., Shao, M., Lee, F. S., and Yu, J.: Species profiles and normalized reactivity of volatile organic compounds from gasoline evaporation in China, *Atmospheric Environment*, 79, 110–118, <https://doi.org/https://doi.org/10.1016/j.atmosenv.2013.06.029>, 2013.