

Influence of wind strength and direction on diffusive methane fluxes and atmospheric methane concentrations above the North Sea

Ingeborg Bussmann¹, Eric P. Achterberg², Holger Brix³, Nicolas Brüggemann⁴, Götz Flöser³, Claudia Schütze⁵, Philipp Fischer²

¹Departments of Shelf Sea System Ecology & Coastal Ecology, Alfred-Wegener-Institut, Helmholtz Zentrum für Polar- und Meeresforschung, Kurpromenade 201, 27498 Helgoland, Germany

²GEOMAR, Helmholtz Centre for Ocean Research, Wischhofstr. 1-3, 24148 Kiel, Germany

³Helmholtz-Zentrum Hereon, Institute of Carbon Cycles, Max-Planck-Straße 1, 21502 Geesthacht, Germany

⁴Institute of Bio- and Geosciences – Agrosphere (IBG-3), Forschungszentrum Jülich GmbH, Wilhelm-Johnen-Str., 52425 Jülich, Germany

⁵Department of Monitoring and Exploration Technologies, Helmholtz Centre for Environmental Research - UFZ, Permoserstr. 15, 04318 Leipzig, Germany

correspondence to ingeborg.bussmann@awi.de

Abstract. Quantification of the diffusive methane fluxes between the coastal ocean and atmosphere is important to constrain the atmospheric methane budget. The determination of the fluxes in coastal waters is characterized by a high level of uncertainty. To improve the accuracy of the estimation of coastal methane fluxes, high temporal and spatial sampling frequencies of dissolved methane in seawater are required as well as the quantification of atmospheric methane concentrations, wind speed and wind direction above the ocean. In most cases, these atmospheric data are obtained from land-based atmospheric and meteorological monitoring stations in the vicinity of the coastal ocean methane observations.

In this study, we measured wind speed and direction as well as atmospheric methane directly on board three research vessels in the southern North Sea and compared the local and remote atmospheric and meteorological measurements on the quality of the flux data. In addition, we assessed the source of the atmospheric methane measured in the study area in the German Bight using air mass back trajectory assessments.

The choice of the wind speed data source had a strong impact on the flux calculations. Fluxes based on wind data from nearby weather stations amounted to only $58 \pm 34\%$ of values based on situ data. Using in-situ data, we calculated an average diffusive methane sea-to-air flux of $221 \pm 351 \mu\text{mol m}^{-2} \text{d}^{-1}$ ($n = 941$) and $159 \pm 444 \mu\text{mol m}^{-2} \text{d}^{-1}$ ($n = 3028$) for our study area in September 2019 and 2020, respectively. The area-weighted diffusive flux for the entire area of Helgoland Bay ($3.78 \times 10^9 \text{ m}^2$) was 836 ± 97 and $600 \pm 111 \text{ kmol d}^{-1}$ for September 2019 and 2020, respectively. Using the median value of the diffusive fluxes for these extrapolations resulted in much lower values, compared to area-weighted extrapolations or mean-based extrapolations.

In general, at high wind speeds, the surface water turbulence is enhanced and the diffusive flux increases. This enhanced methane input however is quickly diluted within the air mass. Hence, a significant correlation between the methane flux and the atmospheric concentration was observed only at wind speeds $< 5 \text{ m s}^{-1}$.
40 The atmospheric methane concentration was mainly influenced by the wind direction, i.e., the origin of the transported air mass. Airmasses coming from industrial regions resulted in elevated atmospheric methane concentrations, while airmasses coming from the North Sea transported reduce methane levels. With our detailed study on the spatial distribution of methane fluxes we were able to provide a detailed and more realistic
45 estimation of coastal methane fluxes.

1 Introduction

1.1 Necessity for coastal methane data

50 Methane (CH_4) is the second-most important greenhouse gas (GHG) after carbon dioxide (CO_2), accounting for 16–25% of atmospheric warming to date (Etminan et al., 2016). Aquatic ecosystems contribute 41% (median) or 53% (mean) of total global CH_4 emissions from anthropogenic and natural sources (Rosentreter et al., 2021a). Coastal seas are an important global source of GHGs (Saunois et al., 2020). For the open and coastal ocean including estuaries, Saunois et al. (2020) suggested an emission of 6 (range 2–10) $\text{Tg CH}_4 \text{ yr}^{-1}$. A more recent
55 study from Rosentreter suggested an emission of 8.4 (4.8–28.4, Q1-Q3) $\text{Tg CH}_4 \text{ yr}^{-1}$, with a contribution of 3% from estuaries, 13% from tidal flats and 52% from continental shelves (Rosentreter et al., 2021a). The near-shore environments hence contribute the largest but most uncertain diffusive fluxes despite accounting for only ~3% of the global ocean area.

The reasons for the large range and uncertainty of coastal CH_4 fluxes are associated with the high spatial and
60 temporal variability of fluxes in coastal ecosystems, driven by, for example, variations in tidal pumping and salinity gradients (Rosentreter et al., 2021a), exacerbated by a paucity of data with sufficient temporal and spatial resolution (Weber et al., 2019). Overall, aquatic GHG emissions are causing considerable uncertainty in global GHG assessments (IPCC, 2021). Thus, reducing the uncertainty in aquatic GHG budgets is important to allow improvements to biogeochemical models and climate predictions.

65

1.2 Traditional method for flux calculation

The air–sea gas flux is a function of the gas transfer velocity (k) and atmospheric and oceanic CH_4 concentrations (Wanninkhof, 2014, details see method section). Since k is difficult to measure, it is often parameterized using widely measured parameters such as wind speed. In offshore regions with greater water
70 depth, wind is known as a good predictor for the gas transfer velocity because wind creates waves and currents which control turbulence and bubbles at the sea surface (Wanninkhof et al., 2009). Also in shallow waters, k can be well estimated by wind speed when the water depth is more than 10 m (Ho et al., 2018). Other techniques to determine k are eddy covariance measurements, tracer injection methods (Gutiérrez-Loza et al., 2022; Dobashi and Ho, 2023) and chamber measurements (Rosentreter et al., 2021b). The best way to determine k is an
75 ongoing matter of debate.

Diffusive CH_4 fluxes are typically determined from direct surface ocean CH_4 observations and parametrizations of wind speed and atmospheric CH_4 concentrations. The atmospheric data used are normally taken from coastal

meteorological stations in close proximity to the marine observations (see for example (Myllykangas et al., 2020;Woszczyk and Schubert, 2021), or a combination of in-situ data and data obtained from a meteorological station is used (Mau et al., 2015;Busmann et al., 2021b;Humborg et al., 2019). Other studies use in-situ data for all variables (de Groot et al., 2023; Thornton, 2016 #2655). We are not aware of any study on the influence of the data source on the quantification of diffusive CH₄ fluxes.

1.3 Atmospheric methane above a water body

The atmospheric CH₄ concentration is determined by several factors. One is the sea-to-air transfer through the diffusive CH₄ flux (Wanninkhof, 2014), implying that periods or areas with high diffusive CH₄ fluxes into the atmosphere would result in higher atmospheric CH₄ concentrations. However, there are contrasting reports in literature in marine science, with highest atmospheric CH₄ concentrations being observed during cruises with lowest CH₄ fluxes (Silyakova et al., 2020). Increasing atmospheric CH₄ levels were not found alongside enhanced dissolved CH₄ concentrations (Vogt et al., 2023;Law et al., 2010). These studies show that there is no clear mechanistic understanding of the relationship between dissolved CH₄ concentrations, CH₄ fluxes to the atmosphere and atmospheric CH₄ concentrations in shallow coastal water areas.

1.4 Methane in the North Sea

The CH₄ budget of the central North Sea is characterized by pockmarks (Römer et al., 2021), drilling activities (Vielstädte et al., 2017), and gas ebullition sites (Mau et al., 2015). In contrast, in the southern North Sea and areas close to the mainland, dissolved CH₄ mainly originates from autochthonous methanogenesis in sediments (Yin et al., 2019) with subsequent fluxes into the water column, and also from tidal flats ((Røy et al., 2008;Wu et al., 2015) and riverine inputs (Upstill-Goddard and Barnes, 2016). Borges et al. (2017) showed that warm summers in northern Europe in recent years have resulted in increased dissolved CH₄ concentrations due to enhanced methanogenesis, which has led to higher sea-to-air CH₄ fluxes along the Belgian coast (Borges et al., 2017;Borges et al., 2019).

Previous studies have investigated the temporal and spatial patterns of dissolved CH₄ between the German North Sea coast and the island of Helgoland (60 km offshore) on a monthly basis from 2010 to 2014 (Matousu et al., 2017;Osudar et al., 2015;Hackbusch et al., 2019). In these studies, the CH₄ concentrations near the coast ranged between 30 and 51 nmol L⁻¹, whereas near Helgoland, the concentrations were 14 ± 6 nmol L⁻¹. However, no flux data were calculated in these studies. At these high concentrations of dissolved CH₄ in the coastal North Sea (the equilibrium concentration is 2–3 nmol L⁻¹), the diffusive flux is mainly directed from the sea into the atmosphere.

1.5 Aim of study

The aim of this study was to establish the diffusive CH₄ fluxes from the sea into the atmosphere in the southern German Bight (North Sea) based on CH₄ concentration data of high spatial and temporal resolution. We also investigated the influence of the use of different auxiliary data sets on the calculation of the diffusive CH₄ fluxes over a wide area of the Helgoland Bay. We assessed whether increased diffusive CH₄ fluxes lead to detectable increases in atmospheric CH₄ concentrations and identified the atmospheric factors that influence CH₄ concentrations in a given area.

hat formatiert: Tiefgestellt

hat formatiert: Tiefgestellt

120 **2 Material & Methods**

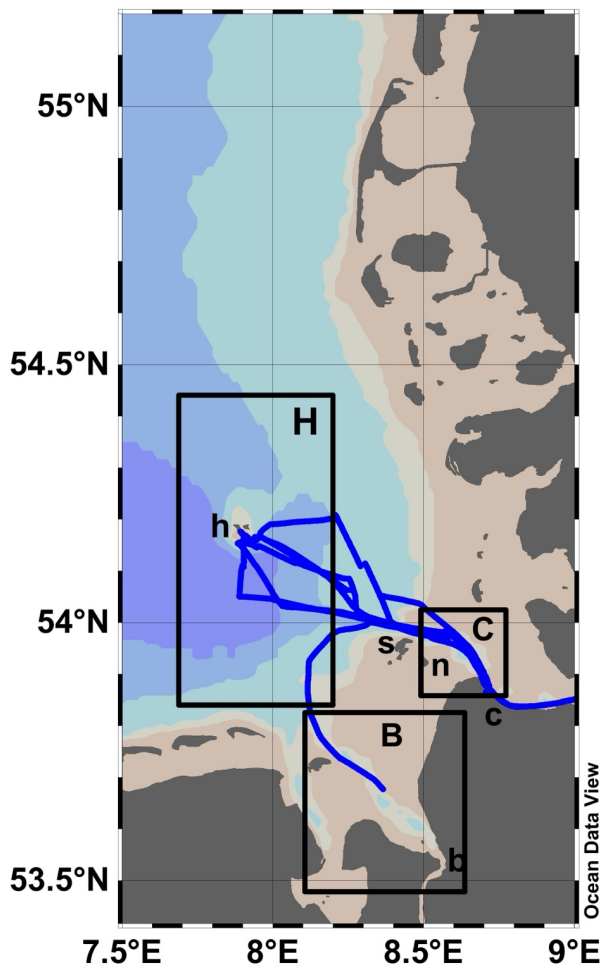
2.1 Study Sites

The cruises Stern-3 and 5 were performed in September 2019 and 2020, as part of the “Modular Observation Solutions for Earth Systems” (MOSES, (Weber et al., 2021)) subproject “Hydrological Extremes”.

125 On Stern-3, the research vessels RV Littorina (German Helmholtz Centre GEOMAR), RV Ludwig Prandtl (German Helmholtz Centre Hereon) and RV Uthörn (German Helmholtz Centre AWI) left the harbor of Cuxhaven (Fig. 1) on 9 September 2019, heading for the island of Helgoland (German Bight) following different cruise tracks. On 10 September 2019, RV Littorina and Ludwig Prandtl returned to Cuxhaven and the Elbe Estuary, while RV Uthörn returned via the river Weser to Bremerhaven (Bussmann et al., 2020).

130 For Stern-5, the three research vessels started from Cuxhaven and the Elbe estuary on 30 August 2020, again heading for Helgoland (Fig. 2). In the following days, RV Littorina covered the area between Helgoland and Büsum (on the mainland), extending the cruise track towards the East. RV Ludwig Prandtl covered the area further north and west of the island of Amrum. Mya II (German Helmholtz Centre AWI) covered the area between Helgoland and Bremerhaven with the Weser Estuary. On the last day (3 September 2020) RV Mya II ended the cruise in Sylt, while the others returned to Cuxhaven (Bussmann et al., 2021a).

135



140 **Figure 1.** Cruise tracks for Stern 3, in September 2019 with RVs Littorina (blue), Ludwig Prandtl (green) and Uthörn (red). The areas for different flux calculations are also indicated: the area around Bremerhaven (B) with its meteorological station (b), the area around Cuxhaven (C) with its meteorological station (c) and the area around Helgoland (H) with its meteorological station (h). The islands Neuwerk (n) and Scharhörn (s) are also indicated.

Kommentiert [MOU1]: A corrected figure 1 was added, with the indications of the islands

145

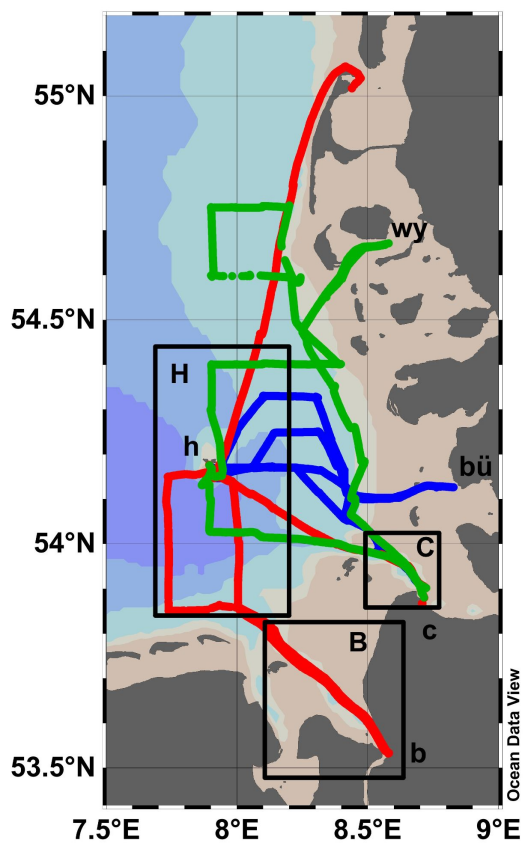


Figure 2. Cruise tracks for Stern 5, in September 2020 with RVs *Littorina* (blue), *Ludwig Prandtl* (green) and *Mya II* (red). The areas for different flux calculations are also indicated: the area around Bremerhaven (B) with its meteorological station (b), the area around Cuxhaven (C) with its meteorological station (c) and the area around Helgoland (H) with its meteorological station (h). The villages Büsum (bü) and Wyk auf Föhr (wy) are also indicated.

Kommentiert [MOU2]: A corrected figure 2 was added with the villages indicated.

2.2 Hydrographic and meteorological parameters

Basic hydrographic parameters, such as temperature, salinity, pH, oxygen, turbidity and chlorophyll fluorescence, were measured by shipboard measurement systems (FerryBoxes; 4Hjena, Germany) on all ships. FerryBox systems had been checked and calibrated during routine maintenance and in preparation for the cruises (Petersen, 2014). The water supply to the FerryBoxes and CH₄ analyzers (see below section Methane analysis) was taken from the ships' underway surface water supply (intake at 1–2 m). The water from the ship was either pumped through a flow-through basin with ambient air pressure (Stern-3) or from a specific in-situ pump tower (Stern-5) with a 10-l volume, pressure regulator and water overflow. Full details are in the cruise

reports (Bussmann et al., 2020; Bussmann et al., 2021a). Both systems ensured a constant and sufficient surface water supply to all sensors.

165 True wind speed and true wind direction were provided by the dship-system (nautical data system, Werum) or equivalent systems of Ludwig Prandtl, Mya and Uthörn (no data were available from RV Littorina) with a frequency of 1 min⁻¹. Available wind speed data were corrected to U₁₀ (at 10 m height) with the respective measuring height (Touma, 1977):

$$170 U_{10} = U_{\text{ship}} (10 / Z_{\text{ship}})^{0.143} \quad (1)$$

For any further calculations, we used the rolling mean over 10 minutes. For comparison, we also used wind data (hourly means) provided by the German Meteorological Service (<https://cdc.dwd.de/portal/>) for the weather stations Bremerhaven, Cuxhaven and Helgoland Dune. For each station, an area was set for which the respective wind data were used for the flux calculations (Fig. 1 and 2). Data on local tidal cycles were provided by the Bundesamt für Seeschifffahrt und Hydrographie (Federal Maritime and Hydrographic Agency, https://www.bsh.de/DE/DATEN/Vorhersagen/Gezeiten/gezeiten_node.html) for the sites Büsum and Wyk auf Föhr.

180 2.3 Methane Analysis

Dissolved CH₄ concentrations were measured with a dissolved gas extraction unit and a laser based analytical Greenhouse Gas Analyzer (GGA; both Los Gatos Research, United States) on all three ships. The degassing devices withdrew water from the flow-through units at 1.2 L min⁻¹. Methane was extracted from the water via a hydrophobic membrane and hydrocarbon-free carrier gas on the other side of the membrane (synthetic air or nitrogen, at 0.5 L min⁻¹). The carrier gas with the extracted CH₄ was then directed to the inlet of the gas analyzer. The time offset between the water intake and stable recording at the GGA was determined beforehand in the laboratory.

To convert the relative concentrations (ppm) given by the GGA to absolute concentrations (nmol L⁻¹), discrete water samples were obtained at least every hour. The CH₄ concentration in these bottles was determined using the headspace method and gas chromatographic analysis (Magen et al., 2014). Based on the obtained values, conversion factors (ppm to nmol L⁻¹) were determined for each setup. The regression lines and equations are given in the supplementary information (Fig. S1). Histograms for dissolved CH₄ concentrations are shown in figure S2. From the intercalibration stations (see section of data management) we calculated an instrumental error of 3.6%. To test the lower sensitivity of the set-up, aerated freshwater with an equilibrium concentration of 2.9 nM was measured in the laboratory and the instrument readings gave a concentration of 2.3 ± 0.3 nM.

195 For quality control, the regional boundaries were set to 1–500 nmol L⁻¹ (see section data management).

Atmospheric CH₄ was measured on board of the research vessels: for Stern-3 on the Littorina, Ludwig Prandtl and Uthörn with a Picarro G2301, a Picarro G2301, and a Microportable Greenhouse Gas Analyzer (LosGatos) respectively; for Stern-5 with a Picarro G2301, a Licor LI-8100A and ~~another Picarro G2301~~, respectively. All data were corrected by the instruments for water vapor resulting in CH₄ dry values. The inlets for the instruments were approximately 4 m above the water surface and located either at the ship's bow (Littorina) or on a railing on the bridge (other ships). For quality control, the regional boundaries were set to 1.8–2.3 ppm (see

hat formatiert: Schriftfarbe: Rot

hat formatiert: Tiefgestellt

hat gelöscht: a LosGatos GGA-911

section data management). Additional data for atmospheric CH₄ concentration were obtained from the meteorological station in Mace Head, Ireland, (<https://gml.noaa.gov/dv/data/index.php?site=MHD>), using the monthly means of September 2019 and September 2020 (1.942 ppm and 1.957 ppm, respectively).

2.4 Calculation of the diffusive methane flux

The overall gas exchange across an air–water interface was determined according to (Wanninkhof et al., 2009) as:

$$F = k_{\text{CH}_4} \cdot (c_m - c_{\text{equ}}) \quad (2)$$

where F is the rate of gas flux per unit area (mmol m⁻² d⁻¹), c_m is the measured CH₄ concentration of the surface waters, and c_{equ} is the atmospheric gas equilibrium concentration (Wiesenburg and Guinasso, 1979). For the atmospheric CH₄ concentration data, we either used our measured data or the data from the Mace Head observatory.

The gas exchange coefficient (k) is a function of water surface agitation. The k value in oceans and estuaries is determined mostly by wind speed (U₁₀). The determination of k is crucial to calculate the sea–air flux. We calculated the gas exchange velocity k₆₀₀ according to the following equation for coastal seas (Nightingale et al., 2000):

$$k_{600} = 0.333U_{10} + 0.222U_{10}^2 \quad (3)$$

We applied the wind-speed-based k₆₀₀ parameterization from Nightingale et al. (2000) here largely because it is commonly used and represents a compromise between relationships that have a very strong or a very weak wind-speed dependence (Yang et al., 2019).

The calculated k₆₀₀ (for CO₂ at 20°C) was converted to k_{CH₄} (Striegl et al., 2012), and the Schmidt number (Sc) was adjusted based on water temperature and salinity (Wanninkhof, 2014):

$$k_{\text{CH}_4} / k_{600} = (\text{Sc}_{\text{CH}_4} / \text{Sc}_{\text{CO}_2})^{-0.5} \quad (4)$$

To determine the influence of wind and atmospheric CH₄ on the flux calculation, three combinations of data sets were applied (Table 1):

- Flux-1 with in-situ wind and in-situ atmospheric CH₄ concentrations, with a resolution of 1 minute.
- Flux-2 with in-situ wind but with the atmospheric CH₄ concentrations from the station Mace Head, Ireland, with a resolution of 1 month.
- Flux-3 fixed monthly atmospheric concentration from the station Mace Head and using hourly wind data from the German Meteorological Service.

Table 1: Calculation of the diffusive CH₄ flux with several combinations of data sources.

	Flux 1	Flux 2	Flux 3
Dissolved CH ₄	In situ*	In situ*	In situ*
Atmospheric CH ₄	In situ*	Mace Head***	Mace Head***
Wind speed	In situ*	In situ*	DWD**

temporal resolution of every minute*, every hour**, every month***

245 To improve the estimation of the diffusive CH₄ flux for the whole study area, we calculated an area weighted
diffusive flux. We split the diffusive flux data ([flux-1 data](#), n = 941 for 2019 and 3028 for 2020) into groups
with a bin size of 100 μmol m⁻² d⁻¹ and calculated a frequency distribution of the mean diffusive flux classes (0-
100, 100-200, 200-300 μmol m⁻² d⁻¹). Next, the relative area was calculated by multiplying the relative
frequency of each class with the total area. Then, the relative area of each class was multiplied with the
250 respective diffusive flux to obtain the relative areal flux. The sum of all relative areal fluxes finally resulted in
the total weighted flux of the whole area. The standard deviation was determined from the relative areal fluxes.
An example of the calculation is given in the supplementary Table S1.

To enhance the validity of our results, we extrapolated our calculated diffusive fluxes from our respective study
255 areas to areas in accordance with the ecosystem type classification of the German Federal Statistical Office
(Statistisches Bundesamt ((Destatis), 2021), which assigns all areas of Germany to different ecosystem types
without gaps or overlaps (<https://oekosystematlas-ugr.destatis.de/>). We used the following ecosystems,
overlapping with our cruise track: eastern Wadden Sea of the Weser River (490000003), open coastal sea of the
Weser (490000004), coastal sea of the Weser (490000005), Helgoland (590000002), coastal sea of the Elbe
260 River (590000003), western Wadden Sea of the Elbe (590000005), Outer Elbe North (590000006) and Piep
Tidal basin (950000001, Fig. [S3](#)). These ecosystems cover a total area of 3.78 x 10⁹ m² (377947 ha).

hat gelöscht: S1

2.5 Data management and handling

During the cruises or shortly afterwards, all data from all ships were uploaded to AWI's data web service
265 (Koppe et al., 2015), <https://dashboard.awi.de/data-ingest/index.html#>) at the highest available resolution. From
this repository, data from different sensors can be combined, aggregated over time and downloaded as .csv files.
In a second step, we applied a quality and plausibility control procedure to the data. In a first plausibility
procedure, the ARGO algorithms (Bittig et al., 2019) for data quality flagging (manufacturer range, local range,
spike check and gradient check) were applied assigning a bad data flag to values outside the ranges.
270 Additionally, as previous cruises had shown that it is essential to compare and possibly correct the sensor's data
between the vessels (Bussmann et al., 2021b; Fischer et al., 2021), two, respectively four, intercalibration phases
were scheduled during Stern-3 and Stern-5. During these phases, all vessels were in close proximity to each
other (100–600 m) with all underway systems running and sampling the same water body.
In a machine-learning supported expert analysis (Fischer et al., 2021), sensor data of all three ships were first
275 visualized synoptically for the full time of the cruise and for the intercalibration intervals. From these
comparisons, correction factors for those sensor data with significant accuracy deviations during the
intercalibration phases were calculated and applied to the ships' respective sensor data. For example, on Stern-5,
the water temperature from Littorina was used as a lead sensor as confirmed by precise measurements. As the

280 temperature data from RV Ludwig Prandtl deviated by -0.03° during the intercalibration phases, $+0.03^\circ\text{C}$ were
added to those temperature data. In contrast, the temperature data from RV Mya deviated for about $+0.07^\circ$ from
the reference value (from Littorina), therefore -0.07° were subtracted from RV Mya's temperature data. For
subsequent calculations, all data were used with one minute resolution.
All calculations and statistics were performed with R-studio (version 2023.09.01+494, Posit Software, PBC).
285 The combined and corrected datasets, including the details of correction, can be found at the online repository
pangea.de (<https://doi.pangaea.de/10.1594/PANGAEA.962691> for Stern-5, and
<https://doi.org/10.1594/PANGAEA.964319> for Stern-3).

hat gelöscht: ##

hat gelöscht: , submitted

290 3 Results

3.1 Oceanographic and meteorological conditions in September 2019 (Stern-3)

Water temperatures in the study area in September 2019 ranged from 17.1 to 19.7°C , salinity ranged from 18.6
to 33.1 , and oxygen saturation ranged from 80.1 to 100.4% . The meteorological situation differed substantially
between 10 and 11 September, with a mean wind speed of $6.7 \pm 2.9 \text{ m s}^{-1}$ compared to $9.2 \pm 2.9 \text{ m s}^{-1}$, and the
295 wind direction shifted from west and west-northwest to southwest, respectively (Fig. 3).

hat gelöscht: and the

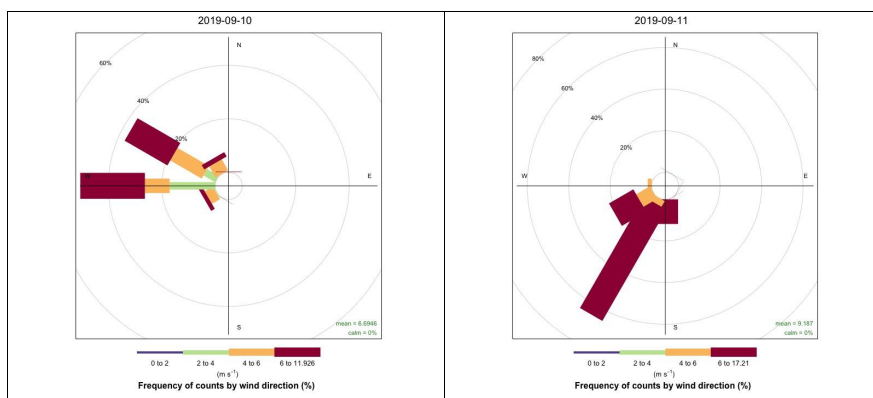
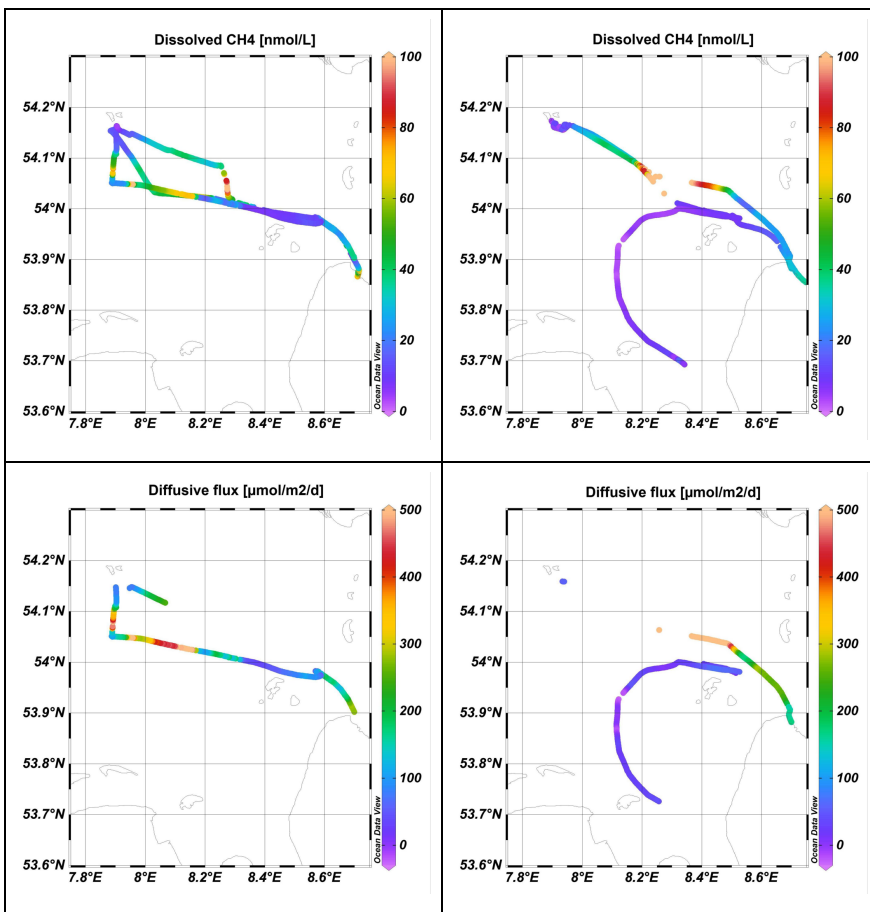


Fig. 3 Wind rose with wind speed and direction for 10 September (left) and 11 September 2019 (right, Stern-3).

As the diffusive flux was calculated using the wind speed data, the CH_4 related parameters are also described
separately for the two days. On 10 September, dissolved CH_4 concentrations showed a median of 22.6 nmol L^{-1}
300 (range $3.9\text{--}304.9 \text{ nmol L}^{-1}$). High CH_4 concentrations were encountered near Cuxhaven, and at two to three
patches between Helgoland and Cuxhaven (Fig. 4). On 11 September, concentrations were lower, with a median
of 12.3 nmol L^{-1} (range $1.1\text{--}175.8 \text{ nmol L}^{-1}$). Lowest concentrations ($1\text{--}2 \text{ nmol L}^{-1}$) were encountered west of
the islands of Scharhörn and Neuwerk.
305 Atmospheric CH_4 concentrations had a median of 1.949 ppm (range 1.936 to 1.971 ppm) on 10 September
versus a median of 2.064 ppm on 11 September (range $1.948\text{--}2.255 \text{ ppm}$). On 11 September, rather high values
(2.15 ppm) were observed near the island of Scharhörn. As the atmospheric CO_2 data were not elevated at this
site, the influence of ship exhausts can be excluded. The wind was coming from south-southwest (200°), and the

tide was just increasing. We assume that the air mass crossing our cruise track had an inherent natural variability.

The diffusive flux was first calculated with in-situ wind and in-situ atmospheric CH₄ concentrations (flux-1, flux-2 and flux-3 data are shown in Table 2 and described in section 3.3). For both days combined, the average flux was $221 \pm 351 \mu\text{mol m}^{-2} \text{d}^{-1}$, the median was $97 \mu\text{mol m}^{-2} \text{d}^{-1}$, and the range was from -27 to $2342 \mu\text{mol m}^{-2} \text{d}^{-1}$. On 10 September, the diffusive flux had a median of $131 \mu\text{mol m}^{-2} \text{d}^{-1}$ (range 316–1500 $\mu\text{mol m}^{-2} \text{d}^{-1}$), with lowest values near Helgoland and near the island of Scharhörn (Fig. 4, left). Highest values were observed southeast of Helgoland. On 11 September, the diffusive flux was half of the one on the day before with a median of $62 \mu\text{mol m}^{-2} \text{d}^{-1}$ (range -27 – 2342 $\mu\text{mol m}^{-2} \text{d}^{-1}$). Highest values were observed again in the region between Helgoland and Cuxhaven; lowest and negative values were observed west of Cuxhaven (Fig. 4 right).



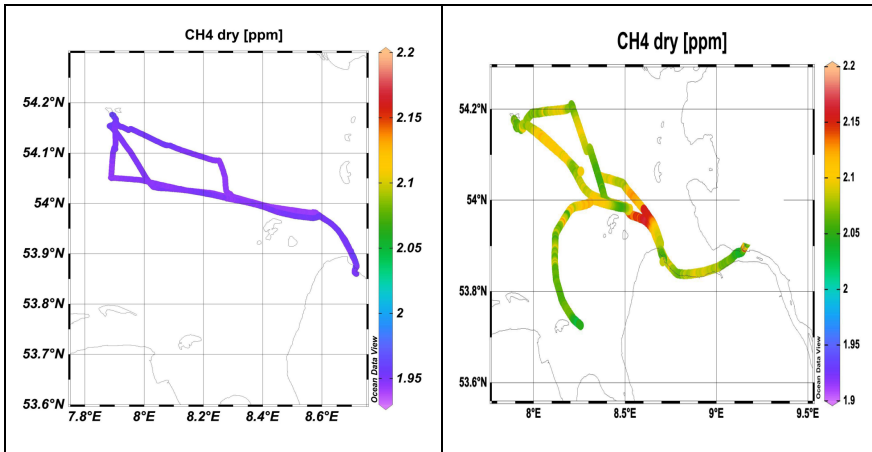


Fig. 4: Concentrations of dissolved CH₄ (top), diffusive CH₄ flux (middle) and in-situ atmospheric CH₄ concentrations (bottom) on 10 September (left) and 11 September (right).

325

3.2 Oceanographic and meteorological conditions in September 2020 (Stern-5)

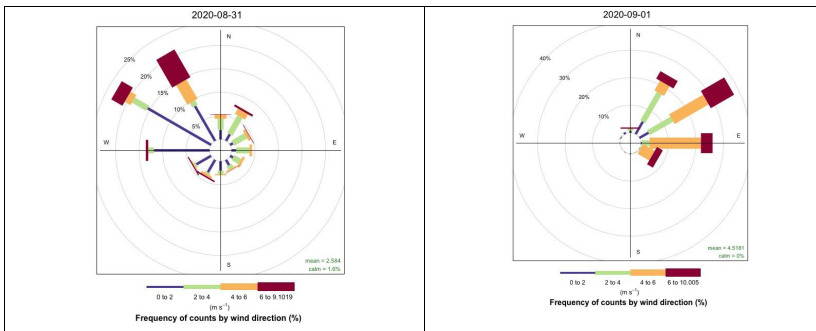
Water temperatures in the study area in September 2020 were warmer compared to 2019, ranging from 17.6 to 21.4°C, salinity ranged from 13.8 to 33.4 and oxygen saturation ranged from 70 to 109%.

330

The meteorological situation differed substantially between the sampling dates, and therefore the data are presented per day (and not for the whole area). On 31 August, the mean wind speed was 2.6 ± 2.2 m s⁻¹ coming from the north-northwest. On 1 September, the wind direction shifted towards northeast, with a mean speed of 4.5 ± 1.9 m s⁻¹. On 2 September, wind speed decreased to 2.3 ± 1.4 m s⁻¹ with no preferred direction. On 3 September, the wind freshened to a mean of 7.6 ± 3.7 m s⁻¹ and was blowing from the south and south-southwest (Fig. 5).

335

- hat gelöscht: median
- hat gelöscht: 1.9
- hat gelöscht: median
- hat gelöscht: 4.5
- hat gelöscht: 2.2
- hat gelöscht: median
- hat gelöscht: 8.2



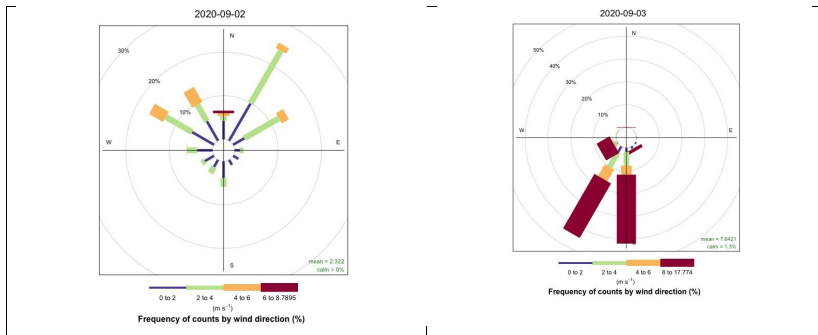


Figure 5: Wind rose with wind speed and direction for 31 August to 3 September 2020 (Stern-5).

345 Dissolved CH₄ concentrations for all days ranged from 1.4 to 607.9 nmol L⁻¹, with a median of 26.2 nmol L⁻¹ (Fig. 6 left). Low concentrations of dissolved CH₄ (5–10 nmol L⁻¹) were observed southwest of Helgoland, in the outer Weser Estuary and in the northern region of the study area towards the island of Sylt (Fig. 6a). West of B_üsum, we observed an area of high concentrations, as well as near Amrum, i.e., near the North Frisian Wadden Sea (> 100 nmol L⁻¹), with additional patches of elevated concentrations (70–100 nmol L⁻¹) located, for example, east and north of Helgoland.

350 The average diffusive CH₄ flux ([flux-1](#)) was $159 \pm 444 \mu\text{mol m}^{-2} \text{d}^{-1}$ ([flux-2](#) and [flux-3](#) data are shown in [Table 2](#) and described in [section 3.3](#)). The median diffusive CH₄ flux for all days combined was $61 \mu\text{mol m}^{-2} \text{d}^{-1}$, ranging from 0.2–4645 $\mu\text{mol m}^{-2} \text{d}^{-1}$. The spatial distribution of the flux was mostly a mirror image of the dissolved CH₄ concentration (Fig. 6 right). For the dataset from RV Littorina no flux data were calculated, as no

355 wind data were available. The data for dissolved and atmospheric CH₄ and the diffusive CH₄ flux for the individual days are shown in [Figure S4](#), analogous to Fig. 4.

hat gelöscht: S2

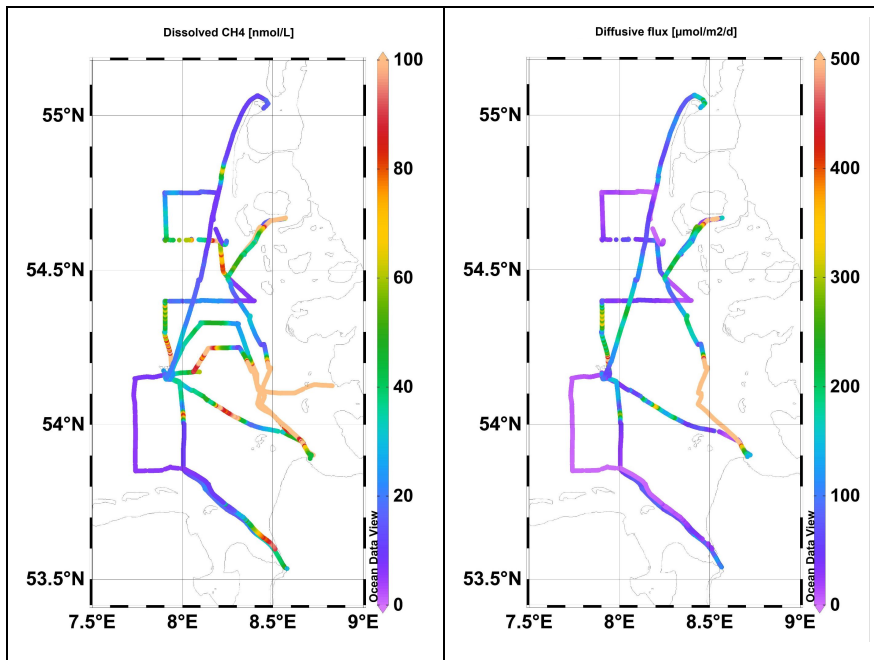
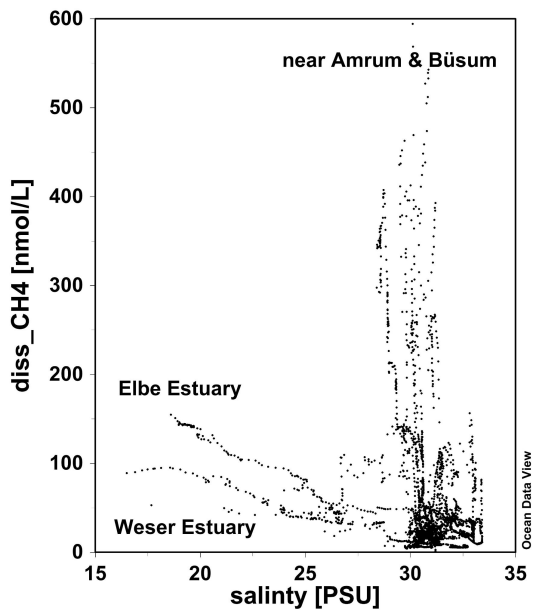


Figure 6: Concentrations of dissolved CH₄ (left) and the diffusive CH₄ flux (right) for the whole study area and Stern-5 study period (31 August to 3 September 2020).

360

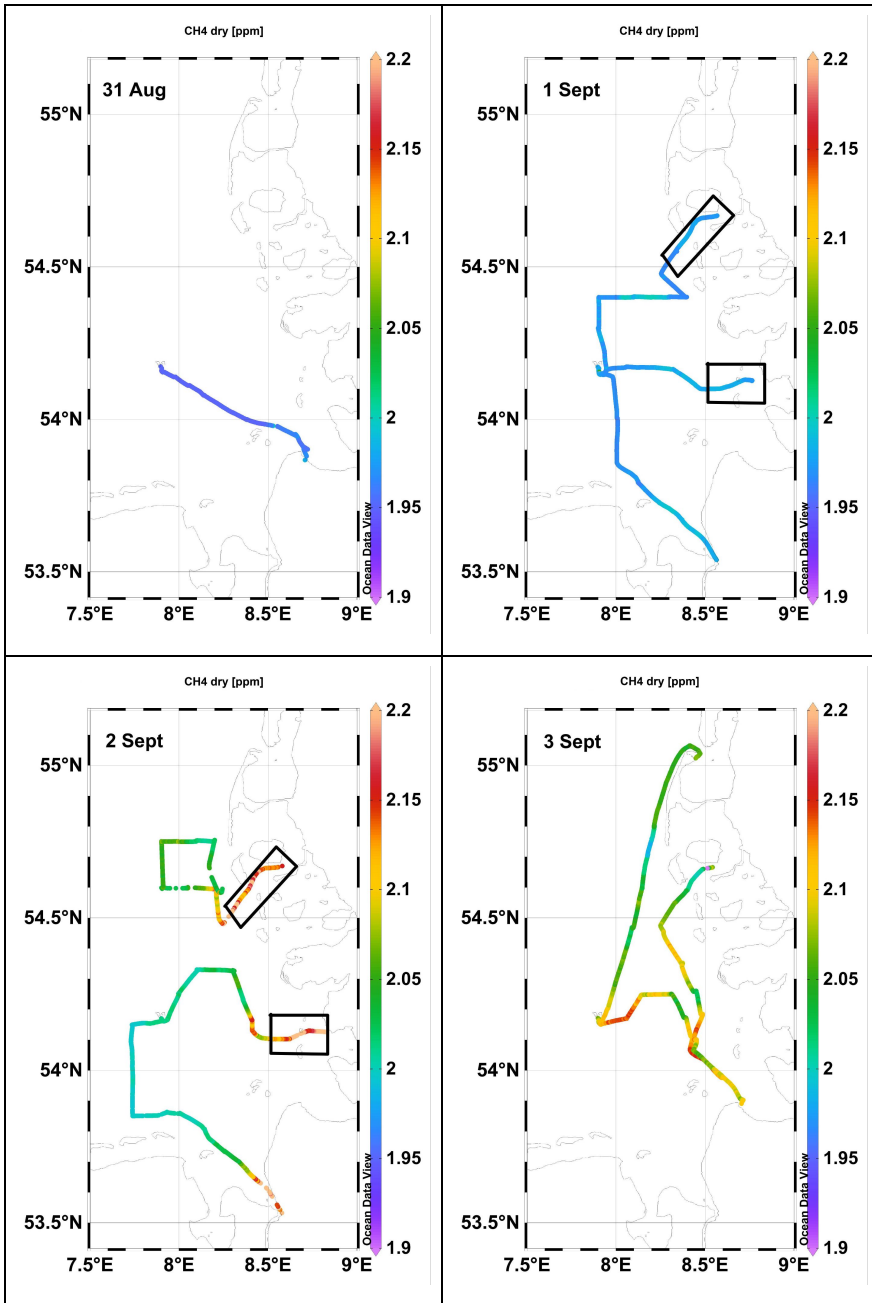
hat gelöscht: 30



365 Fig. 7: Dissolved CH₄ concentration plotted versus salinity for September 2020 (Stern-5). The geographic location of
 the data pairs is also indicated.

In both the Weser and Elbe estuaries, methane-rich river water was diluted with methane-poor marine waters
 (Fig. 7). The riverine endmember of the Weser showed lower CH₄ concentrations (95 nmol L⁻¹) than the Elbe
 370 endmember (151 nmol L⁻¹). However, highest CH₄ concentrations coincided with high salinities (> 30). These
 concentrations were all observed in the area west of Amrum and Büsum in the Wadden Sea. Thus, these areas
 were clearly not part of the dilution scheme, but a strong source of CH₄.

The median atmospheric CH₄ concentrations increased during the observed time span, from 1.951 ppm on 31
 August, 1.979 ppm on 1 September, 2.022 ppm on 2 September to 2.078 ppm on 3 September (Fig 8). This
 375 increase over time was especially evident when comparing 1 and 2 September. The same area was covered (as
 the ships were returning to the same ports), and a substantial increase was observed, especially near the coast.



380

Figure 8: Atmospheric CH₄ concentration for 31 August to 3 September 2020 (Stern-5). The black boxes mark the areas where the vessels approached or left the Wadden Sea area.

hat gelöscht: 30

385 3.3 Calculations of diffusive fluxes using in-situ and land station-based data

The calculation of the diffusive CH₄ flux was performed with three combinations of datasets to explore the influence that the use of atmospheric background data (for CH₄) and the closest land stations (for wind) has on CH₄ flux results (Table 1). For a better assignment of the wind data, the area was split into three boxes, one near Helgoland, one near Bremerhaven and one near Cuxhaven (see Fig. 1 and 2).

390 For the September 2019 cruises, the median in-situ atmospheric CH₄ concentrations ranged from 1.950 to 2.060 ppm, compared to a monthly mean of 1.942 ppm at the Station Mace Head (Table 2). For the wind speed, there was no or only a small difference between the in-situ data and data from the weather stations in Bremerhaven and Helgoland, while for the station Cuxhaven wind speed was almost 4 m s⁻¹ lower than the in-situ wind speed. Higher atmospheric CH₄ concentrations lead to higher equilibrium concentrations of dissolved CH₄, and therewith to a smaller oversaturation and lower diffusive fluxes. In 2019, the measured atmospheric CH₄ concentrations were always higher than those at the meteorological station. Consequently, the flux-2 values were often slightly higher than the flux 1 values (Fig. S5). The strongest difference was noticeable when comparing flux-1 with flux-3. When station data were used for both atmospheric CH₄ and wind (flux-3), there were substantial differences from the calculations using only in-situ data (flux-1).

hat gelöscht: S3

400 The median in-situ atmospheric CH₄ concentrations ranged from 1.967 to 1.994 ppm for the September 2020 cruises, encompassing the monthly mean of 1.987 ppm at the Station Mace Head (Table 2). The wind speed measured on board the vessels was always higher than the data from the stations, with a difference of 0.4 and 0.5 m s⁻¹ for Bremerhaven and Cuxhaven, and a difference of 0.8 m s⁻¹ for Helgoland, resulting in comparatively lower flux-3 data. The flux-1 and flux-2 data were similar or almost identical, while flux-3 data were clearly different or lower than the other two fluxes (Fig. 9). For both years, the number of flux-3 data was higher than for flux-1 and flux-2. The wind data for flux-3 were taken from the meteorological station with hourly averages, while the in-situ wind data were measured every minute, but with data gaps due to the quality control of the data.

410

415 **Table 2: The median concentrations of dissolved and atmospheric CH₄ and median wind speed in September 2019 and September 2020, calculated either with in-situ data, with monthly mean data from Station Mace Head for atmospheric CH₄ or as hourly mean wind data from three weather stations at Bremerhaven, Cuxhaven and Helgoland. The calculation of the diffusive flux was performed according to Table 1. The flux calculations were performed for an area near Bremerhaven (area B), an area near Cuxhaven (area C) and an area near Helgoland (area H), see also Figures 1 and 2.**

420

	Dissolved CH ₄ in situ	Atmospheric CH ₄ in situ / Mace Head	Wind speed in situ / meteo. station	Flux-1	Flux-2	Flux-3
	nmol L ⁻¹	ppm	m s ⁻¹	μmol m ⁻² d ⁻¹		
2019	median	median	median	mean ± SD (n)		
Area B	8.0	2.060 / 1.942	9.5 / 9.5	32 ± 4; (51)	36 ± 8; (64)	38 ± 15; (65)
Area C	14.2	1.950 / 1.942	10.4 / 6.5	138 ± 78; (227)	142 ± 78; (293)	50 ± 25; (493)
Area H	24.1	1.956 / 1.942	7.5 / 7.5	184 ± 192; (281)	185 ± 190; (281)	105 ± 88; (514)
2020						
Area B	22.6	1.994 / 1.957	3.2 / 2.7	52 ± 36; (269)	52 ± 36; (282)	23 ± 17; (269)
Area C	79.6	1.967 / 1.957	2.7 / 2.3	235 ± 342; (226)	235 ± 342; (226)	57 ± 38; (244)
Area H	26.4	1.991 / 1.957	5.9 / 5.1	88 ± 92; (827)	90 ± 92; (851)	57 ± 62; (1186)

425

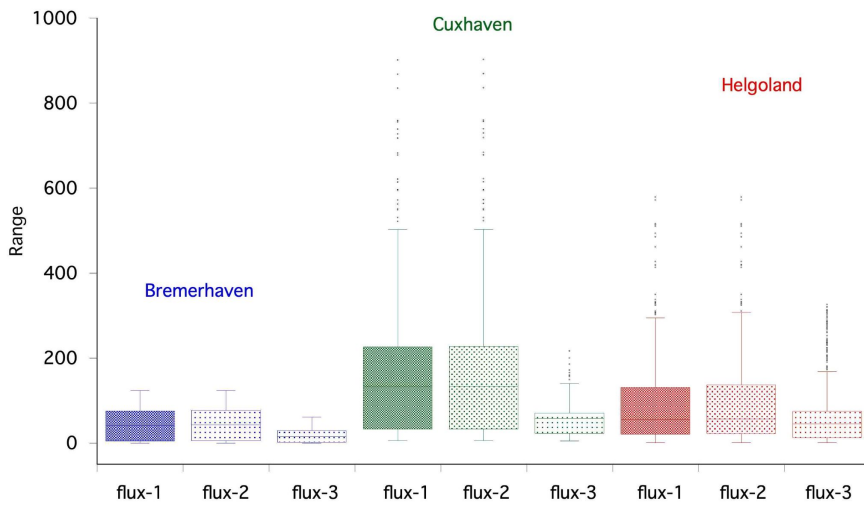


Figure 9: Range of diffusive CH₄ fluxes calculated with all in-situ data from the cruises in September 2020 (flux-1), with in-situ data and atmospheric CH₄ data from the land station (flux-2), and with in-situ data and atmospheric CH₄ concentration and wind from three land stations (flux-3). The calculations were performed for the region of Bremerhaven (blue), for Cuxhaven (green) and Helgoland (red, see Fig. 2)

430

3.4 Area-weighted calculation of the diffusive methane flux

The frequency distribution for the 2019 flux data is shown in Fig. S6. The majority of flux data (48%) belonged to the range class 0–100 μmol m⁻² d⁻¹. The subsequent classes (100–500 μmol m⁻² d⁻¹) had frequencies of 40% in

hat gelöscht: S4

hat gelöscht:

total. Fluxes higher than $500 \mu\text{mol m}^{-2} \text{d}^{-1}$ had a total frequency of 9%. Negative fluxes (-100 – $0 \mu\text{mol m}^{-2} \text{d}^{-1}$) occurred with a frequency of 3%.

hat gelöscht: between 19.2% and 3.6%

The frequency distribution for the 2020 flux data is shown in Fig. S7. Again, most of the data were found in the class 0 – $100 \mu\text{mol m}^{-2} \text{d}^{-1}$, with a frequency of 67%. The next class 100 – 200 had a frequency of 21%; the classes 200 – 300 , 300 – 400 and 400 – 500 had a total frequency of 7%. Fluxes higher than $500 \mu\text{mol m}^{-2} \text{d}^{-1}$ had a total frequency of 5%. In contrast to the September 2019 values, negative fluxes (in the range of -100 – $0 \mu\text{mol m}^{-2} \text{d}^{-1}$) were not observed.

hat gelöscht: S5

hat gelöscht: The other classes (100 – $500 \mu\text{mol m}^{-2} \text{d}^{-1}$) showed frequencies between 21.0% and 0.6%.

To calculate the weighted flux for our study area, we related the total area of the Helgoland Bay ($3.78 \times 10^9 \text{ m}^2$) to the frequency of the flux classes, as explained in the Method section and in supplementary Table S1. This resulted in the total area-weighted diffusive fluxes of 836 ± 32 and $600 \pm 21 \text{ kmol d}^{-1}$ for the area of Helgoland Bay for 2019 and 2020, respectively.

The other approach was to multiply the median or mean of all flux data with the total area. The standard deviation for the mean was also multiplied with the area to maintain the same unit. This resulted in much lower values for the median flux data and identical values for the mean flux data, compared to the area-weighted approach. However, the standard deviation of the mean flux data was much larger than for the area-weighted approach (Table 3).

Table 3. Comparison of three approaches to calculate the total diffusive flux from Helgoland Bay with an area of $3.78 \times 10^9 \text{ m}^2$ based on the median, mean or area-weighted diffusive flux.

	Area related diffusive flux in Helgoland Bay (kmol/d)		
	median (range)	mean \pm SD	Area-weighted
Sept 2019	365 (-104–8851)	836 ± 1328	836 ± 32
Sept 2020	229 (1–17558)	600 ± 1676	600 ± 21

3.5 Estimation of flux contributions to atmospheric concentrations

We often observed a substantial increase in atmospheric CH_4 concentration between single days, but the source of the additional atmospheric CH_4 was unclear. Sources could be the diffusive flux from the sea into the atmosphere or different origins of the air masses above the water.

In September 2019, we observed an increase in atmospheric CH_4 concentrations of 0.116 ppm between 10 and 11 September (from 1.950 to 2.065 ppm). The average diffusive flux on these two days was $222 \mu\text{mol m}^{-2} \text{d}^{-1}$.

Using the ideal gas law, we converted the CH_4 flux into a gas volume (air temperature of 16°C , pressure of 1015 mbar, time frame one day, comparable to the calculations of (Zang et al., 2020)). Under the idealized assumption that we had no advective exchange, the diffusive flux alone would explain the observed concentration difference for a mixed atmospheric layer of 45 m in height.

In September 2020, the strongest difference in atmospheric CH₄ was observed between 1 and 2 September (delta = 0.079 ppm). The average diffusive flux for these two days was 48 μmol m⁻² d⁻¹. The calculation for the idealized mixed layer height for this day yielded 15 m. Further assuming a planetary boundary layer height for mid-latitudes of about 300 m (a lower range estimate based on climatologies by (Ao et al., 2012) and a well-mixed surface layer of about 10% thereof, i.e., 30 m, the observed increase of atmospheric CH₄ in September 2019 could have been mainly due to diffusive flux from the sea into the atmosphere. In September 2020, however, the calculated height of the mixed surface layer would be 15 m, which is not realistic. Thus, the observed increase of atmospheric CH₄ has to be attributed mainly to advection.

475

480 A linear regression analysis between the diffusive flux and atmospheric CH₄ revealed no significant correlation; also, when split by single dates. Strong wind results in an increased diffusive flux, but as the mixing of the atmospheric CH₄ also increases, the signal of the diffusive CH₄ imported will be “diluted”. Thus, we tested the hypothesis that only under low wind conditions a correlation would be detectable. Therefore, we split the wind in classes (<10, <9, <8 m s⁻¹ etc.) and repeated the analyses for each class. These class-separated calculations

485 revealed no correlation between the diffusive flux and atmospheric CH₄ concentration at wind speeds >5 m s⁻¹. However, at wind speeds less than 5 m s⁻¹, a significant correlation between diffusive flux and atmospheric CH₄ was detected (r² = 0.52). The strongest correlation was detected at wind speeds <2 m s⁻¹ (r² = 0.75). A further possible cause for increases in atmospheric CH₄ concentrations are changes in advection under the assumption that wind coming across the sea has a lower CH₄ content than wind coming from land. As wind

490 direction is no linear parameter, we divided the parameter into 30° classes, followed by a one-way analysis of variance. It revealed that the wind direction had a significant influence on the atmospheric CH₄ concentrations in our two study periods of September 2019 and September 2020 (p < 0.001). In September 2019, the highest atmospheric CH₄ concentrations were observed when the wind came from the south-southwest (210–240°) with a median of 2.08 ppm, and lowest values were observed when the wind came

495 from northerly directions (0–30°, 300–330°, 330–360°) with a median of 1.94 ppm, 1.95 ppm and 1.95 ppm, respectively. In September 2020, highest atmospheric CH₄ concentrations were observed when the wind came from the south (180–210°) with a median of 2.07 ppm, and lowest values were observed when the wind came from the east (90–120°) with a median of 1.98 ppm.

In addition to the wind signal, we looked for a possible tidal impact. On 1 September 2020, the RV Ludwig

500 Prandtl approached the harbor at Wyk auf Föhr from 14:00–16:00 UTC and left port around 04:00–06:00 UTC the following morning (Fig. 8). The wind was blowing from northeast on both occasions, with rather low wind speed of less than 5 m s⁻¹ (Fig. 5). High concentrations of dissolved CH₄ were observed, during the approach of the harbor (the data points outside the dilution scheme of Fig. 7). The diffusive CH₄ flux increased, and a most pronounced increase of 0.186 ppm of atmospheric CH₄ was observed (Table 4). In contrast to the overall

505 analyses described above, for this areal section neither wind speed nor diffusive flux were correlated with atmospheric CH₄. However, as Wyk auf Föhr is surrounded by the tidal flats of the Wadden Sea, at low tide these flats are exposed to the atmosphere and tidal creeks withdraw pore water from the surroundings, which results in increased atmospheric CH₄ due to the release of CH₄ formed through anaerobic processes. A similar pattern of atmospheric CH₄ was observed for the tidal area off BÜsum in the cruise section covered by RV

510 Littorina. Atmospheric CH₄ increased for this section from 1.975 to 2.193 ppm, however no additional data (wind, diffusive CH₄ flux) are available for this ship.

Table 4: Atmospheric CH₄ concentration in relation to tidal state, wind and diffusive CH₄ flux.

Section toward Wyk/Föhr	1 September 2020 14:00–16:00 UTC	2 September 2020 04:00–06:00 UTC
Atmospheric CH ₄ (ppm)	1.971 ± 0.007	2.157 ± 0.04
Diffusive flux (μmol m ⁻² d ⁻¹)	24 ± 15.9	115 ± 22
Wind speed (m s ⁻¹)	4.6 ± 0.5	3.1 ± 0.4
Wind direction (°)	63 ± 4	44 ± 12
Tide at Wyk	HT at 12:39	LT at 07:28
Section towards Büsum	1 September 2020 10:40–11:40 UTC	2 September 2020 04:40–05:40 UTC
Atmospheric CH ₄ (ppm)	1.982 ± 0.0072	2.140 ± 0.02
Tide at Büsum	HT at 11:24	LT at 05:53

515

4 Discussion

4.1 Error discussion for calculations of diffusive fluxes using different source data

520 The calculation of the diffusive sea-air flux depends very much on the parametrization of k. The most frequently used formula is the one from Wanninkhof 2014. For comparison we applied this formula to our data set from 2020; and average flux was very similar $153 \pm 441 \mu\text{mol m}^{-2} \text{d}^{-1}$ according to Wanninkhof versus $159 \pm 444 \mu\text{mol m}^{-2} \text{d}^{-1}$ according to Nightingale. Both parametrizations should provide good estimates for most insoluble gases at intermediate wind speed ranges (3-15 m s⁻¹). Our wind data ranged from 1 – 11 m/sec.

525 The study of (Ho et al., 2018) concludes that if the mean depth of the water body is greater than 10 m, an ocean wind speed/gas exchange parameterization could be used in such environments. The mean water depth in our study area 19 ± 12 m in 2019 and 17 ± 13 m in 2020. We therefore believe that the parametrization of Nightingale is appropriate for our study area. However, it should be kept in mind that also this parametrization holds an uncertainty of 19%. Other factors influencing the parametrization of k are rain (which did not occur during our cruises), water-side convection, and a biological surfactant suppression term (Gutiérrez-Loza et al., 2021). During summer, convection and surfactants seemed to act as competing mechanisms controlling the flux. Convective processes slightly enhanced the downward flux, while surfactants tended to suppress it (Gutiérrez-Loza et al., 2021).

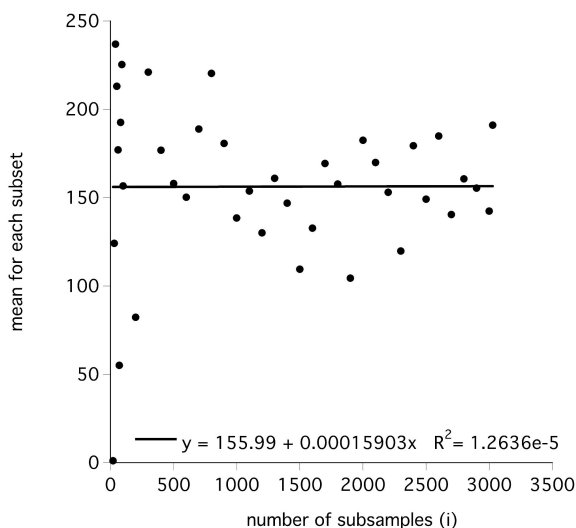
535 In this study we applied several different methods to calculate diffusive sea-to-air CH₄ fluxes, either by using different databases for local values or by applying a weighted method for CH₄ fluxes for larger areas.

The comparison between results obtained using different data sources showed that the choice between using atmospheric CH₄ concentrations from in-situ data or from a land station had no large effect (flux-1 versus flux-2, Fig. 9). In our study, the monthly average atmospheric CH₄ concentration from Mace Head station, that is usually used for providing atmospheric background concentrations, always showed lower values than our in-situ

540 data. Thus, the saturation concentration of dissolved CH₄ was lower, resulting in a smaller sea-to-air diffusive
flux. However, in relation to the variability of the measured datasets, this difference was minor. The calculated
flux-2 values reached on average 103 ± 6% of the corresponding flux-1 values (n = 6).

In contrast, it was important to use the in-situ wind speed for calculating the CH₄ fluxes (flux-3) instead of using
545 data from the closest meteorological land stations. In some cases, the wind data were nearly identical, in other
cases the wind data from the land monitoring stations were lower, resulting in significantly smaller diffusive
fluxes. The stronger impact of the wind speed is based on the fact that the flux calculation uses a quadratic wind
speed formulation (equation 2, (Nightingale et al., 2000). Relating the flux-3 (land station) data to the flux-1 (in-
situ) data revealed that the flux-3 values only reached an average of 58% ± 34% of the flux-1 values (n = 6). As
our flux data have a high variability (see below), a high temporal resolution of the data (as in flux-1) is favorable
550 over hourly (wind data) or monthly (atmospheric CH₄ data) resolution. Several combinations of in-situ data and
data from databases have been reported in literature for calculating diffusive sea-to-air CH₄ fluxes (Myllykangas
et al., 2020; Woszczyk and Schubert, 2021; Mau et al., 2015; Bussmann et al., 2021b; Humborg et al., 2019).
Based on our direct comparison of these different approaches, we strongly recommend obtaining in-situ wind
data.

555 We furthermore observed a high variability in all diffusive CH₄ flux data. For the entire 2019 dataset, the
average diffuse CH₄ flux was 221 ± 351 μmol m⁻² d⁻¹ (n = 941), and for 2020 it was 159 ± 444 μmol m⁻² d⁻¹ (n =
3028). The coefficient of variation (CV) was 158% and 279%, respectively. Flux values for CH₄ in general have
a high variability (36-71% (de Groot et al., 2023); 73% (Bussmann et al., 2021b), 78% (Humborg et al., 2019)),
so that the CV values found here are not unusual. However, to avoid a possible elevated flux variability due to a
560 low sample size (methodological error), we applied a modified bootstrap analysis on the 2020 data to elucidate
the effect of sample size on the calculated flux variability. The 2020 dataset had a total of 3028 measurements.
From this dataset, we iteratively drew random subsamples, beginning with 20 values and increasing the sample
size by 10 and 100 in each iteration. By this method, we finally received 39 datasets with an increasing number
of flux values, starting at 20 and reaching up to 3028 values. The mean of these 39 datasets was calculated and
565 plotted versus sample size (Fig. 10). The analysis revealed that the calculated average mean flux was
independent of the sample size (slope, t = 0.02, p = 0.98) and that the variability of the flux values remained
stable between 104 and 190, around an average mean value of 156 for a sample size of about 900-1000 or
higher. This supported our presumption that our sample size of 3028 for the year 2020 was sufficiently high to
avoid a sample size bias in flux variability and represented a realistic system flux in the area. This high spatial
570 variability is also evident in Figure 6. Thus, it is debatable if our study area is a uniform area and if it is
reasonable to average the diffusive flux for the whole study area.



575

Figure 10: The mean of the diffusive CH₄ flux calculated for a random number of *i* subsamples. The black line indicates the regression line.

580 **4.2 Area-weighted calculation of the diffusive CH₄ flux**

To extrapolate the diffusive flux for larger areas (in mol d⁻¹), the general approach is to multiply the target area (m²) with the median or mean flux (mol d⁻¹ m⁻²) calculated from a restricted number of samples in the area. Figures S4 and S5 show the data base and frequency distribution for such a calculation for our data from the years 2019 and 2020. Both figures show a highly skewed distribution of flux values, with values <100 μmol m⁻² d⁻¹ having the largest share resulting in a skewness of 3.4 and 6.1 for 2019 and 2020, respectively. Table 3 shows the results of different methods of averaging when calculating the diffusive flux for our target areas in 2019 and 2020.

585

According to common recommendations for data with a positive skew (data with the frequency distribution shifted to the left side), the median is always smaller than the mean (median < mean) (Köhler et al., 1996; Doane and Seward, 2011). Accordingly, the median in our calculations revealed almost 3-fold lower overall flux estimates compared to the mean values. To circumvent this bias, a variety of terrestrial, marine and limnic studies (Mallast et al., 2020; Li et al., 2020; Balaña et al., 2023) stressed the importance of applying an area-weighted approach for up-scaling CO₂ flux data. We therefore also applied this method to our data (Table 3, right column). This calculation revealed that flux values for the area calculated by using the arithmetic mean are identical to the area-weighted mean values and significantly higher than the median-based average flux values.

595

In addition, the SD from the area-weighted flux was much lower. Thus, if area-weighted flux estimations are not possible due to a limited dataset, our data suggest that using the mean value is the preferred procedure rather than the median-based average flux calculations for an area.

600 4.3 Methane emissions from Helgoland Bay

In our study we revealed mean diffusive fluxes of $221 \pm 351 \mu\text{mol m}^{-2} \text{d}^{-1}$ and $159 \pm 444 \mu\text{mol m}^{-2} \text{d}^{-1}$ and median values of 97 and $61 \mu\text{mol m}^{-2} \text{d}^{-1}$ for 2019 and 2020, respectively

605 These numbers are within the same range as published previously for June 2019 ($65 \mu\text{mol m}^{-2} \text{d}^{-1}$) (Bussmann et al., 2021b). However, higher flux data are reported for autumn and winter, $104 \mu\text{mol m}^{-2} \text{d}^{-1}$ for the Dogger bank area (Mau et al., 2015) and $124\text{--}299 \mu\text{mol m}^{-2} \text{d}^{-1}$ for our study area (Winkler, 2019) (all median values). These higher fluxes were explained by the authors with higher wind velocities in the autumn / winter season. In comparison to other coastal seas our diffusive fluxes are similar to fluxes from the Belgian North Sea ($161\text{--}221 \mu\text{mol m}^{-2} \text{d}^{-1}$) (Borges et al., 2019). In contrast much higher fluxes are reported from the Baltic Sea, with $-9\text{--}3110 \mu\text{mol m}^{-2} \text{d}^{-1}$ by (Gutiérrez-Loza et al., 2019) and $2400 \mu\text{mol m}^{-2} \text{d}^{-1}$ by (Humborg et al., 2019). On the other side, low fluxes are reported from the Atlantic coast of Spain ($7\text{--}20 \mu\text{mol m}^{-2} \text{d}^{-1}$; (Ortega et al., 2023) and coastal Chile ($5 \pm 5 \mu\text{mol m}^{-2} \text{d}^{-1}$; (Fariás et al., 2021)).

610 However, these comparisons are all based on the median values for the whole area. When focusing on specific locations, other patterns become evident. The lowest fluxes, i.e., negative fluxes, were observed in September 2019 in an area west of Cuxhaven (-15 to $-27 \mu\text{mol m}^{-2} \text{d}^{-1}$; Fig. 4b). At this site and at this time, the water was shallow (< 5 m) with strong winds from southwest resulting in short waves. Thus, we assume that this water body was mostly depleted of CH_4 and was acting as CH_4 sink. For the open North Sea, other studies have reported undersaturation of dissolved CH_4 (Upstill-Goddard et al., 2000) (Bange, 2006), but not for nearshore areas like in this study.

Highest CH_4 concentrations were observed in the Wadden Sea and not related to river water inputs (Fig. 7).

620 Elevated diffusive fluxes and elevated atmospheric concentrations were also observed at these locations and especially at low tide (Tab. 3). Sand flats or tidal flats are known to be a source of biogenic CH_4 that is released directly into the water column of the North Sea and to the atmosphere during low tide (Wu et al., 2015; Beck and Brumsack, 2012). It has been reported that peaks in CH_4 coincided with ebb tides at multiple sites located along the flanks of the estuary adjacent to tidal flats and wetlands (Pfeiffer-Herbert et al., 2019; Trifunovic et al., 2020). Another aspect of elevated CH_4 concentrations, is the distance to the coast, as described in several studies (Sierra et al., 2020), (Thomas and Borges, 2012). However, no such correlation was observed in this study; probably due to the a highly diverse coast (Wadden Sea, sandy beaches, estuaries) superimposed by tidal cycles.

630 4.4 Estimation of sea-air flux contribution to atmospheric concentrations

The average atmospheric CH_4 concentrations in this study were 2.03 ± 0.08 ppm and 2.05 ± 0.08 ppm for September 2019 and 2020, respectively. This is about 0.06 ppm higher than the values from Mace Head at the west coast of Ireland. Since 2020, there have been two new ICOS-Stations on Helgoland and Sylt, which are located in or near our study area. Their average September data (2021 and 2022) support our elevated atmospheric CH_4 concentrations with 2.04 ± 0.07 and 2.04 ± 0.08 ppm (Kubistin et al., 2023; Couret and Schmidt, 2023).

635 One aim of our study was to clarify if, or under which circumstances, the diffusive flux from the water is detectable in the atmosphere above. An increased wind speed will lead to an increased CH_4 flux into the

atmosphere above the water, however, this process is counteracted by the fact that increasing wind speed also leads to increased mixing of the atmosphere and any input will be quickly “diluted”.

640 Our study has shown that there is only a significant correlation between CH₄ fluxes and atmospheric CH₄ concentrations at wind speeds < 5 m s⁻¹. For two examples, when we observed a strong increase of atmospheric CH₄, we estimated whether this increase was due to CH₄ input from the sea. For September 2019, the increase in atmospheric CH₄ could be attributed to the input from the sea, but not for September 2020. Thus, the static approach of (Zang et al., 2020) could not be confirmed by our data, as this approach does not take the turbulent mixing of the atmosphere into account. Several other studies, which also measured atmospheric CH₄ concentrations and diffusive fluxes simultaneously, confirm this absent relationship (Myhre et al., 2016; de Groot et al., 2023; Gutiérrez-Loza et al., 2019). From our more detailed estimates, we conclude that the comparison of diffusive fluxes and atmospheric concentrations alone does not account for the interactions of diffusive flux and atmospheric convection. More insights could be obtained from inverse atmospheric modelling or model-based extrapolation approaches (Saunois et al 2020; Bittig et al 2024), but are beyond the scope of this study. In future studies with further cooperation our data set might be used for these approaches.

650 Wind direction or advection of air masses have a strong influence on atmospheric CH₄ concentrations (Pankratova et al., 2022; Yang et al., 2019). Our data show that, when the wind was coming from the south or south-southwest, significantly higher atmospheric CH₄ concentrations were observed (2.07–2.08 ppm). Wind from this direction originated from the German mainland with the ports of Bremerhaven and Wilhelmshaven, and from regions with intensive livestock farming. Our air mass origin assumptions are supported by results from the NOAA back trajectories modeling (at 10 m height, <https://www.ready.noaa.gov/hypub-bin/trajsrc.pl>). Air masses at the end of 3 September 2020 originated from the mainland of Lower Saxony as well as the Netherlands (Fig. S6). On the other hand, lowest atmospheric CH₄ values were observed when the wind was blowing from the north (1.95 ppm) in 2019. Wind from this direction originates from the open North Sea and shows similar values as those observed at the NOAA Mace Head station in Ireland (1.965 ppm). However, in 2020, easterly winds advected low atmospheric CH₄ concentrations (1.98 ppm). These winds originated from the less populated and more agriculturally used land areas of Schleswig-Holstein, or even from the Baltic Sea. The mean wind speed of these easterly winds was 5 m s⁻¹, and the distance from Helgoland to the Baltic is about 200 km. Thus, the wind covered this distance within eleven hours and the air mass we were measuring could have come again from an open sea area, this time the Baltic Sea. This air mass origin is supported by the NOAA modeling, as air masses observed in our study area at the end of 1 September 2020 originated from Schleswig-Holstein and the Baltic Sea (Fig. S6).

670 4.5 Conclusions

In our study we compared different methods to calculate the diffusive CH₄ fluxes with in-situ data and data from land-based meteorological stations. The usage of in-situ wind data (at high temporal resolution) was most important, while the usage of the in-situ atmospheric concentration data showed no large difference to fluxes obtained using in-situ data. When extrapolating from the measured data and from the real study area to a larger area (i.e., Helgoland Bay) it was important to use the arithmetic average and not the median value. Most natural data are skewed towards the lower values, and using the median of these datasets would result in an

underestimation of diffusive CH₄ flux. The area-weighted extrapolation, however, is recommended, as it yielded the most realistic results with smallest variability.

680 We observed large variability in our data sets, which was not due to methodological constraints but reflects the high natural variability of the study area. Thus, it is debatable if it is reasonable to average over a heterogeneous area such as the Helgoland Bay. An improvement of flux estimates could be achieved by covering the whole area with a systematic zigzag track. [New statistical methods are now available to overcome spatial and temporal restrictions of observed data sets mostly for CO₂ \(Bittig et al., 2024\) and their application might give new insights.](#)

685 Hot spots of CH₄ emissions were the tidal flats at low tide. Their CH₄ emissions resulted in locally elevated atmospheric CH₄ concentrations. However, in shallow water and rough sea, the coastal North Sea was undersaturated with CH₄ and acted as CH₄ sink. Overall, the diffusive CH₄ flux into the atmosphere accounted for increased atmospheric CH₄ concentrations only at low wind speeds. Atmospheric advection was the main driver for low CH₄ concentrations (when coming from the sea) or high CH₄ concentrations (when coming from the mainland).

690 With our comprehensive study we revealed a complex relationship between dissolved CH₄ concentrations, CH₄ fluxes to the atmosphere and atmospheric CH₄ concentrations in shallow coastal water areas.

695 **Acknowledgements:** We thank the crews of our research vessels (Littorina, Ludwig Prandtl, Mya II, and Uthörn) for their support and patience. Special thanks are due to Norbert Anselm and Lea Happel for their unfailing support with our data work. Many thanks also to Jens Greinert & Tim Weiss as well as Uta Ködel for providing atmospheric CH₄ measurements on the RV Littorina and on RV Ludwig Prandtl, Mario Esposito and Felix Geissler for leading the Littorina cruises in 2029 and 2020.

700 This study is part of the Helmholtz program Changing Earth, subtopic 4.1: “Fluxes and transformation of energy and matter in and across compartments”. We acknowledge funding from the Helmholtz Association in the framework of the Helmholtz funded observation system MOSES (Modular Observation Solutions for Earth Systems).

705 **Author contribution:** IB, HB, GF and PF planned and participated in the cruises. Data were prepared by IB and PF. IB prepared the manuscript with contributions from all co-authors.

710 **Competing interests:** NB is member of the editorial board of the journal Biogeosciences. The authors have no other competing interests to declare.

5 References

715 (Destatis), S. B.: Umweltökonomische Gesamtrechnung, Ökosystemgesamtrechnungen, Flächenbilanz der marinen Ökosysteme nach Nord- und Ostsee, 2021.

- Ao, C. O., Waliser, D. E., Chan, S. K., Li, J.-L., Tian, B., Xie, F., and Mannucci, A. J.: Planetary boundary layer heights from GPS radio occultation refractivity and humidity profiles, *Journal of Geophysical Research: Atmospheres*, 117, <https://doi.org/10.1029/2012JD017598>, 2012.
- 720 Baliña, S., Sánchez, M. L., Izaguirre, I., and del Giorgio, P. A.: Shallow lakes under alternative states differ in the dominant greenhouse gas emission pathways, *Limnol. Oceanogr.*, 68, 1-13, <https://doi.org/10.1002/lno.12243>, 2023.
- Bange, H. W.: Nitrous oxide and methane in European coastal waters, *Estuar. Coast. Shelf Sci.*, 70, 361-374, 2006.
- 725 Beck, M., and Brumsack, H. J.: Biogeochemical cycles in sediment and water column of the Wadden Sea: The example Spiekeroog Island in a regional context, *Ocean and Coastal Management*, 68, 102-113, 2012.
- Bittig, H. C., Maurer, T. L., Plant, J. N., Schmechtig, C., Wong, A. P. S., Claustre, H., Trull, T. W., Udaya Bhaskar, T. V. S., Boss, E., Dall'Olmo, G., Organelli, E., Poteau, A., Johnson, K. S., Hanstein, C., Leymarie, E., Le Reste, S., Riser, S. C., Rupan, A. R., Taillandier, V., Thierry, V., and Xing, X.: A BGC-Argo Guide: Planning, Deployment, Data Handling and Usage, *Front. Mar. Sci.*, 6, 10.3389/finars.2019.00502, 2019.
- 730 Bittig, H. C., Jacobs, E., Neumann, T., and Rehder, G.: A regional pCO₂ climatology of the Baltic Sea from in situ pCO₂ observations and a model-based extrapolation approach, *Earth Syst. Sci. Data*, 16, 753-773, [10.5194/essd-16-753-2024](https://doi.org/10.5194/essd-16-753-2024), 2024.
- Borges, A. V., Speeckaert, G. I., Champenois, W., Scranton, M. I., and Gypens, N.: Productivity and temperature as drivers of seasonal and spatial variations of dissolved methane in the Southern Bight of the North Sea, *Ecosystems*, DOI: 10.1007/s10021-017-0171-7, 2017.
- 735 Borges, A. V., Royer, C., Martin, J. L., Champenois, W., and Gypens, N.: Response of marine methane dissolved concentrations and emissions in the Southern North Sea to the European 2018 heatwave, *Cont. Shelf Res.*, 190, 10.1016/j.csr.2019.104004, 2019.
- 740 Bussmann, I., Brix, H., Mario Esposito, Friedrich, M., and Fischer, P.: The MOSES Sternfahrt Expeditions of the Research Vessels LITTORINA, LUDWIG PRANDTL, MYA II, UTHÖRN to the inner German Bight in 2019, Alfred Wegener Institut, Bremerhaven, 68, 2020.
- Bussmann, I., Anselm, N., Brix, H., Fischer, P., Flöser, G., Geissler, F., and Kamjunke, N.: The MOSES Sternfahrt Expeditions of the Research Vessels ALBIS, LITTORINA, LUDWIG PRANDTL, MYA II and UTHÖRN to the Elbe River, Elbe Estuary and German Bight in 2020, Alfred Wegener Institute for Polar and Marine Research, Bremerhaven, 80, 2021a.
- 745 Bussmann, I., Brix, H., Flöser, G., Ködel, U., and Fischer, P.: Detailed patterns of methane distribution in the German Bight, *Front. Mar. Sci.*, 8, 1312, 10.3389/finars.2021.728308, 2021b.
- Couret, C., and Schmidt, M.: ICOS ATC CH₄ Release, Westerland (14.0 m), 2021-07-23–2023-03-31, 2023.
- 750 de Groot, T. R., Mol, A. M., Mesdag, K., Ramond, P., Ndhlovu, R., Engelmann, J. C., Röckmann, T., and Niemann, H.: Diel and seasonal methane dynamics in the shallow and turbulent Wadden Sea, *Biogeosciences*, 20, 3857-3872, [10.5194/bg-20-3857-2023](https://doi.org/10.5194/bg-20-3857-2023), 2023.
- Doane, D. P., and Seward, L. E.: Measuring Skewness: A Forgotten Statistic?, *Journal of Statistics Education*, 19, 2011.
- 755 Dobashi, R., and Ho, D. T.: Air-sea gas exchange in a seagrass ecosystem-results from a 3Heg/gSF₆ tracer release experiment, *Biogeosciences*, 20, 1075-1087, [10.5194/bg-20-1075-2023](https://doi.org/10.5194/bg-20-1075-2023), 2023.

- Etminan, M., Myhre, G., Highwood, E. J., and Shine, K. P.: Radiative forcing of carbon dioxide, methane, and nitrous oxide: A significant revision of the methane radiative forcing, *Geophys. Res. Lett.*, 43, 12,614-612,623, <https://doi.org/10.1002/2016GL071930>, 2016.
- 760 Fariás, L., Troncoso, M., Sanzana, K., Verdugo, J., and Masotti, I.: Spatial Distribution of Dissolved Methane Over Extreme Oceanographic Gradients in the Subtropical Eastern South Pacific (17° to 37°S), *Journal of Geophysical Research: Oceans*, 126, e2020JC016925, <https://doi.org/10.1029/2020JC016925>, 2021.
- Fischer, P., Dietrich, P., Achterberg, E. P., Anselm, N., Brix, H., Bussmann, I., Eickelmann, L., Flöser, G., Friedrich, M., Rust, H., Schütze, C., and Koedel, U.: Effects of measuring devices and sampling strategies on the interpretation of monitoring data for long-term trend analysis, *Front. Mar. Sci.*, 8, 10.3389/fmars.2021.770977, 2021.
- 765 Gutiérrez-Loza, L., Wallin, M. B., Sahlée, E., Nilsson, E., Bange, H. W., Kock, A., and Rutgersson, A.: Measurement of air-sea methane fluxes in the baltic sea using the eddy covariance method, *Frontiers in Earth Science*, 7, 10.3389/feart.2019.00093, 2019.
- Gutiérrez-Loza, L., Wallin, M. B., Sahlée, E., Holding, T., Shutler, J. D., Rehder, G., and Rutgersson, A.: Air-sea CO₂ exchange in the Baltic Sea—A sensitivity analysis of the gas transfer velocity, *J. Mar. Syst.*, 222, 10.1016/j.jmarsys.2021.103603, 2021.
- 770 Gutiérrez-Loza, L., Nilsson, E., Wallin, M. B., Sahlée, E., and Rutgersson, A.: On physical mechanisms enhancing air-sea CO₂ exchange, *Biogeosciences*, 19, 5645-5665, 10.5194/bg-19-5645-2022, 2022.
- Hackbusch, S., Wichels, A., and Bussmann, I.: Abundance, activity and diversity of methanotrophic bacteria in the Elbe Estuary and southern North Sea, *Aquat. Microb. Ecol.*, 83, 35-48, doi.org/10.3354/ame01899, 2019.
- 775 Ho, D. T., De Carlo, E. H., and Schlosser, P.: Air-Sea Gas Exchange and CO₂ Fluxes in a Tropical Coral Reef Lagoon, *Journal of Geophysical Research: Oceans*, 123, 8701-8713, <https://doi.org/10.1029/2018JC014423>, 2018.
- Humborg, C., Geibel, M. C., Sun, X., McCrackin, M., Mörth, C.-M., Stranne, C., Jakobsson, M., Gustafsson, B., Sokolov, A., Norkko, A., and Norkko, J.: High Emissions of Carbon Dioxide and Methane From the Coastal Baltic Sea at the End of a Summer Heat Wave, *Front. Mar. Sci.*, 6, 10.3389/fmars.2019.00493, 2019.
- 780 Köhler, W., Schachtel, G., and Voleske, P.: *Biostatistik*, 2nd edition ed., Springer Verlag, Berlin, 1996.
- Koppe, R., Gerchow, P., Macario, A., Haas, A., Schäfer-Neth, C., and Pfeiffenberger, H.: A generic framework for enabling the flow of sensor observations to archives and publications, *OCEANS. 10.1109/OCEANS-Genova.2015.7271657*, 2015.
- 785 Kubistin, D., Plaß-Dülmer, C., Kneuer, T., Lindauer, M., and Müller-Williams, J.: ICOS ATC CH₄ Release, Helgoland (110.0 m), 2020-11-17–2023-03-31, 2023.
- Law, C. S., Nodder, S. D., Mountjoy, J. J., Marriner, A., Orpin, A., Pilditch, C. A., Franz, P., and Thompson, K.: Geological, hydrodynamic and biogeochemical variability of a New Zealand deep-water methane cold seep during an integrated three-year time-series study, *Mar. Geol.*, 272, 189-208, <https://doi.org/10.1016/j.margeo.2009.06.018>, 2010.
- 790 Li, Q., Guo, X., Zhai, W., Xu, Y., and Dai, M.: Partial pressure of CO₂ and air-sea CO₂ fluxes in the South China Sea: Synthesis of an 18-year dataset, *Prog. Oceanogr.*, 182, 102272, <https://doi.org/10.1016/j.poccean.2020.102272>, 2020.

- 795 Magen, C., Lapham, L. L., Pohlman, J. W., Marshall, K., Bosman, S., Casso, M., and Chanton, J. P.: A simple headspace equilibration method for measuring dissolved methane, *Limnol. Oceanogr.: Methods*, 12, 637-650, doi:10.4319/lom.2014.12.637, 2014.
- Mallast, U., Staniek, M., and Koschorreck, M.: Spatial upscaling of CO₂ emissions from exposed river sediments of the Elbe River during an extreme drought, *Ecohydrology*, 13, e2216, <https://doi.org/10.1002/eco.2216>, 2020.
- 800 Matousu, A., Osudar, R., Simek, K., and Bussmann, I.: Methane distribution and methane oxidation in the water column of the Elbe estuary, Germany, *Aquat. Sci.*, 79, 443-458, 10.1007/s00027-016-0509-9, 2017.
- Mau, S., Gentz, T., Körber, J. H., Torres, M. E., Römer, M., Sahling, H., Wintersteller, P., Martínez, R., Schlüter, M., and Helmke, E.: Seasonal methane accumulation and release from a gas emission site in the central North Sea, *Biogeosciences*, 12, 5261-5276, doi:10.5194/bg-12-5261-2015, 2015.
- 805 Myhre, C. L., Ferré, B., Platt, S. M., Silyakova, A., Hermansen, O., Allen, G., Pisso, I., Schmidbauer, N., Stohl, A., Pitt, J., Jansson, P., Greinert, J., Percival, C., Fjaeraa, A. M., O'Shea, S. J., Gallagher, M., Breton, M. L., Bower, K. N., Bauguutte, S. J. B., Dalsøren, S., Vadakkepuliambatta, S., Fisher, R. E., Nisbet, E. G., Lowry, D., G. Myhre, Pyle, A., Cain, M., and Mienert, J.: Extensive release of methane from Arctic seabed west of Svalbard during summer 2014 does not influence the atmosphere, *Geophys. Res. Lett.*, 43, 4624-4631, doi:10.1002/2016GL068999, 2016.
- Myllykangas, J.-P., Hietanen, S., and Jilbert, T.: Legacy Effects of Eutrophication on Modern Methane Dynamics in a Boreal Estuary, *Estuaries and Coasts*, 43, 189-206, 10.1007/s12237-019-00677-0, 2020.
- Nightingale, P. D., Malin, G., Law, C. S., Watson, A. J., Liss, P. S., Liddicoat, M. I., Boutin, J., and Upstill-Goddard, R. C.: In situ evaluation of air-sea gas exchange parameterizations using novel conservative and volatile tracers, *Glob. Biogeochem. Cycl.*, 14, 373-387, doi:10.1029/1999GB900091, 2000.
- 815 Ortega, T., Jiménez-López, D., Sierra, A., Ponce, R., and Forja, J.: Greenhouse gas assemblages (CO₂, CH₄ and N₂O) in the continental shelf of the Gulf of Cadiz (SW Iberian Peninsula), *Sci. Total Environ.*, 898, 165474, <https://doi.org/10.1016/j.scitotenv.2023.165474>, 2023.
- 820 Osudar, R., Matoušů, A., Alawi, M., Wagner, D., and Bussmann, I.: Environmental factors affecting methane distribution and bacterial methane oxidation in the German Bight (North Sea), *Estuar. Coast. Shelf Sci.*, 160, 10-21, doi:10.1016/j.ecss.2015.03.028, 2015.
- Pankratova, N. V., Belikov, I. B., Skorokhod, A. I., Belousov, V. A., Muravya, V. O., Flint, M. V., Berezina, E. V., and Novigatsky, A. N.: Methane Concentration and $\delta^{13}\text{C}$ Isotopic Signature in Methane over Arctic Seas in Summer and Autumn 2020, *Oceanology*, 62, 757-764, 10.1134/S0001437022060108, 2022.
- 825 Petersen, W.: FerryBox systems: State-of-the-art in Europe and future development, *J. Mar. Syst.*, 140, 4-12, 10.1016/j.jmarsys.2014.07.003, 2014.
- Pfeiffer-Herbert, A. S., Prah, F. G., Peterson, T. D., and Wolhowe, M.: Methane Dynamics Associated with Tidal Processes in the Lower Columbia River, *Estuaries and Coasts*, 10.1007/s12237-019-00568-4, 2019.
- 830 Römer, M., Blumenberg, M., Heeschen, K., Schloemer, S., Müller, H., Müller, S., Hilgenfeldt, C., Barckhausen, U., and Schwalenberg, K.: Seafloor Methane Seepage Related to Salt Diapirism in the Northwestern Part of the German North Sea, *Frontiers in Earth Science*, 9, 10.3389/feart.2021.556329, 2021.
- Rosentreter, J. A., Borges, A. V., Deemer, B. R., Holgersson, M. A., Liu, S., Song, C., Melack, J., Raymond, P. A., Duarte, C. M., Allen, G. H., Olefeldt, D., Poulter, B., Battin, T. I., and Eyre, B. D.: Half of global methane

- 835 emissions come from highly variable aquatic ecosystem sources, *Nature Geoscience*, 14, 225-230, 10.1038/s41561-021-00715-2, 2021a.
- Rosentreter, J. A., Wells, N. S., Ulseth, A. J., and Eyre, B. D.: Divergent Gas Transfer Velocities of CO₂, CH₄, and N₂O Over Spatial and Temporal Gradients in a Subtropical Estuary, *Journal of Geophysical Research: Biogeosciences*, 126, 10.1029/2021JG006270, 2021b.
- 840 Roy, H., Jae, S. L., Jansen, S., and De Beer, D.: Tide-driven deep pore-water flow in intertidal sand flats, *Limnol. Oceanogr.*, 53, 1521-1530, 2008.
- Saunois, M., Stavert, A. R., Poulter, B., Bousquet, P., Canadell, J. G., Jackson, R. B., Raymond, P. A., Dlugokencky, E. J., Houweling, S., Patra, P. K., Ciais, P., Arora, V. K., Bastviken, D., Bergamaschi, P., Blake, D. R., Brailsford, G., Bruhwiler, L., Carlson, K. M., Carrol, M., Castaldi, S., Chandra, N., Crevoisier, C., Crill, P. M., Covey, K., Curry, C. L., Etiope, G., Frankenberg, C., Gedney, N., Hegglin, M. I., Höglund-Isaksson, L., Hugelius, G., Ishizawa, M., Ito, A., Janssens-Maenhout, G., Jensen, K. M., Joos, F., Kleinen, T., Krummel, P. B., Langenfelds, R. L., Laruelle, G. G., Liu, L., Machida, T., Maksyutov, S., McDonald, K. C., McNorton, J., Miller, P. A., Melton, J. R., Morino, I., Müller, J., Murguia-Flores, F., Naik, V., Niwa, Y., Noce, S., O'Doherty, S., Parker, R. J., Peng, C., Peng, S., Peters, G. P., Prigent, C., Prinn, R., Ramonet, M., Regnier, P., Riley, W. J.,
- 850 Rosentreter, J. A., Segers, A., Simpson, I. J., Shi, H., Smith, S. J., Steele, L. P., Thornton, B. F., Tian, H., Tohjima, Y., Tubiello, F. N., Tsuruta, A., Viovy, N., Voulgarakis, A., Weber, T. S., van Weele, M., van der Werf, G. R., Weiss, R. F., Worthy, D., Wunch, D., Yin, Y., Yoshida, Y., Zhang, W., Zhang, Z., Zhao, Y., Zheng, B., Zhu, Q., Zhu, Q., and Zhuang, Q.: The Global Methane Budget 2000–2017, *Earth Syst. Sci. Data*, 12, 1561-1623, 10.5194/essd-12-1561-2020, 2020.
- 855 Sierra, A., Jiménez-López, D., Ortega, T., Fernández-Puga, M. C., Delgado-Huertas, A., and Forja, J.: Methane dynamics in the coastal – Continental shelf transition zone of the Gulf of Cadiz, *Estuar. Coast. Shelf Sci.*, 236, 10.1016/j.ecss.2020.106653, 2020.
- Silyakova, A., Jansson, P., Serov, P., Ferré, B., Pavlov, A. K., Hattermann, T., Graves, C. A., Platt, S. M., Myhre, C. L., Gründger, F., and Niemann, H.: Physical controls of dynamics of methane venting from a shallow seep area west of Svalbard, *Cont. Shelf Res.*, 194, 10.1016/j.csr.2019.104030, 2020.
- 860 Striegl, R. G., Dornblaser, M. M., McDonald, C. P., Rover, J. R., and Stets, E. G.: Carbon dioxide and methane emissions from the Yukon River system, *Glob. Biogeochem. Cycl.*, 26, doi:10.1029/2012GB004306, 2012.
- Thomas, H., and Borges, A. V.: Biogeochemistry of coastal seas and continental shelves – Including biogeochemistry during the International Polar Year, *Estuar. Coast. Shelf Sci.*, 100, 1-2, <https://doi.org/10.1016/j.ecss.2012.02.016>, 2012.
- 865 Touma, J. S.: Dependence of the wind profile power law on stability for various locations *J. Air Pollution Control Association*, 27, 863-866, 1977.
- Trifunovic, B., Vázquez-Lule, A., Capocci, M., Seyfferth, A. L., Moffat, C., and Vargas, R.: Carbon Dioxide and Methane Emissions From A Temperate Salt Marsh Tidal Creek, *Journal of Geophysical Research: Biogeosciences*, 125, e2019JG005558, <https://doi.org/10.1029/2019JG005558>, 2020.
- 870 Upstill-Goddard, R. C., Barnes, J., and Owens, N. J. P.: Methane in the southern North Sea: Low-salinity inputs, estuarine removal, and atmospheric flux, *Glob. Biogeochem. Cycl.*, 14, 1205, 2000.
- Upstill-Goddard, R. C., and Barnes, J.: Methane emissions from UK estuaries: Re-evaluating the estuarine source of tropospheric methane from Europe, *Mar. Chem.*, 180, 14-23, 10.1016/j.marchem.2016.01.010, 2016.

- 875 Vielstädte, L., Haecckel, M., Karstens, J., Linke, P., Schmidt, M., Steinle, L., and Wallmann, K.: Shallow Gas Migration along Hydrocarbon Wells-An Unconsidered, Anthropogenic Source of Biogenic Methane in the North Sea, *Environ. Sci. Technol.*, 51, 10262-10268, 10.1021/acs.est.7b02732, 2017.
- Vogt, J., Risk, D., Bourlon, E., Azetsu-Scott, K., Edinger, E. N., and Sherwood, O. A.: Sea-air methane flux estimates derived from marine surface observations and instantaneous atmospheric measurements in the northern Labrador Sea and Baffin Bay, *Biogeosciences*, 20, 1773-1787, 10.5194/bg-20-1773-2023, 2023.
- 880 Wanninkhof, R., Asher, W. E., Ho, D. T., Sweeney, C. S., and McGillis, W. R.: Advances in quantifying air-sea gas exchange and environmental forcing, *Annual Review of Marine Science* (2009), 1, 213-244, doi:10.1146/annurev.marine.010908.163742, 2009.
- Wanninkhof, R.: Relationship between wind speed and gas exchange over the ocean revisited, *Limnol. Oceanogr.: Methods*, 12, 351-362, doi:10.4319/lom.2014.12.351, 2014.
- 885 Weber, T., Wiseman, N. A., and Kock, A.: Global ocean methane emissions dominated by shallow coastal waters, *Nature Communications*, 10, 10.1038/s41467-019-12541-7, 2019.
- Weber, U., Attinger, S., Baschek, B., Boike, J., Borchardt, D., Brix, H., Brüggemann, N., Bussmann, I., Dietrich, P., Fischer, P., Greinert, J., Hajnsek, I., Kamjunke, N., Kerschke, D., Kiendler-Scharr, A., Körtzinger, A., Kottmeier, C., Merz, B., Merz, R., Riese, M., Schloter, M., Schmid, H., Schnitzler, J. P., Sachs, T., Schütze, C., Tillmann, R., Vereecken, H., Wieser, A., and Teutsch, G.: MOSES: A Novel Observation System to Monitor Dynamic Events Across Earth Compartments, *Bulletin of the American Meteorological Society*, 1-23, doi:10.1175/BAMS-D-20-0158.1, 2021.
- Wiesenburg, D. A., and Guinasso, N. L.: Equilibrium solubilities of methane, carbon monoxide and hydrogen in water and sea water, *J. Chem. Eng. Data*, 24, 356-360, 1979.
- 895 Winkler, H.: High resolution methane measurements and impacts of environmental factors on the methane distribution in the Elbe Estuary, University of Vienna, 2019.
- Woszczyk, M., and Schubert, C. J.: Greenhouse gas emissions from Baltic coastal lakes, *Sci. Total Environ.*, 755, 143500, <https://doi.org/10.1016/j.scitotenv.2020.143500>, 2021.
- 900 Wu, C. S., Røy, H., and de Beer, D.: Methanogenesis in sediments of an intertidal sand flat in the Wadden Sea, *Estuar. Coast. Shelf Sci.*, 164, 39-45, <http://dx.doi.org/10.1016/j.ecss.2015.06.031>, 2015.
- Yang, M., Bell, T. G., Brown, I. J., Fishwick, J. R., Kitidis, V., Nightingale, P. D., Rees, A. P., and Smyth, T. J.: Insights from year-long measurements of air-water CH₄ and CO₂ exchange in a coastal environment, *Biogeosciences*, 16, 961-978, 10.5194/bg-16-961-2019, 2019.
- 905 Yin, X., Wu, W., Maeke, M., Richter-Heitmann, T., Kulkarni, A. C., Oni, O. E., Wendt, J., Elvert, M., and Friedrich, M. W.: CO₂ conversion to methane and biomass in obligate methylotrophic methanogens in marine sediments, *ISME Journal*, 13, 2107-2119, 10.1038/s41396-019-0425-9, 2019.
- Zang, K., Zhang, G., Xu, X., and Yao, Z.: Impact of air-sea exchange on the spatial distribution of atmospheric methane in the Dalian Bay and adjacent coastal area, China, *Chemosphere*, 251, 10.1016/j.chemosphere.2020.126412, 2020.
- 910

hat gelöscht:

Supplement

Hydrographic parameters:

In the RV Ludwig Prandtl, the built-in FerryBox (Petersen, 2014) recorded data using a Teledyne RDI thermosalinograph (temperature and salinity), Aanderaa oxygen optode 4330 (oxygen concentration and saturation), Meinsberg pH electrode (pH values), and SCUFA submersible chlorophyll fluorometer (turbidity and fluorescence). The data were stored on board and automatically sent via a mobile phone connection to the Hereon database. The water flow in the FerryBox was approximately 12 L min⁻¹. In the RV Mya II, the built in Ferrybox recorded data using a salinometer (FSI), and SBE38 Digital Oceanographic Thermometer (SBE38) for salinity and temperature. For pH measurements a Meinsberg pH Sensor was used and for oxygen an Aanderaa oxygen optode. On the RV Uthörn and RV Littorina, a portable pocket FerryBox (4HJena, Germany) was used to record the hydrographic parameters using the following sensors: Seabird SBE45 thermosalinograph, Aanderaa oxygen optode, Meinsberg pH electrode, Seapoint Chlorophyll Fluorometer (SCF), and Seapoint Turbidity Meter. The water flow was between 3 and 4 L min⁻¹. Data were saved once per minute.



Formatiert: Einzug: Erste Zeile: 1.27 cm

