



Revolutionizing Hailstone Analysis: Exploring Non-Soluble Particles through Innovative Confocal Laser and Scanning Electron Microscopy Techniques

Anthony C. Bernal Ayala¹, Angela K. Rowe¹, Lucia E. Arena^{2,3}, William O. Nachlas⁴, and María L. Asar^{2,5}

¹Department of Atmospheric and Oceanic Sciences, University of Wisconsin, Madison, WI, USA

²Facultad de Matemáticas, Astronomía, Física y Computación, Universidad Nacional de Córdoba, Córdoba, Argentina

³Observatorio Hidrometeorológico de Córdoba, Córdoba, Argentina

⁴Department of Geoscience, University of Wisconsin, Madison, WI, USA

⁵Facultad de Ciencias Exactas, Físicas y Naturales, Universidad Nacional de Córdoba, Córdoba, Argentina

Correspondence: Anthony C. Bernal Ayala (crespo3@wisc.edu)

Abstract. This paper introduces an innovative microscopy analysis methodology to preserve in situ non-soluble particles within hailstones using a protective porous plastic coating, overcoming previous limitations related to melting the hailstone sample. The method is composed of two techniques: trapping non-soluble particles beneath a plastic coat by using the adapted sublimation technique and then analyzing the particles individually with both Confocal Laser Scanning Microscopy (CLSM) and Scanning Electron Microscopy with Energy-Dispersive Spectroscopy (SEM-EDS). CLSM provides insights into physical attributes like particle size and surface topography, enhancing understanding of ice nucleation. SEM-EDS complements CLSM by offering detailed information on individual particle elemental chemistry, enabling classification based on composition. Strategies to reduce background noise from glass substrates during EDS spectral analysis are proposed. By combining powerful, high resolution microscopy techniques, this methodology provides valuable data on hailstone composition and properties. This information can give insights into hail developmental processes by enhancing our understanding of the role of atmospheric particles.

1 Introduction

The analysis of hailstone samples has been a subject of increasing interest owing to its potential to provide valuable insights into microphysics and the development of hailstorms (Jeong et al., 2020; Soderholm and Kumjian, 2023; Wang et al., 2023). Consider a hailstone a miniature chronicle of time, preserving a rich history of its formation and growth within its crystalline structure. Understanding hailstones' microphysics and developmental processes is crucial for improving weather forecasting, mitigation strategies, and climate change modeling (Cintineo et al., 2020; Malečić et al., 2022; Wu et al., 2022; Jiang et al., 2023). Atmospheric particles play a crucial role in hailstone microphysics. Particles may be ingested into convective cloud updrafts, serving as cloud condensation nuclei (CCN) or ice nucleating particles (INP), being necessary to form hydrometeors like cloud droplets and ice crystals that are essential for hail formation. Furthermore, hailstones can accumulate particles from



the surrounding environment in the cloud during their growth, which could have sizes larger than those that serve as CCN and INP and would provide information about the source environments involved in cloud formation. Particle size and chemical composition are essential to quantify because they influence the nucleation efficiency and growth rate within hailstones. Characterizing these particles allows us to reconstruct their potential influence on hailstone properties, such as fall speed rates and growth regimes, furthering our understanding of hail formation and its complex interplay with atmospheric conditions.

1.1 Previous Investigations into Hailstone Composition

Previous studies have investigated hailstone composition and properties using various techniques to determine their chemical constituents. For example, Šantl-Temkiv et al. (2013) analyzed hailstones from a thunderstorm in Slovenia, focusing on determining dissolved organic carbon and total dissolved nitrogen in hailstones with a total nitrogen module. They also characterized dissolved organic matter through ultrahigh resolution mass spectrometry, looking into the molecular complexity of hailstones. Overall, they noted a strong link to the local environment, particularly the hailstones' bacterial content, emphasizing a soil-driven origin for aerosol particles. More recently, Kozjek et al. (2023) expanded the analysis of hail in Slovenia by identifying fibrous and abiotic particles within melted hailstones.

Li et al. (2018) similarly examined constituents in melted hailstones. In their study, concentrations of ten ions and six environmental pollutants were compared with the aerosol optical depth retrieved from the Moderate Resolution Imaging Spectroradiometer for 15 hailstorm events in China. They found that particulate matter with an aerodynamic diameter of less than $10 \mu\text{m}$ (PM_{10}) was the most likely source of the water-soluble ions, although with considerable variability between hailstones. These PM_{10} particles are usually condensed below the cloud base and lifted higher through the updraft, highlighting a link to a terrestrial source. The concentration of water-soluble ions, metals, and metalloids in hailstones was investigated for the first time in South America by Beal et al. (2021), who analyzed hailstone samples from the triple border of Parana, Brazil, and Argentina using ion chromatography and inductively coupled plasma mass spectrometry. That study's cleaning procedure efficiently removed potential chemical contaminants from hailstones by following procedures defined by Christner et al. (2005). They found that Ca^{2+} was the most abundant ion in their samples and interpreted it to be related to agricultural activities of non-local regions through long-distance transport. However, in their work, as in the aforementioned studies, these approaches rely on the melting of the hailstones, which obscures the spatial distribution of non-soluble particles within the hailstone.

Michaud et al. (2014) took an approach that constrained their analysis to the hailstone's embryo, focusing on multiple hail-producing storms in the Rocky Mountains of the U.S. They utilized stable isotope analysis to estimate in situ temperatures during freezing and examined particle elemental compositions collected from hailstone embryos through scanning electron microscopy. Similar to Beal et al. (2021), their study followed hailstone cleaning procedures defined by Christner et al. (2005), scrapping the outermost layer with a sterile razor blade rinse with 95% ethanol and then melting to be filtered onto a 13 mm diameter, $0.2 \mu\text{m}$ polytetrafluorethylene membrane filter for elemental analysis. Their study focused on melting and filtering hailstone particles larger than $0.2 \mu\text{m}$ because of their interest in studying ice nucleation by immersion. They found that their hailstone embryos contained biological ice nuclei that can freeze water at relatively warm subzero temperatures, suggesting that biological particles have the potential to serve as nucleation sites for hailstone formation.



55 In the discussed previous literature, hailstones were melted to study soluble compounds or particles, and in the case of
Michaud et al. (2014), they used filters to separate the particles. A new method, derived from particle separation by adapted
sublimation Arena (2023), is proposed to remove the need to melt the hailstone for microscopy analysis while retaining the
particle's position within the hailstone. This new method, therefore, focuses on non-soluble particles within the hailstone
sample, preserving all biological and non-biological particles without maximum size restriction to provide a representative
60 particle distribution in the hailstone. This approach allows for microscopy techniques to be employed, as detailed below,
enabling the characterization of non-soluble particles physically (particle size and surface topography) and chemically (inferred
from elements within the individual particles). This information can be used to improve our understanding of the distribution of
particles within hailstones as a factor that influences the growth of cloud droplets' initial stages of ice nucleation and subsequent
hail growth.

65 **2 Principles of Scanning Microscopy Techniques as Applied to Particle Analysis**

2.1 Confocal Laser Scanning Microscope (CLSM)

Confocal microscopy is a high resolution optical imaging technique that uses a diffraction-limited spot to produce a point
source of light and reject out-of-focus light, allowing for imaging of deep tissues and 3D reconstructions of imaged samples
(Mercer, 2005; Turner et al., 2001; Liu et al., 2011; Anderson, 2014; Wang and Larina, 2017; Elliott, 2020; Claxton et al.,
70 2006). A modern confocal microscope includes pinholes, objective lenses, low-noise detectors, fast-scanning mirrors, filters
for wavelength selection, and laser illumination (Elliott, 2020). Confocal microscopy has been extensively utilized in various
disciplines, including supramolecular chemistry (e.g., Kubota et al., 2020), biology (e.g., Claxton et al., 2006), and materials
science (e.g., Schnell et al., 2019) due to its high resolution imaging capabilities. In particular, it is extensively used for
studying the intricate structures and functions of biological specimens (O'Connor, 1996; Kaye et al., 2015; Fu et al., 2021).
75 This technique offers several advantages over conventional widefield optical microscopy, including the ability to control depth
of field, elimination or reduction of background signal away from the focal plane, and the capacity to collect serial optical
sections from thick specimens (Mercer, 2005; Turner et al., 2001; Liu et al., 2011; Anderson, 2014; Wang and Larina, 2017;
Elliott, 2020; Claxton et al., 2006). CLSM is, therefore, a powerful tool for analyzing non-soluble particles due to its capacity
to acquire three-dimensional images to determine particle size distribution and particle surface information.

80 **2.1.1 Scanning Electron Microscopy (SEM) and Energy Dispersive Spectroscopy (EDS)**

Scanning Electron Microscopy (SEM) and Energy Dispersive Spectroscopy (EDS) are techniques often used together to ana-
lyze the surface of a sample. Both techniques and principles are based on the interaction of electrons with different types of
matter. SEM works by focusing a beam of electrons onto the sample, which causes the emission of secondary electrons and
backscattered electrons. These electrons can be detected and used to create a high resolution image of a surface. SEM has ex-
85 tensive applications across various scientific disciplines, such as material sciences (e.g., Zhang et al., 2020), geology/planetary



science (e.g., Gu et al., 2020), and biology (e.g., Koga et al., 2021). Renowned for its capability to provide high-resolution imaging (e.g., Figure 1) at scales as fine as 50 nm (e.g., Vander Wood, 2017), SEM has proven invaluable in diverse fields, including hailstone analysis (Michaud et al., 2014). Its imaging capabilities make SEM particularly well-suited for investigating the morphology and texture of solid materials, allowing for a detailed analysis of surface features. EDS, on the other hand, is a
90 technique that allows the analysis of the elemental composition of a sample. It works by detecting characteristic X-rays emitted from the sample when bombarded with a beam of electrons. Each element has a unique set of peaks on its electromagnetic emission spectrum, which allows the identification of the chemical elements present in the sample (e.g., Reed, 1996; Raja and Barron, 2016). Both techniques have been widely used in materials science, particle analysis (e.g., ice-nucleating, in-snow, and dust particles), and other fields to study the surface of samples and analyze their chemical composition (e.g., Krueger et al.,
95 2004; Bern et al., 2009; Ketterer, 2010; Nam and Lee, 2013; Farber, 2019; Raval et al., 2019; Wagner et al., 2019; Brostrøm et al., 2020; Sanchez-Marroquin et al., 2020; Rausch et al., 2022).

2.2 Protected Particle Deposit in Hailstone Samples for CLSM/SEM-EDS Analysis

CLSM and SEM-EDS microscopes were not designed for analyzing hailstone composition in sub-zero conditions. While it is common to find cryo stages on SEMs that facilitate sub-zero investigations and heating/cooling stages on optical scopes for
100 handling frozen samples, issues especially arise when trying to preserve the location of particles within the stone. A specific, relevant example of such limitations is that the vacuum in the SEM chamber used to remove air to prevent electron scattering and produce a clear image would result in the sublimation of the hailstone and the movement of particles from their original location within the stone. Prior hail-focused studies (e.g., Mandrioli et al., 1973; Michaud et al., 2014) have avoided these
105 obstacles by melting and filtering the hailstone's liquid water to determine the distribution of viable microorganisms within the hailstone, which limited the analysis to a specific subset of particles. Therefore, a new technique must be applied to hailstones to preserve their in situ particle distribution including non-soluble particles before taking advantage of these powerful microscopy techniques.

Ice exhibits a sublimation point close to its melting point, making it feasible to separate out particles via sublimation. A particularly effective sublimation procedure, as described in Arena (2023), involves placing a thin section of an ice sample on a
110 substrate within a dry environment, allowing the ice to sublime gradually while ensuring minimal contamination during and after the sublimation process. Over time, the particles remain deposited on the substrate, facilitating their examination through microscopy techniques. By first coating the ice with an ultra thin layer of porous plastic, thus slowing the sublimation process, any potential drag or contamination of the trapped particles while handling the sample is prevented.

This coating technique was pioneered by Schaefer (1941) and subsequently refined by K. Higuchi (see Higuchi, 1958;
115 Higuchi and Muguruma, 1958) for the creation of plastic replicas of ice surfaces. Both researchers applied thin layers of a coating made of polyvinyl formal (FORMVAR) dissolved in ethylene dichloride to the sample surface to facilitate ice sublimation through the formation of small pores in the plastic. Relatively shorter sublimation times within these pores led to the formation of thermal attack imprints (pits), enabling the examination of the sample's texture. This approach eliminates all water molecules while preserving the original spatial distribution of all particles, regardless of their size or composition.



120 Consequently, the particles separated and trapped by the plastic coating can be examined using microscopic techniques such as CLSM or SEM-EDS at room temperature. This coating and sublimation technique serves as the basis for this present study. The following sections describe the novel application and expansion of this approach, from hail collection to microscopy analysis, toward investigating non-soluble particle physical-chemical characteristics and distributions within hailstones.

3 Materials and Methods

125 3.1 Hailstone Collection

The hail collection procedure was an effort between the Universidad Nacional de Córdoba (UNC) and Argentinian citizens around the Córdoba Province. When Argentinian citizens collected hail, they took pictures with their hands or some other object as a reference and stored them in their fridges (commonly at $-13\text{ }^{\circ}\text{C}$). Argentinian citizens then contacted the Facultad de Matemática, Astronomía, Física y Computación (FAMAF) at UNC or Dr. Lucia E. Arena directly through COSECHEROS APP, phone and WhatsApp to report the hail they collected. Once the hail report was made, a visit was scheduled with the person who collected the hailstone. During the visit, location coordinates, time of collection, home freezer temperature, and information on whether it rained before, during, or after the hail is noted. The name of the person who collected the sample is recorded, and a document is signed that states that the individual is transferring the hail sample ownership to FAMAF for analysis.

135 The hailstone sample was transferred and kept in a nylon bag in a thermally reinforced cooler where the temperature was controlled at $-15\text{ }^{\circ}\text{C}$. This temperature is chosen because the crystallographic structure changes are prolonged (the significant changes in crystallographic structure at this temperature may not start to happen after a year or more). This timeline, however, is not important for the type of analysis described in this paper because it is focused on particle composition, which is not affected by the storage time and not the crystallographic properties of the hailstone. Each sample was designated an alphanumeric identifier that included the name of the person who collected the sample. Once it reaches the laboratory, the hailstone surface is brushed (to remove contamination) and transferred to a cold chamber with a controlled temperature of $-15\text{ }^{\circ}\text{C}$. No additional cleaning procedure is considered since the hailstone has not melted, and the risk of further contamination is minimal. This hail collection and conservation procedure became the Argentine provincial citizen science program “Cosecheros de Granizo,” which started in October 2018 (Arena and Crespo, 2019; Crespo, 2020).

145 3.2 Hailstone Preparation with an Adapted Sublimation Method

After cleaning subzero facilities (refer to Appendix A), hail samples were processed in the subzero facility Laura Levi Atmospheric Physics Laboratory of FAMAF-UNC, one of the few facilities in the world with the equipment to process hail. Upon the chamber reaching a temperature of $-12\text{ }^{\circ}\text{C}$, the chamber should be quickly entered to minimize heat exchange and maintain this required operating temperature for hailstone processing. After entering the chamber, the following hailstone



150 measurements should be made first before the cutting of the hailstone if needed for additional physical analysis of the stone:
lengths of the lobes, height and width, symmetry, and weight.

The overall objective of the hailstone preparation process is to expose the embryo by cutting the hailstone. However, due to the coating machine's limited size, smaller thin-section glasses are needed to fit the coating chamber. This strategic preparation ultimately serves the larger goal of entrapping the hailstone particles within a FORMVAR layer, a crucial step for subsequent
155 microscopic analysis. For this reason, a glass substrate is needed to affix the hailstone before cutting it into sections for analysis. Toward this goal, several thin glass sections, assembled in a mosaic pattern (Figure 2), were affixed to a larger piece of glass using ultrapure liquid water. The hailstone was then attached to the glass by applying heat to the bottom of the hailstone to slightly melt the bottom surface, positioning it on the glass, then allowing it to freeze once more (within minutes) until firmly bonded to the glass surface. The glass is too thin to firmly grab for cutting the stone, so the hailstone, now firmly attached to the
160 glass, is further affixed to a thick metal section plate using the same ultrapure liquid water (Figure 3-A). The hailstone sample was then cut over the equatorial symmetric plane using a diamond-encrusted cutting disk of 12 *cm* diameter with a cutting width of 2 *mm* approximately 2 *mm* to expose the embryo (Figure 3-B). While alternatives to the mentioned disk are plausible (different sizes and cutting widths), they must adhere to specific criteria to achieve the best hailstone cutting performance: (1) the blade has to be as thin as possible to minimize removing hailstone mass during cutting, and (2) its edge must be adequately
165 broad to facilitate cutting larger hailstones. After cutting, the sample is evenly polished with a microtome (Figure 4-A) to provide a thin, even ice layer over the embryo (Figure 4-B). Immediately after, 1% FORMVAR solution diluted in ethylene dichloride (refer to Appendix B) was applied over the flat polished surface and left to curate for a few minutes.

At this stage, before sublimation, pictures were taken to record the location of growth rings relative to the embryo. Hence, we know where particles will be located relative to the embryo and also allow for future crystallographic and ice growth
170 analysis. To sublimate the hailstone, it is left in a sealed low-humidity container with silica gel (Figure 4-C) at the -12 °C operating temperature. This process enabled the gradual sublimation of ice over a 24- to 48-hour period, with daily sample monitoring, while also capturing non-soluble particles beneath the layer of the FORMVAR solution. During sublimation, dissolved components may undergo precipitation. For instance, in cases where the original hailstone possessed a brine-like composition, the sublimation process could result in the precipitation of once-soluble salt particles. Consequently, discerning
175 between particles that were initially non-soluble and those that became non-soluble post-sublimation poses a challenge and is not the primary focus of this paper. However, it is known to a certain degree that some particles were not originally precipitated from the sublimation process owing to their specific composition determined by the SEM-EDS technique described in the next section.

3.3 Microscopy analysis

180 3.3.1 CLSM analysis

Once the sample is completely sublimated and particles are trapped in the FORMVAR, it is ready for microscopy analysis. An OLYMPUS LEXT OLS4000 Confocal Laser Scanning Microscope (CLSM) is used to create a 2-D cross section of the



sublimated hailstone (centered on the embryo location) along an axis in the equatorial plane using the lowest available magnification (108x) to locate the non-soluble particles trapped in the FORMVAR. Within this cross-section (Figure 5-A), subsectors
185 are selected with respect to the embryo center for higher magnification (Figure 5-B), with the color image (Figure 5-C) providing high resolution 3D particle surface topography and, therefore, size (Figure 5-E) of individual particles within all subsectors of the scanned 2-D cross section. The magnification is dependent on the size of the particle to be analyzed. It is estimated that using the modified sublimation technique, particles trapped in FORMVAR can be observed using the CLSM as small as $1\ \mu\text{m}$, requiring magnification of 2132x. Each particle is individually labeled for further analysis. CLSM files undergo processing using ProFilm software (e.g., as displayed in Figure 5-E), facilitating the extraction of essential particle information. During this
190 stage, particle size is determined by assessing the maximum length along the x and y axes. The obtained data on particle size, coupled with the spatial distribution of each particle, lays the foundation for the subsequent SEM-EDS analysis, as detailed in the following section.

3.3.2 SEM-EDS analysis

195 The 2-D cross section created with the CLSM (Figure 5-A) is used as a reference point to investigate the elemental composition of the individual particles. Elemental analysis with SEM-EDS was performed on electrically conductive samples at high vacuum to improve imaging quality and accuracy of chemical measurements. Some studies of non-soluble particles in hailstones analyzed uncoated samples mounted on conductive substrate under variable-pressure SEM mode ($50\ \text{Pa}$). This approach is advantageous to avoid X-ray interferences from the coating material but can lead to uncertainties in X-ray detection
200 from scattering of the primary beam by air molecules in the sample chamber. To produce a fully conductive surface for most accurate X-ray chemical analysis, the glass slides with hailstone particles were coated with 25 nm Au and analyzed at $10^{-4}\ \text{Pa}$ chamber pressure. Gold coating was selected over other common coating materials (Au, Au-Pd Alloy, Pd, Pt, Ir, C, and Ag) to enable characterization of C-bearing non-soluble particles without X-ray interferences at the C K α position or other elements that may exist in hailstone particles. The sample was analyzed with a ZEISS FEG-SEM Sigma with an EDS X-MAX
205 $80\ \text{mm}^2$ detector at the Laboratorio de Análisis de Materiales por Espectrometría de Rayos X (LAMARX) facilities at UNC.

Analysis of micronscale non-soluble particles involves optimizing both the spatial resolution of electron imaging and the activation volume of X-ray analysis. Selecting the accelerating voltage is critical to determining the ultimate resolution of imaging and X-ray analysis. The accelerating voltage of the primary beam dictates the wavelength of the electrons, with higher voltages recommended for improved spatial resolution of electron imaging (Goldstein et al., 2017). However, increasing the
210 acceleration voltage also increases the X-ray activation volume, as higher energy electrons have greater penetration depth into the sample. By balancing the energy of the incident beam, it is possible to excite all X-ray lines of interest from the smallest possible volume. Additionally, depending on the object being analyzed, increasing the voltage increases the risk of beam damage to the particle (e.g., Figure 6), thereby jeopardizing the sample's integrity and subsequently influencing the conclusive outcomes of this method. On the other hand, the working distance can affect the depth of the field and beam diameter, which
215 will also affect the clarity and resolution of the image of an object. Optimizing the accelerating voltage and working distance will define the clarity, detail, and accuracy of the imagery obtained from an SEM.



The working conditions of accelerating voltage of 15 kV and 8.5 mm working distance were set for creating the secondary electron image (also referred to as a micrograph) shown in Figure 7-A. For these conditions, at a magnification of 1.14 kx , particles as small as $1\text{ }\mu\text{m}$ trapped in the FORMVAR solution are observed in the SEM. These SEM-identified particles are then compared to CLSM image locations to ensure the same particle from the CLSM imagery is the one being targeted in the SEM (e.g., Figures 6-C and 7-A) for EDS spectrum analysis.

EDS analysis is conducted for every particle identified in the SEM imagery to determine major and minor element composition of the non-soluble particles trapped in the hailstone sample (Figure 7-B) using the same voltage defined for electron imaging. The choice of 15 kV ensures that heavier elements are included in the EDS analysis by exciting the K lines of elements up to Fe. However, owing to attaching the hailstone to a glass substrate, a lower voltage may reduce background noise. Specific to soda-lime glass, elements such as Si, Na, Ca, Mg, K, and Al may be introduced into the EDS spectral analysis from the glass. To evaluate this effect, Monte-Carlo Simulations of Electron-Specimen Interactions were conducted for 15 and 8 kV with $0.25\text{ }\mu\text{m}$ beam diameter using the CASINO program (v2.5.1.0; Drouin et al., 2007). Results indicate that for a small grain of biotite particle, with a 7 nm layer of FORMVAR, some X-rays are emitted from the glass substrate for particles smaller than $1.5\text{ }\mu\text{m}$ at 15 kV that can be minimized by using the 8 kV accelerating voltage. While this suggests that the soda-lime glass can exert minimal impact on the spectral readings for particles down to $1\text{ }\mu\text{m}$ minimum size at 8 kV , a single-point analysis approach can further reduce the potential spectral contamination.

An example of the single-point technique is highlighted in Figure 7-A, where the EDS measurement is first taken at a point within the red circle where no glass substrate is present (i.e., focused entirely on a section of the particle). Multiple single-point measurements made at least $10\text{ }\mu\text{m}$ apart prevents overlap and captures composition variability through the particle. Multiple EDS point measurements are essential for assuring representative particle composition for particles showing varying optical properties in the CLSM color imagery (e.g., Figure 5-D). Figure 7-D shows the corresponding output from the SEM-EDS analysis of the particle in Figure 7-A. Micrographs of individual particles (e.g., Figure 7-A) and EDS data are crucial in particle classification (e.g., carbonaceous [biological, organic/inorganic], silicates) based on elemental composition. Additionally, the high resolution geometry information of each individual particle that can be compared to universally known standards to increase confidence of the particle classification. Micrographs are also complementary in ensuring that EDS spectra are accurately attributed to the same particle analyzed using the CLSM.

4 Application of the Microscopy Method to a Hailstone

The outcomes of the methodology applied to a 4 cm hailstone will be discussed in this section to gain insights into the physicochemical properties of non-soluble particulates. The hailstone analyzed originated from a supercell storm in Villa Carlos Paz, Argentina, on 8 February 2018 (Kumjian et al., 2020; Bernal Ayala et al., 2022). With our described method, we are uniquely able to determine the sizes and composition of non-soluble particles with respect to location relative to the hailstone's embryo. Figure 9 shows the results of our method applied to the 8 February 4 cm hailstone, preserving information on the spatial distribution along the 2-D cross section in which each particle has a diameter larger than $1\text{ }\mu\text{m}$. Analyzing this



250 specific hailstorm, CLSM particle size distribution reveals that particles ranged from 2 to 150 μm . When analyzing the spatial distribution of particles from the center of the hailstone (Images 4/5 in Figure 9), Images 5 and 2 (part of the hailstone's center and an outer layer) have the largest variation of particle sizes compared to particles trapped in other sections.

To characterize the elemental composition of the non-soluble particles from the SEM-EDS analysis (e.g., Figure 7-B), we applied a statistical-based clustering k-means method based on elemental weight percentages (e.g., Laskin et al., 2012). More specifically, we used the Orange's 3 k-means clustering algorithm (Demšar et al., 2013), which provides silhouette scores of clustering results for various k where the higher the silhouette score, the better the clustering. This approach resulted in three unique categories: carbon-based, silicon-based, and chloride-based.

Particles included in the C-based group are those that contain C greater than 10 % and C greater than Cl and Si. Those included in the Si-based group are those that contain Si greater than 10 % and Si greater than C and Cl. Finally, particles that contained Cl greater than 10 % and are greater than C or Na were categorized in the Cl-based group. With this characterization framework we found that most particles in this hailstone are C-based, followed by Si-based particles, and lastly, Cl-based particles. Figure 9 reveals that the largest particles were C-based, and C-based and Si-based particles were found through the entire hailstone sample, yet Cl-based particles were only found in the outer layers. The preservation of spatial distribution through this innovative method opens avenues for exploring size distribution and elemental composition of individual particles trapped within each hailstone layer. This information can be used to understand the correlation of the particle size and elemental distribution of particles with different cloud regions during hail formation and consider source regions of these particles that contribute to hail formation and growth.

5 Limitations and Recommendations

The following section discusses some limitations of the microscopy analysis technique, offering suggestions to mitigate these constraints and enhance the analysis by incorporating complementary techniques. A unique aspect of this work is providing characterization of individual particles. While beneficial, it is also a time-consuming process. There are pathways to consider to optimize the SEM-EDS analysis. Studies like Lata et al. (2021) and Diep et al. (2022) have used a computer-controlled SEM-EDS (CCSEM) microscope for elemental chemical composition analyses, which allows the user to analyze many more particles with the labor more invested in interpretation. A computer-controlled "CC" SEM-EDS system is an SEM-EDS with additional software that makes automated analysis possible, including automated sample loading, stage movement, focusing, imaging, and automated elemental analysis. A CCSEM-EDS software can be programmed to analyze hundreds to thousands of particles in less than an hour, one after another, without human intervention (Vander Wood, 1994). In contrast, manual analysis requires an operator to perform each step individually, which is time-consuming and can introduce human error. Using a CCSEM-EDS saves time in the analysis process and optimizes funds allocated for using this instrumentation.

280 Secondly, Section 2.4.2 noted the potential introduction of elements into the EDS spectral analysis from the substrate, in this case, glass. As previously mentioned, higher voltages provide a more accurate analysis of heavier elements but can introduce more contamination from the glass. The single-point measurement technique described in Section 2.4.2 provides a



solution, albeit introducing more labor-intensive steps to the process. Two recommendations, therefore, emerge: 1) measuring particle-free areas of the glass using the EDS to obtain a control elemental spectrum from the glass or 2) decreasing the accelerating voltage to 8 kV to reduce background interference and then rerunning the EDS analysis with a higher (e.g., 15 kV) voltage only on those particles showing the presence of heavier elements to increase accuracy in those composition measurements. Varying voltages in the EDS analysis in the context of this type of particle analysis are uncommon in the literature and may provide more confidence when characterizing non-soluble particles. Furthermore, to validate an individual particle's EDS spectrum result, spectrum mathematical operations were performed using the NIST DTSA-II program (Ritchie, 2010) to mitigate potential contamination originating from the glass substrate associated with a specific particle, as illustrated in Figure 10. The analysis revealed that it is possible to eliminate potential glass-related spectrum contaminants from the particle's spectral results (Figure 10-C) by subtracting the glass-related spectrum (Figure 10-B) from the particle-related spectrum (Figure 10-A). Spectral subtraction of particles from the underlying substrate enables more confident interpretations of element identity and abundance from non-soluble particles mounted on a glass substrate.

6 Conclusions

Analyzing hailstone samples through the proposed methodology offers a promising avenue for gaining deeper insights into the composition, structure, and properties of hailstones. This method has addressed and resolved several limitations observed in previous studies of collected hailstones by shifting the focus from melting to sublimating the hailstone, thus preserving the in situ particle distribution of all non-soluble particles within hailstones. This approach enables the identification of individual particles across each layer of the hailstone, including the embryo and air bubble rings. This approach, therefore, provides a precise representation of particle distribution and allows for the correlation of this data with the corresponding rings associated with specific growth zones within the cloud.

The integration of CLSM and SEM-EDS combines two powerful analytical techniques that contribute to a more comprehensive understanding of hailstones' microphysics and developmental processes. CLSM enables the characterization of non-soluble particles in terms of physical attributes, such as particle size and surface topography, enhancing our ability to discern the initial stages of ice nucleation and hailstone development. On the other hand, SEM-EDS analysis complements CLSM by providing detailed information about the elemental compositions of individual particles, facilitating the classification of particles based on their composition. Using a protective porous plastic coating aids in preserving the integrity of the sample and capturing the complete spectrum of particles.

While this proposed method offers significant advantages in providing more comprehensive data on the individual non-soluble particles trapped in a hailstone, it has some limitations. The optimization of human resources could be achieved by incorporating a CCSEM-EDS microscope, allowing for a more efficient allocation of time toward the interpretation of each individual particle's species. Additionally, while efforts have been made to minimize the impact of glass substrate background noise on EDS spectral analysis, caution should still be exercised in interpreting spectral results, especially for particles near the lower particle size limit.



For readers interested in categorizing carbon-based particles into biological, organic, and inorganic categories, further analysis with different microscopy techniques should be explored. For example, Raman spectroscopy could aid the particle characterization by complementing the SEM-EDS analysis, which does not provide enough information to discriminate different forms of Carbon in the sample. Raman Spectroscopy is a non-destructive chemical analysis technique that provides insights into a material's chemical structure, phase, polymorphy, crystallinity, and molecular interactions (Orlando et al., 2021). This technique yields unique chemical fingerprints, enabling swift identification and differentiation from other substances (Dahal, 2022). By combining Raman spectroscopy with complementary imaging methods, like SEM-EDS analysis used in this study, researchers could compare Raman distribution maps with topographical or morphological images, correlating Raman spectra with complementary SEM-EDS elemental information.

Additionally, scanning transmission X-ray microscopy (STXM) coupled with near-edge X-ray absorption fine structure (NEXAFS) spectroscopy can be explored to distinguish between organic and inorganic carbon (Lehmann et al., 2005; Moffet et al., 2011; Fallica et al., 2018; Lata et al., 2021). NEXAFS spectroscopy exploits the photoexcitation of electrons from a core level to unoccupied molecular orbitals to probe the specific chemical environment of a given element (Fallica et al., 2018). Mapping the distribution of organic carbon at the K-absorption edge of carbon could aid in further distinguishing between organic and inorganic carbon since STXM/NEXAFS applications have been used in atmospheric aerosol research (Moffet et al., 2011; Lata et al., 2021) and soil mapping research (Lehmann et al., 2005) to improve organic and inorganic carbon characterization.

The innovative approach outlined in this paper presents a valuable contribution to the field of hailstone analysis. By combining powerful and high resolution microscopy techniques and meticulous sample preparation, researchers can better uncover the intricate details of hailstone composition and properties, which can give insights into hail developmental processes. This method could enhance our understanding of atmospheric particles' role in hailstone microphysics, contributing to advancements in weather forecasting, mitigation strategies, and climate change modeling.

Appendix A: Appendix A: Cleaning protocol for quasi-clean sub-zero facilities

There are risks involved throughout the acquisition process and subsequent handling, leading to potential contamination and particle loss. Possible contamination sources during the processing of a hailstone may include the ultrapure water used, laboratory air, air from the dry container (silica gel dish), and the FORMVAR solution. The adapted sublimation particle separation procedure (described in Section 2.4) reduces these contamination sources compared to traditional methods that melt hailstones because the hailstone never transitions to the liquid phase; the diffusion coefficients of contaminants for the liquid phase (at 0°C, $4 \times 10^{-9} \text{ m}^2/\text{s}$; Pruppacher, 1972) is at least one order of magnitude higher than in the solid phase (ice, $4 \times 10^{-15} \text{ m}^2/\text{s}$; Petrenko and Whitworth, 1999). Nevertheless, a systematic approach is needed to identify and manage potential contamination sources, including the operator, the working environment, and the materials and tools employed in processing the sample until the particle deposit is completed and the sample is ready for further microscopy analyses.



The sub-zero facility used for the development of the microcopy method is composed of two rooms, a pre-chamber (entry chamber) and a working chamber; this approach is to minimize the introduction of possible contaminants when processing samples. Metal walls and floors were first cleaned with a detergent solution, rinsed with tap water, and disinfected with sodium hypochlorite (commonly used as a disinfectant and bleaching agent), using water with low-lint mops without typical cleaning chemicals, rinsed a second time with clean water and later rinsed a last time with ultrapure water. The rooms do not have an air filter system. All the equipment used to process thin sheets of ice was also washed with ultra-pure water. The glass slides were degreased with a non-ionic detergent and then rinsed multiple times with ultrapure water. The slides were then dried in a clean, quasi-closed container at room temperature without a paper towel. Every operator used protective suits for the cold with an external waterproof fabric. The suits were washed using traditional detergent and rinsed multiple times using water alone. Each operator wore two gloves: the base was made of wool for protection from the cold, and a second latex glove was on top. Common plastic glasses for eye protection were used.

Appendix B: Appendix B: Optimum thickness of the porous plastic coating layer

Beyond the risk of introducing contaminants into the substrate, certain particles might move from their original location during handling or in coating procedures affected by vacuum pressures needed for SEM-EDS analyses. As previously mentioned, a way to address this limitation is to apply a FORMVAR solution film over the sample. Determining the ideal plastic coating layer thickness is essential to using the adapted sublimation method effectively described in Section 2.2. Achieving the right mixture of FORMVAR and ethylene dichloride is essential; the layer must be sufficiently thick to trap particles in the hailstone while remaining thin enough to reduce the sublimation duration (24 to 48 hours and not weeks). Additionally, it must be thin enough to allow the SEM electron beam to penetrate the plastic coating to analyze particles, as seen in Figure 1.

Because the FORMVAR is transparent, the plastic layer thickness presents no major limitations in analyzing particles in a sublimated hailstone sample with the CLSM. However, the thickness limitation is of greater concern when preparing the sample for SEM-EDS analysis to determine the elemental chemical composition of particles. For samples to be analyzed using the SEM, they must be coated with a layer of electrically conductive material, typically with a layer of a metal coating, with a thickness of an order of 25 nm in a vacuum environment of 5×10^{-2} mBar. Additionally, after coating, the sample is inserted into a chamber in the SEM instrumentation that undergoes a vacuum of 5×10^{-5} mBar or greater. If no plastic coating was applied to the sublimated hailstone sample, the vacuum process in both previously described scenarios could remove particles, which makes it essential that the sample is covered with a protective film that keeps the particles trapped.

Multiple lab-grown ice samples were prepared and coated with one to three layers of FORMVAR solution at 1 and 3 % concentrations to address the thickness considerations and minimize particle displacement. This procedure consists of sweeping the polished surface of the ice sample with a rod dipped in FORMVAR solution. The sample is then analyzed with CLSM, where an area exhibiting a distinct FORMVAR relief pattern is identified within the sample, as seen in Figure B-1 (top). Then, a transect across this pattern is used to measure the height of the relief (Figure B-1, bottom) and thus determine the thickness of the FORMVAR layer. Thicknesses measured for multiple FORMVAR coatings are shown in Table B1. This approach



determined that one layer of coating at 1 % FORMVAR thickness optimally addressed the aforementioned tradeoffs of the plastic coating, i.e., preserving particles while being able to see particles with the SEM (e.g., Figure 1).

FORMVAR Concentration	Number of FORMVAR layers		
	1	2	3
	Layer thickness in [μm]		
1%	0.007	0.031	0.100
3%	0.7	1.7	30.0

Table B1. FORMVAR coating thicknesses measured with CLSM

Author contributions. Conceptualization, A.C.B.A. and L.E.A.; methodology, A.C.B.A., A.K.R. and L.E.A., M.L.A.; validation, A.K.R. and L.E.A., W.O.N.; formal analysis, A.C.B.A., and L.E.A.; investigation, A.C.B.A., A.K.R. and L.E.A.; resources, A.K.R. and L.E.A.; data curation, L.E.A.; writing—original draft preparation, A.C.B.A.; writing—review and editing, A.C.B.A., A.K.R., L.E.A. and W.O.N., M.L.A.; visualization, A.C.B.A.; supervision, A.K.R., L.E.A. and W.O.N.; funding acquisition, A.K.R.. All authors have read and agreed to the published version of the manuscript.

Competing interests. The authors declare no competing interests.

Acknowledgements. This research was funded by the National Science Foundation (grant no. AGS-1640452, AGS-1661768). We thank Sebastian García at the Laboratorio de Análisis de Materiales por Espectrometría de Rayos X” facilities at the Universidad Nacional de Cordoba for his technical assistance in the microscopy analysis phase.



References

- Anderson, S. I.: Characterisation of Cells on Biomaterial Surfaces and Tissue-Engineered Constructs Using Microscopy Techniques, in: Tissue Engineering Using Ceramics and Polymers (Second Edition), edited by Boccaccini, A. R. and Ma, P. X., pp. 196–223, Woodhead Publishing, <https://doi.org/10.1533/9780857097163.2.196>, 2014.
- 395 Arena, L. and Crespo, A.: Recopilación de estudios primarios de caracterización cristalográfica de granizos y de las tormentas que los originan, 2019.
- Arena, L. E.: Identificación de partículas incluidas en hielos naturales (glaciares, permafrost, granizo) por sublimación adaptada, 2023.
- Beal, A., Martins, L. D., Martins, J. A., Rudke, A. P., de Almeida, D. S., Costa, L. M., and Tarley, C. R. T.: Evaluation of the Chemical Composition of Hailstones from Triple Border Paraná, Santa Catarina (Brazil) and Argentina, *Atmospheric Pollution Research*, 12, 184–192, <https://doi.org/10.1016/j.apr.2021.01.009>, 2021.
- 400 Bern, A. M., Lowers, H. A., Meeker, G. P., and Rosati, J. A.: Method Development for Analysis of Urban Dust Using Scanning Electron Microscopy with Energy Dispersive X-ray Spectrometry to Detect the Possible Presence of World Trade Center Dust Constituents, *Environmental Science & Technology*, 43, 1449–1454, <https://doi.org/10.1021/es800865n>, 2009.
- 405 Bernal Ayala, A. C., Rowe, A. K., Arena, L. E., and Desai, A. R.: Evaluation of Satellite-Derived Signatures for Three Verified Hailstorms in Central Argentina, *Meteorology*, 1, 183–210, <https://doi.org/10.3390/meteorology1020013>, 2022.
- Brostrøm, A., Kling, K. I., Hougaard, K. S., and Møhlhave, K.: Complex Aerosol Characterization by Scanning Electron Microscopy Coupled with Energy Dispersive X-ray Spectroscopy, *Scientific Reports*, 10, 9150, <https://doi.org/10.1038/s41598-020-65383-5>, 2020.
- Christner, B. C., Mikucki, J. A., Foreman, C. M., Denson, J., and Priscu, J. C.: Glacial Ice Cores: A Model System for Developing Extraterrestrial Decontamination Protocols, *Icarus*, 174, 572–584, <https://doi.org/10.1016/j.icarus.2004.10.027>, 2005.
- 410 Cintineo, J. L., Pavolonis, M. J., Sieglaff, J. M., Cronce, L., and Brunner, J.: NOAA ProbSevere v2.0—ProbHail, ProbWind, and ProbTor, *Weather and Forecasting*, 35, 1523–1543, <https://doi.org/10.1175/WAF-D-19-0242.1>, 2020.
- Claxton, N. S., Fellers, T. J., and Davidson, M. W.: Microscopy, Confocal, in: *Encyclopedia of Medical Devices and Instrumentation*, John Wiley & Sons, Ltd, <https://doi.org/10.1002/0471732877.emd291>, 2006.
- 415 Crespo, author, A.: Characterization of Two Hailstorms in Argentina, Ph.D. thesis, Madison, Wisconsin : University of Wisconsin-Madison, 2020., advisor: Ankur Desai;Department: Atmospheric and Oceanic Sciences;M.S. University of Wisconsin-Madison 2020.;Includes bibliographical references (leaves 47-51)., 2020.
- Dahal, S.: The Essential Guide to Raman Microscopy, <https://www.thermofisher.com/blog/materials/guide-to-raman-microscopy-raman-spectroscopy/>, 2022.
- 420 Demšar, J., Curk, T., Erjavec, A., Gorup, Č., Hočevar, T., Milutinovič, M., Možina, M., Polajnar, M., Toplak, M., Starič, A., Štajdohar, M., Umek, L., Žagar, L., Žbontar, J., Žitnik, M., and Zupan, B.: Orange: Data Mining Toolbox in Python, *J. Mach. Learn. Res.*, 14, 2349–2353, 2013.
- Diep, T., Lata, N. N., Cheng, Z., Mazzola, M., Gilardoni, S., Willbourn, E., Hurst, J., Ogle, H., Hiranuma, N., and China, S.: Chemical Composition and Immersion Freezing Activities of Aerosol Articles in the European Arctic, 2022, A12P–1305, 2022.
- 425 Drouin, D., Couture, A. R., Joly, D., Tastet, X., Aimez, V., and Gauvin, R.: CASINO V2.42: A Fast and Easy-to-Use Modeling Tool for Scanning Electron Microscopy and Microanalysis Users, *Scanning*, 29, 92–101, <https://doi.org/10.1002/sca.20000>, 2007.
- Elliott, A. D.: Confocal Microscopy: Principles and Modern Practices, *Current protocols in cytometry*, 92, e68, <https://doi.org/10.1002/cpcy.68>, 2020.



- Fallica, R., Watts, B., Rösner, B., Giustina, G. D., Brigo, L., Brusatin, G., and Ekinci, Y.: Changes in the near Edge X-Ray Absorption Fine Structure of Hybrid Organic–Inorganic Resists upon Exposure, *Nanotechnology*, 29, 36LT03, <https://doi.org/10.1088/1361-6528/aacd4>, 2018.
- Farber, L.: Microstructure and Mechanical Properties of Granules Formed in High Shear Wet Granulation, in: *Handbook of Pharmaceutical Wet Granulation*, edited by Narang, A. S. and Badawy, S. I. F., pp. 37–88, Academic Press, <https://doi.org/10.1016/B978-0-12-810460-6.00003-8>, 2019.
- 435 Fu, Y.-Z., Li, Y.-D., Su, Y.-T., Cai, C.-Y., and Huang, D.-Y.: Application of Confocal Laser Scanning Microscopy to the Study of Amber Bioinclusions, *Palaeontology*, 4, 266–278, <https://doi.org/10.11646/palaeontology.4.3.14>, 2021.
- Goldstein, J. I., Newbury, D. E., Michael, J. R., Ritchie, N. W. M., Scott, J. H. J., and Joy, D. C.: *Scanning Electron Microscopy and X-Ray Microanalysis*, Springer, 2017.
- Gu, L., Wang, N., Tang, X., and Changela, H. G.: Application of FIB-SEM Techniques for the Advanced Characterization of Earth and Planetary Materials, *Scanning*, 2020, 8406 917, <https://doi.org/10.1155/2020/8406917>, 2020.
- Higuchi, K.: The Etching of Ice Crystals, *Acta Metallurgica*, 6, 636–642, [https://doi.org/10.1016/0001-6160\(58\)90157-3](https://doi.org/10.1016/0001-6160(58)90157-3), 1958.
- Higuchi, K. and Muguruma, J.: Etching of Ice Crystals by the Use of Plastic Replica Film, *Journal of the Faculty of Science*, 1958.
- Jeong, J.-H., Fan, J., Homeyer, C. R., and Hou, Z.: Understanding Hailstone Temporal Variability and Contributing Factors over the U.S. Southern Great Plains, *Journal of Climate*, 33, 3947–3966, <https://doi.org/10.1175/JCLI-D-19-0606.1>, 2020.
- 445 Jiang, F., Chen, B., Qiao, F., Wang, R., Wei, C., and Liu, Q.: Effects of Microphysics Parameterizations on Forecasting a Severe Hailstorm of 30 April 2021 in Eastern China, *Atmosphere*, 14, 526, <https://doi.org/10.3390/atmos14030526>, 2023.
- Kaye, T. G., Falk, A. R., Pittman, M., Sereno, P. C., Martin, L. D., Burnham, D. A., Gong, E., Xu, X., and Wang, Y.: Laser-Stimulated Fluorescence in Paleontology, *PLoS ONE*, 10, e0125 923, <https://doi.org/10.1371/journal.pone.0125923>, 2015.
- Ketterer, M. E.: Geology and Mineralogy Applications of Atomic Spectroscopy, in: *Encyclopedia of Spectroscopy and Spectrometry (Second Edition)*, edited by Lindon, J. C., pp. 757–761, Academic Press, Oxford, <https://doi.org/10.1016/B978-0-12-374413-5.00004-X>, 2010.
- 450 Koga, D., Kusumi, S., Shibata, M., and Watanabe, T.: Applications of Scanning Electron Microscopy Using Secondary and Backscattered Electron Signals in Neural Structure, *Frontiers in Neuroanatomy*, 15, 2021.
- Kozjek, M., Vengust, D., Radošević, T., Žitko, G., Koren, S., Toplak, N., Jerman, I., Butala, M., Podlogar, M., and Viršek, M. K.: Dissecting Giant Hailstones: A Glimpse into the Troposphere with Its Diverse Bacterial Communities and Fibrous Microplastics, *The Science of the Total Environment*, 856, 158 786, <https://doi.org/10.1016/j.scitotenv.2022.158786>, 2023.
- 455 Krueger, B. J., Grassian, V. H., Cowin, J. P., and Laskin, A.: Heterogeneous Chemistry of Individual Mineral Dust Particles from Different Dust Source Regions: The Importance of Particle Mineralogy, *Atmospheric Environment*, 38, 6253–6261, <https://doi.org/10.1016/j.atmosenv.2004.07.010>, 2004.
- Kubota, R., Nakamura, K., Torigoe, S., and Hamachi, I.: The Power of Confocal Laser Scanning Microscopy in Supramolecular Chemistry: In Situ Real-time Imaging of Stimuli-Responsive Multicomponent Supramolecular Hydrogels, *ChemistryOpen*, 9, 67–79, <https://doi.org/10.1002/open.201900328>, 2020.
- 460 Kumjian, M. R., Gutierrez, R., Soderholm, J. S., Nesbitt, S. W., Maldonado, P., Luna, L. M., Marquis, J., Bowley, K. A., Imaz, M. A., and Salio, P.: Gargantuan Hail in Argentina, *Bulletin of the American Meteorological Society*, 101, E1241–E1258, <https://doi.org/10.1175/BAMS-D-19-0012.1>, 2020.



- 465 Laskin, A., Moffet, R. C., Gilles, M. K., Fast, J. D., Zaveri, R. A., Wang, B., Nigge, P., and Shutthanandan, J.: Tropospheric Chemistry of Internally Mixed Sea Salt and Organic Particles: Surprising Reactivity of NaCl with Weak Organic Acids, *Journal of Geophysical Research: Atmospheres*, 117, <https://doi.org/10.1029/2012JD017743>, 2012.
- Lata, N. N., Zhang, B., Schum, S., Mazzoleni, L., Brimberry, R., Marcus, M. A., Cantrell, W. H., Fialho, P., Mazzoleni, C., and China, S.: Aerosol Composition, Mixing State, and Phase State of Free Tropospheric Particles and Their Role in Ice Cloud Formation, *ACS Earth and Space Chemistry*, 5, 3499–3510, <https://doi.org/10.1021/acsearthspacechem.1c00315>, 2021.
- 470 Lehmann, J., Liang, B., Solomon, D., Lerotic, M., Luizão, F., Kinyangi, J., Schäfer, T., Wirick, S., and Jacobsen, C.: Near-Edge X-ray Absorption Fine Structure (NEXAFS) Spectroscopy for Mapping Nano-Scale Distribution of Organic Carbon Forms in Soil: Application to Black Carbon Particles, *Global Biogeochemical Cycles*, 19, <https://doi.org/10.1029/2004GB002435>, 2005.
- Li, X., Zhang, Q., Zhu, T., Li, Z., Lin, J., and Zou, T.: Water-Soluble Ions in Hailstones in Northern and Southwestern China, *Science Bulletin*, 63, 1177–1179, <https://doi.org/10.1016/j.scib.2018.07.021>, 2018.
- 475 Liu, E., Vega, S., Treiser, M. D., Sung, H. J., and Moghe, P. V.: Fluorescence Imaging of Cell–Biomaterial Interactions, in: *Comprehensive Biomaterials*, edited by Ducheyne, P., pp. 291–303, Elsevier, Oxford, <https://doi.org/10.1016/B978-0-08-055294-1.00101-X>, 2011.
- Malečić, B., Telišman Prtenjak, M., Horvath, K., Jelić, D., Mikuš Jurković, P., Ćorko, K., and Mahović, N. S.: Performance of HAILCAST and the Lightning Potential Index in Simulating Hailstorms in Croatia in a Mesoscale Model – Sensitivity to the PBL and Microphysics Parameterization Schemes, *Atmospheric Research*, 272, 106 143, <https://doi.org/10.1016/j.atmosres.2022.106143>, 2022.
- 480 Mandrioli, P., Puppi, G. L., Bagni, N., and Prodi, F.: Distribution of Microorganisms in Hailstones, *Nature*, 246, 416–417, <https://doi.org/10.1038/246416a0>, 1973.
- Mercer, I. P.: PHYSICAL APPLICATIONS OF LASERS | Industrial Applications, in: *Encyclopedia of Modern Optics*, edited by Guenther, R. D., pp. 169–184, Elsevier, Oxford, <https://doi.org/10.1016/B0-12-369395-0/00947-7>, 2005.
- 485 Michaud, A. B., Dore, J. E., Leslie, D., Lyons, W. B., Sands, D. C., and Priscu, J. C.: Biological Ice Nucleation Initiates Hailstone Formation, 119, 12,186–12,197, <https://doi.org/10.1002/2014JD022004>, 2014.
- Moffet, R. C., Tivanski, A. V., and Gilles, M. K.: Scanning Transmission X-ray Microscopy: Applications in Atmospheric Aerosol Research, Tech. Rep. LBNL-4245E, Lawrence Berkeley National Lab. (LBNL), Berkeley, CA (United States), 2011.
- Nam, K. Y. and Lee, C. J.: Characterization of Silver Nanoparticles Incorporated Acrylic-Based Tissue Conditioner with Antimicrobial Effect and Cytocompatibility, in: *Nanobiomaterials in Clinical Dentistry*, edited by Subramani, K., Ahmed, W., and Hartsfield, J. K., pp. 283–295, William Andrew Publishing, <https://doi.org/10.1016/B978-1-4557-3127-5.00014-3>, 2013.
- 490 O'Connor, B.: Confocal Laser Scanning Microscopy: a New Technique for Investigating and Illustrating Fossil Radiolaria, *Micropaleontology*, 42, 395–401, 1996.
- Orlando, A., Franceschini, F., Muscas, C., Pidkova, S., Bartoli, M., Rovere, M., and Tagliaferro, A.: A Comprehensive Review on Raman Spectroscopy Applications, *Chemosensors*, 9, 262, <https://doi.org/10.3390/chemosensors9090262>, 2021.
- 495 Petrenko, V. F. and Whitworth, R. W.: *Physics of Ice*, OUP Oxford, 1999.
- Pruppacher, H. R.: Self-Diffusion Coefficient of Supercooled Water, *The Journal of Chemical Physics*, 56, 101–107, <https://doi.org/10.1063/1.1676831>, 1972.
- Raja, P. M. V. and Barron, A. R.: An Introduction to Energy Dispersive X-ray Spectroscopy, [https://chem.libretexts.org/Bookshelves/Analytical_Chemistry/Physical_Methods_in_Chemistry_and_Nano_Science_\(Barron\)/01%3A_Elemental_Analysis/1.12%3A_An_Introduction_to_Energy_Dispersive_X-ray_Spectroscopy](https://chem.libretexts.org/Bookshelves/Analytical_Chemistry/Physical_Methods_in_Chemistry_and_Nano_Science_(Barron)/01%3A_Elemental_Analysis/1.12%3A_An_Introduction_to_Energy_Dispersive_X-ray_Spectroscopy), 2016.
- 500



- Rausch, J., Jaramillo-Vogel, D., Perseguers, S., Schmidrig, N., Grobéty, B., and Yajan, P.: Automated Identification and Quantification of Tire Wear Particles (TWP) in Airborne Dust: SEM/EDX Single Particle Analysis Coupled to a Machine Learning Classifier, *Science of the Total Environment*, 803, 149 832, <https://doi.org/10.1016/j.scitotenv.2021.149832>, 2022.
- 505 Raval, N., Maheshwari, R., Kalyane, D., Youngren-Ortiz, S. R., Chougule, M. B., and Tekade, R. K.: Importance of Physicochemical Characterization of Nanoparticles in Pharmaceutical Product Development, in: *Basic Fundamentals of Drug Delivery*, edited by Tekade, R. K., *Advances in Pharmaceutical Product Development and Research*, pp. 369–400, Academic Press, <https://doi.org/10.1016/B978-0-12-817909-3.00010-8>, 2019.
- Reed, S. J.: *Introduction to Energy Dispersive X-ray Spectrometry (EDS)*, 1996.
- 510 Ritchie, N. W. M.: Using DTSA-II to Simulate and Interpret Energy Dispersive Spectra from Particles, *Microscopy and Microanalysis: The Official Journal of Microscopy Society of America, Microbeam Analysis Society, Microscopical Society of Canada*, 16, 248–258, <https://doi.org/10.1017/S1431927610000243>, 2010.
- Sanchez-Marroquin, A., Arnalds, O., Baustian-Dorsi, K. J., Browse, J., Dagsson-Waldhauserova, P., Harrison, A. D., Maters, E. C., Pringle, K. J., Vergara-Temprado, J., Burke, I. T., McQuaid, J. B., Carslaw, K. S., and Murray, B. J.: Iceland Is an Episodic Source of Atmospheric Ice-Nucleating Particles Relevant for Mixed-Phase Clouds, *Science Advances*, 6, eaba8137, <https://doi.org/10.1126/sciadv.aba8137>, 2020.
- 515 Šantl-Temkiv, T., Finster, K., Dittmar, T., Hansen, B. M., Thyrhaug, R., Nielsen, N. W., and Karlson, U. G.: Hailstones: A Window into the Microbial and Chemical Inventory of a Storm Cloud, *PLOS ONE*, 8, 1–7, <https://doi.org/10.1371/journal.pone.0053550>, 2013.
- Schaefer, V. J.: A Method for Making Snowflake Replicas, *Science*, 93, 239–240, <https://doi.org/10.1126/science.93.2410.239>, 1941.
- Schnell, G., Staehle, S., Duenow, U., Nebe, J. B., and Seitz, H.: Femtosecond Laser Nano/Micro Textured Ti6Al4V Surfaces—Effect on Wetting and MG-63 Cell Adhesion, *Materials*, 12, 2210, <https://doi.org/10.3390/ma12132210>, 2019.
- Soderholm, J. S. and Kumjian, M. R.: Automating the Analysis of Hailstone Layers, *Atmospheric Measurement Techniques*, 16, 695–706, <https://doi.org/10.5194/amt-16-695-2023>, 2023.
- Turner, J. N., Lasek, S., and Szarowski, D. H.: Confocal Optical Microscopy, in: *Encyclopedia of Materials: Science and Technology*, edited by Buschow, K. H. J., Cahn, R. W., Flemings, M. C., Ilshner, B., Kramer, E. J., Mahajan, S., and Veyssi re, P., pp. 1504–1509, Elsevier, Oxford, <https://doi.org/10.1016/B0-08-043152-6/00271-0>, 2001.
- 525 Vander Wood, T. B.: Automated Particle Analysis by Microscopy, *A Primer*, *Microscopy Today*, 2, 13–17, <https://doi.org/10.1017/S1551929500063008>, 1994.
- Vander Wood, T. B.: Particle Sizing in Emissions Samples by Scanning Electron Microscopy, <https://www.powermag.com/particle-sizing-in-emissions-samples-by-scanning-electron-microscopy/>, 2017.
- 530 Wagner, J., Wang, Z.-M., Ghosal, S., and Wall, S.: Source Identification on High PM_{2.5} Days Using SEM/EDS, XRF, Raman, and Wind-blown Dust Modeling, *Aerosol and Air Quality Research*, 19, 2578–2530, <https://doi.org/10.4209/aaqr.2019.05.0276>, 2019.
- Wang, S. and Larina, I. V.: High-Resolution Imaging Techniques in Tissue Engineering, in: *Monitoring and Evaluation of Biomaterials and Their Performance In Vivo*, edited by Narayan, R. J., pp. 151–180, Woodhead Publishing, <https://doi.org/10.1016/B978-0-08-100603-0.00008-0>, 2017.
- 535 Wang, X., Ran, L., Qi, Y., Jiang, Z., Yun, T., and Jiao, B.: Analysis of Gravity Wave Characteristics during a Hailstone Event in the Cold Vortex of Northeast China, *Atmosphere*, 14, 412, <https://doi.org/10.3390/atmos14020412>, 2023.
- Wu, W., Huang, W., Deng, L., and Wu, C.: Investigation of Maximum Hail-Size Forecasting Using Bulk Microphysics Schemes, *Monthly Weather Review*, 150, 2503–2525, <https://doi.org/10.1175/MWR-D-21-0312.1>, 2022.

<https://doi.org/10.5194/egusphere-2023-2971>

Preprint. Discussion started: 25 January 2024

© Author(s) 2024. CC BY 4.0 License.



Zhang, Z., Zhou, Y., Zhu, X., Fei, L., Huang, H., and Wang, Y.: Applications of ESEM on Materials Science: Recent Updates and a Look
540 Forward, *Small Methods*, 4, 1900 588, <https://doi.org/10.1002/smt.201900588>, 2020.

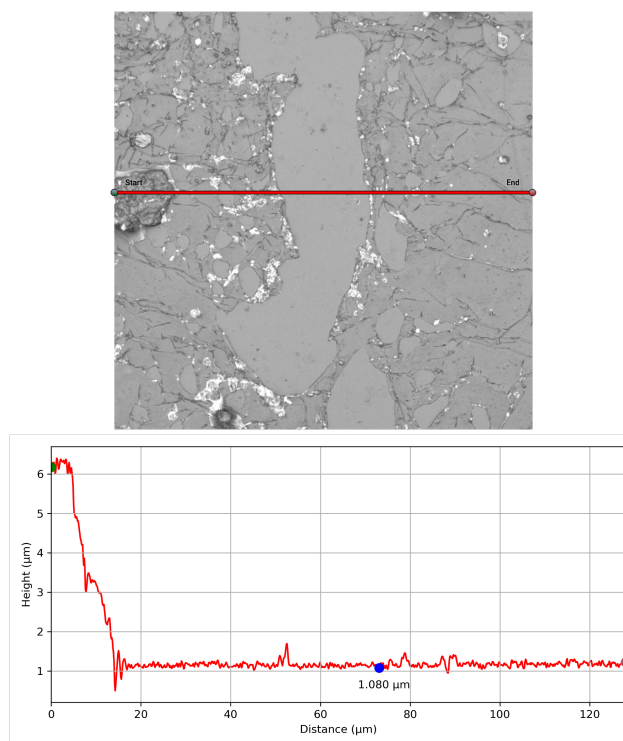


Figure B1. A snapshot from the Olympus LEXT Analysis software of a sublimated ice sample with FORMVAR coating. The top panel shows the 2-D CLSM laser imagery with the red line indicating the transect through an area with and without the coating. The bottom panel shows the height (in microns; y-axis) across that transect (x-axis) for calculating FORMVAR thickness (as seen along the blue segment), plotting the height used for the FORMVAR's thickness calculation shown in the blue dot.

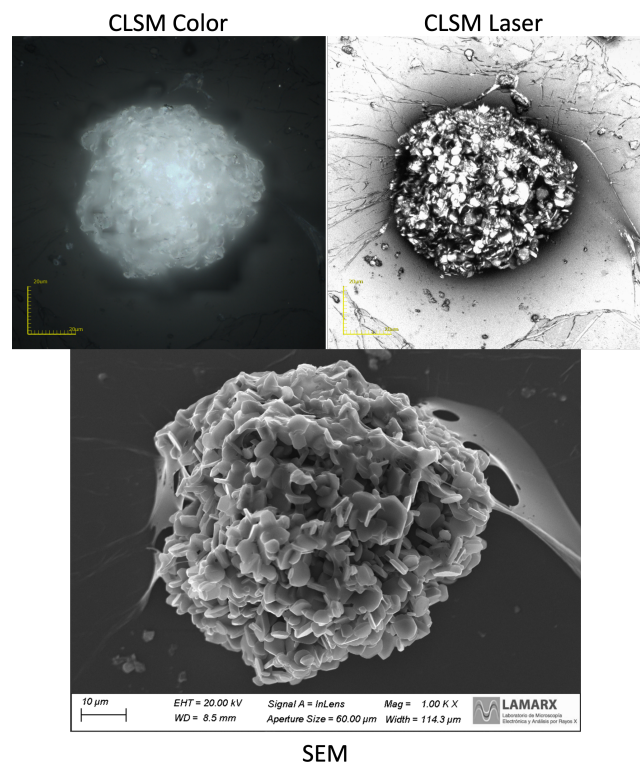


Figure 1. A particle trapped in a hailstone as observed by CLSM and SEM for 1% FORMVAR coating.



Figure 2. An example of a thin cross-section of a hailstone sectioned through its equatorial plane. It is affixed to several thin glass sections arranged in a mosaic pattern on a thin glass slide with dimensions of 25 x 75 mm.



Figure 3. The figure shows the preparation stages of a hailstone. (a) The hailstone is attached to a glass section and then to a metal section plate with ultra-pure liquid water. (b) The hailstone is cut in the equatorial symmetric plane to provide a view of the hailstone's embryo.

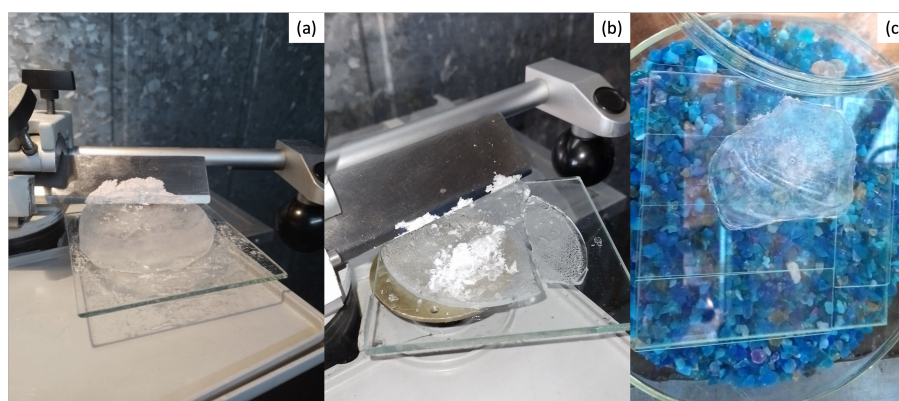


Figure 4. Figure showing before (a) and after (b) a hailstone is evenly polished to the desired thickness with a microtome to obtain a top view of the embryo, and (c) is left to sublimate in a humidity-controlled container with silica gel.

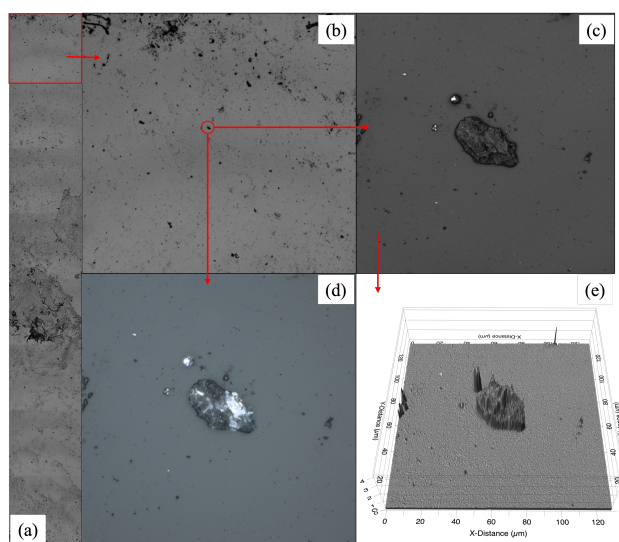


Figure 5. Example CLSM imagery from the coated, sublimated hailstone shows (a) a 2-D cross-section along an axis in the equatorial plane at 108x magnification, (b) a subsector scanned at higher magnification for creating (c) visible and (d) laser images for individual particles. (e) 3D particle surface topography from the visible imagery is analyzed with ProfilmOnline software.

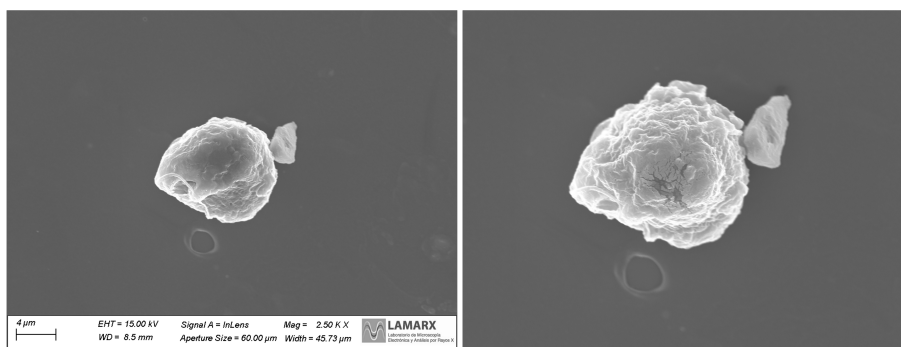


Figure 6. The left panel displays the particle prior to undergoing EDS analysis, while the right panel illustrates the particle post-EDS analysis, revealing subtle breakage and disintegration concentrated at the center of the particle where the SEM-laser was centered.

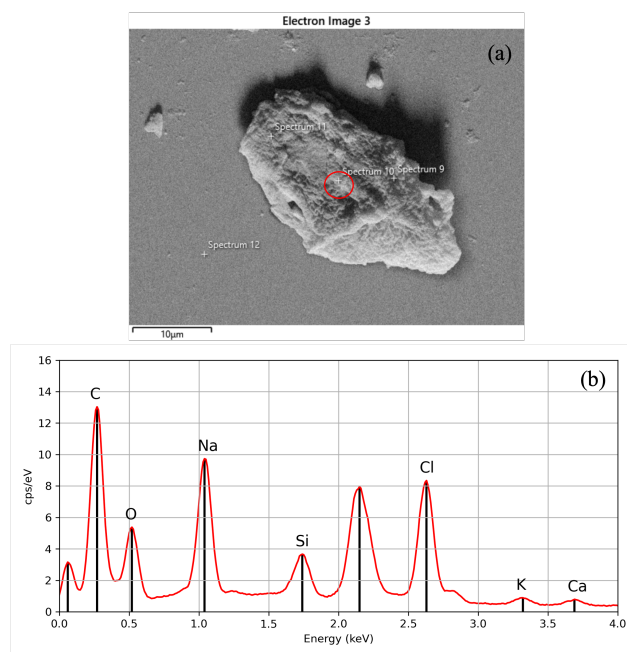


Figure 7. (a) A SEM backscattered electron image for an individual particle categorized as carbon-based with (b) the corresponding EDS elemental composition for that particle.

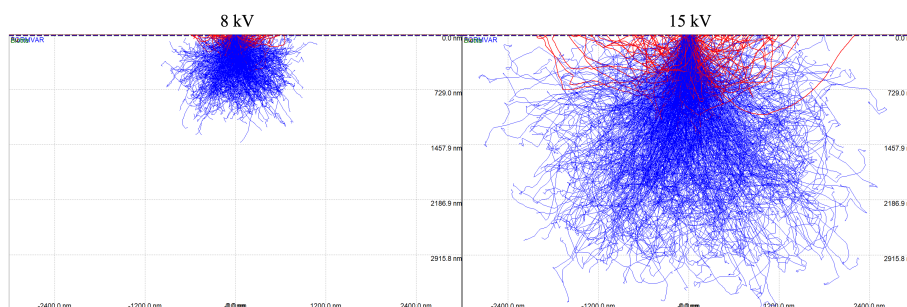


Figure 8. Activation volume producing Fe X-rays within the soda-lime glass for 8 (left) and 15 *kV* (right) accelerating voltage from the Monte-Carlo simulations. Lines indicate the pathways of individual electrons backscattered from within the sample (blue) and from the sample surface (red) as a function of particle size (in *nm*).

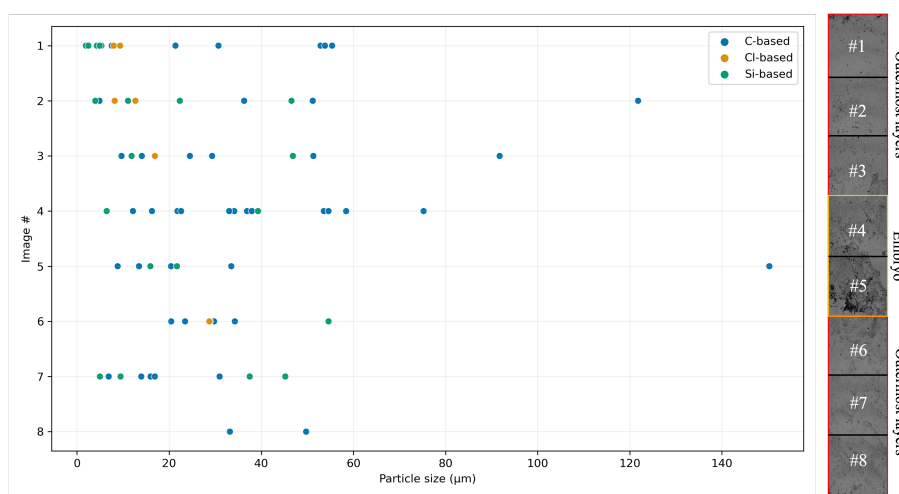


Figure 9. Figure to the left shows the particle size distribution graph (X-axis in μm) across a specific section of the hailstone along a diameter of the equatorial plane. The figure to the right shows the 2-D map from Figure 6 that corresponds to the image number from the y-axis.

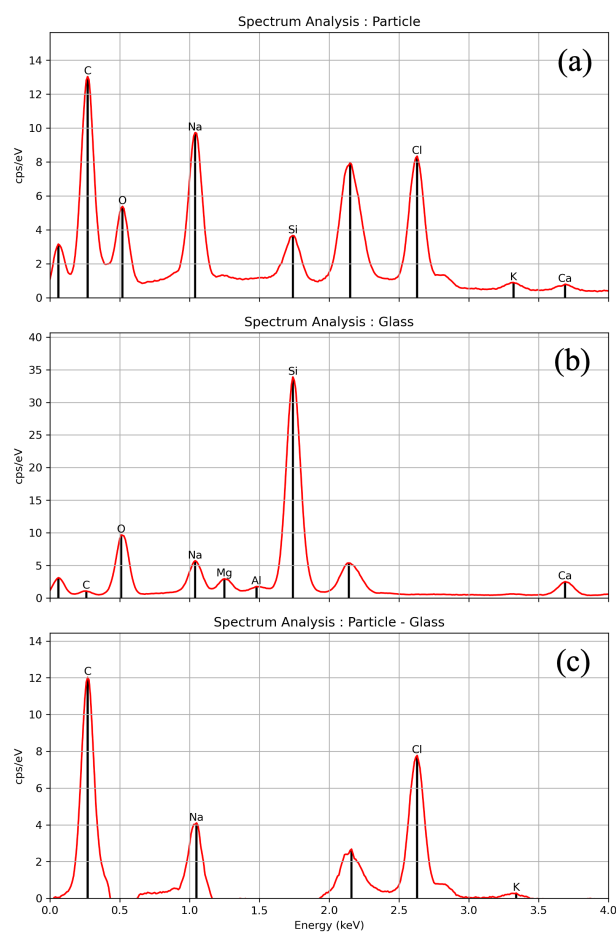


Figure 10. Mathematical operations on the spectrum using DTSA-II were done to analyze the EDS-spectrum data and differentiate a particle's spectrum from the glass substrate. a) Depicts the spectrum of the particle presented in Figure 7-B, b) illustrates the spectrum of the glass, and c) demonstrates the outcome of the subtraction, revealing the presence of elements C, Na, Cl, and K in the particle.