

## Response to Reviewer Comments

We truly appreciate reviewer#1 for the thoughtful and helpful comments. Below are our responses (in regular font) to the reviewer's comments (in ***bolded italic*** font).

### ***Reviewer #1:***

***In this paper, numerical investigations are carried out on the effects of aerosol retrievals on methane remote sensing with GHGSat. The authors first used a radiative transfer model and the multi-angle viewing method to generate “GHGSat measurements”, then the aerosols and methane were retrieved using a retrieval method. If the retrieval method is just right, we can clearly see how the aerosols affect the methane retrieval as there are small uncertainties in the "measurements". This work provides valuable information for methane measurements with the new instrument, so this study certainly falls within the scope of AMT and the results could be of great importance to the scientific community.***

***However, as shown in my initial review, the authors should first clearly review and discuss the applicability of the interrogation method, as this would significantly affect the conclusion. The specific comments are listed below:***

***(1) The authors try to show that the retrieval of aerosols is important for methane retrieval. However, in the simulations, many parameters were fixed in the determination of aerosols. In real cases, these parameters are generally unknown (e.g. surface albedo). Therefore, the retrieval of aerosols in real measurements may lead to larger uncertainties in the methane remote sensing than shown in this manuscript.***

- In response to the reviewer's comment about 'many parameters being fixed in the determination of aerosols', we acknowledge that we fixed several variables in the retrieval experiments. This is done to better understand the impact of non-fixed parameters and their associated uncertainties on the simultaneous retrieval process. Many factors can influence the simultaneous retrieval of methane and aerosols, including aerosol optical properties, surface albedo, and satellite viewing angles. To isolate the effect of each factor, we keep the remaining factors constant to examine how the accuracy and precision of retrieval change with all possible combinations of these factors. For example, to assess the effect of aerosol single scattering albedo (SSA) and asymmetry factor ( $g$ ) when we only retrieve AOD for the aerosol-related parameter, we assume the background surface albedo is 0.2 and examine how the mean bias and STD vary with different combinations of aerosol SSA and  $g$ . Fig.9 suggests that even with extreme and unrealistic SSA and  $g$  values, the simultaneous retrieval can maintain the mean bias and standard deviation (STD) of  $\Delta X_{CH_4}$  within 0.15% and 2.5%, respectively. For typical values of aerosol SSA and  $g$  ranges in

the observation, the mean bias in retrieved AOD and  $X_{alb}$  are within 1.7% and 0.07%, respectively. (Fig.9 and Table 2), indicating robust performance of AOD and  $X_{alb}$  retrieval across diverse aerosol-type conditions. Similarly, to account for the interaction between aerosols and surface albedo, we further fix  $g$  at 0.7 (or SSA at 0.95) to investigate how mean bias and STD change with SSA (or  $g$ ) and surface albedo. These fixed values (surface albedo 0.2; SSA 0.95;  $g$  0.7) are chosen as they are typical in the observations. Our results (Fig.10 and Fig.11) demonstrate mean bias and STD of  $\Delta X_{CH_4}$  within 0.3% and 2.5% regardless of surface albedo and SSA or  $g$  values. These findings suggest that simultaneous  $\Delta X_{CH_4}$  and AOD retrieval performs well across various aerosols and surface simulation configurations. Therefore, although we fixed certain variables in the retrieval for demonstration, the retrieval results are still robust across different retrieval configurations. Explanations regarding the reasons for fixing parameters are included in Lines 346-348.

- In response to the reviewer's comment that 'many parameters are generally unknown (e.g. surface albedo)', it should be noted that surface albedo is consistently retrieved in our study. In  $\Delta X_{CH_4}$ -only retrieval scenario, we obtain both surface albedo ( $X_{alb}$ ) and methane mixing ratio ( $\Delta X_{CH_4}$ ). In simultaneous  $\Delta X_{CH_4}$  and AOD retrieval scenario, we retrieve  $X_{alb}$ , AOD, and  $\Delta X_{CH_4}$ . To account for the bidirectional distribution of surface albedo and the per-pixel signal changes resulting from satellite motion, we also include a second-order polynomial as a function of the image frame index  $n$  in the forward model (Jervis et al., 2021) as shown in Eq. (5) and (7). Clarifications are added in Figure 4 and Lines 217-218 and 223. The  $X_{alb}$  retrieval results are added in Figs 8-11.
- Regarding the reviewer's comment on the potential uncertainties introduced by real aerosol measurements in methane remote sensing, we appreciate this comment and agree that idealizing aerosols (e.g. height distribution) and inaccurate representations of aerosol types and surface albedo in reality could potentially impact the accuracy of simultaneous retrieval. To access such uncertainty, we assume certain aerosol SSA,  $g$ , height distributions, and surface albedo in retrieval (e.g. Jacobian calculation), while for the simulated GHGSat radiance, we incorporate more complex representations for aerosol type, height distributions, and surface albedo. The differences between retrieval with fixed

(inaccurate) parameters and retrieval with real (accurate) parameters enable us to quantify the uncertainty resulting from the inaccurate representation of these parameters.

### Aerosol Type Uncertainties

Fig. S1 presents the differences in mean bias and standard deviations of retrieved variables between retrievals assuming  $SSA = 0.95$  and  $g = 0.7$  for aerosols and retrievals assuming the correct  $SSA$  and  $g$ . These differences could suggest the uncertainty of simultaneous retrieval when assuming inaccurate aerosol types. Fig.S1a and S1d show that the uncertainty in the mean bias and STD of  $\Delta X_{CH_4}$  related to aerosol types ranges from -5.8% to 2.7% and -0.2 to 0.9%, respectively, for typical aerosol optical property values. The uncertainty in the mean bias and STD of AOD falls within -40.2% to 16.1% and -9.6% to 20%, respectively. Similarly, the uncertainty in the mean bias and STD of  $X_{alb}$  ranges from -5.6% to 5.4% and -1.5% to 0.39%, respectively. These findings suggest that even with incorrect  $SSA$  and  $g$  assumptions in the retrieval, the maximum uncertainty induced in the accuracy of retrieved  $\Delta X_{CH_4}$  is within 5.8%.

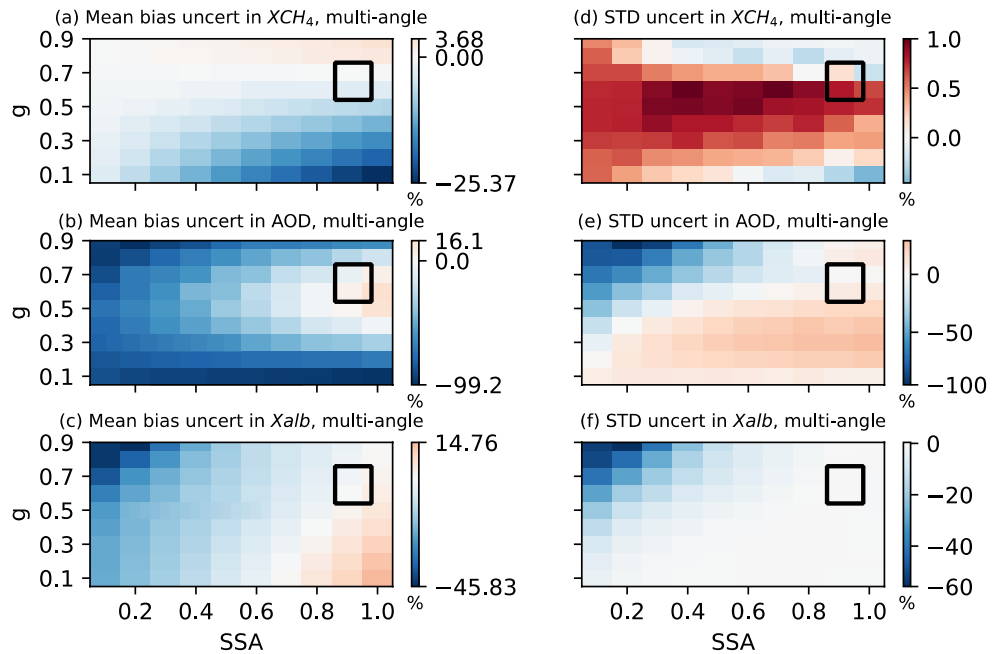


Figure S1. Uncertainties induced by aerosol type in mean bias (left column) and standard deviations (STD) (right column) of retrieved  $\Delta X_{CH_4}$ , AOD, and  $X_{alb}$ , assuming aerosols with an  $SSA$  of 0.95 and a  $g$  of 0.7 in the retrieval. The simulated truth of  $\Delta X_{CH_4}$ , AOD, and

$X_{alb}$  are 0.1 ppm, 0.1, and 0.2, respectively. The scattering angle ranges from 100°-140°. The black box represents the typical values for aerosol optical property ranges ( $SSA \in [0.86, 0.98]$  and  $g \in [0.54, 0.76]$ ) in the observation.

### **Aerosol Height Distribution Uncertainties**

While aerosols primarily reside near the surface at the industrial site, they could also ascend to higher altitudes under favorable atmospheric conditions. Therefore, we examined the uncertainty brought by aerosol height assumptions. We compared the differences between the retrieval when we assume aerosols are near the surface with those when aerosols are elevated to 5 km. In the latter case, AOD linearly decreases with height but we still use the near-surface Jacobian calculations in retrieval. Fig.S2 shows the uncertainties in simultaneous retrieval when assuming incomplete aerosol height.

Similar to the uncertainty results related to aerosol types, Fig.S2a and S2d show that the uncertainty induced by aerosol height in the mean bias and STD of  $\Delta X_{CH_4}$  ranges from 2.3% to 6.4% and from -0.1 to 0.1%, respectively, for typical values of aerosol optical properties. The mean bias uncertainty for AOD and  $X_{alb}$  falls within the range of 2.3% to 41.5% and -0.8 to 1.4%, respectively. The STD uncertainty for  $\Delta X_{CH_4}$ , AOD, and  $X_{alb}$  is generally small, indicating minimal sensitivity of retrieval precision to the aerosol height distributions.

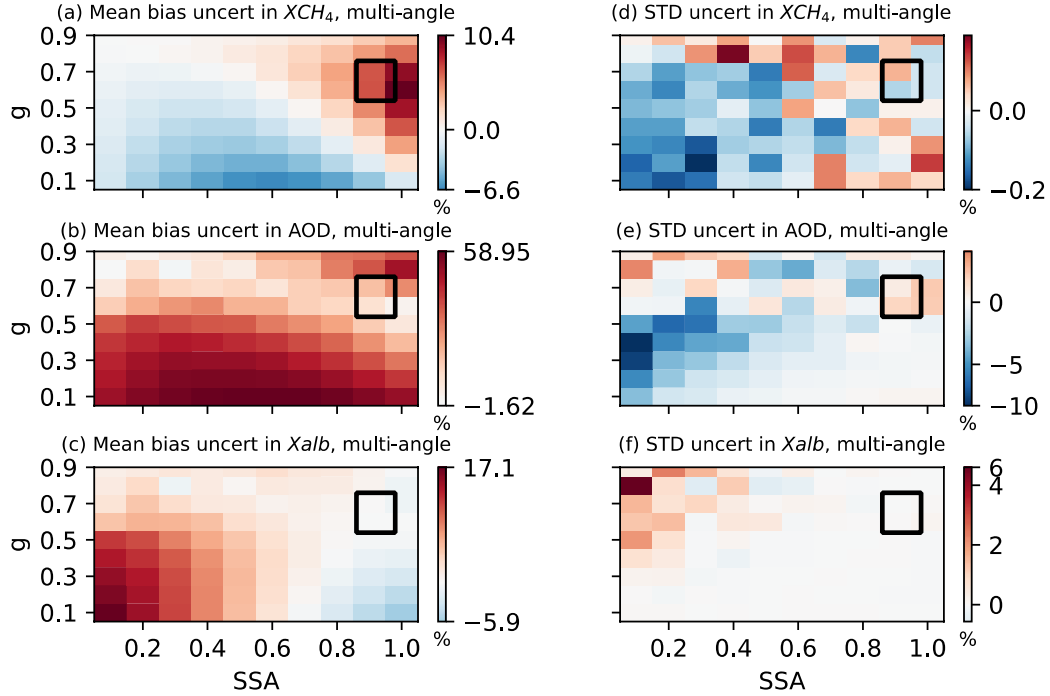


Figure S2. Uncertainties induced by aerosol height distributions in mean bias (left column) and standard deviations (STD) (right column) of retrieved  $\Delta X_{CH_4}$ , AOD, and  $X_{alb}$ , assuming near-surface aerosols in the retrieval. The simulated truth of  $\Delta X_{CH_4}$ , AOD, and  $X_{alb}$  are 0.1 ppm, 0.1, and 0.2, respectively. The scattering angle ranges from  $100^\circ$ - $140^\circ$ . The black box represents the typical values for aerosol optical property ranges ( $SSA \in [0.86, 0.98]$  and  $g \in [0.54, 0.76]$ ) in the observation.

### Surface Albedo Uncertainties

Although a second-order polynomial has been applied in the retrieval to account for the bidirectional distribution of surface albedo, the imperfect representation of surface albedo, particularly in regions with heterogeneous landscapes, could introduce uncertainty in the simultaneous retrieval. To quantify such uncertainty, we compared the differences between the retrieval when we assume surface albedo is 0.2 with those with correct surface albedo values. Fig.S3 shows the uncertainties in simultaneous retrieval when assuming imperfect surface albedo.

Fig.S3a and S3d show that the uncertainty resulting from surface albedo variations in the mean bias and STD of  $\Delta X_{CH_4}$  ranges from -15.1% to 4% and from -0.1 to 0.7%,

respectively, for typical aerosol SSA and surface albedo ranges (sfc alb  $\in [0.1, 0.5]$  and SSA  $\in [0.86, 0.98]$ ). The mean bias uncertainty for AOD and  $X_{alb}$  falls within the range of -12.7% to 37.6% and -5.9 to 3.5%, respectively, while the STD uncertainty for AOD and  $X_{alb}$  ranges from -1.1% to 31.9% and from -0.31% to 2.25%, respectively.

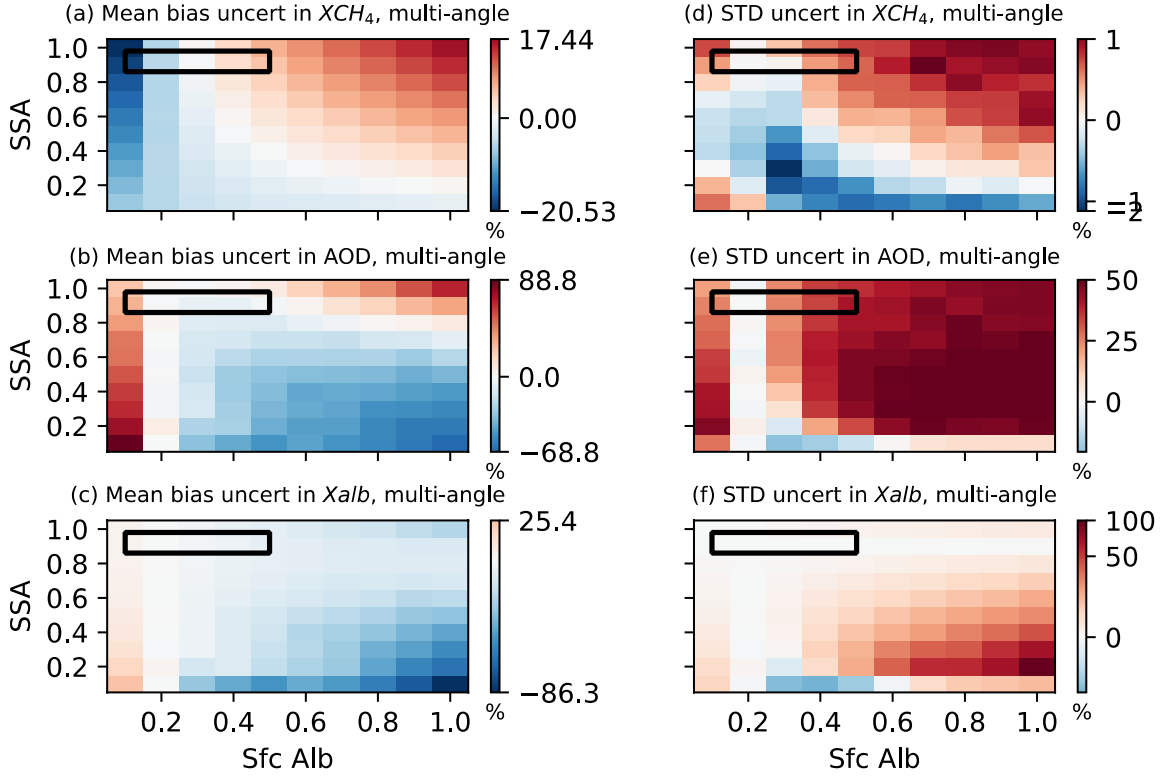


Figure S3. Uncertainties induced by surface albedo in mean bias (left column) and standard deviations (STD) (right column) of retrieved  $\Delta X_{CH_4}$ , AOD, and  $X_{alb}$ , assuming 0.2 surface albedo in the retrieval. The simulated truth of  $\Delta X_{CH_4}$  and AOD are 0.1 ppm and 0.1, respectively. The scattering angle ranges from  $100^\circ$ - $140^\circ$ . The black box represents the typical values for aerosol optical property and surface albedo ranges (sfc alb  $\in [0.1, 0.5]$  and SSA  $\in [0.86, 0.98]$ ) in the observation.

In summary, the uncertainty in the mean bias and STD of  $\Delta X_{CH_4}$  induced by inaccurate aerosol types, height distributions, and surface albedo is less than 15.1% and 0.9%, respectively. This uncertainty is obtained when assuming near-surface aerosols with fixed SSA (0.95) and  $g$  (0.7) and a 0.2 surface albedo in retrieval, while in simulated radiance, aerosol SSA,  $g$ , height distribution, and surface albedo vary across typical observation

ranges. To retrieve more aerosol information and further reduce uncertainty, additional constraints such as multi-band observations are required. However, implementing such measures is not feasible at the moment as the current GHGSat instrument only targets the 1.65  $\mu\text{m}$  band. Discussions about retrieval uncertainty are added in Section 4.3.

***(2) As my first review has shown, the authors should go into more detail on the applicability of the retrieval algorithm. Is the retrieval algorithm correct for the real cases? If it is not correct, the improvement in retrieval accuracy when adding aerosol retrieval does not necessarily mean that aerosol retrieval is important, and it may also be because the algorithm is wrong. Of course, the authors used their retrieval accuracy to show the applicability of the algorithm. However, their simulations and retrievals were simplified by many fixed parameters and assumptions. I suggest that the authors perform a sensitivity analysis for more complex parameters. If the authors can prove that the retrieval is accurate in different and more complex simulation configurations, the retrieval algorithm is credible.***

Thank you for the insightful comments.

- In response to the reviewer’s comment about ‘the applicability of the retrieval algorithm’, the simultaneous  $\Delta X_{CH_4}$  and AOD retrieval method is primarily advantageous in two aspects: it enhances the methane gas retrieval accuracy by accounting for aerosols effect for GHGSat-like point source imagers and it measures aerosol plumes using such imagers. In this study, the integration of LBLRTM, DISORT, and GHGSat instrument model enables us to simulate GHGSat measurements synthetically, serving as a benchmark. Additionally, we employ the same inverse model (Eq. 5) used in current GHGSat operational retrievals. Therefore, the OSSE results in this paper provide a truthful assessment of the simultaneous retrieval using the multi-angle viewing method across various aerosol and surface albedo conditions, demonstrating its direct applicability to GHGSat-like measurements. Discussions about applicability are added in Lines 244 - 250.
- Regarding the reviewer’s comment that ‘their simulations and retrievals were simplified by many fixed parameters and assumptions’, our study conducted retrievals across a wide range of aerosol optical properties (SSA and  $g$ ), surface albedo, and satellite zenith angle conditions to account for the diverse environmental conditions in observations. By fixing unrelated parameters and allowing the parameter of interest to vary during retrieval, we gain a deeper understanding of its impact. For example, to account for the considerable

variability in aerosol species in real-world scenarios, we presented example retrievals to quantify the mean bias and STD in retrieved  $\Delta X_{CH_4}$ , AOD, and  $X_{alb}$  while varying aerosol SSA and  $g$  from 0 to 1. For demonstration purposes, we fixed the background surface albedo as 0.2, following Jervis et al. (2021). Results show that the simultaneous retrieval can significantly reduce the mean bias in  $\Delta X_{CH_4}$  to within 0.3%. More importantly, the bias magnitude remains consistent across other surface albedo values, as indicated by Fig. 10 to Fig.11, indicating the robustness of our retrieval despite fixed parameters. Table 2 summarizes the performance of the retrieval method under different simulation configurations. While certain variables were fixed for demonstration purposes, the simultaneous retrieval exhibits consistently strong performance across diverse aerosol optical properties, surface albedo values, and satellite zenith angles. This indicates the retrieval's versatility across various simulation configurations.

- Regarding to the reviewer's suggestion to perform a sensitivity analysis for more complex simulation configurations, we appreciate this comment and have added additional results accordingly in Section 4.3. In retrieval, we assume near-surface aerosols with SSA = 0.95,  $g = 0.7$ , and sfc alb = 0.2. However, in the simulated GHGSat radiance, we introduce more complex (diverse) representations for both aerosol type (SSA and  $g$ ), height distributions, and surface albedo. Details have been shown in the above discussions (Fig.S1-S3). The uncertainty in the mean bias and STD of  $\Delta X_{CH_4}$  induced by assuming idealized aerosol types, height distributions, and surface albedo is less than 15.1% and 0.9%, respectively. These values suggest that the errors in simultaneous retrieval are relatively small, even in more complex 'real' measurements.

***(3) The numerical simulations in this paper are not able to represent the real retrievals because the real retrievals are more complex, so the conclusion of this paper is not necessarily correct. In particular, aerosol retrieval may introduce other uncertainties, but these are eliminated by other fixed parameters.***

- Regarding the reviewer's comment that 'numerical simulations in this paper are not able to represent the real retrievals', our study applies the same retrieval method (LFM in Eq.(5)) as current GHGSat instruments, which has been validated to successfully measure methane emissions across various real observations (Jervis et al., 2021; Maasackers et al., 2022;



Jacob et al., 2022). Full GHGSat retrieval consists of two steps: a scene-wide retrieval to estimate the background average state vector  $\hat{\mathbf{X}}$  and a per-cell retrieval to estimate the local methane plume enhancement. In this study, we focus on the per-cell retrieval assuming known background  $\hat{\mathbf{X}}$  from the first step of our retrievals, which allows us to better detect the local methane enhancements. The simulated results in this paper provide a truthful assessment of applying the simultaneous retrieval technique to GHGSat-like point source imagers using the multi-angle viewing method. Retrieval experiments have been conducted across a wide range of aerosol optical properties, surface albedo, and satellite zenith angle conditions, demonstrating its direct applicability to real measurements. Discussions are added in Lines 246 - 250.

- Regarding the reviewer's comment that 'the aerosol retrieval may introduce other uncertainties', we have added the retrieval uncertainty analysis as suggested (see discussions above and section 4.3 in the manuscript). The retrieval uncertainties related to aerosol types, height distributions, and surface albedo are less than 15.1% for mean bias and 0.9% for standard deviations of  $\Delta X_{CH_4}$ . This indicates the robustness of the simultaneous retrieval method even under more different (complex) atmospheric conditions.

***To summarise, this work could provide valuable information for methane measurements with the new instrument if the authors can improve the applicability of the retrieval algorithm.***

## References

Jacob, D. J., Varon, D. J., Cusworth, D. H., Dennison, P. E., Frankenberg, C., Gautam, R., Guanter, L., Kelley, J., McKeever, J., Ott, L. E., Poulter, B., Qu, Z., Thorpe, A. K., Worden, J. R., & Duren, R. M. (2022). *Quantifying methane emissions from the global scale down to point sources using satellite observations of atmospheric methane* [Preprint]. Gases/Remote Sensing/Troposphere/Chemistry (chemical composition and reactions). <https://doi.org/10.5194/acp-2022-246>

Jervis, D., McKeever, J., Durak, B. O. A., Sloan, J. J., Gains, D., Varon, D. J., Ramier, A., Strupler, M., & Tarrant, E. (2021). The GHGSat-D imaging spectrometer. *Atmospheric Measurement Techniques*, 14(3), 2127–2140. <https://doi.org/10.5194/amt-14-2127-2021>

Maasackers, J. D., Varon, D. J., Elfarsdóttir, A., McKeever, J., Jervis, D., Mahapatra, G., Pandey, S., Lorente, A., Borsdorff, T., Foorthuis, L. R., Schuit, B. J., Tol, P., van Kempen, T. A., van Hees, R., & Aben, I. (2022). Using satellites to uncover large methane emissions from landfills. *Science Advances*, 8(32), eabn9683. <https://doi.org/10.1126/sciadv.abn9683>