

# Response to Referee 1 Comments

## General comments:

In the paper the authors describe a global data base of pressure and zenith wet delay (ZWD) to be used as a priori information in new estimates of ZWD. The authors show that the performance is better than the current existing models which means that this is an important and interesting contribution to the field. The paper however, is hard to read and figures are hard to follow. Major improvements are needed before the paper can be published.

Thank you very much for the comments and suggestions, which improve our manuscript greatly. We have systematically revised the entire manuscript and conducted more clear and scientific conclusions. The corresponding modifications in the manuscript are marked in yellow. The followings are our specific responses to all the comments.

## First two minor comments:

**Suggestion 1.** In the introduction, please give some examples of applications of the new model. It says that it can improve the positioning precision and enhance convergence speed, but of what and how much? Please mention some potential users of this model.

**Response 1.** Thank you for your suggestions. We have added detailed description of the positioning performance which is improved by the tropospheric model constraints in the introduction. The specific content is as follows:

Xia et al. (2023) comprehensively considered the seasonal and intraday variations of the elevation normalization factor and developed a real-time ZTD model, and the vertical convergence speed was improved by 37.4% after the ZTD constraints are utilized to the float precise point positioning (PPP). Besides, FL-ZTD and SL-ZTD models are established using the piecewise exponential function as the key vertical adjustment scheme for ZTD, which reduced the convergence time by 60.0% and 33.3% compared to the standard PPP, respectively (Zhang et al., 2020). An optimized GPT3 model (RGPT3) is constructed using random forest (RF), achieving 12.3% and 7.9% improvement in vertical convergence speed and accuracy (Li et al., 2023).

**Suggestion 2.** In several places acronyms appear without being defined. Please look through the manuscripts and change this.

**Response 2.** Thank you for your suggestions. We have carefully checked the manuscript and defined all abbreviations. The specific modifications are as follows:

The zenith hydrostatic delay (ZHD) can be accurately determined according to the Saastamoinen model with measured instantaneous pressure as the input, while the zenith wet delay (ZWD) is generally estimated as an unknown parameter (Saastamoinen, 1972., Hadas et al., 2017., Zhang et al., 2021., Yang et al., 2023).

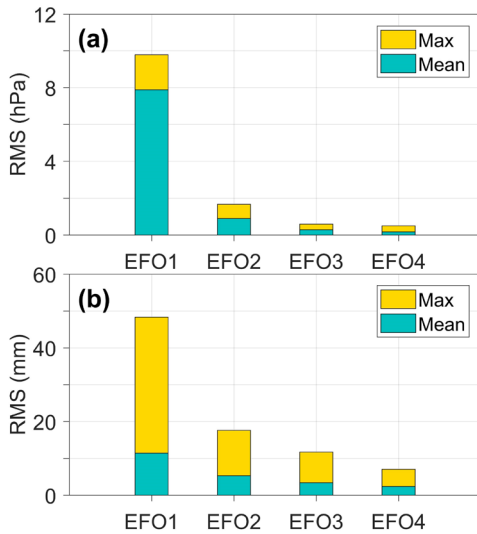
The fifth generation European Centre for Medium-Range Weather Forecasts (ECMWF) atmospheric reanalysis (ERA5) benefits from four-dimensional variational (4D-Var) assimilation solution and integrated forecasting system (IFS) forecast systems, which provides high spatial-temporal resolution and high-accuracy atmospheric state variables over globe (Hersbach et al., 2020; Jiang et al., 2023).

Atmospheric temperature, pressure and water vapor pressure data profiles at 0:00 coordinated universal time (UTC) and 12:00 UTC in 2020 are obtained from the Integrated Global Radiosonde Archive (IGRA).

**Suggestion 3.** Then to the main problems with this paper, which are the figures and the presentation of the results. The panels are too small and provide too much information for the reader to digest. There is no need to display five almost completely blue panels like in figure 4. There is no need to display five almost completely blue panels like in figure 4.

**Response 3.** Thank you for your suggestions. We have simplified figure 4 and the corresponding analysis and only provided the mean accuracy of the four global schemes, which can also indicate that EFO3 is the optimal vertical fitting scheme.

The global mean and maximum root mean square (RMS) values of fitting residuals obtained by four solutions are shown in Figure 4. It is illustrated that the mean RMS of pressure fitted using EFO3 and EFO4 are less than 0.3 hPa on a global scale, they are clearly superior than those of EFO1 and EFO2. As for ZWD, the EFO2 outperforms EFO1, but the maximum RMS values still exceed 17 mm. The EFO3 generally performs identically to the EFO4, and their mean RMS values are less than 3.5 mm. As summarized above, the EFO1 and EFO2 can't reasonably account for the vertical characteristics of ZWD and pressure.



**Figure 4:** The global mean and maximum RMS values for pressure (a) and ZWD (b) fitted using EFO1, EFO2, EFO3 and EFO4.

**Suggestion 4.** Another example is that in figure 9 it is not possible to locate Greenland, Andes mountains or the Tibet Plateau which the authors refer to in the text. There are also both maps and bar charts in some of the figures where the bar charts are not explained. It would be beneficial to split these in to separate figures.

**Response 4.** Thank you for your suggestions. We have removed some of the subgraphs in section 3.2 due to excessive and complex information. The statistical results of bias and RMS are combined to more clearly and intuitively express the accuracy advantage of the proposed IGPZWD model in different height intervals and Temperature zones. Besides, the global statistical results are included in the Appendix A, which can effectively demonstrate the global and regional accuracy and applicability of IGPZWD model in different height ranges, providing indicators and references for users in different regions. The corresponding content in the revised manuscript is as follows:

The bias and RMS values of pressure predicted by GPT3, IGPT and IGPZWD models at three Temperature zones are presented in figure 12. It can be seen that the GPT3 model exhibits a systematic positive bias above 3 km, with a large mean bias value of 29 hPa in the temperate zone at the range of 12-15 km. Evidently, the accuracy of the GPT3 model gradually decreases with the increase of altitude, indicating that its pressure extrapolation scheme is inapplicable when the height difference is large. The IGPT model exhibits superior accuracy than the GPT3 model in the temperate and tropical regions where the intraday variations of pressure are strong, which benefits from the consideration of diurnal and semi-diurnal terms in pressure. IGPZWD model further effectively improves the accuracy

compared to IGPT model, achieving almost unbiased estimation of pressure with RMS improvements of 21.8-41.1% in tropical and 68.7-82.9% in temperate zones. In addition, the RMS of IGPZWD model has improved by over 94% compared to GPT3 model beyond 6 km in tropical regions, indicating the feasibility of the proposed vertical correction algorithm.

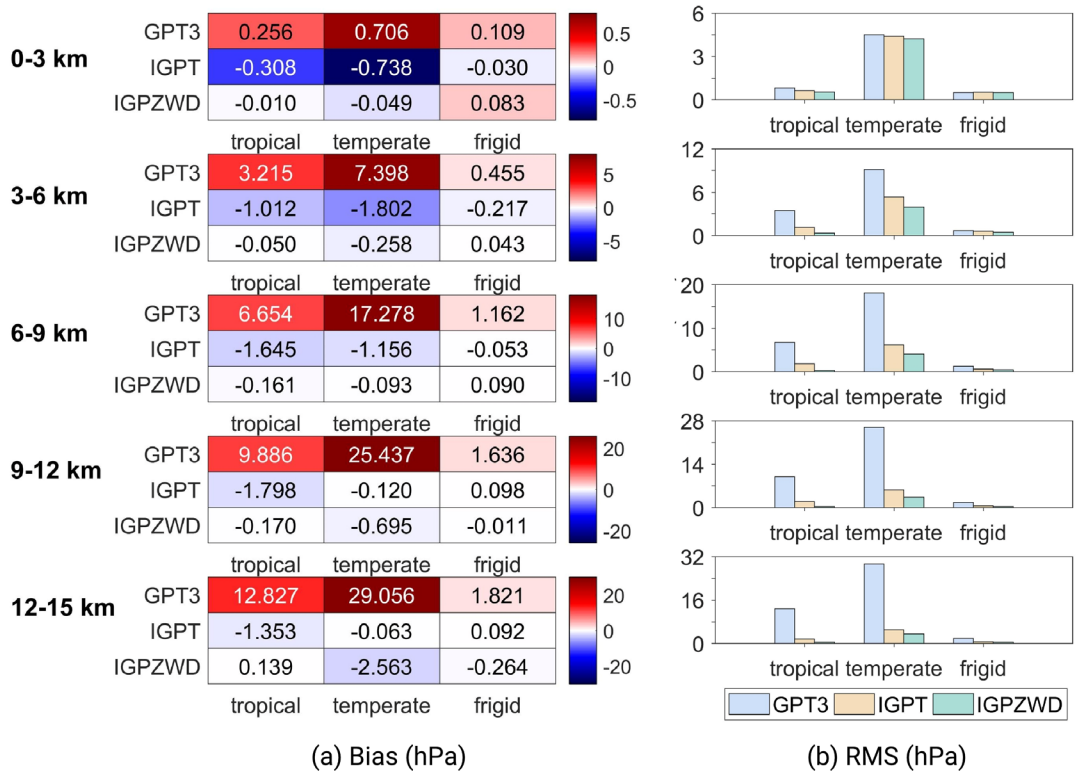


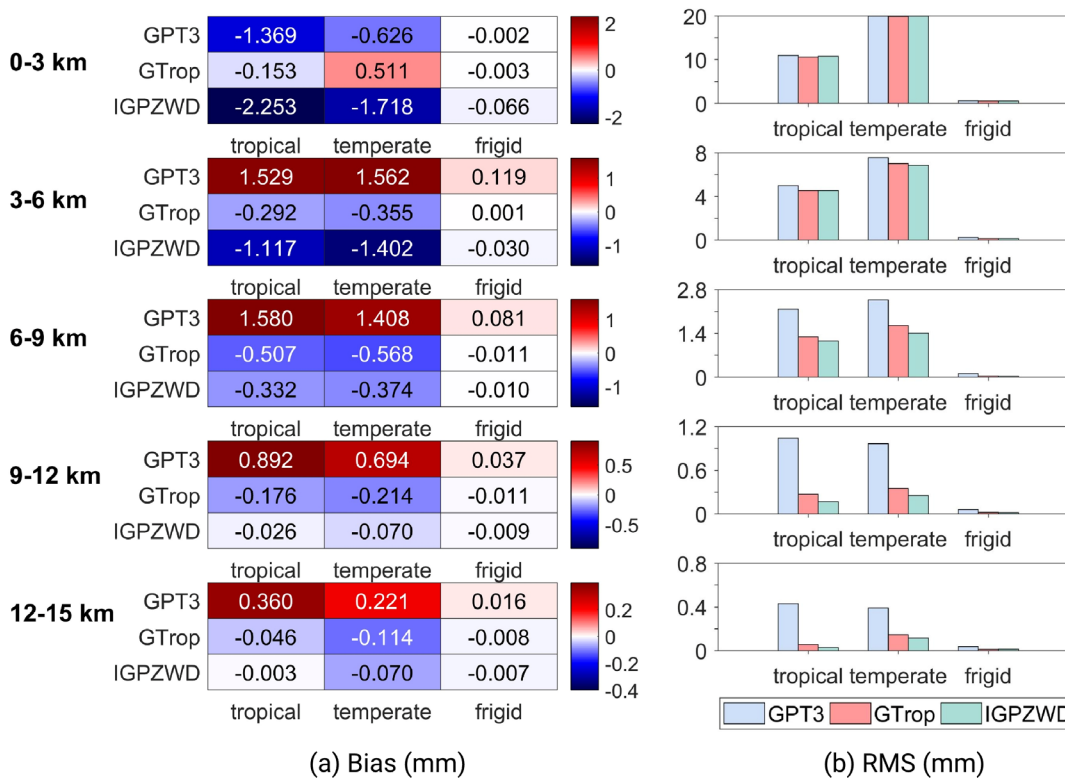
Figure 12: Mean bias (a) and RMS (b) values (d1-d5) for pressure predicted by the GPT3, IGPT and IGPZWD models validated using the radiosonde pressure data at five height ranges of the tropical, temperate, and frigid zones.

Table 1 summarizes the mean pressure bias and RMS values of each height range. The RMS values of IGPZWD do not exceed 5.3 hPa at five height ranges, showing a significant accuracy advantage compared to GPT3, with an improvement of up to 90% for 12-15 km. In contrast to the IGPT model, the IGPZWD model exhibits smaller negative bias values and further improves the performance beyond 3 km with RMS improvements of 32.4-51.8%, indicating the feasibility of the proposed vertical correction algorithm. The magnitude of ZWD in high altitude is small, and thus the pressure is the main factor restricting the accuracy of ZTD according to the rule of uncertainty propagation. It is implied that IGPZWD may provide superior prior tropospheric constraints for GNSS positioning of high-altitude platforms.

**Table 1: Mean bias and RMS values for pressure predicted by the GPT3, IGPT and IGPZWD models at five height ranges.**

Height (km)	Bias (hPa)			RMS (hPa)		
	GPT3	IGPT	IGPZWD	GPT3	IGPT	IGPZWD
0-3	1.1	-1.1	0.0	5.8	5.6	5.3
3-6	11.1	-3.0	-0.3	13.3	7.1	4.8
6-9	25.1	-2.9	-0.2	26.2	8.6	4.8
9-12	37.0	-1.8	-0.9	37.5	8.3	4.0
12-15	43.7	-1.3	-2.7	44.0	7.0	4.2

The bias and RMS values of pressure predicted by GPT3, IGPT and IGPZWD models at three Temperature zones are presented in figure 13. Significant negative bias values of the three models are observed in Southeast Asia below 3 km, which is attributed to the local strong annual and semi-annual amplitudes of ZWD. The GPT3 model exhibits generally positive bias values and large RMS values above 3 km in tropical and temperate zones, which again demonstrate that it can't provide reliable ZWD information in high-altitude areas. Although the GTrop model shows slight accuracy advantage below 3 km, while it performs worse than the IGPZWD model above 3 km. Compared to the GTrop model, IGPZWD model achieves RMS improvements of 14.5-27.8% and 10.6-48.5 % beyond 6 km in temperate and tropical zones, respectively, and the order of magnitude of improvement increases with height.

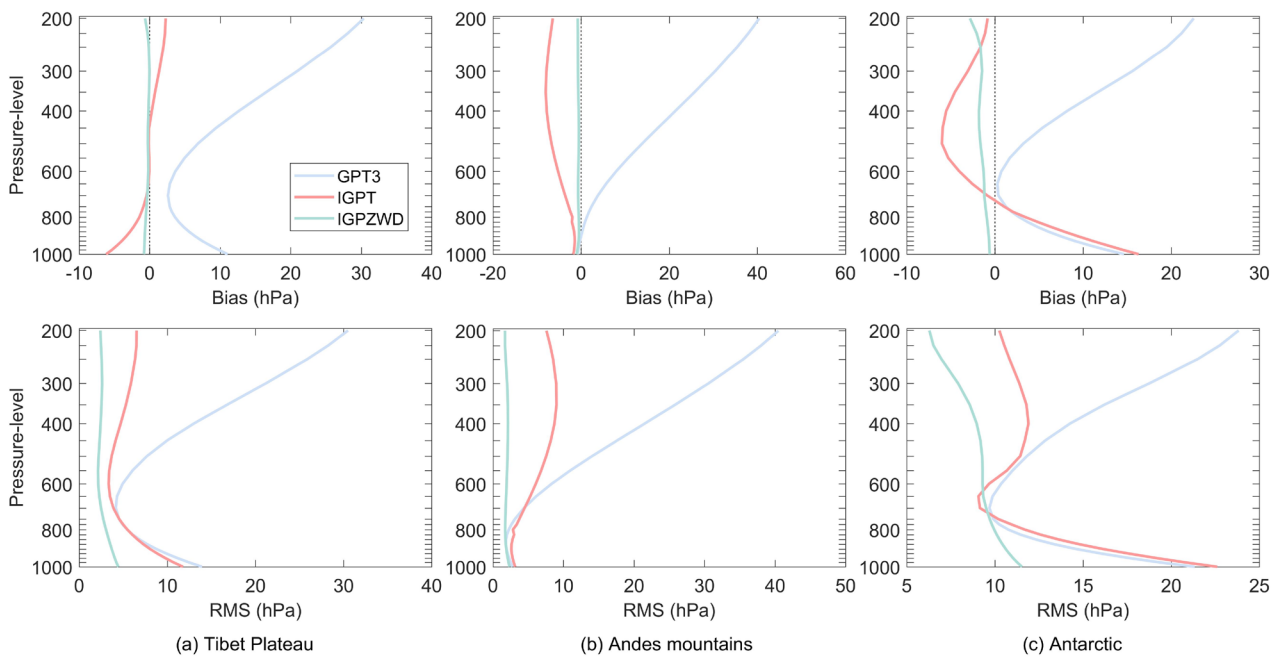


**Figure 13: Mean bias (a) and RMS (b) values (d1-d5) for pressure predicted by the GPT3, IGPT and IGPZWD models validated using the radiosonde ZWD data at five height ranges of the tropical, temperate, and frigid zones.**

**Suggestion 5.** My advice is to describe the over all (global) picture in the text and then show figures with some examples where there are big differences or interesting results. For example in figures 8 an 9, it would be more interesting to see full profiles of selected locations than 4 levels globally. This means a complete make over of sections 3 and 4.

**Response 5.** Thank you for your suggestions. We have added two sets of the experiment results in Section 3.1. We evaluated the vertical (1000 hPa-200 hPa) accuracies of each model in three representative regions and provided interesting conclusions and analysis. In addition, we retain relevant experiments and discussions of the four representative pressure levels over the globe. In this way, readers can simultaneously obtain the horizontal and vertical spatial applicability and accuracy information of the IGPZWD model through the four figures (8-11) and related analysis in Section 3.1. If necessary, further modifications and improvements can be made. The corresponding content in the revised manuscript is as follows:

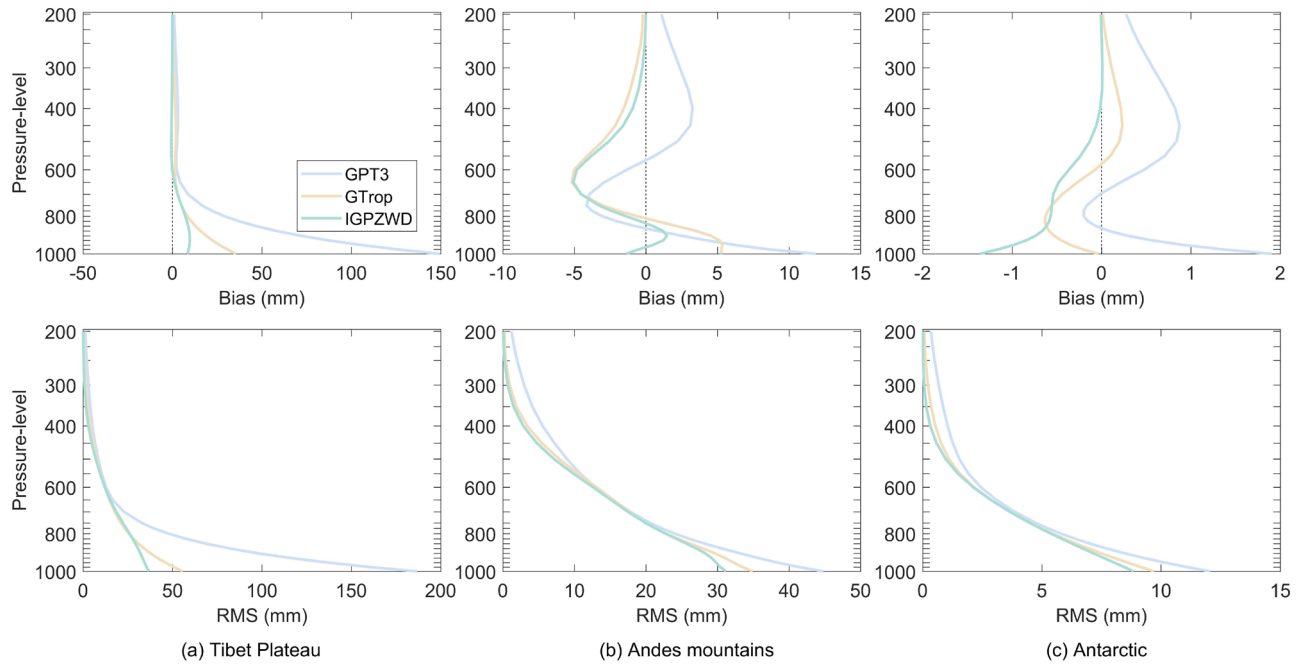
Figure 9 depicts the vertical accuracies of pressure profiles predicted by GTP3, GTrop and IGPZWD models in three representative regions with different climatic environments and geographical locations. IGPZWD model exhibits overall optimal accuracy and stability with no significant sudden change. In the Tibet Plateau and Antarctic, the RMS and bias values of GTP3 model show evident and sharp trends of first decreasing and then increasing with altitude due to unreasonable pressure extrapolation method. Above 800 hPa, IGPT model tends to underestimate the pressure in the Andes mountains region, inducing systematic negative bias and relatively poorer RMS. Overall, the IGPZWD model achieves great pressure prediction on both the surface and the upper air, which benefits from the consideration of the seasonal variations for the pressure height scale factors.



**Figure 9: Bias and RMS of pressure profiles predicted by the GTP3, IGPT, and IGPZWD models validated using the ERA5 pressure from 1000 to 200 hPa in 2020. The three selected regions are Tibet Plateau (a), Andes mountains (b) and Antarctica (c).**

Figure 11 illustrates that the GTP3 and GTrop models exhibit obviously positive bias in the Andes Mountains and Tibet Plateau below 800 hPa, and the RMS values of GTP3 exceeds 100 mm in the Tibetan Plateau region. In contrast, the IGPZWD model exhibits smaller bias values in these regions, and the RMS values are less than 40 mm. In the Antarctica, IGPZWD outperform all the other two models, achieving overall unbiased ZWD prediction above 400

hPa. It is concluded that IGPZWD model-predicted ZWD has a certain vertical accuracy advantage compared to GTrop and it is significantly more accurate than GPT3.



**Figure 11: Bias and RMS of ZWD profiles predicted by the GPT3, IGPT, and IGPZWD models validated using the ERA5 ZWD from 1000 to 200 hPa in 2020. The three selected regions are Tibet Plateau (a), Andes mountains (b) and Antarctica (c).**

**Suggestion 6.** No specific or technical comments will be given here since the paper needs such substantial work. This can be given at later stages of the review process.

**Response 6.** Thank you for your suggestions. We have systematically revised the article to demonstrate the feasibility and high accuracy of our model algorithm. Thank you again for your valuable suggestion.