

Coupling a large-scale glacier and hydrological model (OGGM v1.5.3 and CWatM V1.08) – Towards an improved representation of mountain water resources in global assessments

Sarah Hanus¹, Lilian Schuster², Peter Burek³, Fabien Maussion^{2,4}, Yoshihide Wada⁵, and Daniel Viviroli¹

¹Department of Geography, University of Zurich, Zurich, Switzerland

²Department of Atmospheric and Cryospheric Sciences (ACINN), Universität Innsbruck, Innsbruck, Austria

³International Institute for Applied Systems Analysis, Laxenburg, Austria

⁴Bristol Glaciology Centre, School of Geographical Sciences, University of Bristol, Bristol, United Kingdom

⁵Climate and Livability Initiative, Center for Desert Agriculture, Biological and Environmental Science and Engineering Division, King Abdullah University of Science and Technology, Thuwal, Saudi Arabia

Correspondence: Sarah Hanus (sarah.hanus@geo.uzh.ch)

Abstract. Glaciers are present in many large river basins, and due to climate change, they are undergoing considerable changes in terms of area, volume, ~~runoff and seasonality~~ [magnitude and seasonality of runoff](#). Although the spatial extent of glaciers is very limited in most large river basins, their role in hydrology can be substantial because glaciers store large amounts of water at varying time scales. Large-scale hydrological models are an important tool to assess climate change impacts on water resources in large river basins worldwide. Nevertheless, glaciers remain poorly represented in large-scale hydrological models. Here we present a coupling between the large-scale glacier model OGGM (v1.5.3) and the large-scale hydrological model CWatM (V1.08). We evaluated the improved glacier representation in the coupled model against the baseline hydrological model for [four](#) selected river basins at 5 arcmin resolution and globally at 30 arcmin resolution, focusing on [future](#) discharge projections under ~~climate change~~ [low and high emission](#) scenarios. We find that increases in future discharge are attenuated, whereas decreases are exacerbated when glaciers are represented explicitly in the large-scale hydrological model simulations. This is explained by a projected decrease in [glacier](#) [glacier-sourced](#) runoff in almost all basins. Calibration can compensate for lacking glacier representation in large-scale hydrological models in the past. Nevertheless, only an improved glacier representation can prevent underestimating future discharge changes, even far downstream at the outlets of large glacierized river basins. Therefore, incorporating a glacier representation into large-scale hydrological models is important for climate change impact studies, particularly when focusing on summer months or extreme years. [The uncertainties in glacier-sourced runoff associated with inaccurate precipitation inputs require the continued attention and collaboration of the glacier and hydrological modelling communities.](#)

1 Introduction

Mountains are frequently referred to as "Water Towers" because of their disproportionately high runoff and the delay in water release caused by the mountain cryosphere (Viviroli et al., 2007; Immerzeel et al., 2020; Viviroli et al., 2020). Snow accumu-

lation during winter and snow melt during spring and summer are essential components of the seasonal redistribution of water (Barnett et al., 2005; Mankin et al., 2015). Glaciers, on the other hand, act as storage both seasonally and over the long term (Kaser et al., 2010). Their seasonal melt pattern contributes to discharge during the summer and late summer months (van Tiel et al., 2021).

25 Due to climate change, glaciers are experiencing considerable mass loss (Marzeion et al., 2020; Rounce et al., 2023). As glaciers lose mass, their annual and seasonal melt volumes increase until a maximum, called "glacier peak water", is reached. Thereafter, melt volumes decline due to continued glacier volume decrease or stabilization, leading to lower seasonal and annual melt volumes compared to the years around glacier peak water. If the climate stabilizes, glaciers will eventually reach a smaller stable state, with lower melt volumes, which leads to lower seasonal but similar annual runoff volumes compared
30 to their previous larger stable state condition (Huss and Hock, 2018). Globally, glacier peak water has already been surpassed in around half of the glacierized river basins worldwide (~~Huss and Hock, 2018~~), including the basins in Central Europe and western Canada. In most river basins originating in High Mountain Asia, such as the Amu Darya and Indus, glacier peak water is expected to occur around mid-century (Huss and Hock, 2018). The definition of glacier melt varies among different studies (Gascoin, 2024). In this study, we use the term "glacier-sourced melt" for the combination of ice and snow melt on glaciers to distinguish it from the sole ice melt.

Several studies examine glacier-sourced melt contributions to runoff, streamflow or discharge in large river basins. Streamflow is channelled and routed runoff, whereas discharge is the streamflow at a specific cross-section, e.g. at a discharge gauge. A recent study concludes that the contribution of snowmelt to runoff is more important ~~for streamflow than glacier than glacier-sourced~~ melt contributions in Asia (Kraaijenbrink et al., 2021). However, Lutz et al. (2014) show the importance of
40 ~~glaciers~~ glacier-sourced melt for streamflow in the upper basins of the Himalayas. Furthermore, the global study by Huss and Hock (2018) suggests that ~~glaciers contribute essentially to streamflow in~~ glacier runoff contributes essentially to discharge in many major river basins and ~~that streamflow will decrease by more than 10% during at least one month of the melting season in one-third of the world's glacierized basins due to decreased water contribution by glaciers. is responsible for future discharge decreases in summer months.~~ Even in regions experiencing declining ~~streamflow~~ discharge over the 21st century,
45 ~~glacial~~ glacier-sourced runoff has the potential to buffer droughts (Ultee et al., 2022).

The changing melt seasonality and annual contributions of glaciers to streamflow make it essential to consider ~~glacial~~ glacier-sourced melt in hydrological models to simulate future hydrological changes realistically in partially glacier-covered basins ~~realistically and to assess water availability~~. Moreover, ~~incorporating glaciers into hydrological modelling it~~ allows us to ~~better understand and~~ quantify the importance of glaciers compared to other runoff components in the past and future. ~~This can provide valuable insights into the importance of glaciers for water resources.~~

In catchment modelling, hydrological models have included glacier routines (see van Tiel et al. (2020) for an overview). ~~To model glaciers in a changing climate realistically, glacier area and volume changes should be considered. For example, Seibert et al. (2018) introduce a glacier routine for the semi-distributed model HBVlight that connects mass balance changes to changing glacier area. Some models use~~ A variety of methods are used to consider the changing glacier areas and volumes, such as volume-area scaling (Lutz et al., 2014) ~~or~~, specific ice-flow models (Wijngaard et al., 2018; Biemans et al., 2019)

~~to represent changing glaciers. In contrast, other studies derive changes in glacier extent from outputs of glacier modelling (e.g. Muelchi et al., 2021; Hanus et al., 2021) or outputs from glacier modelling (e.g. Pesci et al., 2023; Muelchi et al., 2021; Hanus et al., 2021).~~

. These methods are often applied to catchments smaller than 5,000 km² and only rarely to catchments larger than 150,000 km² (van Tiel et al., 2020). Most of these hydrological models do not include human water use. However, in many river basins human water use cannot be neglected. Therefore, some regional studies have simulated hydrological processes upstream with a glacio-hydrological model and downstream with a model which incorporates human water use (e.g. Wijngaard et al., 2018; Biemans et al., 2019).

For regional to global studies on water resources, so-called global hydrological models are frequently used to assess water availability and human water use (Schewe et al., 2014). Throughout this study, we refer to these models as large-scale hydrological models because they are increasingly used at a regional scale in addition to a global scale. Large-scale hydrological models mostly lack a glacier representation. Only one out of 16 models used to simulate water availability in the Inter-Sectoral Impact Model Intercomparison Project phase 2 (ISIMIP2) had some representation of mountain glaciers, namely CWatM (Telteu et al., 2021). However, even this model has a very simplistic glacier representation resembling a snow redistribution method to avoid snow accumulation (Burek et al., 2020; Telteu et al., 2021).

~~Efforts~~ Past efforts were made to improve the glacier representation in large-scale hydrological models. An energy balance ice melt method was incorporated in VIC for a regional analysis in China by Zhao et al. (2013). This approach was further developed by Su et al. (2016) to assess future streamflow in various Asian basins. The authors applied volume-area scaling to derive initial glacier volume ~~based on glacier area~~ at the basin-scale and adapted the glacier volume and area ~~accordingly~~ every 10 years. To our knowledge, two attempts exist to couple a global glacier model with a large-scale hydrological model to improve glacier representation. In one study, glacier model outputs were incorporated into the WaterGAP model to assess past water storage changes (Cáceres et al., 2020). In a second study, glacier model outputs were incorporated into the PCR-GLOBWB model to assess potential improvements in model performance (Wiersma et al., 2022). Both studies focused on past simulations and did not evaluate the effect of glacier representation ~~in large-scale hydrological models~~ on future discharge projections, ~~although glacier runoff is expected to change substantially during this century~~. Moreover, ~~the model coupling has not been described in detail nor made publicly available~~. most of the models employed in the coupling are not publicly available which impedes reproducibility.

This confirms that glacier ice melt remains poorly represented in large-scale hydrological models to date. Therefore, large-scale hydrological models lack the representation of this rapidly changing water source. This is problematic because these models are used as tools for climate change impact assessments. Their primary objective is to answer questions about future water availability, water use and its spatial and temporal patterns. Hence, our primary objective was to improve the representation of glaciers, and consequently an important aspect of mountain water towers, within a large-scale hydrological model. This enhancement aims to capture the effect of ~~glacier melt and~~ glacier-sourced melt and glacier retreat on water availability.

Coupling a state-of-the-art glacier and hydrological model has the potential to improve the glacier representation by leveraging the most recent advancements from the glacier modelling community. We think it is beneficial to use a tested and well-established glacier model as opposed to developing a new glacier routine. Additionally, an analysis of the challenges

when coupling such models can provide insights into how the hydrological and glacier modelling communities can foster continued collaboration in the future.

Hence, this paper introduces a framework to couple the Open Global Glacier Model v1.5.3 (OGGM; Maussion et al., 2019) and the Community Water Model V1.08 (CWatM; Burek et al., 2020) on 5 arcmin and 30 arcmin resolution. Both state-of-the-art models are openly available. This framework facilitates an explicit inclusion of glacier-glacier-sourced runoff in large-scale hydrological modelling through dynamic modelling of glaciers. In the methods, the coupling framework is introduced in detail. First, the framework is evaluated using four selected major river basins in Europe and North America on 5 arcmin resolution. Second, a similar evaluation is conducted globally at 30 arcmin. Future changes in mean monthly and mean annual runoff discharge are compared between the coupled model and the original model to assess the influence of the coupling on climate change impact assessments.

2 Methods: model coupling

2.1 Hydrological model

The large-scale hydrological model Community Water Model (CWatM) is an open-source model developed by the International Institute for Applied System Analysis (IIASA) (Burek et al., 2020). The model includes all dominant hydrological storages and processes, such as snow, soil, groundwater and river routing. Additionally, it can simulate irrigation, industrial, domestic and livestock human water use and reservoir regulations. For an in-depth model description, we refer to Burek et al. (2020). CWatM is used at 5 arcmin and 30 arcmin resolution, but can also be used at 1 km resolution (Guillaumot et al., 2022). At 30 arcmin resolution, CWatM was used in the Inter-Sectoral Impact Model Intercomparison Project (ISIMIP) rounds 2b and 3, which compares large-scale hydrological model outputs (Frieler et al., 2017; Warszawski et al., 2014). CWatM has extensive and publicly available documentation of the source code, the model structure and model training and tutorials (<https://cwatm.iiasa.ac.at/>). Together with its modular structure, this makes CWatM a highly suitable candidate for the model coupling. CWatM has a simple glacier representation: At high-elevation zones where snow has not melted until the beginning of summer, the melting rate is increased and the average temperature of the grid cell is applied. This implicitly simulates the downward movement of glaciers (Burek et al., 2020). However, this glacier representation has several shortcomings. First, it assumes that glaciers are in equilibrium, meaning that only snow previously accumulated is melted. This representation neglects the change in glacier-glacier-sourced runoff when glaciers retreat, a phenomenon that is ongoing (Hugonnet et al., 2021) and projected to continue throughout this century (Rounce et al., 2023). Second, it assumes the presence of glaciers wherever snow accumulates in the model. We argue that this glacier representation is more akin to a snow redistribution function used to avoid excessive snow accumulation (Freudiger et al., 2017; Burek et al., 2020).

120 2.2 Glacier model

The Open Global Glacier Model (OGGM) framework is a community-driven, well-documented and open-source global glacier model (Maussion et al., 2019). This makes it stand out from a number of global glacier models which are used for global glacier mass change projections (Marzeion et al., 2020). OGGM has been used in global studies (Marzeion et al., 2020; Rounce et al., 2023) but also on regional and basin scales (e.g. Tang et al., 2023; Furian et al., 2022; Yang et al., 2022). OGGM has a modular structure, which is beneficial for new developments and a variety of research questions requiring different model setups.

Each glacier is simulated individually by OGGM. For this study, OGGM used the glacier outlines from the Randolph Glacier Inventory (RGIv6.0, Pfeffer et al., 2014) and elevation-band flowlines (e.g., Huss and Farinotti, 2012; Werder et al., 2020) derived from a digital elevation model. A one-dimensional shallow-ice flowline model of OGGM approximates the influence of ice flow on glacier dynamics. A temperature index mass-balance model computing mass-balances at each elevation band was calibrated for every glacier by glacier-wide geodetic observations (2000–2019, Hugonnet et al., 2021). The ice volume consensus estimates of Farinotti et al. (2019) at the RGI year (often near the year 2000) ~~have been~~ were matched regionally by calibrating the ice creep parameter A . The model version does not consider refreezing.

For a detailed model description, we refer to Maussion et al. (2019) and the online documentation (<https://docs.oggm.org/>). The model framework is under continuous development and now possesses the capability to simulate at a daily resolution using a daily mass balance model and daily climate data, a novel development for large-scale glacier models (Schuster et al., 2023). In the context of hydrological applications, it is relevant to mention that the utilized OGGM version (v1.5.3) does not differentiate between snowmelt and ice melt on glaciers.

2.3 Model differences in the representation of elevation, precipitation and snowmelt

Both models were slightly adapted to facilitate coupling: In CWatM, we incorporated the rain-snow partitioning function from OGGM. OGGM was modified to provide daily outputs for melt and rainfall on glaciers. Nevertheless, differences between the two models in the representation of snow accumulation and melt processes remain (Table 1).

An important difference is the spatial resolution of snow accumulation and melt processes. CWatM has a maximum of ten evenly large elevation zones per grid cell (at 5 arcmin resolution, one elevation zone per $\sim 10 \text{ km}^2$) for which snow processes are modelled individually. In OGGM, the snow and ice processes are modelled on a much finer scale. Each glacier is split into elevation zones of 30 m height difference. Also, the spatial resolution of the model output is different, as OGGM outputs are given per glacier, whereas CWatM inputs and outputs are given per simulation grid cell.

Another relevant difference between the models is the correction of precipitation input data. Precipitation amounts are often underestimated in mountain areas, but the magnitude of this error remains difficult to assess (Beck et al., 2020; Azam et al., 2021). Glacier models use a precipitation factor to correct for measurement errors and additional errors in snow input, such as those caused by avalanches, thereby allowing for better alignment with mass balance data (Hock et al., 2019; Rounce et al., 2020). In CWatM, a multiplicative factor for snowfall correction is implemented as an optional calibration parameter following the rationale that snowfall has a larger error range than rainfall (Beck et al., 2020). Following the same rationale, we applied

the precipitation factor in OGGM only to snow and not to rain. However, efforts to further harmonize the two models by using the same precipitation correction factor resulted in unrealistic calibration and a deterioration in model performance. Therefore, we decided to retain the snow correction procedures of each model, although this leads to disparities between the two models. Thus, the precipitation factor in OGGM was calibrated to a fixed value across all glaciers in the studied region to best represent the observed inter-annual mass-balance variability from WGMS (2020), which is the standard procedure in OGGM v1.5.3. In CWatM, the snowfall correction factor was only calibrated when there was clear evidence of precipitation underestimation in the river basin. In other cases [and for global simulations](#), no snowfall correction was applied. [This leads to larger precipitation inputs in the coupled model compared to the baseline model, a topic further discussed in Section 6.2.1.](#)

Both models use a temperature-index model to represent snow and ice melt, with CWatM including melt seasonality and the effect of increasing melt during rainfall. Temperature-index models which use a degree-day factor, i.e. snowmelt coefficient, are widely used in hydrological models to calculate snow melt. They have low data requirements which is beneficial for large-scale studies (Girons Lopez et al., 2020). The utilized OGGM version (v1.5.3) uses one combined degree-day factor for snow and ice melt. This parameter was calibrated per glacier using 20-year average geodetic mass balance data from Hugonnet et al. (2021). However, in CWatM the degree-day factor was calibrated jointly with other model parameters using discharge data (Table 1), resulting in one parameter value for the whole basin area upstream of the gauge used for calibration.

2.4 Model coupling approach

The main rationale behind the coupling was to adhere to the modular philosophy of the models and maintain an open framework to enable their continuous development. Therefore, it was decided to implement a one-way sequential coupling where first OGGM was run and the output was translated via a pipeline, consisting of a set of functions, to input for CWatM (Fig. 1). Like this, the glacier output could potentially also be used with other hydrological models that use NetCDF files as input files. OGGM handled the glacierized portions of the modelling domain, while CWatM handled the non-glacierized portions. The glacier area, which was updated each year, determined the extent of the model domain addressed by OGGM and therefore excluded from CWatM simulations. In the modelling chain, the following sequence was followed: first, the glaciers within the modelled river basin were identified. Second, OGGM was calibrated and run for these glaciers. Third, the pipeline translated output from OGGM into a format readable as input for CWatM. Finally, CWatM was run with glacier area and [glacier-sourced melt](#) as input data. The coupling is explained in more detail in the following sections.

2.4.1 Run OGGM for selected glaciers

To model the glaciers in the model domain with OGGM, the glaciers had to be identified using RGIv6.0 (Fig. 1 step 1). The IDs of these glaciers were stored as a list which was used by OGGM. OGGM was calibrated and run dynamically, on a daily timescale. The relevant output variables of OGGM for the hydrological model are the glacier area ("on_area"), the melt ("melt_on_glacier") and the rainfall amount on the glacier ("liq_prpcp_on_glacier"). These variables for each modelled glacier were jointly stored in a NetCDF file (Fig. 1 step 2). Note that we ignore the off-glacier output variables from OGGM, as we model this domain by CWatM.

Table 1. Overview of model inputs, resolution and outputs of the applied CWatM and OGGM versions and their configurations

	CWatM	OGGM
Model version	1.08	1.5.3 + OGGM daily massbalance model
Time-step	Daily	Daily
Vertical resolution of snow calculations	Up to 10 equally sized elevation zones per grid cell. Elevation zones have the same area but different elevation range	Elevation zones with a range of 30m on each glacier. Elevation zones have the same elevation range but different areas
Correction of meteo data to elevation zones	Temperature lapse rate: $-0.0065 \text{ K km}^{-1}$, No precipitation lapse rate	Temperature lapse rate: $-0.0065 \text{ K km}^{-1}$, No precipitation lapse rate
Output resolution	Per grid cell (30', 5' arcmin (~50, 10 km))	Per glacier
Input data	Meteo data (gridded), other gridded input maps, e.g. elevation , land use, soil and aquifer properties, drainage direction (cf. Burek et al., 2020)	Meteo data (gridded), glacier outlines from the Randolph Glacier Inventory (RGIv6.0, Pfeffer et al., 2014), a digital elevation model
Meteo variables	precipitation and temperature; for evaporation calculation: min/max temperature, surface pressure, wind speed, solar radiation, humidity	precipitation and temperature
Precipitation correction	optional snow correction with a multiplicative factor	Basin-specific or global precipitation correction factor
Melt representation	Degree-day method including with melt rate seasonality and the effect of increasing melt during rainfall, melt threshold at 0°C	Degree-day method, melt threshold at 0°C
Partitioning of rain and snow	two thresholds (default: 0 and 2°C); linear snow and rain proportion change in between	two thresholds (default: 0 and 2°C); linear snow and rain proportion change in between
Calibration parameters	Selectable, with a list of 12 suggested parameters (https://cwatm.iiasa.ac.at/calibration.html) including the degree-day factor which governs snow melt	glacier-dependent degree-day factor and regional creep parameter, precipitation correction factor, temperature bias
Operating system	Windows, Linux, MacOS	Linux, MacOS
Can be run on a personal laptop?	Yes, for single basins at 5 arcmin resolution or world at 30 arcmin resolution	For selected basins with less than a few hundred glaciers

Translate OGGM output to CWatM input

2.4.2 Translate OGGM output to CWatM input

CWatM requires input data per grid cell in NetCDF format (latitude, longitude, time dimensions). Therefore, OGGM output per glacier had to be translated to CWatM input per grid cell (Fig. 1 step 3). The following steps were used to generate raster

190 NetCDF files of yearly glacier area and daily [glacier-sourced melt and rain on glaciers](#).

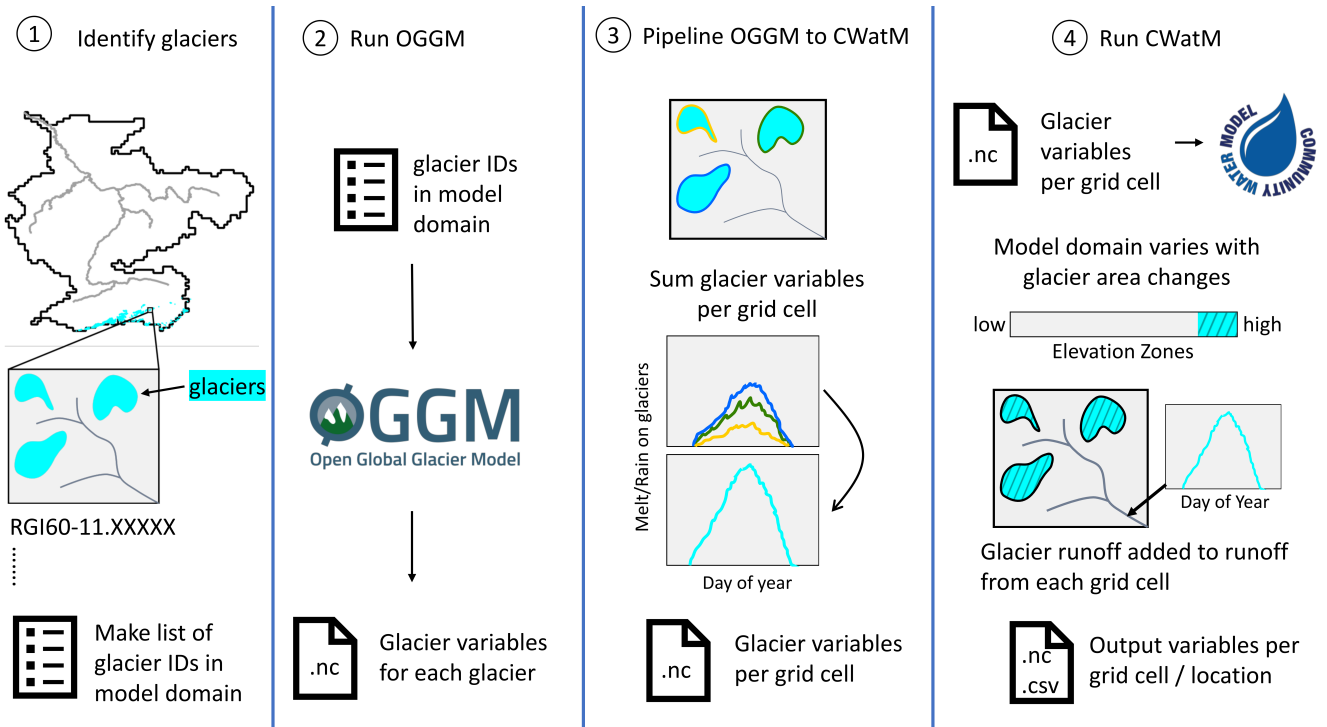


Figure 1. Schematization of the steps to sequentially couple the glacier model (OGGM) and the hydrological model (CWatM)

The rain and melt amount over a glacier were routed to the grid cell in which the terminus of the glacier is located at RGI date. The glacier-sourced melt includes snow and ice melt on the glacier area. The glacier-sourced melt and rain on **glaciers** all glaciers with terminus location within the same grid cell were summed to obtain the total glacier-sourced melt ($M_{t,i}$) and rain ($R_{t,i}$) on glacier per grid cell (Eq. 1, 2).

$$195 \quad M_{t,i} = \sum_{g=1}^G M_{g,t,i} \quad (1)$$

$$200 \quad R_{t,i} = \sum_{g=1}^G R_{g,t,i} \quad (2)$$

One glacier can cover several grid cells and one grid cell can contain several glaciers. Therefore, the geometric glacier outlines of RGIv6.0 were intersected with the model grid at WGS84 and then reprojected to Eckert IV to calculate the glacier area per grid cell at RGI date similarly to Li et al. (2021). To derive the glacier area of each glacier g at time t in grid cell i ($A_{g,t,i}$), the relative change in glacier area was multiplied by the glacier area contained in the grid cell (Eq. 3). Afterwards, the

total glacier area within one grid cell was calculated for every year (Eq. 4). In case it exceeded the area of the grid cell due to glacier growth, the surplus area was redistributed evenly to the four neighboring grid cells.

In reality, the glacier area decreases strongest close to the terminus of the glacier, when the glacier melts, whereas during glacier growth, the volume at the top of the glacier increases and subsequently the area at the terminus. However, the coupling was designed for large-scale modelling, ~~and therefore~~. ~~Therefore~~, these small-scale dynamics ~~are neglected~~. ~~We assume were neglected when adapting the CWatM modelling domain. We assumed~~ the same relative area reduction or growth for all grid cells that a glacier covers (Fig. S1.1).

$$A_{g,t,i} = \left(\frac{A_{g,t}}{A_{g,RGI}} \right) \cdot A_{g,RGI,i} \quad (3)$$

$$A_{t,i} = \sum_{g=1}^G A_{g,t,i} \quad (4)$$

~~The rain and melt amount over a glacier were routed to the grid cell in which the terminus of the glacier is located at RGI date. The glacier melt includes snow and ice melt on the glacier area. The glacier melt and rain on all glaciers with terminus location within the same grid cell were summed to obtain the total glacier melt and rain on glacier per grid cell (Eq. 1, 2).~~

$$\underline{M_{t,i} = \sum_{g=1}^G M_{g,t,i}}$$

215

$$\underline{R_{t,i} = \sum_{g=1}^G R_{g,t,i}}$$

2.4.3 Implementing ~~glacier~~ ~~glacier-sourced~~ runoff in CWatM

CWatM uses up to ten elevation zones per grid cell to simulate snow processes more realistically. The elevation difference within one pixel is assumed to be normally distributed. To exclude the glacier area within each grid cell from CWatM simulations, the glacier area was subtracted from the grid cell area starting from the highest elevation zone of each grid cell. The underlying assumption was that glaciers are located at the highest elevations within each grid cell (Fig. 1 step 4, S1.1). To include the ~~glacier~~ ~~glacier-sourced~~ melt in CWatM, an option was implemented to add the ~~glacier~~ ~~glacier-sourced~~ melt and rain on glaciers to the ~~surface~~ runoff per grid cell, under the assumption that rain on glaciers and ~~glacier~~ ~~glacier-sourced~~ melt cannot infiltrate into the soil or groundwater. The model setup without glacier coupling is called the baseline model (CWatM_{base}) and the model setup including glaciers is referred to as the coupled model (CWatM_{glacier}). Moreover, an additional mode for running CWatM has been implemented to quantify the ~~glacier~~ ~~glacier-sourced~~ melt contribution to discharge. This involves simulations that exclude glacier areas and runoff contributions from glaciers (CWatM_{glacier,bare}).

3 Methods: model coupling evaluation

The model coupling was evaluated on two different use cases: first, for individual well-monitored large river basins with a specific calibration at 5 arcmin resolution; and second, for global simulations at 30 arcmin resolution. The rationale behind employing two different resolutions was to assess the suitability of the coupling for assessments in large river basins and global assessments. ~~For the former, a 5 arcmin resolution is often used, whereas global assessments such as ISIMIP often use 30 arcmin resolution.~~

~~The first use case gives detailed insights into the effect of the coupling on discharge simulations by comparing CWatM_{base} and CWatM_{glacier} simulations to observations, and reveals The benefits and limitations at the river-basin scale. The second case shows how coupling performs at global scale without the explicit calibration of individual river basins, and highlights the challenges and differences compared to modeling at the basin-scale. This is relevant for global climate impact assessments of water availability which are often based on large-scale hydrological models. of its applicability for both use cases are discussed.~~

As daily meteorological input data for OGGM and CWatM we used the GSWP3-W5E5 dataset (Cucchi et al., 2020), which is also employed in ISIMIP3a simulations. For the evaluation at 5 arcmin, we downscaled GSWP3-W5E5 with WorldClim v2.1 (Fick and Hijmans, 2017) using bilinear interpolation. For future simulations, the meteorological forcing data of five GCMs bias-corrected with the GSWP3-W5E5 data set were used (GFDL-ESM4, UKESM1-0-LL, MPI-ESM1-2-HR, IPSL-CM6A-LR, MRI-ESM2-0), each forced with a low and high emission scenario (Shared Socioeconomic Pathways: SSP1-2.6, SSP5-8.5). These were accordingly downscaled to 5 arcmin resolution. The median global temperature increase projected by the GCMs for 2070–2099, in comparison to the pre-industrial level, was +1.92.0°C and +4.24.3°C, respectively.

CWatM requires additional input data, e.g. flow direction map, information on the land cover type, water demand, soil and groundwater characteristics, for which the global maps described in Burek et al. (2020) were used.

3.1 Calibration of selected river basins (5 arcmin)

To evaluate the model coupling on a river basin scale, four large river basins with glacial influence in Europe (Rhine, Rhone, Glomma) and North America (Fraser) were used (Fig. 2). These river basins are well-monitored and have long-term observed discharge time series available at an upstream and downstream gauge. The percentage of glacierized area is highest for the Fraser (1.2%), followed by the Rhone (1%), Glomma (0.7%), and Rhine (0.2%) for the region upstream of the downstream gauge.

A genetic algorithm (NSGA-II from python package DEAP, Fortin et al. (2012)) was used to calibrate 12 parameters in CWatM that govern major hydrological fluxes ~~(Burek et al., 2020)~~(Burek et al., 2020, Table 2). These include factors to adjust the evapotranspiration, soil depth, preferential flow to groundwater, soil infiltration and groundwater contribution to streamflow. The parameters were calibrated separately for the upstream and downstream regions of each basin using two gauges (see Fig. 2). Discharge data were obtained from GRDC (GRDC, 2022) and HydroPortail (HydroPortail, 2022). As objective function, the non-parametric version of the Kling Gupta Efficiency (KGE) was used ~~(NPE, Pool et al., 2018) (weight 0.8) in combination~~

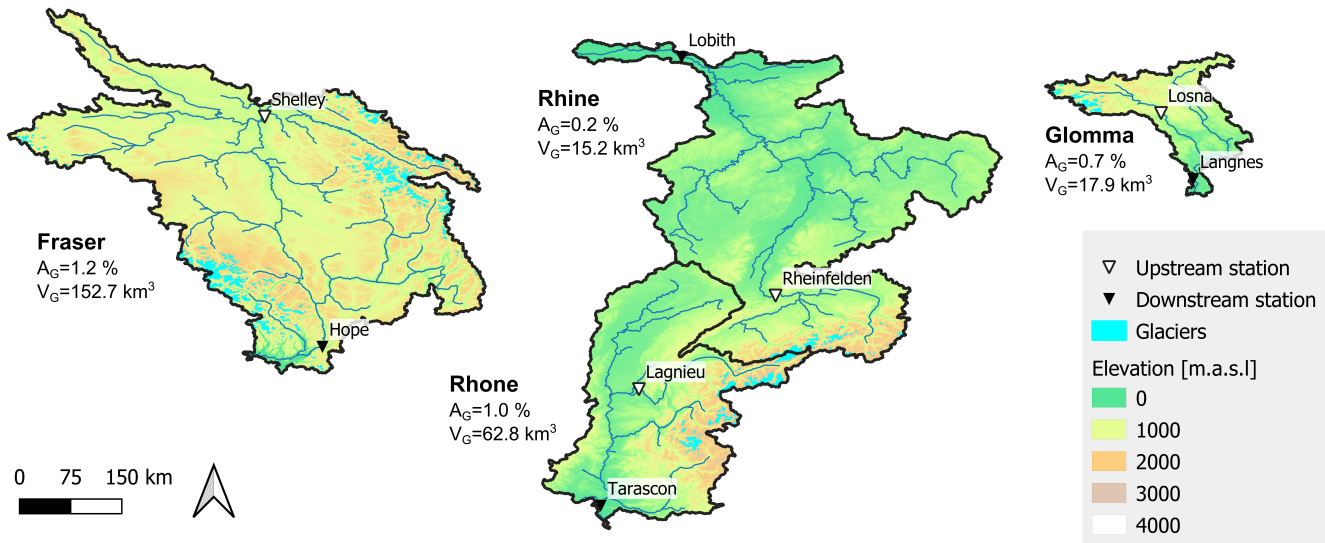


Figure 2. Glacierized study basins selected for model coupling evaluation at 5 arcmin with explicit calibration. The triangles show the location of discharge gauges used for calibration. A_G denotes the glacier area and V_G the glacier volume in 2005 as simulated with OGGM. Elevations shown are based on DEM by Yamazaki et al. (2019).

which jointly evaluates the errors in the mean, the variability and the dynamics of the discharge (NPE, Pool et al., 2018). It was combined with a penalty for the snow cover error to reduce excessive snow accumulation in summer (weight multi-year snow accumulation (weight 0.8 / 0.2, cf. S2A).

CWatM_{base} and CWatM_{glacier} were both calibrated for each study basin for the time period 2000–2009 to evaluate the effect of explicit glacier inclusion in the model. Each setup was calibrated five times to capture parameter uncertainty. The performance of the five calibrated parameter sets per river basin was evaluated for the time period prior to calibration (1990–1999).

3.2 Global parameter sets (30 arcmin)

To evaluate the model coupling on a global scale, global parameter sets were used. Most large-scale hydrological models employ one single parameter set for the entire globe and do not undergo an explicit calibration (Telteu et al., 2021). Here we used To consider parameter uncertainty we used six parameter sets obtained by calibration of CWatM_{base}, including the parameter set , which was used in ISIMIP 3 simulations of CWatM. To consider parameter uncertainty we obtained additional five parameter sets by calibration of CWatM_{base}. We For calibration, we used 601 GRDC stations which complied with criteria laid out in Burek and Smilovic (2022) and had at least 5 years of discharge data in the calibration period. We used the period from The period for calibration was 1985 to 1994 for calibration to maximize the number of discharge stations available and calibrated the. The 12 parameters were calibrated simultaneously to achieve the best possible performance over all stations similar to Greve et al. (2023). The performance was evaluated for the period 2004–2013 to maximise the discharge observation

length available per river basin. To limit runoff-discharge differences between the model setups to the effect of glacier inclusion, the global calibration procedure was not repeated for CWatM_{glacier} and the parameters of CWatM_{base} were used. Repeating the global calibration for CWatM_{glacier} would only have a minor influence on our results because the weight of glacier-influenced discharge gauges in the global calibration is small.

3.3 Simulations and analysis

CWatM was run from 1990–2019 and for future projections from 2020–2099 using the calibrated parameter sets. A total of 5 past simulations and 50 future simulations (using 5 GCMs and 2 SSPs) were performed for each CWatM_{base} and CWatM_{glacier} for the individual river basins. For global simulations, the same strategy was used. For the analysis, the period 1990–2019 and 2070–2099 were used because future changes were more pronounced at the end of the century.

Differences in past and future discharge between the baseline and the coupled model were evaluated close to the outlet of the river basins to assess the effect of explicit glacier inclusion on past and future discharge simulations using the ensemble mean values of the calibrations. In addition to projecting future discharge, climate impact studies often assess future changes in discharge by comparing future mean discharges to mean past discharges (e.g. Schewe et al., 2014; Gosling et al., 2017). This quantification of future change is essential for facilitating adaptation. Consequently, we also conducted comparisons between the model setups to assess how the representation of glaciers influences our projections of future changes in discharge.

4 Results of selected river basins (Sarcmin)

4.1 Past model evaluation

The magnitudes and seasonality of flow are generally well represented during the evaluation period (1990–1999) by the calibrated CWatM_{base} and CWatM_{glacier} (Fig. 3, S2.7). Also for individual years, the discharge dynamics are well matched by the simulations (Fig. S2.2,4).

The Fraser and Glomma basins have a similar discharge seasonality characterised by a melt regime with peak discharge during the early summer (May–July). Simulated discharge peaks later and declines earlier in the year than observed discharge for both basins and early winter discharge (Oct–Dec) is overestimated. The discharge regimes of the Rhone and Rhine river basins, on the other hand, are characterised by higher discharge during the winter months and relatively low discharge during late summer (Aug–Sep) (Fig. 3). The simulations overestimate discharge for the Rhine river basin throughout most of the year, with a mean difference of 8%. In contrast, the simulations closely match observed discharge for the Rhone river basin. The distribution of flow magnitudes is well represented, but annual maximum discharges are underestimated for the Fraser basin and overestimated for the Rhine and Rhone river basins. The annual minimum discharge is underestimated for both model setups for all river basins except the Fraser (Fig. S2.4,6, S2.5,7).

Observations are better matched by CWatM_{glacier} for the Rhone river basin during August and to some extent for the Fraser river basin throughout most of the year. No noticeable differences between the model setups are evident for the Glomma and

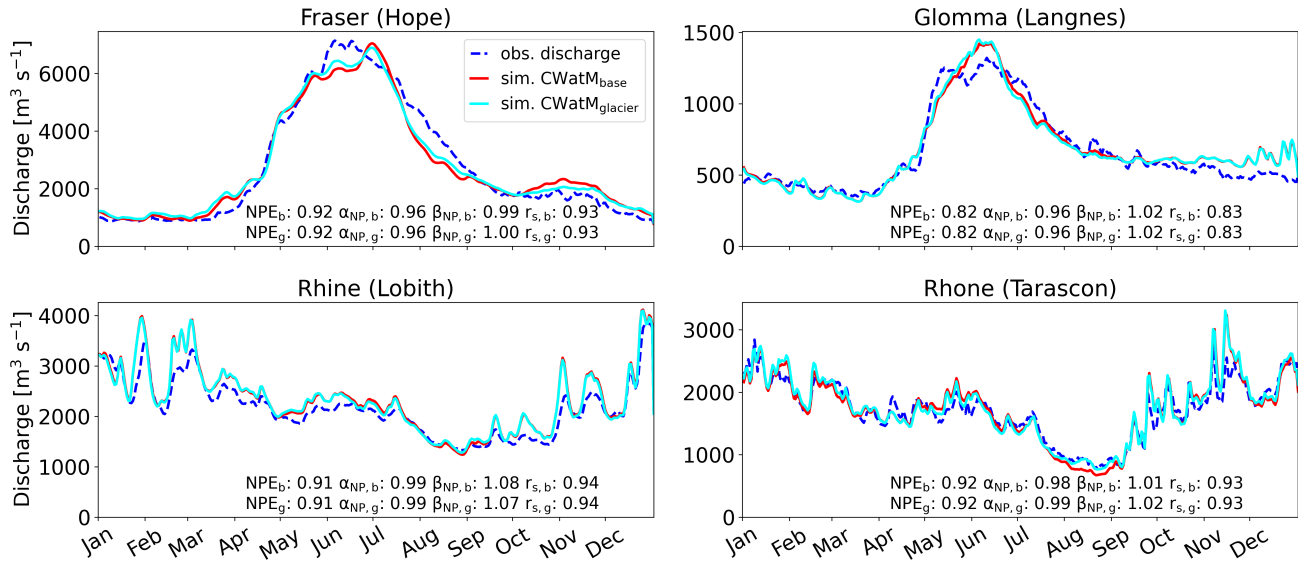


Figure 3. Mean Daily mean hydrographs of the evaluation period (1990–1999) for the downstream station of the study basins. As insert inset the NPE and its error components over the whole evaluation period are given for CWatM_{base} (index b) and CWatM_{glacier} (index g) (α_{NP} : variability, β_{NP} : mean, r_s : dynamics; Pool et al., 2018). Values closer to 1 indicate a better match.

Rhine river basins. For the Rhone river basin, the differences between the two model setups are more pronounced at the upstream station (see Fig. S2.1,3). Simulations of CWatM_{base} show a bias towards too low discharge in August for the Rhone river basin, which suggests that a relevant process during this time of the year is not represented well in this model setup. Using CWatM_{glacier}, summer discharge is well simulated (see Fig. 3, S2.1,3). This indicates that CWatM_{glacier} can capture summer discharge better because glacier ice melt is explicitly included.

In general, discharge differences between CWatM_{base} and CWatM_{glacier} are marginal, which is also reflected by similar performance in the evaluation period. Model calibration can, to some extent, compensate for inadequate process representations within models (Duethmann et al., 2020; Knoben et al., 2020), and consequently, it can also mitigate the limitations arising from the absence of a glacier representation. During calibration of CWatM_{base}, a parameter set is chosen that exhibits a reasonable ability to simulate summer discharge by leveraging other processes within the model. Parameters influence the partitioning between evapotranspiration and runoff and the timing of runoff. Moreover, adjustments to the precipitation input (and thus the water volume) of the river basin can be made if a snowfall correction factor is applied. For example, the calibrated parameters of CWatM_{base} reduce evapotranspiration and enhance groundwater contributions to streamflow in the Rhone river basin to compensate for missing runoff from the glaciers in summer. The choice of parameters affects the partitioning of water to groundwater, soil, and the river and indirectly the length of the melt season (Fig. S2.1, S2.2). Therefore, model setups that do not include all relevant processes can perform fairly well but do not get the right answers for the right reasons (Kirchner,

2006). This presents a challenge when assessing whether an enhanced glacier representation improves model simulations. Additionally, it becomes problematic in a changing environment, a topic discussed in the following section.

4.2 Future projections

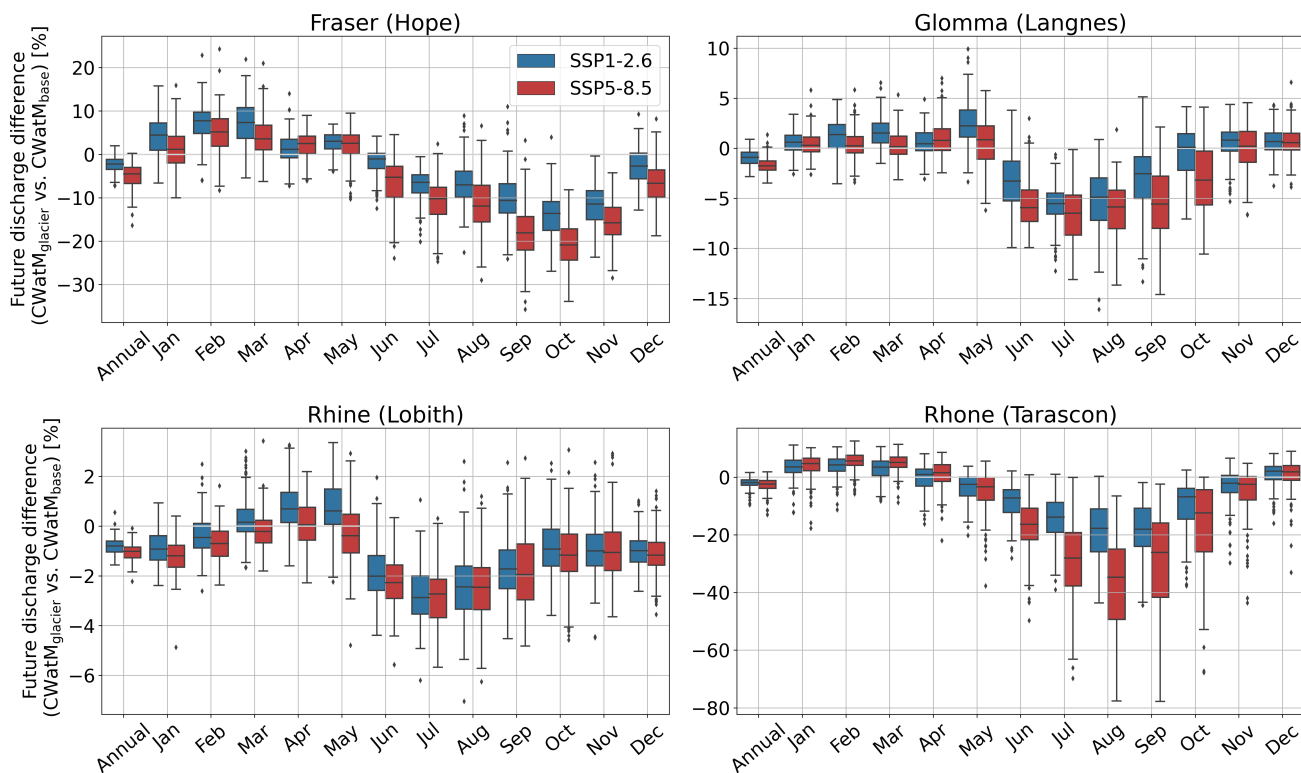


Figure 4. Relative difference in projected mean annual and mean monthly discharge of $CW_{atM_{glacier}}$ compared to $CW_{atM_{base}}$ at the downstream gauges for 30 years from 2070–2099 using 5 GCMs (150 data points per boxplot). Differences are shown per SSP scenario which translate into global median warming levels of $+1.92.0^{\circ}C$ and $+4.24.3^{\circ}C$ compared to pre-industrial time. Note that each subplot has a different y-axis scale.

The impact of enhancing the glacier representation in CW_{atM} by coupling it with the glacier model OGGM becomes more apparent at the outlets of our study basins when simulating future projections. Future simulated discharge of $CW_{atM_{glacier}}$ is lower compared to $CW_{atM_{base}}$ (Fig.4) with annual discharge differences of 1 to 4%. Monthly differences between the model setups are more pronounced and reach 20% for the Fraser and 35% for the Rhone but only 3% for the Rhine and 6% for the Glomma river basin (Fig. 4). The reason for more pronounced differences in the future compared to the past is that $CW_{atM_{glacier}}$ captures glacier retreat and therefore changing glacier-sourced runoff during this century whereas $CW_{atM_{base}}$ cannot capture this. The calibration of $CW_{atM_{base}}$ compensates for lacking glacier representation by adjusting

parameters to fit the observed discharge in the past. Therefore, it implicitly includes the ~~glacier-ice~~ melt during the calibration
335 period in the parameter sets. If these parameter sets are applied to future simulation periods with less ~~glacier-glacier-sourced~~
melt, future discharge is likely overestimated in the river basins ~~by this model setup due to the stationarity of parameters~~. The
differences between the model setups are more pronounced for the higher emission scenario SSP5-8.5 and in months where
~~glacier-ice~~ melt occurs (June to October). However, differences can also be seen during the snow melt period.

Comparing future discharge projections to past discharge simulations yields valuable information about the future change
340 in discharge, which is an important metric for adaptation planning. Future change projections of discharge are more negative
or less positive for $CW_{atM_{glacier}}$ compared to $CW_{atM_{base}}$ (Fig. 5), because $CW_{atM_{base}}$ slightly underestimates discharge in the
past during summer months and likely overestimates future summer discharge, which results in lower future changes.

Differences between the model setups are largest for August where simulations with $CW_{atM_{glacier}}$ project a change of -
29%/-58% for SSP1-2.6 / SSP5-8.5 for the Rhone river basin towards the end of the century, whereas the projected change
345 with $CW_{atM_{base}}$ is lower (-2%/-30%). On an annual scale, the differences are lower than for the summer months with +2%/-8%
change in discharge for $CW_{atM_{glacier}}$ and +6%/-6% changes for $CW_{atM_{base}}$ (Fig. S3.2).

For both model setups and all selected river basins, future change in discharge is positive in winter months and negative in
summer months with a larger change for the higher emission scenario (Fig. 5). These future changes are consistent with previ-
ous studies (~~Stahl et al., 2022~~) (~~Stahl et al., 2022~~; ~~Rottler et al., 2020~~; ~~Schneider et al., 2013~~). The range of projected change is
350 large due to different regional projected changes in the forcing data of the GCMs.

The effect of coupling is larger for the summer months, where glaciers contribute most to discharge. Therefore, it is advisable
to include a realistic glacier representation in the hydrological modelling of large river basins especially when looking beyond
the mean annual cycle.

4.3 ~~Glacier-Glacier-sourced~~ melt contribution

355 The previous section has revealed the effect of coupling a large-scale hydrological model to a glacier model and its added value
in climate change studies for specific large river basins. This section exemplifies the possible use of the coupling to identify
~~glacier-glacier-sourced~~ melt contribution to discharge. The coupled model setup was run excluding ~~glacier-glacier-sourced~~ melt
and the glacier areas, which are updated annually ($CW_{atM_{glacier,bare}}$). This simulation was subtracted from $CW_{atM_{glacier}}$ to derive
the glacier contribution to discharge including melt and rain on glaciers. Simulated annual glacier contributions to discharge
360 show a drastic decline even under a moderate warming level of +1.92.0°C (SSP1-2.6 end of the century). ~~It is projected that~~
~~by~~ By the end of the century, these contributions will be projected to be less than 1.5% for the selected basins in Europe and
North America and thus negligible (Fig. 6). ~~In contrast, they were as high as 6% in the past. Consequently, glacier contributions~~
~~to discharge are projected to become negligible on annual time scales in these river basins in the future.~~ The monthly relative
glacier contribution to discharge is largest in the Rhone river basin due to the substantial percentage of basin area covered by
365 glaciers. ~~Additionally, and low~~ discharge from non-glacierized areas ~~is low~~ during the months when ~~glacier-glacier-sourced~~
melt is occurring (see Fig. 3, S4.1). The simulated average glacier contribution in August diminishes from 37% to 14%/10%
($340 \text{ m}^3 \text{ s}^{-1}$ to $82 \text{ m}^3 \text{ s}^{-1}$ / $38 \text{ m}^3 \text{ s}^{-1}$) at the end of the century for a warming level of +1.92.0°C/+4.24.3°C (Fig. 6, S4.2). ~~On~~

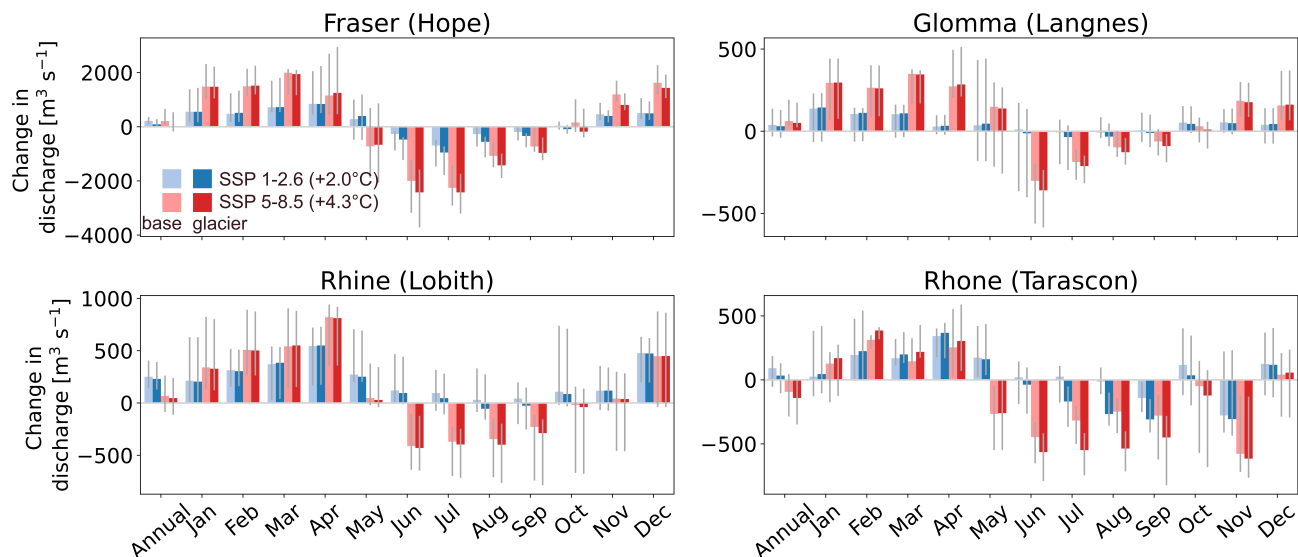


Figure 5. Absolute change in mean annual and mean monthly discharge at the downstream stations for the period 2070–2099 compared to 1990–2019 for CWatM_{base} and CWatM_{glacier}, shown per SSP scenario which translates into global median warming levels of $+1.92^{\circ}\text{C}$ and $+4.24.3^{\circ}\text{C}$ compared to pre-industrial time. The height of each bar indicates the median change based on the GCMs and the grey lines indicate the range between maximum and minimum change of individual GCMs.

an annual time scale, the glacier contribution to discharge is largest for the Fraser river because the percentage of basin area covered by glaciers is the largest. Note that we only show 30-year averaged results here (Fig. 6), but a similar approach could be taken to estimate glacier-sourced melt contributions in individual months and years.

5 Results of all glacierized river basins (30 arcmin)

5.1 Past model evaluation

We used six parameter sets within CWatM for the global evaluation to include parameter uncertainty in this study which is rarely done in large-scale hydrological modelling. The performance of these parameter sets for CWatM_{base} was comparable to other large-scale hydrological models at 30 arcmin resolution (Müller Schmied et al., 2021; Sutanudjaja et al., 2018). Overall, simulations tend to overestimate observed discharge, which is in line with other studies (Müller Schmied et al., 2021; Wiersma et al., 2022) (see Fig. S2.6.8, S2.7.9).

Looking at the 56 large-scale glacierized river basins used by Huss and Hock (2018), observed discharge data are available for 30 out of 56 large-scale glacierized river basins worldwide ($> 5000 \text{ km}^2$) of these basins, mainly located in Europe and North America (Wiersma et al., 2022), with a glacier coverage ranging from 0.02% to 35%. The performance in simulating

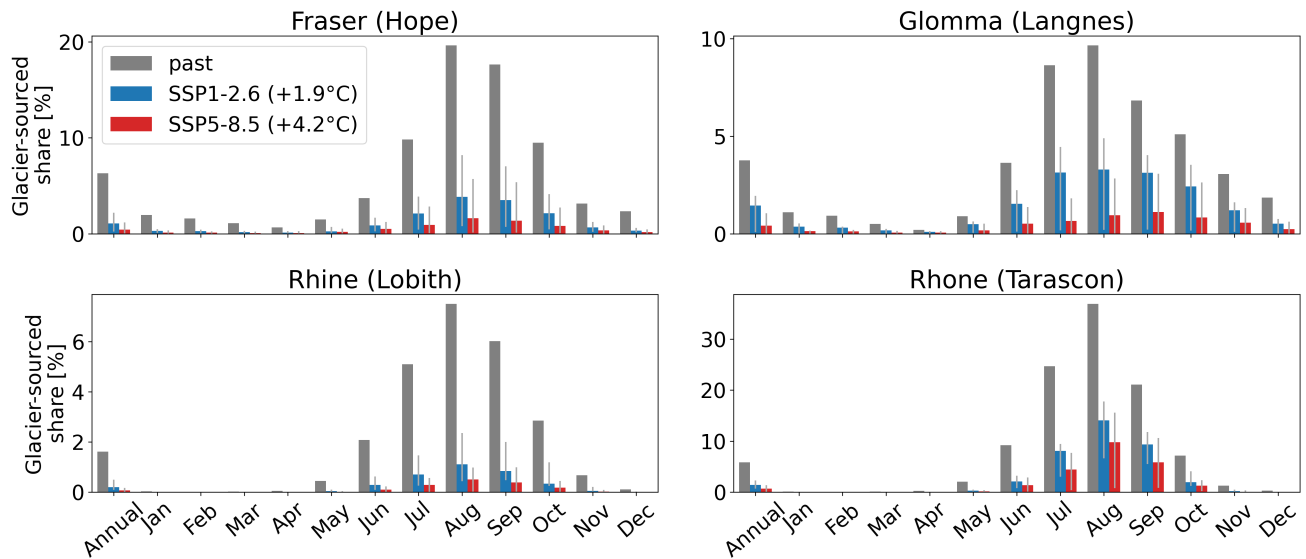


Figure 6. Relative mean glacier contribution to annual and monthly discharge (glacier share) at the downstream gauge for the period 1990–2019 and for the period 2070–2099 for two SSP scenarios which translate into global median warming levels of $+1.92.0^{\circ}\text{C}$ and $+4.24.3^{\circ}\text{C}$ compared to pre-industrial time. The height of the bar indicates median glacier share of GCMs and the grey lines indicate the minimum and maximum glacier share of GCMs.

discharge **increased-improved** or is at least similar for $\text{CWatM}_{\text{glacier}}$ compared to $\text{CWatM}_{\text{base}}$ for all these river basins (Fig. 7a), except for the Skagit river basin. This river basin is comparatively small (7850 km^2) and therefore likely not well represented at 30 arcmin resolution, where it covers only five grid cells.

The improvement in performance when explicitly including glaciers, as compared to $\text{CWatM}_{\text{base}}$, was largest for highly glacierized river basins (Fig. 7a). For example, the Copper river basin, which is 22% glacierized, exhibited substantial improvement in simulation performance when glaciers were explicitly included. In this case, the simulation of $\text{CWatM}_{\text{glacier}}$ matched the observations very well. The analysis of the **runoff-discharge** regime revealed that for $\text{CWatM}_{\text{base}}$, **glacier-runoff ice melt** was missing as the relevant process in the Copper river basin during the summer months. Consequently, simulations with $\text{CWatM}_{\text{base}}$ failed to capture the observed behaviour (Fig. 7b).

In general, performance was very variable among the river basins for both model setups and all parameter sets. This is likely due to using global parameter sets which were not adjusted for each basin individually and inaccurate precipitation input. For example, the glacier inclusion improved the simulations of the Fraser river basin, but simulations were still unsatisfactory because discharge was highly underestimated (Fig. 7c). Thus, further effort in calibration is likely to enhance the advantages of $\text{CWatM}_{\text{glacier}}$ for global simulations. However, improving the global performance of large-scale hydrological models is a research field in itself and beyond the scope of this study.

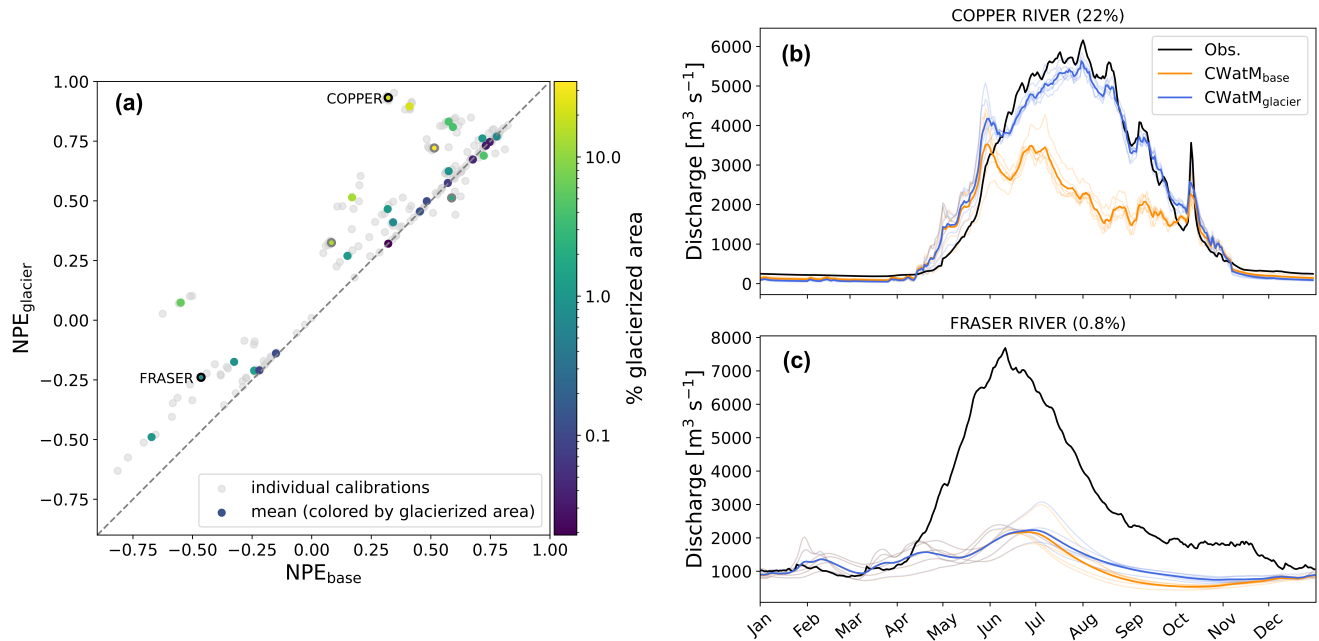


Figure 7. (a) Performance comparison using same discharge stations as presented in Wiersma et al. (2022) between $CWatM_{base}$ and $CWatM_{glacier}$ for individual calibrations (grey dots) and mean of all calibrations (coloured dots) for the 10 year period 2004 to 2013. The performance metric used is NPE (Pool et al., 2018). The Santa Cruz River basin lies outside the figure boundaries ($NPE_{glacier}=-3.2$, $NPE_{base}=-195$). Dots with grey outlines show basins smaller than 10,000 km². The median performance increase was 0.05 with an interquartile range from 0 to 0.2. Performance increased for 23 out of 30 basins. (b) and (c): Comparison of mean discharge of observations and simulations by $CWatM_{base}$ and $CWatM_{glacier}$. The individual lines show simulations of the different parameter sets and the bold line the mean of simulations.

5.2 Effect of coupling (past and future differences)

Differences between past simulations of $CWatM_{glacier}$ and $CWatM_{base}$ can be seen worldwide in large glacierized river basins (Fig. 8). The relative difference in monthly discharge between the two model setups can exceed 50% close to the glaciers and decreases further downstream. Nevertheless, differences between the model setups can also be detected downstream. For example, in September, the $CWatM_{glacier}$ simulations show 15% higher discharge in the Rhone basin, 26% higher discharge in the Glomma basin, and 17% higher discharge in the Amu Darya basin. This shows the influence of glaciers on discharge in large river basins. The timing of the largest differences is delayed further downstream due to travel time through the river network. In winter, no glacier-glacier-sourced melt is expected; thus the change in model setup should not influence the winter discharge. However, a decrease in discharge is simulated for winter and spring months in $CWatM_{glacier}$ compared to $CWatM_{base}$ (see Fig. S5.2.3). The reason behind this is likely, the lack of glacier representation in $CWatM_{base}$ where other runoff processes occur on the glacier area instead of glacier-runoff. Another explanation is the finer spatial resolution of elevations in OGGM (see Table 1) and therefore a later snow melt occurrence in OGGM than in the same areas in $CWatM$.

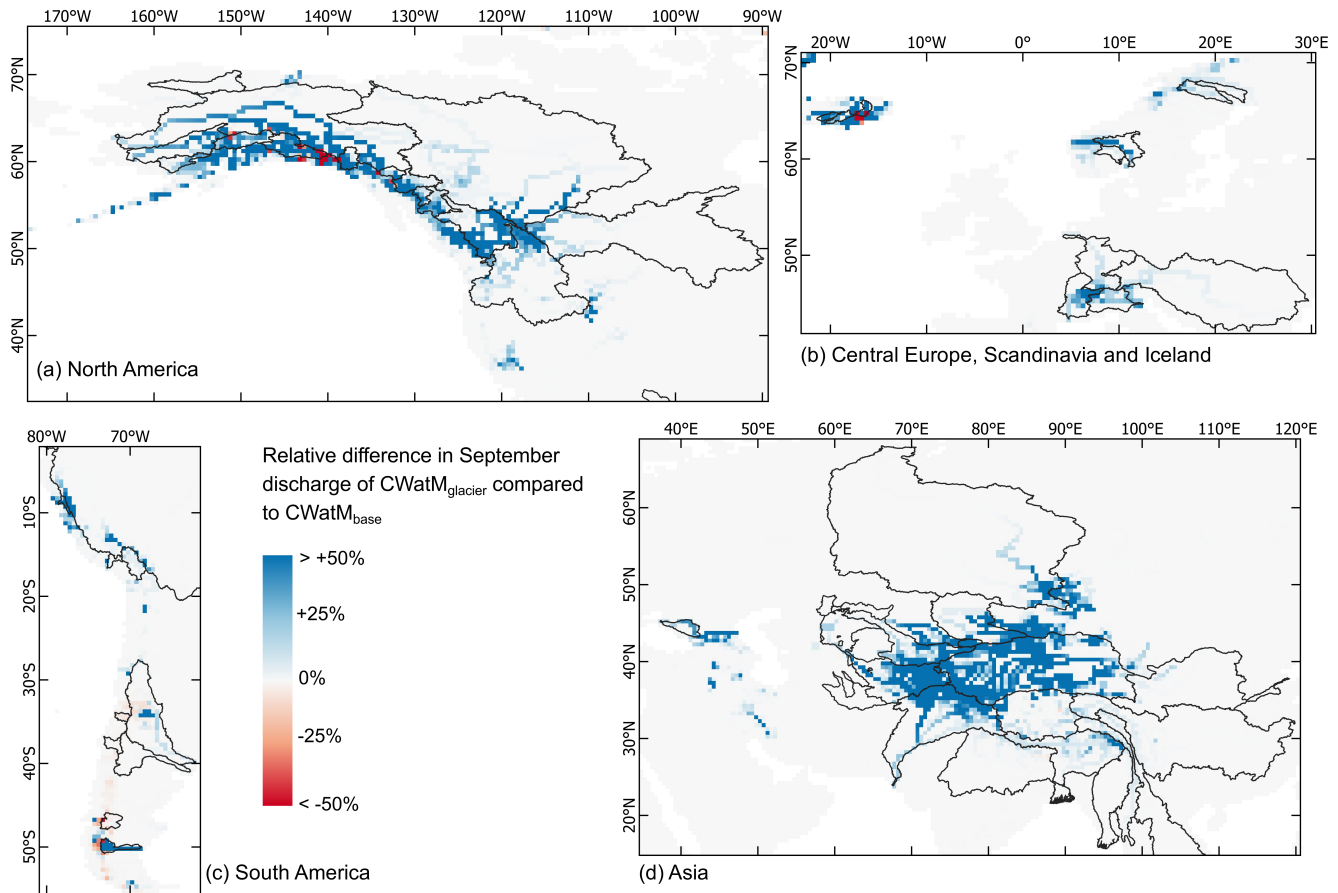


Figure 8. Relative difference in average discharge for September between $CW_{atM_{glacier}}$ and $CW_{atM_{base}}$ during the period 1990–2019. Positive values indicate a larger discharge of $CW_{atM_{glacier}}$. The outlines of large-scale glacierized river basins according to Huss and Hock (2018) (basin area $> 5000 \text{ km}^2$, glacier coverage $> 0.01\%$) are shown in black. Note the difference in degree intervals.

On an annual average, the discharge simulated by $CW_{atM_{glacier}}$ is larger or equal to that of $CW_{atM_{base}}$. This is because the glaciers are diminishing, resulting in a negative change in storage that contributes to discharge. This additional water source
 410 simulated by OGGM is included in $CW_{atM_{glacier}}$ but not in $CW_{atM_{base}}$. The increase in annual discharge is larger for highly glacierized basins (Fig. S5.1). The annual difference between the model setups exceeds 10% for 15 basins and 5% for 22 basins.

Regarding future changes in river discharge, changes can be positive or negative depending on the regional changes in temperature and precipitation. In many river basins, the discharge in the month with the largest past ~~glacier~~ glacier-sourced melt
 415 contributions is projected to decrease at the end of the century compared to the past (Fig. 9), whereas the annual discharge is projected to increase in many basins (Fig. S5-3,4). At the outlets of the 56 glacierized river basins, negative changes are ex-

acerbated when glaciers are included explicitly in large-scale hydrological modelling, whereas positive changes are attenuated (Fig. 9). The reason is that simulated glacier-glacier-sourced melt is smaller at the end of the century than in the past and this negative change is included in $CWatM_{glacier}$, whereas precipitation projections are identical for both model setups. This pattern holds for the majority of river basins, with the exception of a few basins where simulated glacier-glacier-sourced runoff is greater or similar at the end of the century compared to the past because glacier peak water is reached later, most notably Santa Cruz, Tarim, Amu Darya and Jokulsa (Fig. S4.4). The difference in change between the model setups is more pronounced for basins with a higher degree of glaciation. Overall, changes are more substantial for the higher emission scenario (Fig. S5.4.5).

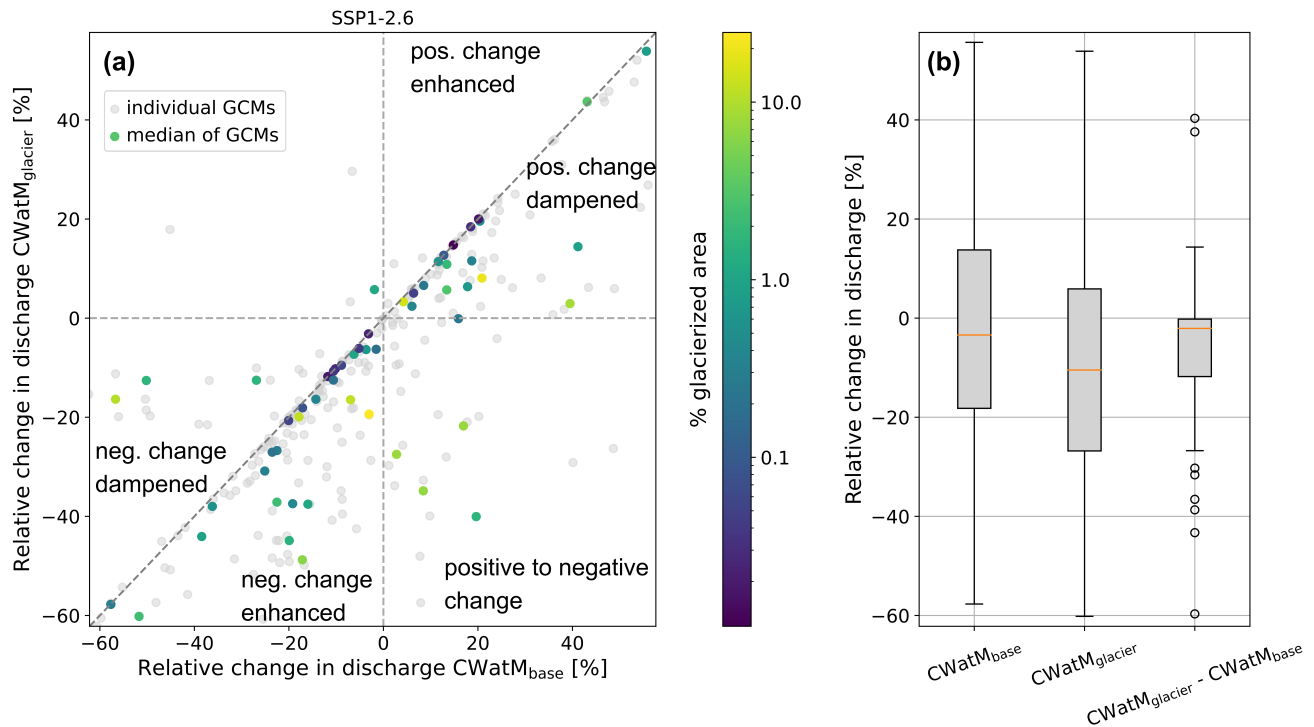


Figure 9. Comparison of relative future discharge change for the month with largest absolute glacier-glacier-sourced melt contribution in the past, at end of the 21st century, considering both $CWatM_{base}$ and $CWatM_{glacier}$, across 56 glacierized river basins for SSP1-2.6. (a) Colored dots show the median of all GCMs and grey dots show individual GCMs. (b) Boxplots show the relative future change of all basins for $CWatM_{base}$ and $CWatM_{glacier}$ and the difference between the two.

5.3 Glacier-Glacier-sourced melt contribution

The simulated relative glacier-glacier-sourced melt contributions to discharge decreased for future periods at the outlets of all glacierized river basins, except for the Amu Darya and Tarim basins, both, on an annual average and during the month with the largest glacier-glacier-sourced melt contribution (Fig. 10). In the Amu Darya and Tarim basins, the projected future

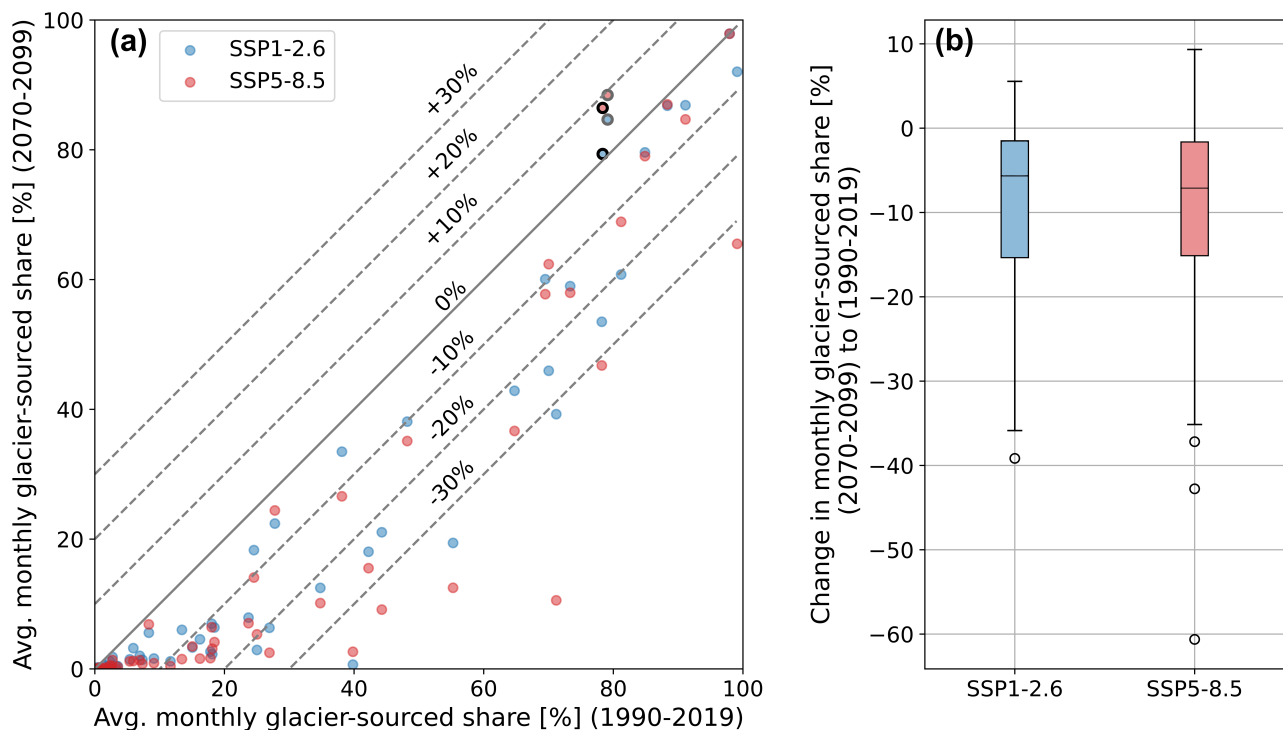


Figure 10. (a) Simulated glacier contribution to total basin discharge in the past (1990–2019) and end of the century (2070–2099) for the month with the highest relative glacier-sourced melt contribution to discharge in past. (b) The difference between the two periods, i.e. the simulated future change in glacier contribution. The outlined circles in (a) show the Amu Darya / Tarim basin (black/grey)

glacier-sourced melt is either larger or similar to the past. This, combined with projected decreased discharge, increases relative glacier-sourced melt contributions. The decrease in glacier-sourced melt contribution to discharge is large in many 430 basins. The highest monthly glacier contribution decreased by more than 10% in 22 river basins for SSP1-2.6 and 26 river basins for SSP5-8.5. It decreased by more than 20% in 12 river basins for SSP1-2.6 and 10 river basins for SSP5-8.5, respectively.

However, it should be noted that deriving glacier-sourced melt contributions can be highly uncertain if observed stream-flow discharge is not accurately represented in discharge simulations. An underestimation in discharge would result in an overestimation of relative glacier-sourced melt contributions, whereas an overestimation of discharge would result 435 in an underestimation of relative glacier-sourced melt contributions.

6 Discussion

6.1 Benefits of coupling

Glaciers were explicitly included in the simulations of the large-scale hydrological model CWatM, which simulates human water use in addition to natural hydrological processes. Incorporating human water use is essential for studying large river
440 basins. No less important is improving the representation of mountainous areas within large-scale hydrological models.

Therefore, including ~~glacier~~glacier-sourced runoff in large-scale hydrological modelling is an important step towards bridging the gap between assessments of natural environmental changes and their potential impacts on societies on larger scales. It is also a step towards better understanding the relevance of glaciers for water availability beyond small headwater catchments because the coupling opens the possibility to estimate glacier contributions to discharge by running the model in different
445 setups. Thus, the inclusion of ~~glacier~~glacier-sourced runoff offers the opportunity for further studies to delve into the impacts of glaciers on water availability.

To our best knowledge, our study is the first to explicitly incorporate ~~glacier~~glacier-sourced runoff generated on a daily resolution and accounting for ice dynamics into a large-scale hydrological model (cf. Cáceres et al., 2020; Wiersma et al., 2022). Our analysis demonstrated that explicitly including glaciers in both past and future simulations leads to notable changes
450 in simulated discharge. Simulation differences were mainly present in the summer months, a period where water availability is especially relevant for irrigated agriculture. In specific years or months, the effect of including glaciers is likely larger than shown in this analysis, for which 30-year average values were used. This is potentially relevant for climate impact assessments with a focus on summer months or extreme years.

Climate change leads to an increase and subsequent decline in ~~glacier~~glacier-sourced melt volumes, occurring once the
455 point of "glacier peak water" is surpassed (Huss and Hock, 2018). Therefore, the impact of improved glacier representation on future discharge changes depends on the period of comparison relative to glacier peak water. If the past period coincides with glacier peak water, the inclusion of glaciers in CWatM simulations results in a better representation of negative future discharge changes. This pattern holds for many river basins worldwide in this study when comparing 1990–2019 to 2070–
2099, including the four selected river basins (cf. Fig. 9, S4.3,4). The rapid changes in ~~glacier~~glacier-sourced melt volumes
460 throughout this century and the dependence of results on the selected period emphasise the relevance of explicitly including a glacier representation in large-scale hydrological modelling studies that focus on future discharge changes.

6.2 Caveats of coupling

The results of coupling a glacier model (OGGM) to a large-scale hydrological model (CWatM) are influenced by the limitations of each model. A major limitation in both models is uncertain precipitation data. Global glacier models such as
465 OGGM are further limited by the scarcity of long-term in-situ mass-balance observations ~~available for model calibration~~
(Schuster et al., 2023)(WGMS, 2020) and thus mostly rely on one observation per glacier (i.e., the 2000-2020 geodetic mass-balance average estimate of Hugonnet et al. (2021)). Nevertheless, we recommend including glacier runoff simulations for future discharge projections in large river basins with many glaciers, because glaciers are a rapidly changing water resource and

[influence future discharge changes, especially in the summer](#). The absence of globally available, temporally and spatially re-
470 solved mass-balance estimates pose a major challenge for the robust calibration of more enhanced mass-balance models (such
as energy-balance models). Yet, such mass-balance models would be valuable to improve the representation of tropical glaciers,
particularly since their current representation is limited by temperature-index models (Fernández and Mark, 2016). Moreover,
model parameter choices affect glacier volume and runoff projections (Rounce et al., 2020; Schuster et al., 2023).

Large-scale hydrological models, including CWatM, are limited by the coarse representation of mountainous areas when
475 typical resolutions of 10–50 km (5–30 arcmin) are used. We did not conduct a comparison between the simulations at different
modelling scales for the selected river basins because simulation differences could not solely be attributed to scale differences
but were also a result of different calibration procedures. At the global scale, the calibration and evaluation of models are limited
by the availability of discharge data, which are biased towards mid-latitudes and temperate climates (Krabbenhoft et al., 2022).
Additionally, large-scale hydrological models often lack a detailed calibration, resulting in poor model performance, especially
480 in arid regions and regions with few discharge observations (Burek et al., 2020). Regionalized and calibrated parameter sets
that encompass all major hydrological processes would certainly improve simulations but are beyond the scope of this study.
In the following section, the most important limitations of the models and their coupling are discussed in more detail.

6.2.1 Precipitation correction

In the hydrological model, a [multiplicative time-independent](#) snow correction was only calibrated and applied when precipita-
485 tion input was underestimated, [based on comparing long-term mean precipitation and observed discharge](#). This was the case
for the Glomma and Fraser river basins, where the calibrated snow correction factor ranges from 1.1 to 2.6. In other cases,
no snow correction factor was used to avoid the compensation of model flaws by correcting the input data. Thus, no snow
correction factors were applied to the Rhine and Rhone river basins and the global simulations.

In global glacier models, inaccurate precipitation data at glacier scale is corrected using a precipitation factor (Hock et al.,
490 2019). Different parameter combinations of precipitation factor (p_f), temperature bias and degree-day factor can represent the
mass balance of a glacier equally well (Rounce et al., 2020). However, the precipitation factor has a strong impact on the
simulated [glacier-glacier-sourced](#) runoff (Schuster et al., 2023). Here, it was chosen to best match the interannual variability
of in-situ glacier mass balance data at the global scale ($p_f = 3$) and in the selected river basins ($p_f = 3$, for the Rhine $p_f =$
2). Thus, precipitation correction is generally higher for the glacier model than for the hydrological model. One possible
495 explanation is the higher elevation of glaciers where precipitation data are often less accurate. Another explanation is that
the precipitation correction in OGGM accounts for processes that increase the snow input on glaciers such as avalanches or
wind-blown snow but are not explicitly simulated (Rounce et al., 2020).

The difference in precipitation correction between OGGM and CWatM led to a larger precipitation input for CWatM_{glacier}
compared to CWatM_{base}. Across the 56 glacierized river basins, the mean difference was +5% for total precipitation and
500 +17% for snowfall for the past period. Thus, differences between the model setups likely partly stem from the differences in
precipitation correction. An extended analysis is presented in the supplements. CWatM_{glacier} also outperforms CWatM_{base} if
precipitation input correction is equalized in both setups (Fig. S6.3).

We conducted additional global simulations with a precipitation factor of $p_f = 2$ to explore the importance of precipitation correction in OGGM. Annual and August ~~glacier~~glacier-sourced melt volumes in the Rhine and Rhone River basins are around 25% lower for $p_f = 2$ compared to $p_f = 3$. The differences in total river discharge are much smaller when assessed based on the relative ~~glacier~~glacier-sourced melt contributions in the basins (see Fig. S6.4). For the highly glacierized Copper river basin, the discharge in July and August is around 20% lower using $p_f = 2$ instead of $p_f = 3$. This underscores the importance of conducting more comprehensive assessments of precipitation correction in future works to provide correct glacier-sourced runoff information. A step towards this is the work by Schuster et al. (2023) and a new option of variable precipitation correction for each glacier introduced in OGGM v1.6.0. However, this cannot compensate for missing precipitation data at high elevations (e.g. Viviroli et al., 2011; Shahgedanova et al., 2021).

6.2.2 Glacier location in modelling grid

The locations of glaciers within the river basin differ between real basin outlines and gridded basin outlines used for modelling. Therefore, ~~glacier~~glacier-sourced melt can be incorrectly routed to a different basin. Although our routing approach for ~~glacier~~glacier-sourced melt and rain on glaciers is consistent with the routing of precipitation in CWatM, it affects ~~glacier~~glacier-sourced melt contributions, especially at 30 arcmin resolution (Table S1). For example, in the Rhine river basin the average annual ~~glacier~~glacier-sourced melt volumes are 13%/6% lower on 30/5 arcmin resolution than for real basin outlines, for the Rhone they are 33%/5% lower. For simulations at 30 arcmin, attributing ~~glacier~~glacier-sourced melt to the correct river basin independent of grid cell resolution would enhance the glacier coupling. However, such an implementation is not straightforward and has its own limitations, i.e. the change of the total basin area (Wiersma et al., 2022).

6.2.3 Differences in representation of mountainous terrain

Representation of elevation differences is distinct in OGGM and CWatM leading to differences in snow simulations (Table 1). These differences are inherent because of different spatial modelling scales (glacier scale vs. basin scale). Introducing sub-grid elevation variability in large-scale hydrological models improves snow representation. However, the resolution, especially at 30 arcmin, is still too coarse to adequately capture small-scale elevation differences (Sutanudjaja et al., 2018). It ~~s-is~~ likely that glaciers are not precisely located at the elevation represented by the elevation zones in CWatM. Moreover, melt coefficients are not the same in the two models but calibrated to glacier (OGGM) and discharge (CwatM) characteristics, respectively. Thus, snow simulations are not identical in the models, leading to differences between CW_{atM}_{base} and $CW_{atM}_{glacier}$ outside the ~~glacier-ice~~ melt season. It is difficult to investigate the effect of different snow representations on model results because the applied OGGM version does not differentiate between snow and ice, making it impossible to disentangle the snow and ice contributions. Nevertheless, due to the finer model resolution, the OGGM results are likely more realistic.

OGGM has no representation of hydrological processes through the subsurface. Therefore, it ~~is-was~~ only used to model the glacier-covered areas and not the emerging glacier-free areas. The glacier area was updated annually. Runoff from glacier-covered areas is assumed to be routed to surface runoff. Emerging glacier-free areas ~~are-were~~ simulated with CWatM, such that its ~~runoff-precipitation~~ can infiltrate into the soil or bedrock because these hydrological processes are represented in

CWatM. This distinction between ~~glacier runoff and runoff from precipitation on glaciers and on~~ emerging glacier-free areas is essential, because ~~runoff precipitation~~ on ice-free areas may interact with the soil and bedrock. Therefore, our approach is an improvement compared to previous studies that do not apply such distinction (Huss and Hock, 2018; Wiersma et al., 2022).

6.2.4 ~~Glacier~~ Glacier-sourced melt contributions

540 In our approach, all ~~glacier-glacier-sourced~~ runoff was fed into surface runoff. We neglected the ~~glacier-glacier-sourced~~ melt contribution to groundwater recharge due to insufficient knowledge about its magnitude (Somers and McKenzie, 2020). This assumption likely overestimates ~~glacier-glacier-sourced~~ melt contribution to surface runoff. ~~Glacier-Glacier-sourced~~ melt contributions to discharge were calculated by subtracting CWatM_{glacier,bare} simulations, which excluded glacier areas from modelling, from CWatM_{glacier} simulations, rather than subtracting CWatM_{base} from CWatM_{glacier} simulations. This approach minimises the
545 risk of incorrectly attributing model differences to ~~glacier-glacier-sourced~~ melt contributions (van Tiel et al., 2023). Nevertheless, differences may remain because CWatM_{glacier,bare} excluded glacier areas from the highest elevation zone without explicitly considering the glacier elevation. This assumption does not represent the accurate elevation of each glacier, but the median accordance is high.

To understand the relevance of glaciers for water availability in large river basins it is important to derive the relative ~~glacier~~
550 glacier-sourced melt contribution to discharge. However, this ratio is highly dependent on the correct ~~runoff-discharge~~ regime representation, because an underestimation (overestimation) of basin discharge leads to an overestimation (underestimation) of relative ~~glacier-glacier-sourced~~ melt contributions. Additionally, estimating the glacier-sourced contribution as the ratio of glacier-sourced runoff to discharge is likely an upper estimate of glacier contribution because water abstractions reduce discharge (Gascoin, 2024). Thus, further improvements in the accuracy of large-scale hydrological models will help reduce the
555 uncertainty in relative ~~glacier-glacier-sourced~~ melt contributions.

6.3 Comparison to other studies

The performance of global hydrological simulations increases especially in highly glacierized river basins when glaciers are explicitly included in modelling (Wiersma et al., 2022). Whereas Wiersma et al. (2022) demonstrated a decrease in model performance in specific months for weakly glacierized basins when glaciers are explicitly included, our study did not find an
560 overall decrease in performance. This might be explained by the underestimation of discharge in many basins in the present study, whereas discharge was mostly overestimated in Wiersma et al. (2022). Like Wiersma et al. (2022), we detected a decrease in winter and spring discharge for the coupled model. Comparing ~~glacier-glacier-sourced~~ melt contributions to ~~further-other~~ studies is challenging due to differences in modelling time periods and varying definitions of what constitutes glacier melt (Gascoin, 2024). Nevertheless, we compare our results to other studies to see whether trends and magnitudes match.

565 The derived ~~glacier-contribution-to-runoff-glacier-sourced contribution to discharge~~ in the Rhine river basin at 5 arcmin resolution fits the results of a detailed study on ~~runoff-discharge~~ components of the Rhine river basin (Stahl et al., 2016), e.g. 2.6%/4.2% ice melt at Lobith in August/September (1901–2006) vs 7.5%/6% glacier-sourced melt in this study (1990–2019). Differences between the studies can be explained by different periods and by ~~a different definition of glacier melt, which~~

~~only comprises ice melt for Stahl et al. (2016) whereas it includes all runoff from glacier areas in our study~~[comparing ice melt to glacier-sourced melt](#). Whereas our study suggests a ~~glacier~~[glacier-sourced](#) melt contribution of 40% for the Upper Indus previous studies reveal a ~~glacier~~ contribution of 60% (Lutz et al., 2014) and 45% (Su et al., 2016). Nevertheless, all studies show a similar pattern of high glacier contributions for the Upper Indus and rather low glacier contributions for the Upper Brahmaputra. The glacier contributions we derived for the Himalayan basins are greater than the results reported by Kraaijenbrink et al. (2021). Differences might stem from differences in evaporation estimates or other discharge components. Whereas Huss and Hock (2018) show a strong decrease in relative ~~glacier~~[glacier-sourced](#) runoff for basins in Central Asia, our results show an increase in glacier contribution to ~~runoff~~[discharge](#) in the Amu Darya and Tarim river basins. This projected increase in glacier contributions is consistent with only a slight decrease in projected glacier volumes in these basins compared to all other regions in High Mountain Asia at the end of the 21st century, as reported by Miles et al. (2021).

7 Conclusions

We added an explicit glacier representation in the large-scale hydrological model CWatM by developing a sequential coupling with the global glacier model OGM. The primary focus of evaluating this model coupling was its impact on future discharge projections, given the anticipated substantial retreat of glaciers.

For simulations of individual large river basins, we found that calibration can compensate for the lack of glacier representation in the past. However, as a result of reduced ~~glacier~~[glacier-sourced](#) runoff, future discharge projections are smaller in the Fraser, Glomma, Rhine and Rhone basins with improved glacier representation. This leads to larger future discharge changes when glaciers are explicitly considered. Including glaciers globally without explicit calibration increases discharge in summer months, also at the outlet of large river basins. Performance improved in highly glacierized river basins and did not deteriorate in weakly glacierized basins. ~~Glacier~~[Glacier-sourced](#) runoff is projected to be lower at the end of the 21st century compared to the recent past in most glacierized river basins worldwide. Therefore, positive future changes in discharge are attenuated and negative future changes are exacerbated when glacier representation is improved.

Thus, including glaciers in large-scale hydrological models is crucial for climate change impact assessments of water resources. We argue that an adequate glacier representation in hydrological simulations for large river basins is essential when studies focus on summer months or extreme years. Otherwise, climate change impacts on river discharge in glacierized river basins, even near the basin outlet, are likely to be underestimated. Such studies are relevant because seasonal and interannual variability potentially impact societies, the economy and the environment stronger than changes in the long-term annual averages. The coupled model setup can not only be used to improve the process representation in large river basins but can also be used to estimate glacier contribution to discharge. This is an important step in assessing the significance of glaciers for large river basins in both the past and the future. ~~The~~[Yet, considerable uncertainties in glacier-sourced runoff remain, which need to be addressed by better constraining the precipitation input and correction in global glacier modelling. Thus, the](#) collaboration between glacier and hydrological modelling communities should persist to further enhance the representation of glaciers in large-scale hydrological models.

Code and data availability. CWatM code is provided through a GitHub repository <https://github.com/iiasa/CWatM> (last access 13.10.2023) and the model version used for this study is provided via <https://doi.org/10.5281/zenodo.10044318>. Documentation and tutorials are available at <https://cwatm.iiasa.ac.at/> (last access 13.10.2023). OGGM code is available through a GitHub repository <https://github.com/OGGM/oggm> (last access 13.10.2023) and the model version used for this study is available via <https://zenodo.org/records/6408559>. The documentation can be found at <http://docs.oggm.org> (last access 13.10.2023). The project website is used for dissemination <http://oggm.org> (last access 13.10.2023). The daily massbalance model used in this study is available through the GitHub repository <https://github.com/OGGM/massbalance-sandbox> (last access 13.10.2023) and the version used for this study is provided via <https://doi.org/10.5281/zenodo.10055600>. The pipeline to translate OGGM outputs to CWatM inputs is provided through a GitHub repository https://github.com/sarah-hanus/pipeline_oggm_cwatm and via Zenodo <https://doi.org/10.5281/zenodo.10048089>. The code for postprocessing simulation outputs, and creating the figures is publicly available via <https://doi.org/10.5281/zenodo.10046823>. The data set also contains parameter sets, (post-processed) simulation outputs and other relevant code and information used for this study. Climate data can be found on the ISIMIP server (Frieler et al., 2017). Global input data for CWatM at 5 arcmin and 30 arcmin is available upon request. Discharge data can be obtained from GRDC (2022) and HydroPortail (2022). Shapefiles of glacier outlines used in this study, namely Randolph Glacier Inventory v6.0, can be obtained from <https://doi.org/10.7265/N5-RGI-60>.

Author contributions. SH developed the model coupling, performed the simulations, did the analysis and drafted the manuscript. LS developed the daily mass balance model. LS and FM helped to configure OGGM for the model coupling and provided input on OGGM specifications and glacier modelling. PB developed the calibration procedure used for CWatM, helped to configure CWatM for this study and provided input on the hydrological model specifications. DV, FM and YW designed the study. All the authors discussed the results and contributed to writing the final manuscript.

Competing interests. At least one of the (co-)authors is a member of the editorial board of Geoscientific Model Development.

Acknowledgements. The authors would like to thank Jan Seibert, Mikhail Smilovic and Ben Marzeion for useful discussions and support of this study. [We thank the reviewers for their constructive comments.](#) LS's contribution was funded by her DOC Fellowship of the Austrian Academy of Sciences at the Department of Atmospheric and Cryospheric Sciences, University of Innsbruck (No. 25928). LS's and FM's contributions were partly funded from the European Union's Horizon 2020 research and innovation programme under grant agreement No. 101003687. This text reflects only the author's view and that the Agency is not responsible for any use that may be made of the information it contains.

References

- Azam, M. F., Kargel, J. S., Shea, J. M., Nepal, S., Haritashya, U. K., Srivastava, S., Maussion, F., Qazi, N., Chevallier, P., Dimri, A., et al.:
630 Glaciohydrology of the Himalaya-Karakoram, *Science*, 373, eabf3668, 2021.
- Barnett, T. P., Adam, J. C., and Lettenmaier, D. P.: Potential impacts of a warming climate on water availability in snow-dominated regions,
Nature, 438, 303–309, 2005.
- Beck, H. E., Wood, E. F., McVicar, T. R., Zambrano-Bigiarini, M., Alvarez-Garretón, C., Baez-Villanueva, O. M., Sheffield, J., and Karger,
D. N.: Bias correction of global high-resolution precipitation climatologies using streamflow observations from 9372 catchments, *J.*
635 *Climate*, 33, 1299–1315, 2020.
- Biemans, H., Siderius, C., Lutz, A., Nepal, S., Ahmad, B., Hassan, T., von Bloh, W., Wijngaard, R., Wester, P., Shrestha, A., et al.: Importance
of snow and glacier meltwater for agriculture on the Indo-Gangetic Plain, *Nature Sustainability*, 2, 594–601, 2019.
- Burek, P. and Smilovic, M.: The use of GRDC gauging stations for calibrating large-scale hydrological models, *Earth Syst. Sci Data Discus-*
sions, 2022, 1–18, <https://doi.org/10.5194/essd-2022-231>, 2022.
- 640 Burek, P., Satoh, Y., Kahil, T., Tang, T., Greve, P., Smilovic, M., Guillaumot, L., Zhao, F., and Wada, Y.: Development of the Community
Water Model (CWatM v1. 04)—a high-resolution hydrological model for global and regional assessment of integrated water resources
management, *Geosci. Model.Dev.*, 13, 3267–3298, 2020.
- Cáceres, D., Marzeion, B., Malles, J. H., Gutknecht, B. D., Müller Schmied, H., and Döll, P.: Assessing global water mass transfers from
continents to oceans over the period 1948–2016, *Hydrol. Earth Syst. Sci.*, 24, 4831–4851, 2020.
- 645 Cucchi, M., Weedon, G. P., Amici, A., Bellouin, N., Lange, S., Müller Schmied, H., Hersbach, H., and Buontempo, C.: WFDE5: bias-adjusted
ERA5 reanalysis data for impact studies, *Earth Syst. Sci Data*, 12, 2097–2120, 2020.
- Duethmann, D., Blöschl, G., and Parajka, J.: Why does a conceptual hydrological model fail to correctly predict discharge changes in
response to climate change?, *Hydrol. Earth Syst. Sci.*, 24, 3493–3511, <https://doi.org/10.5194/hess-24-3493-2020>, 2020.
- Farinotti, D., Huss, M., Fürst, J. J., Landmann, J., Machguth, H., Maussion, F., and Pandit, A.: A consensus estimate for the ice thickness
650 distribution of all glaciers on Earth, *Nat. Geosci.*, 12, 168–173, 2019.
- Fernández, A. and Mark, B. G.: Modeling modern glacier response to climate changes along the Andes Cordillera: A multiscale review, *J.*
Adv. Model Earth Sy., 8, 467–495, 2016.
- Fick, S. E. and Hijmans, R. J.: WorldClim 2: new 1-km spatial resolution climate surfaces for global land areas, *Int. J. Climatol.*, 37, 4302–
4315, 2017.
- 655 Fortin, F.-A., De Rainville, F.-M., Gardner, M.-A. G., Parizeau, M., and Gagné, C.: DEAP: Evolutionary algorithms made easy, *The Journal*
of Machine Learning Research, 13, 2171–2175, 2012.
- Freudiger, D., Kohn, I., Seibert, J., Stahl, K., and Weiler, M.: Snow redistribution for the hydrological modeling of alpine catchments, *Wiley*
Interdisciplinary Reviews: Water, 4, e1232, 2017.
- Frieler, K., Lange, S., Piontek, F., Reyser, C. P., Schewe, J., Warszawski, L., Zhao, F., Chini, L., Denvil, S., Emanuel, K., et al.: Assessing the
660 impacts of 1.5 C global warming—simulation protocol of the Inter-Sectoral Impact Model Intercomparison Project (ISIMIP2b), *Geosci.*
Model.Dev., 10, 4321–4345, 2017.
- Furian, W., Maussion, F., and Schneider, C.: Projected 21st-Century Glacial Lake Evolution in High Mountain Asia, *Front. Earth Sci.*, 10,
<https://doi.org/10.3389/feart.2022.821798>, 2022.
- Gascoin, S.: A call for an accurate presentation of glaciers as water resources, *Wiley Interdisciplinary Reviews: Water*, 11, 2024.

- 665 Giron Lopez, M., Vis, M. J., Jenicek, M., Griessinger, N., and Seibert, J.: Assessing the degree of detail of temperature-based snow routines for runoff modelling in mountainous areas in central Europe, *Hydrol. Earth Syst. Sci.*, 24, 4441–4461, <https://doi.org/10.5194/hess-24-4441-2020>, 2020.
- Gosling, S. N., Zaherpour, J., Mount, N. J., Hattermann, F. F., Dankers, R., Arheimer, B., Breuer, L., Ding, J., Haddeland, I., Kumar, R., et al.: A comparison of changes in river runoff from multiple global and catchment-scale hydrological models under global warming scenarios of 1°C, 2°C and 3°C, *Climatic Change*, 141, 577–595, 2017.
- 670 GRDC: The global runoff data centre, 56068 Koblenz, Germany, <https://www.bafg.de/GRDC>, 2022.
- Greve, P., Burek, P., Guillaumot, L., van Meijgaard, E., Aalbers, E., Smilovic, M. M., Sperna-Weiland, F., Kahil, T., and Wada, Y.: Low flow sensitivity to water withdrawals in Central and Southwestern Europe under 2 K global warming, *Environ. Res. Lett.*, 18, 094 020, 2023.
- Guillaumot, L., Smilovic, M., Burek, P., De Bruijn, J., Greve, P., Kahil, T., and Wada, Y.: Coupling a large-scale hydrological model (CWatM v1. 1) with a high-resolution groundwater flow model (MODFLOW 6) to assess the impact of irrigation at regional scale, *Geosci. Model.Dev.*, 15, 7099–7120, 2022.
- 675 Hanus, S., Hrachowitz, M., Zekollari, H., Schoups, G., Vizcaino, M., and Kaitna, R.: Future changes in annual, seasonal and monthly runoff signatures in contrasting Alpine catchments in Austria, *Hydrol. Earth Syst. Sci.*, 25, 3429–3453, 2021.
- Hock, R., Bliss, A., Marzeion, B., Giesen, R. H., Hirabayashi, Y., Huss, M., Radić, V., and Slangen, A. B.: GlacierMIP—A model intercomparison of global-scale glacier mass-balance models and projections, *J. Glaciol.*, 65, 453–467, 2019.
- 680 Hugonnet, R., McNabb, R., Berthier, E., Menounos, B., Nuth, C., Girod, L., Farinotti, D., Huss, M., Dussaillant, I., Brun, F., et al.: Accelerated global glacier mass loss in the early twenty-first century, *Nature*, 592, 726–731, 2021.
- Huss, M. and Farinotti, D.: Distributed ice thickness and volume of all glaciers around the globe, *J. Geophys. Res-Earth*, 117, 2012.
- Huss, M. and Hock, R.: Global-scale hydrological response to future glacier mass loss, *Nat. Clim. Change*, 8, 135–140, 2018.
- 685 HydroPortal: HydroPortail, <https://hydro.eaufrance.fr/>, 2022.
- Immerzeel, W. W., Lutz, A., Andrade, M., Bahl, A., Biemans, H., Bolch, T., Hyde, S., Brumby, S., Davies, B., Elmore, A., et al.: Importance and vulnerability of the world’s water towers, *Nature*, 577, 364–369, <https://doi.org/10.1038/s41586-019-1822-y>, 2020.
- Kaser, G., Großhauser, M., and Marzeion, B.: Contribution potential of glaciers to water availability in different climate regimes, *P Natl Acad Sci USA*, 107, 20 223–20 227, 2010.
- 690 Kirchner, J. W.: Getting the right answers for the right reasons: Linking measurements, analyses, and models to advance the science of hydrology, *Water Resour. Res.*, 42, 2006.
- Knoben, W., Freer, J., Peel, M., Fowler, K., and Woods, R.: A brief analysis of conceptual model structure uncertainty using 36 models and 559 catchments, *Water Resour. Res.*, 56, e2019WR025 975, 2020.
- Kraaijenbrink, P. D., Stigter, E. E., Yao, T., and Immerzeel, W. W.: Climate change decisive for Asia’s snow meltwater supply, *Nat. Clim. Change*, 11, 591–597, 2021.
- 695 Krabbenhoft, C. A., Allen, G. H., Lin, P., Godsey, S. E., Allen, D. C., Burrows, R. M., DelVecchia, A. G., Fritz, K. M., Shanafield, M., Burgin, A. J., et al.: Assessing placement bias of the global river gauge network, *Nature Sustainability*, 5, 586–592, 2022.
- Li, Y., Li, F., Shangguan, D., and Ding, Y.: A new global gridded glacier dataset based on the Randolph Glacier Inventory version 6.0, *J. Glaciol.*, 67, 773–776, 2021.
- 700 Lutz, A., Immerzeel, W., Shrestha, A., and Bierkens, M.: Consistent increase in High Asia’s runoff due to increasing glacier melt and precipitation, *Nat. Clim. Change*, 4, 587–592, 2014.

- Mankin, J. S., Viviroli, D., Singh, D., Hoekstra, A. Y., and Diffenbaugh, N. S.: The potential for snow to supply human water demand in the present and future, *Environ. Res. Lett.*, 10, 114 016, 2015.
- 705 Marzeion, B., Hock, R., Anderson, B., Bliss, A., Champollion, N., Fujita, K., Huss, M., Immerzeel, W. W., Kraaijenbrink, P., Malles, J.-H., et al.: Partitioning the uncertainty of ensemble projections of global glacier mass change, *Earth's Future*, 8, e2019EF001 470, 2020.
- Maussion, F., Butenko, A., Champollion, N., Dusch, M., Eis, J., Fourteau, K., Gregor, P., Jarosch, A. H., Landmann, J., Oesterle, F., et al.: The open global glacier model (OGGM) v1. 1, *Geosci. Model.Dev.*, 12, 909–931, 2019.
- Miles, E., McCarthy, M., Dehecq, A., Kneib, M., Fugger, S., and Pellicciotti, F.: Health and sustainability of glaciers in High Mountain Asia, *Nat. Commun.*, 12, 2868, 2021.
- 710 Muelchi, R., Rössler, O., Schwanbeck, J., Weingartner, R., and Martius, O.: River runoff in Switzerland in a changing climate–runoff regime changes and their time of emergence, *Hydrol. Earth Syst. Sci.*, 25, 3071–3086, 2021.
- Müller Schmied, H., Cáceres, D., Eisner, S., Flörke, M., Herbert, C., Niemann, C., Peiris, T. A., Popat, E., Portmann, F. T., Reinecke, R., et al.: The global water resources and use model WaterGAP v2. 2d: Model description and evaluation, *Geosci. Model.Dev.*, 14, 1037–1079, 2021.
- 715 Pesci, M. H., Schulte Overberg, P., Bosshard, T., and Förster, K.: From global glacier modeling to catchment hydrology: bridging the gap with the WaSiM-OGGM coupling scheme, *Frontiers in Water*, 5, 1296 344, 2023.
- Pfeffer, W. T., Arendt, A. A., Bliss, A., Bolch, T., Cogley, J. G., Gardner, A. S., Hagen, J.-O., Hock, R., Kaser, G., Kienholz, C., et al.: The Randolph Glacier Inventory: a globally complete inventory of glaciers, *J. Glaciol.*, 60, 537–552, 2014.
- Pool, S., Vis, M., and Seibert, J.: Evaluating model performance: towards a non-parametric variant of the Kling-Gupta efficiency, *Hydrol. Sci. J.*, 63, 1941–1953, 2018.
- 720 Rottler, E., Francke, T., Bürger, G., and Bronstert, A.: Long-term changes in central European river discharge for 1869–2016: impact of changing snow covers, reservoir constructions and an intensified hydrological cycle, *Hydrol. Earth Syst. Sci.*, 24, 1721–1740, 2020.
- Rounce, D. R., Khurana, T., Short, M. B., Hock, R., Shean, D. E., and Brinkerhoff, D. J.: Quantifying parameter uncertainty in a large-scale glacier evolution model using Bayesian inference: application to High Mountain Asia, *J. Glaciol.*, 66, 175–187, 2020.
- 725 Rounce, D. R., Hock, R., Maussion, F., Hugonnet, R., Kochtitzky, W., Huss, M., Berthier, E., Brinkerhoff, D., Compagno, L., Copland, L., et al.: Global glacier change in the 21st century: Every increase in temperature matters, *Science*, 379, 78–83, 2023.
- Schewe, J., Heinke, J., Gerten, D., Haddeland, I., Arnell, N. W., Clark, D. B., Dankers, R., Eisner, S., Fekete, B. M., Colón-González, F. J., et al.: Multimodel assessment of water scarcity under climate change, *P Natl Acad Sci USA*, 111, 3245–3250, 2014.
- Schneider, C., Laizé, C., Acreman, M., and Flörke, M.: How will climate change modify river flow regimes in Europe?, *Hydrol. Earth Syst. Sci.*, 17, 325–339, 2013.
- 730 Schuster, L., Rounce, D. R., and Maussion, F.: Glacier projections sensitivity to temperature-index model choices and calibration strategies, *Ann. Glaciol.*, p. 1–16, <https://doi.org/10.1017/aog.2023.57>, 2023.
- Seibert, J., Vis, M. J., Kohn, I., Weiler, M., and Stahl, K.: Representing glacier geometry changes in a semi-distributed hydrological model, *Hydrol. Earth Syst. Sci.*, 22, 2211–2224, 2018.
- 735 Shahgedanova, M., Adler, C., Gebrekirstos, A., Grau, H. R., Huggel, C., Marchant, R., Pepin, N., Vanacker, V., Viviroli, D., and Vuille, M.: Mountain observatories: Status and prospects for enhancing and connecting a global community, *Mt. Res. Dev.*, 41, A1, 2021.
- Somers, L. D. and McKenzie, J. M.: A review of groundwater in high mountain environments, *Wiley Interdisciplinary Reviews: Water*, 7, e1475, 2020.

- Stahl, K., Weiler, M., Freudiger, D., Kohn, I., Seibert, J., Vis, M., Gerlinger, K., and Böhm, M.: Abflussanteile aus Schnee- und Gletscherschmelze im Rhein und seinen Zuflüssen vor dem Hintergrund des Klimawandels, Abschlussbericht an die Internationale Kommission für die Hydrologie des Rheingebietes (KHR)-Enderfassung 08/2016. Bericht CHR 00-2016. www.chr-khr.org/en/publications, 5, 2016.
- Stahl, K., Weiler, M., van Tiel, M., Kohn, I., Hänsler, A., Freudiger, D., Seibert, J., Gerlinger, K., and Moretti, G.: Impact of climate change on the rain, snow and glacier melt components of streamflow of the river Rhine and its tributaries, CHR report no. I 28. International Commission for the Hydrology of the Rhine basin (CHR), 5, 2022.
- Su, F., Zhang, L., Ou, T., Chen, D., Yao, T., Tong, K., and Qi, Y.: Hydrological response to future climate changes for the major upstream river basins in the Tibetan Plateau, *Global Planet. Change*, 136, 82–95, 2016.
- Sutanudjaja, E. H., Beek, R. v., Wanders, N., Wada, Y., Bosmans, J. H., Drost, N., Ent, R. J., De Graaf, I. E., Hoch, J. M., Jong, K. d., et al.: PCR-GLOBWB 2: a 5 arcmin global hydrological and water resources model, *Geosci. Model.Dev.*, 11, 2429–2453, 2018.
- Tang, S., Vlug, A., Piao, S., Li, F., Wang, T., Krinner, G., Li, L. Z., Wang, X., Wu, G., Li, Y., et al.: Regional and tele-connected impacts of the Tibetan Plateau surface darkening, *Nat. Commun.*, 14, 32, 2023.
- Telteu, C.-E., Müller Schmied, H., Thiery, W., Leng, G., Burek, P., Liu, X., Boulange, J. E. S., Andersen, L. S., Grillakis, M., Gosling, S. N., Satoh, Y., Rakovec, O., Stacke, T., Chang, J., Wanders, N., Shah, H. L., Trautmann, T., Mao, G., Hanasaki, N., Koutroulis, A., Pokhrel, Y., Samaniego, L., Wada, Y., Mishra, V., Liu, J., Döll, P., Zhao, F., Gädeke, A., Rabin, S. S., and Herz, F.: Understanding each other's models: an introduction and a standard representation of 16 global water models to support intercomparison, improvement, and communication, *Geosci. Model.Dev.*, 14, 3843–3878, 2021.
- Ultee, L., Coats, S., and Mackay, J.: Glacial runoff buffers droughts through the 21st century, *Earth Syst. Dynam.*, 13, 935–959, <https://doi.org/10.5194/esd-13-935-2022>, 2022.
- van Tiel, M., Stahl, K., Freudiger, D., and Seibert, J.: Glacio-hydrological model calibration and evaluation, *Wiley Interdisciplinary Reviews: Water*, 7, e1483, 2020.
- van Tiel, M., Van Loon, A. F., Seibert, J., and Stahl, K.: Hydrological response to warm and dry weather: do glaciers compensate?, *Hydrol. Earth Syst. Sci.*, 25, 3245–3265, 2021.
- van Tiel, M., Weiler, M., Freudiger, D., Moretti, G., Kohn, I., Gerlinger, K., and Stahl, K.: Melting Alpine Water Towers Aggravate Downstream Low Flows: A Stress-Test Storyline Approach, *Earth's Future*, 11, e2022EF003 408, 2023.
- Viviroli, D., Dürr, H. H., Messerli, B., Meybeck, M., and Weingartner, R.: Mountains of the world, water towers for humanity: Typology, mapping, and global significance, *Water Resour. Res.*, 43, <https://doi.org/10.1029/2006WR005653>, 2007.
- Viviroli, D., Archer, D. R., Buytaert, W., Fowler, H. J., Greenwood, G. B., Hamlet, A. F., Huang, Y., Koboltschnig, G., Litaor, M., López-Moreno, J. I., et al.: Climate change and mountain water resources: overview and recommendations for research, management and policy, *Hydrol. Earth Syst. Sci.*, 15, 471–504, 2011.
- Viviroli, D., Kummu, M., Meybeck, M., Kallio, M., and Wada, Y.: Increasing dependence of lowland populations on mountain water resources, *Nature Sustainability*, 3, 917–928, <https://doi.org/10.1038/s41893-020-0559-9>, 2020.
- Warszawski, L., Frieler, K., Huber, V., Piontek, F., Serdeczny, O., and Schewe, J.: The inter-sectoral impact model intercomparison project (ISI-MIP): project framework, *P Natl Acad Sci USA*, 111, 3228–3232, 2014.
- Werder, M. A., Huss, M., Paul, F., Dehecq, A., and Farinotti, D.: A Bayesian ice thickness estimation model for large-scale applications, *J. Glaciol.*, 66, 137–152, 2020.
- WGMS: Fluctuations of Glaciers Database. World Glacier Monitoring Service, Zurich, Switzerland, <https://doi.org/10.5904/wgms-fog-2020-08>, 2020.

- Wiersma, P., Aerts, J., Zekollari, H., Hrachowitz, M., Drost, N., Huss, M., Sutanudjaja, E. H., and Hut, R.: Coupling a global glacier model to a global hydrological model prevents underestimation of glacier runoff, *Hydrol. Earth Syst. Sci.*, 26, 5971–5986, 2022.
- 780 Wijngaard, R. R., Biemans, H., Lutz, A. F., Shrestha, A. B., Wester, P., and Immerzeel, W. W.: Climate change vs. socio-economic development: understanding the future South Asian water gap, *Hydrol. Earth Syst. Sci.*, 22, 6297–6321, 2018.
- Yamazaki, D., Ikeshima, D., Sosa, J., Bates, P. D., Allen, G. H., and Pavelsky, T. M.: MERIT Hydro: A high-resolution global hydrography map based on latest topography dataset, *Water Resour. Res.*, 55, 5053–5073, 2019.
- Yang, W., Li, Y., Liu, G., and Chu, W.: Timing and climatic-driven mechanisms of glacier advances in Bhutanese Himalaya during the Little Ice Age, *The Cryosphere*, 16, 3739–3752, <https://doi.org/10.5194/tc-16-3739-2022>, 2022.
- 785 Zhao, Q., Ye, B., Ding, Y., Zhang, S., Yi, S., Wang, J., Shangguan, D., Zhao, C., and Han, H.: Coupling a glacier melt model to the Variable Infiltration Capacity (VIC) model for hydrological modeling in north-western China, *Environ. Earth Sci.*, 68, 87–101, 2013.