

Table of Contents

S1 Optical Correlation Output Data	1
S1.1 All Valid Offset Maps	1
S1.2 Complete Profile Data	7
S2 Field Data	27
S2.1 Database	27
S2.2 Photos	30
S3 Earthquake Catalog	34
S4 SBAS Interferometry Output and Data	49
S4.1 Profile data	49
S4.2 Other MintPy data	51

S1 Optical Correlation Output Data

S1.1 All Valid Offset Maps

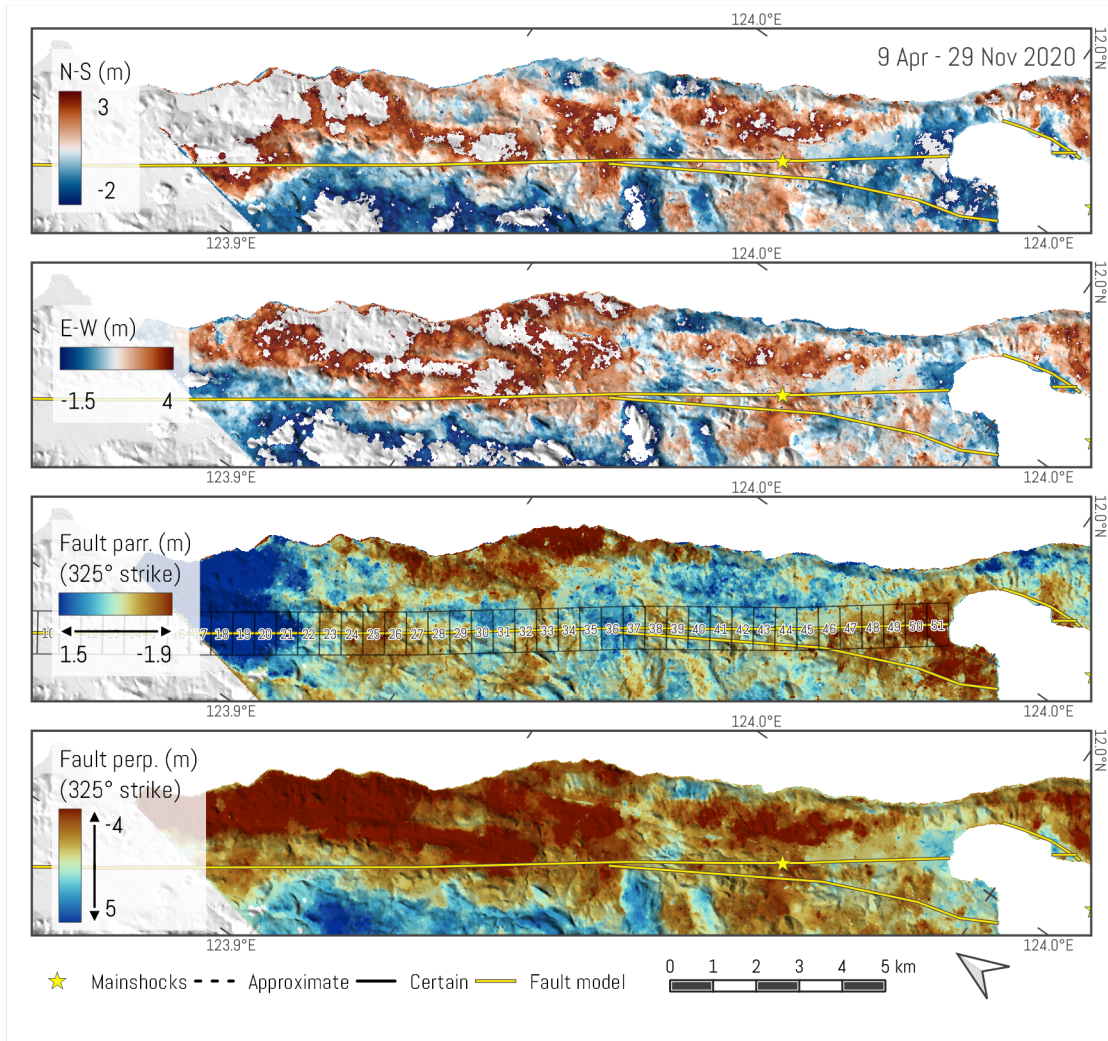


Figure S1: Results of 9 April - 29 November 2020 pair.

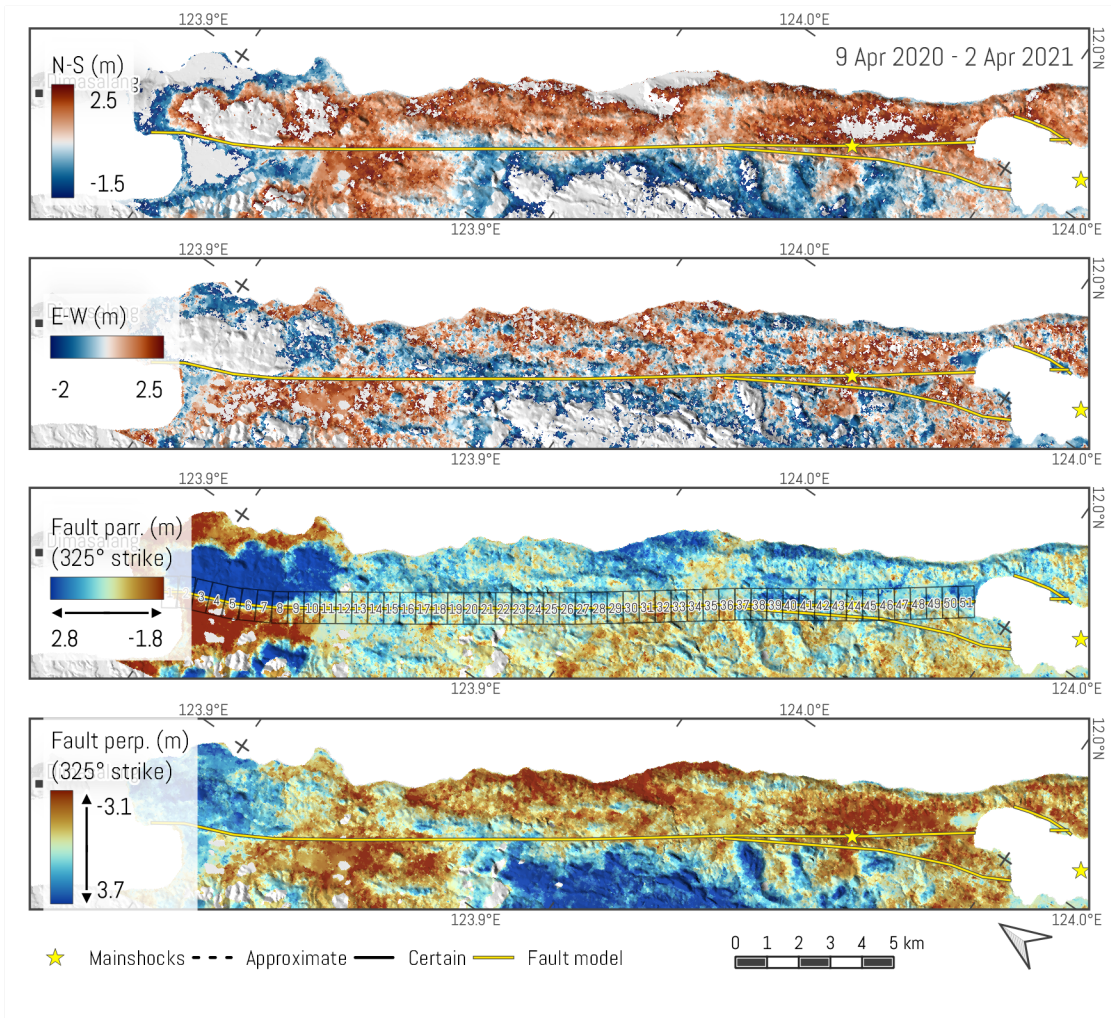


Figure S2: Results of 9 April 2020 (satellite ID 1105) - 2 April 2021 pair.

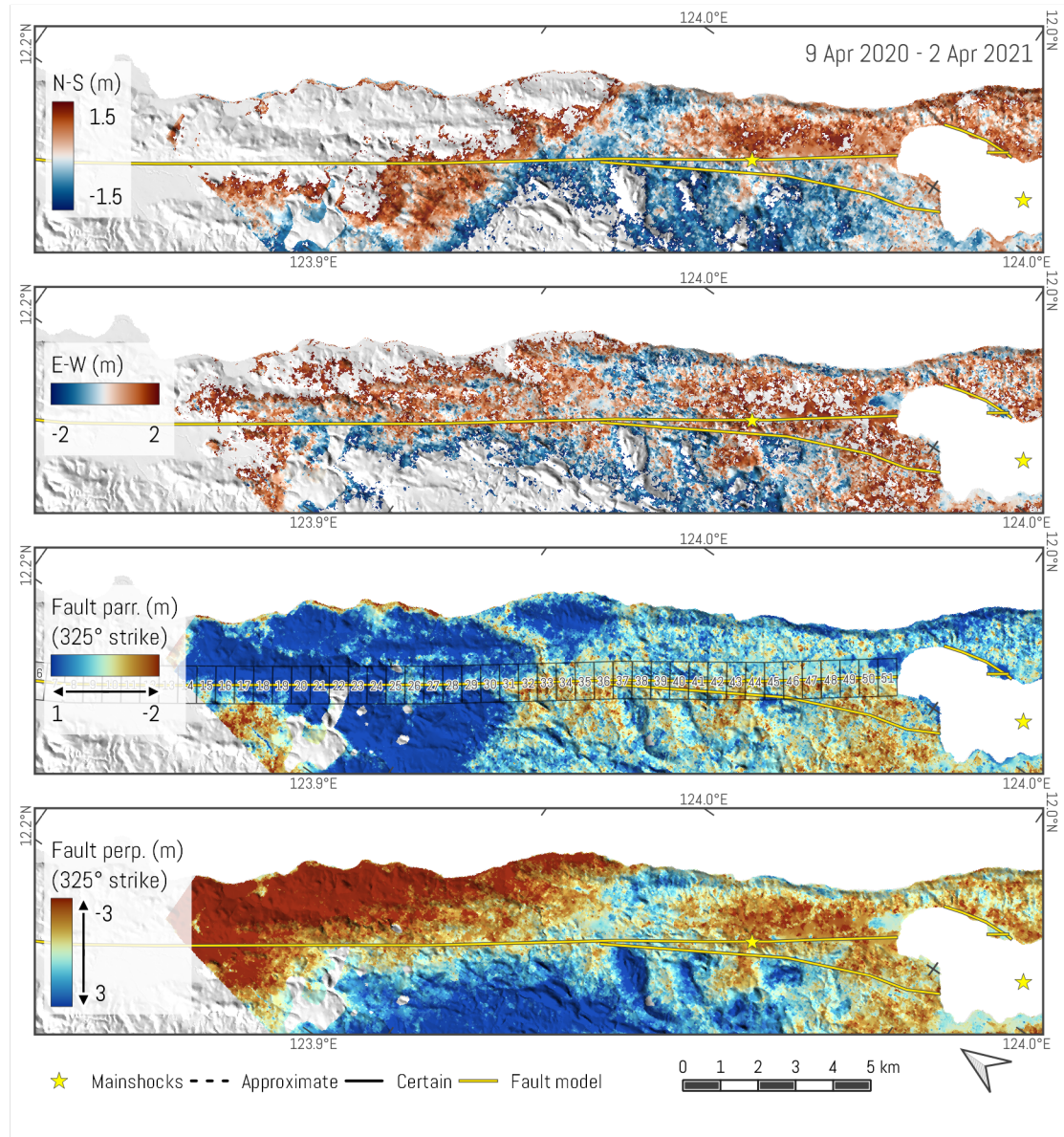


Figure S3: Results of 9 April 2020 (satellite ID 1013) - 2 April 2021 pair.

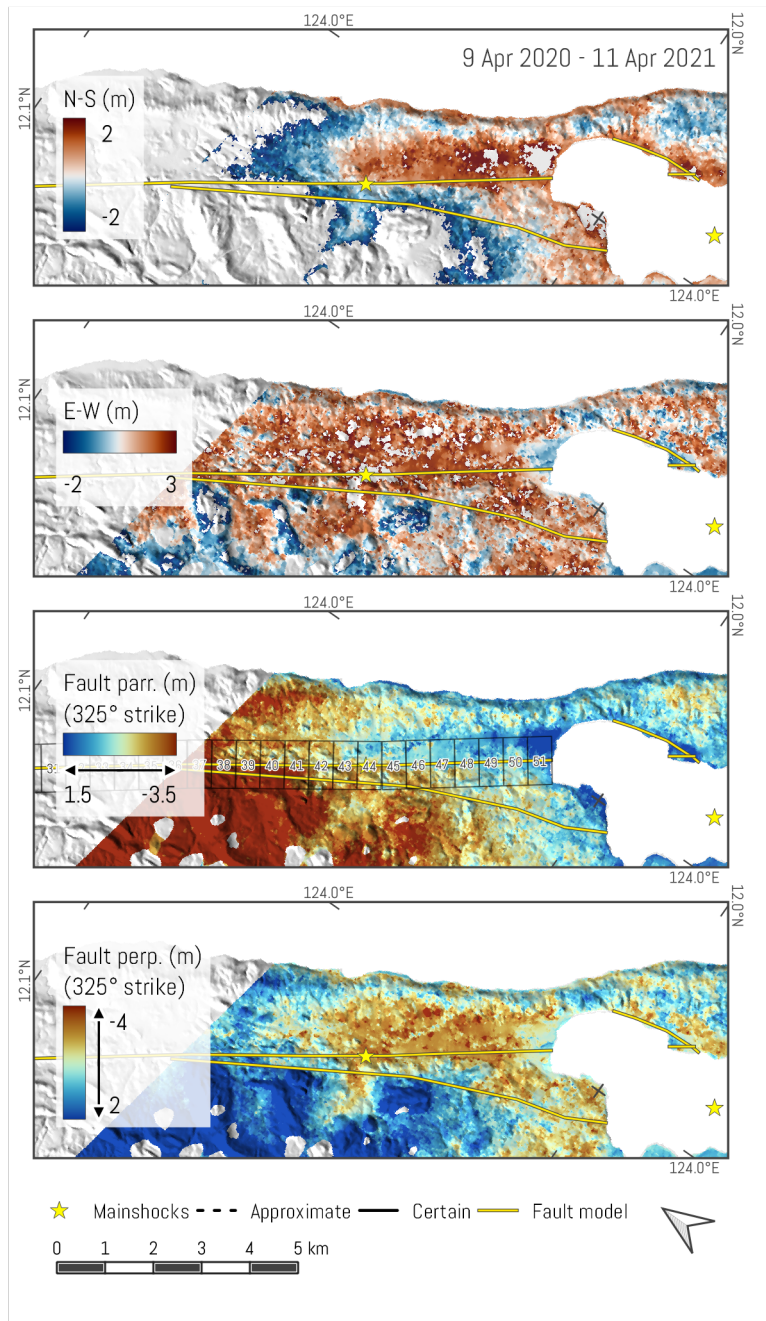


Figure S4: Results of 9 April 2020 - 11 April 2021 pair.

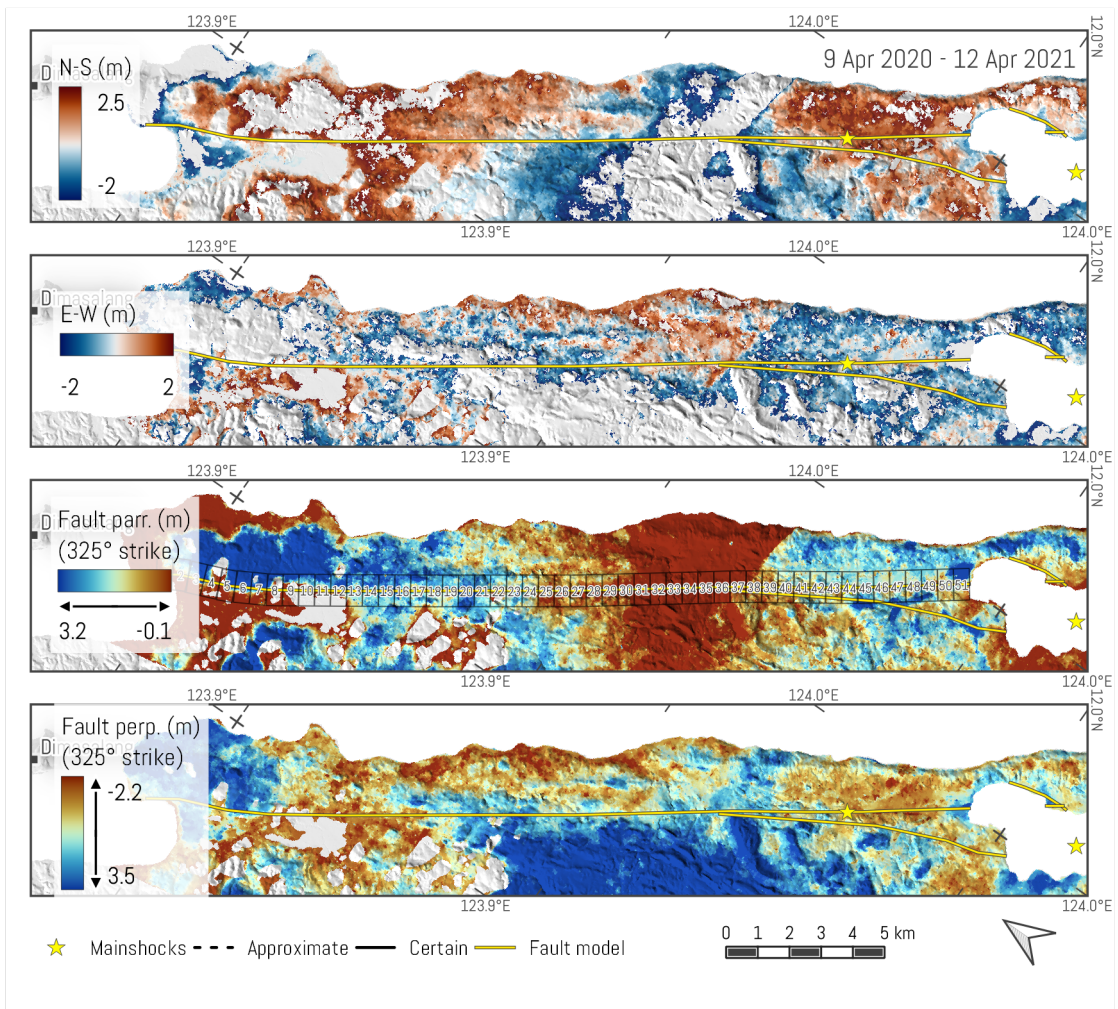


Figure S5: Results of 9 April 2020 - 12 April 2021 pair.

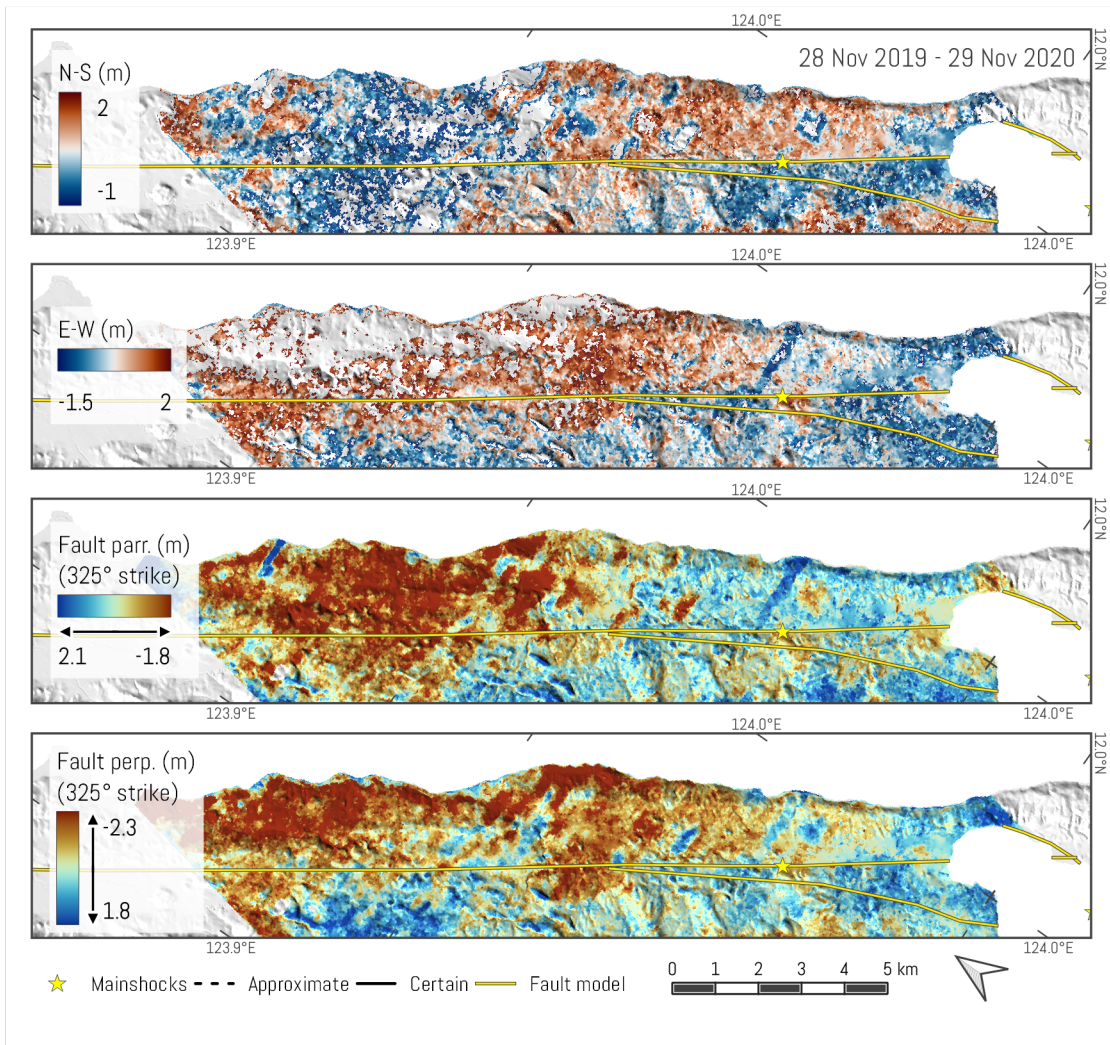


Figure S6: Results of 28 November 2019 - 29 November 2020 pair.

S1.2 Complete Profile Data

Definition of column names:

- Pair - image pair used
- box - boxID number (box 1 is closest to Naro bay, box 51 is closest to Cataingan bay)
- valid - indicates the validity of the particular box profile
- yOffsetAtX0 - difference between the intercepts of the left and right regression lines denoting the fault parallel offset in meters
- sigmabSum - sum of standard errors of the regression line intercepts of the left and right side
- left_slope - slope of the regression line of the left side
- left_int - intercept of the regression line of the left side
- left_SlopeSD - standard deviation of the slope of the left regression line
- left_IntSD - standard deviation of the intercept of the left regression line
- left_RegSD - standard deviation of the left regression line
- left_sumsq - sum of squares of the left side regression
- column names denoted as "right" refer to the regression of the right side
- ctr_lat - degree latitude of the box centerpoint
- ctr_lon - degree longitude of the box centerpoint
- dist_1st_m - distance of the centerpoint from the first point of the trace
- azDeg - azimuthal box rotation in degrees
- xMinL - minimum regression limit on the left side
- xMaxL - maximum regression limit on the left side
- column names denoted as "R" refer to the regression of the right side
- X0 - location of the baseline 0 in the x-axis
- dist_naro - indicates distance of box center from Naro bay in m

Table S1: Compiled regression parameters (western fault block)

Pair	box	left_slope	left_int	left_SlopeSD	left_IntSD	left_RegSD	left_sumsq
9Apr2020-2Apr2021(a)	51	0.00054202	1.46942395	0.00054789	0.02242521	0.01449592	0.00378237
9Apr2020-2Apr2021(a)	50	0.00024503	0.68387629	0.00119372	0.06402295	0.10517301	0.4756386
9Apr2020-2Apr2021(a)	49	0.00150148	0.51973229	0.00063248	0.06822952	0.2290907	5.98301037
9Apr2020-2Apr2021(a)	48	0.00144608	0.24205122	0.0007289	0.04182049	0.21146317	4.38223403
9Apr2020-2Apr2021(a)	47	0.00222074	0.46975449	0.00043837	0.03585239	0.11778938	1.29031344
9Apr2020-2Apr2021(a)	46	0.00333375	0.45613409	0.00057686	0.05341313	0.34124137	18.5148624
9Apr2020-2Apr2021(a)	45	4.61E-05	0.57488711	0.00083124	0.06254323	0.05254567	0.0938756
9Apr2020-2Apr2021(a)	44	-0.0005937	0.13953591	0.00029914	0.02769822	0.17695611	4.97884086
9Apr2020-2Apr2021(a)	43	9.78E-05	0.37336489	0.00047069	0.04086528	0.25295549	9.53398583
9Apr2020-2Apr2021(a)	42	-0.0007744	1.04673339	0.0003334	0.03087055	0.19722324	6.18462422
9Apr2020-2Apr2021(a)	41	-0.0001161	0.22373254	0.00077448	0.03683479	0.17007443	2.34295037
9Apr2020-2Apr2021(a)	40	0.00277014	0.49794674	0.00158016	0.08245153	0.39814947	14.1085473
9Apr2020-2Apr2021(a)	39	0.00236923	1.0751462	0.00045757	0.04831841	0.17872378	3.83306263
9Apr2020-2Apr2021(a)	38	0.00242235	0.63269486	0.00041893	0.02766386	0.14978645	2.53526568
9Apr2020-2Apr2021(a)	37	0.0002008	-0.0063048	0.00156877	0.04173247	0.07941559	0.18289824
9Apr2020-2Apr2021(a)	36	0.00481618	-0.0833054	0.00051525	0.04624428	0.17004074	3.09378223
9Apr2020-2Apr2021(a)	35						
9Apr2020-2Apr2021(a)	34	-0.0037422	-0.1869461	0.00025244	0.02420978	0.13431952	2.67017651
9Apr2020-2Apr2021(a)	33	-0.0004164	0.08879188	0.00027209	0.02519365	0.16095511	4.11914107
9Apr2020-2Apr2021(a)	32	-6.21E-05	-0.9843665	0.00096578	0.03199363	0.12420558	0.86391342
9Apr2020-2Apr2021(a)	31	0.0027678	-0.5827103	0.00227611	0.09523692	0.05155277	0.042523
9Apr2020-2Apr2021(a)	30						
9Apr2020-2Apr2021(a)	29						
9Apr2020-2Apr2021(a)	28						
9Apr2020-2Apr2021(a)	27						
9Apr2020-2Apr2021(a)	26						
9Apr2020-2Apr2021(a)	25						
9Apr2020-2Apr2021(a)	24	-3.83E-05	0.68397177	0.00095809	0.08283624	0.08163489	0.27989873
9Apr2020-2Apr2021(a)	23	0.00257756	0.60555809	0.00083045	0.05394869	0.14747387	1.52239805
9Apr2020-2Apr2021(a)	22						
9Apr2020-2Apr2021(a)	21	-0.0001503	0.15404388	0.000256	0.01986103	0.11634617	1.80034546
9Apr2020-2Apr2021(a)	20						
9Apr2020-2Apr2021(a)	19						
9Apr2020-2Apr2021(a)	18	0.00060881	0.13842822	0.00135676	0.030186	0.01492436	0.00200463
9Apr2020-2Apr2021(a)	17						
9Apr2020-2Apr2021(a)	16						
9Apr2020-2Apr2021(a)	15	0.00011084	0.88931878	0.00028595	0.0230101	0.13722624	2.59868375
9Apr2020-2Apr2021(a)	14	4.20E-05	0.28256542	0.00105119	0.02511339	0.08357479	0.27938985
9Apr2020-2Apr2021(a)	13						
9Apr2020-2Apr2021(a)	12						
9Apr2020-2Apr2021(a)	11	0.00039251	0.26838703	0.00039833	0.0283734	0.15941374	3.10035416
9Apr2020-2Apr2021(a)	10						
9Apr2020-2Apr2021(a)	9						
9Apr2020-2Apr2021(a)	8						
9Apr2020-2Apr2021(a)	7						
9Apr2020-2Apr2021(a)	6						
9Apr2020-2Apr2021(a)	5						
9Apr2020-2Apr2021(a)	4						
9Apr2020-2Apr2021(a)	3						
9Apr2020-2Apr2021(a)	2						
9Apr2020-2Apr2021(a)	1						
9Apr2020-2Apr2021(b)	51	0.00159725	-0.4507299	0.00023582	0.01155764	0.00040845	1.67E-07
9Apr2020-2Apr2021(b)	50	0.00109952	-0.9290425	0.00030539	0.0351407	0.08596213	0.70939078
9Apr2020-2Apr2021(b)	49						

9Apr2020-2Apr2021(b)	48	-0.0012455	-1.0626459	0.00316471	0.27385693	0.02192574	0.00288443
9Apr2020-2Apr2021(b)	47	0.00013265	-0.9965455	0.00085772	0.06236018	0.32276818	12.1889776
9Apr2020-2Apr2021(b)	46	0.00066686	-1.0887126	0.0012856	0.0655559	0.04453433	0.04363274
9Apr2020-2Apr2021(b)	45						
9Apr2020-2Apr2021(b)	44	-7.22E-05	-0.9001846	0.00082435	0.01541124	0.04579063	0.06500024
9Apr2020-2Apr2021(b)	43	0.00048164	-1.0750884	0.0008495	0.09866953	0.06753951	0.18246341
9Apr2020-2Apr2021(b)	42	-0.0030836	-0.7180834	0.00031211	0.03159789	0.14027571	2.59740014
9Apr2020-2Apr2021(b)	41	-0.0006561	-0.2038854	0.00058523	0.0695498	0.14264131	1.77014935
9Apr2020-2Apr2021(b)	40	0.00080766	-0.344379	0.00106435	0.13073823	0.10645715	0.53265687
9Apr2020-2Apr2021(b)	39	-0.001803	-0.6786542	0.00022919	0.02122152	0.1355783	2.92265447
9Apr2020-2Apr2021(b)	38	-0.0004871	-0.51344	0.00021487	0.01989519	0.12710472	2.56874197
9Apr2020-2Apr2021(b)	37	-0.0005803	-0.9251435	0.00164924	0.04320932	0.15014112	0.9918637
9Apr2020-2Apr2021(b)	36	0.00032125	-1.0762703	0.0004279	0.03962091	0.25312681	10.1876358
9Apr2020-2Apr2021(b)	35	0.00019494	-0.9436069	0.00100216	0.11194579	0.19293234	2.75449378
9Apr2020-2Apr2021(b)	34	-0.0008173	-1.0999627	0.00024315	0.01395097	0.07054235	0.48766981
9Apr2020-2Apr2021(b)	33	-0.0015204	-1.4835137	0.00061297	0.01464412	0.04873414	0.09500065
9Apr2020-2Apr2021(b)	32						
9Apr2020-2Apr2021(b)	31	0.00763171	-0.3810304	0.00076704	0.03622114	0.03338752	0.0289829
9Apr2020-2Apr2021(b)	30						
9Apr2020-2Apr2021(b)	29	0.00069066	-0.0023906	0.00289461	0.0691533	0.23013509	2.11848635
9Apr2020-2Apr2021(b)	28	-0.0012282	0.17717191	0.00157897	0.02529631	0.03873027	0.02550057
9Apr2020-2Apr2021(b)	27						
9Apr2020-2Apr2021(b)	26						
9Apr2020-2Apr2021(b)	25	-0.0035803	0.1261032	0.00013935	0.01290262	0.08243118	1.08038893
9Apr2020-2Apr2021(b)	24						
9Apr2020-2Apr2021(b)	23						
9Apr2020-2Apr2021(b)	22						
9Apr2020-2Apr2021(b)	21						
9Apr2020-2Apr2021(b)	20						
9Apr2020-2Apr2021(b)	19	0.01032105	1.76465567	0.00065002	0.01477868	0.04806033	0.08777223
9Apr2020-2Apr2021(b)	18	0.00452302	1.19883386	0.00048312	0.04473322	0.2857879	12.9862813
9Apr2020-2Apr2021(b)	17	0.00475982	0.79325807	0.00037204	0.01232468	0.04784684	0.12820195
9Apr2020-2Apr2021(b)	16	0.00309109	0.50516544	0.00042904	0.02808402	0.15141176	2.56765828
9Apr2020-2Apr2021(b)	15						
9Apr2020-2Apr2021(b)	14						
9Apr2020-2Apr2021(b)	13						
9Apr2020-2Apr2021(b)	12						
9Apr2020-2Apr2021(b)	11						
9Apr2020-2Apr2021(b)	10						
9Apr2020-2Apr2021(b)	9						
9Apr2020-2Apr2021(b)	8						
9Apr2020-2Apr2021(b)	7						
9Apr2020-2Apr2021(b)	6						
9Apr2020-2Apr2021(b)	5						
9Apr2020-2Apr2021(b)	4						
9Apr2020-2Apr2021(b)	3						
9Apr2020-2Apr2021(b)	2						
9Apr2020-2Apr2021(b)	1						
9Apr2020-11Apr2021	51	-0.0001918	1.10269139	0.00144158	0.00948049	0.01800529	0.00324191
9Apr2020-11Apr2021	50	0.00033621	-0.8113609	0.00073588	0.07063263	0.06917237	0.21531677
9Apr2020-11Apr2021	49						
9Apr2020-11Apr2021	48	-0.0002519	-0.8034536	0.00129418	0.1718301	0.12944525	0.78753542
9Apr2020-11Apr2021	47	-5.74E-05	-1.0460302	0.00247505	0.29833705	0.02369675	0.00449229
9Apr2020-11Apr2021	46	0.00898808	-1.1964207	0.00045552	0.04502163	0.22094285	6.78538806
9Apr2020-11Apr2021	45						
9Apr2020-11Apr2021	44	-0.0009285	-1.881344	0.00117123	0.10501277	0.15451766	1.36091523

9Apr2020-11Apr2021	43	0.00057729	-2.1324389	0.00047081	0.02456653	0.11862912	1.25248525
9Apr2020-11Apr2021	42						
9Apr2020-11Apr2021	41	0.00361751	-3.5316447	0.0029349	0.18771327	0.11446115	0.31443252
9Apr2020-11Apr2021	40						
9Apr2020-11Apr2021	39	0.00672206	-3.091719	0.00034455	0.03190254	0.20381628	6.60503126
9Apr2020-11Apr2021	38	0.00298109	-4.0446617	0.00089077	0.02245112	0.02356757	0.00999774
9Apr2020-11Apr2021	37						
9Apr2020-11Apr2021	36						
9Apr2020-11Apr2021	35						
9Apr2020-11Apr2021	34						
9Apr2020-11Apr2021	33						
9Apr2020-11Apr2021	32						
9Apr2020-11Apr2021	31						
9Apr2020-11Apr2021	30						
9Apr2020-11Apr2021	29						
9Apr2020-11Apr2021	28						
9Apr2020-11Apr2021	27						
9Apr2020-11Apr2021	26						
9Apr2020-11Apr2021	25						
9Apr2020-11Apr2021	24						
9Apr2020-11Apr2021	23						
9Apr2020-11Apr2021	22						
9Apr2020-11Apr2021	21						
9Apr2020-11Apr2021	20						
9Apr2020-11Apr2021	19						
9Apr2020-11Apr2021	18						
9Apr2020-11Apr2021	17						
9Apr2020-11Apr2021	16						
9Apr2020-11Apr2021	15						
9Apr2020-11Apr2021	14						
9Apr2020-11Apr2021	13						
9Apr2020-11Apr2021	12						
9Apr2020-11Apr2021	11						
9Apr2020-11Apr2021	10						
9Apr2020-11Apr2021	9						
9Apr2020-11Apr2021	8						
9Apr2020-11Apr2021	7						
9Apr2020-11Apr2021	6						
9Apr2020-11Apr2021	5						
9Apr2020-11Apr2021	4						
9Apr2020-11Apr2021	3						
9Apr2020-11Apr2021	2						
9Apr2020-11Apr2021	1						
9Apr2020-12Apr2021	51	-0.0008025	1.63076889	0.00050563	0.01267869	0.01145234	0.0020985
9Apr2020-12Apr2021	50	0.00124373	1.09922334	0.00017137	0.01740443	0.02917925	0.05789716
9Apr2020-12Apr2021	49						
9Apr2020-12Apr2021	48						
9Apr2020-12Apr2021	47						
9Apr2020-12Apr2021	46	0.00078412	1.18600159	0.00227796	0.1447581	0.01578218	0.00149446
9Apr2020-12Apr2021	45						
9Apr2020-12Apr2021	44	-0.0046116	1.26647098	0.00012023	0.01113222	0.07112058	0.80424376
9Apr2020-12Apr2021	43	0.0050403	1.08573195	0.00059369	0.02789318	0.12803186	1.31137266
9Apr2020-12Apr2021	42	-0.0002948	1.0531296	0.00094705	0.03469568	0.06235554	0.13608747
9Apr2020-12Apr2021	41	0.00182905	0.99823769	0.00049673	0.0290736	0.14843938	2.20342485
9Apr2020-12Apr2021	40	0.00101885	0.63287133	0.00024014	0.02048095	0.0903671	0.95544681
9Apr2020-12Apr2021	39	-0.0003851	0.26368018	0.00083673	0.07628811	0.02052413	0.00716108

9Apr2020-12Apr2021	38	-0.0039807	-0.0662022	0.00017296	0.01491643	0.09203077	1.25351012
9Apr2020-12Apr2021	37						
9Apr2020-12Apr2021	36						
9Apr2020-12Apr2021	35	0.00027338	-2.8001869	0.0001927	0.02139133	0.06272224	0.41701237
9Apr2020-12Apr2021	34						
9Apr2020-12Apr2021	33						
9Apr2020-12Apr2021	32	-0.0020218	-2.1752565	0.00016298	0.01509099	0.09641206	1.47795027
9Apr2020-12Apr2021	31	0.00115461	-1.7068968	0.00016541	0.00805799	0.03763916	0.11758662
9Apr2020-12Apr2021	30	0.00101433	-0.5792901	0.00049516	0.01059404	0.02387586	0.01596158
9Apr2020-12Apr2021	29	0.00043689	-0.5090783	0.00110975	0.02514757	0.05088548	0.06991197
9Apr2020-12Apr2021	28	0.00026088	-0.4688621	0.00047736	0.00892414	0.02651584	0.02179578
9Apr2020-12Apr2021	27	-2.82E-05	-0.5920088	0.00365716	0.01983539	0.03501465	0.0098082
9Apr2020-12Apr2021	26						
9Apr2020-12Apr2021	25						
9Apr2020-12Apr2021	24						
9Apr2020-12Apr2021	23	-0.0030121	1.84569908	0.00249323	0.01208639	0.02048399	0.00293716
9Apr2020-12Apr2021	22						
9Apr2020-12Apr2021	21	0.00056403	2.45103972	0.0003404	0.00900768	0.01179171	0.00305898
9Apr2020-12Apr2021	20						
9Apr2020-12Apr2021	19	0.00290202	1.82283633	0.00074855	0.03703232	0.0574166	0.12856999
9Apr2020-12Apr2021	18	0.00222899	2.00426765	0.00165042	0.06373744	0.01580159	0.00199752
9Apr2020-12Apr2021	17						
9Apr2020-12Apr2021	16						
9Apr2020-12Apr2021	15	0.00496382	2.6235791	0.00035176	0.03935171	0.04758492	0.13133084
9Apr2020-12Apr2021	14	0.00237467	2.1932197	0.00080864	0.02640179	0.04902115	0.07930141
9Apr2020-12Apr2021	13						
9Apr2020-12Apr2021	12						
9Apr2020-12Apr2021	11						
9Apr2020-12Apr2021	10						
9Apr2020-12Apr2021	9						
9Apr2020-12Apr2021	8						
9Apr2020-12Apr2021	7						
9Apr2020-12Apr2021	6						
9Apr2020-12Apr2021	5						
9Apr2020-12Apr2021	4						
9Apr2020-12Apr2021	3						
9Apr2020-12Apr2021	2						
9Apr2020-12Apr2021	1						
28Nov2019-29Nov2020	51	0.00074556	-0.275509	0.00161546	0.17593093	0.08572581	0.22046743
28Nov2019-29Nov2020	50	-0.0004155	-0.5104376	0.00038451	0.02529171	0.05861443	0.21644605
28Nov2019-29Nov2020	49						
28Nov2019-29Nov2020	48	0.00227308	0.42391378	0.00134505	0.05484978	0.02561495	0.00918576
28Nov2019-29Nov2020	47						
28Nov2019-29Nov2020	46	-0.000595	-0.1062332	0.00092998	0.03302396	0.05637679	0.1048853
28Nov2019-29Nov2020	45	0.00171976	-0.2889804	0.00055394	0.03218449	0.11086107	0.93405341
28Nov2019-29Nov2020	44	0.00027886	-0.430993	0.00080943	0.08768954	0.03711475	0.03719262
28Nov2019-29Nov2020	43	0.00082908	-0.0114256	0.0004494	0.05495478	0.09515583	0.71531589
28Nov2019-29Nov2020	42	0.00010532	0.2270684	0.00667032	0.0539499	0.06386342	0.03262829
28Nov2019-29Nov2020	41						
28Nov2019-29Nov2020	40						
28Nov2019-29Nov2020	39						
28Nov2019-29Nov2020	38						
28Nov2019-29Nov2020	37	-0.0029803	0.44470055	0.00155665	0.03817769	0.03241054	0.01575665
28Nov2019-29Nov2020	36	-0.0009068	-0.9115022	0.00167721	0.02370447	0.02625245	0.00827029
28Nov2019-29Nov2020	35	-0.0005222	-0.1348288	0.00211777	0.21085646	0.02645094	0.00699652
28Nov2019-29Nov2020	34	-0.0003036	-0.6273973	0.00049282	0.04925754	0.10822239	0.94867888

28Nov2019-29Nov2020	33						
28Nov2019-29Nov2020	32						
28Nov2019-29Nov2020	31						
28Nov2019-29Nov2020	30						
28Nov2019-29Nov2020	29	-0.0002411	-1.7131261	0.00171724	0.09468443	0.02411274	0.00639567
28Nov2019-29Nov2020	28	0.00018182	-1.7470782	0.0052959	0.07742709	0.02426887	0.00235591
28Nov2019-29Nov2020	27						
28Nov2019-29Nov2020	26	-0.002771	-1.8334223	0.00213154	0.08032031	0.23294028	2.71305876
28Nov2019-29Nov2020	25	-0.001189	-1.9961246	0.00638898	0.4889034	0.029278	0.00342881
28Nov2019-29Nov2020	24						
28Nov2019-29Nov2020	23	-0.0004215	-1.0509688	0.00088491	0.05681033	0.01842444	0.0050919
28Nov2019-29Nov2020	22						
28Nov2019-29Nov2020	21						
28Nov2019-29Nov2020	20						
28Nov2019-29Nov2020	19	-0.0007942	-0.6140679	0.00128596	0.01736047	0.04454697	0.04365752
28Nov2019-29Nov2020	18	0.0007266	-0.684228	0.00137746	0.02582208	0.01318821	0.00139143
28Nov2019-29Nov2020	17						
28Nov2019-29Nov2020	16						
28Nov2019-29Nov2020	15						
28Nov2019-29Nov2020	14						
28Nov2019-29Nov2020	13						
28Nov2019-29Nov2020	12						
28Nov2019-29Nov2020	11						
28Nov2019-29Nov2020	10						
28Nov2019-29Nov2020	9						
28Nov2019-29Nov2020	8						
28Nov2019-29Nov2020	7						
28Nov2019-29Nov2020	6						
28Nov2019-29Nov2020	5						
28Nov2019-29Nov2020	4						
28Nov2019-29Nov2020	3						
28Nov2019-29Nov2020	2						
28Nov2019-29Nov2020	1						
9Apr-29Nov2020	51						
9Apr-29Nov2020	50	-0.0005093	-1.9547025	0.00043251	0.02181864	0.10365206	0.92396246
9Apr-29Nov2020	49	-0.0005524	-1.5396211	0.00168771	0.12461975	0.05846415	0.07519724
9Apr-29Nov2020	48						
9Apr-29Nov2020	47						
9Apr-29Nov2020	46	0.00077754	-1.0007435	0.0004217	0.04057636	0.22214882	7.25446428
9Apr-29Nov2020	45						
9Apr-29Nov2020	44	0.00095701	-0.5263248	0.00026299	0.03433266	0.00328468	0.00010789
9Apr-29Nov2020	43	0.00086401	-0.2794836	0.00047922	0.04636204	0.03675819	0.05269541
9Apr-29Nov2020	42						
9Apr-29Nov2020	41	-0.0002027	-0.3298592	0.00043442	0.03673998	0.03954837	0.06881924
9Apr-29Nov2020	40	0.00064555	-0.110961	0.00061007	0.05069183	0.00856642	0.00080722
9Apr-29Nov2020	39						
9Apr-29Nov2020	38						
9Apr-29Nov2020	37	0.00073882	-0.1670051	0.00144703	0.01530821	0.00373621	2.79E-05
9Apr-29Nov2020	36						
9Apr-29Nov2020	35	-0.0005483	-0.1567405	0.00030376	0.02528017	0.11144467	1.42829013
9Apr-29Nov2020	34	0.0003731	-0.712921	0.00024788	0.02347354	0.05541752	0.25183028
9Apr-29Nov2020	33	0.00053551	-1.009841	0.00108617	0.02806765	0.0170013	0.00346853
9Apr-29Nov2020	32	0.00178464	-0.7270081	0.00042908	0.03378403	0.19934374	5.36461998
9Apr-29Nov2020	31	-0.0004839	-0.3285433	0.0002913	0.02879073	0.14128998	2.77483731
9Apr-29Nov2020	30	-0.0009761	-0.1572179	0.00018572	0.01494431	0.08912398	1.09614562
9Apr-29Nov2020	29	-0.0009741	-1.037528	0.00198583	0.03244877	0.02184416	0.0042945

9Apr-29Nov2020	28						
9Apr-29Nov2020	27						
9Apr-29Nov2020	26	-0.0018491	-1.2013016	0.00019078	0.00808227	0.03529417	0.08968886
9Apr-29Nov2020	25	0.00024373	-1.5855562	0.00067787	0.0208493	0.02204899	0.01020932
9Apr-29Nov2020	24	-0.00027	-1.1161198	0.00036994	0.00777014	0.02435738	0.02076487
9Apr-29Nov2020	23						
9Apr-29Nov2020	22						
9Apr-29Nov2020	21						
9Apr-29Nov2020	20	0.0018012	2.13718048	0.00213991	0.09239265	0.03004774	0.00993153
9Apr-29Nov2020	19						
9Apr-29Nov2020	18						
9Apr-29Nov2020	17						
9Apr-29Nov2020	16						
9Apr-29Nov2020	15						
9Apr-29Nov2020	14						
9Apr-29Nov2020	13						
9Apr-29Nov2020	12						
9Apr-29Nov2020	11						
9Apr-29Nov2020	10						
9Apr-29Nov2020	9						
9Apr-29Nov2020	8						
9Apr-29Nov2020	7						
9Apr-29Nov2020	6						
9Apr-29Nov2020	5						
9Apr-29Nov2020	4						
9Apr-29Nov2020	3						
9Apr-29Nov2020	2						
9Apr-29Nov2020	1						

Table S2: Compiled regression parameters cont. (eastern fault block)

Pair	box	right_slope	right_int	right_SlopeSD	right_IntSD	right_RegSD	right_sumsq
9Apr2020-2Apr2021(a)	51	-0.0011502	1.80004122	0.00028311	0.03561554	0.05132156	0.18700705
9Apr2020-2Apr2021(a)	50	-0.0023468	1.07174221	0.00024522	0.0096809	0.04086672	0.11189593
9Apr2020-2Apr2021(a)	49	-0.0011739	0.98369609	0.00047756	0.04421907	0.28250317	12.6894785
9Apr2020-2Apr2021(a)	48	0.0005263	0.74361822	0.00026334	0.0243839	0.15578187	3.85861052
9Apr2020-2Apr2021(a)	47	-0.0005014	1.06190602	0.00130303	0.06140499	0.0508181	0.0619795
9Apr2020-2Apr2021(a)	46	0.00247696	0.87886459	0.00034874	0.03229072	0.20629629	6.76674711
9Apr2020-2Apr2021(a)	45	0.00057152	1.02295754	0.00100942	0.03363665	0.09189373	0.37155616
9Apr2020-2Apr2021(a)	44	0.00088674	0.6415488	0.00118049	0.04329754	0.0147443	0.00217394
9Apr2020-2Apr2021(a)	43	0.00075618	0.88589469	0.00042888	0.04312075	0.19708	5.20463027
9Apr2020-2Apr2021(a)	42	-1.75E-05	1.55587588	0.00068319	0.04706417	0.08117231	0.34921402
9Apr2020-2Apr2021(a)	41	-0.0029161	0.73723753	0.00175726	0.23866356	0.18655901	1.70540903
9Apr2020-2Apr2021(a)	40	-0.0024096	1.01378024	0.00093607	0.12583009	0.10821636	0.60896056
9Apr2020-2Apr2021(a)	39	0.00228451	1.58644203	0.00056936	0.05288265	0.33367812	17.5918916
9Apr2020-2Apr2021(a)	38	-0.0002976	1.14443314	0.00204521	0.27967986	0.20456387	1.96677961
9Apr2020-2Apr2021(a)	37	0.00149452	0.50407627	0.000278	0.02574069	0.16444999	4.29996395
9Apr2020-2Apr2021(a)	36	0.00358998	0.42116361	0.00059454	0.03997804	0.03452284	0.03813846
9Apr2020-2Apr2021(a)	35						
9Apr2020-2Apr2021(a)	34	0.00049034	0.30266743	0.00033722	0.03122384	0.19948032	6.32699134
9Apr2020-2Apr2021(a)	33	0.00521617	0.53218898	0.00153325	0.07844946	0.06673881	0.1158058
9Apr2020-2Apr2021(a)	32	0.00028936	-0.5543441	0.00107179	0.02601164	0.06497388	0.13931297
9Apr2020-2Apr2021(a)	31	0.00158774	-0.2123433	0.00072763	0.02678685	0.06199836	0.16143947
9Apr2020-2Apr2021(a)	30						
9Apr2020-2Apr2021(a)	29						
9Apr2020-2Apr2021(a)	28						
9Apr2020-2Apr2021(a)	27						
9Apr2020-2Apr2021(a)	26						
9Apr2020-2Apr2021(a)	25						
9Apr2020-2Apr2021(a)	24	-0.0007114	0.89994308	0.00079699	0.03838948	0.07971556	0.29866478
9Apr2020-2Apr2021(a)	23	-0.0005639	0.80859006	0.00080601	0.04413733	0.04080262	0.04828075
9Apr2020-2Apr2021(a)	22						
9Apr2020-2Apr2021(a)	21	0.00257242	0.32424437	0.00036232	0.01991416	0.0219642	0.01592006
9Apr2020-2Apr2021(a)	20						
9Apr2020-2Apr2021(a)	19						
9Apr2020-2Apr2021(a)	18	0.00224879	0.27754387	0.00140137	0.03367672	0.07784247	0.18784293
9Apr2020-2Apr2021(a)	17						
9Apr2020-2Apr2021(a)	16						
9Apr2020-2Apr2021(a)	15	-0.0015808	0.96062606	0.00052082	0.03394086	0.17899983	3.52450346
9Apr2020-2Apr2021(a)	14	1.21E-05	0.36921684	0.0020859	0.03984649	0.03972346	0.02209134
9Apr2020-2Apr2021(a)	13						
9Apr2020-2Apr2021(a)	12						
9Apr2020-2Apr2021(a)	11	-5.10E-05	0.36711569	0.00120672	0.0267392	0.08592344	0.27316501
9Apr2020-2Apr2021(a)	10						
9Apr2020-2Apr2021(a)	9						
9Apr2020-2Apr2021(a)	8						
9Apr2020-2Apr2021(a)	7						
9Apr2020-2Apr2021(a)	6						
9Apr2020-2Apr2021(a)	5						
9Apr2020-2Apr2021(a)	4						
9Apr2020-2Apr2021(a)	3						
9Apr2020-2Apr2021(a)	2						
9Apr2020-2Apr2021(a)	1						
9Apr2020-2Apr2021(b)	51	0.00067134	-0.117995	0.00048176	0.01714327	0.00333776	6.68E-05
9Apr2020-2Apr2021(b)	50	0.00066323	-0.5050781	0.00160945	0.08600256	0.09345422	0.27947815
9Apr2020-2Apr2021(b)	49						

9Apr2020-2Apr2021(b)	48	0.00273664	-0.5709096	0.00011122	0.01029775	0.06578942	0.68819135
9Apr2020-2Apr2021(b)	47	0.00071178	-0.3902947	0.00028675	0.03581938	0.05412247	0.21383462
9Apr2020-2Apr2021(b)	46	0.0008917	-0.6228292	0.00032551	0.03341691	0.13981261	2.50208856
9Apr2020-2Apr2021(b)	45						
9Apr2020-2Apr2021(b)	44	0.00143416	-0.4046229	0.00074494	0.03577599	0.12684092	1.09402602
9Apr2020-2Apr2021(b)	43	0.00377306	-0.5724431	0.00025024	0.0231706	0.14803043	3.48416851
9Apr2020-2Apr2021(b)	42	-0.001601	-0.2176913	0.00022044	0.02239477	0.09797058	1.25736865
9Apr2020-2Apr2021(b)	41	-0.0016377	0.31243706	0.0019894	0.06306728	0.12060068	0.47996931
9Apr2020-2Apr2021(b)	40	0.00187338	0.16395031	0.00148446	0.02346744	0.06461518	0.10855314
9Apr2020-2Apr2021(b)	39	0.00205243	-0.1722367	0.00034213	0.03167856	0.20238536	6.51261363
9Apr2020-2Apr2021(b)	38	-4.62E-06	-0.0124683	0.00052271	0.04115653	0.24284539	7.9614744
9Apr2020-2Apr2021(b)	37	-0.0005436	-0.4316913	0.00041658	0.0385726	0.24642947	9.65566988
9Apr2020-2Apr2021(b)	36	0.00107501	-0.5676634	0.00023947	0.02537712	0.09238976	1.01576829
9Apr2020-2Apr2021(b)	35	0.0003828	-0.4935924	0.00085432	0.05198302	0.02602045	0.01354128
9Apr2020-2Apr2021(b)	34	0.00340609	-0.6585281	0.00056454	0.04734645	0.23140662	6.6400788
9Apr2020-2Apr2021(b)	33	0.00490343	-1.0486861	0.00059761	0.05788501	0.30851475	13.8012963
9Apr2020-2Apr2021(b)	32						
9Apr2020-2Apr2021(b)	31	0.00694735	0.00146122	0.00033469	0.03098994	0.19798596	6.23255173
9Apr2020-2Apr2021(b)	30						
9Apr2020-2Apr2021(b)	29	-0.0003062	0.31819128	0.00050563	0.0225884	0.10119288	0.77823998
9Apr2020-2Apr2021(b)	28	0.00235287	0.44849801	0.00081464	0.01908758	0.01410994	0.00258818
9Apr2020-2Apr2021(b)	27						
9Apr2020-2Apr2021(b)	26						
9Apr2020-2Apr2021(b)	25	0.00283158	0.35728057	0.00079314	0.06846199	0.37251639	18.8725107
9Apr2020-2Apr2021(b)	24						
9Apr2020-2Apr2021(b)	23						
9Apr2020-2Apr2021(b)	22						
9Apr2020-2Apr2021(b)	21						
9Apr2020-2Apr2021(b)	20						
9Apr2020-2Apr2021(b)	19	0.0063276	1.89681688	0.00048827	0.05079655	0.03086513	0.03239032
9Apr2020-2Apr2021(b)	18	0.02727986	1.3091367	0.00057296	0.02394239	0.10386584	0.76595597
9Apr2020-2Apr2021(b)	17	0.02447772	0.90436704	0.0008086	0.09138791	0.24518517	6.07169266
9Apr2020-2Apr2021(b)	16	0.01838238	0.60082993	0.00027807	0.02574697	0.16449009	4.30206129
9Apr2020-2Apr2021(b)	15						
9Apr2020-2Apr2021(b)	14						
9Apr2020-2Apr2021(b)	13						
9Apr2020-2Apr2021(b)	12						
9Apr2020-2Apr2021(b)	11						
9Apr2020-2Apr2021(b)	10						
9Apr2020-2Apr2021(b)	9						
9Apr2020-2Apr2021(b)	8						
9Apr2020-2Apr2021(b)	7						
9Apr2020-2Apr2021(b)	6						
9Apr2020-2Apr2021(b)	5						
9Apr2020-2Apr2021(b)	4						
9Apr2020-2Apr2021(b)	3						
9Apr2020-2Apr2021(b)	2						
9Apr2020-2Apr2021(b)	1						
9Apr2020-11Apr2021	51	0.00364217	1.45753743	0.00132641	0.08257514	0.03253524	0.01799522
9Apr2020-11Apr2021	50	0.00097539	-0.4032546	0.00077726	0.02965594	0.05324681	0.10206801
9Apr2020-11Apr2021	49						
9Apr2020-11Apr2021	48	0.00298769	-0.3133979	0.00012929	0.0049546	0.02061985	0.02763658
9Apr2020-11Apr2021	47	0.00238049	-0.4487936	0.00015166	0.0140424	0.08971296	1.27969788
9Apr2020-11Apr2021	46	0.00309576	-0.7224269	0.00025585	0.02368967	0.15134659	3.64202043
9Apr2020-11Apr2021	45						
9Apr2020-11Apr2021	44	0.00996725	-1.3911327	0.00046942	0.04346495	0.27768526	12.2603475

9Apr2020-11Apr2021	43	0.00740266	-1.6291552	0.00116987	0.03698536	0.03326431	0.02102377
9Apr2020-11Apr2021	42						
9Apr2020-11Apr2021	41	0.00351112	-3.0358797	0.00064056	0.0909186	0.04388199	0.06932264
9Apr2020-11Apr2021	40						
9Apr2020-11Apr2021	39	0.00402826	-2.5848129	0.00059341	0.05323301	0.33484291	17.2664453
9Apr2020-11Apr2021	38	0.0012766	-3.5469529	0.00233245	0.31678436	0.24762464	3.00458016
9Apr2020-11Apr2021	37						
9Apr2020-11Apr2021	36						
9Apr2020-11Apr2021	35						
9Apr2020-11Apr2021	34						
9Apr2020-11Apr2021	33						
9Apr2020-11Apr2021	32						
9Apr2020-11Apr2021	31						
9Apr2020-11Apr2021	30						
9Apr2020-11Apr2021	29						
9Apr2020-11Apr2021	28						
9Apr2020-11Apr2021	27						
9Apr2020-11Apr2021	26						
9Apr2020-11Apr2021	25						
9Apr2020-11Apr2021	24						
9Apr2020-11Apr2021	23						
9Apr2020-11Apr2021	22						
9Apr2020-11Apr2021	21						
9Apr2020-11Apr2021	20						
9Apr2020-11Apr2021	19						
9Apr2020-11Apr2021	18						
9Apr2020-11Apr2021	17						
9Apr2020-11Apr2021	16						
9Apr2020-11Apr2021	15						
9Apr2020-11Apr2021	14						
9Apr2020-11Apr2021	13						
9Apr2020-11Apr2021	12						
9Apr2020-11Apr2021	11						
9Apr2020-11Apr2021	10						
9Apr2020-11Apr2021	9						
9Apr2020-11Apr2021	8						
9Apr2020-11Apr2021	7						
9Apr2020-11Apr2021	6						
9Apr2020-11Apr2021	5						
9Apr2020-11Apr2021	4						
9Apr2020-11Apr2021	3						
9Apr2020-11Apr2021	2						
9Apr2020-11Apr2021	1						
9Apr2020-12Apr2021	51	-0.003005	1.97144723	0.00139587	0.0027625	0.00360411	2.60E-05
9Apr2020-12Apr2021	50	0.00230093	1.49708835	0.00057135	0.07947195	0.04868246	0.09953925
9Apr2020-12Apr2021	49						
9Apr2020-12Apr2021	48						
9Apr2020-12Apr2021	47						
9Apr2020-12Apr2021	46	-0.000891	1.61939157	0.00010327	0.00764424	0.00497926	0.00069421
9Apr2020-12Apr2021	45						
9Apr2020-12Apr2021	44	0.00117201	1.77432383	0.00034213	0.03463734	0.15376904	3.12112926
9Apr2020-12Apr2021	43	0.00217602	1.59599575	0.00039009	0.025985	0.14129475	2.27591957
9Apr2020-12Apr2021	42	0.00096412	1.55307424	0.00038698	0.035832	0.2289205	8.33233084
9Apr2020-12Apr2021	41	0.00062348	1.50475428	0.00051389	0.05849916	0.15132235	2.26694704
9Apr2020-12Apr2021	40	0.00345657	1.13873495	0.00019942	0.01846508	0.11796817	2.2127218
9Apr2020-12Apr2021	39	0.00074236	0.77217399	0.00102895	0.05163156	0.04478793	0.05215492

9Apr2020-12Apr2021	38	-0.0016771	0.43945987	0.00085029	0.04150339	0.12961695	1.05843488
9Apr2020-12Apr2021	37						
9Apr2020-12Apr2021	36						
9Apr2020-12Apr2021	35	0.00035547	-2.3388967	0.0004208	0.0313153	0.09914027	0.8354474
9Apr2020-12Apr2021	34						
9Apr2020-12Apr2021	33						
9Apr2020-12Apr2021	32	0.00033052	-1.7791767	0.00032002	0.03403398	0.12194385	1.75469569
9Apr2020-12Apr2021	31	0.00683397	-1.3312776	0.00038039	0.03319249	0.17288047	3.97505837
9Apr2020-12Apr2021	30	-0.0007945	-0.2189194	0.00058702	0.01817624	0.01329567	0.0028284
9Apr2020-12Apr2021	29	-0.0002062	-0.2157074	0.00051314	0.01759138	0.06941612	0.27947869
9Apr2020-12Apr2021	28	0.00134029	-0.1874114	0.00088661	0.01772113	0.02521001	0.01207535
9Apr2020-12Apr2021	27	0.01150314	-0.3228691	0.00027276	0.02352301	0.14513131	3.11733853
9Apr2020-12Apr2021	26						
9Apr2020-12Apr2021	25						
9Apr2020-12Apr2021	24						
9Apr2020-12Apr2021	23	-0.0034509	2.04233093	0.00049118	0.0154273	0.01022671	0.00156878
9Apr2020-12Apr2021	22						
9Apr2020-12Apr2021	21	0.00013798	2.63070659	0.00317212	0.08266818	0.11673101	0.31340098
9Apr2020-12Apr2021	20						
9Apr2020-12Apr2021	19	0.00556089	1.96480354	0.00058927	0.02258256	0.09398321	0.5741348
9Apr2020-12Apr2021	18	0.00308933	2.11284689	0.00136996	0.05753429	0.09384984	0.31708055
9Apr2020-12Apr2021	17						
9Apr2020-12Apr2021	16						
9Apr2020-12Apr2021	15	0.00411937	2.70355196	0.00198973	0.20514289	0.13630765	0.66887189
9Apr2020-12Apr2021	14	0.00060595	2.26053354	0.00110319	0.00281258	0.00390035	4.56E-05
9Apr2020-12Apr2021	13						
9Apr2020-12Apr2021	12						
9Apr2020-12Apr2021	11						
9Apr2020-12Apr2021	10						
9Apr2020-12Apr2021	9						
9Apr2020-12Apr2021	8						
9Apr2020-12Apr2021	7						
9Apr2020-12Apr2021	6						
9Apr2020-12Apr2021	5						
9Apr2020-12Apr2021	4						
9Apr2020-12Apr2021	3						
9Apr2020-12Apr2021	2						
9Apr2020-12Apr2021	1						
28Nov2019-29Nov2020	51	-0.0003812	0.07638153	8.65E-05	0.00998949	0.0239785	0.054622
28Nov2019-29Nov2020	50	-0.0017416	-0.1100425	0.00272422	0.05052681	0.04718492	0.02894342
28Nov2019-29Nov2020	49						
28Nov2019-29Nov2020	48	0.00638663	0.93735823	0.00044186	0.0161682	0.06581589	0.26856737
28Nov2019-29Nov2020	47						
28Nov2019-29Nov2020	46	-9.21E-05	0.34024625	0.00066772	0.01286832	0.03877157	0.04810351
28Nov2019-29Nov2020	45	0.0019387	0.20142572	0.00010414	0.00209044	0.00198328	5.51E-05
28Nov2019-29Nov2020	44	0.00422387	0.08488022	0.00026662	0.0246872	0.15771953	3.95519639
28Nov2019-29Nov2020	43	0.00551413	0.48807463	0.00046021	0.00706986	0.00506229	0.00023064
28Nov2019-29Nov2020	42	-0.0014105	0.72661048	0.00021988	0.02276507	0.07355976	0.58439209
28Nov2019-29Nov2020	41						
28Nov2019-29Nov2020	40						
28Nov2019-29Nov2020	39						
28Nov2019-29Nov2020	38						
28Nov2019-29Nov2020	37	-0.005584	0.9533322	0.00163655	0.04334531	0.03407398	0.01741554
28Nov2019-29Nov2020	36	-0.0003148	-0.4069287	0.00427692	0.24033683	0.20622577	1.19081388
28Nov2019-29Nov2020	35	-0.0005557	0.30179282	0.00246464	0.14103452	0.05131537	0.03949901
28Nov2019-29Nov2020	34	0.00117498	-0.1707013	0.00019481	0.02035785	0.03317027	0.07481813

28Nov2019-29Nov2020	33						
28Nov2019-29Nov2020	32						
28Nov2019-29Nov2020	31						
28Nov2019-29Nov2020	30						
28Nov2019-29Nov2020	29	-0.0003556	-1.4114933	0.00237407	0.02385915	0.04112017	0.02198128
28Nov2019-29Nov2020	28	-0.0001445	-1.4521628	0.000823	0.01435342	0.01155623	0.00146901
28Nov2019-29Nov2020	27						
28Nov2019-29Nov2020	26	-0.0007052	-1.5777348	0.00095827	0.0444796	0.02724756	0.01410616
28Nov2019-29Nov2020	25	0.00049091	-1.7547919	0.00191814	0.10847689	0.01328929	0.00105963
28Nov2019-29Nov2020	24						
28Nov2019-29Nov2020	23	-0.0005081	-0.8480535	0.00168084	0.07339923	0.25036387	3.88628805
28Nov2019-29Nov2020	22						
28Nov2019-29Nov2020	21						
28Nov2019-29Nov2020	20						
28Nov2019-29Nov2020	19	0.00025856	-0.459075	0.0008193	0.02572218	0.09734392	0.50221943
28Nov2019-29Nov2020	18	-0.0002991	-0.567502	0.00181427	0.07816633	0.06284809	0.08689742
28Nov2019-29Nov2020	17						
28Nov2019-29Nov2020	16						
28Nov2019-29Nov2020	15						
28Nov2019-29Nov2020	14						
28Nov2019-29Nov2020	13						
28Nov2019-29Nov2020	12						
28Nov2019-29Nov2020	11						
28Nov2019-29Nov2020	10						
28Nov2019-29Nov2020	9						
28Nov2019-29Nov2020	8						
28Nov2019-29Nov2020	7						
28Nov2019-29Nov2020	6						
28Nov2019-29Nov2020	5						
28Nov2019-29Nov2020	4						
28Nov2019-29Nov2020	3						
28Nov2019-29Nov2020	2						
28Nov2019-29Nov2020	1						
9Apr-29Nov2020	51						
9Apr-29Nov2020	50	0.00112901	-1.5549769	0.00040996	0.06094747	0.0142013	0.00443689
9Apr-29Nov2020	49	-6.21E-05	-1.0627617	0.00055953	0.02165736	0.02059025	0.00975104
9Apr-29Nov2020	48						
9Apr-29Nov2020	47						
9Apr-29Nov2020	46	0.00076102	-0.5471809	0.00012269	0.00257694	0.00807802	0.00228391
9Apr-29Nov2020	45						
9Apr-29Nov2020	44	0.00124965	-0.0205992	0.00058261	0.04849941	0.03991195	0.05734671
9Apr-29Nov2020	43	0.00210097	0.22577754	0.00344926	0.14958269	0.08460643	0.12169023
9Apr-29Nov2020	42						
9Apr-29Nov2020	41	7.31E-05	0.16648013	0.00030605	0.04015588	0.04243543	0.10624517
9Apr-29Nov2020	40	-7.72E-05	0.39194639	0.00018793	0.02170286	0.05209495	0.25781896
9Apr-29Nov2020	39						
9Apr-29Nov2020	38						
9Apr-29Nov2020	37	0.00081489	0.33751732	0.001088	0.02818329	0.0353894	0.02630061
9Apr-29Nov2020	36						
9Apr-29Nov2020	35	0.00011262	0.31281561	0.00033543	0.03360873	0.15583518	3.27842156
9Apr-29Nov2020	34	0.00221162	-0.2599512	0.00041086	0.04448017	0.14690158	2.43854848
9Apr-29Nov2020	33	0.00120918	-0.5754046	0.00030924	0.03126814	0.0211847	0.01615649
9Apr-29Nov2020	32	0.00276497	-0.3190495	0.00027451	0.02193131	0.13033217	2.32714714
9Apr-29Nov2020	31	0.00254425	0.04337623	0.00028897	0.02675625	0.17093814	4.64595564
9Apr-29Nov2020	30	0.00274063	0.19307827	0.00029103	0.02694699	0.17215669	4.71243045
9Apr-29Nov2020	29	0.00307992	-0.7336942	0.00074298	0.01560543	0.04891897	0.08375728

9Apr-29Nov2020	28						
9Apr-29Nov2020	27						
9Apr-29Nov2020	26	-0.0012153	-0.9466443	0.00049241	0.04844836	0.07679188	0.37740755
9Apr-29Nov2020	25	0.00013858	-1.3521922	0.00030509	0.01024764	0.00211369	2.68E-05
9Apr-29Nov2020	24	-0.0008318	-0.89487	0.00103403	0.0603826	0.03363392	0.02375605
9Apr-29Nov2020	23						
9Apr-29Nov2020	22						
9Apr-29Nov2020	21						
9Apr-29Nov2020	20	0.00028991	2.30386621	0.00084388	0.00749658	0.01607061	0.00361571
9Apr-29Nov2020	19						
9Apr-29Nov2020	18						
9Apr-29Nov2020	17						
9Apr-29Nov2020	16						
9Apr-29Nov2020	15						
9Apr-29Nov2020	14						
9Apr-29Nov2020	13						
9Apr-29Nov2020	12						
9Apr-29Nov2020	11						
9Apr-29Nov2020	10						
9Apr-29Nov2020	9						
9Apr-29Nov2020	8						
9Apr-29Nov2020	7						
9Apr-29Nov2020	6						
9Apr-29Nov2020	5						
9Apr-29Nov2020	4						
9Apr-29Nov2020	3						
9Apr-29Nov2020	2						
9Apr-29Nov2020	1						

Table S3: Compiled regression parameters cont. (regression limits and box data)

Pair	box	valid	yOffsetAtX0	sigmabSum	ctr_lat	ctr_lon	dist_1st_m	azDeg	xMinL	xMaxL	xMinR	xMaxR	X0	dist_naro
9Apr2020-2Apr2021(a)	51	TRUE	0.33061727	0.05804075	12.0134796	123.999837	25989.123	-36.46924	-50	-31	88	160	0	25002.4913
9Apr2020-2Apr2021(a)	50	TRUE	0.38786592	0.07370385	12.0171934	123.997069	25479.747	-36.46924	-74	-30	0	68	0	24491.5148
9Apr2020-2Apr2021(a)	49	TRUE	0.4639638	0.1124486	12.0209071	123.994302	24970.375	-36.46924	-160	-45	0	160	0	23980.5378
9Apr2020-2Apr2021(a)	48	TRUE	0.501567	0.06620439	12.0246208	123.991534	24460.999	-36.46924	-99	0	0	160	0	23469.564
9Apr2020-2Apr2021(a)	47	TRUE	0.59215153	0.09725738	12.0283346	123.988767	23951.623	-36.46924	-124	-30	34	59	0	22958.578
9Apr2020-2Apr2021(a)	46	TRUE	0.42273051	0.08570385	12.032046	123.986001	23442.562	-36.46924	-160	0	0	160	0	22447.9199
9Apr2020-2Apr2021(a)	45	TRUE	0.44807044	0.09617988	12.0357351	123.9832	22933.188	-37.01376	-92	-57	8	53	0	21937.0629
9Apr2020-2Apr2021(a)	44	TRUE	0.50201288	0.07099576	12.0395007	123.980503	22423.5	-34.28242	-160	0	31	42	0	21425.9031
9Apr2020-2Apr2021(a)	43	TRUE	0.51252981	0.08398603	12.0433156	123.977882	21914.122	-34.28242	-150	0	25	160	0	20915.004
9Apr2020-2Apr2021(a)	42	TRUE	0.5091425	0.07793473	12.0471305	123.97526	21404.749	-34.28242	-160	0	40	94	0	20404.1119
9Apr2020-2Apr2021(a)	41	TRUE	0.513505	0.27549835	12.0509453	123.972637	20895.373	-34.28242	-82	0	110	160	0	19893.2368
9Apr2020-2Apr2021(a)	40	TRUE	0.5158335	0.20828162	12.0547578	123.970017	20386.31	-34.28242	-90	0	107	160	0	19382.6862
9Apr2020-2Apr2021(a)	39	TRUE	0.51129583	0.10120106	12.0585726	123.967395	19876.936	-34.28242	-160	-39	1	160	0	18871.8426
9Apr2020-2Apr2021(a)	38	TRUE	0.51173828	0.30734372	12.062385	123.964774	19367.875	-34.28242	-114	0	112	160	0	18361.3219
9Apr2020-2Apr2021(a)	37	TRUE	0.51038104	0.06747316	12.0661997	123.962152	18858.5	-35.0367	-40	-10	0	160	0	17850.5107
9Apr2020-2Apr2021(a)	36	TRUE	0.50446906	0.08622232	12.0699288	123.959401	18348.811	-36.55247	-138	-30	50	83	0	17339.2348
9Apr2020-2Apr2021(a)	35	FALSE			12.0736383	123.956627	17839.436	-36.55247	-31	0	26	51	0	16828.2477
9Apr2020-2Apr2021(a)	34	TRUE	0.48961351	0.05543362	12.0773553	123.953864	17330.061	-36.23412	-160	-11	0	160	0	16317.2378
9Apr2020-2Apr2021(a)	33	TRUE	0.4433971	0.10364311	12.0810798	123.95111	16820.686	-36.23412	-160	0	37	64	0	15806.2305
9Apr2020-2Apr2021(a)	32	TRUE	0.4300224	0.05800527	12.0848044	123.948357	16311.312	-36.23412	-57	0	5	39	0	15295.2102
9Apr2020-2Apr2021(a)	31	TRUE	0.370367	0.12202377	12.0885266	123.945606	15802.248	-36.23412	-50	-33	13	56	0	14784.5169
9Apr2020-2Apr2021(a)	30	FALSE			12.0922488	123.942854	15293.187	-36.23412	-159	-95	34	83	0	14273.8133
9Apr2020-2Apr2021(a)	29	FALSE			12.0959733	123.940101	14783.812	-36.23412	-160	-1	120	138	0	13762.7967
9Apr2020-2Apr2021(a)	28	FALSE			12.0996954	123.937349	14274.748	-36.23412	-136	-130	0	160	0	13252.1006
9Apr2020-2Apr2021(a)	27	FALSE			12.1034198	123.934595	13765.374	-35.65758	-145	-118	0	160	0	12741.0915
9Apr2020-2Apr2021(a)	26	FALSE			12.1072075	123.931928	13255.687	-34.76896	-160	0	0	56	0	12229.853
9Apr2020-2Apr2021(a)	25	FALSE			12.111	123.929271	12746.311	-34.76896	-118	-93	60	83	0	11718.9464
9Apr2020-2Apr2021(a)	24	TRUE	0.21597131	0.12122572	12.1147924	123.926615	12236.937	-34.76896	-107	-64	22	70	0	11208.0693
9Apr2020-2Apr2021(a)	23	TRUE	0.20303197	0.09808602	12.1185848	123.923959	11727.561	-34.76896	-97	-26	39	69	0	10697.2088
9Apr2020-2Apr2021(a)	22	FALSE			12.1223772	123.921303	11218.185	-34.76896	-62	0	2	17	0	10186.3746
9Apr2020-2Apr2021(a)	21	TRUE	0.17020049	0.03977519	12.1261695	123.918647	10708.813	-34.76896	-134	0	37	71	0	9675.57276
9Apr2020-2Apr2021(a)	20	FALSE			12.1299596	123.915992	10199.749	-34.76896	-160	0	87	100	0	9165.09916
9Apr2020-2Apr2021(a)	19	FALSE			12.1337519	123.913335	9690.373	-34.76896	-39	0	0	100	0	8654.35916
9Apr2020-2Apr2021(a)	18	TRUE	0.13911565	0.06386273	12.1375442	123.910679	9180.999	-34.76896	-27	-17	6	38	0	8143.66645
9Apr2020-2Apr2021(a)	17	FALSE			12.1413424	123.908031	8671.623	-34.4424	-160	0	0	160	0	7633.07992
9Apr2020-2Apr2021(a)	16	FALSE			12.1451521	123.9054	8162.25	-34.38453	-160	0	0	160	0	7122.6574
9Apr2020-2Apr2021(a)	15	TRUE	0.07130727	0.05695096	12.1489618	123.90277	7652.873	-34.38453	-139	0	1	112	0	6612.34505
9Apr2020-2Apr2021(a)	14	TRUE	0.08665142	0.06495988	12.1527715	123.900139	7143.5	-34.38453	-41	0	11	26	0	6102.16332
9Apr2020-2Apr2021(a)	13	FALSE			12.1565811	123.897508	6634.125	-34.38453	-160	0	0	160	0	5592.15107
9Apr2020-2Apr2021(a)	12	FALSE			12.1603908	123.894877	6124.748	-34.38453	-160	0	18	39	0	5082.36233
9Apr2020-2Apr2021(a)	11	TRUE	0.09872866	0.0551126	12.1642004	123.892245	5615.375	-34.38453	-123	0	0	38	0	4572.8758
9Apr2020-2Apr2021(a)	10	FALSE			12.1680076	123.889616	5106.312	-34.38453	-19	-7	6	160	0	4064.11111
9Apr2020-2Apr2021(a)	9	FALSE			12.1718149	123.886986	4597.248	-34.38453	-160	0	0	160	0	3555.9179
9Apr2020-2Apr2021(a)	8	FALSE			12.1756244	123.884355	4087.875	-33.38308	-160	0	0	160	0	3048.30546
9Apr2020-2Apr2021(a)	7	FALSE			12.1795879	123.881978	3578.5	-29.12406	-160	0	0	160	0	2548.49746
9Apr2020-2Apr2021(a)	6	FALSE			12.1836163	123.879714	3069.437	-29.12406	-160	0	0	160	0	2058.13857
9Apr2020-2Apr2021(a)	5	FALSE			12.1876735	123.877499	2559.748	-24.86524	-160	0	0	160	0	1583.23562
9Apr2020-2Apr2021(a)	4	FALSE			12.1919488	123.875757	2050.374	-22.02306	-160	0	0	160	0	1176.85011

9Apr2020-2Apr2021(a)	3	FALSE			12.1962216	123.874016	1541.31	-22.02306	-160	0	0	160	0	887.230403
9Apr2020-2Apr2021(a)	2	FALSE			12.2005074	123.87227	1030.686	-27.76169	-160	0	0	160	0	844.385799
9Apr2020-2Apr2021(a)	1	FALSE			12.2043576	123.869682	520.062	-33.81824	-160	0	0	160	0	995.256034
9Apr2020-2Apr2021(b)	51	TRUE	0.33273487	0.0287009	12.0134796	123.999837	25989.123	-36.46924	-50	-48	32	39	0	25002.4913
9Apr2020-2Apr2021(b)	50	TRUE	0.4239644	0.12114326	12.0171934	123.997069	25479.747	-36.46924	-160	-63	36	69	0	24491.5148
9Apr2020-2Apr2021(b)	49	FALSE			12.0209071	123.994302	24970.375	-36.46924	-92	0	65	160	0	23980.5378
9Apr2020-2Apr2021(b)	48	TRUE	0.49173623	0.28415468	12.0246208	123.991534	24460.999	-36.46924	-90	-83	0	160	0	23469.564
9Apr2020-2Apr2021(b)	47	TRUE	0.60625078	0.09817956	12.0283346	123.988767	23951.623	-36.46924	-123	-5	86	160	0	22958.578
9Apr2020-2Apr2021(b)	46	TRUE	0.46588346	0.09897281	12.0320483	123.985999	23442.249	-36.46924	-62	-39	31	160	0	22447.6043
9Apr2020-2Apr2021(b)	45	FALSE			12.0357306	123.983203	22933.81	-37.01649	-159	-118	53	84	0	21936.741
9Apr2020-2Apr2021(b)	44	TRUE	0.49556171	0.05118723	12.0395007	123.980503	22423.5	-34.28242	-32	0	9	78	0	21425.9031
9Apr2020-2Apr2021(b)	43	TRUE	0.50264535	0.12184013	12.0433156	123.977882	21914.122	-34.28242	-136	-95	0	160	0	20915.004
9Apr2020-2Apr2021(b)	42	TRUE	0.50039218	0.05399266	12.0471281	123.975261	21405.062	-34.28242	-160	-27	28	160	0	20404.4302
9Apr2020-2Apr2021(b)	41	TRUE	0.51632243	0.13261708	12.0509406	123.972641	20895.998	-34.28242	-160	-72	13	47	0	19893.8707
9Apr2020-2Apr2021(b)	40	TRUE	0.50832927	0.15420568	12.0547554	123.970019	20386.624	-34.28242	-146	-98	0	27	0	19383.0108
9Apr2020-2Apr2021(b)	39	TRUE	0.50641744	0.05290008	12.0585679	123.967398	19877.562	-34.28242	-160	0	0	160	0	18872.47
9Apr2020-2Apr2021(b)	38	TRUE	0.50097173	0.06105171	12.0623803	123.964777	19368.498	-34.28242	-160	0	0	136	0	18361.9493
9Apr2020-2Apr2021(b)	37	TRUE	0.4934522	0.08178192	12.0661951	123.962155	18859.125	-35.03386	-45	0	0	160	0	17851.1291
9Apr2020-2Apr2021(b)	36	TRUE	0.50860693	0.06499803	12.0699243	123.959405	18349.434	-36.55247	-160	0	40	160	0	17339.8569
9Apr2020-2Apr2021(b)	35	TRUE	0.45001453	0.16392881	12.0736338	123.956631	17840.062	-36.55247	-147	-72	50	71	0	16828.8698
9Apr2020-2Apr2021(b)	34	TRUE	0.44143461	0.06129742	12.0773507	123.953867	17330.685	-36.23412	-99	0	13	138	0	16317.8689
9Apr2020-2Apr2021(b)	33	TRUE	0.43482766	0.07252913	12.0810753	123.951114	16821.31	-36.23412	-41	0	14	160	0	15806.8526
9Apr2020-2Apr2021(b)	32	FALSE			12.0847998	123.948361	16311.936	-36.23412	-57	-23	0	55	0	15295.8413
9Apr2020-2Apr2021(b)	31	TRUE	0.3824916	0.06721108	12.088522	123.945609	15802.874	-36.23412	-60	-33	0	160	0	14785.1416
9Apr2020-2Apr2021(b)	30	FALSE			12.0922442	123.942857	15293.811	-36.23412	-17	0	36	49	0	14274.4444
9Apr2020-2Apr2021(b)	29	TRUE	0.32058185	0.0917417	12.0959687	123.940104	14784.436	-36.23412	-41	0	0	77	0	13763.4278
9Apr2020-2Apr2021(b)	28	TRUE	0.2713261	0.04438389	12.0996909	123.937352	14275.372	-36.23412	-24	-6	16	30	0	13252.7227
9Apr2020-2Apr2021(b)	27	FALSE			12.1034153	123.934599	13765.998	-35.65941	-160	0	96	103	0	12741.7072
9Apr2020-2Apr2021(b)	26	FALSE			12.1072029	123.931931	13256.311	-34.76896	-77	0	0	160	0	12230.4714
9Apr2020-2Apr2021(b)	25	TRUE	0.23117737	0.08136461	12.110993	123.929276	12747.25	-34.76896	-160	0	8	145	0	11719.8892
9Apr2020-2Apr2021(b)	24	FALSE			12.1147854	123.92662	12237.873	-34.76896	-160	0	0	160	0	11209.0121
9Apr2020-2Apr2021(b)	23	FALSE			12.1185755	123.923966	11728.812	-34.76896	-160	0	0	160	0	10698.4607
9Apr2020-2Apr2021(b)	22	FALSE			12.1223655	123.921311	11219.75	-34.76896	-160	0	0	160	0	10187.9508
9Apr2020-2Apr2021(b)	21	FALSE			12.1261556	123.918656	10710.686	-34.76896	-63	-51	0	160	0	9677.44906
9Apr2020-2Apr2021(b)	20	FALSE			12.1299479	123.916	10201.312	-34.76896	-141	-113	0	160	0	9166.66876
9Apr2020-2Apr2021(b)	19	TRUE	0.13216121	0.06557524	12.1337379	123.913345	9692.248	-34.76896	-39	0	86	121	0	8656.24412
9Apr2020-2Apr2021(b)	18	TRUE	0.11030284	0.06867561	12.1375302	123.910689	9182.872	-34.76896	-160	0	0	72	0	8145.55122
9Apr2020-2Apr2021(b)	17	TRUE	0.11110897	0.10371259	12.1413284	123.908041	8673.498	-34.44383	-57	0	58	160	0	7634.95139
9Apr2020-2Apr2021(b)	16	TRUE	0.0956645	0.05383098	12.1451381	123.90541	8164.124	-34.38453	-113	0	0	160	0	7124.53504
9Apr2020-2Apr2021(b)	15	FALSE			12.1489455	123.902781	7655.061	-34.38453	-160	0	0	160	0	6614.52449
9Apr2020-2Apr2021(b)	14	FALSE			12.1527551	123.90015	7145.688	-34.38453	-160	0	0	160	0	6104.35088
9Apr2020-2Apr2021(b)	13	FALSE			12.1565624	123.897521	6636.624	-34.38453	-160	0	0	160	0	5594.65972
9Apr2020-2Apr2021(b)	12	FALSE			12.1603721	123.894889	6127.248	-34.38453	-160	0	0	160	0	5084.86301
9Apr2020-2Apr2021(b)	11	FALSE			12.1641793	123.89226	5618.188	-34.38453	-160	0	0	160	0	4575.6917
9Apr2020-2Apr2021(b)	10	FALSE			12.1679866	123.88963	5109.124	-34.38453	-160	0	0	160	0	4066.91567
9Apr2020-2Apr2021(b)	9	FALSE			12.1717938	123.887001	4600.061	-34.38453	-160	0	0	160	0	3558.72704
9Apr2020-2Apr2021(b)	8	FALSE			12.1756034	123.884369	4090.688	-33.41265	-160	0	0	160	0	3051.10011
9Apr2020-2Apr2021(b)	7	FALSE			12.1795682	123.881989	3580.999	-29.12406	-160	0	0	160	0	2550.91757
9Apr2020-2Apr2021(b)	6	FALSE			12.1835965	123.879725	3071.937	-29.12406	-160	0	0	160	0	2060.52188
9Apr2020-2Apr2021(b)	5	FALSE			12.1876525	123.877507	2562.249	-24.90077	-160	0	0	160	0	1585.37754
9Apr2020-2Apr2021(b)	4	FALSE			12.1919305	123.875764	2052.562	-22.02306	-160	0	0	160	0	1178.41927

9Apr2020-2Apr2021(b)	3	FALSE			12.1962032	123.874024	1543.498	-22.02306	-160	0	0	160	0	888.038444
9Apr2020-2Apr2021(b)	2	FALSE			12.2004864	123.872279	1033.187	-27.70254	-160	0	0	160	0	843.836214
9Apr2020-2Apr2021(b)	1	FALSE			12.2043387	123.869695	522.562	-33.81824	-160	0	0	160	0	993.93096
9Apr2020-11Apr2021	51	TRUE	0.35484604	0.09205563	12.0134796	123.999837	25989.123	-36.46924	-11	0	53	71	0	25002.4913
9Apr2020-11Apr2021	50	TRUE	0.40810627	0.10028857	12.0171911	123.997071	25480.062	-36.46924	-118	-72	18	55	0	24491.8304
9Apr2020-11Apr2021	49	FALSE			12.0209026	123.994305	24970.999	-36.46924	-73	0	30	100	0	23981.16
9Apr2020-11Apr2021	48	TRUE	0.49005569	0.17678469	12.024614	123.991539	24461.936	-36.46924	-156	-108	0	66	0	23470.5017
9Apr2020-11Apr2021	47	TRUE	0.59723665	0.31237946	12.0283277	123.988772	23952.561	-36.46924	-125	-116	0	160	0	22959.5247
9Apr2020-11Apr2021	46	TRUE	0.47399386	0.0687113	12.0320414	123.986004	23443.187	-36.46924	-160	-20	0	160	0	22448.551
9Apr2020-11Apr2021	45	FALSE			12.0357306	123.983203	22933.81	-37.01649	-160	0	0	160	0	21937.685
9Apr2020-11Apr2021	44	TRUE	0.49021133	0.14847772	12.0394937	123.980508	22424.438	-34.28242	-117	-59	0	160	0	21426.8399
9Apr2020-11Apr2021	43	TRUE	0.50328367	0.0615519	12.0433086	123.977886	21915.06	-34.28242	-90	0	21	41	0	20915.9407
9Apr2020-11Apr2021	42	FALSE			12.0471211	123.975266	21405.999	-34.28242	-65	-59	6	41	0	20405.3669
9Apr2020-11Apr2021	41	TRUE	0.49576506	0.27863187	12.0509359	123.972644	20896.626	-34.28242	-76	-51	123	160	0	19894.4981
9Apr2020-11Apr2021	40	FALSE			12.0547484	123.970023	20387.562	-34.28242	-58	0	0	107	0	19383.9475
9Apr2020-11Apr2021	39	TRUE	0.50690608	0.08513555	12.0585632	123.967401	19878.187	-34.28242	-160	0	0	155	0	18873.0975
9Apr2020-11Apr2021	38	TRUE	0.49770879	0.33923548	12.0623756	123.964781	19369.123	-34.28242	-34	-15	110	160	0	18362.5767
9Apr2020-11Apr2021	37	FALSE			12.0661904	123.962158	18859.75	-35.03102	-160	0	0	160	0	17851.7565
9Apr2020-11Apr2021	36	FALSE			12.0699197	123.959408	18350.062	-36.55247	-160	0	0	160	0	17340.488
9Apr2020-11Apr2021	35	FALSE			12.0736292	123.956634	17840.685	-36.55247	-160	0	0	160	0	16829.5009
9Apr2020-11Apr2021	34	FALSE			12.0773439	123.953872	17331.624	-36.23412	-160	0	0	160	0	16318.8066
9Apr2020-11Apr2021	33	FALSE			12.0810661	123.951121	16822.562	-36.23412	-160	0	0	160	0	15808.1148
9Apr2020-11Apr2021	32	FALSE			12.0847884	123.948369	16313.498	-36.23412	-160	0	0	160	0	15297.41
9Apr2020-11Apr2021	31	FALSE			12.0885106	123.945618	15804.437	-36.23412	-160	0	0	160	0	14786.7104
9Apr2020-11Apr2021	30	FALSE			12.0922328	123.942866	15295.373	-36.23412	-160	0	0	160	0	14276.0068
9Apr2020-11Apr2021	29	FALSE			12.095955	123.940114	14786.312	-36.23412	-160	0	0	160	0	13765.3057
9Apr2020-11Apr2021	28	FALSE			12.0996794	123.937361	14276.937	-36.23412	-160	0	0	160	0	13254.2941
9Apr2020-11Apr2021	27	FALSE			12.1034038	123.934607	13767.563	-35.66399	-160	0	0	160	0	12743.2849
9Apr2020-11Apr2021	26	FALSE			12.1071912	123.931939	13257.874	-34.76896	-160	0	0	160	0	12232.0479
9Apr2020-11Apr2021	25	FALSE			12.1109813	123.929285	12748.813	-34.76896	-160	0	0	160	0	11721.4658
9Apr2020-11Apr2021	24	FALSE			12.1147715	123.92663	12239.748	-34.76896	-160	0	0	160	0	11210.8887
9Apr2020-11Apr2021	23	FALSE			12.1185615	123.923975	11730.684	-34.76896	-160	0	0	160	0	10700.3462
9Apr2020-11Apr2021	22	FALSE			12.1223516	123.921321	11221.625	-34.76896	-160	0	0	160	0	10189.8208
9Apr2020-11Apr2021	21	FALSE			12.1261416	123.918666	10712.561	-34.76896	-160	0	0	160	0	9679.32788
9Apr2020-11Apr2021	20	FALSE			12.1299316	123.916011	10203.499	-34.76896	-160	0	0	160	0	9168.86294
9Apr2020-11Apr2021	19	FALSE			12.1337216	123.913357	9694.435	-34.76896	-160	0	0	160	0	8658.4381
9Apr2020-11Apr2021	18	FALSE			12.1375116	123.910702	9185.375	-34.76896	-160	0	0	160	0	8148.05397
9Apr2020-11Apr2021	17	FALSE			12.1413097	123.908054	8675.998	-34.44576	-160	0	0	160	0	7637.46271
9Apr2020-11Apr2021	16	FALSE			12.1451194	123.905423	8166.624	-34.38453	-160	0	0	160	0	7127.03934
9Apr2020-11Apr2021	15	FALSE			12.1489291	123.902792	7657.249	-34.38453	-160	0	0	160	0	6616.71936
9Apr2020-11Apr2021	14	FALSE			12.1527388	123.900161	7147.873	-34.38453	-160	0	0	160	0	6106.53628
9Apr2020-11Apr2021	13	FALSE			12.1565484	123.89753	6638.499	-34.38453	-160	0	0	160	0	5596.53567
9Apr2020-11Apr2021	12	FALSE			12.160358	123.894899	6129.126	-34.38453	-160	0	0	160	0	5086.74676
9Apr2020-11Apr2021	11	FALSE			12.1641677	123.892268	5619.748	-34.38453	-160	0	0	160	0	4577.24172
9Apr2020-11Apr2021	10	FALSE			12.1679772	123.889637	5110.374	-34.38453	-160	0	0	160	0	4068.17171
9Apr2020-11Apr2021	9	FALSE			12.1717868	123.887006	4600.998	-34.38453	-160	0	0	160	0	3559.66528
9Apr2020-11Apr2021	8	FALSE			12.1755964	123.884374	4091.623	-33.4225	-160	0	0	160	0	3052.02928
9Apr2020-11Apr2021	7	FALSE			12.1795583	123.881995	3582.249	-29.12406	-160	0	0	160	0	2552.13546
9Apr2020-11Apr2021	6	FALSE			12.1835891	123.879729	3072.874	-29.12406	-160	0	0	160	0	2061.41679
9Apr2020-11Apr2021	5	FALSE			12.1876446	123.87751	2563.186	-24.91409	-160	0	0	160	0	1586.18379
9Apr2020-11Apr2021	4	FALSE			12.1919252	123.875767	2053.186	-22.02306	-160	0	0	160	0	1178.86694

9Apr2020-11Apr2021	3	FALSE			12.1962006	123.874025	1543.812	-22.02306	-160	0	0	160	0	888.158904
9Apr2020-11Apr2021	2	FALSE			12.2004838	123.87228	1033.501	-27.69515	-160	0	0	160	0	843.77295
9Apr2020-11Apr2021	1	FALSE			12.2043364	123.869696	522.875	-33.81824	-160	0	0	160	0	993.771958
9Apr2020-12Apr2021	51	TRUE	0.34067834	0.01544119	12.0134796	123.999837	25989.123	-36.46924	-33	-16	0	3	0	25002.4913
9Apr2020-12Apr2021	50	TRUE	0.397865	0.09687638	12.0171934	123.997069	25479.747	-36.46924	-134	-65	117	160	0	24491.5148
9Apr2020-12Apr2021	49	FALSE			12.0209071	123.994302	24970.375	-36.46924	-160	0	0	160	0	23980.5378
9Apr2020-12Apr2021	48	FALSE			12.0246208	123.991534	24460.999	-36.46924	-87	-61	113	129	0	23469.564
9Apr2020-12Apr2021	47	FALSE			12.0283346	123.988767	23951.623	-36.46924	-102	-47	0	160	0	22958.578
9Apr2020-12Apr2021	46	TRUE	0.43338997	0.15240233	12.032046	123.986001	23442.562	-36.46924	-67	-60	59	88	0	22447.9199
9Apr2020-12Apr2021	45	FALSE			12.0357306	123.983203	22933.81	-37.01649	-160	0	0	160	0	21937.685
9Apr2020-12Apr2021	44	TRUE	0.50785284	0.04576955	12.0395007	123.980503	22423.5	-34.28242	-160	0	27	160	0	21425.9031
9Apr2020-12Apr2021	43	TRUE	0.51026379	0.05387817	12.0433156	123.977882	21914.122	-34.28242	-81	0	0	115	0	20915.004
9Apr2020-12Apr2021	42	TRUE	0.49994464	0.07052767	12.0471305	123.97526	21404.749	-34.28242	-53	-17	0	160	0	20404.1119
9Apr2020-12Apr2021	41	TRUE	0.50651659	0.08757276	12.0509453	123.972637	20895.373	-34.28242	-101	0	60	160	0	19893.2368
9Apr2020-12Apr2021	40	TRUE	0.50586362	0.03894603	12.0547578	123.970017	20386.31	-34.28242	-137	-19	0	160	0	19382.6862
9Apr2020-12Apr2021	39	TRUE	0.50849381	0.12791967	12.0585726	123.967395	19876.936	-34.28242	-100	-82	36	63	0	18871.8426
9Apr2020-12Apr2021	38	TRUE	0.50566202	0.05641981	12.062385	123.964774	19367.875	-34.28242	-149	0	13	77	0	18361.3219
9Apr2020-12Apr2021	37	FALSE			12.0661997	123.962152	18858.5	-35.0367	-160	0	0	160	0	17850.5107
9Apr2020-12Apr2021	36	FALSE			12.0699288	123.959401	18348.811	-36.55247	-50	0	56	160	0	17339.2348
9Apr2020-12Apr2021	35	TRUE	0.4612902	0.05270663	12.0736383	123.956627	17839.436	-36.55247	-160	-53	27	113	0	16828.2477
9Apr2020-12Apr2021	34	FALSE			12.0773553	123.953864	17330.061	-36.23412	-86	0	0	11	0	16317.2378
9Apr2020-12Apr2021	33	FALSE			12.0810798	123.95111	16820.686	-36.23412	-47	-18	6	14	0	15806.2305
9Apr2020-12Apr2021	32	TRUE	0.39607981	0.04912496	12.0848044	123.948357	16311.312	-36.23412	-160	0	41	160	0	15295.2102
9Apr2020-12Apr2021	31	TRUE	0.37561915	0.04125047	12.0885266	123.945606	15802.248	-36.23412	-84	0	11	145	0	14784.5169
9Apr2020-12Apr2021	30	TRUE	0.3603707	0.02877028	12.0922488	123.942854	15293.187	-36.23412	-34	-5	22	39	0	14273.8133
9Apr2020-12Apr2021	29	TRUE	0.29337087	0.04273896	12.0959733	123.940101	14783.812	-36.23412	-35	-7	0	59	0	13762.7967
9Apr2020-12Apr2021	28	TRUE	0.28145075	0.02664526	12.0996954	123.937349	14274.748	-36.23412	-32	0	9	29	0	13252.1006
9Apr2020-12Apr2021	27	TRUE	0.26913973	0.0433584	12.1034198	123.934595	13765.374	-35.65758	-9	0	0	149	0	12741.0915
9Apr2020-12Apr2021	26	FALSE			12.1072075	123.931928	13255.687	-34.76896	-8	-5	18	32	0	12229.853
9Apr2020-12Apr2021	25	FALSE			12.111	123.929271	12746.311	-34.76896	-160	0	0	160	0	11718.9464
9Apr2020-12Apr2021	24	FALSE			12.1147924	123.926615	12236.937	-34.76896	-160	0	0	160	0	11208.0693
9Apr2020-12Apr2021	23	TRUE	0.19663186	0.02751369	12.1185848	123.923959	11727.561	-34.76896	-8	0	23	39	0	10697.2088
9Apr2020-12Apr2021	22	FALSE			12.1223772	123.921303	11218.185	-34.76896	-160	0	0	160	0	10186.3746
9Apr2020-12Apr2021	21	TRUE	0.17966687	0.09167586	12.1261695	123.918647	10708.813	-34.76896	-37	-14	13	37	0	9675.57276
9Apr2020-12Apr2021	20	FALSE			12.1299596	123.915992	10199.749	-34.76896	-160	0	0	160	0	9165.09916
9Apr2020-12Apr2021	19	TRUE	0.14196721	0.05961489	12.1337519	123.913335	9690.373	-34.76896	-68	-28	0	66	0	8654.35916
9Apr2020-12Apr2021	18	TRUE	0.10857924	0.12127174	12.1375442	123.910679	9180.999	-34.76896	-43	-34	22	59	0	8143.66645
9Apr2020-12Apr2021	17	FALSE			12.1413424	123.908031	8671.623	-34.4424	-160	0	0	160	0	7633.07992
9Apr2020-12Apr2021	16	FALSE			12.1451521	123.9054	8162.25	-34.38453	-160	-81	22	51	0	7122.6574
9Apr2020-12Apr2021	15	TRUE	0.07997286	0.2444946	12.1489618	123.90277	7652.873	-34.38453	-140	-81	84	121	0	6612.34505
9Apr2020-12Apr2021	14	TRUE	0.06731385	0.02921437	12.1527715	123.900139	7143.5	-34.38453	-48	-14	0	4	0	6102.16332
9Apr2020-12Apr2021	13	FALSE			12.1565811	123.897508	6634.125	-34.38453	-25	-13	23	36	0	5592.15107
9Apr2020-12Apr2021	12	FALSE			12.1603908	123.894877	6124.748	-34.38453	-160	0	0	160	0	5082.36233
9Apr2020-12Apr2021	11	FALSE			12.1642004	123.892245	5615.375	-34.38453	-160	0	0	160	0	4572.8758
9Apr2020-12Apr2021	10	FALSE			12.1680076	123.889616	5106.312	-34.38453	-160	0	0	160	0	4064.11111
9Apr2020-12Apr2021	9	FALSE			12.1718149	123.886986	4597.248	-34.38453	-160	0	0	160	0	3555.9179
9Apr2020-12Apr2021	8	FALSE			12.1756244	123.884355	4087.875	-33.38308	-160	0	0	160	0	3048.30546
9Apr2020-12Apr2021	7	FALSE			12.1795879	123.881978	3578.5	-29.12406	-160	0	0	160	0	2548.49746
9Apr2020-12Apr2021	6	FALSE			12.1836163	123.879714	3069.437	-29.12406	-160	0	0	160	0	2058.13857
9Apr2020-12Apr2021	5	FALSE			12.1876735	123.877499	2559.748	-24.86524	-160	0	0	160	0	1583.23562
9Apr2020-12Apr2021	4	FALSE			12.1919488	123.875757	2050.374	-22.02306	-160	0	0	160	0	1176.85011

9Apr2020-12Apr2021	3	FALSE			12.1962216	123.874016	1541.31	-22.02306	-160	0	0	160	0	887.230403
9Apr2020-12Apr2021	2	FALSE			12.2005074	123.87227	1030.686	-27.76169	-160	0	0	160	0	844.385799
9Apr2020-12Apr2021	1	FALSE			12.2043576	123.869682	520.062	-33.81824	-160	0	0	160	0	995.256034
28Nov2019-29Nov2020	51	TRUE	0.35189053	0.18592042	12.0134796	123.999837	25989.123	-36.46924	-124	-93	64	160	0	25002.4913
28Nov2019-29Nov2020	50	TRUE	0.40039509	0.07581852	12.0171934	123.997069	25479.747	-36.46924	-95	-31	11	25	0	24491.5148
28Nov2019-29Nov2020	49	FALSE			12.0209071	123.994302	24970.375	-36.46924	-89	-60	39	56	0	23980.5378
28Nov2019-29Nov2020	48	TRUE	0.51344445	0.07101798	12.0246208	123.991534	24460.999	-36.46924	-48	-33	0	63	0	23469.564
28Nov2019-29Nov2020	47	FALSE			12.0283346	123.988767	23951.623	-36.46924	-93	-22	0	160	0	22958.578
28Nov2019-29Nov2020	46	TRUE	0.44647942	0.04589228	12.032046	123.986001	23442.562	-36.46924	-51	-17	0	33	0	22447.9199
28Nov2019-29Nov2020	45	TRUE	0.4904061	0.03427494	12.0357351	123.9832	22933.188	-37.01376	-92	-15	12	27	0	21937.0629
28Nov2019-29Nov2020	44	TRUE	0.51587319	0.11237674	12.0394984	123.980505	22423.811	-34.28242	-122	-94	0	160	0	21426.2124
28Nov2019-29Nov2020	43	TRUE	0.49950027	0.06202464	12.0433133	123.977883	21914.437	-34.28242	-160	-80	10	20	0	20915.3132
28Nov2019-29Nov2020	42	TRUE	0.49954208	0.07671498	12.0471258	123.975263	21405.372	-34.28242	-12	-3	44	153	0	20404.7394
28Nov2019-29Nov2020	41	FALSE			12.0509383	123.972642	20896.317	-34.28242	-37	-15	0	160	0	19894.1799
28Nov2019-29Nov2020	40	FALSE			12.0547531	123.97002	20386.937	-34.28242	-6	-1	117	139	0	19383.32
28Nov2019-29Nov2020	39	FALSE			12.0585655	123.9674	19877.874	-34.28242	-160	0	0	160	0	18872.7883
28Nov2019-29Nov2020	38	FALSE			12.062378	123.964779	19368.813	-34.28242	-160	-55	19	29	0	18362.2585
28Nov2019-29Nov2020	37	TRUE	0.50863164	0.08152299	12.0661927	123.962157	18859.435	-35.03244	-32	-16	18	34	0	17851.4473
28Nov2019-29Nov2020	36	TRUE	0.50457355	0.26404129	12.069922	123.959406	18349.749	-36.55247	-20	-7	41	70	0	17340.1725
28Nov2019-29Nov2020	35	TRUE	0.43662157	0.35189098	12.0736315	123.956632	17840.374	-36.55247	-105	-94	49	65	0	16829.1853
28Nov2019-29Nov2020	34	TRUE	0.45669601	0.0696154	12.0773484	123.953869	17330.998	-36.23412	-138	-56	68	137	0	16318.1845
28Nov2019-29Nov2020	33	FALSE			12.081073	123.951116	16821.623	-36.23412	-160	0	27	46	0	15807.1681
28Nov2019-29Nov2020	32	FALSE			12.0847975	123.948362	16312.249	-36.23412	-160	0	0	160	0	15296.1568
28Nov2019-29Nov2020	31	FALSE			12.0885198	123.945611	15803.185	-36.23412	-160	0	0	160	0	14785.4482
28Nov2019-29Nov2020	30	FALSE			12.0922419	123.942859	15294.124	-36.23412	-10	-7	46	70	0	14274.76
28Nov2019-29Nov2020	29	TRUE	0.30163284	0.11854357	12.0959664	123.940106	14784.749	-36.23412	-61	-49	2	16	0	13763.7433
28Nov2019-29Nov2020	28	TRUE	0.29491539	0.09178051	12.0996886	123.937354	14275.685	-36.23412	-17	-12	11	23	0	13253.0383
28Nov2019-29Nov2020	27	FALSE			12.103413	123.9346	13766.311	-35.66032	-160	-67	38	60	0	12742.0228
28Nov2019-29Nov2020	26	TRUE	0.2556875	0.12479991	12.1072005	123.931932	13256.626	-34.76896	-60	-9	36	56	0	12230.7959
28Nov2019-29Nov2020	25	TRUE	0.24133267	0.59738029	12.110993	123.929276	12747.25	-34.76896	-79	-74	53	60	0	11719.8892
28Nov2019-29Nov2020	24	FALSE			12.1147854	123.92662	12237.873	-34.76896	-58	-21	0	43	0	11209.0121
28Nov2019-29Nov2020	23	TRUE	0.20291529	0.13020956	12.1185755	123.923966	11728.812	-34.76896	-72	-56	8	71	0	10698.4607
28Nov2019-29Nov2020	22	FALSE			12.1223655	123.921311	11219.75	-34.76896	-25	-2	7	24	0	10187.9508
28Nov2019-29Nov2020	21	FALSE			12.1261556	123.918656	10710.686	-34.76896	-160	0	0	160	0	9677.44906
28Nov2019-29Nov2020	20	FALSE			12.1299456	123.916002	10201.624	-34.76896	-20	-13	0	5	0	9166.98428
28Nov2019-29Nov2020	19	TRUE	0.15499298	0.04308265	12.1337379	123.913345	9692.248	-34.76896	-23	0	0	54	0	8656.24412
28Nov2019-29Nov2020	18	TRUE	0.11672596	0.1039884	12.1375279	123.91069	9183.188	-34.76896	-23	-14	31	54	0	8145.86021
28Nov2019-29Nov2020	17	FALSE			12.1413261	123.908042	8673.813	-34.44408	-160	0	0	160	0	7635.26687
28Nov2019-29Nov2020	16	FALSE			12.1451334	123.905413	8164.749	-34.38453	-160	0	0	160	0	7125.16169
28Nov2019-29Nov2020	15	FALSE			12.1489408	123.902784	7655.686	-34.38453	-160	0	0	160	0	6615.15757
28Nov2019-29Nov2020	14	FALSE			12.1527481	123.900155	7146.623	-34.38453	-160	0	0	160	0	6105.29253
28Nov2019-29Nov2020	13	FALSE			12.1565555	123.897525	6637.56	-34.38453	-160	0	0	160	0	5595.58559
28Nov2019-29Nov2020	12	FALSE			12.1603651	123.894894	6128.186	-34.38453	-160	0	0	160	0	5085.79715
28Nov2019-29Nov2020	11	FALSE			12.1641747	123.892263	5618.813	-34.38453	-160	0	0	160	0	4576.30825
28Nov2019-29Nov2020	10	FALSE			12.1679843	123.889632	5109.436	-34.38453	-160	0	0	160	0	4067.22366
28Nov2019-29Nov2020	9	FALSE			12.1717915	123.887002	4600.373	-34.38453	-160	0	0	160	0	3559.04164
28Nov2019-29Nov2020	8	FALSE			12.175601	123.884371	4090.998	-33.41593	-160	0	0	160	0	3051.4154
28Nov2019-29Nov2020	7	FALSE			12.1795632	123.881992	3581.625	-29.12406	-160	0	0	160	0	2551.53055
28Nov2019-29Nov2020	6	FALSE			12.183594	123.879727	3072.249	-29.12406	-160	0	0	160	0	2060.82271
28Nov2019-29Nov2020	5	FALSE			12.1876498	123.877508	2562.562	-24.90521	-160	0	0	160	0	1585.65362
28Nov2019-29Nov2020	4	FALSE			12.1919278	123.875765	2052.875	-22.02306	-160	0	0	160	0	1178.64037

28Nov2019-29Nov2020	3	FALSE			12.1962006	123.874025	1543.812	-22.02306	-160	0	0	160	0	888.158904
28Nov2019-29Nov2020	2	FALSE			12.2004838	123.87228	1033.501	-27.69515	-160	0	0	160	0	843.77295
28Nov2019-29Nov2020	1	FALSE			12.2043364	123.869696	522.875	-33.81824	-160	0	0	160	0	993.771958
9Apr-29Nov2020	51	FALSE			12.0134796	123.999837	25989.123	-36.46924	-160	0	0	160	0	25002.4913
9Apr-29Nov2020	50	TRUE	0.39972558	0.08276611	12.0171934	123.997069	25479.747	-36.46924	-87	0	137	160	0	24491.5148
9Apr-29Nov2020	49	TRUE	0.47685942	0.14627711	12.0209071	123.994302	24970.375	-36.46924	-85	-62	26	50	0	23980.5378
9Apr-29Nov2020	48	FALSE			12.0246208	123.991534	24460.999	-36.46924	-108	0	45	85	0	23469.564
9Apr-29Nov2020	47	FALSE			12.0283346	123.988767	23951.623	-36.46924	-160	0	130	149	0	22958.578
9Apr-29Nov2020	46	TRUE	0.45356257	0.04315329	12.0320483	123.985999	23442.249	-36.46924	-160	-12	0	36	0	22447.6043
9Apr-29Nov2020	45	FALSE			12.0357306	123.983203	22933.81	-37.01649	-160	0	0	160	0	21936.741
9Apr-29Nov2020	44	TRUE	0.50572554	0.08283207	12.0395007	123.980503	22423.5	-34.28242	-136	-125	64	101	0	21425.9031
9Apr-29Nov2020	43	TRUE	0.50526117	0.19594473	12.0433156	123.977882	21914.122	-34.28242	-116	-76	34	52	0	20915.004
9Apr-29Nov2020	42	FALSE			12.0471281	123.975261	21405.062	-34.28242	-160	0	0	160	0	20404.4302
9Apr-29Nov2020	41	TRUE	0.4963393	0.07689586	12.0509406	123.972641	20895.998	-34.28242	-106	-61	100	160	0	19893.8707
9Apr-29Nov2020	40	TRUE	0.50290736	0.0723947	12.0547554	123.970019	20386.624	-34.28242	-89	-77	64	160	0	19383.0108
9Apr-29Nov2020	39	FALSE			12.0585679	123.967398	19877.562	-34.28242	-160	0	0	160	0	18872.47
9Apr-29Nov2020	38	FALSE			12.0623803	123.964777	19368.498	-34.28242	-160	0	0	160	0	18361.9493
9Apr-29Nov2020	37	TRUE	0.50452237	0.0434915	12.0661951	123.962155	18859.125	-35.03386	-12	-9	14	36	0	17851.1291
9Apr-29Nov2020	36	FALSE			12.0699243	123.959405	18349.434	-36.55247	-115	-91	11	78	0	17339.8569
9Apr-29Nov2020	35	TRUE	0.46955615	0.0588889	12.0736338	123.956631	17840.062	-36.55247	-134	-18	24	160	0	16828.8698
9Apr-29Nov2020	34	TRUE	0.45296987	0.06795371	12.0773507	123.953867	17330.685	-36.23412	-133	-50	46	160	0	16317.8689
9Apr-29Nov2020	33	TRUE	0.43443634	0.05933579	12.0810753	123.951114	16821.31	-36.23412	-32	-19	82	119	0	15806.8526
9Apr-29Nov2020	32	TRUE	0.40795861	0.05571534	12.0847998	123.948361	16311.936	-36.23412	-136	0	0	138	0	15295.8413
9Apr-29Nov2020	31	TRUE	0.37191952	0.05554698	12.088522	123.945609	15802.874	-36.23412	-160	-20	0	160	0	14785.1416
9Apr-29Nov2020	30	TRUE	0.35029621	0.0418913	12.0922442	123.942857	15293.811	-36.23412	-139	0	0	160	0	14274.4444
9Apr-29Nov2020	29	TRUE	0.30383379	0.0480542	12.0959664	123.940106	14784.749	-36.23412	-21	-11	0	36	0	13763.7433
9Apr-29Nov2020	28	FALSE			12.0996886	123.937354	14275.685	-36.23412	-160	0	0	160	0	13253.0383
9Apr-29Nov2020	27	FALSE			12.103413	123.9346	13766.311	-35.66032	-33	-26	55	78	0	12742.0228
9Apr-29Nov2020	26	TRUE	0.2546573	0.05653063	12.1072005	123.931932	13256.626	-34.76896	-73	0	64	129	0	12230.7959
9Apr-29Nov2020	25	TRUE	0.23336395	0.03109694	12.1109907	123.929278	12747.562	-34.76896	-41	-19	30	37	0	11720.1984
9Apr-29Nov2020	24	TRUE	0.22124972	0.06815274	12.1147831	123.926622	12238.186	-34.76896	-36	0	47	69	0	11209.3212
9Apr-29Nov2020	23	FALSE			12.1185732	123.923967	11729.124	-34.76896	-160	0	0	160	0	10698.7762
9Apr-29Nov2020	22	FALSE			12.1223632	123.921313	11220.062	-34.76896	-47	-21	24	47	0	10188.2599
9Apr-29Nov2020	21	FALSE			12.1261532	123.918658	10711	-34.76896	-47	-38	0	61	0	9677.76709
9Apr-29Nov2020	20	TRUE	0.16668573	0.09988923	12.1299456	123.916002	10201.624	-34.76896	-49	-37	0	15	0	9166.98428
9Apr-29Nov2020	19	FALSE			12.1337356	123.913347	9692.56	-34.76896	-160	0	0	160	0	8656.55314
9Apr-29Nov2020	18	FALSE			12.1375256	123.910692	9183.5	-34.76896	-160	0	0	160	0	8146.1692
9Apr-29Nov2020	17	FALSE			12.1413237	123.908044	8674.123	-34.44431	-160	0	0	160	0	7635.58471
9Apr-29Nov2020	16	FALSE			12.1451334	123.905413	8164.749	-34.38453	-160	0	0	160	0	7125.16169
9Apr-29Nov2020	15	FALSE			12.1489408	123.902784	7655.686	-34.38453	-160	0	0	160	0	6615.15757
9Apr-29Nov2020	14	FALSE			12.1527505	123.900153	7146.313	-34.38453	-160	0	0	160	0	6104.97499
9Apr-29Nov2020	13	FALSE			12.1565578	123.897524	6637.249	-34.38453	-160	0	0	160	0	5595.27696
9Apr-29Nov2020	12	FALSE			12.1603674	123.894893	6127.873	-34.38453	-160	0	0	160	0	5085.48868
9Apr-29Nov2020	11	FALSE			12.164177	123.892262	5618.498	-34.38453	-160	0	0	160	0	4575.99997
9Apr-29Nov2020	10	FALSE			12.1679843	123.889632	5109.436	-34.38453	-160	0	0	160	0	4067.22366
9Apr-29Nov2020	9	FALSE			12.1717915	123.887002	4600.373	-34.38453	-160	0	0	160	0	3559.04164
9Apr-29Nov2020	8	FALSE			12.175601	123.884371	4090.998	-33.41593	-160	0	0	160	0	3051.4154
9Apr-29Nov2020	7	FALSE			12.1795657	123.881991	3581.311	-29.12406	-160	0	0	160	0	2551.22406
9Apr-29Nov2020	6	FALSE			12.183594	123.879727	3072.249	-29.12406	-160	0	0	160	0	2060.82271
9Apr-29Nov2020	5	FALSE			12.1876498	123.877508	2562.562	-24.90521	-160	0	0	160	0	1585.65362
9Apr-29Nov2020	4	FALSE			12.1919278	123.875765	2052.875	-22.02306	-160	0	0	160	0	1178.64037

9Apr-29Nov2020	3	FALSE		12.1962006	123.874025	1543.812	-22.02306	-160	0	0	160	0	888.158904
9Apr-29Nov2020	2	FALSE		12.2004838	123.87228	1033.501	-27.69515	-160	0	0	160	0	843.77295
9Apr-29Nov2020	1	FALSE		12.2043364	123.869696	522.875	-33.81824	-160	0	0	160	0	993.771958

S2 Field Data

S2.1 Database

Table S4: Field survey measurements and observations

date	ptID	location	offset	trend	type	lat	long	naro_dist	description
18-May	FD1	Canomay Dimasalang	0.5 cm	308 NW	liquefaction	12.195278	123.86472	0.1621	(possibly due to 2003 event) fence showing offset; or liquefaction induced?
18-May	FD2	Canomay Dimasalang	n/a	n/a	liquefaction	12.195556	123.865	0.1192	Road depressions (smooth, pre-EQ), liquefaction?
18-May	FD3	Dimasalang	n/a	n/a	liquefaction	12.196111	123.86611	0.031	depressions; liquefaction?; depressed wall section
18-May	FD4	Suba, Dimasalang	n/a	n/a	liquefaction	12.198333	123.86778	0.3139	depressions (previously flat)
18-May	FD5	Gaid, Dimasalang	1 cm	342 N	rupture	12.172778	123.88333	3.2264	Fracture on asphalt constructed on 2019; no fracture on other sections of the road; no fracture on road widening concrete constructed post EQ
18-May	FD6	Gaid, Dimasalang	1 cm	340 N	rupture	12.171944	123.88528	3.4277	Piggery, fractured for about 15m long; left lateral slip is apparent; parallel to fault strike if not actually traversed by fault; accompanied by vertical offset due to loss of foundation material
18-May	FP1a	Sta Cruz, Palanas	5 cm	143 SE	rupture	12.169722	123.88694	3.734	Displaced house showing left lateral slip (side wall)
	FP1b		2 cm	145 SE	rupture	12.169722	123.88694	3.734	(cont.) stairs steps
18-May	FP2	Sta Cruz, Palanas	n/a	137 SE	fracture	12.170556	123.88639	3.6238	covered by asphalt already
18-May	FP3a	Sta Cruz, Palanas	3 cm	328 NW	rupture	12.168333	123.88861	3.9674	2 storey green house 2cm verti
	FP3b		1 cm	328 NW	rupture	12.168333	123.88861	3.9674	(cont.) floor
18-May	FP4	Jose Abenir, Palanas	n/a	n/a	EIL	12.131944	123.91694	9.0519	EIL (resident account)
18-May	FP5	Malibas, Palanas	7 cm	263 W	rupture	12.1475	123.90444	6.8524	Road showing left lateral offset with apparent perpendicular separation; directly on top of trace (SEEN ON OIC)
18-May	FP6	Malibas, Palanas	n/a	n/a	fracture	12.147222	123.90417	6.8584	House on top of fault; fractures for measurement?; photo is taken perpendicular to the fault strike direction
18-May	FP7a	Matugnao, Palanas	87 cm	93 E	rupture	12.100556	123.93806	13.2204	cracked tree (offset is total including 2003 event + post seismic) (assumption: 60 cm previous offset)
18-May	FP7b	Matugnao, Palanas	n/a	155 SE	rupture	12.100556	123.93806	13.2204	Fissures/mole tracks near tree; en echelon; already eroded and obscured by vegetation; roughly 20-30m length accdg to residents
18-May	FP8	Puyao, Palanas	n/a	244 NW	rupture	12.088333	123.94583	14.8166	Ruptures/mole tracks (mostly eroded); traversed a termite mound and split it open, torn off portion has been eroded far from rupture, ground shaking induced fractures, road replaced, house cracked
18-May	FP9	Nabangig, Palanas	n/a	n/a	fracture	12.096667	123.94972	14.3417	no rupture nor cracks; possibly repaired
18-May	FC1	Cataingan	n/a	n/a	none	12.088333	123.96333	16.0072	longitudinal fractures on road widening
18-May	FC2	Cataingan	n/a	n/a	fracture	12.078889	123.96778	17.1175	none
19-May	FC3	Cataingan	n/a	n/a	none	12.074722	123.96972	17.6081	unfinished house, wall (entirety of rupture of about 200 m long, rupture length is according to residents)
19-May	FC4a	Sitio Salag, Pawican	50 cm	297 W	rupture	12.07	123.95917	17.3181	visible fractured mound at the base of the wall
19-May	FC4b	Sitio Salag, Pawican	48 cm	297 W	rupture	12.07	123.95917	17.3181	en echelon fissures, several aligned (4 gashes identified in photos)
19-May	FC5	Sitio Salag, Pawican	n/a	300 NW	fracture	12.069167	123.95972	17.4286	

19-May	FC6	Sitio Salag, Pawican	n/a	n/a	fracture	12.066111	123.96222	17.8632	fractured road (about 5m span) running parallel to the fault; photo taken looking 155 SE; unsure if with measurements; no dedicated OIC point
19-May	FP10	Puyao, Palanas	n/a	n/a	none	12.087222	123.94639	14.9521	none
19-May	FP11	Palanas	n/a	n/a	none	12.091667	123.94361	14.3747	none
19-May	FC7	Cataingan	n/a	n/a	fracture	12.061944	123.97278	18.9229	road cracked during the EQ (accdg to residents; asphalted already)
19-May	FC8	Sitio Buri	50 cm	166 S	rupture	12.041667	123.97917	21.1456	ruptured roots of a tree
19-May	FC9	Sitio Buri	50 cm	133 SE	rupture	12.040833	123.97944	21.2386	faint remnant rupture
19-May	FC10	Sitio Buri	n/a	130 SE	rupture	12.040556	123.98	21.2988	Fractured and eroded
19-May	FC11	Gahit, Cataingan	30 cm	140 SE	rupture	12.035556	123.98361	21.9795	asphalted road; possibly showing post seismic deformation thru en echelon cracks
19-May	FC12	San Pedro, Cataingan	60 cm	99 E	rupture	12.028611	123.98917	22.9591	rice field; other ruptures are erased
19-May	FC13	San Pedro, Cataingan	134 cm	330 NW	rupture	12.024167	123.9925	23.572	Offset tree row (too high for the EQ) ; looking 60 NE
19-May	FC14	Concepcion, Cataingan	n/a	130 SE	rupture	12.015556	124.00528	25.1672	Fractured fishpond dike near school
19-May	FC15	Sitio Alimango, Cataingan	n/a	152 SE	rupture	12.013889	123.99972	24.9584	Fractured fishpond dike
19-May	FC16	Sitio Alimango, Cataingan	34 cm	161 S	rupture	12.015278	123.99889	24.7801	Fractured fishpond dikes
19-May	FC17	Madamba	9 cm	133 SE	rupture	11.990556	124.01667	28.1409	road and fence
19-May	FC18	Madamba	3 cm	133 SE	rupture	11.990556	124.01667	28.1409	curb
19-May	FC19	Madamba	5 cm	296 NW	rupture	11.990556	124.01639	28.1233	house inside the fence; cracked terrace with vertical disp
19-May	FC20	Madamba	2 cm	143 SE	rupture	11.990556	124.01667	28.1409	house next to curb "subsided" due to detached and slanted wall
19-May	FC21	Madamba	30 cm	99 E	rupture	11.990278	124.01694	28.1836	Septic tank
19-May	FC22	Madamba	30 cm	293 NW	rupture	11.99	124.01722	28.2263	Fence next to septic tank
19-May	FC23	Concepcion, Cataingan	n/a	n/a	none	12.015556	124.00611	25.2219	erased
20-May	FC24	Cataingan	n/a	n/a	fracture	12.003333	123.99222	25.4722	road fractures with no apparent displacement; repaired with asphalt; asphalt may be showing post seismic displacement (road is 4.2m wide, line to line)
20-May	FC25	Cataingan	n/a	n/a	none	12.003056	123.99167	25.4657	none
20-May	FC26a	Cataingan	n/a	n/a	fracture	12.001111	123.9875	25.4097	road "uplifted" and cracked
20-May	FC26b	Cataingan	mm only	19 N	fracture	12.001111	123.9875	25.4097	(cont) fracture parallel to fault
20-May	FC27	Cataingan	n/a	n/a	fracture	11.999722	123.98806	25.573	road fracture with no apparent displacement across half the road
20-May	FC28	Cataingan	n/a	n/a	fracture	11.991389	123.9825	26.0701	fracture across half the road, unsure if due to earthquake
20-May	FC29	Cataingan	n/a	n/a	liquefaction	11.995278	123.98583	25.8739	several evenly spaced (4.5 m apart) fractures running across the road, no visible displacement; could be the road sections separating = spreading?; fractures ceased in front of Domorog Elem Sch then northwards up to 500m in road span
20-May	FC30	Cataingan	mm only	n/a	fracture	11.985833	123.97861	26.4127	several cracked road sections with minor (mm) verti disp; photo taken looking 300 NW; right side went down?
20-May	FC31	Cataingan	n/a	n/a	EIL	11.986667	123.98556	26.6906	adjacent EIL river side
20-May	FC32	Cataingan	n/a	n/a	shaking	11.981667	123.99	27.4121	ground shaking, no liquefaction accdg to residents
20-May	FC33	Cataingan	n/a	n/a	spreading	11.995556	123.99528	26.3804	longitudinal fractures (about 10m length) along the road parallel to shoreline; lateral spreading? subsidence? no liquefaction
20-May	FC34	Cataingan	n/a	n/a	fracture	12.001667	123.99278	25.6609	(next to big house) road fractures with verti disp?; concrete patched accdg to residents
20-May	FC35	Cataingan	n/a	n/a	none	12.006111	123.99139	25.1634	none

20-May	FC36	Cataingan	n/a	n/a	fracture	12.009444	123.98833	24.6719	<p>(on the eskinita, next to the store) longitudinal fractures terraced; no liquefaction on slope face accd to land owner but water flow increased on the creek at the foot of the slope</p> <p>first side: W dipping slope; ridge perpendicular movement direction; ridge parallel displacements; fractures trend at 180 S; trees leaning towards 254 W</p> <p>(bottom part of second side) scarp terraces; photo taken looking 333 NW; fractures striking similarly 333 NW; dip direction 63 NE; 30-45 dip angle with 1m scarp face</p> <p>(middle part) smaller displacement on this slope evidenced by less bend on trees</p> <p>(top) largest scarps of approx 2m height; ampitheater scarp about 100m width East dipping in the middle, sides are S and N dipping respectively</p> <p>combined, seems to form a circular pattern with central depression</p> <p>limestone (blocky, fractured) floats seen on regolith</p> <p>no fractures were seen on the road adjacent to the slopes (road was built before EQ)</p>
20-May	FC37a	Concepcion	n/a	n/a	sinkhole	12.008611	124.01917	26.7035	
						12.008611	124.01917	26.7035	

S2.2 Photos

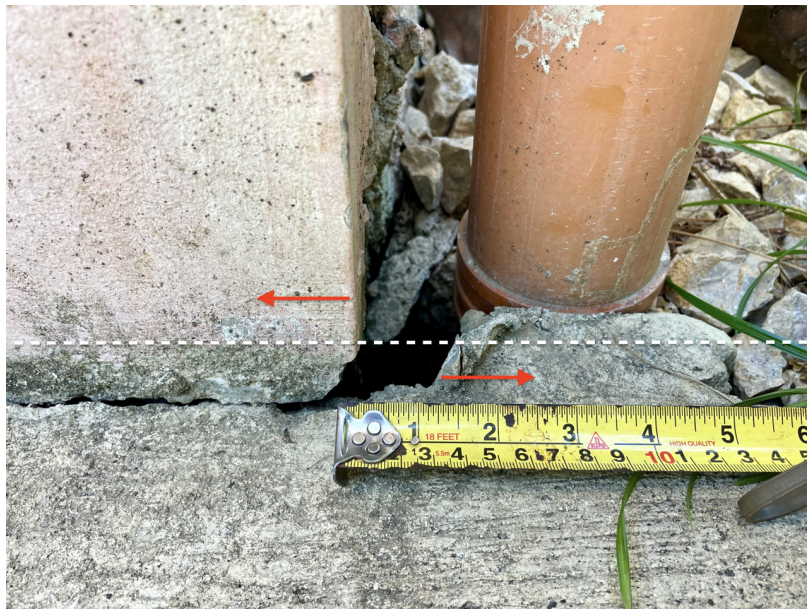


Figure S7: Pt FP1a. House separated from exterior slab showing sinistral offset.



Figure S8: Pt FP5. Ruptured road section showing sinistral offset and perpendicular separation. Point is visible in OIC.



Figure S9: Pt FC4a. Unfinished house traversed by fault with deflected wall.



Figure S10: Pt FC5. Right stepping en echelon fissures along the fault trace near the unfinished house.

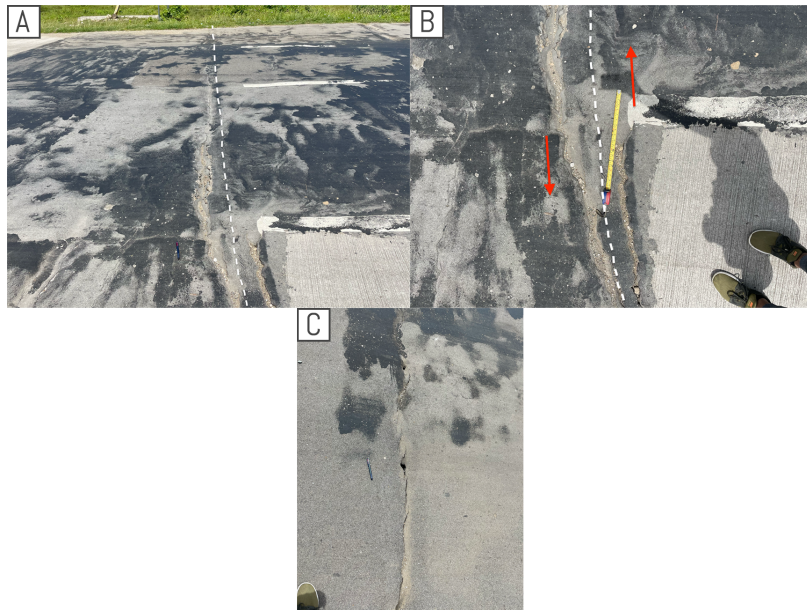


Figure S11: Pt FC11. Road traversed by fault segment that is already repaired at the time of visit. Post-seismic deformation may be seen on the asphalt.



Figure S12: Pt FC22. Fence adjacent to the septic tank showing sinistral offset.

S3 Earthquake Catalog

Table S5: Event seismicity

Date	Time (PHT)	Latitude (°N)	Longitude (°E)	Depth (km)	Magnitude	DataSource
1-Jan-19	11:39 PM	12.58	123.45	24	1.9	PHIVOLCS
2-Jan-19	11:35 PM	12.87	122.78	21	2.9	PHIVOLCS
4-Jan-19	4:51 AM	11.93	124.12	1	2	PHIVOLCS
5-Jan-19	9:05 PM	12.44	123.65	6	4	PHIVOLCS
7-Jan-19	6:01 AM	12.67	123.5	1	3.2	PHIVOLCS
10-Jan-19	5:46 PM	12.74	123.22	17	2.5	PHIVOLCS
11-Jan-19	12:29 AM	12.47	123.63	5	2.6	PHIVOLCS
14-Jan-19	2:39 PM	12.73	123.52	6	3	PHIVOLCS
17-Jan-19	12:39 AM	12.55	123.61	4	2.5	PHIVOLCS
30-Jan-19	11:49 PM	12.91	122.87	26	2.9	PHIVOLCS
5-Feb-19	11:17 PM	12.84	122.89	3	2.7	PHIVOLCS
12-Feb-19	6:47 PM	12.77	122.92	22	2.3	PHIVOLCS
18-Feb-19	11:24 PM	12.96	122.92	8	2.3	PHIVOLCS
23-Feb-19	7:59 PM	12.4	123.74	8	2.5	PHIVOLCS
26-Feb-19	5:31 PM	11.94	124.04	5	2.8	PHIVOLCS
28-Feb-19	1:36 PM	11.95	124.06	2	3.7	PHIVOLCS
1-Mar-19	9:00 AM	11.96	124.23	1	2.5	PHIVOLCS
4-Mar-19	12:35 PM	12.89	122.84	19	2.6	PHIVOLCS
8-Mar-19	3:15 AM	12.9	122.97	6	2	PHIVOLCS
8-Mar-19	5:47 PM	12.81	123.07	7	2.3	PHIVOLCS
8-Mar-19	10:36 PM	12.75	123.45	11	2.8	PHIVOLCS
19-Mar-19	4:35 PM	11.83	124.17	18	3	PHIVOLCS
20-Mar-19	1:12 PM	11.95	124.23	1	2.7	PHIVOLCS
31-Mar-19	12:57 AM	12.81	122.96	11	2.1	PHIVOLCS
3-Apr-19	5:48 AM	12.61	123.51	7	3.7	PHIVOLCS
3-Apr-19	3:56 PM	12.88	122.87	28	2.3	PHIVOLCS
4-Apr-19	3:55 AM	12.77	122.99	1	2.4	PHIVOLCS
4-Apr-19	10:54 AM	12.92	122.88	5	2.5	PHIVOLCS
7-Apr-19	8:29 PM	12.47	123.75	17	1.8	PHIVOLCS
10-Apr-19	5:16 AM	12.43	123.67	11	2.5	PHIVOLCS
12-Apr-19	7:06 PM	12.25	123.92	13	2.4	PHIVOLCS
13-Apr-19	5:34 AM	12.36	123.72	9	3.2	PHIVOLCS
17-Apr-19	5:50 PM	12.81	123.48	10	2.3	PHIVOLCS
19-Apr-19	11:13 AM	11.84	124.24	7	2.6	PHIVOLCS
21-Apr-19	8:58 AM	12.19	123.86	2	2.7	PHIVOLCS
26-Apr-19	12:38 AM	12.54	123.69	11	2.4	PHIVOLCS
28-Apr-19	6:56 PM	11.81	124.32	3	2.8	PHIVOLCS
1-May-19	12:50 AM	13.2	123.01	7	2.4	PHIVOLCS
13-May-19	3:41 PM	11.81	124.22	1	2.4	PHIVOLCS
16-May-19	1:37 AM	12.24	123.84	13	3.2	PHIVOLCS
16-May-19	9:48 PM	11.93	124.1	1	2.6	PHIVOLCS
17-May-19	12:38 PM	12.77	123	3	2.1	PHIVOLCS
19-May-19	8:36 PM	12.72	123.17	1	3.7	PHIVOLCS
20-May-19	6:45 AM	11.91	124.06	11	4.4	PHIVOLCS
21-May-19	4:51 PM	12.78	123.33	18	2.9	PHIVOLCS
1-Jun-19	4:35 AM	12.6	123.48	7	3	PHIVOLCS
3-Jun-19	5:42 PM	12.37	123.72	7	4.3	PHIVOLCS
3-Jun-19	6:56 PM	12.31	123.78	1	2.9	PHIVOLCS

4-Jun-19	12:08 AM	12.4	123.78	6	3.1	PHIVOLCS
5-Jun-19	3:25 AM	12.01	124.01	18	2.6	PHIVOLCS
7-Jun-19	7:24 AM	12.48	123.76	32	3.1	PHIVOLCS
7-Jun-19	9:42 PM	12.31	123.77	1	3	PHIVOLCS
7-Jun-19	9:46 PM	12.38	123.74	11	2.7	PHIVOLCS
8-Jun-19	8:20 PM	12.43	123.86	31	3.3	PHIVOLCS
12-Jun-19	4:19 AM	12.32	123.73	6	3.3	PHIVOLCS
12-Jun-19	5:03 AM	12.35	123.71	7	4.4	PHIVOLCS
12-Jun-19	5:08 AM	12.43	123.79	17	2.2	PHIVOLCS
12-Jun-19	5:09 AM	12.41	123.72	6	3	PHIVOLCS
12-Jun-19	5:15 AM	12.4	123.76	3	2.8	PHIVOLCS
12-Jun-19	5:36 AM	12.38	123.73	13	3.2	PHIVOLCS
12-Jun-19	6:24 AM	12.46	123.61	22	2.1	PHIVOLCS
12-Jun-19	7:02 AM	12.31	123.74	8	4.1	PHIVOLCS
12-Jun-19	3:54 PM	12.42	123.59	31	2.5	PHIVOLCS
13-Jun-19	11:43 AM	12.34	123.76	24	2.3	PHIVOLCS
13-Jun-19	6:53 PM	11.93	124.06	3	3.3	PHIVOLCS
13-Jun-19	11:43 PM	12.31	123.81	2	2.3	PHIVOLCS
14-Jun-19	1:19 AM	11.92	124.1	1	3	PHIVOLCS
14-Jun-19	1:37 AM	11.9	124.05	1	2.3	PHIVOLCS
14-Jun-19	1:42 AM	11.91	124.1	1	2.8	PHIVOLCS
14-Jun-19	2:11 AM	12.46	123.73	24	2.6	PHIVOLCS
14-Jun-19	5:39 AM	11.93	124.04	4	1.8	PHIVOLCS
14-Jun-19	4:38 PM	12.62	123.62	27	2.9	PHIVOLCS
26-Jun-19	12:30 AM	12.44	123.63	21	1.8	PHIVOLCS
26-Jun-19	1:45 AM	12.39	123.65	12	2.2	PHIVOLCS
10-Jul-19	3:38 AM	12.84	123.54	5	3.1	PHIVOLCS
10-Jul-19	10:37 PM	11.92	124.1	1	2.1	PHIVOLCS
11-Jul-19	12:58 AM	11.86	124.13	9	3.2	PHIVOLCS
11-Jul-19	1:46 AM	11.9	124.11	21	2.2	PHIVOLCS
16-Jul-19	3:42 AM	11.78	124.2	7	2.8	PHIVOLCS
21-Jul-19	6:35 PM	11.67	124.15	3	2.3	PHIVOLCS
29-Jul-19	7:07 PM	12.15	124.03	7	3.2	PHIVOLCS
25-Aug-19	4:31 AM	11.95	123.95	28	2	PHIVOLCS
30-Aug-19	2:48 AM	12.88	122.89	14	1.9	PHIVOLCS
31-Aug-19	9:44 PM	11.86	124.23	1	2.4	PHIVOLCS
2-Sep-19	11:10 AM	12.04	124.01	16	4	PHIVOLCS
2-Sep-19	11:33 AM	12.08	124	17	1.9	PHIVOLCS
3-Sep-19	11:41 AM	11.99	123.99	2	3	PHIVOLCS
3-Sep-19	11:43 AM	12.24	124.04	89	2.6	PHIVOLCS
4-Sep-19	11:21 PM	12.1	123.92	1	2.1	PHIVOLCS
14-Sep-19	11:20 PM	12.54	123.73	50	2.3	PHIVOLCS
16-Sep-19	6:54 AM	12	124	1	2.2	PHIVOLCS
17-Sep-19	9:23 PM	11.86	124.11	7	2.4	PHIVOLCS
28-Sep-19	5:22 PM	12.85	123.38	33	2.7	PHIVOLCS
6-Oct-19	9:51 AM	12.98	122.68	1	3	PHIVOLCS
7-Oct-19	7:24 PM	12.73	123.59	6	2.9	PHIVOLCS
10-Oct-19	11:20 AM	11.74	124.19	18	2.4	PHIVOLCS
11-Oct-19	11:37 AM	11.83	124.14	9	2.8	PHIVOLCS
14-Oct-19	5:18 PM	12.89	123.29	2	2.7	PHIVOLCS
16-Oct-19	1:45 AM	12.93	123.34	4	3	PHIVOLCS
3-Nov-19	11:19 PM	12.99	123.21	21	2.3	PHIVOLCS
4-Nov-19	7:01 AM	12.44	123.38	2	2.8	PHIVOLCS
11-Nov-19	11:26 PM	12.93	122.88	11	3	PHIVOLCS
23-Nov-19	11:04 AM	11.94	124.01	2	4.2	PHIVOLCS
23-Nov-19	11:36 AM	11.92	124.04	2	3.5	PHIVOLCS

25-Nov-19	6:16 AM	12.21	123.65	48	2.4	PHIVOLCS
25-Nov-19	9:31 AM	12.02	124	1	2.1	PHIVOLCS
17-Dec-19	8:35 AM	11.98	124.07	7	2.7	PHIVOLCS
18-Jan-20	10:33 AM	11.93	124.14	1	2.4	PHIVOLCS
23-Jan-20	9:05 PM	12.64	123.34	13	4.6	PHIVOLCS
24-Jan-20	6:36 AM	12.54	123.6	1	2.8	PHIVOLCS
29-Jan-20	8:53 AM	11.93	124.05	0	2	PHIVOLCS
30-Jan-20	5:50 PM	11.85	124.13	6	2.8	PHIVOLCS
3-Feb-20	1:00 AM	12.68	123.57	4	2.4	PHIVOLCS
3-Feb-20	2:20 AM	12.69	123.53	5	2.9	PHIVOLCS
16-Mar-20	6:07 AM	12.81	123.01	4	3.9	PHIVOLCS
21-Mar-20	5:01 AM	12.49	123.59	3	3.1	PHIVOLCS
21-Mar-20	7:57 PM	12.45	123.67	1	1.8	PHIVOLCS
22-Mar-20	3:04 AM	12.52	123.56	1	2.3	PHIVOLCS
22-Mar-20	5:45 PM	12.71	123.67	1	1.9	PHIVOLCS
22-Mar-20	8:50 PM	12.52	123.53	1	3.4	PHIVOLCS
23-Mar-20	7:51 AM	13.18	122.83	107	2.1	PHIVOLCS
24-Mar-20	1:51 AM	11.73	124.27	8	2.4	PHIVOLCS
1-Apr-20	11:15 PM	12.74	123.38	4	3	PHIVOLCS
14-Apr-20	11:21 PM	12.33	123.72	3	3.5	PHIVOLCS
26-Apr-20	12:49 AM	11.95	124.05	17	2.6	PHIVOLCS
29-Apr-20	8:26 AM	12.58	123.53	5	2.1	PHIVOLCS
2-May-20	4:12 AM	12.44	123.7	13	2.3	PHIVOLCS
6-May-20	6:20 PM	12.9	122.6	16	2.2	PHIVOLCS
9-May-20	12:56 PM	12.76	123.4	11	2.9	PHIVOLCS
9-May-20	1:21 PM	12.86	123.45	14	3	PHIVOLCS
10-May-20	2:39 AM	12.73	123.41	2	3.3	PHIVOLCS
10-May-20	3:56 AM	12.74	123.39	6	4.2	PHIVOLCS
12-May-20	11:23 PM	12.76	123.45	5	2.6	PHIVOLCS
13-May-20	2:47 AM	12.76	123.41	6	3.4	PHIVOLCS
13-May-20	11:01 PM	12.78	123.09	4	1.5	PHIVOLCS
14-May-20	5:41 PM	12.68	123.32	35	2.1	PHIVOLCS
15-May-20	11:13 AM	12.01	124.03	15	2.4	PHIVOLCS
22-May-20	2:12 AM	11.86	124.15	1	2	PHIVOLCS
23-May-20	5:19 AM	11.75	124.18	23	1.6	PHIVOLCS
24-May-20	10:55 AM	11.9	124.33	5	2.9	PHIVOLCS
31-May-20	1:18 AM	11.87	124.14	1	2.4	PHIVOLCS
8-Jun-20	2:58 AM	12.81	122.93	11	2.9	PHIVOLCS
11-Jun-20	10:52 PM	12.22	124.03	79	2.5	PHIVOLCS
15-Jun-20	7:26 AM	11.73	124.26	12	2.6	PHIVOLCS
16-Jun-20	5:36 PM	12.63	123.52	9	2.5	PHIVOLCS
17-Jun-20	6:53 PM	12.29	123.85	27	2	PHIVOLCS
17-Jun-20	10:03 PM	12.37	123.75	16	2.1	PHIVOLCS
18-Jun-20	3:23 AM	12.41	123.79	19	1.9	PHIVOLCS
24-Jun-20	5:37 AM	12.98	123.24	71	1.9	PHIVOLCS
24-Jun-20	11:25 PM	12.8	123.14	30	2	PHIVOLCS
5-Jul-20	12:46 PM	12.67	123.59	34	2.3	PHIVOLCS
5-Jul-20	5:56 PM	12.85	122.62	29	2.1	PHIVOLCS
10-Jul-20	9:46 AM	11.94	124.08	1	3.3	PHIVOLCS
10-Jul-20	10:01 AM	12.25	123.89	70	2.8	PHIVOLCS
10-Jul-20	10:25 AM	12.01	124.06	16	2.9	PHIVOLCS
10-Jul-20	11:35 AM	12.02	124.04	21	3	PHIVOLCS
19-Jul-20	9:26 AM	12.6	123.72	27	2.2	PHIVOLCS
21-Jul-20	11:17 AM	12.87	123.43	23	2.7	PHIVOLCS
2-Aug-20	8:44 PM	12.82	123.42	7	2.2	PHIVOLCS
4-Aug-20	2:18 AM	11.69	124.19	28	2.9	PHIVOLCS

10-Aug-20	11:32 AM	12.57	123.49	2	2.9	PHIVOLCS
11-Aug-20	4:43 AM	11.93	124.04	6	4	PHIVOLCS
11-Aug-20	3:26 PM	11.95	124.05	7	4.9	PHIVOLCS
12-Aug-20	4:50 PM	11.93	124.08	1	2.5	PHIVOLCS
12-Aug-20	7:41 PM	11.92	124.02	28	2.2	PHIVOLCS
14-Aug-20	8:24 PM	12.02	124.03	17	3.1	PHIVOLCS
15-Aug-20	8:07 PM	11.98	124.06	8	2	PHIVOLCS
16-Aug-20	5:05 PM	12.83	123.36	6	3.3	PHIVOLCS
17-Aug-20	1:21 PM	11.93	123.98	9	4.6	PHIVOLCS
17-Aug-20	1:23 PM	11.99	124.06	6	2.9	PHIVOLCS
17-Aug-20	1:33 PM	11.89	124.27	15	2.4	PHIVOLCS
17-Aug-20	1:49 PM	11.95	124.03	4	3.5	PHIVOLCS
17-Aug-20	2:05 PM	12.1	123.87	36	2.5	PHIVOLCS
17-Aug-20	5:19 PM	11.93	124.05	4	3.2	PHIVOLCS
18-Aug-20	8:03 AM	11.98	124.01	13	6.6	PHIVOLCS
18-Aug-20	8:03 AM	12.0257	124.1272	10	6.6	USGS
18-Aug-20	8:03 AM	12.04	123.98	12	6.6	Global CMT
18-Aug-20	8:23 AM	12.13	123.95	15	4.1	PHIVOLCS
18-Aug-20	8:28 AM	12.14	123.96	16	3.1	PHIVOLCS
18-Aug-20	8:40 AM	11.96	124.03	3	3.7	PHIVOLCS
18-Aug-20	8:53 AM	11.94	124.07	15	3.6	PHIVOLCS
18-Aug-20	9:08 AM	11.94	124.09	15	3.2	PHIVOLCS
18-Aug-20	9:11 AM	11.88	124.12	22	3.1	PHIVOLCS
18-Aug-20	9:13 AM	11.87	124.17	1	2.1	PHIVOLCS
18-Aug-20	9:24 AM	11.9	124.13	8	2	PHIVOLCS
18-Aug-20	9:25 AM	11.84	124.16	12	3.4	PHIVOLCS
18-Aug-20	9:28 AM	11.89	124.1	10	3.4	PHIVOLCS
18-Aug-20	9:33 AM	12.1	123.99	24	2.5	PHIVOLCS
18-Aug-20	9:42 AM	12.21	123.89	19	3.5	PHIVOLCS
18-Aug-20	9:49 AM	11.83	124.13	13	3.8	PHIVOLCS
18-Aug-20	10:01 AM	12.19	123.92	25	3.3	PHIVOLCS
18-Aug-20	10:06 AM	11.98	124.12	1	2.8	PHIVOLCS
18-Aug-20	10:21 AM	11.91	124.02	18	2.3	PHIVOLCS
18-Aug-20	10:34 AM	11.91	124.16	14	2.9	PHIVOLCS
18-Aug-20	10:45 AM	11.88	124.07	28	2.6	PHIVOLCS
18-Aug-20	10:47 AM	11.83	124.15	1	3.4	PHIVOLCS
18-Aug-20	11:04 AM	11.88	124.14	1	2.8	PHIVOLCS
18-Aug-20	11:18 AM	11.95	123.78	1	2.3	PHIVOLCS
18-Aug-20	11:20 AM	12.04	123.94	19	1.9	PHIVOLCS
18-Aug-20	11:21 AM	11.98	124.02	1	2.6	PHIVOLCS
18-Aug-20	11:45 AM	11.98	124	7	3.2	PHIVOLCS
18-Aug-20	11:51 AM	12.06	123.98	23	3.1	PHIVOLCS
18-Aug-20	12:11 PM	11.87	124.02	27	2.7	PHIVOLCS
18-Aug-20	12:48 PM	11.99	124.01	23	2.3	PHIVOLCS
18-Aug-20	12:54 PM	11.99	124.05	5	3.1	PHIVOLCS
18-Aug-20	12:58 PM	12.09	124.01	22	1.8	PHIVOLCS
18-Aug-20	1:08 PM	11.97	124.05	24	2	PHIVOLCS
18-Aug-20	1:15 PM	11.97	124.07	11	3.8	PHIVOLCS
18-Aug-20	2:52 PM	11.94	124.08	27	2.7	PHIVOLCS
18-Aug-20	2:57 PM	11.98	123.77	25	2.8	PHIVOLCS
18-Aug-20	3:03 PM	12.04	123.88	3	2.8	PHIVOLCS
18-Aug-20	3:24 PM	11.83	124.11	1	3.9	PHIVOLCS
18-Aug-20	3:42 PM	11.97	124.09	8	3.7	PHIVOLCS
18-Aug-20	4:04 PM	11.97	124.03	11	4.2	PHIVOLCS
18-Aug-20	4:15 PM	11.86	124.13	7	2.5	PHIVOLCS
18-Aug-20	4:16 PM	12.2	123.94	27	2.2	PHIVOLCS

18-Aug-20	4:17 PM	12.09	123.65	38	2.4	PHIVOLCS
18-Aug-20	4:28 PM	11.88	124.11	14	3.1	PHIVOLCS
18-Aug-20	4:31 PM	11.94	124.04	22	2.2	PHIVOLCS
18-Aug-20	4:46 PM	11.86	124.07	1	2.5	PHIVOLCS
18-Aug-20	4:48 PM	11.85	124.22	5	3	PHIVOLCS
18-Aug-20	5:20 PM	11.85	124.07	2	3.6	PHIVOLCS
18-Aug-20	5:22 PM	11.85	124.13	1	3	PHIVOLCS
18-Aug-20	5:42 PM	11.91	124.12	4	3.4	PHIVOLCS
18-Aug-20	5:46 PM	11.88	124.11	12	3.2	PHIVOLCS
18-Aug-20	5:49 PM	12.09	123.83	50	2.4	PHIVOLCS
18-Aug-20	5:57 PM	11.84	124.16	6	2.7	PHIVOLCS
18-Aug-20	6:00 PM	11.87	124.16	16	2.9	PHIVOLCS
18-Aug-20	6:05 PM	11.89	124.21	19	2.8	PHIVOLCS
18-Aug-20	6:18 PM	11.91	124.07	2	4.4	PHIVOLCS
18-Aug-20	6:38 PM	11.89	124.09	17	2.6	PHIVOLCS
18-Aug-20	6:48 PM	11.91	124.1	16	2.6	PHIVOLCS
18-Aug-20	6:59 PM	12.04	124.07	6	2.5	PHIVOLCS
18-Aug-20	7:14 PM	11.93	123.91	25	2.7	PHIVOLCS
18-Aug-20	7:21 PM	12.01	124.05	15	3.9	PHIVOLCS
18-Aug-20	7:29 PM	12.04	124.04	7	3.3	PHIVOLCS
18-Aug-20	7:31 PM	12	124.09	7	2.5	PHIVOLCS
18-Aug-20	7:33 PM	11.89	124.16	2	3.1	PHIVOLCS
18-Aug-20	7:46 PM	11.83	124.13	8	2.9	PHIVOLCS
18-Aug-20	7:58 PM	11.89	124.17	1	2.6	PHIVOLCS
18-Aug-20	8:02 PM	11.91	124.02	1	2	PHIVOLCS
18-Aug-20	8:09 PM	11.93	124.11	33	2.4	PHIVOLCS
18-Aug-20	8:17 PM	12.1	123.96	24	1.9	PHIVOLCS
18-Aug-20	8:24 PM	12.07	123.93	24	2.1	PHIVOLCS
18-Aug-20	8:25 PM	12.25	123.89	71	1.9	PHIVOLCS
18-Aug-20	8:29 PM	11.8	124.2	1	2.8	PHIVOLCS
18-Aug-20	8:48 PM	12.02	124.08	10	2.2	PHIVOLCS
18-Aug-20	8:59 PM	11.9	124.01	21	2.8	PHIVOLCS
18-Aug-20	9:13 PM	11.89	124	28	2.4	PHIVOLCS
18-Aug-20	9:23 PM	11.94	124	3	2	PHIVOLCS
18-Aug-20	9:43 PM	11.85	123.94	25	2.6	PHIVOLCS
18-Aug-20	9:47 PM	12.03	124.08	18	2.1	PHIVOLCS
18-Aug-20	9:55 PM	12.1	123.95	12	3.5	PHIVOLCS
18-Aug-20	10:01 PM	11.93	124.07	2	3	PHIVOLCS
18-Aug-20	10:18 PM	12.08	124	22	2.9	PHIVOLCS
18-Aug-20	10:28 PM	11.86	124.11	9	3.7	PHIVOLCS
18-Aug-20	10:38 PM	11.86	124.2	5	2.1	PHIVOLCS
18-Aug-20	10:40 PM	11.84	124.01	23	2.1	PHIVOLCS
18-Aug-20	10:55 PM	11.88	124.1	7	2.8	PHIVOLCS
18-Aug-20	10:58 PM	11.86	124.14	7	3.3	PHIVOLCS
18-Aug-20	11:01 PM	12.15	123.93	15	3	PHIVOLCS
18-Aug-20	11:15 PM	12.81	123.33	12	3.4	PHIVOLCS
18-Aug-20	11:17 PM	12.84	123.36	8	2.9	PHIVOLCS
18-Aug-20	11:23 PM	11.86	124.16	1	3.6	PHIVOLCS
18-Aug-20	11:27 PM	11.81	124.13	1	3.4	PHIVOLCS
18-Aug-20	11:38 PM	11.85	124.11	2	3.1	PHIVOLCS
18-Aug-20	11:40 PM	11.88	124.1	15	3.5	PHIVOLCS
18-Aug-20	11:56 PM	12.04	123.99	12	3.3	PHIVOLCS
19-Aug-20	12:21 AM	12.01	123.73	57	2.3	PHIVOLCS
19-Aug-20	12:31 AM	12.03	124.05	13	2.5	PHIVOLCS
19-Aug-20	12:45 AM	11.85	124.15	6	2.3	PHIVOLCS
19-Aug-20	12:46 AM	12.19	123.94	17	3.7	PHIVOLCS

19-Aug-20	1:00 AM	11.93	124.11	1	2.9	PHIVOLCS
19-Aug-20	1:03 AM	11.89	124.08	0	2.2	PHIVOLCS
19-Aug-20	1:05 AM	11.87	124.17	5	2.4	PHIVOLCS
19-Aug-20	1:19 AM	11.9	124.1	4	2.6	PHIVOLCS
19-Aug-20	1:31 AM	12.08	124.01	22	2.3	PHIVOLCS
19-Aug-20	1:37 AM	11.94	124.02	29	2.1	PHIVOLCS
19-Aug-20	2:00 AM	11.85	124.22	8	3	PHIVOLCS
19-Aug-20	2:28 AM	11.84	124.14	11	4	PHIVOLCS
19-Aug-20	2:53 AM	11.91	124.07	3	2.8	PHIVOLCS
19-Aug-20	2:59 AM	11.92	124.08	7	2.3	PHIVOLCS
19-Aug-20	3:06 AM	11.99	124.11	20	2.6	PHIVOLCS
19-Aug-20	3:09 AM	11.91	124.08	1	2.4	PHIVOLCS
19-Aug-20	3:11 AM	11.93	124.07	7	2.9	PHIVOLCS
19-Aug-20	3:20 AM	11.92	124.09	12	2.6	PHIVOLCS
19-Aug-20	3:49 AM	11.99	124.08	22	2.9	PHIVOLCS
19-Aug-20	3:53 AM	11.96	124.11	2	2.5	PHIVOLCS
19-Aug-20	3:58 AM	11.97	124.07	10	2.5	PHIVOLCS
19-Aug-20	4:06 AM	12.17	123.92	26	3	PHIVOLCS
19-Aug-20	4:29 AM	11.93	124.11	17	3.3	PHIVOLCS
19-Aug-20	4:52 AM	11.87	124.1	7	3.3	PHIVOLCS
19-Aug-20	5:11 AM	11.95	124.05	11	2.5	PHIVOLCS
19-Aug-20	5:13 AM	11.88	124.12	7	3	PHIVOLCS
19-Aug-20	5:31 AM	11.95	124.05	13	3.8	PHIVOLCS
19-Aug-20	5:39 AM	12.11	123.99	15	3.3	PHIVOLCS
19-Aug-20	5:41 AM	11.95	124.06	1	2.3	PHIVOLCS
19-Aug-20	5:50 AM	11.86	124.07	2	5.1	PHIVOLCS
19-Aug-20	5:57 AM	11.84	124.13	6	4.4	PHIVOLCS
19-Aug-20	6:57 AM	11.89	124.08	1	2.8	PHIVOLCS
19-Aug-20	7:06 AM	11.96	123.99	18	2.1	PHIVOLCS
19-Aug-20	7:10 AM	11.88	124.05	4	2.8	PHIVOLCS
19-Aug-20	7:17 AM	11.85	124.09	14	3.6	PHIVOLCS
19-Aug-20	7:20 AM	11.87	124.06	8	2.9	PHIVOLCS
19-Aug-20	8:20 AM	12.03	124.11	18	2.1	PHIVOLCS
19-Aug-20	8:36 AM	11.98	124.06	21	2.8	PHIVOLCS
19-Aug-20	9:23 AM	11.96	124.05	1	3.4	PHIVOLCS
19-Aug-20	10:50 AM	11.84	124.11	10	2.9	PHIVOLCS
19-Aug-20	1:08 PM	11.82	124.14	1	2.6	PHIVOLCS
19-Aug-20	3:26 PM	12.05	124.02	22	3	PHIVOLCS
19-Aug-20	6:04 PM	11.87	124.15	17	3.9	PHIVOLCS
19-Aug-20	6:32 PM	12.05	123.98	30	2.2	PHIVOLCS
19-Aug-20	7:26 PM	12.07	123.99	7	2.1	PHIVOLCS
19-Aug-20	8:00 PM	12.31	123.86	15	2.9	PHIVOLCS
19-Aug-20	10:54 PM	11.89	124.04	1	3.3	PHIVOLCS
20-Aug-20	12:29 AM	11.92	124.08	2	3.7	PHIVOLCS
20-Aug-20	2:57 AM	11.88	124.08	1	3.4	PHIVOLCS
20-Aug-20	3:28 AM	11.8	124.18	16	3.3	PHIVOLCS
20-Aug-20	7:02 AM	12.12	123.96	14	2.6	PHIVOLCS
20-Aug-20	8:33 AM	12.1	123.93	1	2.7	PHIVOLCS
20-Aug-20	9:45 AM	12.01	124.03	20	3	PHIVOLCS
20-Aug-20	10:43 AM	12.03	123.89	26	2.2	PHIVOLCS
20-Aug-20	12:39 PM	11.95	123.96	24	2.3	PHIVOLCS
20-Aug-20	3:33 PM	11.97	124.01	17	2.8	PHIVOLCS
20-Aug-20	3:52 PM	12.46	123.2	26	2.4	PHIVOLCS
20-Aug-20	6:40 PM	11.72	124.16	16	3.6	PHIVOLCS
20-Aug-20	7:20 PM	12.07	123.95	1	2.6	PHIVOLCS
20-Aug-20	7:45 PM	11.87	124.1	13	2	PHIVOLCS

20-Aug-20	8:28 PM	11.82	124.16	1	2.4	PHIVOLCS
20-Aug-20	10:07 PM	11.85	124.18	1	3	PHIVOLCS
20-Aug-20	10:19 PM	11.82	124.18	6	2.9	PHIVOLCS
20-Aug-20	11:09 PM	12.13	123.98	17	3.2	PHIVOLCS
20-Aug-20	11:45 PM	12.01	124.02	11	2	PHIVOLCS
20-Aug-20	11:48 PM	11.96	124.01	7	2.7	PHIVOLCS
21-Aug-20	12:21 AM	12.02	124	1	2.2	PHIVOLCS
21-Aug-20	12:30 AM	12.12	123.97	18	3.4	PHIVOLCS
21-Aug-20	1:20 AM	12.13	124.03	19	2.7	PHIVOLCS
21-Aug-20	1:25 AM	12.32	123.82	16	4	PHIVOLCS
21-Aug-20	3:15 AM	13.09	122.59	1	2.6	PHIVOLCS
21-Aug-20	3:51 AM	11.79	124.11	6	2.8	PHIVOLCS
21-Aug-20	3:59 AM	11.92	124.09	1	2.7	PHIVOLCS
21-Aug-20	4:21 AM	11.8	124.24	9	2.6	PHIVOLCS
21-Aug-20	9:02 AM	11.91	124.08	12	3.8	PHIVOLCS
21-Aug-20	9:03 AM	12.21	124.02	14	2.6	PHIVOLCS
21-Aug-20	9:11 AM	11.97	124.05	18	3	PHIVOLCS
21-Aug-20	9:53 AM	12.7	123.2	8	3.1	PHIVOLCS
21-Aug-20	11:54 AM	11.97	123.97	19	2.2	PHIVOLCS
21-Aug-20	4:01 PM	11.94	124.06	11	4.1	PHIVOLCS
21-Aug-20	8:00 PM	11.83	124.16	1	3	PHIVOLCS
21-Aug-20	8:36 PM	12.12	123.86	32	2.7	PHIVOLCS
21-Aug-20	8:49 PM	12.01	124.08	6	3.5	PHIVOLCS
21-Aug-20	9:07 PM	11.88	124.1	7	3.7	PHIVOLCS
21-Aug-20	10:20 PM	12.2	123.88	29	2.6	PHIVOLCS
21-Aug-20	11:25 PM	11.81	124.23	1	2	PHIVOLCS
22-Aug-20	12:06 AM	11.99	124.13	21	2.4	PHIVOLCS
22-Aug-20	1:52 AM	12.23	123.89	25	2.1	PHIVOLCS
22-Aug-20	1:52 AM	12.23	123.89	25	2.1	PHIVOLCS
22-Aug-20	3:27 AM	11.83	124.24	3	2.6	PHIVOLCS
22-Aug-20	5:29 AM	11.98	124.01	1	2.1	PHIVOLCS
22-Aug-20	7:08 AM	12.03	124.02	11	3.2	PHIVOLCS
22-Aug-20	9:22 AM	11.83	123.97	1	2.4	PHIVOLCS
22-Aug-20	3:10 PM	11.94	124.13	5	2.9	PHIVOLCS
22-Aug-20	5:23 PM	12.14	123.99	18	1.9	PHIVOLCS
22-Aug-20	7:12 PM	12.13	123.99	20	2.9	PHIVOLCS
22-Aug-20	8:59 PM	12	124	19	2.5	PHIVOLCS
22-Aug-20	9:51 PM	12.05	123.98	1	3	PHIVOLCS
22-Aug-20	10:06 PM	12.02	124.01	15	3.6	PHIVOLCS
22-Aug-20	10:10 PM	12.01	124.04	9	2.5	PHIVOLCS
22-Aug-20	11:10 PM	12.25	123.84	20	3.1	PHIVOLCS
22-Aug-20	11:40 PM	11.88	124.31	15	2.1	PHIVOLCS
22-Aug-20	11:45 PM	12.09	124.06	21	2.7	PHIVOLCS
22-Aug-20	11:52 PM	12.01	124.11	15	2.1	PHIVOLCS
23-Aug-20	1:07 AM	11.87	124.11	3	2.3	PHIVOLCS
23-Aug-20	2:50 AM	12.11	123.99	15	2.4	PHIVOLCS
23-Aug-20	3:58 AM	12.1	123.93	24	2.4	PHIVOLCS
23-Aug-20	6:28 AM	12.39	123.74	37	3.5	PHIVOLCS
23-Aug-20	6:45 AM	12.11	124.04	18	2.8	PHIVOLCS
23-Aug-20	7:10 AM	11.84	124.11	2	2.8	PHIVOLCS
23-Aug-20	7:25 AM	12.12	123.9	25	3.2	PHIVOLCS
23-Aug-20	11:01 AM	11.84	124.18	21	3.1	PHIVOLCS
23-Aug-20	12:13 PM	11.89	124.19	17	2.2	PHIVOLCS
23-Aug-20	2:43 PM	12.06	123.99	24	3	PHIVOLCS
23-Aug-20	2:47 PM	12.13	123.99	12	3	PHIVOLCS
23-Aug-20	3:07 PM	11.95	124.17	22	2.5	PHIVOLCS

23-Aug-20	3:08 PM	12.09	124.03	28	3.1	PHIVOLCS
23-Aug-20	7:03 PM	12.05	123.94	1	2.9	PHIVOLCS
23-Aug-20	7:27 PM	11.9	124.14	1	3	PHIVOLCS
23-Aug-20	9:45 PM	12.13	123.93	27	2.4	PHIVOLCS
23-Aug-20	10:18 PM	11.88	124.06	5	3.9	PHIVOLCS
23-Aug-20	10:25 PM	11.88	124.05	5	3.5	PHIVOLCS
24-Aug-20	1:13 AM	11.99	123.8	40	2.4	PHIVOLCS
24-Aug-20	1:39 AM	11.9	124.1	4	2.2	PHIVOLCS
24-Aug-20	2:06 AM	12.18	123.88	33	2.4	PHIVOLCS
24-Aug-20	2:28 AM	11.98	124.03	1	2.8	PHIVOLCS
24-Aug-20	3:14 AM	12.06	123.91	1	1.9	PHIVOLCS
24-Aug-20	7:39 AM	11.9	124.15	1	2.4	PHIVOLCS
24-Aug-20	11:36 AM	12.38	123.85	9	2.2	PHIVOLCS
24-Aug-20	11:43 AM	12.06	123.98	5	2.7	PHIVOLCS
24-Aug-20	1:26 PM	12.09	124.06	9	2	PHIVOLCS
24-Aug-20	7:11 PM	11.98	124.04	1	3	PHIVOLCS
24-Aug-20	10:01 PM	11.82	124.22	2	3.1	PHIVOLCS
25-Aug-20	1:34 AM	12.23	123.89	23	3	PHIVOLCS
25-Aug-20	1:41 AM	12.13	123.98	38	3	PHIVOLCS
25-Aug-20	4:19 AM	12.27	123.84	16	3.7	PHIVOLCS
25-Aug-20	10:30 AM	12	124.06	2	2.8	PHIVOLCS
25-Aug-20	7:46 PM	11.78	124.17	16	2.6	PHIVOLCS
25-Aug-20	8:15 PM	12.1	123.91	1	3.8	PHIVOLCS
25-Aug-20	8:19 PM	12.05	124.11	14	2.6	PHIVOLCS
26-Aug-20	1:30 AM	11.91	124.08	1	2.8	PHIVOLCS
26-Aug-20	3:16 AM	12.25	123.7	30	2.6	PHIVOLCS
26-Aug-20	3:19 AM	12.28	123.84	16	3.5	PHIVOLCS
26-Aug-20	5:08 AM	12.47	123.67	22	2.2	PHIVOLCS
26-Aug-20	8:12 AM	12.17	123.93	21	3.8	PHIVOLCS
26-Aug-20	1:08 PM	12.22	123.97	12	2.6	PHIVOLCS
26-Aug-20	3:03 PM	12.01	124.02	15	2.4	PHIVOLCS
26-Aug-20	7:21 PM	12.07	124.01	10	3.5	PHIVOLCS
26-Aug-20	7:28 PM	12.05	123.97	1	2.9	PHIVOLCS
26-Aug-20	10:32 PM	11.86	124.12	7	3.3	PHIVOLCS
27-Aug-20	1:54 AM	12.1	123.98	33	2.5	PHIVOLCS
27-Aug-20	2:09 AM	12.14	124	13	2.6	PHIVOLCS
27-Aug-20	6:35 AM	12.12	124.01	15	2.6	PHIVOLCS
27-Aug-20	11:59 AM	12.12	123.92	22	2.2	PHIVOLCS
27-Aug-20	9:38 PM	11.86	124.19	1	2.1	PHIVOLCS
27-Aug-20	11:15 PM	11.82	124.17	17	3.8	PHIVOLCS
27-Aug-20	11:23 PM	11.85	124.19	1	2.1	PHIVOLCS
28-Aug-20	4:30 AM	11.91	124.12	1	2.5	PHIVOLCS
28-Aug-20	4:49 AM	12.02	124.01	19	2.8	PHIVOLCS
28-Aug-20	8:01 PM	12.01	124.08	17	2.5	PHIVOLCS
28-Aug-20	8:15 PM	12.18	123.85	29	2.3	PHIVOLCS
29-Aug-20	4:56 AM	12.15	123.79	33	2.2	PHIVOLCS
29-Aug-20	6:12 PM	12.16	123.92	8	2.5	PHIVOLCS
29-Aug-20	7:35 PM	12.09	124.02	10	2.5	PHIVOLCS
30-Aug-20	12:04 AM	11.93	124.07	18	3.5	PHIVOLCS
31-Aug-20	10:23 AM	12.17	123.98	19	2.4	PHIVOLCS
31-Aug-20	7:44 PM	12.29	123.85	21	2.4	PHIVOLCS
1-Sep-20	9:44 AM	12.07	123.96	27	3.2	PHIVOLCS
1-Sep-20	12:22 PM	11.95	124.01	4	4.1	PHIVOLCS
1-Sep-20	7:04 PM	12.2	123.71	1	2.6	PHIVOLCS
2-Sep-20	9:54 AM	12.52	123.82	19	2.1	PHIVOLCS
2-Sep-20	10:53 AM	12.08	123.9	1	2.4	PHIVOLCS

2-Sep-20	4:39 PM	12.18	123.99	17	2.2	PHIVOLCS
2-Sep-20	9:25 PM	11.88	124.12	17	2.8	PHIVOLCS
2-Sep-20	9:47 PM	12.06	124.05	2	2	PHIVOLCS
3-Sep-20	7:41 AM	11.83	124.08	2	3.1	PHIVOLCS
3-Sep-20	8:35 PM	12.16	123.96	10	2.8	PHIVOLCS
3-Sep-20	11:16 PM	12.05	124.05	24	2.7	PHIVOLCS
4-Sep-20	7:19 PM	11.9	124.04	8	2.2	PHIVOLCS
5-Sep-20	12:09 PM	11.72	124.24	10	2.9	PHIVOLCS
5-Sep-20	8:20 PM	12.04	124.07	24	2.2	PHIVOLCS
5-Sep-20	8:39 PM	11.98	124.06	2	2.5	PHIVOLCS
5-Sep-20	9:15 PM	11.98	124.07	1	2.2	PHIVOLCS
6-Sep-20	7:45 AM	12.44	123.86	93	2.2	PHIVOLCS
6-Sep-20	8:40 AM	11.86	124.12	1	3.2	PHIVOLCS
6-Sep-20	4:42 PM	12.27	123.88	14	2.4	PHIVOLCS
7-Sep-20	3:48 AM	12.11	124	11	2.8	PHIVOLCS
7-Sep-20	11:44 AM	11.97	124.04	1	3.1	PHIVOLCS
7-Sep-20	11:55 AM	12.46	123.75	24	2.8	PHIVOLCS
8-Sep-20	12:28 AM	11.85	124.01	25	2.6	PHIVOLCS
8-Sep-20	9:54 AM	12.18	123.95	23	2.5	PHIVOLCS
8-Sep-20	9:56 AM	12.09	124.04	12	2.7	PHIVOLCS
8-Sep-20	11:19 AM	12.07	124.01	1	2.4	PHIVOLCS
8-Sep-20	12:04 PM	11.97	124.06	5	3.4	PHIVOLCS
8-Sep-20	1:14 PM	12.29	123.96	66	2.6	PHIVOLCS
8-Sep-20	2:23 PM	12.05	124.05	18	2.7	PHIVOLCS
8-Sep-20	6:02 PM	12.09	124.01	16	3.4	PHIVOLCS
8-Sep-20	6:41 PM	11.94	124.12	18	2.6	PHIVOLCS
8-Sep-20	6:43 PM	11.97	124.11	12	3.1	PHIVOLCS
8-Sep-20	7:35 PM	12.09	123.97	1	1.9	PHIVOLCS
8-Sep-20	7:43 PM	12.07	124.06	15	2.6	PHIVOLCS
8-Sep-20	9:45 PM	12.13	123.9	1	2.5	PHIVOLCS
9-Sep-20	2:02 AM	12.2	123.81	76	2.6	PHIVOLCS
9-Sep-20	5:31 AM	12.15	123.98	20	2	PHIVOLCS
10-Sep-20	3:33 AM	12.14	123.88	70	2.8	PHIVOLCS
10-Sep-20	5:05 AM	12.03	123.78	1	2	PHIVOLCS
10-Sep-20	8:27 AM	11.9	124.08	4	3.9	PHIVOLCS
10-Sep-20	1:32 PM	11.86	124.1	21	2.2	PHIVOLCS
10-Sep-20	11:50 PM	12.16	123.81	1	2.6	PHIVOLCS
11-Sep-20	3:17 AM	12.1	123.87	19	2.6	PHIVOLCS
11-Sep-20	6:46 PM	11.76	124.31	23	2.8	PHIVOLCS
11-Sep-20	6:46 PM	11.75	124.27	13	2.1	PHIVOLCS
12-Sep-20	12:16 AM	11.88	124.05	3	3.1	PHIVOLCS
12-Sep-20	7:27 AM	12.2	123.91	8	3.6	PHIVOLCS
13-Sep-20	12:36 AM	12.03	124.01	2	2.6	PHIVOLCS
13-Sep-20	12:55 AM	12.17	123.88	30	2.5	PHIVOLCS
13-Sep-20	12:44 PM	12.03	124.01	20	3.3	PHIVOLCS
13-Sep-20	3:08 PM	11.96	124.03	1	3.1	PHIVOLCS
13-Sep-20	10:07 PM	11.9	124.12	3	3	PHIVOLCS
14-Sep-20	11:09 AM	12.14	124.01	15	2.4	PHIVOLCS
15-Sep-20	4:41 AM	11.86	124.17	5	3.6	PHIVOLCS
15-Sep-20	4:53 AM	11.84	124.15	6	2.5	PHIVOLCS
15-Sep-20	5:27 AM	12.22	124.01	64	2.3	PHIVOLCS
16-Sep-20	2:43 AM	12.1	123.95	25	2.5	PHIVOLCS
16-Sep-20	1:23 PM	12.27	123.83	21	3.1	PHIVOLCS
16-Sep-20	5:40 PM	11.76	124.19	7	2.4	PHIVOLCS
17-Sep-20	5:54 PM	11.9	124.17	1	2.6	PHIVOLCS
18-Sep-20	5:02 AM	12.47	123.66	33	2.1	PHIVOLCS

18-Sep-20	3:14 PM	11.92	124.13	6	2.2	PHIVOLCS
20-Sep-20	1:49 AM	12.85	123.38	15	3.8	PHIVOLCS
20-Sep-20	2:06 AM	12.86	123.39	27	3.5	PHIVOLCS
20-Sep-20	11:12 AM	12.7	123.18	5	3.7	PHIVOLCS
20-Sep-20	11:50 AM	12.77	123.3	14	3.8	PHIVOLCS
20-Sep-20	6:51 PM	11.86	124.24	5	2.1	PHIVOLCS
22-Sep-20	9:41 PM	12.29	123.95	20	1.7	PHIVOLCS
23-Sep-20	12:38 AM	11.81	124.14	7	4.1	PHIVOLCS
23-Sep-20	3:57 AM	11.84	124.12	1	3	PHIVOLCS
23-Sep-20	6:26 AM	12.09	124.01	5	2.6	PHIVOLCS
23-Sep-20	12:05 PM	12.16	123.91	11	4.5	PHIVOLCS
23-Sep-20	12:09 PM	12.08	123.93	1	3	PHIVOLCS
23-Sep-20	12:11 PM	12.24	123.75	31	2.3	PHIVOLCS
23-Sep-20	10:07 PM	12.29	123.87	21	2.9	PHIVOLCS
24-Sep-20	12:52 AM	11.92	124.06	3	2.7	PHIVOLCS
24-Sep-20	3:28 AM	11.87	124.17	2	2.1	PHIVOLCS
24-Sep-20	4:51 AM	11.83	124.19	1	1.9	PHIVOLCS
24-Sep-20	6:00 AM	11.85	124.09	15	2.1	PHIVOLCS
24-Sep-20	6:00 AM	11.9	124.12	21	2.2	PHIVOLCS
24-Sep-20	6:01 AM	11.82	124.22	3	2.7	PHIVOLCS
25-Sep-20	3:21 AM	12.22	123.78	32	2	PHIVOLCS
25-Sep-20	5:36 PM	12.29	123.76	31	2.8	PHIVOLCS
26-Sep-20	3:17 AM	12.17	123.92	21	2.6	PHIVOLCS
27-Sep-20	5:53 PM	12.57	123.55	4	3.3	PHIVOLCS
27-Sep-20	11:26 PM	12.5	123.55	8	2.9	PHIVOLCS
28-Sep-20	3:13 AM	12.35	123.82	14	2.9	PHIVOLCS
28-Sep-20	5:23 AM	12.59	123.53	33	2.3	PHIVOLCS
28-Sep-20	10:31 AM	11.75	124.27	3	3.1	PHIVOLCS
28-Sep-20	12:34 PM	12.31	123.72	31	2.9	PHIVOLCS
28-Sep-20	9:52 PM	12.31	123.79	28	2.7	PHIVOLCS
29-Sep-20	3:18 AM	11.98	124.08	7	2.8	PHIVOLCS
30-Sep-20	5:39 AM	11.85	124.12	1	1.9	PHIVOLCS
2-Oct-20	3:58 PM	11.81	124.13	1	2.4	PHIVOLCS
2-Oct-20	5:57 PM	12.17	124.02	15	2.2	PHIVOLCS
2-Oct-20	9:54 PM	12.34	123.85	24	3.2	PHIVOLCS
3-Oct-20	2:43 AM	11.83	124.28	11	2.9	PHIVOLCS
3-Oct-20	4:57 AM	11.84	124.16	11	2.4	PHIVOLCS
3-Oct-20	7:12 AM	12.57	123.51	6	3.2	PHIVOLCS
3-Oct-20	9:29 AM	12.22	123.91	19	3.3	PHIVOLCS
4-Oct-20	9:04 AM	11.79	124.28	19	2.4	PHIVOLCS
5-Oct-20	3:58 AM	12.3	123.78	40	2.8	PHIVOLCS
6-Oct-20	2:34 AM	12.53	123.71	11	2.4	PHIVOLCS
8-Oct-20	7:00 PM	11.94	124.15	4	3.4	PHIVOLCS
9-Oct-20	2:49 PM	11.91	124.01	23	2.2	PHIVOLCS
9-Oct-20	5:31 PM	13.05	122.62	3	2.1	PHIVOLCS
9-Oct-20	8:36 PM	12.09	123.94	1	2.8	PHIVOLCS
10-Oct-20	8:27 PM	11.8	124.17	11	3.4	PHIVOLCS
11-Oct-20	6:01 AM	12.05	123.96	4	3	PHIVOLCS
11-Oct-20	2:01 PM	12.08	123.98	4	2.8	PHIVOLCS
12-Oct-20	12:58 AM	12.35	123.76	11	2.9	PHIVOLCS
12-Oct-20	10:40 PM	11.89	124.11	2	2.9	PHIVOLCS
13-Oct-20	12:56 AM	11.83	124.21	1	2.4	PHIVOLCS
14-Oct-20	1:43 AM	12.43	123.72	27	2.8	PHIVOLCS
14-Oct-20	6:46 PM	11.85	124.14	11	2.8	PHIVOLCS
15-Oct-20	9:23 PM	12.35	123.83	29	2.5	PHIVOLCS
19-Oct-20	1:19 AM	12.5	123.65	64	2.4	PHIVOLCS

19-Oct-20	6:23 AM	12.15	123.95	28	2.8	PHIVOLCS
19-Oct-20	8:09 PM	12.8	123.49	13	2.9	PHIVOLCS
21-Oct-20	1:23 AM	11.74	124.1	32	2.6	PHIVOLCS
21-Oct-20	12:17 PM	11.86	124.21	1	2.2	PHIVOLCS
23-Oct-20	2:31 AM	13.14	123.14	18	2.1	PHIVOLCS
24-Oct-20	2:07 AM	13.03	122.79	20	2.5	PHIVOLCS
24-Oct-20	6:34 AM	11.86	124.11	11	2.8	PHIVOLCS
25-Oct-20	3:53 PM	11.94	124.22	15	2.9	PHIVOLCS
26-Oct-20	6:11 PM	12.01	124.1	1	2.8	PHIVOLCS
26-Oct-20	11:49 PM	11.85	124.15	7	2	PHIVOLCS
28-Oct-20	2:21 AM	12.16	123.93	6	3.6	PHIVOLCS
28-Oct-20	7:57 AM	11.91	124.07	1	3.9	PHIVOLCS
28-Oct-20	9:47 PM	12.08	123.98	12	2.7	PHIVOLCS
30-Oct-20	8:43 AM	11.88	124.08	13	3.8	PHIVOLCS
31-Oct-20	5:26 AM	12.31	123.86	18	2.7	PHIVOLCS
2-Nov-20	2:01 PM	12.23	123.73	30	2	PHIVOLCS
2-Nov-20	10:06 PM	11.92	124.14	20	2.4	PHIVOLCS
5-Nov-20	1:53 AM	11.83	124.16	18	2.5	PHIVOLCS
5-Nov-20	6:12 AM	12.18	123.89	52	2.9	PHIVOLCS
5-Nov-20	9:06 AM	11.77	124.09	24	2.2	PHIVOLCS
6-Nov-20	4:40 AM	11.85	124.07	29	2.3	PHIVOLCS
6-Nov-20	6:20 AM	11.83	124.12	1	2.9	PHIVOLCS
8-Nov-20	12:34 AM	12.08	123.96	8	2.7	PHIVOLCS
8-Nov-20	10:17 AM	11.99	123.98	3	3.7	PHIVOLCS
10-Nov-20	8:04 AM	11.75	124.15	1	3.2	PHIVOLCS
13-Nov-20	8:10 AM	12.18	123.94	13	4	PHIVOLCS
13-Nov-20	8:17 AM	12.24	123.9	22	3	PHIVOLCS
13-Nov-20	2:16 PM	11.93	123.88	25	2.3	PHIVOLCS
13-Nov-20	6:22 PM	12.31	123.74	47	2.4	PHIVOLCS
13-Nov-20	11:32 PM	11.82	124.15	1	3.4	PHIVOLCS
15-Nov-20	12:13 AM	12.5	123.44	12	3.8	PHIVOLCS
15-Nov-20	2:35 PM	11.81	124.16	10	5	PHIVOLCS
15-Nov-20	5:40 PM	11.84	124.16	19	2.2	PHIVOLCS
15-Nov-20	9:54 PM	12	124.11	33	2.4	PHIVOLCS
16-Nov-20	2:16 AM	11.87	124.17	6	2.6	PHIVOLCS
16-Nov-20	3:22 AM	11.83	124.13	4	2.7	PHIVOLCS
16-Nov-20	8:34 AM	11.89	124.22	15	3.5	PHIVOLCS
16-Nov-20	1:38 PM	11.83	124.21	2	2.7	PHIVOLCS
18-Nov-20	1:39 PM	12.49	123.69	25	2.4	PHIVOLCS
18-Nov-20	6:46 PM	12.14	123.95	22	2.7	PHIVOLCS
18-Nov-20	9:39 PM	12.45	123.73	15	3.5	PHIVOLCS
19-Nov-20	3:56 AM	12.27	123.77	13	4.4	PHIVOLCS
19-Nov-20	5:15 AM	12.42	123.71	21	3.1	PHIVOLCS
19-Nov-20	8:32 AM	12.38	123.67	28	2.9	PHIVOLCS
19-Nov-20	12:12 PM	12.31	123.76	16	3.3	PHIVOLCS
20-Nov-20	8:19 PM	11.85	124.15	9	3.2	PHIVOLCS
20-Nov-20	8:59 PM	12.03	124.03	2	2.4	PHIVOLCS
20-Nov-20	11:47 PM	12.29	123.76	8	2.3	PHIVOLCS
21-Nov-20	10:52 PM	11.99	124.13	16	2.4	PHIVOLCS
26-Nov-20	2:48 AM	11.74	124.22	12	2.8	PHIVOLCS
26-Nov-20	3:09 AM	11.73	124.26	7	2.6	PHIVOLCS
26-Nov-20	10:07 PM	12.09	123.93	29	2.5	PHIVOLCS
27-Nov-20	6:16 AM	12.4	123.83	56	2.5	PHIVOLCS
29-Nov-20	9:30 PM	13.07	122.76	7	3.2	PHIVOLCS
30-Nov-20	4:23 AM	11.9	124.11	12	4.8	PHIVOLCS
30-Nov-20	7:29 AM	11.89	124.1	1	2.2	PHIVOLCS

1-Dec-20	2:46 AM	11.91	124.08	1	2.4	PHIVOLCS
4-Dec-20	12:52 AM	12.27	123.82	20	2.8	PHIVOLCS
4-Dec-20	4:08 PM	11.89	124.14	6	2.4	PHIVOLCS
4-Dec-20	4:30 PM	11.89	124.14	8	2.3	PHIVOLCS
5-Dec-20	12:41 AM	11.84	124.17	10	2.7	PHIVOLCS
7-Dec-20	2:26 AM	12.13	123.95	19	2.5	PHIVOLCS
8-Dec-20	9:22 PM	11.75	124.25	13	3.3	PHIVOLCS
9-Dec-20	6:15 PM	11.91	124.05	23	2.7	PHIVOLCS
11-Dec-20	12:19 AM	11.9	124.11	8	3.3	PHIVOLCS
13-Dec-20	10:15 AM	11.98	123.94	28	2	PHIVOLCS
13-Dec-20	2:45 PM	11.94	124.06	1	3.8	PHIVOLCS
14-Dec-20	3:20 AM	11.98	124.07	10	3	PHIVOLCS
14-Dec-20	10:14 PM	12.25	123.83	6	2.6	PHIVOLCS
22-Dec-20	5:18 AM	11.83	124.24	2	2.3	PHIVOLCS
22-Dec-20	6:04 AM	12.28	123.81	13	3.6	PHIVOLCS
23-Dec-20	4:24 AM	12.25	123.85	28	2.4	PHIVOLCS
23-Dec-20	5:36 PM	12.62	123.48	1	3	PHIVOLCS
25-Dec-20	11:45 AM	12.45	123.76	28	2.9	PHIVOLCS
25-Dec-20	10:58 PM	12.45	123.87	17	2.3	PHIVOLCS
26-Dec-20	4:37 AM	12.01	124.02	15	3.5	PHIVOLCS
27-Dec-20	4:01 AM	12.85	122.82	20	3.4	PHIVOLCS
27-Dec-20	9:55 PM	12.27	123.87	25	3.2	PHIVOLCS
28-Dec-20	5:04 PM	11.81	124.22	1	2.4	PHIVOLCS
28-Dec-20	11:56 PM	12.26	123.9	22	2.6	PHIVOLCS
29-Dec-20	2:16 PM	11.87	124.15	8	2.1	PHIVOLCS
4-Jan-21	10:57 AM	12.11	123.96	2	3.5	PHIVOLCS
15-Jan-21	3:20 AM	12.09	123.99	6	3.4	PHIVOLCS
17-Jan-21	11:05 AM	12.45	123.8	5	3.3	PHIVOLCS
20-Jan-21	8:19 PM	12.34	123.92	42	3.1	PHIVOLCS
29-Jan-21	4:42 PM	12.33	123.76	12	3.6	PHIVOLCS
31-Jan-21	8:48 AM	11.95	124.06	1	3	PHIVOLCS
9-Feb-21	12:24 PM	12.41	123.81	26	2.3	PHIVOLCS
11-Feb-21	5:52 PM	11.78	124.13	6	2.7	PHIVOLCS
14-Feb-21	5:06 PM	12.07	124.21	1	3.1	PHIVOLCS
16-Feb-21	4:40 AM	12.27	123.81	3	2.9	PHIVOLCS
19-Feb-21	8:54 PM	11.91	124.08	1	2.8	PHIVOLCS
20-Feb-21	4:00 PM	11.86	124.15	7	2.8	PHIVOLCS
20-Feb-21	9:48 PM	12.48	123.65	3	2.8	PHIVOLCS
21-Feb-21	1:31 AM	11.85	124.27	15	2.3	PHIVOLCS
23-Feb-21	11:28 PM	12.07	123.94	1	2.9	PHIVOLCS
2-Mar-21	5:56 PM	12.08	123.9	1	2.9	PHIVOLCS
3-Mar-21	10:23 PM	11.88	124.16	1	2.7	PHIVOLCS
5-Mar-21	4:59 PM	12.38	123.52	5	2.8	PHIVOLCS
6-Mar-21	6:57 AM	12.34	123.67	1	2.5	PHIVOLCS
7-Mar-21	9:30 AM	11.78	124.22	1	2.3	PHIVOLCS
7-Mar-21	5:30 PM	12.16	124.04	15	2.5	PHIVOLCS
19-Mar-21	7:40 PM	12.56	123.6	9	3.6	PHIVOLCS
22-Mar-21	3:48 AM	11.91	124.18	1	2	PHIVOLCS
30-Mar-21	10:02 PM	12.72	123.66	8	3.7	PHIVOLCS
31-Mar-21	9:20 PM	12.36	123.71	2	2.7	PHIVOLCS
31-Mar-21	9:42 PM	12.48	123.69	8	2.8	PHIVOLCS
3-Apr-21	10:01 AM	12.26	123.84	10	3.6	PHIVOLCS
3-Apr-21	10:13 AM	12.2	123.9	1	3	PHIVOLCS
4-Apr-21	6:47 AM	12.98	122.86	21	2.4	PHIVOLCS
5-Apr-21	1:01 AM	12.9	122.94	17	4	PHIVOLCS
5-Apr-21	7:11 AM	12.53	123.62	3	2.9	PHIVOLCS

14-Apr-21	6:34 PM	11.79	124.16	23	2.4	PHIVOLCS
15-Apr-21	2:14 PM	11.87	124.19	10	2.5	PHIVOLCS
29-Apr-21	3:26 AM	11.72	124.16	9	2.7	PHIVOLCS
2-May-21	3:41 AM	11.78	124.13	9	2.3	PHIVOLCS
2-May-21	10:07 PM	12.16	124.1	15	2.6	PHIVOLCS
4-May-21	1:04 AM	11.9	124.11	1	2.5	PHIVOLCS
5-May-21	10:45 PM	12.2	123.9	1	3.6	PHIVOLCS
7-May-21	4:35 AM	12.31	123.77	18	2.5	PHIVOLCS
9-May-21	12:42 AM	11.8	124.13	6	2.1	PHIVOLCS
17-May-21	4:10 AM	12.97	122.53	3	2.2	PHIVOLCS
18-May-21	11:31 PM	12.33	123.72	12	2.8	PHIVOLCS
22-May-21	10:40 PM	13.21	122.89	17	2.8	PHIVOLCS
30-May-21	10:38 AM	12.69	123.17	23	3.7	PHIVOLCS
31-May-21	1:52 AM	12.73	123.32	17	2.9	PHIVOLCS
6-Jun-21	8:18 PM	12.61	123.43	14	2.7	PHIVOLCS
8-Jun-21	2:17 AM	11.9	124.06	17	4.1	PHIVOLCS
10-Jun-21	12:40 AM	11.81	124.2	2	1.9	PHIVOLCS
13-Jun-21	1:34 AM	12.06	124.04	1	1.8	PHIVOLCS
13-Jun-21	8:03 PM	11.88	124.12	3	2.5	PHIVOLCS
16-Jun-21	2:24 AM	12.72	123.29	13	2.4	PHIVOLCS
17-Jun-21	7:21 AM	12.23	123.85	23	3.1	PHIVOLCS
21-Jun-21	12:07 PM	12.31	123.79	38	3	PHIVOLCS
29-Jun-21	7:30 PM	12.36	123.72	34	2.5	PHIVOLCS
30-Jun-21	8:50 AM	12.58	123.62	1	2.7	PHIVOLCS
2-Jul-21	11:01 PM	12.05	124.01	1	2.7	PHIVOLCS
5-Jul-21	11:45 PM	11.91	123.92	20	1.8	PHIVOLCS
11-Jul-21	4:29 AM	12.72	123.12	17	3.8	PHIVOLCS
11-Jul-21	12:43 PM	11.91	124.02	12	3	PHIVOLCS
14-Jul-21	3:29 AM	11.83	124.16	11	3	PHIVOLCS
15-Jul-21	3:10 AM	12.54	123.59	23	2.2	PHIVOLCS
17-Jul-21	5:44 AM	12.28	123.76	40	2.5	PHIVOLCS
17-Jul-21	10:38 PM	11.99	124.04	28	3	PHIVOLCS
21-Jul-21	3:38 AM	12.04	123.98	1	2.3	PHIVOLCS
30-Jul-21	9:39 PM	11.88	124.1	5	2.4	PHIVOLCS
1-Aug-21	6:21 AM	11.86	124.17	3	2	PHIVOLCS
1-Aug-21	3:34 PM	12.18	123.79	34	2.2	PHIVOLCS
10-Aug-21	2:59 AM	12.69	123.22	1	1.9	PHIVOLCS
12-Aug-21	4:53 AM	11.74	124.25	9	2.5	PHIVOLCS
13-Aug-21	2:24 AM	11.75	124.28	6	2.5	PHIVOLCS
18-Aug-21	6:05 AM	12.35	123.8	10	3.1	PHIVOLCS
19-Aug-21	6:08 PM	12.34	123.76	28	2.5	PHIVOLCS
23-Aug-21	12:10 PM	12.54	123.61	16	2.7	PHIVOLCS
26-Aug-21	10:36 PM	11.76	124.24	6	3.6	PHIVOLCS
27-Aug-21	12:30 AM	11.77	124.24	8	2.5	PHIVOLCS
1-Sep-21	5:35 AM	11.77	124.25	5	3.7	PHIVOLCS
11-Sep-21	1:05 PM	12.2	123.87	23	2.6	PHIVOLCS
13-Sep-21	6:48 PM	12.56	123.61	7	2.9	PHIVOLCS
15-Sep-21	7:49 AM	12.74	123.18	13	3.6	PHIVOLCS
22-Sep-21	4:40 AM	11.88	124.08	8	2.8	PHIVOLCS
25-Sep-21	6:30 PM	12.43	123.44	23	2	PHIVOLCS
28-Sep-21	3:59 AM	12.07	123.98	9	2.7	PHIVOLCS
15-Oct-21	1:55 AM	12.5	123.54	7	2.4	PHIVOLCS
15-Oct-21	3:08 AM	12.31	123.8	15	3.6	PHIVOLCS
16-Oct-21	11:29 AM	11.83	124.21	1	2.5	PHIVOLCS
16-Oct-21	6:44 PM	11.86	124.2	1	2.7	PHIVOLCS
19-Oct-21	11:55 PM	11.85	124.19	1	2.1	PHIVOLCS

27-Oct-21	1:03 PM	11.74	124.14	29	2	PHIVOLCS
1-Nov-21	3:33 PM	11.92	124.06	1	2.2	PHIVOLCS
2-Nov-21	12:49 AM	11.8	124.18	6	3.4	PHIVOLCS
8-Nov-21	12:15 AM	13	122.64	8	3.1	PHIVOLCS
17-Nov-21	8:52 AM	12.08	123.99	4	4	PHIVOLCS
17-Nov-21	8:55 AM	12.07	124.01	27	2.2	PHIVOLCS
17-Nov-21	9:15 AM	12.03	123.96	3	2.9	PHIVOLCS
18-Nov-21	1:43 AM	12.24	123.7	34	1.7	PHIVOLCS
19-Nov-21	2:31 PM	11.88	124.09	5	2.6	PHIVOLCS
20-Nov-21	11:40 AM	12.21	123.86	4	3.7	PHIVOLCS
21-Nov-21	9:52 AM	12.14	123.9	3	3.1	PHIVOLCS
21-Nov-21	10:52 AM	12.22	123.9	20	2.7	PHIVOLCS
23-Nov-21	3:47 AM	11.79	124.17	14	3.3	PHIVOLCS
2-Dec-21	7:23 PM	12.82	123.52	9	3.6	PHIVOLCS
17-Dec-21	10:33 PM	12.8	123.63	29	2.5	PHIVOLCS
17-Dec-21	10:41 PM	12.81	123.56	2	3.3	PHIVOLCS
17-Dec-21	10:44 PM	12.88	123.51	9	2.4	PHIVOLCS
17-Dec-21	10:58 PM	12.85	123.54	28	4.1	PHIVOLCS
19-Dec-21	4:29 AM	12.68	123.09	18	2.7	PHIVOLCS
24-Dec-21	2:30 AM	11.74	124.28	3	2.6	PHIVOLCS
24-Dec-21	8:51 PM	12.22	123.87	12	3.5	PHIVOLCS

Table S6: Historical seismicity from USGS-NEIC

Time (UTC)	Lat	Long	Depth	Mag	MagType	RMS	net	id
2/17/03 16:07	12.02	123.978	20.7	4.6	mb	0.86	us	usp000bqwk
2/15/03 11:01	12.168	124.079	10	6.3	mwc	1.4	us	usp000bqr6
2/15/03 7:18	12.033	123.956	10	4.6	mb	1.23	us	usp000bqqp
2/15/03 5:47	12.171	123.921	10	5.8	mwc	1.12	us	usp000bqqg
2/14/03 19:56	12.152	123.869	10	4.5	mb	1.03	us	usp000bqpf
8/23/01 8:32	12.646	123.811	33	4.5	mb	1.37	us	usp000amx4
8/12/01 0:41	12.581	123.524	75.4	4.7	mb	1.13	us	usp000am9c
7/30/01 5:14	12.598	123.381	33	5.4	mwc	0.94	us	usp000akga
8/15/99 0:41	11.816	124.251	33	5.4	mwc	0.95	us	usp0009d1r
8/29/98 11:03	12.641	123.483	33	4.6	mb	1.41	us	usp0008u1t
8/1/98 21:21	12.403	123.834	33	5.3	mwc	1.29	us	usp0008skz
5/7/98 13:53	12.239	123.435	33	5.1	mwc	1.44	us	usp0008mmk
7/15/97 13:08	12.56	123.143	33	4.6	mb	1.14	us	usp00084wn
3/18/96 19:56	12.792	123.297	33	4.5	ms	1.1	us	usp0007eyk
9/7/93 23:01	11.937	124.125	26.5	4.5	mb	1.2	us	usp0005zxc
7/25/93 3:28	11.853	124.015	30.6	4.5	mb	1.2	us	usp0005xb6
7/8/93 16:47	11.984	124.197	18.1	4.9	mb	1.2	us	usp0005vts
4/24/93 15:45	11.926	124.124	42.6	4.6	mb	1.1	us	usp0005rqr
1/18/93 19:56	11.843	124.3	30.9	4.7	mb	1.3	us	usp0005kxv
7/22/91 7:13	12.71	123.376	22.8	4.7	mb	1.1	us	usp0004ufw
4/23/91 2:50	13.087	123.239	40	5.2	mb	1	us	usp0004qpz
3/27/91 16:27	12.535	123.475	47	4.7	mb	1.1	us	usp0004pmu
3/27/91 9:14	12.55	123.461	33	5.1	ms	1.1	us	usp0004pm7
7/18/90 20:10	12.642	123.585	33	5	mb	1.1	us	usp0004c65
1/24/84 16:27	12.244	123.946	18.1	4.9	mb	1.7	us	usp00021hg
1/24/84 16:22	12.364	123.875	24.4	5.9	mw	1.2	us	usp00021hf
8/5/83 18:08	12.5	123.938	32.5	5.1	mb	1.4	us	usp0001xc4
6/13/83 5:59	12.696	123.144	37.7	4.7	mb	1.4	us	usp0001w2e
4/25/83 19:03	12.787	123.052	28.6	5.1	mb	0.9	us	usp0001usa
3/17/83 18:10	12.91	122.94	33	5.7	ms	1.2	us	usp0001tqg
10/10/82 5:13	12.193	123.851	14.6	4.8	mb	1.2	us	usp0001q4w
7/14/78 17:12	12.131	124.028	33	5.3	mb		us	usp0000vk1
11/8/77 3:47	12.23	123.908	33	5.3	ms		us	usp0000rdw
7/25/71 12:51	12.439	123.691	40	6.44	mw		iscgem	iscgem782654
7/2/71 5:34	12.36	123.899	25	6.07	mw		iscgem	iscgem781837
11/13/70 14:16	12.081	123.863	13.5	6.55	mw		iscgem	iscgem790180
6/21/67 15:45	12.874	122.938	29.3	5.53	mw		iscgem	iscgem834734
3/13/58 23:49	12.658	123.092	25	5.84	mw		iscgem	iscgem883999
8/18/57 8:37	12.221	123.959	20	6.48	mw		iscgem	iscgem887045
11/5/41 17:38	12.808	123.518	15	6.85	mw		iscgem	iscgem901063
5/25/39 6:16	12.938	122.954	15	5.78	mw		iscgem	iscgem901989
8/29/38 15:22	12.036	124.134	15	6.75	mw		iscgem	iscgem902648
9/22/37 3:11	12.391	123.841	15	6.26	mw		iscgem	iscgem903260
4/23/22 21:30	12.106	123.392	35	6.23	mw		iscgemsup	iscgemsup911875
5/28/17 12:01	12.77	123.047	15	5.96	mw		iscgemsup	iscgemsup913514

S4 SBAS Interferometry Output and Data

S4.1 Profile data

Definition of column names:

- boxID - boxID number (box 51 is closest to Cataingan bay, box 3 is closest to Naro bay)
- dist_naro - distance of box profile from Naro bay in km
- LrMin - minimum extent of the regression line on the left side
- LrMax - maximum extent of the regression line on the left side
- Ly0 - ordinate of the leftmost limit of the regression line
- Ly1_int - intercept of the regression line of the left side
- left_slope - slope of the regression line of the left side
- left_intercept - intercept of the regression line of the left side
- RrMin - minimum extent of the regression line on the right side
- RrMax - maximum extent of the regression line on the right side
- Ry0_int - intercept of the regression line of the right side
- Ry1 - ordinate of the rightmost limit of the regression line
- Offset - measured slip from the intercepts of both sides in m
- sigmaBsum - sum of the standard error of regression intercepts of the left and right side

Table S7: Compiled regression parameters of the fault parallel afterslip from time series interferometry

boxID	dist_naro	LrMin	LrMax	Ly0	Ly1_int	RrMin	RrMax	Ry0_int	Ry1	Offset	sigmaBsum
3	0.35301441	-1270	-250	-0.00055	-0.0023	500	1520	0.0405	0.037	0.0428	0.00284239
4	0.91454843	-1360	-310	0.0032	-0.0073	290	1460	0.0464	0.0499	0.0537	0.00344597
5	1.42951316	-1120	-370	-0.00245	-0.0147	440	1130	0.0493	0.0668	0.064	0.00578339
6	2.00220612	-1050	-190	-0.0101	-0.0136	150	1220	0.0534	0.0709	0.067	0.00515096
7	2.50100729	-1700	-130	-0.00795	-0.0132	350	950	0.055	0.06375	0.0682	0.00596387
8	3.04949265	-1750	-40	-0.0126	-0.0161	230	900	0.0484	0.0659	0.0645	0.00547217
9	3.55203461	-1750	-110	-0.01295	-0.0147	370	890	0.0465	0.064	0.0612	0.00639642
10	4.07317648	-1750	-770	-0.02215	-0.0204	350	560	0.0566	0.0741	0.077	0.01135092
11	4.58750381	-1415	-770	-0.02145	-0.0197	170	1000	0.0605	0.078	0.0802	0.00725525
12	5.09068063	-1430	-310	-0.02445	-0.0157	270	1280	0.0663	0.0698	0.082	0.00609765
13	5.60109659	-1510	-340	-0.024505	-0.0244	50	1430	0.0593	0.0558	0.0837	0.00511354
14	6.11920439	-580	-160	-0.0154	-0.0224	290	1310	0.0551	0.04985	0.0775	0.0060088
15	6.62486192	-460	-50	-0.0091	-0.0084	400	1300	0.0516	0.050025	0.06	0.00473446
16	7.13955771	-790	-330	-0.00635	-0.0081	270	630	0.0453	0.046175	0.0534	0.00617887
17	7.64745173	-1300	-200	-0.010475	-0.011	575	1240	0.0392	0.03885	0.0502	0.00413589
18	8.14601638	-1305	-300	-0.012025	-0.0136	850	1305	0.0384	0.03805	0.052	0.00493906
19	8.66244769	-1120	-200	-0.0046	-0.0186	380	1170	0.0519	0.0484	0.0705	0.00502087
20	9.16723875	-700	-150	-0.00825	-0.0205	680	1615	0.0715	0.071605	0.092	0.00696304
21	9.67724099	-700	-10	-0.0081	-0.0256	1010	1750	0.0706	0.0671	0.0962	0.00749073
22	10.2048984	-580	-320	-0.02535	-0.0271	980	1425	0.0467	0.06245	0.0738	0.00992499
23	10.7055065	-735	-140	-0.0161	-0.0336	945	1295	0.0279	0.028005	0.0615	0.00606461
24	11.2242614	-550	-175	-0.02375	-0.0325	750	1750	0.0281	0.0316	0.0606	0.00578514
25	11.7250739	-1095	-315	-0.033905	-0.0338	380	1750	0.0352	0.035375	0.069	0.00486956
26	12.2427272	-1180	-190	-0.0405475	-0.0406	310	1235	0.0425	0.040925	0.0831	0.00597106
27	12.752487	-1200	-415	-0.03895	-0.0407	315	905	0.0436	0.0422	0.0843	0.00718267
28	13.2469022	-825	-375	-0.03795	-0.0397	565	1090	0.0389	0.03855	0.0786	0.00793864
29	13.7612246	-880	-500	-0.038325	-0.0385	645	1590	0.0353	0.035405	0.0738	0.00701215
30	14.2836273	-1085	-400	-0.0338525	-0.0338	900	1705	0.0336	0.0371	0.0674	0.00579291
31	14.7836173	-730	-205	-0.03025	-0.0313	20	375	0.0376	0.037425	0.0689	0.00753193
32	15.311448	-1750	-180	-0.0276	-0.0311	25	1750	0.0394	0.037825	0.0705	0.00371754
33	15.8195208	-1750	-220	-0.0319	-0.0354	300	1750	0.0549	0.04265	0.0903	0.00470037
34	16.3299616	-875	-345	-0.04775	-0.039	275	1135	0.0528	0.04405	0.0918	0.00787106
35	16.8427703	-915	-470	-0.05135	-0.0531	185	665	0.0514	0.0479	0.1045	0.01082571
36	17.3409541	-1235	-310	-0.056325	-0.0579	180	820	0.0515	0.048	0.1094	0.00871415
37	17.8833241	-900	-160	-0.0595	-0.0602	295	1535	0.0502	0.0502875	0.1104	0.00814591
38	18.3630961	-780	-70	-0.06015	-0.0654	850	1500	0.055	0.0543	0.1204	0.01020997
39	18.856134	-865	-115	-0.06646	-0.0666	835	1500	0.0531	0.05296	0.1197	0.01008642
40	19.39392	-610	-120	-0.069575	-0.0701	555	1420	0.0503	0.05065	0.1204	0.01095628
41	19.9004125	-625	-200	-0.07273	-0.0728	350	1355	0.0488	0.04845	0.1216	0.01136394
42	20.4183179	-530	-155	-0.074375	-0.0749	340	905	0.0479	0.04755	0.1228	0.01321516
43	20.933317	-515	-175	-0.078675	-0.0792	210	755	0.0442	0.0435	0.1234	0.0138948
44	21.4330272	-860	-135	-0.07165	-0.0839	260	950	0.039	0.03865	0.1229	0.01000801
45	21.9484487	-640	-50	-0.0809425	-0.0811	140	850	0.0403	0.0473	0.1214	0.01109887
46	22.4706024	-1750	0	-0.063	-0.0805	50	970	0.0511	0.04585	0.1316	0.00758686
47	22.9684135	-1750	0	-0.06945	-0.0852	40	1070	0.0549	0.04965	0.1401	0.00792688
48	23.4760262	-1750	0	-0.07545	-0.0912	245	1105	0.0447	0.045225	0.1359	0.00794515
49	23.9801034	-1750	0	-0.0622	-0.0972	300	940	0.0455	0.049	0.1427	0.00866862
50	24.5000114	-1750	-50	-0.0733	-0.0908	320	995	0.0346	0.03425	0.1254	0.00737379
51	25.0104121	-1750	-350	-0.0543	-0.0893	210	1170	0.0258	0.025905	0.1151	0.00642529

S4.2 Other MintPy data

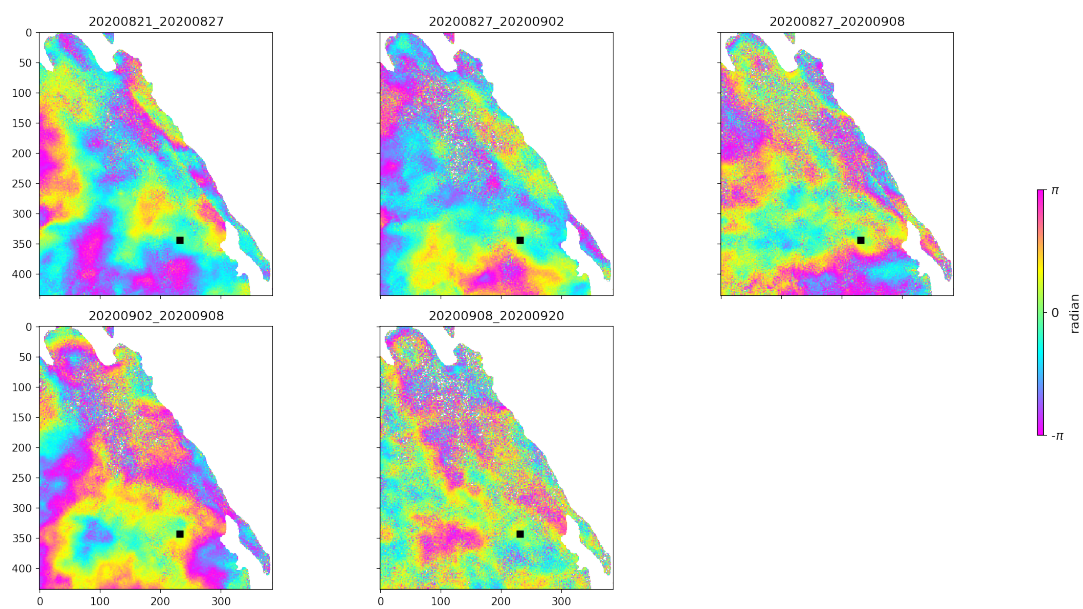


Figure S13: Ascending track interferograms included in the time-series stacking.

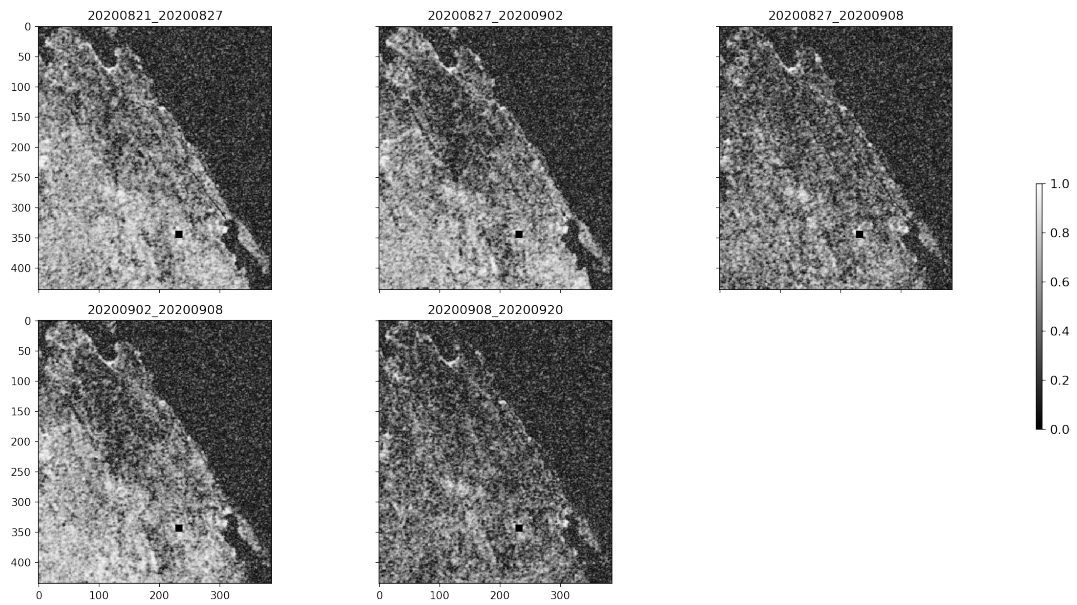


Figure S14: Individual coherence of ascending track interferograms in the stack.

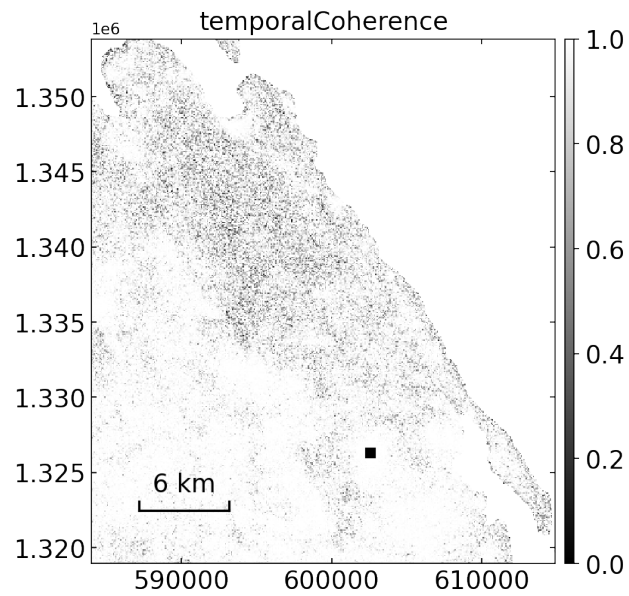


Figure S15: Temporal coherence of the ascending interferogram stack.

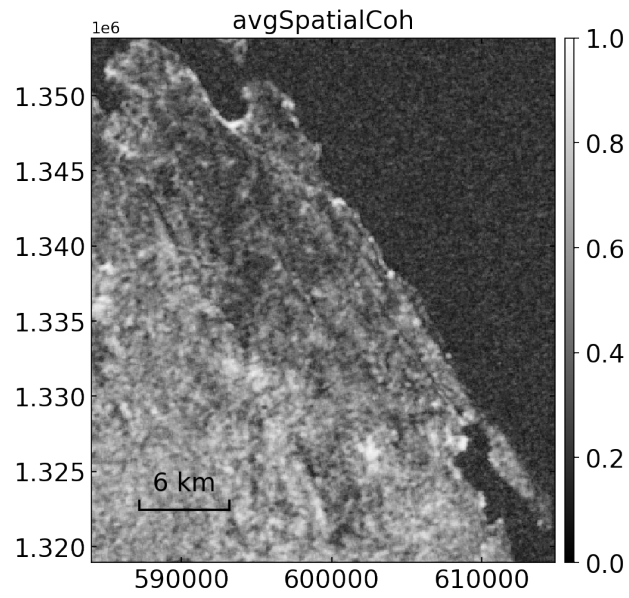


Figure S16: Spatial coherence of the ascending interferogram stack.

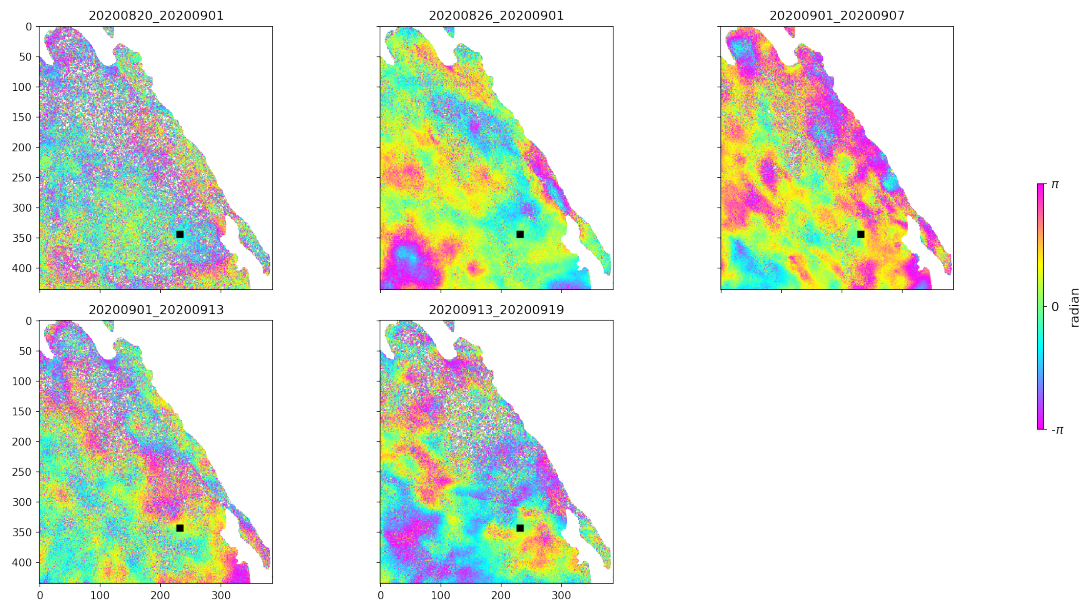


Figure S17: Descending track interferograms included in the time-series stacking.

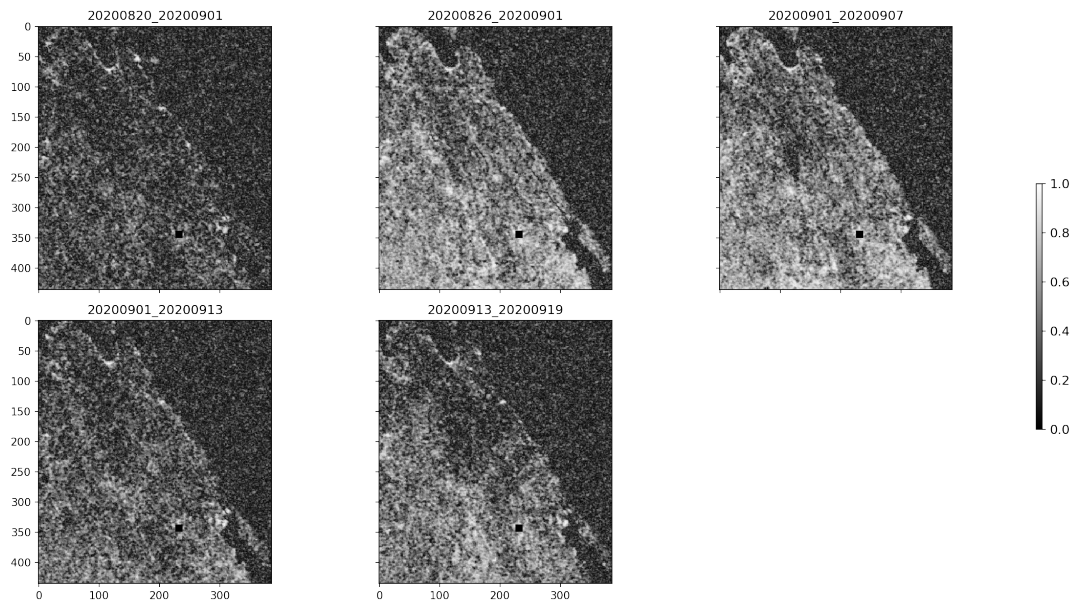


Figure S18: Individual coherence of descending track interferograms in the stack.

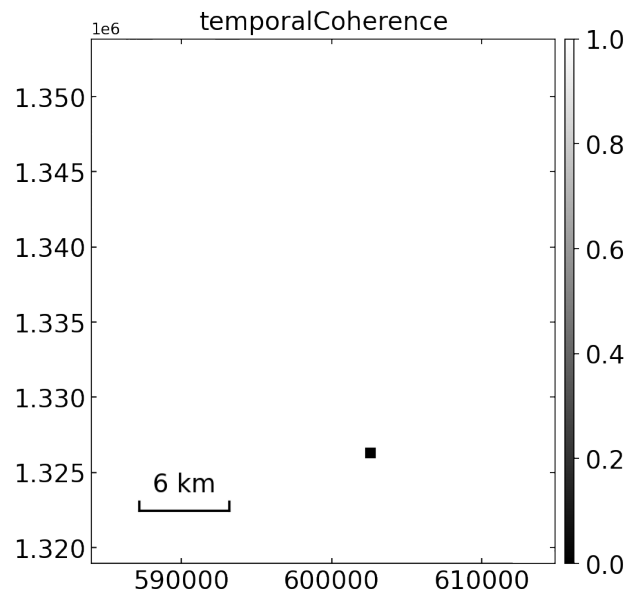


Figure S19: Temporal coherence of the descending interferogram stack.

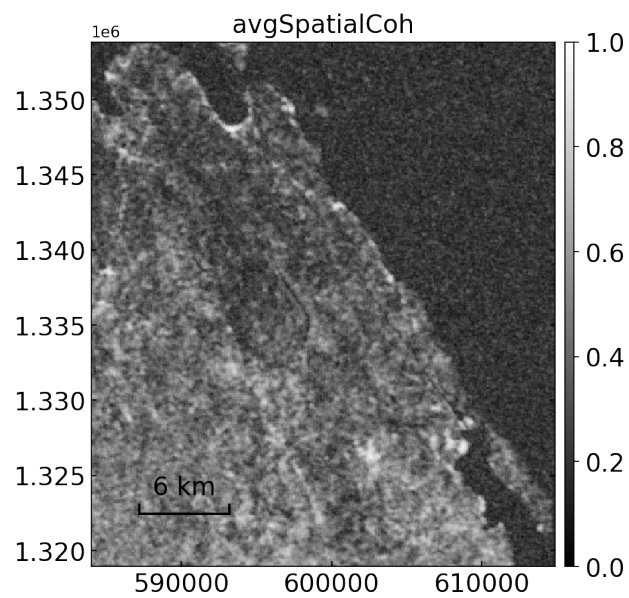


Figure S20: Spatial coherence of the descending interferogram stack.