

Building your own mountain: The effects, limits, and drawbacks of cold-water coral ecosystem engineering

Anna-Selma van der Kaaden^{1,2}, Sandra R. Maier^{1,3}, Siluo Chen^{1,2}, Laurence H. De Clippele⁴, Evert de Froe⁵, Theo Gerkema¹, Johan van de Koppel^{1,6}, Furu Mienis⁵, Christian Mohn⁷, Max Rietkerk², Karline Soetaert¹, Dick van Oevelen¹

¹NIOZ Royal Netherlands Institute for Sea Research, Department of Estuarine and Delta Systems, PO Box 140, 4400 AC Yerseke, The Netherlands

²Copernicus Institute for Sustainable Development, Department of Environmental Sciences, Utrecht University, The Netherlands

10 ³Greenland Climate Research Centre, Greenland Institute of Natural Resources, Nuuk, Greenland

⁴University of Glasgow, School of Biodiversity, One Health, and Veterinary Medicine

⁵Department of Ocean Systems, NIOZ Royal Netherlands Institute for Sea Research, The Netherlands

⁶Conservation Ecology Group, Groningen Institute for Evolutionary Life Sciences, University of Groningen, the Netherlands

⁷Department of Ecoscience, Aarhus University, Roskilde, Denmark

15 *Correspondence to:* Anna van der Kaaden (annavanderkaaden@gmail.com)

Abstract. Framework-forming cold-water corals are ecosystem engineers that build mounds in the deep sea that can be up to several hundred meters high. The effect of the presence of cold-water coral mounds on their surrounding is typically difficult to separate from environmental factors that are not affected by the mounds. We investigated the environmental control on and the importance of ecosystem engineering for cold-water coral reefs, using annotated video transects data, spatial variables (MEMs) and hydrodynamic model output in a redundancy analysis and with variance partitioning. Using available hydrodynamic simulations with cold-water coral mounds and simulations where the mounds were artificially removed, we investigated the effect of coral mound ecosystem engineering on the spatial configuration of reef habitat and discriminated which environmental factors are and which are not affected by the mounds.

25 We find that downward velocities in winter, related to non-engineered environmental factors, e.g., deep winter mixing and dense water cascading, cause substantial differences in reef cover at the broadest spatial scale (20-30 km). Such hydrodynamic processes that stimulate the food supply towards the corals in winter seem more important for the reefs than cold-water coral mound engineering or than similar hydrodynamic processes in summer. While the ecosystem engineering effect of cold-water corals is frequently discussed, our results highlight also the importance of non-engineered environmental processes.

30 We further find that, due to the interaction between the coral mound and the water flow, different hydrodynamic zones are found on coral mounds that likely determine the typical benthic zonation of coral rubble at the mound foot, dead coral framework on the mound flanks, and living corals near the summit. Moreover, we suggest that a so-called massenerhebung effect (well-known for terrestrial mountains) exists, meaning that benthic zonation depends on the location on the mound rather than on the height above the seafloor or water depth.

Our finding that ecosystem engineering determines the configuration of benthic habitats on cold-water coral mounds, implies
35 that cold-water corals cannot grow at deeper depths on the mounds to avoid the adverse effects of climate change.

1. Introduction

Framework-forming cold-water corals are benthic suspension feeders that rely on particulate organic matter originating from
the sunlit ocean surface (van Oevelen et al., 2018; Van Engeland et al., 2019; Carlier et al., 2009). They build habitats of live
and dead reef framework for many species and have a high biodiversity and productivity as compared to the surrounding deep-
40 sea environment (van Oevelen et al., 2009; Cathalot et al., 2015; Bongiorni et al., 2010). Many of the associated reef-fauna are
also suspension feeders that require similar food advection by currents as the framework-forming corals themselves (Maier et
al., 2021). With their structurally complex framework, cold-water corals engineer their environment, increasing the food supply
towards themselves and their associated fauna (van der Kaaden et al., 2020; Hennige et al., 2021; Bartzke et al., 2021; Mienis
et al., 2019). These important deep-sea ecosystems are expected to be severely impacted by ocean warming and acidification
45 (Hennige et al., 2020; Morato et al., 2020; Ragnarsson et al., 2016; Sweetman et al., 2017) and understanding what drives
cold-water coral reef growth at different spatial scales provides insights into their expected response to contemporary global
changes.

When the positive feedbacks of an organism on its own growth are strong enough, the ecosystem engineer can locally create
its own optimal environment and exist in suboptimal ambient environmental conditions where it would not survive otherwise
50 (Jones et al., 1994; Crooks, 2002; Hastings et al., 2007). Recently, reef-forming cold-water corals were identified as a 'self-
organized' system, meaning that the corals enhance their resource intake by optimizing their spatial configuration on the
seafloor (van der Kaaden et al., [in press](#)2023). By adapting their spatial configuration in the ecosystem, ecosystem engineers
can respond gradually to environmental changes, providing resilience in the face of relatively rapid global change (Bastiaansen
et al., 2020; Rietkerk et al., 2021).

55 Framework-forming cold-water corals also engineer their environment at much larger spatial scales, because the reefs can
develop into mounds, [where](#) coral growth and sediment infill on the reefs is higher than in the off-reef area (Wang et al., 2021;
van der Land et al., 2014). These mounds can be hundreds of meters high, enabling corals to feed higher in the water column
where particulate organic matter quality and quantity is higher (Snelgrove et al., 2017; Nakatsuka et al., 1997). Moreover, the
interaction of mounds with (tidal) currents also increases the food supply towards the coral reefs (van der Kaaden et al., 2021).

60 Internal (tidal) waves, created around the mounds (van Haren et al., 2014; Cyr et al., 2016; Davies et al., 2009) increase the
horizontal and vertical food flux towards the reefs (Duineveld et al., 2012; Froe et al., 2022; Soetaert et al., 2016).

Soetaert et al. (2016) simulated the flow of particulate organic matter to cold-water coral reefs in the Logachev cold-water
coral mound province with a coupled 3D model. They found that the flux of particulate organic matter is concentrated towards
the corals living on the mounds due to the physical presence of the mounds. Recent field observations indeed indicate the
65 existence of this food transport pathway (de Froe et al., 2022). Van der Kaaden et al. (2021) further investigated the interaction

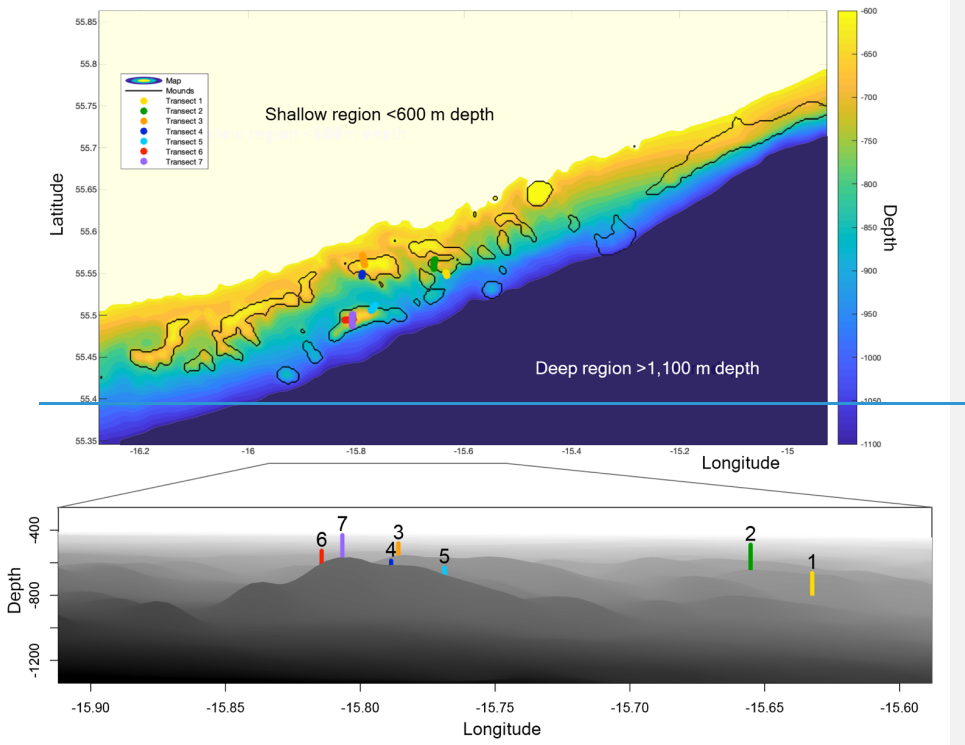
of coral mounds and hydrodynamics for various mound sizes. For this, the bathymetry was modified to mimic different mound sizes, and used in 3D hydrodynamic simulations. They found that, like coral reefs, coral mounds exert several spatial feedbacks through ecosystem engineering of bottom currents and vertical velocities. So, the ecosystem engineering effect of framework-forming cold-water corals is well-established at both the scale of reefs and of coral mounds. However, how the effect of cold-water coral mounds on the hydrodynamics (i.e., ‘coral mound engineering’) affects the spatial configuration of cold-water coral reef habitats, and their associated fauna, remains unclear.

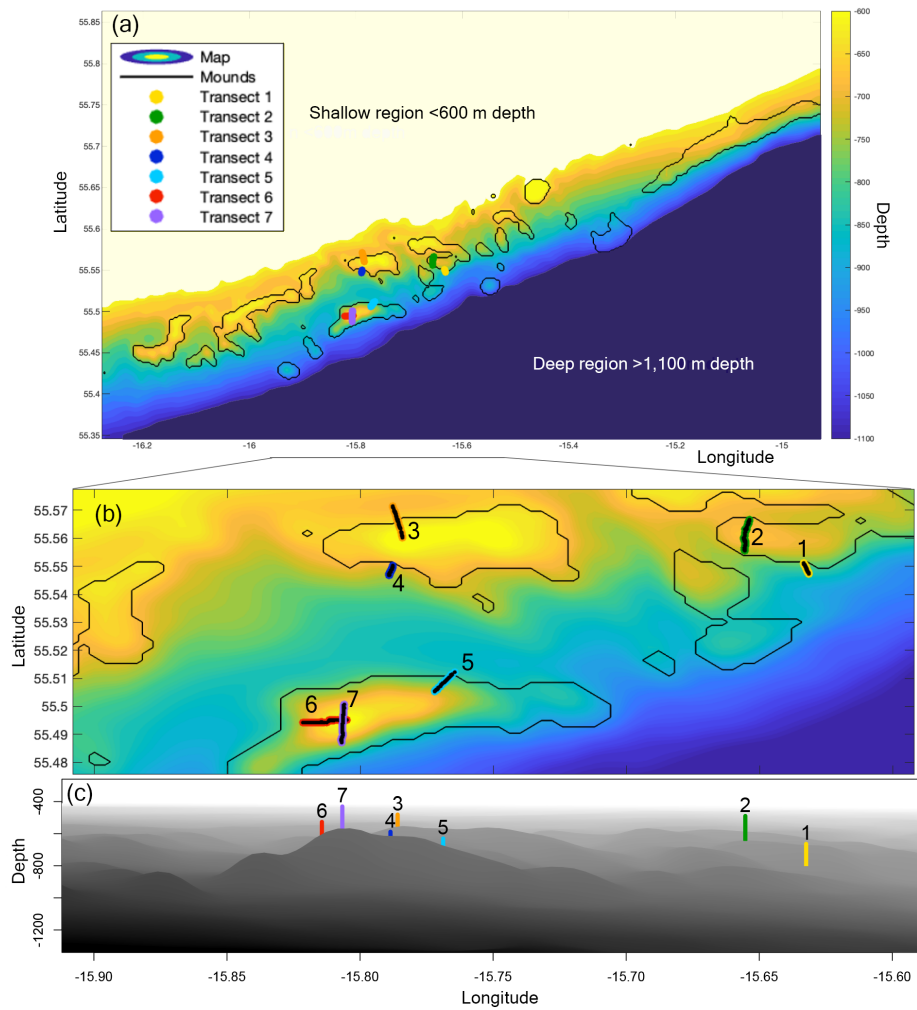
Furthermore, separating those environmental factors that are affected by coral mound engineering and those environmental factors that are not affected by cold-water corals is seemingly impossible since one cannot simply remove all coral mounds and compare measurements of the environment with and without (i.e., smoothed topography) mounds. In this study, we make use of the unique situation at the Logachev cold-water coral mound province for which hydrodynamic model simulations with and without coral mounds are available (van der Kaaden et al., 2021). Specifically, we combined this hydrodynamic model output with annotated video transects from Maier et al. (2021) and De Clippele et al. (2021), and variables identifying spatial scale (Moran Eigenvector Maps) to identify the main environmental drivers of reef cover in a redundancy analysis (RDA). Variance partitioning showed how much of the spatial structure of reef cover is related to the different hydrodynamic variables and by comparing hydrodynamic simulations with and without coral mounds, we investigated which hydrodynamic variables are caused by feedbacks between the mounds and the hydrodynamics. This combined approach allowed us to investigate the environmental control on reef cover at different spatial scales and discriminate the effects of coral mound engineering and non-engineered environmental factors.

2. Methods

2.1 Site description

The Logachev cold-water coral mound province (Fig. 1) is located west of Ireland on the SE Rockall Bank margin (NE Atlantic) (de Haas et al., 2009; Kenyon et al., 2003; Mienis et al., 2006). Cold-water coral mound clusters occur between 600 m and 1,100 m depth, usually in the Wyville Thomson Overflow Water (WTOW) current that flows in SW direction (Schulz et al., 2020; Johnson et al., 2010). The mounds are situated at the location of increased internal-tide generation as compared to the rest of the SE Rockall Bank margin (van der Kaaden et al., 2021). Mound summits are situated around the depth of the permanent pycnocline (White and Dorschel, 2010). A bottom-trapped internal tidal wave at diurnal frequency travels past the Rockall Bank margin, causing internal waves with amplitudes of over 120 m near the mounds (van Haren et al., 2014).





95 Figure 1. (a) Map of the Logachev cold-water coral mound province, as used in the hydrodynamic simulations, depicting the depth (m) in colour. The mounds, as selected by connected-component labelling, are encircled by black lines. The seven transects are

100 plotted in colour. Bottom panel shows a side view of the (b) A zoom in on the Logachev cold-water coral mound province on the seven transects. The transects are numbered and highlighted in black for clarity. (c) A side view of the zoom in on Logachev coral mound province with the centre of the transects indicated by the coloured line. Bathymetric data are derived from the Irish National Seabed Survey (INSS) at 250 m resolution.

2.2 Response and explanatory variables

105 Redundancy Analysis (RDA) identifies the main trends in response variables (i.e., benthic cover) along continuous axes and how these trends correlate to explanatory variables (i.e., depth, hydrodynamic and spatial variables) (Borcard et al., 2011). Below, we first describe how response and explanatory variables were obtained from the available data (Table 1) and then detail the RDA approach.

2.2.1 Video frame extraction and annotation (response variables)

110 Video transects 1 to 6 were recorded with the Remotely Operated Vehicle (ROV) *Holland-1* between 600 m and 850 m depth, during the Changing Oceans Expedition 2012 Cruise 073 with the RRS James Cook. The ROV was equipped with a Reson 7125 multibeam system and a downward-facing HD camera for continuous recording and two lasers for size reference (Roberts and shipboard party, 2013). From these videos, 1,196 frames were manually annotated by De Clippele et al. (2021) for live reef-forming corals, dead coral framework, coral rubble, rocks, and sediment, following the annotation protocol by van der Kaaden and De Clippele (2021).

115 Video transect 7 was recorded during the *RV Pelagia* cruise 64PE360 in October 2012 between 600 m and 700 m depth with a towed camera frame from the NIOZ (Royal Netherlands Institute for Sea Research) and two lasers for size reference. A total of 187 frames were manually annotated by Maier et al. (2021) for live reef-forming corals, less-degraded dead framework, more-degraded dead framework, coral rubble, rocks, sediment, sponges and other macrofauna, following the same annotation protocol (van der Kaaden and De Clippele, 2021). We combined the two datasets for our analysis and used the benthic cover (% of the annotated frames) of live coral, dead coral, rubble, rocks, and sediment as response variables in the RDA.

2.2.2 Bathymetry and hydrodynamic variables (explanatory variables)

120 Bathymetric and hydrodynamic variables were obtained from recently published 3D hydrostatic Regional Ocean Modelling System (ROMS) simulations for the study area (van der Kaaden et al., 2021). The model uses 3D free-surface, hydrostatic equations with grid refinement on a staggered Arakawa C-grid in the horizontal and topography-following coordinates in the vertical (Shepetchkin and McWilliams, 2005). The model covered an area of 85 km x 58 km with a horizontal resolution of 250 m, nested into a model grid of 190 km x 188 km with a resolution of 750 m. In the vertical, the model contained 32 levels with enhanced resolution near the surface and bottom. Tidal forcing (TPXO7) and realistic water (WOA) and atmospheric (COADS) forcings were applied at the boundaries of the lower-resolution model domain. The model was run with climatological forcing and model output was obtained every 6 hours for two runs of 30 days in February and August. A detailed description of the model and selected variables is given in van der Kaaden et al. (2021) and (2022).

We included 30-day averages of the following hydrodynamic variables because they are thought to be related to the coral food supply: horizontal current speed at the bottom layer of the model (“Speed”), upward and downward velocities between 250-300 m depth (“W_{up}” and “W_{down}”), and depth-integrated energy conversion rate (“EC”) to the diurnal (K1) internal tide that is trapped at the Rockall Trough margin (van der Kaaden et al., 2021). The energy conversion rate is a measure of internal tidal wave activity (Gerkema et al., 2004). February and August bottom current speeds and energy conversion rates correlated strongly (Spearman correlation coefficient $r_s=0.81$ and $r_s=0.95$ resp.) which is undesirable in an RDA, so we used the average of the two months (i.e., 60-day average). For each annotated frame, values of all described variables were taken from the model grid cell closest to the position of the respective annotated frames (based on longitude and latitude coordinates).

2.2.3 Spatial variables from Moran’s Eigenvector Maps (explanatory variables)

To investigate the spatial configuration of reef cover and environmental variables at multiple spatial scales, we used Moran’s Eigenvector Maps (MEMs). In the MEM-approach, the study area is divided into groups (i.e., a map with 1 group, 2 groups, 3 groups, etc.) and each annotated video frame is assigned a value that represents its proximity to the centre of the group in which it is located (Borcard et al., 2011). Moran’s Eigenvector Map 1 thus represents variations on the broadest spatial scale of the entire study area (~25 km) and the highest MEMs (i.e., when the study area is divided in the highest number of groups) describe variation at the finest spatial scale of the difference between individual annotated video frames (~4m4 m). MEMs merely describe a certain spatial scale and thus do not exert any control on CWC growth, their specific values are therefore meaningless with respect to CWC growth.

Moran’s Eigenvector Maps were created from a distance-based connectivity matrix with the *adespatial* package in R (Dray et al., 2022). The connectivity matrix was calculated from the transformed spherical longitude and latitude coordinates using a minimum distance of 0 and the maximum distance at which all the datapoints were connected. This resulted in 15 significant (Moran’s adjusted $p<0.05$) MEMs with positive eigenvalues. At the broadest spatial scale (signalling differences between transects) datapoints were classified according to their east-to-west position (MEM 1) or according to their north-to-south position (MEM 2). At finer scales (signalling differences within transects) datapoints were classified by MEMs according to their position along a mound flank (MEM 3, 4, and 5), or according to regular intervals along transects (MEM 6 to MEM 15). So, MEM 1 and MEM 2 describe the between-transect spatial scale and higher MEMs describe the within-transect spatial scale. Data points on the same transect will thus have very similar values for MEM 1 and 2 but can have very different values for MEM 15.

2.3 RDA and variance partitioning

We explored our data following the protocol by Zuur et al. (2010) to ensure compliance to the assumptions of the RDA and variance partitioning. We applied a Hellinger transformation to the benthic cover data to minimize differences in standard deviations and applied scaling during RDA and variance partitioning to homogenise the variable variances. With two variance partitioning analyses, we calculated the percentage of variance in benthic cover that was explained by 1) hydrodynamic

variables, depth, and spatial variables and 2) environmental variables (hydrodynamic variables and depth), between-transect spatial variables, and within-transect spatial variables. The latter analysis provides information on whether benthic cover varies most between transects or within transects.

165 For parsimonious analyses and to avoid high collinearity, we selected the explanatory variables to be used in RDA and variance partitioning using forward selection with a significance level of 0.05 and the extra stopping criterium based on the adjusted coefficient of multiple determination (R^2_{adj}) of the global model (Blanchet et al., 2008). In this way, we selected the variables in the explanatory datasets separately, after verifying that the RDA with variables from the respective dataset was significant (Blanchet et al., 2008). We included depth as a separate variable in the final set of explanatory variables. Forward selection was done in R with the *adespatial* package (Dray et al., 2022), collinearity was tested by calculating Variation Inflation Factors (VIFs) with the *vegan* package, and RDA and variance partitioning were also performed with the *vegan* package (Oksanen et al., 2022).

Table 1. Response and explanatory variables as used in RDA and variance partitioning, with their units and range (min, mean, max). Vertical velocities are 30-day averages of February or August, and bottom current speed and energy conversion rates are 60-day averages of February+August. The range of values was calculated based on the variables as used in RDA and variance partitioning.

Set	Name	Range (min, mean, max)	mean	max	
Response variables	Benthic cover	Live coral cover ("Live")	<u>0</u>	<u>3.9</u>	<u>0, 3.9, 61.6</u> %
		Dead coral cover ("Dead")	<u>0</u>	<u>30.7</u>	<u>0, 30.7, 100</u> %
		Coral rubble cover ("Rubble")	<u>0</u>	<u>37.6</u>	<u>0, 37.6, 100</u> %
		Sediment cover ("Sediment")	<u>0</u>	<u>21.1</u>	<u>0, 21.1, 100</u> %
		Cover of rocks ("Rocks")	<u>0</u>	<u>2.4</u>	<u>0, 2.4, 98.7</u> %
Explanatory variables	Hydrodynamic variables	Bottom current speed ("Speed")	<u>0.18</u>	<u>0.27</u>	<u>0.18, 0.27, 0.34</u> m s ⁻¹
		Upward velocities in February ("W _{up} Feb")	<u>0.001</u>	<u>0.002</u>	<u>0.001, 0.002, 0.003</u> m s ⁻¹
		Upward velocities in August ("W _{up} Aug")	<u>0.003</u>	<u>0.008</u>	<u>0.003, 0.008, 0.015</u> m s ⁻¹

Inserted Cells

Inserted Cells

Inserted Cells

	Downward velocities in February (“W _{down Feb} ”) <u>0.005</u>	<u>0.011</u>	<u>0.020</u> , 0.011 , 0.005 m s ⁻¹
	Downward velocities in August (“W _{down Aug} ”) <u>0.002</u>	<u>0.005</u>	<u>0.011</u> , 0.005 , 0.002 m s ⁻¹
	Energy conversion to the internal tide (“EC”) <u>-0.13</u>	<u>0.45</u>	<u>-0.13</u> , <u>0.45</u> , <u>0.98</u> W m ⁻²
Depth	Depth	<u>528</u>	<u>682</u> , <u>528</u> , <u>682</u> , 877 m
Spatial variables	Between-transect Moran’s Eigenvector Maps		
	MEM 1	-0.7 , -0.0 , <u>0.0</u>	<u>1.6</u>
	MEM 2	1.6 , -1.5 , -0.0 , <u>0.0</u>	<u>2.7</u>
		2.7	
	Within-transect Moran’s Eigenvector Maps		
	MEM 3	-1.9 , -0.0 , <u>0.0</u>	<u>3.1</u>
	MEM 4	3.1 , -2.9 , 0.0 , <u>0.0</u>	<u>3.0</u>
	MEM 5	3.1 , -3.3 , 0.0 , <u>0.0</u>	<u>3.1</u>
	MEM 6	3.1 , -3.3 , 0.0 , <u>0.0</u>	<u>3.5</u>
	MEM 7	3.5 , -3.2 , -0.0 , <u>0.0</u>	<u>3.5</u>
	MEM 8	3.5 , -3.9 , -0.0 , <u>0.0</u>	<u>4.1</u>
	MEM 9	3.5 , -2.9 , -0.0 , <u>0.0</u>	<u>4.3</u>
	MEM 11	4.1 , -2.9 , -0.0 , <u>0.0</u>	<u>4.4</u>
	MEM 13	4.1 , -3.7 , -0.0 , <u>0.0</u>	<u>5.0</u>
	MEM 14	4.3 , -7.7 , -0.0 , <u>0.0</u>	<u>3.6</u>
	MEM 15	4.3 , -5.1 , 0.0 , <u>0.0</u>	<u>4.9</u>
		4.4 , -5.5 , 0.0 , <u>0.0</u>	
		4.6	

Inserted Cells

-3.9, -0.0,
4.9

2.4 Hydrodynamic simulations with and without coral mounds (coral mound engineering effect)

Some hydrodynamic (i.e., part of the explanatory) variables included in the analyses might be affected by the presence of cold-water coral mounds (i.e., ‘coral mound engineering effect’). We try to discriminate the environmental factors that are affected by coral mound engineering and environmental factors that are not affected by cold-water corals by comparing hydrodynamic model simulations with and without cold-water coral mounds from van der Kaaden et al. (2021). Van der Kaaden et al. (2021) mimicked a situation without cold-water coral mounds by smoothing the bathymetry and simulated the hydrodynamics on the smoothed and unmodified bathymetry. We calculated the coral mound engineering effect by subtracting horizontal bottom current speed, upward velocities in February, upward velocities in August, downward velocities in February, downward velocities in August, and energy conversion rates (Table 42) of the simulations with smoothed bathymetry (i.e., without coral mounds) from simulations with unmodified bathymetry (i.e., with coral mounds).

We define a coral mound engineering effect as a positive or negative feedback, meaning that the magnitude of coral mound engineering the effect of the presence of a coral mound on hydrodynamic variables will increase if mound increases or decreases resp. with increasing coral mound height increases (i.e., a feedback). To investigate which hydrodynamic variables are influenced by ecosystem engineering the size of a coral mound we calculated Spearman rho correlation coefficients between the mean absolute effect of mound presence and mound height. A significant correlation thus indicates a significant positive or negative effect of coral mound engineering on the explanatory hydrodynamic variable.

Mound height was defined using the model topography from van der Kaaden et al. (2021) as the maximum difference in topography at the location of the mounds, where we determined the location of mounds using connected component labelling in Matlab (Fig. 1). Mound height is therefore the maximum topographic height corrected for the underlying continental slope.

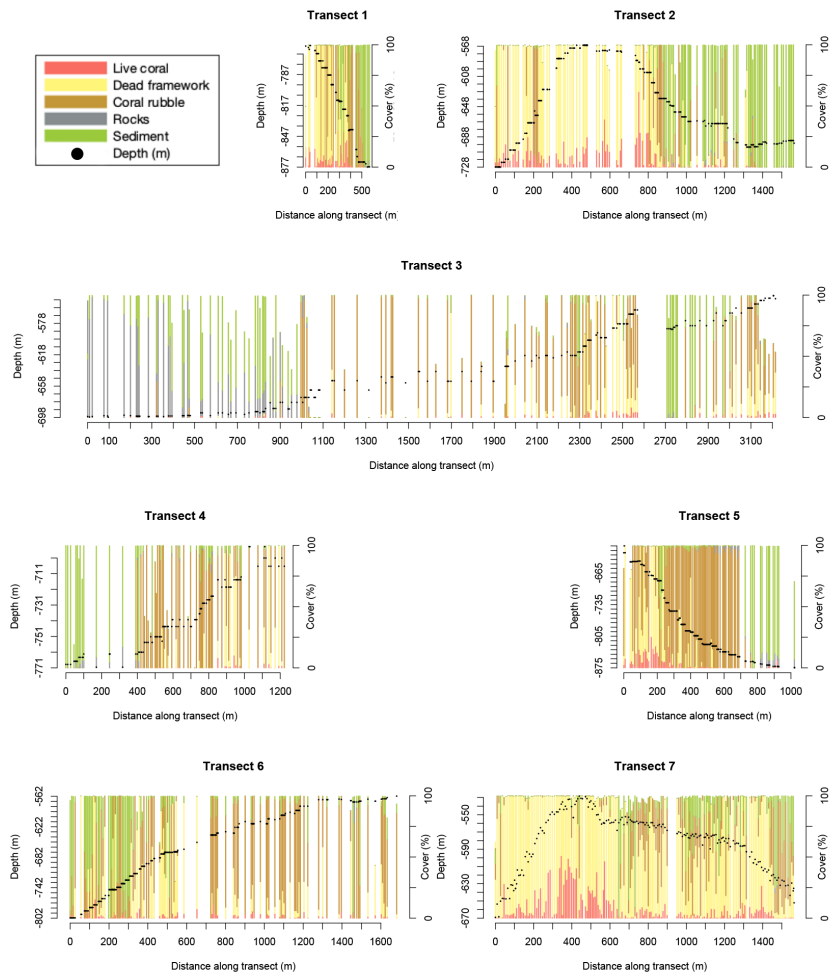
Table 2. Hydrodynamic variables used to visualize the effect of cold-water coral mounds on the hydrodynamics and to calculate Spearman rho correlation coefficients. The values display the minimum, mean, and maximum values of the hydrodynamic variables at the locations of cold-water coral mounds (Fig. 1) for the unmodified bathymetry (with mounds, left) and for the smoothed bathymetry (without mounds, right). Vertical velocities are 30-day averages of February or August, and bottom current speed and energy conversion rates are 60-day averages of February+August.

	With mounds (unmodified bathymetry)			Without mounds (smoothed bathymetry)		
	min	mean	max	min	mean	max
Bottom current speed (“Speed”)	0.12	0.22	0.42 m s ⁻¹	0.08	0.22	0.37 m s ⁻¹
Upward velocities in February (“W _{up_Feb} ”)	0.002	0.007	0.029 m s ⁻¹	0.001	0.002	0.023 m s ⁻¹
Upward velocities in August (“W _{up_Aug} ”)	0	0.004	0.018 m s ⁻¹	0	0.001	0.005 m s ⁻¹
Downward velocities in February (“W _{down_Feb} ”)	0.001	0.007	0.022 m s ⁻¹	0.001	0.003	0.021 m s ⁻¹
Downward velocities in August (“W _{down_Aug} ”)	0	0.003	0.013 m s ⁻¹	0	0.001	0.003 m s ⁻¹
Energy conversion to the internal tide (“EC”)	-0.65	0.08	1.25 W m ⁻²	-0.04	0.04	0.23 W m ⁻²

3. Results

3.1 General transect observations

There is variability in benthic cover within- and between transects (Fig. 2), but clear trends are not obvious. For instance, transect 3, located on the lower southern flank of the northernmost mound, and transect 6, located at the western flank of the highest mound (Fig. 1), have a relatively low live and dead coral cover overall. Transect 7, across the highest mound in the area, shows a relatively high dead coral cover and low sediment and rubble cover overall.



200 **Figure 2.** Stacked barplots show the benthic cover (in percent of the annotated frame) of the seven transects. Each bar represents one annotated video frame. Note: for visibility, only frames at >5.5 m distance apart are shown. Benthic cover types shown are the

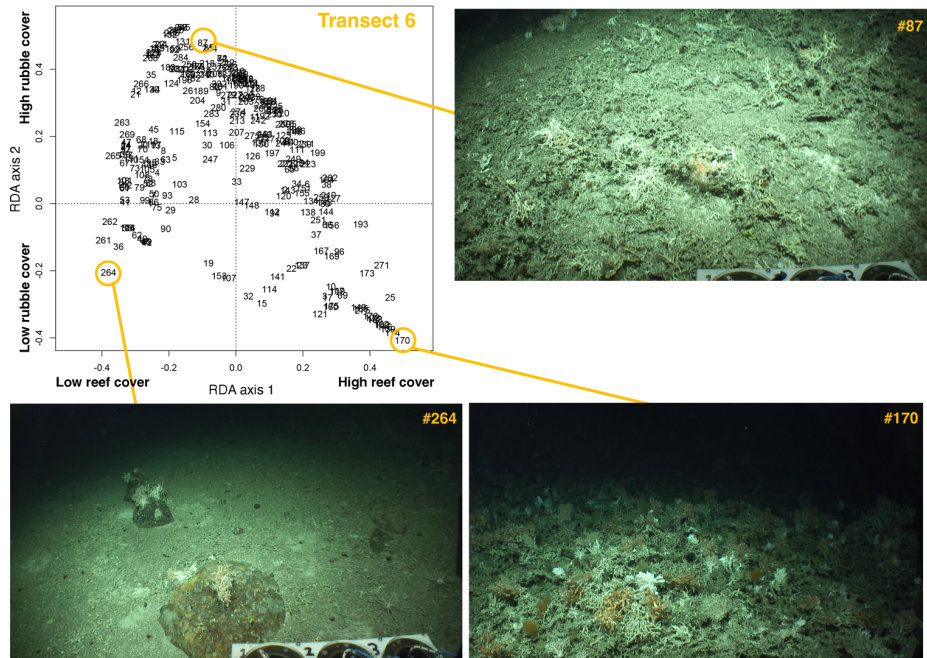
cover of live framework-forming corals (red), dead coral framework (yellow), coral rubble (brown), rocks (grey), and sediment (green). Other cover types are not shown, so bar plots might not reach 100 %. Black dots show the transect depth in m (left y-axis).

3.2 Redundancy analysis (RDA)

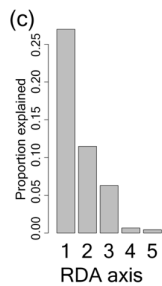
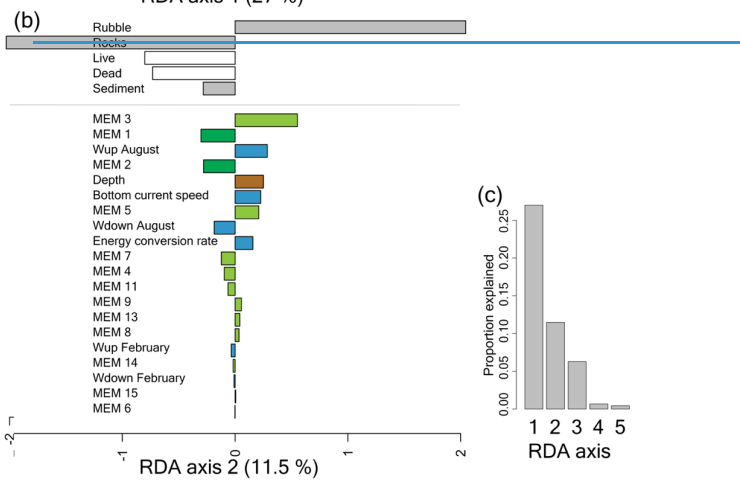
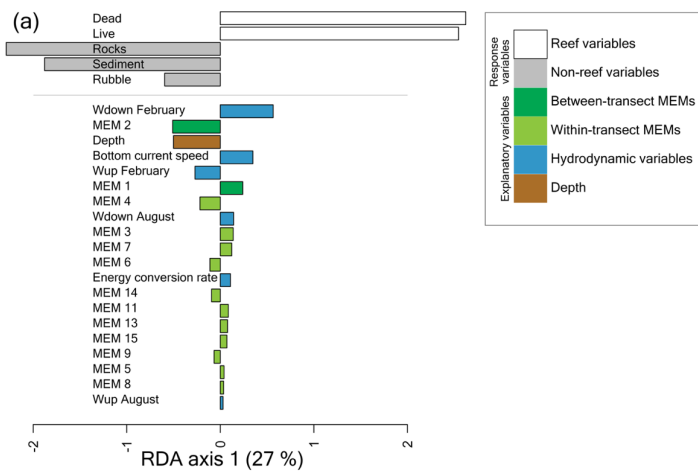
We investigated the relation between benthic cover and environmental variables with a redundancy analysis (RDA) in which we studied the spatial benthic configuration by including Moran's Eigenvector Maps (MEMs) in the analysis. RDA axes 1 to 4 were significant ($p < 0.001$). The first axis of the redundancy analysis explains 27 % of the variation in benthic cover and separates frames with high reef cover (i.e., live corals and dead framework) from frames with low reef cover (i.e., rocks, sediment, and coral rubble cover; Fig. 3 and 4a). The most important variables explaining high versus low reef cover are 'downward velocities in February', the spatial variable 'between-transect MEM 2' and 'depth'. Lesser important variables are 'bottom current speed', 'upward velocities in February', 'between-transect MEM 1', and 'within-transect MEM 4'. The other explanatory variables have only a minor contribution on the first axis. In all, high reef cover is associated with strong downward velocities, shallower water depths, strong bottom currents, and weak upward velocities.

The second RDA axis explains 11.5 % of the variation and separates frames with high coral rubble cover from frames with low coral rubble cover (Fig. 3 and 4b). The most important variable explaining high versus low coral rubble cover is the spatial variable 'within-transect MEM 3'. Lesser important variables are 'between-transect MEM 1', 'upward velocities in August', 'between-transect MEM 2', 'depth', and 'bottom current speed'. High coral rubble cover is associated with strong upward velocities in August, greater depths, and strong bottom current speed.

~~RDA axes 1 to 4 were significant ($p < 0.001$)~~ The third axis explained 6.3 % of the variation in benthic cover ~~and the fourth axis <1%~~ (Fig. 4b4c). The third axis ~~(not shown)~~ separates frames with high sediment cover from frames with low sediment cover. The most important variables explaining high versus low sediment cover are 'between-transect MEM 1' and 'between-transect MEM 2'. Lesser important variables are 'upward velocities in February', 'downward velocities in August', and 'within-transect MEM 5'. High sediment cover is associated with weak upward velocities in February and strong downward velocities in August. ~~The fourth axis (not shown) separates frames with high dead coral cover from frames with high live coral cover. The most important variables explaining dead versus live coral cover are 'within-transect MEM 6' and 'within-transect MEM 7' and 'upward velocities in February'. High live coral cover is associated with weak upward velocities in February and high dead coral cover is associated with strong upward velocities in February. We do not discuss the fourth axis as it explained <1 % of the variation in benthic cover.~~



230 | Figure 3. Annotated [images/video frames](#) from transect 6 plotted on the first (x-axis) and second (y-axis) redundancy analysis (RDA) axes, with three representative images from the seafloor. The first RDA axis separates images with low reef cover (such as image #264) from images with high reef cover (such as image #170). The second RDA axis separates images with low rubble cover (such as image #264 and #170) from images with high coral rubble cover (such as image #87). Note: images are directly extracted from the videos without modifications or annotations. The videos were obtained during the Changing Oceans 2012 expedition with RRS *James Cook* ©2012 Laurence De Clippele.



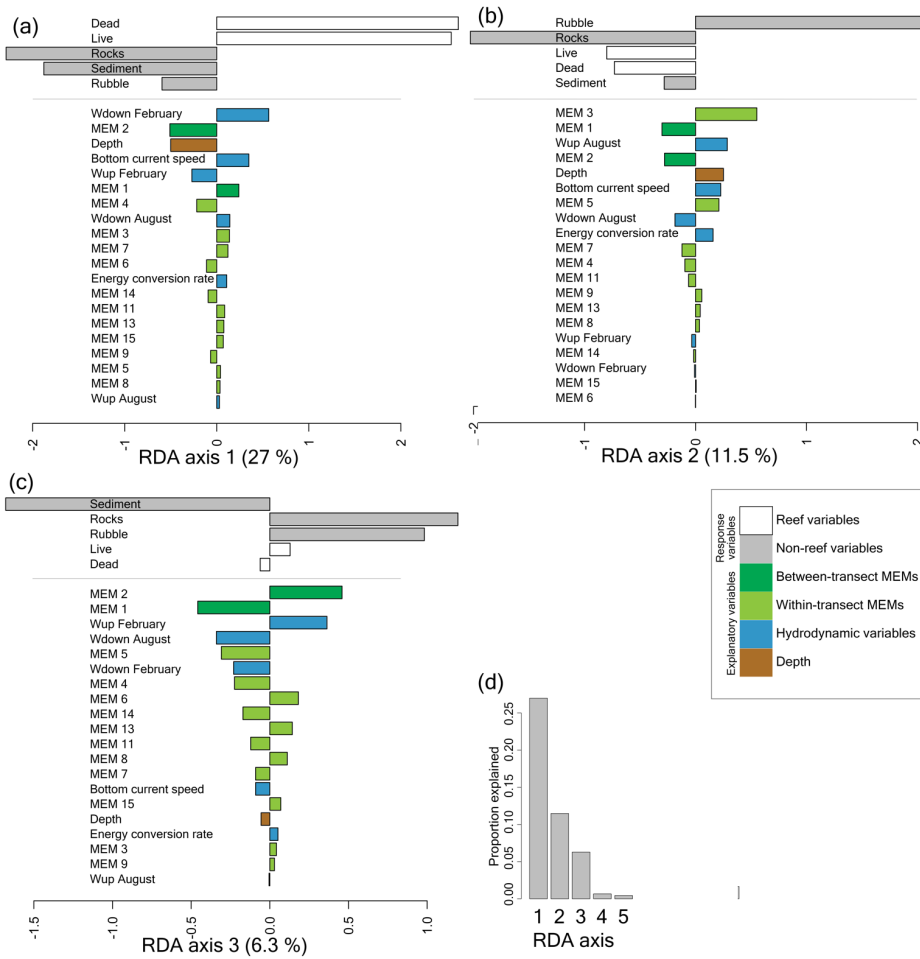


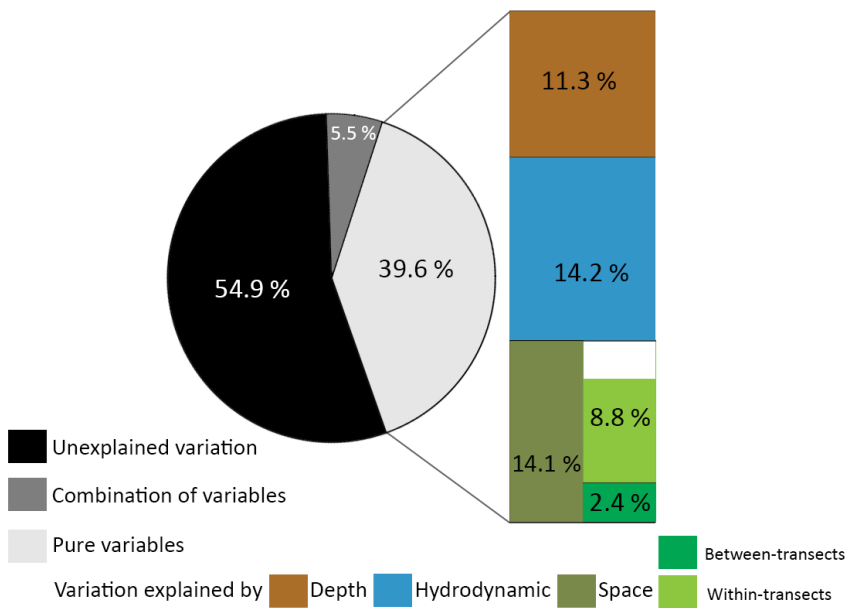
Figure 4. Bar plot of the components of the first (a) and second (b), and third (c) axis of the redundancy analysis (RDA), explaining 27%, 11.5%, and 6.3% of the variation in benthic cover respectively. The x-axis shows the value on the RDA axis. RDA axes 1 to 4 were significant ($p < 0.05$), but only axes 1 and 2 are axis 4 is not shown as axes 3 and 4 describe only 6.3% and <1% resp. it explained <1% of the variation in benthic cover (ed). The benthic cover (response) variables are shown at the top (reef variables in white and non-reef variables in grey) and below that, the explanatory variables are shown in colour. Variables are ordered from

most important to least important and coloured according to the variable type as shown in the legend. Response and explanatory variables on the same side of the axis are correlated.

3.3 Variance partitioning

245 Variance partitioning showed that 39.6 % of the variance in the benthic cover was explained by either depth (11.3 %), hydrodynamic variables (14.2 %), or spatial variables (14.1 %) and 5.5 % by a combination of those variables (Fig. 5). These fractions represent the variation in benthic cover that is explained purely by a (set of) variable(s), meaning that 14.1 % of the variation in benthic cover has a spatial configuration that is not explained by depth or hydrodynamic variables. Of the spatial variables, 2.4 % of the variation in benthic cover is explained purely by between-transect MEMs 1 and 2, i.e., related to

250 variations at the scale of the study area, and 8.8 % by all within-transect MEMs 3 to 15, i.e., related to variations on coral mounds. Since 2.4 % and 8.8 % do not add up to 14.1 %, a fraction of the variation in benthic cover (2.9 %) is explained by a combination of between- and within-transect MEMs. A total of 54.9 % of the variance in benthic cover remained unexplained by the explanatory variables used in this study.



255 Figure 5. Pie chart of the proportion of unexplained variation in the data (black), the proportion explained by a combination of sets of variables (dark-grey) and the proportion explained by the explanatory variables (light-grey). The explained variance is separated in the variation explained purely by depth (brown), hydrodynamic variables (blue) or spatial variables (green). Spatial variables are

260

further separated in MEMs describing the between-transect spatial scale (dark-green) and the within-transect spatial scale (light-green). The sum of the variance explained purely by the between- and within-transect spatial scale did not add up to 14.1 %, possibly because the combined spatial scales also explain a fraction of the variance. All pure fractions were significant ($p < 0.001$).

3.4 Coral mound engineering effect

265

The comparison of hydrodynamic model output with and without coral mounds from van der Kaaden et al. (2021) showed that the presence of cold-water coral mounds causes an acceleration or deceleration of bottom currents near coral mound foots and a deceleration on some mound summits (Fig. 6a). Energy conversion rate to the internal tide is increased at those mound

flanks that face the tidal current and decreased at the right side of mounds that face the incoming residual current (Fig. 6b). Vertical velocities in August and February are increased in the presence of cold-water coral mounds, downward velocities are increased on mound summits and upward velocities on mound flanks (Fig. 6c-f). Vertical velocities are increased more in February than in August. In August, upward velocities are stronger at the northern mound sides whereas downward velocities are stronger at the southern side (Fig. 6c-d). There was a significant correlation between mound height and the absolute effect

270

on all hydrodynamic variables, except for downward velocities in February (Fig. 7).

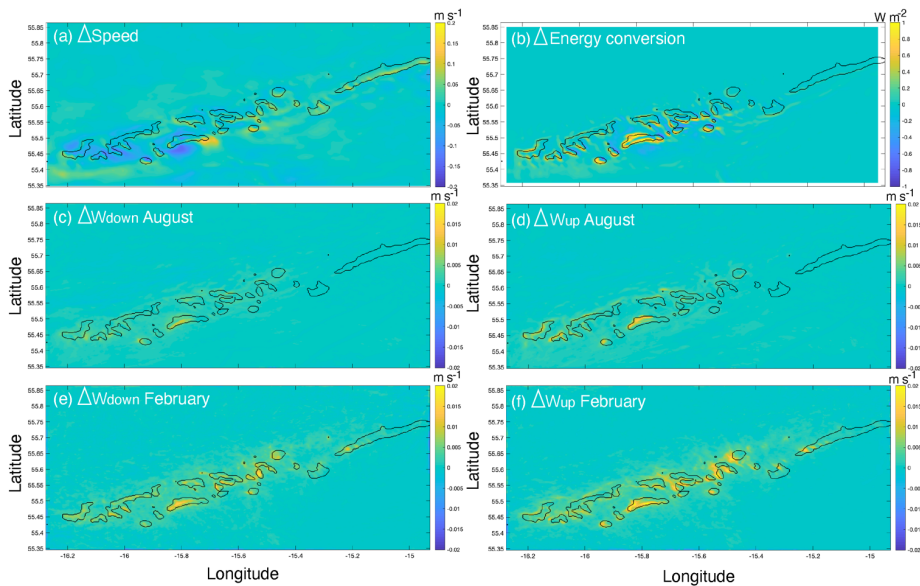
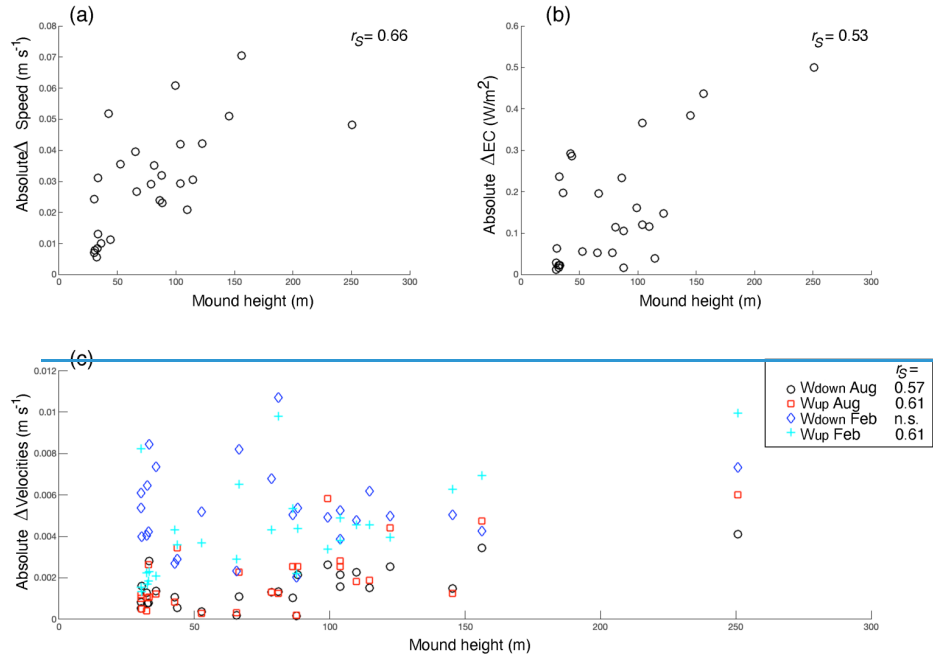
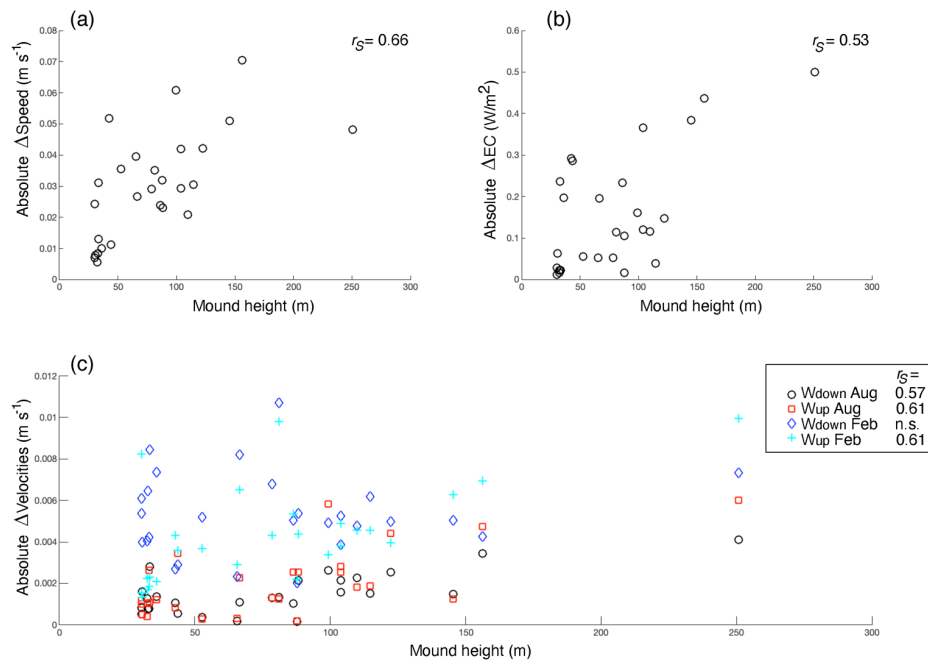


Figure 6. The effect of the presence of cold-water coral mounds on bottom current speed (a), energy conversion to the internal tide (b), downward velocities in August (c), upward velocities in August (d), downward velocities in February (e), and upward velocities in February (f). The mound effect was calculated by subtracting the hydrodynamic variables (Table 2) obtained from hydrodynamic

275 simulations without coral mounds from the variables obtained from hydrodynamic simulations with coral mounds. Positive Δ -values in the panels thus indicate an enhancing effect of coral mounds on the hydrodynamic variables.





280 **Figure 7. The relationships between mound height and the mean absolute effect of mound presence on (a) the bottom current speed, (b) the energy conversion rate to the internal tide, (c) vertical velocities (i.e., downward and upward velocities in August and February, indicated with different colours and symbols as in the legend). Significant ($p < 0.05$) Spearman rho correlation coefficients (r_s) for the relationships ($n = 27$ mounds), with n.s. denoting correlations that were not significant. Note that the y-axes indicate the effect of mound presence on the hydrodynamic variables, not the actual values.**

4. Discussion

285 Through mound formation (ecosystem engineering), cold-water corals can feed higher in the water column. This coral mound engineering also affects the hydrodynamics around coral mounds, possibly increasing the food supply towards the reefs (van der Kaaden et al., 2021; Soetaert et al., 2016). Cold-water corals and most of the fauna associated to the deep-reef habitats rely on organic matter originating from close to the surface ocean (de Froe et al., 2022; van Oevelen et al., 2018; Carlier et al., 2009). Our results underline that, [at the Logachev cold-water coral mound province](#), conditions for cold-water coral reefs are
 290 better higher in the water column since a high reef cover was positively associated to shallower areas (Fig. 2 and 4) and depth explained a large part of the variation in benthic cover (Fig. 5). To determine how coral mound engineering affects the

configuration of cold-water corals reefs, we investigated 1) the environmental control on cold-water coral reefs at multiple spatial scales, and 2) which of the environmental factors are/are not engineered (i.e., affected) by the corals (coral mound engineering).

295 Ventilation and hydrodynamics that stimulate the vertical and lateral food supply have been identified as the most important drivers of cold-water coral reef growth over the past 20,000 years (da Costa Portilho-Ramos et al., 2022). In our analysis we included simulated hydrodynamic variables that indicate increased vertical or lateral food supply, or ventilation. By including spatial variables (Moran Eigenvector Maps, MEMs) in our analysis, we were able to investigate whether these hydrodynamic variables had their largest influence on reef cover at the between- or at the within-transect scale. We found that reef cover
300 varied most at the scale of the study area (~25 km) and this variation seems associated most to non-engineered (i.e., not under coral control) downward velocities in winter (section 4.1).

By explaining 45.1% of the variation in benthic cover, our set of variables performed well in comparison to similar deep-sea studies using RDA: e.g., Vad et al. (2020) explained 15.1% of the variation in benthic cover and Kazanidis et al. (2021) explained 26.7% of macrofauna variation. Henry et al. (2013) explained 65% of the variation in reef fauna using a combination
305 of MEMs, hydrography, and bathymetric variables. So, the inclusion of both spatial factors (MEMs) and hydrodynamic variables appears to benefit the analysis. Especially within-transect MEMs described a relatively large part of the variation in our benthic cover data that was not explained by the environmental variables. Henry et al. (2013) similarly found that community composition was structured mainly by broad-scale environmental forcings, but that fine-scale MEMs described a significant fraction of the variation in community composition. This within-transect variation in benthic cover can be related
310 to spatial patterns of fauna (Henry et al., 2013), such as self-organized regular spatial patterns in coral reefs (van der Kaaden et al., [in press](#)2023) and to the typical reef zonation on cold-water coral mounds (section 4.2).

The variation that remained unexplained in our study might be related to hydrodynamics at a finer resolution, or other food supply mechanisms that were not described fully by our set of hydrodynamic variables, such as enhanced surface productivity (Eisele et al., 2011; Wienberg et al., 2022, 2020), downward migration of zooplankton (Guihen et al., 2018; Yahel et al., 2005),
315 other interspecific interactions causing for example recycling of material within cold-water coral reefs (Maier et al., 2020a; Henry et al., 2013; Rix et al., 2018), resuspension (de Froe et al., 2022; Mienis et al., 2009), and particle trapping by the reef framework (Mienis et al., 2019; Maier et al., 2021; Bartzke et al., 2021), or to sediment supply, which is important for reef stabilization and coral mound formation (Bartzke et al., 2021; Pirlet et al., 2011; Wang et al., 2021). Furthermore, all transects included in this study were located on cold-water coral mounds and not in between mounds. Since there are no reefs in between
320 cold-water coral mounds (Rengstorf et al., 2014), extending transects to include the off-mound region would likely increase the variation explained by the within-transect spatial scale and this could emphasize the coral mound engineering effect.

4.1 Broad-scale environmental control on reef cover that is not engineered by cold-water corals

Reef cover (live coral and dead framework) varied most from north to south in the study area. Strong downward velocities in February favour a high reef cover (Fig. 4) likely through an accelerated downward transport of organic matter from near the

325 ocean surface (Soetaert et al., 2016; Frederiksen et al., 1992; Davies et al., 2009; Findlay et al., 2013). Downward velocities
in February are stronger with coral mounds present than without coral mounds (Fig. 6c). Modelling the hydrodynamics around
one mound of different heights, van der Kaaden et al. (2021) also showed that vertical velocities increased as mound height
increased, suggesting a positive feedback mechanism. However, when including all mounds at the Logachev cold-water coral
mound province, the magnitude of the effect on downwards velocities in February is not correlated to the height of a coral
330 mound (Fig. 7). We thus argue that high reef cover is associated to enhanced downward velocities mostly due to broad-scale,
non-engineered, environmental processes.

Since downward velocities in February did not significantly correlate to downward velocities in August ($r_s=0.26$, $p=0.18$) and
downward velocities in August were barely associated to reef cover (Fig. 4), reef cover seems mostly steered by processes
prevailing in winter and not in summer. At the Rockall trough, deep winter mixing extends as far down into the water column
335 as ~~600m~~600 m (Holliday et al., 2000) and during winter months dense water is created over the Rockall Bank that cascades
down over the Rockall trough margin (White et al., 2005). Both processes cause an accelerated downward flow of organic
matter, that peaks near the winter-spring transition, at the onset of the phytoplankton bloom that is particularly early
(March/April) at the Rockall Bank (Mohn and White, 2007; Duineveld et al., 2007). These broad-scale, non-engineered,
environmental processes offer a food supply mechanism for the cold-water corals during and short after the food-limited winter
340 months (Maier et al., 2020b) and have a larger control on coral survival than food supply mechanisms in summer (Fig. 8a).

This finding suggests that broad-scale environmental processes exert a stronger control on cold-water coral cover than
engineered environmental variables. However, the rather coarse resolution of the hydrodynamic simulations might cause us to
overestimate the importance of broad-scale environmental variables. Variance partitioning showed that 8.8% of the variation
in benthic cover was explained solely by within-transect MEMs, compared to only 2.4% by between-transect MEMs. This
345 signals that the variation at the within-transect scale might be related to environmental variables at a finer resolution. Such
fine-scale variation in hydrodynamic variables is more likely to be caused by the interaction between water flow and fine-scale
topography, i.e., ecosystem engineering. Since MEMs 3 to 5, that describe the mound foot-to-summit spatial scale, play a role
in explaining the variation in benthic cover, cold-water coral mound ecosystem engineering might cause self-organized
variation in benthic cover.

350 [Environmental factors other than the hydrodynamic variables investigated here, might also affect coral reef growth and
subsequent cold-water coral mound formation. For example, certain water masses \(Schulz et al., 2020\), the permanent
pycnocline \(White and Dorschel, 2010\), internal waves \(Wang et al., 2019; Wienberg et al., 2020\), seawater density \(Flögel et
al., 2014\), and \(terrestrial\) sediment supply \(Pirlet et al., 2011; Vandorpe et al., 2017; Lo Iacono et al., 2014\) have been
suggested to restrain mound formation. Cold-water coral mounds can become buried following changes to the sedimentary
355 regime \(Lo Iacono et al., 2014\) and for the Logachev cold-water coral mound province it has been hypothesized that the
mounds stopped growing when reaching the permanent pycnocline \(White and Dorschel, 2010\) or the WTOW upper boundary
\(Schulz et al., 2020\). Van der Kaaden et al. \(2021\) found no levelling off of the engineering effect of the coral mound on the
local hydrodynamics, even when the mound was higher than at present. Such a levelling off is also not apparent in our results](#)

(Fig. 6). This underlines that, even though coral mounds engineer their local hydrodynamic environment, coral mound formation could be restricted by non-engineered environmental processes. Still, for cold-water coral mounds that are not buried it can be interesting to investigate the general hydrodynamic regime that arises around cold-water coral mounds and how this regime might explain reef zonation on mounds.

4.2 Coral mound ecosystem engineering causes self-organized reef zonation

We also clearly here, we demonstrated the effects of coral mound ecosystem engineering: bottom current speeds are accelerated at some parts of the mound and decelerated in other parts. At the mound flank, upward velocities are enhanced, whereas at the mound summits downward velocities are enhanced (Fig. 6). Previous studies (e.g., van der Kaaden et al., 2021; Davies et al., 2009; Findlay et al., 2013; Cyr et al., 2016; Mienis et al., 2007) showed that cold-water coral mounds have an effect on affect downward water motions. Our results also indicate that coral mounds influence downward velocities in February (Fig. 6). However, the magnitude of this effect does not correlate to mound height, likely because of the prevailing influence of non-engineered broad-scale environmental processes in winter. (discussed in section 4.1).

These findings are in line with hydrodynamic theory of waterflow passed an object (Juva et al., 2020; Dewey et al., 2005; Baines, 1995; Genin et al., 1986) and with other studies reporting the hydrodynamics around coral mounds (e.g., Genin et al., 1986; de Froe et al., 2022; Findlay et al., 2013; Davies et al., 2009; Juva et al., 2020). Such a regime can be generalized as: 1) flow acceleration at the mound side facing the incoming current and at the lee, and 2) flow deceleration at the other two mound sides, 3) flow deceleration at the summit if the summit is flat, 4) upwelling along the lower mound flanks, and 5) downwelling around the mound upper flanks and summit. As these typical hydrodynamic zones likely determine the typical benthic cover zones, we will argue in the following that reef zonation on cold-water coral mounds is self-organized.

Cold-water coral mounds show a typical, often reported benthic zonation (Fig. 2), with mostly sediment cover at the mound foot, coral rubble at the lower flank, dead coral framework on the higher flank and living corals at the summit (e.g., Cathalot et al., 2015; Davies et al., 2009; Genin et al., 1986; De Clippele et al., 2021; Genin et al., 1986; Maier et al., 2021; Vertino et al., 2014; Freiwald and Roberts, 2005; Dorschel et al., 2005). Van der Kaaden et al. (2023) in press found self-organized regular patterns in reef cover on the Logachev cold-water coral mounds, with overall reef cover varying along the transects. This suggests that the overall reef cover along a coral mound is steered by environmental conditions that change along the mound, and that, within these benthic zones, cold-water corals self-organize into regular patterns.

Indeed, we found that high cold-water coral reef and rubble cover correlated to the spatial scale from mound foot-to-summit (MEM 3 and 4) and to strong bottom current speeds (Fig. 4), suggesting that reef growth is more prominent on those mound flanks where (engineered) bottom currents are accelerated (i.e., front and rear) than on the flanks where (engineered) bottom currents are decelerated (Fig. 8b; Mohn et al., 2014). High dead coral rubble cover correlated to strong upward velocities in February (section 3.2) and high coral rubble cover to strong upward velocities in August (Fig. 4b), whereas high live coral reef and sediment cover correlated to weak upward velocities in February (section 3.2). This suggests that strong upwelling occurs mostly around the mound flanks and not around the mound summit and foot (Fig. 8b).

Flow induced up- and downwelling over coral mounds is often mentioned as an important food supply mechanism to cold-water coral reefs (Soetaert et al., 2016; Davies et al., 2009; Wagner et al., 2011; Findlay et al., 2014). During a tidal cycle, isopycnals are depressed at the mound flank and at the turning of the tide an internal bore is formed that propagates over the mound flank towards the summit (Legg and Klymak, 2008; Mohn et al., 2014). The vertical length-scale of these excursions follows the length-scale of the mound (van Haren et al., 2014; Cyr et al., 2016). Larger coral mounds generally have a larger effect on hydrodynamics than smaller mounds (Fig. 7; Lim et al. 2018; van der Kaaden et al. 2021). This underlines the mound ecosystem engineering aspect of hydrodynamic- and benthic zonation: as the coral mound grows taller, the formerly higher flank regions on the mound that were suitable for coral growth become unsuitable lower flank regions, thereby maintaining the typical reef zonation, and causing a so-called massenerhebung effect (Fig. 8c).

The massenerhebung effect has first been described for the zonation of flora and fauna on terrestrial mountains (Frahm and Gradstein, 1991; Grubb and Whitmore, 1966). Terrestrial mountains exhibit zones with a typical flora and fauna that are determined by various factors such as temperature, humidity, and solar radiation. These zones vary with relative altitude on the moundmountain, but not with the absolute height above the ground, because of feedbacks between the size of the moundmountain and the environment (Grubb, 1971; Grubb and Whitmore, 1966). A perhaps surprising result of this effect is that, for example, the treeline lies higher on higher mountains than on lower mountains. Genin et al. (1986) report that also cold-water coral presence is related to the position on the mound rather than the actual height above the seafloor or depth in the water column. We here hypothesize that this massenerhebung effect, whereby the distribution of organisms is determined by feedbacks between the moundmountain and the environment, applies to cold-water coral mounds too. Since depth is also an important variable explaining benthic cover, it is likely that the position of cold-water coral reefs on coral mounds is determined by the feedbacks between the mound and the hydrodynamics, but that shallower mounds have a denser reef cover than deeper mounds.

4.3 Ecosystem engineering effects on cold-water corals and climate change

Cold-water coral mounds seem to exhibit a zone with predominantly upward water motions on the mound flanks and a zone with predominantly downward water motions around the mound summit. The summit and upper flank seem most suitable for cold-water coral growth, likely because downward water motions accelerate the downward transport of organic matter. In contrast, on the coral mound flanks, coral rubble and dead coral framework is more abundant than live corals. Nutrient-rich deep water is pushed up towards the lower mound flanks (Cyr et al., 2016) and the community associated to the dead coral framework releases substantial amounts of nutrients (Maier et al., 2021). These nutrients are likely to be transported by the predominantly upward water motions towards the ocean surface (Soetaert et al., 2016; Findlay et al., 2014; de Froe et al., 2022) where they stimulate primary productivity that, in turn, benefits. This might benefit the coral reefs, as a global review (Maier et al., 2023) and studies on millennial time scales (Eisele et al., 2011; Wienberg et al., 2022, 2020) show the benefits of increased primary productivity for coral reef growth. The upward water motions around the mound flanks likely also resuspend

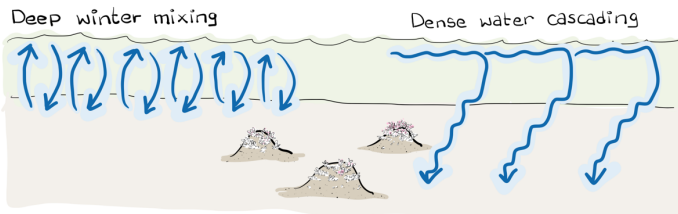
deposited particles. These particles are transported higher up the mound by lateral advection where they supply the corals with
425 additional food (Findlay et al., 2013; Davies et al., 2009; Mienis et al., 2009).

Other factors than food supply also influence cold-water coral growth, such as biogeochemical seawater properties (Flögel et
al., 2014; da Costa Portilho-Ramos et al., 2022; Fink et al., 2012). Deep water that is upwelled around cold-water coral mounds
typically has lower temperatures, oxygen content, and aragonite saturation than water from higher in the water column that is
downwelled (Findlay et al., 2013, 2014; Mienis et al., 2007; Flögel et al., 2014). The mound zone influenced by downward
430 water motions therefore likely experiences higher temperatures, oxygen, and aragonite saturation state than the region of
upward water motions. While higher oxygen and aragonite saturation state would benefit cold-water corals (Fink et al., 2012;
Dodds et al., 2007; Tittensor et al., 2009), higher temperatures might have an adverse effect (Morato et al., 2020; Chapron et
al., 2021). Currently, most cold-water corals occur within their thermal tolerance (Mienis et al., 2007; Chapron et al., 2021).
A higher temperature may be beneficial, but only up to the upper limit of the thermal tolerance range (Büscher et al., 2022;
435 Dodds et al., 2007).

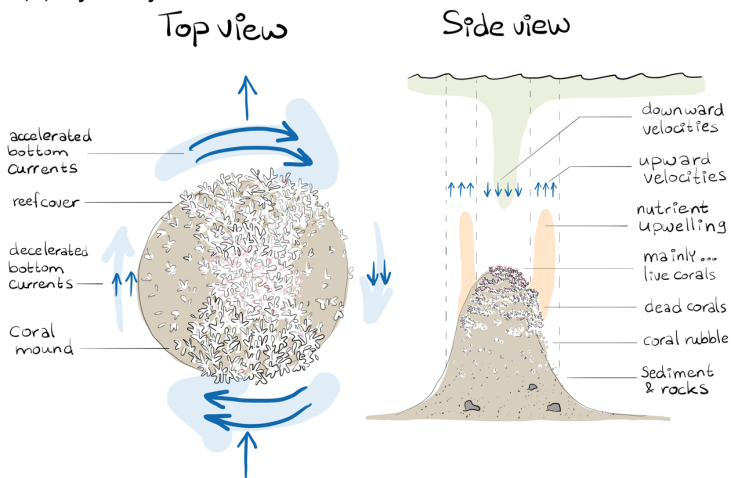
Increased temperatures from global change increase the energy demand of cold-water corals (Dodds et al., 2007; Dorey et al.,
2020; Chapron et al., 2021). When not compensated by sufficient food supply, framework-forming cold-water coral habitat is
expected to move to deeper waters (Morato et al., 2020). Our results show that this poses a problem to cold-water corals and
their associated fauna living on mounds, as the corals prefer the 'downwelling zone' where they profit from a higher vertical
440 particle flux, oxygen content, and aragonite saturation state. The temperatures in this zone, however, might become
unfavourable in the future. Further down the mound flank is the 'upwelling zone' that seems less suitable for cold-water coral
growth. Studies looking into the geological history of cold-water coral reefs have shown the sensitivity of cold-water coral
reefs to a decreased food supply (e.g., Frank et al., 2011; Wienberg et al., 2010; da Costa Portilho-Ramos et al., 2022; Fink et
al., 2013; Eisele et al., 2011). This suggest that cold-water corals on cold-water coral mounds might not be able to 'move'
445 down the mound to escape the adverse effects of climate change.

A sufficient food supply may compensate adverse environmental effects up to a certain limit (Büscher et al., 2017; Dorey et
al., 2020; da Costa Portilho-Ramos et al., 2022; Hebbeln et al., 2020). But we show that the hydrodynamically stimulated food
supply in winter is one of the major factors controlling coral reef cover, at least at the Logachev cold-water coral mound
province. Such vertical mixing is thought to dampen with climate change, since stratification might increase (Gerkema et al.,
450 2004; Müller et al., 2014; Pereira et al., 2002), possibly decreasing benthic-pelagic coupling (Capotondi et al., 2012; Li et al.,
2018; Reid et al., 2009). So, in the worst possible case, climate change might make cold-water coral mounds entirely less
suitable for cold-water coral growth.

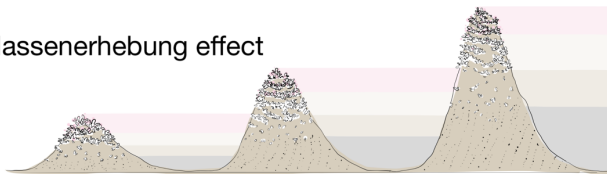
(a) Downward velocities in February



(b) Hydrodynamic zonation



(c) Massenerhebung effect



455 Figure 8. (a) schematic representation of the broad-scale environmental control on reef cover, i.e., downward velocities in February
likely resulting from deep winter mixing and dense water cascading. Note that the two processes happen at the same time and place
but are here separated in space for clarity. (b) schematic representation of the hydrodynamic zones in a top and side view and the
associated benthic zones of “mainly... live corals, dead corals, coral rubble, sediment & rocks”. The top view shows that bottom
460 currents are accelerated at the front and rear of the mound and decelerated at the right and left side, looking downstream of the
incoming flow. Reef cover is higher on those sides of the mound with accelerated currents and at the mound summit. The side view
shows the benthic zones of mainly live corals at the mound summit, dead coral cover at the higher flank, coral rubble at the
[lower](#) flank and sediment with rocks at the mound foot. The zone of upward velocities and upwelling of nutrients released by
the community associated to dead coral framework occurs around the mound flanks whereas downward velocities with transport
465 of organic matter from near the surface happens around the mound summit. The up- and downward water motions do not
necessarily happen simultaneously but can result from [\(spring-neap\)](#) tidal motions. (c) schematic representation of the
massenerhebung effect on three mounds of different sizes with the benthic zones of mainly live corals (pink), dead coral (light brown),
coral rubble (dark brown) and sediment (grey). The massenerhebung effect means that reef cover is determined by the position on
the mound rather than the actual height above the seafloor or depth below the sea surface.

5. Conclusions and outlook

470 We showed that downward velocities in winter, likely driven by non-engineered processes as deep winter mixing and dense
water cascading, control reef growth to such an extent that reef cover differs substantially at the scale of the Logachev cold-
water coral mound province. These broad-scale hydrodynamically enhanced food delivery processes in winter seem to
influence reef cover more than processes related to coral mound ecosystem engineering and are more important for cold-water
coral survival than hydrodynamically enhanced food delivery in summer. Nonetheless, by engineering long-lasting mounds,
475 cold-water corals can stimulate the vertical transport of particles from near the ocean surface towards the mound summits. As
coral mounds grow, they increasingly affect the hydrodynamics around them and thereby affect cold-water coral reef growth.
The initiated hydrodynamic zones shift as the mound grows, leading to a typical reef zonation whereby mound upper flanks
and summits have the densest reef cover. Reef zonation on cold-water coral mounds is therefore controlled by coral mound
engineering, and reef cover is determined by the position on the mound rather than the actual height above the seafloor or
480 depth in the water column (i.e., the massenerhebung effect).

Much research has shown the benefits of cold-water coral mound engineering for the corals (e.g., [Davies et al., 2009](#); [Findlay
et al., 2013](#); [Soetaert et al., 2016](#); [van der Kaaden et al., 2021, 2020, 2021, in press](#)2023; [Findlay et al., 2013](#); [Davies et al.,
2009](#)), but we here show that the hydrodynamic zones around cold-water coral mounds might restrict cold-water corals to grow
deeper on a mound to escape the adverse effects of climate warming. When studying cold-water coral ecosystems and their
485 response to global change the effects of broad-scale, non-engineered environmental processes should not be underestimated,
and it is especially important to gain a better understanding of how benthic-pelagic coupling will change in winter and to
quantify how much alternative food supply mechanisms and coral mound engineering could compensate a lower food
availability.

Code/Data availability

490 Data used in this research from (Maier et al., 2021; Raw data for “Reef communities associated with ‘dead’ cold-water coral
framework drive high resource retention and fast recycling in the deep sea”) are already published and properly cited in this
paper, and publicly available at <https://zenodo.org/record/4076147>. Data used in this research from (De Clippele et al., 2021;
Environmental data and image area measurements of different substrate types extracted from video transects recorded in the
Logachev cold-water coral mound province) are already published and properly cited in this paper, and publicly available at
495 <https://doi.pangaea.de/10.1594/PANGAEA.959612>.

Author contribution

AvdK, SC, EdF, and DvO were involved in conceptualization and design of the study. LDC, FM, and SRM provided the videos
and annotated images. AvdK, SC, LDC, and SRM were involved in data analysis. DvO supervised the study. DvO, JvdK, MR,
and KS were involved in securing funding for this research. AvdK wrote the manuscript. FM collected the video data. All co-
500 authors provided input to the study design, data analysis, data visualization, manuscript writing, and manuscript revisions.

Competing interests

The authors declare that they have no conflict of interest.

Acknowledgements

This research has been made possible due to collaboration funding between the Royal Dutch Institute for Sea Research and
505 Utrecht University. SRM was funded by the Greenland Research Council. LDC and CM were funded by European Union’s
Horizon 2020 research and innovation program under grant agreement No. 818123 (iAtlantic). The output of this study reflects
only the author’s view, and the European Union cannot be held responsible for any use that may be made of the information
contained therein. Funding for video collection was provided by the Netherlands Organisation for Scientific Research NWO-
VENI grant 863.11.012.

510 References

Baines, P. G.: Topographic effects in stratified flows, Cambridge University Press, 1995.

- Bartzke, G., Siemann, L., Büssing, R., Nardone, P., Koll, K., Hebbeln, D., and Huhn, K.: Investigating the Prevailing Hydrodynamics Around a Cold-Water Coral Colony Using a Physical and a Numerical Approach, *Front Mar Sci*, 8, 1–17, <https://doi.org/10.3389/fmars.2021.663304>, 2021.
- 515 Bastiaansen, R., Doelman, A., Eppinga, M. B., and Rietkerk, M.: The effect of climate change on the resilience of ecosystems with adaptive spatial pattern formation, *Ecol Lett*, 23, 414–429, <https://doi.org/10.1111/ele.13449>, 2020.
- Blanchet, F. G., Legendre, P., and Borcard, D.: Forward selection of explanatory variables, *Ecology*, 89, 2623–2632, <https://doi.org/10.1890/07-0986.1>, 2008.
- Bongiorni, L., Mea, M., Gambi, C., Pusceddu, A., Taviani, M., and Danovaro, R.: Deep-water scleractinian corals promote higher biodiversity in deep-sea meiofaunal assemblages along continental margins, *Biol Conserv*, 143, 1687–1700, <https://doi.org/10.1016/j.biocon.2010.04.009>, 2010.
- Borcard, D., Gillet, F., and Legendre, P.: *Numerical Ecology with R*, edited by: Gentleman, R., Hornik, K., and Parmigiani, G., Springer Science & Business Media, 21–54 pp., <https://doi.org/10.1007/978-1-4419-7976-6>, 2011.
- Büscher, J. V., Form, A. U., and Riebesell, U.: Interactive effects of ocean acidification and warming on growth, fitness and survival of the cold-water coral *Lophelia pertusa* under different food availabilities, *Front Mar Sci*, 4, <https://doi.org/10.3389/fmars.2017.00101>, 2017.
- Büscher, J. V., Form, A. U., Wisshak, M., Kiko, R., and Riebesell, U.: Cold-water coral ecosystems under future ocean change: Live coral performance vs. framework dissolution and bioerosion, *Limnol Oceanogr*, 67, 2497–2515, <https://doi.org/10.1002/lno.12217>, 2022.
- 530 Capotondi, A., Alexander, M. A., Bond, N. A., Curchitser, E. N., and Scott, J. D.: Enhanced upper ocean stratification with climate change in the CMIP3 models, *J Geophys Res*, 117, 1–23, <https://doi.org/10.1029/2011JC007409>, 2012.
- Carlier, A., Le Guilloux, E., Olu, K., Sarrazin, J., Mastrototaro, F., Taviani, M., and Clavier, J.: Trophic relationships in a deep Mediterranean cold-water coral bank (Santa Maria di Leuca, Ionian Sea), *Mar Ecol Prog Ser*, 397, 125–137, <https://doi.org/10.3354/meps08361>, 2009.
- 535 Cathalot, C., Van Oevelen, D., Cox, T. J. S., Kutti, T., Lavaleye, M., Duineveld, G., and Meysman, F. J. R.: Cold-water coral reefs and adjacent sponge grounds: hotspots of benthic respiration and organic carbon cycling in the deep sea, *Front Mar Sci*, 2, 1–12, <https://doi.org/10.3389/fmars.2015.00037>, 2015.
- Chapron, L., Galand, P. E., Pruski, A. M., Peru, E., Vétion, G., Robin, S., and Lartaud, F.: Resilience of cold-water coral holobionts to thermal stress, *Proceedings of the Royal Society B: Biological Sciences*, 288, <https://doi.org/10.1098/rspb.2021.2117>, 2021.
- 540 De Clippele, L. H., van der Kaaden, A. S., Maier, S. R., de Froe, E., and Roberts, J. M.: Biomass Mapping for an Improved Understanding of the Contribution of Cold-Water Coral Carbonate Mounds to C and N Cycling, *Front Mar Sci*, 8, <https://doi.org/10.3389/fmars.2021.721062>, 2021.
- Environmental data and image area measurements of different substrate types extracted from video transects recorded in the Logachev cold-water coral mound province:
- 545

- da Costa Portilho-Ramos, R., Titschack, J., Wienberg, C., Rojas, M. G. S., Yokoyama, Y., and Hebbeln, D.: Major environmental drivers determining life and death of cold-water corals through time, *PLoS Biol*, 20, <https://doi.org/10.1371/journal.pbio.3001628>, 2022.
- Crooks, J. A.: Characterizing ecosystem-level consequences of biological invasions : the role of ecosystem engineers, 2, 153–166, 2002.
- 550 Cyr, F., Van Haren, H., Mienis, F., Duineveld, G., and Bourgault, D.: On the influence of cold-water coral mound size on flow hydrodynamics, and vice versa, *Geophys Res Lett*, 43, 1–9, <https://doi.org/10.1002/2015GL067038>, 2016.
- Davies, A. J., Duineveld, G. C. A., Lavaleye, M. S. S., Bergman, M. J. N., van Haren, H., and Roberts, J. M.: Downwelling and deep-water bottom currents as food supply mechanisms to the cold-water coral *Lophelia pertusa* (Scleractinia) at the 555 Mingulay Reef complex, *Limnol Oceanogr*, 54, 620–629, <https://doi.org/10.4319/lo.2009.54.2.0620>, 2009.
- Dewey, R., Richmond, D., and Garrett, C.: Stratified tidal flow over a bump, *J Phys Oceanogr*, 35, 1911–1927, <https://doi.org/10.1175/JPO2799.1>, 2005.
- Dodds, L. A., Roberts, J. M., Taylor, A. C., and Marubini, F.: Metabolic tolerance of the cold-water coral *Lophelia pertusa* (Scleractinia) to temperature and dissolved oxygen change, *J Exp Mar Biol Ecol*, 349, 205–214, 560 <https://doi.org/10.1016/j.jembe.2007.05.013>, 2007.
- Dorey, N., Gjelsvik, Ø., Kutti, T., and Büscher, J. V.: Broad Thermal Tolerance in the Cold-Water Coral *Lophelia pertusa* From Arctic and Boreal Reefs, *Front Physiol*, 10, <https://doi.org/10.3389/fphys.2019.01636>, 2020.
- [Dorschel, B., Hebbeln, D., Rüggeberg, A., and Dullo, C.: Carbonate budget of a cold-water coral carbonate mound: Propeller Mound, Porcupine Seabight, *International Journal of Earth Sciences*, 96, 73–83, <https://doi.org/10.1007/s00531-005-0493-0>, 565 \[2005\]\(#\).](#)
- Dray, S., Bauman, D., Blanchet, G., Borcard, D., Clappe, S., Guénard, G., Jombart, T., Larocque, G., Legendre, P., Madi, N., and Wagner, H. H.: *_adespatial: Multivariate Multiscale Spatial Analysis_*. R package version 0.3-20, <https://CRAN.R-project.org>, 2022.
- Duineveld, G. C. A., Lavaleye, M. S. S., Bergman, M. J. N., de Stigter, H., and Mienis, F.: Trophic structure of a cold-water coral mound community (Rockall Bank, NE Atlantic) in relation to the near-bottom particle supply and current regime, *Bull Mar Sci*, 81, 449–467, <https://doi.org/10.1080/17451000.2017.1398404>, 2017.
- Duineveld, G. C. A., Jeffreys, R. M., Lavaleye, M. S. S., Davies, A. J., Bergman, M. J. N., Watmough, T., and Witbaard, R.: Spatial and tidal variation in food supply to shallow cold-water coral reefs of the Mingulay Reef complex (Outer Hebrides, Scotland), *Mar Ecol Prog Ser*, 444, 97–115, <https://doi.org/10.3354/meps09430>, 2012.
- 575 Eisele, M., Frank, N., Wienberg, C., Hebbeln, D., López Correa, M., Douville, E., and Freiwald, A.: Productivity controlled cold-water coral growth periods during the last glacial off Mauritania, *Mar Geol*, 280, 143–149, <https://doi.org/10.1016/j.margeo.2010.12.007>, 2011.

- Van Engeland, T., Rune Godo, O., Johnsen, E., Duineveld, G. C. A., and van Oevelen, D.: Cabled ocean observatory data reveal food supply mechanisms to a cold-water coral reef, *Prog Oceanogr*, 172, 51–64, <https://doi.org/10.1016/j.pocean.2019.01.007>, 2019.
- 580 Findlay, H. S., Artioli, Y., Moreno Navas, J., Hennige, S. J., Wicks, L. C., Huvenne, V. A. I., Woodward, E. M. S., and Roberts, J. M.: Tidal downwelling and implications for the carbon biogeochemistry of cold-water corals in relation to future ocean acidification and warming, *Glob Chang Biol*, 19, 2708–2719, <https://doi.org/10.1111/gcb.12256>, 2013.
- Findlay, H. S., Hennige, S. J., Wicks, L. C., Navas, J. M., Woodward, E. M. S., and Roberts, J. M.: Fine-scale nutrient and carbonate system dynamics around cold-water coral reefs in the northeast Atlantic, *Sci Rep*, 4, 1–10, <https://doi.org/10.1038/srep03671>, 2014.
- Fink, H. G., Wienberg, C., Hebbeln, D., McGregor, H. V., Schmiedl, G., Taviani, M., and Freiwald, A.: Oxygen control on Holocene cold-water coral development in the eastern Mediterranean Sea, *Deep-Sea Research Part I*, 62, 89–96, <https://doi.org/10.1016/j.dsr.2011.12.013>, 2012.
- 590 Fink, H. G., Wienberg, C., De Pol-Holz, R., Wintersteller, P., and Hebbeln, D.: Cold-water coral growth in the Alboran Sea related to high productivity during the Late Pleistocene and Holocene, *Mar Geol*, 339, 71–82, <https://doi.org/10.1016/j.margeo.2013.04.009>, 2013.
- Flögel, S., Dullo, W. Chr., Pfannkuche, O., Kiriakoulakis, K., and Rüggeberg, A.: Geochemical and physical constraints for the occurrence of living cold-water corals, *Deep Sea Res 2 Top Stud Oceanogr*, 99, 19–26, <https://doi.org/10.1016/j.dsr2.2013.06.006>, 2014.
- 600 Frahm, J.-P. and Gradstein, R. S.: An Altitudinal Zonation of Tropical Rain Forests Using Bryophytes, *J Biogeogr*, 18, 669–678, 1991.
- Frank, N., Freiwald, A., López Correa, M., Wienberg, C., Eisele, M., Hebbeln, D., Van Rooij, D., Henriet, J. P., Colin, C., van Weering, T., de Haas, H., Buhl-Mortensen, P., Roberts, J. M., De Mol, B., Douville, E., Blamart, D., and Hatté, C.: Northeastern Atlantic cold-water coral reefs and climate, *Geology*, 39, 743–746, <https://doi.org/10.1130/G31825.1>, 2011.
- Frederiksen, R., Jensen, A., and Westerberg, H.: The distribution of the scleractinian coral *Lophelia pertusa* around the Faroe islands and the relation to internal tidal mixing, *Sarsia*, 77, 157–171, <https://doi.org/10.1080/00364827.1992.10413502>, 1992.
- [Freiwald, A. and Roberts, J. M.: Cold-Water Corals and Ecosystems. 1st ed., Springer-Verlag, 1243 pp., 2005.](#)
- de Froe, E., Maier, S. R., Horn, H. G., Wolff, G. A., Blackbird, S., Mohn, C., Schultz, M., van der Kaaden, A., Cheng, C. H., Wubben, E., van Haastregt, B., Friis Moller, E., Lavaleye, M., Soetaert, K., Reichart, G., and van Oevelen, D.: Hydrography and food distribution during a tidal cycle above a cold-water coral mound, *Deep-Sea Research Part I*, 189, 103854, <https://doi.org/10.1016/j.dsr.2022.103854>, 2022.
- 605 Genin, A., Dayton, P. K., Lonsdale, P. F., and Spiess, F. N.: Corals on seamount peaks provide evidence of current acceleration over deep-sea topography, *Nature*, 322, 59–61, 1986.
- 610 Gerkema, T., Lam, F. P. A., and Maas, L. R. M.: Internal tides in the Bay of Biscay: Conversion rates and seasonal effects, *Deep Sea Res 2 Top Stud Oceanogr*, 51, 2995–3008, <https://doi.org/10.1016/j.dsr2.2004.09.012>, 2004.

- Grubb, P. J.: Interpretation of the ‘Massenerhebung’ Effect on Tropical Mountains, *Nature*, 229, 44–45, <https://doi.org/10.1038/229044a0>, 1971.
- Grubb, P. J. and Whitmore, T. C.: A Comparison of Montane and Lowland Rain Forest in Ecuador : II . The Climate and its
615 Effects on the Distribution and Physiognomy of the Forests, *Journal of Ecology*, 54, 303–333, 1966.
- Guihen, D., White, M., and Lundälv, T.: Zooplankton drive diurnal changes in oxygen concentration at Tisler cold-water coral reef, *Coral Reefs*, <https://doi.org/10.1007/s00338-018-1711-0>, 2018.
- de Haas, H., Mienis, F., Frank, N., Richter, T. O., Steinacher, R., de Stigter, H., van der Land, C., and van Weering, T. C. E.: Morphology and sedimentology of (clustered) cold-water coral mounds at the south Rockall Trough margins, NE Atlantic
620 Ocean, *Facies*, 55, 1–26, <https://doi.org/10.1007/s10347-008-0157-1>, 2009.
- van Haren, H., Mienis, F., Duineveld, G. C. A., and Lavaleye, M. S. S.: High-resolution temperature observations of a trapped nonlinear diurnal tide influencing cold-water corals on the Logachev mounds, *Prog Oceanogr*, 125, 16–25, <https://doi.org/10.1016/j.pocan.2014.04.021>, 2014.
- Hastings, A., Byers, J. E., Crooks, J. A., Cuddington, K., Jones, C. G., Lambrinos, J. G., Talley, T. S., and Wilson, W. G.:
625 Ecosystem engineering in space and time, *Ecol Lett*, 10, 153–164, <https://doi.org/10.1111/j.1461-0248.2006.00997.x>, 2007.
- Hebbeln, D., Wienberg, C., Dullo, W. C., Freiwald, A., Mienis, F., Orejas, C., and Titschack, J.: Cold-water coral reefs thriving under hypoxia, *Coral Reefs*, 39, 853–859, <https://doi.org/10.1007/s00338-020-01934-6>, 2020.
- Hennige, S. J., Larsson, A. I., Orejas, C., Gori, A., De Clippele, L. H., Lee, Y. C., Jimeno, G., Georgoulas, K., Kamenos, N. A., and Roberts, J. M.: Using the Goldilocks Principle to model coral ecosystem engineering, *Proceedings of the Royal Society
630 B: Biological Sciences*, 288, <https://doi.org/10.1098/rspb.2021.1260>, 2021.
- Henry, L.-A., Moreno Navas, J., and Roberts, J. M.: Multi-scale interactions between local hydrography, seabed topography, and community assembly on cold-water coral reefs, *Biogeosciences*, 10, 2737–2746, <https://doi.org/10.5194/bg-10-2737-2013>, 2013.
- Holliday, N. P., Pollard, R. T., Read, J. F., and Leach, H.: Water mass properties and fluxes in the Rockall Trough, 1975-1998,
635 *Deep Sea Res 1 Oceanogr Res Pap*, 47, 1303–1332, [https://doi.org/10.1016/S0967-0637\(99\)00109-0](https://doi.org/10.1016/S0967-0637(99)00109-0), 2000.
- [Lo Iacono, C., Gràcia, E., Ranero, C. R., Emelianov, M., Huvenne, V. A. I., Bartolomé, R., Booth-Rea, G., Prades, J., Ambrosog, S., Dominguez, C., Grinyó, J., Rubiñ, E., and Torrenth, J.: The West Melilla cold water coral mounds, Eastern Alboran Sea: Morphological characterization and environmental context, *Deep Sea Res 2 Top Stud Oceanogr*, 99, 316–326, <https://doi.org/10.1016/j.dsr.2013.07.006>, 2014.](https://doi.org/10.1016/j.dsr.2013.07.006)
- 640 Johnson, C., Sherwin, T., Smythe-Wright, D., Shimmield, T., and Turrel, W.: Wyville Thomson Ridge Overflow Water: Spatial and temporal distribution in the Rockall Trough, *Deep-Sea Research Part I*, 57, 1153–1162, <https://doi.org/10.1016/j.dsr.2010.07.006>, 2010.
- Jones, C. G., Lawton, J. H., Shachak, M., Jones, C. G., Lawton, J. H., and Shachak, M.: Organisms as Ecosystem Engineers, *Oikos*, 69, 373–386, 1994.

- 645 Juva, K., Flögel, S., Karstensen, J., Linke, P., and Dullo, W.-C.: Tidal dynamics control on cold-water coral growth: A high-resolution multivariable study on eastern Atlantic cold-water coral sites, *Front Mar Sci*, 7, 132, <https://doi.org/10.3389/FMARS.2020.00132>, 2020.
- van der Kaaden, A., Maier, S. R., Siteur, K., De Clippele, L. H., van de Koppel, J., Purkis, S. J., Rietkerk, M., Soetaert, K., and van Oevelen, D.: Tiger reefs: Self-organized regular patterns in deep-sea cold-water coral reefs, *Ecosphere*, 14, <https://doi.org/10.1002/ecs2.4654>, 2023.
- 650 <https://doi.org/10.5281/zenodo.5547565>, 2021.
- van der Kaaden, A.-S. and De Clippele, L. H.: Image/Video Annotation and Analysis. Zenodo protocol and functions. DOI: 10.5281/zenodo.5547565, <https://doi.org/10.5281/zenodo.5547565>, 2021.
- van der Kaaden, A.-S., van Oevelen, D., Rietkerk, M., Soetaert, K., and van de Koppel, J.: Spatial Self-Organization as a New Perspective on Cold-Water Coral Mound Development, *Front Mar Sci*, 7, 1–8, <https://doi.org/10.3389/fmars.2020.00631>, 655 2020.
- van der Kaaden, A.-S., Mohn, C., Gerkema, T., Maier, S. R., de Froe, E., van de Koppel, J., Rietkerk, M., Soetaert, K., and van Oevelen, D.: Feedbacks between hydrodynamics and cold-water coral mound development, *Deep-Sea Research Part I*, 178, <https://doi.org/10.1016/j.dsr.2021.103641>, 2021.
- van der Kaaden, A.-S., Mohn, C., Gerkema, T., Maier, S. R., de Froe, E., van de Koppel, J., Rietkerk, M., Soetaert, K., and 660 van Oevelen, D.: Corrigendum to “Feedbacks between hydrodynamics and cold-water coral mound development” [*Deep-Sea Res.* 178 (2021) 103641] Elsevier Enhanced Reader, *Deep-Sea Research Part I*, 184, <https://doi.org/10.1016/j.dsr.2022.103743>, 2022.
- <https://doi.org/10.1016/j.dsr.2022.103743>, 2022.
- van der Kaaden, A.-S., Maier, S. R., Siteur, K., De Clippele, L. H., van de Koppel, J., Purkis, S. J., Rietkerk, M., Soetaert, K., and van Oevelen, D.: Tiger reefs: self-organised regular patterns in deep-sea cold-water coral reefs, *Ecosphere*, 2023.
- 665 Kazanidis, G., Henry, L. A., Vad, J., Johnson, C., De Clippele, L. H., and Roberts, J. M.: Sensitivity of a cold-water coral reef to interannual variability in regional oceanography, *Divers Distrib*, 27, 1719–1731, <https://doi.org/10.1111/ddi.13363>, 2021.
- Kenyon, N. H., Akhmetzhanov, A. M., Wheeler, A. J., van Weering, T. C. E., de Haas, H., and Ivanov, M. K.: Giant carbonate mud mounds in the southern Rockall Trough, *Mar Geol*, 195, 5–30, [https://doi.org/10.1016/S0025-3227\(02\)00680-1](https://doi.org/10.1016/S0025-3227(02)00680-1), 2003.
- van der Land, C., Eisele, M., Mienis, F., de Haas, H., Hebbeln, D., Reijmer, J. J. G., and van Weering, T. C. E.: Carbonate 670 mound development in contrasting settings on the Irish margin, *Deep Sea Res 2 Top Stud Oceanogr*, 99, 297–306, <https://doi.org/10.1016/j.dsr2.2013.10.004>, 2014.
- Legg, S. and Klymak, J.: Internal Hydraulic Jumps and Overturning Generated by Tidal Flow over a Tall Steep Ridge, *J Phys Oceanogr*, 38, 1949–1964, <https://doi.org/10.1175/2008jpo3777.1>, 2008.
- Li, G., Cheng, L., Zhu, J., Trenberth, K. E., Mann, M. E., and Abraham, J. P.: Increasing ocean stratification over the past half-century, *Nat Clim Chang*, <https://doi.org/10.1038/s41558-020-00918-2>, 2018.
- 675 Lim, A., Huvenne, V. A. I., Vertino, A., Spezzaferri, S., and Wheeler, A. J.: New insights on coral mound development from groundtruthed high-resolution ROV-mounted multibeam imaging, *Mar Geol*, 403, 225–237, <https://doi.org/10.1016/j.margeo.2018.06.006>, 2018.

- Maier, S. R., Kutti, T., Bannister, R. J., Fang, J. K. H., van Breugel, P., van Rijswijk, P., and van Oevelen, D.: Recycling pathways in cold-water coral reefs: Use of dissolved organic matter and bacteria by key suspension feeding taxa, *Sci Rep*, 10, 1–13, <https://doi.org/10.1038/s41598-020-66463-2>, 2020a.
- Maier, S. R., Bannister, R. J., van Oevelen, D., and Kutti, T.: Seasonal controls on the diet, metabolic activity, tissue reserves and growth of the cold-water coral *Lophelia pertusa*, *Coral Reefs*, 39, 173–187, <https://doi.org/10.1007/s00338-019-01886-6>, 2020b.
- 685 Raw data for “Reef communities associated with ‘dead’ cold-water coral framework drive high resource retention and fast recycling in the deep sea”:
- Maier, S. R., Mienis, F., de Froe, E., Soetaert, K., Lavaleye, M., Duineveld, G., Beauchard, O., van der Kaaden, A.-S., Koch, B. P., and van Oevelen, D.: Reef communities associated with ‘dead’ cold-water coral framework drive resource retention and recycling in the deep sea, *Deep Sea Research Part I: Oceanographic Research Papers*, 175, 103574, 690 <https://doi.org/10.1016/j.dsr.2021.103574>, 2021.
- [Maier, S. R., Brooke, S., De Clippele, L. H., de Froe, E., van der Kaaden, A., Kutti, T., Mienis, F., and van Oevelen, D.: On the paradox of thriving cold-water coral reefs in the food-limited deep sea, *Biological Reviews*, <https://doi.org/10.1111/brv.12976>, 2023.](https://doi.org/10.1111/brv.12976)
- Mienis, F., van Weering, T., de Haas, H., de Stigter, H., Huvenne, V., and Wheeler, A.: Carbonate mound development at the SW Rockall Trough margin based on high resolution TOBI and seismic recording, *Mar Geol*, 233, 1–19, 695 <https://doi.org/10.1016/j.margeo.2006.08.003>, 2006.
- Mienis, F., de Stigter, H. C., White, M., Duineveld, G., de Haas, H., and van Weering, T. C. E.: Hydrodynamic controls on cold-water coral growth and carbonate-mound development at the SW and SE Rockall Trough Margin, NE Atlantic Ocean, *Deep Sea Res 1 Oceanogr Res Pap*, 54, 1655–1674, <https://doi.org/10.1016/j.dsr.2007.05.013>, 2007.
- 700 Mienis, F., de Stigter, H. C., de Haas, H., and van Weering, T. C. E.: Near-bed particle deposition and resuspension in a cold-water coral mound area at the Southwest Rockall Trough margin, NE Atlantic, *Deep Sea Res 1 Oceanogr Res Pap*, 56, 1026–1038, <https://doi.org/10.1016/j.dsr.2009.01.006>, 2009.
- Mienis, F., Bouma, T. J., Witbaard, R., van Oevelen, D., and Duineveld, G. C. A.: Experimental assessment of the effects of cold-water coral patches on water flow, *Mar Ecol Prog Ser*, 609, 101–117, <https://doi.org/10.3354/meps12815>, 2019.
- 705 Mohn, C. and White, M.: Remote sensing and modelling of bio-physical distribution patterns at Porcupine and Rockall Bank, Northeast Atlantic, *Cont Shelf Res*, 27, 1875–1892, <https://doi.org/10.1016/j.csr.2007.03.006>, 2007.
- Mohn, C., Rengstorf, A., White, M., Duineveld, G., Mienis, F., Soetaert, K., and Grehan, A.: Linking benthic hydrodynamics and cold-water coral occurrences: A high-resolution model study at three cold-water coral provinces in the NE Atlantic, *Prog Oceanogr*, 122, 92–104, <https://doi.org/10.1016/j.pocean.2013.12.003>, 2014.
- 710 Morato, T., González-Irusta, J. M., Domínguez-Carrión, C., Wei, C. L., Davies, A., Sweetman, A. K., Taranto, G. H., Beazley, L., García-Alegre, A., Grehan, A., Laffargue, P., Murillo, F. J., Sacau, M., Vaz, S., Kenchington, E., Arnaud-Haond, S., Callery, O., Chimentí, G., Cordes, E., Egilsdóttir, H., Freiwald, A., Gasbarro, R., Gutiérrez-Zárate, C., Gianni, M., Gilkinson,

- K., Wareham Hayes, V. E., Hebbeln, D., Hedges, K., Henry, L. A., Johnson, D., Koen-Alonso, M., Lirette, C., Mastrototaro, F., Menot, L., Molodtsova, T., Durán Muñoz, P., Orejas, C., Pennino, M. G., Puerta, P., Ragnarsson, S., Ramiro-Sánchez, B.,
715 Rice, J., Rivera, J., Roberts, J. M., Ross, S. W., Rueda, J. L., Sampaio, Í., Snelgrove, P., Stirling, D., Treble, M. A., Urrea, J.,
Vad, J., van Oevelen, D., Watling, L., Walkusz, W., Wienberg, C., Woillez, M., Levin, L. A., and Carreiro-Silva, M.: Climate-
induced changes in the suitable habitat of cold-water corals and commercially important deep-sea fishes in the North Atlantic,
Glob Chang Biol, 26, 2181–2202, <https://doi.org/10.1111/gcb.14996>, 2020.
- Müller, M., Cherniawsky, J. Y., Foreman, M. G. G., and Von Storch, J. S.: Seasonal variation of the M2 tide, *Ocean Dyn*, 64,
720 159–177, <https://doi.org/10.1007/s10236-013-0679-0>, 2014.
- Nakatsuka, T., Handa, N., Harada, N., Sugimoto, T., and Imaizumi, S.: Origin and decomposition of sinking particulate organic
matter in the deep water column inferred from the vertical distributions of its $\delta^{15}\text{N}$, $\delta^{13}\text{C}$ and $\delta^{14}\text{C}$, *Deep Sea Research Part I:
Oceanographic Research Papers*, 44, 1957–1979, [https://doi.org/10.1016/s0967-0637\(97\)00051-4](https://doi.org/10.1016/s0967-0637(97)00051-4), 1997.
- van Oevelen, D., Duineveld, G., Lavaley, M., Mienis, F., Soetaert, K., and Heip, C. H. R.: The cold-water coral community
725 as a hot spot for carbon cycling on continental margins: A food-web analysis from Rockall Bank (Northeast Atlantic), *Limnol
Oceanogr*, 54, 1829–1844, <https://doi.org/10.4319/lo.2009.54.6.1829>, 2009.
- van Oevelen, D., Duineveld, G. C. A., Lavaley, M. S. S., Kutti, T., and Soetaert, K.: Trophic structure of cold-water coral
communities revealed from the analysis of tissue isotopes and fatty acid composition, *Marine Biology Research*, 14, 287–306,
<https://doi.org/10.1080/17451000.2017.1398404>, 2018.
- 730 Oksanen, J., Simpson, G., Blanchet, F., Kindt, R., Legendre, P., Minchin, P., O'Hara, R., Solymos, P., Stevens, M., Szoecs,
E., Wagner, H., Barbour, M., Bedward, M., Bolker, B., Borcard, D., Carvalho, G., Chirico, M., de Cáceres, M., Durand, S.,
Evangelista, H., FitzJohn, R., Friendly, M., Furneaux, B., Hannigan, G., Hill, M., Lathi, L., McGlenn, D., Ouellette, M., Ribeiro
Cunha, E., Smith, T., Stier, A., ter Braak, C., and Weedon, J.: `_vegan: Community Ecology Package_`. R package version 2.6-
4, <https://CRAN.R-project.org/package=vegan>, 2022.
- 735 Pereira, A. F., Beckmann, A., and Hellmer, H. H.: Tidal Mixing in the Southern Weddell Sea: Results from a Three-
Dimensional Model, 2002.
- Pirlet, H., Colin, C., Thierens, M., Latruwe, K., Van Rooij, D., Foubert, A., Frank, N., Blamart, D., Huvenne, V. A. I., Swennen,
R., Vanhaecke, F., and Henriët, J. P.: The importance of the terrigenous fraction within a cold-water coral mound: A case
study, *Mar Geol*, 282, 13–25, <https://doi.org/10.1016/j.margeo.2010.05.008>, 2011.
- 740 Ragnarsson, S. Á., Burgos, J. M., Kutti, T., van den Beld, I., Egilsdóttir, H., Arnaud-Haond, S., and Grehan, A.: The Impact
of Anthropogenic Activity on Cold-Water Corals, in: *Marine Animal Forests*, Springer International Publishing, 1–35,
https://doi.org/10.1007/978-3-319-17001-5_27-1, 2016.
- Reid, P. C., Fischer, A. C., Lewis-Brown, E., Meredith, M. P., Sparrow, M., Andersson, A. J., Antia, A., Bates, N. R.,
Bathmann, U., Beaugrand, G., Brix, H., Dye, S., Edwards, M., Furevik, T., Gangstø, R., Hátún, H., Hopcroft, R. R., Kendall,
745 M., Kasten, S., Keeling, R., Le Quéré, C., Mackenzie, F. T., Malin, G., Mauritzen, C., Ólafsson, J., Paull, C., Rignot, E.,

- Shimada, K., Vogt, M., Wallace, C., Wang, Z., and Washington, R.: Impacts of the Oceans on Climate Change, in: *Advances in Marine Biology*, vol. 56, 1–150, 2009.
- Rengstorf, A. M., Mohn, C., Brown, C., Wisz, M. S., and Grehan, A. J.: Predicting the distribution of deep-sea vulnerable marine ecosystems using high-resolution data: Considerations and novel approaches, *Deep Sea Res 1 Oceanogr Res Pap*, 93, 72–82, <https://doi.org/10.1016/j.dsr.2014.07.007>, 2014.
- 750 Rietkerk, M., Bastiaansen, R., Banerjee, S., Koppel, J. Van De, Baudena, M., and Doelman, A.: Evasion of tipping in complex systems through spatial pattern formation, *Science* (1979), 169, <https://doi.org/10.1126/science.abj0359>, 2021.
- Rix, L., De Goeij, J. M., Van Oevelen, D., Struck, U., Al-Horani, F. A., Wild, C., and Naumann, M. S.: Reef sponges facilitate the transfer of coral-derived organic matter to their associated fauna via the sponge loop, *Mar Ecol Prog Ser*, 589, 85–96, 755 <https://doi.org/10.3354/meps12443>, 2018.
- Roberts, J. M. and shipboard party, ~: *Changing Oceans Expedition 2012. RRS James Cook 073 Cruise Report*, 224 pp., 2013.
- Schulz, K., Soetaert, K., Mohn, C., Korte, L., Mienis, F., Duineveld, G., and van Oevelen, D.: Linking large-scale circulation patterns to the distribution of cold water corals along the eastern Rockall Bank (northeast Atlantic), *Journal of Marine Systems*, 212, 103456, <https://doi.org/10.1016/j.jmarsys.2020.103456>, 2020.
- 760 Shchepetkin, A. F. and McWilliams, J. C.: The regional oceanic modeling system (ROMS): A split-explicit, free-surface, topography-following-coordinate oceanic model, *Ocean Model* (Oxf), 9, 347–404, <https://doi.org/10.1016/j.ocemod.2004.08.002>, 2005.
- Snelgrove, P. V. R., Soetaert, K., Solan, M., Thrush, S., Wei, C. L., Danovaro, R., Fulweiler, R. W., Kitazato, H., Ingole, B., Norkko, A., Parkes, R. J., and Volkenborn, N.: Global Carbon Cycling on a Heterogeneous Seafloor, *Trends Ecol Evol*, 33, 765 <https://doi.org/10.1016/j.tree.2017.11.004>, 2017.
- Soetaert, K., Mohn, C., Rengstorf, A., Grehan, A., and Van Oevelen, D.: Ecosystem engineering creates a direct nutritional link between 600-m deep cold-water coral mounds and surface productivity, *Sci Rep*, 6, 1–9, <https://doi.org/10.1038/srep35057>, 2016.
- Sweetman, A. K., Thurber, A. R., Smith, C. R., Levin, L. A., Mora, C., Wei, C.-L., Gooday, A. J., Jones, D. O. B., Rex, M., 770 Yasuhara, M., Ingels, J., Ruhl, H. A., Frieder, C. A., Danovaro, R., Würzberg, L., Baco, A., Grupe, B. M., Pasulka, A., Meyer, K. S., Dunlop, K. M., Henry, L.-A., and Roberts, J. M.: Major impacts of climate change on deep-sea benthic ecosystems, *Elem Sci Anth*, 5, 4, <https://doi.org/10.1525/elementa.203>, 2017.
- Tittensor, D. P., Baco, A. R., Brewin, P. E., Clark, M. R., Consalvey, M., Hall-Spencer, J., Rowden, A. A., Schlacher, T., Stocks, K. I., and Rogers, A. D.: Predicting global habitat suitability for stony corals on seamounts, *J Biogeogr*, 36, 1111– 775 1128, <https://doi.org/10.1111/j.1365-2699.2008.02062.x>, 2009.
- Vad, J., Kazanidis, G., Henry, L. A., Jones, D. O. B., Gates, A. R., and Roberts, J. M.: Environmental controls and anthropogenic impacts on deep-sea sponge grounds in the Faroe-Shetland Channel, NE Atlantic: The importance of considering spatial scale to distinguish drivers of change, *ICES Journal of Marine Science*, 77, 451–461, <https://doi.org/10.1093/icesjms/fsz185>, 2020.

- 780 [Vandorpe, T., Wienberg, C., Hebbeln, D., Van den Berghe, M., Gaide, S., Wintersteller, P., and Van Rooij, D.: Multiple generations of buried cold-water coral mounds since the Early-Middle Pleistocene Transition in the Atlantic Moroccan Coral Province, southern Gulf of Cádiz, *Palaeogeogr Palaeoclimatol Palaeoecol*, 485, 293–304, <https://doi.org/10.1016/j.palaeo.2017.06.021>, 2017.](#)
- [Vertino, A., Spezzaferri, S., Rüggeberg, A. R. T., Stalder, C., and Wheeler, A. J.: An overview on cold-water coral ecosystems and facies, in: *Cushman Foundation Species Publication No. 44*, 12–19, 2014.](#)
- 785 [Wagner, H., Purser, A., Thomsen, L., Jesus, C. C., and Lundälv, T.: Particulate organic matter fluxes and hydrodynamics at the Tisler cold-water coral reef, *Journal of Marine Systems*, 85, 19–29, <https://doi.org/10.1016/j.jmarsys.2010.11.003>, 2011.](#)
- [Wang, H., Lo Iacono, C., Wienberg, C., Titschack, J., and Hebbeln, D.: Cold-water coral mounds in the southern Alboran Sea \(western Mediterranean Sea\): Internal waves as an important driver for mound formation since the last deglaciation, *Mar Geol*, 412, 1–18, <https://doi.org/10.1016/j.margeo.2019.02.007>, 2019.](#)
- 790 [Wang, H., Titschack, J., Wienberg, C., Korpanty, C., and Hebbeln, D.: The Importance of Ecological Accommodation Space and Sediment Supply for Cold-Water Coral Mound Formation, a Case Study from the Western Mediterranean Sea, *Front Mar Sci*, 8, 1–14, <https://doi.org/10.3389/fmars.2021.760909>, 2021.](#)
- [White, M. and Dorschel, B.: The importance of the permanent thermocline to the cold water coral carbonate mound distribution in the NE Atlantic, *Earth Planet Sci Lett*, 296, 395–402, <https://doi.org/10.1016/j.epsl.2010.05.025>, 2010.](#)
- 795 [White, M., Mohn, C., de Stigter, H., and Mottram, G.: Deep-water coral development as a function of hydrodynamics and surface productivity around the submarine banks of the Rockall Trough, NE Atlantic, in: *Cold-water Corals and Ecosystems*, edited by: Freiwald, A. and Roberts, J. M., 503–514, 2005.](#)
- [White, M., Roberts, J. M., and van Weering, T.: Do bottom-intensified diurnal tidal currents shape the alignment of carbonate mounds in the NE Atlantic?, *Geo-Marine Letters*, 27, 391–397, <https://doi.org/10.1007/s00367-007-0060-8>, 2007.](#)
- 800 [Wienberg, C., Frank, N., Mertens, K. N., Stuut, J. B., Marchant, M., Fietzke, J., Mienis, F., and Hebbeln, D.: Glacial cold-water coral growth in the Gulf of Cádiz: Implications of increased palaeo-productivity, *Earth Planet Sci Lett*, 298, 405–416, <https://doi.org/10.1016/j.epsl.2010.08.017>, 2010.](#)
- [Wienberg, C., Titschack, J., Frank, N., De Pol-Holz, R., Fietzke, J., Eisele, M., Kremer, A., and Hebbeln, D.: Deglacial upslope shift of NE Atlantic intermediate waters controlled slope erosion and cold-water coral mound formation \(Porcupine Seabight, Irish margin\), *Quat Sci Rev*, 237, 106310, <https://doi.org/10.1016/j.quascirev.2020.106310>, 2020.](#)
- [Wienberg, C., Kregel, T., Frank, N., Wang, H., van Rooij, D., and Hebbeln, D.: Cold-water coral mounds in the western Mediterranean Sea New insights into their initiation and development since the Mid-Pleistocene in response to changes of African hydroclimate, *Quat Sci Rev*, 293, 107723, <https://doi.org/10.1016/j.quascirev.2022.107723>, 2022.](#)
- 810 [Yahel, R., Yahel, G., and Genin, A.: Near- bottom depletion of zooplankton over coral reefs: I: Diurnal dynamics and size distribution, *Coral Reefs*, 24, 75–85, <https://doi.org/10.1007/s00338-004-0449-z>, 2005.](#)
- [Zuur, A. F., Ieno, E. N., and Elphick, C. S.: A protocol for data exploration to avoid common statistical problems, *Methods Ecol Evol*, 1, 3–14, <https://doi.org/10.1111/j.2041-210x.2009.00001.x>, 2010.](#)

