

# Overview and statistical analysis of boundary layer clouds and precipitation over the western North-Atlantic Ocean

Simon Kirschler<sup>1,2</sup>, Christiane Voigt<sup>1,2</sup>, Bruce E. Anderson<sup>3</sup>, Gao Chen<sup>3</sup>, Ewan C. Crosbie<sup>3</sup>, Richard A. Ferrare<sup>3</sup>, Valerian Hahn<sup>1,2</sup>, Johnathan W. Hair<sup>3</sup>, Stefan Kaufmann<sup>1,2</sup>, Richard H. Moore<sup>3</sup>, David Painemal<sup>3</sup>, Claire E. Robinson<sup>3</sup>, Kevin J. Sanchez<sup>3</sup>, Amy J. Scarino<sup>3</sup>, Taylor J. Shingler<sup>3</sup>, Michael A. Shook<sup>3</sup>, Kenneth L. Thornhill<sup>3</sup>, Edward L. Winstead<sup>3</sup>, Luke D. Ziemba<sup>3</sup>, and Armin Sorooshian<sup>4,5</sup>

<sup>1</sup>Institut für Physik der Atmosphäre, Deutsches Zentrum für Luft- und Raumfahrt (DLR), Oberpfaffenhofen, Germany

<sup>2</sup>Institut für Physik der Atmosphäre, Johannes Gutenberg-Universität, Mainz, Germany

<sup>3</sup>NASA Langley Research Center, Hampton, VA, USA

<sup>4</sup>Department of Chemical and Environmental Engineering, University of Arizona, Tucson, Arizona, USA

<sup>5</sup>Department of Hydrology and Atmospheric Sciences, University of Arizona, Tucson, Arizona, USA

**Correspondence:** Kirschler Simon (Simon.Kirschler@dlr.de)

**Abstract.** Due to their fast evolution and large ~~variability~~natural variability in macro- and microphysical properties, the accurate representation of boundary layer clouds in current climate models remains a challenge. One of the regions with large intermodel spread of the Coupled Model Intercomparison Project Phase 6 ensemble is the western North-Atlantic Ocean. Here, statistically representative in-situ measurements can help to develop and constrain the parameterization of clouds in global models. To this end, we performed comprehensive measurements of boundary layer clouds, aerosol, trace gases, and radiation in the western North-Atlantic Ocean during the NASA Aerosol Cloud meTeorology Interactions oVer the western ATLantic Experiment (ACTIVATE) mission. 174 research flights with 574 flight hours for cloud and precipitation measurements were performed with the HU-25 Falcon during three winter (February-March 2020, January-April 2021, and November 2021-March 2022) and three summer seasons (August-September 2020, May-June 2021, and May-June 2022). Here we present a statistical evaluation of 17209 individual cloud events probed by the Fast Cloud Droplet Probe and the Two-Dimensional Stereo cloud probe during 155 research flights in a representative and repetitive flight strategy allowing for robust statistical data analyses. We show that the vertical profiles of distributions of the liquid water content and the cloud droplet effective diameter (ED) increase with altitude in the marine boundary layer. Due to higher updraft speeds, higher cloud droplet number concentrations ( $N_{\text{liquid}}$ ) were measured in winter compared to summer despite lower cloud condensation nuclei abundance. Flight cloud cover derived from statistical analysis of in-situ data is reduced in summer and shows large variability. This seasonal contrast in cloud coverage is consistent with a dominance of a synoptic pattern in winter that favors conditions for the formation of stratiform clouds in the western edge of cyclones (post-cyclonic). In contrast, a dominant summer anticyclone is concomitant with the occurrence of shallow cumulus clouds and lower cloud coverage. The evaluation of boundary layer clouds and precipitation in the  $N_{\text{liquid}}$ -ED phase space sheds light on liquid, mixed-phase, and ice cloud properties and helps to ~~understand~~their formationcategorize the cloud data. Ice and liquid precipitation, often masked in cloud statistics by high abundance of liquid clouds, is often observed throughout the cloud. The ACTIVATE in-situ cloud measurements provide a wealth of cloud

information useful for assessing airborne and satellite remote sensing ~~product~~products, for global climate and weather model evaluations, and for dedicated process studies that address precipitation and aerosol-cloud interactions.

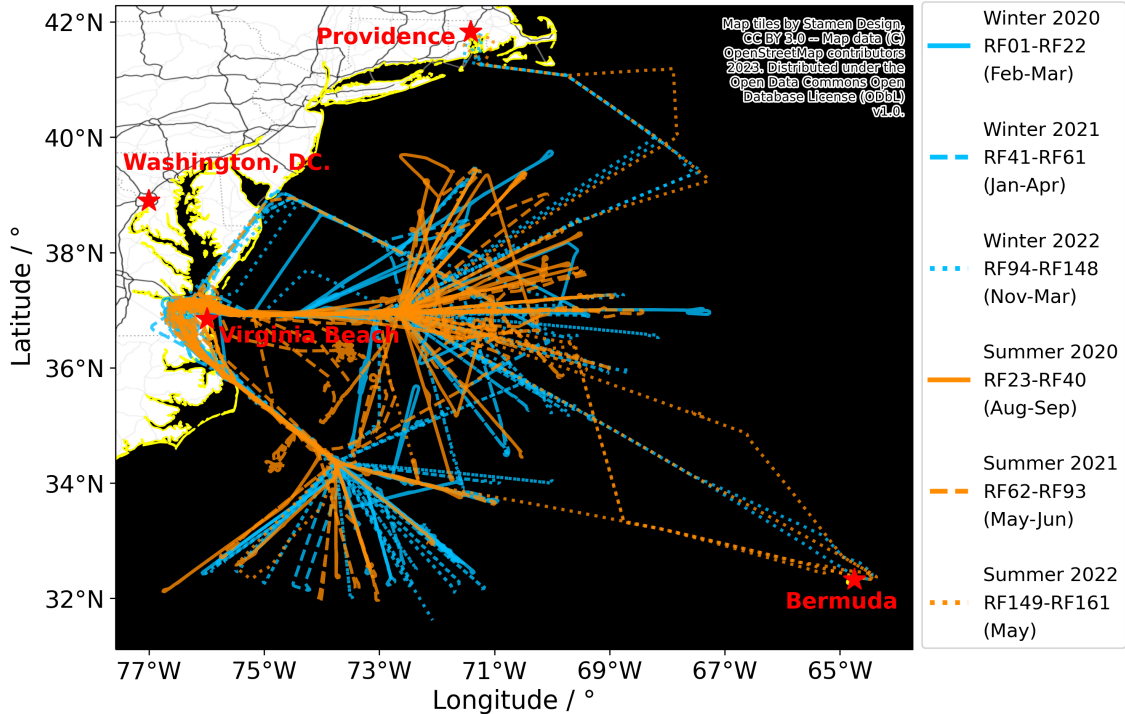
## 1 Introduction

25 Low-level clouds play a significant role in the climate system. They reflect shortwave solar radiation and prevent it from reach-  
ing the Earth's surface, which leads to cooling (~~Hartmann et al., 1992~~)([Hartmann et al., 1992](#); [Stephens et al., 2012](#); [Henderson et al., 2013](#)  
. As temperatures of low-level clouds are close to surface temperatures, the absorption of terrestrial longwave radiation  
by low-level clouds has a minor warming effect (IPCC, 2013). The large negative shortwave cloud radiative cooling effect  
together with a negligible longwave cloud radiative warming effect results in higher cooling rates ~~of~~by low-level clouds  
30 compared to other cloud types (~~Hartmann et al., 1992~~). ~~Meteorological weather~~ ([Hartmann et al., 1992](#); [Wang et al., 2023](#)).  
Weather systems affect cloud cover and microphysical properties and can induce ice nucleation or the formation of precip-  
itation ([Painemal et al., 2023](#); [Naud and Kahn, 2015](#)), which in turn affects their radiative properties. Hence, due to the fast  
evolution and large natural variability of clouds, the representation of clouds in climate models remains a challenge (Mülmen-  
städt and Feingold, 2018). The multimodel net cloud feedback in Coupled Model Intercomparison Project Phase 5 (CMIP5)  
35 models ranges from  $-0.13$  to  $1.24 \text{ W m}^{-2} \text{ K}^{-1}$  (Ceppi et al., 2017) and shows a larger range in CMIP6 models with an  
increase in their mean values from  $0.09$  to  $0.21 \text{ W m}^{-2} \text{ K}^{-1}$  due to a decrease in low cloud coverage (Zelinka et al., 2020)  
. Cesana et al. (2022) show that the reflected shortwave solar radiation is still underestimated in CMIP6 models compared to  
satellite observations in the Southern Ocean. This calls for the need of constraining cloud parameterizations in global climate  
models with observational data (e.g. IPCC, 2021). Marine low-level clouds cover more than 45% of the ocean surface (War-  
40 ren et al., 1988). Tselioudis et al. (2013) show that in particular the occurrence of low-level broken or shallow cloud systems  
are significantly underestimated by the ~~Coupled Model Intercomparison Project Phase 5 (CMIP5)~~ models. In the following  
CMIP6, global models improved their cloud parameterizations and simulated a stronger shortwave cloud feedback compared  
to CMIP5 model versions; however, CMIP6 shows larger intermodel spread in effective climate sensitivity than CMIP5 (Bock  
et al., 2020).

45 The western North-Atlantic Ocean (WNAO) is one of the regions where the CMIP6 multi-model mean surface tempera-  
ture significantly departs from observations ([Bock et al., 2020](#)). The WNAO has a ~~wide range of aerosol variability and broad~~  
spectrum of aerosol sources, species and abundances (Sorooshian et al., 2020; Corral et al., 2021). In addition, the WNAO  
has a wide range of meteorological conditions with mainly low shallow cumulus clouds and episodic occurrence of ma-  
rine stratocumulus clouds (Tselioudis et al., 2013) and frontal systems (Field et al., 2017a). This provides ideal conditions  
50 for assessing the representation of cloud and aerosols in climate models. In-situ cloud observations have been used to eval-  
uate and constrain large eddy simulation (LES) in cold air outbreak (CAO) situations in the WNAO and are able to repro-  
duce the marine boundary layer (MBL) meteorology (Li et al., 2022, 2023). Other LES studies point to the importance of  
mixed-phase cloud processes and the need of in-situ observations for evaluation. ~~Tornow et al. (2021)~~ Other studies found  
that riming, the collection of droplets, and consequential reduction of aerosol concentration, promotes the transition from over-

55 cast to broken clouds in the WNAO (Tornow et al., 2021; Goren et al., 2022; Abel et al., 2017). Additionally, entrainment from the free troposphere dilutes the aerosol concentration downwind offshore and accelerates this transition (Tornow et al., 2022) (Tornow et al., 2022; Wood et al., 2011).

The WNAO ~~has undergone a large increase in aerosol and cloud droplet~~ MBL is influenced by the Gulf Stream and the Bermuda-Azores anticyclone in summer (Sorooshian et al., 2020). The anticyclone drives south-westerly winds near sea surface, reaching their maximum in summer. It moves south-westward during winter primarily due to the development of a cyclonic low north of 45°N, which promotes strong north-westerly winds. The north-westerly winds are accompanied with strong sensible heat fluxes and vertical motions during winter (Painemal et al., 2021) leading to supersaturation of moist air and cloud formation by droplet activation of the available cloud condensation nuclei. In the life cycle of clouds, after cloud droplet activation, further impact and growth processes of cloud particles take place, which change the microphysical properties of the cloud. Immediately after cloud droplet activation, condensation is the most important growth process up to droplet diameters of about 15  $\mu\text{m}$  (Pruppacher and Klett, 2010). The thermodynamic system of a cloud strives to reduce the present supersaturation. Maximizing the surface area of the water-water vapor interface layer serves for an effective reduction by condensation. Therefore, higher cloud droplet number concentrations ( $N_{\text{liquid}}$ ) ~~since preindustrial times with a slight reduction of aerosol burden since the early 1980s (Merikanto et al., 2010; Chin et al., 2014).~~ lead to faster reduction of supersaturation and smaller cloud droplets due to water vapor competition (Pinsky et al., 2012). Another important growth process of liquid clouds is collision-coalescence (Pruppacher and Klett, 2010). Since cloud droplets  $<10 \mu\text{m}$  have very low collision probabilities with other cloud droplets (Böhm, 1992b), high concentrations of cloud condensation nuclei can suppress the formation of precipitation through reduced coalescence (Albrecht, 1989; Freud and Rosenfeld, 2012; Braga et al., 2021b). The growth of ice particles by condensation works analogously to that of cloud droplets. If the air is superaturated with respect to ice and undersaturated with respect to liquid in mixed-phase clouds, the growth of ice particles by condensation is significantly accelerated as the water droplets evaporate and act as an additional water vapor reservoir, this is called the Wegener-Bergeron-Findeisen process (WBF) (Wegener, 1911; Bergeron, 1935; Findeisen, 1938; Korolev, 2007b, 2008). Riming describes ice growth by the accumulation of supercooled water droplets that freeze on contact with ice particles, leading to the glaciation of mixed-phase clouds (Böhm, 1992a; Pruppacher and Klett, 2010). The glaciation of clouds is further accelerated by secondary ice production processes that increase the ice number concentration (Hallett and Mossop, 1974; Field et al., 2017). Overall, dynamics and aerosols are key parameters for cloud formation. Recent studies show an aerosol gradient over the WNAO with lower number concentrations and aerosol optical depth off the coast and strong aerosol transport from the continent (Corral et al., 2021). In addition, variables representing aerosol abundance (e.g., aerosol optical depth, number concentration) over this region ~~shows show~~ a marked annual cycle, with minimum and maximum values in winter and summer, respectively (Dadashazar et al., 2021b). ~~The WNAO MBL is influenced by the Gulf Stream and the Bermuda-Azores anticyclone in summer (Sorooshian et al., 2020). The anticyclone drives south-westerly winds near sea surface, reaching their maximum in summer. It moves south-westward during winter primarily due to the development of a cyclonic low north of 45°N, which promotes strong north-westerly winds. The north-westerly winds are accompanied with strong sensible heat fluxes and vertical motions during winter (Painemal et al., 2021).~~ Despite high aerosol ~~Despite high cloud condensation nuclei~~ number concentrations in



**Figure 1.** Flight tracks of 155 compiled research flights from the HU-25 Falcon during the 2020-2022 ACTIVATE mission. The number range of the research flights (RF) are given in the legend.

90 summer, the dynamical impact of updraft speeds dominates the cloud formation process and leads to higher  $N_{\text{liquid}}$  in winter (Kirschler et al., 2022). Altogether the WNAO ~~exhibits an features~~ interesting and complex weather ~~system, and provides~~ patterns, providing a natural laboratory ~~to study for studying liquid and mixed-phase~~ shallow and broken cumulus clouds in a broad spectrum of aerosol and meteorological conditions.

Here, we present an overview of microphysical properties of low-level clouds measured during the Aerosol Cloud meTe-  
 95 orology Interactions oVer the western ATLantic Experiment (ACTIVATE) campaign (Sorooshian et al., 2019). We investigate the spatial, seasonal and altitude dependence of  $N_{\text{liquid}}$ , ice number concentrations ( $N_{\text{ice}}$ ), effective diameter of liquid ( $ED_{\text{liquid}}$ ) and ice ( $ED_{\text{ice}}$ ) particles, liquid water content (LWC) and ice water content (IWC), with a focus on cloud phase. We relate the cloud properties to different meteorological conditions and derive the correlation of selected cloud properties in phase space diagrams and infer details about cloud formation, growth, and precipitation processes.

## 100 2 Instrumentation

The ACTIVATE campaign targeted the WNAO between 25 to 50°N and 60 to 85°W. Clouds, aerosols, trace gas, and meteorological data were measured simultaneously by two aircraft, with comprehensive dataset details provided elsewhere (Sorooshian

et al., 2023). The HU-25 Falcon aircraft probed the MBL and lower troposphere with a pre-determined, repeated series of flight levels in a stairstepping fashion at different levels below cloud base, above cloud base, below cloud top, and above cloud top to provide a statistical approach to sampling the region (Sorooshian et al., 2019; Dadashazar et al., 2022). The King Air was instrumented with remote sensing instruments and dropsondes and operated above the HU-25 Falcon at around 9 km altitude. In total we compiled observations of 155 research flights with more than 512 flight hours from six ACTIVATE deployments. 17 Flights from June 2022 were omitted from this analysis that were based in Bermuda to maintain consistency in the sampled region, forthcoming work will explore the Bermuda flight data. In addition, two flights (RF38 and RF41) were omitted due to partly missing cloud microphysical data. The flights cover three winter seasons (February-March 2020, January-April 2021 and November 2021-March 2022) and three summer periods (August-September 2020, May-June 2021 and May 2022), with flight tracks shown in Figure 1.

## 2.1 Cloud instruments

We use data from a cloud combination probe consisting of the Fast Cloud Droplet Probe (FCDP) and the Two-Dimensional Stereo (2D-S) probe, both developed by Stratton Park Engineering Company Incorporated (SPEC Inc.) (Lawson et al., 2019), onboard the HU-25 Falcon. The FCDP is a forward scattering single particle counter that measures sizes ranging between  $1.5 - 50 \mu\text{m}$  (O'Connor et al., 2008; Knop et al., 2021). The FCDP measures the scattered light of particles passing a laser beam with a wavelength of 785 nm in a  $4^\circ - 12^\circ$  scattering angle. The measured scattered light intensity is related to the particle diameter via Mie theory. Calibrations, with lime ( $n=1.52$ ) and borosilicate ( $n=1.56$ ) beads of known sizes, before and after each deployment verify the relationship between measured light intensity and particle diameter and validate the sizing. The FCDP is equipped with a pinhole-masked sizing detector for coincidence reduction (Lance, 2012) and special arm tips to reduce shattering (Korolev et al., 2013). In addition, methods for coincidence and shattering correction have been applied during post processing (Baumgardner et al., 1985; Field et al., 2006; Lawson, 2011; SPEC inc, 2012; Kleine et al., 2018). Particle number concentration is computed by multiplying the corrected count rate by the sample volume, which is the product of (i) a calibrated sample area of  $0.294 \text{ mm}^2$  (at depth of field criterion 0.6) determined with a droplet generator experiment (Faber et al., 2018) and (ii) the probe air speed (PAS) measured by the Cloud Aerosol and Precipitation Spectrometer (CAPS, Voigt et al. (2021, 2022); Hahn et al. (2022); Moser et al. (2023)) flow tube at the opposite wing pot to relate the compressed measurement condition to ambient conditions (Weigel et al., 2016). The propagated uncertainties for scattering probes are  $10 - 50\%$  in size and  $10 - 30\%$  in cloud particle concentration ( $N_C$ ) according to Baumgardner et al. (2017). Other studies found a size dependent uncertainty in sizing never exceeding  $15\%$  for the predecessor model Cloud Droplet Probe (CDP) (Lance et al., 2010; Faber et al., 2018; Braga et al., 2017a; Taylor et al., 2019). The FCDP has fast electronics with single particle counting similar to the Fast Forward Scattering Spectrometer Probe F-FSSP (Bräuer et al., 2021b, a). The fast electronics, per particle storage, and pinhole feature, result in FCDP in-cloud calibrated uncertainties in  $N_C/LWC/ED$  of  $15\%/40\%/45\%$  respectively.

The 2D-S is an optical array probe that generates shadow images of cloud particles on 128 photodiodes (Lawson et al., 2006, 2019). The measurement concept of optical array probes was developed by Knollenberg (1970) and measures diffraction patterns of particles passing the laser beam (Korolev et al., 1991). The 2D-S has a calibrated effective pixel resolution of

11.4  $\mu\text{m}$  and covers a diameter size range of 5.7 – 1465  $\mu\text{m}$  (Lawson et al., 2019; Bansmer et al., 2018). The images contain shape information and can therefore distinguish between spherical and non-spherical particles. The diffraction pattern of particles changes with distance to the optical plane, which can be corrected in the spherical case (Korolev, 2007a). Non-spherical particles remain uncorrected with a systematic overestimation in size (Gurganus and Lawson, 2018). The ice mass of each particle is determined with the area-to-mass parametrization of Baker and Lawson (2006). The particle concentration is computed by multiplying the PAS with the photodiode array width which is the photodiode number times the effective pixel resolution and the size dependent depth of field at 50% intensity level (Korolev et al., 1998). According to Baumgardner et al. (2017), the sizing and counting accuracy lies in a range of 10 – 100% for optical array probes and the 2D-S, with the applied corrections and a relative fast response time of 41 ns, is estimated to be on the lower end in sizing spherical particles and in the middle for ice particles. The calibrated uncertainties in  $N_C/LWC/ED$  are 20%/50%/60% for the 2D-S in our case.

## 2.2 Cloud probe data evaluation

The FCDP and 2D-S combination probe measures particle size distributions with diameter between 3 and 1465  $\mu\text{m}$  and has an overlap in the size range of 5.7 to 50  $\mu\text{m}$ . Since the counting efficiency of one or two pixel images in the 2D-S is smaller than particle images with more pixels (Korolev et al., 1998), we use the 2D-S starting with the third size bin of 28.5 to 39.9  $\mu\text{m}$ . The FCDP has a significantly smaller sample volume compared to the 2D-S which is beneficial in terms of suppressing coincidence, but leads to an undercounting of larger particles due to their lower statistical occurrence in clouds observed during ACTIVATE which cannot be resolved in a 1Hz sampling rate by the FCDP. Therefore we perform an overlap calculation which is outlined in the following. We use the nearest FCDP size bin of 27 to 30  $\mu\text{m}$  next to the lower bin limit of 28.5  $\mu\text{m}$  of the third 2D-S size bin and attribute all particles larger than 30  $\mu\text{m}$  solely to the 2D-S and all particles smaller than 28.5  $\mu\text{m}$  solely to the FCDP. The size distribution inside the third 2D-S size bin is unknown and therefore estimated with the next 2D-S size bin by linear interpolation. The interpolated distribution is used to split the third 2D-S size bin's number concentration into a portion of 28.5 to 30  $\mu\text{m}$  attributable to the nearest FCDP size bin and a portion of 30 to 39.9  $\mu\text{m}$  attributable to a new third 2D-S size bin with a reduced bin width of 9.9  $\mu\text{m}$ . Then the number concentration of the nearest FCDP size bin is calculated with the arithmetic mean of the original and attributable number concentration if the original nearest FCDP size bin yields measured particles. If there were no measured particles in the nearest FCDP size bin the new nearest FCDP size bin is determined by the attributable number concentration of the third 2D-S size bin, since we expect the lack of particles is caused by the undercounting of larger particles.

We derive microphysical cloud properties from the particle size distribution measured with the FCDP-2D-S cloud combination probe. In order to assess the particle phase, we assume all small particles <100  $\mu\text{m}$  detected by the FCDP and the 2D-S to be liquid, as there is no other information available. This threshold has to be taken into account for model evaluation. For particles larger than 100  $\mu\text{m}$  we use the phase information from the particle images to separate spherical and non-spherical shaped particles. [The lower detection limit for ice is 100  \$\mu\text{m}\$  in diameter, because we use a minimum number of 50 pixels for habit classification. Korolev and Sussman \(2000\) showed that the minimum pixel number should be between 20 and 60 for the separation of irregulars and spheres. An adequate number of pixels is necessary to extract shape information with sufficient](#)

accuracy. We use the particle area of the 2D images of each ice particle to derive the ice water content using the method of Baker and Lawson (2006) and the maximum diameter for sizing. From the spherical particle size distribution, we derive the number concentration ( $N_{\text{liquid}}$ ), effective diameter ( $ED_{\text{liquid}}$ ) and liquid water content (LWC) at 1 Hz resolution. The effective diameter is calculated as:

$$175 \quad ED = \frac{\sum_i D_i^3 N_i}{\sum_i D_i^2 N_i}, \quad (1)$$

where  $D_i$  is the arithmetic mean diameter and  $N_i$  the number concentration of the respective size bin  $i$  (Parol et al., 1991). The LWC is calculated from the particle size distribution based on number and particle size of the droplets:

$$180 \quad LWC = \sum_i LWC_i = \sum_i \frac{N_i}{V} \frac{4}{3} \pi \rho_w \left( \frac{D_i}{2} \right)^3, \quad (2)$$

where  $\rho_w$  is the density of water and the water droplets are assumed to be an ideal sphere.  $V$  is the probed volume.  $LWC_i$  represents the liquid water content of the respective size bin  $i$ . Similarly, we derive the ice number concentration ( $N_{\text{ice}}$ ), effective diameter ( $ED_{\text{ice}}$ ) and ice water content (IWC) from the non-spherical particle size distribution measured by the 2D-S for particles  $>100 \mu\text{m}$ . The lower detection limit for ice is  $100 \mu\text{m}$  in diameter, because we use a minimum number of 50 pixels for habit classification. Korolev and Sussman (2000) showed that the minimum pixel number should be between 20 and 60 for the separation of irregulars and spheres. An adequate number of pixels is necessary to extract shape information with a sufficient accuracy. We use the particle IWC is calculated as:

$$185 \quad IWC = \frac{\sum_p M_{\text{Eis},p} w_p}{V} = \frac{\sum_p 0.115 A_p^{1.218} w_p}{V}, \quad (3)$$

whereby all particles  $p$  in the measurement volume are summed up.  $M_{\text{Eis},p}$  is the mass-dimension relationship of Baker and Lawson (2006) and  $A_p$  the area of the 2D images of each ice particle to derive the ice water content using Baker and Lawson (2006) and the maximum diameter for sizing particles. The factor  $w_p$  represents a weighting of the chosen method. Here, we apply the All-In method of Knollenberg (1970). The uncertainties for the FCDP-2D-S cloud combination probe in  $N_C/LWC/ED$  are 15%/40%/45% in cloud and are consistent with the FCDP uncertainties, since the vast majority of in over 95% of the in cloud measurements more than 98% of all cloud particles are measured by the FCDP. The corresponding uncertainties for precipitation in  $N_C/LWC/ED$  are 55%/85%/85% and are driven by low statistics where the statistical uncertainty is estimated with Poisson statistics (Baumgardner et al., 2017).

### 195 2.2.1 Phase space diagrams of WNAO Boundary Layer Clouds

To investigate microphysical properties of clouds we have to define a cloud in the context of the in-situ data. Phase space diagrams of selected cloud properties are useful for identifying precipitation, determining cloud thresholds, and facilitating

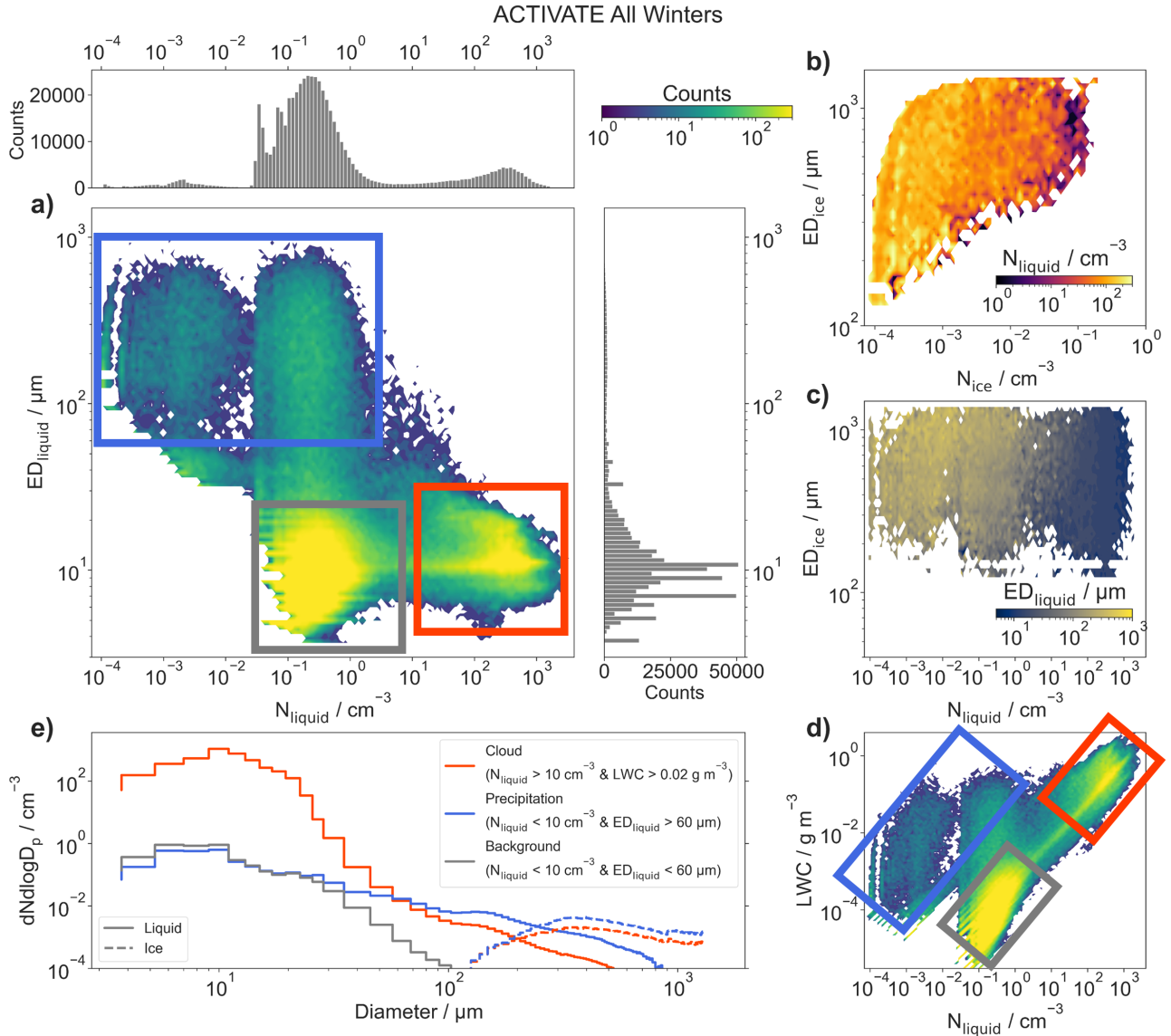
the investigation of in-cloud and out-of-cloud samples. Finally, we suggest to use a phase space diagram to compare in-situ measured cloud properties to results from process and global models. Figure 2a depicts the distribution of  $ED_{\text{liquid}}$  versus that for  $N_{\text{liquid}}$  for all winter deployments based on 1 Hz particle data from the FCDP-2D-S combination probe; see Figure S1 for all summer deployments.

The region with  $0.03 < N_{\text{liquid}} < 10 \text{ cm}^{-3}$  and  $ED_{\text{liquid}} < 20 \mu\text{m}$  can be attributed to background aerosols (gray) in the MBL out of clouds with low number concentrations of rather large volatile or non-volatile aerosol. The lower limit of  $N_{\text{liquid}}$  reflects the FCDP detection limit in number concentration. Liquid clouds (orange) are associated with higher  $N_{\text{liquid}}$  in the range of 100 to 1000  $\text{cm}^{-3}$  and  $ED_{\text{liquid}} < 30 \mu\text{m}$ ; those clouds were frequently encountered. Data with  $N_{\text{liquid}}$  below 3  $\text{cm}^{-3}$  and  $ED_{\text{liquid}}$  above 60  $\mu\text{m}$  up to one millimeter indicate the detection of precipitation (blue). This suggests that  $ED_{\text{liquid}}$  is well suited to distinguish precipitation from cloud liquid droplets and  $N_{\text{liquid}}$  helps to distinguish between inside or outside of clouds. Figure 2b shows the phase space diagram for ice particles identified by the 2D-S with its lower size detection limit of 100  $\mu\text{m}$  and represents precipitation of ice particles or snow. The color code shows that high  $ED_{\text{ice}}$  and  $N_{\text{ice}}$  values correlate with lower  $ED_{\text{liquid}}$  values. Lowest  $N_{\text{ice/liquid}}$  values indicate the detection limit of the 2D-S which is significantly smaller due to a larger sample volume of the probe.  $ED_{\text{ice}}$  is filled only when ice particles are detected by the 2D-S, and is thus a good indicator for the presence of ice ~~and its~~. Its relation to  $N_{\text{liquid}}$  instead of  $N_{\text{ice}}$  (Figure 2c) suggests that ice exists both inside as well as outside of clouds.

In Figure 2d the phase space of LWC and  $N_{\text{liquid}}$  exhibits the same regions for liquid cloud, precipitation, and background. In contrast, a fixed LWC threshold is often used in literature ~~and models~~ for defining clouds (McFarquhar et al., 2007; Ahn et al., 2018; Abel et al., 2020; Korolev and Milbrandt, 2022). High LWC values could either stem from large particle concentrations of small particles typical for liquid clouds or low concentrations of large particles linked to precipitation. This suggests that LWC only is not a good indicator for separating cloud from precipitation without  $ED_{\text{liquid}}$ , because a typical LWC threshold of 0.02  $\text{gm}^{-3}$  in the ACTIVATE campaign includes not only the cloud data, but also a fraction of precipitation. Even more important is the fact that a lot of data are missed if precipitation is targeted only by the LWC threshold. Additionally, a lower fixed LWC threshold for the ACTIVATE campaign hampers the differentiation of aerosol from precipitation events.

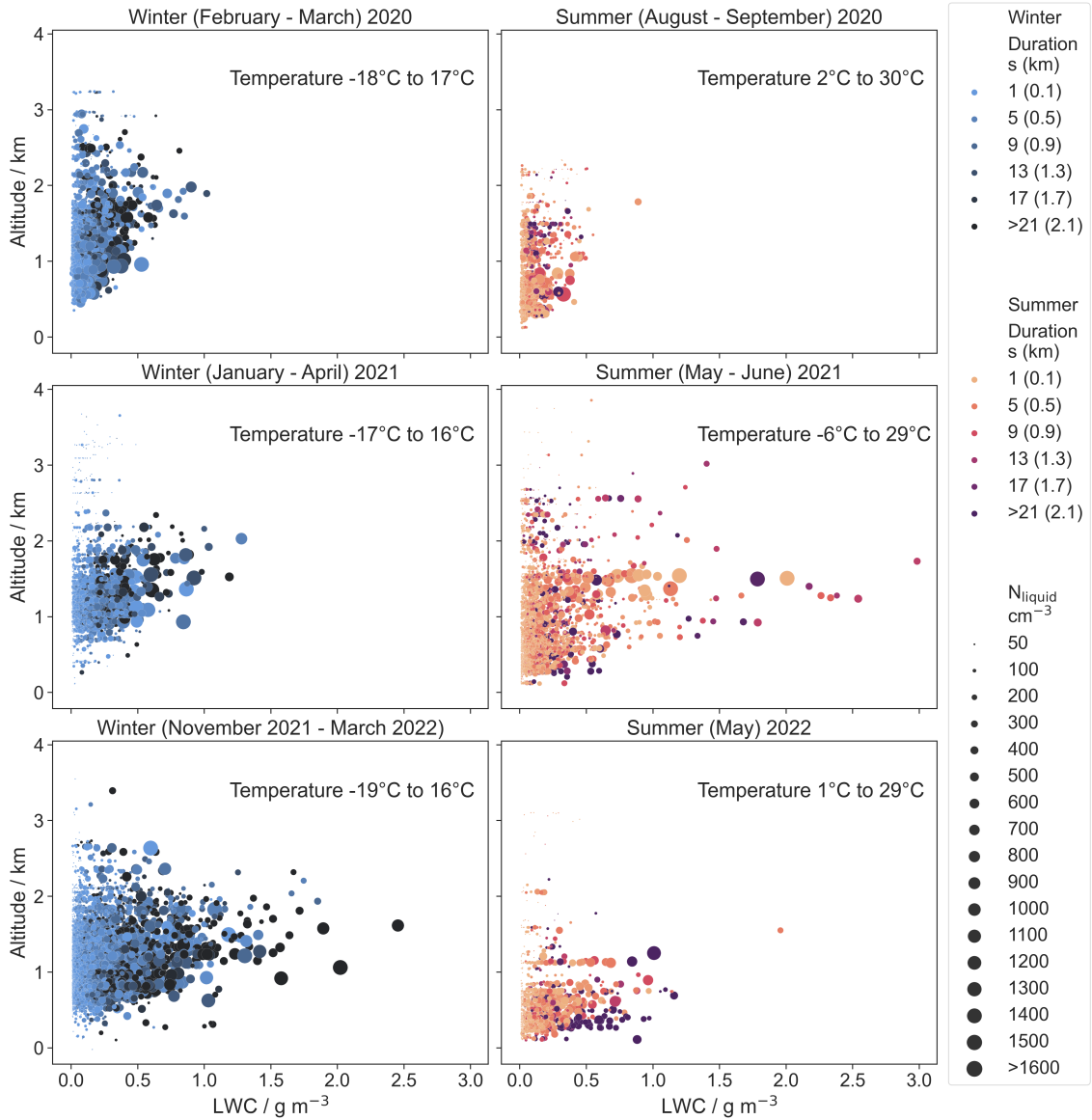
Given the disadvantages of using a single LWC-based threshold, we add a threshold for  $N_{\text{liquid}}$  similar to previous studies (e.g. Wood, 2005; Gupta et al., 2021; Dzambo et al., 2021), because it provides a better differentiation between in-cloud and out-of-cloud situations and avoids a misclassification of precipitation. Here we use the cloud threshold  $N_{\text{liquid}} > 10 \text{ cm}^{-3}$  and  $LWC > 0.02 \text{ gm}^{-3}$ . The remaining data are categorized with the  $ED_{\text{liquid}}$  either above or below 60  $\mu\text{m}$  into the precipitation or background group, respectively. The groups' mean particle size distribution of liquid droplets and ice particles are illustrated in Figure 2e. We want to note that the use of the means instead of medians emphasizes outliers and that a relative occurrence of 10% in measurement seconds is equivalent to a shift of one magnitude towards lower size bin concentrations. The cloud group with  $ED_{\text{liquid}}$  around 10  $\mu\text{m}$  includes occasional measurements of larger particles showing the development of precipitation inside cloud. Finally, we define cloud events as periods where the HU-25 Falcon flight has the prescribed cloud threshold flag set for > 1 consecutive seconds. We calculate mean microphysical cloud properties for each cloud event. In mixed-phase





**Figure 2.** Cloud (orange), precipitation (blue), and background (gray) illustrated by the occurrence frequency of cloud properties in parameter phase space of  $ED_{\text{liquid}}$  and  $N_{\text{liquid}}$  (a) and parameter phase space of  $ED_{\text{ice}}$  and  $N_{\text{ice}}$  (b),  $ED_{\text{ice}}$  and  $N_{\text{liquid}}$  (c) and  $LWC$  and  $N_{\text{liquid}}$  (d). The color code shows the number of seconds of cloud data and is the same for **all shown phase spaces panels (a) and (d)**. The color code of panel (b)/(c) shows the mean  $N_{\text{liquid}}/ED_{\text{liquid}}$  values. Mean particle size distribution of the cloud, precipitation, and background region (e). All subplots relate to all winter deployments.

clouds, we give both the liquid and the ice information as percentage of seconds containing ice in relation to the duration of the cloud event.



**Figure 3.** Altitude dependence of the liquid water content from all cloud events during the ACTIVATE mission in winter and summer 2020, 2021 and 2022. Each dot represents a cloud event with their duration and corresponding width in parenthesis color coded in winter from light blue to dark blue and in summer from orange to violet. The width of the cloud event is calculated from its duration with a representative HU-25 Falcon true air speed of 100 m s<sup>-1</sup>. The mean number concentration of each event is given with the dot size.

**Table 1.** Cloud event statistics for each deployment during the ACTIVATE mission. Average number of cloud events per RF ( $\emptyset$ ) during a deployment. Width, LWC and  $N_{\text{liquid}}$  and  $ED_{\text{liquid}}$  are given in median/mean and their standard deviation in parenthesis.

Deployment	Total Events	$\emptyset$	Width km	LWC $\text{g m}^{-3}$	$N_{\text{liquid}} \text{cm}^{-3}$	$ED_{\text{liquid}} \mu\text{m}$
Winter 2020	2690	122	0.3/0.7( $\pm 1.4$ )	0.06/0.10( $\pm 0.11$ )	186/249( $\pm 223$ )	<u>8.8/11.7(11.7)</u>
Winter 2021	2126	133	0.3/0.7( $\pm 1.0$ )	0.11/0.15( $\pm 0.14$ )	152/227( $\pm 253$ )	<u>11.3/14.1(10.9)</u>
Winter 2022	6683	122	0.3/0.8( $\pm 1.8$ )	0.12/0.19( $\pm 0.21$ )	113/180( $\pm 193$ )	<u>11.9/14.8(8.9)</u>
	6281*	119*	0.3/0.8( $\pm 1.8$ )*	0.12/0.19( $\pm 0.21$ )*	113/178( $\pm 193$ )*	<u>11.9/14.7(8.7)</u>
Summer 2020	1517	89	0.2/0.4( $\pm 0.6$ )	0.05/0.08( $\pm 0.08$ )	114/163( $\pm 165$ )	<u>9.8/11.8(8.0)</u>
Summer 2021	3127	98	0.2/0.6( $\pm 2.2$ )	0.09/0.16( $\pm 0.22$ )	84/118( $\pm 140$ )	<u>13.2/16.5(16.1)</u>
Summer 2022	1253	96	0.2/1.4( $\pm 5.4$ )	0.10/0.16( $\pm 0.19$ )	93/132( $\pm 130$ )	<u>12.8/14.5(6.4)</u>
	835 <sup>†</sup>	84 <sup>†</sup>	0.2/0.6( $\pm 2.3$ ) <sup>†</sup>	0.08/0.14( $\pm 0.16$ ) <sup>†</sup>	94/129( $\pm 129$ ) <sup>†</sup>	<u>12.7/13.2(2.2)</u>

\* Without RF128/RF129 (stratiform cloud deck).

<sup>†</sup> Without RF150/RF151/RF152 (stratiform cloud deck).

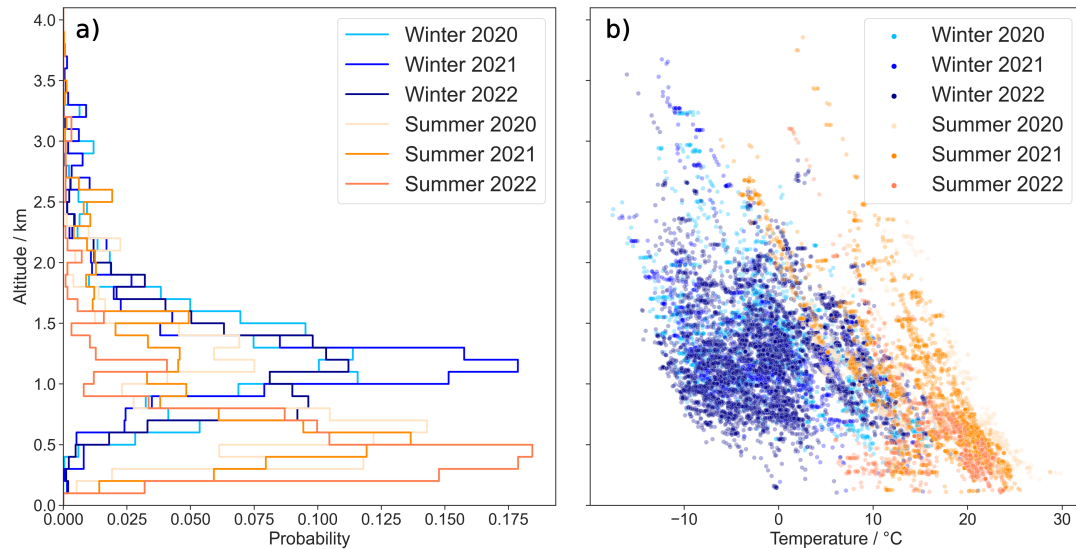
### 3 Results and Discussion

#### 235 3.1 Occurrence and Microphysical Properties of Marine Boundary Layer Clouds in the WNAO

We first show an overview of the microphysical cloud properties of all marine boundary layer cloud events measured in the WNAO during the ACTIVATE campaign in Figure 3. After this general description, we will examine cloud properties and processes in higher detail in the subsequent sections. Figure 3 shows the LWC of each cloud event versus altitude for the six deployments. Clouds were observed at altitudes between 0.3 and 4 km in and above the boundary layer.

240 The LWC of the WNAO boundary layer clouds increase with altitude is in line with the assumption of idealized cloud formation and growth due to adiabatic uplift. In an upward motion, the air cools down and cloud condensation nuclei are activated into water droplets as soon as the Kelvin barrier is surpassed and water supersaturation is reached (Feingold and Heymsfield, 1992; Ervens et al., 2005). With further updraft, more water vapor condenses and the droplets grow, which leads to an increase in LWC, as indicated by the increasing maximum LWC values with altitude in Figure 3. Due to the sampling  
245 strategy in the MBL during ACTIVATE, we lack the exact cloud base height for all cloud events and therefore refrain from the calculation of adiabatic LWC. However, the linear increase of LWC with height is consistent with adiabatic expectations.

A total of 11499 cloud events were measured in winter and 5897 in summer, with the detailed statistics of the cloud events in Table 1 and the full distribution of LWC and  $N_{\text{liquid}}$  for each deployment in Figure S2. We compute cloud width from the mean duration of a cloud event, and an in-situ derived horizontal flight cloud cover from both the cloud width and  $\emptyset$ . We want to note  
250 that the duration and occurrence of the cloud events depend on the flight patterns. The clouds were probed by the same flight pattern in the majority of cases and the flight patterns rarely changed due to unforeseen reasons. Therefore the statistics from the 155 flights is sufficient for a trend analysis. The less frequent cloud observations per research flight in summer in combination



**Figure 4.** Probability distribution of the cloud occurrences versus altitude **on the left (a)** and the corresponding temperature distribution **on the right (b)** for all cloud events in winter and summer 2020, 2021 and 2022.

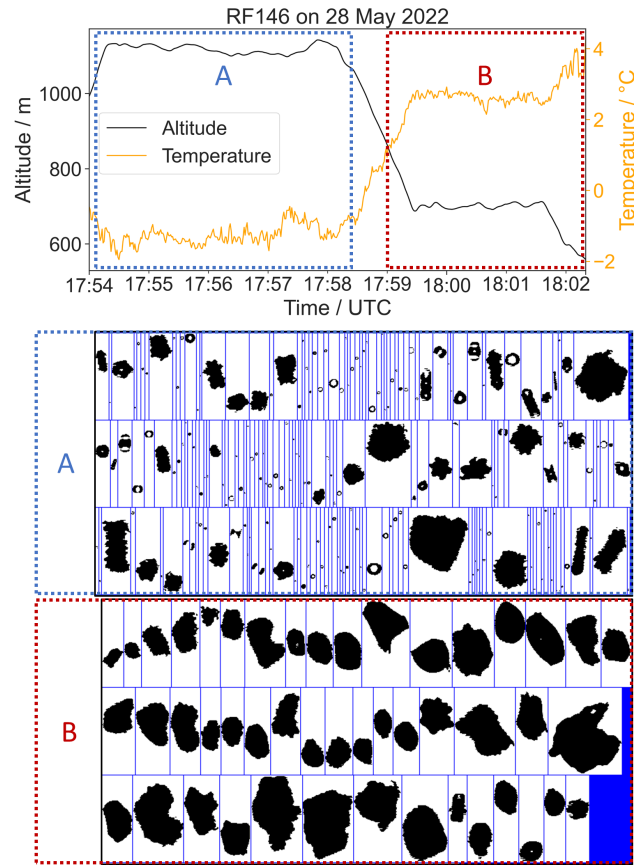
with the similar (summer 2021) and reduced (summer 2020 and summer 2022<sup>†</sup>) horizontal cloud widths compared to winter indicate smaller clouds and enhanced broken cloud systems in summer. Consequently, the larger distances between clouds is equivalent to more cloud free areas, which results in a reduced flight cloud cover **in during the** summer. In contrast, the large cloud width in summer 2022 stems from stratiform closed cloud decks in stratus during RF150/RF151 (5 May 2022) to Providence, Rhode Island, and during RF152 (10 May 2022). The aerosol background in the WNAO above 39°N deviates from areas farther south with higher aerosol abundance (Corral et al., 2021), which could result in more frequent occurrence of stratiform cloud decks.

260 The timeframe **of the summer seasons vary and LWC and varies between the the summer seasons. LWC,  $N_{\text{liquid}}$  and  $ED_{\text{liquid}}$**  of summer 2020 suggests a particle size distribution with a dominant small particle mode below 50  $\mu\text{m}$  and less large particles in late summer. In contrast, observations during early summer 2021 and 2022 feature a more pronounced large particle mode, which probably stems from enhanced coalescence processes promoting warm rain formation (Berry and Reinhardt, 1974; Pinsky et al., 2000; Rauber et al., 2007; Braga et al., 2017b). Kirschler et al. (2022) found that smaller  $N_{\text{liquid}}$  and LWC values  
 265 in summer 2020 relative to winter 2020 can be explained by increased updraft speeds in winter and consequently increased supersaturation at the cloud base, despite higher aerosol number concentrations with sizes  $>85$  nm than in summer. The positive correlation of updraft speed and supersaturation at the cloud base determines the critical diameter of aerosol activation leading to a higher fraction of activated aerosols at smaller critical diameters for higher updraft speeds (Köhler, 1936; Dusek et al., 2006; Schulze et al., 2020; Braga et al., 2021a).

270 The probability of cloud occurrence with height is shown in Figure 4. ~~Performing level flight legs a.~~ Performing flight levels  
at different altitudes limits the number of times we penetrate the cloud base, but allows us to show the cloud occurrence versus  
~~altitudes flown~~ altitude. In addition, the typical cloud field consisted of broken cumulus clouds with varying cloud bases. Clouds  
are typically confined to the MBL, with a peak of occurrence of around 1.3 km in winter and 0.5 km in summer. This difference  
can be explained by the MBL temperature inversion height, which caps the vertical propagation of the clouds and determines  
275 the maximum cloud top height. The higher MBL temperature inversion height is connected to the larger surface heat fluxes in  
winter, resulting from the temperature difference between cold and dry air masses from the west and the warm Gulf Stream,  
which increases updrafts and turbulence, thereby deepening the marine boundary layer (Small et al., 2008; Chelton et al.,  
2004). While the majority of the MBL clouds are at 0.5 km in summer, there is a second layer at 1.3 km height which is  
most pronounced in summer 2020 suggesting a double (decoupled) cloud layer structure. The increased occurrence of clouds  
280 at higher altitudes in winter than in summer is consistent with the satellite climatology in Painemal et al. (2021). In addition,  
the temperature distribution of the clouds is shown in Figure 4b. In winter, the clouds were observed at higher altitudes and  
colder temperatures compared to summer, which mainly exhibited temperatures above 0°C. During summer 2021, mixed-phase  
clouds were only measured in the morning research flight on 14 May 2021 (RF63). Other research flights during summer 2021  
and 2022 contained non-spherical particles at temperatures above 10°C ~~and which are~~ mainly larger than 100 μm, which. This  
285 might indicate the presence of large bioaerosol particles in small concentrations (see examples in Figure S3). The winter and  
summer 2021 cloud events above 2 km with temperatures below 0°C contained ice particles and were therefore classified as  
mixed-phase or ice clouds. In all winter seasons ice particles, mostly graupel, were observed. A case of graupel measurements  
above 0°C up to 3.5°C is shown in Figure 5 ~~and they.~~ They probably formed near the colder cloud top before falling into the  
warmer cloud base without enough time to melt completely.

### 290 3.2 Formation and Properties of Liquid Marine Boundary Layer Clouds in the WNAO

We now investigate the properties of pure liquid clouds in more detail. To this end we show vertical profiles of LWC,  $N_{\text{liquid}}$  and  
 $ED_{\text{liquid}}$  as well as average particle size distributions of liquid clouds in Figure 6. The majority of cloud events were measured  
below 1.8 km in winter and below 0.8 km in summer. Statistical inferences above 2 km are limited due to the reduced number  
of cloudy samples. The LWC increase with altitude up to 1.6 km is comparable in both seasons and differs above.  $N_{\text{liquid}}$  is  
295 higher in winter, which is the results of higher updraft speeds in winter, leading to stronger activation of cloud condensation  
nuclei (Kirschler et al., 2022). In winter and summer,  $N_{\text{liquid}}$  increases to a maximum near 1 km altitude. Above that,  $N_{\text{liquid}}$   
decreases in both seasons except for a cloud event at 2.7 km in winter. This is in line with an increase in  $ED_{\text{liquid}}$  and LWC  
at altitudes above 1 km. The steady increase of  $ED_{\text{liquid}}$  with altitude in Figure 6 shows the growth processes by uptake of  
water from the gas phase and by collision-coalescence of liquid particles inside the clouds for all seasons. The summer periods  
300 have larger  $ED_{\text{liquid}}$  and corresponding lower  $N_{\text{liquid}}$ . The higher  $N_{\text{liquid}}$  and smaller  $ED_{\text{liquid}}$  of liquid marine boundary  
layer clouds increase cloud lifetime and suppress processes leading to precipitation and thus yielding ~~stronger suppression of~~  
~~precipitation during~~ lower concentrations for droplets larger than 40 μm during the winter as compared to summer (Albrecht,



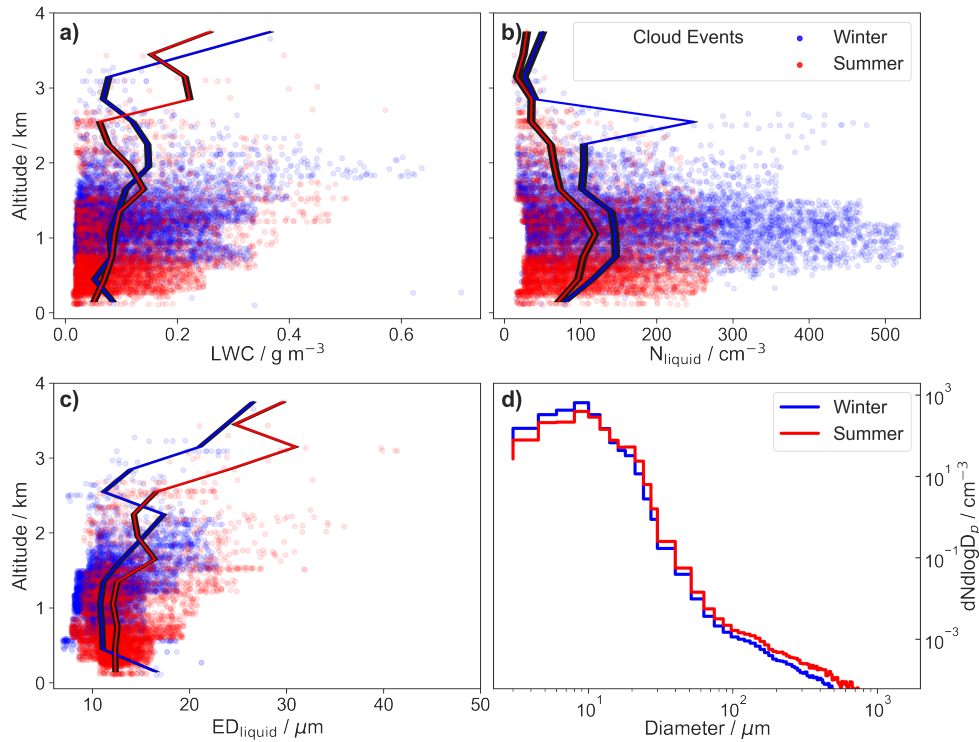
**Figure 5.** 2D-S Graupel measurements above 0°C during RF146 on 28 May 2022. Mixed-phase conditions above cloud base in Box A (blue) and graupel measurements in the following near cloud base leg at temperatures up to 3.5°C in Box B (red).

1989; Freud et al., 2011; Freud and Rosenfeld, 2012; Braga et al., 2021b). Above 2.3 km, midlevel clouds were observed, but their lower measurement frequency hampers a more detailed trend analysis.

### 305 3.3 Formation and Properties of Mixed-Phase Marine Boundary Layer Clouds in the WNAO

Figure 7 shows the vertical profiles of mixed-phase cloud events. Since the summer 2021 deployment only contained one research flight with mixed-phase clouds above 2 km, we will focus our study solely on the winter seasons and compare the liquid fraction of the cloud to their equivalent parameter in pure liquid clouds. We would like to remind the reader that, based on the 2D-S shape information, we assume particles ~~to be liquid those~~ with sizes smaller than 100  $\mu\text{m}$  to be liquid, and liquid or ice for larger sizes. This could lead to an overestimation of liquid fraction and underestimation of ice fraction in clouds. The mixed-phase clouds could therefore contain a fraction of pure ice clouds.  $N_{\text{liquid}}$  in mixed-phase clouds shows a similar pattern to that for liquid clouds with an increase up to about 1.3 km and a subsequent decrease. The  $ED_{\text{liquid}}$  has a wider range from 5

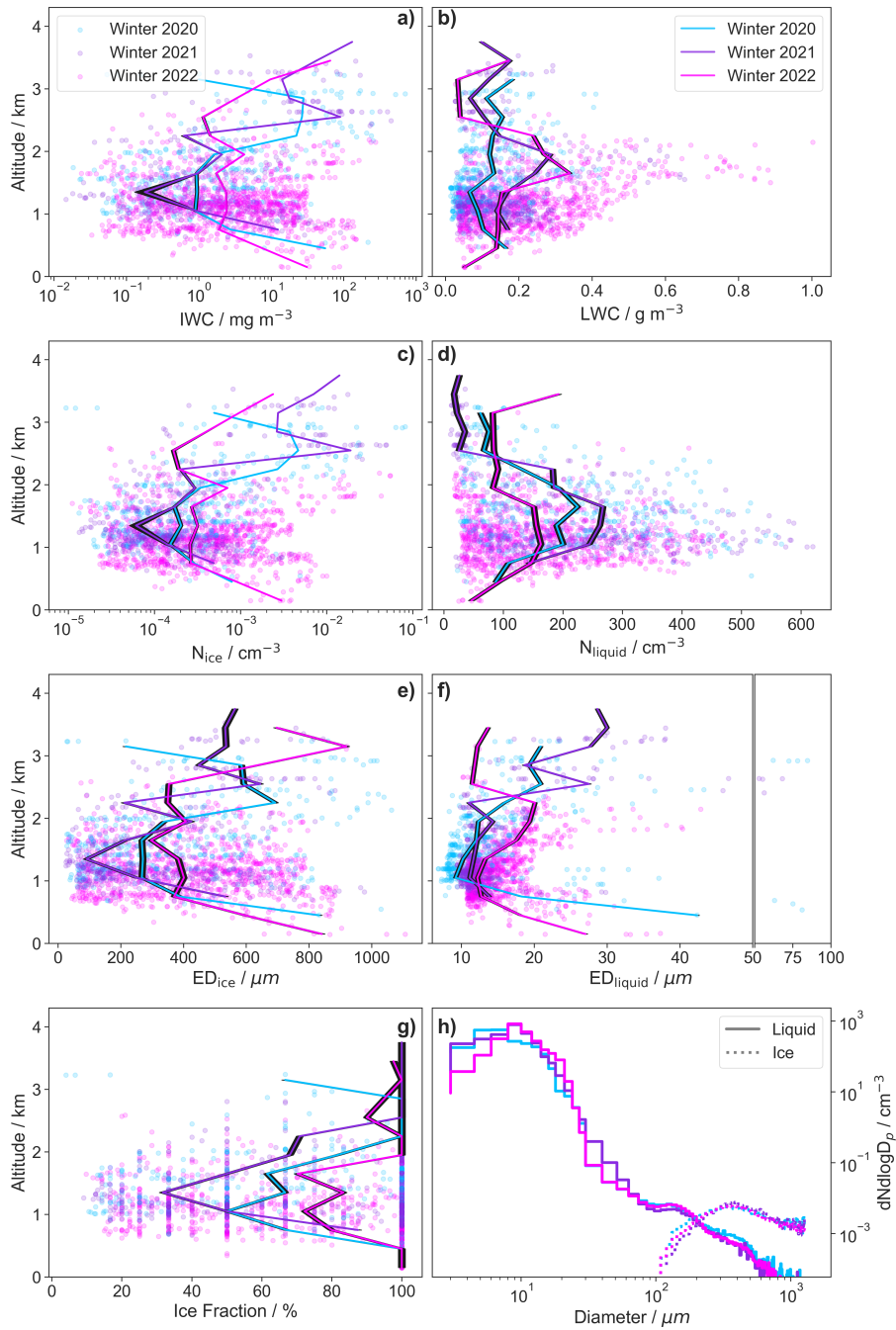
310



**Figure 6.** Median vertical profiles (lines) of LWC (a),  $N_{\text{liquid}}$  (b) and  $ED_{\text{liquid}}$  (c), and the mean particle size distribution (d) of all pure liquid cloud events in all winter (blue) and summer (red) seasons. Cloud events (dots) in the 10 – 90% percentile range of a 300 m altitude intervals starting at the surface are shown.

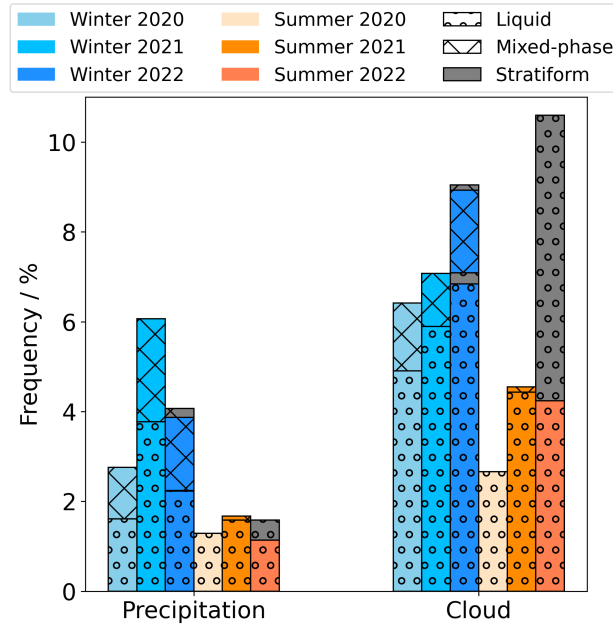
to  $80 \mu\text{m}$  than in the case of pure liquid clouds and could contain an ice fraction, which is not distinguishable with the current instrumentation.  $N_{\text{ice}}$ , IWC, and  $ED_{\text{ice}}$  all increase above 1 km up to 3.5 km in the mixed-phase and ice clouds in and above the  
 315 MBL. Due to the limited statistics, the ice parameters show a strong fluctuation in their mean values with altitude. In winter, ice particles are measured above 2 km almost during the entire mixed-phase cloud segments. The particle size distribution of the ice particles measured by the 2D-S shows the abundance of ice particles up to 1.5 mm, which is the upper detection limit of the 2D-S.

The median vertical  $ED_{\text{ice}}$  profile features an increase with altitudes which can be attributed to the ~~Wegener–Bergeron–Findeisen~~  
 320 ~~(WBF)→WBF~~ mechanism primarily observed in mixed-phase clouds (Wegener, 1911; Bergeron, 1935; Findeisen, 1938; Korolev, 2007b). The ice fraction is defined as the percentage of time containing ice particles relative to the duration of the individual cloud event and shows increasing glaciation of the clouds with altitude above 1.5 km and correlates with the onset of the WBF process above 1.5 km. In addition, the LWC and  $N_{\text{liquid}}$  decrease as the WBF process converts liquid into ice mass. Mixing processes with dry air from the free troposphere affect the  $N_{\text{liquid}}$  and LWC first and small droplets evaporate



**Figure 7.** Median vertical profiles (lines) of LWC (b), IWC (a),  $N_{\text{liquid}}$  (d),  $N_{\text{ice}}$  (c),  $ED_{\text{liquid}}$  (f) ([vertical double line indicates a switch in the scaling of the x-axis](#)),  $ED_{\text{ice}}$  (e) and the ice fraction (g) for all mixed-phase cloud events in winter 2020, 2021 and 2022. Cloud events (dots) in the 10 – 90% percentile range of 300 m altitude intervals starting at the surface are shown. The mean particle size distribution (h) of retrieved liquid (lines) and ice (dotted) particles.





**Figure 8.** Frequency of clouds and precipitation across the entire flights for winter and summer 2020, 2021 and 2022. The cloud phase is indicated by circles (liquid) and crosses (mixed-phase). The contribution of flights with a stratiform cloud deck, see Table 1, is in gray color.

325 faster due to their size and the Kelvin effect, while ice crystals survive longer. Increased mixing owing to free tropospheric air entrainment was observed in the WNAO farther off shore (Tornow et al., 2022).

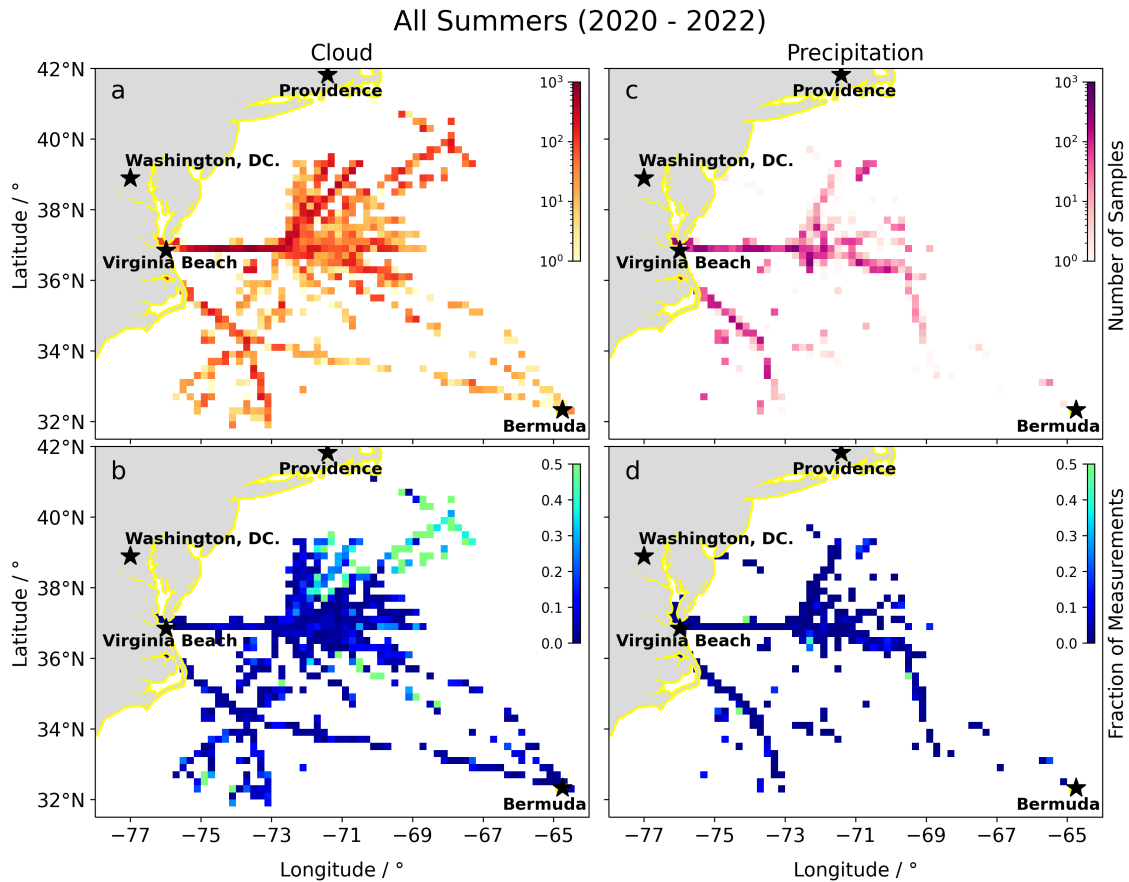
The mixed-phase cloud size distribution reveals that the WBF process and other mixed-phase related processes like coalescence, riming, and aggregation (Böhm, 1992b, a) result in higher concentrations of large particles  $>100 \mu\text{m}$  compared to the size distribution of pure liquid clouds. These processes lead to precipitation caused by the ice phase. In addition, the ice particles trigger other processes of secondary ice production like droplet fragmentation, ice fragmentation through thermal shock or during sublimation, and splintering during riming and ice collision, which accelerate the process even further (Hallett and Mossop, 1974; Field et al., 2017b; Keinert et al., 2020; Korolev et al., 2020, 2022). Furthermore, the MBL is turbulent (Brunke et al., 2022) and the cloud experiences spatially small-scale upwelling and downwelling that can maintain non-equilibrium mixed-phase cloud state for several hours (Korolev, 2008; Yang et al., 2015).

### 335 3.4 Statistics of Cloud and Precipitation Measurement Data

After the discussion of liquid and mixed-phase clouds, we now investigate precipitation measurements and provide an overview of their occurrence and spatial distribution. Figure 8 shows the frequency of precipitation and cloud measurements on a per second basis in winter and summer 2020, 2021, and 2022, using all seconds that fall into the precipitation ( $N_{\text{liquid}} < 10 \text{ cm}^{-3}$  and  $\text{ED}_{\text{liquid}} > 60 \mu\text{m}$ ) or cloud ( $N_{\text{liquid}} > 10 \text{ cm}^{-3}$  and  $\text{LWC} > 0.02 \text{ g m}^{-3}$ ) category. The frequency is defined as the ratio of precipitation or cloud measurements to all measurement seconds. A further distinction of the phase with 2D-S shape

information shows the respective liquid and mixed-phase or ice fraction. In winter, the total occurrence of cloud measurements is between 6.5% and 9%, while in summer a much larger spread of 3% to 11% is observed. In the summer and winter 2022 deployments, flights north of 39°N with stratiform cloud decks contribute substantially to the observed cloud frequency, since measurement seconds are used and considerably more flights were conducted in winter (55 RF) than in the summer (13 RF) of 345 2022. The findings from the observation of defined cloud events are reflected in the frequency of cloud measurements with less frequent cloud measurements during summer compared to the winter seasons. The cloud deck is consequently characterized by more cloud-free areas and the width of the clouds is reduced. The difference between summer 2020 and summer 2021/2022 (without flights that contain a stratiform cloud deck) could stem from the different time periods sampled during each deployment (August-September 2020 and May-June 2021/2022). A similar reduction in cloud fraction from early to late summer 350 was seen from a combined CloudSat and CALIPSO analysis (Painemal et al., 2021). We want to emphasize that in general the in-situ derived flight cloud cover cannot be directly compared to satellite cloud cover. ACTIVATE is a special case because the same strategy was used for each flight, large statistics are available, and the width of the predominant cumulus clouds was mainly within the cloud flight leg. The occurrence of mixed-phase clouds varies between 1% and 2% in winter.

The frequency of precipitation in Figure 8 shows larger values in winter (3 - 6%) than in summer (1.3 - 1.6%), in qualitative 355 agreement with a satellite microwave climatology in Painemal et al. (2021). In addition, the relative mixed-phase fraction in precipitating samples is higher than that in non-precipitating clouds. This increased proportion of mixed-phase precipitation is in line with the observed larger number concentrations of particles above 100  $\mu\text{m}$  in mixed-phase clouds which consequently promotes precipitation. The spatial distribution of precipitation and cloud measurements in summer is shown in Figure 9. Most of the measurements in summer were made in the west-to-east corridor. Cloud measurements in summer are distributed all 360 along the flight paths, whereas precipitation was very rarely measured between the west-to-east and northwest-to-southeast corridors and north of 37.5°N. The low-level cloud fraction, computed over 0.2° regular grids, features values that exceed 40% north of 38.5°N and east of 71°W, whereas cloud fractions remain below 10% for the rest of the domain. Low cloud fractions near the coast occur over with a local minimum in sea surface temperature, west of the Gulf Stream (Painemal et al., 2021). Spatial distribution of precipitation and cloud measurements in winter are depicted in Figure 10. As in summer, most measurements 365 were made along the west-to-east and northwest-to-southeast corridors. When the HU-25 Falcon followed the west-to-east corridor, then precipitation measurements are seen almost at all locations where cloud measurements were observed. In contrast, in the northwest-to-southeast corridor, precipitation measurements occur mostly in the southeast direction. The relative cloud frequency shows that clouds occur more frequently in winter than in summer by 20 - 30%, somewhat consistent with satellite climatologies (Dadashazar et al., 2021b; Painemal et al., 2021). [The ACTIVATE flights were mostly conducted over the Gulf Stream, and the increased frequency of cloud measurements in winter correlates with high surface latent and sensible heat fluxes driven by the Gulf Stream, which peak in winter and are considerably lower in summer \(Painemal et al., 2021\).](#) 370 In terms of spatial distribution, cloud frequency tends to increase east of 74°W, whereas precipitation measurements occur more often east of 71.5°W. This eastward shift in precipitation occurrence is linked to the dynamics of cyclonic systems, with boundary layer clouds developing west of the cyclone (postfrontal) and precipitation being more prevalent over the eastern edge of the 375 postfrontal region, where synoptic-scale ascending motions are more common (Painemal et al., 2023). An increased eastward

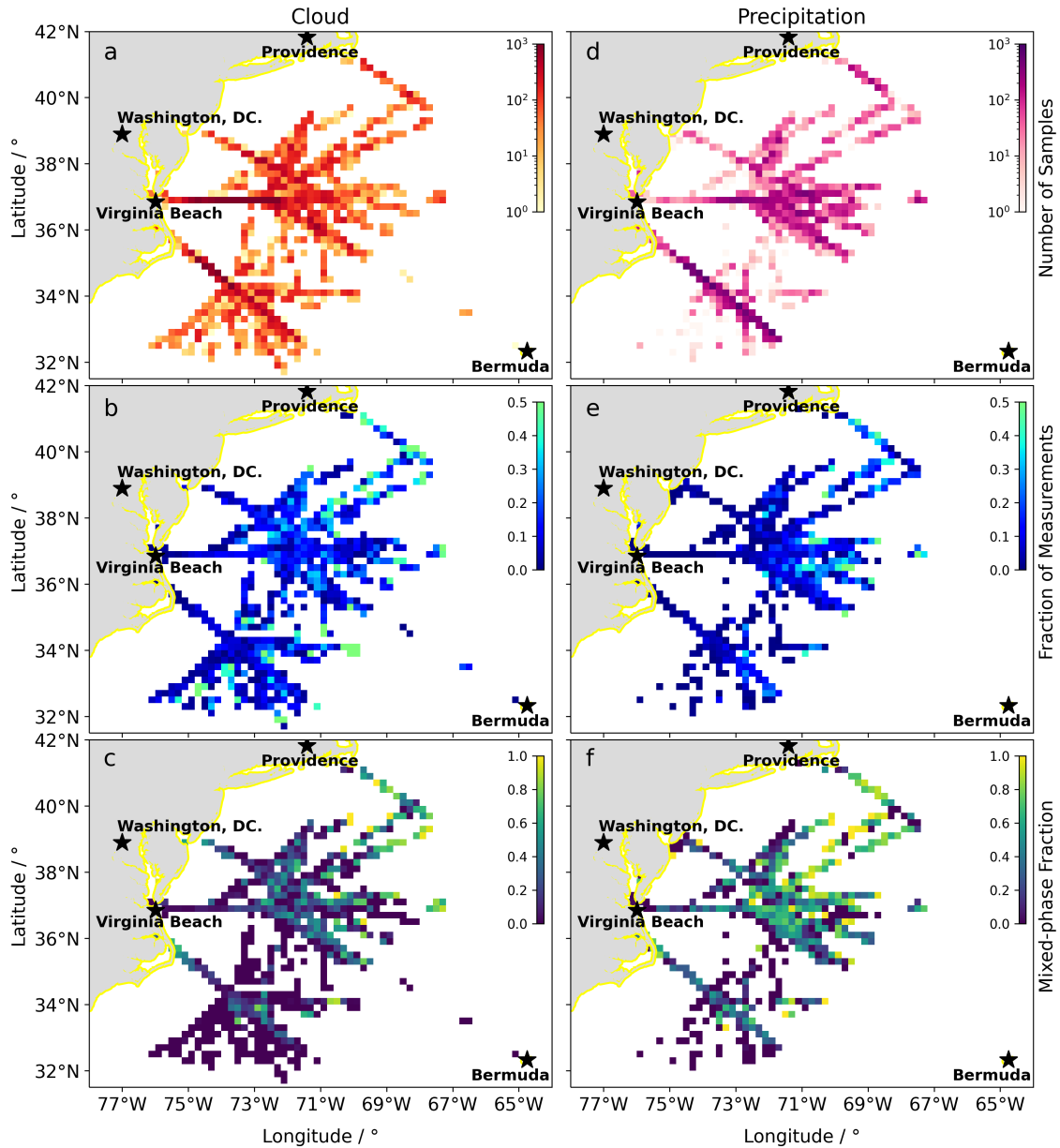


**Figure 9.** The spatial distribution in  $0.2^\circ$  latitude and longitude grid cells of cloud (left) and precipitation (right) measurements. The upper panels show the number of cloud measurement seconds (a) in oranges and the number of precipitation measurement seconds (c) in violets. The lower panels show the fraction of cloud (b) and precipitation (d) measurements color coded from dark blue to green. All subplots relate to all summer deployments.

occurrence of precipitation was observed in typical WNAO cloud conditions and in CAOs (Dadashazar et al., 2021a; Tornow et al., 2021). The importance of winter midlatitude weather disturbances in cloud and precipitation occurrence can be assessed by applying the synoptic classification of Painemal et al. (2023) to the individual research flights. 52% of the winter flights are characterized by a mid-tropospheric trough configuration, which either encompasses the entire WNAO region or is limited to the WNAO western section. These cases are typically associated with CAO conditions of varying intensity (Painemal et al., 2023). This synoptic pattern features lower-tropospheric subsidence and northerly/northwesterly winds that enhance surface heat turbulent fluxes (Painemal et al., 2023), and, thus, likely strengthening the boundary layer turbulence. All these conditions are favorable for the formation of low-level clouds and offshore precipitation near the western sector of midlatitude cyclones (Painemal et al., 2023). Moreover, updrafts driven by strong turbulence are thought to be a key factor that explains the sig-

380

All Winters (2020 - 2022)



**Figure 10.** The spatial distribution in  $0.2^\circ$  latitude and longitude grid cells of cloud (left) and precipitation (right) measurements. The upper panels show the number of cloud measurement seconds (a) in oranges and the number of precipitation measurement seconds (d) in violets. The middle panels show the fraction of cloud (b) and precipitation (e) measurements color coded from dark blue to green. The lower panels show the fraction of mixed-phase clouds (c) and precipitation (f) with coloring from violet to yellow. All subplots relate to all winter deployments.

385 nificant enhancement of cloud droplet number concentration in winter relative to summer (Kirschler et al., 2022). In contrast,  
summer synoptic variability is less pronounced, and characterized by midlatitude geopotential height perturbations with mag-  
nitude 50% smaller than those observed in winter. This gives rises to a semipermanent anticyclone that undergoes synoptic  
changes in its magnitude and extension. The summer anticyclonic circulation drives weak surface heat turbulence fluxes and  
reduced static stability under a warm sea surface, promoting the occurrence of shallow cumulus clouds with low spatial cloud  
390 coverage (Painemal et al., 2021).

The mixed-phase fraction of clouds and precipitation measurements in Figure 10c,f show a latitudinal decline with highest  
fractions north of 37.5°N. It is defined as measurement seconds containing ice particles to all cloud or precipitation measurements  
in the regular grids, respectively. The mixed-phase fraction of the precipitation measurements is higher than that of the cloud  
measurements. This may be due to the lower detection limit for ice classification of the 2D-S. It is likely that the cloud  
395 measurements had a higher fraction of mixed-phase or ice clouds that could not be detected. In those cloud measurement  
seconds, no large ice particles were measured by the 2D-S. Thus, smaller ice particles could be present but not identified as  
such. Therefore, the difference in mixed-phase fractions between cloud and precipitation measurements is highly uncertain.  
However, the mixed-phase fraction of both shows a slight increase with distance to the coast.

#### 4 Summary and Conclusions

400 Here we presented an overview of liquid and mixed-phase clouds and precipitation for marine boundary layer clouds over  
the WNAO. We have shown that the utilization of multiple phase spaces of microphysical parameters provides access to  
a classification of cloud and precipitation, which were partitioned into liquid and mixed-phase. With this classification, we  
provided an overview of all cloud measurements during the ACTIVATE campaign deployments in winter (February-March  
2020, January-April 2021, and November 2021-March 2022) and summer (August-September 2020, May-June 2021, and  
405 May-June 2022). Vertical profiles of liquid and mixed-phase ~~clouds~~ cloud properties were shown separately and the spatial  
distribution and frequency of clouds and precipitation were discussed. The findings are listed below:

- LWC of clouds increases with altitude in the MBL and shows large seasonal variability. In addition, the average ~~cloud~~  
number of clouds encountered per research flight is higher in winter. Overall, our analysis ~~indicate~~ indicates that more  
overcast conditions occurred during the winter deployments, whereas summer was dominated by an increased number  
410 of broken cloud scenes.
- The altitude distribution of MBL clouds shows a maxima near 1.3 km in winter and 0.5 km in summer, and is consistent  
with higher satellite-based cloud top height from MODIS. In winter the majority of MBL clouds were observed below  
0°C and ~~contain~~ contained mixed-phase and ice clouds. If ice particles were seen in the winter seasons, they were  
mostly composed of graupel and were observed for temperatures up to 3.5°C. Non-spherical particles without hexagonal  
415 structure occurred at temperatures above 10°C during summer, suggesting the presence of scarce and large bioaerosol.

- Vertical profiles of pure liquid clouds show ~~increased-higher~~  $N_{\text{liquid}}$  and ~~decreased-lower~~  $ED_{\text{liquid}}$  for MBL clouds in winter compared to summer. The LWC values and profiles are comparable in both seasons. Therefore, the anti-correlation of  $N_{\text{liquid}}$  and  $ED_{\text{liquid}}$  between seasons ~~results in~~ shows a less efficient collision-coalescence process in winter, leading to a higher suppression of precipitation ~~in winter~~ for pure liquid clouds during winter.
- 420 – Vertical profiles of mixed-phase clouds show ~~enhanced glaciation and the onset of the WBF process above 1.5 km. The effects of WBF are evident, with~~ a decrease in the liquid parameters  $N_{\text{liquid}}$  and LWC, and a simultaneous increase in IWC,  $N_{\text{ice}}$ , and  $ED_{\text{ice}}$  ~~above 1.5 km. This shows enhanced glaciation and can be explained by the onset of the WBF process.~~
- 425 – The particle size distribution of mixed-phase clouds shows ~~that with the initiation~~ a higher concentration of precipitation particles  $>100 \mu\text{m}$  up to two orders of magnitude compared to pure liquid clouds. This can be explained by the onset of the ice phase, processes such as WBF, coalescence, riming and aggregation, as well as secondary ice production and secondary ice formation, together with dynamic influences ~~lead to a higher concentration of precipitation particles  $>100 \mu\text{m}$  compared to pure liquid clouds.~~ Therefore, the initiation of the ice phase promotes stronger precipitation.
- 430 – The frequency of precipitation is higher in winter than in summer ~~and consists of a larger mixed-phase fraction compared to clouds.~~ The spatial distribution shows that in winter most of the cloud measurements are associated with precipitation in the same area, while ~~precipitation~~ the frequency of precipitation sampling coincides less frequently with cloud measurements during summer. In addition, the mixed-phase fraction of clouds and precipitation measurements show a latitudinal decline with highest fractions north of  $37.5^\circ\text{N}$ .

The results presented in this study provide an overview of the cloud data measured during ACTIVATE and show how the  
 435 data can be classified. Also, we demonstrated that the data collected from the statistical sampling strategy can be used to derive macro- as well as microphysical cloud properties from in-situ data. As the flight strategy was statistically ~~orientated~~oriented, the wealth of cloud and precipitation data will help to develop parameterizations for climate and weather models. Lastly, the dataset is particularly well suited for investigating the processes that give rise to liquid and mixed-phase clouds, ice and precipitation, which are generally associated with cold-air outbreaks.

440 *Data availability.* The ACTIVATE data are available at <http://doi.org/10.5067/SUBORBITAL/ACTIVATE/DATA001>

*Author contributions.* S.K. conducted the analysis and wrote the manuscript. C.V. advised the study and provided feedback on the manuscript. D.P. wrote the last paragraph of 2.5.1.. S.K., V.H., St.K. and C.R. participated in instrument calibration. B.A., R.M., L.Z. and A.S. participated in mission planning. R.F., A.J.S. and M.S. conducted the weather forecast. E.C, R.F., A.J.S., R.M., M.S., J.W.H., T.S. and A.S. participated in strategic flight planning. S.K., E.C., R.M., K.T., C.R, E.W., L.Z., M.S., J.W.H., T.S and A.S. participated in mission operation. G.C. and  
 445 M.S. conducted the data management. All authors commented on the manuscript.

*Competing interests.* The authors declare that they have no conflict of interest.

*Acknowledgements.* The work was supported by ACTIVATE, a NASA Earth Venture Suborbital-3 (EVS-3) investigation funded by NASA's Earth Science Division and managed through the Earth System Science Pathfinder Program Office. C.V, S.K. and St.K. were funded by the Deutsche Forschungsgemeinschaft (DFG, German Research Foundation) – TRR 301 – Project-ID 428312742 and the SPP 1294 HALO 450 under contract VO 1504/7-1 and VO 1504/9-1. University of Arizona investigators were funded by NASA grant 80NSSC19K0442.

## References

- Abel, S. J., Boutle, I. A., Waite, K., Fox, S., Brown, P. R. A., Cotton, R., Lloyd, G., Choulaton, T. W., and Bower, K. N.: The Role of Precipitation in Controlling the Transition from Stratocumulus to Cumulus Clouds in a Northern Hemisphere Cold-Air Outbreak, *Journal of the Atmospheric Sciences*, 74, 2293–2314, <https://doi.org/10.1175/JAS-D-16-0362.1>, 2017.
- 455 Abel, S. J., Barrett, P. A., Zuidema, P., Zhang, J., Christensen, M., Peers, F., Taylor, J. W., Crawford, I., Bower, K. N., and Flynn, M.: Open Cells Exhibit Weaker Entrainment of Free-Tropospheric Biomass Burning Aerosol into the South-East Atlantic Boundary Layer, *Atmospheric Chemistry and Physics*, 20, 4059–4084, <https://doi.org/10.5194/acp-20-4059-2020>, 2020.
- Ahn, E., Huang, Y., Siems, S. T., and Manton, M. J.: A Comparison of Cloud Microphysical Properties Derived From MODIS and CALIPSO With In Situ Measurements Over the Wintertime Southern Ocean, *Journal of Geophysical Research: Atmospheres*, 123, 11,120–11,140, <https://doi.org/10.1029/2018JD028535>, 2018.
- 460 Albrecht, B. A.: Aerosols, Cloud Microphysics, and Fractional Cloudiness, *Science*, 245, 1227–1230, <https://doi.org/10.1126/science.245.4923.1227>, 1989.
- Baker, B. and Lawson, R. P.: Improvement in Determination of Ice Water Content from Two-Dimensional Particle Imagery. Part I: Image-to-Mass Relationships, *Journal of Applied Meteorology and Climatology*, 45, 1282–1290, <https://doi.org/10.1175/JAM2398.1>, 2006.
- 465 Bansmer, S. E., Baumert, A., Sattler, S., Knop, I., Leroy, D., Schwarzenboeck, A., Jurkat-Witschas, T., Voigt, C., Pervier, H., and Esposito, B.: Design, Construction and Commissioning of the Braunschweig Icing Wind Tunnel, *Atmospheric Measurement Techniques*, 11, 3221–3249, <https://doi.org/10.5194/amt-11-3221-2018>, 2018.
- Baumgardner, D., Strapp, W., and Dye, J. E.: Evaluation of the Forward Scattering Spectrometer Probe. Part II: Corrections for Coincidence and Dead-Time Losses, *Journal of Atmospheric and Oceanic Technology*, 2, 626–632, [https://doi.org/10.1175/1520-0426\(1985\)002<0626:EOTFSS>2.0.CO;2](https://doi.org/10.1175/1520-0426(1985)002<0626:EOTFSS>2.0.CO;2), 1985.
- 470 Baumgardner, D., Abel, S. J., Axisa, D., Cotton, R., Crosier, J., Field, P., Gurganus, C., Heymsfield, A., Korolev, A., Krämer, M., Lawson, P., McFarquhar, G., Ulanowski, Z., and Um, J.: Cloud Ice Properties: In Situ Measurement Challenges, *Meteorological Monographs*, 58, 9.1–9.23, <https://doi.org/10.1175/AMSMONOGRAPHS-D-16-0011.1>, 2017.
- Bergeron, T.: On the Physics of Clouds and Precipitation, *Proc. 5th Assembly UGGI, Lisbon, Portugal, 1935*, pp. 156–180, 1935.
- 475 Berry, E. X. and Reinhardt, R. L.: An Analysis of Cloud Drop Growth by Collection: Part I. Double Distributions, *Journal of the Atmospheric Sciences*, 31, 1814–1824, [https://doi.org/10.1175/1520-0469\(1974\)031<1814:AAOCDG>2.0.CO;2](https://doi.org/10.1175/1520-0469(1974)031<1814:AAOCDG>2.0.CO;2), 1974.
- Bock, L., Lauer, A., Schlund, M., Barreiro, M., Bellouin, N., Jones, C., Meehl, G. A., Predoi, V., Roberts, M. J., and Eyring, V.: Quantifying Progress Across Different CMIP Phases With the ESMValTool, *Journal of Geophysical Research: Atmospheres*, 125, e2019JD032321, <https://doi.org/10.1029/2019JD032321>, 2020.
- 480 Böhm, J. P.: A General Hydrodynamic Theory for Mixed-Phase Microphysics. Part III: Riming and Aggregation, *Atmospheric research*, 28, 103–123, 1992a.
- Böhm, J. P.: A General Hydrodynamic Theory for Mixed-Phase Microphysics. Part II: Collision Kernels for Coalescence, *Atmospheric research*, 27, 275–290, 1992b.
- Braga, R. C., Rosenfeld, D., Weigel, R., Jurkat, T., Andreae, M. O., Wendisch, M., Pöhlker, M. L., Klimach, T., Pöschl, U., Pöhlker, C., Voigt, C., Mahnke, C., Borrmann, S., Albrecht, R. I., Molleker, S., Vila, D. A., Machado, L. A. T., and Artaxo, P.: Comparing Parameterized versus Measured Microphysical Properties of Tropical Convective Cloud Bases during the ACRIDICON-CHUVA Campaign, *Atmospheric Chemistry and Physics*, 17, 7365–7386, <https://doi.org/10.5194/acp-17-7365-2017>, 2017a.



- 490 Braga, R. C., Rosenfeld, D., Weigel, R., Jurkat, T., Andreae, M. O., Wendisch, M., Pöschl, U., Voigt, C., Mahnke, C., Borrmann, S., Albrecht, R. I., Molleker, S., Vila, D. A., Machado, L. A. T., and Grulich, L.: Further Evidence for CCN Aerosol Concentrations Determining the Height of Warm Rain and Ice Initiation in Convective Clouds over the Amazon Basin, *Atmospheric Chemistry and Physics*, 17, 14433–14456, <https://doi.org/10.5194/acp-17-14433-2017>, 2017b.
- 495 Braga, R. C., Ervens, B., Rosenfeld, D., Andreae, M. O., Förster, J.-D., Fütterer, D., Hernández Pardo, L., Holanda, B. A., Jurkat-Witschas, T., Krüger, O. O., Lauer, O., Machado, L. A. T., Pöhlker, C., Sauer, D., Voigt, C., Walser, A., Wendisch, M., Pöschl, U., and Pöhlker, M. L.: Cloud Droplet Formation at the Base of Tropical Convective Clouds: Closure between Modeling and Measurement Results of ACRIDICON-CHUVA, *Atmospheric Chemistry and Physics*, 21, 17513–17528, <https://doi.org/10.5194/acp-21-17513-2021>, 2021a.
- Braga, R. C., Rosenfeld, D., Krüger, O. O., Ervens, B., Holanda, B. A., Wendisch, M., Krisna, T., Pöschl, U., Andreae, M. O., Voigt, C., and Pöhlker, M. L.: Linear Relationship between Effective Radius and Precipitation Water Content near the Top of Convective Clouds: Measurement Results from ACRIDICON-CHUVA Campaign, *Atmospheric Chemistry and Physics*, 21, 14079–14088, <https://doi.org/10.5194/acp-21-14079-2021>, 2021b.
- 500 Bräuer, T., Voigt, C., Sauer, D., Kaufmann, S., Hahn, V., Scheibe, M., Schlager, H., Diskin, G. S., Nowak, J. B., DiGangi, J. P., Huber, F., Moore, R. H., and Anderson, B. E.: Airborne Measurements of Contrail Ice Properties—Dependence on Temperature and Humidity, *Geophysical Research Letters*, 48, e2020GL092166, <https://doi.org/10.1029/2020GL092166>, 2021a.
- Bräuer, T., Voigt, C., Sauer, D., Kaufmann, S., Hahn, V., Scheibe, M., Schlager, H., Huber, F., Le Clercq, P., Moore, R. H., and Anderson, B. E.: Reduced Ice Number Concentrations in Contrails from Low-Aromatic Biofuel Blends, *Atmospheric Chemistry and Physics*, 21, 16817–16826, <https://doi.org/10.5194/acp-21-16817-2021>, 2021b.
- 505 Brunke, M. A., Cutler, L., Urzua, R. D., Corral, A. F., Crosbie, E., Hair, J., Hostetler, C., Kirschler, S., Larson, V., Li, X.-Y., Ma, P.-L., Minke, A., Moore, R., Robinson, C. E., Scarino, A. J., Schlosser, J., Shook, M., Sorooshian, A., Lee Thornhill, K., Voigt, C., Wan, H., Wang, H., Winstead, E., Zeng, X., Zhang, S., and Ziemba, L. D.: Aircraft Observations of Turbulence in Cloudy and Cloud-Free Boundary Layers Over the Western North Atlantic Ocean From ACTIVATE and Implications for the Earth System Model Evaluation and Development, *Journal of Geophysical Research: Atmospheres*, 127, e2022JD036480, <https://doi.org/10.1029/2022JD036480>, 2022.
- Ceppi, P., Brient, F., Zelinka, M. D., and Hartmann, D. L.: Cloud Feedback Mechanisms and Their Representation in Global Climate Models, *WIREs Climate Change*, 8, e465, <https://doi.org/10.1002/wcc.465>, 2017.
- 515 Cesana, G. V., Khadir, T., Chepfer, H., and Chiriaco, M.: Southern Ocean Solar Reflection Biases in CMIP6 Models Linked to Cloud Phase and Vertical Structure Representations, *Geophysical Research Letters*, 49, e2022GL099777, <https://doi.org/10.1029/2022GL099777>, 2022.
- Chelton, D. B., Schlax, M. G., Freilich, M. H., and Milliff, R. F.: Satellite Measurements Reveal Persistent Small-Scale Features in Ocean Winds, *Science*, 303, 978–983, <https://doi.org/10.1126/science.1091901>, 2004.
- 520 Chin, M., Diehl, T., Tan, Q., Prospero, J. M., Kahn, R. A., Remer, L. A., Yu, H., Sayer, A. M., Bian, H., Geogdzhayev, I. V., Holben, B. N., Howell, S. G., Huebert, B. J., Hsu, N. C., Kim, D., Kucsera, T. L., Levy, R. C., Mishchenko, M. I., Pan, X., Quinn, P. K., Schuster, G. L., Streets, D. G., Strode, S. A., Torres, O., and Zhao, X.-P.: Multi-Decadal Aerosol Variations from 1980 to 2009: A Perspective from Observations and a Global Model, *Atmospheric Chemistry and Physics*, 14, 3657–3690, <https://doi.org/10.5194/acp-14-3657-2014>, 2014.
- Corral, A. F., Braun, R. A., Cairns, B., Gorooh, V. A., Liu, H., Ma, L., Mardi, A. H., Painemal, D., Starnes, S., van Diedenhoven, B., Wang, H., Yang, Y., Zhang, B., and Sorooshian, A.: An Overview of Atmospheric Features Over the Western North Atlantic Ocean and North American East Coast – Part I: Analysis of Aerosols, Gases, and Wet Deposition Chemistry, *Journal of Geophysical Research: Atmospheres*, 126, e2020JD032592, <https://doi.org/10.1029/2020JD032592>, 2021.
- 525

- Dadashazar, H., Alipanah, M., Hilario, M. R. A., Crosbie, E., Kirschler, S., Liu, H., Moore, R. H., Peters, A. J., Scarino, A. J., Shook, M., Thornhill, K. L., Voigt, C., Wang, H., Winstead, E., Zhang, B., Ziemba, L., and Sorooshian, A.: Aerosol Responses to Precipitation along North American Air Trajectories Arriving at Bermuda, *Atmospheric Chemistry and Physics*, 21, 16 121–16 141, <https://doi.org/10.5194/acp-21-16121-2021>, 2021a.
- 530 Dadashazar, H., Painemal, D., Alipanah, M., Brunke, M., Chellappan, S., Corral, A. F., Crosbie, E., Kirschler, S., Liu, H., Moore, R. H., Robinson, C., Scarino, A. J., Shook, M., Sinclair, K., Thornhill, K. L., Voigt, C., Wang, H., Winstead, E., Zeng, X., Ziemba, L., Zuidema, P., and Sorooshian, A.: Cloud Drop Number Concentrations over the Western North Atlantic Ocean: Seasonal Cycle, Aerosol Interrelationships, and Other Influential Factors, *Atmospheric Chemistry and Physics*, 21, 10 499–10 526, <https://doi.org/10.5194/acp-21-10499-2021>, 2021b.
- 535 Dadashazar, H., Crosbie, E., Choi, Y., Corral, A. F., DiGangi, J. P., Diskin, G. S., Dmitrovic, S., Kirschler, S., McCauley, K., Moore, R. H., Nowak, J. B., Robinson, C. E., Schlosser, J., Shook, M., Thornhill, K. L., Voigt, C., Winstead, E. L., Ziemba, L. D., and Sorooshian, A.: Analysis of MONARC and ACTIVATE Airborne Aerosol Data for Aerosol-Cloud Interaction Investigations: Efficacy of Stairstepping Flight Legs for Airborne In Situ Sampling, *Atmosphere*, 13, 1242, <https://doi.org/10.3390/atmos13081242>, 2022.
- Dusek, U., Frank, G. P., Hildebrandt, L., Curtius, J., Schneider, J., Walter, S., Chand, D., Drewnick, F., Hings, S., Jung, D., Borrmann, S.,  
540 and Andreae, M. O.: Size Matters More Than Chemistry for Cloud-Nucleating Ability of Aerosol Particles, *Science*, 312, 1375–1378, <https://doi.org/10.1126/science.1125261>, 2006.
- Dzambo, A. M., L'Ecuyer, T., Sinclair, K., van Diedenhoven, B., Gupta, S., McFarquhar, G., O'Brien, J. R., Cairns, B., Wasilewski, A. P., and Alexandrov, M.: Joint Cloud Water Path and Rainwater Path Retrievals from Airborne ORACLES Observations, *Atmospheric Chemistry and Physics*, 21, 5513–5532, <https://doi.org/10.5194/acp-21-5513-2021>, 2021.
- 545 Ervens, B., Feingold, G., and Kreidenweis, S. M.: Influence of Water-Soluble Organic Carbon on Cloud Drop Number Concentration, *Journal of Geophysical Research: Atmospheres*, 110, <https://doi.org/10.1029/2004JD005634>, 2005.
- Faber, S., French, J. R., and Jackson, R.: Laboratory and In-Flight Evaluation of Measurement Uncertainties from a Commercial Cloud Droplet Probe (CDP), *Atmospheric Measurement Techniques*, 11, 3645–3659, <https://doi.org/10.5194/amt-11-3645-2018>, 2018.
- Feingold, G. and Heymsfield, A. J.: Parameterizations of Condensational Growth of Droplets for Use in General Circulation Models, *Journal*  
550 *of the Atmospheric Sciences*, 49, 2325–2342, [https://doi.org/10.1175/1520-0469\(1992\)049<2325:POCGOD>2.0.CO;2](https://doi.org/10.1175/1520-0469(1992)049<2325:POCGOD>2.0.CO;2), 1992.
- Field, P. R., Heymsfield, A. J., and Bansemer, A.: Shattering and Particle Interarrival Times Measured by Optical Array Probes in Ice Clouds, *Journal of Atmospheric and Oceanic Technology*, 23, 1357–1371, <https://doi.org/10.1175/JTECH1922.1>, 2006.
- Field, P. R., Brožková, R., Chen, M., Dudhia, J., Lac, C., Hara, T., Honnert, R., Olson, J., Siebesma, P., de Roode, S., Tomassini, L., Hill, A.,  
and McTaggart-Cowan, R.: Exploring the Convective Grey Zone with Regional Simulations of a Cold Air Outbreak, *Quarterly Journal of*  
555 *the Royal Meteorological Society*, 143, 2537–2555, <https://doi.org/10.1002/qj.3105>, 2017a.
- Field, P. R., Lawson, R. P., Brown, P. R. A., Lloyd, G., Westbrook, C., Moisseev, D., Miltenberger, A., Nenes, A., Blyth, A., Choulaton, T., Connolly, P., Buehl, J., Crosier, J., Cui, Z., Dearden, C., DeMott, P., Flossmann, A., Heymsfield, A., Huang, Y., Kalesse, H., Kanji, Z. A., Korolev, A., Kirchgaessner, A., Lasher-Trapp, S., Leisner, T., McFarquhar, G., Phillips, V., Stith, J., and Sullivan, S.: Secondary Ice Production: Current State of the Science and Recommendations for the Future, *Meteorological Monographs*, 58, 7.1–7.20,  
560 <https://doi.org/10.1175/AMSMONOGRAPHS-D-16-0014.1>, 2017b.
- Findeisen, W.: Kolloid-Meteorologische Vorgänge Bei Neiderschlags-bildung, *Meteor. Z*, 55, 121–133, 1938.
- Freud, E. and Rosenfeld, D.: Linear Relation between Convective Cloud Drop Number Concentration and Depth for Rain Initiation, *Journal of Geophysical Research: Atmospheres*, 117, D02 207, <https://doi.org/10.1029/2011JD016457>, 2012.

- Freud, E., Rosenfeld, D., and Kulkarni, J. R.: Resolving Both Entrainment-Mixing and Number of Activated CCN in Deep Convective  
565 Clouds, *Atmospheric Chemistry and Physics*, 11, 12 887–12 900, <https://doi.org/10.5194/acp-11-12887-2011>, 2011.
- Gottelman, A. and Sherwood, S. C.: Processes Responsible for Cloud Feedback, *Current Climate Change Reports*, 2, 179–189,  
<https://doi.org/10.1007/s40641-016-0052-8>, 2016.
- Goren, T., Feingold, G., Gryspeerdt, E., Kazil, J., Kretzschmar, J., Jia, H., and Quaas, J.: Projecting Stratocumulus Transitions on  
the Albedo—Cloud Fraction Relationship Reveals Linearity of Albedo to Droplet Concentrations, *Geophysical Research Letters*, 49,  
570 e2022GL101 169, <https://doi.org/10.1029/2022GL101169>, 2022.
- Gupta, S., McFarquhar, G. M., O'Brien, J. R., Delene, D. J., Poellot, M. R., Dobracki, A., Podolske, J. R., Redemann, J., LeBlanc, S. E.,  
Segal-Rozenhaimer, M., and Pistone, K.: Impact of the Variability in Vertical Separation between Biomass Burning Aerosols and Marine  
Stratocumulus on Cloud Microphysical Properties over the Southeast Atlantic, *Atmospheric Chemistry and Physics*, 21, 4615–4635,  
<https://doi.org/10.5194/acp-21-4615-2021>, 2021.
- 575 Gurganus, C. and Lawson, P.: Laboratory and Flight Tests of 2D Imaging Probes: Toward a Better Understanding of Instrument Performance  
and the Impact on Archived Data, *Journal of Atmospheric and Oceanic Technology*, 35, 1533–1553, <https://journals.ametsoc.org/doi/pdf/10.1175/JTECH-D-17-0202.1>, 2018.
- Hahn, V., Meerkötter, R., Voigt, C., Gisinger, S., Sauer, D., Catoire, V., Dreiling, V., Coe, H., Flamant, C., Kaufmann, S., Kleine, J., Knippertz,  
P., Moser, M., Rosenberg, P., Schlager, H., Schwarzenboeck, A., and Taylor, J.: Pollution Slightly Enhances Atmospheric Cooling by Low-  
580 Level Clouds in Tropical West Africa, Preprint, *Clouds and Precipitation/Field Measurements/Troposphere/Physics (physical properties  
and processes)*, <https://doi.org/10.5194/acp-2022-795>, 2022.
- Hallett, J. and Mossop, S. C.: Production of Secondary Ice Particles during the Riming Process, *Nature*, 249, 26–28,  
<https://doi.org/10.1038/249026a0>, 1974.
- Hartmann, D. L., Ockert-Bell, M. E., and Michelsen, M. L.: The Effect of Cloud Type on Earth's Energy Balance: Global Analysis, *Journal*  
585 *of Climate*, 5, 1281–1304, [https://doi.org/10.1175/1520-0442\(1992\)005<1281:TEOCTO>2.0.CO;2](https://doi.org/10.1175/1520-0442(1992)005<1281:TEOCTO>2.0.CO;2), 1992.
- Henderson, D. S., L'Ecuyer, T., Stephens, G., Partain, P., and Sekiguchi, M.: A Multisensor Perspective on the Radiative Impacts of Clouds  
and Aerosols, *Journal of Applied Meteorology and Climatology*, 52, 853–871, <https://doi.org/10.1175/JAMC-D-12-025.1>, 2013.
- IPCC: Climate Change 2013: The Physical Science Basis. Contribution of Working Group I to the Fifth Assessment Report of the  
Intergovernmental Panel on Climate Change, Cambridge University Press, Cambridge, United Kingdom and New York, NY, USA,  
590 <https://doi.org/10.1017/CBO9781107415324>, 2013.
- IPCC: Climate Change 2021 - the Physical Science Basis, in: *Climate Change 2021: The Physical Science Basis. Contribution of Working*  
*Group I to the Sixth Assessment Report of the Intergovernmental Panel on Climate Change* [Masson-Delmotte, v., p. Zhai, a. Pirani, s. L.  
Connors, c. Péan, s. Berger, n. Caud, y. Chen, l. Goldfarb, m. I. Gomis, m. Huang, k. Leitzell, e. Lonnoy, j. B. R. Matthews, t. K. Maycock,  
t. Waterfield, o. Yelekçi, r. Yu and b. Zhou (Eds.)], p. 1535, Cambridge University Press, cambridge edn., 2021.
- 595 Keinert, A., Spannagel, D., Leisner, T., and Kiselev, A.: Secondary Ice Production upon Freezing of Freely Falling Drizzle Droplets, *Journal*  
*of the Atmospheric Sciences*, 77, 2959–2967, <https://doi.org/10.1175/JAS-D-20-0081.1>, 2020.
- Kirschler, S., Voigt, C., Anderson, B., Campos Braga, R., Chen, G., Corral, A. F., Crosbie, E., Dadashazar, H., Ferrare, R. A., Hahn, V.,  
Hendricks, J., Kaufmann, S., Moore, R., Pöhlker, M. L., Robinson, C., Scarino, A. J., Schollmayer, D., Shook, M. A., Thornhill, K. L.,  
Winstead, E., Ziemba, L. D., and Sorooshian, A.: Seasonal Updraft Speeds Change Cloud Droplet Number Concentrations in Low-Level  
600 Clouds over the Western North Atlantic, *Atmospheric Chemistry and Physics*, 22, 8299–8319, <https://doi.org/10.5194/acp-22-8299-2022>,  
2022.

- Kleine, J., Voigt, C., Sauer, D., Schlager, H., Scheibe, M., Jurkat-Witschas, T., Kaufmann, S., Kärcher, B., and Anderson, B. E.: In Situ Observations of Ice Particle Losses in a Young Persistent Contrail, *Geophysical Research Letters*, 45, 13,553–13,561, <https://doi.org/10.1029/2018GL079390>, 2018.
- 605 Knollenberg, R. G.: The Optical Array: An Alternative to Extinction and Scattering for Particle Size Measurements, *J. Appl. Meteor*, 9, 86–103, 1970.
- Knop, I., Bansmer, S. E., Hahn, V., and Voigt, C.: Comparison of Different Droplet Measurement Techniques in the Braunschweig Icing Wind Tunnel, *Atmospheric Measurement Techniques*, 14, 1761–1781, <https://doi.org/10.5194/amt-14-1761-2021>, 2021.
- Köhler, H.: The Nucleus in and the Growth of Hygroscopic Droplets, *Transactions of the Faraday Society*, 32, 1152–1161, 1936.
- 610 Korolev, A. V.: Reconstruction of the Sizes of Spherical Particles from Their Shadow Images. Part I: Theoretical Considerations, *Journal of Atmospheric and Oceanic Technology*, 24, 376–389, <https://doi.org/10.1175/JTECH1980.1>, 2007a.
- Korolev, A. V.: Limitations of the Wegener–Bergeron–Findeisen Mechanism in the Evolution of Mixed-Phase Clouds, *Journal of the Atmospheric Sciences*, 64, 3372–3375, <https://doi.org/10.1175/JAS4035.1>, 2007b.
- Korolev, A. V.: Rates of Phase Transformations in Mixed-Phase Clouds, *Quarterly Journal of the Royal Meteorological Society*, 134, 595–608, <https://doi.org/10.1002/qj.230>, 2008.
- 615 Korolev, A. V. and Milbrandt, J.: How Are Mixed-Phase Clouds Mixed?, *Geophysical Research Letters*, 49, e2022GL099578, <https://doi.org/10.1029/2022GL099578>, 2022.
- Korolev, A. V. and Sussman, B.: A Technique for Habit Classification of Cloud Particles, *Journal of Atmospheric and Oceanic Technology*, 17, 1048–1057, 2000.
- 620 Korolev, A. V., Kuznetsov, S. V., Makarov, Y. E., and Novikov, V. S.: Evaluation of Measurements of Particle Size and Sample Area from Optical Array Probes, *Journal of Atmospheric and Oceanic Technology*, 8, 514–522, [https://doi.org/10.1175/1520-0426\(1991\)008<0514:EOMOPS>2.0.CO;2](https://doi.org/10.1175/1520-0426(1991)008<0514:EOMOPS>2.0.CO;2), 1991.
- Korolev, A. V., Strapp, J. W., and Isaac, G. A.: Evaluation of the Accuracy of PMS Optical Array Probes, *Journal of Atmospheric and Oceanic Technology*, 15, 708–720, [https://doi.org/10.1175/1520-0426\(1998\)015<0708:EOTAOP>2.0.CO;2](https://doi.org/10.1175/1520-0426(1998)015<0708:EOTAOP>2.0.CO;2), 1998.
- 625 Korolev, A. V., Emery, E., and Creelman, K.: Modification and Tests of Particle Probe Tips to Mitigate Effects of Ice Shattering, *Journal of Atmospheric and Oceanic Technology*, 30, 690–708, <https://doi.org/10.1175/JTECH-D-12-00142.1>, 2013.
- Korolev, A. V., Heckman, I., Wolde, M., Ackerman, A. S., Fridlind, A. M., Ladino, L. A., Lawson, R. P., Milbrandt, J., and Williams, E.: A New Look at the Environmental Conditions Favorable to Secondary Ice Production, *Atmospheric Chemistry and Physics*, 20, 1391–1429, <https://doi.org/10.5194/acp-20-1391-2020>, 2020.
- 630 Korolev, A. V., DeMott, P. J., Heckman, I., Wolde, M., Williams, E., Smalley, D. J., and Donovan, M. F.: Observation of Secondary Ice Production in Clouds at Low Temperatures, *Atmospheric Chemistry and Physics*, 22, 13 103–13 113, <https://doi.org/10.5194/acp-22-13103-2022>, 2022.
- Lance, S.: Coincidence Errors in a Cloud Droplet Probe (CDP) and a Cloud and Aerosol Spectrometer (CAS), and the Improved Performance of a Modified CDP, *Journal of Atmospheric and Oceanic Technology*, 29, 1532–1541, <https://doi.org/10.1175/JTECH-D-11-00208.1>, 2012.
- 635 Lance, S., Brock, C. A., Rogers, D., and Gordon, J. A.: Water Droplet Calibration of the Cloud Droplet Probe (CDP) and in-Flight Performance in Liquid, Ice and Mixed-Phase Clouds during ARCPAC, *Atmospheric Measurement Techniques*, 3, 1683–1706, <https://doi.org/10.5194/amt-3-1683-2010>, 2010.

- Lawson, R. P.: Effects of Ice Particles Shattering on the 2D-S Probe, *Atmospheric Measurement Techniques*, 4, 1361–1381, <https://doi.org/10.5194/amt-4-1361-2011>, 2011.
- 640 Lawson, R. P., O'Connor, D., Zmarzly, P., Weaver, K., Baker, B., Mo, Q., and Jonsson, H.: The 2D-S (Stereo) Probe: Design and Preliminary Tests of a New Airborne, High-Speed, High-Resolution Particle Imaging Probe, *Journal of Atmospheric and Oceanic Technology*, 23, 1462–1477, <https://doi.org/10.1175/JTECH1927.1>, 2006.
- Lawson, R. P., Woods, S., Jensen, E., Erfani, E., Gurganus, C., Gallagher, M., Connolly, P., Whiteway, J., Baran, A. J., May, P., Heymsfield, A., Schmitt, C. G., McFarquhar, G., Um, J., Protat, A., Bailey, M., Lance, S., Muehlbauer, A., Stith, J., Korolev, A., Toon, O. B., and Krämer, M.: A Review of Ice Particle Shapes in Cirrus Formed In Situ and in Anvils, *Journal of Geophysical Research: Atmospheres*, 124, 10 049–10 090, <https://doi.org/10.1029/2018JD030122>, 2019.
- 645 Lawson, R. P., Korolev, A. V., DeMott, P. J., Heymsfield, A. J., Bruintjes, R. T., Wolff, C. A., Woods, S., Patnaude, R. J., Jensen, J. B., Moore, K. A., Heckman, I., Rosky, E., Haggerty, J., Perkins, R. J., Fisher, T., and Hill, T. C. J.: The Secondary Production of Ice in Cumulus Experiment (SPICULE), *Bulletin of the American Meteorological Society*, 104, E51–E76, <https://doi.org/10.1175/BAMS-D-21-0209.1>, 2023.
- 650 Li, X.-Y., Wang, H., Chen, J., Endo, S., George, G., Cairns, B., Chellappan, S., Zeng, X., Kirschler, S., Voigt, C., Sorooshian, A., Crosbie, E., Chen, G., Ferrare, R. A., Gustafson, W. I., Hair, J. W., Kleb, M. M., Liu, H., Moore, R., Painemal, D., Robinson, C., Scarino, A. J., Shook, M., Shingler, T. J., Thornhill, K. L., Tornow, F., Xiao, H., Ziemba, L. D., and Zuidema, P.: Large-Eddy Simulations of Marine Boundary Layer Clouds Associated with Cold-Air Outbreaks during the ACTIVATE Campaign. Part I: Case Setup and Sensitivities to Large-Scale Forcings, *Journal of the Atmospheric Sciences*, 79, 73–100, <https://doi.org/10.1175/JAS-D-21-0123.1>, 2022.
- 655 Li, X.-Y., Wang, H., Chen, J., Endo, S., Kirschler, S., Voigt, C., Crosbie, E., Ziemba, L. D., Painemal, D., Cairns, B., Hair, J. W., Corral, A. F., Robinson, C., Dadashazar, H., Sorooshian, A., Chen, G., Ferrare, R. A., Kleb, M. M., Liu, H., Moore, R., Scarino, A. J., Shook, M. A., Shingler, T. J., Thornhill, K. L., Tornow, F., Xiao, H., and Zeng, X.: Large-Eddy Simulations of Marine Boundary Layer Clouds Associated with Cold-Air Outbreaks during the ACTIVATE Campaign. Part II: Aerosol–Meteorology–Cloud Interaction, *Journal of the Atmospheric Sciences*, 80, 1025–1045, <https://doi.org/10.1175/JAS-D-21-0324.1>, 2023.
- 660 Luke, E. P., Yang, F., Kollias, P., Vogelmann, A. M., and Maahn, M.: New Insights into Ice Multiplication Using Remote-Sensing Observations of Slightly Supercooled Mixed-Phase Clouds in the Arctic, *Proceedings of the National Academy of Sciences*, 118, e2021387 118, <https://doi.org/10.1073/pnas.2021387118>, 2021.
- 665 McFarquhar, G. M., Zhang, G., Poellot, M. R., Kok, G. L., McCoy, R., Tooman, T., Fridlind, A., and Heymsfield, A. J.: Ice Properties of Single-Layer Stratocumulus during the Mixed-Phase Arctic Cloud Experiment: 1. Observations, *Journal of Geophysical Research: Atmospheres*, 112, 2007.
- Merikanto, J., Spracklen, D. V., Pringle, K. J., and Carslaw, K. S.: Effects of Boundary Layer Particle Formation on Cloud Droplet Number and Changes in Cloud Albedo from 1850 to 2000, *Atmospheric Chemistry and Physics*, 10, 695–705, <https://doi.org/10.5194/acp-10-695-2010>, 2010.
- 670 Moser, M., Voigt, C., Jurkat-Witschas, T., Hahn, V., Mioche, G., Jourdan, O., Dupuy, R., Gourbeyre, C., Schwarzenboeck, A., Lucke, J., Boose, Y., Mech, M., Borrmann, S., Ehrlich, A., Herber, A., Lüpkes, C., and Wendisch, M.: Microphysical and Thermodynamic Phase Analyses of Arctic Low-Level Clouds Measured above the Sea Ice and the Open Ocean in Spring and Summer, *Atmospheric Chemistry and Physics Discussions*, pp. 1–27, <https://doi.org/10.5194/acp-2023-44>, 2023.
- 675 Mülmenstädt, J. and Feingold, G.: The Radiative Forcing of Aerosol–Cloud Interactions in Liquid Clouds: Wrestling and Embracing Uncertainty, *Current Climate Change Reports*, 4, 23–40, <https://doi.org/10.1007/s40641-018-0089-y>, 2018.

- Naud, C. M. and Kahn, B. H.: Thermodynamic Phase and Ice Cloud Properties in Northern Hemisphere Winter Extratropical Cyclones Observed by Aqua AIRS, *Journal of Applied Meteorology and Climatology*, 54, 2283–2303, <https://doi.org/10.1175/JAMC-D-15-0045.1>, 2015.
- 680 O'Connor, D., Baker, B., and Lawson, R. P.: Upgrades to the FSSP-100 Electronics, in: Proc. 15th Int. Conf. on Clouds and Precipitation, p. P13.7, Cancun, 2008.
- Painemal, D., Corral, A. F., Sorooshian, A., Brunke, M. A., Chellappan, S., Goroooh, V. A., Ham, S.-H., O'Neill, L., Smith, W. L., Tselioudis, G., Wang, H., Zeng, X., and Zuidema, P.: An Overview of Atmospheric Features Over the Western North Atlantic Ocean and North American East Coast—Part 2: Circulation, Boundary Layer, and Clouds, *Journal of Geophysical Research: Atmospheres*, 126, e2020JD033423, <https://doi.org/10.1029/2020JD033423>, 2021.
- 685 Painemal, D., Chellappan, S., Smith Jr., W. L., Spangenberg, D., Park, J. M., Ackerman, A., Chen, J., Crosbie, E., Ferrare, R., Hair, J., Kirschler, S., Li, X.-Y., McComiskey, A., Moore, R. H., Sanchez, K., Sorooshian, A., Tornow, F., Voigt, C., Wang, H., Winstead, E., Zeng, X., Ziemba, L., and Zuidema, P.: Wintertime Synoptic Patterns of Midlatitude Boundary Layer Clouds Over the Western North Atlantic: Climatology and Insights From In Situ ACTIVATE Observations, *Journal of Geophysical Research: Atmospheres*, 128, e2022JD037725, <https://doi.org/10.1029/2022JD037725>, 2023.
- 690 Parol, F., Buriez, J. C., Brogniez, G., and Fouquart, Y.: Information Content of AVHRR Channels 4 and 5 with Respect to the Effective Radius of Cirrus Cloud Particles, *Journal of Applied Meteorology and Climatology*, 30, 973–984, <https://doi.org/10.1175/1520-0450-30.7.973>, 1991.
- Pinsky, M., Khain, A., and Shapiro, M.: Stochastic Effects of Cloud Droplet Hydrodynamic Interaction in a Turbulent Flow, *Atmospheric Research*, 53, 131–169, [https://doi.org/10.1016/S0169-8095\(99\)00048-4](https://doi.org/10.1016/S0169-8095(99)00048-4), 2000.
- 695 Pinsky, M., Khain, A., Mazin, I., and Korolev, A.: Analytical Estimation of Droplet Concentration at Cloud Base, *Journal of Geophysical Research: Atmospheres*, 117, D18 211, <https://doi.org/10.1029/2012JD017753>, 2012.
- Pruppacher, H. and Klett, J.: Microstructure of Atmospheric Clouds and Precipitation, in: *Microphysics of Clouds and Precipitation*, edited by Pruppacher, H. and Klett, J., Atmospheric and Oceanographic Sciences Library, pp. 10–73, Springer Netherlands, Dordrecht, [https://doi.org/10.1007/978-0-306-48100-0\\_2](https://doi.org/10.1007/978-0-306-48100-0_2), 2010.
- 700 Rauber, R. M., Stevens, B., Ochs, H. T., Knight, C., Albrecht, B. A., Blyth, A. M., Fairall, C. W., Jensen, J. B., Lasher-Trapp, S. G., Mayol-Bracero, O. L., Vali, G., Anderson, J. R., Baker, B. A., Bandy, A. R., Burnet, E., Brenguier, J.-L., Brewer, W. A., Brown, P. R. A., Chuang, R., Cotton, W. R., Girolamo, L. D., Geerts, B., Gerber, H., Göke, S., Gomes, L., Heikes, B. G., Hudson, J. G., Kollias, P., Lawson, R. R., Krueger, S. K., Lenschow, D. H., Nuijens, L., O'Sullivan, D. W., Rilling, R. A., Rogers, D. C., Siebesma, A. P., Snodgrass, E., Stith, J. L., Thornton, D. C., Tucker, S., Twohy, C. H., and Zuidema, P.: Rain in Shallow Cumulus Over the Ocean: The RICO Campaign, *Bulletin of the American Meteorological Society*, 88, 1912–1928, <https://doi.org/10.1175/BAMS-88-12-1912>, 2007.
- 705 Schulze, B. C., Charan, S. M., Kenseth, C. M., Kong, W., Bates, K. H., Williams, W., Metcalf, A. R., Jonsson, H. H., Woods, R., Sorooshian, A., Flagan, R. C., and Seinfeld, J. H.: Characterization of Aerosol Hygroscopicity Over the Northeast Pacific Ocean: Impacts on Prediction of CCN and Stratocumulus Cloud Droplet Number Concentrations, *Earth and Space Science*, 7, e2020EA001098, <https://doi.org/10.1029/2020EA001098>, 2020.
- Small, R. J., deSzoeko, S. P., Xie, S. P., O'Neill, L., Seo, H., Song, Q., Cornillon, P., Spall, M., and Minobe, S.: Air–Sea Interaction over Ocean Fronts and Eddies, *Dynamics of Atmospheres and Oceans*, 45, 274–319, <https://doi.org/10.1016/j.dynatmoce.2008.01.001>, 2008.
- Sorooshian, A., Anderson, B., Bauer, S. E., Braun, R. A., Cairns, B., Crosbie, E., Dadashazar, H., Diskin, G., Ferrare, R., Flagan, R. C., Hair, J., Hostetler, C., Jonsson, H. H., Kleb, M. M., Liu, H., MacDonald, A. B., McComiskey, A., Moore, R., Painemal, D., Russell, L. M.,

- 715 Seinfeld, J. H., Shook, M., Smith, W. L., Thornhill, K., Tselioudis, G., Wang, H., Zeng, X., Zhang, B., Ziemba, L., and Zuidema, P.: Aerosol–Cloud–Meteorology Interaction Airborne Field Investigations: Using Lessons Learned from the U.S. West Coast in the Design of ACTIVATE off the U.S. East Coast, *Bulletin of the American Meteorological Society*, 100, 1511–1528, <https://doi.org/10.1175/BAMS-D-18-0100.1>, 2019.
- Sorooshian, A., Corral, A. F., Braun, R. A., Cairns, B., Crosbie, E., Ferrare, R., Hair, J., Kleb, M. M., Mardi, A. H., Maring, H., McComiskey, A., Moore, R., Painemal, D., Scarino, A. J., Schlosser, J., Shingler, T., Shook, M., Wang, H., Zeng, X., Ziemba, L., and Zuidema, P.: Atmospheric Research Over the Western North Atlantic Ocean Region and North American East Coast: A Review of Past Work and Challenges Ahead, *Journal of Geophysical Research: Atmospheres*, 125, e2019JD031 626, <https://doi.org/10.1029/2019JD031626>, 2020.
- 720 Sorooshian, A., Alexandrov, M. D., Bell, A. D., Bennett, R., Betito, G., Burton, S. P., Buzanowicz, M. E., Cairns, B., Chemyakin, E. V., Chen, G., Choi, Y., Collister, B. L., Cook, A. L., Corral, A. F., Crosbie, E. C., van Dienenhoven, B., DiGangi, J. P., Diskin, G. S., Dmitrovic, S., Edwards, E.-L., Fenn, M. A., Ferrare, R. A., van Gilst, D., Hair, J. W., Harper, D. B., Hilario, M. R. A., Hostetler, C. A., Jester, N., Jones, M., Kirschler, S., Kleb, M. M., Kusterer, J. M., Leavor, S., Lee, J. W., Liu, H., McCauley, K., Moore, R. H., Nied, J., Notari, A., Nowak, J. B., Painemal, D., Phillips, K. E., Robinson, C. E., Scarino, A. J., Schlosser, J. S., Seaman, S. T., Seethala, C., Shingler, T. J., Shook, M. A., Sinclair, K. A., Smith Jr., W. L., Spangenberg, D. A., Stammes, S. A., Thornhill, K. L., Voigt, C., Vömel, H., Wasilewski, A. P., Wang, H., Winstead, E. L., Zeider, K., Zeng, X., Zhang, B., Ziemba, L. D., and Zuidema, P.: Spatially-Coordinated Airborne Data and Complementary Products for Aerosol, Gas, Cloud, and Meteorological Studies: The NASA ACTIVATE Dataset, *Earth System Science Data Discussions*, pp. 1–79, <https://doi.org/10.5194/essd-2023-109>, 2023.
- 725 730 SPEC inc: FFSSP and FCDP Data Processing Manual, 10/27/2012, Available at: [http://www.specinc.com/sites/default/files/software\\_and\\_manuals/FCDP\\_](http://www.specinc.com/sites/default/files/software_and_manuals/FCDP_) (Last Access: 20 June 2022), 2012.
- Stephens, G. L., Li, J., Wild, M., Clayson, C. A., Loeb, N., Kato, S., L’Ecuyer, T., Stackhouse, P. W., Lebsock, M., and Andrews, T.: An Update on Earth’s Energy Balance in Light of the Latest Global Observations, *Nature Geoscience*, 5, 691–696, <https://doi.org/10.1038/ngeo1580>, 2012.
- 735 Taylor, J. W., Haslett, S. L., Bower, K., Flynn, M., Crawford, I., Dorsey, J., Choularton, T., Connolly, P. J., Hahn, V., Voigt, C., Sauer, D., Dupuy, R., Brito, J., Schwarzenboeck, A., Bourriane, T., Denjean, C., Rosenberg, P., Flamant, C., Lee, J. D., Vaughan, A. R., Hill, P. G., Brooks, B., Catoire, V., Knippertz, P., and Coe, H.: Aerosol Influences on Low-Level Clouds in the West African Monsoon, *Atmospheric Chemistry and Physics*, 19, 8503–8522, <https://doi.org/10.5194/acp-19-8503-2019>, 2019.
- 740 Tornow, F., Ackerman, A. S., and Fridlind, A. M.: Preconditioning of Overcast-to-Broken Cloud Transitions by Riming in Marine Cold Air Outbreaks, *Atmospheric Chemistry and Physics Discussions*, pp. 1–25, <https://doi.org/10.5194/acp-2021-82>, 2021.
- Tornow, F., Ackerman, A. S., Fridlind, A. M., Cairns, B., Crosbie, E. C., Kirschler, S., Moore, R. H., Painemal, D., Robinson, C. E., Seethala, C., Shook, M. A., Voigt, C., Winstead, E. L., Ziemba, L. D., Zuidema, P., and Sorooshian, A.: Dilution of Boundary Layer Cloud Condensation Nucleus Concentrations by Free Tropospheric Entrainment During Marine Cold Air Outbreaks, *Geophysical Research Letters*, 49, e2022GL098 444, <https://doi.org/10.1029/2022GL098444>, 2022.
- 745 Tselioudis, G., Rossow, W., Zhang, Y., and Konsta, D.: Global Weather States and Their Properties from Passive and Active Satellite Cloud Retrievals, *Journal of Climate*, 26, 7734–7746, <https://doi.org/10.1175/JCLI-D-13-00024.1>, 2013.
- Voigt, C., Kleine, J., Sauer, D., Moore, R. H., Bräuer, T., Le Clercq, P., Kaufmann, S., Scheibe, M., Jurkat-Witschas, T., Aigner, M., Bauder, U., Boose, Y., Borrmann, S., Crosbie, E., Diskin, G. S., DiGangi, J., Hahn, V., Heckl, C., Huber, F., Nowak, J. B., Rapp, M., Rauch, B., Robinson, C., Schripp, T., Shook, M., Winstead, E., Ziemba, L., Schlager, H., and Anderson, B. E.: Cleaner Burning Aviation Fuels Can Reduce Contrail Cloudiness, *Communications Earth & Environment*, 2, 1–10, <https://doi.org/10.1038/s43247-021-00174-y>, 2021.

- Voigt, C., Lelieveld, J., Schlager, H., Schneider, J., Curtius, J., Meerkötter, R., Sauer, D., Bugliaro, L., Bohn, B., Crowley, J. N., Erbetseder, T., Groß, S., Hahn, V., Li, Q., Mertens, M., Pöhlker, M. L., Pozzer, A., Schumann, U., Tomsche, L., Williams, J., Zahn, A., Andreae, M.,  
755 Borrmann, S., Brüauer, T., Dörich, R., Dörnbrack, A., Edtbauer, A., Ernle, L., Fischer, H., Giez, A., Granzin, M., Grewe, V., Harder, H.,  
Heinritzi, M., Holanda, B. A., Jöckel, P., Kaiser, K., Krüger, O. O., Lucke, J., Marsing, A., Martin, A., Matthes, S., Pöhlker, C., Pöschl, U.,  
Reifenberg, S., Ringsdorf, A., Scheibe, M., Tadic, I., Zauner-Wieczorek, M., Henke, R., and Rapp, M.: Cleaner Skies during the COVID-  
19 Lockdown, *Bulletin of the American Meteorological Society*, 103, E1796–E1827, <https://doi.org/10.1175/BAMS-D-21-0012.1>, 2022.
- Wang, M., Su, J., Xu, Y., Han, X., Peng, N., and Ge, J.: Radiative Contributions of Different Cloud Types to Regional Energy Budget over  
760 the SACOL Site, *Climate Dynamics*, <https://doi.org/10.1007/s00382-022-06651-0>, 2023.
- Warren, S. G., Hahn, C. J., London, J., Chervin, R. M., and Jenne, R. L.: Global Distribution of Total Cloud Cover and Cloud Type Amounts  
over the Ocean, Tech. rep., USDOE Office of Energy Research, Washington, DC (USA). Carbon Dioxide Research Div.; National Center  
for Atmospheric Research, Boulder, CO (USA), <https://doi.org/10.2172/5415329>, 1988.
- Wegener, A.: *Thermodynamik Der Atmosphäre*, JA Barth, 1911.
- 765 Weigel, R., Spichtinger, P., Mahnke, C., Klingebiel, M., Afchine, A., Petzold, A., Krämer, M., Costa, A., Molleker, S., Reutter, P., Szakáll,  
M., Port, M., Grulich, L., Jurkat, T., Minikin, A., and Borrmann, S.: Thermodynamic Correction of Particle Concentrations Measured by  
Underwing Probes on Fast-Flying Aircraft, *Atmospheric Measurement Techniques*, 9, 5135–5162, <https://doi.org/10.5194/amt-9-5135-2016>, 2016.
- Wood, R.: Drizzle in Stratiform Boundary Layer Clouds. Part I: Vertical and Horizontal Structure, *Journal of the Atmospheric Sciences*, 62,  
770 3011–3033, <https://doi.org/10.1175/JAS3529.1>, 2005.
- Wood, R., Bretherton, C. S., Leon, D., Clarke, A. D., Zuidema, P., Allen, G., and Coe, H.: An Aircraft Case Study of the Spatial Transition  
from Closed to Open Mesoscale Cellular Convection over the Southeast Pacific, *Atmospheric Chemistry and Physics*, 11, 2341–2370,  
<https://doi.org/10.5194/acp-11-2341-2011>, 2011.
- Yang, F., Ovchinnikov, M., and Shaw, R. A.: Long-Lifetime Ice Particles in Mixed-Phase Stratiform Clouds: Quasi-steady and Recycled  
775 Growth, *Journal of Geophysical Research: Atmospheres*, 120, 11,617–11,635, <https://doi.org/10.1002/2015JD023679>, 2015.
- Zelinka, M. D., Myers, T. A., McCoy, D. T., Po-Chedley, S., Caldwell, P. M., Ceppi, P., Klein, S. A., and Taylor, K. E.: Causes of Higher Cli-  
mate Sensitivity in CMIP6 Models, *Geophysical Research Letters*, 47, e2019GL085 782, <https://doi.org/10.1029/2019GL085782>, 2020.