

Satellite-based, top-down approach for the adjustment of aerosol precursor emissions over East Asia: TROPOMI product, and the Geostationary Environment Monitoring Spectrometer (GEMS) data fusion product and its proxy

5 Jincheol Park¹, Jia Jung², Yunsoo Choi^{1*}, Hyunkwang Lim³, Minseok Kim⁴, Kyunghwa Lee⁵, Yungon Lee⁶, Jhoon Kim^{4,7}

¹Department of Earth and Atmospheric Sciences, University of Houston, Houston, TX, USA

²Atmospheric Sciences and Global Change Division, Pacific Northwest National Laboratory (PNNL), Richland, WA, USA

³National Institute for Environmental Studies, Tsukuba, Japan

10 ⁴Department of Atmospheric Sciences, Yonsei University, Seoul, South Korea

⁵Environmental Satellite Center, Climate and Air Quality Research Department, National Institute of Environmental Research (NIER), Incheon, South Korea

⁶Department of Atmospheric Sciences, Chungnam National University, Daejeon, South Korea

⁷Particulate Matter Research Institute, Samsung Advanced Institute of Technology, Suwon, South Korea

15 *Correspondence to: Yunsoo Choi (ychoi6@uh.edu)

Abstract. In response to the need for securing a spatiotemporally more up-to-date emissions inventory and the impending release of new geostationary platform-derived observational data generated by the Geostationary Environment Monitoring Spectrometer (GEMS) and its sister instruments, this study, using a series of GEMS data fusion product and its proxy data, TROPOMI data, and CTM-based inverse modeling techniques, aims to establish a top-down approach for adjusting aerosol precursor emissions over East Asia. We begin by sequentially adjusting bottom-up estimates of nitrogen oxides (NO_x) and primary particulate matter (PM) emissions, both of which significantly contribute to aerosol loadings over East Asia, to reduce model biases in aerosol optical depth (AOD) simulations during the year 2019. While the model initially underestimates AOD by 50.73% on average, the sequential emissions adjustments that led to overall increases in the amounts of NO_x emissions by 122.79% and of primary PM emissions by 76.68% and 114.63% (single- and multiple-instrument-derived emissions adjustments, respectively), reduce the extent of AOD underestimation to 33.84% and 19.60%, respectively. We consider the outperformance of the model using the emissions constrained by the data fusion product the result of the improvement in the quantity of available data. Taking advantage of the data fusion product, we perform sequential emissions adjustments during the spring of 2022, the period during which the substantial reductions in anthropogenic emissions took place accompanied by the COVID-19 pandemic lockdowns over highly industrialized and urbanized regions in China. While the model initially overestimates surface PM_{2.5} concentrations by 47.58% and 20.60% in the North China Plain (NCP) region and Korea, the sequential emissions adjustments that led to overall decreases in NO_x and primary PM emissions by 7.84% and 9.03%, respectively, substantially reduce the extent of PM_{2.5} underestimation to 19.58%

20
25
30

and 6.81%, respectively. These findings indicate that the series of emissions adjustments, supported by TROPOMI and GEMS-involved data fusion products, performed in this study are generally effective at reducing model biases in simulations of aerosol loading over East Asia; in particular, the model performance tends to improve to a greater extent on the condition that spatiotemporally more continuous and frequent observational references are used to capture variations in bottom-up estimates of emissions. In addition to reconfirming the close association between aerosol precursor emissions and AOD as well as surface PM_{2.5} concentrations, the findings of this study could provide a useful basis for how to most effectively exploit multi-source top-down information for capturing highly varying anthropogenic emissions.

40 **1 Introduction**

In East Asia, atmospheric aerosols, such as particulate matter (PM), have been a focus of great concern because of their adverse impact on public health and safety, accompanied by rapid urban and industrial growth that has elevated levels of anthropogenic emissions over time (Hatakeyama et al., 2001; Ohara et al., 2007). In response to the growing interest in airborne hazards, many research entities, using ground-based networks of monitoring sites in many industrial regions and megacities over East Asia, have devoted considerable effort to systemically monitoring local and regional air quality. Unfortunately, the limited number of stations often impedes efforts to secure efficient sampling coverage and data availability for aerosol studies (Kumar et al., 2007; Tian and Chen, 2010).

To overcome this limitation, many research entities have substantially improved the collection and, thus, the availability of satellite observational data, which enables them to estimate the spatiotemporal distributions of aerosols over vast areas that are not in close proximity to monitoring sites (Remer et al., 2013; Levy et al., 2013). A variety of aerosol products derived from sun-synchronous low Earth orbit (LEO) satellite instruments, such as the Advanced Very High Resolution Radiometer, the Visible Infrared Imaging Radiometer (VIIRS), the MODerate-resolution Imaging Spectroradiometer (MODIS), and the Multiangle Imaging SpectroRadiometer (MISR), have been available for many years (Chan et al., 2013; Ahn et al., 2014; Levi et al., 2015; Garay et al., 2020). For example, researchers have conducted a number of comprehensive air quality assessments on local to global scales using the aerosol optical depth (AOD), an essential property of aerosols that represents columnar aerosol loadings in the atmosphere (Bellouin et al., 2005; Remer et al., 2008, Munchak et al., 2013; Filonchik et al., 2019; Jung et al., 2019, 2021; Lee et al., 2022).

Since the recent advent of satellite products, researchers have increased their efforts to use top-down observational data to improve the performance of chemical transport models (CTMs) such as the Community Multiscale Air Quality (CMAQ) model (Byun and Schere, 2006). A number of studies have applied satellite data in CTM-based numerical approaches, such as inverse modeling and data assimilation, to reduce the uncertainties in bottom-up estimates of air pollutant emissions and perform more accurate air quality simulations (Wang et al., 2012; Ku et al., 2013; Koo et al., 2015; Pang et al., 2018; Xia et al., 2019; Wang et al., 2020; Li et al., 2021; Lee et al., 2022); most of these studies, however, share a common challenge in

resolving uncertainties originating from retrieval discontinuity (i.e., coarse orbiting cycles of satellite instruments and cloud contamination). Using Ozone Mapping and Profiler Suite products, Wang et al. (2020) performed top-down optimizations of nitrogen dioxide (NO₂) and sulfur dioxide (SO₂) emissions and examined the sensitivity of AOD to concentrations of secondary inorganic aerosols over East Asia. Their results suggested a need for spatiotemporally more continuous satellite data. To improve model estimate of the AOD over East Asia, Li et al. (2021) used Ozone Monitoring Instrument data to perform a top-down inversion of SO₂ emissions. Their results emphasized the need for satellite data at finer temporal scales, which would allow one to capture highly variable SO₂ emissions over East Asia.

To address such instrument-inherent challenges, researchers have developed a number of approaches to applying more continuous and frequent observational data afforded by geostationary Earth orbit (GEO) satellite instruments; temporal resolutions of GEO satellite instruments (e.g., from a few minutes to an hour) are relatively finer than those of LEO satellite instruments on a 12-hour orbit cycle at best over given geographic locations (Vijayaraghavan et al., 2008). Leveraging aerosol product data derived from GEO satellite instruments such as the Geostationary Ocean Color Imager (GOCI) and the Advanced Himawari Imager (AHI), several CTM-based studies have shown substantial improvements in model performances in estimating aerosol loadings in East Asia (Jeon et al., 2016; Lee et al., 2016; Yumimoto et al. 2016; Jin et al., 2019). In addition, in response to the increasing demand for satellite data available at finer temporal resolutions, the Committee on Earth Observation Satellites has led an international effort to coordinate a new constellation of GEO satellite instruments for monitoring the behaviors of atmospheric constituents over the globe at faster sampling rates. For example, the Geostationary Environment Monitoring Spectrometer (GEMS), jointly developed by the Korea Aerospace Research Institute and Ball Aerospace, was launched onboard the GEO-KOMPSAT-2B satellite in 2020 as the first ultraviolet-visible (UV-Vis) instrument of its kind that can measure the columnar loadings of both trace gases and aerosols over the Asia-Pacific region in a geostationary manner up to eight times during daytime (Choi et al., 2018; Kim et al., 2018; Kim et al., 2020); before the advent of the GEMS mission, all UV-Vis instruments had been operating on LEO platforms. Furthermore, equipped with similar observational capabilities, a series of GEO satellite instruments are planned to be launched in 2023 to complete building the future constellation, which includes NASA's Tropospheric Emissions: Monitoring of Pollution (TEMPO) above North America (Zoogman et al. 2017) and the European Space Agency Sentinel-4 above Europe and North Africa (Ingmann et al., 2012), and ultimately serve the needs of more detailed and frequent air quality measurements over the Northern Hemisphere.

In addition to taking advantage of such finer spatiotemporal resolutions afforded by GEO satellite instruments, researchers have developed numerous data fusion approaches to integrating atmospheric properties retrieved by multiple individual instruments in order to further improve the quality of satellite products; the products derived from multiple instruments can be spatiotemporally complementary in terms of the completeness of observational data (Zou et al., 2020). For example, several studies have fused multi-source satellite products to yield more accurate estimates of air quality over East Asia (Choi

et al., 2019; Go et al., 2020; Lim et al., 2021) in response to the upcoming releases of GEMS products. Choi et al. (2019) fused multiple aerosol products afforded by three LEO satellite instruments (i.e., MODIS, MISR, and VIIRS) and two GEO satellite instruments (i.e., GOCI and AHI) to examine how effective the data fusion approach was at improving the accuracy of AOD estimates over East Asia. Their results showed that the multi-source aerosol product could substantially improve observational coverage and frequency, and the AOD estimates from which showed closer spatiotemporal agreement with in situ ground-based measurements at AEROSOL ROBOTIC NETWORK (AERONET) sites (Holben et al., 1998) than those from AOD estimates provide by each of the individual satellite instruments (Choi et al., 2019). As a follow-up study over East Asia, Lim et al.' (2021) fused the GOCI AOD with AHI AOD (hereafter referred to as GOCI-AHI AOD) products by using multi-source aerosol properties and land surface parameters from those in ensemble-mean and maximum-likelihood estimation (MLE) methods in order to reduce observational and systematic biases occurring during the retrieval process. Their multi-source AOD estimates showed substantially improved agreement with AERONET AOD measurements over East Asia, which they considered to be the result of complementary retrievals that reduced the number of pixels with missing values and ensured more cloud-free pixels (Lim et al., 2021). Note that their study aimed to develop and examine data fusion algorithms for near-future use, which would be applied to producing synergistic satellite products after the full product releases of GEMS and its sister instruments, including the Advanced Meteorological Imager (AMI) onboard the GEO-KOMPSAT-2A satellite and Geostationary Ocean Color Imager 2 (GOCI-2) onboard the GEO-KOMPSAT-2B satellite.

Despite the availability of the many numerical approaches and data fusion techniques for reducing the uncertainties in the model and observations, efforts to couple them have not been sufficiently rigorous over East Asia; therefore, this study aimed to examine the utility of synergistic satellite observation data in improving the performance of CTM-based simulations of aerosol loadings over East Asia. Hypothesizing that finer spatiotemporal resolutions of multi-source data fusion products would provide more observational references available for use, we employed the GEMS data fusion product and its proxy data in adjusting the emissions inventory in East Asia in a top-down manner. This study largely consists of two phases: 1) the implementation and evaluation of emissions adjustments using the TROPospheric Monitoring Instrument (TROPOMI) tropospheric NO₂ columns (hereafter referred to as TROPOMI NO₂ columns), and AHI AOD and GOCI-AHI fused AOD (the proxies of GEMS AOD and GEMS-AHI-GOCI-2 fused AOD, respectively) for the simulation year 2019, and 2) the application of the emissions adjustment approach using the TROPOMI NO₂ columns and GEMS-AHI-GOCI-2 fused AOD for the spring of 2022. For the former period, which represents the most recent year before the COVID-19 outbreak in this study, we first performed inverse modeling to constrain bottom-up estimates of nitrogen oxides (NO_x) emissions using TROPOMI NO₂ columns, and then we constrained bottom-up estimates of primary PM emissions using each of the AHI AOD and GOCI-AHI fused AOD. Prior to proceeding with the second phase, we compared the model performances from using the single-instrument- and multi-source-derived AOD products in constraining primary PM emissions. For the latter period, which was considered to be severely affected by the resumptions of city- and province-wide lockdowns (Dyer, 2022) in China, we used the TROPOMI NO₂ columns and GEMS-AMI-GOCI-2 fused AOD to

sequentially constrain NO_x and primary PM emissions based on the earlier top-down approach. Note that we did not focus on
130 other gaseous air pollutants than NO_x considering the future application of GEMS tropospheric NO_2 product, which has
recently been released (as of November 23, 2022) by Environmental Satellite Center of Korean National Institute of
Environmental Research (NIER) (<https://nesc.nier.go.kr>). And then, using a series of a posteriori emissions (i.e., NO_x -
constrained emissions and NO_x - and primary PM-constrained emissions) in CMAQ, we simulated AOD and $\text{PM}_{2.5}$
135 concentrations over East Asia to examine the utility of the GEMS-involved synergistic product in inverse modeling and
ultimately to improve model performances in estimating aerosol loadings over East Asia.

2 Materials and Methods

2.1 Modeling setup and preparation of base emissions

Using the 2016 KORUS-AQ emissions inventory version 5.0 developed by Konkuk University (Woo et al., 2020), we
prepared CMAQ-ready anthropogenic emission inputs over the modeling domain, shown in Fig. 1, which encloses the
140 eastern half of China, the Korean Peninsula, southern Russian Far East, and Japan. The KORUS-AQ emissions inventory
consists of multiple individual emissions inventories, including the Comprehensive Regional Emissions for Atmospheric
Transport Experiments version 2.3 (Jang et al., 2019), Clean Air policy Support System 2015 (Yeo et al., 2019), and Studies
of Emissions and Atmospheric Composition, Clouds, and Climate Coupling by Regional Surveys (Toon et al., 2016). To
prepare biogenic emissions inputs, we employed the Model of Emissions of Gases and Aerosols from Nature (MEGAN)
145 version 3.0 (Guenther et al., 2012), which can speciate, quantify, and regrid biogenic emissions from terrestrial ecosystems
based on a series of input data (e.g., meteorological fields and land surface parameters) (Guenther et al., 2006, 2020). We
used reprocessed MODIS version 6 leaf area index (LAI) products (Yuan et al., 2011) and VIIRS global green vegetation
fraction (GVF) products (Jiang et al., 2016) as input data for MEGAN. We merged the anthropogenic and biogenic
emissions to prepare the a priori emissions inputs (hereafter referred to as base emissions).

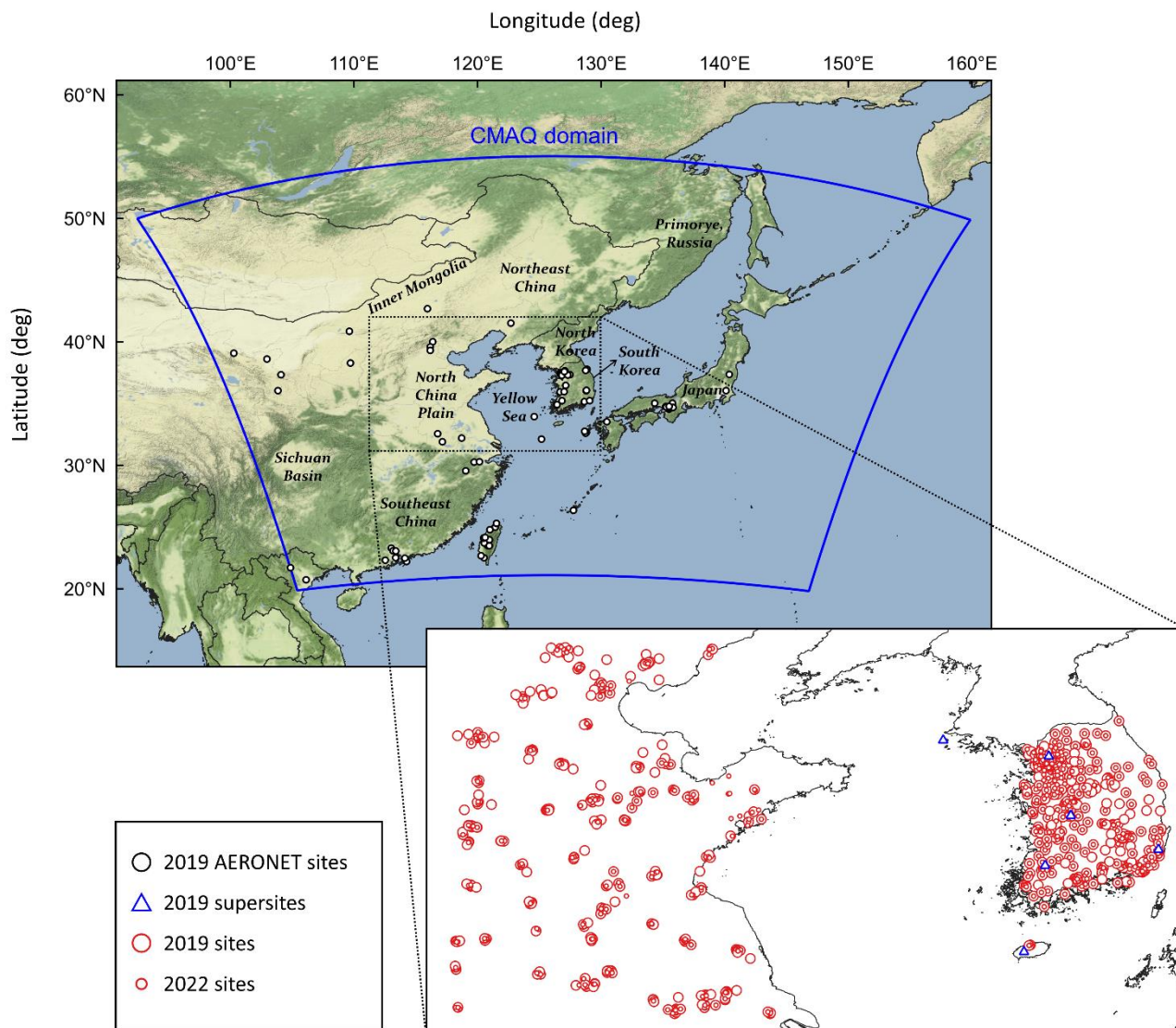


Figure 1. Modeling domain and the locations of the ground-based in-situ measurement sites used for model evaluation.

To simulate the meteorological fields and ambient concentrations of gaseous air pollutants and aerosols for each of the study periods, we used the Weather Research and Forecasting (WRF) version 3.8 developed by the National Center for Atmospheric Research (NCAR) (Skamarock et al., 2008) and CMAQ version 5.2 developed by the U.S. Environmental Protection Agency (EPA) (Byun and Schere, 2006). Employing the same modeling setups and initial conditions used in our

previous studies over East Asia (Jung et al., 2019, 2021; Pouyaei et al., 2020, 2021; Park et al., 2022), we configured WRF and CMAQ to cover the modeling domain at a horizontal resolution of 27 km and 35 vertical variable thickness layers from the surface up to 100 hPa. Detailed model configurations are listed in Table S1. Then, using the WRF-simulated meteorological fields and base emissions in CMAQ, we simulated NO₂ columns and concentrations, AOD, and PM_{2.5} concentrations over the modeling domain for the entire year 2019 and the period from March to May 2022. For each of these two study periods, we initiated both WRF and CMAQ simulations with a 10-day spin-up time.

2.2 TROPOMI NO₂ product

TROPOMI, an LEO satellite instrument launched onboard the Copernicus Sentinel-5 Precursor satellite in 2017, provides global observations of trace gases and aerosols (Veefkind et al., 2012). To obtain daily tropospheric NO₂ and SO₂ column densities observed during the study periods, we used TROPOMI Level 2 NO₂ and SO₂ products. The spatial resolution of TROPOMI was initially 3.5 km × 7 km and was improved to 3.5 km × 5.5 km in early August 2019. The daily acquisition time of the column data was approximately 04:30 UTC when the instrument overpassed the modeling domain during the study period. For the NO₂ columns, we used pixels with quality assurance values (qa_values) larger than 0.75 and cloud fractions smaller than 0.3. To ensure consistency in the horizontal spacings between the TROPOMI NO₂ columns and CMAQ's modeling grids, we regrided the TROPOMI NO₂ columns into 27 km × 27 km grids by using distance-weighted mean of those observation references with a radius of 0.25° (approximately 27 km).

2.3 AHI AOD and GOCI-AHI fused AOD products

The AHI, a GEO satellite instrument launched onboard the Himawari-8 geostationary meteorological satellite in 2014, provides regional observations of aerosol properties over East Asia and western Pacific regions in a spatiotemporally continuous manner (Okuyama et al., 2015; Bessho et al., 2016). For the study period 2019, we used the Japan Aerospace Exploration Agency (JAXA) AHI Level 3 aerosol product to obtain the hourly estimates of AOD over the modeling domain, the spatiotemporal resolutions of which are 0.05° × 0.05° and one hour for 8 consecutive daytime (00:30 UTC to 07:30 UTC) retrievals per day. To ensure consistency between the observed AOD and modeled AOD, the latter of which was estimated based on the light extinction of aerosols at a wavelength of 550 nm (Pitchford et al., 2007), we converted the AHI AOD retrieved at 500 nm wavelength to those at a 550 nm wavelength following Eq. 1 (Angstrom, 1961):

$$AOD_{550\text{ nm}} = AOD_{500\text{ nm}} \times \left(\frac{550}{500}\right)^{-AE} \quad (1)$$

where $AOD_{550\text{ nm}}$ and $AOD_{500\text{ nm}}$ are AODs at 550 and 500 nm wavelengths, respectively, and AE is the Angstrom exponent at 400 - 600 nm wavelengths provided in the AHI aerosol product. To ensure the retrieval quality, we used pixels with quality assurance values (AOT_merged_uncertainty) smaller than 1 (very good and good retrievals).

To explore the utility of the synergistic observational data in the emission adjustments, we employed the GOCI-AHI fused AOD product developed by Lim et al. (2021), which provides near-real-time bias-corrected AOD estimates over East Asia, taking advantage of multi-source retrievals of aerosol optical properties that complement each other. GOCI, a GEO satellite instrument launched onboard the Communication, Ocean and Meteorological Satellite (COMS-1) in 2010, provides regional observations of ocean environments (i.e., sea surface albedo and reflectance) and aerosol properties (i.e., the AOD) over East Asia and western Pacific regions (Lee et al., 2010). The GOCI-AHI AOD product affords the best compromise among four individual retrievals post-processed based on Yonsei Aerosol Retrieval (YAER) retrieval algorithms (Choi et al., 2016, 2018; Lim et al., 2018); the data fusion process comprises a series of post-processing and data fusion techniques to complement the error characteristics of each other (i.e., the spatiotemporal collocation, the cloud removal process, the ensemble-mean method, the MLE method, and systematic bias correction based on the long-term validation of AERONET AOD measurements) (Lim et al., 2021). For the study period 2019, we used the GOCI-AHI fused AOD product to obtain hourly estimates of the AOD (at a 550 nm wavelength) over the modeling domain, the spatial resolution of which was initially $6 \text{ km} \times 6 \text{ km}$ and regridded into $0.05^\circ \times 0.05^\circ$, and the temporal resolution of which is identical to that of the AHI AOD product described above. [The consistency in the grid spacings among AHI AOD, GOCI-AHI AOD, and CMAQ's modeling grids was ensured in the same approach described in Section 2.2 above.](#)

2.4 GEMS-AMI-GOCI-2 fused AOD product

The GEMS-AMI-GOCI-2 fused AOD product is a synergistic science product jointly developed by Yonsei University, Chungnam National University, and the Korean National Institute of Environmental Research (NIER) based on their earlier data fusion approach applied to the GOCI-AHI fused AOD product (the proxy of the GEMS-AMI-GOCI-2 fused AOD product in this study) described in Sect. 2.3. GEMS provides hourly daytime observations of the columnar loadings of gaseous air pollutants (i.e., ozone, NO_2 , SO_2 , formaldehyde, and glyoxal) and aerosols (i.e., the AOD) (Kim et al., 2020a). The AMI, a meteorological satellite instrument, provides regional observations of meteorology (i.e., cloud mask) and terrestrial environments (i.e., vegetation indices, surface reflectivity, albedo, and turbid water) as well as aerosol optical properties (i.e., fine mode fraction (FMF) and AOD) every 10 minutes at spatial resolutions of 0.5 km - 1.0 km for visible channels and of 2 km for near-infrared and infrared channels (Chung et al., 2020; Kim et al., 2021). GOCI-2, an advanced ocean color imager that succeeded the mission of GOCI, provides hourly observations of ocean environments (i.e., ocean current, green tide, and red tide) as well as of aerosol optical properties (i.e., FMF and AOD) over the ocean surface at a full-domain spatial resolution of 1 km (Kim et al., 2020a). Note that these three individual instruments are in operation onboard two sister GEO platforms (i.e., the AMI onboard GEO-KOMPSAT-2A, and GEMS and GOCI-2 onboard GEO-KOMPSAT-2B) over the Asia-Pacific region. To create the best synergy from the superiorities of these instruments over each other (i.e., GEMS's retrieval accuracy over bright surfaces, and AMI's and GOCI-2's sampling performances over cloud-free pixels at finer spatiotemporal resolutions) (Kim et al., 2020b), the data fusion process utilizes GEMS Level 2 aerosol product version 1, and AMI and GOCI-2 aerosol products post-processed based on the YAER algorithm (Kim et al., 2020b) to produce the

220 GEMS-AMI-GOCI-2 AOD product. For the study period 2022, we used the GEMS-AMI-GOCI-2 AOD product to obtain the hourly estimates of AOD (at a 550 nm wavelength) collocated into the spatiotemporal resolutions identical to those of the AHI AOD and GOCI-AHI AOD products described earlier. Detailed information about the data fusion process is provided by Kim et al. (2020b).

2.5 Top-down approaches for NO_x and primary PM emissions adjustments

2.5.1 Emissions adjustments for the study period 2019

225 To constrain the NO_x and primary PM emissions based on top-down information provided by satellite instruments for the study period 2019, we employed a series of inverse modeling techniques. To adjust the a priori NO_x emissions, we performed analytical (or Bayesian) inverse modeling towards mathematically minimizing the difference between TROPOMI NO₂ and CMAQ-simulated NO₂ columns based on the following cost function in Eq. 2 under the assumptions that 1) the relationship between the changes in NO₂ columns and NO_x emissions is not rigorously nonlinear, 2) observation and emission error covariances are described by zero-bias Gaussian probability density functions, and 3) observation and emission error covariances are independent of each other (Rodgers, 2000):

$$J(x) = \frac{1}{2}(y - F(x))^T S_o^{-1}(y - F(x)) + \frac{1}{2}(x - x_a)^T S_e^{-1}(x - x_a) \quad (2)$$

where x is a posteriori NO_x emissions, x_a a priori NO_x emissions, S_o the observational error covariance provided in the TROPOMI NO₂ product, and S_e the error covariance of the a priori NO_x emissions, the uncertainty of which was calculated by combining the error covariances of anthropogenic (50%) and biogenic (200%) NO_x emissions (Souri et al., 2020; Jung et al., 2022). F is the first-order sensitivity coefficient that correlates NO_x emissions with tropospheric NO₂ columns. We used the CMAQ decoupled direct method in three dimensions (CMAQ DDM-3D) version 5.2 (Napelenok et al., 2006) to compute the initial sensitivity coefficient, a measure of the responses of modeled NO₂ columns to changes in NO_x emissions. We used the same model configurations in CMAQ DDM-3D as those used in CMAQ described in Sect. 2.1. To infer the a posteriori emissions, we used the Gauss-Newton method in Eq. 3 (Rodgers, 2000):

$$x_{i+1} = x_a + S_e K_i^T (K_i S_e K_i^T + S_o)^{-1} [y - F(x_i) + K_i (x_i - x_a)] \quad (3)$$

where i is the number of iteration, and K is the Jacobian matrix calculated in CMAQ DDM-3D. We iterated Eq. 3 two times within each month to attain convergence, and F and K were updated after each iteration. It should be noted that we derived $\log(x)$ instead of x to constrain negative a posteriori values, the details of which are described in Souri et al. (2018). And then, we applied the monthly emissions adjustment ratios derived from Eqs. 2 and 3 to the base emissions to update the bottom-up estimates of NO_x emissions over the modeling domain (hereafter referred to as 2019 NO_x-constrained emissions).

Further details about the analytical inverse modeling approach employed in this study are provided by Sourì et al. (2020) and Jung et al. (2022).

To adjust the primary PM emissions, we applied analytical inversion described in Eqs. 2 and 3 to the emissions of 19 primary PM species predefined as contributors to the AOD in the 6th generation CMAQ aerosol module (AERO6) (Simon, 2015) listed in Table S2. Note that the primary PM emissions, hereafter, refer to the summation of the emissions of all 19 individual primary PM species. In Eq. 2, x is a posteriori primary PM emissions, x_a is a priori primary PM emissions (in the NO_x-constrained emissions inventory obtained earlier), and S_e the error covariance of the a priori primary PM emissions, the uncertainty of which was set as 100% (Crippa et al., 2019). For S_o , we employed $\pm 0.1 + 0.3 \times AOD$ (Zhang et al., 2020) and $\pm 0.043 + 0.178 \times AOD$ (Lim et al., 2021) as the observational error covariances of the AHI AOD and the GOCI-AHI AOD, respectively. To compute F , since CMAQ DDM-3D is not available for aerosols, we employed the brute-force method (BFM) described in Eq. 4 (Napelenok et al., 2006):

$$F^{bfm} = \frac{C^{+10\%} - C^{-10\%}}{0.2} \quad (4)$$

where F^{bfm} is the approximate first-order sensitivity coefficient that correlates primary PM emissions to the AOD, $C^{+10\%}$ the CMAQ-simulated AOD of the primary PM emissions perturbed by +10%, and $C^{-10\%}$ the CMAQ-simulated AOD of the primary PM emissions perturbed by -10%. In this approach, F^{bfm} represents the sensitivity of the total primary PM emissions with regard to changes in the AOD; therefore, the resultant adjustment ratio was applied to the emissions of each of the primary PM species equally, not in a selective manner due to the limited data availability. Note that no routine observations have been made until today for the loadings of such species over vast areas in East Asia in a top-down manner. We applied the daily emissions adjustment ratios derived from Eqs. 2, 3, and 4 to the 2019 NO_x-constrained emissions to update the bottom-up estimates of primary PM emissions over the modeling domain (hereafter referred to as 2019 NO_x- and PM-constrained emissions). To evaluate the model performance before and after the application of the sequential emission adjustments, we used the series of a priori and a posteriori emissions (i.e., the base emissions, 2019 NO_x-constrained emissions, and a pair of 2019 NO_x- and PM-constrained emissions using the AHI AOD and GOCI-AHI AOD) to perform CMAQ simulations for the study period 2019. It should be noted that NO_x emissions were adjusted monthly, due to the relatively coarse temporal resolution of TROPOMI NO₂ columns (providing zero to one valid snapshot of columnar NO₂ per day over the modeling domain), while primary PM emissions were adjusted daily by using the AOD products at sufficiently fine temporal resolutions afforded by geostationary platforms.

2.5.2 Emissions adjustments for the study period 2022

275 Similar to the approach described in Sect. 2.5.1, we first adjusted NO_x emissions by using the TROPOMI NO_2 columns
obtained for the study period 2022 prior to proceeding with the primary PM emissions adjustment. To adjust the a priori NO_x
emissions, we employed the basic mass balance method described by Martin et al. (2003) and Cooper et al. (2017).
Assuming a direct linear relationship between changes in both the NO_2 columns and the NO_x emissions, we adjusted the a
priori NO_x emissions based on the ratios between the TROPOMI NO_2 and CMAQ-simulated NO_2 columns following Eq. 5:

$$280 \quad E_{2022} = \frac{E_{2019}}{\Omega_{2019}} \times \Omega_{2022} \quad (5)$$

where E_{2022} represents the a posteriori NO_x emissions, E_{2019} the a priori NO_x emissions (from the 2019 NO_x -constrained
emissions described in Sect. 2.5.1), Ω_{2019} and Ω_{2022} the TROPOMI NO_2 columns obtained for the study periods 2019 and
2022, respectively. We then applied the monthly emissions adjustment ratios derived from Eq. 5 to the 2019 NO_x -
constrained emissions to update the NO_x emissions for the study period 2022 (hereafter referred to as 2022 NO_x -constrained
285 emissions).

Then, to adjust the primary PM emissions, we used the GEMS-AMI-GOCI-2 AOD obtained for the study period 2022 to
perform the analytical inversion and BFM described in Sect. 2.5.1 by using the S_o of $\pm (-0.001 + 0.48 \times AOD)$ provided in
the GEMS-AMI-GOCI-2 AOD product and the perturbed ($\pm 10\%$) primary PM emissions. The daily emissions adjustment
ratios were applied to the 2022 NO_x -constrained emissions to update the primary PM emissions (hereafter referred to as 2022
290 NO_x - and PM-constrained emissions). Using the base emissions, 2022 NO_x -constrained emissions, and 2022 NO_x - and PM-
constrained emissions to perform CMAQ simulations for the study period 2022, we evaluated the performance of the model

2.6 Ground-based measurements for model evaluation

To evaluate the model performance, we used ground-based in situ observations across South Korea (hereafter referred to as
Korea) and the North China Plain (NCP) region. To validate the accuracy of the WRF-simulated meteorological fields, we
295 obtained hourly measurements of the 2 m air temperature and 10 m wind U and V components from the Korean
Meteorological Administration database (132 sites for 2019 and 95 for 2022). The WRF-simulated hourly meteorological
fields showed fair agreements with the in situ measurements (Figures S1 and S2; Table S3), which we considered sufficient
for further use as meteorological inputs for CMAQ.

To evaluate the performance of the CMAQ model, we obtained the hourly measurements of surface NO_2 and $\text{PM}_{2.5}$
300 concentrations from the AirKorea website (<https://www.airkorea.or.kr>) (346 sites for 2019 and 425 for 2022) and from the
Chinese Ministry of Ecology and Environment database (MEE) (312 sites for 2022), and hourly sun photometer
measurements of the AOD (at a 550 nm wavelength) (85 AERONET sites for 2019). To ensure the quality of the validation

sets, we excluded observation sites in which the frequency of missing values exceeded 50% of all observations made during the study period. For the measurements collected from the MEE sites, we applied the quality assurance processes (e.g., elimination of negative values) that we used in our previous study over mainland China (Mousavinezhad et al., 2021). To quantify the extent of model overestimation and underestimation, we employed a normalized mean bias (NMB) following Eq. 6:

$$\text{Normalized mean bias (NMB)} = \frac{\sum_{i=1}^n (M_i - O_i)}{\sum_{i=1}^n (O_i)} \quad (6)$$

where M represents the model predictions, O the observations, and n the total number of pairs.

To discuss the success of the sequential NO_x and primary PM emissions adjustments described in Sect. 2.5, we obtained the seasonal compositions of surface $\text{PM}_{2.5}$ assessed at six ground-based supersites in Korea, the constituents of which include secondary inorganic aerosols (i.e., nitrate, sulfate, and ammonium aerosols), the lumped summation of the primary PM species listed in Table S2, and the rest remaining undefined. The locations of the supersites are as follows: Incheon (37.61°N, 126.93°E), Seoul (37.96°N, 124.63°E), Daejeon (35.23°N, 126.85°E), Gwangju (36.32°N, 127.41°E), Ulsan (35.58°N, 129.32°E), and Jeju (33.35°N, 126.39°E).

3. Results and Discussions

3.1 Evaluation of the top-down approach using TROPOMI NO_2 , AHI AOD, and GOCI-AHI AOD

We performed a series of emissions adjustments by using the TROPOMI NO_2 columns, AHI AOD, and GOCI-AHI AOD as the constraints to updating the bottom-up estimates of NO_x and primary PM emissions over the modeling domain. Prior to proceeding with the primary PM emissions adjustments, we examined the model performances in simulating NO_2 columns during the study period 2019 on a seasonal basis. The model using the base emissions tended to underestimate NO_2 columns over the major portion of the modeling domain during the entire study period (Figure S3). After the NO_x emissions adjustment, which resulted in overall increases in NO_x emissions by 71.64% - 174.16% (Figure S4; Table S4), the modeled NO_2 columns showed closer spatial agreements to the observed NO_2 columns (Figure S5). Then we evaluated the model performances in simulating daily surface NO_2 concentrations at ground-based in-situ measurement sites in Korea and the NCP region in a time series. Overall, the NO_x emissions adjustment led to a closer temporal agreement between the modeled and observed NO_2 concentrations with reduced model biases. While the model using the base emissions showed NMBs (Rs) of -24.20%, 15.63%, -2.06%, and -23.54% (0.66, 0.45, 0.72, and 0.71) in the spring, summer, fall, and winter, respectively, the model using the NO_x -constrained emissions showed NMB of -5.66%, 1.83%, 21.66%, and 13.45% (0.72, 0.63, 0.82, and 0.76) in the corresponding seasons, the results of which indicate that the NO_x emissions adjustment was effective (Figure S6; Table S5) at reducing the model biases in most seasons. However, in the NCP region, the NO_x emissions adjustment showed

335 mixed results in reducing the model biases. While the model using the base emissions showed NMBs (Rs) of -13.90%, 5.25%, -11.43%, and -1.05% (0.75, 0.54, 0.50, and 0.55) in the spring, summer, fall, and winter, respectively, the model using the NO_x-constrained emissions showed NMBs of 12.34%, 22.32%, 15.24%, and 33.75% (0.75, 0.52, 0.55, and 0.59) in the corresponding seasons. Although the NO_x emissions adjustment led to some improvements in Rs in the NCP region, NMBs showed increases in the summer, fall, and winter seasons, which indicate that the emissions adjustment was not as effective in reducing the model biases in the NCP region as it was in Korea.

340 In addition to the NO_x emission adjustment, we performed primary PM emission adjustments followed by evaluating the model performance in simulating AOD during the study period 2019. To compare the use of the single-instrument- and multi-source-derived AOD products for constraining primary PM emissions, we performed two separate emission adjustments, using each of the AHI AOD and GOCI-AHI AOD as a constraint to updating the primary PM emissions over the modeling domain. To ensure the consistency between the comparisons, we spatially collocated the CMAQ-simulated AOD to each of the AHI AOD and GOCI-AHI AOD. We found that during the entire study period, the model using the base emissions tended to underestimate AODs over a major portion of the modeling domain except for a few inland regions in China (Figures 2a, 2b, 3a, and 3b). After the NO_x emissions adjustment, the modeled AODs showed closer spatial agreement with the observed AODs in Korea and the NCP region (Figures 2c and 3c); the model, however, tended to overestimate the AODs in some inland regions such as southeast China and the Sichuan Basin region; we consider this tendency the result of uncertainty in the bottom-up estimates of air pollutant emissions coming from the unique basin landform that often encloses highly concentrated anthropogenic emissions (Chen et al., 2021). After the primary PM emission adjustments using the AHI AOD and GOCI-AHI AOD, which resulted in overall increases in primary PM emissions by 19.55% - 31.79% (Figure S7; Table S6) and 87.54% - 142.96% (Figure S8; Table S6), respectively, the modeled AODs showed even closer spatial agreement with the observed AODs (Figures 2d and 3d).

355 We then evaluated the performance of the model at simulating daily mean AODs at AERONET sites in time series and found that overall, the series of emissions adjustments resulted in improvements in the performance of the model during the entire study period 2019. In brief, the model's initial underestimation of AOD was mitigated by the NO_x emissions adjustment, which led to increased NO_x emissions, and then by the subsequent primary PM emissions adjustment, which resulted in overall increases in primary PM emissions. Whereas the model using the base emissions showed an average NMB of -50.73% (Figure 4a; Table 1a), the model using the 2019 NO_x-constrained emissions showed an average NMB of -42.52% (Figure 4b; Table 1b). The model using the 2019 NO_x- and PM-constrained emissions showed average NMBs of -33.84% (using the AHI AOD) and -19.60% (using GOCI-AHI AOD), respectively (Figures 4c and 4d; Tables 1c and 1d). 360 These results indicate that the sequential adjustments of NO_x and primary PM emissions were generally effective at improving model performance in simulating the AOD; in particular, the use of the multi-source AOD product led to a greater reduction in model biases than that of the single-instrument AOD product. Despite the success of the sequential adjustments

of NO_x and primary PM emissions in improving the model's AOD simulations, there are still uncertainties remaining regarding the accuracy of NO_x emissions. For example, in the NCP region, the NO_x emissions adjustment caused the model to overestimate surface NO₂ concentrations in some seasons, and consequently, increased the model biases. Nevertheless, this overestimation was shown to help the model to reduce its AOD underestimation. Addressing this issue requires the development of region-specific tactics for adjusting the bottom-up estimates of gas-phase air pollutant emissions in future studies.

370

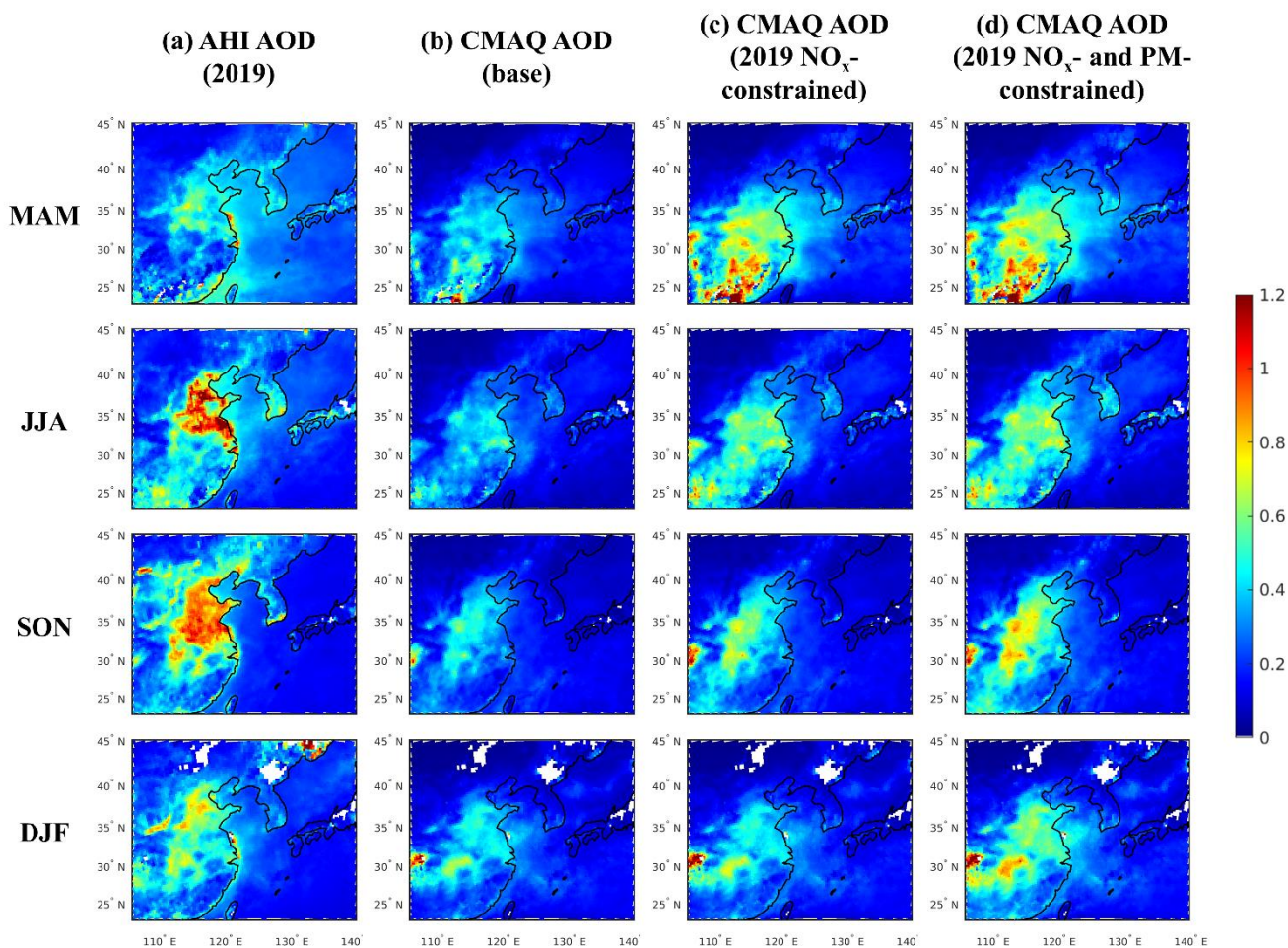
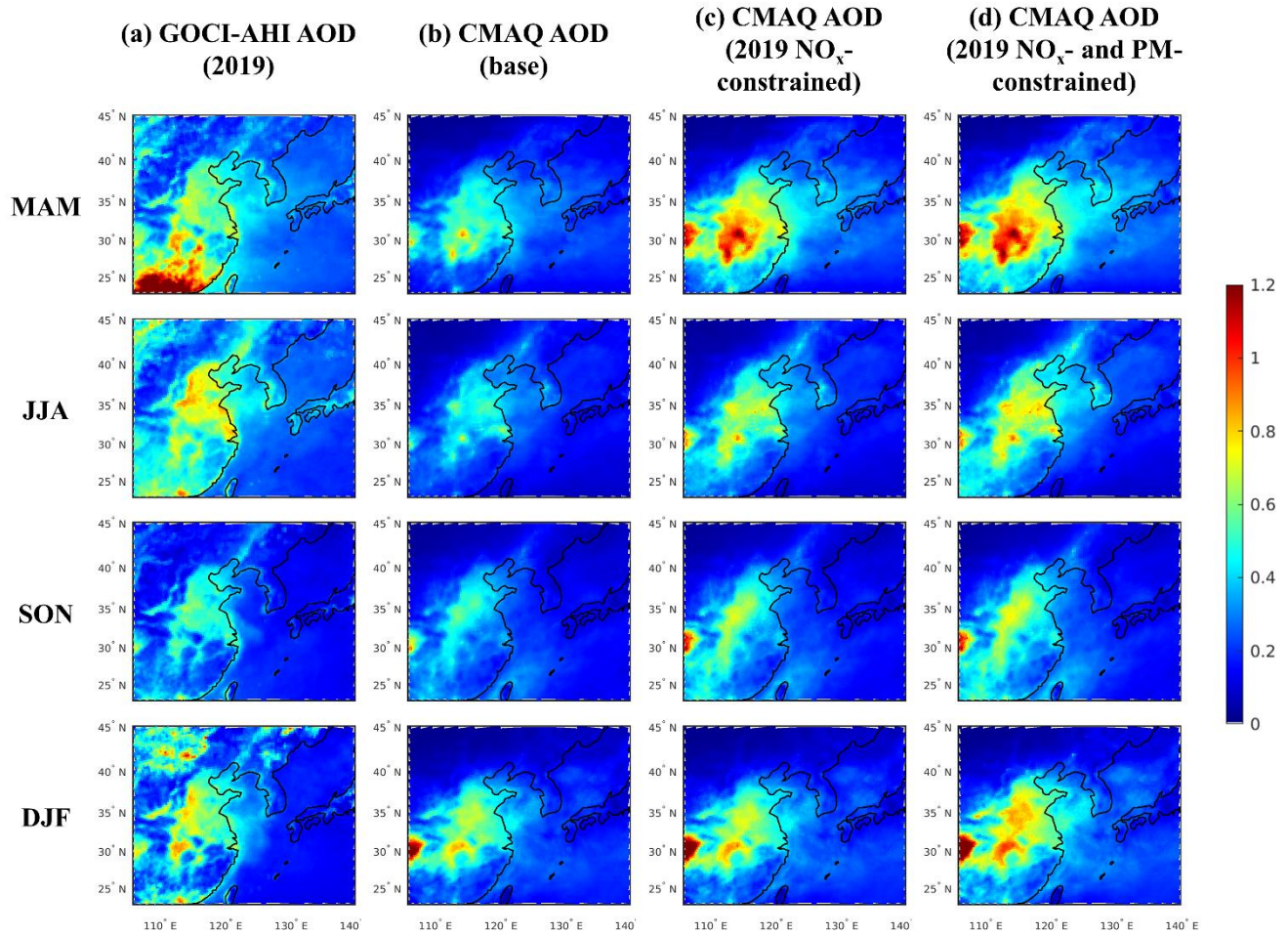
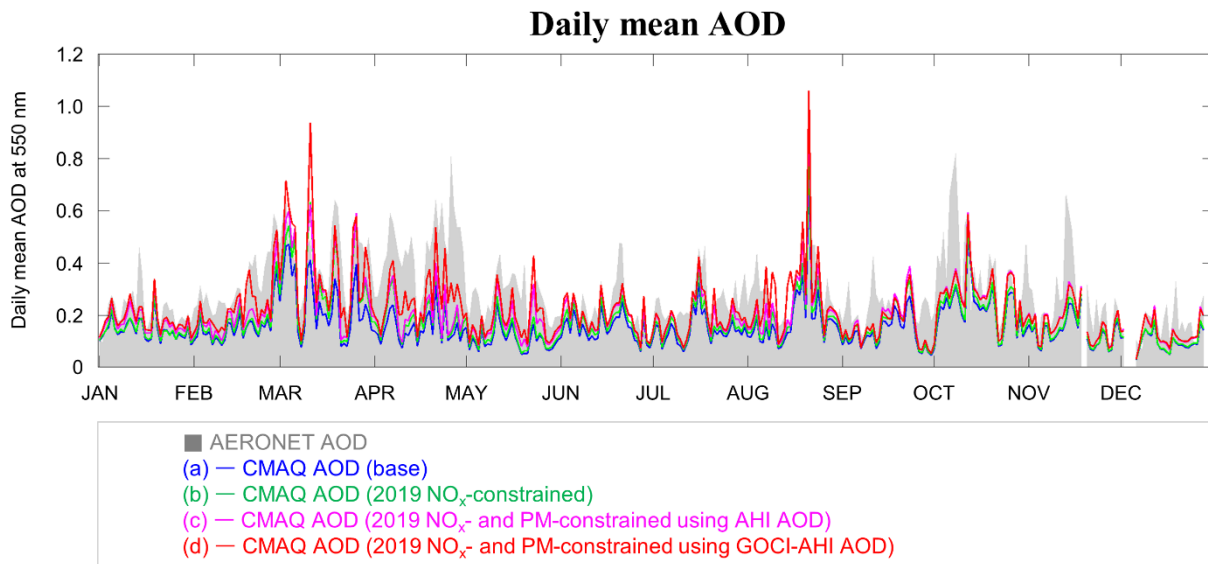


Figure 2. Spatial distributions of the AHI and CMAQ-simulated AODs before and after the NO_x emissions adjustment (based on TROPOMI NO₂ columns) and primary PM emissions adjustment (based on AHI AOD) during the study period 2019. (a) The AHI AOD, (b) the CMAQ-simulated AOD using base emissions, (c) the CMAQ-simulated AOD using 2019 NO_x-constrained emissions,

375 and (d) the CMAQ-simulated AOD using 2019 NO_x - and PM-constrained emissions. Note that CMAQ-simulated AODs were temporally collocated to the AHI AOD.



380 **Figure 3. Spatial distributions of GOCI-AHI fused and CMAQ-simulated AODs before and after the NO_x emissions adjustment (based on TROPOMI NO_2 columns) and primary PM emissions adjustment (based on GOCI-AHI AOD) during the study period 2019. (a) The GOCI-AHI AOD, (b) the CMAQ-simulated AOD using base emissions, (c) the CMAQ-simulated AOD using 2019 NO_x -constrained emissions, and (d) the CMAQ-simulated AOD using 2019 NO_x - and PM-constrained emissions. Note that CMAQ-simulated AODs were temporally collocated to the GOCI-AHI AOD.**



385

Figure 4. Comparisons of the time series of daily mean AERONET AODs (85 sites) and CMAQ-simulated daily mean AODs before and after the NO_x and primary PM emissions adjustments during the study period 2019. (a) The CMAQ-simulated AOD using the base emissions, (b) the CMAQ-simulated AOD using the 2019 NO_x-constrained emissions, (c) the CMAQ-simulated AOD using the 2019 NO_x- and PM-constrained emissions using the AHI AOD, and (d) the CMAQ-simulated AOD using the 2019 NO_x- and PM-constrained emissions using the GOCI-AHI fused AOD.

390

395

Table 1. Summary statistics of the daily mean AERONET AOD (85 sites) and the CMAQ-simulated daily mean AOD before and after the NO_x emissions adjustment (based on TROPOMI NO₂ columns) and primary PM emissions adjustment (based on AHI AOD and GOCI-AHI AOD) during the study period 2019. (a) The CMAQ-simulated AOD using the base emissions, (b) the CMAQ-simulated AOD using 2019 NO_x-constrained emissions, (c) the CMAQ-simulated AOD using 2019 NO_x- and PM-constrained emissions using the AHI AOD, and (d) the CMAQ-simulated AOD using 2019 NO_x- and PM-constrained emissions using GOCI-AHI fused AOD. R: Pearson's correlation coefficient; NMB (%): normalized mean bias.

		(a) Base emissions	(b) 2019 NO _x -constrained emissions	2019 NO _x - and PM-constrained emissions	
				(c) AHI AOD	(d) GOCI-AHI AOD
MAM	R	0.45	0.43	0.45	0.45
	NMB	-64.74	-55.62	-49.63	-26.76
JJA	R	0.77	0.78	0.77	0.77
	NMB	-29.45	-19.71	-9.20	0.21
SON	R	0.57	0.57	0.62	0.62
	NMB	-51.13	-47.09	-38.03	-39.70
DJF	R	0.55	0.48	0.57	0.57
	NMB	-43.23	-41.77	-28.65	-23.36
Yearly	R	0.53	0.53	0.54	0.54
	NMB	-50.73	-42.52	-33.84	-19.60

3.2 Merits and limitations of the sequential emission adjustments and the use of the data fusion product

Despite the many top-down approaches to achieving more up-to-date emissions inventories, questions still remain about the extent to which each of the aerosol components contributes to aerosol loadings. To ascertain the possible implications for our understanding of sequential improvements in the performance of the model in simulating the AOD, we examined the chemical compositions of surface PM_{2.5} in Korea during the study period 2019 on a seasonal basis. While a slightly larger portion (53.26% on average) of surface PM_{2.5} loadings was comprised of secondary inorganic aerosols such as nitrate, sulfate, and ammonium aerosols (20.90%, 18.56%, and 13.81%, respectively), the remaining portion (46.74% on average) was mostly comprised of primary PM (36.32% on average) and some unknown (undefined) aerosols (Table 2).

As both the contributions of primary and secondary aerosols to aerosol loadings were significant, we considered the sequential adjustments of NO_x and primary PM emissions effective at improving model performance. However, setting aside the earlier improvements in the model performances achieved for the study period 2019, such a chemical makeup of PM_{2.5} observed implies that the adjustment of solely NO_x emissions performed in this study might not have sufficiently reduced the uncertainty underlying the emissions of the precursors of other secondary inorganic aerosols, such as sulfate and ammonium aerosols. Considering the impending availability of the GEMS tropospheric NO₂ product in its mature stage, this study

410

mainly focused on examining the utility of NO₂ columns, not the other gas-phase precursors, which could have been beneficial for constraining the remaining secondary inorganic aerosols. This limitation presents a need for follow-up research that employs more comprehensive sets of top-down constraints (e.g., observational references for SO₂ and ammonia loadings in the troposphere).

Table 2. Concentrations ($\mu\text{g}/\text{m}^3$) and compositions (%) of surface PM_{2.5} and its components in Korea during the study period 2019. ANO₃, ASO₄, and ANH₄: nitrate, sulfate, and ammonium aerosols, respectively; Lumped PM: the lumped summation of primary PM species, Unknown: the summation of undefined PM_{2.5} species.

	ANO ₃	ASO ₄	ANH ₄	Lumped primary PM	Unknown PM	PM _{2.5}
MAM	6.76 (26.02)	4.83 (18.59)	4.05 (15.59)	8.72 (33.57)	1.61 (6.22)	25.97 (100)
JJA	1.66 (10.37)	4.43 (27.68)	2.37 (14.81)	6.99 (43.72)	0.55 (3.42)	16.00 (100)
SON	2.05 (13.31)	2.43 (15.82)	1.56 (10.15)	6.27 (40.75)	3.07 (19.96)	15.38 (100)
DJF	7.34 (26.35)	4.12 (14.79)	3.79 (13.59)	9.22 (33.11)	3.39 (12.16)	27.86 (100)
Yearly	4.45 (20.90)	3.95 (18.56)	2.94 (13.81)	7.80 (36.62)	2.15 (10.12)	21.30 (100)

To account for the outperformance of the model that used the adjusted emissions based on the data fusion product, we quantified the amount of observational references available from each of the AHI AOD and GOCI-AHI AOD products. The benefit of securing more continuous and frequent observations, which provide more data available for constraining model biases, has often been highlighted in many satellite-based inverse modeling and data assimilation studies (Jeon et al., 2016; Lee et al., 2016; Yumimoto et al. 2016; Jin et al., 2019; Choi et al., 2019). We compared the numbers of valid AOD retrievals made for each of the modeling grids (hereafter referred to as AOD records) obtained from the AHI AOD and GOCI-AHI AOD products. Note that the grid-specific number of AOD records does not necessarily indicate the instrumental sampling frequency of the satellite instrument in this comparison. Whereas the AHI AOD product showed some clusters of missing values over several inland regions (i.e., southeastern and northeastern China, the Sichuan Basin, and some areas in Primorye in Russia, North Korea, and Japan), the GOCI-AHI AOD product produced more spatially complete domain-wide observations during the study period 2019 (Figure 5).

In addition to the improvement in the observational coverage, the GOCI-AHI AOD product showed a noticeable improvement in the amount of available data. Compared to the AHI AOD product, the GOCI-AHI AOD product showed increases in the numbers of AOD records by 132.23% on average during the entire study period, the seasonal extents of which ranged from 90.20% - 198.01% (Figure 5; Table 3). In other words, even though the AHI AOD and GOCI-AHI AOD were given over the modeling domain at identical spatiotemporal resolutions in the first place, there was a substantial difference in the volume of the information available in the end. We accounted for the greater improvement in the model performance afforded by the use of GOCI-AHI AOD (Figures 3 and 4; Table 1) by the instruments supplementing

undetected or discarded pixels of other instruments that originate from different aerosol retrieval algorithms and by the additional bias correction approaches (Lim et al., 2018; Choi et al., 2019; Lim et al., 2020).

440 For example, in MAM 2019, the use of the emissions constrained based on GOCI-AHI AOD reduced the model bias more effectively compared to that based on AHI AOD. This improvement (or the difference in the extent of emissions adjustment) was considered to be originating from whether the high AOD peaks along southeast China were captured (Figure 3a) or not (Figure 2a). Throughout the entire year 2019, the season MAM showed the most frequent occurrences of high AOD peaks over AERONET sites compared to other seasons (Figure 5). Considering the locations of those ground-based sites (Figure 1
445 above), many of which cover the southeast China, we first presumed that GOCI-AHI AOD would represent the aerosol loadings more realistically. And then, this was supported by the grid-specific number of AOD records afforded by AHI AOD and GOCI-AHI AOD (Figure 5), the former of which showed noticeably fewer information available for use. Therefore, we concluded that the use of the emissions constrained based on GOCI-AHI AOD, which was considered to better capture the high AOD peaks across the southeast China in a spatiotemporally more frequent and continuous manner, was more effective
450 in resolving the model's initial AOD underestimation.

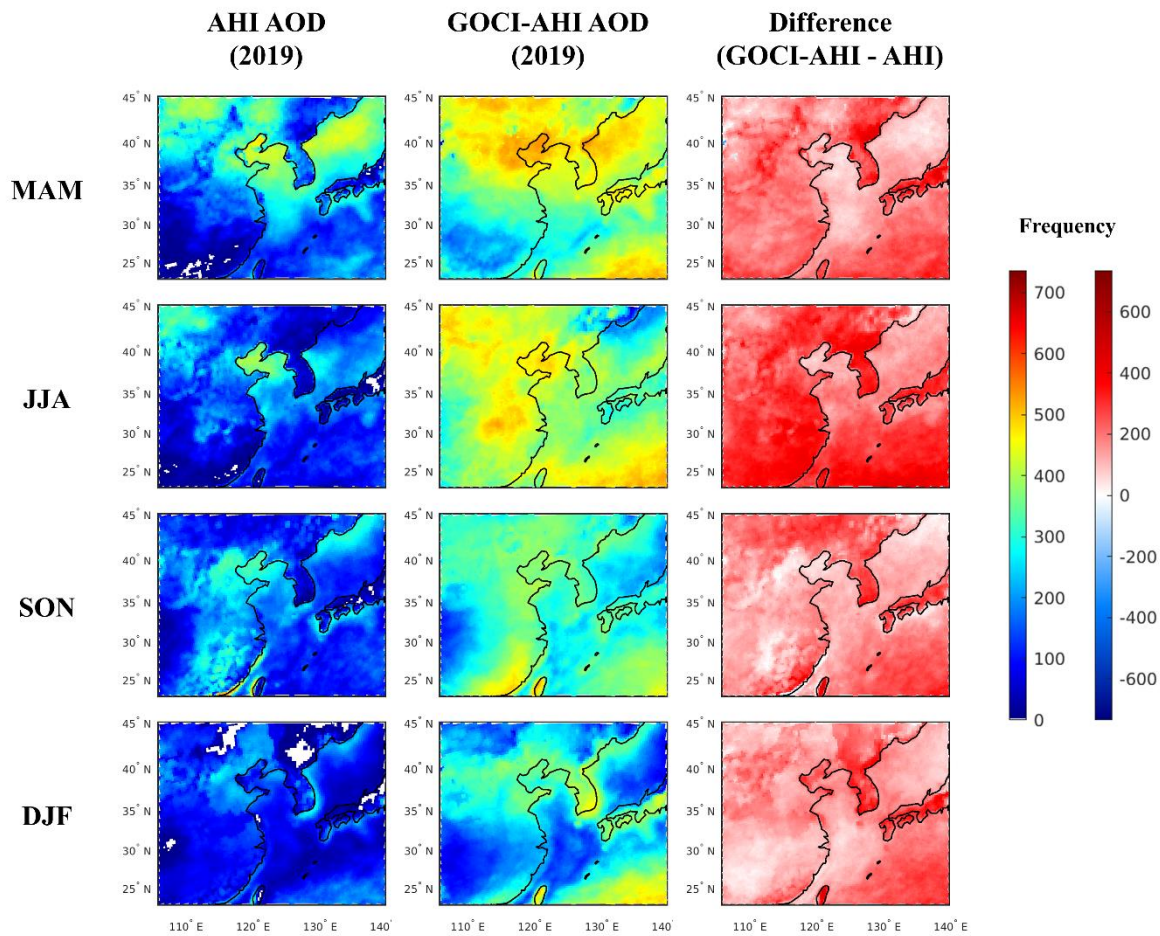


Figure 5. The number of AOD records (in each of the modeling grids) obtained from the AHI AOD product and the GOCI-AHI fused AOD product during the study period 2019.

Table 3. The number of AOD records (domain-wide) (unit: thousands) obtained from the AHI AOD product and the GOCI-AHI fused AOD product during the study period 2019.

	MAM	JJA	SON	DJF	Yearly
(a) AHI AOD	2,654	1,779	2,055	1,233	7,723
(b) GOCI-AHI AOD	5,049	5,302	4,169	3,415	17,936
Difference (b - a) (%)	90.20	198.01	102.81	176.81	132.23

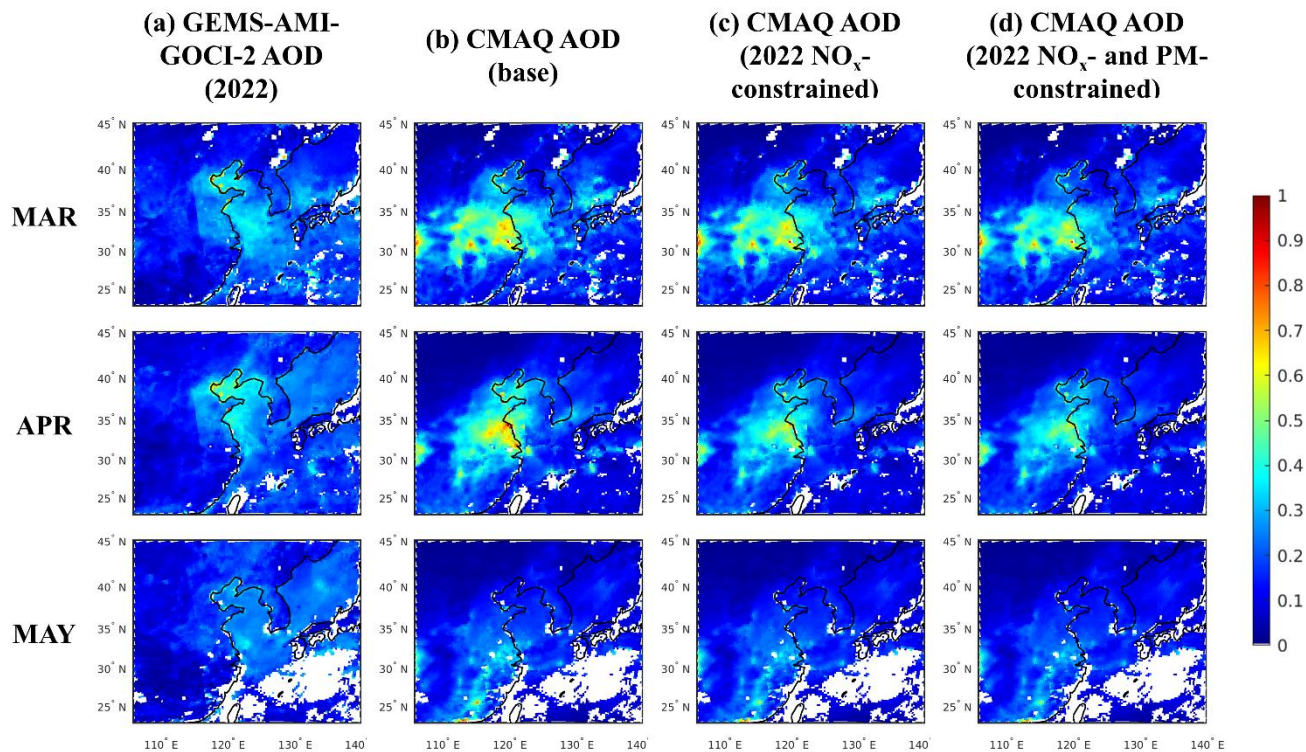
3.2 Application of the top-down approach using the GEMS-AMI-GOCI-2 fused AOD product

460 Upon the earlier success of the use of the proxy of GEMS-AMI-GOCI-2 AOD (GOCI-AHI AOD described in Sect. 3.1) in
 updating the emissions inventory, which resulted in further reduced model biases compared to those from the use of the
 proxy of GEMS AOD (AHI AOD described in Sect. 3.1), we employed the GEMS-AMI-GOCI-2 AOD product to proceed
 with the emissions adjustment for the study period 2022. [Note that the GOCI-AHI AOD product used earlier was served as a
 prototype for the development of the GEMS-AMI-GOCI-2 AOD product; the production of the GOCI-AHI AOD product
 has been discontinued, and it is currently only available for research purposes for the year 2019](#)
 465 To explore the utility of the multi-source data fusion product in constraining the temporal variations of aerosol precursor emissions and ultimately to
 leverage the up-to-date emissions inventory to improve model performance at simulating AOD and PM_{2.5} concentrations, we
 used the GEMS-AMI-GOCI-2 fused AOD as top-down constraints to adjusting primary PM emissions over the modeling
 domain. Similar to the earlier top-down approach, we used TROPOMI NO₂ columns in advance of the primary PM
 470 emissions adjustments to constrain NO_x emissions.

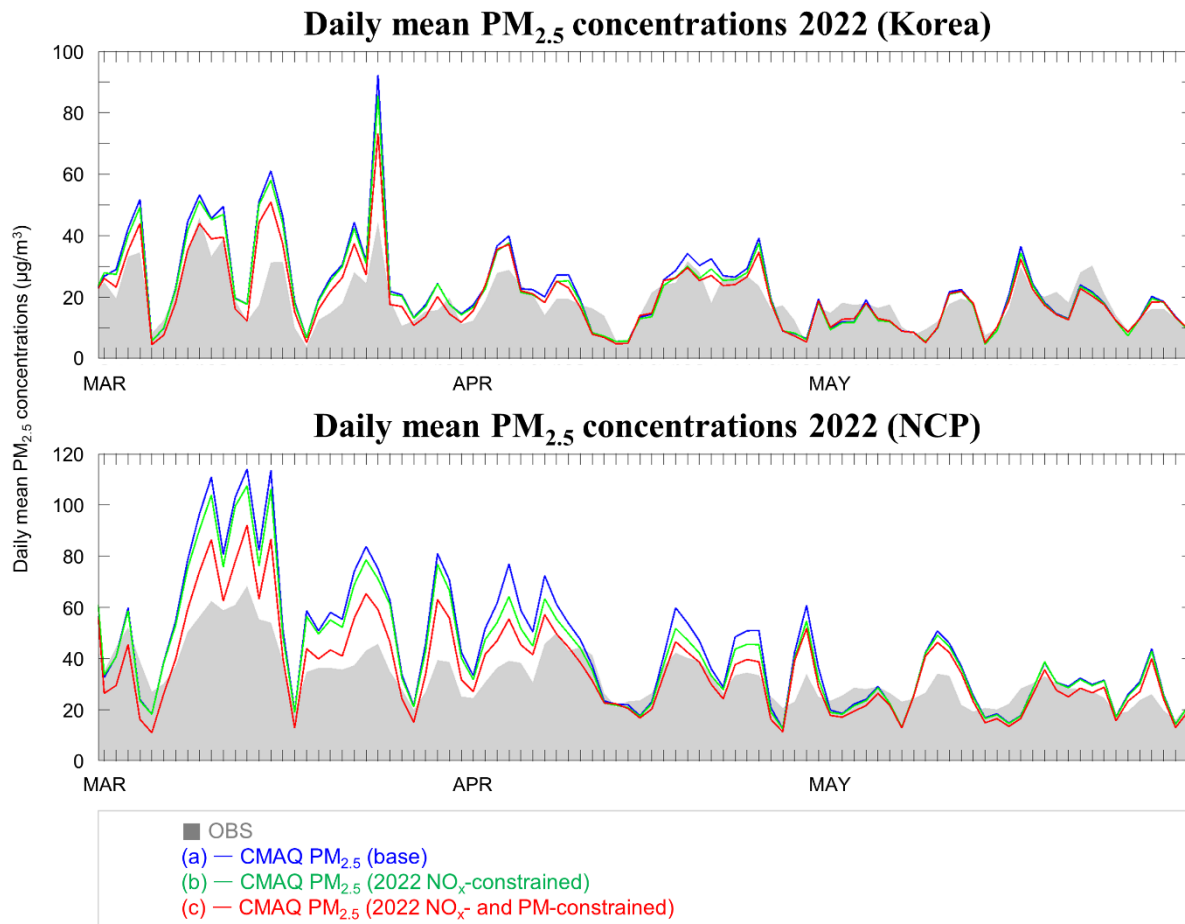
Using the base emissions, the model tended to overestimate AODs over a major portion of the modeling domain, particularly
 across the NCP region, during the study period 2022 (Figures 6a and 6b). Upon the relative decreases in monthly mean NO₂
 columns in March, April, and May 2022 compared to the corresponding months in 2019 (Figure S9), the NO_x emissions
 adjustment led to overall reductions in NO_x emissions by 2.83% - 13.40% (Figure S10; Table S7), which appeared to be
 475 effective at reducing the discrepancy between the observed and modeled AODs (Figure 6c). After the primary PM emission
 adjustment, which resulted in overall decrease in primary PM emissions by 9.03% (Figure S11; Table S8), the modeled
 AODs showed even closer spatial agreements with the observed AODs (Figure 6d). Then we evaluated the model
 performance in simulating daily mean surface PM_{2.5} concentrations in Korea and the NCP region in a time-series. Similar to
 the earlier results shown for the study period 2019, the NO_x and primary PM emission adjustments led to overall
 480 improvements in the model performances during the study period 2022. Using the base emissions, the model overestimated
 PM_{2.5} concentrations by 20.60% in Korea and 47.58% in the NCP region (Figure 7a; Table 4a); on the other hand, using the
 NO_x emission adjustment, the model reduced the extent of overestimation to 15.74% in Korea and 39.80% in the NCP region

(Figure 7b; Table 4b); and then the primary PM emission adjustment further reduced those to 6.81% and 19.58% (Figure 7c; Table 4c).

485 Unlike top-down constraints used during the study period 2019, those used during the study period 2022 led to overall
reductions in NO_x and primary PM emissions, particularly over the highly industrialized regions (e.g., the NCP region and
other major metropolitan areas in China) (Figures S10 and S11). An explanation for the noticeable decreases in NO₂ columns
and AODs observed across these regions in March, April, and May 2022 compared to those observed in the corresponding
months during the pre-COVID-19 period (the year 2019 in this study) (Figures 2a, 3a, 6a, and S9) was the strict city- and
490 province-wide lockdown regulations (the so-called “zero-COVID strategy” that resumed in March 2022) (Dyer, 2022),
which led to substantial reductions in the amounts of anthropogenic emissions (e.g., vehicular, industrial, and agricultural
emissions) (Caporale et al., 2022) in China. In addition, the updated emissions inventory yielded more accurate
representations of the aerosol loadings over the sea surface (i.e., the Yellow Sea), which could benefit other studies that
involve the long-range transport of aerosols emitted from inland sources (Hatakeyama et al., 2001; Carmichael et al., 2002;
495 Pouyaei et al., 2020, 2021; Jung et al., 2021).



500 **Figure 6. Spatial distributions of GEMS-AMI-GOCI-2 fused AOD and CMAQ-simulated AODs before and after the NO_x and primary PM emissions adjustments during the study period 2022. (a) The GEMS-AMI-GOCI-2 AOD, (b) the CMAQ-simulated AOD using base emissions, (c) the CMAQ-simulated AOD using 2022 NO_x-constrained emissions, and (d) the CMAQ-simulated AOD using 2022 NO_x- and PM-constrained emissions.**



505 **Figure 7.** Comparisons of the time series of the CMAQ-simulated daily mean surface PM_{2.5} concentrations (µg/m³) before and after the NO_x and primary PM emissions adjustments, and ground-based in situ measurements in Korea (425 sites) and the NCP region (312 sites) during the study period 2022. OBS: ground-based in situ measurements; (a) CMAQ-simulated PM_{2.5} using base emissions, (b) CMAQ-simulated PM_{2.5} using 2022 NO_x-constrained emissions, and (c) CMAQ-simulated PM_{2.5} using 2022 NO_x- and PM-constrained emissions.

Table 4. Summary statistics of CMAQ-simulated daily mean PM_{2.5} concentrations before and after the NO_x and primary PM emissions adjustments, and ground-based in situ measurements in Korea (425 sites) and the NCP region (312 sites) during the study period 2022. (a) CMAQ-simulated PM_{2.5} using base emissions, (b) CMAQ-simulated PM_{2.5} using NO_x-constrained emissions, and (c) CMAQ-simulated PM_{2.5} using 2022 NO_x- and PM-constrained emissions.

			(a) Base emissions	(b) 2022 NO _x -constrained emissions	(c) 2022 NO _x - and PM-constrained emissions
Korea	MAR	R	0.81	0.81	0.81
		NMB	47.26	42.09	21.54
	APR	R	0.68	0.67	0.69
		NMB	14.67	7.83	4.25
	MAY	R	0.72	0.72	0.70
		NMB	-6.51	-8.88	-8.93
	3-month	R	0.76	0.76	0.77
		NMB	20.60	15.74	6.81
NCP	MAR	R	0.46	0.46	0.46
		NMB	73.94	65.71	32.38
	APR	R	0.41	0.42	0.41
		NMB	46.84	32.80	19.34
	MAY	R	0.31	0.31	0.30
		NMB	16.44	14.63	6.95
	3-month	R	0.50	0.50	0.48
		NMB	47.58	39.30	19.58

4. Summary and Conclusion

515 In summary, this study attempted to sequentially adjust bottom-up estimates of NO_x and primary PM emissions over East Asia by employing observational references afforded by multiple satellite instruments retrofitted on various platforms and the synergistic science product. During the study period 2019, we reconfirmed the utility of LEO and GEO satellite products in emission adjustments and then explored that of the multi-source data fusion product, whose enhanced observational quantity and quality appeared to reduce model biases in AOD simulations to a great extent. During the study period 2022, 520 which experienced noticeable reductions in the amounts of anthropogenic emissions primarily resulting from severe lockdowns across major urban regions in China, the earlier top-down approach to constraining aerosol precursor emissions was also effective at reducing spatiotemporal discrepancies between the modeled and observed loadings of aerosols and their

precursors; particularly, the emission adjustments were effective at improving the model performances in simulating surface PM_{2.5} concentrations during the lockdown period.

525 In light of such findings, we conclude that the series of emission adjustments in this study, which were capable of closely capturing variations in the emissions of both primary aerosols and the precursors of secondary aerosols in a top-town manner, were generally effective at improving the model performances in estimating aerosol loadings over East Asia. **The enhanced observation quality and quantity afforded by the GEMS-involved synergistic product and its proxy appeared to be beneficial to capturing the spatiotemporal variations in the emissions of the aerosol precursors.** In terms of possible uncertainties that could originate from other aerosol precursor species, which was outside the scope of this study, the methodology used left some room for further improvement; nonetheless, this study reconfirmed the significant association between emissions of aerosol precursors and the AOD as well as surface PM_{2.5} concentrations and underscored the benefit of using multi-source, top-down information to best exploit available observational references. In light of the improvement in data availability (e.g., tropospheric SO₂ columns and the operational version of the data fusion product) in the near future, afforded by GEMS and its sister instruments, we conclude that the findings of this study could provide a useful basis for how to more effectively use the new data for producing more up-to-date emission inventories, the expected results of which could provide more precise insight into the spatiotemporal behaviors of air pollutants under pandemic situations.

Acknowledgments

This work was supported by a grant from the National Institute of Environment Research (NIER), funded by the Ministry of Environment (MOE) of the Republic of Korea (NIER-2022-04-02-088). We are grateful for the support of the Research Computing Data Core at the University of Houston for assistance with the calculations carried out in this work. J. Jung was supported by NASA grant #80HQTR21T0069 at Pacific Northwest National Laboratory (PNNL). PNNL is operated for DOE by Battelle Memorial Institute under contract DE-AC06-76RLO 1830.

Data availability

545 AHI aerosol products can be accessed at Japan Aerospace Exploration Agency Himawari Monitor (P-Tree system) database (<https://www.eorc.jaxa.jp/ptree/index.html>). TROPOMI tropospheric NO₂ columns sampled along the study area are available at European Space Agency Copernicus Services Data Hub (<https://cophub.copernicus.eu/>). Data fusion products may be available upon request to the authors. Ground-based in-situ measurements of NO₂ and PM_{2.5} concentrations are available at AirKorea (<https://www.airkorea.or.kr>) and Chinese Ministry of Ecology and Environment (<http://www.cnemc.cn/en/>) databases.

Author contributions

JP took the lead in drafting the original manuscript. JP, JJ, YC, and KL set up the experimental design. JP and JJ set up the modeling system and conducted emissions adjustments and model simulations. HL, MK, YL, and JK developed and provided the multi-source data fusion products (GOCI-AHI and GEMS-AMI-GOCI-2 aerosol products). KL provided
555 AirKorea datasets for model evaluation. YC and KL provided overall context as a principal investigator and project manager, respectively, and supervised the entire research. All authors discussed the results, exchanged comprehensive feedback on the original manuscript draft, and contributed to preparing the final version of the manuscript.

Competing interests

Some authors are members of the editorial board of the special issue (GEMS: first year in operation) jointly organized
560 between Atmospheric Measurement Techniques and Atmospheric Chemistry and Physics. The peer-review process was guided by an independent editor, and the authors have also no other competing interests to declare.

References

- Hatakeyama, S., Murano, K., Sakamaki, F., Mukai, H., Bandow, H., & Komazaki, Y. (2001). Transport of Atmospheric
565 Pollutants from East Asia. *Water, Air, and Soil Pollution*, 130(1), 373–378. <https://doi.org/10.1023/A:1013877000169>
- Ohara, T., Akimoto, H., Kurokawa, J., Horii, N., Yamaji, K., Yan, X., & Hayasaka, T. (2007). An Asian emission inventory
of anthropogenic emission sources for the period 1980–2020. *Atmospheric Chemistry and Physics*, 7(16), 4419–4444.
<https://doi.org/10.5194/acp-7-4419-2007>
- Kumar, N., Chu, A., & Foster, A. (2007). An empirical relationship between PM_{2.5} and aerosol optical depth in Delhi
570 Metropolitan. *Atmospheric Environment*, 41(21), 4492–4503. <https://doi.org/10.1016/j.atmosenv.2007.01.046>
- Tian, J. and Chen, D., 2010. Spectral, spatial, and temporal sensitivity of correlating MODIS aerosol optical depth with
ground-based fine particulate matter (PM_{2.5}) across southern Ontario. *Canadian Journal of Remote Sensing*, 36, 119–
128. 10.5589/m10-033.
- Remer, L. A., Mattoo, S., Levy, R. C., & Munchak, L. A. (2013). MODIS 3 km aerosol product: Algorithm and global
575 perspective. *Atmospheric Measurement Techniques*, 6(7), 1829–1844. <https://doi.org/10.5194/amt-6-1829-2013>
- Levy, R. C., Mattoo, S., Munchak, L. A., Remer, L. A., Sayer, A. M., Patadia, F., & Hsu, N. C. (2013). The Collection 6
MODIS aerosol products over land and ocean. *Atmospheric Measurement Techniques*, 6(11), 2989–3034.
<https://doi.org/10.5194/amt-6-2989-2013>
- Chan, P. K., Zhao, X.-P., & Heidinger, A. K. (2013). Long-Term Aerosol Climate Data Record Derived from Operational
580 AVHRR Satellite Observations. *Dataset Papers in Geosciences*, 2013, e140791. <https://doi.org/10.7167/2013/140791>
- Ahn, C., Torres, O., & Jethva, H. (2014). Assessment of OMI near-UV aerosol optical depth over land. *Journal of
Geophysical Research: Atmospheres*, 119(5), 2457–2473. <https://doi.org/10.1002/2013JD020188>
- Levy, R., Hsu, C., et al., 2015. MODIS Atmosphere L2 Aerosol Product. NASA MODIS Adaptive Processing System,
Goddard Space Flight Center, USA: http://dx.doi.org/10.5067/MODIS/MOD04_L2.006
- 585 Garay, M. J., Witek, M. L., Kahn, R. A., Seidel, F. C., Limbacher, J. A., Bull, M. A., Diner, D. J., Hansen, E. G.,
Kalashnikova, O. V., Lee, H., Nastan, A. M., & Yu, Y. (2020). Introducing the 4.4 km spatial resolution Multi-Angle
Imaging SpectroRadiometer (MISR) aerosol product. *Atmospheric Measurement Techniques*, 13(2), 593–628.
<https://doi.org/10.5194/amt-13-593-2020>
- Bellouin, N., Boucher, O., Haywood, J., & Reddy, M. S. (2005). Global estimate of aerosol direct radiative forcing from
590 satellite measurements. *Nature*, 438(7071), 1138–1141. <https://doi.org/10.1038/nature04348>
- Remer, L. A., Kleidman, R. G., Levy, R. C., Kaufman, Y. J., Tanré, D., Mattoo, S., Martins, J. V., Ichoku, C., Koren, I., Yu,
H., & Holben, B. N. (2008). Global aerosol climatology from the MODIS satellite sensors. *Journal of Geophysical
Research: Atmospheres*, 113(D14). <https://doi.org/10.1029/2007JD009661>

- Munchak, L. A., Levy, R. C., Mattoo, S., Remer, L. A., Holben, B. N., Schafer, J. S., Hostetler, C. A., & Ferrare, R. A. (2013). MODIS 3 km aerosol product: Applications over land in an urban/suburban region. *Atmospheric Measurement Techniques*, 6(7), 1747–1759. <https://doi.org/10.5194/amt-6-1747-2013>
- Filonchik, M., Yan, H., Zhang, Z., Yang, S., Li, W., & Li, Y. (2019). Combined use of satellite and surface observations to study aerosol optical depth in different regions of China. *Scientific Reports*, 9(1), 6174. <https://doi.org/10.1038/s41598-019-42466-6>
- Jung, J., Souri, A. H., Wong, D. C., Lee, S., Jeon, W., Kim, J., & Choi, Y. (2019). The Impact of the Direct Effect of Aerosols on Meteorology and Air Quality Using Aerosol Optical Depth Assimilation During the KORUS-AQ Campaign. *Journal of Geophysical Research: Atmospheres*, 124(14), 8303–8319. <https://doi.org/10.1029/2019JD030641>
- Jung, J., Choi, Y., Wong, D. C., Nelson, D., & Lee, S. (2021). Role of Sea Fog Over the Yellow Sea on Air Quality With the Direct Effect of Aerosols. *Journal of Geophysical Research: Atmospheres*, 126(5), e2020JD033498. <https://doi.org/10.1029/2020JD033498>
- Lee, K., Kim, M., Choi, M., Kim, K., Choi, Y., Jeong, J., Moon, K.-J., & Lee, S. (2022). Fast and operational gap filling in satellite-derived aerosol optical depths using statistical techniques. *J. Appl. Rem. Sens.*, 16(4). <https://doi.org/10.1117/1.JRS.16.044507>
- Byun, D., & Schere, K. L. (2006). Review of the Governing Equations, Computational Algorithms, and Other Components of the Models-3 Community Multiscale Air Quality (CMAQ) Modeling System. *Applied Mechanics Reviews*, 59(2), 51–77. <https://doi.org/10.1115/1.2128636>
- Wang, J., Xu, X., Henze, D. K., Zeng, J., Ji, Q., Tsay, S.-C., & Huang, J. (2012). Top-down estimate of dust emissions through integration of MODIS and MISR aerosol retrievals with the GEOS-Chem adjoint model. *Geophysical Research Letters*, 39(8). <https://doi.org/10.1029/2012GL051136>
- Ku, B., & Park, R. J. (2013). Comparative inverse analysis of satellite (MODIS) and ground (PM10) observations to estimate dust emissions in East Asia. *Asia-Pacific Journal of Atmospheric Sciences*, 49(1), 3–17. <https://doi.org/10.1007/s13143-013-0002-5>
- Koo, Y.-S., Choi, D.-R., Kwon, H.-Y., Jang, Y.-K., & Han, J.-S. (2015). Improvement of PM10 prediction in East Asia using inverse modeling. *Atmospheric Environment*, 106, 318–328. <https://doi.org/10.1016/j.atmosenv.2015.02.004>
- Pang, J., Liu, Z., Wang, X., Bresch, J., Ban, J., Chen, D., & Kim, J. (2018). Assimilating AOD retrievals from GOCI and VIIRS to forecast surface PM2.5 episodes over Eastern China. *Atmospheric Environment*, 179, 288–304. <https://doi.org/10.1016/j.atmosenv.2018.02.011>
- Xia, X., Min, J., Shen, F., Wang, Y., & Yang, C. (2019). Aerosol Data Assimilation Using Data from Fengyun-3A and MODIS: Application to a Dust Storm over East Asia in 2011. *Advances in Atmospheric Sciences*, 36(1), 1–14. <https://doi.org/10.1007/s00376-018-8075-9>

- Wang, Y., Wang, J., Xu, X., Henze, D. K., Qu, Z., & Yang, K. (2020). Inverse modeling of SO₂ and NO_x emissions over China using multisensor satellite data – Part 1: Formulation and sensitivity analysis. *Atmospheric Chemistry and Physics*, 20(11), 6631–6650. <https://doi.org/10.5194/acp-20-6631-2020>
- 630 Li, N., Tang, K., Wang, Y., Wang, J., Feng, W., Zhang, H., Liao, H., Hu, J., Long, X., Shi, C., & Su, X. (2021). Is the efficacy of satellite-based inversion of SO₂ emission model dependent? *Environmental Research Letters*, 16(3), 035018. <https://doi.org/10.1088/1748-9326/abe829>
- Lee, S., Song, C. H., Han, K. M., Henze, D. K., Lee, K., Yu, J., Woo, J.-H., Jung, J., Choi, Y., Saide, P. E., & Carmichael, G. R. (2022). Impacts of uncertainties in emissions on aerosol data assimilation and short-term PM_{2.5} predictions over
635 Northeast Asia. *Atmospheric Environment*, 271, 118921. <https://doi.org/10.1016/j.atmosenv.2021.118921>
- Vijayaraghavan, K., Snell, H. E., & Seigneur, C. (2008). Practical Aspects of Using Satellite Data in Air Quality Modeling. *Environmental Science & Technology*, 42(22), 8187–8192. <https://doi.org/10.1021/es7031339>
- Jeon, W., Choi, Y., Percell, P., Sourì, A. H., Song, C.-K., Kim, S.-T., & Kim, J. (2016). Computationally efficient air quality forecasting tool: Implementation of STOPS v1.5 model into CMAQ v5.0.2 for a prediction of Asian dust. *Geoscientific
640 Model Development*, 9(10), 3671–3684. <https://doi.org/10.5194/gmd-9-3671-2016>
- Lee, S., Song, C. H., Park, R. S., Park, M. E., Han, K. M., Kim, J., et al. (2016). GIST-PM-Asia v1: Development of a numerical system to improve particulate matter forecasts in South Korea using geostationary satellite-retrieved aerosol optical data over Northeast Asia. *Geoscientific Model Development*, 9(1), 17–39. <https://doi.org/10.5194/gmd-9-17-2016>
- 645 Yumimoto, K., Nagao, T. m., Kikuchi, M., Sekiyama, T. t, Murakami, H., Tanaka, T. y., Ogi, A., Irie, H., Khatri, P., Okumura, H., Arai, K., Morino, I., Uchino, O., & Maki, T. (2016). Aerosol data assimilation using data from Himawari-8, a next-generation geostationary meteorological satellite. *Geophysical Research Letters*, 43(11), 5886–5894. <https://doi.org/10.1002/2016GL069298>
- Jin, J., Segers, A., Heemink, A., Yoshida, M., Han, W., & Lin, H.-X. (2019). Dust Emission Inversion Using Himawari-8
650 AODs Over East Asia: An Extreme Dust Event in May 2017. *Journal of Advances in Modeling Earth Systems*, 11(2), 446–467. <https://doi.org/10.1029/2018MS001491>
- Choi, W. J., and Coauthors, 2018: Introducing the Geostationary Environment Monitoring Spectrometer. *J. Appl. Remote Sens.*, 13, 044005, <https://doi.org/10.1117/1.JRS.12.044005>
- Kim, J., Choi, M., Kim, M., Lim, H., Lee, S., Moon, K. J., Choi, W. J., Yoon, J. M., Kim, S.-K., Ko, D. H., Lee, S. H., Park,
655 Y., & Chung, C.-Y. (2018). Monitoring Atmospheric Composition by Geo-Kompsat-2: Goci-2, Ami and Gems. IGARSS 2018 - 2018 IEEE International Geoscience and Remote Sensing Symposium, 7750–7752. <https://doi.org/10.1109/IGARSS.2018.8518713>
- Kim, J., Jeong, U., Ahn, M.-H., Kim, J. H., Park, R. J., Lee, H., Song, C. H., Choi, Y.-S., Lee, K.-H., Yoo, J.-M., Jeong, M.-J., Park, S. K., Lee, K.-M., Song, C.-K., Kim, S.-W., Kim, Y. J., Kim, S.-W., Kim, M., Go, S., ... Choi, Y. (2020a).

- 660 New Era of Air Quality Monitoring from Space: Geostationary Environment Monitoring Spectrometer (GEMS).
Bulletin of the American Meteorological Society, 101(1), E1–E22. <https://doi.org/10.1175/BAMS-D-18-0013.1>
- Zoogman, P., and Coauthors, 2011: Ozone air quality measurement requirements for a geostationary satellite mission. *Atmos. Environ.*, 45, 7143–7150, <https://doi.org/10.1016/j.atmosenv.2011.05.058>
- 665 Ingmann, P., B. Veihelmann, J. Langen, D. Lamarre, H. Stark, and G. B. Courrèges-Lacoste, 2012: Requirements for the
GMES atmosphere service and ESA’s implementation concept: Sentinels-4/-5 and -5p. *Remote Sens. Environ.*, 120,
58–69, <https://doi.org/10.1016/j.rse.2012.01.023>
- Zou, B., Liu, N., Wang, W., Feng, H., Liu, X., & Lin, Y. (2020). An Effective and Efficient Enhanced Fixed Rank
Smoothing Method for the Spatiotemporal Fusion of Multiple-Satellite Aerosol Optical Depth Products. *Remote
Sensing*, 12(7), Article 7. <https://doi.org/10.3390/rs12071102>
- 670 Choi, M., Lim, H., Kim, J., Lee, S., Eck, T. F., Holben, B. N., Garay, M. J., Hyer, E. J., Saide, P. E., & Liu, H. (2019).
Validation, comparison, and integration of GOCI, AHI, MODIS, MISR, and VIIRS aerosol optical depth over East
Asia during the 2016 KORUS-AQ campaign. *Atmospheric Measurement Techniques*, 12(8), 4619–4641.
<https://doi.org/10.5194/amt-12-4619-2019>
- 675 Go, S., Kim, J., Park, S. S., Kim, M., Lim, H., Kim, J.-Y., Lee, D.-W., & Im, J. (2020). Synergistic Use of Hyperspectral
UV-Visible OMI and Broadband Meteorological Imager MODIS Data for a Merged Aerosol Product. *Remote Sensing*,
12(23), Article 23. <https://doi.org/10.3390/rs12233987>
- Lim, H., Go, S., Kim, J., Choi, M., Lee, S., Song, C.-K., & Kasai, Y. (2021). Integration of GOCI and AHI Yonsei aerosol
optical depth products during the 2016 KORUS-AQ and 2018 EMERGe campaigns, *Atmospheric Measurement
Techniques*, 14, 4575-4592
- 680 Holben, B. N., Eck, T. F., Slutsker, I., Tanré, D., Buis, J. P., Setzer, A., Vermote, E., Reagan, J. A., Kaufmann, Y. J.,
Nakajima, T., Lavenu, F., Jankowiak, I., and Smirnov, A. (1998). AERONET: A federated instrument network and data
archive for aerosol characterisation, *Remote Sens. Environ.*, 66, 1–16
- Dyer, O. (2022). Covid-19: Lockdowns spread in China as omicron tests “zero covid” strategy. *BMJ*, 376, o859.
<https://doi.org/10.1136/bmj.o859>
- 685 Woo, J.-H., Kim, Y., Kim, H.-K., Choi, K.-C., Eum, J.-H., Lee, J.-B., Lim, J.-H., Kim, J., & Seong, M. (2020). Development
of the CREATE Inventory in Support of Integrated Climate and Air Quality Modeling for Asia. *Sustainability*, 12(19),
7930. <https://doi.org/10.3390/su12197930>
- Jang, Y., Lee, Y., Kim, J., Kim, Y., Woo, J.-H. (2019). Improvement China Point Source for Improving Bottom-Up
Emission Inventory. *Asia Pac. J. Atmos. Sci.*, 56, 107–118
- 690 Yeo, S.Y., Lee, H.K., Choi, S.W, Seol, S.H., Jin, H.A., Yoo, C., Lim, J.Y., Kim, J.S. (2019). Analysis of the national air
pollutant emission inventory (CAPSS 2015) and the major cause of change in Republic of Korea. *Asian J. Atmos.
Environ.* 13 (3), 212–231. <https://doi.org/10.5572/ajae.2019.13.3.212>

- Toon, O. B., et al. (2016), Planning, implementation and scientific goals of the Studies of Emissions and Atmospheric Composition, Clouds and Climate Coupling by Regional Surveys (SEAC4RS) field mission, *J. Geophys. Res. Atmos.*, 121, 4967–5009, doi:10.1002/2015JD024297
- 695
- Guenther, A. B., Jiang, X., Heald, C. L., Sakulyanontvittaya, T., Duhl, T., Emmons, L. K., & Wang, X. (2012). The Model of Emissions of Gases and Aerosols from Nature version 2.1 (MEGAN2.1): An extended and updated framework for modeling biogenic emissions. *Geoscientific Model Development*, 5(6), 1471–1492. <https://doi.org/10.5194/gmd-5-1471-2012>
- 700
- Guenther, A.B., Karl, T., Harley, P., Wiedinmyer, C., Palmer, P. I., & Geron, C. (2006). Estimates of global terrestrial isoprene emissions using MEGAN (Model of Emissions of Gases and Aerosols from Nature). *Atmospheric Chemistry and Physics*, 6(11), 3181–3210. <https://doi.org/10.5194/acp-6-3181-2006>
- Guenther, A., Jiang, X., Shah, T., Huang, L., Kemball-Cook, S., & Yarwood, G. (2020). Model of Emissions of Gases and Aerosol from Nature Version 3 (MEGAN3) for Estimating Biogenic Emissions. In C. Mensink, W. Gong, & A. Hakami (Eds.), *Air Pollution Modeling and its Application XXVI* (pp. 187–192). Springer International Publishing. https://doi.org/10.1007/978-3-030-22055-6_29
- 705
- Yuan, H., Dai, Y., Xiao, Z., Ji, D., & Shangguan, W. (2011). Reprocessing the MODIS Leaf Area Index products for land surface and climate modelling. *Remote Sensing of Environment*, 115(5), 1171–1187. <https://doi.org/10.1016/j.rse.2011.01.001>
- 710
- Jiang, Z., Vargas, M., & Csiszar, I. (2016). New operational real-time daily rolling weekly Green Vegetation fraction product derived from suomi NPP VIIRS reflectance data. 2016 IEEE International Geoscience and Remote Sensing Symposium (IGARSS), 3524–3527. <https://doi.org/10.1109/IGARSS.2016.7729911>
- Skamarock, W. C., Klemp, J. B., Dudhia, J., Gill, D. O., Barker, D., Duda, M. G., ... Powers, J. G. (2008). A Description of the Advanced Research WRF Version 3 (No. NCAR/TN-475+STR). University Corporation for Atmospheric Research. <https://doi.org/10.5065/D68S4MVH>
- 715
- Pouyaei, A., Choi, Y., Jung, J., Sadeghi, B., & Song, C. H. (2020). Concentration Trajectory Route of Air pollution with an Integrated Lagrangian model (C-TRAIL Model v1.0) derived from the Community Multiscale Air Quality Model (CMAQ Model v5.2). *Geoscientific Model Development*, 13(8), 3489–3505. <https://doi.org/10.5194/gmd-13-3489-2020>
- Pouyaei, A., Sadeghi, B., Choi, Y., Jung, J., Souri, A. H., Zhao, C., & Song, C. H. (2021). Development and Implementation of a Physics-Based Convective Mixing Scheme in the Community Multiscale Air Quality Modeling Framework. *Journal of Advances in Modeling Earth Systems*, 13(6), e2021MS002475. <https://doi.org/10.1029/2021MS002475>
- 720
- Park, J., Jung, J., Choi, Y., Mousavinezhad, S., & Pouyaei, A. (2022). The sensitivities of ozone and PM_{2.5} concentrations to the satellite-derived leaf area index over East Asia and its neighboring seas in the WRF-CMAQ modeling system. *Environmental Pollution*, 306, 119419. <https://doi.org/10.1016/j.envpol.2022.119419>
- 725
- Veefkind, J. P., Aben, I., McMullan, K., Förster, H., de Vries, J., Otter, G., Claas, J., Eskes, H. J., de Haan, J. F., Kleipool, Q., van Weele, M., Hasekamp, O., Hoogeveen, R., Landgraf, J., Snel, R., Tol, P., Ingmann, P., Voors, R., Kruizinga, B.,

- ... Levelt, P. F. (2012). TROPOMI on the ESA Sentinel-5 Precursor: A GMES mission for global observations of the atmospheric composition for climate, air quality and ozone layer applications. *Remote Sensing of Environment*, 120, 70–83. <https://doi.org/10.1016/j.rse.2011.09.02>
- 730 Okuyama, A., Andou, A., Date, K., Hoasaka, K., Mori, N., Murata, H., Tabata, T., Takahashi, M., Yoshino, R., & Bessho, K. (2015). Preliminary validation of Himawari-8/AHI navigation and calibration. *Earth Observing Systems*, 9607, 663–672. <https://doi.org/10.1117/12.2188978>
- Bessho, K., Date, K., Hayashi, M., Ikeda, A., Imai, T., Inoue, H., Kumagai, Y., Miyakawa, T., Murata, H., Ohno, T., Okuyama, A., Oyama, R., Sasaki, Y., Shimazu, Y., Shimoji, K., Sumida, Y., Suzuki, M., Taniguchi, H., Tsuchiyama, 735 H., ... Yoshida, R. (2016). An Introduction to Himawari-8/9—Japan’s New-Generation Geostationary Meteorological Satellites. *Journal of the Meteorological Society of Japan*. Ser. II, 94(2), 151–183. <https://doi.org/10.2151/jmsj.2016-009>
- Pitchford, M., Maim, W., Schichtel, B., Kumar, N., Lowenthal, D., & Hand, J. (2007). Revised algorithm for estimating light extinction from IMPROVE particle speciation data. *Journal of the Air & Waste Management Association* 57(11), 740 1326–1336. <https://doi.org/10.3155/1047-3289.57.11.1326>
- Ångström, A. (1961). Techniques of Determining the Turbidity of the Atmosphere. *Tellus*, 13(2), 214–223. <https://doi.org/10.3402/tellusa.v13i2.9493>
- Choi, M., Kim, J., Lee, J., Kim, M., Park, Y.-J., Jeong, U., Kim, W., Hong, H., Holben, B., Eck, T. F., Song, C. H., Lim, J.-H., & Song, C.-K. (2016). GOCI Yonsei Aerosol Retrieval (YAER) algorithm and validation during the DRAGON-NE 745 Asia 2012 campaign. *Atmospheric Measurement Techniques*, 9(3), 1377–1398. <https://doi.org/10.5194/amt-9-1377-2016>
- Choi, M., Kim, J., Lee, J., Kim, M., Park, Y.-J., Holben, B., Eck, T. F., Li, Z., & Song, C. H. (2018). GOCI Yonsei aerosol retrieval version 2 products: An improved algorithm and error analysis with uncertainty estimation from 5-year validation over East Asia. *Atmospheric Measurement Techniques*, 11(1), 385–408. <https://doi.org/10.5194/amt-11-385-2018> 750
- Lim, H., Choi, M., Kim, J., Kasai, Y., & Chan, P. W. (2018). AHI/Himawari-8 Yonsei Aerosol Retrieval (YAER): Algorithm, Validation and Merged Products. *Remote Sensing*, 10(5), 699. <https://doi.org/10.3390/rs10050699>
- Chung, S.-R., Ahn, M.-H., Han, K.-S., Lee, K.-T., & Shin, D.-B. (2020). Meteorological Products of Geo-KOMPSAT 2A (GK2A) Satellite. *Asia-Pacific Journal of Atmospheric Sciences*, 56(2), 185–185. <https://doi.org/10.1007/s13143-020-00199-x> 755
- Kim, D., Gu, M., Oh, T.-H., Kim, E.-K., & Yang, H.-J. (2021). Introduction of the Advanced Meteorological Imager of Geo-Kompsat-2a: In-Orbit Tests and Performance Validation. *Remote Sensing*, 13(7), Article 7. <https://doi.org/10.3390/rs13071303>
- Kim, M., Kim, J., Lim, H., & Chan, P. W. (2020b). The implementation of Yonsei Aerosol Retrieval (YAER) Algorithm to 760 GK-2A/AMI and FY-4A/AGRI. American Geophysical Union, Fall Meeting 2020, A141-0007.

- Rodgers, C.D. (2000). Inverse Methods for Atmospheric Sounding: Theory and Practice, Series on Atmospheric, Oceanic and Planetary Physics. WORLD SCIENTIFIC. <https://doi.org/10.1142/3171>
- 765 Sourì, A. H., Nowlan, C. R., González Abad, G., Zhu, L., Blake, D. R., Fried, A., Weinheimer, A. J., Wisthaler, A., Woo, J.-H., Zhang, Q., Chan Miller, C. E., Liu, X., & Chance, K. (2020). An inversion of NO_x and non-methane volatile organic compound (NMVOC) emissions using satellite observations during the KORUS-AQ campaign and implications for surface ozone over East Asia. *Atmospheric Chemistry and Physics*, 20(16), 9837–9854. <https://doi.org/10.5194/acp-20-9837-2020>
- 770 Jung, J., Choi, Y., Sourì, A. H., Mousavinezhad, S., Sayeed, A., & Lee, K. (2022). The Impact of Springtime-Transported Air Pollutants on Local Air Quality With Satellite-Constrained NO_x Emission Adjustments Over East Asia. *Journal of Geophysical Research: Atmospheres*, 127(5), e2021JD035251. <https://doi.org/10.1029/2021JD035251>
- Napelenok, S. L., Cohan, D. S., Hu, Y., & Russell, A. G. (2006). Decoupled direct 3D sensitivity analysis for particulate matter (DDM-3D/PM). *Atmospheric Environment*, 40(32), 6112–6121. <https://doi.org/10.1016/j.atmosenv.2006.05.039>
- Zhang, W., Xu, H., & Zheng, F. (2018). Aerosol Optical Depth Retrieval over East Asia Using Himawari-8/AHI Data. *Remote Sensing*, 10(1), 137. <https://doi.org/10.3390/rs10010137>
- 775 Martin, R. V., Jacob, D. J., Chance, K., Kurosu, T. P., Palmer, P. I., & Evans, M. J. (2003). Global inventory of nitrogen oxide emissions constrained by space-based observations of NO₂ columns. *Journal of Geophysical Research: Atmospheres*, 108(D17). <https://doi.org/10.1029/2003JD003453>
- Cooper, M., Martin, R. V., Padmanabhan, A., & Henze, D. K. (2017). Comparing mass balance and adjoint methods for inverse modeling of nitrogen dioxide columns for global nitrogen oxide emissions. *Journal of Geophysical Research: Atmospheres*, 122(8), 4718–4734. <https://doi.org/10.1002/2016JD025985>
- 780 Mousavinezhad, S., Choi, Y., Pouyaei, A., Ghahremanloo, M., & Nelson, D. L. (2021). A comprehensive investigation of surface ozone pollution in China, 2015–2019: Separating the contributions from meteorology and precursor emissions. *Atmospheric Research*, 257, 105599. <https://doi.org/10.1016/j.atmosres.2021.105599>
- Chen, L., Fei, Y., Wang, R., Fang, P., Han, J., & Zha, Y. (2021). Retrieval of High Temporal Resolution Aerosol Optical Depth Using the GOCI Remote Sensing Data. *Remote Sensing*, 13(12), 2376. <https://doi.org/10.3390/rs13122376>
- 785 Caporale, G. M., Carmona-González, N., & Gil-Alana, L. A. (2022). Atmospheric Pollution in Chinese Cities: Trends and Persistence (SSRN Scholarly Paper No. 4309213). <https://doi.org/10.2139/ssrn.4309213>
- Chen, L., Mao, F., Hong, J., Zang, L., Chen, J., Zhang, Y., Gan, Y., Gong, W., & Xu, H. (2022). Improving PM_{2.5} predictions during COVID-19 lockdown by assimilating multi-source observations and adjusting emissions. *Environmental Pollution*, 297, 118783. <https://doi.org/10.1016/j.envpol.2021.118783>
- 790 Li, K., Ni, R., Jiang, T., Tian, Y., Zhang, X., Li, C., & Xie, C. (2022). The regional impact of the COVID-19 lockdown on the air quality in Ji'nan, China. *Scientific Reports*, 12(1), Article 1. <https://doi.org/10.1038/s41598-022-16105-6>

Carmichael, G.R., Streets, D.G., Calori, G., Amann, M., Jacobson, M.Z., Hansen, J., & Ueda, H. (2002). Changing trends in sulfur emissions in Asia: Implications for acid deposition. *Environ. Sci. Technol.*, 36, 4707-4713, doi:10.1021/es011509c.

Supplement of

Satellite-based, top-down approach for the adjustment of aerosol precursor emissions over East Asia: TROPOMI product, and the Geostationary Environment Monitoring Spectrometer (GEMS) data fusion product and its proxy

Jincheol Park and Jia Jung et al.

Correspondence to: Yunsoo Choi (ychoi6@uh.edu)

Table S1. Model configurations.

WRF 3.8	
Domain	East Asia on 27 km × 27 km grids
Microphysics	Morrison double-moment scheme (Morrison <i>et al.</i> , 2009)
Longwave and shortwave radiation	Rapid Radiative Transfer Model for GCMs (RRTMG) (Clough <i>et al.</i> , 2005; Iacono <i>et al.</i> , 2008)
Land surface	Pleim-Xiu land surface model (Xiu and Pleim, 2001)
Surface layer	Pleim-Xiu surface layer (Pleim, 2006)
Planetary boundary layer	ACM2 planetary boundary layer model (Pleim 2007a, 2007b)
Cumulus parameterization	Kain-Fritsch (new Eta) scheme (Kain, 2004)
Four-Dimensional Data Assimilation	FDDA option for grid-nudging (Jeon <i>et al.</i> , 2015)
Initial and boundary conditions for meteorology	1° × 1° National Centers for Environmental Prediction (NCEP) FNL (final) operational model global analysis data
CMAQ 5.2 and CMAQ DDM-3D 5.2	
Horizontal advection	YAMO
Vertical advection	WRF omega formula
Horizontal diffusion	Multiscale
Vertical diffusion	ACM2 vertical diffusion scheme (Pleim 2007a, 2007b)
Chemical mechanism and aerosol processing module	SAPRC-07 and AERO6 (Carter, 2010; Simon, 2015)
Dry deposition model	M3Dry (Pleim <i>et al.</i> , 2001)

Table S2. The list of the primary PM species included the KORUS-AQ emission inventory, and the corresponding pollutants simulated in CMAQ version 5.2 and measured at the Korean supersites.

KORUS-AQ emissions species	Corresponding CMAQ species	Corresponding Korean supersite species	Description
PSO4	ASO4J	PM _{2.5} SO ₄	Fine mode sulfate
PNO3	ANO3J	PM _{2.5} NO ₃	Fine mode nitrate
PCL	ACLJ	PM _{2.5} Cl	Fine mode particulate chloride
PNH4	ANH4J	PM _{2.5} NH ₄	Fine particulate ammonium
PNA	ANAJ	PM _{2.5} Na	Fine mode sodium
PCA	ACAJ	PM _{2.5} Ca	Fine mode calcium
PMG	AMGJ	PM _{2.5} Mg	Fine mode magnesium
PK	AKJ	PM _{2.5} K	Fine mode potassium
POC	APOCI, APOCJ	PM _{2.5} OC	Fine mode primary organic carbon
PNCOM	APNCOMI, APNCOMJ	-	Fine mode primary non-carbon organic matter
PEC	AECI, AECJ	PM _{2.5} EC	Fine mode elemental carbon
PFE	AFEJ	PM _{2.5} Fe	Fine mode iron
PAL	AALJ	-	Fine mode aluminum
PSI	ASIJ	-	Fine mode silicon
PTI	ATIJ	PM _{2.5} Ti	Fine mode titanium
PMN	AMNJ	PM _{2.5} Mn	Fine mode manganese
PH2O	AH2OJ	-	Fine mode particulate water
PMOTHR	AOTHRJ	PM _{2.5} V, PM _{2.5} Cr, PM _{2.5} Ni, PM _{2.5} Cu, PM _{2.5} Zn, PM _{2.5} As, PM _{2.5} Se, PM _{2.5} Br, PM _{2.5} Pb	Remaining unspicated (undefined) fine mode primary PM
PMC	ACORS	-	Coarse mode primary PM

Table S3. Summary statistics between the WRF-simulated hourly meteorological fields (2 m air temperatures (°C), and 10 m wind U and V components (m/s)) and ground-based in-situ measurements in Korea during the study periods 2019 (132 sites) and 2022 (95 sites). R: Pearson’s correlation coefficient, IOA: index of agreement, RMSE: root mean square error, MB: mean bias.

	2019			2022		
	Air temperature	Wind U	Wind V	Air temperature	Wind U	Wind V
R	0.98	0.64	0.52	0.95	0.65	0.48
IOA	0.99	0.74	0.69	0.96	0.75	0.66
RMSE	2.34	1.68	1.55	2.81	1.56	1.41
MB	-1.00	0.16	-0.21	-1.56	0.49	0.02

20

Table S4. Seasonal and yearly mean NO_x emissions (tons/day) before (a priori) and after (a posteriori) the NO_x emissions adjustment over the modeling domain during the study period 2019. MAM: March, April, and May, JJA: June, July, and August, SON: September, October, and November, DJF: December, January, and February.

	MAM	JJA	SON	DJF	Yearly
A priori	2.21	2.28	2.17	2.17	2.21
A posteriori	4.98	6.25	4.72	3.73	4.92
Difference (post - prior) (%)	125.08	174.16	117.68	71.64	122.79

25 Table S5. Summary statistics of the CMAQ-simulated daily mean surface NO₂ concentrations (ppb) before (a priori) and after (a posteriori) the NO_x emission adjustment and ground-based in-situ measurements (346 sites in Korea and 235 sites in the NCP region) during the study period 2019. R: Pearson’s correlation coefficient; NMB (%): normalized mean bias.

		Korea		NCP	
		A priori	A posteriori	A priori	A posteriori
MAM	R	0.66	0.72	0.75	0.75
	NMB	-24.20	-5.66	-13.90	12.34
JJA	R	0.45	0.63	0.54	0.52
	NMB	15.63	1.83	5.25	22.32
SON	R	0.72	0.82	0.50	0.55
	NMB	-2.06	21.66	-11.43	15.24
DJF	R	0.75	0.76	0.55	0.59
	NMB	-23.54	13.45	-1.05	33.75
Yearly	R	0.71	0.84	0.76	0.78

NMB	-12.11	8.51	-6.00	21.70
-----	--------	------	-------	-------

30 **Table S6. Seasonal and yearly mean primary PM emissions (g/s) before (a priori) and after (a posteriori) the primary PM emissions adjustments (the emissions adjustments using the AHI AOD and GOCI-AHI fused AOD) over the modeling domain during the study period 2019. The primary PM emissions here indicate the total amount of all primary PM species listed in Table S2.**

		MAM	JJA	SON	DJF	Yearly
Emissions adjusted using AHI AOD	A priori	13.45	11.90	12.35	15.19	13.22
	A posteriori	21.19	21.61	19.55	31.79	23.53
	Difference (post - prior) (%)	57.54	81.62	58.27	109.30	76.68
Emissions adjusted using GOCI-AHI AOD	A priori	13.45	11.90	12.35	15.19	13.22
	A posteriori	28.28	28.91	23.16	33.08	28.36
	Difference (post - prior) (%)	110.30	142.96	87.54	117.73	114.63

35 **Table S7. Monthly and 3-month mean NO_x emissions (tons/day) before (a priori) and after (a posteriori) the NO_x emissions adjustment over the modeling domain during the study period 2022.**

	MAR	APR	MAY	3-month
A priori	0.83	0.82	0.82	0.82
A posteriori	0.80	0.71	0.76	0.76
Difference (post - prior) (%)	-2.83	-13.40	-7.33	-7.84

Table S8. Monthly and 3-month mean primary PM emissions (g/s) before (a priori) and after (a posteriori) the primary PM emissions adjustments (using GEMS-AMI-GOCI-2 fused AOD) over the modeling domain during the study period 2022. The primary PM emissions here indicate the total amount of all primary PM species listed in Table S2.

	MAR	APR	MAY	3-month
A priori	14.61	12.80	12.61	13.34
A posteriori	10.35	13.67	12.38	12.14
Difference (post - prior) (%)	-29.17	6.86	-1.81	-9.03

40

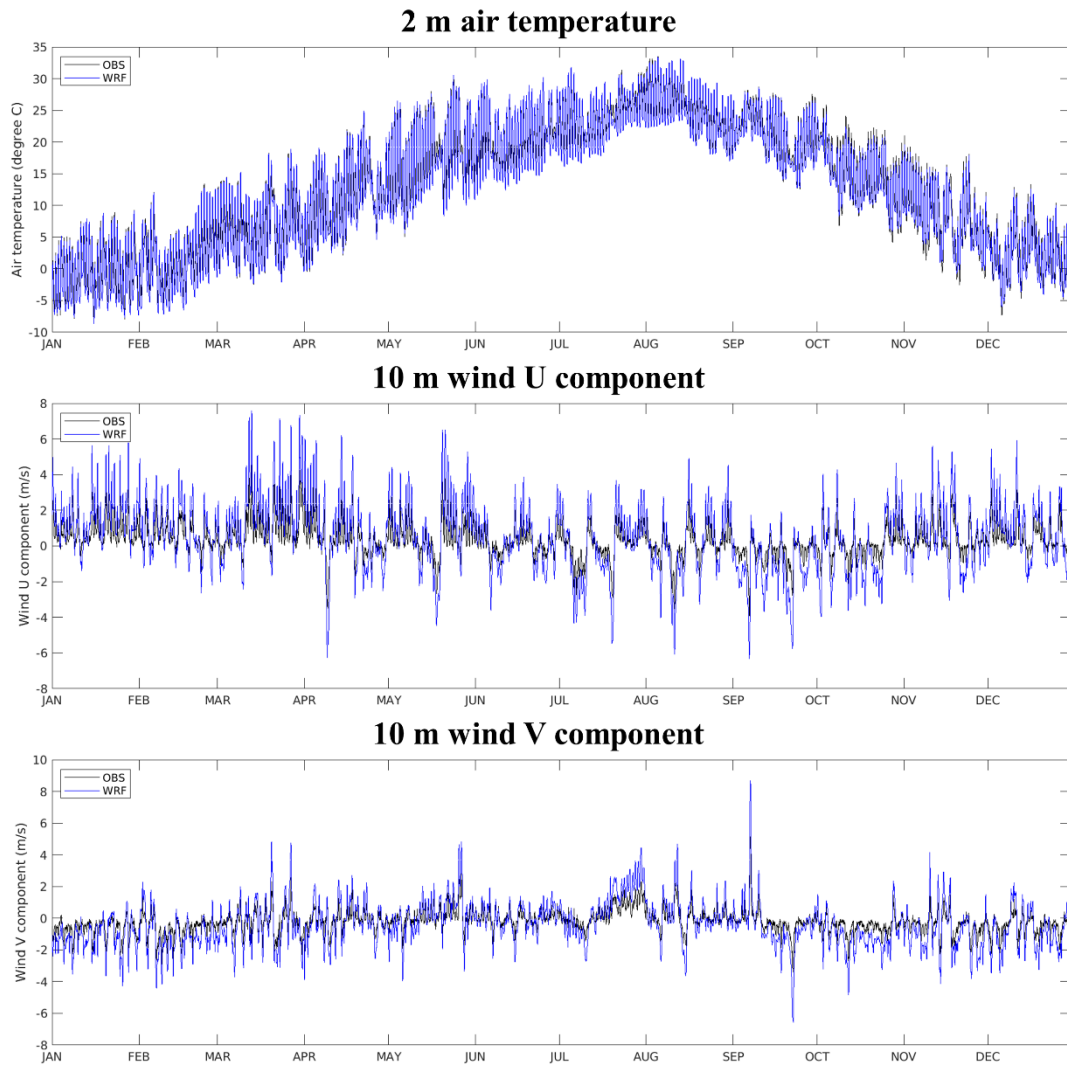


Figure S1. Time-series comparisons between WRF-simulated hourly meteorological fields (2 m air temperatures (°C), and 10 m wind U and V components (m/s)) and ground-based in-situ measurements in Korea during the study period 2019 (132 sites). OBS: ground-based in-situ measurements, WRF: WRF-simulated meteorological fields.

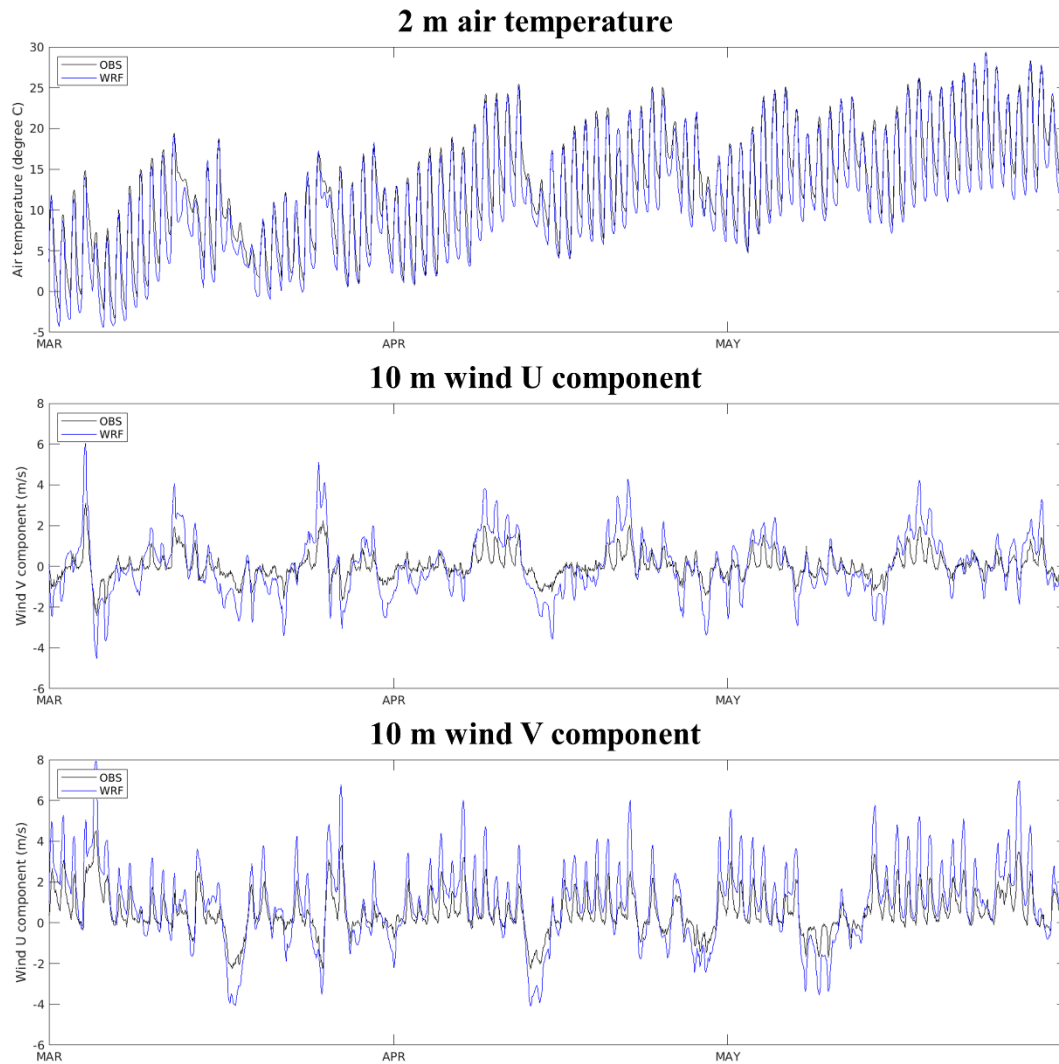


Figure S2. Time-series comparisons between WRF-simulated hourly meteorological fields (2 m air temperatures ($^{\circ}$ C), and 10 m wind U and V components (m/s)) and ground-based in-situ measurements in Korea during the study period 2022 (95 sites). OBS: ground-based in-situ measurements, WRF: WRF-simulated meteorological fields.

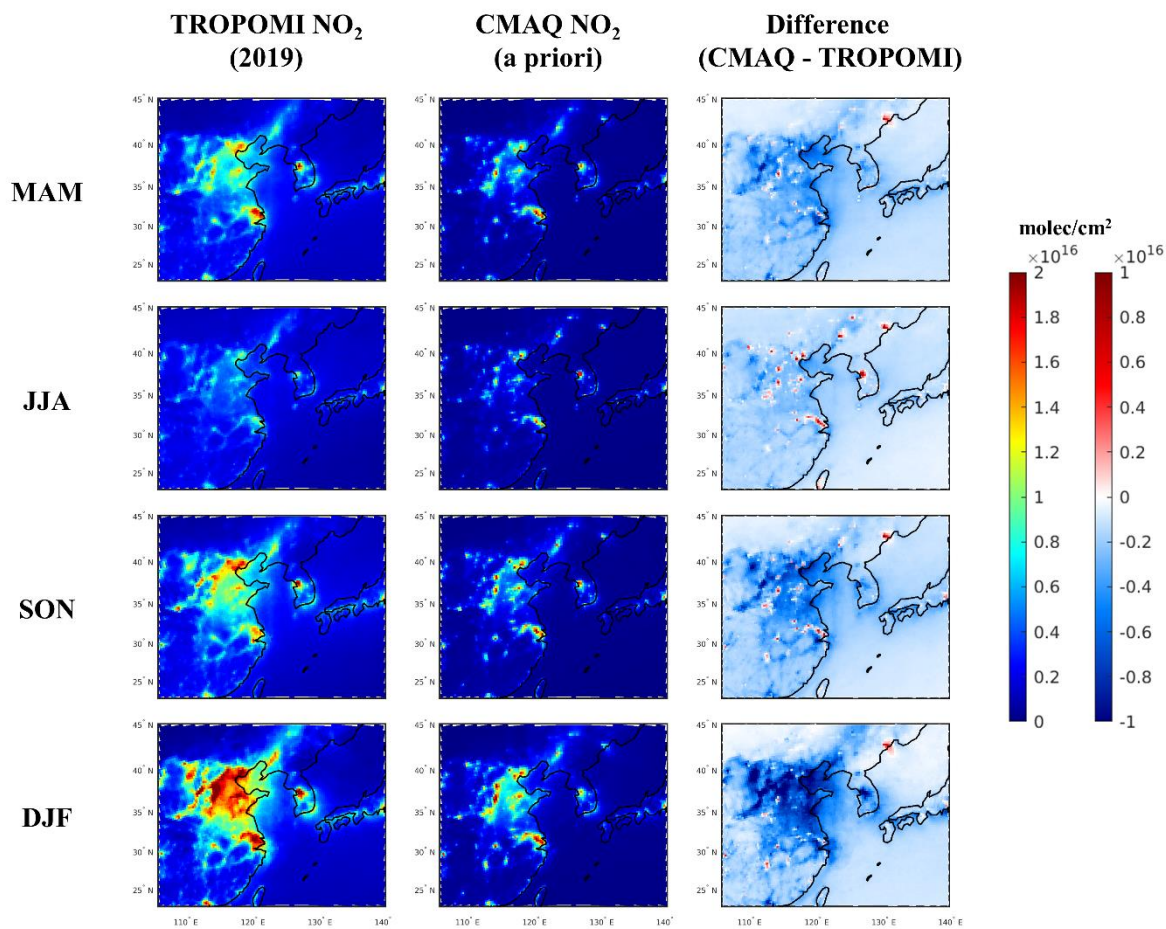


Figure S3. Spatial distributions of TROPOMI NO₂ columns (molec/cm²) and CMAQ-simulated NO₂ columns before the NO_x emissions adjustment during the study period 2019. MAM: March, April, and May, JJA: June, July, and August, SON: September, October, and November, DJF: December, January, and February

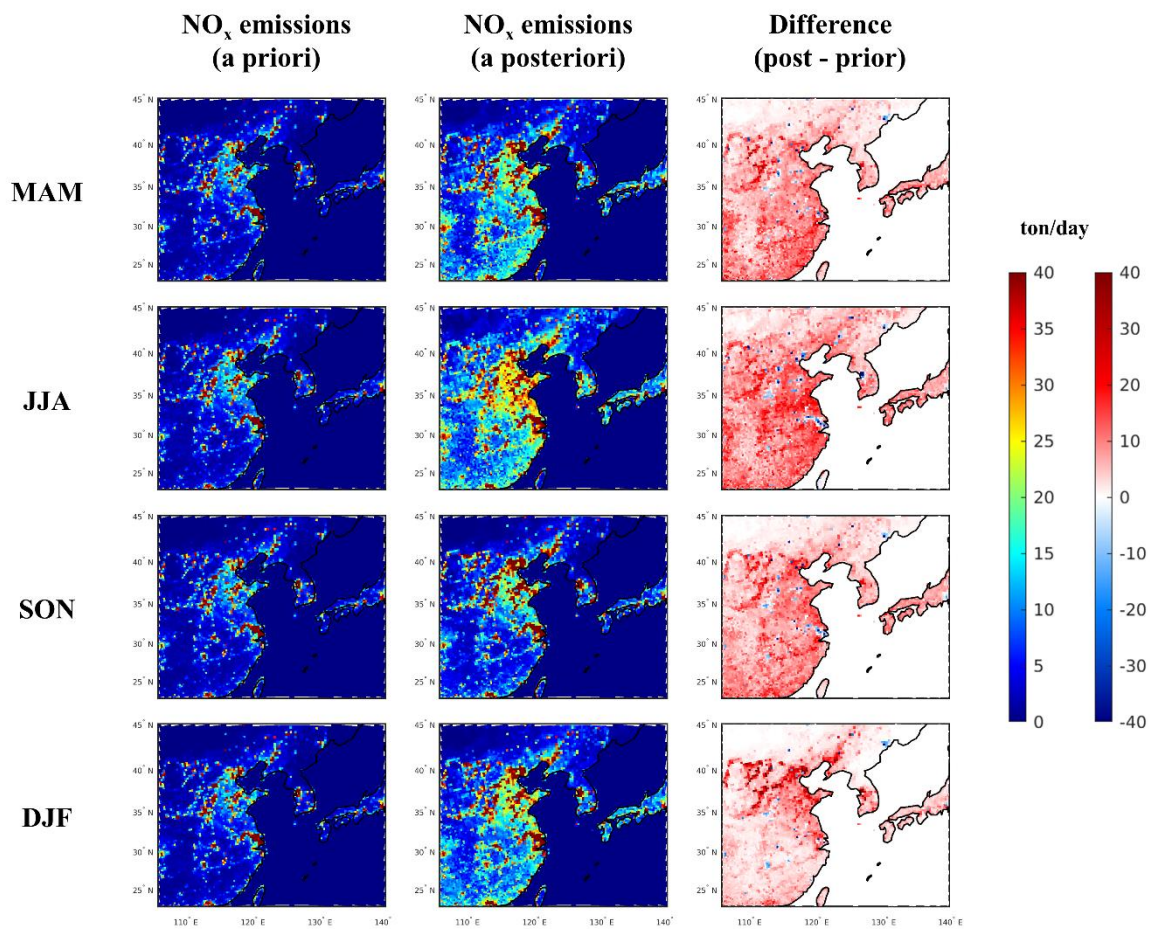
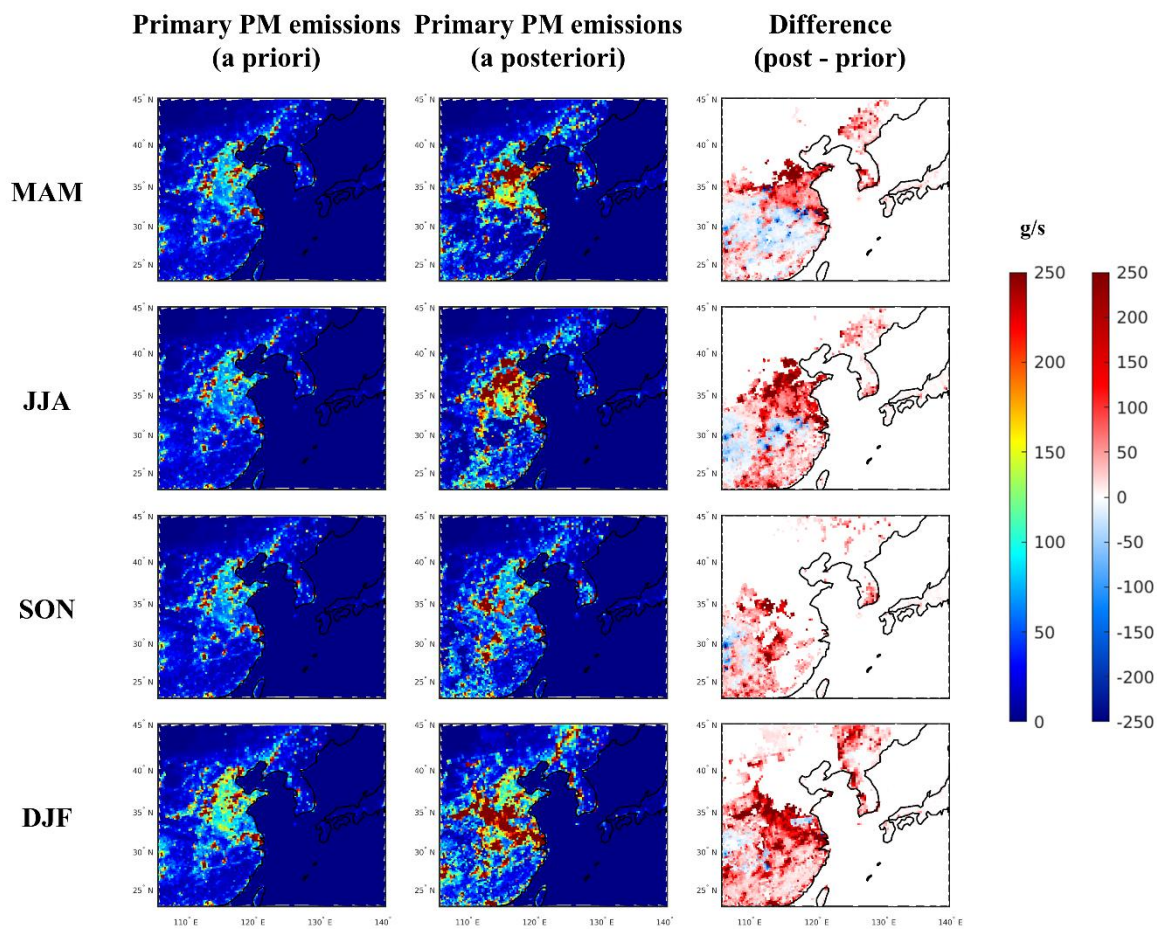
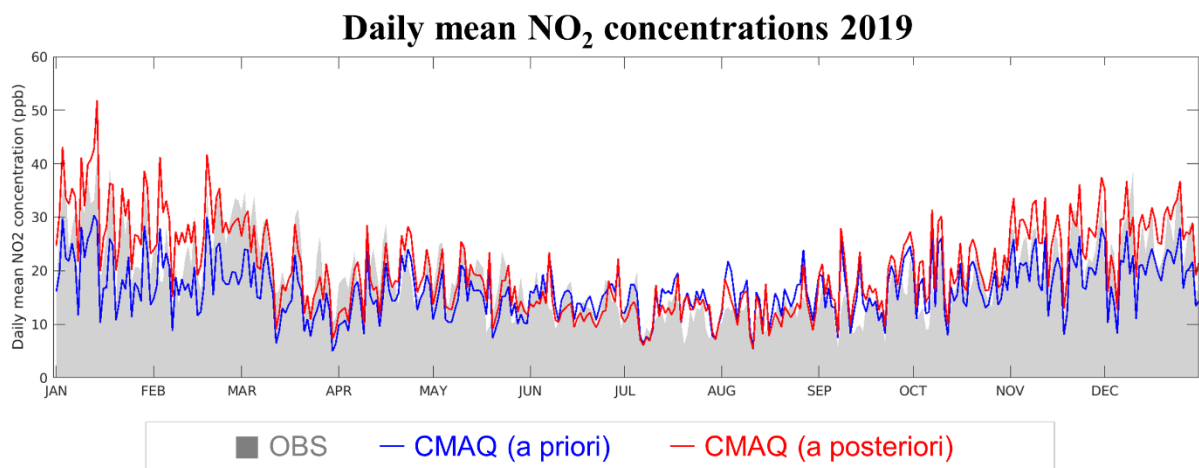


Figure S4. Spatial distributions of the bottom-up estimates of NO_x emissions (ton/day) before (a priori) and after (a posteriori) the NO_x emissions adjustment during the study period 2019.



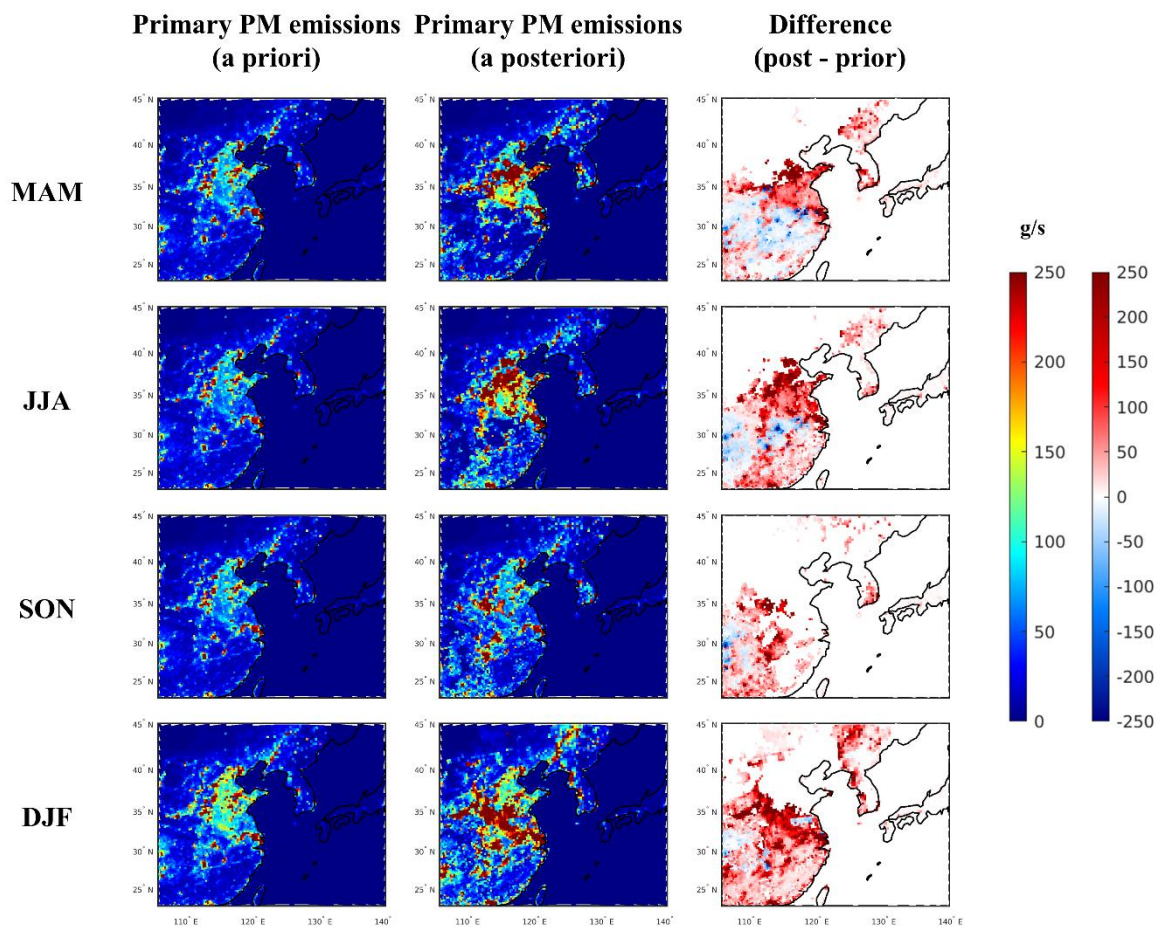
60

Figure S5. Spatial distributions of TROPOMI NO₂ columns, and CMAQ-simulated NO₂ columns before (a priori) and after (a posteriori) the NO_x emissions adjustment during the study period 2019. MAM: March, April, and May; JJA: June, July, and August; SON: September, October, and November; and DJF: December, January, and February.



65

Figure S6. Comparisons of the time-series of the CMAQ-simulated daily mean surface NO₂ concentrations (ppb) before (a priori) and after (a posteriori) the NO_x emission adjustment, and the ground-based in-situ measurements in Korea (346 AirKorea sites) during the study period 2019. OBS: ground-based in-situ measurements.



70

Figure S7. Spatial distributions of the bottom-up estimates of primary PM emissions (g/s) before (a priori) and after (a posteriori) the primary PM emissions adjustment (using the AHI AOD) during the study period 2019. The primary PM emissions here indicate the total amount of all primary PM species listed in Table S2.

75

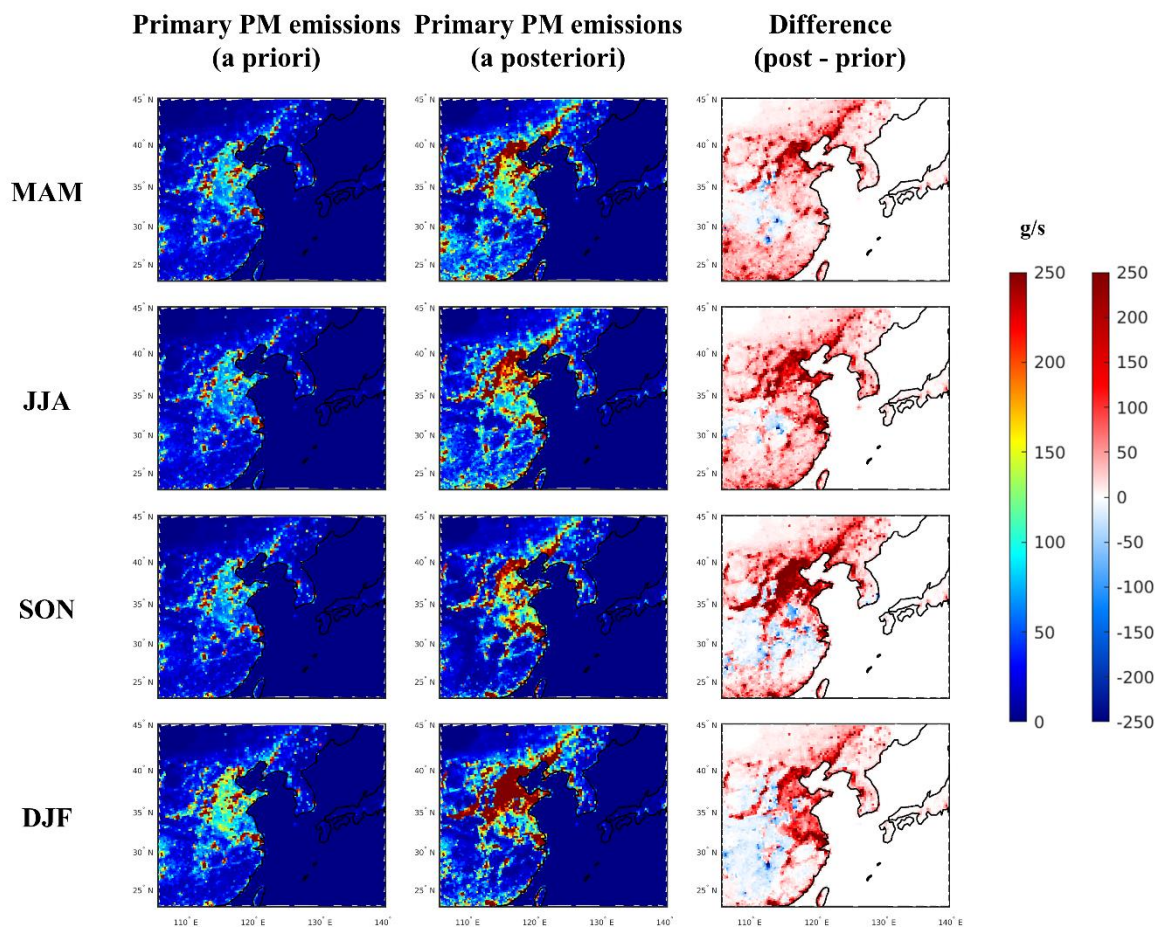


Figure S8. Spatial distributions of the bottom-up estimates of primary PM emissions (g/s) before (a priori) and after (a posteriori) the primary PM emissions adjustment (using GOCI-AHI fused AOD) during the study period 2019. The primary PM emissions here indicate the total amount of all primary PM species listed in Table S2.

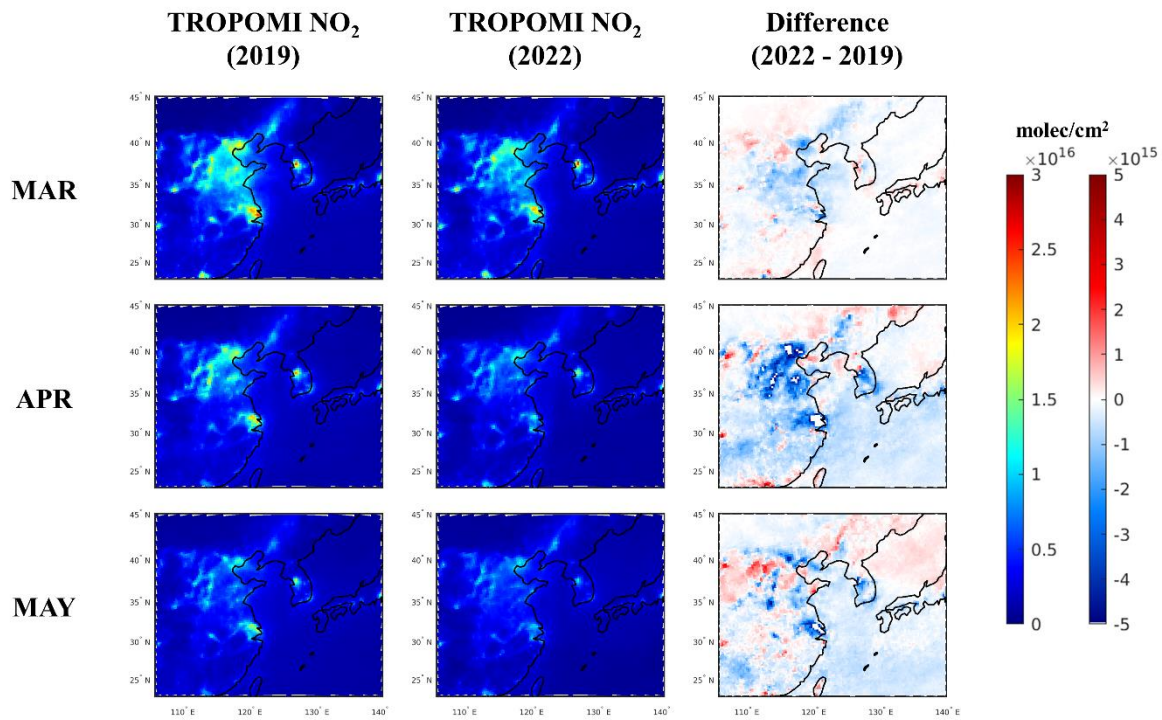
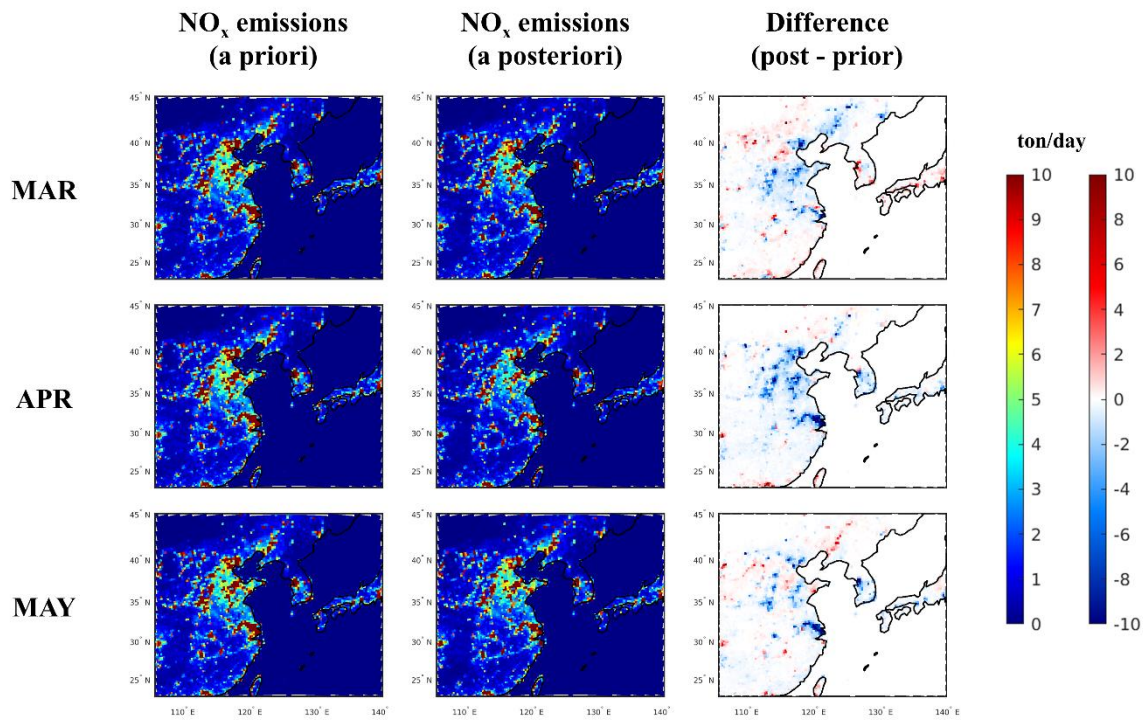
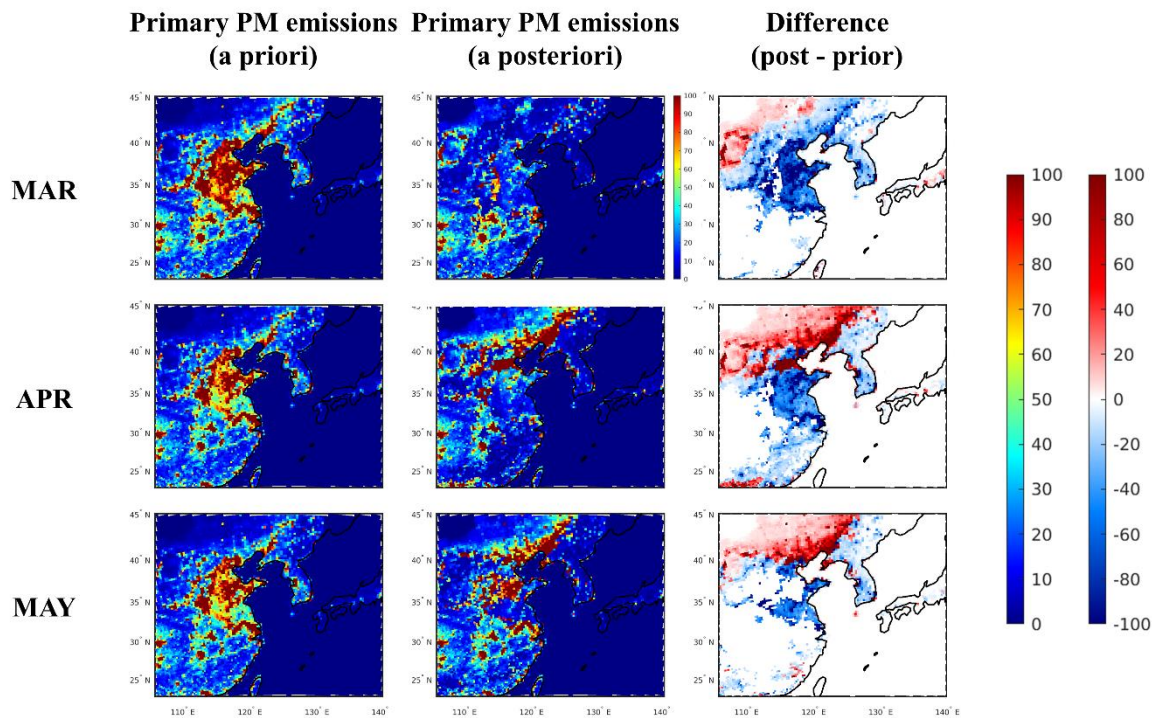


Figure S9. Spatial distributions of TROPOMI NO₂ columns (molec/cm²) in March, April, and May 2019 and 2022.



85 **Figure S10. Spatial distributions of the bottom-up estimates of NO_x emissions (ton/day) before (a priori) and after (a posteriori) the NO_x emissions adjustment during the study period 2022.**



90 **Figure S11.** Spatial distributions of the bottom-up estimates of primary PM emissions (g/s) before (a priori) and after (a posteriori) the primary PM emissions adjustment (using GEMS-AMI-GOCI-2 fused AOD) during the study period 2022. The primary PM emissions here indicate the total amount of all primary PM species listed in Table S2.

References

- Hatakeyama, S., Murano, K., Sakamaki, F., Mukai, H., Bandow, H., & Komazaki, Y. (2001). Transport of Atmospheric
95 Pollutants from East Asia. *Water, Air, and Soil Pollution*, 130(1), 373–378. <https://doi.org/10.1023/A:1013877000169>
- Ohara, T., Akimoto, H., Kurokawa, J., Horii, N., Yamaji, K., Yan, X., & Hayasaka, T. (2007). An Asian emission inventory
of anthropogenic emission sources for the period 1980–2020. *Atmospheric Chemistry and Physics*, 7(16), 4419–4444.
<https://doi.org/10.5194/acp-7-4419-2007>
- Kumar, N., Chu, A., & Foster, A. (2007). An empirical relationship between PM_{2.5} and aerosol optical depth in Delhi
100 Metropolitan. *Atmospheric Environment*, 41(21), 4492–4503. <https://doi.org/10.1016/j.atmosenv.2007.01.046>
- Tian, J. and Chen, D., 2010. Spectral, spatial, and temporal sensitivity of correlating MODIS aerosol optical depth with
ground-based fine particulate matter (PM_{2.5}) across southern Ontario. *Canadian Journal of Remote Sensing*, 36, 119–
128. [10.5589/m10-033](https://doi.org/10.5589/m10-033).
- Remer, L. A., Mattoo, S., Levy, R. C., & Munchak, L. A. (2013). MODIS 3 km aerosol product: Algorithm and global
105 perspective. *Atmospheric Measurement Techniques*, 6(7), 1829–1844. <https://doi.org/10.5194/amt-6-1829-2013>
- Levy, R. C., Mattoo, S., Munchak, L. A., Remer, L. A., Sayer, A. M., Patadia, F., & Hsu, N. C. (2013). The Collection 6
MODIS aerosol products over land and ocean. *Atmospheric Measurement Techniques*, 6(11), 2989–3034.
<https://doi.org/10.5194/amt-6-2989-2013>
- Chan, P. K., Zhao, X.-P., & Heidinger, A. K. (2013). Long-Term Aerosol Climate Data Record Derived from Operational
110 AVHRR Satellite Observations. *Dataset Papers in Geosciences*, 2013, e140791. <https://doi.org/10.7167/2013/140791>
- Ahn, C., Torres, O., & Jethva, H. (2014). Assessment of OMI near-UV aerosol optical depth over land. *Journal of
Geophysical Research: Atmospheres*, 119(5), 2457–2473. <https://doi.org/10.1002/2013JD020188>
- Levy, R., Hsu, C., et al., 2015. MODIS Atmosphere L2 Aerosol Product. NASA MODIS Adaptive Processing System,
Goddard Space Flight Center, USA: http://dx.doi.org/10.5067/MODIS/MOD04_L2.006
- 115 Garay, M. J., Witek, M. L., Kahn, R. A., Seidel, F. C., Limbacher, J. A., Bull, M. A., Diner, D. J., Hansen, E. G.,
Kalashnikova, O. V., Lee, H., Nastan, A. M., & Yu, Y. (2020). Introducing the 4.4 km spatial resolution Multi-Angle
Imaging SpectroRadiometer (MISR) aerosol product. *Atmospheric Measurement Techniques*, 13(2), 593–628.
<https://doi.org/10.5194/amt-13-593-2020>
- Bellouin, N., Boucher, O., Haywood, J., & Reddy, M. S. (2005). Global estimate of aerosol direct radiative forcing from
120 satellite measurements. *Nature*, 438(7071), 1138–1141. <https://doi.org/10.1038/nature04348>
- Remer, L. A., Kleidman, R. G., Levy, R. C., Kaufman, Y. J., Tanré, D., Mattoo, S., Martins, J. V., Ichoku, C., Koren, I., Yu,
H., & Holben, B. N. (2008). Global aerosol climatology from the MODIS satellite sensors. *Journal of Geophysical
Research: Atmospheres*, 113(D14). <https://doi.org/10.1029/2007JD009661>
- Munchak, L. A., Levy, R. C., Mattoo, S., Remer, L. A., Holben, B. N., Schafer, J. S., Hostetler, C. A., & Ferrare, R. A.
125 (2013). MODIS 3 km aerosol product: Applications over land in an urban/suburban region. *Atmospheric Measurement
Techniques*, 6(7), 1747–1759. <https://doi.org/10.5194/amt-6-1747-2013>

- Filonchyk, M., Yan, H., Zhang, Z., Yang, S., Li, W., & Li, Y. (2019). Combined use of satellite and surface observations to study aerosol optical depth in different regions of China. *Scientific Reports*, 9(1), 6174. <https://doi.org/10.1038/s41598-019-42466-6>
- 130 Jung, J., Souri, A. H., Wong, D. C., Lee, S., Jeon, W., Kim, J., & Choi, Y. (2019). The Impact of the Direct Effect of Aerosols on Meteorology and Air Quality Using Aerosol Optical Depth Assimilation During the KORUS-AQ Campaign. *Journal of Geophysical Research: Atmospheres*, 124(14), 8303–8319. <https://doi.org/10.1029/2019JD030641>
- 135 Jung, J., Choi, Y., Wong, D. C., Nelson, D., & Lee, S. (2021). Role of Sea Fog Over the Yellow Sea on Air Quality With the Direct Effect of Aerosols. *Journal of Geophysical Research: Atmospheres*, 126(5), e2020JD033498. <https://doi.org/10.1029/2020JD033498>
- Lee, K., Kim, M., Choi, M., Kim, K., Choi, Y., Jeong, J., Moon, K.-J., & Lee, S. (2022). Fast and operational gap filling in satellite-derived aerosol optical depths using statistical techniques. *J. Appl. Rem. Sens*, 16(4). <https://doi.org/10.1117/1.JRS.16.044507>
- 140 Byun, D., & Schere, K. L. (2006). Review of the Governing Equations, Computational Algorithms, and Other Components of the Models-3 Community Multiscale Air Quality (CMAQ) Modeling System. *Applied Mechanics Reviews*, 59(2), 51–77. <https://doi.org/10.1115/1.2128636>
- Wang, J., Xu, X., Henze, D. K., Zeng, J., Ji, Q., Tsay, S.-C., & Huang, J. (2012). Top-down estimate of dust emissions through integration of MODIS and MISR aerosol retrievals with the GEOS-Chem adjoint model. *Geophysical Research Letters*, 39(8). <https://doi.org/10.1029/2012GL051136>
- 145 Ku, B., & Park, R. J. (2013). Comparative inverse analysis of satellite (MODIS) and ground (PM10) observations to estimate dust emissions in East Asia. *Asia-Pacific Journal of Atmospheric Sciences*, 49(1), 3–17. <https://doi.org/10.1007/s13143-013-0002-5>
- Koo, Y.-S., Choi, D.-R., Kwon, H.-Y., Jang, Y.-K., & Han, J.-S. (2015). Improvement of PM10 prediction in East Asia using inverse modeling. *Atmospheric Environment*, 106, 318–328. <https://doi.org/10.1016/j.atmosenv.2015.02.004>
- 150 Pang, J., Liu, Z., Wang, X., Bresch, J., Ban, J., Chen, D., & Kim, J. (2018). Assimilating AOD retrievals from GOCI and VIIRS to forecast surface PM2.5 episodes over Eastern China. *Atmospheric Environment*, 179, 288–304. <https://doi.org/10.1016/j.atmosenv.2018.02.011>
- Xia, X., Min, J., Shen, F., Wang, Y., & Yang, C. (2019). Aerosol Data Assimilation Using Data from Fengyun-3A and MODIS: Application to a Dust Storm over East Asia in 2011. *Advances in Atmospheric Sciences*, 36(1), 1–14. <https://doi.org/10.1007/s00376-018-8075-9>
- 155 Wang, Y., Wang, J., Xu, X., Henze, D. K., Qu, Z., & Yang, K. (2020). Inverse modeling of SO₂ and NO_x emissions over China using multisensor satellite data – Part 1: Formulation and sensitivity analysis. *Atmospheric Chemistry and Physics*, 20(11), 6631–6650. <https://doi.org/10.5194/acp-20-6631-2020>

- 160 Li, N., Tang, K., Wang, Y., Wang, J., Feng, W., Zhang, H., Liao, H., Hu, J., Long, X., Shi, C., & Su, X. (2021). Is the efficacy of satellite-based inversion of SO₂ emission model dependent? *Environmental Research Letters*, 16(3), 035018. <https://doi.org/10.1088/1748-9326/abe829>
- Lee, S., Song, C. H., Han, K. M., Henze, D. K., Lee, K., Yu, J., Woo, J.-H., Jung, J., Choi, Y., Saide, P. E., & Carmichael, G. R. (2022). Impacts of uncertainties in emissions on aerosol data assimilation and short-term PM_{2.5} predictions over
165 Northeast Asia. *Atmospheric Environment*, 271, 118921. <https://doi.org/10.1016/j.atmosenv.2021.118921>
- Vijayaraghavan, K., Snell, H. E., & Seigneur, C. (2008). Practical Aspects of Using Satellite Data in Air Quality Modeling. *Environmental Science & Technology*, 42(22), 8187–8192. <https://doi.org/10.1021/es7031339>
- Jeon, W., Choi, Y., Percell, P., Sourì, A. H., Song, C.-K., Kim, S.-T., & Kim, J. (2016). Computationally efficient air quality forecasting tool: Implementation of STOPS v1.5 model into CMAQ v5.0.2 for a prediction of Asian dust. *Geoscientific
170 Model Development*, 9(10), 3671–3684. <https://doi.org/10.5194/gmd-9-3671-2016>
- Lee, S., Song, C. H., Park, R. S., Park, M. E., Han, K. M., Kim, J., et al. (2016). GIST-PM-Asia v1: Development of a numerical system to improve particulate matter forecasts in South Korea using geostationary satellite-retrieved aerosol optical data over Northeast Asia. *Geoscientific Model Development*, 9(1), 17–39. <https://doi.org/10.5194/gmd-9-17-2016>
- 175 Yumimoto, K., Nagao, T. m., Kikuchi, M., Sekiyama, T. t, Murakami, H., Tanaka, T. y., Ogi, A., Irie, H., Khatri, P., Okumura, H., Arai, K., Morino, I., Uchino, O., & Maki, T. (2016). Aerosol data assimilation using data from Himawari-8, a next-generation geostationary meteorological satellite. *Geophysical Research Letters*, 43(11), 5886–5894. <https://doi.org/10.1002/2016GL069298>
- Jin, J., Segers, A., Heemink, A., Yoshida, M., Han, W., & Lin, H.-X. (2019). Dust Emission Inversion Using Himawari-8
180 AODs Over East Asia: An Extreme Dust Event in May 2017. *Journal of Advances in Modeling Earth Systems*, 11(2), 446–467. <https://doi.org/10.1029/2018MS001491>
- Choi, W. J., and Coauthors, 2018: Introducing the Geostationary Environment Monitoring Spectrometer. *J. Appl. Remote Sens.*, 13, 044005, <https://doi.org/10.1117/1.JRS.12.044005>
- Kim, J., Choi, M., Kim, M., Lim, H., Lee, S., Moon, K. J., Choi, W. J., Yoon, J. M., Kim, S.-K., Ko, D. H., Lee, S. H., Park,
185 Y., & Chung, C.-Y. (2018). Monitoring Atmospheric Composition by Geo-Kompsat-2: Goci-2, Ami and Gems. IGARSS 2018 - 2018 IEEE International Geoscience and Remote Sensing Symposium, 7750–7752. <https://doi.org/10.1109/IGARSS.2018.8518713>
- Kim, J., Jeong, U., Ahn, M.-H., Kim, J. H., Park, R. J., Lee, H., Song, C. H., Choi, Y.-S., Lee, K.-H., Yoo, J.-M., Jeong, M.-J., Park, S. K., Lee, K.-M., Song, C.-K., Kim, S.-W., Kim, Y. J., Kim, S.-W., Kim, M., Go, S., ... Choi, Y. (2020a).
190 New Era of Air Quality Monitoring from Space: Geostationary Environment Monitoring Spectrometer (GEMS). *Bulletin of the American Meteorological Society*, 101(1), E1–E22. <https://doi.org/10.1175/BAMS-D-18-0013.1>
- Zoogman, P., and Coauthors, 2011: Ozone air quality measurement requirements for a geostationary satellite mission. *Atmos. Environ.*, 45, 7143–7150, <https://doi.org/10.1016/j.atmosenv.2011.05.058>

- 195 Ingmann, P., B. Veihelmann, J. Langen, D. Lamarre, H. Stark, and G. B. Courrèges-Lacoste, 2012: Requirements for the
GMES atmosphere service and ESA's implementation concept: Sentinels-4/-5 and -5p. *Remote Sens. Environ.*, 120,
58–69, <https://doi.org/10.1016/j.rse.2012.01.023>
- Zou, B., Liu, N., Wang, W., Feng, H., Liu, X., & Lin, Y. (2020). An Effective and Efficient Enhanced Fixed Rank
Smoothing Method for the Spatiotemporal Fusion of Multiple-Satellite Aerosol Optical Depth Products. *Remote
Sensing*, 12(7), Article 7. <https://doi.org/10.3390/rs12071102>
- 200 Choi, M., Lim, H., Kim, J., Lee, S., Eck, T. F., Holben, B. N., Garay, M. J., Hyer, E. J., Saide, P. E., & Liu, H. (2019).
Validation, comparison, and integration of GOCI, AHI, MODIS, MISR, and VIIRS aerosol optical depth over East
Asia during the 2016 KORUS-AQ campaign. *Atmospheric Measurement Techniques*, 12(8), 4619–4641.
<https://doi.org/10.5194/amt-12-4619-2019>
- Go, S., Kim, J., Park, S. S., Kim, M., Lim, H., Kim, J.-Y., Lee, D.-W., & Im, J. (2020). Synergistic Use of Hyperspectral
205 UV-Visible OMI and Broadband Meteorological Imager MODIS Data for a Merged Aerosol Product. *Remote Sensing*,
12(23), Article 23. <https://doi.org/10.3390/rs12233987>
- Lim, H., Go, S., Kim, J., Choi, M., Lee, S., Song, C.-K., & Kasai, Y. (2021). Integration of GOCI and AHI Yonsei aerosol
optical depth products during the 2016 KORUS-AQ and 2018 EMERGE campaigns, *Atmospheric Measurement
Techniques*, 14, 4575–4592
- 210 Holben, B. N., Eck, T. F., Slutsker, I., Tanré, D., Buis, J. P., Setzer, A., Vermote, E., Reagan, J. A., Kaufmann, Y. J.,
Nakajima, T., Lavenu, F., Jankowiak, I., and Smirnov, A. (1998). AERONET: A federated instrument network and data
archive for aerosol characterisation, *Remote Sens. Environ.*, 66, 1–16
- Dyer, O. (2022). Covid-19: Lockdowns spread in China as omicron tests “zero covid” strategy. *BMJ*, 376, o859.
<https://doi.org/10.1136/bmj.o859>
- 215 Woo, J.-H., Kim, Y., Kim, H.-K., Choi, K.-C., Eum, J.-H., Lee, J.-B., Lim, J.-H., Kim, J., & Seong, M. (2020). Development
of the CREATE Inventory in Support of Integrated Climate and Air Quality Modeling for Asia. *Sustainability*, 12(19),
7930. <https://doi.org/10.3390/su12197930>
- Jang, Y., Lee, Y., Kim, J., Kim, Y., Woo, J.-H. (2019). Improvement China Point Source for Improving Bottom-Up
Emission Inventory. *Asia Pac. J. Atmos. Sci.*, 56, 107–118
- 220 Yeo, S.Y., Lee, H.K., Choi, S.W, Seol, S.H., Jin, H.A., Yoo, C., Lim, J.Y., Kim, J.S. (2019). Analysis of the national air
pollutant emission inventory (CAPSS 2015) and the major cause of change in Republic of Korea. *Asian J. Atmos.
Environ.* 13 (3), 212–231. <https://doi.org/10.5572/ajae.2019.13.3.212>
- Toon, O. B., et al. (2016), Planning, implementation and scientific goals of the Studies of Emissions and Atmospheric
Composition, Clouds and Climate Coupling by Regional Surveys (SEAC4RS) field mission, *J. Geophys. Res. Atmos.*,
225 121, 4967–5009, doi:10.1002/2015JD024297
- Guenther, A. B., Jiang, X., Heald, C. L., Sakulyanontvittaya, T., Duhl, T., Emmons, L. K., & Wang, X. (2012). The Model
of Emissions of Gases and Aerosols from Nature version 2.1 (MEGAN2.1): An extended and updated framework for

- modeling biogenic emissions. *Geoscientific Model Development*, 5(6), 1471–1492. <https://doi.org/10.5194/gmd-5-1471-2012>
- 230 Guenther, A.B., Karl, T., Harley, P., Wiedinmyer, C., Palmer, P. I., & Geron, C. (2006). Estimates of global terrestrial isoprene emissions using MEGAN (Model of Emissions of Gases and Aerosols from Nature). *Atmospheric Chemistry and Physics*, 6(11), 3181–3210. <https://doi.org/10.5194/acp-6-3181-2006>
- Guenther, A., Jiang, X., Shah, T., Huang, L., Kemball-Cook, S., & Yarwood, G. (2020). Model of Emissions of Gases and Aerosol from Nature Version 3 (MEGAN3) for Estimating Biogenic Emissions. In C. Mensink, W. Gong, & A. Hakami (Eds.), *Air Pollution Modeling and its Application XXVI* (pp. 187–192). Springer International Publishing. https://doi.org/10.1007/978-3-030-22055-6_29
- 235 Yuan, H., Dai, Y., Xiao, Z., Ji, D., & Shangguan, W. (2011). Reprocessing the MODIS Leaf Area Index products for land surface and climate modelling. *Remote Sensing of Environment*, 115(5), 1171–1187. <https://doi.org/10.1016/j.rse.2011.01.001>
- 240 Jiang, Z., Vargas, M., & Csiszar, I. (2016). New operational real-time daily rolling weekly Green Vegetation fraction product derived from suomi NPP VIIRS reflectance data. 2016 IEEE International Geoscience and Remote Sensing Symposium (IGARSS), 3524–3527. <https://doi.org/10.1109/IGARSS.2016.7729911>
- Skamarock, W. C., Klemp, J. B., Dudhia, J., Gill, D. O., Barker, D., Duda, M. G., ... Powers, J. G. (2008). A Description of the Advanced Research WRF Version 3 (No. NCAR/TN-475+STR). University Corporation for Atmospheric Research. <https://doi.org/10.5065/D68S4MVH>
- 245 Pouyaei, A., Choi, Y., Jung, J., Sadeghi, B., & Song, C. H. (2020). Concentration Trajectory Route of Air pollution with an Integrated Lagrangian model (C-TRAIL Model v1.0) derived from the Community Multiscale Air Quality Model (CMAQ Model v5.2). *Geoscientific Model Development*, 13(8), 3489–3505. <https://doi.org/10.5194/gmd-13-3489-2020>
- Pouyaei, A., Sadeghi, B., Choi, Y., Jung, J., Souri, A. H., Zhao, C., & Song, C. H. (2021). Development and Implementation of a Physics-Based Convective Mixing Scheme in the Community Multiscale Air Quality Modeling Framework. *Journal of Advances in Modeling Earth Systems*, 13(6), e2021MS002475. <https://doi.org/10.1029/2021MS002475>
- 250 Park, J., Jung, J., Choi, Y., Mousavinezhad, S., & Pouyaei, A. (2022). The sensitivities of ozone and PM2.5 concentrations to the satellite-derived leaf area index over East Asia and its neighboring seas in the WRF-CMAQ modeling system. *Environmental Pollution*, 306, 119419. <https://doi.org/10.1016/j.envpol.2022.119419>
- 255 Veefkind, J. P., Aben, I., McMullan, K., Förster, H., de Vries, J., Otter, G., Claas, J., Eskes, H. J., de Haan, J. F., Kleipool, Q., van Weele, M., Hasekamp, O., Hoogeveen, R., Landgraf, J., Snel, R., Tol, P., Ingmann, P., Voors, R., Kruizinga, B., ... Levelt, P. F. (2012). TROPOMI on the ESA Sentinel-5 Precursor: A GMES mission for global observations of the atmospheric composition for climate, air quality and ozone layer applications. *Remote Sensing of Environment*, 120, 70–83. <https://doi.org/10.1016/j.rse.2011.09.02>

- 260 Okuyama, A., Andou, A., Date, K., Hoasaka, K., Mori, N., Murata, H., Tabata, T., Takahashi, M., Yoshino, R., & Bessho, K. (2015). Preliminary validation of Himawari-8/AHI navigation and calibration. *Earth Observing Systems*, 9607, 663–672. <https://doi.org/10.1117/12.2188978>
- Bessho, K., Date, K., Hayashi, M., Ikeda, A., Imai, T., Inoue, H., Kumagai, Y., Miyakawa, T., Murata, H., Ohno, T., Okuyama, A., Oyama, R., Sasaki, Y., Shimazu, Y., Shimoji, K., Sumida, Y., Suzuki, M., Taniguchi, H., Tsuchiyama, H., ... Yoshida, R. (2016). An Introduction to Himawari-8/9—Japan’s New-Generation Geostationary Meteorological Satellites. *Journal of the Meteorological Society of Japan*. Ser. II, 94(2), 151–183. <https://doi.org/10.2151/jmsj.2016-009>
- 265 H., ... Yoshida, R. (2016). An Introduction to Himawari-8/9—Japan’s New-Generation Geostationary Meteorological Satellites. *Journal of the Meteorological Society of Japan*. Ser. II, 94(2), 151–183. <https://doi.org/10.2151/jmsj.2016-009>
- Pitchford, M., Maim, W., Schichtel, B., Kumar, N., Lowenthal, D., & Hand, J. (2007). Revised algorithm for estimating light extinction from IMPROVE particle speciation data. *Journal of the Air & Waste Management Association* 57(11), 1326–1336. <https://doi.org/10.3155/1047-3289.57.11.1326>
- 270 1326–1336. <https://doi.org/10.3155/1047-3289.57.11.1326>
- Ångström, A. (1961). Techniques of Determining the Turbidity of the Atmosphere. *Tellus*, 13(2), 214–223. <https://doi.org/10.3402/tellusa.v13i2.9493>
- Choi, M., Kim, J., Lee, J., Kim, M., Park, Y.-J., Jeong, U., Kim, W., Hong, H., Holben, B., Eck, T. F., Song, C. H., Lim, J.-H., & Song, C.-K. (2016). GOCI Yonsei Aerosol Retrieval (YAER) algorithm and validation during the DRAGON-NE Asia 2012 campaign. *Atmospheric Measurement Techniques*, 9(3), 1377–1398. <https://doi.org/10.5194/amt-9-1377-2016>
- 275 Asia 2012 campaign. *Atmospheric Measurement Techniques*, 9(3), 1377–1398. <https://doi.org/10.5194/amt-9-1377-2016>
- Choi, M., Kim, J., Lee, J., Kim, M., Park, Y.-J., Holben, B., Eck, T. F., Li, Z., & Song, C. H. (2018). GOCI Yonsei aerosol retrieval version 2 products: An improved algorithm and error analysis with uncertainty estimation from 5-year validation over East Asia. *Atmospheric Measurement Techniques*, 11(1), 385–408. <https://doi.org/10.5194/amt-11-385-2018>
- 280 385–408. <https://doi.org/10.5194/amt-11-385-2018>
- Lim, H., Choi, M., Kim, J., Kasai, Y., & Chan, P. W. (2018). AHI/Himawari-8 Yonsei Aerosol Retrieval (YAER): Algorithm, Validation and Merged Products. *Remote Sensing*, 10(5), 699. <https://doi.org/10.3390/rs10050699>
- Chung, S.-R., Ahn, M.-H., Han, K.-S., Lee, K.-T., & Shin, D.-B. (2020). Meteorological Products of Geo-KOMPSAT 2A (GK2A) Satellite. *Asia-Pacific Journal of Atmospheric Sciences*, 56(2), 185–185. <https://doi.org/10.1007/s13143-020-00199-x>
- 285 185–185. <https://doi.org/10.1007/s13143-020-00199-x>
- Kim, D., Gu, M., Oh, T.-H., Kim, E.-K., & Yang, H.-J. (2021). Introduction of the Advanced Meteorological Imager of Geo-Kompsat-2a: In-Orbit Tests and Performance Validation. *Remote Sensing*, 13(7), Article 7. <https://doi.org/10.3390/rs13071303>
- Kim, M., Kim, J., Lim, H., & Chan, P. W. (2020b). The implementation of Yonsei Aerosol Retrieval (YAER) Algorithm to GK-2A/AMI and FY-4A/AGRI. American Geophysical Union, Fall Meeting 2020, A141-0007.
- 290 GK-2A/AMI and FY-4A/AGRI. American Geophysical Union, Fall Meeting 2020, A141-0007.
- Rodgers, C.D. (2000). Inverse Methods for Atmospheric Sounding: Theory and Practice, Series on Atmospheric, Oceanic and Planetary Physics. WORLD SCIENTIFIC. <https://doi.org/10.1142/3171>

- 295 Souri, A. H., Nowlan, C. R., González Abad, G., Zhu, L., Blake, D. R., Fried, A., Weinheimer, A. J., Wisthaler, A., Woo, J.-
H., Zhang, Q., Chan Miller, C. E., Liu, X., & Chance, K. (2020). An inversion of NO_x and non-methane volatile
organic compound (NMVOC) emissions using satellite observations during the KORUS-AQ campaign and
implications for surface ozone over East Asia. *Atmospheric Chemistry and Physics*, 20(16), 9837–9854.
<https://doi.org/10.5194/acp-20-9837-2020>
- 300 Jung, J., Choi, Y., Souri, A. H., Mousavinezhad, S., Sayeed, A., & Lee, K. (2022). The Impact of Springtime-Transported
Air Pollutants on Local Air Quality With Satellite-Constrained NO_x Emission Adjustments Over East Asia. *Journal of
Geophysical Research: Atmospheres*, 127(5), e2021JD035251. <https://doi.org/10.1029/2021JD035251>
- Napelenok, S. L., Cohan, D. S., Hu, Y., & Russell, A. G. (2006). Decoupled direct 3D sensitivity analysis for particulate
matter (DDM-3D/PM). *Atmospheric Environment*, 40(32), 6112–6121. <https://doi.org/10.1016/j.atmosenv.2006.05.039>
- Zhang, W., Xu, H., & Zheng, F. (2018). Aerosol Optical Depth Retrieval over East Asia Using Himawari-8/AHI Data.
Remote Sensing, 10(1), 137. <https://doi.org/10.3390/rs10010137>
- 305 Martin, R. V., Jacob, D. J., Chance, K., Kurosu, T. P., Palmer, P. I., & Evans, M. J. (2003). Global inventory of nitrogen
oxide emissions constrained by space-based observations of NO₂ columns. *Journal of Geophysical Research:
Atmospheres*, 108(D17). <https://doi.org/10.1029/2003JD003453>
- Cooper, M., Martin, R. V., Padmanabhan, A., & Henze, D. K. (2017). Comparing mass balance and adjoint methods for
inverse modeling of nitrogen dioxide columns for global nitrogen oxide emissions. *Journal of Geophysical Research:
310 Atmospheres*, 122(8), 4718–4734. <https://doi.org/10.1002/2016JD025985>
- Mousavinezhad, S., Choi, Y., Pouyaei, A., Ghahremanloo, M., & Nelson, D. L. (2021). A comprehensive investigation of
surface ozone pollution in China, 2015–2019: Separating the contributions from meteorology and precursor emissions.
Atmospheric Research, 257, 105599. <https://doi.org/10.1016/j.atmosres.2021.105599>
- Chen, L., Fei, Y., Wang, R., Fang, P., Han, J., & Zha, Y. (2021). Retrieval of High Temporal Resolution Aerosol Optical
315 Depth Using the GOCI Remote Sensing Data. *Remote Sensing*, 13(12), 2376. <https://doi.org/10.3390/rs13122376>
- Caporale, G. M., Carmona-González, N., & Gil-Alana, L. A. (2022). Atmospheric Pollution in Chinese Cities: Trends and
Persistence (SSRN Scholarly Paper No. 4309213). <https://doi.org/10.2139/ssrn.4309213>
- Chen, L., Mao, F., Hong, J., Zang, L., Chen, J., Zhang, Y., Gan, Y., Gong, W., & Xu, H. (2022). Improving PM_{2.5}
320 predictions during COVID-19 lockdown by assimilating multi-source observations and adjusting emissions.
Environmental Pollution, 297, 118783. <https://doi.org/10.1016/j.envpol.2021.118783>
- Li, K., Ni, R., Jiang, T., Tian, Y., Zhang, X., Li, C., & Xie, C. (2022). The regional impact of the COVID-19 lockdown on
the air quality in Ji'nan, China. *Scientific Reports*, 12(1), Article 1. <https://doi.org/10.1038/s41598-022-16105-6>
- Carmichael, G.R., Streets, D.G., Calori, G., Amann, M., Jacobson, M.Z., Hansen, J., & Ueda, H. (2002). Changing trends in
sulfur emissions in Asia: Implications for acid deposition. *Environ. Sci. Technol.*, 36, 4707-4713,
325 [doi:10.1021/es011509c](https://doi.org/10.1021/es011509c).