

# Four North American glaciers advanced past their modern positions thousands of years apart in the Holocene

Andrew G. Jones<sup>1</sup>, Shaun A. Marcott<sup>1</sup>, Andrew L. Gorin<sup>2</sup>, Tori M. Kennedy<sup>3</sup>, Jeremy D. Shakun<sup>2</sup>, Brent M. Goehring<sup>3</sup>, Brian Menounos<sup>4,5</sup>, Douglas H. Clark<sup>6</sup>, Matias Romero<sup>1</sup>, Marc W. Caffee<sup>7,8</sup>

<sup>1</sup>Department of Geoscience, University of Wisconsin-Madison, Madison, Wisconsin, USA

<sup>2</sup>Department of Earth & Environmental Sciences, Boston College, Chestnut Hill, Massachusetts, USA

<sup>3</sup>Department of Earth and Environmental Sciences, Tulane University, New Orleans, Louisiana, USA

<sup>4</sup>Geography Department, University of Northern British Columbia, Prince George, British Columbia, Canada

<sup>5</sup>Hakai Institute, Campbell River, British Columbia, Canada

<sup>6</sup>Department of Geology, Western Washington University, Bellingham, Washington, USA

<sup>7</sup>Department of Physics and Astronomy, Purdue University, West Lafayette, IN 47907, USA

<sup>8</sup>Department of Earth, Atmospheric, and Planetary Science, Purdue University, West Lafayette, IN 47907, USA

Correspondence to: Andrew G. Jones (agjones3@wisc.edu)

**Abstract.** There is unambiguous evidence that glaciers have retreated from their 19<sup>th</sup> century positions, but it is less clear how far glaciers have retreated relative to their long-term Holocene fluctuations. Glaciers in western North America are thought to have advanced from minimum positions in the early Holocene to maximum positions in the late Holocene. We assess when four North American glaciers, located between 38–60° N, were larger or smaller than their modern (2018–2020 CE) positions during the Holocene. We measured 26 paired cosmogenic *in situ* <sup>14</sup>C and <sup>10</sup>Be concentrations in recently exposed proglacial bedrock and applied a Monte Carlo forward model to reconstruct plausible bedrock exposure-burial histories. We find that these glaciers advanced past their modern positions thousands of years apart in the Holocene: a glacier in the Juneau Icefield (BC, Canada) at ~2 ka, Kokanee Glacier (BC, Canada) at ~6 ka, and Mammoth Glacier (WY, USA) at ~1 ka; the fourth glacier, Conness Glacier (CA, USA), was likely larger than its modern position for the duration of the Holocene until present. The disparate Holocene exposure-burial histories are at odds with expectations of similar glacier histories given the presumed shared climate forcings of decreasing Northern Hemisphere summer insolation through the Holocene followed by global greenhouse gas forcing in the industrial era. We hypothesize that the range in histories is the result of unequal amounts of modern retreat relative to each glacier's Holocene maximum position, rather than asynchronous Holocene advance histories. We explore the influence of glacier hypsometry and response time on glacier retreat in the industrial era as a potential cause of the non-uniform burial durations. We also report mean abrasion rates at three of the four glaciers: Juneau Icefield Glacier:  $0.3 \pm 0.3 \text{ mm yr}^{-1}$ ; Kokanee Glacier:  $0.04 \pm 0.03 \text{ mm yr}^{-1}$ ; and Mammoth Glacier:  $0.2 \pm 0.2 \text{ mm yr}^{-1}$ .

## 1 Introduction

As global temperatures have increased since the industrial era, alpine glaciers have receded worldwide to lengths not observed since record-keeping began in the 17<sup>th</sup> century (Oerlemans, 2005). Declining glacial meltwater poses threats to agriculture, human consumption, and biodiversity (Milner et al., 2017; Huss et al., 2017) with severe consequences for people who live in high mountain regions (IPCC, 2021). Although significant strides have been made towards projecting glacier disappearance (e.g. Rounce et al., 2023), there is ample room to reduce uncertainty in these projections by studying past glacier length fluctuations in response to climate change. Notably, temperatures in recent decades are almost as warm (Marcott et al., 2013) or warmer than

Deleted: <sup>5</sup> Hakai

Deleted: The global retreat of alpine glaciers provides visible

Deleted: of industrial-era warming

Deleted: glacier position today compares to glacier length

Deleted: over the Holocene is less clear.

Deleted: over the

Deleted: , occupying their

Deleted: Holocene position

Deleted: 19<sup>th</sup> century before rapidly retreating to their sizes today

Deleted: sizes

Deleted: measure

Deleted: sizes

Deleted: during

Deleted: Ice Field

Deleted: by

Deleted: size

Deleted: interpret

Deleted: to be

Deleted: length history

Deleted: The intensity and rate of modern warming has exacerbated length differences between glaciers that occur due to ...

Deleted: . We hypothesize that highly varying magnitudes of glacier change in North America today is a departure from similar magnitudes of

Deleted: change over the Holocene.

Deleted: (IPCC, 2021)

Deleted: using

Deleted: better understand glacier

Deleted: Temperatures in the 21<sup>st</sup> century

(Osman et al., 2021) the peak temperatures of the Holocene (11.7 ka to present). Holocene glacier length fluctuations thereby provide critical long-term context for modern glacier retreat and insight into glacier change in the coming decades.

It is difficult, however, to directly assess the modern positions of North American glaciers within the context of their Holocene length fluctuations due to the glaciers' advance history. Glaciers in North America are thought to have progressively advanced from minimum positions occupied in the early Holocene between 11–7 ka to maximum positions in the latest Holocene during the so-called Little Ice Age (LIA, 1350–1850 CE; Wanner et al., 2008; Menounos et al., 2009; Solomina et al., 2015). The glacier advances are evidenced in increasing glaciogenic sediment fluxes in distal lakes and overridden trees preserved in moraines (Davis et al., 2009; Solomina et al., 2015; Menounos et al., 2009; Osborn et al., 2012) and are likely related to decreasing Northern Hemisphere summer insolation from ~9 ka to present (Menounos et al., 2009; Laskar et al., 2004). As North American glaciers advanced, they overrode moraines formed in the early and mid-Holocene, destroying the spatial record of their minimum and intermediate glacier positions and leaving only a record of their maximum area (Gibbons et al., 1984; Anderson et al., 2014; Rowan et al., 2022). The lake sediment records are also limited in spatial information during inferred advances and retreats. As a result, many questions remain about the recessed glacier positions that are most similar to glaciers today.

It is expected that glaciers across western North America advanced roughly synchronously over the Holocene because the first-order climate controls are similar: insolation decreases across the northern mid-latitudes and mean annual temperature decreases coherently across the western United States (Osman et al., 2021; Menounos et al., 2009). Glacier length is a robust archive of climate, having among the highest known signal-to-noise ratios in recording industrial era climate changes (Roe et al., 2017). Yet, glacier-specific variables such as hypsometry and local climate are known to cause non-uniform responses between glaciers within and across regions (Hugonnet et al., 2021; Rupper et al., 2009). We attempt to minimize the complexities of comparing glaciers to one another by focusing on glacier area change rather than area alone, which should control for the differences in hypsometry and background climate.

Here, we use the  $^{14}\text{C}$ - $^{10}\text{Be}$  chronometer in proglacial bedrock (Goehring et al., 2011; Vickers et al., 2020) to directly compare modern glacier positions to glacier length fluctuations over the Holocene at four North American glaciers. Cosmogenic nuclides accumulated in bedrock collected from the terminus of a modern glacier reflect past changes in glacier position. Using *in situ*  $^{14}\text{C}$ - $^{10}\text{Be}$  cosmogenic exposure dating of proglacial bedrock and a Monte Carlo-based forward model (Vickers et al., 2020), we assess when the glaciers were larger or smaller than their present-day positions during the Holocene. Our findings indicate more heterogeneity amongst the four sites than expected given their relative proximity to one another and shared climate forcings. We hypothesize that rather than representing disparate Holocene histories, non-uniform amounts of industrial era retreat caused some glaciers to recede more than others relative to their LIA maxima. We discuss the influence of glacier hypsometry and response time on glacier retreat in the industrial era as a potential factor causing the non-uniform burial durations. We also present mean abrasion rates for three of the four glaciers here and discuss the influence of glacier erosion on our measurements.

## 2 Background

The four North American glaciers in this study are located along the American Cordillera between 38–60° N (Figure 1, inset map). From north to south, the first glacier is an unnamed valley glacier in the Juneau Icefield that we henceforth refer to as JIF Glacier (59.47° N, 135.96° W, 1492 m). JIF Glacier is located in the Coast Mountains on the border of southeast Alaska and British Columbia. It is an independent glacier today within the broader Juneau Icefield due to a drainage divide at its headwall.

Deleted: . How glaciers fluctuated in the

Deleted: provides

Deleted: as glaciers equilibrate to modern climate

Deleted: In North America, expanded ice positions are well-constrained, but there are few measurements of glaciers in recessed positions (Solomina et al., 2015) in which to compare to today. Glaciers in the western United States retreated from valley positions during deglaciation to largely within their cirques by the start of the Holocene (Marcott et al., 2019); this retreat is recorded in a series of moraines dated to be deglacial and earliest Holocene in age. Then, over the Holocene, glaciers in western Canada advanced from minimum positions occupied between 11–7 ka (Menounos et al., 2009), when Northern Hemisphere summer insolation was high, to maximum positions in the latest Holocene, during the so-called Little Ice Age (LIA, 1350–1850 CE; Wanner et al., 2008; Menounos et al., 2009). While Holocene maximum positions are recorded in well-preserved LIA moraines, how small glaciers became during the early Holocene is difficult to assess—as the glaciers advanced from their minimum positions, they overrode their prior moraines, destroying the record of their former size (Gibbons et al., 1984; Anderson et al., 2014; Rowan et al., 2022). Inferences of glacier activity are commonly made from glaciogenic sediment fluxes recorded in distal lakes, but these do not directly record glacier length. Lake records have been paired with radiocarbon dating of fossil trees in moraines to constrain periods of glacier advance, with such a multi-proxy approach forming much of the understanding of Holocene glacier trends that exists today (Davis et al., 2009; Solomina et al., 2015; Menounos et al., 2009; Osborn et al., 2007). In many mid-to-low latitude locations, fossil trees are absent in moraines, and lake records alone are used to infer relative changes. The overall weaker constraints on glacier position in the early to mid-Holocene have prevented a direct assessment of modern glacier size within a Holocene context. [1]

Deleted: also

Deleted: record

Deleted: Yet, other variables can cause variation in glacier length responses, such as glacier hypsometry and climate heterogeneity (Hugonnet et al., 2021; Rupper et al., 2009)

Deleted: For example, in the western United States, glaciers in the Sierra Nevada, California are thought to have disappeared from ~10–3 ka prior to 'Neoglacial' cooling. [2]

Deleted: Cosmogenic nuclides accumulated in bedrock collected from the terminus of modern ice reflect past intervals when the glacier was larger or smaller than it. [3]

Deleted: not only integrated exposure and burial durations of recently exposed bedrock, but

Deleted: today

Formatted: Font: Not Italic

Deleted: suggest

Deleted: We propose that the large differences in the magnitude of glacier retreat across western North America. [4]

Deleted: [5]  
2 Glacier Setting and Historical Retreat [5]

The known Holocene history of Alaskan glaciers most likely resembles that of western Canada, with minimum glacier positions in the early Holocene and maximum glacier positions in the late Holocene (1810–1880 CE) as insolation decreases from ~9 ka to present (Barclay et al., 2009; Menounos et al., 2009). Overridden tree stumps and detrital wood suggest that two land-terminating outlet glaciers of the Juneau Icefield advanced at ~2 ka past their ‘modern’ (at time of field work in 2004 CE) positions (Clague et al., 2010). In the Chugach Mountains, ~600 km northwest of the Juneau Icefield, distal lake sediment records suggest glaciers disappeared there from 10–6 ka before the onset of Neoglaciation at ~4.5 ka (McKay and Kaufman, 2009). McKay and Kaufman (2009) report synchronous glacier advances at their two Chugach sites in the last two millennium, one at ~2 ka, and the other during the LIA (1400–1900 CE, or 0.6–0.1 ka), in agreement with the late-Holocene advances

observed elsewhere in the Juneau Icefield (Clague et al., 2010). Distal lake sediments from the Ahklun Mountains of southwestern Alaska also suggest that glaciers disappeared locally from 9–3 ka before Neoglaciation at ~3 ka (Levy et al., 2004). In sum the early and mid-Holocene history of glaciers in southern Alaska appears to be spatially variable but there is consistent, repeated evidence of late Holocene glacier growth.

Kokanee Glacier (49.75° N, 117.14° W, 2561 m) is in southeastern British Columbia in the Selkirk Mountains. Menounos et al. (2009) review Holocene glacier fluctuations in the Canadian Cordillera using lake sediment records, moraine dendrochronology, and lichen ages. They find that from 11–7 ka, ice was smaller than its extent in the late 20<sup>th</sup> century. Episodic glacier advances occurred at 8.6–8.1 ka, 7.4–6.5 ka, 5.8 ka, 4.4–4.0 ka, 3.7–2.8 ka, 1.7–1.3 ka, and through the LIA (Menounos et al., 2009; Osborn et al., 2012). These advances are inferred to be synchronous at the centennial-scale amongst the southern Canadian Cordillera, suggesting that these advances are related to broad climate signals across western North America (Menounos et al., 2009).

Mammoth Glacier (43.17°N, 109.67°W, 3627 m) is in the Wind River Range, Wyoming. Its Holocene length history is expected to follow that of the western United States and Canada: glaciers reached Holocene minimum positions between 11–7 ka and then advanced to maximum extents during the LIA (Marcott et al., 2019; Menounos et al., 2009). Distal lake sediment fluxes from

the valley below Mammoth Glacier suggest that the glacier has been active since at least 4.5 ka—though perhaps disappearing in the early Holocene—but was much smaller than its LIA extent from 4.5–1 ka (Davies, 2011), implying a substantial advance during the LIA.

Conness Glacier (37.97°N, 119.32°W, 3603 m) is in the Sierra Nevada, California, USA. Glaciers in the Sierra Nevada are thought to have disappeared entirely by the early Holocene (~10 ka) prior to so-called ‘Neoglacial’ advances beginning at ~3 ka (Bowerman and Clark, 2011; Cary, 2018; Konrad and Clark, 1998; Porter and Denton, 1967). Progressively increasing fluxes of rock flour from ~3 ka to the LIA have been documented in distal lake sediments at Conness Glacier (Konrad and Clark, 1998) and at Palisade Glacier (Bowerman and Clark, 2011), located ~125 km south of Conness Glacier, interpreted as the reformation and advance of both glaciers.

**Moved down [1]:** is related to the climate change at the glacier and the glacier’s response time, defined as the time for each glacier’s length to reach equilibrium with climate change. Hypsometric variables such as ice surface slope, cirque-wall shading, and debris cover impact response time, with steep ice surface slopes thought to be a particular correlate for quick response times (Pelto and Hedlund, 2001; Zekollari et al., 2020).

**Moved down [2]:** ¶

$$\tau = \frac{H}{-b_t} \rightarrow \rightarrow \rightarrow \rightarrow \rightarrow \rightarrow \rightarrow \rightarrow$$

**Moved down [3]:** ¶  
where  $\tau$  = time for volume adjustment in years,  $H$  = thickness in meters (m), and  $b_t$  = maximum mass loss at the terminus in  $\text{m yr}^{-1}$ .

**Deleted:** Below, we summarize each glacier’s modern retreat history, hypsometry, and Holocene paleoclimate information, with data reported in Table 1. We approximate each glacier’s response time as maximum mass loss from the terminus divided by mean glacier thickness (Jóhannesson et al., 1989) as shown in Eq. 1

**Deleted: (1)** ¶

**Deleted:** This approximation for response time (along with glacier slope) provides insight into how much each glacier has been impacted by industrial-era warming. We caveat this response time as being a minimum estimate of how quickly a glacier could adjust its volume because we use the maximum mass loss from the terminus; its purpose is to serve as a common point of comparison. ¶  
From north to south, the first glacier is an unnamed valley glacier in the Juneau Ice Field (henceforth JIF Glacier) in the Coast Mountains on the border of southeast Alaska and British Columbia. It is the largest glacier studied here, with an area of 15.2 km<sup>2</sup> in 2021 (compared to the smallest glacier presented, Conness Glacier, at 0.1 km<sup>2</sup>). It has the lowest-sloping ice surface of the four glaciers (5°) and has the slowest response time ( $\tau = 27$ ). It is the most impacted by absolute area loss from climate change, but the least impacted by percentage relative to its Holocene maximum at 70% of its LIA area. The 2004 area of JIF glacier mapped in Figure 1 is likely similar to the area of the glacier at ~2 ka prior to the latest Holocene and LIA advances (Clague et al., 2010). JIF Glacier’s Holocene history is expected to exhibit the ‘classic’ two-phase history observed in Alaska and western Canada of smaller in the early Holocene and larger in the late Holocene (Davis et al., 2009; McKay and Kaufman, 2009; Levy et al., 2004; Menounos et al., 2009).

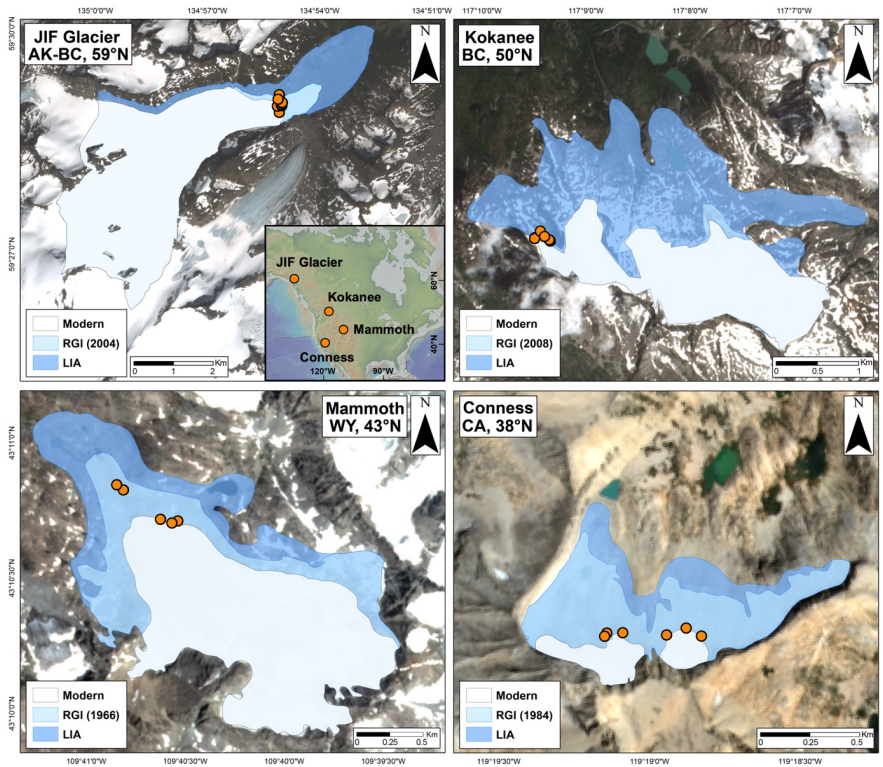
Page Break

[6]

**Moved down [4]:** Modern ice extent represents glacier size in 2021 CE. Randolph Glacier Inventory (RGI) data depends upon data availability in the RGI database.

**Moved down [5]:** Image credit: Copernicus. ¶

**Moved down [6]:** assumed to be last occupied at ~1880 CE (Menounos et al., 2009; Wanner et al., 2008). Two composites of regional glaciers from the Wind River Range and Sierra Nevada are included to provide context for regional glacier change (DeVisser and Fountain, 2015; Basagic and Fountain, 2011). Internal mapping has been



**Figure 1.** Study site locations and historical ice extents. Little Ice Age extent mapped from trimlines and moraines assumed to be last occupied by glaciers in ~1880 CE. Proglacial bedrock sample locations from this study denoted by orange dots. Modern ice extent represents glacier size in 2021 CE. Randolph Glacier Inventory (RGI) date depends upon data availability in the RGI database. Image credit: Copernicus.

Moved (insertion) [4]

Moved (insertion) [5]

### 3 Methods

#### 3.1 Field sampling, laboratory procedures, and cosmogenic nuclide concentration measurements

We collected surface exposure samples by hammer and chisel from glacially abraded, quartz-bearing bedrock within tens of meters of the modern ice margin. We targeted bedrock high points (local topographic maxima) as they are less likely to have prior till accumulation during episodes of exposure. We sampled abraded bedrock to minimize the chance that the bedrock had been quarried, although abrasion does not exclude the possibility of subglacial quarrying prior to abrasion (Rand and Goehring, 2019). All samples were collected in the last five years: JIF Glacier samples collected in 2019; Kokanee Glacier in 2018; Mammoth Glacier in 2020; Conness Glacier in 2018. We present apparent exposure ages that are calculated using the CRONUS-Earth online calculator v.3 (Balco et al., 2008) with the LSDn scaling scheme (Lifton et al., 2014) and primary production

Moved (insertion) [7]



dataset of Borchers et al. (2016). These ages assume continuous exposure with no erosion, modern elevation, and standard atmosphere. Uncertainties are analytical (i.e., internal) only. Exposure ages are ‘apparent’ because subglacial erosion removes nuclides during burial, thus lowering the calculated exposure age from some ‘true’ exposure age.

Quartz separation procedures are modified from Kohl and Nishiizumi (1992). We crushed and sieved samples (~1 kg of rock) to the 250–710  $\mu\text{m}$  size fraction, magnetically separated the minerals, and etched the non-magnetic fraction in dilute HCl and HF/HNO<sub>3</sub>. We performed chemical froth flotation on these aliquots to remove feldspathic minerals. We etched remaining grains in dilute (1–5%) HF/HNO<sub>3</sub> until pure quartz was attained. Samples were then wet-sieved at 250  $\mu\text{m}$  to remove lingering mafic minerals, fine quartz grains, and partially dissolved feldspars. Quartz purity was confirmed by ICP-OES measurement. Quartz was separated at Boston College for samples from Kokanee Glacier and Conness Glacier, at the University of Wisconsin-Madison for samples from Mammoth Glacier, and at Tulane University for samples from JIF Glacier.

We analyzed all samples for *in situ* cosmogenic <sup>14</sup>C and <sup>10</sup>Be concentrations. <sup>10</sup>Be extraction procedures follow Ceperley et al. (2019). We extracted <sup>10</sup>Be at the University of Wisconsin-Madison for all samples except JIF Glacier samples, which were extracted at Tulane University and follow procedures of Ditchburn and Whitehead (1994). We spiked the samples with a <sup>9</sup>Be carrier prepared from raw beryl (OSU White standard, 251.6 ± 0.9 ppm; JIF Glacier samples TuBE, 904 ± 28 ppm). We isolated Be from Fe, Ti, Al, and other ions using anion-cation exchange chromatography. We precipitated BeOH in a pH 8 solution and incinerated the BeOH gels at ~1000°C to convert to BeO. We packed samples with Nb powder into stainless steel cathodes for accelerator mass spectrometry analysis. <sup>10</sup>Be/<sup>9</sup>Be ratios were measured at Purdue Rare Isotope Measurement Lab relative to 07KNSTD dilution series. We ran each batch with at least two blanks; we background-correct samples using the average blank value from within the specific sample batch.

We extracted <sup>14</sup>C at Tulane University for all samples following Goehring et al. (2019). <sup>14</sup>C/<sup>13</sup>C ratios were measured at the National Ocean Sciences Accelerator Mass Spectrometry facility. We calculated exposure ages using the CRONUS Earth-online calculator v.3 using LSDn scaling (Balco et al., 2008; Lifton et al., 2014). Exposure age calculations have ± 4% external uncertainty (Phillips et al., 2016).

### 3.2 <sup>14</sup>C-<sup>10</sup>Be ratios as records of past glacier length

We determined the total time during the Holocene that each glacier was larger or smaller than its present-day size using *in situ* cosmogenic <sup>14</sup>C-<sup>10</sup>Be dating of proglacial bedrock (Goehring et al., 2011). The bedrock abutting the terminus of a glacier today was exposed or buried during the Holocene as the glacier advanced and retreated over the bedrock (Figure 2). We collected several (n = 5–9) bedrock samples at the modern margin of each glacier that were recently exposed during modern retreat (Figure 1). We assume that all samples at a given glacier experienced the same exposure-burial history because the samples have been exposed by retreating ice roughly contemporaneously (within uncertainties of cosmogenic nuclide dating). Nuclide concentrations vary amongst the samples in each glacier’s transect due to unique erosion depths. Exposure duration is inferred from <sup>10</sup>Be concentrations which accumulate when the glacier is smaller than its modern size; burial duration is inferred from disparity between <sup>14</sup>C and <sup>10</sup>Be concentrations because <sup>14</sup>C ( $t_{1/2}$  = 5,700 ± 30 yr) decays rapidly during burial relative to <sup>10</sup>Be ( $t_{1/2}$  = 1.387 ± 0.012 Myr; Chmeleff et al., 2010; Hippe, 2017). We assume that subglacial erosion during the last glacial period removed any nuclides from pre-Holocene exposure (Ivy-Ochs and Briner, 2014), consistent with the absence of cosmogenic exposure ages greater than the length of the Holocene measured in this study. We also assume that burial by till or nonglacial debris (e.g. rockfalls, hillslope sloughing) is insignificant. Although it is possible that bedrock sites were covered in debris during

Formatted: Font color: Auto

Moved up [7]:  
**3.1 Field sampling, laboratory procedures, and cosmogenic nuclide concentration measurements**

We collected surface exposure samples by hammer and chisel from glacially abraded, quartz-bearing bedrock within tens of meters of the modern ice margin. We targeted bedrock high points (local topographic maxima) as they are less likely to have prior till accumulation during episodes of exposure.

Deleted: We sampled abraded bedrock to minimize the change that the bedrock had been quarried, while acknowledging that abrasion does not exclude the possibility of subglacial quarrying prior to abrasion (Rand and Goehring, 2019).

Deleted: performed magnetic separation

Deleted: them

Deleted: non-magnetic grains

Deleted: reached

Formatted: Font: Not Bold

Deleted: determine

Deleted: is

Deleted: advances

Deleted: retreats

Deleted: 3

Deleted: 6

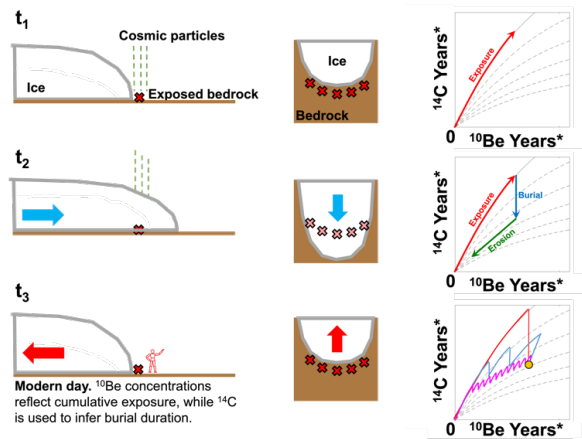
Deleted: see supplement for field photos and historical imagery).

Deleted: contemporaneously.

Deleted: )

Deleted: (

intervals of past ice recession, that scenario is unlikely to uniformly affect all samples given the [spatial variability of such deposits, and thus coherency between samples is a reasonable check.](#)



**Figure 2.** Schematic of *in situ*  $^{14}\text{C}$ - $^{10}\text{Be}$  concentrations in proglacial bedrock in response to glacier length fluctuations. At  $t_1$ , bedrock is exposed and nuclides accumulate along the continuous exposure curve. At  $t_2$ , the glacier has advanced and buried the bedrock. Nuclide production ceases while erosion occurs;  $^{14}\text{C}$  decays rapidly relative to  $^{10}\text{Be}$  during burial, while erosion removes both nuclides. At  $t_3$ , bedrock is re-exposed during modern retreat and sampled. Many scenarios of exposure, burial, and erosion can explain the measured nuclide concentrations, represented by the colored lines in the nuclide plot.

### 3.3 Monte Carlo forward model of nuclide concentrations in proglacial bedrock

We apply a Monte Carlo forward model of  $^{14}\text{C}$  and  $^{10}\text{Be}$  concentrations in proglacial bedrock (Vickers et al., 2020) to determine when in the Holocene each glacier was larger or smaller than its modern position. Because numerous combinations of bedrock exposure, burial, and erosion can create the same concentrations in bedrock, we use the Monte Carlo forward model to iterate through an exhaustive list of 100,000 exposure-burial scenarios at various erosion rates to identify all scenarios that reproduce nuclide concentrations within  $2\sigma$  measurement uncertainty. Fundamentally, the model calculates how  $^{14}\text{C}$  and  $^{10}\text{Be}$  concentrations evolve in a 5 m bedrock column as a glacier advances and retreats over the bedrock surface, simulating production during exposure, and decay and erosion when buried. Each sample is simulated one at a time, and scenarios that can explain the measurements made on all samples at a given glacier are considered successful. Below, the full details of the Monte Carlo forward model are provided; the original documentation can be found in the supplement to Vickers et al. (2020).

The Monte Carlo forward model is governed by Equation 1:

$$N(z, t) = P_{NT}(z) \cdot t + N(z, t - 1) \cdot e^{(-\lambda_N t)} \quad (1)$$

Where  $N$  is the concentration of the nuclide in the bedrock as a function of depth ( $z$ ) and time ( $t$ ),  $P_{NT}$  is the total production of the nuclide via spallation and muon production as a function of depth, and  $\lambda_N$  is the decay constant of the nuclide. The model

**Deleted:** spatially variability of such deposits, and thus coherency between samples is a reasonable check. Results are plotted as nuclide concentrations along surface exposure and burial isochrons (Figure 4), but we note these are merely a visual aid for interpreting the nuclide ratios; more complex modeling is needed to fully understand the relationship between exposure, burial, and erosion, which we assess with the Monte Carlo forward model. Our assumption of simultaneous exposure (or burial) implies that differences in measured concentrations are due to erosion rather than glacier histories at each sample.

### Moved down [8]: 3.3 Monte Carlo forward model of nuclide concentrations in proglacial bedrock

**Deleted:** To constrain when exposure and burial occurred, beyond integrated durations, we apply a Monte Carlo forward model of  $^{14}\text{C}$  and  $^{10}\text{Be}$  concentrations in proglacial bedrock (Vickers et al., 2020). The purpose is to iterate through millions of combinations of nuclide production, radioactive decay, and glacial erosion to identify Holocene exposure-burial scenarios that best explain the measured nuclide concentrations in our proglacial bedrock samples. Fundamentally, the model simulates how  $^{14}\text{C}$  and  $^{10}\text{Be}$  concentrations evolve as a glacier advances and retreats over a transect of surface bedrock samples, simulating production during exposure, and decay and erosion when buried. The Monte Carlo forward model applies 100,000 unique exposure-burial histories to theoretical bedrock columns. Each exposure-burial scenario is a sequence of 100-year timesteps that represent either exposure or burial. There are 110 total timesteps summing to 11,000 years, representing the Holocene when glaciers reached roughly modern sizes (Marcott et al., 2019). The scenarios include a range of natural variability intended to simulate natural glacier length oscillations, where some stochastic length variation over bedrock is expected. At each timestep, the bedrock is either 1) exposed at the surface, with nuclides produced along a 5 m bedrock depth profile, or 2) buried by ice, where nuclide production ceases and the uppermost bedrock is eroded. Ice thickness during burial is assumed to be greater than 10 m where production becomes negligible (Goehring et al., 2011). Erosion rates from 0–2.5 mm yr<sup>-1</sup> are applied to each scenario in steps of 0.1 mm yr<sup>-1</sup>, such that each of the 100,000 scenarios is tested 26 times. Radioactive decay occurs throughout the simulation, depressing  $^{14}\text{C}$ - $^{10}\text{Be}$  ratios relative to the production ratio during burial. Scenarios that recreate measured concentrations in a bedrock sample ... [7]

**Deleted: 3**

**Formatted:** Font: Times New Roman

**Formatted:** Font: Times New Roman

**Formatted:** Font: Times New Roman, Not Bold

**Formatted:** Font: Times New Roman

**Formatted:** Normal, Add space between paragraphs of the same style

**Deleted:** We apply a Monte Carlo forward model to identify best-fitting scenarios.

**Formatted:** Font: Not Bold

**Moved (insertion) [8]**

simulates a binary between exposure or burial; no partial exposure or production through thin ice is considered (ice thicknesses > 10 m make production negligible; Goehring et al., 2011). During exposure, nuclide production is simulated with depth according to CRONUS production and depth attenuation rates (Balco et al., 2008, left of the addition sign in Equation 1) while radioactive decay is ongoing. During burial, production ceases and radioactive decay depresses  $^{14}\text{C}$  relative to  $^{10}\text{Be}$  (the right side of the addition sign in Equation 1), while erosion is simulated by removing the top of the bedrock column at a prescribed rate. We assume that erosion only occurs during burial. Samples with  $^{14}\text{C}$ - $^{10}\text{Be}$  ratios above the production ratio for surface exposure are excluded from the Monte Carlo forward model as some of these samples are not physically reproducible (i.e. ratios cannot be recreated at any erosion depth from our Holocene erosion-burial scenarios), a decision explored in the Discussion.

To be consistent and to consider a range of possible Holocene histories, the Monte Carlo forward model tests the same 100,000 exposure-burial histories for each sample. Each scenario is discretized into 100-year timesteps representing either exposure or burial and there are 110 total timesteps summing to 11,000 years.

To generate a list of exposure-burial histories that are representative of all the possibilities ( $2^{110}$  possibilities, to be precise), one cannot simply select exposure or burial at random for any given timestep, as this leads to highly oscillatory behavior where the state changes, on average, every timestep. In correcting for this, we quasi-randomly generate scenarios by specifying the probability that one timestep is the same as its preceding timestep, designated the P-value. For example, if  $P = 0.50$ , there is a 50% chance that a given timestep has the same designation (exposure or burial) as the preceding one. Scenarios generated at  $P = 0.5$  have high-frequency variability, while scenarios generated at  $P = 0.99$  are relatively stable, typically with millennia of either exposure or burial at a time. The comprehensive list of 100,000 histories used in this paper was generated with constant P-values between 0.6 and 0.99, increasing in increments of 0.01 (i.e.  $P = 0.60$ ,  $P = 0.61$ , etc. to  $P = 0.99$  with 2,500 histories per P-value). We discounted  $P < 0.6$  because values below this threshold did not produce viable exposure-burial histories.

The nuclide concentrations at each sample location are forward modeled using erosion rates from  $0.0\text{--}2.5\text{ mm yr}^{-1}$  in steps of  $0.1\text{ mm yr}^{-1}$ . A scenario is considered successful for a particular bedrock sample if the final surface  $^{14}\text{C}$  and  $^{10}\text{Be}$  concentrations are within uncertainty as determined by the  $2\sigma$  measurement uncertainty and the production rate ratio uncertainty (7.3% for  $^{14}\text{C}$  and 8.3% for  $^{10}\text{Be}$ ,  $1\sigma$ ; Borchers et al., 2016) added in quadrature. Scenarios that reproduce all nuclide concentrations for *all* samples at a given glacier are recorded and saved as viable exposure-burial histories. Solutions that do not include burial in the final 200 years are discarded given the broad evidence of expanded glacier positions during the LIA (Solomina et al., 2015; Menounos et al., 2009) and satellite imagery showing most sample positions buried under ice until the last few years before sampling (Figure 3).

We report the percentage of overlapping scenarios that have exposure at each timestep as ‘probability of exposure’ through time (Figure 5; Figure S5). The probability of exposure is the percentage of overlapping scenarios that feature exposure at a given timestep. For example, if 900 out of 1000 plausible exposure-burial scenarios include exposure from 8.1–8.0 ka, then the probability of exposure in that timestep is 90%. We interpret the change in probability of exposure from greater than 50% to less than 50% to indicate roughly when the glacier advanced past its modern position and buried the bedrock transect we sampled.

### 3.4 Glacier mapping, hypsometry, and response time

Although we are primarily concerned with length fluctuations of the four glaciers in the Holocene, our measurements are inherently linked to the modern-day position of each glacier because it is the reference point. It is therefore necessary to

understand the history of each glacier's position since the industrial era that have influenced its modern position. We first mapped modern (2021 CE) glacier area against LIA glacier extents in QGIS to characterize glacier retreat over this period (Figure 1). We inferred the LIA glacier extents from moraines and trimlines. We overlaid glacier outlines onto modern satellite imagery from Copernicus. We also included an intermediate position using the outlines available from the Randolph Glacier Inventory (RGI Consortium, 2017). The RGI data are from miscellaneous years based on what was available in RGI. The amount of retreat since ~1880 CE is related to the climate change at the glacier and the glacier's response time, defined as the time for each glacier's length to reach equilibrium with climate change. Hypsometric variables such as ice surface slope, cirque-wall shading, and debris cover impact response time, with steep ice surface slopes thought to be a particular correlate for quick response times (Pelto and Hedlund, 2001; Zekollari et al., 2020). We approximate each glacier's response time according to Jóhannesson et al. (1989), where mean glacier thickness is divided by maximum mass loss from the terminus as shown in Eq. 2:

$$\tau = \frac{H}{-b_t} \quad (2)$$

where  $\tau$  = time for volume adjustment in years,  $H$  = thickness in meters (m), and  $b_t$  = maximum mass loss at the terminus in  $\text{m yr}^{-1}$ . Mean glacier thickness is taken from Farinotti et al. (2019), and maximum mass loss at the terminus is from Hugonnet et al. (2021). This approximation for response time (along with glacier slope) provides insight into the glacier's response to industrial-era warming. We note this calculation is a minimum estimate of how quickly a glacier could adjust its volume because we use the maximum mass loss from the terminus; the purpose of this calculation is merely to serve as a common point of comparison amongst the four glaciers rather than a robust estimate of glacier response time. We present glacier areas in Figure 6 and report all glacier hypsometry data and response time calculation details in Table 2.

## 4 Results

### 4.1 $^{14}\text{C}$ - $^{10}\text{Be}$ ratios, burial isochrons, and exposure ages

Apparent exposure ages are presented in Table 1 and plotted onto satellite imagery of the glacier forefields in Figure 3. The highest ages likely have experienced the least erosion during burial and thereby provide an approximate sense for total Holocene exposure. We therefore calculated the mean and standard deviation of the three highest apparent ages at each glacier. The first observation is that bedrock exposure ages are non-uniform across the four glaciers: mean exposure ages are the highest at Mammoth Glacier of the four sites, with a mean from the three highest apparent exposure ages of  $7.9 \pm 1.5$  ka; Kokanee Glacier bedrock has the next highest apparent  $^{10}\text{Be}$  exposure ages, with an average of  $4.7 \pm 0.8$  ka from its three most-exposed samples; JIF Glacier bedrock has a mean age  $3.4 \pm 0.4$  ka of its three highest ages; and Conness Glacier bedrock has a mean age of  $0.1 \pm 0.02$  ka for its three highest measurements.

We then plotted our results as nuclide ratios along exposure and burial isochrons (Figure 4). The burial isochrons leverage the preferential decay of  $^{14}\text{C}$  to provide approximate insight into Holocene burial durations. Nuclide concentrations have been normalized by their local production rates to easily compare between sites (such that concentrations are expressed in years). The solid line represents  $^{14}\text{C}$ - $^{10}\text{Be}$  ratios under continuous exposure. The dashed lines represent  $^{14}\text{C}$ - $^{10}\text{Be}$  ratios when bedrock is buried and the  $^{14}\text{C}$ - $^{10}\text{Be}$  ratios are depressed through the relatively rapid decay of  $^{14}\text{C}$ . Figure 4 does not include any erosion, though samples plotting closer to the origin but along the same isochron are typically more eroded than those further from the

Moved (insertion) [1]

Moved (insertion) [2]

Moved (insertion) [3]

Formatted: Font: Times New Roman, 10 pt, Bold

Deleted: sample

Deleted: at JIF Glacier, Kokanee Glacier, and Mammoth Glacier require a complex history of exposure and burial, while nuclide concentrations from Conness Glacier are very low, near AMS-system blank values (Figure 4 and Table 2). Samples from each glacier have distinct  $^{14}\text{C}$ - $^{10}\text{Be}$  ratios that cluster in different regions of the isochron plot, suggesting unique Holocene exposure-burial histories at each glacier rather than a uniform history amongst all four sites. CRONUS

Deleted: are mapped

Formatted: Font: Bold

Formatted: Font: Bold

Formatted: Font: Bold

Deleted: (

Deleted: 5).  $^{10}\text{Be}$  exposure

Deleted: , which

Deleted: insight into

Deleted: ,

Deleted: age

Deleted: (standard deviation) from the three highest-concentration samples. Glacial erosion removes nuclides, so the highest nuclide concentrations best approximate total Holocene exposure. Kokanee Glacier samples have

Deleted:

Deleted: amongst the

Deleted: highest concentrations.

Deleted: concentration samples.

Moved down [9]: The solid line represents the evolution of  $^{14}\text{C}$ - $^{10}\text{Be}$  ratios if samples are continuously exposed. Subsequent dashed lines represent  $^{14}\text{C}$ - $^{10}\text{Be}$  ratios when sample bedrock is buried and the  $^{14}\text{C}$ - $^{10}\text{Be}$  ratio is depressed through radioactive decay. The x-axis approximates integrated exposure during the Holocene in years, while the y-axis values inform burial duration.

Deleted:

Figure 4.  $^{14}\text{C}$ - $^{10}\text{Be}$  ratios plotted against burial isochrons. Nuclide concentrations have been normalized by their local production rates to easily compare between sites (such that concentrations are expressed in years but are not true exposure ages).

Deleted: Erosion and radioactive decay are not incorporated into the nuclide concentrations; for concentrations modeled as exposure ages, see the CRONUS exposure ages in Table 2.

Page Break



origin. Glacial erosion less than 2 m depth removes both nuclides in roughly equal proportions, such that  $^{14}\text{C}$ - $^{10}\text{Be}$  ratios are not significantly altered (Hippe, 2017).

**Table 1.  $^{14}\text{C}$  and  $^{10}\text{Be}$  concentrations and apparent exposure ages. All uncertainties are  $1\sigma$  and internal only.**

Sample	$^{10}\text{Be}^a$ ( $10^3$ atoms $\text{g}^{-1}$ )	$^{10}\text{Be}$ Uncert. ( $10^3$ atoms $\text{g}^{-1}$ )	$^{14}\text{C}^a$ ( $10^3$ atoms $\text{g}^{-1}$ )	$^{14}\text{C}$ Uncert. ( $10^3$ atoms $\text{g}^{-1}$ )	$^{14}\text{C}/^{10}\text{Be}$	$^{10}\text{Be}$ Age <sup>b</sup> (yr)	Uncert. (yr)	$^{14}\text{C}$ Age <sup>b</sup> (yr)	Uncert. (yr)
<b><i>Juneau Icefield (JIF) Glacier</i></b>									
JIF-01	39.60	3.27	75.3	1.42	1.90	3163	261	2154	46
JIF-02	32.90	6.51	139.0	2.54	4.22	2708	536	4946	124
JIF-03	3.14	1.80	61.6	1.60	19.62	250	143	1694	49
JIF-04	48.30	2.90	102.0	1.83	2.11	3939	237	3206	70
JIF-05	36.80	2.58	73.5	1.43	2.00	3090	217	2211	49
JIF-06	3.01	8.74	25.3	1.02	8.42	249	72	662	28
JIF-07	11.00	1.45	37.4	1.07	3.40	847	112	993	30
JIF-08	29.30	2.82	61.5	1.32	2.10	2324	224	1732	41
JIF-09	40.10	2.90	56.6	1.28	1.41	3294	238	1599	40
<b><i>Kokanee Glacier</i></b>									
KG-01	81.12	4.52	109.0	1.87	1.35	2860	160	1385	26
KG-02	74.43	4.22	68.9	1.34	0.93	2572	146	780	16
KG-03	105.67	5.70	102.0	2.18	0.96	3707	200	1260	29
KG-04	136.84	6.96	103.0	1.78	0.75	4523	230	1190	22
KG-05	172.02	8.56	117.0	2.04	0.68	5562	277	1392	26
KG-06	122.44	6.21	115.0	2.00	0.94	4133	210	1394	26
<b><i>Mammoth Glacier</i></b>									
MG-01	334.55	17.26	568.0	7.71	1.70	6388	330	5566	108
MG-02	504.01	25.85	597.0	8.10	1.18	9307	478	5910	117
MG-03	422.73	20.54	653.0	8.83	1.55	7884	384	6610	137
MG-04	31.95	2.68	86.8	1.78	2.72	574	48	578	12
MG-05	252.02	12.59	476.0	6.50	1.89	5309	265	4826	89
<b><i>Conness Glacier</i></b>									
CG-01	6.37	0.79	26.5	1.09	4.16	124	15	184	8
CG-02	5.26	0.74	29.1	1.49	5.53	103	15	203	11
CG-03	3.85	0.71	15.9	10.10	4.13	77	14	112	72
CG-04	1.59	0.50	3.7	7.09	2.36	33	10	28	52
CG-05	1.77	0.48	11.3	7.26	6.36	37	10	83	53
CG-06	2.02	0.45	25.5	1.37	12.62	42	9	184	10

<sup>a</sup>Nuclide concentrations are blank-corrected specific to each sample batch. See supplement for background measurements. All AMS measurements standardized to 07KNSTD.

<sup>b</sup>Calculated using the CRONUS-Earth online calculator v.3 (Balco et al., 2008) with the LSDn scaling scheme (Lifton et al., 2014).

Deleted: Juneau Ice Field (JIF) Glacier

... [9]

#### Formatted Table

**Deleted:** ) and global production rate. Ages assume continuous exposure with no erosion, modern elevation, and standard atmosphere. Uncertainties are analytical (i.e., internal) only. Rock density is  $2.65 \text{ g cm}^{-3}$ . JIF Glacier samples collected in 2019; Kokanee Glacier in 2018; Mammoth Glacier in 2020; Conness Glacier in 2018.

**Moved down [10]:** (Rand and Goehring, 2019).

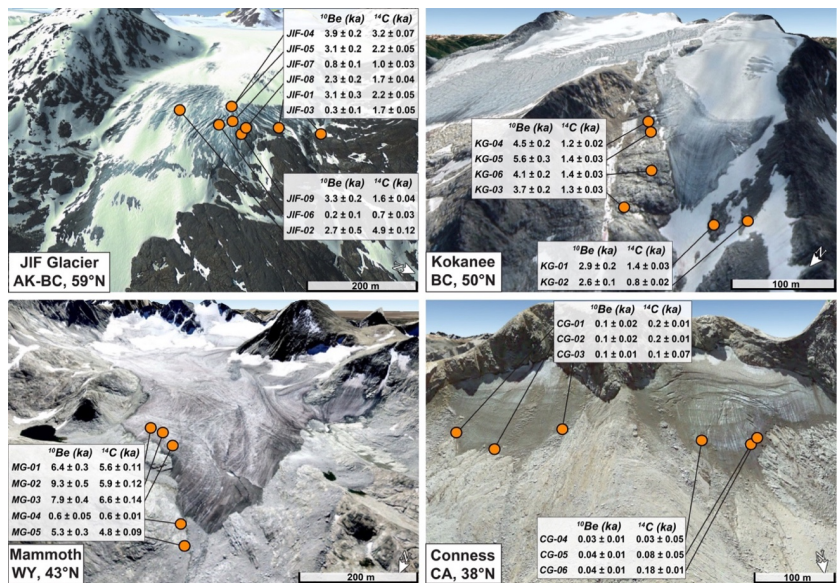
**Moved down [11]:** Bedrock samples from Kokanee Glacier have the lowest  $^{14}\text{C}$ - $^{10}\text{Be}$  ratios of any of the four sites and suggest Holocene burial durations of 6–10 ky.

**Moved down [12]:** The Mammoth Glacier samples cluster around 1–2 ky of burial. These samples have high  $^{14}\text{C}$ - $^{10}\text{Be}$  ratios which are only possible with minimal burial

**Deleted:** The  $^{14}\text{C}$ - $^{10}\text{Be}$  ratios plotted against burial isochrons in Figure 5 provide approximate bedrock exposure and burial durations at each glacier. Proceeding north to south, JIF Glacier samples have two populations: samples below the continuous exposure curve that mostly plot along a ~3 ky burial isochron (thus suggesting 3 ky of cumulative Holocene burial) and samples above the continuous exposure curve. Deep glacial erosion (0.5–3.0 m) via subglacial quarrying is a known way to elevate the  $^{14}\text{C}$ - $^{10}\text{Be}$  ratio above the continuous exposure curve due to the depth-dependent production of  $^{14}\text{C}$  versus  $^{10}\text{Be}$

**Deleted:** Low ratios are only possible through decay of  $^{14}\text{C}$  relative to  $^{10}\text{Be}$ ; this process dominates when bedrock is shielded from production during burial.

**Deleted:** . Samples closer to the origin along the same isochron experienced more erosion than those with higher concentrations. The Conness Glacier samples have uniquely low nuclide concentrations amongst the four glaciers and thus plot near the origin. Samples with nuclide concentrations near the detection limit in both nuclides are only observed at Conness Glacier of the four glaciers presented here. Scatter in bedrock samples at each site is expected due to variable erosion depths along the glacier width.



**Figure 3.** Oblique satellite images of glacier forefields with sample locations and  $^{14}\text{C}$  and  $^{10}\text{Be}$  exposure ages (CRONUS). Sample locations denoted by colored dots corresponding to each glacier. Images are from different years; the highest-resolution years with least snow cover were selected. Some samples are still buried by glacial ice at the time the image was captured, showing the recent burial prior to sampling in 2018–2020 CE. Image years: Juneau Icefield Glacier, 2011; Kokanee Glacier, 2021; Mammoth Glacier, 2006; Conness Glacier, 2013. Image credit: Google Earth.

The second observation is that  $^{14}\text{C}$ - $^{10}\text{Be}$  sample ratios at JIF Glacier, Kokanee Glacier, and Mammoth Glacier are depressed, which is indicative of exposure followed by burial via rapid decay of  $^{14}\text{C}$  relative to  $^{10}\text{Be}$  (Figure 4). Like the apparent exposure ages, nuclide ratios from the four glaciers appear distinct, with the samples from each glacier plotting in separate regions of the isochron plot. The Mammoth Glacier samples cluster around 1–2 ky of burial. These samples have high  $^{14}\text{C}$ - $^{10}\text{Be}$  ratios which are only possible with minimal burial (else  $^{14}\text{C}$  concentrations would be lower). Bedrock samples from Kokanee Glacier have the lowest  $^{14}\text{C}$ - $^{10}\text{Be}$  ratios of any of the four sites and suggest Holocene burial durations of 6–10 ky. Low ratios are only possible through extensive decay of  $^{14}\text{C}$  relative to  $^{10}\text{Be}$ , severely limiting the number of plausible scenarios. The JIF Glacier samples have two populations: samples below the continuous exposure curve and samples above the continuous exposure curve. Of the samples beneath the continuous exposure curve, four samples plot at ~2–3 ky of burial. These four samples plot closer to the origin than the Mammoth Glacier bedrock despite similar burial durations, suggesting the JIF Glacier samples are more deeply eroded. The samples above the continuous exposure curve are difficult to interpret which we consider in the Discussion. The Conness Glacier samples have uniquely low nuclide concentrations amongst the four glaciers—approaching AMS-system blank levels—and are clustered around the origin. Low nuclide concentrations reflect burial for thousands of years, either by glacial ice, bedrock that was eroded away, or debris.

Deleted: 5

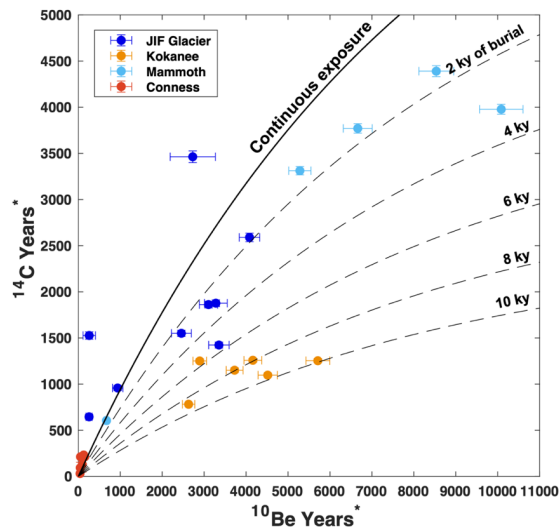
Deleted: .

Deleted: Ice Field

Deleted: .....Page Break.....

Moved (insertion) [12]

Moved (insertion) [11]



**Figure 4.**  $^{14}\text{C}$ - $^{10}\text{Be}$  ratios plotted against burial isochrons. Nuclide concentrations are normalized by their local production rates. The solid line represents the evolution of  $^{14}\text{C}$ - $^{10}\text{Be}$  ratios if samples are continuously exposed. Subsequent dashed lines represent  $^{14}\text{C}$ - $^{10}\text{Be}$  ratios when sample bedrock is buried and the  $^{14}\text{C}$ - $^{10}\text{Be}$  ratio is depressed through radioactive decay. The x-axis approximates integrated exposure during the Holocene in years, while the y-axis values inform burial duration.

Moved (insertion) [9]

#### 4.2 Holocene exposure-burial histories and erosion rates from Monte Carlo forward modeling

We present the results from the Monte Carlo forward model experiments separately from the nuclide ratios so the two methods can be compared. We plotted the overlapping exposure-burial scenarios as bedrock ‘probability of exposure’ through the Holocene (Figure 5). The full model output with plausible exposure-burial histories for each sample and a histogram of the erosion rates used at each sample can be found in Figures S5 and S6 of the supplement.

The Monte Carlo forward model results predict that JIF, Kokanee, and Mammoth glaciers were smaller than their modern size in the early-to-mid-Holocene and larger than their modern size in the late Holocene (Figure 5). At Mammoth Glacier, bedrock shows the most exposure of the four sites (from 11–1 ka) and the latest burial in the Holocene (~1 ka). The number of overlapping scenarios is 124. The probability of exposure is relatively high (80–90%) during inferred exposure, suggesting good agreement amongst the overlapping scenarios. Kokanee Glacier exhibits exposure before ~6 ka and burial after ~6 ka. The number of plausible overlapping scenarios is 137. The overlapping scenarios for Kokanee’s bedrock similarly agree well with each other: the probability of exposure is >90% in the early Holocene and <10% by 5 ka. At JIF Glacier, model results suggest bedrock burial at ~2 ka. The number of plausible overlapping scenarios is 282. However, the probability of exposure at any one time is relatively low, never rising above 70%.

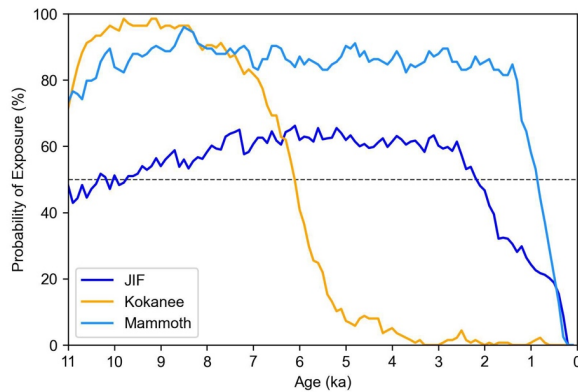
We calculated the mean erosion rates used in only the overlapping scenarios from each glacier and plot the data as histograms in Figure S7. This includes all samples to provide an approximate erosion rate at a given glacier. The mean erosion

**Formatted:** Don't add space between paragraphs of the same style

**Deleted:** 6). The probability of bedrock exposure at each site exhibits a quick transition from exposure to burial. For simplicity, we interpret burial to begin at the mid-point of this transition and report the time in which glaciers advanced past modern positions as approximate values. JIF Glacier bedrock samples suggest advance past modern size at ~2 ka. However, the JIF Glacier bedrock lacks a probability of exposure greater than 70% from 8–3 ka, when exposure is most likely to have occurred. Kokanee Glacier advances past its modern size at ~6 ka. These samples have tight agreement amongst overlapping scenarios: the probability of exposure is >90% in the early Holocene and drops to <10% by 5 ka. Mammoth Glacier advances past modern size shortly after ~1 ka. Mammoth Glacier samples have a high probability (80–90%) of exposure from 10–1 ka.

**Deleted:** <object>Conness Glacier samples are unique amongst the four glaciers in that nuclide concentrations cannot be successfully reproduced with our Monte Carlo analysis using any scenarios that include exposure unless an exceptionally high erosion rate (>0.5 mm yr<sup>-1</sup>) is applied (Figure S8). Erosion rates at bedrock samples from the other three glaciers are dominantly below 0.5 mm yr<sup>-1</sup>, with all three glaciers expected to be more erosive than Conness, therefore we favor these results (Figure 6), but consider the possibility of high erosion below. Full model outputs are provided in the Supplement. **Figure 6**

rate at Mammoth Glacier is  $0.7 \pm 0.7 \text{ mm yr}^{-1}$  ( $0.2 \pm 0.2 \text{ mm yr}^{-1}$  when a low-concentration sample is excluded, see Discussion); at Kokanee Glacier is  $0.04 \pm 0.03 \text{ mm yr}^{-1}$ ; and at JIF Glacier is  $0.3 \pm 0.3 \text{ mm yr}^{-1}$ .



**Figure 5.** Modeled probability of exposure of bedrock at Juneau Icefield, Kokanee, and Mammoth Glaciers from Monte Carlo forward model results. Probability of exposure is generated from overlapping scenarios between all samples at a given glacier. The change in probability of exposure from greater than 50% to less than 50% indicates roughly when the glacier advanced past its modern position. Results from Conness Glacier not presented here, see Figure S8 for Monte Carlo forward model output.

Nuclide concentrations in the Conness Glacier samples are uniquely low amongst the four glaciers, which poses challenges for our Monte Carlo analysis. At such low concentrations, small differences in blank corrections, scaling schemes, and production pathways have an outsize influence on modeling nuclide concentrations. We initially ran the model using the same parameterizations at the other sites where erosion rates are tested up to  $2.5 \text{ mm yr}^{-1}$ . The model finds 4,914 overlapping solutions and erosion rates skew heavily towards the highest possible rates ( $2.5 \text{ mm yr}^{-1}$ ; Figure S8). However, erosion rates at the other three sites all skew towards lower rates ( $< 0.5 \text{ mm yr}^{-1}$ ; Figure S6), and there is no geologic evidence that Conness Glacier is a uniquely erosive glacier. We then re-ran the Monte Carlo forward model with erosion rates capped at  $0.5 \text{ mm yr}^{-1}$ . Under this low-erosion parameterization, no scenarios could reproduce the measured concentrations at all samples (zero overlapping scenarios, Figure S8). Because of these complexities, we do not present modeling results from Conness Glacier in Figure 5 and explore the various ways to interpret the low concentrations in the Discussion.

#### 4.3 Glacier mapping, hypsometry, and response time calculations

The four glaciers retreated 14–70% from their maximum Holocene extents recorded during the LIA (Figure 6). We also present intermediate glacier positions where available from the published literature and composite data calculated for the Wind River Range and the Sierra Nevada to provide insight into how each glacier compares to the rest of the glaciers in its region (Basagic and Fountain, 2011; DeVisser and Fountain, 2015).

**Deleted:** the four glaciers. The probability of exposure is the percentage of plausible exposure-burial scenarios that feature exposure at a given timestep. For example, if 900 out of 1000 plausible exposure-burial scenarios include exposure...

**Deleted:** 8.1–8.0 ka, then the probability

**Formatted:** Font: Times New Roman

**Formatted:** Font: Times New Roman

**Deleted:** 8.1–8.0 ka is 90%. We interpret the

**Formatted:** Font: Times New Roman

**Formatted:** Font: Times New Roman

**Deleted:** to indicate

**Formatted:** Font: Times New Roman

**Formatted:** Font: Times New Roman

**Deleted:** size and bedrock samples were buried. Note that Conness Glacier's probability of exposure is 0% based

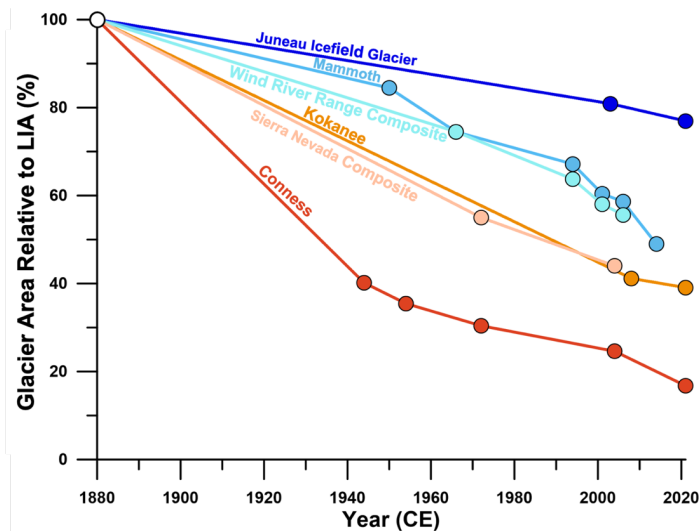
**Deleted:** our

**Deleted:** , and thus

**Formatted:** Font: Times New Roman

**Formatted:** Font: Times New Roman

**Formatted:** Font: Times New Roman



**Figure 6.** Glacier area through the industrial era relative to glacier area at the end of the Little Ice Age (LIA). LIA moraines, assumed to be last occupied at ~1880 CE (Menounos et al., 2009; Wanner et al., 2008). Two composites of regional glaciers from the Wind River Range and Sierra Nevada are included to provide context for regional glacier change (DeVisser and Fountain, 2015; Basagic and Fountain, 2011). Internal mapping has been supplemented with mapping by DeVisser and Fountain (2015) at Mammoth Glacier and Basagic and Fountain (2011) at Conness Glacier. See Table S5 for calculation and source details.

Moved (insertion) [6]

Deleted: history is along the x-axis.

Conness Glacier is 14% of its LIA area; it is the most retreated of the four glaciers relative to its LIA area. It has also retreated more than the composite of Sierra Nevada glaciers. Kokanee Glacier has retreated the second-most, occupying 46% of its LIA area today. Mammoth Glacier is 49% of its LIA area; its retreat closely matches the average retreat for glaciers in the Wind River Range. JIF Glacier has retreated the least and is 70% of its LIA area.

Glacier hypsometry data and response time calculations are presented in Table 2. The four glaciers can be subdivided into two groups: bigger glaciers with shallow ice-surface slopes and slow response times, and smaller glaciers with steep ice-surface slopes and quick response times. JIF Glacier and Mammoth Glacier are characterized by their shallow slopes and slow response times. JIF Glacier has the shallowest ice surface ( $5^\circ$ ) and the longest response time ( $\tau = 27$  yrs) of the four glaciers. It is also the largest glacier studied here, with an area of  $15.2 \text{ km}^2$  in 2021 (compared to the smallest glacier presented, Conness Glacier, at  $0.1 \text{ km}^2$ ). Mammoth Glacier has the second-shallowest ice-surface slope at  $9^\circ$  and the second-slowest response time ( $\tau = 23$  yrs). Kokanee and Conness Glacier are characterized by their relatively steep slopes and quick response times. Kokanee Glacier has a steep ice-surface slope at  $22^\circ$  and the second quickest response time ( $\tau = 14$  yrs). Conness has the steepest ice surface slope,  $23^\circ$ , suggesting the quickest response time of the glaciers studied here given the relationship between slope and response time proposed by Zekollari et al. (2020). We omit Conness Glacier from these calculations because there was a large



discrepancy between the area of the glacier today and the area of the glacier used in the mean thickness calculations by Farinotti et al.

**Table 2. Glacier hypsometry data**

Glacier	Lat. (DD)	Long. (DD)	Modern Area (km <sup>2</sup> )	LIA Area <sup>a</sup> (km <sup>2</sup> )	% of LIA Area	Modern Ice Surface Slope (°)	Aspect (°)	Mean Elev. (m)	Avg. thickness <sup>b</sup> (m)	Max. mass loss at terminus <sup>c</sup> (m yr <sup>-1</sup> )	Response Time <sup>d</sup> (yrs)
JIF	59.47	-134.96	10.7	15.2	70	5	53	1490	126.91	-4.6	27
Kokanee	49.75	-117.14	2.6	5.5	46	22	22	2560	29.13	-2.1	14
Mammoth	43.17	-109.67	1.7	3.4	49	9	318	3630	52.27	-2.2	23
Conness	37.97	-119.32	0.1	0.6	14	23	11	3600	-	-	-

<sup>a</sup>Little Ice Age areas were mapped for this study based on trimline and proximal moraines as seen in Figure 1.

<sup>b</sup>From Farinotti et al., 2019.

<sup>c</sup>From Hugonnet et al., 2021.

<sup>d</sup>Calculated according to Jóhannesson et al., 1989. Conness Glacier omitted due to large discrepancies between ice extent when calculations were made versus modern ice extent.

## 5 Discussion

In agreement with broad evidence of Holocene glacier advance in western North America (Menounos et al., 2009; Solomina et al., 2015; Davis et al., 2009), our results at three of four sites suggest glaciers advanced past their modern positions in the mid-to-late Holocene. The trend is apparent from the nuclide ratios alone: sample populations from JIF Glacier, Kokanee Glacier, and Mammoth Glacier all exhibit the depressed <sup>14</sup>C-<sup>10</sup>Be ratios characteristic of early-to-mid-Holocene exposure followed by late Holocene burial. At Conness Glacier, ice growth cannot be inferred due to near-blank nuclide concentrations, although it seems likely given the evidence for increasing rock flour in the Sierra Nevada in the late Holocene (Konrad and Clark, 1998; Bowerman and Clark, 2011). Mid-to-late Holocene glacier expansion agrees with similar studies using *in situ* <sup>14</sup>C-<sup>10</sup>Be to constrain glacier advance in the Swiss Alps, Peru, and Uganda (Goehring et al., 2011; Schimmelfennig et al., 2022; Vickers et al., 2020). Minimum positions in the early to mid-Holocene supports the presence of a Holocene Thermal Maximum in western North America that remains persistent in proxy temperature records (Kaufman and Broadman, 2023), at odds with recent data-assimilation research that find slight warming in the Holocene (Osman et al., 2021). Sea-surface temperature reconstructions from 30–90° N (Marcott et al., 2013) and terrestrial temperature reconstructions from western North America (Routson et al., 2021) resemble decreasing Northern Hemisphere summer insolation (Figure 7). Increasing winter precipitation (Routson et al., 2021) also likely contributes to glacier growth. Whether the observed glacier expansion is due to glaciers' seasonal bias is unclear, but our results support the proxy data trends of cooler summers and wetter winters.

Where we find our results surprising, however, is in the non-uniform bedrock burial durations. The <sup>14</sup>C-<sup>10</sup>Be sample ratios and modeled exposure-burial histories suggest the glaciers advanced past their modern sizes thousands of years apart. Consider the two endmembers: Mammoth Glacier was likely smaller than its modern size for almost the entire Holocene until the last millennium, while Conness Glacier was larger than its modern size for the entire Holocene until present. These are vastly different Holocene length histories relative to their terminus positions today, despite evidence that western North America experienced roughly similar climate changes over the Holocene (Shuman and Marsicek, 2016; Menounos et al., 2009). Below,

**Formatted:** Font: Bold, Font color: Text 1

**Formatted:** Heading 1, Add space between paragraphs of the same style, Line spacing: single

**Deleted:** all

**Deleted:** are best explained by glacier expansion from

**Deleted:** early

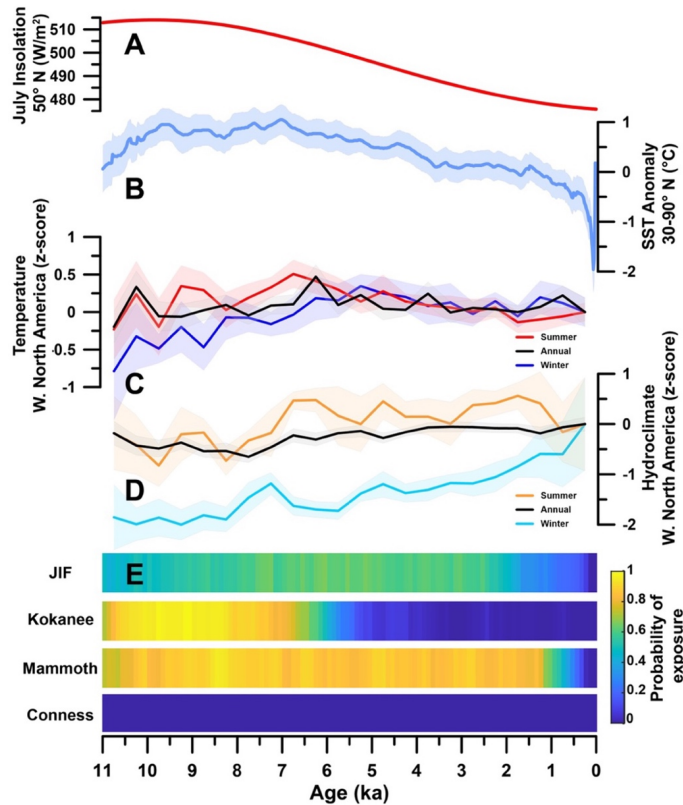
**Deleted:**

**Deleted:** At Conness Glacier, ice growth cannot be directly inferred due to near-blank nuclide concentrations, but given evidence for increasing glaciogenic sediment flux in the late Holocene recorded in distal lakes directly downstream of Conness Glacier (Konrad and Clark, 1998) and elsewhere in the Sierras (Bowerman and Clark, 2011), it is highly likely Conness advanced in the late Holocene as well. Mid-to-late Holocene advances also

**Deleted:** Glacier expansion from

**Deleted:** Although it is possible to interpret the range of bedrock burial durations as bellwethers of previously unrecognized climate heterogeneity over the Holocene, we instead consider non-uniform amounts of modern retreat relative to Holocene fluctuations. Our sampling approach treats the modern position of each glacier as a common reference point, but modern glaciers are transiently responding to geologically abrupt warming; they are out of equilibrium with climate (IPCC, 2021). We posit that the non-uniform burial durations are the result of some glaciers having receded further relative to their long-term Holocene sizes than others. Below, we first evaluate the modeled probabilities of exposure and compare them with the <sup>14</sup>C-<sup>10</sup>Be ratios and extant paleoclimate data. Then, we explore hypotheses for why the modern glacier terminus positions are non-uniform relative to their Holocene length histories and their implications.

we first evaluate the modeled probabilities of exposure and compare them with the  $^{14}\text{C}$ - $^{10}\text{Be}$  ratios and extant paleoclimate data. Then, we explore hypotheses for why the modern glacier terminus positions are non-uniform relative to their Holocene length histories and their implications.



**Figure 7.** Holocene paleoclimate data and modeled probability of exposure at each glacier. **A.** 50° N July insolation (Laskar et al., 2004). **B.** Sea-surface temperature proxy reconstruction for 30–90° N where shaded band is 1- $\sigma$  uncertainty (Marcott et al., 2013). **C, D.** Annual and seasonal temperature and hydroclimate reconstruction from western North America proxy data (Routson et al., 2021). **E.** Modeled probability of exposure for each glacier. Color bar ranges from 100% chance of exposure in yellow to 0% chance of exposure (i.e. burial) in blue.

**5.1 Holocene exposure-burial histories at each glacier**

We first evaluate Mammoth Glacier and Kokanee Glacier because they appear to have tightly-constrained Holocene exposure-burial histories. The high apparent exposure ages of both nuclides in the Mammoth Glacier samples require the glacier

Deleted: -----Page Break-----  
<object>

Deleted: At JIF Glacier, the measured concentrations and burial isochrons necessitate exposure in the early-to-mid-Holocene and burial in the late Holocene (Figure 4), but the overlapping scenarios from the Monte Carlo forward model do not fully agree on precisely when the exposure occurred. The highest  $^{10}\text{Be}$  exposure age is  $3.9 \pm 0.2$  ky (sample JIF-04) which we interpret as the minimum Holocene exposure duration (minimum because erosion removes nuclides from a ‘true’ exposure duration). The population of samples plotting along the ~3 ky burial isochron approximates burial duration. Summing the ~4 ky of exposure and ~3 ky of burial, however, the total time exposed or buried falls short of the length of the Holocene. It is the exposure duration that appears particularly anomalous: there is broad evidence from fossil trees in moraines that glaciers in the Juneau Ice Field did not advance past their modern positions until the late Holocene (Clague et al., 2010; Menounos et al., 2009). One hypothesis to explain the lower-than-expected exposure durations is that JIF Glacier deglaciated slowly, not reaching its minimum Holocene size until ~7 ka, akin to other arctic glaciers (Briner et al., 2016), instead of at ~10 ka like the mid-latitude glaciers in the western United States and Canada. In this scenario, bedrock would be exposed from ~7–3 ka and buried from 3–0 ka, matching the simplified exposure-burial durations from the isochron plot. However, these values do not consider erosion, and this interpretation would contradict the inferred history of many other glaciers in the Coast Range that record minimum glacier extents between 11–7 ka (Menounos et al., 2009). Instead, a preferred explanation for lower-than-expected exposure durations is that JIF Glacier eroded enough bedrock to significantly alter  $^{14}\text{C}$ - $^{10}\text{Be}$  ratios.  $^{14}\text{C}$ - $^{10}\text{Be}$  ratios increase with depth as a function of  $^{14}\text{C}$ ’s higher production rate at depth than  $^{10}\text{Be}$ . Near the bedrock surface (uppermost 10 cm of bedrock), the difference is negligible as  $^{14}\text{C}$  and  $^{10}\text{Be}$  are produced similarly (Hippe, 2017). At greater bedrock depths, in the range of 50–300 cm, the  $^{14}\text{C}$ - $^{10}\text{Be}$  ratio can become so high that it exceeds the surface-production ratio. The Monte Carlo forward model is designed to test high-erosion scenarios and account for changes in the  $^{14}\text{C}$ - $^{10}\text{Be}$  ratio with depth. However, high erosion rates present challenges by simply increasing the number of plausible scenarios:  $^{14}\text{C}$ - $^{10}\text{Be}$  ratios near the continuous exposure ratio can be created by continuous exposure alone or by exposure, burial, and high erosion. Low  $^{14}\text{C}$ - $^{10}\text{Be}$  ratios are only possible through decay of  $^{14}\text{C}$  during burial, which numerically constrains solutions. The lack of agreement amongst overlapping scenarios at JIF Glacier is almost certainly related to the multitude of ways to recreate measured concentrations. Alaskan glaciers are among the most erosive in the world (Koppes and Montgomery, 2009). Erosion rates of 1–15 mm yr<sup>-1</sup> have been observed in coastal Alaska over the last few centuries (Hallet, 2011), orders of magnitude higher than our erosion rate estimates at Kokanee and Mammoth Glaciers (<0.5 mm yr<sup>-1</sup>, excluding likely quarried samples). The high erosion rates increase the number of plausible scenarios, and no singular plausible history presents itself. High erosion rates also explain the apparent ‘youthfulness’ of  $^{10}\text{Be}$  ages, where primary bedrock erosion removed nuclides that other

to be smaller than its modern area for most of the Holocene. The Monte Carlo forward model results quantify this interpretation, predicting Mammoth Glacier was smaller than its modern area from ~11–1 ka before advancing beyond its modern position in the last millennium. An interesting implication of Mammoth Glacier's advance beyond its modern position at ~1 ka is that Mammoth Glacier doubled in area in a millennium: Mammoth's area today is ~50% of its LIA area, meaning that at ~1 ka the glacier was also 50% of its LIA area, and so it doubled to '100%' by 0.1 ka. This finding agrees well with the evidence from distal lake sediment cores that Mammoth Glacier was much smaller than its LIA extent from 4.5–1 ka and advanced significantly after 1 ka (Davies, 2011).

Sample MG-04 has exposure ages an order of magnitude lower ( $^{10}\text{Be}$ :  $0.5 \pm 0.05$  ka,  $^{14}\text{C}$ :  $0.6 \pm 0.01$  ka) than the other samples in the Mammoth transect. The Monte Carlo forward model erosion rate histogram (Figure S6) shows that much higher erosion rates are required for MG-04 than the other samples. Subglacial quarrying is a plausible mechanism for much deeper erosion at one point than others (Rand and Goehring, 2019). We interpret that this sample was deeply eroded, probably by quarrying, while the remaining samples are abrasion-dominated. We therefore present two erosion rates from Mammoth Glacier. With MG-04 included, the mean erosion rate is  $0.7 \pm 0.7$  mm yr $^{-1}$ . With MG-04 excluded, the mean erosion rate is  $0.2 \pm 0.2$  mm yr $^{-1}$ ; we consider this more likely to represent an abrasion rate rather than a general erosion (quarrying-included) rate. We plot histograms for both distributions in Figure S7.

Kokanee Glacier was smaller than its modern position from ~10–6 ka and larger from ~6 ka to the LIA. The tight convergence in the overlapping scenarios supports this interpretation. Kokanee Glacier samples have the lowest  $^{14}\text{C}$ - $^{10}\text{Be}$  ratios of the four glaciers (Table 1), which agrees with the longest burial duration inferred by forward modeling. The advance of Kokanee Glacier across its modern size threshold at ~6 ka is earlier in the Holocene than any other site studied using the same sampling approach (Vickers et al., 2020; Goehring et al., 2011), but in good agreement with lake and moraine records that document glacier advances in Canada as early as 7 ka (Menounos et al., 2009). Our results imply that Kokanee has been larger than its present-day position today from ~6 ka through the LIA, and that any glacier length fluctuations from ~6 ka onwards were between the position occupied at ~6 ka and its LIA maximum extent. Erosion rates at Kokanee Glacier are quite low ( $0.04 \pm 0.03$  mm yr $^{-1}$ , Figure S7). We interpret this erosion rate as better approximating an abrasion rate than a general erosion rate, since we avoided sampling surfaces that appeared plucked and there is no evidence for anomalously deep erosion in the data.

At JIF Glacier, the scatter in nuclide ratios and the relatively low agreement amongst overlapping scenarios make it challenging to infer a conclusive Holocene exposure-burial history. For one, it is difficult to interpret the samples that plot above the exposure curve in Figure 4 (JIF-02, JIF-03, JIF-06, JIF-07). Deep glacial erosion (> 2 m erosion depth) via subglacial quarrying has been hypothesized to explain  $^{14}\text{C}$ - $^{10}\text{Be}$  ratios that plot above the continuous exposure curve (Rand and Goehring, 2019). Radiocarbon has a higher muogenic production rate than  $^{10}\text{Be}$  such that, at some depth, the production ratio of  $^{14}\text{C}$ - $^{10}\text{Be}$  exceeds the surface production ratio. Glaciers in the Juneau Icefield are fed by high amounts of precipitation which has been associated with high erosion rates (Cook et al., 2020), and Alaskan glaciers are generally considered to be some of the most erosive in the world (Koppes and Montgomery, 2009). If deep erosion is the cause of the elevated  $^{14}\text{C}$ - $^{10}\text{Be}$  ratios, then it should be replicable by modeling.

To explore the possibility of deep glacial erosion as the cause of samples plotting above the continuous exposure curve, we modeled simple Holocene exposure-burial histories at various erosion rates to explore the three-parameter space (Figure 8). We modeled 10 simple histories: 9 ky of exposure followed by 1 ky years of burial; 8 ky of exposure followed by 2 ky of burial; and so on to 1 ky of exposure followed by 9 ky of burial. These scenarios are applied to theoretical 5 m bedrock columns using the same production and depth attenuation code as the Monte Carlo forward model. We used a singular production rate created

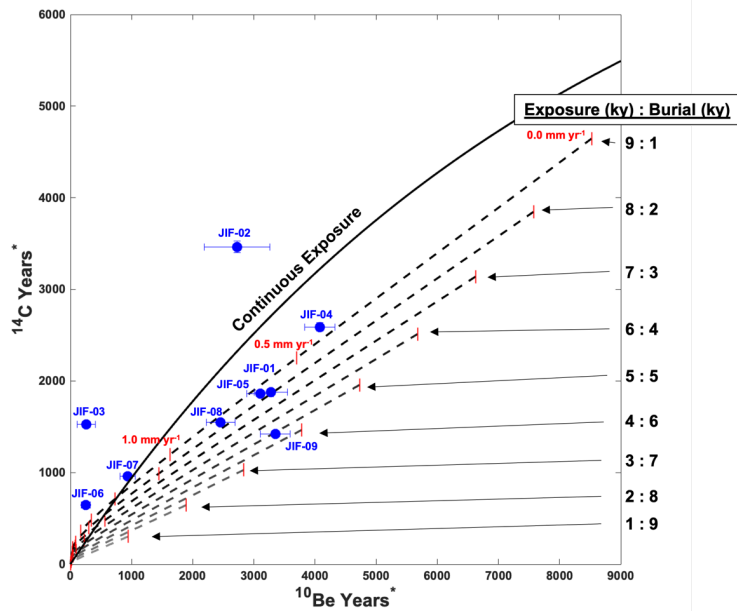
**Deleted:** advanced

**Deleted:** The non-linear behavior of Mammoth Glacier's length suggests ice dynamics may play a role in its length changes in addition to a more favorable climate for growth during the LIA. One hypothesis is that for most of the Holocene, the glacier was buttressed by a bedrock knob or contained within its cirque, and when a thickness threshold was crossed, the glacier spilled out of its cirque rapidly, manifesting as a doubling in size over such a short interval. It is hard to explain such a large change with climate alone, though it is theoretically possible.

**Moved (insertion) [10]**

**Deleted:** The extremely low nuclide concentrations at Conness Glacier could be explained by 1) glacial burial in the Holocene until modern retreat, 2) deep erosion, or 3) burial by debris when bedrock would otherwise be exposed during glacier retreat. Holocene exposure followed by deep erosion is a plausible mechanism to explain the low nuclide concentrations. To test whether the low-nuclide concentrations represent burial or deep erosion, we ran two forward model simulations for Conness Glacier, one with erosion rates tested from 0–2.5 mm yr $^{-1}$  (like at the other glaciers) and one with erosion rates capped at 0.5 mm yr $^{-1}$  (Figure S8). When erosion rates up to 2.5 mm yr $^{-1}$  are included, solutions are found that feature mid to late-Holocene exposure followed by deep erosion. Erosion rates used were skewed toward higher values, with most plausible scenarios requiring erosion rates approaching 2.5 mm yr $^{-1}$ . When erosion is capped at 0.5 mm yr $^{-1}$ , no solutions can recreate the measured concentrations at all samples. What are reasonable erosion rates for alpine glaciers? Estimates in the literature of subglacial abrasion rates vary widely, from 0.1 mm yr $^{-1}$  (Rand and Goehring, 2019) up to 5 mm yr $^{-1}$  (Wirsig et al., 2016). However, modeled erosion rates at Kokanee and Mammoth Glacier are almost all below 0.5 mm yr $^{-1}$  (Figure S6). Similarly, 10 out of 11 proglacial bedrock samples at the Rhone Glacier in Switzerland—a comparable mid-latitude glacier—are less than 0.4 mm yr $^{-1}$  (Goehring et al., 2011). We therefore find it unlikely that erosion has removed sufficient nuclides exposure in the early Holocene. Subglacial quarrying is a plausible mechanism for deep erosion, but quarrying is spatially heterogeneous (Woodard et al., 2019); the measured concentrations at Conness Glacier are remarkably consistent and clustered tightly around the origin of the isochron plot. If not erosion, the third explanation is that talus and debris falling off the cirque headwall may have covered the bedrock sites after deglaciation. The consistency of the nuclide measurements is difficult to reconcile with the spatial heterogeneity of a talus field, and debris burial would have needed to have happened immediately after deglaciation to keep concentrations near blank levels. While this hypothesis cannot be completely rejected, it requires an unlikely set of conditions. We find the simplest explanation

by averaging latitude, longitude, sample thickness, and elevation from all nine samples for simplicity. Then, we modeled the nuclide concentrations in each scenario at erosion rates (during burial) of 0.0–5.0 mm yr<sup>-1</sup>, marked by vertical red tick marks along each scenario. Erosion rates in each scenario start at 0.0 mm yr<sup>-1</sup> on the righthand side. Erosion rates increase towards the origin, with erosion rates >1.0 mm yr<sup>-1</sup> clustering so tightly towards the origin that they are largely obscured on the plot.



**Figure 8.** JIF Glacier <sup>14</sup>C-<sup>10</sup>Be concentrations plotted against ten ‘simple’ Holocene exposure-burial scenarios along erosion isochrons. The solid line is continuous exposure (10 ky of exposure with 0 year of burial) and dashed lines are subsequent exposure-burial scenarios labeled on the righthand side. Erosion rates are marked by red vertical tick marks along each scenario (black dashed line), starting from an erosion rate of 0.0 mm yr<sup>-1</sup> on the righthand side progressing to 5.0 mm yr<sup>-1</sup>. As an example, erosion rates of 0.0, 0.5, and 1.0 mm yr<sup>-1</sup> are labeled in the first scenario. Concentrations have been normalized by their production rate such that concentrations are expressed in years.

There is only a small area towards the origin in Figure 8 where deep erosion exhumes bedrock with <sup>14</sup>C-<sup>10</sup>Be ratios above the continuous exposure curve (where the dashed lines are above the continuous exposure curve). Samples JIF-02 and JIF-03 are far outside of this region within measurement uncertainty (1σ); we exclude these samples as outliers since they are not physically reproducible. Samples JIF-06 and JIF-07 are close to this region but still outside of it within measurement uncertainty. These two samples may well be deeply eroded by quarrying, but it is not clear from our simple modeling exercise. These samples also were excluded from the Monte Carlo forward model simulations because no overlapping scenarios were found when they were included. For simplicity, we exclude all four of these samples from our interpretations and erosion rate

calculations. This decision removes samples that may have been deeply eroded by quarrying, which means that the erosion rate from JIF Glacier is a minimum estimate that more likely approximates an abrasion rate than a general erosion rate.

Of the samples beneath the exposure curve in Figure 8, samples JIF-01, JIF-05, and JIF-08 have relatively tight agreement along the scenario of ~8 ky of exposure followed by ~2 ky of burial at erosion rates of 0.3–0.4 mm yr<sup>-1</sup>. These measurements also agree well with the burial durations suggested in Figure 4, the timing of burial in the Monte Carlo forward model from ~2 ka to present, and the mean erosion rate found from Monte Carlo forward model results (0.3 mm ± 0.3 yr<sup>-1</sup>). Samples JIF-04 and JIF-09 plot along different exposure-burial histories; this could be due to several geologic reasons such as partial shielding (snow, thin ice) or non-contemporaneous burial. Acknowledging the scatter in the dataset, the consistency of JIF-01, JIF-05, and JIF-08 across the modeling exercises appears to provide the simplest explanation. We therefore interpret that JIF Glacier was smaller than its modern position from ~10–2 ka and larger from ~2 ka to present, but with less confidence than the findings from Mammoth and Kokanee. This interpretation agrees with findings from Clague et al. (2010) that show similar advances past modern margins at ~2 ka by two outlet glaciers of the Juneau Icefield.

The extremely low nuclide concentrations at Conness Glacier could be explained by 1) glacial burial in the Holocene until modern retreat, 2) deep erosion, or 3) burial by debris when bedrock would otherwise be exposed during glacier retreat. We consider it unlikely that deep erosion is the primary explanation for the low concentrations. First, the Monte Carlo forward model experiments at various erosion rates are used to investigate deep erosion as a cause for the low concentrations. In the deep erosion scenarios, exposure is more likely in the late Holocene (Figure S8) than the early Holocene, which is at odds with the understanding of Holocene glacier history in western North America. Second, the deep erosion scenario requires erosion rates at Conness to be higher than the other three sites, more so than even JIF Glacier which has a mean thickness of over 100 m today and area an order of magnitude larger (Table 2). A third line of evidence is the consistency of the measurements. Subglacial erosion via abrasion or quarrying is spatially variable; abrasion rates vary across the glacier valley (Goehring et al., 2011), while quarrying (the most plausible mechanism for rapid, deep erosion) is related to pre-existing bedrock fractures (Woodard et al., 2019) with no clear distribution by our methods. The measured concentrations at Conness Glacier are consistent and clustered tightly around the origin of the isochron plot (Figure 4). Estimates in the literature of subglacial abrasion rates at mid-latitude glaciers vary widely, from 0.1 mm yr<sup>-1</sup> (Goehring et al., 2011; Schimmelpfennig et al., 2022) up to 5 mm yr<sup>-1</sup> (Wirsig et al., 2016), so although we cannot fully reject the deep erosion hypothesis, it seems unlikely. If not erosion, another possibility is that talus and debris falling off the cirque headwall may have covered the bedrock sites after deglaciation, prevent nuclides from accumulating prior to late Holocene glacier reformation. Again, the consistency of the nuclide measurements is difficult to reconcile with the spatial heterogeneity of a talus field, and the burial would need to have happened immediately after deglaciation to keep concentrations near blank levels. While this hypothesis also cannot be completely rejected, it requires an unlikely set of conditions.

The simplest explanation for the extremely low nuclide concentrations is that Conness Glacier has buried the sample sites for the duration of the Holocene. This interpretation is plotted in Figure 7 as ‘0% probability of exposure’ generated by the lack of plausible exposure-burial histories when erosion rates are capped at 0.5 mm yr<sup>-1</sup> (Figure S5; S8). This finding challenges previously published work that projects glacier disappearance in the Sierra Nevada from 10–3 ka prior to ‘Neoglacial’ advance in the late Holocene (Bowerman and Clark, 2011; Konrad and Clark, 1998; Porter and Denton, 1967). Whether Conness Glacier is representative of the entire Sierra Nevada or not remains an open question. It has retreated more by percentage of its LIA area than the composite of Sierra Nevada glaciers (Basagic and Fountain, 2011, Figure 6) and the most amongst the four glaciers considered here. It therefore could be an outlier in the Sierras, outpacing other glaciers in its retreat. It is also possible that the

Deleted: to be

Deleted: our

Deleted: 2



hypsometry of Conness Glacier (e.g. headwall shading, orientation, [insulation from debris](#), etc.) ~~caused it to be~~ resilient in the early to mid-Holocene while others in the Sierra Nevada disappeared. [The sensitivity of small glaciers like Conness to changes in temperature and precipitation has been shown to be similar to that of large glaciers, but small glaciers have been shown to be more variable from one to another than large glaciers \(Huss and Fischer, 2016\).](#) Further research is needed to assess whether Conness Glacier is representative of the Sierra Nevada or an outlier, [as well as to continue to probe hypotheses about the role of erosion and debris burial.](#)

## 5.2 Understanding the non-uniform signal

We seek to understand why four North American glaciers would advance beyond their modern positions many thousands of years apart despite presumed common climate forcing over the Holocene and through the industrial era. While there is spatial climate variability over the Holocene, it seems unlikely that within western North America there would be variation large enough to cause the four glaciers to advance past their modern positions thousands of years apart. However, sufficient local terrestrial archives are lacking to determine if climate variability is main driver of the spatial difference in our observed glacier changes (Routson et al., 2021). Therefore, we turn to the reviews of Holocene glacier change in western Canada (Menounos et al., 2009) and Holocene temperature and precipitation variability in North America (Shuman and Marsicek, 2016). These reviews suggest synchronicity across the region during the Holocene on centennial-to-millennial scales, rather than variability. Additionally, the trendline of slow cooling from ~7 ka to present is similar between western North America and the Northern mid-to-high latitudes (30–90° N), suggesting commonality across scale (Figure 7).

We explore the possibility that the four glaciers advanced roughly in concert across North America, as predicted, but have retreated non-uniformly in the industrial era. Our Holocene exposure-burial histories are predicated upon a comparison to today's glacier positions. [We initially assumed](#) that the modern position of each glacier would be similar relative to its Holocene length history, but if this is not the case, then [we are comparing across non-uniform reference points.](#) [Changes in glacier position always](#) reflect the [intersection of climate change and glacier hypsometry.](#) However, glaciers today are transiently responding to geologically abrupt warming, [and small differences in glacier response time could be amplifying](#) any relative difference between glaciers that might [have been negligible](#) over longer timescales (Rupper et al., 2009). We observe that the amount of retreat relative to LIA extent varies widely amongst the four glaciers we present here (Figure 6). Given this evidence, we consider [the idea](#) that glaciers advanced past their modern sizes thousands of years apart because [they have experienced non-uniform amounts of modern retreat relative to their LIA extent.](#)

In support of this hypothesis, there appears to be a connection between the amount of retreat relative to LIA extent, glacier response time, and [the bedrock burial durations.](#) Conness likely has the fastest response time of the four glaciers (smallest area; steepest slope) and thus we expect it would retreat the most relative to its LIA extent and [reveal bedrock that has been buried the longest, which](#) is what we observe; Conness is the most retreated relative to its LIA extent and the only glacier to [expose bedrock that has been buried for the duration](#) of the Holocene (burial duration > ~11 ka). JIF Glacier, on the other hand, is two orders of magnitude larger, has a lower slope, and has the slowest approximate response time we calculated ( $\tau = 27$  years). [We expect it would retreat the least relative to its LIA extent and reveal bedrock that has only been recently buried, which again](#) is largely what we observe; JIF has retreated the least relative to its LIA extent and [has receded to a position last occupied](#) at ~2 ka. Taken together, a simple relationship emerges: the quicker a glacier can respond to industrial-era climate change, the more it has retreated relative to its LIA extent, [exposing bedrock that has been buried for longer and longer in the Holocene.](#)

Deleted: make this glacier

Deleted: and to provide more insight into potential

Deleted: ¶  
5.2 Understanding the non-uniform signal¶  
We seek to understand why four North American glaciers would advance beyond their modern positions many thousands of years apart despite presumed common climate forcing over the Holocene and through the industrial era. While there is certainly spatial climate variability over the Holocene, it seems unlikely that within western North America there would be variation large enough to cause the four glaciers to be thousands of years out of sync. Only Holocene climate records from near each glacier with well-resolved chronologies could untangle these differences, and such terrestrial archives are lacking. Reviews of Holocene glacier change in western Canada (Menounos et al., 2009) and Holocene temperature and precipitation variability in North America (Shuman and Marsicek, 2016) suggest synchronicity across the region, rather than variability... [11]

Deleted: Our initial assumption was

Deleted: modern position is not a common

Deleted: point relative to the Holocene. Modern

Deleted: positions

Deleted: magnitude

Deleted: modern retreat, which is occurring at a vast... [12]

Deleted: advance. Glaciers

Deleted: where

Deleted: amplify

Deleted: exist

Deleted: .

Deleted: 2

Deleted: it more likely

Deleted: their modern positions are more variable than... [13]

Deleted: how far each glacier has receded relative to... [14]

Deleted: Holocene advance history. This

Deleted: :

Deleted: have receded past its minimum size

Deleted: .

Deleted: ); we

Deleted: Holocene advance history. This

Deleted: also

Deleted: : it

Deleted: nearly the least relative

Deleted: its Holocene advance history (it

Deleted: was a similar size

Deleted: versus Mammoth Glacier at ~1 ka).

Deleted: further back into its

Deleted: advance history it resides today

This relationship holds for Kokanee Glacier, but not for Mammoth Glacier. Kokanee Glacier is 46% of its LIA extent, an intermediate amount between Conness (14%) and JIF (70%) Glaciers. Kokanee has the second-steepest slope behind Conness and the quickest response time we calculated ( $\tau = 14$  years), with Conness Glacier's response expected to be quicker given its steeper slope. We expect then Kokanee would retreat to an intermediate position relative to its Holocene length history, which it did. It has retreated to a size last occupied at  $\sim 6$  ka; not as far back in time as Conness ( $> 11$  ka) but more than JIF Glacier at  $\sim 2$  ka. Mammoth Glacier, though, does not fit the overall pattern. Mammoth Glacier has a low slope and slower response time ( $\tau = 23$  years), closer to JIF Glacier ( $\tau = 27$  years). It has lost nearly the same area from its LIA extent as Kokanee Glacier. We would then expect it to retreat further back relative to its Holocene advance history than JIF Glacier, yet it is the least retreated relative to its Holocene advance history, last occupying its present-day position at  $\sim 1$  ka. It is difficult to interpret whether this is an outlier to the trend or proves it false. In either case, the complexity underscores the need to consider glacier hypsometry and ice dynamics when interpreting climate from glaciers.

Regardless of the strength of the connection between response time and bedrock burial duration, there is clear non-uniformity amongst the four sites. We cannot rule out regional climate variability over the Holocene as the source of the variation. However, we find it possible that disparate amounts of modern retreat have caused some glaciers to recede further back than others and modulated our point of comparison. More well-resolved Holocene paleoclimate records from near active glaciers in western North America would provide clarity on this hypothesis, along with glacier flow-line modeling to test whether response time and hypsometry would indeed cause some glaciers to retreat more than others relative to their LIA extents. The impact of spatially heterogeneous climate changes, such as arctic amplification or regional precipitation change, can also be investigated for their impact on individual glacier retreat.

## 6 Conclusion

Our results provide spatial constraints on modern North American glacier positions within the context of the Holocene. JIF Glacier has been larger than its modern position from  $\sim 2$  ka onwards. Kokanee Glacier larger from  $\sim 6$  ka onwards, and Mammoth Glacier from  $\sim 1$  ka onwards. Proglacial bedrock at Conness Glacier has been buried for at least the duration of the Holocene ( $> \sim 11$  ka). Conness Glacier may have receded to its smallest area of the Holocene, though further analysis is required to rule out deep glacial erosion or bedrock burial by debris. Our bedrock erosion rates are on the low end of published estimates for alpine glaciers. We find mean abrasion rates below  $0.3 \text{ mm} \pm 0.3 \text{ yr}^{-1}$ , but present no upper limit for erosion rates that include quarrying. The four North American glaciers exhibit surprisingly disparate Holocene exposure-burial histories relative to their positions occupied today. We posit that this variability is related to non-uniform amounts of retreat since the LIA, rather than asynchronous behavior over the Holocene. Glacier hypsometry and response time have offer insight into why some glaciers have retreated more than others during the industrial era. Comparing modern-day glaciers to a Holocene baseline is nuanced and requires accounting for variables related to modern retreat such as glacier hypsometry as well as Holocene climate.

## Code availability

Monte Carlo forward model code used here is available via Vickers et al. (2020).

## Data availability

Deleted: has retreated

Deleted: from

Deleted: It

Deleted: lower

Deleted: As noted earlier, Mammoth Glacier's doubling in area within the last millennium is a surprising finding if purely climate driven. It is simpler to explain the rapid advance with non-climatic length changes perhaps related to bed morphology (i.e., the glacier debutting from a bedrock knob or spilling out of its cirque and rapidly advancing). If true, then Mammoth Glacier's Holocene length history is not representative of climate and should be excluded.

Deleted: paleoglaciers.

Deleted: relative to their Holocene length fluctuations. We cannot rule out regional climate variability over the Holocene as the source of the variation. However, we find it more convincing that disparate amounts of modern retreat have caused some glaciers to recede further back than others relative to their Holocene advance histories. The pace and intensity of modern climate change exacerbates normal variation in length response between glaciers due to unique hypsometry and response time. Glaciers in western North America have faced extremely rapid warming, experiencing the coldest decades of the Holocene to the warmest within a little over a century (Marcott et al., 2013). It appears (... [15])

Deleted: All four North American glaciers expanded (... [16])

Deleted: to understand

Deleted: position

Deleted: , and support that modern retreat is a reverse (... [17])

Formatted: Indent: First line: 0"

Deleted: at least

Deleted: .

Deleted: has receded to a position last occupied at

Deleted: .

Deleted: has receded to its size last occupied at

Deleted: and nearly doubled in area over the last (... [18])

Deleted: likely receded past its minimum Holocene P (... [19])

Deleted: Our results fit best with erosion

Deleted: 5

Deleted: , except in instances where subglacial

Deleted: is likely to have occurred, and at JIF Glacier (... [20])

Deleted: argue

Deleted: the magnitude

Deleted: modern

Deleted: , and how our method treats the modern gla (... [21])

Deleted: amplify or dampen a glacier's climate respo (... [22])

Deleted: because glaciers are complex transfer functi (... [23])

Deleted: and ice dynamics

All data presented here is available in the main-text tables and supplementary tables. Cosmogenic nuclide measurements will also be deposited into the ICE-D database (<https://version2.ice-d.org/alpine/>) following publication.

#### Declaration of competing interest

The authors declare that they have no competing interests that influenced the research presented in this publication.

#### Author contribution

SAM, JDS, and BMG designed the experiments and acquired funding. AGJ, DLG, TMK, SAM, JDS, BMG, and DHK collected samples. AGJ, TMK, DLG, SAM, and BMG processed samples. MAC leads isotope measurement lab where samples were measured. DLG and JDS developed the model code. AGJ and MR made visualizations and mapped glacier areas. AGJ and SAM wrote the original draft, BM and JDS assisted extensively in manuscript conceptualization, and all authors participated in the final writing and editing of the paper.

#### Acknowledgements

This research was funded by [U.S. National Science Foundation](#) (Grant EAR-1805620), the Tula Foundation, the National Sciences and Engineering Research Council of Canada, and Canada Research Chairs. We thank Inyo National Forest, the Bridger-Teton National Forest, and the Provincial Park Service of Canada. We thank Ben Pelto for helping us access Kokanee Glacier, Aaron Barth and Alden Laev for field assistance in collecting the Mammoth Glacier samples, and Luke Zoet and Summer Rupper for thoughtful discussion.

#### References

Anderson, L. S., Roe, G. H., and Anderson, R. S.: The effects of interannual climate variability on the moraine record, *Geology*, 42, 55–58, <https://doi.org/10.1130/G34791.1>, 2014.

Balco, G., Stone, J. O., Lifton, N. A., and Dunai, T. J.: A complete and easily accessible means of calculating surface exposure ages or erosion rates from  $^{10}\text{Be}$  and  $^{26}\text{Al}$  measurements, *Quaternary Geochronology*, 3, 174–195, <https://doi.org/10.1016/j.quageo.2007.12.001>, 2008.

[Barclay, D. J., Wiles, G. C., and Calkin, P. E.: Holocene glacier fluctuations in Alaska, \*Quaternary Science Reviews\*, 28, 2034–2048, <https://doi.org/10.1016/j.quascirev.2009.01.016>, 2009.](#)

Basagic, H. J. and Fountain, A. G.: Quantifying 20th Century Glacier Change in the Sierra Nevada, California, Arctic, Antarctic, and Alpine Research, 43, 317–330, <https://doi.org/10.1657/1938-4246-43.3.317>, 2011.

[Borchers, B., Marrero, S., Balco, G., Caffee, M., Goehring, B., Lifton, N., Nishiizumi, K., Phillips, F., Schaefer, J., and Stone, J.: Geological calibration of spallation production rates in the CRONUS-Earth project, \*Quaternary Geochronology\*, 31, 188–198, <https://doi.org/10.1016/j.quageo.2015.01.009>, 2016.](#)

Bowerman, N. D. and Clark, D. H.: Holocene glaciation of the central Sierra Nevada, California, *Quaternary Science Reviews*, 30, 1067–1085, <https://doi.org/10.1016/j.quascirev.2010.10.014>, 2011.

[Cary, W.: Testing  \$^{10}\text{Be}\$  Exposure Dating of Holocene Cirque Moraines using Glaciolacustrine Sediments in the Sierra Nevada, California, MS Thesis, Western Washington University, Tacoma, WA, 2018.](#)

Deleted: ,

Deleted: Briner, J. P., McKay, N. P., Axford, Y., Bennike, O., Bradley, R. S., de Vernal, A., Fisher, D., Francus, P., Fréchette, B., Gajewski, K., Jennings, A., Kaufman, D. S., Miller, G., Rouston, C., and Wagner, B.: Holocene climate change in Arctic Canada and Greenland, *Quaternary Science Reviews*, 147, 340–364, <https://doi.org/10.1016/j.quascirev.2016.02.010>, 2016.

Ceperley, E. G., Marcott, S. A., Rawling, J. E., Zoet, L. K., and Zimmerman, S. R. H.: The role of permafrost on the morphology of an MIS 3 moraine from the southern Laurentide Ice Sheet, *Geology*, 47, 440–444, <https://doi.org/10.1130/G45874.1>, 2019.

Chmeleff, J., von Blanckenburg, F., Kossert, K., and Jakob, D.: Determination of the  $^{10}\text{Be}$  half-life by multicollector ICP-MS and liquid scintillation counting, *Nuclear Instruments and Methods in Physics Research Section B: Beam Interactions with Materials and Atoms*, 268, 192–199, <https://doi.org/10.1016/j.nimb.2009.09.012>, 2010.

Clague, J. J., Koch, J., and Geertsema, M.: Expansion of outlet glaciers of the Juneau Icefield in northwest British Columbia during the past two millennia, *The Holocene*, 20, 447–461, <https://doi.org/10.1177/0959683609353433>, 2010.

Cook, S. J., Swift, D. A., Kirkbride, M. P., Knight, P. G., and Waller, R. I.: The empirical basis for modelling glacial erosion rates, *Nat Commun*, 11, 759, <https://doi.org/10.1038/s41467-020-14583-8>, 2020.

Davies, N.: Holocene glaciation of the Green River drainage, Wind River Range, Wyoming, MS Thesis, Western Washington University, Tacoma, WA, 2011.

Davis, P. T., Menounos, B., and Osborn, G.: Holocene and latest Pleistocene alpine glacier fluctuations: a global perspective, *Quaternary Science Reviews*, 28, 2021–2033, <https://doi.org/10.1016/j.quascirev.2009.05.020>, 2009.

DeVisser, M. H. and Fountain, A. G.: A century of glacier change in the Wind River Range, WY, *Geomorphology*, 232, 103–116, <https://doi.org/10.1016/j.geomorph.2014.10.017>, 2015.

Ditchburn, R. G. and Whitehead, N. E.: Proceedings of the 3rd workshop of the South Pacific Environmental Radioactivity Association (SPERA) Extended abstracts, 3 SPERA workshop, Australia, INIS Reference Number: 27007716, 1994.

Farinotti, D., Huss, M., Fürst, J. J., Landmann, J., Machguth, H., Maussion, F., and Pandit, A.: A consensus estimate for the ice thickness distribution of all glaciers on Earth, *Nat. Geosci.*, 12, 168–173, <https://doi.org/10.1038/s41561-019-0300-3>, 2019.

Gibbons, A. B., Megeath, Joe. D., and Pierce, K. L.: Probability of moraine survival in a succession of glacial advances, *Geology*, 12, 327–330, [https://doi.org/10.1130/0091-7613\(1984\)12<327:POMSIA>2.0.CO;2](https://doi.org/10.1130/0091-7613(1984)12<327:POMSIA>2.0.CO;2), 1984.

Goehring, B. M., Schaefer, J. M., Schluechter, C., Lifton, N. A., Finkel, R. C., Jull, A. J. T., Akcar, N., and Alley, R. B.: The Rhone Glacier was smaller than today for most of the Holocene, *Geology*, 39, 679–682, <https://doi.org/10.1130/G32145.1>, 2011.

Goehring, B. M., Wilson, J., and Nichols, K.: A fully automated system for the extraction of in situ cosmogenic carbon-14 in the Tulane University cosmogenic nuclide laboratory, *Nuclear Instruments and Methods in Physics Research Section B: Beam Interactions with Materials and Atoms*, 455, 284–292, <https://doi.org/10.1016/j.nimb.2019.02.006>, 2019.

Hippe, K.: Constraining processes of landscape change with combined in situ cosmogenic  $^{14}\text{C}$ - $^{10}\text{Be}$  analysis, *Quaternary Science Reviews*, 173, 1–19, <https://doi.org/10.1016/j.quascirev.2017.07.020>, 2017.

Deleted: Hallet, B.: Glacial Erosion Assessment, 67, 2011.

Hugonnet, R., McNabb, R., Berthier, E., Menounos, B., Nuth, C., Girod, L., Farinotti, D., Huss, M., Dussaillant, I., Brun, F., and Kääb, A.: Accelerated global glacier mass loss in the early twenty-first century, *Nature*, 592, 726–731, <https://doi.org/10.1038/s41586-021-03436-z>, 2021.

Huss, M., Bookhagen, B., Huggel, C., Jacobsen, D., Bradley, R. s., Clague, J. j., Vuille, M., Buytaert, W., Cayan, D. r., Greenwood, G., Mark, B. g., Milner, A. m., Weingartner, R., and Winder, M.: Toward mountains without permanent snow and ice, *Earth's Future*, 5, 418–435, <https://doi.org/10.1002/2016EF000514>, 2017.

Ivy-Ochs, S. and Briner, J. P.: Dating Disappearing Ice with Cosmogenic Nuclides, *Elements*, 10, 351–356, <https://doi.org/10.2113/gselements.10.5.351>, 2014.

Jóhannesson, T., Raymond, C. F., and Waddington, E. D.: A Simple Method for Determining the Response Time of Glaciers, in: *Glacier Fluctuations and Climatic Change*, Dordrecht, 343–352, [https://doi.org/10.1007/978-94-015-7823-3\\_22](https://doi.org/10.1007/978-94-015-7823-3_22), 1989.

Kaufman, D. S. and Broadman, E.: Revisiting the Holocene global temperature conundrum, *Nature*, 614, 425–435, <https://doi.org/10.1038/s41586-022-05536-w>, 2023.

Kohl, C. P. and Nishiizumi, K.: Chemical isolation of quartz for measurement of in-situ -produced cosmogenic nuclides, *Geochimica et Cosmochimica Acta*, 56, 3583–3587, [https://doi.org/10.1016/0016-7037\(92\)90401-4](https://doi.org/10.1016/0016-7037(92)90401-4), 1992.

Konrad, S. K. and Clark, D. H.: Evidence for an Early Neoglacial Glacier Advance from Rock Glaciers and Lake Sediments in the Sierra Nevada, California, U.S.A., *Arctic and Alpine Research*, 30, 272–284, <https://doi.org/10.2307/1551975>, 1998.

Koppes, M. N. and Montgomery, D. R.: The relative efficacy of fluvial and glacial erosion over modern to orogenic timescales, *Nature Geosci*, 2, 644–647, <https://doi.org/10.1038/ngeo616>, 2009.


Laskar, J., Robutel, P., Joutel, F., Gastineau, M., Correia, A. C. M., and Levrard, B.: A long-term numerical solution for the insolation quantities of the Earth, *A&A*, 428, 261–285, <https://doi.org/10.1051/0004-6361:20041335>, 2004.


Levy, L. B., Kaufman, D. S., and Werner, A.: Holocene glacier fluctuations, Waskey Lake, northeastern Ahklun Mountains, southwestern Alaska, *The Holocene*, 14, 185–193, <https://doi.org/10.1191/0959683604hl675rp>, 2004.

Lifton, N., Sato, T., and Dunai, T. J.: Scaling in situ cosmogenic nuclide production rates using analytical approximations to atmospheric cosmic-ray fluxes, *Earth and Planetary Science Letters*, 386, 149–160, <https://doi.org/10.1016/j.epsl.2013.10.052>, 2014.

Marcott, S. A., Shakun, J. D., Clark, P. U., and Mix, A. C.: A Reconstruction of Regional and Global Temperature for the Past 11,300 Years, *Science*, 339, 1198–1201, <https://doi.org/10.1126/science.1228026>, 2013.

Marcott, S. A., Clark, P. U., Shakun, J. D., Brook, E. J., Davis, P. T., and Caffee, M. W.: 10 Be age constraints on latest Pleistocene and Holocene cirque glaciation across the western United States, *npj Clim Atmos Sci*, 2, 1–7, <https://doi.org/10.1038/s41612-019-0062-z>, 2019.

**Deleted:** McKay, N., Routson, C., Erb, M., Dätwyler, C., Sommer, P. S., Heiri, O., and Davis, B.: Holocene global mean surface temperature, a multi-method reconstruction approach, *Sci Data*, 7, 201, <https://doi.org/10.1038/s41597-020-0530-7>, 2020.   
Kaufman, D

**Deleted:** Larsen, D. J., Crump, S. E., and Blumm, A.: Alpine glacier resilience and Neoglacial fluctuations linked to Holocene snowfall trends in the western United States, *Science Advances*, 6, eabc7661, <https://doi.org/10.1126/sciadv.abc7661>, 2020. 



Masson-Delmotte, V., Zhai, P., Pirani, A., Connors, S. L., Péan, C., Berger, S., Caud, N., Chen, Y., Goldfarb, L., Gomis, M. I., Huang, M., Leitzell, K., Lonnoy, E., Matthews, J. B. R., Maycock, T. K., Waterfield, T., Yelekçi, Ö., Yu, R., and Zhou, B. (Eds.): *Climate Change 2021: The Physical Science Basis. Contribution of Working Group I to the Sixth Assessment Report of the Intergovernmental Panel on Climate Change*, Cambridge University Press, Cambridge, United Kingdom and New York, NY, USA, <https://doi.org/10.1017/9781009157896>, 2021.

McKay, N. P. and Kaufman, D. S.: Holocene climate and glacier variability at Hallet and Greyling Lakes, Chugach Mountains, south-central Alaska, *J Paleolimnol*, 41, 143–159, <https://doi.org/10.1007/s10933-008-9260-0>, 2009.

Menounos, B., Osborn, G., Clague, J. J., and Luckman, B. H.: Latest Pleistocene and Holocene glacier fluctuations in western Canada, *Quaternary Science Reviews*, 28, 2049–2074, <https://doi.org/10.1016/j.quascirev.2008.10.018>, 2009.

Milner, A. M., Khamis, K., Battin, T. J., Brittain, J. E., Barrand, N. E., Füreder, L., Cauvy-Fraunié, S., Gislason, G. M., Jacobsen, D., Hannah, D. M., Hodson, A. J., Hood, E., Lencioni, V., Ólafsson, J. S., Robinson, C. T., Tranter, M., and Brown, L. E.: Glacier shrinkage driving global changes in downstream systems, *Proceedings of the National Academy of Sciences*, 114, 9770–9778, <https://doi.org/10.1073/pnas.1619807114>, 2017.

Oerlemans, J.: Extracting a Climate Signal from 169 Glacier Records, *Science*, 308, 675–677, <https://doi.org/10.1126/science.1107046>, 2005.

Osborn, G., Menounos, B., [Ryane, C.](#), [Riedel, J.](#), Clague, J. J., [Koch, J.](#), [Clark, D.](#), [Scott, K.](#), and [Davis, P. T.](#): Latest Pleistocene and Holocene glacier fluctuations on Mount Baker, Washington, *Quaternary Science Reviews*, 49, 33–51, <https://doi.org/10.1016/j.quascirev.2012.06.004>, 2012.

Osman, M. B., Tierney, J. E., Zhu, J., Tardif, R., Hakim, G. J., King, J., and Poulsen, C. J.: Globally resolved surface temperatures since the Last Glacial Maximum, *Nature*, 599, 239–244, <https://doi.org/10.1038/s41586-021-03984-4>, 2021.

Pelto, M. S. and Hedlund, C.: Terminus behavior and response time of North Cascade glaciers, Washington, U.S.A., *Journal of Glaciology*, 47, 497–506, <https://doi.org/10.3189/172756501781832098>, 2001.

Phillips, F. M., Argento, D. C., Balco, G., Caffee, M. W., Clem, J., Dunai, T. J., Finkel, R., Goehring, B., Gosse, J. C., Hudson, A. M., Jull, A. J. T., Kelly, M. A., Kurz, M., Lal, D., Lifton, N., Marrero, S. M., Nishiizumi, K., Reedy, R. C., Schaefer, J., Stone, J. O. H., Swanson, T., and Zreda, M. G.: The CRONUS-Earth Project: A synthesis, *Quaternary Geochronology*, 31, 119–154, <https://doi.org/10.1016/j.quageo.2015.09.006>, 2016.

Porter, S. C. and Denton, G. H.: Chronology of neoglaciation in the North American Cordillera, *American Journal of Science*, 265, 177–210, <https://doi.org/10.2475/ajs.265.3.177>, 1967.

Rand, C. and Goehring, B. M.: The distribution and magnitude of subglacial erosion on millennial timescales at Engabreen, Norway, *Annals of Glaciology*, 60, 73–81, <https://doi.org/10.1017/aog.2019.42>, 2019.

Deleted: Koch

Deleted: Vallis, V.: Multi-proxy record of

Deleted: glacial history of the Spearhead and Fitzsimmons ranges, southern Coast Mountains, British Columbia

Deleted: 26, 479–493

Deleted: 2006.09.003, 2007

Deleted: : Snowline depression in the tropics during the Last Glaciation, *Quaternary Science Reviews*, 20, 1067–1091, [https://doi.org/10.1016/S0277-3791\(00\)00178-5](https://doi.org/10.1016/S0277-3791(00)00178-5), 2000. Porter, S. C

- 1685 RGI Consortium, R. G. I.: Randolph Glacier Inventory 6.0, <https://doi.org/10.7265/N5-RGI-60>, 2017.
- Roe, G. H., Baker, M. B., and Herla, F.: Centennial glacier retreat as categorical evidence of regional climate change, *Nature Geosci*, 10, 95–99, <https://doi.org/10.1038/ngeo2863>, 2017.
- Rounce, D. R., Hock, R., Maussion, F., Hugonnet, R., Kochtitzky, W., Huss, M., Berthier, E., Brinkerhoff, D., Compagno, L., Copland, L., Farinotti, D., Menounos, B., and McNabb, R. W.: Global glacier change in the 21st century: Every increase in temperature matters, *Science*, 379, 78–83, <https://doi.org/10.1126/science.abo1324>, 2023.
- 1690 Routson, C. C., Kaufman, D. S., McKay, N. P., Erb, M. P., Arcusa, S. H., Brown, K. J., Kirby, M. E., Marsicek, J. P., Anderson, R. S., Jiménez-Moreno, G., Rodysill, J. R., Lachniet, M. S., Fritz, S. C., Bennett, J. R., Goman, M. F., Metcalfe, S. E., Galloway, J. M., Schoups, G., Wahl, D. B., Morris, J. L., Staines-Urías, F., Dawson, A., Shuman, B. N., Gavin, D. G., Munroe, J. S., and Cumming, B. F.: A multiproxy database of western North American Holocene paleoclimate records, *Earth System Science Data*, 13, 1613–1632, <https://doi.org/10.5194/essd-13-1613-2021>, 2021.
- Rowan, A. V., Egholm, D. L., and Clark, C. D.: Forward modelling of the completeness and preservation of palaeoclimate signals recorded by ice-marginal moraines, *Earth Surface Processes and Landforms*, 47, 2198–2208, <https://doi.org/10.1002/esp.5371>, 2022.
- 1700 Rupper, S., Roe, G., and Gillespie, A.: Spatial patterns of Holocene glacier advance and retreat in Central Asia, *Quaternary Research*, 72, 337–346, <https://doi.org/10.1016/j.yqres.2009.03.007>, 2009.
- Schimmelpfennig, I., Schaefer, J. M., Lamp, J., Godard, V., Schwartz, R., Bard, E., Tuna, T., Akçar, N., Schlüchter, C., Zimmerman, S., and ASTER Team: Glacier response to Holocene warmth inferred from in situ  $^{10}\text{Be}$  and  $^{14}\text{C}$  bedrock analyses in Steingletscher's forefield (central Swiss Alps), *Climate of the Past*, 18, 23–44, <https://doi.org/10.5194/cp-18-23-2022>, 2022.
- 1705 Shuman, B. N. and Marsicek, J.: The structure of Holocene climate change in mid-latitude North America, *Quaternary Science Reviews*, 141, 38–51, <https://doi.org/10.1016/j.quascirev.2016.03.009>, 2016.
- Solomina, O. N., Bradley, R. S., Hodgson, D. A., Ivy-Ochs, S., Jomelli, V., Mackintosh, A. N., Nesje, A., Owen, L. A., Wanner, H., Wiles, G. C., and Young, N. E.: Holocene glacier fluctuations, *Quaternary Science Reviews*, 111, 9–34, <https://doi.org/10.1016/j.quascirev.2014.11.018>, 2015.
- 1710 Vickers, A. C., Shakun, J. D., Goehring, B. M., Gorin, A., Kelly, M. A., Jackson, M. S., Doughty, A., and Russell, J.: Similar Holocene glaciation histories in tropical South America and Africa, *Geology*, 49, 140–144, <https://doi.org/10.1130/G48059.1>, 2020.
- Wanner, H., Beer, J., Büttikofer, J., Crowley, T. J., Cubasch, U., Flückiger, J., Goosse, H., Grosjean, M., Joos, F., Kaplan, J. O., Küttel, M., Müller, S. A., Prentice, I. C., Solomina, O., Stocker, T. F., Tarasov, P., Wagner, M., and Widmann, M.: Mid- to Late Holocene climate change: an overview, *Quaternary Science Reviews*, 27, 1791–1828, <https://doi.org/10.1016/j.quascirev.2008.06.013>, 2008.
- 1715 Wirsig, C., Ivy-Ochs, S., Reitner, J., Christl, M., Vockenhuber, C., Steinbichler, M., and Reindl, M.: Subglacial abrasion rates at Goldbergkees, Hohe Tauern, Austria, determined from cosmogenic  $^{10}\text{Be}$  and  $^{36}\text{Cl}$  concentrations: Subglacial abrasion rates at Goldbergkees, Hohe Tauern, *Earth Surface Processes and Landforms*, 42, <https://doi.org/10.1002/esp.4093>, 2016.
- 1720

Deleted: Quat. res.,

Woodard, J. B., Zoet, L. K., Iverson, N. R., and Helanow, C.: Linking bedrock discontinuities to glacial quarrying, *Ann. Glaciol.*, 60, 66–72, <https://doi.org/10.1017/aog.2019.36>, 2019.

Zekollari, H., Huss, M., and Farinotti, D.: On the Imbalance and Response Time of Glaciers in the European Alps, *Geophysical Research Letters*, 47, e2019GL085578, <https://doi.org/10.1029/2019GL085578>, 2020.

1725

1730

Page 2: [1] Deleted      Andrew Jones      9/25/23 12:14:00 PM



Page 2: [2] Deleted      Andrew Jones      9/25/23 12:14:00 PM



Page 2: [3] Deleted      Andrew Jones      9/25/23 12:14:00 PM



Page 2: [4] Deleted      Andrew Jones      9/25/23 12:14:00 PM



Page 2: [5] Deleted      Andrew Jones      9/25/23 12:14:00 PM



Page 3: [6] Deleted      Andrew Jones      9/25/23 12:14:00 PM



Page 6: [7] Deleted      Andrew Jones      9/25/23 12:14:00 PM



Page 8: [8] Deleted      Andrew Jones      9/25/23 12:14:00 PM



Page 9: [9] Deleted      Andrew Jones      9/25/23 12:14:00 PM



Page 15: [10] Deleted      Andrew Jones      9/25/23 12:14:00 PM



Page 19: [11] Deleted      Andrew Jones      9/25/23 12:14:00 PM



Page 19: [12] Deleted      Andrew Jones      9/25/23 12:14:00 PM



Page 19: [13] Deleted      Andrew Jones      9/25/23 12:14:00 PM



Page 19: [14] Deleted      Andrew Jones      9/25/23 12:14:00 PM



Page 20: [15] Deleted      Andrew Jones      9/25/23 12:14:00 PM



Page 20: [16] Deleted      Andrew Jones      9/25/23 12:14:00 PM



Page 20: [17] Deleted      Andrew Jones      9/25/23 12:14:00 PM



Page 20: [18] Deleted      Andrew Jones      9/25/23 12:14:00 PM



**Page 20: [19] Deleted      Andrew Jones      9/25/23 12:14:00 PM**



**Page 20: [20] Deleted      Andrew Jones      9/25/23 12:14:00 PM**



**Page 20: [21] Deleted      Andrew Jones      9/25/23 12:14:00 PM**



**Page 20: [22] Deleted      Andrew Jones      9/25/23 12:14:00 PM**



**Page 20: [23] Deleted      Andrew Jones      9/25/23 12:14:00 PM**

