



# Evaluation of hydrological models on small mountainous catchments: impact of the meteorological forcings

Guillaume Evin<sup>1</sup>, Matthieu Le Lay<sup>2</sup>, Catherine Fouchier<sup>3</sup>, Alexandre Mas<sup>1</sup>, François Colleoni<sup>3</sup>, David Penot<sup>2</sup>, Pierre-André Garambois<sup>3</sup>, and Olivier Laurantin<sup>4</sup>

<sup>1</sup>Univ. Grenoble Alpes, INRAE, CNRS, IRD, Grenoble INP, IGE, 38000 Grenoble, France

<sup>2</sup>EDF-DTG, Grenoble, France

<sup>3</sup>INRAE, Aix Marseille Univ – RECOVER, Aix-en-Provence, France

<sup>4</sup>DSO, Météo-France, Toulouse, France

**Correspondence:** Guillaume Evin (guillaume.evin@inrae.fr)

**Abstract.** Hydrological modelling of small mountainous catchments is particularly challenging because of the high spatio-temporal resolution required for the meteorological forcings. In-situ measurements of precipitation are typically scarce in these remote areas, particularly at high elevations. Precipitation reanalyses propose different alternative forcings for the simulation of streamflow using hydrological models. In this paper, we evaluate the performances of two hydrological models representing some of the key processes for small mountainous catchments, using different meteorological products with a fine spatial and temporal resolution. The evaluation is performed on 55 small catchments of the Northern French Alps. While the simulated streamflows are adequately reproduced for most of the configurations, these evaluations emphasize the added value of radar measurements, in particular for the reproduction of flood events. However, these better performances are only obtained because the hydrological models correct the underestimations of accumulated amounts (e.g. annual) from the radar data in high-elevation areas.

## 1 Introduction

Hydrological modelling of small mountainous catchments is particularly challenging for many reasons. These catchments exhibit very quick hydrological responses due to their high slopes, which require a fine temporal representation of meteorological forcings. Considering the small size of the target catchments, a high spatial resolution for precipitation is also needed, typically down to 1 km<sup>2</sup>, in order to catch the spatial variability of local/intense precipitation events. However, precipitation measurements in high-elevation areas suffer from many limitations. Weather stations are difficult to maintain in remote areas, and cover mostly low-elevation areas (Gottardi et al., 2012), while the highest intensities and annual amounts are often reached along the crests. Radar measurements have limited spatial coverage in mountains, and are affected by the type and density of the hydrometeors, as well as orographic enhancements. In addition, in mountainous areas, the representation of hydrological processes related to snow (sometimes ice) is mandatory. Finally, streamflow is particularly hard to monitor in these areas, due to the important volumes of solid transport and the very quick rise of water levels during flood events. As a consequence, long-time series of streamflow measurements are rare, which hampers hydrological applications.



Conceptual models have been extensively used to represent the key hydrological processes of small mountainous catchments. In the Alps, they have been used for the assessment of the debris flow generation processes (Simoni et al., 2020), or for climate change impacts evaluation (Aili et al., 2019). These hydrological models usually represent key hydrological processes with a flexible modelling framework and a variable number of modules, e.g. snow modules (Valéry et al., 2014), ice modules (Viviroli et al., 2009) or more complex representations of the cryosphere (Mosier et al., 2016). In France, these conceptual models have been applied to large sets of catchments (Velázquez et al., 2010; Valéry et al., 2014; Lobligeois, 2014; Garavaglia et al., 2017; de Lavenne et al., 2019). These studies usually consider a large range of catchment size, typically between 10 km<sup>2</sup> and 10,000 km<sup>2</sup>, covering partially the Northern French Alps, i.e. the region considered in this study.

Conceptual models are usually calibrated using observed meteorological forcings and streamflow. In recent years, many meteorological reanalyses have been developed in order to propose long archives of meteorological variables on a regular grid and at a relatively fine temporal resolution (e.g. hourly, daily). At the planetary scale, different products are based on numerical models of the atmosphere and land surface. Some examples are MERRA (Rienecker et al., 2011) and ERA-Interim (Dee et al., 2011) and their respective land-surface counterparts MERRA-Land (Reichle et al., 2011) and ERA-Interim/Land (Balsamo et al., 2015). They mostly assimilate remote sensing observations. It can be viewed as an advantage considering the inhomogeneous coverage of weather stations delivering in-situ observations, in time and space, which results in temporal and spatial inconsistencies if they are integrated. Recently, a significant upgrade of ERA-Interim led to the ERA5-Land reanalysis (Muñoz-Sabater et al., 2021) available at a 9 km resolution and an hourly time scale. Alternatively, at a country or regional scale, different reanalyses are produced at a finer spatial resolution and assimilate mostly ground measurements and apply advanced interpolation techniques, see, e.g. Vidal et al. (2010); Gottardi et al. (2012); Devers et al. (2021) in France, Frei and Schär (1998) in Switzerland or Frei and Isotta (2019) in the Alps. Finally, in the last decade, weather radars have been extensively exploited in order to provide information about precipitation at a fine temporal (hourly or sub-hourly) and spatial (1 km<sup>2</sup>) resolution. In France, the French meteorological office Météo-France has delivered several composite products that correct the areal precipitation amounts obtained from the reflectivity alone with the precipitation amounts measured by the gauges (Champeaux et al., 2009). While these different products have all been designed for land-surface applications, including hydrological applications, they have different strengths and weaknesses which impact their capacity to simulate streamflows, especially for small mountainous catchments (Villarini and Krajewski, 2010).

This paper aims at evaluating the performances of different combinations of hydrological models and precipitation reanalysis for the reproduction of streamflow in 55 small mountainous catchments located in the Northern French Alps. Two hydrological models representing some of the key processes for small mountainous catchments are tested. Four different meteorological products with fine spatial and temporal resolutions are used as inputs of these hydrological models. These different reanalyses assimilate different data information and provide different spatial/temporal resolutions. The different hydrological evaluations shown in this paper will show how the different features of the meteorological forcings impact streamflow simulations. Unlike many studies considering a large number of catchments in France, this study focuses on a selection of small mountainous catchments (less than 200 km<sup>2</sup>) subject to orographic effects favoring very intense precipitation amounts and fast hydrologic concentration potentially leading to important damages (Creutin et al., 2022). A primary objective of this study is the compari-



son of different meteorological forcings in order to select the most appropriate reanalysis for hydrological modelling of the set of catchments considered. A second objective is to assess the reliability of simulated streamflow, with an emphasis on flood characteristics. The performances and limitations of these hydrological simulations are important to describe in the context of flood risk management. Section 2 presents the study area, the catchments, the meteorological and streamflow data, and the hydrological models considered in this study. In section 3, the properties of the mean areal precipitation values obtained with the different precipitation reanalysis are then compared. Section 4 evaluates the performances of the different meteo-hydrological frameworks. Section 5 provides an extensive discussion of different key points. Section 6 concludes.

## 2 Study area, meteorological data and hydrological models

### 2.1 Study area and catchments

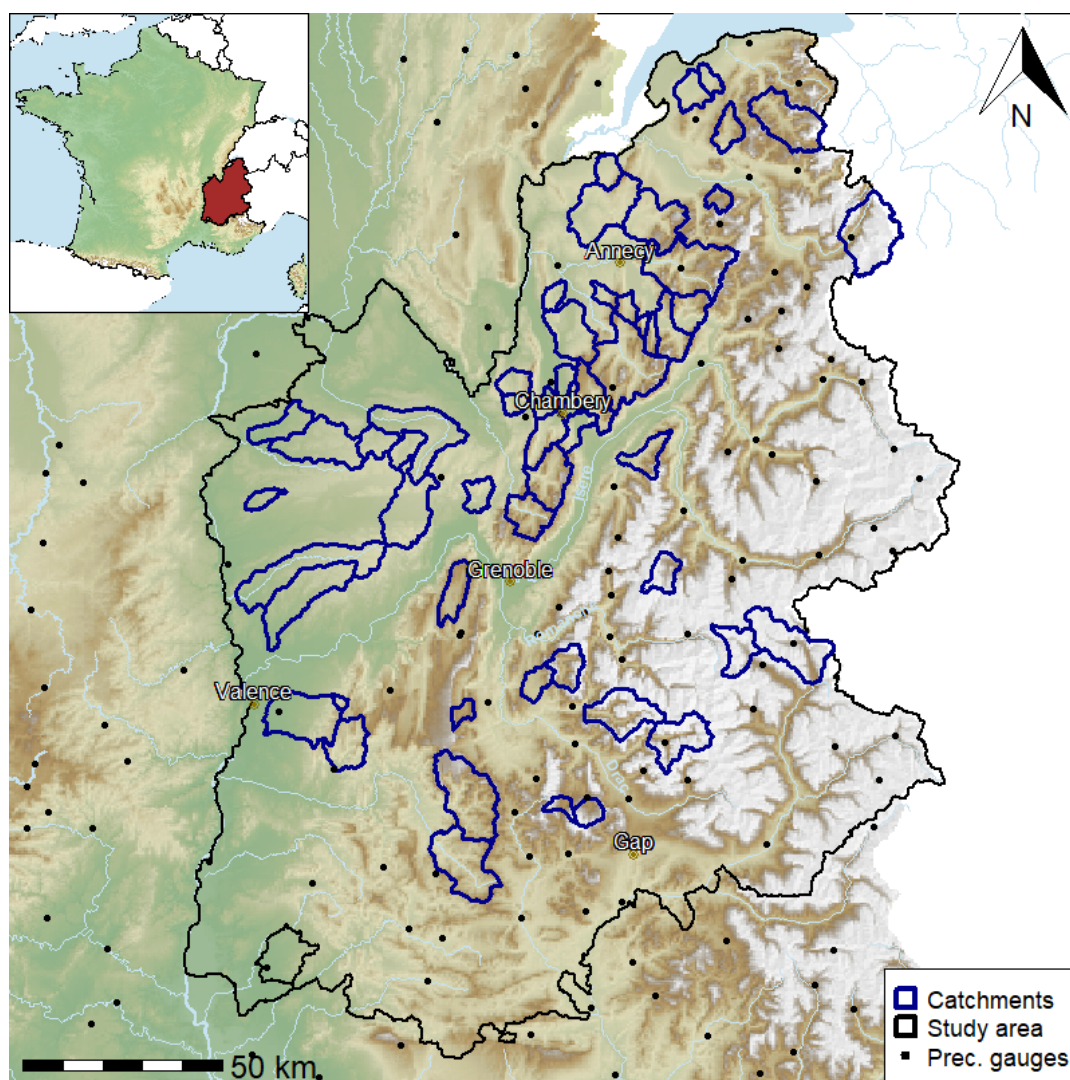
Figure 1 shows the location of the 55 catchments considered in this study. They cover a region in the Northern French Alps delimited by the contours of French administrative entities (so-called “Département” of Drôme, Isère, Savoie, Haute-Savoie and Hautes-Alpes). These catchments have been selected according to their size (area between 10 km<sup>2</sup> and 300 km<sup>2</sup>) and the availability and quality of streamflow measurements (at least 10 years in the period 1997-2017). Streamflow data have been obtained from the French national database Banque Hydro (<http://hydro.eaufrance.fr/>, last date of access: 10 October 2022).

By construction, most of these catchments are small (75% are smaller than 150 km<sup>2</sup>) and typical of mountainous catchments, with 25% and 75% quantiles for the median elevations equal to 580 m and 1450 m, respectively, 1380 m and 2330 m for the maximum elevations, and 9% and 25% for the mean slopes. At the exception of a few catchments located in plains in the West of the domain, this set of catchments concerns small and steep torrential catchments largely influenced by the snow conditions during winter and spring (roughly from December to May), and for four of them by glacial contribution.

### 2.2 Meteorological data

In this study, precipitation and temperature reanalysis available at a high spatial resolution and at an hourly time scale for the period 1997-2017 are selected in order to provide homogeneous meteorological forcings (i.e. without missing data) with an adequate representation of the meteorological dynamics at the catchment scale.

Table 1 presents the key features of the atmospheric reanalysis products considered in this study. They all cover the period 1997-2017. Four types of hourly precipitation data are used to evaluate the influence of the different precipitation forcings: ERA5-Land (Muñoz-Sabater et al., 2021), COMEPHORE (Champeaux et al., 2009), and two sets of SPAZM precipitation reanalysis (Gottardi et al., 2012) disaggregated from a daily to an hourly time step. As we focus on the influence of the different kinds of precipitation forcings, a unique source of temperature data is considered in all hydrological applications: the SPAZM temperature reanalysis disaggregated with hourly SAFRAN temperature.



**Figure 1.** Location of the 55 catchments (in dark blue) in the study area (in black) and of 149 hourly precipitation gauges available in this region (black dots).



**Table 1.** Key features of atmospheric reanalysis products. The products written in bold are used as inputs in the present study.

Type of data	Name	Spatial and temporal resolution	Data assimilation	Post-treatment	Final resolution
Precipitation	<b>ERA5-Land</b>	9 km / hourly	Satellite	none	9 km / hourly
	<b>COMEPHORE</b>	1 km / hourly	Radar / Hourly and daily gauges	none	1 km / hourly
	SPAQM	1 km / daily	Daily gauges	temporal disaggregation: (with gauges) and <b>SPAQM-g</b> (with both COMEPHORE and gauges)	1 km / hourly
Temperature	SAFRAN	8 km / hourly	Hourly temperatures	none	8 km / hourly
	SPAQM	1 km / daily	Min. and max. daily temperatures	temporal disaggregation: with hourly SAFRAN temperature	<b>SPAQM_temp</b> 1 km / hourly

## 2.2.1 ERA5-Land

ERA5-Land (Muñoz-Sabater et al., 2021) is a reanalysis dataset derived from atmospheric data of the ERA5 reanalysis which provides hourly estimates of a large number of atmospheric, land and oceanic climate variables, at a 30 km resolution (Hersbach et al., 2020). ERA5 and ERA5-Land are produced by the European Center for Medium Range Weather Forecast (ECMWF) and can be easily accessed through the Copernicus Climate Data Store (CDS). As such, they are widely used and can be considered as a reference dataset for the analysis of land surface variables, e.g. streamflow (Alfieri et al., 2020; Xu et al., 2022; Probst and Mauser, 2022). The ERA5-Land dataset provides many atmospheric and surface variables, including hourly precipitation amounts and temperature at a 9 km resolution. Unlike the other reanalysis considered in this study, ERA5-Land mostly assimilates satellite data and does not consider gauged measurements. It also has the coarsest spatial resolution.

## 2.2.2 SAFRAN

SAFRAN (Système d'Analyse Fournissant des Renseignements Atmosphériques à la Neige) is a widely used precipitation and temperature reanalysis available for France at an 8 km spatial resolution grid but with an effective resolution of around 30 km (Durand et al., 1993; Vidal et al., 2010). SAFRAN assimilates daily precipitation data from many stations but not at an hourly scale. While SAFRAN provides different meteorological variables at an hourly scale (temperature, wind, rain and snow intensities), the subdaily dynamics are inferred from vertical profiles obtained from a numerical weather model. As shown in Quintana-Seguí et al. (2008), the temporal dynamics at a subdaily scale are poorly described for precipitation, with many 6-hour blocks of constant precipitation derived from the vertical profile of humidity. As a consequence, we decided not to use hourly SAFRAN precipitation data. In this study, we only use SAFRAN hourly temperature data to disaggregate daily





105 temperature data from the SPAZM reanalysis (see Appendix A2). SAFRAN assimilates in situ temperature measurements at an hourly time scale in about 4000 stations in France. Quintana-Seguí et al. (2008) show that its subdaily structure correlates well to observed data and can be considered to be adequate for our applications.

### 2.2.3 SPAZM

110 SPAZM is a reanalysis produced by EdF (Électricité de France) specifically for hydrological evaluations in a large southeastern part of France, where most of the catchments with hydroelectricity stakes are located. SPAZM combines in-situ measurements and meteorological guesses conditioned by the topography, the season, and the weather type of the target day (Gottardi et al., 2012). SPAZM precipitation is available at a daily time scale and at a 1 km<sup>2</sup> spatial resolution. SPAZM temperature is available at the same temporal and spatial resolutions (Gottardi, 2009) and provides minimum and maximum values for each day of the reanalysis.

115 Because an hourly resolution is required to perform the hydrological evaluation of the small catchments considered in this study, postprocessing of SPAZM data is performed to disaggregate precipitation and temperature data from daily to hourly time scales. For the disaggregation of SPAZM precipitation data, COMEPHORE and precipitation gauges are used to provide the temporal structures. In the following sections, SPAZM-c will refer to SPAZM precipitation data disaggregated with COMEPHORE or with gauged data, and SPAZM-g will refer to SPAZM precipitation disaggregated with gauged data only  
120 (see Appendix A1 for further details). These gauged data are composed of 149 precipitation gauges belonging to EdF and Météo-France and which are located in the study area (see Fig. 1).

For the disaggregation of SPAZM temperature data, the hourly temporal structure from the SAFRAN reanalysis provides the subdaily dynamics, while the daily minimum and maximum temperatures are obtained from SPAZM (Gottardi, 2009). Further details are provided in Appendix A2. Note that, although ERA5-Land and SAFRAN also provide hourly temperature  
125 data, we choose to keep this SPAZM/SAFRAN composite reanalysis which has been shown to combine the strength of both reanalyses on a mountainous catchment (Magand et al., 2018). The use of this single temperature forcing, combined with the four available precipitation forcings, also enables the assessment of the differences in the hydrological model performances related to the different precipitation inputs alone.

### 2.2.4 COMEPHORE

130 COMEPHORE (Combinaison en vue de la Meilleure Estimation de la Précipitation HORaiRE) is a radar/gauge composite reanalysis of precipitation available at the spatial resolution of 1 km<sup>2</sup> and at an hourly time step on the French territory (Champeaux et al., 2009) for the period 1997-2017. COMEPHORE assimilates in-situ measurements from many precipitation gauges (more than 4000 at a daily time step, and more than 1000 at an hourly scale) and radar data. However, it must be noticed that the radar network significantly evolved during the period 1997-2017. In particular, the quality of radar measurements in  
135 the French Alps is rather poor before 2006 due to a lack of coverage by the French radar network (see Fig. 1 in Fumière et al., 2020). In addition, the methodology applied to merge radar and in-situ measurements is also different for the periods



1997-2006 and 2007-2017 with a different treatment of convective and stratiform precipitation events after 2007 (Laurantin, 2008).

For each of the 55 catchments and for each hour of the period 1997-2017, four different precipitation forcings are thus used as inputs for the two hydrological models considered in this study, corresponding to ERA5-Land, SPAZM-g, SPAZM-c and COMEPHORE, along with one temperature forcing corresponding to the SPAZM/SAFRAN composite reanalysis.

## 2.3 Hydrological models

### 2.3.1 MORDOR-SD

MORDOR hydrological model (Garçon, 1996) is the operational hydrological model of Edf for about 30 years and is applied in different contexts (real-time forecastings, flood frequency analysis and continuous monitoring of water resources). Garavaglia et al. (2017) describe the last version of the semi-distributed model MORDOR-SD with a spatialization of the main meteorological forcings and hydrological processes by elevation band. In particular, MORDOR-SD represents the accumulation and melting of ice and snow cover in each of these elevation bands.

MORDOR-SD considers mean areal precipitation (MAP) and temperature (MAT) values as inputs, which are obtained by averaging the precipitation or temperature of all pixels belonging to the catchment. If a pixel only partially covers a catchment, a weight corresponding to the surface covered by the catchment is assigned.

The parameterization of the version applied in this study contains 12 free parameters described in Table 2. In this study, four catchments with a significant fraction of their surface covered with ice (1%, 2%, 4% and 28%, respectively) require 2 additional parameters related to ice melting. The parameter  $cp$  is a correction factor of the total amount of precipitation and directly affects the water balance. A constraint  $z_{max} = u_{max}$  for the maximum capacity of the capillarity storage  $z_{max}$  and maximum capacity of the root zone  $u_{max}$  is applied, as these two parameters are strongly interrelated.

In this study, MORDOR-SD is calibrated using the procedure described by Paquet et al. (2013) and Garavaglia et al. (2017) which applies a genetic algorithm to find the parameters that maximize a multi-criterion objective function. This objective function minimizes the difference between observed and simulated streamflow time series, seasonal streamflows and flow duration curves, these differences being quantified with the Kling-Gupta efficiency (KGE) criteria (Gupta et al., 2009).

### 2.3.2 SMASH

SMASH is a computational software framework dedicated to *Spatially distributed Modeling and data ASsimilation for Hydrology*. It provides a flexible hydrological spatially distributed modelling framework, capable to operate at high spatio-temporal resolution. It includes many functionalities for parameter sensitivity analysis, uniform, and spatially distributed parameter calibration methods as well as variational data assimilation algorithms (Jay-Allemand et al., 2019).

SMASH is the result of work carried out at INRAE of Aix-en-Provence in the fields of flood forecasting (Javelle et al., 2016) and low water levels modeling in France (Folton and Arnaud, 2020). Based on a conceptual representation of the dominant hydrological processes, SMASH is a continuous distributed model that enables to represent, on each grid cell, different hy-



**Table 2.** MORDOR-SD free parameters, units, range and description.

Parameter	Units	Prior range	Description
cp	-	[0.1,3]	Precipitation correction factor
gtz	$^{\circ}\text{C } 100 \text{ m}^{-1}$	[-0.8,-0.4]	Air temperature gradient
umax	mm	[30,300]	Maximum capacity of the root zone
lmax	mm	[30,300]	Maximum capacity of the hillslope zone
cel	$\text{km h}^{-1}$	[0.1,5]	Wave celerity
kdif	km	[0.1,5]	$dif/cel$ ratio where $dif$ is the wave diffusion in $\text{km}^2\text{h}^{-1}$
evl	-	[1.5,4]	Outflow exponent of storage related to the hillslope zone
kr	-	[0.1,0.9]	Runoff coefficient
lkn	$\log(\text{mm h}^{-1})$	[-6,-1]	logarithm of the outflow coefficient of base flow storage
kf	$\text{mm } ^{\circ}\text{C}^{-1} \text{ day}^{-1}$	[0,5]	Constant part of melting coefficient
eft	$^{\circ}\text{C}$	[-3,3]	Additive correction of snowpack temperature
efp	$^{\circ}\text{C}$	[-3,3]	Additive correction of temperature for rain-snow partitioning
kg	$\text{mm } ^{\circ}\text{C}^{-1}$	[2,8]	Fixed part of the glacial melting coefficient
efg	$^{\circ}\text{C}$	[-3,3]	Additive correction of melting ice temperature

drological functions at the user's choice: snow accumulation and melting, production, transfer within the grid cell, and runoff  
 170 routing between grid cells. It uses spatially distributed meteorological forcings and hydrometric observations. The model has  
 been developed with the objective to maintain a relative parametric parsimony, in order to facilitate its regionalization and  
 allow its application to ungauged catchments.

The SMASH grid-based model structure implemented in this study combines the following components: i) the CemaNeige  
 snow store introduced by Valéry (2010), ii) the production store and the transfer store of the GR4J model described in Perrin  
 175 et al. (2003), iii) a second transfer store coupled with a direct runoff branch, iv) the water exchange function described in  
 Perrin et al. (2003) which enables to simulate losses or gains of water, which can be required in cases of non-conservative  
 catchments (groundwater exchange) and/or data uncertainties, v) a simple cell to cell routing scheme (linear reservoir) to  
 convey the discharge downstream following a drainage plan derived from terrain elevation data. This model structure contains  
 8 free parameters described in Table 3 along with their calibration ranges. Further details about the model structure are provided  
 180 in Appendix B.

The calibration algorithm used here to calibrate the SMASH model parameters is the simple steepest descent global-  
 minimization algorithm. The objective function is the Kling-Gupta efficiency (KGE) criteria (Gupta et al., 2009) computed  
 between the observed and simulated streamflow time series. In this study, SMASH is run at the spatial resolution of  $1 \text{ km}^2$  and  
 temporal resolution of 1 h, and for each catchment eight spatially uniform parameters are calibrated.





**Table 3.** SMASH free parameters, units, range and description.

Parameter	Units	Prior range	Description
$c_p$	mm	[1, 100000]	Capacity of the production reservoir
$c_{ft}$	mm	[1, 1000]	Capacity of the 1 <sup>st</sup> transfer reservoir
$c_{st}$	mm	[1, 10000]	Capacity of the 2 <sup>nd</sup> transfer reservoir
$l_r$	min	[0.0001, 1000]	Linear routing reservoir parameter
$\alpha$	-	[0, 1]	Partition parameter between the two transfer reservoirs
$tc$	-	[0, 1]	Weighting coefficient for the thermal state of the snowpack
$mc$	mm °C <sup>-1</sup> hour <sup>-1</sup>	[0, 4]	Melting coefficient
$exc$	mm hour <sup>-1</sup>	[-20, 20]	Water exchange parameter applied to the direct runoff branch and to the 1 <sup>st</sup> transfer reservoir

### 185 3 Comparison of mean areal precipitation values

Figure 2 presents different statistics of mean areal precipitation obtained with the different precipitation products for the 55 catchments. The proportion of dry hours (Fig. 2a) varies between 0.93 and 0.97 and is roughly similar for the four different meteorological products and the different catchments. At a daily scale (Fig. 2b), ERA5-Land produces much more wet days than the other products. The average annual amounts cover the same range for SPAZM and ERA5-Land (Fig. 2c), which means that the annual amounts for ERA5-Land are obtained with a higher number of wet days with more moderate intensities (Fig. 2d). Annual amounts from COMEPHORE are about 14% smaller than SPAZM and ERA5-Land. The four products are equivalent concerning the number of days with more than 10 mm (Fig. 2e) but exhibit major discrepancies for the number of days with heavy precipitation (i.e. more than 50 mm, Fig. 2f), with 50% of the catchments with 1 to 2 days in average with SPAZM, and more than 5 in average for four catchments, while there is around 1 day with heavy precipitation with COMEPHORE, and around 0.25 with ERA5-Land. This agrees with the statistics of extreme mean areal precipitation values presented in Fig. 2g-i where ERA5-Land leads to much more moderate annual maxima than SPAZM and COMEPHORE at hourly and daily scales.

Obviously, the two versions of SPAZM lead to very similar results at a daily scale since the disaggregation method mostly impacts the subdaily statistics. A slight difference can be noticed for the maximum records of daily precipitation (Fig. 2i) due to the fact that SPAZM precipitation are recorded and disaggregated for days starting and ending at 6:00 in the morning while the statistics are computed on standard calendar days. At an hourly scale (Fig. 2g), the average annual maxima are higher when SPAZM is disaggregated with gauges only (SPAZM-g) than when it is disaggregated with COMEPHORE in priority. It can be explained by the fact that the temporal structures from one gauge impact more than one pixel in SPAZM-g, so that many pixels of a catchment share exactly the same subdaily distribution, including the timing of the peak value.

These statistics are in line with previous evaluations of the different precipitation reanalysis which have concluded to the following deficiencies:



- **ERA5-Land:** ERA5-Land usually underestimates the largest intensities at hourly and daily scales. While ERA5-Land represents a good reference for mean statistics (annual amounts, seasonality), it seems unable to produce very intense precipitation events, probably due to the direct parameterisation of convection (Reder et al., 2022) and the absence of assimilation of ground measurements. The overestimation of the number of wet days was also denoted by Bandhauer et al. (2022).
- **SPAZM:** SPAZM has been shown to produce reliable amounts of precipitation at an annual scale and the pixel scale, by comparison to observed precipitation values (Penot, 2014). Hydrological evaluations have also shown that annual amounts of areal precipitation values are correctly estimated for large catchments ( $> 700 \text{ km}^2$ ). However, for smaller spatial scales, the variability of daily intensities and annual maxima tends to be underestimated (Penot, 2014).
- **COMEPHORE:** COMEPHORE tends to underestimate the daily precipitation amounts in mountainous areas (Roger, 2017) especially before 2006 and above 1000 m. As COMEPHORE does not integrate any additional constraint about the effect of the relief, the vertical profiles of annual precipitation amounts are almost flat. Roger (2017) also provides an evaluation of COMEPHORE in terms of return levels (10-year and 50-year) by comparison with return levels obtained from weather station measurements and more advanced techniques (Arnaud et al., 2008) and does not conclude to a particular under or over-estimation of these return levels. However, COMEPHORE has some limitations related to the assimilation of radar data, such as the radar signal attenuation by precipitation or beam blockage, which cannot be avoided in mountainous regions (Villarini and Krajewski, 2010).

## 4 Hydrological evaluation of meteorological forcings

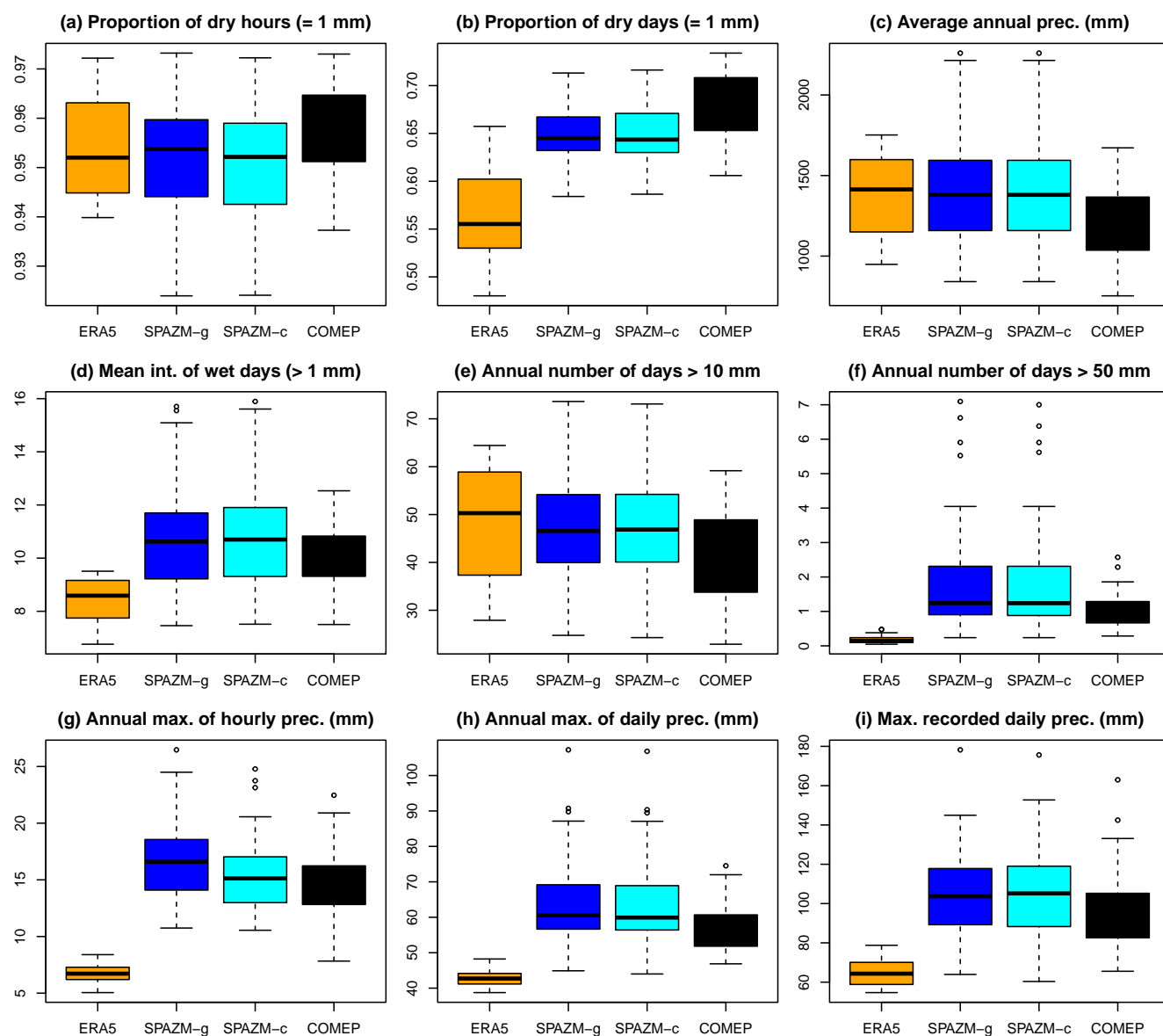
### 4.1 Evaluation criteria

Many evaluation criteria have been proposed to assess the performances of hydrological models. Several studies have discussed the pros and cons of two popular criteria: The Nash-Sutcliffe efficiency (NSE Nash and Sutcliffe, 1970) and the Kling-Gupta Efficiency (KGE Gupta et al., 2009). Recently, Clark et al. (2021) emphasize the fact that these criteria rely on squared errors between simulated and observed streamflows and are subject to considerable sampling uncertainties. Large differences between observations and simulations are amplified by these squared errors and different remedies have been proposed to reduce their influence on the calibration process (e.g., log transformation, see Santos et al., 2018). In this study, different performances are quantified with a modified NSE criterion ( $mNSE$ , see Krause et al., 2005) defined as follows:

$$mNSE(x) = 1 - \frac{\sum_t |x_{s,t} - x_{o,t}|}{\sum_t |x_{o,t} - \bar{x}_o|}, \quad (1)$$

where  $x$  is an hydrological signature which is either observed ( $x_{o,t}$ ) at time  $t$  or simulated ( $x_{s,t}$ ).  $\bar{x}_o$  is the average observed signature over the period. In what follows, the  $mNSE$  criterion is applied to different types of signatures, e.g.:

- for the whole time series of flow (denoted by  $Q$ ),



**Figure 2.** Boxplots of mean areal precipitation statistics for the different meteorological products and the 55 catchments. (a) Proportion of dry hours. (b) Proportion of dry days. (c) Average annual precipitation. (d) Mean intensity of wet days (i.e. days with more than 1 mm). (e) Average annual number of days with more than 10 mm. (f) Average annual number of days with more than 50 mm. (g) Mean annual maximum of hourly precipitation. (h) Mean annual maximum of daily precipitation. (i) Maximum record of daily precipitation for the period 1997-2017.



- for the inter-annual averages of hourly streamflow in order to evaluate the reproduction of the seasonal variation of observed streamflow (denoted by  $Q_{sea}$ ).

This criterion can also be obtained for the different seasons. Here, we consider a first period from December to May in order to assess the reproduction of streamflows influenced by snow, and the rest of the year, from June to November.

An additional criterion, the Quantile Relative Error (QRE), is proposed to evaluate the reproduction of observed streamflows in terms of distribution: The QRE assesses the differences between observed and simulated quantiles and is defined as:

$$QRE = 1 - |\hat{F}_o^{-1}(p) - \hat{F}_s^{-1}(p)| / \hat{F}_o^{-1}(p), \quad (2)$$

where  $\hat{F}_o$  and  $\hat{F}_s$  are the empirical distributions of observed and simulated streamflows, respectively.

Finally, different criteria are proposed to assess the performances for the reproduction of flooding events (Lobligeois et al., 2014). Different methods have been proposed to extract floods from streamflow series, by identifying the peak flows, and the period of rising and declining limb. These methods usually assume a threshold streamflow value. In our experience, the choice of this threshold is critical and can lead to very long flood events for slow-declining limbs. In this paper, we focus on the reproduction of the observed streamflows around the peak flow and extract 48-hour events centered on the 10 largest peak flows, with at least one week between each flood. Four criteria are considered:

- the  $mNSE$  criteria is applied between the observed flood and the simulated streamflow of the corresponding period.
- the peak flows error ( $PFE$ ) is defined as the relative error between observed and simulated peak flows, i.e.  $PFE = |\max(q_{o,f}) - \max(q_{s,f})| / \max(q_{o,f})$  where  $f$  is the flood period.
- the time to peak error ( $TPE$ ) is the absolute difference between the time of observed and simulated peak flows in hours, i.e.  $TPE = |\arg\max(q_{o,f}) - \arg\max(q_{s,f})|$ , where  $\arg\max$  indicates the time at which the observed and simulated flows reach their peak.
- the volume error ( $VE$ ) is the sum of absolute differences between observed and simulated flows of the flood period, i.e.  $VE = \sum(|q_{o,f} - q_{s,f}| / q_{o,f})$ .

The  $PFE$ ,  $TPE$  and  $VE$  criteria are obtained for each selected flood. Their averages over the 10 selected floods are denoted respectively by  $\overline{PFE}$ ,  $\overline{TPE}$ , and  $\overline{VE}$ . The  $mNSE$  and  $QRE$  criteria are positively oriented and have their maximum value equal to 1. As  $\overline{PFE}$ ,  $\overline{TPE}$  and  $\overline{VE}$  are negatively oriented and have an optimum value of zero, we apply the transformation  $1 - \overline{PFE}$ ,  $1 - \overline{TPE}$  and  $1 - \overline{VE}$  in order to be in agreement with the other criteria and have an optimum value of 1.

## 4.2 Split-sample evaluation

A first split-sample evaluation (Klemeš, 1986) is performed by dividing the period 1997-2017 into two subperiods of equal lengths depending on the availability of the observed streamflows. 45 out of the 55 catchments cover the entire period 1997-2017 and are calibrated on two periods of 9 years (1998-2007 and 2008-2017), one year being used as a warm-up period.



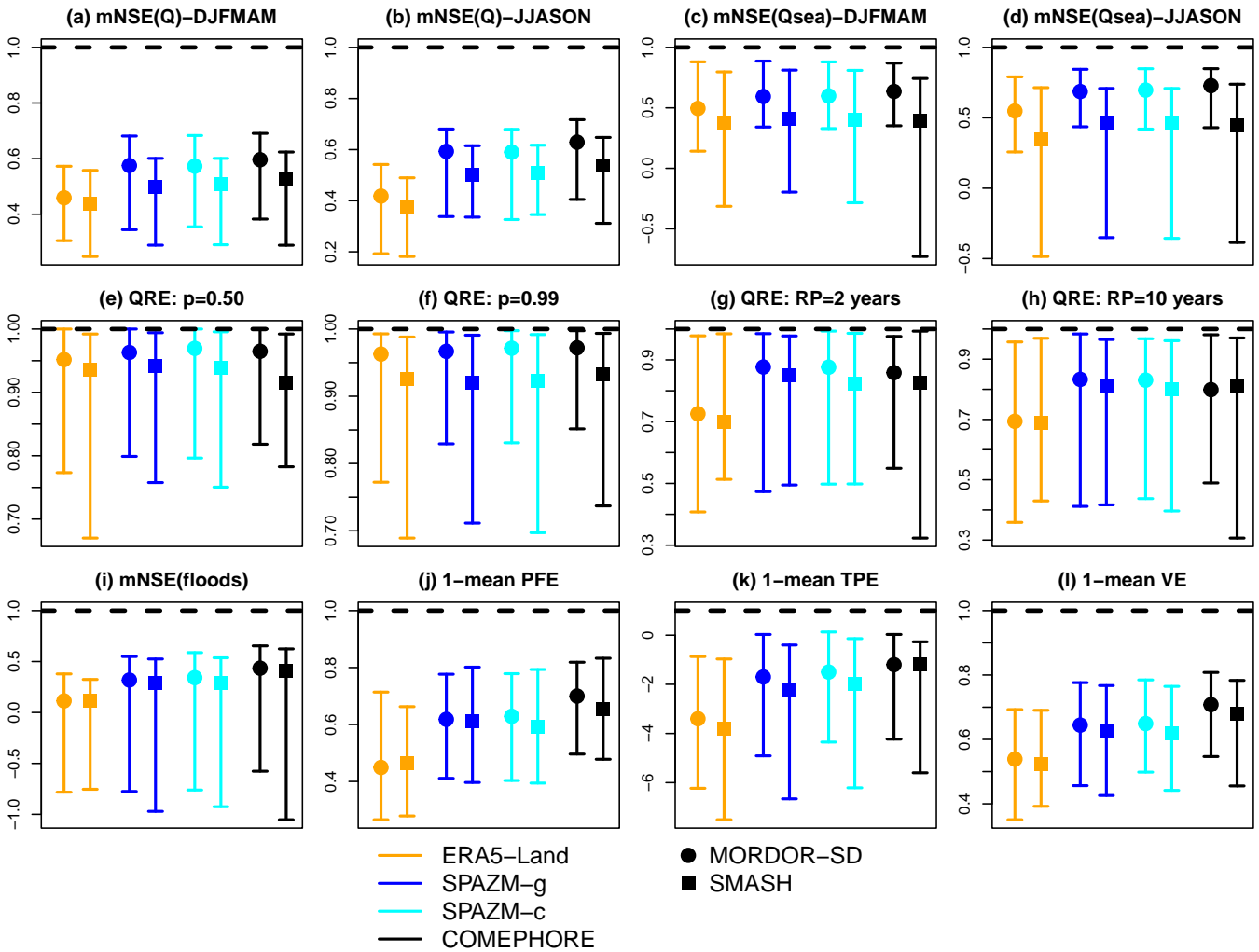
The other 10 catchments cover at least the period 2004–2017. Model parameters are calibrated on the first half and criteria are computed on the second half, and conversely.

Figure 3 shows the different evaluation criteria obtained with the split-sample experiment on the validation periods, for the two hydrological models and the four types of precipitation forcings. The  $mNSE$  applied to the entire series of streamflow (Fig. 3a–b) ranges between 0.2 and 0.55 for ERA5-Land, and 0.4 and 0.7 for COMEPHORE. A clear increase of the performances is obtained for SPAZM and COMEPHORE in summer and autumn (JJASON), compared to ERA5-Land. Concerning the seasonal flows (Fig. 3c–d), the differences are not as marked, the median criteria for the 55 catchments being around 0.5 for ERA5-Land, 0.6 for SPAZM and 0.6 for COMEPHORE in winter and spring (DJFMAM) and slightly higher in summer and autumn (JJASON).

The reproduction of the probability distribution of streamflow is evaluated in Fig. 3e–h for different levels of probability. The 0.50 and 0.99-quantiles (Fig. 3e–f) are adequately reproduced by all configurations, the median of the relative errors being less than 5% with MORDOR-SD and less than 10% for SMASH for most of the cases. For return periods of 2 and 10 years (Fig. 3g–h), the performances are variable according to the catchments, the 90% intervals of the  $QRE$  indicating relative differences ( $1-QRE$ ) varying between 60% and less than 5%. For these two return periods, median  $QRE$  with ERA5-Land are lower by 0.10–0.15 than with the other precipitation products.

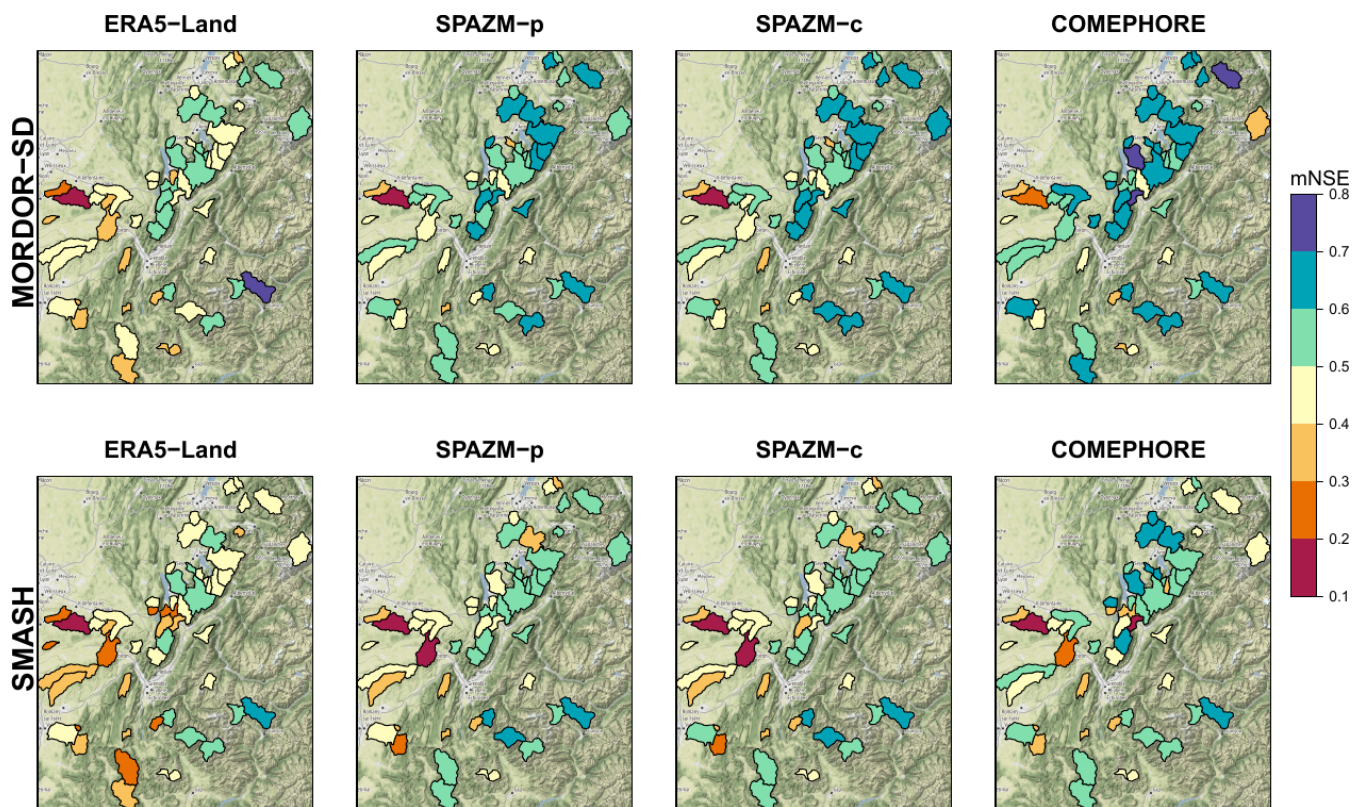
The  $mNSE$  applied to the 48-hour floods (Fig. 3i) shows a wide range of performances across the 55 catchments, the differences between observed and simulated streamflows being important for a large part of catchments. Indeed, the median  $mNSE$  for floods is close to zero for ERA5-Land, and the 0.1-quantile is below zero in all cases, which means that the simulated streamflow is further away from the observed streamflow than the average observed streamflow during these periods. The peak flow errors are shown in Fig. 3j and the corresponding relative differences ( $\overline{PFE}$ ) range between 70% and 30% for ERA5-Land, 60% and 20% for SPAZM, and 50% and 20% for COMEPHORE. The differences in the timing of these peak flows (Fig. 3k) are of the order of a few hours, the median difference ( $\overline{TPE}$ ) being 4.5 hours for ERA5-Land and less than 3 hours for the other precipitation products.

Overall, we can see a clear hierarchy between the performances obtained with the four meteorological forcings, with increasing performances between ERA5-Land, SPAZM-g, SPAZM-c, and COMEPHORE. ERA5-Land has lower performances for all the considered criteria, the differences being less pronounced in terms of distribution (e.g. reproduction of the 0.50- and 0.99-quantiles). For the largest streamflow values, streamflows using ERA5-Land are not as close to the observed values as with the other products. A slight difference of performances can be seen between SPAZM-g and SPAZM-c, i.e. when SPAZM is disaggregated with either gauged values or with radar and gauges information. The timing of the simulated flood peaks is better with SPAZM-c for some catchments (lower bound of the bar going from -6 hours to -5 hours). The gain provided by COMEPHORE compared to SPAZM is visible in terms of peak flow error (Fig. 3j) or volume error (Fig. 3l). While some differences of performances are observed between MORDOR-SD and SMASH for some criteria and some catchments (mainly in terms of seasonal streamflow, see Fig. 3c–d), it is interesting to note that the differences related to the choice of the precipitation forcings have very similar patterns for both hydrological models.



**Figure 3.** Evaluation criteria for the two hydrological models and the four types of precipitation forcings, computed on the two validation periods of the split-sample experiment. The colored error bars indicated the 0.10 and 0.90 quantiles over the 55 catchments, and the symbols indicate the median values. (a-b)  $mNSE$  criteria for the streamflows  $Q$  in DJFMAM and JJASON. (c-d)  $mNSE$  criteria for the seasonal streamflow  $Q_{sea}$  in DJFMAM and JJASON. (e-h)  $QRE$  criteria for the median streamflows ( $p = 0.50$ ), 0.99-quantiles and streamflows associated to return period of 2 and 10 years. (i-l)  $mNSE$  for the 10 largest floods, peak flows error ( $1 - \overline{PFE}$ ), time to peak error ( $1 - \overline{TPE}$ ) and volume error ( $1 - \overline{VE}$ ). Optimum values are indicated with horizontal black dashed lines.

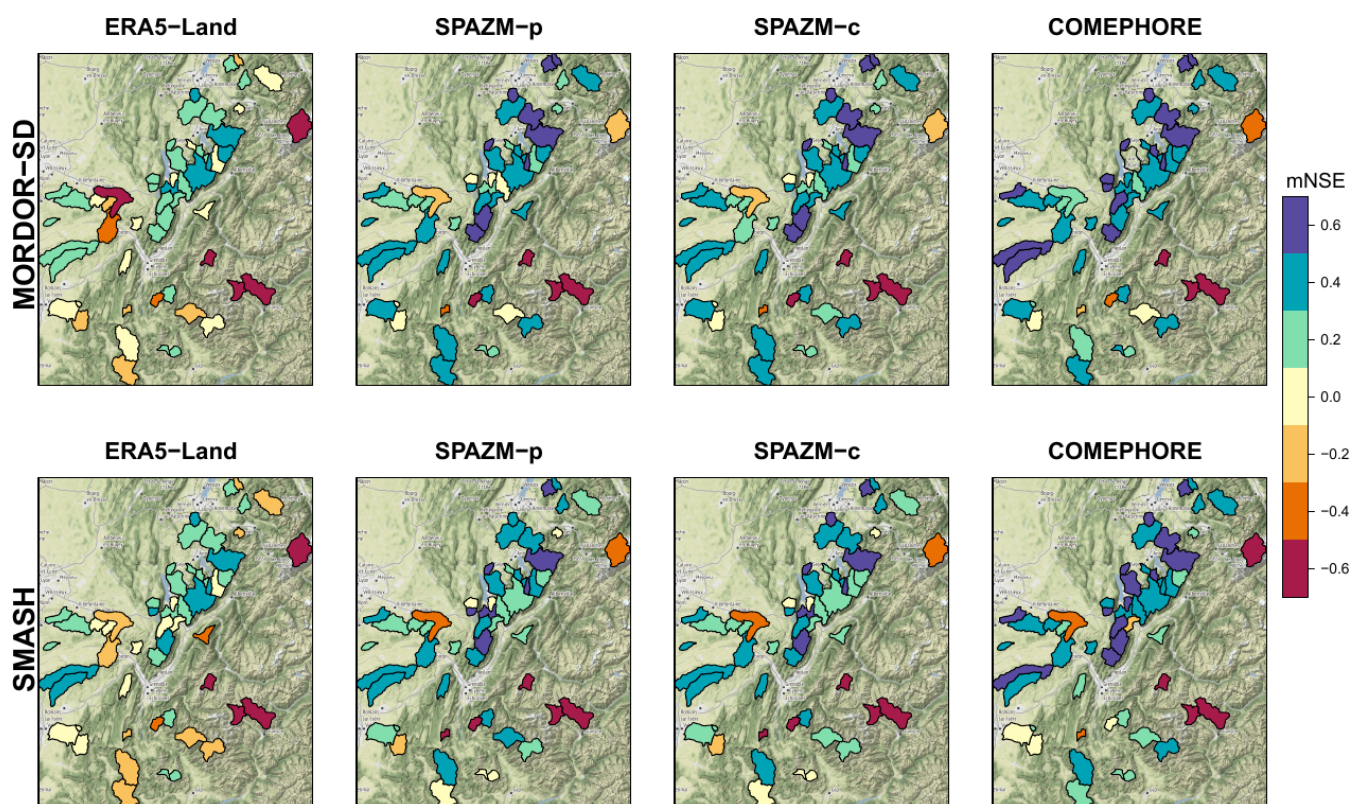




**Figure 4.** Maps of the  $mNSE(Q)$  in winter and spring (DJFMAM) obtained with MORDOR-SD (top row) and SMASH (bottom row) and the four types of precipitation forcings. Map tiles by Stamen Design, under CC BY 3.0. Data by © OpenStreetMap, under ODbL.

Figures 4 and 5 present the spatial variation of the  $mNSE(Q)$  in winter and spring (DJFMAM) and of the  $mNSE$  for the 10 largest floods, for the two hydrological models and the four types of precipitation forcings. Concerning the overall reproduction of streamflows in winter and spring, a clear west-east gradient is observed in all cases, lowest  $mNSE$  values being reached in the plains at the Northwest of Grenoble, especially with ERA5-Land (similar results are obtained in summer and autumn, see Fig. S35 in the Supplement). The  $mNSE$  for the 10 largest floods shown in Fig. 5 does not show the same patterns. A few catchments exhibit lower performances whatever the configuration. In particular, three catchments between Briançon and Grenoble lead to  $mNSE$  values of -2.1, -3.8, and -1 with COMEPHORE and MORDOR-SD, and even lower values for the other cases.

Figure 6 illustrates a meteorological event on September 6th, 2008 which led to major flood impacts (cars swept away, roof collapses) in the west of the domain considered in this study ([https://youtu.be/Ngk2eV\\_WJk8](https://youtu.be/Ngk2eV_WJk8)). In particular, in the small village of Saint-Donat-sur-l'Herbasse, a flood wave of 1m70 crossed the main street and damaged cars and houses. Cumulative amounts of precipitation over our study area reached 140 mm, with maximum hourly intensities around 20 mm on the morning of September 6th, 2008. For the catchment LaGalaure@Saint-Uze, all simulated streamflows underestimate the observed peak

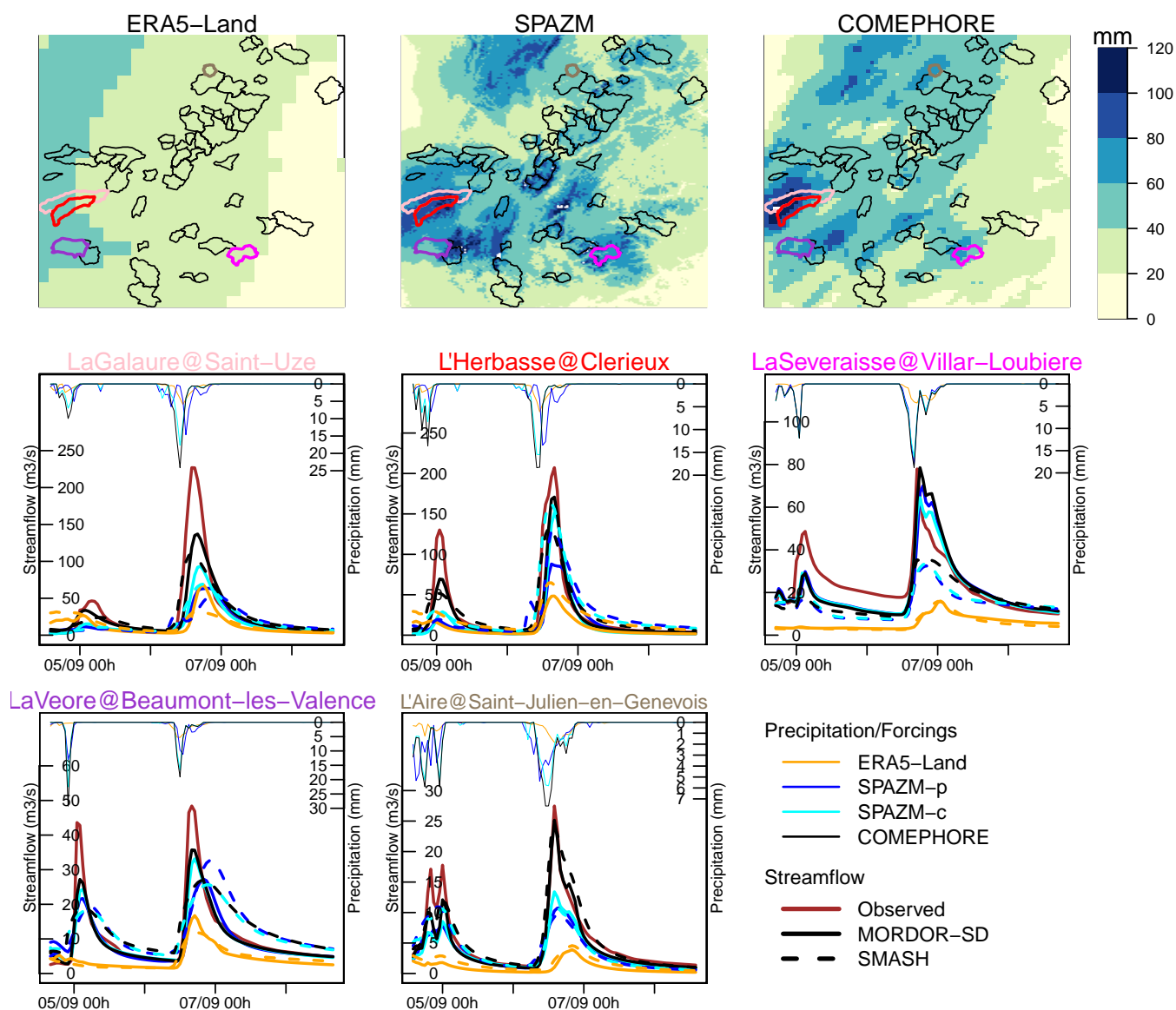


**Figure 5.** Maps of the  $mNSE$  for the 10 largest floods obtained with MORDOR-SD (top row) and SMASH (bottom row) and the four types of precipitation forcings. A few values exceed the lower bound of -0.7 (dark brown). Map tiles by Stamen Design, under CC BY 3.0. Data by © OpenStreetMap, under ODbL.

flow at  $250 \text{ m}^3/\text{s}$ , but this underestimation is less severe when COMEPHORE is used as input of the hydrological models, followed by SPAZM-c. COMEPHORE leads to a reasonable reproduction of observed peak flows for the other catchments. In this example, we can notice the different results obtained with SPAZM-c and SPAZM-g for two catchments: LaGalaure@Saint-Uze and L'Herbasse@Clerieux, where SPAZM-c, in coherence with COMEPHORE, provides a larger hourly intensity of precipitation two hours before SPAZM-g and simulates highest peak flows. In this case, the timing of the precipitation event provided by the radar information seems to produce a better reproduction of the observed flood.

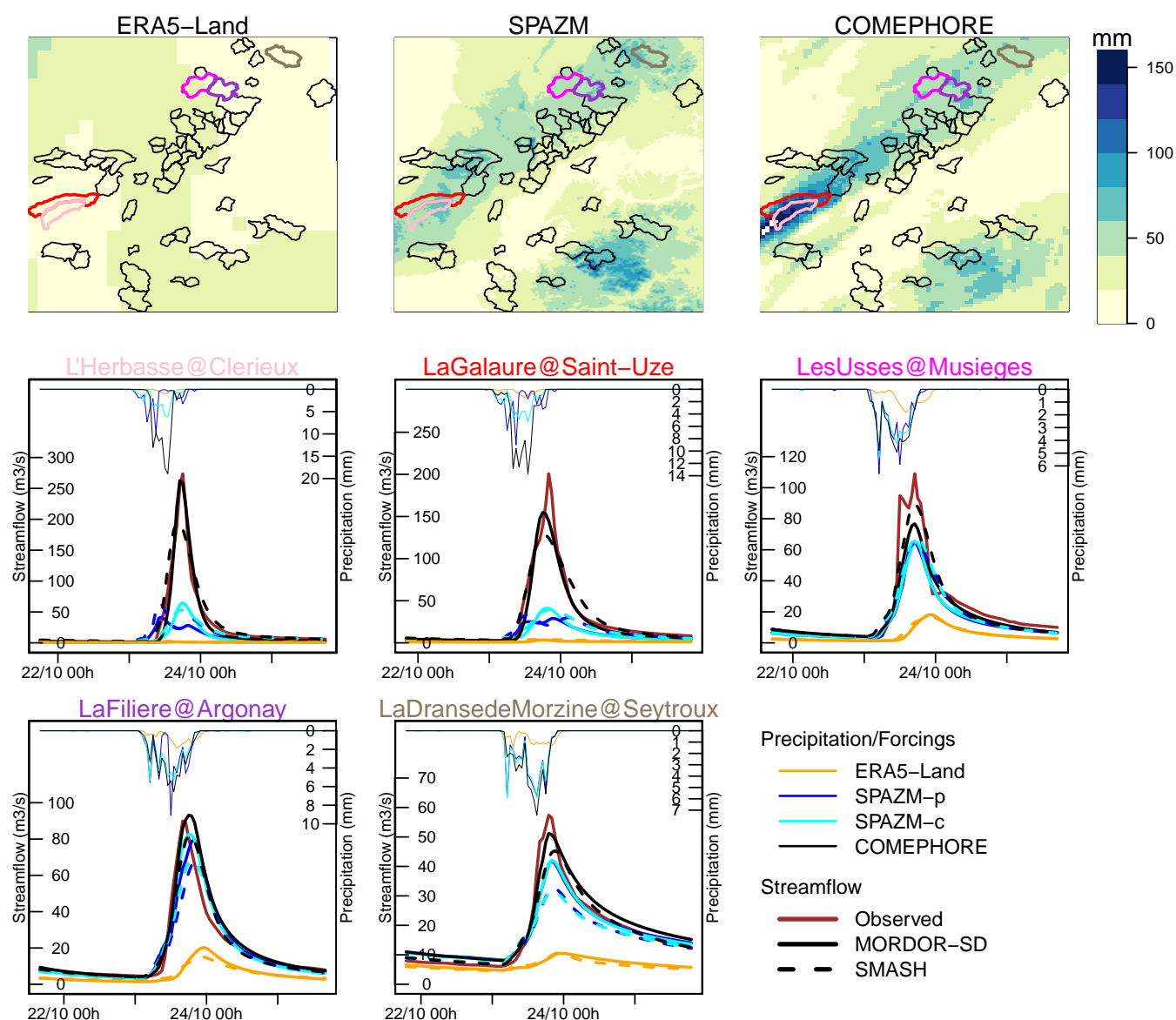
Figure 7 illustrates the flooding event of October 22-23, 2013 consecutive to a series of several storm cells organized along a southwest-northeast axis crossing the Départements of Ardèche and Drôme (<https://youtu.be/sId0smhhF70>). Cumulative amounts exceeded 200 mm in the southwest part of our study area according to COMEPHORE. At the time of this event, the soil was probably saturated by a recent precipitation event on 19-20 October 2013 (50-100 mm). For two catchments that have reached the highest observed peak flows for this event (L'Herbasse@Clerieux and LaGalaure@Sainte-Uze), COMEPHORE provides much more precipitation than ERA5-Land and SPAZM and the simulated streamflow obtained with this reanalysis





**Figure 6.** Cumulative amount of precipitation between 05/09/2008 06:00 and 07/09/2008 06:00 for ERA5-Land, SPAZM and COMEPHORE (top row) and time series of precipitation (thin lines) and streamflow (thick lines) for five catchments which have reached the highest observed peak flows for this event (middle and bottom rows).

match almost perfectly the observed streamflow. SPAZM leads to a very large underestimation of the peak flow. ERA5-Land, in this case, provides little precipitation in this area. This event exemplifies the added value of radar information.



**Figure 7.** Cumulative amount of precipitation between 22/10/2013 06:00 and 24/10/2013 06:00 for ERA5-Land, SPAZM and COMEPHORE (top row) and time series of precipitation (thin lines) and streamflow (thick lines) for five catchments which have reached the highest observed peak flows for this event (middle and bottom rows).



## 5 Discussion

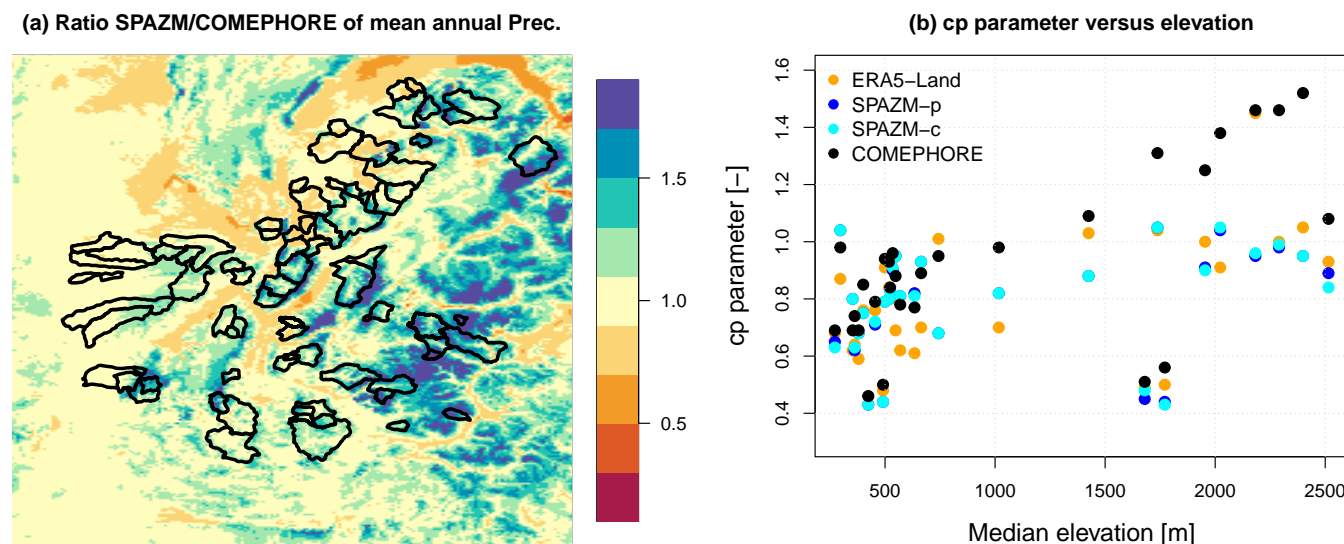
### 5.1 Reproduction of the water balance

330 A key property of precipitation inputs is their ability to balance the amount of water measured by the streamflow at aggregated time scales (annual or monthly scales). In order to correct the water balance, SMASH and MORDOR-SD include correction parameters, *exc* and *cp*, respectively. the SMASH parameter *exc* enables water exchanges but is only applied to a part of the streamflow production (direct runoff branch). For MORDOR-SD, the parameter *cp* is a multiplication factor that is applied to the precipitation inputs and can be interpreted in terms of correction of the water balance. A *cp* value below 1 means that  
335 total precipitation amounts do not lead to a correct water balance, and must be reduced. It can be due to various reasons. For example, some catchments of the study areas located in the plains around Valence and at northwest of Grenoble have important exchanges with groundwater. Two of these catchments located in the “4 vallées” area have important infiltration of surface water upstream and an important contribution of groundwater to the streamflow downstream. For these catchments, the runoff ratio (i.e. the proportion of precipitation that does not infiltrate and is not taken up by evapotranspiration, and thus ends up as  
340 runoff) can vary by a factor of 5 (Brenot and Dupré la Tour, 2010). An additional factor is the high presence of karstic areas. Figure S1 in the supplementary materials shows the percentage of areas characterized as karstic or supplying karstic sources, for each catchment of this study (Brugeron et al., 2018). This percentage exceeds 0.8 for many catchments located along the Drac and Isère rivers in the Vercors, Chartreuse, and Bauges massifs. On the contrary, when a *cp* value exceeds 1, it means that insufficient precipitation amounts are provided, which is rarely explained by the particular geology of the catchment. A  
345 probable explanation is an underestimation of accumulated precipitation amounts in the corresponding reanalysis.

Figure 8a shows the map of the ratios between the mean annual precipitation values from SPAZM and COMEPHORE, for each pixel of the domain. These ratios are greater than 1 at high elevations, and less than 1 in the valleys. For the catchments located at high elevations, SPAZM clearly leads to larger accumulated amounts than COMEPHORE. Figure 8b shows the values of the *cp* parameter as a function of the median elevation of each catchment, for the four different precipitation reanalysis.  
350 The catchments with a high percentage of karst (greater than 20%) are masked. *cp* values range between 0.6 and 1 for median elevations below 1000 m, probably confirming large contributions of precipitation to groundwater for some catchments located in the plains. Above 1000 m, it is interesting to note that *cp* is close to 1 when SPAZM and ERA5-Land are used as inputs. COMEPHORE seems to underestimate precipitation amounts in high-elevation catchments (*cp* > 1), confirming the findings of Roger (2017) detailed in Section 3.

### 355 5.2 Atmospheric forcings obtained from numerical weather models and satellite data

ERA5-Land, as most reanalysis at the planetary scale, mainly results from a numerical model representing the atmospheric circulation, constrained by satellite observations. As such, it represents the main dynamics of the atmosphere and provides a reasonable representation of the main hydrometeorological fluxes. Figs. 6 and 7 show that the timing of the precipitation events is roughly in agreement with the other reanalysis which assimilate ground measurements. The spatial patterns of the



**Figure 8.** (a) Ratio of mean annual precipitation between SPAZM and COMEPHORE. The catchment boundaries are indicated in black. (b) Values of the  $cp$  parameter as a function of the median elevation of each catchment with a percentage of karst below 20%, for the four different precipitation reanalysis.

360 precipitation fields are also reproduced to some extent (see for example the highest intensities in the North-East of the domain in Figs. S2, S16, S21, and S22 in the Supplement).

The spatial resolution of ERA5-Land is too coarse to represent the dynamics of precipitation at the scale of the catchments considered in this study. Recently, convection-permitting regional climate models (CP-RCM) have shown their added value in terms of reproduction of the highest precipitation intensities (Lucas-Picher et al., 2021). In France, Caillaud et al. (2021) show that the CP-RCM CNRM-AROME41t1, driven by CNRM-ALADINv6.2, itself driven by ERA-Interim, improves the reproduction of large hourly and daily precipitation values, especially during the fall season. This improvement is probably due to the high spatial resolution (2.5 km grid resolution), the explicit resolution of the deep convection and a better representation of the mesoscale processes. However, the authors note that even this 2.5 km resolution might be too coarse to represent the most extreme hourly and daily intensities. Brousseau et al. (2016) show that the numerical weather prediction system AROME leads to a better reproduction of the extreme values when horizontal and vertical resolutions are increased (2.5 km and 60 levels versus 1.3 km and 90 vertical levels).

### 5.3 Added-value of ground measurements

In this study, ERA5-Land is clearly outperformed by the reanalysis for most of the metrics considered (see Fig. 3). ERA5-Land, on the contrary to the other reanalysis considered in this study, does not assimilate ground measurements and is available at a coarser spatial scale. For infrequent events (e.g. annual maxima), ERA5-Land provides smaller precipitation intensities than





SPA2M and COMEPHORE at a daily or at an hourly scale (Fig. 2) which leads to a severe underestimation of the largest floods in terms of peak flow and volume (see, e.g., Fig. 7). Ground precipitation measurements assimilated in SPA2M and COMEPHORE lead to more realistic precipitation fields and provide important information about the relationship between precipitation intensities and the relief. Indeed, ERA5-Land, in the absence of further constraint about the topography, produces smooth precipitation fields (see Figs. 6 and 7), which turns out to be a severe limitation for the hydrological modelling of small mountainous catchments.

ERA5-Land is the only global-scale reanalysis considered in this study. It assimilates few in-situ measurements of precipitation (only radar data in the USA). To our knowledge, there is no global-scale reanalysis that assimilates available in-situ precipitation measurements up to date. In Europe, many recent initiatives aim at providing long reanalysis of surface variables at a high spatial and temporal resolution. For example, UERRA-Land (Soci et al., 2016) covers the period 1961-2019 at a 5.5 km spatial resolution and at a 3-hour temporal resolution (Schimanke et al., 2021). It integrates a dense precipitation observation network at a daily scale, especially in France (see Fig. 1 in Soci et al., 2016).

#### 5.4 Added-value of radar information

COMEPHORE and SPA2M assimilate approximately the same number of precipitation gauges at a daily scale. In this study, intercomparisons between the results obtained with SPA2M-g and SPA2M-c inform about the added-value of the radar information concerning the subdaily dynamics of the precipitation events, since the only difference between SPA2M-g and SPA2M-c is that SPA2M-c applies the subdaily temporal structure provided by COMEPHORE when possible. Overall, there is only a marginal improvement of performances of SPA2M-c in comparison to SPA2M-g, for example for a few catchments in terms of reproduction of peak time or flood volume (see Figs. 3k and 3l). Figure 6 illustrates this difference for the flood event of 06/09/2008 in two catchments, LaGalaure@Sainte-Uze and l'Herbasse@Clérieux, for which the maximum precipitation intensity is reached earlier for SPA2M-c (cyan curve) and leads to a largest simulated peak flow and volume.

Overall, for the different metrics considered in this study, COMEPHORE leads to a better reproduction of the observed streamflow, including flood statistics (Fig. 3), this improvement being consistent over all considered catchments (Figs. 4 and 5). One striking illustration is provided in Fig. 7 where a very intense precipitation event occurred on 23/10/2013 over the catchment l'Herbasse@Clérieux according to COMEPHORE, with a maximum hourly precipitation close to 20 mm, whereas SPA2M recorded much less precipitation (100 mm versus 40 mm of cumulative precipitation amounts for COMEPHORE and SPA2M, respectively). A perfect match between observed and simulated streamflow is obtained when COMEPHORE feeds MORDOR-SD, whereas SPA2M leads to a severe underestimation of observed streamflows.

Some limitations must however be acknowledged with the use of radar data in general, and the COMEPHORE reanalysis in particular. First, there are many difficulties related to the estimation of precipitation intensities using radar signal. The quality of radar estimates are strongly dependent on the distance from the radar site, the radar signal being attenuated by various factors such as crests, precipitation meteors, etc. (Villarini and Krajewski, 2010; McRoberts and Nielsen-Gammon, 2017). As discussed in Section 5.1, COMEPHORE clearly underestimates accumulated precipitation amounts at high elevations. In this study, the hydrological models compensate for this underestimation using calibrated parameters that affect the water



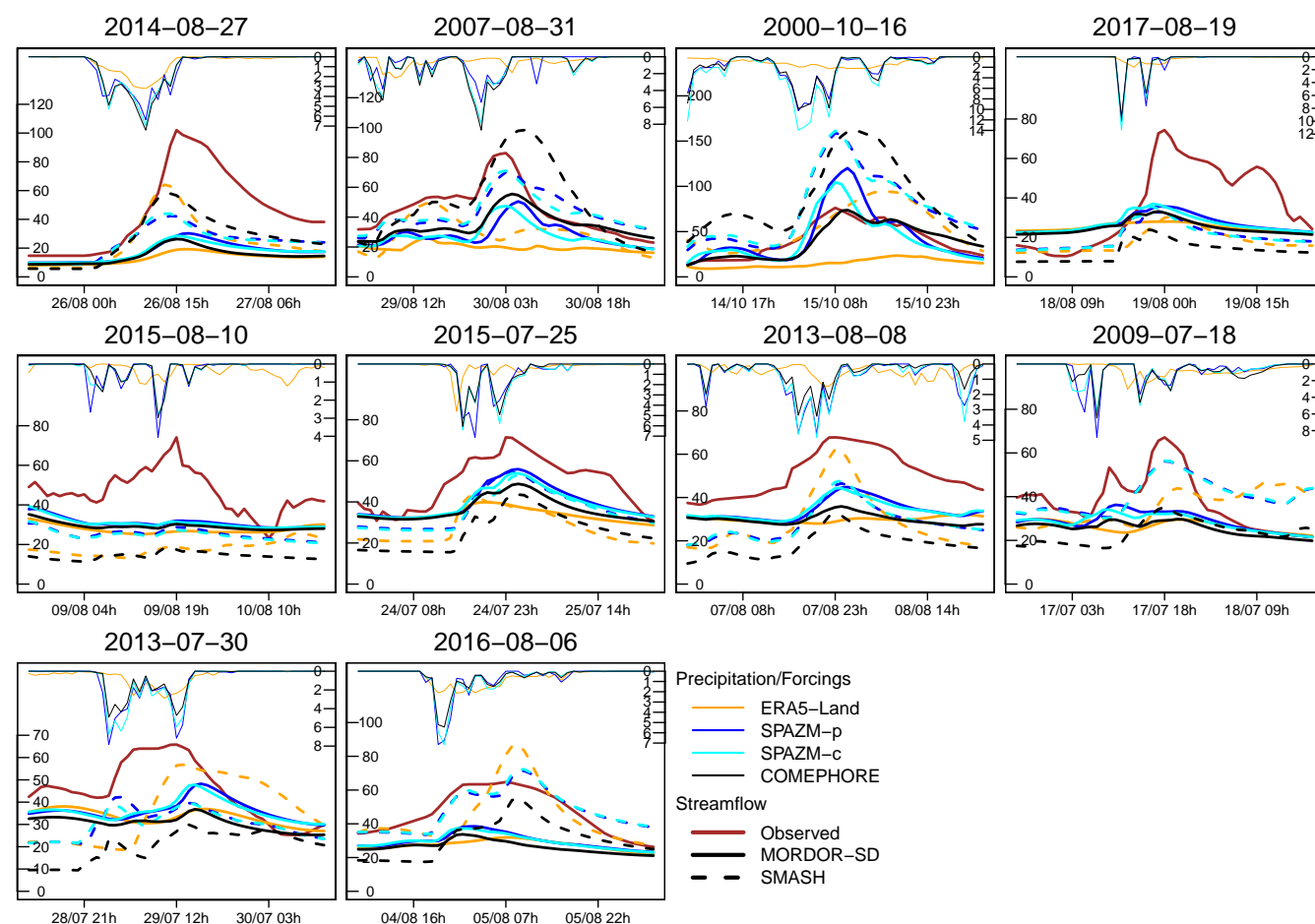
balance (parameters *cp* and *exc* for MORDOR-SD and SMASH, respectively). Second, as indicated in paragraph 2.2.4, the radar network has evolved over the period 1997-2017. Several X-band radars were installed during the period 2007-2014 but the integration of these radar measurements into the precipitation estimates was effective later, with important contributions of the radars of Mont-Maurel, Colombis, Moucherotte and la Dôle since 2016. The current radar network provides adequate coverage of most of the French Alps, except for an area near the Italian border (Haute-Tarentaise and Queyras). Third, the different methodologies applied to merge radar and in-situ measurements for the periods 1997-2006 and 2007-2017 also lead to potential inhomogeneities in the quality of the radar estimates. As a significant difference of performances of the simulated streamflow between these two periods can be suspected when COMEPHORE is used as precipitation inputs, additional analysis has been performed based on the split-sample calibration procedure. Figures S35-S36 in the Supplement show different criteria for the periods 1997-2006 and 2007-2017, for MORDOR-SD and SMASH, respectively. No major differences are noted for the *mNSE* criteria for the streamflows *Q* in DJFMAM, and for the *mNSE* of the 10 largest floods and peak flows error ( $1 - \overline{PFE}$ ). Only a slight increase by 0.05-0.1 of the *mNSE* criteria for the streamflow in winter and spring can be seen for about half of the catchments with MORDOR-SD, which indicates better performances for the period 2007-2017 for these catchments.

## 5.5 Problematic catchments

Overall, MORDOR-SD and SMASH hydrological models provide a fair reproduction of observed streamflows when SPAZM and COMEPHORE are used as precipitation forcings. For a few catchments, however, the evaluation metrics are clearly lower. As indicated in subsection 5.1, two of these catchments at the northwest of Grenoble have important groundwater exchanges that are not explicitly represented by MORDOR-SD and SMASH. At the event scale, the scores related to the reproduction of the ten largest floods are very low for some catchments (i.e.  $mNSE < -0.3$  in Fig. 5). One of these catchments concerns L'Arve@Chamonix-Mont-Blanc, located on the eastern side of the domain. Figure 9 reports the observed and simulated streamflow of the ten largest floods for this catchment, along with the associated precipitation for the different reanalysis. Underestimation of the observed streamflow can be noticed for most of these floods, which occur mainly in summer. It is difficult to ascertain the causes of these underestimations but it can be noted that L'Arve@Chamonix-Mont-Blanc has the highest median elevation among the catchments considered in this study. For this catchment, we can suspect that the meteorological forcings are not as reliable as for the other catchments (precipitation and snow/rain partition). For another high-elevation catchment, L'Arvan@Saint-Jean-d'Arves, peak flows are often underestimated by the simulated streamflows during the largest floods (see Fig. S40 in the Supplement). Likely explanations are the limitations of the hydrological models to simulate the rapid rise of surface runoff during these intense events and, similarly to L'Arve@Chamonix-Mont-Blanc, a possible underestimation of precipitation forcings at these elevations.

## 5.6 Comparison of hydrological models

In this study, streamflow simulations are obtained using two hydrological models with different structures. On the one hand, MORDOR-SD is a semi-distributed model with 12 to 14 free parameters. On the other hand, SMASH is a distributed model



**Figure 9.** Precipitation and streamflow of the ten largest floods (highest observed peak flows) at L'Arve@Chamonix-Mont-Blanc. Time series of precipitation (thin lines) and streamflow (thick lines) for the different reanalysis.

with 8 free parameters held constant in space (like MORDOR-SD) but where each grid cell has its representation of the hydrological processes. In this version, we do not exploit the possibility of distributing the parameters in space (Jay-Allemand et al., 2019) and opt for a more parsimonious version more easily applied to ungauged catchments using regionalisation methods. An additional difference is the objective function used by the two hydrological models, MORDOR-SD optimizing three hydrological signatures (streamflow time series, seasonal streamflows, and flow duration curves) while SMASH is calibrated using only the streamflow time series.

Figure 3 highlights some differences of performances between the two hydrological models. For the overall reproduction of streamflow (Fig. 3a-b), similar performances are obtained. SMASH has some difficulties to reproduce seasonal streamflows for many catchments (Fig. 3c-d), compared to MORDOR-SD. Interannual streamflows are often underestimated by SMASH in winter and spring and overestimated in summer and autumn (see Figure S38 in the Supplement). The criteria for flood



signatures are comparable for both models, especially when COMEPHORE is used as input (Fig. 3i-k). In addition, the two hydrological models lead to the same conclusions concerning the hierarchy of the performances obtained with the different meteorological forcings.

## 6 Conclusion

This study presents an evaluation of the hydrological modelling for 55 small mountainous of the Northern French Alps, focusing on the influence of the precipitation forcings. Four different precipitation products are tested. ERA5-Land assimilates satellite data and exploits a numerical weather model. SPAZM-g and SPAZM-c are two different versions of SPAZM available at a daily scale and based on precipitation gauges. Finally, COMEPHORE is a radar/gauge composite precipitation product. The semi-distributed MORDOR-SD model and the distributed SMASH model are used to simulate streamflows using the different precipitation products. Comparisons with observed streamflows highlight that:

- ERA5-Land provides the general dynamics of the precipitation events but does not reproduce their spatial features at the scale of the catchments considered in this study (less than 200 km<sup>2</sup>). Relationship with the relief is poorly represented and the highest intensities are underestimated.
- While fair performances are obtained with SPAZM and COMEPHORE, a clear added value of the radar information assimilated in COMEPHORE is demonstrated for the reproduction of flood events in terms of peak flows, timing, and volume. However, it must be noticed that COMEPHORE underestimates accumulated amounts in high elevations. The better performances obtained with COMEPHORE are only possible because the hydrological models compensate for these underestimations using parameters that correct the water balance.

One challenging aspect of hydrological modelling for these mountainous catchments is the adequate reproduction of the water balance at aggregated scales (e.g. annual). Precipitation inputs are highly uncertain in high-elevation areas due to the lack of direct measurements. Furthermore, groundwater exchanges or karstic sources make the representation of hydrological fluxes more difficult. However, this aspect is crucial for applications to ungauged catchments and operational applications where observed streamflows are usually absent.

## Code and data availability

Hourly streamflow observations are available from the French HydroPortail database (<http://www.hydro.eaufrance.fr/>, last access: 27th April 2023). The R codes used to perform the analysis are available upon reasonable requests by directly contacting the first author.



## 480 Author contributions

GE, MLL and CF designed the experiments. FC and AM performed the first hydrological simulations and their evaluation. GE prepared the article with the help of all co-authors.

## Competing interests

The authors declare no conflict of interest.

## 485 Acknowledgements

This study is part of the HYDRODEMO project which is financed by the European Union through the FEDER-POIA program and by state funds through the FNADT-CIMA program.

## Appendix A: Disaggregation from daily to hourly precipitation and temperature using the method of fragments

### A1 Precipitation

490 For a day  $d$ , let  $P_d$  denote the daily SPAZM precipitation at a pixel that we want to disaggregate. The method of fragments (Wójcik and Buishand, 2003; Breinl and Di Baldassarre, 2019) consists in using the temporal structure of another precipitation data available at a finer scale and preserving the daily amounts. Let  $\tilde{P}_h$  denote the hourly precipitation for this alternative source, where  $h = 1, \dots, 24$  corresponds to the day  $d$ , and  $\tilde{P}_d = \sum_h \tilde{P}_h$  is the corresponding daily amount. If  $\tilde{P}_d$  greater than zero positive at this pixel, then the disaggregated hourly amounts  $P_h$  are obtained as follows:

$$495 \quad P_h = \tilde{P}_h \times \frac{\tilde{P}_d}{P_d}. \quad (A1)$$

Obviously, when  $P_d = 0$ , there is no precipitation to disaggregate and  $P_h$  equals zero for any hour  $h$  of the day. However, when  $P_d$  is positive and  $\tilde{P}_d$  is equal to zero, the temporal structure  $\tilde{P}_d$  is absent and different solutions have been considered:

- **SPAZM-c:** COMEPHORE data are used to provide the finer precipitation data  $\tilde{P}$ . However, if for a day  $d$  and some pixels,  $\tilde{P}_d = 0$ , then we look for hourly gauged precipitation data for the same day  $d$  in the neighbouring region of these  
500 pixels, at a maximum distance of 100 km (see Fig. 1). If no precipitation data can be found inside this circle with a 100 km radius,  $\tilde{P}$  is uniformly distributed throughout the day.
- **SPAZM-g:** This second approach is similar to SPAZM-c, except that COMEPHORE data are not used to disaggregate SPAZM precipitation, i.e. only gauged precipitation data close to the pixels are used.



## A2 Temperature

505 Similarly to SPAZM precipitation, daily SPAZM temperature data are disaggregated to an hourly scale using SAFRAN data as a reference. The daily ranges of SAFRAN temperatures, available at a coarser spatial scale, are corrected using the minimum and maximum daily temperature provided by the SPAZM reanalysis. For a day  $d$  and a SPAZM pixel  $k$ , the disaggregated temperatures  $T_h$  are obtained as follows:

$$T_h = (\tilde{T}_h - \tilde{T}_h^{\min}) \times \frac{T_d^{\max} - T_d^{\min}}{\tilde{T}_d^{\max} - \tilde{T}_d^{\min}} + T_d^{\min}, \quad (\text{A2})$$

510 where  $T_d^{\min}$  and  $T_d^{\max}$  are the daily minimum and maximum SPAZM temperatures, respectively, for the pixel  $k$  and the day  $d$ , and  $\tilde{T}_d^{\min}$  and  $\tilde{T}_d^{\max}$  are minimum and maximum SAFRAN temperatures for this day  $d$  and the closest SAFRAN pixel, derived from the hourly SAFRAN temperatures  $\tilde{T}_h$ . The daily temperature range produced by SPAZM is thus preserved, and SAFRAN provides the subdaily temporal structure.





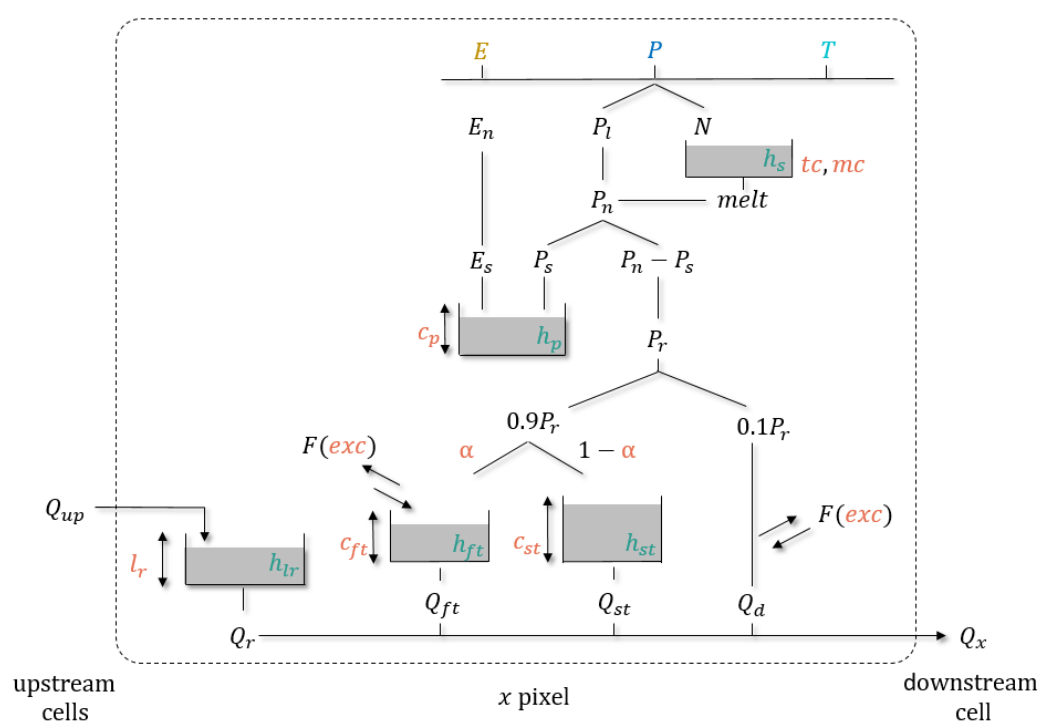
## Appendix B: Description of the SMASH model structure

515 Figure B1 represents schematically the structure of the SMASH model implemented in this study. This structure is based on, for each pixel  $x$  within a catchment, a snow module with two parameters  $mc$  and  $tc$ , a production reservoir of capacity  $c_p$  which receives as inputs the liquid precipitation  $Pl$  and the snow melt  $melt$  generated by the snow module, two transfer reservoirs of capacity  $c_{ft}$  and  $c_{st}$  as well as a direct runoff branch and a routing reservoir of capacity  $c_r$  which delays the runoff coming from the upstream cells.

520 As no solid/snow precipitation is entered as input, the initial total precipitation  $P$  is divided into a liquid part named  $P_l$  and a solid part  $N$  using a liquid ratio  $lr$  computed as a function of temperature following the S-shaped parametric curve method derived from the MORDOR-SD snow module proposed by Garavaglia et al. (2017). This solid part  $N$  is stored in the snow reservoir whose melt  $melt$  is function of temperature, of an estimation of the snow cover area and of the two parameters of the snow module:  $tc$ , the weighting coefficient for the thermal state of the snowpack and  $mc$ , the melting coefficient.

525 Within each pixel, the neutralization of the liquid inputs ( $P_l + melt$ ) by potential evapotranspiration allows estimating a neutralized precipitation  $P_n$  which is distributed between the production reservoir and the transfer module. The part of precipitation that runs off,  $P_r$ , is proportional to the squared  $h_p$  level of the production reservoir of capacity  $c_p$ . The non-linear transfer of this precipitation  $P_r$ , within the pixel, is then ensured for 90% by two transfer reservoirs as a function of their filling levels ( $h_{ft}$ , and  $h_{st}$ ) and capacities ( $c_{ft}$  and  $c_{st}$ ) and for 10% by a direct branch. The splitting between the two transfer reservoirs is controlled by a partition parameter  $\alpha$ . A water exchange term depending on the  $exc$  parameter, which is a non-conservative operator, is then applied to the direct runoff branch and to the 1<sup>st</sup> transfer reservoir.

530 The total runoff amount of a cell  $Q_{ft} + Q_{st} + Q_d$  is then added to the upcoming routed runoff  $Q_r$  to produce the pixel runoff  $Q_x$ . Given known flow directions  $D(x)$ , classically obtained from DEM, the cell-to-cell routing is done with a linear routing reservoir of stage  $h_{lr}$  whose emptying is parameterized by  $l_r$ .



**Figure B1.** Diagram of the 8-parameter SMASH model.



## 535 References

- Aili, T., Soncini, A., Bianchi, A., Diolaiuti, G., D'Agata, C., and Bocchiola, D.: Assessing water resources under climate change in high-altitude catchments: a methodology and an application in the Italian Alps, *Theoretical and Applied Climatology*, 135, 135–156, <https://doi.org/10.1007/s00704-017-2366-4>, 2019.
- Alfieri, L., Lorini, V., Hirpa, F. A., Harrigan, S., Zsoter, E., Prudhomme, C., and Salamon, P.: A global streamflow reanalysis for 1980–2018, *Journal of Hydrology X*, 6, 100 049, <https://doi.org/10.1016/j.hydroa.2019.100049>, 2020.
- Arnaud, P., Lavabre, J., Sol, B., and Desouches, C.: Régionalisation d'un générateur de pluies horaires sur la France métropolitaine pour la connaissance de l'aléa pluviographique / Regionalization of an hourly rainfall generating model over metropolitan France for flood hazard estimation, *Hydrological Sciences Journal*, 53, 34–47, <https://doi.org/10.1623/hysj.53.1.34>, publisher: Taylor & Francis \_eprint: <https://doi.org/10.1623/hysj.53.1.34>, 2008.
- 545 Balsamo, G., Albergel, C., Beljaars, A., Boussetta, S., Brun, E., Cloke, H., Dee, D., Dutra, E., Muñoz-Sabater, J., Pappenberger, F., de Rosnay, P., Stockdale, T., and Vitart, F.: ERA-Interim/Land: a global land surface reanalysis data set, *Hydrology and Earth System Sciences*, 19, 389–407, <https://doi.org/10.5194/hess-19-389-2015>, publisher: Copernicus GmbH, 2015.
- Bandhauer, M., Isotta, F., Lakatos, M., Lussana, C., Båserud, L., Izsák, B., Szentes, O., Tveito, O. E., and Frei, C.: Evaluation of daily precipitation analyses in E-OBS (v19.0e) and ERA5 by comparison to regional high-resolution datasets in European regions, *International*
- 550 *Journal of Climatology*, 42, 727–747, <https://doi.org/10.1002/joc.7269>, 2022.
- Breidl, K. and Di Baldassarre, G.: Space-time disaggregation of precipitation and temperature across different climates and spatial scales, *Journal of Hydrology: Regional Studies*, 21, 126–146, <https://doi.org/10.1016/j.ejrh.2018.12.002>, 2019.
- Brenot, A. and Dupré la Tour, J.: Connaissance de l'hydrosystème et aide à la définition de la gestion de la ressource en eau sur le territoire des 4 vallées de Vienne. Phase 1 - Acquisition, mise en forme et analyse des données disponibles, Tech. Rep. BRGM/RP-59220-FR, BRGM, 2010.
- 555 Brousseau, P., Seity, Y., Ricard, D., and Léger, J.: Improvement of the forecast of convective activity from the AROME-France system, *Quarterly Journal of the Royal Meteorological Society*, 142, 2231–2243, <https://doi.org/10.1002/qj.2822>, 2016.
- Brugeron, A., Paroissien, J., and Tillier, L.: Référentiel hydrogéologique BDLISA version 2 : Principes de construction et évolutions, Tech. Rep. BRGM/RP-67489-FR, BRGM/OFB, 2018.
- 560 Caillaud, C., Somot, S., Alias, A., Bernard-Bouissières, I., Fumière, Q., Laurantin, O., Seity, Y., and Ducrocq, V.: Modelling Mediterranean heavy precipitation events at climate scale: an object-oriented evaluation of the CNRM-AROME convection-permitting regional climate model, *Climate Dynamics*, 56, 1717–1752, <https://doi.org/10.1007/s00382-020-05558-y>, 2021.
- Champeaux, J.-L., Dupuy, P., Laurantin, O., Soulan, I., Tabary, P., and Soubeyroux, J.-M.: Les mesures de précipitations et l'estimation des lames d'eau à Météo-France : état de l'art et perspectives, *La Houille Blanche*, pp. 28–34, <https://doi.org/10.1051/lhb/2009052>, 2009.
- 565 Clark, M. P., Vogel, R. M., Lamontagne, J. R., Mizukami, N., Knoben, W. J. M., Tang, G., Gharari, S., Freer, J. E., Whitfield, P. H., Shook, K. R., and Papalexiou, S. M.: The Abuse of Popular Performance Metrics in Hydrologic Modeling, *Water Resources Research*, 57, e2020WR029 001, <https://doi.org/10.1029/2020WR029001>, 2021.
- Creutin, J.-D., Blanchet, J., Reverdy, A., Brochet, A., Lutoff, C., and Robert, Y.: Reported Occurrence of Multiscale Flooding in an Alpine Conurbation over the Long Run (1850–2019), *Water*, 14, 548, <https://doi.org/10.3390/w14040548>, 2022.
- 570 de Lavenne, A., Andréassian, V., Thirel, G., Ramos, M.-H., and Perrin, C.: A Regularization Approach to Improve the Sequential Calibration of a Semidistributed Hydrological Model, *Water Resources Research*, 55, 8821–8839, <https://doi.org/10.1029/2018WR024266>, 2019.



- Dee, D. P., Uppala, S. M., Simmons, A. J., Berrisford, P., Poli, P., Kobayashi, S., Andrae, U., Balmaseda, M. A., Balsamo, G., Bauer, P., Bechtold, P., Beljaars, A. C. M., Berg, L. v. d., Bidlot, J., Bormann, N., Delsol, C., Dragani, R., Fuentes, M., Geer, A. J., Haimberger, L., Healy, S. B., Hersbach, H., Hólm, E. V., Isaksen, I., Kållberg, P., Köhler, M., Matricardi, M., McNally, A. P., Monge-Sanz, B. M., Morcrette, J.-J., Park, B.-K., Peubey, C., Rosnay, P. d., Tavolato, C., Thépaut, J.-N., and Vitart, F.: The ERA-Interim reanalysis: configuration and performance of the data assimilation system, *Quarterly Journal of the Royal Meteorological Society*, 137, 553–597, <https://doi.org/10.1002/qj.828>, 2011.
- Devers, A., Vidal, J.-P., Lauvernet, C., and Vannier, O.: FYRE Climate: a high-resolution reanalysis of daily precipitation and temperature in France from 1871 to 2012, *Climate of the Past*, 17, 1857–1879, <https://doi.org/10.5194/cp-17-1857-2021>, 2021.
- Durand, Y., Brun, E., Merindol, L., Guyomarc’h, G., Lesaffre, B., and Martin, E.: A meteorological estimation of relevant parameters for snow models, *Annals of Glaciology*, 18, 65–71, <https://doi.org/10.3189/S0260305500011277>, 1993.
- Folton, N. and Arnaud, P.: Water resource indicators estimated by regionalized daily rainfall-runoff model: LoiEau Web Database, *La Houille Blanche*, 106, 22–29, <https://doi.org/10.1051/lhb/2020034>, 2020.
- Frei, C. and Isotta, F. A.: Ensemble Spatial Precipitation Analysis From Rain Gauge Data: Methodology and Application in the European Alps, *Journal of Geophysical Research: Atmospheres*, 124, 5757–5778, <https://doi.org/10.1029/2018JD030004>, 2019.
- Frei, C. and Schär, C.: A precipitation climatology of the Alps from high-resolution rain-gauge observations, *International Journal of Climatology*, 18, 873–900, [https://doi.org/10.1002/\(SICI\)1097-0088\(19980630\)18:8<873::AID-JOC255>3.0.CO;2-9](https://doi.org/10.1002/(SICI)1097-0088(19980630)18:8<873::AID-JOC255>3.0.CO;2-9), 1998.
- Fumière, Q., Déqué, M., Nuissier, O., Somot, S., Alias, A., Caillaud, C., Laurantin, O., and Seity, Y.: Extreme rainfall in Mediterranean France during the fall: added value of the CNRM-AROME Convection-Permitting Regional Climate Model, *Climate Dynamics*, 55, 77–91, <https://doi.org/10.1007/s00382-019-04898-8>, 2020.
- Garavaglia, F., Lay, M. L., Gottardi, F., Garçon, R., Gailhard, J., Paquet, E., and Mathevet, T.: Impact of model structure on flow simulation and hydrological realism: from a lumped to a semi-distributed approach, *Hydrology and Earth System Sciences*, 21, 3937–3952, <https://doi.org/https://doi.org/10.5194/hess-21-3937-2017>, 2017.
- Garçon, R.: Prévision opérationnelle des apports de la Durance à Serre-Ponçon à l’aide du modèle MORDOR. Bilan de l’année 1994-1995, *La Houille Blanche*, pp. 71–76, <https://doi.org/10.1051/lhb/1996056>, 1996.
- Gottardi, F.: Estimation statistique et réanalyse des précipitations en montagne<br />Utilisation d’ébauches par types de temps et assimilation de données d’enneigement<br />Application aux grands massifs montagneux français, phdthesis, Institut National Polytechnique de Grenoble - INPG, <https://tel.archives-ouvertes.fr/tel-00419170>, 2009.
- Gottardi, F., Obled, C., Gailhard, J., and Paquet, E.: Statistical reanalysis of precipitation fields based on ground network data and weather patterns: Application over French mountains, *Journal of Hydrology*, 432-433, 154–167, <https://doi.org/10.1016/j.jhydrol.2012.02.014>, 2012.
- Gupta, H. V., Kling, H., Yilmaz, K. K., and Martinez, G. F.: Decomposition of the mean squared error and NSE performance criteria: Implications for improving hydrological modelling, *Journal of Hydrology*, 377, 80–91, <https://doi.org/10.1016/j.jhydrol.2009.08.003>, 2009.
- Hersbach, H., Bell, B., Berrisford, P., Hirahara, S., Horányi, A., Muñoz-Sabater, J., Nicolas, J., Peubey, C., Radu, R., Schepers, D., Simmons, A., Soci, C., Abdalla, S., Abellan, X., Balsamo, G., Bechtold, P., Biavati, G., Bidlot, J., Bonavita, M., De Chiara, G., Dahlgren, P., Dee, D., Diamantakis, M., Dragani, R., Flemming, J., Forbes, R., Fuentes, M., Geer, A., Haimberger, L., Healy, S., Hogan, R. J., Hólm, E., Janisková, M., Keeley, S., Laloyaux, P., Lopez, P., Lupu, C., Radnoti, G., de Rosnay, P., Rozum, I., Vamborg, F., Villaume, S., and Thépaut, J.-N.: The ERA5 global reanalysis, *Quarterly Journal of the Royal Meteorological Society*, 146, 1999–2049, <https://doi.org/10.1002/qj.3803>, 2020.



- 610 Javelle, P., Organde, D., Demargne, J., Saint-Martin, C., Saint-Aubin, C. d., Garandeau, L., and Janet, B.: Setting up a French national flash flood warning system for ungauged catchments based on the AIGA method, E3S Web of Conferences, 7, 18010, <https://doi.org/10.1051/e3sconf/20160718010>, 2016.
- Jay-Allemand, M., Javelle, P., Gejadze, I., Arnaud, P., Malaterre, P.-O., Fine, J.-A., and Organde, D.: On the potential of variational calibration for a fully distributed hydrological model: application on a Mediterranean catchment, Hydrology and Earth System Sciences Discussions, pp. 1–24, <https://doi.org/https://doi.org/10.5194/hess-2019-331>, 2019.
- 615 Klemeš, V.: Operational testing of hydrological simulation models, Hydrological Sciences Journal, 31, 13–24, <https://doi.org/10.1080/02626668609491024>, 1986.
- Krause, P., Boyle, D. P., and Bäse, F.: Comparison of different efficiency criteria for hydrological model assessment, in: Advances in Geosciences, vol. 5, pp. 89–97, Copernicus GmbH, <https://doi.org/10.5194/adgeo-5-89-2005>, iSSN: 1680-7340, 2005.
- 620 Laurantin, O.: Hourly rainfall analysis merging radar and rain gauge data, pp. 2–8, Grenoble, France, 10–12 March 2008, 2008.
- Lobligeois, F.: Mieux connaître la distribution spatiale des pluies améliore-t-il la modélisation des crues ? Diagnostic sur 181 bassins versants français, Ph.D. thesis, AgroParisTech, 2014.
- Lobligeois, F., Andréassian, V., Perrin, C., Tabary, P., and Loumagne, C.: When does higher spatial resolution rainfall information improve streamflow simulation? An evaluation using 3620 flood events, Hydrology and Earth System Sciences, 18, 575–594, <https://doi.org/https://doi.org/10.5194/hess-18-575-2014>, 2014.
- 625 Lucas-Picher, P., Argüeso, D., Brisson, E., Tramblay, Y., Berg, P., Lemonsu, A., Kotlarski, S., and Caillaud, C.: Convection-permitting modeling with regional climate models: Latest developments and next steps, WIREs Climate Change, 12, e731, <https://doi.org/10.1002/wcc.731>, 2021.
- Magand, C., Ducharne, A., Tilmant, F., Moine, N. L., Sauquet, E., Mathevet, T., Vidal, J.-P., and Perrin, C.: Hybridation de réanalyses météorologiques de surface pour les zones de montagne : exemple du produit DuO sur le bassin de la Durance, La Houille Blanche, pp. 77–85, <https://doi.org/10.1051/lhb/2018035>, 2018.
- 630 McRoberts, D. B. and Nielsen-Gammon, J. W.: Detecting Beam Blockage in Radar-Based Precipitation Estimates, Journal of Atmospheric and Oceanic Technology, 34, 1407–1422, <https://doi.org/10.1175/JTECH-D-16-0174.1>, 2017.
- Mosier, T. M., Hill, D. F., and Sharp, K. V.: How much cryosphere model complexity is just right? Exploration using the conceptual cryosphere hydrology framework, The Cryosphere, 10, 2147–2171, <https://doi.org/10.5194/tc-10-2147-2016>, 2016.
- 635 Muñoz-Sabater, J., Dutra, E., Agustí-Panareda, A., Albergel, C., Arduini, G., Balsamo, G., Boussetta, S., Choulga, M., Harrigan, S., Hersbach, H., Martens, B., Miralles, D. G., Piles, M., Rodríguez-Fernández, N. J., Zsoter, E., Buontempo, C., and Thépaut, J.-N.: ERA5-Land: a state-of-the-art global reanalysis dataset for land applications, Earth System Science Data, 13, 4349–4383, <https://doi.org/10.5194/essd-13-4349-2021>, 2021.
- 640 Nash, J. E. and Sutcliffe, J. V.: River flow forecasting through conceptual models part I — A discussion of principles, Journal of Hydrology, 10, 282–290, [https://doi.org/10.1016/0022-1694\(70\)90255-6](https://doi.org/10.1016/0022-1694(70)90255-6), 1970.
- Paquet, E., Garavaglia, F., Garçon, R., and Gailhard, J.: The SCHADEX method: A semi-continuous rainfall–runoff simulation for extreme flood estimation, Journal of Hydrology, 495, 23–37, <https://doi.org/10.1016/j.jhydrol.2013.04.045>, 2013.
- Penot, D.: Cartographie des événements hydrologiques extrêmes et estimation SCHADEX en sites non jaugés, PhD thesis, Université de Grenoble, <https://tel.archives-ouvertes.fr/tel-01233267/document>, 2014.
- 645 Perrin, C., Michel, C., and Andréassian, V.: Improvement of a parsimonious model for streamflow simulation, Journal of Hydrology, 279, 275–289, [https://doi.org/10.1016/S0022-1694\(03\)00225-7](https://doi.org/10.1016/S0022-1694(03)00225-7), 2003.



- Probst, E. and Mauser, W.: Evaluation of ERA5 and WFDE5 forcing data for hydrological modelling and the impact of bias correction with regional climatologies: A case study in the Danube River Basin, *Journal of Hydrology: Regional Studies*, 40, 101023, <https://doi.org/10.1016/j.ejrh.2022.101023>, 2022.
- Quintana-Seguí, P., Moigne, P. L., Durand, Y., Martin, E., Habets, F., Baillon, M., Canellas, C., Franchisteguy, L., and Morel, S.: Analysis of Near-Surface Atmospheric Variables: Validation of the SAFRAN Analysis over France, *Journal of Applied Meteorology and Climatology*, 47, 92–107, <https://doi.org/10.1175/2007JAMC1636.1>, 2008.
- Reder, A., Raffa, M., Padulano, R., Rianna, G., and Mercogliano, P.: Characterizing extreme values of precipitation at very high resolution: An experiment over twenty European cities, *Weather and Climate Extremes*, 35, 100407, <https://doi.org/10.1016/j.wace.2022.100407>, 2022.
- Reichle, R. H., Koster, R. D., Lannoy, G. J. M. D., Forman, B. A., Liu, Q., Mahanama, S. P. P., and Touré, A.: Assessment and Enhancement of MERRA Land Surface Hydrology Estimates, *Journal of Climate*, 24, 6322–6338, <https://doi.org/10.1175/JCLI-D-10-05033.1>, 2011.
- Rienecker, M. M., Suarez, M. J., Gelaro, R., Todling, R., Bacmeister, J., Liu, E., Bosilovich, M. G., Schubert, S. D., Takacs, L., Kim, G.-K., Bloom, S., Chen, J., Collins, D., Conaty, A., Silva, A. d., Gu, W., Joiner, J., Koster, R. D., Lucchesi, R., Molod, A., Owens, T., Pawson, S., Pegion, P., Redder, C. R., Reichle, R., Robertson, F. R., Ruddick, A. G., Sienkiewicz, M., and Woollen, J.: MERRA: NASA's Modern-Era Retrospective Analysis for Research and Applications, *Journal of Climate*, 24, 3624–3648, <https://doi.org/10.1175/JCLI-D-11-00015.1>, 2011.
- Roger, L.: Validation et utilisation climatologiques de la ré-analyse de lame d'eau radar Comephore étendue, Stage de fin d'étude, Météo-France, Toulouse, 77 p., 2017.
- Santos, L., Thirel, G., and Perrin, C.: Technical note: Pitfalls in using log-transformed flows within the KGE criterion, *Hydrology and Earth System Sciences*, 22, 4583–4591, <https://doi.org/10.5194/hess-22-4583-2018>, 2018.
- Schimanke, S., Ridal, M., Le Moigne, P., Berggren, L., Undén, P., Randriamampianina, R., Andrea, U., Bazile, E., Bertelsen, A., Brousseau, P., Dahlgren, P., Edvinsson, L., El Said, A., Glinton, M., Hopsch, S., Isaksson, L., Mladek, R., Olsson, E., Verrelle, A., and Wang, Z.: CERRA sub-daily regional reanalysis data for Europe on single levels from 1984 to present, <https://doi.org/10.24381/CDS.622A565A>, 2021.
- Simoni, A., Bernard, M., Berti, M., Boreggio, M., Lanzoni, S., Stancanelli, L. M., and Gregoretti, C.: Runoff-generated debris flows: Observation of initiation conditions and erosion–deposition dynamics along the channel at Cancia (eastern Italian Alps), *Earth Surface Processes and Landforms*, 45, 3556–3571, <https://doi.org/10.1002/esp.4981>, 2020.
- Soci, C., Bazile, E., Besson, F., and Landelius, T.: High-resolution precipitation re-analysis system for climatological purposes, *Tellus A: Dynamic Meteorology and Oceanography*, 68, 29879, <https://doi.org/10.3402/tellusa.v68.29879>, 2016.
- Valéry, A.: Modélisation précipitations – débit sous influence nivale Elaboration d'un module neige et évaluation sur 380 bassins versants, Ph.D. thesis, AgroParisTech, Paris, <https://webgr.inrae.fr/wp-content/uploads/2012/07/2010-VALERY-THESE.pdf>, 2010.
- Valéry, A., Andréassian, V., and Perrin, C.: 'As simple as possible but not simpler': What is useful in a temperature-based snow-accounting routine? Part 1 – Comparison of six snow accounting routines on 380 catchments, *Journal of Hydrology*, 517, 1166–1175, <https://doi.org/10.1016/j.jhydrol.2014.04.059>, 2014.
- Velázquez, J. A., Ancil, F., and Perrin, C.: Performance and reliability of multimodel hydrological ensemble simulations based on seventeen lumped models and a thousand catchments, *Hydrology and Earth System Sciences*, 14, 2303–2317, <https://doi.org/10.5194/hess-14-2303-2010>, 2010.





- 685 Vidal, J.-P., Martin, E., Franchistéguy, L., Baillon, M., and Soubeyroux, J.-M.: A 50-year high-resolution atmospheric reanalysis over France with the Safran system, *International Journal of Climatology*, 30, 1627–1644, <https://doi.org/10.1002/joc.2003>, 2010.
- Villarini, G. and Krajewski, W. F.: Review of the Different Sources of Uncertainty in Single Polarization Radar-Based Estimates of Rainfall, *Surveys in Geophysics*, 31, 107–129, <https://doi.org/10.1007/s10712-009-9079-x>, 2010.
- Viviroli, D., Zappa, M., Gurtz, J., and Weingartner, R.: An introduction to the hydrological modelling system PREVAH and its pre- and  
690 post-processing-tools, *Environmental Modelling & Software*, 24, 1209–1222, <https://doi.org/10.1016/j.envsoft.2009.04.001>, 2009.
- Wójcik, R. and Buishand, T. A.: Simulation of 6-hourly rainfall and temperature by two resampling schemes, *Journal of Hydrology*, 273, 69–80, [https://doi.org/10.1016/S0022-1694\(02\)00355-4](https://doi.org/10.1016/S0022-1694(02)00355-4), 2003.
- Xu, X., Frey, S. K., and Ma, D.: Hydrological performance of ERA5 and MERRA-2 precipitation products over the Great Lakes Basin, *Journal of Hydrology: Regional Studies*, 39, 100 982, <https://doi.org/10.1016/j.ejrh.2021.100982>, 2022.