

Spatiotemporal snow water storage uncertainty in the midlatitude American Cordillera

Yiwen Fang¹, Yufei Liu², Dongyue Li¹, Haorui Sun¹, Steven A. Margulis¹

¹Department of Civil and Environmental Engineering, University of California, Los Angeles, Los Angeles, 90095, USA

5 ²China Institute of Water Resources and Hydropower Research, Beijing, 100048, China

Correspondence to: Steven A. Margulis (margulis@seas.ucla.edu)

Abstract. This work quantifies the uncertainty of accumulation-season peak snow water storage in the portions of the midlatitude American Cordillera where snow is a dominant driver of hydrology. This is accomplished through intercomparison of commonly used global and regional products over the Western U.S. (WUS) and Andes domains, which have similar hydrometeorology but are disparate with respect to the amount of available in situ information. The recently developed WUS Snow Reanalysis (WUS-SR) and Andes Snow Reanalysis (Andes-SR) datasets, which have been extensively verified against in situ measurements, are used as baseline reference datasets in the intercomparison. Relative to WUS-SR climatological peak SWE storage (269 km³), high- and moderate-resolution products (i.e., those with resolutions less than ~10 km) are in much better agreement (284 ± 14 km³; overestimated by 6 %) compared to low-resolution products (127 km³ ± 54 km³; underestimated by 53 %). In comparison to the Andes-SR peak snow storage (29 km³), all other products show large uncertainty and bias (19 km³ ± 16 km³; underestimated by 34 %). Examination of spatial patterns related to orographic effects, showed that only the high- to moderate-resolution SNODAS and UA products show comparable estimates of windward-leeward SWE patterns over a subdomain (Sierra Nevada) of the WUS. Coarser products distribute too much snow on the leeward side in both the Sierra Nevada and Andes, missing orographic-rainshadow patterns that have important hydrological implications. The uncertainty of peak seasonal snow storage is primarily explained by precipitation uncertainty in both the WUS ($R^2 = 0.55$) and Andes ($R^2 = 0.84$). Despite using similar forcing inputs, snow storage diverges significantly within the ERA5 (i.e. ERA5 vs. ERA5-Land) products and the GLDAS (modeled with Noah, VIC, and Catchment model) products due to resolution-induced elevation differences and/or differing model process representation related to rain–snow partitioning and accumulation-season snowmelt generation. The availability and use of in situ precipitation and snow measurements (i.e., in WUS) in some products adds value by reducing snow storage uncertainty, however where such data are limited, i.e. in the Andes, significant biases and uncertainty exist.

1 Background and Motivation

Seasonal snow storage in mountains provide vital freshwater to downstream users estimated to be over 16.7 % of the global population (Immerzeel et al., 2020; Rhoades et al., 2022). Melt of accumulated winter snow in the spring and

30 summer impacts agriculture, hydropower generation, and water supply and recreation, making it a key component of the food-energy-water nexus in many regions of the world (Siirila-Woodburn et al., 2021; Huss et al., 2017; Qin et al., 2020). Despite its importance, a complete understanding of continental terrestrial water cycles is hampered by a limited characterization of seasonal mountain snow storage uncertainty.

The lack of in situ and remotely sensed measurements of mountain snow water equivalent (SWE), a key metric
35 related to water availability, are primarily responsible for the limited characterization of seasonal snow storage in these regions. For example, in the midlatitude American Cordillera, where snowmelt is estimated to contribute to as much as 70 % of total runoff in some basins (Li et al., 2017), existing in situ networks are both sparse and unrepresentative of the conditions spanning the larger domains in the Western United States (WUS) and South American Andes (Nolin et al., 2021; Dozier et al., 2016; Molotch and Bales, 2006, Saavedra et al., 2018). Current remotely sensed SWE estimates from passive
40 microwave measurements are useful over much of the globe, but are too coarse to capture the spatial heterogeneity and deep snowpacks in these regions with complex terrain (Luoju et al., 2021).

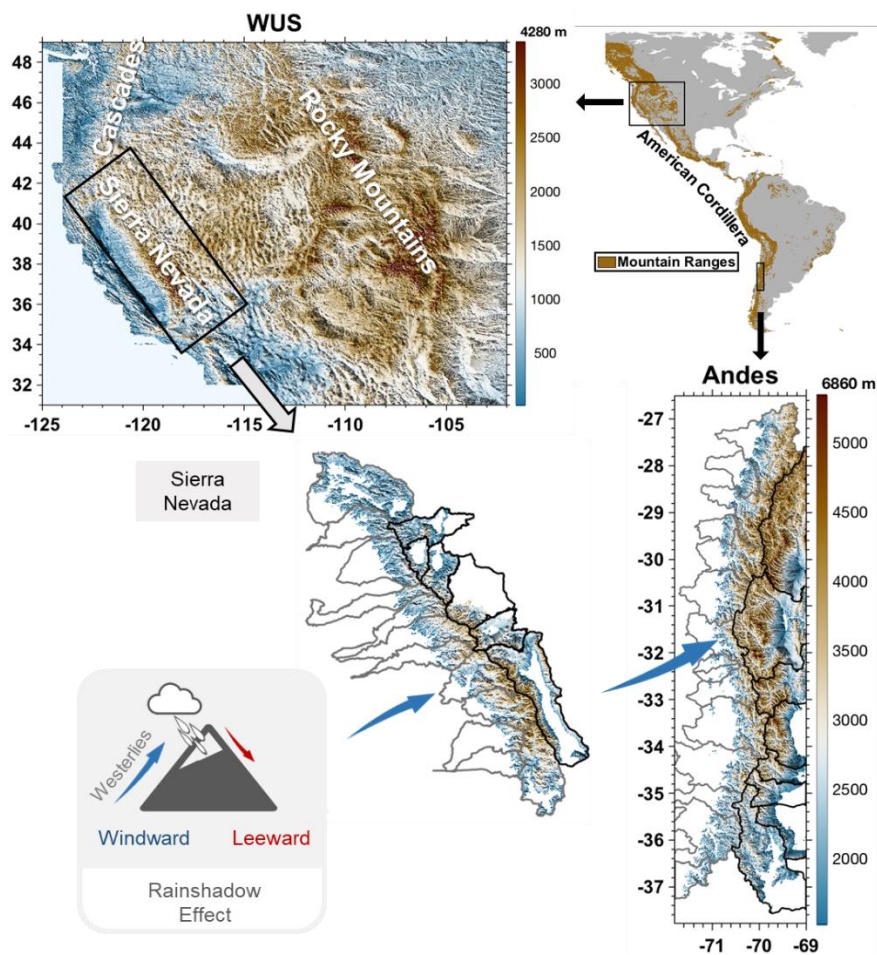
In lieu of measurements, globally available snow products, typically generated from land surface models (LSMs), provide the majority of large-scale estimates of the spatiotemporal patterns of mountain snow water storage. However, seasonal snow storage estimates from global snow products remains highly uncertain, which results from discrepancies in
45 meteorological forcings, variations in snow process representation, and coarse spatial resolution (Broxton et al., 2016b; Wrzesien et al., 2019; Cho et al., 2022; Liu et al., 2022). The uncertainty (including bias) of seasonal snow storage further propagates to streamflow forecasts (Kim et al., 2021) and impacts water resources management. Coarse spatial resolutions smooth topography and impact the ability to resolve orographic features (including rainshadows) over complex terrain (Daly, 2006). Current estimates of mountain snow water storage uncertainties in both space and time need to be characterized to
50 ensure the reliability of impact studies that rely on SWE estimates (e.g., Mankin et al., 2015; Immerzeel et al., 2020; Huning and AghaKouchak, 2020).

The analysis herein is applied to the snow-dominated midlatitude portions of the American Cordillera (Fig. 1), which are representative of regional mountains of significant importance to humans. To quantify the spatiotemporal uncertainties of snow storage from commonly used snow products, recently-developed high-resolution snow reanalysis
55 datasets covering the WUS (Fang et al., 2022) and Andes (Cortés and Margulis, 2017) are used in this work as reference datasets. The WUS and Andes domains have comparable atmospheric circulation patterns and hydrologic cycles (Rhoades et al., 2022), but are disparate with respect to [elevation and](#) the amount of available in situ information. The WUS has among the highest density of in situ snow information, which either directly or indirectly inform SWE estimates, while the Andes has little to no ground measurements, making SWE estimates almost entirely model-based. This paper aims to assess: 1) the
60 spatiotemporal uncertainty of SWE in the WUS and Andes over the accumulation season, and 2) the drivers of the SWE uncertainty. Knowledge of the uncertainty and its drivers will put current snow-impact studies in better context and provide a pathway for improving future estimates aimed at reducing SWE quantification uncertainty.

2 Study Domain and Datasets

2.1 Study Domain

65 This study focuses on the snow-dominated midlatitude mountain ranges of the America Cordillera (Fig. 1), where
snowmelt-driven runoff serves large populations. Specifically, the WUS and Andes are selected as the study domains based
on recently developed snow-specific reanalysis products (Fang et al., 2022; Cortés and Margulis, 2017). These SWE
estimates have been significantly verified against independent in situ and airborne measurements, making them well-suited
to being used as references for other products. The average elevation across the WUS is ~ 1383 m with a maximum > 4300
70 m, in contrast to a higher average elevation of ~ 2999 m with a maximum > 6800 m in the Andes. The beginning of the
seasonal snow cycle starts from 01 October and 01 April in the WUS and Andes, respectively. Hence, a water year (WY)
spans from 01 October to 30 September in the WUS, and 01 April to 31 March in the Andes.



75 **Figure 1.** DEM and location of midlatitude American Cordillera including its subdomains in the Western U.S. (WUS) and
Andes. Bottom left cartoon highlights the typical rainshadow effect whereby ~~shows that~~ moist air rises on the windward side

of a mountain depositing significant amounts of snow, and drier air flows down the leeward side of the mountain creating a rainshadow effect. Arrows represent the generalized directions of westerlies that drive orographic and rainshadow SWE patterns. The Sierra Nevada (SN, sub-basin of WUS) and Andes are chosen to study the rainshadow effect. Windward watersheds are shown in gray boundaries and leeward watersheds are shown in black boundaries. Mountain ranges are based on Sneath et al. (2022).

The WUS contains three major mountain ranges including the Sierra Nevada, Rocky Mountains and Cascades (Figure Fig. 1). Amongst these, the Sierra Nevada subdomain is the closest analog to the Andes, sharing similar hydroclimatology and topography. Winter westerlies dominate precipitation timing and patterns in these two mountain ranges, leading to orographic gradients on the windward side of the mountains and rainshadow effects resulting in significant snow differences across relatively short windward-leeward gradients.

2.2 Datasets

This paper intercompares data from the Andes Snow Reanalysis (Andes-SR) and WUS Snow Reanalysis (WUS-SR) datasets (as reference datasets), to seven global snow datasets (available over both domains), and two regional datasets (available only over the WUS domain) shown in Table 1. The Andes-SR (WYs 1985 to 2015; Cortés and Margulis, 2017) SWE estimates were derived at a regular 180 m resolution grid before regridding to a regular latitude/longitude grid (0.001° or ~100 m). The WUS-SR (WYs 1985 to 2021; Fang et al., 2022) SWE estimates are at ~480 m resolution. The different resolutions used for the Andes and WUS domains were based on computational constraints. In addition to spatial resolution differences, glaciers and elevation below 1500 m were masked out before applying the Andes-SR. The newer WUS-SR dataset is applied over the full domain and then masked afterwards as described in Fang et al. (2022). The Andes-SR and WUS-SR datasets were both generated from the Bayesian framework developed by Margulis et al. (2016, 2019) with assimilation of fractional snow-covered area images derived from Landsat 5, 7 and 8 using the Particle Batch Smoother (PBS; Margulis et al., 2015). Independent verification shows that both datasets are consistent with in situ peak SWE with a correlation coefficient of 0.73 over the Andes (Cortés and Margulis, 2017) and 0.77 (using > 25,000 station-years of in situ data) over the WUS (Fang et al., 2022). Further verification of the WUS-SR SWE against Airborne Snow Observatory (ASO) SWE estimates shows consistent performance between these two spatial products with correlation coefficients ranging from 0.75 to 0.91. With high consistency against point-scale in situ and spatially-distributed airborne SWE estimates, as well as the high spatial resolutions specifically targeting mountainous domains, these two snow reanalysis datasets are used as reference SWE datasets to evaluate the snow storage of global and regional products over the WUS and Andes.

The seven global snow products include ERA5-Land, ERA5, MERRA2 and four GLDAS-2.1 products (GLDAS-NOAH at 0.25°, GLDAS-NOAH at 1.0°, GLDAS-VIC at 1.0°, and GLDAS-CLSM at 1.0°). The SNODAS and UA products only cover the US and therefore are not included in the Andes intercomparison. Following Liu et al. (2022), SWE, precipitation and snowfall were collected from each of the seven global products, SNODAS, and UA (including PRISM

precipitation (Daly et al., 1994) used in the UA product). Since the reference snow reanalysis datasets do not output precipitation and snowfall, only SWE is used for reference. For the purposes of analysis and discussion in this work, the products described above are classified by their spatial resolution. Specifically, reference datasets and those products with spatial resolution less than ~1 km are deemed “high-resolution” (*HR*: WUS-SR, Andes-SR, and SNODAS), those with spatial resolutions between ~1 km and ~10 km are deemed “moderate-resolution” (*MR*: UA, ERA5-Land), and those with spatial resolutions greater than ~10 km are deemed “low-resolution” (“*LR*”: ERA5, GLDAS subset). Globally and regionally available datasets are referred to as “products” to distinguish them from the reference “datasets”, i.e., WUS-SR and Andes-SR.

The snow reanalysis reference datasets are, by design, constrained by [satellite snow cover](#) observations using a data assimilation approach. However, not all the products are solely model-based. SNODAS uses in situ snow, airborne SWE from gamma radiation snow surveys and satellite snow cover, and UA uses in situ SWE as inputs to constrain estimates. Although ERA5 assimilates snow depth, limited examples of these in situ measurements are used in the WUS and Andes. However, in the WUS, with its relatively high density of in situ meteorological sites, almost all products are based on models with meteorological forcings that include some in situ measurements. In contrast, due to limited in situ meteorological sites in the Andes, the quality of input forcings remains unclear, but is likely more uncertain than over the WUS. More details on the snow products used herein are given in Table 1 and Appendix A.

125

Table 1. Details of snow datasets and products used in this work. Note that SNODAS data in WY 2004 is not used due to quality issues cited in NOHRSC (2004). *Snow reanalysis datasets are used as reference datasets.

Datasets/Products	Land surface model	Spatial Resolution	Temporal Coverage	Forcings	Assimilated snow data (Method)	Domain availability
WUS-SR*	SSiB - SDC	16" (~54800 m)	1985-2021	MERRA2	Landsat fSCA (PBS)	WUS
ANDES-SR*	SSiB - SDC	6" (~180 m)	1985-2015	MERRA	Landsat fSCA (PBS)	Andes
SNODAS	NOHRSC Snow Model (NSM)	1 km (~0.01°)	2004-present	Downscaled NWP forcing	Ground based snow/ airborne SWE/ satellite snow cover (Newtonian Nudging)	WUS
UA	-	4 km (~0.04°)	1981-present	PRISM	In situ SWE/ snow depth from SNOTEL and snow depth from COOP (Ordinary Kriging Interpolation)	WUS
ERA5-Land	H-TESEL (IFS Cy45r1)	0.1° (~10 km)	1950-present	ERA5 with "lapse rate correction"	-	WUS, Andes
ERA5	H-TESEL (IFS Cy41r2)	0.25° (~25 km)		IFS Cy41r2 with 4D-Var	In situ snow depth (Optimal Interpolation); IMS snow cover	WUS, Andes
MERRA2	Catchment	0.5° × 0.625° (~50 - 63 km)	1980-present	MERRA2	-	WUS, Andes
GLDAS-2.1	Noah	0.25° (~25 km)	2001-present	NOAA/GDAS, GPCP 1.3, bias corrected AGRMET	-	WUS, Andes
	Noah	1° (~100 km)				WUS, Andes
	VIC	1° (~100 km)				WUS, Andes
	Catchment (CLSM)	1° (~100 km)				WUS, Andes

3 Intercomparison Methodology

130 3.1 Intercomparison study period

Where possible, the intercomparison study periods in the two domains are chosen as WYs 1985-2021 (01 October 1984 to 30 September 2021) for the WUS, and WYs 1985-2015 (01 April 1984 to 31 March 2015) for the Andes, based on the availability of the respective snow reanalysis datasets. Among the products listed in Table 1, only GLDAS (starting in WY 2001) and SNODAS (starting in WY 2005) are not available over the full snow reanalysis period. For those products, 135 long-term climatologies are necessarily derived over the shorter periods. Hence in the WUS, climatologies for the GLDAS and SNODAS products are over their available 21- and 17-year records, while all other products span the 37-year record. In the Andes, the GLDAS products are over their 15-year record, while all other products span the 31-year record. Analysis of climatological results from the products with longer periods do not show significant differences when applied to the shorter study periods (~~not shown~~[Fig. S1](#)).

140 3.2 Focusing on intercomparison during the snow accumulation season

The intercomparison herein focuses on the snow accumulation season. To motivate this focus, the climatological (long-term average) daily time series of domain-aggregated SWE volume across all products are illustrated in Fig. 2. Two key points are evident: (i) there are significant discrepancies between products (that are analyzed in more detail below) and (ii) much of the uncertainty occurs during the accumulation season (and then propagates to the ablation season). An accurate 145 characterization of peak SWE (at the end of the accumulation season) is a key metric of the final condition of snow accumulation processes and the initial condition leading into the main snowmelt season. Intercomparison of modeled snowmelt season processes are made more difficult when the initial conditions (i.e., peak SWE prior to the primary ablation season) across models are different. Given the large uncertainties observed in domain-wide peak SWE climatology (Fig. 2), this paper focuses on the uncertainties in the accumulation season (as done in Liu et al., 2022) in order to better understand 150 how and why accumulation season estimates diverge across products. All the analyses focus on the accumulation season using metrics described below.

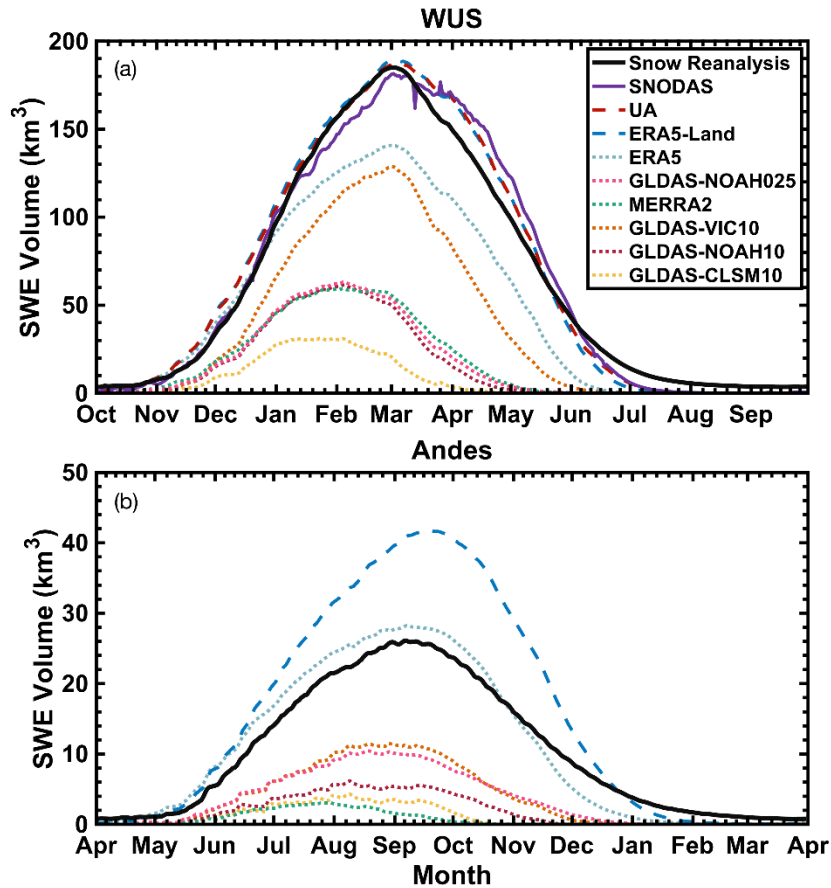


Figure 2. Climatology of seasonal cycle of SWE volume in the WUS and Andes domains. Solid lines represent high-resolution (HR) datasets and products, dashed lines represent moderate-resolution (MR) products, and dotted lines represent low-resolution (LR) products.

3.3 Snow metrics used in the intercomparison

The processes leading to the domain-aggregated peak SWE shown in Fig. 2 depend on pixel-scale snow mass balance processes. Hereafter, for each product, the pixel-wise processes are analyzed prior to aggregating to the larger domain. The day corresponding to pixel-wise peak SWE (defined as t_{peak}) is computed for each product at their raw spatial resolution. The pixel-wise peak SWE depth (swe_{peak}) is aggregated to get pixel-wise peak SWE volume (SWE_{peak}). Hence in results to follow, swe_{peak} is used to describe and analyze maps of SWE, while SWE_{peak} is used to describe spatially aggregated volumes of SWE.

At each pixel, accumulation-season precipitation and snowfall are accumulated from the beginning of the WY up to t_{peak} , where the accumulated maps of SWE can then be aggregated over the domain of interest. The mass balance equations

165 relating domain-aggregated cumulative snowfall (S_{acc}), SWE (SWE_{peak}), cumulative ablation (A_{acc}), cumulative precipitation (P_{acc}), cumulative snowfall (S_{acc}), and cumulative rainfall (R_{acc}) are shown below:

$$SWE_{peak} = S_{acc} - A_{acc} \quad (1)$$

$$S_{acc} = P_{acc} - R_{acc} \quad (2)$$

170 where in Eq. (1) and (2), P_{acc} , S_{acc} , SWE_{peak} are directly computed from the snow products. R_{acc} and A_{acc} are the residuals based on these two mass balance equations. Climatological values are computed as the long-term (interannual) mean of P_{acc} , S_{acc} , SWE_{peak} over the intercomparison periods.

175 Persistent snow and ice areas are excluded before spatially integrating the SWE volumes, since most products analyzed in this work do not explicitly estimate glaciers and persistent snow. Such persistent snow and ice masks are first obtained from the Andes-SR and WUS-SR products and then aggregated to the spatial resolution of each product (as done in Liu et al., 2022). Domain masks in each product are also applied here, which are derived based on the reference datasets using the same approach. Details of persistent snow and ice masks and domain masks are described in Supplement S22, and shown in Fig. S12 and S2S3.

180 Beyond domain-wide results, we ~~choose to~~ intercompare products and their ability to capture rainshadow effects, that often occur over short geographic scales, but have significant influence on the water availability between windward and leeward sides of mountain ranges. For simplicity we focus on the windward-leeward contrasts over the Sierra Nevada in the WUS and those over the Andes. Figure 1 shows the boundaries of windward basins (in gray) and leeward basins (in black) for both domains. The Sierra Nevada and Andes are analogs of each other due to the mostly north-south orientation of the mountain ranges that are relatively perpendicular to the mostly westerly prevailing winds. In both cases, the windward and leeward basins serve distinct downstream populations and so resolving those spatial variations have important hydrological implications. To assess the ability of products in capturing rainshadow effects, pixel-wise SWE_{peak} is aggregated over the windward (SWE_{peak}^{wind}) and leeward (SWE_{peak}^{lee}) watersheds. Since ~~MR and LR~~ pixels may cover both windward and leeward watersheds, for MR and LR products, fractional swe_{peak} is aggregated to get SWE_{peak} over the two types of watersheds separately (Fig. S3-S4 and S4S5). For HR products and datasets, the pixels spanning the windward to leeward side has a negligible impact on the distribution. The fractional swe_{peak} is computed by multiplying pixel-wise swe_{peak} and the fraction of pixel within the windward or leeward watershed. The detailed steps used to derive the windward and leeward watershed snow storage are described in S2S3.

190

4 Results and Discussion

4.1 Climatological SWE uncertainty

4.1.1 Spatial distribution of pixel-wise peak SWE

195 Climatological pixel-wise swe_{peak} maps for the WUS-SR (Fig. 3a) clearly show the highest snow storage occurring in the Sierra Nevada, Cascades, and Rocky Mountains. When integrated over the whole domain, the climatological WUS SWE_{peak} is 269 km^3 (Fig. 3k). Similar spatial distributions of swe_{peak} are observed for the HR (SNODAS; Fig. 3b) and MR products (UA and ERA5-Land; Fig. 3c and 3d). However, the remaining products (ERA5, MERRA5 and GLDAS subset; Fig. 3e to 3j) significantly underestimate swe_{peak} and smooth out the spatial patterns captured by the HR and MR products.

200 The combined HR and MR inter-product average of climatological WUS SWE_{peak} is $284 \pm 14 \text{ km}^3$, in contrast to an average of $127 \pm 54 \text{ km}^3$ for LR products (Fig. 3k). This suggests large uncertainty (both bias and spread) in SWE_{peak} among LR products. Compared to WUS-SR, SNODAS overestimates SWE_{peak} by $\sim 12 \%$ (Fig. 3k) and exhibits higher swe_{peak} in the Sierra Nevada, Cascades, and Rocky Mountains. UA and ERA5-Land both exhibit a similar magnitude of SWE_{peak} (differences $< 5 \%$) compared to WUS-SR, both of which have higher swe_{peak} in the Cascades. Despite similar spatial

205 distribution of swe_{peak} , ERA5 underestimates WUS SWE_{peak} by 22% (Fig. 3k) compared to WUS-SR. All GLDAS products severely underestimate SWE_{peak} , where GLDAS-VIC10 shows the highest WUS SWE_{peak} (with a 35% underestimation compared to WUS-SR).

Based on the Andes-SR, the climatological SWE_{peak} is 29 km^3 (Fig. 4i). The southern Andes has higher swe_{peak} compared to the northern region (Fig. 4a). The spatial distribution of swe_{peak} and integrated SWE_{peak} volumes vary much

210 more broadly across different products (Fig. 4b to 4k) [in the Andes](#) than they do in the WUS. The MR and LR inter-product average of climatological SWE_{peak} is $19 \pm 16 \text{ km}^3$ (Fig. 4i). ERA5-Land and ERA5 overestimate SWE_{peak} by 66% and 18% , respectively (Fig. 4i). ERA5-Land significantly overestimates swe_{peak} in the southern part of the Andes. Most of the LR products, including MERRA2 and the GLDAS subset, significantly underestimate SWE_{peak} by as much as 79% (MERRA2), compared to Andes-SR (Fig. 4i). These findings for the Andes domain are qualitatively similar to Liu et al. (2022), where

215 ERA5 and ERA5-Land overestimate SWE_{peak} and MERRA2 and GLDAS underestimate SWE_{peak} in High Mountain Asia (HMA), another snow-dominated region with limited in situ measurements.

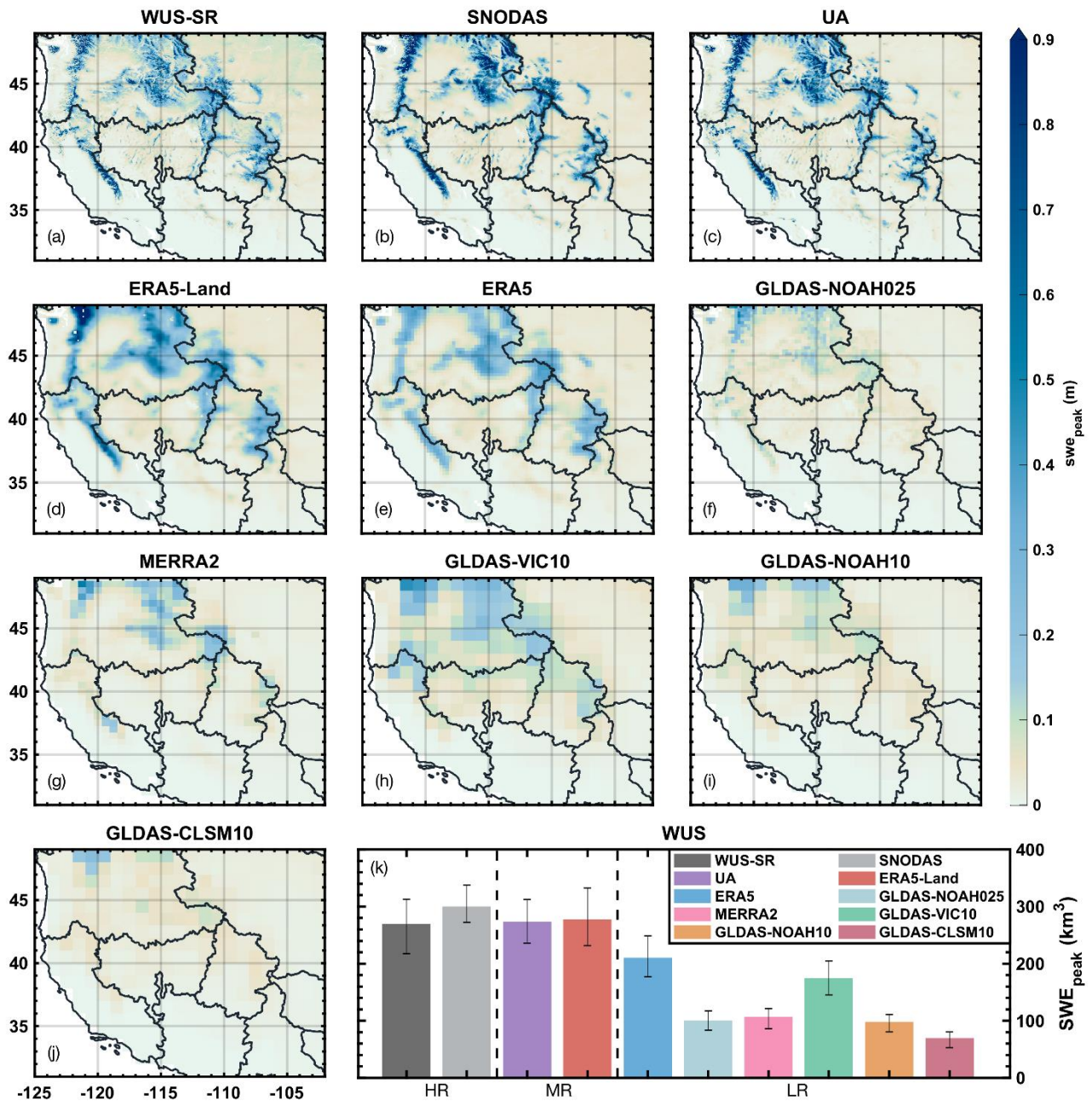


Figure 3. (a – j) Spatial distribution of climatological swe_{peak} in the WUS. (k) shows the climatological WUS SWE_{peak} (colored bars) and the interannual inter-quartile range (IQR; black error bars). The bar plots are ordered by spatial resolution, with highest resolution on the left and lowest resolution on the right. The vertical dashed lines separate the three spatial resolution categories (i.e., HR <math>< \sim 1\text{ km}</math>,

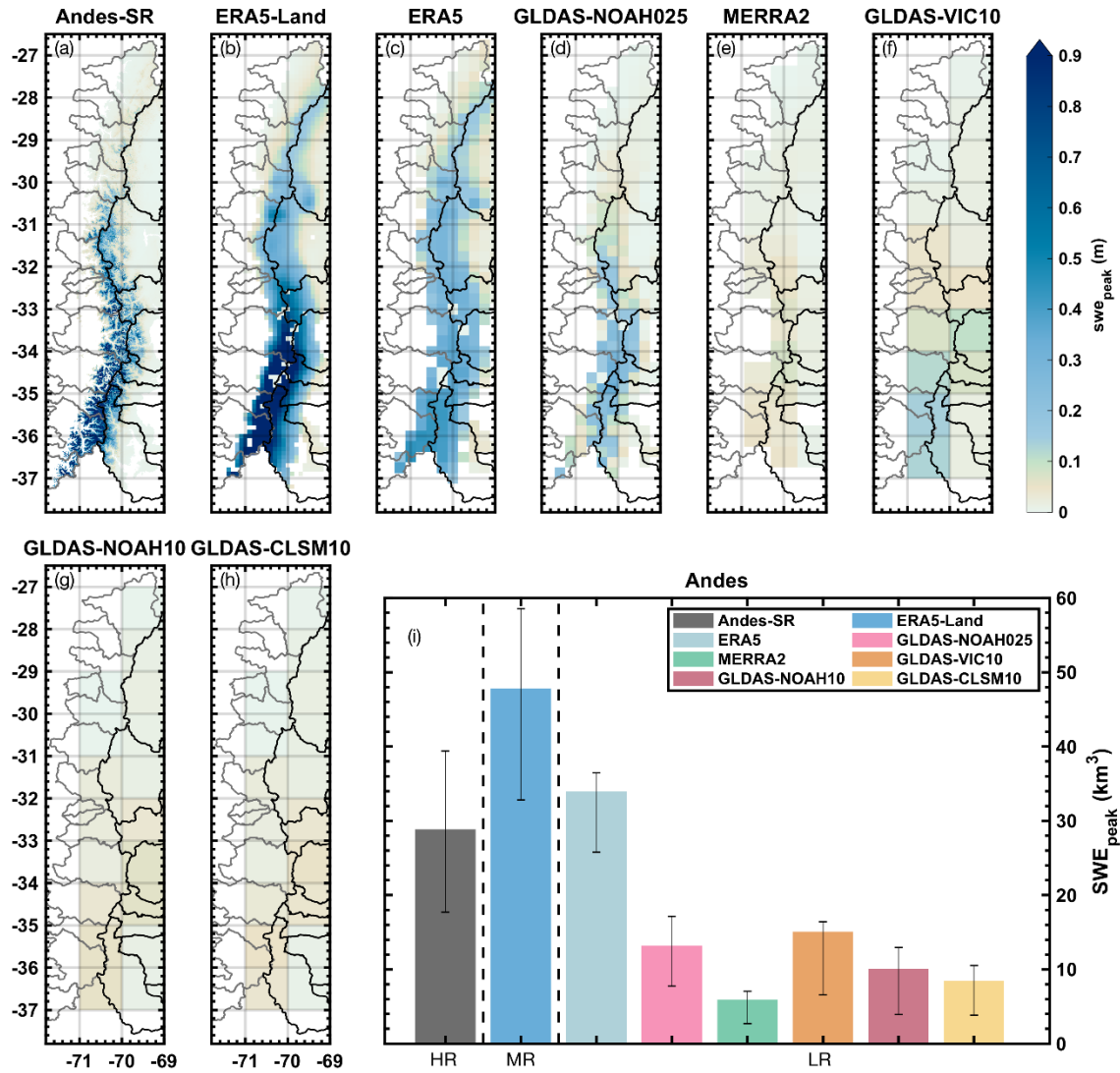


Figure 4. (a – h) Spatial distribution of climatological swe_{peak} in the Andes. (i) shows the climatological Andes SWE_{peak} (colored bars) and the interannual inter-quartile range (IQR; black error bars). The bar plots are ordered by spatial resolution, with highest resolution on the left and lowest resolution on the right. The vertical dashed lines separate the three spatial resolution categories (i.e., HR <math>< \sim 1\text{ km}</math>, <math>\sim 1\text{ km} < \text{MR} < \sim 10\text{ km}</math>, LR $> \sim 10\text{ km}$). Glacier and permanent snow areas are masked out in the maps and domain aggregated volumes.

4.1.2 Resolving key spatial gradients: Rainshadow effects

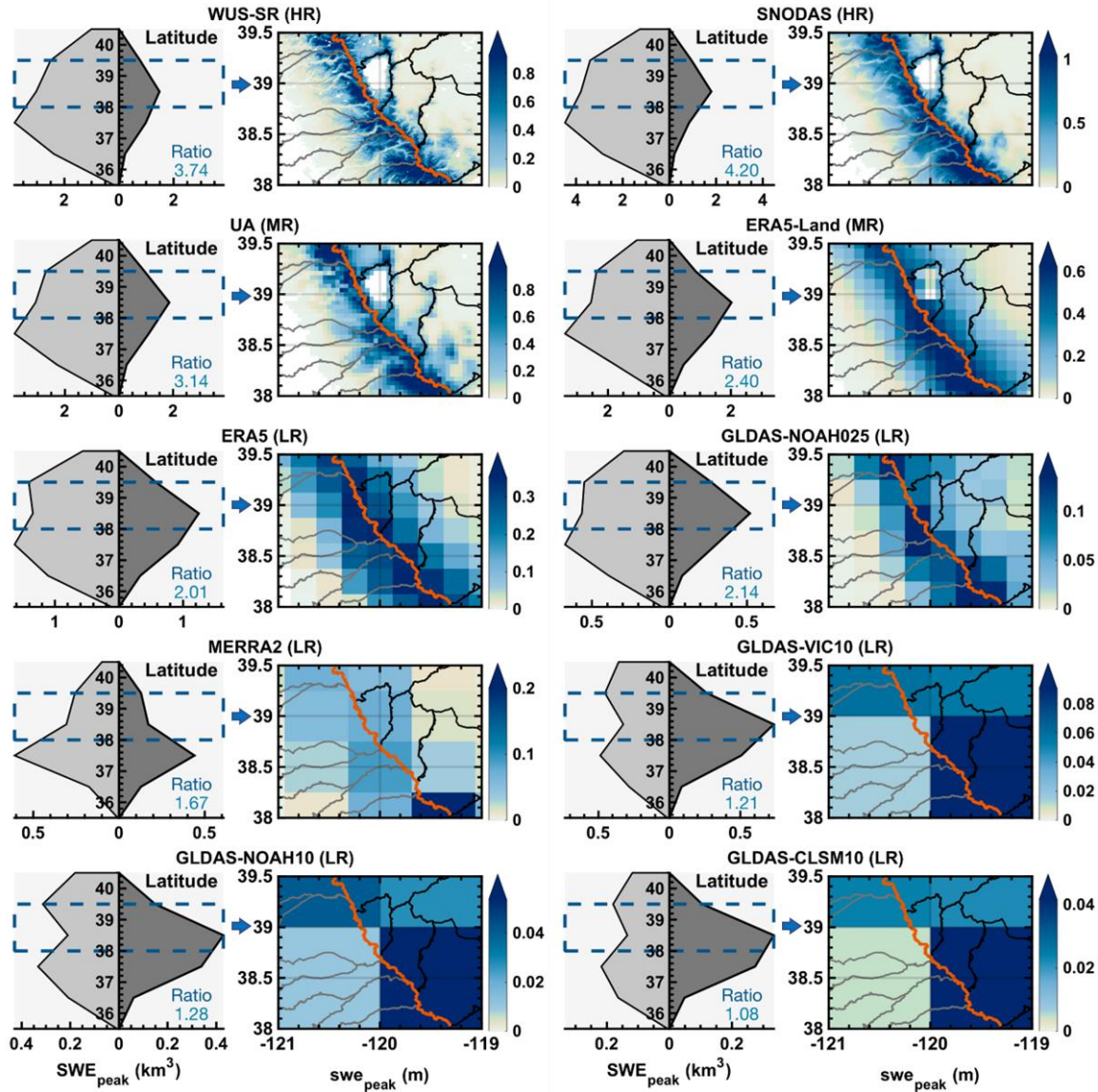
In addition to the overall spatial distribution in SWE, the orographically-driven rainshadow (windward vs. leeward) distribution represents an example of an important spatial feature in many mountain contexts. In mountain ranges exposed to persistent prevailing winds, it is expected that the windward side of the range will have more SWE than the leeward side

(Fig. 1). While significant biases exist in products as described in Section 4.1.1, this section focuses on the relative patterns of windward vs. leeward storage. The differences in rainshadow storage gradients are specifically examined in the Sierra Nevada subdomain of the WUS and the Andes. While resolving rainshadow effects is challenging for narrow topographic regions like the Sierra Nevada and Andes, it has important hydrological implications as large gradients in SWE storage propagate to spring/summer runoff and streamflow that supply downstream users.

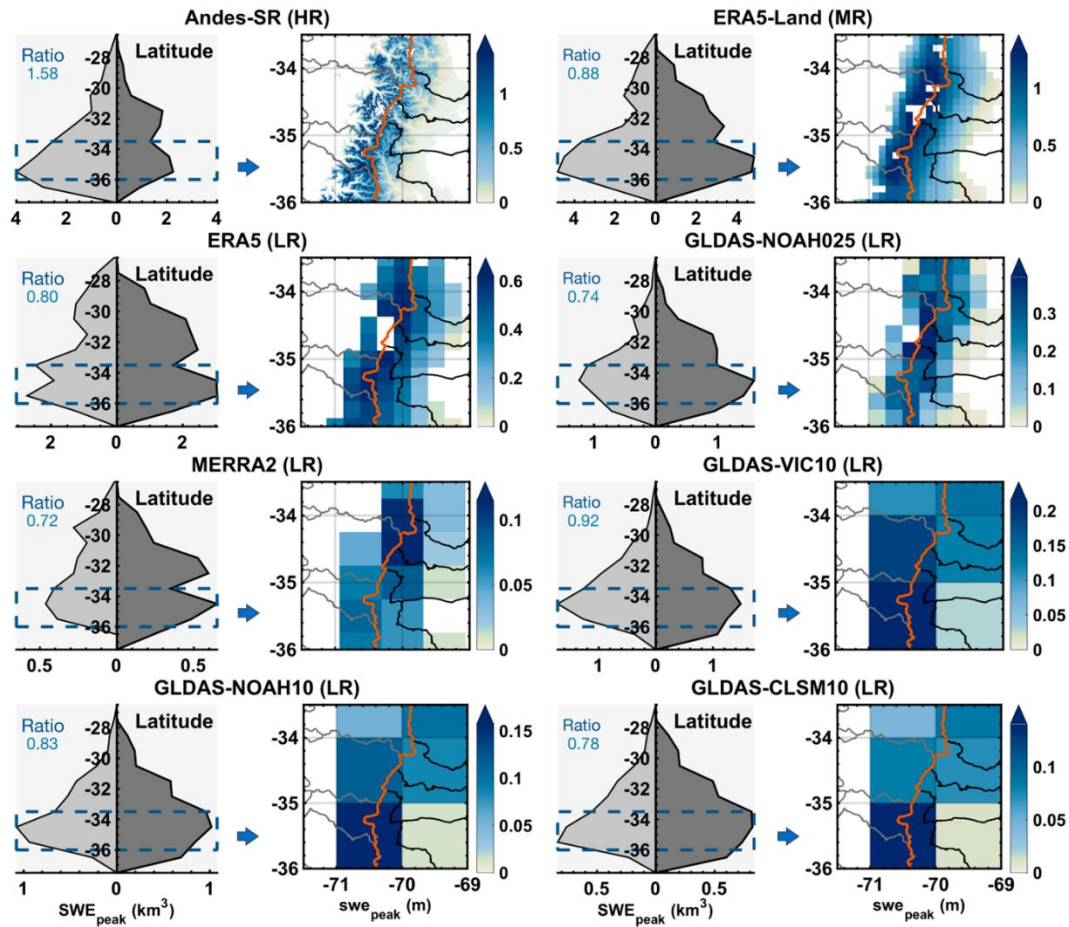
Based on the WUS-SR in the Sierra Nevada (Fig. 5), the latitudinal distribution of SWE_{peak}^{wind} is the largest in the 37°–38° N latitudinal band, while the latitudinal distribution of SWE_{peak}^{lee} is the largest in the 38°–39° N latitudinal band. The latitudinal windward and leeward storage of SWE decreases monotonically north and south of these maximum values. The total stored windward volume SWE_{peak}^{wind} is 3.74 times more than the leeward volume SWE_{peak}^{lee} . This ratio is the combined effect of variations in area and SWE depth between the windward and leeward basins and identifies that (on average) the windward basins store between 3 and 4 times more SWE volume than the leeward basins. Given that the windward and leeward areas across which SWE is integrated are effectively the same across products, any differences in windward-leeward ratio are driven by differences in SWE depth. SWE depth variations are primarily driven by resolving orographic enhancement of snowfall between windward and leeward slopes. In the Sierra Nevada, only SNODAS and UA products (spatial resolutions $< \sim 4$ km) exhibit comparable SWE_{peak}^{wind} to SWE_{peak}^{lee} ratios. The ratios of SWE_{peak}^{wind} to SWE_{peak}^{lee} are 4.20 (12 % greater than the WUS-SR) for SNODAS and 3.14 (16 % less than WUS-SR) for UA, suggesting a fairly good agreement between windward-leeward snow volume distributions in these products. However, resolving the pattern of windward-leeward snow distribution is significantly impaired in the other MR and LR products. The ratios computed from ERA5-Land, ERA5, GLDAS-NOAH025, MERRA2, GLDAS-VIC10, GLDAS-NOAH10, and GLDAS-CLSM10 range from 1.08-2.40 and are 36 %, 46 %, 43 %, 55 %, 68 %, 66 %, and 71 % less than that in the WUS-SR, respectively. Hence, the MR and LR products generally have too little snow on the windward side compared to the leeward side. The location of the windward maximum SWE_{peak} is consistent in most snow products with the exception of the LR products (i.e., ERA5, GLDAS), which have a secondary maximum between 39°–40° N. The location of the leeward maximum SWE_{peak} is consistent in most of the snow products with the exception of MERRA2, which is maximum at a lower latitude.

Based on the Andes-SR, the largest SWE_{peak}^{wind} is distributed in the 35°–36° S latitudinal band, while the distribution of SWE_{peak}^{lee} has two local maxima in the 31°–32° S and 35°–36° S latitudinal bands (Fig. 6). The ratio of SWE_{peak}^{wind} to SWE_{peak}^{lee} is 1.58 from the Andes-SR, which is again the combined effect of windward-leeward variations in both area and SWE depth. Like the Sierra Nevada, ERA5-Land and all of the LER products improperly partition SWE_{peak} over the windward vs. leeward basins in the Andes. These products have SWE_{peak}^{wind} to SWE_{peak}^{lee} ratios less than 1 indicating deficient snow in the windward watersheds compared to the leeward watersheds. The lowest SWE_{peak}^{wind} to SWE_{peak}^{lee} ratio of 0.72 is observed from MERRA2 (54 % less than Andes-SR). GLDAS-VIC10 has the largest SWE_{peak}^{wind} to SWE_{peak}^{lee} ratio of 0.92 among Andes global products, which is still 42 % less than the Andes-SR. For the windward watersheds, SWE_{peak}^{wind} from

265 ERA5-Land and GLDAS-CLSM10 are the highest in the same latitudinal band as the Andes-SR, however, the other products have an erroneous SWE_{peak}^{wind} distribution. None of the products resolve the SWE_{peak}^{lee} distribution on the leeward side.



270 **Figure 5.** Latitudinal distribution of integrated SWE_{peak} (km^3) over windward (SWE_{peak}^{wind} ; light gray areas) and leeward basins (SWE_{peak}^{lee} ; dark gray areas) in the Sierra Nevada in first and third columns. Text labels indicate the ratio of latitudinally-integrated SWE_{peak}^{wind} to SWE_{peak}^{lee} . The climatological swe_{peak} (m) spatial patterns corresponding to the latitude bands indicated by dashed boxes are illustrated in the second and fourth columns. The red line represents the Sierra Nevada ridgeline separating windward (western) from leeward (eastern) basins. Note: Different swe_{peak} ranges are used for each product to highlight latitudinal/spatial patterns more than absolute values (due to significant biases in some products).



275 **Figure 6.** Latitudinal distribution of SWE_{peak} (km^3) over windward (SWE_{peak}^{wind} ; light gray areas) and leeward basins (SWE_{peak}^{lee} ; dark gray areas) in the Andes in first and third columns. Text labels indicate the ratios of latitudinally-integrated SWE_{peak}^{wind} to SWE_{peak}^{lee} . The climatological swe_{peak} (m) spatial patterns corresponding to the latitude bands indicated by dashed boxes are illustrated in the second and fourth columns. The red line represents the Andes ridgeline separating windward (western) from leeward (eastern) basins. Note: Different swe_{peak} ranges are used for each product to highlight latitudinal/spatial patterns.

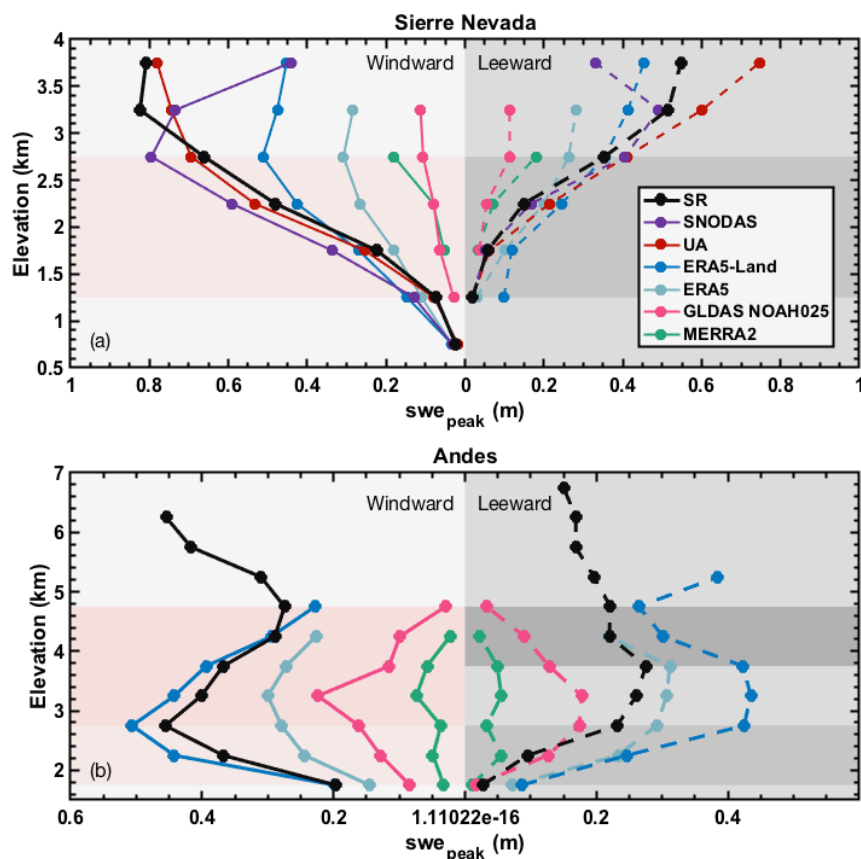
280

285 The elevational distributions of bin-averaged climatological swe_{peak} in the Sierra Nevada (Fig. 7a) and Andes (Fig. 7b) are plotted to compare the elevational gradient of windward and leeward swe_{peak} from products with different spatial resolutions. The lapse rate in swe_{peak} was determined by linear regression of swe_{peak} averaged across elevational bins (Text S5). Lapse rates from GLDAS products at 1.0° are not included because the subdomains analyzed are covered by less than 10 pixels (Fig. S7 and S8).

290

295

Based on the WUS-SR, climatological swe_{peak} on the windward side of the Sierra Nevada monotonically increases up to ~ 3.5 km. Across different products, the uncertainty of swe_{peak} is smaller at the lower elevation $\sim 1-1.5$ km, however, the differences in lapse rate project to larger swe_{peak} uncertainty as elevation increases. The gradients of windward swe_{peak} (i.e., $d(swe_{peak})/dz$) from WUS-SR, averaged over HR and MR products, and averaged over LR products are 0.40 m/km, 0.38 m/km, and 0.10 m/km, respectively. On the leeward side of the Sierra Nevada, the swe_{peak} increases monotonically with elevation from 1 – 3.5 km in the WUS-SR and most of the other products. Similarly, the uncertainty of swe_{peak} is smaller at low elevation from 1 – 1.5 km and gradually increases with elevation corresponding with the differences in lapse rate across different products. The gradients of leeward swe_{peak} (i.e., $d(swe_{peak})/dz$) from WUS-SR, averaged over HR and MR products, and averaged over LR products are 0.22 m/km, 0.23 m/km, and 0.13 m/km, respectively. HR and MR products have qualitatively similar elevational distributions of swe_{peak} on both the leeward and windward side of the Sierra Nevada for elevations below 3 km, whereas that swe_{peak} from LR are underestimated with large differences in lapse rates compared to WUS-SR.



300

Figure 7. Elevational distribution of windward and leeward swe_{peak} in the Sierra Nevada and Andes across reference datasets and products with spatial resolution higher than 1° . Each dot represents the elevation bin-averaged swe_{peak} . The interval of

each bin is set to be 0.5 km. GLDAS products at 1° are not included for comparison due to too few points. On the windward side of the subdomains, dots within the red shaded areas are used to compute lapse rates. On the leeward side, dots in the darker shaded areas are used to compute lapse rates.

305 On the windward side of the Andes, swe_{peak} from the Andes-SR increases from 1.5 – 3 km, with decreases between
3 and 5 km. The swe_{peak} uncertainty is smaller at low elevation bands between 1.5 - 2 km. The uncertainty gets larger as
elevation increases from 2 – 3 km corresponding to large differences in positive lapse rates. In contrast, large differences in
negative lapse rates above 3 km reduces the uncertainty as elevation increases. The lapse rates of windward swe_{peak} from the
Andes-SR are 0.4 m/km between elevation bands of 1.5 – 3 km and -0.16 m/km between 2.5 – 5 km (Table S1). On the
leeward side, swe_{peak} increases between 1.5 – 4 km and slightly decrease above 4 km in the Andes-SR. Similar to the
310 windward side, differences in positive lapse rate below 3 km project to larger swe_{peak} uncertainty as elevation increases from
1.5 km, whereas differences in negative lapse reduces uncertainty as elevation increases above 3 km. The lapse rates of
windward swe_{peak} from the Andes-SR are 0.27 m/km between elevations of 1.5 – 3 km, and -0.03 m/km between 3.5 – 5 km.

4.2 Interannual SWE uncertainty

The interannual variability of SWE_{peak} is in general agreement (with correlation coefficients $R > 0.85$) between the
315 WUS-SR snow reanalysis and other products shown in Fig. 78. SWE_{peak} from UA and ERA5-Land agrees well with WUS-
SR in both magnitude and correlation (Fig. 7b-8b and 7e8c), with relative mean differences (RMD) of less than 3 % in
absolute value and $R > 0.9$. While SNODAS overestimates SWE volume with a RMD of 14 % (Fig. 7a8a), it shows
consistent interannual variations with a high R value of 0.92. The LR products are generally well correlated with WUS-SR,
although SWE_{peak} from these products is underestimated by as much as 190 km³ (GLDAS-CLSM10), equivalent to a RMD of
320 71% compared to WUS-SR. Figure 7j-8j shows that SWE percentiles computed from different products in the WUS are in
better agreement in extreme years and in less agreement for near-average years. For example, WY 2017 was the wettest year
among all products and WY 2015 was the driest year for all products except for SNODAS (in which WY 2005 is
suspiciously low). WY 2014 was a normal-to-wet year with SWE_{peak} between the sixtieth and seventieth percentiles from
GLDAS-NOAH025, MERRA2, GLDAS-NOAH10, and GLDAS-CLSM10, but a normal-to-dry year with SWE_{peak} less than
325 the fiftieth percentile in the other products.

The interannual variability of SWE_{peak} is in much less agreement in the Andes (Fig. 89; with R as low as 0.56). Fig.
8-9 shows that ERA5-Land and MERRA2 are most consistent with Andes-SR in terms interannual variability ($R > 0.85$).
However, ERA5-Land overestimates SWE_{peak} by 18 km³ ($RMD = 65$ %) and MERRA2 underestimates SWE_{peak} by 23 km³
($RMD = -80$ %). Although ERA5 has the smallest RMD of 17 %, the correlation coefficient R is 0.74, suggesting that
330 SWE_{peak} from ERA5 is less representative of interannual variation in the Andes. For the GLDAS products, GLDAS-
NOAH025 has $R = 0.79$, whereas R values for other GLDAS products at 1° are less than 0.65, indicating that SWE from
these LR products are less consistent with the interannual variation from Andes-SR. Figure 8a-9a illustrates that the SWE_{peak}
percentiles computed from the common 12-year record are much less consistent in the Andes than in the WUS (shown in

Fig. 7j8i) for both normal and extreme years. Despite good temporal correlation of SWE_{peak} ($R > 0.86$) in WUS, the relatively poorer temporal correlations ($R > 0.56$) identified from the LR products in the Andes, indicate that they may be less suitable for trend or other analyses that require snow estimates with representative interannual variability.

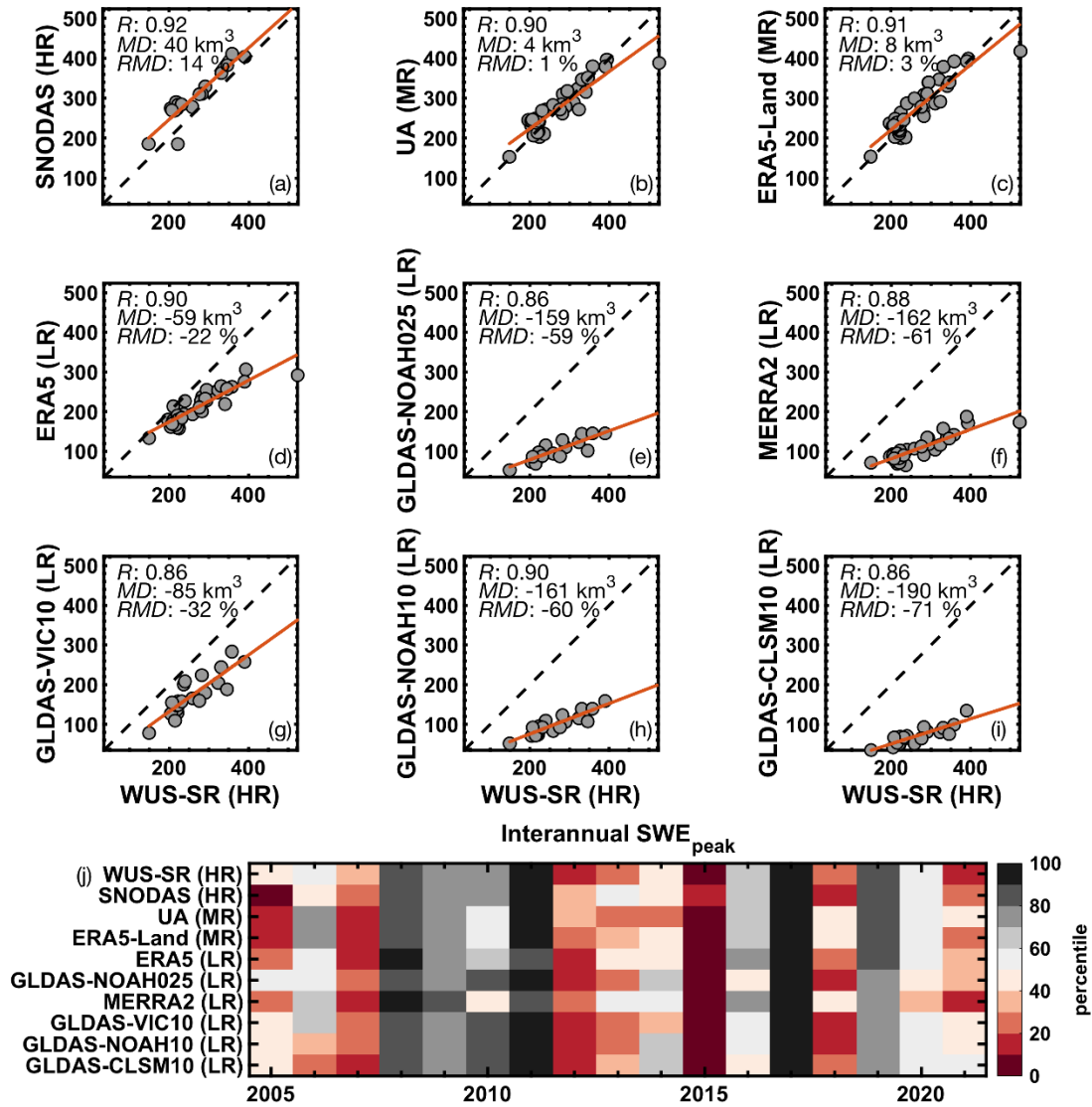
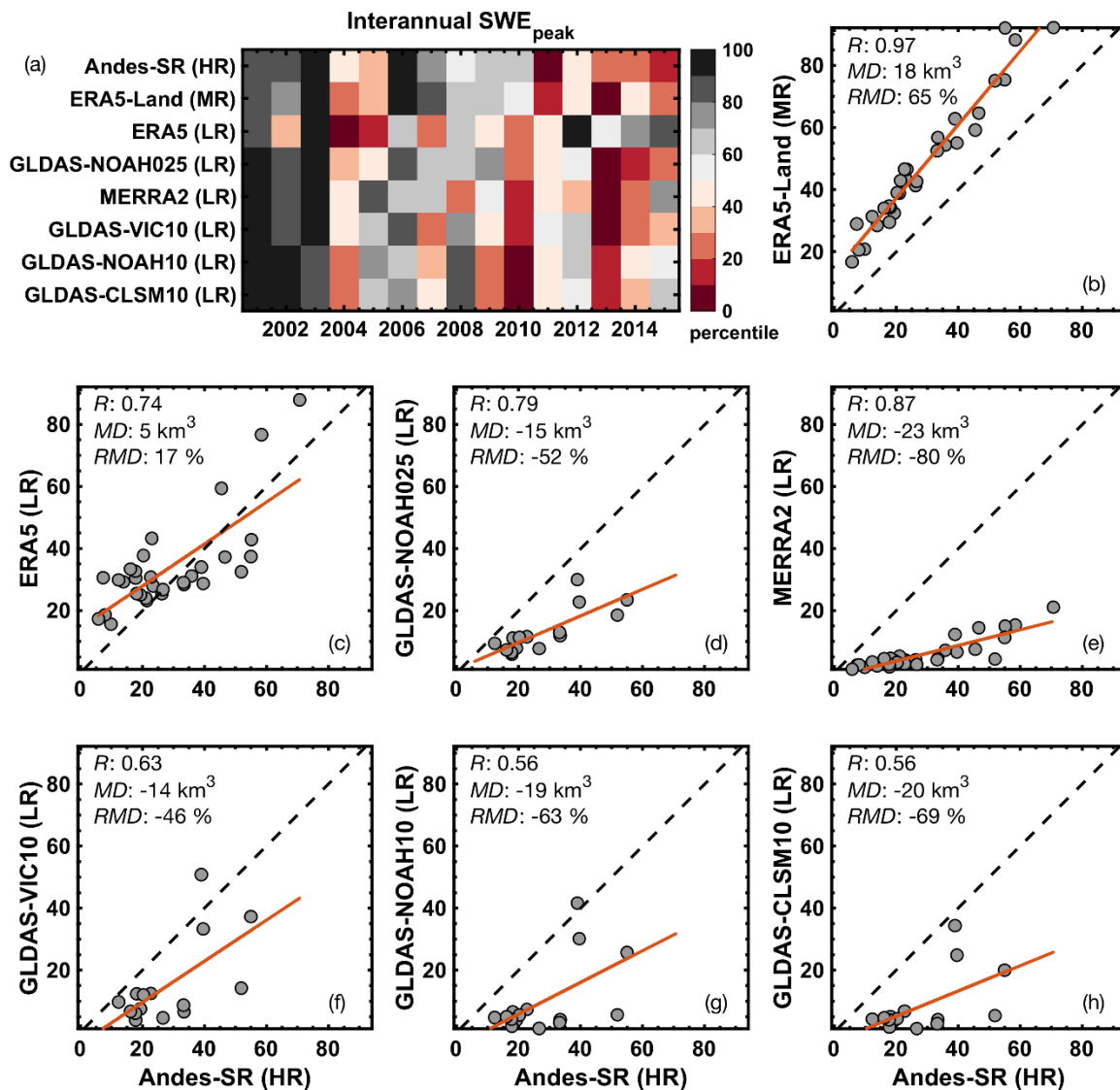


Figure 87. Scatter plots (a – i) of SWE_{peak} volumes between WUS-SR and other products. Each dot represents SWE_{peak} volume (km^3) for each year over the study period (WYs 1985 to 2021) where data [are](#) available. For the SNODAS and GLDAS products, the comparison is over WYs 2005 to 2021, and 2001 to 2021, respectively. The WY 1993 SWE_{peak} in WUS-SR is the highest and much higher than those from UA and ERA5-Land. Statistics do not change significantly if excluding this data point. (j) shows the SWE_{peak} percentiles in each WY over the overlapping period including all products (WYs 2005 to 2021).



345 **Figure 98.** Scatter plots (b – h) of SWE_{peak} volumes between Andes-SR and other products. Each dot represents SWE_{peak} volume (km^3) for each year over the study period (WYs 1985 to 2015) where data is available. For the GLDAS products, the comparison is over WYs 2001 to 2015. (a) shows the SWE_{peak} percentiles in each WY over the overlapping period including all products (WYs 2001 to 2015).

350 Overall, dry to wet years identified from products in the WUS generally agree with the WUS-SR with a correlation coefficient above 0.8 over WYs 2005 to 2021 (Table 2). In contrast, discrepancies are evident among SWE_{peak} percentiles computed from different products over WYs 2001 to 2021. Percentiles from ERA5-Land and GLDAS-NOAH025 agree well with the Andes-SR. However, the correlation is low between other products and Andes-SR. Although SWE_{peak} from ERA5

has comparable climatology with Andes-SR (Fig. 4i), its interannual distribution disagrees with the Andes-SR, especially after WY 2001.”

355 Table 2. Correlation of SWE_{peak} percentiles of each product against the reference datasets over WYs 2005 to 2021 in the WUS, and WYs 2001 to 2021 in the Andes.

<u>Products</u>	<u>WUS-SR</u>	<u>ANDES-SR</u>
<u>SNODAS</u>	<u>0.89</u>	<u>-</u>
<u>UA</u>	<u>0.86</u>	<u>-</u>
<u>ERA5-Land</u>	<u>0.91</u>	<u>0.93</u>
<u>ERA5</u>	<u>0.95</u>	<u>0.11</u>
<u>GLDAS-NOAH025</u>	<u>0.92</u>	<u>0.85</u>
<u>MERRA2</u>	<u>0.87</u>	<u>0.51</u>
<u>GLDAS-VIC10</u>	<u>0.95</u>	<u>0.60</u>
<u>GLDAS-NOAH10</u>	<u>0.91</u>	<u>0.42</u>
<u>GLDAS-CLSM10</u>	<u>0.84</u>	<u>0.46</u>

4.3 Drivers of SWE uncertainty

360 **4.3.1 Impact of accumulation-season precipitation and snowfall on annual SWE_{peak}. Uncertainty in annual SWE_{peak} primarily explained by accumulation-season precipitation and snowfall**

To better understand the accumulation-season SWE_{peak} uncertainty driven by model inputs, the relationship among P_{acc}, S_{acc}, and SWE_{peak} is quantified for all products. The annual data points are more clustered in the WUS (Fig. 9a10a, b) than those in the Andes (Fig. 9e10c, d). GLDAS-CLSM10 and MERRA2 tend to have lower P_{acc}, S_{acc} and therefore SWE_{peak} in both the WUS and Andes. ERA5-Land and ERA5, on the other hand, have higher P_{acc}, S_{acc} and SWE_{peak} in both domains.

365 For rain-snow partitioning, UA (Fig. 9a10a) tends to have higher S_{acc} over the WUS compared to the other products. Given similar S_{acc}, SNODAS (Fig. 9b10b) is inclined to generate higher SWE_{peak}. In the Andes, GLDAS-NOAH10 and GLDAS-CLSM10 partition less P_{acc} into S_{acc} (circles lower than the regression line), in contrast to ERA5-Land and ERA5 that tend to partition more (Fig. 9e10c). SWE_{peak} from ERA5-Land diverges from ERA5 (Fig. 9d10d) given similar amount of P_{acc} and S_{acc}, presumably caused by different melt amounts between the two products driven by resolution-induced

370 elevation differences.

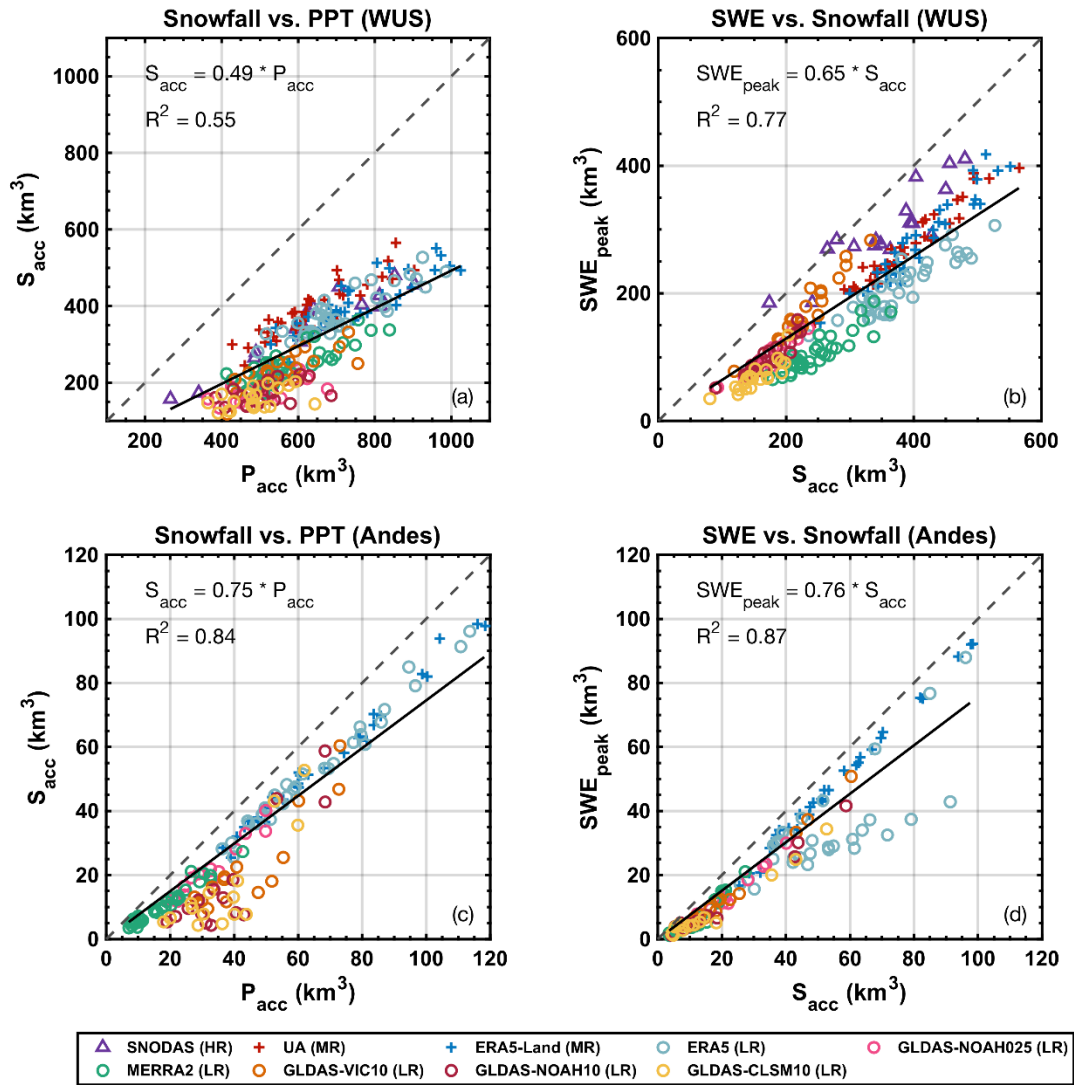


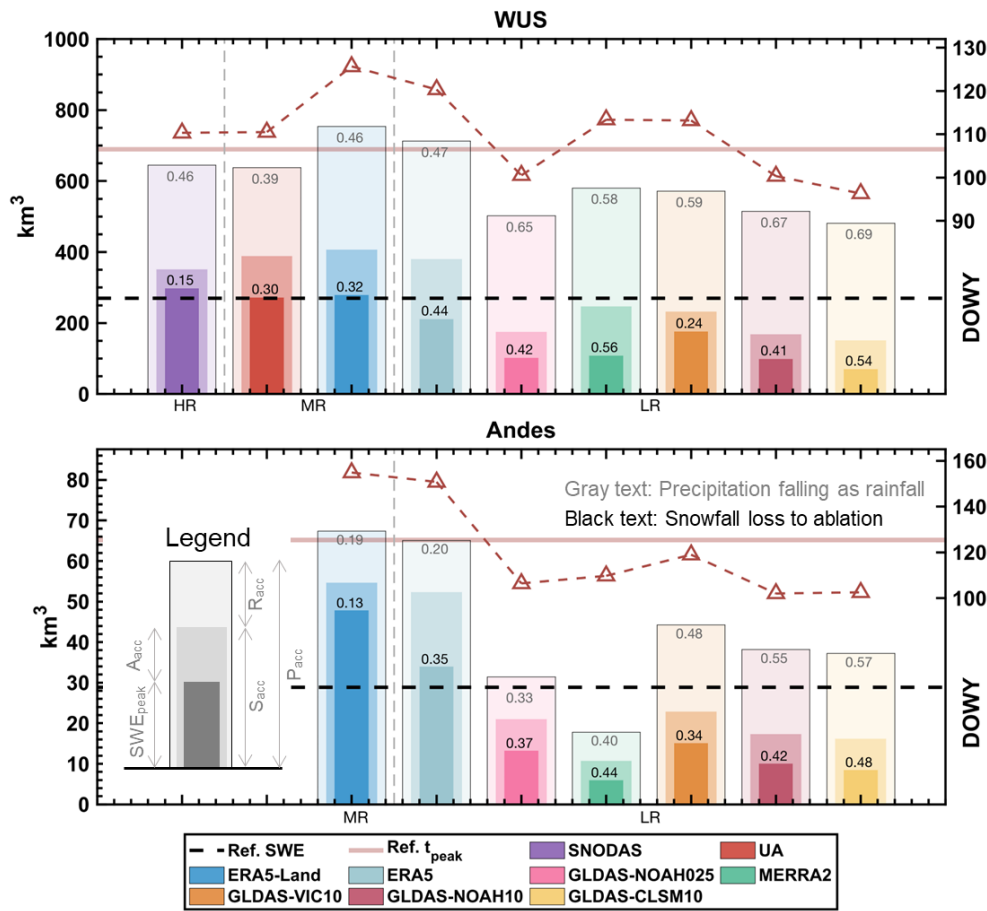
Figure 910. Left panels show scatter plots of accumulation-season S_{acc} (km^3) vs. P_{acc} (km^3) volumes over the WUS and Andes, respectively, indicating the partitioning of precipitation into snowfall. Right panels show scatter plots of accumulation-season SWE_{peak} (km^3) vs. S_{acc} (km^3) over WUS and Andes, respectively, indicating how much snowfall remains as SWE vs. being lost to ablation. Solid lines are linear regression and dashed lines are 1:1 lines.

Annual values of P_{acc} and S_{acc} estimates from all products show that the variance in P_{acc} explains the majority of the variance in snowfall in the accumulation season with a coefficient of determination $R^2 = 0.55$ in the WUS (Fig. 9a10a) and $R^2 = 0.84$ in the Andes (Fig. 9e10c). This is consistent with previous findings (Cho et al., 2022; Broxton et al., 2016b; Liu et al., 2022) and the expectation that precipitation is the major contributor to uncertainty in SWE. The lower R^2 in the WUS compared to the Andes suggests that other factors such as air temperature plays a more important role in rain-snow

partitioning in the WUS. Approximately 49 % of P_{acc} falls as snow in the WUS, whereas, around 75 % of P_{acc} falls as snow in the Andes (Fig. 9a10a, c). This is because the Andes ~~are~~ at higher average elevation (~2999 m) with cooler temperature than the WUS (~1383 m), leading to more precipitation falling as snow. The variance in SWE_{peak} is mostly explained by the variance in S_{acc} , i.e., $R^2 = 0.77$ in WUS (Fig. 9b10b) and $R^2 = 0.87$ in the Andes (Fig. 9d10d). As a fraction of cumulative snowfall, 65 % and 76 % remains as SWE_{peak} in the WUS and Andes, respectively, while the rest is lost to accumulation-season ablation.

~~4.3.2 Impact of LSM and spatial resolution on climatological SWE_{peak} . Uncertainty in climatological SWE_{peak} significantly impacted by differences in LSMs and spatial resolution~~

To understand the impact of varying LSM mechanisms (i.e., rain-snow partitioning and snowmelt generation) and spatial resolution on the uncertainties in SWE, the climatological precipitation, snowfall, and SWE_{peak} for all products over the WUS and Andes are shown in Fig. 1011. The rainfall to precipitation ratio (R_{acc}/P_{acc} , gray text) represents the impact of rain-snow partitioning mechanisms, and the ablation to snowfall ratio (A_{acc}/S_{acc} , black text) represents the impact of accumulation-season snowmelt mechanisms. It should be noted that different peak SWE days may impact R_{acc}/P_{acc} via the accumulation window, i.e., the shorter accumulation season in the GLDAS subset (associated with earlier peak SWE days, t_{peak} , Fig. 110 red symbol) has cooler average temperature, and thus lower R_{acc}/P_{acc} . However, no significant relationship was found between t_{peak} and R_{acc}/P_{acc} , suggesting that R_{acc}/P_{acc} is not sensitive to t_{peak} . The WUS, with relatively lower elevation, has higher precipitation in the form of rainfall and higher snowfall loss to ablation than the Andes at higher elevation. In the WUS, R_{acc}/P_{acc} ranges from 0.39 (UA) to 0.69 (GLDAS-CLSM10), and A_{acc}/S_{acc} ranges from 0.15 (SNODAS) to 0.56 (MERRA2). In the Andes, R_{acc}/P_{acc} ranges from 0.19 (ERA5-Land) to 0.57 (GLDAS-CLSM10), and A_{acc}/S_{acc} ranges from 0.13 (ERA5-Land) to 0.48 (GLDAS-CLSM10). Precipitation tends to fall more as snow in the HR, MR, and ERA5 products, whereas a higher fraction of precipitation falls as rainfall in the other products (GLDAS, MERRA2), even though lower P_{acc} are observed in both domains. The differences in melt mechanisms across product models further differentiate the A_{acc}/S_{acc} , and therefore SWE_{peak} .



405 **Figure 1011.** Climatological SWE_{peak} , S_{acc} , and P_{acc} volumes aggregated over WUS (top panel) and Andes (bottom panel) in km^3 . Red triangles (corresponding to right y-axis) shows the t_{peak} averaged over all pixels and WYs. The horizontal dashed lines and red lines are the reference snow reanalysis SWE volumes and t_{peak} , respectively, from WUS-SR and Andes-SR. The vertical dashed lines group the products by spatial resolution (i.e., HR, MR, LR). The black text lists the A_{acc}/S_{acc} and gray text lists the R_{acc}/P_{acc} .

410 Accumulation-season snowfall and SWE_{peak} are sensitive to different rain-snow partitioning and snowmelt generation mechanisms across products. The same precipitation inputs (with only minor differences caused by downscaling) are used to derive GLDAS estimates at 1.0° from three different LSMs, making the GLDAS models a useful subset to understand the impact of LSM process representation on SWE estimates. Among the GLDAS subset at 1.0° , R_{acc}/P_{acc} and A_{acc}/S_{acc} range from 0.59-0.69 and 0.24-0.54, respectively, in the WUS (Fig. 1012a), and range from 0.48-0.57 and 0.34-0.48, respectively, in the Andes (Fig. 1012b). Compared to R_{acc}/P_{acc} , a wider range of A_{acc}/S_{acc} values are observed in both the WUS and Andes, suggesting that snowmelt generation mechanism differences contribute more to the climatological SWE_{peak} uncertainties than the rain-snow partitioning differences. Given a similar amount of P_{acc} , GLDAS-VIC10 partitions

415

the most into snowfall even with later peak days, whereas GLDAS-CLSM10 partitions the least in both domains. ~~The differences in R_{acc}/P_{acc} are ≤ 0.1 between GLDAS-VIC10 and GLDAS-CLSM10 in contrast to the differences of 0.2-0.3 in A_{acc}/S_{acc} . GLDAS-VIC10 tends to have higher P_{acc} , S_{acc} , and SWE_{peak} , which are closer to those from the HR or MR snow products. The better performance of GLDAS-VIC10 than others might be associated with the usage of snow elevational bands in the VIC model, in which sub-grid snowfall and SWE estimates are better represented. GLDAS-CLSM10 has the highest rates of A_{acc}/S_{acc} and lowest SWE_{peak} . Previous study shows a larger portion of snowfall is lost as accumulation season ablation in the Catchment model (Xiao et al., 2021). Therefore, a better characterization of snowmelt during the accumulation season is beneficial to improve SWE_{peak} accuracy. The differences in R_{acc}/P_{acc} are ≤ 0.1 between GLDAS-VIC10 and GLDAS-CLSM10, implying that the differences in snowfall caused by rain-snow partitioning is less than 10% of precipitation inputs among the GLDAS subset at 1.0° . For A_{acc}/S_{acc} , GLDAS-VIC10 has the lowest ratio compared to others, suggesting that VIC snowfall loss to ablation is the least in this domain. GLDAS-VIC10 tends to have higher P_{acc} , S_{acc} , and SWE_{peak} which are closer to those from the HR or MR snow products. In the VIC model, elevation bands are used to better represent sub-grid snowfall and SWE estimates. In addition to GLDAS-CLSM10, which has the highest A_{acc}/S_{acc} among the GLDAS subset at 1.0° , MERRA2 has a comparably high A_{acc}/S_{acc} . Both products use the same LSM, suggesting that a larger portion of snowfall is lost as accumulation season ablation in the Catchment model (Xiao et al., 2021).~~

Domains with larger variance in elevation are likely to be more sensitive to model spatial resolution, and therefore impact elevation-dependent mechanisms in the LSMs. ERA5-Land (0.1°) and ERA5 (0.25°) SWE are derived from the same LSM driven by similar forcings but modeled at different spatial resolutions. Similarly, GLDAS-NOAH025 (0.25°) and GLDAS-NOAH10 (1°) SWE are derived from the same Noah model driven by similar forcings but at two spatial resolutions. These two groups of products (Fig. 4e-4f) are useful to isolate the impact of spatial resolution on SWE estimates via differences in elevation representation. The raw DEMs from each product are used to compute the mean and standard deviation of elevation over WUS and Andes. The Andes, located at higher elevation also has a larger variance in elevation (standard deviation > 1100 m) compared to the WUS (standard deviation < 800 m) for any resolution. The standard deviation varies more significantly with resolution than the mean in both WUS and Andes (Fig. 4g-4h). With coarser spatial resolution, the variance in elevation decreases, indicating that coarse-resolution products tend to underestimate the true variance in elevation. The differences in elevation variance between products are larger in the Andes than the WUS. For example, when increasing resolution of GLDAS from 1.0° (~ 100 km) to 0.25° (~ 25 km), the standard deviation of elevation increases by 14% in the Andes compared to 8% in the WUS. The R_{acc}/P_{acc} is similar in the ERA5-Land and ERA5 for the same domains (i.e., 0.46 from ERA5-Land and 0.47 from ERA5 in the WUS; 0.19 from ERA5-Land and 0.20 from ERA5 in the Andes), suggesting that the rain-snow partitioning in the ERA5 models is relatively insensitive to the elevation differences introduced by different spatial resolutions. The Andes ~~is~~ are located at a higher elevation than the WUS, resulting in lower R_{acc}/P_{acc} . However, the A_{acc}/S_{acc} varies significantly between ERA5-Land and ERA5 in both WUS (0.32 vs. 0.44, respectively) and Andes (0.13 vs. 0.35, respectively). Hence, even though similar amounts of snowfall are generated for ERA5 and ERA5-Land, SWE_{peak} can be significantly different due to differences in ablation resulting from spatial

resolution-based elevation differences. For GLDAS-NOAH025 and GLDAS-NOAH10, R_{acc}/P_{acc} and A_{acc}/S_{acc} are similar in the WUS. Large differences of both R_{acc}/P_{acc} and A_{acc}/S_{acc} are observed between GLDAS-NOAH025 and GLDAS-NOAH10. This suggests that increasing spatial resolution from 0.25° to 0.1° (ERA5 subsets) significantly impact snowmelt generation in both Andes and WUS, whereas increasing spatial resolution from 1° to 0.25° (GLDAS subsets) impacts rain-snow partition and snowmelt generation only in Andes with its larger differences in standard deviation of elevation between products at two different spatial resolutions.

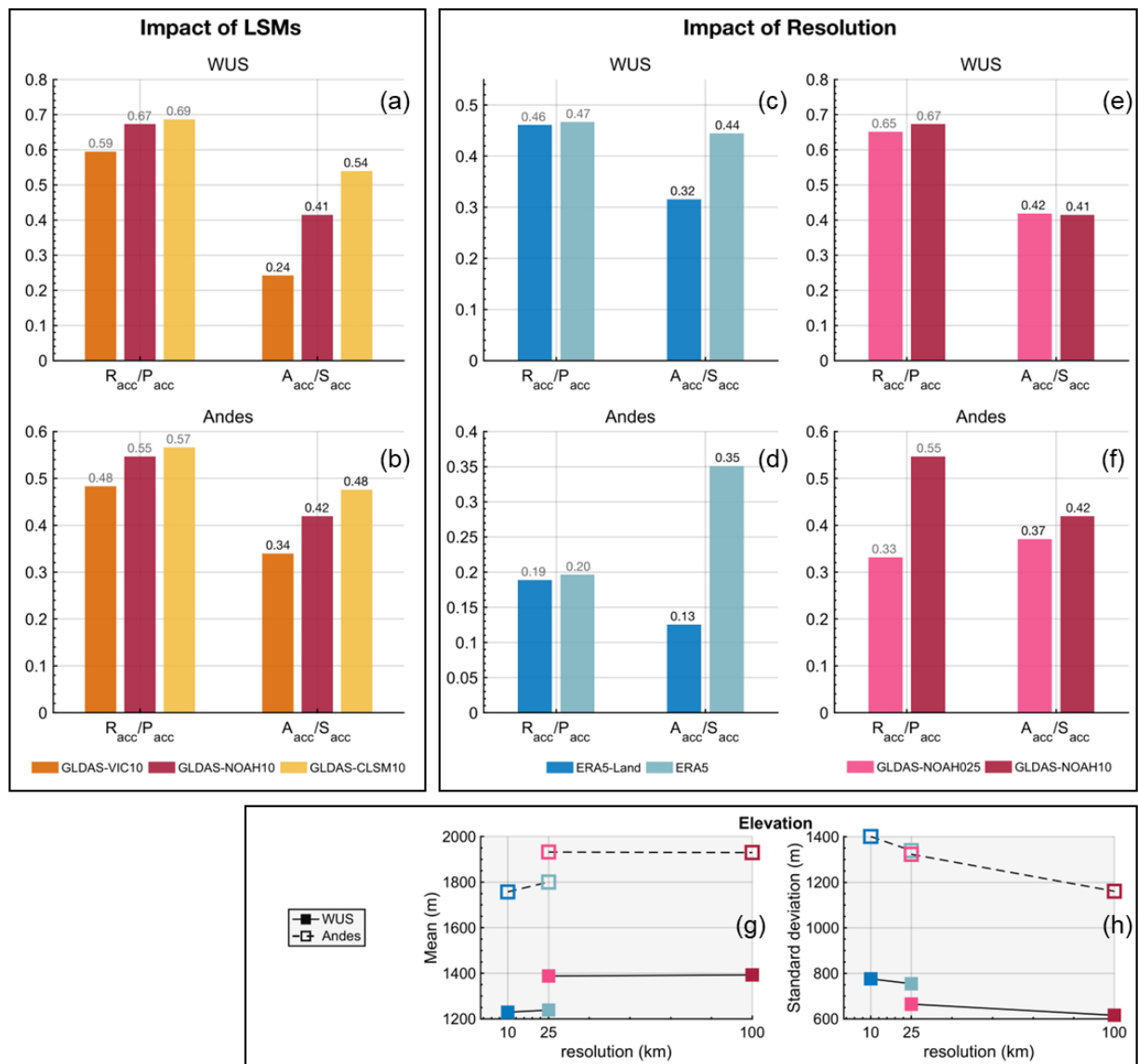


Figure 4.12. (a) and (b) R_{acc}/P_{acc} and A_{acc}/S_{acc} for three GLDAS LSMs (VIC, Noah, and Catchment) at the same spatial resolution (~ 100 km). (c) and (d) R_{acc}/P_{acc} and A_{acc}/S_{acc} for ERA5-Land (~ 10 km) and ERA5 (~ 25 km) using the same LSM

and similar forcings, but different spatial resolutions. (e) and (f) R_{acc}/P_{acc} and A_{acc}/S_{acc} for GLDAS-NOAH025 (~ 25 km) and GLDAS-NOAH10 (~ 100 km) using the same LSM and similar forcings, but different spatial resolutions. (g) and (h) mean and standard deviation of elevation over WUS and Andes from the ERA5-Land and ERA5 group, and the GLDAS-NOAH025 and GLDAS-NOAH10 group (where colors represent the products shown in (c)-(f)).

465 5 Conclusion

This paper quantifies the spatiotemporal snow storage uncertainty over the midlatitude American Cordillera (i.e., the intermountain WUS and Andes) that is influenced significantly by snow processes. These two domains are both snow-dominated areas sharing similar hydrometeorology, however, much fewer in situ measurements are available in the Andes compared with the WUS. The uncertainties of snow water storage, spatial patterns (including orographic-rainshadow effect), and interannual variability are analyzed among the high-resolution (HR, less than ~1 km), moderate-resolution (MR, 470 between ~1 km to ~10 km) and low-resolution (LR, greater than ~10 km) snow products. The impact of forcings, LSM differences and spatial resolution on snow storage uncertainty is assessed to provide insights for generating future snow products especially for snow-dominated regions including areas with scarce in situ measurements.

With respect to characterizing climatological and interannual storage uncertainty, the key conclusions are:

- 475 1) In the WUS, HR and MR snow products are in better agreement with WUS-SR peak snow storage (269 km³) than the LR snow products, where the among which snow storage is biased low with large uncertainty. The climatological snow storage was found to be 284 km³ ± 14 km³ among HR and MR products and 127 km³ ± 54 km³ among LR products. For context, the reservoir capacity in the contiguous U.S. is around 600 km³ (Steyaert et al., 2022). Thus, based on the WUS-SR, the snow water stored in the WUS is 45 % (269 km³ of WUS-SR SWE_{peak} / 600 km³ of contiguous US reservoir capacity) of the total reservoir capacity. Compared to the snow storage from WUS-SR, the averaged snow water storage from LR products misses 142 km³ of snow water storage, equivalent to 24% of total reservoir capacity over the contiguous U.S. In the Andes, MR and LR products exhibit much larger relative uncertainty in snow storage. The Andes-wide peak snow storage estimates are less clustered by spatial resolution with climatological estimates of 19 km³ ± 16 km³ compared with peak snow storage of 29 km³ from Andes-SR. The averaged SWE volumes from LR products in the WUS and Andes are underestimated by over 30% compared to the reanalysis datasets. For similar melt rates, SWE computed from LR models would therefore disappear more quickly than HR/MR products. Hence calculation of snow volume sensitivity based on LR products could exaggerate the impact of warming on snow loss.
- 485 2) Beyond significant biases in overall storage, most of the global products poorly characterize snow storage variations related to orographically-induced rainshadow effects. Compared to the WUS-SR, only SNODAS 490 (spatial resolution of ~ 1 km) and UA (~ 4 km) reasonably distribute snow storage over windward and leeward watersheds in the Sierra Nevada. Globally-available MR and LR products partition less snow storage on the

windward side in both Sierra Nevada and Andes. In the Andes, global products show that more snow water is stored on the leeward side of the mountain than the windward side, completely missing the orographic-rainshadow patterns. Based on these results, to accurately resolve topographically-driven features in snow storage likely requires spatial resolutions less than ~5 km.

- 495
- 3) Consistent interannual variability is observed among all products assessed in the WUS, whereas there is less agreement in the Andes. This suggests that snow trend studies based on these globally available snow products applied in the Andes might not be as reliable as those applied in the WUS.

500 With respect to drivers of uncertainty in snow storage estimates, the key conclusions are:

- 1) Precipitation primarily explains the variance of snowfall as expected, which propagates to the variance of snow storage. Precipitation uncertainty accounts for a larger portion of snowfall uncertainty in the Andes than the WUS.
- 2) Aside from precipitation, LSM differences result in varying rain–snow partitioning and snowmelt generation, that play important roles in snow storage variance. Accumulation-season snowmelt generation mechanisms tend to contribute more to the climatological SWE_{peak} uncertainties than the rain–snow partitioning. At coarser spatial resolutions, there is a larger spatial variance in elevation between products in the Andes that propagates to larger differences in precipitation falling as rainfall, snowfall loss to ablation, and thus SWE_{peak} than in the WUS where elevation variance is lower.

510 Data assimilation techniques are used to constrain the SWE uncertainties in SNODAS, UA, WUS-SR and Andes-SR. Moreover, many products are implicitly constrained by their use of in situ precipitation data in some form over the WUS. With more accurate precipitation estimates in the WUS, products at HR to MR show reasonable estimates of SWE_{peak} . However, ERA5-Land (MR) and LER products miss orographic-rainshadow patterns (Section 4.1.2). SNODAS and UA generate high quality SWE estimates in the WUS via inclusion of in situ SWE measurements that are generally unavailable for regions like the Andes. Additionally, regions like Andes do not have sufficient in situ forcing measurements, resulting in a large uncertainty in forcings that propagates to SWE.

520 Although HR and MR products reasonably estimate snow storage in the WUS, uncertainty in snow storage from products at coarse spatial resolution in the WUS and at moderate and coarse spatial resolution in the Andes (where there are limited in situ measurements) need to be reduced to increase their utility for understanding the role of snow in regional water and energy cycling. Resolving orographic-rainshadow patterns is still a challenging task among existing products. Future work is needed to reduce the accumulation-season snow storage uncertainty for mountainous regions with limited in situ measurements. Beyond the accumulation-season processes focused on herein, the snowmelt uncertainty and its drivers in the melt-season should be investigated to further characterize additional uncertainty in warm-season snowmelt rates and timing.

525 New and future SWE products such as the recently published SWE reconstruction at 500 m (Bair et al., 2023), and other products such as Daymet SWE at 1 km (Thornton et al., 2021) could be examined to further characterize uncertainty in

~~higher resolution products. The ability to capture orographic rainshadow patterns from snow reanalysis datasets and SNODAS encourages the usage of existing spaceborne snow covered area measurements and/or future spaceborne missions that can directly provide high-resolution SWE measurements to constrain mountain SWE. Aiming for resolving orographic rainshadow patterns and generating reliable SWE estimates globally will likely require assimilation of space-borne snow observations. Specifically, future spaceborne missions that can directly provide SWE measurements at high to moderate spatial resolution over mountainous domains would be extremely valuable for constraining modeled estimates and generating continuous space-time SWE products at high accuracy over the globe.~~

Appendix A. Description of products compared to WUS-SR and Andes-SR

A1. HR product

SNODAS (NOHRSC, 2004) outputs daily SWE from WY 2004 at 1 km over CONUS. Although SNODAS is available starting from WY 2004, data assimilation was only regularly performed from WY 2005. Therefore, it is suggested to exclude SNODAS data in WY 2004 for analysis. SNODAS SWE is generated from the NOHRSC Snow Model, an energy and mass balance model forced with downscaled forcings from numerical weather prediction (NWP) models. Assimilation of ground-based snow data, airborne SWE from gamma radiation snow surveys, and satellite snow cover is performed via Newtonian nudging.

A2. MR products

The UA daily SWE dataset (Zeng et al., 2018; Broxton et al., 2019) at 4 km over CONUS is generated from analysis and interpolation of in situ measurements including SWE from SNOTEL, snow depth, air temperature and precipitation from COOP stations, and gridded estimates including air temperature and precipitation from PRISM. The ordinary kriging method is used for interpolating the ratio of SWE to net snowfall at in situ sites to the PRISM grid. The interpolated ratio is then multiplied by gridded 4-km PRISM net snowfall to get gridded SWE. At in situ sites, precipitation falls as snow on days when snow depth change is positive. As a result, snowfall may be overestimated on rain-on-snow days when both rainfall and snowfall occur, but precipitation is entirely recorded as snowfall. The temperature threshold to partition PRISM precipitation into snowfall and rainfall is interpolated from in situ threshold determined by each site (Broxton et al., 2016a, b). Net snowfall is estimated by the difference in accumulated snowfall and accumulated ablation which is a function of degree days above 0 °C. A new snow density parameterization (Dawson et al., 2017) was developed to convert snow depth at COOP stations to SWE. Precipitation and air temperature for UA are taken from PRISM (Daly et al., 1994).

ERA5-Land (Muñoz-Sabater et al., 2021) hourly SWE globally at 0.1° is generated from the same land surface model as ERA5 (with different versions) but driven by downscaled and lapse rate corrected forcings from ERA5 at higher spatial resolution. Specifically, shortwave, longwave, liquid, and solid precipitation are downscaled using a linear triangular

mesh interpolation. Other variables such as air temperature, specific humidity, relative humidity, and surface pressure are adjusted to account for differences in elevations between the two spatial resolutions. No additional data assimilation is involved in generating the ERA5-Land SWE.

~~ERA5 (Hersbach et al., 2020) outputs hourly SWE globally at 0.25° using the H-TESEL model. An optimal interpolation (OI) method is used to update the grid-averaged snow depth from a maximum of 50 in situ measurements within a radius of 250 km from a given grid cell. In situ snow depth observations from SYNOP and GTS are used as assimilated measurements, and 4 km snow extent from NOAA/NESDIS is applied at elevation lower than 1500 m since 2004. However, SNOTEL/SCAN/COOP snow depth in the WUS are not currently used in the snow assimilation system. Though there might be some sparsely distributed in situ sites that measure snow depth which were assimilated in the WUS and Andes, the impact of data assimilation on SWE in both regions appears to be negligible. The binary snow extent is converted to snow depth at grids below 1500 m, assuming 5 cm of snow depth when snow cover is 1. The conversion is not conducted at elevations above 1500 m to avoid improper terrain information from coarse spatial resolution in mountainous area. SWE is set to 10 m at permanent snow and ice grids. Beyond snow observations, 4 km precipitation data from NCEP stage IV over the U.S. was assimilated in ERA5 using 4D var data assimilation method (Lopez, 2011). NCEP precipitation data is produced radar and gauge observations (Lin and Mitchell, 2005). Hence it is reasonable to assume that ERA5 precipitation may be more accurate over the WUS than the Andes where such data is not assimilated.~~

A3. LCR products

ERA5 (Hersbach et al., 2020) outputs hourly SWE globally at 0.25° using the H-TESEL model. An optimal interpolation (OI) method is used to update the grid-averaged snow depth from a maximum of 50 in situ measurements within a radius of 250 km from a given grid cell. In situ snow depth observations from SYNOP and GTS are used as assimilated measurements, and 4-km snow extent from NOAA/NESDIS is applied at elevation lower than 1500 m since 2004. However, SNOTEL/SCAN/COOP snow depth in the WUS are not currently used in the snow assimilation system. Though there might be some sparsely distributed in situ sites that measure snow depth which were assimilated in the WUS and Andes, the impact of data assimilation on SWE in both regions appears to be negligible. The binary snow extent is converted to snow depth at grids below 1500 m, assuming 5 cm of snow depth when snow cover is 1. The conversion is not conducted at elevations above 1500 m to avoid improper terrain information from coarse spatial resolution in mountainous area. SWE is set to 10 m at permanent snow and ice grids. Beyond snow observations, 4-km precipitation data from NCEP stage IV over the U.S. was assimilated in ERA5 using 4D var data assimilation method (Lopez, 2011). NCEP precipitation data is produced radar and gauge observations (Lin and Mitchell, 2005). Hence it is reasonable to assume that ERA5 precipitation may be more accurate over the WUS than the Andes where such data is not assimilated.

~~ERA5 Land (Muñoz-Sabater et al., 2021) hourly SWE globally at 0.1° is generated from the same land surface model as ERA5 (with different versions) but driven by downscaled and lapse rate corrected forcings from ERA5 at higher spatial resolution. Specifically, shortwave, longwave, liquid, and solid precipitation are downscaled using a linear triangular mesh interpolation. Other~~

~~variables such as air temperature, specific humidity, relative humidity, and surface pressure are adjusted to account for differences in elevations between the two spatial resolutions. No additional data assimilation is involved in generating the ERA5 Land SWE.~~

595 The suite of GLDAS 2.1 products consist of daily SWE since WY 2001 from four globally distributed products (Rodell et al., 2004). The four products are generated from three LSMs and at two spatial resolutions (i.e., Noah LSM at 0.25°: GLDAS – NOAH025; Noah LSM at 1.0°: GLDAS – NOAH10; VIC LSM at 1.0°: GLDAS – VIC10; Catchment LSM at 1.0°: GLDAS – CLSM10). The same meteorological forcings from multiple sources, including NOAA/GDAS, GPCP1.3, and corrected AGRMET, are employed to generate the four products. Adjustments for forcings are conducted to account for
600 the elevation differences between GLDAS at 1.0° and 0.25°. No snow data assimilation is conducted in generating the products, whereas input forcings include sources from in situ measurements.

MERRA2 outputs hourly SWE globally at 0.625° x 0.5° resolution using the Catchment LSM (Reichle et al., 2017). The Catchment LSM is forced by bias-corrected precipitation using Climate Prediction Center (CPC) unified gauge-based analysis of global daily precipitation products. Similar to the GLDAS subset, no snow data assimilation is involved in
605 generating the MERRA2 dataset, whereas in situ precipitation measurements are involved in deriving the SWE.

Data availability

The Andes-SR and WUS-SR datasets are publicly available on <https://doi.org/10.5061/dryad.ngf1vhj0s> ~~https://ucla.app.box.com/folder/89588138091?v=ANDES_SWE_REANALYSIS~~ (last access: 16 November 2022) and <https://doi.org/10.5067/PP7T2GBI52I2> (last access: 6 September 2022), respectively. SNODAS product is available on
610 <https://doi.org/10.7265/N5TB14TC>. The UA daily SWE product is available on <https://doi.org/10.5067/OGGPB220EX6A> (last access: 6 December 2022). The PRISM product is available on <https://ftp.prism.oregonstate.edu/> (last access: 17 October 2022). The ERA5 product is available on <https://doi.org/10.24381/cds.adbb2d47> (last access: 24 September 2022). The ERA5-land product is available on <https://doi.org/10.24381/cds.e2161bac> (last access: 25 October 2022), respectively. For GLDAS 2.1 products, the GLDAS – NOAH025 is available on <https://doi.org/10.5067/E7TYRXPJKWOO> (last access:
615 17 October 2022); GLDAS – NOAH10 is available on <https://doi.org/10.5067/IIG8FHR17DA9> (last access: 17 October 2022); GLDAS – VIC10 is available on <https://doi.org/10.5067/ZOG6BCSE26HV> (last access: 17 October 2022); and GLDAS – CLSM10 products are available on <https://doi.org/10.5067/VCO8OCV72XO0> (last access: 17 October 2022). MERRA2 SWE is available on <https://doi.org/10.5067/RKPHT8KC1Y1T> (last access: 16 August 2022); bias-corrected precipitation is available on <https://doi.org/10.5067/7MCPBJ41YOK6> (last access: 19 December 2022); bias-corrected
620 snowfall is available on <https://doi.org/10.5067/L0T5GEG1NYFA> (last access: 19 December 2022).

Author contribution

YF contributed to data acquisition and analysis, manuscript conceptualization and writing. YL contributed to data acquisition, manuscript conceptualization and revision. DL contributed to manuscript conceptualization and revision. HS contributed to manuscript conceptualization and revision. SM contributed to manuscript conceptualization, revision, and supervision.

Competing interests

The authors declare no competing interests.

Acknowledgements

This work is funded by the National Science Foundation (NSF) Grant # 1641960, the National Oceanic and Atmospheric Administration (NOAA) OAR/OWAQ Observations Program Award # NA18OAR4590396, and the National Aeronautics and Space Administration (NASA) IDS Grant # 80NSSC20K1293.

References

- Bair, E. H., Dozier, J., Rittger, K., Stilling, T., Kleiber, W., and Davis, R. E.: How do tradeoffs in satellite spatial and temporal resolution impact snow water equivalent reconstruction?, *The Cryosphere*, 17, 2629–2643, <https://doi.org/10.5194/tc-17-2629-2023>, 2023.
- Broxton, P., Zeng, X., and Dawson, N.: Daily 4 km Gridded SWE and Snow Depth from Assimilated In-Situ and Modeled Data over the Conterminous US, Version 1, 2019.
- Broxton, P. D., Dawson, N., and Zeng, X.: Linking snowfall and snow accumulation to generate spatial maps of SWE and snow depth, *Earth and Space Science*, 3, 246–256, <https://doi.org/10.1002/2016EA000174>, 2016a.
- Broxton, P. D., Zeng, X., and Dawson, N.: Why Do Global Reanalyses and Land Data Assimilation Products Underestimate Snow Water Equivalent?, *Journal of Hydrometeorology*, 17, 2743–2761, <https://doi.org/10.1175/JHM-D-16-0056.1>, 2016b.
- Cho, E., Vuyovich, C. M., Kumar, S. V., Wrzesien, M. L., Kim, R. S., and Jacobs, J. M.: Precipitation biases and snow physics limitations drive the uncertainties in macroscale modeled snow water equivalent, *Hydrol. Earth Syst. Sci.*, 26, 5721–5735, <https://doi.org/10.5194/hess-26-5721-2022>, 2022.
- Cortés, G. and Margulis, S.: Impacts of El Niño and La Niña on interannual snow accumulation in the Andes: Results from a high-resolution 31 year reanalysis, *Geophysical Research Letters*, 44, 6859–6867, <https://doi.org/10.1002/2017GL073826>, 2017.
- Daly, C.: Guidelines for assessing the suitability of spatial climate data sets, *International Journal of Climatology*, 26, 707–721, <https://doi.org/10.1002/joc.1322>, 2006.

- 650 Daly, C., Neilson, R. P., and Phillips, D. L.: A Statistical-Topographic Model for Mapping Climatological Precipitation over Mountainous Terrain, *Journal of Applied Meteorology and Climatology*, 33, 140–158, [https://doi.org/10.1175/1520-0450\(1994\)033<0140:ASTMFM>2.0.CO;2](https://doi.org/10.1175/1520-0450(1994)033<0140:ASTMFM>2.0.CO;2), 1994.
- Dawson, N., Broxton, P., and Zeng, X.: A New Snow Density Parameterization for Land Data Initialization, *Journal of Hydrometeorology*, 18, 197–207, <https://doi.org/10.1175/JHM-D-16-0166.1>, 2017.
- 655 Dozier, J., Bair, E. H., and Davis, R. E.: Estimating the spatial distribution of snow water equivalent in the world’s mountains, *WIREs Water*, 3, 461–474, <https://doi.org/10.1002/wat2.1140>, 2016.
- Fang, Y., Liu, Y., and Margulis, S. A.: A western United States snow reanalysis dataset over the Landsat era from water years 1985 to 2021, *Sci Data*, 9, 677, <https://doi.org/10.1038/s41597-022-01768-7>, 2022.
- 660 Hersbach, H., Bell, B., Berrisford, P., Hirahara, S., Horányi, A., Muñoz-Sabater, J., Nicolas, J., Peubey, C., Radu, R., Schepers, D., Simmons, A., Soci, C., Abdalla, S., Abellan, X., Balsamo, G., Bechtold, P., Biavati, G., Bidlot, J., Bonavita, M., Chiara, G. D., Dahlgren, P., Dee, D., Diamantakis, M., Dragani, R., Flemming, J., Forbes, R., Fuentes, M., Geer, A., Haimberger, L., Healy, S., Hogan, R. J., Hólm, E., Janisková, M., Keeley, S., Laloyaux, P., Lopez, P., Lupu, C., Radnoti, G., Rosnay, P. de, Rozum, I., Vamborg, F., Villaume, S., and Thépaut, J.-N.: The ERA5 global reanalysis, *Quarterly Journal of the Royal Meteorological Society*, 146, 1999–2049, <https://doi.org/10.1002/qj.3803>, 2020.
- 665 Huning, L. S. and AghaKouchak, A.: Global snow drought hot spots and characteristics, *Proceedings of the National Academy of Sciences*, 117, 19753–19759, <https://doi.org/10.1073/pnas.1915921117>, 2020.
- Huss, M., Bookhagen, B., Huggel, C., Jacobsen, D., Bradley, R. s., Clague, J. j., Vuille, M., Buytaert, W., Cayan, D. r., Greenwood, G., Mark, B. g., Milner, A. m., Weingartner, R., and Winder, M.: Toward mountains without permanent snow and ice, *Earth’s Future*, 5, 418–435, <https://doi.org/10.1002/2016EF000514>, 2017.
- 670 Immerzeel, W. W., Lutz, A. F., Andrade, M., Bahl, A., Biemans, H., Bolch, T., Hyde, S., Brumby, S., Davies, B. J., Elmore, A. C., Emmer, A., Feng, M., Fernández, A., Haritashya, U., Kargel, J. S., Koppes, M., Kraaijenbrink, P. D. A., Kulkarni, A. V., Mayewski, P. A., Nepal, S., Pacheco, P., Painter, T. H., Pellicciotti, F., Rajaram, H., Rupper, S., Sinisalo, A., Shrestha, A. B., Viviroli, D., Wada, Y., Xiao, C., Yao, T., and Baillie, J. E. M.: Importance and vulnerability of the world’s water towers, *Nature*, 577, 364–369, <https://doi.org/10.1038/s41586-019-1822-y>, 2020.
- 675 Kim, R. S., Kumar, S., Vuyovich, C., Houser, P., Lundquist, J., Mudryk, L., Durand, M., Barros, A., Kim, E. J., Forman, B. A., Gutmann, E. D., Wrzesien, M. L., Garnaud, C., Sandells, M., Marshall, H.-P., Cristea, N., Pflug, J. M., Johnston, J., Cao, Y., Mocko, D., and Wang, S.: Snow Ensemble Uncertainty Project (SEUP): quantification of snow water equivalent uncertainty across North America via ensemble land surface modeling, *The Cryosphere*, 15, 771–791, <https://doi.org/10.5194/tc-15-771-2021>, 2021.
- 680 Li, D., Wrzesien, M. L., Durand, M., Adam, J., and Lettenmaier, D. P.: How much runoff originates as snow in the western United States, and how will that change in the future?, *Geophysical Research Letters*, 44, 6163–6172, <https://doi.org/10.1002/2017GL073551>, 2017.
- Lin, Y. and Mitchell, K. E.: 1.2 the NCEP stage II/IV hourly precipitation analyses: Development and applications., in: 19th Conference Hydrology, American Meteorological Society, 2005.
- 685 Liu, Y., Fang, Y., and Margulis, S. A.: Spatiotemporal distribution of seasonal snow water equivalent in High Mountain Asia from an 18-year Landsat–MODIS era snow reanalysis dataset, *The Cryosphere*, 15, 5261–5280, <https://doi.org/10.5194/tc-15-5261-2021>, 2021.

- Liu, Y., Fang, Y., Li, D., and Margulis, S. A.: How Well do Global Snow Products Characterize Snow Storage in High Mountain Asia?, *Geophysical Research Letters*, 49, e2022GL100082, <https://doi.org/10.1029/2022GL100082>, 2022.
- 690 Lopez, P.: Direct 4D-Var Assimilation of NCEP Stage IV Radar and Gauge Precipitation Data at ECMWF, *Monthly Weather Review*, 139, 2098–2116, <https://doi.org/10.1175/2010MWR3565.1>, 2011.
- Luojus, K., Pulliainen, J., Takala, M., Lemmetyinen, J., Mortimer, C., Derksen, C., Mudryk, L., Moisander, M., Hiltunen, M., Smolander, T., Ikonen, J., Cohen, J., Salminen, M., Norberg, J., Veijola, K., and Venäläinen, P.: GlobSnow v3.0 Northern Hemisphere snow water equivalent dataset, *Sci Data*, 8, 163, <https://doi.org/10.1038/s41597-021-00939-2>, 2021.
- 695 Mankin, J. S., Viviroli, D., Singh, D., Hoekstra, A. Y., and Diffenbaugh, N. S.: The potential for snow to supply human water demand in the present and future, *Environ. Res. Lett.*, 10, 114016, <https://doi.org/10.1088/1748-9326/10/11/114016>, 2015.
- Margulis, S. A., Giroto, M., Cortés, G., and Durand, M.: A Particle Batch Smoother Approach to Snow Water Equivalent Estimation, *Journal of Hydrometeorology*, 16, 1752–1772, <https://doi.org/10.1175/JHM-D-14-0177.1>, 2015.
- 700 Margulis, S. A., Cortés, G., Giroto, M., and Durand, M.: A Landsat-Era Sierra Nevada Snow Reanalysis (1985–2015), *Journal of Hydrometeorology*, 17, 1203–1221, <https://doi.org/10.1175/JHM-D-15-0177.1>, 2016.
- Margulis, S. A., Liu, Y., and Baldo, E.: A Joint Landsat- and MODIS-Based Reanalysis Approach for Midlatitude Montane Seasonal Snow Characterization, *Front. Earth Sci.*, 7, 272, <https://doi.org/10.3389/feart.2019.00272>, 2019.
- Molotch, N. P. and Bales, R. C.: SNOTEL representativeness in the Rio Grande headwaters on the basis of physiographics and remotely sensed snow cover persistence, *Hydrological Processes*, 20, 723–739, <https://doi.org/10.1002/hyp.6128>, 2006.
- Muñoz-Sabater, J., Dutra, E., Agustí-Panareda, A., Albergel, C., Arduini, G., Balsamo, G., Boussetta, S., Choulga, M., Harrigan, S., Hersbach, H., Martens, B., Miralles, D. G., Piles, M., Rodríguez-Fernández, N. J., Zsoter, E., Buontempo, C., and Thépaut, J.-N.: ERA5-Land: a state-of-the-art global reanalysis dataset for land applications, *Earth System Science Data*, 13, 4349–4383, <https://doi.org/10.5194/essd-13-4349-2021>, 2021.
- 710 NOHRSC: Snow Data Assimilation System (SNODAS) Data Products at NSIDC, Version 1, 2004.
- Nolin, A. W., Sproles, E. A., Rupp, D. E., Crumley, R. L., Webb, M. J., Palomaki, R. T., and Mar, E.: New snow metrics for a warming world, *Hydrological Processes*, 35, <https://doi.org/10.1002/hyp.14262>, 2021.
- Qin, Y., Abatzoglou, J. T., Siebert, S., Huning, L. S., AghaKouchak, A., Mankin, J. S., Hong, C., Tong, D., Davis, S. J., and Mueller, N. D.: Agricultural risks from changing snowmelt, *Nat. Clim. Chang.*, 10, 459–465, <https://doi.org/10.1038/s41558-020-0746-8>, 2020.
- 715 Reichle, R. H., Draper, C. S., Liu, Q., Giroto, M., Mahanama, S. P. P., Koster, R. D., and Lannoy, G. J. M. D.: Assessment of MERRA-2 Land Surface Hydrology Estimates, *Journal of Climate*, 30, 2937–2960, <https://doi.org/10.1175/JCLI-D-16-0720.1>, 2017.
- Rhoades, A. M., Hatchett, B. J., Risser, M. D., Collins, W. D., Bambach, N. E., Huning, L. S., McCrary, R., Siirila-Woodburn, E. R., Ullrich, P. A., Wehner, M. F., Zarzycki, C. M., and Jones, A. D.: Asymmetric emergence of low-to-no snow in the midlatitudes of the American Cordillera, *Nat. Clim. Chang.*, 12, 1151–1159, <https://doi.org/10.1038/s41558-022-01518-y>, 2022.

- 725 Rodell, M., Houser, P. R., Jambor, U., Gottschalck, J., Mitchell, K., Meng, C.-J., Arsenault, K., Cosgrove, B., Radakovich, J., Bosilovich, M., Entin, J. K., Walker, J. P., Lohmann, D., and Toll, D.: The Global Land Data Assimilation System, *Bulletin of the American Meteorological Society*, 85, 381–394, <https://doi.org/10.1175/BAMS-85-3-381>, 2004.
- Siirila-Woodburn, E. R., Rhoades, A. M., Hatchett, B. J., Huning, L. S., Szinai, J., Tague, C., Nico, P. S., Feldman, D. R., Jones, A. D., Collins, W. D., and Kaatz, L.: A low-to-no snow future and its impacts on water resources in the western United States, *Nat Rev Earth Environ*, 2, 800–819, <https://doi.org/10.1038/s43017-021-00219-y>, 2021.
- 730 Snethlage, M. A., Geschke, J., Ranipeta, A., Jetz, W., Yoccoz, N. G., Körner, C., Spehn, E. M., Fischer, M., and Urbach, D.: A hierarchical inventory of the world’s mountains for global comparative mountain science, *Sci Data*, 9, 149, <https://doi.org/10.1038/s41597-022-01256-y>, 2022.
- Thornton, P. E., Shrestha, R., Thornton, M., Kao, S.-C., Wei, Y., and Wilson, B. E.: Gridded daily weather data for North America with comprehensive uncertainty quantification, *Sci Data*, 8, 190, <https://doi.org/10.1038/s41597-021-00973-0>, 2021.
- 735 Wrzesien, M. L., Pavelsky, T. M., Durand, M. T., Dozier, J., and Lundquist, J. D.: Characterizing Biases in Mountain Snow Accumulation From Global Data Sets, *Water Resources Research*, 55, 9873–9891, <https://doi.org/10.1029/2019WR025350>, 2019.
- Zeng, X., Broxton, P., and Dawson, N.: Snowpack Change From 1982 to 2016 Over Conterminous United States, *Geophysical Research Letters*, 45, 12,940-12,947, <https://doi.org/10.1029/2018GL079621>, 2018.

740

Using newly developed snow reanalysis datasets as references, snow water storage is at high uncertainty among commonly used global products in the Andes, and low-resolution products in the western U.S, where snow is the key element of water resources. In addition to precipitation, elevation differences and model mechanisms variances drive snow uncertainty. This
745 work provides insights for research applying these products and generating future products in areas with limited in situ data.