



Representing inter-annual land cover and vegetation variability based on satellite observations in the HTESSSEL land surface model

Fransje van Oorschot^{1,2}, Ruud J. van der Ent², Markus Hrachowitz², Emanuele Di Carlo¹, Franco Catalano³, Souhail Boussetta⁴, Gianpaolo Balsamo⁴, and Andrea Alessandri¹

¹Institute of Atmospheric Sciences and Climate, National Research Council of Italy (CNR-ISAC), Bologna, Italy

²Department of Water Management, Faculty of Civil Engineering and Geosciences, Delft University of Technology, Delft, The Netherlands

³Italian National Agency for New Technologies, Energy and Sustainable Economic Development (ENEA), Rome, Italy

⁴European Centre for Medium-Range Weather Forecasts (ECMWF), Reading, UK

Correspondence: Fransje van Oorschot (f.vanoorschot@tudelft.nl)

Abstract. Vegetation largely controls land surface-atmosphere interactions. Although vegetation is highly dynamic across spatial and temporal scales, most land surface models currently used for reanalyses and near-term climate predictions do not adequately represent these dynamics. This causes deficiencies in the variability of modeled water and energy states and fluxes from the land surface. In this study we evaluated the effects of integrating spatially and temporally varying land cover and vegetation characteristics derived from satellite observations on modelled evaporation and soil moisture in the Hydrology Tiled ECMWF Scheme for Surface Exchanges over Land (HTESSSEL) land surface model. Specifically, we integrated inter-annually varying land cover from the European Space Agency Climate Change Initiative, and inter-annually varying Leaf Area Index (LAI) from the Copernicus Global Land Services (CGLS). Additionally, satellite data of the Fraction of green vegetation Cover (FCover) from CGLS was used to formulate and integrate a spatially and temporally varying effective vegetation cover parameterization. The effects of these three implementations on model evaporation fluxes and soil moisture were analysed using historical offline (land-only) model experiments at the global scale, and model performances were quantified with global observational products of evaporation (E) and near-surface soil moisture (SM_s). The inter-annually varying land cover consistently altered the evaporation and soil moisture in regions with major land-cover changes. The inter-annually varying LAI considerably improved the correlation of SM_s and E with respect to the reference data, with largest improvements in semiarid regions with predominantly low vegetation during the dry season. These improvements are related to the activation of soil moisture-evaporation feedbacks during vegetation-water-stressed periods with inter-annually varying LAI in combination with inter-annually varying effective vegetation cover, defined as an exponential function of LAI. The further improved effective vegetation cover parameterization consistently reduced the errors of model effective vegetation cover, and it regionally improved SM_s and E . Overall, our study demonstrated that the enhanced vegetation variability consistently improved the near-surface soil moisture and evaporation variability, but the availability of reliable global observational data remains a limitation for complete understanding of the model response. To further explain the improvements found, we developed an interpretation framework for how the model development activates feedbacks between soil moisture, vegetation, and evaporation during vegetation-water-stress periods.



1 Introduction

25 Land surface-atmosphere interactions are largely controlled by vegetation, which is dynamic across spatial (local, regional and global) and temporal (seasonal, inter-annual and decadal) scales (Seneviratne et al., 2010). Land surface models (LSMs) aim to describe these interactions and are, therefore, a crucial aspect of models used for climate reanalysis and climate predictions. However, most state-of-the-art LSMs do not adequately represent the temporal and spatial variability of vegetation, resulting in weaknesses in the associated variability of modelled surface water and energy states and fluxes (e.g. Alessandri et al., 2007; 30 Pitman et al., 2009; Ukkola et al., 2016; Fisher and Koven, 2020; Hersbach et al., 2020; Van Oorschot et al., 2021).

Satellite remote sensing based data products provide observations that can be used in land surface models. Global satellite derived maps of land cover, leaf area index, or albedo have been directly used as boundary conditions in such models (Faroux et al., 2013; Alessandri et al., 2017; Boussetta et al., 2021). Furthermore, satellite products have been used to improve model parameterizations of e.g. surface roughness, soil characteristics, and subsurface water storage (Lo et al., 2010; Trigo et al., 35 2015; Yang et al., 2016; Orth et al., 2017). Moreover, LSMs have been evaluated using global satellite products of e.g. land surface temperatures, snow depth, and soil moisture (Balsamo et al., 2018; Johannsen et al., 2019; Dong et al., 2020; Nogueira et al., 2020, 2021; Boussetta et al., 2021).

Recent studies have exploited latest satellite campaigns to update land cover (LC) and Leaf Area Index (LAI) representation into the land surface model ‘Carbon-Hydrology ECMWF Tiled Scheme for Surface Exchanges over Land’ (CHTESSEL) 40 (Johannsen et al., 2019; Nogueira et al., 2020, 2021; Boussetta et al., 2021) as part of the Integrated Forecasting System (IFS) of the European Centre for Medium-range Weather Forecasts (ECMWF). These studies replaced the original fixed map of land cover from the Global Land Cover Characteristics (GLCC) dataset representing the early 1990s (Loveland et al., 2000) with an updated map obtained from the latest generation estimates of land cover from the European Space Agency Climate Change Initiative (ESA-CCI) (Poulter et al., 2015). Similarly, the LAI climatology from the Moderate Resolution Imaging 45 Spectroradiometer (MODIS) (Boussetta et al., 2013) was replaced with updated climatology from the recent Copernicus Global Land Service (CGLS) LAI dataset (Verger et al., 2014). The integration of these satellite-derived variables considerably reduced the bias of model land surface temperatures (Johannsen et al., 2019; Nogueira et al., 2020, 2021). In addition, Boussetta et al. (2021) showed an overall reduction of model annual mean evaporation bias when using the updated LC and LAI in CHTESSEL.

LAI in LSMs can be coupled to the effective vegetation cover (C_{eff}), which characterizes the density of the vegetated surface 50 from a top view that effectively contributes to the water and energy balances. The organization structure of leaves inside the canopy is reported as vegetation clumping. In previous modelling studies, the seasonal variations in C_{eff} have been described as an exponential function of LAI considering vegetation clumping in (C)HTESSEL (Alessandri et al., 2017; Nogueira et al., 2020; Boussetta et al., 2021) and in other land modelling efforts (Anderson et al., 2005; Krinner et al., 2005; Le Moigne, 2012). The shape of the exponential relation between C_{eff} and LAI in state-of-the-art land surface models has, to our knowledge been 55 assumed constant in time and space so far (Krinner et al., 2005; Alessandri et al., 2017; Nogueira et al., 2020; Boussetta et al.,



2021). However, studies have shown that the degree of vegetation clumping, and so the shape of this relation, actually varies for different vegetation types (Chen et al., 2005; Ryu et al., 2010; Zhang et al., 2014).

The research gap that we identified is that most previous LSM studies aimed at improving the temporally fixed boundary condition of land cover and the monthly seasonal cycle of LAI, while not exploring the effects of inter-annual variations of LC and LAI. Moreover, previous studies have generally used one spatially fixed relationship between effective vegetation cover and LAI, while there is considerable evidence that this relationship is vegetation type dependent.

The objective of this research is to evaluate the effects of integrating temporal and spatial variations of land cover and vegetation characteristics derived from satellite observations on modelled evaporation and soil moisture in the land surface model HTESSEL. Specifically, we will integrate annually varying LC from ESA-CCI as well as seasonally and inter-annually varying LAI from CGLS. Additionally, CGLS 'Fraction of green vegetation cover' (FCover; Verger et al., 2014) is used to formulate and implement a spatially (i.e. vegetation dependent) and temporally (i.e. inter-annually) variable effective vegetation cover parameterization in HTESSEL.

2 Methods

2.1 Earth observation products

Here we used yearly land cover maps at a 300 m spatial resolution from ESA-CCI for the time period 1993-2019 (Defourny et al., 2017; Copernicus Climate Change Service, 2019). In this dataset the land cover is classified into 22 classes based on the United Nations Land Cover Classification System (LCCS) (Di Gregorio and Jansen, 2005).

LAI and FCover data were obtained from CGLS for 1999-2019 (Copernicus Global Land Service, 2022). We used the 1km version 2 collection in which both products were derived at a 10-daily resolution from the top of canopy reflectance measurements by the SPOT/VEGETATION (1999-2013) and PROBA-V (2014-2019) sensors (Verger et al., 2019). These two timeseries were homogenized using a cumulative distribution function (CDF) approach following Boussetta and Balsamo (2021). For model spin-up purposes, the CGLS LAI (1999-2019) was further extended backwards with former-generation LAI data from the Advanced Very-High Resolution Radiometer (AVHRR) for 1993-1999 at a 0.05° resolution (Pacholczyk and Verger, 2020). The AVHRR LAI (1993-1999) was interpolated using conservative interpolation (Schulzweida, 2022) to the CGLS 1km resolution and harmonised with CGLS (1999-2019) using CDF-matching (Boussetta and Balsamo, 2021).

2.2 Model description

Here we used the HTESSEL land surface model (Balsamo et al., 2009) as it was developed and implemented for climate predictions with the EC-Earth3 Earth system model (Döscher et al., 2022). This version already implements a temporally, but not spatially, varying effective vegetation cover, which is further developed in this work (Alessandri et al., 2017). This section describes the relevant model representations and adaptations.



2.2.1 Land cover representation

In HTESSEL the vegetated area of a grid cell is divided into high and low vegetation tiles. In case of snow there are separate model tiles for snow on bare ground/low vegetation and snow beneath high vegetation (Balsamo et al., 2009). Figure 1a represents an example of the vegetation types and cover fractions for a single grid cell, that were originally based on the GLCC
90 land cover dataset (Loveland et al., 2000). The low (L) and high (H) vegetation types with the largest cover fraction in each grid cell (see example in Fig. 1a) are used in HTESSEL as dominant vegetation types T_L and T_H (Fig. 1b). The corresponding HTESSEL vegetation cover fractions A_L and A_H are based on the total low and high vegetation grid cell cover fractions.

T_L and T_H directly control surface water and energy fluxes because model parameters such as vegetation root distribution, minimum canopy resistance, and roughness lengths for momentum and heat are obtained from lookup tables based on the
95 vegetation type (ECMWF, 2015). Surface fluxes are calculated separately for low and high vegetation tiles, and combined based on the fractions A_L and A_H . Here we only focus on the surface evaporation flux, that we define as the sum of transpiration, soil evaporation, interception evaporation, and, in case of lakes, also open water evaporation (Savenije, 2004; Miralles et al., 2020). The subsurface in HTESSEL consists of 4 soil layers with depths of 7, 21, 100 and 189 cm. In this study we differentiate between near-surface soil moisture (SM_s) in the top layer (0-7 cm), and the subsurface soil moisture (SM_{sb}) in the three deeper
100 layers (7-289 cm).

2.2.2 Leaf Area Index representation

LAI is defined separately for the high and low vegetation tiles (LAI_L and LAI_H). In the original HTESSEL model, LAI_L and LAI_H are prescribed as a seasonal cycle that is derived from a satellite-based climatology based on MODIS (Boussetta et al., 2013), and the vegetation cover fractions A_L and A_H . The LAI controls the canopy resistance r_c of the high and low vegetation
105 tiles through the following linear relation:

$$r_c = \frac{r_{s,\min}}{LAI} f_1(R_s) f_2(D_a) f_3(\overline{SM}) \quad (1)$$

with $r_{s,\min}$ the vegetation specific minimum canopy resistance and $f_1(R_s)$, $f_2(D_a)$ and $f_3(\overline{SM})$ functions describing the dependencies on shortwave radiation (R_s), atmospheric water vapor deficit (D_a), and weighted average soil moisture based on the root distribution over the four soil layers (\overline{SM}), respectively. The root fractions are generally the largest in soil layers 2
110 and 3, and, therefore, transpiration mostly originates from the SM_{sb} . The transpiration is linearly related to r_c and atmospheric variables. Furthermore, the LAI controls the capacity of the model interception reservoir W_{1m} by:

$$W_{1m} = W_{1\max} * (C_B + C_L * LAI_L + C_H * LAI_H) \quad (2)$$

with $W_{1\max}=0.0002$ m and C_B , C_L and C_H the fractions of bare soil, effective low and high vegetation, respectively (Sect. 2.2.3). The interception evaporation per time step follows from the water content of the interception reservoir (calculated from
115 precipitation), W_{1m} , and the potential evaporation.



2.2.3 Effective vegetation cover representation

The model effective low and high vegetation cover ($C_{\text{eff,L}}$ and $C_{\text{eff,H}}$) represent the part of the model vegetation cover fraction (A_L and A_H) that is actively contributing to the water balance through transpiration and interception evaporation (Fig. 1c). The fraction of the grid cell not covered by effective vegetation is treated as bare soil (C_B), where only soil evaporation takes place.

120 Soil evaporation only occurs in the top soil layer (0–7 cm), and, therefore, originates only from SM_s . The model resistance to soil evaporation (r_{soil}) is described by

$$r_{\text{soil}} = r_{\text{soil,min}} f_3(SM_s) \quad (3)$$

with $r_{\text{soil,min}} = 50 \text{ sm}^{-1}$ and $f_3(SM_s)$ representing the dependency on the first layer soil moisture content. The effective vegetation cover fractions $C_{\text{eff,L}}$ and $C_{\text{eff,H}}$ and bare soil fraction C_B , are described by:

$$125 \quad C_{\text{eff,L}} = c_{v,L} * A_L \quad (4)$$

$$C_{\text{eff,H}} = c_{v,H} * A_H \quad (5)$$

$$C_{\text{eff}} = C_{\text{eff,L}} + C_{\text{eff,H}} \quad (6)$$

$$C_B = 1 - C_{\text{eff}} \quad (7)$$

with $c_{v,L}$ and $c_{v,H}$ representing the low and high vegetation density. Originally, $c_{v,L}$ and $c_{v,H}$ were described by a lookup table
130 with vegetation specific values, allowing for spatial variation of the $C_{\text{eff,L}}$, $C_{\text{eff,H}}$, and C_B fractions. However, this approach does not represent temporal variations in vegetation density. To allow for temporal variability in C_{eff} (represented by the arrows in Fig. 1c), $c_{v,L}$ and $c_{v,H}$ were linked to the seasonal variability of LAI by the following exponential relation (Alessandri et al., 2017):

$$c_{v,L} = 1 - e^{-kLAI_L} \quad (8)$$

$$135 \quad c_{v,H} = 1 - e^{-kLAI_H} \quad (9)$$

with k the canopy light extinction coefficient that represents the degree of vegetation clumping (Anderson et al., 2005). Previously k was in general for all vegetation types set to constant values of 0.5 (Krinner et al., 2005; Alessandri et al., 2017) or 0.6 (Boussetta et al., 2021). As a consequence, the vegetation-dependent spatial variability in k was not accounted for.

2.3 The implemented vegetation variability

140 2.3.1 Land cover variability

Here we implemented the annually varying ESA-CCI land cover (LC) data for the 1993-2019 period (Sect. 2.1), as developed by Boussetta and Balsamo (2021) for the HTESSEL vegetation types and spatial resolution. For consistency with the other model adaptations and evaluations (Sect. 2.3.2, 2.3.3 and 2.5), our LC analyses were based on 1999-2018. The inter-annually varying LC from ESA-CCI introduced a change in T_L in 5%, and T_H in 4% of the land grid cells between the first (1999)



145 and the last (2018) year of the considered study period (Fig. 2). Figure 2c shows the fraction of land grid cells in which each vegetation type (dominant in 1999) is replaced by another type in 2018 (plain colors), and conversely how often each vegetation type replaces the 1999 dominant one in 2018 (hatched colors). Crops and short grass relatively often replaced other low vegetation types, and evergreen needleleaf (EN) and deciduous broadleaf (DB) trees were relatively often replaced by other high vegetation types.

150 The low and high vegetation cover fractions changed in many regions according to the ESA-CCI LC dataset (Fig. 3). During the 1999-2018 period, low vegetation replaced high vegetation in the Southern Amazon and North-Eastern Siberia. Conversely, high vegetation replaced low vegetation in the boreal regions of Lapland and North-Western Siberia. Moreover, arid regions such as Central Asia and Australia experienced an expansion of low vegetation over the 1999-2018 period. In Fig. 3 we highlighted the Southern Amazon, Lapland and Central Asia regions where the vegetation cover fraction changed
155 considerably. These regions are further analyzed in Sect. 3.1.

2.3.2 Leaf Area Index variability

We used the monthly CGLS LAI data described in Sect. 2.1 to prescribe model LAI, representing both the seasonal cycle and inter-annual variability of LAI. The 1 km LAI data was interpolated using conservative interpolation to the HTESSSEL grid (Schulzweida, 2022). Next, LAI was disaggregated into low and high LAI (LAI_L and LAI_H) based on the low and high
160 vegetation cover fractions (A_L and A_H), for the use in the HTESSSEL model setup with separate low and high vegetation tiles (Boussetta et al., 2021; Boussetta and Balsamo, 2021). Figure 4 shows the LAI inter-annual variability as integrated here in HTESSSEL, quantified with the standard deviation.

2.3.3 Vegetation specific effective vegetation cover parameterization

The CGLS FCover and LAI data were used (Sect. 2.1) to further develop the model effective vegetation cover parameterization
165 as described by Eqs. (4)-(9). The constant $k=0.5$ parameter was replaced with a vegetation specific k to improve spatial and temporal variability of the model C_{eff} . We assumed that the model C_{eff} is equivalent to the CGLS FCover data. Following the model C_{eff} parameterization, FCover is then described as follows:

$$\text{FCover} = 1 - e^{-k\text{LAI}} \quad (10)$$

We estimated k for different HTESSSEL vegetation types by solving the minimization problem in Eq. (11) using a non-linear
170 least squares optimization at a 1 km spatial resolution.

$$\min \|1 - e^{-k\text{LAI}} - \text{FCover}\|_2 \quad (11)$$

To discriminate vegetation types, the grid cells where each vegetation type maximizes its cover fraction based on the ESA-CCI LC developed in Boussetta and Balsamo (2021) were selected for each year. For each set of grid cells corresponding to each
175 selected subsample of 2000 grid points of the LAI and FCover timesteps (10-daily) for each vegetation type was used to keep



the analysis computationally feasible, while ensuring a representative sample with robust significance of the fit. In this way, we obtained a sample of 2000 grid cells times 36 timesteps per year times 20 years, which equals 1 440 000 data points to be used for the optimization for each vegetation type. This optimization resulted in vegetation specific k -values that were implemented in the HTESSEL code as in Eqs. (4)-(9). The robustness of the optimization was verified by repeating the random selection
180 procedure several times, which resulted in negligible changes in the k -estimates.

2.4 Model experiments

We performed experiments with an offline, uncoupled version of HTESSEL to evaluate the effect of the implemented vegetation variability as described in Sect. 2.3. HTESSEL was forced with atmospheric hourly forcing from ECMWF Reanalysis v5 (ERA5) and simulations were performed from 1993-2019, with 1993-1999 as spin-up period (details in Table S1). The model
185 spatial resolution is the n128 reduced Gaussian grid corresponding to grid-cells of $\sim 75 \times 75$ km. In total, four different model experiments were performed (Table 1). In the first experiment, as a benchmark and control experiment (CTR) the land cover of all years was set to the ESA-CCI land cover of 1993, the LAI of all years was set to the 1993-2019 climatology and the C_{eff} parameterization with $k=0.5$ was used. This reflects standard settings of the EC-Earth3 version of HTESSEL. In the second
190 experiment (IALC) the inter-annually varying ESA-CCI LC was included, while in the third experiment (IAK5) we further added inter-annually varying CGLS LAI. Finally, the model sensitivity to the vegetation specific C_{eff} parameterization (see Sect. 2.2.3) was evaluated in the fourth experiment (IAKV). The model experiments were evaluated for 1999-2018, which is the longest period to consistently assess all three model implementations, with the available evaluation data described in Sect. 2.5.

2.5 Model evaluation

195 2.5.1 Model variables

The effects of the vegetation specific C_{eff} parameterization on the model C_{eff} were assessed in IAKV compared to IAK5. Furthermore, we analysed the effects of the increasingly detailed model land cover and vegetation variability in the three experiments (IALC, IAK5, IAKV) on total evaporation (E), and the evaporation components, i.e. transpiration (E_t), soil evaporation (E_s) and interception evaporation (E_i). In addition, the effects on model near-surface soil moisture (SM_s) and
200 subsurface soil moisture (SM_{sb}) were analysed.

2.5.2 Reference data

The modeled C_{eff} was compared to the CGLS FCover data (Sect. 2.1) at the model spatial resolution. As a benchmark for total evaporation we used the ‘Derived Optimal Linear Combination Evapotranspiration’ version 3 (DOLCEv3), which is a linear combination of estimates from ERA5-land, GLEAM v3.5a and v3.5b and FLUXCOM-RSMETEO that was regionally
205 weighted based on the performance in reproducing FLUXNET tower evaporation observations (Hobeichi et al., 2021). The associated uncertainty estimate is spatially and temporally varying based on the gridded evaporation and flux tower observa-



tions (Hobeichi et al., 2018). This dataset was selected because it is intended to better capture evaporation temporal variations compared to previous DOLCE versions (v1 and v2) and was, therefore, found suitable for evaluating the effects of the modified temporal and spatial variability of vegetation on evaporation (Hobeichi et al., 2021). Daily evaporation and associated uncertainty at a 0.25° resolution was used for 1999-2018 and was here interpolated using conservative interpolation (Schulzweida, 2022) to the model spatial resolution. Model near-surface soil moisture (SM_s) (0-7 cm) was compared to the ESA-CCI soil moisture product (ESA-CCI SM), that is based on multiple satellites with active and passive sensors (Dorigo et al., 2017; Gruber et al., 2019). This dataset provides near-surface ($\sim 0-5$ cm) soil moisture at a daily resolution and a 0.25° grid. Here we used the combined active-passive product interpolated using conservative interpolation (Schulzweida, 2022) to the model spatial resolution for 1999-2018 (European Space Agency, 2022). The uncertainty estimates for ESA-CCI SM were also considered as they were provided with the data product and based on error variance of the data used to generate the product (Dorigo et al., 2017). ESA-CCI SM contains spatial and temporal gaps due to densely vegetated areas (tropical forests) and snow coverage. Here only grid cells with a temporal coverage larger than 60% were used, and, as a consequence, model performance metrics for SM_s were only calculated for these grid cells.

2.5.3 Evaluation metrics

The hourly model output was first averaged to monthly values, based on which then annual means, monthly climatology, and inter-annual anomalies were calculated. To differentiate the seasons (June, July and August: JJA; September, October and November: SON; December, January and February: DJF; March, April and May: MAM), the monthly values were averaged to seasonal means, and inter-annual seasonal anomalies were calculated. For the evaluation of E and SM_s with respect to reference data, we used the Pearson correlation coefficients r of the inter-annual monthly and seasonal anomalies. To calculate r of the inter-annual monthly and seasonal anomalies, the anomalies were detrended assuming a linear trend. Detrending was not applied for the effects of the modified LC, as the inter-annually varying LC mostly influenced the trend. In addition, we quantified the effects of the improved vegetation variability with the Root Mean Squared Error (RMSE). For C_{eff} and E RMSE we used monthly values, while for SM_s we used standardized inter-annual anomalies. Model SM_s and reference ESA-CCI SM cannot be compared directly in absolute terms due to the different representative soil layers, and as a consequence, different temporal variability (Sect. 2.5.2). To overcome this limitation, we standardized the inter-annual anomalies for model and reference SM_s by dividing the monthly SM_s with the climatological standard deviation.

To test the significance of the r and RMSE differences between models we used a bootstrap, in which 1000 data samples were randomly created by resampling the data of model 1 and model 2 with replacement for each timestep. We tested the null hypothesis that the r or RMSE of model 1 and model 2 with respect to the reference data are not significantly different from each other at the 10% significance level.



3 Results

3.1 Land cover inter-annual variability effects

The inter-annually varying land cover from ESA-CCI in experiment IALC resulted in a shift in mean evaporation components (i.e. E_t , E_s , and E_i) compared to the CTR experiment (Fig. 5). The last five years of the simulations (2014-2019) are considered, because the effects of the inter-annually varying land cover mostly emerge in this period. In the Southern Amazon, where A_H on average reduced from 0.64 to 0.57 in IALC compared to CTR (Fig. 3), the mean E_t reduced by 3% from 633 to 615 mm year⁻¹ and E_i reduced by 6% from 384 to 363 mm year⁻¹, while E_s increased by 17% from 156 to 183 mm year⁻¹. In this region, the total evaporation reduced only by 1% from 1174 to 1162 mm year⁻¹ in IALC compared to CTR, because the reductions in E_t and E_i were partially compensated by increased E_s . The reduced E in IALC is closer to the the DOLCEv3 E , which is in this region 1160 mm year⁻¹. We also found the evaporation compensation effect in Lapland, where A_H increased from 0.24 to 0.30, and Central Asia, where A_L increased from 0.66 to 0.71 (Fig. 3). In Lapland and in Central Asia E increased with 2% and 0.1%, respectively, moving closer to the DOLCEv3 E (Fig. 5b; Table S2). In contrast with the small changes in E , the individual E -fluxes changed considerably in these two cases (Fig. 5d,f,h).

The changes in E_t and E_s also induced changes in soil moisture, because E_s extracts water exclusively from the near-surface soil layer (SM_s), while E_t originates mostly from deeper soil layers (SM_{sb}). However, we observed only marginal differences between mean SM_s and SM_{sb} in IALC compared to CTR (Fig. 6), except for the Southern Amazon SM_s . Here, the increased E_s in the Southern Amazon reduced the SM_s by 2%, as more near-surface soil moisture was extracted (Fig. 6b). Individual evaporation fluxes influence the timing of total evaporation and soil moisture differently. However, the overall minor magnitude of changes in total E and SM_s in IALC compared to CTR led to marginal changes in RMSE and pearson correlation coefficients with respect to the reference data in the three highlighted cases (Table S3, Fig. S1-S3).

3.2 Leaf Area Index inter-annual variability effects

The inclusion of inter-annual LAI variability in IAK5 (Fig. 4) generally led to an increased anomaly standard deviation (i.e. variability) of E (Fig. 7a,b). This effect is mostly dominated by E_t (Fig. 7d), which, in the model, is linearly related to LAI (Eq. (1)). Figure 7d and h show that the variability in E_t and E_i were mostly increased in semiarid regions such as the Great Plains region of the US, Central Asia and Southern Africa, with a stronger effect for E_t than for E_i . In contrast, the E_s variability was reduced with the enhanced LAI variability in these semiarid regions, but was increased in more temperate regions such as in Europe, the Eastern US and the La Plata Basin in South America (Fig. 7e,f). While the E_t anomaly variability considerably increased in IAK5 compared to IALC in semiarid regions, the anomaly variability in subsurface soil moisture (SM_{sb}), that acts as the main source of E_t , reduced in these regions (Fig. 8c,d). On the other hand, the anomaly variability of SM_s increased (Fig. 8a,b), while the E_s variability reduced.

Figure 9 shows that pearson correlation coefficient (r) of anomaly E with respect to DOLCEv3 increased in IAK5 compared to IALC in 85% of the land area in which the r was significantly different in IAK5 compared to IALC. Consistently, the r of



anomaly SM_s with respect to ESA-CCI SM also improved in 85% of the significantly changing land area. For both E and SM_s ,
270 r increased mostly in semiarid regions with predominantly low vegetation (Fig. 3).

3.3 Vegetation specific effective vegetation cover parameterization effects

The observed relationship of LAI and FCover in Fig. 10 is broadly consistent with the shape of the exponential functions with
the vegetation specific k , with RMSEs between 0.018 and 0.053 for the individual vegetation types. All optimized LAI-FCover
relations are characterized by k -values that are with 0.351-0.458 consistently lower than the original $k=0.5$, which has been
275 used as constant default value in most HTESSEL applications so far (Alessandri et al., 2017; Boussetta et al., 2021). We found
that the k -values for low vegetation types (0.438-0.458) are higher than for high vegetation types (0.351-0.396), except for
tundra regions (0.375).

The vegetation specific C_{eff} parameterization (IAKV) generally reduced the k -values compared to the $k=0.5$ setup (IAK5),
and as a consequence the associated vegetation densities $c_{v,L}$ and $c_{v,H}$ also decreased (Eqs. (8) and (9)). On average, the global
280 mean C_{eff} reduced from 0.21 in IAK5 to 0.19 in IAKV (Fig. 11). The reduced C_{eff} considerably reduced the RMSE with
respect to the FCover data in IAKV compared to IAK5 (Fig. 12), as expected from the parameterization optimization presented
in Fig. 10. The RMSE reduced the most over the boreal and tropical forests, with an average RMSE reduction from 0.12 to 0.06
for evergreen needleleaf trees, and from 0.05 to 0.03 for evergreen broadleaf trees. On the other hand, the differences in regions
with predominantly low vegetation were smaller because the fitted k -value was closer to the original $k=0.5$, with an average
285 RMSE reduction from 0.06 in IAK5 to 0.05 in IAKV for crops, and from 0.04 to 0.03 for short grass. For low vegetation, the
effects were not consistent throughout the seasons, with RMSE increasing at high latitudes in JJA (Fig. 12d). Here the C_{eff} in
IAK5 was smaller than the CGLS FCover and is further reduced in IAKV, increasing the RMSE. This was likely caused by a
poor fit for short grass at $LAI > 2$ (Fig. 10b) and tundra at $LAI > 1$ (Fig. 10g).

The reduced model C_{eff} in IAKV compared to IAK5 led to a shift in individual evaporation fluxes. On average, E_s increased
290 and E_t and E_i reduced, while the total E was not much affected (Fig. S6). These shifts led to changes in the temporal
distribution of the evaporation. Figure 13 shows quite mixed results of the vegetation specific C_{eff} parameterization on the
model E RMSE with respect to DOLCEv3. The RMSE consistently reduced during summer months in temperate regions such
as in Europe, Eastern US and Eastern China (JJA), and in South-Eastern Brazil and Southern Africa (DJF). On the other hand,
the results for tropical and boreal regions were less consistent throughout the seasons (Fig. 13). The effects of the vegetation
specific C_{eff} on SM_s RMSE with respect to ESA-CCI SM show consistent RMSE reductions in the JJA period for Canada and
295 South-Eastern Brazil, and in the DJF period for the Sahel (Fig. 14). Consistent with the C_{eff} RMSE increase in boreal regions
in JJA (Fig. 12), the Pearson correlation coefficient for monthly anomaly E with respect to DOLCEv3 E significantly reduced
in these regions in IAKV compared to IAK5, while other regions were not much affected (Fig. S14). On the other hand, the
correlation of monthly anomaly SM_s with respect to ESA-CCI SM did not considerably change (Fig. S14).



300 3.4 Combined effects of land cover, Leaf Area Index, and effective vegetation cover

The results presented in Sect.3.2 demonstrate that the inter-annually varying LAI in experiment IAK5 considerably improved the correlation of E and SM_s with respect to reference data. On the other hand, the annually varying LC and vegetation specific C_{eff} affected correlations merely to a minor degree (Sects.3.1 and 3.3). Here, we further elaborate on the effects of combining the enhanced variability in LC, LAI and C_{eff} on correlation of E and SM_s .

305 Figure 15 shows that the E correlation improved in 68 % (JJA) and 54 % (DJF) of the land area in which the r significantly changed in IAKV compared to CTR. Significant reduction of r is found over boreal regions, which is related to the effects of the effective vegetation cover parameterization, as discussed in Sect. 3.3 and Fig. S14. Figures 15b and d show that the SM_s correlation consistently and significantly improved in 83 % (JJA) and 76 % (DJF) of the land area in which the r significantly changed in IAKV compared to CTR. The E and SM_s correlations got consistently stronger during dry periods in regions
310 with a semiarid climate and predominantly low vegetation (Figs. 3 and 15). For example, in North-Eastern Brazil during the dry JJA season, the correlation coefficient for E increased from $r=0.79$ in CTR to 0.84 in IAKV with respect to DOLCEv3 and for SM_s from $r=0.57$ to 0.67 with respect to ESA-CCI SM. Similarly, in Western India during the dry DJF season, the correlation coefficient for E increased from $r=0.78$ to 0.85, and for SM_s from $r=0.45$ to 0.73. To further explore the effects in these semiarid regions, we zoom in to North-Eastern Brazil for the 2010-2013 period (Fig. 16). This period is characterized
315 by positive LAI and C_{eff} anomalies in JJA 2011 and a negative LAI and C_{eff} anomalies in JJA 2012 (Fig. 16a,b). The negative LAI and C_{eff} anomalies in 2012 characterize a dry period in which the negative E anomaly was magnified in IAKV compared to CTR (Fig. 16c). During this dry period, E_t reduced, while E_s increased. This is consistent with the soil moisture response presented in Fig. 16d, as the SM_s reduced (due to more E_s) and the SM_{sb} increased (due to less E_t) during the 2012 dry period. Opposite effects were found for the 2011 period with positive LAI and C_{eff} anomalies. So in this specific case, the variability
320 in E_t and SM_s anomalies was enhanced in IAKV compared to CTR, while the variability in E_s and SM_{sb} anomalies was dampened. This is consistent with the results presented in Figs. 7 and 8, in which the effect of the inter-annually varying LAI on the variability of E and SM are presented.

The opposing effects of the enhanced LAI variability on anomaly E_t and SM_{sb} can be explained by a negative feedback between vegetation and soil moisture schematized on the right side in Fig. 17a. During dry periods, the soil moisture reduces;
325 this lower soil water availability can result in vegetation water stress; consequently leading to lower vegetation activity in terms of transpiration and primary production, which is reflected, for example, in the typical dry season browning of grass species in low-vegetation regions and in the model represented by negative LAI and C_{eff} anomalies (Fig. 16a,b). As transpiration is reduced (Fig. 16c), the negative sub-surface soil moisture anomaly is similarly reduced, because less water is extracted (Fig. 16d). On the other hand, the enhanced vegetation variability activated a positive feedback between anomaly vegetation activity and anomaly SM_s , as illustrated on the left side of Fig. 17a. Reduced vegetation activity is reflected in the model by a reduced
330 C_{eff} and an increased bare soil fraction (Eq. (7)), which leads to an increased E_s , (Fig. 16b), and, as a consequence, less SM_s during a dry period as long as soil moisture is available (Fig. 16d).



335 Figures 17b and c show that the positive feedback between E_s and SM_s , as introduced by the improved vegetation variability, is the strongest over semiarid regions with low vegetation, while the negative feedback between E_t and SM_{sb} is more pronounced for temperate regions with deciduous vegetation and crops, where the inter-annual LAI variability is larger (Fig. 4).

4 Discussion

4.1 Synthesis of results

340 The results presented in Sect. 3.4 indicate overall improvements of correlation coefficients of E and SM_s with all three aspects of vegetation variability implemented. We attribute these effects primarily to the implementation of inter-annually varying LAI, as the effects of the LC variability and vegetation specific C_{eff} on E and SM_s were smaller (Sects. 3.1 and 3.3). The pronounced improvements in SM_s and E correlation in semiarid regions (Fig. 15) are directly related to the feedback mechanisms typical of water-limited regions that were activated by the vegetation variability. Regions where the positive feedback is strong (Fig. 17b) coincide with the regions that exhibit a strengthening of the correlations. In the model setup with seasonally varying LAI only (experiments CTR and IALC), the feedbacks in Fig. 17 are not represented because the interaction between SM and LAI is activated by the inter-annually varying LAI. In particular, the interactions between LAI, C_{eff} and bare soil cover are only captured if model C_{eff} is exponentially related to LAI (Sect. 2.2.3). This finding complements the arguments from previous studies for using the exponential LAI- C_{eff} relation instead of the lookup table C_{eff} in HTESSEL (Alessandri et al., 2017; Johannsen et al., 2019; Nogueira et al., 2020, 2021).

350 The vegetation specific effective vegetation cover parameterization presented in Sect. 3.3 generally resulted in an improved match of model C_{eff} and CGLS FCover (Fig. 12), which was expected because the FCover data was used for the estimation of the exponential coefficient k based on least squares minimization (Sect. 2.3.3). CGLS FCover explicitly represents the fraction of green vegetation cover, and, therefore, matches the model actively transpiring vegetation fraction C_{eff} . However, also the non-green vegetated area cover affects the atmosphere by e.g. modifying albedo and roughness lengths, which is not considered in the model, as non-green vegetation is represented as bare soil. This is a limitation for the present implementation of the vegetation specific effective vegetation cover parameterization. The results presented in Fig. 13 showed both increased and reduced RMSE for E with respect to the reference data in IAKV compared to IAK5. Consistent reductions of E RMSE for in Europe and Eastern US in the JJA period were found. These regions coincide with regions with a high density of FLUXNET tower observations used for generation of the DOLCEv3 E (Hobeichi et al., 2021). The lack of tower observations in the Tropics, the Sahel, South Eastern Asia and at high latitudes may potentially explain the mixed RMSE results in these regions presented in Fig. 13. For high latitudes (e.g. Northern Canada and Eastern Siberia) the RMSE for both E as C_{eff} increased and the pearson correlation reduced (Fig. S14) in IAKV compared to IAK5 for the JJA period. This might be at least in part related to the poor fit of the parameterization for high LAI values for short grass and tundra, as explained in Sect. 3.3 (Fig. 10).

365 The inter-annually varying land cover locally affected the model E and SM as expected, with reduced (increased) E driven by corresponding reductions (increases) in high vegetation cover fraction (Fig. 5 and 6). However, the effects on E and SM



are likely underestimated due to the HTESSEL land cover structure in which the dominant vegetation type and cover fraction are used, and vegetation mixing within high or low vegetation types is not represented (Fig. 1). With this, only major changes in the ESA-CCI vegetation types and fractions are captured by the model. In IALC we evaluated the effects of inter-annually varying LC individually, but for internal consistency LAI and LC inter-annual variations should ideally be used together as they are interdependent. The local effects of the inter-annually varying land cover on the total E were considerably smaller than on the individual E fluxes (Fig. 5). The reduced (increased) E_t and E_i , were compensated for by increased (reduced) E_s . This compensation is related to the C_{eff} parameterization (Eq. (6)), and also to the offline setup, which does not allow for couplings with the atmosphere. Reduced A_H in the Amazon (Fig. 3), led to a reduced C_{eff} and an increased bare soil fraction (Eq. (4)-(7)), and, therefore, reduced E_t and E_i , and increased E_s , in order to fulfill the atmospheric evaporation demand defined by the prescribed atmospheric forcing. Similarly, the on average reduced C_{eff} with the vegetation specific C_{eff} parameterization (Fig. 11) introduced in experiment IAKV, led to a shift in annual mean individual E -fluxes, with increased E_s and reduced E_t and E_i (Fig. S6).

It is important to note that the partitioning of evaporation into the three individual components E_t , E_s and E_i in the model remains problematic to compare with observations. There is wide-spread consensus that, globally averaged, transpiration is the largest land evaporation flux component, followed by soil evaporation and interception evaporation (Miralles et al., 2011; Wei et al., 2017; Nelson et al., 2020). However, estimates of the average global E_t contribution to total terrestrial evaporation are subject to major uncertainties, with the global E_t contribution quantified in the range of 35-80 % (Schlesinger and Jasechko, 2014; Coenders-Gerrits et al., 2014). The global mean modelled partitioning of evaporation in our study is on the low end of these estimates with 39 % E_t , 38 % E_s and 20 % E_i in CTR and 38 % E_t , 41 % E_s and 20 % E_i , in IAKV (the values do not add to 100 % due to open water evaporation). Despite the consistent improvements in anomaly correlation coefficients of E and SM_s found in IAKV compared to CTR (Fig. 15), the apparently low contribution of E_t to total E needs further evaluation, which was out of scope in this study.

4.2 Methodological limitations

Our model experiments were performed in an offline mode with fixed atmospheric forcing, which allowed us to analyse individual hydrological processes in detail. However, the fixed atmospheric model input considerably constrains changes of model surface fluxes. Moreover, the ERA5 forcing used here is based on a LSM that does not represent land cover and vegetation variability, which is partially corrected for by data assimilation of observations (Hersbach et al., 2020; Nogueira et al., 2021). The potential mismatch between our LSM and the ERA5 atmospheric forcing may also have influenced the observed model effects. Another possible limitation is the absence of re-calibration of model parameters, such as roughness lengths and minimum stomatal resistances. Fixed model parameters were originally calibrated using the lookup table C_{eff} parameterization, MODIS LAI and GLCC LC, and have not been adjusted for the three new model scenarios tested here (IALC, IAK5 and IAKV). This was also emphasized by Johannsen et al. (2019), Nogueira et al. (2020, 2021) and Boussetta et al. (2021) who concluded that model vegetation changes should be implemented in an integral context and re-calibration of model parameters is needed.



400 This study emphasizes the importance of realistic representation of vegetation variability for modelling land surface-atmosphere interactions. However, for further applications it is needed to explore how the vegetation variability influences atmospheric variables in a coupled model setup. The availability of reliable observations is therefore fundamental to properly understand and model the processes of relevance for land surface and the interaction with atmosphere. Here, the evaluation of model performance was limited to total evaporation and near-surface soil moisture. The evaluated performances of model E and SM_s need
405 to be interpreted in a careful way, bearing in mind the uncertainties. For total evaporation we used the DOLCEv3 evaporation data that merges FLUXNET tower observations with evaporation from FLUXCOM-RSMETEO, GLEAM v3.5a and v3.5b and ERA5-land, which all include very specific model assumptions on vegetation representations. Although these data are considered suitable for time series and trend analyses, the associated uncertainty estimates are large (Hobeichi et al., 2021) (Fig. 16). Figure 16c shows that the DOLCEv3 inter-annual variability is systematically smaller than the modeled variability. This
410 limited inter-annual variability in DOLCEv3 could be at least in part related to the combination of several products, because the averaging based on FLUXNET towers in-avoidably dampens the anomalies, reducing the inter-annual variability. Evaluation of the modeled near-surface soil moisture was limited by missing data due to dense forests or snow cover, and the lack of detailed information of the representative soil depth. However, we still find the ESA-CCI SM the most trustworthy reference data because it is a direct product of remote sensing observations, without blending land surface models as done for DOLCEv3.

415 5 Conclusions

This study aimed to address the limitations of state-of-the-art land surface models in representing spatial and temporal vegetation dynamics. We evaluated the effects of improving the representation of land cover and vegetation variability based on satellite observational products in the HTESSEL land surface model. Specifically, we directly integrated satellite based inter-annually varying land cover, and seasonally and inter-annually varying LAI. In addition, we formulated and integrated
420 an effective vegetation cover parameterization that can distinguish between different vegetation types. The effects of these three implementations were analysed for soil moisture and evaporation in offline experiments forced with ERA5 atmospheric forcing.

The inter-annually varying land cover locally altered the model evaporation and soil moisture. In regions with major land cover changes, such as the Amazon, the model evaporation fluxes and soil moisture responded consistently, capturing the
425 effects of increased or decreased high or low vegetation cover. The inter-annually varying LAI led to significant improvements of the correlation coefficients computed with the available observations of near-surface soil moisture and evaporation. This was specifically true in semiarid regions with predominantly low vegetation, during the dry season. The inter-annually varying LAI and effective vegetation cover allow for an adequate representation of soil moisture-evaporation feedback by activating the couplings with vegetation during vegetation-water-stressed periods (Fig. 17). From these results, we conclude that it is
430 essential to realistically represent inter-annual variability of LAI, and to include the exponential relation between LAI and effective vegetation cover to correctly capture land-atmospheric feedbacks during droughts in HTESSEL. The developments of the effective vegetation cover parameterization considerably improved the spatial and temporal variability of the model



effective vegetation cover, and regionally reduced the model errors of evaporation and near-surface soil moisture. Overall, our results emphasize the need for representing spatial and temporal vegetation variability in LSMs used for climate reanalyses and near-term climate predictions. In climate predictions, we obviously cannot rely on satellite observations, and, therefore, the development and validation of dynamical or statistical models able to reliably predict vegetation evolution is an important challenge for the land surface modelling community.

Code and data availability. ESA-CCI land cover data was taken from <https://cds.climate.copernicus.eu/cdsapp#!/dataset/satellite-land-cover?tab=overview> (Copernicus Climate Change Service, 2019) (last access: June 2021). CGLS LAI and FCover data were downloaded from <https://land.copernicus.eu/global/products/> (last access: January 2022) (Copernicus Global Land Service, 2022). AVHRR LAI was accessed from <https://www.ncei.noaa.gov/access/metadata/landing-page/bin/iso?id=gov.noaa.ncdc:C01559> (last access: June 2021). The preparation of the ESA-CCI land cover, CGLS LAI and AVHRR LAI for the use in HTESSEL is explained in Boussetta and Balsamo (2021). DOLCEv3 was accessed through <https://doi.org/10.25914/606e9120c5ebe> (last access: May 2022) (Hobeichi et al., 2021) and ESA-CCI SM through <https://esa-soilmoisture-cci.org/data> (last access: May 2022). The offline HTESSEL model was provided by EC-EARTH, together with the ERA5 forcing data as well as vegetation and soil data. The python scripts used for the LAI-FCover non linear least squared optimization, and for the analyses are available on github https://github.com/fvanoorschot/lai_fcover_fitting and https://github.com/fvanoorschot/htessel_analyses. Upon acceptance, these scripts will be moved to Zenodo with a doi assigned to them, and the underlying data will be shared in an open research database.

Author contributions. The study was conceived by AA and amended with input from all co-authors. FO carried out the study and prepared the original draft with supervision of AA, RE and MH. SB and GB prepared part of the data used for modeling. All authors contributed to review and editing of the final draft.

Competing interests. The authors declare that they have no conflict of interest

Acknowledgements. Acknowledgement is given for the use of ECMWF's computing and archive facilities for this research, which were provided by CNR-ISAC and by ECMWF in the framework of the special project SPITALEs. This work was supported by the European Union's Horizon 2020 research and innovation program under grant agreement no. 101004156 (CONFESS project). Ruud J. van der Ent acknowledges funding from the Netherlands Organization for Scientific Research (NWO) under project number 016.Veni.181.015.



References

- Alessandri, A., Gualdi, S., Polcher, J., and Navarra, A.: Effects of land surface–vegetation on the boreal summer surface climate of a GCM, *Journal of climate*, 20, 255–278, <https://doi.org/10.1175/JCLI3983.1>, 2007.
- Alessandri, A., Catalano, F., De Felice, M., Van Den Hurk, B., Doblas Reyes, F., Boussetta, S., Balsamo, G., and Miller, P. A.: Multi-scale enhancement of climate prediction over land by increasing the model sensitivity to vegetation variability in EC-Earth, *Climate Dynamics*, 49, 1215–1237, <https://doi.org/10.1007/s00382-016-3372-4>, 2017.
- Anderson, M. C., Norman, J. M., Kustas, W. P., Li, F., Prueger, J. H., and Mecikalski, J. R.: Effects of vegetation clumping on two-source model estimates of surface energy fluxes from an agricultural landscape during SMACEX, *Journal of Hydrometeorology*, 6, 892–909, <https://doi.org/10.1175/JHM465.1>, 2005.
- Balsamo, G., Viterbo, P., Beljaars, A., van den Hurk, B., Hirschi, M., Betts, A. K., and Scipal, K.: A revised hydrology for the ECMWF model: Verification from field site to terrestrial water storage and impact in the integrated forecast system, *Journal of Hydrometeorology*, 10, 623–643, <https://doi.org/10.1175/2008JHM1068.1>, 2009.
- Balsamo, G., Agusti-Panareda, A., Albergel, C., Arduini, G., Beljaars, A., Bidlot, J., Bousserez, N., Boussetta, S., Brown, A., Buizza, R., Buontempo, C., Chevallier, F., Choulga, M., Cloke, H., Cronin, M. F., Dahoui, M., Rosnay, P. D., Dirmeyer, P. A., Drusch, M., Dutra, E., Ek, M. B., Gentine, P., Hewitt, H., Keeley, S. P., Kerr, Y., Kumar, S., Lupu, C., Mahfouf, J. F., McNorton, J., Mecklenburg, S., Mogensen, K., Muñoz-Sabater, J., Orth, R., Rabier, F., Reichle, R., Ruston, B., Pappenberger, F., Sandu, I., Seneviratne, S. I., Tietsche, S., Trigo, I. F., Uijlenhoet, R., Wedi, N., Woolway, R. I., and Zeng, X.: Satellite and in situ observations for advancing global earth surface modelling: A review, *Remote Sensing*, 10, 1–72, <https://doi.org/10.3390/rs10122038>, 2018.
- Boussetta, S. and Balsamo, G.: Vegetation dataset of Land Use / Land Cover and Leaf Area Index Land Use / Land Cover and Leaf Area Index, Tech. rep., <https://confess-h2020.eu/results/deliverables/>, 2021.
- Boussetta, S., Balsamo, G., Beljaars, A., Kral, T., and Jarlan, L.: Impact of a satellite-derived leaf area index monthly climatology in a global numerical weather prediction model, *International Journal of Remote Sensing*, 34, 3520–3542, <https://doi.org/10.1080/01431161.2012.716543>, 2013.
- Boussetta, S., Balsamo, G., Arduini, G., Dutra, E., Choulga, M., Agustí-panareda, A., Beljaars, A., Wedi, N., Muñoz-sabater, J., Rosnay, P. D., Sandu, I., Hadade, I., Mazzetti, C., Prudhomme, C., Yamazaki, D., and Zsoter, E.: ECLand : The ECMWF Land surface modelling system, <https://doi.org/10.3390/atmos12060723>, 2021.
- Chen, J. M., Menges, C. H., and Leblanc, S. G.: Global mapping of foliage clumping index using multi-angular satellite data, *Remote Sensing of Environment*, 97, 447–457, <https://doi.org/10.1016/j.rse.2005.05.003>, 2005.
- Coenders-Gerrits, A. M., Van Der Ent, R. J., Bogaard, T. A., Wang-Erlandsson, L., Hrachowitz, M., and Savenije, H. H.: Uncertainties in transpiration estimates, *Nature*, 506, 2013–2015, <https://doi.org/10.1038/nature12925>, 2014.
- Copernicus Climate Change Service: Land cover classification gridded maps from 1992 to present derived from satellite observations, <https://doi.org/10.24381/cds.006f2c9a>, 2019.
- Copernicus Global Land Service: Fraction of green vegetation Cover and Leaf Area Index, <https://land.copernicus.eu/global/products/>, last access: January 2022, 2022.
- Defourny, P., Lamarche, C., Bontemps, S., de Maet, T., Van Bogaert, E., Moreau, I., Brockmann, C., Boettcher, M., Kirches, G., Wevers, J., and Santoro, M.: Land Cover CCI Product User Guide, Tech. rep., European Space Agency, https://maps.elie.ucl.ac.be/CCI/viewer/download/ESACCI-LC-Ph2-PUGv2_2.0.pdf, 2017.



- 495 Di Gregorio, A. and Jansen, L. J. M.: Land cover classification system: LCCS : Classification concepts and user manual, Food & Agriculture Organization of the United Nations, ISBN 95-5-105327-8, 2005.
- Dong, J., Crow, W. T., Tobin, K. J., Cosh, M. H., Bosch, D. D., Starks, P. J., Seyfried, M., and Collins, C. H.: Comparison of microwave remote sensing and land surface modeling for surface soil moisture climatology estimation, *Remote Sensing of Environment*, 242, <https://doi.org/10.1016/j.rse.2020.111756>, 2020.
- 500 Dorigo, W., Wagner, W., Albergel, C., Albrecht, F., Balsamo, G., Brocca, L., Chung, D., Ertl, M., Forkel, M., Gruber, A., Haas, E., Hamer, P. D., Hirschi, M., Ikonen, J., de Jeu, R., Kidd, R., Lahoz, W., Liu, Y. Y., Miralles, D., Mistelbauer, T., Nicolai-Shaw, N., Parinussa, R., Pratola, C., Reimer, C., van der Schalie, R., Seneviratne, S. I., Smolander, T., and Lecomte, P.: ESA CCI Soil Moisture for improved Earth system understanding: State-of-the art and future directions, *Remote Sensing of Environment*, 203, 185–215, <https://doi.org/10.1016/j.rse.2017.07.001>, 2017.
- 505 Döscher, R., Acosta, M., Alessandri, A., Anthoni, P., Arsouze, T., Bergman, T., Bernardello, R., Boussetta, S., Caron, L. P., Carver, G., Castrillo, M., Catalano, F., Cvijanovic, I., Davini, P., Dekker, E., Doblas-Reyes, F. J., Docquier, D., Echevarria, P., Fladrich, U., Fuentes-Franco, R., Gröger, M., Hardenberg, J. V., Hieronymus, J., Karami, M. P., Keskinen, J. P., Koenigk, T., Makkonen, R., Massonnet, F., Ménégos, M., Miller, P. A., Moreno-Chamarro, E., Nieradzic, L., Van Noije, T., Nolan, P., O'donnell, D., Ollinaho, P., Van Den Oord, G., Ortega, P., Prims, O. T., Ramos, A., Reerink, T., Rousset, C., Ruprich-Robert, Y., Le Sager, P., Schmith, T., Schrödner, R., Serva, F.,
- 510 Sicardi, V., Sloth Madsen, M., Smith, B., Tian, T., Tourigny, E., Uotila, P., Vancoppenolle, M., Wang, S., Wärlind, D., Willén, U., Wyser, K., Yang, S., Yepes-Arbós, X., and Zhang, Q.: The EC-Earth3 Earth system model for the Coupled Model Intercomparison Project 6, *Geoscientific Model Development*, 15, 2973–3020, <https://doi.org/10.5194/gmd-15-2973-2022>, 2022.
- ECMWF: Part IV: Physical Processes, IFS Documentation – Cy43r1, pp. 1–223, <https://www.ecmwf.int/sites/default/files/elibrary/2016/17117-part-iv-physical-processes.pdf>, 2015.
- 515 European Space Agency: Soil Moisture CCI Data v07.1, <https://www.esa-soilmoisture-cci.org/data>, 2022.
- Faroux, S., Kaptué Tchuenté, A. T., Roujean, J.-L., Masson, V., Martin, E., and Le Moigne, P.: ECOCLIMAP-II/Europe: a twofold database of ecosystems and surface parameters at 1 km resolution based on satellite information for use in land surface, meteorological and climate models, *Geoscientific Model Development*, 6, 563–582, <https://doi.org/10.5194/gmd-6-563-2013>, 2013.
- Fisher, R. A. and Koven, C. D.: Perspectives on the Future of Land Surface Models and the Challenges of Representing Complex Terrestrial
- 520 Systems, *Journal of Advances in Modeling Earth Systems*, 12, <https://doi.org/10.1029/2018MS001453>, 2020.
- Gruber, A., Scanlon, T., Van Der Schalie, R., Wagner, W., and Dorigo, W.: Evolution of the ESA CCI Soil Moisture climate data records and their underlying merging methodology, *Earth System Science Data*, 11, 717–739, <https://doi.org/10.5194/essd-11-717-2019>, 2019.
- Hersbach, H., Bell, B., Berrisford, P., Hirahara, S., Horányi, A., Muñoz-Sabater, J., Nicolas, J., Peubey, C., Radu, R., Schepers, D., Simmons, A., Soci, C., Abdalla, S., Abellan, X., Balsamo, G., Bechtold, P., Biavati, G., Bidlot, J., Bonavita, M., De Chiara, G., Dahlgren,
- 525 P., Dee, D., Diamantakis, M., Dragani, R., Flemming, J., Forbes, R., Fuentes, M., Geer, A., Haimberger, L., Healy, S., Hogan, R. J., Hólm, E., Janisková, M., Keeley, S., Laloyaux, P., Lopez, P., Lupu, C., Radnoti, G., de Rosnay, P., Rozum, I., Vamborg, F., Villaume, S., and Thépaut, J. N.: The ERA5 global reanalysis, *Quarterly Journal of the Royal Meteorological Society*, 146, 1999–2049, <https://doi.org/10.1002/qj.3803>, 2020.
- Hobeichi, S., Abramowitz, G., Evans, J., and Ukkola, A.: Derived Optimal Linear Combination Evapotranspiration (DOLCE): A global
- 530 gridded synthesis et estimate, *Hydrology and Earth System Sciences*, 22, 1317–1336, <https://doi.org/10.5194/hess-22-1317-2018>, 2018.
- Hobeichi, S., Abramowitz, G., and Evans, J. P.: Robust historical evapotranspiration trends across climate regimes, *Hydrology and Earth System Sciences*, 25, 3855–3874, <https://doi.org/10.5194/hess-25-3855-2021>, 2021.



- Johannsen, F., Ermida, S., Martins, J. P., Trigo, I. F., Nogueira, M., and Dutra, E.: Cold bias of ERA5 summertime daily maximum land surface temperature over Iberian Peninsula, *Remote Sensing*, 11, <https://doi.org/10.3390/rs11212570>, 2019.
- 535 Krinner, G., Viovy, N., de Noblet-Ducoudré, N., Ogée, J., Polcher, J., Friedlingstein, P., Ciais, P., Sitch, S., and Prentice, I. C.: A dynamic global vegetation model for studies of the coupled atmosphere-biosphere system, *Global Biogeochemical Cycles*, 19, 1–33, <https://doi.org/10.1029/2003GB002199>, 2005.
- Le Moigne, P.: SURFEX scientific documentation, Groupe de météorologie a moyenne échelle, p. 237, http://www.cnrm.meteo.fr/surfex/IMG/pdf/surfex_scidoc_v2.pdf, 2012.
- 540 Lo, M. H., Famiglietti, J. S., Yeh, P. J., and Syed, T. H.: Improving parameter estimation and water table depth simulation in a land surface model using GRACE water storage and estimated base flow data, *Water Resources Research*, 46, 1–15, <https://doi.org/10.1029/2009WR007855>, 2010.
- Loveland, T. R., Reed, B. C., Ohlen, D. O., Brown, J. F., Zhu, Z., Yang, L., and Merchant, J. W.: Development of a global land cover characteristics database and IGBP DISCover from 1 km AVHRR data, *International Journal of Remote Sensing*, 21, 1303–1330, <https://doi.org/10.1080/014311600210191>, 2000.
- 545 Miralles, D. G., De Jeu, R. A., Gash, J. H., Holmes, T. R., and Dolman, A. J.: Magnitude and variability of land evaporation and its components at the global scale, *Hydrology and Earth System Sciences*, 15, 967–981, <https://doi.org/10.5194/hess-15-967-2011>, 2011.
- Miralles, D. G., Brutsaert, W., Dolman, A. J., and Gash, J. H.: On the Use of the Term “Evapotranspiration”, *Water Resources Research*, 56, e2020WR028055, <https://doi.org/10.1029/2020WR028055>, 2020.
- 550 Nelson, J. A., Pérez-Priego, O., Zhou, S., Poyatos, R., Zhang, Y., Blanken, P. D., Gimeno, T. E., Wohlfahrt, G., Desai, A. R., Gioli, B., Limousin, J. M., Bonal, D., Paul-Limoges, E., Scott, R. L., Varlagin, A., Fuchs, K., Montagnani, L., Wolf, S., Delpierre, N., Berveiller, D., Gharun, M., Beileli Marchesini, L., Gianelle, D., Šigut, L., Mammarella, I., Siebicke, L., Andrew Black, T., Knohl, A., Hörtnagl, L., Magliulo, V., Besnard, S., Weber, U., Carvalhais, N., Migliavacca, M., Reichstein, M., and Jung, M.: Ecosystem transpiration and evaporation: Insights from three water flux partitioning methods across FLUXNET sites, *Global Change Biology*, 26, 6916–6930, <https://doi.org/10.1111/gcb.15314>, 2020.
- 555 Nogueira, M., Albergel, C., Boussetta, S., Johannsen, F., Trigo, I. F., Ermida, S. L., Martins, J. P., and Dutra, E.: Role of vegetation in representing land surface temperature in the CHTESSEL (CY45R1) and SURFEX-ISBA (v8.1) land surface models: A case study over Iberia, *Geoscientific Model Development*, 13, 3975–3993, <https://doi.org/10.5194/gmd-13-3975-2020>, 2020.
- Nogueira, M., Boussetta, S., Balsamo, G., Albergel, C., Trigo, I. F., Johannsen, F., Miralles, D. G., and Dutra, E.: Upgrading
560 Land-Cover and Vegetation Seasonality in the ECMWF Coupled System: Verification With FLUXNET Sites, METEOSAT Satellite Land Surface Temperatures, and ERA5 Atmospheric Reanalysis, *Journal of Geophysical Research: Atmospheres*, 126, 1–26, <https://doi.org/10.1029/2020JD034163>, 2021.
- Orth, R., Dutra, E., Trigo, I. F., and Balsamo, G.: Advancing land surface model development with satellite-based Earth observations, *Hydrology and Earth System Sciences*, 21, 2483–2495, <https://doi.org/10.5194/hess-21-2483-2017>, 2017.
- 565 Pacholczyk, P. and Verger, A.: GEOV2 AVHRR Product User Manual, Tech. rep., <https://www.theia-land.fr/wp-content/uploads/2020/11/THEIA-MU-44-0369-CNES-GEOV2-AVHRR-Product-User-Manual-V2.pdf>, 2020.
- Pitman, A. J., De Noblet-Ducoudré, N., Cruz, F. T., Davin, E. L., Bonan, G. B., Brovkin, V., Claussen, M., Delire, C., Ganzeveld, L., Gayler, V., Van Den Hurk, B. J., Lawrence, P. J., Van Der Molen, M. K., Müller, C., Reick, C. H., Seneviratne, S. I., Strengren, B. J., and Voldoire, A.: Uncertainties in climate responses to past land cover change: First results from the LUCID intercomparison study, *Geophysical
570 Research Letters*, 36, 1–6, <https://doi.org/10.1029/2009GL039076>, 2009.



- Poulter, B., MacBean, N., Hartley, A., Khlystova, I., Arino, O., Betts, R., Bontemps, S., Boettcher, M., Brockmann, C., Defourny, P., Hagemann, S., Herold, M., Kirches, G., Lamarche, C., Lederer, D., Ottlé, C., Peters, M., and Peylin, P.: Plant functional type classification for earth system models: Results from the European Space Agency's Land Cover Climate Change Initiative, *Geoscientific Model Development*, 8, 2315–2328, <https://doi.org/10.5194/gmd-8-2315-2015>, 2015.
- 575 Ryu, Y., Nilson, T., Kobayashi, H., Sonntag, O., Law, B. E., and Baldocchi, D. D.: On the correct estimation of effective leaf area index: Does it reveal information on clumping effects?, *Agricultural and Forest Meteorology*, 150, 463–472, <https://doi.org/10.1016/j.agrformet.2010.01.009>, 2010.
- Savenije, H. H.: The importance of interception and why we should delete the term evapotranspiration from our vocabulary, *Hydrological processes*, 18, 1507–1511, <https://doi.org/10.1002/hyp.5563>, 2004.
- 580 Schlesinger, W. H. and Jasechko, S.: Transpiration in the global water cycle, *Agricultural and Forest Meteorology*, 189–190, 115–117, <https://doi.org/10.1016/j.agrformet.2014.01.011>, 2014.
- Schulzweida, U.: CDO User Guide, Max Planck Institute for Meteorology, <https://doi.org/10.5281/zenodo.3539275>, 2022.
- Seneviratne, S. I., Corti, T., Davin, E. L., Hirschi, M., Jaeger, E. B., Lehner, I., Orlowsky, B., and Teuling, A. J.: Investigating soil moisture-climate interactions in a changing climate: A review, *Earth-Science Reviews*, 99, 125–161, <https://doi.org/10.1016/j.earscirev.2010.02.004>,
585 2010.
- Trigo, I. F., Boussetta, S., Viterbo, P., Balsamo, G., Beljaars, A., and Sandu, I.: Comparison of model land skin temperature with remotely sensed estimates and assessment of surface-atmosphere coupling, *Journal of Geophysical Research Atmospheres*, 175, 238, <https://doi.org/10.1038/175238c0>, 2015.
- Ukkola, A. M., De Kauwe, M. G., Pitman, A. J., Best, M. J., Abramowitz, G., Haverd, V., Decker, M., and Houghton, N.: Land surface models
590 systematically overestimate the intensity, duration and magnitude of seasonal-scale evaporative droughts, *Environmental Research Letters*, 11, <https://doi.org/10.1088/1748-9326/11/10/104012>, 2016.
- Van Oorschot, F., Van Der Ent, R. J., Hrachowitz, M., and Alessandri, A.: Climate-controlled root zone parameters show potential to improve water flux simulations by land surface models, *Earth System Dynamics*, 12, 725–743, <https://doi.org/10.5194/esd-12-725-2021>, 2021.
- Verger, A., Baret, F., and Weiss, M.: Near real-time vegetation monitoring at global scale, *IEEE Journal of Selected Topics in Applied Earth
595 Observations and Remote Sensing*, 7, 3473–3481, <https://doi.org/10.1109/JSTARS.2014.2328632>, 2014.
- Verger, A., Baret, F., and Weiss, M.: Vegetation and Energy Algorithm Theoretical Basis Document, Copernicus Global Land Operations, pp. 1–93, https://land.copernicus.eu/global/sites/cgls.vito.be/files/products/CGLOPS1_ATBD_LAI1km-V2_I1.41.pdf, 2019.
- Wei, Z., Yoshimura, K., Wang, L., Miralles, D. G., Jasechko, S., and Lee, X.: Revisiting the contribution of transpiration to global terrestrial evapotranspiration, *Geophysical Research Letters*, 44, 2792–2801, <https://doi.org/10.1002/2016GL072235>, 2017.
- 600 Yang, K., Zhu, L., Chen, Y., Zhao, L., Qin, J., Lu, H., Tang, W., Han, M., Ding, B., and Fang, N.: Land surface model calibration through microwave data assimilation for improving soil moisture simulations, *Journal of Hydrology*, 533, 266–276, <https://doi.org/10.1016/j.jhydrol.2015.12.018>, 2016.
- Zhang, L., Hu, Z., Fan, J., Zhou, D., and Tang, F.: A meta-analysis of the canopy light extinction coefficient in terrestrial ecosystems, *Frontiers of earth science*, 8, 599–609, <https://doi.org/10.1007/s11707-014-0446-7>, 2014.



Table 1. Details of model experiments

Experiment	Land cover	Leaf Area Index	Effective vegetation cover
CTR	ESA-CCI fixed	CGLS climatology	$k=0.5$
IALC	ESA-CCI inter-annual	CGLS climatology	$k=0.5$
IAK5	ESA-CCI inter-annual	CGLS inter-annual	$k=0.5$
IAKV	ESA-CCI inter-annual	CGLS inter-annual	k vegetation specific

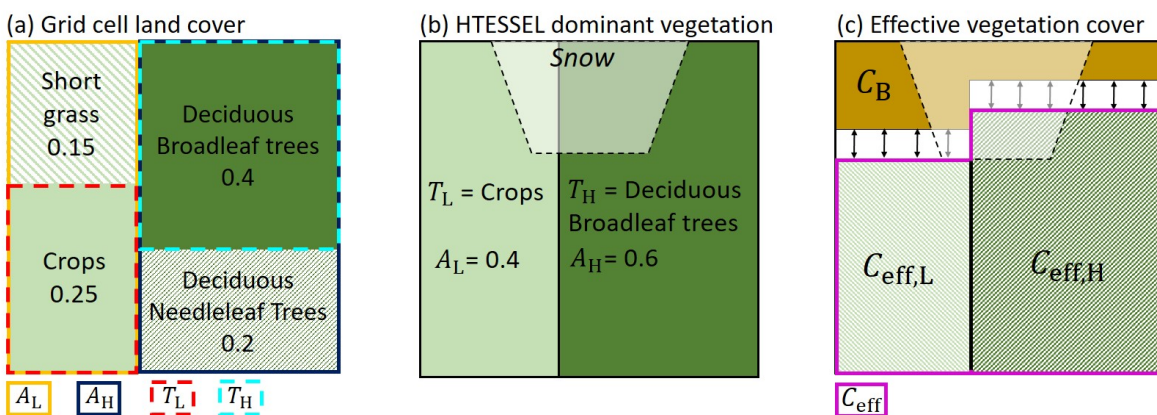


Figure 1. Vegetation representation in a grid cell with example vegetation types and cover fractions. (a) Grid cell vegetation type and cover fraction based on land cover dataset. (b) HTESSEL dominant low and high vegetation type (T_L and T_H) and cover fraction (A_L and A_H). (c) HTESSEL effective vegetation cover with $C_{\text{eff},L}$ and $C_{\text{eff},H}$ the effective low and high vegetation cover fraction, C_B the bare soil fraction, and $C_{\text{eff}} = C_{\text{eff},L} + C_{\text{eff},H}$, with the arrows indicating the temporal variability of C_{eff} as discussed in Sect. 2.2.3.

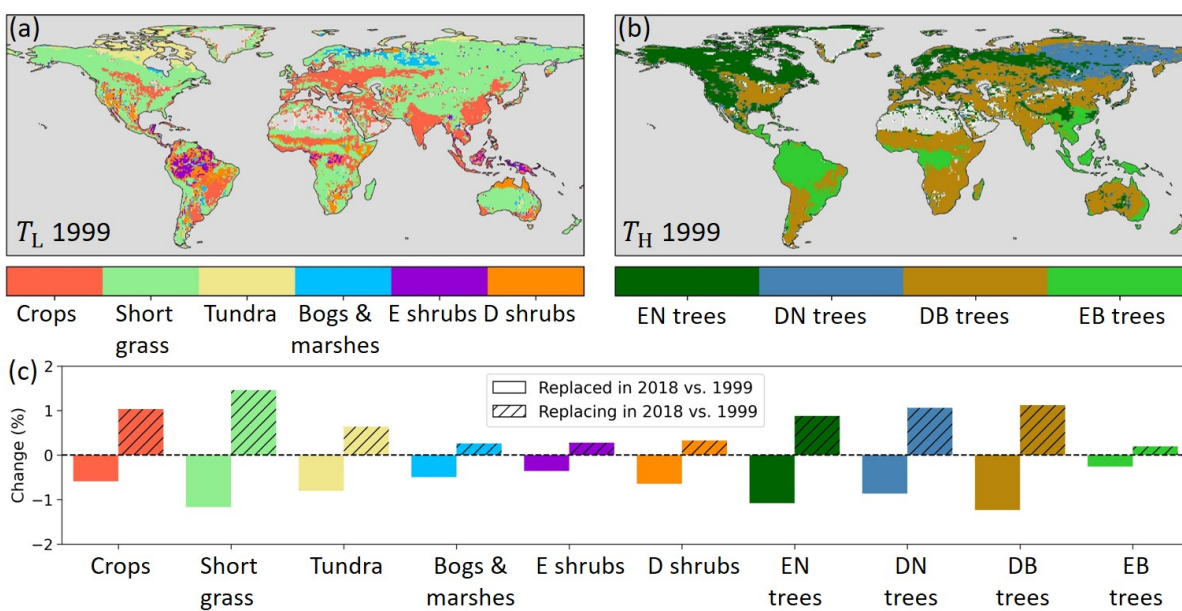


Figure 2. (a) Model low (T_L) and (b) high (T_H) dominant vegetation types in 1999 based on ESA-CCI land cover. (c) Changes in vegetation type in percent of the total land points with plain colors indicating that the vegetation type has been replaced in 2018 compared to 1999 and hatched colors that the vegetation replaces another type in 2018 compared to 1999. E stands for evergreen, D for deciduous, N for needleleaf, and B for broadleaf

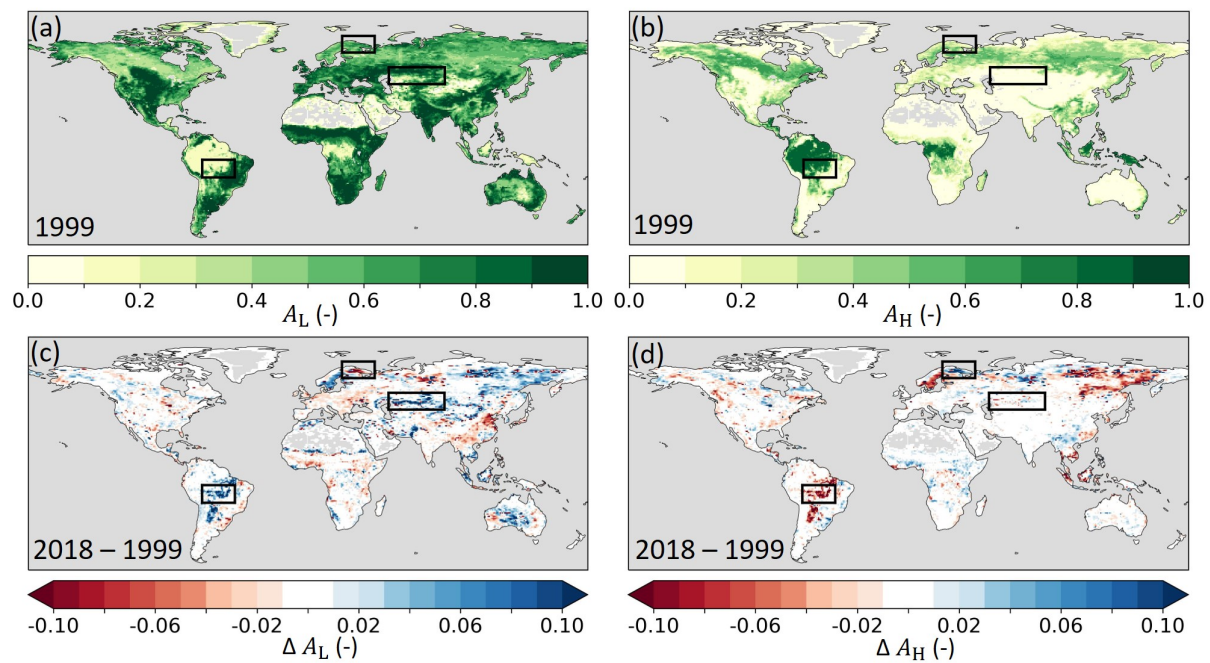


Figure 3. (a) Model low (A_L) and (b) high (A_H) vegetation cover fraction in 1999 and absolute difference in (c) A_L and (d) A_H between 2018 and 1999 (2018–1999) based on ESA-CCI land cover. Blue (red) indicates an increased (reduced) cover in 2018. The black boxes highlight the three regions Southern Amazon, Lapland and Central Asia that are further analyzed in Sect. 3.1.

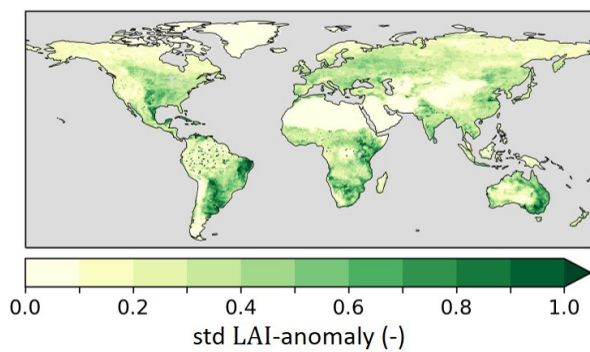


Figure 4. Standard deviation (std) of monthly inter-annual anomaly CGLS LAI for 1999-2018 as implemented in experiment IAK5 (Table 1).

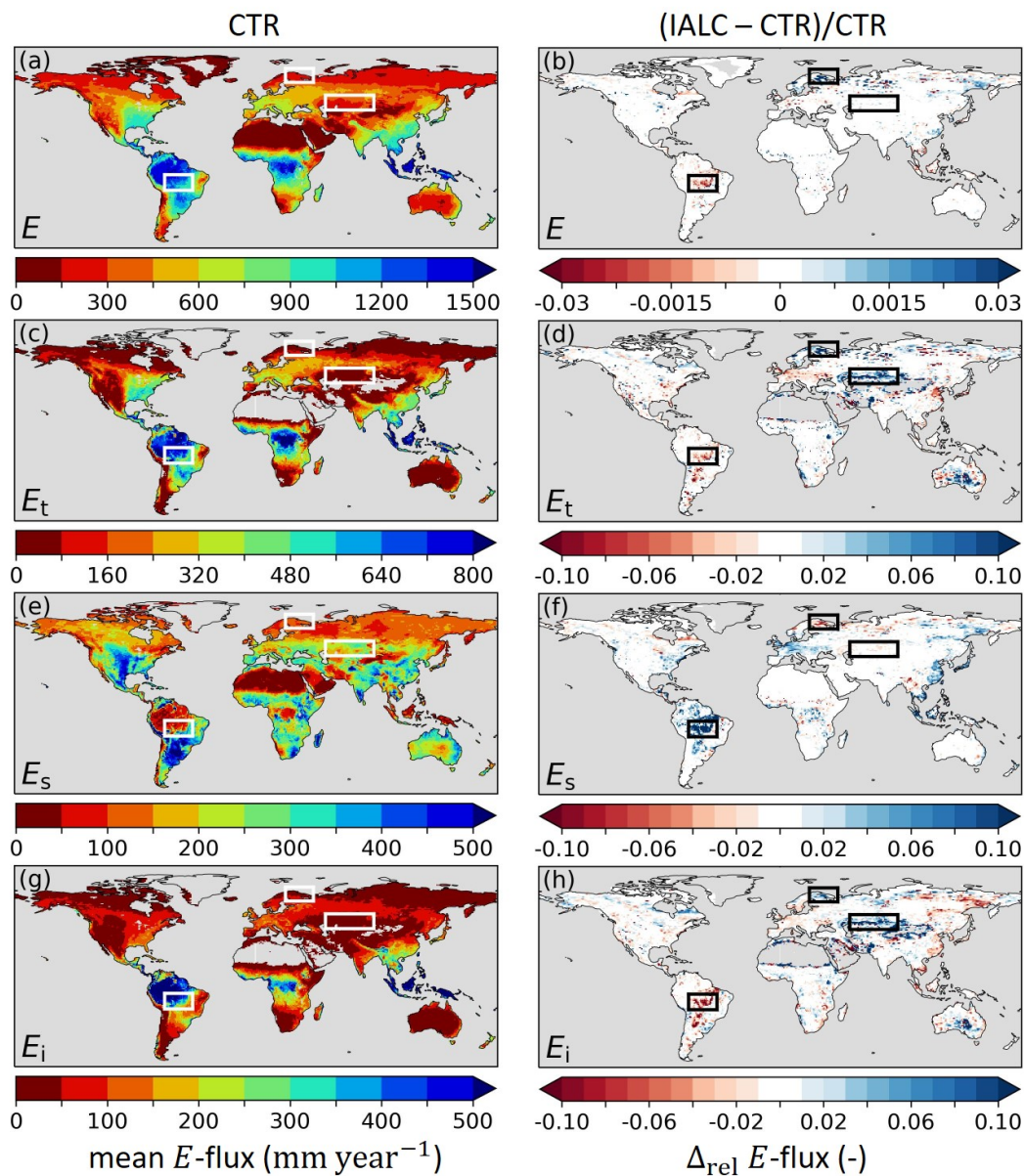


Figure 5. Annual mean evaporation fluxes (2014–2018) in experiment CTR with (a) total evaporation (E), (c) transpiration (E_t), (e) soil evaporation (E_s) and (g) interception evaporation (E_i), and the relative difference (Δ_{rel}) between annual mean evaporation fluxes in experiments IALC and CTR $(IALC - CTR)/CTR$ for (b) E , (d) E_t , (f) E_s and (h) E_i . Blue (red) indicates an increased (reduced) flux. Grey land areas indicate regions with annual mean E-fluxes $< 0.1 \text{ mm year}^{-1}$. The boxes highlight the three regions Southern Amazon, Lapland and Central Asia with major land cover changes (Fig. 3). See Table 1 for details of the experiments.

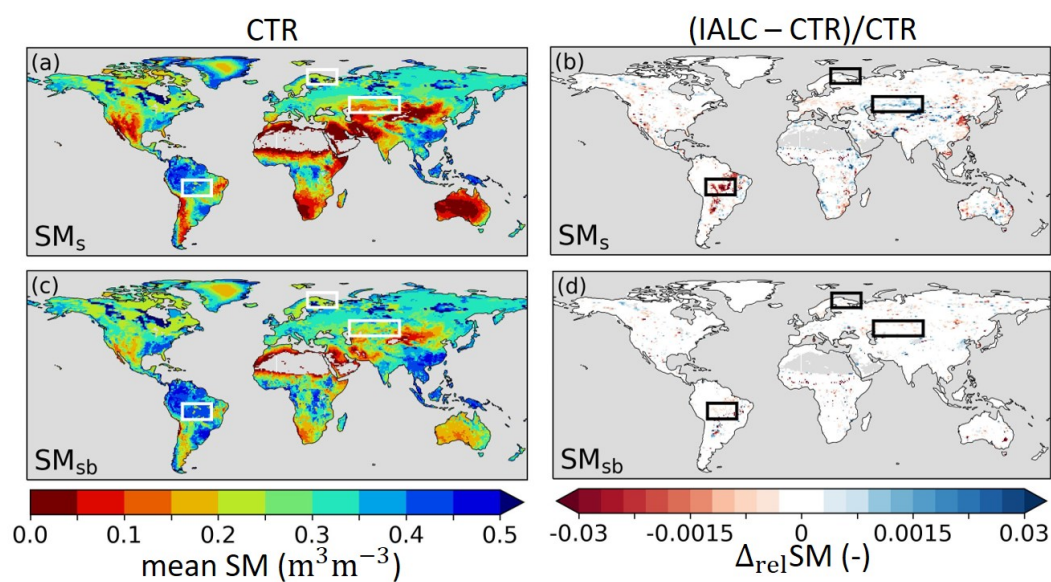


Figure 6. Annual mean soil moisture (2014-2018) (SM) in experiment CTR with (a) near-surface soil moisture (SM_s) and (c) subsurface soil moisture (SM_{sb}), and the relative difference (Δ_{rel}) between annual mean SM in experiments IALC and CTR ($(IALC-CTR)/CTR$) for (b) SM_s and (d) SM_{sb} . Blue (red) indicates an increased (reduced) soil moisture. Grey land areas indicate regions with annual mean SM $< 0.01 m^3 m^{-3}$. The boxes highlight the three regions Southern Amazon, Lapland and Central Asia with major land cover changes (Fig. 3). See Table 1 for details of the experiments.

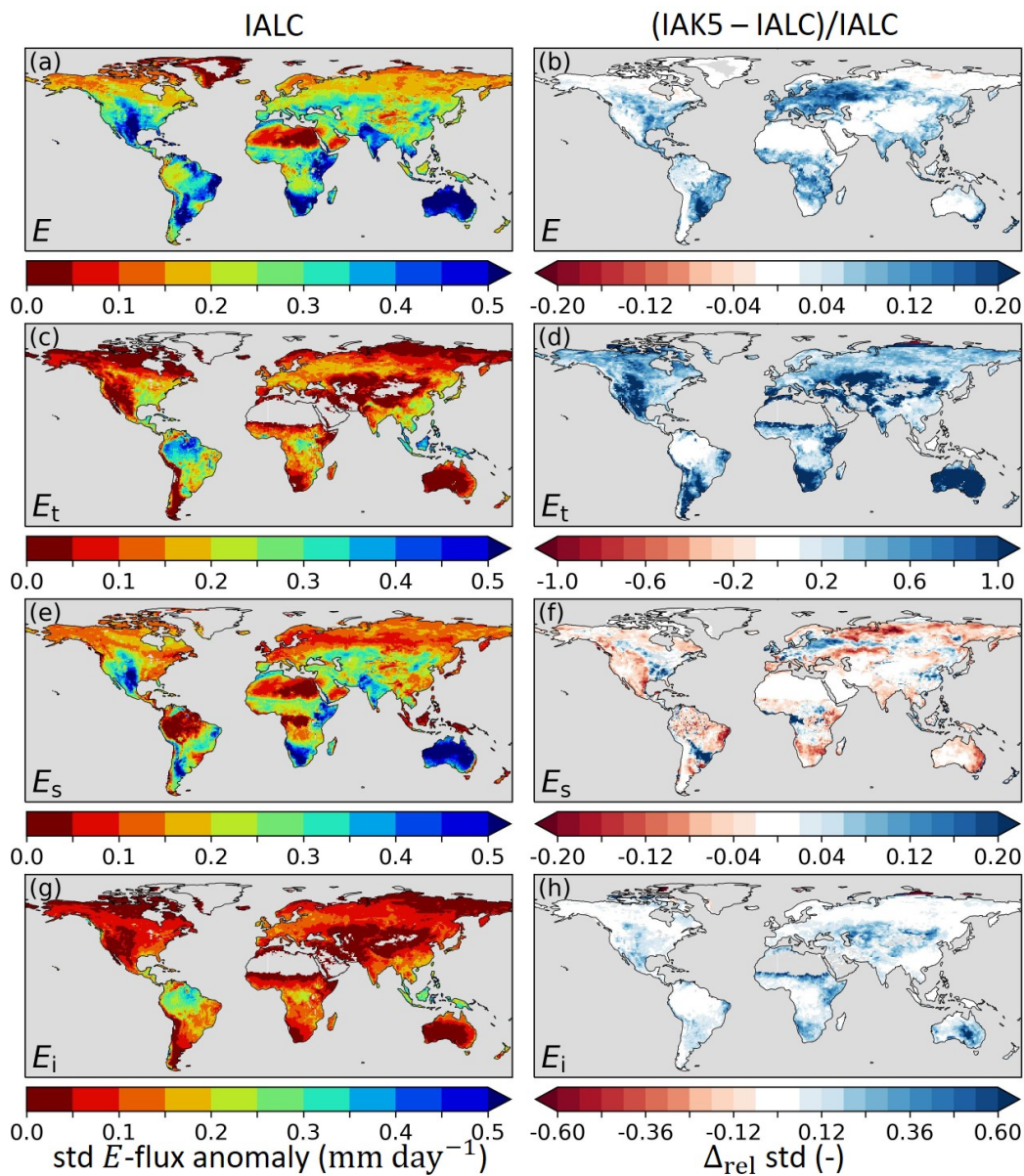


Figure 7. Standard deviation (std) of anomaly evaporation fluxes in experiment IALC with (a) total evaporation (E), (c) transpiration (E_t), (e) soil evaporation (E_s) and (g) interception evaporation (E_i), and the relative difference (Δ_{rel}) between the anomaly E std in experiments IAK5 and IALC ($(\text{IAK5} - \text{IALC})/\text{IALC}$) for (b) E , (d) E_t , (f) E_s and (h) E_i . Blue (red) indicates an increased (reduced) std. See Table 1 for details of the experiments.

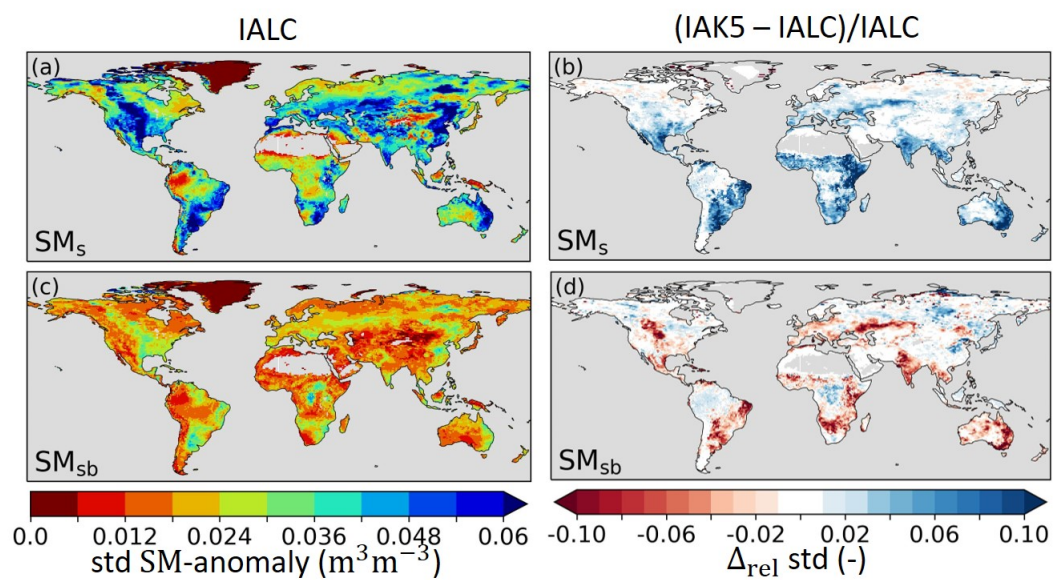
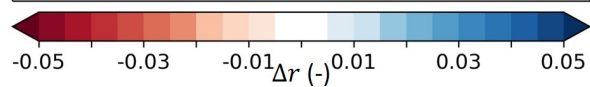
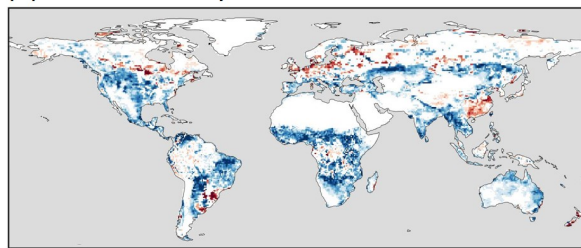


Figure 8. Standard deviation (std) of anomaly soil moisture (SM) in experiment IALC with (a) near-surface soil moisture (SM_s), and (c) subsurface soil moisture (SM_{sb}), and the relative difference (Δ_{rel}) between the anomaly SM std in experiments IAK5 and IALC ($(IAK5 - IALC)/IALC$) for (b) SM_s and (d) SM_{sb} . Blue (red) indicates an increased (reduced) variability. See Table 1 for details of the experiments.



(a) Δr E -anomaly IAK5 – IALC



(b) Δr SM_s -anomaly IAK5 – IALC

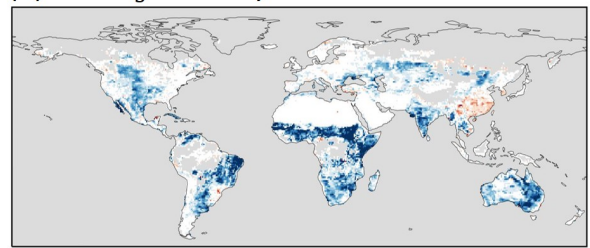


Figure 9. Pearson correlation difference (Δr) between experiments IALC and IAK5 (IAK5–IALC) for (a) monthly anomaly total evaporation (E) with respect to DOLCEv3 evaporation and (b) monthly anomaly near-surface soil moisture (SM_s) with respect to ESA-CCI SM. Blue (red) indicates an increased (reduced) correlation in IAK5 compared to IALC, white colors indicate small and/or insignificant Δr , and grey indicates no data points. See Table 1 for details of the experiments. Similar figures for seasonal anomalies are presented in Fig. S4-5.

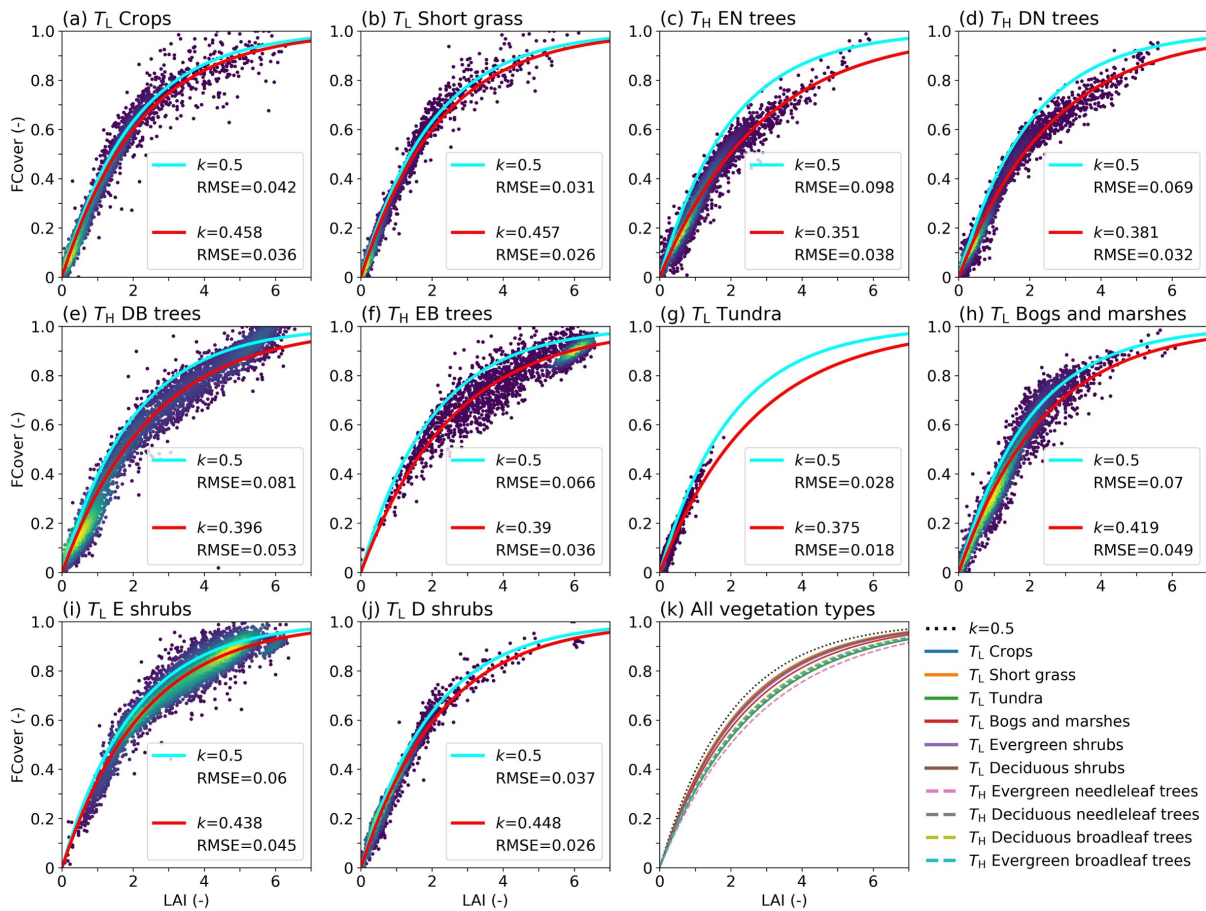


Figure 10. (a – j) LAI vs FCover for a subsample (5000) of the selected points used for the least squares optimization for all vegetation types with in red the optimized LAI-FCover relation (Eq. 10) and in lightblue the $k=0.5$ relation, with RMSE values of the data points with respect to the curve. The colors indicate the point density with purple a low density and yellow a high density. (k) The optimized LAI-FCover relation for all vegetation types. E stands for evergreen, D for deciduous, N for needleleaf, and B for broadleaf.

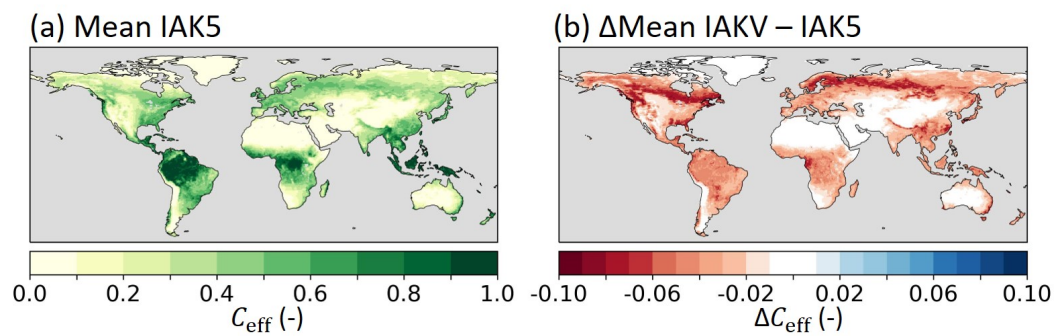


Figure 11. (a) Mean monthly model effective vegetation cover (C_{eff}) in experiment IAK5 and (b) the absolute difference between IAKV and IAK5 (IAKV-IAK5) mean monthly C_{eff} , red (blue) indicates a reduced (increased) C_{eff} in IAKV compared to IAK5. Details of model experiments in Table 1.

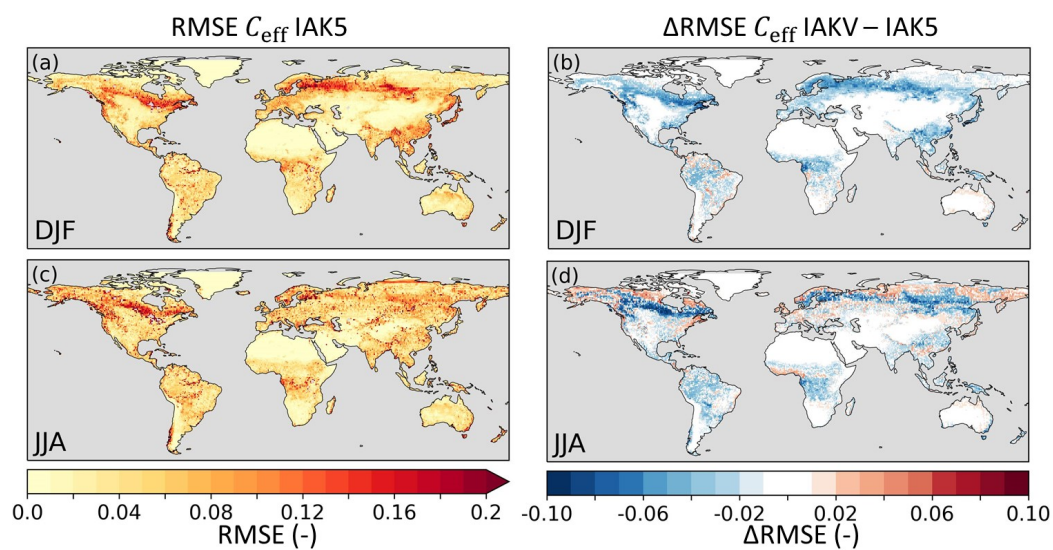


Figure 12. Root mean squared error (RMSE) of model seasonal C_{eff} in experiment IAK5 with respect to CGLS FCover for DJF (a) and JJA (c), with red indicating a larger RMSE. The difference between RMSE in IAK5 and IAKV ($\text{IAKV} - \text{IAK5}$) for DJF (b) and JJA (d) with blue (red) indicating a reduced (increased) RMSE, and white colors indicate small and/or insignificant ΔRMSE . See Table 1 for details of the experiments. Similar figures for monthly values and all the seasons are presented in Fig. S8-9.

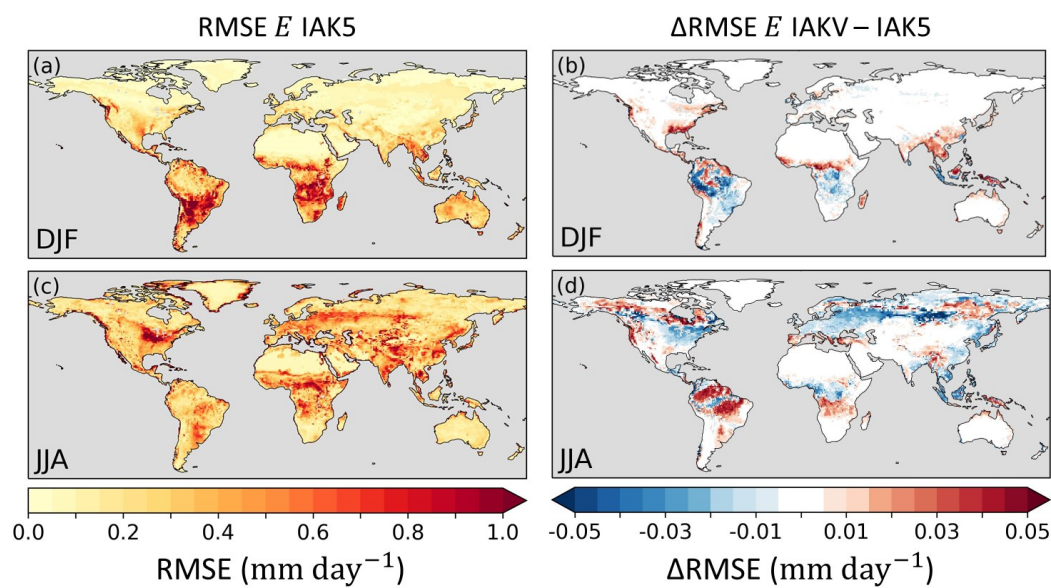


Figure 13. Root mean squared error (RMSE) of model seasonal E in experiment IAK5 with respect to DOLCEv3 E for DJF (a) and JJA (c), with red indicating a larger RMSE. The difference between RMSE in IAK5 and IAKV ($\text{IAKV} - \text{IAK5}$) for DJF (b) and JJA (d) with blue (red) indicating a reduced (increased) RMSE, and white colors indicate small and/or insignificant ΔRMSE . See Table 1 for details of the experiments. Similar figures for monthly values and all the seasons are presented in Fig. S10-11.

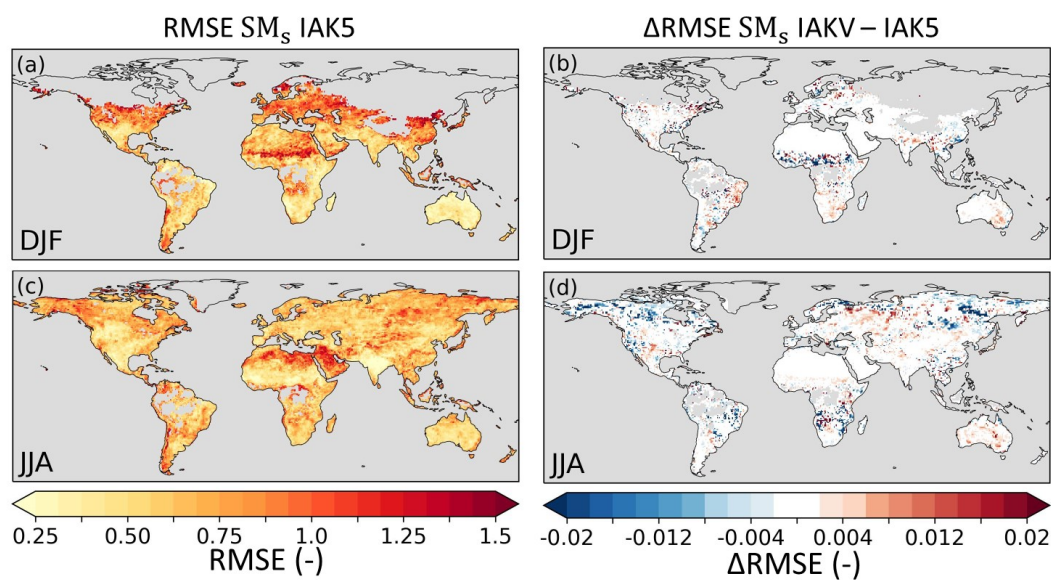


Figure 14. Root mean squared error (RMSE) of model standardized inter-annual seasonal anomaly SM_s in experiment IAK5 with respect to ESA-CCI SM for DJF (a) and JJA (c). The difference between RMSE in IAK5 and IAKV (IAKV–IAK5) for DJF (b) and JJA (d) with blue (red) indicating a reduced (increased) RMSE, white colors indicate small and/or insignificant $\Delta RMSE$, and grey indicates no data points. See Table 1 for details of the experiments. Similar figures for monthly values and all the seasons are presented in Fig. S12-13.

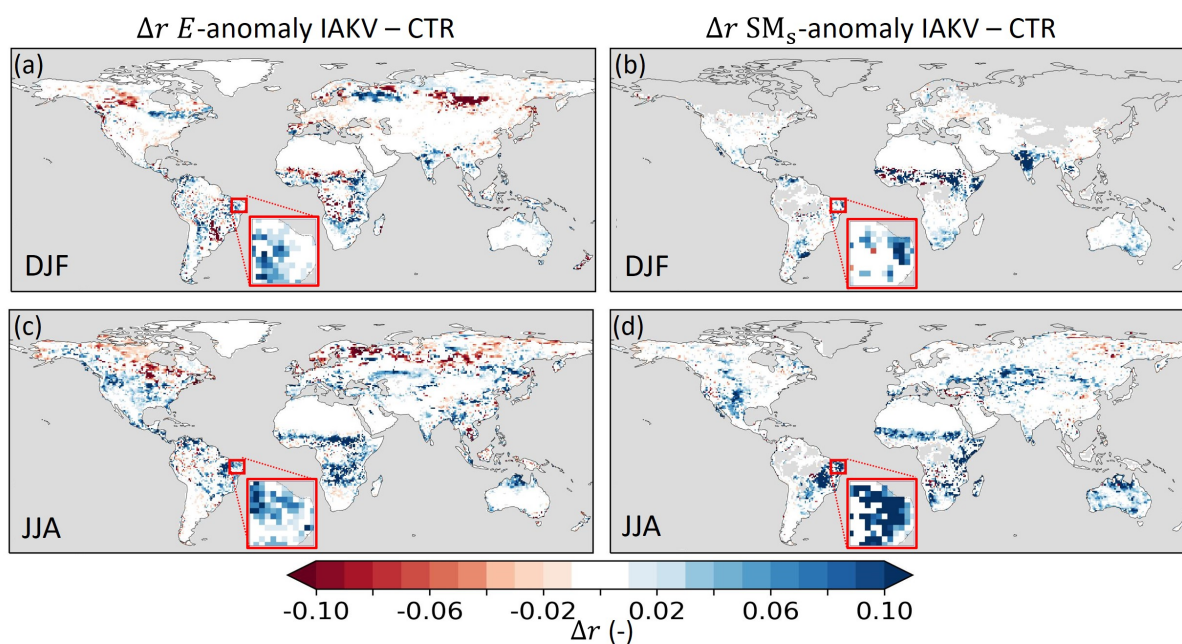


Figure 15. Pearson correlation coefficient difference (Δr) between experiment IAK5 and IAKV (IAKV–IAK5) for (a,c) seasonal anomaly total evaporation (E) with respect to DOLCEv3 evaporation for DJF and JJA and (b,d) seasonal anomaly near-surface soil moisture (SM_s) with respect to ESA-CCI SM for DJF and JJA. Blue (red) indicates an increased (reduced) correlation in IAKV compared to IAK5, white colors indicate small and/or insignificant Δr , and grey indicates no data points. The red box is highlighted in Fig. 16. See Table 1 for details of the experiments. Similar figures for all the seasons and monthly anomalies are presented in Fig. S17-19.

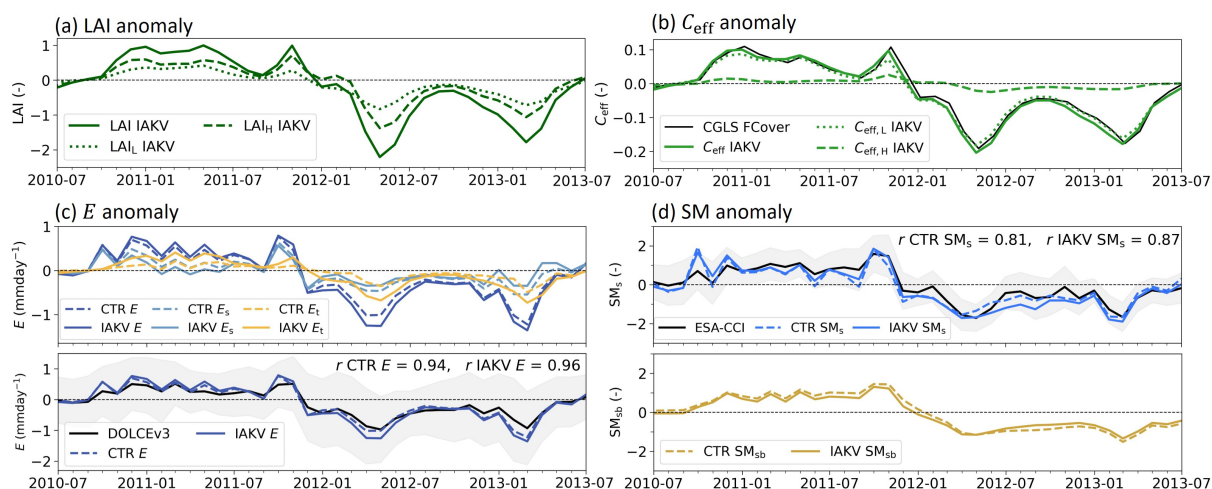


Figure 16. Timeseries of the North-Eastern Brazil case highlighted in Fig. 15 for (a) LAI anomalies, (b) Effective vegetation cover (C_{eff}) anomalies with in black the CGLS FCover data as a reference, (c) Evaporation anomalies with E total evaporation, E_t transpiration, E_s soil evaporation and E_i interception evaporation, and in black DOLCEv3 E as a reference, and (d) Soil moisture standardized anomalies with SM_s near-surface soil moisture and SM_{sb} subsurface soil moisture, and in black ESA-CCI SM as a reference. Dashed lines in (c) and (d) represent experiment CTR and solid lines IAKV. The shading in (c) and (d) represents the uncertainty associated with the reference data. For this case T_L =Short grass, T_H =Deciduous broadleaf trees, $A_L=0.84$ and $A_H=0.16$.

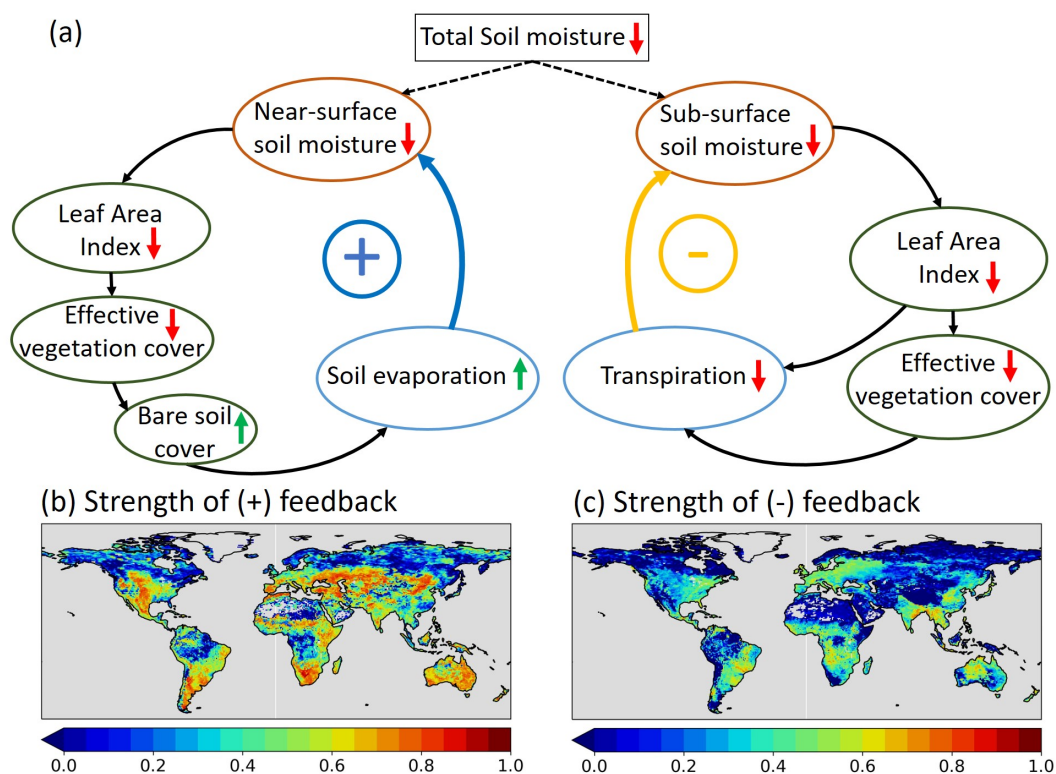


Figure 17. (a) Processes contributing to the anomaly vegetation-soil moisture feedback mechanisms as activated with the improved vegetation variability in IAKV compared to CTR. Upward (downward) arrows indicate positive (negative) change in the involved variables. Positive (blue) arrows indicate positive feedback and negative (yellow) arrows indicate negative feedback. +/- refer to the resulting positive/negative feedback loop relative to the sign of the change of the involved variables. The strength of the feedbacks (b,c) is quantified as the absolute correlation between anomaly ΔE_s and ΔSM_s (b), and ΔE_t and ΔSM_{sb} (c), with Δ representing the difference between CTR and IAKV (IAKV-CTR).