

Response to Reviewers  
An Updated Modeling Framework to Simulate Los Angeles Air Quality. Part 1: Model  
Development, Evaluation, and Source Apportionment

Review 1:

In this manuscript the authors present a comprehensive exploration of air quality in the LA basin, a complex region influenced by unique atmospheric dynamics and diverse emission sources. As a prologue to a planned future submission exploring consequences of the COVID-19 pandemic lockdowns in more detail, the authors here set out to model regional air quality by applying updated and optimized emissions inventories to the chemical transport model CMAQ, and to evaluate the model against a suite of observations including typical gas- and particle-phase pollutants and their precursors.

On the whole I find this to be an important and well-composed manuscript, providing a compilation of recently identified emission types and associated chemistry into valuable new model/measurement comparisons. The manuscript text is clear and well-composed, as are key figures. However, I do have just a few concerns, mostly related to the treatment of modeled dynamics and its consequences, which I'd like to see addressed before I recommend publication.

Thank you for your thoughtful response and helpful comments. Each question is addressed individually below.

- My primary concern is related to WRF performance in reproducing dynamics and transport. As noted by the authors, wind speed and direction are both crucial components in overall model performance due to their role in determining the transport of pollutants and precursors. The failure of the nested WRF model to adequately represent these features is therefore a pretty big issue in my mind: it's hard to tell how much of the subsequent analyses of chemical composition are impacted by problems in dynamics, casting many of the subsequent conclusions in doubt. I understand that this is a very thorny modeling problem, but I would very much like to see the authors attempt to address this problem in some form, at the very least to try and better understand when and where their WRF simulations are failing, and to quantify the sensitivity of their final results to transport issues.

The reviewer points out that wind speed is inaccurately predicted, as demonstrated by the large normalized mean bias (NMB) values in Figure 5 in the submitted publication. NMB for all 3 domains is presented in Figure R1. WRF tends to overpredict wind speed at most locations in all 3 modeling domains. This suggests that the model error lies with the input reanalysis data, and less with the model configuration. This further suggests that to improve model simulations, new reanalysis data should be used or observational nudging should be engaged when running WRF. However, using new reanalysis data may introduce error to other meteorological fields, whereas temperature is well-predicted by this model setup. Please see the response to the third point below, where we re-ran CMAQ to test the sensitivity of the model to the WRF-predicted wind speed. We concluded that a reduction of wind field error cannot improve the modeled O<sub>3</sub> and PM<sub>2.5</sub>.

Figure R1 was included in the manuscript as Figure S10, and the conclusions made here have been integrated into the main text in Section 3.1.1:



Please see the response to the question below. As those results demonstrate, wind speed does not cause noticeable bias in the error of species such as ozone or PM<sub>2.5</sub>. Hence, we expect that improving wind speed predictions using a tool such as HRRR will not have a large impact on predicted pollutant levels.

- o Regardless of how well these (or other) techniques might improve model performance, their use would also allow for a kind of sensitivity study to assess the impact of transport on modeled chemistry. It would be helpful and informative to assess CMAQ predictions under alternative (hopefully improved!) meteorological methods such as those described above, and to compare that performance against predictions made using original meteorology, thereby estimating sensitivities. As suggested by the reviewer, we have now conducted additional sensitivity study to assess the impact of transport on modeled chemistry. The WRF wind speed was reduced by 25% (i.e., scaled by a factor of 0.75) in an effort to correct for some of the bias. A reduction of 25% was chosen to represent the correction required to bring modeled wind speed into the range of observed wind speed, as represented by the values in Table S1 from the submitted manuscript SI. CMAQ was re-run using the new meteorological files to assess the impact of improved wind speed on pollutant predictions. The results are presented below in Figures R2 and R3. The values in Figure R2 can be compared to the values in Figure 5 in the main text. Wind speed improved appreciably in response to the 25% reduction in their values throughout the domain. In spite of improved wind speed, modeled PM<sub>2.5</sub> only exhibits small improvement, while modeled O<sub>3</sub> did not respond much. This suggests that wind speed does not have a large effect on modeled pollutant concentrations, and bias in those concentrations is more likely caused by errors in modeled chemistry and/or emissions.

This paragraph has been copied into the main text in Section 3.2, and Figures R2-R3 have become Figures 7 and 8 in the main text.

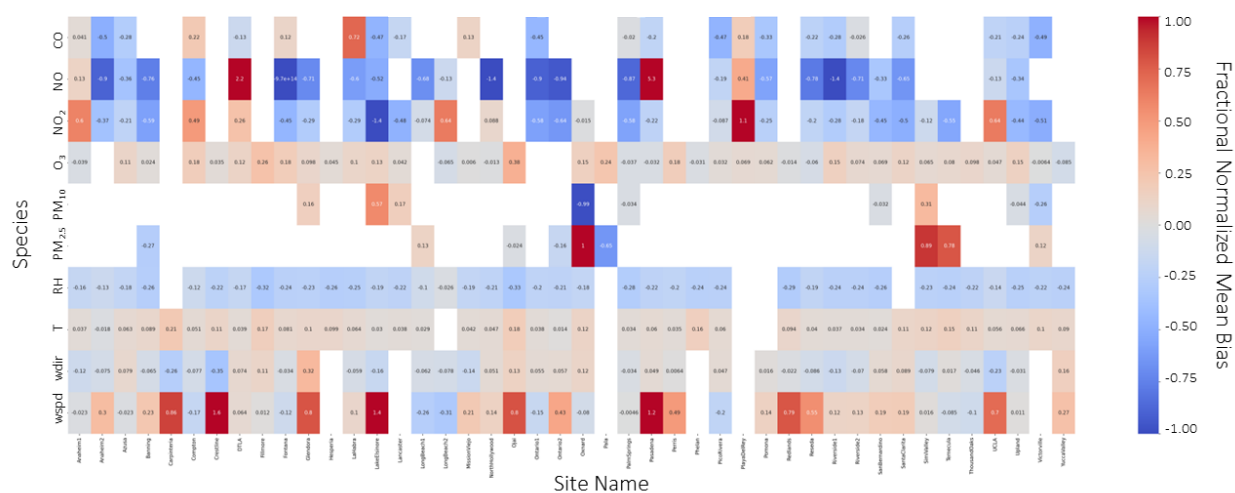


Figure R2: Fractional NMB of pollutants (rows) at all EPA AQS sites (columns) in the LA domain using daily-average values April 1-30, 2020. Empty boxes represent sites without measurements of the given pollutant.

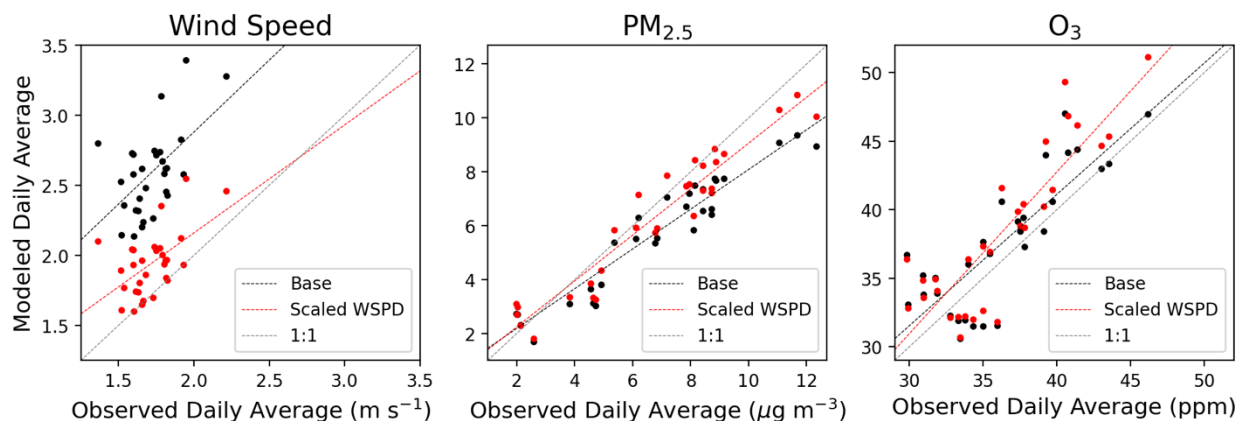


Figure R3: Daily-averaged modeled versus observed values of (left) wind speed, (middle)  $O_3$ , and (right)  $PM_{2.5}$ . Black markers and lines represent data from the “base case” wind speed simulations. Red markers and lines represent data from the scaled (i.e. scaled by 0.75) wind speed simulations. Gray line represents the 1:1 modeled:observed line.

- Why were lightning  $NO_x$  and windblown dust sources omitted? While they may not dominate in this urban region, they still seem like sources better included than excluded. (If the omission was due to a lack of trust in modeled wind speeds and convection, this seems like all the more reason to improve these elements.)

Dust makes up a small fraction of total PM loading. Hayes et al. (2013) showed that in Pasadena, dust makes up only 1.6% of total  $PM_{10}$  by mass. Natural emissions are the lowest source of PM emissions (CARB, 2023), so windblown dust is a minor contributor to total PM. However, it is possible that muting the dust scheme could cause underestimations of  $PM_{2.5}$  and  $PM_{10}$ . Previous work suggests that crustal elements, i.e. dust elements, do not have a large impact on modeled ammonium and nitrate concentrations (Ensberg et al., 2013), so omitting these emissions should not have a large impact on other inorganic aerosol or gas-phase species. Previous work (e.g. Choi et al., 2009) has shown that lightning  $NO_x$  is nearly negligible over Southern California. Lightning  $NO_x$  and windblown dust sources were also omitted to be consistent with prior works investigating the Los Angeles Basin (e.g., Murphy et al., 2017; Qin et al., 2021). This paragraph has been copied into Section 2.1.3.

- This is a more subjective and minor request, but I also would like to suggest that the authors consider an alternative and consistent color scheme for the panel maps of Fig. 6. Rainbow schemes such as this one produce artificial bands across specific color ranges, making it harder to consistently evaluate differences in the maps across concentration thresholds. It also looks like some of the maps use discretized color bins while others are continuous. Unless there is a specific reason for this, please make this a consistent decision one way or the other.

The color scheme has been updated in Figure 6. All figures now use discretized color bins.

Aside from these concerns I am confident that this will be an important literature contribution deserving of publication. My hope is that improved model dynamics will allow for a stronger profile of emissions and chemistry, along with the potential to quantify their associated sensitivities.

Thank you for your review!

## References

- CARB. (2023). *Criteria Pollutant Emission Inventory Data* | California Air Resources Board. <https://ww2.arb.ca.gov/criteria-pollutant-emission-inventory-data>
- Choi, Y., Kim, J., Eldering, A., Osterman, G., Yung, Y. L., Gu, Y., & Liou, K. N. (2009). Lightning and anthropogenic NO<sub>x</sub> sources over the United States and the western North Atlantic Ocean: Impact on OLR and radiative effects. *Geophysical Research Letters*, *36*(17). <https://doi.org/10.1029/2009GL039381>
- Ensberg, J. J., Craven, J. S., Metcalf, A. R., Allan, J. D., Angevine, W. M., Bahreini, R., Brioude, J., Cai, C., Coe, H., de Gouw, J. A., Ellis, R. A., Flynn, J. H., Haman, C. L., Hayes, P. L., Jimenez, J. L., Lefer, B. L., Middlebrook, A. M., Murphy, J. G., Neuman, J. A., ... Seinfeld, J. H. (2013). Inorganic and black carbon aerosols in the Los Angeles Basin during CalNex. *Journal of Geophysical Research: Atmospheres*, *118*(4), 1777–1803. <https://doi.org/10.1029/2012JD018136>
- Hayes, P. L., Ortega, A. M., Cubison, M. J., Froyd, K. D., Zhao, Y., Cliff, S. S., Hu, W. W., Toohey, D. W., Flynn, J. H., Lefer, B. L., Grossberg, N., Alvarez, S., Rappenglück, B., Taylor, J. W., Allan, J. D., Holloway, J. S., Gilman, J. B., Kuster, W. C., Gouw, J. A. de, ... Jimenez, J. L. (2013). Organic aerosol composition and sources in Pasadena, California, during the 2010 CalNex campaign. *Journal of Geophysical Research: Atmospheres*, *118*(16), 9233–9257. <https://doi.org/10.1002/jgrd.50530>
- Murphy, B. N., Woody, M. C., Jimenez, J. L., Carlton, A. M. G., Hayes, P. L., Liu, S., Ng, N. L., Russell, L. M., Setyan, A., Xu, L., Young, J., Zaveri, R. A., Zhang, Q., & Pye, H. O. T. (2017). Semivolatile POA and parameterized total combustion SOA in CMAQv5.2: Impacts on source strength and partitioning. *Atmospheric Chemistry and Physics*, *17*(18), 11107–11133. <https://doi.org/10.5194/acp-17-11107-2017>
- Qin, M., Murphy, B. N., Isaacs, K. K., McDonald, B. C., Lu, Q., McKeen, S. A., Koval, L., Robinson, A. L., Efsthathiou, C., Allen, C., & Pye, H. O. T. (2021). Criteria pollutant impacts of volatile chemical products informed by near-field modelling. *Nature Sustainability*, *4*(2), Article 2. <https://doi.org/10.1038/s41893-020-00614-1>