



Investigating the development of clouds within marine cold air outbreaks

Rebecca J. Murray-Watson¹, Edward Gryspeerdt¹, and Tom Goren^{2,3}

¹Space and Atmospheric Physics Group, Department of Physics, Imperial College London, UK

²Department of Geography and Environment, Bar-Ilan University, Ramat Gan 52900, Israel

³Institute for Meteorology, Leipzig University, Stephanstr. 3, 04103 Leipzig, Germany

Correspondence: Rebecca J. Murray-Watson (rebecca.murray-watson17@imperial.ac.uk)

Abstract.

Marine cold air outbreaks are important parts of the high-latitude climate system, and are characterised by strong surface fluxes generated by the air-sea temperature gradient. These fluxes promote cloud formation, which can be identified in satellite imagery by the distinct transformation of stratiform cloud ‘streets’ into a broken field of cumuliform clouds downwind of the outbreak. This evolution in cloud morphology changes the radiative properties of the cloud, and therefore is of importance to the surface energy budget. While the drivers of stratocumulus-to-cumulus transitions, such as aerosols or the sea surface temperature gradient, have been extensively studied for subtropical clouds, the factors influencing transitions at higher latitudes are relatively poorly understood. This work uses reanalysis data to create a set of composite trajectories of cold air outbreaks moving off the Arctic ice edge and co-locates these trajectories with satellite data to generate a unique view of cloud development within cold air outbreaks.

The results of this analysis show that clouds embedded in cold-air outbreaks have distinctive properties relative to clouds following other, more stable, trajectories in the region. The initial strength of the outbreak shows a lasting effect on cloud properties, with differences between clouds in strong and weak events visible over 30 hours after the air has left the ice edge. However, while the strength (measured by the magnitude of the marine cold-air outbreak index) of the outbreak affects the magnitude of cloud properties, it does not affect the timing of the transition to cumuliform clouds nor the top-of-atmosphere albedo. In contrast, the initial aerosol concentration does not strongly affect the magnitude of the cloud properties, but aerosol concentration is correlated to cloud break-up, leading to an enhanced cooling effect in clouds moving through high aerosol conditions due to delayed break-up. This evidence of precipitation suppression enhancing cloud lifetime highlights the need for information about aerosol sources at the ice edge to correctly model cloud development. Both the aerosol environment and the strength and frequency of marine cold air outbreaks are expected to change in the future Arctic, and these results provide insight into how these changes will affect the radiative properties of the clouds.

1 Introduction

Marine boundary layer clouds play a critical role in the global climate system (Klein and Hartmann, 1993). The albedo contrast with the underlying ocean surface means clouds strongly modulate the surface energy balance through their shortwave cooling



25 effect. However, due to difficulties in parameterising microphysical processes which govern cloud radiative properties, clouds
contribute the most significant uncertainty to climate forcing (Boucher et al., 2013). Arctic clouds pose a particular problem,
as obtaining in situ or satellite data of their properties is challenging (e.g. Khanal and Wang, 2018). However, these clouds are
central to the Arctic energy budget (Shupe and Intrieri, 2004), and changes in their properties may play a role in enhancing
or abating Arctic Amplification (Schmale et al., 2021). Marine Arctic clouds also affect sea ice extent; a decrease in cloud
30 reflectivity in the summer leads to more shortwave radiation absorbed by the ocean surface, which is linked to a lower sea ice
extent the following autumn (Choi et al., 2014).

One important type of boundary layer cloud is those embedded in marine cold air outbreaks (MCAO), formed due to polar or
cold continental air moving over a relatively warm ocean surface. The vertical temperature gradient generates intense turbulent
heat and moisture surface fluxes, promoting cloud formation (Brümmer, 1996; Fletcher et al., 2016a; Papritz and Spengler,
35 2017). Outbreak events can last several days and reach scales of up to 1000 km (Fletcher et al., 2016a; Kolstad, 2017). MCAO
clouds can be characterised in satellite imagery as cloud ‘streets’ (stratocumulus decks) moving to a broken, cumuliform cloud
field downwind (Brümmer, 1999; Pithan et al., 2018), as seen in Figure 1. This evolution in cloud morphology results in a
change in cloud radiative properties; McCoy et al. (2017) found that the pre-transition stratiform clouds have a higher cloud
albedo than the open-cell clouds formed in the MCAO.

40 Stratocumulus-to-cumulus transitions have been extensively studied for subtropical clouds using model simulation (e.g.
Sandu and Stevens, 2011), satellite studies (e.g. Christensen et al., 2020) and in situ measurements (e.g. Sarkar et al., 2020).
These studies have identified several causes as the driving force behind stratocumulus-to-cumulus transitions, such as an
increasing sea surface temperature gradient and precipitation mediated by aerosol and ice-production processes. As air is
advected over the relatively warm ocean surface, the strength of the turbulent surface fluxes deepens the boundary layer,
45 eventually causing the cloud layer to be decoupled from the surface (Bretherton and Wyant, 1997; Sandu and Stevens, 2011).
As the ocean surface is cut off as a source of moisture and aerosols, the stratocumulus eventually dissipates. However, the
below-cloud layer continues to be warmed and moistened by the ocean surface, allowing cumuliform clouds in the lower
boundary layer. Although primarily studied for subtropical clouds, McCoy et al. (2017) found that boundary layer instability
and surface forcing were key drivers for developing open-cell cloud morphologies in MCAO.

50 Precipitation can also facilitate the break-up of cloud fields; the evaporation of precipitation below the cloud cools and
moistens the air of the sub-cloud layer (Stevens et al., 1998; Yamaguchi et al., 2017; Tornow et al., 2021). This stratifies
the lower boundary layer, creating convective conditions in which cumuliform clouds can form. All else being equal, earlier
precipitation would cause a more rapid transition. Precipitation also reduces the lifetime of the stratiform cloud layer by the
removal of water (Abel et al., 2017; Lloyd et al., 2018). Frozen precipitation, in particular, has been identified as key to breaking
55 up the cloud field in MCAO by accelerating the removal of cloud water through aerosol scavenging and mechanisms such as
riming (Tornow et al., 2021) or secondary ice production (Abel et al., 2017; Karalis et al., 2022). Through modelling an MCAO
north of the United Kingdom, Abel et al. (2017) found that precipitation, as opposed to the sea surface temperature gradient or
entrainment drying of the cloud, was the key driver of cloud breakup.

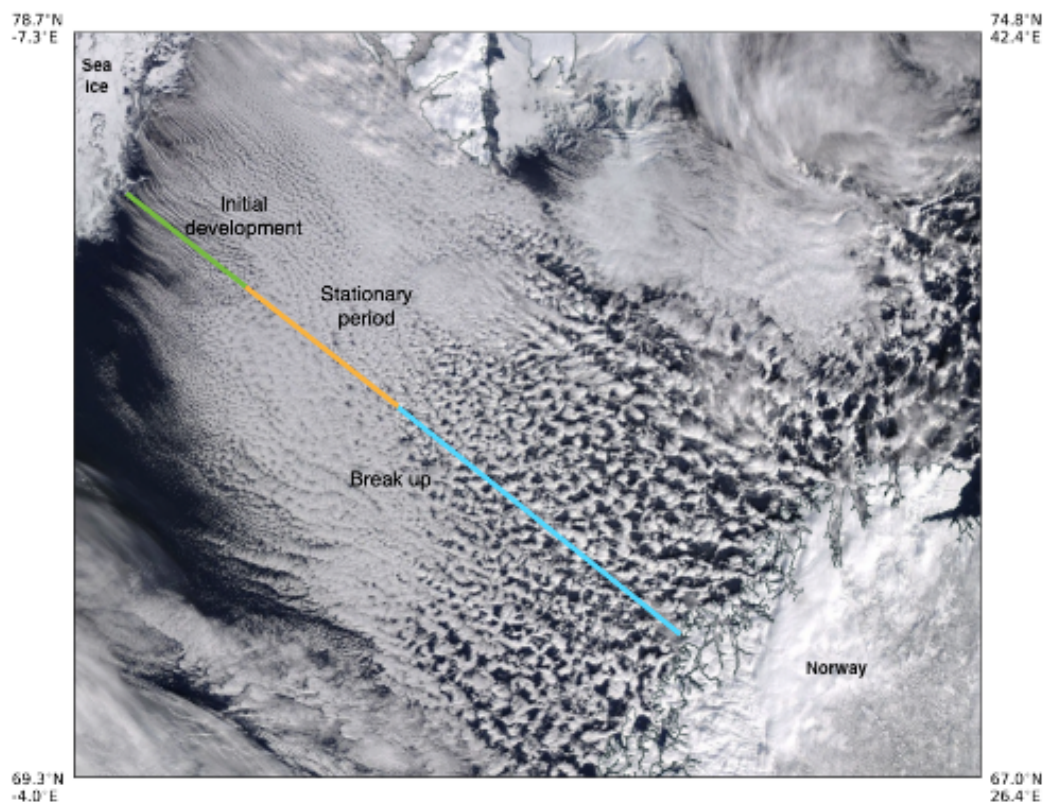


Figure 1. Cloud development in a marine cold air outbreak on 21st March 2021, moving from the ice edge to the Norwegian coastline in the bottom right. Source: NASA Worldview, Corrected Reflectance (True Color) from the MODIS instrument on Terra.

Aerosols can strongly influence the onset of precipitation. A higher aerosol concentration leads to smaller liquid cloud droplets, which coalesce into precipitation-sized droplets more slowly, potentially delaying the transition (Albrecht, 1989; Yamaguchi et al., 2017; Goren et al., 2019). Once rainfall begins, often through the build-up of cloud water, the falling precipitation removes boundary layer aerosols, creating a negative aerosol gradient over the outbreak (Abel et al., 2017; Lloyd et al., 2018; Dadashazar et al., 2021). This aerosol scavenging creates a positive feedback loop, as fewer aerosols mean a reduced number of sites on which new droplets can form, causing droplets to grow sufficiently large to precipitate (Jing and Suzuki, 2018). Modelling studies suggest that higher initial CCN concentrations delay the formation of precipitation in MCAO (Tornow et al., 2021). However, if the aerosols can act as ice nucleating particles, this increases the ice content of the cloud, potentially accelerating the transition through droplet riming and enhancing precipitation (Abel et al., 2017; Tornow et al., 2021).

Global and higher-resolution models struggle to simulate evolution and properties of the low-level liquid and mixed-phase liquid clouds often found in these outbreaks (Morrison et al., 2012; Field et al., 2014; Bodas-Salcedo et al., 2016; Abel et al., 2017; Field et al., 2017). The persistent negative biases in the shortwave reflectivity of Southern Ocean clouds in general circu-



lation models have been attributed to the representation of supercooled liquid (Cesana et al., 2022). The radiative properties of supercooled liquid clouds - which are prevalent in the Arctic (Cesana et al., 2012) - in a changing climate are of particular concern, as the Arctic region is warming at a much faster rate than in lower latitudes (Serreze and Barry, 2011), and establishing industry and shipping routes will mean more aerosols are available to interact with clouds (Peters et al., 2011; Schmale et al., 2018; Maahn et al., 2021). As Arctic clouds strongly influence the surface energy budget (Curry and Ebert, 1992; Shupe and Intrieri, 2004), understanding potential changes in these clouds is essential for understanding future changes in the region.

The processes which affect the MCAO cloud evolution are fundamentally time-dependent, and knowledge of these process rates is essential for improving their representation in climate models (Pithan et al., 2018). Previous studies have used models (e.g Tornow et al., 2021), in situ or airborne measurements (Hartmann et al., 1997; Young et al., 2016; Abel et al., 2017; Lloyd et al., 2018; Ruiz-Donoso et al., 2020; Geerts et al., 2022) and satellites (Wu and Ovchinnikov, 2022) to investigate the factors influencing cloud property development during the course of an outbreak. However, these were typically based on a relatively small set of examples of MCAO events. Geostationary satellites have been used to study clouds along the stratocumulus-to-cumulus transition following a large collection of Lagrangian trajectories in the subtropics (e.g. Christensen et al., 2020), but they do not cover high latitudes well.

Polar-orbiting satellites can provide several consecutive images for a location at high latitudes, providing a unique opportunity to characterise the temporal development of clouds. To study this evolution, we generate composite trajectories of air parcels moving off the ice edge using reanalysis wind fields. These trajectories are co-located with reanalysis data and data from several satellite instruments to investigate the factors which influence liquid cloud properties during the course of the cold air outbreak. In particular, we examine the controls on cloud properties that most strongly determine cloud albedo, namely cloud fraction and liquid water path (Loeb et al., 2007; Engström et al., 2015). The development of these cloud properties are then linked to changes in the top-of-atmosphere (TOA) albedo to estimate how these different environmental conditions affect the potential cloud radiative forcing.

2 Materials and Methods

2.1 Data

Cloud property data were obtained from the MODIS Level 2 Collection 6.1 data product (MYD06_L2, Platnick et al. 2017). The data were regridded to a 25 km by 25 km polar stereographic grid, and only those above 60° latitude were included in this analysis. It is possible that clouds embedded in the outbreaks are obscured by higher-level overlying clouds; to limit this effect, L2 pixels with cloud top heights above 500 hPa were eliminated; Fletcher et al. (2016b) showed that clouds within outbreaks are typically lower than this. The 'Cloud_Multi_Layer_Flag' was also used to filter the data to only include single layer clouds. The period of study was between 2008 and 2014, inclusive.

The Arctic environment provides many challenges to obtaining reliable satellite data, particularly those relating to cloud microphysical properties, such as the frequency of high solar zenith angles (Kato and Marshak, 2009; Grosvenor and Wood, 2014) However, rigorous filtering of these data to remove particularly uncertain cases helps to limit the effects of these biases



on the results. The cloud optical depth and cloud effective radius (r_e) were filtered and used to calculate the cloud liquid water
105 path (LWP) and cloud droplet number concentration (N_d), following Murray-Watson and Gryspeerdt (2022). This filtering
involved excluding pixels with high heterogeneity index ('Cloud_Mask_SPI' > 30; Zhang and Platnick 2011) and high solar
zenith angles (>65°) or high viewing angles (>50°) (Grosvenor and Wood, 2014). The LWP and N_d were calculated using
Equations 1 and 2, respectively:

$$LWP = \frac{5}{9} \rho_w \tau_c r_e \quad (1)$$

$$110 \quad N_d = \frac{1}{2\pi k} \sqrt{\frac{5}{Q\rho_w}} (f_{ad} c_w)^{\frac{1}{2}} \tau_c^{\frac{1}{2}} r_e^{-\frac{2}{5}} \quad (2)$$

in which τ_c is the cloud optical thickness, r_e is the cloud droplet effective radius. For the N_d calculations, additional filtering
of r_e (> 4 μm) and τ_c (> 4) is used to minimize retrieval biases (Quaas et al., 2006; Sourdeval et al., 2016); this is not applied to
the LWP as it would introduce a high bias in LWP (Gryspeerdt et al., 2019a). ρ is the density of water. A value of 0.8 is used for
 k , which is related to the droplet spectrum width (Painemal and Zuidema, 2011; Grosvenor and Wood, 2014). The scattering
115 coefficient (Q) is assumed to be approximately equal to 2 (Bennartz, 2007). The temperature-dependent condensation rate is
calculated following Gryspeerdt et al. 2016 and Grosvenor and Wood 2014, using the MODIS cloud top temperature, and a
subadiabatic factor (f_{ad}) of 0.7 is assumed (Painemal and Zuidema, 2011). Equations 1 and 2 assume adiabatic conditions
(Brennguier et al., 2000; Wood and Hartmann, 2006).

Although ice is often present in MCAO clouds (Fletcher et al., 2016b), the factors which influence ice-phase processes and
120 phase transitions are challenging to study using satellite data. As such, this study focuses on the development of liquid MCAO
clouds. Grid cells (25 x 25 km) in which the MODIS sensor detect a non-zero ice fraction are removed from the analysis.
Additionally, only pixels with a cloud top temperature above 263 K are included; in situ measurements of Arctic clouds have
shown that these clouds are predominantly composed of liquid water (de Boer et al., 2009). This filtering to remove ice reduces
the dataset to 31% of its original size.

125 DARDAR, which is produced by combining lidar data from CALIOP and radar data from CloudSat (Delanoë and Hogan,
2010; Ceccaldi et al., 2013) is used to analyse the efficacy of these filters to restrict the analysis to liquid clouds. Due to
known issues with surface clutter affecting DARDAR retrievals, cases with cloud top heights below 720 m are not included.
Figure 2 shows the DARDAR-retrieved cloud top phase fractions as a function of MODIS temperature for the set of MODIS
pixels filtered to remove ice. The phase fraction is calculated as the number of DARDAR retrievals with a given phase flag
130 divided by the number of DARDAR retrievals for each 25 km by 25 km grid box. For this analysis, DARDAR phase flags
'Ice', 'Spherical_or_2D_ice' and 'Highly_concentrated_ice' are together considered as 'ice' and 'Supercooled_and_ice' is
considered 'mixed phase'. Figure 2 indicates that with this filtering, the supercooled phase fraction starts at 73% at 263 K and
increases with temperature. Although DARDAR shows a non-negligible proportion of ice-containing phases, the real amount
of ice present in these clouds is uncertain, as it would take a relatively small amount of ice to register a radar return and cause



135 the retrieval to be classified as ‘mixed’ phase (Bühl et al., 2013). Restricting this study to pixels where DARDAR only registers supercooled liquid clouds would also reduce the volume of data available for analysis to less than 5% of the MODIS pixels co-located with the trajectories due to the DARDAR’s nadir-only sampling. As such, the method used here for filtering out ice-containing pixels is deemed sufficient for this work. The potential effects of biases introduced by ice undetected by MODIS will be discussed more in Section 4.

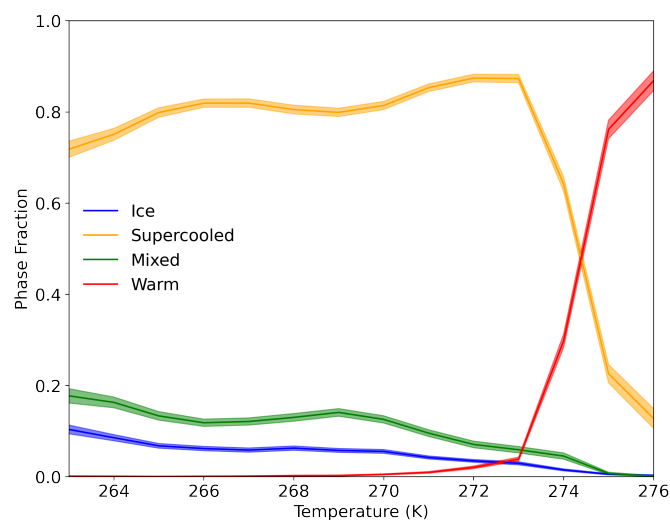


Figure 2. DARDAR cloud top phase fraction binned against MODIS cloud top temperature for clouds following the trajectories generated in this study. DARDAR phase flags ‘Ice’, ‘Spherical_or_2D_ice’ and ‘Highly_concentrated_ice’ are combined to calculate the ‘ice’ fraction. DARDAR flags ‘Supercooled’, ‘Liquid’ and ‘Supercooled_and_ice’ are considered to be ‘Supercooled’, ‘Liquid’ and ‘Mixed’, respectively. Phase fraction is calculated by dividing the number of successful retrievals for a given phase flag by the total number of DARDAR retrievals for a 25 km by 25 km pixel.

140 Top-of-atmosphere (TOA) albedo data were obtained from hourly Clouds and the Earth’s Radiant Energy System (CERES) SYN1deg L3 dataset NASA/LARC/SD/ASDC (2017). These data were regrided from the original 1 x 1° resolution to the same 25 x 25 km grid and projection as the MODIS data. Previous studies have shown that CERES TOA albedo measurements perform well over ocean (e.g. Sun et al., 2006; Kato et al., 2018), but is biased relative to in-situ measurements if sea ice is present (e.g. Riihelä et al., 2017; Huang et al., 2022).

145 Sea ice data were obtained from from Nimbus-7 SMMR and DMSP SSM/I-SSMIS Passive Microwave Data, Version 2 product (DiGirolamo et al., 2022). These data are produced in a 25 km resolution polar stereographic grid. A binary mask is created such that if there is a non-zero sea ice concentration, that pixel is considered sea ice, and ocean pixels are entirely ice-free (zero detected sea ice concentration). This strict filtering causes pixels with relatively little ice to be classified as ‘sea ice’ in the mask. This may bias these results as some air parcels may be moving over relatively ice-free ocean before they are
150 classified as having left the ice edge and being ‘over ocean’ (see 2.2). However, MODIS struggles to retrieve cloud properties over sea ice (e.g. Chan and Comiso, 2013) so the conservative sea ice mask helps to prevent potential cloud misclassification.



The meteorological reanalysis data were obtained from ERA5 (Hersbach et al., 2020). The data, were regridded to the same grid and projection as the MODIS data. The wind data at 1000 hPa was chosen to represent the boundary layer wind speed (following Grypsperdt et al. 2021), and the specific humidity at 750 hPa was taken to represent the moisture conditions above the cloud top. The total aerosol optical depth at 550 nm (AOD) reanalysis data from the Copernicus Atmosphere Monitoring Services (CAMS; Inness et al. 2019), was used as an indicative measure of aerosol conditions in the region. These were regridded in a similar manner to the meteorological reanalysis data.

The marine cold air outbreak index (MCAO; Kolstad and Bracegirdle, 2008) is an important indicator of cloud formation and behaviour at high latitudes. It measures the stability of the boundary layer and is calculated as the difference between the potential temperature at 800 hPa and the sea surface temperature (Fletcher et al., 2016a), with positive values indicating higher instability. This metric is particularly suitable for the air moving off the ice edge as it highlights the difference in temperature of the relatively warm ocean with the cool overlying air masses. In the Northern Hemisphere, outbreak events are most common in the winter, followed by autumn and spring (Fletcher et al., 2016a). MCAO are relatively rare in the summer. As some cloud properties, such as r_e , can only be retrieved during sunlight hours, this analysis is restricted from March to October each year. Figure 3 shows the mean MCAO index within outbreaks (so excluding times when MCAO < 0) and the relative frequency of occurrence of outbreaks (b) for March to October 2008-2014. The data have been filtered to over-ocean values only.

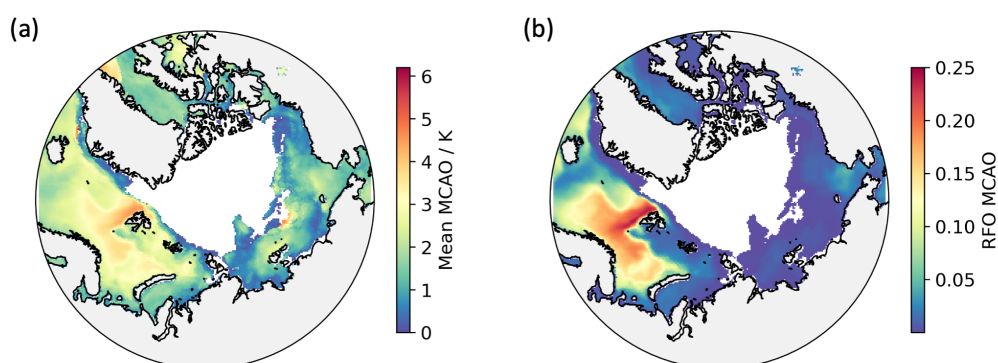


Figure 3. MCAO index calculated from ERA5 data for March-October 2008-2014, filtered to only include MCAO events ($M > 0$) (a) and relative frequency of occurrence for outbreaks (b). Grey represents no data.

2.2 Trajectory Generation

ERA5 reanalysis wind fields, regridded to the same 25 km by 25 km grid as the MODIS data, were used to create the Lagrangian trajectories. Wind data at 1000 hPa were used for the advection, as this has previously been shown to follow low-level clouds successfully (following Grypsperdt et al. 2019b). Examples of the trajectories generated by this method are shown in Figure 4.

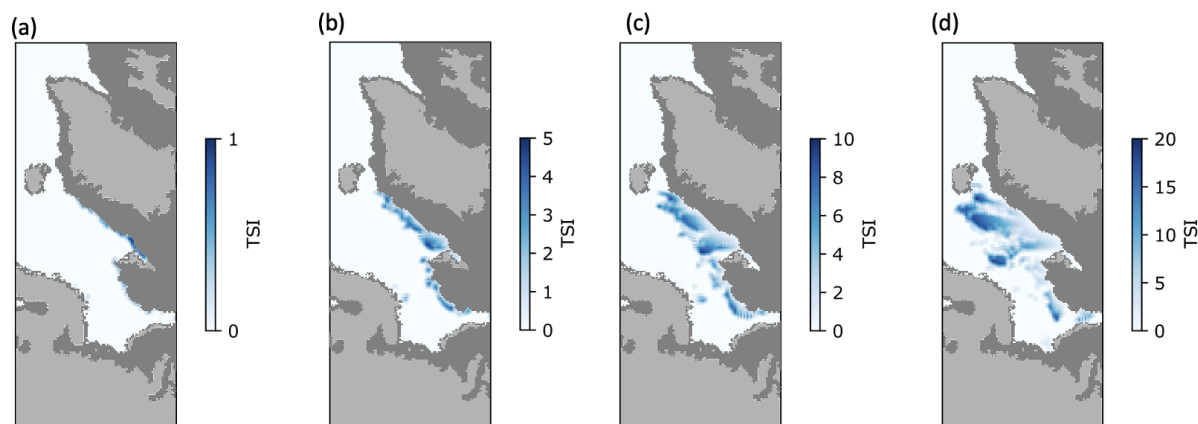


Figure 4. Snapshot of the ‘time since ice’ trajectory generation for (a) one (b) five (c) ten and (d) twenty hours since moving from the ice edge. Dark and light grey represent sea ice and land pixels, respectively. The scale varies between subplots.

The advection procedure is adapted from Horner and Gryspeerdt (2022), which focuses on trajectories starting from points of new convection. Here, a similar method is used, but the initial points are identified as cases where the air has moved from being over sea ice to being over open ocean between time steps of one hour. These pixels newly over the ocean are given a value of ‘time since ice’ (TSI) of one hour, and all other pixels which did not move from ice to ocean remain at zero. Then, all pixels are advected forward again following the wind fields. For pixels previously identified as having moved off the ice edge in the first time step, one hour is added to their TSI. Pixels newly over ocean are again identified and given TSI values of one hour. This advection process repeats for every time step, with a value of one being added to all pixels on trajectories moving from the ice edge, a value of one hour assigned to pixels newly over the ocean, and zero assigned to all other pixels. In addition to the TSI value, each pixel has a date and time associated with the wind fields used to produce it; this is used to co-locate these pixels with the satellite data. If pixels move over land or back over sea ice, the trajectory is no longer followed. When two trajectories of two or more pixels converge, the smaller TSI is taken as the value for that pixel. Trajectories are restricted to the area shown in Figure 5 (showing the mean TSI for the study area) to prevent bias towards short trajectories.

A set of reverse trajectories of air parcels travelling over the ocean towards the ice edge were generated by running the above process in reverse; cases which move from being over open ocean to being over ice between time steps in the "forwards" direction are identified, and then tracked backwards in time. These are useful to compare to clouds moving away from the ice edge as the effects of any retrieval biases, particularly close to the ice edge, are revealed. Additionally, the clouds along these trajectories are effectively blind to the ice edge but travel through generally similar environmental conditions over the ocean as those moving off of the ice edge. As a result, the changes in cloud properties resulting from moving off the ice edge can be highlighted. In these cases, ‘time towards ice’ (TTI) pixel values indicate the number of hours before the clouds reach the ice edge along these trajectories (i.e., a TTI of 30 hours means that, following this advection scheme, that pixel will reach the ice in 30 hours).

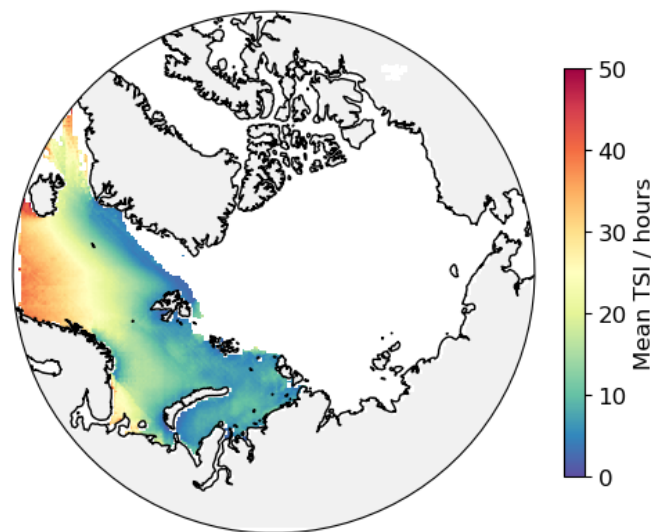


Figure 5. Map of the average time since ice for trajectories generated between March-October 2008-2014.

3 Results

3.1 Effects of moving off the ice edge

Figure 6 shows the development of cloud properties along three sets of trajectories: clouds approaching the ice edge (‘Towards’), clouds not embedded in cold air outbreaks (‘non-MCAO’) moving away from the ice and those within outbreaks (‘MCAO’). The MCAO and non-MCAO trajectories were partitioned based on the MCAO index value early on in the trajectory ($M > 0$ within the first ten hours of leaving the ice edge).

3.1.1 Cloud Fraction

Clouds moving towards the ice edge (the ‘Towards’ trajectories) maintain a consistently high cloud fraction (between 90% to 92%; Figure 6 (b)) over the observation period, with a sharp decrease near the ice edge. This decrease may be because of a retrieval bias, but as it does not appear to affect any of the other measured properties, we expect this to have negligible impact on the results. While high, these cloud fractions are typical for the region, particularly between spring and autumn in the Barents Sea, where most of the trajectories in this study were generated (Figure 6 (a); Kay et al. 2016). Non-MCAO clouds slowly increase to a peak of 94% at 22 hours away from the ice and generally persist at this coverage for the remainder of the trajectory. After the crossover at five hours, these clouds maintain a cloud fraction on average 3% less than Towards clouds over the observation period. This difference between the non-MCAO and Towards clouds may in part be because while non-MCAO clouds are, by definition, not exposed to the extremely powerful fluxes generated in MCAO events, they still move through

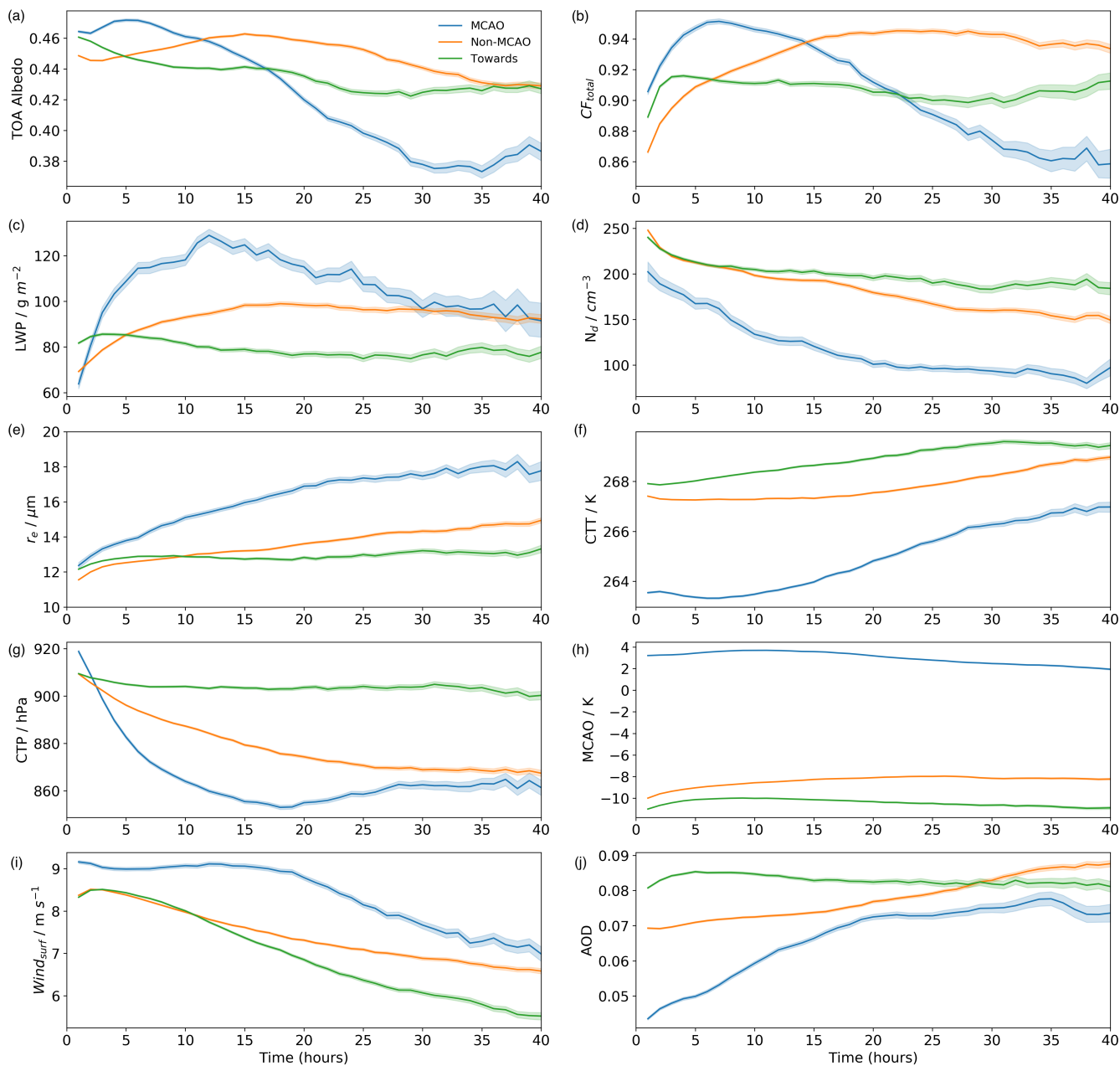


Figure 6. Cloud properties and environmental conditions along the MCAO (blue), non-MCAO (orange) and Towards (green) trajectories. CERES data was used for (a), and data for (b) - (f) were obtained from the MODIS instrument. Reanalysis data was used for Figures (g)-(j). For all of the trajectories, a time of 0 hours represents the ice edge. For the MCAO and non-MCAO clouds, the time coordinate represents the 'time since ice', and their development moving from the ice edge proceeds from left to right in each subplot. For the Towards clouds, it is the 'time towards ice', or the number of hours until these air parcels reach the ice edge, and their development is instead read from right to left.



more unstable environments (higher MCAO, Figure 6 (h)) with higher windspeeds (Figure 6 (i)), promoting cloud formation by transporting energy and moisture from the surface to the boundary layer.

210 MCAO clouds sharply increase in cloud fraction within a few hours of leaving the ice edge, reaching coverage of about 95%. Between 7 and 40 hours TSI time, the MCAO cloud fraction decreases at approximately $-0.3\% \text{ hr}^{-1}$, with the cloud fraction falling below that of non-MCAO and Towards events at 14 and 22 hours, respectively. This decrease in cloud fraction is due to the stratiform layers initially produced in MCAO transitioning to the ‘roll-like’ cumulus clouds, commonly observed in outbreaks (Figure 1). The factors controlling the cloud fraction are discussed further in subsequent sections.

215 3.1.2 Liquid Water Path

The LWP of clouds moving towards the ice edge is generally steady, maintaining an average of around 80 g m^{-2} (Figure 6 (c)), which is in line with other liquid clouds in the region during spring to autumn (Shupe et al., 2006). Non-MCAO clouds moving from the ice edge start with a lower LWP to these clouds, but overtakes them at around 5 hours and remain on average 17 g m^{-2} higher for the rest of the trajectory, reaching a maximum of 100 g m^{-2} after 17 hours. For both of these sets of clouds, 220 there is little variability in LWP along the trajectory.

In contrast, MCAO clouds show a rapid initial increase in LWP within 5-6 hours of leaving the ice, reaching a peak of around 127 g m^{-2} after 13 hours. The LWP then begins to decrease at a rate of $-1 \text{ g m}^{-2}\text{hr}^{-1}$, but remaining higher than non-MCAO clouds for 40 hours. This initial increase and then decline with LWP along the trajectory has been found in other studies examining the evolution of MCAO cloud properties (Abel et al., 2017; Lloyd et al., 2018; Tornow et al., 2021). It is 225 partly due to the unstable conditions, which promote the entrainment of subsaturated air into the cloud, thereby reducing the LWP through evaporation (Chen et al., 2014; Michibata et al., 2016) However, Figure 6 (e) shows that precipitation is also key to LWP depletion, as the size of the droplets reach $15 \mu\text{m}$, considered to be precipitation-sized (Rosenfeld and Gutman, 1994), just before the LWP decline. As with cloud fraction, a combination of effects related to the instability and precipitation mechanisms are explored in further sections.

230 3.1.3 Droplet Number Concentration

The N_d of clouds moving towards the ice edge increases over the trajectory, from about 200 cm^{-3} to 250 cm^{-3} (Figure 6 (d)). For non-MCAO clouds, the N_d values are similar to the Towards clouds close to the ice edge, but decrease at a rate -2 cm^{-3} hour and fall below the Towards clouds after 7 hours. For both of these trajectories, the values further from the ice edge are approximately the same or slightly higher than previous studies using MODIS have found (Zeng et al., 2014; McCoy et al., 235 2020), whereas the values close to the ice edge are higher. The larger N_d at the ice edge may be due to an increase in aerosol sources available in this biologically active zone (Leck and Persson, 1996), or the stronger winds (Figure 6 (h)) transporting aerosol to the cloud layer more efficiently. It is also possible that despite the extensive filtering of the satellite data, retrieval errors contribute to this increase near the ice edge.

MCAO events start at lower N_d concentrations (200 cm^{-3}) and decline at a rate of $4 \text{ cm}^{-3} \text{ hr}^{-1}$ until about 25 hours into the 240 trajectory. From there, the N_d concentration is relatively steady at about $90\text{-}100 \text{ cm}^{-3}$, which is on average 110 cm^{-3} lower



than Towards clouds and 90 cm^{-3} lower than non-MCAO clouds. MCAO events may start at a lower N_d due to a potentially different origin of the air relative to non-MCAO events; the air may have travelled over ice for longer, and is therefore cooler and cleaner than the non-MCAO air. However, a full investigation is beyond the scope of this study. Previous work has found a similarly steep decline in N_d concentration following an MCAO (Abel et al., 2017; Sanchez et al., 2022). Two main drivers of this N_d gradient in MCAO have been proposed; the dilution of aerosol concentration through entrainment of air from the free troposphere and precipitation scavenging of aerosol from the below-cloud layer, which are considered further below.

3.1.4 TOA Albedo

For all sets of trajectories, the TOA albedo (Figure 6 (a)) generally follows the cloud fraction trend, as has been observed in previous studies (e.g Loeb et al., 2007; Bender et al., 2011). The TOA albedo for Towards trajectories is generally steady between 0.42 and 0.44, until very close to the ice edge where it increases relatively sharply to 0.46. This increase may be due to the increases in LWP and N_d close to the ice edge (Figure 6 (c) and (d)), despite decreases in cloud cover, or it may be due to a bias introduced by undetected sea ice. Although initially high, the MCAO TAO albedo gradually decreases from about 0.47 to 0.37 after about 35 hours, an albedo of about 0.06 below the non-MCAO and Towards clouds. This translates to 20 W m^{-2} more radiation reaching the surface relative to non-MCAO trajectories post-transition, assuming incident solar radiation of 340 W m^{-2} . However, this reduced cooling effect is only present during the summer, when the shortwave cooling effect of clouds is relevant.

3.2 Effects of instability

The intensity of MCAO are expected to change as the high latitudes warm (Kolstad and Bracegirdle, 2008); therefore, it is important to know how the MCAO strength affects the evolution of cloud properties. Fletcher et al. (2016b) found that for mid-latitude outbreaks, clouds embedded in stronger MCAO events typically had higher cloud fractions and optical thickness, which enhanced their shortwave effect. However, whether this relationship between MCAO strength and cloud properties persists over the temporal development of the cloud is uncertain.

To characterise the influence of MCAO strength on cloud development, the MCAO trajectories are divided based on whether their initial MCAO index (within the first 10 hours) fell into the upper or lower terciles of the MCAO index distribution (3.9 K and 1.5 K, respectively, similar to Fletcher et al. 2016b). As aerosol concentration is also known to affect cloud development (Section 4.3), the data are resampled such that the AOD distributions are equal for the strong and weak MCAO composites for each timestep (following Gryspeerd et al. 2014). The resampling method involves dividing the AOD distribution into separate bins for the strong and weak MCAO trajectories and randomly sampling the bin of the trajectory with more points in it until it matches the trajectory with fewer points (as illustrated in Figure 1 of Gryspeerd et al. 2014). This is repeated for each time step. The results are shown in Figure 7.

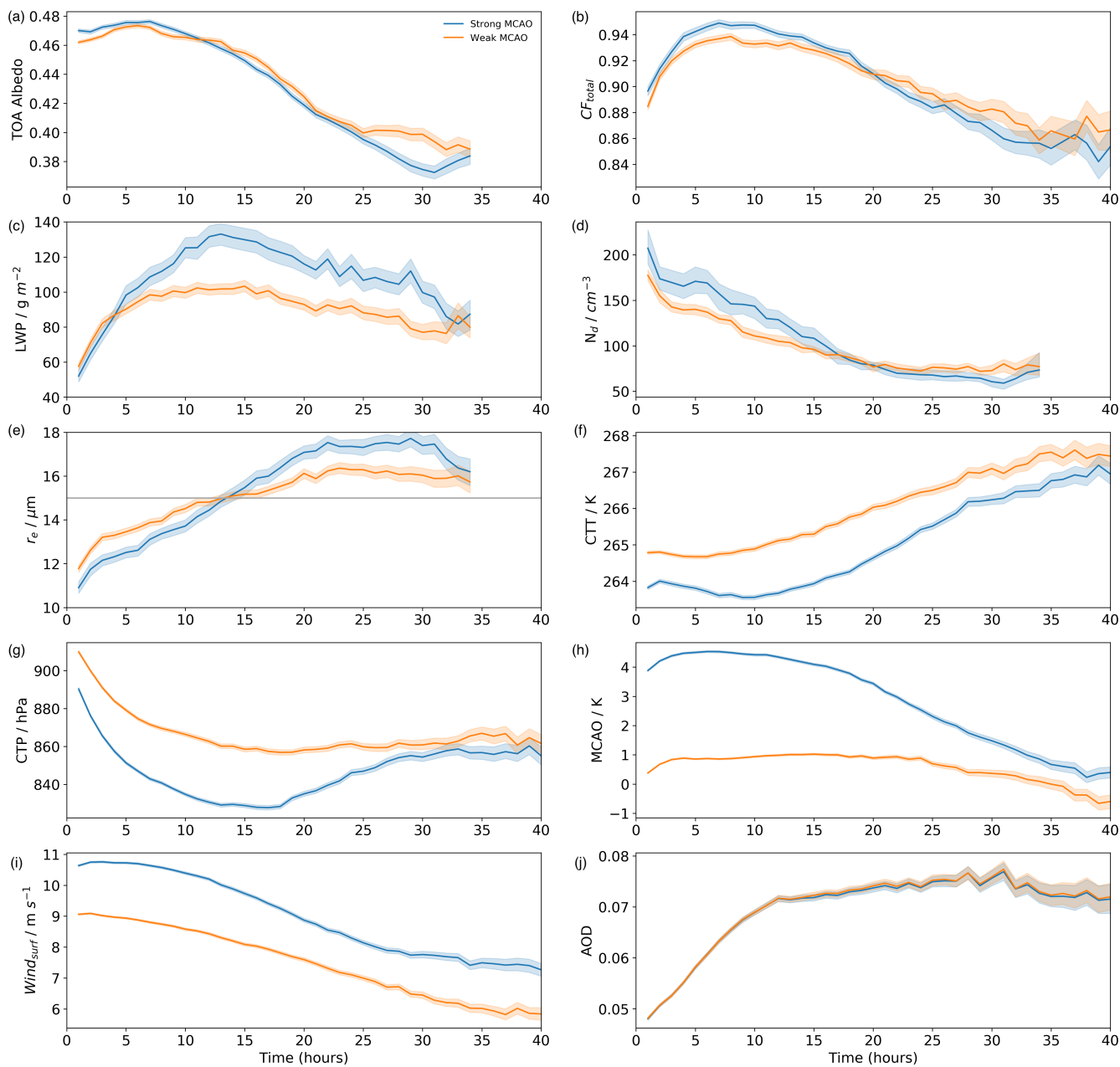


Figure 7. As Figure 6, but for strong (MCAO > 3.9 K, blue) and weak (0 K < MCAO < 1.5 K, orange) outbreak events moving away from the ice edge.



3.2.1 Cloud Fraction

Initially, clouds embedded in strong MCAO events have cloud fraction about 1-2% higher than those in weak events (Figure 7 (b)). The high MCAO clouds maintain a high cloud fraction (94%) for several hours, but then decrease at a rate of $0.3\% \text{ hr}^{-1}$ after 7 hours. The low MCAO cloud fraction begins to decline around the same time, at a similar rate ($0.2\% \text{ hr}^{-1}$). The gap in cloud coverage between the two trajectories closes at around 20 hours, after which the strong MCAO clouds are approximately 1% lower for the remainder of the observation period. Although small, the difference in the rate of decline results in weaker MCAO events having higher cloud coverage for longer; for instance, after 25 hours, the high MCAO cloud fraction falls below 88% - a level only reached four hours later for low MCAO events.

This faster decrease in cloud fraction for stronger outbreaks is mirrored by the N_d development (Figure 7 (d)). Clouds in strong MCAO start with much higher N_d than those in lower intensity outbreaks, but fall steeply within the first 20 hours ($-7 \text{ cm}^{-3} \text{ hr}^{-1}$), plateauing around $60\text{-}70 \text{ cm}^{-3}$. In contrast, N_d in lower MCAO events decreases more gradually over the first 24 hours ($-5 \text{ cm}^{-3} \text{ hr}^{-1}$), steadying at about 10 cm^{-3} higher than the high MCAO case. These observations of cloud fraction development concur with previous work, showing an increase in aerosol or N_d associated with an increase in cloud fraction (Gryspeerd et al., 2016; Goren et al., 2019; Chen et al., 2022). As in Section 3.1.3, the cause for the difference in N_d between strong and weak events may depend on factors such as how long the air has spent over ice; while this is beyond the scope of this present study, it should be accounted for in future work investigating the effect of MCAO strength on cloud development.

The steeper decline in N_d (and therefore cloud fraction) in the stronger outbreaks is potentially due to the stronger entrainment of drier air (Figure S1), leading to droplet evaporation and aerosol loss to the free troposphere. The deeper boundary layer (Figure 7 (g)) would also enhance decoupling from the surface, and therefore prevent the surface from acting as a source of moisture and aerosols, enhancing the decline in N_d , and hence cloud fraction. Another contributing factor to the more rapid N_d decline could be driven by collision-coalescence prior to precipitation; stronger outbreaks have higher LWP (Figure 7 (c)), which contributes strongly to the rain rate and accelerates collision-coalescence (Pawlowska and Brenguier, 2003), and therefore may reduce N_d prior to droplets reaching $15 \mu\text{m}$.

3.2.2 Liquid Water Path

Instability has little relationship to LWP for the first few hours of their development (Figure 7 (c)). However, after 5 hours, LWP in strong MCAO events continue to increase, reaching a maximum of about 135 g m^{-2} at 13 hours. Following this peak, the high MCAO LWP decreases at a rate of approximately $3 \text{ g m}^{-2} \text{ hr}^{-1}$. Conversely, the low MCAO LWP remains around 100 g m^{-2} until 15 hours from ice, after which it decreases at a slower rate than the high MCAO cases ($-1 \text{ g m}^{-2} \text{ hr}^{-1}$). Until around 33 hours, the weak MCAO cases maintain a LWP of about 20-30 g m^{-2} lower than the high MCAO composite. Although entrainment drying would be enhanced in more unstable conditions, the strong MCAO clouds have higher LWP to start with due to the heat and moisture fluxes associated with these events (Fletcher et al., 2016a), which also allow the clouds to grow deeper (lower CTP in Figure 6 (g)).



For both sets of trajectories, the timing of the LWP decline is nearly coincident with the point at which the mean droplet reaches precipitation collision-coalescence threshold ($15 \mu\text{m}$, Figure 7 (e)), indicating the importance of precipitation to cloud break-up. Despite having an impact on the magnitude of the LWP increase, the MCAO strength does not appear to strongly modify the timing of the transition; the point at which LWP begins to decrease is only two to three hours earlier in the strong outbreaks. This may be due to the competing effects of LWP and N_d on precipitation (Goren et al., 2022); in strong MCAO events, LWP is high (which promotes precipitation), but higher N_d also suppresses precipitation. Conversely, in weaker events, lower LWP hinders precipitation while low N_d enhances precipitation formation. Therefore, the effects of LWP and N_d act as a buffer against each other in strong and weak MCAO events, leading to both trajectories reaching the $r_e = 15 \mu\text{m}$ point at approximately the same time.

3.2.3 TOA Albedo

Despite the differences in the evolution of the macro- and micro-physical properties, there is a negligible difference (0.01-0.02) between the scene albedo over the course of the strong and weak MCAO trajectories. This may be due to the competing effects on the albedo; although the cloud fraction of the strong events does fall slightly below the weaker events over time, the enhanced LWP compensates for this decline, leading to roughly similar reflectivities. This suggests that should the MCAO strength change with the changing climate (e.g., Kolstad and Bracegirdle, 2008), the impact on the shortwave energy budget due to changes in cloud properties may be minimal.

3.3 Effects of aerosol on cloud development

Aerosols can affect the transition from stratocumulus decks to broken cloud fields influencing the timing of precipitation (e.g. Christensen et al., 2020). In MCAOs, higher aerosol concentrations can delay the formation of the cumuliform regime (Tornow et al., 2021, 2022). However, once precipitation occurs, the aerosol scavenging accelerates the cloud field's break-up through enhanced water loss from the stratocumulus layer (Abel et al., 2017; Lloyd et al., 2018). The timescales over which aerosols modulate MCAO cloud development have not previously been studied with observational data.

To characterise these timescales, the MCAO trajectories are divided into above and below median (0.06) aerosol conditions based on the AOD early in their trajectory (within the first 10 hours). As previously discussed, AOD from reanalysis is imperfect, especially in the Arctic, with aerosol sources potentially missing from the data product. Furthermore, the vertical profile of the aerosol concentration is important to clouds in MCAO; Tornow et al. (2022) showed that entrainment of free tropospheric air may reduce the aerosol concentration in MCAO. As AOD is a column-integrated value, it does not describe the aerosol concentration throughout the cloud. Additionally, the AOD does not differentiate between INP and CCN, which is important considering the differing roles they play in cloud lifetime. However, INP concentrations are typically much less than CCN in the atmosphere. Here, the AOD is used simply to indicate whether the trajectories are moving through more or less aerosol-laden conditions.

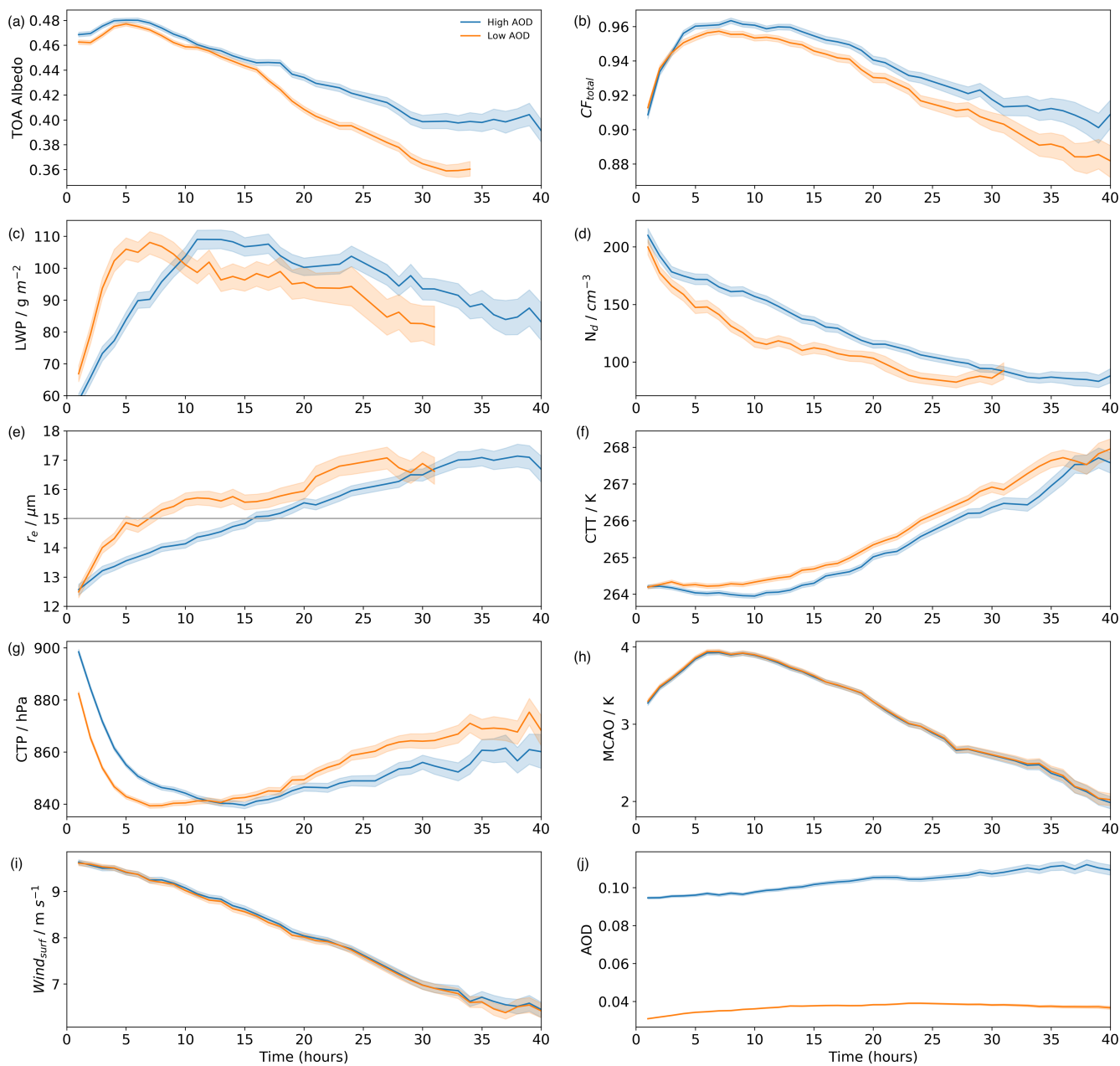


Figure 8. As Figure 6, but for trajectories in high and low aerosol concentration conditions.

335 The influence of boundary layer instability on cloud development is constrained using the resampling method discussed in Section 4.2 on the MCAO index for each time step. Additionally, as the wind speed is also known to affect cloud properties (such as cloud fraction; Engström and Ekman 2010), it is also resampled to be the same for the high and low AOD trajectories.



3.3.1 Cloud Fraction

Figure 8 (b) shows that there is initially a small difference in cloud fraction between the high and low AOD cases. However, after about three hours, the effects of aerosol become apparent and the trajectories diverge. The high AOD cases reaches 96% coverage, and maintains this level until about 10 hours from ice, after which it decreases at a rate of about $0.2\% \text{ hr}^{-1}$. The low AOD cases remain about 1-2% lower, with the difference growing over time. As before, the cloud fraction evolution is mirrored by the N_d development in both high and low AOD conditions. Initially, the N_d for both trajectories is similar, but the decrease in N_d in cleaner conditions is more rapid than in cases with more aerosol ($-6 \text{ cm}^{-3} \text{ hour}^{-1}$ versus $-4 \text{ cm}^{-3} \text{ hour}^{-1}$).

As the MCAO and wind speed are accounted for by the resampling, both the dilution of aerosol to the free troposphere and ability of the surface to act as a source is similar in both high and low AOD cases. Therefore, the difference between the two sets of outbreaks is likely due to enhanced precipitation earlier in the low aerosol trajectories. Figure 8 (e) shows that the cloud droplets grow in size more quickly in cleaner conditions, and reach precipitation-sized about 6-7 hours. Higher aerosol loads mean cloud droplets stay smaller for longer, keeping the N_d higher and maintaining a higher cloud coverage for a longer time.

3.3.2 Liquid Water Path

In contrast to the effects of outbreak strength, which strongly modulated the peak LWP but not the timing, changes in aerosol conditions influence the point of LWP decline but only moderately affect peak LWP magnitude (Figure 8 (c)). Clouds in low AOD trajectories have a much earlier peak in LWP (about 108 g m^{-2} at 5-7 hours) than clouds in high AOD trajectories (112 g m^{-2} at 12 hours). The LWP decreases in both sets of trajectories are closely linked to precipitation dynamics; the point at which r_e reaches $15 \mu\text{m}$ is within 1-2 hours of the start of the LWP decline in both cases. As with the cloud fraction cases, more aerosols lead to precipitation suppression, which allows the LWP to build up more gradually. However, due to the build up of cloud water, precipitation eventually still occurs, triggering the transition. The near doubling of the time to the LWP peak highlights the potentially significant effect that aerosols, through influencing precipitation dynamics, can have on the cloud development.

3.3.3 TOA Albedo

As would be expected from the cloud fraction and LWP development, the TOA albedo declines more slowly in high AOD trajectories. Although the difference in albedo is initially small, the composites diverge over time, eventually growing to 0.04 after about 30 hours. This approximately corresponds to an additional 14 W m^{-2} of cooling in summer due to the prolonged high cloud cover and delayed LWP peak. This cooling is not insignificant; Huang et al. (2017) found that anomalies in the shortwave cooling of a similar magnitude caused by changes in cloud properties during late spring and early summer influenced the extent of sea ice melt.



3.4 Stability-dependent aerosol effect

Section 3.3 considered the effects of an aerosol perturbation while constraining the instability; however, previous work has shown that the cloud response to aerosols can change depending on the stability environment (Murray-Watson and Gryspeerdt, 2022). Therefore, the response of cloud properties to aerosols may depend on the strength of the MCAO. Figure 9 shows the effects of dividing the MCAO trajectories into four regimes, strong/weak MCAO and high/low aerosol, based on the upper and lower MCAO terciles and median AOD, as in previous sections. To highlight the overall differences in responses between clouds in strong and weak events, the MCAO index is constrained to be identical along high/low aerosol trajectories for each case.

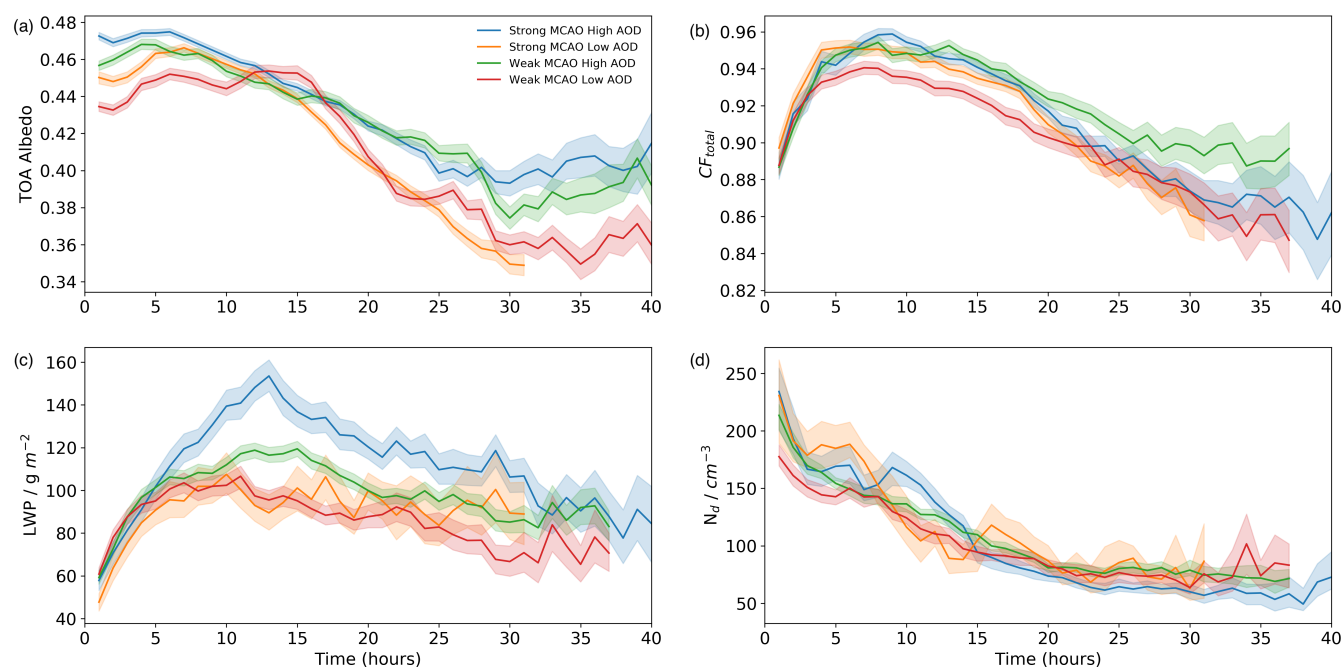


Figure 9. As Figure 6, but for trajectories in strong/weak MCAO high/low aerosol concentration conditions.

In general, the effects of aerosols on clouds in strong and weak events is similar to that seen in Section 3.3; clouds in higher aerosol conditions typically have higher cloud fractions (Figure 9 (b)) and delayed peak in LWP (Figure 9 (c)), leading to a higher albedo (Figure 9 (a)). In strong MCAO events, the difference in albedo between the high and low aerosol conditions appears to be driven by the large difference in LWP, with relatively little difference in cloud fraction between the two cases. However, both the cloud fraction and the LWP contribute to the higher albedo in the weak MCAO/high AOD cases. Previous work has shown that in relatively clean conditions, as the aerosol load increases, more unstable conditions typically have a higher LWP than stable conditions (Murray-Watson and Gryspeerdt, 2022), potentially explaining the difference in LWP response between strong and weak events in Figure 9 (c). However, it is unclear why the aerosol load does not strongly affect



the cloud coverage in strong MCAO events; the large surface fluxes may be the dominant term in promoting cloud formation, leaving little sensitivity to aerosol.

4 Discussion

385 This work presents a novel way of investigating the temporal development of cloud properties during cold air outbreaks by creating composite trajectories and co-locating these with satellite and reanalysis data. Through comparison with clouds in non-MCAO events, the extent to which the extreme turbulent fluxes affect the cloud development and formation are revealed. Many of the results here confirm what has been observed in model results or field campaigns; deep, high-coverage clouds form quickly as the air moves from the ice edge. Eventually, through precipitation, these clouds transition into thinner, low coverage
390 cloud fields. The cloud microphysical properties also evolve throughout the outbreak; N_d declines and LWP initially builds up before decreasing. The unique aspect of this study is the insight into the timescales for these processes occurring, and the ability to use reanalysis data to probe the mechanisms controlling these cloud properties.

When considering the effects of MCAO strength, these composite trajectories reveal the importance of considering how far the clouds are along the outbreak. Fletcher et al. (2016b) found that clouds in stronger outbreaks had higher cloud fraction and
395 optical thickness, and therefore a greater shortwave cooling effect. However, weak and strong outbreak cases were selected based on the value of the MCAO for a given gridbox. Figure 7 (g) shows that the MCAO index decreases over the course of a trajectory, particularly for strong events, so that selection by gridbox is actually choosing clouds at different points in their development. Although initially lower, weak outbreaks actually maintain a higher coverage for longer. However, due to the enhanced LWP in stronger outbreaks, this does not translate to a strong change in TOA albedo or shortwave cooling effect of
400 the cloud.

Due to changes in the Arctic climate, the strength and frequency of MCAO are expected to change in the future. Several modelling studies have projected an overall decrease in the MCAO index, except in areas of sea ice retreat, where the MCAO index will increase due to the availability of the ocean surface (Kolstad and Bracegirdle, 2008; Landgren et al., 2019). Figure 7 indicates a shift in the MCAO strength would not strongly shift the shortwave cooling effect of the clouds, due to the competing
405 factors controlling the TOA albedo. However, should the MCAO weaken so much that they constitute 'non-MCAO' events moving off the ice edge, there would be a shift to higher-albedo, more cooling clouds over their trajectories (Figure 6 (a)). The data presented here only considers MCAO events during sunlit months, where the shortwave cooling effects of low-level clouds over the ocean surface is expected to be dominant over the longwave warming. However, MCAO are most common during winter (Fletcher et al., 2016a), when a lack of sunlight precludes the analysis of some cloud properties. Although Fletcher et al.
410 (2016b) found that MCAO strength, rather than season, was the strongest determinant of cloud properties, the generalisability of the results presented here is uncertain. However, if these results hold, it would be the longwave warming effect of the clouds which is most relevant. As the clouds in this study typically emit as black bodies (for $LWP > 30 \text{ g m}^{-2}$; Shupe and Intrieri 2004), the cloud longwave effect is predominantly controlled by cloud cover. If the MCAO-CF relationship holds in a future Arctic, this suggests that a weakening of the MCAO would generate longer-lasting, more warming clouds.



415 As more aerosol sources such as industry or shipping move further into the Arctic, from Figure 8, it appears that should these
aerosols interact with clouds in MCAO, they would lead to longer-lived stratocumulus fields, and these higher-coverage, thicker
clouds would have either a stronger warming or cooling effect, depending on the season. These results highlight that knowledge
of the aerosol environment close to the ice edge is essential to model the development of these clouds correctly. Despite recent
efforts, such as the measurement of aerosols capable of ice nucleation during the Multidisciplinary drifting Observatory for the
420 Study of Arctic Climate (MOSAIC) expedition (Creamean et al., 2022), the aerosol sources and sinks close to the ice edge are
not well characterised, and thus leaving models poorly constrained. Given the effects that aerosols have on the timing of the
cloud transition, this uncertainty around aerosol sources may make it difficult to determine the radiative impact of these clouds.

This work solely focuses on liquid-phase clouds embedded in MCAO, limiting ourselves to only a third of all available
data. However, clouds embedded in MCAO are often mixed-phase, with lower ice concentrations in the stratocumulus decks
425 and increasing in the cumulus fields (Abel et al., 2017; Lloyd et al., 2018). These ice crystals can be important in cloud
development, and although efforts have been made to exclude the influence of these ice crystals, it is possible that undetected
ice may introduce some bias into the results. For example, due to the colder clouds present in strong MCAO events, it would
be expected that these clouds would have a higher ice concentration than low MCAO clouds. These ice crystals may rime the
liquid droplets, enhancing precipitation and contributing to the steep N_d gradient in Figure 7 (d). Additionally, if an ice crystal
430 is misclassified as liquid water, it may produce a higher measurement for the liquid droplet effective radius due to the different
scattering and absorption properties of ice crystals (Platnick et al., 2003). This would lead to an underestimation in N_d and
overestimation of LWP. Figure 7 (e) shows that stronger events - more likely to have undetected ice - have a lower r_e than
lower MCAO clouds, suggesting that this is not the dominant effect. However, it is possible that ice undetected by MODIS has
a non-negligible influence on these results.

435 5 Conclusions

Clouds in marine cold air outbreaks undergo a characteristic evolution, transforming from high-coverage, stratiform clouds
to a broken, low-coverage cumuliform cloud field. Despite previous flight and measurement campaigns, models struggle to
capture this development due to the complex set of factors controlling cloud properties. This work uses a set of composite
trajectories to develop a time-resolved picture of how cloud properties change as air moves away from the ice edge and the
440 effect of different environmental conditions on the cloud evolution.

MCAO cloud properties are distinct from clouds following other, non-MCAO trajectories (Figure 6 (b) - (e)). The cloud
albedo is largely controlled by cloud fraction, so as the clouds transition from high- to low-coverage cloud fields during an
outbreak, their shortwave cooling effect weakens. The cloud fraction in turn is strongly correlated with the N_d , a relationship
seen in previous studies and which holds across the range of factors considered here. Similarly, along each set of composite
445 trajectories, the timing of LWP peak is nearly coincident with point at which the mean r_e reaches $15 \mu\text{m}$, indicating the
importance of precipitation to cloud transition.



The initial MCAO strength has a lasting impact on the cloud property development, particularly visible in the LWP (Figure 7 (c)). Previous work investigating the impact of MCAO strength on clouds has considered a gridbox-by-gridbox approach, rather than how clouds develop as the outbreak progresses. These results show that for some cloud properties (such as the cloud fraction, Figure 7 (b)), clouds in strong MCAO events typically start with a higher cloud fraction, as had been seen in previous studies, but this does not hold at later stages of development. However, despite differences in cloud property development, the opposing influences of the cloud fraction and LWP development mean that the TOA albedo for clouds in each set of composite trajectories is very similar (Figure 7 (a)). Furthermore, the timing of the transition is not strongly changed by the MCAO strength.

In contrast, a higher initial aerosol concentration delayed the transition by 5-7 hours and slowed the decline in cloud fraction, enhancing the TOA shortwave cooling by approximately 14 W m^{-2} relative to low aerosol conditions (Figure 8). This suggests that in a future, more polluted Arctic, these new aerosols sources may increase the cloud cooling effect through delaying the stratocumulus-to-cumulus transition. This potentially strong impact on cloud development and radiative properties highlights the need to constrain sources of Arctic aerosols, particularly close to the ice edge.

Data availability. The MODIS data were obtained from NASA Goddard Space Flight Center (<https://modis.gsfc.nasa.gov/data/>). The ERA5 data were obtained from the Climate Data Store (<https://cds.climate.copernicus.eu/>), and the CAMS reanalysis from the Atmospheric Data Store (<https://ads.atmosphere.copernicus.eu/>). The sea ice data were obtained from the National Snow and Ice Data Center (<https://nsidc.org/data/>). The CERES data were downloaded from the NASA Langley Research Center (<https://ceres.larc.nasa.gov/data/>).

Author contributions. RMW and EG contributed to study design and all authors were involved with the interpretation of results. RMW performed the analysis and prepared the manuscript, with comments from EG and TG.

Competing interests. The authors declare that they have no conflict of interest.

Acknowledgements. RMW and EG were supported by funding from the Royal Society (University Research Fellowship URF/R1/191602). TG acknowledges funding by the German Research Foundation (Deutsche Forschungsgemeinschaft, DFG, project “CDNC4ACT”, GZ QU 311/27-1). We thank George Horner for his insight on generating the composite trajectories.



470 References

- Abel, S. J., Boutle, I. A., Waite, K., Fox, S., Brown, P. R. A., Cotton, R., Lloyd, G., Choulaton, T. W., and Bower, K. N.: The Role of Precipitation in Controlling the Transition from Stratocumulus to Cumulus Clouds in a Northern Hemisphere Cold-Air Outbreak, *Journal of the Atmospheric Sciences*, 74, 2293–2314, <https://doi.org/10.1175/JAS-D-16-0362.1>, publisher: American Meteorological Society Section: Journal of the Atmospheric Sciences, 2017.
- 475 Albrecht, B. A.: Aerosols, Cloud Microphysics, and Fractional Cloudiness, *Science*, 245, 1227–1230, <https://doi.org/10.1126/science.245.4923.1227>, 1989.
- Bender, F. A.-M., Charlson, R. J., Ekman, A. M. L., and Leahy, L. V.: Quantification of Monthly Mean Regional-Scale Albedo of Marine Stratiform Clouds in Satellite Observations and GCMs, *Journal of Applied Meteorology and Climatology*, 50, 2139 – 2148, <https://doi.org/10.1175/JAMC-D-11-049.1>, 2011.
- 480 Bennartz, R.: Global assessment of marine boundary layer cloud droplet number concentration from satellite, *Journal of Geophysical Research: Atmospheres*, 112, <https://doi.org/https://doi.org/10.1029/2006JD007547>, 2007.
- Bodas-Salcedo, A., Andrews, T., Karmalkar, A. V., and Ringer, M. A.: Cloud liquid water path and radiative feedbacks over the Southern Ocean, *Geophysical Research Letters*, 43, 10,938–10,946, <https://doi.org/https://doi.org/10.1002/2016GL070770>, 2016.
- Boucher, O., Randall, D., Artaxo, P., Bretherton, C., Feingold, G., Forster, P., Kerminen, V.-M., Kondo, Y., Liao, H., Lohmann, U., Rasch, P., 485 Satheesh, S. K., Sherwood, S., Stevens, B., and Zhang, X. Y.: Clouds and aerosols, in: *Climate Change 2013: The Physical Science Basis. Contribution of Working Group I to the Fifth Assessment Report of the Intergovernmental Panel on Climate Change*, edited by Stocker, T. F., Qin, D., Plattner, G.-K., Tignor, M., Allen, S. K., Doschung, J., Nauels, A., Xia, Y., Bex, V., and Midgley, P. M., pp. 571–657, Cambridge University Press, Cambridge, UK, <https://doi.org/10.1017/CBO9781107415324.016>, 2013.
- Brenguier, J.-L., Pawlowska, H., Schüller, L., Preusker, R., Fischer, J., and Fouquart, Y.: Radiative Properties of Boundary Layer Clouds: 490 Droplet Effective Radius versus Number Concentration, *Journal of the Atmospheric Sciences*, 57, 803 – 821, [https://doi.org/10.1175/1520-0469\(2000\)057<0803:RPOBLC>2.0.CO;2](https://doi.org/10.1175/1520-0469(2000)057<0803:RPOBLC>2.0.CO;2), 2000.
- Bretherton, C. S. and Wyant, M. C.: Moisture Transport, Lower-Tropospheric Stability, and Decoupling of Cloud-Topped Boundary Layers, *Journal of the Atmospheric Sciences*, 54, 148 – 167, [https://doi.org/10.1175/1520-0469\(1997\)054<0148:MTLTA>2.0.CO;2](https://doi.org/10.1175/1520-0469(1997)054<0148:MTLTA>2.0.CO;2), 1997.
- Brümmer, B.: Boundary-layer modification in wintertime cold-air outbreaks from the Arctic sea ice, *Boundary-Layer Meteorology*, 80, 495 109–125, <https://doi.org/10.1007/BF00119014>, 1996.
- Brümmer, B.: Roll and Cell Convection in Wintertime Arctic Cold-Air Outbreaks, *Journal of the Atmospheric Sciences*, 56, 2613 – 2636, [https://doi.org/10.1175/1520-0469\(1999\)056<2613:RACCIW>2.0.CO;2](https://doi.org/10.1175/1520-0469(1999)056<2613:RACCIW>2.0.CO;2), 1999.
- Bühl, J., Ansmann, A., Seifert, P., Baars, H., and Engelmann, R.: Toward a quantitative characterization of heterogeneous ice formation with lidar/radar: Comparison of CALIPSO/CloudSat with ground-based observations, *Geophysical Research Letters*, 40, 4404–4408, 500 <https://doi.org/https://doi.org/10.1002/grl.50792>, 2013.
- Ceccaldi, M., Delanoë, J., Hogan, R. J., Pounder, N. L., Protat, A., and Pelon, J.: From CloudSat-CALIPSO to EarthCare: Evolution of the DARDAR cloud classification and its comparison to airborne radar-lidar observations, *Journal of Geophysical Research: Atmospheres*, 118, 7962–7981, <https://doi.org/https://doi.org/10.1002/jgrd.50579>, 2013.
- Cesana, G., Kay, J. E., Chepfer, H., English, J. M., and de Boer, G.: Ubiquitous low-level liquid-containing Arctic 505 clouds: New observations and climate model constraints from CALIPSO-GOCCP, *Geophysical Research Letters*, 39, <https://doi.org/https://doi.org/10.1029/2012GL053385>, 2012.



- Cesana, G. V., Khadir, T., Chepfer, H., and Chiriaco, M.: Southern Ocean Solar Reflection Biases in CMIP6 Models Linked to Cloud Phase and Vertical Structure Representations, *Geophysical Research Letters*, 49, e2022GL099777, <https://doi.org/https://doi.org/10.1029/2022GL099777>, e2022GL099777 2022GL099777, 2022.
- 510 Chan, M. A. and Comiso, J. C.: Arctic Cloud Characteristics as Derived from MODIS, CALIPSO, and CloudSat, *Journal of Climate*, 26, 3285 – 3306, <https://doi.org/10.1175/JCLI-D-12-00204.1>, 2013.
- Chen, Y., Haywood, J., Wang, Y., Malavelle, F., Jordan, G., Partridge, D., Fieldsend, J., De Leeuw, J., Schmidt, A., Cho, N., Oreopoulos, L., Platnick, S., Grosvenor, D., Field, P., and Lohmann, U.: Machine learning reveals climate forcing from aerosols is dominated by increased cloud cover, *Nature Geoscience*, 15, 609–614, <https://doi.org/10.1038/s41561-022-00991-6>, 2022.
- 515 Chen, Y.-C., Christensen, M., Stephens, G., and Seinfeld, J.: Satellite-based estimate of global aerosol–cloud radiative forcing by marine warm clouds, *Nature Geoscience*, 7, 643–646, <https://doi.org/10.1038/ngeo2214>, 2014.
- Choi, Y.-S., Kim, B.-M., Hur, S.-K., Kim, S.-J., Kim, J.-H., and Ho, C.-H.: Connecting early summer cloud-controlled sunlight and late summer sea ice in the Arctic, *Journal of Geophysical Research: Atmospheres*, 119, 11,087–11,099, <https://doi.org/https://doi.org/10.1002/2014JD022013>, 2014.
- 520 Christensen, M. W., Jones, W. K., and Stier, P.: Aerosols enhance cloud lifetime and brightness along the stratus-to-cumulus transition, *PNAS*, 117, 17 591–17 598, <https://doi.org/10.1073/pnas.1921231117>, publisher: National Academy of Sciences Section: Physical Sciences, 2020.
- Creamean, J. M., Barry, K., Hill, T. C. J., Hume, C., DeMott, P. J., Shupe, M. D., Dahlke, S., Willmes, S., Schmale, J., Beck, I., Hoppe, C. J. M., Fong, A., Chamberlain, E., Bowman, J., Scharien, R., and Persson, O.: Annual cycle observations of aerosols capable of ice
525 formation in central Arctic clouds, *Nature Communications*, 13, 3537, <https://doi.org/10.1038/s41467-022-31182-x>, 2022.
- Curry, J. A. and Ebert, E. E.: Annual Cycle of Radiation Fluxes over the Arctic Ocean: Sensitivity to Cloud Optical Properties, *Journal of Climate*, 5, 1267 – 1280, [https://doi.org/10.1175/1520-0442\(1992\)005<1267:ACORFO>2.0.CO;2](https://doi.org/10.1175/1520-0442(1992)005<1267:ACORFO>2.0.CO;2), 1992.
- Dadashazar, H., Painemal, D., Alipanah, M., Brunke, M., Chellappan, S., Corral, A. F., Crosbie, E., Kirschler, S., Liu, H., Moore, R. H., Robinson, C., Scarino, A. J., Shook, M., Sinclair, K., Thornhill, K. L., Voigt, C., Wang, H., Winstead, E., Zeng, X., Ziemba, L., Zuidema, P.,
530 and Sorooshian, A.: Cloud drop number concentrations over the western North Atlantic Ocean: seasonal cycle, aerosol interrelationships, and other influential factors, *Atmospheric Chemistry and Physics*, 21, 10 499–10 526, <https://doi.org/10.5194/acp-21-10499-2021>, 2021.
- de Boer, G., Eloranta, E. W., and Shupe, M. D.: Arctic Mixed-Phase Stratiform Cloud Properties from Multiple Years of Surface-Based Measurements at Two High-Latitude Locations, *Journal of the Atmospheric Sciences*, 66, 2874 – 2887, <https://doi.org/10.1175/2009JAS3029.1>, 2009.
- 535 Delanoë, J. and Hogan, R. J.: Combined CloudSat-CALIPSO-MODIS retrievals of the properties of ice clouds, *Journal of Geophysical Research: Atmospheres*, 115, <https://doi.org/https://doi.org/10.1029/2009JD012346>, 2010.
- DiGirolamo, N., Parkinson, C. L., D. J. Cavalieri, P. G., and Zwally, H. J.: Sea Ice Concentrations from Nimbus-7 SMMR and DMSP SSM/I-SSMIS Passive Microwave Data, Version 2, <https://doi.org/10.5067/MPYG15WAA4WX>, 2022.
- Engström, A. and Ekman, A. M. L.: Impact of meteorological factors on the correlation between aerosol optical depth and cloud fraction,
540 *Geophysical Research Letters*, 37, <https://doi.org/https://doi.org/10.1029/2010GL044361>, 2010.
- Engström, A., Bender, F. A.-M., Charlson, R. J., and Wood, R.: Geographically coherent patterns of albedo enhancement and suppression associated with aerosol sources and sinks, *Tellus B: Chemical and Physical Meteorology*, 67, 26 442, <https://doi.org/10.3402/tellusb.v67.26442>, 2015.



- Field, P. R., Cotton, R. J., McBeath, K., Lock, A. P., Webster, S., and Allan, R. P.: Improving a convection-permitting model simulation of
545 a cold air outbreak, *Quarterly Journal of the Royal Meteorological Society*, 140, 124–138, <https://doi.org/https://doi.org/10.1002/qj.2116>,
2014.
- Field, P. R., Brožková, R., Chen, M., Dudhia, J., Lac, C., Hara, T., Honnert, R., Olson, J., Siebesma, P., de Roode, S., Tomassini, L., Hill,
A., and McTaggart-Cowan, R.: Exploring the convective grey zone with regional simulations of a cold air outbreak, *Quarterly Journal of
the Royal Meteorological Society*, 143, 2537–2555, <https://doi.org/https://doi.org/10.1002/qj.3105>, 2017.
- 550 Fletcher, J., Mason, S., and Jakob, C.: The Climatology, Meteorology, and Boundary Layer Structure of Marine Cold Air Outbreaks in
Both Hemispheres, *Journal of Climate*, 29, 1999–2014, <https://doi.org/10.1175/JCLI-D-15-0268.1>, publisher: American Meteorological
Society Section: *Journal of Climate*, 2016a.
- Fletcher, J. K., Mason, S., and Jakob, C.: A Climatology of Clouds in Marine Cold Air Outbreaks in Both Hemispheres, *Journal of Cli-
mate*, 29, 6677–6692, <https://doi.org/10.1175/JCLI-D-15-0783.1>, publisher: American Meteorological Society Section: *Journal of Cli-
mate*, 2016b.
- 555 Geerts, B., Giangrande, S. E., McFarquhar, G. M., Xue, L., Abel, S. J., Comstock, J. M., Crewell, S., DeMott, P. J., Ebell, K., Field, P.,
Hill, T. C. J., Hunzinger, A., Jensen, M. P., Johnson, K. L., Juliano, T. W., Kollias, P., Kosovic, B., Lackner, C., Luke, E., Lüpkes, C.,
Matthews, A. A., Neggers, R., Ovchinnikov, M., Powers, H., Shupe, M. D., Spengler, T., Swanson, B. E., Tjernström, M., Theisen, A. K.,
Wales, N. A., Wang, Y., Wendisch, M., and Wu, P.: The COMBLE campaign: a study of marine boundary-layer clouds in Arctic cold-
560 air outbreaks, *Bulletin of the American Meteorological Society*, -1, <https://doi.org/10.1175/BAMS-D-21-0044.1>, publisher: American
Meteorological Society Section: *Bulletin of the American Meteorological Society*, 2022.
- Goren, T., Kazil, J., Hoffmann, F., Yamaguchi, T., and Feingold, G.: Anthropogenic Air Pollution Delays Marine Stratocumulus Breakup to
Open Cells, *Geophysical Research Letters*, 46, 14 135–14 144, <https://doi.org/https://doi.org/10.1029/2019GL085412>, 2019.
- Goren, T., Feingold, G., Gryspeerdt, E., Kazil, J., Kretzschmar, J., Jia, H., and Quaas, J.: Projecting Stratocumulus Transitions on
565 the Albedo—Cloud Fraction Relationship Reveals Linearity of Albedo to Droplet Concentrations, *Geophysical Research Letters*, 49,
e2022GL101 169, <https://doi.org/https://doi.org/10.1029/2022GL101169>, e2022GL101169 2022GL101169, 2022.
- Grosvenor, D. P. and Wood, R.: The effect of solar zenith angle on MODIS cloud optical and microphysical retrievals within marine liquid
water clouds, *Atmospheric Chemistry and Physics*, 14, 7291–7321, <https://doi.org/10.5194/acp-14-7291-2014>, 2014.
- Gryspeerdt, E., Stier, P., and Partridge, D. G.: Satellite observations of cloud regime development: the role of aerosol processes, *Atmospheric
570 Chemistry and Physics*, 14, 1141–1158, <https://doi.org/10.5194/acp-14-1141-2014>, 2014.
- Gryspeerdt, E., Quaas, J., and Bellouin, N.: Constraining the aerosol influence on cloud fraction, *Journal of Geophysical Research: Atmo-
spheres*, 121, 3566–3583, <https://doi.org/https://doi.org/10.1002/2015JD023744>, 2016.
- Gryspeerdt, E., Goren, T., Sourdeval, O., Quaas, J., Mülmenstädt, J., Dipu, S., Unglaub, C., Gettelman, A., and Christensen, M.: Constraining
the aerosol influence on cloud liquid water path, *Atmospheric Chemistry and Physics*, 19, 5331–5347, [https://doi.org/10.5194/acp-19-
5331-2019](https://doi.org/10.5194/acp-19-
5331-2019), 2019a.
- 575 Gryspeerdt, E., Smith, T. W. P., O’Keeffe, E., Christensen, M. W., and Goldsworth, F. W.: The Impact of Ship Emission Controls Recorded
by Cloud Properties, *Geophysical Research Letters*, 46, 12 547–12 555, <https://doi.org/https://doi.org/10.1029/2019GL084700>, 2019b.
- Gryspeerdt, E., Goren, T., and Smith, T. W. P.: Observing the timescales of aerosol–cloud interactions in snapshot satellite images, *Atmo-
spheric Chemistry and Physics*, 21, 6093–6109, <https://doi.org/10.5194/acp-21-6093-2021>, 2021.
- 580 Hartmann, J., Kottmeier, C., and Raasch, S.: Roll Vortices and Boundary-Layer Development during a Cold Air Outbreak, *Boundary-Layer
Meteorology*, 84, 45–65, <https://doi.org/10.1023/A:1000392931768>, 1997.



- Hersbach, H., Bell, B., Berrisford, P., Hirahara, S., Horányi, A., Muñoz-Sabater, J., Nicolas, J., Peubey, C., Radu, R., Schepers, D., Simmons, A., Soci, C., Abdalla, S., Abellan, X., Balsamo, G., Bechtold, P., Biavati, G., Bidlot, J., Bonavita, M., De Chiara, G., Dahlgren, P., Dee, D., Diamantakis, M., Dragani, R., Flemming, J., Forbes, R., Fuentes, M., Geer, A., Haimberger, L., Healy, S., Hogan, R. J., 585 Hólm, E., Janisková, M., Keeley, S., Laloyaux, P., Lopez, P., Lupu, C., Radnoti, G., de Rosnay, P., Rozum, I., Vamborg, F., Villaume, S., and Thépaut, J.-N.: The ERA5 global reanalysis, *Quarterly Journal of the Royal Meteorological Society*, 146, 1999–2049, <https://doi.org/https://doi.org/10.1002/qj.3803>, 2020.
- Horner, G. A. and Gryspeerdt, E.: The evolution of deep convective systems and their associated cirrus outflows, *Atmospheric Chemistry and Physics Discussions*, 2022, 1–22, <https://doi.org/10.5194/acp-2022-755>, 2022.
- 590 Huang, Y., Dong, X., Xi, B., Dolinar, E. K., and Stanfield, R. E.: The footprints of 16 year trends of Arctic springtime cloud and radiation properties on September sea ice retreat, *Journal of Geophysical Research: Atmospheres*, 122, 2179–2193, <https://doi.org/https://doi.org/10.1002/2016JD026020>, 2017.
- Huang, Y., Taylor, P. C., Rose, F. G., Rutan, D. A., Shupe, M. D., Webster, M. A., and Smith, M. M.: Toward a more realistic representation of surface albedo in NASA CERES-derived surface radiative fluxes: A comparison with the MOSAiC field campaign: Comparison of 595 CERES and MOSAiC surface radiation fluxes, *Elementa: Science of the Anthropocene*, 10, <https://doi.org/10.1525/elementa.2022.00013>, 00013, 2022.
- Inness, A., Ades, M., Agustí-Panareda, A., Barré, J., Benedictow, A., Blechschmidt, A.-M., Dominguez, J. J., Engelen, R., Eskes, H., Flemming, J., Huijnen, V., Jones, L., Kipling, Z., Massart, S., Parrington, M., Peuch, V.-H., Razinger, M., Remy, S., Schulz, M., and Suttie, M.: The CAMS reanalysis of atmospheric composition, *Atmospheric Chemistry and Physics*, 19, 3515–3556, <https://doi.org/10.5194/acp-19-3515-2019>, 2019. 600
- Jing, X. and Suzuki, K.: The Impact of Process-Based Warm Rain Constraints on the Aerosol Indirect Effect, *Geophysical Research Letters*, 45, 10,729–10,737, <https://doi.org/https://doi.org/10.1029/2018GL079956>, 2018.
- Karalis, M., Sotiropoulou, G., Abel, S. J., Bossioli, E., Georgakaki, P., Methymaki, G., Nenes, A., and Tombrou, M.: Effects of secondary ice processes on a stratocumulus to cumulus transition during a cold-air outbreak, *Atmospheric Research*, 277, 106 302, 605 <https://doi.org/https://doi.org/10.1016/j.atmosres.2022.106302>, 2022.
- Kato, S. and Marshak, A.: Solar zenith and viewing geometry-dependent errors in satellite retrieved cloud optical thickness: Marine stratocumulus case, *Journal of Geophysical Research: Atmospheres*, 114, <https://doi.org/https://doi.org/10.1029/2008JD010579>, 2009.
- Kato, S., Rose, F. G., Rutan, D. A., Thorsen, T. J., Loeb, N. G., Doelling, D. R., Huang, X., Smith, W. L., Su, W., and Ham, S.-H.: Surface Irradiances of Edition 4.0 Clouds and the Earth's Radiant Energy System (CERES) Energy Balanced and Filled (EBAF) Data Product, 610 *Journal of Climate*, 31, 4501 – 4527, <https://doi.org/10.1175/JCLI-D-17-0523.1>, 2018.
- Kay, J., L'Ecuyer, T., Chepfer, H., Loeb, N., Morrison, A., and Cesana, G.: Recent Advances in Arctic Cloud and Climate Research, *Current Climate Change Reports*, 2, 159–169, <https://doi.org/10.1007/s40641-016-0051-9>, 2016.
- Khanal, S. and Wang, Z.: Uncertainties in MODIS-Based Cloud Liquid Water Path Retrievals at High Latitudes Due to Mixed-Phase Clouds and Cloud Top Height Inhomogeneity, *Journal of Geophysical Research: Atmospheres*, 123, 11,154–11,172, <https://doi.org/10.1029/2018JD028558>, 2018. 615
- Klein, S. A. and Hartmann, D. L.: The Seasonal Cycle of Low Stratiform Clouds, *Journal of Climate*, 6, 1587 – 1606, [https://doi.org/10.1175/1520-0442\(1993\)006<1587:TSCOLS>2.0.CO;2](https://doi.org/10.1175/1520-0442(1993)006<1587:TSCOLS>2.0.CO;2), 1993.
- Kolstad, E. W.: Higher ocean wind speeds during marine cold air outbreaks, *Quarterly Journal of the Royal Meteorological Society*, 143, 2084–2092, <https://doi.org/10.1002/qj.3068>, [_eprint: https://onlinelibrary.wiley.com/doi/pdf/10.1002/qj.3068](https://onlinelibrary.wiley.com/doi/pdf/10.1002/qj.3068), 2017.



- 620 Kolstad, E. W. and Bracegirdle, T. J.: Marine cold-air outbreaks in the future: an assessment of IPCC AR4 model results for the Northern Hemisphere, *Climate Dynamics*, 30, 871–885, <https://doi.org/10.1007/s00382-007-0331-0>, 2008.
- Landgren, O. A., Seierstad, I. A., and Iversen, T.: Projected future changes in Marine Cold-Air Outbreaks associated with Polar Lows in the Northern North-Atlantic Ocean, *Climate Dynamics*, 53, 2573–2585, <https://doi.org/10.1007/s00382-019-04642-2>, 2019.
- Leck, C. and Persson, C.: The central Arctic Ocean as a source of dimethyl sulfide Seasonal variability in relation to biological activity, *Tellus B: Chemical and Physical Meteorology*, 48, 156–177, <https://doi.org/10.3402/tellusb.v48i2.15834>, 1996.
- 625 Lloyd, G., Choularton, T. W., Bower, K. N., Gallagher, M. W., Crosier, J., O’Shea, S., Abel, S. J., Fox, S., Cotton, R., and Boutle, I. A.: In situ measurements of cloud microphysical and aerosol properties during the break-up of stratocumulus cloud layers in cold air outbreaks over the North Atlantic, *Atmospheric Chemistry and Physics*, 18, 17 191–17 206, <https://doi.org/10.5194/acp-18-17191-2018>, publisher: Copernicus GmbH, 2018.
- 630 Loeb, N. G., Wielicki, B. A., Rose, F. G., and Doelling, D. R.: Variability in global top-of-atmosphere shortwave radiation between 2000 and 2005, *Geophysical Research Letters*, 34, <https://doi.org/https://doi.org/10.1029/2006GL028196>, 2007.
- Maahn, M., Goren, T., Shupe, M. D., and de Boer, G.: Liquid Containing Clouds at the North Slope of Alaska Demonstrate Sensitivity to Local Industrial Aerosol Emissions, *Geophysical Research Letters*, 48, e2021GL094 307, <https://doi.org/https://doi.org/10.1029/2021GL094307>, e2021GL094307 2021GL094307, 2021.
- 635 McCoy, I. L., Wood, R., and Fletcher, J. K.: Identifying Meteorological Controls on Open and Closed Mesoscale Cellular Convection Associated with Marine Cold Air Outbreaks, *Journal of Geophysical Research: Atmospheres*, 122, 11,678–11,702, <https://doi.org/https://doi.org/10.1002/2017JD027031>, 2017.
- McCoy, I. L., McCoy, D. T., Wood, R., Regayre, L., Watson-Parris, D., Grosvenor, D. P., Mulcahy, J. P., Hu, Y., Bender, F. A.-M., Field, P. R., Carslaw, K. S., and Gordon, H.: The hemispheric contrast in cloud microphysical properties constrains aerosol forcing, *Proceedings of the National Academy of Sciences*, 117, 18 998–19 006, <https://doi.org/10.1073/pnas.1922502117>, 2020.
- 640 Michibata, T., Suzuki, K., Sato, Y., and Takemura, T.: The source of discrepancies in aerosol–cloud–precipitation interactions between GCM and A-Train retrievals, *Atmospheric Chemistry and Physics*, 16, 15 413–15 424, <https://doi.org/10.5194/acp-16-15413-2016>, 2016.
- Morrison, H., de Boer, G., Feingold, G., Harrington, J., Shupe, M. D., and Sulia, K.: Resilience of persistent Arctic mixed-phase clouds, *Nature Geoscience*, 5, 11–17, <https://doi.org/10.1038/ngeo1332>, 2012.
- 645 Murray-Watson, R. J. and Gryspeerdt, E.: Stability-dependent increases in liquid water with droplet number in the Arctic, *Atmospheric Chemistry and Physics*, 22, 5743–5756, <https://doi.org/10.5194/acp-22-5743-2022>, 2022.
- NASA/LARC/SD/ASDC: CERES and GEO-Enhanced TOA, Within-Atmosphere and Surface Fluxes, Clouds and Aerosols 1-Hourly Terra-Aqua Edition4A, https://doi.org/10.5067/TERRA+AQUA/CERES/SYN1DEG-1HOUR_L3.004A, 2017.
- Painemal, D. and Zuidema, P.: Assessment of MODIS cloud effective radius and optical thickness retrievals over the
- 650 Southeast Pacific with VOCALS-REx in situ measurements, *Journal of Geophysical Research: Atmospheres*, 116, <https://doi.org/https://doi.org/10.1029/2011JD016155>, 2011.
- Papritz, L. and Spengler, T.: A Lagrangian Climatology of Wintertime Cold Air Outbreaks in the Irminger and Nordic Seas and Their Role in Shaping Air–Sea Heat Fluxes, *Journal of Climate*, 30, 2717 – 2737, <https://doi.org/10.1175/JCLI-D-16-0605.1>, 2017.
- Pawlowska, H. and Brenguier, J.-L.: An observational study of drizzle formation in stratocumulus clouds for general circulation model
- 655 (GCM) parameterizations, *Journal of Geophysical Research: Atmospheres*, 108, <https://doi.org/https://doi.org/10.1029/2002JD002679>, 2003.



- Peters, G. P., Nilssen, T. B., Lindholt, L., Eide, M. S., Glømsrød, S., Eide, L. I., and Fuglestedt, J. S.: Future emissions from shipping and petroleum activities in the Arctic, *Atmospheric Chemistry and Physics*, 11, 5305–5320, <https://doi.org/10.5194/acp-11-5305-2011>, 2011.
- 660 Pithan, F., Svensson, G., Caballero, R., Chechin, D., Cronin, T. W., Ekman, A. M. L., Neggers, R., Shupe, M. D., Solomon, A., Tjernström, M., and Wendisch, M.: Role of air-mass transformations in exchange between the Arctic and mid-latitudes, *Nature Geosci*, 11, 805–812, <https://doi.org/10.1038/s41561-018-0234-1>, bandiera_abtest: a Cg_type: Nature Research Journals Number: 11 Primary_atype: Reviews Publisher: Nature Publishing Group Subject_term: Atmospheric dynamics;Atmospheric science Subject_term_id: atmospheric-dynamics;atmospheric-science, 2018.
- 665 Platnick, S., King, M. D., Ackerman, S. A., Menzel, W. P., Baum, B. A., Riedi, J. C., and Frey, R. A.: The MODIS cloud products: algorithms and examples from Terra, *IEEE Transactions on Geoscience and Remote Sensing*, 41, 459–473, <https://doi.org/10.1109/TGRS.2002.808301>, 2003.
- Platnick, S., Meyer, K. G., King, M. D., Wind, G., Amarasinghe, N., Marchant, B., Arnold, G. T., Zhang, Z., Hubanks, P. A., Holz, R. E., Yang, P., Ridgway, W. L., and Riedi, J.: The MODIS Cloud Optical and Microphysical Products: Collection 6 Updates and Examples From Terra and Aqua, *IEEE Transactions on Geoscience and Remote Sensing*, 55, 502–525, <https://doi.org/10.1109/TGRS.2016.2610522>, 2017.
- 670 Quaas, J., Boucher, O., and Lohmann, U.: Constraining the total aerosol indirect effect in the LMDZ and ECHAM4 GCMs using MODIS satellite data, *Atmospheric Chemistry and Physics*, 6, 947–955, <https://doi.org/10.5194/acp-6-947-2006>, 2006.
- Riihelä, A., Key, J. R., Meirink, J. F., Kuipers Munneke, P., Palo, T., and Karlsson, K.-G.: An intercomparison and validation of satellite-based surface radiative energy flux estimates over the Arctic, *Journal of Geophysical Research: Atmospheres*, 122, 4829–4848, <https://doi.org/https://doi.org/10.1002/2016JD026443>, 2017.
- 675 Rosenfeld, D. and Gutman, G.: Retrieving microphysical properties near the tops of potential rain clouds by multispectral analysis of AVHRR data, *Atmospheric Research*, 34, 259–283, [https://doi.org/https://doi.org/10.1016/0169-8095\(94\)90096-5](https://doi.org/https://doi.org/10.1016/0169-8095(94)90096-5), 11th conference on clouds and precipitation, 1994.
- Ruiz-Donoso, E., Ehrlich, A., Schäfer, M., Jäkel, E., Schemann, V., Crewell, S., Mech, M., Kulla, B. S., Kliesch, L.-L., Neuber, R., and Wendisch, M.: Small-scale structure of thermodynamic phase in Arctic mixed-phase clouds observed by airborne remote sensing during a cold air outbreak and a warm air advection event, *Atmospheric Chemistry and Physics*, 20, 5487–5511, <https://doi.org/10.5194/acp-20-5487-2020>, 2020.
- 680 Sanchez, K. J., Zhang, B., Liu, H., Brown, M. D., Crosbie, E. C., Gallo, F., Hair, J. W., Hostetler, C. A., Jordan, C. E., Robinson, C. E., Scarino, A. J., Shingler, T. J., Shook, M. A., Thornhill, K. L., Wiggins, E. B., Winstead, E. L., Ziemba, L. D., Saliba, G., Lewis, S. L., Russell, L. M., Quinn, P. K., Bates, T. S., Porter, J., Bell, T. G., Gaube, P., Saltzman, E. S., Behrenfeld, M. J., and Moore, R. H.: North Atlantic Ocean SST-gradient-driven variations in aerosol and cloud evolution along Lagrangian cold-air outbreak trajectories, *Atmospheric Chemistry and Physics*, 22, 2795–2815, <https://doi.org/10.5194/acp-22-2795-2022>, publisher: Copernicus GmbH, 2022.
- Sandu, I. and Stevens, B.: On the Factors Modulating the Stratocumulus to Cumulus Transitions, *Journal of the Atmospheric Sciences*, 68, 1865 – 1881, <https://doi.org/10.1175/2011JAS3614.1>, 2011.
- 690 Sarkar, M., Zuidema, P., Albrecht, B., Ghate, V., Jensen, J., Mohrmann, J., and Wood, R.: Observations Pertaining to Precipitation within the Northeast Pacific Stratocumulus-to-Cumulus Transition, *Monthly Weather Review*, 148, 1251 – 1273, <https://doi.org/10.1175/MWR-D-19-0235.1>, 2020.
- Schmale, J., Arnold, S. R., Law, K. S., Thorp, T., Anenberg, S., Simpson, W. R., Mao, J., and Pratt, K. A.: Local Arctic Air Pollution: A Neglected but Serious Problem, *Earth’s Future*, 6, 1385–1412, <https://doi.org/10.1029/2018EF000952>, 2018.



- Schmale, J., Zieger, P., and Ekman, A.: Aerosols in current and future Arctic climate, *Nature Climate Change*, 11, 95–105, <https://doi.org/10.1038/s41558-020-00969-5>, 2021.
- 695 Serreze, M. C. and Barry, R. G.: Processes and impacts of Arctic amplification: A research synthesis, *Global and Planetary Change*, 77, 85–96, <https://doi.org/https://doi.org/10.1016/j.gloplacha.2011.03.004>, 2011.
- Shupe, M. D. and Intrieri, J. M.: Cloud Radiative Forcing of the Arctic Surface: The Influence of Cloud Properties, Surface Albedo, and Solar Zenith Angle, *Journal of Climate*, 17, 616 – 628, [https://doi.org/10.1175/1520-0442\(2004\)017<0616:CRFOTA>2.0.CO;2](https://doi.org/10.1175/1520-0442(2004)017<0616:CRFOTA>2.0.CO;2), 2004.
- 700 Shupe, M. D., Matrosov, S. Y., and Uttal, T.: Arctic Mixed-Phase Cloud Properties Derived from Surface-Based Sensors at SHEBA, *Journal of the Atmospheric Sciences*, 63, 697 – 711, <https://doi.org/10.1175/JAS3659.1>, 2006.
- Sourdeval, O., C-Labonnote, L., Baran, A. J., Mülmenstädt, J., and Brogniez, G.: A methodology for simultaneous retrieval of ice and liquid water cloud properties. Part 2: Near-global retrievals and evaluation against A-Train products, *Quarterly Journal of the Royal Meteorological Society*, 142, 3063–3081, <https://doi.org/https://doi.org/10.1002/qj.2889>, 2016.
- 705 Stevens, B., Cotton, W. R., Feingold, G., and Moeng, C.-H.: Large-Eddy Simulations of Strongly Precipitating, Shallow, Stratocumulus-Topped Boundary Layers, *Journal of the Atmospheric Sciences*, 55, 3616 – 3638, [https://doi.org/10.1175/1520-0469\(1998\)055<3616:LESOSP>2.0.CO;2](https://doi.org/10.1175/1520-0469(1998)055<3616:LESOSP>2.0.CO;2), 1998.
- Sun, W., Loeb, N. G., Davies, R., Loukachine, K., and Miller, W. F.: Comparison of MISR and CERES top-of-atmosphere albedo, *Geophysical Research Letters*, 33, <https://doi.org/https://doi.org/10.1029/2006GL027958>, 2006.
- 710 Tornow, F., Ackerman, A. S., and Fridlind, A. M.: Preconditioning of overcast-to-broken cloud transitions by riming in marine cold air outbreaks, *Atmospheric Chemistry and Physics*, 21, 12 049–12 067, <https://doi.org/10.5194/acp-21-12049-2021>, 2021.
- Tornow, F., Ackerman, A. S., Fridlind, A. M., Cairns, B., Crosbie, E. C., Kirschler, S., Moore, R. H., Painemal, D., Robinson, C. E., Seethala, C., Shook, M. A., Voigt, C., Winstead, E. L., Ziemba, L. D., Zuidema, P., and Sorooshian, A.: Dilution of Boundary Layer Cloud Condensation Nucleus Concentrations by Free Tropospheric Entrainment During Marine Cold Air Outbreaks, *Geophysical Research Letters*, 49, e2022GL098 444, <https://doi.org/https://doi.org/10.1029/2022GL098444>, e2022GL098444 2022GL098444, 2022.
- 715 Wood, R. and Hartmann, D. L.: Spatial Variability of Liquid Water Path in Marine Low Cloud: The Importance of Mesoscale Cellular Convection, *Journal of Climate*, 19, 1748 – 1764, <https://doi.org/10.1175/JCLI3702.1>, 2006.
- Wu, P. and Ovchinnikov, M.: Cloud Morphology Evolution in Arctic Cold-Air Outbreak: Two Cases During COMBLE Period, *Journal of Geophysical Research: Atmospheres*, 127, e2021JD035 966, <https://doi.org/https://doi.org/10.1029/2021JD035966>, e2021JD035966
- 720 2021JD035966, 2022.
- Yamaguchi, T., Feingold, G., and Kazil, J.: Stratocumulus to Cumulus Transition by Drizzle, *Journal of Advances in Modeling Earth Systems*, 9, 2333–2349, <https://doi.org/10.1002/2017MS001104>, <https://agupubs.onlinelibrary.wiley.com/doi/pdf/10.1002/2017MS001104>, 2017.
- Young, G., Jones, H. M., Choularton, T. W., Crosier, J., Bower, K. N., Gallagher, M. W., Davies, R. S., Renfrew, I. A., Elvidge, A. D., Darbyshire, E., Marenco, F., Brown, P. R. A., Ricketts, H. M. A., Connolly, P. J., Lloyd, G., Williams, P. I., Allan, J. D., Taylor, J. W., Liu, D., and Flynn, M. J.: Observed microphysical changes in Arctic mixed-phase clouds when transitioning from sea ice to open ocean, *Atmospheric Chemistry and Physics*, 16, 13 945–13 967, <https://doi.org/10.5194/acp-16-13945-2016>, 2016.
- Zeng, S., Riedi, J., Trepte, C. R., Winker, D. M., and Hu, Y.-X.: Study of global cloud droplet number concentration with A-Train satellites, *Atmospheric Chemistry and Physics*, 14, 7125–7134, <https://doi.org/10.5194/acp-14-7125-2014>, 2014.

<https://doi.org/10.5194/egusphere-2023-734>

Preprint. Discussion started: 2 May 2023

© Author(s) 2023. CC BY 4.0 License.



- 730 Zhang, Z. and Platnick, S.: An assessment of differences between cloud effective particle radius retrievals for marine water clouds from three MODIS spectral bands, *Journal of Geophysical Research: Atmospheres*, 116, [https://doi.org/https://doi.org/10.1029/2011JD016216](https://doi.org/10.1029/2011JD016216), 2011.