

Detecting the human fingerprint in the summer 2022 West-Central European soil drought

Dominik L. Schumacher¹, Mariam Zachariah², Friederike Otto², Clair Barnes², Sjoukje Philip³, Sarah Kew³, Maja Vahlberg⁴, Roop Singh⁴, Dorothy Heinrich⁴, Julie Arrighi^{4,5,6}, Maarten van Aalst^{4,6,7},
5 Mathias Hauser¹, Martin Hirschi¹, Verena Bessenbacher¹, Lukas Gudmundsson¹, Hiroko K. Beaudoin^{8,9}, Matthew Rodell⁸, Sihan Li¹⁰, Wenchang Yang¹¹, Gabriel A. Vecchi^{11,12}, Luke J. Harrington¹³, Flavio Lehner^{14,15}, Gianpaolo Balsamo¹⁶, and Sonia I. Seneviratne¹

¹ Institute for Atmospheric and Climate Science, ETH Zurich, 8092, Switzerland

² Grantham Institute, Imperial College, London, SW7 2BU, UK

10 ³ Royal Netherlands Meteorological Institute (KNMI), De Bilt, 3731, The Netherlands

⁴ Red Cross Red Crescent Climate Centre, The Hague, 2593, Netherlands

⁵ Global Disaster Preparedness Center, Washington DC, 20006, USA

⁶ University of Twente, Enschede, 7500, Netherlands

⁷ International Research Institute for Climate and Society, Columbia University, New York, NY 10964-1000, US

15 ⁸ Earth Sciences Division, NASA GSFC, Greenbelt, MD 20771, USA

⁹ Earth System Science Interdisciplinary Center, University of Maryland, College Park, MD 20740, USA

¹⁰ Department of Geography, University of Sheffield, S10 2TN, UK

¹¹ Department of Geosciences, Princeton University, Princeton, NJ 08544, USA

¹² High Meadows Environmental Institute, Princeton University, Princeton, NJ 08544, USA

20 ¹³ Te Aka Mātuatua School of Science, University of Waikato, Hillcrest, Hamilton 3214, New Zealand

¹⁴ Department of Earth and Atmospheric Sciences, Cornell University, Ithaca, NY 14853-1504, USA,

¹⁵ Climate and Global Dynamics Laboratory, National Center for Atmospheric Research, Boulder, CO 80301, USA

¹⁶ European Centre for Medium-range Weather Forecasts, ECMWF, Reading, RG2 9AX, UK

Correspondence to: Dominik L. Schumacher (dominik.schumacher@env.ethz.ch)

25

Abstract. In the 2022 summer, West-Central Europe and several other northern-hemisphere mid-latitude regions experienced substantial soil moisture deficits in the wake of precipitation shortages and elevated temperatures. Much of Europe has not witnessed a more severe soil drought since at least the mid-20th century, raising the question whether this is a manifestation of our warming climate. Here, we employ a well-established statistical approach to attribute the low 2022
30 summer soil moisture to human-induced climate change, using observation-driven soil moisture estimates and climate models. We find that in West-Central Europe, a June–August root-zone soil moisture drought such as in 2022 is expected to occur once in 20 years in the present climate, but would have occurred only about once per century during pre-industrial times. The entire northern extratropics show an even stronger global warming imprint with a 20-fold soil drought probability increase or higher, but we note that the underlying uncertainty is large. Reasons are manifold, but include the lack of direct
35 soil moisture observations at the required spatiotemporal scales, the limitations of remotely sensed estimates, and the resulting need to simulate soil moisture with land surface models driven by meteorological data. Nevertheless, observation-based products indicate long-term declining summer soil moisture for both regions, and this tendency is likely fueled by

regional warming, while no clear trends emerge for precipitation. Finally, our climate model analysis suggests that in a 2 °C world, 2022-like soil drought conditions would become twice as likely for West-Central Europe compared to today, and would take place nearly every year across the northern extratropics.

1 Introduction

Following a dry spring with above-average air temperatures across much of Europe (Toreti et al., 2022), the 2022 summer was assessed “hottest on record” by the European Union’s Copernicus environmental programme. The unusually hot and dry conditions were accompanied by widespread soil desiccation, particularly in western regions of the continent (Copernicus, 2022a) that experienced a sequence of heatwaves (Zachariah et al., 2022) and precipitation shortages. Based on runoff anomalies, it was highlighted in the press that the 2022 European drought could be the “worst in 500 years” (Henley, 2022). This event was preceded by the 2018–2020 drought in Europe (e.g., Boergens et al., 2020, Rakovec et al., 2022), and while 2021 brought relief to dry soils through above-normal precipitation in western parts of the continent (Copernicus, 2021), soil moisture drought indicators point to an incomplete recovery in many areas (NASA GRACE-FO, 2022; EDO, 2022). As such, at least part of Europe was already primed for a severe soil drought in 2022 well before summertime. Unusual heat and drought also characterised the 2022 boreal summer elsewhere, however; for example, China was affected by exceptionally high aridity and temperatures (Ahmedzade et al., 2022), and North America experienced a warm summer with below-average soil moisture (Copernicus, 2022a). In the midlatitudes, extreme summer heat and precipitation shortages are typically fostered by persistent, often near-stationary anticyclones (e.g., Li et al., 2020), or in some cases subtropical ridges (e.g., Sousa et al., 2020), and many areas in Europe were indeed subject to the strongest 500 hPa geopotential height anomalies between May and July 2022 since 1950 (Toreti et al., 2022). Such anticyclonic circulation patterns are intrinsically related to the extratropical jetstream, which is known to simultaneously promote drought and heavy precipitation in different regions for certain (wavy) flow configurations (Lau & Kim, 2012, Coumou et al., 2014), but the underlying dynamics are complex and still not fully understood. Nevertheless, a recent study has suggested that many heatwaves in the ongoing century in Western Europe have been caused by increasingly frequent and persistent double jets, whose occurrence is closely linked to anticyclonic flow (Rousi et al., 2022). From a global perspective, ENSO has remained in the “La Niña” phase since late 2020 (CPC, 2022), which may have contributed to the hot and dry conditions in parts of both China and North America (Wang et al., 2007, Karori et al., 2013).

While the roles of such and other local and remote dynamic and thermodynamic drivers for the dry and hot 2022 summer are yet to be investigated in detail, it is already clear that the soils in large parts of the northern extratropics were unusually dry. As such, enhanced land–atmosphere coupling (e.g., Seneviratne et al., 2006, Mueller and Seneviratne 2012, Miralles et al., 2019, Stegehuis et al., 2021) likely contributed to heatwaves in Europe, China, the southwestern United States (NASA Earth Observatory, 2022), and triggered hot and dry summer conditions in large parts of the northern extratropics. On the other hand, the high temperatures likely exacerbated dry soil conditions due to increased land evapotranspiration, as identified in recent drought events in Europe (e.g. Seneviratne et al. 2012, Teuling et al. 2013). This is in line with a detected trend towards decreased water-availability in the dry season across land regions in the recent past, 1985–2014, compared to the

75 first half of the 20th century (Padrón et al., 2020). Furthermore, the mechanism of northward ‘drought propagation’ — a causal link between (spring) drought in the Mediterranean, and hot and dry summers in West-Central Europe (Vautard et al., 2005; Zampieri et al., 2009) — may also have played a role in the evolution of the 2022 European drought. The extreme conditions manifested in some of the most severe soil moisture droughts on record; e.g., in July 2022, nearly half of Europe was assigned a drought warning (EC JRC, 2022a). In some areas, shortages of drinkable water due to low water tables were reported, whereas China issued its first nationwide drought alert (Reuters, 2022). In addition, the combination of excessive heat and moisture deficits strongly increased the fire risk in Europe, leading to the highest burnt area ever recorded since the start of measurements (EFFIS, 2022).

80 Low soil moisture typically implies increased water stress for natural vegetation and crops (e.g., Berg & Sheffield, 2018, Liu et al., 2020), which can be further exacerbated by elevated air temperatures and hence heat stress (Seneviratne et al., 2021). According to the 6th Assessment Report from the Intergovernmental Panel on Climate Change (IPCC), there is *medium confidence* that human-induced climate change has contributed to increases in agricultural and ecological droughts in some regions due to evapotranspiration increases (Seneviratne et al., 2021). Nevertheless, while strong evidence for human-
85 induced aggravations of recent heatwaves has been reported repeatedly (Seneviratne et al., 2021), such as for the heatwave in Western Europe in July 2022 (Zachariah et al., 2022), there are more uncertainties in the contribution of anthropogenic climate change to trends in agricultural drought conditions in single regions. Building on a rapid attribution analysis of the World Weather Attribution (Schumacher et al., 2022), we investigate the role of climate change in the frequency and magnitude of 2022 surface and root-zone soil moisture deficits — the latter a measure of agro-ecological drought — for two
90 regions: the West-Central Europe (WCE) region in IPCC AR6 (Iturbide et al., 2020), and the northern extratropics, i.e. the land area between 23.5 °N to 90 °N (NHET). We restrict our analysis to boreal summer (June–August), the season with the largest spatial extent of droughts in the northern extratropics (Lu et al., 2019), which is also when the widespread 2022 drought conditions peaked. As temperature and precipitation anomalies are known to strongly influence agricultural drought, we also analyse summertime mean temperature and precipitation over the same regions as for soil moisture.

95 **2 Event description and associated impacts**

Several regions across the northern extratropics suffered from persistent drought and heatwaves in the 2022 summer. Parts of southwestern North America, for example, were reported to experience their driest period in more than 1,200 years, causing three water reservoirs in northern Mexico to drain and leading to water insecurity for five million residents (Linthicum, 2022). China, and particularly Hunan Province, experienced its longest drought and most severe heatwave on record (CMA, 2022; Ahmedzade et al., 2022; Le Page, 2022). As of 10 August 2022, nearly two-thirds of Europe was affected by drought
100 (Seabrook, 2022). We focus on West-Central Europe in the following and explore associated impacts in the context of vulnerability and exposure, since such extreme dry and hot conditions are known to act as a risk multiplier for energy, environmental and socio-economic vulnerability (Rakovec et al., 2022; Gazol and Camarero, 2022; Naumann et al., 2021).

105 Since the beginning of May to mid-September, five back-to-back heatwaves blanketed large swathes of Europe. Throughout these months, several daily and monthly maximum temperature records were broken across Italy, France, Switzerland, Germany, Poland, Hungary, and Slovenia (see, e.g., Phys.org, 2022; Breteau, 2022; le News, 2022; Wang, 2022; Twoja Pogoda, 2022; OMSZ, 2022; BBC Weather, 2022). It is estimated that the persistent heat has led to over 24'000 fatalities across Europe, more than 18'000 of which within Western Central Europe — 11'000 in France and over 8'000 in Germany alone (Roucaute, 2022; Destatis, 2022a; Destatis, 2022b). Infrastructure was also impacted as the heat melted roads, buckled 110 railway lines, halted public transportation services, and increased the electricity demand while power stations operated at reduced capacity (Dhanesha & Jones, 2022; Binnie & Twidale, 2022; Rocha, 2022). The hot and dry conditions were also associated with a spike in wildfires; by 24 September, more than 770.000 hectares of land had burnt throughout the European Union (EU; EFFIS, 2022), which equals nearly three times the EU average over 2006-2021 (Copernicus, 2022b). Italy, Slovenia, France, and Romania were particularly affected by these fires (Roscoe, 2022; Lukov, 2022; Korosec, 2022; 115 Dumitrescu, 2022), and by late June, Italy had surpassed its historical wildfire average threefold (The Local, 2022).

Europe's prolonged hot and dry weather conditions during the first half of 2022, and ensuing low water reservoir levels, has led to significant reductions in summer crop yields, most significantly in France, northern Italy, Germany, Slovenia, Hungary, and Romania (EC JRC, 2022b). These significant agricultural impacts are unsurprising, given that this sector is the most water intensive industry in the region (Heggie, 2020; EEA, 2020a). Compared to their five-year averages, maize, 120 soybean and sunflower crops suffered 16, 15 and 12 percent decreases, respectively (Toreti et al., 2022). For example, in northern Italy, the Po River basin experienced its worst water crisis in approximately 70 years, leading to an estimated 30 percent reduction of rice crop yields and at least 50 cattle deaths (Clifford, 2022; Coldiretti, 2022). Paired with the Ukraine crisis hiking up the price for fertilisers fourfold, these decreases in agricultural production led to a "heatflation" of food prices as well as higher feed prices for livestock (DW, 2022; Mendes, 2022). Food prices in China, especially for fruits and 125 vegetables, were also driven up by the heat and drought (Bradsher & Dong, 2022). We note that crop loss poses increasing threats to food security not only in the affected regions, but also globally, and is hence one of the major impacts of the 2022 drought.

The drought in Europe also had indirect impacts on electricity generation in several European countries (Horowitz, 2022). Lower river flows and thus lower reservoir levels have significantly decreased hydroelectric power generation; for example, 130 in Italy, hydroelectric plants generated 40-50 percent less power over the summer months, and one plant in Piacenza was temporarily shut down (Good et al., 2022). The low water levels in rivers in Germany also reduced the ability to transport coal by boat, further impacting energy supply (Horowitz, 2022). In France, where nuclear energy provides a clear majority of the electricity, decreased water availability and the associated lack of cooling mandated output reductions and complete shutdowns of nuclear reactors on the Belgium-France border (Kollewe, 2022). These supply constraints coincided with high 135 demand, particularly due to air conditioning during hot periods. We also emphasise here that the drought occurred at a time when Europe was facing a number of other, compounding stressors on its energy supply; the COVID-19 pandemic led to a slow-down in demand for energy in 2020, but demand has rebounded by 2022 while supply has not kept up, leading to an

increase in global energy prices. In addition, the war in Ukraine has strained ties between Europe and Russia, until recently the main supplier of Europe's natural gas. The restricted supply sent prices soaring, with different impacts across European countries based on their energy mix and import capacity from alternative routes. In Germany, for instance, the energy crisis had (and still has) far-reaching economic ramifications affecting small and medium-sized enterprises, the backbone of Germany's economy (Kagerl et al., 2022).

The drought also highlighted the vulnerability of Europe's water infrastructure; roughly 66% of the European population relies on groundwater for its water-related needs, about 60% are residing in cities where groundwater is over-exploited (EEA, 2020b), and water wastage in public supply systems is estimated at 20–40% of the available water for the entire EU and up to 80% in individual cities (EEA 2020b; Hirschnitz-Garbers et al., 2016). In response to the 2022 drought, and to effectively conserve water, multiple countries enforced water protection practices; e.g., cities and districts across Germany prohibited extraction from various bodies of water, as well as filling pools, watering lawns, and cleaning cars (Stresing and Wolf, 2022). By early August 2022, over 100 French municipalities relied on water deliveries by truck to overcome potable tap water shortages (Chadwick, 2022), and 62 of 96 of France's departments were at the highest level of drought alert, many of which implemented water restrictions (Al Jazeera, 2022). While the country experienced its driest July in more than half a decade (BBC, 2022), and its reportedly most extreme drought in history (Breedon, 2022), the effects of the below-average rainfall was likely aggravated by unsustainable water use and losses in the water distribution system.

We also point out that until recently, drought risk management at the pan-European scale has predominantly focused on coping with financial losses, mainly through calamity funds, mutual funds, and insurances (Bielza Diaz-Caneja et al., 2009). This opposes the current scientific consensus, which entails a shift from reactive to proactive risk management strategies (Wilhite et al., 2007; Blauhut et al., 2016). Blauhut et al. (2022) note that drought risk management planning does not exist on a unified continental scale in Europe, despite the potential benefits for large-scale directive planning in reducing emergency response costs. Following a comprehensive review of drought management practices in 28 European countries and surveying 712 experts across Europe, the paper recommends some key areas to reduce vulnerability and exposure from the planning perspective. Its recommendations include developing a pan-European approach to drought management, allowing for country contextualization while also supporting cross-border drought preparedness efforts.

To summarise, the 2022 heat and drought in Western Central Europe had far-reaching impacts on a variety of sectors including health, energy, agriculture, and municipal water supply, reflecting the need to reassess drought preparedness and deal with trade-offs in water management. It came at a time when its impacts were interacting with non-climate risks to create compounding and cascading impacts. For example, impacts on power generation due to heat and drought (on hydropower, nuclear and coal power plants) coincided with increasing energy prices linked to the conflict in Ukraine. Similarly, impacts on agricultural yields in Europe coincided with strained global food supply due to reduced exports from Russia and Ukraine, as well as high fertiliser prices with knock-on effects on inflation in Europe, but also on global food prices and therefore food insecurity, resulting in risks cascading across sectors and regions (as flagged as a rising risk in IPCC AR6 WGII; IPCC 2022). Overall, this event serves as a strong motivation to strive for proactive drought risk

management strategies, and developing and coordinating such strategies across the continent is considered an effective approach to improve drought preparedness and resilience.

3 Data and methods

175 We examine trends in root zone soil moisture over the two selected regions — WCE and NHET — for quantifying the role of climate change in the widespread 2022 drought conditions that impacted large parts of the northern extratropics, and in particular the European continent. We also compare the results for these variables and regions with the respective estimates based on precipitation and temperature to gain insights on how the soil moisture drought has been influenced by the accompanying precipitation deficits and anomalously high temperatures.

180 3.1 Observational data

3.1.1 Main datasets

To analyse the drought event, we rely on a mixture of reanalysis and observation-based data. The employed statistical approach (Sect. 3.3), mandates (i) continuous data, ideally since pre-industrial times but at least from 1950 onwards (van Oldenborgh et al., 2021), and (ii) data coverage at least until August 2022 to infer the probability — or return period — of the 2022 summer soil drought. Many available soil moisture observations do not meet these criteria, hence we perform our main analysis for 1950–2022 and with soil moisture estimates derived from land surface models ingesting reanalysed or observed meteorological data, a common approach for assessing soil moisture trends (e.g., Albergel et al., 2013; Bi et al., 2016; Cheng & Huang, 2016; Deng et al., 2020; Qiao et al., 2021; Almendra-Martín et al., 2022). These datasets are introduced below along with additional meteorological variables used for analysis.

190 ERA5

The ERA5 reanalysis product by the European Centre for Medium-Range Weather Forecasts (ECMWF) contains simulated estimates of climate variables for the period 1950–present, at $0.25 \text{ km} \times 0.25 \text{ km}$ resolution and at hourly intervals (Hersbach et al., 2020). ERA5 uses the ECMWF assimilation system IFS (IFS Cycle 41R2), and simulates land surface processes with the Hydrology Tiled ECMWF Scheme for Surface Exchanges over Land (H-TESSSEL) model. For the production of ERA5, more than 200 satellite instruments and conventional meteorological data types are assimilated, including scatterometer soil moisture, rain gauge–radar composites (but only for the United States of America), and in-situ measurements of 2m temperature and humidity. We use the data of four variables: precipitation, temperature and volumetric soil moisture at surface (0cm–7cm) and root zone levels (0cm–100cm). ERA5 soil moisture is computed for four vertical soil layers extending down to 289cm, of which the first three are aggregated here to the root-zone soil moisture. Due to unrealistic values in Greenland, especially noticeable prior to ~1970, we mask the affected area prior to calculating the regional mean of the northern extratropics. For other datasets without problematic soil moisture values in Greenland, including or masking the latter results in nearly identical timeseries as Greenland (about $2 \times 10^6 \text{ km}^2$) only accounts for a small fraction of the entire northern extratropical land area (on the order of $80 \times 10^6 \text{ km}^2$).

Together with the other main soil moisture datasets (and additionally EFAS-historical for West-Central Europe), we use
205 ERA5 data for our comparison of summertime root-zone soil moisture. However, we refrain from employing ERA5 root-
zone soil moisture for the statistical analysis because ERA5 has been produced using several production streams (see Table 3
in Hersbach et al., 2020), employing a spin-up period of 1 year for merging the different simulations. This is known to cause
discontinuities in the deep soil, and manifests in visible jumps in NHET root-zone soil moisture (not shown). Even though
the effects on WCE root-zone soil moisture are not as obvious, we exclude ERA5 root-zone soil moisture for both of our
210 domains and rely on ERA5-Land instead. Surface soil moisture is not affected, as its memory timescale is on the order of
days to weeks (McColl et al., 2019), and is thus included in the additional surface soil moisture attribution analysis.

ERA5-Land

ERA5-Land is an offline $0.1^\circ \times 0.1^\circ$ land surface model simulation that ingests ERA5 precipitation and altitude-corrected air
temperature, humidity and pressure to match the higher resolution land grid (Muñoz-Sabater et al., 2021). Even though the
215 employed land surface model H-TESSSEL represents land processes similarly as within IFS, the non-linear downscaling
enables a more realistic simulation of the hydrological cycle in ERA5-Land compared to ERA5. We also note that ERA5-
Land has been produced with only 3 production streams, and that these streams are merged with a spin-up period of 3 years
(rather than 1 year as for ERA5). While minor discontinuities are still evident in the deepest layer of ERA5-Land at 100–289
cm (not shown), the root-zone as defined in this study (0-100 cm) is not affected. As such, ERA5-Land does not feature the
220 same collation issues as ERA5 (see above), and is thus more suitable for our attribution study. In addition, restricting the
analysis to ERA5-Land and GLDAS-CLSM prevents an overrepresentation of ECMWF products, since ERA5 and ERA5-
Land are (by design) closely related.

GLDAS-CLSM

We also employ the NASA Global Land Data Assimilation System Catchment Land Surface Model (GLDAS-CLSM; Rodell
225 et al., 2004; Li et al., 2019). Initialised using the soil moisture and spatial fields from the land surface model climatology for
January 1, 1948, the simulations are forced by the global meteorological forcing data from Princeton University (Sheffield et
al., 2006) and (after 2003) by ECMWF IFS analysis fields. Run within the Land Information System (LIS; Kumar et al.,
2016) framework, this model simulates water storage in the full soil profile at $0.25^\circ \times 0.25^\circ$ resolution, from which surface
(0-2 cm) and root zone (0-100 cm) soil moisture and groundwater can be derived. Outputs are available from 1948 to the
230 present. Beginning in 2003, the model assimilates GRACE/GRACE-FO terrestrial water storage anomaly data from the
University of Texas (Save et al., 2016; Save, 2020). The 2003 to present data is scaled to the open loop, using scaling factors
determined for each grid cell and with a 7-day moving window such that the mean and standard deviation of soil moisture
obtained with GRACE data assimilation across 2003–2012 matches the Princeton-forced (1948-2012) climatology in the
same period (Houborg et al., 2012). For some grid cells in high latitudes, this results in negative and hence not physically
235 meaningful values, which we remove for our analysis of the northern extratropics.

E-OBS

For the WCE region, we additionally analyse E-OBS (version 25.0e). The E-OBS dataset is a $0.25^\circ \times 0.25^\circ$ gridded temperature and precipitation dataset for Europe, formed from the interpolation of station-derived meteorological observations (Comes et al., 2018). E-OBS was used to produce seasonal cycles and climatology and for trend analysis of precipitation and temperature over Europe.

GISTEMP

Finally, as a measure of anthropogenic climate change, we use the global mean surface temperature (GMST from the National Aeronautics and Space Administration (NASA) Goddard Institute for Space Science (GISS) surface temperature analysis (GISTEMP, Hansen et al., 2010 and Lenssen et al. 2019). GMST is represented by anomalies with respect to 1951–1980, and is low-pass filtered with a 4-year running mean prior to analysis.

3.1.2 Supplementary datasets

We emphasise that the soil moisture in reanalyses and land surface model simulations is a derived variable affected both by model formulation and the quality of meteorological forcing (and, in the case of ERA5, the assimilated soil moisture data). Compared to meteorological variables such as temperature or precipitation with far better in-situ coverage, soil moisture estimates are hence associated with considerable uncertainty. In this context, it is worth noting that in recent decades and particularly in the ongoing millennium, the progressive deployment of satellites and development of more capable sensors has ushered in an era of remote-sensed surface soil moisture estimates. However, microwave remote-sensed soil moisture products typically feature data gaps due to incomplete satellite coverage and radio frequency interference as well as environmental conditions that prevent the measurement of soil water content such as dense canopies, frozen soil or snow cover (Llamas et al., 2020, Bessenbacher et al., 2022, Liu et al., 2023). Nevertheless, satellite-based soil moisture estimates can — if adequately gap-filled — provide a valuable alternative perspective for assessing recent large-scale surface soil moisture changes (Bessenbacher et al., in review). The advances in remote sensing are complemented by the development of increasingly capable approaches in the field of artificial intelligence to extract the most out of the available data, enabling additional lines of evidence. We thus expand our analysis by using data obtained with various observation-driven approaches listed below, including soil moisture estimated by comparatively simple process-based models or neural networks instead of land surface models, ingesting both in-situ and remote-sensed measurements.

EFAS-historical

The European Drought Observatory provides information on the current status of drought in Europe, including a soil moisture index (SMI) and SMI anomalies based on the European Flood Awareness System (EFAS). The latter is a hydrological forecasting and monitoring system from the European Commission and the ECMWF, ingesting a range of meteorological forecasts at medium to seasonal timescales as well as observations. The underlying hydrological model is LISFLOOD (EC JRC, 2020), a hydrological rainfall-runoff model, and we employ EFAS-historical simulations (Mazetti et al., 2020) forced with meteorological observations and available every 6 hours at $5 \text{ km} \times 5 \text{ km}$ for Europe since 1991. Soil

moisture is provided at three soil levels (superficial, upper and lower soil), yet these depths vary for each grid cell and are not provided. While soil evaporation is restricted to the superficial layer, plant roots can extract moisture from both the superficial and upper soil layer for transpiration. As the lack of layer depth information prevents vertical aggregation, we rely on the upper soil as a proxy for root-zone soil moisture in our study, whereas the superficial layer represents the surface soil moisture.

SoMo.ml

Generated with a Long Short-Term Memory neural network ingesting in-situ measurements and ERA5 meteorological forcing, SoMo.ml provides global daily soil moisture data from 2000 to 2019 at $0.25^\circ \times 0.25^\circ$ horizontal resolution (O. & Orth, 2021). Since the in-situ soil moisture data collected across more than 1000 sites is based on several sensor types and different calibrations, the creators of SoMo.ml employ ERA5 soil moisture to scale the point-scale measurements. In essence, the mean and standard deviation of soil moisture is inferred from ERA5, whereas point-level in-situ data represent the temporal dynamics. With this approach, the machine learning model can be trained around the globe to estimate soil moisture at the grid-scale rather than only for individual sites. The resulting data are provided at three depths (0 cm–10 cm, 10 cm–30 cm and 30 cm–50 cm), and we use the uppermost layer as an indicator of surface soil moisture. We note that the performance of this dataset depends on in-situ data availability, and is hence limited in sparsely monitored areas such as the tropics.

RSSSM

The remote-sensing-based surface soil moisture (RSSSM, Chen et al., 2020) combines 11 high-quality microwave products with a neural network approach, resulting in gap-free, global data. This dataset has been validated against in-situ measurements, and is provided at $0.1^\circ \times 0.1^\circ$ every 10 days from 2003 to 2018.

ESA-CCI gap-filled

The European Space Agency (ESA) Climate Change Initiative (CCI) soil moisture products are currently (v07.1) based on either 5 active, 12 passive or a blend of all (microwave) sensors, and provide remote-sensed surface soil moisture estimates since 1978 (Gruber et al., 2019; Preimesberger et al., 2021). In these products and due to the difficulties outlined above, however, less than half of all global land data points are observed in the years 2003-2020 (Bessenbacher et al., in review). In addition, trend analyses are complicated by the fact that the sensor coverage is not constant in time and used to be fairly limited; e.g., a majority of the northern extratropics is only covered since 2007 (Dorigo et al., 2017). To address these problems, a gap-filled soil moisture product is currently being developed by ESA-CCI, building on the combined product (blended active + passive) and the application of the DCT-PLS smoothing algorithm (Garcia, 2010) for the gap filling. In addition, GLDAS-Noah v2.1 surface soil temperature data is used for the detection of frozen soil conditions, in which case soil moisture values are gap-filled by a temporal linear interpolation. The gap-filled daily product at $0.25^\circ \times 0.25^\circ$ is currently available for 2000–2021.

ESA-CCI gap-filled with the multivariate CLIMFILL approach

The recently developed CLIMFILL is a multivariate gap-filling framework (Bessenbacher et al., 2022) that exploits the spatial, temporal, and cross-variable dependence structure of Earth system observations. It has been used to gap-fill a wide range of observations including surface temperature, precipitation and ESA CCI surface soil moisture, on monthly grids from 1995 to 2020 and at $0.5^\circ \times 0.5^\circ$ spatial resolution (Bessenbacher et al., in review). Within this dataset, gaps in surface soil moisture are filled by taking into account information acquired through spatial interpolation of the monthly maps, temporal lagged effects like soil moisture memory and observed values of related variables at the land surface, for example temperature and precipitation. Bessenbacher et al. (in review) have demonstrated that this approach fills gaps in the data more accurately than univariate interpolation that cannot take into account information from other observed variables.

310 **3.2 Model and experiment descriptions**

We use several climate modelling experiments in this study, building on three multi-model ensembles of different model types (Philip et al., 2020a): coupled global circulation models (GCMs), high-resolution models, and sea surface temperature (SST) driven GCMs. All models are evaluated, and the simulations of models that pass the required checks (Sect. 3.4) are combined into a single multi-model ensemble that is subsequently treated under the same framing.

315 The first set of models used in this analysis comes from the CMIP6 experiment (Eyring et al., 2016). For all simulations, the period 1850 to 2015 is based on historical coupled simulations, while the SSP5-8.5 scenario is used for the remainder of the 21st century. Models are excluded if they do not provide all relevant variables, do not cover 1850–2100, or include duplicate time steps or missing time steps. The first available ensemble member is used for each model.

The second set of models used in the analysis include the AM2.5C360 (Yang et al., 2021; Chan et al. 2021) and the FLOR (Vecchi et al., 2014) high-resolution climate models developed at Geophysical Fluid Dynamics Laboratory (GFDL). The AM2.5C360 is an atmospheric GCM based on that in the FLOR model (Delworth et al., 2012, Vecchi et al., 2014) with a horizontal resolution of 25 km. Ten ensemble simulations of the Atmospheric Model Intercomparison Project (AMIP) experiment (1871–2021) are analysed. These simulations are initialised from ten different pre-industrial conditions but forced by the same SSTs from HadISST1 (Rayner et al., 2003) after groupwise adjustments (Chan et al., 2021), as well as the same historical radiative forcings. The FLOR model, on the other hand, is an atmosphere-ocean coupled GCM with a resolution of 50 km for land and atmosphere and 1° for ocean and ice. Ten ensemble simulations from FLOR are analysed, which cover the period from 1860 to 2100 and include both the historical and RCP4.5 experiments driven by transient radiative forcings from CMIP5 (Taylor et al., 2012).

325 The third ensemble considered in this study is the HighResMIP SST-forced model ensemble (Haarsma et al., 2016), the simulations for which span from 1950 to 2050. The SST and sea ice forcings for the period 1950-2014 are obtained from the $0.25^\circ \times 0.25^\circ$ Hadley Centre Global Sea Ice and Sea Surface Temperature dataset that have undergone area-weighted regridding to match the climate model resolution. For the ‘future’ time period (2015-2050), SST/sea-ice data are derived from RCP8.5 (CMIP5) data, and combined with greenhouse gas forcings from SSP5-8.5 (CMIP6) simulations (see Sect. 3.3

of Haarsma et al., 2016 for further details). It is worth noting that this ensemble only has outputs for moisture in the upper
335 portion of the soil column (i.e., the upper 10cm of the soil layer), but not moisture in the total soil column, therefore is not
considered in the analysis of root zone soil moisture.

3.3 Statistical methods

In this study we analyse summer (June–August) mean time series of soil moisture, precipitation and temperature, averaged
over both West-Central Europe and the northern extratropics, as defined in Sect. 1. Methods for observational and model
340 analysis and for model evaluation and synthesis are used according to the World Weather Attribution Protocol, described in
Philip et al. (2020a), with supporting details found in van Oldenborgh et al. (2021) and Ciavarella et al. (2021). The essence
of the approach we employ here is that event indices — regional summertime averages of soil moisture, precipitation,
temperature — are represented with continuous probability distributions conditional on GMST, which enables us to estimate
how the intensity (event magnitude) and probability of occurrence have changed under human-induced climate change. We
345 characterise the 2022 summer drought by first determining the return time of the event with the observations-based products
and then querying the model distributions at the corresponding return level. The analysis steps include: (i) trend calculation
from observations; (ii) model validation; (iii) multi-method multi-model attribution and (iv) synthesis of the attribution
statement. We note that, regardless of the underlying emission scenario, model data from 1850 to 2022 and from 1850 to
2050 are used to conduct the present-vs-past and future-vs-present climate analyses, but these time periods only indicate the
350 amount of data used to fit the statistical model and hence infer the relationship between event indices and GMSTs. We then
rely on global warming levels to calculate the return periods, the probability ratio (PR — the factor-change in the event's
probability) and change in intensity of the drought event.. For our comparison of the present (2022) to the past (1850–1900)
climate, the GMST changes with respect to the present amount to $-1.2\text{ }^{\circ}\text{C}$ according to the Global Warming Index
(<https://www.globalwarmingindex.org>), and for comparing additional changes in the future to the present, we use $+0.8\text{ }^{\circ}\text{C}$
355 relative to the 2022 GMSTs ($+2.0\text{ }^{\circ}\text{C}$ with respect to pre-industrial conditions). In other words, we are conditioning the
analysis on observed and simulated global warming levels and not on specific time frames. As such, it does not matter when
the future warming is reached in any given model simulation, which allows us to combine models with different emission
scenarios and still perform a consistent analysis.

To statistically model the event, we approximate the variable of interest — e.g., soil moisture — by a Gaussian distribution
360 that incorporates a dependency on global warming. For soil moisture and precipitation, we model the mean and scale
parameters as exponential functions of GMST (for details see Kew et al., 2021), whereas for temperature, the mean
parameter depends linearly on GMST (details in Philip et al., 2020b), which is in line with other research (Wartenburger et
al., 2017, Seneviratne & Hauser, 2020). As such, we use a Gaussian distribution that scales (soil moisture, precipitation) or
shifts (temperature) with GMST, and note that all climate variables of interest are reasonably Gaussian distributed, as one
365 would expect when examining large regions and seasonal averages (e.g., Schär et al., 2004, Wang et al., 2019). Where
applicable (see Sect. 3.3), multiple initial condition ensemble members are pooled together for the statistical evaluation and

analysis (e.g., the 10-member AMIP AM2.5C360 ensemble). Finally, results from observations and models that pass the validation tests are synthesised into a single attribution statement.

To facilitate comparisons between different models and the observation-driven products, all soil moisture data were scaled prior to the statistical analysis by dividing through the respective 1950–2022 June–August standard deviation.

3.4 Model evaluation

Because observation-driven soil moisture products feature large uncertainties owing to the different land surface models employed and their inherent deficiencies (Gevaert et al., 2018), as well as the limitations of remote sensing particularly for the root-zone soil moisture (Babaeian et al., 2019), we rely on precipitation and temperature as proxies for moisture supply and demand in our model evaluation. Rather than directly evaluating the statistical parameters for soil moisture, we require all models to pass validation for the respective domain (WCE, NHET) for both precipitation and temperature and the 1950–2022 period. For these variables, we assess the models’ fitness for purpose in three ways. First, we qualitatively compare the seasonal cycles in models to observations, checking for the timing and relative amplitudes of peaks and troughs. Second, we compare the spatial pattern of mean summer temperatures for both regions. Third, we check if the parameters of the fitted statistical distribution (Gaussian shifting with GMST for temperature, Gaussian scaling with GMST for precipitation) in models are compatible with those from observation-based estimates. For the observational parameter range, wherever applicable, all of the respective listed observation-based datasets are considered. Models whose statistical parameter range lies within the observational range (95% confidence interval) are considered as ‘good’, whereas overlapping ranges are ‘reasonable’. Additionally, wherever available, the seasonal cycle and spatial pattern of soil moisture were also evaluated against ERA5-Land estimates — these were typically found to be ‘reasonable’ in the models that passed the combined precipitation and temperature validation. **Suppl. Tables 1 & 2** show the model evaluation results for the root zone soil moisture in the WCE and NHET region, respectively, whereas **Suppl. Tables 3 & 4** present the results for the same regions and surface soil moisture. Only models with an overall performance of ‘reasonable’ or better were used for the attribution analysis. Based on the capability of the model to capture the seasonal cycle, spatial pattern and statistical properties for temperature and precipitation, a model must pass at least 6 checks, or 8 for models with soil moisture available for evaluation, such as the CMIP6 models, each of which without a single ‘bad’ performance.

3.5 Synthesis

All synthesis figures presented in this study show the changes in probability (a) and intensity (b) of the variable of interest (soil moisture, temperature, precipitation) for the observation-based products (blue) and models (red), and follow the standard analysis method employed by the World Weather Attribution (Philip et al., 2020a). To combine the two lines of evidence into a synthesised assessment, first, a representation error is added (in quadrature) to the observations. The rationale behind this is that we consider observations as equally valid representations of a singular climate realisation with the same underlying true natural (internally generated) variability. Therefore, the mean deviation of individual datasets to the

overall mean best estimate indicates a representation error (of observations with respect to reality), shown in the synthesis
400 figures as white boxes around the natural — that is, internally generated — variability (light blue bars). The dark blue bar
shows the average over the observation-based products (black marker) and the total uncertainty (width of the bar) based on
natural variability and representation errors. Instead of representation errors, next, a term to account for intermodel spread is
added (in quadrature) to the natural variability of the models. Note that while this term is based on the scatter of model
means (analogous to the representation error for observations), we interpret model simulations as independent climate
405 realisations. Consequently, we only add this term granted that the differences between models cannot solely be explained by
natural variability, which is the case here. The intermodel spread is shown in the synthesis figures as white boxes around the
light red bars. The dark red bar surrounding the model average (black marker) is based on a weighted mean using the
respective uncorrelated uncertainties due to natural variability plus intermodel spread. Specifically, the weights are given by
the inverse sum of the squared model variability (i.e., the square of the light red bars) and the squared intermodel spread (i.e.,
410 the square of the white bars).

Observation-based products and models are combined into a single result in two ways. Firstly, we neglect common model
uncertainties beyond the intermodel spread that is depicted by the model average, and compute the average of models and
observations using the total respective uncertainties as weights (widths of dark red and blue bars). The resulting weighted
average is indicated by the magenta bar. Due to common model uncertainties, the true model uncertainty can be larger than
415 indicated by the intermodel spread. Therefore, we also show the more conservative estimate of an unweighted, direct average
of observations (dark red bar) and models (dark blue bar) contributing 50% each, indicated by the white box around the
magenta bar in the synthesis figures. Note that so as to not distort the synthesis, we limit very high probability ratios to
10'000.

4 Observation-based analysis

420 4.1 Comparing soil moisture across several datasets

The summer of 2022 featured root-zone soil moisture deficits across much of the northern extratropics (**Fig. 1a**). We begin
our analysis by examining regionally averaged July–August soil moisture for NHET (**Fig. 1b**), which is remarkably similar
in the last 2 decades with a consistent downward trend for all main datasets (described in Sect. 3.1.1). In the 20th century,
the correspondence between different soil moisture estimates is clearly worse, and both ERA5 and ERA5-Land indicate an
425 upward trend whereas GLDAS-CLSM already features a downward trend. This disagreement is most likely a consequence
of observation density generally increasing in time (e.g., Dorigo et al., 2015), and the limited availability of satellite data,
especially prior to 1979 (e.g., Dorigo et al., 2012). Nevertheless, all datasets used here indicate that the summer of 2022
featured pronounced — yet not unprecedented — soil moisture deficits averaged across the northern extratropics. Zooming
into West-Central Europe (delineated in **Fig. 1a**), we find a good correspondence across all datasets except for the first few
430 decades, providing strong evidence for declining root-zone soil moisture since about 1980 (**Fig. 1c**). Such downward trends
have also been noted in other studies (e.g., Trnka et al., 2015, Scherrer et al., 2022). Overall, the 2022 summer drought

signal is stronger in West-Central Europe than in the larger domain, with ERA5, ERA5-Land and GLDAS-CLSM pointing to the driest regionally averaged root-zone soil moisture since 1950. EFAS-historical, the hydrological forecasting and monitoring system used by the EDO and restricted to Europe, indicates that only the summer of 2015 was slightly drier than 435 2022, but is otherwise consistent with the main datasets.

Since the root-zone soil moisture can only be observed through elaborate, sparse and highly heterogeneously distributed in-situ measurements, we cannot rely on direct observations for our analysis. Surface soil moisture, on the other hand, can be sensed from space, although there are several caveats such as dense vegetation resulting in canopy rather than soil water measurements, as well as limited spatiotemporal coverage, although the latter has been improving. Nonetheless, the main 440 datasets feature largely similar root-zone and surface soil moisture interannual variability and long-term changes. This is easiest observed when comparing the datasets without subtracting the baseline as done in **Fig. 2**, although the correspondence of soil moisture between surface layer and root-zone is lower in ERA5 than for GLDAS-CLSM and ERA5-Land. Nevertheless, the overall temporal evolution of summer soil moisture in the surface layer and root-zone is consistent in both regions for all main datasets, which is plausible given that soil moisture near the surface and in deeper layers is 445 inherently connected through infiltration and diffusion processes (e.g., Albergel et al., 2008). Considering that Berg et al. (2017) reported stronger surface drying than in deeper soil layer for CMIP5 projections, we also compare the historic long-term changes of surface and root-zone soil moisture by representing the respective timeseries as percentage changes for both domains and GLDAS-CLSM and ERA5-Land (**Suppl. Fig. 1**). While there is a stronger decrease in surface than root-zone soil moisture for NHET based on GLDAS-CLSM, comparatively minor drying gradients between the surface and root-zone 450 emerge for NHET using ERA5-Land, and similarly for WCE with both datasets. Our findings do suggest that soil moisture decreased more near the surface than in deeper layers during the 1950-2022 period, yet the extent of this surface drying gradient remains unclear and might be negligibly small.

Next, we extend our analysis by comparing surface soil moisture across a total of 7 and 8 products for the northern extratropics and West-Central Europe, respectively, by adding several supplementary datasets that incorporate either 455 microwave-sensed or in-situ soil moisture measurements (see also Sect. 3.1.2). In ERA5-Land, the spatial pattern of soil moisture anomalies is fairly similar for the surface and the root-zone (cf. **Fig. 1a, 3a**), and this also applies to the other main soil moisture datasets. For the mean surface soil moisture across the northern extratropics (**Fig. 3b**), almost all datasets agree on an overall decline in the last two decades. Only the satellite-based, gap-free RSSSM shows an upward trend for 2003–2018, as already noted by its creators (Chen et al., 2020). The downward trend is also observed for the gap-filled products 460 from ESA-CCI and CLIMFILL, which show a remarkable correspondence even though the original, not gap-filled soil moisture from ESA-CCI features upward trends for the northern extratropics, especially prior to 2008 (not shown). None of the supplementary datasets available for NHET covers the year 2022, but ESA-CCI and CLIMFILL do not seem to exhibit the clear decline evident for the ECMWF products and GLDAS-CLSM after 2017. Otherwise, both of these remote-sensed estimates show a particularly good agreement with GLDAS-CLSM, whereas SoMo.ml, a machine-learning based product

465 relying on in-situ soil moisture and ERA5 meteorological forcing, is largely consistent with ERA5 but portrays a slightly weaker downward tendency.

While there seems to be some inconsistency with regards to long-term changes in NHET soil water content, we are not aware of any recent studies that have discussed positive northern hemispheric or global soil moisture trends. A tendency toward drying — especially for the surface and during summer — has been reported in several analyses (e.g., Sheffield & 470 Wood, 2012; Cheng & Huang, 2016; Deng et al., 2020; Qiao et al., 2021). This increases our confidence in the two selected soil moisture datasets for further analyses, GLDAS-CLSM and ERA5-Land, as both feature downward trends for the surface and for the root-zone soil moisture. We cannot reliably assess, however, whether these products are truly more accurate than, e.g., RSSSM, which features a recent surface soil moisture increase at the hemispheric or global scale.

For West-Central Europe, on the other hand, none of the 8 available surface soil moisture products indicates clear upward 475 trends in the ongoing millennium, and the overall agreement between the different estimates is better than for the northern extratropics (**Fig. 3c**). We remark that, based on the last two decades, the remote-sensed products show smaller drying tendencies than the other datasets used here, but also point out that the short available time period complicates such assessments. Moreover, this domain is much more observationally constrained than the entire northern extratropics, and in particular the high latitudes, and we hence deem the choice of soil moisture dataset for the attribution analysis less critical 480 than for the larger domain.

Finally, we also briefly inspect the total water storage as measured by the Gravity Recovery and Climate Experiment (GRACE). These data are not only measured in a fundamentally different manner than remote-sensed surface soil moisture, but also represent the sum of all above and below surface water storages (e.g., canopy water, rivers and lakes, groundwater, and, of course, soil moisture) and hence typically serve as a proxy for groundwater drought. As such, the downward trends 485 evident for both domains (**Suppl. Fig. 2**), which is especially pronounced for West-Central Europe, cannot directly validate long-term changes in soil moisture. Nevertheless, the observed drying tendency is fully consistent with the declining root-zone soil moisture in the last two decades evident in **Fig. 1**. Overall, we conclude that the comparison to supplementary datasets strengthens our analysis, but also emphasise that the observation-based attribution of the 2022 soil drought to human-induced climate change may be associated with more uncertainty than represented by GLDAS-CLSM and ERA5- 490 Land alone, particularly for the northern extratropics.

4.2 Event return period and long-term trend analysis

In a next step, we investigate the probability of the 2022 soil drought as well as the anthropogenic fingerprint for both analysis regions. Whereas the previous Sect. presented soil moisture as a function of time, here, we explore the relationship between the warming climate and soil moisture.

495 4.2.1 West-Central Europe

We fit June–August root-zone soil moisture averaged over the WCE region as a function of GMST, as described in Philip et al. (2020a), for ERA5-Land (**Fig. 4a**) and GLDAS-CLSM (**Fig. 4b**). The left panels depict soil moisture as a function of the GMST anomaly, while the right panels show the corresponding Gaussian distribution-based return period curves in the present 2022 climate (red lines) and the past, 1.2 °C cooler climate (blue lines). The return periods are 12 and 23 years according to ERA5-Land and GLDAS-CLSM, respectively. We average and round this to a return period of 20 years for the remainder of the analysis. We obtain probability ratios well above one (95% confidence interval of 4 .. 450) for ERA5-Land, and estimates based on GLDAS-CLSM are several orders of magnitude higher with a lower bound of 53'000, suggesting an even stronger warming signal (Table S5). We also estimate the mean change in WCE summer root-zone soil moisture from the past to the present climate, which yields intensity changes with best estimates (confidence intervals) of -9% (-13% .. -4%) for ERA5-Land and -14% (-16% .. -11%) for GLDAS-CLSM. Despite the apparent mismatch of the probability ratios, there is an overlap in confidence intervals of mean intensity changes. The latter are less sensitive than the probability ratios to the inferred relationships between global warming and long-term soil moisture changes, since they are derived from the linear trend between the covariate (here GMST) and the index (here regional summer mean root-zone soil moisture) rather than the ratio of occurrence probabilities, for which the denominator — the probability of the event for the past climate — can become very small, as is the case for GLDAS-CLSM.

Overall, these results indicate that an event such as the 2022 summer drought in WCE has become far more likely due to our warming climate. We also perform an analogous analysis for the June–August average temperature and precipitation (**Suppl. Figs. 3 & 4**). Temperature shows very strong trends with probability ratios of at least 170 for E-OBS data, and even much larger for ERA5 data. This corresponds to a change in intensity of about 1.7°C to 2 °C (for details see **Suppl. Table 6**). The return period used for the model analysis of temperature in the WCE region is 20 years. Trends in precipitation are much smaller and encompass no change (**Suppl. Table 7**), and we employ a return period for the model analysis of a low precipitation event in the WCE region of 10 years.

4.2.2 Northern extratropics

Repeating our analysis for the northern extratropics, we find 2022 summer root zone soil drought return periods of about 6 and 20 years for GLDAS-CLSM and ERA5-Land, respectively (**Fig. 5**). The resulting average of 13 years is slightly lower than, but still comparable to, the mean return period determined for WCE (17.5 years), and we proceed with the same value of 20 years for the subsequent model analyses such that our results for WCE and NHET can be easily compared. Our conclusions are not affected by this choice. ERA5-Land-based data gives a probability ratio of around 700 (50 to 70,000) and GLDAS-CLSM even larger, with a lower bound already on the order of 10 million. The corresponding changes in intensity of root-zone soil moisture are -2.4% (-3.2% to -1.5%) for ERA5-Land, and -3.1% (-3.6% to -2.7%) for GLDAS-CLSM. Compared to the much smaller European region, there is thus a weaker tendency toward soil drying in summer, yet the warming-induced change in probability of occurrence of a 2022-like soil moisture deficit is even higher in NHET. We

attribute this to the fact that the interannual variability of climate variables tends to decrease at larger spatial scales, especially for precipitation but also for temperature (Giorgi, 2002, Lehner et al., 2020), so that the anthropogenic signal emerges more clearly for the northern extratropics despite weaker downward soil moisture trends. We complement our investigation by analysing the June–August average temperature and precipitation for the NHET domain (**Suppl. Figs. 5 & 6**), with temperature showing strong trends and very large probability ratios for ERA5 data. This indicates that such a hot summer would have been virtually impossible without climate change, and the corresponding change in intensity is about 1.9 °C with a 95% confidence interval of 1.7 °C to 2.1 °C (for details see **Suppl. Table 9**). The return period used for the model analysis of temperature in the NHET region is 10 years. As for the WCE region, the trend in precipitation is much smaller and encompasses no change, see **Suppl. Table 10** for details. The return period used for the model analysis of a low precipitation event in the NHET region is 10 years.

540 **5 Hazard synthesis using observation-based datasets and models**

In a final step, we combine results from observations-based products — the offline reanalysis or observation-driven land surface model simulations ERA5-Land and GLDAS-CLSM — and models that passed the evaluation. This synthesis, explained in Sect. 3.5, enables us to give overarching attribution statements building on all the employed simulations and observation-driven estimates.

545 **5.1 West-Central Europe root-zone soil moisture**

For probability ratios of WCE, **Fig. 6** reveals large representation errors (white bars surrounding observational estimates), owing to the fact that the confidence intervals of observation-based estimates (light blue shading) do not overlap. The model uncertainty is comparatively low, and the probability ratio averaged across models of 2.2 (0.4 to 13) is notably lower than for the observation-based estimates with 546 (0.1 to $2.3 \cdot 10^6$). When combining models and ‘observations’ according to their visualised uncertainties, the high representation error results in a synthesis dominated by the models, with a probability ratio best estimate of 2.8 (0.5 to 16). This partly holds for the change in intensity as well, for which the models also show a weaker signal than the observation-driven soil moisture products, synthesised to a best estimate of -3.7% (-7.4 to 0.1 %). We point out that here, consistent with the World Weather Attribution Protocol (Philip et al. 2020a, van Oldenborgh et al., 2021), we rely on historical climate simulations extended with one of the climate scenarios up to the event year, 2022. This makes the statistical analysis more robust due to the larger sample size, from 1850 onwards, compared to the observation-driven estimates.

Nonetheless, we repeat this analysis in the next step, enforcing a uniform analysis period of 1950–2022 for all datasets and models to use a consistent time period for models and observations. The resulting synthesis plot (**Fig. 7**) is the product of the

same methodological steps used to create **Fig. 6**. Given that the long-term evolution of soil moisture is dominated by global warming in the models, these figures should depict similar best estimates since our analysis evaluates soil moisture changes as a function of warming rather than time. Compared to recent decades since about the mid-1980s, when the period of global dimming had ended (Wild et al., 2005), there was little warming between 1850 and 1950, and soil moisture is expected to portray at most weak trends. For some models, such as CESM2-WACCM, WCE root-zone soil moisture is fully consistent with this expectation, depicting a moderate decline up until 1980, followed by sharp decrease (**Suppl. Fig. 7**). Other models, such as, e.g., MPI-ESM1-2-HR, feature increasing soil moisture from pre-industrial times into the second half of the 20th century for the same region, followed by clear downward trends. In other words, for some models, the sign of the apparent relationship between GMST and soil moisture changes, which is consistent with a study pointing to potentially non-linear scaling of soil moisture with global warming (Lehner & Coats, 2021), and can mask the emerging response to strong global warming in recent decades within our (linear) statistical framework. This is why when we restrict the analysis period to 1950 onwards, **Fig. 7** depicts a probability ratio on the order of 10 for MPI-ESM1-2-HR, whereas it is < 1 in **Fig. 6**. For CESM2-WACCM, on the other hand, whose long-term root-zone soil moisture in WCE evolves in line with the nonlinear GMST increase, the probability ratio remains between 4 and 5 for both analysis periods.

For most models, **Fig. 7** shows both higher probability ratios as well as stronger mean soil moisture declines than **Fig. 6**, with a synthesised probability ratio of 8.8 (0.8 to 93.6) and changes in intensity of -7.5% (-12.5% to -2.1%). Consequently, the model probability ratios are more consistent with ERA5-Land, although GLDAS-CLSM still features a much stronger warming signal. In terms of the more robust changes in intensity, GLDAS-CLSM is similar to MPI-ESM1-2-LR, the model with the strongest signal, whereas ERA5-Land is closer to the remaining models. As outlined in Sect. 4.1, the different observation-driven datasets agree on the decline of WCE root-zone soil moisture after 1980, yet the ECMWF products suggest an upward tendency prior to 1980 that is largely absent in GLDAS-CLSM. Such disagreements are also found among the models; e.g., MPI-ESM1-2-LR suggests that WCE root-zone soil moisture decreases notably sooner than MPI-ESM1-2-HR, and is similar to GLDAS-CLSM with downward trends since about 1960. GLDAS-CLSM and MPI-ESM1-2-LR likely indicate the strongest anthropogenic fingerprint in root-zone soil moisture precisely because of this, as our statistical approach can infer a stronger link between global warming and soil moisture changes. Finally, we remark that among the 25 available CMIP6 models used here (of which 7 passed the validation), all agree that based on 1950–2022, the best estimate of the probability ratio is at least 1, and oftentimes on the order of 10 or higher. Nonetheless, the lower bounds of the probability ratio for all validated models and observation-based estimates — with MPI-ESM1-2-LR and GLDAS-CLSM being the sole exceptions — are below 1, while the corresponding upper bound of the change in intensity is positive, suggesting that a weaker or even opposing response to global warming than suggested by the best estimates is possible, albeit unlikely. Overall, our analysis indicates a human-induced summer root-zone soil moisture decline in West-Central Europe, rendering the 2022 soil drought more likely than in a pre-industrial climate, although the associated uncertainties are high.

5.2 Northern extratropics root-zone soil moisture

Moving on to the northern extratropics, for which far more models have passed validation (always performed for the respective domain), the synthesised probability ratio using the weighted average is much larger than for the WCE region with a probability ratio of 877 (25 to 39,900). The unweighted synthesis, that is, averaged giving equal weight to observation-based estimates (blue bar) and models (red bar), has a similarly large upper bound, whereas the lower bound amounts to 4 (**Fig. 8a**). For such high probability ratios, the exact quantification of the best estimate is highly uncertain, hence we use the (weighted) lower bound as the synthesised result, which suggests that anthropogenic climate change has increased the likelihood of the NHET root zone soil moisture event by a factor of at least 20. The synthesised change in intensity is -2.5% (-3.6% to -1.4%) when combining individual models and observation-based estimates according to their total uncertainties (**Fig. 8b**), and is similar for an unweighted average. Overall, **Fig. 8** shows that most validated models agree with the employed observational datasets in that an event such as the 2022 summer soil drought has become more likely under global warming. But while the observation-based products agree that the probability ratio is larger than 1 (and the change of intensity below 0) based on their confidence intervals, a clear majority of the models feature a weaker and less certain warming response. Compared to WCE (cf. **Figs. 6 or 7**), the intermodel spread is higher, whereas the representation error of the observation-based products is lower. We note again, however, that in light of our findings in Sect. 4.1, GLDAS-CLSM and ERA5-Land may not sufficiently capture the true ‘observational’ uncertainty, and hence we emphasise here that these root-zone soil moisture attribution results, particularly for the NHET region, should be interpreted with caution.

5.3 Temperature and precipitation

The 2022 summer was characterised by unusually hot and dry conditions in West-Central Europe and across much of the northern extratropics, as evidenced by positive temperature anomalies and precipitation deficits. For WCE and compared to the entire analysis period (1950–2022), we obtain standardised precipitation anomalies of -1.4σ and -2σ according to ERA5 and E-OBS, whereas temperature anomalies amount to 2.3σ in both products. ERA5 features similar anomalies in the northern extratropics, with -1.3σ and 2.2σ for precipitation and temperature, respectively. Considering these pronounced anomalies, excessive heat and precipitation shortages likely played an important role in the occurrence of soil drought in the 2022 summer. As noted in Sect. 4.2.1 & 4.2.2, however, we have found clear upward temperature trends for temperature yet no clear precipitation changes for the two regions in ERA5 (and E-OBS for WCE). Here, we also include model results to further examine changes in precipitation and temperature (**Suppl. Figs. 8–11**). Using the same synthesis procedure, the weighted average for temperature in the WCE region is $PR = 2430$ (214–26400), with a change in intensity of 1.8 (1.1 to 2.5) °C, (**Suppl. Fig. 8**). Similarly, for the northern extratropics, the change in intensity is 1.9 (1.7 to 2.1) °C. The synthesised probability ratio, on the other hand, is even higher than for WCE, so high that we refrain from a quantification, and instead limit the values to 10’000 (see also Sect. 3.5), thereby confirming the finding from the observational analysis that the extreme temperatures over the NHET region would have been virtually impossible without climate change (**Suppl. Fig. 10**). This is consistent with our soil moisture analysis, for which a stronger warming signal emerged in the larger region. In contrast, the change in precipitation is centred around 1 for both regions (**Suppl. Figs. 9 & 11**), with no clear changes in intensity.

630 These results suggest that for both domains, trends in root-zone soil moisture are likely fueled by increasing temperatures, since no clear signal emerges for precipitation. Previous research by Cheng & Huang (2016), who argue that the interannual to decadal variability of soil moisture tends to be controlled by precipitation whereas long-term changes are dominated by upward temperature trends, is consistent with our findings. This does not imply that precipitation shortages were irrelevant for the occurrence of soil drought in the 2022 summer, but rather that these rainfall deficits are primarily manifestations of natural variability. The regional summer temperatures are, of course, also subject to natural variability, but additionally reveal a clear warming signal that considerably boosts the probability of occurrence of marked positive anomalies such as in 2022.

635 **5.4 Surface soil moisture**

To complement our statistical analysis of the relationship between the warming climate and root-zone soil moisture in West-Central Europe and the northern extratropics, we also attribute the 2022 surface soil moisture drought. Since long-term changes in observation-based root-zone and surface soil moisture estimates seem largely consistent for both domains (**Fig. 2**), we expect similar results as for the analysis of agro-ecological drought. ERA5 — which, unlike ERA5-Land, assimilates soil moisture data from scatterometers — is also considered for the analysis of surface soil moisture, as the discontinuities due to the use of multiple production streams for the reanalysis only affect deeper soil layers.

We provide the event return period and long-term trend analysis for surface soil moisture in the Supplementary Information (**Suppl. Figs. 18–19**), and proceed with the same return period of 20 years as for root-zone soil moisture. For the surface soil moisture in West-Central Europe, the synthesised probability ratio using the weighted average is 8.0 (1.1 to 59.2); whereas the unweighted upper bound is much larger at 1350, the lower bound in this case is similar to the weighted average, as shown in **Suppl. Fig. 12a**. As for WCE root-zone soil moisture, we use the rounded best estimate as the synthesised result, suggesting anthropogenic climate change has increased the likelihood of the WCE surface soil moisture event by a factor of about 8. The change in intensity for the same event is shown in **Suppl. Fig. 12b**, and averages -9.0% (-14.5% to -3.3%).

650 For the surface soil moisture in the northern extratropics, the synthesised probability ratio using the weighted average is again much larger than for the WCE region with a probability ratio of 320 (5.4 to 21800), as shown in **Suppl. Fig. 13a**. Consistent with our analysis of root-zone soil moisture in the northern extratropics, we rely on the lower bound as the synthesised result; anthropogenic climate change has increased the likelihood of the NHET surface soil moisture event by a factor of at least 5. The change in intensity for the same event is shown in **Suppl. Fig. 13b**, suggesting an average of -3.1% (-5.2% to -1.0%).

655 **5.5 Synthesis for an additional warming of 0.8 °C**

We also assessed how the frequency and intensity of the two types of soil moisture drought in both regions would change in a 0.8 °C warmer world compared to today. For all event definitions, a further increase in intensity as well as a ~2–30-fold further increase in the frequency of such an event is found (**Suppl. Figs. 14–17**): for WCE (NHET) and in terms of best

estimates, the PR of root-zone and surface soil moisture droughts amount to 1.6 and 2.3 (14.6 and 32.4), respectively. In
660 combination with the strong trends in temperature extremes, these results strengthen our confidence in the soil moisture
results, even though an exact quantification is difficult due to the difficulties in measuring soil moisture and resulting large
discrepancies in observation-based data sets.

6 Conclusion

Extending our rapid attribution analysis (Schumacher et al., 2022), we find evidence for a global warming-induced summer
665 root-zone soil moisture decline in West-Central Europe, and several observation-driven soil moisture estimates agree on a
downward trend since at least 1980. Our analysis suggests that the large uncertainties, also due to a lack of in-situ root-zone
soil moisture observations except for a few hundred stations, make it difficult to communicate precise numbers.
Nevertheless, the synthesised probability ratio for a 2022-like summer drought in West-Central Europe is likely larger than 1
and amounts to about 5 (2.8 when using 1850–2022 model data, and 8.8 for 1950–2022). In other words, combining
670 observation-driven and model evidence, we find that anthropogenic climate change has made such an event more probable.
We emphasise here, however, that the lower bound of the synthesised probability ratio is below 1, and hence we cannot
exclude the possibility that the likelihood of an event such as the 2022 soil drought has not been modulated (or even
decreased) by human-induced global warming. For the northern extratropics, our analysis suggests a stronger overall
warming signal, with a probability ratio of at least 20, and associated decline in root-zone soil moisture. The “observational”
675 uncertainty is higher than for West-Central Europe, however, and hence this result should be treated with caution. Moreover,
observation-based soil moisture products do not agree on when the warming signal becomes evident, with GLDAS-CLSM
displaying drying tendencies about 2 decades earlier than the ECMWF products for both regions. Similarly, nearly all
CMIP6 models display declining summertime root-zone soil moisture throughout the 21st century in West-Central Europe
and averaged over the northern extratropics, but there is no agreement whether this decline started in recent decades or
680 already in pre-industrial times. This could indicate that long-term soil moisture changes are not solely driven by global
warming, and hence only emerge clearly in the presence of strong warming. In snow-dominated regions it is also possible
that changes in snowpack and precipitation partitioning in winter and spring influence soil moisture droughts in the
subsequent summer (Wieder et al., 2022).

Nonetheless, and in line with previous research, our results point to increasing temperatures as a key driver behind declining
685 soil moisture in West-Central Europe and across much of the northern extratropics. Our analysis of surface soil moisture
provides additional evidence for an enhanced tendency toward soil drought in both regions, with similar results as obtained
for the root-zone. According to the reanalysis and observation-driven land surface models ERA5-Land and GLDAS-CLSM,
low summer soil moisture such as observed in 2022 happens about once in 20 years in today's climate in both regions. For a
pre-industrial climate (1.2°C cooler than the present), a similarly intense soil drought would take place in West-Central
690 Europe roughly once per century, and even less often in the northern extratropics. In this context, we point out that our
analysis has been largely restricted to the lower bounds and best estimates of the synthesised probability ratios and intensity

changes. This appears adequate considering that the uncertainty in the attribution of extremes in soil moisture is higher than for variables such as temperature, and hence we intentionally stay on the conservative side. Even so, in light of the high upper bounds, we also mention the possibility that our best estimates underestimate the decline in soil moisture in response to a warming climate, in which case widespread drought conditions as in the 2022 summer would have been virtually impossible without human-induced climate change. Moreover, the models analysed also show that soil moisture drought will continue to increase with additional global warming — in West-Central Europe, a 2022-like event or worse is expected to occur about every 10 years once a warming level of 2 °C is reached, and nearly every single year in the northern extratropics. In other words, for 0.8 °C additional warming compared to the present, the mean probability ratios of surface and root-zone soil moisture drought in West-Central Europe and the northern extratropics amount to about 2 and 20, respectively. This is consistent with projected long-term trends in climate models as reported, e.g., in the IPCC AR6 (IPCC, 2021), and should serve as a strong motivation to increase our efforts to limit future global warming.

705

Code availability

The code used to process the data and perform analysis can be obtained from the corresponding author upon request.

Data availability

710 The data used for the statistical analyses are available via the Climate Explorer (<https://climexp.knmi.nl/start.cgi>).

Author contribution

HKB, SL, WY, MHau, MHir, VB, and DLS prepared data for analysis and/or contributed post-processing code; MZ, FO, CB, SP, SK, SL, WY, and DLS analysed the data; MZ, FO, CB, SP, SK, MV, RS, DH, JA, MvA, LJH and DLS wrote the first manuscript draft, and all authors reviewed and edited the manuscript.

715 Competing interests

The authors declare that they have no conflict of interest.

Acknowledgements

This analysis was partly funded by the XAIDA H2020 project, and has received funding from the European Union's Horizon 2020 research and innovation programme under grant agreement No. 101003469.

720

725

730

References

- Ahmedzade, T., Horton, J., Mwai, P., Song, W for BBC News: China, Europe, US drought: Is 2022 the driest year recorded?, 17-09-2022, URL: <https://www.bbc.com/news/62751110>, last accessed: 27-02-2023, 2022.
- Al Jazeera: 'Historic' drought prompts French government into action. 05-08-2023, URL: <https://www.aljazeera.com/news/2022/8/5/france-orders-crisis-task-force-over-historic-drought>, last accessed: 13-03-2023, 2022.
- Albergel, C., Rüdiger, C., Pellarin, T., Calvet, J.-C., et al.: From near-surface to root-zone soil moisture using an exponential filter: an assessment of the method based on in-situ observations and model simulations, *Hydrol. Earth Syst. Sci.*, 12, 1323–1337, doi:10.5194/hess-12-1323-2008, 2008.
- Albergel, C., Dorigo, W., Reichle, R. H. et al.: Skill and Global Trend Analysis of Soil Moisture from Reanalyses and Microwave Remote Sensing, *Journal of Hydrometeorology*, 13, 1259–1277, doi: [10.1175/JHM-D-12-0161.1](https://doi.org/10.1175/JHM-D-12-0161.1), 2013.
- Almendra-Martín, L., Martínez-Fernández, J., Piles, M., González-Zamora, Á., et al.: Analysis of soil moisture trends in Europe using rank-based and empirical decomposition approaches, *Global and Planetary Change*, 215, 103868, doi:10.1016/j.gloplacha.2022.103868, 2022.
- Babaeian, E., Sadeghi, M., Jones, S.B., Montzka, C., et al.: Ground, Proximal, and Satellite Remote Sensing of Soil Moisture, *Rev. Geophys.* 57, 530–616, doi:10.1029/2018RG000618, 2019.
- BBC: France experiencing worst drought on record, 08-08-2022, URL: <https://www.bbc.co.uk/newsround/62456540>, last accessed: 13-03-2023, 2022.
- BBC Weather: Europe heatwave breaks multiple June records, 30-06-2022, URL: <https://www.bbc.com/weather/features/62001812>, last accessed: 27-02-2023, 2022.
- Berg, A., and Sheffield, J.: Climate Change and Drought: the Soil Moisture Perspective, *Curr. Clim. Change Rep.*, 4, 180–191, doi:10.1007/s40641-018-0095-0, 2018.
- Bessenbacher, V., Seneviratne, S. I., and Gudmundsson, L.: CLIMFILL v0.9: a framework for intelligently gap filling Earth observations, *Geosci. Model Dev.*, 15, 4569–4596, doi:<https://doi.org/10.5194/gmd-15-4569-2022>, 2022.
- Bessenbacher, V., Schumacher, D. L., Hirschi, M., Seneviratne, S. I., and Gudmundsson, L.: Gap-filled Multivariate Observations of Global Land–climate Interactions, in review. Bi, H., Ma, J., Zheng, W. and Zeng, J.: Comparison of Soil Moisture in GLDAS Model Simulations and in situ Observations over the Tibetan Plateau, *Journal of Geophysical Research: Atmospheres*, 121, 2658–2678, doi:10.1002/2015JD024131, 2016.
- Bielza Diaz-Caneja, M., Conte, C., Gallego Pinilla, F.: Risk management and agricultural insurance schemes in Europe, Joint Research Centre, Institute for the Protection and Security of the Citizen, Publications Office. URL:<https://data.europa.eu/doi/10.2788/24307>, last accessed: 13-03-2023, 2009.
- Binnie, I. and Twidale, S. for Reuters: Europe's power system feels the heat as cooling demand soars, 21-07-2022, URL: <https://www.reuters.com/world/europe/europes-power-system-feels-heat-cooling-demand-soars-2022-07-21/>, last accessed: 13-03-2023, 2022.
- Blauhut, V., Stahl, K., Stagge, J. H., Tallaksen, L. M., et al.: Estimating drought risk across Europe from reported drought impacts, drought indices, and vulnerability factors, *Hydrol. Earth Syst. Sci.*, 20, 2779–2800, <https://doi.org/10.5194/hess-20-2779-2016>, 2016.

- 770 Blauhut, V., Stoelzle, M., Ahopelto, L., Brunner, M., et al.: Lessons from the 2018–2019 European droughts: a collective need for unifying drought risk management, *Nat. Hazards Earth Syst. Sci.*, 22, 2201–2217, <https://doi.org/10.5194/nhess-22-2201-2022>, 2022.
- Boergens, E., Güntner, A., Dobsław, H., and Dahle, C.: Quantifying the Central European droughts in 2018 and 2019 with GRACE Follow-On, *Geophys. Res. Lett.*, 47, e2020GL087285, doi: <https://doi.org/10.1029/2020GL087285>, 2020.
- 775 Bradsher, K. and Dong, J. for The New York Times: China’s Record Drought Is Drying Rivers and Feeding Its Coal Habit, 26-08-2022, last modified 29-08-2022, URL: <https://www.nytimes.com/2022/08/26/business/economy/china-drought-economy-climate.html>, last accessed: 13-03-2023, 2022.
- Breeden, A. for the New York Times: ‘Most Severe’ Drought Grips France as Extreme Heat Persists in Europe, 05-08-2022, URL: <https://www.nytimes.com/2022/08/05/world/europe/france-drought-europe-heat.html>, last accessed: 13-03-2023, 780 2022.
- Breteau, P. for LeMonde: Heat wave: View the high-temperature records broken in France in June and July, 20-07-2022, URL: https://www.lemonde.fr/en/les-decodeurs/article/2022/07/20/heat-wave-view-the-high-temperature-records-broken-in-france-in-june-and-july_5990792_8.html, last accessed: 27-02-2023, 2022.
- Chadwick, L. for EuroNews: More than 100 French towns without drinking water amid 'historic drought', Updated: 05/08/2022, URL: <https://www.euronews.com/my-europe/2022/08/05/more-than-100-french-towns-without-drinking-water-amid-historic-drought>, last accessed: 13-03-2023, 2022. 785
- Chan, D., Vecchi, G.A., Yang, W., and Huybers, P.: Improved simulation of 19th- and 20th-century North Atlantic hurricane frequency after correcting historical sea surface temperatures, *Sci. Adv.*, 7, eabg6931. doi:10.1126/sciadv.abg6931, 2021.
- Chen, Y., Feng, X., and Fu, B.: An improved global remote-sensing-based surface soil moisture (RSSSM) dataset covering 790 2003–2018, *Earth Syst. Sci. Data*, 13, 1–31, doi:10.5194/essd-13-1-2021, 2021.
- Cheng, S. and Huang, J.: Enhanced soil moisture drying in transitional regions under a warming climate, *J. Geophys. Res. Atmos.*, 121, 2542-2555. doi:10.1002/2015JD024559, 2016.
- Ciavarella, A., Cotterill, D., Stott, P., Kew, S., et al.: Prolonged Siberian heat of 2020 almost impossible without human influence, *Climatic Change*, 166. doi:10.1007/s10584-021-03052-w, 2021.
- 795 Clifford, C. for CNBC: Italy has declared a state of emergency because of drought: ‘There is no doubt that climate change is having an effect,’ the prime minister said, 05-07-2022, URL: <https://www.cnbc.com/2022/07/05/italy-declared-a-state-of-emergency-because-of-drought-in-the-po-river.html>, last accessed: 13-03-2023, 2022.
- CMA | China Meteorological Administration: Combined intensity of heat wave events has reached the strongest since 1961 according to BCC, 21-08-2022, URL: https://www.cma.gov.cn/en2014/news/News/202208/t20220821_5045788.html, last 800 accessed: 27-02-2023, 2022.
- Coldiretti: Siccità: devasta il raccolto di riso italiano (-30%), 03-07-2022, URL: <https://www.coldiretti.it/economia/siccita-devasta-il-raccolto-di-riso-italiano-30>, last accessed: 13-03-2023, 2022.
- Copernicus: Precipitation, relative humidity and soil moisture for August 2021. Hydrological climate bulletin, September 2021, URL: <https://climate.copernicus.eu/precipitation-relative-humidity-and-soil-moisture-august-2021>, last accessed: 27- 805 02-2023, 2021.
- Copernicus: Summer 2022 Europe’s hottest on record, 08-09-2022, URL: <https://climate.copernicus.eu/copernicus-summer-2022-europes-hottest-record>, last accessed: 27-02-2023. 2022a.

- Copernicus: Europe's summer wildfire emissions highest in 15 years, 06-09-2022, URL: <https://atmosphere.copernicus.eu/europes-summer-wildfire-emissions-highest-15-years>, last accessed: 13-03-2023, 2022b.
- 810 Coumou, D., V. Petoukhov, S. Rahmstorf, S. Petri, and H. J. Schellnhuber: Quasi-resonant circulation regimes and hemispheric synchronization of extreme weather in boreal summer, *Proc. Natl. Acad. Sci. USA*, 111, 12 331–12 336, doi:[10.1073/pnas.1412797111](https://doi.org/10.1073/pnas.1412797111), 2014.
- Cornes, R. C., van der Schrier, G., van den Besselaar, E. J., and Jones, P. D.: An Ensemble Version of the E-OBS Temperature and Precipitation Data Sets, *J. Geophys. Res.-Atmos.*, 123, 9391–9409. doi:[10.1029/2017JD028200](https://doi.org/10.1029/2017JD028200), 2018.
- 815 CPC | Climate Prediction Center: Historical El Nino / La Nina episodes (1950-present). URL: https://origin.cpc.ncep.noaa.gov/products/analysis_monitoring/ensostuff/ONI_v5.php, last accessed: 27-02-2023, 2022.
- Delworth, T. L., Rosati, A., Anderson, W., Adcroft, A. J., et al.: Simulated Climate and Climate Change in the GFDL CM2.5 High-Resolution Coupled Climate Model, *J. Clim.*, 2755-2781, doi:[10.1175/JCLI-D-11-00316.1](https://doi.org/10.1175/JCLI-D-11-00316.1), 2012.
- Deng, Y., Wang, S., Bai, X., et al.: Variation trend of global soil moisture and its cause analysis, *Ecological Indicators*, 110, 2020, 105939, doi:[10.1016/j.ecolind.2019.105939](https://doi.org/10.1016/j.ecolind.2019.105939), 2020.
- 820 DESTATIS | Federal Statistical Office of Germany: Sonderauswertung zu Sterbefallzahlen: Entwicklung im Jahr 2022, URL: <https://www.destatis.de/DE/Themen/Gesellschaft-Umwelt/Bevoelkerung/Sterbefaelle-Lebenserwartung/sterbefallzahlen.html#>, last accessed: 13-03-2023, 2022a.
- DESTATIS | Federal Statistical Office of Germany: Sterbefallzahlen im Juni 2022 um 8 % über dem mittleren Wert der Vorjahre, press release nr. 295 from 12-07-2022, URL: https://www.destatis.de/DE/Presse/Pressemitteilungen/2022/07/PD22_295_126.html, last accessed: 13-03-2023, 2022b.
- 825 Dhanesha, N. and Jones, B. for Vox: It's so hot in Europe that roads are literally buckling: The world wasn't built for this heat, 20-07-2022, URL: <https://www.vox.com/2022/7/20/23270092/europe-uk-heat-wave-roads-trains-climate-change>, last accessed: 13-03-2023, 2022.
- 830 Dorigo, W. A., Jeu, R. D., Chung, D., Parinussa, R., et al.: Evaluating global trends (1988–2010) in harmonized multi-satellite surface soil moisture, *Geophys. Res. Lett.*, 39, 18405, doi:[10.1029/2012GL052988](https://doi.org/10.1029/2012GL052988), 2012.
- Dorigo, W. A., Gruber, A., De Jeu, R.A.M., Wagner, W. T., et al.: Evaluation of the ESA CCI soil moisture product using ground-based observations, *Remote Sensing of Environment*, 162, 380–395. doi:[10.1016/j.rse.2014.07.023](https://doi.org/10.1016/j.rse.2014.07.023), 2015.
- 835 Dorigo, W., Wagner, W., Albergel, C., Albrecht, F., et al: ESA CCI Soil Moisture for improved Earth system understanding: State-of-the art and future directions, *Remote Sensing of Environment*, 203, 185–215, doi:[10.1016/j.rse.2017.07.001](https://doi.org/10.1016/j.rse.2017.07.001), 2017.
- Dumitrescu, R. for Romania-insider.com: Romania sees sevenfold increase in vegetation fires in 2022, 20-07-2022, URL: <https://www.romania-insider.com/romania-sevenfold-increase-vegetation-fires-2022>, last accessed: 13-03-2023, 2022.
- 840 DW | Deutsche Welle: Serious drought hits Europe and beyond, 08-13-2022, URL: <https://www.dw.com/en/serious-drought-hitting-europe-wider-world/a-62786406>, last accessed: 13-03-2023, 2022.
- EC JRC | European Commission Joint Research Centre: LISFLOOD - a distributed hydrological rainfall-runoff model. Model documentation, URL:https://ec-jrc.github.io/lisflood-model/Lisflood_Model.pdf, last accessed: 13-03-2023, 2020.
- 845 EC JRC | European Commission Joint Research Centre: Droughts in Europe in July 2022: almost half of the EU +UK territory at risk, 18-07-2022, URL: https://joint-research-centre.ec.europa.eu/jrc-news/droughts-europe-july-2022-almost-half-eu-uk-territory-risk-2022-07-18_en, last accessed: 27-02-2023, 2022a.

- EC JRC | European Commission's Joint Research Centre: Summer drought keeps its grip on Europe, 22-08-2022, URL: https://joint-research-centre.ec.europa.eu/jrc-news/summer-drought-keeps-its-grip-europe-2022-08-22_en, last accessed: 13-03-2023, 2022b.
- 850 EDO | European Drought Observatory: Drought Map Generator, URL: <https://edo.jrc.ec.europa.eu/edov2/php/index.php?id=1181>, last accessed: 13-03-2023, 2022.
- EEA | European Environment Agency: Water use by sectors, last modified 23-11-2020, URL: <https://www.eea.europa.eu/archived/archived-content-water-topic/water-resources/water-use-by-sectors>, last accessed: 13-03-2023, 2020a.
- 855 EEA | European Environment Agency: The Problems of water stress, 23-11-2020, URL: <https://www.eea.europa.eu/publications/92-9167-025-1/page003.html>, last accessed: 13-03-2023, 2020b.
- EFFIS | European Forest Fire Information System: Seasonal Trend for European Union (charts updated every 7 days, archive available), URL: <https://effis.jrc.ec.europa.eu/apps/effis.statistics/seasonaltrend>, last accessed: 27-02-2023, 2022.
- Eyring, V., Bony, S., Meehl, G. A., Senior, C. A., et al.: Overview of the Coupled Model Intercomparison Project Phase 6 (CMIP6) experimental design and organization, *Geosci. Model Dev.*, 9, 1937–1958, doi:[10.5194/gmd-9-1937-2016](https://doi.org/10.5194/gmd-9-1937-2016), 2016.
- 860 Garcia, D.: Robust smoothing of gridded data in one and higher dimensions with missing values, *Computational Statistics & Data Analysis*, 54, 1167–1178, doi:[10.1016/j.csda.2009.09.020](https://doi.org/10.1016/j.csda.2009.09.020), 2010.
- Gazol, A. and Camarero, J. J.: Compound climate events increase tree drought mortality across European forests, *Science of The Total Environment*, 816, 151604, doi:[10.1016/j.scitotenv.2021.151604](https://doi.org/10.1016/j.scitotenv.2021.151604), 2022.
- 865 Gevaert, A. I., Miralles, D. G., de Jeu, R. A. M., Schellekens, J. and Dolman, A. J.: Soil moisture-temperature coupling in a set of land surface models. *J. Geophys. Res. Atmos.*, 123, 1481–1498, doi:[10.1002/2017JD027346](https://doi.org/10.1002/2017JD027346), 2018.
- Giorgi, F.: Dependence of the surface climate interannual variability on spatial scale, *Geophys. Res. Lett.*, 29, 16-1–16-4, doi:[10.1029/2002GL016175](https://doi.org/10.1029/2002GL016175), 2002.
- 870 Good, R., Sandford A. & Askew, J. for EuroNews: Drought and heatwaves: How is Europe tackling unprecedented water shortages?, 09-08-2022, URL: <https://www.euronews.com/2022/08/08/nothing-left-in-the-pipes-europe-tackles-unprecedented-water-shortages-as-heatwave-rages>, last accessed: 13-03-2023, 2022.
- Gruber, A., Scanlon, T., van der Schalie, R., Wagner, W., and Dorigo, W.: Evolution of the ESA CCI Soil Moisture climate data records and their underlying merging methodology, *Earth Syst. Sci. Data*, 11, 717–739, doi:[10.5194/essd-11-717-2019](https://doi.org/10.5194/essd-11-717-2019), 2019.
- 875 Haarsma, R. J., Roberts, M. J., Vidale, P. L., Senior, C. A., et al.: High Resolution Model Intercomparison Project (HighResMIP v1.0) for CMIP6, *Geosci. Model Dev.*, 9, 4185–4208. doi:[10.5194/gmd-9-4185-2016](https://doi.org/10.5194/gmd-9-4185-2016), 2016.
- Hansen, J., Ruedy, R., Sato, M., Lo, K.: Global surface temperature change, *Reviews of Geophysics*, 48, RG4004. doi:[10.1029/2010RG000345](https://doi.org/10.1029/2010RG000345), 2010.
- 880 Heggie, J. for National Geographic: Solving Italy's water problem: It's time to fix the dripping tap, 22-06-2020, URL: <https://www.nationalgeographic.com/science/article/partner-content-solving-the-water-problem-in-italy>, last accessed: 13-03-2023, 2020.
- Henley, J. for The Guardian: Europe's rivers run dry as scientists warn drought could be worst in 500 years, 13-08-2022, URL: <https://www.theguardian.com/environment/2022/aug/13/europes-rivers-run-dry-as-scientists-warn-drought-could-be-worst-in-500-years>, last accessed: 27-02-2023, 2022.

- 885 Hersbach, H., Bell, B., Berrisford, P., Hirahara, S., et al.: The ERA5 global reanalysis, *Q. J. Roy. Meteor. Soc.*, 146, 1999–2049, doi:[10.1002/qj.3803](https://doi.org/10.1002/qj.3803), 2020.
- Hirschnitz-Garbers, M., Tan, A. R., Gradmann, A., and Srebotnjak, T.: Key drivers for unsustainable resource use – categories, effects and policy pointers, *Journal of Cleaner Production*, 132, 13–31, doi:[10.1016/j.jclepro.2015.02.038](https://doi.org/10.1016/j.jclepro.2015.02.038), 2016.
- Horowitz, J. for The New York Times: Europe’s Scorching Summer Puts Unexpected Strain on Energy Supply, 18-08-2022, URL: <https://www.nytimes.com/2022/08/18/world/europe/drought-heat-energy.html>, last accessed: 13-03-2023, 2022.
- 900 Houborg, R., Rodell, M., Li, B., Reichle, R., Zaitchik, B. F.: Drought indicators based on model-assimilated gravity recovery and climate experiment (GRACE) terrestrial water storage observations, *Water Resour. Res.*, 48, W07525, doi:[10.1029/2011WR011291](https://doi.org/10.1029/2011WR011291), 2012.
- IPCC: Climate Change 2021: The Physical Science Basis. Contribution of Working Group I to the Sixth Assessment Report of the Intergovernmental Panel on Climate Change [Masson-Delmotte, V., P. Zhai, A. Pirani, S.L. Connors, C. Péan, S. Berger, N. Caud, Y. Chen, L. Goldfarb, M.I. Gomis, M. Huang, K. Leitzell, E. Lonnoy, J.B.R. Matthews, T.K. Maycock, T. Waterfield, O. Yelekçi, R. Yu, and B. Zhou (eds.)], Cambridge University Press, Cambridge, United Kingdom and New York, NY, USA, 2391 pp., 2021.
- 905 IPCC: Climate Change 2022: Impacts, Adaptation, and Vulnerability. Contribution of Working Group II to the Sixth Assessment Report of the Intergovernmental Panel on Climate Change [H.-O. Pörtner, D.C. Roberts, M. Tignor, E.S. Poloczanska, K. Mintenbeck, A. Alegría, M. Craig, S. Langsdorf, S. Lösschke, V. Möller, A. Okem, B. Rama (eds.)], Cambridge University Press. Cambridge University Press, Cambridge, UK and New York, NY, USA, 3056 pp., 2022.
- Iturbide, M., Gutiérrez, J. M., Alves, L. M., Bedia, J., et al.: An update of IPCC climate reference regions for subcontinental analysis of climate model data: Definition and aggregated datasets, *Earth System Science Data*, 12, 2959–2970, doi:[10.5194/essd-12-2959-2020](https://doi.org/10.5194/essd-12-2959-2020), 2020.
- 905 Kagerl, C., Moritz, M., Roth, D. et al.: Energiekrise und Lieferstopp für Gas: Auswirkungen auf die Betriebe in Deutschland. *Wirtschaftsdienst*, 102, 486–491, doi:[10.1007/s10273-022-3211-7](https://doi.org/10.1007/s10273-022-3211-7), 2022.
- Karori, M. A., Li, J., & Jin, F.: The Asymmetric Influence of the Two Types of El Niño and La Niña on Summer Rainfall over Southeast China, *Journal of Climate*, 26, 4567–4582, doi:[10.1175/JCLI-D-12-00324.1](https://doi.org/10.1175/JCLI-D-12-00324.1), 2013.
- 910 Kew, S. F., Philip, S. Y., Hauser, M., Hobbins, M., et al.: Impact of precipitation and increasing temperatures on drought trends in eastern Africa, *Earth Syst. Dynam.*, 12, 17–35, doi:[10.5194/esd-12-17-2021](https://doi.org/10.5194/esd-12-17-2021), 2021.
- Kollewe, J. for The Guardian: EDF cuts output at nuclear power plants as French rivers get too warm, 03-08-2022, URL: <https://www.theguardian.com/business/2022/aug/03/edf-to-reduce-nuclear-power-output-as-french-river-temperatures-rise>, last accessed: 13-03-2023, 2022.
- 915 Korosec, M. for Severe Weather Europe: Karst Region on Fire – The Largest, Historic Wildfire on Record in Slovenia spreads fast under the new extreme heat dome Heatwave event over Europe, 24-07-2022, URL: <https://www.severe-weather.eu/global-weather/heatwave-heat-dome-slovenia-historic-wildfire-karst-summer-july-2022-mk/>, last accessed: 13-03-2023, 2022.
- Kumar, S. V., et al.: Assimilation of gridded GRACE terrestrial water storage estimates in the North American land data assimilation system, *J. Hydrometeorol.*, 17, 1951–1972, doi:[10.1175/JHM-D-15-0157.1](https://doi.org/10.1175/JHM-D-15-0157.1), 2016.
- 920 Llamas, R. M., Guevara, M., Rorabaugh, D., Taufer, M., and Vargas, R.: Spatial Gap-Filling of ESA CCI Satellite-Derived Soil Moisture Based on Geostatistical Techniques and Multiple Regression, *Remote Sensing*, 12, doi:[10.3390/rs12040665](https://doi.org/10.3390/rs12040665), 2020.

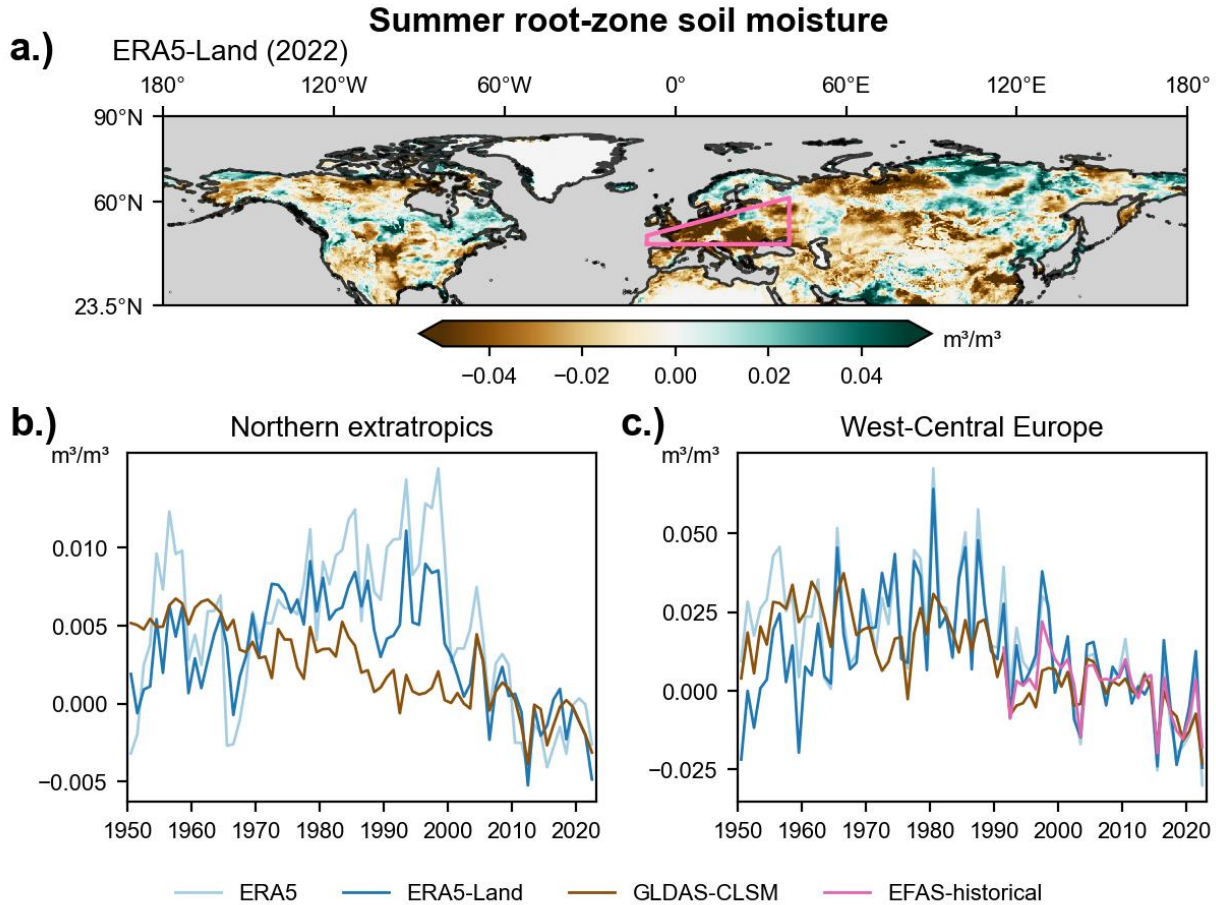
- Lau, W.K.M., and Kim, K. M.: The 2010 Pakistan flood and Russian heat wave: teleconnection of hydrometeorological extremes, *J. Hydrometeorol.*, 13, 392–403, doi:[10.1175/JHM-D-11-016.1](https://doi.org/10.1175/JHM-D-11-016.1), 2012.
- 925 Lehner, F., and Coats, S.: Does regional hydroclimate change scale linearly with global warming?, *Geophys. Res. Lett.*, 48, e2021GL095127. doi:[10.1029/2021GL095127](https://doi.org/10.1029/2021GL095127), 2021.
- Le News: 2022 Switzerland’s second hottest summer since 1864, 02-09-2022, URL: <https://lenews.ch/2022/09/02/2022-switzerlands-second-hottest-summer-since-1864/>, last accessed: 27-02-2023, 2022.
- Le Page, M. for the NewScientist: Heatwave in China is the most severe ever recorded in the world, 23-08-2022, URL: <https://www.newscientist.com/article/2334921-heatwave-in-china-is-the-most-severe-ever-recorded-in-the-world/>, last accessed: 13-03-2023, 2022.
- 930 Lehner, F., Deser, C., Maher, N., Marotzke, J., et al.: Partitioning climate projection uncertainty with multiple large ensembles and CMIP5/6, *Earth Syst. Dynam.*, 11, 491–508, doi:[10.5194/esd-11-491-2020](https://doi.org/10.5194/esd-11-491-2020), 2020.
- Lenssen, N. J. L., Schmidt, G. A., Hansen, J. E., Menne, M. J., et al.: Improvements in the GISTEMP uncertainty model. *Journal of Geophysical Research: Atmospheres*, 124, 6307–6326, doi:[10.1029/2018JD029522](https://doi.org/10.1029/2018JD029522), 2019.
- Li, B., Rodell, M., Kumar, S., Beaudoin, H. K., et al.: Global GRACE Data Assimilation for Groundwater and Drought Monitoring: Advances and Challenges, *Water Resour. Res.*, 55, 7564–7586, doi:[10.1029/2018WR024618](https://doi.org/10.1029/2018WR024618), 2019.
- Li, M., Yao, Y., Simmonds, I., Luo, D., et al.: Collaborative impact of the NAO and atmospheric blocking on European heatwaves, with a focus on the hot summer of 2018, *Environ. Res. Lett.*, 15, 114003, doi:[10.1088/1748-9326/aba6ad](https://doi.org/10.1088/1748-9326/aba6ad), 2020.
- 940 Linthicum, K. for the Los Angeles Times: Taps have run dry in Monterrey, Mexico, where there is water for factories but not for residents, 22-07-2022, URL: <https://www.latimes.com/world-nation/story/2022-07-22/the-taps-have-run-dry-in-mexicos-second-biggest-city-this-is-what-life-is-like-without-water>, last accessed: 27-02-2023, 2022.
- Liu, L., Gudmundsson, L., Hauser, M. et al.: Soil moisture dominates dryness stress on ecosystem production globally, *Nat. Commun.*, 11, 4892, <https://doi.org/10.1038/s41467-020-18631-1>, 2020.
- 945 Liu, K., Li, X., Wang, S., and Zhang, H.: A robust gap-filling approach for European Space Agency Climate Change Initiative (ESA CCI) soil moisture integrating satellite observations, model-driven knowledge, and spatiotemporal machine learning, *Hydrol. Earth Syst. Sci.*, 27, 577–598, doi:[10.5194/hess-27-577-2023](https://doi.org/10.5194/hess-27-577-2023), 2023.
- Lu, J., Carbone, G.J. & Grego, J.M. Uncertainty and hotspots in 21st century projections of agricultural drought from CMIP5 models, *Sci. Rep.*, 9, 4922, <https://doi.org/10.1038/s41598-019-41196-z>, 2019.
- 950 Lukov, Y. for BBC News: France firefighters battle 'monster' wildfire near Bordeaux, 11-08-2022, URL: <https://www.bbc.com/news/world-europe-62503775>, last accessed: 13-03-2023, 2022.
- Mazzetti, C., Decremier, D., Barnard, C., Blick, M.: River discharge and related historical data from the European Flood Awareness System, v4.0, Copernicus Climate Change Service (C3S) Climate Data Store (CDS), doi: 10.24381/cds.e3458969, accessed: 19-12-2022, 2020.
- 955 McColl, K. A., He, Q., Lu, H., and Entekhabi, D.: Short-term and long-term surface soil moisture memory time scales are spatially anticorrelated at global scales, *J. Hydrometeorol.*, 20, 1165–1182, doi:[10.1175/JHM-D-18-0141.1](https://doi.org/10.1175/JHM-D-18-0141.1), 2019.
- Mendes, L. for Trade Finance Global: ‘Heatflation’ warning as 2022 EU crop harvests affected by climate change, 09-08-2022, last modified 27-02-2023, URL: <https://www.tradefinanceglobal.com/posts/heatflation-warning-as-2022-eu-crop-harvests-affected-by-climate-change/>, last accessed: 13-03-2023, 2022.

- 960 Mueller, B. & Seneviratne, S. I.: Hot days induced by precipitation deficits at the global scale, *Proc. Natl Acad. Sci. USA*, 109, 12398–12403, doi:[10.1073/pnas.1204330109](https://doi.org/10.1073/pnas.1204330109), 2012.
- Muñoz-Sabater, J., Dutra, E., Agustí-Panareda, A., Albergel, C., et al.: ERA5-Land: a state-of-the-art global reanalysis dataset for land applications, *Earth Syst. Sci. Data*, 13, 4349–4383, doi:[10.5194/essd-13-4349-2021](https://doi.org/10.5194/essd-13-4349-2021), 2021.
- Miralles, D. G., Gentile, P., Seneviratne, S. I. and Teuling, A. J.: Land–atmospheric feedbacks during droughts and
965 heatwaves: state of the science and current challenges, *Ann. New York Acad. Sci.*, 1436, 19–35, doi:[10.1111/nyas.13912](https://doi.org/10.1111/nyas.13912), 2019.
- Pratt, S. for the NASA Earth Observatory: A Long-lasting Western Heatwave, 10-09-2022, URL: <https://earthobservatory.nasa.gov/images/150318/a-long-lasting-western-heatwave>, last accessed: 27-02-2023, 2022.
- Preimesberger, W., Scanlon, T., Su, C. -H., Gruber, A. and Dorigo, W.: Homogenization of Structural Breaks in the Global
970 ESA CCI Soil Moisture Multisatellite Climate Data Record, *IEEE Transactions on Geoscience and Remote Sensing*, 59, 2845–2862, doi:[10.1109/TGRS.2020.3012896](https://doi.org/10.1109/TGRS.2020.3012896), 2021.
- NASA GRACE-FO: Map Archive, URL:<https://nasagrace.unl.edu/Archive.aspx>, last accessed: 13-03-2023, 2022.
- Naumann, G., Cammalleri, C., Mentaschi, L. et al: Increased economic drought impacts in Europe with anthropogenic warming, *Nat. Clim. Chang.*, 11, 485–491, doi:[10.1038/s41558-021-01044-3](https://doi.org/10.1038/s41558-021-01044-3), 2021.
- 975 Padrón, R.S., Gudmundsson, L., Decharme, B. et al.: Observed changes in dry-season water availability attributed to human-induced climate change, *Nat. Geosci.*, 13, 477–481, doi:[10.1038/s41561-020-0594-1](https://doi.org/10.1038/s41561-020-0594-1), 2020.
- Phys.org: Italy heatwave peaks with 16 cities on red alert as Tuscany burns, 22-07-2022, URL: <https://phys.org/news/2022-07-italy-heatwave-peaks-cities-red.html>, last accessed: 27-02-2023, 2022.
- Qiao L., Zuo, Z., Xiao, D., Bu, L.: Detection, Attribution, and Future Response of Global Soil Moisture in Summer,
980 *Frontiers in Earth Science*, 9, 745185, doi:[10.3389/feart.2021.745185](https://doi.org/10.3389/feart.2021.745185), 2021.
- O., S., and Orth, R.: Global soil moisture data derived through machine learning trained with in-situ measurements, *Sci. Data*, 8, 170, doi:[10.1038/s41597-021-00964-1](https://doi.org/10.1038/s41597-021-00964-1), 2021.
- OMSZ | Országos Meteorológiai Szolgálat, Hungarian Meteorological Service: Több melegrekord is megdőlt, 23-07-2022, URL:[https://www.met.hu/omsz/OMSZ_hirek/index.php?id=4849&m=2&hir=Tobb_melegrekord_is_megdolt_\(2022.07.23.\)](https://www.met.hu/omsz/OMSZ_hirek/index.php?id=4849&m=2&hir=Tobb_melegrekord_is_megdolt_(2022.07.23.)),
985 last accessed: 27-02-2023, 2022.
- Philip, S., Kew, S., van Oldenborgh, G. J., Otto, F., et al.: A protocol for probabilistic extreme event attribution analyses, *Adv. Stat. Clim. Meteorol. Oceanogr.*, 6, 177–203, doi:[10.5194/ascmo-6-177-2020](https://doi.org/10.5194/ascmo-6-177-2020), 2020a.
- Philip, S. Y., Kew, S. F., van der Wiel, K., Wanders, N., and van Oldenborgh, G. J.: Regional differentiation in climate change induced drought trends in the Netherlands, *Environ. Res. Lett.*, 15, 094081, doi:[10.1088/1748-9326/ab97ca](https://doi.org/10.1088/1748-9326/ab97ca), 2020b.
- 990 Rakovec, O., Samaniego, L., Hari, V., Markonis, Y., et al.: The 2018–2020 multi-year drought sets a new benchmark in Europe, *Earth’s Future*, 10, e2021EF002394, doi:[10.1029/2021EF002394](https://doi.org/10.1029/2021EF002394), 2022.
- Rayner, N. A., Parker, D. E., Horton, E.B., Folland, C. K., et al.: Global analyses of sea surface temperature, sea ice and night marine air temperature since the late nineteenth century, *J. Geophys. Res. Atmos.*, 108, 4407, doi:[10.1029/2002JD002670](https://doi.org/10.1029/2002JD002670), 2003.
- 995 Reuters: China issues first national drought alert, battles to save crops in extreme heatwave, Shanghai, 19-08-2022, URL: <https://www.reuters.com/world/china/china-issues-first-national-drought-alert-battles-save-crops-extreme-heatwave-2022-08-19/>, last accessed: 27-02-2023, 2022.

- 1000 Rocha, P. A. for Bloomberg: Heat Wave Is Pushing Europe's Energy System to the Limit, 18-07-2022, URL: <https://www.bloomberg.com/news/articles/2022-07-18/heat-wave-is-pushing-europe-s-energy-system-to-the-limit#>, last accessed: 13-03-2023, 2022.
- Rodell, M., Houser, P., Jambor, U., Gottschalck, J., et al.. The global land data assimilation system, *Bulletin of the American Meteorological Society*, 85, 381–394, doi:[10.1175/bams-85-3-381](https://doi.org/10.1175/bams-85-3-381), 2004.
- Roscoe, M. for EuroWeeklyNews: Huge fire rages in Massarosa (Lucca) Italy as evacuations continue, 19-07-2022, URL: <https://euroweeklynews.com/2022/07/19/fire-massarosa-lucca-italy/>, last accessed: 13-03-2023, 2022.
- 1005 Roucate, D. for Le Monde: Heat wave 'likely' to have caused over 11,000 additional deaths in France this summer, 06-09-2022, URL:https://www.lemonde.fr/en/france/article/2022/09/06/heat-wave-likely-to-have-caused-over-11-000-additional-deaths-in-france-this-summer_5996012_7.html, last accessed: 13-03-2023, 2022.
- Rousi, E., Kornhuber, K., Beobide-Arsuaga, G. et al.: Accelerated western European heatwave trends linked to more-persistent double jets over Eurasia, *Nat. Commun.*, 13, 3851, doi:[10.1038/s41467-022-31432-y](https://doi.org/10.1038/s41467-022-31432-y), 2022.
- 1010 Save, H., Bettadpur, S., and Tapley, B. D.: High-resolution CSR GRACE RL05 mascons, *J. Geophys. Res.-Sol. Ea.*, 121, 7547–7569, doi:[10.1002/2016jb013007](https://doi.org/10.1002/2016jb013007), 2016.
- Save, H.: CSR GRACE and GRACE-FO RL06 Mascon Solutions v02 [dataset], doi:[10.15781/cgq9-nh24](https://doi.org/10.15781/cgq9-nh24), 2020.
- Schär, C., Vidale, P., Lüthi, D. et al.: The role of increasing temperature variability in European summer heatwaves, *Nature*, 427, 332–336, doi:[10.1038/nature02300](https://doi.org/10.1038/nature02300), 2004.
- 1015 Scherrer, S.C., Hirschi, M., Spirig, C., Maurer, F., and Kotlarski, S.: Trends and drivers of recent summer drying in Switzerland, *Environ. Res. Commun.*, 4, 025004, doi:[10.1088/2515-7620/ac4fb9](https://doi.org/10.1088/2515-7620/ac4fb9), 2022.
- Schumacher, D. L., Zachariah, M., Otto, F., Barnes, B., et al.: High temperatures exacerbated by climate change made 2022 Northern Hemisphere soil moisture droughts more likely, *World Weather Attribution*, URL:<https://www.worldweatherattribution.org/wp-content/uploads/WCE-NH-drought-scientific-report.pdf>, last accessed: 1020 27-02-2023, 2022.
- Seabrook, V. for Sky News: Climate crisis: Drought hitting more than half of Europe - these are the consequences, 10-08-2022, URL: <https://news.sky.com/story/almost-half-of-eu-countries-still-suffering-from-drought-12667870>, last accessed: 27-02-2023, 2022.
- Seneviratne, S. I., Lüthi, D., Litschi, M., Schär, C.: Land–atmosphere coupling and climate change in Europe. *Nature*, 443, 1025 205–209, doi:[10.1038/nature05095](https://doi.org/10.1038/nature05095), 2006.
- Seneviratne, S. I., Lehner, I., Gurtz, J., Teuling, A. J., et al.: Swiss prealpine Rietholzbach research catchment and lysimeter: 32 year time series and 2003 drought event, *Water Resour. Res.*, 48, doi:[10.1029/2011WR011749](https://doi.org/10.1029/2011WR011749), 2012.
- Seneviratne, S. I., and Hauser, M.: Regional climate sensitivity of climate extremes in CMIP6 versus CMIP5 multimodel ensembles, *Earth's Future*, 8, e2019EF001474, doi:[10.1029/2019EF001474](https://doi.org/10.1029/2019EF001474), 2020.
- 1030 Seneviratne, S.I., X. Zhang, M. Adnan, W. Badi, C. et al.: Weather and Climate Extreme Events in a Changing Climate. In *Climate Change 2021: The Physical Science Basis. Contribution of Working Group I to the Sixth Assessment Report of the Intergovernmental Panel on Climate Change* [Masson-Delmotte, V., P. Zhai, A. Pirani, S.L. Connors, C. Péan, S. Berger, N. Caud, Y. Chen, L. Goldfarb, M.I. Gomis, M. Huang, K. Leitzell, E. Lonnoy, J.B.R. Matthews, T.K. Maycock, T. Waterfield, O. Yelekçi, R. Yu, and B. Zhou (eds.)]. Cambridge University Press, Cambridge, United Kingdom and New York, NY, 1035 USA, pp. 1513–1766, 2021.

- Sheffield, J., Goteti, G., and Wood, E. F.: Development of a 50-year high-resolution global dataset of meteorological forcings for land surface modeling, *Journal of Climate*, 19, 3088–3111, doi:[10.1175/JCLI3790.1](https://doi.org/10.1175/JCLI3790.1), 2006.
- Sheffield, J., and Wood, E. F.: Global Trends and Variability in Soil Moisture and Drought Characteristics, 1950–2000, from Observation-Driven Simulations of the Terrestrial Hydrologic Cycle, *Journal of Climate*, 21, 432–458. doi:[10.1175/2007JCLI1822.1](https://doi.org/10.1175/2007JCLI1822.1), 2008.
- 1040 Sousa, P.M., Barriopedro, D., García-Herrera, R. et al.: Distinct influences of large-scale circulation and regional feedbacks in two exceptional 2019 European heatwaves, *Commun. Earth Environ.*, 1, doi:[10.1038/s43247-020-00048-9](https://doi.org/10.1038/s43247-020-00048-9), 2020.
- Stegehuis, A. I., Vogel, M. M., Vautard, R., Ciais, P., et al.: Early summer soil moisture contribution to western European summer warming, *Journal of Geophysical Research: Atmospheres*, 126, e2021JD034646, doi:[10.1029/2021JD034646](https://doi.org/10.1029/2021JD034646), 2021.
- 1045 Stresing, L. and Wolf, C. for ntv.de: So trocken ist es aktuell in Deutschland und Europa, 24-08-2022, URL: <https://www.ntv.de/infografik/So-trocken-ist-es-aktuell-in-Deutschland-und-Europa-article23535525.html>, last accessed: 13-03-2023, 2022.
- Taylor, K. E., Stouffer, R. J., and Meehl, G.A.: An overview of CMIP5 and the experiment design, *Bull. Am. Meteorol. Soc.*, 93, 485-498. doi:[10.1175/BAMS-D-11-00094.1](https://doi.org/10.1175/BAMS-D-11-00094.1), 2012.
- 1050 Teuling, A. J., Van Loon, A. F., Seneviratne, S. I., Lehner, I., et al.: Evapotranspiration amplifies European summer drought, *Geophys. Res. Lett.*, 40, 2071–2075, doi:[10.1002/grl.50495](https://doi.org/10.1002/grl.50495), 2013.
- The Local: Italian wildfires ‘three times worse’ than average as heatwave continues, 27-06-2022, URL: <https://www.thelocal.it/20220627/heatwave-italian-wildfires-already-three-times-worse-than-average/>, last accessed: 13-03-2023, 2022.
- 1055 Toreti, A., Bavera, D., Acosta Navarro, J., Cammalleri, C., et al.: Drought in Europe August 2022, Publications Office of the European Union, Luxembourg, JRC130493, doi:[10.2760/264241](https://doi.org/10.2760/264241), 2022.
- Trnka, M., Brázdil, R., Možný, M., Štěpánek, P., et al.: Soil moisture trends in the Czech Republic between 1961 and 2012, *International Journal of Climatology*, 35, 3733–3747. doi:[10.1002/joc.4242](https://doi.org/10.1002/joc.4242), 2015.
- Twoja Pogoda: Najpierw w czerwcu, a teraz w lipcu takiego żaru jeszcze nie było. Nawet 38 stopni. Gdzie było najgoręcej (“First in June and now in July, this heat is unprecedented. Up to 38 °C. Where was it hottest?”), 02-07-2023, URL: <https://www.twojapogoda.pl/wiadomosc/2022-07-02/najpierw-w-czerwcu-a-teraz-w-lipcu-takiego-zaru-jeszcze-nie-bylo-nawet-38-stopni-gdzie-bylo-najgorzej/>, last accessed: 27-02-2023, 2022.
- 1060 van Oldenborgh, G.J., van der Wiel, K., Kew, S. et al.: Pathways and pitfalls in extreme event attribution, *Climatic Change*, 166, doi:[10.1007/s10584-021-03071-7](https://doi.org/10.1007/s10584-021-03071-7), 2021.
- 1065 Vautard, R., Yiou, P., D'Andrea, F., de Noblet, N., et al.: Summertime European heat and drought waves induced by wintertime Mediterranean rainfall deficit, *Geophys. Res. Lett.*, 34, L07711, <https://doi.org/10.1029/2006GL028001>, 2007.
- Vecchi, G. A., Delworth, T., Gudgel, R., Kapnick, S., et al.: On the seasonal forecasting of regional tropical cyclone activity. *J. Clim.*, 27, 7994–8016, doi:[10.1175/JCLI-D-14-00158.1](https://doi.org/10.1175/JCLI-D-14-00158.1), 2014.
- 1070 Wang, Z., Chang, C-P., Wang, B.: Impacts of El Niño and La Niña on the U.S. Climate during Northern Summer, *Journal of Climate*, 20, 2165-2177, doi:[10.1175/JCLI4118.1](https://doi.org/10.1175/JCLI4118.1), 2007.
- Wang, Y., Luo, Y., Shafeeque, M.: Using a Gaussian function to describe the seasonal courses of monthly precipitation and potential evapotranspiration across the Yellow River Basin, China, *Journal of Hydrometeorology*, 20, 2185–2201, doi:[10.1175/jhm-d-19-0019.1](https://doi.org/10.1175/jhm-d-19-0019.1), 2019.

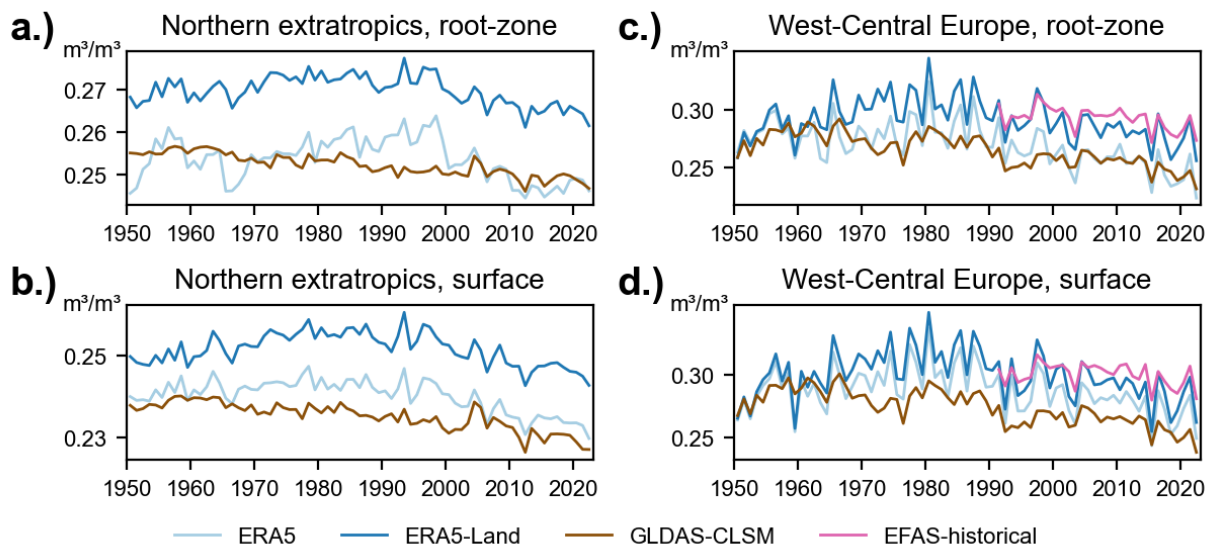
- 1075 Wang, A. for CareOurEarth: Record-Breaking Heatwaves Around the World In 2022, 30-07-2022, URL: <https://www.careourearth.com/record-breaking-heatwaves-around-the-world-in-2022/>, last accessed: 27-02-2023, 2022.
- Wartenburger, R., Hirschi, M., Donat, M. G., Greve, P., et al.: Changes in regional climate extremes as a function of global mean temperature: an interactive plotting framework, *Geosci. Model Dev.*, 10, 3609–3634, doi:[10.5194/gmd-10-3609-2017](https://doi.org/10.5194/gmd-10-3609-2017), 2017.
- 1080 Wieder, W. R., Kennedy, D., Lehner, F., Musselman, K. N., et al.: Pervasive alterations to snow-dominated ecosystem functions under climate change. *Proc. Natl. Acad. Sci.*, 19, e2202393119, doi:[10.1073/pnas.2202393119](https://doi.org/10.1073/pnas.2202393119), 2022.
- Wild, M., Gilgen, H., Roesch, A., Ohmura, A., et al.: From dimming to brightening: Decadal changes in solar radiation at earth's surface. *Science*, 308, 847–850, doi:[10.1126/science.1103215](https://doi.org/10.1126/science.1103215), 2005.
- Wilhite, D. A., Svoboda, M. D., and Hayes, M. J.: Understanding the Complex Impacts of Drought: A Key to Enhancing Drought Mitigation and Preparedness, *Water Resources Management*, 21, 763–774, doi:[10.1007/s11269-006-9076-5](https://doi.org/10.1007/s11269-006-9076-5), 2007.
- 1085 WMO | World Meteorological Organization: El Niño/La Niña update, URL:<https://public.wmo.int/en/our-mandate/climate/el-ni%C3%B1o-la-ni%C3%B1a-update>, last accessed: 27-02-2023, 2022.
- Yang, W., Hsieh, T-L., and Vecchi, G. A.: Hurricane annual cycle controlled by both seeds and genesis probability. *Proc. Natl. Acad. Sci. USA*, 118, e2108397118, doi:[10.1073/pnas.2108397118](https://doi.org/10.1073/pnas.2108397118), 2021.
- 1090 Zachariah, M., Vautard, R., Schumacher, D. L., Vahlberg, M., et al.: Without human-caused climate change temperatures of 40° C in the UK would have been extremely unlikely. World Weather Attribution, URL: <https://www.worldweatherattribution.org/wp-content/uploads/UK-heat-scientific-report.pdf>, last accessed: 27-02-2023, 2022.
- Zampieri, M., D'Andrea, F., Vautard, R., Ciais, P., et al.: Hot European Summers and the Role of Soil Moisture in the Propagation of Mediterranean Drought, *Journal of Climate*, 22, 4747–4758, doi:[10.1175/2009JCLI2568.1](https://doi.org/10.1175/2009JCLI2568.1), 2009.
- 1095



1105

Figure 1: (a) Mean summer (June–August) root-zone soil moisture in 2022 over the northern extratropics (NHET), shown for the ERA5-Land dataset and expressed as anomalies with respect to 1950–2022. West-Central Europe (WCE) is highlighted by the pink contour. (b) Summer root-zone soil moisture averaged over the northern extratropics for the main datasets used for analysis, with the 2003–2018 baseline subtracted to facilitate the comparison. (c) Like (b), but for West-Central Europe. Note that the supplementary dataset EFAS-historical is also shown, but this product is only available for Europe and hence not used for (b), and that the second (“upper”) soil layer — which does not represent a fixed depth, unlike for the other datasets displayed here (1m) — is selected to represent the root-zone.

Summer soil moisture



1110

Figure 2: Summer soil moisture averaged over the northern extratropics and West-Central Europe for the same datasets as in **Fig. 1**, but for both the root-zone — a.), c.) — and surface layer — b.), d.) — for the two domains. No baseline is subtracted here for a convenient comparison of individual products across the different soil depths.

1115

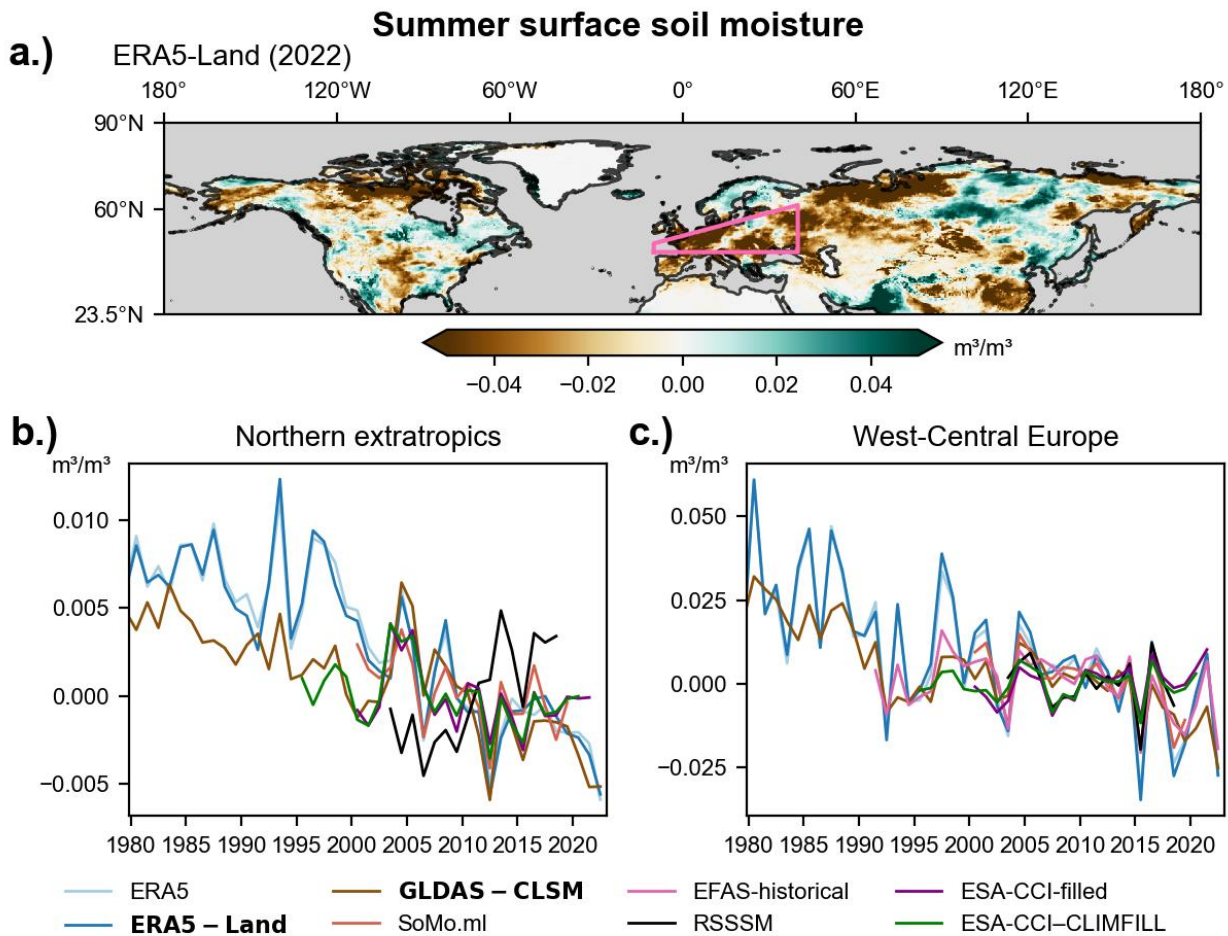
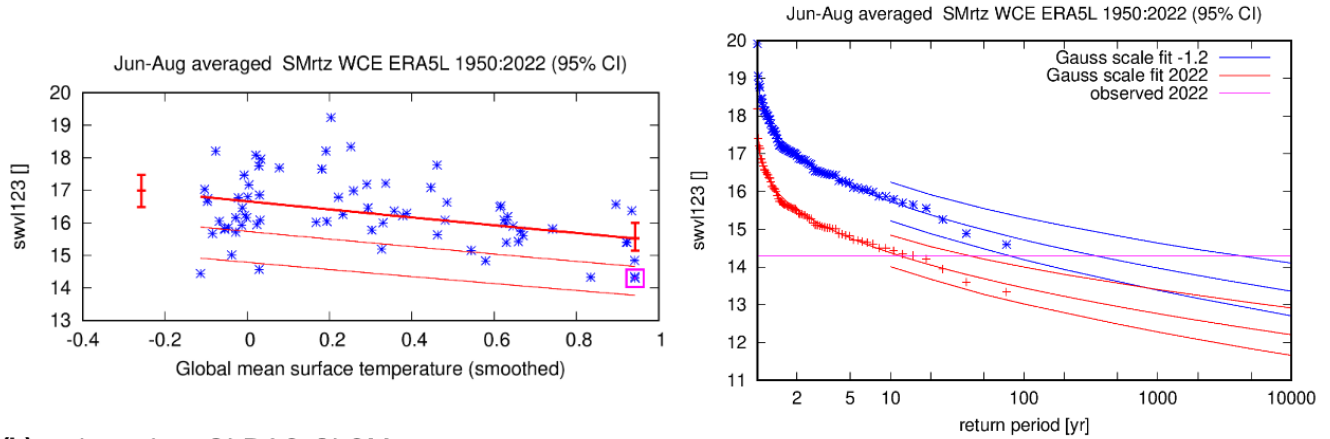
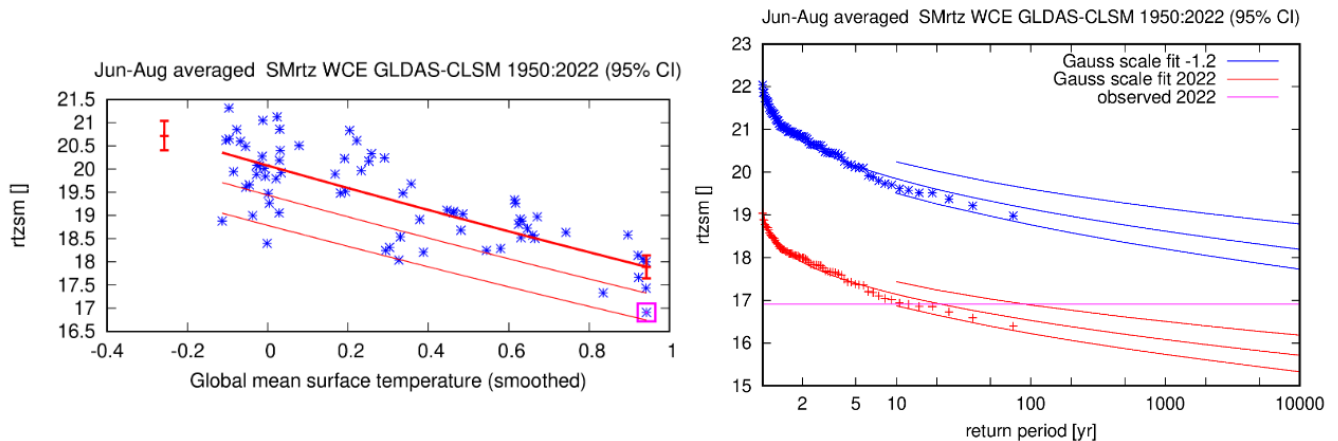


Figure 3: (a) Summer average surface soil moisture in 2022 over the northern extratropics (NHET), shown for the ERA5-Land dataset and expressed as anomalies with respect to 1950–2022. West-Central Europe (WCE) is highlighted by the pink box. (b) Summer surface soil moisture averaged over the northern extratropics for several datasets, with the 2003–2018 baseline subtracted to facilitate the comparison. (c) Like (b), but for West-Central Europe. Note that for EFAS-historical, the first (“superficial”) soil layer — which does not represent a fixed depth, contrary to the other datasets shown here — is selected to represent the surface soil moisture. The two main datasets employed for both the root-zone and surface soil moisture event attribution are highlighted in the legend (bold font).

(a) based on ERA5-Land



(b) based on GLDAS-CLSM

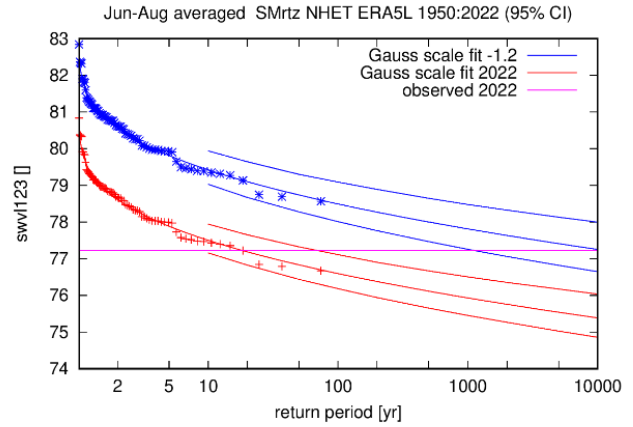
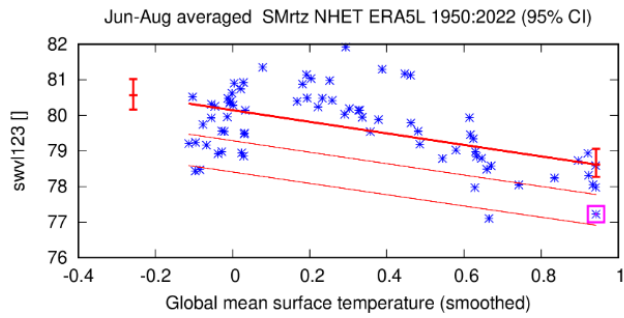


1130

Figure 4: Summer WCE root-zone soil moisture under global warming. Gaussian fit with location parameter scaling proportional to GMST and constant dispersion parameter, for the WCE region and based on (a) ERA5-Land and (b) GLDAS-CLSM. The 2022 event is included in the fit. **Left:** Observed summer mean surface soil moisture as a function of the smoothed GMST. The thick red line denotes the time-varying location parameter. The vertical red lines show the 95% confidence interval for the location parameter, for the current, 2022 climate and a 1.2°C cooler climate. The 2022 observation is highlighted with the magenta box. **Right:** Return time plots for the climate of 2022 (red) and a climate with GMST 1.2 °C cooler (blue). The observations are shown twice: once shifted up to the current climate and once shifted down to the climate of the late nineteenth century. The markers show the data and the lines show the fits and uncertainty from the bootstrap. The magenta line shows the magnitude of the 2022 event analysed here.

1140

(a) based on ERA5-Land



(b) based on GLDAS-CLSM

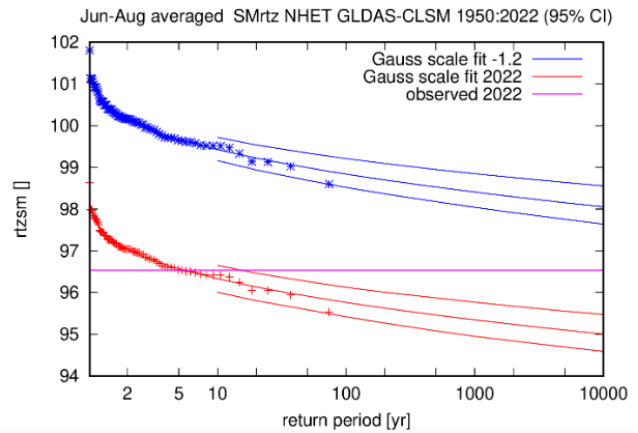
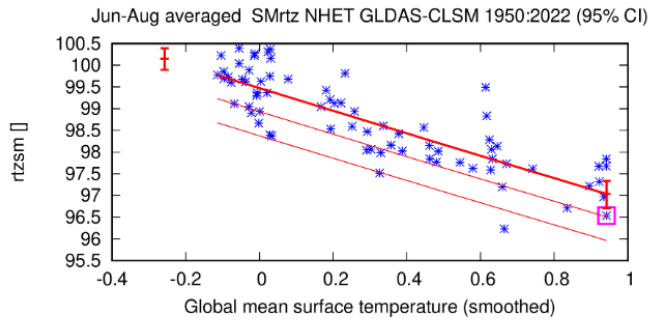


Figure 5: Summer NHET root-zone soil moisture under global warming. As Fig. 4, but for the northern extratropics.

1150

1155

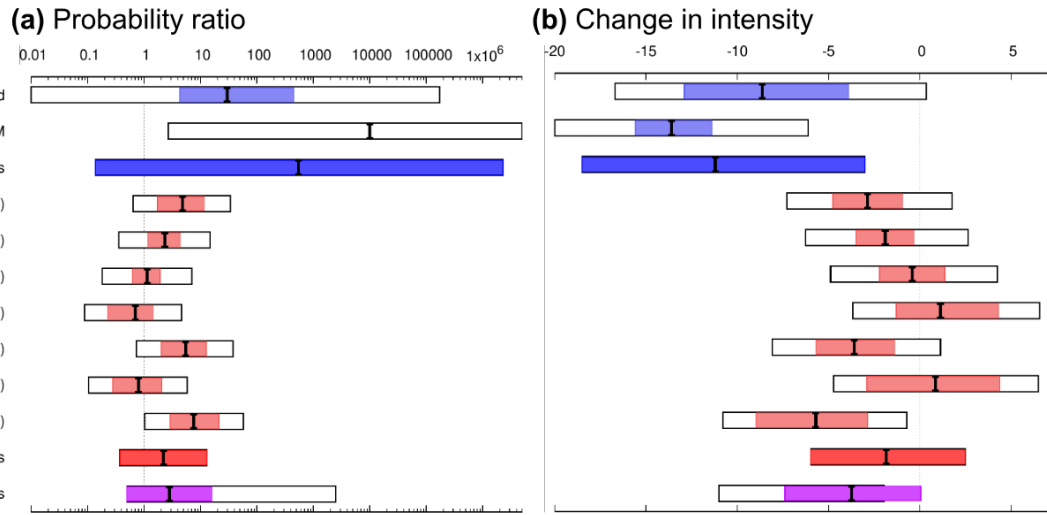


Figure 6: Synthesis for WCE root-zone soil moisture. Synthesised (a) probability ratios and (b) intensity changes (%) when comparing the return period and magnitudes of the 2022 summer root zone soil moisture for the WCE region in the current climate and a 1.2oC cooler climate. Note that while the employed observation-based products are restricted to 1950–2022, for models, we make use of the additional available data for the statistical analysis (1850–2022).

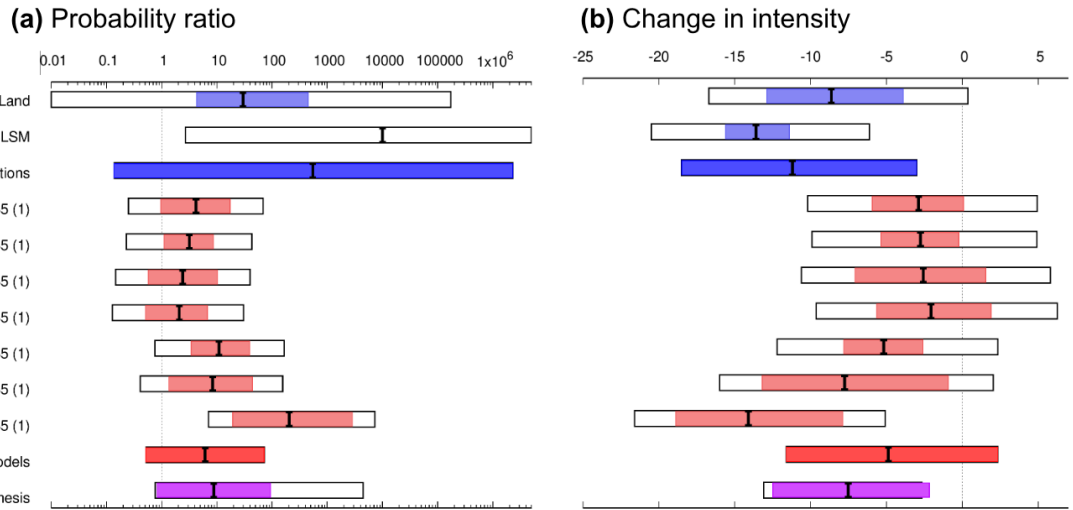
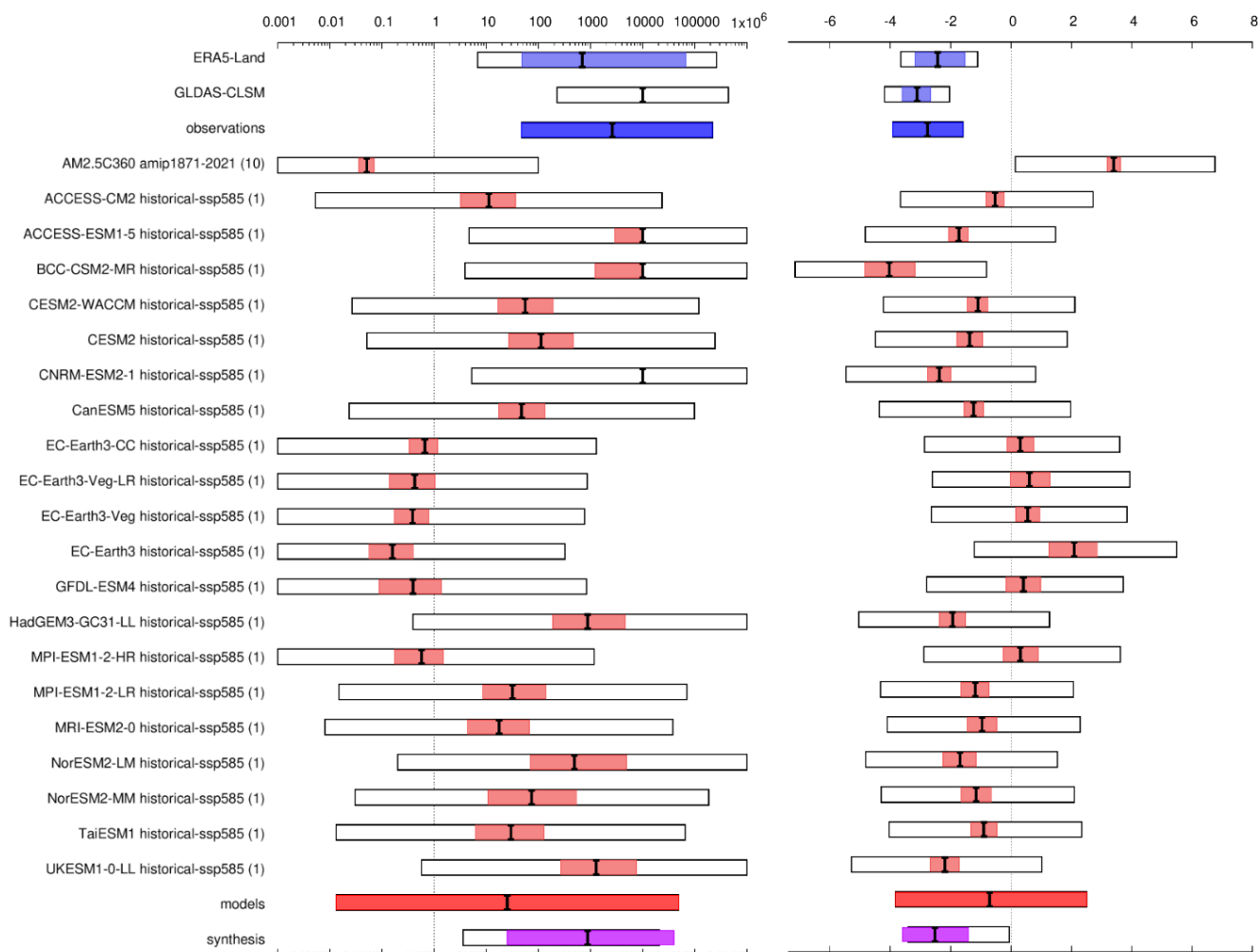


Figure 7: As Fig. 6, but restricting the model data to 1950–2022, and hence using consistent time periods among observation-driven estimates and models.

(a) Probability ratio**(b) Change in intensity**

1160

Figure 8: Synthesis for NHET root-zone soil moisture. Synthesised (a) probability ratios and (b) intensity changes (%) when comparing the return period and magnitudes of the 2022 June–August root zone soil moisture for the northern extratropics in the current climate and a 1.2 oC cooler climate. Note that while the employed observation-based products are restricted to 1950–2022, for models, we make use of the additional available data for the statistical analysis (1850–2022).

1165