

The influence of ~~future changes in~~ springtime Arctic ozone ~~recovery~~ on stratospheric and surface climate

Gabriel Chiodo^{1,*}, Marina Friedel^{1,*}, Svenja Seeber^{1,*}, Daniela Domeisen^{1,2}, Andrea Stenke^{1,3,4}, Timofei Sukhodolov^{5,6}, and Franziska Zilker^{1,7}

¹Institute for Atmospheric and Climate Science, ETH Zürich, Zurich, 8092, Switzerland

²Institute of Earth Surface Dynamics, University of Lausanne, Lausanne, Switzerland

³Institute of Biogeochemistry and Pollutant Dynamics, ETH Zürich, Zürich, Switzerland

⁴Eawag, Swiss Federal Institute of Aquatic Science and Technology, Dübendorf, Switzerland

⁵Physikalisch-Meteorologisches Observatorium Davos and World Radiation Center, Davos, Switzerland

⁶Ozone layer and upper atmosphere research laboratory, St. Petersburg State University, St. Petersburg, Russia

⁷Swiss Federal Institute for Forest, Snow, and Landscape Research (WSL), Birmensdorf, Switzerland

*These authors contributed equally to this work.

Correspondence: Gabriel Chiodo (gabriel.chiodo@env.ethz.ch); Marina Friedel (marina.friedel@env.ethz.ch); Svenja Seeber (svenja.seeber@env.ethz.ch)

Abstract.

Stratospheric ozone is expected to recover by mid-century due to the success of the Montreal Protocol in regulating the emission of ozone-depleting substances (ODSs). In the Arctic, ozone abundances are projected to surpass historical levels due to the combined effect of decreasing ODSs and elevated greenhouse gases (GHGs). While ~~ozone recovery has long-term~~ changes in stratospheric ozone have been shown to be a major driver of future surface climate in the Southern Hemisphere during summertime, the dynamical and climatic impacts of elevated ozone levels in the Arctic have not been investigated. In this study, we use two chemistry climate models (SOCOL-MPIOM and CESM-WACCM) to assess the climatic impacts of ~~Arctic ozone recovery~~ future changes in Arctic ozone on stratospheric dynamics and surface climate in the Northern Hemisphere (NH) during the 21st century. Under the high-emission scenario (RCP8.5) examined in this work, Arctic ozone returns to pre-industrial levels by the middle of the century. Thereby, ~~it the increase in Arctic ozone in this scenario~~ warms the lower Arctic stratosphere, reduces the strength of the polar vortex, advancing its breakdown, and ~~weakening weakens~~ the Brewer-Dobson circulation. The ozone-induced changes in springtime generally oppose the effects of GHGs on the polar vortex. In the troposphere, ~~Arctic ozone recovery induces~~ future changes in Arctic ozone induce a negative phase of the Arctic Oscillation, pushing the jet equatorward over the North Atlantic. These impacts of ~~ozone recovery in the NH~~ future ozone changes on NH surface climate are smaller than the effects of GHGs, but they are remarkably robust among the two models employed in this study, cancelling out ~~some a portion~~ of the GHG effects (up to 20% over the Arctic). In the stratosphere, Arctic ozone changes cancel out a much larger fraction of the GHG induced signal (up to 50-100%), resulting in no overall change in the projected springtime Northern Annular Mode, and a reduction of the GHG-induced delay of vortex breakdown of around 15 days. Taken together, our results indicate that ~~Arctic ozone recovery actively shapes~~ future changes in Arctic ozone actively

20 [shape](#) the projected changes in the stratospheric circulation and their coupling to the troposphere, thereby playing an important and previously unrecognized role as [a](#) driver of the large-scale atmospheric circulation response to climate change.

1 Introduction

Ozone in the stratosphere plays a vital role in the Earth System, by protecting the biosphere from harmful UV radiation. The distribution of ozone in the stratosphere is determined by two large-scale circulation features. Firstly, the Brewer-Dobson circulation (BDC) transports ozone from the tropics, where it is mainly produced, poleward to the winter hemisphere (Butchart, 2014). Secondly, the polar vortex, a cyclonic jet around the winter pole, acts as a mixing barrier and [prevents](#)[limits](#), if sufficiently strong, mixing of ozone-rich air from the mid-latitudes with air masses at higher latitudes (Waugh et al., 2017). Conditions within the cold, isolated vortex favour springtime chemical ozone depletion induced by chlorine and bromine species originating from chlorofluorocarbons (CFCs) (via photolysis) that get activated on the surface of polar [stratospheric](#) clouds (PSCs), and consequently catalyse the breakdown of ozone into oxygen (Solomon, 1999). These conditions are met almost every year in the Antarctic stratosphere, due to the [strong-vortex-cold local temperatures, strong vortex,](#) and weak planetary wave activity in the Southern [Hemisphere-Hemisphere](#) (SH). As a result of anthropogenic activities, CFCs have become the most important ozone depleting substances (ODSs) over the second half of the 20th century, and have led to massive thinning of the global ozone layer.

35 Thanks to the signing of the Montreal Protocol (MP) in 1987 and its subsequent amendments, ODSs are being phased out. The decline in ODSs is expected to lead to a recovery of the global ozone layer to 1980 levels by the middle of the 21st century (WMO, 2022). Moreover, declining abundances of ODSs, which also act as greenhouse gases (GHGs), are expected to help [mitigating-mitigate](#) climate change - via [a](#) reduction in the projected warming ([Goyal et al., 2019; Virgin and Smith, 2019; ?](#)) ([Goyal et al., 2019; Virgin and Smith, 2019; Egorova et al., 2023; Zilker et al., 2023](#)). Most importantly, the resulting changes in the ozone layer have crucial implications for the Earth system, [as-e.g.](#) reduced exposure of the biosphere to UV radiation (Bais et al., 2018), and protection of the terrestrial carbon sink (Young et al., 2021). A significant increase in ozone levels since the beginning of the century is already detectable in some regions of the stratosphere, such as the Antarctic [stratosphere](#) (Solomon et al., 2016) and the global upper stratosphere (Godin-Beekmann et al., 2022), demonstrating the success of the MP in allowing the global ozone layer to recover.

45 The recovery of the ozone layer will, however, not occur uniformly across all regions of the stratosphere. In the Antarctic region, the largest increase relative to present-day is expected (WMO, 2022). Outside of this region, ozone will increase in the upper stratosphere and in the Arctic stratosphere, while it will decrease in the lower tropical stratosphere (Keeble et al., 2021). These changes are due to the combined effect of ODSs and GHGs, and the resulting changes in local stratospheric temperature and transport (Chipperfield et al., 2017). Such changes in ozone can also in turn affect the thermal structure of the stratosphere (e.g. via changes in heating), thereby affecting future temperature trends (Maycock, 2016) and inducing a radiative forcing on climate (Bekki et al., 2013). One of the best understood pathways whereby ozone can also affect tropospheric climate is via changes in the meridional temperature gradient in the stratosphere, which alters the dissipation of waves, ultimately resulting in

changes of the large-scale atmospheric circulation (Previdi and Polvani, 2014), and regional climate (e.g., Ivanciu et al., 2022), although the details of the physical mechanism are still a subject of ongoing research (WMO, 2022). A number of studies have documented the downward influence ~~for~~ of ozone recovery on the region with the largest ~~projected~~ future changes in ozone: the Antarctic stratosphere (e.g. ~~Ivanciu et al. (2022); Mindlin et al. (2021); Barnes et al. (2014); Polvani et al. (2011); Previdi and Polvani (2020); Ivanciu et al. (2022); Mindlin et al. (2021); Barnes et al. (2014); Polvani et al. (2011); Previdi and Polvani (2014); Banerjee et al. (2020)~~). These studies consistently showed that the imprint of ozone recovery on the circulation is opposite to the effects of ozone depletion trends over the recent past, ~~including e.g.,~~ Over the recent past, ozone depletion has led to a delay in the breakdown of the stratospheric polar vortex, and a ~~slow-down~~ speed-up of the Brewer Dobson circulation (BDC) (Abalos et al., 2019; Polvani et al., 2019). In the future, Antarctic ozone recovery due to declining ODS abundances will slow down the BDC (Polvani et al., 2019) and anticipate the breakdown of the stratospheric polar vortex (Mindlin et al., 2021). These dynamical changes extend to the troposphere, resulting in a negative phase of the Southern Annular Mode (SAM), an equatorward shift of the mid-latitude eddy-driven jet (Son et al., 2008, 2009; Polvani et al., 2011; Previdi and Polvani, 2014), and changes in rainfall patterns (Purich and Son, 2012; IPCC, 2021).

In the Arctic, ~~warmer~~ the climatological stratospheric air temperatures are warmer than in the Antarctic due to ~~larger wave activity~~ stronger wave activity. These warmer temperatures have limited ozone depletion in the recent past (1980-present). Despite the smaller chemical depletion, strong variations in tropospheric wave forcing also cause sizable interannual variability of ozone levels ~~(?)~~ (Newman et al., 2001). Such large variability in the Arctic stratosphere has also generally made it extremely challenging to detect any significant long-term trends in ozone (e.g., Fusco and Salby, 1999) and, consequently, any dynamical impacts of long-term ozone depletion trends have been considered negligible so far (WMO, 2018, 2022). On shorter timescales, it has recently been demonstrated that Arctic ozone and its inter-annual variations can actively influence stratosphere-troposphere coupling in the context of vortex extremes (Haase and Matthes, 2019; Oehrlein et al., 2020). For example, positive ozone anomalies during sudden breakdowns of the polar vortex (Sudden Stratospheric Warmings, SSWs (Baldwin et al., 2021)) are associated with a negative phase of the North Atlantic Oscillation (NAO) (Domeisen and Butler, 2020). Conversely, episodic depletion events in the Arctic are associated with a strong vortex, and a positive phase of the Arctic Oscillation (Ivy et al., 2017). Extreme variations in Arctic ozone can exert a radiative and dynamical feedback, actively modulating the extremes and dynamical coupling to the troposphere (Friedel et al., 2022a, b).

Over the 21st century, stratospheric cooling from higher atmospheric GHG abundances (primarily CO₂), paired with the projected speed-up of the BDC, is expected to substantially change Arctic ozone abundances, leading to ozone levels that in springtime can even surpass historic levels in some GHG scenarios (i.e. "super recovery" (WMO, 2022)). Hence, unlike historic ozone depletion, future trends in springtime Arctic ozone are expected to be ~~very-detectable~~ significant, particularly in high-emission scenarios (Keeble et al., 2021). Long-term changes in mean ozone levels can affect stratospheric temperature even in the Arctic stratosphere, and can lead to dynamical changes in the stratosphere that project onto surface climate; however, this has only been shown in the context of abrupt-4×CO₂ experiments (Chiodo and Polvani, 2019; Li and Newman, 2022), with little applicability for more policy-relevant scenarios from the ~~The~~ Intergovernmental Panel on Climate Change (IPCC). In this work, we seek to better understand the role of future changes in springtime Arctic ozone ~~recovery in the projected future~~

~~changes in climate~~ over the 21st century in the Northern Hemisphere (NH), isolating ~~them~~ ~~these changes~~ from the effects of GHGs on ~~stratospheric climate~~. Our paper aims at documenting the dynamical impacts of projected long-term ozone changes in the Arctic and NH stratosphere and so, by definition, it contains the contribution of all major GHG and ODS emissions to the ozone changes, irrespective of the individual emissions from each of these separate sources.

To our knowledge, there is no study investigating the impact of future ~~Arctic ozone recovery~~ ~~changes in Arctic ozone~~ (including the effects of ODS-driven recovery and GHG-driven super-recovery) on the large-scale circulation and surface climate in the NH. Currently, there is also no consensus about the overall effect of climate change on the stratospheric polar vortex (Manzini et al., 2014; Karpechko and Manzini, 2012) (Manzini et al., 2014; Karpechko et al., 2022), which has implications for regional climate over the NH (Simpson et al., 2018; Ayarzagüena et al., 2020; Karpechko et al., 2022) (Simpson et al., 2018; Ayarzagüena et al., 2020). At the same time, the demand for reliable climate projections at the regional scale is rising. However, compared to thermodynamic aspects, the dynamic response of the climate system to rising GHG levels is only poorly understood (Shepherd, 2014). A detailed assessment of the role of future drivers in atmospheric circulation changes, such as ozone and GHGs, might help to reduce the considerable uncertainty associated with regional climate change projections. In this paper we present, ~~for the first time~~, modeling evidence pointing at a sizable role of ~~future changes in~~ springtime Arctic ozone ~~recovery in future in~~ stratospheric and surface climate.

2 Methods

In the following, we describe the numerical model simulations and statistical analysis employed in this work.

2.1 Model simulations

We use two chemistry-climate models (CCMs); the Whole Atmosphere Community Climate Model (WACCM) and the Solar Climate Ozone Links (SOCOL). WACCM is the atmospheric component of the NCAR Community Earth System Model version 1 (CESM1.2.2), it has a high top (140 km) and vertical resolution of 66 levels (Marsh et al., 2013) and is coupled to interactive ocean and sea ice components. WACCM has a horizontal resolution of 1.9° in latitude and 2.5° in longitude (Marsh et al., 2013) and can be run in different configurations for ozone, namely with the standard "interactive" configuration (where ozone chemistry is interactive and thus the ~~model-modelled ozone~~ responds to external forcings and the circulation) and a "specified chemistry" configuration (Smith et al., 2014), in which ozone concentrations and other radiative species are prescribed in the radiation scheme. This model captures stratospheric trends and polar vortex variability well and has been used in a number of studies on the effects of ozone on stratospheric and tropospheric climate (to name a few; (Haase and Matthes, 2019; Oehrlein et al., 2020; Rieder et al., 2019; Friedel et al., 2022a, b)).

The second model we use is SOCOL: this is a CCM (Stenke et al., 2013) based on the general circulation model MA-ECHAM5, which is interactively coupled to the chemistry transport model MEZON (Model for Evaluation of oZONe trends; Egorova et al., 2003 (Egorova et al., 2003)) and to the ocean-sea ice model MPIOM (Muthers et al., 2014). SOCOL-MPIOM has a model top at 0.01 hPa and 39 vertical levels and is used here at a horizontal resolution of T31 (3.75° ~~x3.75~~x3.75°) (Muthers

120 et al., 2014). SOCOL-MPIOM can be run with interactive chemistry and just like WACCM, SOCOL-MPIOM can also be run with specified ozone concentrations, by decoupling the chemistry module and general circulation model (Muthers et al., 2014). Like WACCM, SOCOL-MPIOM captures stratospheric variability reasonably well (Muthers et al., 2014) and has been recently used for studying the effects of ozone feedbacks on climate (Friedel et al., 2022a, b).

We perform two ~~ensembles~~ experiments with 5 realizations each (which solely differ in the initial conditions) for each of the two models, listed in Table 1. First, we run a reference future scenario covering the 21st century (2005-2099) following the high-emission Representative Concentration Pathway 8.5 (RCP8.5) (Meinshausen et al., 2011) for GHGs, while ODSs are following the recommended WMO 2018 scenario baseline A1 (WMO, 2018). In this scenario (~~termed~~ henceforth referred to as "RecoveryRCP8.5"), the chemistry is fully interactive and thus the ~~recovery of changes in~~ the ozone layer from declining ODSs and rising GHGs is simulated, along with its impacts on climate. The second set of experiments (~~henceforth~~ termed "NoRecoveryRCP8.5 fO₃") follows the same RCP8.5 scenario for GHGs, but we do not use interactive ozone chemistry. Instead, we impose a monthly-mean 3-D ozone climatology to the models' radiation schemes, perpetually throughout the entire simulated period: this ozone data-set is derived as the ensemble mean from the first 15 years of the "Recovery" RCP8.5 ensemble. In both models, we nudge the QBO by mapping the observed QBO cycles over 1954-2009 into the future. The QBO effects on ozone are thus not fully considered, but since the QBO does not change in any of our future scenarios, this inconsistency is not expected to affect the results.

In both models, the climatology and variability of stratospheric, tropospheric, and surface climate is nearly identical in both configurations in the early stages of the simulations (interactive vs. prescribed, but consistent with boundary conditions) (Smith et al., 2014), even under present-day conditions (Friedel et al., 2022a). We verified this by comparing the two ensembles (the "Recovery" RCP8.5 experiments with interactive ozone vs "No-Recovery" RCP8.5 fO₃ experiments with prescribed ozone) over the reference period used to obtain the ozone climatology imposed in the "No-Recovery" ensemble (2005-2019 RCP8.5 fO₃ ensemble (2005-2020)). This comparison reveals only marginal differences of less than 1 K in the upper stratosphere (above 10 hPa, not shown), which are likely due to the underestimation of the heating arising from the diurnal ozone cycle (which is not captured by the monthly-mean 3-D ozone climatology, as shown in Smith et al. (2014)). However, these differences are much smaller than the dynamical impacts of long-term ozone trends in the Arctic and global stratosphere ~~as shown below. Hence, the~~ (not shown). We also evaluate potential inconsistencies arising from the use of a fixed (constant) 3-D daily ozone climatology (which is derived by averaging over 2005-2020) in an ensemble with transient GHG forcings (RCP8.5 fO₃); see extended discussion in Appendix A. The very small projected changes in the vortex morphology in our two CCMs under RCP8.5 ensures spatial coherence between the vortex and the 3-D ozone climatology even in the late stages of the simulations (2080-2099), thus minimizing any potential artifacts (Fig. A1).

In the high-emission scenario used here (RCP8.5), future ozone changes are considered in one ensemble (RCP8.5) but not in the other (RCP8.5 fO₃). Hence, differences between modeled projections by 2100 in the two ensembles ("Recovery" minus "No-Recovery") ~~allows~~ RCP8.5 minus RCP8.5 fO₃) allow us to unambiguously quantify the impact of long-term Arctic ozone changes with respect to present-day, which ~~are considered in one ensemble ("Recovery") but not in the other ("No-recovery");~~ which is the key purpose of ~~the present paper. this paper.~~

155 We carry out five realizations (with fully coupled ocean) for each of the ensembles and models: this allows us to ensure robustness of the results, as discussed in Section 2.2. We note that ~~our definition of "ozone recovery" slightly differs from the WMO, in that our period of reference is present-day (2005-2020) instead of 1980. However, we also note that in particular in the lower stratosphere in the NH mid-latitudes and Arctic, i.e. our area of interest, the ozone levels reached by 2020 are close to those of 1980 (see Fig. 5 in ?), and our aim is to look at the expected changes with respect to near-present ozone levels. Lastly,~~
 160 ~~our definition of recovery also includes the long-term~~ the future ozone changes considered here include the trends induced by GHGs in a high-emission scenario, aside from the phase-out of ODS. ~~These induce a~~ The GHG emissions considered in the scenario studied in this paper induce a super-recovery ~~"~~in ozone with respect to 1980 levels (WMO, 2022).

Ensemble	Period	Realizations	GHG Forcing	Ozone
RCP8.5	2005-2099	5	RCP8.5	Interactive (transient)
RCP8.5_fO ₃	2005-2099	5	RCP8.5	Climatological (2005-2020)

Table 1. List of model simulations used in this work. Note that both ensembles have been performed with both chemistry climate models, and are fully coupled to the ocean. Note that the climatological ozone forcing is derived from the first 15 years of the ~~"Recovery"~~ RCP8.5 ensemble mean.

2.2 Statistical analysis

To assess changes in our simulations over the course of the 21st century, we compare the climatology in the first 20 years of simulations (2005-2024) to the climatology in the last 20 years of the century (i.e. 2080-2099) for the variables of interest.
 165 Changes derived that way for ~~"Recovery"~~ RCP8.5 simulations show the combined effect of GHGs and ozone changes on the climate system, while changes in ~~"No recovery"~~ RCP8.5_fO₃ simulations show the isolated effect of GHGs. Thus, differences in changes calculated this way between ~~"Recovery" and "No recovery"~~ RCP8.5 and RCP8.5_fO₃ scenarios display the isolated impact of ~~ozone recovery~~ future ozone changes on the climate system. The analysis presented here is entirely focused on
 170 springtime (March – April averages), when Arctic ozone is expected to increase the most due to the projected decline of springtime ozone depletion over the 21st century (Eyring et al., 2013) (their Fig. 6). Therefore, the dynamical and radiative impacts of ~~ozone recovery~~ future ozone changes are expected to maximize in this season, and we thus focus our analysis on springtime. Indeed, this is the season in which signals in the NH are statistically significant (~~See see~~ Fig. B3). We use a two-tailed Student's t-test to assess significance of changes between the first and last 20 years of simulation, assuming
 175 independence between two consecutive spring seasons. With n=100 samples (5 ensemble members ~~times~~ x 20 years), the sample size is assumed to be sufficiently large to be distributed normally.

We use the Northern Annular Mode (NAM) at 10 hPa as a measure for large-scale dynamical changes in the stratosphere. For this purpose, empirical orthogonal functions (EOFs) are calculated based on zonally averaged geopotential height anomalies.

To ensure that the NAM time series reflects the long-term changes in the mean state of the stratosphere, geopotential height anomalies are calculated for each month of the year as deviations from the monthly climatology from 2005 to 2020. The EOF spatial loading pattern is then calculated based on the entire period (2005 – 2099) of geopotential height anomalies north of 20° N, applying latitudinal weights according to the square root of the cosine of latitude. Subsequently, geopotential height anomalies are projected onto the EOF loading pattern to derive the principal component (PC) time series. The PC time series is then scaled to unit variance to obtain NAM indices.

The final stratospheric warming (FSW) is calculated based on springtime wind reversal at 50 hPa and 60° N. More specifically, we define the FSW date as the first day of the year when zonal mean zonal wind at 60° N has fallen below 7 m s^{-1} and does not return above this threshold for more than 10 consecutive days until the following fall. ~~This definition has been~~ We here adjust the definition proposed by Butler and Domeisen (2021) ~~and is used here with an adjusted wind threshold (, by using a wind threshold of~~ 7 instead of 5 m s^{-1} ~~)~~ to account for biases in our models (Friedel et al., 2022b). We focus on the FSW date in the lower stratosphere (50 hPa), because changes in ozone have been shown to have the largest influence on the FSW in this region (Friedel et al., 2022b).

2.3 Radiative impacts of projected future ozone recovery changes

To diagnose the radiative impacts of ~~ozone recovery~~ future ozone changes across our model experiments, we perform offline radiative forcing (RF) calculations with the Parallel Offline Radiative Transfer (PORT) from the Community Earth System Model (CESM) (Conley et al., 2013). First, we carry out a "baseline" PORT run with ensemble mean values for meteorological variables (e.g., temperature, humidity, cloud fraction and height), the spatial distribution of radiatively active species (e.g., CO₂, ODS, and ozone), and the zonal mean tropopause height (following the WMO tropopause definition) specified from the average over the period 2005–2010 of the transient RCP8.5 simulations from WACCM and SOCOL. Second, we run a set of "perturbation" runs with PORT, replacing solely the 3-D ozone field, allowing us to obtain the RF and temperature adjustment. The ozone perturbation imposed in PORT is obtained as the projected ensemble mean ozone change over the 21st century, calculated as average differences between the 20-year periods 2080-2099 and 2005-2024, for consistency with the free running experiments. We use hourly instantaneous input meteorological and composition fields (averaged over the five available members), following the approach of Conley et al. (2013) to ensure accuracy in the calculations. All meteorological variables, including water vapor and cloud optical properties, are specified at the year 2005–2010, since changes in such quantities are part of the rapid adjustments and are not part of the stratosphere-adjusted RF.

For each PORT experiment, we compute the annual and global average tropopause-level shortwave and longwave fluxes after stratospheric temperatures reach equilibrium. We diagnose the (radiative) temperature correction needed to achieve radiative equilibrium within the stratosphere, while tropospheric temperatures are kept fixed. This is referred to as the radiative temperature adjustment in the fixed dynamical heating approximation, following the approach by Fels et al. (1980). This approach allows us to quantify the radiative impact on stratospheric temperatures of ~~ozone recovery~~ future ozone changes simulated by the two CCMs, under the assumption that the dynamical heating of the stratosphere does not change. By contrasting this temperature change against the total temperature response to ~~Arctic ozone recovery~~ future Arctic ozone changes simulated in

the free running experiments in springtime, we can assess the importance of individual processes, namely radiative vs. dynamical heating arising from circulation changes. For the PORT experiments, we consider a longer averaging period (March – May), to take into account the radiative damping time-scale for the lower stratosphere, which is approximately one month and beyond (Ming et al., 2017).

3 Results

3.1 Climate change under the 21st century and impacts on the atmospheric circulation

In the high-emission scenario RCP8.5, our models project a global warming of 3 K (WACCM4) and 5 K (SOCOL-MPIOM) by the end of the century (Fig. B1 - panel a): these values are within, albeit at the two extremes, of the range of warming projections published in the IPCC-AR5 (Chapter 7 in IPCC (2013); see also Fig. 1 in Sherwood et al. (2020)) and are consistent with the different climate sensitivity of the two underlying models (CCSM4 and MPI-ECHAM5 in Grise and Polvani (2014)). In the latest assessment of the IPCC (AR6), the projected global warming for high-emission scenarios is stronger, but the spread across models is also larger (IPCC (2021), Chapter 4, see Fig. 4.35), due to larger climate sensitivity as well as the stronger GHG forcing in AR6 projections. Hence, our model simulations are well within the model uncertainty and bracket a good fraction of the inter-model spread, thereby serving as a valid test-bed for assessing the climatic impacts of ~~Arctic ozone recovery~~ future Arctic ozone changes.

Aside from surface warming, our models also simulate the well-known pattern of tropospheric warming and stratospheric cooling, resulting from enhanced atmospheric GHG levels (McLandress et al., 2014). In particular, all ubiquitous features of the atmospheric response to CO₂ documented across different generations of climate models are simulated by our two CCMs, such as the amplified warming in both the upper tropical troposphere ~~as well as~~ and near the surface in the NH high latitudes (IPCC, 2021). These patterns are very pronounced in NH spring in the RCP8.5 scenario (Fig. 1) but are relatively insensitive of the season, except for the surface amplified polar warming, which maximizes in NH fall (not shown). These patterns also scale quasi-linearly with global warming, ~~being much more pronounced in SOCOL than in WACCM~~, with tropical upper tropospheric warming of up to 12 K in SOCOL, being much more pronounced than in WACCM. In the stratosphere, the cooling maximizes with up to -8 K above 10 hPa (being dominated by CO₂) in both models, consistent with previous modeling evidence (Shine et al., 2003). In contrast, polar lower stratospheric temperatures do not ~~significantly change~~ change significantly, again consistent with the majority of IPCC-AR6 models (IPCC (2021) - Chapter 4, Fig. 4.22). As a result of these temperature changes, the meridional temperature gradient decreases near the surface, while it increases near the tropopause. By the thermal wind relationship, the subtropical jet strengthens in both hemispheres, with the largest wind changes again visible in SOCOL (Fig. 1c), due to the ~~larger~~ stronger tropospheric warming in this model. The strengthening is mostly pronounced on the upper flanks of the subtropical jets, allowing more wave activity to penetrate and dissipate into the subtropical lower stratosphere, ultimately leading to faster tropical upwelling in both models (Fig. B1 - panel b). This mechanism is very robust (Garcia and Randel, 2008; Shepherd and McLandress, 2011) and is reproduced by our two models, and it is relatively insensitive to the season being considered in both models (Fig. ~~B2-B3~~ B2-B3 - panels c-d).

The ~~strengthening of the subtropical jets extends~~ subtropical jets extend poleward and upward, ~~reaching;~~ under climate change, their upper flank strengthens. These wind anomalies reach the mid stratosphere during NH spring, similar to other models (McLandress et al., 2014). Regarding the NH stratospheric polar vortex, whose strength is usually defined as the zonal mean zonal wind at 10 hPa at 60° N, both CCMs show very distinct responses; SOCOL exhibits a statistically significant
250 strengthening of up to 4 m s⁻¹, while no change is simulated in WACCM. Such a lack of a robust response in the polar vortex has been a long-standing issue in inter-model comparisons (Manzini et al., 2014; Karpechko et al., 2022), even regarding the sign of the projected changes. ~~Possible reasons for this uncertainty are the~~ More generally, the fate of the polar vortex under climate change is uncertain due to competing effects of ~~Polar Amplification, warming in the tropical upper troposphere, as well as stratospheric cooling by GHGs,~~ changes in tropospheric wave driving. ~~In addition, stratospheric processes also influence~~
255 ~~the response of the polar vortex,~~ and stratospheric changes such as the ~~underlying wind climatology (as it determines the propagation tropospheric waves and their dissipation pattern), and the~~ speed-up of the Brewer Dobson circulation (BDC); ~~inducing dynamical heating in the polar stratosphere.~~ To date, the role of different processes and underlying drivers across models remains an open question (Manzini et al., 2014; Simpson et al., 2018). Future changes in Arctic ozone are yet another potential and undocumented driver modulating the projected polar vortex changes over the 21st century, which we examine
260 next.

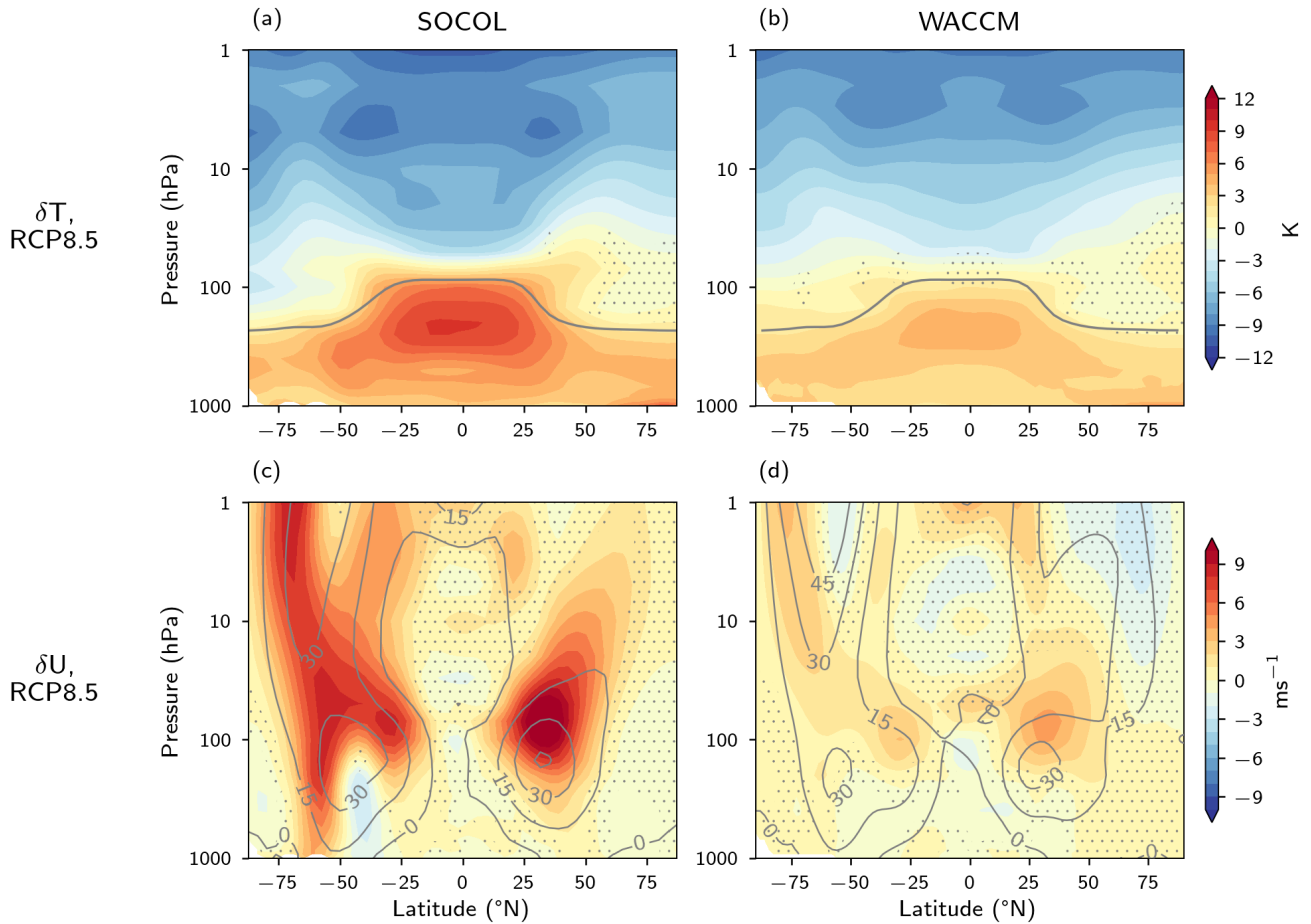


Figure 1. Zonal mean temperature (a, b) and zonal wind (b, c) changes in springtime (March-April) between the late (2080-2099) and early (2005-2024) 21st century under RCP8.5 in SOCOL (left) and WACCM (right). Contours in a, b show the tropopause height, and contours in c, d depict the climatology of the zonal mean zonal wind (in m s^{-1}) in the early 21st century. Stippling marks regions that are not significant on a 95 % level.

3.2 **Ozone-recovery** Future ozone changes and impacts on stratospheric climate

Before turning our attention to the impact of future Arctic ozone changes, we first characterize the projected changes in this quantity in the Arctic region and global stratosphere. The simulated zonal mean springtime ozone changes simulated by the two CCMs are shown in Fig. 2. In the upper stratosphere, ozone increases almost uniformly across all latitudes in both CCMs by 20-30 %. Conversely, ozone in the lower stratosphere (50 - 100 hPa) decreases in low latitudes, while it increases in the Arctic. The overall pattern is robust across the two CCMs and is similar to other CMIP6 models in the comparable SSP 5.85 scenario (see Keeble et al. (2021) - their Fig. 10), although sizable differences appear in certain regions, such as e.g. the larger decline in SOCOL in the tropical lower stratosphere and the larger Arctic ozone increase in the mid-stratosphere in WACCM

(i.e. 10 - 30 hPa). The mechanisms behind these projected ozone changes are well understood (WMO, 2022); namely, the
270 radiative cooling in the upper stratosphere from higher CO₂ abundances slows down the odd oxygen loss cycles, resulting
in less ozone loss and thus an increase in ozone abundances at these stratospheric levels (Haigh and Pyle, 1982; Jonsson
et al., 2004). In addition, the decline in hODS leads to less chlorine and bromine-induced ozone depletion in the middle
and upper global stratosphere, as well as in high latitudes (where under present-day conditions, the largest ozone depletion
occurs). ~~Increases~~ In the high-emission scenario considered here, increases in methane abundances (CH₄) also contribute to
275 enhanced Arctic ozone abundances, although increased N₂O acts in the opposite direction (Revell et al., 2012; Butler et al.,
2016). In the lower stratosphere, changes in ozone are primarily driven by transport: the speed-up of the BDC (Shepherd and
McLandress, 2011) and its upward expansion (Match and Gerber, 2022) lead to enhanced advection of ozone-poor air into the
lower tropical stratosphere (Chiodo et al., 2018), further contributing to Arctic polar cap ozone abundances, especially during
NH springtime. The larger tropical lower stratospheric ozone decline in SOCOL is likely due to the larger tropical upwelling
280 response, associated with the larger tropospheric warming in this model (Fig. B1). In WACCM, the slightly larger ozone
increases in the upper stratosphere at mid-latitudes are possibly leading to slightly larger increase in Arctic ozone abundances
than in SOCOL (i.e. a larger "source" of ozone for the dynamical resupply into the Arctic stratosphere is available). These
changes in springtime ozone are sizable and can largely affect heating and thus stratospheric temperatures (Maycock, 2016),
but such effects cannot be easily quantified in these transient (~~"Recovery"~~) scenarios alone, as they include several forcings and
285 drivers acting in parallel.

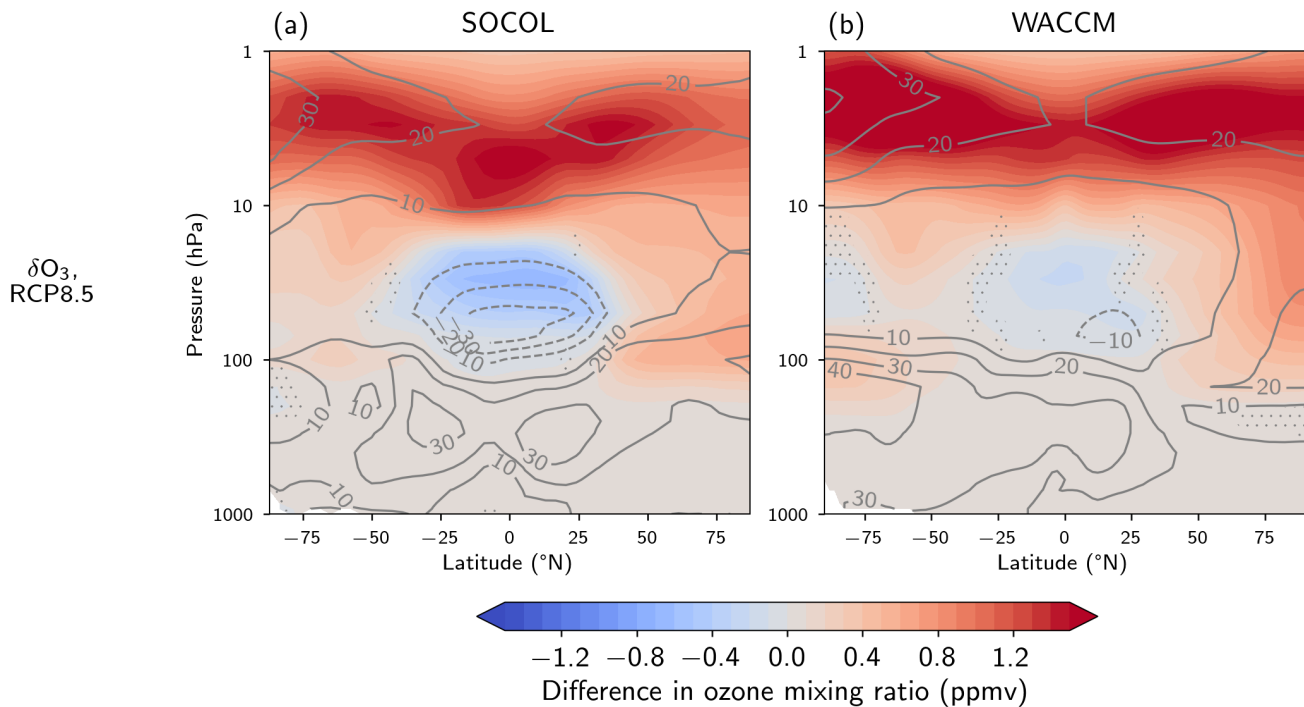


Figure 2. Changes in springtime (March–April) zonal mean ozone between the late (2080–2099) and early (2005–2024) 21st century under RCP8.5 in SOCOL (a) and WACCM (b). Stippling marks regions where changes are not significant on a 95 % level. Contours show the relative ozone changes in percent.

By contrasting the late period (2080–2099) between the **"Recovery"** and **"No Recovery"** RCP8.5 and RCP8.5 fO_3 ensembles, we can unambiguously attribute the impacts of **ozone recovery** future ozone changes, and we can directly compare these impacts to those projected by 2100 in the RCP8.5 emission scenario. We start by documenting these impacts on temperature and winds on Fig. 3. The temperature response to ozone **recovery** changes in both CCMs (panels a–b) is broadly coherent with the pattern of ozone changes depicted in Fig. 2, namely (1) a warming of the upper stratosphere by up to 4 K, (2) a cooling of the tropical lower stratosphere by 1 - 3 K, and (3) a warming of the polar stratosphere of up to 4 K in SOCOL and more than 4 K in WACCM. Both models are consistent in the simulated impacts; differences among them in the lower stratosphere are primarily related to differences in the simulated ozone **recovery** increase rates in these regions. Accordingly, the warming due to ozone **recovery** increase offsets the radiative cooling by GHGs by approx. 30–35% in the upper stratosphere. In the lower polar stratosphere, the temperature changes due to ozone **recovery** changes are larger than those simulated under RCP8.5 (Fig. 1). In particular, the warming in the Arctic lower stratosphere (50 - 100 hPa) stands in stark contrast with the total temperature change projected by 2100 (which is close to zero), meaning that **ozone recovery** the increase in ozone completely compensates any GHG-induced cooling in this region. A similar compensation of radiative effects in this region under springtime conditions has been shown by Kult-Herdin et al. (2023) using idealized time-slice experiments. In the troposphere, we find a weak warming

300 (less than 0.5 K) signal in WACCM: this is likely due to the tropospheric ozone increases by up to 30% (Fig. 2b). Tropospheric
ozone can enhance global warming (Banerjee et al., 2018), but its effects are not robust across the two models and are much
smaller than those induced in the stratosphere by stratospheric ozone changes. Hence, ~~the ozone recovery future ozone changes~~
under this emission scenario strongly ~~modulates~~ modulate the projected temperature changes in the lower stratosphere, similar
to what has been previously reported for abrupt-4xCO₂ experiments (Nowack et al., 2015; Chiodo and Polvani, 2019; Li and
305 Newman, 2022).

These changes in lower stratospheric temperature imply a reduction in the meridional temperature gradient. By thermal wind
relationship, these changes lead to a weakening of the westerly winds in the polar stratosphere by up to 4 m s⁻¹ (Fig. 3c-d):
this is statistically significant in both CCMs, with WACCM exhibiting the largest response, consistent with the larger Arctic
mid-stratospheric ozone increase in this model (Fig. 2). This signal is in contrast with what is projected by 2100 in both models
310 in the polar vortex in the RCP8.5 ensemble (Fig. 1c-d), which instead shows a strengthening in one model (SOCOL) ~~or a~~
~~marginally significant response but no significant response in another~~ (WACCM). Thus, Arctic ozone offsets the influence of
GHGs cooling on the polar vortex (which would by itself strengthen the vortex instead), likely introducing uncertainty in the
overall projected changes by 2100 in this region. We note that the signal induced by ozone ~~recovery changes~~ in the NH is much
smaller than its SH counterpart during Austral spring (Fig. B3), but it is statistically significant in both models and it is largely
315 driven by shortwave (SW) heating (panels a-b).

We also tested the robustness of the dynamical impacts documented here, by analyzing a set of CCMI-1 runs that isolate the
impact of ODS-driven ozone recovery (senC2-fODS2000); these runs were performed by CESM1-WACCM and show a signal
that is consistent, indicating weakening of the vortex when ozone recovery is present (Fig. C1). However, the signal is smaller in
those experiments, due to the smaller ozone forcing when neglecting any GHG-induced ozone changes (see extended discussion
320 in the Appendix). As springtime is a season with active coupling between the stratosphere and the troposphere (Baldwin and
Dunkerton, 2001; Baldwin et al., 2021), we next explore the impacts on downward coupling, with focus on annular modes and
the lifetime of the vortex.

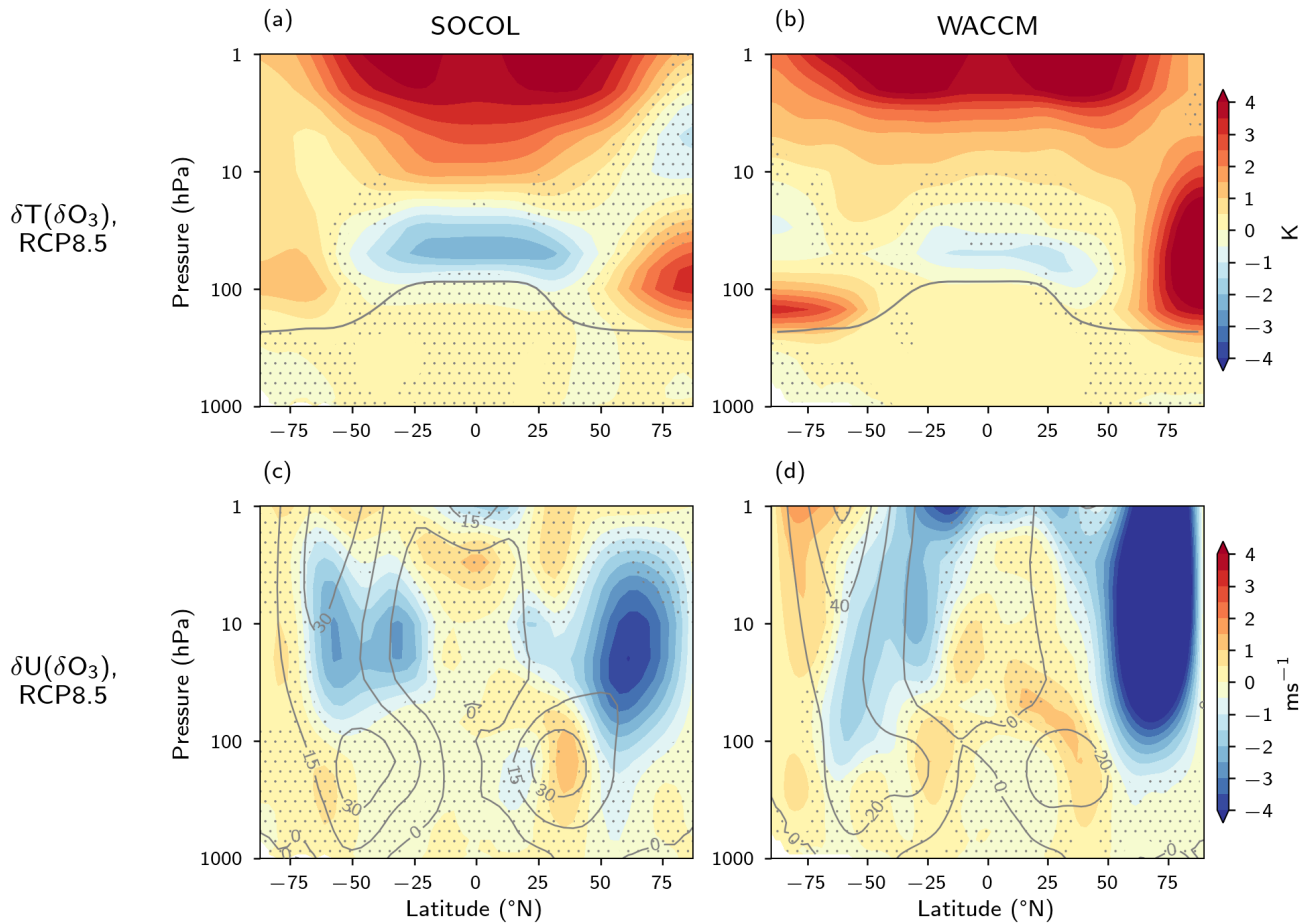


Figure 3. Isolated impact of ozone on zonal mean temperature (a, b) in springtime (March-April) derived from the difference between "Recovery"-RCP8.5 and "No recovery"-RCP8.5 fO_3 simulations in the late (2080-2099) 21st century in SOCOL (left) and WACCM (right). Contours in a, b show the tropopause height, and contours in c, d depict the climatology of the zonal mean zonal wind (in $m\ s^{-1}$) in the early-late 21st century. Stippling marks regions that are not significant on a 95 % level.

3.3 Ozone-recovery-Future ozone changes and impacts on stratosphere-troposphere coupling and surface climate

The polar vortex strength is tightly correlated with the stratospheric NAM index (e.g. Baldwin and Dunkerton, 2001), which is usually applied as a measure for the large-scale climate variability in the NH. Here, we utilize the NAM index to quantify changes in the stratospheric mean state, similar to analyses presented in the IPCC (2021) (AR6) for changes in surface NAM. Figure 4 (panel a) displays changes in the springtime stratospheric NAM at 10 hPa over the 21st century in simulations with and without ozone-recovery-any future ozone changes for individual ensemble members in both models. When only considering the isolated GHG effect ("No recovery"-RCP8.5 fO_3 simulations), the stratospheric NAM increases compared to its present-

330 day climatology (which is zero by construction) by approximately 0.5 (SOCOL) to 1.0 (WACCM) standard deviations on an ensemble mean. A shift towards a positive NAM implies a strengthening of the polar vortex; This strengthening is consistent with the GHG-induced warming of the tropical upper troposphere and radiative cooling of the polar lower stratosphere ([see the GHG-only impact displayed in Fig. 1a-bB2](#)), which results in an increased temperature gradient between equator and poles and thus induces a large vertical wind shear. These changes in the stratospheric NAM towards more positive values are evident in

335 all ensemble members, albeit with some uncertainty in the shift's magnitude across members. However, when accounting for the combined effect of GHGs and ozone ~~recovery~~ ("~~Recovery~~" [changes RCP8.5 simulations](#)), there is considerable uncertainty regarding the sign of stratospheric NAM changes across ensemble members, and changes cancel out ~~on an in the~~ ensemble mean, consistent with the little robustness of the ensemble mean wind changes displayed in Fig. 1 (panels c-d). [Future ozone changes are projected to reduce the GHG-induced shift towards a more positive stratospheric NAM by around -0.5 \(SOCOL\) to](#)

340 [-1.0 \(WACCM\), cancelling any GHG-induced effects on the stratospheric NAM, effectively leading to no robust changes in the NAM \(which is near 0 in the RCP8.5 ensembles\)](#). Consequently, the NAM analysis confirms that ~~ozone recovery counteracts Arctic ozone increases counteract~~ changes in the polar vortex strength induced by GHGs, ~~fully offsetting any GHG effect on the stratospheric NAM. Hence, ozone recovery induces a negative shift in the stratospheric NAM of around 0.5 (SOCOL) to 1 (WACCM)~~.

345 The springtime polar vortex strength is further linked to the occurrence of the FSW. For example, a persistently cold polar vortex in springtime (March and April) tends to be less susceptible to tropospheric wave driving, thus radiatively breaking up late in spring (Vaughan et al., 1999). The timing of the FSW has previously been shown to be a key driver of springtime NH climate, ~~with early FSWs inducing a shift towards a negative~~ [as both early and late FSWs are usually associated with a shift of the surface NAM in spring \(Black et al., 2006; Ayarzagüena and Serrano, 2009; Thiéblemont et al., 2019\) towards its negative phase \(Black et al., 2006; Ayarzagüena and Serrano, 2009; Thiéblemont et al., 2019; Butler et al., 2019; Butler and Domeisen, 2021\)](#)

350 . Similar to changes in the stratospheric NAM, we isolate the impacts of GHGs and ~~ozone recovery~~ [future changes in Arctic ozone](#) on the breakup date of the polar vortex in spring. Our analysis reveals that the isolated GHG effect delays the FSW compared to the present-day climatology by approximately 15 (WACCM) to 40 (SOCOL) days, which is consistent with the positive shift in the NAM in ~~"No recovery" simulations~~ [the RCP8.5 fO₃ ensemble](#). However, the magnitude of the shift differs

355 remarkably between the two models, which may be attributed to biases in the timing of the FSW under present-day conditions. While both models exhibit a delayed FSW compared to observations, WACCM shows a considerably larger bias (21 days) compared to SOCOL (12 days) (Friedel et al., 2022b). As a result, the impact of GHGs on the timing of the FSW in WACCM may be limited, as they might only be able to induce a small delay in the FSW, before the polar vortex breaks up radiatively. ~~The recovery of~~ [Future changes in Arctic](#) ozone, on the other hand, ~~opposes~~ [oppose](#) the GHG-induced delay of the FSW, effectively

360 neutralizing some (SOCOL) or all (WACCM) of the GHG effect (~~"Recovery" simulations~~ [RCP8.5 ensemble](#)). Consequently, the total projected changes (which represent the combined effect of GHGs and ~~ozone recovery~~ [future changes in Arctic ozone](#)) of the timing of the FSW manifest differently in the two models; By the end of the 21st century, SOCOL projects a delay of approximately 20 days, while WACCM shows no changes. This model discrepancy is consistent with previous findings for CMIP5/6 models (Rao and Garfinkel, 2021), where some models project a delay in the FSW, while others indicate minimal

365 changes (see their Fig. 8). The analysis presented here suggests that the delay in the FSWs would be significantly greater across models — and thus the sign of the projected changes might be more consistent — if it were not for ~~the recovery of Arctic elevated levels of Arctic stratospheric~~ ozone.

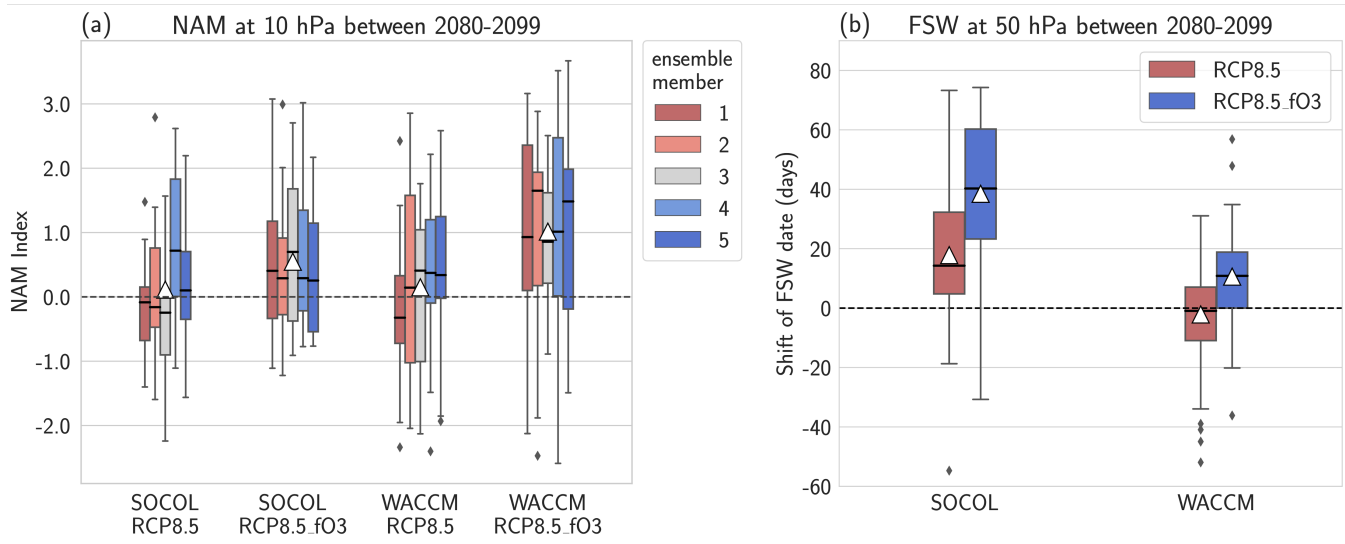


Figure 4. (a) Changes in the 10 hPa NAM in springtime (March-April) between the late (2080-2099) and early (2005-2024) 21st century in Socol and WACCM ~~recovery-RCP8.5~~ and ~~no-recovery-RCP8.5_fO3~~ simulations for individual ensemble members. Black lines show the median value for each ensemble members, and the white triangle shows the mean change over all ensemble members. (b) Changes in the SFW date between the late (2080-2099) and early (2005-2024) 21st century in Socol and WACCM ~~recovery-RCP8.5~~ and ~~no-recovery-RCP8.5_fO3~~ simulations. Black lines show the median value, white triangles the mean change. The upper and lower boundaries of the boxes represent the upper and lower quantile of the distribution, and the whiskers show the maximum and minimum values, respectively.

Next, we aim at understanding the mechanisms behind the effects of ~~ozone-recovery-future ozone changes~~ on the stratospheric temperature and thus on the stratospheric polar vortex. For this purpose, we disentangle the contribution of radiative vs. dynamical heating, by means of offline PORT calculations (see Section 2.3), and display the results in Fig. 5. First, we see that radiative heating (due to SW absorption by ozone) provides the largest contribution to the ozone-induced stratospheric temperature changes simulated in both models (contrast ~~panals-panels~~ a-b and d-e), explaining almost entirely the warming near the stratopause, and most of the changes in the Arctic stratosphere. Changes in dynamical heating (which are themselves due to changes in upwelling/downwelling via the BDC) are non-negligible, as they partly offset the radiative cooling from ozone near the tropical lower stratosphere, and contribute to the warming of the polar stratosphere. These temperature changes are the result of a weakening in the shallow branch of the BDC, as diagnosed via transformed Eulerian-Mean (TEM) analysis (Fig. B4 panels c-d), consistent with what has been reported ~~elsewhere~~ in the context of long-term changes in ozone due to ODSs for the SH polar vortex (Abalos et al., 2019; Polvani et al., 2019). In the Arctic polar vortex, the radiative heating thus slows down the westerlies, allowing for more waves to dissipate (Fig. B4 panels a-b), ~~anticipating-advancing~~ the breakdown

380 of the vortex (Fig. 4b), inducing further heating of the Arctic stratosphere. These processes are robust across the two models, although their detailed contribution to the overall radiative and dynamical changes are model dependent, due to differences in the modeled structure and amplitude of the ozone changes.

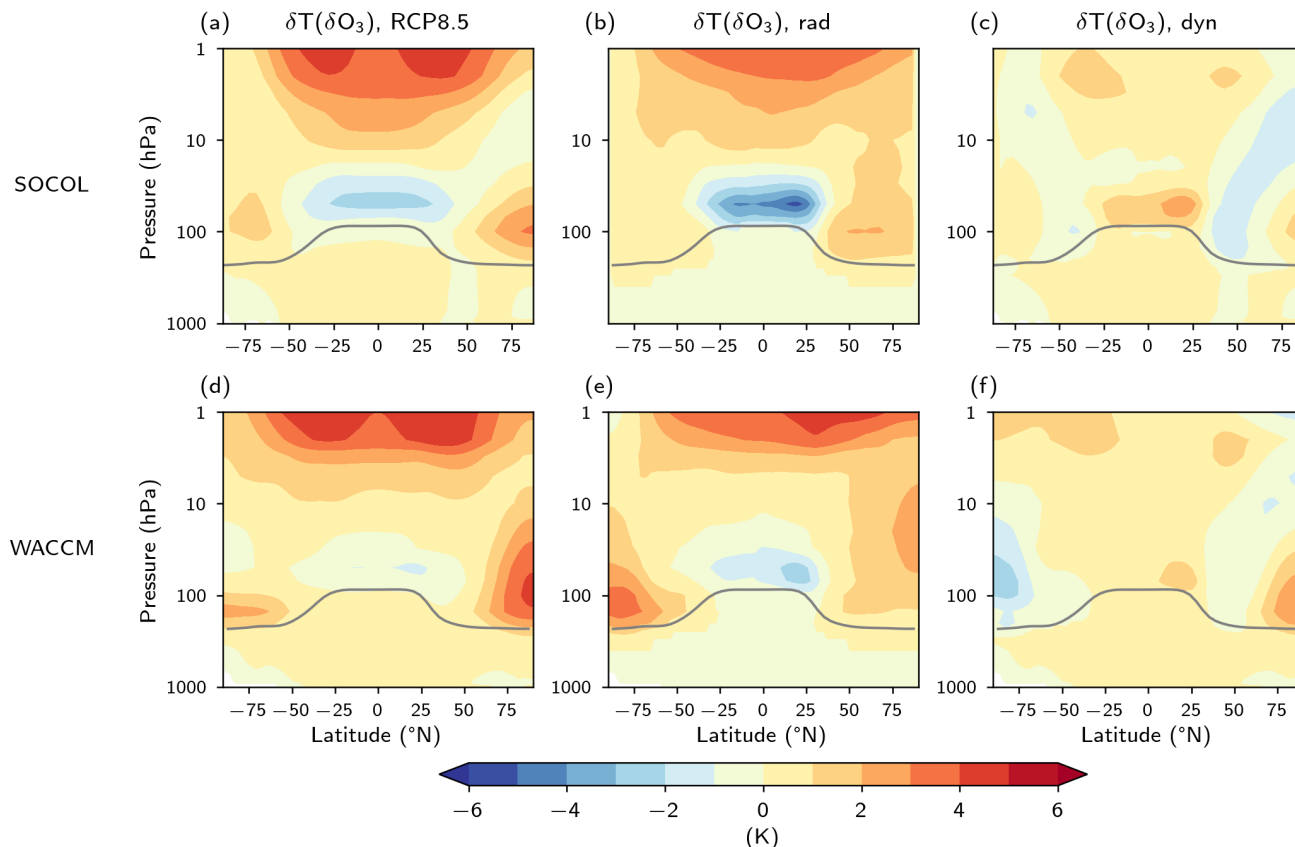


Figure 5. Impact Separation of radiative vs. dynamical heating on springtime stratospheric temperatures, as computed using PORT (panels b-e), vs. and radiative contributions to the total springtime temperature response simulated anomalies induced by ozone in the coupled ensembles two models. Panels (panels a-d) for SOCOL and (top row) show the total ozone-induced temperature changes simulated by SOCOL and WACCM (bottom row note that we plot the same panels as in Fig.3 a-b). Note that Panels (b-f) show the contribution of radiative (b,e) vs. dynamical (c,f) heating on springtime stratospheric temperatures changes. The radiative contribution is computed using the fixed dynamical heating (FDH) assumption, calculating the ozone-induced radiative flux changes, but neglecting any temperature changes due to large-scale circulation (see methods). Hence, the dynamical heating contribution (panel-panels c and f) is obtained by simply subtracting the "radiative" (panels b and e) from the "total" temperature response (panels a-d). Units-K

Changes in the polar vortex due to GHGs and ozone can potentially affect tropospheric and surface climate: these are examined next. We first explore the response of tropospheric and surface climate during springtime, by first documenting the projected sea-level pressure (SLP) response in Fig. 6 in the ensembles with and without ozone recovery including future ozone

385

changes (panels a, ~~b, dd~~) and in the ensembles without future ozone changes (panels b, e). Interestingly, we see that the total projected changes in springtime by 2100 under RCP8.5 are largely model dependent, with SLP declining in SOCOL over the Aleutian sector (panel a), and increasing across the North Pacific in WACCM (panel d). We find a much clearer positive Arctic Oscillation (AO) pattern in WACCM (which is similar to other CMIP6 models) in the ensemble excluding the effects of ~~ozone recovery~~ any future ozone changes (panel e). Most remarkably, when isolating the effects of ozone ~~recovery~~ (changes by taking differences between RCP8.5 and RCP8.5 fO₃) - panels c, f), we find a much more consistent response across both models, reminiscent of a negative AO pattern, with positive SLP anomalies over Greenland and the Arctic ocean. Note that such surface signal is highly consistent with a weak stratospheric polar vortex (Fig. 3), being reminiscent of what occurs in the aftermath of Sudden Stratospheric Warmings (SSWs) (Baldwin et al., 2021; Domeisen and Butler, 2020). However, the SLP signal induced by ~~ozone recovery~~ future ozone changes (panel c, f) is much smaller - by approximately a factor of two - than that induced by GHGs (panels b, e) and is on the fringe of statistical significance (i.e., only a limited region around Greenland is significant at the 95 % level).

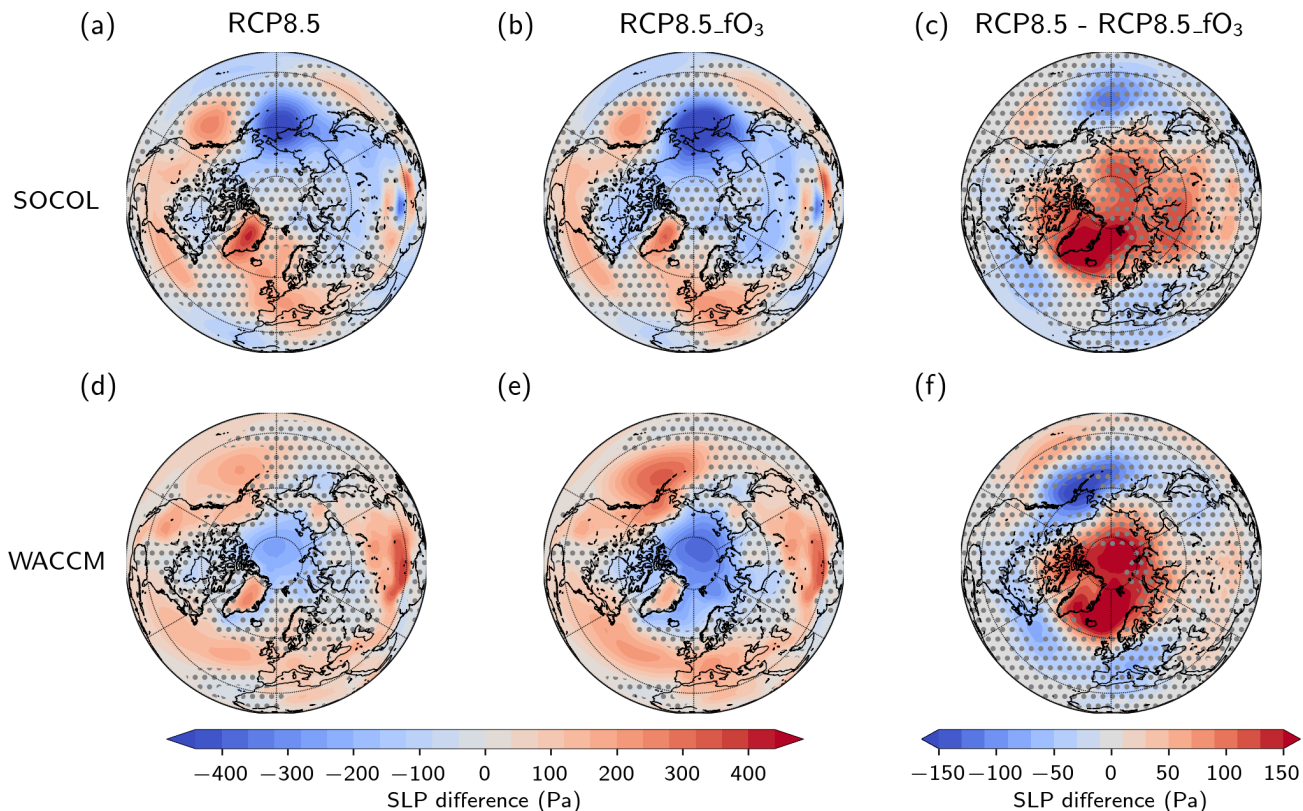


Figure 6. Changes of Sea Level Pressure (SLP) in springtime (March-April) due to the combined effect of GHGs and long-term ozone recovery changes simulated under RCP8.5 (recovery, a, d), isolated changes of SLP due to GHGs alone (no-recovery, b, e), and isolated changes of SLP due to future changes in ozone recovery (recovery-RCP8.5 minus no-recoveryRCP8.5_O3, c, f) between the late (2080-2099) and early (2005-2024) 21st century under RCP8.5 this scenario in SOCOL (upper row) and WACCM (lower row). Stippling marks regions where changes are not significant on a 95 % level. Units-Pa.

These effects on SLP also have implications for tropospheric (500 hPa) zonal wind, as shown in Fig. 7. Similar to SLP, we see that the overall tropospheric zonal wind changes projected by 2100 are very different across the two models (panels a, d). In
 400 SOCOL, we see a significant strengthening of the westerly winds across the North Atlantic and over Eurasia in both ensembles (panels a-b), whereas in WACCM, we find an acceleration of westerlies on the poleward side of the jet maximum on the Western North Atlantic in the ensemble without ozone-recovery-any ozone changes (panel e), similar to other CMIP5 models (Barnes and Polvani, 2013). By quantifying the effects of ozone recovery changes (panels c, f), we again gain a more consistent picture from both models, indicating a weakening of tropospheric westerly winds on the poleward side of the eddy-driven jet
 405 over the North Atlantic by up to 1 m s^{-1} . Again, the ozone-induced signals are much smaller (and of opposite sign) than those induced by GHGs (compare panels c, f against panels b, e), but are much more robust across the two models. Furthermore, they are consistent with observational and modeling evidence for the effects of a disturbed stratospheric polar vortex on the

Atlantic storm tracks (Afargan-Gerstman and Domeisen, 2020). Thus, ozone provides yet another mechanism in the "tug of war" of processes opposing the influences of climate change induced by GHGs (Shaw et al., 2016).

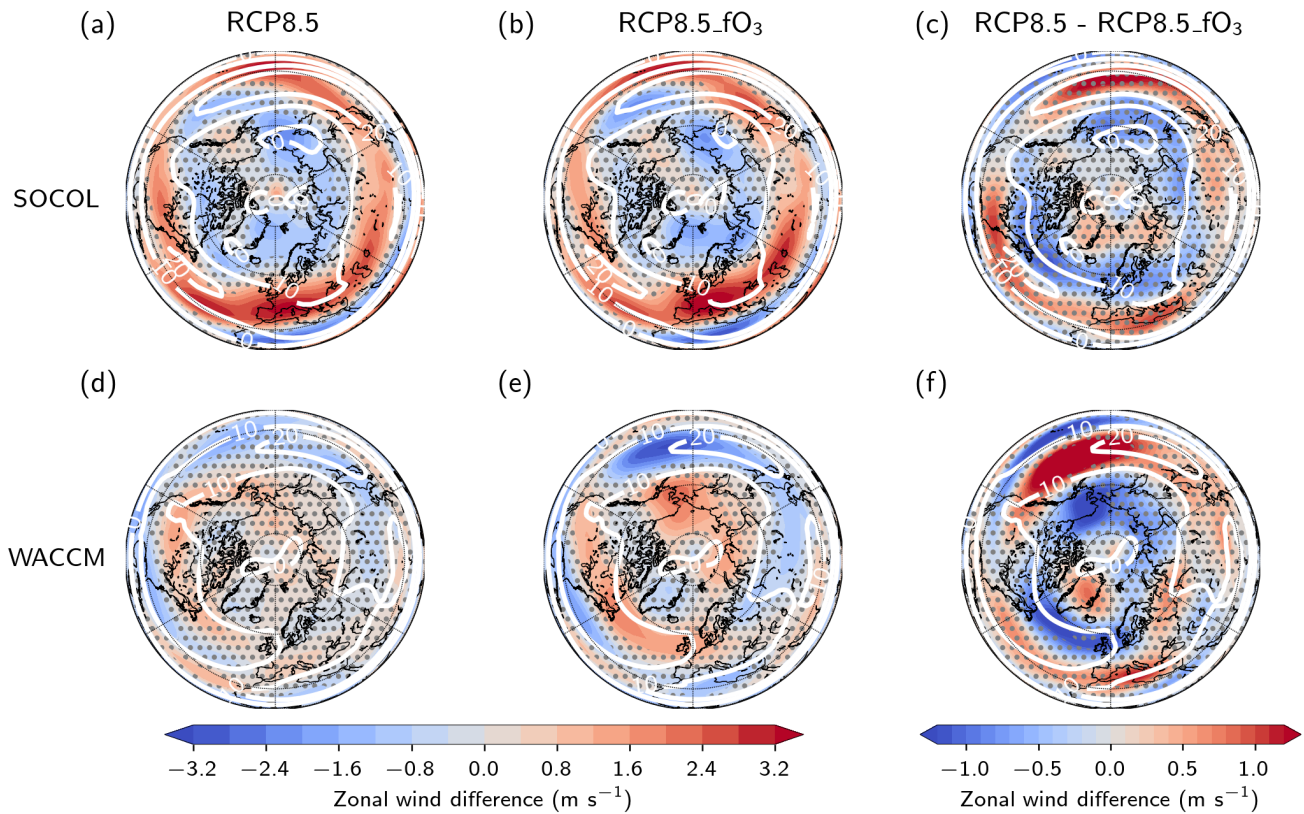


Figure 7. As in Fig. 6 but for zonal wind at 500 hPa. Contours show the climatology of the mean zonal wind in the early 21st century (first 20 years of simulation) in SOCOL and WACCM, respectively. Units m s^{-1} .

410 4 Conclusions

In this study, we have explored and quantified the impacts of future springtime Arctic ozone recovery changes on future projections in the NH for the stratospheric circulation and surface climate. Our experimental setup allows us to assess the effects of ozone recovery future ozone changes and GHGs under a high-emission scenario from IPCC-AR5 (RCP8.5, see Meinshausen et al. (2011)). The key findings are summarized as follows:

- 415 – Future projections of the large-scale atmospheric circulation response to climate change in the NH are widely different across the two CCMs examined here, similar to recent inter-model comparisons. For example, the stratospheric polar vortex strengthens by $4\text{--}6 \text{ m s}^{-1}$ and breaks up later in one CCM (SOCOL) (by 15 days) in SOCOL, while no changes

in any of the vortex diagnostics are simulated in ~~the other one (WACCM)~~ WACCM. Similarly, the projected changes in tropospheric and surface climate differ across the two models.

420 – Future changes in GHGs and ODSs drive sizable increases (by up to 20%) in springtime ozone in the Arctic. These changes in ozone ~~(which we refer to as "Arctic ozone recovery")~~ lead to warming of the Arctic stratosphere and consequently, weaken the polar vortex, anticipating-advancing its break-up date ~~-This by 10-20 days.~~ The warming of the polar stratosphere is primarily due to enhanced solar absorption by Arctic ozone abundances, and partly due to enhanced downwelling (from enhanced wave dissipation).

425 – In the troposphere, we find regional signals that are coherent with those induced in the stratospheric polar vortex. Namely, Arctic ozone recovery-an increase in Arctic stratospheric ozone abundances leads to a negative Arctic Oscillation pattern and an equatorward shift of the eddy-driven jet over the North Atlantic. While the effects in the stratosphere are very detectable, those in the troposphere are only on the fringe of significance, although they are very robust across the two models used in this study.

430 Taken together, these results suggest that ~~long-term ozone recovery trends~~ future trends in ozone oppose the effects of GHGs. In the NH polar stratosphere, ~~ozone recovery almost entirely cancels these ozone changes almost entirely cancel~~ the effects of GHGs (by up to 50-100% in metrics such as the NAM and vortex breakup date), while in tropospheric and surface climate, ozone ~~recovery changes only~~ partly counteracts them (by up to 10-20%). In so doing, springtime Arctic ozone ~~recovery~~ increase shapes the large-scale atmospheric circulation response to climate change in the NH. Hence, the uncertainty in the
435 overall impacts of climate change on certain dynamical metrics, such as the stratospheric polar vortex strength and timing of its break-up, partly result from the competition between ozone ~~recovery~~ and GHGs. These effects are similar in the two CCMs examined here, despite the large differences in the models' projections of global warming. We acknowledge that the large and previously unrecognized role of Arctic ozone may partly be due to the large ozone changes arising from the high-emission scenario considered in this study (RCP8.5) (WMO, 2022). The large ozone changes in this scenario are partly due to the large
440 CH₄ forcing, although large abundances of N₂O would reduce the contribution of non-CO₂ GHGs to the projected ozone changes in this specific scenario. Assuming linearity of the dynamical response to the ozone changes, the forcing by future ~~ozone recovery~~ Arctic ozone trends in this scenario is larger than by past ozone depletion trends (1960-2000), for which a dynamical impact has been ruled out in several Ozone Assessments (see WMO, 2014, 2018, 2022). Moreover, our study only highlights the impacts during springtime, for which the forcing (and thus dynamical impacts) is the largest.

445 In spite of these caveats, our results demonstrate, for the first time, that long-term changes in the ozone layer can significantly influence the circulation response in the NH. We obtain this conclusion in the context of a high-emission, but yet policy-relevant ~~IPCC scenarios,~~ IPCC scenario, thereby expanding on previous results on the SH (Mindlin et al., 2021; Ivanciu et al., 2022) and idealized experiments using abrupt-4xCO₂ (Li and Newman, 2022; Chiodo and Polvani, 2019). ~~A correct representation of the ozone recovery might therefore~~ The implications of this study are threefold. First, models need to
450 include a consistent representation of stratospheric ozone trends; models without interactive chemistry thus need to impose a forcing-consistent ozone data-set (Maycock, 2016). Second, in models with interactive chemistry (CCMs), any uncertainty in

the projected recovery rates could result in uncertainty in the degree to which ozone offsets the effects of GHGs in these types of models. Third, models may exhibit different sensitivities to long-term ozone trends (see, e.g. Lin et al. (2017)). Considering these aspects and in particular constraining any of these potential sources of uncertainty might help to decrease the longstanding uncertainty about the dynamical effect of a given radiative forcing (see examples of this e.g. for the polar vortex in Karpechko et al. (2022)). Given the sizable effects of the stratosphere on tropospheric and surface climate (Simpson et al., 2018), ~~this would-an improved understanding of the role of Arctic ozone as a driver could~~ benefit regional climate change projections in springtime, especially in the mid- and high latitudes, where ~~internal variability of the atmospheric circulation causes at least half of the uncertainty in projected climate trends (Deser et al., 2010, 2012)~~ the projections is sizable (see IPCC, 2021, Fig. 4.30).

460 *Data availability.* Data for the transient simulations for WACCM and SOCOL-MPIOM, as well as all scripts used for the analysis in this study are available upon request.

Code and data availability. The code needed to produce the plots and the analysis can be made available by the corresponding author upon reasonable request.

Appendix A: Appendix

465 Appendix A: Coherence between vortex shape and imposed ozone climatology

470 We verify that imposing an ozone climatology in the RCP8.5 fO_3 ensemble does not introduce any major inconsistencies with the vortex morphology, by contrasting the 3-D daily ozone climatology being used in the RCP8.5 fO_3 and the vortex location (measured by geopotential height values at the 50 hPa level), under both present-day (2005-2024) and future (2080-2099) conditions in the RCP8.5 fO_3 ensemble. Fig. A1 shows the location and shape of the polar vortex, along with the ozone climatology being used. As the Figure shows, the vortex differs between the two models, being stronger and less elongated in WACCM than in SOCOL-MPIOM. Most importantly, the morphology of the vortex does not change strongly towards the end of the 21st century in any of the two models (contrast left vs right panels). Thus, the minimum in the ozone climatology being imposed in these ensembles (color shading) approximately coincides with the location of the polar vortex. Similarly, the higher ozone abundances correspond to the edge of the polar vortex in both present-day and also future conditions. From this,

475 we conclude that the "mismatch" between future dynamics and present ozone field mentioned is unlikely to affect the results, and any differences between the two ensembles are due to long-term ozone changes, and not due to potential artifacts.

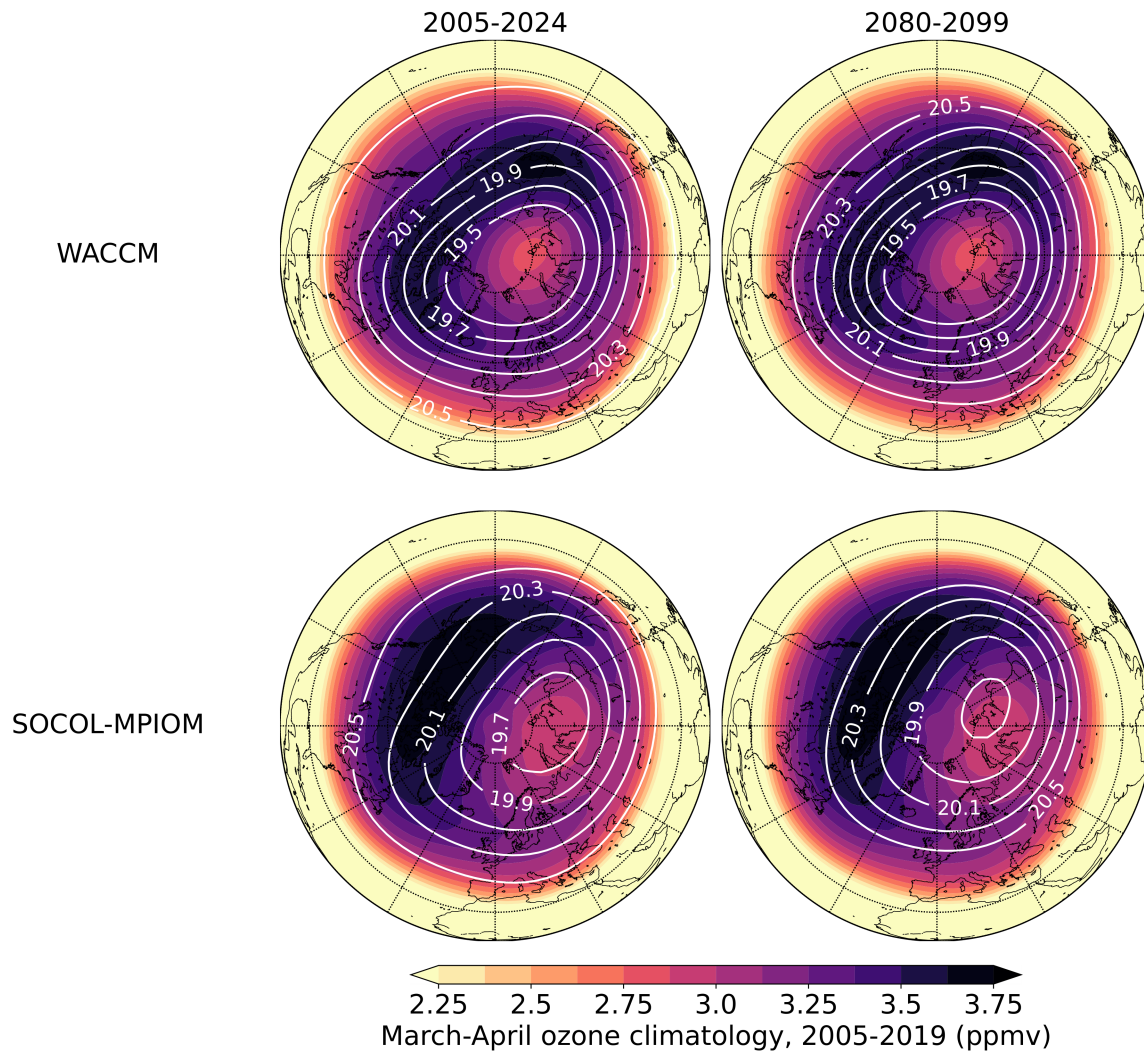


Figure A1. Springtime ozone climatology at 50 hPa used for the RCP8.5 fO_3 experiment (color shading), with superimposed geopotential height (in units of km) corresponding to the same pressure level (isolines) for WACCM (top) and SOCOL-MPIOM (bottom), averaged over the "early" (2005-2024; left) vs "late" period (2080-2099; right). The lowest isolines (19.5-19.7 km) identify the approximate location of the stratospheric polar vortex, while the meridional gradient in geopotential height corresponds to its strength. As one can see, the lowest ozone concentrations that are imposed in the fO_3 ensemble correspond to the location of the vortex in both time periods.

Appendix B: Global warming and changes in the stratosphere projected in the high-emission scenario

In the following, we show the projected changes in key metrics of global warming, namely global mean surface temperature, and tropical average residual upwelling (w^*) in both models (Fig. B1). Both models exhibit warming of 0.3 - 0.5 K decade⁻¹, and a strengthening of the tropical upwelling by 3-4 % decade⁻¹, in line with other high-top climate models (Butchart, 2014). To analyze the isolated impact of GHGs alone (i.e., without concomitant future ozone changes) on zonal mean temperature, we display the changes in this field from the RCP8.5 fO₃ in Fig. B2.

To examine the seasonality of the projected climate change in the lower stratosphere (resulting from both GHGs and ozone recovery/ODS reduction), we then plot the change in four variables (shortwave heating, residual upwelling, temperature and zonal mean zonal wind) as a function of month in Fig. B2B3. Here, we see that the projected strengthening of tropical upwelling is balanced by a strengthening in the downwelling at mid and high-latitudes (panels c, d). This response is consistent with an acceleration of the shallow branch of the BDC throughout the year in both hemispheres, resulting from a strengthening of the subtropical jets (panels g-h). In the Arctic stratosphere, no significant temperature changes are projected, except for the fall season (cooling in panels e-f). The isolated effect of the recovery of the ozone layer (Fig. B3B4) leads to warming of up to 8 K in the SH high latitudes during austral spring and early summer (September – December) and a weakening (and earlier breakdown) of the SH polar vortex, consistent with the vast literature on the subject (e.g. Ivanciu et al. (2022)). The ozone recovery-increase also leads to significant warming by 2-4 K in the Arctic boreal spring (panels e-f), and a weakening of the westerlies at 60-70N (panels g-h). These signals are much smaller than those in SH, which are associated with the closing of the Antarctic ozone hole, but they are detectable in both models. These changes in the westerlies have repercussions on wave propagation, and in turn on the overturning circulation in the stratosphere (Fig. B5). More specifically, ozone-induced changes in the meridional temperature gradient near the tropopause weaken the zonal mean zonal winds in the sub-polar lower stratosphere, resulting in more wave dissipation in the Arctic stratosphere, although the exact location of the enhanced wave dissipation depends on the model (panels a-b). These changes in wave dissipation in turn induce stronger downwelling in the polar lower stratosphere at 30 - 100 hPa, although the details of this structure are again model-dependent, with WACCM exhibiting the largest downwelling anomalies (and thus also largest dynamical heating) (panel d).

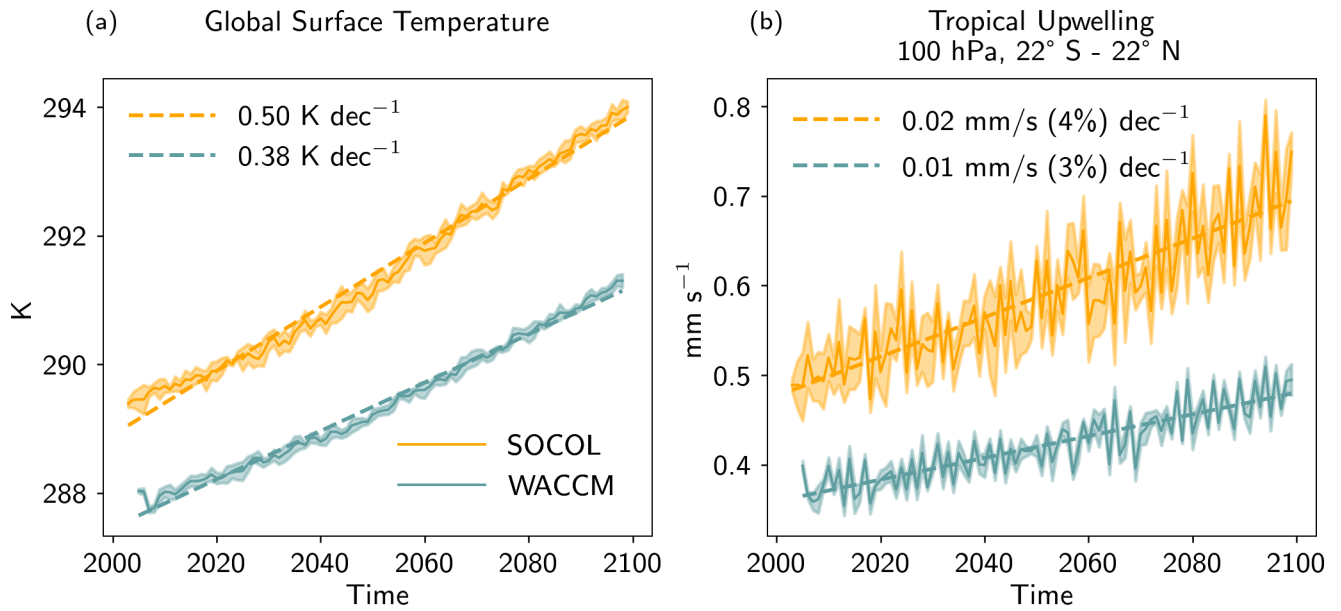


Figure B1. Annual mean global mean changes in surface temperature in WACCM and SOCOL under-in the RCP8.5 in-recovery-simulations ensemble (a), and tropical average residual upwelling (w^*) (b). The shading represents the uncertainty across the five ensemble realizations performed for each model.

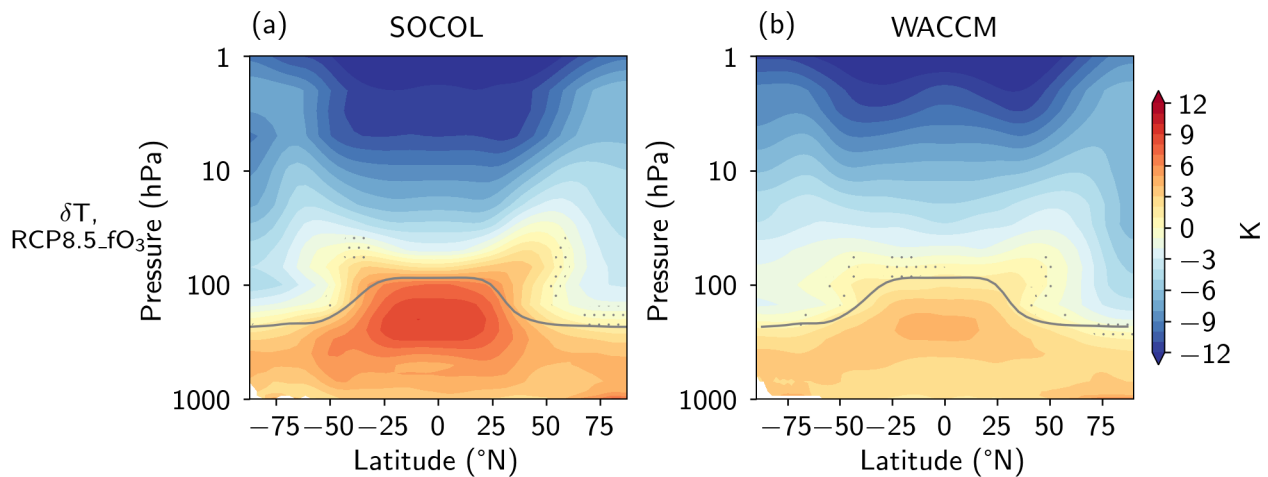


Figure B2. Projected-Zonal mean temperature changes under-in springtime in SOCOL (a) and WACCM (b), calculated as difference between late (2080-2099) and early (2005-2024) period in the ensemble with fixed present-day ozone climatology (RCP8.5 fO₃). Stippling masks changes that are not significant at the 95% level. Units K.

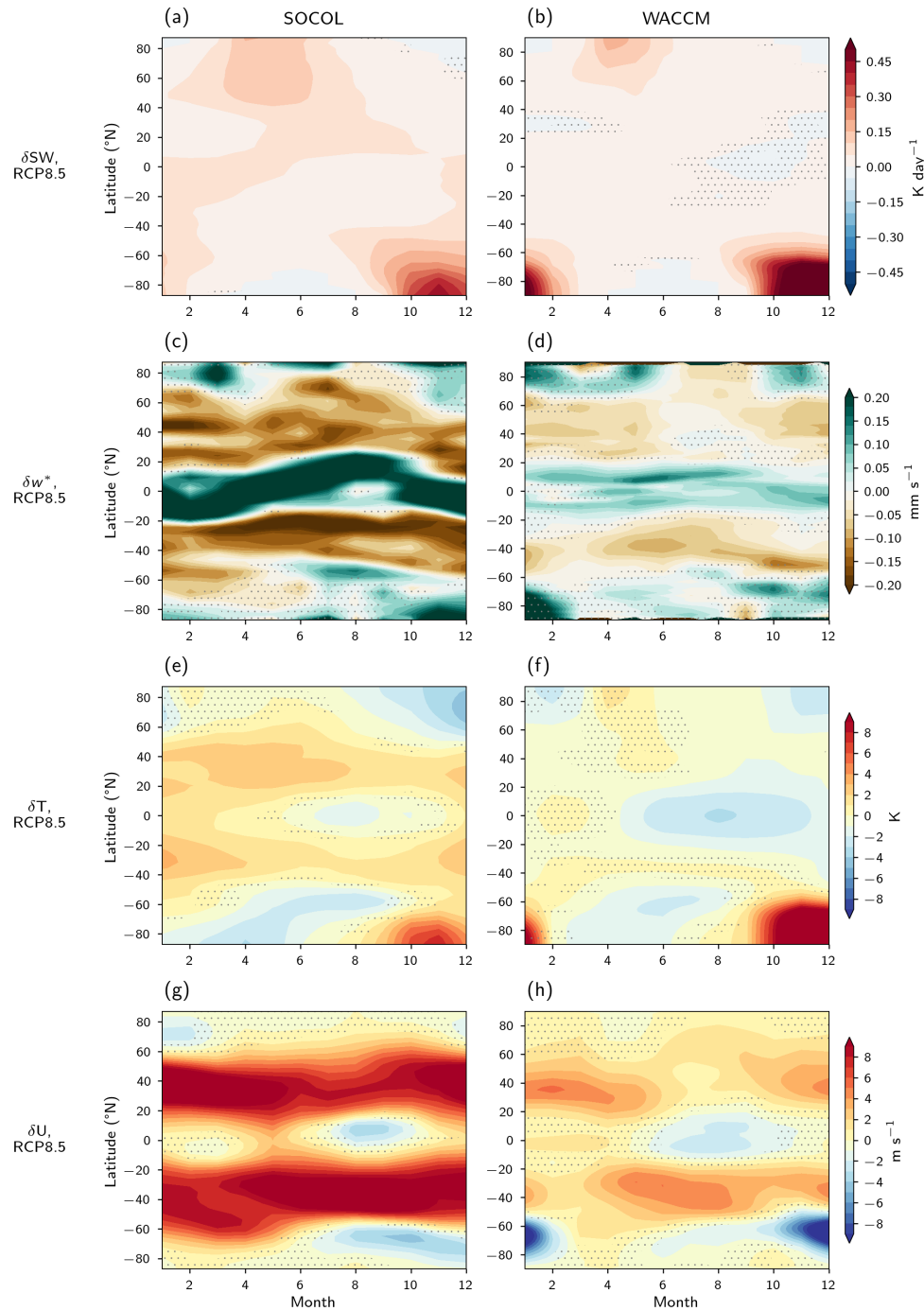


Figure B3. Projected changes in the "Recovery-RCP8.5" ensemble, in zonally averaged SW heating rates (panels a and b), residual upwelling (panels c and d), temperature (panels e and f), zonal wind (panels g and h) for each month at the 70 hPa pressure level. Stippling masks changes that are not significant at the 95 % level.

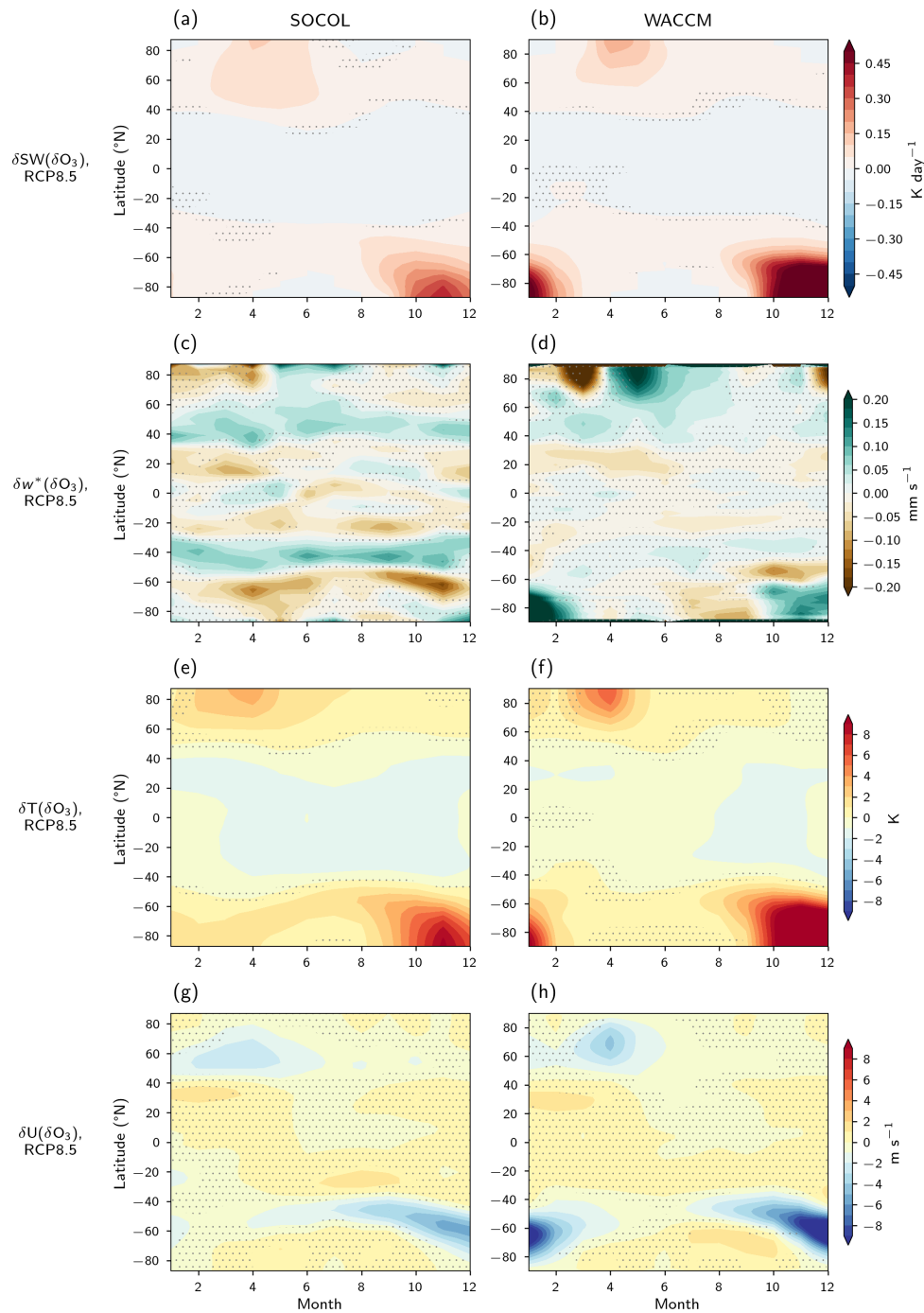
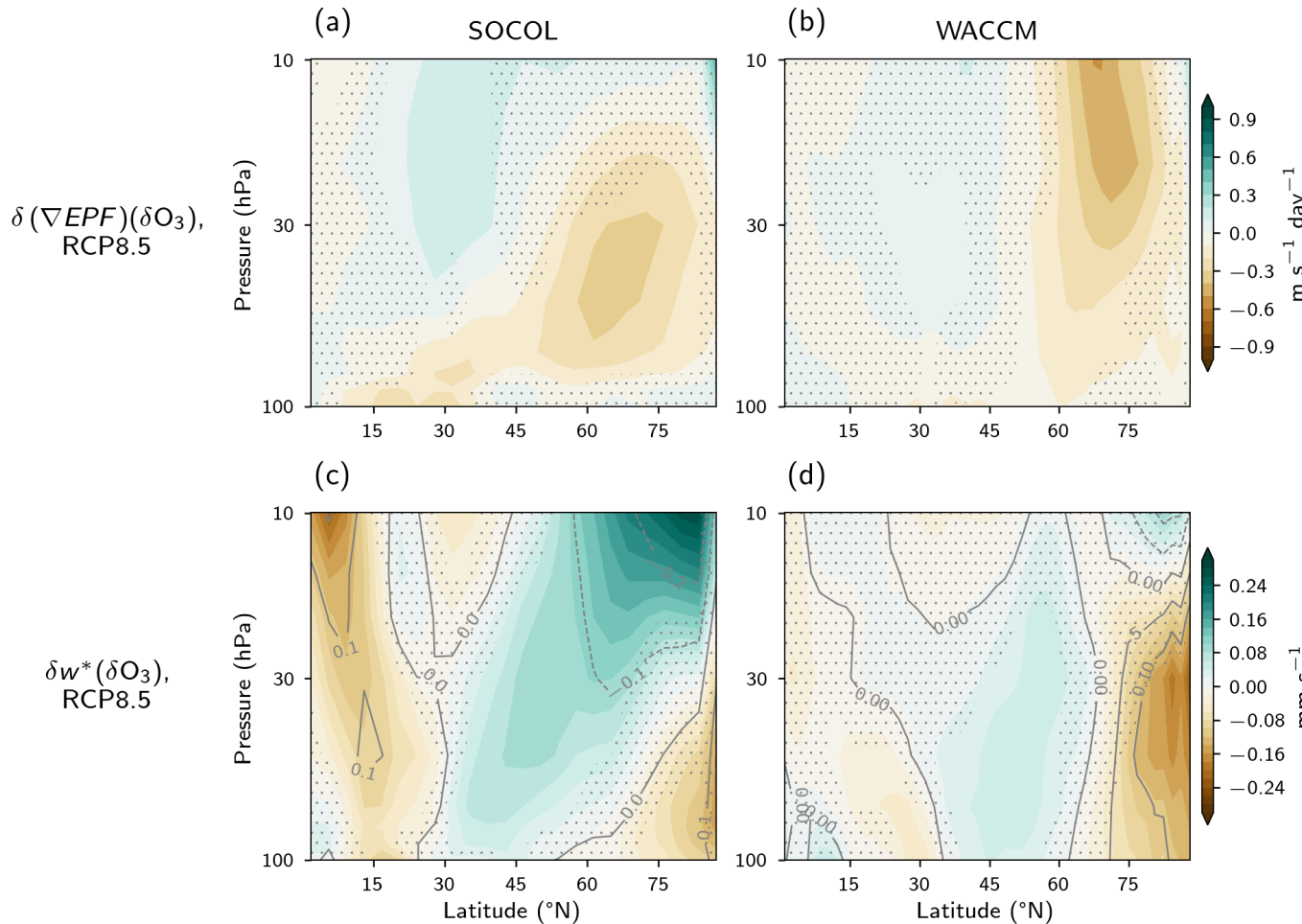


Figure B4. As Fig. A2, but isolating the contribution by the future changes in Arctic ozone recovery, quantified as difference between the "Recovery" RCP8.5 and the "No Recovery" RCP8.5 fO₃ ensembles in the late period (2080-2099). Stippling masks changes that are not significant at the 95 % level.

Isolated impact of ozone recovery during springtime (March–April) on EP flux divergence (a, b) and residual vertical velocity (c, d) in SOCOL (left column) and WACCM (right column). Contours in c and d show the dynamical heating rate in K day^{-1} . Residual velocities and EP flux divergence are calculated using the Eulerian mean framework according to Andrews et al. (1987). For details on the calculation of dynamical heating rates, please refer to Friedel et al. (2022a). Changes that are not significant at the 95% level are



stippled.

Figure B5. Isolated impact of Arctic ozone changes (quantified as difference the RCP8.5 and RCP8.5 fO_3 ensembles in the late period of 2080-2099) during springtime (March – April) on EP flux divergence (a, b) and residual vertical velocity (c, d) in SOCOL (left column) and WACCM (right column). Contours in c and d show the dynamical heating rate in K day^{-1} . Residual velocities and EP flux divergence are calculated using the Eulerian mean framework according to Andrews et al. (1987). For details on the calculation of dynamical heating rates, please refer to Friedel et al. (2022a). Changes that are not significant at the 95% level are stippled.

Appendix C: Impact of ODS on the circulation based on CCMI-1 experiments

505 Lastly, we examined the impact of ODS-induced ozone changes on the polar vortex, by analyzing the CCMI-1 sensitivity experiments performed by CESM1-WACCM; results for zonal mean zonal wind are shown in Fig. C1. It is readily evident how ODS emissions, via their effects on ozone, induce a weakening of the polar vortex. The sign of the changes is consistent with what is reported in this paper for the Arctic ozone under RCP8.5 (Fig. 3), but the magnitude is much smaller (by 50%), most likely due to the smaller ozone forcing in these runs.

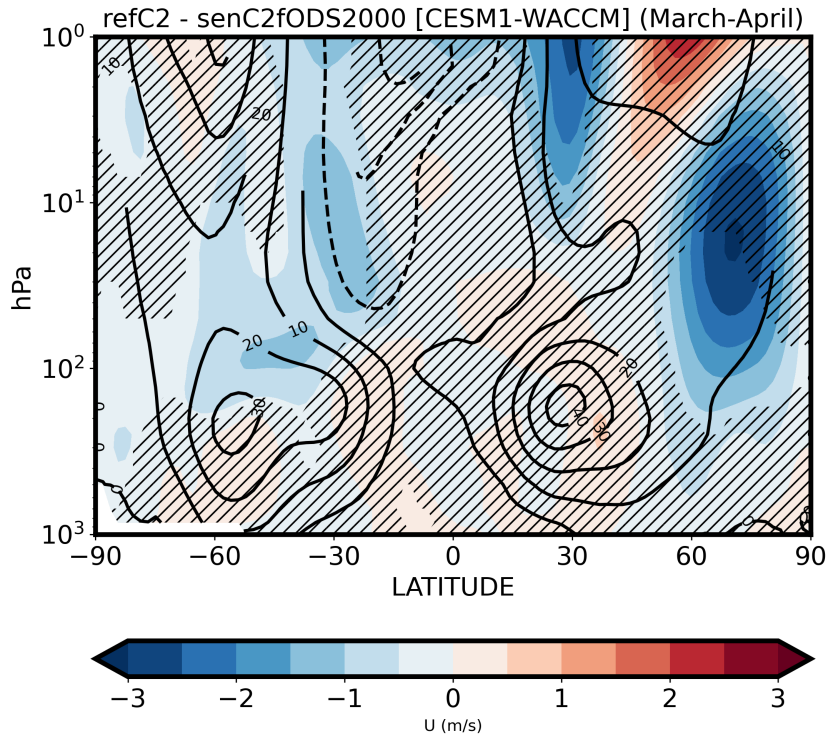


Figure C1. Isolated impact of future ODS emissions (and their induced ozone changes) on zonal mean zonal wind from CESM1-WACCM runs contributing to CCMI-1, calculated as springtime (March - April) ensemble mean differences between three reference runs ("refC2" in Morgenstern et al. (2017)) and three future scenarios with ODS surface-mixing ratios fixed at their year-2000 values ("SEN-C2-fODS2000" in Morgenstern et al. (2017)). Contour lines show the climatological averages over 2005-2025 in the "refC2" ensemble. Changes that are stippled are not significant at the 95% level. Units m/s.

Author contributions. G.C., M.F. and S.S. contributed equally to this publication. G.C., M.F., S.S. and A.S. performed and processed the modelling experiments, and analysed the output. S.S., M.F., G.C. interpreted the data, with input from A.S., D.D., T.S. and F.Z. G.C. wrote the paper with input from all authors.

510 *Competing interests.* The authors declare no competing interests.

Acknowledgements. ~~We thank D. Domeisen for useful comments on the paper draft.~~ G.C. and M.F. gratefully acknowledge the Swiss National Science Foundation for support via the Ambizione Grant N. PZ00P2_180043-180043. Support from the Swiss National Science Foundation through project PP00P2_198896 to D.D. is gratefully acknowledged.

References

- 515 Abalos, M., Polvani, L., Calvo, N., Kinnison, D., Ploeger, F., Randel, W., and Solomon, S.: New insights on the impact of ozone-depleting substances on the Brewer-Dobson circulation, *Journal of Geophysical Research: Atmospheres*, 124, 2435–2451, 2019.
- Afargan-Gerstman, H. and Domeisen, D. I.: Pacific modulation of the North Atlantic storm track response to sudden stratospheric warming events, *Geophysical Research Letters*, 47, e2019GL085 007, 2020.
- Andrews, D. G., Holton, J. R., and Leovy, C. B.: *Middle atmosphere dynamics*, Academic Press, San Diego, California, 1987.
- 520 Ayarzagüena, B., Charlton-Perez, A. J., Butler, A. H., Hitchcock, P., Simpson, I. R., Polvani, L. M., Butchart, N., Gerber, E. P., Gray, L., Hassler, B., et al.: Uncertainty in the response of sudden stratospheric warmings and stratosphere-troposphere coupling to quadrupled CO₂ concentrations in CMIP6 models, *Journal of Geophysical Research: Atmospheres*, 125, e2019JD032 345, 2020.
- Ayarzagüena, B. and Serrano, E.: Monthly characterization of the tropospheric circulation over the Euro-Atlantic Area in Relation with the Timing of Stratospheric Final Warmings, *Journal of Climate*, 22, 6313 – 6324, <https://doi.org/10.1175/2009JCLI2913.1>, 2009.
- 525 Bais, A. F., Lucas, R. M., Bornman, J. F., Williamson, C. E., Sulzberger, B., Austin, A. T., Wilson, S. R., Andrady, A. L., Bernhard, G., McKenzie, R. L., et al.: Environmental effects of ozone depletion, UV radiation and interactions with climate change: UNEP Environmental Effects Assessment Panel, update 2017, *Photochemical & Photobiological Sciences*, 17, 127–179, 2018.
- Baldwin, M. P. and Dunkerton, T. J.: Stratospheric Harbingers of Anomalous Weather Regimes, *Science*, 294, 581–584, <https://doi.org/10.1126/science.1063315>, 2001.
- 530 Baldwin, M. P., Ayarzagüena, B., Birner, T., Butchart, N., Butler, A. H., Charlton-Perez, A. J., Domeisen, D. I., Garfinkel, C. I., Garny, H., Gerber, E. P., et al.: Sudden stratospheric warmings, *Reviews of Geophysics*, 59, e2020RG000 708, 2021.
- Banerjee, A., Maycock, A. C., and Pyle, J. A.: Chemical and climatic drivers of radiative forcing due to changes in stratospheric and tropospheric ozone over the 21st century, *Atmospheric Chemistry and Physics*, 18, 2899–2911, 2018.
- Banerjee, A., Fyfe, J. C., Polvani, L. M., Waugh, D., and Chang, K.-L.: A pause in Southern Hemisphere circulation trends due to the
- 535 Montreal Protocol, *Nature*, 579, 544–548, 2020.
- Barnes, E. A. and Polvani, L.: Response of the midlatitude jets, and of their variability, to increased greenhouse gases in the CMIP5 models, *Journal of Climate*, 26, 7117–7135, 2013.
- Barnes, E. A., Barnes, N. W., and Polvani, L. M.: Delayed Southern Hemisphere climate change induced by stratospheric ozone recovery, as projected by the CMIP5 models, *Journal of Climate*, 27, 852–867, 2014.
- 540 Bekki, S., Rap, A., Poulain, V., Dhomse, S., Marchand, M., Lefèvre, F., Forster, P. M., Szopa, S., and Chipperfield, M. P.: Climate impact of stratospheric ozone recovery, *Geophysical Research Letters*, 40, 2796–2800, 2013.
- Black, R. X., McDaniel, B. A., and Robinson, W. A.: Stratosphere–troposphere coupling during spring onset, *Journal of Climate*, 19, 4891 – 4901, <https://doi.org/10.1175/JCLI3907.1>, 2006.
- Butchart, N.: The Brewer-Dobson circulation, *Reviews of Geophysics*, 52, 157–184, <https://doi.org/https://doi.org/10.1002/2013RG000448>,
- 545 2014.
- Butler, A., Daniel, J. S., Portmann, R. W., Ravishankara, A., Young, P. J., Fahey, D. W., and Rosenlof, K. H.: Diverse policy implications for future ozone and surface UV in a changing climate, *Environmental Research Letters*, 11, 064 017, 2016.
- Butler, A. H. and Domeisen, D. I. V.: The wave geometry of final stratospheric warming events, *Weather and Climate Dynamics*, 2, 453–474, <https://doi.org/10.5194/wcd-2-453-2021>, 2021.

- 550 Butler, A. H., Charlton-Perez, A., Domeisen, D. I., Simpson, I. R., and Sjöberg, J.: Predictability of Northern Hemisphere Final Stratospheric Warmings and Their Surface Impacts, *Geophysical Research Letters*, 46, 10578–10588, <https://doi.org/https://doi.org/10.1029/2019GL083346>, 2019.
- Chiodo, G. and Polvani, L. M.: The response of the ozone layer to quadrupled CO₂ concentrations: Implications for climate, *Journal of climate*, 32, 7629–7642, 2019.
- 555 Chiodo, G., Polvani, L. M., Marsh, D. R., Stenke, A., Ball, W., Rozanov, E., Muthers, S., and Tsigaridis, K.: The response of the ozone layer to quadrupled CO₂ concentrations, *Journal of Climate*, 31, 3893–3907, 2018.
- Chipperfield, M. P., Bekki, S., Dhomse, S., Harris, N. R., Hassler, B., Hossaini, R., Steinbrecht, W., Thiéblemont, R., and Weber, M.: Detecting recovery of the stratospheric ozone layer, *Nature*, 549, 211–218, 2017.
- Conley, A. J., Lamarque, J.-F., Vitt, F., Collins, W., and Kiehl, J.: PORT, a CESM tool for the diagnosis of radiative forcing, *Geoscientific*
- 560 *Model Development*, 6, 469–476, doi: 10.5194/gmd-6-469-2013, 2013.
- Deser, C., Phillips, A., Bourdette, V., and Teng, H.: Uncertainty in climate change projections: the role of internal variability, *Climate dynamics*, 38, 527–546, doi: 10.1007/s00382-010-0977-x, 2010.
- Deser, C., Knutti, R., Solomon, S., and Phillips, A. S.: Communication of the role of natural variability in future North American climate, *Nature Climate Change*, 2, 775–779, doi: 10.1038/NCLIMATE1562, 2012.
- 565 Domeisen, D. I. V. and Butler, A. H.: Stratospheric drivers of extreme events at the Earth’s surface, *Communications Earth & Environment*, 1, 59, <https://doi.org/10.1038/s43247-020-00060-z>, 2020.
- Egorova, T., Rozanov, E., Zubov, V., and Karol, I.: Model for investigating ozone trends (MEZON), *Izvestiya Atmospheric and Oceanic Physics*, 39, 277–292, 2003.
- Egorova, T., Sedlacek, J., Sukhodolov, T., Karagodin-Doyennel, A., Zilker, F., and Rozanov, E.: Montreal Protocol’s impact on the ozone
- 570 layer and climate, *Atmospheric Chemistry and Physics*, 23, 5135–5147, 2023.
- Eyring, V., Arblaster, J. M., Cionni, I., Sedláček, J., Perlwitz, J., Young, P. J., Bekki, S., Bergmann, D., Cameron-Smith, P., Collins, W. J., et al.: Long-term ozone changes and associated climate impacts in CMIP5 simulations, *Journal of Geophysical Research: Atmospheres*, 118, 5029–5060, 2013.
- Fels, S., Mahlman, J., Schwarzkopf, M., and Sinclair, R.: Stratospheric sensitivity to perturbations in ozone and carbon dioxide- Radiative and dynamical response, *Journal of the Atmospheric Sciences*, 37, 2265–2297, 1980.
- 575 Friedel, M., Chiodo, G., Stenke, A., Domeisen, D. I., Fueglistaler, S., Anet, J. G., and Peter, T.: Springtime arctic ozone depletion forces northern hemisphere climate anomalies, *Nature Geoscience*, 15, 541–547, 2022a.
- Friedel, M., Chiodo, G., Stenke, A., Domeisen, D. I., and Peter, T.: Effects of Arctic ozone on the stratospheric spring onset and its surface impact, *Atmospheric Chemistry and Physics*, 22, 13997–14017, 2022b.
- 580 Fusco, A. C. and Salby, M. L.: Interannual variations of total ozone and their relationship to variations of planetary wave activity, *Journal of climate*, 12, 1619–1629, 1999.
- Garcia, R. R. and Randel, W. J.: Acceleration of the Brewer–Dobson circulation due to increases in greenhouse gases, *Journal of the Atmospheric Sciences*, 65, 2731–2739, 2008.
- Godin-Beekmann, S., Azouz, N., Sofieva, V. F., Hubert, D., Petropavlovskikh, I., Effertz, P., Ancellet, G., Degenstein, D. A., Zawada, D.,
- 585 Froidevaux, L., et al.: Updated trends of the stratospheric ozone vertical distribution in the 60 S–60 N latitude range based on the LOTUS regression model, *Atmospheric Chemistry and Physics*, 22, 11657–11673, 2022.

- Goyal, R., England, M. H., Sen Gupta, A., and Jucker, M.: Reduction in surface climate change achieved by the 1987 Montreal Protocol, *Environmental Research Letters*, 14, 124041, 2019.
- 590 Grise, K. M. and Polvani, L. M.: Is climate sensitivity related to dynamical sensitivity? A Southern Hemisphere perspective, *Geophysical Research Letters*, 41, 534–540, 2014.
- Haase, S. and Matthes, K.: The importance of interactive chemistry for stratosphere–troposphere coupling, *Atmospheric Chemistry and Physics*, 19, 3417–3432, 2019.
- Haigh, J. and Pyle, J.: Ozone perturbation experiments in a two-dimensional circulation model, *Quarterly Journal of the Royal Meteorological Society*, 108, 551–574, 1982.
- 595 IPCC: Climate Change 2013: The Physical Science Basis. Contribution of Working Group I to the Fifth Assessment Report of the Intergovernmental Panel on Climate Change, Cambridge University Press, Cambridge, United Kingdom and New York, NY, USA, <https://www.ipcc.ch/report/ar5/wg1/>, 2013.
- IPCC: Climate Change 2021: The Physical Science Basis. Contribution of Working Group I to the Sixth Assessment Report of the Intergovernmental Panel on Climate Change, vol. In Press, Cambridge University Press, Cambridge, United Kingdom and New York, NY, USA, 600 <https://doi.org/10.1017/9781009157896>, 2021.
- Ivanciu, I., Matthes, K., Biastoch, A., Wahl, S., and Harlaß, J.: Twenty-first-century Southern Hemisphere impacts of ozone recovery and climate change from the stratosphere to the ocean, *Weather and Climate Dynamics*, 3, 139–171, 2022.
- Ivy, D. J., Solomon, S., Calvo, N., and Thompson, D. W.: Observed connections of Arctic stratospheric ozone extremes to Northern Hemisphere surface climate, *Environmental Research Letters*, 12, 024004, 2017.
- 605 Jonsson, A., De Grandpre, J., Fomichev, V., McConnell, J., and Beagley, S.: Doubled CO₂-induced cooling in the middle atmosphere: Photochemical analysis of the ozone radiative feedback, *Journal of Geophysical Research: Atmospheres*, 109, 2004.
- Karpechko, A. Y. and Manzini, E.: Stratospheric influence on tropospheric climate change in the Northern Hemisphere, *Journal of Geophysical Research: Atmospheres*, 117, 2012.
- Karpechko, A. Y., Afargan-Gerstman, H., Butler, A. H., Domeisen, D. I., Kretschmer, M., Lawrence, Z., Manzini, E., Sigmond, M., Simpson, 610 I. R., and Wu, Z.: Northern Hemisphere Stratosphere-Troposphere Circulation Change in CMIP6 Models: 1. Inter-Model Spread and Scenario Sensitivity, *Journal of Geophysical Research: Atmospheres*, 127, e2022JD036992, 2022.
- Keeble, J., Hassler, B., Banerjee, A., Checa-Garcia, R., Chiodo, G., Davis, S., Eyring, V., Griffiths, P. T., Morgenstern, O., Nowack, P., et al.: Evaluating stratospheric ozone and water vapour changes in CMIP6 models from 1850 to 2100, *Atmospheric Chemistry and Physics*, 21, 5015–5061, 2021.
- 615 Kult-Herdin, J., Sukhodolov, T., Chiodo, G., Checa-Garcia, R., and Rieder, H. E.: The impact of different CO₂ and ODS levels on the mean state and variability of the springtime Arctic stratosphere, *Environmental Research Letters*, <https://doi.org/10.1088/1748-9326/acb0e6>, 2023.
- Li, F. and Newman, P. A.: Prescribing stratospheric chemistry overestimates southern hemisphere climate change during austral spring in response to quadrupled CO₂, *Climate Dynamics*, pp. 1–18, 2022.
- 620 Lin, P., Paynter, D., Polvani, L., Correa, G. J., Ming, Y., and Ramaswamy, V.: Dependence of model-simulated response to ozone depletion on stratospheric polar vortex climatology, *Geophysical Research Letters*, 44, 6391–6398, 2017.
- Manzini, E., Karpechko, A. Y., Anstey, J., Baldwin, M., Black, R., Cagnazzo, C., Calvo, N., Charlton-Perez, A., Christiansen, B., Davini, P., et al.: Northern winter climate change: Assessment of uncertainty in CMIP5 projections related to stratosphere-troposphere coupling, *Journal of Geophysical Research: Atmospheres*, 119, 7979–7998, 2014.

- 625 Marsh, D. R., Mills, M. J., Kinnison, D. E., Lamarque, J.-F., Calvo, N., and Polvani, L. M.: Climate change from 1850 to 2005 simulated in CESM1 (WACCM), *Journal of climate*, 26, 7372–7391, 2013.
- Match, A. and Gerber, E. P.: Tropospheric expansion under global warming reduces tropical lower stratospheric ozone, *Geophysical Research Letters*, 49, e2022GL099463, 2022.
- Maycock, A.: The contribution of ozone to future stratospheric temperature trends, *Geophysical Research Letters*, 43, 4609–4616, 2016.
- 630 McLandress, C., Shepherd, T. G., Reader, M. C., Plummer, D. A., and Shine, K. P.: The climate impact of past changes in halocarbons and CO₂ in the tropical UTLS region, *Journal of Climate*, 27, 8646–8660, 2014.
- Meinshausen, M., Smith, S. J., Calvin, K., Daniel, J. S., Kainuma, M. L., Lamarque, J.-F., Matsumoto, K., Montzka, S. A., Raper, S. C., Riahi, K., et al.: The RCP greenhouse gas concentrations and their extensions from 1765 to 2300, *Climatic Change*, 109, 213–241, doi: 10.1007/s10584-011-0156-z, 2011.
- 635 Mindlin, J., Shepherd, T. G., Vera, C., and Osman, M.: Combined effects of global warming and ozone depletion/recovery on Southern Hemisphere atmospheric circulation and regional precipitation, *Geophysical Research Letters*, 48, e2021GL092568, 2021.
- Ming, A., Maycock, A. C., Hitchcock, P., and Haynes, P.: The radiative role of ozone and water vapour in the annual temperature cycle in the tropical tropopause layer, *Atmospheric Chemistry and Physics*, 17, 5677–5701, 2017.
- Morgenstern, O., Hegglin, M. I., Rozanov, E., O'Connor, F. M., Abraham, N. L., Akiyoshi, H., Archibald, A. T., Bekki, S., Butchart, N.,
 640 Chipperfield, M. P., Deushi, M., Dhomse, S. S., Garcia, R. R., Hardiman, S. C., Horowitz, L. W., Jöckel, P., Josse, B., Kinnison, D., Lin, M., Mancini, E., Manyin, M. E., Marchand, M., Maréchal, V., Michou, M., Oman, L. D., Pitari, G., Plummer, D. A., Revell, L. E., Saint-Martin, D., Schofield, R., Stenke, A., Stone, K., Sudo, K., Tanaka, T. Y., Tilmes, S., Yamashita, Y., Yoshida, K., and Zeng, G.: Review of the global models used within phase 1 of the Chemistry–Climate Model Initiative (CCMI), *Geoscientific Model Development*, 10, 639–671, <https://doi.org/10.5194/gmd-10-639-2017>, 2017.
- 645 Muthers, S., Anet, J. G., Stenke, A., Raible, C. C., Rozanov, E., Brönnimann, S., Peter, T., Arfeuille, F. X., Shapiro, A. I., Beer, J., Steinhilber, F., Brugnara, Y., and Schmutz, W.: The coupled atmosphere-chemistry-ocean model SOCOL-MPIOM, *Geoscientific Model Development*, 7, 2157–2179, doi: 10.5194/gmd-7-2157-2014, 2014.
- Newman, P. A., Nash, E. R., and Rosenfield, J. E.: What controls the temperature of the Arctic stratosphere during the spring?, *Journal of Geophysical Research: Atmospheres*, 106, 19999–20010, 2001.
- 650 Nowack, P. J., Luke Abraham, N., Maycock, A. C., Braesicke, P., Gregory, J. M., Joshi, M. M., Osprey, A., and Pyle, J. A.: A large ozone-circulation feedback and its implications for global warming assessments, *Nature climate change*, 5, 41–45, 2015.
- Oehrlin, J., Chiodo, G., and Polvani, L. M.: The effect of interactive ozone chemistry on weak and strong stratospheric polar vortex events, *Atmospheric Chemistry and Physics*, 20, 10531–10544, 2020.
- Polvani, L. M., Previdi, M., and Deser, C.: Large cancellation, due to ozone recovery, of future Southern Hemisphere atmospheric circulation
 655 trends, *Geophysical Research Letters*, 38, 2011.
- Polvani, L. M., Wang, L., Abalos, M., Butchart, N., Chipperfield, M., Dameris, M., Deushi, M., Dhomse, S., Jöckel, P., Kinnison, D., et al.: Large impacts, past and future, of ozone-depleting substances on Brewer-Dobson circulation trends: A multimodel assessment, *Journal of Geophysical Research: Atmospheres*, 124, 6669–6680, 2019.
- Previdi, M. and Polvani, L. M.: Climate system response to stratospheric ozone depletion and recovery, *Quarterly Journal of the Royal
 660 Meteorological Society*, 140, 2401–2419, 2014.
- Purich, A. and Son, S.-W.: Impact of Antarctic ozone depletion and recovery on Southern Hemisphere precipitation, evaporation, and extreme changes, *Journal of Climate*, 25, 3145–3154, 2012.

- Rao, J. and Garfinkel, C. I.: Projected changes of stratospheric final warmings in the Northern and Southern Hemispheres by CMIP5/6 models, *Climate Dynamics*, 56, 3353–3371, 2021.
- 665 Revell, L. E., Bodeker, G. E., Huck, P. E., Williamson, B. E., and Rozanov, E.: The sensitivity of stratospheric ozone changes through the 21st century to N₂O and CH₄, *Atmospheric Chemistry and Physics*, 12, 11 309–11 317, 2012.
- Rieder, H. E., Chiodo, G., Fritzer, J., Wienerroither, C., and Polvani, L. M.: Is interactive ozone chemistry important to represent polar cap stratospheric temperature variability in Earth-System Models?, *Environmental Research Letters*, 14, 044 026, 2019.
- Shaw, T., Baldwin, M., Barnes, E. A., Caballero, R., Garfinkel, C., Hwang, Y.-T., Li, C., O’gorman, P., Rivière, G., Simpson, I., et al.: Storm 670 track processes and the opposing influences of climate change, *Nature Geoscience*, 9, 656–664, 2016.
- Shepherd, T. G.: Atmospheric circulation as a source of uncertainty in climate change projections, *Nature Geoscience*, 7, 703–708, doi: 10.1038/ngeo2253, 2014.
- Shepherd, T. G. and McLandress, C.: A robust mechanism for strengthening of the Brewer–Dobson circulation in response to climate change: Critical-layer control of subtropical wave breaking, *Journal of the Atmospheric Sciences*, 68, 784–797, 2011.
- 675 Sherwood, S., Webb, M. J., Annan, J. D., Armour, K. C., Forster, P. M., Hargreaves, J. C., Hegerl, G., Klein, S. A., Marvel, K. D., Rohling, E. J., et al.: An assessment of Earth’s climate sensitivity using multiple lines of evidence, *Reviews of Geophysics*, 58, e2019RG000 678, 2020.
- Shine, K. P., Bourqui, M., Forster, P. d. F., Hare, S., Langematz, U., Braesicke, P., Grewe, V., Ponater, M., Schnadt, C., Smith, C., et al.: A 680 comparison of model-simulated trends in stratospheric temperatures, *Quarterly Journal of the Royal Meteorological Society: A journal of the atmospheric sciences, applied meteorology and physical oceanography*, 129, 1565–1588, 2003.
- Simpson, I. R., Hitchcock, P., Seager, R., Wu, Y., and Callaghan, P.: The downward influence of uncertainty in the Northern Hemisphere stratospheric polar vortex response to climate change, *Journal of Climate*, 31, 6371–6391, 2018.
- Smith, K. L., Neely, R., Marsh, D., and Polvani, L. M.: The specified chemistry whole atmosphere community climate model (SC-WACCM), *Journal of Advances in Modeling Earth Systems*, 6, 883–901, 2014.
- 685 Solomon, S.: Stratospheric ozone depletion: A review of concepts and history, *Reviews of Geophysics*, 37, 275–316, <https://doi.org/https://doi.org/10.1029/1999RG900008>, 1999.
- Solomon, S., Ivy, D. J., Kinnison, D., Mills, M. J., Neely III, R. R., and Schmidt, A.: Emergence of healing in the Antarctic ozone layer, *Science*, 353, 269–274, 2016.
- Son, S.-W., Polvani, L., Waugh, D., Akiyoshi, H., Garcia, R., Kinnison, D., Pawson, S., Rozanov, E., Shepherd, T., and Shibata, K.: The 690 impact of stratospheric ozone recovery on the Southern Hemisphere westerly jet, *Science*, 320, 1486–1489, 2008.
- Son, S.-W., Tandon, N. F., Polvani, L. M., and Waugh, D. W.: Ozone hole and Southern Hemisphere climate change, *Geophysical Research Letters*, 36, 2009.
- Stenke, A., Schraner, M., Rozanov, E., Egorova, T., Luo, B., and Peter, T.: The SOCOL version 3.0 chemistry–climate model: description, evaluation, and implications from an advanced transport algorithm, *Geoscientific Model Development*, 6, 1407–1427, doi: 695 10.5194/gmd-6-1407-2013, 2013.
- Thiéblemont, R., Ayarzagüena, B., Matthes, K., Bekki, S., Abalichin, J., and Langematz, U.: Drivers and surface signal of inter-annual variability of boreal stratospheric final warmings, *Journal of Geophysical Research: Atmospheres*, 124, 5400–5417, <https://doi.org/10.1029/2018JD029852>, 2019.
- Virgin, J. and Smith, K.: Is Arctic Amplification Dominated by Regional Radiative Forcing and Feedbacks: Perspectives From the World- 700 Avoided Scenario, *Geophysical Research Letters*, 46, 7708–7717, 2019.

- Waugh, D. W., Randel, S. P., Newman, P. A., and Nash, E. R.: Persistence of the lower stratospheric polar vortices, *Journal of Geophysical Research: Atmospheres*, 104, 27 191–27 201, <https://doi.org/https://doi.org/10.1029/1999JD900795>, 1999.
- Waugh, D. W., Sobel, A. H., and Polvani, L. M.: What is the polar vortex and how does it influence weather?, *Bulletin of the American Meteorological Society*, 98, 37–44, doi: 10.1175/BAMS-D-15-00212.1, 2017.
- 705 WMO: Executive Summary. Scientific Assessment of Ozone Depletion: 2014, vol. GAW Report No. 55, European Commission, Geneva, Switzerland, 2014.
- WMO: Executive Summary. Scientific Assessment of Ozone Depletion: 2018, vol. GAW Report No. 58, European Commission, Geneva, Switzerland, 2018.
- 710 WMO: Executive Summary. Scientific Assessment of Ozone Depletion: 2022, vol. GAW Report No. 278, European Commission, Geneva, Switzerland, 2022.
- Young, P. J., Harper, A. B., Huntingford, C., Paul, N. D., Morgenstern, O., Newman, P. A., Oman, L. D., Madronich, S., and Garcia, R. R.: The Montreal Protocol protects the terrestrial carbon sink, *Nature*, 596, 384–388, 2021.
- Zilker, F., Sukhodolov, T., Chiodo, G., Friedel, M., Egorova, T., Rozanov, E., Sedlacek, J., Seeber, S., and Peter, T.: Stratospherically induced tropospheric circulation changes under the extreme conditions of the No-Montreal-Protocol scenario, *EGUsphere*, 2023, 1–29, 2023.