

Asymmetries in ~~winter~~ cloud microphysical properties ascribed to sea ice leads via water vapour transport in the central Arctic

Pablo Saavedra Garfias¹, Heike Kalesse-Los¹, Luisa von Albedyll², Hannes Griesche³, and Gunnar Spreen⁴

¹Institute for Meteorology, Faculty of Physics and Geosciences, University of Leipzig, Leipzig, Germany

²Alfred Wegener Institute, Helmholtz Centre for Polar and Marine Research, Bremerhaven, Germany

³Leibniz Institute for Tropospheric Research (TROPOS), Leipzig, Germany

⁴Institute of Environmental Physics, University of Bremen, Bremen, Germany

Correspondence: Pablo Saavedra Garfias (pablo.saavedra@uni-leipzig.de)

Abstract. To investigate the influence of sea ice openings like leads on wintertime Arctic clouds, the air mass transport is exploited as heat and humidity feeding mechanism which ~~modifies cloud properties like total water content, cloud phase partitioning, cloud altitude, and thickness.~~ can modify Arctic cloud properties. Cloud microphysical properties in the Central Arctic are analyzed as a function of sea ice conditions during the Multidisciplinary drifting Observatory for the Study of Arctic Climate (MOSAiC) expedition in 2019-2020. ~~A state-of-the-art cloud~~ The Cloudnet classification algorithm is used to characterize the clouds based on ~~observations by vertical pointing lidar, radar, microwave radiometer, remote sensing observations~~ and atmospheric thermodynamic state from the observatory on board the research vessel RV *Polarstern*. To link the sea ice conditions around the observational site with the cloud observations, the water vapor transport (WVT) being conveyed towards the RV *Polarstern* has been ~~exploited as a~~ utilized as mechanism to associate upwind sea ice conditions ~~upwind~~ with the measured cloud properties. This novel methodology is used to classify the observed clouds as coupled or decoupled to the WVT based on the location of the maximum vertical gradient of WVT height relative to the cloud-driven mixing layer ~~extending above and below the cloud top and base, respectively.~~ Only a conical sub-sector of sea ice concentration (SIC) and lead fraction (LF) centered at the RV *Polarstern* location and extending up to 50 km radius and azimuth angle governed by the time-dependent wind direction measured at the maximum WVT is related to the observed clouds. We found significant asymmetries for cases when the clouds are coupled or decoupled to the WVT, and ~~when cases are~~ selected by LF regimes. Liquid water path of low level clouds is found to increase as a function of LF while ice water path does so only for deep precipitating systems. Clouds coupled to WVT are found to ~~be low level clouds and are thicker~~ generally have lower cloud base and larger thickness than decoupled clouds. Thermodynamically, ~~we found that~~ for coupled cases the cloud top temperature is warmer and accompanied by a temperature inversion at cloud top, whereas the decoupled cases are found to ~~closely be~~ be closely compliant with the moist adiabatic temperature lapse rate. The ice water fraction within the cloud layer has been found to present a noticeable asymmetry when comparing coupled versus decoupled cases. This novel approach of coupling sea ice to cloud properties via the WVT mechanism unfolds a new tool to study Arctic surface-atmosphere processes. With this formulation long-term observations can be analyzed to enforce the statistical significance of the asymmetries. ~~Our~~ Furthermore, our results serve as an

25 opportunity to better understand the dynamic linkage between clouds and sea ice and to evaluate its representation in numerical climate models for the Arctic system.

Copyright statement. TEXT

1 Introduction

Cloud processes are among the major factors influencing the Arctic climate system. Compared to lower latitudes, Arctic clouds are more commonly occurring as mixed-phase clouds (MPC). MPC consist of ice crystals co-existing with supercooled liquid droplets and are predominantly located at low atmospheric levels (Mioche et al., 2015; Gierens et al., 2020; Korolev and Milbrandt, 2022). Because of their ubiquitous nature, MPC have a dominant role in important processes like precipitation and the surface radiative energy balance (Korolev and Milbrandt, 2022). The latter is particularly relevant during wintertime since it has been established that MPC have a significant impact in causing surface longwave radiative warming. This results in reducing the surface cooling rates thus being linked to the rapid Arctic warming (Serreze and Barry, 2011; Wendisch et al., 2017), which results in a wintertime Arctic amplification factor. In the central Arctic this factor is about 2.5 times higher than the current Earth's global warming signal (Wendisch et al., 2023).

There are still limitations on the understanding of the Arctic's persistent low-level MPC due to their counter-intuitive longevity despite instabilities arising from a variety of microphysical and dynamical processes. Surface-related interactions that foster turbulent and cloud-scale upward air motion are highlighted as important processes to maintain MPC under weak synoptic scale forcing (Morrison et al., 2012). Surface turbulence-driven heat and moisture exchange via updrafts can lead to relative humidity increases. These updrafts, when intense enough, can lead to situations of supersaturation with respect to liquid water, hampering the ice growing at the expense of liquid but instead fostering the simultaneous growth of ice particles and supercooled liquid droplets. When dynamic forcing is absent, MPC are generally unstable (Korolev and Milbrandt, 2022) and prone to ice growth at the expense of vapour deposition as expected from the ~~Bergeron-Findeisen process~~ (Bergeron, 1935; Findeisen, 1938) Wegener-Bergeron-Findeisen process (Wegener, 1911; Bergeron, 1935; Findeisen, 1938). Feed-back processes between the surface and clouds can foster the resilience of mixed-phase clouds when being dynamically coupled to the surface. In addition, local feedbacks among clouds, radiation, and turbulence together with moisture intrusions can lead to the persistence of MPC even in cases when the cloud is decoupled from the surface's energy and moisture sources (Morrison et al., 2012). Sources of surface energy and moisture in the Arctic are patches of open-water in the form of polynyas or leads in the otherwise closed sea ice pack, ~~such as polynyas or leads~~.

As defined by the World Meteorological Organization (WMO), leads are elongated areas of open water within the thick pack ice ranging from tens to hundreds of meters in width and tens to hundreds of kilometers in length. In the wintertime, leads are the natural sources of substantial heat and moisture flux thus warming the atmospheric boundary layer by transferring latent and sensible heat from the ocean to the atmosphere. In wintertime this process is governed by a large temperature

55 difference between the air and water, and increases the atmospheric stability over ice floes (Lüpkes et al., 2008; Chechin et al., 2019), whereas in summertime the ocean and air temperatures are quite similar around 0°C. Furthermore, as Lüpkes et al. (2008) concluded, when sea ice concentration is above 90% during winter, a change of 1% in sea ice concentration causes a temperature signal of +3.5 K on the near surface atmospheric temperature. Therefore leads provide an efficient mechanism to modify the atmospheric boundary layer to create unstably stratified conditions in contrast to the atmosphere
60 over the surrounding ice which is stratified stably (Andreas and Cash, 1999; Michaelis and Lüpkes, 2022). The extreme heat fluxes over leads are typically two orders of magnitude higher than over sea ice in winter (Andreas, 1980). As reported by Creamean et al. (2022), sampled concentrations of ice nucleating particles (INP), which are important for cloud processes, coincide with the occurrence of sea ice leads and melt ponds. Therefore leads and melt ponds can be thought as sources of nucleating particles necessary for cloud formation. However, the occurrence of melt ponds happens during the Arctic summer
65 mainly after May, when air temperature is close to 0°C or even slightly above (Creamean et al., 2022), which makes melt ponds not very efficient as sources of sensible heat in contrast to sea ice leads. This is one reason the present manuscript focuses in the wintertime, thus the effects by leads can be stressed and better isolated from the cloud observations.

Recent studies based on the analysis of lead fraction of 200 km around the North Slope of Alaska, in Utqiagvik, have shed light on the more complex interactions between leads and low-level clouds in the Arctic. Li et al. (2020a, b) found that although
70 open leads foster the creation of low-level clouds; newly re-frozen leads tend to promote the dissipation of low-level clouds due to the cut-off of moisture while heat supply is still on-going. This counterintuitive result emphasizes the need to study the interaction of sea ice leads with clouds at smaller scales.

The Multidisciplinary drifting Observatory for the Study of Arctic Climate (MOSAiC) expedition from October 2019 to September 2020 was an international effort to study and characterize all aspects of the Arctic atmospheric-sea ice, ocean,
75 ecology, and bio-geochemistry system in unprecedented detail, using a variety of approaches, and across multiple scales (Shupe et al., 2022; Nicolaus et al., 2022). MOSAiC is the most comprehensive measurement program conducted over the central Arctic. The obtained data provides the optimal framework to study coupled systems such as the interaction of sea ice leads and low-level clouds. This gives us the opportunity to scrutinize the effects induced by the occurrence of leads on low-level clouds and characterize the differences in cloud properties when leads are coupled or decoupled to the clouds.

80 The manuscript is structured as followed: In [Seet.Section 2](#) the set of instrumentation used for this study on board of RV *Polarstern* is presented. Section 3 gives a detailed description of the methodology developed for the study and applied to a case study as an example is presented in [Seet.Section 4](#), 4.1. The whole MOSAiC wintertime period is statistically analyzed and the statistical results for November 2019-April 2020 are presented in [Seet.Section 4](#), 4.2. Conclusions and an outlook are given in [Seet.Section 5](#). Supporting material for definitions, methodology, data processing, and further statistical results are
85 summarized in the Appendix.

2 Instrumentation and data products

The suite of atmospheric remote sensing instrumentation on board of the RV *Polarstern* relevant for this study is mainly comprised of the Atmospheric Radiation Measurement (ARM) mobile facility AMF-1 of the US Department of Energy (www.arm.gov) and the OCEANET-Atmosphere container (hereafter referred to as OCEANET) of the Leibniz Institute for Tropospheric Research (TROPOS); (Engelmann et al., 2016). The list of instrumentation and data products utilized in this manuscript, along with their spatial and temporal resolutions, and references is summarized in Table 1. An extensive and detailed description of data availability of all MOSAiC instrumentation can be found in (Shupe et al., 2022, Table B1) [Shupe et al. \(2022\) Table B1](#).

2.1 Ground-based atmospheric remote sensing

The primary set of ship-based remote sensing instruments for the observation and characterization of clouds are the ARM Ka-band zenith-pointing cloud radar (KAZR), a ceilometer (from ARM) as well as a PollyXT lidar and a microwave radiometer (MWR) [HATPRO \(of type Humidity and Temperature Profiler \(HATPRO\)\)](#), both from TROPOS and installed in the OCEANET-container).

Figure 1 shows a typical synergy of observations by the KAZR cloud radar, the PollyXT lidar and the MWR for the case study of 18 November, 2019. These synergistic observations together with the atmospheric thermodynamic information provided by weather models are imperative for the cloud type classification and retrieval algorithms for cloud macro- and micro-physics as explained in [Sect. Section 3.1](#).

Table 1. Specifications of instrumentation and data products used in this study.

RV <i>Polarstern</i> central observatory					
Instrument/VAP	Full name	Variables/Products *	Resolution		Reference
			time	range	
HATPRO	passive microwave radiometer	LWP, IWV	1 s	-	Ebell et al. (2022)
KAZR	Ka-band cloud radar	Z_e , V_D , S_w , LDR	3 s	30 m	Johnson et al. (2020)
PollyXT	Multi-wavelength Raman Lidar	β ,	30 s	7.5 m	Engelmann et al. (2016)
CEIL10m	Ceilometer 10m	β , CBH	16 s	10 m	Zhang et al. (2020)
INTERPSONDE	Interpolated Radiosonde	T, P, q_v , V	1 min	20 m	Jensen et al. (2020)
GND_IRT	Ground Infrared Thermometer	T_{gnd}	1 min	-	Howie and Morris (2020)
Space-borne sensors					
MODIS-AMSR2	*	SIC	1 day	1.0 km	Ludwig et al. (2020)
Sentinel-1A SAR	*	LF, DIV	1 day	700 m	von Albedyll and Hutter (2022)

* See appendix D3 for full definition of acronyms.

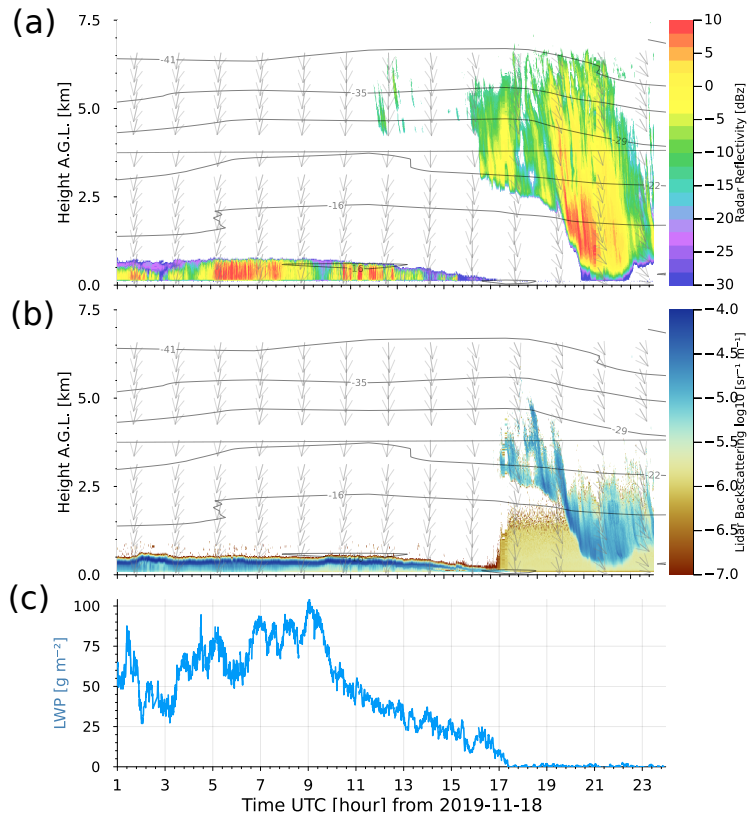


Figure 1. Synergistic observations with atmospheric remote-sensing instruments on board of the RV *Polarstern* from 18 November, 2019 during MOSAiC. (a) KAZR cloud radar reflectivity factor; (b) PollyXT lidar backscattering coefficient; (c) microwave radiometer liquid water path (LWP). Shown isotherms (horizontally aligned) and wind vectors (vertical profile lines) were obtained from radiosonde data at selected altitudes and time steps.

2.2 Radiosondes

For the characterization of the atmospheric thermodynamic state, the main information is obtained from radiosondes launched from the RV *Polarstern* (Maturilli et al., 2021). For this study the high-resolution ARM Value Added Product (VAP) interpolated sonde INTERPONDE is being used. The INTERPONDE is obtained from linear interpolation of the atmospheric state variables from consecutive soundings into a fixed two-dimensional (2-D) time-height grid. The height and time resolutions are 20 m and 1 minute, respectively. The grid extends from 10 m up to 40 km altitude (Jensen et al., 2020). In order to account for the thermodynamic interaction between the surface and the atmosphere, in this study the radiosonde vertical profile has been merged with the Ground Infrared Thermometer (GND_IRT; Howie and Morris (2020)) as proxy for surface skin temperature T_{gnd} [K] which was assigned to altitude zero meters in the radiosonde profile.

Relevant atmospheric state variables needed for our methodology are provided or calculated from the radiosonde, e.g., pressure P [Pa], air temperature T [$^{\circ}\text{C}$], specific and relative humidity q_v [$g g^{-1}$], relative humidity [%], wind speed [$m s^{-1}$],

and wind direction [degrees] (see Table 1 and references therein). Derived atmospheric state quantities are virtual potential temperature (θ_v) [K], water vapour transport (WVT) [$\text{kg s}^{-1} \text{m}^{-2}$], bulk Richardson number (Ri_b), planetary boundary layer height (PBLH) [m], and cloud-driven mixing layer height (CMLH) [m] above cloud top and below cloud base.

2.3 Satellite-based information for sea ice conditions

Space-borne sensors are the main source of information for long-term and large-scale monitoring of sea ice conditions in the Arctic. For this study, two main sea ice state variables are used: sea ice concentration (SIC), and lead fraction (LF).

2.3.1 Sea ice concentration

For the observation of sea ice concentration, satellite-borne instruments like the Advanced ~~Scanning Microwave~~ Microwave Scanning Radiometer 2 (AMSR2) and the Moderate Resolution Imaging Spectrometer (MODIS) are the most reliable instruments in terms of spatial and temporal continuity. These types of instruments, however, have limitations intrinsic to their measurement principles. AMSR2 is a microwave radiometer that is less influenced by clouds than optical sensors and has a good spatial coverage but is limited by its low spatial resolution of about 4 km at 89 GHz or coarser at lower frequencies. On the contrary, MODIS is an optical sensor and offers a higher spatial resolution of 1 km but its observations are restricted to cloudless conditions. In order to exploit the best features of both sensors, Ludwig et al. (2020) have developed a merged 1 km MODIS-AMSR2 product by tuning SIC from the MODIS 1 km resolution to preserve the AMSR2 average SIC.

The merged MODIS-AMSR2 sea ice product is of particular relevance for the present study since it provides the benefit of potentially detecting open water leads within sea ice due to its finer resolution. We note that leads covered with thin ice, which happens during winter conditions, are not necessarily detected. Nevertheless, for instance, the south-north aligned sea ice lead on 15 April 2020 observed by Sentinel-1 SAR (Krumpfen et al., 2021, Fig. 3), is resolved by the MODIS-AMSR2 SIC retrieval (Ludwig et al. (2020)), but not by the 25 km resolution Ocean and Sea Ice Satellite Application Facility (OSI-SAF) product (Lavergne et al., 2016) as shown in Fig. D2 (a) and D2 (b), respectively.

Nonetheless, a recent study by Rückert et al. (2023) has shown that warm air intrusion events occurring during the MOSAiC drift in April 2020, have fostered the formation of a large-scale surface glazing resulting in an underestimation of SIC retrievals of about 30% which compromise the accuracy of the ASI algorithm used by the AMSR2 retrievals (Spren et al., 2008), thus affecting also the MODIS-AMSR2 product. Therefore, in order to evaluate the accuracy of the MODIS-AMSR2 product an alternative SIC product needs to be used. Here, the OSI-SAF SIC product (Lavergne et al., 2016) was chosen, mainly because of its availability, coverage and higher accuracy during MOSAiC for April 2020 as shown by Rückert et al. (2023). The details of the MODIS-AMSR2 SIC versus OSI-SAF product evaluation are described in Appendix C.

2.3.2 Divergence-derived sea ice lead fraction

The Satellites Sentinel-1 A/B from the European Space Agency use active microwave Synthetic Aperture Radar (SAR) in C-band to capture the microwave properties of the sea ice. They are a valuable source to detect leads.

While the most common application is to classify leads from the backscatter coefficient of the SAR scenes (e.g. Murashkin et al. (2018)), there is another approach that focuses on the formation process of the leads as seen in sea ice divergence (e.g., Kwok (2002), von Albedyll (2022)).

By calculating sea ice drift and sea ice divergence from sequential SAR scenes, leads show up in the sea ice divergence whenever the ice moved apart from each other. Such lead fractions from SAR-derived sea ice divergence have the advantage that they indicate the strong local change in ice velocity when a lead opens. They indicate the exact location of leads, are independent of cloud coverage and their magnitude is directly linked to the widths of the leads without requiring sensor calibration (Kwok, 2002).

Here, LF is calculated from divergence as described in von Albedyll et al. (2021) and von Albedyll (2022). The results are interpreted as the average LF per grid cell which is subsequently drift-corrected and rendered with a spatial resolution of 700 m. One limitation on the lead detection by the divergence-based method is that only detects new openings. Stationary leads, i.e. leads that do not open or close further, are not detected on the following days after the formation even though the leads still exists. Those stationary leads during winter will likely be covered by thin ice. Figure 2 shows a comparison of MODIS-AMSR2 and SAR SENTINEL-1 sensors for the sea ice situation on 18 November, 2019 around RV *Polarstern*, illustrating the contrasting capabilities of MODIS-AMSR2 SIC (Fig. 2, a) and SENTINEL-1 divergence-based LF (Fig. 2, b) ~~provide~~ provided to reveal in the sea ice.

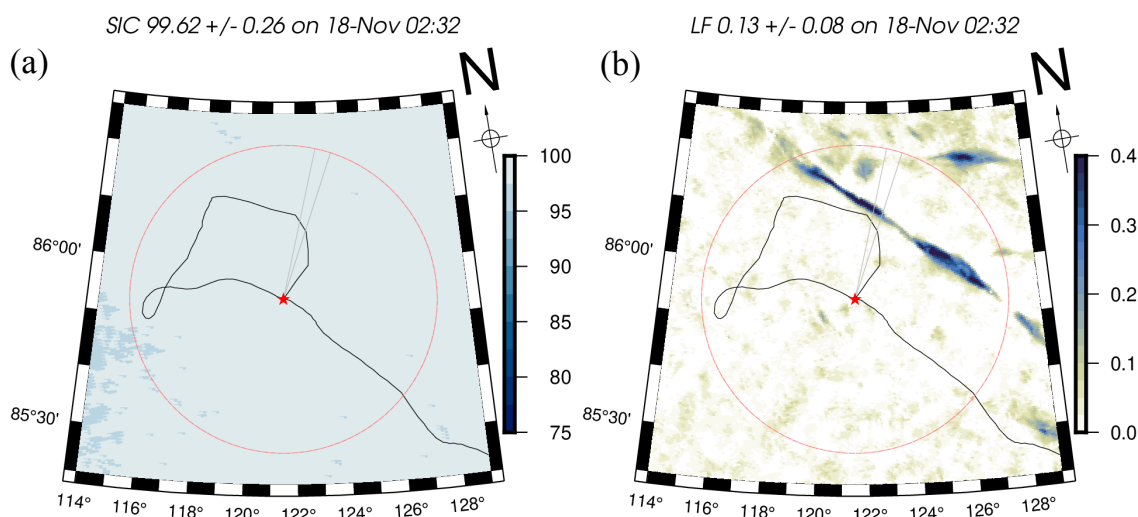


Figure 2. (a) SIC from MODIS-AMSR2 merged product from 18 November, 2019. (b) Lead fraction from SAR SENTINEL-1. The images are centered at the position of the RV *Polarstern* (red star) at the given date. The RV drift is indicated by the black line, the circle indicates the 50 km radius as region of interest. The grey cone indicates the relevant observation sector determined by the wind direction at the maximum water vapour transport (see text [Sect. Section 3.4](#)).

160 LF from SAR divergence-based data is available for the study period, except for the time between 14 January and 15 March 2020 (vertical dashed-grey lines in Fig. 3), when the RV *Polarstern* was north of the latitudinal coverage extending up to 87 °N

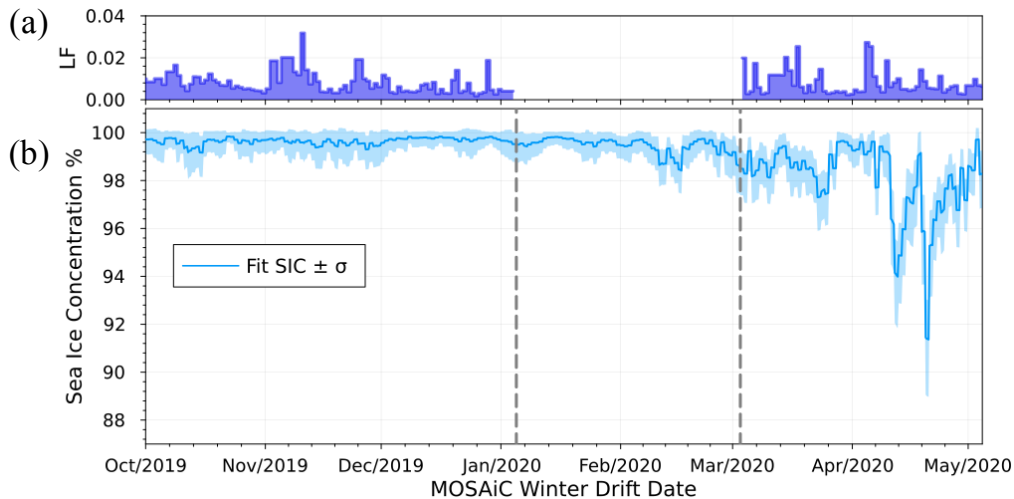


Figure 3. (a) Lead fraction (LF) estimated from SAR SENTINEL-1 divergence product within 50 km around RV *Polarstern* central observatory position, note the gap due to a lack of satellite overpasses at RV *Polarstern* latitude from 14 January 2019 to 13 March 2020; (b) Average fitted sea ice concentration (SIC) from MODIS-AMSR2 retrievals (blue). Shaded area corresponds to the SIC standard deviation of all pixels within 50 km.

of the Sentinel-1 satellite. To extract the mean LF of a certain region, e.g., 50 km around RV *Polarstern* (Fig. 3, top panel), the average of all grid cells that are located completely or partly in the region of interest are calculated.

3 Methodology

165 The present study focuses on the MOSAiC expedition from the 1st to 3rd leg which ranged from 11 October, 2019 to 16 May, 2020 thus covering the main part of the transpolar drift though the central Arctic (Nicolaus et al., 2022; Shupe et al., 2022).

To obtain the relevant metrics used to identify the cloud properties that can be associated with effects induced by the presence or absence of sea ice leads, two Arctic observables need to be linked, namely the clouds and the sea ice. This section details the methods applied for this purpose.

170 The conceptual model proposed to identify ~~eases the influence~~ of sea ice leads ~~with a potential to influence on~~ the cloud properties observed aloft the RV *Polarstern* 's central observatory (~~CO~~) is depicted in Fig. 4 and described as following:

- leads occurring spatially distributed within 50 km radius around RV *Polarstern*, are considered (Nicolaus et al., 2022),
- leads release energy in form of heat and moisture to the atmosphere (Andreas, 1980; Michaelis and Lüpkes, 2022),
- this release of energy can initiate a flux of water vapour along the wind direction or feed the already present horizontal water vapour transport (WVT) in the atmosphere,
- given the proper wind direction that WVT can move towards the RV *Polarstern* location,

- the WVT might favor the formation of new clouds or interact with already existing clouds by changing their properties,
- these clouds are then observed at the RV *Polarstern* [EOcentral observatory](#).

According to this concept, the water vapour transport is an important component which serves as linking mechanism between
 180 sea ice leads and the clouds properties observed above the [EOcentral observatory](#).

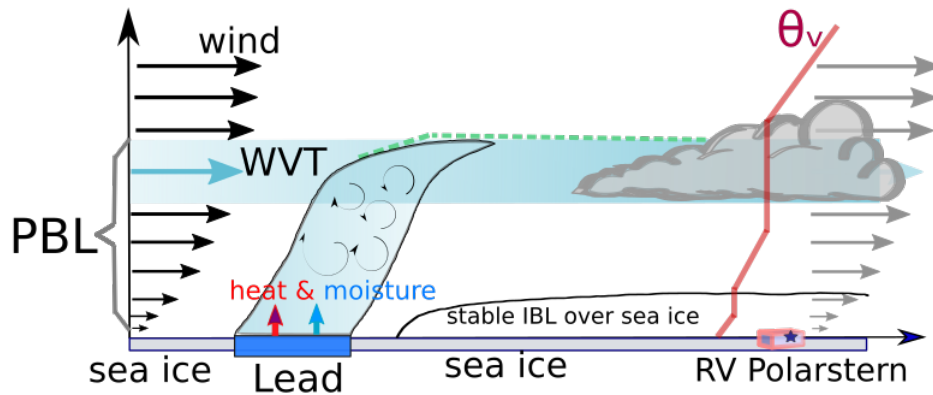


Figure 4. Conceptual model explaining how the presence of a sea ice lead can interact with the cloud observed above RV *Polarstern*. Water vapour transport (WVT) serves as conveyor belt for the latent and sensible heat released by the lead which can influence the cloud over the measurement site. [The thermodynamic and wind profiles are observed above RV Polarstern and considered constant up to the lead location.](#) PBL stands for planetary boundary layer and IBL for intermediate boundary layer.

3.1 Cloud classification

The suite of remote sensing instruments, outlined in [Seet.Section 2.1](#), observing the atmospheric state in zenith-pointing direction are the main source to estimate relevant cloud properties. Several procedures and algorithms have been developed
 185 to perform atmospheric target classifications based on synergistic ground-based remote sensing observations (e.g., Shupe (2007), Wang et al. (2020)). Here we make use of the Cloudnet processing chain introduced by Illingworth et al. (2007). Cloudnet is an advanced classification algorithm specifically designed for the continuous evaluation of operational models using state-of-the-art ground-based instruments, Cloudnet not only provides the atmospheric target and cloud phase classification but also an accurate prediction of the vertical and horizontal distribution of cloud micro-physical properties like ice
 190 and liquid water content (IWC, LWC; respectively) which are analyzed in [Seet.Section 4](#). Basic requirements for the application of Cloudnet processing routines are of having observations from a backscattering lidar, a microwave radiometer and a

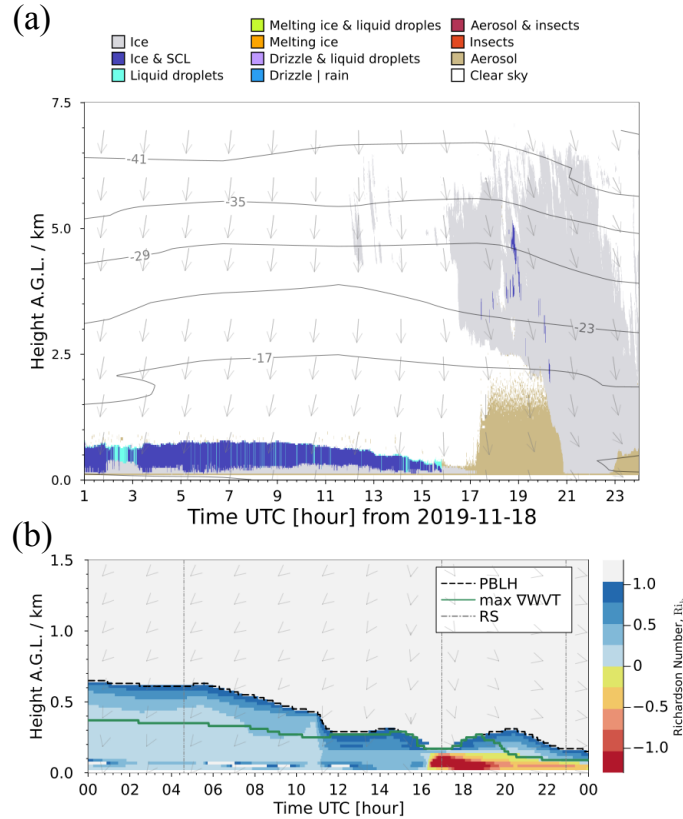


Figure 5. (a) Cloudnet classification for RV *Polarstern* observations on 18 Nov, 2019. Iso-therms and wind vectors are obtained from radiosonde profiles. Top colour coded boxes indicate the type of target classification. (b) Profile of the bulk Richardson number. The selected Ri_c is visualized by black-dashed line as PBLH. The dark-green line indicates the location of maximum ∇WVT within the PBLH. Radiosonde launch times are indicated as vertical dash-dotted lines (RS). Wind direction profile is indicated by arrows.

Doppler cloud radar. Cloudnet is continuously being improved and developed by a large community of users under an open-source scheme (<https://cloudnet.fmi.fi>) hosted by the Finnish Meteorological Institute and coordinated by the ACTRIS initiative (<https://www.actris.eu>). Cloudnet has been selected as classification algorithm for this study in its open source version developed by the ACTRIS consortium (Tukiainen et al., 2020). Table 2 lists the input parameters and retrieval products obtained from Cloudnet, and Table 1 the instrumentation used with Cloudnet in the present work.

Figure 5 (a) synthesizes an example of Cloudnet classification capabilities adapted to observations during MOSAiC. In addition to the target classification, The presented case study of 18 November, 2019 shows that the stratiform low-level cloud present until 17:00 UTC mostly consists of a mixture of supercooled liquid droplets and ice particles while the deep cloud system (present from 19:00 UTC onwards in Fig. 1) is mostly classified as ice-only.

A limitation of the Cloudnet classification and other synergistic retrievals happens in situations when the liquid cloud base is located below the ~~lowest range gate defined as the height where all instruments are available~~ first radar range gate, meaning

the lidar signal is attenuated by low-level liquid clouds. This hampers the proper classification of liquid layers for which a lidar signal is required, hence all clouds are classified as pure ice clouds. This situation can be seen, for example, in Fig. 7 (b) from 16:00 to 17:00 UTC and Fig. D1 (b, from 14:30 to 18:00 UTC). For the MOSAiC wintertime period, about 29% of observed clouds were found to have bases below the first radar range gate and identified as occurrence of, they were classified as low-level stratus according to the methodology developed by Griesche et al. (2020) based on information from the signal-to-noise-ratio of the PollyXT 532 nm near range channel.

Table 2. [Cloudnet product specifications and reference for retrieval methods.](#)

Product	Uncertainty	Input parameter (Instrument)	Reference
Liquid water content	15%	LWP (MWR) Z_e (cloud radar) T, p (radiosonde) β (lidar) [for liquid identification]	Frisch et al. (1998)
Ice water content	-30% ... 50%	Z_e (cloud radar) T (radiosonde)	Hogan et al. (2006)
Liquid droplet effective radius	15%	Z_e cloud radar β (lidar) [for liquid identification]	Frisch et al. (2002)
Ice crystal effective radius	42% ... 71%	Z_e (cloud radar) T (radiosonde)	Griesche et al. (2020) Hogan et al. (2006)

3.2 Atmospheric water vapour transport

The transport of air masses in the atmosphere is the main mechanism for the interaction of water vapour with the cloud characterized as in [Seet. Section 3.1](#). One widely-used concept to describe intense filament-like vapour transport in the atmosphere is the one of Atmospheric Rivers (AR); (Martin-Ralph et al., 2020). Typically, either the vertically integrated -water vapour (IWV) or -vapour transport (IVT) defined by Eq. B1 in Appendix B are analyzed to characterize ARs. Commonly AR are identified whenever vapour flux exceeds a defined threshold relative to the zonal mean (Martin-Ralph et al., 2020; Zhu and Newell, 1998). One disadvantage of both AR characteristic variables is that IVT - being an integrated quantity - does not carry the information about the location of vapour transport in the vertical or whether one or multiple layers of vapour fluxes are present at different altitudes. The same is true for the IWV, with an additional limitation being that IWV is a wind-independent variable thus no transport is implicit with this metric.

For the present study, however, it is of main interest to monitor the transport of water vapour in the lower layers of the atmosphere where the interaction with sea ice or open ocean is mostly taking place. That is why a detailed analysis of the vertical changes of vapour transport in the lower atmosphere becomes of paramount interest to locate where the most relevant flux is located. To do so, we derive the vertical gradient of WVT starting from the standard definition of IVT (Martin-Ralph et al., 2020) given by Equation B1 detailed in Appendix B. The vertical gradient of WVT (∇ WVT) is calculated using

225 radiosonde profiles of specific humidity q_v [$g\ g^{-1}$], horizontal wind speed v_w [$m\ s^{-1}$], and air pressure P [Pa] ~~from radiosonde~~
~~profiles with all these at~~ altitudes z [m], following Eq. 1 whose detailed derivation is described in Appendix B:

$$\nabla WVT = -\frac{10^2}{g} |q_v \cdot v_w| \frac{dP}{dz} \quad (1)$$

where g is the constant of gravity, and $nabla$ indicates the vertical gradient.

The advantage of using Eq. 1 is threefold: First, the altitudes at which local maximums of WVT occur can be identified separately from the flux $|q_v \cdot v_w|$ profile; second, there is no need for thresholds to identify whether or not a layer of WVT
 230 is present (as is the case for IVT); and third, the derivative component $\frac{dP}{dz}$ behaves as a weighting factor (inverse exponential with altitude) that naturally gives more weight to fluxes at the lowest layers and diminishes the upper ones where meso-scale AR are more likely to be present. To constrain the relevant atmospheric layer even more, the ∇WVT profile is analyzed only below the planetary boundary layer height (PBLH, estimation is explained in the following subsection). This allows to dismiss ∇WVT peaks that are less likely to have interacted with sea ice in the vicinity of the RV *Polarstern*.

235 3.2.1 Estimation of the Planetary Boundary Layer Height

The Richardson number is defined as the ratio of turbulence associated with buoyancy to that associated with mechanical shear. This ratio resolved at increasing altitudes above surface level is known as the gradient Richardson number (Ri) and it is widely used to estimate the planetary boundary layer (PBL). However, when the atmospheric turbulence profile cannot be resolved with measurements at sufficiently high spatial and temporal resolution to resolve small scale turbulence - as in the case with
 240 sounding the atmosphere - it is more convenient to use the bulk Richardson number (Ri_b) as a good indicator of the stability conditions in the atmosphere. The bulk Richardson number is defined as in Eq. 2:

$$Ri_b(z) = \frac{g}{\theta_v} \frac{\Delta\theta_v \Delta z}{(\Delta u)^2 + (\Delta v)^2} \quad (2)$$

where g is the constant of gravity acceleration $9.81\ [m\ s^{-2}]$, θ_v is the virtual potential temperature profile [K], $\Delta\theta_v = \theta_v - \theta_v(z_0)$, $\Delta u = u - u_0$, and $\Delta v = v - v_0$, the horizontal wind components [$m\ s^{-1}$]. The $\Delta z = z - z_0$ with z the altitude of the
 245 atmosphere layers [m] and the subscript 0 indicates the surface reference.

The atmospheric stability is characterized by a range values of Ri_b, with Ri_b < 0 indicating an unstable and turbulent atmosphere, Ri_b < Ri_c neutral atmosphere and Ri_b ≥ Ri_c a stable with almost all turbulence diminished; with Ri_c being the critical Richardson number. To estimate the PBLH by means of the Ri_b, the standard procedure relies on applying Ri_c as threshold that defines the layer above which the atmosphere is considered to be non-turbulent and laminar. The most common
 250 Ri_c used value is 0.25 although there is a wide range of values that can be found in the literature spreading from 0.1 to 1. For this study the Ri_b has been calculated using the radiosonde data and the T_{gnd} ground infrared thermometer (GND_TIR) as surface skin temperature to estimate $\theta_v(z_0)$. For the purpose of this study an exact estimation for PBLH is not crucial but rather a rough approximation is useful to be used as atmospheric layer top to be considered for the determination of the altitude at which ∇WVT reaches local maximum. The top of the PBL is then considered to be located at the altitude when the condition

255 $Ri_b \geq 1$ is first met, with 1 being a rather conservative critical value to cover most of the relevant mixing layers for the Arctic winter atmosphere.

In Fig. 5 (b) the atmospheric stability based on the bulk Richardson number given by Eq. 2 and calculated from the ARM INTERPSONDE product is depicted for the Nov 18, 2019 case study. The atmospheric stability is colour-coded by light- to dark-blue colours ($0 < Ri_b < Ri_c$) for statically stable to neutral atmosphere. Above the critical values $Ri_c = 1$ (light-grey) 260 the atmosphere is not considered to be significantly turbulent anymore, therefore the cloud within or above this level does not have potential to mix with the layers below. Unstable atmospheric conditions are highlighted by the yellow-to-red colours corresponding to sub-zero Ri_b which, for the case of 18 November, 2019, occur once the wind direction shifts to northerly and northwesterly directions and the deep cloud system is observed above RV *Polarstern*. For this case, the maximum of ∇WVT within the PBLH varies between 0.1-0.4 km which is depicted by the solid green line in Fig. 5 (b).

265 In the following section, it is explained how ∇WVT is being exploited as the mechanism responsible for the interaction between sea ice or open ocean and the clouds observations above RV *Polarstern*.

3.3 Cloud coupling

3.3.1 Cloud mixing layer

The cloud-driven mixing layer below the cloud base is determined by calculations based on the degree of variability of the 270 virtual potential temperature θ_v profile (Eq. A1). A quasi-constant θ_v profile below cloud base height (CBH) implies a well-mixed layer. A departure from quasi-constant θ_v indicates a thermodynamic inversion, thus decoupling from the layer beneath.

To estimate the cloud mixing-layer height (CMLH) the relative variability of θ_v starting at cloud base downwards is analyzed. This concept has been extensively utilized by Sotiropoulou et al. (2014) and Gierens et al. (2020) for classification of surface coupled clouds. The criteria used in this study consists of calculating the cumulative variance of $\theta_v(i)$ ($\sigma_{\Sigma}^2(z)$ defined by 275 equation A2) starting from cloud base towards the surface level or $i=0$. Thus CMLH is equal to z at which the criteria $\sigma_{\Sigma}^2(z) \geq 0.01 \text{ K}^2$ is first met. The same procedure is applied to estimate the cloud-driven mixing layer above cloud top. The CMLH below and above cloud-base and -top are quantities used to estimate the coupling or decoupling state of the cloud with the water vapour transport as described in the following section.

3.3.2 Cloud coupling classification

280 The observations are sorted into two classes depending on the likelihood of interaction between the sea ice situation **down-wind** upwind with the cloud observed aloft, and linked by the water vapour transport as conveying mechanism for moisture and sensible heat to the clouds above the **Central observatory**, i.e., whether or not the WVT is coupled or decoupled to the cloud. A cloud observation is considered to be coupled to WVT when the location of maximum ∇WVT is found to meet one of the following criteria: be in the cloud, or between the cloud's CMLH below and above cloud-base and -top, respectively. 285 Conversely it is considered decoupled when the maximum of ∇WVT happens to be either above the cloud top's CMLH **of** or below cloud base's CMLH. Those cases are illustrated in Fig. 6 for coupled (a and c), and decoupled (c) situations. It is

important to note that in the present study we are departing from the canonical concept of surface-cloud coupling generally found in the literature. This is due to the fact that the location of sea ice lead occurrence is not strictly co-located with the position of the RV *Polarstern* (see for instance Fig. 2 and D2), thus the sea ice-cloud interaction is not expected to be-take place vertically within a static column, but rather dynamically ascribed by the air mass movement from afar. Moreover, the persistence presence of a surface temperature inversion in the Arctic makes the case of a vertically static column cloud-surface coupled a rare event.

Hence our definition of sea ice-cloud coupling status is governed by the following criteria:

I. Coupled. when the maximum of ∇WVT is localized within the cloud-driven mixed height above- and below cloud-top and -base, respectively (panel (a) and (b) in Fig. 6),

II. Decoupled. when the maximum of ∇WVT is found to be outside the cloud layer limited by the top- or bottom- CMLH, as shown in Fig. 6 panel (c).

According to the above, the classical definition of cloud-surface coupling is only a special case of this more general approach when the CMLH below cloud base reaches the surface level, i.e., $z = 0$ in Eq. A2. We found, however, that during the MOSAiC wintertime this situation only comprises of 4.7% of all cloudy observations and 7.3% of all cases that fulfill criterion **I. Coupled**.

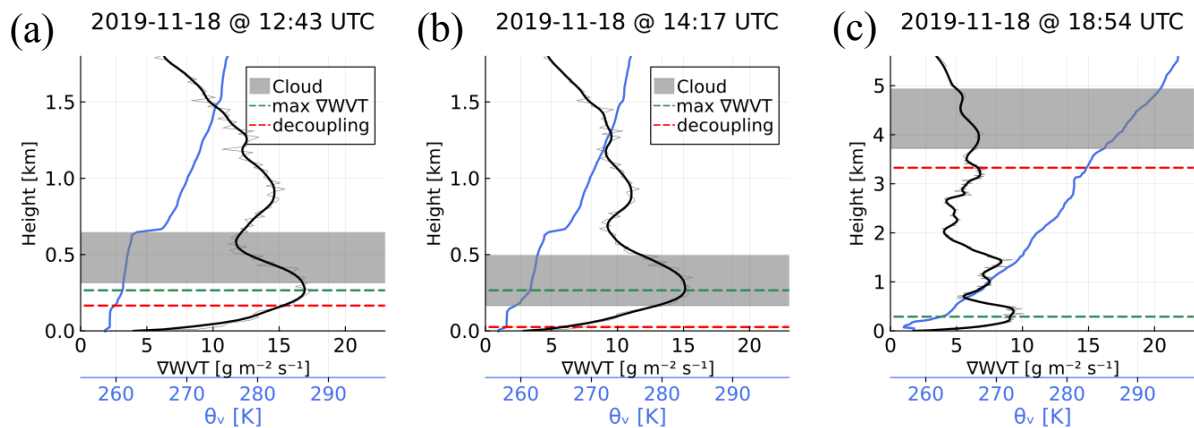


Figure 6. Examples for ∇WVT profiles (black axes) coupling (a) and (b) and decoupling (c) to the cloud for 18 November, 2019. The liquid cloud layer is shown as grey shaded area. The coupling status is determined by the position of the maximum ∇WVT (green-dashed) relative to the decoupling height CMLH (red-dashed): (a) the max ∇WVT is above CMLH and below cloud base but still considered coupled to the cloud, (b) when max ∇WVT is inside the cloud. Panel (c) shows a case when the cloud is decoupled. For reference the θ_v is indicated by the solid line and x-axis in blue.

3.4 Sea ice concentration in the direction of WVT

Information about the state of the sea ice is considered within a circular area of 50 km radius centered at the RV *Polarstern* ~~central-observatory (CO)~~. This particular radius has been chosen as a compromise to cover the sea ice conditions representative for the observations at ~~CO~~ central observatory based on SIC comparisons of circles with 6, 50 and 100 km radius (see Krumpfen et al. (2021)).

Within the 50 km circular area, sea ice conditions relevant for the interaction with the cloud observations are extracted from a conical sector centered at RV *Polarstern* and extended up to 50 km radius and angular span of 5 degrees. The azimuth angle of this conical sector is adjusted every minute based on the wind direction measured at the altitude of maximum ∇ WVT (green lines in Fig. 6 and Fig. 5 (b)). For instance, for the sea ice situation on ~~Nov~~ November 18, 2019 only the LF and SIC highlighted within the grey lines in Fig. 2 is associated with the zenith-pointing cloud observations. To ensure that the considered wind direction is still representative within the 50 km range, back-trajectory analysis were performed using the Lagrangian back-trajectory tool Lagranto (Sprenger and Wernli, 2015). The trajectory of WVT was tracked backwards from the altitude where maximum ∇ WVT occurs, it was found that the back-trajectories show a considerable agreement with the assumed wind direction within the 50 km radius (see supplementary material).

Although the drifting of the RV *Polarstern*'s ice floe (i.e., the geographical position for the center of the 50 km circular area had an average drifting speed of 8.52 km per day (Krumpfen et al., 2021; Nicolaus et al., 2022), ~~we up-date~~), we update the azimuth angle of the sea ice conical sectors every minute in synchrony to the available vertical wind profiles given by the ARM's INTERPSONDE product. Since LF and SIC information is only available in a daily basis, the center of the 50 km circular area also needs to be ~~up-dated~~ updated accordingly to avoid abrupt changes on the relative position of the leads respect to the RV *Polarstern*.

4 Results

4.1 Case Study of 18 November, 2019

Besides the Cloudnet retrieval products summarized in Table 2, further macrophysical and thermodynamical properties of the cloud are estimated from the Cloudnet target classification and from radiosonde. There properties include cloud base- and top height (CBH and CTH, respectively) as well as the temperature at cloud base and -top. Fig. 7 summarizes all those properties as well as the coupled/decoupled status of every observation according to Seet. Section 3.3 for the case study of 18 November, 2019. Results presented in Fig. 57 (c) are based on vertical-integrals from single layer CBH to CTH of Cloudnet-determined LWC and IWC (see Table 2). LWP is determined for liquid-only clouds and MPC whereas IWP is determined for MPC and pure ice clouds and includes falling solid precipitation (snowfall).

The case study in Fig. 7 (a) shows the corresponding 1-minute resolution time series for the sea ice statistics of all grid cells located within the conical sector aligned with the wind direction (see grey cone in Fig. 2) as described in Seet. Section 3.4. The

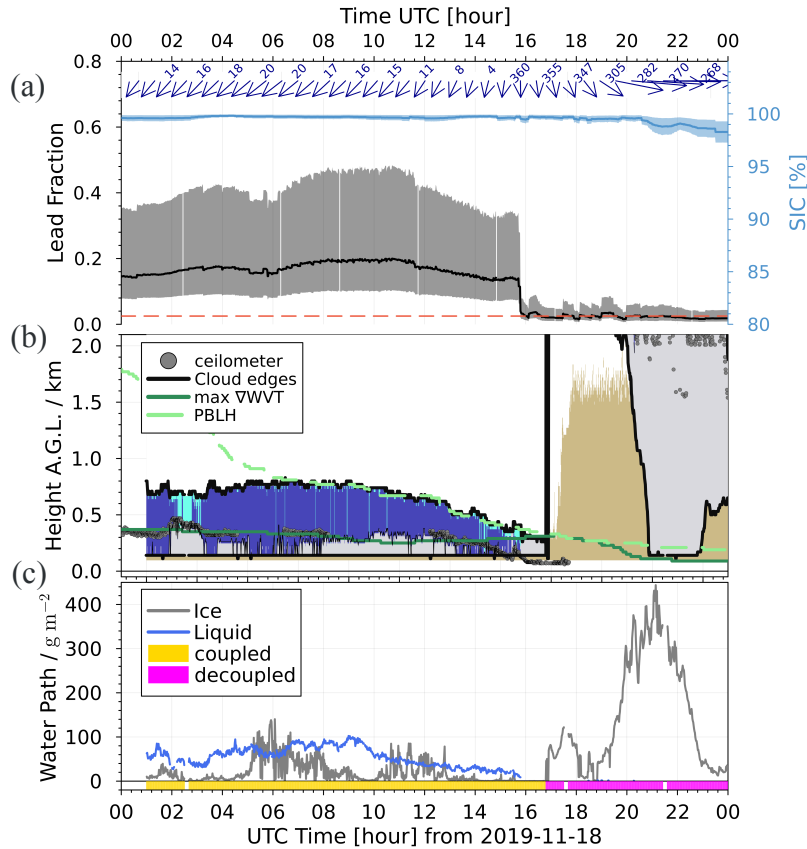


Figure 7. From top to bottom: (a) Median lead fraction time-series (black line, left axis) with the inter-quantile region (shaded region), and Sea ice concentration (light-blue, right axis) after considering only grid cells within a conical sector centered at RV *Polarstern*. The direction of conical sector as a function of the wind direction is shown by the blue arrows and values on top. The horizontal red-dashed line indicates an average LF value for totally covered sea ice. (b) same as Fig. 5 but magnified to the lower 2 km where the post-processing cloud edge detection is highlighted with black lines and the lidar cloud base is shown in grey dots. The height of maximum ∇WVT is shown in dark-green and the PBLH is in dashed light green. (c) IWP and LWP within the detected cloud layer (middle panel). The coupled/decoupled status flag is highlighted in yellow and magenta, respectively.

conical sector is adjusted as a function of the wind direction (blue arrows at top panel of Fig. 7) given at the height of maximum ∇WVT occurrence (Fig. 7 b, green-solid line).

335 From 00:00 to 16:00 UTC of 18 November, 2019 latent and sensible heat were advected towards RV *Polarstern* from North-Northeasterly directions where a sea ice lead had formed (Fig. 2, right panel). LF within the conical sector has median values ranging from 0.1 - 0.2, and with inter quantile region (IQR) of up to 0.4 in Fig. 7 (top panel). During this time period of high LF, a stratiform low-level MPC was observed (Fig. 1, 5 (a), and 7 (b)).

At approximately 16:00 UTC, the wind direction changed towards the northwest to west, where no leads were located. This cut-off of the heat and moisture supply led to dissipation of the low-level MPC. After about 17:00 UTC, a deep cloud system related to a storm was observed above RV *Polarstern*. This storm is associated with sublimation just above the maximum ∇WVT and also led to an increase of turbulence in the lowest atmospheric layers (see Fig. 5 (b) red colours). SIC shows a slight decrease from values near 100 % to about 98 % towards the end of the case study period. The coupling status is highlighted by the yellow (coupled) and magenta (decoupled) flag on the bottom of Fig. 7, panel (c).

~~From the obtained time series of extracted LF and cloud properties relationships between LF and micro- and macro-physical properties of the cloud are investigated. In order to reduce small scale variability in the following results (Fig. 8), for the case study of 18 November 2019, the observations are averaged in 10 minutes intervals, therefore every point represents ~ 10 observations and the bars are the corresponding standard deviation within this time interval. Moreover, the results are sorted by cloud-WVT-coupling status with coupled cases represented by circles and decoupled cases by triangles.~~

From Fig. 8 (a) a ~~clear relationship of LWP with~~ relationship between LWP and LF can be seen, i.e. the larger the LF, the higher LWP, and the warmer the cloud top temperature. For IWP (Fig. 8 (b)), a less clear relationship is found, with a wide range of IWP values occurring independently of the magnitude of the observed LF. The only clear feature is the clustering of larger IWP at low LF which correspond to the decoupled profiles of the deep cloud present after 17:00 UTC. Note that between 16:00 to 17:30 UTC (in Fig. 7 (b)) the lidar detects a liquid layer below the lowest available Cloudnet classification height, ~~which meaning~~ Cloudnet could not relate this period with the occurrence of liquid droplets but instead ~~it~~ mis-classifies as ice cloud only. This is reflected in the total water path calculated within the lowest and top cloud limits as indicated in Fig. 7 (bottom panel) ~~and shown as IWP $\sim 10^{-1} \text{ g m}^{-2}$ at the lower-left corner in Fig. 8 (b) below LF of 0.05.~~

Panel (c) in Fig. 8 depicts the liquid effective radius retrieved by Cloudnet and averaged over the cloud layer defined by

$$\bar{r}_{\text{eff}} = \frac{\int_{\text{clb}}^{\text{cth}} N(z) r_e(z) dz}{\int_{\text{clb}}^{\text{cth}} N(z) dz} \quad (3)$$

where $N(z)$ is the droplet number concentration, and $r_e(z)$ is the effective radius corresponding to the altitude z within CBH and CTH. The best fit curve indicates a slightly positive correlation with LF and an increase of cloud layer thickness (exposed by the grey colours of the data points) as the LF increases.

Shown in Fig. 8 (d) is the in-cloud temperature lapse-rate defined as following:

$$\Gamma_{\text{cloud}} = -\frac{dT}{dh} = -\left(\frac{T_{\text{top}} - T_{\text{base}}}{CTH - CBH}\right) \quad (4)$$

Figure 8 (d) indicates that Γ_{cloud} is often close to the moist adiabatic lapse-rate, ~~whereas large negative~~ $6.5 \text{ }^\circ\text{C km}^{-1}$ (dashed horizontal line in Fig. 8 (d)). The negative Γ_{cloud} values represent cases with a temperature increase within the cloud layer or inversion at cloud top. ~~This feature is inconsistent with the data points between a LF of 0.13 and 0.14 where the Γ_{cloud} shows a sharp drop from approximately $0 \text{ }^\circ\text{C km}^{-1}$ to $-10 \text{ }^\circ\text{C km}^{-1}$.~~ The points are colour coded by the surface skin temperature, showing that coupled cases correspond to warmer surface as compared to the decoupled cases.

The ~~presented~~ 18 November, 2019 case study, ~~nonetheless this case study~~ encompasses a situation where the observed clouds have a high well-defined correlation with LF situation up-wind, mainly due to the occurrence of a single cloud layer.

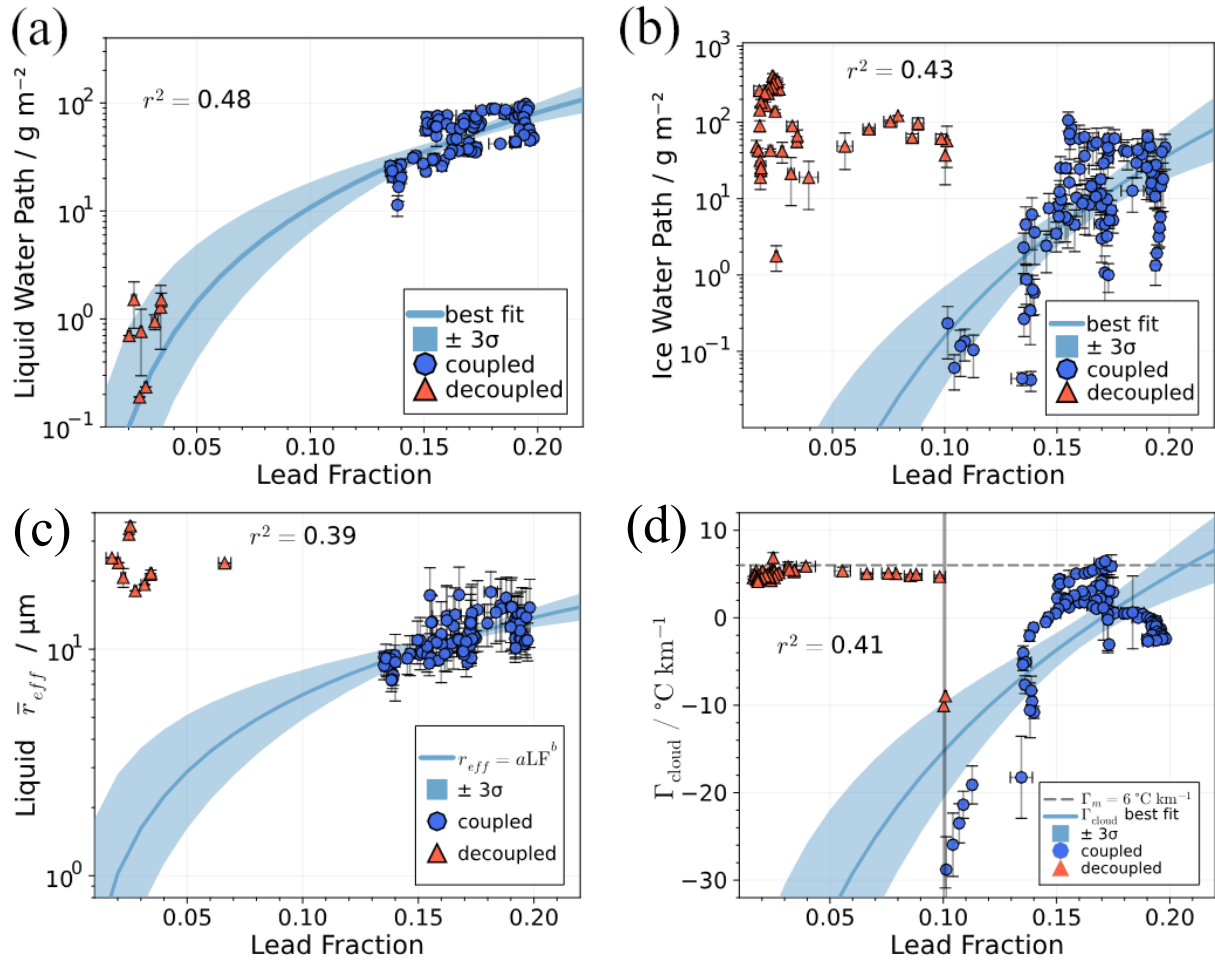


Figure 8. Results for 18 November 2019: [Single cloud layer relationships between LF and micro- and macro-physical cloud properties.](#) Observations are represented averaged (circles/triangles) with standard deviation (bars) within intervals of 10 minutes, coupled and decoupled cases are marked as blue circles and orange triangles, respectively. (a) Mean single cloud layer LWP vs. LF (black-line in Fig. 7 top panel) colour-coded by cloud top temperature, coupled and decoupled cases are marked as circles and triangles, respectively. (b) Same but for IWP of same cloud layer. (c) Cloud layer average effective radius for liquid droplets, grey colour-coded by cloud thickness. (d) shows Γ_{cloud} as defined in Eq. 4 vs. LF with surface skin temperature as colour-coded, the horizontal dashed-line represents the moist adiabatic Γ_m . In all panels the best fit is shown as dark-blue-line and corresponding coefficient of determination r^2 based only on coupled data points.

[This is not always the case as it can be seen in D1 where the cloud properties correlated to LF is more subtle.](#) To assess the robustness of the case study results over a wide range of cases, a statistics analysis is performed based on the same methodology applied to the whole wintertime MOSAiC expedition.

Table 3. Number of available observations at 1 min resolution during MOSAiC wintertime for the statistical analysis. The number of data represents observations at a minute resolution. The total of observations during wintertime includes cloudless and cloudy observations. For cloudy situations, a further distinction is made between WVT coupled and decoupled.

Description	Number of Available Observations		
	Total	Coupled [%]	Decoupled [%]
During wintertime	259 200		
With cloudy sky	199 926	121 970 [61%]	77 955 [39%]
Cloudy and LF available	124 787		
LF \leq 0.02	104 025	66 432 [64%]	37 593 [36%]
LF $>$ 0.02	20 762	13 081 [63%]	7 681 [37%]
Cloudy and SIC available	199 333		
SIC $>$ 98%	108 979	69 332 [64%]	39 647 [36%]
SIC \leq 98%	15 808	10 181 [64%]	5 627 [36%]
Liquid clouds detected below first radar range gate	68 998 [29%]		

Number of available observations at 1 min resolution

~~during wintertime for the statistical analysis. The number of data represents observations at a minute resolution. The total of observations during wintertime includes cloudless and cloudy observations. For cloudy situations, a further distinction is made between WVT coupled and decoupled.~~

375 4.2 Statistical Analysis

The methodology introduced for the case study in [Seet, Section 4.1](#) was applied to the whole wintertime MOSAiC period (November 2019-April 2020). Table 3 summarizes the obtained dataset that was statistically analyzed after splitting for cases with LF less or equal to 0.02 ($LF \leq 0.02$) and greater than 0.02 ($LF > 0.02$). In that way we try to isolate cases in which sea ice leads have most likely been interacting with the observed clouds. Additionally the frequency of occurrences of different intervals of cloud water path sorted by the status of coupling to WVT for the whole period of analysis is presented in Fig. D3 (a) in Appendix D2. Relevant differences are found in relation to the cloud micro-, macro-physic and thermodynamic properties between clouds classified as coupled or decoupled to the WVT.

Figure 9 depicts the probability distribution functions (PDF) of different macro- and microphysical cloud properties. The data is separated into four groups: WVT coupled cases (blue), decoupled cases (orange), cases with $LF \leq 0.02$ (dashed-lines) and $LF > 0.02$ (solid lines). In Fig. 9 (a) the PDFs of liquid layer base height is presented for coupled cases are generally comprised of low level clouds with a probability of occurrence significantly enhanced for the subset corresponding to $LF > 0.02$, with a main peak at 250 m. In contrast, decoupled clouds do not have a pronounced peak in liquid layer base height occurrence but are more homogeneously distributed over a range of a few hundred meters to one kilometer. Furthermore, Fig. 9 (b) exposes the fact that coupled clouds also tend to be thicker, with a peak in PDF at around 400 m, whereas decoupled clouds are equally

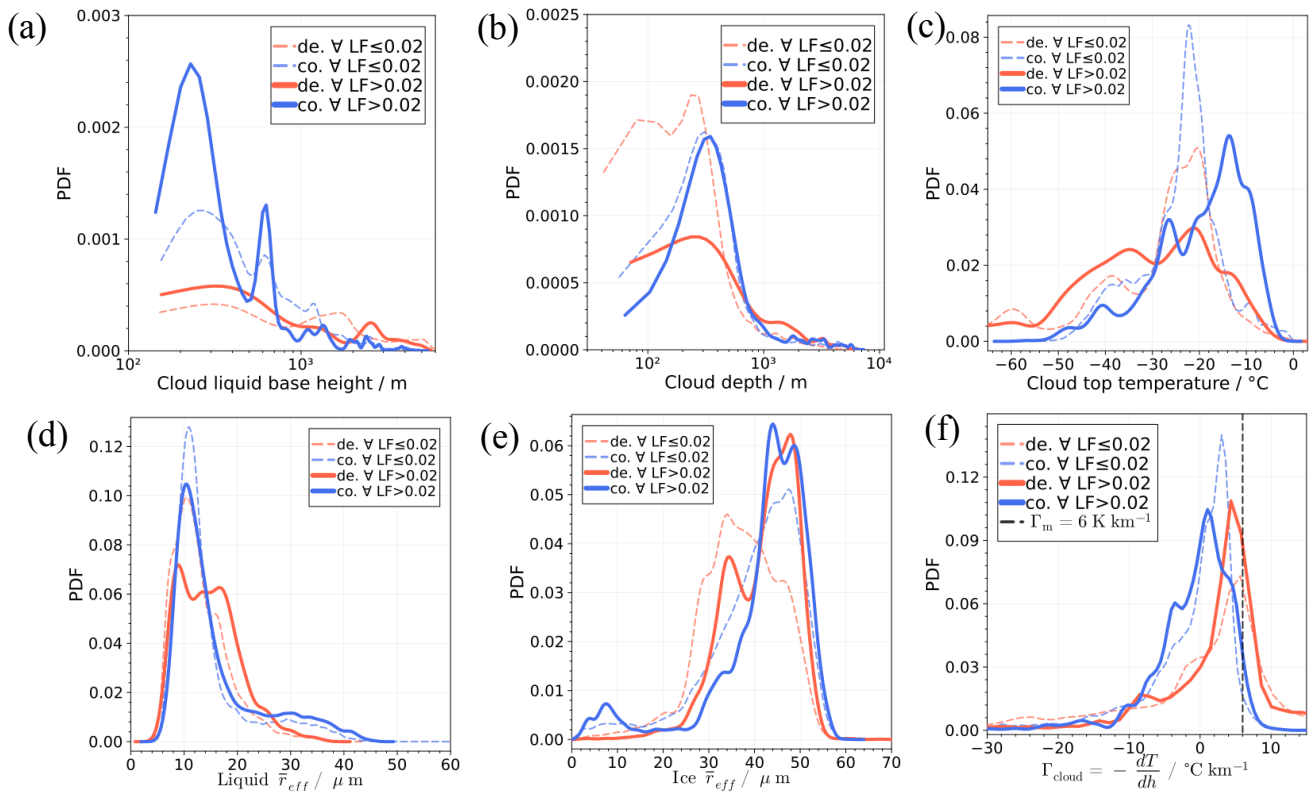


Figure 9. Probability distribution functions for all observations from November 2019 to April 2020. Data is sorted by $LF \leq 0.02$ (dashed-lines), $LF > 0.02$ (solid-lines), coupled ("co.", blue), and decoupled ("de.", orange) cases of cloud properties for (a) liquid layer base height, separated for coupled (blue lines) and decoupled (orange lines) cases. Dashed-lines correspond to $LF \leq 0.02$ and the solid lines to $LF > 0.02$. (b) Same but for the cloud depth. (c) PDF for cloud top temperature, (d) PDF for cloud layer mean effective radius of liquid droplets. (e) cloud layer mean effective radius of ice crystals, and (f) in-cloud temperature lapse rate, with the black dashed-line indicating a nominal moist adiabatic lapse rate.

390 likely to have thicknesses ranging between 40 to 500 m. Statistics of cloud top temperature are shown in Fig. 9 (c) where two
 distinct features appear: clouds related to $LF \leq 0.02$ have a maximum probability of cloud top temperature at around -22°C
 regardless of their coupling state. Conversely, for $LF > 0.02$, coupled clouds are generally warmer with maximum PDF of cloud
 top temperature at about -12°C and a second minor PDF peak at -29°C . For decoupled clouds and $LF > 0.02$, the cloud top
 temperature PDF spreads out to colder temperatures with a primary peak at -22°C and a second peak at -36°C . Moreover
 395 cloud top temperatures below -40°C are considerably more frequent to be observed for decoupled than coupled clouds.

Figure 9 (d) the PDF of cloud layer mean liquid droplet effective radius \bar{r}_{eff} of coupled cases peaks at $12 \mu\text{m}$ for both LF
 classes. The PDF of \bar{r}_{eff} for the WVT-decoupled cases exhibits a bimodal distribution peaking at $8 \mu\text{m}$ and $17 \mu\text{m}$ irrespective
 of LF. Likewise, the average effective radius for ice particles (Fig. 9 (e)) exposes a bimodal PDF of ice \bar{r}_{eff} with peaks at 42

and 49 μm almost equally likely to occur for coupled cases, while the PDF for decoupled cases have one minor peak at 32 μm and a major peak at 48 μm . The PDFs for $\text{LF} \leq 0.02$ (dashed-lines) have single maximums at 48 and 32 μm for coupled and decoupled cases, respectively.

To complement the thermodynamic features of the cloud, Fig. 9 (f) shows the PDF of cloud layer temperature lapse rate. The main feature found is that for $\text{LF} \leq 0.02$ the decoupled PDF indicated a maximum at the nominal value for moist adiabatic lapse rate Γ_m , while decoupled clouds at $\text{LF} > 0.02$ show a slightly lower lapse rate.

The coupled Γ_{cloud} PDFs are biased and skewed towards negative lapse rates with the most probable value found to be 0 $^{\circ}\text{C km}^{-1}$ and -2 $^{\circ}\text{C km}^{-1}$ for $\text{LF} \leq 0.02$ and $\text{LF} > 0.02$, respectively. The latter also has a minor peak in the PDF around -5 $^{\circ}\text{C km}^{-1}$. The dominant feature found in Fig. 9 (f) is that the Γ_{cloud} PDFs of clouds coupled to the WVT mechanism are displaced towards lower or even negative Γ_{cloud} (i.e., temperature inversion above the cloud base) and this characteristic is enhanced when $\text{LF} > 0.02$.

4.2.1 Fraction of ice water content in cloud

Hereafter we define the fraction of ice water content in the clouds relative to the total condensed water in the cloud (ice and liquid) as follow:

$$\chi_{ice} = \frac{IWP}{IWP + LWP} \quad (5)$$

The definition given in Eq. 5 is in line with Korolev and Milbrandt (2022) phase composition of clouds but differs from most of the studies based on space-borne Arctic observation (Coopman et al., 2018) where the χ_{ice} is defined as the number of grid cells considered to be ice divided by the number of grid cells considered as either liquid or ice. Similarly, the definition in Eq. 5 differs from other ground-based and ship-based observations over mid-latitudes and the Arctic where the fraction of ice containing clouds with respect to all observed clouds is considered (Kanitz et al., 2011; Westbrook and Illingworth, 2011; Griesche et al., 2021) regardless of the water content in those clouds. Therefore the results based on ice water fraction analysis presented here cannot be directly related to the previously mentioned work. We mainly are interested in the features controlling the cloud microphysical properties such as LWP and IWP since those are the dominant drivers for the cloud-surface interaction. Furthermore, note that in the following analysis Eq. 5 is only applied to the single cloud layer relevant for the classification of coupled or decoupled to the WVT, therefore the results are not representative of the whole atmosphere in case of multi-layer cloud situations.

Fig. 10 depicts a clear difference of ice water fraction when separated by the cloud coupling to the WVT status (blue for coupled and orange for decoupled) between -15 and -25 $^{\circ}\text{C}$ for cases with $\text{LF} \leq 0.02$ (a) and between -12 and -30 $^{\circ}\text{C}$ for cases with $\text{LF} > 0.02$ (b). For the situation in (a) the ice water fraction, for coupled and decoupled cases, increases until a local maximum corresponding to a cloud top temperature of -15 $^{\circ}\text{C}$ as indicated by the vertical light-blue dashed-line. This can be explained by the fact that at approximately -15 $^{\circ}\text{C}$ the maximum ice growth takes place due to the largest difference between saturation water vapour pressure over ice and water (Rogers and Yau, 1991). Below -15 $^{\circ}\text{C}$ cloud top temperature the coupled and decoupled cases depart significantly until approximately -25 $^{\circ}\text{C}$, with the coupled cases showing a steady increase of ice

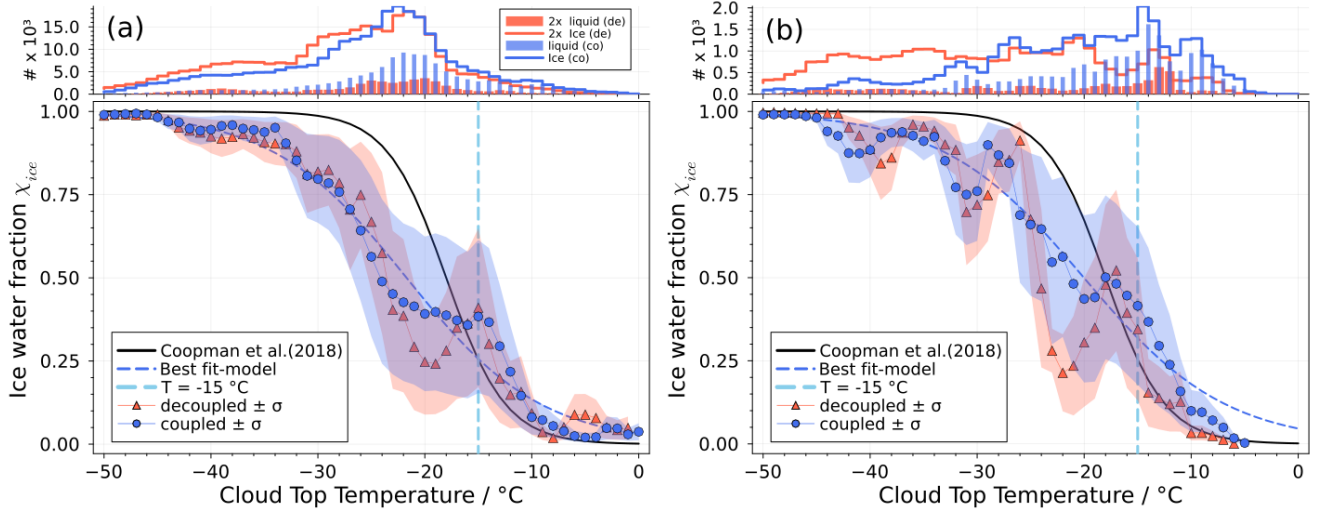


Figure 10. Top panels: Histograms of the number of occurrence for liquid (bars) and ice (lines) water path for coupled ("co", blue) and decoupled ("de", orange) cases. For visualization purposes, the decoupled number of occurrence has been scaled by 2 (2x). Bottom panels: Ice water fraction, as defined by Eq. 5, versus cloud top temperature for (a) all cases, and (b) cases where $LF > 0.02$. Coupled (decoupled) cases are depicted as blue circles (orange triangles), shaded areas represent one standard deviation of the ice water fraction sorted within 1 °C temperature bins. The best fit to the coupled data is shown as dashed blue line.

water fraction presumably due to the intake of humidity provided by the coupling with the WVT, thus fostering the formation of ice particles, whereas the decoupled case indicates a drop of ice water content up to $\chi_{ice}=25\%$ at a cloud top temperature of -20°C whereafter the heterogeneous freezing process continues. Both χ_{ice} curves reach 50% at about the same temperature of -22°C and -24°C for the decoupled and coupled cases, respectively. For $\chi_{ice}=75\%$ and higher, the coupled and decoupled χ_{ice} curves behave similarly towards homogeneous freezing which has been found to occur within the range -37°C to -40°C (Rogers and Yau, 1991; Pruppacher and Klett, 1997).

For the subset of data with $LF > 0.02$ (Fig. 10 (b)) the χ_{ice} coupled and decoupled cases reach a first local maximum at a colder temperature of -18°C . Note, however, that the number of cases for $LF > 0.02$ are much smaller by a factor of ~ 6 (Table 3). Furthermore this local maximum at -18°C coincides with $\chi_{ice}=50\%$ which means it reaches the 50% ice water fraction at a warmer temperature as compared to the Fig. 10 (a). Moreover, it can also be seen that χ_{ice} for $LF > 0.02$ follows more closely the empirical model given as $\chi_{ice}(T) = 0.5[1 + \tanh(-\beta_0(T - \beta_1))]$ by Coopman et al. (2018) based on satellite-based observations for the Arctic between 2005 and 2010 during March to September. A slight modification to the empirical model for χ_{ice} was done in this study so that β_1 fits the temperature corresponding to $\chi_{ice}=50\%$. The decoupled curve shows a steep drop on ice fraction to a minimum of about 15% at the temperature of -20°C (similar situation as observed in Fig. 10 (a)), followed by an abrupt increase of χ_{ice} to 95%. The best fit curve for χ_{ice} of coupled cases has a more monotonically increase but with a less steep slope as the empirical model (blue-dashed-line curve).

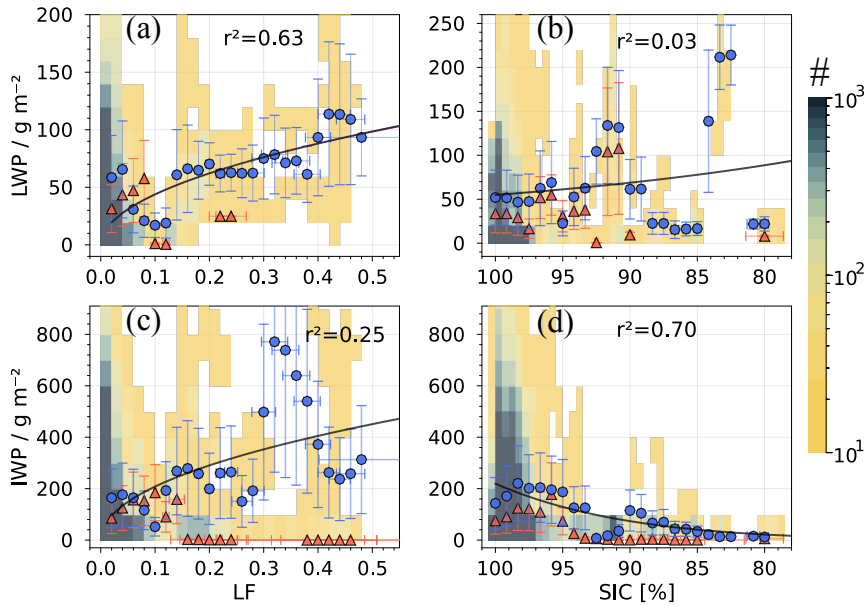


Figure 11. Data for the period November 2019–April 2020: **Left column** **Top row**, distribution of LWP as a function of observed **lead-fraction LF** (a) and **SIC** (eb); **right column** **bottom row**, distribution of IWP as a functions of **sea-ice-concentration-LF** (bc) and **SIC** (d). The symbols are the average of the observations within a fixed LF bin-width while the bars indicate 63% of variability within the **bin-LF-bin**. The colour scale **indicated-indicates** the number of observations within the bins for the whole dataset whereas the symbols represent only the data corresponding to LF>0.02. The coupling status is indicated by orange triangles (decoupled) and blue circles (coupled). The black curves represent the best fit for only the coupled blue circles and the coefficient of determination is given by r^2 .

4.2.2 Liquid and ice water content as a function of sea ice

With the aim to confirm the relationship between cloud properties with sea ice lead fraction found in [Seet.Section 4.1](#) the whole
 450 dataset is analyzed and summarized in Fig. 11. The number of occurrence for the whole dataset of observations containing
 either ice or MPC is shown colour-coded in the background (corresponding to the total cloudy sky in Table 3). Overlaid on
 every subfigure the data for LF>0.02 (see Table 3 for reference on number of observations for LF>0.02) is depicted as binned
 average for water vapour transport coupled (blue circles) and decoupled (orange triangles) with the corresponding standard
 deviation indicated by the bars. The best fit curve to the coupled data (blue circles) is indicated by the black curves and the
 455 coefficient of determination r^2 is given.

The positive correlation between LWP and LF is evident from Fig. 11 (a), with the later being responsible for 63% of the
 variability observed of LWP as indicated by r^2 . Albeit an apparent reduction of LWP is found from LF between 0.02 and
 0.08, this can be due to the circumstantial lack of LWP observations around LF of 0.1. However, the fit is robust for data with
 LF from 0.1 and higher. When comparing LWP to sea ice concentration, the positive relation is certainly weak or arguable
 460 nonexistent since the analysis shows that SIC can only explain 3% of variability of LWP values (Fig. 11 (b)). This result is

strongly influenced by the LWP values less than 40 g m^{-2} paired with SIC between 90% and 80%. When excluding these data points, the correlation of LWP and SIC is enhanced. It is important to remark that due to the different sensors and retrieval methods, SIC and LF are not equivalent or interchangeable, meaning that higher LF observations not necessarily correspond to low SIC as demonstrated in Fig. 3. Therefore even after SIC is adjusted to reduce retrieval underestimations during April
465 (see Appendix C), SIC can still contain ill-posed SIC retrievals that can attribute LWP values to uncertain SIC, e.g., a range of LWP values mapped to low SIC.

Regarding the IWP sensitivity to changes in LF and SIC, Fig. 11 bottom row indicates a moderate positive correlation with LF (r^2 of 0.25 for LWP-IWP vs. LF). On the contrary, when IWP is related to SIC, the relation is opposite as for the case IWP versus LF, mainly for the region of SIC between 80 and 96%, with only a fairly increase of LWP-IWP when SIC change from
470 100 to 97%. Important to note that most of the observed high values of IWP are related to deep precipitating cloud systems. When the data is additionally constrained to cloud depths below 3 km (not shown) the IWP is drastically reduced to values mainly below 150 g m^{-2} and the graphs in Fig. 11 bottom row do not show any significant positive correlation with LF, whereas the LWP versus LF and SIC are only subject to negligible changes. Concluding, a positive correlation of IWP versus LF is mostly caused by deep cloud systems.

475 5 Discussion and Conclusions

Based on the methodology developed in [Seet:Section 3](#) applied to the case study of 18 November, 2019 and to the complete MOSAiC wintertime observations (November 2019 - April 2020) for statistical analysis, the following can be concluded:

- The WVT coupled cloud observations outnumber the decoupled cases by at least a factor of 1.6 (61% vs. 39% from all cloudy cases in Table 3). However, this factor can range between 10 up to 100 for a given total water path (Fig. D3).
480 With the LWP found to be mostly below 150 g m^{-2}) whereas for IWP most of the data points are above 100 g m^{-2} .
- When the $LF > 0.02$, coupled clouds are statistically lower and thicker in height and depth, respectively.
- Coupled clouds have significantly warmer cloud top temperatures, with a vast majority of clouds having a temperature inversion at cloud top, thus implying a stratified stable cloud layer.
- The cloud microphysical properties such as droplet effective radii distribution does not shown any clear indication of relevant differences between $LF \leq 0.02$ and $LF > 0.02$ for WVT coupled clouds. With only a slightly increase of probability of occurrences of \bar{r}_{eff} between 10 and $25 \mu\text{m}$ for decoupled cases. The effective radius for ice does not show a clear dependence on LF for coupled cases. For decoupled cases the \bar{r}_{eff} are larger for $LF > 0.02$ than for $LF < 0.02$. This suggests that the ice \bar{r}_{eff} of decoupled clouds seems to be more sensitive to LF which is counter intuitive.
485
- The distribution of LWP and IWP as a function of sea ice lead fraction and sea ice concentration reveals that only LWP and LF are strongly related ($r^2 = 0.63$). For the case of LWP versus SIC, the correlation is weakly negative ($r \sim -0.17$),
490 with SIC only explaining 3% of the LWP variability. Important to note that $SIC < 90\%$ was mainly observed during the

April 2020 (Fig. C1), this MOSAiC period is being extensively studied due to the occurrence of warm air intrusions into the central Arctic conducive to inaccuracies on AMSR2 based retrievals (Krumpen et al., 2021; Rückert et al., 2023). Given that in April there was not 8% open water reported around RV *Polarstern*, the bias correction to the AMSR2-MODIS merge product (presented in Appendix C) still has inaccuracies leading to the attribution of LWP at lower SIC values, hence affecting the correlation between LWP and SIC.

- The occurrence of $LF > 0.02$ is correlated with increases of IWP. This is however contradictory with the result found for IWP versus SIC, where decreasing SIC is strongly correlated with reduction of IWP. Important to note, however, is that when cases with cloud depth larger than 3 km are excluded (not shown), the relation between LWP versus LF and SIC does not differ from the results in Fig. 11. The main difference is the that for these situations no significant relation between IWP versus LF ($r^2 = 0.0$) is found. For IWP versus SIC, when only cloud depths below 3 km are considered, the pattern remains similar ($r^2 = 0.33$) when all cloud depths are considered. This is an indicator that sea ice leads have no trivial effect on IWP but are only strongly correlated to LWP.
- The ice fraction of total water content χ_{ice} depicts major differences when the entire dataset is compared to cases with $LF > 0.02$. Mainly in the region of heterogeneous ice formation between -10 to -32°C , with the observations with $LF \leq 0.02$ have a pronounced peak at about -15°C (temperature where maximum growth of ice crystals takes place (Rogers and Yau, 1991)). For the subset of data with $LF > 0.02$ the maximum χ_{ice} peaks is displaced to slightly colder temperature (-17°C). The $\chi_{ice}=50\%$ is reached at warmer temperatures (-18°C) for $LF > 0.02$ as compared to the entire dataset (-22°C). Both cases contrast largely to results reported by Westbrook and Illingworth (2011) for mid-latitude observation where $\chi_{ice}=50\%$ was reported to happen at -27°C based, however, on cloud observations only for temperatures below -10°C .

The findings presented here can be used as valuable constrains to evaluate cloud microphysical parameterizations for the Arctic system. Since sea ice leads are not explicitly resolved in such models, lead-averaged surface heat flux, and its influence on clouds, is of considerable interest for the parameterization of energy exchange (Gryschka et al., 2023). The different features of ice water fraction χ_{ice} , as a function of cloud top temperature, found for coupled and decoupled cloud cases are a result that deserves to be deeply investigated by validating it with long-term observations but also by a better understanding the modelling of cloud microphysics that can lead to explain the finding. The results found in this study are presented using the lead fraction as constrain to distinguish effects on cloud properties. Based on SIC data from the MODIS-AMSR2 merged products which has a spatial resolution of 1 km is sufficient to detect large leads. However, this resolution and merged retrieval product are not sufficient to resolve most small leads. Thus the novel product of lead fraction (LF) with spacial resolution of 700 m based on SENTINEL-1 SAR satellite divergence data is of utter importance to prescribe the influence of sea ice leads over the cloud properties and its ability to only detect leads when they open, avoiding therefore the consideration of newly frozen leads which has been argued to serve as a dissipation mechanism for low level clouds Li et al. (2020b). Regarding aerosols as key components in cloud processes, although no direct or remote sensing measurements of advected aerosols along the WVT path is available during MOSAiC, aerosols and ice nucleation particles (INP) have been sampled at the RV *Polarstern* location

(Creamean et al., 2022). INP concentrations are found to be persistent among the months from October to April mainly at temperatures ranging from -25°C to -15°C , with large INP sampling during periods with high lead occurrence and wind speeds above 5ms^{-1} . Therefore, as highlighted by Creamean et al. (2022) the high fractional occurrence of ice in clouds below 3 km in winter implies that observed small INP could serve as important role in cloud ice formation. Since the surface is predominantly frozen the local source of INP is locally limited, thus it is plausible to support the hypothesis that leads play an important role as sources of sea spray by windy conditions during the wintertime. It is feasible that the sea ice leads as sources of INP like sea-spray can be advected along the WVT, and therefore be included in our analysis as part of the coupled/decoupled classification. However, since no continuous INP sampling has been performed our dataset cannot be separated based on INP concentration, but such type of analysis is an important source of information to narrow down the leads effects on cloud properties.

The MOSAiC observations of LWP and IWP for cloud layers coupled to WVT have been analyzed as a function of LF and depict a clear positive relation between LWP and IWP with LF for coupled cases. When compared to SIC, LWP has a less pronounced positive relation and IWP even exhibits a negative correlation, and practically no correlation when cloud top heights below 2.5 km are considered. The dataset constrained to $\text{LF} > 0.02$ comprises only about 10% of the total data containing clouds, nevertheless it exhibits significant differences compared to the whole dataset regarding cloud liquid base height, cloud thickness, cloud top temperature and lapse-rate. ~~In contrast, micro-physical properties like liquid and ice effective radius have a less pronounced difference based on LF but rather on their coupled status.~~

Previous studies have already shown differences on various cloud properties when classified by surface coupling or observations over ocean or sea ice. For instance, Gierens et al. (2020) found, using observation from Ny-Ålesund in Svalbard, that surface coupled persistent MPC contain about twice as much more liquid as the decoupled clouds. The total amount of condensed water was higher for coupled persistent MPC which let them to suggest the existence of a humidity source which is not available for the decoupled MPC. This suggestion can be confirmed by the present study since the WVT serves as humidity source from sea ice leads. Papakonstantinou-Presvelou et al. (2022), using satellite products for large-scale clouds below 2 km in the Arctic, found strong ocean/sea ice contrast of ice crystal number concentration over sea ice than over ocean, with this difference being enhanced for temperatures between 0 and -10°C and clouds located south to 70°N latitude. Although our study encompasses a different scale, we found that highest values of IWP are concentrated at low LF or high SIC.

Griesche et al. (2021) reported contrasting ice formation in summer Arctic clouds when separated by surface coupling from observations on-board the RV *Polarstern* in 2017. With larger number of ice containing clouds corresponding to surface coupled clouds between -10°C and -5°C cloud minimum temperature. Although we use ice water fraction instead, our study found contrasting differences for WVT coupled versus decoupled cases, but mainly located in the range between -15°C and -25°C cloud top temperature.

~~Of significant importance~~ Danker et al. (2022) using CloudSat-Calipso DARDAR product for clouds below 2.5 km, have also reported the increase on occurrence of mixed-phase and decrease of super cooled liquid clouds at temperatures around -15°C , although they only consider cloud top temperatures up to -20°C . For similar dips on χ_{ice} at lower temperatures no other references have been found, which exposes the significant importance that is the understanding of the micro-physical

processes related to the interaction between water vapour, liquid and ice growth revealed by the ice water fraction which exposed a clear asymmetry when separated by the coupling to WVT. This result requires further investigation since such an impact of WVT on cloud properties has not been reported previously.

The presented study puts into consideration a methodology to study the influence of sea ice to cloud properties based on the observations from the MOSAiC expedition. Although MOSAiC is unprecedented in terms of detailed dataset, it only comprises one winter. Therefore, a similar study is being extended to a period from 2012 to 2022 at the Western Arctic using data from the ARM North Slope of Alaska (NSA) site in Utqiávik, which has a comparable instrumental suite as the RV *Polarstern* during MOSAiC. Moreover, recent improvements for cloud phase classification are being implemented. This refers to Schimmel et al. (2022) who use radar Doppler spectrum for the detection of liquid layers above lidar attenuation, and thus provides the potential to significantly improve the cloud phase target classification which can then be used to support the findings of this study.

Code and data availability. Data were obtained from the atmospheric radiation measurement (ARM) user facility, a U.S. department of energy (DOE) office of science user facility managed by the biological and environmental research program. The merged MODIS-AMSR2 1 km SIC product is publicly available at the University Bremen data repository seice.uni-bremen.de. HATPRO MWR data is public and published (Ebell et al., 2022). PollyXT and Cloudnet classification was provided by H. Giesche and is available on request. Lead fraction data based on divergence product from SENTINEL-1 is currently under publication process by L. von Albedyll and can be provided on request. Cloudnet target classification has been calculated using Tukiainen et al. (2020).

Appendix A: Cloud decoupling criteria

The virtual potential temperature is defined as:

$$\theta_v = \theta \left(\frac{1 + \frac{q_r}{\epsilon}}{1 + q_r} \right) \quad (\text{A1})$$

where q_r is the water vapour mixing ratio [g g^{-1}], $\epsilon \approx 0.622$ is the ratio of dry air to wet air gas constant, and θ is the potential temperature $\theta = T \left(\frac{P_0}{P} \right)^\kappa$ in K, being $\kappa \approx 0.286$ the ratio of the dry air gas constant and specific heat capacity for constant pressure.

In order to estimate the mixing layer below the cloud, the radiosonde profiles are used first to compute the virtual potential temperature according to equation A1 and then the cumulative variance of the potential temperature is calculated following:

$$\sigma_\Sigma^2(z) = \sum_i^z \theta_v^2(i) - \left[\sum_i^z \theta_v(i) \right]^2 \quad \forall i = \{\text{CBH}, \dots, 0\} \quad (\text{A2})$$

Equation A2 is evaluated starting at cloud base height (CBH) downwards until surface level, i.e., $i=0$. The mixing layer below the cloud is then assigned to the altitude where Eq. A2 first surpasses a threshold value of $0.050.01 \text{ K}^2$, as explained in main text [Seet. Section 3.3](#).

Similarly for the cloud driven mixing layer above the cloud top, Eq. A2 is evaluated from cloud top height (CTH) upwards until a threshold of 0.01 K^2 is fulfilled. A stricter criteria for the upper threshold is due to the fact that there are cases where the

temperature inversion happens inside the cloud and not necessarily above CTH, for these cases θ_v can already be at a regime of adiabatic cooling thus its variability might be small. This was also reported by Sedlar et al. (2012) for central Arctic oceans where they found cloud top was frequently located at 100-200 m above the temperature inversion base.

Appendix B: Derivation for the gradient of water vapour transport

595 The integrated vapour transport (IVT) is defined as the vertical integral of horizontal vapour fluxes (Zhu and Newell, 1998) and normally used to identify AR whenever either the IVT threshold of $250 \text{ kg s}^{-1} \text{ m}^{-1}$ is exceeded or when the IVT exceeds the 85th percentile of a climatologically varying value. IVT can be calculated by integrating the module of the wind vector \mathbf{v}_w times the specific humidity q_v :

$$\text{IVT} = -\frac{10^2}{g} \int_{P_0}^{P_1} |q_v \cdot \mathbf{v}_w| dP \quad (\text{B1})$$

600 where V_w is the horizontal wind speed [m s^{-1}], q_v the specific humidity [g g^{-1}], P atmospheric pressure [hPa], and g the constant of gravity 9.81 m s^{-2} . The factor 10^2 in Eq. B1 expresses IVT in units of $\text{kg m}^{-1} \text{ s}^{-1}$ after the integration normally performed from surface reference pressure P_0 to a nominal $P_1=300$ hPa.

The vertical gradient of ~~WVF~~ WVT is obtained starting from the definition of IVT given by Eq. B1 and applying the derivative with respect to the vertical component z ,

$$605 \quad \frac{d}{dz} \text{IVT}(P) = -\frac{10^2}{g} \frac{d}{dz} \left[\int_{P_0}^P |q_v \cdot \mathbf{v}_w| dP \right] \quad (\text{B2})$$

by using the chain rule the integration variable can be changed from P to z as,

$$\frac{d}{dz} \text{IVT}(z) = -\frac{10^2}{g} \frac{d}{dz} \left[\int_{z_0}^z \left(|q_v \cdot \mathbf{v}_w| \frac{dP}{dz} \right) dz \right] \quad (\text{B3})$$

thus the integral can be canceled by the outer derivative resulting in:

$$\frac{d}{dz} \text{IVT}(z) = -\frac{10^2}{g} \left(|q_v \cdot \mathbf{v}_w| \frac{dP}{dz} \right) \quad (\text{B4})$$

610 hereafter we rename the derivative of IVT with respect to the z variable in Eq. B4 as gradient along the vertical for the water vapour transport as $\nabla_z \text{WVT}(z)$ which has units of $\text{kg s}^{-1} \text{ m}^{-2}$, resulting in

$$\nabla_z \text{WVT} = -\frac{10^2}{g} |q_v \cdot \mathbf{v}_w| \frac{dP}{dz} \quad (\text{B5})$$

Note that we started from the definition of IVT given by Eq. B1 where the horizontal wind speed is used. Some authors prefer to define IVT by means of the wind zonal and meridional components U and V , respectively. It is important to mention
615 that both definitions are not mathematically identical, thus producing slightly different results.

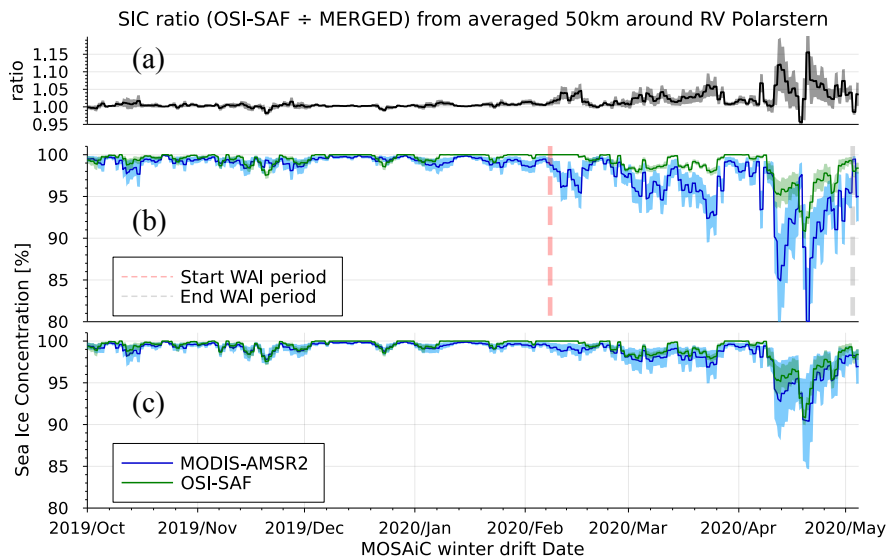


Figure C1. From top to bottom: (a) the ration of OSI-SAF by MODIS-AMSR2 SIC products, close to 1 indicates that both products are in average similar within the sector of study; (b) SIC from MODIS-AMSR2 (blue) and from OSI-SAF product (green) averaged within 50 km around RV *Polarstern*. The initial and end of reported warm air intrusions are marked by the dashed red and grey vertical lines; (c) same as above but with the MODIS-AMSR2 SIC corrected (blue). In all panels the shared areas correspond to 1 standard deviation.

Appendix C: Sea ice concentration offset correction

As reported first by Krumpen et al. (2021) and extensively studied by Rückert et al. (2023), there were several events of warm air mass intrusion (WAI) during the MOSAiC expedition mainly in spring 2020. Those WAI events have fostered inaccuracies in some sea ice concentration retrievals (Fig. 1 and Fig. 9 by Rückert et al. (2023) and Krumpen et al. (2021), respectively).
 620 This is particularly the case for products from algorithms that use MWR polarization information at 36 GHz, i.e. the ASI algorithm. In the context of the present study those inaccuracies have fostered a misclassification of cloud properties when sorted as a function of SIC due to the SIC offset. Therefore it is paramount to correct the SIC product when the offset due to WAI is present. This section describes the details of this correction.

The underestimation by MODIS-AMSR2 SIC retrievals can be observed from Fig. C1 middle-panel. For the period of mid-
 625 February to end of May 2020 considerable disagreement has been found in the SIC products obtained by the MODIS-AMSR2 and the OSI-SAF retrievals. Unfortunately, the resolution of the OSI-SAF product is 25 km which is not enough to resolve small leads relevant to this study. Therefore, OSI-SAF is only being used as reference product and we do not imply OSI-SAF as error-free retrieval or for absolute values of SIC.

630 In Fig. D2 can be seen the advantage to detect leads by the MODIS-AMSR2 product (a) as compared to the OSI-SAF (b). Conversely OSI-SAF sea ice concentration has the advantage of not being affected by the WAI events due to its different

retrieval algorithm, which has been corroborated by Krumpfen et al. (2021) and Rückert et al. (2023). Therefore those two products are being used in order to fix the SIC bias using OSI-SAF while still keeping the high resolution variability of the MODIS-AMSR2 product.

635 The time series of the OSI-SAF and merged MODIS-AMSR2 products averaged over the 50 km radius around RV *Polarstern* is shown in Fig. C1. Clearly confirms the WAI compromised sea ice concentration mainly from February to May 2020 as reported by Rückert et al. (2023).

In order to have both products statistically comparable, the MODIS-AMSR2 SIC is averaged by assuming a truncated normal distribution with 0 and 100 as lower and upper distribution limits. The averaging was performed within a 10 km grid centered at every OSI-SAF coordinate grid thus a MODIS-AMSR2 and OSISAF dataset is achieved with the same spatial resolution of the OSI-SAF grid. Then the ratio of those two products is calculated as an indicator of over or under estimation of ASI relative to OSI-SAF. The ratio is shown in Fig. C1 (top panel) for the entire period of interest. It can be seen that the greatest discrepancy occurs from middle February to May (in agreement with findings by Rückert et al. (2023)) with the OSI-SAF SIC retrieval being up to 15% higher than the MODIS-AMSR2. On the other hand the ratio rarely reaches $\pm 2\%$ for lower or higher MODIS-AMSR2 SIC outside the WAI period (mainly winter 2019) corroborating the fact that when no WAI events are experienced both product are comparable.

645 Since both SIC products are provided at a 24 hours temporal resolution the SIC ratio has been estimated on a daily bases. Every MODIS-AMSR2 SIC section of interest around RV *Polarstern* is then corrected by the SIC-ratio to match in average the OSI-SAF but keeping the high-spatial resolution and the variability within this sector of study. The comparison of this procedure is depicted in Fig. C1 bottom panel where the offset free SIC is overlapped to the OSI-SAF as visual assessment for the feasibility of the method.

Appendix D: Supporting Material

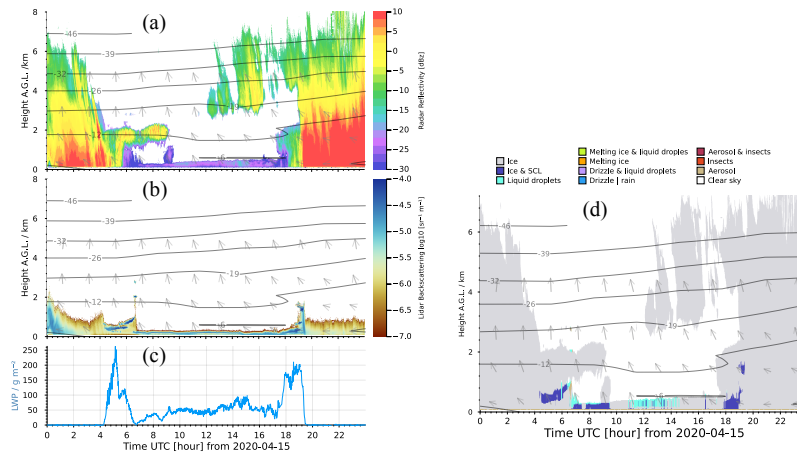


Figure D1. Synergy of remote sensing instruments on board of the RV *Polarstern* for 15 April 2020. (a) KAZR cloud radar reflectivity factor; (b) PolyXT lidar backscattering coefficient; (c) liquid water path from the microwave radiometer. The Iso-therms and wind vectors are obtained from the weather model at selected altitudes and time steps. (d) Cloudnet classification.

D1 Case Study for 15 April, 2020

Sea ice observations for 15 April, 2020. In this example, both MODIS-AMSR2 (1 km resolution) and SENTINEL-1 (700 m) detected the lead, whereas OSI-SAF (25 km resolution) is not able to detect the lead.

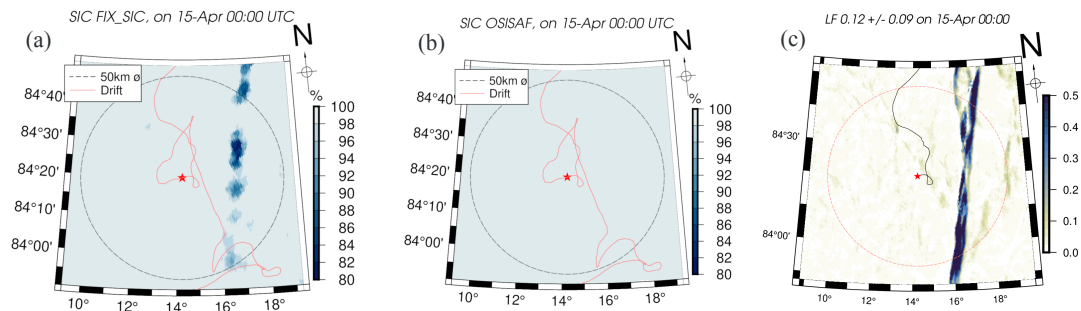


Figure D2. Satellite-based sea ice observations for 15 April, 2020. (a) SIC from MODIS-AMSR2 merge product after being offset corrected (see appendix C). (b) SIC from OSI-SAF. (c) LF from SAR SENTINEL-1. The images are centered at the position of the RV *Polarstern* (red star) at the given date. The RV drift is indicated by the red-line, the dashed circle indicates a the 50 km radius region of interest.

655

D2 Statistical Analysis Additional Results

In Fig. D3 (a) ~~is shown that when~~ shows the frequency of occurrence ~~is of coupled versus decoupled cases when~~ binned within intervals of total water path, ~~For total water path larger than 50 g m^{-2} (light to dark green colours) the coupled cases are~~

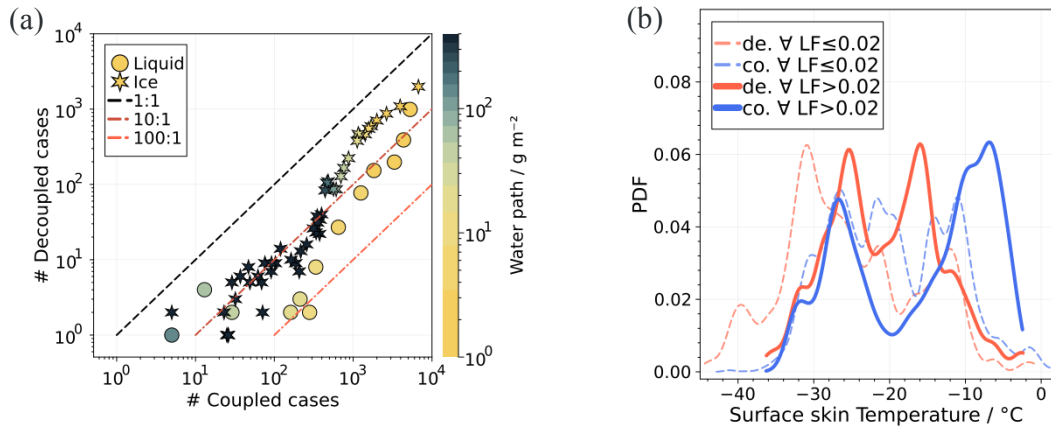


Figure D3. (a) the distribution of cloud observations as a function of the integrated water path for coupled versus decoupled cases. The colour scale indicates the cloud water path for ice (stars) and liquid (circles). (b) PDF for the surface skin temperature from the GNDIRT sensor.

can be approximately 10 times more frequent than decoupled cases. Fig. D3 (a) also shows the distribution of coupled and decoupled cases with respect to cloud phase and integrated water path (colour scale) (middle red dashed-line). Whereas cases with lower than 50 g m^{-2} are the most frequent observations (yellow colours) with a ration of $\sim 3 \div 2$. It can be seen that liquid clouds are mostly found below 200 g m^{-2} and are more frequent than the ice clouds.

Finally the PDFs for surface skin temperature are presented in Fig. D3 (b), showing a asymmetric coupled/decoupled bimodal distributions. Cases with $\text{LF} > 0.02$ are associated with a considerable warm surface for coupled cases with one peak located at -6°C , whereas the decoupled PDF shows one peak at -17°C .

D3 List of Acronyms and variables

Acronym	Description
KAZR	Ka Zenith Radar
MWR	Microwave Radiometer
HATPRO	Humidity and Temperature Profiler
CEIL10m	Ceilometer 10 m resolution
INTERPSONDE	Interpolated Radiosonde
RV	Research Vessel
CO-Central Observatory -AMSR2	Advanced Microwave Scanning Radiometer 2
MODIS	Moderate Resolution Imaging Spectroradiometer
MPC	Mixed-phase Clouds
ASI	Artist sea ice algorithm
OSI SAF	Ocean and Sea Ice Satellite Application Facility
SAR	Synthetic Aperture Radar

Symbol	Description	Unit
LWP	liquid water path	g m^{-2}
IWV	integrated water vapour	kg m^{-2}
LWC	liquid water content	g m^{-3}
IWC	ice water content	g m^{-3}
IWP	ice water path	g m^{-2}
IVT	integrated water vapour transport	$\text{kg s}^{-1} \text{m}^{-1}$
$\nabla_z \text{WVT}$	vertical gradient of water vapour transport	$\text{g s}^{-1} \text{m}^{-2}$
CBH	cloud base height	m
CTH	cloud top height	m
CMLH	cloud mixing-layer height	m
LF	sea ice lead fraction	-
SIC	sea ice concentration	%
Z_e	radar equivalent reflectivity factor	dBz
V_D	mean Doppler velocity	m s^{-1}
SW_D	Doppler spectral width	m s^{-1}
β	lidar attenuated backscattering coefficient	$\text{m}^{-1} \text{sr}^{-1}$
δ	lidar depolarization ratio	-
P	atmospheric pressure	Pa
q_v	specific humidity	g g^{-1}
W_s	horizontal wind speed	m s^{-1}
W_d	wind direction from North	$^\circ$
T_v	virtual temperature	K
θ_v	virtual potential temperature	K
$\Sigma \sigma_i^2(\cdot)$	cumulative variance function	K^2
Ri_b	bulk Richardson number	-
T_{gnd}	skin surface temperature	K
Γ_{cloud}	cloud layer temperature lapse rate	$^\circ\text{C km}^{-1}$
χ_{ice}	ice water fraction in cloud layer	-
\bar{r}_{eff}	cloud layer average effective radius	μm

670 *Author contributions.* PSG performed the data analysis and led the manuscript writing. HKL as project leader contributed to the research design and result analysis. LvA produced the sea ice divergence and lead fraction from SAR SENTINEL-1 data. HG provided Cloudnet and the low level cloud flag product for MOSAiC. GS provided the sea ice concentration products. All co-authors contributed with discussion and revision of the manuscript .

Competing interests. The authors declare no conflict of interest.

675 *Acknowledgements.* We thank all those who contributed to the Multidisciplinary drifting Observatory for the Study of Arctic Climate (MO-
SAiC) Consortium, and made this drift observatory possible! (Nixdorf et al., 2021). Our gratitude to the DOE ARM program for openly
provide the data from its Mobile Facility 1 on board of RV *Polarstern* . To the open Sea Ice data repository from the University of Bremen and
the EUMESAT Ocean and Sea Ice Satellite Application Facility (OSI SAF). This work was supported by the *Deutsche Forschungsgemein-*
schaft (DFG) funded Transregio-project TR-172 “Arctic Amplification (*AC*)³” (grant 268020496). Thanks to Nils Hutter who developed the
680 directional filter used to remove noise from the SAR divergence fields, [and to Torsten Seelig for performing the Lagrangian back-trajectories
for the case study, and the three anonymous reviewers for valuable feedback and comments.](#)

References

- Andreas, E. L.: Estimation of Heat and Mass Fluxes Over Arctic Leads, *Monthly Weather Review*, 108, 2057–2063, [https://doi.org/10.1175/1520-0493\(1980\)108<2057:EOHAMF>2.0.CO;2](https://doi.org/10.1175/1520-0493(1980)108<2057:EOHAMF>2.0.CO;2), publisher: American Meteorological Society Section: Monthly Weather Review, 1980.
- Andreas, E. L. and Cash, B. A.: Convective heat transfer over wintertime leads and polynyas, *Journal of Geophysical Research: Oceans*, 104, 25 721–25 734, <https://doi.org/10.1029/1999JC900241>, _eprint: <https://onlinelibrary.wiley.com/doi/pdf/10.1029/1999JC900241>, 1999.
- Bergeron, T.: On the physics of cloud and precipitation, *Mémoire présenté a l'Association de Météorologie de l'U.G.G.I. Lissabon Septembre 1933*, p. 156–178, paris. Imprimerie Paul Dupont, 1935.
- Chechin, D., Makhotina, I., Lüpkes, C., and Makshtas, A.: Effect of Wind Speed and Leads on Clear-Sky Cooling over Arctic Sea Ice during Polar Night, *Journal of the Atmospheric Sciences*, 76, <https://doi.org/10.1175/JAS-D-18-0277.1>, 2019.
- Coopman, Q., Riedi, J., Finch, D. P., and Garrett, T. J.: Evidence for Changes in Arctic Cloud Phase Due to Long-Range Pollution Transport, *Geophysical Research Letters*, 45, 10,709–10,718, <https://doi.org/10.1029/2018GL079873>, _eprint: <https://onlinelibrary.wiley.com/doi/pdf/10.1029/2018GL079873>, 2018.
- Creamean, J. M., Barry, K., Hill, T. C. J., Hume, C., DeMott, P. J., Shupe, M. D., Dahlke, S., Willmes, S., Schmale, J., Beck, I., Hoppe, C. J. M., Fong, A., Chamberlain, E., Bowman, J., Scharien, R., and Persson, O.: Annual cycle observations of aerosols capable of ice formation in central Arctic clouds, *Nature Communications*, 13, 3537, <https://doi.org/10.1038/s41467-022-31182-x>, number: 1 Publisher: Nature Publishing Group, 2022.
- Danker, J., Sourdeval, O., McCoy, I. L., Wood, R., and Possner, A.: Exploring relations between cloud morphology, cloud phase, and cloud radiative properties in Southern Ocean's stratocumulus clouds, *Atmospheric Chemistry and Physics*, 22, 10 247–10 265, <https://doi.org/10.5194/acp-22-10247-2022>, publisher: Copernicus GmbH, 2022.
- Ebell, K., Walbröl, A., Engelmann, R., Griesche, H., Radenz, M., Hofer, J., and Althausen, D.: Temperature and humidity profiles, integrated water vapour and liquid water path derived from the HATPRO microwave radiometer onboard the Polarstern during the MOSAiC expedition, <https://doi.org/10.1594/PANGAEA.941389>, 2022.
- Engelmann, R., Kanitz, T., Baars, H., Heese, B., Althausen, D., Skupin, A., Wandinger, U., Komppula, M., Stachlewska, I. S., Amiridis, V., Miranou, E., Matthis, I., Linné, H., and Ansmann, A.: The automated multiwavelength Raman polarization and water-vapor lidar PollyXT: the neXT generation, *Atmospheric Measurement Techniques*, 9, 1767–1784, <https://doi.org/10.5194/amt-9-1767-2016>, 2016.
- Findeisen, W.: Die kolloidmeteorologischen Vorgänge bei der Niederschlagsbildung, *Meteorol. Z.*, 55, 121 – 133, 1938.
- Frisch, A. S., Feingold, G., Fairall, C. W., Uttal, T., and Snider, J. B.: On cloud radar and microwave radiometer measurements of stratus cloud liquid water profiles, *Journal of Geophysical Research: Atmospheres*, 103, 23 195–23 197, <https://doi.org/10.1029/98JD01827>, _eprint: <https://onlinelibrary.wiley.com/doi/pdf/10.1029/98JD01827>, 1998.
- Frisch, S., Shupe, M., Djalalova, I., Feingold, G., and Poellot, M.: The Retrieval of Stratus Cloud Droplet Effective Radius with Cloud Radars, *Journal of Atmospheric and Oceanic Technology*, 19, 835–842, [https://doi.org/10.1175/1520-0426\(2002\)019<0835:TROSCD>2.0.CO;2](https://doi.org/10.1175/1520-0426(2002)019<0835:TROSCD>2.0.CO;2), publisher: American Meteorological Society Section: Journal of Atmospheric and Oceanic Technology, 2002.
- Gierens, R., Kneifel, S., Shupe, M. D., Ebell, K., Maturilli, M., and Löhnert, U.: Low-level mixed-phase clouds in a complex Arctic environment, *Atmospheric Chemistry and Physics*, 20, 3459–3481, <https://doi.org/10.5194/acp-20-3459-2020>, publisher: Copernicus GmbH, 2020.

- Griesche, H. J., Seifert, P., Ansmann, A., Baars, H., Barrientos Velasco, C., Bühl, J., Engelmann, R., Radenz, M., Zhenping, Y., and Macke, A.: Application of the shipborne remote sensing supersite OCEANET for profiling of Arctic aerosols and clouds during *Polarstern* cruise PS106, *Atmospheric Measurement Techniques*, 13, 5335–5358, <https://doi.org/10.5194/amt-13-5335-2020>, 2020.
- 720 Griesche, H. J., Ohneiser, K., Seifert, P., Radenz, M., Engelmann, R., and Ansmann, A.: Contrasting ice formation in Arctic clouds: surface-coupled vs. surface-decoupled clouds, *Atmospheric Chemistry and Physics*, 21, 10357–10374, <https://doi.org/10.5194/acp-21-10357-2021>, 2021.
- Gryschka, M., Gryanik, V. M., Lüpkes, C., Mostafa, Z., Sühling, M., Witha, B., and Raasch, S.: Turbulent Heat Exchange Over Polar Leads Revisited: A Large Eddy Simulation Study, *Journal of Geophysical Research: Atmospheres*, 128, e2022JD038236, <https://doi.org/10.1029/2022JD038236>, [_eprint: https://onlinelibrary.wiley.com/doi/pdf/10.1029/2022JD038236](https://onlinelibrary.wiley.com/doi/pdf/10.1029/2022JD038236), 2023.
- 725 Hogan, R. J., Mittermaier, M. P., and Illingworth, A. J.: The Retrieval of Ice Water Content from Radar Reflectivity Factor and Temperature and Its Use in Evaluating a Mesoscale Model, *Journal of Applied Meteorology and Climatology*, 45, 301–317, <https://doi.org/10.1175/JAM2340.1>, publisher: American Meteorological Society Section: Journal of Applied Meteorology and Climatology, 2006.
- 730 Howie, J. and Morris, V.: Infrared Thermometer (GNDIRT), <https://doi.org/10.5439/1376838>, 2020.
- Illingworth, A. J., Hogan, R. J., O'Connor, E. J., Bouniol, D., Brooks, M. E., Delanoé, J., Donovan, D. P., Eastment, J. D., Gaussiat, N., Goddard, J. W. F., Haefelin, M., Baltink, H. K., Krasnov, O. A., Pelon, J., Piriou, J.-M., Protat, A., Russchenberg, H. W. J., Seifert, A., Tompkins, A. M., van Zadelhoff, G.-J., Vinit, F., Willén, U., Wilson, D. R., and Wrench, C. L.: CloudnetContinuous Evaluation of Cloud Profiles in Seven Operational Models Using Ground-Based Observations, *Bull. Amer. Meteor. Soc.*, 88, 883–898, <https://doi.org/10.1175/BAMS-88-6-883>, publisher: American Meteorological Society, 2007.
- 735 Jensen, M., Giangrande, S., Fairless, T., and Zhou, A.: Interpolated Sonde (INTERPOLATEDSONDE), <https://doi.org/10.5439/1095316>, 2020.
- Johnson, K., Giangrande, S., and Toto, T.: Active Remote Sensing of Clouds (ARSCL) product using Ka-band ARM Zenith Radars (AR-SCLKAZR1KOLLIAS), <https://doi.org/10.5439/1393437>, 2020.
- 740 Kanitz, T., Seifert, P., Ansmann, A., Engelmann, R., Althausen, D., Casiccia, C., and Rohwer, E. G.: Contrasting the impact of aerosols at northern and southern midlatitudes on heterogeneous ice formation, *Geophysical Research Letters*, 38, <https://doi.org/https://doi.org/10.1029/2011GL048532>, 2011.
- Korolev, A. and Milbrandt, J.: How are mixed-phase clouds mixed?, *Geophysical Research Letters*, 49, <https://doi.org/10.1029/2022GL099578>, e2022GL099578, 2022.
- 745 Krumpen, T., von Albedyll, L., Goessling, H. F., Hendricks, S., Juhls, B., Spreen, G., Willmes, S., Belter, H. J., Dethloff, K., Haas, C., Kaleschke, L., Katlein, C., Tian-Kunze, X., Ricker, R., Rostovsky, P., Rückert, J., Singha, S., and Sokolova, J.: MOSAiC drift expedition from October 2019 to July 2020: sea ice conditions from space and comparison with previous years, *The Cryosphere*, 15, 3897–3920, <https://doi.org/10.5194/tc-15-3897-2021>, publisher: Copernicus GmbH, 2021.
- 750 Kwok, R.: Sea ice concentration estimates from satellite passive microwave radiometry and openings from SAR ice motion, *Geophysical Research Letters*, 29, 25–1–25–4, <https://doi.org/https://doi.org/10.1029/2002GL014787>, 2002.
- Lavergne, T., Tonboe, R., Lavelle, J., and Eastwood, S.: Algorithm Theoretical Basis Document (ATBD) for the OSI SAF Global Sea Ice Concentration Climate Data Record (v1.1), https://www.researchgate.net/publication/306365213_Algorithm_Theoretical_Basis_Document_ATBD_for_the_OSI_SAF_Global_Sea_Ice_Concentration_Climate_Data_Record_v11, 2016.

- 755 Li, X., Krueger, S. K., Strong, C., and Mace, G. G.: Relationship Between Wintertime Leads and Low Clouds in the Pan-Arctic, *Journal of Geophysical Research: Atmospheres*, 125, e2020JD032595, <https://doi.org/10.1029/2020JD032595>, 2020a.
- Li, X., Krueger, S. K., Strong, C., Mace, G. G., and Benson, S.: Midwinter Arctic leads form and dissipate low clouds, *Nature Communications*, 11, 206, <https://doi.org/10.1038/s41467-019-14074-5>, 2020b.
- Ludwig, V., Spreen, G., and Pedersen, L. T.: Evaluation of a New Merged Sea-Ice Concentration Dataset at 1 km Resolution from Thermal
760 Infrared and Passive Microwave Satellite Data in the Arctic, *Remote Sensing*, 12, 3183, <https://doi.org/10.3390/rs12193183>, number: 19
Publisher: Multidisciplinary Digital Publishing Institute, 2020.
- Lüpkes, C., Vihma, T., Birnbaum, G., and Wacker, U.: Influence of leads in sea ice on the temperature of the atmospheric boundary layer during polar night, *Geophysical Research Letters*, 35, <https://doi.org/10.1029/2007GL032461>, _eprint: <https://onlinelibrary.wiley.com/doi/pdf/10.1029/2007GL032461>, 2008.
- 765 Martin-Ralph, F., Dettinger, M., Rutz, J., and Waliser, D.: Atmospheric Rivers, Springer, <https://doi.org/https://doi.org/10.1007/978-3-030-28906-5>, 2020.
- Maturilli, M., Holdridge, D. J., Dahlke, S., Graeser, J., Sommerfeld, A., Jaiser, R., Deckelmann, H., and Schulz, A.: Initial radiosonde data from 2019-10 to 2020-09 during project MOSAiC, <https://doi.org/10.1594/PANGAEA.928656>, 2021.
- Michaelis, J. and Lüpkes, C.: The Impact of Lead Patterns on Mean Profiles of Wind, Temperature, and Turbulent Fluxes in the Atmospheric
770 Boundary Layer over Sea Ice, *Atmosphere*, 13, 148, <https://doi.org/10.3390/atmos13010148>, 2022.
- Mioche, G., Jourdan, O., Ceccaldi, M., and Delanoë, J.: Variability of mixed-phase clouds in the Arctic with a focus on the Svalbard region: a study based on spaceborne active remote sensing, *Atmospheric Chemistry and Physics*, 15, 2445–2461, <https://doi.org/10.5194/acp-15-2445-2015>, 2015.
- Morrison, H., de Boer, G., Feingold, G., Harrington, J., Shupe, M. D., and Sulia, K.: Resilience of persistent Arctic mixed-phase clouds,
775 *Nature Geosci*, 5, 11–17, <https://doi.org/10.1038/ngeo1332>, number: 1 Publisher: Nature Publishing Group, 2012.
- Murashkin, D., Spreen, G., Huntemann, M., and Dierking, W.: Method for detection of leads from Sentinel-1 SAR images, *Annals of Glaciology*, 59, 124–136, <https://doi.org/10.1017/aog.2018.6>, 2018.
- Nicolaus, M., Perovich, D. K., Spreen, G., Granskog, M. A., von Albedyll, L., Angelopoulos, M., Anhaus, P., Arndt, S., Belter, H. J.,
780 Bessonov, V., Birnbaum, G., Brauchle, J., Calmer, R., Cardellach, E., Cheng, B., Clemens-Sewall, D., Dadic, R., Damm, E., de Boer, G., Demir, O., Dethloff, K., Divine, D. V., Fong, A. A., Fons, S., Frey, M. M., Fuchs, N., Gabarró, C., Gerland, S., Goessling, H. F., Gradinger, R., Haapala, J., Haas, C., Hamilton, J., Hannula, H.-R., Hendricks, S., Herber, A., Heuzé, C., Hoppmann, M., Høyland, K. V., Huntemann, M., Hutchings, J. K., Hwang, B., Itkin, P., Jacobi, H.-W., Jaggi, M., Jutila, A., Kaleschke, L., Katlein, C., Kolabutin, N., Krampe, D., Kristensen, S. S., Krumpen, T., Kurtz, N., Lampert, A., Lange, B. A., Lei, R., Light, B., Linhardt, F., Liston, G. E., Loose, B., Macfarlane, A. R., Mahmud, M., Matero, I. O., Maus, S., Morgenstern, A., Naderpour, R., Nandan, V., Niubom, A., Oggier, M., Oppelt, N., Pätzold,
785 F., Perron, C., Petrovsky, T., Pirazzini, R., Polashenski, C., Rabe, B., Raphael, I. A., Regnery, J., Rex, M., Ricker, R., Riemann-Campe, K., Rinke, A., Rohde, J., Salganik, E., Scharien, R. K., Schiller, M., Schneebeli, M., Semmling, M., Shimanchuk, E., Shupe, M. D., Smith, M. M., Smolyanitsky, V., Sokolov, V., Stanton, T., Stroeve, J., Thielke, L., Timofeeva, A., Tonboe, R. T., Tavri, A., Tsamados, M., Wagner, D. N., Watkins, D., Webster, M., and Wendisch, M.: Overview of the MOSAiC expedition: Snow and sea ice, *Elementa: Science of the Anthropocene*, 10, 000046, <https://doi.org/10.1525/elementa.2021.000046>, 2022.
- 790 Nixdorf, U., Dethloff, K., Rex, M., Shupe, M., Sommerfeld, A., Perovich, D. K., Nicolaus, M., Heuzé, C., Rabe, B., Loose, B., Damm, E., Gradinger, R., Fong, A., Maslowski, W., Rinke, A., Kwok, R., Spreen, G., Wendisch, M., Herber, A., Hirsekorn, M., Mohaupt, V., Frickenhaus, S., Immerz, A., Weiss-Tuider, K., König, B., Mengedocht, D., Regnery, J., Gerchow, P., Ransby, D., Krumpen, T., Morgenstern,

- A., Haas, C., Kanzow, T., Rack, F. R., Saitzev, V., Sokolov, V., Makarov, A., Schwarze, S., Wunderlich, T., Wurr, K., and Boetius, A.: MOSAiC Extended Acknowledgement, <https://doi.org/10.5281/zenodo.5179739>, 2021.
- 795 Papakonstantinou-Presvelou, I., Sourdeval, O., and Quaas, J.: Strong Ocean/Sea-Ice Contrasts Observed in Satellite-Derived Ice Crystal Number Concentrations in Arctic Ice Boundary-Layer Clouds, *Geophysical Research Letters*, 49, e2022GL098207, <https://doi.org/10.1029/2022GL098207>, eprint: <https://onlinelibrary.wiley.com/doi/pdf/10.1029/2022GL098207>, 2022.
- Pruppacher, H. and Klett, J.: *Microphysics of Clouds and Precipitation*, vol. 18 of *Atmospheric and Oceanographic Science Library*, Springer Dordrecht, 2 edn., <https://doi.org/10.1007/978-0-306-48100-0>, 1997.
- 800 Rogers, R. and Yau, M.: *A Short Course in Clouds Physics*, Pergamon Press, third edition edn., 1991.
- Rückert, J. E., Rostovsky, P., Huntemann, M., Clemens-Sewall, D., Ebell, K., Kaleschke, L., Lemmetyinen, J., Macfarlane, A. R., Naderpour, R., Stroeve, J. C., Walbröl, A., and Spreen, G.: Sea ice concentration satellite retrievals influenced by surface changes due to warm air intrusions: A case study from the MOSAiC expedition., <https://eartharxiv.org/repository/view/5195/>, preprint ~~publisher:~~ EarthArXiv, 2023.
- 805 Schimmel, W., Kalesse-Los, H., Maahn, M., Vogl, T., Foth, A., Garfias, P. S., and Seifert, P.: Identifying cloud droplets beyond lidar attenuation from vertically pointing cloud radar observations using artificial neural networks, *Atmospheric Measurement Techniques*, 15, 5343–5366, <https://doi.org/10.5194/amt-15-5343-2022>, 2022.
- Sedlar, J., Shupe, M. D., and Tjernström, M.: On the Relationship between Thermodynamic Structure and Cloud Top, and Its Climate Significance in the Arctic, *Journal of Climate*, 25, 2374–2393, <https://doi.org/10.1175/JCLI-D-11-00186.1>, publisher: American Meteorological Society Section: *Journal of Climate*, 2012.
- 810 Serreze, M. C. and Barry, R. C.: Processes and impacts of Arctic amplification: A research synthesis, *Global Planet. Change*, 77, 85–96, <https://doi.org/10.1016/j.gloplacha.2011.03.004>, <https://doi.org/10.1016/j.gloplacha.2011.03.004>, 2011.
- Shupe, M. D.: A ground-based multisensor cloud phase classifier, *Geophysical Research Letters*, 34, <https://doi.org/https://doi.org/10.1029/2007GL031008>, 2007.
- 815 Shupe, M. D., Rex, M., Blomquist, B., Persson, P. O. G., Schmale, J., Uttal, T., Althausen, D., Angot, H., Archer, S., Bariteau, L., Beck, I., Bilberry, J., Bucci, S., Buck, C., Boyer, M., Brousseau, Z., Brooks, I. M., Calmer, R., Cassano, J., Castro, V., Chu, D., Costa, D., Cox, C. J., Creamean, J., Crewell, S., Dahlke, S., Damm, E., de Boer, G., Deckelmann, H., Dethloff, K., Dütsch, M., Ebell, K., Ehrlich, A., Ellis, J., Engelmann, R., Fong, A. A., Frey, M. M., Gallagher, M. R., Ganzeveld, L., Gradinger, R., Graeser, J., Greenamyre, V., Griesche, H., Griffiths, S., Hamilton, J., Heinemann, G., Helmig, D., Herber, A., Heuzé, C., Hofer, J., Houchens, T., Howard, D., Inoue, J., Jacobi, H.-
- 820 W., Jaiser, R., Jokinen, T., Jourdan, O., Jozef, G., King, W., Kirchgaessner, A., Klingebiel, M., Krassovski, M., Krumpen, T., Lampert, A., Landing, W., Laurila, T., Lawrence, D., Lonardi, M., Loose, B., Lüpkes, C., Maahn, M., Macke, A., Maslowski, W., Marsay, C., Maturilli, M., Mech, M., Morris, S., Moser, M., Nicolaus, M., Ortega, P., Osborn, J., Pätzold, F., Perovich, D. K., Petäjä, T., Pilz, C., Pirazzini, R., Posman, K., Powers, H., Pratt, K. A., Preußner, A., Quélever, L., Radenz, M., Rabe, B., Rinke, A., Sachs, T., Schulz, A., Siebert, H., Silva, T., Solomon, A., Sommerfeld, A., Spreen, G., Stephens, M., Stohl, A., Svensson, G., Uin, J., Viegas, J., Voigt, C., von der Gathen, P.,
- 825 Wehner, B., Welker, J. M., Wendisch, M., Werner, M., Xie, Z., and Yue, F.: Overview of the MOSAiC expedition—Atmosphere, *Elementa: Science of the Anthropocene*, 10, 00060, <https://doi.org/10.1525/elementa.2021.00060>, 2022.
- Sotiropoulou, G., Sedlar, J., Tjernström, M., Shupe, M. D., Brooks, I. M., and Persson, P. O. G.: The thermodynamic structure of summer Arctic stratocumulus and the dynamic coupling to the surface, *Atmospheric Chemistry and Physics*, 14, 12573–12592, <https://doi.org/10.5194/acp-14-12573-2014>, publisher: Copernicus GmbH, 2014.

- 830 Spreen, G., Kaleschke, L., and Heygster, G.: Sea ice remote sensing using AMSR-E 89-GHz channels, *Journal of Geophysical Research: Oceans*, 113, <https://doi.org/https://doi.org/10.1029/2005JC003384>, 2008.
- Sprenger, M. and Wernli, H.: The LAGRANTO Lagrangian analysis tool – version 2.0, *Geoscientific Model Development*, 8, 2569–2586, <https://doi.org/10.5194/gmd-8-2569-2015>, publisher: Copernicus GmbH, 2015.
- Tukiainen, S., O'Connor, E., and Korpinen, A.: CloudnetPy: A Python package for processing cloud remote sensing data, *Journal of Open Source Software*, 5, 2123, <https://doi.org/10.21105/joss.02123>, 2020.
- 835 von Albedyll, L.: Sea ice deformation and sea ice thickness change, Ph.D. thesis, <https://doi.org/https://doi.org/10.26092/elib/1868>, 2022.
- von Albedyll, L. and Hutter, N.: High resolution sea ice drift and deformation in the Transpolar Drift during MOSAiC 2019/2020, PAN-GAEA, submitted, 2022.
- von Albedyll, L., Haas, C., and Dierking, W.: Linking sea ice deformation to ice thickness redistribution using high-resolution satellite and
840 airborne observations, *The Cryosphere*, 15, 2167–2186, <https://doi.org/10.5194/tc-15-2167-2021>, publisher: Copernicus GmbH, 2021.
- Wang, D., Stachlewska, I. S., Delanoë, J., Ene, D., Song, X., and Schüttemeyer, D.: Spatio-temporal discrimination of molecular, aerosol and cloud scattering and polarization using a combination of a Raman lidar, Doppler cloud radar and microwave radiometer, *Opt. Express*, OE, 28, 20 117–20 134, <https://doi.org/10.1364/OE.393625>, publisher: Optical Society of America, 2020.
- Wegener, A.: *Thermodynamik der atmosphäre*, Leipzig: Verlag von Johann Ambrosius Barth, pp. 8+331,
845 <https://doi.org/10.1002/qj.49703916510>, 1911.
- Wendisch, M., Brückner, M., Burrows, J. P., Crewell, S., Dethloff, K., Ebell, K., Lüpkes, C., Macke, A., Notholt, J., Quaas, J., Rinke, A., and Tegen, I.: Understanding causes and effects of rapid warming in the Arctic, *Eos*, 98, 22–26, <https://doi.org/10.1029/2017EO064803>, <https://doi.org/10.1029/2017EO064803>, 2017.
- Wendisch, M., Brückner, M., Crewell, S., Ehrlich, A., Notholt, J., Lüpkes, C., Macke, A., Burrows, J. P., Rinke, A., Quaas, J., Maturilli,
850 M., Schemann, V., Shupe, M. D., Akansu, E. F., Barrientos-Velasco, C., Bärfuss, K., Blechschmidt, A.-M., Block, K., Bougoudis, I., Bozem, H., Böckmann, C., Bracher, A., Bresson, H., Bretschneider, L., Buschmann, M., Chechin, D. G., Chylik, J., Dahlke, S., Deneke, H., Dethloff, K., Donth, T., Dorn, W., Dupuy, R., Ebell, K., Egerer, U., Engelmann, R., Eppers, O., Gerdes, R., Gierens, R., Gorodetskaya, I. V., Gottschalk, M., Griesche, H., Gryanik, V. M., Handorf, D., Harm-Altstädter, B., Hartmann, J., Hartmann, M., Heinold, B., Herber, A., Herrmann, H., Heygster, G., Höschel, I., Hofmann, Z., Hölemann, J., Hünnerbein, A., Jafariserajehlou, S., Jäkel, E., Jacobi, C., Janout,
855 M., Jansen, F., Jourdan, O., Jurányi, Z., Kalesse-Los, H., Kanzow, T., Käthner, R., Kliesch, L. L., Klingebiel, M., Knudsen, E. M., Kovács, T., Körtke, W., Krampe, D., Kretzschmar, J., Kreyling, D., Kulla, B., Kunkel, D., Lampert, A., Lauer, M., Lelli, L., von Lerber, A., Linke, O., Löhnert, U., Lonardi, M., Losa, S. N., Losch, M., Maahn, M., Mech, M., Mei, L., Mertes, S., Metzner, E., Mewes, D., Michaelis, J., Mioche, G., Moser, M., Nakoudi, K., Neggers, R., Neuber, R., Nomokonova, T., Oelker, J., Papakonstantinou-Presvelou, I., Pätzold, F., Pefanis, V., Pohl, C., van Pinxteren, M., Radovan, A., Rhein, M., Rex, M., Richter, A., Risse, N., Ritter, C., Rostosky, P., Rozanov, V. V.,
860 Donoso, E. R., Saavedra Garfias, P., Salzmann, M., Schacht, J., Schäfer, M., Schneider, J., Schnierstein, N., Seifert, P., Seo, S., Siebert, H., Soppa, M. A., Spreen, G., Stachlewska, I. S., Stapf, J., Stratmann, F., Tegen, I., Viceto, C., Voigt, C., Vountas, M., Walbröl, A., Walter, M., Wehner, B., Wex, H., Willmes, S., Zanatta, M., and Zeppenfeld, S.: Atmospheric and Surface Processes, and Feedback Mechanisms Determining Arctic Amplification: A Review of First Results and Prospects of the (AC)3 Project, *Bulletin of the American Meteorological Society*, 104, E208 – E242, <https://doi.org/10.1175/BAMS-D-21-0218.1>, 2023.
- 865 Westbrook, C. D. and Illingworth, A. J.: Evidence that ice forms primarily in supercooled liquid clouds at temperatures > -27°C, *Geophysical Research Letters*, 38, <https://doi.org/https://doi.org/10.1029/2011GL048021>, 2011.
- Zhang, D., Morris, V., and Ermold, B.: Ceilometer (CEIL10M), 2020.

Zhu, Y. and Newell, R. E.: A Proposed Algorithm for Moisture Fluxes from Atmospheric Rivers, *Monthly Weather Review*, 126, 725 – 735, [https://doi.org/10.1175/1520-0493\(1998\)126<0725:APAFMF>2.0.CO;2](https://doi.org/10.1175/1520-0493(1998)126<0725:APAFMF>2.0.CO;2), 1998.