

Supplementary material to:

Atmospheric impacts of chlorinated very short-lived substances over the recent past - Part 2: Impacts on ozone

Ewa M. Bednarz^{1,2,3}, Ryan Hossaini^{1,4}, Martyn P. Chipperfield^{5,6}

1. Lancaster Environment Centre, Lancaster University, Lancaster, UK
2. Cooperative Institute for Research in Environmental Science (CIRES), University of Colorado Boulder, Boulder, CO, USA.
3. NOAA Chemical Sciences Laboratory (NOAA CSL), Boulder, CO, USA
4. Centre of Excellence in Environmental Data Science (CEEDS), Lancaster University, Lancaster UK.
5. School of Earth and Environment, University of Leeds, Leeds, UK
6. National Centre for Earth Observation (NCEO), University of Leeds, Leeds, UK

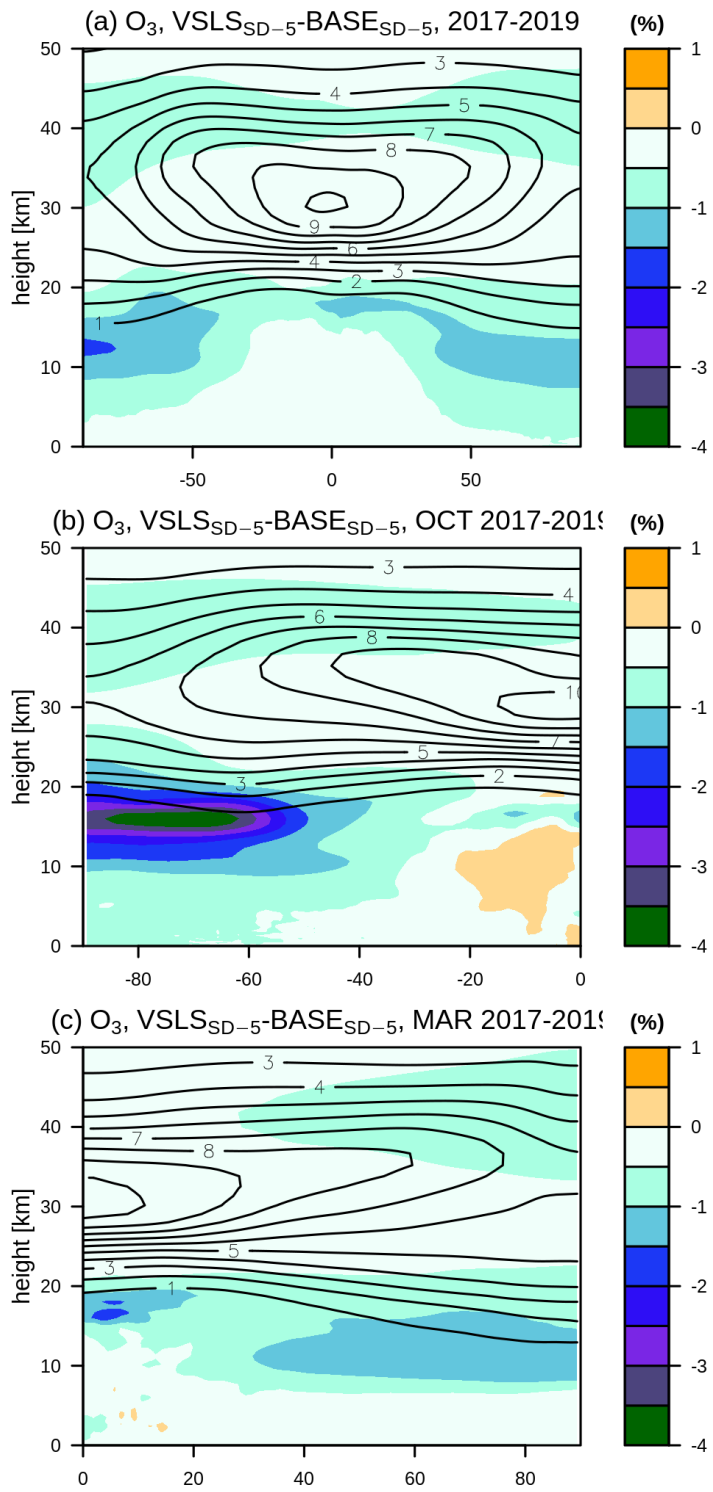


Figure S1. As in Figure 2 but for the mean over 2017-2019 inclusive.

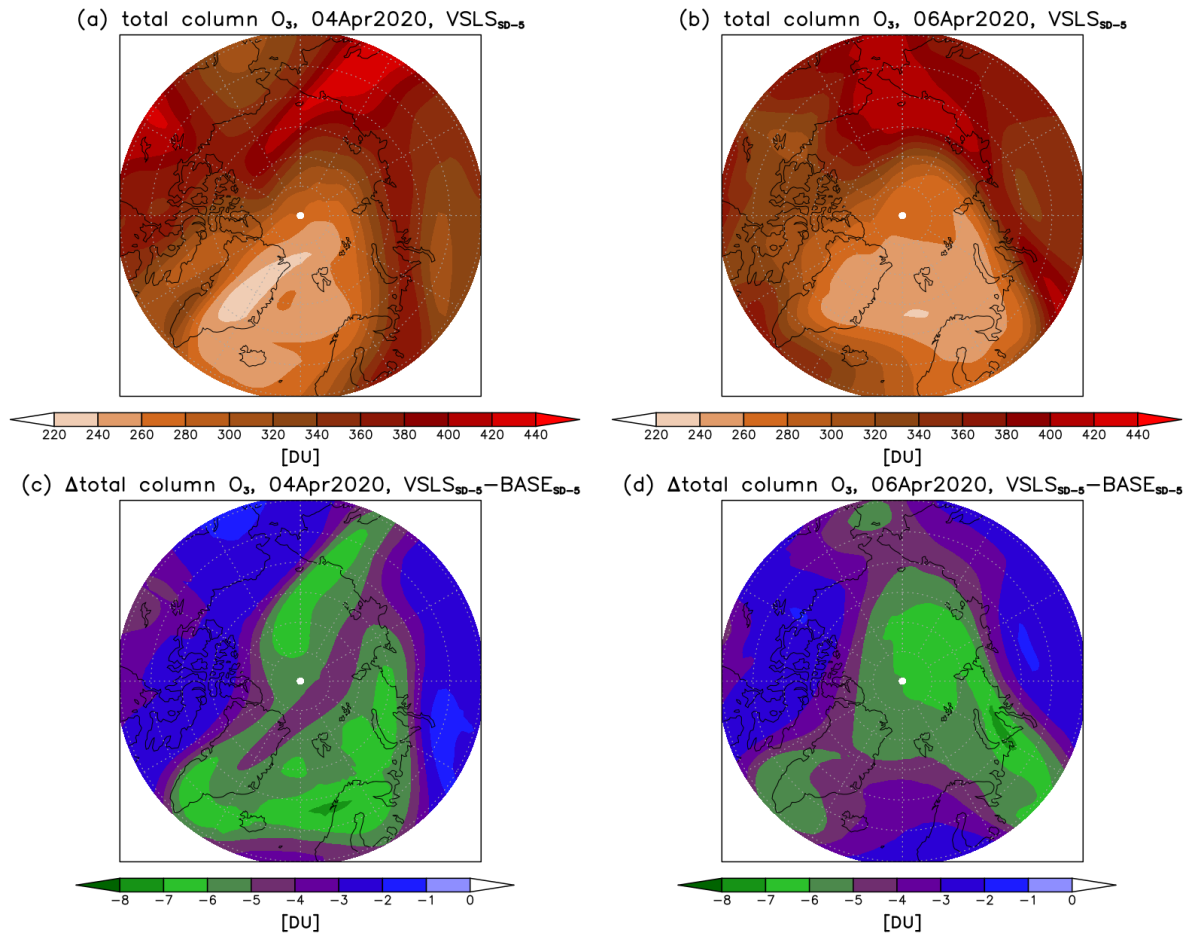


Figure S2. Stereographic projections poleward of 60°N of daily mean total column ozone [DU] on (a) 04 Apr 2020 and (b) 06 April 2020 simulated in the nudged VLSLSD-5 run. Panels (c-d) show the respective differences between VLSLSD-5 and BASESD-5 runs.

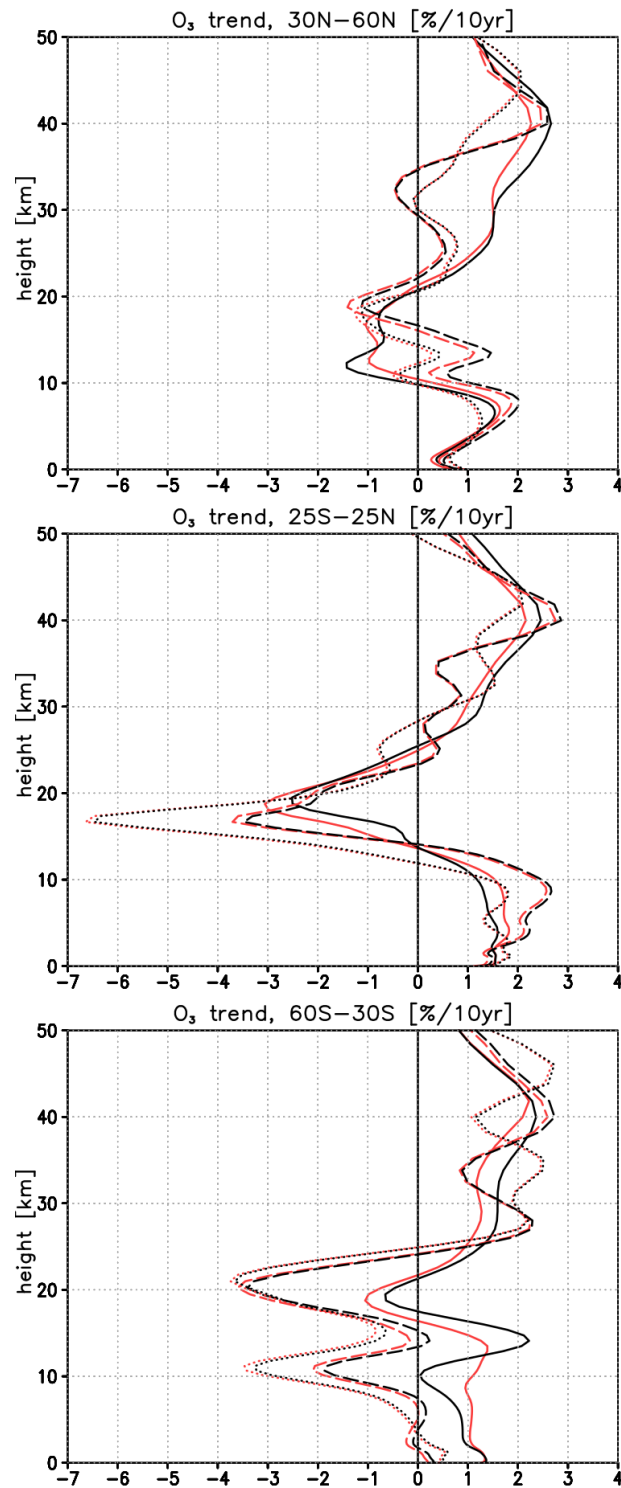


Figure S3. Linear trends in de-seasonalised O₃ mixing ratios over December 1999 to August 2019 [% per 10 years] averaged over (top) 30N-60N, (middle) 25S-25N, and (bottom) 60S-30S. The simulations with CI-VLS included are in red, and the simulations without CI-VLS are in black. Solid lines are for the free-running simulations (VLSL and BASE), dashed lines are for the simulations nudged to ERA5 (VLSL_{SD-5} and BASE_{SD-5}), and dotted lines are for the simulations nudged to ERA-Interim (VLSL_{SD-I} and BASE_{SD-I}).

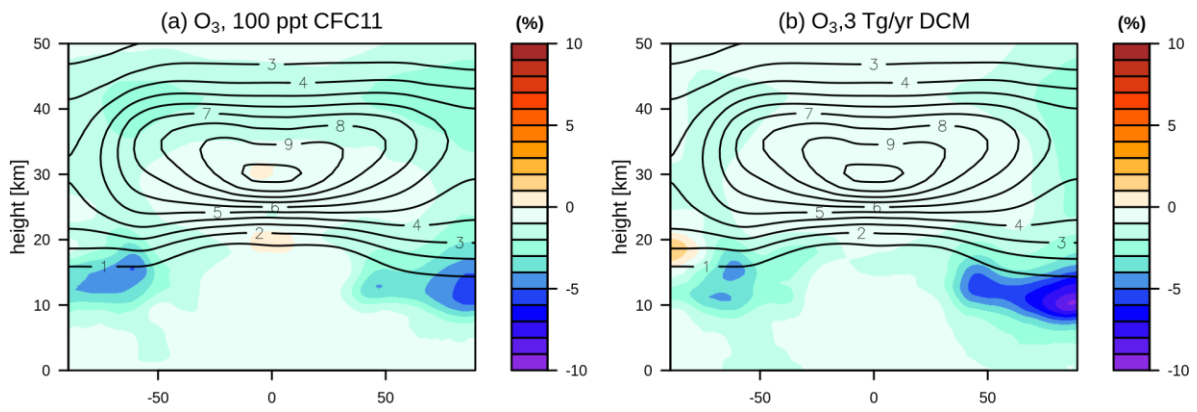


Figure S4. Shading: Yearly mean changes in ozone mixing ratios [%] compared to base case simulation for the simulation with (a) additional 100 ppt CFC-11 at the surface, and (b) 3 Tg/yr CH_2Cl_2 emissions. Contours show the corresponding ozone values [ppm] in the base case run for reference.

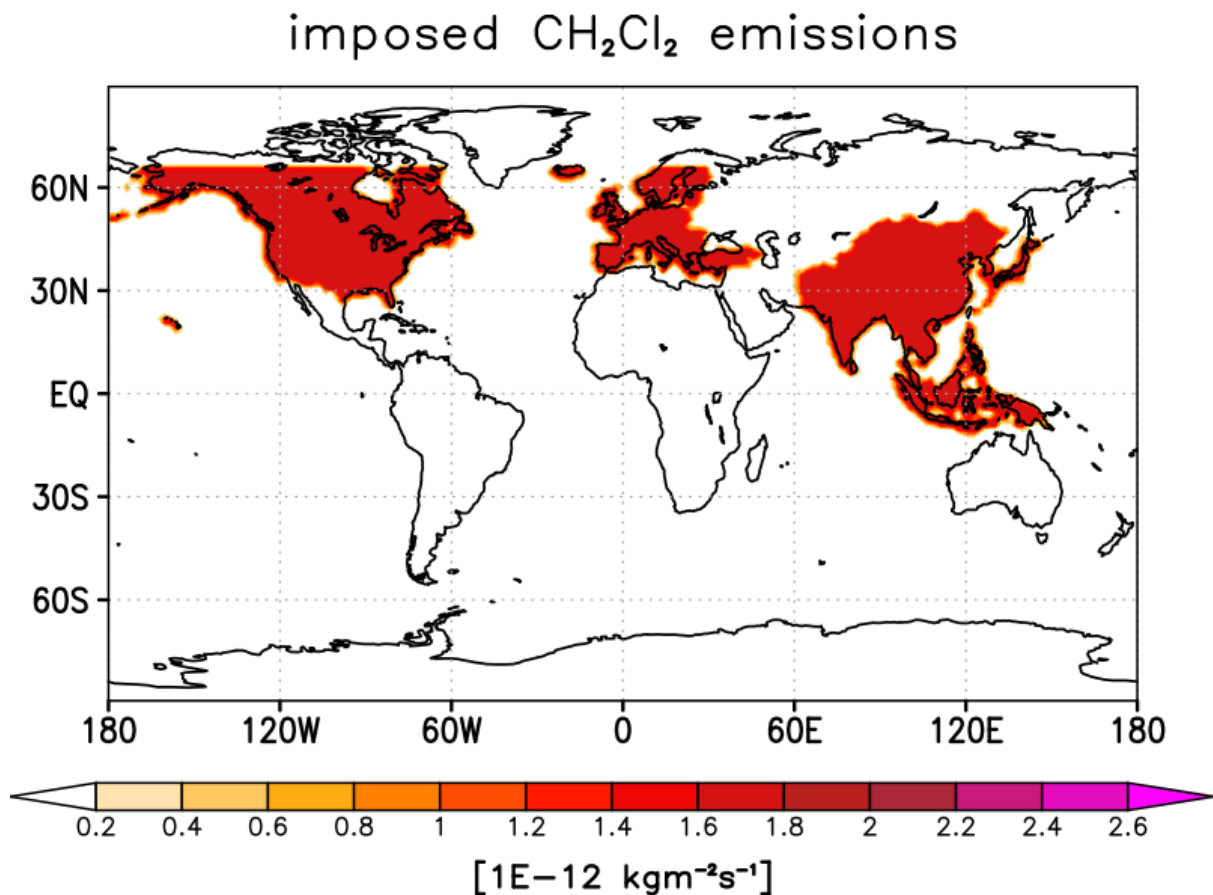


Figure S5. Imposed surface CH_2Cl_2 emissions corresponding to 3 Tg/yr in the time-slice simulations used for the ODP calculation.