

Figure S1. The frequency (% , ratio of occurrence cities to total NCP cities) of SO_4^{2-} , NO_3^- , NH_4^+ , OC, and gaseous pollutants (SO_2 and NO_2) in the NCP from June 1 to July 31, 2021. The color shading represented different categories classified by SO_4^{2-} , NO_3^- , NH_4^+ , OC, and gaseous pollutants levels. The red dash boxes represent three typical $\text{PM}_{2.5}$ and O_3 pollution episodes.

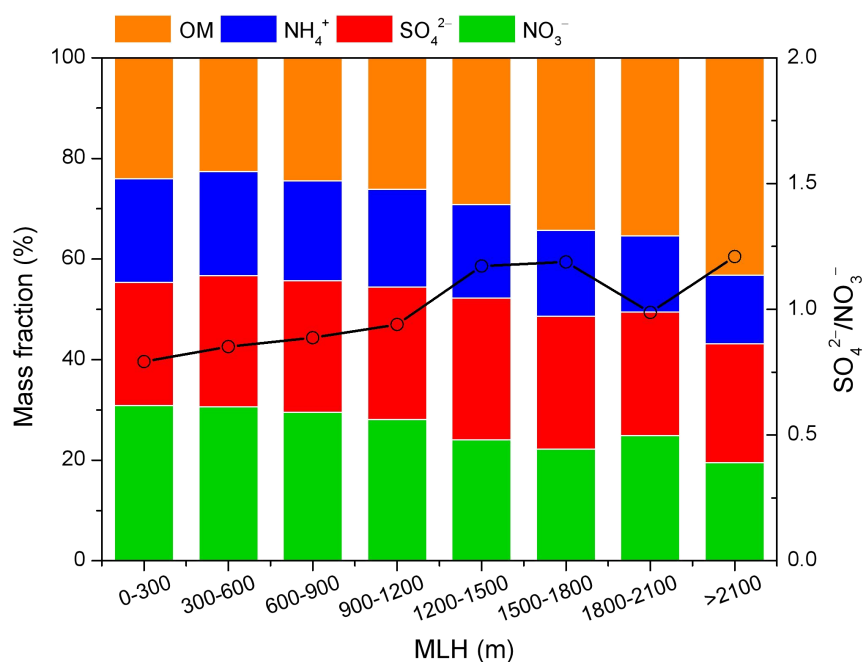


Figure S2. The mass fractions of major $\text{PM}_{2.5}$ components and the mass ratio of SO_4^{2-} to NO_3^- in different MLH conditions.

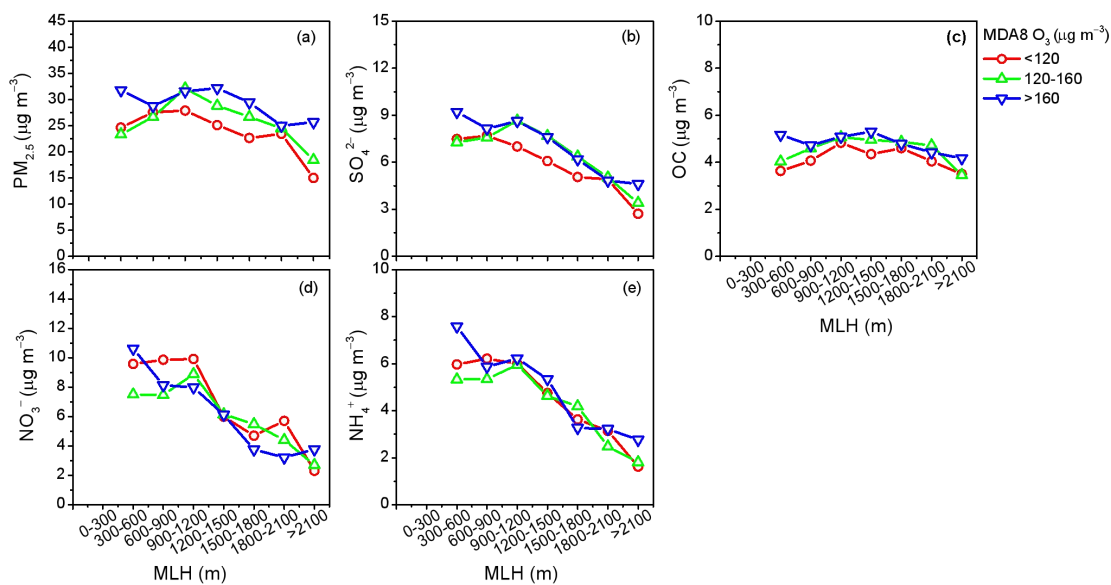


Figure S3. The distribution characteristics of (a) $\text{PM}_{2.5}$, (b) SO_4^{2-} , (c) OC, (d) NO_3^- , and (e) NH_4^+ concentrations with the evolution of MLH under different MDA8 O_3 conditions. Note that rainy days were excluded.