

An optimisation method to improve modelling of wet deposition in atmospheric transport models: applied to FLEXPART v10.4

Stijn Van Leuven^{1,2,3}, Pieter De Meutter^{1,2}, Johan Camps¹, Piet Termonia^{2,3}, and Andy Delcloo^{2,3}

¹Belgian Nuclear Research Centre, Mol, Belgium

²Royal Meteorological Institute of Belgium, Brussels, Belgium

³Department of Physics and Astronomy, Ghent University, Ghent, Belgium

Correspondence: Stijn Van Leuven (stijn.van.leuven@sckcen.be)

Abstract. Wet deposition plays a crucial role in the removal of aerosols from the atmosphere. Yet, large uncertainties remain in its implementation in atmospheric transport models, specifically in the parameterisation schemes that are often used. Recently, a new wet deposition scheme was introduced in FLEXPART. The input parameters for its wet deposition scheme can be altered by the user, and may be case-specific. In this paper, a new method is presented to optimise the wet scavenging rates in atmospheric transport models such as FLEXPART. The optimisation scheme is tested in a case study of aerosol-attached ¹³⁷Cs following the Fukushima Daiichi nuclear power plant accident. From this, improved values for the wet scavenging input parameters in FLEXPART are suggested.

1 Introduction

Aerosols play an important role in the atmosphere, for instance through their impact on the climate and air pollution ([Lohmann and Feichter, 2005](#)), but also as carriers of many radionuclides such as caesium and iodine ([Sportisse, 2007](#); [Baklanov and Sorensen, 2001](#)). This latter aspect is especially relevant in the context of nuclear safety. In assessing the impact of atmospheric aerosols, it is important to understand and predict their transport in the atmosphere ([World Health Organization, 2013](#)). This can be done with state-of-the-art atmospheric transport models (~~hereafter ATMs~~) ([Hertel et al., 1995](#); [Baklanov et al., 2002](#); [Morino et al., 2011](#); [Draxler et al., 2015](#)), [hereafter abbreviated ATMs](#).

Following an accidental or planned release of nuclear material, such as a nuclear power plant (NPP) accident or the testing and use of nuclear weapons, it is important to assess the consequences on the population and environment on both a local and global scale. A vital tool in this context are ATMs, allowing for the prediction and simulation of the dispersion of radioactive particles in the atmosphere. On top of the dispersion there exist several removal processes, which form sinks for the aerosols. Two of these processes are dry and wet deposition ([Seinfeld and Pandis, 2006](#)). Dry deposition occurs through gravitational settling and turbulent diffusion, which can transport aerosols from the atmosphere to the Earth's surface. These particles then have to be taken up by the surface in order to be deposited. The adsorption rate depends on the terrain and type of surface cover ([Seinfeld and Pandis, 2006](#)). Wet deposition, on the other hand, functions through scavenging processes that occur in clouds and precipitation. In general, the wet scavenging processes are described through a scavenging coefficient Λ , acting on the concentration of aerosols c as

$$25 \quad \frac{dc}{dt} = -\Lambda c. \quad (1)$$

Empirical knowledge of Λ remains limited, resulting in large uncertainties in the modelling of wet deposition. This is exemplified by the large variety of wet deposition schemes in existing ATMs, leading to a broad range of values for the scavenging coefficient, spanning up to four orders of magnitude (Sportisse, 2007).

Different processes contribute to the total wet scavenging, which are represented to various degrees in different ATMs. Usually, these are split up into two main categories depending on the location where the scavenging takes place: below-cloud or in-cloud. For particles in the accumulation mode ($0.1\text{--}1 \mu\text{m}$ [in diameter](#)), in-cloud scavenging is said to have a larger efficiency compared to below-cloud scavenging (Baklanov and Sorensen, 2001; Andronache, 2003; Henzing et al., 2006). It is thus often thought that in-cloud scavenging plays a dominant role in the removal of these aerosols from the atmosphere (Arnold et al., 2015; Grythe et al., 2017; Piss0 et al., 2019). The difference in efficiency is a consequence of the physics driving both scavenging processes. Below-cloud scavenging is caused by falling hydrometeors (rain, snow, etc.) collecting the particulates as the hydrometeors fall towards the ground. The collections are thought to occur through various processes such as Brownian diffusion, interception and inertial impaction (Slinn, 1984; Seinfeld and Pandis, 2006; Sportisse, 2007). Theoretical wet scavenging models can take these processes into account, but are known to underestimate the scavenging rate by 1-2 orders of magnitude for accumulation-mode particles (Wang et al., 2010, 2011). This offset can be reduced by taking into account other so-called phoretic effects (thermophoresis, diffusiophoresis and electric effects, Sportisse (2007); Jones et al. (2022)) and the rear capture effect (Jones et al., 2022). Most ATMs, however, use empirical models for scavenging, which ignore these more complex microphysical processes, and instead use fits of measured scavenging rates to certain empirical functions. These are also called parameterised models. Most empirical studies of scavenging rates look at below-cloud scavenging. Less data exists for in-cloud scavenging, leaving its implementation in models more uncertain compared to below-cloud scavenging. In-cloud scavenging occurs through particulates acting as nuclei for the formation of cloud particles (liquid droplets or ice crystals), which then fall down as they grow larger. Accurate modelling of in-cloud scavenging is difficult, as it requires taking into account aqueous-phase chemistry.

Many sensitivity studies of wet scavenging schemes in ATMs exist (Croft et al., 2010; Draxler et al., 2015; Fang et al., 2022; Leadbetter et al., 2015; Querel et al., 2015, 2021; Solazzo and Galmarini, 2015). These studies consist of running different ATMs with different scavenging schemes each, or running the same ATM with different scavenging schemes and altering model-parameter values. The parameter space is explored in this case by running many simulations. From these studies it is clear that no single existing ATM or deposition scheme consistently outperforms all others. The study of wet deposition thus remains an important area of research, and one where improvements to existing ATMs can make a significant impact.

In this paper, an optimisation scheme is presented which improves the modelling of wet deposition through optimising the wet scavenging coefficient. For this study, the stochastic Lagrangian particle model FLEXPART was chosen since it is a widely used state-of-the-art ATM. Furthermore, a revised wet deposition scheme was introduced in FLEXPART version 10.4 (Grythe

et al., 2017; Pisso et al., 2019), which can give significantly different output compared to the old scheme when using default input parameters. Therefore in this paper we focus on the wet deposition scheme, leaving dry deposition unaltered.

In FLEXPART 10.4, the user is able to prescribe the efficiencies of below- and in-cloud scavenging. These efficiency parameters are input parameters to the simulation, and can greatly affect the resulting concentration and deposition following dispersion calculations over global scales. Determining which parameter values are appropriate is a question mark, and may depend on a case-by-case basis (Grythe et al., 2017). Instead of exploring the parameter space of all the efficiency parameters and their possible values, we develop a method that can scale the scavenging processes post-simulation, circumnavigating the need to explore the parameter space with individual simulations. The remaining air concentration, after scaling the scavenging processes, can then be fitted to available measurements of air concentration in order to find more appropriate values of the efficiency parameters. The proposed method is tested on the Fukushima Daiichi Nuclear Power Plant (FDNPP) accident (2011), by considering the subsequent transport and deposition of ^{137}Cs . [This radionuclide attaches to aerosol particles.](#)

The rest of this paper is structured as follows. In Sect. 2 an overview of the wet deposition scheme in FLEXPART is given. Section 2.3 describes the ~~methodology~~ [methods](#) behind the new optimisation scheme in detail, while Sect. 3 contains the simulation setup and an overview of the observational data that was used. The results, as applied to the FDNPP case, are shown and discussed in Sect. 4.

2 Wet deposition of aerosols in FLEXPART 10.4

FLEXPART is a stochastic Lagrangian particle dispersion model (Stohl et al., 1998, 2005; Pisso et al., 2019), where each released particle represents a population of aerosols or gaseous atoms. Aerosol particles are assumed to have a log-normal size distribution in FLEXPART. The removal of aerosols and gases is modelled by reducing the mass of the particles.

With FLEXPART v10.4 a new, more physically based wet deposition scheme was introduced (Grythe et al., 2017). Similar to the old scheme, the new scheme distinguishes between below - and in-cloud scavenging. With the new version, clouds are determined by the 3D cloud water fields from meteorological data. These fields are currently only provided by ECMWF. The scavenging in FLEXPART occurs through a reduction in particle mass and takes the form of an exponential decay process during a time step Δt :

$$m(t + \Delta t) = m(t) \exp(-\Lambda \Delta t), \quad (2)$$

where $m(t)$ is the particle mass at time t and Λ the scavenging coefficient (s^{-1}). The previous version of FLEXPART used a simple power law of the precipitation intensity to determine the scavenging coefficients of below- and in-cloud scavenging:

$$\Lambda = AI^B, \quad (3)$$

with I the precipitation intensity and A and B fitting parameters. The new version, as summarised in Sect. 2.1 and 2.2 below, uses a more physically based parameterisation scheme for both.

2.1 In-cloud scavenging

The in-cloud scavenging in FLEXPART 10.4 depends on the cloud water phase (liquid, ice or mixed) and on the nucleation efficiency of the aerosols for serving as ice crystal or liquid droplet nuclei. In-cloud scavenging is activated inside precipitating
90 grid cells where cloud water is also present. The precipitating cloud water (PCW) is defined as

$$\text{PCW} = \text{CTWC} \frac{F}{cc}, \quad (4)$$

where CTWC is the cloud total water content, F the fraction of the grid cell experiencing precipitation and cc the surface cloud cover. F/cc is then the fraction of cloud water in the precipitating part of the cloud. In-cloud scavenging occurs by aerosol particles being activated as cloud droplet or cloud ice nuclei. The quantity PCW is used in the scavenging coefficient
95 for the in-cloud deposition scheme as

$$\Lambda = F_{\text{nuc}} \frac{I}{\text{PCW}} i_{\text{cr}}, \quad (5)$$

where F_{nuc} is the nucleation efficiency (equal to the fraction of the aerosols in the cloud that are also in the cloud water), I is the precipitation intensity and i_{cr} is a correction factor to account for cloud water replenishment, set to a value 6.1 in FLEXPART 10.4. The nucleation efficiency F_{nuc} itself is further split up into contributions from the liquid and ice water
100 fractions (α_L and α_I respectively):

$$F_{\text{nuc}} = \alpha_L \text{CCN}_{\text{eff}} + \alpha_I \text{IN}_{\text{eff}}, \quad (6)$$

where CCN_{eff} is the cloud condensation nucleation efficiency and IN_{eff} the ice nucleation efficiency. For the liquid and ice water fractions, it holds that $\alpha_L + \alpha_I = 1$. The parameters CCN_{eff} and IN_{eff} are input parameter to the simulation, that can be changed by the user. They may depend on a case-by-case basis as there exist no unique globally representative values. The
105 efficiencies depend on aerosol particle size, aerosol concentration and cloud properties such as updraft velocities. Furthermore, larger particles are found to have larger nucleation efficiencies compared to smaller particles. Due to the Bergeron-Findeisen process (where few ice crystals grow at the expense of many liquid droplets), it is generally assumed that for most aerosol particles $\text{CCN}_{\text{eff}} > \text{IN}_{\text{eff}}$ (Grythe et al., 2017).

2.2 Below-cloud scavenging

110 Below-cloud scavenging occurs by raindrops or snow flakes colliding, in various possible ways, with an aerosol particle and said particle staying attached to the hydrometeor. For large particle sizes, scavenging by snow is substantially more efficient than scavenging by rain. For this reason scavenging by rain and snow is calculated separately in FLEXPART. The scavenging coefficient of below-cloud scavenging by rain and snow is parameterised as

$$\log_{10} \left(\frac{\Lambda}{\Lambda_0} \right) = \log_{10} (C_*) \left(\sum_{n=0}^4 a_n D_p^{-n} + b \sqrt{\frac{I}{I_0}} \right), \quad (7)$$

115 with $D_p = \log_{10}(d_p/d_0)$, d_p being the mean particle diameter and $\Lambda_0 = 1 \text{ s}^{-1}$, $d_0 = 1 \text{ m}$, $I_0 = 1 \text{ mm h}^{-1}$. The factors a_n and b are fitting parameters based on observations and differ between rain (Laakso et al., 2003) and snow (Kyro et al., 2009). The scalars C_* can be adjusted by the user to change the efficiency of below-cloud scavenging by rain (C_{rain}) or snow (C_{snow}). Values from 0.1 to 10 are supposed to cover the range of below-cloud scavenging rates seen in other ATMs (Grythe et al., 2017).

120 Despite the fact that each particle in FLEXPART represents a population of particles with a log-normal size distribution, the size-dependent below-cloud scavenging is only calculated for the mean particle diameter. This differs from the dry deposition, which is also size dependent, but is calculated in FLEXPART by sampling the log-normal size distribution.

2.3 ~~Methodology~~ Methods for the optimisation scheme

In order to improve the efficiency of optimising the wet deposition input parameters for FLEXPART, we propose a new
125 systematic framework. The ~~methodology~~ method we propose in this paper can be summarised in ~~three~~ four steps:

1. define the contributions of individual scavenging processes for each measurement (Sect. 2.4),
2. develop an appropriate scaling scheme to the scavenging processes (Sect. 2.5),
3. minimise the error between simulations and observations (Sect. 2.6) ~~→~~,
4. translate the optimisation parameters to FLEXPART input parameters (Sect 2.7).

130 2.4 Scavenging contributions

At a given receptor, during a given time-interval, the detector will measure a concentration which is reduced due to all scavenging that has taken place in the plume on its way from the source to the receptor. We mathematically define this reduction simply as

$$c(t) = c_0(t) - \Delta c(t), \quad (8)$$

135 with c_0 the concentration if there were no scavenging and Δc the scavenged concentration. The quantity $c_0(t)$ can be obtained through simulation by disabling all scavenging processes. Obtaining $\Delta c(t)$ is more subtle, since multiple processes can contribute:

$$\Delta c(t) = \sum_i \Delta c_i(t), \quad (9)$$

with $\Delta c_i(t)$ being the individual scavenging contribution of each process. Equations (8) and (9) can be rewritten into a single
140 normalised summation:

$$\frac{c(t)}{c_0(t)} + \sum_i \frac{\Delta c_i(t)}{c_0(t)} = 1, \quad (10)$$

which will be useful in the further analysis. For each scavenging process, the concentration removed by scavenging can be formally noted as

$$\Delta c_i(t) = \int_{t_0}^t \Lambda_i(t') c(t') dt', \quad (11)$$

145 where t_0 is the time of the first release at the source and Λ_i is the scavenging coefficient of process i . Extracting the Δc_i 's from the FLEXPART simulations is not as straightforward as simply setting $\Lambda_i = 0$, as this method is subject to “compensation effects” which cause the contribution of the other scavenging processes to simultaneously increase. This problem arises since disabling certain scavenging processes leaves more concentration available for the other, active, scavenging processes. To avoid this problem, we directly write the Δc_i 's into the simulation output by altering the source code. This method should provide
150 more accurate insight into the different contributions, compared to ~~methodologies~~ methods in previous studies (e.g. Arnold et al., 2015; Grythe et al., 2017) which were done by setting $\Lambda_i = 0$.

2.5 Scaling scheme

The goal is to change the scavenging contributions Δc_i in a post-process step (i.e. after obtaining the results of a simulation), in order to generate new physical air concentrations $c(t)$ with Eq. (8). Simply scaling the different contributions Δc_i with
155 a scaling factor x_i , however, can quickly lead to non-physical negative concentrations. Therefore a more elaborate scaling scheme is proposed. With every scavenging process i , a scaling factor A_i will be associated which acts on the concentration field through

$$\begin{aligned} \Delta c_i(t) &= [c(t) + \Delta c_i(t)] A_i(t) \\ &= \left(c_0(t) - \sum_{j \neq i} \Delta c_j(t) \right) A_i(t). \end{aligned} \quad (12)$$

In other words, the scaling factor A_i - associated with scavenging process i - acts on the part of the concentration field that
160 is not scavenged by the other processes. Equation (12) forms a closed system of equations for all processes, which allows us to express any scavenging contribution Δc_i as a function of all the scaling factors A_j :

$$\Delta c_i(t) = c_0(t) \frac{A_i(t)}{1 - A_i(t)} \left(1 + \sum_j \frac{A_j(t)}{1 - A_j(t)} \right)^{-1}. \quad (13)$$

By this definition, the remaining concentration $c = c_0 - \sum_i \Delta c_i$ and each Δc_i remains positive as long as every $A_i \in [0, 1[$. Here $A_i = 0$ corresponds to scavenging process i not contributing at all, while in the limit $A_i \rightarrow 1$ all c_0 is scavenged by process i . The scaling scheme of Eq. (13) also reproduces the physical compensation effect when increasing the strength of one of the scavenging processes.

2.6 Minimisation process

New Δc_i 's can be created by invoking a dependency of A_i on a set of optimisation parameters x_i . As mentioned above, this dependency has to abide by $A_i(t; x_i) \in [0, 1[$. To accommodate this requirement, the following parameterisation can be chosen:

$$A_i(t; x_i) = 1 - \exp[-x_i \lambda_i(t)], \quad (14)$$

which satisfies $A_i(t; x_i) \in [0, 1[$ for $x_i \in [0, \infty[$. The values $\lambda_i(t)$ can be defined through $A_i(t, x_i = x_{i,0})$, where $x_{i,0}$ represent the reference simulation. The factors $\lambda_i(t)$ can then be interpreted to contain information about the total amount of scavenging - according to the reference simulation ($x_i = x_{i,0}$) - that has occurred inside the plume between the release and its arrival at the measurement station at time t . The parameterisation of Eq. (14) is chosen to resemble the exponential nature of scavenging, analogous to Eq. (2). It is worth emphasising that in defining the optimisation parameters x_i , a single scavenging process is not scaled independently for each measurement. Indeed, the time dependence is isolated in the immutable factors $\lambda_i(t)$. Instead x_i represents a universal change in the strength of scavenging process i across all times, and as such across all measurements. The values of $x_{i,0}$ can be chosen arbitrarily, and are thus set equal to 1 going forward.

Equations (8), (9), (13) and (14) can then be implemented in a numerical optimisation scheme that minimises a cost function F with respect to x_i such as

$$F(c, c_{\text{obs}}; x_i) = \sum_k (\log_{10} c(t_k; x_i) - \log_{10} c_{\text{obs}}(t_k))^2, \quad (15)$$

where the summation is over all measurements k , respectively done at times t_k . This minimisation in logarithmic space is chosen since air-concentration measurements c_{obs} tend to be approximately log-normally distributed (Andersson, 2021). For the optimisation scheme, an interior-point algorithm was used to minimise the cost function Eq. (15). The numerical variation of x_i was limited by demanding $x_i \in [0, 10]$. The lower bound corresponds to no scavenging by process i . The upper bound is arbitrarily chosen, but is not exceeded in any of the results. The initial guess of the optimisation algorithm is taken as $x_{i,0} = 1$, corresponding to the reference simulation.

2.7 Translation to Flexpart parameters

190 In order for the results of the optimisation method to be usable in future FLEXPART simulations, one has to translate the optimisation parameters x_i to the physical scavenging coefficients which can be altered in FLEXPART through the input parameters $\{C_{\text{rain}}, C_{\text{rain}}, CCN_{\text{eff}}, IN_{\text{eff}}\}$ (Table 1). Since the method laid out above is only a post-process approach, it is not necessarily expected to have an exact one-to-one corresponding FLEXPART simulation. Therefore the goal is to find a simulation that matches the optimised concentrations as closely as possible. We propose an ansatz that

$$\Lambda_i \Big|_{\text{optim.}} = \frac{x_i}{x_{i,0}} \times \Lambda_i \Big|_{\text{initial}}. \quad (16)$$

195 This a priori guess can be motivated as follows. The scaling factors A_i (Eq. (14)) are defined analogous to the exponential nature of scavenging (Eq. (2)). Therefore an analogy can be drawn between $x_i \lambda_i$ and $\Lambda_i \Delta t$. By taking the fraction of optimised scavenging over initial scavenging, what remains is Eq. (16).

3 Simulation setup & observational data

This section contains the information (simulation input parameters/data and observational data) needed to replicate the results
200 shown in this paper.

3.1 FLEXPART input and metadata

The numerical weather data used for this study was obtained from the MARS archive of the European Centre for Medium-Range Weather Forecast (ECMWF). It consists of 6-hourly analysis data complemented with short 3-hour forecasts and a spatial resolution of 0.5° covering the Northern Hemisphere. It contains 91 non-uniformly spaced vertical levels, ranging from
205 10 m to approximately 80 km.

The ~~methodology~~ methods laid out in Sect. 2.3 ~~is~~ are applied by using the Lagrangian particle model FLEXPART v10.4. The FLEXPART calculations are performed with 10 million particles over the period from 11 March 2011 00:00 UTC to 5 April 2011 00:00 UTC. The results are output in 3h intervals. The ^{137}Cs source term for the FDNPP release is taken from Terada et al. (2020) and the ^{133}Xe source term from Stohl et al. (2012). The relevant deposition parameters are shown in Table 1 with their
210 initial ~~value~~ values. The mean particle diameter d_p is not the default value, but is instead chosen as to be in better agreement with measurements from the aftermath of the FDNPP accident (Kaneyasu et al., 2012; Masson et al., 2013; Miyamoto et al., 2014). Concentration and deposition values are output over a 3 h interval on a 0.5° grid.

parameter	value
C_{rain}	1
C_{snow}	1
CCN_{eff}	0.9
IN_{eff}	0.9
ρ_{p}	1900 kg m^{-3}
d_{p}	$0.65 \text{ }\mu\text{m}$
σ_{p}	3

Table 1. FLEXPART v10.4 input-parameters for the deposition scheme, as used in the reference simulation of ^{137}Cs .

3.2 Observational data

Measurements of ^{137}Cs and ^{133}Xe air concentrations are provided by the Comprehensive Nuclear-Test-Ban Treaty Organisation (CTBTO). The ^{137}Cs data consists of 248 measurements across 20 radionuclide stations of the International Monitoring System (IMS) that measured the highest amount of ^{137}Cs over the simulation period (Fig. 1). For the ^{133}Xe comparison 626 measurements were used, across the 19 IMS stations with the highest measured concentration for this radionuclide. The IMS stations are implemented as receptors in FLEXPART, which - through the use of a parabolic kernel - give more accurate values compared to a grid output (Stohl et al., 1998). The IMS measurements are daily averaged concentrations for ^{137}Cs and daily or twice-daily for ^{133}Xe . In order to compare the FLEXPART simulations to the IMS observations, the simulation output is averaged over the integration time of the measurements (i.e. 24 h for ^{137}Cs and 24 h or 12 h for ^{133}Xe).

Furthermore, wet deposition measurements of ^{137}Cs from the National Atmospheric Deposition Program (NADP) in the United States are used (Wetherbee et al., 2012). This data was obtained by the use of collectors that open only when it rains, thus minimising the contamination by dry deposition. The dataset consists of measured radioactive samples from 35 NADP sites across the contiguous United States and Alaska (Fig. 1). The deposition data of each site was integrated over a 1- to 2-week period ranging from 8 March to 5 April 2011. Since FLEXPART does not allow the use of receptors for collecting deposition values, the NADP sites are compared to the closest FLEXPART grid-points.

4 Results & Discussion

In this section we show the results obtained by applying the above ~~methodology~~method to the Fukushima Nuclear accident. First, we show the results of a FLEXPART simulation with initial parameters of Table 1, referred to as the “reference” simulation, in Sect. 4.1. Section 4.2 visualises the results of the individual scavenging contributions. The next section, Sect. 4.3, shows the results of the optimisation scheme. Finally, the results of the translation from optimisation to FLEXPART parameters are shown in Sect. 4.4.

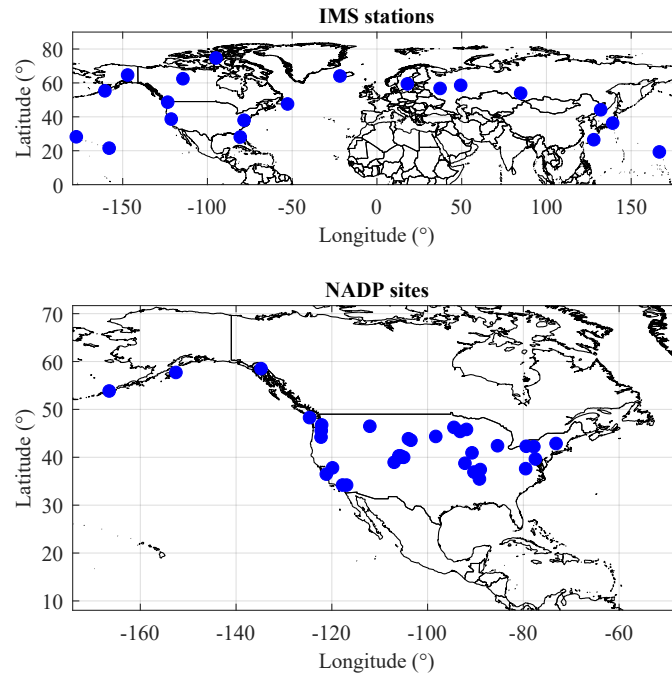


Figure 1. Locations of the measurement stations used in this study. Top: IMS stations. Bottom: NADP sites.

4.1 Reference simulation

235 In order to assess whether the optimisation scheme provides an improved agreement between simulations and observations, a simulation is conducted with deposition parameters of Table 1. This simulation will be used as a reference for the sake of comparing the results of the optimisation scheme. However, of the 20 stations implemented as receptors in FLEXPART, the results of station RN38 located in Takasaki, Gunma Japan (36.3° N, 139.1° E) were troubling. The station is located only 200 km west of the FDNPP. FLEXPART produced radionuclide concentrations up to 5 orders of magnitude too low compared to
 240 observations, thus heavily skewing the resulting statistical analysis. Due to its proximity, it is known that the interior of the building became contaminated and showed incorrect measurements (Stohl et al., 2012). For this reason, the measurements of station RN38 were discarded in the further analysis. We do not take into account any ^{137}Cs background, as its contribution is considered negligible, being at the order of 0.1 to 1 $\mu\text{Bq m}^{-3}$ (Masson et al., 2015; Biegalski et al., 2001).

Figure ?? The top row of Fig. 2 shows the simulated air concentrations of ^{137}Cs compared to the IMS observations, in both
 245 a scatter plot form and a histogram. With the initial deposition parameters, the simulation shows an over-estimation of the air concentration by around a factor five. The performance of the reference simulation is further quantified by several statistical scores shown in Table 2. The metrics chosen are the fractional bias (FB), the geometric mean bias (MG), the normalised means square error (NMSE), geometric variance, the correlation coefficient (R) and the fraction of predictions within a factor two of observations (FAC2). A perfect model would have scores $\text{MG} = \text{VG} = \text{R} = \text{FAC2} = 1$ and $\text{FB} = \text{NMSE} = 0$. The

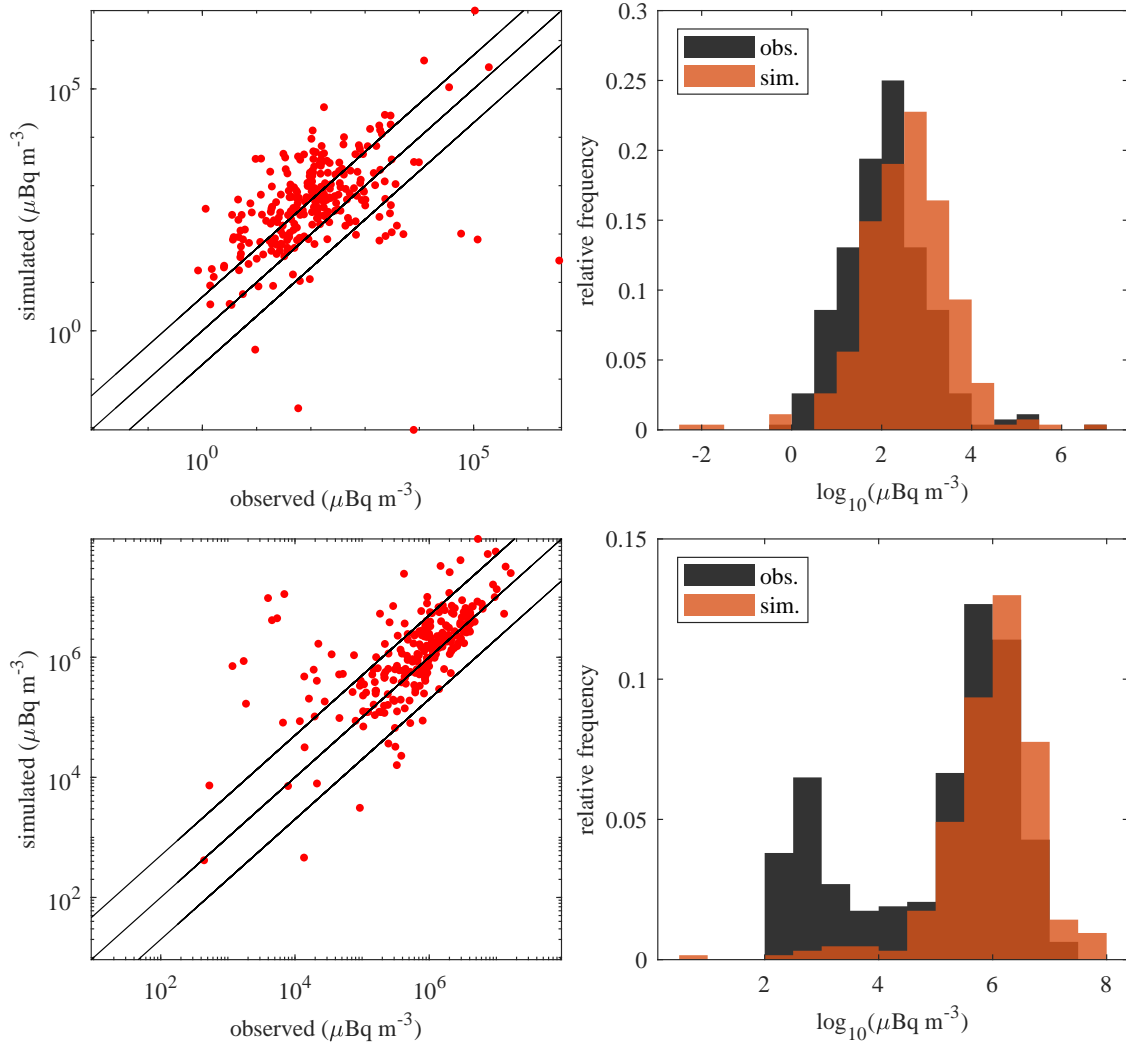


Figure 2. Top: ^{137}Cs concentrations - reference simulation vs. IMS observations. Bottom: ^{133}Xe air concentrations - simulated vs. IMS observations.

250 performance of the reference simulation is not particularly satisfying. We identify four potential sources of error that can explain this discrepancy: (i) the windfields, (ii) the source term, (iii) the precipitation data and (iv) the deposition scheme.

In order to eliminate the possibility that the windfields cause this discrepancy, we evaluate the transport and dispersion of ^{133}Xe during the FDNPP accident. Xe is a noble gas, and is therefore not subject to deposition. The winds are thus what drives its transport and dispersion. The scatter plot and histogram of the simulated Xe air concentrations and corresponding

<u>simulation</u>	FB	MG	NMSE	VG	R	FAC2
	(0)	(1)	(0)	(1)	(1)	(1)
<u>¹³⁷Cs</u>	1.42	0.19	36.60	195.19	0.35	0.19
<u>¹³³Xe</u>	<u>0.81</u>	<u>0.62</u>	<u>13.06</u>	<u>4.88</u>	<u>0.53</u>	<u>0.53</u>

Table 2. Statistical scores of the ~~reference~~¹³⁷Cs simulation with default scavenging parameters in FLEXPART, and of the ¹³³Xe simulation.
In parentheses are the scores of an ideal model.

255 IMS observations are shown in ~~Fig~~the bottom row of Fig. 2. ??. These show a much better agreement between observations and simulations. The observational peak around $\sim 10^3 \mu\text{Bq m}^{-3}$ is likely to originate from regulated emission sources such as medical isotope production facilities, nuclear power plants and research reactors (Gueibe et al., 2017) which were not taken into account in the simulation. Here we are only interested in the Xe originating from the FDNPP accident. Therefore, only the values above $10^{4.5} \mu\text{Bq m}^{-3}$ are considered. The statistical scores for this subset of the data are shown in Table ~~??~~2. The
260 Xe simulation performs much better than the Cs simulation. From this, it can be concluded that the winds are not mainly responsible for the large discrepancy found in the reference ¹³⁷Cs simulations.

~~¹³³Xe air concentrations: simulated vs. IMS observations:~~

~~FB MG NMSE VG R FAC2 (0) (1) (0) (1) (1) (1) 0.81 0.62 13.06 4.88 0.53 0.53~~ Statistical scores of the ~~¹³³Xe simulation~~
(for $c_{\text{obs}} > 10^{4.5}$).

265 No uncertainty range on the FDNPP source term is given by Terada et al. (2020). Looking at other source terms found in the literature, in order to make an uncertainty estimate, suggests the source term of Terada et al. (2020) is on the lower end in terms of total emitted ¹³⁷Cs. The Terada et al. (2020) source term is recently revised from Katata et al. (2015), and reduced the estimated total amount of emitted ¹³⁷Cs by 29% from 14 PBq to 10 PBq. This is also a reduction of 73% compared to one of the earliest source term reconstructions of the FDNPP incident by Stohl et al. (2012) which gave a total emission of 37 PBq,
270 with an uncertainty range of 20-53 PBq. Since FLEXPART is a linear dispersion model - meaning that the air concentrations scale linearly with the source term - an additional reduction of a factor five in the source term would be needed to explain the discrepancy seen in the ¹³⁷Cs FLEXPART simulation. Thus, considering that the Terada et al. (2020) source term already appears on the lower end of available estimated source terms, we consider the source term to be an unlikely main source of the discrepancy.

275 To tackle a potential flaw in the use of the precipitation data, we also compare the ECMWF precipitation (as obtained through the use of the Flex_extract software (Tipka et al., 2020)) to observations by the Global Precipitation Climatology Project (GPCP, Adler et al., 2023, 2018). The GPCP data is based on microwave and infrared satellite measurements, and is calibrated with rain gauge observations by the Global Precipitation Climatology Centre (GPCC, Schneider et al., 2011). Figure 3 shows the GPCP and the ECMWF data. The precipitation is integrated over the whole month of April 2011. A good
280 correspondence is seen between the GPCP and the ECMWF data.

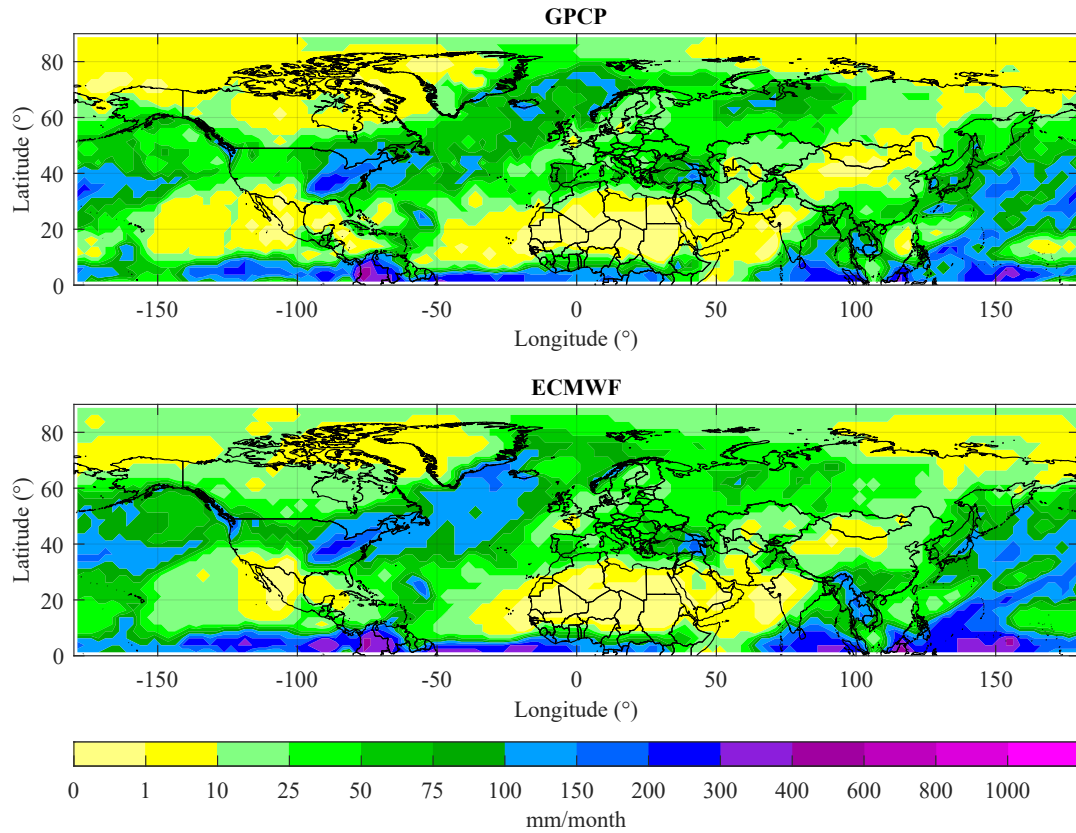


Figure 3. Top: GPCP precipitation data for the month of April 2011. Bottom: ECMWF integrated precipitation over the month of April 2011.

Given the above validation of the meteorological data and the source term, we conclude that the discrepancy of the reference simulation probably lies in the deposition scheme in FLEXPART. We seek an improvement by finding new, better input parameters to the wet deposition scheme compared to those in Table 1.

285 The results from Fig. 2 stand in contrast to simulations of the FDNPP accident with Flexpart v9, such as Stohl et al. (2012),
where an under-estimation of the air concentrations is found. This can be explained by the fact that the scavenging has generally
decreased in Flexpart v10.4 compared to v9 (Grythe et al., 2017). Grythe et al. (2017) find that the modelled aerosol lifetime
of ^{137}Cs for the Fukushima case went from 6 days in Flexpart v9 to 10 days in v10, with no significant bias in modelled
versus observed air concentrations of the latter. The observed aerosol lifetime from measurements is closer to 14 days. A
longer lifetime is associated with higher air concentrations. Our reference simulation, however, finds an overestimation of the
290 air concentrations for Flexpart v10. This discrepancy compared to the Grythe et al. (2017) study can potentially be contributed
to the fact that Grythe et al. (2017) uses multiple particle size bins ranging from mean diameters of 0.4 to 6.2 μm . We have
considered a single size bin with a particle diameter of 0.65 μm , as this corresponds more closely to the particle sizes found
in measurements (see Sect. 3). Table 3 in Grythe et al. (2017) provides some of their results with the use of single size bins.

There it is found that releasing all mass in the size bin of $0.65\ \mu\text{m}$ results in an relative air concentration bias of 11. This is an overestimation, similar to what we found in our reference simulation.

The motivation for our choice of particle diameter is as follows. The change in wet deposition scheme between FLEXPART v9 and v10 suggests that wet deposition is a major contributor to changes in air concentrations for the Fukushima case between the two FLEXPART versions. Therefore we have chosen to focus solely on the wet deposition scheme. Dry deposition is more sensitive to particle size compared to wet deposition, the latter of which is only dependent on particle size in the below-cloud scavenging scheme of FLEXPART. Hence, we did not alter the particle size distribution further.

Stohl et al. (2012) found large model differences between the use of ECMWF and the Global Forecast System (GFS) for the FNDPP case. The influence of the numerical weather data manifests not only as a difference in the spatiotemporal precipitation pattern, but also in the cloud water fields that are used by FLEXPART to quantify below- and in-cloud scavenging. Although the methods presented herein can be used with any numerical weather data, the resulting wet deposition parameters can be specific for said data.

4.2 Scavenging contributions

Step one in the methodology-methods is to quantify the individual scavenging contributions of the reference simulation (Sect. 2.4). Figure 4 (left panel) shows the scavenging contributions of the reference simulation for the IMS radionuclide station RN71 (Sand Point, Alaska US, $55.3^\circ\text{ N } 160.5^\circ\text{ W}$). The horizontal axis starts on 18 March 2011, when the simulated plume first reached the receptor. The vertical axis shows the relative amount of each contribution compared to the concentration c_0 (i.e. the fictitious concentration that would be left over without any scavenging). The values are daily averaged concentrations as calculated by the parabolic kernel-method in FLEXPART. The relative sum of all scavenging-contributions and remaining air concentration is equal to 1, in accordance with Eq. (10). Figure 4 thus shows quantitatively which part of the concentration has been removed due to the different scavenging processes for the part of the plume that reaches the detector during a given time period.

Note that the air concentration left over after scavenging (c , black coloured area), as with all quantities on this plot, is relative to c_0 . The fictitious concentration c_0 is determined only by the winds and not deposition, much like what would be the case with a noble gas such as Xenon. Therefore unlike the temporal variations in c , the variations in the ratio c/c_0 are not mediated by the windfields, but instead solely by spatiotemporal variations of the different removal processes. In other words: the windfield-variations are divided out by taking the quantities relative to c_0 .

An overview of the scavenging processes across all stations is shown in Fig. 5 (left panel). It covers the whole simulation period (11 March - 5 April 2011). In total 84% of the concentration is scavenged and deposited in the reference simulation. 66% of the wet scavenging occurs below-cloud, while 34% occurs in-cloud. The partitioning of below- and in-cloud scavenging found here is in contrast with those of some previous studies (Andronache, 2003; Henzing et al., 2006; Arnold et al., 2015; Grythe et al., 2017; Pisso et al., 2019), who found that in-cloud scavenging has a greater influence on deposition values than below-cloud scavenging. An explanation of this discrepancy can likely be found in either the use of erroneous methodology-methods for calculating the partitioning or in the underestimation of the scavenging coefficients in the other studies. Whereas

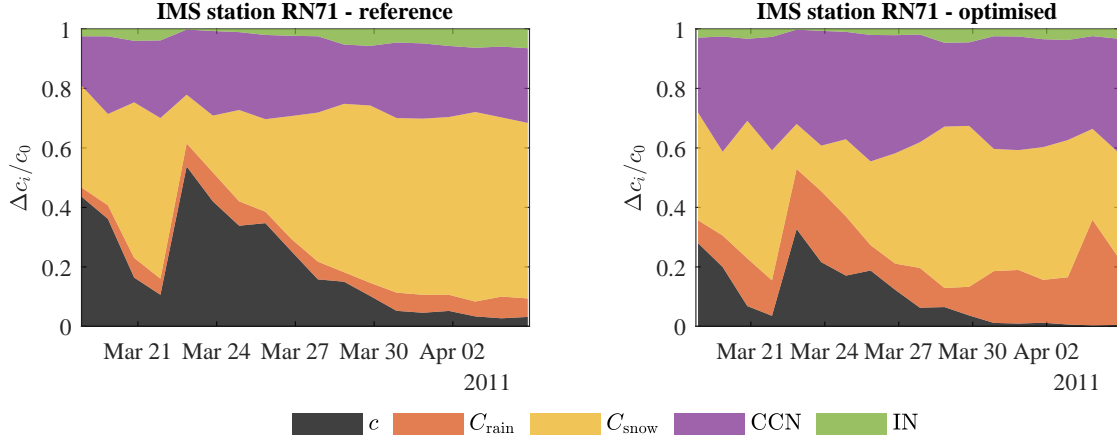


Figure 4. Simulated relative contributions of the different removal processes of ^{137}Cs for the RN71 station following the FDNPP accident. Left: reference simulation. Right: [post-process](#) optimised concentrations.

we extracted the Δc_i 's directly during a single simulation, Arnold et al. (2015), Grythe et al. (2017) and Pisso et al. (2019) performed simulation runs of the FDNPP accident with below- and in-cloud scavenging separately disabled. The latter method, however, is subject to compensation effects. Disabling a scavenging process leaves a higher air concentration for the other scavenging process(es). Indeed, by simply disabling a single scavenging process, more mass is available to the other scavenging processes. This compensation effect is avoided in our [methodology-method](#) as the scavenging contributions are directly extracted from the simulation, through alterations of the FLEXPART source code. The [methodology-method](#) of Andronache (2003) and Henzing et al. (2006) is based on a theoretical approach to the below-cloud scavenging coefficient; a method which is known to underestimate the scavenging coefficient by 1-2 orders of magnitude (Wang et al., 2010, 2011). Recent measurements have indicated that below-cloud scavenging contributes to the majority of the total wet deposition (Chatterjee et al., 2010; Xu et al., 2017; Ge et al., 2021).

4.3 Optimised concentrations

Quantified in the previous section, the individual removal processes were then scaled and optimised according to Sect. 2.6. The optimisation method is able to reduce the bias compared to the reference simulation, as can be seen in [the top row of](#) Fig. 6 and the statistical scores in Table 3. An improvement in all statistical scores is seen.

The optimisation algorithm found this best fit with the x_i -values (Eq. (14)) shown in Table 4. All optimisation parameters have increased, suggesting the efficiency of all four scavenging processes needs increasing. The greatest increase is found for below-cloud scavenging by rain ($\times 3.6$). Below-cloud scavenging by snow is relatively little changed with a factor 1.4. In-cloud scavenging by cloud condensation nucleation (CCN) and ice nucleation (IN) are increased by slightly greater amounts ($\times 2.0$ and 1.8 respectively). The optimised scavenging contributions for station RN71 are shown in Fig. 4 (right panel). Figure 5 (right

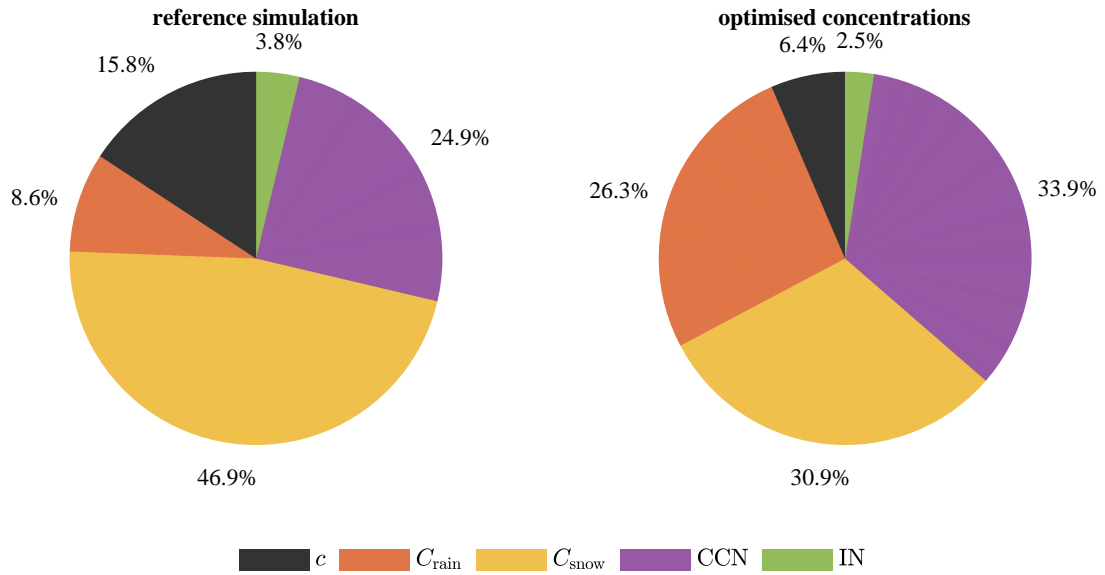


Figure 5. Total simulated contributions of the different removal processes over all stations. Left: reference simulation. Right: [post-process](#) optimised concentrations.

simulation	FB	MG	NMSE	VG	R	FAC2
	(0)	(1)	(0)	(1)	(1)	(1)
post-process optimised	0.82	0.73	15.71	22.67	0.41	0.27
optimised FLEXPART run	0.69	0.76	13.47	15.11	0.44	0.29

Table 3. Statistical scores of the [post-process](#) optimised [137Cs](#) concentrations, and of the [137Cs](#) concentrations resulting from a FLEXPART simulation with the use of the optimised scavenging parameters of Table 5. In parentheses are the scores of an ideal model.

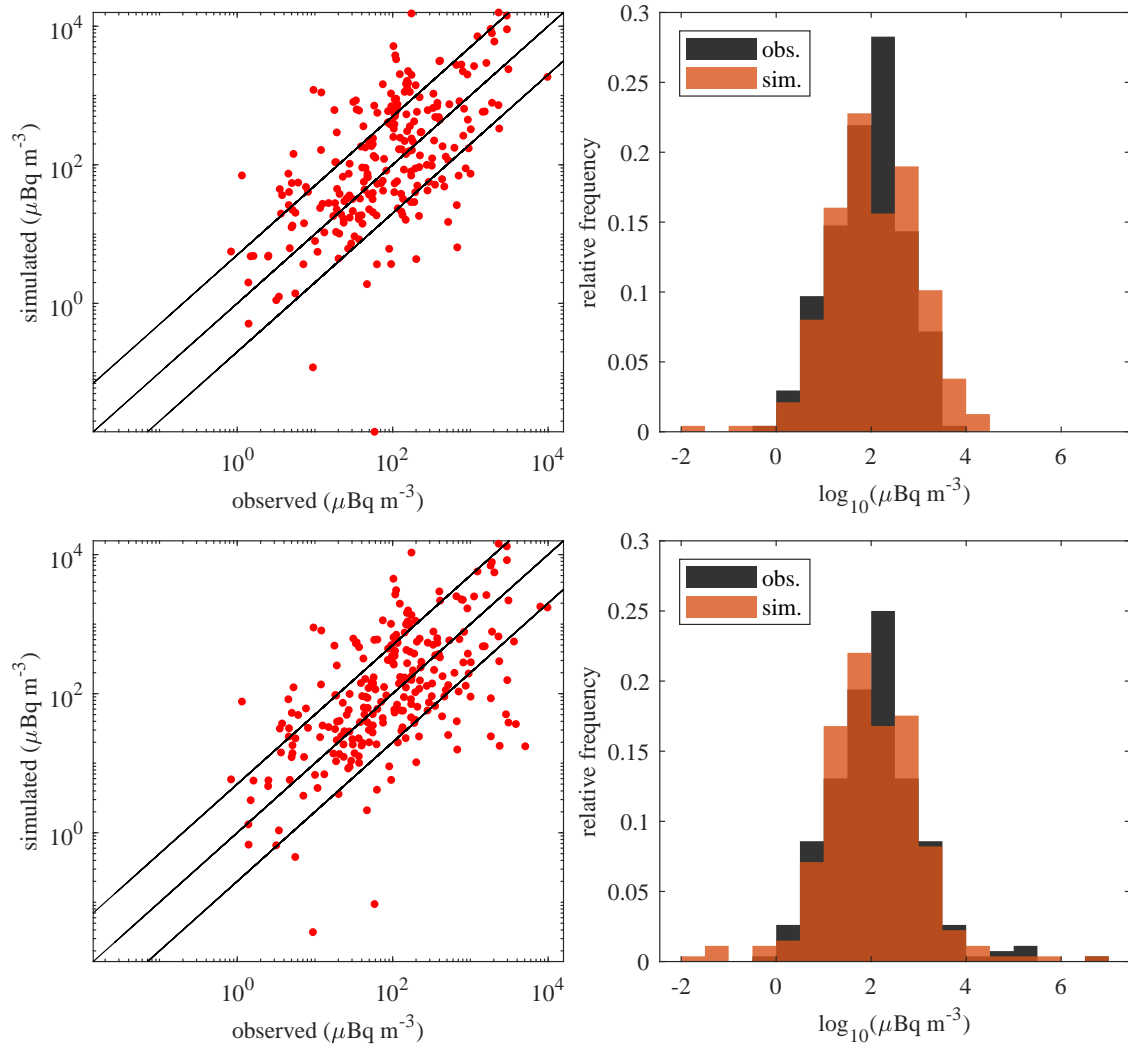


Figure 6. Top: post-process optimised ^{137}Cs concentrations vs. IMS observations. Bottom: ^{137}Cs concentrations from optimised FLEXPART run vs. IMS observations.

	rain	snow	CCN	IN
initial ($x_{i,0}$)	1	1	1	1
optimised (x_i)	3.6	1.4	2.0	1.8

Table 4. Optimisation parameters (as in Eq. (14)) before and after the optimisation process.

panel) shows the new removal contributions over all stations. We find that the largest contributor to the total wet deposition remains below-cloud scavenging at 63% compared to 37% for in-cloud scavenging. Compared to the reference simulations (Fig. 5, left panel), the total concentration reaching the detectors is reduced from 16% of the concentration c_0 to 6%. The greatest increases in scavenging are seen in collection by rain (from 9 to 25%) and cloud condensation nucleation (from 25 to 33%). One may notice that despite the increase in efficiency of collection by snow, the relative contribution thereof has decreased from 47 to 33%. This is the aforementioned compensation effect at play. A greater increase of other processes leaves less concentration available for snow collection. Similarly for ice nucleation, whose contribution has actually shrunk from 4 to 2% despite the increase in its efficiency.

4.4 Translation to scavenging coefficients

In order for the results of the optimisation method to be usable in future FLEXPART simulations, one has to translate To validate the consistency of these results, the optimisation parameters x_i (Table 4) to the physical scavenging coefficients which can be altered in FLEXPART through the input parameters $\{C_{\text{rain}}, C_{\text{rain}}, \text{CCN}_{\text{eff}}, \text{IN}_{\text{eff}}\}$ (Table 1). Since the methodology laid out above is only a post-process approach, it is not necessarily expected to have an exact one-to-one corresponding FLEXPART simulation. Therefore the goal is to find a simulation that matches the optimised concentrations as closely as possible. We propose an ansatz that 000 samples of a random selection of 50% of the available measurements, and subsequently applied to the remaining 50% of measurements. The distributions of the optimisation parameters are shown in Figure 7. All parameters differ significantly from the default value of 1. The relative standard deviations of the optimisation parameters for rain, snow and CCN scavenging are 6.8%, 6.1% and 4.6% respectively. Scavenging by ice nucleation (IN) shows a slightly larger relative deviation of 11%. The statistical scores that result from applying these optimised parameters to the rest of the measurements show a significant improvement over the reference simulation for almost all samples, as can be seen in Fig. 8. A slightly peculiar result is seen for the Pearson correlation coefficient (R), which shows bimodal behaviour. This is likely the result of this score being dominated by the larger values since the concentrations span multiple orders of magnitude. Depending on whether the largest detections are selected in the random samples, a different correlation is found.

$$\Lambda_i \Big|_{\text{optim.}} = \frac{x_i}{x_{i,0}} \times \Lambda_i \Big|_{\text{initial}}.$$

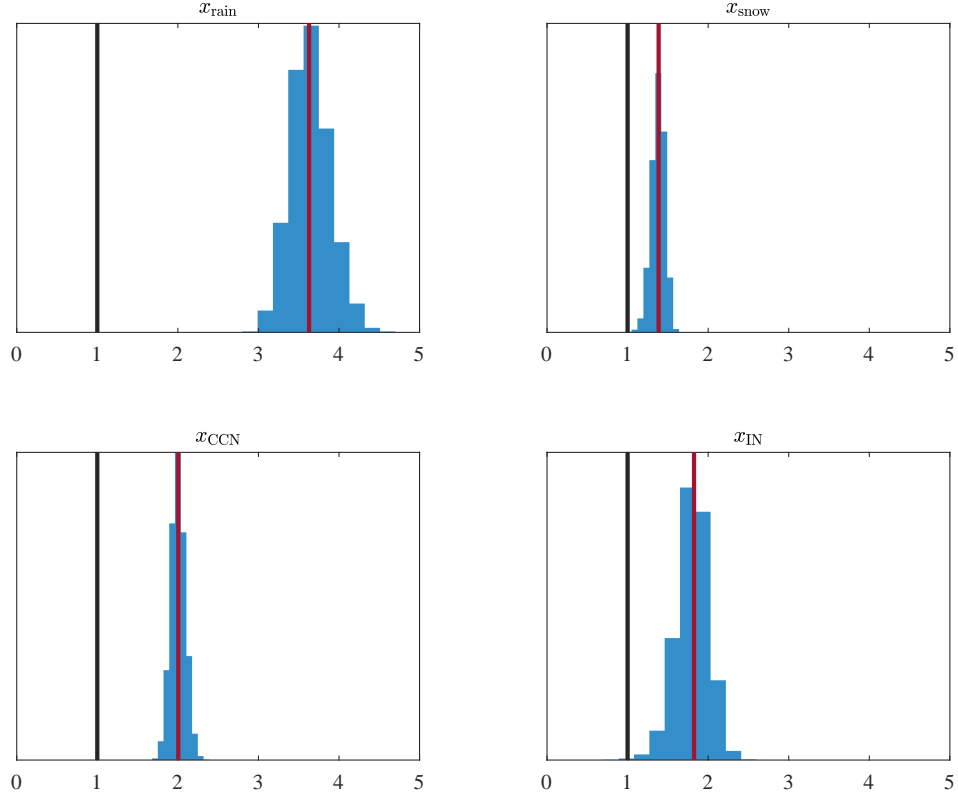


Figure 7. Distribution of the optimisation parameters x_i as a result of 10,000 samples of a random selection of 50% of the available measurements. The black vertical lines represent the unoptimised, default values $x_{i,0}$. The red vertical lines denote the values found by using all measurements (Table 4).

This a priori guess can be motivated as follows. The scaling factors A_i (Eq. (14)) are defined analogous to the exponential nature of scavenging (Eq. (2)). Therefore an analogy can be drawn between $x_i \lambda_i$ and $A_i \Delta t$. By taking the fraction of optimised scavenging over initial scavenging, what remains is Eq. (16).

375 4.4 Translation to scavenging coefficients

The new FLEXPART input parameters, according to Eq. (16), are shown in Table 5. One may notice that according to the optimisation process, the efficiencies of in-cloud nucleation are greater than 1, which is a challenge to interpret physically. If a maximum possible efficiency of 1 is assumed, then larger values of x_i can be interpreted to actually probe other factors in Eq. (5), such as the cloud water replenishment factor i_{cr} . Since the value of i_{cr} is not an input parameter to FLEXPART, but

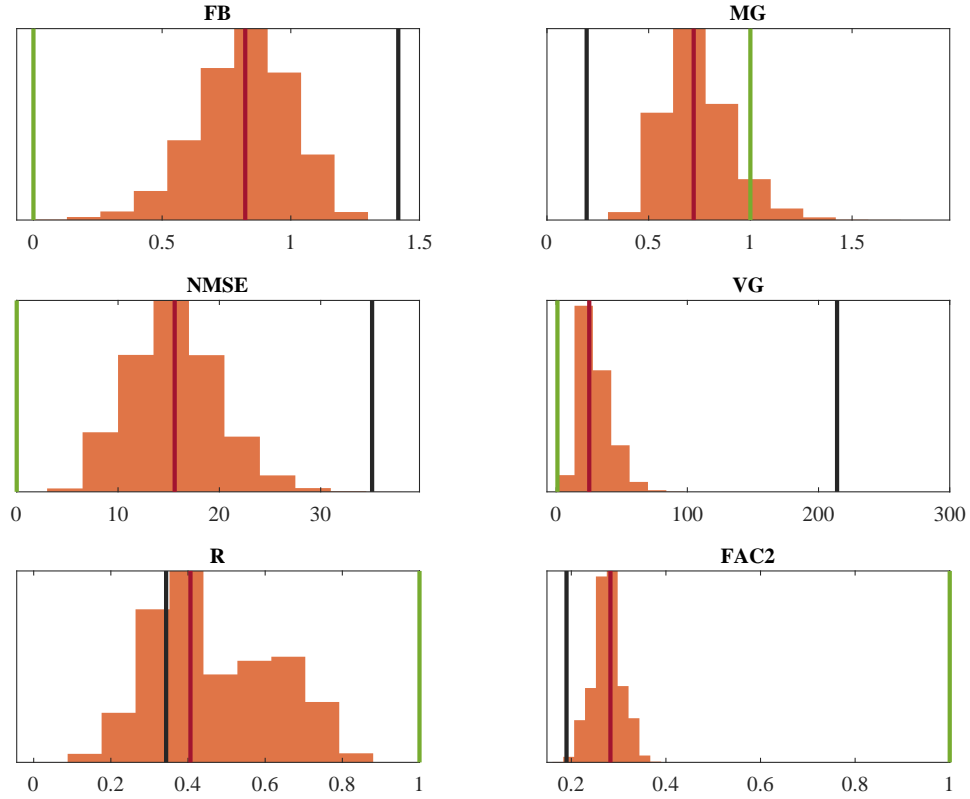


Figure 8. Distribution of the statistical scores as a result of optimising 10,000 samples of a random selection of 50% of the available measurements, and applying the optimised parameters to the rest of the data. The black vertical lines represent the values of the reference simulation (Table 2). The green vertical lines represent the score of a perfect model. The red vertical lines denote the values found by using all measurements (Table 3).

parameter	value
C_{rain}	3.6
C_{snow}	1.4
CCN_{eff}	1.8
IN_{eff}	1.6

Table 5. Optimised ^{137}Cs wet deposition input-parameters for FLEXPART v10.4 for the FDNPP accident, as obtained through Eq. (16).

380 instead defined in the source-code, one can still use the optimised values of CCN_{eff} and IN_{eff} as input parameters to obtain the result of increased Λ for these processes; albeit with the caveat that one should be mindful with the physical interpretation.

Using the optimised input parameters from Table 5 in a new FLEXPART simulation leads to the ^{137}Cs concentrations shown in Figthe bottom row of Fig. 6. ??. Already with the ansatz of Eq. (16), results are obtained that are close to the post-process optimised concentrations (top row of Fig. 6). A comparison of the new scores in Table ??-3 with the post-process optimisation
385 (Table-3) even shows a quantitative improvement for all statistical scores.

^{137}Cs concentrations: optimised FLEXPART simulation vs. IMS observations. Note that the optimised FLEXPART parameters of Table 5 are likely to depend on the numerical weather model used, as it can account for model specific biases in the precipitation and 3D cloud water fields.

~~FB-MG-NMSE-VG-R-FAC2 (0) (1) (0) (1) (1) (1) 0.69 0.76 13.47 15.11 0.44 0.29~~ Statistical scores of the optimised
390 ~~FLEXPART simulation.~~

4.5 Independent verification with wet deposition measurements

Finally, we present an independent check of the results by looking at the wet deposition measurements from NADP. The deposition values of the reference simulation and NADP observations are shown in Fig. ??the top row of Fig. 9, and the corresponding scores in Table ??6. The reference FLEXPART predictions are a better match with the observations in this case
395 compared to the air concentrations as seen previously. Still, a slight bias for overprediction is seen. The optimised ~~FLEXPART~~ FLEXPART simulation is shown in Figthe bottom rows of Fig. 9 and Table 6. ?? and in Table ??. A marginal improvement is seen in FB, VG, R and FAC2 and a slight deterioration of MG and NMSE. Overall, we can say that the optimisation process has neither significantly improved or worsened the deposition results. This is despite the overprediction found for the air concentrations in the reference simulation. This is the result of two competing effects: an increase in deposition reduces air
400 concentration, but also a higher air concentration increases scavenging and thus deposition. In the deposition results of the reference simulations these two effects almost cancel out.

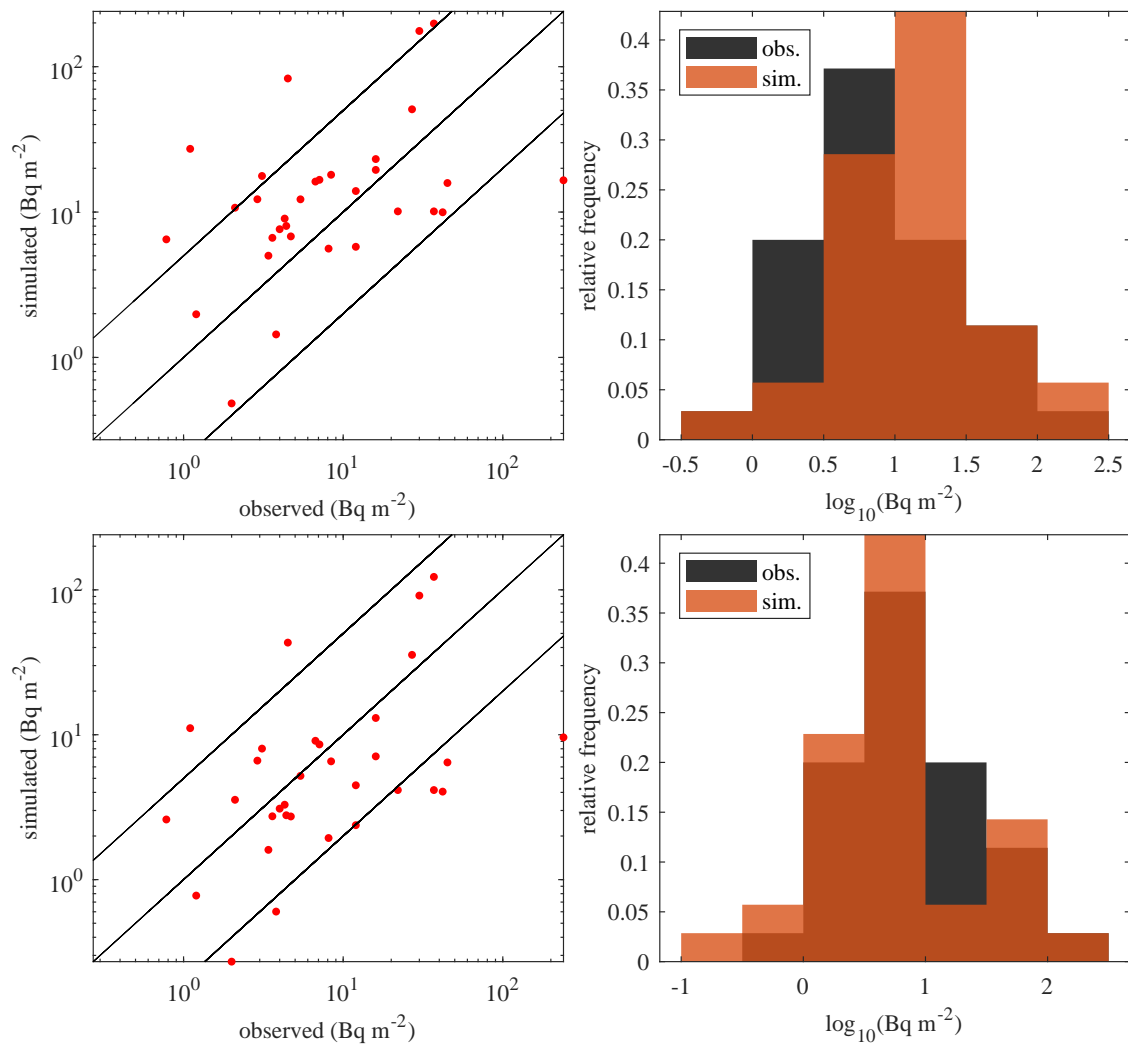


Figure 9. Wet-Top: wet deposition of ^{137}Cs reference simulation vs. NADP observations. Bottom: wet deposition of ^{137}Cs - optimised simulation vs. NADP observations.

Table 6. Statistical scores of the ^{137}Cs deposition ~~from values obtained in the concentration-optimised FLEXPART reference simulation, and~~ in the optimised simulation. In parentheses are the scores of an ideal model.

5 Conclusions

Wet deposition plays a crucial role in many atmospheric aspects, such as the transport and ~~diffusion~~ dispersion of airborne radionuclides. Simulating wet deposition in atmospheric transport models, however, remains a challenge. Therefore we have developed a post-processing scheme to optimise the wet scavenging rate in ATMs. This ~~methodology~~ method was applied to a case study of aerosol-attached ^{137}Cs following the Fukushima nuclear accident, with the use of the atmospheric transport model FLEXPART. In order to utilise the new optimisation scheme, we accurately determined the partitioning of the scavenging processes as calculated by FLEXPART: (1) below-cloud scavenging by rain, (2) below-cloud scavenging by snow, (3) in-cloud scavenging by cloud condensation nucleation and (4) in-cloud scavenging by ice nucleation. We found that the majority of radionuclides that contribute to ground station measurements are scavenged below-cloud. The optimisation scheme is able to reduce the originally over-predicted air concentrations of ^{137}Cs from an average factor 5 to a factor 2. A proposal is made to translate the post-process optimisation results to the physical scavenging coefficients Λ_i of the different processes. Using these Λ_i 's, a FLEXPART simulation could be performed which closely matched the post-process-optimised concentrations. The deposition results of this optimised simulation were compared with measurements made in the U.S. (as an independent check) and show neither a significant improvement nor worsening of the already reasonable prior agreement.

~~Although applied to FLEXPART, the proposed methodology~~ We hypothesise that, although applied to the Fukushima nuclear accident, the optimised scavenging coefficients will be valid more generally, under similar conditions using the same numerical weather prediction model (ECMWF). Furthermore, the proposed methods herein could be applied to any ATM other than FLEXPART, even with different scavenging processes modelled. In general, the optimisation scheme will result in a scaling factor of the scavenging coefficient for each scavenging process. In this way, one can circumvent the need to explore the parameter-space of scavenging rates with many separate ATM simulations.

Code availability. The FLEXPART v10.4 source code is available at <https://doi.org/10.5281/zenodo.3542278>. The MATLAB (2021b) code used for our analysis can be found at <https://doi.org/10.5281/zenodo.7789039>. The FLEXPART in-/output data is available at <https://doi.org/10.5281/zenodo.7906927>.

425 *Author contributions.* SVL: methodology, formal analysis, writing – original draft. PDM: methodology, conceptualisation, writing – review and editing; JC: conceptualisation, supervision. PT: conceptualisation, writing – review and editing, supervision. AD: conceptualisation, software and metadata access, computing resources, writing – review and editing.

Competing interests. The authors declare that they have no conflict of interest.

Acknowledgements. The work herein was made possible by using data from the Global Precipitation Climatology Project, the European
430 Centre for Medium-Range Weather Forecasts, the Comprehensive Nuclear Test-Ban Treaty Organisation and the National Atmospheric Deposition Program.

References

- Adler, R., Wang, J.-J., Sapiano, M., Huffman, G., Chiu, L., Xie, P. P., Ferraro, R., Schneider, U., Becker, A., Bolvin, D., Nelkin, E., Gu, G., and (2016), N. C. P.: Global Precipitation Climatology Project (GPCP) Climate Data Record (CDR), Tech. Rep. Version 2.3 (Monthly),
435 National Centers for Environmental Information., <https://doi.org/10.7289/V56971M6>, 2023.
- Adler, R. F., Sapiano, M. R. P., Huffman, G. J., Wang, J. J., Gu, G. J., Bolvin, D., Chiu, L., Schneider, U., Becker, A., Nelkin, E., Xie, P. P., Ferraro, R., and Shin, D. B.: The Global Precipitation Climatology Project (GPCP) Monthly Analysis (New Version 2.3) and a Review of 2017 Global Precipitation, *Atmosphere*, 9, <https://doi.org/ARTN 138 10.3390/atmos9040138>, 2018.
- Andersson, A.: Mechanisms for log normal concentration distributions in the environment, *Scientific Reports*, 11, <https://doi.org/ARTN 16418 10.1038/s41598-021-96010-6>, 2021.
- 440 Andronache, C.: Estimated variability of below-cloud aerosol removal by rainfall for observed aerosol size distributions, *Atmospheric Chemistry and Physics*, 3, 131–143, <https://doi.org/DOI 10.5194/acp-3-131-2003>, 2003.
- Arnold, D., Maurer, C., Wotawa, G., Draxler, R., Saito, K., and Seibert, P.: Influence of the meteorological input on the atmospheric transport modelling with FLEXPART of radionuclides from the Fukushima Daiichi nuclear accident, *Journal of Environmental Radioactivity*, 139, 212–225, <https://doi.org/10.1016/j.jenvrad.2014.02.013>, 2015.
- 445 Baklanov, A. and Sorensen, J. H.: Parameterisation of radionuclide deposition in atmospheric long-range transport modelling, *Physics and Chemistry of the Earth Part B-Hydrology Oceans and Atmosphere*, 26, 787–799, [https://doi.org/Doi 10.1016/S1464-1909\(01\)00087-9](https://doi.org/Doi 10.1016/S1464-1909(01)00087-9), 2001.
- Baklanov, A., Mahura, A., Jaffe, D., Thaning, L., Bergman, R., and Andres, R.: Atmospheric transport patterns and possible consequences for the European North after a nuclear accident, *Journal of Environmental Radioactivity*, 60, 23–48, [https://doi.org/Pii S0265-931x\(01\)00094-7 Doi 10.1016/S0265-931x\(01\)00094-7](https://doi.org/Pii S0265-931x(01)00094-7 Doi 10.1016/S0265-931x(01)00094-7), 2002.
- 450 Biegalski, S. R., Hosticka, B., and Mason, L. R.: Cesium-137 concentrations, trends, and sources observed in Kuwait City, Kuwait, *Journal of Radioanalytical and Nuclear Chemistry*, 248, 643–649, <https://doi.org/Doi 10.1023/A:1010676208657>, 2001.
- Chatterjee, A., Jayaraman, A., Rao, T. N., and Raha, S.: In-cloud and below-cloud scavenging of aerosol ionic species over a tropical rural atmosphere in India, *Journal of Atmospheric Chemistry*, 66, 27–40, <https://doi.org/10.1007/s10874-011-9190-5>, 2010.
- 455 Colbeck, I. and Lazaridis, M.: Aerosols and environmental pollution, *Naturwissenschaften*, 97, 117–131, <https://doi.org/10.1007/s00114-009-0594-x>, 2010.
- Croft, B., Lohmann, U., Martin, R. V., Stier, P., Wurzler, S., Feichter, J., Hoose, C., Heikkila, U., van Donkelaar, A., and Ferrachat, S.: Influences of in-cloud aerosol scavenging parameterizations on aerosol concentrations and wet deposition in ECHAM5-HAM, *Atmospheric Chemistry and Physics*, 10, 1511–1543, <https://doi.org/DOI 10.5194/acp-10-1511-2010>, 2010.
- 460 Draxler, R., Arnold, D., Chino, M., Galmarini, S., Hort, M., Jones, A., Leadbetter, S., Malo, A., Maurer, C., Rolph, G., Saito, K., Servranckx, R., Shimbori, T., Solazzo, E., and Wotawa, G.: World Meteorological Organization’s model simulations of the radionuclide dispersion and deposition from the Fukushima Daiichi nuclear power plant accident, *Journal of Environmental Radioactivity*, 139, 172–184, <https://doi.org/10.1016/j.jenvrad.2013.09.014>, 2015.
- 465 Fang, S., Zhuang, S. H., Goto, D., Hu, X. F., Li, S., and Huang, S. X.: Coupled modeling of in- and below-cloud wet deposition for atmospheric ¹³⁷Cs transport following the Fukushima Daiichi accident using WRF-Chem: A self-consistent evaluation of 25 scheme combinations, *Environment International*, 158, <https://doi.org/ARTN 106882 10.1016/j.envint.2021.106882>, 2022.

- Ge, B. Z., Xu, D. H., Wild, O., Yao, X. F., Wang, J. H., Chen, X. S., Tan, Q. X., Pan, X. L., and Wang, Z. F.: Inter-annual variations of wet deposition in Beijing from 2014-2017: implications of below-cloud scavenging of inorganic aerosols, *Atmospheric Chemistry and Physics*, 21, 9441–9454, <https://doi.org/10.5194/acp-21-9441-2021>, 2021.
- Grythe, H., Kristiansen, N. I., Groot Zwaafink, C. D., Eckhardt, S., Ström, J., Tunved, P., Krejci, R., and Stohl, A.: A new aerosol wet removal scheme for the Lagrangian particle model FLEXPART v10, *Geosci. Model Dev.*, 10, 1447–1466, <https://doi.org/10.5194/gmd-10-1447-2017>, 2017.
- Gueibe, C., Kalinowski, M. B., Bare, J., Gheddou, A., Krysta, M., and Kusmierczyk-Michulec, J.: Setting the baseline for estimated background observations at IMS systems of four radionuclide isotopes in 2014, *Journal of Environmental Radioactivity*, 178, 297–314, <https://doi.org/10.1016/j.jenvrad.2017.09.007>, 2017.
- Henzing, J. S., Olivie, D. J. L., and van Velthoven, P. F. J.: A parameterization of size resolved below cloud scavenging of aerosols by rain, *Atmospheric Chemistry and Physics*, 6, 3363–3375, <https://doi.org/10.5194/acp-6-3363-2006>, 2006.
- Hertel, O., Christensen, J., Runge, E. H., Asman, W. A. H., Berkowicz, R., Hovmand, M. F., and Hov, O.: Development and Testing of a New Variable Scale Air-Pollution Model - Acdep, *Atmospheric Environment*, 29, 1267–1290, [https://doi.org/10.1016/1352-2310\(95\)00067-9](https://doi.org/10.1016/1352-2310(95)00067-9), 1995.
- Jones, A. C., Hill, A., Hemmings, J., Lemaitre, P., Querel, A., Ryder, C. L., and Woodward, S.: Below-cloud scavenging of aerosol by rain: a review of numerical modelling approaches and sensitivity simulations with mineral dust in the Met Office's Unified Model, *Atmospheric Chemistry and Physics*, 22, 11 381–11 407, <https://doi.org/10.5194/acp-22-11381-2022>, 2022.
- Kaneyasu, N., Ohashi, H., Suzuki, F., Okuda, T., and Ikemori, F.: Sulfate Aerosol as a Potential Transport Medium of Radiocesium from the Fukushima Nuclear Accident, *Environmental Science & Technology*, 46, 5720–5726, <https://doi.org/10.1021/es204667h>, 2012.
- Katata, G., Chino, M., Kobayashi, T., Terada, H., Ota, M., Nagai, H., Kajino, M., Draxler, R., Hort, M. C., Malo, A., Torii, T., and Sanada, Y.: Detailed source term estimation of the atmospheric release for the Fukushima Daiichi Nuclear Power Station accident by coupling simulations of an atmospheric dispersion model with an improved deposition scheme and oceanic dispersion model, *Atmospheric Chemistry and Physics*, 15, 1029–1070, <https://doi.org/10.5194/acp-15-1029-2015>, 2015.
- Kyro, E. M., Gronholm, T., Vuollekoski, H., Virkkula, A., Kulmala, M., and Laakso, L.: Snow scavenging of ultrafine particles: field measurements and parameterization, *Boreal Environment Research*, 14, 527–538, <GotoISI>://WOS:000270282100008, 2009.
- Laakso, L., Gronholm, T., Rannik, U., Kosmale, M., Fiedler, V., Vehkamäki, H., and Kulmala, M.: Ultrafine particle scavenging coefficients calculated from 6 years field measurements, *Atmospheric Environment*, 37, 3605–3613, [https://doi.org/10.1016/S1352-2310\(03\)00326-1](https://doi.org/10.1016/S1352-2310(03)00326-1), 2003.
- Leadbetter, S. J., Hort, M. C., Jones, A. R., Webster, H. N., and Draxler, R. R.: Sensitivity of the modelled deposition of Caesium-137 from the Fukushima Dai-ichi nuclear power plant to the wet deposition parameterisation in NAME, *Journal of Environmental Radioactivity*, 139, 200–211, <https://doi.org/10.1016/j.jenvrad.2014.03.018>, 2015.
- Lohmann, U. and Feichter, J.: Global indirect aerosol effects: a review, *Atmospheric Chemistry and Physics*, 5, 715–737, <https://doi.org/10.5194/acp-5-715-2005>, 2005.
- Masson, O., Ringer, W., Mala, H., Rulik, P., Dlugosz-Lisiecka, M., Eleftheriadis, K., Meisenberg, O., De Vismes-Ott, A., and Gensdarmes, F.: Size Distributions of Airborne Radionuclides from the Fukushima Nuclear Accident at Several Places in Europe, *Environmental Science & Technology*, 47, 10 995–11 003, <https://doi.org/10.1021/es401973c>, 2013.
- Masson, O., Ott, A. D., Bourcier, L., Paulat, P., Ribeiro, M., Pichon, J. M., Sellegri, K., and Gurriaran, R.: Change of radioactive cesium (Cs-137 and Cs-134) content in cloud water at an elevated site in France, before and after the Fukushima nuclear accident: Comparison with

- radioactivity in rainwater and in aerosol particles, *Atmospheric Research*, 151, 45–51, <https://doi.org/10.1016/j.atmosres.2014.03.031>, 2015.
- Miyamoto, Y., Yasuda, K., and Magara, M.: Size distribution of radioactive particles collected at Tokai, Japan 6 days after the nuclear accident, *Journal of Environmental Radioactivity*, 132, 1–7, <https://doi.org/10.1016/j.jenvrad.2014.01.010>, 2014.
- 510 Morino, Y., Ohara, T., and Nishizawa, M.: Atmospheric behavior, deposition, and budget of radioactive materials from the Fukushima Daiichi nuclear power plant in March 2011, *Geophysical Research Letters*, 38, <https://doi.org/Artn L00g11 10.1029/2011gl048689>, 2011.
- Pisso, I., Sollum, E., Grythe, H., Kristiansen, N. I., Cassiani, M., Eckhardt, S., Arnold, D., Morton, D., Thompson, R. L., Groot Zwaafink, C. D., Evangeliou, N., Sodemann, H., Haimberger, L., Henne, S., Brunner, D., Burkhart, J. F., Fouilloux, A., Brioude, J., Philipp, A., Seibert, P., and Stohl, A.: The Lagrangian particle dispersion model FLEXPART version 10.4, *Geosci. Model Dev.*, 12, 4955–4997, <https://doi.org/10.5194/gmd-12-4955-2019>, 2019.
- 515 Querel, A., Roustan, Y., Quelo, D., and Benoit, J. P.: Hints to discriminate the choice of wet deposition models applied to an accidental radioactive release, *International Journal of Environment and Pollution*, 58, 268–279, <https://doi.org/10.1504/Ijep.2015.077457>, 2015.
- Querel, A., Quelo, D., Roustan, Y., and Mathieu, A.: Sensitivity study to select the wet deposition scheme in an operational atmospheric transport model, *Journal of Environmental Radioactivity*, 237, <https://doi.org/ARTN 106712 10.1016/j.jenvrad.2021.106712>, 2021.
- 520 Schneider, U., Becker, A., Finger, P., Meyer-Christoffer, A., Rudolf, B., and Ziese, M.: GPCC Full Data Reanalysis Version 6.0 at 0.5°: Monthly Land-Surface Precipitation from Rain-Gauges built on GTS-based and Historic Data, https://doi.org/DOI 10.5676/DWD_GPCC/FD_M_V6_050, 2011.
- Seinfeld, J. H. and Pandis, S. N.: *Atmospheric chemistry and physics : from air pollution to climate change*, A Wiley Inter-science Publication, Wiley John Wiley distributor, Hoboken, N.J Chichester, 2nd edn., 2006.
- 525 Slinn, W.: *Precipitation Scavenging in Atmospheric Science and Power Production*, Tech. Inf. Cent., Off. of Sci. and Techn. Inf., Dep. of Energy, Washington DC, USA, 1984.
- Solazzo, E. and Galmarini, S.: The Fukushima-Cs-137 deposition case study: properties of the multi-model ensemble, *Journal of Environmental Radioactivity*, 139, 226–233, <https://doi.org/10.1016/j.jenvrad.2014.02.017>, 2015.
- Sportisse, B.: A review of parameterizations for modelling dry deposition and scavenging of radionuclides, *Atmospheric Environment*, 41, 2683–2698, <https://doi.org/10.1016/j.atmosenv.2006.11.057>, 2007.
- 530 Stohl, A., Hittenberger, M., and Wotawa, G.: Validation of the Lagrangian particle dispersion model FLEXPART against large-scale tracer experiment data, *Atmospheric Environment*, 32, 4245–4264, [https://doi.org/Doi 10.1016/S1352-2310\(98\)00184-8](https://doi.org/Doi 10.1016/S1352-2310(98)00184-8), 1998.
- Stohl, A., Forster, C., Frank, A., Seibert, P., and Wotawa, G.: Technical note: The Lagrangian particle dispersion model FLEXPART version 6.2, *Atmos. Chem. Phys.*, 5, 2461–2474, <https://doi.org/10.5194/acp-5-2461-2005>, 2005.
- 535 Stohl, A., Seibert, P., Wotawa, G., Arnold, D., Burkhart, J. F., Eckhardt, S., Tapia, C., Vargas, A., and Yasunari, T. J.: Xenon-133 and caesium-137 releases into the atmosphere from the Fukushima Dai-ichi nuclear power plant: determination of the source term, atmospheric dispersion, and deposition, *Atmospheric Chemistry and Physics*, 12, 2313–2343, <https://doi.org/10.5194/acp-12-2313-2012>, 2012.
- Terada, H., Nagai, H., Tsuduki, K., Furuno, A., Kadowaki, M., and Kakefuda, T.: Refinement of source term and atmospheric dispersion simulations of radionuclides during the Fukushima Daiichi Nuclear Power Station accident, *Journal of Environmental Radioactivity*, 213, <https://doi.org/ARTN 106104 10.1016/j.jenvrad.2019.106104>, 2020.
- 540 Tipka, A., Haimberger, L., and Seibert, P.: Flex_extract v7.1.2 – a software package to retrieve and prepare ECMWF data for use in FLEXPART, *Geosci. Model Dev.*, 13, 5277–5310, <https://doi.org/10.5194/gmd-13-5277-2020>, 2020.

- Wang, X., Zhang, L., and Moran, M. D.: Uncertainty assessment of current size-resolved parameterizations for below-cloud particle scavenging by rain, *Atmospheric Chemistry and Physics*, 10, 5685–5705, <https://doi.org/10.5194/acp-10-5685-2010>, 2010.
- 545 Wang, X., Zhang, L., and Moran, M. D.: On the discrepancies between theoretical and measured below-cloud particle scavenging coefficients for rain - a numerical investigation using a detailed one-dimensional cloud microphysics model, *Atmospheric Chemistry and Physics*, 11, 11 859–11 866, <https://doi.org/10.5194/acp-11-11859-2011>, 2011.
- Wetherbee, G. A., Gay, D. A., Debey, T. M., Lehmann, C. M. B., and Nilles, M. A.: Wet Deposition of Fission-Product Isotopes to North America from the Fukushima Dai-ichi Incident, March 2011, *Environmental Science & Technology*, 46, 2574–2582, <https://doi.org/10.1021/es203217u>, 2012.
- 550 World Health Organization: Health risk assessment from the nuclear accident after the 2011 Great East Japan earthquake and tsunami, based on a preliminary dose estimation, 2013.
- Xu, D. H., Ge, B. Z., Wang, Z. F., Sun, Y. L., Chen, Y., Ji, D. S., Yang, T., Ma, Z. Q., Cheng, N. L., Hao, J. Q., and Yao, X. F.: Below-cloud wet scavenging of soluble inorganic ions by rain in Beijing during the summer of 2014, *Environmental Pollution*, 230, 963–973, <https://doi.org/10.1016/j.envpol.2017.07.033>, 2017.
- 555