

Molecular simulations reveal that heterogeneous ice nucleation occurs at higher temperatures in water under capillary tension

Elise Rosky¹, Will Cantrell¹, Tianshu Li², Issei Nakamura¹, and Raymond A. Shaw¹

¹Department of Physics, Michigan Technological University, Houghton, MI, USA

²Department of Civil & Environmental Engineering, George Washington University, Washington, DC, USA

Correspondence: Elise Rosky (emrosky@mtu.edu)

Abstract.

Homogeneous ice nucleation rates occur at higher temperatures when water is under tension, otherwise known as negative pressure. If also true for heterogeneous ice nucleation rates, then this phenomenon can result in higher heterogeneous freezing temperatures in water capillary bridges, pores, and other geometries where water is subjected to negative Laplace pressure. Molecular dynamics simulations of heterogeneous ice nucleation demonstrate that negative pressure within supercooled water allows for a given ice nucleation rate to occur at higher temperatures. The increase in heterogeneous freezing temperature with negative pressure is approximately linear within the atmospherically relevant range of 1 atm to -1000 atm; the equation describing the slope depends on the latent heat of freezing and the molar volume difference between liquid and ice. Simulations of water capillary bridges confirm that negative Laplace pressure within the water corresponds to an increase in heterogeneous freezing temperature. The freezing temperature in the capillary bridges increases linearly with inverse capillary bridge height ($1/h$), consistent with the slope equation. When approaching small enough spatial dimensions, both the height and width of the capillary bridge can produce confinement effects that further enhance or suppress the ice nucleation rate. These results clarify multiple lines of experimental evidence for enhanced nucleation rates due to reduced pressure, either resulting from surface geometry (Laplace pressure) or mechanical agitation of water droplets. Any process that leads to a negative pressure perturbation could play a role in ice formation, which may be relevant to the phenomenon of contact nucleation or freezing of large droplets.

1 Introduction

Heterogeneous freezing of water occurs when a substrate or material in contact with water catalyzes the formation of ice. The heterogeneous ice nucleation rate coefficient, referred to in this paper as the intensive nucleation rate j_{het} , describes the number of ice nucleation events per unit area of substrate per unit time ($\text{m}^{-2} \text{s}^{-1}$). It is commonly recognized that j_{het} is temperature dependent, with probability of nucleation increasing as temperature is decreased. Meanwhile, less attention has been given to the pressure dependence of j_{het} , which will be the focus of this study. Specifically, we study the behavior of j_{het} under negative pressure, with the hypothesis being that negative pressure in supercooled water will correspond to elevated temperatures of heterogeneous ice nucleation.

25 Negative pressure in water is prevalent throughout nature, occurring in tree xylem (Jacobsen et al., 2007), in water capillary
bridges in soil (Seiphoori et al., 2020), and within nano-sized pores on atmospheric ice nucleating particles (David et al., 2020;
Marcolli, 2020; Klumpp et al., 2023). Negative Laplace pressure, given by $\Delta P \approx \sigma_{lv}/2r$, (where $\sigma_{lv} \approx 0.7 \text{ J m}^{-2}$ is the liquid-
vapor surface tension of water), becomes significant for nucleation when the air-water interface radius of curvature r is on the
order of nanometers. This corresponds to negative pressures on the order of hundreds of atmospheres. Thus, in this work we
30 explore atmospherically-relevant negative pressures down to -1000 atm .

Though small changes in temperature exert a much larger influence on ice nucleation rate compared to changes in pressure,
our results show that negative pressures within the range of -1000 atm can cause heterogeneous ice nucleation rates to occur
several Kelvin higher compared to without any pressure change. Within the narrow band of temperatures where heterogeneous
ice nucleation is active in the atmosphere, it is commonly approximated that the concentration of ice-nucleating particles
35 increases exponentially with decreasing temperature (Pruppacher and Klett, 1997, Sec. 9.2); this suggests the activation of
ice-nucleating particles a few Kelvin warmer can have significant impacts.

Recent experiments provide compelling evidence that dynamic or geometric factors can lead to enhancement of ice nu-
cleation rates independent of temperature, leading investigators to explore non-thermal sources of freezing enhancement. For
example, it is widely known that contact between an ice-nucleating material and supercooled liquid leads to an increase in
40 the freezing temperature as compared to when the material is immersed (Pitter and Pruppacher, 1973; Levin and Yankofsky,
1983; Diehl et al., 2002). Wetting of a small ice-nucleating particle at a water surface (Shaw et al., 2005) and roughening of a
substrate (Gurganus et al., 2014) have both yielded similar increases. Even contact with a soluble material not typically con-
sidered an ice nucleating particle can induce freezing (Niehaus and Cantrell, 2015). It has been observed that ice nucleation is
strongly enhanced when the three-phase contact line of a sessile drop distorts and moves over a substrate during electrowetting
45 (Yang et al., 2015) or over a surface with pinning points (Yang et al., 2018). One hypothesis that attempts to unify these diverse
observations is that the curvature and/or stretching of the air-water interface produces negative Laplace pressure and tension
within the water (Marcolli, 2017; Yang et al., 2020).

Our previous molecular dynamics simulations of homogeneous ice nucleation within pure water identified that homogeneous
ice nucleation rates occur at higher temperatures due to negative pressure, where the increase in temperature ΔT resulting from
50 a decrease in pressure ΔP is described by the linear approximation (Rosky et al., 2022)

$$\Delta T = \frac{T_m \Delta \nu_{ls}}{l_f} \Delta P. \quad (1)$$

The governing quantities are the equilibrium melting point (T_m), the molar-volume difference between liquid and solid water
($\Delta \nu_{ls} = \nu_l - \nu_s$), and the enthalpy of fusion (also known as latent heat, l_f) — all evaluated at a reference pressure of 1 atmo-
sphere. The molar volume difference between liquid water and ice is negative across the range of pressures addressed in this
55 study. This property of water allows for an increase in freezing temperature ($\Delta T > 0$) from a decrease in pressure ($\Delta P < 0$).
A thorough derivation of Eq. (1) can be found in the appendix of Rosky et al. (2022), using the pressure-dependent formulation
of the solid-liquid chemical potential difference (μ) formulated by Němec (2013) combined with classical nucleation theory

for j_{hom} (see also Yang et al., 2018). Several thermodynamic properties of water such as the ice and liquid density, latent heat of fusion, and ice–liquid surface tension are approximated as constant with temperature and pressure on the scales relevant to
60 this work.

In Equation 1, the slope of $(\Delta T/\Delta P)_{hom}$ is approximated as parallel to the liquid-solid phase coexistence (melting point) line, given by the Clapeyron equation. However, it is important to note that homogeneous freezing lines are not actually parallel to the melting point line as shown in both experiments and simulations of water (Bianco et al., 2021; Espinosa et al., 2016; Kanno et al., 1975; Lu et al., 2016; Dhabal et al., 2022). The slope of $(\Delta T/\Delta P)_{hom}$ becomes increasingly steeper than
65 the melting point line at large positive pressures. However, all of these studies suggest that the homogeneous freezing lines and melting point line become closer in slope when approaching the negative pressure regime. Indeed, Rosky et al. (2022) has shown that approximating the two slopes as parallel is satisfactory at negative pressures ranging from 1 atm to -1000 atm. Furthermore, inspection of the simulated thermodynamic properties of water by Montero de Hijes et al. (2023) arrived at a similar conclusion that “the homogeneous nucleation line should be parallel to the coexistence line for pressures below
70 500 \sim bars.” In light of this interpretation, we see that applying Eq. (1) at moderate positive pressures (e.g. 200 atm) provides excellent agreement with the experimental homogeneous freezing temperature depression measured by Kanno et al. (1975), whereas extending the approximation of Eq. (1) farther into the positive pressure regime (e.g., beyond 500 atm) exhibits a growing discrepancy between the predicted value and the experimental measurement. Given the lack of experimental measurements of ice nucleation at negative pressures, it is helpful to ensure that the water models used for this study compare well with
75 measurements in the positive regime before extrapolating to negative pressures. We describe in the Methods section how the water models employed in this study show reasonable agreement with experimental measurements of homogeneous freezing at positive pressures, which builds confidence that they can be used to derive useful insights pertaining to freezing of real water under negative pressures.

In the present study we ask: Does the heterogeneous ice nucleation rate follow a similar expression for pressure dependence
80 at negative pressures as that of the homogeneous ice nucleation rate? And do simple geometric arrangements leading to negative Laplace pressure indeed result in similar behavior? The behavior of homogeneous ice nucleation at negative pressures has been the subject of investigation because of its relationship to the fundamental properties of water (e.g., Bianco et al., 2021; Lu et al., 2016). The work of Rosky et al. (2022) used molecular simulations to characterize a simple (linear) behavior of homogeneous ice nucleation rate across the range of negative pressures thought to be relevant to the atmosphere. Extending
85 these studies to heterogeneous ice nucleation is an integral step towards applying these findings to physical situations. In particular, heterogeneous ice nucleation in atmospheric cloud droplets is of great interest because the majority of ice in the atmosphere forms via this mechanism (Cantrell and Heymsfield, 2005; Hoose and Möhler, 2012). Heterogeneous ice nucleation rates determine the temperature at which primary ice particles form in clouds, which goes on to influence the cloud optical properties, lightning activity, and precipitation (Lamb and Verlinde, 2011).

90 In this work we characterize the pressure dependence of intensive heterogeneous ice nucleation rates j_{het} at negative pressures using a molecular model of water in contact with an ice-nucleating substrate. In the first method of applying negative pressure we use a barostat to explicitly set the pressure. In the second method we use capillary water bridges of varying heights

to create a range of negative Laplace pressures. We consider whether Eq. (1) remains a valid description for the pressure dependence of heterogeneous ice nucleation in the negative pressure range. In addition to analyzing heterogeneous ice nucleation rates, we also explore the spatial distribution of ice nucleation events within the water capillary bridges to understand how confinement relative to the substrate and the air-water interface may influence our results.

While our simulations do not attempt to represent any specific substrate or configuration found in atmospheric or experimental ice nucleation, our findings provide insight into the extent that capillary tension and surface curvature (e.g. due to mechanical agitation) can influence heterogeneous ice nucleation rates through negative Laplace pressure. Additionally, the spatial locations of ice nucleation relative to the substrate and to the air-water interface inform us that these length scales must be taken into account when considering ice nucleation rate enhancement via this mechanism.

2 Methods

Molecular dynamics (MD) simulations are carried out in LAMMPS (Plimpton, 1995) using the mW (Molinero and Moore, 2009) water model, and the ML-mW (Machine-Learning-mW) model which has a more realistic representation of the density difference between liquid water and ice (Chan et al., 2019). The mW homogeneous freezing curve was explored across a wide range of positive pressures by Lu et al. (2016), showing qualitative agreement with that measured by Kanno et al. (1975). More relevant to our study, the ML-mW model also exhibits quantitative agreement with the experimental measurements. Using the same methods described in Rosky et al. (2022), we simulated homogeneous freezing of the ML-mW model at a positive pressure of 500 atm and observed a 6 K depression in the freezing temperature in reference to 1 atm. This agrees quantitatively with the experimental results of Kanno et al. (1975), and exhibits the expected steepening of the homogeneous freezing line in the positive pressure regime. This increases our confidence that ML-mW simulation results will provide useful insights pertaining to real water at negative pressures.

To observe ice nucleation, we equilibrate the water at a supercooled temperature and then cool the water at a constant rate of 0.25 K ns^{-1} until ice forms. The same cooling rate is used for all simulations in this study. The starting temperature for the cooling ramp at all pressures is 240 K for ML-mW and 225 K for mW, corresponding to 52 K and 48 K of supercooling respectively, relative to their melting temperatures at 1 atm. Ice is identified using the q_6 order parameter, where clusters of molecules with $q_6 > 0.54$ are considered to be ice (Steinhardt et al., 1983; Lupi et al., 2014; Rosky et al., 2022). Using the same method as Rosky et al. (2022), the freezing temperature of each cooling ramp is identified by the sharp increase in ice to liquid ratio. The steepest point on a sigmoidal fit to the ice/liquid ratio curve is used to select the nominal nucleation temperature.

Intensive nucleation rates are found by running the same cooling simulation a minimum of 20 times and recording the freezing temperature of each cooling run. These repeated cooling runs form a statistical distribution of freezing temperatures that can be divided into temperature bins with a corresponding intensive nucleation rate, $j_{het}(T)$, within each bin. Calculation of intensive nucleation rate values for this process is described in Rosky et al. (2022) using the methods of Zobrist et al. (2007). The width of the temperature bins are displayed as uncertainty bounds on our data points. As determined from Poisson statistics, we report with 99% certainty that the intensive nucleation rates shown are contained within the bounds of the temperature bin.

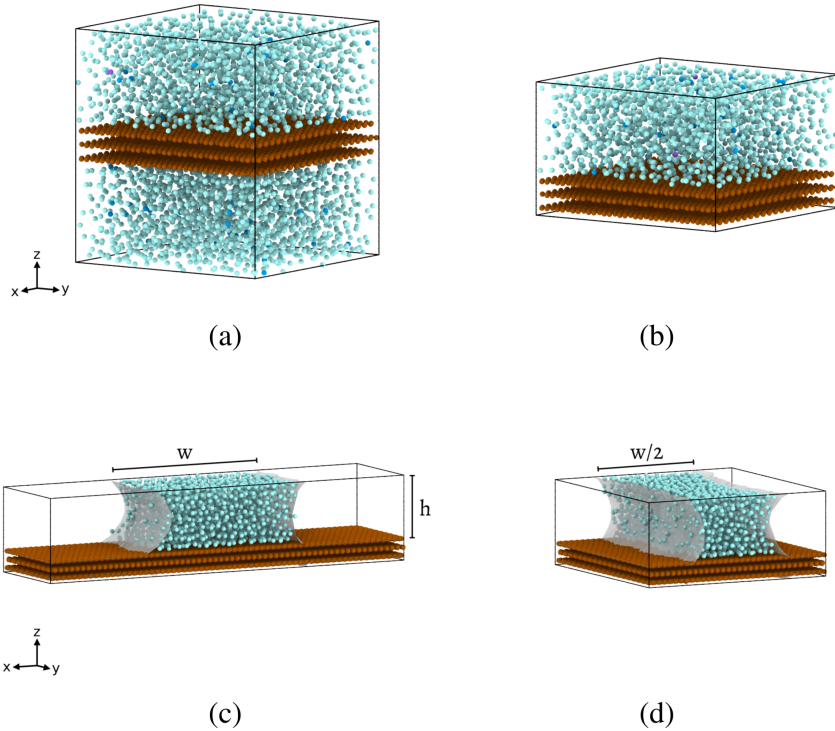


Figure 1. Heterogeneous ice nucleation simulation configurations with periodic boundary conditions employed along all three dimensions. Water molecules are cyan and the substrate material is brown. All configurations have the same total surface area of contact between water and substrate to within 6%. (a) "Unconfined" water with a barostat. (b) Confined water with a barostat, designed to capture the effect of confining water along the z -axis between substrate surfaces. (c) Capillary water bridge, used without a barostat so that negative Laplace pressure may arise naturally within the water capillary bridge due to the curved geometry of the air-water interface (gray shading). (d) Narrow capillary bridge, simulates confinement of the water along the x -axis between the two air-water interfaces (gray shading). In configurations (b), (c), and (d), the periodic boundary conditions cause the bottom surface of the substrate to be in contact with the water molecules at the top of the simulation cell, thus forming the water bridge in (c) and (d).

We reference Table 2 of Koop et al. (1997) to obtain the 99% upper and lower confidence bounds for the number of freezing events observed in each temperature bin. The cooling rate and substrate surface area used in our study allow us to sample intensive heterogeneous nucleation rates of order of magnitude $j_{het} = 10^{24} \text{ m}^{-2} \text{ s}^{-1}$.

130 We simulate heterogeneous ice nucleation by inserting an ice-nucleating substrate into a box of water with periodic boundary conditions. This configuration is shown in Fig. 1(a). The Fig. 1(a) simulation box has dimensions of $49.22 \times 49.02 \times \sim 58.75$ Å, containing 4,906 water molecules with a 10 Å thick sheet of ice-nucleating substrate inserted at the center of the z -axis. The total surface area of substrate in contact with water (including both the top and bottom of the substrate) is 48.25 nm^2 . The substrate molecules are held fixed with zero velocity. The x, y -dimensions of the simulation cell are kept constant, while the

z-axis dimension may adjust to accommodate changes in pressure. After equilibration of the simulation box, we use cooling
135 ramps to measure $\dot{j}_{het}(T)$ at three pressures: 1 atm, -500 atm, and -1000 atm.

Simulations containing 4,906 molecules (a volume of roughly 125 nm^3) are a conventional choice for studies that aim to
simulate bulk water properties (e.g., Molinero and Moore, 2009; Lupi et al., 2014; Li et al., 2011). The interaction forces felt
between two water molecules in our simulation go to zero when molecules are spaced further than $\sim 4 \text{ \AA}$ apart, and forces
between water molecules and substrate molecules go to zero for separations beyond $\sim 5 \text{ \AA}$ (Molinero and Moore, 2009). Thus,
140 the chosen thickness of our substrate ensures that water molecules on either side of the substrate will not interact with each
other. We refer to the configuration shown in Fig. 1(a) as “unconfined” because the vertical dimension is large enough that
much of the water is unaware of the substrate. Structural correlations in the liquid decay to zero beyond 1.5 nm (Cox et al.,
2015; Bi et al., 2016; Lupi et al., 2014); the height of the “unconfined” simulation cell is more than twice this length. To
confirm that the nucleation rate on the substrate is not influenced by confinement effects in the “unconfined” cell, simulations
145 at 1 atm were performed with the z -axis dimension doubled to 100 \AA , showing no change in the heterogeneous nucleation rate.

To simulate the effects of confining the water between the two substrate surfaces, we repeat the simulations with reduced box
heights, as shown in Fig. 1(b). We test z -axis heights of $h = 30 \text{ \AA}$, 24 \AA , and 18 \AA , which will later be used as the heights of our
capillary water bridges. All simulations in this study employ periodic boundary conditions along the three spatial dimensions,
and use a timestep of 5 fs. For both the “unconfined” and confined configurations, equilibration is carried out with a Berendsen
150 barostat (damping constant of 10 ps) and Bussi thermostat (damping constant of 5 ps). The cooling runs are carried out in
the isothermal-isobaric (NPT) ensemble, implemented by employing an isobaric-isoenthalpic (NPH) ensemble using a Nose-
Hoover barostat (damping constant of 10 ps) coupled with the Bussi thermostat (Allen and Tildesley, 2017).

The selection of pressures used for this study is informed by two factors. First, Eq. (1) dictates that an increase in freezing
temperature due to negative pressure is expected when the molar volume difference between liquid water and ice is negative
155 in value ($\Delta v_{ls} < 0$). Simulations of water under a wide range of thermodynamic conditions indicate that Δv_{ls} changes from
negatively to positively valued at some point below -1000 atm (Bianco et al., 2021). Thus, we do not explore pressures below
 -1000 atm to stay within the range of interest to ice nucleation enhancement. Furthermore, we are particularly interested in
negative pressure regimes that could be feasible during atmospheric processes or during laboratory experiments, making the
range of pressure from 1 atm to -1000 atm appropriate for our purposes.

160 We have taken steps towards addressing whether these magnitudes of negative pressure within water can be found in nature
by simulating water capillary bridges. A volume of water placed between two hydrophilic substrate surfaces forms a capillary
bridge that is expected to have negative Laplace pressure within the water. As shown in Fig. 1(c), we use the same ice-nucleating
substrate used in the previously described configurations to construct water capillary bridges with heights $h = 30 \text{ \AA}$, 24 \AA , and
 18 \AA . We apply the same constant-cooling simulation procedure to obtain intensive heterogeneous ice nucleation rates within
165 the capillary bridges. In these simulations, we remove the external barostat so that negative pressure within the water is solely a
result of the capillary bridge geometry. Water capillary bridge simulations are equilibrated and carried out in the NVT ensemble
(number of molecules, volume, and temperature is conserved during each timestep), using a Bussi thermostat with damping
constant of 5 ps. The simulation cell dimensions are all held fixed during the capillary bridge simulations. The widths of

these capillary bridges are measured at the water–substrate interface. The total area of contact between the water and substrate remains consistent ($\sim 48.25 \text{ nm}^2$) to within 6% for all capillary bridge configurations. The desired contact area is achieved by tuning the y-axis dimension of the simulation cells to adjust the length of the capillaries along the y-axis. Intensive nucleation rates are ultimately obtained by dividing by the water–substrate surface area ($\text{m}^{-2} \text{ s}^{-1}$) and maintaining a consistent surface area ensures that all simulations sample the same magnitude of nucleation rate. Only the ML-mW model was used for the capillary bridge simulations.

We look more closely at the ice nucleation events within the water capillary bridges by identifying the location of all nucleation events. The identification of ice nucleation location is done visually using the clustering capability of OVITO, a visualization and analysis tool for molecular dynamics simulation data (Stukowski, 2010). The center of mass of the initial ice cluster is used as the freezing location. The initial ice clusters contain an average of 25 water molecules and their positions have an uncertainty of 5 \AA along each axis.

Throughout this paper, data points will be presented using circles to indicate unconfined heterogeneous freezing in the configuration shown by Fig. 1(a). Squares will indicate confined heterogeneous freezing as in the example of Fig. 1(b). Diamonds will indicate water capillary bridge data, as in Fig. 1(c). Narrow diamonds will represent the narrow capillary configuration, shown by Fig. 1(d).

2.1 Interaction potential between water and substrate

In molecular dynamics simulation, the forces between molecules are defined by interaction potentials. Lupi et al. (2014) introduced an interaction potential to model mW water with a carbon substrate, with the contact angle between mW water and carbon tuned to 86 degrees. We use this same interaction potential to simulate heterogeneous freezing of the mW water model. Although our focus in this work is not to model any particular substrate, this mW-Carbon interaction potential has the benefit of having been already used in studies of ice nucleation (Lupi et al., 2014; Bi et al., 2016). A description of the equations of interaction for this potential and its parameters is included in Appendix A.

We observe that a simulation box containing 4,096 mW water molecules at 1 atm with no substrate freezes homogeneously at an average temperature of 202 K when cooled at a constant rate of 0.25 K ns^{-1} . After inserting a layer of substrate into the center of this same volume of water (as in Fig. 1(a)) and using the same cooling rate, we observe that heterogeneous freezing on the substrate takes place at an average temperature of 217.5 K, a 15.5 K increase over the homogeneous freezing temperature. This is consistent with the results of Lupi et al. (2014), who reported a $12 \pm 3 \text{ K}$ difference between heterogeneous and homogeneous freezing temperature when cooling at a rate of 1 K ns^{-1} .

Our previous study (Rosky et al., 2022) indicates that the ML-mW water model is more appropriate for studying pressure effects on ice nucleation because it exhibits a molar volume difference between liquid water and ice that is closer to real water (Chan et al., 2019). Therefore, in order to increase the ability to translate our findings onto real water droplets, we focus our study on the ML-mW model instead of mW. We define a substrate interaction potential for the ML-mW model that is a modified version of the mW-Carbon interaction potential defined by Lupi et al. (2014). We adjust the parameters of the interaction potential to form a substrate on which ML-mW water is stable within the range of negative pressures that

we study and exhibits a similar temperature difference between heterogeneous and homogeneous freezing as seen in the mW-Carbon interaction. A simulation box containing 4,096 ML-mW water molecules at 1 atm freezes homogeneously at an average
205 temperature of 214.5 K when cooled at a constant rate of 0.25 K ns^{-1} . With the substrate inserted, the average heterogeneous freezing temperature on this substrate is 228.5 K, a change in temperature of 14 K.

The resulting ML-mW-Substrate interaction potential has a contact angle between water and substrate that is smaller than that of the mW-Carbon potential. This smaller contact angle is consistent with Bi et al. (2016), Cox et al. (2015) and Lupi and Molinero (2014), where the interaction potential is adjusted in a similar manner as here to modify the substrates hydrophilicity.
210 Our estimate of the ML-mW-Substrate contact angle is 50.5 degrees and will be discussed in Sec. 3.2. The resulting interaction parameters used in this work are summarized in Table A1.

3 Results

3.1 Heterogeneous nucleation rate with negative pressure

Freezing of water on an ice-nucleating substrate (Fig. 1(a)) is simulated at 1 atm, -500 atm and -1000 atm to identify how
215 the intensive heterogeneous nucleation rate, j_{het} , behaves at negative pressures. The cooling rate and area of the substrate in contact with water is kept fixed as we change the pressure of the system so that the same magnitudes of j_{het} is sampled at all pressures. For each pressure setting, we identify the temperature at which the intensive nucleation rate j_{het} is equal to $10^{24} \text{ m}^{-2}\text{s}^{-1}$, thus obtaining contours of constant j_{het} in pressure-temperature coordinates. Figure 2 shows these results for both the ML-mW model and mW model. Intensive homogeneous nucleation rate data j_{hom} ($\text{m}^{-3}\text{s}^{-1}$), as well as equilibrium
220 melting points T_m are also included in these plots for comparison with Rosky et al. (2022).

Comparing the data for intensive heterogeneous nucleation rate ($j_{het} = 10^{24} \text{ m}^{-2}\text{s}^{-1}$) with the data for intensive homogeneous nucleation rate ($j_{hom} = 10^{32} \text{ m}^{-3}\text{s}^{-1}$), we see that the two follow a similar slope in pressure-temperature coordinates. Most significantly, we observe that the increase in temperature as a function of pressure for j_{het} can be approximated as linear within the sampling uncertainty, indicating that the use of a linear estimate for $(\Delta T/\Delta P)_{het}$ may be applied to heterogeneous
225 ice nucleation. For the mW model in particular, the slope predicted by Eq. (1) fits exceptionally well to both the homogeneous and heterogeneous freezing data. Meanwhile, Eq. (1) seems to underestimate the heterogeneous slope of the ML-mW model. The source of excess steepness in the ML-mW heterogeneous slope is not uncovered in this study and merits further investigation. Despite this weakness, these results do indicate that the slope predicted by Eq. (1) may still be applicable to heterogeneous nucleation, to within the simulation uncertainty. The similarity between the heterogeneous and homogeneous slopes for each
230 respective water model suggest that l_f and Δv_{ls} remain key factors in determining the pressure dependence of heterogeneous nucleation rate. Indeed, the consistent change in slope between the mW and ML-mW models indicate that the magnitude of density difference between liquid water and ice plays a similar role for heterogeneous freezing as was previously found for homogeneous freezing (Rosky et al., 2022).

In classical nucleation theory, j_{het} has the form (Lamb and Verlinde, 2011)

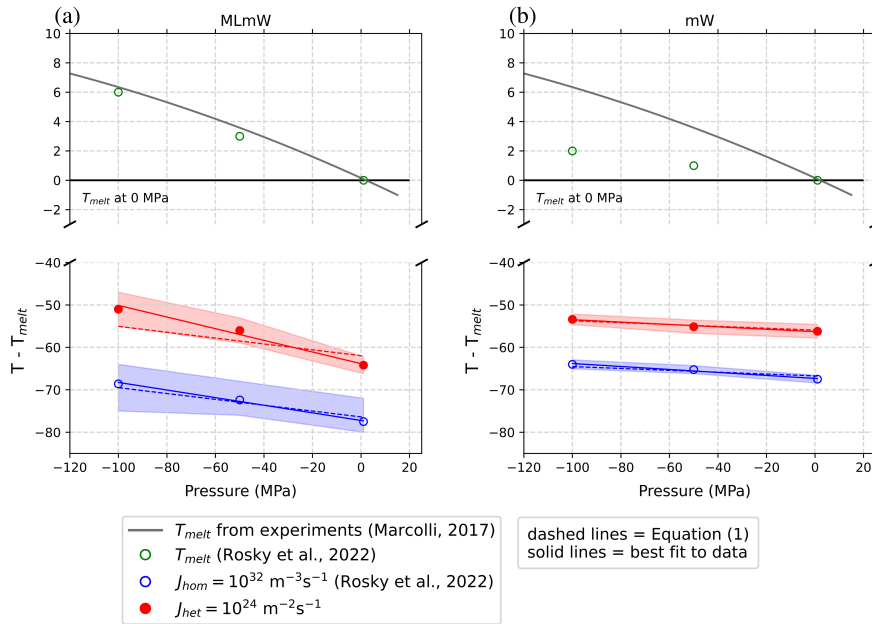


Figure 2. Melting (green open circles), heterogeneous-freezing (red closed circles) and homogeneous freezing temperature (blue open circles) versus pressure. The heterogeneous freezing results are new, using an ice-nucleating substrate inserted into a filled box of water with periodic boundary conditions (See Fig. 1(a)). The melting and homogeneous freezing results are reproduced from Rosky et al. (2022) for comparison. The red and blue shading represents the 99% confidence intervals (uncertainty) for the simulation data. Dashed lines use the slope predicted by Eq. (1) to obtain a best fit to the intercept. Solid lines are a best linear fit of both slope and intercept. The numeric values of these slopes are given in Table 1. Contours of constant heterogeneous nucleation rate are, to within sampling uncertainty, linear and nearly parallel with lines of constant homogeneous nucleation rate for both the ML-mW model (a) and mW model (b). The gray melting point line from Marcolli (2017) is a fit to experimental measurements, which the ML-mW model reproduces more realistically. Note that -100 MPa = -1000 atm.

$$235 \quad j_{het} = A_{het} \exp\left(\frac{C f_{het}}{T \Delta \mu^2}\right), \quad (2)$$

where f_{het} is a heterogeneous compatibility function, typically related to the contact angle on the substrate, and $\Delta \mu$ is the chemical potential difference for the phase change. The factor $C = 16\pi\gamma_{ls}^3/(3k_B\rho^2)$ depends on the liquid-solid surface tension (γ_{ls}) and density of ice (ρ). The pre-factor A_{het} is related to the diffusivity of water molecules. The pressure dependence is introduced into this expression by using a formulation for chemical potential difference given by Němec (2013). As with

240 homogeneous freezing, we may approximate that the pre-factor, liquid and ice density, latent heat of fusion, and ice-liquid surface tension remain constant with temperature and pressure on the scales relevant to this work. As long as the heterogeneous compatibility function f_{het} is not strongly pressure dependent, the approximation of Eq. (1) is valid for heterogeneous, as well as homogeneous, ice nucleation. The heterogeneous compatibility function, f_{het} of the substrate, is formulated as a function

of the effective contact angle between water and substrate (Lamb and Verlinde, 2011; Zobrist et al., 2007)). The roughly linear
245 trend in our data suggest that the contact angle and compatibility function are not strongly dependent on pressure in the negative
pressure regime studied here. This follows from the fact that the derivation of Eq. (1) hinges on approximating many terms
as constant along lines of constant j ; if these assumptions are invalid in the pressure regime examined here, we would expect
their effects to reveal themselves by producing a highly non-linear trend in pressure–temperature coordinates, which we do not
observe.

250 The values of T_m , Δv_{ls} , and l_f used in Eq. (1) to produce the dashed lines in Fig. 2 are listed in Table 1 and correspond to
bulk water at 1 atm (no proximity to an interface). As summarized in column four of Table 1, these values predict a slope of
 $(\Delta T/\Delta P)_{het} = -0.069 \text{ K MPa}^{-1}$ for the ML-mW model. A line of best fit to the simulated ML-mW heterogeneous freezing
data instead gives a slope of $(\Delta T/\Delta P)_{het} = -0.14 \text{ K MPa}^{-1}$ (solid red line in Fig. 2(a)). The predicted slope (dashed red line
in Fig. 2(a)) sits only marginally within the uncertainty bounds of the heterogeneous nucleation rate data and is 47% steeper
255 than the best fit of the ML-mW homogeneous freezing data (See Table 1).

We take some time to consider which factors may contribute to the steeper slope of heterogeneous freezing in the ML-
mW model compared to the homogeneous freezing line. One hypothesis is that Eq. (1) still holds true for heterogeneous ice
nucleation, but that adjustments need to be made to the values of Δv_{ls} or l_f used in the equation to achieve quantitative
agreement with the heterogeneous freezing line. While our results support that the trend in $(\Delta T/\Delta P)_{het}$ can be approximated
260 as linear in the negative pressure regime, we are less confident in the quantitative values of Δv_{ls} and l_f for heterogeneous
freezing compared to homogeneous freezing. In the homogeneous case, the values of T_m , l_f , and Δv_{ls} are well constrained
because they can be calculated from bulk water, which could account for the excellent agreement between Eq. (1) and the
homogeneous simulation results of Rosky et al. (2022). For the heterogeneous case, there is more ambiguity around these
thermodynamic values because the properties of water near an interface may differ from the bulk properties. We see that
265 by using bulk thermodynamic values in Eq. (1), we underestimate the slope of $(\Delta T/\Delta P)_{het}$ by up to 50%. Interestingly,
this discrepancy between the homogeneous and heterogeneous slopes is seen only in the ML-mW model. Meanwhile the
homogeneous and heterogeneous freezing lines are nearly parallel for the mW model. This could indicate the thermodynamic
properties of mW water are less influenced near the substrate compared to the ML-mW model. This interpretation is supported
by evidence from Qiu et al. (2018) which identified that mW water at the mW-Carbon interface has thermodynamics similar to
270 that of the bulk liquid.

Another possibility is that the contact angle and surface free energy (surface tension) between water and substrate exerts
an influence on the slope of $(\Delta T/\Delta P)_{het}$. Evans (1967) showed that a heterogeneous freezing line for aqueous suspension
of ice-nucleating material at positive pressures is actually less steep than the melting point line, and thus also less steep than
the homogeneous freezing line. Although the mW–substrate and ML-mW–substrate were designed to have the same freezing
275 temperature enhancement over the homogeneous freezing temperatures, they do exhibit different contact angles between the
water and substrate. Thus, this could potentially be a factor involved in the discrepancy between ML-mW homogeneous and
heterogeneous slopes as compared to the mW case where the two lines are parallel. Note that in the previously mentioned study

Table 1. Parameters entering Eq. (1) for homogeneous and heterogeneous nucleation, for both mW and ML-mW models. Dashes indicate that a measurement of this value is not known to us. Sources: ^a Chan et al. (2019), ^b Rosky et al. (2022).

	l_f [J/mol]	T_m [K]	Δv_{ls} [m ³ /mol]	$\frac{T_m \Delta v_{ls}}{l_f}$ [K/MPa]	$\Delta T / \Delta P$ best fit [K/MPa]
mW J_{hom}	5271.8 ^a	273 ^{a,b}	-4.2×10^{-7} ^{a,b}	-0.022	-0.035
mW J_{het}	---	273	---		-0.028
ML-mW J_{hom}	5857.6 ^a	292 ^b	-13.8×10^{-7} ^{a,b}	-0.069	-0.089
ML-mW J_{het}	---	292	---		-0.14
Real water J_{hom}	6025.0 ^a	273.15 ^a	-16.1×10^{-7} ^b	-0.073	---

by Qiu et al. (2018), the bulk-like thermodynamics of mW at the substrate interface can be attributed to the nearly 90 degree contact angle between mW and Carbon.

280 In our simulation results, using bulk water thermodynamic values in Eq. (1) provides a lower-bound to the slope of $(\Delta T / \Delta P)_{het}$, which can be very useful in estimating the increase in heterogeneous freezing temperature due to negative pressure in atmospheric and experimental contexts. However, further investigation is needed to identify a robust way to account for the observed steepness of the ML-mW heterogeneous nucleation slope. Going forward, the linearity and the theoretical prediction of the slope are probably adequate for practical use, given other significant uncertainties in using classical nucleation theory.

285 3.2 Heterogeneous ice nucleation in water capillary bridges

One way for water to exist stably under negative pressure is through geometric configurations which produce high degrees of negative surface curvature at the air-water interface, such as inside a water capillary bridge. The negative pressure experienced by the water in these cases is a result of Laplace pressure, $\Delta P = \sigma_{lv}(\frac{1}{r_1} + \frac{1}{r_2})$, where σ_{lv} is the surface tension between liquid and vapor, and r_1 and r_2 are the radii of curvature of the air-water interface. The negatively valued radii of curvature
290 cause the equilibrium pressure within the water to be smaller than the external environmental pressure, allowing for negative pressure to exist within water that is otherwise in a 1 atm environment. The Laplace pressure associated with different capillary geometries is summarized by Elliott (2021). For the capillary bridge configuration used in this study, shown in Fig. 1(c), the expected Laplace pressure within the water is

$$\Delta P = -\sigma_{lv} \frac{2 \cos(\theta)}{h}, \quad (3)$$

295 where θ is the contact angle between water and the substrate. By substituting the above equation into Eq. (1), we obtain an expression to predict the temperature increase for a given nucleation rate j_{het} as a function of inverse capillary bridge height,

$$\Delta T = -2\sigma_{lv} \cos(\theta) \frac{\Delta v_{ls} T_m}{l_f} \left(\frac{1}{h} \right). \quad (4)$$

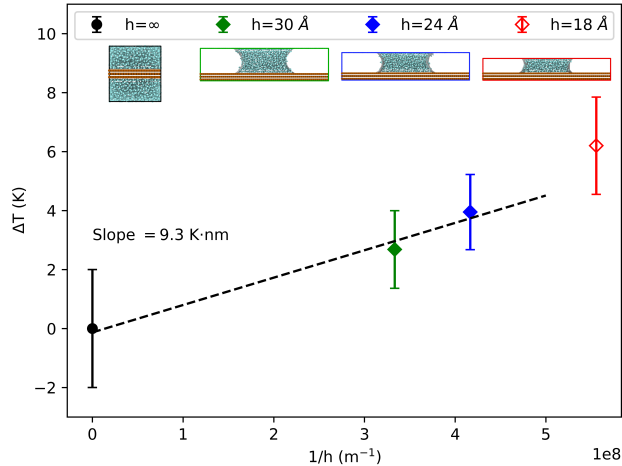


Figure 3. Increase in heterogeneous freezing temperature ΔT versus $1/h$ for capillary-bridge heights of $h = 30$ (green filled diamond), 24 (blue filled diamond), and 18 Å (red open diamond), as well as for bulk water (filled black circle) in contact with identical ice-nucleating substrates. Excluding the 18-Å capillary (red diamond) which is influenced by confinement effects, the line of constant nucleation rate as a function of inverse capillary height follows a linear trend shown by the linear best fit to the data (dashed black line). The 18-Å capillary data is not included in the linear fit to obtain the indicated slope $\Delta T \cdot h$.

Given the previous inference that terms σ_{lv} and θ do not change significantly with pressure, we expect a linear relationship between freezing temperature and inverse capillary height $1/h$. Figure 3 shows the freezing temperatures corresponding to an intensive heterogeneous nucleation rate $j_{het} = 10^{24} \text{ m}^{-2}\text{s}^{-1}$ inside water capillary bridges with heights $h = 30, 24,$ and 18 Å. We find that the data can be described by a linear trend as anticipated. As will be discussed in Sec. 3.4, we have excluded the 18 Å capillary bridge from the current analysis because this scale of confinement of the water between the substrate surfaces causes an increase in ice nucleation rate that cannot be attributed to negative pressure alone.

We can now use the linear slope $-\sigma_{lv} \cos(\theta) \left[\frac{\Delta \nu_{ls} T_m}{l_f} \right]$ from Eq. (4) to analyze the results in Fig. 3. A linear fit to the data, shown by the dashed black line in Fig. 3, produces a slope of $(\Delta T \cdot h) = 9.3 \text{ K}\cdot\text{m}$. We also know from our analysis of $(\Delta T / \Delta P)_{het}$ in Sec. 3.1 and Table 1 that the best fit value of $\left[\frac{\Delta \nu_{ls} T_m}{l_f} \right]$ for the ML-mW model is -0.14 K MPa^{-1} . We substitute these two slopes into Eq. (4) to solve for the value $\sigma_{lv} \cos(\theta) = 0.042 \text{ J m}^{-2}$. The surface tension σ_{lv} of the mW model was reported by Molinero and Moore (2009) to be 0.066 J m^{-2} , and by following methods of Li et al. (2009, Supplementary material), we found the same value for the ML-mW model. Using this value of σ_{lv} , we solve for the contact angle $\theta = 50.5$ degrees. This value of θ is consistent with estimates we obtain by measuring the radius of curvature of the capillary bridge air-water interfaces using a method similar to Giovambattista et al. (2007). With these estimates of σ_{lv} and θ , we can also use Eq. (3) to calculate the magnitude of Laplace pressure that may be present within the water capillary bridges. The 24-Å capillary bridge has a pressure of -345 atm , and the 30-Å bridge a pressure of -275 atm .

Our main findings are that negative Laplace pressure created within water capillary bridges increases the temperature of j_{het} in a manner that is consistent with the linear slope of $(\Delta T/\Delta P)_{het}$ combined with the expected Laplace pressure for this capillary geometry. A 24-Å capillary bridge can exhibit a ≈ 3 -K increase in heterogeneous freezing temperature, and a ≈ 2 -K increase within a 30-Å water capillary bridge.

3.3 Effect of confinement between substrate layers

Capillary theory is expected to remain valid at the nano-scale (Elliott, 2021), however the ice nucleation rate in water can be affected by confined geometries on these scales (Cao et al., 2019; Roudsari et al., 2022; Hussain and Haji-Akbari, 2021). When confined between two flat surfaces (sometimes referred to as a “slit pore”), density oscillations in the water induced by the flat interfaces can interfere constructively and influence the ice-forming probability (Cox et al., 2015; Bi et al., 2016; Lupi et al., 2014). When analyzing the increase in freezing temperature within the water capillary bridges, we need to disentangle the effects of confinement from the effects of Laplace pressure. To do so, we ran simulations to observe how confinement alone affects ice nucleation rate on the substrate. We use the configuration shown in Fig. 1(b), where the spacing between the substrate surfaces along the z -axis dimension has been reduced to 18, 24 and 30 Å to match the levels of confinement present in our water capillary bridges. In these simulations, water molecules are confined between the substrate surfaces, but have no air-water interface that gives rise to Laplace pressure. The pressure in the boxes is set to 1, -500, and -1000 atm, to directly compare against the “unconfined” configuration across the full range of pressures. Results are plotted in Fig. 4(a), showing that 24 and 30-Å separations (blue and green data points) have identical freezing temperatures at all pressures as the “unconfined” configuration (black data points). This allows us to conclude that the freezing temperature enhancement reported previously, e.g. for 24 and 30-Å capillary bridges in Fig. 3, are due to pressure alone. The 18-Å setup (red data points in Fig. 4(a)) exhibits a significant increase in freezing temperature as a result of the confined geometry. This behavior is indeed evident in the departure of the 18-Å capillary bridge freezing data point from the linear trend in Fig. 3. This is why we have excluded the 18-Å capillary bridge data from the slope analysis in the previous section.

3.4 Freezing locations relative to the air-water interface

We now consider whether there is an analogous confinement effect along the x -axis, between the two air-water interfaces of our capillary bridge simulations. A narrow capillary bridge configuration can be seen in Fig. 1(d). These narrow capillary bridges are 30 Å wide, while the capillary bridges used in our previous results (henceforth referred to as “wide capillary bridges”) are 60 Å wide. The total surface area of substrate–water contact is kept constant between the narrow and wide capillary bridges by doubling the y -dimension of the narrow capillary simulation box. Figure 4(b) shows heterogeneous freezing rate temperature as a function of $1/h$ for the wide capillary bridges (purple diamonds), compared with narrow capillary bridges (orange diamonds). We observe that confining the water within a narrow capillary bridge eliminates the temperature enhancement from Laplace pressure that is observed in the wide capillaries. This result may be connected to the apparent suppression of ice nucleation near the air-water interface, as discussed below.

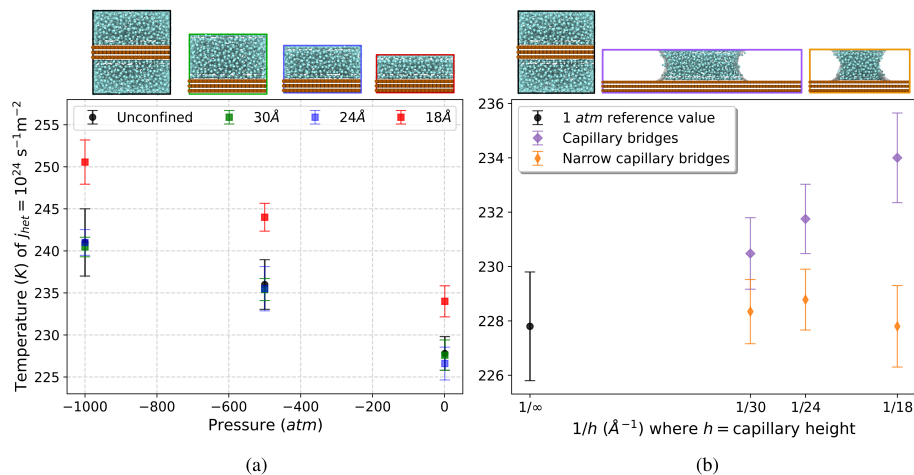


Figure 4. (a) Heterogeneous freezing temperature versus pressure with varying separation between substrates, illustrating the effect of confinement along the z -axis. We see that confinement influences the ice nucleation rate for only the 18-Å configuration (red squares). The 24-Å (blue squares) and 30-Å (green squares) confinement configurations exhibit the same freezing temperatures at all pressures as the “unconfined” reference simulations (black circles). (b) Heterogeneous freezing temperature versus inverse capillary-bridge height for varying widths of the capillary bridge, showing the effect of confinement along the x -axis between air-water interfaces. Confining the water within a narrow capillary bridge (orange diamonds) suppresses the increase in freezing temperature that is seen in the capillary bridges that are twice as wide (purple diamonds).

Figure 5(a) shows the x, z -plane locations of ice nucleation events within the wide 30-Å tall capillary bridge viewed from the side. The air-water interface is shown in red shading. Figure 5(b) shows the combined locations of ice nucleation events in the wide 24-Å and 30-Å tall capillary bridges, as viewed from above in the x, y -plane. In this case, the red shading indicates the position of the air-water interface at the substrate. We see that nucleation is preferred near the substrate as expected, but also that it is suppressed near the air-water interfaces. In Fig. 5(c) we plot freezing probability density as a function of distance from the nearest substrate surface using all freezing events in the wide 24-Å and 30 Å tall capillary bridges. Because this distribution is asymmetric (being affected by the substrate on one side) we fit a gamma distribution to the data to find that 99% of nucleation events occur at distances between 3.2 and 6.9 Å from the substrate, along the z -axis. Figure 5(d) shows the probability density of ice nucleation as a function of distance from the nearest air-water interface using all freezing events in the wide 24-Å and 30-Å capillary bridges. Analyzing this spatial distribution of ice nucleation events, we observe that ice nucleation never occurs within approximately 10 Å of the air-water interface. This lack of heterogeneous ice nucleation in the immediate vicinity of the air–water interface could be related to premelting at the ice–vapor interface, as described by Qiu and Molinero (2018).

The narrow capillary bridges being 30-Å wide implies that most of the water molecules are positioned within 10 Å of an air-water interface where no ice nucleation events are observed. In all of the narrow capillary bridges (orange diamonds in 4(b)) the heterogeneous freezing temperature is the same as the 1 atm reference temperature (black data point in Fig. 4(b)).

Furthermore, the enhancement in freezing temperature previously seen in the wide 18-Å tall capillary due to confinement between the substrate layers is eliminated inside the narrow 18-Å tall capillary bridge.

365 Suppression of ice nucleation in the vicinity of flat air-water interfaces has been noted by Haji-Akbari et al. (2014) using the mW model. They explain this effect through the observation that ice embryos near the interface tend to be less spherical compared to in the bulk, thus imposing a larger ice–liquid surface energy term that inhibits nucleation. For the more detailed TIP4P/Ice model, Haji-Akbari and Debenedetti (2017) saw that ice nucleation was not only suppressed within 10 Å of the air-water interface but also showed evidence of higher ice nucleation rates in the sub-surface region of the interface compared to in the bulk. In Figure 5(d), we see that the freezing locations in the wide capillary bridge simulations hint at a slight preference
370 for ice nucleation to occur between ~ 20 and 25 Å from the air-water interface. However, when we repeat these simulations with an even wider (120-Å) capillary bridge we find that this propensity for nucleation in the sub-surface region near the air–water interface is not broadly observed for all geometries (see Appendix B). Whether or not the ML-mW exhibits any surface freezing propensity is inconclusive from our results.

In summary, confinement between the ice-nucleating substrates at scales smaller than 20 Å tends to enhance nucleation in the
375 ML-mW model, whereas confinement between air-water interfaces on scales smaller than 30 Å tends to inhibit heterogeneous nucleation.

4 Discussion

From what we understand about ice nucleation, a supercooled water droplet in a cloud at a given temperature can be expected to freeze within a time frame dictated by the heterogeneous ice nucleation rate of the particle surfaces it may be in contact
380 with. However, the factors that influence the heterogeneous nucleation rate are not all understood. Research on heterogeneous freezing in the atmosphere is performed on scales ranging from full clouds, using in-situ and remote sensing measurements to characterize aerosols and to identify the presence of ice in clouds; to the scale of single water droplets in laboratory studies and computer simulations to investigate the mechanisms that lead to freezing. Most measurements and computational results are interpreted in the context of classical nucleation theory, allowing the roles of temperature and time in the nucleation
385 process to be understood (e.g., Niedermeier et al., 2011). Most often, it is assumed that singular properties dominate over the stochastic time dependence, and it is therefore typical in cloud physics to characterize ice nucleating particles in terms of their freezing temperature (e.g., Hoose and Möhler, 2012; Frostenberg et al., 2022). Knowledge of the freezing efficiency of ice nucleating particles is then used to understand the formation of ice in clouds (e.g., Yang et al., 2013; Fu and Xue, 2017). Their representation in coarse-resolution models even has implications for prediction of Arctic amplification in the climate problem
390 (Tan et al., 2022).

This study has focused on how, for a fixed nucleation rate, the heterogeneous freezing temperature increases with decreasing pressure. Our key result is that the temperature corresponding to a certain ice nucleation rate increases linearly with the magnitude of negative pressure. Specifically, regardless of how negative pressure is created in the system, e.g. barostat or Laplace pressure, the change is described by the approximation $\Delta T/\Delta P = T_m \Delta v_{ls}/l_f$ (see Eq. (1)). This is certainly not

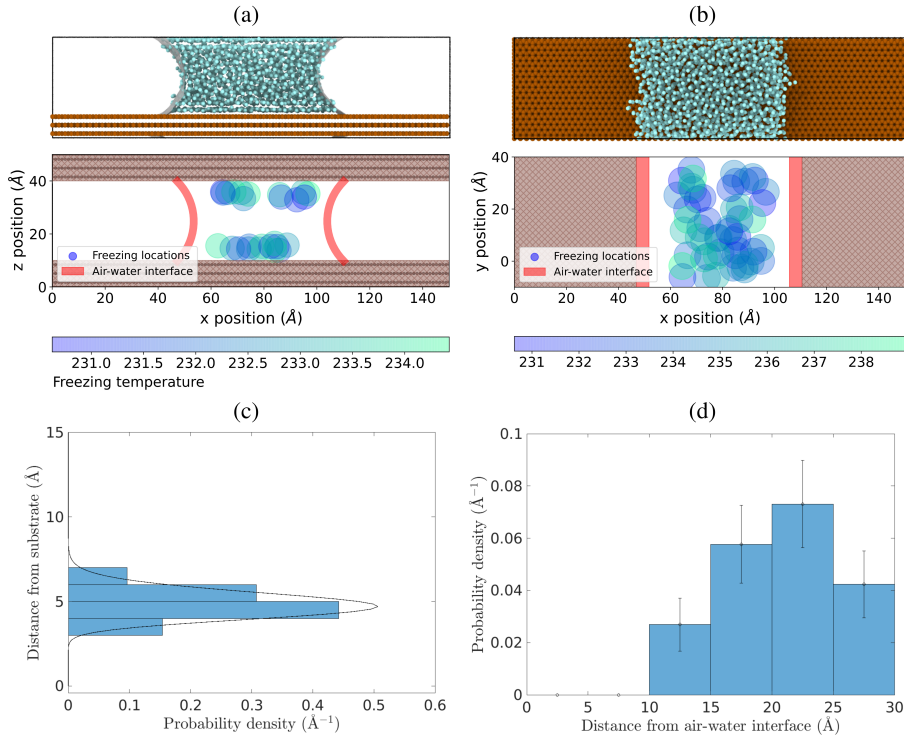


Figure 5. Spatial locations of ice nucleation within water capillary bridges. (a) Locations in a 30 Å tall capillary bridge, in the x-z plane. (b) Locations of freezing events in the x-y plane for both the 24 Å and 30 Å capillary bridges combined, viewed from above. (c) Probability density of ice nucleation initiating a distance away from the substrate, using freezing locations inside the 24 Å and 30 Å capillary bridges. The dashed line is a gamma distribution fit. (d) Probability density of ice nucleation initiating a distance away from the air-water interface (red shading in Fig. (a) and (b)) freezing locations inside the 24 Å and 30 Å capillary bridges.

395 true across a broad range of pressures (e.g., Bianco et al., 2021; Espinosa et al., 2016); however, for atmospheric processes
it is likely that only the negative pressure range of 1 atm to -1000 atm, which was investigated here, is relevant. Therefore,
the linear approximation can serve as the basis for a straightforward parameterization of the pressure effect. Essentially, the
temperature increase for heterogeneous freezing is determined in large part by the volume difference between liquid and ice.
For real water, using the values listed in Table 1, we can estimate that the slope ($\Delta T/\Delta P$) is $7.3 \times 10^{-8} \text{ K Pa}^{-1} = 7.3 \times 10^{-3}$
400 K atm^{-1} .

To understand the implications this pressure effect could have in atmospheric ice nucleation, consider a hypothetical case
where atmospheric cloud droplets containing a certain type of ice-nucleating particle (IN) are likely to freeze within a second
at -20 °C. This would correspond to a nucleation rate of what we shall call $J_{atmospheric}$. The parameterization given by Eq.
(1) states that if the water in contact with the ice nucleating substrate is under a tension of -500 atm, then $\Delta T_{het} \approx 3.7$ K.
405 Thus, the same nucleation rate $J_{atmospheric}$ at which freezing occurs within a second, would instead be encountered at -16.3

°C. A common parameterization for the concentration of ice forming nuclei is $n_{IN} \propto \exp(\beta\delta T)$, where $\delta T = T_m - T$ and $\beta \approx 0.6 \text{ K}^{-1}$ (Pruppacher and Klett, 1997, Sec. 9.2). It follows that the enhancement in the concentration of ice nucleating particles when pressure is reduced by ΔP is $n_{IN,\Delta P}/n_{IN} = \exp(\beta\Delta T)$, where ΔT is obtained from ΔP using Eq. (1). An order-of-magnitude increase in concentration results from $\Delta T = 3.8 \text{ K}$, very close to the value suggested above for -500 atm .
410 More recent measurements have led to refinements in parameterizations of n_{IN} , but the general exponential trend with δT still holds in many contexts (DeMott et al., 2010). Thus, these moderate differences in the temperature at which IN are active are certainly worth attention in the context of mixed-phase clouds.

Natural examples abound with water under tension, having negative pressures in the range of 100s of atmospheres, within the range explored in this paper. For example, changes in pressure within mineral inclusions have been shown to lead to significant
415 changes in the conditions for ice-water coexistence, and even to the superheating of ice (Roedder, 1967). Soils consist of a hierarchy of particle sizes that are bound through capillary tension, with similar pressure ranges being present (Seiphoori et al., 2020). Negative pressures in trees, and even synthetic trees, reach negative pressures of 100s of atmospheres (Wheeler and Stroock, 2008). Negative pressures can also be generated through dynamic means. For example, droplets impacting solid or liquid surfaces can experience significant pressure perturbations (Cheng et al., 2022). In fact, mechanical impact has been
420 implemented as a method to initiate ice nucleation to avoid the persistence of supercooled liquid in phase-change thermal storage systems (Wang et al., 2022). Conversely, imposing isochoric conditions has been shown to greatly increase the stability of supercooled water so that it can be used for cryopreservation (Powell-Palm et al., 2020). One can speculate that there could be connections to contact nucleation or even formation of ice from collisions between supercooled droplets (Alkezweeny, 1969) or breakup of supercooled raindrops that contain ice nucleating particles that otherwise would not be active, save for large,
425 transient negative pressures (James et al., 2021). It has been observed repeatedly that ice generation in clouds is correlated with the presence of large drops (Rangno and Hobbs, 1991; Lance et al., 2011), and it is worth noting that such drops are exactly what is needed to allow significant collisional growth or drop breakup. These will be exciting ideas to explore in future research.

Other perspectives on ice nucleation can also be related to the pressure and liquid-ice molar volume difference results
430 presented here. Baker and Baker (2004) argued that freezing in pure water occurs at the temperature at which its compressibility, with associated density fluctuations, reaches a maximum. The results were for atmospheric pressure, but the perspective that local densities of water and ice drive ice nucleation, rather than specific interfacial properties, is consistent. Insofar as pressure and water activity both contribute to the chemical potential difference between liquid water and ice (Němec, 2013), our results are consistent with previous efforts connecting heterogeneous nucleation to water activity (Koop et al., 2000; Knopf and Alpert,
435 2013). The effect of pressure on nucleation rate can be interpreted in terms of water activity; for example, (Knopf and Alpert, 2013) have shown via extensive laboratory experiments with a range of materials, that nucleation rates scale with water activity. This further extends the findings of Koop et al. (2000) that freezing and melting are related to pressure, following the water activity. Freezing temperature depression due to positive pressure in water was measured experimentally by Kanno et al. (1975) and decrease in ice nucleation rate due to positive Laplace pressure in nano-scale water droplets was demonstrated by Li et al.
440 (2013), both leading to the intuitive notion that negative Laplace pressure will cause an increase in freezing temperature.

Creating Laplace pressures large enough in magnitude to enhance ice nucleation temperatures involves geometric configurations on nanometer spatial scales, which also may introduce confinement effects into the system. Thus, one must consider whether or not enhancement in ice nucleation due to Laplace pressure will be suppressed or further enhanced by the specific geometry at play. For example, water in the xylem of vascular plants should be under significant negative pressure, yet Lin-
445 tunen et al. (2013) shows a tendency for ice nucleation to be suppressed. Our simulations in Sections 3.3 and 3.4 show that confinement between flat substrate surfaces can lead to enhanced nucleation rates, whereas confinement between air–water interfaces can suppress ice nucleation. Furthermore, other examples of confinement exist, such as experimental measurements compiled in Marcolli (2014) which show a depression in freezing temperatures of water inside completely filled pores with nanometer scale diameters. The nature of the confinement present is likely an important consideration in interpreting various
450 findings. Water confined between flat surfaces separated by less than ~ 2 nm may experience ice nucleation enhancement due to the density oscillations induced by the flat interfaces; however, the curved geometry in a cylindrical pore of the same size would not produce this density oscillation effect (Cox et al., 2015; Bi et al., 2016; Lupi et al., 2014).

Even though the findings presented in this study describe the effect of negative pressure on heterogeneous ice nucleation rates, there are still open questions remaining that involve the thermodynamic properties of water at interfaces, under confine-
455 ment, and across greater regions of water's phase diagram. Key questions of interest to refine and expand upon the results of this study include; (1) simulating different substrates to observe changes, if any, in the slope of heterogeneous nucleation rate coefficient lines, (2) exploring liquid water and ice properties near substrates to determine whether they alter the parameters in Eq. (1), (3) assessing the level of surface freezing propensity present in the ML-mW water model and how this factors into the confinement effects seen in this study, and (4) investigating the interplay between cavitation and ice nucleation in this doubly
460 metastable regime of water.

5 Concluding Remarks

Using molecular dynamics simulations of heterogeneous ice nucleation on an ice-nucleating substrate, we demonstrate that negative pressure within supercooled water allows for a given ice nucleation rate to occur at higher temperatures. The increase in heterogeneous freezing temperature with negative pressure can be estimated as linear in nature, which lends support to the
465 use of a linear approximation that depends on the latent heat release and the molar volume difference between liquid and ice to predict the slope. This approximation works particularly well for homogeneous nucleation rates; it is acceptable for heterogeneous nucleation, but may need adjustment to provide better quantitative agreement.

To observe this pressure-dependent trend in heterogeneous nucleation rate, we first used a simulation setup with a substrate in contact with the volume of water. A barostat was applied to this system to probe pressures of 1 atm, -500 atm, and -1000 atm.
470 Next, we created a configuration where negative pressure is introduced into the water without applying a barostat, but instead through negative Laplace pressure inside a water capillary bridge between the surfaces of substrate. The pressure within the capillary bridge depends on the level of curvature, which is set by the contact angle and separation between substrate layers.

The observed enhancement in heterogeneous ice nucleation rate with increasing negative Laplace pressure is consistent with Eq. (1).

475 Finally, to see how confinement alone affects ice nucleation rate on the substrate, we decreased the substrate separation distance to 18, 24, and 30 Å. We observed that 24 and 30-Å separations showed identical ice nucleation rates as the larger volume system. The 18 Å setup exhibited a large increase in ice nucleation rate as a result of the confinement. Nucleation was also shown to avoid regions within approximately 10 Å of an air-water interface. Thus, capillary bridges or other substrate-water geometries with layers less than 20 Å thick will be strongly influenced by the proximity of the interfaces, and the simple
480 parameterization of freezing temperature enhancement due to negative pressure cannot be directly applied.

Appendix A: Molecular Interaction Potential

Interactions between water molecules and other water molecules, as well as interactions between water molecules and substrate molecules are all described using versions of the Stillinger-Weber interaction potential (Stillinger and Weber, 1985). When used for interactions involving water molecules, this potential is coarse-grained, meaning that the oxygen and hydrogen atoms are
485 combined into one atom. The bonds between water molecules are then represented using a three-body potential, ϕ_3 , which is a function of the angle θ_{ijk} formed between every set of three water molecules (i, j , and k). This three-body potential creates a preference towards water molecules adopting a bond angle of approximately 105 degrees, set by the $\cos\theta_0$ parameter in Table A1. A two-body interaction term, ϕ_2 , applies forces that are dependent on the radial distance between two atoms r_{ij} .

$$\phi_2(r_{ij}) = A\epsilon \left[B \left(\frac{\sigma}{r_{ij}} \right)^p - \left(\frac{\sigma}{r_{ij}} \right)^q \right] \exp \left(\frac{\sigma}{r_{ij} - a\sigma} \right) \quad (\text{A1})$$

$$490 \quad \phi_3(\theta_{ijk}, r_{ij}, r_{ik}) = \lambda\epsilon [\cos\theta_{ijk} - \cos\theta_0]^2 \exp \left(\frac{\gamma\sigma}{r_{ij} - a\sigma} \right) \exp \left(\frac{\gamma\sigma}{r_{ik} - a\sigma} \right) \quad (\text{A2})$$

The parameters used for the interaction between water molecules and the substrate are summarized in Table A1. The cutoff distance where forces between molecules goes to zero is $a\sigma$. Note also that interactions between water molecules and substrate molecules do not have a three-body contribution, and are only influenced by the two-body potential term.

In creating a suitable interaction potential for an interaction between ML-mW water and the substrate, we start with the
495 ML-mW-ML-mW parameters and, as in the methods of Fitzner et al. (2015), only the ϵ and σ values are adjusted to produce our ML-mW-Substrate interaction. Given that the value of ϵ we have used is larger than that of the mW-Carbon interaction, the smaller contact angle that we see for ML-mW-Substrate is consistent with Bi et al. (2016) and Cox et al. (2015), where higher values of ϵ were used to increase hydrophilicity of the Carbon-mW interaction potential Bi et al. (2016).

Appendix B: Freezing locations in an extra wide capillary

500 Prompted by a reviewer comment, we constructed a 120-Å wide capillary bridge to look at where in relation to the air-water interfaces ice nucleation events tend to occur. Using 50 ice nucleation events, we see that they again avoid the immediate

Table A1. Parameters of the interaction potential between water and the substrate, and for water-water interactions, for the mW model and the ML-mW model. The Stillinger–Weber interaction potential is given by Eq. (A1).

	mW-Carbon (Lupi et al., 2014)	ML-mW-Substrate	mW-mW (Molinero and Moore, 2009)	ML-mW-ML-mW (Chan et al., 2019)
ϵ (Kcal/mole)	0.13	0.35	6.189	6.855473
σ (Å)	3.2	2.2	2.3925	1.884015
a	1.80	2.124872	1.80	2.124872
λ	0.0	0.0	23.15	24.673877
γ	0.0	0.0	1.20	1.207943
$\cos \theta_0$	0.0	0.0	-0.33	-0.279667
A	7.049556277	7.111598	7.049556277	7.111598
B	0.6022245584	1.991526	0.6022245584	1.991526
p	4.0	4.011214	4.0	4.011214
q	0.0	0.0	0.0	0.0
tol	0.0	0.0	0.0	0.0

~ 10 Å vicinity of the air–water interface. However, the slight preference for freezing in the region just beyond 10 Å from the air–water interface that was noticed in the 60-Å wide capillary bridges is no longer pronounced in this 120-Å wide capillary bridge. Oscillations in the water density field may play a role here (Cox et al., 2015; Bi et al., 2016; Lupi et al., 2014), making this an intriguing subject for further investigation.

Code and data availability. LAMMPS is free and open-source software developed by Sandia National Laboratory and a large user community. Scripts to reproduce simulations in LAMMPS and data going into Figures can be found at <http://doi.org/10.37099/mtu.dc.all-datasets/41>

Author contributions. ER, WC, and RAS designed the study; ER, TL, and IN set up the simulations; ER ran the simulations; All authors contributed to interpreting the results and writing the paper.

510 *Competing interests.* No competing interests are present

Acknowledgements. Funding from NSF grant AGS-2019649 is gratefully acknowledged. TL acknowledges support from NSF through award CBET-2053330. IN acknowledges NSF (DMR-1944211). The High-Performance Computing Shared Facility (Portage) at Michigan Tech-

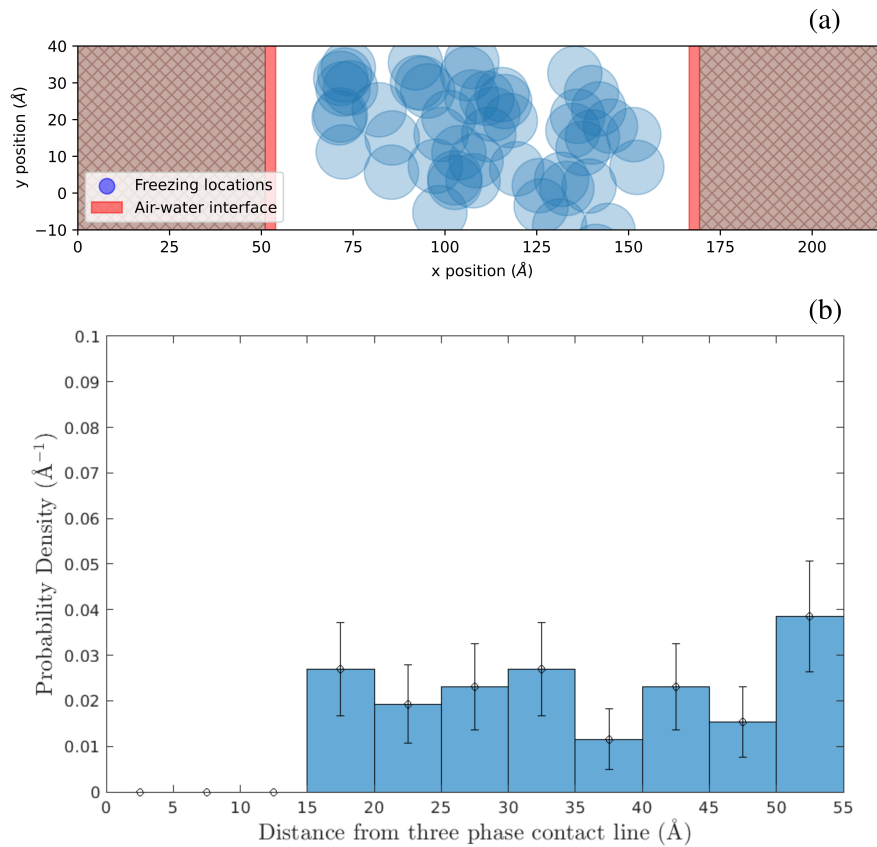


Figure B1. (a) Ice nucleation locations in the x-y plane of a 120-Å wide capillary bridge. (b) Probability distribution of freezing events as a function of distance from the nearest air-water interface in a 120 Å wide capillary bridge. The figure contains 50 data points.

nological University was used in obtaining results presented in this publication. We acknowledge the LAMMPS community for helpful discussions and support.

515 References

- Alkezweeny, A. J.: Freezing of supercooled water droplets due to collision, *Journal of Applied Meteorology and Climatology*, 8, 994–995, 1969.
- Allen, M. P. and Tildesley, D. J.: *Computer Simulation of Liquids*, Oxford University Press, second edn., 2017.
- Baker, M. and Baker, M.: A new look at homogeneous freezing of water, *Geophysical Research Letters*, 31, L19 102, 2004.
- 520 Bi, Y., Cabriolu, R., and Li, T.: Heterogeneous ice nucleation controlled by the coupling of surface crystallinity and surface hydrophilicity, *Journal of Physical Chemistry C*, 120, 1507–1514, 2016.
- Bianco, V., de Hijes, P. M., Lamas, C. P., Sanz, E., and Vega, C.: Anomalous behavior in the nucleation of ice at negative pressures, *Physical Review Letters*, 126, 015 704, 2021.
- Cantrell, W. and Heymsfield, A.: Production of ice in tropospheric clouds: A review, *Bulletin of the American Meteorological Society*, 86, 525 795–808, 2005.
- Cao, B., Xu, E., and Li, T.: Anomalous stability of two-dimensional ice confined in hydrophobic nanopores, *ACS Nano*, 13, 4712–4719, 2019.
- Chan, H., Cherukara, M. J., Narayanan, B., Loeffler, T. D., Benmore, C., Gray, S. K., and Sankaranarayanan, S. K. R. S.: Machine learning coarse grained models for water, *Nature Communications*, 10, 2009–2014, 2019.
- 530 Cheng, X., Sun, T.-P., and Gordillo, L.: Drop impact dynamics: Impact force and stress distributions, *Annual Review of Fluid Mechanics*, 54, 57–81, 2022.
- Cox, S. J., Kathmann, S. M., Slater, B., and Michaelides, A.: Molecular simulations of heterogeneous ice nucleation. I. Controlling ice nucleation through surface hydrophilicity, *The Journal of Chemical Physics*, 142, 184 704, 2015.
- David, R. O., Fahrni, J., Marcolli, C., Mahrt, F., Brühwiler, D., and Kanji, Z. A.: The role of contact angle and pore width on pore condensation and freezing, *Atmospheric Chemistry and Physics*, 20, 9419–9440, 2020.
- 535 DeMott, P. J., Prenni, A. J., Liu, X., Kreidenweis, S. M., Petters, M. D., Twohy, C. H., Richardson, M., Eidhammer, T., and Rogers, D.: Predicting global atmospheric ice nuclei distributions and their impacts on climate, *Proceedings of the National Academy of Sciences*, 107, 11 217–11 222, 2010.
- Dhabal, D., Sankaranarayanan, S. K. R. S., and Molinero, V.: Stability and Metastability of Liquid Water in a Machine-Learned Coarse-Grained Model with Short-Range Interactions, *The Journal of Physical Chemistry B*, 126, 9881–9892, 2022.
- 540 Diehl, K., Matthias-Maser, S., Jaenicke, R., and Mitra, S.: The ice nucleating ability of pollen: Part II. Laboratory studies in immersion and contact freezing modes, *Atmospheric Research*, 61, 125–133, 2002.
- Elliott, J. A. W.: Surface thermodynamics at the nanoscale, *Journal of Chemical Physics*, 154, 190 901, 2021.
- Espinosa, J. R., Zaragoza, A., Rosales-Pelaez, P., Navarro, C., Valeriani, C., Vega, C., and Sanz, E.: Interfacial free energy as the key to the pressure-induced deceleration of ice nucleation, *Physical Review Letters*, 117, 135 702, 2016.
- 545 Evans, L. F.: Two-dimensional Nucleation of Ice, *Nature*, 213, 384–385, 1967.
- Fitzner, M., Sosso, G. C., Cox, S. J., and Michaelides, A.: The many faces of heterogeneous ice nucleation: Interplay between surface morphology and hydrophobicity, *Journal of the American Chemical Society*, 137, 13 658–13 669, 2015.
- Frostenberg, H. C., Welti, A., Luhr, M., Savre, J., Thomson, E., and Ickes, L.: The chance of freezing–Parameterizing temperature dependent freezing including randomness of INP concentrations, *Atmospheric Chemistry and Physics Discussions*, pp. 1–24, 2022.
- 550

- Fu, S. and Xue, H.: The effect of ice nuclei efficiency on Arctic mixed-phase clouds from large-eddy simulations, *Journal of the Atmospheric Sciences*, 74, 3901–3913, 2017.
- Giovambattista, N., Debenedetti, P. G., and Rosky, P. J.: Effect of surface polarity on water contact angle and interfacial hydration structure, *The Journal of Physical Chemistry B*, 111, 9581–9587, 2007.
- 555 Gurganus, C., Charnawskas, J., Kostinski, A., and Shaw, R.: Nucleation at the contact line observed on nanotextured surfaces, *Physical review letters*, 113, 235 701, 2014.
- Haji-Akbari, A. and Debenedetti, P. G.: Computational investigation of surface freezing in a molecular model of water, *Proceedings of the National Academy of Sciences*, 114, 3316–3321, 2017.
- Haji-Akbari, A., DeFever, R. S., Sarupria, S., and Debenedetti, P. G.: Suppression of sub-surface freezing in free-standing thin films of a
560 coarse-grained model of water, *Physical Chemistry Chemical Physics*, 16, 25 916–25 927, 2014.
- Hoose, C. and Möhler, O.: Heterogeneous ice nucleation on atmospheric aerosols: a review of results from laboratory experiments, *Atmospheric Chemistry and Physics*, 12, 9817–9854, 2012.
- Hussain, S. and Haji-Akbari, A.: Role of Nanoscale Interfacial Proximity in Contact Freezing in Water, *Journal of the American Chemical Society*, 143, 2272–2284, 2021.
- 565 Jacobsen, A. L., Pratt, R. B., Ewers, F. W., and Davis, S. D.: Cavitation resistance among 26 chaparral species of southern California, *Ecological Monographs*, 77, 99–115, 2007.
- James, R. L., Phillips, V. T. J., and Connolly, P. J.: Secondary ice production during the break-up of freezing water drops on impact with ice particles, *Atmospheric Chemistry and Physics*, 21, 18 519–18 530, 2021.
- Kanno, H., Speedy, R. J., and Angell, C. A.: Supercooling of water to -92°C under pressure, *Science*, 189, 880–881, 1975.
- 570 Klumpp, K., Marcolli, C., Alonso-Hellweg, A., Dreimol, C. H., and Peter, T.: Comparing the ice nucleation properties of the kaolin minerals kaolinite and halloysite, *Atmospheric Chemistry and Physics*, 23, 1579–1598, 2023.
- Knopf, D. A. and Alpert, P. A.: A water activity based model of heterogeneous ice nucleation kinetics for freezing of water and aqueous solution droplets, *Faraday Discussions*, 165, 513–534, 2013.
- Koop, T., Luo, B., Biermann, U. M., Crutzen, P. J., and Peter, T.: Freezing of $\text{HNO}_3/\text{H}_2\text{SO}_4/\text{H}_2\text{O}$ solutions at stratospheric temperatures:
575 Nucleation statistics and experiments, *Journal of Physical Chemistry A*, 101, 1117–1133, 1997.
- Koop, T., Luo, B., Tsias, A., and Peter, T.: Water activity as the determinant for homogeneous ice nucleation in aqueous solutions, *Nature*, 406, 611–614, 2000.
- Lamb, D. and Verlinde, J.: *Physics and Chemistry of Clouds*, Cambridge University Press, 2011.
- Lance, S., Shupe, M., Feingold, G., Brock, C., Cozic, J., Holloway, J., Moore, R., Nenes, A., Schwarz, J., Spackman, J. R., et al.: Cloud
580 condensation nuclei as a modulator of ice processes in Arctic mixed-phase clouds, *Atmospheric Chemistry and Physics*, 11, 8003–8015, 2011.
- Levin, Z. and Yankofsky, S. A.: Contact versus immersion freezing of freely suspended droplets by bacterial ice nuclei, *Journal of Climate and Applied Meteorology*, pp. 1964–1966, 1983.
- Li, T., Donadio, D., Ghiringhelli, L. M., and Galli, G.: Surface-induced crystallization in supercooled tetrahedral liquids, *Nature Materials*,
585 8, 726–730, 2009.
- Li, T., Donadio, D., Russo, G., and Galli, G.: Homogeneous ice nucleation from supercooled water, *Physical Chemistry Chemical Physics*, 13, 19 807–19 813, 2011.
- Li, T., Donadio, D., and Galli, G.: Ice nucleation at the nanoscale probes no man’s land of water, *Nature Communications*, 4, 1–6, 2013.

- 590 Lintunen, A., Hölttä, T., and Kulmala, M.: Anatomical regulation of ice nucleation and cavitation helps trees to survive freezing and drought stress, *Scientific Reports*, 3, 1–7, 2013.
- Lu, J., Chakravarty, C., and Molinero, V.: Relationship between the line of density anomaly and the lines of melting, crystallization, cavitation, and liquid spinodal in coarse-grained water models, *The Journal of Chemical Physics*, 144, 2016.
- Lupi, L. and Molinero, V.: Does hydrophilicity of carbon particles improve their ice nucleation ability?, *The Journal of Physical Chemistry A*, 118, 7330–7337, 2014.
- 595 Lupi, L., Hudait, A., and Molinero, V.: Heterogeneous nucleation of ice on carbon surfaces, *Journal of the American Chemical Society*, 136, 3156–3164, 2014.
- Marcolli, C.: Deposition nucleation viewed as homogeneous or immersion freezing in pores and cavities, *Atmospheric Chemistry and Physics*, 14, 2071–2104, 2014.
- Marcolli, C.: Ice nucleation triggered by negative pressure, *Scientific Reports*, 7, 2017.
- 600 Marcolli, C.: Technical note: Fundamental aspects of ice nucleation via pore condensation and freezing including Laplace pressure and growth into macroscopic ice, *Atmospheric Chemistry and Physics*, 20, 3209–3230, 2020.
- Molinero, V. and Moore, E.: Water modeled as an intermediate element between carbon and silicon, *Journal of Physical Chemistry B*, 113, 4008–4016, 2009.
- Montero de Hijes, P., R Espinosa, J., Vega, C., and Dellago, C.: Minimum in the pressure dependence of the interfacial free energy between ice Ih and water, *The Journal of Chemical Physics*, 158, 124503, 2023.
- 605 Němec, T.: Estimation of ice–water interfacial energy based on pressure-dependent formulation of classical nucleation theory, *Chemical Physics Letters*, 583, 64–68, 2013.
- Niedermeier, D., Shaw, R., Hartmann, S., Wex, H., Claus, T., Voigtländer, J., and Stratmann, F.: Heterogeneous ice nucleation: exploring the transition from stochastic to singular freezing behavior, *Atmospheric Chemistry and Physics*, 11, 8767–8775, 2011.
- 610 Niehaus, J. and Cantrell, W.: Contact freezing of fater by falts, *Journal of Physical Chemistry Letters*, 6, 3490–3495, 2015.
- Pitter, R. and Pruppacher, H.: A wind tunnel investigation of freezing of small water drops falling at terminal velocity in air, *Quarterly Journal of the Royal Meteorological Society*, 99, 540–550, 1973.
- Plimpton, S.: Fast parallel algorithms for short-range molecular dynamics, *Journal of Computational Physics*, 117, 1–19, 1995.
- Powell-Palm, M. J., Koh-Bell, A., and Rubinsky, B.: Isochoric conditions enhance stability of metastable supercooled water, *Applied Physics Letters*, 116, 123 702, 2020.
- 615 Pruppacher, H. R. and Klett, J. D.: *Microphysics of Clouds and Precipitation*, Kluwer Academic Publishers, Dordrecht, The Netherlands, 1997.
- Qiu, Y. and Molinero, V.: Why Is It So Difficult to Identify the Onset of Ice Premelting?, *The Journal of Physical Chemistry Letters*, 9, 5179–5182, 2018.
- 620 Qiu, Y., Lupi, L., and Molinero, V.: Is Water at the Graphite Interface Vapor-like or Ice-like?, *The Journal of Physical Chemistry B*, 122, 3626–3634, 2018.
- Rangno, A. L. and Hobbs, P. V.: Ice particle concentrations and precipitation development in small polar maritime cumuliform clouds, *Quarterly Journal of the Royal Meteorological Society*, 117, 207–241, 1991.
- Roedder, E.: Metastable superheated ice in liquid-water inclusions under high negative pressure, *Science*, 155, 1413–1417, 1967.
- 625 Rosky, E., Cantrell, W., Li, T., and Shaw, R. A.: Homogeneous ice nucleation rate at negative pressures: The role of the density anomaly, *Chemical Physics Letters*, 789, 139 289, 2022.

- Roudsari, G., Pakarinen, O. H., Reischl, B., and Vehkamäki, H.: Atomistic and coarse-grained simulations reveal increased ice nucleation activity on silver iodide surfaces in slit and wedge geometries, *Atmospheric Chemistry and Physics*, 22, 10 099–10 114, 2022.
- Seiphoori, A., Ma, X.-G., Arratia, P. E., and Jerolmack, D. J.: Formation of stable aggregates by fluid-assembled solid bridges, *Proceedings of the National Academy of Sciences*, 117, 3375–3381, 2020.
- 630 Shaw, R. A., Durant, A. J., and Mi, Y.: Heterogeneous surface crystallization observed in undercooled water, *Journal of Physical Chemistry B*, 109, 9865–9868, 2005.
- Steinhardt, P. J., Nelson, D. R., and Ronchetti, M.: Bond-orientational order in liquids and glasses, *Physical Review B*, 28, 784–805, 1983.
- Stillinger, F. H. and Weber, T. A.: Computer simulation of local order in condensed phases of silicon, *Physical review B*, 31, 5262, 1985.
- 635 Stukowski, A.: Visualization and analysis of atomistic simulation data with OVITO—the Open Visualization Tool, *Modeling and Simulation in Materials Science and Engineering*, 18, 2010.
- Tan, I., Barahona, D., and Coopman, Q.: Potential link between ice nucleation and climate model spread in arctic amplification, *Geophysical Research Letters*, 49, e2021GL097 373, 2022.
- Wang, L., Wang, F., Lu, C., and Liu, H.: Nucleation in supercooled water triggered by mechanical impact: Experimental and theoretical 640 analyses, *Journal of Energy Storage*, 52, 104 755, 2022.
- Wheeler, T. D. and Stroock, A. D.: The transpiration of water at negative pressures in a synthetic tree, *Nature*, 455, 208–212, 2008.
- Yang, F., Ovchinnikov, M., and Shaw, R. A.: Minimalist model of ice microphysics in mixed-phase stratiform clouds, *Geophysical research letters*, 40, 3756–3760, 2013.
- Yang, F., Shaw, R. A., Gurganus, C. W., Chong, S. K., and Yap, Y. K.: Ice nucleation at the contact line triggered by transient electrowetting 645 fields, *Applied Physics Letters*, 107, 264 101, 2015.
- Yang, F., Cruikshank, O., He, W., Kostinski, A., and Shaw, R.: Nonthermal ice nucleation observed at distorted contact lines of supercooled water drops, *Physical Review E*, 97, 023 103, 2018.
- Yang, F., Cantrell, W. H., Kostinski, A. B., Shaw, R. A., and Vogelmann, A. M.: Is contact nucleation caused by pressure perturbation?, *Atmosphere*, 11, 2020.
- 650 Zobrist, B., Koop, T., Luo, B. P., Marcolli, C., and Peter, T.: Heterogeneous ice nucleation rate coefficient of water droplets coated by a nonadecanol monolayer, *Journal of Physical Chemistry C*, 111, 2149–2155, 2007.