

# Numerical simulation and evaluation of global ultrafine particle concentrations at the Earth's surface

Matthias Kohl<sup>1</sup>, Jos Lelieveld<sup>1,2</sup>, Sourangsu Chowdhury<sup>3</sup>, Sebastian Ehrhart<sup>4</sup>, Disha Sharma<sup>1</sup>, Yafang Cheng<sup>1</sup>, Sachchida Nand Tripathi<sup>5</sup>, Mathew Sebastian<sup>6</sup>, Govindan Pandithurai<sup>7</sup>, Hongli Wang<sup>8</sup>, and Andrea Pozzer<sup>1,2</sup>

<sup>1</sup>Max Planck Institute for Chemistry, Mainz, Germany

<sup>2</sup>Climate and Atmosphere Research Center, The Cyprus Institute, Nicosia, Cyprus

<sup>3</sup>CICERO Center for International Climate Research, Oslo, Norway

<sup>4</sup>Finnish Environment Institute (SYKE), Marine Research Centre, Helsinki, Finland

<sup>5</sup>Department of Civil Engineering, Indian Institute of Technology Kanpur, Kanpur, India

<sup>6</sup>Centre for Earth, Ocean and Atmospheric Sciences, University of Hyderabad, Hyderabad, India

<sup>7</sup>Indian Institute of Tropical Meteorology, Ministry of Earth Sciences, Pune, India

<sup>8</sup>State Environmental Protection Key Laboratory of Formation and Prevention of Urban Air Pollution Complex, Shanghai Academy of Environmental Sciences, Shanghai 200233, China

**Correspondence:** Matthias Kohl (m.kohl@mpic.de), Andrea Pozzer (andrea.pozzer@mpic.de)

**Abstract.** A new global dataset of annual averaged ultrafine particle (UFP) concentrations at the Earth's surface [for the years 2015-2017](#) has been developed through numerical simulations using the ECHAM/MESSy Atmospheric Chemistry model (EMAC). [We present total and size-resolved concentrations along with their interannual variability.](#) Size distributions of emitted particles from the contributing source sectors have been derived based on literature reports. The model results of UFP concentrations are evaluated using particle size distribution and particle number concentration measurements from available datasets and the literature. While we obtain reasonable agreement between the model results and observations (logarithmic scale correlation of  $r = 0.76$  for non-remote, polluted regions), the highest values of observed, street-level UFP concentrations are systematically underestimated, whereas in rural environments close to urban areas the model generally overestimates observed UFP concentrations. As the relatively coarse global model does not resolve concentration gradients in urban centres and industrial UFP hotspots, high-resolution data of anthropogenic emissions is used to account for such differences in each model grid box, obtaining UFP concentrations with unprecedented  $0.1^\circ \times 0.1^\circ$  horizontal resolution at the Earth's surface. This observation-guided downscaling further improves the agreement with observations, leading to an increase of the logarithmic scale correlation between observed and simulated UFP concentrations to  $r = 0.84$  in polluted environments (and 0.95 in all regions), a decrease of the root mean squared logarithmic error (from 0.57 to 0.43), and removes discrepancies associated with air quality and population density gradients within the model grid boxes. Model results are made publicly available for studies on public health and other impacts of atmospheric UFPs, and for intercomparison with other regional and global models and datasets.

## 1 Introduction

Atmospheric aerosols in various size ranges have a significant impact on public health, the hydrological cycle and climate.

20 Close to the Earth's surface, aerosol particles are among the main pollutants and drivers of atmospheric chemistry in the boundary layer, being directly relevant for human health (Burnett et al., 2014; Pope and Dockery, 2006; Cohen et al., 2005). At the same time, aerosols can directly scatter and absorb solar and thermal radiation, altering the radiative balance of the Earth's atmosphere (e. g. Bellouin et al., 2020). Furthermore, atmospheric aerosols act as cloud condensation nuclei (CCN), and thus influence cloud formation processes and cloud properties. Consequently, changes in CCN concentrations may affect  
25 the hydrological cycle and indirectly the radiative balance of the Earth's atmosphere by altering cloud cover and albedo (e. g. Christensen et al., 2020; Lohmann and Feichter, 2005; Twomey, 1959).

Recently, multiple studies have concluded that the exposure to particulate matter air pollution from a variety of sources has major implications for public health (Lelieveld et al., 2020, 2015; Chowdhury et al., 2022). The latest Global Burden of Disease study has associated 4.2 million deaths globally to the exposure to ambient particulate matter with an aerodynamic  
30 diameter smaller than  $2.5\ \mu\text{m}$  ( $\text{PM}_{2.5}$ ) and 0.37 million to ambient ozone pollution (Murray et al., 2020). Evidence presented in recent studies indicates that the long-time exposure to high concentrations of ultrafine particles (UFPs), i.e. particles with an aerodynamic diameter smaller than 100 nm (WHO, 2006) which barely contribute to  $\text{PM}_{2.5}$  mass, significantly impacts human health, leading to the increased incidence of cardiovascular and cerebrovascular diseases (Downward et al., 2018; Delfino et al., 2005; Stone et al., 2017). The health impacts of UFPs may be attributed to their high potential to penetrate more deeply into the  
35 lungs and potentially into the blood stream compared to coarser size particles (Schraufnagel et al., 2019; Schraufnagel, 2020; Hong and Jee, 2020).

Reflection and absorption of solar radiation can be neglected for UFPs as the scattering and absorption coefficients typically peak at particle diameters between 400 and 1000 nm. However, aerosol particles with a minimum diameter of approximately 40 nm and larger can serve as CCN, while particle numbers strongly decrease for sizes greater than 200–300 in general nm  
40 (Andreae, 2009). Thus, UFPs significantly contribute to CCN concentrations.

Atmospheric aerosols can either be directly emitted into the atmosphere (primary) by natural or anthropogenic processes or nucleate from precursor gases (secondary), with the latter being considered to be the largest source of atmospheric aerosols (Gordon et al., 2017). Freshly nucleated secondary particles usually have a diameter between 1 and 20 nm (Curtius, 2006) and can grow by coagulation and condensation of trace gases (Kulmala et al., 2004). While primary aerosols from natural sources  
45 (e. g. desert dust and sea salt) are emitted at diameters predominantly in the micrometer range and larger (Dentener et al., 2006), anthropogenic particles (e. g. from combustion processes) are usually emitted at much smaller sizes, contributing to UFPs (Kwon et al., 2020; Paasonen et al., 2016).

Despite the importance of UFPs for atmospheric processes and human health, very little is known about their global distribution at the Earth's surface. A simulation of global particle number concentrations [at the Earth's surface](#) was performed  
50 by Gordon et al. (2017), however focusing on new particle formation and CCN up to an altitude of 460 m above the surface. ~~Present-~~, [and by Chen et al. \(2021\) with a nested high-resolution simulation over East Asia \( \$0.33^\circ \times 0.33^\circ\$ \) and a particular](#)

focus on organic aerosols. Local (surface or vertical) distributions of particle number concentrations and size distributions were measured and modelled by Ketzel et al. (2021) and Frohn et al. (2021, both street- and address-level UFP concentrations in Denmark), Fountoukis et al. (2012) and Saha et al. (2021, high resolution UFP concentrations over Europe and the USA, respectively), Kukkonen et al. (2019), Franco et al. (2022, NPF and growth in the Amazon rainforest), Williamson et al. (2019) and Liu and Matsui (2022, both new particle formation and growth in the Arctic), and Weigel et al. (2021, NPF in the South Asian monsoon).

Thus, present knowledge on global surface UFP concentrations is mostly limited to local model studies and in-situ measurements of particle size distributions (PSDs), from which UFP concentrations can be inferred. While the number of PSD measurements is increasing (Wu and Boor, 2021; Rose et al., 2021), they are still sparse and mostly not continuous over time. Furthermore, there are no clear methodology guidelines for measuring PSDs or particle number concentrations (PNCs) (Trechera et al., 2023) whereas new recommendations have been recently suggested (CEN/TS 17434:2020, 2020; CEN/TS 16976:2016, 2016), and measurement size limits vary greatly.

To generate a first, global, annually averaged UFP dataset for the years 2015-2017 we used the ECHAM/MESSy Atmospheric Chemistry model (EMAC, Jöckel et al., 2006), including gas phase and heterogeneous chemistry with comprehensive chemical mechanisms, aerosol microphysics with size-resolved particulate matter and cloud interactions. Such data can be applied to investigate the impact of UFPs on public health, CCN formation and cloud properties, as well as for intercomparison studies with other regional and global models and datasets.

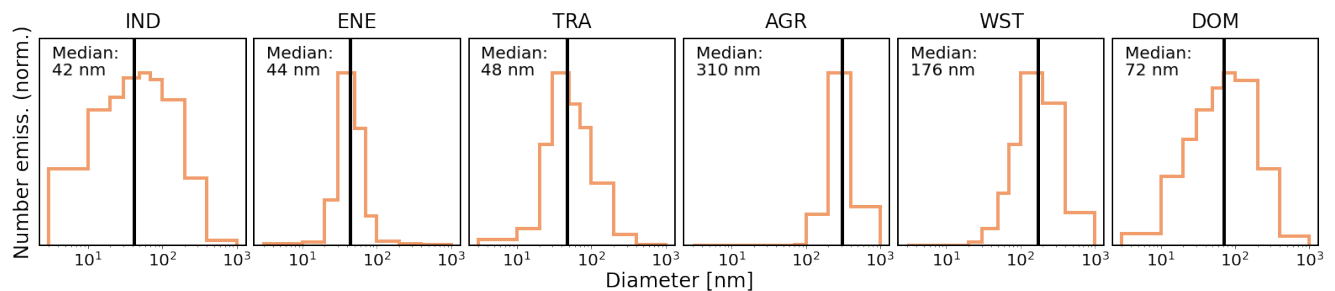
Several emission inventories describe the total emitted mass of aerosol and gas species on a global grid (e. g. Hoesly et al., 2018; Crippa et al., 2020; Granier et al., 2019). However, the inference of the number of emitted particles is very sensitive to their size distribution as small changes can lead to large deviations in the resulting particle number concentrations. Information on these size distributions is rare and the uncertainties are high (Paasonen et al., 2016). For that reason we use existing information on PSDs of emitted particles from the literature, and evaluate our results against measurement data in China, India, Europe, the United States and various remote regions.

Another challenge in the global modelling of UFPs is the limited model resolution. Studies showed that UFP concentrations return to background levels within a distance of about 1000 m from the source (e. g. Karner et al., 2010, for roadways). Thus, UFP concentrations can show sharp urban to rural gradients (e. g. Saha et al., 2021) that cannot be captured efficiently by a global model that is limited in the horizontal grid size. As a result, high local UFP concentrations in densely populated urban areas may be artificially diluted by the surrounding regions in the grid boxes. This may result in an underestimation of UFP concentrations in city centres, while concentrations in remote regions close to urban areas may be overestimated. The correlation between the underestimation of the model on the one hand, and local high resolution anthropogenic emissions at the measurement sites relative to the average anthropogenic emissions at model resolution on the other hand is used here to derive UFP concentrations at  $0.1^\circ \times 0.1^\circ$  horizontal resolution. We show that this improves the agreement between observations and simulations and decreases inconsistencies introduced by the difficulties of the coarse model resolution to capture population density and air pollution gradients.

## 85 2 Global Model & Methods

The ECHAM/MESSy Atmospheric Chemistry (EMAC) model (Jöckel et al., 2006) is a combination of the 5th generation European Centre Hamburg general circulation model, ECHAM5, (Roeckner et al., 2003), which serves as the dynamical basemodel, and the second version of the Modular Earth Submodel System, MESSy2, (Jöckel et al., 2010), comprising various submodels that describe the chemistry and physics of the atmosphere.

90 The simulation used for this study is performed at a spectral, horizontal resolution of T63 ( $1.875^\circ \times 1.875^\circ$  or approx.  $180 \times 180$  km at the equator) with 31 vertical, hybrid terrain-following and pressure levels up to 10 hPa altitude, and the surface level extending up to approximately 45-70 m above the surface, depending on latitude and season. The model simulation is “nudged” (Jeuken et al., 1996; Jöckel et al., 2006) towards meteorological reanalysis data [of the years 2014-2017](#) (ERA-Interim, Berrisford et al., 2011) from the European Centre for Medium-Range weather forecasts (ECMWF).



**Figure 1.** Normalized size distributions of primary emitted particles from different sectors (IND: industries, ENE: energy generation, TRA: land transportation, AGR: agricultural soils, WST: waste, DOM: domestic energy use) taken from Paasonen et al. (2016) with corresponding median diameters derived from these distributions (black line). The median diameters are taken as median diameters for the sector emissions in our simulation.

95 Global anthropogenic emissions of reactive gases and aerosols at the surface [from the simulated years](#) are taken from the Community Emission Data System (CEDS McDuffie et al., 2020). We consider primary emitted Black Carbon (BC), Organic Carbon (OC) and sulfate ( $\text{SO}_4$ ; 2.5% of  $\text{SO}_2$  emissions according to Dentener et al., 2006) as direct aerosol sources at the surface. The CEDS anthropogenic emissions from the sectors energy generation (ENE), industries (IND), land transportation (TRA), domestic energy use (DOM), waste (WST), agricultural soils (AGR), solvent production and application (SLV; [no](#)  
100 [primary particle emissions](#)), and ship and other navigation (SHIP) are considered. Emissions from biomass burning (BB) and agricultural waste and residue burning (AWB) were calculated daily using the BIOBURN submodel based on observed dry matter burned and fire type compiled by Andreae (2019). The biomass burning emissions for OC and BC were increased by a factor of 4.48 and 2.8, respectively, based on the work of Pan et al. (2020) and a comparison with observations in the Amazon Basin (Holanda Bruna, personal communication). Aircraft emissions of reactive gases, BC and OC were taken from  
105 the CAMS Global aviation emissions (CAMS-GLOB-AIR; Granier et al., 2019). Seasalt (algorithm from Guelle et al., 2001) and dust emissions (algorithm from Klingmüller et al., 2018) are calculated online using the submodel ONEMIS (Kerkweg

et al., 2006). All emissions are distributed in six different emission height levels based on the description by Pozzer et al. (2009).

Aerosols are treated using the MESSy submodel GMXe (Pringle et al., 2010). Aerosol microphysics are based on aerosol size distributions with currently 7 interactive lognormal modes that cover the typical size spectrum of aerosol species and differentiate into 4 hydrophilic (Nucleation, Aitken, Accumulation and Coarse) and 3 hydrophobic (Aitken, Accumulation and Coarse) aerosol modes. All aerosols are approximated as spherical particles. The properties of aerosols in each mode are completely defined by the total mass (internal mixture of contributing species), density, number concentration, median radius and width of the log-normal distribution. After each simulation step aerosols may transfer between modes depending on size changes. Organic aerosol species are additionally described by the ORACLE (Organic Aerosol Composition and Evolution; Tsimpidi et al., 2018) submodel, taking into account the partitioning between aerosols and the gas phase. ORACLE distinguishes between primary and secondary organic aerosols from different sources and volatilities (in up to 5 logarithmically spaced saturation concentration bins, ranging from  $10^{-2}$  to  $10^6$   $\mu\text{g}/\text{m}^3$ , depending on the emission sector).

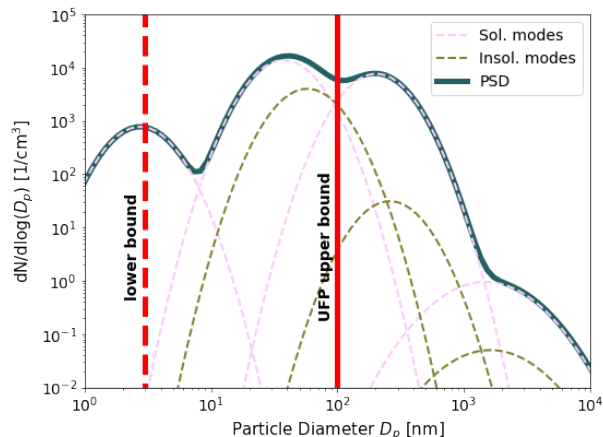
Heterogeneous and gas phase chemistry are treated with the submodel MECCA (Sander et al., 2019) with the Mainz Isoprene Mechanism (MIM1; Pöschl et al., 2000; Jöckel et al., 2006) as chemical mechanism, comprising more than 100 gas phase species and more than 250 reactions. Dry deposition, sedimentation and wet deposition are simulated with the submodels DDEP, SEDI (both Kerkweg et al., 2006) and SCAV (Tost et al., 2006), respectively. The submodel NAN (Ehrhart et al., 2018) is used to estimate binary and ternary nucleation following Dunne et al. (2016), pure organic nucleation (Kirkby et al., 2016) and nucleation from oxidized organic species and sulfuric acid (Riccobono et al., 2014). The parameterization of ion induced nucleation is included in NAN, using ion pair production and steady-state ion concentrations from the submodel IONS (Ehrhart et al., 2018). IONS calculates the ion pair production from galactic cosmic rays and from radon decay, the latter obtained from the diagnostic radon (DRADON) submodel (Jöckel et al., 2010).

Aerosols at the surface simulated with the EMAC model have been extensively evaluated in many publications, either with a focus on  $\text{PM}_{2.5}$  mass or on aerosol optical depth (Pozzer et al., 2012, 2015; Lelieveld et al., 2019; Pozzer et al., 2022). Chowdhury et al. (2022) conducted an evaluation for aerosol optical depth,  $\text{PM}_{2.5}$ , and black carbon and organic aerosols in  $\text{PM}_{2.5}$  using a similar setup as used in this study.

The number of emitted aerosols ( $N_{aer}$ ) is calculated as

$$N_{aer} = \frac{6 \cdot M_{aer}}{\pi \cdot \rho_{aer} \cdot d_{med}^3 + \exp(4.5 \ln^2 \sigma_{ln})} \cdot \frac{6 \cdot M_{aer}}{\pi \cdot \rho_{aer} \cdot d_{med}^3} \cdot \exp(-4.5 \ln^2 \sigma_{ln}) \quad (1)$$

where the emitted aerosol mass  $M_{aer}$  is given by the respective emission dataset.  $\rho_{aer}$  is the density of the considered aerosol species and  $\sigma_{ln}$  is the width of the log-normal mode in the model. The fraction is just the geometrical derivation of the number of spherical particles from total mass, given a diameter  $d_{med}$ , while the exponential function corrects for the lognormal volume distribution (compare equations (8.34) and (8.51) from Seinfeld and Pandis, 2016). The median diameter of the emitted particles ( $d_{med}$ ) depends on the considered sector and species. As  $N_{aer} \propto 1/d_{med}^3$ , the number of emitted particles is highly sensitive to the emission median diameter, i. e. a doubling of the diameter leads to a reduction of the number of emitted particles by a factor of 8.



**Figure 2.** Typical particle size distribution (PSD) taken from the simulation in an urban region. The dashed lines represent the soluble and insoluble aerosol modes. The PSD is the sum of all these modes (blue line), typically dominated by the soluble modes. UFPs are defined as all particles with diameter below 100 nm (right red line), while the total particle number concentration is the full integral over the PSD. For comparison between observed and simulated concentrations, the lower bound (red dashed line) is considered as a cutoff, which depends on the measurement device. The final dataset includes all UFPs without lower bound.

In order to emit the aerosols with a realistic size distribution for each sector, a detailed investigation of the emission size distributions is performed based on the findings of Paasonen et al. (2016). Paasonen et al. (2016) used an emission model (Amann et al., 2011) in combination with emission factors and size distributions from the literature in order to obtain global emission particle size distributions for different sectors. As the median emission diameter  $d_{med}$  is a global quantity in the  
 145 EMAC model, we derived the median of the present global size distributions from Paasonen et al. (2016) and used them as  $d_{med}$  for the corresponding sectors in our model. The distributions along with their median diameters are depicted in Fig. 1.

Additionally, the aerosol median emission diameter from biomass burning and AWB is estimated to be 130 nm based on the average of multiple studies on biomass burning emissions summarized in a review (Reid et al., 2005), confirmed by Janhäll et al. (2010, who measured 120 nm) and the respective size distribution from Paasonen et al. (2016) for AWB (median diameter  
 150 of 126 nm). Ship aerosol emissions are assumed to be represented by a median diameter of 40 nm based on studies by Kasper et al. (2007, who found 20–40 nm for low-speed marine diesel engines), Diesch et al. (2013, small nucleation mode from 10–20 nm and Aitken mode around 35 nm) and Petzold et al. (2008, 52 nm in fresh plume up to 100 nm in aged plume). Aerosols from aircraft emissions are emitted at a diameter of 40 nm as well, based on studies from Petzold and Schröder (1998) and Petzold et al. (2003), who distinguished a mode between 30 and 45 nm and an additional smaller accumulation mode around  
 155 180 nm. Dust particles are emitted only in the accumulation and coarse modes according to Klingmüller et al. (2018) and play a negligible role in UFP concentrations (d’Almeida, 1987). For the emissions of sea salt we use the diameters from the algorithm of Monahan (1986), also only emitting particles in the accumulation and coarse modes.

As only few measurements of PSDs are available, which can be used to directly infer UFP concentrations, measurements of total ~~particle number concentrations (PNCs)~~ PNCs are additionally used for the model evaluation as they are often dominated by UFPs, especially close to UFP sources (e. g. Baldauf et al., 2016; Kumar et al., 2014). Figure 2 shows a typical simulated PSD (blue line) as the sum of the four soluble and three insoluble modes. The red solid line shows the upper bound for UFPs at 100 nm. The red dashed line is the variable lower bound, used exclusively for comparison to observations, as measurement devices entail a cutoff particle diameter below which no particles are detected. The published global UFP dataset includes arbitrarily small particles and does not use a lower cutoff value.

The UFP concentration in the simulation  $N_{\text{UFP}}$  is calculated using the particle number concentration  $N_{\text{tot},i}$ , the width  $\sigma_i$  and the median diameter  $D_{m,i}$  of each mode  $i$ :

$$N_{\text{UFP}} = \sum_{i=1}^7 \frac{N_{\text{tot},i}}{2} \cdot \left\{ \operatorname{erf} \left( \frac{\ln(D_{\text{up}}/D_{m,i})}{\sqrt{2} \ln(\sigma_i)} \right) - \operatorname{erf} \left( \frac{\ln(D_{\text{low}}/D_{m,i})}{\sqrt{2} \ln(\sigma_i)} \right) \right\} \quad (2)$$

where  $D_{\text{up}}$  is the fixed upper bound of 100 nm and  $D_{\text{low}}$  is the variable lower bound associated with the measurement device. For the final dataset we report the total number of UFPs, and thus  $D_{\text{low}}$  is set to 0 nm and the second error function in Eq. (2) evaluates to  $-1$ .

The total PNC is the sum over the particle number concentrations  $N_{\text{tot},i}$  for each mode (i. e.  $D_{\text{up}} = +\infty$  and the terms in the curly brackets in Eq. (2) add up to  $+2$  for  $D_{\text{low}} = 0$ ). However, PNC measurements also have a lower cutoff value, which has to be considered for model evaluation when comparing simulated and measured PNCs.

### 3 Observations

In order to evaluate the simulated UFP concentrations from the EMAC model, observations were collected from different stationary measurement sites at the Earth's surface with a focus on polluted regions. The simulation has been performed for the ~~year 2015~~ years 2015-2017 with one year of spin-up (2014), whereas we evaluated the simulation for the year 2015 only. Thus, if available, the simulations were compared to observations in 2015. However, to increase the number of available datasets to compare with simulation results, we additionally used annual averages of observed UFP concentrations and PNCs from all available years for the evaluation. This is noted accordingly in the following sections. Observational data were collected for UFP concentrations and PNCs and compared to the respective calculated simulated values according to the lower cutoff value of the respective measurement devices. The sources of the observational data of UFPs (derived from PSDs) and PNCs are listed below.

### 3.1 EBAS

185 EBAS is a database for atmospheric measurement data operated by the Norwegian Institute for Air Research (NILU) and contains measurements for different programs of which we used the following:

- **EMEP** (European Monitoring and Evaluation Programme) monitors air pollutants in Europe.
- **GAW-WDCA** (Global Atmosphere Watch - World Data Centre for Aerosols) is a data repository for microphysical, optical and chemical properties of atmospheric aerosol.
- 190 – **ACTRIS** (Aerosol, Cloud and Trace Gas Research Infrastructure) contains long-term atmospheric measurement data.

The data was obtained from the EBAS database (<http://ebas.nilu.no/>, last access on February 17, 2022). We analysed all available PSDs (mostly Europe and remote regions) and PNC measurements (Europe, Northern America and remote regions) taken in 2015.

### 3.2 Field measurements, literature and published datasets

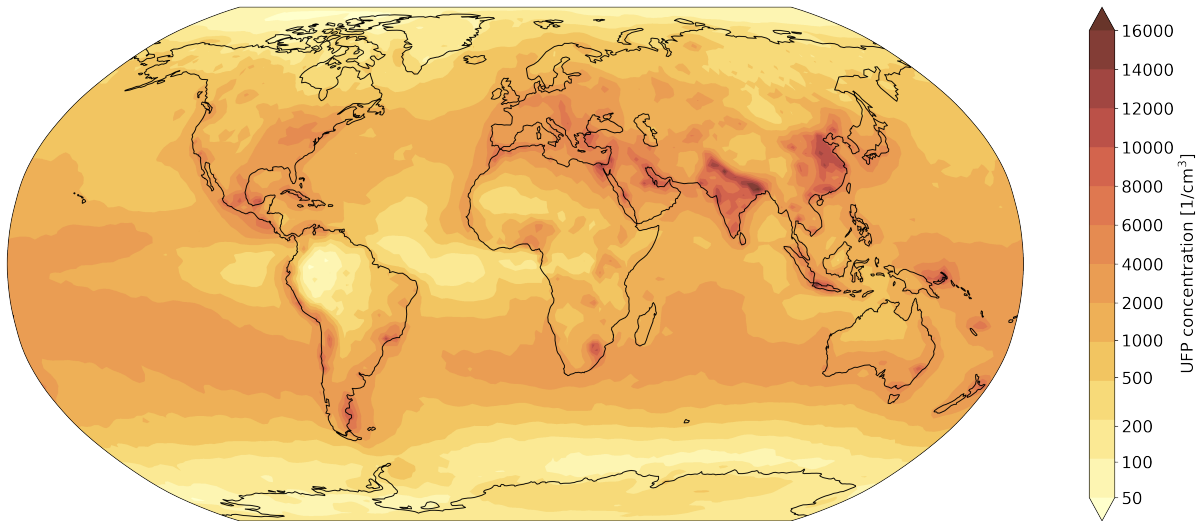
195 We derived UFP concentrations from PSDs measured by groups involved in the present study in India, China and the Amazon rainforest. In India PSDs were measured in Delhi (Thamban et al., 2021), Mahabaleshwar and Hyderabad (both Sebastian et al., 2022). Measurements in China were taken in Shanghai (unpublished), Beijing (Liu et al., 2020), Lin'an (Shen et al., 2022) and Gucheng (Li et al., 2021). Additionally, we used measurements from the Amazonian Tall Tower Observatory (ATTO) centrally located in the rainforest in Brazil, about 150 km northeast of Manaus (Franco et al., 2022). The observational datasets are  
200 complemented by including literature and published datasets from China and India (Gani et al., 2020; Wu et al., 2008), as well as from the ATom aircraft campaign (Brock et al., 2019).

## 4 Results

Annual averages of modelled UFP ( $\text{UFP}_M$ ) concentrations in 2015 on a global scale are displayed in Fig. 3, ranging from about 40 per  $\text{cm}^3$  over parts of the ocean up to more than 12,000 per  $\text{cm}^3$  in China, India, Indonesia and Papua New Guinea  
205 (considering averages over model grid boxes).  $\text{UFP}_M$  concentrations are generally high across Europe ranging from 2,000 to 6,000 per  $\text{cm}^3$ , however, lower than in several Asian hotspot areas. In North America,  $\text{UFP}_M$  concentrations are simulated to be higher along the East coast, with additional hotspots in and around the big cities along the West Coast, reaching up to 8,000 per  $\text{cm}^3$  in and around San Francisco and Los Angeles. We also simulate high  $\text{UFP}_M$  concentrations close to 10,000 per  $\text{cm}^3$  at the West Coast of South America and regional enhancements along the East Coast. Southern Australia, Northern Africa, the  
210 Middle East (the Persian Gulf region) also show enhanced  $\text{UFP}_M$  concentrations exceeding 8,000 per  $\text{cm}^3$ .

Continental polar regions in North America, Europe, Asia and Antarctica are simulated to have  $\text{UFP}_M$  concentrations mostly below 500 per  $\text{cm}^3$ , due to the absence of pollution particle sources. Low  $\text{UFP}_M$  concentrations (down to 150 per  $\text{cm}^3$ ) are also simulated across the Amazon rainforest and in major desert regions (e.g. the Sahara). However, there is a lack of measurement



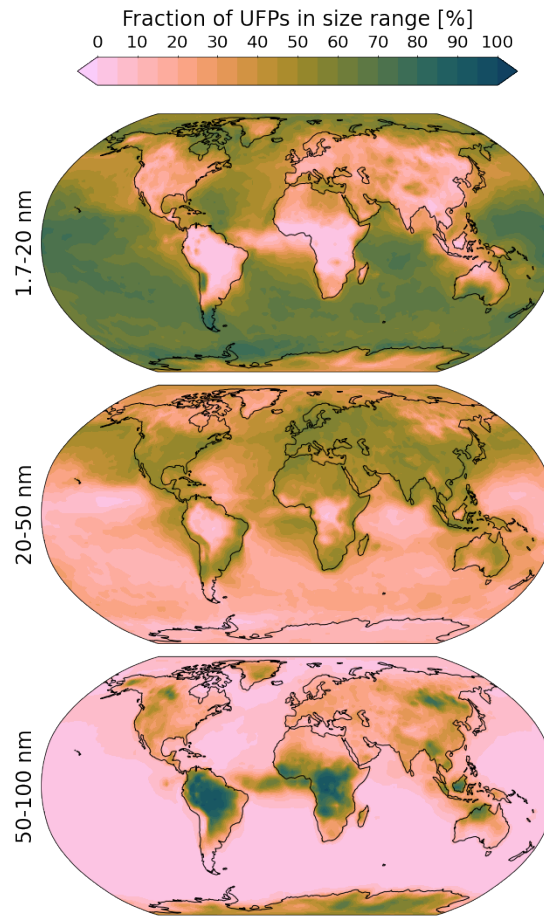


**Figure 3.** Annual average of global UFP concentrations simulated with EMAC for the year 2015 at model resolution of  $1.875^\circ \times 1.875^\circ$  and from the lowest vertical model level (surface level).

data of PNCs and UFP concentrations in desert regions to evaluate the model results. Low UFP concentrations in the boundary  
 215 layer over the Amazon forest have been reported previously and were attributed to missing sources of primary UFPs and  
 the growth of secondary particles during transport from the upper troposphere through the condensation of oxidized organic  
 species, reaching the boundary layer through convective downdrafts (Zhao et al., 2020; Wang et al., 2016; Andreae et al., 2018).

UFP<sub>M</sub> concentrations over the oceans are highly variable, with relatively high values exceeding 2,500 per cm<sup>3</sup> over the  
 Pacific and Indian Oceans downwind of pollution sources on land, and very low values below 50 per cm<sup>3</sup> over the Southern  
 220 Ocean and tropical Atlantic and Pacific Oceans. Low UFP concentrations in the tropical ocean environment have been observed  
 by the ATom aircraft campaign as well, potentially caused by the efficient removal of small particles by coagulation, and again  
 the downward transport of aged secondary particles from the upper troposphere (Williamson et al., 2019).

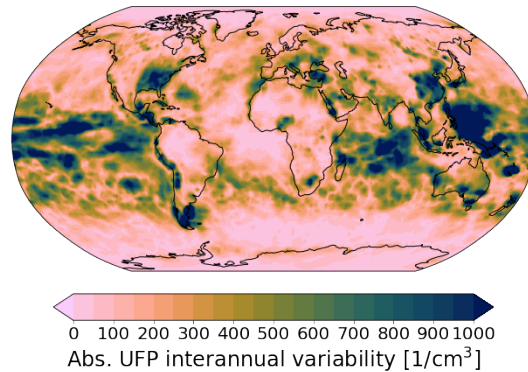
PNCs were modelled previously by Gordon et al. (2017) at relatively low global resolution and, by Saha et al. (2021) for the  
 United States only, and by Chen et al. (2021) with a focus on East Asia. Gordon et al. (2017) concentrated on cloud conden-  
 225 sation nuclei and averaged over a vertical column of 460 m. We generally simulate higher concentrations compared to Gordon  
 et al. (2017) mostly capturing UFP hotspots, and in accord with observations, especially after the redistribution based on anthro-  
 pogenic emissions (see Sect. 4 and 4.2). The comparably lower concentrations simulated by Gordon et al. (2017) might partially  
 result from the larger vertical column in the simulation, the coarser resolution or the different emission diameters (globally 60  
 nm for all fossil fuel related emissions). Our simulated UFP concentrations agree very well with the PNC simulation from  
 230 Chen et al. (2021) in most continental regions, especially Europe, North and South America, Africa, Australia and East Asia  
(which they focused on). However, simulated PNCs in India are considerably lower than our UFP concentrations (supported



**Figure 4.** Fraction of UFPs in different size ranges, representing freshly nucleated particles (1.7 - 20 nm), fossil fuel emissions or grown nucleation particles (20 - 50 nm), and further grown or larger emitted particles (50 - 100 nm).

by observations, see Sect. 4.1.3). Additionally, we simulate higher UFP concentrations at marine southern mid-latitudes (in reasonable agreement with measurements during the ATom campaign, see Sect. 4.1.5) than Chen et al. (2021).

The simulated spatial distribution of UFPs over contiguous USA matches that of Saha et al. (2021). They used a land use regression model to produce a high ( $200 \times 200$  m) resolution product of UFP concentrations. We reach similar values in the urban regions in the USA after the redistribution based on anthropogenic emissions as described in Sect. 4.2, however still lower than the highest values simulated by Saha et al. (2021). The difference might be due to the fact that UFP concentrations are a subset of PNCs. Ketzel et al. (2021) simulated PNCs at street- and address-level in the same order of magnitude as our simulation up to urban background level, but with much higher peak values reaching more than 30,000 per  $\text{cm}^3$  in traffic hotspots, which we cannot resolve. Our simulated UFP concentrations are much lower than the modelled results from Fountoukis et al. (2012), that reach around 20,000 per  $\text{cm}^3$ , even for background regions in Europe in May 2008, and up to



**Figure 5.** Absolute interannual variation of UFP concentrations calculated based on the years 2015-2017. It is defined by the maximum minus the minimum annual averaged UFP concentrations.

more than 100,000 per cm<sup>3</sup> in local hotspots in Southeastern Europe. However, the general increasing trends from Western to Eastern Europe agree.

Trechera et al. (2023) analysed observations of PNCs and UFP concentrations in Europe from 2017 to 2019, focusing on  
 245 daily and seasonal patterns, UFP drivers and regional trends. They again find increasing UFP concentrations from Northern to Southern and from Western to Eastern Europe. Our simulation also exhibits the west-east tendency in Europe, however no clear pattern from North to South. Seasonality and drivers of UFP concentrations and composition will be the subject of follow-up studies.

UFPs have widely differing size distributions across the globe. Figure 4 illustrates this based on three size bins, i. e. 1.7-20  
 250 nm, 20-50 nm, and 50-100 nm. Freshly nucleated particles between 1.7 and 20 nm mostly dominate in remote environments, especially over oceans. PSDs usually peak at diameters between 20 and 50 nm in polluted regions, representing a mixture of freshly emitted fossil fuel primary and rapidly grown secondary particles. Biomass burning particles are typically emitted at larger diameters (see Fig. 1). Additionally, high concentrations of organic vapors lead to strong condensational growth in forest regions. Thus, UFPs are dominated by 50-100 nm particles there.

The interannual variability in UFP concentrations is presented in Fig. 5. We observe strong interannual variation, exceeding  
 255 1000 per cm<sup>3</sup> and (up to 50 %) along the ITCZ, that is mostly caused by meteorological differences in the different years, potentially caused by the strong El Niño in 2015, followed by weaker La Niña and El Niño events in 2016 and 2017. The meteorological influence on UFP concentrations could be the basis for future studies. We additionally find increased interannual variation over polluted regions, although below 20 %. This is mostly due to a decreasing trend in emissions over South and  
 260 East Asia, Europe and the United States. However, we observe an increasing trend in UFP concentrations over parts of Africa, especially Nigeria and South Africa.

## 4.1 Evaluation

In the following, we present the evaluation of the simulated  $\text{UFP}_M$  concentrations based on observational data. Sections 4.1.1 to 4.1.4 evaluate urban and rural regions in four comparably highly polluted regions for which measurement data are available, namely Europe, North America, India and China. In Sect. 4.1.5 remote regions in polar, forest, mountain and ocean environment with lower population density are evaluated. Mountain environments are defined covering altitudes from 1500 m to 3000 m asl, while measurements above 3000 m asl were excluded as they are mostly located in the free troposphere ~~and the model setup was optimized for the boundary layer~~, and this study concentrates on boundary layer processes and the respective evaluation.

Annual averages of observed UFP ( $\text{UFP}_O$ ) concentrations, respectively PNCs ( $\text{PNC}_O$ ), were either derived from daily PSDs (by integrating the number of aerosol particles per size bin from the lowest measurement bin up to the bin crossing the upper size threshold of 100 nm) and PNCs – removing outliers differing by a factor greater than 10 from the median value, and subsequently calculating the annual average –, or directly provided. The ~~aerosol modes of the simulation~~ daily averaged number concentrations of the model aerosol modes were integrated for the same size region (from the lower measurement cut up to the highest ~~included measurement bin~~ measurement bin with a mean diameter below 100 nm) according to Eq. (2).  $\text{UFP}_M$  concentrations were sampled at the vertical grid box covering the measurement site altitude.

The evaluation in this section concentrates on the modelled ( $\text{UFP}_M$  or  $\text{PNC}_M$ ) and observed ( $\text{UFP}_O$  or  $\text{PNC}_O$ ) concentrations. The downscaled (i. e. redistributed within each grid box) concentrations ( $\text{UFP}_R$  or  $\text{PNC}_R$ ) will be the subject of Sect. 4.2. We used three different statistical measures for the evaluation based on daily model output and observations if available:

- PF2: Percentage of modelled values that are simulated within the range of a factor of two of the observed values
- NRMSE: RMSE (root mean squared error) normalized by the range of the observations
- $\overline{M/O}$ : Geometric mean of the ratio between modelled (M) and observed daily mean (O)

### 4.1.1 Europe

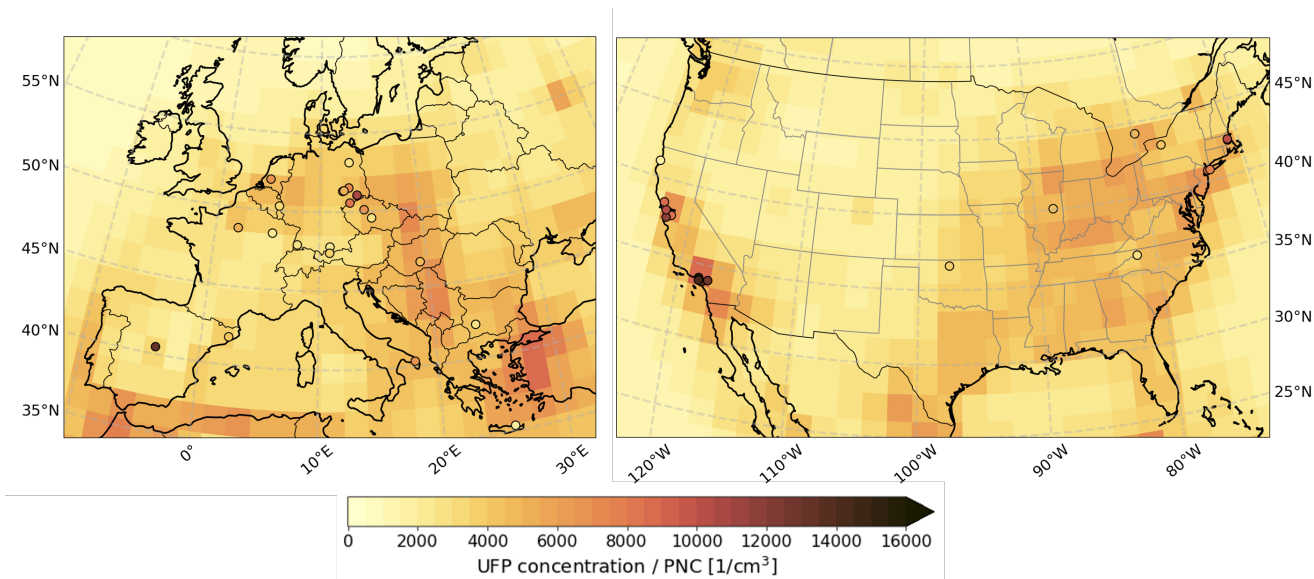
$\text{UFP}_O$  concentrations in Europe were derived from daily PSDs provided by the EBAS database. An overview of the different measurements in Europe and a comparison to  $\text{UFP}_M$  is presented in Table 1. We used all available observations from the EBAS database from 2015 in Europe from rural and urban stations. The remote stations as defined above were excluded here and will be separately discussed in Sect. 4.1.5. Additionally, we excluded measurements in Athens (GR) and Preila (LT) due to apparent inconsistencies in the observational datasets.

The simulation shows reasonable agreement with the observations at most measurement stations with  $\text{PF2} \geq 40\%$  (~~percentage of modelled values that are simulated within the range of a factor of two of the observed values~~),  $\text{NRMSE} \leq 0.4$  (~~RMSE normalized by the range of the observations~~) and  $0.5 \leq \overline{M/O} \leq 2.0$  (~~Geometric mean of the ratio between modelled (M) and observed daily mean (O)~~).

However, there are some exceptions. At the measurement stations of Madrid, Leipzig-Eisenbahnstrasse, Leipzig-Mitte and Dresden-Nord the model strongly underestimates the UFP concentrations. This is due to a combination of two effects. Firstly,

**Table 1.** Summary of observations of UFP (UFP<sub>O</sub>) concentrations (cm<sup>-3</sup>) derived from PSDs across Europe for 2015, with data archived in the EBAS database. The geographical location is indicated by latitude (Lat) and longitude (Lon), the elevation of the site above the sea surface is indicated by the altitude asl in metres (Alt). The measurement lower cutoff value (Cut) is expressed in nm. The annual averages of the UFP<sub>O</sub> and UFP<sub>M</sub> concentrations for the grid box encompassing the station are compared and different measures of agreement are listed (PF2: percentage of modelled values that are simulated within the range of a factor of two of the observed values; NRMSE: Normalized root-mean-squared error – RMSE normalized by the range of the observations;  $\overline{M/O}$ : Geometric mean of the ratio between modelled (M) and observed (O) daily concentrations). The same comparisons are performed after the redistribution of the model ("Redistributed model", UFP<sub>R</sub>), which will be discussed in detail in Sect. 4.2. All included measurement stations contained at least 200 days of valid measurements in 2015. Abbreviations: DD – Dresden, NOAK – National Atmospheric Observatory Košetice, ECO – Environmental-Climatology Observatory, LE – Leipzig, OPE – Observatoire pérenne de l'environnement.

Station	Observations					Model results				Redistributed Model			
	Lat	Lon	Alt	Cut	UFP <sub>O</sub>	UFP <sub>M</sub>	PF2	NRMSE	$\overline{M/O}$	UFP <sub>R</sub>	PF2	NRMSE	$\overline{M/O}$
Annaberg-Buchholz (DE)	50.57	13.0	545	9.4	6649	3597	55	0.21	0.55	3317	49	0.22	0.51
Cabauw Zijdeweg (NL)	51.97	4.93	1	9.1	6324	4539	77	0.22	0.72	3828	62	0.26	0.6
DD-Nord (DE)	51.06	13.74	120	4.8	10526	4289	29	0.34	0.39	7690	67	0.25	0.7
DD-Winckelmannstr (DE)	51.04	13.73	112	9.4	5474	4218	85	0.16	0.78	7562	77	0.22	1.39
ECO Lecce (IT)	40.34	18.12	36	9.4	5372	3741	59	0.36	0.62	4821	62	0.37	0.8
Finokalia (GR)	35.34	25.67	250	8.6	1421	3628	34	0.6	2.3	3917	28	0.67	2.48
Hohenpeissenberg (DE)	47.8	11.01	985	9.4	2302	2479	78	0.25	1.08	2234	76	0.23	0.97
K-pusztá (HU)	46.58	19.35	125	6.0	4040	5127	67	0.27	1.32	4966	66	0.26	1.28
LE-Eisenbahnstr (DE)	51.35	12.41	120	4.8	14410	4358	15	0.37	0.3	5020	23	0.35	0.34
LE-Mitte (DE)	51.34	12.38	111	4.8	10624	4251	27	0.34	0.39	5521	47	0.3	0.5
LE-West (DE)	51.32	12.3	122	4.8	6222	4451	74	0.21	0.69	4686	77	0.21	0.73
Leipzig (DE)	51.35	12.43	118	4.8	4882	4300	88	0.17	0.86	4953	91	0.17	0.99
Madrid (ES)	40.46	-3.73	669	14.4	11311	2916	22	0.17	0.28	6192	59	0.15	0.59
Melpitz (DE)	51.53	12.93	87	4.8	7018	4343	72	0.19	0.62	4400	72	0.19	0.63
Montseny (ES)	41.78	2.36	700	8.9	3056	2375	69	0.21	0.78	2371	69	0.21	0.78
NOAK Kosetice (CZ)	49.58	15.08	534	8.6	2569	4332	57	0.3	1.79	3701	66	0.24	1.53
Neuglobsow (DE)	53.14	13.03	62	9.4	2808	3515	69	0.17	1.3	2986	74	0.15	1.11
OPE (FR)	48.56	5.5	392	9.7	1834	2865	63	0.32	1.6	2786	64	0.31	1.55
Prague-Suchdol (CZ)	50.12	14.38	277	5.6	6421	4412	74	0.15	0.7	6124	89	0.13	0.97
SIRTA Palaiseau (FR)	48.71	2.16	162	10.0	4239	3441	82	0.2	0.84	5391	79	0.24	1.31
Schauinsland (DE)	47.9	7.92	1205	9.4	1545	1833	78	0.19	1.22	1783	80	0.19	1.19
Vielsalm (BE)	50.3	6.0	496	8.8	2082	2596	75	0.22	1.26	2628	73	0.23	1.27



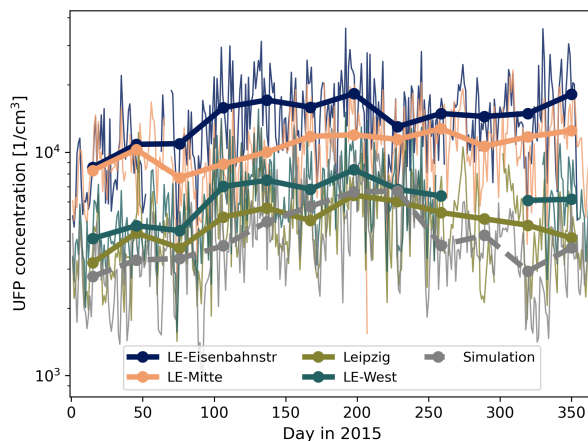
**Figure 6.** Annual average (2015) of simulated  $UFP_M$  concentrations in Europe (left) and of simulated  $PNC_M$  in Northern America (right), overlaid with observations from the EBAS database and from Saha et al. (2021) (colored points). Note that the color scale is differing from Fig. 3.

UFP concentrations are typically related to anthropogenic emissions (see Sect. 4.2 for details). The high UFP concentrations in the densely populated urban centres are artificially diluted in the simulation by lower concentrations in the surroundings covered by the grid box. This can partly be corrected for by redistributing UFP concentrations using high resolution anthropogenic emission datasets, discussed in detail in Sect. 4.2. Secondly, the measurements were performed close to busy streets (Leipzig-Eisenbahnstrasse, Leipzig-Mitte and Dresden-Nord sites are explicitly measuring traffic emissions) with high primary UFP emissions from vehicles, which would require impracticable street-level horizontal resolution to resolve.

The model overestimates  $UFP_M$  concentrations at the stations of L'Observatoire pérenne de l'environnement (OPE, France) and Finokalia (GR). OPE is located at a remote region close to Nancy and the grid box is thereby highly influenced by the urban region. Finokalia on the other hand is located in a rural environment close to the coast of the island Crete. The interference of the oceanic influence and surrounding enhanced anthropogenic emissions from the island leads to enhanced UFP concentrations within the grid box.

The left map in Fig. 6 shows the annual averages of  $UFP_M$  concentrations simulated in Europe overlaid with the observations from the EBAS database. Especially at the urban sites the model tends to underestimate the observed  $UFP_O$  numbers, while additionally the overestimation at sites like Finokalia and OPE are apparent.

Multiple measurements in one city provide an interesting case of the variability of UFPs within one modelled grid box. Measurements were performed at four different locations in Leipzig (shown in Fig. 7), varying by up to a factor of 3, while simulated  $UFP_M$  concentrations (grey dashed line) approximately coincide with the observations taken at some distance from



**Figure 7.** Monthly averaged UFP concentrations in the simulation (grey, dashed) and measured at different stations in Leipzig, Germany (thick solid lines). The daily fluctuating UFP concentrations are shown with thin, transparent lines in the same color.

heavy traffic locations (Leipzig). The station at Leipzig-Eisenbahnstrasse is at a curbside, and measures very high  $\text{UFP}_O$  concentrations. It can be noted that the model is capable of reproducing urban background conditions, i.e. the average over urban regions and their surroundings in the grid box, while not replicating local UFP hotspots, for example roadsides or near industrial emitters, due to limited horizontal resolution. It is expected that dilution and coagulation during atmospheric transport from these hotspots to the surroundings will quickly reduce the UFP concentrations to levels that are realistically represented by the urban background (e. g. Karner et al., 2010, finding a distance of 1000 m for roadways). This is in agreement with a study from Salma et al. (2014), showing measured UFP concentrations at different locations across Budapest, Hungary. They measured on average a factor of 3 higher UFP concentrations in the city centre compared to the urban background, and an additional factor of 2 higher concentrations in street canyons.

#### 320 4.1.2 North America

In North America only measurements of PNCs are available. Annual averages of observed PNCs ( $\text{PNC}_O$ ) at urban sites in the United States are taken from a study by Saha et al. (2021). The measurements were performed in different years, from 2009 to 2016. The results are summarized in Table 2 and displayed on a map of the United States and Canada in Fig. 6 (right map). We note that the model again underestimates  $\text{PNC}_O$  at central urban stations, mostly by a factor ranging from 1.5 to 2.5.

325 Additional observations of  $\text{PNC}_O$  in the United States and Canada were obtained from the EBAS database providing daily measurements. They are compared to annual averages of the simulation for days with valid measurements, shown in Table 3 and the right map in Fig. 6.  $\text{PNC}_M$  in Bondville, Egbert and at the Appalachian State University (ASU) agree reasonably well with the observations with respect to the aforementioned criteria (see Sect. 4.1.1), while at Southern Great Plains (SGP) and Trinidad Head the concentrations are overestimated by the model. The SGP site is located in the middle of wheat fields

**Table 2.** Summary of observations of PNCs (annual averages,  $\text{cm}^{-3}$ ) in urban regions across the United States for different years taken from a study by Saha et al. (2021). The geographical location is indicated by latitude (Lat) and longitude (Lon). The annual averages of observed ( $\text{PNC}_O$ ) and modelled ( $\text{PNC}_M$ ) PNCs (2015 for  $\text{PNC}_M$ , variable years for the observations) for the grid box encompassing the station are compared. The measurements applied a cut-off minimum diameter (Cut). The same cut-off was used to calculate simulated  $\text{PNC}_M$ . Simulated PNCs after the emission sector-based redistribution are displayed as well ( $\text{PNC}_R$ ), discussed in Sect. 4.2.

Location	Lat	Lon	Year	Cut [nm]	$\text{PNC}_O$	$\text{PNC}_M$	$\text{PNC}_R$
Rochester (NY)	43.14	-77.54	2013	10	4450	3799	6294
Boston (MA)	42.33	-71.10	2016	10	12200	4614	9169
Somerville (MA)	42.40	-71.09	2009	6	10000	4687	8640
Queens (NY)	40.73	-73.82	2009	20	8210	4787	12722
Long Island (NY)	40.74	-73.58	2009	20	7600	4787	9975
Livermore (CA)	37.69	-121.78	2012	7	8220	6090	6553
Red Wood (CA)	37.48	-122.20	2015	7	11910	6090	9757
San Pablo (CA)	37.96	-122.36	2012	7	10480	6090	12119
Santa Rosa (CA)	38.44	-122.71	2012	7	8660	6090	11526
Anaheim (CA)	33.83	-117.94	2016	7	13950	8019	12100
Central LA (CA)	34.07	-118.23	2016	7	17780	8019	14929
Compton (CA)	33.90	-118.21	2012	7	14000	8019	14916
Rubidoux (CA)	34.00	-117.42	2016	10	12930	7975	11858

330 and pastures, and is thereby efficiently shielded from major UFP sources in the encompassing grid box. The Trinidad Head measurement was performed directly at the Californian Coast, and the corresponding grid box is influenced by a mixture of anthropogenic, rural and oceanic influences, leading to strong UFP gradients (comparable to Finokalia in Europe).

### 4.1.3 India

335 Annual average  $\text{UFP}_O$  concentrations in Delhi (Thamban et al., 2021), Mahabaleshwar and Hyderabad (both from Sebastian et al., 2022) were obtained from a collaboration with groups performing field measurements. Additionally, we adopted daily measurements of PSDs from Gani et al. (2020) for the Indian Institute of Technology Delhi (IITD), which we converted to UFP concentrations and combined with the measurements of Thamban et al. (2021). The evaluation for India is summarized in Table 4.

340 The simulation grid cell covering Delhi underestimates  $\text{UFP}_O$  concentrations at all three urban measurement stations in Delhi. The higher  $\text{UFP}_O$  concentrations over the Indian Institute of Technology Delhi (IITD) compared to the two other measurements may be due to its proximity to a major highway. In contrast, our simulations are high-biased over Hyderabad. The measurement station in Hyderabad is a suburban university campus, approximately 15 km from the city centre, where UFP



**Table 3.** Summary of observations of  $\text{PNC}_{\text{O}}$  ( $\text{cm}^{-3}$ ) across the United States and Canada in 2015, with data archived in the EBAS database. The geographical location is indicated by latitude (Lat) and longitude (Lon), the elevation of the site above the sea surface is indicated by the altitude asl in metres (Alt). The annual averages of  $\text{PNC}_{\text{M-Q}}$  and  $\text{PNC}_{\text{M}}$  for the grid box encompassing the station are compared and different measures of agreement are listed (see Table 1). The same comparisons are performed after the redistribution of the model ("Redistributed model"), which will be discussed in Sect. 4.2. All included measurement stations contained at least 250 days of valid measurements in 2015. There is no particle size cutoff value given in the datasets, and thus none is applied on the simulation. Abbreviations: ASU – Appalachian State University, SGP – Southern Great Plains

Station	Observations				Model results				Redistributed Model			
	Lat	Lon	Alt [m]	$\text{PNC}_{\text{O}}$	$\text{PNC}_{\text{M}}$	PF2	NRMSE	$\overline{\text{M/O}}$	$\text{PNC}_{\text{R}}$	PF2	NRMSE	$\overline{\text{M/O}}$
ASU, Boone (NC, US)	36.21	-81.69	1076	2930	2471	58	0.26	0.81	3317	55	0.3	1.09
Bondville (IL, US)	40.05	-88.37	213	4095	4130	55	0.26	0.96	4343	55	0.27	1.01
Egbert (ON, CA)	44.23	-79.78	255	4962	3238	53	0.26	0.68	2775	49	0.27	0.58
SGP E13 (OK, US)	36.60	-97.48	318	3600	6966	40	0.61	1.82	7457	38	0.67	1.95
Trinidad Head (CA, US)	41.05	-124.15	107	1526	2882	48	0.59	1.8	2800	49	0.57	1.75

**Table 4.** Summary of  $\text{UFP}_{\text{O}}$  concentrations ( $\text{cm}^{-3}$ ) derived from PSDs in India for different years. The geographical location is indicated by latitude (Lat) and longitude (Lon). The annual averages of  $\text{UFP}_{\text{O}}$  and  $\text{UFP}_{\text{M}}$  concentrations (2015 for  $\text{UFP}_{\text{M}}$ , variable years for the observations) for the grid box encompassing the station are compared. Simulated UFP concentrations after the emission sector-based redistribution are displayed as well ( $\text{UFP}_{\text{R}}$ ), which will be discussed in Sect. 4.2. Abbreviations: IITM – Institute of Information Technology & Management, IITD – Indian Institute of Technology Delhi, MRIU – Manav Rachna International University

Station	Lat	Lon	Year	Cut [nm]	$\text{UFP}_{\text{O}}$	$\text{UFP}_{\text{M}}$	$\text{UFP}_{\text{R}}$	Reference
Delhi IITM	28.61	77.1	18/19	14.1	19750	15339	28789	Thamban et al. (2021)
Delhi IITD	28.55	77.19	17/18/19	14.1	42972	15339	24917	Thamban et al. (2021) & Gani et al. (2020)
Delhi MRIU	28.45	77.28	18/19	14.1	17350	15339	15959	Thamban et al. (2021)
Mahabaleshwar	17.92	73.66	15	5.5	2441	2248	2316	Sebastian et al. (2022)
Hyderabad	17.46	78.32	19/20/21	10	4680	6350	11131	Sebastian et al. (2022)

concentrations are expected to be significantly reduced compared to the downtown regions with strong traffic emissions. The consequent UFP gradients may not be adequately resolved by our model calculations.

#### 345 4.1.4 China

Observations of PSDs in China were obtained through collaboration with relevant groups for Shanghai (unpublished), Beijing in 2018/19 (Liu et al., 2020), Lin'an (Shen et al., 2022) and Gucheng (Li et al., 2021). Additionally, we included observations

**Table 5.** Summary of  $\text{UFP}_O$  concentrations ( $\text{cm}^{-3}$ ) derived from PSDs in China for different years. The geographical location is indicated by latitude (Lat) and longitude (Lon). The annual averages of  $\text{UFP}_O$  and  $\text{UFP}_M$  concentrations (2015 for the simulation, variable years for the observations) for the grid box encompassing the station are compared. Simulated UFP concentrations after the emission sector-based redistribution are displayed as well ( $\text{UFP}_R$ ), which will be discussed in Sect. 4.2.

Station	Lat	Lon	Year	Cut [nm]	$\text{UFP}_O$	$\text{UFP}_M$	$\text{UFP}_R$	Reference
Shanghai	31.17	121.43	14	13.4	12800	10850	23623	Unpublished
Beijing	39.94	116.29	18/19	5.6	14812	11489	20123	Liu et al. (2020)
Beijing	39.9	116.38	04–06	3.0	24900	11408	21041	Wu et al. (2008)
Lin’an	30.28	119.75	15	3.8	4928	11815	12447	Shen et al. (2022)
Gucheng	39.15	115.73	18/19	12.9	8284	10678	9680	Li et al. (2021)

from Beijing from 2004–2006 (Wu et al., 2008). We compare the UFP concentrations derived from our simulation to the PSD measurements from these sites. The results are summarized in Table 5.

350  $\text{UFP}_M$  concentrations in Shanghai and Beijing are slightly lower (approximately 20%) than  $\text{UFP}_O$  concentrations for the years closest to 2015 (2014 for Shanghai, 2018/19 for Beijing), unlike other urban locations discussed above. However,  $\text{UFP}_O$  concentrations in Beijing from 2004–2006 are underestimated by more than a factor of 2 by  $\text{UFP}_M$ . A probable reason for that is the various air pollution reduction measures taken in China, especially in Beijing. In Beijing,  $\text{PM}_{2.5}$  concentrations decreased from  $89 \mu\text{g}/\text{cm}^3$  in 2013 to  $58 \mu\text{g}/\text{cm}^3$  in 2017 and  $42 \mu\text{g}/\text{cm}^3$  in 2019 (Zeng et al., 2019; Lu et al., 2020), implying  
355 a simultaneous reduction of UFP sources. With the air pollution reduction measures industries also moved further away from city centres, potentially decreasing the association with UFP concentrations (see also Sect. 4.2).

$\text{UFP}_M$  overestimates  $\text{UFP}_O$  strongly in Lin’an and slightly in the Beijing suburban Gucheng. Lin’an is influenced by the neighboring city of Hangzhou with approximately 10 million inhabitants, Gucheng by sharing the grid box with central Beijing.

#### 4.1.5 Remote regions

360 We considered remote measurements over the open ocean, in forests, on mountains and polar sites, both of PNCs and UFP concentrations. The simulation and measurement results are summarized in Table 6. Simulated average concentrations are all within a factor of 2 of the observations. Especially the Northern Hemispheric polar regions show good agreement, while there is a stronger over-, respectively underestimation of  $\text{UFP}_O$  at the two measurement stations in Antarctica, both at elevated altitude.

365 The annual average forest  $\text{UFP}_O$  concentrations at the ATTO Tower in Brasil (Franco et al., 2022) and in Hyytiälä (EBAS database) are both underestimated by the simulation. The timeline analysis of the measurements in the Amazon forest (ATTO) shows this pronounced underestimation only in winter, i. e.  $\text{UFP}_M$  shows a stronger seasonality than  $\text{UFP}_O$ . The potential causes will be subject of future studies, also considering data from an upcoming measurement campaign.

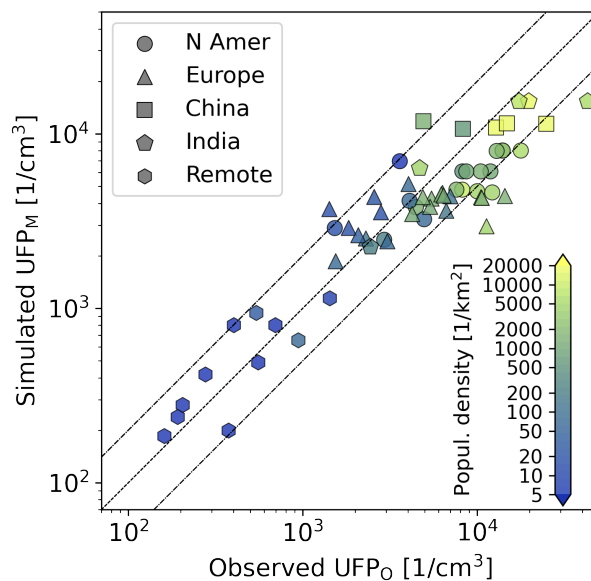
**Table 6.** Summary of  $\text{UFP}_O$  concentrations ( $\text{cm}^{-3}$ ), respectively  $\text{PNC}_O$ , in remote regions. Four different settings are distinguished, namely Ocean, Forest, Mountain and Polar. The geographical location is indicated by latitude (Lat) and longitude (Lon), the elevation of the site above the sea surface is indicated by the altitude asl in metres (Alt). The annual averages of the observed (Obs) and simulated (Mod) concentrations for the grid box encompassing the station are compared and different measures of agreement are listed (see Table 6).

Station	Setting	Lat	Lon	Alt	Meas	Obs	Mod	PF2	NRMSE	$\overline{M/O}$	Reference
ATom campaign	Ocean	-	-	< 200	UFP	403	800	-	-	-	Brock et al. (2019)
ATTO Tower (Brasil)	Forest	-2.14	-59.0	120	UFP	376	199	-	-	-	Franco et al. (2022)
BEO Moussala (BG)	Mountain	42.18	23.59	2925	UFP	542	940	45	0.51	1.58	EBAS
Hyytiälä (FI)	Forest	61.85	24.3	179	UFP	1430	1140	59	0.21	0.77	EBAS
Sammaltunturi Pallas (FI)	Polar	67.97	24.12	565	UFP	556	489	43	0.24	0.71	EBAS
Trollhaugen (NO)	Polar	-72.02	2.53	1309	UFP	154	62	31	0.23	0.36	EBAS
Värriö (FI)	Polar	67.75	29.61	390	UFP	697	800	44	0.34	0.93	EBAS
Zeppelin Mountain (NO)	Polar	79.9	11.86	473	UFP	161	185	40	0.42	0.55	EBAS
Zugspitze (DE)	Mountain	47.41	10.98	2650	UFP	944	655	57	0.22	0.65	EBAS
Alert (NU, CA)	Polar	82.50	-62.34	2182	PNC	205	279	47	0.26	1.48	EBAS
Barrow (AK, US)	Polar	71.32	-156.61	11	PNC	277	417	33	0.44	0.98	EBAS
South Pole	Polar	-90.00	-24.80	2841	PNC	192	238	56	0.21	1.5	EBAS

Measurements over the open ocean were taken from the ATom aircraft campaign (Brock et al., 2019), conducted in different seasons from 2016 to 2018. We collected all measurements that were performed below 200 m over the ocean and compared them to daily averaged  $\text{UFP}_M$  concentrations ~~at surface level in the corresponding grid cell and in the lowest vertical model level of the corresponding horizontal grid cell at the respective~~ day of the year.  $\text{UFP}_O$  concentrations over the Southern Ocean are mostly underestimated by the simulation, while concentrations over the Pacific are overestimated. Considering generally higher  $\text{UFP}_M$  concentrations over the Pacific Ocean and lower  $\text{UFP}_M$  concentrations over the Southern Ocean (compare Fig. 3), the open ocean UFP variance seems to be overestimated by the model.

#### 4.1.6 Global

Figure 8 summarizes the evaluation results of all measurement stations presented and compares the annual averages of the observed to the simulated UFP concentrations in a scatter plot. The shapes of the symbols represent the five studied regions. Population density data (represented by the color scheme in Fig. 8) is taken from CIESIN, 2018 ~~with a higher than model~~, sampled at the measurement stations with a resolution of  $0.1^\circ \times 0.1^\circ$ .



**Figure 8.** Summary of all measurement stations in a scatter plot showing observed  $UFP_O$  concentrations on the x axis and simulated  $UFP_M$  concentrations on the y axis. Different symbols indicate the different regions, respectively settings. The color represents the local population density, sampled at the measurement stations at higher than model with a resolution of  $0.1^\circ \times 0.1^\circ$ .

The logarithms of  $UFP_O$  and  $UFP_M$  concentrations are correlated by  $r = 0.93$  ( $r = 0.76$  excluding remote regions), while the RMSLE (root mean square logarithmic error) is  $0.55$ <sup>1</sup>. The geometric mean of the ratio between the modelled and observed mean values is  $\overline{M/O} = 0.82$ .

In remote areas all simulated concentrations are within a factor of 2 of the observed ones. For these areas the population  
 385 density (and respective anthropogenic emissions) within the encompassing grid box is mostly uniform at low numbers of inhabitants, i.e. the grid cells only cover remote areas. Thus, the grid cell average of UFP concentrations is not influenced by densely populated and typically much more polluted regions.

All other measurement stations considered have in common that the encompassing grid boxes include an urban city centre with its surroundings, and thus have high variance in anthropogenic emissions within the grid box. Figure 8 indicates a link between local population density and UFP concentrations. In fact, the logarithm of the population density is positively correlated  
 390 to the logarithm of the  $UFP_O$  concentrations in non-remote regions with  $r = 0.80$ . Thus, it can be expected that the actual UFP concentrations in grid boxes encompassing urban regions and its surroundings is non-uniform, with higher UFP concentrations at higher population density and lower UFP concentrations at lower population density.

<sup>1</sup>We use the correlation and RMSE of the logarithmic values here as several orders of magnitudes are covered and the influence of the lower UFP concentrations would be negligible otherwise.

This bias is illustrated in Fig. 8. At low  $\text{UFP}_O$  concentrations in non-remote regions the local population density is lower (background, suburban and rural stations in grid boxes including urban centres), while  $\text{UFP}_M$  are higher than  $\text{UFP}_O$  concentrations ( $\overline{M/O} = 1.32$  for a population density smaller than 100 individuals/ $\text{km}^2$ ), as the model grid boxes are influenced by the urban regions. At higher  $\text{UFP}_O$  concentrations population density increases as well and the simulation underestimates  $\text{UFP}_O$  concentrations on average by a factor of almost 2 ( $\overline{M/O} = 0.62$  for a population density in excess of 1000 individuals/ $\text{km}^2$ ), as these urban stations are surrounded by suburban and rural regions that lower the simulation grid cell average of  $\text{UFP}_M$  concentrations.

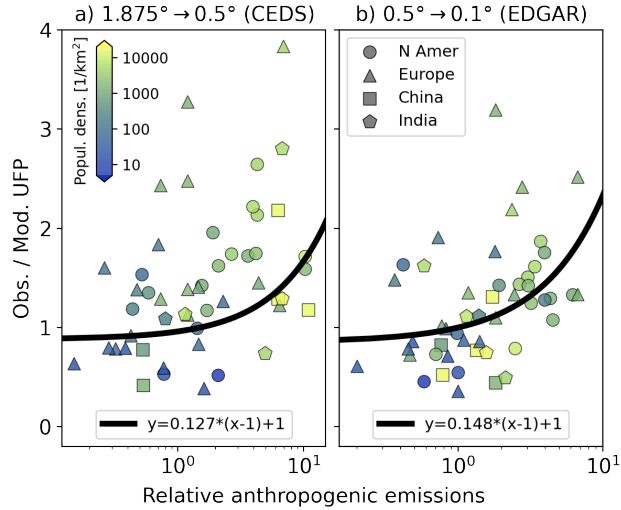
The main cause of the described effect is the limited model resolution of approx.  $180 \times 180$  km (at the equator). Consequently, the correlation between the logarithm of the local population density and  $\text{UFP}_M$  concentrations in non-remote regions is only  $r = 0.57$ , thus much lower than the correlation to  $\text{UFP}_O$  concentrations. To overcome this, an increase in model resolution of at least a factor of 3 (in one dimension) would be necessary, which would lead to an unreasonably high demand of computing time. Thus, an alternative approach was developed to mimic a resolution increase, by retroactively (after the simulation) redistributing  $\text{UFP}_M$  concentrations per grid box based on local high resolution primary anthropogenic emissions relative to the grid box averaged primary anthropogenic emissions, guided by observations. This will be discussed in the following section.

## 4.2 Downscaling based on primary anthropogenic emissions

Our results, in line with the observations, corroborate that UFP concentrations at the Earth's surface are strongly influenced by anthropogenic activity. Although our access to long-term measurements is limited, the data available from several urban stations show a high variance of  $\text{UFP}_O$  concentrations among different sites in a city (e. g. for Leipzig, Germany and Los Angeles, USA), being enhanced when model grid boxes contain urban and rural environments (e. g. Salma et al., 2014). Population density and  $\text{UFP}_O$  concentrations are highly correlated, while the evaluation of  $\text{UFP}_M$  concentrations indicates discrepancies due to sharp gradients of anthropogenic emissions within areas covered by the model grids.

Primary anthropogenic emissions ([PAE](#)) from the CEDS database are available at a higher than model resolution of  $0.5^\circ \times 0.5^\circ$  (hereafter referred to as  $\text{PAE}_{\text{CEDS};0.5}$ ) and were regridded to the simulation mesh (resulting in grid box averaged emissions  $\text{PAE}_{\text{CEDS};\text{GB}}$ ). Primary anthropogenic emissions from the EDGAR database v6.1 (Crippa et al., 2022) are available at even higher resolution of  $0.1^\circ \times 0.1^\circ$  (hereafter referred to as  $\text{PAE}_{\text{EDGAR};0.1}$ ). Studies showed that locally enhanced UFP concentrations usually reach (urban) background levels within 1000 m from sources (Karner et al., 2010, e. g.), and the curbside UFP concentrations are highly localized. Hence, this section aims to use local  $\text{PAE}_{\text{CEDS};0.5}$  and  $\text{PAE}_{\text{EDGAR};0.1}$  and the relation to [grid box averaged PAE<sub>GB</sub> the respective grid box average at coarser resolution](#) to fine-tune the simulation results guided by the observations, gaining improved resolution (downscaling) and closer agreement with observations, especially in urban centres and their surroundings. It is important to mention that we do not modify the total number of  $\text{UFP}_M$  per grid box in the following, but that  $\text{UFP}_M$  concentrations are merely redistributed within each grid box.

Figure 10 illustrates the two-step downscaling procedure by the example of New Delhi and surroundings, using  $\text{PAE}_{\text{CEDS};0.5}$  to downscale to  $0.5^\circ \times 0.5^\circ$  and  $\text{PAE}_{\text{EDGAR};0.1}$  for further downscaling obtaining a UFP dataset with  $0.1^\circ \times 0.1^\circ$  horizontal res-



**Figure 9.** Scatter plot of the *relative anthropogenic emissions* (RAE) against the model-measurement discrepancy (Observed / Simulated UFP concentrations). RAE of the CEDS database relative to the model grid box are directly compared to the model-measurement discrepancy (a), while the RAE of CEDS relative to the CEDS grid box are compared to the remaining discrepancy after the first downscaling (b). We use the same color code for the population density and shapes for the regions as in Fig. 8. The black lines show a linear fit crossing the (1,1) point. Higher RAE correspond to more pronounced underestimation of the observations.

olution. As a basis we calculate *relative anthropogenic emissions* (RAE), i.e. the local anthropogenic particle number emissions relative to the average emissions of the grid box at coarser resolution:

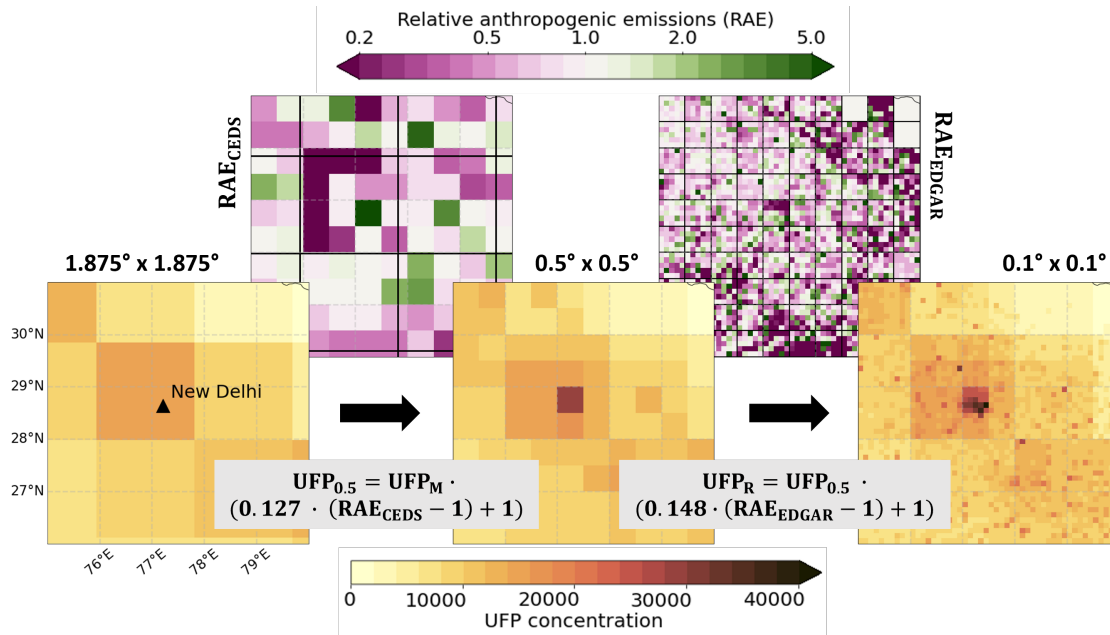
$$430 \quad \text{RAE}_{\text{CEDS}} = \text{PAE}_{\text{CEDS};0.5} / \text{PAE}_{\text{CEDS};\text{GB}}$$

$$\text{RAE}_{\text{EDGAR}} = \text{PAE}_{\text{EDGAR};0.1} / \text{PAE}_{\text{EDGAR};0.5}$$

$\text{RAE}_{\text{CEDS}}$  (top left in Fig. 10), respectively  $\text{RAE}_{\text{EDGAR}}$  (top right in Fig. 10), can be interpreted as the local excess or deficit of  $\text{PAE}_{\text{CEDS};0.5}$  ( $\text{PAE}_{\text{EDGAR};0.1}$ ) over  $\text{PAE}_{\text{CEDS};\text{GB}}$  ( $\text{PAE}_{\text{EDGAR};0.5}$ ). We limit  $\text{RAE}_{\text{CEDS}}$  to a maximum value of 10 and  $\text{RAE}_{\text{EDGAR}}$  to 7 due to missing observational datasets at locations with higher RAE.

435 In the first step we investigated the relationship between  $\text{RAE}_{\text{CEDS}}$  and the underestimation of  $\text{UFP}_O$  concentrations, respectively  $\text{PNC}_O$ , at each station ( $\text{UFP}_O / \text{UFP}_M$  or  $\text{PNC}_O / \text{PNC}_M$ ) for all evaluation results in grid boxes with anthropogenic emissions exceeding two million particles per square meter and second<sup>2</sup>. The relationship is displayed in Fig. 9(a). As expected there is a logarithmic correlation ( $r = 0.42$ ) between the two quantities. We perform a linear fit that crosses the point (1,1), i.e.  $y = c_{\text{CEDS}} \cdot (x - 1) + 1$ , where  $y$  is the ratio  $N_{\text{obs}} / N_{\text{mod}}$  and  $x$  are the  $\text{RAE}_{\text{CEDS}}$ . This function was chosen as it is the  
 440 only global function that conserves the average grid box  $\text{UFP}_M$  concentrations after applying it on the model results. The fit parameter  $c$  was determined to be  $c_{\text{CEDS}} = 0.127$  using a logarithmic least squares fit. Thus, if  $\text{RAE}_{\text{CEDS}}$  increases by 1, the

<sup>2</sup>All high resolution pixels in the remaining (less anthropogenically influenced) grid boxes are bilinearly interpolated with respect to the coarser resolution.



**Figure 10.** Illustration of the downscaling procedure using anthropogenic particle number emissions from the CEDS (Hoesly et al., 2018) and EDGAR (Crippa et al., 2022) emission databases by the example of New Delhi and surroundings. Relative anthropogenic emissions (RAE; local anthropogenic particle number emissions relative to the average over the initial grid box; displayed on the top) are set in relation to the model-observation discrepancy (Observed / Modelled UFP concentrations), displayed in Fig. 9. The resulting relation is used for downscaling UFP concentrations from model ( $1.875^\circ \times 1.875^\circ$ ) to  $0.5^\circ \times 0.5^\circ$  (CEDS) respectively  $0.1^\circ \times 0.1^\circ$  (EDGAR) horizontal resolution in two steps. The average of the RAE over each grid box of the coarser resolution (black boxes) equals to 1, and thus the respective average UFP concentrations per grid box remain unchanged. Note that the color scale for UFP concentrations is differing from Fig. 3.

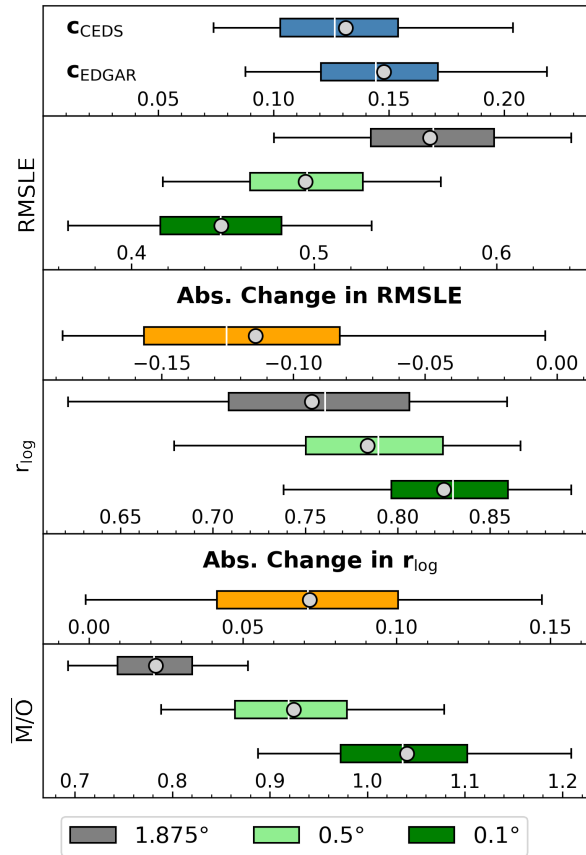
model underestimation increases by 0.127. The fit function is shown as a black line in Fig. 9(a). This relationship is used to downscale simulated  $UFP_M$  concentrations, yielding redistributed UFP ( $UFP_{0.5}$ ) concentrations.

This procedure is repeated for the relationship between  $RAE_{EDGAR}$  and the remaining model-observation discrepancies after the first downscaling (Fig. 9(b)). We determine  $c_{EDGAR}$  to be  $c = 0.148$ , and thus  $UFP_{0.5}$  can be further downscaled to the urban and industrial environments, yielding redistributed  $UFP_{0.1}$  (hereafter referred to as  $UFP_R$ ) concentrations (rightmost plot in Fig. 10). Summarized, we obtain two downscaling functions that are applied sequentially to simulated  $UFP_M$  concentrations:

$$UFP_{0.5} = UFP_M \cdot (0.127 \cdot (RAE_{CEDs} - 1) + 1)$$

$$UFP_R = UFP_{0.5} \cdot (0.148 \cdot (RAE_{EDGAR} - 1) + 1)$$

445 To demonstrate the independence of the downscaling procedure from the data used for the fit, we randomly subdivided the non-remote measurement stations into a training and a test dataset (25 for training, 24 for testing) in 5000 different random ways, derived the fit parameters from the training dataset only, and applied them on the test dataset subsequently. The results



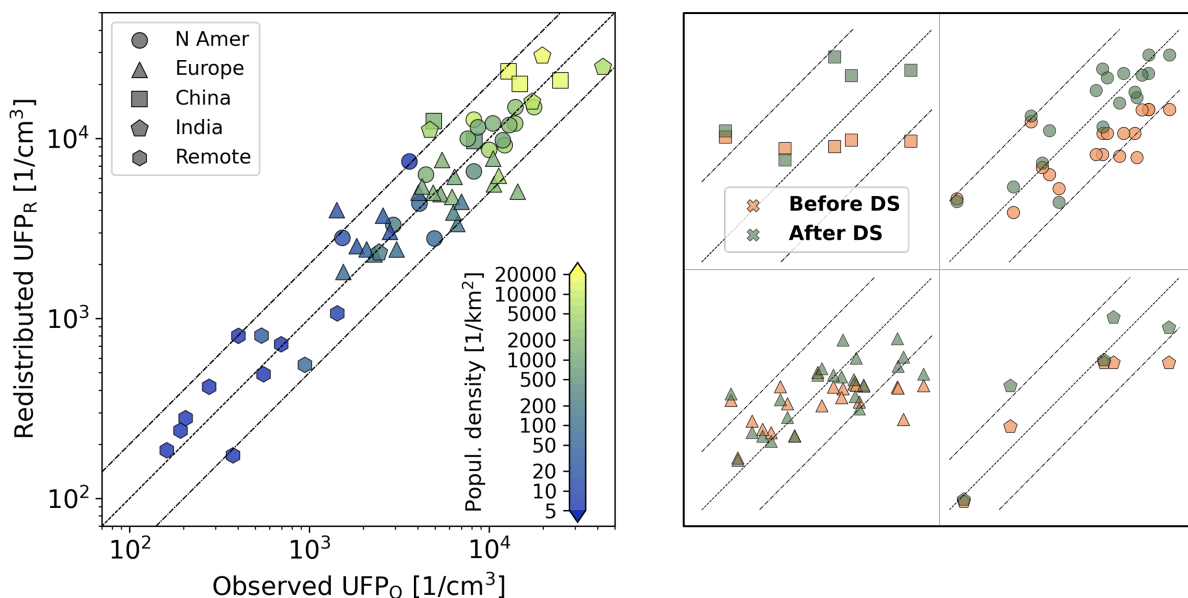
**Figure 11.** Results of 5000 independent training and test runs for the fit parameter estimation (25 stations in training dataset, 24 in test dataset). The fit parameters are displayed in the top panel, while the statistical measures are displayed below at different orders of downscaling, along with the absolute change of RMSLE and the logarithmic correlation. We show box-whisker plots, where the boxes illustrate the 25-75% interval and the whiskers the 5-95% interval. Median values are marked by the vertical white line and mean values by the light-grey circles.

are displayed in Fig. 11. The fit parameters  $c_{\text{CEDS}}$  and  $c_{\text{EDGAR}}$  range between 0.07 and 0.23 in 90% of the runs, while the average values are very close to the values derived from the complete dataset, and all derived fit parameters are greater than 0. The RMSLE consistently decreases with rising order of downscaling, with an average improvement of 0.11 in total (95.6% of the time RMSLE decreases), while the logarithmic correlation increases on average by 0.07 (improves 95.1% of the time). The bias  $\overline{M/O}$  evolves from 0.78 on average in the model output resolution (2.4% of the time between 0.9 and 1.1) to 0.92 after the CEDS downscaling (55.3% between 0.9 and 1.1) to 1.04 (66.2% between 0.9 and 1.1) after the final downscaling, slightly overestimating the observed values. We conclude that the fit parameters can be applied to data points outside the training

455



460 [dataset. However, as we want to maximise the number of measurement stations to use for the global downscaling, we use the complete evaluation results for the downscaling as described before.](#)



**Figure 12.** Left: Same as Fig. 8, but after the redistribution of UFP<sub>M</sub> concentrations (downscaling) based on the *relative anthropogenic emissions* per grid box (more details in the text). Right: Evaluation results before and after the downscaling (DS) for China, North America Europe and India (from top left to bottom right). Note that the value range differs in all subpanels.

The resulting UFP<sub>R</sub> concentrations are included in Tables 1–5 in the last columns. At measurement sites in Europe, urban regions in the United States, India and China the agreement with measurements generally improves. For instance, UFP<sub>R</sub> concentrations in Madrid, the measurement station with the strongest underestimation in this analysis (triangle in the top right corner in Fig. 9(a)), are increased by a factor of 2.1, strongly improving the agreement (see Table 1: PF<sub>2</sub> from 22 to 59 %,  $\overline{M/O}$  from 0.28 to 0.59). The remaining underestimation is likely caused by the influence of nearby roads with heavy traffic, which are of localized relevance only.

UFP<sub>R</sub> in Beijing and Shanghai are strongly increased by the redistribution as well, which can even lead to an overestimation of the observed UFP<sub>O</sub> concentrations (see Table 5). However, for Beijing the redistributed UFP<sub>R</sub> fall between the high UFP<sub>O</sub> from 2004–2006 and the lower UFP<sub>O</sub> from 2018/19. This is in line with the emission reduction in China (see Sect. 4.1.4). UFP<sub>R</sub> concentrations over the Beijing suburban Gucheng, sharing the model grid box with Beijing, are reduced, approaching UFP<sub>O</sub> concentrations.

Similarly, UFP<sub>R</sub> concentrations are strongly increased at the measurement stations Delhi IITM and Delhi IITD, resulting in UFP<sub>R</sub> concentrations in-between the two UFP<sub>O</sub> concentrations. Moreover, UFP<sub>R</sub> is only slightly increased at Delhi MRIU due to lower local PAE<sub>HR</sub>, remaining similar to UFP<sub>O</sub>.

The left panel of Fig. 12 shows the comparison between  $UFP_R$  and  $UFP_O$  concentrations (analogously to Fig. 8) after the applied redistribution. **The logarithmic correlation coefficient improves from 0.76 to 0.84 for non-remote regions (leading to a total logarithmic correlation coefficient of 0.95), while the RMSLE improves to 0.43 (0.57 before) for non-remote regions.  $\overline{M/O}$  increases to 1.02, close to unity.** In spite of the redistribution of UFPs within grid cells, there is still an overestimation of  $\overline{M/O} =$   
480 1.27 (1.32 before) at low population density below 100 individuals/km<sup>2</sup>. On the other hand, in densely populated regions (more than 1000 individuals/km<sup>2</sup>) simulated and observed UFP concentrations are of the same magnitude ( $\overline{M/O} = 1.01$ ). Thus, the biases described in Sect. 4.1.6 are strongly reduced though not fully eliminated, especially for scarcely populated regions.

Evaluation results before and after the downscaling are displayed in the right panel of Fig. 12. The strong improvement  
485 in municipal regions is apparent when considering the urban measurement stations in the United States (top right), aligning closely around the center line. An increase in correlation is also clearly visible in China, Europe and India.

All  $UFP_R$  concentrations differing by more than a factor of 2 from  $UFP_O$  can be attributed to nearby major traffic nodes and motorways (Leipzig-Eisenbahnstrasse), or alternatively coastal sites (Finokalia), a shielded location in a wheat field (Southern Great Plains E13) and influence of a neighbouring megacity (Lin'an and Hyderabad). These discrepancies between  $UFP_R$  and  
490  $UFP_O$  may perhaps be resolved with very high (< 1 km) horizontal resolution, which is computationally impracticable with a global model and cannot be achieved with downscaling due to missing emission datasets with respective horizontal resolution.

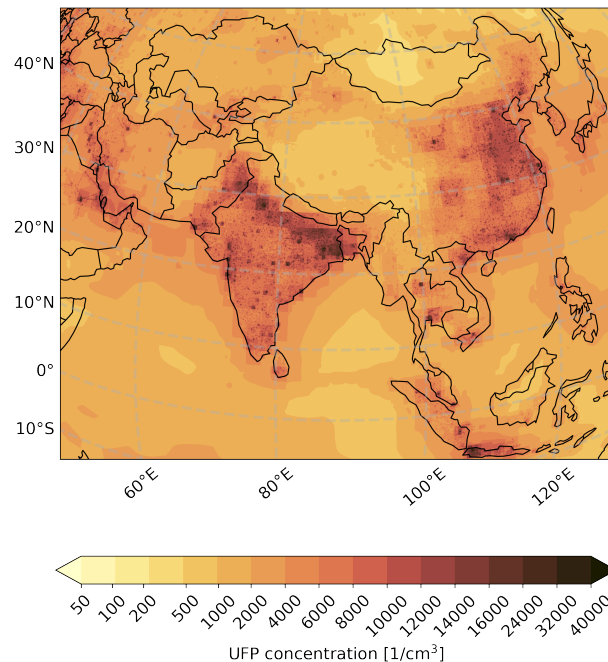
Finally, the logarithmic correlation between population density and  $UFP_R$  concentrations increases to  $r = 0.77$  ( $r = 0.57$  for  $UFP_M$ ) after redistribution, which is similar to the logarithmic correlation between population density and  $UFP_O$  concentrations ( $r = 0.80$ ). This indicates an improved representation of the anthropogenic influence in the downscaled dataset.

495 Figure 13 shows  $UFP_R$  concentrations in Asia after the applied downscaling, revealing more detailed features in anthropogenically influenced regions, especially in Eastern China and Northern India. Note that the color scale is extended as  $UFP_R$  concentrations can exceed 40,000 per cm<sup>3</sup> in Indian industrial regions, as well as parts of urban environments in Mumbai, New Delhi, Shanghai, Riyadh, Kuwait and Cairo.

## 5 Limitations and Uncertainties

500 As the resulting  $UFP_M$  and  $UFP_R$  concentrations are an intricate interplay of emission parameters, numerical simulation, evaluation and observation-guided redistribution, it is not possible to directly infer quantitative uncertainties for the provided datasets. However, the final results in Fig. 12 show that 90% of the annual averaged  $UFP_R$  concentrations are within a factor of 2 of  $UFP_O$  concentrations (84% for  $UFP_M$ ) and all simulated  $UFP_R$  concentrations are within a factor of 3 of the observations after the emission-grid based redistribution. Additional limitations and uncertainties will be discussed qualitatively next.

505 Median diameters of directly emitted particles per sector were estimated based on the emission size distributions from Paasonen et al. (2016) and measurement reports in the literature with associated uncertainties. Additionally, we assumed the diameters to be globally identical for each sector, and used the same diameters for all species. These simplifications lead to limitations in the precision by which the different sectors and species contribute to the total  $UFP_M$ , respectively  $UFP_R$



**Figure 13.** Annual average of  $\text{UFP}_R$  concentrations in Asia simulated with EMAC for the year 2015 after the downscaling based on primary anthropogenic emissions at a resolution of  $0.1^\circ \times 0.1^\circ$ . Note that the color scale from Fig. 8 is extended as  $\text{UFP}_R$  concentrations can exceed 40,000 per  $\text{cm}^3$ .

number. Anthropogenic emissions are distributed in each time step based on monthly averages from the emission datasets.  
 510 This potentially introduces bias, due to the non-linearity of chemical and microphysical processes. Future studies will include emission time factors, to improve the time resolution of emissions.

Apart from UFP concentrations, we also used PNCs for the evaluation. PNCs are a proxy for UFP concentrations, as UFPs tend to dominate the total particle number (e. g. Baldauf et al., 2016; Kumar et al., 2014). However, locally there can be deviations. To increase the number of measurements for the evaluation we additionally used observations from years that differ  
 515 from the simulation year (2015). Different meteorological conditions and emissions potentially lead to biases in the evaluation. The downscaling was performed using evaluation results from differing years as well, while the simulation results were only taken from 2015. Thus, potential interfering effects may arise from the downscaling and general temporal trends as seen from the analysis of the interannual variability in Sect. 4. The interannual variability (up to 50 % at low absolute UFP concentrations and below 20 % over polluted regions over a timespan of 3 years) has been attributed to meteorological variations (along the  
 520 ITCZ and mostly over the oceans), and decreasing (South and East Asia, Europe and the United States) respectively increasing (Nigeria and South Africa) long-term trends.

Additional uncertainties are introduced by the missing guidelines for PSD and PNC measurements along with different measurement size ranges (Trechera et al., 2023). The latter is addressed by performing the evaluation using model results with the same diameter cuts as in the respective observations, however this information is not available for all measurement data.

525 We define UFPs as all particles with a diameter smaller than 100 nm in the model without a lower cut on the particle diameter. Particles with a diameter below 1.7 nm are typically regarded as molecular clusters, and nucleation rates are reported as the frequency that clusters reach this threshold (e. g. by the CLOUD experiment; Kirkby et al., 2011). As a consequence, freshly formed particles are introduced to the model with a diameter of 1.7 nm. However, due to the log-normal modal aerosol distribution (Pringle et al., 2010), smaller particles down to infinitesimal small diameters are automatically created  
530 by definition. As a result, small fractions (up to around 2 % in polluted regions, with maximum values of up to 20 % locally over the oceans) of the presented UFPs have a diameter smaller than 1.7 nm. However, these particles are not considered as molecular clusters as the low diameter is a result of computational effects.

The evaluation of UFP concentrations over the free ocean were performed with daily averaged model output and instantaneous measurements from the ATom aircraft campaign. This potentially introduces representation errors as described by Schutgens et al. (2017)

535  
In addition to the uncertainties introduced by the horizontal resolution of the model, the vertical resolution of the model, ranging from 45 – 70 m for the surface layer, adds additional uncertainties. While the surface layer is mostly entirely located in the boundary layer, decreases in UFP concentrations are still observed in general, as reported by Du et al. (2017); Harrison et al. (2019); Heintzenberg et al. (2011), with the strongest decrease with altitude being observed close to UFP sources. We analysed the relative change in UFP  
540 concentrations from the surface layer to the next-highest model level, exhibiting a decrease of 20-30% in UFP concentrations on average over polluted regions, with the reduction slightly exceeding 50% over Central Africa. At higher latitudes, we even see increasing UFP concentrations at the second lowest model level. The decrease over polluted regions is in line with the observations from Du et al. (2017); Harrison et al. (2019); Heintzenberg et al. (2011), who observe a decrease of up to 30 % at comparable altitudes<sup>3</sup>. Considering a linear decrease respectively increase within the range of 30% within the model surface  
545 layer, this adds an additional uncertainty of  $\pm 15\%$  to the simulated UFP concentrations.

The analysis in Sect. 4.2 showed that even after downscaling discrepancies in the evaluation remain, which are at least partly related to the representativeness of the measurement locations for the modelled grid areas, also for  $\text{UFP}_R$ . Model concentrations of UFPs in rural regions in the vicinity of urban centres tend to be overestimated by the model (i.e.  $\text{UFP}_R$ ). Hence, even for  $\text{UFP}_R$  the horizontal resolution is still a limiting factor. To improve this further, the simulations would need to be  
550 performed at very high resolution requiring currently impracticable computing resources, at least for the global scale, as well as additional measurement data for UFPs and meteorological parameters in urban and industrialized regions including road-sides and background urban environments. Salma et al. (2014) showed that UFP concentrations can typically vary by a factor of six from the urban background to street canopies within cities, and Karner et al. (2010) showed that UFP concentrations reach (urban) background concentrations within about a kilometre. A next step could be to apply high-resolution dynamical

<sup>3</sup>Villa et al. (2017) even observe a decrease of up to 80%, however these measurements were performed directly at a highway and at some distance to other sources, which is not representative for a grid box covering approx. 180 x 180 km and overestimates the effect

555 downscaling of concentrations guided by comprehensive measurements of which data may become available in the future, [either using machine learning methods or a combination of operational street pollution models and human exposure modelling as done by Ketzel et al. \(2021\)](#). Clearly, to make progress a much larger number of stations that continuously measure aerosol size distributions will need to be implemented.

## 6 Conclusions

560 We presented a first numerical simulation of ultrafine particles (UFPs) at the Earth's surface with the global EMAC model which includes a relatively detailed representation of aerosol formation and growth processes (i.e. the nucleation and Aitken aerosol size modes). [Total concentrations were shown along with interannual variability in the years 2015-2017 and the dominating particle size segments around the globe.](#) Emissions of gaseous and aerosol species were taken from the CEDS and CAMS databases, and the emission radii for aerosol species were taken or derived from the literature referring to the  
565 contributing source sectors.

Simulated UFP and particle number concentrations (PNCs) were evaluated using particle size distributions and PNCs from field measurements, the EBAS database, literature and published datasets. We generally achieve reasonable agreement between observed and simulated UFP concentrations, with good agreement for remote regions (forest, mountain, polar and ocean) that are not directly influenced by urban and other strong source regions (all simulated concentrations within a factor of 2 of the  
570 observations). In grid boxes with a high variance in population density we obtain larger deviations with observations related to the coarse model resolution (approximately 180 x 180 km at the equator). UFP concentrations in urban regions with a high population density are underestimated by the simulation, while being overestimated in less densely populated regions. These biases are associated with the high correlation between local population density and observed UFP concentrations (logarithmic correlation of  $r = 0.80$ ).

575 The relationship between the underestimation of the observed UFP concentrations and the local high resolution anthropogenic emissions relative to the grid box average was used to redistribute UFPs within each grid box, leaving the total number of particles unchanged. This yields a higher resolution, i. e. downscaled data for grid boxes with dominant anthropogenic influence, increases the agreement between observations and simulations (logarithmic correlation improves from 0.76 to 0.84 for non-remote regions, Root Mean Squared Logarithmic Error from 0.57 to 0.43), and decreases the population density bias by  
580 improving the representation of the anthropogenic impact on UFP concentrations.

We provide two global [annual averaged](#) datasets of UFP concentrations [for the years 2015-2017](#) at different horizontal resolution that can be used for several purposes. The first dataset is given at a resolution of  $1.875^\circ \times 1.875^\circ$  (roughly 180 x 180 km at the equator) and is directly derived from the simulation. This dataset can serve the purpose of global scale analyses of UFP concentrations, e. g. the comparison of different source regions, meteorology and atmospheric chemistry. The downscaled  
585 dataset has a much finer resolution of  $0.1^\circ \times 0.1^\circ$  (roughly 10 x 10 km at the equator, and about 10 x 8 km at mid-latitudes) and includes the within-grid box UFP redistribution based on anthropogenic emission data. The latter is recommended to be used to characterize the exposure to UFPs in public health studies with a focus on densely populated regions, in particular the

urban environment. Additionally, we make the 2015 UFP concentrations available in three size bins (1.7-20 nm, 20-50 nm, and 50-100 nm).

590 Future applications may also include studies ~~of~~on seasonality, anthropogenic source sectors and ~~the~~ chemical composition of UFPs, and their contribution to health impacts of fine particulate matter.

*Code availability.* The Modular Earth Submodel System (MESSy) is continuously further developed and applied by a consortium of institutions. The usage of MESSy and access to the source code is licensed to all affiliates of institutions that are members of the MESSy Consortium. Institutions can become a member of the MESSy Consortium by signing the MESSy Memorandum of Understanding. More in-  
595 formation can be found on the MESSy Consortium Website (<http://www.messy-interface.org>, last access: 17 February 2023; MESSy, 2023). The code presented here is available as git commit #49a7a544 in the MESSy repository, and all changes have been included in the main repository.

*Data availability.* We provide datasets with annual averages of UFP concentrations for the years 2015-2017, both in model resolution ( $1.875^\circ \times 1.875^\circ$ ) directly derived from the model output, and at a resolution of  $0.1^\circ \times 0.1^\circ$  with the observation-guided downscaling based  
600 on anthropogenic emissions. Additionally, we provide number concentrations in 3 size bins, i. e. 1.7-20 nm, 20-50 nm and 50-100 nm. The datasets are publicly available at [will be filled upon acceptance of the manuscript].

*Author contributions.* SC, AP and JL planned the research. AP prepared the model set-up and performed the simulation with the help of MK and SC. DS, YC, SNT, MS, GP and HW helped in collecting and/or directly provided the observational datasets. MK analysed the model results, evaluated the simulation, developed the downscaling procedure and wrote the manuscript with the help of AP. JL and AP supervised  
605 the project. All authors discussed the results and contributed to the review and editing of the manuscript.

*Competing interests.* At least one of the (co-)authors is a member of the editorial board of Atmospheric Chemistry and Physics.

*Acknowledgements.* MK acknowledges the financial support of the Max Planck Graduate Center with the Johannes Gutenberg University (Mainz). Hyderabad measurements were carried out with the financial support from Science Engineering Research Board, Government of India (ECR/2016/001333). MS acknowledges the Institute of Eminence, University of Hyderabad (sanction no. UoH/IOE/RC1/RC1-20-014).  
610 We acknowledge the ~~effort~~work of Leslie Kremper, Marco Franco, Florian Ditas, Paulo Artaxo and Christopher Pöhlker, who collected and provided the observations at the ATTO tower. We additionally acknowledge the effort of Chao Yan and Xiaojing Shen for providing the ~~datasets for the ATTO tower,~~observational datasets from Beijing and Lin'an. The model simulations have been performed at the German Climate Computing Centre (DKRZ) through support from the Max Planck Society. Scientific colour maps (Crameri, 2021) are used in this study to prevent visual distortion of the data and exclusion of readers with colour vision deficiencies (Crameri et al., 2020).

## 615 References

- ACTRIS: ACTRIS Recommendation for mobility particle size spectrometer measurements, <https://www.actris-ecac.eu/pnsd-10-to-800nm.html>, 2021.
- Amann, M., Bertok, I., Borcken-Kleefeld, J., Cofala, J., Heyes, C., Höglund-Isaksson, L., Klimont, Z., Nguyen, B., Posch, M., Rafaj, P., Sandler, R., Schöpp, W., Wagner, F., and Winiwarter, W.: Cost-effective control of air quality and greenhouse gases in Europe: Modeling and policy applications, *Environmental Modelling & Software*, 26, 1489–1501, <https://doi.org/10.1016/j.envsoft.2011.07.012>, 2011.
- 620 Andreae, M. O.: Correlation between cloud condensation nuclei concentration and aerosol optical thickness in remote and polluted regions, *Atmospheric Chemistry and Physics*, 9, 543–556, <https://doi.org/10.5194/acp-9-543-2009>, 2009.
- Andreae, M. O.: Emission of trace gases and aerosols from biomass burning – an updated assessment, *Atmospheric Chemistry and Physics*, 19, 8523–8546, <https://doi.org/10.5194/acp-19-8523-2019>, 2019.
- 625 Andreae, M. O., Afchine, A., Albrecht, R., Holanda, B. A., Artaxo, P., Barbosa, H. M. J., Borrmann, S., Cecchini, M. A., Costa, A., Dollner, M., Fütterer, D., Järvinen, E., Jurkat, T., Klimach, T., Konemann, T., Knote, C., Krämer, M., Krisna, T., Machado, L. A. T., Mertes, S., Minikin, A., Pöhlker, C., Pöhlker, M. L., Pöschl, U., Rosenfeld, D., Sauer, D., Schlager, H., Schnaiter, M., Schneider, J., Schulz, C., Spanu, A., Sperling, V. B., Voigt, C., Walser, A., Wang, J., Weinzierl, B., Wendisch, M., and Ziereis, H.: Aerosol characteristics and particle production in the upper troposphere over the Amazon Basin, *Atmospheric Chemistry and Physics*, 18, 921–961, [https://doi.org/10.5194/acp-](https://doi.org/10.5194/acp-18-921-2018)
- 630 18-921-2018, 2018.
- Baldauf, R. W., Devlin, R. B., Gehr, P., Giannelli, R., Hassett-Sipple, B., Jung, H., Martini, G., McDonald, J., Sacks, J. D., and Walker, K.: Ultrafine Particle Metrics and Research Considerations: Review of the 2015 UFP Workshop, *International Journal of Environmental Research and Public Health*, 13, <https://doi.org/10.3390/ijerph13111054>, 2016.
- Bellouin, N., Quaas, J., Gryspeerdt, E., Kinne, S., Stier, P., Watson-Parris, D., Boucher, O., Carslaw, K. S., Christensen, M., Daniau, A.-L., Dufresne, J.-L., Feingold, G., Fiedler, S., Forster, P., Gettelman, A., Haywood, J. M., Lohmann, U., Malavelle, F., Mauritsen, T., McCoy, D. T., Myhre, G., Mülmenstädt, J., Neubauer, D., Possner, A., Rugenstein, M., Sato, Y., Schulz, M., Schwartz, S. E., Sourdeval, O., Storelvmo, T., Toll, V., Winker, D., and Stevens, B.: Bounding Global Aerosol Radiative Forcing of Climate Change, *Reviews of Geophysics*, 58, e2019RG000660, <https://doi.org/10.1029/2019RG000660>, 2020.
- Berrisford, P., Dee, D., Poli, P., Brugge, R., Fielding, M., Fuentes, M., Kållberg, P., Kobayashi, S., Uppala, S., and Simmons, A.: The ERA-Interim archive Version 2.0, Tech. Rep. 1, ECMWF, Shinfield Park, Reading, <https://www.ecmwf.int/node/8174>, 2011.
- 640 Brock, C., Kupc, A., Williamson, C., Froyd, K., Erdesz, F., Murphy, D., Schill, G., Gesler, D., McLaughlin, R., Richardson, M., Wagner, N., and Wilson, J.: ATom: L2 In Situ Measurements of Aerosol Microphysical Properties (AMP), <https://doi.org/10.3334/ORNLDAAC/1671>, 2019.
- Burnett, R. T., Pope, C. A., Ezzati, M., Olives, C., Lim, S. S., Mehta, S., Shin, H. H., Singh, G., Hubbell, B., Brauer, M., Anderson, H. R., Smith, K. R., Balmes, J. R., Bruce, N. G., Kan, H., Laden, F., Prüss-Ustün, A., Turner, M. C., Gapstur, S. M., Diver, W. R., and Cohen, A.: An Integrated Risk Function for Estimating the Global Burden of Disease Attributable to Ambient Fine Particulate Matter Exposure, *Environmental Health Perspectives*, 122, 397–403, <https://doi.org/10.1289/ehp.1307049>, 2014.
- 645 CEN/TC 264/WG 32 - Air quality - Determination of the particle number concentration: CEN/TS 16976:2016: Ambient air - Determination of the particle number concentration of atmospheric aerosol, <https://standards.iteh.ai/catalog/standards/cen/91f1ac67-f6d6-408c-af89-e81763194fd3/cen-ts-16976-2016>, 2016.
- 650

- CEN/TC 264/WG 32 - Air quality - Determination of the particle number concentration: CEN/TS 17434:2020: Ambient air - Determination of the particle number size distribution of atmospheric aerosol using a Mobility Particle Size Spectrometer (MPSS), <https://standards.iteh.ai/catalog/standards/cen/a841bc08-ed34-4fa8-94ca-8c5e07b99db9/cen-ts-17434-2020>, 2020.
- 655 Chen, X., Yu, F., Yang, W., Sun, Y., Chen, H., Du, W., Zhao, J., Wei, Y., Wei, L., Du, H., Wang, Z., Wu, Q., Li, J., An, J., and Wang, Z.: Global–regional nested simulation of particle number concentration by combing microphysical processes with an evolving organic aerosol module, *Atmospheric Chemistry and Physics*, 21, 9343–9366, <https://doi.org/10.5194/acp-21-9343-2021>, 2021.
- Chowdhury, S., Pozzer, A., Haines, A., Klingmüller, K., Münzel, T., Paasonen, P., Sharma, A., Venkataraman, C., and Lelieveld, J.: Global health burden of ambient PM<sub>2.5</sub> and the contribution of anthropogenic black carbon and organic aerosols, *Environment International*, 159, 107 020, <https://doi.org/10.1016/j.envint.2021.107020>, 2022.
- 660 Christensen, M. W., Jones, W. K., and Stier, P.: Aerosols enhance cloud lifetime and brightness along the stratus-to-cumulus transition, *Proceedings of the National Academy of Sciences*, 117, 17 591–17 598, <https://doi.org/10.1073/pnas.1921231117>, 2020.
- CIESIN - Center for International Earth Science Information Network: Gridded Population of the World, Version 4 (GPWv4): Population Density Adjusted to Match 2015 Revision UN WPP Country Totals, Revision 11, <https://doi.org/10.7927/H4F47M65>, 2018.
- Cohen, A. J., Ross Anderson, H., Ostro, B., Pandey, K. D., Krzyzanowski, M., Künzli, N., Gutschmidt, K., Pope, A., Romieu, I., Samet, J. M., et al.: The global burden of disease due to outdoor air pollution, *Journal of Toxicology and Environmental Health, Part A*, 68, 1301–1307, <https://doi.org/10.1080/15287390590936166>, 2005.
- Cramer, F.: Scientific colour maps, <https://doi.org/10.5281/zenodo.5501399>, 2021.
- Cramer, F., Shephard, G. E., and Heron, P. J.: The misuse of colour in science communication, *Nature communications*, 11, 1–10, <https://doi.org/10.1038/s41467-020-19160-7>, 2020.
- 670 Crippa, M., Solazzo, E., Huang, G., Guizzardi, D., Koffi, E., Muntean, M., Schieberle, C., Friedrich, R., and Janssens-Maenhout, G.: High resolution temporal profiles in the Emissions Database for Global Atmospheric Research, *Scientific data*, 7, 1–17, <https://doi.org/10.1038/s41597-020-0462-2>, 2020.
- Crippa, M., Guizzardi, D., Muntean, M., Schaaf, E., Monforti-Ferrario, F., Banja, M., Pagani, F., and Solazzo, E.: EDGAR v6.1 global air pollutant emissions, [https://edgar.jrc.ec.europa.eu/index.php/dataset\\_ap61](https://edgar.jrc.ec.europa.eu/index.php/dataset_ap61), 2022.
- 675 Curtius, J.: Nucleation of atmospheric aerosol particles, *Comptes Rendus Physique*, 7, 1027–1045, <https://doi.org/10.1016/j.crhy.2006.10.018>, 2006.
- d’Almeida, G. A.: On the variability of desert aerosol radiative characteristics, *Journal of Geophysical Research: Atmospheres*, 92, 3017–3026, <https://doi.org/10.1029/JD092iD03p03017>, 1987.
- Delfino, R. J., Sioutas, C., and Malik, S.: Potential Role of Ultrafine Particles in Associations between Airborne Particle Mass and Cardio-vascular Health, *Environmental Health Perspectives*, 113, 934–946, <https://doi.org/10.1289/ehp.7938>, 2005.
- 680 Dentener, F., Kinne, S., Bond, T., Boucher, O., Cofala, J., Generoso, S., Ginoux, P., Gong, S., Hoelzemann, J. J., Ito, A., Marelli, L., Penner, J. E., Putaud, J.-P., Textor, C., Schulz, M., van der Werf, G. R., and Wilson, J.: Emissions of primary aerosol and precursor gases in the years 2000 and 1750 prescribed data-sets for AeroCom, *Atmospheric Chemistry and Physics*, 6, 4321–4344, <https://doi.org/10.5194/acp-6-4321-2006>, 2006.
- 685 Diesch, J.-M., Drewnick, F., Klimach, T., and Borrmann, S.: Investigation of gaseous and particulate emissions from various marine vessel types measured on the banks of the Elbe in Northern Germany, *Atmospheric Chemistry and Physics*, 13, 3603–3618, <https://doi.org/10.5194/acp-13-3603-2013>, 2013.



- Downward, G. S., van Nunen, E. J., Kerckhoffs, J., Vineis, P., Brunekreef, B., Boer, J. M., Messier, K. P., Roy, A., Verschuren, W. M. M., van der Schouw, Y. T., et al.: Long-term exposure to ultrafine particles and incidence of cardiovascular and cerebrovascular disease in a prospective study of a Dutch cohort, *Environmental Health Perspectives*, 126, 127007, <https://doi.org/10.1289/EHP3047>, 2018.
- 690 Du, W., Zhao, J., Wang, Y., Zhang, Y., Wang, Q., Xu, W., Chen, C., Han, T., Zhang, F., Li, Z., Fu, P., Li, J., Wang, Z., and Sun, Y.: Simultaneous measurements of particle number size distributions at ground level and 260 m on a meteorological tower in urban Beijing, China, *Atmospheric Chemistry and Physics*, 17, 6797–6811, <https://doi.org/10.5194/acp-17-6797-2017>, 2017.
- Dunne, E. M., Gordon, H., Kürten, A., Almeida, J., Duplissy, J., Williamson, C., Ortega, I. K., Pringle, K. J., Adamov, A., Baltensperger, U., 695 Barmet, P., Benduhn, F., Bianchi, F., Breitenlechner, M., Clarke, A., Curtius, J., Dommen, J., Donahue, N. M., Ehrhart, S., Flagan, R. C., Franchin, A., Guida, R., Hakala, J., Hansel, A., Heinritzi, M., Jokinen, T., Kangasluoma, J., Kirkby, J., Kulmala, M., Kupc, A., Lawler, M. J., Lehtipalo, K., Makhmutov, V., Mann, G., Mathot, S., Merikanto, J., Miettinen, P., Nenes, A., Onnela, A., Rap, A., Reddington, C. L. S., Riccobono, F., Richards, N. A. D., Rissanen, M. P., Rondo, L., Sarnela, N., Schobesberger, S., Sengupta, K., Simon, M., Sipilä, M., Smith, J. N., Stozkhov, Y., Tomé, A., Tröstl, J., Wagner, P. E., Wimmer, D., Winkler, P. M., Worsnop, D. R., and Carslaw, K. S.: Global 700 atmospheric particle formation from CERN CLOUD measurements, *Science*, 354, 1119–1124, <https://doi.org/10.1126/science.aaf2649>, 2016.
- Ehrhart, S., Dunne, E. M., Manninen, H. E., Nieminen, T., Lelieveld, J., and Pozzer, A.: Two new submodels for the Modular Earth Submodel System (MESSy): New Aerosol Nucleation (NAN) and small ions (IONS) version 1.0, *Geoscientific Model Development*, 11, 4987–5001, <https://doi.org/10.5194/gmd-11-4987-2018>, 2018.
- 705 Fountoukis, C., Riipinen, I., Denier van der Gon, H. A. C., Charalampidis, P. E., Pilinis, C., Wiedensohler, A., O’Dowd, C., Putaud, J. P., Moerman, M., and Pandis, S. N.: Simulating ultrafine particle formation in Europe using a regional CTM: contribution of primary emissions versus secondary formation to aerosol number concentrations, *Atmospheric Chemistry and Physics*, 12, 8663–8677, <https://doi.org/10.5194/acp-12-8663-2012>, 2012.
- Franco, M. A., Ditas, F., Kremper, L. A., Machado, L. A. T., Andreae, M. O., Araújo, A., Barbosa, H. M. J., de Brito, J. F., Carbone, S., 710 Holanda, B. A., Morais, F. G., Nascimento, J. P., Pöhlker, M. L., Rizzo, L. V., Sá, M., Saturno, J., Walter, D., Wolff, S., Pöschl, U., Artaxo, P., and Pöhlker, C.: Occurrence and growth of sub-50 nm aerosol particles in the Amazonian boundary layer, *Atmospheric Chemistry and Physics*, 22, 3469–3492, <https://doi.org/10.5194/acp-22-3469-2022>, 2022.
- Frohn, L. M., Ketzler, M., Christensen, J. H., Brandt, J., Im, U., Massling, A., Andersen, C., Plejdrup, M. S., Nielsen, O.-K., van der 715 Gon, H. D., Manders-Groot, A., and Raaschou-Nielsen, O.: Modelling ultrafine particle number concentrations at address resolution in Denmark from 1979–2018 – Part I: Regional and urban scale modelling and evaluation, *Atmospheric Environment*, 264, 118 631, <https://doi.org/https://doi.org/10.1016/j.atmosenv.2021.118631>, 2021.
- Gani, S., Bhandari, S., Patel, K., Seraj, S., Soni, P., Arub, Z., Habib, G., Hildebrandt Ruiz, L., and Apte, J. S.: Particle number concentrations and size distribution in a polluted megacity: the Delhi Aerosol Supersite study, *Atmospheric Chemistry and Physics*, 20, 8533–8549, <https://doi.org/10.5194/acp-20-8533-2020>, 2020.
- 720 Gordon, H., Kirkby, J., Baltensperger, U., Bianchi, F., Breitenlechner, M., Curtius, J., Dias, A., Dommen, J., Donahue, N. M., Dunne, E. M., Duplissy, J., Ehrhart, S., Flagan, R. C., Frege, C., Fuchs, C., Hansel, A., Hoyle, C. R., Kulmala, M., Kürten, A., Lehtipalo, K., Makhmutov, V., Molteni, U., Rissanen, M. P., Stozkhov, Y., Tröstl, J., Tsagkogeorgas, G., Wagner, R., Williamson, C., Wimmer, D., Winkler, P. M., Yan, C., and Carslaw, K. S.: Causes and importance of new particle formation in the present-day and preindustrial atmospheres, *Journal of Geophysical Research: Atmospheres*, 122, 8739–8760, <https://doi.org/10.1002/2017JD026844>, 2017.

- 725 Granier, C., Darras, S., Denier van der Gon, H., Doubalova, J., Elguindi, N., Galle, B., Gauss, M., Guevara, M., Jalkanen, J.-P., Kuenen, J., Liousse, C., Quack, B., Simpson, D., and Sindelarova, K.: The Copernicus Atmosphere Monitoring Service global and regional emissions (April 2019 version), Copernicus Atmosphere Monitoring Service (CAMS) report, <https://doi.org/10.24380/d0bn-kx16>, 2019.
- Guelle, W., Schulz, M., Balkanski, Y., and Dentener, F.: Influence of the source formulation on modeling the atmospheric global distribution of sea salt aerosol, *Journal of Geophysical Research: Atmospheres*, 106, 27 509–27 524, <https://doi.org/10.1029/2001JD900249>, 2001.
- 730 Harrison, R. M., Beddows, D. C. S., Alam, M. S., Singh, A., Breat, J., Xu, R., Kotthaus, S., and Grimmond, S.: Interpretation of particle number size distributions measured across an urban area during the FASTER campaign, *Atmospheric Chemistry and Physics*, 19, 39–55, <https://doi.org/10.5194/acp-19-39-2019>, 2019.
- Heintzenberg, J., Birmili, W., Otto, R., Andreae, M. O., Mayer, J.-C., Chi, X., and Panov, A.: Aerosol particle number size distributions and particulate light absorption at the ZOTTO tall tower (Siberia), 2006–2009, *Atmospheric Chemistry and Physics*, 11, 8703–8719, <https://doi.org/10.5194/acp-11-8703-2011>, 2011.
- 735 Hoesly, R. M., Smith, S. J., Feng, L., Klimont, Z., Janssens-Maenhout, G., Pitkanen, T., Seibert, J. J., Vu, L., Andres, R. J., Bolt, R. M., Bond, T. C., Dawidowski, L., Kholod, N., Kurokawa, J.-I., Li, M., Liu, L., Lu, Z., Moura, M. C. P., O'Rourke, P. R., and Zhang, Q.: Historical (1750–2014) anthropogenic emissions of reactive gases and aerosols from the Community Emissions Data System (CEDS), *Geoscientific Model Development*, 11, 369–408, <https://doi.org/10.5194/gmd-11-369-2018>, 2018.
- 740 Hong, G. and Jee, Y.-K.: Special issue on ultrafine particles: where are they from and how do they affect us?, *Exp. Mol. Med.*, 52, 309–310, <https://doi.org/10.1038/s12276-020-0395-z>, 2020.
- Janhäll, S., Andreae, M. O., and Pöschl, U.: Biomass burning aerosol emissions from vegetation fires: particle number and mass emission factors and size distributions, *Atmospheric Chemistry and Physics*, 10, 1427–1439, <https://doi.org/10.5194/acp-10-1427-2010>, 2010.
- Jeuken, A. B. M., Siegmund, P. C., Heijboer, L. C., Feichter, J., and Bengtsson, L.: On the potential of assimilating meteorological analyses in a global climate model for the purpose of model validation, *Journal of Geophysical Research: Atmospheres*, 101, 16 939–16 950, <https://doi.org/10.1029/96JD01218>, 1996.
- 745 Jöckel, P., Tost, H., Pozzer, A., Brühl, C., Buchholz, J., Ganzeveld, L., Hoor, P., Kerkweg, A., Lawrence, M. G., Sander, R., Steil, B., Stiller, G., Tanarhte, M., Taraborrelli, D., van Aardenne, J., and Lelieveld, J.: The atmospheric chemistry general circulation model ECHAM5/MESSy1: consistent simulation of ozone from the surface to the mesosphere, *Atmospheric Chemistry and Physics*, 6, 5067–5104, <https://doi.org/10.5194/acp-6-5067-2006>, 2006.
- 750 Jöckel, P., Kerkweg, A., Pozzer, A., Sander, R., Tost, H., Riede, H., Baumgaertner, A., Gromov, S., and Kern, B.: Development cycle 2 of the Modular Earth Submodel System (MESSy2), *Geoscientific Model Development*, 3, 717–752, <https://doi.org/10.5194/gmd-3-717-2010>, 2010.
- Karner, A. A., Eisinger, D. S., and Niemeier, D. A.: Near-Roadway Air Quality: Synthesizing the Findings from Real-World Data, *Environmental Science & Technology*, 44, 5334–5344, <https://doi.org/10.1021/es100008x>, PMID: 20560612, 2010.
- 755 Kasper, A., Aufdenblatten, S., Forss, A., Mohr, M., and Burtscher, H.: Particulate Emissions from a Low-Speed Marine Diesel Engine, *Aerosol Science and Technology*, 41, 24–32, <https://doi.org/10.1080/02786820601055392>, 2007.
- Kerkweg, A., Sander, R., Tost, H., and Jöckel, P.: Technical note: Implementation of prescribed (OFFLEM), calculated (ONLEM), and pseudo-emissions (TNUDGE) of chemical species in the Modular Earth Submodel System (MESSy), *Atmospheric Chemistry and Physics*, 6, 3603–3609, <https://doi.org/10.5194/acp-6-3603-2006>, 2006.
- 760 Ketzel, M., Frohn, L. M., Christensen, J. H., Brandt, J., Massling, A., Andersen, C., Im, U., Jensen, S. S., Khan, J., Nielsen, O.-K., Plejdrup, M. S., Manders, A., van der Gon, H. D., Kumar, P., and Raaschou-Nielsen, O.: Modelling ultrafine particle number concentrations at

- address resolution in Denmark from 1979 to 2018 - Part 2: Local and street scale modelling and evaluation, *Atmospheric Environment*, 264, 118 633, <https://doi.org/https://doi.org/10.1016/j.atmosenv.2021.118633>, 2021.
- 765 Kirkby, J., Curtius, J., Almeida, J., Dunne, E., Duplissy, J., Ehrhart, S., Franchin, A., Gagné, S., Ickes, L., Kürten, A., et al.: Role of sulphuric acid, ammonia and galactic cosmic rays in atmospheric aerosol nucleation, *Nature*, 476, 429–433, <https://doi.org/10.1038/nature10343>, 2011.
- Kirkby, J., Duplissy, J., Sengupta, K., Frege, C., Gordon, H., Williamson, C., Heinritzi, M., Simon, M., Yan, C., Almeida, J., et al.: Ion-induced nucleation of pure biogenic particles, *Nature*, 533, 521–526, <https://doi.org/10.1038/nature17953>, 2016.
- 770 Klingmüller, K., Metzger, S., Abdelkader, M., Karydis, V. A., Stenchikov, G. L., Pozzer, A., and Lelieveld, J.: Revised mineral dust emissions in the atmospheric chemistry–climate model EMAC (MESSy 2.52 DU\_Astitha1 KKDU2017 patch), *Geoscientific Model Development*, 11, 989–1008, <https://doi.org/10.5194/gmd-11-989-2018>, 2018.
- Kukkonen, J., Karl, M., Keuken, M. P., Denier van der Gon, H. A. C., Denby, B. R., Singh, V., Douros, J., Manders, A., Samaras, Z., Mousiopoulos, N., Jonkers, S., Aarnio, M., Karppinen, A., Kangas, L., Lützenkirchen, S., Petäjä, T., Vouitsis, I., and Sokhi, R. S.: Modelling the dispersion of particle numbers in five European cities, *Geoscientific Model Development*, 9, 451–478, <https://doi.org/10.5194/gmd-9-451-2016>, 2016.
- 775 Kulmala, M., Vehkamäki, H., Petäjä, T., Dal Maso, M., Lauri, A., Kerminen, V.-M., Birmili, W., and McMurry, P.: Formation and growth rates of ultrafine atmospheric particles: a review of observations, *Journal of Aerosol Science*, 35, 143–176, <https://doi.org/10.1016/j.jaerosci.2003.10.003>, 2004.
- 780 Kumar, P., Morawska, L., Birmili, W., Paasonen, P., Hu, M., Kulmala, M., Harrison, R. M., Norford, L., and Britter, R.: Ultrafine particles in cities, *Environment International*, 66, 1–10, <https://doi.org/https://doi.org/10.1016/j.envint.2014.01.013>, 2014.
- Kwon, H.-S., Ryu, M. H., and Carlsten, C.: Ultrafine particles: unique physicochemical properties relevant to health and disease, *Experimental & molecular medicine*, 52, 318–328, <https://doi.org/10.1038/s12276-020-0405-1>, 2020.
- Lelieveld, J., Evans, J. S., Fnais, M., Giannadaki, D., and Pozzer, A.: The contribution of outdoor air pollution sources to premature mortality on a global scale, *Nature*, 525, 367–371, <https://doi.org/10.1038/nature15371>, 2015.
- 785 Lelieveld, J., Klingmüller, K., Pozzer, A., Burnett, R. T., Haines, A., and Ramanathan, V.: Effects of fossil fuel and total anthropogenic emission removal on public health and climate, *Proceedings of the National Academy of Sciences*, 116, 7192–7197, <https://doi.org/10.1073/pnas.1819989116>, 2019.
- Lelieveld, J., Pozzer, A., Pöschl, U., Fnais, M., Haines, A., and Münzel, T.: Loss of life expectancy from air pollution compared to other risk factors: a worldwide perspective, *Cardiovascular Research*, 116, 1910–1917, <https://doi.org/10.1093/cvr/cvaa025>, 2020.
- 790 Li, G., Su, H., Ma, N., Tao, J., Kuang, Y., Wang, Q., Hong, J., Zhang, Y., Kuhn, U., Zhang, S., Pan, X., Lu, N., Tang, M., Zheng, G., Wang, Z., Gao, Y., Cheng, P., Xu, W., Zhou, G., Zhao, C., Yuan, B., Shao, M., Ding, A., Zhang, Q., Fu, P., Sun, Y., Pöschl, U., and Cheng, Y.: Multiphase chemistry experiment in Fogs and Aerosols in the North China Plain (McFAN): integrated analysis and intensive winter campaign 2018, *Faraday Discuss.*, 226, 207–222, <https://doi.org/10.1039/D0FD00099J>, 2021.
- 795 Liu, M. and Matsui, H.: Secondary Organic Aerosol Formation Regulates Cloud Condensation Nuclei in the Global Remote Troposphere, *Geophysical Research Letters*, 49, e2022GL100 543, <https://doi.org/https://doi.org/10.1029/2022GL100543>, e2022GL100543 2022GL100543, 2022.
- Liu, Y., Yan, C., Feng, Z., Zheng, F., Fan, X., Zhang, Y., Li, C., Zhou, Y., Lin, Z., Guo, Y., Zhang, Y., Ma, L., Zhou, W., Liu, Z., Dada, L., Dällenbach, K., Kontkanen, J., Cai, R., Chan, T., Chu, B., Du, W., Yao, L., Wang, Y., Cai, J., Kangasluoma, J., Kokkonen, T., Kujansuu, J., Rusanen, A., Deng, C., Fu, Y., Yin, R., Li, X., Lu, Y., Liu, Y., Lian, C., Yang, D., Wang, W., Ge, M., Wang, Y., Worsnop, D. R., Junninen,
- 800

- H., He, H., Kerminen, V.-M., Zheng, J., Wang, L., Jiang, J., Petäjä, T., Bianchi, F., and Kulmala, M.: Continuous and comprehensive atmospheric observations in Beijing: a station to understand the complex urban atmospheric environment, *Big Earth Data*, 4, 295–321, <https://doi.org/10.1080/20964471.2020.1798707>, 2020.
- 805 Lohmann, U. and Feichter, J.: Global indirect aerosol effects: a review, *Atmospheric Chemistry and Physics*, 5, 715–737, <https://doi.org/10.5194/acp-5-715-2005>, 2005.
- Lu, X., Zhang, S., Xing, J., Wang, Y., Chen, W., Ding, D., Wu, Y., Wang, S., Duan, L., and Hao, J.: Progress of Air Pollution Control in China and Its Challenges and Opportunities in the Ecological Civilization Era, *Engineering*, 6, 1423–1431, <https://doi.org/10.1016/j.eng.2020.03.014>, 2020.
- 810 McDuffie, E. E., Smith, S. J., O'Rourke, P., Tibrewal, K., Venkataraman, C., Marais, E. A., Zheng, B., Crippa, M., Brauer, M., and Martin, R. V.: A global anthropogenic emission inventory of atmospheric pollutants from sector- and fuel-specific sources (1970–2017): an application of the Community Emissions Data System (CEDS), *Earth System Science Data*, 12, 3413–3442, <https://doi.org/10.5194/essd-12-3413-2020>, 2020.
- Monahan, E. C.: *The Ocean as a Source for Atmospheric Particles*, pp. 129–163, Springer Netherlands, Dordrecht, [https://doi.org/10.1007/978-94-009-4738-2\\_6](https://doi.org/10.1007/978-94-009-4738-2_6), 1986.
- 815 Murray, C. J., Aravkin, A. Y., Zheng, P., Abbafati, C., Abbas, K. M., Abbasi-Kangevari, M., Abd-Allah, F., Abdelalim, A., Abdollahi, M., Abdollahpour, I., et al.: Global burden of 87 risk factors in 204 countries and territories, 1990–2019: a systematic analysis for the Global Burden of Disease Study 2019, *The Lancet*, 396, 1223–1249, [https://doi.org/10.1016/S0140-6736\(20\)30752-2](https://doi.org/10.1016/S0140-6736(20)30752-2), 2020.
- Paasonen, P., Kupiainen, K., Klimont, Z., Visschedijk, A., Denier van der Gon, H. A. C., and Amann, M.: Continental anthropogenic primary particle number emissions, *Atmospheric Chemistry and Physics*, 16, 6823–6840, <https://doi.org/10.5194/acp-16-6823-2016>, 2016.
- 820 Pan, X., Ichoku, C., Chin, M., Bian, H., Darmenov, A., Colarco, P., Ellison, L., Kucsera, T., da Silva, A., Wang, J., Oda, T., and Cui, G.: Six global biomass burning emission datasets: intercomparison and application in one global aerosol model, *Atmospheric Chemistry and Physics*, 20, 969–994, <https://doi.org/10.5194/acp-20-969-2020>, 2020.
- Petzold, A. and Schröder, F. P.: Jet Engine Exhaust Aerosol Characterization, *Aerosol Science and Technology*, 28, 62–76, <https://doi.org/10.1080/02786829808965512>, 1998.
- 825 Petzold, A., Stein, C., Nyeki, S., Gysel, M., Weingartner, E., Baltensperger, U., Giebl, H., Hitzenberger, R., Döpelheuer, A., Vrchoticky, S., Puxbaum, H., Johnson, M., Hurley, C. D., Marsh, R., and Wilson, C. W.: Properties of jet engine combustion particles during the PartEmis experiment: Microphysics and Chemistry, *Geophysical Research Letters*, 30, <https://doi.org/10.1029/2003GL017283>, 2003.
- Petzold, A., Hasselbach, J., Lauer, P., Baumann, R., Franke, K., Gurk, C., Schlager, H., and Weingartner, E.: Experimental studies on particle emissions from cruising ship, their characteristic properties, transformation and atmospheric lifetime in the marine boundary layer, *Atmospheric Chemistry and Physics*, 8, 2387–2403, <https://doi.org/10.5194/acp-8-2387-2008>, 2008.
- 830 Pope, C. A. and Dockery, D. W.: Health Effects of Fine Particulate Air Pollution: Lines that Connect, *Journal of the Air & Waste Management Association*, 56, 709–742, <https://doi.org/10.1080/10473289.2006.10464485>, 2006.
- Pöschl, U., von Kuhlmann, R., Poisson, N., and Crutzen, P. J.: Development and intercomparison of condensed isoprene oxidation mechanisms for global atmospheric modeling, *Journal of Atmospheric Chemistry*, 37, 29–52, <https://doi.org/10.1023/A:1006391009798>, 2000.
- 835 Pozzer, A., Jöckel, P., and Van Aardenne, J.: The influence of the vertical distribution of emissions on tropospheric chemistry, *Atmospheric Chemistry and Physics*, 9, 9417–9432, <https://doi.org/10.5194/acp-9-9417-2009>, 2009.

- Pozzer, A., de Meij, A., Pringle, K. J., Tost, H., Doering, U. M., van Aardenne, J., and Lelieveld, J.: Distributions and regional budgets of aerosols and their precursors simulated with the EMAC chemistry-climate model, *Atmospheric Chemistry and Physics*, 12, 961–987, <https://doi.org/10.5194/acp-12-961-2012>, 2012.
- 840 Pozzer, A., de Meij, A., Yoon, J., Tost, H., Georgoulias, A. K., and Astitha, M.: AOD trends during 2001–2010 from observations and model simulations, *Atmospheric Chemistry and Physics*, 15, 5521–5535, <https://doi.org/10.5194/acp-15-5521-2015>, 2015.
- Pozzer, A., Reifenberg, S. F., Kumar, V., Franco, B., Kohl, M., Taraborrelli, D., Gromov, S., Ehrhart, S., Jöckel, P., Sander, R., Fall, V., Rosanka, S., Karydis, V., Akritidis, D., Emmerichs, T., Crippa, M., Guizzardi, D., Kaiser, J. W., Clarisse, L., Kiendler-Scharr, A., Tost, H., and Tsimpidi, A.: Simulation of organics in the atmosphere: evaluation of EMACv2.54 with the Mainz Organic Mechanism (MOM) coupled to the ORACLE (v1.0) submodel, *Geoscientific Model Development*, 15, 2673–2710, <https://doi.org/10.5194/gmd-15-2673-2022>, 2022.
- 845 Pringle, K. J., Tost, H., Metzger, S., Steil, B., Giannadaki, D., Nenes, A., Fountoukis, C., Stier, P., Vignati, E., and Lelieveld, J.: Description and evaluation of GMXc: a new aerosol submodel for global simulations (v1), *Geosci. Model Dev.*, 3, 391–412, <https://doi.org/10.5194/gmd-3-391-2010>, 2010.
- 850 Reid, J. S., Koppmann, R., Eck, T. F., and Eleuterio, D. P.: A review of biomass burning emissions part II: intensive physical properties of biomass burning particles, *Atmospheric Chemistry and Physics*, 5, 799–825, <https://doi.org/10.5194/acp-5-799-2005>, 2005.
- Riccobono, F., Schobesberger, S., Scott, C. E., Dommen, J., Ortega, I. K., Rondo, L., Almeida, J., Amorim, A., Bianchi, F., Breitenlechner, M., David, A., Downard, A., Dunne, E. M., Duplissy, J., Ehrhart, S., Flagan, R. C., Franchin, A., Hansel, A., Junninen, H., Kajos, M., Keskinen, H., Kupc, A., Kürten, A., Kvashin, A. N., Laaksonen, A., Lehtipalo, K., Makhmutov, V., Mathot, S., Nieminen, T., Onnela, A., Petäjä, T., Praplan, A. P., Santos, F. D., Schallhart, S., Seinfeld, J. H., Sipilä, M., Spracklen, D. V., Stozhkov, Y., Stratmann, F., Tomé, A., Tsigogeorgas, G., Vaattovaara, P., Viisanen, Y., Vrtala, A., Wagner, P. E., Weingartner, E., Wex, H., Wimmer, D., Carslaw, K. S., Curtius, J., Donahue, N. M., Kirkby, J., Kulmala, M., Worsnop, D. R., and Baltensperger, U.: Oxidation Products of Biogenic Emissions Contribute to Nucleation of Atmospheric Particles, *Science*, 344, 717–721, <https://doi.org/10.1126/science.1243527>, 2014.
- 855 Roeckner, E., Bäuml, G., Bonaventura, L., Brokopf, R., Esch, M., Giorgetta, M., Hagemann, S., Kirchner, I., Kornblüeh, L., Manzini, E., et al.: The atmospheric general circulation model ECHAM 5. PART I: Model description, Tech. rep., Max-Planck-Institut für Meteorologie, <https://doi.org/10.17617/2.995269>, 2003.
- 860 Rose, C., Collaud Coen, M., Andrews, E., Lin, Y., Bossert, I., Lund Myhre, C., Tuch, T., Wiedensohler, A., Fiebig, M., Aalto, P., Alastuey, A., Alonso-Blanco, E., Andrade, M., Artíñano, B., Arsov, T., Baltensperger, U., Bastian, S., Bath, O., Beukes, J. P., Brem, B. T., Bukowiecki, N., Casquero-Vera, J. A., Conil, S., Eleftheriadis, K., Favez, O., Flentje, H., Gini, M. I., Gómez-Moreno, F. J., Gysel-Beer, M., Hallar, A. G., Kalapov, I., Kalivitis, N., Kasper-Giebl, A., Keywood, M., Kim, J. E., Kim, S.-W., Kristensson, A., Kulmala, M., Lihavainen, H., Lin, N.-H., Lyamani, H., Marinoni, A., Martins Dos Santos, S., Mayol-Bracero, O. L., Meinhardt, F., Merkel, M., Metzger, J.-M., Mihalopoulos, N., Ondracek, J., Pandolfi, M., Pérez, N., Petäjä, T., Petit, J.-E., Picard, D., Pichon, J.-M., Pont, V., Putaud, J.-P., Reisen, F., Sellegri, K., Sharma, S., Schauer, G., Sheridan, P., Sherman, J. P., Schwerin, A., Sohmer, R., Sorribas, M., Sun, J., Tulet, P., Vakkari, V., van Zyl, P. G., Velarde, F., Villani, P., Vratolis, S., Wagner, Z., Wang, S.-H., Weinhold, K., Weller, R., Yela, M., Zdimal, V., and Laj, P.: Seasonality of the particle number concentration and size distribution: a global analysis retrieved from the network of Global Atmosphere Watch (GAW) near-surface observatories, *Atmospheric Chemistry and Physics*, 21, 17 185–17 223, <https://doi.org/10.5194/acp-21-17185-2021>, 2021.
- 870

- Saha, P. K., Hankey, S., Marshall, J. D., Robinson, A. L., and Presto, A. A.: High-Spatial-Resolution Estimates of Ultrafine Particle Concentrations across the Continental United States, *Environmental Science & Technology*, 55, 10320–10331, <https://doi.org/10.1021/acs.est.1c03237>, 2021.
- 875
- Salma, I., Borsós, T., Németh, Z., Weidinger, T., Aalto, P., and Kulmala, M.: Comparative study of ultrafine atmospheric aerosol within a city, *Atmospheric Environment*, 92, 154–161, <https://doi.org/10.1016/j.atmosenv.2014.04.020>, 2014.
- Sander, R., Baumgaertner, A., Cabrera-Perez, D., Frank, F., Gromov, S., Grooß, J.-U., Harder, H., Huijnen, V., Jöckel, P., Karydis, V. A., Niemeyer, K. E., Pozzer, A., Riede, H., Schultz, M. G., Taraborrelli, D., and Tauer, S.: The community atmospheric chemistry box model CAABA/MECCA-4.0, *Geoscientific Model Development*, 12, 1365–1385, <https://doi.org/10.5194/gmd-12-1365-2019>, 2019.
- 880
- Schraufnagel, D. E.: The health effects of ultrafine particles, *Exp. Mol. Med.*, 52, 311–317, <https://doi.org/10.1038/s12276-020-0403-3>, 2020.
- Schraufnagel, D. E., Balmes, J. R., Cowl, C. T., De Matteis, S., Jung, S.-H., Mortimer, K., Perez-Padilla, R., Rice, M. B., Riojas-Rodriguez, H., Sood, A., Thurston, G. D., To, T., Vanker, A., and Wuebbles, D. J.: Air Pollution and Noncommunicable Diseases: A Review by the Forum of International Respiratory Societies' Environmental Committee, Part 2: Air Pollution and Organ Systems, *Chest*, 155, 417–426, <https://doi.org/10.1016/j.chest.2018.10.041>, 2019.
- 885
- Schutgens, N., Tsyro, S., Gryspeerd, E., Goto, D., Weigum, N., Schulz, M., and Stier, P.: On the spatio-temporal representativeness of observations, *Atmospheric Chemistry and Physics*, 17, 9761–9780, <https://doi.org/10.5194/acp-17-9761-2017>, 2017.
- Sebastian, M., Kompalli, S. K., Kumar, V. A., Jose, S., Babu, S. S., Pandithurai, G., Singh, S., Hooda, R. K., Soni, V. K., Pierce, J. R., Vakkari, V., Asmi, E., Westervelt, D. M., Hyvärinen, A.-P., and Kanawade, V. P.: Observations of particle number size distributions and new particle formation in six Indian locations, *Atmospheric Chemistry and Physics*, 22, 4491–4508, <https://doi.org/10.5194/acp-22-4491-2022>, 2022.
- 890
- Seinfeld, J. H. and Pandis, S. N.: *Atmospheric chemistry and physics: from air pollution to climate change*, John Wiley & Sons, 2016.
- Shen, X., Sun, J., Ma, Q., Zhang, Y., Zhong, J., Yue, Y., Xia, C., Hu, X., Zhang, S., and Zhang, X.: Long-term trend of new particle formation events in the Yangtze River Delta, China and its influencing factors: 7-year dataset analysis, *Science of The Total Environment*, 807, 150783, <https://doi.org/10.1016/j.scitotenv.2021.150783>, 2022.
- 895
- Stone, V., Miller, M. R., Clift, M. J., Elder, A., Mills, N. L., Møller, P., Schins, R. P., Vogel, U., Kreyling, W. G., Jensen, K. A., Kuhlbusch, T. A., Schwarze, P. E., Hoet, P., Pietrojusti, A., Vizcaya-Ruiz, A. D., Baeza-Squiban, A., Teixeira, J. P., Tran, C. L., and Cassee, F. R.: Nanomaterials Versus Ambient Ultrafine Particles: An Opportunity to Exchange Toxicology Knowledge, *Environmental Health Perspectives*, 125, 106002, <https://doi.org/10.1289/EHP424>, 2017.
- 900
- Thamban, N. M., Lalchandani, V., Kumar, V., Mishra, S., Bhattu, D., Slowik, J. G., Prevot, A. S., Satish, R., Rastogi, N., and Tripathi, S. N.: Evolution of size and composition of fine particulate matter in the Delhi megacity during later winter, *Atmospheric Environment*, 267, 118752, <https://doi.org/10.1016/j.atmosenv.2021.118752>, 2021.
- Tost, H., Jöckel, P., Kerkweg, A., Sander, R., and Lelieveld, J.: Technical note: A new comprehensive SCAVenging submodel for global atmospheric chemistry modelling, *Atmospheric Chemistry and Physics*, 6, 565–574, <https://doi.org/10.5194/acp-6-565-2006>, 2006.
- 905
- Trechera, P., Garcia-Marlès, M., Liu, X., Reche, C., Pérez, N., Savadkoobi, M., Beddows, D., Salma, I., Vörösmarty, M., Casans, A., Casquero-Vera, J. A., Hueglin, C., Marchand, N., Chazeau, B., Gille, G., Kalkavouras, P., Mihalopoulos, N., Ondracek, J., Zikova, N., Niemi, J. V., Manninen, H. E., Green, D. C., Tremper, A. H., Norman, M., Vratolis, S., Eleftheriadis, K., Gómez-Moreno, F. J., Alonso-Blanco, E., Gerwig, H., Wiedensohler, A., Weinhold, K., Merkel, M., Bastian, S., Petit, J.-E., Favez, O., Crumeyrolle, S., Ferlay, N., Martins Dos Santos, S., Putaud, J.-P., Timonen, H., Lampilahti, J., Asbach, C., Wolf, C., Kaminski, H., Al-  
tug, H., Hoffmann, B., Rich, D. Q., Pandolfi, M., Harrison, R. M., Hopke, P. K., Petäjä, T., Alastuey, A., and Querol, X.: Phe-
- 910

- nomenology of ultrafine particle concentrations and size distribution across urban Europe, *Environment International*, 172, 107744, <https://doi.org/https://doi.org/10.1016/j.envint.2023.107744>, 2023.
- 915 Tsimpidi, A. P., Karydis, V. A., Pozzer, A., Pandis, S. N., and Lelieveld, J.: ORACLE 2-D (v2.0): an efficient module to compute the volatility and oxygen content of organic aerosol with a global chemistry–climate model, *Geoscientific Model Development*, 11, 3369–3389, <https://doi.org/10.5194/gmd-11-3369-2018>, 2018.
- Twomey, S.: The nuclei of natural cloud formation part II: The supersaturation in natural clouds and the variation of cloud droplet concentration, *Geofisica Pura e Applicata*, 43, 243–249, <https://doi.org/10.1007/BF01993560>, 1959.
- Villa, T., Jayaratne, E., Gonzalez, L., and Morawska, L.: Determination of the vertical profile of particle number concentration adjacent to a motorway using an unmanned aerial vehicle, *Environmental Pollution*, 230, 134–142, <https://doi.org/https://doi.org/10.1016/j.envpol.2017.06.033>, 2017.
- 920 Wang, J., Krejci, R., Giangrande, S., Kuang, C., Barbosa, H. M., Brito, J., Carbone, S., Chi, X., Comstock, J., Ditas, F., et al.: Amazon boundary layer aerosol concentration sustained by vertical transport during rainfall, *Nature*, 539, 416–419, <https://doi.org/10.1038/nature19819>, 2016.
- Weigel, R., Mahnke, C., Baumgartner, M., Dragoneas, A., Vogel, B., Ploeger, F., Viciani, S., D’Amato, F., Bucci, S., Legras, B., Luo, B., and 925 Borrmann, S.: In situ observation of new particle formation (NPF) in the tropical tropopause layer of the 2017 Asian monsoon anticyclone – Part 1: Summary of StratoClim results, *Atmospheric Chemistry and Physics*, 21, 11 689–11 722, <https://doi.org/10.5194/acp-21-11689-2021>, 2021.
- WHO - World Health Organization. Occupational and Environmental Health Team: WHO Air quality guidelines for particulate matter, ozone, nitrogen dioxide and sulfur dioxide : global update 2005 : summary of risk assessment, 2006.
- 930 Williamson, C. J., Kupc, A., Axisa, D., Bilsback, K. R., Bui, T., Campuzano-Jost, P., Dollner, M., Froyd, K. D., Hodshire, A. L., Jimenez, J. L., et al.: A large source of cloud condensation nuclei from new particle formation in the tropics, *Nature*, 574, 399–403, <https://doi.org/10.1038/s41586-019-1638-9>, 2019.
- Wu, T. and Boor, B. E.: Urban aerosol size distributions: a global perspective, *Atmospheric Chemistry and Physics*, 21, 8883–8914, <https://doi.org/10.5194/acp-21-8883-2021>, 2021.
- 935 Wu, Z., Hu, M., Lin, P., Liu, S., Wehner, B., and Wiedensohler, A.: Particle number size distribution in the urban atmosphere of Beijing, China, *Atmospheric Environment*, 42, 7967–7980, <https://doi.org/10.1016/j.atmosenv.2008.06.022>, 2008.
- Zeng, Y., Cao, Y., Qiao, X., Seyler, B. C., and Tang, Y.: Air pollution reduction in China: Recent success but great challenge for the future, *Science of The Total Environment*, 663, 329–337, <https://doi.org/10.1016/j.scitotenv.2019.01.262>, 2019.
- 940 Zhao, B., Shrivastava, M., Donahue, N. M., Gordon, H., Schervish, M., Shilling, J. E., Zaveri, R. A., Wang, J., Andreae, M. O., Zhao, C., Gaudet, B., Liu, Y., Fan, J., and Fast, J. D.: High concentration of ultrafine particles in the Amazon free troposphere produced by organic new particle formation, *Proceedings of the National Academy of Sciences*, 117, 25 344–25 351, <https://doi.org/10.1073/pnas.2006716117>, 2020.