

Cloud optical and physical properties retrieval from EarthCARE multi-spectral imager: the M-COP products

Anja Hünerbein¹, Sebastian Bley¹, Hartwig Deneke¹, Jan Fokke Meirink², Gerd-Jan van Zadelhoff², and Andi Walther³

¹Leibniz Institute for Tropospheric Research, Leipzig, Germany

²Royal Netherlands Meteorological Institute, De Bilt, The Netherlands

³Cooperative Institute for Meteorological Satellite Studies, University of Wisconsin-Madison, Madison, United States

Correspondence: Anja Hünerbein (anjah@tropos.de)

Abstract. ESA's Cloud, Aerosol and Radiation Explorer EarthCARE is the first mission that will provide measurements from active profiling, passive imaging and a broad-band radiometer from a single satellite platform. The passive multi-spectral imager (MSI) features four solar and three thermal infrared channels, and has a swath of 150 km and a spatial pixel resolution of 500 m. The MSI observations will provide across-track information on clouds and aerosol to extend the active profiling information into the swath. In this paper, we present the algorithm used for retrieving the cloud optical and physical products (M-COP), specifically cloud optical thickness, effective radius and top height. The algorithm is based on the solar and terrestrial MSI channels within an optimal estimation framework. This framework enables full error propagation given by the uncertainties in measurements and a-priori information. The MSI cloud algorithm has been successfully exercised on different imagers and on synthetically generated MSI observations.

10 1 Introduction

Clouds play an important role in the Earth's radiation budget due to their strong interaction with atmospheric radiation, and the resulting complex influence on radiative fluxes (Hartmann and Short, 1980). Global-scale satellite observations of clouds and radiation are thus essential for our knowledge about the Earth's energy budget and climate system. Of particular scientific interest are cloud changes in response to anthropogenic influences, including aerosol emissions, which manifest themselves as radiative forcing and can potentially contribute to a number of feedback processes and thus further amplify climate change (IPCC 2021, in press).

There is an urgent need for long-term, high-quality global-scale observations to improve our understanding of cloud processes including their representation in weather and climate models. Here, the interaction of aerosol particles and clouds deserves particular focus, due to the uncertainty introduced in climate change projects.

20 Since the early 1980's, a number of satellite missions have provided multi-spectral imagery as basis for long-term global-scale cloud and radiation data sets. A particularly noteworthy effort is the International Satellite Cloud Climatology Project (ISCCP), which utilized both the early geostationary satellite instruments and the Advanced Very High Resolution Radiometer (AVHRR) flown on NOAA's operational polar-orbiting satellite series. The inter-calibration of individual sensors to yield a ho-

mogeneous record was found to deserve special attention for data consistency. Over time, the observational capabilities of these
25 passive imaging spectrometers have also greatly improved both for polar-orbiting (MODerate-resolution Imaging Spectrom-
eter (MODIS), Visible Infrared Imaging Radiometer Suite (VIIRS)) and geostationary satellites (Geostationary Operational
Environmental Satellites (GOES), Meteosat Second Generation (MSG), Himawari).

A variety of methods and data sets exist for the determination of cloud microphysical properties from multi-spectral satellite
imagery, for example from AVHRR (Derrien et al. (1993); Kriebel et al. (1989); Nakajima and King (1990); Walther and
30 Heidinger (2012)), ATSR (Along Track Scanning Radiometer, Watts et al. (1998)), MODIS (King et al., 1997; Platnick et al.,
2016), VIIRS Platnick et al. (2021), AHI (Advanced Himawari Imager, Letu et al. (2020)), the GOES series Minnis and
Harrison (1984); Heidinger et al. (2020) and SEVIRI (Spinning Enhanced Visible and InfraRed Imager, Stengel et al. (2014)).
All these methods share a fundamental principle: the reflection of clouds in the visible wavelength region, specifically in a
non-absorbing channel, is primarily determined by cloud optical thickness. In contrast, the reflection function at the absorbing
35 channels in the shortwave-infrared region primarily relies on cloud particle size.

Hence, at present, there are several long-term, consistent satellite-based climate data records of cloud properties available
from passive satellite imagery, with various differences in time coverage, accuracy, and availability of parameters, which
ultimately determines their suitability for a particular scientific question (Stubenrauch et al., 2013).

Passive multi-spectral satellite imagers have inherent limitations in terms of their information content, providing only indirect
40 and limited details about cloud vertical structure. However, a significant breakthrough occurred with the launch of Cloudsat
and CALIPSO (Cloud and Aerosol Lidar and Infrared Pathfinder Mission) satellites in 2006, which joined the A-Train satellite
constellation. These satellites introduced a novel perspective from space by providing unprecedented and detailed information
on the intricate vertical structure of cloud and aerosol profiles. The Cloudsat satellite incorporated the Cloud Profiling Radar
(CPR), while CALIPSO carried the CALIOP (Cloud and Aerosol Lidar with Orthogonal Polarization) instruments. These
45 instruments marked the first long-term active remote sensing observations from space (Stephens and Kummerow, 2007).

The EarthCARE satellite mission is a joint mission by the European and Japanese Space Agencies, and is ESA's 6th Earth
Explorer. The spacecraft will feature four instruments on a single platform: the Cloud Profiling Radar (CPR) with Doppler
capability, the high spectral resolution Atmospheric Lidar (ATLID), the Multi-Spectral Imager (MSI), and the Broad-Band
Radiometer (BBR) (Wehr et al., 2023). The satellite measurements will be used to retrieve global profiles of cloud, aerosol,
50 and precipitation properties and along with top of atmosphere terrestrial and solar fluxes (Illingworth et al., 2015). The MSI
instrument is measuring in 7 channels in the visible, near infrared, shortwave infrared and infrared spectrum, with central
wavelengths of 0.67 (VIS), 0.865 (NIR), 1.65 (SWIR1), 2.21 (SWIR2), 8.8 (TIR1), 10.8 (TIR2), and 12.0 μm (TIR3), and
with 500 m spatial resolution (Wehr et al., 2023). MSI will have a swath width of 150 km, asymmetrically tilted away from
the sun and covering 35 km to right side and 115 km to the left side of nadir. MSI observations will be used to provide cloud
55 products and to extend the spatially limited coverage of cloud properties obtained from the active sensors into the across-track
direction. Furthermore, the information gained from the MSI swath will make it possible to identify weather phenomena at the
mesoscale or even synoptic scale, and utilize these as context for the interpretation of the active observations. The cloud micro-
physical retrievals are based on the combination of the non-absorbing visible channels and the absorbing shortwave infrared

channels. MSI has no dedicated absorption channels for cloud top determination. Therefore, the cloud top height retrieval is limited to the information from the infrared window-channels (Inoue (1985), Fritz and Winston (1962)). To compensate for the instrument limitations and ensure consistency between the products, the cloud microphysical retrieval is combined with the macro-physical retrievals into one retrieval algorithm similar to Watts et al. (2011) or Poulsen et al. (2012).

The goal of the present paper is to introduce the algorithms used as basis for the cloud property retrievals, which will be applied operationally to MSI observations as part of the MSI cloud processor (M-CLD, Fig. A1). The M-CLD consists of two main parts, which are sequentially processed. First the cloud mask (M-CM) is processed with output of the cloud flag (M-CF) and cloud phase (M-CP) product Hünerbein et al. (2023), which are mandatory to retrieve the cloud optical and physical product (M-COP). The M-COP includes the cloud optical thickness (M-COT), cloud effective radius (M-REF), cloud top temperature/height/pressure (M-CTT, M-CTH, M-CTP), and the cloud water path (M-CWP) for daylight conditions. During nighttime, only the cloud top temperature/height/pressure can be provided. The instrumental characteristics of the MSI sensor, which largely determine the design and accuracy of the M-COP retrievals, are described in more detail in Wehr et al. (2023).

The paper is structured as follows: In section 2, the operational Level 2 M-COP algorithms will be described in detail. Section 3 presents some examples of the verification of the M-COP products. This has been performed by applying the M-CLD processor to the EarthCARE simulator test scenes (Donovan et al., 2023), MODIS measurements and Spinning Enhanced Visible and Infrared Imager (SEVIRI) measurements. Finally, results will be summarized and discussed in section 4.

2 M-COP algorithm description

The M-COP retrieval uses multiple MSI channels in visible/shortwave infrared and thermal range of the electromagnetic spectrum to derive cloud optical thickness (M-COT), effective cloud radius (M-REF) and multiple estimates of cloud height (M-CTT, M-CTH, M-CTP) as output products. The algorithm is embedded in the M-CLD processor framework. While it is in many aspects similar to already existing cloud retrievals for current sensors in space (e.g., MODIS, SEVIRI), it has been implemented from scratch following a mathematically optimal estimation approach. An overview of the workflow is given in Figure 1. The main idea is to compare simulated reflectance and radiance values for a wide range of possible atmospheric conditions with the measured values from the sensor. The simulations, which build the forward model of the retrieval, are partly created in advance with a radiative transfer model (RTM) and then stored in look-up-tables. We decided to use an optimal estimation (OE) inversion technique (OE, (Rodgers, 2000), sec.2.4), because this provides very nicely an uncertainty propagation from the measurement through the forward model to a product uncertainty estimates. M-COP assumes cloud mask and cloud phase as a known input. These parameters are supplied from directly preceding procedures within the M-CLD processor (Hünerbein et al., 2023). Furthermore, background information of atmospheric and surface state, such as humidity and temperature profiles and surface reflectance and emissivity, is needed. We get this information from the auxiliary meteorological database (X-MET, Eisinger et al. (2023)), which is specifically initiated for this mission. The OE technique finds the best estimate of the cloud properties by an iterative retrieval loop, which compares the forward model result of an assumed state vector with the observation by taking into account the respective uncertainties. Once the forward model output

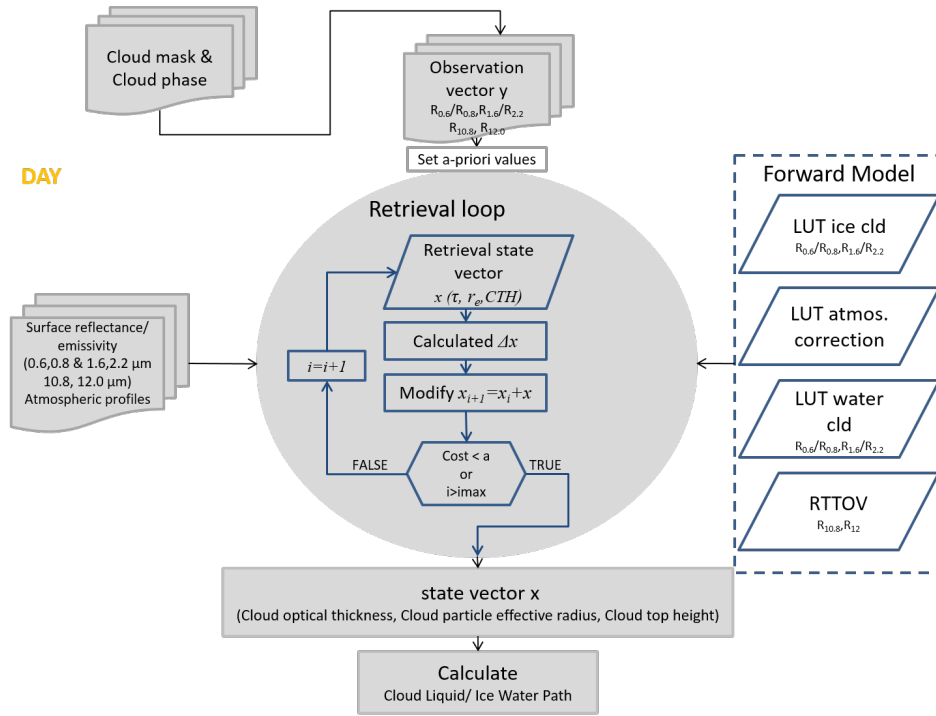


Figure 1. Flowchart of the M-COP algorithm. The algorithm is applied to all cloudy MSI pixels.

of the assumed state vector, and the observation vector satisfies the requirement of the minimization of a cost function, the retrieval process is considered successful. This state vector represents then the solution. The OE can also include a-priori knowledge of the to-derived products. We present in the following subsections details of the components of M-COP.

95 2.1 Input data

The MSIL1c products are calibrated and geolocated instrument data. The measurements for solar channels are given in radiance and the three terrestrial channels in brightness temperature. The L1c product is re-sampled onto the grid of a reference TIR channel (Eisinger et al., 2023). Therefore, each channel is mapped on the same pixel, which is important for the M-CLD processor, where we use the combination of all channels. The algorithm starts with the calculation of the reflectances at the top of the atmosphere in the solar channels. The reflectances $R(\theta_0, \theta, \phi)$ of each channel i are obtained from the following input parameters, the measured radiance (L) and the corresponding inband solar irradiance E_0 , i as

$$R(\theta_0, \theta, \phi) = \frac{\pi L_i(\theta_0, \theta, \phi)}{E_{0,i} \cos(\theta_0)}, i = VIS, NIR, SWIR1, SWIR2.$$

The measured radiance and brightness temperature for each pixel depends on the solar zenith angle θ_0 , the viewing zenith angle θ and the relative azimuth angle ϕ , defined by the difference between sun and instrument viewing azimuth angles.

105 2.2 Ancillary data

The retrieval requires further background information on atmospheric and surface conditions. The forward model includes a reflectance term which accounts for backscattered radiation from the underlying surface. For land pixels, we use the long-term albedo climatology from the MODIS science team (Moody et al., 2008). We assume that the white-sky albedo product is best suited for cloudy atmospheres, since it refers to the reflection of incoming diffuse radiation. MODIS has very similar channel specifications so that these data can be used as it is. Over ocean, the surface albedo is assumed to be 0.05 at both 0.6 μm and 1.6 μm . For the forward model in the longwave channels, we use the land surface emissivity values provided by the MODIS land surface temperature and emissivity products, which provides per-grid temperature and emissivity values (Wan (2014)).

2.3 Forward model

The forward model is an operator which simulates the observed radiance at the sensor based on a known atmospheric state and given auxiliary input parameters. It is strictly channel based, so that the complete operator is composed of independent simulations of the channel i from a set of:

$$F_i(x) = y$$

with x is the state vector of the atmosphere (including the cloud properties) and y the vector of the observations (the measurements). The forward operator F includes the auxiliary data with their uncertainties. The individual components of the equation are separated into the solar spectrum with negligible terrestrial emission (up to 3.5 micron wavelength), and the part of the spectrum where thermal emission dominates the radiative transfer.

2.3.1 Visible and shortwave infrared radiative transfer

This part of the forward model is built on an existing retrieval algorithm, the Cloud Physical Properties developed at KNMI (CPP, Cloud Physical Properties retrieval, Roebeling et al. (2006)), which has been used operationally for SEVIRI and AVHRR for more a decade. It has been validated and improved over the years (Greuell and Roebeling (2009), Roebeling et al. (2013), Benas et al. (2017)).

Radiative transfer in this range is formulated in terms of reflectance values. The measured spectral reflectance R_{toa} at the top of the atmosphere can be expressed for a known surface reflectance α_s , and a known geometrical constellation as

$$130 \quad R_{toa}(\tau, r_e, \theta_0, \theta, \phi) = R_{cl}(\tau, r_e, \theta_0, \theta, \phi) + \frac{\alpha_s t_c(\tau, r_e, \theta_0) t_c(\tau, r_e, \theta)}{1 - \alpha_s \alpha_a(\tau, R_e)} \quad (1)$$

where τ is the cloud optical thickness, r_e the effective radius of cloud particle distribution, α is the surface reflectance, t_c cloud transmittance, which is needed for both angles, incoming θ_0 and outgoing θ , R_{cl} the cloud reflectance, and α_a is the hemispherical sky albedo for upwelling, isotropic radiation also known as spherical albedo. Other effects below and above the cloud layer are neglected in this equation. The target is to find the pair of τ, r_e which gives the highest accordance, or

135 better the optimal estimate for the set of equations above for the *VIS/SWIR1* channels. Within the retrieval loop, a pair of τ, r_e is assumed initially (the a-priori), and the result R_{toa} of the forward model is compared to the observation to adjust the assumption till an optimal result is found. Thus, the functions R_{cl}, t_c and α_a have to be simulated during the retrieval loop. Since this is not a simple and fast task, it is carried out in advance, and the results are stored in look-up-tables (LUT), and being interpolated from there to speed up the processing.

140 To generate these tables we use the radiative transfer model, DAK (Doubling-Adding KNMI, de Haan et al. (1987), Stammes (2001)). To take in account also the Rayleigh scattering and ozone absorption above a cloud, the simulations were carried out with standard atmospheric states. Table 1 summarizes the LUT settings together with binning of individual dimensions. DAK can simulate cloud reflectance, cloud transmittance and cloud spherical albedo without the influence of surface reflectivity, so that the second term on the right side of Equation 1 takes this into account directly during the optimization process.

145 The DAK calculations concern monochromatic radiative transfer at a wavelength close to the centre of the respective satellite channel. This implies an assumption that reflectance at the central wavelength is close enough to the average reflectance over the channel. The radiative transfer calculations neglect scattering and absorption by atmospheric gases, except for Rayleigh scattering by air molecules and absorption by ozone.

The atmospheric correction for scattering and absorption processed in layers above cloud top is derived by MODTRAN
 150 radiative transfer model Berk et al. (2000). The atmosphere corrected top of atmosphere reflectance ($R_{atm.corr.}$) is calculated as:

$$R_{atm.corr.} = R_{toa} t_{a,ac}(\theta_0, z_{ct}, H) t_{a,ac}(\theta, z_{ct}, H, TCO) \quad (2)$$

where $t_{a,ac}$ is the above-cloud atmospheric transmission simulated by MODTRAN using a Lambertian surface placed at the cloud top height (z_{ct} , M-CTH) and for a given water vapor path (H , humidity profile) and total column ozone (TCO).
 155 The two-way transmission, i.e., the product of the two transmission values, is a function of the geometrical air mass factor ($AMF = 1/\theta_0 + 1/\theta$). This two-way transmission is calculated in advance for a wide range of AMFs and stored in a LUT with dimensions AMF, z_{ct} , and H . Absorption by trace gases within and below the cloud is neglected. More details on the implementation of atmospheric correction and the effect on retrieved cloud properties can be found in (Meirink et al., 2009).

2.3.2 Terrestrial radiative transfer

160 In contrast to the solar forward model, the thermal part includes mainly the emission from surface, atmosphere, and cloud layers. The calculations are done with RTTOV 11.3 Saunders et al. (2009, 1999). The forward simulations of the infrared radiances are used to compare the observed MSI brightness temperature with the simulated brightness temperature to retrieve the M-CTT based on the method of Fritz and Winston (1962). The simulations require atmospheric profiles e.g. temperature (T) and humidity (H), which are provided by the X-MET product Eisinger et al. (2023). The top of the atmosphere radiance (L)
 165 or brightness temperature (T_b) at $8.8\mu\text{m}$, $10.8\mu\text{m}$ and $12.0\mu\text{m}$ will be simulated once for clear sky and black cloud (emissivity equal 1) condition. The overcast radiance (L) consists of contributions from four terms, transmission radiance upwelling from below cloud level (L_s), emission from the cloud (L_c), reflection of radiance downwelling from above the cloud level and

Table 1. Summary of the setup for generating the M-COP LUTs for VIS and SWIR1 channels.

Parameter	Settings	
Vertical profiles of pressure, Temperature, and ozone	Midlatitude summer	
Aerosol model	None	
Solar zenith angle (θ_0) ^a	0-84.3° (73 Gaussian points in $\mu_0 = \cos(\theta_0)$)	
Viewing zenith angle (θ) ^a	Same as θ_0	
Relative azimuth angle (ϕ) ^a	0-180° (equidistant, 91 points)	
Cloud optical thickness (τ)	0-256 (equidistant in $\log(\tau)$, 22 points)	
Cloud particle types	water clouds	ice clouds
Cloud particle radius	Spherical water droplet	General habit ice crystal ^b
Size distribution	3-34 μm (equidistant in $\log(r_e)$)	5-80 μm (equidistant in $\log(r_e)$)
Effective variance	Two-parameter gamma	-
Complex refractive index	Segelstein (1981)	Warren and Brandt (2008)

a) The chosen distributions of angles are motivated in Wolters et al. (2006).

b) Baum et al. (2014)

emission of radiance from the atmosphere above the cloud (L_{at}).

$$L(x, \theta, \epsilon) = L_s + L_c + L_{at} \quad (3)$$

170 The surface partition can be formulated with:

$$L_s(x, \theta, \epsilon_s) = \epsilon_s B(T_s) t_a(\theta) t_c(\theta) \quad (4)$$

and is a function of surface emissivity ϵ_s and the Planck function of surface temperature. Both values are assumed as known from the X-MET data set. $t_c = 1 - \epsilon_c$; for optically very thick clouds the cloud emissivity is equal to 1. In that case the surface as well as the atmospheric layer below the cloud is not contributing to the TOA radiance. t_a is the transmission of the

175 atmosphere. The cloud part of Equation 3 is formulated as

$$L_c(x, \theta, \epsilon_c) = \epsilon_c(\tau, \theta) B(T_c) t_{ac}(\theta) \quad (5)$$

where we again have to assume the emissivity of the cloud layer, and the cloud top temperature. The cloud emissivity can be parameterised by $\epsilon_c = 1 - \exp[-\tau_{ir}/\cos\theta]$ by assuming the optical thickness in IR range with $\tau_{ir} = 0.5\tau_{vis}$ ((Minnis et al., 1993))

180 The value t_a depicts the entire atmospheric transmission from cloud top to the top of the atmosphere. The radiance coming from atmospheric layers outside the cloud is simulated with RTTOV 11.3 for different atmospheric levels z based on auxiliary

data (T, P, H) profiles.

$$L_{at}(\theta, \epsilon_s) = \int_{t_s}^1 B(T_a) dt + [1 - \epsilon_s] * t_s(\theta)^2 \int_{t_s}^1 \frac{B(T_a)}{t(\theta)^2} dt \quad (6)$$

185 whereby t_s is the total transmission from surface to the top of the atmosphere.

Note that we can modulate the cloud emissivity by changing the cloud optical thickness and the cloud top height as an input parameter.

2.4 Retrieval Method

The retrieval loop (Figure 1) uses 1D-var optimal estimation inversion techniques to retrieve the cloud optical thickness, effective radius and cloud top heights during daytime, which is defined by the solar zenith angle ($\theta < 84^\circ$). At nighttime the retrieval relies on the infrared channels and only the cloud top height is retrieved.

2.4.1 Optimal estimation

The basic principle of the M-COP algorithm follows the description of Rodgers (2000). The OE method is commonly used to solve the inverse problem (e.g., Watts et al. (2011), Walther and Heidinger (2012), Poulsen et al. (2012)). The OE does not provide an explicit solution but a class of solutions and assigns a probability density to each. The probability $P(x|y)$ of the retrieval state for all possible solutions x for a given observation y is defined as: $P(x|y) = \frac{P(y|x)P(x)}{P(y)}$

- $P(x)$: prior PDF of the atmospheric state x
- $P(y|x)$: conditional PDF of y given x ; requires knowledge of forward model and statistical description of the measurement error
- 200 – $P(y)$: prior PDF of the measurement y

The solution is found by maximising the probability $P(x|y)$ related to the values of the state vector x . The a priori estimate of the state is defined by x_a and the measurement vector y is defined as a three element vector with visible, shortwave IR and infrared radiances.

$$\mathbf{x} = \begin{pmatrix} \tau \\ r_e \\ CTT \end{pmatrix} \text{ and } \mathbf{y} = \begin{pmatrix} R_{vis} \\ R_{swir1} \\ T_b \end{pmatrix}$$

205 The state is mapped into the measurement space with the forward model $F(x)$ (see section 2.3.1, 2.3.2). The OE based on the assumption that the errors in the measurements S_e and background S_a can be described by a Gaussian distribution. Therefore, the state vector x should be preferable also Gaussian distributed. To account for this, the τ and r_e are transformed in the logarithmic space with a base two for the inversion, which leads also to a more Gaussian error distribution. In order to find the

Table 2. Comparison of the minimum and maximum radiances/brightness temperatures from the SEVIRI channels.

	VIS	NIR	SWIR-1	SWIR-2	TIR-1	TIR-2	TIR-3
L_{min} [$W/m^2/sr/\mu m$] or T_b [K]	53	34	8	0.8	185	185	185
L_{max} [$W/m^2/sr/\mu m$] or T_b [K]	531	336	79	338	328	328	328
L_{typ} [$W/m^2/sr/\mu m$] or T_b [K]	54	40	9	4	286	286	285

210 solution, an iterative search is done by maximize $P(x|y)$ or minimize the cost function J , which comprises the measurement error and the background knowledge:

$$J(x) = (F(x) - y)S_e^{-1}(F(x) - y)^T + (x - x_a)S_a^{-1}(x - x_a)^T$$

The M-COP retrieval loop starts with a defined a-priori values of the state vector x and the observation y . The cost J is calculated for each iteration step. Each iteration step of the retrieval loop requires search events in the forward model operators F . The derived radiances by the forward model $F(x_i)$ are compared to measurement, y which defines the cost function. The 215 optimal estimation searches for the minima in the cost function until convergence. The Levenberg-Marquardt descent method is used for the minimization within an iteration process (Marquardt (1963); Levenberg (1944)). If the cost reaches a pre-defined threshold, the solution is found and the retrieval loop will end.

2.4.2 Measurement vector and covariance matrix

220 A global set of SEVIRI data has studied in order to establish typical top of the atmosphere radiances/brightness temperatures. The SEVIRI instrument aboard MSG (Meteosat Second Generation) offers excellent measurements to study the global variation of the radiances. SEVIRI covers the visible (VIS006, VIS008), the near infrared (NIR016), and the thermal infrared spectral region (IR039, IR062, IR073, IR087, IR097, IR108, IR120, IR134) with twelve channels. These SEVIRI channels match the spectral position of the same MSI channels. This gives the possibility to use the SEVIRI data set for comparison of the 225 maximum and minimum radiances, as well as for the specification of the typical radiance. To get the full range of the four seasons the criteria for the data set were: time: 9 UTC; day: in the mid of the months; month: March, June, September, December; year: 2007; for all SEVIRI pixels.

The histogram distribution for cloudy, clear and mixed cases have been studied (see Fig. 2) as well as the maximum and 230 minimum radiances/brightness temperatures have been taken from cloud free and cloudy atmosphere. From the mixed cases the typical scene radiances were estimated from the 50th percentile of the data. The typical radiances of the MSI channels are specified with the comparable Seviri channels (see Tab. 2).

The measurement and background knowledge are described by the covariance matrices. The measurement error S_e is defined through the instrument signal-to-noise ratio or the noise equivalent different temperature (Wehr et al., 2023) and the forward 235 model error as:

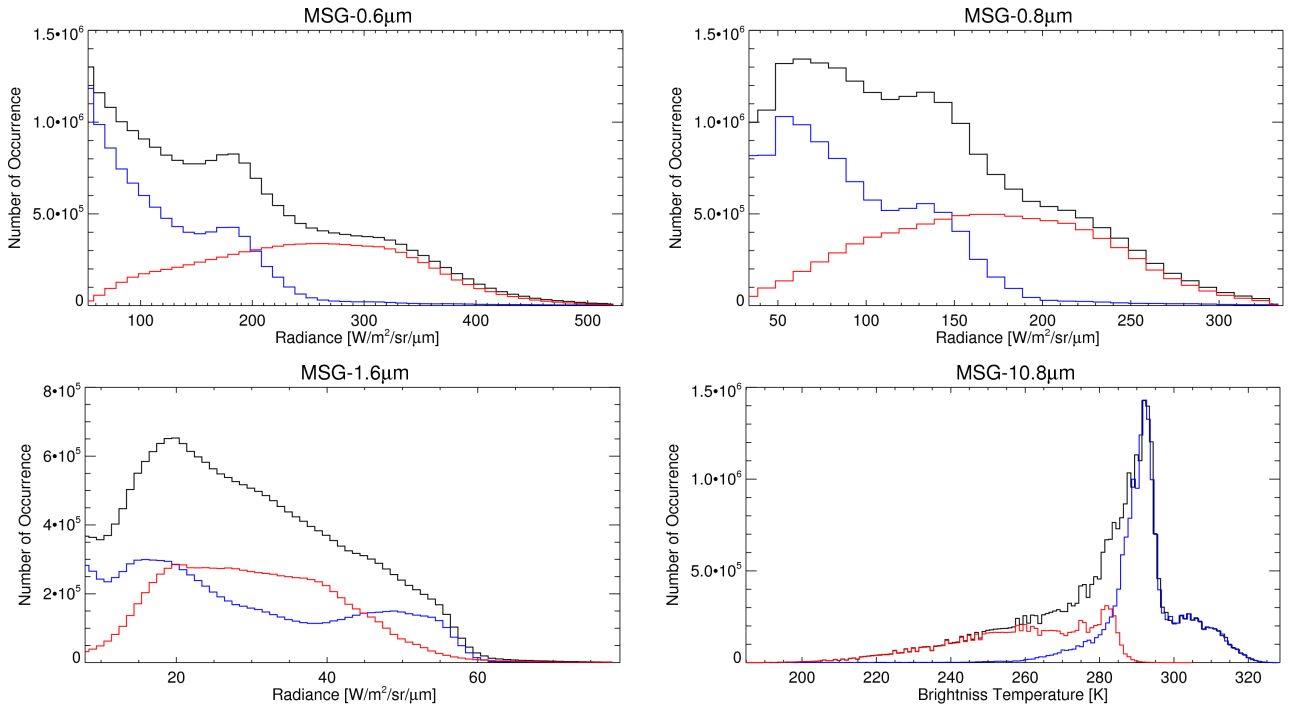


Figure 2. Histogram of the radiance in VIS, NIR, SWIR-1 and the brightness temperature TIR-2 based on SEVIRI measurements for cloud free (blue), cloudy (red) and mixed (black) cases.

Table 3. Used geophysical variable error based on the breakthrough values of the user requirement tables from the position paper (Rizzi et al., 2006).

	τ	r_e	CTT
acc_n	20%	$2\mu m$	5K

$$S_e = \left(\frac{L_{typ}}{SNR}\right)^2 + \sum_n (K_n acc_n)^2, n = \tau, r_e, CTT$$

The typical radiances L_{typ} are taken from the above described SEVIRI analysis. This will be adapted during the commissioning phase to on-board measured uncertainties and radiances. The forward model errors are calculated by the Jacobians K and the geophysical variable error acc_n for each iteration step. The applied geophysical variable errors are provided in Tab. 3. For the background covariance, S_a the variance of the state vector is used based on the minimum and maximum values (see Tab. 4). The uncertainties are assumed to be independent of each other so that the off-diagonal elements can be set to zero.

2.5 Cloud optical and physical properties

The derived Level-2 cloud properties from the OE retrieval schema are M-COT, M-REF and M-CTT. The M-CTT is further converted to M-CTH and M-CTP using the atmospheric profiles (X-MET) of pressure, temperature and height. These properties

Table 4. Minimum and maximum values of the state vector.

	τ	$r_{e-water}$	r_{e-ice}	CTT_{water}	CTT_{ice}
<i>Minimum</i>	$\log_2(1)$	$\log_2(3\mu m)$	$\log_2(5\mu m)$	230K	180K
<i>Maximum</i>	$\log_2(300)$	$\log_2(34\mu m)$	$\log_2(80\mu m)$	330K	270K

245 are accompanied by uncertainty measures derived from the OE algorithm. The Figure 3 presents the full suite of M-COP products for one EarthCARE test scene, which refers to a realistic EarthCARE frame and MSI swath.

2.6 Cloud water path

The relation between the cloud optical thickness and the cloud effective radius is used to calculate the cloud water path based on the assumption of a homogeneous cloud. The cloud water path is calculated only indirectly due to the fact that the measurements from the MSI have no water absorption channel. The cloud water path CWP is defined as the integral of the liquid/ice water content throughout the profile of an ice/water cloud layer. MSI measurements of solar reflectance in shortwave atmospheric window channels are used to retrieve the cloud phase (water or ice on the top of the cloud, (Hünerbein et al., 2023)), cloud optical thickness (τ) and the effective radius (r_e). The cloud liquid/ice water path is calculated as a function of τ and r_e . The CWP is derived by using the following equation Stephens (1984):

$$255 \quad CWP = \frac{2}{3}\tau r_e \rho_{w,i}$$

where ρ_w is the density of liquid water 1 g/cm^3 and ρ_i is the density of ice 0.916 g/cm^3 . The CWP error is estimated from the combination of the error of τ and $r_{w,i}$ as follows:

$$\Delta CWP = \tau \Delta r_e + r_e \Delta \tau$$

260 3 Performance and intercomparison / algorithm results

3.1 Evaluation with synthetic test scene

The M-COP algorithm performance has been tested by applying the M-CLD processor to different atmospheric test scenes created with the EarthCARE simulator. This is an end-to-end simulator for the EarthCARE mission capable to simulate the four instruments configurations for complex realistic scenes. Specific test scenes have been created from model output data, see (Donovan et al., 2023). The 6000 km long frames include different types of clouds and aerosols as well as surface and illumination conditions. These synthetic scenes make it possible to evaluate and to intercompare the different cloud properties from active and passive sensors as e.g., cloud liquid water path or the cloud effective radius (Mason et al., 2022). The synthetic test scenes set up have been also considered as the truth to better understand and quantify the differences between the retrieved cloud properties based on the different measurement principle. It should be noted that the simulated test scenes are intended to quantify the performance of the different processors, but not to tune the retrievals because the test scenes strongly depend

on the assumption made in the EarthCARE simulator. In the following, we present results obtained with the M-CLD processor for the HALIFAX scene (Donovan et al. (2023), van Zadelhoff et al. (2022)). The scene starts with clouds over the Greenland ice sheet followed by high backscatter/extinction clouds down to 50° N. A high ice cloud regime starting over east Canada down to 35° N is followed by a low-level cumulus cloud regime embedded in a marine aerosol layer below an elevated dirty dust later around 5 km altitude. The results for the M-COP products for the HALIFAX scene are presented in Fig.3 with the corresponding optimal estimation uncertainty. The M-COT uncertainty generally increases with increasing M-COT above 50, which is expected as the measurement at the non absorption channel (VIS) gets saturated with increasing COT. The M-REF error shows clear separation between the detected cloud phase (Figure 5), where ice clouds associate with higher errors. Note above 50°N the solar zenith angle is higher than 84° due to nighttime condition. Therefore, M-COT/M-REF cannot be retrieved, only the M-CTH is retrieved for this region. The simple M-CTH night time retrieval provides no uncertainty values.

In this evaluation, the 3d dataset input for the test scene (called as the truth) is used to define the presence of clouds and to calculate the modelled cloud optical thickness. This is calculated from the extinction profiles of all hydrometeors multiplied by the layer thickness (Figure 5) and compared to the retrieved M-COT. The true cloud optical thickness can also be retrieved in nighttime condition. Further, the truth includes values below 0.01, which are generally classified as clear sky by the M-CM cloud mask. This has been discussed in Hünnerbein et al. (2023). Overall, the comparison with the true cloud optical thickness M-COT (Figure 5) shows a good and promising agreement (Figure 6).

3.2 MODIS data for testing M-COP

Additionally, to the synthetic test scenes, the M-COP cloud algorithm has been also tested against realistic satellite observation from MODIS. For that purpose, MODIS Terra L1b calibrated reflectance have been used as input for the M-CLD processor. The MODIS channels 1, 2, 6, 7, 29, 31 and 32 are closed to the seven MSI channels and taken to replace the MSI signal. The meteorological auxiliary data required as input for the M-CLD processor are replaced by CAMS (Copernicus Atmosphere Monitoring Service) forecast data field. The cloud mask and phase (M-CM) are produced within the M-CLD processor, and the results are described in the companion paper Hünnerbein et al. (2023). The three MODIS channels 1, 6 and 31 are used for the M-COP retrieval. The LUTs are not specifically adapted to the MODIS filter function, which will cause some uncertainties. The Figure 7 shows a case study over the Capo Verde islands in the Atlantic Ocean. The right column shows the M-CTT, M-COT and M-REF (at 1.6 μ m) results as retrieved by the M-CLD processor. The corresponding MODIS L2 products (MOD06_L2, Platnick et al. (2015b)) are given at the left column. The CTT comparisons show an underestimation of the cloud top height for high cirrus clouds, especially multilayer clouds, which will be further investigated if an improvement is possible by using multilayer flags. The COT comparison of M-CLD and MODIS exhibits an almost perfect match, with a correlation factor of 0.95 and a bias of less than 1. The REF comparisons show more differences, such as for ice clouds the M-REF have smaller particle sizes but for water clouds the sizes are slightly higher. Compared to MODIS the MSI cloud product shows in general a good agreement. The robustness of these results could be demonstrated by using longer time periods and also other regions, which is however not shown in this study.

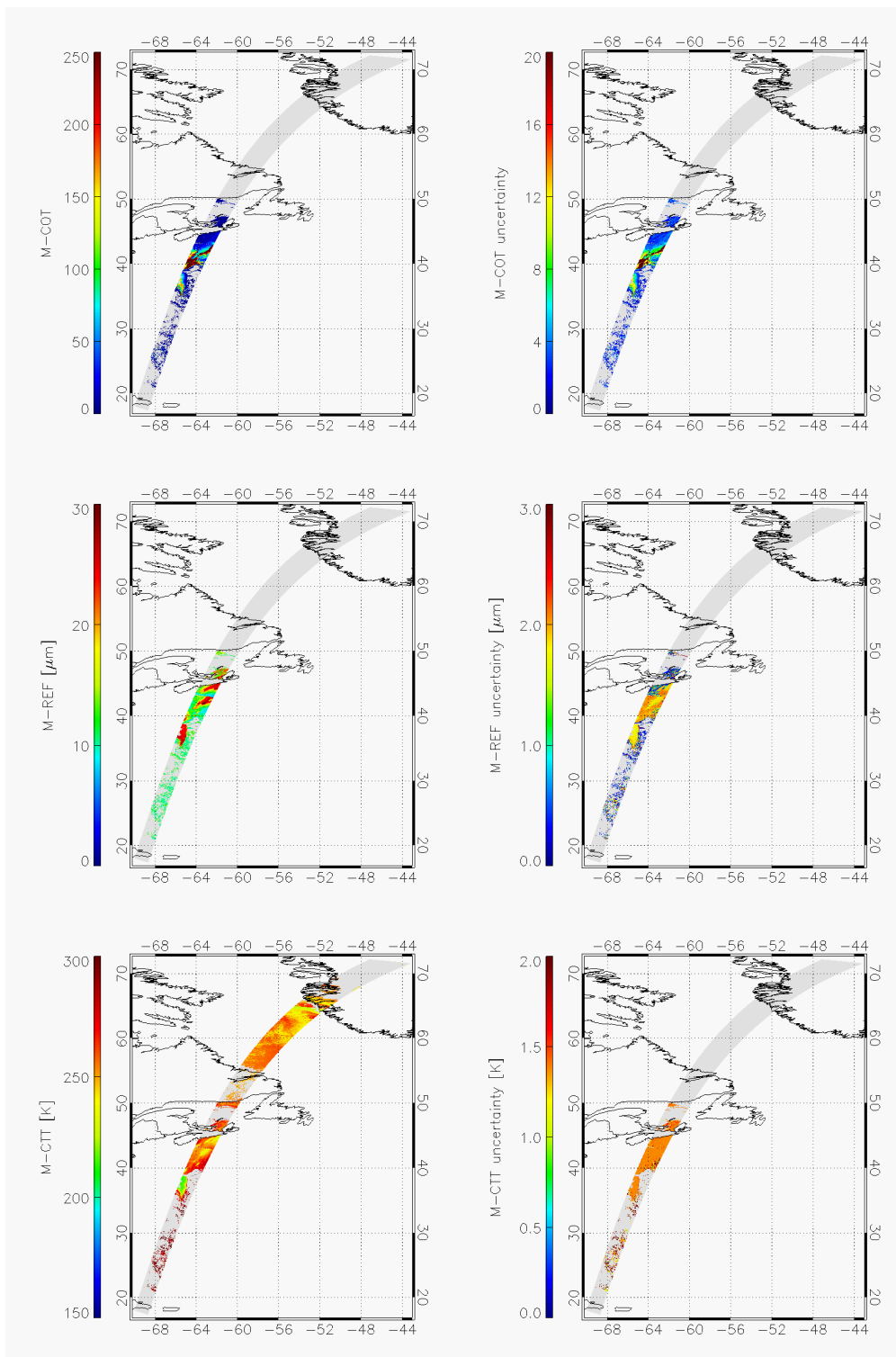


Figure 3. M-COP for the HALIFAX scene with: M-COT (top, left), OE uncertainties of M-COT (top, right), M-REF (middle, left), OE uncertainties of M-REF (middle, right), CTT (bottom, left), OE uncertainties of CTT (bottom, right). Note for night time CTT retrieval no uncertainty is provided.

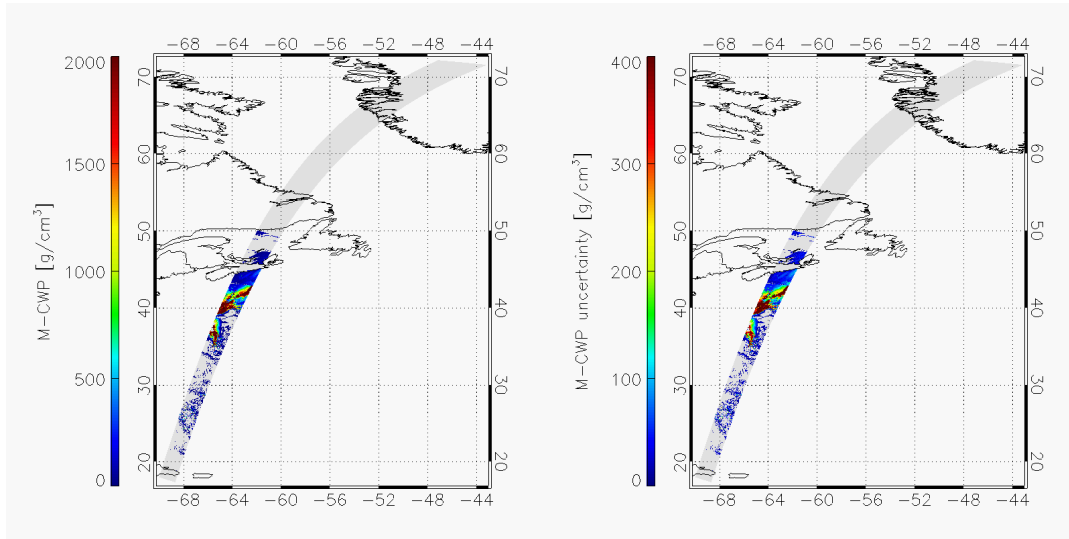


Figure 4. M-CWP of the HALIFAX scene (left) and the OE uncertainties of M-CWP (right).

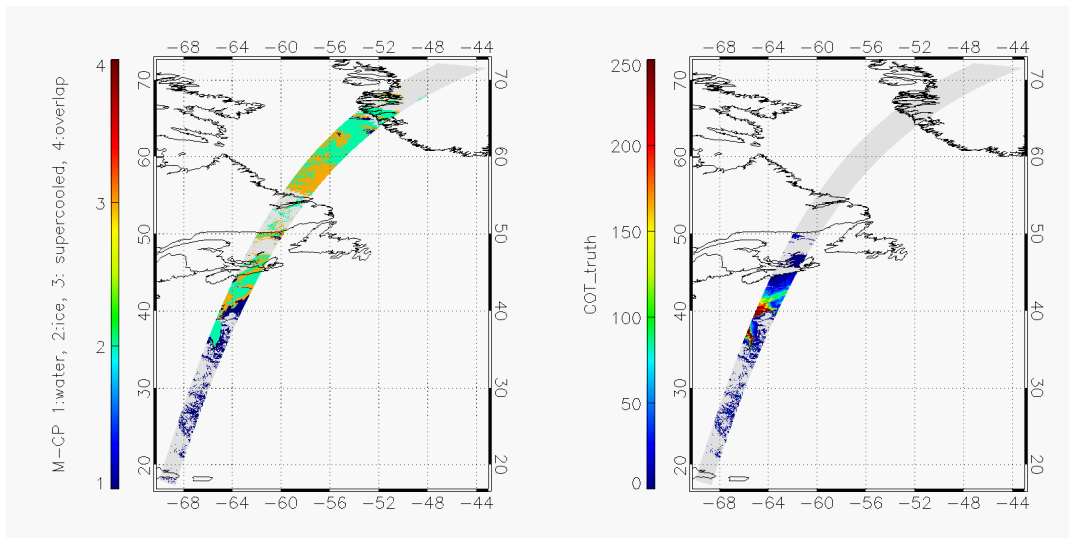


Figure 5. M-CP of the HALIFAX scene (left) and the true cloud optical thickness at 680nm (right).

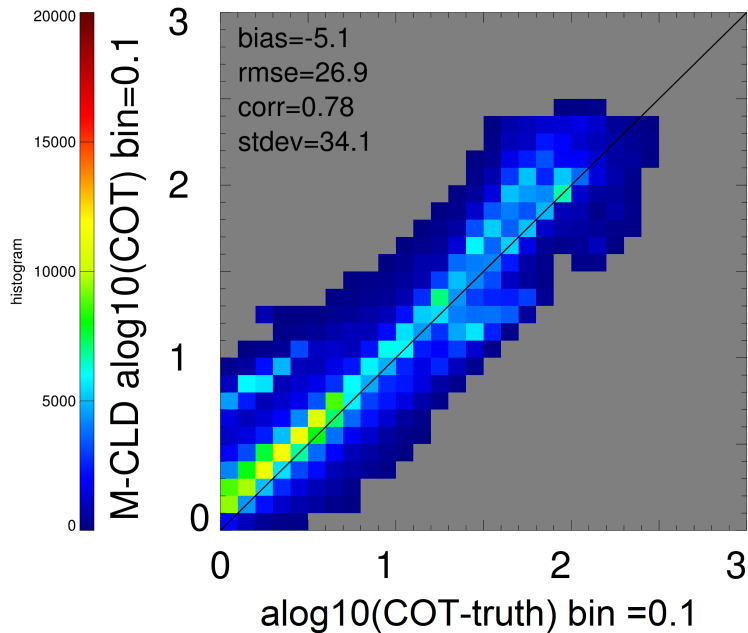


Figure 6. Histogram of the true cloud optical thickness and M-COT for the Halifax scene histogram.

3.3 Intercomparison with other SEVIRI cloud products

305 The M-CLD cloud products have also been validated within the framework of the CGMS International Cloud Working Group
 (ICWG, Roebeling et al. (2013), (Roebeling et al., 2015)). The ICWG is a working group aimed at harmonizing and advancing
 quantitative cloud property retrievals. In support of its mission, the ICWG has assessed a large number of level-2 passive im-
 310 ger cloud parameter retrievals through inter-comparison activities. The ICWG cloud assessment have focused on quantifying
 deterministic differences between level-2 cloud parameters (and their error estimates), and the statistical validation against
 superior reference dataset. This assessment so far has been limited to geostationary satellites, i.e., Meteosat Second Generation
 (MSG) with the SEVIRI instrument. SEVIRI provides similar channel settings to MSI except for the $2.2\mu\text{m}$ channel, which
 is missing. The cloud parameters that have been part of the assessment are: cloud mask, cloud top temperature, cloud top
 pressure, cloud top height, cloud phase, cloud optical thickness, effective particle size, cloud liquid water path, and cloud ice
 water path. As reference datasets, the main sources of information have been the cloud properties obtained from CLOUDSAT
 315 and/or CALIPSO observations and Cloud Liquid Water Path observations from passive microwave instruments (e.g., AMSR).
 For a number of “golden days” different scientific institutions have contributed their cloud datasets for intercomparison among
 others the EUMETSAT central facility, the Nowcasting SAF and the Climate Monitoring SAF. The cloud properties retrieved
 from all MSG SEVIRI scans collected during - 13 June 2008, 19 August 2015 and 21 July 2016 had to be submitted and served
 as basis for the intercomparison (Hamann et al., 2014). It should be noticed that the MSI M-CLD algorithm is developed for a

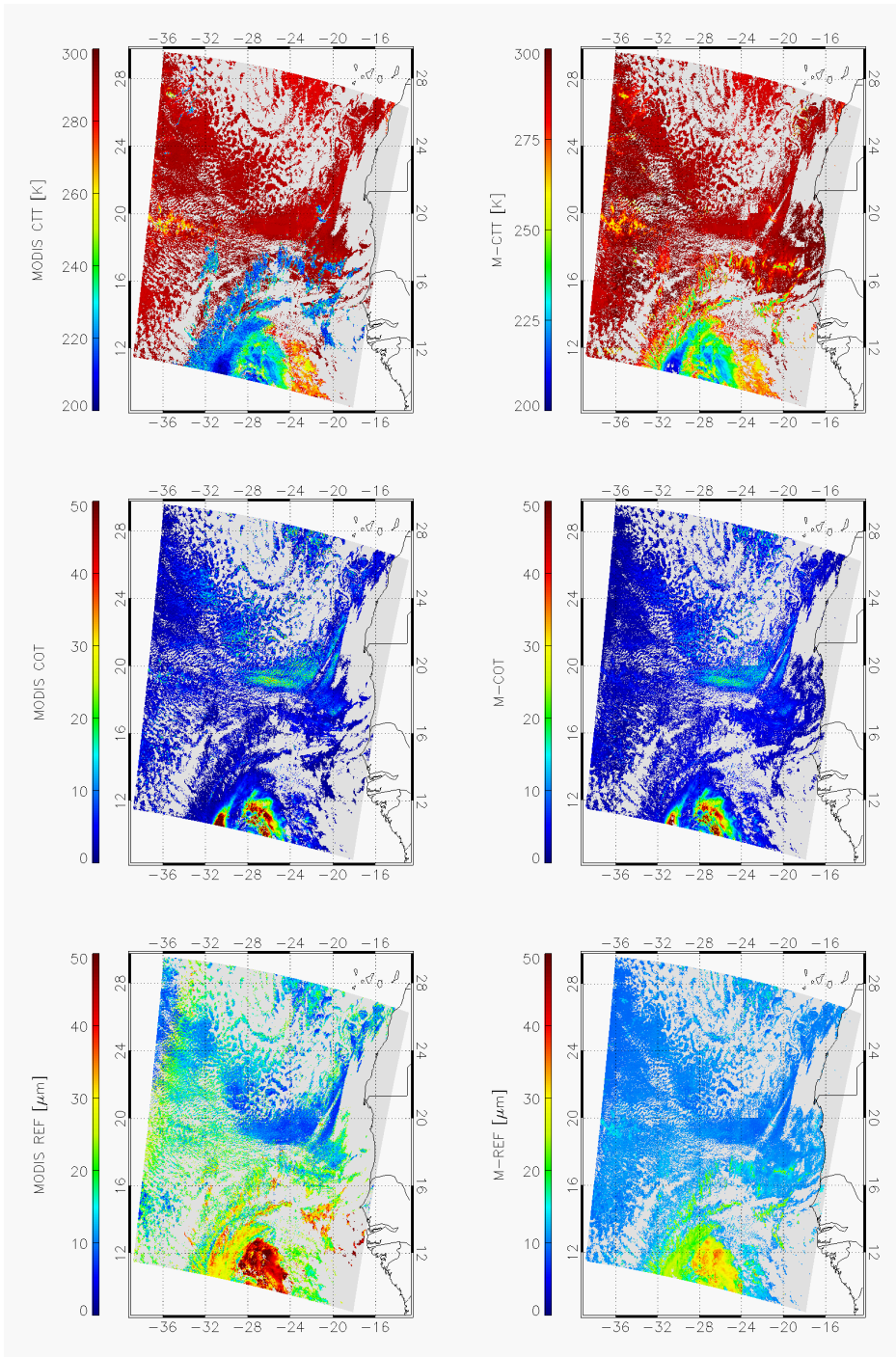


Figure 7. Case study from MODIS Terra granule at 1220UTC, 30 September 2021. The top row shows the cloud top temperature, the middle panel shows the cloud optical thickness and the bottom row shows the cloud effective radius at $1.6 \mu\text{m}$, whereby the left column belongs to the MOD06 L2 products and the right column to the M-CLD.

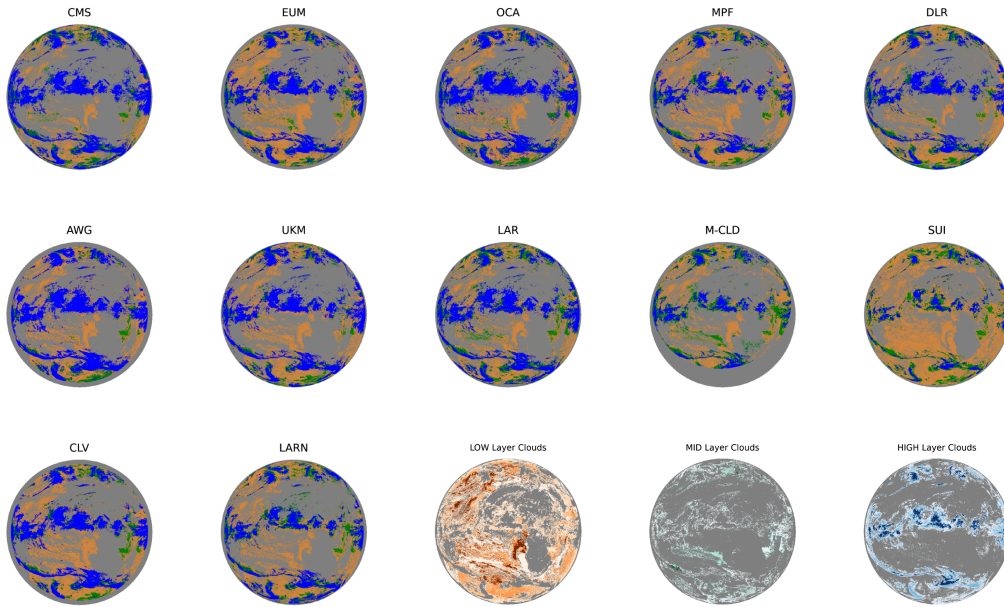


Figure 8. Cloud top pressure heights of the thirteen algorithms submitted to ICWG, classified into three cloud classes: low (orange), middle (green) and high (blue) based on the ISCCP classification: for 13-06-2008 at 12:00 UTC. The combined cloud top pressure classes based the consensus of all thirteen ICWG algorithms are shown in the bottom row, separated in low (third MSG disc), middle (fourth MSG disc) and high (fifth MSG disc). Detailed information about the algorithms behind the acronyms in the titles are provided in table 4 of Hamann et al. (2014).

320 polar orbiting satellite and is adapted to the MSI specification, which lead to uncertainties in the adaptation to SEVIRI due to differences in central wavelength and spectral response function, radiative transfer simulations and generated look-up-tables. The M-CLD processor has been directly applied to the SEVIRI observation.

Figure 8 shows the cloud top pressure obtained by thirteen different retrievals for the noon scene of the 13th June 2008 and the combined cloud top pressure separated in low, middle and high. The cloud top pressure is separated in three classes
 325 for the comparison: low (red), middle (green) and high (blue) based on the ISCCP classification. The zonal distribution of the cloud top pressure is comparable for all datasets. High clouds are present in the intertropical convergence zone. The combined cloud top pressure illustrates the disagreement for the anvil of the convective clouds within the intertropical convergence zone. Adjacent to them, low clouds are most common in the marine stratocumulus region between 30° S and 30° N and agree well
 330 between the algorithms. Note that the cloud masks differ between the algorithms, which also influences the mean cloud top pressure obtained by the algorithm. Some algorithms also limit the domain for retrieval due to large viewing or solar zenith angles and/or sun glint.

Figure 9 shows the histograms of the cloud top temperature from all the applied retrievals. A common cloud mask is used to calculate the individual CTT histograms. Different cloud occurrence frequencies are observed for the boundary layer clouds.

Cloud Top Temperature

2008-06-13 12:00UTC Region 00 COM Mask

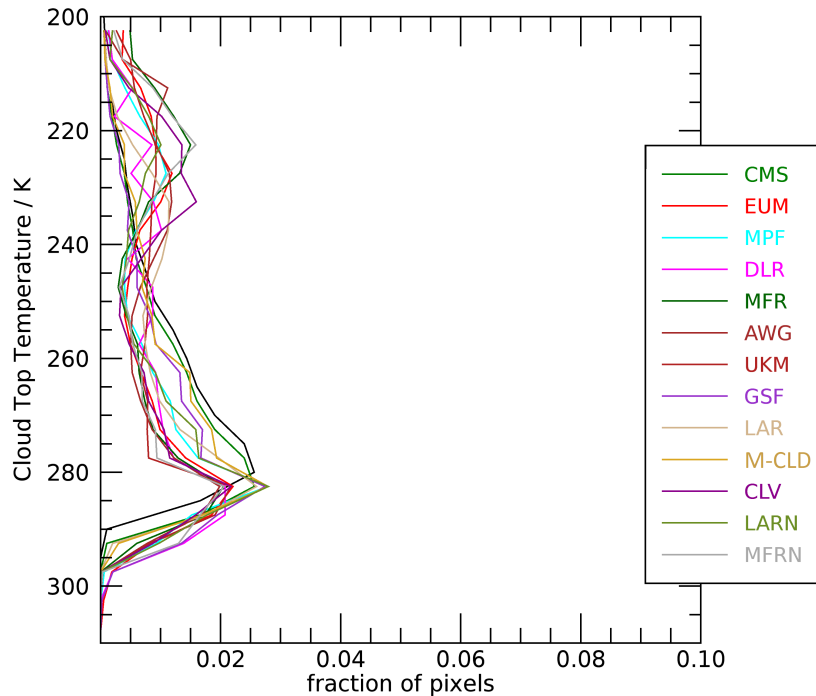


Figure 9. Histograms of the cloud top temperature of the thirteen ICWG algorithms for 13-06-2008 at 12:00 UTC based on a common cloud mask. The M-CTT product is named here under the processor name M-CLD.

Most histograms show a distribution with two cloud occurrence maxima, one around 230 K and a second one below 280 K. The weakness of M-CTT is the detection of multilayer clouds with high cirrus clouds in the upper troposphere. For example, the anvil of the deep convective storm systems classified as with medium instead of high cloud top height (see Figure 8). This is also reflected in the histogram (Figure 9, yellow curve) where the second maximum at 230 K is not present. It should be noted that the other algorithms take advantage of the SEVIRI CO_2 band, which MSI does not have.

Additionally, the A-Train constellation of Earth-observing satellites (Stephens et al., 2002, 2018) of the comparison, the CloudSat (Marchand et al., 2008) and MODIS measurement (MYD06_L2, Platnick et al. (2015a)) are re-gridded onto the SEVIRI grid. Five regions from the SEVIRI disc have been selected to study in more detail specific meteorological conditions. One example is a deep convection cell over West Africa is presented in Figure 10. On top, the CloudSat measurements on the A-Train track are compared with the M-CTH (white crosses, Figure 10), which generally show a good agreement for most of the collocated observations. The M-CLD COT and REF values (red: ice phase, green: water phase) have been also compared to the L2 products from MODIS (blue, Figure 10). The COT values between MODIS and MSI are in good agreement, while

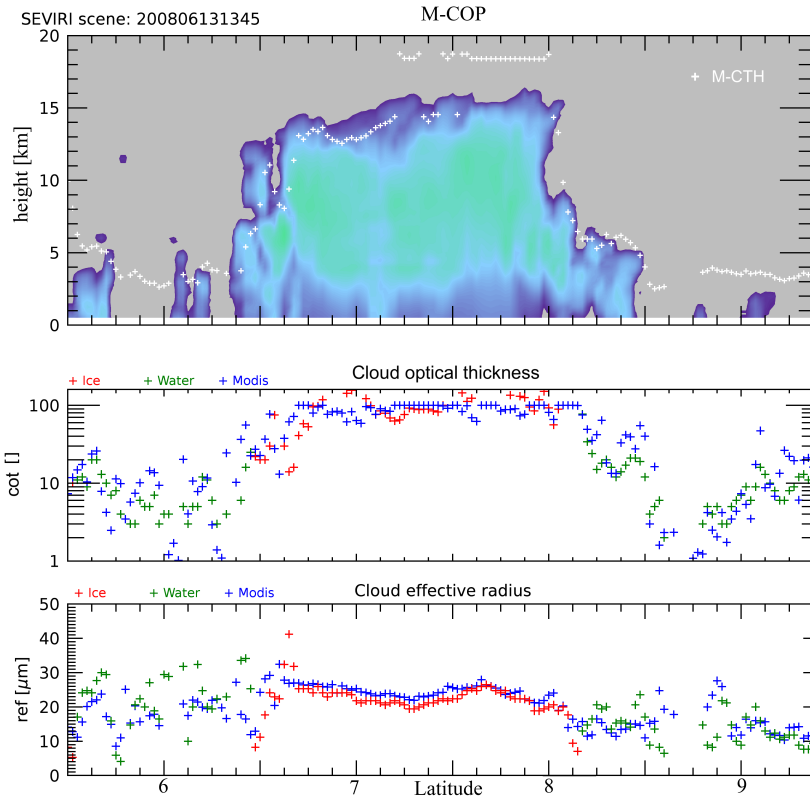


Figure 10. Selected CloudSAT, MODIS and M-COP (based on SEVIRI L1) cloud properties over West Africa with deep convection. Top panel, Cloud radar reflections are shown with the M-CTH (dotted white line). The middle panel shows the MODIS-COT (blue) and the M-COT (with cloud phase red: ice, green: water) on the track and the lower panel presents the MODIS-REF compared to M-REF while M-REF is also separated between water and ice.

there is a slight overestimation of M-REF compared to MODIS for water clouds and underestimation for ice clouds. However, one should note that this is only a qualitative comparison for one case study and a comprehensive assessment of the quality of the M-CLD products will be performed once real MSI observations are available.

350 4 Conclusion

This paper describes the baseline algorithms used to retrieve the optical and physical products (M-COP) from observations of the MSI instrument onboard the EarthCARE satellite. As such, M-COP is an essential part of the MSI cloud processor M-CLD. The cloud mask algorithm M-CM, which is an important input for M-COP, is described in the accompanying paper Hünnerbein et al. (2023). We described all significant components of the M-CLD processor to retrieve the M-COP products (Figure

355 A1). The algorithm is based on the widely used optimal estimation technique and simultaneously considers the shortwave and longwave MSI channels to obtain an optimal estimate of the targeted cloud properties, including an error estimate. The validation results demonstrate the comparability of M-COP results with those of similar operationally used algorithms. M-CLD is able to provide cloud optical and physical products in near real time on a global basis. It has to be realized however that the performance depends on the observation conditions including surface type (desert, sun-glint, ice), illumination and viewing
360 geometry, and cloud type. The provision of uncertainty estimates as part of the M-COP products will enable an assessment of the situation-dependent retrieval uncertainty. The software will be embedded in the ESA processing framework.

The algorithm performance has been assessed using synthetic EarthCARE test scenes as well as satellite observations from the MODIS and SEVIRI instruments. Overall, the comparison with the test scene truth and the different imager cloud products show good and encouraging results. The MODIS and SEVIRI imagers feature additional channels which provide further
365 information, e.g., for detecting thin clouds or identifying multilayer cloud situations (thin over thick). In particular, the cloud top height is observed to be biased low in multilayer situations, which are further investigated with the synergistic ATLID-MSI retrieval in Haarig et al. (2023).

The MSI solar channels show a spectral curvature nonlinearity disturbance due to imperfect bandpass filters on the curved optical lenses (Wehr et al. (2023)), which causes a spectral shift in across-track direction. This degradation of the spectral
370 formation content is currently under investigation, and it is planned to integrate mitigation measures in the M-CLD processor. Further, the forward model RTTOV will be updated soon to its newest version 13.3, which includes the real MSI filter functions as one important update. During the commissioning phase, the configurable parameter of the processor will be still adjusted and optimized to improve the accuracy by using dedicated EarthCARE campaigns and geostationary satellites observations.

Data availability. The EarthCARE Level-2 demonstration products from simulated scenes, including the MSI cloud mask products discussed in this paper, are available from <https://doi.org/10.5281/zenodo.7117115> (van Zadelhoff et al., 2022). MODIS Level-1 (MODIS Science Data Support Team (SDST), 2017) and the MODIS Level-2 cloud product MOD06 (Platnick et al., 2015a) and MYD06 (Platnick et al., 2015b) are available through the Level-1 and Atmosphere Archive Distribution System Distributed Active Archive Center (LAADS DAAC: <https://ladsweb.modaps.eosdis.nasa.gov>, last access 31-01-2023). The Cloudsat 2B-GEOPROF product (Marchand et al., 2008) can be ordered via (CloudSat data processing center: <https://www.cloudsat.circa.colostate.edu>). Thanks are also given to EUMETSAT for providing the MSG2-SEVIRI data.
380

Author contributions. The manuscript was prepared by AH, SB and HD. The M-COP code was developed by AH and JF. AH validated the M-COP algorithm against MODIS, SEVIRI and simulated test scenes. GZ generated the CPP LUTs. AW generated the dataset and created the plots for the ICWG results.

Competing interests. The authors declare that they have no conflict of interest.

385 *Acknowledgements.* This work has been funded by ESA grants (IRMA), 4000112018/14/NL/CT (APRIL) and 4000134661/21/NL/AD (CARDINAL). We thank Tobias Wehr and Michael Eisinger for their continuous support over many years, and the EarthCARE developer team for valuable discussions during various meetings. The authors would like to express their gratitude to the MODIS science team, the SEVIRI science team for providing their data to the scientific community.

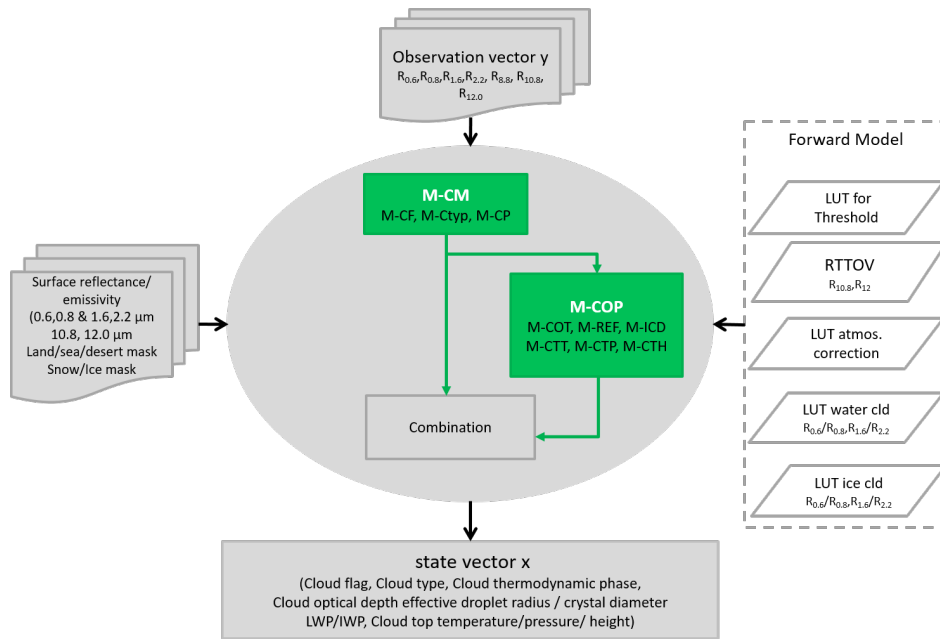


Figure A1. Flowchart of the M-CLD processor.

Appendix A

390 The MSI cloud processor consists of two main parts (see Figure A1), which are sequentially processed. The M-COP relies on the availability of M-CM information as provided also by the M-CLD processor in the first step, which is described in Hünnerbein et al. (2023).

References

- Baum, B. A., Yang, P., Heymsfield, A. J., Bansemer, A., Cole, B. H., Merrelli, A., Schmitt, C., and Wang, C.: Ice cloud single-scattering property models with the full phase matrix at wavelengths from 0.2 to 100 μm , *Journal of Quantitative Spectroscopy and Radiative Transfer*, 146, 123–139, 2014.
- Benas, N., Finkensieper, S., Stengel, M., Zadelhoff, G.-J., Hanschmann, T., Hollmann, R., and Meirink, J. F.: The MSG-SEVIRI-based cloud property data record CLAAS-2, *Earth System Science Data*, 9, 415–434, <https://doi.org/10.5194/essd-9-415-2017>, 2017.
- Berk, A., Acharya, P. K., Bernstein, L. S., Anderson, G. P., Chetwynd Jr, J. H., and Hoke, M. L.: Reformulation of the MODTRAN band model for higher spectral resolution, in: *Algorithms for Multispectral, Hyperspectral, and Ultraspectral Imagery VI*, vol. 4049, pp. 190–198, SPIE, 2000.
- de Haan, J. F., Bosma, P., and Hovenier, J.: The adding method for multiple scattering calculations of polarized light, *Astronomy and astrophysics*, 183, 371–391, 1987.
- Derrien, M., Farki, B., Harang, L., LeGleau, H., Noyalet, A., Pochic, D., and Sairouni, A.: Automatic cloud detection applied to NOAA-11/AVHRR imagery, *Remote Sensing of Environment*, 46, 246–267, 1993.
- Donovan, D., Kollias, P., and van Zadelhoff, G.-J.: Generating satellite test datasets - 2. The EarthCARE End-to-End Simulator (E3SIM), *Atmospheric Measurement Techniques*, to be submitted, 2023.
- Eisinger, M., Wehr, T., Kubota, T., Bernaerts, D., and Wallace, K.: The EarthCARE production model and auxiliary products, *Atmospheric Measurement Techniques*, to be submitted, 2023.
- Fritz, S. and Winston, J. S.: Synoptic use of radiation measurements from satellite TIROS II, *Monthly Weather Review*, 90, 1–9, 1962.
- Greuell, W. and Roebeling, R.: Toward a standard procedure for validation of satellite-derived cloud liquid water path: A study with SEVIRI data, *Journal of applied meteorology and climatology*, 48, 1575–1590, 2009.
- Haarig, M., Hünerbein, A., Wandinger, U., Docter, N., Preusker, R., Horn, S., Schneider, F., Donovan, D., and van Zadelhoff, G.-J.: Retrieval of cloud top heights and aerosol columnar properties from combined lidar and imager observations: the AM-COL product, *Atmospheric Measurement Techniques*, to be submitted, 2023.
- Hamann, U., Walther, A., Baum, B., Bennartz, R., Bugliaro, L., Derrien, M., Francis, P. N., Heidinger, A., Joro, S., Kniffka, A., Le Gléau, H., Lockhoff, M., Lutz, H.-J., Meirink, J. F., Minnis, P., Palikonda, R., Roebeling, R., Thoss, A., Platnick, S., Watts, P., and Wind, G.: Remote sensing of cloud top pressure/height from SEVIRI: analysis of ten current retrieval algorithms, *Atmospheric Measurement Techniques*, 7, 2839–2867, <https://doi.org/10.5194/amt-7-2839-2014>, 2014.
- Hartmann, D. L. and Short, D. A.: On the use of earth radiation budget statistics for studies of clouds and climate, *Journal of Atmospheric Sciences*, 37, 1233–1250, 1980.
- Heidinger, A. K., Pavolonis, M. J., Calvert, C., Hoffman, J., Nebuda, S., Straka, W., Walther, A., and Wanzong, S.: Chapter 6 - ABI Cloud Products from the GOES-R Series, in: *The GOES-R Series*, edited by Goodman, S. J., Schmit, T. J., Daniels, J., and Redmon, R. J., pp. 43–62, Elsevier, <https://doi.org/https://doi.org/10.1016/B978-0-12-814327-8.00006-8>, 2020.
- Hünerbein, A., Bley, S., Horn, S., Deneke, H., and Walther, A.: Cloud mask algorithm from the EarthCARE Multi-Spectral Imager: the M-CM products, *Atmospheric Measurement Techniques*, 16, 2821–2836, <https://doi.org/10.5194/amt-16-2821-2023>, 2023.
- Illingworth, A. J., Barker, H. W., Beljaars, A., Ceccaldi, M., Chepfer, H., Clerbaux, N., Cole, J., Delanoë, J., Domenech, C., Donovan, D. P., Fukuda, S., Hiraoka, M., Hogan, R. J., Huenerbein, A., Kollias, P., Kubota, T., Nakajima, T., Nakajima, T. Y., Nishizawa, T., Ohno, Y., Okamoto, H., Oki, R., Sato, K., Satoh, M., Shephard, M. W., Velázquez-Blázquez, A., Wandinger, U., Wehr, T., and van Zadelhoff, G.-J.:

- 430 The EarthCARE Satellite: The Next Step Forward in Global Measurements of Clouds, Aerosols, Precipitation, and Radiation, *Bulletin of the American Meteorological Society*, 96, 1311 – 1332, <https://doi.org/10.1175/BAMS-D-12-00227.1>, 2015.
- Inoue, T.: On the temperature and effective emissivity determination of semi-transparent cirrus clouds by bi-spectral measurements in the $10\mu\text{m}$ window region, *Journal of the Meteorological Society of Japan. Ser. II*, 63, 88–99, 1985.
- IPCC 2021: Climate Change 2021: The Physical Science Basis. Contribution of Working Group I to the Sixth Assessment Report of the
- 435 Intergovernmental Panel on Climate Change, [Masson-Delmotte, V., P. Zhai, A. Pirani, S.L. Connors, C. Péan, S. Berger, N. Caud, Y. Chen, L. Goldfarb, M.I. Gomis, M. Huang, K. Leitzell, E. Lonnoy, J.B.R. Matthews, T.K. Maycock, T. Waterfield, O. Yelekçi, R. Yu, and B. Zhou (eds.)], Cambridge University Press, Cambridge, United Kingdom and New York, NY, USA, doi: 10.1017/9781009157896, in press.
- King, M. D., Tsay, S.-C., Platnick, S. E., Wang, M., and Liou, K.-N.: Cloud retrieval algorithms for MODIS: Optical thickness, effective
- 440 particle radius, and thermodynamic phase, MODIS Algorithm Theoretical Basis Document, 1997, 1997.
- Kriebel, K., Saunders, R., and Gesell, G.: Optical properties of clouds derived from fully cloudy AVHRR pixels, *Beiträge zur Physik der Atmosphäre*, 62, 165–171, 1989.
- Letu, H., Yang, K., Nakajima, T. Y., Ishimoto, H., Nagao, T. M., Riedi, J., Baran, A. J., Ma, R., Wang, T., Shang, H., Khatri, P., Chen, L., Shi, C., and Shi, J.: High-resolution retrieval of cloud microphysical properties and surface solar
- 445 radiation using Himawari-8/AHI next-generation geostationary satellite, *Remote Sensing of Environment*, 239, 111583, <https://doi.org/https://doi.org/10.1016/j.rse.2019.111583>, 2020.
- Levenberg, K.: A method for the solution of certain non-linear problems in least squares, *Quarterly of applied mathematics*, 2, 164–168, 1944.
- Marchand, R., Mace, G. G., Ackerman, T., and Stephens, G.: Hydrometeor Detection Using Cloudsat—An Earth-Orbiting 94-GHz Cloud
- 450 Radar, *Journal of Atmospheric and Oceanic Technology*, 25, 519 – 533, <https://doi.org/https://doi.org/10.1175/2007JTECHA1006.1>, 2008.
- Marquardt, D. W.: An algorithm for least-squares estimation of nonlinear parameters, *Journal of the society for Industrial and Applied Mathematics*, 11, 431–441, 1963.
- Mason, S., Hogan, R. J., Donovan, D., van Zadelhoff, G.-J., Kollias, P., Treserras, B. P., Qu, Z., and OTHERS: An intercomparison of EarthCARE cloud, aerosol and precipitation retrieval products, *Atmospheric Measurement Techniques*, to be submitted, 2022.
- 455 Meirink, J., Roebeling, R. A., and Stammes, P.: Atmospheric correction for the KNMI Cloud Physical Properties retrieval algorithm, TR-304, 22, 2009.
- Minnis, P. and Harrison, E. F.: Diurnal variability of regional cloud and clear-sky radiative parameters derived from GOES data. Part I: Analysis method, *Journal of Applied Meteorology and Climatology*, 23, 993–1011, 1984.
- Minnis, P., Liou, K.-N., and Takano, Y.: Inference of cirrus cloud properties using satellite-observed visible and infrared radiances. Part I:
- 460 Parameterization of radiance fields, *Journal of the atmospheric sciences*, 50, 1279–1304, 1993.
- Moody, E. G., King, M. D., Schaaf, C. B., and Platnick, S.: MODIS-derived spatially complete surface albedo products: Spatial and temporal pixel distribution and zonal averages, *Journal of applied meteorology and climatology*, 47, 2879–2894, 2008.
- Nakajima, T. and King, M. D.: Determination of the optical thickness and effective particle radius of clouds from reflected solar radiation measurements. Part I: Theory, *Journal of the atmospheric sciences*, 47, 1878–1893, 1990.
- Platnick, S., Ackerman, S. A., King, M. D., Meyer, K., Menzel, W. P., Holz, R. E., Baum, B. A., and Yang, P.: MODIS atmosphere L2 cloud product (06_{L2}), *NASAMODIS Adaptive Processing System, Goddard Space Flight Center*, https://doi.org/dx.doi.org/10.5067/MODIS/MYD06_L2.006, 2015a.

- Platnick, S., Ackerman, S. A., King, M. D., Meyer, K., Menzel, W. P., Holz, R. E., Baum, B. A., and Yang, P.: MODIS atmosphere L2 cloud product (06_{L2}), *NASAMODIS Adaptive Processing System, Goddard Space Flight Center*, https://doi.org/dx.doi.org/10.5067/MODIS/MOD06_L2.006, 2015b.
- 465 Platnick, S., Meyer, K. G., King, M. D., Wind, G., Amarasinghe, N., Marchant, B., Arnold, G. T., Zhang, Z., Hubanks, P. A., Holz, R. E., et al.: The MODIS cloud optical and microphysical products: Collection 6 updates and examples from Terra and Aqua, *IEEE Transactions on Geoscience and Remote Sensing*, 55, 502–525, 2016.
- Platnick, S., Meyer, K., Wind, G., Holz, R. E., Amarasinghe, N., Hubanks, P. A., Marchant, B., Dutcher, S., and Veglio, P.: The NASA MODIS-VIIRS Continuity Cloud Optical Properties Products, *Remote Sensing*, 13, <https://doi.org/10.3390/rs13010002>, 2021.
- 470 Poulsen, C., Siddans, R., Thomas, G., Sayer, A., Grainger, R., Campmany, E., Dean, S., Arnold, C., and Watts, P.: Cloud retrievals from satellite data using optimal estimation: evaluation and application to ATSR, *Atmospheric Measurement Techniques*, 5, 1889–1910, 2012.
- Rizzi, R., Bauer, P., Crewell, S., Leroy, M., Mätzler, C., Menzel, W., Ritter, B., Russell, J., and Thoss, A.: Cloud, Precipitation and Large Scale Land Surface Imaging (CPL) Observational Requirements for Meteorology, Hydrology and Climate, EUMETSAT position paper, EUMETSAT, Darmstadt, Germany, 2006.
- 475 Rodgers, C. D.: *Inverse methods for atmospheric sounding : theory and practice*, World Scientific Publishing, 2000.
- Roebeling, R., Feijt, A., and Stammes, P.: Cloud property retrievals for climate monitoring: Implications of differences between Spinning Enhanced Visible and Infrared Imager (SEVIRI) on METEOSAT-8 and Advanced Very High Resolution Radiometer (AVHRR) on NOAA-17, *Journal of geophysical research*, 111, D20 210, 2006.
- Roebeling, R., Baum, B., Bennartz, R., Hamann, U., Heidinger, A., Thoss, A., and Walther, A.: Evaluating and improving cloud parameter retrievals, *Bulletin of the American Meteorological Society*, 94, ES41–ES44, 2013.
- 480 Roebeling, R., Baum, B., Bennartz, R., Hamann, U., Heidinger, A., Meirink, J. F., Stengel, M., Thoss, A., Walther, A., and Watts, P.: Summary of the Fourth Cloud Retrieval Evaluation Workshop, *Bulletin of the American Meteorological Society*, 96, ES71–ES74, 2015.
- Saunders, R. W., Matricardi, M., and Brunel, P.: An Improved Fast Radiative Transfer Model for Assimilation of Satellite Radiances Observations, *QJRM*, 125, 1407–1425, 1999.
- 485 Saunders, R. W., Matricardi, M., and Geer, A.: RTTOV9.1 User Guide, EUMETSAT, NWPSAF-MO-UD-016, Tech. rep., 2009.
- Segelstein, D. J.: *The complex refractive index of water*, Ph.D. thesis, University of Missouri–Kansas City, 1981.
- Stammes, P.: Spectral radiance modeling in the UV-visible range, in: *IRS 2000: Current problems in atmospheric radiation*, pp. 385–388, 2001.
- Stengel, M., Kniffka, A., Meirink, J. F., Lockhoff, M., Tan, J., and Hollmann, R.: CLAAS: the CM SAF cloud property data set using SEVIRI, *Atmospheric Chemistry and Physics*, 14, 4297–4311, <https://doi.org/10.5194/acp-14-4297-2014>, 2014.
- 490 Stephens, G., Winker, D., Pelon, J., Trepte, C., Vane, D., Yuhas, C., L’ecuyer, T., and Lebsock, M.: CloudSat and CALIPSO within the A-Train: Ten years of actively observing the Earth system, *Bulletin of the American Meteorological Society*, 99, 569–581, 2018.
- Stephens, G. L.: The parameterization of radiation for numerical weather prediction and climate models, *Monthly weather review*, 112, 826–867, 1984.
- Stephens, G. L. and Kummerow, C. D.: The remote sensing of clouds and precipitation from space: A review, *Journal of the Atmospheric Sciences*, 64, 3742–3765, 2007.
- 495 Stephens, G. L., Vane, D. G., Boain, R. J., Mace, G. G., Sassen, K., Wang, Z., Illingworth, A. J., O’connor, E. J., Rossow, W. B., Durden, S. L., et al.: The CloudSat mission and the A-Train: A new dimension of space-based observations of clouds and precipitation, *Bulletin of the American Meteorological Society*, 83, 1771–1790, 2002.

- Stubenrauch, C. J., Rossow, W. B., Kinne, S., Ackerman, S., Cesana, G., Chepfer, H., Di Girolamo, L., Getzewich, B., Guignard, A., Heidinger, A., et al.: Assessment of global cloud datasets from satellites: Project and database initiated by the GEWEX radiation panel, *Bulletin of the American Meteorological Society*, 94, 1031–1049, 2013.
- van Zadelhoff, G.-J., Barker, H. W., Baudrez, E., Bley, S., Clerbaux, N., Cole, J. N. S., de Kloe, J., Docter, N., Domenech, C., Donovan, D. P., Dufresne, J.-L., Eisinger, M., Fischer, J., García-Marañón, R., Haarig, M., Hogan, R. J., Hünerbein, A., Kollias, P., Koopman, R., Madenach, N., Mason, S. L., Preusker, R., Puigdomènech Treserras, B., Qu, Z., Ruiz-Saldaña, M., Shephard, M., Velázquez-Blazquez, A., Villefranque, N., Wandinger, U., Wang, P., and Wehr, T.: EarthCARE level-2 demonstration products from simulated scenes, <https://doi.org/10.5281/zenodo.7117116>, 2022.
- Walther, A. and Heidinger, A. K.: Implementation of the daytime cloud optical and microphysical properties algorithm (DCOMP) in PATMOS-x, *Journal of Applied Meteorology and Climatology*, 51, 1371–1390, 2012.
- Wan, Z.: New refinements and validation of the collection-6 MODIS land-surface temperature/emissivity product, *Remote sensing of Environment*, 140, 36–45, 2014.
- Warren, S. G. and Brandt, R. E.: Optical constants of ice from the ultraviolet to the microwave: A revised compilation, *Journal of Geophysical Research: Atmospheres*, 113, 2008.
- Watts, P., Bennartz, R., and Fell, F.: Retrieval of two-layer cloud properties from multispectral observations using optimal estimation, *Journal of Geophysical Research: Atmospheres*, 116, 2011.
- Watts, S. K., Watts, P. D., and Baran, A. J.: Tropical cirrus cloud parameters from the Along Track Scanning Radiometer (ATSR-2), in: *Satellite Remote Sensing of Clouds and the Atmosphere III*, vol. 3495, pp. 321–331, SPIE, 1998.
- Wehr, T., Kubota, T., Tzeremes, G., Wallace, K., Nakatsuka, H., Ohno, Y., Koopman, R., Rusli, S., Kikuchi, M., Eisinger, M., Tanaka, T., Taga, M., Deghaye, P., Tomita, E., and Bernaerts, D.: The EarthCARE Mission - Science and System Overview, *Atmospheric Measurement Techniques*, to be submitted, 2023.
- Wolters, E. L. A., Roebeling, R., and Stammes, P.: Cloud reflectance calculations using DAK: study on required integration points, *Koninklijk Nederlands Meteorologisch Instituut*, 2006.