

FastIsostasy v1.0 – ~~An accelerated~~ A regional, accelerated 2D GIA model accounting for the lateral variability of the solid Earth

Jan Swierczek-Jereczek^{1,2}, Marisa Montoya^{1,2}, Konstantin Latychev³, Alexander Robinson⁴, Jorge Alvarez-Solas^{1,2}, and Jerry Mitrovica⁵

¹Department of Earth Physics and Astrophysics, Complutense University of Madrid, Madrid, Spain.

²Geosciences Institute, CSIC-UCM, Madrid, Spain.

³Seakon, Toronto, Canada.

⁴Alfred Wegener Institute, Helmholtz Centre for Polar and Marine Research, Potsdam, Germany.

⁵Department of Earth and Planetary Sciences, Harvard University, Massachusetts, USA.

Correspondence: Jan Swierczek-Jereczek (janswier@ucm.es)

Abstract. The vast majority of ice-sheet modelling studies rely on simplified representations of the Glacial Isostatic Adjustment (GIA), which, among other limitations, do not account for lateral variations of the lithospheric thickness and upper-mantle viscosity. In studies of the last glacial cycle using 3D GIA models, this has however been shown to have major impacts on the dynamics of marine-based sectors of Antarctica, which are likely to be the greatest contributors to sea-level rise in the coming

5 centuries. This gap in comprehensiveness is explained by the fact that 3D GIA models are computationally expensive, seldomly open-source and require ~~the implementation of an iterative coupling scheme to converge with the history of the ice-sheet model~~ a complex coupling scheme. To close this gap between "best" and "tractable" GIA models, we here propose FastIsostasy, a regional GIA model capturing lateral variations of the lithospheric thickness and mantle viscosity. By means of Fast-Fourier

10 ~~transforms~~ Transforms and a hybrid collocation scheme to solve its underlying partial differential equation, FastIsostasy can simulate 100,000 years of high-resolution bedrock displacement in only minutes of single-CPU computation, including the changes in sea-surface height due to mass redistribution. Despite its 2D grid, FastIsostasy parametrises the depth-dependent viscosity in a physically meaningful way and therefore represents the depth dimension to a certain extent. FastIsostasy is here benchmarked against analytical, as well as 1D and 3D GIA-numerical solutions and shows ~~very~~ good agreement with them. ~~It is fully~~ For a simulation of the last glacial cycle, its mean and maximal error over time and space respectively yield less than 5

15 and 16% compared to a 3D GIA model over the regional solution domain. FastIsostasy is open-source, documented with many examples and provides a straight-forward interface for coupling to an ice-sheet model. The model is benchmarked here based on its implementation in Julia, while a Fortran version is also provided to allow for compatibility with most existing ice-sheet models. The Julia version provides additional features, including a vast library of adaptive time-stepping methods and GPU support.

1 Introduction

1.1 GIA is an important feedback on ice-sheet dynamics

Glacial isostatic adjustment (GIA) denotes the crustal displacement that results from changes in the ice, liquid water and sediment columns, as well as the associated changes in Earth's gravity and rotation axis (Mitrovica et al., 2001), ultimately ~~impacting~~ altering the sea level (Farrell and Clark, 1976). In the present work, we focus on the deformation and gravitational effects. ~~The~~ For ice sheets, the former is a net negative feedback on ~~ice-sheet~~ mass balance through the lapse rate of the troposphere and both imply additional negative feedbacks on ~~ice-sheet dynamics in the case~~ the dynamics of marine-based regions (Gomez et al., 2010, 2012, 2015, 2018; Whitehouse et al., 2019). ~~Although enhanced melting at the grounding line results in a grounding-line retreat, it also implies,~~ where enhanced melting leads to a grounding line retreat but also to a regional bedrock uplift and a ~~reduction~~ decrease of the sea-surface height, ~~respectively~~ (SSH), due to the reduced load ~~and~~ applied upon the solid Earth and the lesser gravitational pull of the ice sheet on the oceans (Gomez et al., 2010, 2012, 2015, 2018; Whitehouse et al., 2019). As depicted in Fig. 1, these effects combine in a decrease in ~~sea level and a potential~~ relative sea level (RSL), which is defined as the difference between the SSH and the bedrock elevation. Compared to the retreated state (panel (b) of Fig. 1), this decrease ultimately leads to a readvance of the grounding line (panels (c) and (d) of Fig. 1), therefore conditioning the marine ice-sheet instability along with the buttressing effect from ice shelves (Gudmundsson et al., 2012). It was shown that the representation of the deformation and gravitational feedbacks can stabilise grounding lines on retrograde slopes (Gomez et al., 2010, 2012) and that a rapid bedrock uplift can prevent the collapse of marine-terminating glaciers that are transiently forced (Konrad et al., 2014, 2015, 2016) (Konrad et al., 2015, 2016). Furthermore, an uplifting bedrock might lead isolated bathymetric peaks to connect with the ice sheet, creating so-called pinning points (Adhikari et al., 2014) that further contribute to the stability of a marine ice sheet. Although the negative feedbacks are illustrated here for ice-sheet retreat, they conversely apply to ice-sheet growth.

In addition to these effects, recent work has shown that the ice-sheet evolution might be significantly affected by the forebulge dynamic on longer time scales in which viscous effects become important. This process denotes the region of comparatively small bedrock uplift (subsidence) surrounding a region of pronounced bedrock subsidence (uplift), which results from a positive (negative) surface load anomaly. Albrecht et al. (in rev.) suggest that the forebulge formation represents a positive feedback on ice sheet growth through a decrease of the RSL close to the ice-sheet margin and Kreuzer et al. (in rev.) show that a subsiding forebulge can increase sub-shelf melting through the formation of oceanic gateways that ease the intrusion of warm circumpolar deep water.

1.2 Laterally-variable structure of the solid Earth modulates GIA

For a given load applied to the solid Earth, the ~~amplitude, time scale and pattern of the bedrock deformation are~~ time scale of bedrock deformation is determined by the horizontal extent of the load and the mantle viscosity. The amplitude and the pattern of deformation are in turn determined by the ~~upper-mantle density and viscosity and the~~ magnitude of the load, the mantle density and the (elastic) lithospheric thickness. These ~~parameters~~ properties are close to being laterally homogeneous in many

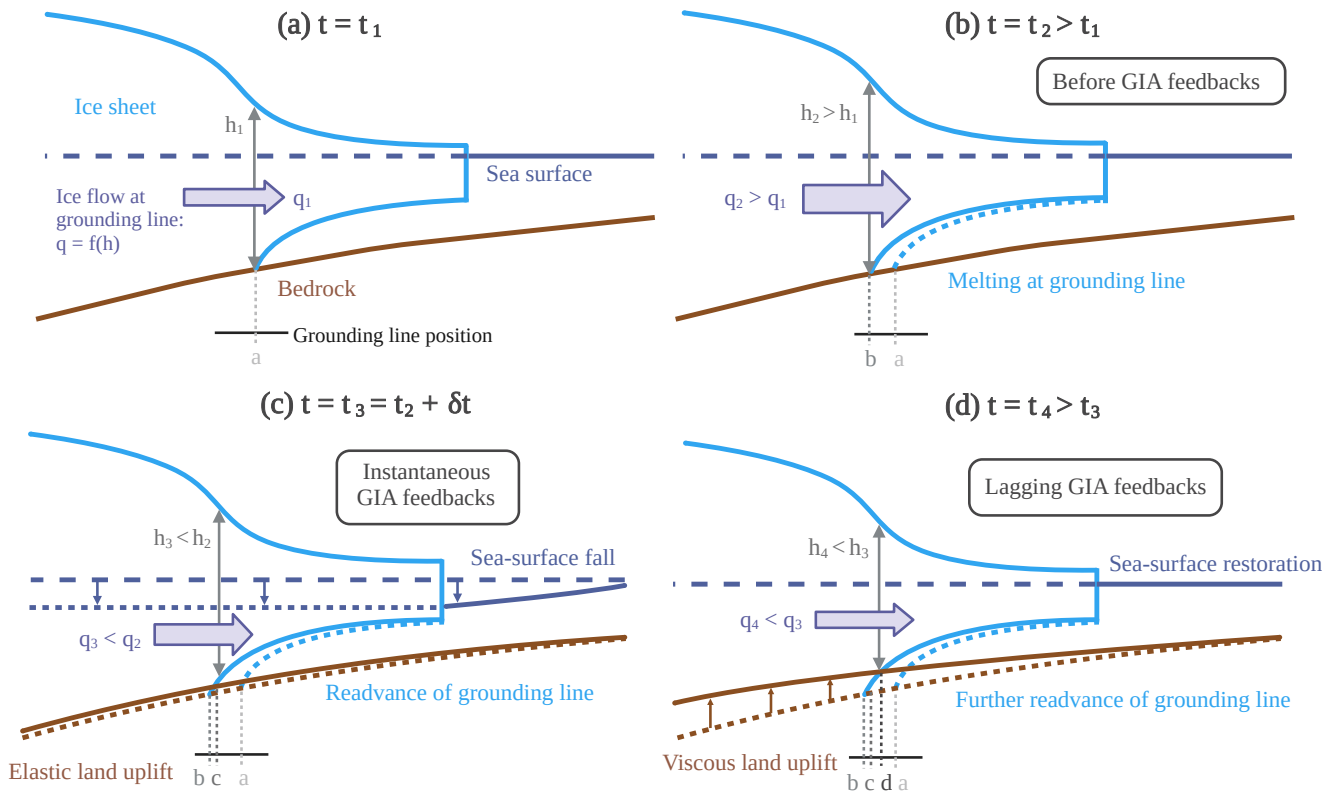


Figure 1. Idealised representation, adapted from (Whitehouse et al., 2019) Whitehouse et al. (2019), of the negative GIA feedbacks at a marine-terminating glacier on a marine-terminating glaciers with retrograde bedrock (e.g. Gomez et al., 2010). We perturb the (a) the initial configuration of the ice-sheet by (b) enhanced sub-shelf melting at the grounding line, leading to larger thickness grounding-line retreat, and therefore larger thickness and increased outflow $\dot{\tau}$ at the grounding line. (c) The loss of ice leads to an instantaneous ($\delta t \ll 1 \text{ yr}$) decrease of the local sea level RSL, which can be decomposed into an elastic uplift of the bedrock, and a decrease of the sea surface height SSH due to the reduction of the gravitational pull on the ocean, leading to a readvance of the grounding line. (d) The elastic uplift is followed by a larger, viscous uplift which further readvances the grounding line and compensates the mass anomaly generated by the ice loss, therefore restoring the sea surface height SSH close to its original value. The dashed lines used for the ice and the bedrock contour represent their original position (a).

regions of the solid Earth, which motivated the development of 1D GIA models, where these parameters only depend properties are assumed to depend only on the depth coordinate (Dziewonski and Anderson, 1981). However, some regions are an exception to this and present a significant lateral variability of solid-Earth parameters-properties (further simply referred to as LV), even on relatively short spatial scales. Since Antarctica displays a strong dichotomy between a moderately rifting system in the West-west and an old craton in the East-east (Behrendt, 1999), it represents a prototypical example of LV. As depicted in Fig.

2, the lithospheric thickness and upper-mantle viscosity are respectively as little as 50 km and 10^{18} Pa s in the ~~West-west~~ and as
60 large as 250 km and 10^{23} Pa s in the ~~East (Morelli and Danesi, 2004; Nield et al., 2014; Lloyd et al., 2015, 2020; Barletta et al., 2018; White
-east (Morelli and Danesi, 2004; Nield et al., 2014; Lloyd et al., 2015; Heeszel et al., 2016; Lloyd et al., 2020; Barletta et al., 2018; White
-~~

For simulations of the Antarctic Ice Sheet (AIS) on the time scale of glacial cycles, accounting for ~~the Antarctic~~-LV by
using 3D GIA models has shown great differences compared to 1D GIA models (~~Gomez et al., 2018; Van Calcar et al., 2023~~)
65 (~~Gomez et al., 2018; Van Calcar et al., 2023; Albrecht et al., in rev.~~), leading to discrepancies reaching up to 700 km for the
~~grounding-line position and~~ grounding-line position, more than 1 km for the ice thickness and several metres for the sea-level
equivalent volume of the AIS. Although these impacts are large, they are to be expected, given that the AIS is characterised
by large marine-based regions ~~the~~. The East-Antarctic basins and the West-Antarctic Ice-Sheet (WAIS) ~~, with respective
respectively represent~~ sea-level contributions from ice grounded below sea level of about 19.2 m and 3.4 m (~~Fretwell et al., 2013~~)
70 ~~whose at present day (Fretwell et al., 2013) and their~~ evolution strongly depends on the representation of the GIA feedbacks
depicted in ~~Fig. 1~~. Figure 1. While both regions are likely to present abrupt transitions to ice-free conditions under warming
scenarios, the WAIS is thought to have particularly low resilience, displaying a bifurcation at a mean global warming of as
little as 2°C with respect to the pre-industrial era (Garbe et al., 2020). In the context of anthropogenic warming, this is very
likely to result in an unprecedented rate of sea-level rise, challenging the adaptation of coastal livelihoods that represent a large
75 portion of human societies (Kulp and Strauss, 2019).

For these reasons, comprehensive projections of sea-level rise require the representation of the Antarctic LV in coupled ice-
sheet/GIA settings. Furthermore, the ~~upper-mantle~~ mantle viscosity is uncertain and involves discrepancies of up to two orders
of magnitude at some locations in the upper mantle (i.e. above ~ 670 km depth), depending on how viscosities are inferred
from sparse seismic data (Ivins et al., 2022). ~~Parametric uncertainties of the ice-sheet and GIA models~~ Such uncertainties
80 thus need to be propagated to the solution ~~, typically by means of ensemble simulations.~~ typically by an ensemble of
simulations. This was addressed by Coulon et al. (2021) by relying on a computationally efficient 2D GIA model that allows
for laterally-variable relaxation times of the deformational response. However, this is not a standard practice ~~in~~ since only a
few ice-sheet modelling, mostly models are coupled to a laterally-variable solid Earth, typically represented by using a 3D
GIA model (Gomez et al., 2018; Van Calcar et al., 2023; Albrecht et al., in rev.). This is largely due to the ~~sheer computational
cost of using fact that~~ 3D GIA models ~~and the fact that none of them is fully are~~ computationally too expensive for large
ensemble simulations and represent a level of complexity that may be much higher than what is required to answer most of the
on-going research questions related to the evolution of ice sheets. With the exception of CitComSVE (Zhong et al., 2022), 3D
GIA models do not present open-source codes to this date¹ and some of them even requiring a commercial licence. Instead,
the require a commercial license (e.g. Huang et al., 2023). These obstacles have prevented most ice-sheet modelling studies
90 from using 3D GIA models.

¹Some of them can however be obtained upon request, such as Seakon (Latychev et al., 2005)

1.3 FastIsostasy: reducing the misrepresentation of a laterally-variable solid Earth at low computational cost

The vast majority of ice-sheet simulations rely on greatly simplified GIA models without accounting for the parametric uncertainties of the solid Earth, thus potentially introducing biases in sea-level projections (Gomez et al., 2015). This also holds ~~to a certain extent~~ for the Ice-Sheet Model Intercomparison Project (ISMIP) (Seroussi et al., 2020) and its recent continuation to 2300 (Seroussi, 2022), used as the physical basis for the reports of the Intergovernmental Panel on Climate Change (IPCC). In summary, the ice-sheet modelling community faces the somewhat paradoxical situation of being ~~well~~ increasingly aware of how important 3D GIA is, without being able to represent it at a reasonable computational cost. The work of Coulon et al. (2021) partly addresses this with a computationally efficient 2D GIA model but is also characterised by an important limitation: the viscous response is parametrised by a field of relaxation times. However, the response time scale of the solid Earth depends not only on the viscosity, but also on the wavelength of the load as mentioned above. For these reasons, deriving spatially coherent maps of the relaxation time and constraining them within realistic ranges is not straightforward, as pointed out by Coulon et al. (2021).

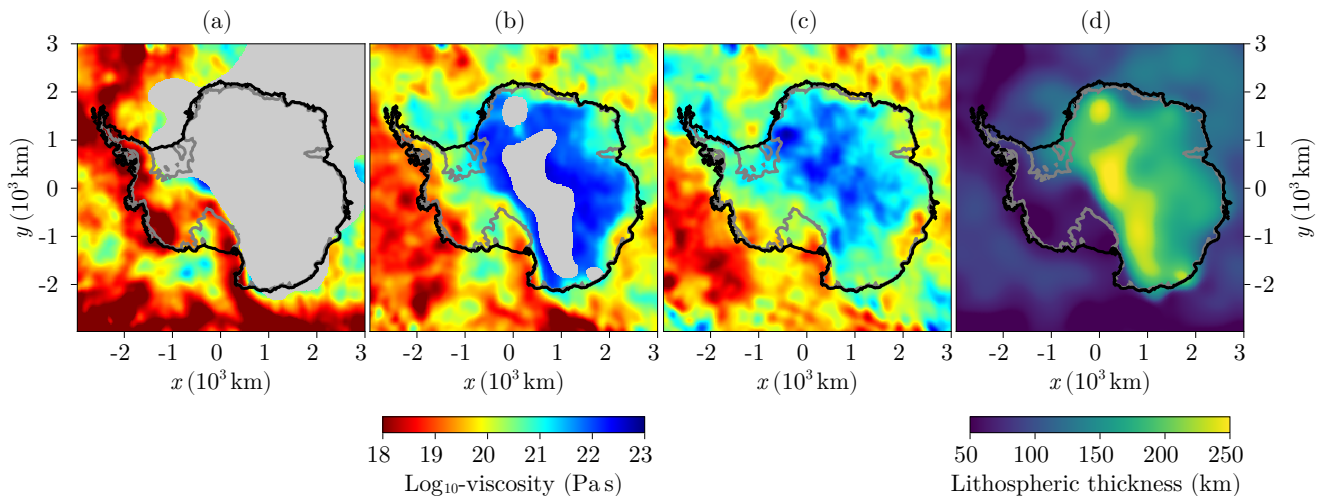


Figure 2. (a-c) Upper-mantle viscosity from ~~(Whitehouse et al., 2019; Ivins et al., 2022)~~ Whitehouse et al. (2019) and Ivins et al. (2022) at 100, 200 and 300 km depth, respectively. If the lithospheric thickness (Pan et al., 2022), depicted in (d), is larger than the layer depth, a grey shading is applied. The black and dark grey contour lines respectively indicate the present-day ~~ice-sheet~~ ice-sheet and grounded ice margins (Morlighem et al., 2020).

To tackle ~~this~~ these issues, we here propose FastIsostasy, a regional ~~GIA model derived from 2D GIA model inspired by~~ first principles and specially tailored for the needs of ice-sheet modellers. FastIsostasy (1) accounts for LV, (2) ~~allows for~~ parametrises the depth-dependence of the mantle viscosity, (3) captures the dependence of the response time scale on the mantle viscosity and the spatial scale of the load, (4) approximates the regional gravitation response and sea-level evolution, (5) is computationally ~~cheap~~ inexpensive, (6) is extensively tested and (7) offers a simple, open-source and extensively documented

interface for ~~an effortless a simplified~~ coupling to an ice-sheet model. To illustrate its capabilities, Antarctica is used as leitmotif of the present work since it displays (a1) a high LV and depth-dependence of solid-Earth ~~parameters properties~~ as depicted in Fig. 2, (b2) a high sensitivity to GIA due to the vast, marine sectors of the AIS, (e3) a large impact on the future of human societies due to possible rapid sea-level rise and (d4) large uncertainties in the solid-Earth parameters due, in part, to limited regional data sets. Antarctica might therefore be "the toughest test" when it comes to GIA modelling. ~~We emphasise that, because of this, Accordingly,~~ the tools provided here are equally well applicable to any other region covered by a past, present or future ice sheet.

115 ~~FastIsostasy in the model hierarchy~~

1.4 ~~FastIsostasy in the model hierarchy~~

The hierarchy of GIA models displays ~~a large an important complexity~~ gap between the ~~regional models, computationally cheap models, which are~~ largely used by the ice-sheet modelling community, and the ~~global computationally expensive~~ models, developed by the GIA community. ~~We herein give To give an impression of this, we herein present~~ a brief overview, summarised in Tab. 1 and Tab. 2, of the GIA model classes that are available to date. ~~We focus on Maxwell rheology, since it is the only one that is sufficiently constrained in literature. We start with the lowest and end with the highest model complexity-, and focus on the computation of the deformational response, with references to open-source implementations that we are aware of. The governing equations of the three first models can be found in~~ Appendix A.

1.4.1 ~~ELRA~~

125 ~~ELRA: We here propose to rename the The~~ Elastic-Lithosphere/Relaxed-Asthenosphere (ELRA) (Le Meur and Huybrechts, 1996) ~~to Elastic-Lithosphere/Relaxed-mAntle without any change in the acronym to avoid confusions. This is motivated by the fact that, in cratonic regions with a thick lithosphere, as e.g. East-Antarctica, there might be no asthenosphere. ELRA (ELRA, Le Meur and Huy)~~ ~~model~~ conceptualises the structure of the solid Earth as two layers stacked along the depth dimension of a Cartesian coordinate system, obtained by a regional projection of the spherical Earth. The elastic lithosphere is parametrised by its ~~thickness~~ ~~$T = \text{constant}$~~ ~~constant thickness~~ $T(x, y) = T$ and undergoes instantaneous compression under the effect of a load. It is underlain by the ~~upper mantle, asthenosphere~~², idealised as a viscous half-space parametrised by a constant ~~the relaxation time~~ τ , ~~with which~~ relaxation time $\tau(x, y) = \tau$. According to this, the solution exponentially converges to the equilibrium ~~solution. This parametrisation one, which is computed by convolving the load with a Green's function. Parametrising the transient behaviour with a relaxation time~~ is however simplistic, since, in reality, the response time scale of the solid Earth does not only depend on the viscosity, but also on the ~~transient behaviour of the neighbouring points and the wavenumber of the load~~ ~~wavelength of the load, as mentioned previously~~. Furthermore, ELRA does not represent the depth-dependence of the mantle viscosity ~~nor any LV, and or any LV. Due to its 2D regional domain, it~~ ignores the gravitational and rotational feedbacks on the sea level-

²In cratonic regions with a thick lithosphere (e.g. East-Antarctica) there might be no asthenosphere. This does not prevent the use of ELRA, which is suited, more generally, to approximate the sublithospheric mantle.

In Konrad et al. (2014), ELRA was demonstrated to display, as well as the prestress and self-gravitation (Purcell, 1998) - the latter being partly cancelled by the lack of sphericity (Amelung and Wolf, 1994). Konrad et al. (2014) demonstrated that ELRA displays important transient differences to a 1D GIA model as well as large discrepancies in the representation of the peripheral forebulge. Despite these numerous flaws, ELRA remains the standard choice for - or even simplified versions of it - remains a widespread choice among ice-sheet modellers (DeConto and Pollard, 2016; Pattyn, 2017; Quiquet et al., 2018; Rückamp et al., 2019; Lipscomb et al., 2019), as it mimics the visco-elastic-viscoelastic behaviour of the solid Earth with little implementation effort and at low computational cost. Its simplicity has led to a large number of implementations within open-source ice-sheet models (e.g. Lipscomb et al., 2019; Roberts et al., 2019) but, to our knowledge, no modular implementation is available to date. Ice-sheet modellers have therefore repeatedly spent time implementing ELRA, possibly with suboptimal computational performance as it does not represent the primary focus of their work.

ELVA:

1.4.2 ELVA

This modelling approach was proposed by Cathles (1975), applied to ice-sheet modelling for the first time in by Lingle and Clark (1985) and efficiently implemented in Bueler et al. (2007) by means of by Bueler et al. (2007) through a Fourier collocation method (FCM). Although this model is sometimes named after the authors of the aforementioned work, we here try to provide a unifying terminology and therefore call it Elastic-Lithosphere/Viscous-mAntle (ELVA). ELVA resembles ELRA in its structure but is parametrised by the spatially homogeneous upper-mantle viscosity $\eta(x,y) = \eta$. It thus avoids any conversion from viscosity to relaxation time and allows the mechanical response to depend on the wavelength of the load (Bueler et al., 2007). Furthermore, it permits embedding more of the radial structure of the mantle viscosity by introducing a viscous channel between the elastic plate and the viscous half-space³. However, it does not address any other limitation of ELRA. It is worth mentioning that PISM (Winkelmann et al., 2011) provides an open-source implementation of ELVA, which is however embedded within a larger code base. This lack of modularity is addressed by giapy (Kachuck, 2017), a Python implementation of ELVA that might be more accessible than codes traditionally written in Fortran or C++. ELVA was used, for example, by Kachuck et al. (2020) and Book et al. (2022) to study the stabilising potential of rapid bedrock uplift on the WAIS grounding line retreat.

LV-ELRA:

1.4.3 LV-ELRA

The laterally-variable ELRA (LV-ELRA) proposed in (Coulon et al., 2021) is conceptually similar to ELRA but allows for by Coulon et al. (2021) is a generalisation of ELRA to include laterally-variable upper-mantle relaxation time $\tau(x,y)$ and lithospheric thickness $T(x,y)$. The latter is achieved equilibrium displacement is obtained by solving equations derived from thin plate theory (Ventsel and Krauthammer, 2001; Coulon et al., 2021). A smoothing of the (Ventsel and Krauthammer, 2001) , which requires the use of Finite Difference Method (FDM) and is computationally more expensive than ELRA, since a large

³A viscous channel is of finite thickness, unlike a viscous half-space.

170 ~~system of linear equations needs to be solved. To obtain $\tau(x, y)$ field is typically performed to preserve a~~, Coulon et al. (2021),
 apply a Gaussian smoothing on a binary field, with $\tau(x, y) = \tau_1$ in East-Antarctica and $\tau(x, y) = \tau_2$ in the rest of the domain.
 Since LV-ELRA does not include a lateral coupling between the transient behaviour of neighbouring cells, this smoothing
 ensures a certain spatial coherence ~~of the transient dynamics of the vertical deformation~~ when relaxing the displacement field
 to the equilibrium solution, i.e. neighbouring ~~points~~ cells have similar time scales. ~~Although this is a generalisation of ELRA,~~
 175 ~~it does not address its many other limitations~~ In addition to the limitations mentioned in Sect. 1.3, this coupling prevents the
 representation of very localised features, depicted in Fig. 2 and inferred in many studies (e.g. Nield et al., 2014; Heeszel et al., 2016; Barlett
 . In the rest of the manuscript, we will refer to these limitations as the ones resulting from a relaxed rheology.

~~1D GIA: Self-gravitating visco-elastic Earth models, commonly called~~ Although computing the changes in SSH resulting
 from changes in Earth's gravity field requires, a-priori, a global domain, it can also be approximated on a regional one. This was
 done by Coulon et al. (2021) and combined with an LV-ELRA, resulting in the so-called *elementary GIA model*. This approach
 180 represents one of the most comprehensive regional GIA models developed to date and a valuable improvement for regional
 modelling, as it bypasses the computational expense of more complex models. The open-source ice-sheet model Kori includes
 the effort of Coulon et al. (2021), however not in a modular way that is directly usable to other ice-sheet modellers.

	<u>ELRA</u>	<u>ELVA</u>	<u>Elementary GIA model (LV-ELRA)</u>	<u>FastIsostasy (LV-ELVA)</u>
<u>Grid</u>	<u>2D</u>	<u>2D</u>	<u>2D</u>	<u>2D</u>
<u>Rheology</u>	<u>Relaxed</u>	<u>Maxwell</u>	<u>Relaxed</u>	<u>Maxwell</u>
<u>LV</u>	<u>×</u>	<u>×</u>	<u>≈</u>	<u>✓</u>
<u>Radial structure</u>	<u>2 layers (lumped)</u>	<u>3 layers (lumped)</u>	<u>2 layers (lumped)</u>	<u>L layers (lumped)</u>
<u>Domain</u>	<u>regional</u>	<u>regional</u>	<u>regional</u>	<u>regional</u>
<u>Distortion accounted for</u>	<u>×</u>	<u>×</u>	<u>×</u>	<u>✓</u>
<u>Sea level treatment</u>	<u>×</u>	<u>×</u>	<u>≈</u>	<u>≈</u>
<u>Variable ocean surface</u>	<u>×</u>	<u>×</u>	<u>×</u>	<u>≈</u>
<u>Rotational feedback</u>	<u>×</u>	<u>×</u>	<u>×</u>	<u>×</u>
<u>Numerical scheme</u>	<u>Green's function</u>	<u>FCM</u>	<u>FDM</u>	<u>FDM/FCM</u>
<u>Computational cost</u>	<u>low</u>	<u>low</u>	<u>low/intermediate</u>	<u>low</u>
<u>Exemplary publications</u>	<u>Le Meur and Huybrechts (2016)</u>	<u>Book et al. (2017)</u>	<u>Book et al. (2020); Book et al. (2022) Coulon et al. (2021)</u>	<u>This study</u>

Table 1. Comparison of the GIA models with 2D grids and low computational cost. $L \in \mathbb{N}$ here denotes an arbitrary number of layers. Well-represented phenomena are symbolised by "✓" and neglected ones by "×". Phenomena that are represented with a large amount of simplification are denoted by "≈". For instance, LV-ELRA is here considered to only partially represent LV, since it is subject to the limitations of a relaxed rheology. Another example of partially represented phenomenon is the change in sea level, which typically requires a global domain but can be reasonably approximated regionally as done in the elementary GIA model (Coulon et al., 2021) and FastIsostasy (c.f. Section 2.4).

1.4.4 Global 1D GIA models

185 Global 1D GIA models capture the radial structure of the solid Earth and compute its (down to the core-mantle boundary) but none of its lateral variability. They compute the gravitational field as well as the vertical and horizontal deformation by means of spherical harmonics. They solving the underlying PDEs after spherical harmonic expansion of the dependent variables. 1D GIA models typically represent the spatial heterogeneity of the sea-surface height SSH, the migration of shorelines and the rotational feedback (Mitrovica and Milne, 2003; Kendall et al., 2005; Spada and Melini, 2019). Most of them were
190 cross-validated in by Spada et al. (2011) and Martinec et al. (2018), showing great agreement while presenting intermediate computational cost. However, they are incapable of rendering any LV (e.g. Klemann et al., 2008; Spada and Melini, 2019). (e.g. Klemann et al., 2008). Spada and Melini (2019) proposed an open-source implementation of 1D GIA, which remains an exception in the field.

3D GIA:

195 1.4.5 Regional 3D GIA models

Based on Finite Element Methods (FEMs), Nield et al. (2018) and Weerdesteijn et al. (2023) have proposed regional models to compute the solid-Earth deformation in the presence of LV. Unlike ELRA, ELVA and LV-ELRA, these regional GIA models resolve the depth dimension (down to the core-mantle boundary) and allow for grid refinement in regions where a higher resolution is needed. In particular, the work of Weerdesteijn et al. (2023) provides an open-source implementation
200 that is compatible with heavily parallel hardware by extending ASPECT, a model originally developed to solve mantle convection problems. Despite this, ASPECT requires about an hour to compute a few hundred years of high-resolution bedrock deformation on 256 CPUs. This represents a computational cost that is too high for most on-going ice-sheet modelling studies, while ignoring the gravitational and rotational effects of GIA.

1.4.6 Global 3D GIA models

205 3D GIA models account for all the processes represented in 1D GIA models and are, in addition, capable of fully capturing the heterogeneity of solid Earth parameters-properties. This also results in simulations that are more complicated to set up, since the user needs to provide fields of lithospheric thickness and mantle viscosity. Unlike 1D GIA models, they were not coherently benchmarked so far 3D ones have not been systematically benchmarked but can be considered to be the best technology available for cases like Antarctica. They either rely In these models, the computation of the deformational response either relies on
210 spherical harmonics (e.g. Bagge et al., 2021), finite elements (e.g. Wu, 2004), finite volumes (e.g. Latychev et al., 2005; Gomez et al., 2018), FEM (e.g. Martinec, 2000; Wu, 2004; A et al., 2013; van der Wal et al., 2015; Sasgen et al., 2018; Zhong et al., 2022; Huang et al., 2023), Finite Volume Method (FVM, Latychev et al., 2005; Gomez et al., 2018), or perturbation theory (e.g. Wu and Wang, 2006; Zhong et al., 2022) (e.g. Wu and Wang, 2006). Simulations on glacial time scales however typically require from days up to weeks typically require at least several hours and up to few days (Zhong et al., 2022; Pan et al., 2022; Albrecht et al., in rev.) of computation,
215 even with heavily parallelised codes (Gomez et al., 2018; Van Caleur et al., 2023). This is particularly problematic for propa-

gating parametric uncertainties of the solid Earth ~~and the ice-sheet on long simulation times~~ on long simulations, since the limit of computational resources is typically reached with only a one or few ensemble members. ~~Furthermore, As mentioned above, Zhong et al. (2022) proposed the first open-source implementation of a 3D GIA models tend to have large time steps~~ $\Delta t_{\text{GIA}} \in [100, 1000] \text{ yr}$ compared to ice-sheet models $\Delta t_{\text{ISM}} \in [1, 10] \text{ yr}$. In case of a two-way coupling, an iterative procedure ~~has to be implemented for the history of both components to converge (Van Calcar et al., 2023; Wan et al., 2022).~~ code.

220

	ELRA <u>Global 1D</u>	ELVA <u>Regional 3D</u>	Elementary-GIA model <u>Global 3D (LV-ELRA)</u>
Grid	Fast <u>Isostasy (LV-ELVA) 3D</u>	1D-GIA <u>3D</u>	3D-GIA <u>3D</u>
Rheology	Maxwell-like <u>Maxwell</u>	Maxwell-like <u>Maxwell</u>	Maxwell <u>Maxwell and others</u>
Explicit mantle viscosity ×× <u>Wavelength-dependent response</u> ×× <u>LV</u>	×	× <u>≈</u> <u>✓</u>	× <u>✓</u>
Radial structure	<u>2 layers (lumped) L layers (resolved)</u>	<u>3 layers (lumped) 2 layers (lumped) n layers (lumped) n layers (L layers (resolved)</u>	<u>n L layers (resolved)</u>
Domain	<u>regional</u> <u>global</u>	<u>regional</u>	<u>regional</u> <u>regional</u> <u>global</u> <u>global</u>
Distortion accounted for	××× <u>✓</u>	Gravitationally self-consistent <u>×</u>	××× <u>✓</u>
Sea level	× <u>✓</u>	×	≈ <u>≈</u> <u>✓</u>
Time-varying <u>Variable ocean basins</u> <u>surface</u>	× <u>✓</u>	×	× <u>≈</u> <u>✓</u>
Rotational feedback	× <u>✓</u>	×	×× <u>✓</u>
Numerical scheme	<u>Green's function</u> <u>FCM</u> <u>FDM</u> <u>FDM/FCM</u> <u>spherical harmonics</u>	<u>FEM</u>	<u>diverse</u>
Computational cost	<u>low</u> <u>intermediate</u>	<u>low</u> <u>intermediate</u> <u>high</u>	<u>low</u> <u>high</u>
Exemplary publications	<u>low</u> <u>Spada and Melini (2019)</u>	<u>intermediate</u> <u>Nield et al. (2018); Weerdesteijn et al. (2021)</u>	<u>high</u> <u>Imray et al. (2005); Zhong et al. (2022)</u>

Table 2. Comparison of the GIA ~~model families available at the time~~ models with 3D grid and higher computational cost. $L \in \mathbb{N}$ here denotes an arbitrary number of ~~this publication~~ layers. We here focus on Maxwell rheology, since it is the most commonly used in literature. However these models can also be adapted to represent other rheologies.

Although computing the changes in sea-surface height requires, a-priori, a global domain, it can also be approximated on a regional one. This was done in Coulon et al. (2021) and combined with an LV-ELRA. The so-called *elementary GIA model* obtained this way represents one of the highest complexity of regional GIA models to this date and a valuable improvement for regional modelling, as it bypasses the computational expense of 1D or

225 1.4.7 FastIsostasy

The summary above points out a gap between the elementary GIA model (Coulon et al., 2021) and regional 3D GIA models
~~-Going a step further in the complexity of regional models, ASPECT has recently been extended and offers an open-source solution to compute the deformational response on laterally-variable Earth structures (Weerdesteijn et al., 2023). It is the first regional GIA model to fully resolve the depth dimension down to the core-mantle boundary and allows for grid refinement in~~
230 ~~regions where a higher resolution is needed. Despite great efforts on parallelism, ASPECT requires about an hour to compute a few hundred years of high-resolution bedrock deformation on 256 CPUs. This represents a~~ (Nield et al., 2018; Weerdesteijn et al., 2023)
~~: the former is computationally cheap but suffers the limitation of a relaxed rheology, whereas the latter accurately represent the viscoelastic response of the solid Earth, however with a computational cost that is too high for most on-going makes them impractical for most ice-sheet modelling studies, while ignoring the gravitational effects of GIA and the treatment of the sea~~
235 ~~level.~~

~~This essentially means that no regional model is able to compute a comprehensive GIA response subject to LV within a run time that is acceptable for modelling ice sheets on the time scale of glacial cycles. To fill the complexity gap between regional and 3D GIA models, we introduce FastIsostasy in the next section. It essentially consists of.~~ FastIsostasy fills this gap by relying on LV-ELVA, a laterally-variable ELVA generalisation of ELVA, coupled to a Regional Sea-Level Model (LV-ELVA) model
240 ~~coupled to the regional sea-level model (ReSeLeM). Subsequently, we discuss some of,~~ both of which are introduced in Sect. 2, along with a discussion of the underlying limitations. In Sect. 3, we discuss the practical features of the its Julia implementation, such as the adaptive time stepping used for integration and GPU support. Finally, we
~~In Sect. 4, we subsequently benchmark FastIsostasy against analytical, as well as 1D GIA and 3D numerical solutions. Finally, we discuss the results as well as possible future improvements.~~

245 **Remarks on open-source codes.** Thanks to recent work, the GIA model classes listed above now present at least one open-source code, which have typically become available much later than the first equivalent proprietary code. For instance, 1D and 3D GIA solutions in the results section before discussing the limitations, future improvements and novel contributions of the model.
~~models already exist for 40 and 20 years, respectively, but their first open-source implementation were only published much later, respectively in Spada and Melini (2019) and Zhong et al. (2022). We here specifically refer to source~~
250 ~~codes that are licensed and can be downloaded and used without request. All open-source codes mentioned above however lack tools from modern software development, including (1) dynamically built documentations with code examples, (2) automated test suites and (3) a transparent development, which can be eased, for instance, by the use of GitHub issues and pull requests. Although these aspects are of technical nature, we believe that they can greatly contribute to making GIA model development~~

255 more transparent, participative and reliable, as well as increasing the user-friendliness of the code. This, in turn, eases the progress of research and we have therefore applied these concepts to FastIsostasy.

Since LV-ELVA is a generalisation of ELVA, the latter can be used in FastIsostasy by simply providing it with homogeneous parameter fields. Additionally, we implemented ELRA in an efficient way, further described in Appendix A. Thus, both of these simpler models now present a modular, optimised and documented implementation, distributed under GNU General Public License v3.0.

260 2 Model description

~~M_E (kg) r_E (km) g (ms^{-2}) ρ^{ice} (kg m^{-3}) ρ^{sw} ρ^{sed} E_0 (Pa) ν_0 (1) A_{pd}^0 (m^2)~~

~~5.972 · 10²⁴ 6371 9.8 910 1028 3200 3400 6.6 · 10¹⁰ 0.28 3.625 · 10¹⁴ Numerical values of constants in FastIsostasy. Values for the solid Earth are largely derived from the Preliminary Reference Earth Model (PREM) (Dziewonski and Anderson, 1981) and the ocean surface from Cogley (2012).~~

265 2.1 Preliminary considerations

As depicted in Fig. 3, FastIsostasy assumes a rectangular domain $\Omega \subset \mathbb{R}^2$, obtained from a projection of the spherical Earth onto a Cartesian plane with dimensions $2W_x$ and $2W_y$, **respectively** in the directions of the lateral coordinates x and y respectively. We introduce the uniform spatial discretization step $h_x = h_y = h$ such that the domain is subdivided into $N_x \times N_y$ cells, with $N_x, N_y \in \mathbb{N}$. We define all variables that are not specified as scalars (c.f. [Tab. 3](#)) to be smooth fields, as, for instance, the vertical load $\sigma^{zz}(x, y, t) : \mathbb{R}^3 \rightarrow \mathbb{R}$. For convenience, we will omit the space and time dependence from now on. The discretized equivalent of smooth fields are denoted by bold symbols, e.g. $\boldsymbol{\sigma}^{zz} \in \mathbb{R}^{N_x \times N_y}$ and their entries by the index notation $\sigma_{i,j}^{zz}$, with $i \in \{1, 2, \dots, N_x\}$, $j \in \{1, 2, \dots, N_y\}$. The ~~field of vertical load~~ vertical load field is expressed as:

$$\sigma^{zz} = -g (\rho^{\text{ice}} \Delta H^{\text{ice}} + \rho^{\text{sw}} \Delta H^{\text{sw}} + \rho^{\text{sed}} \Delta H^{\text{sed}}), \quad (1)$$

with ~~$g = 9.8 \text{ ms}^{-2}$ the gravitational acceleration,~~ g the mean gravitational acceleration at the Earth surface, and ρ^{ice} , ρ^{sw} and ρ^{sed} respectively the mean densities of ice, seawater and sediment respectively.⁴ The height anomalies ΔH^{ice} , ΔH^{sw} and ΔH^{sed} of the corresponding columns are defined with respect to ~~the initial condition, assumed to represent a configuration close to equilibrium~~ a reference state. On this domain, the first and second spatial derivatives of a ~~placeholder~~ an arbitrary field M can be computed with central differences:

⁴~~In the present work, the contribution from sediments will be ignored but~~ FastIsostasy's API interface already accepts external forcing from sediments but they will be ignored for the present work.

$$\begin{aligned}
\mathcal{D}_x M_{i,j} &= \frac{M_{i+1,j} - M_{i-1,j}}{2hK_{i,j}}, \\
\mathcal{D}_y M_{i,j} &= \frac{M_{i,j+1} - M_{i,j-1}}{2hK_{i,j}}, \\
\mathcal{D}_{xx} M_{i,j} &= \frac{M_{i+1,j} - 2M_{i,j} + M_{i-1,j}}{h^2 \cdot K_{i,j}^2}, \\
\mathcal{D}_{yy} M_{i,j} &= \frac{M_{i,j+1} - 2M_{i,j} + M_{i,j-1}}{h^2 \cdot K_{i,j}^2}, \\
\mathcal{D}_{xy} M_{i,j} &= \mathcal{D}_y(\mathcal{D}_x M_{i,j}),
\end{aligned} \tag{2}$$

280 with K the distortion factor of the chosen projection.⁵ Furthermore, the pseudo-differential operator $|\nabla|$ of a [placeholder arbitrary](#) matrix M is adapted from Bueler et al. (2007) to suit [non-equispaced distorted](#) grids:

$$|\nabla|M = \mathcal{F}^{-1}(\kappa \odot \mathcal{F}(M)) \oslash \mathbf{K}, \tag{3}$$

with \odot the element-wise product, \oslash the element-wise division, \mathcal{F} the Fourier transform, \mathcal{F}^{-1} its inverse and κ the coefficient matrix derived in Bueler et al. (2007). Models that do not account for distortion underestimate the length and area of cells away
285 from the reference latitude and therefore require a domain with restricted spatial extent, a limitation that is here overcome.

M_E (kg)	r_E (km)	g (ms ⁻²)	ρ^{ice} (kg m ⁻³)	ρ^{sw}	ρ^{l}	ρ^{m}	E_0 (Pa)	ν_0 (1)	A_{pd} (m ²)
$5.972 \cdot 10^{24}$	6371	9.8	910	1028	3200	3400	$6.6 \cdot 10^{10}$	0.28	$3.625 \cdot 10^{14}$ ~

Table 3. [Numerical values of constants in FastIsostasy, from left to right: Earth mass, Earth radius, mean gravitational acceleration at Earth's surface, density of ice, sea-water, lithosphere and mantle, elastic modulus and Poisson ratio of the lithosphere \(compressible\), present-day ocean surface area. Values for the solid Earth are largely derived from the Preliminary Reference Earth Model \(PREM, Dziewonski and Anderson, 1981\) and the ocean surface from Cogley \(2012\).](#)

2.2 Lumping the depth dimension

As depicted in Fig. 3, the vertical structure of the solid Earth is modelled by a stack of layers along the vertical dimension z . With the layer index $l \in \{0, 1, \dots, L-1, L\}$ going from top to bottom, the layers are:

- $l = 0$: an elastic plate with [Young modulus \$E_0 = \text{constant}\$, Poisson ratio \$\nu_0 = \text{constant}\$ laterally-constant Young modulus \$E_0\(x, y\) = E_0\$ and Poisson ratio \$\nu_0\(x, y\) = \nu_0\$](#) , and laterally-variable thickness $T_0(x, y)$.
- $l \in \{1, 2, \dots, L-2, L-1\}$: an arbitrary number of viscous channels, each with Young modulus [\$E_l = \text{constant}\$ \$E_l\(x, y\) = E_l\$](#) , Poisson ratio [\$\nu_l = \text{constant}\$ \$\nu_l\(x, y\) = \nu_l\$](#) and viscosity $\eta_l(x, y)$. As depicted in Fig. 3, the first of these layers has a

⁵The distortion K does not appear in σ^{zz} since it cancels out when computing the volume-to-area ratio.

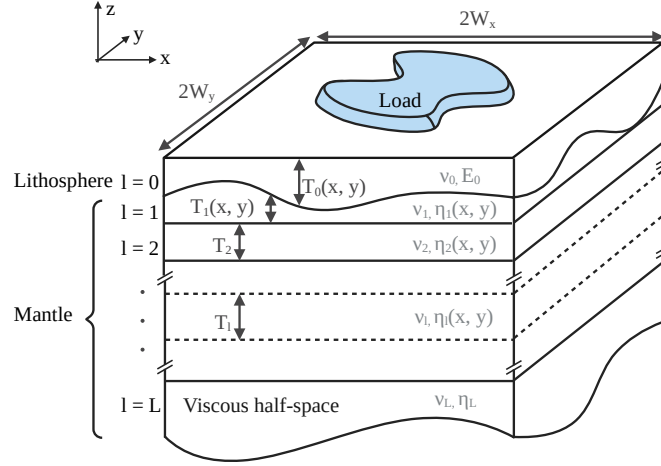


Figure 3. Schematic representation of a typical FastIsostasy domain.

laterally-variable thickness $T_1(x, y)$ that is complementary to $T_0(x, y)$ and allows all further layers to have a homogeneous one ~~$T_l(x, y) = \text{constant}$~~ $T_l(x, y) = T_l$ for $l \geq 2$.

- 295 – $l = L$: a viscous half-space with ~~Young modulus $E_L = \text{constant}$~~ laterally-constant Young modulus $E_L(x, y) = E_L$, Poisson ratio ~~$\nu_L = \text{constant}$ and homogeneous viscosity $\eta_L = \text{const}$~~ $\nu_L(x, y) = \nu_L$ and viscosity $\eta_L(x, y) = \eta_L$.

Whereas $l = 0$ represents the lithosphere, all further layers represent the remaining mantle. ~~To avoid resolving the depth-dimension,~~ FastIsostasy lumps the latter layers into a single ~~one-layer~~ by computing a so-called *effective viscosity* for the whole mantle. The key to do so is provided by Cathles (1975), where a three-layer model including an elastic plate, a viscous channel and a
300 viscous half-space is converted into a two-layer model where the viscous channel and the viscous half-space have been lumped into a single half-space by introducing the following scaling factor:

$$R(\kappa, \tilde{\eta}, T) = \frac{2\tilde{\eta}C(\kappa)S(\kappa) + (1 - \tilde{\eta}^2)T^2\kappa^2 + \tilde{\eta}^2S(\kappa)^2 + C(\kappa)^2}{(\tilde{\eta} + \tilde{\eta}^{-1})C(\kappa)S(\kappa) + (\tilde{\eta} - \tilde{\eta}^{-1})T\kappa + S(\kappa)^2 + C(\kappa)^2}, \quad (4)$$

with T the channel thickness, $\tilde{\eta}$ the channel viscosity divided by the half-space viscosity, ~~$C(\kappa) = \cosh(T\kappa)$, $S(\kappa) = \sinh(T\kappa)$~~ and κ the wavenumber of and $S(\kappa) = \sinh(T\kappa)$. The characteristic wavenumber $\kappa = \pi\lambda^{-1}$ is defined by choosing a characteristic
305 wavelength λ for the load. Hence, solving the ~~3-layer three-layer~~ case can be formulated as solving the ~~2-layer two-layer~~ case with the half-space viscosity scaled by R . We propose to generalise this idea by performing an induction from the bottom to the top layers, i.e., with decreasing l :

Initialisation: layer $l = L$ is a viscous half-space with $\eta_l^{\text{eff}} = \eta_L$,

310 **Induction step:** layer $l + 1$ can be represented as viscous half-space with η_{l+1}^{eff} and is overlain by a viscous channel l . These can be converted in an equivalent half-space with effective viscosity:

$$\eta_l^{\text{eff}} = R\left(\kappa, \frac{\eta_l}{\eta_{l+1}^{\text{eff}}}, T_l\right) \cdot \eta_{l+1}^{\text{eff}}. \quad (5)$$

Thus, η_1^{eff} is the effective viscosity of the half-space representing the compound of layers $l \in \{1, 2, \dots, L - 1, L\}$. In essence, this represents a nonlinear mean of the viscosity over ~~depth and allows accounting for~~ an arbitrary number of layers ~~in a regional model. Since a load wavenumber $\kappa = \pi W^{-1}$ has to be chosen for this procedure, we here introduce a source of error compared to~~, which is only computed at initialisation and can improve the parametrisation of the depth dimension compared, for instance, to Bueler et al. (2007). However, this approach presents important limitations:

- ~~Since the depth dimension is not resolved, the multi-modal response of the Earth to surface loading is not captured as accurately as in~~ 1D and 3D GIA models. ~~In the present work, we set the characteristic length W of the load to be 1000 km, a value suited for~~ For instance, the ~~computation on the scale of continental ice sheets. Larger the load, the deeper the deformation into the mantle and the more relevant the radial layering of viscosity and density, which is not captured in FastIsostasy.~~
- ~~The deformational response is likely to be less accurate for loads with dimensions that substantially differ from the characteristic wavelength λ , used in Equation 4 to lump the depth dimension. We however emphasise that, for a given ice sheet, λ can be chosen such that the near field of deformation is well represented, which is typically what is required in coupled simulations to ice-sheet models. For all the computations presented here, we choose λ to be the mean of $\{W_x, W_y\}$.~~
- Equation 4, ~~as derived in Cathles (1975), applies to laterally-constant viscosities. In the present case, we however allow the viscosity to be laterally variable and apply this scaling for each column.~~

330 Finally, to account for compressibility and lateral variations of the shear modulus, a scaling α of the viscosity is introduced and described in ~~Sect. C~~:

$$\eta = \alpha \eta_1^{\text{eff}}.$$

~~This gives~~ Appendix C. ~~This yields~~ the corrected effective viscosity η , which brings the Maxwell time of FastIsostasy close to that of a 3D GIA model ~~;~~:

335
$$\eta = \alpha \eta_1^{\text{eff}}. \quad (6)$$

Although converting the 3D problem into a 2D one introduces ~~an error~~the limitations mentioned above, it also greatly reduces the computational cost. In particularaddition, the partial differential equation (PDE) governing an elastic plate on a viscous half-space can be transformed into an ordinary differential equation (ODE), as we describe in the next section.

2.3 LV-ELVA

340 We now assume that the aforementioned lumping of the layers has been performed and that the lithosphere and underlying mantle are represented by an elastic plate overlaying a viscous half-space. Since the vertical extent of the plate is typically two orders of magnitude smaller than its horizontal one, it is considered to be thin. By assuming a Maxwell rheology, the vertical displacement $u^{\text{tot}} = u^e + u$ total vertical displacement $u^{\text{el}} + u$ of the bedrock resulting from a stress σ^{zz} can be decomposed in an elastic and a viscous response, respectively denoted by u^e and u . ~~In its current version, FastIsostasy only computes the vertical displacement of the bedrock, since the horizontal one has a negligible impact on ice-sheet dynamics. Nonetheless, it might be used to constrain the model through GPS measurements and its implementation is left for future versions of the model.~~

Computing the As in Bueler et al. (2007), the elastic response of the lithosphere can be done by convoluting is computed by a convolution of the load σ^{zz} with an appropriate Green's function $\Gamma^e \Gamma^{\text{el}}$:

$$350 \quad u^{\text{el}} = \Gamma^{\text{el}} \otimes \frac{K^2 \sigma^{zz}}{g}. \quad (7)$$

This represents the instantaneous compression of the lithosphere and accounts for the distortion resulting from the projection. In reality, this process takes place on the time scale of days, but it can be considered to be immediate-instantaneous compared to the long time scales of the viscous response and the ice-sheet dynamics. To construct the elastic Green's function, ~~tabulated values from Farrell (1972) are used and show a "Gutenberg-Bullen A" spherical Earth model is assumed, and values from~~ Farrell (1972, table A3) are used, as done by Bueler et al. (2007). This treatment of the elastic response shows great agreement with a 3D GIA model ~~in Test 3~~, as shown in Section 4.

When material from the solid Earth is displaced, a hydrostatic force counteracting the load arises. We define the pressure field p as the sum of all these effects:

$$p = \sigma^{zz} - g \left(\rho^{\text{l}} u^{\text{el}} + \rho^{\text{m}} u \right), \quad (8)$$

360 with ρ^{l} and ρ^{m} mean densities of the lithosphere and the upper mantle. Since the displacement occurs in Earth's outermost layers, we here assume g to be constant over these shallow depths. 3D GIA models usually represent the elastic lithosphere as a viscous layer with very high viscosity and the elastic displacement therefore also implies a hydrostatic force. We argue that this is closer to reality and adapt this point of view to the present context by including the elastic displacement in Eq. 8, unlike Bueler et al. (2007) and Coulon et al. (2021). The evolution of the viscous displacement is therefore coupled to the elastic one and is governed by:

$$2\eta(x,y)|\nabla|\left(\frac{\partial u}{\partial t}\right) = p + \frac{\partial^2 M_{xx}}{\partial x^2} + 2\frac{\partial^2 M_{xy}}{\partial x\partial y} + \frac{\partial^2 M_{yy}}{\partial y^2} = F, \quad (9)$$

with η the upper-mantle viscosity field and M_{xx} , M_{yy} , M_{xy} the flexural moments for a thin plate (Ventsel and Krauthammer, 2001; Coulon et al., 2021):

$$M_{xx} = \int_{\frac{-h/2-T_0/2}{\frac{h/2-T_0/2}} \sigma^{xx} z dz = -D \left(\frac{\partial^2 u}{\partial x^2} + \nu \frac{\partial^2 u}{\partial y^2} \right), \quad (10)$$

$$370 \quad M_{yy} = \int_{\frac{-h/2-T_0/2}{\frac{h/2-T_0/2}} \sigma^{yy} z dz = -D \left(\frac{\partial^2 u}{\partial y^2} + \nu \frac{\partial^2 u}{\partial x^2} \right), \quad (11)$$

$$M_{xy} = \int_{\frac{-h/2-T_0/2}{\frac{h/2-T_0/2}} \sigma^{xy} z dz = -D(1-\nu) \frac{\partial^2 u}{\partial x\partial y}. \quad (12)$$

In these equations, $D = D(x,y) = E_0 T_0^3 / (12(1-\nu_0^2))$ is the $D = E_0 T_0^3(x,y) / (12(1-\nu_0^2))^{-1}$ is the laterally-variable lithospheric rigidity field.

The PDE can be understood as an ad-hoc generalisation of both ELVA (Cathles, 1975; Lingle and Clark, 1985; Bueler et al., 2007) and that is inspired by LV-ELRA (Coulon et al., 2021) and further described in Appendix A. Though we did not yet manage to formally derive it by generalising the work of Cathles (1975) to heterogeneous viscosities, setting $\eta = \eta(x,y)$ in Eq. 9 yields results that are very close to those of a 3D GIA model, as shown in Sect. Section 4. The right-hand side F of the PDE can be evaluated by applying a finite difference method (FDM) finite difference, as defined in Eq. 2 Equation 2:

$$F = p + \mathcal{D}_{xx} M_{xx} + 2\mathcal{D}_{xy} M_{xy} + \mathcal{D}_{yy} M_{yy}. \quad (13)$$

380 ~~By Subsequently, a Fourier collocation of this equation can be achieved by~~ making use of Eq. 3 and rearranging terms, ~~the time derivative of the displacement can be computed from Eq. 9 by applying a hybrid FCM/FDM:~~

$$\frac{\partial \mathbf{u}}{\partial t} = \mathcal{F}^{-1} (\mathcal{F}(\mathbf{F} \odot \mathbf{K} \otimes 2\eta) \otimes (\boldsymbol{\kappa} + \varepsilon)), \quad (14)$$

with $\varepsilon \ll 1$ a regularisation term to avoid division by 0. Thus, ~~without the need of solving large systems of linear equations, we obtain an ODE that by using a hybrid FDM/FCM approach the PDE expressed in Eq. 9 is transformed into an ODE, which~~ can be solved with explicit integration methods. ~~In particular, we thus avoid solving a large system of linear equations, as normally done in FDM, FVM or FEM codes.~~ Note that in Bueler et al. (2007) the closed form of a Crank-Nicolson (implicit) scheme is given derived, thus providing unconditional stability. Due to the complexity of the right-hand side, finding such a closed form for LV-ELVA is more challenging and goes beyond the scope of this work. We emphasise that the smaller time steps resulting from explicit schemes might nevertheless be needed for (1) coupling purposes, as ~~an iterative scheme for convergence of the~~

390 ~~a dense output in time can be provided to the ice-sheet and solid-Earth history can be avoided~~model, and (2) ~~capturing with enough accuracy accurately capturing~~ the fast dynamics that can occur in regions of low viscosity.

Formally, ~~we require the far-field~~ Far away from the ice sheet, the changes of the load are comparatively small and we therefore require the displacement to be zero ~~at the domain boundaries~~⁶. However, FCM does not allow explicit treatment of ~~such Dirichlet~~ boundary conditions (BCs). To enforce its approximate representation, we subtract the mean displacement of
 395 the corner vertices from the solution at each time step, which is here expressed with the common choice of notation from programming:

$$u_{i,j}(t) := u_{i,j}(t) - \frac{1}{4}(u_{1,1}(t) + u_{1,N_y}(t) + u_{N_x,1}(t) + u_{N_x,N_y}(t)). \quad (15)$$

Note that this differs from Bueler et al. (2007), where the whole domain boundary is used for this purpose. We argue that our approach is a better representation of the required BC because (1) corner points are further away from the load and (2) are
 400 equidistant from the centre of a rectangular domain.

2.4 Regional sea-level model (ReSeLeM)

~~Assuming a fixed ocean surface to compute the evolution of the sea level can lead to a bias of tens of metres over glacial cycles. To tackle this, we propose an extension of Goelzer et al. (2020) that accounts for the time dependence of the ocean surface $A^o(t)$ when computing $s(t)$.~~ In a coupled setting, a GIA model is typically expected to take the ice thickness field as an input
 405 and to return the RSL field, S , as an output, which can be expressed as:

$$S(x, y, t) \equiv z^{\text{ss}}(x, y, t) - z^{\text{b}}(x, y, t), \quad (16)$$

$$z^{\text{ss}}(x, y, t) \equiv s(t) + N(x, y, t) + c(t), \quad (17)$$

$$z^{\text{b}}(x, y, t) \equiv z_{\text{ref}}^{\text{b}}(x, y) + u(x, y, t) + u^{\text{el}}(x, y, t), \quad (18)$$

with z^{ss} the SSH, z^{b} the bedrock elevation, s the barostatic sea level (BSL), N the SSH perturbation due to changes in
 410 the gravitational field and c a time-dependent scalar. In a global model, c ensures mass conservation of water, which is however impossible to ensure in a regional model with open boundaries. In contrast, we here use c to impose a mean zero SSH perturbation at the domain boundary, similar to Equation 15. The sea-level terminology used here follows the definitions of Gregory et al. (2019), which we refer to for any further detail. Whereas the displacements u and u^{el} are computed as described in Sect. 2.3, the SSH perturbation N can be regionally approximated by the convolution of the mass anomaly with
 415 an appropriate Green's function Γ^N , as proposed in Coulon et al. (2021):

⁶This is not completely correct since the ocean load changes at the domain margin, which is however impossible to represent accurately in a regional model.

$$\underline{N} \equiv \frac{\Gamma^N \otimes K^2 p}{g}, \quad (19)$$

$$\underline{\Gamma^N(\theta)} \equiv \frac{R_e}{M_e} \left(\frac{1}{2 \sin(\theta/2)} \right), \quad (20)$$

with R_e the Earth radius at the equator, M_e the Earth mass, and θ the colatitude. To avoid dividing by $\theta = 0^\circ$, we impose a minimal colatitude of the **barystatic sea level (BSL)**. The volume change of order of the resolution. By neglecting the changes in surface load from sediments and expressing ΔH^{sw} with the RSL, Eq. 1 becomes:

$$\underline{\sigma^{zz}} \equiv -g \left(\rho^{sw} (S - S_{\text{ref}}) \mathcal{O} + \rho^{\text{ice}} (H^{\text{ice}} - H_{\text{ref}}^{\text{ice}}) \mathcal{C} \right) \mathcal{A}, \quad (21)$$

with \mathcal{O} the ocean function, \mathcal{C} the continent function, \mathcal{G} the **ocean at time step k is defined as grounded-ice function**, which can be expressed by introducing the indicator function $\mathbb{1}$ and the ice thickness above flotation H^{af} :

$$\mathcal{O} \equiv 1 - \max(\mathcal{C}, \mathcal{G}), \quad (22)$$

$$\mathcal{C} \equiv \mathbb{1}(S < 0), \quad (23)$$

$$\mathcal{G} \equiv \mathbb{1}(H^{\text{af}} > 0), \quad (24)$$

$$\underline{H^{\text{af}}} \equiv \frac{H^{\text{ice}} - S \frac{\rho^{\text{ice}}}{\rho^{\text{sw}}}}{\rho^{\text{sw}}}. \quad (25)$$

In Eq. 21, the activation mask \mathcal{A} defines what we further consider the near field of displacement: it yields 1 close to the ice sheet and 0 otherwise. This approach is similar to what is done in Coulon et al. (2021) and is, by definition, somewhat arbitrary. The choice made here is exemplarily shown in Sect. 4 for Antarctica. Most importantly, the activation mask enforces a zero change in load close to the boundary of the domain, which is necessary to fulfil the BCs expressed in Equation 15. This is a limitation compared to a global GIA model but allows to account for water column changes in the near field of the ice sheet, unlike most regional models (Lingle and Clark, 1985; Le Meur and Huybrechts, 1996; Bueler et al., 2007; Kachuck et al., 2020; Book et al.

In Goelzer et al. (2020), the evolution of the BSL is described as⁷:

$$\underline{s(t)} \equiv \frac{V(t)}{A_{\text{pd}}}, \quad (26)$$

$$\underline{V_{\underline{k}}} = V^{\text{af}} \frac{\rho^{\text{ice}}}{\rho^{\text{sw}}} + V^{\text{pov}} + V^{\text{den}}, \quad (27)$$

⁷We refer the reader to Adhikari et al. (2020) for an alternative treatment.

with A_{pd} the present-day ocean surface and V the volume contribution of ice sheets to the ocean. The latter is decomposed into V^{af} , the contribution from ice above flotation; V^{pov} , the contribution from changes in the bedrock height; and V^{den} , the contribution from density differences between meltwater and seawater. We refer the reader to Goelzer et al. (2020) for the detailed computation of these quantities, which are defined with respect to a reference state, typically the present-day one.

Global GIA models typically assuming a fixed ocean surface to compute the evolution of shorelines, leading to an important nonlinearity in the sea-level equation (Mitrovica and Milne, 2003; Kendall et al., 2005). We propose to solve this nonlinear relation in a simplified way, by introducing $\Delta V_k = V_k - V_{k-1}$, the volume change the sea level can, however, lead to a bias of tens of metres over glacial cycles. To tackle this, we propose an extension of Goelzer et al. (2020) that accounts for the time dependence of the ocean surface $A(t)$ when computing the BSL. To this end, we first introduce a time discretisation $t = k \Delta t$, with $\mathcal{O}(\Delta t) = 10 \text{ yr}$. We further introduce the ocean surface as a function $A(s)$, which is nonlinear with respect to the BSL s when a realistic topography is used, as shown in Fig. 4 and described with more detail in Appendix B. The volume change $\Delta V_k = V_k - V_{k-1}$ over a time step $\Delta t = t_k - t_{k-1}$, which in turns leads to a change $\Delta s_k = s_k - s_{k-1}$ of the BSL. Over small time intervals $\mathcal{O}(\Delta t) = 10 \text{ yr}$, the change in ocean volume is small enough to Since Δt is much smaller than glaciological time scales, Δs_k is a small number and the nonlinear relationship between the volume contribution, the ocean surface and the BSL can be approximated by a trapezoidal rule, depicted pictured in Fig. 4 and leading to described by the following equation:

$$\Delta V_k = (s_k - s_{k-1}) \frac{A(s_k) + A(s_{k-1})}{2}. \quad (28)$$

This equation is solved by using s_{k-1} as an initial guess and the updated BSL, s_k , is typically obtained after a few iterations of the nonlinear solver. The function $A^\circ(s) : \mathbb{R} \rightarrow \mathbb{R}$ is here computed by summing the surfaces of cells situated below the BSL, based on the 1 arc-minute global topography of ETOPO1 (Amante and Eakins, 2009). Note that this slightly overestimates the ocean surface, since all regions below sea-level are counted as part of the ocean, including, for instance, most of the Netherlands. To tackle this, we introduce a bias correction scaling γ , which avoids any offset for the present-day value A_{pd}° and depends on the uncorrected value $\tilde{A}^\circ(s)$:

$$A^\circ(s) = \gamma \tilde{A}^\circ(s), \quad \text{with : } \gamma = \frac{A_{\text{pd}}^\circ}{\tilde{A}^\circ(s=0)}.$$

To reduce the run time, we precompute $A^\circ(s)$ as a piecewise-linear interpolator for $\text{SLC} \in [-150, 70] \text{ yr}$ with a discretization of $\Delta \text{SLC} = 0.1 \text{ m}$. The resulting function is depicted in the bottom-left panel of Fig. 4 and shows that, for the range of realistic sea-level contributions over glacial cycles, the trapezoidal approximation leads to variations of the ocean surface between -7% and +4% around the present-day value. Although this is a rough approximation of the ocean surface evolution, it is This is of course an important simplification compared to global GIA models, which typically resolve the migration of shorelines (Mitrovica and Milne, 2003; Kendall et al., 2005). Nonetheless, this is an improvement compared to fixing $A^\circ(t) = A_{\text{pd}}^\circ A(t) = A_{\text{pd}}$. In particular, the bottom-right panel of Fig. 4 shows that the LGM sea level sea level of the Last Glacial Maximum (LGM) is

overestimated by about 5 m for fixed ocean boundaries compared to the our trapezoidal approximation. This can lead to differences of several kilometres in the grounding line grounding-line position, depending on the local bedrock slope. We emphasise 470 that a more sophisticated approach than ours is likely to require a global domain, which we here want to avoid.

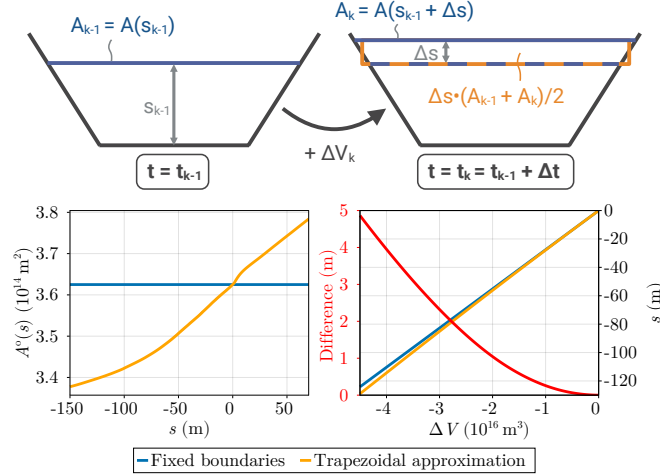


Figure 4. (Top) Schematic representation of the trapezoidal approximation used to solve the nonlinearity of the sea-level equation nonlinear dependence between BSL, s , and ocean surface, A . We hereby use A_k as shorthand for $A(s_k)$. (Bottom left) Ocean Present-day ocean surface over barystatic change of sea level with respect to present day and ocean-surface function, for fixed boundaries versus $A(s)$, as computed by the trapezoidal approximation of the basin evolution. (Bottom right) Sea level BSL computed for a change in ice volume equivalent to LGM, for fixed boundaries versus compared to the trapezoidal approximation.

We then compute the sea-surface height perturbation N as in (Coulon et al., 2021) – that is, by convoluting the Green function Γ^N of sea-surface height with the mass-column anomaly:-

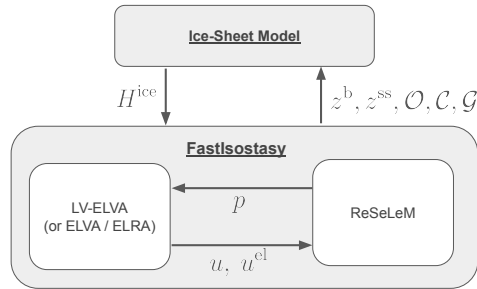


Figure 5. Interface between FastIsostasy and an ice-sheet model, adapted from De Boer et al. (2017) and Coulon et al. (2021).

$$N = \Gamma^N \otimes \frac{K^2 p}{g}, \quad \text{with: } \Gamma^N(\theta) = \frac{R_e}{M_e} \left(\frac{1}{2 \sin(\theta/2)} \right),$$

475 R_e the Earth's radius, M_e the Earth's mass and θ the colatitude. To avoid $\theta = 0$, we impose a minimal colatitude of the order of θ_{\min} . In summary, allowing for a time variable ocean surface is the main adaptation of the resolution. Finally, the regional sea-level field $SL(x, y, t)$ is updated by: treatment described in previous work (Goelzer et al., 2020; Coulon et al., 2021) and it constitutes ReSeLeM. FastIsostasy involves, as depicted in Fig. 5, a coupling between LV-ELVA and ReSeLeM.

$$SL(x, y, t) = s(t) + N(x, y, t) + c(t),$$

2.5 Limitations

480 In a global model, $c(t)$ is a scalar ensuring conservation of mass, which is however impossible to impose on a regional model with open boundaries. In contrast, we here use $c(t)$ to impose a zero sea-surface height perturbation in LV-ELVA presents limitations, since it relies on a linear PDE describing the macroscopic behaviour of the solid Earth as a Maxwell body. Therefore it does not account for transient rheologies (Caron et al., 2017; Ivins et al., 2021), nonlinear rheologies (Gasperini et al., 2004; Kang et al., 2004), composite rheologies (van der Wal et al., 2010, 2015), anisotropy (Beghein et al., 2006; Accardo et al., 2014), or microscale properties of the material (Van Calcar et al., 2023). LV-ELVA only computes the vertical displacement of GIA and neglects the horizontal one, which has a negligible impact on ice-sheet dynamics. Nonetheless, the horizontal displacement might be used to constrain GIA models through GNSS measurements and its implementation is left for future versions of the model.

490 The governing equation of LV-ELVA was postulated here in an ad-hoc way, as described in Appendix A, but lacks a formal derivation. Since the depth dimension is not resolved in LV-ELVA, Stokes flow of the mantle is not fully represented, similar to depth-integrated solvers of ice-sheet dynamics and shallow-water approximations used in general circulation models. In addition, the regional nature of the domain makes it inherently complicated to ensure BCs that are consistent with a global conservation of mass. Therefore, the sea-level is only solved in an approximate way and the feedback from perturbations in the Earth's rotation, which will be small near the poles, is not accounted for. In particular, we emphasise that the far-field, similar to Eq. 15. Note that we apply this BC on the extended domain, on which the result of a convolution is typically computed.

495 Furthermore, we draw attention upon the fact that Eq. ?? implies that the load at the domain boundary can change over time. This is however incompatible with the treatment of the BCs outlined update of the BSL described in Eq. 15 and we therefore impose the load anomaly to be zero outside of a predefined mask. This mask is typically larger than the LGM extent of the ice sheet and thus prevents us from ignoring important changes in the load, while avoiding deformation in the far field that cannot be handled with an FCM. We call this adaptation of previous work (Goelzer et al., 2020; Coulon et al., 2021) the Regional Sea-Level Model (ReSeLeM). FastIsostasy is, in essence, a coupling between LV-ELVA and ReSeLeM. 28 fails to give good results if most of the contribution stems from an ice sheet that is not included in the domain. For instance, the BSL computed in FastIsostasy over a glacial cycle cannot be correct if the domain only covers Antarctica, since most of the contribution stems

from the Northern Hemisphere ice sheets. This can however be solved by setting up a domain for the northern hemisphere and coupling it to the Antarctic one, or simply by taking the BSL obtained from proxies or global GIA models.

505 Future releases of FastIsostasy will focus on addressing some of these problems. We emphasise that, despite these limitations, the results presented in Sect. 4 show that FastIsostasy is a significant improvement compared to ELRA and ELVA, since it represents the near-field GIA response of laterally-variable Earth structures with improved accuracy and a negligible increase in computational cost. We believe that this adequately covers the needs of most ice-sheet modellers.

3 Implementation, performance and further remarks

510 FastIsostasy has been implemented in Julia (FastIsostasy.jl) and in Fortran. Julia (Bezanson et al., 2017) is a high-performance language with a vast ecosystem, on which FastIsostasy.jl relies to offer convenient features and ~~good performance~~efficient computation:

1. To evaluate the right-hand side of the ODE obtained in Eq. 14 and perform the convolutions used to compute the elastic and the ~~sea-surface gravitational~~ response, FastIsostasy.jl ~~relies on~~uses forward and inverse Fast-Fourier Transforms (FFTs), which are implemented in an optimised way in FFTW.jl (Frigo and Johnson, 2005). Evaluating the right-hand side therefore ~~displays scales with~~ a computational complexity of $\mathcal{O}(N \log_2 N)$, for a matrix of size $N = N_x \times N_y$. To achieve an even better speed increase, (1) N_x, N_y are generally chosen as powers of 2, (2) ~~FFT plans are pre-computed during the initialisation of the computation domain~~ FFTs are precomputed as far as possible and (3) the transforms are computed in-place to reduce the memory allocation. FastIsostasy owes its name to fast-earth, an early implementation of ELVA (referred in the acknowledgements) and to its reliance on FFTs to perform all the expensive computations.

2. To subsequently integrate the right-hand side in time, FastIsostasy.jl ~~relies on~~uses OrdinaryDiffEq.jl (Rackauckas and Nie, 2017), a package that offers a wide range of optimised routines. We here restrict ourselves to explicit methods, which ~~however~~ range from the simplest explicit Euler scheme up to schemes of order 14. ~~Explicit time integration~~ For all the results presented here, we used the Runge-Kutta method proposed in Bogacki and Shampine (1996). Explicit integration schemes typically require decreasing the time step with increasing spatial resolution, which is handled by the adaptive time-stepping methods of OrdinaryDiffEq.jl to prevent instabilities. This requires more evaluations of the right-hand side and leads the scaling of computational complexity for the full problem to be higher than $\mathcal{O}(N \log_2 N)$. ~~In FastIsostasy.jl, stability is enforced at minimal cost by relying on the adaptive time-stepping methods of OrdinaryDiffEq.jl.~~ associated with FFTs. By providing keyword arguments, the user is able to influence any option related to the ~~time integration~~ integration in time, such as the scheme, the error tolerance, the minimal ~~time-step~~time step, etc.

3. FastIsostasy.jl ~~relies on~~uses CUDA.jl (Besard et al., 2019b, a) (Besard et al., 2019b) and ParallelStencil.jl to optionally run performance-relevant computations on a GPU (so far restricted to NVIDIA hardware). Due to their heavily parallelised architecture, GPUs are able to scale better than CPUs for some computations ~~in our case, the FFT-related~~

535 ~~operations mentioned above~~. The speed increase thus obtained will be illustrated in Test 1 of the model validation. Offering a GPU-parallelised GIA code is unprecedented to our knowledge and only requires the user to set the keyword argument `use_cuda=true`.

4. In `FastIsostasy.jl`, the nonlinearity introduced by the time-dependent ocean surface is solved by using `NLsolve.jl`, in combination with an interpolator of $A(\text{SLC})A(s)$, which is constructed at initialisation using `Interpolations.jl`. Since ~~$A(\text{SLC})A(s)$~~ is monotonic and initial guesses are close to the solution, the computation time associated with this step is negligible. Furthermore, whereas the adaptive time-stepping is convenient to enforce stability of the viscous displacement, updating the diagnostics - such as the elastic displacement, the ocean surface and sea level - can be done less frequently. For instance ~~$\Delta t_{\text{diag}} = 10 \text{ yr}$~~ $\Delta t = 10 \text{ yr}$ is used in the present work and can be determined by the user through a keyword argument.

545 As illustrated above, `FastIsostasy.jl` relies on numerous Julia packages. Since it is a registered package, it can however be easily installed, along with all its dependencies, by simply running `add FastIsostasy` in Julia's package manager. Furthermore, it is thoroughly documented at <https://janjereczek.github.io/FastIsostasy.jl/dev/>, including ~~an API reference~~ a description of the application programming interface, a tutorial and ~~a few examples~~ practical examples, which are a simplified version of the code used for the results shown in Section 4. Additionally, `FastIsostasy.jl` is designed in a modular way that facilitates its coupling to an ice-sheet model and we therefore believe that the implementation burden associated with its use is very low.

550 Since Julia does not yet support compilation to binaries, `FastIsostasy` is additionally programmed in Fortran to allow for compatibility with most existing ice-sheet models ~~Nonetheless,~~ and has already been coupled to Yelmo (Robinson et al., 2020). Since Fortran does not provide packages that allow convenience at the level of the Julia ecosystem. ~~Thus,~~ the Fortran version: (1) does not allow computation on GPU, (2) only provides explicit Euler ~~and Runge-Kutta methods of 4th order~~ for integration in time, and (3) does not allow for time-evolving ocean boundaries.

4 Model validation and benchmarks

We now validate `FastIsostasy` with series of tests:

- Test 1: a comparison to an analytical solution for an idealised load on a homogeneous, flat Earth. This aims to check that the numerics are well-implemented for the simplest case and that our results are comparable to Bueler et al. (2007).
- 560 - Test 2: a comparison to benchmark solutions of three different 1D GIA models, ~~showing great agreement among each other~~ presented in Spada et al. (2011). This aims to understand the discrepancies which can arise from the ~~flat-Earth simplification and the~~ lumping of depth-dependent viscosity profiles ~~into a single value~~ and the regional approximations of the SSH perturbation.
- Test 3: a comparison to ~~Seakon (Latychev et al., 2005; Gomez et al., 2018), a the~~ 3D GIA model ~~Seakon (Latychev et al., 2005; Gon~~ on idealised cases of LV. This aims to check whether Eq. 9 and its discretization, Eq. 14, are valid ~~for heterogeneous~~

565

~~parameter fields~~ approximations of the deformational response in the presence of LV. Here we will also compare the elastic displacement of Seakon ~~versus and~~ FastIsostasy.

- Test 4: a comparison to Seakon with realistic LV and forced by the ice loading of a full glacial cycle ~~as ice history~~. This aims to check whether loads and Earth structures of typical applications can be reasonably well represented.

570 These tests are summarised in Tab. 4 and aim to quantify, as orthogonally independently as possible, each source of difference error between FastIsostasy and the reference baseline solutions listed above. This is measured by an absolute and a relative value, respectively defined as:

$$e^{\text{abs}}(x, y, t) = |u_{\text{FI}}(x, y, t) - u_{\text{refBL}}(x, y, t)|, \quad (29)$$

$$e(x, y, t) = \frac{e^{\text{abs}}(x, y, t)}{\max_{x, y, t} |u_{\text{BL}}(x, y, t)|}, \quad (30)$$

575 with the indices "FI" and "refBL" respectively indicating the FastIsostasy and ~~reference solutions~~. ~~For Test 1, we require the relative error to be at the level of only a few percent, since the problem solved by FastIsostasy is equivalent to the reference. For all other tests, the reference is given by results from 1D and 3D GIA models, which intrinsically differ from FastIsostasy by relying on a global domain and by resolving the depth dimension. For these examples, larger errors are therefore to be expected and we define an acceptable upper bound of 5 and 20% for the mean and maximum relative difference respectively.~~
 580 ~~This choice is motivated by the fact that, despite great efforts to improve the constraints on the upper-mantle viscosity, this quantity remains largely uncertain (Ivins et al., 2022). It is therefore easy to imagine that two simulations performed with the same 3D GIA model and realistic but differently inferred viscosity fields, might display mean and maximum relative differences of up to 5 and 20% respectively. In other words, throughout the tests, baseline solutions. We refer to the model uncertainties of FastIsostasy are required to be comparable to the parametric uncertainties inherent to any GIA model mean and maximal errors
 585 over space, respectively using $\bar{e}(t)$ and $\hat{e}(t)$. In the forthcoming analysis, we will often mention a tight upper bound for these timeseries to quantify them in a scalar way, and will emphasise the maximal error, since the spatial mean can hide important local discrepancies.~~

4.1 Test 1 – Analytical solution for idealised load on homogeneous Earth

We first reproduce the test proposed in Bueler et al. (2007) by using a 2-layer model with $W_x = W_y = 3000$ km, $N = N_x =$
 590 $N_y = 256$ and $h \simeq 23$ km. The ~~lithosphere has a first layer is parametrised by the lithospheric~~ thickness $T(x, y) = 88$ km and ~~a~~
~~the underlying half space by the mantle~~ viscosity $\eta(x, y) = 10^{21}$ Pa.s. The load ~~, placed at the centre of the computation domain,~~
~~is a~~ is a Heaviside function in time that represents a flat cylinder of ice, with radius $R = 1000$ km and thickness $H = 1$ km,
~~placed at the centre of the computation domain~~. For this idealised case, an analytical solution of the viscous solution is provided
 in Bueler et al. (2007), yielding:

$$595 \quad u(r, t) = \rho^{\text{ice}} g H R \int_0^\infty \beta^{-1} \left[\exp\left(-\frac{\beta t}{2\eta\kappa}\right) - 1 \right] J_1(\kappa R_0) J_0(\kappa r) d\kappa, \quad (31)$$

Test	Compared to...	Load	T, η	L	$\bar{e}(t) < \dots$	$\hat{e}(t) < \dots$
1	Analytical solution	Ice cylinder	homogeneous	2-1	0.019	0.021
2	1D GIA models	Ice cylinder & ice cap	homogeneous	3-2	0.11	0.19
3	3D GIA model	Ice cylinder	Gaussian heterogeneity (see Fig. D1 (c.f. Appendix D))	3-2	0.05	0.15
4	3D GIA model	Glacial cycle (ICE6G D)	Estimation for Antarctica (Pan et al., 2022)	4-3	0.05	0.16

Table 4. Summary of the tests performed using FastIsostasy. The two last columns provide tight upper bounds on the mean and maximal errors over space.

with J_0 and J_1 the Bessel functions of first kind and respectively of order 0 and 1, and $\beta = \beta(\kappa) = \rho^m g + D\kappa^4$. To make the solution of FastIsostasy comparable to this, we set $K_{i,j} = 1$ and $\rho^1 = 0$, which neglects distortion and prevents the elastic displacement from contributing to the pressure term. Panel (a) of Fig. 6 shows cross-sections of the domain along the x dimension, demonstrating that the numerical solution closely follows the analytical one. In complement, panel (b) shows the corresponding maximal and mean error over time. It appears that for $t \geq 5000$ yr, the viscous displacement is captured with $\text{mean}(e^{\text{abs}}) < \text{max}(e^{\text{abs}}) < 1$ m. For $t \leq 2000$ yr, $\bar{e}^{\text{abs}} < \hat{e}^{\text{abs}} < 1$ m. For $t \leq 2000$ yr, the displacement surface is well captured in terms of shape but appears to be slightly shifted along the z -dimension, due to the approximate treatment of the BCs as written in Eq. 15 and leading to an error of up to $e^{\text{abs}} \simeq 5$ m, leading to a larger upper bound on the error $\hat{e}^{\text{abs}}(t) < 5.8$ m, which corresponds to $e \simeq 0.02 \hat{e} < 0.021$. Whereas in Bueler et al. (2007) a correction of this effect is applied based on the knowledge of the analytical solution, we here decide not to do so. First, because such correction only applies to this specific case and second, because users should be informed about the upper bound of potential numerical error that will arise in their own experiments. In fact, for this idealised case, the forcing is a step function in time, thus leading to unrealistically high rates of ice volume change. This in turns experiments. When imposing Eq. 15, the unrealistically high forcing rate resulting from the Heaviside load leads to errors resulting from Eq. 15 that are larger than for realistic applications, where the load that are higher than what is expected from a load that is coherent in space and time-time. The discretisation error presented here should be therefore understood as an upper bound for a flat Earth.

Panel (c) shows that the maximal and mean equilibrium error respectively decrease with $\mathcal{O}(-0.4)$ and $\mathcal{O}(-0.36)$ a slope of -0.4 and -0.33 in $\log_2 - \log_{10}$ space, showing that convergence to the analytical solution of equilibrium can be achieved relatively quickly with increasing resolution. To study the The run-time on CPU (Intel i7-10750H 2.60GHz) versus GPU (NVIDIA GeForce RTX 2070), the computations of Test 1 have been performed with an explicit Euler scheme with fixed time step. This isolates the evaluated computation time from the influence of adaptive time-stepping. The results are is depicted in

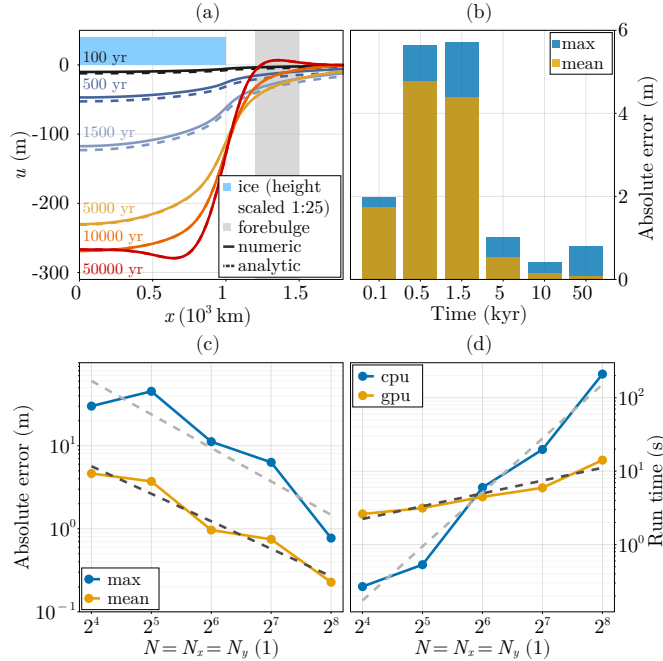


Figure 6. (a) Transient cross-sections of bedrock displacement along x -axis, from the center of the domain until $x = 1800$ km. The resolution used here is $N_x = N_y = 2^8$, $h \simeq 23$ km. (b) Corresponding mean and maximal errors over time. (c) Resolution-dependence of maximum and mean error at equilibrium with respect to the analytical solution, with the light and dark ~~gray~~ dashed lines representing the corresponding linear regressions, respectively ~~corresponding to~~ $\mathcal{O}(-0.4)$, $\mathcal{O}(-0.36)$ with slopes of -0.4 and -0.33 in $\log_2 - \log_{10}$ space. (d) Resolution dependence of the computation time on CPU versus GPU, with the light and dark ~~gray~~ dashed lines respectively representing the corresponding to $\mathcal{O}(0.6)$, $\mathcal{O}(0.02)$ linear regressions, respectively with slopes of 0.73 and 0.17 in $\log_2 - \log_{10}$ space.

panel (d) and ~~show~~ shows that using a GPU is advantageous for $N \geq 128$, $N \geq 64$, which corresponds to the typical problem size for ice-sheet modelling. More specifically, the CPU and GPU computation time respectively increase with $\mathcal{O}(0.6)$ and $\mathcal{O}(0.02)$ a slope of 0.73 and 0.17 in $\log_2 - \log_{10}$ space, thus giving a clear advantage to GPU computation for large problems.

620 Thanks to the hybrid FCM/FDM scheme used to evaluate Eq. 14, the scaling of computation time on both CPU and GPU is better than is usually obtained from ~~finite difference, volume or element methods,~~ FDM, FVM and FEM since all of them rely on ~~the expensive operation of~~ solving a large system of linear equations.

4.2 Test 2 – 1D GIA solutions of idealised loads on layered Earth

In Spada et al. (2011), a range of 1D GIA models are benchmarked against each other and show ~~great~~ excellent agreement
625 on various experiments. Here, we reproduce the benchmark tests called "1/2" (geodetic quantities) and "2/2" (geodetic rates), which are similar to Test 1 but presents the following differences:

– The computation domain is a ~~spherical Earth on which we~~ stereographic projection of the spherical Earth, centred at colatitude $\theta = 0^\circ$, and the effect of distortion is therefore included, unlike for Test 1. We apply ice loads with $\rho^{\text{ice}} = 931 \text{ kg m}^{-3}$, chosen in agreement with Spada et al. (2011), and the following geometries:

630

(A) ~~a cylindrical ice load of thickness $H = 1 \text{ km}$ and radius $\theta = 10^\circ$,~~

~~(B)~~ an ice cap with maximal height $H_{\text{max}} = 1.5 \text{ km}$, radius $\theta = 10^\circ$ and its shape defined by a cosine function.

(B) a cylindrical ice load of thickness $H = 1 \text{ km}$ and radius $\theta = 10^\circ$,

635

– The Earth structure has three layers, namely (1) a lithosphere of thickness $T_0 = 70 \text{ km}$ and shear modulus $G_0 = 5 \cdot 10^{11} \text{ Pa}$, (2) an upper mantle of thickness $T_1 = 600 \text{ km}$ and viscosity $\eta_1 = 10^{21} \text{ Pa s}$ and (3) a lower mantle reaching down to the core-mantle boundary with a viscosity $\eta_2 = 2 \cdot 10^{21} \text{ Pa s}$. For any further detail, we refer the reader to the M3-L70-V01 profile shown in (Spada et al., 2011). In FastIsostasy, these layers are translated into ~~a quasi-elastic an~~ elastic plate, a viscous channel and a viscous half-space.

– The ~~sea-surface height results~~ results of SSH perturbation provided in Spada et al. (2011) allow us to check the validity of Eq. 29, used in FastIsostasy.

640

~~It appears in Fig. 7~~ Figure 7 demonstrates that the viscous displacement, its rate and the ~~sea-surface height SSH~~ computed in FastIsostasy ~~reasonably qualitatively~~ follow the results of Spada et al. (2011). The latter corresponds to the outputs of PMTF, VILMA (Martinec, 2000) and VEENT, which show such good agreement that they are ~~lumped gathered~~ into a single output. ~~The maximal difference of u~~ Quantitatively, the mean displacement error between FastIsostasy and Spada et al. (2011) ~~arises for the cylindrical load and yields $e^{\text{abs}} < 40 \text{ m}$, i.e. $e < 0.16$. In contrast, the cap load leads to maximal value of $e^{\text{abs}} < 30 \text{ m}$, i.e. $e < 0.07$ is small, with $\bar{e}^{\text{abs}}(t) < 27.0 \text{ m}$ for both loading cases. In addition, the equilibrium displacement is well represented with a maximal error of $\hat{e}^{\text{abs}}(t = 100 \text{ kyr}) < 7 \text{ m}$ and $\hat{e}^{\text{abs}}(t = 100 \text{ kyr}) < 12 \text{ m}$ and a mean error of $\bar{e}^{\text{abs}}(t = 100 \text{ kyr}) < 5 \text{ m}$ and $\bar{e}^{\text{abs}}(t = 100 \text{ kyr}) < 7 \text{ m}$, for the cap and the disc load respectively. The maximal difference arises at $t = 10 \text{ kyr}$ for the cylindrical load and yields $\hat{e}^{\text{abs}} < 47 \text{ m}$, i.e. $\hat{e} < 0.19$. In both cases, the difference in vertical displacement ~~propagates is~~ propagated to the computation of the ~~sea-surface height according to Eq. 8 and Eq. 29. The relative maximal difference in~~ sea-surface height SSH perturbation according to 29. As shown in the last row of Fig. 7, this leads to a maximal difference between FastIsostasy and the 1D GIA models ~~thus yields a similar value, reaching at most 15% of the maximal sea-surface height displacement that reaches at most 6 m but less than 2 m on average, for maximal SSH perturbations around 40 m in both models.~~~~

650

655

Since the experimental setup is ~~strictly the same as similar as possible~~ for the 1D GIA models and FastIsostasy, ~~the~~ differences in viscous displacement these differences can be largely attributed to (1) the lumping of the depth dimension as performed in Eq. 4, which leads the two approaches solving different equations. ~~Given the relatively small maximal differences, FastIsostasy can be used to replace a 1D GIA model for regional ice-sheet modelling since it reduces the computation time while allowing excellent resolution in time, thus avoiding sophisticated schemes for coupling to the ice-sheet model. This represents a significant improvement relative to the results presented by ELRA in Konrad et al. (2014) to solve different~~

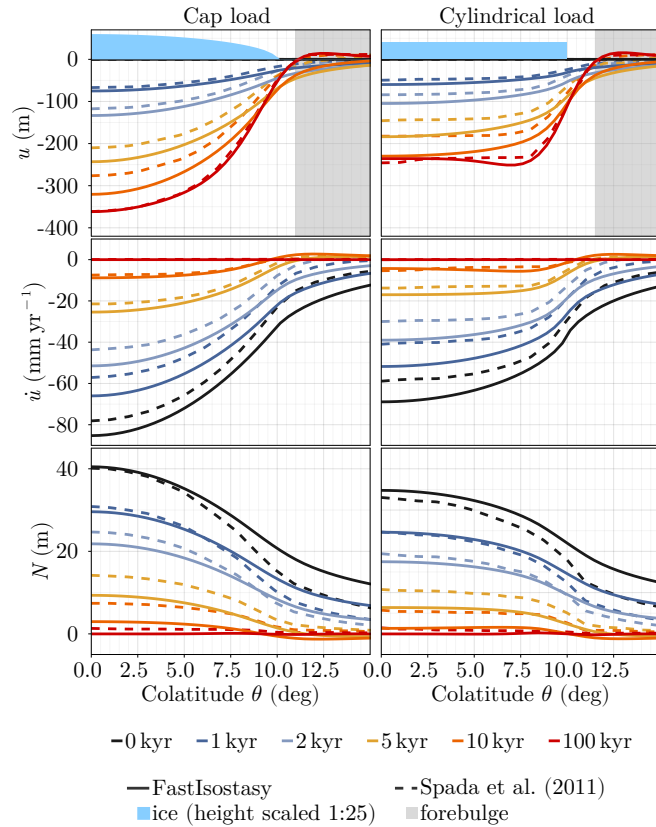


Figure 7. Comparison of FastIsostasy ~~versus~~ and Spada et al. (2011) on tests "1/2" and "2/2". From top to bottom: viscous displacement u , viscous displacement rate \dot{u} and resulting sea-surface height SSH perturbation N . From left to right: cylinder and cap of ice applied as load.

660 equations and (2) to the regional domain used here, which only allows an approximate treatment of the BCs as described in Equation 15.

4.3 Test 3 – 3D GIA solution of idealised load on idealised LV-Earth

Seakon is a global 3D GIA model (Latychev et al., 2005; Gomez et al., 2018) that that includes all the processes mentioned in Section 1.4.6. It solves the deformational response of the solid Earth with FVM on an unstructured grid, which is typically
 665 finer at the poles, where the bedrock displacement is largest. It has been extensively used in GIA studies (e.g. Mitrovica et al., 2009; Austermann et al., 2021; Pan et al., 2021, 2022) and even-coupled to an ice-sheet model in (Gomez et al., 2018). We here propose to Gomez et al. (2018). For further details about the model and the adaptive grid refinement, we refer the reader to Latychev et al. (2005) and Gomez et al. (2018). We here benchmark FastIsostasy against Seakon on for idealised cases with LV similar to that estimated across Antarctica. Here again, a cylindrical ice load with $H = 1$ km and $R = 1000$ km is applied

670 ~~upon on~~ a domain with $W_x = W_y = 3000$ km and ~~only two layers: the lithosphere and the mantle.~~ $N_x = N_y = 128$. ~~To isolate the error from the lumping of the depth dimension, the vertical structure of the solid Earth is kept as simple as possible, with a mantle viscosity that is constant along z .~~

We distinguish four cases (a-d), which are all parametrised by a Gaussian-shaped anomaly that is almost zero on the boundary and yields its largest value at the interior of the domain. For case ~~A (case B(a) (case b))~~, this anomaly represents a decrease (increase) from $T = 150$ km down to $T = 50$ km (up to $T = 250$ km) of the ~~lithospheric-lithospheric~~ thickness towards the interior of the domain. For case ~~C (case D(c) (case d))~~, this anomaly represents ~~a logarithmic an exponential~~ decrease (increase) from $\eta = 10^{21}$ Pa.s down to $\eta = 10^{20}$ Pa.s (up to $\eta = 10^{22}$ Pa.s) of the mantle viscosity towards the interior of the domain. The heterogeneities (a-d) are ~~represented in Fig. D1 shown in~~ Appendix D and are used to generate results that ~~will be referred to as FastIsostasy 3D (FI3D), since the parameter fields are dependent on x, y and z are referred to by "LV-ELVA"~~. To quantify the improvement resulting from the use of LV-ELVA instead of ELVA (or ELRA), we also generate results with the nominal, homogeneous parameters $T(x, y) = 150$ km and $\eta(x, y) = 10^{21}$ Pa.s ~~and refer to this run as FastIsostasy 1D (F1D). Furthermore, we introduce the index SK to refer to the output of Seakon. (or $\tau = 3,000$ yr) and index them with "ELVA" (or "ELRA").~~

As can be seen in the top ~~and middle~~ row of Fig. 8, ~~FI3D-LV-ELVA~~ closely follows Seakon on cases (a-da-b) by showing similar time scales, amplitudes and shapes of the bedrock displacement. In the bottom row of Fig. 8, ~~it appears that the maximal and mean relative differences respectively remain at $\max(e) < 0.08$ and $\text{mean}(e) < 0.04$ over time, thus satisfying the above-defined upper bound of relative difference. We emphasise that, in an ice-sheet coupled context, looking at maximal values is more meaningful, since the behaviour of a small region (e.g. Thwaites glacier) can lead to larger-scale impacts (e.g. the collapse of the WAIS). Since, in the present case, even maximal differences are in a reasonable range, we argue that FastIsostasy can be used instead of a much more expensive 3D GIA model for regional ice-sheet modelling. Despite this, it should be pointed out that FastIsostasy systematically underestimates the peripheral forebulge by about $[10, 15]$ m. Since the latter forms in the vicinity of the ice margin, it might be an important difference to keep in mind when comparing FastIsostasy to a 3D GIA model in a coupled ice-sheet context.~~

Comparison of FastIsostasy and Seakon for heterogeneous lithospheric thickness (a-b) and upper-mantle viscosity (c-d). (Top row) cross section of the domain along the x dimension, displaying the displacement of both models and (middle row) the corresponding difference. (Bottom row) Transient evolution of the mean and maximal relative differences of F1D and FI3D compared to Seakon.

~~$\hat{e}(t) < 0.07$ and $\bar{e}(t) < 0.03$ over time.~~ In comparison, ~~the differences of F1D to Seakon are similar to those of FI3D-ELVA yields similar errors~~ for case (a) and ~~only~~ slightly higher in case (b), with values of ~~$\max(e) < 0.12$ and $\text{mean}(e) < 0.05$.~~ ~~This is due to the fact $\hat{e}(t) < 0.12$ and $\bar{e}(t) < 0.05$.~~ For ELRA, the maximal error over time is slightly higher, although not significantly. We recall that the lithospheric thickness is an important control ~~of on~~ the shape of the bedrock displacement but ~~not directly of its magnitude nor only an indirect one on its magnitude and~~ time scale. This can be seen in Eq. 9, where the lithospheric rigidity D is only multiplied with spatial derivatives of the displacement. ~~Its Misrepresenting the LV of lithospheric thickness therefore only has a marginal effect for cases (a-b), but we emphasise that its~~ impact on the displacement magnitude can however become important when the ~~lithosphere is thin and the load localised, since the low flexural moments effectively~~

705 ~~decouple neighbouring cells, as displayed in Fig. D2 for the extreme case where there is no lithosphere. load presents localised~~
~~features, as later shown in Test 4.~~ Furthermore, accounting for a heterogeneous lithospheric thickness can impact the bedrock
slopes significantly, which are an important control ~~of on~~ ice-sheet grounding-line stability and therefore ~~of on~~ the evolution of
ice sheets. ~~Finally, as shown in an additional experiment presented in Appendix D, (LV-)ELVA yields equally low error values~~
~~in the absence of a lithosphere. This is the extreme case of a thin lithosphere, where the absence of flexural moments effectively~~
710 ~~decouples the displacement of neighbouring cells - a behaviour that is present in both Seakon and (LV-)ELVA.~~

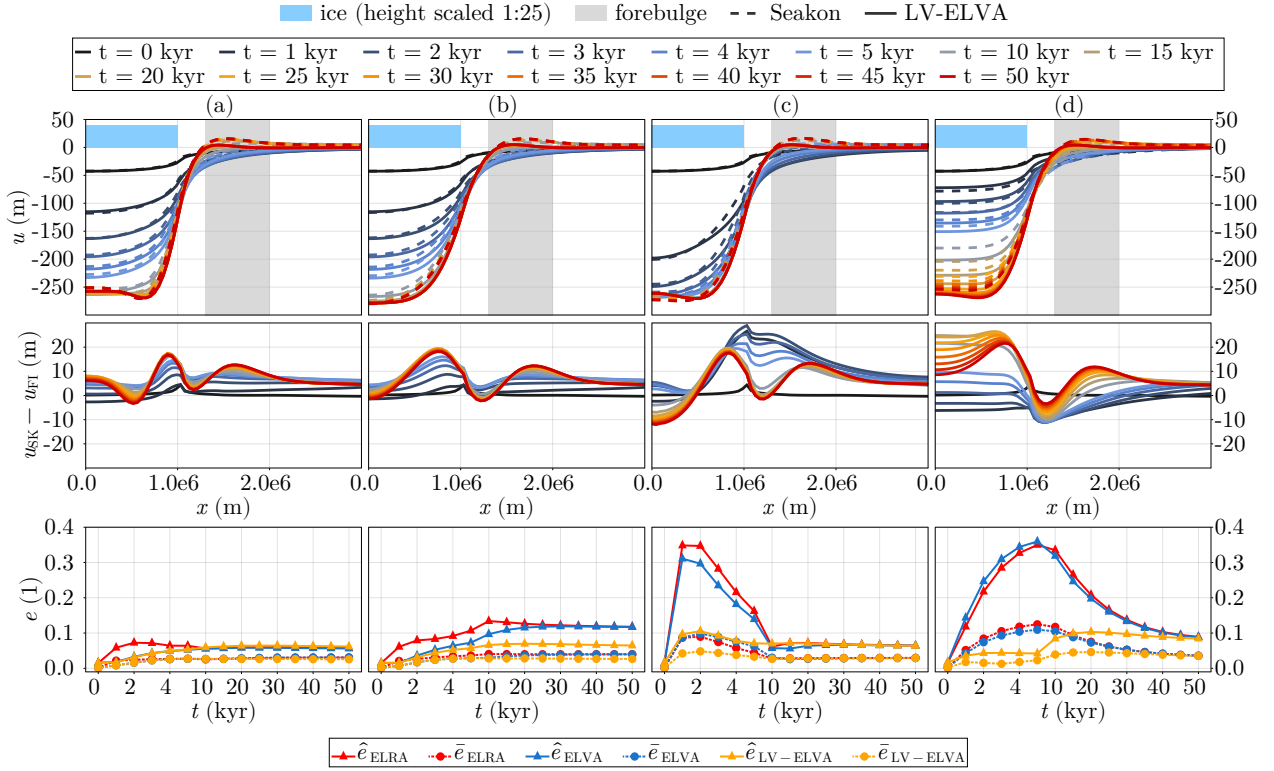


Figure 8. Comparison of FastIsostasy and Seakon for (a-b) heterogeneous lithospheric thickness and (c-d) upper-mantle viscosity. (Top row) cross section of the domain along the x dimension, displaying the displacement of both models and (middle row) the corresponding difference. (Bottom row) Transient evolution of \bar{e} and \hat{e} , the mean and maximal relative errors of ELRA, ELVA and LV-ELVA compared to Seakon.

The advantage of using LV-ELVA over ELVA ~~becomes more prominent and ELRA becomes significant~~ when studying (c-d). For these cases, ~~FHD-ELVA~~ yields large transient differences compared to Seakon, ~~reaching $\max(e) < 0.37$ and $\text{mean}(e) < 0.11$ with $\hat{e}(t) < 0.37$ and $\bar{e}(t) < 0.11$.~~ Here again, ELRA shows marginally higher error values. This clearly shows that ~~ELVA, and thus ELRA, are not~~ ~~neither ELRA nor ELVA~~ are suited to represent the typical variations of viscosity over Antarctica. ~~In comparison, LV-ELVA yields errors of only $\hat{e} < 0.11$ and $\bar{e} < 0.04$, similar to those obtained on tests (a-b). Since these values~~

715

are systematically lower than what was obtained in Test 2, it appears that the error of LV-ELVA mainly stems from the layered Earth structure that can only be partially accounted for on a 2D grid, and not from the LV generalisation presented in Equation 9. This is further supported by an additional test, presented in Appendix D, where Seakon and LV-ELVA adopt a 1D Earth structure following PREM. This leads to errors of $\hat{e} < 0.16$ and that $\bar{e} < 0.06$, which is very close to what was observed on Test 2.

For cases (a-b), it should be noted that ELRA, ELVA and LV-ELVA should be systematically preferred—particularly because it only requires a negligible increase of the computational cost—present the same equilibrium state because of the constant lithospheric thickness, as can be formally deduced by setting the time derivative to 0 in the equations presented in Appendix A. We stress that the higher transient error of FHD can ELVA and ELRA can therefore be easily missed when considering equilibrium states. This is the case in Le Meur and Huybrechts (1996), where the only spatial comparison across models is made for a quasi-equilibrium state. We further draw attention to the fact that the transient error metrics used in the present study are stricter than plotting the mean spatial displacement of each model over time, which is done in Le Meur and Huybrechts (1996) and which potentially hides large localised differences between ELRA and the 1D GIA model used for comparison.

Throughout Test 3, since its steady-state error is comparable to FHD in the case of a heterogeneous lithosphere and even strictly the same in the case of a homogeneous one. Therefore, comparing models by looking at quasi-equilibrated states may be misleading. This is the case in Le Meur and Huybrechts (1996), where ELRA is validated on the final uplift map of a deglaciation—a result that ignores transient errors, which can be critical for the LV-ELVA underestimates the peripheral forebulge by about [10, 15] m, which is a systematic error. When considering a layered Earth, as shown in Appendix D, this value becomes as big as 40 m for early time steps but evolves to less than 20 m at equilibrium. Konrad et al. (2014) observed a similar behaviour when comparing ELRA to a 1D GIA. This comparatively large transient is the source of the aforementioned error of $\bar{e}(t) < 0.16$. This most likely arises because the mantle flow contributing to the amplitude of the forebulge is not resolved in LV-ELVA. Since the forebulge forms in the vicinity of the ice margin, this might be an important error source to keep in mind when comparing FastIsostasy to a 3D GIA model in a coupled ice-sheet evolution context, especially when studying the possibility of a forebulge feedback as proposed in Albrecht et al. (in rev.).

We also note here that our experience has shown that When performing Test 3, we noticed that a large lithospheric thickness, a large gradient of the lithospheric thickness, or a low viscosity leads to the requirement of a stricter error tolerance for the adaptive time stepping all lead to a higher computational cost. This is consistent with theoretical insights, predicting that systems that are stiffer or that display a lower Maxwell time require since all of these cases lead to a larger value of the right-hand side in Eq. 14, thus making the ODE stiffer and requiring smaller time steps. Most importantly, it appears through this example that Eq. 9 is capable of representing the bedrock displacement, even for significant LVs to resolve this with sufficient accuracy in time. For quantitative values, we refer the reader to the comparative table of runtimes provided in Appendix D.

4.4 Test 4 – 3D GIA solution of the last glacial cycle on a realistic Earth

So far, the model FastIsostasy has been tested with idealised loads and parameter fields. We now consider the more realistic case of simulating the GIA response of two different Earth structures to the last glacial cycle, as reconstructed in ICE6G_D

750 (Peltier et al., 2018), an updated version of ICE6G_C (Peltier et al., 2015; Argus et al., 2014) after a mismatch with the present-day uplift was pointed out in Purcell et al. (2016). The first structure is a 1D Earth that does not present any LV. The second structure is a 3D Earth with the lithospheric thickness ~~depicted in Fig. 2~~ and the mantle viscosity fields from ~~(Pan et al., 2022)~~ Pan et al. (2022), which are similar to those of ~~(Ivins et al., 2022)~~. ~~Combining these two structures with the two models available, we obtain a total of 4 results:~~ ~~depicted in~~ Figure 2. ~~We now compare the results of 5 different models:~~
 755 ~~ELRA, ELVA, LV-ELVA, Seakon 1D (SK1D), and Seakon 3D (SK3D), FastIsosasy 1D (F1D) and FastIsostasy 3D (F3D).~~ ~~For F3D, we define the depth of the model's mantle to be~~. ~~It should be noted that the present comparison omits LV-ELRA, since its implementation goes beyond the scope of the present work.~~

~~For the regional models to be comparable with each other, ELRA, ELVA and LV-ELVA are coupled to ReSeLeM, which uses a BSL forcing derived from SK3D instead of Equation 28, in accordance with the comment made in Section 2.5. To~~
 760 ~~perform the lumping of the depth dimension for LV-ELVA, we define the viscous half-space to begin at 300 km, since it was observed that shallower models lead to better results. This appears plausible,~~. ~~We observed this to yield lower error metrics than {400, 500} km, which appears coherent~~ since, according to Eq. 4, deeper models might overestimate the ~~influence of contribution of the~~ deeper layers of the mantle to the effective viscosity. ~~In Fig. D3, we provide a comparison to SK1D, confirming that F1D can be used to mimic a 1D GIA model setting. In the present section we however focus on comparing~~
 765 ~~results to SK3D~~ We recall that the effective viscosity should primarily capture the response to loads with characteristic lengths of continental ice sheets and that deeper layers are mostly excited by loads with larger wavelengths.

~~Panel~~ The error plot shown in panel (a) of Fig. 9 depicts, for all time steps, the displacement of SK3D, considered to be closest to reality, against ~~the other results, indexed with {F1D, SK1D, F3D}~~ ELRA, ELVA, SK1D and LV-ELVA. We hereby only represent the points within ~~a mask~~ the activation mask \mathcal{A} , represented by the black contours of panels (c-h) and corresponding to
 770 the ~~LGM extent of the AIS, since this is the typical~~ region of interest ~~in for~~ ice-sheet ~~modelling~~ modellers. The position around the identity shows that ~~F1D~~ ELVA leads to displacements that are biased towards lower values, especially for $u_{SK3D} \leq -300$ m where the error comes close to $e^{\text{abs}} \simeq 130$ m. Although this bias is somewhat smaller for SK1D, it still reaches similar maximal values. In comparison, ~~F3D~~ LV-ELVA is centred around the identity and presents no such bias. This can be explained by the fact that a thinner lithosphere and a less viscous mantle in West-Antarctica allows for larger transient displacements around
 775 LGM. Furthermore, the spread around ~~identity~~ the identity, especially around the lower, unbiased displacement values, is an additional metric to take into account. For $u_{SK3D} \geq -300$ m, SK1D, ~~F3D and F1D~~ LV-ELVA and ELVA respectively present the smallest, the intermediate and the largest spread. ~~As expected, ELRA shows a larger bias than LV-ELVA but, surprisingly, a smaller one than SK1D and ELVA. However, the spread of ELRA is larger than for any other model.~~

Panel (b) depicts the ~~evolution of the~~ mean and maximal relative difference ~~e~~ for ~~F1D, F3D~~ for ELRA, ELVA, LV-ELVA
 780 and SK1D with respect to SK3D. The mean and maximal value respectively relate to the spread around ~~the~~ identity and the bias observed in panel (a). ~~In panel (b), the error metrics are computed for the full domain and therefore include the far field, where the rotational feedback dominates the displacement. Since none of the regional models is capable of capturing this, SK1D shows the smallest mean error over time, with $\bar{e}_{SK1D}(t) < 0.01$. In comparison, ELRA, ELVA and LV-ELVA show larger mean error metrics that are however similar among each other, with $\bar{e}(t) < 0.04$. When computing the mean error only over the~~

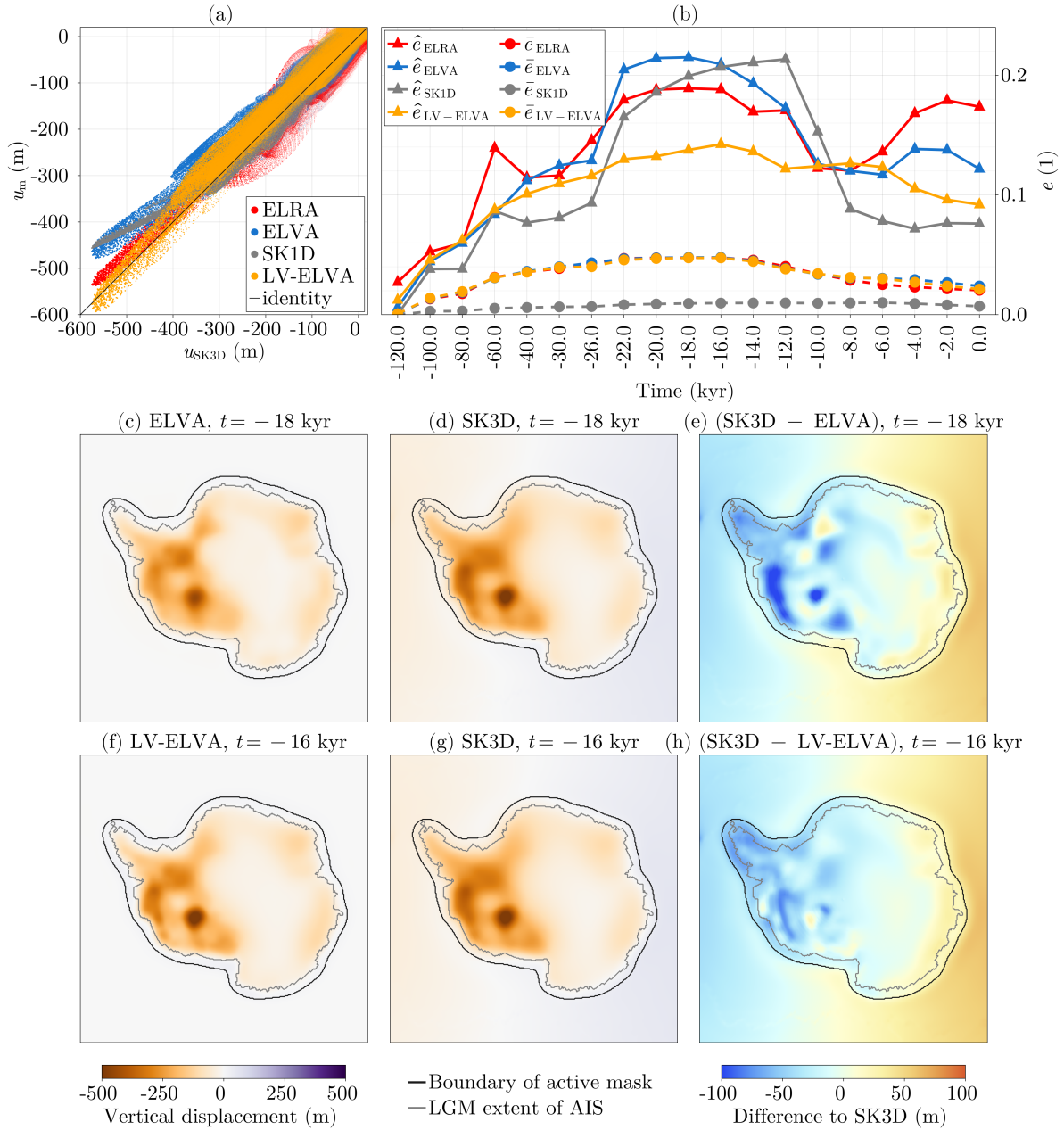


Figure 9. Comparison of Seakon and FastIsostasy, following glacial-cycle forced by the ice loading from ICE6G_D (Peltier et al., 2018). (a) Displacements at all time steps of u_{SK3D} versus u_{FI3D} ELRA, u_{SK1D} ELVA, SK1D and u_{FI3D} LV-ELVA against SK3D for cells that are ice-covered at LGM, visualised by within the black contour in panels (e-h) active mask. (b) Mean-Transient mean and maximal displacement errors, respectively denoted by $\bar{e}(t)$ and $\hat{e}(t)$, of u_{FI3D} ELRA, u_{SK1D} ELVA, SK1D and u_{FI3D} LV-ELVA with respect to u_{SK3D} over time SK3D, for all domain cells. (c-e) Displacement of u_{FI3D} ELVA, SK3D and their differences for the time step of maximal error. (f-h) Displacement fields of u_{FI3D} , SK3D and their difference Same as (c-e) for the time step of maximal error LV-ELVA.

785 ~~active mask, this difference between SK1D and the regional models vanishes, with $\bar{e} < 0.01$ for all models. We believe that this latter definition of the mean error is closer than what is relevant to most ice-sheet modellers but highlighting the larger error of regional models in the far field ensures that the users of FastIsostasy are aware of this limitation. The low values of the mean error that are observed regardless of the model can be explained by the fact that most of the regions, especially the bulk of East Antarctica, can be well represented by an intermediate mantle viscosity and lithospheric thickness.~~

790 Interestingly, the peak values of ~~$\max(e_{\text{SK1D}})$ and $\max(e_{\text{F1D}})$~~ \hat{e}_{SK1D} and \hat{e}_{ELVA} are very close to each other and yield about 0.22, corresponding to ~~$\max(e^{\text{abs}}) \simeq 130\text{m}$~~ $\hat{e}^{\text{abs}} \simeq 130\text{m}$. In both cases, these values are observed over $t \in [-22, -12]\text{kyr}$, which correspond to the 10kyr of rapid deglaciation following LGM. ~~In comparison, ELRA presents a peak maximal error with a similar timing and a marginally smaller amplitude $\hat{e}_{\text{ELRA}} < 0.19$. However, it presents large errors over the last 6kyr of simulation.~~ This points out that high errors of ~~FHD-ELRA, ELVA~~ and SK1D are to be expected when rapid changes of ice thickness occur - a situation that could be triggered by sustained anthropogenic climate warming. For ~~FHD-ELVA~~, the peak difference to SK3D is observed at $t = -18\text{kyr}$. The corresponding displacement fields and their difference are plotted in (e-dc-e), corroborating that a ~~1D Earth structure used in FastIsostasy-ELVA~~ does not allow enough displacement in West-Antarctica after LGM. ~~In contrast to the maximal values, the mean differences of FHD and SK1D with respect to SK3D respectively remain below 5% and 1% at all time. This can be explained by the fact that most of the regions, especially the bulk of East Antarctica, can be well represented by an intermediate mantle viscosity and lithospheric thickness. Nonetheless, The location of the peak error points out that the use of ELVA, coupled to an ice sheet model, may lead to significant errors since the WAIS is strongly dependent on small changes of the grounding-line position, typically occurring in regions of lower viscosities. Therefore, large localised errors of the GIA response can have significant impacts on the evolution of the AIS and a limited amount of outliers can be arguably preferred over a slightly reduced mean error based on a retrograde bedrock below sea level and is therefore particularly sensitive to the GIA response, as pointed out in the introduction.~~

800

805

Compared to ~~FHD-ELRA, ELVA~~ and SK1D, ~~F1D-LV-ELVA~~ reduces the maximal error down to about ~~$\max(e_{\text{F1D}}) \leq 0.14$~~ $\hat{e}_{\text{LV-ELVA}} < 0.14$ which corresponds to ~~$\max(e^{\text{abs}}) \leq 80\text{m}$ and satisfies our bound on the relative difference $\hat{e}^{\text{abs}} < 80\text{m}$.~~ The displacement fields for the time ~~step of peak maximal error~~ $t = -14\text{kyr}$ are plotted in panels (f-h) and show that the overall near-field displacement is reasonably well matched, even in the worst case. ~~In the near field, F1D slightly underestimates the displacement compared to SK3D for the time step showing the largest error metrics. In particular, the displacement is slightly underestimated in most of the active mask.~~ Since this appears to be a systematic offset, it could easily be corrected by tuning the density and/or the viscosity chosen for ~~F1D-LV-ELVA~~⁸. We however decide not to do so ~~and give the user an idea of the~~ to highlight the differences to SK3D without additional tuning.

810

~~In (e-h), it appears that Throughout Test 4, SK3D displays a subtle dipole separated by a great circle whereas FHD and F1D do not. By looking at the global results of SK3D, this is in fact a quadrupole and is the typical fingerprint of the rotational feedback, which is not included in FastIsostasy. This translates into a systematic albeit small error of the far field. has been used as the baseline model. In Appendix D, we show a similar analysis that compares ELRA and ELVA by using SK1D displays the same feature and is therefore better-suited to represent the far-field displacement. Nonetheless, we stress that ice-sheet~~

⁸~~This could simply be done by hand or, for instance, with an unscented Kalman inversion, as shown in the code documentation.~~

820 modelling requires a good representation of the near-field, which seems to be better captured by FI3D as baseline. There it appears (1) that ELVA presents smaller errors than ELRA and (2) that LV-ELVA presents smaller errors compared to SK3D than ELVA compared to SK1D.

~~Despite these differences-~~

Run-time analysis. Despite the errors compared to Seakon, and potentially to any 3D GIA model, we believe that FastIsostasy can be a particularly appealing tool, since the ~~120 kyr run of FI3D~~ 122 kyr run takes only about 14.9 minutes to 825 compute for a horizontal resolution of $h = 20$ km, resulting in 350×350 grid points. For ~~FHD~~ ELVA, the absence of LV leads to a reduced computation time of only about 4 minutes and outperforms ELRA, which requires about 6 minutes. These computations were performed on an NVIDIA GeForce RTX 2070, ~~an intermediate-performance and easily accessible GPU~~ a low-cost GPU with moderate performance by the standards of ~~2023-~~ 2024. Although the time stepping is adaptive, no values beyond ~~$\Delta t = 10$ yr~~ $dt = 10$ yr are used. This ~~contrasts with coupled studies (Gomez et al., 2018; Van Calcar et al., 2023), where the~~ 830 ~~time steps are typically of the order of centuries and therefore require a coupling scheme that ensures the convergence of the~~ potentially provides the ice-sheet and GIA model histories model with an input that is very dense in time, for instance as opposed to Gomez et al. (2018).

In comparison, the Seakon simulation takes about 4.5 days on 150 CPUs with a time step of ~~$\Delta t \in [125, 1000]$ yr~~ $dt \in [125, 1000]$ yr. Assuming an ideal ~~parallelization~~ parallelisation scaling of 100%, this corresponds to about a million minutes of CPU-runtime, 835 ~~or $\sim 70,000$ times~~ which roughly corresponds to five orders of magnitude more than what FastIsostasy requires. The models used in Zhong et al. (2022); Albrecht et al. (in rev.) present smaller computation times, reducing this order of magnitude down to 4.

Furthermore, the power consumption of the GPU used in the present study is of 185 W ⁹, compared to a typical value of more than 100 W for a single, modern CPU. As the energy consumption is expressed as the product of power and computation 840 time, FastIsostasy appears to be less energy-consuming than Seakon by several orders of magnitude. Finally, we draw attention to the fact that the acquisition price of the GPU used here is a few hundred euros, which is far less than that of a large CPU cluster.

Of course, the ~~two run-time of Seakon and FastIsostasy~~ are not directly comparable: Seakon solves the global GIA problem, which requires ~~many more grid points and the representation of additional processes. Seakon's output~~ a grid with many more 845 degrees of freedom that reaches down to the core-mantle boundary. The output of Seakon is much richer, since it includes, ~~for instance, the position of the~~ among others, the rotational feedback, the position of migrating shorelines, the horizontal displacement of the bedrock and the relative sea level at any point on Earth. Nonetheless, these quantities tend to be ~~irrelevant~~ less relevant for ice-sheet modelling ~~purposes~~, and FastIsostasy therefore offers an opportunity to regionally mimic the behaviour of a 3D GIA model at very low computational, energy and financial cost.

850 5 Conclusions

⁹Tabulated value found at <https://www.nvidia.com/es-es/geforce/graphics-cards/compare/?section=compare-20>

Throughout all the tests, FastIsostasy displays a maximal and mean error over space of $\hat{\epsilon}(t) < 0.2$ and $\bar{\epsilon}(t) < 0.05$, both being typically much smaller for most time steps. In particular, Test 1 has shown that the discretisation error of FastIsostasy is very small and that, with increasing problem size, its computational expense scales better than what is typically obtained with FDM, FVM and FEM solvers. Test 2 has shown that FastIsostasy represents the deformational response and the SSH perturbation with a relatively low error compared to 1D GIA models, despite solving the problem on a 2D regional grid. Test 3 and Test 4 have shown that LV-ELVA presents limitations, since it relies on a linear PDE describing the macroscopic behaviour of the solid Earth as a Maxwell body. Therefore it does not account for nonlinearities (Gasperini et al., 2004), transient rheologies (Ivins et al., 2021), composite rheologies (van der Wal et al., 2010, 2015), anisotropy (Beghein et al., 2006; Accardo et al., 2014), or microscale properties of the material (Van Calcar et al., 2023). LV-ELVA only computes the vertical displacement of the GIA and neglects the horizontal components. Its underlying PDE was postulated here in an ad-hoc way and the regional nature of its domain makes it inherently complicated to ensure conservation of mass. Furthermore, FastIsostasy does not account for Earth's rotation and does not aim to provide global solutions, the latter being rather irrelevant since most on-going ice-sheet modelling studies are still performed on regional domains. Future releases of FastIsostasy will focus on addressing some of these problems produces greatly reduced errors with respect to SK3D, compared to ELRA and ELVA, and even to SK1D for the near-field GIA response. This means that the model uncertainty between FastIsostasy and Seakon is smaller than the upper bound on parametric uncertainty, given by the difference between a 1D and a 3D Earth structure (Albrecht et al., in rev.).

Despite the aforementioned limitations In conclusion, FastIsostasy can greatly reduce the transient error of bedrock displacement compared to ELRA, ELVA and, in some cases, even even to 1D GIA models, by dealing with laterally variable Earth structures for regions of significant LV. This was achieved by introducing LV-ELVA, which generalises the work of Bueler et al. (2007) and Coulon et al. (2021) and was coupled to ReSeLeM, which regionally approximates the transient changes in ocean load. Whereas the differences between FastIsostasy and global GIA models are within the range of parametric uncertainties, the computation time is typically reduced by 3 to 5 orders of magnitude. For most ice-sheet models, FastIsostasy thus represents can thus represent a leap in GIA comprehensiveness at very low computational cost, even for high-resolution runs on the time scale of glacial cycles. This has straight-forward applications, since the GIA response is particularly relevant for the many marine-based regions of the AIS, where significant LVs of the solid Earth can be present. This is the case for the Amundsen sector, which could become the largest source of sea-level rise in the coming century and therefore requires projections that account, as accurately as possible, for the stabilising effect of GIA.

Since fields of the lithospheric thickness and the upper-mantle viscosity can be easily found in literature, FastIsostasy reduces the difficulty of creating meaningful ensembles is reduced, for instance compared with models that are not directly parametrised by the viscosity compared to relaxed rheologies (Coulon et al., 2021). The very short runtime of FastIsostasy offers an efficient method of propagating the uncertainties of the solid-Earth parameters to future sea-level projections, thus allowing more comprehensive forecasts. Most importantly, it minimises the misrepresentation of the GIA feedbacks in a coupled ice-sheet setting, which is particularly relevant for marine-based regions such as the WAIS, which are likely to be the largest contributors to sea-level rise over the coming centuries. FastIsostasy is therefore not only a convenient tool but also a reliable way to reduce

885 ~~biases in sea-level projections, as well as in paleoclimatic simulations, for instance of glacial cycles, past and future climatic scenarios.~~

~~We believe that even~~ We believe that GIA modellers, as well as the few ice-sheet models that are coupled to a 3D GIA model ~~can still~~, can benefit from FastIsostasy, since it can be used as a fast-prototyping tool. In particular, a scheme to tune the parameters of FastIsostasy can turn it into an emulator of a 3D GIA model ~~–however with a~~ with better interpretability than, for instance, machine learning techniques. Nonetheless, it should be emphasised that some scientific questions can only be answered with a global 3D GIA model and that FastIsostasy is a complementary tool that does not aim to replace it. Finally, we believe that ~~its~~ the relatively abbreviated code ~~and of FastIsostasy and its~~ few equations compared to 1D or 3D GIA models ~~can be~~ are particularly well suited for educational purposes.

Code and data availability. FastIsostasy is available under GNU General Public License v3.0 at <https://github.com/JanJereczek/FastIsostasy>. 895 jl (Julia version) and <https://github.com/palma-ice/FastIsostasy> (Fortran version). The data used in the present work can be found at https://github.com/JanJereczek/isostasy_data. The archived versions of the code and data used for this paper can be found at <https://zenodo.org/doi/10.5281/zenodo.10419117> and <https://zenodo.org/doi/10.5281/zenodo.10419334>.

Video supplement. Animations of the results obtained by FastIsostasy on Test 4 can be found at <https://github.com/JanJereczek/FastIsostasy>. jl.

900 **Appendix A: From ELRA to LV-ELVA**

Following Le Meur and Huybrechts (1996), the governing equations of ELRA yield:

$$\rho^m g u^{\text{eq}} + D \nabla^4 u^{\text{eq}} = \sigma^{zz}, \quad (\text{A1})$$

$$\frac{\partial u}{\partial t} = \frac{1}{\tau} (u - u^{\text{eq}}) \quad (\text{A2})$$

with u^{eq} the equilibrium displacement and all further quantities already introduced in this paper. Equation A1 can be solved 905 by convolving the load with a Green's function derived from a Kelvin function of order 0, as described in Le Meur and Huybrechts (1996). In FastIsostasy, the convolution is performed via FFTs, which is much faster than a computation in time domain. Coulon et al. (2021) generalised the equations of ELRA to a laterally-variable lithospheric thickness and relaxation time (LV-ELRA):

$$\rho^m g u^{\text{eq}} + \frac{\partial^2 M_{xx}^{\text{eq}}}{\partial x^2} + 2 \frac{\partial^2 M_{xy}^{\text{eq}}}{\partial x \partial y} + \frac{\partial^2 M_{yy}^{\text{eq}}}{\partial y^2} = \sigma^{zz}, \quad (\text{A3})$$

$$\frac{\partial u}{\partial t} = \frac{1}{\tau(x, y)} (u - u^{\text{eq}}), \quad (\text{A4})$$

910 with M_{xx}^{eq} , M_{xy}^{eq} and M_{yy}^{eq} the flexural moments at equilibrium, computed by introducing u^{eq} into Equations 10-12. For ELRA as well as LV-ELRA, a relaxed rheology is used, which presents the limitations explained in Section 1.3. ELVA, as proposed by Cathles (1975); Lingle and Clark (1985); Bueler et al. (2007), addresses this limitation because its governing equation is directly parametrised by viscosity:

$$2\eta|\nabla| \frac{\partial u}{\partial t} + \rho^m g u^{\text{eq}} + D \nabla^4 u = \sigma^{zz}. \quad (\text{A5})$$

915 However, this assumes a constant lithospheric thickness $T(x, y) = T$ and sub-lithospheric mantle viscosity $\eta(x, y) = \eta$ throughout the domain, which therefore prevents the representation of LV. We tried to generalise the derivation presented in Cathles (1975) to LV, however unsuccessfully. Instead, we combined Eq. A3 and Eq. A5, thus obtaining:

$$2\eta(x, y)|\nabla| \frac{\partial u}{\partial t} + \rho^m g u^{\text{eq}} + \frac{\partial^2 M_{xx}}{\partial x^2} + 2 \frac{\partial^2 M_{xy}}{\partial x \partial y} + \frac{\partial^2 M_{yy}}{\partial y^2} = \sigma^{zz}, \quad (\text{A6})$$

920 with the flexural moments accounting for the laterally-variable lithospheric thickness. By introducing a pressure term, as done in Eq. 8, and accounting for the distortion K , we obtain the governing equation of LV-ELVA, as written in Equation 9. For constant parameters, LV-ELVA simplifies to the equation of ELVA and can be therefore understood as an ad-hoc generalisation that reduces the error made compared to a 3D GIA model. Using ELVA in FastIsostasy is simply achieved by running LV-ELVA with constant parameters. This seamless approach offers a code that is easier to maintain and an interface that is simpler to use, at the expense of a minor increase in computational expense compared to the use of a specific solver that takes advantage of
925 the simplifications made in ELVA.

Appendix B: Ocean surface function

The function $\tilde{A}(s): \mathbb{R} \rightarrow \mathbb{R}$ is here computed by summing the surfaces of cells situated below the BSL, s , based on the 1 arc-minute global topography of ETOPO1 (Amante and Eakins, 2009). Note that this slightly overestimates the ocean surface, since all regions below sea-level are counted as part of the ocean, including, for instance, parts of the Netherlands. To tackle
930 this, we introduce a bias correction scaling γ , which avoids any offset for the present-day value A_{pd} and depends on the uncorrected value $\tilde{A}(s)$:

$$A(s) = \gamma \tilde{A}(s), \quad \text{with: } \gamma = \frac{A_{pd}}{\tilde{A}(s=0)}. \quad (\text{B1})$$

935 To reduce the runtime, we precompute $A(s)$ as a piecewise-linear interpolator for $s \in [-150, 70]$ yr with a discretization of $\Delta s = 0.1$ m. The resulting function is depicted in the bottom-left panel of Fig. 4 and shows that, for the range of realistic sea-level contributions over glacial cycles, the trapezoidal approximation leads to variations of the ocean surface between -7% and +4% around the present-day value.

Appendix C: Scaling the effective viscosity

Two important characteristics of the mantle have to be accounted for, such that the Maxwell time $\tau = \eta E^{-1}$ of FastIsostasy is comparable to that of a 3D GIA model. This is done by introducing two correction factors. First, one of the underlying assumptions made by Cathles (1975) is that the mantle is incompressible, i.e. ~~$\nu^i = 0.5$ is assumed~~ $\nu^i = 0.5$ is assumed as opposed to $\nu_0 = 0.28$ for the elastic lithosphere. In reality, the mantle is however a compressible medium with $\nu^c \simeq 0.28$, $\nu^c \simeq 0.28$. We now look for η^i , the viscosity that has to be used in the incompressible case in order to match the Maxwell time of the compressible case. By introducing the shear modulus $G = E(2(1 + \nu))^{-1}$, we obtain:

$$\frac{\eta^i}{2G(1 + \nu^i)} = \frac{\eta^c}{2G(1 + \nu^c)} \quad (\text{C1})$$

$$945 \quad \Leftrightarrow \eta^i = \frac{1 + \nu^i}{1 + \nu^c} \eta^c = \alpha^{cc} \eta^c. \quad (\text{C2})$$

In essence, this means that compressible mediums have a ~~longer relaxation~~ larger Maxwell time and that we need to slightly increase the viscosity values ~~for the incompressible case~~ to render this, since Eq. A5 used to postulate Eq. 9 assumes an incompressible viscous flow. This is supported by Fig. C1, which shows that a 1D GIA model displays longer decay times for a compressible mantle, compared to an incompressible one.

950 Second, both the shear modulus and the viscosity depend on the temperature of the medium. For instance, a positive temperature anomaly in the mantle leads to a negative anomaly of both viscosity and shear modulus. This means that the decrease of the Maxwell time due to the decrease of viscosity is somewhat compensated by the decrease in shear modulus. We have chosen to compute this scaling by calibrating FastIsostasy to results of a 3D GIA model:

$$\eta = \exp\left(\log_{10}\left(\frac{\eta_0}{\eta^i}\right)\right) \eta^i = \alpha^{GG}(\eta^i) \cdot \eta^i, \quad (\text{C3})$$

955 with $\eta_0 = 10^{21}$ Pa s the calibration constant used throughout this work. We thus obtain a relation between the viscosity η^c , inferred from seismic measurements, and the corrected effective viscosity η , ultimately used in FastIsostasy:

$$\eta = \alpha^{GG} \alpha^{cc} \eta^c = \alpha \eta^c. \quad (\text{C4})$$

If the depth dimension is lumped according to Eq. B1, then the viscosity field $\eta_1^{eff} \eta_L^{eff}$, representing the compound of layers from $l = 1$ to $l = L$, is used for η^c .

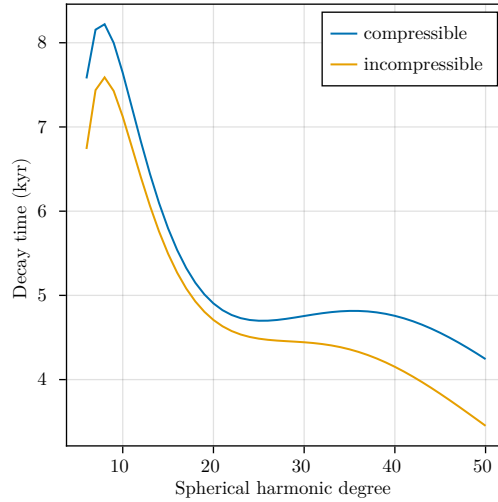


Figure C1. Decay times of a 1D GIA model with $\nu^c = 0.28$ (compressible) and $\nu^i = 0.5$ (incompressible).

960 **Appendix D: Additional figures Complementary information on Test 3 & 4**

The anomalies of lithospheric thickness and upper-mantle viscosity used in Test 3 are represented in Figure D1 and result from a scaled Gaussian distribution $\mathcal{N}(0, \sigma)$ with $\sigma = (W/4)^2 \mathbf{I}$, and $\mathbf{I} \in \mathbb{R}^{2 \times 2}$ the identity matrix.

965 In addition to Test 3, we perform two simulations with laterally-constant Earth structures in Seakon. The first one corresponds to PREM (Dziewonski and Anderson, 1981) and the second to a single-layer mantle without elastic lithosphere. The results are respectively depicted in columns (a) and (b) of Fig. D2. Unsurprisingly, the first case shows a very similar error pattern to what is obtained in Test 2 and highlights that the main error source of FastIsostasy comes from the lumped depth dimension rather than from the generalisation of ELVA to LV-ELVA. The second case shows that, in the absence of a lithosphere, the match between Seakon and FastIsostasy yields $\bar{\epsilon}(t) < 0.04$ and $\hat{\epsilon}(t) < 0.08$. In particular, this example shows that, in both models, the absence of a lithosphere effectively decouples neighbouring cells due to the absence of flexural moments.

<u>Case</u>	<u>Decreasing T</u>	<u>Increasing T</u>	<u>Decreasing η</u>	<u>Increasing η</u>	<u>PREM</u>	<u>$T = 0$</u>	<u>ELRA</u>
<u>Runtime (s)</u>	<u>35.6</u>	<u>40.7</u>	<u>33.8</u>	<u>25.0</u>	<u>24.1</u>	<u>24.9</u>	<u>14.2</u>

Table D1. Runtime of FastIsostasy in Test 3 for a resolution of $N_x = N_y = 128$, on a single CPU (Intel i7-10750H 2.60GHz).

970 Whereas Fig. 9 uses SK3D as baseline for the error metrics, we propose to use SK1D as a baseline to compare ELRA and ELVA in Figure D3. In Fig. D3, it appears that ELRA is more biased towards large displacements than ELVA. Furthermore, the mean error is similar for both models but the maximal error is overall higher for ELRA, with $\hat{\epsilon}(t) < 0.21$. In comparison, the

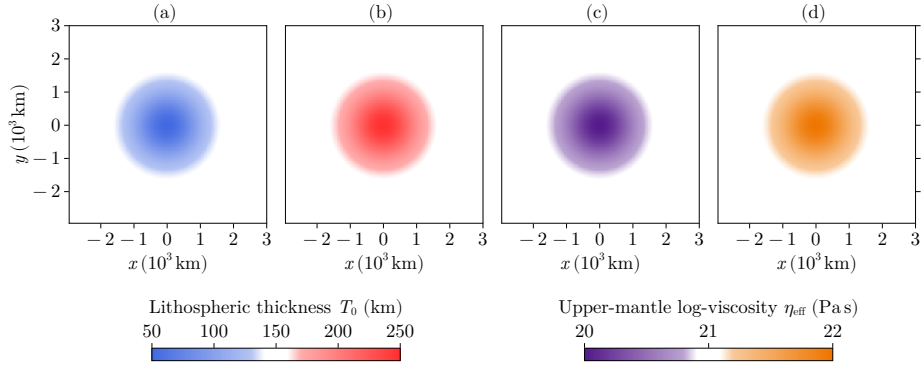


Figure D1. Gaussian-shaped LV [used in Test 3](#) for (a) a lithospheric thinning, (b) a lithospheric thickening, (c) a viscosity decrease and (d) a viscosity ~~decrease~~ [increase](#) towards the centre of the domain.

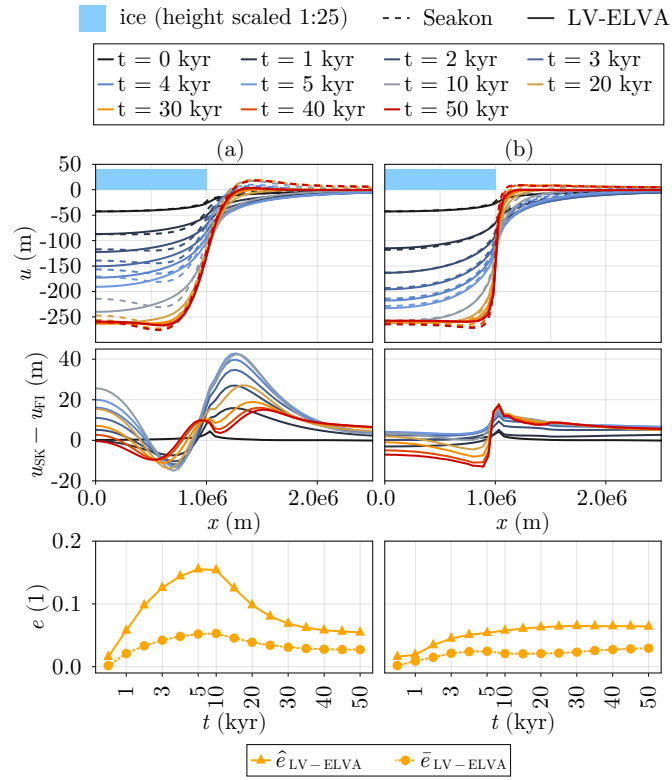


Figure D2. Comparison of FastIsostasy and Seakon for (a) a layered mantle [with homogeneous following PREM](#) and (b) ~~the absence of any a mantle with a single layer and no lithosphere.~~

975 maximum error of ELVA yields $\hat{\epsilon}(t) < 0.16$. The middle row of Fig. D3 highlights that the higher error of ELRA stems from an overestimated displacement in the Mary Byrd Land. In comparison, the bottom row shows that ELVA displays a much more homogeneously distributed error.

Author contributions. J.S-J. conceptually developed FastIsostasy as well as its Julia version. The Fortran one was co-developed by M.M., A.R. and J.S-J. The Seakon simulations were performed by K.L., who, along with J.X.M. also provided insights on 3D GIA modelling for the purposes of this manuscript. This manuscript was prepared by J.S-J. with contributions from all co-authors.

Competing interests. The authors declare no competing interests.

980 *Disclaimer.*

Acknowledgements. We would like to thank Ed Bueler and Constantine Khroulev for the helpful email exchange. Their openly accessible implementations of ELVA, available at <https://github.com/pism> and <https://github.com/bueler/fast-earth>, greatly eased the initial phase of FastIsostasy's development and inspired its name. We'd also like to thank Douglas Wiens, Ana Negredo and Javier Fulla for providing valuable comments and/or data. A particular thanks goes to the reviewers of this paper, who provided many helpful comments to improve this manuscript. Finally, J.S-J. wants to thank the whole PalMA team for providing their daily support and for creating a fantastic working environment.

Financial support. J.S-J. is funded by CriticalEarth, grant no. 956170, an H2020 Research Infrastructure of the European Commission. A.R. received funding from the European Union (ERC, FORCLIMA, 101044247). ~~J.A-S~~M.M. is funded by the Spanish Ministry of Science and Innovation (project MARINE, grant no. PID2020-117768RB-I00).

990

References

- A, G., Wahr, J., and Zhong, S.: Computations of the viscoelastic response of a 3-D compressible Earth to surface loading: an application to Glacial Isostatic Adjustment in Antarctica and Canada, *Geophysical Journal International*, 192, 557–572, <https://doi.org/10.1093/gji/ggs030>, 2013.
- 995 Accardo, N. J., Wiens, D. A., Hernandez, S., Aster, R. C., Nyblade, A., Huerta, A., Anandakrishnan, S., Wilson, T., Heeszel, D. S., and Dalziel, I. W. D.: Upper mantle seismic anisotropy beneath the West Antarctic Rift System and surrounding region from shear wave splitting analysis, *Geophysical Journal International*, 198, 414–429, <https://doi.org/10.1093/gji/ggu117>, 2014.
- Adhikari, S., Ivins, E. R., Larour, E., Seroussi, H., Morlighem, M., and Nowicki, S.: Future Antarctic bed topography and its implications for ice sheet dynamics, *Solid Earth*, 5, 569–584, <https://doi.org/10.5194/se-5-569-2014>, 2014.
- 1000 Adhikari, S., Ivins, E. R., Larour, E., Caron, L., and Seroussi, H.: A kinematic formalism for tracking ice–ocean mass exchange on the Earth’s surface and estimating sea-level change, *The Cryosphere*, 14, 2819–2833, <https://doi.org/10.5194/tc-14-2819-2020>, 2020.
- Albrecht, T., Bagge, M., and Klemann, V.: Feedback mechanisms controlling Antarctic glacial cycle dynamics simulated with a coupled ice sheet–solid Earth model, preprint, *Ice sheets/Antarctic*, <https://doi.org/10.5194/egusphere-2023-2990>, in rev.
- Amante, C. and Eakins, B. E.: ETOPO1 1 arc-minute global relief model: procedure, data sources and analysis, Tech. rep., NOAA, 2009.
- 1005 Amelung, F. and Wolf, D.: Viscoelastic perturbations of the earth: significance of the incremental gravitational force in models of glacial isostasy, *Geophysical Journal International*, 117, 864–879, <https://doi.org/10.1111/j.1365-246X.1994.tb02476.x>, 1994.
- Argus, D. F., Peltier, W. R., Drummond, R., and Moore, A. W.: The Antarctica component of postglacial rebound model ICE-6G_C (VM5a) based on GPS positioning, exposure age dating of ice thicknesses, and relative sea level histories, *Geophysical Journal International*, 198, 537–563, <https://doi.org/10.1093/gji/ggu140>, 2014.
- 1010 Austermann, J., Hoggard, M. J., Latychev, K., Richards, F. D., and Mitrovica, J. X.: The effect of lateral variations in Earth structure on Last Interglacial sea level, *Geophysical Journal International*, 227, 1938–1960, <https://doi.org/10.1093/gji/ggab289>, 2021.
- Bagge, M., Klemann, V., Steinberger, B., Latinović, M., and Thomas, M.: Glacial-Isostatic Adjustment Models Using Geodynamically Constrained 3D Earth Structures, *Geochemistry, Geophysics, Geosystems*, 22, <https://doi.org/10.1029/2021GC009853>, 2021.
- Barletta, V. R., Bevis, M., Smith, B. E., Wilson, T., Brown, A., Bordoni, A., Willis, M., Khan, S. A., Rovira-Navarro, M., Dalziel, I., Smalley, R., Kendrick, E., Konfal, S., Caccamise, D. J., Aster, R. C., Nyblade, A., and Wiens, D. A.: Observed rapid bedrock uplift in Amundsen Sea Embayment promotes ice-sheet stability, *Science*, 360, 1335–1339, <https://doi.org/10.1126/science.aao1447>, 2018.
- Beghein, C., Trampert, J., and van Heijst, H. J.: Radial anisotropy in seismic reference models of the mantle: ANISOTROPY IN MANTLE MODELS, *Journal of Geophysical Research: Solid Earth*, 111, <https://doi.org/10.1029/2005JB003728>, 2006.
- Behrendt, J. C.: Crustal and lithospheric structure of the West Antarctic Rift System from geophysical investigations — a review, *Global and Planetary Change*, 1999.
- 1020 Besard, T., Churavy, V., Edelman, A., and Sutter, B. D.: Rapid software prototyping for heterogeneous and distributed platforms, *Advances in Engineering Software*, 132, 29–46, <https://doi.org/10.1016/j.advengsoft.2019.02.002>, 2019a.
- Besard, T., Foket, C., and De Sutter, B.: Effective Extensible Programming: Unleashing Julia on GPUs, *IEEE Transactions on Parallel and Distributed Systems*, 30, 827–841, <https://doi.org/10.1109/TPDS.2018.2872064>, 2019b.
- 1025 Bezanson, J., Edelman, A., Karpinski, S., and Shah, V. B.: Julia: A Fresh Approach to Numerical Computing, *SIAM Review*, 59, 65–98, <https://doi.org/10.1137/141000671>, 2017.

- Bogacki, P. and Shampine, L.: An efficient Runge-Kutta (4,5) pair, *Computers & Mathematics with Applications*, 32, 15–28, [https://doi.org/10.1016/0898-1221\(96\)00141-1](https://doi.org/10.1016/0898-1221(96)00141-1), 1996.
- 1030 Book, C., Hoffman, M. J., Kachuck, S. B., Hillebrand, T. R., Price, S. F., Perego, M., and Bassis, J. N.: Stabilizing effect of bedrock uplift on retreat of Thwaites Glacier, Antarctica, at centennial timescales, *Earth and Planetary Science Letters*, 597, 117–128, <https://doi.org/10.1016/j.epsl.2022.117798>, 2022.
- Bueler, E., Lingle, C. S., and Brown, J.: Fast computation of a viscoelastic deformable Earth model for ice-sheet simulations, *Annals of Glaciology*, 46, 97–105, <https://doi.org/10.3189/172756407782871567>, 2007.
- 1035 Caron, L., Métivier, L., Greff-Lefftz, M., Fleitout, L., and Rouby, H.: Inverting Glacial Isostatic Adjustment signal using Bayesian framework and two linearly relaxing rheologies, *Geophysical Journal International*, 209, 1126–1147, <https://doi.org/10.1093/gji/ggx083>, 2017.
- Cathles, L. M.: *Viscosity of the Earth's Mantle*, Princeton University Press, 1975.
- Cogley, J. G.: Area of the Ocean, *Marine Geodesy*, 35, 379–388, <https://doi.org/10.1080/01490419.2012.709476>, 2012.
- 1040 Coulon, V., Bulthuis, K., Whitehouse, P. L., Sun, S., Haubner, K., Zipf, L., and Pattyn, F.: Contrasting Response of West and East Antarctic Ice Sheets to Glacial Isostatic Adjustment, *Journal of Geophysical Research: Earth Surface*, 126, <https://doi.org/10.1029/2020JF006003>, 2021.
- De Boer, B., Stocchi, P., Whitehouse, P. L., and Van De Wal, R. S.: Current state and future perspectives on coupled ice-sheet – sea-level modelling, *Quaternary Science Reviews*, 169, 13–28, <https://doi.org/10.1016/j.quascirev.2017.05.013>, 2017.
- DeConto, R. M. and Pollard, D.: Contribution of Antarctica to past and future sea-level rise, *Nature*, 531, 591–597, <https://doi.org/10.1038/nature17145>, 2016.
- 1045 Dzionowski, A. M. and Anderson, D. L.: Preliminary Earth Model, *Physics of the Earth and Planetary Interiors*, 25, 297–356, 1981.
- Farrell, W. E.: Deformation of the Earth by surface loads, *Reviews of Geophysics*, 10, 761, <https://doi.org/10.1029/RG010i003p00761>, 1972.
- Farrell, W. E. and Clark, J. A.: On Postglacial Sea Level, *Geophysical Journal of the Royal Astronomical Society*, 46, 647–667, <https://doi.org/10.1111/j.1365-246X.1976.tb01252.x>, 1976.
- 1050 Fretwell, P., Pritchard, H. D., Vaughan, D. G., Bamber, J. L., Barrand, N. E., Bell, R., Bianchi, C., Bingham, R. G., Blankenship, D. D., Casassa, G., Catania, G., Callens, D., Conway, H., Cook, A. J., Corr, H. F. J., Damaske, D., Damm, V., Ferraccioli, F., Forsberg, R., Fujita, S., Gim, Y., Gogineni, P., Griggs, J. A., Hindmarsh, R. C. A., Holmlund, P., Holt, J. W., Jacobel, R. W., Jenkins, A., Jokat, W., Jordan, T., King, E. C., Kohler, J., Krabill, W., Riger-Kusk, M., Langley, K. A., Leitchenkov, G., Leuschen, C., Luyendyk, B. P., Matsuoka, K., Mouginot, J., Nitsche, F. O., Nogi, Y., Nost, O. A., Popov, S. V., Rignot, E., Rippin, D. M., Rivera, A., Roberts, J., Ross, N., Siegert, M. J., Smith, A. M., Steinhage, D., Studinger, M., Sun, B., Tinto, B. K., Welch, B. C., Wilson, D., Young, D. A., Xiangbin, C., and Zirizzotti, A.: Bedmap2: improved ice bed, surface and thickness datasets for Antarctica, *The Cryosphere*, 7, 375–393, <https://doi.org/10.5194/tc-7-375-2013>, 2013.
- 1055 Frigo, M. and Johnson, S.: The Design and Implementation of FFTW3, *Proceedings of the IEEE*, 93, 216–231, <https://doi.org/10.1109/JPROC.2004.840301>, 2005.
- 1060 Garbe, J., Albrecht, T., Levermann, A., Donges, J. F., and Winkelmann, R.: The hysteresis of the Antarctic Ice Sheet, *Nature*, 585, 538–544, <https://doi.org/10.1038/s41586-020-2727-5>, 2020.
- Gasparini, P., Dal Forno, G., and Boschi, E.: Linear or non-linear rheology in the Earth's mantle: the prevalence of power-law creep in the postglacial isostatic readjustment of Laurentia, *Geophysical Journal International*, 157, 1297–1302, <https://doi.org/10.1111/j.1365-246X.2004.02319.x>, 2004.

- Goelzer, H., Coulon, V., Pattyn, F., de Boer, B., and van de Wal, R.: Brief communication: On calculating the sea-level contribution in marine ice-sheet models, *The Cryosphere*, 14, 833–840, <https://doi.org/10.5194/tc-14-833-2020>, 2020.
- 1065 Gomez, N., Mitrovica, J. X., Huybers, P., and Clark, P. U.: Sea level as a stabilizing factor for marine-ice-sheet grounding lines, *Nature Geoscience*, 3, 850–853, <https://doi.org/10.1038/ngeo1012>, 2010.
- Gomez, N., Pollard, D., Mitrovica, J. X., Huybers, P., and Clark, P. U.: Evolution of a coupled marine ice sheet-sea level model, *Journal of Geophysical Research: Earth Surface*, 117, <https://doi.org/10.1029/2011JF002128>, 2012.
- 1070 Gomez, N., Pollard, D., and Holland, D.: Sea-level feedback lowers projections of future Antarctic Ice-Sheet mass loss, *Nature Communications*, 6, 8798, <https://doi.org/10.1038/ncomms9798>, 2015.
- Gomez, N., Latychev, K., and Pollard, D.: A Coupled Ice Sheet–Sea Level Model Incorporating 3D Earth Structure: Variations in Antarctica during the Last Deglacial Retreat, *Journal of Climate*, 31, 4041–4054, <https://doi.org/10.1175/JCLI-D-17-0352.1>, 2018.
- Gregory, J. M., Griffies, S. M., Hughes, C. W., Lowe, J. A., Church, J. A., Fukimori, I., Gomez, N., Kopp, R. E., Landerer, F., Cozannet, G. L., Ponte, R. M., Stammer, D., Tamisiea, M. E., and Van De Wal, R. S. W.: Concepts and Terminology for Sea Level: Mean, Variability and Change, Both Local and Global, *Surveys in Geophysics*, 40, 1251–1289, <https://doi.org/10.1007/s10712-019-09525-z>, 2019.
- 1075 Gudmundsson, G. H., Krug, J., Durand, G., Favier, L., and Gagliardini, O.: The stability of grounding lines on retrograde slopes, *The Cryosphere*, 6, 1497–1505, <https://doi.org/10.5194/tc-6-1497-2012>, 2012.
- Heeszel, D. S., Wiens, D. A., Anandakrishnan, S., Aster, R. C., Dalziel, I. W. D., Huerta, A. D., Nyblade, A. A., Wilson, T. J., and Winberry, J. P.: Upper mantle structure of central and West Antarctica from array analysis of Rayleigh wave phase velocities, *Journal of Geophysical Research: Solid Earth*, 121, 1758–1775, <https://doi.org/10.1002/2015JB012616>, 2016.
- 1080 Huang, P., Steffen, R., Steffen, H., Klemann, V., Wu, P., van der Wal, W., Martinec, Z., and Tanaka, Y.: A commercial finite element approach to modelling Glacial Isostatic Adjustment on spherical self-gravitating compressible earth models, *Geophysical Journal International*, 235, 2231–2256, <https://doi.org/10.1093/gji/ggad354>, 2023.
- 1085 Ivins, E. R., Caron, L., Adhikari, S., and Larour, E.: Notes on a compressible extended Burgers model of rheology, *Geophysical Journal International*, 228, 1975–1991, <https://doi.org/10.1093/gji/ggab452>, 2021.
- Ivins, E. R., van der Wal, W., Wiens, D. A., Lloyd, A. J., and Caron, L.: Antarctic upper mantle rheology, *Geological Society, London, Memoirs*, 56, M56–2020–19, <https://doi.org/10.1144/M56-2020-19>, 2022.
- Kachuck, S. B.: giapy: Glacial Isostatic Adjustment in PYthon (1.0.0), <https://github.com/skachuck/giapy/>, 2017.
- 1090 Kachuck, S. B., Martin, D. F., Bassis, J. N., and Price, S. F.: Rapid Viscoelastic Deformation Slows Marine Ice Sheet Instability at Pine Island Glacier, *Geophysical Research Letters*, 47, e2019GL086446, <https://doi.org/10.1029/2019GL086446>, 2020.
- Kang, K., Zhong, S., Geruo, A., and Mao, W.: The effects of non-Newtonian rheology in the upper mantle on relative sea level change and geodetic observables induced by glacial isostatic adjustment process, *Geophysical Journal International*, 228, 1887–1906, <https://doi.org/10.1093/gji/ggab428>, 2021.
- 1095 Kendall, R. A., Mitrovica, J. X., and Milne, G. A.: On post-glacial sea level - II. Numerical formulation and comparative results on spherically symmetric models, *Geophysical Journal International*, 161, 679–706, <https://doi.org/10.1111/j.1365-246X.2005.02553.x>, 2005.
- Klemann, V., Martinec, Z., and Ivins, E. R.: Glacial isostasy and plate motion, *Journal of Geodynamics*, 46, 95–103, <https://doi.org/10.1016/j.jog.2008.04.005>, 2008.
- 1100 Konrad, H., Thoma, M., Sasgen, I., Klemann, V., Grosfeld, K., Barbi, D., and Martinec, Z.: The Deformational Response of a Viscoelastic Solid Earth Model Coupled to a Thermomechanical Ice Sheet Model, *Surveys in Geophysics*, 35, 1441–1458, <https://doi.org/10.1007/s10712-013-9257-8>, 2014.

- Konrad, H., Sasgen, I., Pollard, D., and Klemann, V.: Potential of the solid-Earth response for limiting long-term West Antarctic Ice Sheet retreat in a warming climate, *Earth and Planetary Science Letters*, 432, 254–264, <https://doi.org/10.1016/j.epsl.2015.10.008>, 2015.
- 1105 Konrad, H., Sasgen, I., Klemann, V., Thoma, M., Grosfeld, K., and Martinec, Z.: Sensitivity of Grounding-Line Dynamics to Viscoelastic Deformation of the Solid-Earth in an Idealized Scenario, *Polarforschung*; 85, <https://doi.org/10.2312/POLFOR.2016.005>, publisher: Bibliothek Wissenschaftspark Albert Einstein, 2016.
- Kreuzer, M., Albrecht, T., Nicola, L., Reese, R., and Winkelmann, R.: Oceanic gateways in Antarctica – Impact of relative sea-level change on sub-shelf melt, <https://doi.org/10.5194/egusphere-2023-2737>, in rev.
- 1110 Kulp, S. A. and Strauss, B. H.: New elevation data triple estimates of global vulnerability to sea-level rise and coastal flooding, *Nature Communications*, 10, 4844, <https://doi.org/10.1038/s41467-019-12808-z>, 2019.
- Latychev, K., Mitrovica, J. X., Tromp, J., Tamisiea, M. E., Komatitsch, D., and Christara, C. C.: Glacial isostatic adjustment on 3-D Earth models: a finite-volume formulation, *Geophysical Journal International*, 161, 421–444, <https://doi.org/10.1111/j.1365-246X.2005.02536.x>, 2005.
- 1115 Le Meur, E. and Huybrechts, P.: A comparison of different ways of dealing with isostasy: examples from modelling the Antarctic ice sheet during the last glacial cycle, *Annals of Glaciology*, 23, 309–317, <https://doi.org/10.3189/S0260305500013586>, 1996.
- Lingle, C. S. and Clark, J. A.: A numerical model of interactions between a marine ice sheet and the solid earth: Application to a West Antarctic ice stream, *Journal of Geophysical Research*, 90, 1100, <https://doi.org/10.1029/JC090iC01p01100>, 1985.
- 1120 Lipscomb, W. H., Price, S. F., Hoffman, M. J., Leguy, G. R., Bennett, A. R., Bradley, S. L., Evans, K. J., Fyke, J. G., Kennedy, J. H., Perego, M., Ranken, D. M., Sacks, W. J., Salinger, A. G., Vargo, L. J., and Worley, P. H.: Description and evaluation of the Community Ice Sheet Model (CISM) v2.1, *Geoscientific Model Development*, 12, 387–424, <https://doi.org/10.5194/gmd-12-387-2019>, 2019.
- Lloyd, A. J., Wiens, D. A., Nyblade, A. A., Anandakrishnan, S., Aster, R. C., Huerta, A. D., Wilson, T. J., Dalziel, I. W. D., Shore, P. J., and Zhao, D.: A seismic transect across West Antarctica: Evidence for mantle thermal anomalies beneath the Bentley Subglacial Trench and the Marie Byrd Land Dome, *Journal of Geophysical Research: Solid Earth*, 120, 8439–8460, <https://doi.org/10.1002/2015JB012455>, 2015.
- 1125 Lloyd, A. J., Wiens, D. A., Zhu, H., Tromp, J., Nyblade, A. A., Aster, R. C., Hansen, S. E., Dalziel, I. W. D., Wilson, T., Ivins, E. R., and O’Donnell, J. P.: Seismic Structure of the Antarctic Upper Mantle Imaged with Adjoint Tomography, *Journal of Geophysical Research: Solid Earth*, 125, 2019JB017823, <https://doi.org/10.1029/2019JB017823>, 2020.
- Martinec, Z.: Spectral-finite element approach to three-dimensional viscoelastic relaxation in a spherical earth, *Geophysical Journal International*, 142, 117–141, <https://doi.org/10.1046/j.1365-246x.2000.00138.x>, 2000.
- 1130 Martinec, Z., Klemann, V., van der Wal, W., Riva, R. E. M., Spada, G., Sun, Y., Melini, D., Kachuck, S. B., Barletta, V., Simon, K., A., G., and James, T. S.: A benchmark study of numerical implementations of the sea level equation in GIA modelling, *Geophysical Journal International*, 215, 389–414, <https://doi.org/10.1093/gji/ggy280>, 2018.
- Mitrovica, J. X. and Milne, G. A.: On post-glacial sea level: I. General theory, *Geophysical Journal International*, 154, 253–267, <https://doi.org/10.1046/j.1365-246X.2003.01942.x>, 2003.
- 1135 Mitrovica, J. X., Milne, G. A., and Davis, J. L.: Glacial isostatic adjustment on a rotating earth, *Geophysical Journal International*, 147, 562–578, <https://doi.org/10.1046/j.1365-246x.2001.01550.x>, 2001.
- Mitrovica, J. X., Gomez, N., and Clark, P. U.: The Sea-Level Fingerprint of West Antarctic Collapse, *Science*, 323, 753–753, <https://doi.org/10.1126/science.1166510>, 2009.

- Morelli, A. and Danesi, S.: Seismological imaging of the Antarctic continental lithosphere: a review, *Global and Planetary Change*, 42, 1140 155–165, <https://doi.org/10.1016/j.gloplacha.2003.12.005>, 2004.
- Morlighem, M., Rignot, E., Binder, T., Blankenship, D., Drews, R., Eagles, G., Eisen, O., Ferraccioli, F., Forsberg, R., Fretwell, P., Goel, V., Greenbaum, J. S., Gudmundsson, H., Guo, J., Helm, V., Hofstede, C., Howat, I., Humbert, A., Jokat, W., Karlsson, N. B., Lee, W. S., Matsuoka, K., Millan, R., Mouginot, J., Paden, J., Pattyn, F., Roberts, J., Rosier, S., Ruppel, A., Seroussi, H., Smith, E. C., Steinhage, D., Sun, B., Broeke, M. R. V. D., Ommen, T. D. V., Wessem, M. V., and Young, D. A.: Deep glacial troughs and stabilizing ridges unveiled 1145 beneath the margins of the Antarctic ice sheet, *Nature Geoscience*, 13, 132–137, <https://doi.org/10.1038/s41561-019-0510-8>, 2020.
- Nield, G. A., Barletta, V. R., Bordoni, A., King, M. A., Whitehouse, P. L., Clarke, P. J., Domack, E., Scambos, T. A., and Berthier, E.: Rapid bedrock uplift in the Antarctic Peninsula explained by viscoelastic response to recent ice unloading, *Earth and Planetary Science Letters*, 397, 32–41, <https://doi.org/10.1016/j.epsl.2014.04.019>, 2014.
- Nield, G. A., Whitehouse, P. L., van der Wal, W., Blank, B., O'Donnell, J. P., and Stuart, G. W.: The impact of lateral varia- 1150 tions in lithospheric thickness on glacial isostatic adjustment in West Antarctica, *Geophysical Journal International*, 214, 811–824, <https://doi.org/10.1093/gji/ggy158>, 2018.
- Pan, L., Powell, E. M., Latychev, K., Mitrovica, J. X., Creveling, Gomez, N., Hoggard, M. J., and Clark, P. J.: Rapid postglacial rebound amplifies global sea level rise following West Antarctic Ice Sheet collapse, *SCIENCE ADVANCES*, 2021.
- Pan, L., Milne, G. A., Latychev, K., Goldberg, S. L., Austermann, J., Hoggard, M. J., and Mitrovica, J. X.: The influence of lateral 1155 Earth structure on inferences of global ice volume during the Last Glacial Maximum, *Quaternary Science Reviews*, 290, 107644, <https://doi.org/10.1016/j.quascirev.2022.107644>, 2022.
- Pattyn, F.: Sea-level response to melting of Antarctic ice shelves on multi-centennial timescales with the fast Elementary Thermomechanical Ice Sheet model (f.ETISH v1.0), *The Cryosphere*, 11, 1851–1878, <https://doi.org/10.5194/tc-11-1851-2017>, 2017.
- Peltier, W. R., Argus, D. F., and Drummond, R.: Space geodesy constrains ice age terminal deglaciation: The global ICE-6G_C (VM5a) 1160 model, *Journal of Geophysical Research: Solid Earth*, 120, 450–487, <https://doi.org/10.1002/2014JB011176>, 2015.
- Peltier, W. R., Argus, D. F., and Drummond, R.: Comment on “An Assessment of the ICE-6G_C (VM5a) Glacial Isostatic Adjustment Model” by Purcell et al., *Journal of Geophysical Research: Solid Earth*, 123, 2019–2028, <https://doi.org/10.1002/2016JB013844>, 2018.
- Purcell, A.: The significance of pre-stress advection and internal buoyancy in the flat-Earth formulation, in: *Dynamics of the Ice Age Earth - A Modern Perspective*, vol. 24, pp. 105–122, Trans Tech Publications LTD, patrick wu edn., 1998.
- 1165 Purcell, A., Tregoning, P., and Dehecq, A.: An assessment of the *ICE6G_C(VM5a)* glacial isostatic adjustment model, *Journal of Geophysical Research: Solid Earth*, 121, 3939–3950, <https://doi.org/10.1002/2015JB012742>, 2016.
- Quiquet, A., Dumas, C., Ritz, C., Peyaud, V., and Roche, D. M.: The GRISLI ice sheet model (version 2.0): calibration and validation for multi-millennial changes of the Antarctic ice sheet, *Geoscientific Model Development*, 11, 5003–5025, <https://doi.org/10.5194/gmd-11-5003-2018>, 2018.
- 1170 Rackauckas, C. and Nie, Q.: *DifferentialEquations.jl* – A Performant and Feature-Rich Ecosystem for Solving Differential Equations in Julia, *Journal of Open Research Software*, 5, 15, <https://doi.org/10.5334/jors.151>, 2017.
- Robinson, A., Alvarez-Solas, J., Montoya, M., Goelzer, H., Greve, R., and Ritz, C.: Description and validation of the ice-sheet model Yelmo (version 1.0), *Geoscientific Model Development*, 13, 2805–2823, <https://doi.org/10.5194/gmd-13-2805-2020>, 2020.
- Rückamp, M., Greve, R., and Humbert, A.: Comparative simulations of the evolution of the Greenland ice sheet under simplified Paris 1175 Agreement scenarios with the models SICOPOLIS and ISSM, *Polar Science*, 21, 14–25, <https://doi.org/10.1016/j.polar.2018.12.003>, 2019.

- Sasgen, I., Martín-Español, A., Horvath, A., Klemann, V., Petrie, E. J., Wouters, B., Horvath, M., Pail, R., Bamber, J. L., Clarke, P. J., Konrad, H., Wilson, T., and Drinkwater, M. R.: Altimetry, gravimetry, GPS and viscoelastic modeling data for the joint inversion for glacial isostatic adjustment in Antarctica (ESA STSE Project REGINA), *Earth System Science Data*, 10, 493–523, <https://doi.org/10.5194/essd-10-493-2018>, 2018.
- 1180 Seroussi, H., Nowicki, S., Payne, A. J., Goelzer, H., Lipscomb, W. H., Abe-Ouchi, A., Agosta, C., Albrecht, T., Asay-Davis, X., Barthel, A., Calov, R., Cullather, R., Dumas, C., Galton-Fenzi, B. K., Gladstone, R., Golledge, N. R., Gregory, J. M., Greve, R., Hattermann, T., Hoffman, M. J., Humbert, A., Huybrechts, P., Jourdain, N. C., Kleiner, T., Larour, E., Leguy, G. R., Lowry, D. P., Little, C. M., Morlighem, M., Pattyn, F., Pelle, T., Price, S. F., Quiquet, A., Reese, R., Schlegel, N.-J., Shepherd, A., Simon, E., Smith, R. S., Straneo, F., Sun, S., 1185 Trusel, L. D., Van Breedam, J., Van De Wal, R. S. W., Winkelmann, R., Zhao, C., Zhang, T., and Zwinger, T.: ISMIP6 Antarctica: a multi-model ensemble of the Antarctic ice sheet evolution over the 21st century, *The Cryosphere*, 14, 3033–3070, <https://doi.org/10.5194/tc-14-3033-2020>, 2020.
- Seroussi, H. L.: ISMIP6 Antarctica 2300 Projections, 2022.
- Spada, G. and Melini, D.: SELEN4 (SELEN version 4.0): a Fortran program for solving the gravitationally and topographically self-consistent sea-level equation in glacial isostatic adjustment modeling, *Geoscientific Model Development*, 12, 5055–5075, <https://doi.org/10.5194/gmd-12-5055-2019>, 2019.
- 1190 Spada, G., Barletta, V. R., Klemann, V., Riva, R. E., Martinec, Z., Gasperini, P., Lund, B., Wolf, D., Vermeersen, L. L. A., and King, M. A.: A benchmark study for glacial isostatic adjustment codes: A GIA benchmark study, *Geophysical Journal International*, 185, 106–132, <https://doi.org/10.1111/j.1365-246X.2011.04952.x>, 2011.
- 1195 Van Calcar, C. J., Van De Wal, R. S. W., Blank, B., De Boer, B., and Van Der Wal, W.: Simulation of a fully coupled 3D glacial isostatic adjustment – ice sheet model for the Antarctic ice sheet over a glacial cycle, *Geoscientific Model Development*, 16, 5473–5492, <https://doi.org/10.5194/gmd-16-5473-2023>, 2023.
- van der Wal, W., Wu, P., Wang, H., and Sideris, M. G.: Sea levels and uplift rate from composite rheology in glacial isostatic adjustment modeling, *Journal of Geodynamics*, 50, 38–48, <https://doi.org/10.1016/j.jog.2010.01.006>, 2010.
- 1200 van der Wal, W., Whitehouse, P. L., and Schrama, E. J. O.: Effect of GIA models with 3D composite mantle viscosity on GRACE mass balance estimates for Antarctica, *Earth and Planetary Science Letters*, 414, 134–143, <https://doi.org/10.1016/j.epsl.2015.01.001>, 2015.
- Ventsel, E. and Krauthammer, T.: *Thin Plates and Shells: Theory, Analysis, and Applications*, CRC Press, Boca Raton, 1st edition edn., ISBN 978-0-429-22131-6, 2001.
- Wan, J. X. W., Gomez, N., Latychev, K., and Han, H. K.: Resolving glacial isostatic adjustment (GIA) in response to modern and future ice 1205 loss at marine grounding lines in West Antarctica, *The Cryosphere*, 16, 2203–2223, <https://doi.org/10.5194/tc-16-2203-2022>, 2022.
- Weerdesteijn, M. F. M., Naliboff, J. B., Conrad, C. P., Reusen, J. M., Steffen, R., Heister, T., and Zhang, J.: Modeling Viscoelastic Solid Earth Deformation Due To Ice Age and Contemporary Glacial Mass Changes in ASPECT, *Geochemistry, Geophysics, Geosystems*, 24, e2022GC010813, <https://doi.org/10.1029/2022GC010813>, 2023.
- Whitehouse, P. L., Gomez, N., King, M. A., and Wiens, D. A.: Solid Earth change and the evolution of the Antarctic Ice Sheet, *Nature 1210 Communications*, 10, 503, <https://doi.org/10.1038/s41467-018-08068-y>, 2019.
- Wiens, D. A., Shen, W., and Lloyd, A. J.: The seismic structure of the Antarctic upper mantle, *Geological Society, London, Memoirs*, 56, M56–2020–18, <https://doi.org/10.1144/M56-2020-18>, 2022.
- Winkelmann, R., Martin, M. A., Haseloff, M., Albrecht, T., Bueler, E., Khroulev, C., and Levermann, A.: The Potsdam Parallel Ice Sheet Model (PISM-PIK) – Part 1: Model description, *The Cryosphere*, 5, 715–726, <https://doi.org/10.5194/tc-5-715-2011>, 2011.

- 1215 Wu, P.: Using commercial finite element packages for the study of earth deformations, sea levels and the state of stress, *Geophysical Journal International*, 158, 401–408, <https://doi.org/10.1111/j.1365-246X.2004.02338.x>, 2004.
- Wu, P. and Wang, H.: Effects of mode coupling and location of rotational axis on glacial induced rotational deformation in a laterally heterogeneous viscoelastic earth, *Geophysical Journal International*, 167, 853–859, <https://doi.org/10.1111/j.1365-246X.2006.03103.x>, 2006.
- 1220 Zhong, S., Kang, K., A, G., and Qin, C.: CitcomSVE: A Three-Dimensional Finite Element Software Package for Modeling Planetary Mantle's Viscoelastic Deformation in Response to Surface and Tidal Loads, *Geochemistry, Geophysics, Geosystems*, 23, e2022GC010359, <https://doi.org/10.1029/2022GC010359>, 2022.

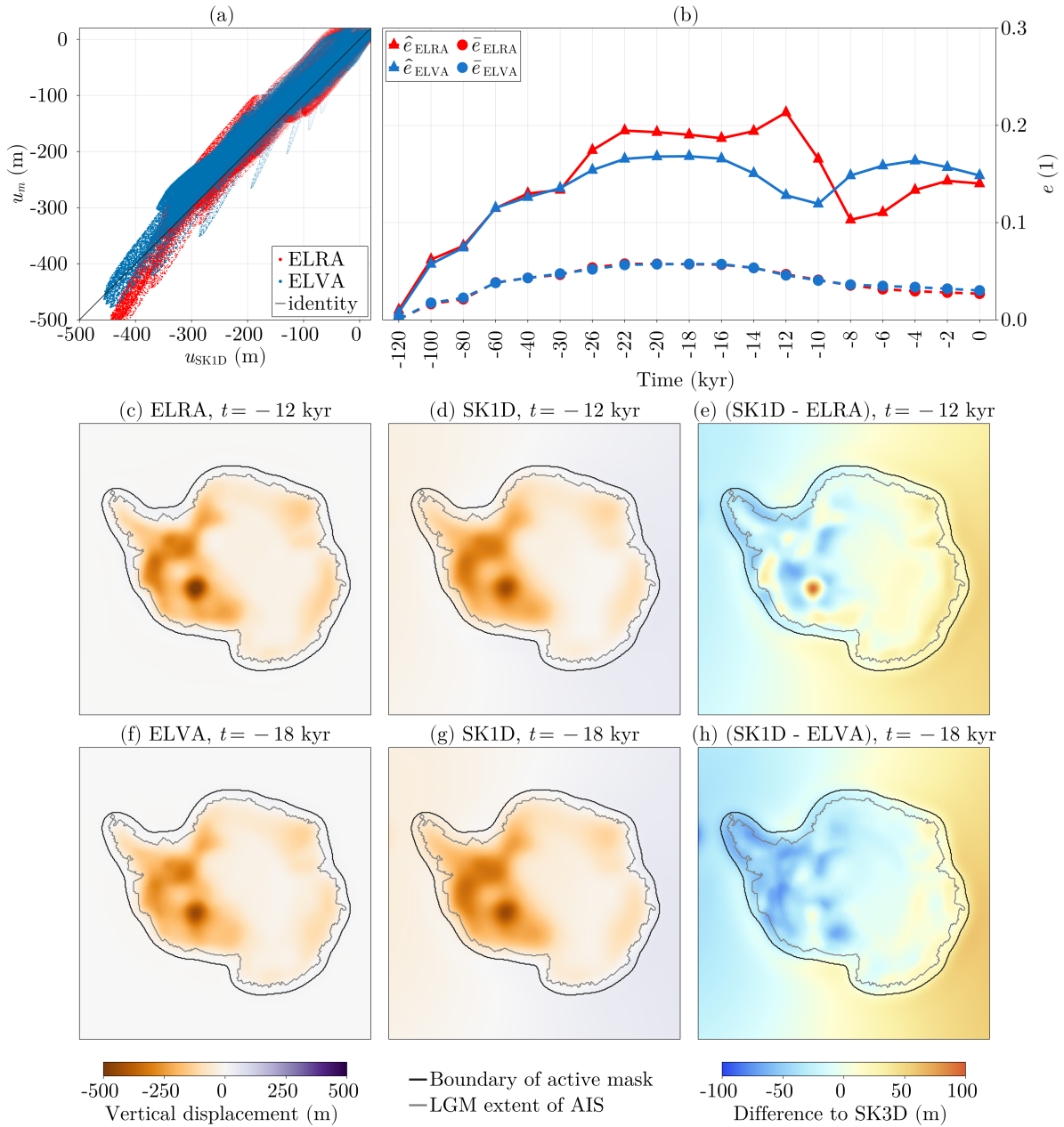


Figure D3. Comparison of ~~SK1D and FHDELRA~~, following glacial cycle loading from ~~ELVA and SK1D forced by ICE6G_D~~ (Peltier et al., 2018). (a) Displacements at all time steps of ~~u_{FTID} versus u_{SK1D}~~ ELRA and ELVA against SK1D, for cells that are ice-covered at LGM, visualised by within the black contour in panels (c-h) active mask. (b) Mean Transient mean and maximal errors of ~~u_{FTID}~~ ELRA and ELVA with respect to ~~u_{SK1D} over time~~ SK1D. (c-e) Displacement of ~~FHDELRA~~, SK1D and their differences for the time step of maximal error. (f-h) Same as (c-e) for ELVA.