

Exploring aerosol-cloud interactions in liquid-phase clouds over eastern China and its adjacent ocean using the WRF-Chem-SBM model

Jianqi Zhao¹, Xiaoyan Ma¹, Johannes Quaas², Hailing Jia³

5 ¹Key Laboratory for Aerosol-Cloud-Precipitation of China Meteorological Administration, Nanjing University of Information Science & Technology, Nanjing 210044, China

²Institute for Meteorology, Leipzig University, Leipzig, Germany

³SRON Netherlands Institute for Space Research, Niels Bohrweg 4, 2333 CA Leiden, the Netherlands

Correspondence to: Xiaoyan Ma (xma@nuist.edu.cn)

10 **Abstract.** In this study we explore aerosol-cloud interactions in liquid-phase clouds over eastern China (EC) and its adjacent ocean (ECO) using the WRF-Chem-SBM model with four-dimensional assimilation. The results show that our simulations and analyses based on each vertical layer provide a more detailed representation of the aerosol-cloud relationship compared to the column-based analyses which have been widely conducted previously. For aerosol activation, cloud droplet number concentration (N_d) generally increases with aerosol number concentration (N_{aero}) at low N_{aero} and decreases with N_{aero} at high

15 N_{aero} . The main difference between EC and ECO is that N_d increases faster in ECO than EC at low N_{aero} due to abundant water vapor, whereas at high N_{aero} , when aerosol activation in ECO is suppressed, N_d in EC shows significant fluctuation due to strong surface effects (longwave radiation cooling and terrain uplift) and intense updrafts. Cloud liquid water content (CLWC) increases with N_d but the increase rate gradually slows down for precipitating clouds, while CLWC increases and then decreases in non-precipitating clouds. Higher N_d and CLWC in EC can be found than in ECO, and the transition point N_d value

20 at which CLWC in non-precipitating clouds changes from increasing to decreasing is also higher in EC. Aerosol activation is strongest at moderate N_{aero} , but CLWC increases relatively fast at low N_{aero} . ECO cloud processes are more limited by cooling and humidification, whereas strong and diverse surface and atmospheric processes in EC allow intense cloud processes to occur under significant warming or drying conditions.

1 Introduction

25 Atmospheric aerosols have significant effects on the Earth's radiation balance, water cycle, and climate system through direct absorption and scattering of solar radiation as well as indirect effects on cloud formation and development by acting as cloud condensation nuclei (CCN) and ice nuclei (IN) (Carslaw et al., 2010; Wilcox et al., 2013; Tian et al., 2021). The latter, known as the aerosol indirect effect, or more recently by the Intergovernmental Panel on Climate Change (2013) defined as effective radiative forcing due to aerosol-cloud interactions, RF_{aci} , remains a challenging scientific topic in climate assessment and

30 prediction because of its complex mechanisms and high uncertainties (Church et al., 2013; Jia et al., 2019a; Arias et al., 2021).

Liquid-phase clouds offer great opportunities to untangle aerosol indirect effect due to their sheer abundance and impact on cloud radiative forcing (Christensen et al., 2016).

Twomey (1977) pointed out that under a constant cloud water content, the activation of atmospheric aerosol particles entering into clouds leads to an increase in cloud droplet number concentration (N_d), a decrease in droplet size, and an increase in cloud albedo. This mechanism, termed the aerosol first indirect effect, is revealed to be the key driver of aerosol indirect effect, besides, the rapid adjustments also contribute significantly (Quaas et al., 2020). Two key competing mechanisms exist in the latter, one of which is that an increase in N_d causes a decrease in precipitation efficiency and with this, a co-increase in cloud liquid water path (CLWP) and cloud fraction (CF), this mechanism dominates in precipitation clouds (Albrecht, 1989). The other mechanism dominates in non-precipitating clouds, i.e., with limited water content, the decrease in droplet size reduces sedimentation velocity and increases cloud-top liquid water content, resulting in additional cloud top cooling and pushing further entrainment and evaporation (Bretherton et al., 2007). Moreover, as cloud droplets decrease in size, their ratio of surface area to volume is higher and evaporation is faster, resulting in further enhancement of the negative buoyancy at cloud top (Small et al., 2009). Numerous studies have been conducted to assess the contribution of these three mechanisms. Statistical analysis based on satellite-retrieved data indicates that the CLWP of marine low clouds exhibits a weak decreasing trend with rising N_d caused by aerosol increase (Michibata et al., 2016; Rosenfeld et al., 2019). Gryspeerd et al. (2019) found that CLWP is positively correlated with N_d at low N_d and droplet size greater than the precipitation threshold, i.e., delayed precipitation leads to increased CLWP. In contrast, for the clouds with high N_d and low possibility of precipitation, CLWP shows a negative correlation with N_d . In this case, the increase of aerosol leads to the decrease of cloud droplet size and the increase of N_d , which in turn accelerates the mixing and evaporation process and makes CLWP decrease. The CLWP response to aerosols differs clearly between precipitation and non-precipitating clouds because of the significant influence of precipitation process on CLWP (Christensen and Stephens, 2012). CLWP has a significant positive correlation with the aerosol index (AI) in precipitation clouds, and the opposite in non-precipitating clouds (Chen et al., 2014). Furthermore, the response of CLWP to aerosol highly depends on meteorological conditions. Chen et al. (2014) indicated that CLWP and aerosol concentration show a negative correlation when entrainment mixing exerts a marked impact on the cloud-side evaporation process (which usually occurs under free troposphere with dry and unstable atmosphere), and this relationship shifts to positive as the atmosphere becomes moist and stable. Such statistical analysis, however, suffers severely from retrieval uncertainties (Arola et al., 2022). In turn, also “opportunistic experiments” such as the analysis of ship and pollution tracks hint at a decrease in CLWP but an increase in cloud horizontal extent in response to aerosol increases (Toll et al., 2019; Christensen et al., 2022). In spite of considerable efforts in recent researches to unravel aerosol-cloud interactions, it remains challenging to distinguish and quantify underlying mechanisms of aerosol-cloud interactions under diverse air pollution and meteorological conditions.

In order to further resolve the mechanisms of aerosol-cloud interactions, the proper use of numerical simulations is necessary. Current global climate models (GCMs) have difficulties in accurately representing the response of cloud to aerosol, which is mainly due to (1) the limitation of coarse model resolution, (2) the absence of sufficient consideration of cloud droplet spectral characteristics, and (3) the fact that most current GCMs parameterize the precipitation mechanism through the

65 autoconversion process as an inverse function of N_d , without accurate representation of entrainment-mixing processes (Quaas
et al., 2009; Bangert et al., 2011; Michibata et al., 2016; Zhou and Penner, 2017). Regional climate models (RCMs) with higher
resolution and finer physical parameterization can effectively compensate for at least some of these shortcomings and better
reproduce the physical processes, which help to further distinguish and quantify the aerosol-cloud interaction mechanisms (Li
et al., 2008; Bao et al., 2015). The Weather Research and Forecasting model (WRF) has been widely used in regional numerical
70 simulation studies because of its advanced technology in numerical calculation, model framework, and program optimization,
which has many advantages in portability, maintenance, expandability, and efficiency (Maussion et al., 2011; Islam et al.,
2015; Xu et al., 2021). The chemistry-coupled version of the WRF model (WRF-Chem) allows to simulate the spatial and
temporal distributions of reactive gases and aerosol, spatial transport and their interconversion while simulating meteorological
fields and atmospheric physical processes (Tuccella et al., 2012; Sicard et al., 2021). Bulk and bin approaches are commonly
75 utilized to simulate regional cloud microphysical processes. Bulk schemes diagnose the size distribution of hydrometeor based
on different predicted bulk mass (one-moment schemes) or number and mass mixing ratios (double-moment schemes) and
assumed size distribution, showing significant limitations in reproducing processes such as condensation, deposition and
evaporation (Lebo et al., 2012; Wang et al., 2013; Fan et al., 2015). Bin schemes predict the size distribution of hydrometeors
based on a number of discrete bins, enabling better representation of cloud microphysical processes. As stated by Khain et al.
80 (2015), previous studies have demonstrated that bin schemes outperform bulk schemes in simulations. The evaluation of WRF-
chem cloud microphysics by Zhang et al. (2021b) also showed that the bin scheme using the explicit approach reproduced the
aerosol-induced convection and precipitation enhancement that the bulk scheme using the saturation-adjusted approach failed
to model. In this study, the WRF-Chem-SBM model (Gao et al., 2016) is used, in which the Model for Simulating Aerosol
Interactions and Chemistry (MOSAIC) in WRF-Chem (Fast et al., 2006) is coupled with a spectral-bin microphysics (SBM)
85 scheme (Khain et al., 2004). In WRF-Chem-SBM, aerosol information is provided for cloud microphysical simulations, and
cloud microphysical parameters are offered to aerosol-chemistry simulations, which are of great help to reproduce accurate
aerosol and cloud conditions as well as to distinguish and quantify aerosol-cloud interaction mechanisms.

Eastern China (EC) is one of the most human-active regions worldwide, resulting in numerous anthropogenic aerosol
emissions. The contrast between the high aerosol-content air masses of EC and the relatively clean air masses of the Pacific
90 Ocean makes EC and its adjacent ocean (ECO) ideal regions for exploring aerosol-cloud interactions (Fan et al., 2012; Wang
et al., 2015; Zhang et al., 2021a). It is shown that low clouds contribute the most to the Earth's energy balance due to their
broad coverage and the albedo effect governing their impact on emitted thermal radiation (Hartmann et al., 1992). The statistics
of Niu et al. (2022) using the satellite data from 2007-2016 show that low clouds in EC and ECO occur most frequently in
winter, reaching more than 50%, with stratocumulus clouds, which are persistent and sensitive to aerosol variations (Jia et al.,
95 2019b), constituting more than 70% of the low clouds. Therefore, the EC and ECO aerosol-cloud response in winter is an ideal
condition to investigate aerosol-cloud interactions in liquid-phase clouds. Based on the WRF-Chem-SBM model, we
investigate the aerosol-cloud interaction mechanisms of EC and ECO in winter by obtaining detailed and high-resolution
aerosol, cloud parameters as well as meteorological information through reproduction of real scenarios.

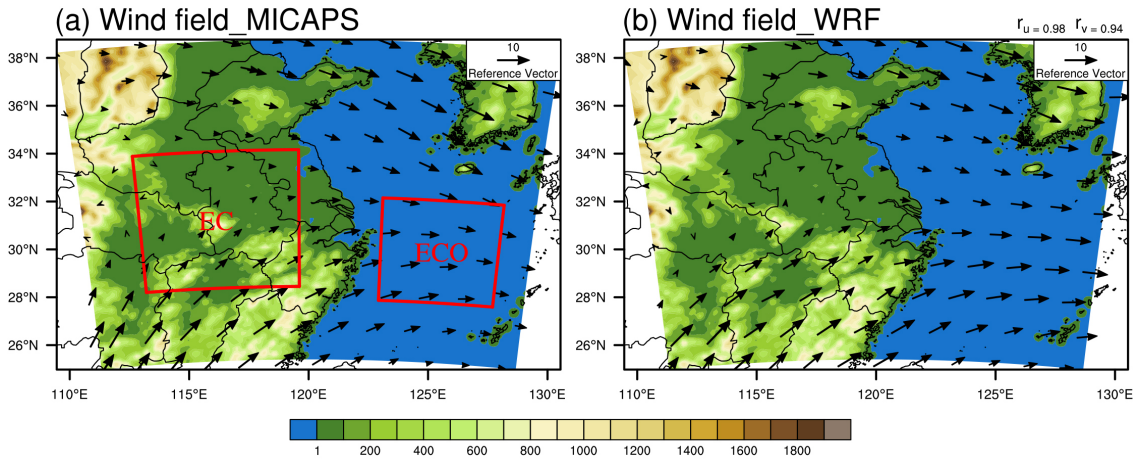
The paper is structured as follows: Section 2 introduces the model configuration and observational data used in the study, Section 3 presents the evaluation of simulated results and the analysis of aerosol-cloud responses presented in the simulations, and the summary is given in Section 4.

2 Methods and Data

2.1 Simulation Setup

We performed model simulations using the WRF-Chem-SBM (Gao et al., 2016), in which the 4-bin MOSAIC aerosol module treats mass and number of nine major aerosol species, including sulfate, nitrate, sodium, chloride, ammonium, black carbon, primary organics, other inorganics, and liquid water (Zaveri et al., 2008). The diameters of 4 bins ranges from 0.039-0.156, 0.156-0.624, 0.624-2.5 and 2.5-10.0 μm , respectively, and aerosol particles are assumed to be internally mixed. This module is capable of treating processes such as emissions, new particle formation, particle growth/shrinkage due to uptake/loss of trace gases, coagulation, dry and wet deposition (Sha et al., 2019). In addition, this model incorporates the fast version of SBM, which solves a system of prognostic equations for three hydrometeor types (liquid drops, ice/snow and graupel) and CCN size distribution functions (Khain et al., 2010). Each size distribution is structured by 33 mass doubling bins (i.e., the mass of the particle in the k th bin is twice that of the $k-1$ th bin). The cloud microphysical processes described in the SBM contain aerosol activation, freezing, melting, diffusion growth/evaporation of liquid drops, deposition/sublimation of ice particles, drop and ice collisions.

The model domain is shown in Fig. 1, and two-layer nested grids are employed. The parent domain (12 km resolution) have centroids and grid points of (32°N, 120°E) and 151×125 , while the nested domains (4 km resolution) represent EC (160×160 grid points) and ECO (121×121 grid points), respectively. There are 48 vertical layers up to 50 hPa, with layer spacing extending from 40 m near the surface to 200 m at 3000 m altitude and over 1000 m above 10000 m altitude. The simulations run from 00:00:00 UTC on 1 Feb 2019 to 00:00:00 UTC on 13 Feb 2019, where the first 24 h are disregarded as spin-up and not involved in subsequent analyses. The model outputs once per hour. Meteorological initial and boundary conditions are obtained from the National Center for Environmental Prediction (NCEP) FNL global reanalysis data with 0.25° resolution and available every 6 h (<https://rda.ucar.edu/datasets/ds083.3>, last access: 11 October 2023), chemical initial and boundary conditions from Community Atmosphere Model with Chemistry (Emmons et al., 2020), and anthropogenic emission sources come from the Multi-resolution Emission Inventory for China (MEIC) 2016 version developed by Tsinghua University (<http://meicmodel.org.cn>, last access: 19 March 2023). As presented in Fig.1, the anthropogenic aerosols of EC and ECO are dominated by EC under winter monsoon, although the model domain contains countries and regions other than China, MEIC can satisfy the anthropogenic aerosol simulation of the region concerned in this study. The model parameterization settings are listed in Table 1. Using these configurations, EC and ECO simulations require around 15,000 and 10,000 CPU core-hours, respectively.



130

Figure 1. Topography (unit: m) of the model domain, MICAPS (a) and assimilated simulated (b) 850 hPa wind fields (unit: $\text{m}\cdot\text{s}^{-1}$) during the simulation period and their correlation coefficients of u and v components (r_u , r_v) given in the upper right corner

135

Table 1. Model parameterization settings

Process	Number	Name
Longwave radiation	4	RRTMG (Mlawer et al., 1997)
Shortwave radiation	5	Goddard (Zhong et al., 2016)
Surface layer	1	MM5 Monin-Obukhov (Pahlow et al., 2001)
Land surface	2	Unified Noah (Chen et al., 2010)
Boundary layer	1	YSU (Shin et al., 2012)
Chemistry and aerosols	9	CBMZ and 4-bin MOSAIC (Sha et al., 2022)
Photolysis	2	Fast-J (Wild et al., 2000)
Sea salt emission	2	MOSAIC/SORGAM (Fuentes et al., 2011)
Dust emission	13	GOCART (Zhao et al., 2010)
Biogenic emission	3	MEGAN (Guenther et al., 2006)

2.2 Four-dimensional data assimilation

The accuracy of the meteorological field is crucial to reproduce realistic aerosol-cloud interaction, and thus a four-dimensional data assimilation approach is used in both parent domain and nested domains to improve the simulated meteorological field.

140

This approach utilizes relaxation terms based on the model error at observational stations to make the simulated meteorological fields closer to reality (Liu et al., 2005), thus exerting positive effects on the simulation of atmospheric physical and chemical

processes (Rogers et al., 2013; Li et al., 2016; Ngan and Stein, 2017; Zhao et al., 2020; Hu et al., 2022). The data used for assimilation are obtained from the NCEP operational global surface (<https://rda.ucar.edu/datasets/ds461-0>, last access: 19 March 2023) and upper-air (<https://rda.ucar.edu/datasets/ds351-0>, last access: 19 March 2023) observation subsets, which
145 contain meteorological elements such as altitude, wind direction, wind speed, air pressure, temperature and dew point.

2.3 Observational data

We use multiple observational data to assess the ability of the model to reproduce meteorological fields, aerosol and cloud parameters. Precipitation data is taken from the Integrated Multi-satellitE Retrievals for GPM (IMERG) dataset (Huffman et al., 2019), of which the daily accumulated high quality precipitation product (0.1° resolution) is used in this study
150 (https://disc.gsfc.nasa.gov/datasets/GPM_3IMERGDF_06/summary?keywords=Precipitation, last access: 30 May 2023). Other meteorological variables are obtained from the Meteorological Information Comprehensive Analysis and Process System (MICAPS) developed by the National Meteorological Center (NMC) of China (<http://www.nmc.cn>, last access: 19 March 2023), with 12 h temporal resolution and 11 vertical layers, containing meteorological elements such as wind field, height, temperature and temperature dew point difference. Near-surface $PM_{2.5}$ data are obtained from the National Urban Air
155 Quality Real-time Release Platform of China National Environmental Monitoring Centre with 1 h temporal resolution (<https://air.cnemc.cn:18007>, last access: 19 March 2023). The cloud optical depth (AOD) data is obtained from the Moderate Resolution Imaging Spectrometer (MODIS) MOD04_L2 dataset (Levy et al., 2015), of which the AOD product combining the "Dark Target" and "Deep Blue" algorithms with 10km resolution is used in this study (https://ladsweb.modaps.eosdis.nasa.gov/search/order/1/MOD04_L2--61, last access: 19 March 2023). The cloud parameters including cloud droplet effective
160 radius (CER), cloud optical thickness (COT), CLWP and cloud phase data at 1 km resolution, as well as cloud top temperature (CTT) at 5 km resolution (https://ladsweb.modaps.eosdis.nasa.gov/search/order/1/MOD06_L2--61, last access: 19 March 2023), are obtained from the MODIS Level-2 Cloud (MOD06_L2) product (Platnick et al., 2015). The CER, COT and CLWP are retrieved from 2.1 μm wavelength, which is the default value in the product (1.6 μm and 3.7 μm wavelength retrievals are also available).

165 Spatial correlation analysis (Pearson product-moment coefficient), Pearson linear correlation analysis, and root mean square error (RMSE) are used to assess the spatial and temporal correlations of the simulated and observed values as well as the error of the simulated values relative to the observations, respectively. To calculate these parameters, it is necessary to unify the spatio-temporal coordinates of the simulated and observed data. Specifically, MODIS (1-10 km resolution) and IMERG (0.1° resolution) data are interpolated to the WRF grid (12 km resolution) when comparing the model to satellite data,
170 and WRF simulations are interpolated to the MICAPS grid (2.5° resolution) when comparing the model to MICAPS data.

Some screening criteria are applied to MODIS-retrieved cloud variables to make sure liquid clouds are selected (Saponaro et al., 2017), i.e., (1) selecting only liquid-phase cloud parameters and (2) filtering out transparent-cloudy pixels ($COT < 5$) to limit uncertainties (Zhang et al., 2012). The same filtering also applied to WRF-Chem model results when we evaluate the simulations against MODIS data. Cloud droplet number concentration N_d is calculated according to the approach of Brenguier

175 et al. (2000) and Quaas et al. (2006):

$$N_d = \gamma \cdot COT^{0.5} \cdot CER^{-2.5} \quad (1)$$

where γ is an empirical constant with the value of $1.37 \times 10^{-5} \text{ m}^{-5}$, and COT and CER are obtained from MODIS. Moreover, due to the discontinuity of MODIS data, we matched the simulated data with MODIS data in spatio-temporal coordinates for evaluation (i.e., the simulated value is valid only when the MODIS data is valid in that spatio-temporal coordinate, otherwise
180 the simulated value is set as the missing and does not participate in the calculation). Due to the differences in satellite retrievals and model parameterization, the simulated liquid-phase clouds are often defined based on certain thresholds when comparing with satellite-retrieved data, e.g. Roh et al. (2020) classified the clouds with $CLWC > 1 \text{ mg m}^{-3}$ and cloud ice water content (CIWC) $< 1 \text{ mg m}^{-3}$ as liquid-phase clouds. In this study, based on the selection of column $COT \geq 5$ that matched with MODIS filtering, the vertical layers (48 layers in total) with cloud optical thickness for water (COTW) > 0.1 and cloud optical thickness
185 for ice (COTI) < 0.01 at each grid point and each time are selected as liquid-phase cloud layers, and the highest layer meeting this condition is defined as the simulated cloud top (this filtering is only used for comparison with MODIS data, and the analysis of aerosol-cloud interactions in liquid-phase clouds in this study is strictly limited to $CLWC > 0$ and $CIWC = 0$).

3 Results and Discussion

3.1 Evaluation of simulation result

190 Due to limitations in the resolution of observational data (e.g., MICAPS gridded upper-air meteorological field data with a resolution of 2.5°) and data availability (e.g., only terrestrial near-surface observations of $PM_{2.5}$ are available), we utilized outer domain simulations when evaluating the model results. For aerosol-cloud analysis in Section 3.3 and beyond, we employed finer inner domain simulations.

Four-dimensional data assimilation directly impacts the simulations of meteorological fields (temperature, pressure,
195 humidity and wind), and thereby aerosol and cloud. Figure 2 presents the vertical distribution of meteorological variables from the simulations and observations, as well as the RMSE and spatial correlation coefficients of the simulations relative to observations at each layer. As the complexity of atmospheric physical and chemical processes and data errors resulted from processes such as observation and interpolation, the assimilation exerts some positive effects on the simulated meteorological field, but also increases the difference between some of the simulated variables and the observations. Assimilation effectively
200 improves the correlation between simulated and observed temperatures, dew point depression, middle level zonal wind, and meridional wind, while reducing the RMSE of simulated and observed temperatures, upper level dew point depression, and lower and upper level meridional winds. At the same time, however, it also weakens the correlation between the simulated and observed low-level zonal winds, and increases the RMSE of the simulated and observed mid-level dew point depression, upper-level zonal winds, and mid-level meridional winds. But overall, the assimilation is positive and provides effective help
205 in exploring aerosol-cloud interactions.

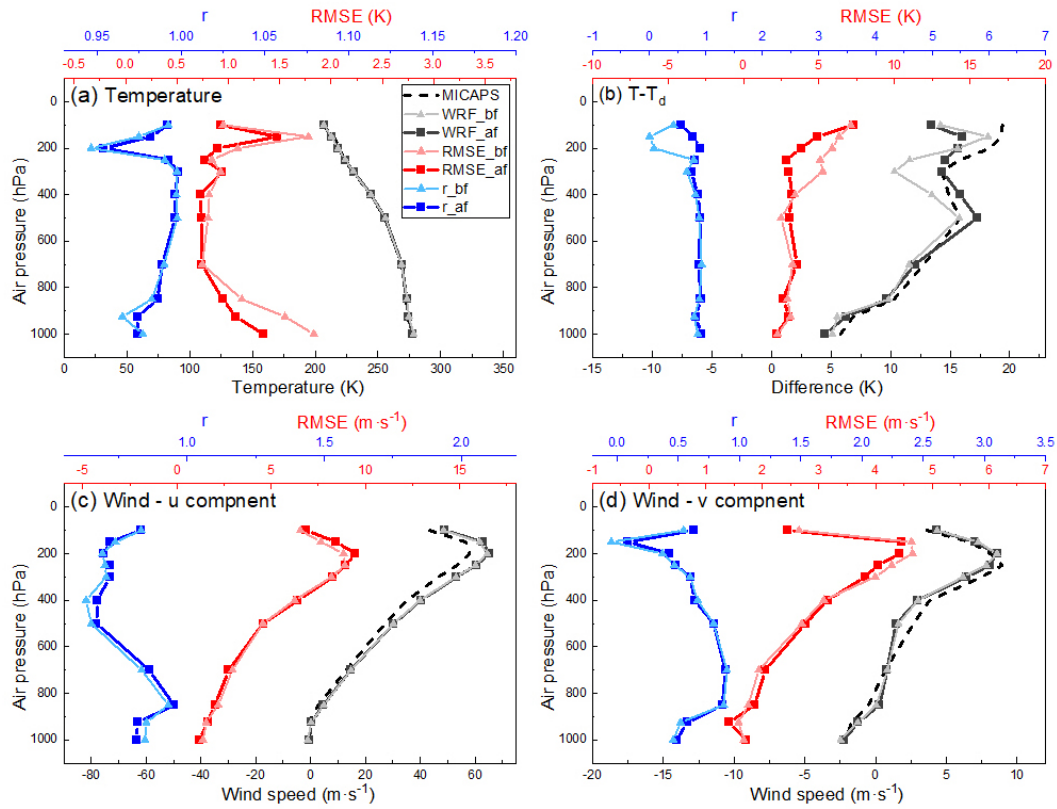
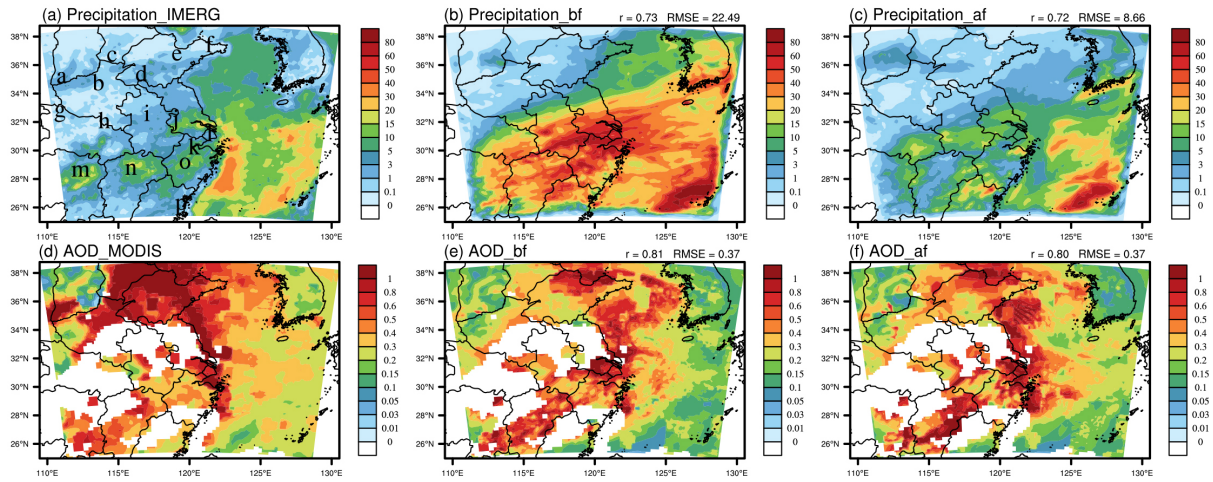
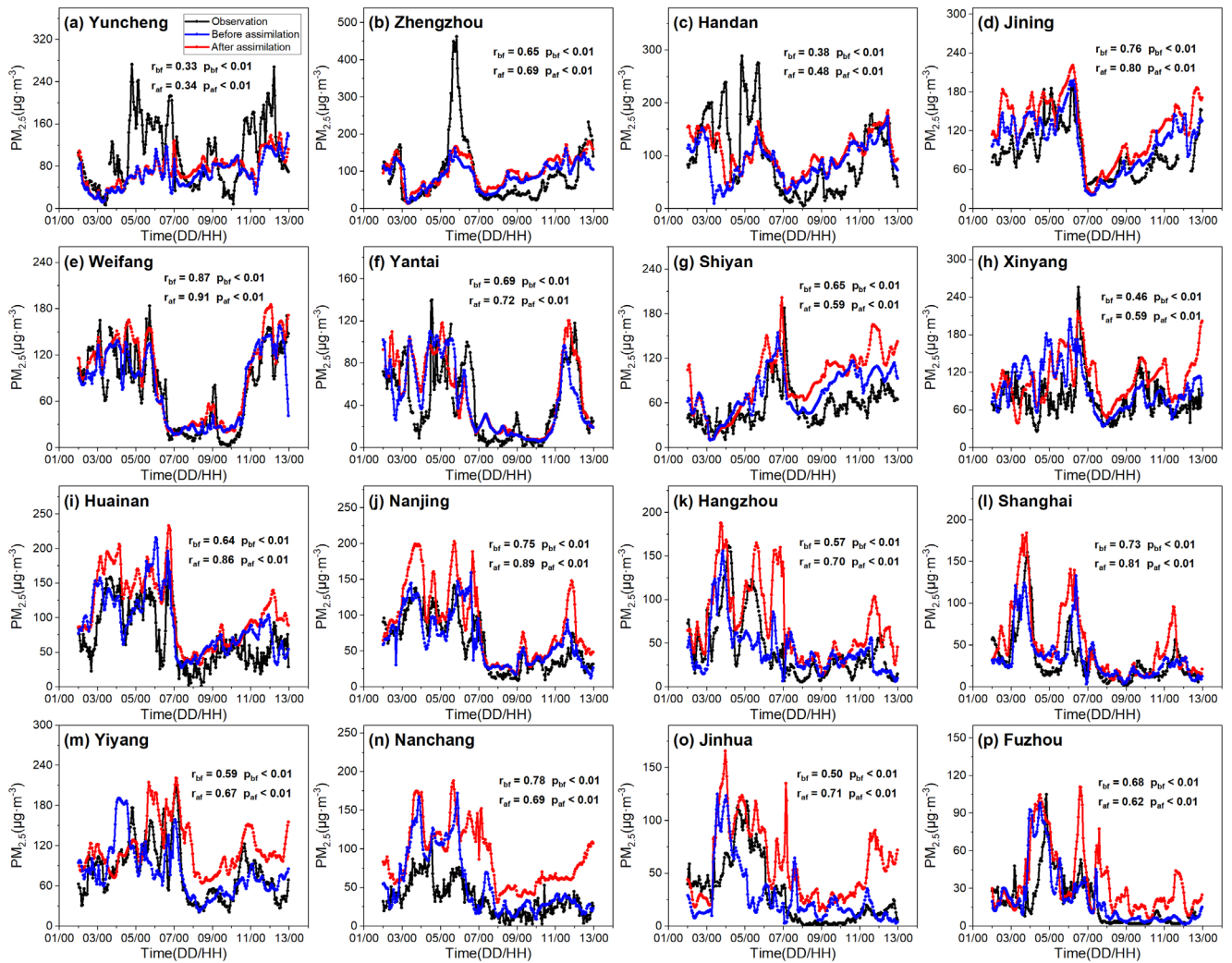


Figure 2. MICAPS and simulated average temperature (a) and dew point depression (b) as well as u (c) and v (d) components of wind during the simulation period (black lines) as well as RMSE (red lines) and spatial correlation coefficients (blue lines) between observations and simulations before and after assimilation for each vertical layer (subscripts “_bf” and “_af” represent simulation before and after assimilation)

Assimilation exerts indirect influences on precipitation, aerosol emission (mainly natural aerosols such as dust and sea salt), transport, and deposition. The RMSE of simulated and observed precipitation (Figs. 3a-c) is reduced by 61.5% after assimilation. In terms of aerosol spatial distribution (Figs. 3d-f), the model reasonably reproduces the MODIS AOD distribution, and there is no significant difference in the simulated average AOD before and after assimilation. To further evaluate the effect of assimilation on the simulation of aerosol temporal variations, 16 stations with relatively continuous observation (Fig. 3a) are selected evenly from the model domain (Fig. 4). In general, the simulations before and after assimilation both reasonably reproduce the temporal variation of near-surface $PM_{2.5}$, and the correlation between simulated and observed $PM_{2.5}$ at all stations pass the test at 99% significance. But with assimilation, the simulated $PM_{2.5}$ concentrations are generally closer to the observations, and the correlation coefficients between the simulated and the observed have increased in 13 of the 16 stations, while the average correlation coefficient of the 16 stations has increased from 0.63 to 0.69.

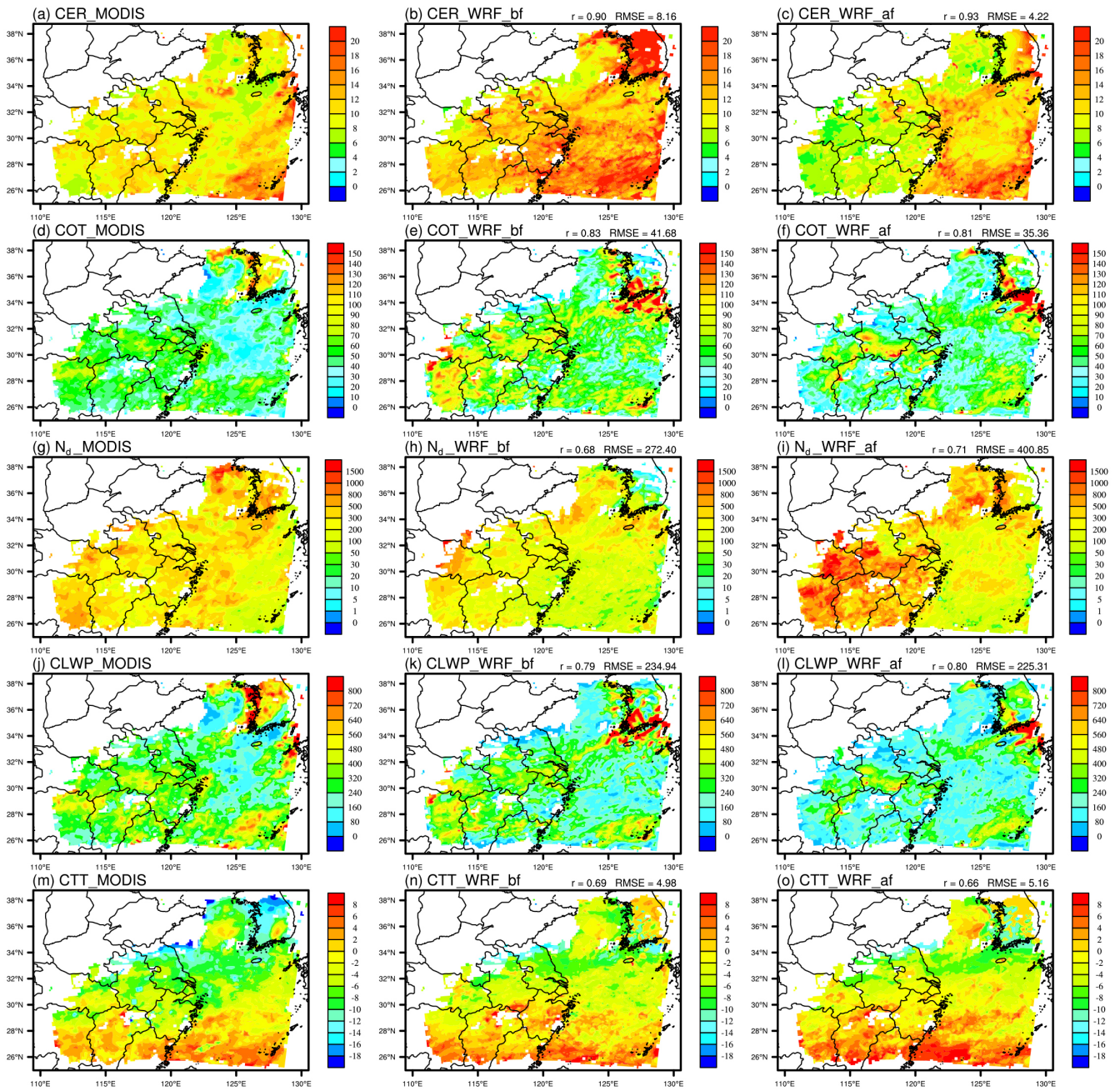


225 **Figure 3.** Distributions of accumulated precipitation (unit: mm, a-c) and average AOD (dimensionless, d-f) during the simulation period from the observation as well as before and after assimilation of the meteorological fields (r and RMSE at the up-right corner represent the spatial correlation coefficient and root mean square error of the observed and the simulated, respectively, where RMSE is in the same unit as the variable in the figure. The subscripts "_bf" and "_af" in the subfigure captions have the same meaning as in Fig. 2. The markers a-p in Fig. 3a represent the locations of the stations in Fig. 4)



230 **Figure 4.** Temporal variations of near-surface $PM_{2.5}$ observed (black line) and simulated before (blue line) and after (red line) assimilation of meteorological fields, at each site (the r and p values represent the correlation and significance of the observation and simulation, respectively, and subscripts “bf” and “af” have the same meaning as in the previous figure)

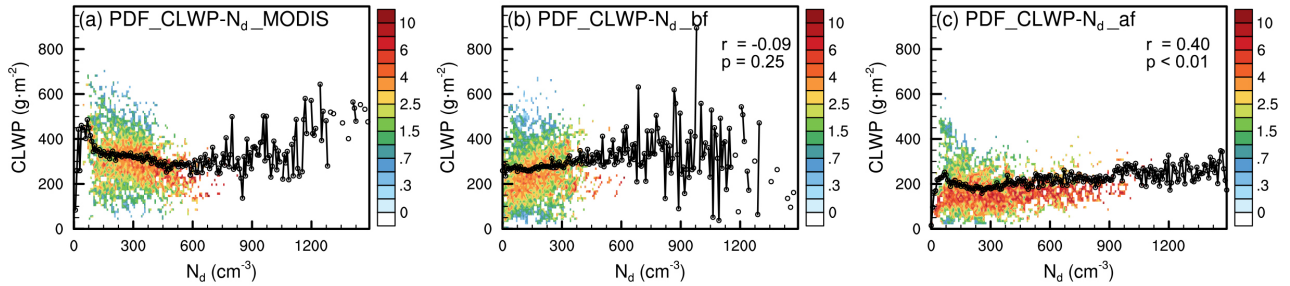
235 Figure 5 presents the simulated cloud parameters before and after assimilation and compared with MODIS. It is seen that the model without assimilation generally reproduces the spatial distribution of MODIS cloud parameters, but with some overestimation for CER and COT and some underestimation for N_d . Compared with MODIS, the simulation with assimilation produces overall higher N_d and lower CLWP over land but more reasonable CER and its distribution. The model also reasonably reproduces the spatial distribution of MODIS-retrieved COT and CTT, which is important to our analysis presented below.



240 **Figure 5.** Spatial distribution of average CER (a-c, in μm), COT (d-f, dimensionless), N_d (g-i, in cm^{-3}), CLWP (j-l, in $\text{g}\cdot\text{m}^{-2}$) and CTT (m-o, in $^{\circ}\text{C}$) from MODIS and WRF simulation before and after assimilations (The r and RMSE in the upper right corner and the subscripts "_bf" and "_af" in the subfigure captions have the same meaning as in the previous figure)

Based on the model samples matched with the spatio-temporal coordinates of MODIS valid values, we further evaluate

245 the ability of the model to reproduce the satellite-retrieved CLWP- N_d relationship (Figure 6). It is found that the simulation with assimilation generally reproduces the increase-decrease-increase variation in CLWP with N_d although the model underestimates CLWP at low N_d as shown by MODIS. The correlation between the simulation and the MODIS CLWP passes the test at the 99% significance level ($p < 0.01$). In contrast, the simulation before assimilation fails to reproduce the above mentioned CLWP- N_d relationship.



250

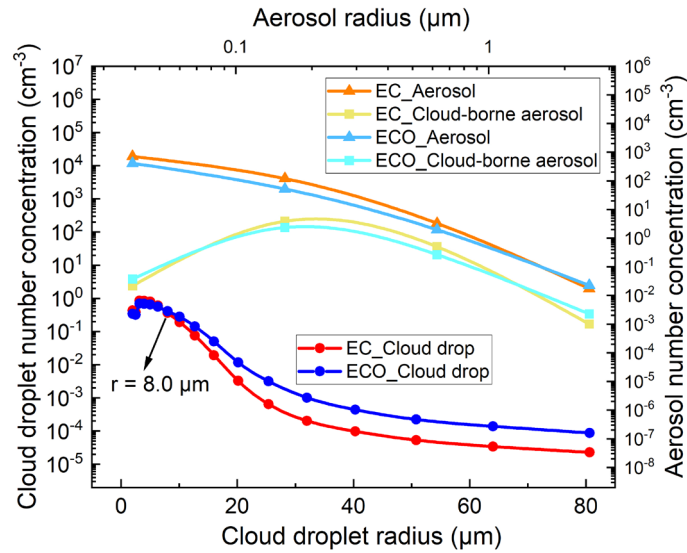
Figure 6. CLWP- N_d relationship of MODIS (a) and simulated before (b) and after (c) assimilation (all samples are assigned into 200×100 bins, with each N_d value corresponding to 100 CLWP bins, and the colored dots in the figure represent the number of samples in that CLWP bin as a percentage of all the samples corresponding to that N_d value, i.e., each N_d value corresponds to a total of 100% of the colored dot values. The black line in the figure represents the average of all samples corresponding to each N_d value)

255

3.2 Aerosol and cloud droplet distribution in EC and ECO

The aerosol physical and chemical processes, aerosol-cloud interactions, and consequent aerosol and cloud droplet distribution in EC and ECO (Fig. 7) exhibit distinct discrepancies due to the differences in aerosol properties, topography, and meteorological fields. EC aerosols are mainly primary and secondary aerosols produced by anthropogenic emissions (Fig. 8a), with small initial particle size. Under the influence of strong surface effects (surface longwave radiation cooling and terrain uplift) and intense updrafts, these small particles can be activated into cloud droplets, but the limited water vapor hinders further growth of cloud droplets. ECO aerosols are mainly transported from EC (as shown in Fig. 8b, ECO's locally emitted chloride and sodium aerosols contribute less than 20% of the total aerosol mass), so that most aerosols in ECO are anthropogenic aerosols with mostly easily transportable small particles, while with relatively more large particles compared to EC due to sea salt contribution. In addition, the abundant water vapor in ECO provides favorable conditions for aerosol activation and cloud droplet growth, with much more cloud droplets above $8 \mu\text{m}$ radius than that in EC though the total cloud droplet number is lower than that in EC.

265



270 **Figure 7.** Size distributions of cloud droplets, total aerosols and activated (cloud-borne) aerosols in liquid-phase clouds of EC
 and ECO (in order to obtain the spectral distributions, the aerosols and cloud droplets number concentrations of each bins were
 first vertically weighted averaged into three-dimensional data containing only time, longitude, and latitude, and only the
 vertical layers of the liquid-phase cloud were weighted averaged, i.e., the layers with CIWC>0 were excluded from the
 calculations. Subsequent direct averaging of the three-dimensional number concentrations in each bins obtained the values in
 275 figure)

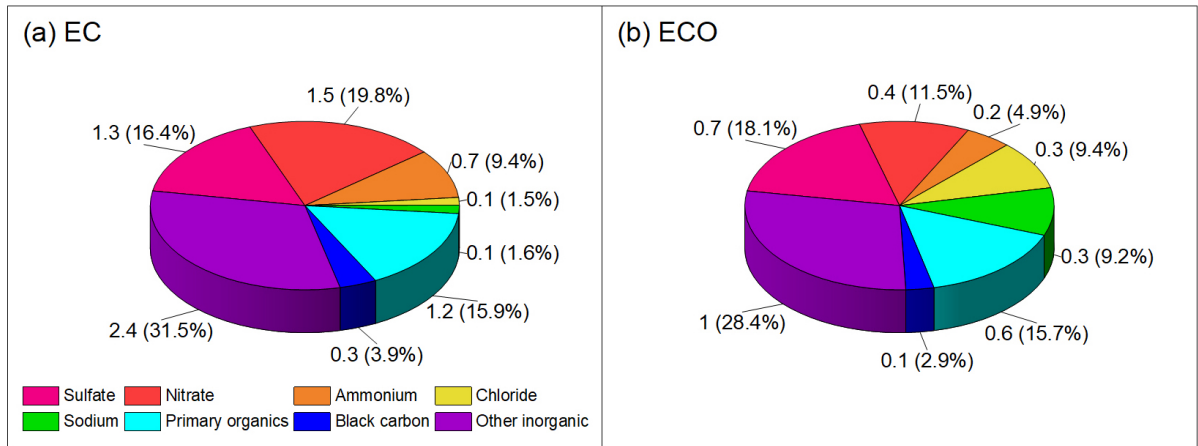
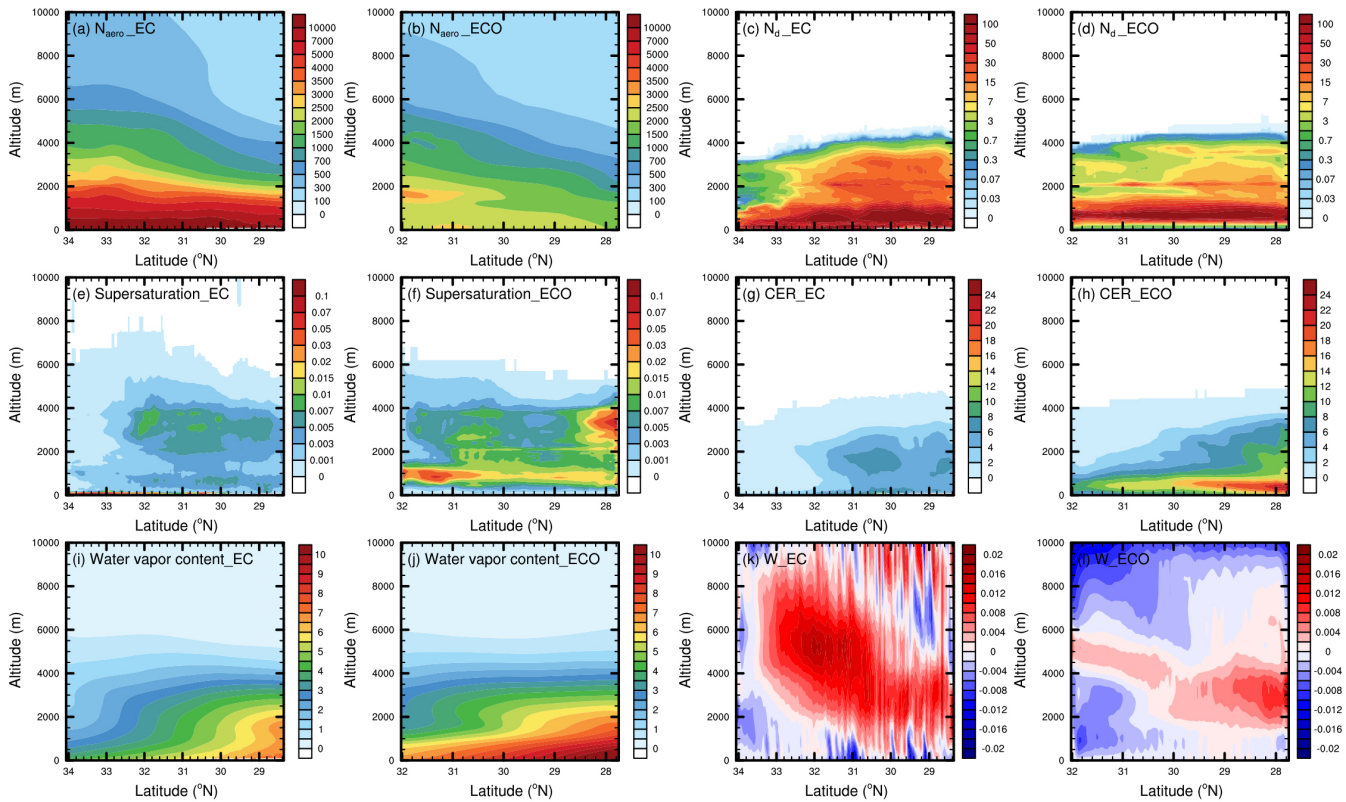


Figure 8. Average concentration (in $\mu\text{g}\cdot\text{m}^{-3}$) and percentage of each type of aerosol in EC and ECO during the simulation
 period (the concentration is a vertically weighted average of each type of aerosol)

280 EC aerosol mainly originates from surface emissions, so its number concentration (N_{aero}) gradually decreases from surface
 to upper layer (Fig. 9a), while ECO aerosols are mainly transported from EC, so N_{aero} hotspot in ECO is located at the transport

altitude near 1800 m above sea level (Fig. 9b). In addition to aerosol number and size, atmospheric supersaturation is a determinant of aerosol activation. In EC, the main contributing factors to supersaturation include (1) atmospheric convection, which acts mainly in the areas with relatively strong updrafts and high water vapor content below 4000m altitude. Above 4000 m, the lack of water vapor makes it difficult to supersaturate even with strong updrafts (Fig. 9e, i and k). (2) Water vapor and temperature changes caused by advection, which mainly work in the region of high water vapor content at tens of meters to 1000 m above surface. (3) Long-wave radiative cooling at surface, which acts mainly at night or early morning (Fig. S1), leads to a high supersaturation of the atmosphere (the disappearance of this effect during the daytime makes the temporal average supersaturation near surface relatively low). The high aerosol concentration and supersaturation makes the high N_d near surface (Fig. 9c). (4) Topographic uplift, the forced uplift of topography makes the atmosphere more susceptible to becoming supersaturated. In ECO, convection and advection are main influencing factors for supersaturation. Due to the abundant water vapor content, even though vertical convection is weak, the relatively strong updraft area near 28°N at 2000-4000 m elevation generates much higher supersaturation than the EC (Figs. 9e-f and i-l).



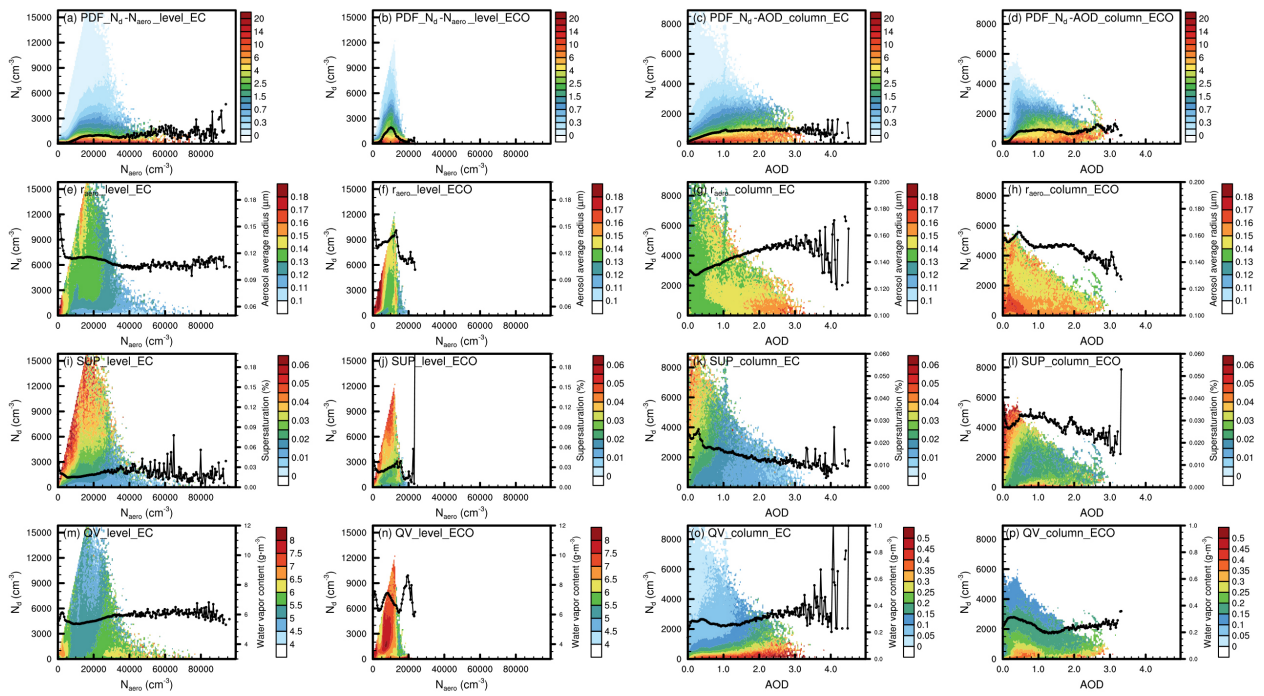
295 **Figure 9.** EC and ECO aerosol number concentration (in cm^{-3} , a-b), N_d in liquid-phase cloud (in cm^{-3} , c-d), atmospheric supersaturation (in %, e-f), CER (in μm , g-h), water vapor content (in $\text{g}\cdot\text{m}^{-3}$, i-j) and vertical wind speed (in $\text{m}\cdot\text{s}^{-1}$, k-l) distributions (this figure presents the latitude-averaged variables vary with the height. For N_d , supersaturation, and CER, we first filtered out the grid points with CIWC higher than 0. The lower limit of supersaturation value used in this study is 0. Even

if the atmosphere is not saturated, the supersaturation value is 0 rather than a negative value. The average supersaturation
300 characterizes the overall intensity of supersaturation in EC and ECO during the simulation period)

3.3 Aerosol activation of liquid-phase clouds in EC and ECO

To explore the responses of clouds to aerosols and their influencing factors, we perform a statistical analysis on aerosols,
clouds and meteorological elements for the grid points with liquid-phase cloud (i.e. $N_d > 1 \text{ cm}^{-3}$, CIWC = 0 and supersaturation >
0) at each time. The statistics are based on each vertical layer and the column (vertical integration of layers with liquid-phase
305 clouds), respectively, with the former providing abundant samples and more immediate and detailed aerosol-cloud
relationships, and the latter facilitating relevant studies to compare it directly with information such as satellite retrievals.

Aerosol activation is the first step of aerosol-cloud interaction, and we analyze the variation of N_d with aerosol (Fig. 10)
based on the statistics for each vertical layer and for the column, respectively. At low N_{aero} , aerosols promote cloud droplet
increase by acting as CCN (Figs. 10a-b). As aerosols and cloud droplets increase, more small aerosols (Figs. 10e-f) heighten
310 the requirement of atmospheric supersaturation for aerosol activation, and the consumption of water vapor from cloud droplet
growth makes it more difficult for the atmosphere to reach supersaturation, thus suppressing aerosol activation. As shown in
Fig. 10a-b, N_d in both EC and ECO exhibit the general trend of increasing first and then decreasing with increasing N_{aero} , but
there are some differences between EC and ECO. In EC (Fig. 10a), strong surface effects and updrafts as well as abundant
aerosols allow N_d to maintain a more persistent trend. In addition, aerosol activation is not suppressed in the near-surface areas
315 with high aerosol concentration, and aerosols can still be activated at high supersaturation (Fig. 10i) caused by the effects of
longwave radiative cooling (the diurnal variation of this effect is also one of the main reasons for the fluctuation of N_d with
 N_{aero}), terrain uplift (the high topographic gradient areas where this action takes effect are also usually characterized by aerosol
accumulation), and relatively high water vapor content (Fig. 10m) near surface. In ECO, the absence of surface effects as in
EC and weaker updrafts limit its supersaturated water supply, and the supersaturation (Fig. 10f) shows a more pronounced and
320 synchronized variation with variation in ambient water vapor content (Fig. 10n) and decreases rapidly with increasing N_{aero}
after N_d peak. After N_d reaches its peak, the increase in small aerosols and the decrease in supersaturation prevent N_d from
continuing to increase and N_d starts to show a decreasing trend, without fluctuations like EC. Unlike the statistics for each
vertical layer, the statistics for the column show that N_d exhibits an increase with AOD followed by a general maintenance
(Figs. 10c-d). In EC, the maintenance is mainly due to a higher percentage of easily activated large particles at high AOD (Fig.
325 10g), while in ECO it is mainly due to an overall higher supersaturation (Fig. 10l) associated with the abundant water vapor
(because column sampling cannot accurately match aerosol-cloud related variables in vertical coordinates based on the
intensity of cloud processes, column sampling exhibits a less immediate and precise relationship between supersaturation and
water vapor content than sampling of each vertical layer. So in terms of column statistics, although ECO water content is close
to EC, its average supersaturation is much higher than that of EC).



330

Figure 10. N_d varies with aerosol (a-d, the unit for colored dots is %, while the unit for the black lines is the left vertical axis unit), as well as the aerosol volume average radius (e-h, the colored dots and black lines of these figures and all subsequent figures correspond to the units on the right vertical axis unit), supersaturation (i-l) and water vapor content (m-p) varies with N_d and aerosol in EC and ECO based on statistics at each vertical layer (two columns on the left) and column (two columns on the right), respectively (samples were taken from each time and each grid point, and each sample contained N_{aero} or AOD, N_d , aerosol volume mean radius, supersaturation, and water vapor content values. These samples were placed into $200 N_{aero} \times 100 N_d$ bins according to the interval in which their N_{aero} or AOD values and N_d values were located. The colored dots in Figs. a-d represent the proportion of that bin's sample number to the total number of samples of the 100 bins corresponding to the N_{aero} or AOD interval, i.e., the total value of all colored dots corresponding to each N_{aero} or AOD interval is 100%. The black lines in Figs. a-d represent the average N_d of all samples at the corresponding N_{aero} or AOD intervals. The colored dots in Figs. e-p represent the average values of the variable for all samples in the bin corresponding to the aerosol and N_d intervals. The black lines in Figs. e-p represent the average value of this variable in all samples corresponding to this aerosol interval)

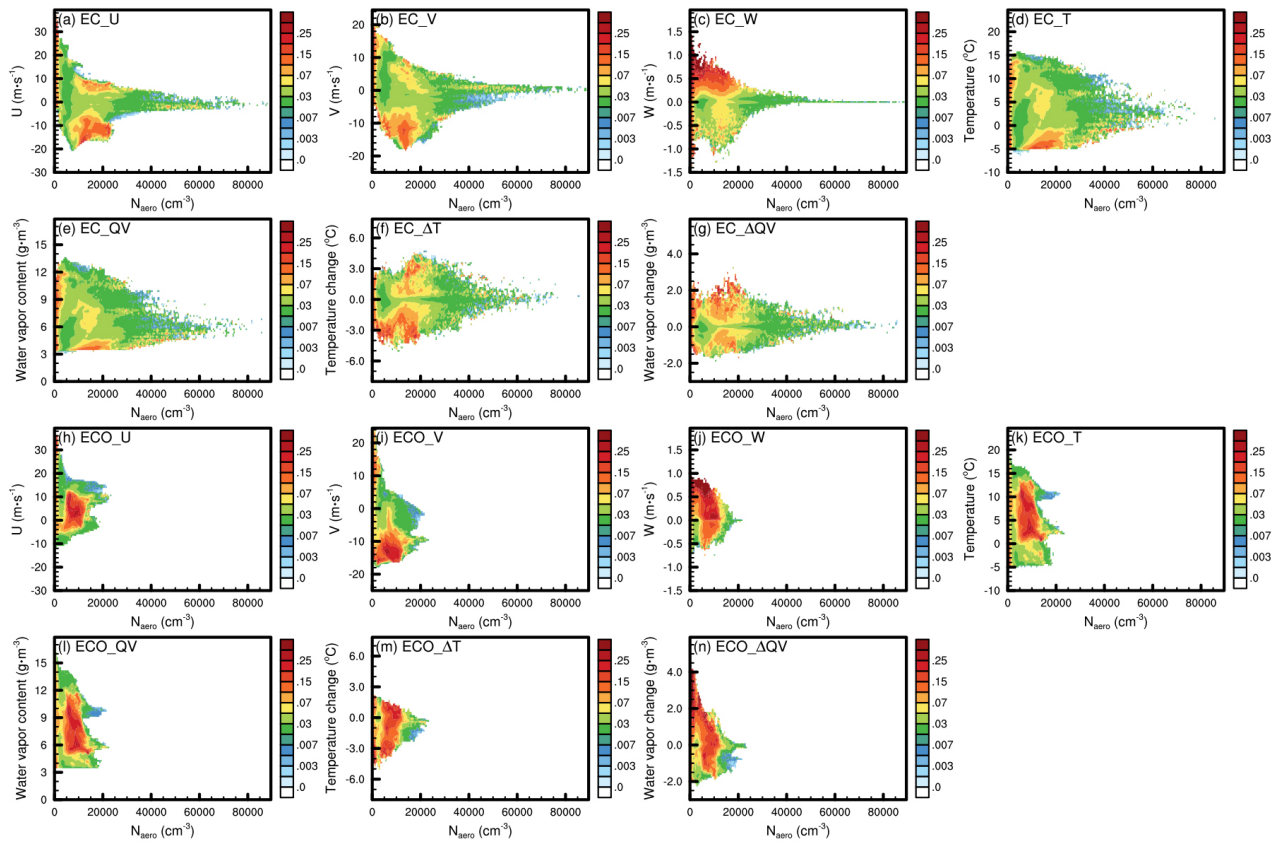
335

340

345

To investigate the influence of meteorological conditions on aerosol activation, a statistically analysis on the variation of N_d to N_{aero} ratio (characterizing the intensity of aerosol activation) with N_{aero} for different zonal wind speed (U), meridional wind speed (V), vertical wind speed (W), temperature, water vapor content, as well as changes in temperature and water vapor per hour are presented in Fig. 11. In EC, high N_d to N_{aero} ratio occurs when the zonal wind speed $< -6 \text{ m s}^{-1}$ or meridional wind speed $< -7 \text{ m s}^{-1}$, the former due to large amounts of water vapor from the ocean brought by easterly winds (Fig. S2b) and the latter due to cold air brought by northerly winds (Fig. S2a) and uplift caused by the south high and north low topography in

350 EC (Fig. 1). The overall high ratio is exhibited at relatively high vertical wind speeds, but aerosol activation is also found when the vertical airflow is weak or dominated by downdraft due to the influence of advection at tens of meters to 1000 m above surface, topographic uplift, and long-wave radiative cooling at surface. High N_d to N_{aero} ratio in EC mainly occurs at low temperatures and low humidity conditions, which is due to the fact that the temperature and humidity horizontal gradients are essentially the same (Fig. S2), and EC with low overall water vapor content is more likely to reach supersaturation at both low
 355 temperature and water vapour content, and becomes increasingly difficult to reach supersaturation when the temperature and humidity are simultaneously increased. The increase in water vapor and decrease in temperature contribute to EC aerosol activation, but the strong surface effects and updrafts enable aerosol activation to occur even at significant warming or humidity reduction.



360 **Figure 11.** Variation of EC (a-g) and ECO (h-n) N_d to N_{aero} ratio (unit: $\text{cm}^{-3} \cdot \text{cm}^3$) with N_{aero} at different U-wind (a and h), V-wind (b and i), W-wind (c and j), temperature (d and k), water vapor content (e and l), temperature change (f and m) and water vapor change (g and n, this figure is sampled at each vertical layer and calculated in the same way as Fig. 10, except that the bin of N_d is replaced by the bin of each meteorological element)

365 In ECO, the zonal wind speed favourable to aerosol activation is below $0 \text{ m} \cdot \text{s}^{-1}$ or $0\text{-}13 \text{ m} \cdot \text{s}^{-1}$, with the former ensuring

the supply of water vapor and the latter providing more abundant aerosols, while at zonal wind speed above $13 \text{ m}\cdot\text{s}^{-1}$, the excessively dry air from land makes the atmosphere difficult to reach supersaturation, despite the large amount of aerosols brought by the westerly wind. The meridional wind speed suitable for ECO activation is mainly below $-8 \text{ m}\cdot\text{s}^{-1}$, the cold air brought by strong northerly winds makes it easier for the atmosphere to reach supersaturation. The abundance of water vapor makes ECO more susceptible to reach supersaturation by updrafts, making its activation exhibit a high sensitivity to vertical wind speeds. Compared to EC, ECO's more abundant water vapor content generate higher N_d to N_{aero} ratio at higher temperatures and humidity conditions. In addition, ECO aerosol activation is more limited by cooling and humidification due to atmospheric motion (no strong surface effects like in EC), its high N_d to N_{aero} ratio is clearly skewed toward high humidification and cooling conditions compared to EC.

3.4 Impact of aerosols on development of liquid-phase clouds

Aerosol activation alters cloud droplet size distribution and consequent changes in cloud microphysical and dynamical processes, which is also known as rapid adjustment (Heyn et al., 2017; Mulmenstadt and Feingold, 2018). We discuss the variations of CLWC and CER with increasing N_d (Fig.12) for precipitation clouds (rainwater content above $1 \text{ mg}\cdot\text{m}^{-3}$ for each vertical layer and above $1 \text{ g}\cdot\text{m}^{-2}$ for column) and non-precipitating clouds (rainwater content below $0.001 \text{ mg}\cdot\text{m}^{-3}$ for each vertical layer and below $0.001 \text{ g}\cdot\text{m}^{-2}$ for column). For precipitation clouds, CLWC in both EC and ECO show a trend of rapid increase followed by a gradual slowdown (the net influence of water content limitation, evaporation and precipitation effects, accompanied by the decrease in CER) with N_d . The difference lies in that the abundant water vapor in ECO makes its CLWC increase much faster than that in EC when N_d is very low, whereas the higher aerosol concentration, strong surface effects and updrafts in EC enable it to have a wider N_d range and can produce higher CLWC. For non-precipitating clouds, the consumption of limited supersaturated water by aerosol activation and cloud droplet growth causes clear decreasing trends of CLWC with N_d after CLWC increasing to a certain level. The difference between the two regions is that more limited supersaturated water supply in ECO causes its CER to decrease faster and CLWC to start decreasing earlier.

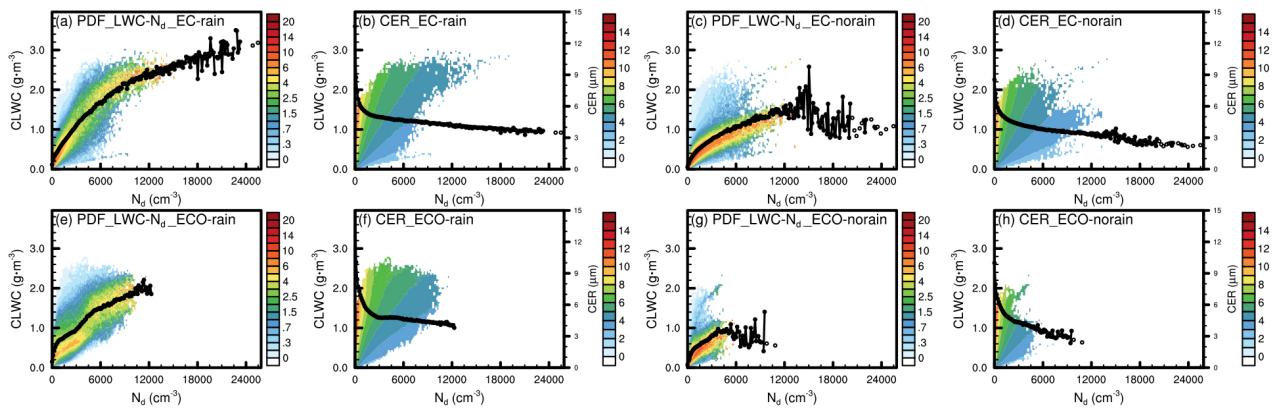
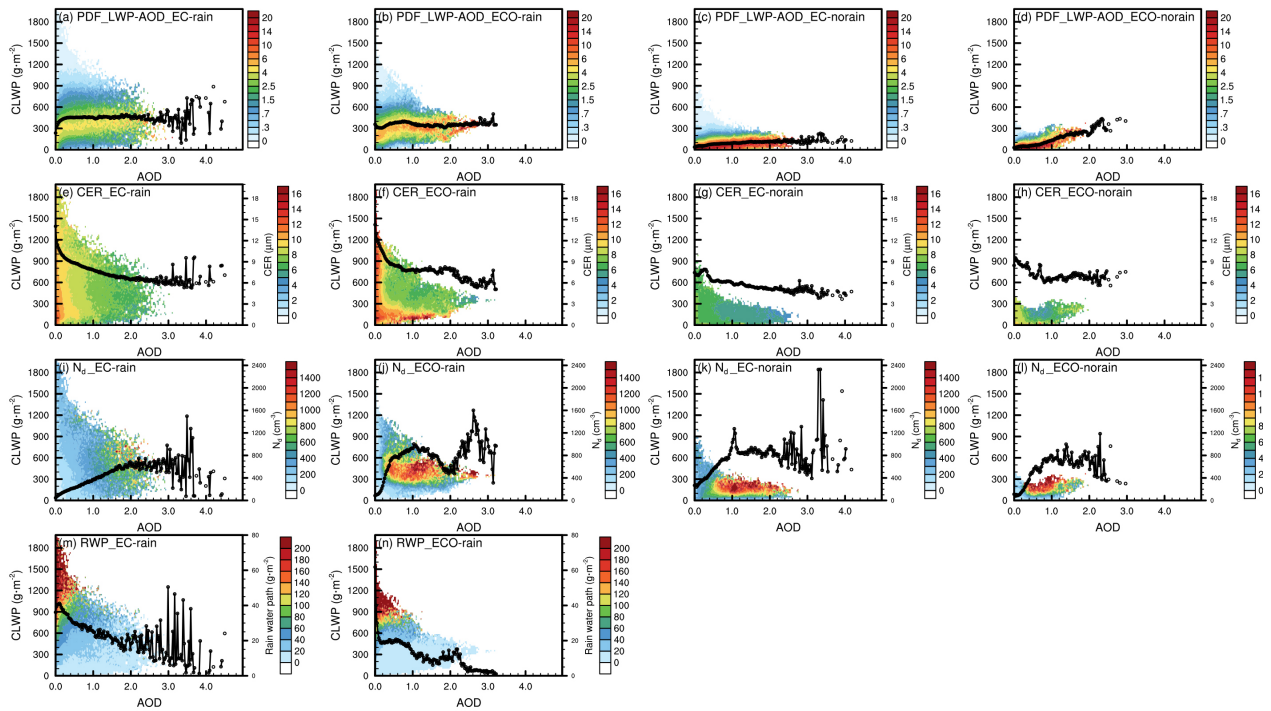


Figure 12. CLWC varies with N_d (a, c, e and g), and CER varies with CLWC and N_d (b, d, f and h) for precipitating (two

390 columns on the left) and non-precipitating (two columns on the right) clouds in EC (a-d) and ECO (e-h), based on statistics at each vertical layer (interpretation of the figure is the same as in the caption of Fig. 10)

We further examine the variations of CLWP and its related elements with AOD based on the statistics of the column (Fig. 13). For the precipitation clouds, with the increase of AOD, CLWP remains generally stable (the combined effects of cloud droplets and precipitation changes), while N_d increases initially and then decreases (the decrease in N_d of ECO at AOD 1.5-2.0 is due to a decrease in water vapor content caused by individual processes as shown in Fig. 10p, and simulations and statistical analyses for longer time periods can attenuate the effect of such individual processes), and both CER and rain water path (RWP, i.e. rainwater column content) decrease. There is a bi-directional interaction between RWP and aerosols, i.e., low AOD is largely resulted from the washout of aerosols by precipitation, whereas increasing N_d and decreasing CER due to increasing aerosols also decrease the RWP. For non-precipitation clouds, CLWP increases with AOD, while N_d firstly increases and then shows a weak decreasing trend.



405 **Figure 13.** CLWP varies with AOD (a-d), as well as CER (e-h), N_d (i-l) and RWP (m-n) varies with CLWP and AOD for precipitation clouds (two columns on the left) and non-precipitating clouds (two columns on the right) in EC and ECO (interpretation of the figure is the same as in the caption of Fig. 10)

Fig. 14 exhibits the effects of different meteorological and aerosol conditions on CLWC. The CLWC and N_{aero} ratio (characterizing the speed of cloud development) under different meteorological and N_{aero} conditions shows generally similar

variation to the N_d and N_{aero} ratio in Fig. 11, with only some minor differences. Compared to the high N_d and N_{aero} ratios exhibited in Fig. 10, which tend to occur at medium N_{aero} , the high CLWC and N_{aero} ratios at low N_{aero} are more heavily weighted due to the more abundant water vapor supply and weaker evaporation when there are fewer but larger cloud droplets.

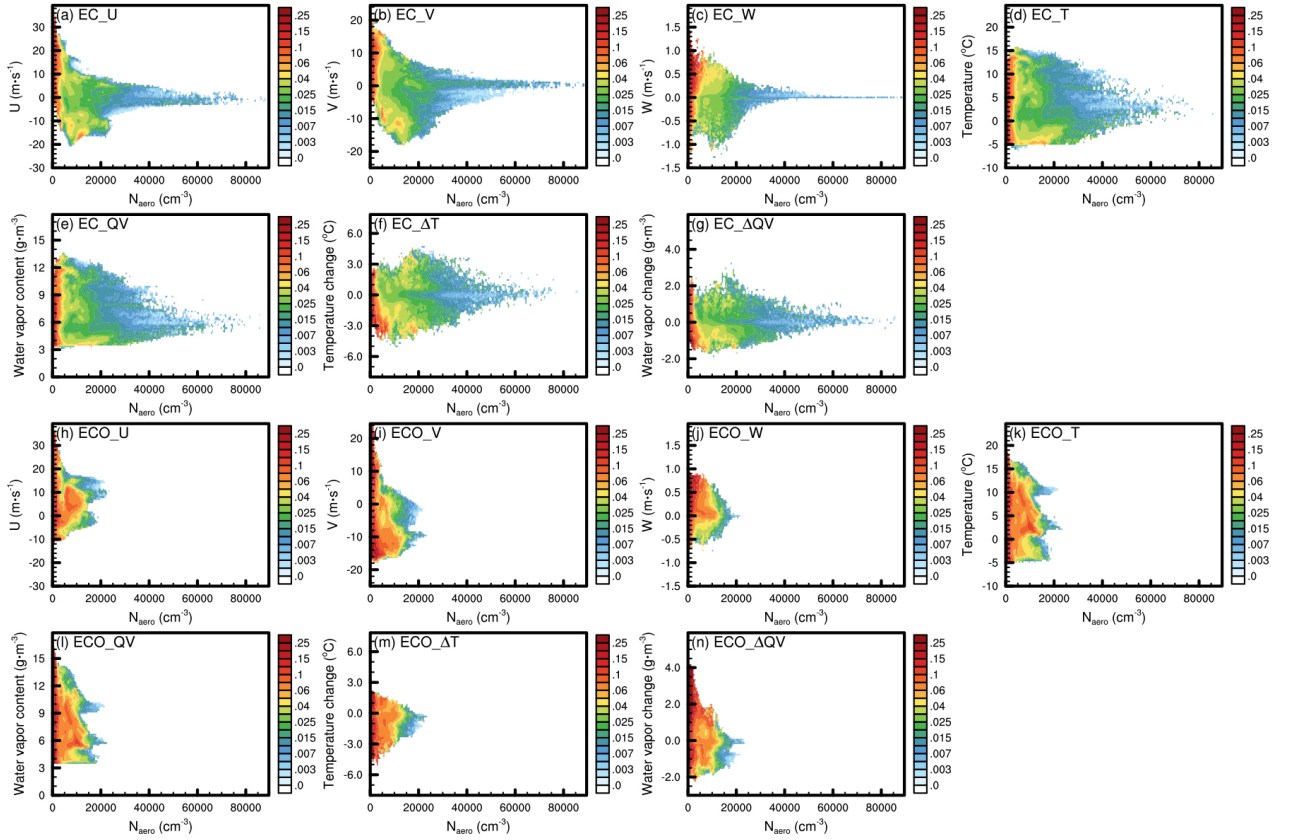


Figure 14. Same as Fig. 11 but for CLWC to N_{aero} ratio (unit: $\text{mg}\cdot\text{m}^{-3}\cdot\text{cm}^{-3}$)

4 Summary

In this study, aerosol-cloud interactions in liquid-phase clouds over eastern China (EC) and its adjacent ocean region (ECO) in winter are explored based on the WRF-Chem-SBM model in which a spectral-bin cloud microphysics (SBM) and online aerosol module (MOSAIC) are coupled.

The impact of four-dimensional data assimilation on the simulation and performance of the coupling system is firstly evaluated using multiple observations. With assimilation, the simulated meteorological field is generally closer to the observations both in values and spatial distribution. The simulations of precipitation and aerosol are effectively improved by optimizing the meteorological field, the RMSE of simulated precipitation versus observation is reduced by 61.5%, and the temporal correlation of simulated $\text{PM}_{2.5}$ with observations at each site is improved by 9.5% on average.

We explore the responses of clouds to aerosols and their influencing factors through the statistics of liquid-phase cloud samples. Statistics on each vertical layer show that in both EC and ECO, N_d exhibits an overall increasing and then decreasing trend with N_{aero} . The difference is that the strong surface effects (surface longwave radiation cooling and terrain uplift) in EC induce high N_d near-surface with high N_{aero} , whereas in ECO, N_d increases faster at low N_{aero} due to abundant water vapor, and decreases rapidly after the peak of N_d . However, the statistics on the entire column show that N_d increases with AOD and then generally remains unchanged (there is no clear decrease as in the statistics on each vertical layer), partly because high AOD does not correspond to high N_{aero} , and also because the statistics on column are not as detailed and immediate as those on each vertical layer.

Statistics on each vertical layer show that in precipitation clouds, CLWC increases with N_d and its increase rate gradually slows down, whereas in non-precipitation clouds with lower water content, CLWC decreases with N_d after its increase to the peak. The difference between EC and ECO precipitation clouds lies in that the abundant aerosol, strong surface effects and updrafts allow EC to produce higher N_d and CLWC, and the more abundant water vapor in ECO enables its CLWC to increase faster at low N_d . The difference between the non-precipitating clouds in the two regions is that the insufficient supply of supersaturated water due to fewer and less intense processes affecting supersaturation in ECO leads to its CER decreasing rapidly, and the CLWC begins to decrease at lower N_d than in EC. We further analyse the variation of CLWP with AOD based on the statistics on column. For precipitation clouds, CLWP remains generally stable with AOD without significant variation due to the combined effect of precipitation and aerosol. While in non-precipitating clouds, which are almost unaffected by precipitation, CLWP increases gradually with AOD.

We explore the effects of different meteorological and aerosol conditions on N_d to N_{aero} ratio (characterizing the intensity of aerosol activation) and CLWC to N_{aero} ratio (characterizing the speed of cloud development). In EC, favourable meteorological conditions for aerosol activation include: (1) moist air brought by strong easterly wind, (2) cooling and topographic uplift due to strong northerly wind, and (3) strong updraft. In ECO, the meteorological conditions suitable for aerosol activation include (1) aerosol-rich and not excessive dry airflow from moderate westerly wind, (2) cooling due to strong northerly wind, and (3) updraft. ECO's abundant water vapor allows it to produce high N_d to N_{aero} ratio at higher temperature environments than EC, but fewer and less intense processes affecting supersaturation make its activation more dependent on strong humidification and cooling (whereas EC's strong surface effects can enable high N_d to N_{aero} ratio to occur even under significant warming or humidity reduction). Meteorological conditions suitable for CLWC increase are close to aerosol activation, while high CLWC to N_{aero} ratios occur more often at low N_{aero} conditions compared to moderate N_{aero} conditions where high N_d to N_{aero} ratio appears.

Data availability. The model outputs are available upon request (the namelist file of the model simulation is attached as Supplement A), the other data can be accessed from the websites listed in Sect. 2.

Author contributions. JZ and XM designed and conducted the model experiments, analysed the result and wrote the paper.

XM developed the project idea and supervised the project. XM, JQ and HJ proposed scientific suggestions and revised the paper.

460 **Competing interests.** One author (JQ) is a member of the editorial board of journal ACP, and the authors have no other competing interests to declare.

Acknowledgements. This study is supported by the Second Tibetan Plateau Scientific Expedition and Research (STEP) program (2019QZKK0103), the National Nature Science Foundation of China (Grants 42061134009 & 41975002), and the
465 Postgraduate Research and Practice Innovation Program of Jiangsu Province (Grant KYCX22_1151). The numerical calculations in this paper was conducted in the High-Performance Computing Center of Nanjing University of Information Science & Technology. We express our gratitude to Dr. Jiwen Fan of Argonne National Laboratory for providing the code for the WRF-Chem-SBM model and Prof. Qian Chen of Nanjing University of Information Science & Technology for providing advice on this study. We are grateful to the National Aeronautics and Space Administration, the National Center for
470 Environmental Prediction, MEIC Support Team, the Chinese National Meteorological Center and China National Environmental Monitoring Centre for providing the MODIS and GPM data, FNL and observation subsets, MEIC emission inventory, MICAPS data and PM_{2.5} data respectively.

References

- 475 Albrecht, B. A.: Aerosols, cloud microphysics, and fractional cloudiness, *Science* 245, 1227-1230, <https://doi.org/10.1126/science.245.4923.1227>, 1989.
- Arias, P., Bellouin, N., Coppola, E., Jones, R., Krinner, G., Marotzke, J., Naik, V., Palmer, M., Plattner, G.-K., Rogelj, J., Rojas, M., Sillmann, J., Storelvmo, T., Thorne, P., Trewin, B., Achutarao, K., Adhikary, B., Allan, R., Armour, K., Bala, G., Barimalala, R., Berger, S., Canadell, J. G., Cassou, C., Cherchi, A., Collins, W. D., Collins, W. J., Connors, S., Corti, S., Cruz, F., Dentener, F. J., Dereczynski, C., Di Luca, A., Diongue Niang, A., Doblas-Reyes, P., Dosio, A., Douville, H.,
480 Engelbrecht, F., Eyring, V., Fischer, E. M., Forster, P., Fox-Kemper, B., Fuglested, J., Fyfe, J., Gillett, N., Goldfarb, L., Gorodetskaya, I., Gutierrez, J. M., Hamdi, R., Hawkins, E., Hewitt, H., Hope, P., Islam, A. S., Jones, C., Kaufmann, D., Kopp, R., Kosaka, Y., Kossin, J., Krakovska, S., Li, J., Lee, J.-Y., Masson-Delmotte, V., Mauritsen, T., Maycock, T., Meinshausen, M., Min, S.-k., Ngo Duc, T., Otto, F., Pinto, I., Pirani, A., Raghavan, K., Ranasinghe, R., Ruane, A., Ruiz, L., Sallée, J.-B., Samset, B. H., Sathyendranath, S., Monteiro, P. S., Seneviratne, S. I., Sörensson, A. A., Szopa, S.,
485 Takayabu, I., Treguier, A.-M., van den Hurk, B., Vautard, R., Von Schuckmann, K., Zaehle, S., Zhang, X., and Zickfeld, K.: *Climate Change 2021: The Physical Science Basis. Contribution of Working Group I to the Sixth Assessment Report of the Intergovernmental Panel on Climate Change; Technical Summary*, The Intergovernmental Panel on Climate Change AR6, Remote, 2021.
- Arola, A., Lipponen, A., Kolmonen, P., Virtanen, T. H., Bellouin, N., Grosvenor, D. P., Gryspeerdt, E., Quaas, J., and Kokkola, H.: Aerosol effects on clouds are concealed by natural cloud heterogeneity and satellite retrieval errors, *Nat. Commun.*, 13, 1-8, <https://doi.org/10.1038/s41467-022-34948-5>, 2022.
- Bangert, M., Kottmeier, C., Vogel, B., and Vogel, H.: Regional scale effects of the aerosol cloud interaction simulated with an online coupled comprehensive chemistry model, *Atmos. Chem. Phys.*, 11, 4411-4423, <https://doi.org/10.5194/acp-11-4411-2011>, 2011.
- 495 Bao, J. W., Feng, J. M., and Wang, Y. L.: Dynamical downscaling simulation and future projection of precipitation over China,

- Journal of Geophysical Research-Atmospheres, 120, 8227-8243, <https://doi.org/10.1002/2015jd023275>, 2015.
- Brenguier, J.-L., Pawlowska, H., Schüller, L., Preusker, R., Fischer, J., and Fouquart, Y.: Radiative properties of boundary layer clouds: Droplet effective radius versus number concentration, *J. Atmos. Sci.*, 57, 803-821, [https://doi.org/10.1175/1520-0469\(2000\)057<0803:RPOBLC>2.0.CO;2](https://doi.org/10.1175/1520-0469(2000)057<0803:RPOBLC>2.0.CO;2), 2000.
- 500 Bretherton, C. S., Blossey, P. N., and Uchida, J.: Cloud droplet sedimentation, entrainment efficiency, and subtropical stratocumulus albedo, *Geophys. Res. Lett.*, 34, <https://doi.org/10.1029/2006gl027648>, 2007.
- Carslaw, K. S., Boucher, O., Spracklen, D. V., Mann, G. W., Rae, J. G. L., Woodward, S., and Kulmala, M.: A review of natural aerosol interactions and feedbacks within the Earth system, *Atmos. Chem. Phys.*, 10, 1701-1737, <https://doi.org/10.5194/acp-10-1701-2010>, 2010.
- 505 Chen, Y. C., Christensen, M. W., Stephens, G. L., and Seinfeld, J. H.: Satellite-based estimate of global aerosol-cloud radiative forcing by marine warm clouds, *Nat. Geosci.*, 7, 643-646, <https://doi.org/10.1038/ngeo2214>, 2014.
- Chen, Y. Y., Yang, K., Zhou, D. G., Qin, J., and Guo, X. F.: Improving the Noah Land Surface Model in Arid Regions with an Appropriate Parameterization of the Thermal Roughness Length, *J. Hydrometeorol.*, 11, 995-1006, <https://doi.org/10.1175/2010jhm1185.1>, 2010.
- 510 Christensen, M. W. and Stephens, G. L.: Microphysical and macrophysical responses of marine stratocumulus polluted by underlying ships: 2. Impacts of haze on precipitating clouds, *Journal of Geophysical Research-Atmospheres*, 117, <https://doi.org/10.1029/2011jd017125>, 2012.
- Christensen, M. W., Chen, Y. C., and Stephens, G. L.: Aerosol indirect effect dictated by liquid clouds, *Journal of Geophysical Research: Atmospheres*, 121, 14,636-614,650, <https://doi.org/10.1002/2016JD025245>, 2016.
- 515 Christensen, M. W., Gettelman, A., Cermak, J., Dagan, G., Diamond, M., Douglas, A., Feingold, G., Glassmeier, F., Goren, T., and Grosvenor, D. P.: Opportunistic experiments to constrain aerosol effective radiative forcing, *Atmos. Chem. Phys.*, 22, 641-674, <https://doi.org/10.5194/acp-22-641-2022>, 2022.
- Church, J., Clark, P., Cazenave, A., Gregory, J., and Unnikrishnan, A.: Climate Change 2013: The Physical Science Basis. Contribution of Working Group I to the Fifth Assessment Report of the Intergovernmental Panel on Climate Change, Computational Geometry, [https://doi.org/10.1016/S0925-7721\(01\)00003-7](https://doi.org/10.1016/S0925-7721(01)00003-7), 2013.
- 520 Emmons, L. K., Schwantes, R. H., Orlando, J. J., Tyndall, G., Kinnison, D., Lamarque, J., Marsh, D., Mills, M. J., Tilmes, S., and Bardeen, C.: The chemistry mechanism in the community earth system model version 2 (CESM2), *J. Adv. Model. Earth Syst.*, 12, e2019MS001882, <https://doi.org/10.1029/2019MS001882>, 2020.
- Fan, J. W., Leung, L. R., Li, Z. Q., Morrison, H., Chen, H. B., Zhou, Y. Q., Qian, Y., and Wang, Y.: Aerosol impacts on clouds and precipitation in eastern China: Results from bin and bulk microphysics, *Journal of Geophysical Research-Atmospheres*, 117, <https://doi.org/10.1029/2011jd016537>, 2012.
- 525 Fan, J. W., Liu, Y. C., Xu, K. M., North, K., Collis, S., Dong, X. Q., Zhang, G. J., Chen, Q., Kollias, P., and Ghan, S. J.: Improving representation of convective transport for scale-aware parameterization: 1. Convection and cloud properties simulated with spectral bin and bulk microphysics, *Journal of Geophysical Research-Atmospheres*, 120, 3485-3509, <https://doi.org/10.1002/2014jd022142>, 2015.
- 530 Fast, J. D., Gustafson, W. I., Easter, R. C., Zaveri, R. A., Barnard, J. C., Chapman, E. G., Grell, G. A., and Peckham, S. E.: Evolution of ozone, particulates, and aerosol direct radiative forcing in the vicinity of Houston using a fully coupled meteorology-chemistry-aerosol model, *Journal of Geophysical Research-Atmospheres*, 111, <https://doi.org/10.1029/2005jd006721>, 2006.
- 535 Fuentes, E., Coe, H., Green, D., and McFiggans, G.: On the impacts of phytoplankton-derived organic matter on the properties of the primary marine aerosol—Part 2: Composition, hygroscopicity and cloud condensation activity, *Atmos. Chem. Phys.*, 11, 2585-2602, <https://doi.org/10.5194/acp-11-2585-2011>, 2011.
- Gao, W. H., Fan, J. W., Easter, R. C., Yang, Q., Zhao, C., and Ghan, S. J.: Coupling spectral-bin cloud microphysics with the MOSAIC aerosol model in WRF-Chem: Methodology and results for marine stratocumulus clouds, *J. Adv. Model. Earth Syst.*, 8, 1289-1309, <https://doi.org/10.1002/2016ms000676>, 2016.
- 540 Gryspeerdt, E., Goren, T., Sourdeval, O., Quaas, J., Mulmenstadt, J., Dipu, S., Unglaub, C., Gettelman, A., and Christensen, M.: Constraining the aerosol influence on cloud liquid water path, *Atmos. Chem. Phys.*, 19, 5331-5347, <https://doi.org/10.5194/acp-19-5331-2019>, 2019.
- 545 Guenther, A., Karl, T., Harley, P., Wiedinmyer, C., Palmer, P. I., and Geron, C.: Estimates of global terrestrial isoprene emissions using MEGAN (Model of Emissions of Gases and Aerosols from Nature), *Atmos. Chem. Phys.*, 6, 3181-3210,

- <https://doi.org/10.5194/acp-6-3181-2006>, 2006.
- Hartmann, D. L., Ockert-Bell, M. E., and Michelsen, M. L.: The Effect of Cloud Type on Earth's Energy Balance: Global Analysis, *J. Clim.*, 5, 1281-1304, [https://doi.org/10.1175/1520-0442\(1992\)005<1281:Teocto>2.0.Co;2](https://doi.org/10.1175/1520-0442(1992)005<1281:Teocto>2.0.Co;2), 1992.
- 550 Heyn, I., Block, K., Mulmenstadt, J., Gryspeerd, E., Kuhne, P., Salzmann, M., and Quaas, J.: Assessment of simulated aerosol effective radiative forcings in the terrestrial spectrum, *Geophys. Res. Lett.*, 44, 1001-1007, <https://doi.org/10.1002/2016gl071975>, 2017.
- Hu, Y. W., Zang, Z. L., Ma, X. Y., Li, Y., Liang, Y. F., You, W., Pan, X. B., and Li, Z. J.: Four-dimensional variational assimilation for SO₂ emission and its application around the COVID-19 lockdown in the spring 2020 over China, *Atmos. Chem. Phys.*, 22, 13183-13200, <https://doi.org/10.5194/acp-22-13183-2022>, 2022.
- 555 Huffman, G. J., Stocker, E. F., Bolvin, D. T., Nelkin, E. J., and Tan, J.: GPM IMERG Final Precipitation L3 1 day 0.1 degree x 0.1 degree V06, Edited by Andrey Savtchenko, Greenbelt, MD [dataset], <https://doi.org/10.5067/GPM/IMERGDF/DAY/06>, 2019.
- Islam, T., Srivastava, P. K., Rico-Ramirez, M. A., Dai, Q., Gupta, M., and Singh, S. K.: Tracking a tropical cyclone through WRF-ARW simulation and sensitivity of model physics, *Nat. Hazard.*, 76, 1473-1495, <https://doi.org/10.1007/s11069-014-1494-8>, 2015.
- 560 Jia, H. L., Ma, X. Y., Quaas, J., Yin, Y., and Qiu, T.: Is positive correlation between cloud droplet effective radius and aerosol optical depth over land due to retrieval artifacts or real physical processes?, *Atmos. Chem. Phys.*, 19, 8879-8896, <https://doi.org/10.5194/acp-19-8879-2019>, 2019a.
- Jia, H. L., Ma, X. Y., and Liu, Y. G.: Exploring aerosol-cloud interaction using VOCALS-REx aircraft measurements, *Atmos. Chem. Phys.*, 19, 7955-7971, <https://doi.org/10.5194/acp-19-7955-2019>, 2019b.
- 565 Khain, A., Pokrovsky, A., Pinsky, M., Seifert, A., and Phillips, V.: Simulation of Effects of Atmospheric Aerosols on Deep Turbulent Convective Clouds Using a Spectral Microphysics Mixed-Phase Cumulus Cloud Model. Part I: Model Description and Possible Applications, *J. Atmos. Sci.*, 61, 2963-2982, <https://doi.org/10.1175/jas-3350.1>, 2004.
- Khain, A., Lynn, B., and Dudhia, J.: Aerosol effects on intensity of landfalling hurricanes as seen from simulations with the WRF model with spectral bin microphysics, *J. Atmos. Sci.*, 67, 365-384, <https://doi.org/10.1175/2009JAS3210.1>, 2010.
- 570 Khain, A. P., Beheng, K. D., Heymsfield, A., Korolev, A., Krichak, S. O., Levin, Z., Pinsky, M., Phillips, V., Prabhakaran, T., Teller, A., van den Heever, S. C., and Yano, J. I.: Representation of microphysical processes in cloud-resolving models: Spectral (bin) microphysics versus bulk parameterization, *Rev. Geophys.*, 53, 247-322, <https://doi.org/10.1002/2014rg000468>, 2015.
- 575 Lebo, Z. J., Morrison, H., and Seinfeld, J. H.: Are simulated aerosol-induced effects on deep convective clouds strongly dependent on saturation adjustment?, *Atmos. Chem. Phys.*, 12, 9941-9964, <https://doi.org/10.5194/acp-12-9941-2012>, 2012.
- Levy, R., Hsu, C., et al.: MODIS Atmosphere L2 Aerosol Product. NASA MODIS Adaptive Processing System, Goddard Space Flight Center, USA [dataset], https://doi.org/10.5067/MODIS/MOD04_L2.061, 2015.
- 580 Li, G. H., Wang, Y., and Zhang, R. Y.: Implementation of a two-moment bulk microphysics scheme to the WRF model to investigate aerosol-cloud interaction, *Journal of Geophysical Research-Atmospheres*, 113, <https://doi.org/10.1029/2007jd009361>, 2008.
- Li, X. S., Choi, Y., Czader, B., Roy, A., Kim, H., Lefer, B., and Pan, S.: The impact of observation nudging on simulated meteorology and ozone concentrations during DISCOVER-AQ 2013 Texas campaign, *Atmos. Chem. Phys.*, 16, 3127-3144, <https://doi.org/10.5194/acp-16-3127-2016>, 2016.
- 585 Liu, Y., Bourgeois, A., Warner, T., Swerdlin, S., and Hacker, J.: Implementation of observation-nudging based FDDA into WRF for supporting ATEC test operations, WRF/MM5 Users' Workshop June, 27-30.
- Maussion, F., Scherer, D., Finkelnburg, R., Richters, J., Yang, W., and Yao, T.: WRF simulation of a precipitation event over the Tibetan Plateau, China - an assessment using remote sensing and ground observations, *Hydrol. Earth Syst. Sci.*, 15, 1795-1817, <https://doi.org/10.5194/hess-15-1795-2011>, 2011.
- 590 Michibata, T., Suzuki, K., Sato, Y., and Takemura, T.: The source of discrepancies in aerosol-cloud-precipitation interactions between GCM and A-Train retrievals, *Atmos. Chem. Phys.*, 16, 15413-15424, <https://doi.org/10.5194/acp-16-15413-2016>, 2016.
- Mlawer, E. J., Taubman, S. J., Brown, P. D., Iacono, M. J., and Clough, S. A.: Radiative transfer for inhomogeneous atmospheres: RRTM, a validated correlated-k model for the longwave, *J. Geophys. Res.: Atmos.*, 102, 16663-16682,
- 595

- <https://doi.org/https://doi.org/10.1029/97JD00237>, 1997.
- Mulmenstadt, J. and Feingold, G.: The Radiative Forcing of Aerosol-Cloud Interactions in Liquid Clouds: Wrestling and Embracing Uncertainty, *Curr. Clim. Change Rep.*, 4, 23-40, <https://doi.org/10.1007/s40641-018-0089-y>, 2018.
- 600 Ngan, F. and Stein, A. F.: A Long-Term WRF Meteorological Archive for Dispersion Simulations: Application to Controlled Tracer Experiments, *Journal of Applied Meteorology and Climatology*, 56, 2203-2220, <https://doi.org/10.1175/jamc-d-16-0345.1>, 2017.
- Niu, X., Ma, X., and Jia, H.: Analysis of cloud-type distribution characteristics over major aerosol emission regions in the Northern Hemisphere by using CloudSat/CALIPSO satellite data, *Journal of the Meteorological Sciences*, 42, 467-480, <https://doi.org/10.12306/2021jms.0006>, 2022.
- 605 Pahlow, M., Parlange, M. B., and Porté-Agel, F.: On Monin–Obukhov similarity in the stable atmospheric boundary layer, *Boundary Layer Meteorol.*, 99, 225-248, <https://doi.org/10.1023/A:1018909000098>, 2001.
- Platnick, S., Ackerman, S., King, M., et al.: MODIS Atmosphere L2 Cloud Product (06_L2). NASA MODIS Adaptive Processing System, Goddard Space Flight Center, USA [dataset], https://doi.org/10.5067/MODIS/MOD06_L2.061, 2015.
- 610 Quaas, J., Boucher, O., and Lohmann, U.: Constraining the total aerosol indirect effect in the LMDZ and ECHAM4 GCMs using MODIS satellite data, *Atmos. Chem. Phys.*, 6, 947-955, <https://doi.org/10.5194/acp-6-947-2006>, 2006.
- Quaas, J., Boucher, O., Jones, A., Weedon, G. P., Kieser, J., and Joos, H.: Exploiting the weekly cycle as observed over Europe to analyse aerosol indirect effects in two climate models, *Atmos. Chem. Phys.*, 9, 8493-8501, <https://doi.org/10.5194/acp-9-8493-2009>, 2009.
- 615 Quaas, J., Arola, A., Cairns, B., Christensen, M., Deneke, H., Ekman, A. M. L., Feingold, G., Fridlind, A., Gryspeerdt, E., Hasekamp, O., Li, Z. Q., Lipponen, A., Ma, P. L., Mulmenstadt, J., Nenes, A., Penner, J. E., Rosenfeld, D., Schrodner, R., Sinclair, K., Sourdeval, O., Stier, P., Tesche, M., van Diedenhoven, B., and Wendisch, M.: Constraining the Twomey effect from satellite observations: issues and perspectives, *Atmos. Chem. Phys.*, 20, 15079-15099, <https://doi.org/10.5194/acp-20-15079-2020>, 2020.
- 620 Rogers, R. E., Deng, A. J., Stauffer, D. R., Gaudet, B. J., Jia, Y. Q., Soong, S. T., and Tanrikulu, S.: Application of the Weather Research and Forecasting Model for Air Quality Modeling in the San Francisco Bay Area, *Journal of Applied Meteorology and Climatology*, 52, 1953-1973, <https://doi.org/10.1175/jamc-d-12-0280.1>, 2013.
- Roh, W., Satoh, M., Hashino, T., Okamoto, H., and Seiki, T.: Evaluations of the thermodynamic phases of clouds in a cloud-system-resolving model using CALIPSO and a satellite simulator over the Southern Ocean, *J. Atmos. Sci.*, 77, 3781-3801, <https://doi.org/10.1175/JAS-D-19-0273.1>, 2020.
- 625 Rosenfeld, D., Zhu, Y. N., Wang, M. H., Zheng, Y. T., Goren, T., and Yu, S. C.: Aerosol-driven droplet concentrations dominate coverage and water of oceanic low-level clouds, *Science*, 363, 599+, <https://doi.org/10.1126/science.aav0566>, 2019.
- Saponaro, G., Kolmonen, P., Sogacheva, L., Rodriguez, E., Virtanen, T., and de Leeuw, G.: Estimates of the aerosol indirect effect over the Baltic Sea region derived from 12 years of MODIS observations, *Atmos. Chem. Phys.*, 17, 3133-3143, <https://doi.org/10.5194/acp-17-3133-2017>, 2017.
- 630 Sha, T., Ma, X. Y., Jia, H. L., Tian, R., Chang, Y. H., Cao, F., and Zhang, Y. L.: Aerosol chemical component: Simulations with WRF-Chem and comparison with observations in Nanjing, *Atmos. Environ.*, 218, <https://doi.org/10.1016/j.atmosenv.2019.116982>, 2019.
- 635 Sha, T., Ma, X. Y., Wang, J., Tian, R., Zhao, J. Q., Cao, F., and Zhang, Y. L.: Improvement of inorganic aerosol component in PM_{2.5} by constraining aqueous-phase formation of sulfate in cloud with satellite retrievals: WRF-Chem simulations, *Sci. Total Environ.*, 804, <https://doi.org/10.1016/j.scitotenv.2021.150229>, 2022.
- Shin, H. H., Hong, S. Y., and Dudhia, J.: Impacts of the Lowest Model Level Height on the Performance of Planetary Boundary Layer Parameterizations, *Mon. Weather Rev.*, 140, 664-682, <https://doi.org/10.1175/mwr-d-11-00027.1>, 2012.
- 640 Sicard, P., Crippa, P., De Marco, A., Castruccio, S., Giani, P., Cuesta, J., Paoletti, E., Feng, Z. Z., and Anav, A.: High spatial resolution WRF-Chem model over Asia: Physics and chemistry evaluation, *Atmos. Environ.*, 244, <https://doi.org/10.1016/j.atmosenv.2020.118004>, 2021.
- Small, J. D., Chuang, P. Y., Feingold, G., and Jiang, H. L.: Can aerosol decrease cloud lifetime?, *Geophys. Res. Lett.*, 36, <https://doi.org/10.1029/2009gl038888>, 2009.
- 645 Tian, R., Ma, X. Y., and Zhao, J. Q.: A revised mineral dust emission scheme in GEOS-Chem: improvements in dust simulations over China, *Atmos. Chem. Phys.*, 21, 4319-4337, <https://doi.org/10.5194/acp-21-4319-2021>, 2021.

- Toll, V., Christensen, M., Quaas, J., and Bellouin, N.: Weak average liquid-cloud-water response to anthropogenic aerosols, *Nature*, 572, 51-55, <https://doi.org/10.1038/s41586-019-1423-9>, 2019.
- 650 Tuccella, P., Curci, G., Visconti, G., Bessagnet, B., Menut, L., and Park, R. J.: Modeling of gas and aerosol with WRF/Chem over Europe: Evaluation and sensitivity study, *Journal of Geophysical Research-Atmospheres*, 117, <https://doi.org/10.1029/2011jd016302>, 2012.
- Twomey, S.: The Influence of Pollution on the Shortwave Albedo of Clouds, *Journal of Atmospheric Sciences*, 34, 1149-1152, [https://doi.org/10.1175/1520-0469\(1977\)034<1149:Tiopot>2.0.Co;2](https://doi.org/10.1175/1520-0469(1977)034<1149:Tiopot>2.0.Co;2), 1977.
- Wang, F., Guo, J. P., Zhang, J. H., Huang, J. F., Min, M., Chen, T. M., Liu, H., Deng, M. J., and Li, X. W.: Multi-sensor quantification of aerosol-induced variability in warm clouds over eastern China, *Atmos. Environ.*, 113, 1-9, <https://doi.org/10.1016/j.atmosenv.2015.04.063>, 2015.
- 655 Wang, Y., Fan, J. W., Zhang, R. Y., Leung, L. R., and Franklin, C.: Improving bulk microphysics parameterizations in simulations of aerosol effects, *Journal of Geophysical Research-Atmospheres*, 118, 5361-5379, <https://doi.org/10.1002/jgrd.50432>, 2013.
- Wilcox, L. J., Highwood, E. J., and Dunstone, N. J.: The influence of anthropogenic aerosol on multi-decadal variations of historical global climate, *Environ. Res. Lett.*, 8, <https://doi.org/10.1088/1748-9326/8/2/024033>, 2013.
- 660 Wild, O., Zhu, X., and Prather, M. J.: Fast-J: Accurate simulation of in-and below-cloud photolysis in tropospheric chemical models, *J. Atmos. Chem.*, 37, 245-282, <https://doi.org/10.1023/A:1006415919030>, 2000.
- Xu, W. F., Liu, P., Cheng, L., Zhou, Y., Xia, Q., Gong, Y., and Liu, Y. N.: Multi-step wind speed prediction by combining a WRF simulation and an error correction strategy, *Renewable Energy*, 163, 772-782, <https://doi.org/10.1016/j.renene.2020.09.032>, 2021.
- 665 Zaveri, R. A., Easter, R. C., Fast, J. D., and Peters, L. K.: Model for Simulating Aerosol Interactions and Chemistry (MOSAIC), *Journal of Geophysical Research-Atmospheres*, 113, <https://doi.org/10.1029/2007jd008782>, 2008.
- Zhang, X., Wang, H., Che, H. Z., Tan, S. C., Yao, X. P., Peng, Y., and Shi, G. Y.: Radiative forcing of the aerosol-cloud interaction in seriously polluted East China and East China Sea, *Atmos. Res.*, 252, <https://doi.org/10.1016/j.atmosres.2020.105405>, 2021a.
- 670 Zhang, Y. W., Fan, J. W., Li, Z. Q., and Rosenfeld, D.: Impacts of cloud microphysics parameterizations on simulated aerosol-cloud interactions for deep convective clouds over Houston, *Atmos. Chem. Phys.*, 21, 2363-2381, <https://doi.org/10.5194/acp-21-2363-2021>, 2021b.
- Zhang, Z. B., Ackerman, A. S., Feingold, G., Platnick, S., Pincus, R., and Xue, H. W.: Effects of cloud horizontal inhomogeneity and drizzle on remote sensing of cloud droplet effective radius: Case studies based on large-eddy simulations, *Journal of Geophysical Research-Atmospheres*, 117, <https://doi.org/10.1029/2012jd017655>, 2012.
- 675 Zhao, C., Liu, X., Leung, L. R., Johnson, B., McFarlane, S. A., Gustafson, W. I., Fast, J. D., and Easter, R.: The spatial distribution of mineral dust and its shortwave radiative forcing over North Africa: modeling sensitivities to dust emissions and aerosol size treatments, *Atmos. Chem. Phys.*, 10, 8821-8838, <https://doi.org/10.5194/acp-10-8821-2010>, 2010.
- 680 Zhao, J. Q., Ma, X. Y., Wu, S. Q., and Sha, T.: Dust emission and transport in Northwest China: WRF-Chem simulation and comparisons with multi-sensor observations, *Atmos. Res.*, 241, <https://doi.org/10.1016/j.atmosres.2020.104978>, 2020.
- Zhong, X. h., Ruiz-Arias, J. A., and Kleissl, J.: Dissecting surface clear sky irradiance bias in numerical weather prediction: Application and corrections to the New Goddard Shortwave Scheme, *Sol. Energy*, 132, 103-113, <https://doi.org/10.1016/j.solener.2016.03.009>, 2016.
- 685 Zhou, C. and Penner, J. E.: Why do general circulation models overestimate the aerosol cloud lifetime effect? A case study comparing CAM5 and a CRM, *Atmos. Chem. Phys.*, 17, 21-29, <https://doi.org/10.5194/acp-17-21-2017>, 2017.